

# The Winters Enterprise



VOLUME SEVENTY-TWO

WINTERS, TEXAS 79567, THURSDAY, JANUARY 13, 1977

PRICE 15 CENTS

NUMBER 45

## Gas Cutoff Causes No Problems

Lone Star Gas Company's order to schools and industrial plants in the Winters area to cut off gas usage during the extremely cold weather Sunday and Monday caused no "crippling" effect to local users, according to a survey taken Tuesday.

The gas company ordered cut-off or curtailment of gas by big users beginning early Sunday, throughout the gas company's statewide distribution system. Most schools in the system were closed Monday, along with industrial users.

However, Winters schools already had planned to be closed Monday of this week for a teacher's work day, so restrictions caused no problem. Teachers congregated in one area to do their work.

In the Winters industrial community, no ill effects were felt by the gas curtailment. At Alderman-Cave Milling & Grain Co., water pipes had been

frozen before the order came down, and crews which would have been making pellets—which process uses a considerable amount of heat—were sent home. Spokesmen for the company said there were no serious results from the gas cut-off. Frozen water lines had thawed during the day Monday, by the time the cut-off order was rescinded. The company is prepared for another such situation, however, spokesmen said, with an alternate fuel system.

At Dry Manufacturing Division, Wallace Murray Corp., paint sections were closed down for part of Monday only, and employees were reassigned to other tasks, although plant heating was lowered during the time.

John's International shut down the paint department, but used the down time to perform other manufacturing

See GAS Page 8



**NEW YEAR, NEW TIMER**—Maintenance personnel of the Winters Public Schools have completed installation of a new scoreboard-clock in the school gymnasium. The new clock has a digital read-out instead of the old style clock. Cost of the new scoreboard-clock was

\$816, with The Winters State Bank splitting the expense with the school. Maintenance personnel installing the clock were Cecil Sudduth, Manuel Esquivel and Carson Easterly.

## Valley Creek Watershed Directors Election 15th

Landowners within the Valley Creek Watershed will elect four directors to the board in the annual

### Lions Club Chili

### Supper January 28

The annual Winters Lions Club Chili Supper has been scheduled for Friday, January 28, in the school cafeteria.

A basketball game will be played in the evening, and those attending the chili supper will have time to eat before the game begins.

Tickets may be obtained from any member of the Winters Lions Club or at the door.

election called for Saturday, January 15.

Voting boxes will be located at Wingate and at Norton. Polls will open at 8 a.m. and close at 7 p.m.

Directors will be elected to specific "places," each district within the watershed being represented. In this year's election, director will be elected to Places 1 through 4.

For Place No. 1, candidates are H. O. Poik, incumbent director, and C. L. Rogers.

For Place No. 2, candidates are Duncan Hensley, incumbent, and J. H. King.

For Place No. 3, candidate is Mardell Shedd, incumbent.

For Place No. 4, John W. Bird, incumbent.

### Norton Lions' Chili Supper Saturday Night

The annual Norton Lions Club chili supper will be held in the Norton Community Center Saturday, Jan. 15, beginning at 5:30 p.m.

Tickets will be \$1.50 for adults, and \$1.00 for children under 12. Cake and pie also will be available.



**SPECIAL AWARDS**—These young people received special recognition after showing their livestock in the annual Winters Junior Livestock Show Monday. They are, left to right, Jerry Don Vinson, Herdsman award; Kathy Bredemeyer, Lamb Showman-

ship; Bill Bredemeyer, Champion lamb trophy; Doug Bryan, Champion swine trophy; Teresa Helm, Overall Showmanship Award and Champion steer trophy; Kelly Blackerby, Steer Showmanship. (Photo by Keith Burns).

## Big Turnout For Stock Show

Teresa Helm, a sophomore in Winters High School and daughter of Mr. and Mrs. Calvin Helm of Winters, took a lions share of the trophies and ribbons at the annual Winters Junior Livestock Show Monday. Miss Helm won eight major awards in the show.

Although the weather was cold—as is usual with a Winters livestock show—a good crowd of spectators showed up for the event, which is known as one of the biggest such livestock shows in this part of the state, limited to a school district.

In amassing a handful of trophies and ribbons, Teresa Helm showed the grand champion market steer, a 1,070 pound Shorthorn; champion fine wool lamb, fine wool cross and Southdown lamb. And she also was named "Overall Showman" for the show.

Kelly Blackerby, son of Mr. and Mrs. A. N. Blackerby, showed the reserve grand champion steer of the show, with a 3/4 Simmental and 1/4 Hereford cross.

In the sheep show, Bill Bredemeyer, son of Mr. and Mrs. Eddie Bredemeyer, showed a top Hampshire and

won the grand champion market lamb honors. His sister, Kathy Bredemeyer, 16, also earned the Lamb Showmanship trophy, in addition to other winnings for the day.

Doug Bryan, 16, a Winters sophomore, showed the grand champion market hog with a heavy weight Duroc. He is the son of Mr. and Mrs. Joe Bryan, and also had the champion crossbred hog.

James Blackwell showed the reserve grand champion market hog. He is the son of Mr. and Mrs. Stanley Blackwell. His reserve grand champion was a heavy Chester White, and was also champion Chester White. Blackwell also showed the reserve Chester White, and showed the Spotted Poland China champion, and the champion and reserved champion Hampshire. His sister, Rene, showed second to him several times.

Fran Hoppe showed the champion Yorkshire hog. She is the daughter of Mr. and Mrs. Calvin Hoppe.

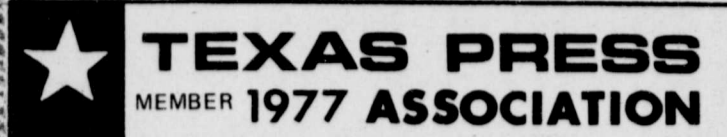
In cattle showing, Cathy Colburn

See LIVESTOCK Page 8



**SCHOOL PAVING**—Workmen of Bill Walters Paving Contractors of Coleman distribute

"hot mix" on the parking area at the Winters schools' new business office.



# The Winters Enterprise

RICHARD C. THOMAS, Publisher

Entered At Post Office, Winters, Texas 79567,  
As Second-Class Matter.

### SUBSCRIPTION RATES

One Year, In Runnels and Adjoining Counties ..... \$5.00  
In Other Texas Counties (Tax Inc.) ..... \$6.25  
Out of State (Tax Inc.) ..... \$7.00

Any erroneous reflection upon the character, standing or reputation of any person, firm or corporation which may appear in the columns of this newspaper, will be gladly corrected upon due notice of same being given to the editor personally at this office.

## Mother of Local Woman Died At Odessa

Graveside services were held at 4 p.m. last Wednesday in Fairview Cemetery in Winters for Mrs. S. P. (Bessie Hughes) Gray, 92, mother of Margaret Gideon of Winters.

Mrs. Gray died at Odessa Medical Center after a short illness. Services were held at noon Wednesday at Odessa.

Born Sept. 10, 1884, in Arkansas, she married S. P. Gray in 1902 at Blanket. He died in October 1966. She moved to Odessa from Winters in 1971. Mrs. Gray was a member of Eastside Baptist Church.

Survivors include four sons, Brodie F. of San Angelo, Ervin Y. of Los Bonas, Calif., and A. B. and Marvin, both of Winters; three daughters, Margaret

## Sub Deb Club Meeting Monday

The Sub Deb Club held the regular meeting in the home of Mr. and Mrs. Alpheus Hill of Wingate Monday, with Belinda Hill serving as hostess.

A new member, Becky McAnally, was welcomed. A program was presented by Cindy Hatler.

Present were Debbie Carey, Rhonda Davis, Debbie Austin, Belinda Hill, Cherie Krause, Susan Lisso, Melinda Hill, Becky McAnally, Patti Walker and the sponsor, Cindy Hatler.

Gideon of Winters, Thelma Putman of Lubbock and Mrs. Vernon McCartney of Odessa; 23 grandchildren; 41 great-grandchildren; and four great-great-grandchildren.

She was preceded in death by a son and a daughter.



TO BE WED—Wedding vows will be exchanged by Cindy Hoelsher and Mr. Kent McMillan, February 5, at St. Joseph Catholic Church in Rowena.

Parents of the couple are Mr. and Mrs. Ray Gene Hoelsher of Rowena and Mr. and Mrs. John W. McMillan of Abilene.

## Sew and Sew Club Meeting

The Wingate Sew and Sew Club met recently in the Wingate Baptist Church Annex. A quilt was made for the hostess, Mrs. Bobby Airhart.

Others present were Opal Belew, Leila Harter, Mabel Hancock, Lorene Kinard, Madelin King, Flossie Kirkland, Jo Lindsey, Eura Lloyd, Martha O'Dell, Mildred Patton, Ethel Polk, Lessie Robinson, Edna Rogers, Grace Smith, Minnie Williams and Johnny Woodfin.

The next meeting will be Jan. 18 with Nellie Adcock as hostess.

### CARD OF THANKS

Even though we have been gone from home for two years, we are thankful for our thoughtful and wonderful friends in Winters. For your cards, prayers, and flowers while I was in the hospital in Houston, we are deeply grateful. A special thanks to those who donated blood. May God bless you and yours is our prayer.  
-Charlene and Bill Craven.  
45-1tc.

## Californian Looking For "Old Grads"

A member of the 1918 Winters High School graduating class, now living in California, is seeking information on some of her classmates.

She said there were 18 in the class, nine boys and nine girls. She has not heard from any of her classmates for many years. Some of the members of the class, she recalls, were Loye Kornegay, Mattie Cook, Mayme Smith, Trixie Mullen, Gaines Hall, Grady Beard, and Melvin Roberts.

There were about 400 in the Winters Schools at that time, she said.

Those who would like to contact her may write to: Mildred Harrell Smith, Box 144, Alpine, Calif., 92001.

### ASU HONOR ROLL

Donald Solomon, son of Mr. and Mrs. Wayne Solomon of Christoval, was listed on the honor roll at Angelo State University with a grade point average of 3.81. He is a freshman. Mr. and Mrs. Solomon are former residents of Winters.

## Marshall Simons Died Thursday At Irving

Marshall (Dugan) Simons, 77, a former resident of the Winters and Wingate-areas, died Thursday morning of last week in Irving.

Funeral services were held at 10:30 a.m. Saturday in Spill Memorial Chapel with the Rev. Virgil James, pastor of the Wilmeth Baptist Church, officiating. Burial was in Fairview Cemetery.

Mr. Simons was born Feb. 10, 1899, in Hill County, near Itasca. As a child he moved with his parents to Runnels County, and he lived for a number of years in the Wingate-Wilmeth area. He was a cotton ginmer, and worked for the Planter Gin Co., for many years.

He married Eunice Puckett, Dec. 25, 1921, at Wilmeth. Mrs. Simons died in 1964.

Mr. Simons was a member of the Baptist Church.

Survivors are two sons, Marshall (Speedy) Simons of Irving, and Carroll Simons of

Houston; a daughter-in-law, Mrs. Bill Simons of Oklahoma City; a brother, Roy E. Simons of California; a sister, Mrs. Dexter Randell of Santa Fe, N.M.; his mother, Mrs. W. E. Simons of Santa Fe; eight grandchildren and one great-grandchild.

Pallbearers were King Barker, Homer Tubbs, J. T. Sprinkle Jr., Bill McCown, Raymond Dixon, Virgil Low, Everett Low, E. F. Albro and Terrell Woodrow.

## C. T. Parker's Weekly News Column

### Garden Check List for January

1. Be prepared to protect tender plants against a sudden severe cold snap. Provide adequate moisture if severe freeze is predicted. Cover tender plants with cardboard boxes, newspaper or plastic sheets. If plastic sheet is used remove before bright sun hits it.

2. Continue to select and plant ornamental trees and shrubs to fill landscape needs as determined in your June survey of the home landscape. Plan before you plant.

3. Apply light application of fertilizer to established pansy beds using one pound of 10-10-10 per 100 square feet of bed area and repeat every four to six weeks.

4. Keep lawn free of fallen leaves to prevent smothering the grass.

5. Select and order gladiolus corms for February and March planting.

6. Treat Hydrangeas with aluminum sulphate to obtain blue flowers. Apply lime or superphosphate to keep them pink.

7. Clean up all fallen Camellia blossoms to reduce danger of Camellia Petal Blight.

8. Prepare soil and beds for planting spring and

summer annuals and perennials.

9. Select and plant roses. For best results, use only Number 1 grade bushes. Beware of bargains.

10. Prune established roses. Cut hybrid teas back to 12 or 14 inches above the ground and remove all weak and spindly growth.

11. Plan your vegetable and flower garden now before the rush of spring planting. One cold winter's evening spent in planning can pay off in improved plant selection.

12. Plant a tree for Arbor Day.

13. Sow seeds indoors for spring gardens. Petunias, begonias and all the other slow growers should be sown in early January. Faster growing types such as tomatoes, marigolds and zinnias should be planted later in the month.

14. Transplant native or established trees or shrubs now while they're totally dormant.

15. Be sure to prune back bare-root plants at least 1/3 to 1/2 of their top growth to insure a successful planting.

16. Prune deciduous trees now while you can see damaged or rubbing limbs, misshaped parts, etc. Don't top!

17. Prune summer flowering shrubs now, also evergreens. Wait to prune spring

flowering shrubs until after they blossom.

18. Prune fruit trees. Apples should be thinned of all weak, non-productive growth. Peaches and plums should be pruned to an open center to allow sun to reach ripening fruit.

19. If there are any bagworm pouches or bags hanging on the junipers and other shrubs, try to remove them and destroy by burning. The insect eggs overwinter in the bag and starts the cycle again by emerging in spring and laying eggs on the plant foliage.

20. Don't neglect to water evergreen plants in the landscape. Those plants located beneath the roof overhang are often overlooked during periods of inadequate rainfall.

21. Consider the use of a dormant oil spray on landscape plants for controlling scale. Be sure to follow instructions on container for recommended strength and also temperature restrictions.

22. If you overseeded the lawn to annual rye grass be sure to keep it mowed. Also use a nitrogenous fertilizer to keep it green and prevent nitrogen starvation of your permanent grass. About 1/2 pound of actual Nitrogen every six to eight weeks should be sufficient. (2 1/2 pounds of 21-0-0).

**Announcing**  
the moving of the offices of  
**James A. Griswold, M. D.**  
from 102 S. Seventh St., Ballinger  
to  
**Swan Medical Bldg.,**  
Old Winters Highway,  
next to Ballinger Memorial Hospital  
Phone 365-2545

Choose your car financing as carefully as you choose your car and Finance the **BANK** Way!

- ✓ Check These Advantages
- ✓ You establish bank credit!
- ✓ You deal with local people!
- ✓ Arrange your loan in advance, shop as a cash buyer!
- ✓ You have access to complete bank service!

You **SAVE** when you finance the **BANK** way!

**THE WINTERS STATE BANK**

**WINTERS MEAT PROCESSING CO.**  
**OPENING SOON**  
111 South Church  
Custom Meat Processing

**YOUR PHARMACIST DEPENDABLE**

Exactly As Your Doctor Ordered!

We not only carefully compound the ingredients in your prescription, we make double sure every ingredient is of the freshest quality. Nothing is overlooked when it comes to your health!

**Main Drug Co.**

**INSURE What You Have Fire-Life-Property**  
**JNO. W. NOR MAN**  
The Insurance MAN

**NOTICE Building Sold**

**MUST LEAVE ..MUST VACATE**

Bissett Tire & Appliance regrets very much that they have to make this announcement.

There is no place here that is adaptable to this type of business, and there is no alternative.

We wish to express our sincere thanks to our customers for their patronage for seven years we have operated this store. You have been good to us and we dislike having to give up a good business.

We are combining this store with our store in Ballinger, and if at any time we can be of service to you, we will appreciate your business.

We plan to expand and improve our Farm Service work. Please call us at 365-2322 for all of your on-the-farm tire needs. Our service and our tires will be competitively priced.

**BISSETT'S TIRE & APPLIANCE**



# Sonny's

HOME OWNED AND OPERATED

EXTRA QUALITY MEATS, FARM FRESH PRODUCE, EVERYDAY LOW PRICES, PLUS ADVERTISED SPECIALS AND DISCOUNT STAMPS WITH FRIENDLY SERVICE. WE RESERVE THE RIGHT TO LIMIT QUANTITIES.

EFFECTIVE  
THURSDAY, FRIDAY,  
and SATURDAY  
JAN. 13, 14, & 15

KOUNTRY FRESH HALFMOON LONGHORN	<b>CHEDDAR CHEESE</b>	10-oz. PKG.	<b>89¢</b>
KOUNTRY FRESH	<b>CINNAMON ROLLS</b>	9.5-oz. CAN	<b>39¢</b>

DOMINO  
**SUGAR**  
5-LB. BAG **85¢**

KOLD KOUNTRY  
**Orange Juice**  
3 12-oz. CANS **\$1**

KEITH'S  
**French Fries**  
2-LB. BAG **39¢**

JENOS  
**PIZZAS**  
13-oz. PKG. **79¢**

MORTON'S  
**Potato Chips** 16-oz. BAG **\$1 19**  
NABISCO  
**Snack Crackers** BOX **59¢**  
KRAFT MINIATURE  
**Marshmallows** 6 1/2-oz. PKG. **25¢**

BIG "K"  
**FLOUR** 25-LB. BAG **\$2 89**  
REYNOLDS  
**FOIL** HEAVY DUTY 18" x 25' **65¢**  
GLAD HEAVYWEIGHT  
**TRASH BAGS** 8-CT. PKG. **99¢**

KOUNTRY FRESH  
**Waffle Syrup** QT. BOTTLE **69¢**  
DEL MONTE  
**Mandarin Oranges** 11-oz. CAN **3 \$1** FOR  
KIMBELL PIE SLICED  
**APPLES** 20-oz. CAN **49¢**

KIMBELL  
**SHORTENING**  
PURE VEGETABLE 3-LB. CAN **\$1 29**

NABISCO  
**CRACKERS**  
LB. BOX **59¢**

GANDY'S  
**ICE CREAM**  
1/2-GAL. CTN. **99¢**

DEEP SOUTH  
**Peanut Butter**  
28-oz. JAR SMOOTH OR CRUNCHY **99¢**

RANCH STYLE  
**BEANS** 15-oz. CAN **4 \$1** FOR  
KIMBELL W/SNAPS  
**Blackeye Peas** 15-oz. CAN **4 \$1** FOR  
DUNCAN HINES  
**CAKE MIXES** 10-oz. PKG. **59¢**  
EATWELL  
**BONITA TUNA** 6 1/2-oz. CAN **43¢**

CARNATION  
**COCOA MIX** 12-oz. PKG. **89¢**  
BAKER'S ANGEL FLAKE  
**COCONUT** 14-oz. PKG. **89¢**  
KOUNTRY FRESH  
**Light Corn Syrup** 32-oz. BOTTLE **69¢**  
HERSHEY'S FLAVORED  
**Chocolate Chips** 12-oz. PKG. **69¢**

WATERMAID  
**RICE** 2-LB. BAG **59¢**  
NABISCO  
**OREO COOKIES** 15-oz. PKG. **79¢**  
NINE LIVES SQUARE MEALS  
**CAT FOOD** 9-oz. PKG. **49¢**  
OLD PAL  
**DOG FOOD** TALL CAN **9 \$1 00** FOR

WINN-DIXIE WHOLE HOG  
**SAUSAGE**  
2-LB. BAG **\$1 69**

HEAVY BEEF  
**Round Steak**  
LB. **\$1 19**

WINN-DIXIE MARKET SLICED  
**BOLOGNA**  
LB. **79¢**

HEAVY BEEF  
**RUMP ROAST**  
LB. **89¢**

HEAVY BEEF  
**SIRLOIN TIP STEAK** LB. **\$1 59**  
BONELESS PACKER TRIM  
**BEEF BRISKET** LB. **98¢**

**BEEF CUTLETS** LB. **\$1 59**  
BONELESS  
**STEW MEAT** LB. **98¢**

**BEEF LIVER** LB. **49¢**  
SLICED  
**SLAB BACON** LB. **98¢**

RUSSET  
**POTATOES**  
10-LB. BAG **69¢**

C ALIFORNIA  
**AVOCADOS** EA. **19¢**  
EAST TEXAS  
**YAMS** LB. **29¢**

RED DELICIOUS  
**APPLES** 3 LBS. **\$1 00**  
TEXAS RUBY RED  
**Grapefruit** 7 **\$1** FOR

CALIFORNIA NAVAL  
**ORANGES**  
LB. **19¢**

# Bargain Hunter's Paradise THE WANT ADS

### CLASSIFIED AD CHARGES

**CASH**  
Minimum.....\$2.00 (1 line, 15 words); 7 cents per word for over 15 words).

**CHARGED**  
Minimum.....\$2.50 (First insertion; \$2.00 minimum thereafter).

**LONG TERM**  
Minimum.....12 weeks or longer; \$2.00 each week; (15 words); 7 cents per word over 15 words).

**CLASSIFIED AD DEADLINE**  
2 p.m. Tuesday.

### FLOWERS

**FLOWERS FOR ALL OCCASIONS:** Orders wired anywhere, any time. Bonded FTD florist. Mayme Little, Winters Flower Shop, Dial 754-4568.

**BLOSSOM SHOP: BONDED** FTD, Teleflora, and Florafax florists. Mrs. Floyd Grant, Sr. Flowers for all occasions. Flowers wired anywhere. Phone 754-5311. 30-tfc.

### REAL ESTATE

#### LAND

30 acres—South of Winters with 3 bedroom house, pecan trees, minerals. ....

48A—With house, barn. All in cultivation. Minerals. ....

160 acres—northeast Winters, road frontage 2 sides. 95 cultivation. Good hunting 1/2 minerals. \$210 acre. ....

### FOR SALE

**FOR SALE—1971 FORD** Maverick, 6 cylinder, low mileage, new tires, 1008 W. State, after 5:00 p.m. 45-2tp.

**FOR SALE—NK 300, \$1.50** bale at barn. Phone 754-5344. L. L. Chapmond. 45-4tp.

**FOR SALE—USED ELECTRIC** dryer and used gas range at Higginbotham's Hardware, Winters. 45-2tc.

**FOR SALE—MOBILE** home, 12x60, 2 bedroom, central heat. In good condition. Don Boyd, 754-4685. 44-2tc.

**FOR SALE—1968 CHEVY** Impala. Call after 5:00, 754-4100. 43-tfc.

**FOR SALE—MATCHING** Wards washer and gas dryer, large capacity. Call 723-2418 after 6 p.m. 39-tfc.

### REAL ESTATE

#### COMMERCIAL LOCATIONS

196 acres near Hords Creek Lake—20 acres cultivated, 176 acres wooded. Good grass net wire fences, tanks, strong water well with pump. 100% minerals including current gas production. Owner financing. ....

Owner will finance 355 acres, including 100 acres cultivated. Several tanks, net wire fences, good hunting. 1/2 minerals—8 miles East of Coleman. ....

### REAL ESTATE

**Runnels County Real Estate**

**Wendell Stasey, Broker** Cassie Minzenmayer, Agent Phone 767-3522 Winters, Texas

**FARM & RANCH** Hurry!—100 Acres in Hurry area; 9 miles E. of Winters, 70 acres in coastal bermuda, 2 stock tanks, fenced and minerals. ....

**490 Acres—8 miles South** of Winters, exceptionally nice 3 bedroom rock home with CITY WATER!! 287 acres in cultivation, 3 tanks, 1/2 minerals including current production. Owner will finance at 8%. ....

90 acres improved pasture land. Good fences, tanks, 3 miles from Ballinger—near lake and Country Club. Excellent for sub-dividing. ....

196 acres near Hords Creek Lake—20 acres cultivated, 176 acres wooded. Good grass net wire fences, tanks, strong water well with pump. 100% minerals including current gas production. Owner financing. ....

### REAL ESTATE

#### COMMERCIAL LOCATIONS

312 N. Main—Corner lot with frame building. Good parking. ....

Good business location—155 N. Main. 2520 sq. ft. Good condition. ....

Corner of S. Main & Wood St.—Large building and parking! ....

Call Cassie Minzenmayer at 767-3522. Nights of Day!!

### REAL ESTATE

**HOUSE FOR SALE**—Large lot on 512 Vancil. 1 bedroom, could be made into 2 bedrooms, new carport, good cellar. Pecan and fruit trees, vented furnaces, refrigerator and new cook stove. 754-4879. 45-tfc.

**FOR SALE—2 BEDROOM** house, refinished throughout. With 2 lots in Reeves addition. Near hospital. Leon Springer, 754-5009. 42-tfc.

**FOR RENT OR LEASE**—Lay your own water lines. Small Pitch Witch ditcher. Will also furnish quotes on pipe. All types backhoe service. K. W. Cook, 754-4719. 40-tfc.

### FOR RENT

**FOR RENT OR LEASE**—Lay your own water lines. Small Pitch Witch ditcher. Will also furnish quotes on pipe. All types backhoe service. K. W. Cook, 754-4719. 40-tfc.

### WORK WANTED

**CALL COLLECT BALLINGER,** 365-3769, we do rock, cement work, foundation work and plastering. 45-4tp.

### CLEAN CESSPOOLS

septic tanks, grease traps. Call Ballinger collect—365-3043. 45-4tp.

### RONNIE'S SPRAYING

Service. Home Pest Control a specialty. Termites, roaches, tree spraying, trimming and removal. Phone 754-5230 or 754-4147 after 6 p.m. 43-tfc.

### HELP WANTED

**HELP WANTED—PART-** time church secretary. First United Methodist Church, Winters. Must be able to type, do bookkeeping and general office work. Call 754-5213 or 754-4172. 44-2tc.

### UNEMPLOYED?

Looking for an organization to grow into? Where you get some of the finest training in the nation? You'll find that no one offers better benefits than we do. Over \$374.00 a month starting salary with frequent pay raises. Medical and dental care plus food, housing and clothing. Opportunities in many locations throughout the world. Responsibility as soon as you complete training. The chance to serve your nation. Your local Air Force recruiter has all the details. Contact him today.

### AIR FORCE...A GREAT WAY OF LIFE

Sgt. Jerry Parks  
165 Pine, Abilene  
Call Collect - 672-8949  
44-3tc.

### BAHLMAN CLEANERS

Home of quality Dry-cleaning, Laundry and the do-it-yourself and save Steamex Carpet Cleaner. 138 S. Main

### PROFESSIONAL DIRECTORY

**Dr. Z. I. Hale**  
Optometrist  
Tues., Thurs., Fri.  
9-12, 1-4:30  
Winters, Texas

**JNO. W. NORMAN**  
ATTORNEY-AT-LAW  
Winters, Texas

**Dr. C. R. Bellis**  
CHIROPRACTOR  
407 N. Rogers, 754-5464  
Hours 9-5:30  
Wed. By Appointment

### HELP WANTED

**HELP WANTED—GROCERY** stock clerk. Apply at Piggly Wiggly. 40-tfc.

**HELP WANTED—WAITRESS** at the Fireside Restaurant. Apply in person. 36-tfc.

### Miscellaneous

**NOTICE—I WILL NOT BE** responsible for any debts other than my own. Tommy Hord. 45-2tp.

### TRENCHING FOR WATER

lines, etc. J-20 and C-9 ditch witch. Call for estimate. Randall Conner, 743-2158. 45-2tp.

### SPECIALIZE IN BACKHOE

work. ROY CALCOTE & SONS DIRT WORK. Sand and gravel hauling, dump trucks. Have yard dirt in stock for quick delivery. We have a new telephone number 767-3241 or if no answer 754-4995. 7-tfc.

### For Temporary Relief Of SORE THROAT

Due to a Cold, try **Durham's Anesthesia Mop** and see how pleasant and effective a mop can be. Generous bottle with applicators at Main Drug. 41-4tc.

### ABSTRACTS GENERAL TITLE SERVICE

on all lands and lots in RUNNELS COUNTY  
**J. W. Purifoy**  
ABSTRACTOR  
Bernie Purifoy, Mgr.  
701 Hutchings  
Tel. 365-3572  
Ballinger, Texas

### GARDEN PLOWING

2-Disc Breaking plow, Planter, Shredder.  
**ALLEN FOWLER**  
Call 754-4292

### Central West Broadcasting, Inc.

is making final plans for programming the new  
**FM Radio Station**  
in Ballinger.

We need your help! In order to please our listeners...we are asking you to fill out the coupon below and mail it to Box 351, Ballinger, Texas 76821.

I would like to see the new KCWB [FM] Radio Station feature the following music format:

[Check preference and circle age.]  
Soft Instrumental Easy Listening   
Popular Middle-of-Road & Vocals   
Modern Cross Country & Western   
Contemporary Top 40 Format

[Name] \_\_\_\_\_

[Address] \_\_\_\_\_

Age: under 25      25 to 50      Over 50

Thanks for your assistance.

KCWB is coming soon.

103.1 FM in Stereo Sound.....

### Dan's Shoppe of Upholstery

507 4th St. Ballinger, Tex.  
365-3448  
Thousands of Fabrics to choose from.  
Free Pick-up and Delivery  
2 Weeks' Service from date of booking  
Call Eddie Hart 754-5092  
in Winters for Appointment of Fabric Selections and Estimates.

### WESTERN MATTRESS SERVICE

Pick up and delivery. Save up to 50% renovation. Box Springs to match. Guaranteed customer satisfaction. Phone 754-4558.

### WANTED

**WANTED: SCRAP IRON,** cables, metals. Ballinger Salvage Company. 27-tfc.

### LUNCHROOM MENU

**Monday January 17**  
Hot dog with chili, French fries, catsup in cups, orange juice, fruit, brownies, milk.

**Tuesday January 18**  
Chicken fried steak, cream gravy (by choice), mashed potatoes, green beans, cake, jello salad, hot rolls with butter on top, milk or chocolate milk.

**Wednesday January 19**  
Enchiladas, pinto beans, Mexican slaw, corn muffins, doughnuts, milk or chocolate milk.

**Thursday January 20**  
Baked ham, whole kernel corn, pea salad, apple pie, hot rolls with butter on top, milk or chocolate milk.

**Friday January 21**  
Barbecue on toasted bun, pinto beans, creamy cole slaw, dill pickles, cinnamon rolls, milk or chocolate milk.

### LEGAL NOTICE

**NOTICE TO CREDITORS OF ESTATE**

Notice to Creditors of the Estate of Merle R. Proctor, Deceased.

Notice is hereby given that original letters of administration upon the estate of Merle R. Proctor, deceased, were granted to me, the undersigned, on the 23rd day of August, 1976, by the county court of Runnels County. All persons having claims against said estate are hereby required to present the same to me within the time prescribed by law. My residence and post office address are P.O. Box 789, Stamford, county of Jones, state of Texas.

**GERALD E. PROCTOR**  
Administrator of Estate of Merle R. Proctor, Deceased. 45-1tc.

### Legal Notice

Notice is hereby given that the City of Winters, a Municipal Corporation of Runnels County, Texas, will receive sealed written bids in the office of the City Secretary at the City Hall, 310 South Main Street, Winters, Texas, until 5:00 P.M. on the 7th day of February, 1977 for bids on:

Addresser-Printer and Hand operated embosser.

Specifications may be secured in the office of the City Secretary at the above mentioned address.

The City of Winters reserves the right to reject any or all bids and to award the bid considered the most advantageous to the City of Winters.

**BIDS MARKED TO BE OPENED** Monday, February 7, 1977 at 5:30 P.M. at City Hall, 310 S. Main Street, Winters, Texas 79567. 45-2tc.

### With the kids outgrowing everything every time you turn around, lengthening a coat's sleeves for that ever-growing child can result in a substantial saving.

Let out the sleeves at the cuff edges and press down. The backing is removed from the belt and two cuffs are cut to fit around the sleeves and sewed to the sleeve edges, right sides together. Turn

down and then sew a small piece of lining to the edge of each cuff.

Turn the lining under and tack to the edge of the lining on the inside of the sleeve. Top stitch on the same seam where the belt was previously stitched. Before starting, baste the sleeve lining close to the edge of the sleeves to keep it in place while working.

### Business Services

**RCA TV**  
Authorized Dealer  
**WE SERVICE ALL MAKES!**  
**SALES & SERVICE BARNES RADIO-TV**  
754-4223 135 N. Main

**Mansell Bros.**  
Ballinger-Winters  
"Your Authorized John Deere Dealer"  
Ballinger 365-3811  
Winters 754-4027  
Parts & Service  
Complete Shop Facilities  
904 N. Main, Winters

**SWATCHSUE ELECTRIC CO.**  
Electrical and Air Conditioning Contractor.  
FRIEDRICH Air Conditioners  
Refrigeration Sales and Service  
Homelite Chain Saws  
139 West Dale  
Ph. 754-5115 - Box 307

**MERLE NORMAN Cosmetic Studio BEAUTY CENTER**  
COMPLETE LINE OF COSMETICS.  
Call For Appointment  
754-4322

**MCGINNIS ELECTRIC**  
Complete Electrical Contractor  
Industrial — Residential  
Oil Field  
Sales and Service  
Ruth-Berry Pumps  
311 Jewell  
754-4152  
**RUTH BERRY**

**HAVE Dump Truck and Loader**  
Have Large and Small  
**BACK-HOE**  
For Ditch Digging, Will Haul Sand, Gravel, Caliche and Top Soil  
**Lonnie Fowler**  
Phone 754-4292

**BOOKKEEPING and INCOME TAX SERVICE**  
Beulah Schaffrina  
607 Wood - Phone 754-4652

**FOR YOUR PROTECTION**

**AGAINST THE LOSS OF...**  
your home from fire, flood, wind or accidents to others. Make sure you are not under-insured on today's market. Call us today for free appraisal.

**BEDFORD INSURANCE AGENCY**

### HOMES

**New Homes—3** bedrooms, 2 bath. Interior to suit your taste. Warm earth tone or cool greens. Central heat & air. Corner brick fireplace. Double garage. Fenced yard. Mid \$30's.

Will trade for country property or sell, large 3 bedroom, 2 bath home. Central heat & air. Game room. Many amenities!

Church building and lot \$2500.

Lots—near downtown \$600.

Older home convenient to town. Lots of room inside and out. Has income or guest house on property. Plus separate office or workshop. \$2500 down, owner will finance.

To be moved. Gracious living area. Big picture windows, central heat and air. Birch paneling in den. 1500 sq. ft. Brick exterior.

**New Listings—3** bedroom, 1 1/2 bath, large rooms, garage, apple trees. Nice neighborhood \$14,500.

**Reduced!** Nice carpeted 2 or 3 bedroom house, with stove, ref. & washer. Also fenced in back yard with trees. \$17,900—\$15,500.

Extra nice 4 bedroom, 1 1/2 bath, large den and living room, central heat and air, dish washer, fully carpeted. Mid \$20's.

2 bedroom frame, large kitchen, fenced yard \$7500.

Lovely paneled 3 bedroom, 2 bath home in quiet neighborhood. New central heat and air. \$20,000.

Attractive 3 bedroom home. Attached garage, refrigerated window units. Quite neighborhood. Wingate \$11,000.

**Reduced!** Large spacious rooms, big kitchen, dining room, big living room! 3 1/2 bedroom, 2 bath on quiet street. Also income from garage apartment \$29,000.

### BUSINESS OPPORTUNITIES

Excellent opportunity—14 unit motel w/good year round business. Beautiful living quarters. Good gross. Owner finance.

Good building plus sporting goods inventory. Can rent out part of building and keep shop in one-half.

Ready income! Can be hotel or rooming house. 14 rooms—4 baths. Completely updated with new wiring throughout. Separate workshop on grounds. Entire inventory included in price \$15,500.

### ALDERMAN Real Estate

Billie Alderman, Broker  
Jo Evans, Salesperson  
Phone 754-5218  
302 S. Main  
Winters, Texas

### AMBULANCE SERVICE

**DIAL 754-4511**  
Day or Night  
Including Sundays or Holidays!  
Air Ambulance  
WHEN DESIRED CAN BE ARRANGED ANY TIME ANY PLACE

### Miss Williams and Mr. Tatom Married Saturday

Sheila Rae Williams and Stanley William Tatom of Austin were married Saturday at the First Baptist Church. The Rev. James Vermillion, pastor of the Drasco Baptist Church officiated. The bride is the daughter of Mr. and Mrs. Melvin R. Williams and the bridegroom's parents are Mr. and Mrs. Carroll E. Tatom of Brady. The bride was given in marriage by her father. Susan Williams, sister of the bride, served as maid of honor. Bridesmaids were Rita Cooper of San Angelo, Carla Davis of Fort Worth, Mrs. Luther Smith of Ster-



MRS. STANLEY TATOM

### Bridal Luncheon Saturday Honors Sheila Williams

A bridal luncheon Saturday in the reception room of the Winters Housing Authority honored Sheila Williams, whose marriage to Stanley Tatom was held at the First Baptist Church at 7 o'clock Saturday evening. Party room appointments were of the bride's chosen colors of yellow and green. A salad buffet was served from a table decorated with a white cut work linen cloth and the centerpiece was of yellow candles and daisies. Each individual table carried out the color motif, with yellow brassy snifters with floating candles, napkins, place cards and coasters with daisies. Special guests were the bride's mother, Mrs. M. C. Williams, and the bridegroom's mother, Mrs. Carroll Tatom of Brady; the grandmothers of the bride, Mrs. D. C. Robertson, and Mrs. A. T. Williams. Hostesses were Mesdames G. F. Lloyd, Charlotte R. Davis, Pyburn Brown and Billy J. Colburn.

### BUDGET OUT OF HAND?



### Save money with FARMERS AUTO INSURANCE

Be assured of modern, broad form coverage and fast, fair, friendly service while you save!

### FARMERS INSURANCE GROUP

For information call **JIM HATLER** Insurance Agency 127 N. Main Phone 754-5032

Our policy is saving you money.

### CREWS NEWS

Life is as unpredictable as a grapefruit's squirt. A small crowd turned out Saturday night at the gym for the chili and stew supper. Some 88 was played. Due to the cold it soon folded up and everyone went home. Welcome our visitors back.

Our sympathy to the Keith Collum family due to the death of his granddad, Mr. Cordney Collum in Ballinger.

Mr. and Mrs. O. Z. Foreman of Abilene spent Tuesday afternoon late with the Coleman Foremans.

Mrs. S. J. Brevard and Mrs. Lemma Fuller of Coleman stopped by with Mrs. Alta Hale on Friday afternoon.

Mr. and Mrs. Jack Ziller of Liberty Hill spent the weekend with the Calvin Hoppe family. They all had dinner Sunday at the Winters Stock Show barbecue.

Mike and Von Hill were out with the Robert Hills Saturday night from Drasco.

Mr. and Mrs. Chester McBeth attended the Thad Traylor's 50th anniversary on Sunday afternoon.

Mrs. Marion Wood spent some time in Big Spring with her granddaughter, Darla Minzey, who was in the hospital. She is home now and doing fine.

The Methodist and Hope-well churches didn't have any services Sunday due to the weather.

Mrs. Hazel Mae Bragg attended the birthday party for her granddaughter, Joys 11th birthday Saturday night in the home of Joys parents, Mr. and Mrs. Harold Bragg in Glen Cove.

Mrs. Boyd Grissom, Mrs. John Sims, Melinda and Kriss were in Abilene and spent the day with the Von Byrd family.

The Doug Bryans had Mrs. Marsha Feldhousen, Lance and Clint of Frendecis as visitors.

Mr. and Mrs. B. M. Batts spent Saturday night with Mrs. Cora Petrie.

A group of friends surprised the Earl Coopers Thursday night bringing barbecue deer and all the trimmings. Afterwards they watched a film in Peru that their son Ray had sent. Mrs. Elwood Brown and Mrs. Frances Mueller were visitors during the week.

Mr. and Mrs. Burley Campbell visited with Miss Borgia Ray in Coleman Saturday. Allen Bishop dropped in and had a good chat with Burley. After the Campbells attended the Collum's funeral they saw Mrs. Effie Dietz in the Ballinger hospital, who was cheerful and in good spirit.

Mrs. Odie Matthews spent Tuesday with her mother, Mrs. George Coleman in Bronte. Mr. and Mrs. Alfred Collom and son of Friendswood came by to see the Matthews.

Randy Herrington is moving to the Crews Community.

Mrs. Chester McBeth is in Hendricks Hospital for test and surgery.

### Legion Auxiliary Meeting Recently

The Auxiliary of the American Legion met recently in the home of the president, Mrs. Ava Crawford.

Present were Mesdames Ida Bates, Eura Beard, Lorene Frazier, Angie Glen, Geneva Emmert, Cora Hord, Alma Hughes, Laura Pace and Ola Yates.

### O'CONNOR'S COLUMN

### Sweetpotatoes—A Bargain In Nutrition

Sweetpotatoes are in such good supply that the U.S. Department of Agriculture has added them to the list of plentiful foods for January.

Moist sweetpotatoes have a deep yellow to rosy, orange-colored flesh and are moist and sweet when cooked. Dry sweetpotatoes have a light yellow or pale orange flesh and a dry, mealy texture when cooked.

When you buy fresh sweetpotatoes, look for those that are well-shaped and firm with smooth, bright, uniformly colored skins. They should be free from signs of decay, worm holes, cuts or any other defects which penetrate the skin.

Store fresh sweetpotatoes in a cool dry place—not in the refrigerator.

Sweetpotatoes are a bargain in nutrition, says USDA, because they are high in vitamins and low in calories.

And when it comes to calories, a medium-sized yam has only about 150. It cannot be called a fattening food until prepared with butter or margarine, nuts, sugar or other high calorie foods.

How easy sweetpotatoes are to prepare! They are at their best when baked or boiled in the jackets. To bake, wash and dry the potatoes. Place on the center rack of your oven and bake at 425 degrees F. 35 to 60 minutes, depending on size, until tender.

To boil sweetpotatoes, scrub clean and drop them into two inches of boiling water. Cover and simmer—do not boil vigorously lest the potatoes break up. Medium-sized potatoes should be tender in about 25 minutes. Drain at once to keep them from becoming water logged. Peel and season with butter or margarine. Season with salt and other spices to taste. Serve as individual potatoes or mash and fluff. For a festive dish, stuff the mashed sweetpotatoes into a half of an orange or grapefruit shell. Place marshmallows on top and return to oven to heat just before serving. Remove from oven when marshmallows begin to melt.

### Alpha Pi Delta Members "Ritual Of Jewels," Ballinger

Fourteen members of the Winters Alpha Pi Delta Chapter of Beta Sigma Phi participated in the Ritual of Jewels conducted by the Omicron Psi Chapter of Ballinger. The meeting was held in the Community Room of the First National Bank, January 10.

Janet Kozelsky, president of the Ballinger chapter, presented a Beta Sigma Phi banner to Winters Chapter president Kay Mills.

Sue Morris conducted the candlelight ritual and badges were presented to the Winters members by Mickie Jackson and Janet Kozelsky.

Winters members also made plans to attend the ACU production of "The Fantasticks" in Abilene on February 3. Members are asked to contact Cindy Cathey to get their tickets.

Those attending Monday night's meeting were Billie Farr, Mona White, Priscilla Condra, Jane Allcorn, Rhunell Poe, Sue Spill, Mary Browning, Zelta Spill, Kay Mills, Linda Stubblefield, Linda Dry, Cindy Cathey, Vickey Harrison, Ann Eckols and sponsor Dollie Airhart.

The next meeting will be held January 17 in the home of Billie Farr.

### Bethany SS Class Meeting Recently

The Bethany Sunday School Class of the First Baptist Church met last week in the home of Mrs. J. B. Whitlow. Mrs. Bill Milborn was co-hostess.

Mrs. McBeth presided, and Mrs. Bedford gave the devotional. Roll call was answered with Bible verses.

Present were Mesdames F. C. Mills, Ralph McWilliams, Earl Murphy, Sam Russell, Chester McBeth, R. T. Duncan, Gene Virden, Joe Irvin, Oliver Wood, Ches Busher, Marvin Bedford and Jack Harrison.

The circle will again sponsor the layette project and take part in the Lutheran World Relief on Hunger.

Hostesses were Mesdames W. W. Ahrens and W. E. Bredemeyer. Twenty-eight women answered roll call.

### Final Tax Payment Due For Some, IRS Says

Many people who do not have enough taxes withheld are required to pay their final installment of 1976 estimated Federal income tax no later than Monday, January 17. Also due the same day are amended estimates from those whose 1976 income changed substantially during the last quarter.

Many taxpayers first met the requirements for filing a tax declaration during the last three months of 1976, according to the Internal Revenue Service. Taxpayers are generally required to file an estimate if they owe the IRS more than \$100 not covered by withholding. The estimates in this case are due January 17.

There is one exception to this rule, the IRS said, and that's when taxpayers file their returns and pay all taxes due by January 31. In that case the final 1976 installment is not required, the amended declaration is not required nor is an original January 17 declaration required.

IRS Publication 505, "Tax Withholding and Declaration of Estimated Tax," provides additional information and may be obtained free from local IRS offices.

CARD OF THANKS We would love to say thanks for all acts of kindness during our bereavement in the loss of our mother. For the prayers, visit, flowers and food. A special thanks to Spill Bros. and Ted Meyer. May God bless each of you. —The Family of Mrs. S. P. Gray. 45-1tp.

### Merrill Nursing Home News

As we looked out on the icy streets this week, read of the fuel shortage, remember what a chore it was to do laundry, and shop for groceries in winter weather, we are thankful in our hearts to have the comforts of this home.

Minnie Cotton had a birthday on Jan. 4th, and she was the honoree at "Fun Time" on Tuesday afternoon.

Lynn Hudson picked her guitar and sang for us. We ate ice cream cones and enjoyed Minnie's birthday.

Myrtle Green will be honored on her birthday on Tuesday afternoon Jan. 18th at three o'clock. Friends and relatives are invited to come and be with her at that time.

The Winters String Band will be here to play for us on Friday evening at seven o'clock.

We wish to thank the Hospital Auxiliary for helping with our crafts on Tuesday morning. We think we are making some very pretty things.

### Lutheran Ladies Aid Met Recently

The Ladies Aid Circle of St. John's Lutheran Church met in regular session Jan. 6 in the Fellowship Center, with Mrs. Walter Gerhart presiding.

Mrs. A. C. Minzenmayer, program chairman, led the opening song with Mrs. Ellis Ueckert at the piano.

The Book of Isaiah will be the study topic for the year.

Mrs. W. E. Bredemeyer led the offering meditation and led in prayer.

The circle will again sponsor the layette project and take part in the Lutheran World Relief on Hunger.

Hostesses were Mesdames W. W. Ahrens and W. E. Bredemeyer. Twenty-eight women answered roll call.

### Funeral Rites Last Week

Mrs. George (Rabie) Rosson, 80, of Winters and formerly of Winters died at 9:30 p.m. Monday of last week in Callahan General Hospital in Baird after a lengthy illness.

Services were at 10 a.m. Wednesday at Clyde, with burial in Northview Cemetery in Winters.

She was born June 28, 1896 in Rockdale and was married to George T. Rosson in October, 1915 in Clyde.

She and her husband owned and operated a jewelry store and optical business from 1916 until he died in 1941.

She operated both businesses until 1959, when she retired. She moved to Clyde in 1973. She was a member of First United Methodist Church of Winters, United

### Women's Organizational News

Survivors include a brother, Harry Snively Jr. of Abilene; a sister, Mrs. Ray (Majorie) Jones of Clyde; and several nieces and nephews.

### CARD OF THANKS

Many thanks to all our friends for the prayers, cards, memorials and food, during our bereavement. A special thanks to the Rev. James, and to Johnny Denison and Sharon McGinnis for the special music, and to Susan Connors, organist, and to Ted Meyer and Joe Eckols for their help and kindness, and all our friends who remembered us during this time. —The Family of Marshall (Dugan) Simons. 45-1tp.

### COW POKES

### By Ace Reid



"Whew! I wish they would cut them happy hours to about 15 minutes!"

### WESTERN AUTO WES AND JUNE HAYS

### WE ARE OPEN HERMAN'S MEN'S STORE

CLOSING OUT EVERYTHING - AT COST or LESS

BROKEN SIZES & STYLES BUT A LOT OF GOOD BUYS

LEVI'S BUTTON STYLE \$788 VAL. \$13<sup>00</sup> 27 to 33 Sizes

LEVI'S BIG BELL \$988 Val. \$16<sup>00</sup>

ALL COTTON COVERALLS \$895 36 to 46

FOOT BALL SHIRTS Val. to \$7<sup>95</sup> \$288

LEISURE SHIRTS Val. to \$13<sup>95</sup> \$488 Size S-L-XL

FRUIT OF THE LOOM BOXER SHORTS 3 For \$3<sup>44</sup> \$4<sup>99</sup> Val.

BRADFORD HATS Val. to \$35<sup>00</sup> Silver Belly & Black NOW \$19<sup>95</sup>

LEVI JACKETS DENIM \$14<sup>95</sup> Val. NOW \$9<sup>95</sup>

20 ONLY LEFT

LOOK AT OUR SHOES & BOOTS BROKEN SIZES ALL AT COST OR LESS

BAILEY STRAW HATS Val. to \$12<sup>00</sup> NOW \$3<sup>95</sup> & \$4<sup>95</sup>

HAVE SOME XXL SHIRTS LEFT COME IN AND LOOK

Advertisement for the Fort Worth Stock Show and Rodeo, featuring 'Red in Person' Steagall and 'Top Cowboys' for \$139,000. Includes ticket information and contact details for Robinson Chevrolet Co.

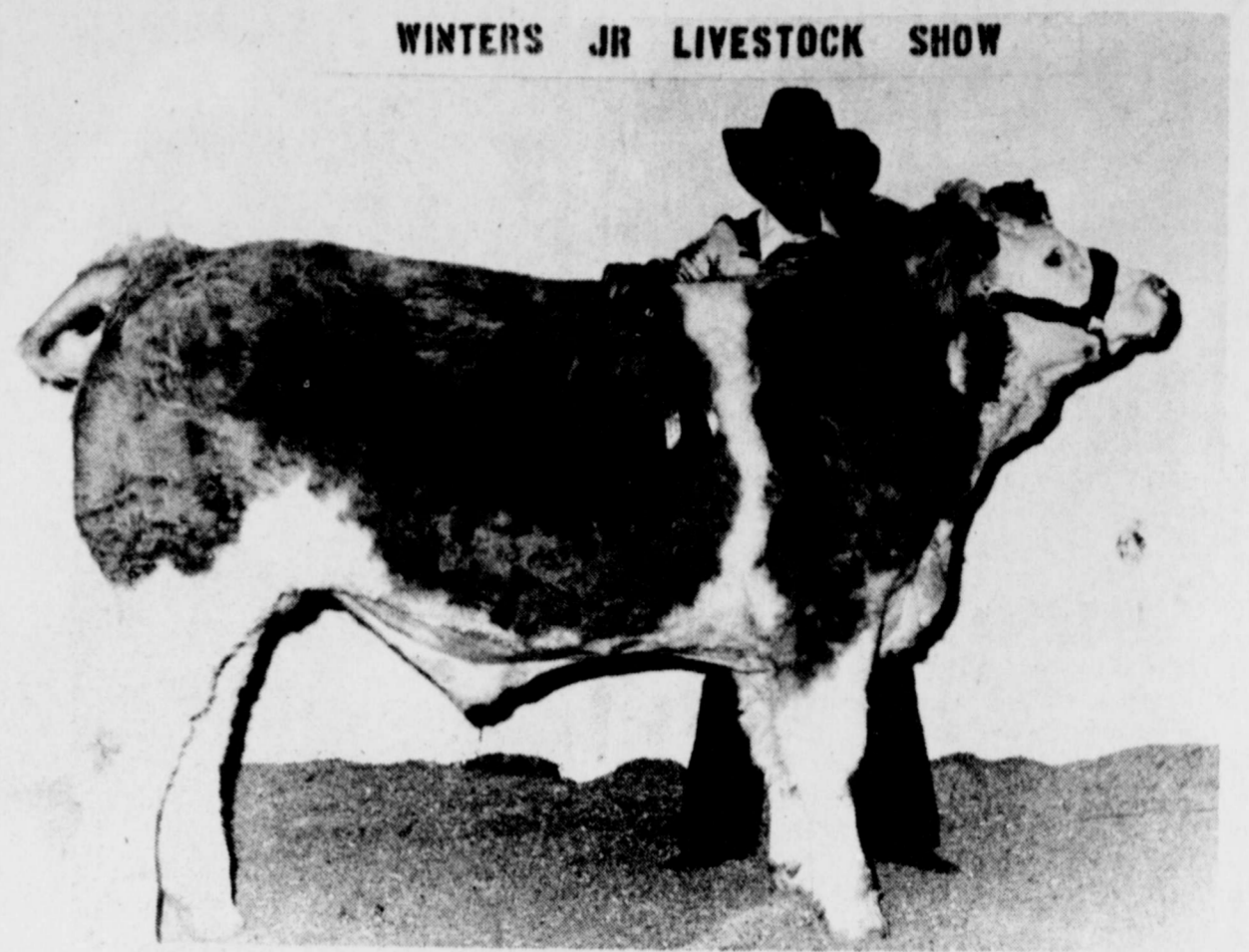
Advertisement for Robinson Chevrolet Co. featuring 'USED CARS & PICKUPS' with a list of vehicles from 1975 to 1959, including Vega, Olds, Ford, and GMC models.

Advertisement for H&R Block, featuring a portrait of Henry W. Block and the slogan 'Even if you use the short form, it could pay you to see us.' Includes contact information for 157 N. Main.

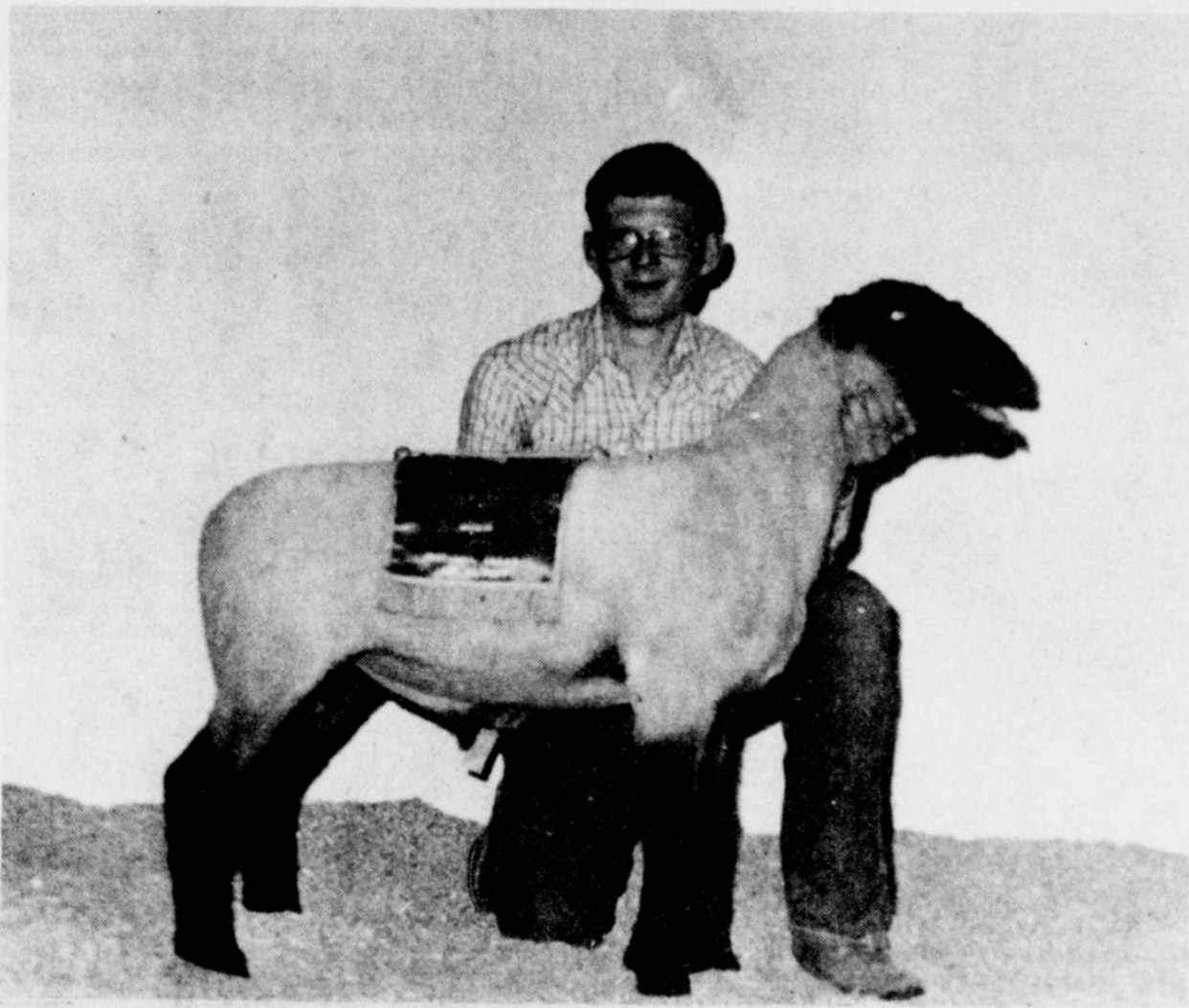
Large advertisement for Herman's Men's Store, listing various clothing items like Levi's, Bradford Hats, and Bailey Straw Hats, all at cost or less.



TERESA HELM  
Grand Champion Shorthorn Steer



KELLY BLACKERBY  
Reserve Champion Steer of Show



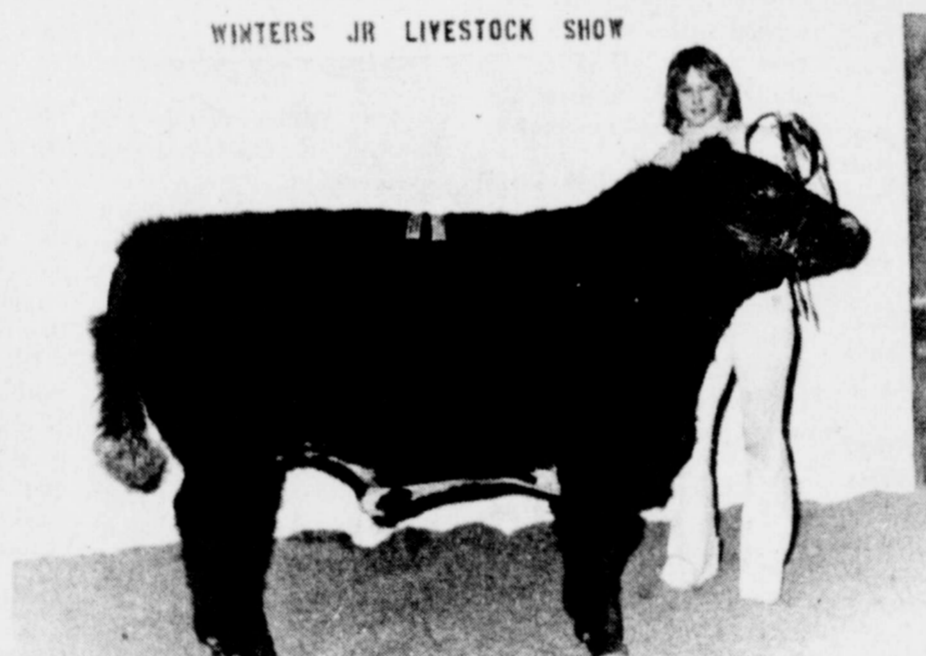
BILL BREDEMEYER  
Grand Champion of Show—Suffolk Lamb



TERESA HELM  
Champion Finewool



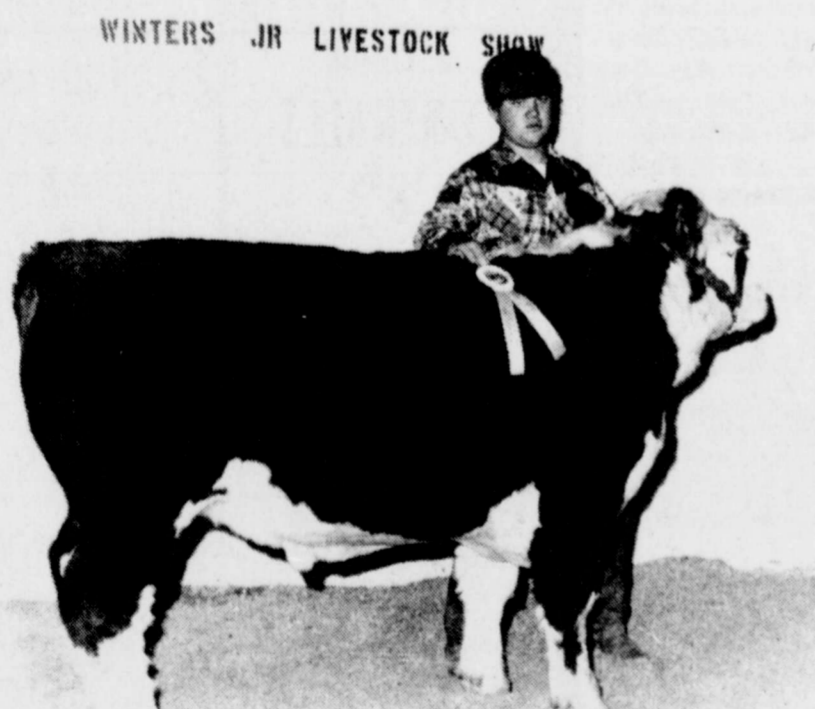
CATHY COLBURN  
Champion Hereford



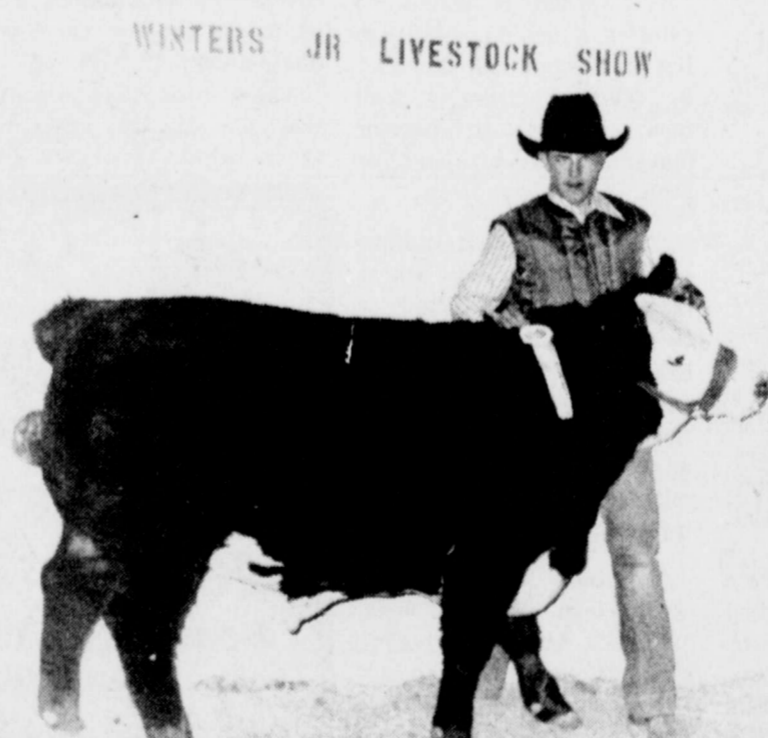
TERESA HELM  
Reserve Champion Shorthorn



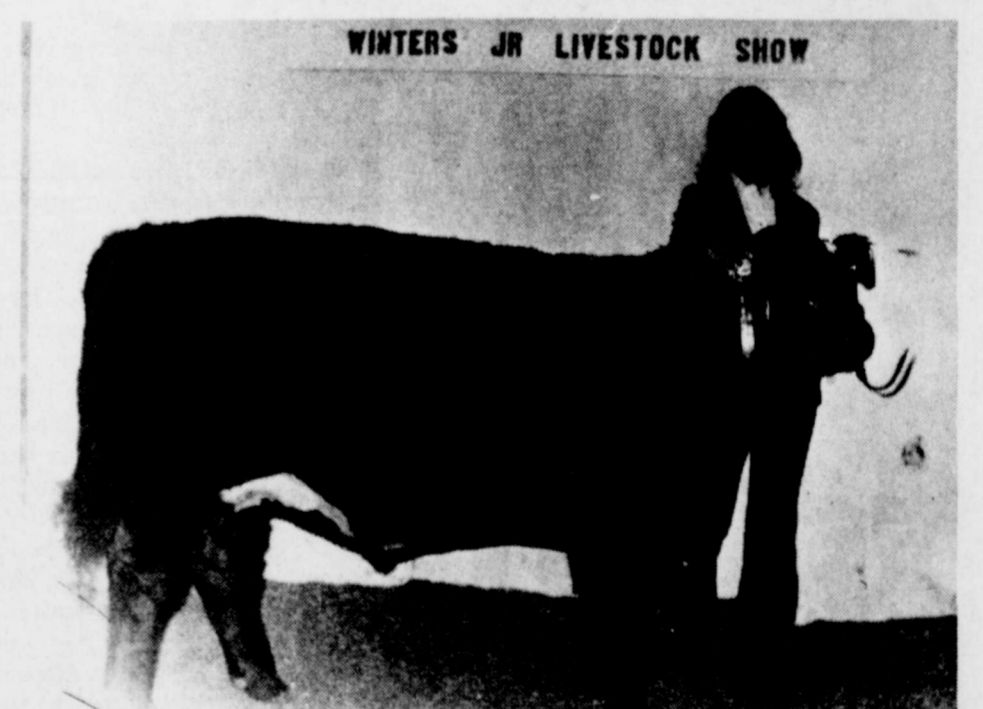
JAMES BLACKWELL  
Reserve Champion Hampshire



DOUG BRYAN  
Reserve Champion Hereford



JIM BOB WEBB  
Reserve Champion Angus



RHONDA CARTER  
Champion Angus

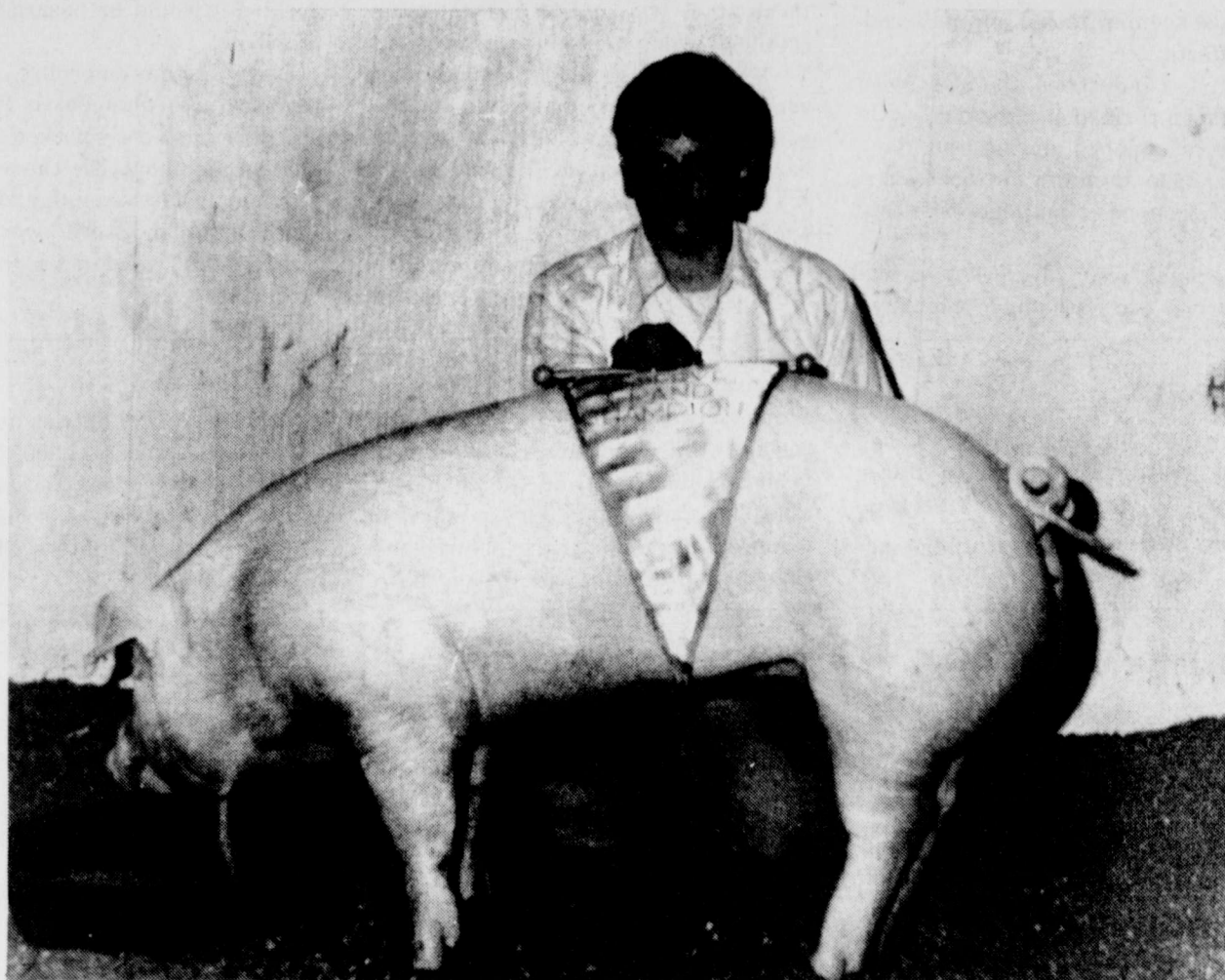
These Picture Pages Sponsored By

(All Photos by Keith Burns and Terry Gerhart)

**THE WINTERS STATE BANK**  
and  
**THE WINTERS ENTERPRISE**



DOUG BRYAN  
Grand Champion Market Pig—Duroc



JAMES BLACKWELL  
Reserve Champion Pig

1977

Winters

Junior

Livestock Show



DAWN MILLER  
Champion Doe



FRAN HOPPE  
Champion Yorkshire



BENNY BOATRIGHT  
Reserve Champion Duroc



FLENT & KENT McNEILL  
Reserve Champion Crossbred Barrow



TERRY GERHART  
Reserve Champion Med. wool—Hampshire

WINTERS JR LIVESTOCK SHOW



TERESA HELM  
Reserve Champion Exotic



BILL BREDEMEYER  
Reserve Champion Finewool

WINTERS JR LIVESTOCK SHOW



DOUG BRYAN  
Reserve Champion Charolais

**Gas--**  
and housekeeping tasks, and suffered no ill effects.

At Wintex Industries, the plant was closed down throughout Monday, with only offices opened during the day. However, the situation did not cause serious problems, and no loss in production.

In the retail area, supply trucks did not arrive on schedule Monday,

because of bad highway conditions to the east, it was understood. So some retailers were forced to wait until Tuesday to receive replacement supplies. This was not caused by the gas shortage, but was caused by hazardous weather conditions.

The extreme cold weather and high winds Sunday caused cancellation of the horse show scheduled Sunday afternoon. There was enough sleet and

ice on the show grounds sponsors decided it would be hazardous to hold the show.

Early Sunday morning, when the temperatures plunged to 10 degrees, and winds were clocked at 20-25, gusting to about 30, the chill factor dropped to near a minus 20 degrees. Very little moisture was received during the weekend's cold spell, however.

**Livestock--**

daughter of Mr. and Mrs. B. J. Colburn, showed the champion Hereford, and Doug Bryan showed reserve.

Rhonda Carter, daughter of Mr. and Mrs. Frank Carter, showed the

champion Angus steer, and Jim Bob Webb showed the reserve. Jim Bob is the son of Mr. and Mrs. Bob Webb.

Miss Colburn showed the champion Charolais, and Doug Bryan showed reserve. Miss Colburn also showed the champion Brahman, and Bryan show-

ed the reserve.

There were 199 entries in the show. Exhibitors split \$2,300 in prize money—\$1,640 from the sponsoring Winters Livestock Association, and \$1,660 from the Winters Chamber of Commerce.

**Cynthia Wolford Received Notice of Scholarship**

Dr. Harvey W. Saalberg, professor of journalism and head of the department at Angelo State University, has notified Miss Cynthia Wolford that she is a recipient of a \$100 semester scholarship from the Scripps-Howard Foundation of New York City.

This is the third such scholarship Miss Wolford has received for her achievement in journalism. She is a senior student at ASU, majoring in journalism. She is the daughter of Mrs. Mary Wolford of Winters, and a 1974 graduate of Winters High School.

**Mary Browning Received Degree**

Mary Shell Browning of Winters was one among 180 Angelo State University students who completed degree requirements at the conclusion of the fall 1976 semester.

Ms. Browning completed work on a bachelor of science degree.

Of the 180 graduates, 16 were awarded masters degrees, 46 bachelors of arts, 40 bachelors of business administration and 78 bachelors of science.

Diplomas will be mailed to students after they are received from the engraver. Students wishing to take part in formal commencement exercises may do so, upon request, in May.

**Multi-Purpose Center Moved To West Dale**

The Winters Multi-Purpose Center has moved from South Main St. to 142 W. Dale, in the building formerly used by Dr. Y. K. Lee.

The Center directs work in several areas, including a family planning clinic, health clinic, job placements, and the food stamp program.

Lillian Awalt is director of the Center. Maud Gore is an aide, and Rosa Linda Vera works with food stamp applicants and arranges transportation.

**SHOW RESULTS**

**Lamb Show**  
Lightweight Finewool: 1. Teresa Helm; 2. 3. 4. 5. Bill Bredemeyer.  
Heavyweight Finewool: 1. Karen Carter; 2. Brett Mikeska; 3. 4. Bill Bredemeyer; 5. Brett Mikeska.  
Champion Finewool: Teresa Helm, lightweight; reserve, Bill Bredemeyer, lightweight.  
Lightweight Crossbred: 1. Bill Bredemeyer; 2. Gary Schwartz; 3. Teresa Helm; 4. Gary Schwartz; 5. Terry Gerhart.  
Medium weight Crossbred: 1. Bill Bredemeyer; 2. Mikeska Bros.; 3. Terry Gerhart; 4. Darrell Kurtz;

5. Bill Bredemeyer.  
Heavyweight Crossbred: 1. Teresa Helm; 2. 3. Doug Bryan; 4. Teresa Helm; 5. Doug Bryan.  
Champion Crossbred: Teresa Helm, heavyweight; reserve, Doug Bryan, heavyweight.  
Lightweight med. wool: 1. Terry Gerhart; 2. Bill Bredemeyer; 3. Teresa Helm; 4. Bill Bredemeyer; 5. Mike Dry.  
Heavyweight med. wool: 1. Bill Bredemeyer; 2. Teresa Helm; 3. Benny Boatright; 4. Terry Gerhart; 5. Teresa Helm.  
Champion Medium Wool: Bill Bredemeyer, heavy; reserve, Ter-

ry Gerhart, lightweight.  
Southdown: 1. 3. 4. Teresa Helm; 2. 5. Bill Bredemeyer.  
Champions of the lamb show, heavyweight Medium Wool, Bill Bredemeyer; reserve, heavyweight Finewool, Teresa Helm. 3. lightweight Medium wool, Terry Gerhart; 4. Crossbred, Doug Bryan.  
**Swine Show**  
Lightweight Hampshire: 1. James Blackwell; 2. Rene Blackwell; 3. Don Kvapil; 4. Darrell Kurtz; 5. Hope and Marks.  
Heavyweight Hampshire: 1. 2. James Blackwell; 3. Hope and Marks; 4. Benny Boatright; 5. Lee Evans.  
Champion Hampshire and reserve: James Blackwell, heavyweight.  
Lightweight Durocs: 1. James Blackwell; 2. Doug Bryan; 3. 4. Hope and Marks; 5. Cody Hord.  
Heavyweight Durocs: 1. Doug Bryan; 2. Benny Boatright; 3. Cody Hord; 4. Fran Hoppe.  
Champion Duroc: Doug Bryan, heavyweight; reserve, Benny Boatright, heavyweight.  
Lightweight Chester White: 1. 3. James Blackwell; 2. Rene Blackwell; 4. Donna Carroll; 5. McNeil Bros.  
Heavyweight Chester White: 1. 2. 3. 4. James Blackwell; 5. Rene Blackwell.  
Champion Chester White and reserve: James Blackwell, both heavyweight.  
Lightweight Yorkshire: 1. Fran Hoppe; 2. McNeil Bros.; 3. Doug Rogers; 4. Darrell Kurtz.  
Champion, Fran Hoppe; reserve, McNeil Bros.  
Lightweight Poland China: 1. James Blackwell; 2. Benny Boatright; 3. Lee Evans.  
Champion: James Blackwell; reserve, Benny Boatright.  
Lightweight Cross: 1. 2. Darrell Kurtz; 3. Melinda Kvapil; 4. Cody Hord; 5. Susie Vincent.  
Medium wt. Cross: 1. Doug Bryan; 2. James Blackwell; 3. Doug Bryan; 4. James Blackwell; 5. McNeil Bros.  
Heavyweight Cross: 1. McNeil Bros.; 2. Benny Boatright; 3. Fran Hoppe; 4. Darrell Kurtz; 5. Rhonda Carter.  
Champion, Doug Bryan, medium; reserve, McNeil Bros., heavyweight.  
Grand Champion of Swine show: Doug Bryan, heavy Duroc. Reserve: James Blackwell, heavy Chester White. 3. James Blackwell, heavy Spotted Poland China; 4. Fran Hoppe, Yorkshire; 5. James Blackwell, heavy Chester.

**Rabbits & Poultry**  
Doe and Litter: 1. Dawn Miller. Does: 1. Keith Kraatz; 2. Kyle Kraatz; 3. Dawn Miller; 4. Dawn Miller.  
Pen of 3: 1. Kyle Kraatz; 2. Dawn Miller; 3. Francene Miller.  
Pen of 3 Broilers: 1. 2. Dawn Miller; 3. Francene Miller.  
**Steer Show**  
Light Hereford: 1. Kelly Blackerby; 2. Teresa Helm; 3. Doug Bryan; 4. Roger Kruse.  
Heavy Hereford: 1. Cathy Colburn; 2. Doug Bryan; 3. Bill Bredemeyer; 4. Kenny Hope; 5. Jim Bob Webb.  
Champion Hereford, Cathy Colburn, heavy; reserve, Doug Bryan, heavy.  
Light Angus: 1. Rhonda Carter; 2. Jim Bob Webb; 3. Bill Bredemeyer; 4. Roger Kruse; 5. Rhonda Carter.  
Champion Angus: Rhonda Carter; reserve, Jim Bob Webb.  
Shorthorn: 1. 2. Teresa Helm; 3. Kenny Hope; 4. Rhonda Carter; 5. Roger Kruse.  
Champion Shorthorn and reserve, Teresa Helm.  
Light Charolais: 1. Jerry Don Vinson; 2. Teresa Helm; 3. John Carter; 4. Wayne Kraatz; 5. Blair McGinnis.  
Heavy Charolais: 1. Cathy Colburn; 2. Doug Bryan; 3. Teresa Helm; 4. Bill Bredemeyer; 5. Wayne Kraatz.  
Champion Charolais, Cathy Colburn, heavy; reserve, Doug Bryan, heavy.  
Light Exotic: 1. Kelly Blackerby; 2. Wayne Kraatz; 3. Gary Schwartz; 4. Rhonda Carter.

Heavy Exotic: 1. Kelly Blackerby; 2. 3. Teresa Helm; 4. Jim Bob Webb; 5. Bill Bredemeyer.  
Champion Exotic, Kelly Blackerby, heavy; reserve, Teresa Helm, heavy.  
Brahman: 1. Cathy Colburn; 2. Doug Bryan.  
Champion Brahman, Cathy Colburn; reserve, Doug Bryan.  
Grand Champion of steer show: Shorthorn, Teresa Helm. Reserve: Exotic, Kelly Blackerby; 3. Exotic, Teresa Helm; 4. Hereford heavy, Cathy Colburn.  
**SHOWMANSHIP AWARDS**  
Champion lamb trophy: Bill Bredemeyer.  
Champion swine trophy: Doug Bryan.  
Champion Steer trophy: Teresa Helm.  
Showmanship lamb trophy: Kathy Bredemeyer.  
Showmanship swine trophy: Doug Bryan.  
Showmanship steer: Kelly Blackerby.  
Overall Showman: Teresa Helm. Herdsman Award: Jerry Don Vinson.

**READ THE CLASSIFIEDS**  
**HBO**  
HBO Is Only \$5.00 a Month After Installation  
Call Us - We'll Turn You On!  
**SCHEDULE**  
FRIDAY JAN. 14  
4:30 Funny Lady  
7:00 On Location: Myron Cohen  
8:00 Big Bad Mama  
9:30 Funny Lady  
SATURDAY JAN. 15  
2:00 Lies Father Told ME  
4:00 Up In The Air  
5:00 Paddle Ball  
6:00 Championship  
Lies Father Told Me  
8:00 Lucky Luciano  
10:00 Seven Beauties  
SUNDAY JAN. 16  
2:00 Sherlock Holmes' Smarter Brother  
4:00 The Return of the Scarlet Pimpernel  
5:30 Conduct Unbecoming  
7:30 Sherlock Holmes' Smarter Brother  
9:15 Bette Midler  
MONDAY JAN. 17  
4:30 Lone Wolf  
5:15 In Celebration  
7:30 Professional Wrestling  
10:00 Big Bad Mama  
TUESDAY JAN. 18  
4:30 Who?  
6:30 NBA Basketball  
9:00 Next Stop, Greenwich Village  
11:00 On Location: Henry Youngman  
WEDNESDAY JAN. 19  
4:30 The Return of the Scarlet Pimpernel  
6:00 The Tamarind Seed  
8:15 The Seventh Seal  
10:00 The Tamarind Seed  
THURSDAY JAN. 20  
4:30 Up In The Air  
6:00 Sherlock Holmes' Smarter Brother  
8:00 Big Bad Mama  
9:30 Sherlock Holmes' Smarter Brother

**Farmers Must File Estimates By January 17**

Farmers who have not filed their 1976 declaration of estimated Federal income tax must file and pay that tax by Monday, January 17. The sole exception to this rule is if they file their

income tax return and pay the total tax due by March 1, the Internal Revenue Service says.

Farmers are defined as those persons who earned at least two-thirds of their 1976 gross income from farming. IRS Publications 225, "Farmer's Tax Guide," and 505, "Tax Withholding and Declaration of Estimated Tax," provide additional in-

**Be Busy Club Meeting Recently**

The Be Busy Club met in the home of Mrs. L. B. Blackmon recently. The afternoon was spent doing handwork for the hostess.

Those attending were Mesdames Nadeen Smith,

formation and are available free at local IRS offices.

Bill Milliorn, Vallie Brannon, M. H. Hogan, Becky Poe and Eura Lloyd.

The next meeting will be in the home of Mrs. Vallie Brannon Jan. 24.



Sweet potatoes are best if they taper at both ends.

**JANUARY SUPER SALE**

All Fall Goods in the store now regrouped and every garment marked with the newer LOWER Jan. Clearance Prices.

**JANUARY FASHION SALES**



MEN'S 100% Polyester SUITS One big group that have been selling at \$79<sup>95</sup> NOW \$50<sup>00</sup> EACH



ONE GROUP OF MEN'S LEISURE SUITS 1/2 PRICE



**& CLEARANCES**



ALL REDUCED SPECIAL SALE PRICES

SPECIAL SALE this week only Tony Lama, Nocona & Justin Boots... \$69<sup>95</sup> Values \$50<sup>00</sup>



MEN'S 100% Polyester DRESS SUITS WITH VESTS \$78<sup>95</sup>

**JACKETS**

**COATS for girls**

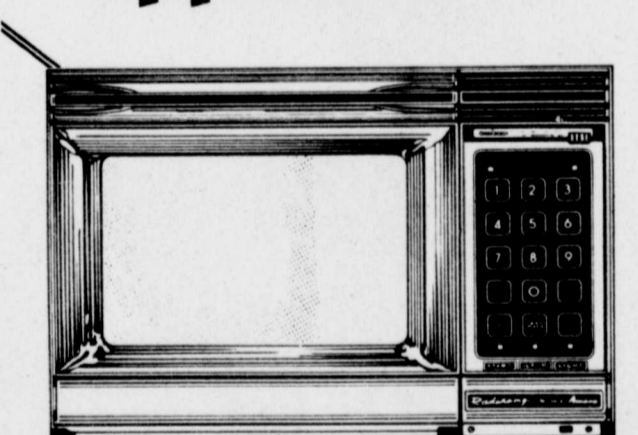


EACH COAT MARKED SALE PRICES



**HEIDENHEIMER'S**

**CONSERVE AND SAVE with Amana ENERGY SAVER Appliances...**



**Radarange** MICROWAVE OVEN

675 watts of cooking power. Cooks almost everything gourmet perfect in 1/4th the usual time!  
A Real Energy Saver! Cooks almost everything with 50% to 75% less electricity than a conventional electric range.

Cook delicious, nutritious family meals in minutes instead of hours! Radarange

See Our Complete Line of Amana Appliances



Remember REDDY Supplies the energy—but only YOU can use it wisely!





# COUPON CARNIVAL

SAVE \$5.70 WITH THESE COUPONS...  
4 BIG WEEKS OF COUPON SAVINGS

615-1393-1395

BROCKWAY  
**COFFEE MUGS** LIMIT 2 WITH COUPON AT RIGHT **10¢**

3<sup>RD</sup> WEEK VALUABLE COUPON  
LIMIT ONE COUPON PER FAMILY  
BROCKWAY **SAVE 78c**  
**Coffee Mugs...10c**  
LIMIT TWO CUPS WITH THIS COUPON  
COUPON EFFECTIVE NOW THROUGH JAN. 15, 1977

U.S. No. 1 RUSSET  
**POTATOES** 10 LB. BAG LIMIT 2 BAGS WITH COUPON AT RIGHT **69¢**

3<sup>RD</sup> WEEK VALUABLE COUPON  
LIMIT ONE COUPON PER FAMILY  
10 LB. BAG U.S. NO. 1 RUSSETS **SAVE \$1.00**  
**Potatoes.....69c**  
LIMIT TWO BAGS WITH THIS COUPON  
COUPON EFFECTIVE NOW THROUGH JAN. 15, 1977

SHURFRESH  
**MELLORINE** 1/2 GAL. CARTON LIMIT 3 CTNS. WITH COUPON AT RIGHT **38¢**

3<sup>RD</sup> WEEK VALUABLE COUPON  
LIMIT ONE COUPON PER FAMILY  
SHURFRESH **SAVE 93c**  
**Mellorine...1/2 GAL. 38c**  
LIMIT THREE CARTONS WITH THIS COUPON  
COUPON EFFECTIVE NOW THROUGH JAN. 15, 1977

SHURFINE  
**BLEACH** 1/2 GAL. BOTTLE LIMIT 2 BOTTLES WITH COUPON AT RIGHT **29¢**

3<sup>RD</sup> WEEK VALUABLE COUPON  
LIMIT ONE COUPON PER FAMILY  
SHURFINE **SAVE 32c**  
**Bleach...1/2 GAL. 29c**  
LIMIT TWO BOTTLES WITH THIS COUPON  
COUPON EFFECTIVE NOW THROUGH JAN. 15, 1977

VICK'S COLD MEDICINE  
**NYQUIL** 100Z. SIZE LIMIT 1 WITH COUPON AT RIGHT **1.79**

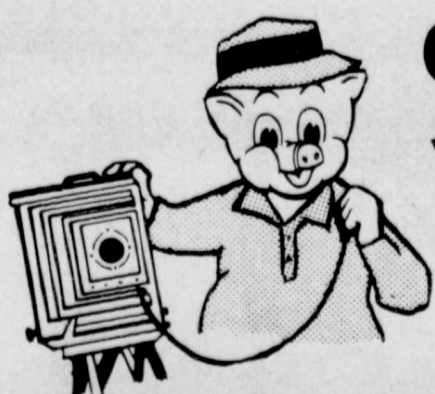
3<sup>RD</sup> WEEK VALUABLE COUPON  
LIMIT ONE COUPON PER FAMILY  
COLD MEDICINE **SAVE 60c**  
**Nyquil...10 OZ. 1.79**  
LIMIT ONE WITH THIS COUPON  
COUPON EFFECTIVE NOW THROUGH JAN. 15, 1977

**CHOPPED SIRLOIN STEAK** LIMIT 1 PKG WITH COUPON AT RIGHT 5 LB. PKG. **3.88**

3<sup>RD</sup> WEEK VALUABLE COUPON  
LIMIT ONE COUPON PER FAMILY  
CHOPPED SIRLOIN **SAVE 20¢**  
**Steak...5-LB. 3.88**  
LIMIT 1 PACKAGE WITH THIS COUPON  
COUPON EFFECTIVE NOW THROUGH JAN. 15, 1977

PRICES EFFECTIVE THRU JANUARY 15, 1977

Quantity Rights Reserved!



## Smile - You're Saving At PIGGLY WIGGLY

SUPPLEMENT TO SWEETWATER REPORTER; BALLINGER LEDGER; AND WINTERS ENTERPRISE.

WE GIVE



WINTERS

• 339 SOUTH MAIN

SWEETWATER

• 300 HALLEY ST. • 1410 LAMAR ST.

BALLINGER

• 108 NORTH SEVENTH

WE GIVE



SHOP HERE FOR BIG SAVINGS DURING OUR

**Coupon**

**FAIRFAX**

DEL MONTE 8oz. CAN  
TOMATO SAUCE... 5 for 89¢

DEL MONTE 16oz.  
CUT GREEN BEANS... 4 for 11¢

DEL MONTE 15oz.  
SPINACH... 3 for 79¢

DEL MONTE 17oz.  
SWEET PEAS... 3 for 11¢



SHURFINE  
**TUNA**  
6.5oz. CAN  
**39**



DEL MONTE PINEAPPLE  
GRAPEFRUIT DRINK  
2 46oz. Cans 89¢

"Mix or Match"  
DEL MONTE  
FRUIT COCKTAIL 2 79¢  
and  
PEAR HALVES 303 Cans

"Mix or Match"  
DEL MONTE  
CORN-SAUERKRAUT 3 89¢  
and  
WHOLE NEW POTATOES 303 Cans



GRADE "A"  
**FRYERS**  
**39**

Family Pack  
PORK CHOPS  
16. 119¢

Smoked  
HOT LINKS 16. 69¢  
SILVER PINE  
BACON... 16. 89¢

Enjoy Good Food at Lower Prices

MAXWELL HOUSE  
COFFEE 2lb. Can 419¢  
with a \$10.00 PURCHASE

Flavor Famous...  
PRODUCE SUPER SAVINGS

LARGE SLINKIST NAVAL  
ORANGES 10 for 119¢  
FLORIDA  
TANGELOES 13 for 119¢

TEXAS RUBY RED  
GRAPEFRUIT 7 for 119¢  
WHITE  
ONIONS 4 lbs. 119¢