

Railroad Hearing Here Monday

SEE COLUMN 1 BELOW



The Winters Enterprise



VOLUME SEVENTY-TWO

WINTERS, TEXAS 79567, THURSDAY, DECEMBER 2, 1976

PRICE 15 CENTS

NUMBER 39

Hearing Scheduled In Community Center

The hearing on the petition for abandonment of the railroad from Winters to Abilene will begin at 9:30 a.m. Monday, December 6, in the Winters Community Center.

One week has been allotted for the hearing, according to information from the Interstate Commerce Commission, but it has been anticipated locally that presentation of evidence and arguments will not use that much time.

Administrative law judge, representing the Interstate Commerce Commission, will hear arguments and evidence for and against the petition. Final decision is not expected for some time. Also, it was understood, petitioners and opponents will have opportunity for appeal on any decision handed down by the Commission.

At the hearing, which will be public, area shippers and direct users of the railroad, and others, are expected to present evidence of the need for continuance of the rail line into Winters, and the negative impact on the economy of the whole area in the event the railroad is abandoned.

Shippers and others vitally interested in the presence of the railroad have been gathering evidence purportedly outlining the importance of the railroad to the economic structure of the entire county, and the area. Rail shipment of agricultural produce into and out of the area, along with movement of other goods, can prevent

City Will Apply For Federal Grant Funds

The City of Winters within the next few days will make application for federal funds under the Federal Block Grant Program, to be used for rebuilding part of the sewer system, it was announced this week.

A hearing has been called for the general public at the City Hall at 5:30 next Monday, Dec. 6, to discuss the proposal. The hearing is a requirement under regulations concerning the program.

Up to \$250,000 could be made available to the City of Winters, City Hall sources said. However, it was not known how much would be forthcoming. This money, if granted, would be used to help update the sewer system, and other projects approved by the West Central Texas Council of Governments. Application must be made through WCTCOG, and approved by that agency, it was stated.

The public is urged to attend the meeting.

Water Project Ready

All distribution lines of the first phase of the North Runnels Rural Water Supply Corp. system were completed, and lines purged, by December 1, and ready for use, LaDell Davis, system manager, reported.

Many of the customers who will be connected to this first part of the project already have been receiving water from the distribution lines, and others are expected to complete their own lines and be ready to receive water shortly.

Davis said that as of December 1, minimum charges will be made to all customers assigned to the lines completed, whether or not final private connections have been made. He said meters will be read by a representative of the water corporation until the entire project is completed, and then readings will be made by each customer.

economic hardships on both producers and consumers, it has been stated.

Local residents are being urged to attend the hearing, in order to show the public interest in the matter. Community leaders have insisted that a small turnout for the hearing will be a negative attitude toward the outcome. Businessmen have been urged to make arrangements to attend the hearing, to show their interest. The Winters Chamber of Commerce, and individuals, have increased publicity regarding the hearing and the effects the final decision will have locally.

Shippers of agricultural products, for example have explained that abandonment of the railroad would mean higher shipping costs into and out of the area, thus lessening the amount producers would receive for their produce, and increasing the cost

See RAILROAD Back Page

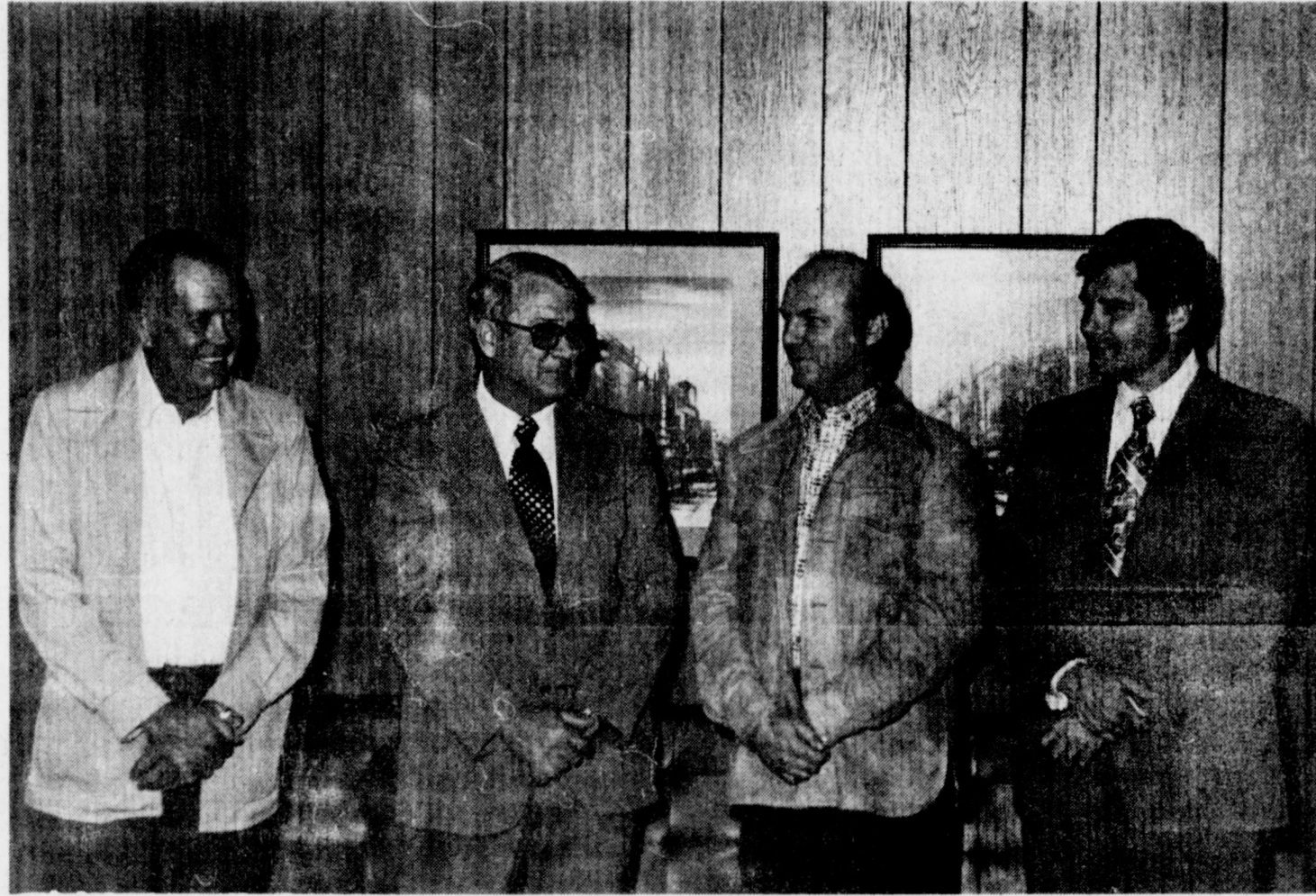
Mexican Dinner At Catholic Church Sunday

A Mexican dinner will be served by members of Mt. Carmel Catholic Church in the church hall, Sunday, December 5, beginning at 11:30 a.m. Serving will continue to 2 p.m.

Homemade food with dessert will be served. Take out orders will be available.

Cost of the dinner will be \$2.50 for adults and \$1.75 for children.

Christmas Parade Saturday



JOHN'S INTERNATIONAL—J. P. Dry, left, last week completed transactions selling his interest in John's International, Inc., a Winters industry, to another group of stockholders. Second from left is James West of Winters, who is president and chief executive of the new company. Third from left is Irvin Kaplan of Houston, a principal stockholder, and

on the right is Livingston Kosberg, of Houston, a principal stockholder of the company. Dry formed the company about seven years ago, manufacturing pickup boxes and accessories, and other metal products. Kaplan and Kosberg will not move to Winters, but the offices and manufacturing plant will remain here, it was stated.

The annual Christmas parade, sponsored by the Winters Chamber of Commerce, will be held at 3 p.m. Saturday, Dec. 4.

Two divisions will be included in the parade, with cash prizes for each division. The children's division, for groups, individuals and organizations, for children 12 and under, will have cash prizes of \$15, \$10, and \$5.

In the float division, for businesses and organizations, cash prizes of \$30, \$20 and \$10 will be offered for first, second and third place winners.

Winters school bands will be in the parade, and candidates for "Miss Sno Queen '76" will ride in the parade, on floats or vehicles provided by individual sponsors.

The Winters Lions Club will direct the parade, and make position assignments. Those planning to have entries in the parade are asked to meet in the parking lot behind the Chamber of Commerce office at 2 p.m. Saturday to be assigned positions and numbers. The parade will begin at 3 p.m.

Out of town judges will pick parade winners.

"Miss Sno Queen '76" Contest Saturday,

About 30 Winters High School girls have entered the "Miss Sno Queen '76" contest, sponsored by the Winters Chamber of Commerce, and to coincide with the annual Christmas parade scheduled Saturday, Dec. 4.

Each girl entered in the contest will be sponsored by a local business. Sponsors are drawn by lot.

Out-of-town judges will pick "Miss Sno Queen '76" and announcement of the winner will be made following the downtown parade Saturday.

Before the parade, girls entered in the contest will attend a luncheon in the Housing Authority hall at 11:30 a.m. The luncheon is sponsored by the Ladies' Committee of the Chamber of Commerce.

Girls entered in the contest will be assigned floats or cars by their sponsors for the parade. The parade

will assemble in the parking lot behind the Chamber of Commerce office at 2 p.m. Saturday.

Following the parade, "Miss Sno Queen '76" contestants will assemble in the office of the Chamber of Commerce where the announcement of the winner will be made.

CONTESTANTS AND SPONSORS
Debbie Carey—Fashion Shop
Karen Krause—Sonny's Grocery & Market
Sheri Krause—Huffman House
Kelley Thomas—Harrison Auto Parts
Debbie Austin—Dairy Queen
Kelli Busher—Winn's Variety
Susan Williams—Bahman Jewelers
Christy Spraberry—Springer Fabrics
Shelia Mathis—Spill Bros. Co.

See SNO QUEEN Page 10



DE STUDENTS—This group of Distributive Education students of Winters High School gained practical experience in commercial window display, by setting up show window displays downtown. Shown in Heidenheimer's last week, preparing to set up window displays,

are Celeste Sanchez, a senior; Tony Howard, a senior; Brandon Hambricht, a senior; Marilyn Powers, a junior; and Olivia Aguera, a senior. Mrs. Vicki Harrison is Distributive Education instructor in Winters High School.

Bank Will Exhibit Work Of Local Artists

Several local artists will exhibit their work in an art show in the lobby of the Winters State Bank, beginning December 8 and continuing through December 17.

The show will be open to the public during banking hours, 9 a.m. to 3 p.m. daily.

Included in the showing will be paintings of still life, scenery, and floral. Acrylic paintings also will be on

display. Artists whose works will be shown are Jane Walker, Shirley Minzenmayer, Eloise Chestnut, Nan Bryan, Darlene Sims, Dorene Kozelsky, Katherine Porter, Un Soon Lee, and Bill Wilson.

The Hospital Auxiliary will serve coffee during the show, on December 8, 9 and 10.

Cancer Unit Plans Rummage Sale Dec. 3-4

The North Runnels Unit of the American Cancer Society will hold a rummage sale Friday and Saturday, Dec. 3-4, from 9 a.m. to 5 p.m., in the old Queen theatre building on West Dale.

Donations of articles, especially toys and Christmas decorations, are being solicited for the sale.

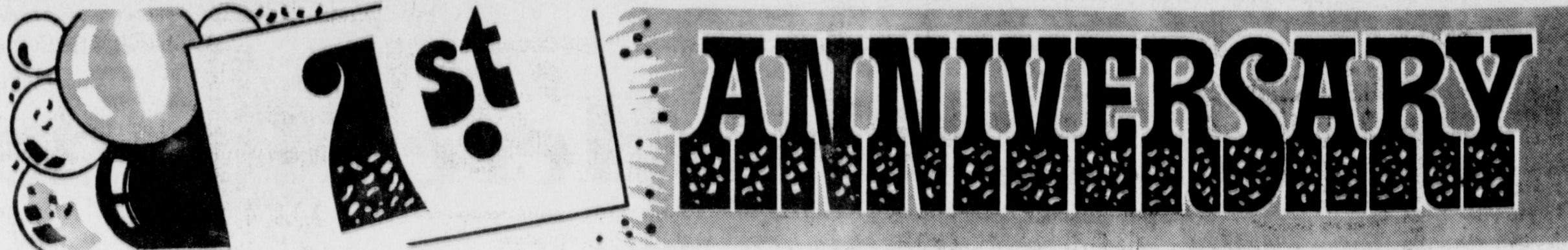
Proceeds are to be used for the



RETIREE—Mrs. Hattie Minzenmayer of Route 1, Winters, is congratulated by Hal Dry, vice president-general manager of Dry Division, Wallace Murray Corporation, upon her retirement last Wednesday. Mrs. Minzenmayer has been employed by Dry Division since Jan. 14, 1971. Born Hedwig Frances Turk, in Gonzales County, she married the late

Skeet Minzenmayer in Winters. They had four children, Henry Jr., of San Antonio, Luther of Midland, Mrs. George (Margaret) Pruser Jr., of Winters, and Mrs. Jerry (Frances) Holle of Ballinger; and eight grandchildren.

Retirement plans? "Take it easy, and one day at a time," Mrs. Minzenmayer said.



HELP US CELEBRATE OUR

1st ANNIVERSARY IN WINTERS

BETWEEN DECEMBER 2nd and DECEMBER 17th, THE FOLLOWING SPECIAL INSTALLATION RATES WILL BE IN EFFECT:

INSTALLATION	REGULAR PRICE	ANNIVERSARY PRICE	MONTHLY SERVICE
NEW INSTALLATION.....	\$20.00	FREE	CABLE \$7.00
EXTRA OUTLET	\$10.00	\$5.00	EXTENSION..... \$1.00
RECONNECT	\$10.00	FREE	HBO..... \$8.00
HOME BOX OFFICE	\$10.00	FREE	

CABLEVISION BRINGS YOU.....

Ch-2	DALLAS	ABC/CBS (24 Hour)
Ch-3	WINTERS	WEATHER
Ch-4	HOME BOX OFFICE	
Ch-5	AL FINE	NBC
Ch-7	SWETT WATER	ABC/CBS
Ch-8	SAN ANGELO	CBS
Ch-11	FT. WORTH	INDEPENDENT
Ch-13	DALLAS	EDUCATIONAL

REMOTE CONTROL WORKS ON ALL TV SETS - ONLY PENNIES A DAY!

PG-Key - KEEPS "R" RATED MOVIES FROM CHILDREN WHEN YOU ARE NOT HOME - ONLY 50¢ A MONTH!!

TRY OUR ANNUAL PAYMENT PLAN FOR CABLE SERVICE - PAY FOR ELEVEN MONTHS... GET THE TWELFTH MONTH FREE!!
DOES NOT APPLY TO HOME BOX OFFICE

Call Us - We'll Turn You On!

texas **cablevision**

"Total Entertainment Service"

DIAL "0" FOR THE OPERATOR - ASK FOR ENTERPRISE 67534

DECEMBER ATTRACTIONS

MOVIES

THE BLUE BIRD	HARRY AND TONTO
DEAD CERT	LENNY
FUNNY LADY	MAD ADVENTURES OF RABBI JACOB
THE KILLER ELITE	THE MAN IN THE GLASS BOOTH
LIES MY FATHER TOLD ME	THE MOONRUNNERS
LOST IN THE STARS	THE PRISONER OF SECOND AVENUE
LUCKY LADY	ROLLERBALL
THE DRUM	SWEPT AWAY...
FORGET ME NOT	THE TERRORISTS
PRIVATE LIFE OF HENRY VIII	B MUST DIE
ADVENTURES OF FRONTIER FREMONT	BITE THE BULLET
MITCHELL	ALICE DOESN'T LIVE HERE ANYMORE
THE EXORCIST	

SPECIALS

CHRISTMAS THAT ALMOST WASN'T	ON LOCATION: DAVID BRENNER
ON LOCATION: MYRON COHEN	ON LOCATION: HENNY YOUNGMAN
ON LOCATION: STEVE MARTIN	ON LOCATION: LAUGHS '76
	ON LOCATION: MORT SAHL

SPORTS

BOXING	BASKETBALL	GYMNASTICS	HOCKEY
	WRESTLING		

CHILDREN'S FILMS

MR. HORATIO KNIBBLES	MAURO THE GYPSY	SMOKEY JOE'S REVENGE
----------------------	-----------------	----------------------

FOREIGN FILMS

THE KNACK	LOVE IS A FUNNY THING	PERSONA
-----------	-----------------------	---------

COMING IN JANUARY
 THE LATEST MOVIES AND ENTERTAINMENT

WOLF PLAIN
CHILI
19-oz. CAN **79¢**



Sonny's

Effective
Thursday, Friday,
and Saturday
Dec. 2, 3, & 4

ARROW
PAPER TOWELS
JUMBO ROLL **39¢**

HOME OWNED AND OPERATED
EXTRA QUALITY MEATS, FARM FRESH PRODUCE, EVERYDAY LOW PRICES, PLUS ADVERTISED SPECIALS AND DISCOUNT STAMPS WITH FRIENDLY SERVICE. WE RESERVE THE RIGHT TO LIMIT QUANTITIES

PEPSI-COLA OR
DR PEPPER
32-oz. RETURNABLE BOTTLES
4 FOR 99¢

GOLD MEDAL
FLOUR
25-LB. BAG **\$2.99**

GANDY'S
ICE CREAM
½ GAL. CTN. **99¢**

KING SIZE
TIDE
84-oz. BOX **\$1.89**

KOUNTY KIST
CORN W.K. 12-oz. or C.S. 16-oz. CANS **4 FOR \$1.00**
DEL MONTE CUT
Green Beans 16-oz. CAN **4 FOR \$1**
THRIFTY MAID
SWEET PEAS 17-oz. CAN **4 FOR \$1**
THRIFTMAID
TOMATOES 16-oz. CAN **4 FOR \$1**
THRIFT MAID
Pineapple Tidbits 20-oz. CAN **2 FOR \$1**
THRIFTY MAID 15-oz. CAN
CHILI W/BEANS **3 FOR \$1**
CRACKIN GOOD
CRACKERS LB. BOX **39¢**

ARROW
Paper Napkins 180-CT. PKG. **49¢**
8-oz. CAN CONTADINA
TOMATO SAUCE **5 FOR \$1**
SOLO 12-oz.
PARTY CUPS 24-CT. **49¢**
LEISURE
PAPER PLATES 100-CT. PKG. **69¢**
KIMBELL HEAVY DUTY
FOIL 18" x 25' **63¢**
PALMOLIVE
SOAP BATH SIZE **4 FOR \$1.00**
LIQUID
JOY 22-oz. BOTTLE **69¢**

BEST MAID HAMBURGER SLICED 48-oz. JAR
DILL PICKLES **89¢**
SMUCKER'S 32-oz. JAR
GRAPE JELLY **89¢**
18-oz. JAR KOUNTRY FRESH INSTANT
ORANGE DRINK **89¢**
NABISCO
SNACK CRACKERS BOX **69¢**
ARMOUR
POTTED MEAT 3-oz. CAN **4 FOR 89¢**
SWIFT 5-oz. CAN
VIENNA SAUSAGE **3 FOR 99¢**
KRAFT JET PUFFED
Marshmallows 10-oz. PKG. **39¢**

HEAVY BEEF
Chuck Roast
LB. **59¢**

HEAVY BEEF
Family Steak
LB. **79¢**

SLICED
SLAB BACON
LB. **79¢**

BOSTON BUTT
PORK STEAK
LB. **79¢**

HEAVY BEEF
ARM ROAST LB. **79¢**
PORK ROAST BOSTON BUTT LB. **79¢**

HEAVY BEEF BONELESS
CHUCK ROAST LB. **89¢**
MARKET MADE
PORK SAUSAGE LB. **89¢**

BONELESS
STEW MEAT LB. **98¢**
CANNED
PICNICS 3-LB. CAN **\$3.49**

RUSSET
POTATOES
10-LB. BAG **69¢**

CALIFORNIA
AVOCADOS EA. **19¢**
TEXAS RUBY RED
GRAPEFRUIT EA. **15¢**
ARIZONA JUMBO
TANGERINES LB. **25¢**
EAST TEXAS
YAMS LB. **25¢**
RED DELICIOUS
APPLES 3-LB. BAG **69¢**
TEXAS 5-LB. BAG
ORANGES **69¢**

WESTERN ICEBERG
LETTUCE
EA. **23¢**

! PUT IT IN THE MAIN ! FOR RESULTS !

CLASSIFIED AD CHARGES

CASH
Minimum.....\$2.00 (1 time, 15 words); 7 cents per word for over 15 words).

CHARGED
Minimum.....\$2.50 (First insertion; \$2.00 minimum thereafter).

LONG TERM
Minimum.....12 weeks or longer; \$2.00 each week; (15 words); 7 cents per word over 15 words).

CLASSIFIED AD DEADLINE
2 p.m. Tuesday.

FLOWERS

FLOWERS FOR ALL OCCASIONS: Orders wired anywhere, any time. Bonded FTD florist. Mayme Little, Winters Flower Shop, Dial 754-4568. tfc.

BLOSSOM SHOP: BONDED
FTD, Teleflora, and Florafax florists. Mrs. Floyd Grant, Sr. Flowers for all occasions. Flowers wired anywhere. Phone 754-5311. 30-tfc.

FOR SALE

FOR SALE—MATCHING
Wards washer and gas dryer, large capacity. Call 723-2418 after 6 p.m. 39-tfc.

FOR SALE—1962 CHEVROLET
pickup, \$300.00, call 754-4705. 39-1tp.

FOR SALE—COMPLETE
set of books and records for piano students, recommended by Leroy Moore, teacher. Excellent condition. Call or write Mrs. C. L. Arrott, Box 396, Bronte, Texas 76933. Phone 473-4021. 38-2tc.

FOR SALE—HONDA
Trail 70. Also Kawasaki 500. Bishop Boys Ford. 30-tc

REAL ESTATE

FARMS

146A, just a 30 minute drive from Winters, fenced, 2 tanks, 1/2 pasture, 1/2 cultivation, nice home, beautiful yard.

50A, SE of Winters 20 miles, excellent seeded grass, modern 3 bedroom home, central air, plenty water, large tank, well, orchard, budded pecans, deer & turkey country, 5 miles from Hords Creek Lake.

183A, home, tanks, excellent cultivation land, good rich soil with clay base, good fence, West of Bradshaw.

88 1/2 A, beautiful rock home, 3 bedrooms, den with fireplace, formal living room, 2 car garage plus carport, 2 barns, 2 tanks, oak trees, good deer hunting.

FRANKLIN REAL ESTATE
Tuscola, Texas
915/554-7814

REAL ESTATE

FOR SALE—BUSINESS
building next to State Theatre of S. Main in Winters. Very reasonable. Call Mrs. W. J. Yates at 754-4369. 39-tfc.

Runnels County

Real Estate
Wendell Stasey, Broker
Cassie Minzenmayer, Agent
Phone 767-3422
Winters, Texas

COMMERCIAL LOCATIONS

812 N. Main—Corner lot with frame building. Good parking.

Good business location—155 N. Main, 2520 sq. ft. Good condition.

Corner of S. Main & Wood St.—Large building and parking!

FARM & RANCH

90 acres improved pasture land. Good fences, tanks, 3 miles from Ballinger—near lake and Country Club. Excellent for sub-dividing.

196 acres near Hords Creek Lake—20 acres cultivated, 176 acres wooded. Good grass net wire fences, tanks, strong water well with pump. 100% minerals including current gas production. Owner financing.

Owner will finance 355 acres, including 100 acres cultivated. Several tanks, net wire fences, good hunting. 1/2 minerals—8 miles East of Coleman.

Call Cassie Minzenmayer at 767-3422. Night or Day!!

Interested in selling your wheat grazing by the mouth or acre?

Call Weldon Minzenmayer, 767-3422.

FOR SALE—3 BEDROOM
house, carport, fireplace, carpeted, 10 acres, peach and pecan trees. 5 1/2 miles south of Winters. Financing available. 754-5095. 38-2tp.

FOR SALE—2 BEDROOM
home, 407 Melwood. Call 767-3255 or 754-5021. 36-tfc.

WORK WANTED

RONNIE'S SPRAYING
Service. Home Pest Control a specialty. Termites, roaches, tree spraying, trimming and removal. Ph. 754-5230 or 754-4147. 14-tfc.

WANTED

WANTED: SCRAP IRON, cables, metals. Ballinger Salvage Company. 27-tfc.

REAL ESTATE

LAND
30 acres—South of Winters with 3 bedroom house, pecan trees, minerals. 38-tfc.

48A—With house, barn. All in cultivation. Minerals. 38-tfc.

523A—East of Winters. Pasture, 68 cultivation, tanks, fenced, cross-fenced \$225A. 38-tfc.

153A—Hatchel Area—all cultivation except 21A. 3 irrigation wells, rock house, barns, 1/4 minerals. 38-tfc.

HOMES

Lots - near downtown \$600. 38-tfc.

New Listing—Older
home convenient to town. Lots of room inside and out. Has income or guest house on property. Plus separate office or workshop. Low \$20's.

Extra nice 4 bedroom, 1 1/2 bath, large den and living room, central heat and air, dish washer, fully carpeted. Mid \$20's.

Reduced! Large spacious
rooms, big kitchen, dining room, big living room! 3 bedroom, 2 bath on quiet street. Also income from garage apartment \$29,000.

Choose your own interior!
3 bedroom, 2 bath homes under construction. Good financing available.

Beautifully decorated 3 bedroom home in nice area. Double carport, separate storage house in rear, fenced. \$17,500.

Will trade for country property or sell, large 3 bedroom 2 bath home. Central heat and air. Game room. Many amenities!

Lovely paneled 3 bedroom, 2 bath home in quiet neighborhood. New central heat and air. \$20,000.

Nice carpeted 2 or 3 bedroom house, with stove, ref. & washer. Also fenced in back yard with trees. \$17,000.

To be moved. Gracious living area. Big picture windows, central heat and air. Birch paneling in den. 1500 sq. ft. Brick exterior.

BUSINESS OPPORTUNITIES

Have your Own Business. Set your Income. Fully equipped restaurant on Hwy. 83 with acre of land.

Good building plus sporting goods inventory. Can rent out part of building and keep shop in one/half.

Outstanding business locations on Main Street. Suited for many types of businesses. —starting at \$4000!

Excellent opportunity—14 unit motel w/good year round business. Beautiful living quarters. Good gross. Owner finance.

ALDERMAN REAL ESTATE
Billie Alderman, Broker
Jo Evans, Salesperson
Phone 754-5218
302 S. Main
Winters, Texas

HELP WANTED

HELP WANTED—WAITress at the Fireside Restaurant. Apply in person. 36-tfc.

Miscellaneous

FREE MUSIC AND
instrument catalogs: Tell us the kind of music you like and the instrument you play. Also, musical gifts. Alpha Music Center, 6609 Airport, Austin, Tex. 78752. 512/451-0645. 38-tfc.

HAVE MOVED MY CLOCK & SWAP SHOP
to 1008 Broadway in Ballinger. Turn right in front of the Courthouse on Hwy. 158 towards Bronte. I have a good stock of American made clocks ready for Christmas. There is no more lasting gift. I do pendulum clock repairs. Buck Coleman, Ballinger. 37-4tc.

WANTED—COMIC BOOKS
wanted complete with covers. 317 Church St., call 754-4757. 39-1tp.

WESTERN MATTRESS SERVICE: Pick up and delivery. Save up to 50% renovation. Box Springs to match. Guaranteed customer satisfaction. Phone 754-4558.

ATTENTION HUNTERS & TRAPPERS

Fur buyer will be in Winters at the Fireside Restaurant each Sunday from 8:00 a.m. till 8:30 a.m. beginning Dec. 5. We buy green and dry furs of all kinds. Skin case all fur (like opposums), not open up the middle. We also buy deer hides! Well handled furs bring TOP PRICES! Northwestern Fur Co. Colorado City, Texas 38-3tc

HELP WANTED

CENTRAL TEXAS OPPORTUNITIES, Inc. has a job opening for the teacher aide position at the Winters Child Development Center. Applicant must be willing to attend out-of-town workshops, staff meetings, etc.; (preferably bi-lingual.) Interested applicants may obtain job applications from the Head Start main office; Box 820, Coleman, Texas 76834, or phone: (915) 625-4167. Deadline is December 14, 1976. Central Texas Opportunities, Inc. is an equal opportunity employer. 39-2tc.

BALLINGER MEMORIAL
Hospital School of Vocational Nursing is now accepting applications from students for the winter class. Those interested may call or contact Ballinger Memorial Hospital, 365-2531. 39-5tc.

PROFESSIONAL DIRECTORY

Dr. Z. I. Hale
Optometrist
Tues., Thurs., Fri.
9-12, 1-4-30
Winters, Texas

JNO. W. NORMAN
ATTORNEY-AT-LAW
Winters, Texas

Dr. C. R. Bellis
CHIROPRACTOR
407 N. Rogers, 754-5464
Hours 9-5:30
Wed. By Appointment

SUBSCRIBE NOW TO
Abilene Reporter-News
Reasonable Subscription Rates—with the freshest news and features
CALL LOCAL AGENT
Byron D. Jobe
Phone 754-4683
Winters, Texas

LEGAL NOTICE

NOTICE TO THE HERBICIDE AREA IN RUNNELS COUNTY

A Special Meeting of the Commissioners' Court on Tuesday, December 7th, 1976 at 10:00 A.M. for the purpose of hearing the report of the recently appointed Herbiicide Committee and take the necessary action pursuant to the Texas Herbiicide Law.

J. W. Purifoy, County Judge; Chas. E. Bradshaw, Commissioner Prec. #1; David Carroll, Commissioner Prec. #2; Pat Pritchard, Commissioner Prec. #3; Marvin Salling, Commissioner Prec. #4.

NOTICE FOR BIDS

Purchase bids will be considered by the undersigned Executor of the Estate of Emmie Michaelis on the following two tracts of land:

(1) 186 more or less as described in Deed from Paul Michaelis and wife Louisa Michaelis to C. T. Michaelis as recorded in Volume 169, page 14 of the Deed records of Runnels County, Texas.

(2) 374 acres of land more or less as described in the Deed executed by L. W. Michaelis to C. T. Michaelis as recorded in Volume 169, page 14 of the Deed records of Runnels County, Texas.

Seller reserves right to reject any and all bids and all royalty on non-participating basis shall be reserved by seller for a period of 20 years or as long thereafter as there is production.

Seal bids should be received by mail or in person prior to 10:00 A.M. on December 20th, 1976.

The Estate of Emmie Michaelis by E. C. Grindstaff, Independent Executor, P.O. Box 576, 707 Hutchings Ave., Ballinger, Texas 76821 (915) 365-3515. 37-4tc.

CARD OF THANKS

We can not change the Divine laws, but we can face the days ahead with courage and with hope—thankful for friends, especially Ted Meyer, Rev. Mel Swoyer, and relatives for their understanding, flowers, and food at a time of need. —The Family of Ida Jacob 39-1tp.

Miscellaneous

TRAILER REPAIR & PARTS. Trailers: Stock, horse, gooseneck, flatbeds, grain dumps. Complete parts and service. All makes. Hale Trailer Sales, 1765 E. Hwy. 80, Abilene, Texas, 672-2691. 30-12tp.

SPECIALIZE IN BACKHOE
work. ROY CALCOTE & SONS DIRT WORK. Sand and gravel hauling, dump trucks. Have yard dirt in stock for quick delivery. We have a new telephone number 767-3241 or if no answer 754-4995. 7-tfc.

BAHLMAN CLEANERS
Home of quality Dry-cleaning, Laundry and the do-it-yourself and save Steamex Carpet Cleaner.
138 S. Main

MARY KAY COSMETICS
FOR COMPLIMENTARY FACIALS and MARY KAY COSMETICS Call SUSAN BLAKE 754-4746 - 1100 W. Dale

ABSTRACTS GENERAL TITLE SERVICE
on all lands and lots in RUNNELS COUNTY
J. W. Purifoy
ABSTRACTOR
Bernie Purifoy, Mgr.
701 Hutchings
Tel. 365-3572
Ballinger, Texas

GARDEN PLOWING
2-Disc Breaking plow, Planter, Shredder.
ALLEN FOWLER
Call 754-4292

Dan's Shoppe of Upholstery
507 4th St. Ballinger, Tex.
365-3448
Thousands of Fabrics to choose from.
Free Pick-up and Delivery
2 Weeks' Service from date of booking
Special Mileage Discount to persons in Winters, Wilmeth, Wingate, & Crews

Legal Notice

PUBLIC HEARING NOTICE

A hearing is called for the general public at the City Hall, 310 South Main Street, for the purpose of discussing A Federal Block Grant Program for the City of Winters. Time: 5:30 Monday, December 6, 1976, Upstairs City Hall.

The Public is invited to attend this discussion and other projects. 29-1tc.

AN ORDINANCE FIXING AND DETERMINING THE GENERAL SERVICE RATE TO BE CHARGED FOR SALES OF NATURAL GAS TO RESIDENTIAL AND COMMERCIAL CONSUMERS WITHIN THE CITY LIMITS OF WINTERS, RUNNELS COUNTY, TEXAS, AND PROVIDING FOR THE MANNER IN WHICH SUCH RATE MAY BE CHANGED, ADJUSTED AND AMENDED.

BE IT ORDAINED BY THE CITY COUNCIL OF THE CITY OF WINTERS:

SECTION 1. Effective with the first gas bills rendered from and after thirty (30) days from the date of final passage of this ordinance, the maximum general service rate for sales of natural gas rendered to residential and commercial consumers within the city limits of Winters by Lone Star Gas Company, its successors and assigns, is hereby fixed and determined as follows: First—1000 Cu. Ft. or Fraction Thereof—\$3.00. Over—1000 Cu. Ft. at \$1.875 Per Mcf. No gas bill will be rendered to any residential or commercial consumer served under the above rate not consuming any gas during any monthly billing period, except that where customer's only use for gas service is in an outdoor grill and/or a fireplace starter, the amount shown for the first consumption block shall constitute a minimum monthly bill.

ADJUSTMENTS
The amount of each monthly bill computed at the above-stated rates shall be subject to the following adjustments: Plus or minus the amount of any increase or decrease, respectively, above or below the \$1.3488 per Mcf level in the intra-company city gate charge as authorized by the Railroad Commission of the State of Texas or other regulatory body having jurisdiction for gas delivered to Lone Star Gas Company's distribution system for sale to residential and commercial consumers where such changes are caused by increases or decreases in the cost of gas purchased by the Company; plus an amount equivalent to the proportionate part of any new tax, or increased tax, or any other governmental imposition, rental, fee or charge (except state, county, city and special district ad valorem taxes and taxes on net income) levied, assessed or imposed subsequent to July 1, 1976, upon or allocable to the Company's distribution operations, by any new or amended law, ordinance or contract. Company, at its option, may forego the application of any adjustment if such adjustment would result in an increase in the monthly bill; however, failure of

ADJUSTMENTS
The amount of each monthly bill computed at the above-stated rates shall be subject to the following adjustments: Plus or minus the amount of any increase or decrease, respectively, above or below the \$1.3488 per Mcf level in the intra-company city gate charge as authorized by the Railroad Commission of the State of Texas or other regulatory body having jurisdiction for gas delivered to Lone Star Gas Company's distribution system for sale to residential and commercial consumers where such changes are caused by increases or decreases in the cost of gas purchased by the Company; plus an amount equivalent to the proportionate part of any new tax, or increased tax, or any other governmental imposition, rental, fee or charge (except state, county, city and special district ad valorem taxes and taxes on net income) levied, assessed or imposed subsequent to July 1, 1976, upon or allocable to the Company's distribution operations, by any new or amended law, ordinance or contract. Company, at its option, may forego the application of any adjustment if such adjustment would result in an increase in the monthly bill; however, failure of

ADJUSTMENTS
The amount of each monthly bill computed at the above-stated rates shall be subject to the following adjustments: Plus or minus the amount of any increase or decrease, respectively, above or below the \$1.3488 per Mcf level in the intra-company city gate charge as authorized by the Railroad Commission of the State of Texas or other regulatory body having jurisdiction for gas delivered to Lone Star Gas Company's distribution system for sale to residential and commercial consumers where such changes are caused by increases or decreases in the cost of gas purchased by the Company; plus an amount equivalent to the proportionate part of any new tax, or increased tax, or any other governmental imposition, rental, fee or charge (except state, county, city and special district ad valorem taxes and taxes on net income) levied, assessed or imposed subsequent to July 1, 1976, upon or allocable to the Company's distribution operations, by any new or amended law, ordinance or contract. Company, at its option, may forego the application of any adjustment if such adjustment would result in an increase in the monthly bill; however, failure of

ADJUSTMENTS
The amount of each monthly bill computed at the above-stated rates shall be subject to the following adjustments: Plus or minus the amount of any increase or decrease, respectively, above or below the \$1.3488 per Mcf level in the intra-company city gate charge as authorized by the Railroad Commission of the State of Texas or other regulatory body having jurisdiction for gas delivered to Lone Star Gas Company's distribution system for sale to residential and commercial consumers where such changes are caused by increases or decreases in the cost of gas purchased by the Company; plus an amount equivalent to the proportionate part of any new tax, or increased tax, or any other governmental imposition, rental, fee or charge (except state, county, city and special district ad valorem taxes and taxes on net income) levied, assessed or imposed subsequent to July 1, 1976, upon or allocable to the Company's distribution operations, by any new or amended law, ordinance or contract. Company, at its option, may forego the application of any adjustment if such adjustment would result in an increase in the monthly bill; however, failure of

ADJUSTMENTS
The amount of each monthly bill computed at the above-stated rates shall be subject to the following adjustments: Plus or minus the amount of any increase or decrease, respectively, above or below the \$1.3488 per Mcf level in the intra-company city gate charge as authorized by the Railroad Commission of the State of Texas or other regulatory body having jurisdiction for gas delivered to Lone Star Gas Company's distribution system for sale to residential and commercial consumers where such changes are caused by increases or decreases in the cost of gas purchased by the Company; plus an amount equivalent to the proportionate part of any new tax, or increased tax, or any other governmental imposition, rental, fee or charge (except state, county, city and special district ad valorem taxes and taxes on net income) levied, assessed or imposed subsequent to July 1, 1976, upon or allocable to the Company's distribution operations, by any new or amended law, ordinance or contract. Company, at its option, may forego the application of any adjustment if such adjustment would result in an increase in the monthly bill; however, failure of

ADJUSTMENTS
The amount of each monthly bill computed at the above-stated rates shall be subject to the following adjustments: Plus or minus the amount of any increase or decrease, respectively, above or below the \$1.3488 per Mcf level in the intra-company city gate charge as authorized by the Railroad Commission of the State of Texas or other regulatory body having jurisdiction for gas delivered to Lone Star Gas Company's distribution system for sale to residential and commercial consumers where such changes are caused by increases or decreases in the cost of gas purchased by the Company; plus an amount equivalent to the proportionate part of any new tax, or increased tax, or any other governmental imposition, rental, fee or charge (except state, county, city and special district ad valorem taxes and taxes on net income) levied, assessed or imposed subsequent to July 1, 1976, upon or allocable to the Company's distribution operations, by any new or amended law, ordinance or contract. Company, at its option, may forego the application of any adjustment if such adjustment would result in an increase in the monthly bill; however, failure of

ADJUSTMENTS
The amount of each monthly bill computed at the above-stated rates shall be subject to the following adjustments: Plus or minus the amount of any increase or decrease, respectively, above or below the \$1.3488 per Mcf level in the intra-company city gate charge as authorized by the Railroad Commission of the State of Texas or other regulatory body having jurisdiction for gas delivered to Lone Star Gas Company's distribution system for sale to residential and commercial consumers where such changes are caused by increases or decreases in the cost of gas purchased by the Company; plus an amount equivalent to the proportionate part of any new tax, or increased tax, or any other governmental imposition, rental, fee or charge (except state, county, city and special district ad valorem taxes and taxes on net income) levied, assessed or imposed subsequent to July 1, 1976, upon or allocable to the Company's distribution operations, by any new or amended law, ordinance or contract. Company, at its option, may forego the application of any adjustment if such adjustment would result in an increase in the monthly bill; however, failure of

ADJUSTMENTS
The amount of each monthly bill computed at the above-stated rates shall be subject to the following adjustments: Plus or minus the amount of any increase or decrease, respectively, above or below the \$1.3488 per Mcf level in the intra-company city gate charge as authorized by the Railroad Commission of the State of Texas or other regulatory body having jurisdiction for gas delivered to Lone Star Gas Company's distribution system for sale to residential and commercial consumers where such changes are caused by increases or decreases in the cost of gas purchased by the Company; plus an amount equivalent to the proportionate part of any new tax, or increased tax, or any other governmental imposition, rental, fee or charge (except state, county, city and special district ad valorem taxes and taxes on net income) levied, assessed or imposed subsequent to July 1, 1976, upon or allocable to the Company's distribution operations, by any new or amended law, ordinance or contract. Company, at its option, may forego the application of any adjustment if such adjustment would result in an increase in the monthly bill; however, failure of

ADJUSTMENTS
The amount of each monthly bill computed at the above-stated rates shall be subject to the following adjustments: Plus or minus the amount of any increase or decrease, respectively, above or below the \$1.3488 per Mcf level in the intra-company city gate charge as authorized by the Railroad Commission of the State of Texas or other regulatory body having jurisdiction for gas delivered to Lone Star Gas Company's distribution system for sale to residential and commercial consumers where such changes are caused by increases or decreases in the cost of gas purchased by the Company; plus an amount equivalent to the proportionate part of any new tax, or increased tax, or any other governmental imposition, rental, fee or charge (except state, county, city and special district ad valorem taxes and taxes on net income) levied, assessed or imposed subsequent to July 1, 1976, upon or allocable to the Company's distribution operations, by any new or amended law, ordinance or contract. Company, at its option, may forego the application of any adjustment if such adjustment would result in an increase in the monthly bill; however, failure of

ADJUSTMENTS
The amount of each monthly bill computed at the above-stated rates shall be subject to the following adjustments: Plus or minus the amount of any increase or decrease, respectively, above or below the \$1.3488 per Mcf level in the intra-company city gate charge as authorized by the Railroad Commission of the State of Texas or other regulatory body having jurisdiction for gas delivered to Lone Star Gas Company's distribution system for sale to residential and commercial consumers where such changes are caused by increases or decreases in the cost of gas purchased by the Company; plus an amount equivalent to the proportionate part of any new tax, or increased tax, or any other governmental imposition, rental, fee or charge (except state, county, city and special district ad valorem taxes and taxes on net income) levied, assessed or imposed subsequent to July 1, 1976, upon or allocable to the Company's distribution operations, by any new or amended law, ordinance or contract. Company, at its option, may forego the application of any adjustment if such adjustment would result in an increase in the monthly bill; however, failure of

ADJUSTMENTS
The amount of each monthly bill computed at the above-stated rates shall be subject to the following adjustments: Plus or minus the amount of any increase or decrease, respectively, above or below the \$1.3488 per Mcf level in the intra-company city gate charge as authorized by the Railroad Commission of the State of Texas or other regulatory body having jurisdiction for gas delivered to Lone Star Gas Company's distribution system for sale to residential and commercial consumers where such changes are caused by increases or decreases in the cost of gas purchased by the Company; plus an amount equivalent to the proportionate part of any new tax, or increased tax, or any other governmental imposition, rental, fee or charge (except state, county, city and special district ad valorem taxes and taxes on net income) levied, assessed or imposed subsequent to July 1, 1976, upon or allocable to the Company's distribution operations, by any new or amended law, ordinance or contract. Company, at its option, may forego the application of any adjustment if such adjustment would result in an increase in the monthly bill; however, failure of

ADJUSTMENTS
The amount of each monthly bill computed at the above-stated rates shall be subject to the following adjustments: Plus or minus the amount of any increase or decrease, respectively, above or below the \$1.3488 per Mcf level in the intra-company city gate charge as authorized by the Railroad Commission of the State of Texas or other regulatory body having jurisdiction for gas delivered to Lone Star Gas Company's distribution system for sale to residential and commercial consumers where such changes are caused by increases or decreases in the cost of gas purchased by the Company; plus an amount equivalent to the proportionate part of any new tax, or increased tax, or any other governmental imposition, rental, fee or charge (except state, county, city and special district ad valorem taxes and taxes on net income) levied, assessed or imposed subsequent to July 1, 1976, upon or allocable to the Company's distribution operations, by any new or amended law, ordinance or contract. Company, at its option, may forego the application of any adjustment if such adjustment would result in an increase in the monthly bill; however, failure of

ADJUSTMENTS
The amount of each monthly bill computed at the above-stated rates shall be subject to the following adjustments: Plus or minus the amount of any increase or decrease, respectively, above or below the \$1.3488 per Mcf level in the intra-company city gate charge as authorized by the Railroad Commission of the State of Texas or other regulatory body having jurisdiction for gas delivered to Lone Star Gas Company's distribution system for sale to residential and commercial consumers where such changes are caused by increases or decreases in the cost of gas purchased by the Company; plus an amount equivalent to the proportionate part of any new tax, or increased tax, or any other governmental imposition, rental, fee or charge (except state, county, city and special district ad valorem taxes and taxes on net income) levied, assessed or imposed subsequent to July 1, 1976, upon or allocable to the Company's distribution operations, by any new or amended law, ordinance or contract. Company, at its option, may forego the application of any adjustment if such adjustment would result in an increase in the monthly bill; however, failure of

CARD OF THANKS

With deepest gratitude, we extend this word of thanks for the many acts of sympathy expressed by thoughtful friends. Your great kindnesses have meant much to us. —The Family of Hubert Halfmann 39-1tp.

Company to apply any adjustment shall not constitute a waiver of Company's right from time to time, or at any time, to make any adjustment, in whole or in part, in any subsequent current monthly bill that may be applicable to such bill.

All bills shall be due and payable when rendered.

The above rate is applicable to each residential and commercial consumer per meter per month or for any part of a month for which gas is used at the same location.

In addition to the aforesaid rates, Company shall have the right to collect such reasonable charges as are necessary to conduct its business and to carry out its reasonable rules and regulations in effect.

SECTION 2. The rate set forth in Section 1 may be changed and amended by either the City or Company furnishing gas in the manner provided by law. Service hereunder is subject to the orders of regulatory bodies having jurisdiction, and to the Company's Rules and Regulations currently on file in the Company's office.

SECTION 3. It is hereby found and determined that the meeting at which this ordinance was passed was open to the public, as required by Texas law, and that advance public notice of the time, place and purpose of said meeting was given.

PASSED AND APPROVED on this 15th day of November, A.D. 1976.

ATTEST:
Buford Baldwin, Secretary
Homer Hodge, Mayor City of Winters, Texas.

STATE OF TEXAS
COUNTY OF RUNNELS
I, Buford Baldwin, Secretary of the City of Winters, Runnels County, Texas, hereby certify that the above and foregoing is a true and correct copy of an ordinance passed and approved by the City Council of the City of Winters at a regular session held on the 15th day of November, 1976, as it appears of record in the Minutes of said City in Book 9, Page 81 & 82.

WITNESS MY HAND AND SEAL OF SAID CITY, this 16th day of November, A.D. 1976.
Buford Baldwin, Secretary City of Winters, Texas

HBO Is Only \$8.00 a Month After Installation Call Us - We'll Turn You On! SCHEDULE

FRIDAY DEC. 3
4:30 High Hill
5:00 Lost In The Stars
7:00 USA—USSR Boxing

SATURDAY DEC. 4
10:00 The Exorcist
2:00 Bite The Bullet
4:30 Mauro The Gypsy, The Dragon
6:00 Skate Canada
7:00 Bite The Bullet
9:30 Rollerball
11:45 On Location

<

Two Blizzards Named To All-District Team

Phillip Colburn, a member of the 1976 Winters High School Blizzard football team, was named to both offense and defense first teams in All-District picks for District 6-AA last week.

Jimmy Chapman, a senior, was named to the second team, offense.

Colburn, a junior student, was named an All-District offensive lineman, first team, and as a defensive lineman.

Chapman was named a running back on the second team, offense.

**DISTRICT 6-AA
ALL-DISTRICT**

Offense—1st Team
Quarterback—Ray Torres, senior, Colorado City.
Running backs—Don Earl, senior, Stamford; Larry Smith, Merkel, senior; Ken Kelso, senior, Coahoma; Gary Hulme, Soph., Colorado City.
Receivers—Bill Harrell, senior, Stamford; Pete Parham, senior, Colorado City; Benny Arispe, senior, Colorado City.
Linemen—Jim Jordan, senior, C-

City; Kevin Herm, senior, C-City; Terry Don Roberts, junior, Coahoma; Kenny Fryrear, senior, Coahoma; Phillip Colburn, junior, Winters.
Offense—2nd Team
Quarterback—Bryan Tabor, senior, Stamford.
Running Backs—Jim Bob Phillups, senior, Coahoma; Jimmy Chapman, senior, Winters; Roger Doane, senior, Merkel; Frank Sanchez, junior, C-City.
Receivers—Brad Pursley, junior,

Merkel; Allen Ritchey, senior, Ballinger.
Lineman—Ruben Ornelas, senior, C-City; Billy Smith, senior, Coahoma; Benny Herman, senior, Stamford; Tom DeBerry, junior, Wylie; Glen Braune, senior, Merkel.
Defense—1st Team
Lineman—Bobby Fryar, senior, Coahoma; Jackie Ellis, senior, C-City; Steve Belvin, senior, C-City; Phillip Colburn, junior, Winters; Mark Shaw,

senior, Merkel.
Linebackers—Ruben Ornelas, senior, C-City; Ken Kelso, senior, Coahoma; Greg Haley, senior, Ballinger; Larry Smith, senior, Merkel.
Backs—Time Greenfield, junior, Coahoma; Wayne McKee, senior, C-City; John Biera, senior, Merkel; Rast Rosenquist, senior, Stamford.

WE'LL CLIMB THE HIGHEST MOUNTAINS to give you the LOWEST PRICES!

SHURFINE TUNA
6 1/2 -oz. CAN **49¢**

KRAFT
Miracle Whip
93¢
QT.

PIGGLY WIGGLY

BORDEN'S
Ice Cream
HALF GAL. **99¢**

TEXSUN
Orange Juice
46 -oz. **53¢**

WE GIVE S & H Green Stamps

We Welcome FOOD STAMP SHOPPERS

HEINZ
CATSUP 32-oz. **79¢**

COLORADO
PINTOS 2 -LB. BAG **43¢**

BAMA JAM OR
JELLY 18-oz. **59¢**

VEGALL MIXED
Vegetables 16 -oz. **29¢**

WOLF
CHILI 19-oz. **79¢**

LOOSE LEAF
FILLER 200-CT. **63¢**

DEL MONTE
TOMATO JUICE 46-oz. **53¢**

CHARMIN
TOILET TISSUE 4-Roll PAK **75¢**

CREAMY
CRISCO
3 -LB. CAN **\$1.53**

PILLSBURY'S
BANQUET FROZEN POT PIES
3 FOR **79¢**

SHURFRESH BLOCK
OLEO LB. **34¢**

COLGATE
TOOTHPASTE 7-oz. TUBE **88¢**

LIPTON'S
Instant Tea 3 -oz. **\$1.39**

AMERICAN BEAUTY INSTANT
Potatoes 16 -oz. **57¢**

PHASE III
Bar Soap BATH SIZE **29¢**

PET
CREAMER 16-oz. **87¢**

5-oz. LIBBY'S
Vienna Sausage 3/95¢

3/4 -oz. LIBBY'S
Potted Meat 3/49¢

HEAVY BEEF ROUND
STEAK
LB. **\$1.19**

SLICED
SLAB BACON
LB. **79¢**

HEAVY BEEF SIRLOIN
STEAK
LB. **\$1.29**

VELVEETA
CHEESE
2 -LB. BOX **\$1.89**

32-oz. SPRITE OR
Coca Cola
4 BOTTLES **\$1**
PLUS BOTTLE DEPOSIT

HOT OR MILD
LINKS
LB. **69¢**

OWENS
Country Style Sausage
Straight from the farm

PORK
SAUSAGE
2 -LB. BAG **\$1.99**

BAMA
PEACH PRESERVES
18 -oz. **69¢**

QUANTITY RIGHTS RESERVED

POTATOES No. 1 RUSSET
KRISP **10 -LB. BAG 65¢**

DELICIOUS
Lettuce LARGE HEAD **23¢**

APPLES LB. **29¢**

STORE HOURS
7:30 a.m. to 6:30 p.m.

PIGGLY WIGGLY

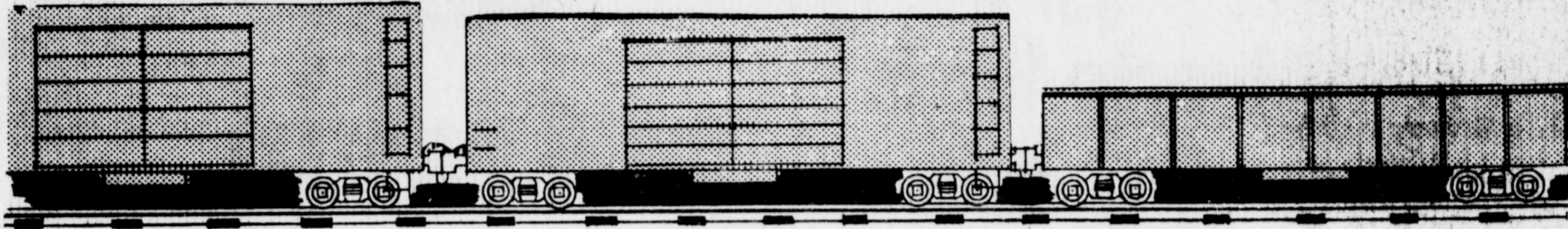
PIGGLY WIGGLY

PIGGLY WIGGLY

PIGGLY WIGGLY

WILL YOU

...do your part to help
keep the railroad in Winters .. ?



In the early days, the people of this community contributed \$50,000 to GET the railroad into Winters . . . the presence of a railroad meant much to the future of the community then. The railroad means much to the present and the future of this community NOW . . .

You are not being asked to contribute money in the present efforts to prevent abandonment of the railroad—only a bit of your time . . .

A large show of support is vitally needed in order to impress the hearing committee of the importance of continued rail service to the citizens of this community.

The following urge your presence and support at the hearing,

MONDAY, DECEMBER 6,

at 9:30 a. m.

in the Winters Community Center

- | | | |
|---------------------------------------|--------------------------------------|-----------------------------------|
| SMITH DRUG CO. | WINTERS STATE BANK | WINTERS SHEET METAL CO. |
| SPILL BROS. CO. | HEIDENHEIMER'S | HIGGINBOTHAM'S |
| FOXWORTH-GALBRAITH
Building Center | NORMAN INSURANCE | BISHOP & SONS
Dirt Contractors |
| BAHLMAN JEWELERS | DRY DIVISION
Wallace Murray Corp. | MAIN DRUG CO. |
| BEDFORD INSURANCE | WINTERS WELDING WORKS | CHAMBER OF COMMERCE |
| HARRISON AUTO PARTS | FIRST SAVINGS & LOAN | ALDERMAN REAL ESTATE |
| WINN'S VARIETY | BAHLMAN CLEANERS | VAUGHAN OIL & GAS CO. |
| ROBINSON CHEVROLET | THE WINTERS ENTERPRISE | WINTERS FARM EQUIPMENT |
| ALDERMAN-CAVE
Milling & Grain Co. | WESTERN AUTO | CHICKASHA
Cotton & Oil Co. |
| FASHION SHOP | MANSELL BROS. | WINTEX INDUSTRIES |
| BOB LOYD LP GAS CO. | JOHN'S INTERNATIONAL | SURPLUS STORE |
| | MAC OIL FIELD | |

FB Members To Attend State Meet Dec. 5

Runnels County Farm Bureau will send 12 voting delegates to the 43rd annual meeting of the Texas Farm Bureau Dec. 5-8 in Fort Worth, according to LeRoy Pelzel, Miles, president of the 1186 member county organization.

Attending as delegates from Runnels County will be Mr. and Mrs. Edward Brede-meyer, Mr. and Mrs. J. B.

Estes Jr., of Winters; Mr. and Mrs. Leon Frerich of Norton; Mr. and Mrs. Harvey Droll, Rowena; Mr. and Mrs. LeRoy Pelzel, and Mr. and Mrs. James Eggemeyer, Miles.

Also attending from this county will be Mr. and Mrs. Dub McMillon, agency manager, and Mr. and Mrs. Doyle Dondra, state director from District 7, Texas FB.

Crews News

Middle age is when you've got everything and still don't feel good.

We're glad to hear Mr. Burley Campbell is back at home and doing real well. He got to come home "Thanksgiving Day. He got to come home after a spell in the hospital. Mr. and Mrs. Jim Martin of San Angelo, Mr. and Mrs. Jerry Martin and boys of San Antonio and Bonnie Clark of Ballinger spent Thanksgiving with them. Mr. and Mrs. Buck Campbell of Abilene on Sunday.

Mrs. John Sims and girls Melinda and Kris of Winters spent Sunday with the Kat Grissoms.

Mr. and Mrs. Mike Prater and Perry of San Angelo were weekend guests in the Noble Faubion home.

Our latest report about Mrs. Effie Dietz is she's still in the Ballinger Hospital, Room 21 and is doing nicely. Over the Thanksgiving

holidays the Morrison family, had their reunion at the Howard Morrison hilltop home. 31 attended. Mrs. Annie Morrison, 87, who is making her home in a San Antonio nursing home got to attend also. Tee and Selma Berry made the trip here from Arlington also their daughter Mr. and Mrs. Sutherland out on the plains some place. Afterwards they all gathered around the piano at the Clyde Brevards and had a sing song. All of Mrs. Annie Morrisons grandchildren were here.

The Allen Bishop family were with the Jimmy Criswell family for the Thanksgiving holiday.

Mr. and Mrs. Horace Stokes, Mr. and Mrs. S. J. Brevard, Mrs. Alta Hale spent Thanksgiving with Mrs. Lemma Fuller in Coleman.

Mr. and Mrs. Calvin Hoppe and girls spent the holidays with Mr. and Mrs. Jack Ziller in Liberty Hill. Mr. and Mrs. Marion

Wood attended the Groom and Forsan football game Friday night. Afterwards they spent the night with their daughter, Mr. and Mrs. Don Minzey. Mr. and Mrs. Bobbie Calcote came by for a visit on their way to Pearson to see Mr. and Mrs. Maloze Bryant Saturday night.

Mr. and Mrs. Robert Hill had Thanksgiving dinner in Sweetwater with the Robert Hills, Mr. and Mrs. Mike Hill and Mrs. Leona Voss also were guests. Gary Hill spent the weekend, he's from Andrews.

Judie and Jim Chapman of Winters were dinner guests Thanksgiving out here with Selma and Hazel Dietz.

Mr. and Mrs. Rodney Faubion had these guests on Thanksgiving. Mr. and Mrs. Jimmy McAden and girls; Mr. and Mrs. Marvin Gerhart and family; Mr. and Mrs. Mike Prater of San Angelo; Mr. and Mrs. Noble Faubion; Mr. and Mrs. L. A. Faubion of Ballinger; Mr. and Mrs. Bobbie Baker of Midland; Walter Jr. Pape of Denver, Colo.; and Bradley Pape.

Area missionary Harry K. Morris held services Sunday at the Hopewell Church due to the illness in the Bob Underwood family.

Mr. and Mrs. Ronnie Clay and son Cody of Lubbock ate Thanksgiving with the James Earl Coopers. The Richard Chambliss also were guests. Buddy and Charollet Sutherland, old friends of the Coopers dropped by on their way home Sunday.

Spending the holidays with Jack Bragg were Mr. and Mrs. Carl Bull of Tow and Mr. and Mrs. Ray Mulax from San Antonio.

Mrs. Hazel Mae Bragg won a free turkey for her holiday guests at the Oaks Grocery in Coleman. Those guests were Dr. Larry Bragg and Miss Cindy Stermond of El Paso, Mr. and Mrs. Glen

Bragg, David and Shelly of Hondo, Mr. and Mrs. Harold Bragg, Mike and Joy of Talpa.

Attending the Cowboys and St. Louis football game in Dallas Thanksgiving were Mr. and Mrs. Kat Grissom, Mr. and Mrs. John Sims and girls, Mr. and Mrs. Ricky Grissom, Corey and Stacey, Mr. and Mrs. Von Byrd and Jennifer of Abilene, Mr. and Mrs. Steve Grissom and daughter of Fort Worth, Mrs. Kathrine Thomas and Max. Mr. and Mrs. Steve Grissom hosted the Thanksgiving dinner before the game. Steve and Jan returned home with the Kat Grissoms and then attended the Hamlin and Seagraves football game in Big Spring on Friday night.

Through the week with the Doug Bryans were Mr. and Mrs. Bill Feldhausen, Vance and Flint of Francitas, Lelon and Vicki Bryan, Cheryl Pritchard of Stephenville, Dewitt and Francis Bryan, Susan and Brent.

Those attending the party and birthday dinner for Mr. Andrew Michaelwicz 74th birthday at Cross Road Community were the honoree Mr. Michalewicz, Mrs. Michalewicz, Mr. and Mrs. Walter Jacob, Brenda and Beverly, Mr. and Mrs. Joe Bunsenlehner and sons, Mr. and Mrs. Herbert Jacob and family, Mr. and Mrs. Gary Jacob, Mr. and Mrs. Bernice Michalewicz and Barbara and Denny Heathcott, Mr. and Mrs. Daniel Stuable and family, Mr. and Mrs. Olen Weishuhn and family, Dennis Holubec, Mr. and Mrs. Don Michalewicz and family, Mr. and Mrs. Warren Michalewicz and family, Mr. and Mrs. Kenneth Hoelscher and daughters.

Brenda and Beverly Jacob of San Angelo were home 4 days during the Thanksgiving holidays.

The O. Z. Foremans had their reunion in the Ballinger Community Center Sunday, approximately 40 attended. Mr. and Mrs. Clarence Hallmark, Mr. and Mrs. E. W. Bridwell were visitors. A new addition to the Foreman reunion was little Reesa Noel of San Antonio, a great-granddaughter to O. Z.

The Coleman Foremans visited with Mrs. Effie Dietz in the hospital afterwards. She was in good spirits.

Mr. and Mrs. Bill Villers, Jim and Peggy of San Angelo were home with the Raymond Kurtz Thanksgiving.

The Chester McBeths had Thanksgiving dinner in Tuscola with Mrs. Mable White. Mr. and Mrs. A. E. Tounget of Lubbock spent Friday and Saturday in the McBeths home.

With the Marvin Hambrights Thanksgiving were Mr. and Mrs. Michale Dyes

of Lubbock, Mr. and Mrs. Arbury Faubion, Cliff and Donna, Mr. and Mrs. Cecil Hambricht, Brandon and Toni and Eldon Hambricht in the afternoon. Mr. and Mrs. George Lange and Scott, Mr. and Mrs. Dennis Lange and son of Beeville, Mr. and Mrs. Cecil Tucker and girls of Miles, Mr. and Mrs. Bennie Hambricht and boys of Bronte and David Lange of Lubbock. Others visitors were Mr. and Mrs. Burley Campbell, Mr. and Mrs. Theron Osborne, Mr. and Mrs. Clarence Hambricht and Dean Taylor.

Mr. and Mrs. D. S. Osborne and family of Houston were up for Thanksgiving in the Lilly and Selma Osborne home. Other guests were Mr. and Mrs. Theron Osborne and Mr. and Mrs. Wesley McGallion and son.

Mr. and Mrs. Berdell McDonald, a niece of Level-land, came to see the Burley Campbells on Friday.

Miss Collins, Mr. Rick DeLaCruz Plan To Wed

(CORRECTION)
Mrs. Weldon L. Collins announces the approaching marriage of her daughter, Sherry, to Mr. Rick De La Cruz, son of Mr. and Mrs. Jose S. De La Cruz of Winters.

The wedding will be in the

First Baptist Church, Winters, May 14, 1977.
(The Enterprise regrets the error in the above announcement as published last week, and for any inconvenience or embarrassment it may have caused.)

Young Farmers Yule Party Monday Night

The annual Winters Young Farmers family Christmas party will be held Monday, December 6, at 7 p.m. in the Lions Club Building at Wingate.

Ladies will bring dessert.

Members will bring gifts for their own children if they desire.
Final plans will be made for the Young Farmers Christmas Ball, planned for December 23.

Retired Teachers Meeting Scheduled December 7

Runnels County Retired Teachers Association will meet Tuesday, Dec. 7, at 2:30 p.m. in the home of Mrs. Earl Dorsett, 510 Tinkle.

Mrs. Homer Hodge Jr., will present a Christmas

selection, and a gift exchange will be held.
Co-hostesses with Mrs. Dorsett will be Mrs. J. S. Tierce, Mrs. Elo Michaelis, Mrs. Ennis Steele and Miss Lucy Kittrell.

Dale Sewing Club Meeting Recently

The Dale Sewing Club met Monday at the Humble Building for an all-day quilting.

Present were Mesdames E. E. Thormeyer, Herman Spill, Bill Mayo, Marvin Traylor, I. W. Rogers, Quincy Traylor, Oliver Wood, Thad-Traylor, Ralph McWilliams, Verge Fisher, Clarence Hambricht, Jack Whit-

tenberg, Carl Baldwin, Reese Jones, and Carroll Stoecker.
The Christmas Party will be held Thursday, December 9 at the Humble Building.

IN WHITTENBERG HOME
Thanksgiving guests in the home of Mr. and Mrs. Jack Whittenberg were Mrs. Stanley Roth of Phoenix, Ariz.; Mrs. Bernice Stanford and Larry of San Angelo; Mr. and Mrs. Randall Watson, Terry and Lori of Coleman; Mrs. Pete Wessels and Clarence, Mr. and Mrs. Willis Whittenberg and Mr. and Mrs. Ronnie Bethel and Rhonda Kay, all of Winters.

IN BUCHANAN HOME

Visitors in the Joe Buchanan home during the Thanksgiving holidays were Bill and Doris Bradshaw of Wichita Falls; Bruce and Beckie Pearce of San Angelo; Bob and Faye Pearce of Abilene; Doyle, Pat, Kathy, Billy, Kim and Tammy Buchanan, all of Ovalo.

CARD OF THANKS

We are sincerely grateful to friends and neighbors for their many acts of sympathy and thoughtfulness during our bereavement. These expressions have been deeply appreciated and will always be remembered by the family of Mrs. G. C. Byers.

-Bo and Bess Byers, Becky and Barby 39-1tp.

IN O'DELL HOME

Thanksgiving visitors in the home of Mr. and Mrs. Suvern O'Dell were Mr. and Mrs. Jack Roe, Haysville, Kans.; Mr. and Mrs. Virgil Lee Blackmon and family, West Fork, Ark.; Mr. and Mrs. James Spradling and family, San Antonio; Mr. and Mrs. M. L. Stanfield and Marty, Barbara Blackmon and children, Austin; Mr. and Mrs. Michael O'Dell, San Angelo; Mr. and Mrs. Benny O'Dell, Mr. and Mrs. Garland O'Dell and Clay, Phyllis and Kay O'Dell, Abilene; Mr. and Mrs. Douglas Overman, Mr. and Mrs. R. Q. O'Dell, Winters; Mr. and Mrs. John Haney and son, Abilene; Melinda Hill, Wingate, and Tony Howard, Winters.

Sub Deb Club Meeting Recently

The Sub Deb Club honored the Goal Diggers Club with a Thanksgiving dinner last Tuesday in the Fellowship Building of the Church of Christ.

Thanksgiving and fall themes, with autumn leaves and scarecrow characters,

were carried out in the party room.

The salad supper was one of many held by the two girls' clubs since they were formed in the early 1940's. Approximately 22 club members, sponsors and guests attended the annual event.

USE THE CLASSIFIEDS

USED CARS & TRUCKS

1968 FORD LTD Clean.....	\$795.00
1973 FORD LTD Extra Clean, Loaded.....	\$2495
1966 BUICK ELECTRA.....	\$475.00
1968 PONTIAC BONNEVILLE.....	\$495.00
1973 CHEVROLET 1/2 ton, Loaded, Extra Clean.....	\$1995
1974 GMC SIERRA GRANDE.....	\$2475
1972 FORD 3/4 ton, 4 speed, air, power.....	\$895.00
1973 CHEVROLET 3/4 ton, loaded, 4 speed, 35,000 miles.....	\$3275
1966 RANCHERO.....	\$595.00
KAWASAKI 500 cc.....	\$595.00
YAMAHA 500 cc, Extra Clean.....	\$795.00

BISHOP BOYS FORD

TUESDAY, Dec. 14

9 99¢

KING SIZE WALLET CREATIVE COLOR PORTRAITS FOR ONLY

ORDER PICTURES FOR CHRISTMAS NOW



NO LIMIT

Extra Charge for GROUPS

GET PICTURES MADE OF GRANDPA, GRANDMA, DAD, MOM AND ALL THE LITTLE ONES AT THESE SAME LOW PRICES!

SHUGART COLOR PHOTOS

ASK About Our FREE 8 x 10 OFFER

WINN'S

106 West Broadway

BUDGET OUT OF HAND?



Save money with FARMERS AUTO INSURANCE

Be assured of modern, broad form coverage and fast, fair, friendly service while you save!

FARMERS INSURANCE GROUP

For information call

JIM HATLER

Insurance Agency
127 N. Main
Phone 754-5032

YOU CAN BUY A ZENITH COLOR TV FOR \$318*

Model G-1410

WESTERN AUTO ASSOCIATE STORE

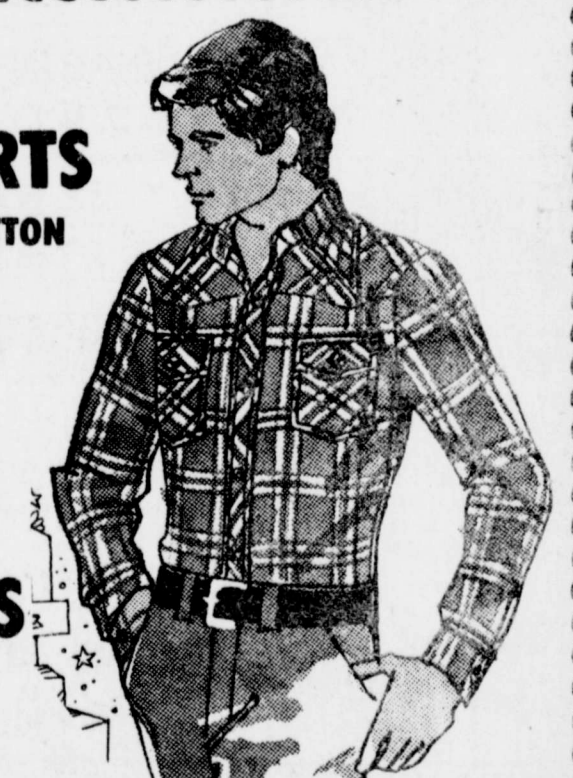
MEN'S LAZY H WESTERN SHIRTS

65% POLYESTER- 35% COTTON PERMA-PRESSED

\$6.95

MEN'S LEISURE SHIRTS

\$5.95



Toasty Warm QUILTED ROBES

Rinse-Dry **\$7.95**

Comfy acetate tric-ot with polyester fiberfill. Assorted colors and sizes.

MISSES' 7-14 \$6.95

FACTORY IRREGULARS

GOWNS ROBES PAJAMAS

1/2 PRICE



Snuggly GRANNY GOWNS

Cloud Soft **\$3.95**

Pink and pretty... warm too! Dreamy nightgowns of brushed nylon.

EXTRA SIZES \$4.95

SALE WOMEN'S VINYL JACKETS

WEAR WITH EVERYTHING

PLAIN **\$13.88**

EMBROIDERY TRIMMED **\$16.88**

SURPLUS STORE

Melody Home

14x80 \$9,795 \$136 mo.

14x70 \$8,695 \$122 mo.

14x56 \$7,295 \$103 mo.

1344 sq. ft. \$163 mo.

Abilene Mobile Homes

TEXAS PRESS
MEMBER 1976 **ASSOCIATION**

The Winters Enterprise

RICHARD C. THOMAS, Publisher

Entered At Post Office, Winters, Texas 79567.

As Second-Class Matter.

SUBSCRIPTION RATES

One Year, In Rannels and Adjoining Counties.....\$5.00
In Other Texas Counties (Tax Inc.).....\$6.25
Out of State (Tax Inc.).....\$7.00

Any erroneous reflection upon the character, standing or reputation of any person, firm or corporation which may appear in the columns of this newspaper, will be gladly corrected upon due notice of same being given to the editor personally at this office.

**Gift Tea Honors
Bride-To-Be**

Miss Sheila Williams, whose marriage to Stanley W. Tatom will take place January 8, was guest of honor at a gift tea and miscellaneous shower in the home of Mr. and Mrs. M. E. Mathis Nov. 13.

Green, gold and yellow were the colors used throughout the home.

Miss Susan Williams, sister of the bride-elect, presided at the register. Others who assisted in hostess duties were Mmes. C. J. Blackshear, Clifton Poe, Roger Bryan, Cecil Tekell, Dennis Poe, Lee Harrison, E. A. Fairey, Dennie Rogers, James West, M. E. Mathis, and Miss Jean Sneed.

**Merrill Nursing
Home News**

We are always pleased to welcome a new resident to make this a "Home away from home." Those who have come into our home recently are Mrs. Carolyn Nelson, Miss La Francis Johnson, Mr. Ollie Hamilton, and Mrs. Cecil Inez Smith, the mother of Mrs. John Waddell, moved in yesterday. Lavinia Crockett has returned to live here, after spending several weeks with her daughter in Conroe. We hope these five people will have a pleasant stay with us.

Our administrators, Janice and Johnnie Merrill are in Houston this week attending a seminar. Janice says she is always eager to learn how to better care for the residents in her home.

Many of our residents were out of the home over the Thanksgiving holidays, and others had an opportunity to express the things they were most thankful for at the "Tuesday Fun Time." We all enjoy this session each week, and you are invited to come down any Tuesday afternoon.

**CLASSIFIEDS
GET RESULTS**

INSURE
What You Have
Fire-Life-Property
JNO. W. NOR
The Insurance MAN

**Miss Casey and Mr.
Doucette Will Wed**

Mrs. J. T. Casey of Wingate announces the engagement and approaching marriage of her daughter, Sarah, to Mr. Ed Doucette.

The wedding will be December 11, at 7 o'clock in the evening, in Ashbury United Methodist Church, Charleston, West Virginia.

**Sew and Sew
Club Meeting**

The Sew and Sew Club met recently in the home of Mrs. J. R. Woodfin. Quilting was done for the hostess.

Present were Mesdames Dolly Airhart, Nellie Adcock, Mabel Bagwell, Opal Belew, Nolan Cave, Suvern O'Dell, Pete Polk, F. N. Robinson, Dock Rogers, and Miss Mildred Patton and Miss Leila Harter.

Custom quilting will be done at the next meeting.

**Be Busy Sewing
Club Meeting**

The Be Busy Sewing Club met November 22 in the home of Mrs. Etta Bryant. The afternoon was spent doing handwork for the hostess.

Attending were Mesdames Lewis Blackmon, Bill Millhorn, M. H. Hogan, Eura Lloyd, Vallie Brannon, Becky Poe, Mayola Cathey, Nadine Smith and the hostess.

The next meeting will be a Christmas luncheon December 13 in the home of Mrs. Nadine Smith.

**Southside WMU
Meeting Tuesday**

The Southside Baptist Women's Missionary Union met Tuesday of last week in the home of Mrs. Marilyn Rose. Mrs. Fred Young brought the Bible study, and Mrs. Joy Hasty read the prayer calendar.

Others attending the meeting were Mesdames J. R. White, Juanita Bentley and V. M. Fisher.

**Diversity Club
Saw Cancer
Film Recently**

Dr. Rahlman, a chemotherapist of San Angelo, showed a cancer film and held a question and answer period during a meeting of the Diversity Club in the Church of Christ Fellowship Building November 18.

Mrs. W. L. England, Mrs. Earl Roach, Mrs. Frank Brown, and Mrs. Wayne Roberts were hostesses.

Guests were members of the Literary and Service Club, the Junior Culture Club, and others.

Approximately 40 attended.

**WINGATE
NEWS**

Mr. and Mrs. Dave Howard and children of San Angelo were holiday guests in the home of Mrs. I. G. Hensley.

Mr. and Mrs. Gilbert Smith and Jim and Mrs. M. R. Smith and brother Boyd King were dinner guests in Robert Lee with Marie and family.

Mr. and Mrs. Buddy King are visiting his mother Madalyn King.

Gladys, W. F. and Tommy Matthews of San Angelo were visiting her mother, Mrs. Wheat last Thursday. The Gene Wheats came in the afternoon.

Mrs. Clarence Morris is home from the hospital.

Ray Bagwell of Odessa was visiting his mother Mrs. W. N. Bagwell this week.

Melva and Ken Rogers of Midland were here for the holidays with Ruby and Bob.

Mr. Ulyses Eans of California is visiting his sister, Mrs. W. N. Bagwell.

Mr. and Mrs. Irvy Talley visited in the home of their daughter, Melva in Abilene Sunday.

Mrs. Flossie Kirkland is spending a few days in Abilene with Demetra.

Mrs. Clarence (Soc) Morris is a patient in North Rannels Hospital.

Mr. and Mrs. L. C. Briley and Bryan of Midland and the Gene Wheats of Winters were guests with their mother, Mrs. W. W. Wheat.

M. B. Folsom and Dody attended the football game at Hereford between Floydada and Demmitt this week.

Word was received here by Mrs. M. B. Folsom of the death of Mrs. Myrtle Hughes Hicks at Pearland. She was a former resident of Wingate.

Mrs. David Bryan is a patient in North Rannels Hospital.

**Winters Joint 4-H
Club Meeting**

Winters Joint 4-H Club met November 22 in the vo-ag building, with Rhonda Carter presiding.

Dale Brandenberger showed slides on National Citizenship Short Course and Heritage Tour to Washington.

Members present were Rhonda Carter, John Carter, Karen Carter, Keith Kraatz, Kyle Kraatz, Don Kvapil, Melinda Kvapil, Claudette Faubion, Rosalinda Vera, Adelita Vera, Anna Vera, Rose Marie Faubion, Scott Gerhart, Janet Jacob, Fran Hoppe, Sherri Gerhart, Dawn Miller, Vonda Webb, Debbie Hamilton, Beverly Hamilton, Ronny Ripley, Gina Guevara, Wayne Kraatz, Francene Miller, Jim Bob Webb. Sponsors present were Elaine Miller, Oleta Webb, Ruby Carter, Mrs. O'Connor, and Dale Brandenberger.

**Literary, Service
Club Heard
Crime Program**

A program on crime prevention, "Hands Up," was presented during a meeting of the Literary and Service Club Nov. 18 in the home of Mrs. M. G. Middlebrook. Mrs. C. A. Lacy was also a hostess.

The program was presented by Mrs. J. S. Tierce. Mrs. Bobbie Butts, Mrs. Lee Harrison, and Mrs. J. S. Tierce encouraged the group to take preventive measures to prevent crime. Mrs. Butts, a member of the Winters Police Department, spoke to the group about crime in Winters, and held a question and answer session. Mrs. Harrison used "Citizenship" as her topic on the program.

Mrs. Ray Alderman urged all members to be present at the hearing concerning the abandonment of the railroad from Winters to Abilene. The hearing will be Dec. 6. Fifteen members and one guest, Mrs. Butts, were present.

Members present were Mesdames J. S. Tierce, Ray Alderman, E. E. Thormeyer, Loyd Roberson, Newt Blackerby, Earl Dorsett, Lee Harrison, C. T. Hart, H. M. Nichols, Elo Michaelis, Mae Lewis, Chas. Kruse Jr., Joe Irvin, M. G. Middlebrook, and C. A. Lacy.

Mr. and Mrs. Stan Graczyk of St. Paul, Minn., announce the birth of a daughter, Christina Marie, born Nov. 22, 1976. The baby weighed 7 pounds 13 ounces. Grandparents are Mr. and Mrs. Matt Graczyk of Three Lakes, Wis., and Mr. and Mrs. A. O. Merck of Winters.

Mr. and Mrs. Terry Loehman of Odessa announce the birth of a son, Terry Lynn Jr., born Nov. 18, 1976, at Women's & Children's Hospital in Odessa. The baby weighed 9 pounds 12 1/2 ounces. Mr. and Mrs. Loehman have one daughter, Lisa. Paternal grandparents are Mrs. Weetona Stuteville of Winters and Eddie Loehman of Odessa. Maternal grandparents are Mr. and Mrs. Noel Graves of San Angelo. Great-grandparents are Mrs. George Akeman of Winters, Mr. and Mrs. Sam Morris of Abilene and Mrs. Frank Borders of Ballinger.

Mr. and Mrs. Bill Miller Sr., of Trinidad, spent several days recently in the home of Mr. and Mrs. W. F. Minzenmayer.

**Miss Curbo, Mr.
Poindexter were Wed**

Sherri Lynn Curbo became the bride of Mr. Bobby Joe Poindexter in a ceremony Sunday afternoon at the First Baptist Church, with the Rev. James Gehrels officiating.

The bride is the daughter of Mr. and Mrs. Pat Wood and the late J. H. Curbo Jr.

Poindexter is the son of Donald Poindexter and the late Betty Poindexter. Cindy Pumphrey was maid

of honor and Johnny Key was best man.

Guests were registered by Kim Wood, sister of the bride.

Johnny Curbo, brother of the bride was usher.

The couple will live in Charleston, S.C., where the bridegroom is stationed with the U.S. Navy.

RECEIPT BOOKS now available at The Enterprise office.



NEWCOMERS

Mr. and Mrs. Charles Sawyer of Blackwell announce the birth of a daughter, Connie Jean, born Nov. 19, 1976, in the San Angelo Clinic Hospital. The baby weighed 8 pounds 7 1/2 ounces. Paternal grandparents are Mr. and Mrs. T. A. McMillan of Winters. Maternal grandmother is Mrs. Johnny Armstrong of Blackwell.

SHUGART COUPON
TUESDAY, Dec. 14
WINN'S
106 West Broadway
9
WALLET SIZE
COLOR PORTRAITS
99¢
ASK
Also Our
FREE
8 x 10
OFFER
Extra charge
for
GROUPS

COW POKES By Ace Reid



Thems Hunters!!
WESTERN AUTO
WES AND JUNE HAYS



Woodland
by Fostoria

An elegant pattern that catches and reflects light. Available in Blue, Green, Brown, and Crystal.

**Bahlman
Jewelers**

BIG STOCK



1977

CARS and PICKUPS

at
INFLATION FIGHTING PRICES.

Check with us before you buy.

**ROBINSON
CHEVROLET
CO.**



**DIAL
754-4511**
Day or Night

Including Sundays
or Holidays!

Air Ambulance
WHEN DESIRED
CAN BE ARRANGED
ANY TIME - ANY PLACE

SPILL BROS. CO.
Winters, Texas

**LET US
FILL
YOUR
STOCKING
THIS
YEAR - - -**



Christmas has a way of arriving before we know it. If you need money, let us help you get your holiday shopping started.

- CAR LOANS
- TV LOANS
- APPLIANCE LOANS
- FURNITURE LOANS

Payments Can Be Arranged!

THE WINTERS STATE BANK

The Bank with Better Ideas to make the problems of living a little easier.



MR. AND MRS. ADAMS

Miss Williams, Mr. Adams Wed In Pakistan

Mr. and Mrs. Jim Williams of Winters announce the marriage of their daughter, Denise, to Mr. Steve Adams, September 25, 1976, in Islamabad, Pakistan.

He is the son of Harry B. Adams of Beaumont and Louise Little of Silsbee.

They were married in the home of Mr. and Mrs. Gary McCreight. Performing the ceremony was Lt. Col. J. E. Umar Khitab, senior registrar for Christian marriages in Pakistan, and witnessed by Gerald Feisterstein, U.S. Vice Counsel in Pakistan.

The couple was presented with traditional ornaments worn by brides and bridegrooms in Pakistan. For a wedding trip, they went to Saudi Sharif in the Himalayan mountains, and Peshawar.

The bride is a 1972 graduate of Winters High School. She attended Angelo State University and in 1975 received an associate of science degree in nursing. While in Angelo State she was a charter member of Lambda Omicron chapter of Delta Zeta, social sorority, and Alpha Lambda Delta, freshman honor society. She was also a member of Alpha

Chi, National Honor Society. Mr. Adams is a 1968 graduate of Hillcrest High School, Dallas, and attended El Centro College in Dallas. He served in the U.S. Navy and is now employed by Haliburton International.

Mr. and Mrs. Adams are at home in Dubai, U.A.E.

U-M Women Met Last Tuesday

The United Methodist Women met in the Fellowship Hall of the First United Methodist Church last Tuesday, with Mrs. M. G. Middlebrook presiding.

Mrs. Melvin Dozier was leader for the program, "An Outpouring of Grateful Thanks." Mrs. Sharon McGinnis sang a solo. Others on the program were Mrs. Ralph Arnold, Mrs. Fred Young and Mrs. Middlebrook.

Names were drawn for the Circles for 1977. Sixteen members were present.

FROM ARIZONA

Mrs. Stanley L. Roth of Phoenix, Ariz., was a visitor in the home of her mother, Mrs. Pete Wessels and Clarence for a week.



When Paige, my five-year-old grandson, comes to see me we have some lively discussions except when he is in a negative mood. Once when he had said "No" to my every suggestion, I said, "I know what's wrong with you. You were born in the objective mood."

"No, I wasn't," he replied. It is very easy to be negative without realizing it, like the farmer who was congratulated for making a bumper harvest. "Yes, but it sure was hard on the land," was his answer.

In spite of the fact that there has never been a time in history when as much attention has been paid to the suggestions of the minority, some have developed a fatalistic attitude of "What's the use—there's nothing we can do."

There is a very important issue regarding the future welfare of our town to be decided on Dec. 6, at a hearing set by the Interstate Commerce Commission, and there is something you can do. YOU CAN BE PRESENT at the Community Center at 9:30 a.m. and show the officials that you are concerned.

An excellent attorney will represent the city and witnesses have already been secured, but every able bodied person should attend the hearing "to impress the hearing committee of the importance of continued rail service to the community."

Farming is the backbone of our economy and farmers have a big stake in this, too. The railroad is used to move farm products out and farm machinery in. It does make a difference.

Now, for the first time, there are several factors in our favor. The government is looking favorable on small farming communities with existing rail service and the energy situation is playing a part. It is also in our favor that the hearing will be here instead of some distant city.

IF WE DON'T MAKE ENOUGH NOISE THE

BATTLE IS LOST, BUT IT HASN'T BEEN DECIDED YET.

What if that little group of men who formed a committee, back in 1908, to bring the railroad to Winters had said, "What's the use, we'll never get a railroad," and hadn't tried.

There was great rejoicing by the Winters people on July 7, 1909, when the first train puffed into the station. The band was playing and all the citizens turned out to celebrate with a picnic.

The arrival of the train was the result of many hours of hard work by the men of the town. Thirty three of them signed the petition asking for the railroad and that was just about all the men at that time. It meant hard work to raise a large sum of money by donations, and travel to secure easements through farms, also buying property for a depot, switches, tracks and yards. All this required time away from home and business, but these men were willing to work for progress.

Mrs. John Gardner who now runs Spill Brothers, bought by her father in 1905, said, "When the railroad became available my Dad hauled all his furniture by rail for years and years. He received whole carloads of sofas, beds or chairs at a time. Furniture is now shipped by rail to Dallas or Abilene, and we have to go after it with trucks."

"We used the service as long as it was available. Rail is a safe way to move furniture, it comes in good shape, and the railroad is economical in the use of fuel. Personally, we believe there is going to be an energy crisis."

"I would welcome the opportunity to go back to rail service, and that's possible only if we have a railroad here."

The W. H. Lockharts entered the Motel business in Winters 18 years ago and the first three years were rough said Mrs. Lockhart. "But this town has come into its own, industry wise, in the last 15 years," she adds.

"When we came here the mill was on a decline and the only other plant was the evaporative cooler factory which operated a few months during the year. The oil production also bottomed out in the 60's."

"Since then Dry Manufacturing Co. has been a big asset, also Wintex, and now John's International. The services of the Milling & Grain Co. have been greatly improved and expanded under new management. The new North Runnels Hospital helps from all standpoints. Sooner or later, if we didn't have the doctors and facilities for treatment in case of injuries we would lose our industries. We draw a lot of business from the industries indirectly and when we get

Former County Resident Died In Accident

Clarence Clay Keele, 74, of Melvin, a former resident of Runnels County, was struck by a car five minutes after his pickup struck and killed a Lockhart man Tuesday night of last week about 11.5 miles east of Eden on U.S. 87.

Pronounced dead at the scene by justice of the peace Mrs. Tek Brusenhan were Allie Morgan Fox, 47, of Lockhart, and Keele.

Fox was standing in the road beside his apparently stalled car when a pickup driven by Keele struck him at about 6:30 p.m., Department of Public Safety officials said.

Fox's body was tossed about 165 feet from the point of impact, officers said. Keele stepped out of his pickup and ran 200 feet back toward Fox's car, DPS officials said. When he turned to go back to his truck, he was struck by a car driven by William Edward Lohn of Brady at 6:35 p.m.

The bodies of the two men were taken to Day-Loveless Funeral Home in Eden. Fox's body was sent to Arkansas.

Funeral services for Mr. Keele were held at 3 p.m. Thursday in Spill Memorial

CARD OF THANKS

We wish to express our deep appreciation to our friends and neighbors that shared in our sorrow in the loss of our wonderful dad and granddad. We especially thank Dr. Strole and Dr. Iles, the staff of Hendrick Hospital, for the flowers and food brought in. Rev. Steinberg and Rev. Pendergrass for their services, and Ted Meyer and the staff of Spill Funeral Home. May God richly bless each and every one of you. —The Family of O. R. Parker 39-1tc.

LUNCHROOM MENU

Monday December 6
Barbecue on toasted bun, pinto beans, creamy cole slaw, doughnuts, dill pickles, milk or chocolate milk.

Tuesday December 7
Salmon croquettes, tartar sauce in cups, savory rice, whole kernel corn, pear half with grated cheese on top, chocolate chip cookies, hot rolls with butter on top, milk or chocolate milk.

Wednesday December 8
Western spaghetti, tossed green salad with French dressing, green beans, cream potatoes, sliced peaches, peanut butter cookies, French sticks with garlic butter, milk or chocolate milk.

Thursday December 9
Hamburger or combination sandwiches, French fries, catsup in cups, fruit salad, pork and beans, chocolate sheath cake, milk.

Friday December 10
Chicken fried steak, cream gravy (by choice), whipped potatoes, tossed green salad, frozen peas, cake, hot rolls with butter on top, milk or chocolate milk.

money we spend it here.

"Anything that helps the town helps us all. We are dependent upon each other and all industry contributes to our well being. The railroad undergirds all phases of community life."

The city and school both benefit from taxes paid by the railroad. And when any source of revenue is lost something has to be added to take its place.

We believe the time is coming when the railroad will be needed even more than now. And if it is lost there will be no chance of regaining its services.

Small communities like Content, Truett and Victory who fought for the railroad and failed to get it have disappeared from the map. There is a psychological factor involved that we won't mention here—just show up and be counted.

And when we succeed, we can say, like the little mouse crossing the bridge with the elephant, "We sure did shake that bridge!"

Chapel, with the Rev. Mosley, pastor of the Melvin Baptist Church, officiating. Burial was in Fairview Cemetery in Winters under the direction of Spill Funeral Home.

He married Delia Louise Adami June 23, 1924, at Winters. He later moved to West Texas and in 1950 moved to New Mexico. He returned to Winters in 1968 and moved to Melvin in 1972. He was a longtime rancher.

Survivors include his wife; two sons, C. G. of Southfield, Mich., and James of Houston; two daughters, Mrs. Walter Johnson of Amarillo and Mrs. John Gregory Mesquite; three brothers, Ben of Eden, Orville of Stanton and Audie of Balinger; and nine grandchildren.

A son, Raymond, died in 1963.

Grandsons and nephews served as pallbearers.

SANTA IS COMING!

Be Prepared With Fashions By



GIFTS WRAPPED FREE!

From

FASHION SHOP

MASTER CHARGE

CHRISTMAS SHOPPERS



Take a Tag from Spill's Christmas Tree—Furniture Discount on tag is Free!

Shop Throughout the Store.

For Many Furniture Gifts Galore!

DISCOUNTS UP TO 50%!

SPILL BROS. CO.

ZENITH TRAINLOAD OF HOLIDAY VALUES

Zenith introduces Color Sentry.

THE AUTOMATIC PICTURE CONTROL SYSTEM Zenith's Color Sentry™ does it all for you: controls the color picture when the scene changes, or the channel changes, even when the room light changes. You get that great Zenith picture—automatically.

1977 ZENITH 100% SOLID-STATE CHROMACOLOR II ZENITH'S LOWEST PRICED SET WITH COLOR SENTRY!

\$479*

- 100% Solid-State Titan™ Chassis
- Chromacolor Picture Tube
- EVG—Electronic Video Guard Tuning System
- One-Knob VHF and UHF Channel Selection
- 19" Diagonal
- Power Sentry Voltage Regulating System

Hurry! Stop in today!

OUTSTANDING VALUE!

\$318*

The MALIBU - H1310C—Personal-size color compact with solid-state chassis and Patented Power Sentry System. Famous Chromacolor Picture. Ebony color cabinet with Silver color accents.

OUTSTANDING VALUE!

\$98

The CIMARRON - H121—Stark Wrap-Around Styling. 100% Solid-State Chassis for dependable operation. Quick-on Sunshine™ Picture Tube. Solid-State Tuning System. 12" diagonal.

SEE YOUR NEAREST ZENITH DEALER TODAY!

WESTERN AUTO ASSOCIATE STORE

RENT RINSEVAC

No other "do-it-yourself" method cleans carpets as . . .

EASILY—
38 pound portable power-house does all the work

EFFECTIVELY—
cleans, rinses and vacuums out deep down dirt and grime in a single sweep

ECONOMICALLY—
cleans the way professionals do—at a fraction of the cost (YOU SAVE UP TO \$25.00 PER ROOM)

Rent for only \$12.00 a day

Winn's VARIETY STORES

106 W. Broadway



Shall These Tracks Be Torn Up?

OPINION

These are railroad tracks—in Winters. Since 1909, they have been a prime factor in the building and growth of the entire area. Even though the coming of the automobile and the truck during the decades since the first tracks were laid, they are still economically important to the present and future of the community.

However, there is great danger that these tracks will be ripped out, leaving Winters and this area without railroad inlets and outlets, bringing farm machinery and livestock feed ingredients and other freight into our town, and hauling away the produce of farms and ranches and industry.

The Abilene & Southern Railway Co. has petitioned the Interstate Commerce Commission for person to abandon the line into Winters. With abandonment of this trackage, this community would be severed from the main railway lines in Abilene—literally cut off from the rest of the world, except through highway traffic.

To some thinking, loss of the railroad would have little effect. After all, according to some reasoning, there are the highways and the big trucks which could service the community. "There are only a few people (companies) using the railroad, anyway, and they could easily use the highways and trucks," some believe. And, "Times have changed; the presence of a railroad is not so important these days of modern highway transportation," goes some thinking.

There is more to it than that, however. Even though most of us personally do not receive and ship freight and goods via the railroads, the use of the railroads by the shippers who do has a vital economic effect on every person in the community, whether or not we realize it. For instance, much farm machinery is shipped into Winters by rail. Which means, according to those in positions to know, a savings of a good many dollars to the farmers who purchase this machinery. The presence and use of a railroad in the community means that those who buy the farmers' produce are able to pay just a bit more than would be the case if everything had to be shipped by truck. Railroad freight has certain "transit privileges," it has been explained, not allowed for trucks, which means lower freight costs.

It's a matter of mathematics and economics.

And to those who believe that "Times have changed . . .": Many experts in the field now agree that a complete reversal of the trend away from the railroads as a method of transportation is in prospect. They see a trend to a return to the rails as a primary means of moving this nation's produce and goods. They point out that, per unit of fuel consumed, the railroad is 10 times more efficient than any other method. This alone, in these days of energy shortages—and prospects for the situation to worsen—and increasing fuel costs, should indicate something. Most of us probably will

live to see the day when we again become as dependent upon the railroads as we were in the first half of this century.

And to those who believe that the effects of loss of the railroad would be felt by only a few: Anything which economically affects anyone or any company affects everyone, whether we admit it or not. The fight to save the railroad is not a selfish act on the part of any one individual or company—they are fighting for the economic survival of us all.

Once these tracks are removed, they will never be replaced. And this community probably would feel the loss more bitterly than we would the loss of practically anything else.

If enough people let their interest in continuation of the railroad be known, there is a probability that the tracks will remain in place, to serve us and those who follow. Everyone, regardless of their position in the community, is urged to attend the hearing next Monday, to amplify their interest, to show their concern over the prospects of losing the railroad, and the economic distress it could cause.

This is no time to "Let George do it!" We all must take and show an interest in this matter. If we sit idly by and twiddle our thumbs, and expect the other person to pull our chestnuts out of the fire, then we shall deserve exactly what we shall surely get—a community with out a railroad. Now is the time to act, on our own and in groups, to show our interest.

Railroad—

(Continued from Page One)

of incoming materials and products for consumers. Energy conservation, for the present and for the future, will be vital, it has been explained, and the area and the nation continues to search for more economical means of goods shipment.

Abilene & Southern Railway Company, operators of the line, in mid 1975 petitioned the Interstate Commerce Commission for permission to abandon the line from Winters to Abilene.

In protesting the abandonment proposal, shippers and others have pointed out that the highway company has used flagless equipment for the year 1974, to show cause for abandonment. Opponents have stated that 1974 "is not a representative year, because of the prolonged drought responsible for a short crop year, and a bad livestock year. Only 357 cars were moved in and out of Winters during that period,

they said, far below the normal traffic.

The year 1973 was a much better railroad traffic year, it was said, with 956 cars in and out. And then in 1975, a big grain crop and a building livestock year, more railroad traffic was experienced by midyear than during all of 1974. It would have taken 2868 trucks to move the tonnage shipped into and out of Winters for 1973 alone, it has been said, which would have been much more expensive. Also, it was pointed out, rail traffic in 1976 has been substantially greater than that of the "example" year, 1974.

Some years ago, the railway company abandoned the line from Winters to Ballinger, where connections with Santa Fe were made. This made little difference on the traffic out of Winters, as most traffic went from Winters to the main line at Abilene.

During the past few years, the railway company has accomplished comprehensive repair and rebuilding projects on the line from Winters to Abilene. New rails were put down,

and the roadbed rebalanced and repaired. In 1970, it was pointed out, new rail was installed to milepost 10; in 1971, to milepost 17.5; in 1972, to milepost 27; in 1973, to milepost 31.6; and in 1974, the project was completed to milepost 39.

In this rebuilding project, it was said, 85 to 89-pound rail was installed to replace the 54-pound rail which had been in place for many years.

Opponents of the abandonment petition have emphasized the need for the railroad to remain in place and in use, because of the growing energy shortage. They stated that a railroad is 10 times more efficient per unit of fuel consumed than trucks. They call attention to the talk of the trend to return to the railroad for freight hauling because of the energy situation, which is likely to continue and become even more acute. "If these conditions continue and grow," they say, "and the railway serving the Winters area is ripped out, the economic effect on this area would be disastrous."

Runnels District Will Sponsor Essay Contest

The Runnels Soil and Water Conservation District will sponsor an essay contest again this year, according to Douglas Cole, Chairman of the Board of Directors of the Runnels Soil and Water Conservation District.

The subject for essays this year will be "Soil and Water Conservation—Present and Future", and essays should be 300 words or less.

Cole said this is an open contest to young men and women 18 years of age and under. Entries will be accepted until February 1, 1977. Essays should be sent to the Runnels Soil and Water Conservation District, Box 136, Ballinger, Texas 76821, or they may be

handed to any of the district directors: Cone J. Robinson, Sr. of Norton; Sam Faubion of Crews; Otto Gottschalk of Ballinger; David Ocker of Rowena; or to Douglas Cole of Winters.

According to Cole, the State Soil and Water Conservation Board notified the local district that there would not be a state conservation awards program this year. He said due to the interest in this contest

in the Runnels S&WCD, it was decided to continue the local contest. In the past several years the Runnels District has had a regional and state winner.

The top three essay winners from each school will be awarded ribbons. There will also be an award for the district champion essay.

Imagination is more important than knowledge.

Sno Queen—

(Continued from Page One)

Teresa Wright—Heidenheimer's

Janet Brun—Robinson Chevrolet Co.

Kathy Bredemeyer—Milton's Auto Parts

Mary Jo Plumley—Jim Hatler Insurance

Fran Hoppe—West Dale Grocery

Kathy Walker—First Savings & Loan

Becky De La Cruz—Smith Drug Co.

Sara Parramore—Bahlman Cleaners

Cathy Colburn—Bishop Boys Ford

Cheryl Bahlman—Winters Enterprise

Kathy Fenwick—Blossom Shop

Janet Jacob—Winters State Bank

Leslie Dunlap—Beta Sigma Phi

Becky McKnight—Main Drug Co.

Melinda Hill—Foxworth-Galbraith

Dena De La Cruz—Winters Flower Shop

Mitzi Blackwood—Piggly Wiggly

Linda Tekell—Western Auto

FARMERS-RANCHERS' tax exemption certificates available at The Enterprise office.

Merry Christmas

Ladies **PANT COAT** VALUE TO \$35⁰⁰

\$24⁹⁵

Cuddle up to the cold & look sensational too. Fine quality brushed polyurethane malon fabric with leather finish. White acrylic pile on collar, cuff, and front closure.

Ladies' Butter Soft Vinyl

SHORT COATS

Some embroidered in a variety of colors. Val. to \$24.95.

\$16⁹⁵

Hush Hush pantyhose are always a most welcome gift for any woman on your shopping list for Christmas. Choose several pairs in assorted shades to compliment her wardrobe.

Super Stretch PANTYHOSE

MAY QUEEN

99¢

SANDAL FOOT

Give Them for Christmas. Ladies' **JOGGER SUITS**

Asst. colors of warm fleece.

\$16⁹⁵

Kitchen Towel Sets

Towels.....\$1⁴⁹

Dish Towels.....79¢

Pot Holders.....79¢

Apron.....\$1⁹⁸

Sale on Arrow **SPORT SHIRTS**

One group of the better ones. Preticketed \$25.

\$19⁹⁵

Men's Rochelle thermal underwear for Winter warmth. Sizes S,M,L,XL.

THERMAL UNDERWEAR \$2⁹⁸

Your Choice TOP or BOTTOM

Men's Hooded **SWEAT SHIRTS \$5⁹⁵**

Zip front sweat shirt with front pocket. Outside and inside lining of 100% cotton with 100% polyester foam filling. Sizes S,M,L,XL.

With concealed zippers. Smart for gifts.

\$1⁹⁸

PILLOW COVERS

DOUBLE KNIT JUMP SUITS IN SOLID AND FANCY PATTERNS—NO IRON—INSIZES S-M-L and XL

\$14⁹⁵

Something she will not have. Several styles to choose from.

\$1⁹⁸

1977 Calendars

Give A Touch of American Heritage

DINGOS

by Acme, World's largest bootmaker. 14" cowhide foot and top in both medium and narrow widths.

\$49⁹⁵

The No. 1 house-slipper for Christmas. S, M, L, XL, for easier fitting. Most styles.

\$6⁰⁰

JIFFIES

One Special Group **LADIES' BOOTS**

of manmade materials. 2" heel and full zipper in side.

\$19⁹⁵

The boot to wear with your jeans.

HEIDENHEIMER'S