



**FOOTBALL SWEETHEART**—Susan Williams was crowned Football Sweetheart for '76 during halftime activities at the Winters-Wylie football game last Friday night. Miss Williams, daughter of Mr. and Mrs. M.

R. Williams, is a senior student in Winters High School, is a member of the Blizzard Band, a member of the Student Council, and is Senior Cheerleader.



**MISS SPIRIT OF '76**—Lisa Bedford, a senior student in Winters High School, was named Miss Spirit of '76 in ceremonies before the Winters-Wylie football game Friday night. She is the

daughter of Mr. and Mrs. John Bedford, and is now head cheerleader. She has been a member of the Blizzard Band for two years, a member of the FHA and Geneology Club.

## Dam Practically Assured

The whole of Runnels County is practically assured of a joint reservoir and water supply source, following a meeting of members of the Runnels County Water Authority, and other interested county citizens, and the Texas Water Development Board, at Henderson.

Following the presentation of evidence of a need for additional water in the county, by the Runnels group, the Water Development Board voted approval of the application for assistance, it was reported. This means that the Water Development Board will provide approximately \$2.5 million as a 40-year loan to the Runnels County Water Authority to be used for construction of a water reservoir on Elm Creek, between

Winters and Ballinger.

In further developments, Mayor Homer Hodge of Winters said this week that the Farmers Home Administration has approved a grant of approximately \$2.2 million to the cities of Winters and Ballinger, to be used for the water project.

The next step, Mayor Hodge said, will be approval of a water permit from the state agency. This may take as long as six months, he said, but after that, the project should develop rapidly.

In the hearing with the Water Development Board at Henderson on Tuesday of last week, members of the Runnels County Water Authority

presented testimony of the need for additional water supplies in Runnels County. They were backed up by other interested county citizens, and the engineering firm of Freese and Nichols of Fort Worth. The engineers presented evidence of feasibility of the site chosen for the reservoir.

The reservoir planned would store 20,000 acre feet of water, and the entire lake area would contain about 2,000 acres, it was understood.

Under the plan approved by the Water Development Board, Winters would own 21 percent of the water, Ballinger would own 26 percent, and the state (Water Development Board) would own 53 percent. The local political entities would have option to

obtain additional percentages in the future, it was said.

Among those attending the hearing at Henderson last week were Arnold Frerich of Rowena, president of the board of the Runnels County Water Authority; Ray Alderman, vice president of the board; Barney Puckett, member of the board; Mayor Homer Hodge of Winters; the mayor of Ballinger; the mayor of Miles; LaDell Davis, manager of North Runnels Rural Water Supply Corp.; Ed Grindstaff, attorney from Ballinger; and others.

Members of the Runnels County Water Authority and Mayor Hodge said additional information regarding the project would be released as the project develops.

## General Election Tuesday

Election judges and clerks who will conduct the General Election next Tuesday, November 2, have publicly requested that all voters have their voter registration cards ready for presentation when they reach the polling places, to prevent delays in voting. A fairly heavy turnout of voters locally is expected, according to many, because of the presidential election and local contests.

(A sample ballot is being published

elsewhere in this issue, as an aid to voters.)

On the state level, Democratic nominees—winners of the May primaries—have little or no opposition, and their election November 2 is mere formality. The same is true with most county and district nominees. In the race for Sheriff of Runnels County, however, a lively contest has developed during the past few months.

Hershal Hall, who won the Demo-

cratic nomination for Sheriff is being challenged by O. L. Rake, who has waged a vigorous write-in campaign. No other county nominees have visible competition.

Of great interest to Runnels County voters will be the two proposed constitutional amendments which will be on the ballot. No. 1 is "The constitutional amendment authorizing an increase of \$400 million in the amount of Texas Water Development

Bonds that may be issued on approval of two-thirds of the legislature; x x x." No. 2 is "The constitutional amendment to increase from \$100 million to \$200 million the amount of Texas Water Development Bonds that may be issued for water quality enhancement purposes."

These two amendments are of much interest to local residents because of the current drive to locate and develop additional water supply sources for the county.

## Blizzards To Coahoma Friday

The Winters Blizzards, at last back on their feet and fairly free from injuries, will travel to Coahoma for a big test this week.

The Blizzards zipped Wylie 20-0 last week, as they started feeling muscles they hadn't found before. They'll probably be helped by the return of Marvin Moore, who was injured in the Merkel game the week before. Coach Jimmy Stubblefield said Monday he felt sure Moore would be back in

action and have all the splinters collected at Merkel out of his left arm, and his pole-bruised ribs feeling a lot better.

At Coahoma, the Blizzards will face a big—but big—Bulldog squad, which has stacked up a record of 5-1-1 for the season, and has only one loss—to C-City—to mar their 6-AA record.

The Bulldogs have no "outstanding"

players in one sense of the word, but they field a lot of beef in FB Tracy Frazier, 195 pounds; B Ken Kelso, 170 pounds; G Terry Don Roberts, 200 all-there pounds; T Ken Fryar, 170 pounds and another lineman, 200-pound Bobby Fryar.

Coahoma doesn't depend on the air too much, but runs power plays, heavy sweeps, traps, options, working out of

the wishbone, power I and slot I. They use a split 6 lineup on defense.

The Blizzards and the Bulldogs played no common opponents in pre-conference games. Winters has lost to Stamford 20-13, to Merkel 19-12, and then zipped Wylie 20-0.

The Bulldogs hit Wylie 32-8, dropped one to Colorado City 33-0, and then clobbered Ballinger 21-7.

## AN EDITORIAL

Runnels County residents have a direct interest in the proposed Constitutional Amendment No. 1 which will appear on the ballot in next Tuesday's general election. The decision made by the voters of the State stands to affect the water situation in Runnels County.

Residents of the county now are in the process of applying for assistance in developing a water supply which would serve the entire county—including the rural water distribution system.

An editorial in the Tuesday morning edition of The Abilene Reporter-News states the case FOR the amendment in graphic terms. The editorial is reproduced herewith:

## Area Projects Testify To Water Bond Benefits

Big Country voters wondering how to vote on amendment 1 to the Texas Constitution which would authorize an additional \$400 million in water development bonds can find their answer in looking around them.

From the original water development bond program enacted in 1957 and added to in 1966, Breckenridge, Clyde, Haskell, Munday, Knox City, Goree, Crosbyton, Post, Ralls, Spur, Rotan and Mineral Wells all have benefitted with water projects built with state loans.

Ballinger and the Runnels County Water Authority have pending an application for state help totaling \$5,650,000 for a dam and water lines.

The area projects financed through state bond proceeds: Breckenridge, \$2,640,000 in 1975 for water lines, treatment plant, distribution lines and elevated water storage facilities.

Clyde, \$775,000, loans in 1967, 1969 and 1972 for construction or improvement of a reservoir, water treatment facilities and distribution system.

Rotan Municipal Water Authority, \$900,000 loan in 1962 to finance water transmission line from Snyder to Rotan.

Palo Pinto Municipal Water District (Mineral Wells), \$3,620,000, reservoir construction and transmission lines.

North Central Texas Municipal Water Authority (Haskell, Munday,

Knox City, Goree), \$3,665,000, including loans from the board, and the board's purchase of 33.25 percent interest (\$1,100,000) in Miller Creek Reservoir. The loan was for construction of the reservoir, treatment plant, and 54 miles of transmission lines to serve the four towns.

White River Municipal Water District (Crosbyton, Post, Ralls and Spur), \$4,500,000, 1961 and 1963 loans for construction of the reservoir, treatment plant and transmission lines to the four towns.

Texas voters in the past approved \$400 million in water development bonds, of which about \$280 million have been loaned or requested. The remaining funds will be exhausted by 1980, state officials estimate.

Amendment 1 would authorize an additional \$400 million in water development bonds, of which about \$280 million have been loaned or requested. The remaining funds will be exhausted by 1980, state officials estimate.

Amendment 1 would authorize an additional \$400 million to continue state assistance as has been provided in the past.

This section of the state especially with its low rainfall and limited water resources, has a high priority stake in this amendment passing. The next town needing help on a water supply may be your own.

## C-C Planning 'Burger Supper Next Friday

Winters Chamber of Commerce will sponsor a hamburger supper next Friday, Nov. 5, beginning at 5:30 at the school cafeteria.

Hamburgers will be served until about 7:30, in time for those attending to get to the Winters-Colorado City football game.

Charcoaled hamburgers and the fixins' will be served, at a cost of \$1.25 per ticket. Tickets may be obtained from directors of the chamber, or at the door.

## Local Church Members Take Part In Rally

Several members of the St. John's Lutheran Church of Winters will attend a Reformation Rally at Abilene Civic Center Sunday, October 31, at 4 p.m. The Rally is sponsored by Lutheran congregations in the Big Country area.

Attending from Winters and assisting with the Rally will be the Rev. Mel Swoyer, pastor of St. John's Lutheran Church, serving on the planning committee; Hans F. Gerhart, ushering committee; Mrs. Ellis Ueckert, worship and music committee, and Mrs. Charles Kruse Jr., publicity committee.

Main speaker for the Rally will be the Rev. Frederick A. Naumann, Jr., S.T.M., professor of Old Testament and New Testament History at Concordia Teachers College, Seward, Neb. The Rev. Naumann is a graduate of Concordia Lutheran Seminary, St. Louis, director of Lutheran Tape Ministry and a speaker on evangelism.

**TEXAS PRESS ASSOCIATION**  
MEMBER 1976

**The Winters Enterprise**  
RICHARD C. THOMAS, Publisher

Entered At Post Office, Winters, Texas 79567,  
As Second Class Matter.

**SUBSCRIPTION RATES**

One Year, In Runnels and Adjoining Counties..... \$5.00  
In Other Texas Counties (Tax Inc.)..... \$6.25  
Out of State (Tax Inc.)..... \$7.00

Any erroneous reflection upon the character, standing or reputation of any person, firm or corporation which may appear in the columns of this newspaper, will be gladly corrected upon due notice of same being given to the editor personally at this office.

**HILLCREST**  
Drive-In Theatre — Ballinger, Texas

Friday and Saturday, October 29-30

MARJOE GÖRTNER **THE FOOD OF THE GODS**  
..for a taste of HELL!  
AN AMERICAN INTERNATIONAL PICTURE

**TERROR IN THE WAX MUSEUM**  
Ray Milland Color Elsa Lanchester  
CINERAMA RELEASING

**INSURE**  
What You Have  
Fire-Life-Property  
JNO. W. NORMAN  
The Insurance Man

**COW POKES** By Ace Reid



Yeah Paw your a good provider — providin' you git past the next bar

**WESTERN AUTO**  
WES AND JUNE HAYS

**Mr. Cotton Farmer:**

The WINTERS GIN is ready to roll! We have made repairs to the gin all summer and have it in excellent ginning condition.

In addition, we have installed two new Continental 93 Gin Stands. They are the latest in the Continental line of equipment and will give the best TURN-OUT and GRADE of any gin in the area.

We are now prepared to give you service and a ginning job second to none. It will pay you to gin at Winters!

**Winters Gin**  
WINTERS, TEXAS  
Don Robertson, Manager  
Phone 754-5111



S. N. ANSLEY FAMILY—Back row, left to right, Nick, Jack, Gertrude. Front row, Bob, Mr. and Mrs. Ansley, and Merle (Mrs. Bains) Madge, the baby, seated on mother's lap.

**POE'S CORNER**  
BY CHARLES POE

"All the hardships of growing up on a frontier ranch were nothing compared to the fear we had of Pancho Villa," said Mrs. M. E. Bains, who moved to the Big Bend area with her parents and six brothers and sisters back in the early 1900's.

Just across the Rio Grande River in Mexico, Mexican bandits led by the revolutionist, Pancho Villa, hid out in the mountains and made raids across the river into Texas, rustling the ranchers' cattle for use as food. "We were told that if the rancher interfered he would be killed, so we lived in constant dread," said Mrs. Bains.

"The time came when most of our cattle were stolen one night and they were never recovered. Since the cows were gone we had no means of support for there were no jobs to be had, so my father and two oldest brothers, Nick and Jack, came to Central Texas to pick cotton one fall."

Mrs. Bains father, S. N. Ansley, born in 1854, was a native Georgian who came to Texas and joined the Rangers. He was stationed in Comanche and served throughout this territory, engaging in many skirmishes with the Indians.

After his marriage to Mary Margaret Gaston, Georgian school teacher, 13 years his junior, they moved to Comanche where they lived for some time.

As an inducement for people to settle in the Big Bend section, the government offered eight sections of ranch land to families who could qualify, if they would also live on the land for three years.

Since Mr. Ansley had been a Ranger and liked frontier life he took advantage of the offer and with his wife and seven children, ranging in ages from three to 16, moved in a covered wagon to the foot of Santiago Peak, south of Marathon. He built a shack for the family to live in and bought a few horses and cattle. The ranch was not fenced as most were not, and each rancher had to keep up with his livestock the best he could.

Life was lived in the most primitive way. The next neighbor was ten miles distant and the nearest town which was Marathon was 40 miles away, a three days journey by wagon. Trips were made about once a month, and only for supplies. The family camped out on the way.

"The only water we had was from Chalk Draw, about 100 yds. from the house, and a hand-dug well we used when the draw was dry which was a large part of the time. We had to draw water from the well by hand for our use and for the livestock. Our cattle were the longhorn breed, and believe me, those

bulls made shiny up a tree at record speed to miss their horns when they were waiting for water," Mrs. Bains recalls.

After the return from the cotton picking trip, Mr. Ansley died and his body had to be carried in the covered wagon to Marathon for burial. A rancher and his wife came to help the grieving family.

While camped for the night, on the return journey, the oldest boy, Nick, was sleeping on the ground. He was bitten by a skunk and managed to kill it by using a singletree from the wagon. The travelers turned around and went back to Marathon with the skunk to have it analyzed for rabies. The head was sent to Austin for the test and when it proved to be negative there was great rejoicing, for at the time there was no known cure for rabies.

"Now that my father was gone, my teenage brothers were our only support. But by this time a rubber manufacturing plant had been built at Marathon. Rubber was made from guayule, a plant native to that part of Texas and Northern Mexico. Guayule looks something like the purple sage bush and it yields a large percent of rubber," said Mrs. Bains.

Nick hired several Mexicans with burros and they gathered the guayule which had to be brought from the mountain side packed on the back of the donkeys, and in turn loaded on wagons to be taken to market. Nick bought several wagons for this purpose. Jack and Bob also helped with the business.

Bill, the youngest son, stayed at home with his mother and the girls, Gertrude, Merle and Madge. Merle Bains was next to the youngest and about eight

years old. And this is when they had the most frightening experience of all.

"About dusk one evening we saw a band of horsemen top a ridge not far from the house. Of course, we were sure they were bandits who had come to raid us again and take what food we had. We women hid behind nearby boulders. Bill got a rifle and crouched in a ditch. He meant to hold them off as long as he could. Soon they topped another ridge nearer to us and now we could see it was a band of about 20 United States Cavalrymen. They came to inform us that they would be patrolling that country to stop the raiders from across the river. After that some ranchers were raided again but we never were," said Mrs. Bains.

"I'm sure everyone slept well that night."

Next Week: Education in the wilderness.

**CARD OF THANKS**  
Carl and Aileen Olson wish to thank the boys and girls, Mrs. Hudson, and the ladies from the Dairy Queen for making their son, Cully Olson's birthday the success it was. Cully had a ball. You were great kids. 34-ltc.

**Former Winters Woman Died In Abilene**

Mrs. Gary (Cheryl) Liner, 29, of Abilene, died at 6 a.m. Monday in Hendrick Memorial Hospital following an illness of two years.

Services were at 2 p.m. Tuesday in First Baptist Church, Anson, with Stuart Love, minister of College Church of Christ in Abilene, and the Rev. Jerry Hines, pastor of Anson First Baptist Church, officiating. Burial was in Mt. Hope Cemetery, Anson.

In an interview story on the front page of the evening edition of The Abilene Reporter-News June 18, Mrs. Liner told of the discovery she had breast cancer by means of a biopsy Nov. 7, 1974. She discussed her subsequent surgery and treatment here and in Houston and of her decision, when she learned she was pregnant, to have her baby rather than submit to an abortion.

She was born Cheryl Lunez Sosebee July 11, 1947, in Abilene and grew up in West Texas where her father was stationed at several towns with the Texas Highway Patrol. She was graduated from Eastland High School in 1965 and attended Cisco Junior College and East Texas State University.

She married Gary Liner May 8, 1970, in Anson. They moved to Winters in March 1973 and to Abilene in April of this year. She was a member of the Anson Church of Christ.

Survivors include her husband; two children, Brian Lee, 4, and Misty Roe, eight months; her parents, Mr. and Mrs. Roger Sosebee, 3201 N. 3rd, Abilene; a brother, Roger C. Sosebee of Anson; a sister, Mrs. Butch (Tam) Luedtke of 2457 Glendale, Abilene; and her grandmother, Inez Sosebee of Anson.

RECEIPT BOOKS now available at The Enterprise office.

**Guest Speaker For Meeting Of Women's Club**

Mrs. John C. Ward, president of Heart of Texas District, was speaker at the Federation Day Tea in the community room of the Winters Housing Authority October 21. Mrs. Ward, a teacher in Angelo State University, attended the national convention of the General Federation of Women's Clubs in Kansas City last summer. She used as her topic, Why are you a member of Federated Clubs?

The Literary and Service Club was host club with members of the Junior Culture Club and the Diversity Club, and others as guests.

Present were Mesdames E. E. Thormeyer, Joe Irvin, John P. Ward, Loyd Roberson, Zula Mae Lacy, Charles Kruse Jr., M. L. Dobbins, Nadeen Smith, J. S. Tierce, L. L. Jernagan, C. R. Kendrick, Roy Crawford, Earl Roach, Newt Blackerby. Also, Frank Brown, Clarence Ledbetter, George Garrett, Ralph Arnold, Joe Floyd, Robert Parramore, J. E. Smith, H. M. Nichols, Max Lewis, Roy Alexander of Richmond, Va., and Mrs. Carl Wyndhal of Morena, Calif.

Hostesses were Mesdames M. G. Middlebrook, Elo Michaelis, Earl Dorsett and Velma Hart.

Made in USA  
**Steel Tee Posts**  
A quality made from the finest steel. Strong, durable and easy to install.

6' \$1.79  
6 1/2' \$1.89  
Includes clips

**Barbed Wire**  
Domestic \$1.88

**Wolfproof Fence**  
1035-12-12 1/4 ga. 33 3/4 per roll  
35" high \$28.22

**Field Fence**  
1047-12-12 1/4 ga. 33 3/4 per roll  
47" high \$39.82

Other Sizes Available  
Open 7:30 to 5:00 on Saturday

**FOXWORTH GALBRAITH**  
Building Materials Center WINTERS

**Can we afford four more years without effective leadership?**

There is a critical decision to be made on November 2nd. It goes far beyond the question of which Presidential candidate can govern with integrity and honesty. We must determine which candidate has the ability and strength to lead our country out of economic chaos, and the vision to see that all Americans—not just the powerful and influential—have a better future.

During the past two years, the middle class has paid far too dear a price for a President lacking that ability.

Since Gerald Ford took office, the unemployment rate has risen 50%, from 5.5% to 8.2% for 5 million people, to 7.9% or 7-1/2 million jobless Americans.

Today's inflation rate of 6% is higher than it was at any time between the

Korean War and the inauguration of Richard Nixon.

The 1968 food dollar is now worth 57¢.

Mr. Ford's budget will account for the largest single deficit and more than 1/3 of the public debt incurred during our entire 200-year history.

Real GNP has actually declined during each of Gerald Ford's two years in office.

And who is most affected by these distressing statistics? Not the Washington establishment, or the economic elite courted by the Republicans. The burden falls on the person who can least afford it: the average American.

Jimmy Carter means to change all that. As President, he will make government responsive to your needs.

**Tax Reform:** "The average family in this country actually pays a higher proportion of their income in taxes than the average family that makes more than a million dollars a year. That's disgraceful. We need to move toward a truly progressive and simplified tax system, with reduced tax rates for the average American."

**Economy:** "We'll never have a balanced budget nor an end to the inflationary problems as long as we have 7-1/2 million people out of work. Employment needs to be the major thrust of the whole domestic policy of our government."

**Efficiency in Government:** "We now have in the

federal government the most bloated, confused, wasteful bureaucracy ever created. There's no way to get an answer out of Washington and no way to understand what's going on there. We need to reorganize completely the executive branch of government, making it fair, efficient, effective, and responsive to our people's needs."

**Housing:** "No government that cared about our neighborhoods would stack the tax deck against them. A landlord can let a building run down and make a good living on tax breaks. But when a home owner spends a little hard-earned money fixing up his home, the assessor raises his taxes. And the FHA no longer

cares about families getting started in their own homes. I intend to restore the FHA to the time when, for a down payment, a family could get a mortgage which the government would insure."

**Health Care:** "We need a nationwide health care delivery system which will make adequate health care a right for all people."

Jimmy Carter has the strength to take charge of our government. If you are tired of paying the high price of Republican ineffectiveness, you have only one choice on November 2nd, and that choice is for change.

Vote for **JIMMY CARTER.**  
A leader, for a change.





# Sonny's

Prices Effective Thursday, Friday, and Saturday OCT. 28, 29, & 30

**HOME OWNED AND OPERATED**  
**DOUBLE DISCOUNT STAMPS ON WEDNESDAY** Get double savings with every purchase. Top Quality Meats, Produce & Service  
 WE RESERVE THE RIGHT TO LIMIT QUANTITIES.



RUSSET  
**POTATOES**  
 10-LB. BAG **69¢**

RED OR GOLDEN DELICIOUS  
**APPLES**  
 3-LB. BAG **79¢**

FRESH GROUND  
**GROUND BEEF** LB. **69¢**

HEAVY BEEF BONELESS  
**CHUCK ROAST** LB. **89¢**

WASHINGTON  
**PEARS** LB. **29¢**  
 LB. PKG. **Carrots** **19¢**

GREEN **Cabbage** **10¢** LB.  
 YELLOW **ONIONS** **10¢** LB.

FAMILY-PAK  
**Pork Chops** LB. **\$1.09**

**CANNED PICNICS** 3-LB. CAN **\$3.99**

TEXAS  
**ORANGES**  
 5-LB. BAG **69¢**

TEXAS  
**GRAPEFRUIT**  
 5-LB. BAG **99¢**

**PORK SAUSAGE** LB. **98¢**

BONELESS  
**STEW MEAT** LB. **98¢**

FRESH LEAN  
**PORK RIBS** LB. **89¢**

FRESH GROUND  
**GROUND CHUCK** LB. **89¢**

LEAN SLICED  
**SLAB BACON** LB. **95¢**

**PORK STEAK** LB. **79¢**

**GAIN**  
 84-oz. BOX **\$1.93**

WOLF  
**CHILI**  
 19-oz. CAN **79¢**

GOLD MEDAL  
**FLOUR**  
 5-LB. BAG **67¢**

BLUE BONNET  
**OLEO**  
 LB. PKG. **39¢**

BIG "K"  
**BISCUITS**  
 10-CT. CAN **10¢**

CRACKIN' GOOD  
**CRACKERS**  
 LB. BOX **39¢**

SCOTT  
**Paper Towels** JUMBO ROLL **53¢**

KIMBELL  
**FOIL** 18" x 25' HEAVY DUTY **59¢**

KIMBELL CUT  
**ASPARAGUS** 15-oz. CAN **53¢**

KOUNTRY FRESH  
**WAFFLE SYRUP** QT. BOTTLE **79¢**

KIMBELL  
**PEAR HALVES** 16-oz. CAN **39¢**

OSAGE FREESTONE  
**PEACHES** 29-oz. CAN **49¢**

BEST MAID  
**DILL PICKLES** 48-oz. JAR **89¢**

MABISCO COOKIES 15-oz. PKG.  
**CHIPS AHOY** **79¢**

GLADIOLA  
**BREAD MIXES** 6 1/4-oz. POUCH **7 FOR**

KOUNTY KIST  
**SWEET PEAS** 16-oz. CAN **4 FOR \$**

KOUNTY KIST  
**CORN** W.K. 12-oz. CAN C.S. 16-oz. CAN **4 FOR**

ARGO  
**SPINACH** 16-oz. CAN **5 FOR**

STAR CUT  
**GREEN BEANS** 16-oz. CAN **5 FOR**

KELOGGS FROSTED  
**POP TARTS** 11-oz. PKG. **2 FOR**

KOUNTRY FRESH  
 CHICKEN W/RICE CREAM OF MUSHROOM CREAM OF CHICKEN CHICKEN NOODLE  
**SOUP** 10 1/2-oz. CAN **4 FOR**

KOUNTRY FRESH  
**Cinnamon Rolls** 9.5-oz. CAN **45¢**

KOUNTRY FRESH  
**TOMATO SOUP** 10 1/2-oz. CAN **5 \$1 FOR**

MORTON HOUSE  
**BEEF STEW** 24-oz. CAN **79¢**

OLD PAL  
**DOG FOOD** 15-oz. CAN **8 \$1.00 FOR**

KOUNTRY FRESH INSTANT  
**ORANGE DRINK** 18-oz. JAR **89¢**

HORMEL HOT  
**TAMALES** 15-oz. CAN **39¢**

SOLO 12-oz.  
**PARTY CUPS** 24-ct. PKG. **49¢**

PALMOLIVE  
**SOAP** BATH SIZE **4 \$1.00 FOR**

# PUT IT IN THE WANT ADS FOR RESULTS!

## CLASSIFIED AD CHARGES

**CASH**  
Minimum . . . . . \$2.00 (1 time, 15 words; 7 cents per word for over 15 words).  
**CHARGED**  
Minimum . . . . . \$2.50 (First insertion; \$2.00 minimum thereafter).  
**LONG TERM**  
Minimum . . . . . 12 weeks or longer; \$2.00 each week; (15 words; 7 cents per word over 15 words).  
**CLASSIFIED AD DEADLINE**  
2 p.m. Tuesday.

## FLOWERS

**FLOWERS FOR ALL OCCASIONS:** Orders wired anywhere, any time. Bonded FTD florist. Mayme Little, Winters Flower Shop, Dial 754-4568.

**BLOSSOM SHOP: BONDED** FTD, Teleflora, and Florafax florists. Mrs. Floyd Grant, Sr. Flowers for all occasions. Flowers wired anywhere. Phone 754-5311. 30-tfc.

## FOR SALE

**FOR SALE—1971 YAMAHA** motorcycle. 2,098 actual miles. Also a used dryer. At Crenshaw Motor Co. 34-1tp.

**FOR SALE—1969 FORD** pickup, 3/4 ton, wide bed. Wesley Dean, Wingate, 743-6240. 34-1tp.

**FOR SALE—NK 300 HAY.** \$1.40 per bale, delivered in 10 miles of Winters. \$1.15 in the field. Phone 754-5344. L. L. Chammond. 33-4tp.

**FOR SALE—1960 CHEVROLET** pickup. Charles Wearlen, 1003 Trinity, 754-4323. 33-2tp.

**FOR SALE—5x10 SNOOKER** table with new cover for bed and rails. 754-4118. 32-tfc.

**FOR SALE—HONDA** Trail 70. Also Kawasaki 500. Bishop Boys Ford. 30-3tc

## REAL ESTATE

**FARMS**  
80A. cabin, water, birds, deer, owner financed. \$325A. 414A. South of Buffalo Gap 3 miles. \$285A.  
49A. ideal for development, water line, pavement.  
52A. scenic hide-a-way, you will love this.  
103A. barn, tank, trees, deer. \$300A.  
11A. fenced. Utilities available. Take your choice; one at Lawn; one at Novice.  
183A. 3 bedroom home, tanks, coastal, well, cultivation 159A.  
190A. stock farm. Owner financed.

**FRANKLIN REAL ESTATE**  
Tuscola, Texas  
Phone 915-554-7814  
554-7783

## REAL ESTATE

**FOR SALE—2 BEDROOM** house, newly remodeled, carpeted and tiled. 2 lots and 10 ft. 3 peach trees, 2 pecan trees, water well. East of school. 902 N. Rogers. Phone 754-4688. 26-tfc.

## WORK WANTED

**RONNIE'S SPRAYING** Service. Home Pest Control a specialty. Termites, roaches, tree spraying, trimming and removal. Ph. 754-5230 or 754-4147. 14-tfc.

## HELP WANTED

**DID YOU NEED MORE** money? Earn \$100 to \$300 per month—part time. Call Beth Whitlow, 754-4469 after 4:00 p.m. 34-tfc.

## Miscellaneous

**TRAILER REPAIR & PARTS.** Trailers: Stock, horse, gooseneck, flatbeds, grain dumps. Complete parts and service. All makes. Hale Trailer Sales, 1765 E. Hwy. 80, Abilene, Texas, 672-2691. 30-12tp.

**SPECIALIZE IN BACKHOE** work. ROY CALCOTE & SONS DIRT WORK. Sand and gravel hauling, dump trucks. Have yard dirt in stock for quick delivery. We have a new telephone number 767-3241 or if no answer 754-4995. 7-tfc.

**WESTERN MATTRESS SERVICE:** Pick up and delivery. Save up to 50% renovation. Box Springs to match. Guaranteed customer satisfaction. Phone 754-4558.

**YOU can steam clean carpets** professionally clean with portable RINSEVAC. Rent at Winn's Variety Store.

## WANTED

**WANTED: SCRAP IRON,** cables, metals. Ballinger Salvage Company. 27-tfc.

## Garage Sales

**GARAGE SALE—MOTORCYCLE,** guitar, clothes, children's clothes, and etc. Sat. 8-12, Oct. 30, 1100 W. Dale. 34-1tp.

## GARDEN PLOWING

**2-Disc Breaking plow.** Planter, Shredder.  
**ALLEN FOWLER**  
Call 754-4292

## REAL ESTATE

### LAND

**Your Home in the Country—2 or 3 bedroom** homes on small acreage close to town.

523A—East of Winters. Pasture, 68 cultivation, tanks, fenced, cross-fenced \$225A.

153A—Hatchel Area—all cultivation except 21A. 3 irrigation wells, rock house, barns, 3/4 minerals.

160A.—Northeast of Crews. Road frontage on two sides. 95A. cultivation, one tank, good hunting, 1/2 minerals and royalty. \$210A.

### HOMES

**New Listing—Beautifully** decorated 3 bedroom home in nice area. Double carport, separate storage house in rear, fenced. \$17,500.

Immaculate 2 bedroom home on 2 lots with 5 extra lots to go with it. 19 fruit trees. \$10,000.

Small house on big lot. Many trees \$1500.

Will trade for country property, large 3 bedroom 2 bath home. Central heat and air. Game room. Many amenities!

3 bedroom, 2 bath home in quiet neighborhood. Central heat and air. \$20,000.

**Choose your own interior!** 3 bedroom, 2 bath homes under construction. Good financing available.

Extra nice 4 bedroom, den and living room, central air, Mid 20's.

Spacious 2 bedroom with large game room. \$17,000.

**Has Been Reduced - 3** bedroom, 2 bath split, nicest area of town \$30,000.

3 bedroom, 2 bath, with separate apartment for income. Low 30's.

Space galore - 2200 sq. ft. \$1,000 down.

Good 3 bedroom house. Needs finishing out. \$6500.

Lots - near downtown \$600.

**BUSINESS OPPORTUNITIES** Have your Own Business. Set your Income. Fully equipped restaurant on Hwy. 83 with acre of land.

Outstanding business locations on Main Street. Suited for many types of businesses. —starting at \$4000!

Good building plus sporting goods inventory. Can rent out part of building and keep shop in one-half.

Excellent opportunity—14 unit motel w/good year round business. Beautiful living quarters. Good gross. Owner finance.

## ALDERMAN REAL ESTATE

Billie Alderman, Broker  
Jo Evans, Salesperson  
Phone 754-5218  
302 S. Main  
Winters, Texas  
FARMERS-RANCHERS' tax exemption certificates available at The Enterprise office.  
RECEIPT BOOKS now available at The Enterprise office.

## LEGAL NOTICE

### NOTICE TO RECEIVE WRITTEN, SEALED BIDS FOR THE SALE OF SCHOOL LANDS

Notice is hereby given that the board of trustees of the Winters Independent School District of Winters, Texas, will meet on the 9th day of November, 1976, at 7:30 p.m., at their regular meeting place, same being the School Administration Office, Winters, Texas, for the purpose of receiving written, sealed bids for the sale of the following described property, to wit:

Being 4 acres of land, more or less, out of a league survey known as Abstract No. 368, Survey No. 535, originally granted to Elisha Mather, Patent No. 330, Volume 11, and being the same land described in a deed from Hugh Lewis to B. B. Stone, County Judge of the County of Runnels, State of Texas, and his successors in office of County Judge, which deed is now on record in Volume 46, Page 404, deed of records of Runnels County, Texas.

Property is to be delivered with the title as is, with the Winters School retaining one-half of the mineral rights. All legal work that is required in delivering this title shall be at the expense of the purchaser. Said board shall receive and consider any and all written, sealed bids submitted for the purchase of the said above described property, and in the discretion of said board of trustees shall accept the highest and/or best bid. In the event that the bids submitted do not represent a fair value for the property, the said board reserves the right to reject any and all bids. Bids should be accompanied by the full amount of the purchase price. Bids not accepted will be returned to the sender.

### DIRECTION FOR MAILING BIDS:

Mark in the lower left hand corner. Bid for the purchase of school land to be opened Tuesday, November 9, 1976, at 7:30 p.m. ADDRESS: Winters Ind. School District, Box 125 Winters, Texas 79567

The odds against a bridge player being dealt a hand containing six cards of one suit, four of another, two of a third and one of a fourth are about 20 to 1.

The odds for any particular woman to give birth to twins at any particular time are 1 in 87.

## REAL ESTATE

**FOR SALE BY OWNER—** 160 1/2 acres in Crews area. Nice 4 bedroom house, large barn and other improvements. Also 160 acres in Wingate, Pumphrey area. Call Herbert Stehle, Crews, 723-2303 or Midland, 694-1287. 25-tfc.

## ABSTRACTS

**GENERAL TITLE SERVICE** on all lands and lots in RUNNELS COUNTY  
**J. W. Purifoy** ABSTRACTOR  
Bernie Purifoy, Mgr.  
701 Hutchings  
Tel. 365-3572  
Ballinger, Texas



**FOR COMPLIMENTARY FACIALS and MARY KAY COSMETICS** Call **SUSAN BLAKE** 754-4746 - 1100 W. Dale

## Dan's Shoppe of Upholstery

507 4th St. Ballinger, Tex. 365-3448

Thousands of Fabrics to choose from.  
Free Pick-up and Delivery  
2 Weeks' Service from date of booking  
Special Mileage Discount to persons in Winters, Wilmeth, Wingate, & Crews

## HBO

**HBO Is Only \$8.00 a Month** After Installation  
**Call Us - We'll Turn You On!**

### SCHEDULE

**FRIDAY OCTOBER 29**  
4:30 Paganini Strikes Again  
5:30 The Adventures Of Frontier Fremont  
7:00 Four Musketeers  
9:00 On Location  
10:00 Four Musketeers

**SATURDAY OCT. 30**  
2:00 Professional Wrestling  
4:30 Murder On Orient Express  
6:45 Coming Your Way On HBO  
7:00 Missouri Breaks  
9:15 Murder On Orient Express

**SUNDAY OCTOBER 31**  
2:00 The Adventures Of Frontier Fremont  
3:30 Halloween on HBO  
5:00 The Adventures Of Frontier Fremont  
6:30 Halloween On HBO  
8:00 Comedy Of Terrors  
10:15 Mississippi Mermaid

**MONDAY NOV. 1**  
4:30 New Adventures Of Space Explorers  
6:30 The Adventures Of Frontier Fremont  
8:00 Nashville  
11:00 On Location

**TUESDAY NOV. 2**  
4:30 Missouri Breaks  
6:35 The National Horse Show

**10:00 The Arena**  
**WEDNESDAY NOV. 3**  
4:30 New Adventure Of Space Explorers  
6:30 The Man With The Golden Gun

**8:45 The Ghost Goes West**  
**10:15 The Man With The Golden Gun**  
**THURSDAY NOV. 4**  
4:30 Two Tails  
5:00 The Maids  
7:00 On Location  
8:00 The Arena  
9:30 NBA Game Of The Week

If all the people on earth counted a million arrangements of cards every second for 24 hours a day for 80 years, they could not count a billionth of a billionth of 1 percent of the sequential combinations that could come up in a deck of 52 cards.

## Legal Notice

### NOTICE OF INTENT TO HOLD A PUBLIC HEARING ON THE USE OF HORMONE TYPE HERBICIDES

Pursuant to Section XVII of the Texas Herbicide Law (VACS, Article 135b4), the Commissioners' Court of Runnels County will hold a public hearing at 10:00 a.m. on Tuesday, November 9, 1976 in the County Courtroom of the Runnels County Courthouse for the purpose of determining whether the present agreement controlling the Texas Herbicide Law should be extended for another year. All interested parties are urged to attend the hearing.

J. W. Purifoy, County Judge; Chas E. Bradshaw, Commissioner Prec. #1; David Carroll, Commissioner Prec. #2; Pat Pritchard, Commissioner Prec. #3; Marvin Salling, Commissioner #4.

### LEGAL NOTICE

Notice is hereby given that the City of Winters, a Municipal Corporation of Runnels County, Texas, will receive sealed written bids in the office of the City Secretary at the City Hall, 310 South Main Street, Winters, Texas, until 5:00 p.m. on the 1st day of November, 1976 for bids on: ONE LOADER, NEW OR USED.

Specifications may be secured in the office of the City Secretary at the above mentioned address. The City of Winters reserves the right to reject any or all bids and to award the bid considered the most advantageous to the City of Winters.

BIDS MARKED TO BE OPENED Monday, November 1, 1976 at 5:30 p.m. at City Hall, 310 S. Main Street, Winters, Texas 79567. 34-tfc.



Among the greatest things parents can give their children, most psychologists agree, are themselves. They recommend parents be available to their children whenever they're needed.

### SUBSCRIBE NOW TO

**Abilene Reporter-News** Reasonable Subscription Rates—with the freshest news and features  
**CALL LOCAL AGENT**  
**Byron D. Jobe**  
Phone 754-4683  
Winters, Texas

### PROFESSIONAL DIRECTORY

**Dr. Z. I. Hale** Optometrist  
Tues., Thurs., Fri. 9-12, 1-4:30  
Winters, Texas

**JNO. W. NORMAN** ATTORNEY-AT-LAW  
Winters, Texas

**Dr. C. R. Bellis** CHIROPRACTOR  
407 N. Rogers, 754-5464  
Hours 9:5-30  
Wed. By Appointment

## LUNCHROOM MENU

**Monday November 1** Western burger, French fries, catsup in cups, red beans, fruit salad, chocolate chip cookies, milk or chocolate milk.

**Tuesday November 2** Baked ham, whole kernel corn, green beans, jello salad, brownies, hot rolls with butter, milk or chocolate milk.

**Wednesday November 3** Toasted cheese sandwiches, beef stew, peach half, orange juice in cups, peanut butter cookies, milk or chocolate milk.

**Thursday November 4** Hamburgers or combination sandwiches, French fries, catsup in cups, red beans, fruit salad, chocolate cake, milk.

**Friday November 5** Chicken fried steak, cream gravy (by choice), mashed potatoes, mixed vegetables, tossed green salad, cake, hot rolls with butter on top, milk or chocolate milk.

## SS Rep Sets Winters Visits

Mrs. Jo McCullah, social security representative for the San Angelo Social Security office, has scheduled her November visits to Winters.

She will be at the office of the Housing Authority of Winters, Monday, November 8 and 22, from 9:30 to 11:30 a.m.

Anyone who wants to file claims for benefits, get information, or transact other business with the Social Security Administration may contact her on these dates.

## Business Services

**RCA TV** Authorized Dealer  
**WE SERVICE ALL MAKES!**  
**SALES & SERVICE BARNES RADIO-TV**  
754-4223 135 N. Main

**Mansell Bros.** Ballinger-Winters  
"Your Authorized John Deere Dealer"  
Ballinger 365-9811  
Winters 754-4027  
Parts & Service Complete Shop Facilities  
904 N. Main, Winters

**SWATCHSUE ELF TRIC CO.** Electrical and Air Conditioning Contractor.  
**FRIEDRICH** Air Conditioners Refrigeration Sales and Service  
Homelite Chain Saws  
139 West Dale  
Ph. 754-5115 - Box 307

**MERLE NORMAN** Cosmetic Studio  
**BEAUTY CENTER** COMPLETE LINE OF COSMETICS.  
Call For Appointment  
754-4322

**McGINNIS ELECTRIC** Complete Electrical Contractor  
Industrial — Residential  
Oil Field  
Sales and Service  
Ruth-Berry Pumps  
311 Jewell  
754-4152  
**RUTH BERRY**

**HAVE Dump Truck and Loader**  
Have Large and Small  
**BACK-HOE** For Ditch Digging, Will Haul Sand, Gravel, Caliche and Top Soil  
**Lonnie Fowler**  
Phone 754-4292

**FOR YOUR PROTECTION**

**AGAINST THE LOSS OF...**  
your home from fire, flood, wind or accidents to others. Make sure you are not under-insured on today's market. Call us today for free appraisal.

**BEDFORD INSURANCE AGENCY**

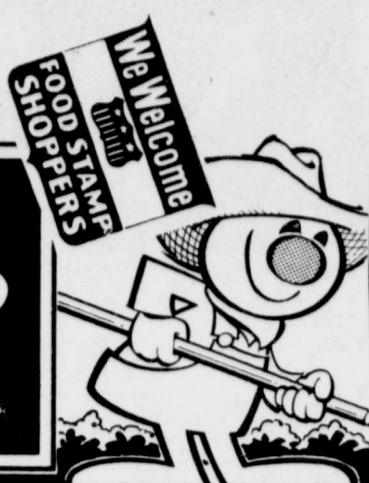
# Register all hand-guns?

Carter says yes.  
Ford says no.  
What do you say?  
Say it on Nov. 2nd.  
Vote for President Ford.

THE PRESIDENT FORD COMMITTEE, JAMES A. BAKER, CHAIRMAN, ROBERT C. HUGHES, TREASURER

PICK YOUR SAVINGS

**Shur Fine**



**Harvest of Values**

CARNIVAL of VARIETY

WE GIVE



WE GIVE



WE GIVE



WE GIVE



WE GIVE



WE GIVE



WE GIVE



WE GIVE



WE GIVE

DOUBLE STAMPS ON WEDNESDAY

QUANTITY RIGHTS RESERVED

SHOP

**PIGGLY WIGGLY**

SHURFINE

**FLOUR 5 LBS. 59**

SHURFINE PURE CANE

**SUGAR**

**5 LBS. 83¢**

16-oz. SHURFINE CUT GREEN

**BEANS 4 CANS \$1.00**

13-oz. SHURFINE

**MILK 3 CANS 89¢**

SOFLIN FACIAL

**TISSUE 200-CT. BOX 39¢**

SHURFINE YELLOW CLING

**PEACHES**

SLICED HALVES

**43¢**

8-oz. SHURFINE

**TOMATO SAUCE**

**4 CANS 63¢**

SOFLIN BATHROOM

**TISSUE 8 ROLL PKG. \$1.29**

FOOD KING

**CRACKERS 1 -LB. BOX 39¢**

SHURFINE PINEAPPLE

**JUICE 46 -OZ. 65¢**

Fresh FRUITS & VEGETABLES



DELICIOUS

**APPLES 3 LB. BAG 59¢**

RUSSET

**POTATOES 10 -LB. BAG 79¢**

WHITE

**ONIONS LB. 15¢**

SHURFRESH ORANGE SLICES

**CANDY 14-oz. BAG 43¢**

SHURFINE STUFFED

**OLIVES 7-oz. 83¢**

SHURFRESH VANILLA

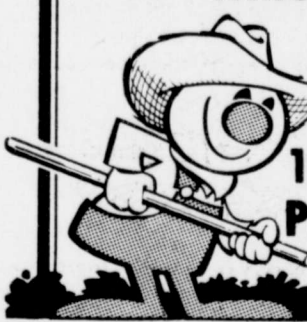
**WAFERS 10-oz. 33¢**

SHURFINE

**RICE 2 LB. BAG 49¢**

WRIGLEY'S

**GUM 10 PKGS. 69¢**



SHURFINE FROZEN

**ORANGE JUICE 6oz. CAN 15¢**

SHURFINE FROZEN

**Strawberries 16 -OZ. 65¢**

SHURFINE

**CATSUP 32 -OZ. 87¢**

SHURFINE WAFFLE

**SYRUP 32 -OZ. 79¢**

SHURFINE

**FRUIT COCKTAIL 16 -OZ. 39¢**

15-oz. SHURFINE

**SPINACH 2 CANS 49¢**

SHURFINE

**PEARS 16 -OZ. 39¢**

16-oz. SHURFINE

**HOMINY 2 CANS 39¢**

TOP GRADE MEATS



USDA GRADE A

**FRYERS LB. 39¢**

HEAVY BEEF

**CLUB STEAK LB. \$1.29**

FRESH

**BEEF LIVER LB. 49¢**

SLICED SLAB

**BACON LB. 93¢**

CEDAR FARM

**FRANKS 12-oz. PKG. 57¢**

SHURFRESH PIMENTO CHEESE SPREAD

**7 1/2 -OZ. PKG. 79¢**

17-oz. SHURFINE

**CORN 3 CANS 83¢**

EAGLE BRAND

**MILK 14-oz. CAN 63¢**

FOOD KING

**OLEO 3 LBS. 79¢**

8-oz. SHURFRESH

**Biscuits CAN 10¢**



# GO BLIZZARDS!

**Friday, Oct. 29**  
**SMOTHER**  
**COAHOMA**  
**There**

Kickoff At 7:30 p. m.

### NON-CONFERENCE GAMES

- Sept. 3 Winters vs. Clyde
- Sept. 10 Winters vs. Junction
- Sept. 17 Winters vs. Coleman
- Sept. 24 Winters vs. Eldorado

### DISTRICT 6-AA GAMES

- Oct. 8 Winters vs. Stamford
- Oct. 15 Winters vs. Merkel
- Oct. 22 Winters vs. Wylie
- Oct. 29 Winters vs. Coahoma
- Nov. 5 Winters vs. Colorado City
- Nov. 12 Winters vs. Ballinger

**Support Your Hometown Team--Attend All The Games!**

**SUPPORT THE BLIZZARD BACKERS!**



**McGINNIS ELECTRIC**  
 Sid & Sharon McGinnis

**Chapal Yarn & Gift Shop**  
 Kobert & Betty Paschal

**SMITH DRUG COMPANY**

**BISHOP & SONS**  
 Dirt Contractors, Inc.  
**BISHOP BOYS FORD**

**BISSETT'S**  
**TIRE & APPLIANCE**

**BEDFORD**  
 Insurance Agency

**WINTERS**  
**SPORTING GOODS**

**SWATCHSUE ELEC. CO.**  
**SKELLY SELF SERVICE & CAR WASH**  
 Virgil Awalt

**MELBA'S**  
 Arts, Crafts & Gifts

**KENDRICK**  
 Heating & Air Cond.  
 Fred & Ozaine Kendrick

**FASHION SHOP**  
 Joyce & Connie Bahlman

**HEIDENHEIMER'S**  
**EXXON COMPANY**  
 Ercel & Marie Vaughn

**JOHN'S**  
**INTERNATIONAL**

**WINN'S**  
**VARIETY STORE**

**WESTERN AUTO**  
 Associate Store

**MANSELL BROS.**  
 John Deere  
 Farm Equipment

**BORDEN'S, Inc.**  
 Ricky Grissom

**HARRISON'S**  
**AUTO PARTS**

**MAIN DRUG CO.**

**ROBINSON**  
**CHEVROLET CO.**

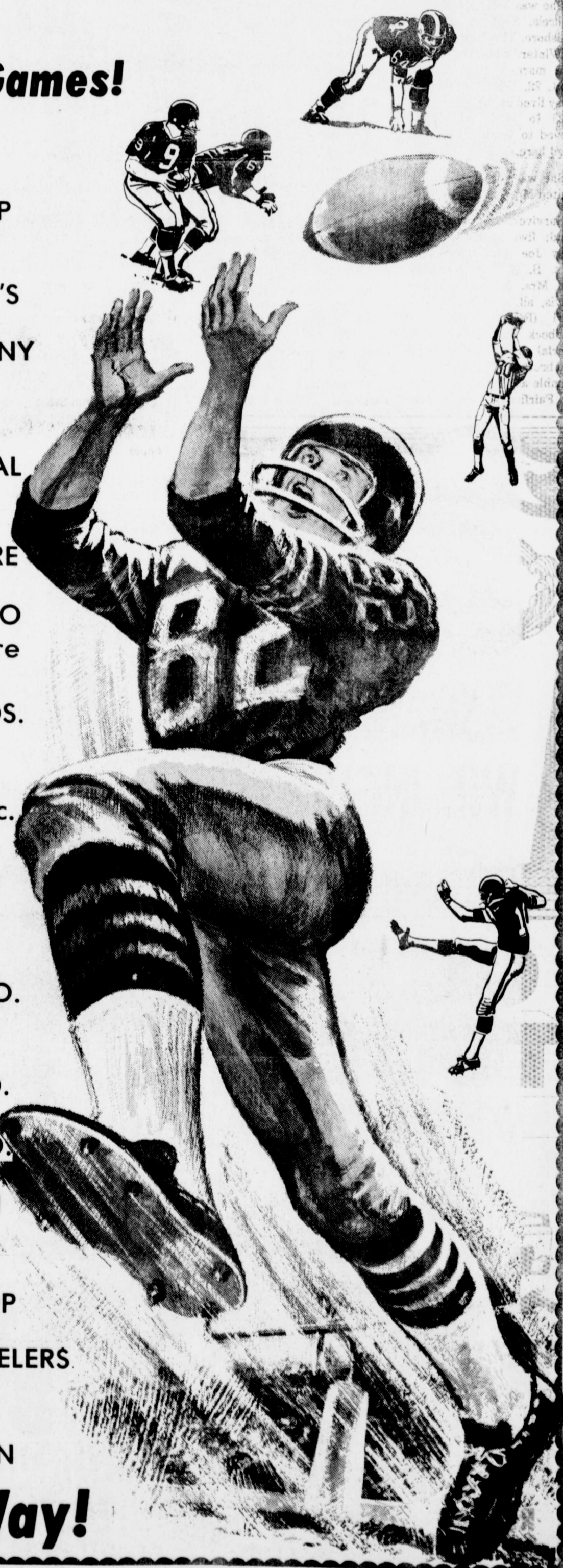
**SPILL BROS. CO.**

**DAIRY QUEEN**

**WINTERS**  
**FLOWER SHOP**

**BAHLMAN JEWELERS**

**JOHNNY'S**  
**SHELL STATION**



**THE WINTERS ENTERPRISE**

**Winters Farm Equipment**  
 E. E. Thormeyer, Owner

**GRS SERVICE**  
 Oil Well Servicing

**We're Backing the Big Blue All the Way!**

### Former Resident Observes 20 Years With Exxon

Mrs. John R. (Lena) Jehle, of Midland, formerly of Winters, observed her 20-year service anniversary with Exxon Company, USA, Oct. 19. At a luncheon held in her honor Oct. 20, she was presented service awards by Marvin L. Wigley, exploration land supervisor for the company.

Mrs. Jehle is the former

Lena June Pruette, daughter of the late Mr. and Mrs. Jack Pruette of Winters. She was a 1951 honor graduate of Winters High School.

She is assigned as secretary for the company in Midland. She attended Gail College of Business Efficiency, Abilene. Mrs. Jehle, her husband and son, Jon reside at 3329 Camarie, Midland.

### Mrs. P. Gerlach Died Sunday In NR Hospital

Mrs. Paul Gerlach, 75, of Winters, died at 10:35 a.m. Sunday in North Runnels Hospital.

Funeral services were held at 2:30 p.m. Tuesday in First United Methodist Church, with the Rev. Bob Lindsey, pastor, and the Rev. Mel Swoyer, pastor of St. John's Lutheran Church, officiating.

Burial was in the Lutheran Cemetery, directed by Spill Funeral Home.

She was born Minnie Lois Gehrels, Sept. 2, 1901, in Hillsboro. The family moved to Winters when she was 16. She married Paul Gerlach Sept. 22, 1922, in Ballinger. They lived in Bradshaw from 1923 to 1955, when they moved to Winters. She had lived here since.

She was a member of the United Methodist Church.

Survivors include her husband; five daughters, Mrs. Billy Joe (Melba) Emmert, Mrs. B. E. (L.B.) Baldwin and Mrs. Robert (Carolyn) Davis, all of Winters, Mrs. Earl (Ruth) Williams of Lubbock and Mrs. James (Darla) Kruse of Midland; two brothers, Ado Gehrels of Humble and Monroe Gehrels of Fairfield; two sisters,

### Friendly Neighbors Meeting Recently

The Friendly Neighbors Club met last Wednesday in the home of Mrs. Kay Rose. Handwork was planned for the next meeting.

Present were Mesdames Kay Rose, Tye Hunter, Alice Traylor, Charlsie Poe, Flora McWilliams, Erna Marks, Hartie Baty, Frances Campbell and Bertha Grisham.

### Band Boosters Make Plans For Carnival

Members of the Blizzard Band Boosters made final plans for a booth at the Halloween carnival, scheduled for Saturday night, in a meeting recently. The boosters will operate a dunking booth.

All band parents who have not worked in the concession stand are asked to contact a band booster officer.

RECEIPT BOOKS now available at The Enterprise office.

Lydia Kelley of Winters and Alice Fulton of Rowena; eight grandchildren; and two great-grandchildren.

Grandsons were pallbearers.

## O'CONNOR'S COLUMN

### Americans to Eat More Beef Than Ever

What's so special about beef? Just about everything—protein power, price and perhaps the most important of all, taste. Beef is clearly America's no. 1 choice of meat.

Statisticians at the U.S. Department of Agriculture (USDA) estimate the per capita consumption of all meats will total about 151 pounds (retail weight equivalent) in 1976. Of this, about 94 pounds will be beef, up from 89 pounds last year and the largest per capita beef consumption on record.

It's a good time to gear up those fall menus and restock the freezer for there's a whopping big supply of fed beef still moving to market. Beef may not always be this abundant, nor will it be offered at present prices.

Marketing specialists with USDA's Agricultural Marketing Service say that cattlemen who can no longer afford to continue to take the financial losses they have been experiencing for the past several months, are bringing breeding cattle to slaughter now to reduce their herd size and thus cut future losses. This reduction in herds will influence the supply of beef available in future years.

Producer prices for choice steers of 1100-1500 pounds at Omaha for the week ending October 1 averaged about \$36 per hundred pounds, off about \$14 from a year ago. Producers are reporting losses up to \$100 per animal sold. Unfavorable cost-price relationships for beef producers will likely continue into November.

For good, hearty beef eating this fall, try one of these recipes:

**Broiled Sirloin Steak**  
1 beef sirloin steak, cut 1 to 2 inches thick  
Pepper  
Salt

Set regulator for broiling. Place steak on broiler rack. Insert broiler pan and rack so the top of 1-inch steak is 2 to 3 inches from the heat and 2-inch steak is 3 to 5 inches from the heat. When one side is browned, season, turn and finish cooking on the second side. Season. Steaks cut 1 inch thick require 18 to 20 minutes for rare and 20 to 25 minutes for medium. Steaks cut 2 inches thick require 30 to 40 minutes for rare and 35 to 45 minutes for medium.

If you wish to add something special to turn a hearty meal into a memorable one, you may want to try flaming fruit. Here's how it's done:

### Flaming Fruits For Steak

1 can (17 ounces) dark sweet cherries  
1 can (13-1/4 ounces) pineapple chunks  
1 can (17 ounces) apricots  
1 can (11 ounces) mandarin orange segments  
1 tablespoon lemon juice  
1 teaspoon vanilla  
1/2 teaspoon almond extract  
1/2 cup sugar  
2 tablespoons butter or margarine  
4 sugar cubes  
2 tablespoons lemon extract

Drain fruit, reserving 1/2 cup juice from canned pineapple. Place fruit in chafing dish. Combine reserved pineapple juice, lemon juice, vanilla and almond extract and pour over fruit. Sprinkle with sugar and dot with butter or margarine. Cover and heat until fruit is warm and butter is melted. Just before serving, top with cubes of sugar soaked in lemon extract. Ignite sugar cubes and serve immediately. 6 servings.

### Beef A La Mode

3-5 pound rolled beef rump or sirloin tip roast  
2 tablespoon cooking fat  
1 teaspoon salt  
1/8 teaspoon pepper  
1 can (10-1/2 ounces) condensed beef consommé  
2 tablespoon chopped parsley  
1/2 teaspoon thyme  
1/8 teaspoon garlic powder  
1 bay leaf  
10-12 small whole onions  
10-12 small whole carrots  
2-3 tablespoons cornstarch  
1/4 cup water

Brown beef in cooking fat. Pour off drippings. Season beef with salt and pepper. Place on rack in dutch oven. Add consommé, parsley, thyme, garlic powder and bay leaf. Cover tightly and cook in slow oven (325 degrees) 2 hours. Add onions and carrots, cover and continue cooking 1 hour longer or until meat and vegetables are tender. Remove beef and vegetables. Discard bay leaf. Blend cornstarch and water, stir into liquid in pan and cook,

stirring constantly until thickened. Reduce heat and cook 5 minutes. Spoon gravy over beef and vegetables. 8 to 12 servings.

### Beef, Poultry Top USDA List of Plentiful Foods

Prospects for the nation's October food supply situation are "very good," according to the U.S. Department of Agriculture (USDA).

Beef, broiler-fryers and turkey are expected to be plentiful—more than enough to meet requirements. Other plentifuls are dry onions, potatoes, sweet potatoes, fresh Bartlett pears, grapes, apples, canned peaches and pears and canned and frozen vegetables.

The monthly "Food Marketing Alert" issued by the USDA's Agricultural Marketing Service reports beef production should be 3 to 5 percent above 1975 averages. Record October marketings of broiler-fryers are expected to be about 10 percent more than last year and turkeys about 8 percent more than a year ago.

The summer storage onion crop is forecast to be almost 20 percent larger than a year ago and fall storage potatoes are likely to hit a record.

Looking toward Thanksgiving, the AMS says this year's cranberry output should be 9 percent above last year's crop and the second largest crop of record.

Pork, eggs, raisins, milk and dairy products are expected to be in adequate supply—enough to meet needs. The pecan crop is expected to be light this year, probably the smallest in 14 years.

Other foods predicted as being plentiful in October include dried prunes, almonds, walnuts, rice, dry beans and dry peas.

### CARD OF THANKS

The kindness and sympathy of neighbors and friends in our recent sorrow will always remain with us as a precious memory. Our sincere thanks and gratitude for all those comforting acts.  
—The Family of Larry Wayne Cooper 34-1tc.

### Mrs. Babston Died, Funeral Thursday

Mrs. Rufus Babston, 73, died at 10:15 a.m. Tuesday of last week in Merrill Nursing Home following an illness of several months.

Funeral services were held at 10 a.m. Thursday in the First United Methodist Church, with the Rev. Bob Lindsey, pastor, officiating. Burial was in Midway Cemetery in Coleman County under direction of Spill Funeral Home.

She was born Vada Mae Cary, Nov. 5, 1902, at Content, in the northeast part of Runnels County. With the exception of five years following the death of her husband, when she lived at Houston, she had lived in Runnels County all her life. She lived in Winters since 1933.

She married Rufus Babston Oct. 6, 1921, at Goldsboro. Mr. Babston died Oct. 22, 1958.

She was a long time member of the First United Methodist Church of Winters.

Survivors include one daughter, Mrs. Norma E. Melver of Houston; two brothers, Lawrence and Charles Cary, both of Tuscola; four sisters, Mrs. Cullen Mills of Sweetwater, Mrs. E. L. Crockett of Winters, and Mrs. Pearl McFadden and Mrs. J. E. McNeill, both of Abilene; and a granddaughter, Mrs. Susan Mitchell of Hollywood, Calif.

Pallbearers were Melvin Mapes, Herbert Turk, Sid Anderson, M. L. Dobbins, Eldon Gray and Elmo Mayhew.

### FFA FRUIT SALE

The Winters FFA is once again having their fruit sale. 40-lb. Boxes of either fruit is \$6.50 and 20-lb. Boxes of either fruit is \$4.00. Those who are not contacted by a member may fill in the form below and mail to:

Winters FFA  
Box 396  
Winters, Texas 79567

Name: \_\_\_\_\_  
Address: \_\_\_\_\_  
Tel. No. \_\_\_\_\_  
\_\_\_\_\_ 20 lb. GRAPEFRUIT @ \_\_\_\_\_  
\_\_\_\_\_ 40 lb. GRAPEFRUIT @ \_\_\_\_\_  
\_\_\_\_\_ 20 lb. ORANGES @ \_\_\_\_\_  
\_\_\_\_\_ 40 lb. ORANGES @ \_\_\_\_\_  
 Paid Cash With Order  
 I Agree To Pay On Delivery Of Order



THANKS for nominating me your Sheriff in the Democratic Primary.

### Please Give Me A Chance

to make you a good Sheriff by voting for me in November.

I am not obligated to any organization or committees. If elected, I will run a clean and honest office, the same way I have run my campaign.

### HERSHALL HALL

(Pol. adv. paid for by Hershall Hall)

READ AND USE THE ENTERPRISE CLASSIFIEDS!

Happy Birthdays

**SHANNA WILLINGHAM**

**GET A TOUGH '77 BIG-10 PICKUP.**

**IT'S EASY.**

Get a tough challenge? We've got the challenger! Chevy's tough new heavy-duty 1/2-ton pickup is equipped to carry 1 ton. It runs on regular or unleaded fuel, too.

**Robinson Chevrolet Co.**

### Health Tip OF THE WEEK



T. A. Smith R. Springer

Many people try to save money on medical bills by not seeing the doctor until they are seriously ill. This defeats the purpose of "preventive medicine" (the only sound way to preserve your health) and it is more expensive in the long run. Once a disease process has started, it often lasts longer and costs more to cure. A regular medical checkup is not only a good investment, but the resulting peace of mind also promotes good health.

**SMITH DRUG**  
WALGREEN AGENCY  
WINTERS PH. 754-4543

I guess it's possible to go to Washington and forget where you came from. That's why I've traveled back and forth across this district listening to what you want America to be.

We won't agree on every vote I've cast. But you can count on this: I'll listen to you and your neighbor, weigh both sides, and do what I think is right.

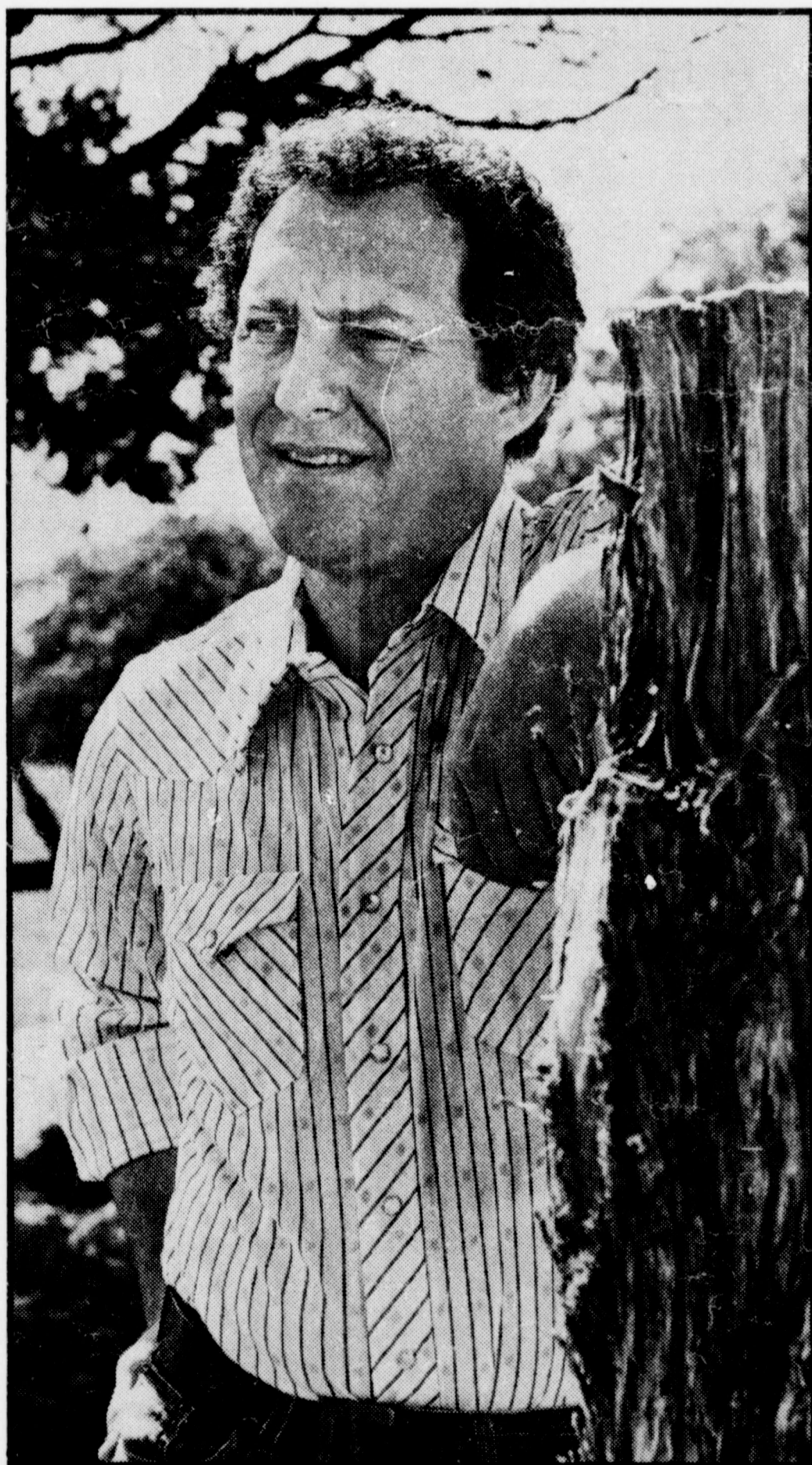
I want to thank you for your continued trust and support, and I urge you to vote in the general election November 2.

We have a lot to be proud of in America. That's why we have a lot at stake.

*Bob Krueger*

Congressman Bob Krueger  
21st District of Texas

### KRUEGER of Texas



Paid Political Advertisement by Friends of Bob Krueger, W. C. Richter, P. O. Box 911, New Braunfels, Texas

SHOP IN  
WINTERS...

# SUPER SATURDAY IN WINTERS!

## OCTOBER 30th

AND  
SAVE!

These Winters Merchants Are Offering These Big Savings

PRICES GOOD ONLY SAT., OCT. 30th

**BIG SPECIALS**

PECAN PICKER-UP-ER \$3.98

CIRCULAR SAW BLADES 6½" & 7" \$2.65

CAST IRON WOOD HEATER \$99.50

PKG. of 15 TRASH BAGS 33 Gal. Cap. \$1.50  
Sat. Only

**HIGGINBOTHAM'S**  
"THE BEST OF EVERYTHING UNDER ONE ROOF"

SELECTED GROUP  
FRANCISCAN POTTERY  
and  
FOSTORIA CRYSTAL

**½ Price**  
Sat. Only

**Bahlman Jewelers**

Complete New Stock  
AUTO & PICKUP

FLOOR MATS  
**10% Off** Introductory Offer  
Saturday Only

**WESTERN AUTO**

Shop in Winters  
... and Save!

**ALL BLOUSES**

JUNIOR, MISSES,  
CUSTOM SIZE

**10% OFF**  
Sat. Only

**FASHION SHOP**

every one's jumping into jeans

CHOOSE FROM MANY STYLES

FANCIES SOLIDS

Val. to \$9.95

**\$5.00**  
Sat. Only



**SPECIAL**  
200 Yds. Poly-Double Knits  
**88¢** yd. Sat. Only

**MEN'S POLYESTER DRESS PANTS**  
SAVE \$2.00 pr. NOW \$7.95 Sat. Only  
FREE ALTERATIONS

**MEN'S WINTER JACKETS**

"SPECIAL"  
ONE RACK  
**\$8.95** EA.



**SUPER SATURDAY SPECIALS**  
Come browse in the New Addition to our Store....  
"The Cupboard"  
Gifts, Knick-Knacks, Everything

(Sat. Only)  
**10% Off**  
on any item in  
"The Cupboard"  
**Spill Bros. Co.**

**MEN'S LEISURE SUITS**  
\$29.95

**SALE**  
\$39.95  
Sat. Only

MARKED DOWN FROM \$55.00  
FALL STYLES 1976 HAGGAR & FARAH



Leather-Look SHIRT-JACKET  
Easy-Care CASUALS

The perfect Fall versatile top. With snap front; embroidered yoke.

WHITES PASTELS  
**\$19.95**  
SAT. ONLY



**JOGGERS**

BLUE & ORANGE NYLONS  
MEN'S - BOYS'  
SAVE \$2.00 Pr. **\$8.88**  
Sat. Only

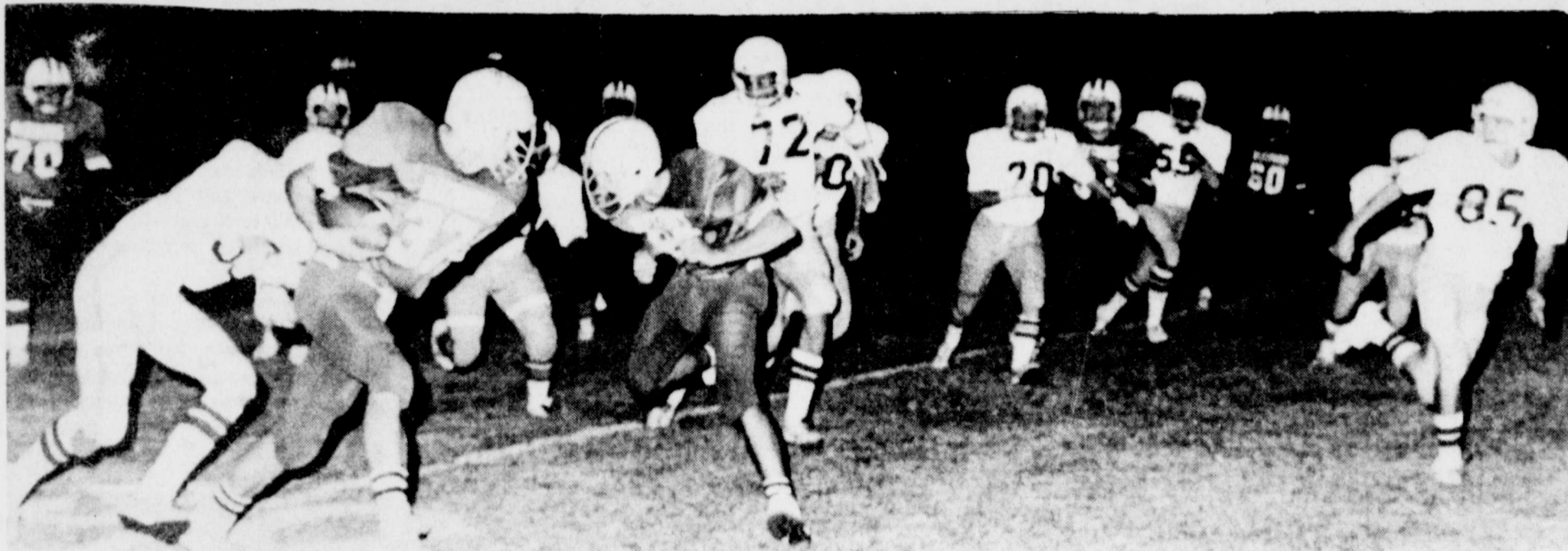
**HEIDENHEIMER'S**



**MEN'S**  
Long Sleeve Ribbed  
Turtle Necks  
White & Colors  
Val. to \$10.95  
**\$5.00**  
Sat. Only







Around End!



Battle Line!

**AROUND THE 6-AA LOOP**

Colorado City and Stamford are tied for leadership in 6-AA, with 3-0 records, with Stamford having the

edge by beating Merkel 14-0 while C-City beat Merkel 14-7. C-City plays Ballinger this week; Stamford already has played and beaten Ballinger, and will go to Wylie this week.

Coahoma has a 2-1 record, and will host Winters this

week. Winters has a 1-2 record in 6-AA after beating Wylie last week 20-0.

Merkel has a 2-2 record, and will rest this week.

Wylie has a 0-3-1 record, with Ballinger trailing the pack at 0-3-1, after losing to Coahoma last week.

For the season, Coahoma leads with 5-1-1, and C-City and Stamford are close behind with 5-2 records. Ballinger is the only team in 6-AA without a positive figure in the won column.

SEASON				
	W	L	T	Pts. Opp.
Coahoma	5	1	1	105 124
C-City	5	2	0	117 62
Stamford	5	2	0	119 61
Merkel	5	3	0	99 79
Ballinger	0	6	1	52 178
Wylie	1	6	1	50 201
Winters	2	5	0	84 100

DISTRICT				
	W	L	T	Pts. Opp.
C-City	3	0	0	80 7
Stamford	3	0	0	43 20
Coahoma	2	1	0	53 48
Merkel	2	2	0	38 47
Winters	1	2	0	45 39
Ballinger	0	3	1	21 42
Wylie	0	3	1	8 85

FARMERS' RANCHERS' tax exemption certificates available at The Enterprise office.

**Wallace Murray Reports Record Third Quarter and Nine Months Earnings**

Wallace Murray Corporation reported the highest third quarter and nine months earnings in its history. Income from continuing operations was up 47 percent for the third quarter and 55 percent for the nine months as compared with the like periods last year. 1975 itself was a record year for the Corporation.

Sales for the third quarter were \$83,102,000 as compared with \$67,855,000 in the third quarter of 1975, an increase of 22 percent. Income from continuing operations amounted to \$4,653,000 versus \$3,170,000 reported for the same period last year. Primary earnings per common share from continuing operations were \$1.38 compared with \$.89 in the third quarter of last year. On a fully diluted basis, earnings per share from continuing operations amounted to \$.95 as opposed to \$.65 in the similar period last year.

Volume for the nine months was \$243,597,000 as compared with \$207,326,000

to be consummated by month end.

Myers also said, "The financial position of the Corporation continues strong, as was reported in prior quarters. At the end of September, cash and short-term investments amounted to approximately \$20 million. Stockholders equity increased to \$114 million and the ratio of current assets to current liabilities has improved to 3.1 to 1."



Registry Service

For Your Wedding

Gifts!

Bahlman Jewelers

**HAPPY BIRTHDAY BRENDA**

**Melody Home**

**14 X 80 1,064 Sq. Ft.**

**\$9,495 UNDER \$135 MO.**

**HOT DOG & COKE ONLY 10¢ SAT. OCT. 30**

**Abilene Mobile Homes**  
4618 N. 1st 672-6466

**GOODIES FOR GHOSTS**

**HALLOWEEN COSTUMES**  
Goblins and spooks... super heroes and fairy tale characters! A big variety to choose from, all flame retardant.  
**\$1.57 to \$2.99**

**OLD TIME FAVORITES**  
Judson candies - 100 individually wrapped. Assorted flavors. A real old-fashioned bargain... regularly \$1.09  
**SPECIAL 99¢**

**CREPE PAPER AND STREAMERS** - all the Black, orange... all the traditional colors for a successful Halloween party.  
**49¢**

**ASSORTED CANDY KISSES**  
Delicious and chewy! Each piece wrapped separately... buy plenty.  
**60 PIECE BAG 59¢**

**EVEREADY FLASHLIGHT BATTERIES**  
Stock up now! "C" and "D" size batteries in package of two.  
**PKG. OF 2 57¢**

**GRAB BAGS**  
Package of 30 individual bags for treats, prizes and surprises.  
**29¢**

**PLASTIC HALLOWEEN MASKS**  
Full face and half masks with a big selection to help disguise everyone. Elastics attached!  
**19¢ to 98¢**

**KIDS Enter Winn's HALLOWEEN COSTUME Contest**  
**CONTEST DATE: OCT. 30<sup>TH</sup> 1976**  
**Details at store.**

**Winn's VARIETY STORES**  
**The REAL variety store.**  
**106 W. Broadway Winters**



## Miss Curbo and Mr. Poindexter To Wed

Mr. and Mrs. Pat Wood have announced the engagement and approaching marriage of their daughter, Sherri Lynn Curbo, to Mr. Bobby Jo Poindexter, son of Donald Poindexter and the late Betty Poindexter.

A November wedding is planned.

Miss Curbo is a senior in Winters High School. Mr. Poindexter, a graduate of Winters High School, is with the U.S. Navy, stationed at San Diego, Calif.



## Mr., Mrs. Esquivel To Note 50th Anniversary

The children of Mr. and Mrs. Juan H. Esquivel will honor their parents at a 50th wedding anniversary mass at 7:30 p.m., Saturday, October 30, in Mt. Carmel Catholic Church, and at a reception to follow in the Church Hall.

Children of the couple are Mr. and Mrs. Leonel T. Esquivel of Hart, Mrs. Maria

Sepulveda of Bakersfield, Calif.; Mrs. Lupe Gonzales of McFarland, Calif.; and Mr. and Mrs. Juan T. Esquivel, Mr. and Mrs. Salvador Esquivel, all of Winters.

Mr. and Mrs. Esquivel have 21 grandchildren. Also at the reception will be a brother, Francisco Trivno of Detroit, Mich.

## Church Women To San Antonio Convention

Several members of St. John's Lutheran Church, Winters, attended the 6th triennial convention of the American Lutheran Church Women of the Southern District, in San Antonio Oct. 22-24. The Southern District consists of Texas, parts of Louisiana and parts of Arkansas.

Total attendance was 753 with seven district officers, 158 delegates, 14 conference presidents, 42 conference officers, and 532 visitors.

Speaker Friday night was Dr. V. A. Mohr, Bishop, Southern District ALC. Dr. Mary Louise Rowand, pastor of the Christian Church, Dallas, was Saturday morning speaker. Saturday evening speaker was Mrs. Robert Connors, second vice presi-

dent, American Lutheran Church Women, Minneapolis, Minn. A. E. Rode, pastor of Christ Lutheran Church, was Sunday morning speaker.

Attending from Winters were Mrs. Walter Kraatz, the delegate; Mrs. R. C. Kurtz Jr., conference officer; and visitors, Mrs. Walter Gerhart, president of Ladies Aid Circle of St. John's Lutheran Church; Mrs. Ellis Ueckert, stewardship secretary of ALC Women of St. John's; Mrs. Herman Spill, Miss Minnie Belitz, and Miss Estella Bredemeyer.

FARMERS' RANCHERS' tax exemption certificates available at The Enterprise office.

## Winters Native Died Thursday In Arkansas

Kelly Cooke, 20, of Sallisaw, Okla., died Thursday afternoon of last week in Alma, Ark.

Funeral services were held Saturday at 2 p.m. in Wheeler Funeral Home in Sallisaw, with burial in a Sallisaw cemetery.

He was born in Winters, April 4, 1956, and had lived in Oklahoma and Arkansas for several years.

He is survived by his father, Ernest Cooke of Winters; his mother, Mrs. Bob Hammonds of Sallisaw; two sisters, Mrs. Brenda Parker of Alma, Ark., and Miss Tracy Cooke of Sallisaw; grandparents, Mr. and Mrs. Sam Cooke of Winters and Mr. and Mrs. W. B. McLeroy of Victoria.

## NR Hospital Auxiliary Is Organized

The North Runnels Hospital Auxiliary was recently organized, and officers were named. Plans were made to meet November 1 at 9:00 a.m. at the First Baptist Church. A nursery will be open for mothers with small children. This will be an orientation meeting and all members are urged to attend.

Officers elected include Mrs. Lynn Billups, president; Mrs. Oliver Wood, vice president; Mrs. Bobby Rogers, secretary-treasurer; Mrs. Weldon Middleton, community relations director; Mrs. David Bradley, director of volunteers.

Members are Lillian A. Walt, Diana Billups, Beth Bradley, Zula Mae Lacy, Nell Lollar, Alise Middleton, Jerry Miller, Nadine Robinson, Patsy Rogers, Darlene Sims and Ivy Wood.

Purpose of the organization, it was explained, "shall

## 4-H Clubs In Meeting Recently

Winters Joint 4-H Club met recently in the school vo-ag building.

Richard Hamilton, member of the fire department, presented a program on fire prevention. Dale Brandenburger explained planned events for 1976-77.

Members present were Dawn Miller, Francene Miller, Jimmy Henson, Rose Marie Faubion, Claudette Faubion, Anna Vera, Rosalinda Vera, Susie Vera, Adelita Vera, Mark DeBerry, Lance DeBerry, Andy DeBerry, Vonda Webb, Jim Bob Webb, Debbie Hamilton, Beverly Hamilton, Gina Guevara, Wayne Kraatz, Keith Kraatz, Kyle Kraatz, Rhonda Carter, John Carter, Karen Carter, Lee Evans, Jay West, Ronny Ripley, Fran Hoppe, Sherrie Gerhart, Scott Gerhart, Alfred Yates, Janet Jacob, Renee Blackwell, Suzy Vinson, Jerry Don Vinson, Don Kvapil, and Melinda Kvapil.

Adult leaders present were Mrs. Dan Miller, Mrs. Bob Webb, Mildred DeBerry, Mrs. O'Connor and Mrs. Frank Carter.

be to promote and to advance the welfare of the North Runnels Hospital through ways approved by the hospital board and the administrator. This shall be accomplished through good public relations programs and by service to the hospital and its patients. This is a non-profit organization consisting of women who are willing to donate their time to do special work at the hospital. Women who cannot work at the hospital may want to do some sewing, mending, making tray favors for the patients, or other special projects in their homes." Anyone interested may call Mrs. Lynn Billups or Mrs. David Bradley.

## G.C. Potts Died Sunday In Midland

George Clinton Potts, 73, of Midland, formerly of Winters, died at 9:30 a.m. Sunday in the Midland Hospital following an illness of several months.

Funeral services were held at 10 a.m. Wednesday in Spill Memorial Chapel, Winters, with Martha Wilke, minister of the Winters Pentecostal Church of God, officiating.

Burial was in Lakeview Cemetery under direction of Spill Funeral Home.

Mr. Potts was born in Ballard County, Ken., April 3, 1903. He lived in Little Rock, Ark., for a number of years and later moved to Winters. Since July, 1976, he had lived in Midland.

Survivors are one brother, Luther Potts of Winters, and one sister, Mrs. Bea Sutton of Ramona, Calif.; and several nieces and nephews. Nephews were pallbearers.

## Miss Hilliard and Mr. Crouch Plan Wedding

Mr. and Mrs. Leon Hilliard announce the engagement of their daughter, Judy Ann, to Mr. Wesley Crouch, son of Mr. and Mrs. Garland

Crouch of Muleshoe.

The wedding is planned for December 18 in the First Baptist Church.

## Merrill Nursing Home News

Our building is decorated with all kinds of spooky things and we will be looking forward to a visit from all the little goblins next Saturday night. The wicked witch rode in on her broom stick on Tuesday while we were having our Halloween party. She kissed the men and cast a magic spell on the ladies.

Memorial service was conducted for Vada Babston last Wednesday morning here in the home. We all loved Vada and will miss her.

Some of our people are getting real excited over the upcoming election. Some have voted absentee, while

others say they will go to vote on Tuesday, rain, shine, sleet or snow.

We are planning to enter a booth at the Annual Art & Crafts show on Nov. 12th and 13th. You are encouraged to come by, see what we have made, and make a purchase.

### CARD OF THANKS

Dear Winters friends. Please accept our sincere gratitude for your thoughtfulness and kind concern for us. Thank you especially for all the loving tributes to Teri. We are most grateful. To the graduating class of 1976. Thank you for remembering and caring. -The Family of Teri Stathem. 34-n

## NEARLY EVERYONE NEEDS LIFE INSURANCE.....

Wouldn't you rather buy your life and health insurance from a local agent who will be here when you need him?? Call today for some great buys in life and health insurance.



**JIM HATLER**  
INSURANCE AGENCY  
127 N. Main  
754-5032

Our policy is saving you money.

A "Thank You" for Past Support and a Plea for Your Vote in the General Election



I am deeply grateful for the support I received in the May Primary in my bid for election as your Sheriff. You chose me over an outstanding man who conducted a clean campaign.

While nomination in the Democratic Primaries is usually considered tantamount to election, opposition has developed via the write-in route.

I feel confident that you, the voters of Runnels County, will continue to support me in sufficient numbers to assure my election November 2.

If you vote a straight Democratic ballot, you check the party square, and your vote will count for every nominee in that column. But, if you vote for individuals in different columns, be sure and check your vote for HERSHAL HALL. Otherwise, I may lose your vote by default.

Here is how your Ballot should be marked:

For Sheriff, Runnels Co.

Hershhal Hall

Again, my thanks for your liberal support in the past, and for your continued support in the General Election.

**HERSHAL HALL**  
Sheriff Nominee, Runnels County

(Pol. Adv. Paid for by Hershhal Hall, Ballinger, Tex.)

## If you smell natural gas, follow these 3 steps to safety.

The natural gas industry has one of the best safety records of any energy source in the United States.

The fact that you *can* smell natural gas is because we add a harmless chemical to it as an extra safety feature. Otherwise, it would be completely odorless. If you detect faint whiffs of what you think may be gas, investigate. It may be something that is as easily and safely corrected as a pilot light that has gone out, or a burner valve that's partially open.

If your equipment seems to be working properly and the odor intensifies and seems to be everywhere, please follow these precautions:

1. Do not switch anything electrical on or off. Don't use the telephone in your own home. Do not strike a match. Do not do anything that might cause a spark.
2. Have everyone leave the house immediately, leaving doors open to help ventilate.
3. Go to a nearby telephone and call Lone Star Gas Company. Wait until we have found the source of the odor to determine whether it's safe for you to return to the house.

You may never have a natural gas leak, but we want you to be informed in case one does occur. Please make sure your family is aware of these precautionary steps. And we suggest that you keep this message for future reference.

**Lone Star Gas Company**

This Sample Ballot Is Published As A Public Service By

# THE WINTERS STATE BANK AND THE WINTERS ENTERPRISE

## GENERAL ELECTION [ELECCION GENERAL]

[Condado de] Runnels County, Texas  
November 2, 1976 [2 de noviembre de 1976]

November 2, 1976  
[2 de noviembre de 1976]  
GENERAL ELECTION  
[ELECCION GENERAL]  
NOTE: VOTER'S SIGNATURE TO BE AFFIXED ON THE REVERSE SIDE.  
[NOTA: FIRMA DEL VOTANTE SERA FIJADA AL LADO REVERSO]

### SAMPLE BALLOT

**INSTRUCTION NOTE: [NOTA DE INSTRUCCION:]**

Vote for the candidate of your choice in each race by placing an "X" in the square beside the candidate's name. You may vote a straight ticket by placing an "X" in the square beside the name of the party of your choice at the head of the party column.  
[Vote por el candidato de su preferencia para cada candidatura marcando con una "X" el cuadro al lado del nombre del candidato. Usted puede votar por todos los candidatos de un solo partido marcando con una "X" el cuadro al lado del partido de su preferencia a la cabeza de la columna para partidos.]

Candidates for: [Candidatos para:]	<input type="checkbox"/> Democratic Party (Partido Democratico)	<input type="checkbox"/> Republican Party (Partido Republicano)	<input type="checkbox"/> Raza Unida Party (Partido Raza Unida)	<input type="checkbox"/> American Party (Partido Americano)	<input type="checkbox"/> Socialist Workers Party (Partido de Trabajadores Socialistas)	<input type="checkbox"/> Independent (Independiente)	<input type="checkbox"/> Write In (Voto Escrito)
President and Vice President [Presidente y Vice Presidente]	<input type="checkbox"/> Jimmy Carter Walter Mondale	<input type="checkbox"/> Gerald R. Ford Robert Dole		<input type="checkbox"/> Thomas J. Anderson Rufus Shackelford	<input type="checkbox"/> Peter Camejo Willie Mae Reid	<input type="checkbox"/> Eugene J. McCarthy	
United States Senator [Senador de los Estados Unidos]	<input type="checkbox"/> Lloyd Bentsen	<input type="checkbox"/> Alan Steelman		<input type="checkbox"/> Marjorie P. Gallion	<input type="checkbox"/> Pedro Vasquez		
United States Representative [Representante de los Estados Unidos] Distrito No. 21 District	<input type="checkbox"/> Robert (Bob) Krueger	<input type="checkbox"/> Bobby A. Locke	<input type="checkbox"/> Ramon Carrillo	<input type="checkbox"/> Ed Gallion			
Railroad Commissioner [Comisionado de Ferrocarriles]	<input type="checkbox"/> Jon Newton	<input type="checkbox"/> Walter Wendlandt	<input type="checkbox"/> Fred Rodriguez Garza		<input type="checkbox"/> Pat O'Reilly		
Associate Justice, Supreme Court, Place 1 [Juez Asociado, Corte Suprema, Lugar 1]	<input type="checkbox"/> Jack Pope						
Associate Justice, Supreme Court, Place 2 [Juez Asociado, Corte Suprema, Lugar 2]	<input type="checkbox"/> Don Yarbrough						
Associate Justice, Supreme Court, Place 3 [Juez Asociado, Corte Suprema, Lugar 3]	<input type="checkbox"/> James G. Denton						
Presiding Judge, Court of Criminal Appeals [Juez Presidente, Corte de Apelacion Criminal]	<input type="checkbox"/> John F. Onion, Jr.						
Judge, Court of Criminal Appeals [Juez, Corte de Apelacion Criminal]							
Judge, Court of Criminal Appeals - Unexpired Term [Juez, Corte de Apelacion Criminal - Termino no Completado]	<input type="checkbox"/> W. T. Phillips						
State Senator [Senador Estatal] Distrito No. 24 District	<input type="checkbox"/> Grant Jones						
State Representative, [Representante Estatal], Distrito No. 55 District	<input type="checkbox"/> Lynn Nabers			<input type="checkbox"/> Jay J. Longley			
Member, State Board of Education [Miembro de la Junta Estatal de Instruccion Publica], Distrito No. 21 District	<input type="checkbox"/> Jimmy L. Elrod	<input type="checkbox"/> H. Dell Foster					
Associate Justice, Court of Civil Appeals [Juez asociado de la corte de apelacion civil] Distrito No. 3 District	<input type="checkbox"/> Bob Shannon.						
District Judge Unexpired Term [Juez del distrito Termino no Completado] Distrito No. 119 District	<input type="checkbox"/> Curt F. Steib						
District Attorney [Fiscal] Distrito No. 119 District	<input type="checkbox"/> Royal Hart						
County Attorney [Procurador del condado]	<input type="checkbox"/> John W. McGregor						
Sheriff [Sherife]	<input type="checkbox"/> Hershall Hall						
County Tax Assessor-Collector [Asesor-colector de Impuestos del condado]	<input type="checkbox"/> Jack Farmer						
County Commissioner [Comisionado del condado] Precinct No. 3 Precinct No. 3	<input type="checkbox"/> Pat Pritchard						
Justice of the Peace [Juez de paz] Precinct #2 Precinct #2	<input type="checkbox"/> J. C. Hodnett						

**PROPOSED CONSTITUTIONAL AMENDMENTS  
[ENMIENDAS PROPUESTAS A LA CONSTITUCION]**

**INSTRUCTION NOTE: [NOTA DE INSTRUCCION:]**

Place an "X" in the square beside the statement indicating the way you wish to vote. [Marque con una "X" el cuadro al lado de la frase que indica la manera en que quiere usted votar.]

No. 1

- FOR [A FAVOR DE]  
 AGAINST [EN CONTRA DE]

The constitutional amendment authorizing an increase of \$400 million in the amount of Texas Water Development Bonds that may be issued on approval of two-thirds of the legislature; amending and consolidating provisions of Sections 49-c, 49-d, and 49-d-1 of Article III of the Texas Constitution; and repealing Sections 49-d and 49-d-1 of Article III of the Texas Constitution. [La enmienda constitucional autorizando un incremento de \$400 millones de la cantidad de Bonos de Desarrollo de Agua en Texas que podran ser emitidos al ser aprobada por dos terceras partes de la legislatura; emendando y consolidando disposiciones de Secciones 49-c, 49-d, y 49-d-1 del Artículo III de la Constitucion de Texas; y revocando Secciones 49-d y 49-d-1 del Artículo III de la Constitucion de Texas.]

No. 2

- FOR [A FAVOR DE]  
 AGAINST [EN CONTRA DE]

A constitutional amendment to increase from \$100 million to \$200 million the amount of Texas Water Development Bonds that may be issued for water quality enhancement purposes. [Una enmienda constitucional para incrementar desde \$100 millones hasta \$200 millones la cantidad de Bonos de Desarrollo de Agua en Texas que podran ser emitidos con el proposito de mejorar la calidad del agua.]

**THIS IS WHERE  
YOU WRITE IN RAKE**

**GENERAL ELECTION  
[ELECCION GENERAL]**  
[Condado de] Runnels County, Texas  
November 2, 1976 [2 de noviembre de 1976]  
**SAMPLE BALLOT  
[BOLETA]**

**If you need assistance,  
be sure and ask one of  
the election judges to  
help you**

**INSTRUCTION NOTE: [NOTA DE INSTRUCCION:]**

Vote for the candidate of your choice in each race by placing an "X" in the square beside the candidate's name. You may vote a straight ticket by placing an "X" in the square beside the name of the party of your choice at the head of the party column.  
[Vote por el candidato de su preferencia para cada candidatura marcando con una "X" el cuadro al lado del nombre del candidato. Usted puede votar por todos los candidatos de un solo partido marcando con una "X" el cuadro al lado del partido de su preferencia a la cabeza de la columna para partidos.]

Candidates for: [Candidatos para:]	<input type="checkbox"/> Democratic Party (Partido Democratico)	<input type="checkbox"/> Republican Party (Partido Republicano)	<input type="checkbox"/> Raza Unida Party (Partido Raza Unida)	<input type="checkbox"/> American Party (Partido Americano)	<input type="checkbox"/> Socialist Workers Party (Partido de Trabajadores Socialistas)	<input type="checkbox"/> Independent (Independiente)	<input type="checkbox"/> Write In (Voto Escrito)
President and Vice President [Presidente y Vice Presidente]	<input type="checkbox"/> Jimmy Carter Walter Mondale	<input type="checkbox"/> Gerald R. Ford Robert Dole		<input type="checkbox"/> Thomas J. Anderson Rufus Shackelford	<input type="checkbox"/> Peter Camejo Willie Mae Reid	<input type="checkbox"/> Eugene J. McCarthy	
United States Senator [Senador de los Estados Unidos]	<input type="checkbox"/> Lloyd Bentsen	<input type="checkbox"/> Alan Steelman		<input type="checkbox"/> Marjorie P. Gallion	<input type="checkbox"/> Pedro Vasquez		
United States Representative [Representante de los Estados Unidos] Distrito No. 21 District	<input type="checkbox"/> Robert (Bob) Krueger	<input type="checkbox"/> Bobby A. Locke	<input type="checkbox"/> Ramon Carrillo	<input type="checkbox"/> Ed Gallion			
Railroad Commissioner [Comisionado de Ferrocarriles]	<input type="checkbox"/> Jon Newton	<input type="checkbox"/> Walter Wendlandt	<input type="checkbox"/> Fred Rodriguez Garza		<input type="checkbox"/> Pat O'Reilly		
Associate Justice, Supreme Court, Place 1 [Juez Asociado, Corte Suprema, Lugar 1]	<input type="checkbox"/> Jack Pope						
Associate Justice, Supreme Court, Place 2 [Juez Asociado, Corte Suprema, Lugar 2]	<input type="checkbox"/> Don Yarbrough						
Associate Justice, Supreme Court, Place 3 [Juez Asociado, Corte Suprema, Lugar 3]	<input type="checkbox"/> James G. Denton						
Presiding Judge, Court of Criminal Appeals [Juez Presidente, Corte de Apelacion Criminal]	<input type="checkbox"/> John F. Onion, Jr.						
Judge, Court of Criminal Appeals [Juez, Corte de Apelacion Criminal]							
Judge, Court of Criminal Appeals Unexpired Term [Juez, Corte de Apelacion Criminal - Termino no Completado]	<input type="checkbox"/> W. T. Phillips						
State Senator [Senador Estatal] Distrito No. 24 District	<input type="checkbox"/> Grant Jones						
State Representative, [Representante Estatal], Distrito No. 55 District	<input type="checkbox"/> Lynn Nabers			<input type="checkbox"/> Jay J. Longley			
Member, State Board of Education [Miembro de la Junta Estatal de Instruccion Publica], Distrito No. 21 District	<input type="checkbox"/> Jimmy L. Elrod	<input type="checkbox"/> H. Dell Foster					
Associate Justice, Court of Civil Appeals [Juez asociado de la corte de apelacion civil] Distrito No. 3 District	<input type="checkbox"/> Bob Shannon						
District Judge Unexpired Term [Juez del distrito Termino no Completado] Distrito No. 119 District	<input type="checkbox"/> Curt F. Steib						
District Attorney [Fiscal] Distrito No. 119 District	<input type="checkbox"/> Royal Hart						
County Attorney [Procurador del condado]	<input type="checkbox"/> John W. McGregor						
Sheriff [Sherife]	<input type="checkbox"/> Hershall Hall						<b>RAKE</b>
County Tax Assessor-Collector [Assessor-colector de Impuestos del condado]	<input type="checkbox"/> Jack Farmer						
Constable [Condestable] Precinct #7 Precinct #7	<input type="checkbox"/> Clarence Goetz						

**THERE IS A DIFFERENCE**

QUESTION	O. L. RAKE	OTHER CANDIDATE
What is your previous employment record?	1971-73 Abilene Police Dept. - Patrolman 1973-75 Simplex Security - Personnel Director 1975-76 Chief of Police, Ballinger.	With the exception of most recent employment, no information ever provided to the public.
Who are some of your previous employers and character references?	Warren Dodson, Chief of Police, Abilene. Ray Trammel, Retired Sheriff, Taylor County Noel D. Calloway, Professor of Law Enforcement, Hardin Simmons Univ.	No information ever provided to the public.
What is your educational level?	1963 graduate of Abilene Cooper. 1968 graduate of Angelo State Univ. Completing masters degree in law enforcement from Univ. of Texas.	No information ever provided to the Public.
What are some of your awards and achievements?	Holds intermediate Law Enforcement Certification. Member of Texas Police Chiefs Association, and the Texas Municipal Police Officers Association.	No information ever provided to the public.
What are your financial obligations?	No debts other than basic home and automobile payments. Excellent credit rating.	No information ever provided to the public.
What was your reason for leaving your last employer?	Under honorable conditions to enter Sheriff's race.	No information ever provided to the public.
Do you have a police record? If so, explain.	No.	No information ever provided to the public.

These questions are routinely asked on almost every employment application for any type of job, yet they have never been answered by one of the men who is applying for the very important job of County Sheriff.

**The stakes are much too high to gamble.**

**Vote for the man you really know something about.**

**Write-in O. L. RAKE for Sheriff in the Nov. 2 election.**

(Pol. Adv. Paid for by O. L. Rake, Ballinger, Tex.)

## Crews News

If the knocking at the door is loud and long, it isn't opportunity, it's relatives. Don't forget our Halloween carnival at the gym, 7:30 p.m. if you like prizes and fun.

Fred Martin of Odessa, a former Crews resident, was in a head on wreck near Sterling City. He was returning home after spending the day Saturday with his brother, J. M. Martin, who came home Tuesday after treatments in Galveston. Fred is in serious condition with broken ribs, and injuries to his head and face.

Mr. and Mrs. Douglas Bryan attended a birthday dinner in the Lelon Bryan home for Brent, Gary and Vicki Bryan.

Mr. and Mrs. H. P. Morrison of San Antonio visited the Clyde Brevards and Mrs. Elsie Kirby Saturday night.

During the week with Mrs. Effie Dietz were Mr. and Mrs. Allen Rosinbaum, Abilene; Mrs. Theron Osborne; Mrs. Wesley McGallion and son; Mrs. Althia Self; Mrs. Lilly Osborne and Selma; Mrs. Ralph Lopez, Billie, Johnny and Ronda; Clara McKissack.

The Burley Campbells visitors were Mr. and Mrs. Theron Osborne, Mrs. Marvin Hambright, Mr. and Mrs. Wesley McGallion and son, Mr. and Mrs. Buck Campbell of Abilene were Sunday dinner guests.

Mr. and Mrs. Theron Osborne and Mrs. Addie Hardaway were Mrs. Amber Fullers visitors.

The Allen Bishops and boys spent Sunday with her parents, Mr. and Mrs. H. W. Curry in Norton. Other dinner guests were Mr. and Mrs. Thomas Curry and girls, Mrs. Jimmy Criswell and boys, and Debbie Curry of San Angelo.

Sunday dinner guests in the Theron Osborne home were Bro. Bob and Mrs. Underwood and son Bobbie of Coleman and Karen McGallion and son Jr. of Winters.

Ray Cooper, Carrol and Kirby returned from Colorado with their bear. Mr. and Mrs. Earl Cooper gave Ray a going away dinner and for his friends Wednesday night. Those attending were the Kat Grissoms, Edward Browns, Richard Chambliss and girls, Harold Mullers, David Carroll and Mr. Kirby. Ray has returned to Brazil. His folks received a phone call Friday that he had a good trip and arrived in Brazil where his crew met him. They are working for the Parker Drilling Co.

Mr. and Mrs. Walter Jacob attended a birthday supper in the home of Mr. and Mrs. Joe Kozelsky for their son Mike Kozelsky. Others attending were Mr. and Mrs. Mike Kozelsky, Mr. and Mrs. Herbert Jacob, Mr. and Mrs. Joe Kozelsky Jr., Mr. and Mrs. Gary Jacob, Brenda and Cookie Jacob of San Angelo, Mrs. Steward Lehr and children.

The Walter Jacobs visited the Felix Books in San Angelo on Monday afternoon.

Mrs. Alta Hale accompanied 43 Bank Club ladies of Coleman to Granbury on a

### Be Busy Club Met Recently

The Be Busy Sewing Club met Oct. 25 in the home of Mrs. Becky Poe. The afternoon was spent doing handwork for the hostess.

Those present were Mesdames M. H. Hogan, Lewis Blackmon, Bill Milliorn, J. C. Martin, Eura Lloyd, Mayola Cathey, Vallie Brannon, Etta Bryant, Lillie Shott, Nadine Smith and the hostess.

The next meeting will be Nov. 8 in the home of Mrs. J. C. Martin.

### CARD OF THANKS

The family of Mrs. Vada Babston wishes to express our deep gratitude for all the kindness and sympathy extended to us during her illness and our time of sorrow. We especially wish to thank the nurses and staff of the Merrill Nursing Home. 34-1tp.

tour where they toured old homes. They attended the Opry play 905 and other sights of interest. Mrs. Hale spent Tuesday in Ballinger with Miss Willie Hale.

During the week with Mrs. Cora Petrie were Mrs. Frank Mitchell, Mrs. M. E. Leeman of Winters, Mrs. Hazel Mae Bragg, Brandon Hambright, Johnnie Parrish and Mr. and Mrs. B. M. Batts.

The Bill Villers, Jimmy and Peggy spent Sunday with the Raymond Kurtzs.

First of the week with the Marion Woods were Mr. and Mrs. Marcus Dickey of Pasco, Wash. The Woods spent the weekend in Snyder with the Larry Calcote family.

Mr. and Mrs. Odie Matthews spent Sunday in Miles with her mother, Mrs. George Coleman. The Richard Colemans and the Hagon family of San Angelo joined them.



## IN NOVEMBER

### MOVIES

ALOHA, BOBBY AND ROSE  
B MUST DIE  
BITE THE BULLET  
THE EXORCIST  
MITCHELL  
THREE SISTERS  
TIDAL WAVE  
THE DAY OF THE LOCUST  
HESTER STREET  
THE LITTLE PRINCE  
LOVE AND DEATH  
THE MAIDS

MAN WHO WOULD BE KING  
THE MAN WITH THE GOLDEN GUN  
RETURN OF THE PINK PANTHER  
THE THIEF OF PARIS  
VISIT TO A CHIEF'S SON  
ADVENTURES OF FRONTIER FREMONT  
THE ARENA  
MANDINGO  
THE MISSOURI BREAKS  
NASHVILLE  
THE GHOST GOES WEST  
MAN WHO COULD WORK MIRACLES

### SPECIALS

ON LOCATION: DAVID BRENNER

ON LOCATION: MYRON COHEN

ON LOCATION: STEVE MARTIN

### FOREIGN FILMS

PERSONA

SHAME

### CHILDREN'S FILMS

GHOST OF A CHANCE

HEADLINE HUNTERS

LUCKY LUKE

NEW ADVENTURES OF THE SPACE EXPLORERS

### SPORTS

CANADIAN FOOTBALL

NHL

GYMNASTICS

SKATE CANADA

NATIONAL HORSE SHOW

WRESTLING

NBA

### COMING IN DECEMBER

FUNNY LADY

LUCKY LADY

THE BLUE BIRD

HBO is Only \$8.00 a Month

AFTER INSTALLATION

Call Us - We'll Turn You On!

texas cablevision "Total Entertainment Service"

28 W. CONCHO SAN ANGELO, TX. 76901 PHONE 915-653-2401

BALLINGER 915-365-2726, WINTERS "ENTERPRISE 67534"

**Every day, more than 186,000 adults in The Big Country read more local West Texas news and sports in The Reporter-News.**

**By mail in West Texas**

**ONE YEAR** morning and Sunday . . . . . \$42.00

**ONE YEAR** morning only . . . . . \$34.00

Or for carrier delivery contact your Home town agent.

Byron Jobe  
754-4683

## Voters of Runnels County:

I would like to express my opinion on facts, observations and what I read in your paper.

I came to Runnels County 60 years ago this month. This is my first time to take issue in our local government. It seems to me it is time we take inventory of what is happening to us. First let us look at the Sheriff's race. Our sheriff nominee conducted the cleanest campaign I ever saw. He won by a big majority over one of the best and most outstanding sheriffs the County or State ever had. But the people felt that after 27 or 28 years, we should have a change and chose Hershall Hall as our next sheriff. After all, Father Time takes his toll—I know, I am not near the farm boy that I was 28 years ago.

Don Atkins was man enough and honest enough to make a public statement that he was sick and not physically able to be on the job some of the time, consequently he was replaced. But who can say that for many years that rugged Marine was not as good a sheriff as ever wore a badge? I feel Don is grateful to the people of Runnels County for their many years of support and they are grateful for his many years of outstanding service. He can retire with dignity and be proud of his record.

Now we have a few sore losers on this issue and they have taken it on themselves to defy the majority's wishes and take over our county by brainwashing a newcomer to go around begging the people to change their minds and write in his name for sheriff.

Why didn't the newcomer pay an entrance fee and get his name on the ballot if he wanted to be sheriff? I noticed in Monday's paper (10/11/76) where he tried to wiggle out of some of the slander against Hershall Hall that has been mailed to a lot of people. He claims he knew nothing about it. How come he only addressed this to the citizens of Ballinger. There are other citizens in the county, you know. Evidently he knew who this slander was mailed to. In his "so-called apology" he called it trash and slander against his opponent. Whatever gave him the idea he had an opponent? His name will not be on the ballot—he paid no entrance fee. He seems to want a free ride.

He is going around begging and glorifying himself in the papers and begging people to vote for him. As to his insinuation that he is the only man capable of being sheriff of Runnels County, I resent that. I think there are a lot of "just as good" or better men that could be picked from Winters, Ballinger, Norton, Wingate, Rowena, Miles and other communities of the county. I just can't appreciate some newcomer coming in and classifying my friends and neighbors as being "dumb."

Lets take a look at our past record of law enforcement in Runnels County. I have known

personally all the sheriffs of Runnels County with the exception of the first one, Mr. Formwalt. Several years after the second sheriff, J. W. Clampitt, left office I worked for him 5 years and knew all the others personally up to our present sheriff. I want to point out some of the history of these lawmen. The first president of the Sheriff's Association was a Runnels County sheriff. The man voted the Model Texas Ranger was an ex-county sheriff. The man with the most convictions of criminal cases for many years was an ex-Runnels county sheriff; and our present sheriff, Don Atkins, qualified in most and received some of these honors. It seems to me that Runnels County has done pretty good in the field of law enforcement and I don't think we have run out of material yet. Now we have a newcomer that we know nothing about except what he has praised himself for.

As for our nominee, Hershall Hall, I can say this—while he was deputy sheriff, I had three occasions to call the sheriff's department on theft and other violations. Hall was the man that came to my rescue. In each instance, he did not come the next day—but within minutes and did his job well.

It seems to me since he has had, I believe, 6 years of law enforcement in the county as deputy sheriff and other law enforcement that he won the nomination fair and square and on his own merits. He has not slandered his opponent or anyone else. I think he should have our support and be given a chance to prove himself. He has been slandered unmercifully.

The write-in candidate in the several months he was chief of police—I never saw him one time on the streets. But I did go to his office to get acquainted with him. He was so enthralled telling me about his education and how smart he was—and how good and perfect he was—and how his integrity was so far above reproach. I did not learn much but he did convince me—by his own testimony—he was the smartest, best educated and most perfect man in the county. He left me with the impression that me and the majority of the people of Runnels County were Dumb Clucks—that we were in desperate need for him to take charge and drive us down the straight and narrow way and to enlighten us to our dumb and wicked ways.

When I go to the polls in November, I am going to mark the Democratic nominee's box—to vote for the man who paid the price in more ways than one—our nominee, Hershall Hall.

Thanks!

**GENE CRAWFORD**

(Paid for by Friends of Hershall Hall, E. H. Crawford, chairman, Ballinger, Texas)



**STUDENT TEACHER—**  
Jay W. Davis, senior agricultural education major from Tarleton State University, has begun his student teaching in the Winters Public Schools under the supervision of Stanley Blackwell and Charles Allecorn, vocational agriculture teachers.

Davis will be in the community from October 25 through December 16 for the purpose of receiving training for vocational agriculture teaching. This arrangement has been made by mutual agreement between Bill Graves, Superintendent of Schools, and Tarleton State University. Davis will assist with all activities concerning the local vocational agriculture program. Upon completion of this training period, he will receive the bachelor of science degree from Tarleton State University and be eligible for the provisional secondary vocational agriculture teaching certificate.

Davis is a 1972 graduate of Coleman High School where he was active in FFA and 4-H activities. Drs. Bill Irick, Johnny Johnson, and Len Steakley are the Tarleton State University supervisors for the teacher education program in the Department of Agricultural Education.



Headed for Touchdown!



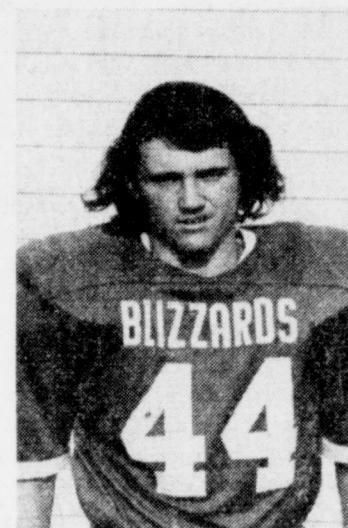
Extra Two Points!

# Blizzards Zap Wylie Bulldogs



Touchdown!

## Blizzard of the Week



JOHN MUSICK

The Blizzards will play the Coahoma Bulldogs Friday night in Coahoma. Kick-off time is 7:30 p.m.

### STATISTICS

Winters	Wylie
19	First Downs 9
258	Rushing Yardage 72
16	Passing Yardage 66
2-16	Passes Completed 6-16
1	Passes Intercepted By 0
0	Punts, Averages 4-28
50	Penalties, Yards 15
1	Fumbles Lost 2

The Blizzards warmed up an otherwise chilly Friday night and earned their first 1976 district win by defeating the Wylie Bulldogs 20-0.

Jimmy Chapman put the Blizzards on the scoreboard with 7:21 left in the first quarter, when he took a

hand-off from quarterback Jeff Russell and circled right end for eight yards. Flent McNeill ran for the two extra points.

With 52 seconds left in the period, Russell again handed off to Chapman who burst through the middle for a one-yard TD. Flent McNeill's PAT attempt failed.

The Blizzards led the Bulldogs 14-0 until the third quarter when Chapman scored again on a 10-yard run.

Twice in the second half, Wylie penetrated the Winters 10-yard line, but the Blizzards held them scoreless.

Jimmy Chapman led the Winters rush with 139 yards

in 22 carries. Other rushers were Flent McNeill with 18 carries and 22 yards; Kent McNeill, 7 carries and 23 yards; Gary Schwartz, 1 carry and 30 yards; Jeff Russell, 4 carries for 21 yards; Johnny Curbo, 4 carries and 16 yards; Reggie Boles, 1 carry for 6 yards; and Leroy Jones, 1 carry for 15 yards.

In return yardage, Chapman picked up 69 yards; Flent McNeill, 25 yards; and Kent McNeill, 6 yards.

Phillip Colburn and Gary Schwartz tied for the most tackles with six each. The "Big Hit" award went to Doug Cooper.

Coaches graded the players for their efforts against Wylie as follows:

### OFFENSE

- Johnny Curbo, 88%
- Jeff Russell, 88%
- Kent McNeill, 88%
- Phillip Colburn, 88%
- Darrell Kurtz, 83%
- Jimmy Chapman, 80%
- Doug Rogers, 80%
- Flent McNeill, 76%
- Gary Schwartz, 73%
- Leroy Jones, 73%
- Mike Davis, 71%

### DEFENSE

- Bret Guy, 94%
- Phillip Colburn, 83%
- John Musick, 75%
- Gary Schwartz, 70%
- Reggie Boles, 70%
- Flent McNeill, 66%
- Kent McNeill, 65%
- Johnny Curbo, 65%

Players receiving grades of 90% or above are awarded three stars, a grade of 80%-90% earns two stars,



Almost Made It!

**"Things To Remember"**  
Back in July 1975 Hershall Hall made it plain that he would be a candidate for Runnels County Sheriff in the 1976 Democratic Primary Election. Mr. Hall filed for a place on the Ballot; he paid the filing fee, and his name was on the ballot with the incumbent also on the ballot. In the Primary Mr. Hall was favored with a substantial majority of the votes. That should have been the end, but no, no. Now the voters in Runnels County know the story from here on. Hershall Hall was elected Sheriff by Runnels County Democrats, now let's keep it that way.  
Tom Caudle  
1105 5th St.  
Ballinger, Texas

(Pol. Adv. Paid for by Tom Caudle, Ballinger, Tex.)

Buy Your Next **Watch** from your **JEWELER!**  
**BAHLMAN JEWELERS**  
106 South Main Phone 754-4067

**Cozy Warm in Coldest Weather!**  
**Super Insulated WALL'S Coveralls...**

2466 Insulated Coveralls

Strong sateen of 50% Dacron® polyester/50% Rayon with a water repellent finish, is laminated to Walls' polyurethane apparel insulating foam and is fully nylon lined.

Men's model has two zippered chest pockets, two pants pockets, two hip pockets (one zippered), two-way zipper front, bi-swing back, elastic inserts at the waist for comfort, hidden knit storm cuffs, snap adjustments at leg cuffs for closing when needed, plus an inside chest pocket.

Boys model has matching corduroy collar, full cut, suitable for boys and girls.

SIZES:  
SHORT - S-M-L-XL  
REGULAR - S-M-L-XL  
TALLS - S S-M-L-XL

**MEN'S \$24<sup>95</sup> BOYS' \$19<sup>95</sup>**

**HEIDENHEIMER'S**

24 HR. **AMBULANCE SERVICE**  
**DIAL 754-4511**  
Day or Night  
Including Sundays or Holidays!  
Air Ambulance WHEN DESIRED  
CAN BE ARRANGED ANY TIME - ANY PLACE  
**SPILL BROS. CO.**  
Winters, Texas

**YOU HAVE A STRONG VOICE IN THE TEXAS LEGISLATURE LYNN NABERS**

STATE REPRESENTATIVE FOR THE 55th LEGISLATIVE DISTRICT

BROWN, CALAHAN, COLEMAN, COMANCHE, McCULLOCH, RUNNELS COUNTIES

**PROVEN LEADERSHIP**

- ★ FOUR TERMS OF SERVICE
- ★ CHAIRMAN OF MAJOR COMMITTEE
- ★ WORKED FOR IMPROVED LAW ENFORCEMENT
- ★ WORKED FOR A STRONG EDUCATION SYSTEM
- ★ WORKED FOR BETTER HIGHWAYS & TRANSPORTATION
- ★ WORKED FOR IMPROVEMENT OF SERVICES TO THE ELDERLY
- ★ WORKED FOR WATER IMPROVEMENT

**RE-ELECT LYNN NABERS STATE REPRESENTATIVE DEMOCRAT**

**"A STRONG VOICE FOR YOU"**

(Pol. Adv. Paid for by Lynn Nabers, Brownwood, Tex.)