

Insurance FIRE-WINDSTORM-HAIL LIFE-ACCIDENT-AUTOMOBILE See Anderson & Carrithers, Agts., Phone 275

TOOLS FOR CUNNINGHAM & DEVINE EAST TEST DUE MONDAY

NEW WELL TO BE DRILLED ON WHITE RANCH

After a series of delays occasioned by wet weather and bad roads, C. J. Vater, who last November struck the new oil well on the G. R. and W. N. White "Company" ranch, 17 miles northeast of Brady, was last week enabled to get to the well and resume operations.

C. A. Devine was here yesterday and reported that the tools for the east location, G. H. & S. A. Ry. Survey No. 19, would arrive at Mercury Monday, and that they would be moved out at once to the location.

The rainy weather the first of this week has served to again hinder operations in the county, the roads being again almost impassable in places.

THIEVES BREAK INTO HALLETT MERCANTILE STORE AT WAGRAM FRI.

C. J. Hallett has been advised that thieves broke into his mercantile store at Wagram last Friday night, carrying off with them a quantity of flour, tobacco and other articles.

Buy an I. H. C. Ensilage Cutter. It grinds the corn, cob and all. Get all there is out of your feed, by grinding in a Feed Grinder. BROAD MERCANTILE CO.

Just received—shipment of Hoosier Kitchen Cabinets. O. D. MANN & SONS.

Watch the advertisements of the Essex, then come and ask for a demonstration. F. R. WULFF.

Never before has there been such a demand for Good Stoves. That is why we have sold so many Charter Ranges. People are demanding the best in a Range, and they know the quality of the Charter Oak. BROAD MERCANTILE CO.

McCULLOCH COUNTY GINNING TO JANUARY 16TH REACHES 18,842 BALES

According to the report of the Bureau of Census, cotton ginned in McCulloch county prior to January 16, 1920, totaled 18,842 bales, as compared with 838 bales at a corresponding date in 1919.

Table with 3 columns: Name, 1919, 1918. Lists ginners and their bales ginned in 1919 and 1918.

The Pathe Phonograph will please you. No better Phonograph made than the Pathe, and it plays all makes of records. BROAD MERCANTILE CO.

Do you want reserve power and speed? Let us demonstrate the Essex. F. R. WULFF.

Bath Room fixtures! We can supply your needs. O. D. MANN & SONS.

Give us a chance to figure with you on your Furniture bill. We believe we can save you some money. BROAD MERCANTILE CO.

New Perfection Oil Cook stoves are the best made. O. D. MANN & SONS.

Cheaper. Pat, who had just landed, watched the diver climb upon the pier from the water. "Faith," he said thoughtfully, "if I'd got a suit like that I'd 'av' walked too."

Barb Wire and Hog Wire. BROAD MERCANTILE CO.

What He Heard. Scene (a seaside resort)—Hear the moaning of the tide, John? "That's not the tide. It's the hotel guests paying their bills."

A full line of Hardware. BROAD MERCANTILE CO.

Filing Devices. The Brady Standard.

Everything in Implements. BROAD MERCANTILE CO.

COUNTY COMMISSIONERS APPOINT ROAD OVERSEERS FOR PRECINCTS

ELECTION OFFICERS FOR EACH VOTING BOX ALSO APPOINTED FOR ENSUING YEAR—BUSY SESSION HELD THIS TERM.

The county commissioners adjourned Wednesday after a busy three-day session, during which road commissioners were appointed for each road precinct in the county.

The naming of the road overseers not only required considerable time because of the number, but also because of the court's desire to get the very best and most capable men for each place. The court named the following:

Table with 3 columns: Road No., Overseer, Road. Lists precinct numbers and names of appointed overseers.

Election Officers. Election officers for ensuing year are as follows: Brady, 1—O. L. McShan, presiding judge; W. W. Sammons, W. H. Ballou, A. B. Carrithers, assistant judges. Nine, 2—D. Harkrider, presiding judge; Clint Spivey, assistant judge.

S. H. Gainer, assistant judges. Cow Boy, 6—Robert Stewart, presiding judge; A. A. Jordan, assistant judge.

Milburn, 7—J. E. Long, presiding judge; J. W. Cummins, assistant judge. Lohn, 8—Wm. F. Roberts, Jr., presiding judge; Dr. J. P. Barton, H. L. Winstead, Jess Bissett, assistant judges.

Waldrip, 9—Nat Randalls, presiding judge; Jim Hill, assistant judge. Stacy, 10—J. H. Snodgrass, presiding judge; Miller Hammons, assistant judge.

Mercury, 11—J. R. Beasley, presiding judge; J. N. Holland, assistant judge. Five, 12—Jas. Finlay, presiding judge; R. H. Coonrod, assistant judge.

Pear Valley, 13—L. A. Watkins, presiding judge; J. E. White, assistant judge. Melvin, 14—J. D. McCaughn, presiding judge; G. S. Johnson, assistant judge.

Mt. Tabor, 15—Walter Millsap, presiding judge; E. M. Bratton, assistant judge. Calf Creek, 16—J. W. Attaway, presiding judge; C. W. Tucker, assistant judge.

Placid, 17—Nat Gault, presiding judge; J. M. Parker, assistant judge. Lost Creek, 18—W. W. Henderson, presiding judge; Ezra Willis, assistant judge.

East Gansel, 19—J. R. Herd, presiding judge; C. M. Coalson, assistant judge. Whiteland, 20—Dan Zimmerman, presiding judge; Paul Allen, assistant judge.

Card of Thanks. We wish to thank our many friends and neighbors for their help and kindness to us during the illness and death of our darling Annie Bell Pence.

Don't overlook the Rock Island Two-Row Planters and Cultivators. We have them in stock now for immediate delivery. BROAD MERCANTILE CO.

We have everything for the early Spring garden. O. D. MANN & SONS.

Tax. An Irishman was before a judge on the charge of wife-beating. The judge looked down at him and said: "It will cost you just two dollars and twenty cents."

Dishes. Broad Mercantile Co. New shipment highest grade typewriter carbon paper—purple and black. The Brady Standard

We will have in this week Six Rock Island Middle Breaker Sulkeys. If you need a Sulkey let us save you one. BROAD MERCANTILE CO.

It will be a pleasure to demonstrate the Essex to you without any obligation on your part. F. R. WULFF.

Harness. BROAD MERCANTILE CO. Sleeping on a Sealy Mattress is like sleeping on a cloud. O. D. MANN & SONS.

JUDGE WOODWARD MON. TO CONVENE DISTRICT COURT

Sheriff J. C. Wall Wednesday was advised by Judge J. O. Woodward by phone that the February term of district court would be convened next Monday at 1:30 p. m. It was thought because of the flu epidemic, court might be postponed, but Judge Woodward ruled against this, and advised that all jurors and witnesses summoned were expected to report.

SIMPSON & CO. SHOWING NEW 1920 SERIES BIG SIX STUDEBAKER AUTOMOBILE

Simpson & Company are displaying one of the beautiful new 1920 series "Big Six" Studebaker automobiles, driven out the past week from Dallas by Mr. Simpson.

REMOVAL NOTICE! I have moved the office of the Pierce-Fordyce Oil Co. to the Syndicate building, one door east of Moffatt Bros. & Jones' grocery. Phone 40 for prompt attention to your wants. J. H. OGDEN.

We have the nicest assortment we have ever had of dishes—in plain white and bordered patterns, and gold band. O. D. MANN & SONS.

When you want saddles, harness, bridles or leather goods of any kind, remember that only the best of leather and the finest of workmanship goes into our goods. We want your patronage. H. P. C. EVERS.

We have on hand John Deere Buggies, and have another car that will be here in a day or two. Get our price on a John Deere Buggy. You will like the John Deere Buggy. BROAD MERCANTILE CO.

The High clearance, lightweight and rugged construction makes the Essex the ideal car for the farmer and cattleman. F. R. WULFF.

International 8 and 6 H. P. Kero. Engines in stock. Broad Mercantile Co.

Wall Paper advertisement for TRIGG DRUG CO. REXALL STORE. Includes image of wall paper and text: "Get your Wall Paper now. We have a well assorted stock of Wall Paper and Ceiling Border. We supply the Paste also."

PAINLESS advertisement for DR. H. W. LINDLEY. Text: "I can extract teeth absolutely PAINLESS. I will give free demonstrations of painless extractions every morning from 10 to 11. I use all modern Painless methods in dentistry. No need to fear pain. I have THREE chairs—no long waits. Service is my Motto. I use the best of everything, and my prices are very reasonable." Includes phone number and address: "DR. H. W. LINDLEY LADY IN ATTENDANCE Phone 81 Over Hub Dry Goods Co. Brady"





# Essex Triumphs Confirm It the New Dominant Type

*Its 50-Hours at Top Speed Endurance Mark is Unmatched. But That is Proof of Only One of the Fine Car Qualities Essex Brings to the Light Car Field*

Today light car advantages challenge attention, imperatively. They were never so wanted.

Mere bulk and weight are no longer necessary to finest car quality.

Essex success proves that. Consider its unrivalled endurance feat of traveling 3037 miles in 50 hours. Mark its world sales record of more than \$35,000,000 paid for 22,000 cars in its first year. And note how many who formerly bought big, costly cars, now own an Essex.

They find in it all the fine performance, speed, power and reliability, for which they paid big premiums, in their former large cars.

Moreover they find such exclusive light car benefits as economy, nimbleness and handling ease.

### Essex Has These Exclusive Light Car Advantages

The light car saving in gasoline, oil and tires is no longer a question of a few cents daily. The difference in these items today is far greater.

And of great importance also are the light car advantages that present-day crowded street traffic force every buyer to consider.

The light Essex needs no unobstructed boulevard to make fast time safely. It is away quicker. It stops, starts, turns and picks up, with a speed and ease impossible avier types.

It needs only limited parking space.

You who have prospected car-lined curbs for a gap in which to fit a big car, appreciate what it means to find convenient parking.

### 5870 Miles at More Than a Mile a Minute

And see how it has proved endurance. Not only in setting the official world long distance endurance mark of 3037 miles in 50 hours. Not only in covering 5870 miles in three tests, averaging more than a mile a minute.

Even more important than its unequalled 24-hour road mark of 1061 miles, made on snow-covered Iowa country roads, is the durability it has shown in the hands of more than 22,000 owners, its positive day-in-and-day-out dependable transportation.

The spacious interior, its luxury finish, its solidness are qualities none would associate with light cars they have known.

Women like the Essex daintiness and beauty.

But it is Essex performance and endurance that must always be its strongest appeal. Power for the hills, speed and endurance to which no distance is a barrier, alertness and prompt pick-up in crowded traffic—these qualities must always be first.

With last year's experience of two buyers waiting for every Essex produced, it is obvious that you must act promptly to secure early delivery.

## F. R. WULFF, Dealer

Phone 30

Brady, Texas



WHEN you see this famous trade-mark, think a minute! Think of the delicious taste of a slice of fresh toasted bread!

That's the real idea back of the success of Lucky Strike cigarettes. Toasting improves tobacco just as well as bread. And that's a lot.

Try a Lucky Strike cigarette—

# It's toasted

Guaranteed by The American Tobacco Co.



### SOCIAL ITEMS.

**San Saba Leap Year Dance.**  
One hundred and fifty couples enjoyed the Valentine Leap Year dance given at San Saba Wednesday night by the San Saba club. The dance was held in the ball room of the club and was the biggest social event of the season. Many out-of-town guests were present, among them being parties from Brady, Lampasas, Llano, Goldthwaite, Mason, Cherokee and other nearby towns.

The dance program was given in two parts. The first, the Valentine dance, consisted of the grand march, programs for the first part were distributed and bore the following lines: "Four hundred years ago: The man with powder in his gun went out to hunt DEER." At the conclusion of the first part new programs were distributed among the surprised dancers. The new cards read: "But today things work on a different plan. The DEAR with powder on her cheeks goes out to hunt the man."

From thenceforth the dance became strictly a Leap Year affair, and the ladies were supposed to engage their own dances. The second programs also provided for a grand march, eight numbers and two extras.

Music was furnished for the dancers by the Bartlett orchestra. A salad course was served. The dance hall and club rooms were especially decorated for the evening.

Among the out-of-town guests invited were: Messrs. and Mesdames W. R. Davidson, S. A. Benham, W. D. Crothers, H. B. Ogden, W. E. Campbell, R. A. Ramage, G. C. Chambliss, A. R. Hooper and D. F. Maples; Misses Minnie J. Crothers, Lucille Benham, Rebecca Francks, Queen Willson, Norma and Lessie Samuel, Willa Mae Dillard and Edith Brook; Messrs. Fuller, White, Ragsdale, Adkins, Gentry, Rainbolt, Brooks, Lang, Campbell.

**Chronic Constipation.**  
There are people who never have a movement of the bowels without it is produced by a cathartic. Most of them have brought that condition on themselves by the use of mineral waters and strong cathartics that take too much water out of the system and aggravate the disease they are meant to relieve. A mild laxative tonic like Chamberlain's Tablets affords a gentle movement of the bowels that you hardly realize has been produced by a medicine, and their use is not so likely to be followed by constipation.

### WEST SWEDEN WHISPERS.

Complimentary Party to Mr. and Mrs. Edward Helge, Brady, Texas, Feb. 11.  
Editor Brady Standard:  
After a weeks' absence, will try to write again.  
The party at Mr. Irvin's given in honor of Mr. and Mrs. Edward Helge, was greatly enjoyed by all present. Games were played, after which chocolate and cake was served. A number of young people from Brady attended.

The play given by the school Saturday night, January 21, was a success. A good crowd was present, and \$12.50 was taken in. The program consisted of music, readings by Luella Lunger and Edith Young, and the play by the school girls.  
We are very fortunate so far as we have no "flu" in our community and the attendance at school is still good.

Rev. Martinson filled his regular appointment Sunday morning, but did not come Sunday night.

Mrs. Abner Hanson was called to the home of her daughter, Mrs. Herbert Harkrider, to minister to them during a siege of the flu.

Mr. and Mrs. Emil Nelson visited Mrs. Nelson's sister, Mrs. Raymond Rose of Coleman, last week. Mr. and Mrs. Rose accompanied them home and are visiting Mrs. Rose's parents, Mr. and Mrs. Joseph Hanson. They are thinking of locating here.

Miss Alpha Allison was a pleasant visitor at the Rice home Sunday before last.

Mr. and Mrs. E. J. D. Peters have moved back to their farm. They have resided in Brady the past year.

Miss Esther Hanson is visiting home folks this week, there being no school in Brady on account of the flu. Mrs. George E. Youngdale visited in the Rush home Friday afternoon. Come on correspondents; let's make our column more interesting.  
"DOLLY and POLLY."

### Rich-Tone Is a Friend of the Weak

"It Has Made Me Strong and Well Again."—Says J. R. Martinez.

He writes: "Rich-Tone is a wonderful remedy for people who are weak and lacking in vigor, and all those who desire to gain strength and energy should take this truly famous tonic. It has given me perfect health and cured me of ailments from which I had long suffered."

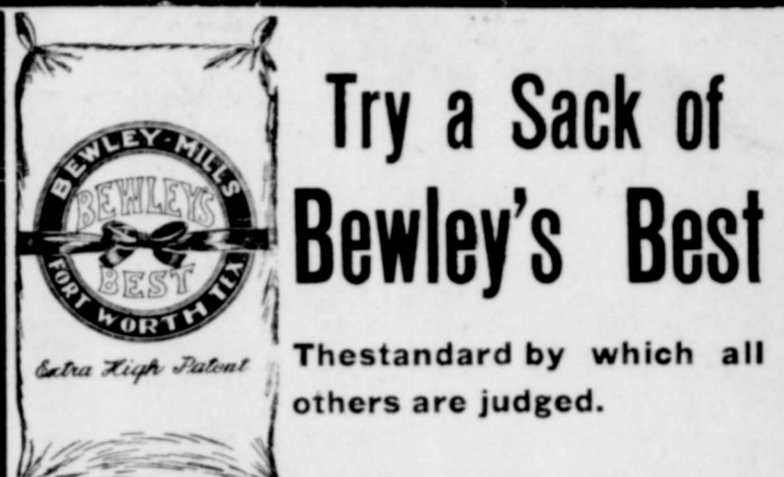
### Take RICH-TONE and gain new energy

Not one penny will Rich-Tone cost you, if it doesn't prove of genuine worth in treating your case.  
You are to be the judge—try this famous tonic—it doesn't bring to you new energy, splendid appetite, regular sleep, peaceful and quiet nerves—if it doesn't destroy that tired feeling and build you up, then Rich-Tone will be free to you—it will not cost you anything—not one penny.  
You owe it to yourself to try this marvelous remedy. You owe it to your family and friends to be strong, well, happy, bright of eye, brisk of step, ruddy of cheek, able to go about your work with a smile on your lips!  
Try Rich-Tone entirely at our risk. Get a bottle today on our money-back guarantee. Sold and guaranteed locally by

TRIGG DRUG CO.



Stamp Pad Ink—in sizes from 25c to \$1.00. JUST IN—Kindergarten Scissors. Brady Standard.



GROCERIES—are the biggest item of living expenses. We sell the best, and help you save by selling cheap and for cash only. Buy your next bill here and your money will go farther.

## Myers Bros.

Cheap Cash Grocery South Side Square

# LAUNDRY BASKET

I am now making regular shipments of laundry to Coleman, until I can re-establish the laundry in Brady.

Give me a trial---you'll be pleased with the work.

Will call for laundry every day and make deliveries.

PHONE 228

## BERT STOBAUGH

Brady, Texas



Expecting a Car of the Famous American Beauty Flour

In a few days. If you try this flour, you'll know why it is a prize-winner everywhere.

LIGHT CRUST FLOUR  
Lots of it on hand.

Everyone asks for more after once using it.

## JOE MYERS

