

The Baird Star

Our Motto—"Tis Neither Birth, Nor Wealth, Nor State, But The Get-Up-And-Get That Makes Men Great."

FIFTY-THIRD YEAR

BAIRD, CALLAHAN COUNTY, TEXAS, FRIDAY, SEPTEMBER 27, 1940

NUMBER FORTY-TWO

Bears First Conference Game Here Tonight With Tigers

The Baird Bears test their strength in the first conference game of the season to-night when they meet the Anson Tigers for the second game on the Bear's newly lighted field.

Following his tradition of pre game doledrums, Coach White says if the Baird team manages to ride the hefty end of the score to-night that Baird rooters can sit tight for at least two other wins, for altogether the Anson team is not the strongest in the district it lacks a great deal of being he weakest.

Coach White gives the following starting line-up for Baird, L. End, Arthur Burleson, L. Tackle, Bill Odom, or Ben Glover

L. Guard, J. C. Earp, or Franky Crow

Center, Wilbur Briscoe, or Robt. Wristen

R. Guard Buddy Brumbaugh, R. Tackle Junior Cutbirth, R. End, Elwood Gion, L. Half, Bill Hatchett or Carl Yarbrough

R. Half Raymond Cook, Full Back J. C. (Bullet) Cook, Quarter Back, Bill Yarbrough, Anson's coach, Carroll Roland, gives his line up as follows:

L. E. J. P. Ward, L. T. Earl Morris, L. G. Clifford Martin, Center, Jack Greer, R. G. Ray Greer, R. T. Otho Snider, R. E. Don Boyd

R. Half Richard Thrumen, L. Half Roy McCoy, Full back Othell Ball (Captain) Quarter Billy Joe Rust

Officials of the game will be Jake Bentley, Johnny Brookshire and Frank Cogdell.

The kick-off is called for 8 P. M.

Church Federation Meets Monday

The Federation of all churches meets Monday afternoon at 3 o'clock at the Methodist Church all ladies of the other churches are invited.

Program
Song,—"Come, Thou Almighty King."
Prayer, Mrs. Reynolds.
Scripture, Mrs. Cecil West.
Musical Numbers,
Mrs. Hugh Ross.

Off To College

Among the students going away to colleges and universities are: Jim Tom Lawrence, Catherine James, Jo Ruth Arvin, Billy Hollingshead, Denton, Billy McCoy and Sam Driskell, Texas Tec. Lubbock Lewis Hill, Frank Stanley Jr. Randall Jackson, and Marian Dyer. Texas State University, Billy Fetterley and R. L. Griggs McMurry, Abilene.

HOSPITAL NEWS

Misses Clara Nell Hughes, Belle Plain, Nell Lunsford, Lillit Mae Benson, Baird and Johnnie Pearl Emmerson, Clyde, are student nurses at the hospital.

W. G. Jeans, Mr. Cozart and Mrs. Rosie Green are improving. Miss Estell Hudson of Cross Plains is a surgical patient.

Mrs. Robert Spence is a medical patient.

Bobbie Elliott was tonsilectomy patient Monday.

Born—To Mr. and Mrs. Hugh Curtis Monday, Sept 23rd a son who has been named James Conrad.

GARDEN CLUB ILL MEET ON OCTOBER FIRST

The Garden Club will meet with Mrs. Ace Hickman, Tuesday Subject Garden Suggestions. Program Legends on Halloween, Mrs. Hickman.

When Witches Walk—Mrs. N. L. Dickey
Treat and Tricks—Atrelle Estes.

First Cotton Checks Totaling \$17,296.20 Received

E. L. Pierson, Secretary of the Callahan County A. C. A. received 629 cotton parity checks totaling \$17,296.20. These payments were received by cotton producers that planted within their 1940 cotton allotment. The above amount of money represents only about one-half of the total cotton parity payments that will be received within the next two weeks.

Baird Bears Take First Game Of Season

The Baird Bears trimmed the Moran team to a tune of 37-0 in the initial game of the season played here last Friday night. The game, which put the opposing Bulldogs way, way back in the dim depth of the dog house, got off to a rousing start with Bullet Cook receiving the kick-off and chalking up the first count. Just because big brother turns out to be a gradstand hero was no reason for little brother Cook to take a back seat and with a left end gallop Raymond Cook tallied up the second score and fans began to wonder if the first football game was that or a track and field event for the Bears. Raymond Cook doubled his score later in the game when he pushed the pigskin into the pay-dirt for the third count. Close on his heels Bullet Cook went fifteen yards with the ball after recovering a Moran fumble and rung up the fourth touchdown of the night and it might be added here that Cook brothers are what the patron Saint of football sends to coaches who are good. The boys took over Friday night in something that should be game history. It was later in the game that Yarbrough power came into play and Bill tucked the pill under his arm for a ninety eight yard run for a touchdown. "Buck" Yarbrough rode again in the first play of the third quarter for a ninety yard run and the final score of the game. Yarbrough always turns in a good game and he didn't disappoint the crowd Friday. Somewhere in route a goal point was made but the heel dust flew so fast and furious that I doubt if you could find when.

As usual, the backfield attracted the attention Friday but the linesmen if you noticed, are something we can be proud of. Burleson is a steady one, who always fills his position to perfection, and Elwood Goin, J. C. Earp, Franky Crow, and Johnny Cutbirth looked good from where this reporter stood.

The Baird team has been fortunate in finding good center for the past few years and Wilbur Briscoe is no exception.

When the score began to pile up on the steep side, Bill White ran in his second string men and by his own word there is definitely good material there Bill Wylie is a game little scrap per who should go places and young Carl Yarbrough is going to show brother Bill some competition this year.

Of more importance is the conference game to be played to-night but for a bracing start you couldn't have asked for a better tiff than the one last week, and may it be the pace for game to come.

COOKED FOOD SALE

The Senior Wednesday Club will sell Cakes and Pies on Saturday, September 28th, first door north of Quality Cafe.

Mrs. Jimmie Hasting of Lamesa, is visiting her sister Mrs. Sarah Barclay.

Mrs. Price McFarlane Honored On Birthday

Mrs. E. C. Fulton entertained Friday afternoon, Sept 20th in honor of Mrs. Price McFarlane the occasion being her 72nd birthday. A contest was engaged in for a time then the honoree's favorite songs were sung and all were invited to the dining room where a candle decorated cake centered a lace laid. The honoree lighted and blew out the candles as the guests sang "Happy Birthday". The guests returned to the living room where a package of gifts were presented Mrs. McFarlane. After all had viewed the gifts a plate of delicious chicken salad, crackers and cake was passed to Mesdames McFarlane, W.T. Hensley, R. L. Elliott, V. E. Hill, Pearl Harris, C. W. Sutphen, Willie Barnhill, Lolette Gilliland, H. Schwartz, Frank Miller, T.E. Powel, E. B. Mullican H. N. Ebert, J. A. Jackson and V. F. Jones.

Mrs. Estes Shows Dolls At Eula H. D. Club

Mrs. Frank Estes of Baird showed her collection of dolls at the Eula Home Demonstration Club meeting in their home of Mrs. L. E. Lewis, Sept. 4, in place of the previously planned table service demonstration due to the illness of Miss Clara Brown, Home Demonstration Agent, who was to give the demonstration.

Mrs. Estes' dolls portrayed the trends of America dress styles from the year 1615 to 1914. The influence of war and politics as well as fashions from Paris aided in the designs from time to time.

Mrs. N. H. Stephenson presided at the election of officers for the coming year. They are: President, Mrs. N. H. Stephenson, re-elected.

Vice-President: Mrs. Lester Farmer

Secretary-Treasurer: Miss Gertrude Harris, re-elected

Council Delegate. Ms. Clyde Johnston

Recreational Director Mrs. A. L. Barnes

Reported Miss Ida Lewis

Mrs. R. G. Edwards reported on the two previous council meetings.

Guests attending were Mrs. Frank Estes, and Mrs. E. H. Leach of Baird, and Mrs. Estes Farrar of Eula. The members present were Mesdames L. E. Lewis, R. G. Edwards, Lester Farmer, Ross Farmer, A. L. Barnes, Cecil Harris, N. H. Stephenson, Clyde Johnston, Misses Willie Mae Bourland, and Ida Lewis.

MARRIAGE ANNOUNCED

Mrs. O. S. Anthony of Abilene, announces the marriage of her daughter, Musette Kirby to Rowland Hall, Mr. and Mrs. Hall will be at home at 5606 Metropolitan Ave, Dallas, where Mr. Hall is connected with Kieth Co. Mr. Hall is the son of Lewis Hall of Baird.

PRESBYTERIAN LADIES

The Presbyterian Ladies met in the home of Mrs. E. C. Fulton, with Mrs. Lee Estes as co hostess. The meeting opened by singing "Higher Ground", The "Lord's Prayer", was repeated in unison. Scripture lesson by Mrs. Fulton, Mrs. Lee Ivey, leader reviewed the 4th Chapter of the Mission Study book.

A delicious plate salad was passed to 14 members.

Mrs. Rosa Bell Prichard is convalescing from a recent illness.

Abilene Rotary Club Will Give Free Concert

The Abilene Rotary Club with the A C C Band and a special act will give a free Goodwill program advertising the West Texas Fair in Abilene. The program will be in Baird, Tuesday night at 7:30, a motorcade will accompany the club.

PROGRAM

I. Master Ceremonies (Member Abilene Rotary Club)

II. Fifteen-minute band concert by the Abilene Christian College Band, interspersed with remarks by the Master of Ceremonies.

III. Three-minute talk by representative of Hardin-Simmons or McMurry College.

IV. Specialty Number by A. C. C. Band.

V. Response by Mayor Schwartz of Baird.

VI. Short number by A. C. C. Band.

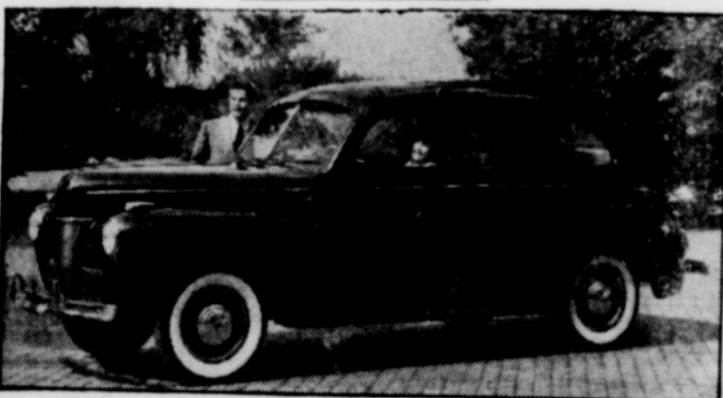
VII. Short talk by Jim Stinson.

VIII. Number by A. C. C. Band

IX. Number by Ed Shumway.

Then meeting to be closed by audience sing-song, led by Ed Shumway (closing number, "God Bless America", by entire audience.)

1941 FORDS ON DISPLAY AT EARL JOHNSON MOTOR COMPANY TODAY



1941 Ford Super DeLuxe Fordor sedan. Like the rest of the new Ford line, it is larger, easier riding, and more beautiful outside and in.

The new Ford line is released for public inspection today in Earl Johnson Motor Company, local dealers' show room, which has been rededicated for the showing.

There has been a lot of advance discussion of changes. And changes there are, starting off with considerable increase in size for the Ford V-8's DeLuxe and Super DeLuxe.

Designers have taken full advantage of increased wheelbase and overall lengths to give added spaciousness, and Ford engineers have worked right up from big tires through to luxury seat cushions and new softer springs for the solid enhancement of riding comfort.

A new four-cylinder truck and commercial car engine is part of the economy features included in the Ford working line.

The wheelbase of these big new DeLuxe and Super DeLuxe Ford V-8's is longer and the over all length greater. The designers have taken advantage of this extra overall to increase the inside body length both in foot room and seating width. In fact, the front seat of the sedan is seven inches wider than last year. The head room is greater and the window area, already large in previous Ford cars, is even larger this year.

Running beards have practically disappeared from sight, due to the width of the new bodies. But they are there to step off when the doors are opened.

The 85 horsepower V-8 engine is still unique as it is in the only eight cylinder car in the low price field. These new Fords have lower transmission gear ratios thus hiking up the "get-away."

The four lever-type hydraulic shock absorbers now have a more sensitive adjustment to

match the new softer acting springs. The new improved ride stabilizer, connected by swinging shackles to the front axle, minimizes side sway and improves steering.

The new Fords have big 12-inch hydraulic brakes, for quick smooth action and long service. The emergency, or parking brake is on the rear wheels and operated by a steel cable. The brake lever is under the instrument panel near the brake lever. This protects the engine, battery and accessories from theft.

An entirely new body design is included in the 1941 Super DeLuxe line—a sedan coupe. This coupe combines a close coupled body design with comfortable seating for six. Also in the line there is a convertible club coupe, seating five, and equipped with an electrically operated top that functions even when the engine is not running. It is operated by throwing an electric switch.

There are four body types in the DeLuxe line, six in the Super DeLuxe. There are three color choices for the DeLuxe and six in the Super DeLuxe line.

Among refinements which are new this year on all models are the speed lines on the side of both front and rear fenders the new hidden gasoline filler cap electric light on the luggage compartment lid which automatically lights whenever the lid is raised if the car light are burning ventilating front windows, a new wide tempered glass one-piece rear window, radio grilles in all cars, twin windshield wipers with speed control, twin sun visors, fender top parking lamps, and two-spoke, clear-vision comfort-type steering wheels. There is a center front license plate on the Super DeLuxe.

The four lever-type hydraulic shock absorbers now have a more sensitive adjustment to

match the new softer acting springs. The new improved ride stabilizer, connected by swinging shackles to the front axle, minimizes side sway and improves steering.

The new Fords have big 12-inch hydraulic brakes, for quick smooth action and long service. The emergency, or parking brake is on the rear wheels and operated by a steel cable. The brake lever is under the instrument panel near the brake lever. This protects the engine, battery and accessories from theft.

An entirely new body design is included in the 1941 Super DeLuxe line—a sedan coupe. This coupe combines a close coupled body design with comfortable seating for six. Also in the line there is a convertible club coupe, seating five, and equipped with an electrically operated top that functions even when the engine is not running. It is operated by throwing an electric switch.

There are four body types in the DeLuxe line, six in the Super DeLuxe. There are three color choices for the DeLuxe and six in the Super DeLuxe line.

Among refinements which are new this year on all models are the speed lines on the side of both front and rear fenders the new hidden gasoline filler cap electric light on the luggage compartment lid which automatically lights whenever the lid is raised if the car light are burning ventilating front windows, a new wide tempered glass one-piece rear window, radio grilles in all cars, twin windshield wipers with speed control, twin sun visors, fender top parking lamps, and two-spoke, clear-vision comfort-type steering wheels. There is a center front license plate on the Super DeLuxe.

The four lever-type hydraulic shock absorbers now have a more sensitive adjustment to

match the new softer acting springs. The new improved ride stabilizer, connected by swinging shackles to the front axle, minimizes side sway and improves steering.

The new Fords have big 12-inch hydraulic brakes, for quick smooth action and long service. The emergency, or parking brake is on the rear wheels and operated by a steel cable. The brake lever is under the instrument panel near the brake lever. This protects the engine, battery and accessories from theft.

An entirely new body design is included in the 1941 Super DeLuxe line—a sedan coupe. This coupe combines a close coupled body design with comfortable seating for six. Also in the line there is a convertible club coupe, seating five, and equipped with an electrically operated top that functions even when the engine is not running. It is operated by throwing an electric switch.

There are four body types in the DeLuxe line, six in the Super DeLuxe. There are three color choices for the DeLuxe and six in the Super DeLuxe line.

Among refinements which are new this year on all models are the speed lines on the side of both front and rear fenders the new hidden gasoline filler cap electric light on the luggage compartment lid which automatically lights whenever the lid is raised if the car light are burning ventilating front windows, a new wide tempered glass one-piece rear window, radio grilles in all cars, twin windshield wipers with speed control, twin sun visors, fender top parking lamps, and two-spoke, clear-vision comfort-type steering wheels. There is a center front license plate on the Super DeLuxe.

The four lever-type hydraulic shock absorbers now have a more sensitive adjustment to

match the new softer acting springs. The new improved ride stabilizer, connected by swinging shackles to the front axle, minimizes side sway and improves steering.

The new Fords have big 12-inch hydraulic brakes, for quick smooth action and long service. The emergency, or parking brake is on the rear wheels and operated by a steel cable. The brake lever is under the instrument panel near the brake lever. This protects the engine, battery and accessories from theft.

An entirely new body design is included in the 1941 Super DeLuxe line—a sedan coupe. This coupe combines a close coupled body design with comfortable seating for six. Also in the line there is a convertible club coupe, seating five, and equipped with an electrically operated top that functions even when the engine is not running. It is operated by throwing an electric switch.

There are four body types in the DeLuxe line, six in the Super DeLuxe. There are three color choices for the DeLuxe and six in the Super DeLuxe line.

Among refinements which are new this year on all models are the speed lines on the side of both front and rear fenders the new hidden gasoline filler cap electric light on the luggage compartment lid which automatically lights whenever the lid is raised if the car light are burning ventilating front windows, a new wide tempered glass one-piece rear window, radio grilles in all cars, twin windshield wipers with speed control, twin sun visors, fender top parking lamps, and two-spoke, clear-vision comfort-type steering wheels. There is a center front license plate on the Super DeLuxe.

The four lever-type hydraulic shock absorbers now have a more sensitive adjustment to

match the new softer acting springs. The new improved ride stabilizer, connected by swinging shackles to the front axle, minimizes side sway and improves steering.

The new Fords have big 12-inch hydraulic brakes, for quick smooth action and long service. The emergency, or parking brake is on the rear wheels and operated by a steel cable. The brake lever is under the instrument panel near the brake lever. This protects the engine, battery and accessories from theft.

An entirely new body design is included in the 1941 Super DeLuxe line—a sedan coupe. This coupe combines a close coupled body design with comfortable seating for six. Also in the line there is a convertible club coupe, seating five, and equipped with an electrically operated top that functions even when the engine is not running. It is operated by throwing an electric switch.

There are four body types in the DeLuxe line, six in the Super DeLuxe. There are three color choices for the DeLuxe and six in the Super DeLuxe line.

Among refinements which are new this year on all models are the speed lines on the side of both front and rear fenders the new hidden gasoline filler cap electric light on the luggage compartment lid which automatically lights whenever the lid is raised if the car light are burning ventilating front windows, a new wide tempered glass one-piece rear window, radio grilles in all cars, twin windshield wipers with speed control, twin sun visors, fender top parking lamps, and two-spoke, clear-vision comfort-type steering wheels. There is a center front license plate on the Super DeLuxe.

The four lever-type hydraulic shock absorbers now have a more sensitive adjustment to

match the new softer acting springs. The new improved ride stabilizer, connected by swinging shackles to the front axle, minimizes side sway and improves steering.

The new Fords have big 12-inch hydraulic brakes, for quick smooth action and long service. The emergency, or parking brake is on the rear wheels and operated by a steel cable. The brake lever is under the instrument panel near the brake lever. This protects the engine, battery and accessories from theft.

An entirely new body design is included in the 1941 Super DeLuxe line—a sedan coupe. This coupe combines a close coupled body design with comfortable seating for six. Also in the line there is a convertible club coupe, seating five, and equipped with an electrically operated top that functions even when the engine is not running. It is operated by throwing an electric switch.

There are four body types in the DeLuxe line, six in the Super DeLuxe. There are three color choices for the DeLuxe and six in the Super DeLuxe line.

Among refinements which are new this year on all models are the speed lines on the side of both front and rear fenders the new hidden gasoline filler cap electric light on the luggage compartment lid which automatically lights whenever the lid is raised if the car light are burning ventilating front windows, a new wide tempered glass one-piece rear window, radio grilles in all cars, twin windshield wipers with speed control, twin sun visors, fender top parking lamps, and two-spoke, clear-vision comfort-type steering wheels. There is a center front license plate on the Super DeLuxe.

The four lever-type hydraulic shock absorbers now have a more sensitive adjustment to

match the new softer acting springs. The new improved ride stabilizer, connected by swinging shackles to the front axle, minimizes side sway and improves steering.

The new Fords have big 12-inch hydraulic brakes, for quick smooth action and long service. The emergency, or parking brake is on the rear wheels and operated by a steel cable. The brake lever is under the instrument panel near the brake lever. This protects the engine, battery and accessories from theft.

An entirely new body design is included in the 1941 Super DeLuxe line—a sedan coupe. This coupe combines a close coupled body design with comfortable seating for six. Also in the line there is a convertible club coupe, seating five, and equipped with an electrically operated top that functions even when the engine is not running. It is operated by throwing an electric switch.

There are four body types in the DeLuxe line, six in the Super DeLuxe. There are three color choices for the DeLuxe and six in the Super DeLuxe line.

Among refinements which are new this year on all models are the speed lines on the side of both front and rear fenders the new hidden gasoline filler cap electric light on the luggage compartment lid which automatically lights whenever the lid is raised if the car light are burning ventilating front windows, a new wide tempered glass one-piece rear window, radio grilles in all cars, twin windshield wipers with speed control, twin sun visors, fender top parking lamps, and two-spoke, clear-vision comfort-type steering wheels. There is a center front license plate on the Super DeLuxe.

The four lever-type hydraulic shock absorbers now have a more sensitive adjustment to

match the new softer acting springs. The new improved ride stabilizer, connected by swinging shackles to the front axle, minimizes side sway and improves steering.

The new Fords have big 12-inch hydraulic brakes, for quick smooth action and long service. The emergency, or parking brake is on the rear wheels and operated by a steel cable. The brake lever is under the instrument panel near the brake lever. This protects the engine, battery and accessories from theft.

An entirely new body design is included in the 1941 Super DeLuxe line—a sedan coupe. This coupe combines a close coupled body design with comfortable seating for six. Also in the line there is a convertible club coupe, seating five, and equipped with an electrically operated top that functions even when the engine is not running. It is operated by throwing an electric switch.

There are four body types in the DeLuxe line, six in the Super DeLuxe. There are three color choices for the DeLuxe and six in the Super DeLuxe line.

Among refinements which are new this year on all models are the speed lines on the side of both front and rear fenders the new hidden gasoline filler cap electric light on the luggage compartment lid which automatically lights whenever the lid is raised if the car light are burning ventilating front windows, a new wide tempered glass one-piece rear window, radio grilles in all cars, twin windshield wipers with speed control, twin sun visors, fender top parking lamps, and two-spoke, clear-vision comfort-type steering wheels. There is a center front license plate on the Super DeLuxe.

The four lever-type hydraulic shock absorbers now have a more sensitive adjustment to

match the new softer acting springs. The new improved ride stabilizer, connected by swinging shackles to the front axle, minimizes side sway and improves steering.

The new Fords have big 12-inch hydraulic brakes, for quick smooth action and long service. The emergency, or parking brake is on the rear wheels and operated by a steel cable. The brake lever is under the instrument panel near the brake lever. This protects the engine, battery and accessories from theft.

An entirely new body design is included in the 1941 Super DeLuxe line—a sedan coupe. This coupe combines a close coupled body design with comfortable seating for six. Also in the line there is a convertible club coupe, seating five, and equipped with an electrically operated top that functions even when the engine is not running. It is operated by throwing an electric switch.

There are four body types in the DeLuxe line, six in the Super DeLuxe. There are three color choices for the DeLuxe and six in the Super DeLuxe line.

Among refinements which are new this year on all models are the speed lines on the side of both front and rear fenders the new hidden gasoline filler cap electric light on the luggage compartment lid which automatically lights whenever the lid is raised if the car light are burning ventilating front windows, a new wide tempered glass one-piece rear window, radio grilles in all cars, twin windshield wipers with speed control, twin sun visors, fender top parking lamps, and two-spoke, clear-vision comfort-type steering wheels. There is a center front license plate on the Super DeLuxe.

The four lever-type hydraulic shock absorbers now have a more sensitive adjustment to

match the new softer acting springs. The new improved ride stabilizer, connected by swinging shackles to the front axle, minimizes side sway and improves steering.

The new Fords have big 12-inch hydraulic brakes, for quick smooth action and long service. The emergency, or parking brake is on the rear wheels and operated by a steel cable. The brake lever is under the instrument panel near the brake lever. This protects the engine, battery and accessories from theft.

An entirely new body design is included in the 1941 Super DeLuxe line—a sedan coupe. This coupe combines a close coupled body design with comfortable seating for six. Also in the line there is a convertible club coupe, seating five, and equipped with an electrically operated top that functions even when the engine is not running. It is operated by throwing an electric switch.

There are four body types in the DeLuxe line, six in the Super DeLuxe. There are three color choices for the DeLuxe and six in the Super DeLuxe line.

Among refinements which are new this year on all models are the speed lines on the side of both front and rear fenders the new hidden gasoline filler cap electric light on the luggage compartment lid which automatically lights whenever the lid is raised if the car light are burning ventilating front windows, a new wide tempered glass one-piece rear window, radio grilles in all cars, twin windshield wipers with speed control, twin sun visors, fender top parking lamps, and two-spoke, clear-vision comfort-type steering wheels. There is a center front license plate on the Super DeLuxe.

The four lever-type hydraulic shock absorbers now have a more sensitive adjustment to

match the new softer acting springs. The new improved ride stabilizer, connected by swinging shackles to the front axle, minimizes side sway and improves steering.

The new Fords have big 12-inch hydraulic brakes, for quick smooth action and long service. The emergency, or parking brake is on the rear wheels and operated by a steel cable. The brake lever is under the instrument panel near the brake lever. This protects the engine, battery and accessories from theft.

An entirely new body design is included in the 1941 Super DeLuxe line—a sedan coupe. This coupe combines a close coupled body design with comfortable seating for six. Also in the line there is a convertible club coupe, seating five, and equipped with an electrically operated top that functions even when the engine is not running. It is operated by throwing an electric switch.

There are four body types in the DeLuxe line, six in the Super DeLuxe. There are three color choices for the DeLuxe and six in the Super DeLuxe line.

Among refinements which are new this year on all models are the speed lines on the side of both front and rear fenders the new hidden gasoline filler cap electric light on the luggage compartment lid which automatically lights whenever the lid is raised if the car light are burning ventilating front windows, a new wide tempered glass one-piece rear window, radio grilles in all cars, twin windshield wipers with speed control, twin sun visors, fender top parking lamps, and two-spoke, clear-vision comfort-type steering wheels. There is a center front license plate on the Super DeLuxe.

The four lever-type hydraulic shock absorbers now have a more sensitive adjustment to

match the new softer acting springs. The new improved ride stabilizer, connected by swinging shackles to the front axle, minimizes side sway and improves steering.

The new Fords have big 12-inch hydraulic brakes, for quick smooth action and long service. The emergency, or parking brake is on the rear wheels and operated by a steel cable. The brake lever is under the instrument panel near the brake lever. This protects the engine, battery and accessories from theft.

An entirely new body design is included in the 1941 Super DeLuxe line—a sedan coupe. This coupe combines a close coupled body design with comfortable seating for six. Also in the line there is a convertible club coupe, seating five, and equipped with an electrically operated top that functions even when the engine is not running. It is operated by throwing an electric switch.

There are four body types in the DeLuxe line, six in the Super DeLuxe. There are three color choices for the DeLuxe and six in the Super DeLuxe line.

Among refinements which are new this year on all models are the speed lines on the side of both front and rear fenders the new hidden gasoline filler cap electric light on the luggage compartment lid which automatically lights whenever the lid is raised if the car light are burning ventilating front windows, a new wide tempered glass one-piece rear window, radio grilles in all cars, twin windshield wipers with speed control, twin sun visors, fender top parking lamps, and two-spoke, clear-vision comfort-type steering wheels. There is a center front license plate on the Super DeLuxe.

The four lever-type hydraulic shock absorbers now have a more sensitive adjustment to

match the new softer acting springs. The new improved ride stabilizer, connected by swinging shackles to the front axle, minimizes side sway and improves steering.

The new Fords have big 12-inch hydraulic brakes, for quick smooth action and long service. The emergency, or parking brake is on the rear wheels and operated by a steel cable. The brake lever is under the instrument panel near the brake lever. This protects the engine, battery and accessories from theft.

THE BAIRD STAR

Established by W. E. Gilliland, December 8, 1887

Issued every Friday, Baird, Texas

Entered as Second Class Matter, December 8, 1887, at the Post Office in Baird, Texas, under the Act of 1879.

Elise Gilliland, Editor and Publisher Haynie Gilliland, Asso. Editor

Advertising Rates on Application

AROUND TOWN

With OTTO B. GRATE

Whatever it is you want, you can find the best in West Texas and if you've never seen Indian summer in this section you have not really lived. The hills are draped in veils of silvery mist, with here and there a rocky crag lifting its head to catch the shafts of sunlight which filter through the low clouds. The splendor of a West Texas morning make you wonder if its reality or a painting playing truant from some art gallery.

Wasn't the football game last Friday on the new lighted grid a dilly? Your reporter and Heckler Harris did some fancy leg work trying to keep up the Cook Yarbrough touchdowns and finally bedded down under the Baird goal post and chalked up runs. An say there's another game on docket for tonight so dust off your tonsils and let's hoop it up again.

Have you noticed the lovely Queens wreath which litterly covers the porch of the Hays residence with a pink froth that entwines itself in a flowering crepe myrtle as pretty display as you will find anywhere.

And to those of you who swore to climb on the wagon for keeps you can breathe easy, that really is a dog and not a dinosaur walking the streets as the report goes. The Great Dane belongs to Bobby Stanley who brought him from Cisco last week.

A record crowd poured into the Plaza last week for the stage attraction of Bob and Joe Shelton and the Sunshine Boys from Fort Worth. The act really was good and such a relief from the usual run of things that I believe a repeat performance would bring an even better response, if that could be possible. There was a spontaneous fun about the shindig that must have been contagious for the theater was in a constant uproar. The Shelton's and band followed through the performance and seemed to get as much out of the nonsense as their audience, and it is this informality which keeps the show from being just another of those things and puts it in a class of high grade entertainment.

If my memory serves me correctly the Pal is showing "Turn-a-bout" this week, a first run picture for this immediate vicinity and a nifty little dish of sophisticated comedy in the Thorne Smith style. Smith gave you "Topper" and is just about the master of light, fantastic stories that never cease to be amusing. This one has a new twist, that of a dissatisfied husband and wife who are suddenly allowed to switch places.

The Plaza isn't lacking in entertainment either this week, and the show you'll be wanting to see is "Maryland", coming next Thursday and Friday. Its chief point is the glorious technicolor photography which hits an all about a horsewoman who became time high in this. The yarn is about a horsewoman who becomes bitter against the animals when her husband is killed by one. She destroys ever memento of the fine horses which she once loved but the sporting blood won't be killed in her son and through him she returns to normality. John Payne is the son, Brenda Joyce is refreshing as the girl in the story and Walter Brennan goes above par as always, but the honors go to the negro troop and the highlight of the picture is their meeting at church and the conversation of one of the "lost sheep".

Spotlight of the week goes to Mr. and Mrs. "Smokey Edwards" and their baby son, and for own-right regular folks you can't beat this trio. They are the personification of western neighbors who are nice to know and nice to be associated with.

NOTICE

The Baird Baptist Intermediate B. T. U. is saving warppers and box tops from any Proctor and Gamble products in order to make money for our organization. Will you please help us by saving them for us? We will gladly call for them if you will Phone 88 or 142, Thanks

ON THE BAIRD CAMPUS

PAE

The newly lighted gridiron was dedicated last week with ceremonies which the school and a passage from Maribeau Lamar the M. C. job with expertness was Olaf G. South who introduced Band Director Dale McCook to the crowd. Mr. McCook directed special music for the program Mayor Schwartz sighted the lighted field as a milestone in civic as well as school progress and complimented the citizenry for making the field possible. Bob Norrell delivered a particularly fitting talk in which he quoted a passage from Maribeau Lamar president of Texas, who said, "Cultivated minds are the guardians of democracy", and supplemented this by emphasizing that school in Baird have always been of high rating. Judge L. L. Blackburn, representing the Luncheon club, commended the school on the sportmanship it has always shown and congratulated the community on the installation of the lighted field. R. L. Elliott, city secretary appeared on the program to add his applause to the others for the field and to speak in behalf of the city administration their appreciation of the co-operation which made the project possible. Guest for the evening was Deputy State Superintendent

Sandlin who was coach of the Texarkana schools when the first lighted field in Texas was installed. He sighted the advantages of a lighted field and congratulated the town on making it possible for the Baird school to have such a splendid field.

The program was climaxed with the introduction of the Pep leaders, Betty McCoy, Ellen Gee Tankersley, Ruth Dyer pep mascot, Billy Beth Bell, and band sweetheart, Laura Mae Windham, who were presented with flowers and proper fan fare.

Plans are running high in the Baird schools to make this school term the most successful in the entire school history and student and teachers alike are working toward that goal. The Home Economics chapter was organized last week and plans to have a meeting with special program each month. A Committee to plan these programs has been named and programs for the year will be laid out for approval of the director Helen Willard.

Mrs. Frak Estes was a special guest this week when she displayed costume dolls from the various periods in the growth of our nation and connected each costume with a particular date in history. The students as well as their teacher, complimented Mrs. Estes on her entertainment which educates.

Federal Loans

If interested in refinancing or purchasing farm on long terms per cent interest through Federal Land Bank and supplemental and Bank—foreclosed farms and other real estate for sale; small town payment and easy terms on balance with cheap rate of interest see or write,

H. M. Perkins, Sec-Treas. Citizens NFLA, Clyde, Texas

A Million Texas Votes For Roosevelt

Stepping up the campaign for "A Million Texas Votes for Roosevelt", state headquarters at Austin has prepared weeks of intensified campaigning for the Democratic Party and its candidates before the election Nov 5. Every democrat will be given an opportunity to aid the party with a contribution and with active support. Director Myron Blalock announced.

A special appeal is made to newspaper of Texas, he declared, to inform their democratic reader of the party's plans to keep Texas as the banner state of the party again in 1940.

As campaign director, Blalock has named Claude C. Wild, prominent Austin attorney, as coordinator of the organization throughout the state. Wild's duties consist in perfecting the organization already set up and expanding it in detail every precinct of the state.

Wild has announced that the organization already functioning in the 21 congressional districts will be expanded not only to the counties under leading democrats, but that this week will see the appointment of finance committees throughout the state. Many county organizations have already been at work, and some have already attained the quota of funds asked.

"The national committee is badly in need of funds to use to combat "Willkie dollars" in doubtful states," Wild said, "and Texas is looked to again to do its share. Every democrat has a responsibility to the party and Texas democrats will be given the opportunity to give some money as well as a vote for

the nominees."

Appointed by Mrs. Driscoll, Mrs. H. H. Weinert of Seguin, recently named vice-chairman of the state democratic executive committee, is working out plans for women's activities in the drive for Roosevelt in Texas.

"Since the heavy contributions as either for Willkie or cold to Mr. Roosevelt, the democratic party will, as usual depend upon the people who make up the party to put over the program for funds as well as to get out the vote," Campaign Director Blalock declared. Blalock is democratic national committeeman.

Construction Starts On Taylor Co. REA This Week

Construction work is to start on Taylor Electric Cooperative, Inc "A" Project this week. The contractor will be in Merkel, Friday, at which time he will meet with those who wish to do work on the construction of the line. Men who want employment are asked to meet the contractor at the Cooperative office, Farmer State Bank Building, in Merkel around 10:30 Friday morning, Sept 27.

At a regular meeting of the board of directors held last week application was made to REA in Washington, for permission to begin preallotment survey work on the new "B" project. Engineer are expected to get started on this work not later than next Monday.

SSince he new "B" Project is composed of extensions from the main line, it is necessary that each community have two and one-third members permile signed before they can be included

in this project. Approximately 200 mile will be included in this project provided all communities are completed by the time engineering work starts. People working on these various project are urged to see that their communities are complete and applications are in the office at Merkel not later than next Monday.

As much as we regret to do so, communities not completed by that time will necessarily be left off of this project.

MARK EVERY GRAVE
I handle Monuments and Grave Markers in Granite and Marble
C W Conner, Baird

FOR THE DALLAS MORNING NEWS delivered behind your screen door every morning (including Sunday) See JAMES N. WALLS, Baird, Texas.

POSTED: All lands owned or controlled by me is posted. No hunting or fishing allowed. Tom Windham, Oplin, Texas.

LIBRARY NOTICE
The County Library is open now 12:30 to 5:30 each week day.

A CHECKING ACCOUNT

in this bank
Serves You in these Five Ways:

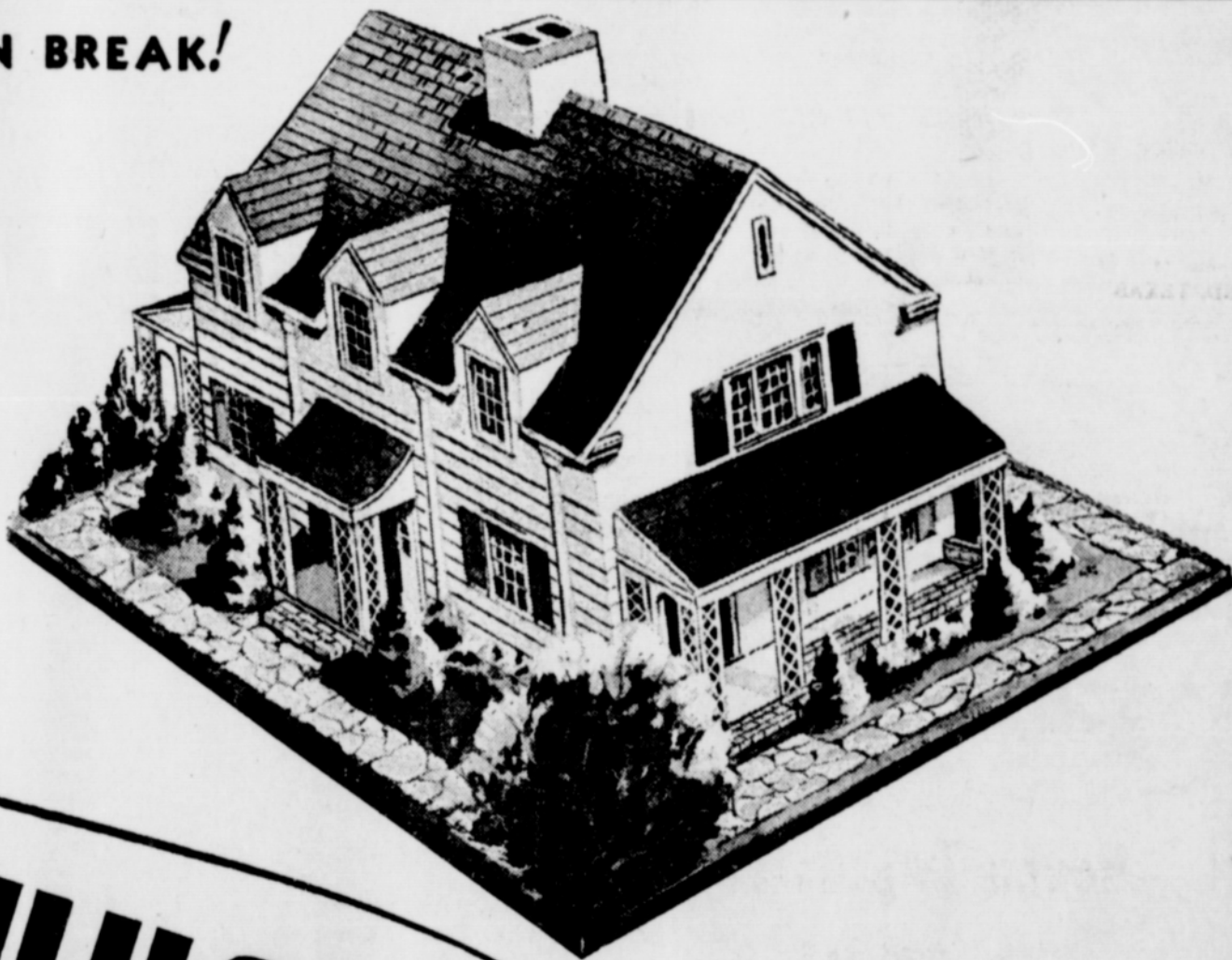
1. It keeps your money safe.
2. It saves you time and effort.
3. It gives you accurate control of your finances.
4. It provides receipts for payments.
5. It furnishes complete records.

The First National Bank

BAIRD, TEXAS

(Member Federal Deposit Insurance Corporation)

DON'T GIVE A COLD AN EVEN BREAK!



HEAT WHOLE

Chilly nights are sending out the "alert" signals that winter is close at hand. Soon the common cold, forerunner of two hundred million annual illnesses, will wage its winter attack. Be prepared to safeguard the health of your family with adequate heat throughout the entire house. Give it serious thought now, so you will be ready when winter strikes, to HEAT YOUR ENTIRE HOME FOR YOUR HEALTH'S SAKE.

HEAT your ENTIRE HOUSE and provide ADEQUATE VENTILATION for your HEALTH'S SAKE.

HOUSE



Lone Star Gas Company

Supplying Natural Gas to Your Local Distributing Company

Bayou News

School started last Monday Sept. 16th. We have lots of new students and are very proud of our new primary teacher, Miss Otlee Rucker of Strawn. We hope she likes Bayou and will be here a long time.

The Senior class met Tuesday and elected class officers. They are as follows: President Bertha Walker Secretary Clovis Mc Don ald Reporter Earlene Bibb.

Mr. Wilburn Walker and wife are spending a few day with his parents Mr. and Mrs. H. W. Walker. Welburn has been ill for quit some time and his many friends hope he is better.

Mr. Garvin Miller of Wink is visiting his parents Mr. and Mrs. John Miller.

Miss Bertha Walker spent the past week-end with Miss Louise Parker.

Delphian Club

The Delphian Club met on Tuesday afternoon at 3 o'clock with Mrs. Lee Alexander as hostess.

Three resignations were read and accepted. Three new members were elected.

Mrs. C. B. Snyder was elected Vice-President and Mrs. Alexander was elected recording secretary.

Mrs. Olaf South was leader for a program on "Our National Capitol. This was an appropriate study for the first meeting, since the theme of the year's work is "The Faith That is America". Mrs. South and Mrs. Norrell gave interesting talks describing their recent visits to Washington. Mrs. James Ross gave an interesting talk on "The White House".

Fourteen members answered roll call.

Abilene Morning

News

DELIVERED TWICE DAILY
See or Call

C. W. Conner

Phone 21
BAIRD, TEXAS

Get Fire On The Run

Here's a date to mark on your calendar Oct 6 to 12.

During that period, Fire Prevention Week will be observed this year, and that week isn't something to idly notice, then forget. Fire Prevention week is carried on for you and all the other people of this country. It is carried on for your business, and every other man's business. It marks an intensive effort to awaken the American people to the terrible waste fire leaves behind it, and to show how fire may be conquered.

Fire Prevention Week is far more than usually important this year. Today, largely due to the rearmament drive, industrial production is on the upward curve, and is slated to go rapidly higher as the drive gains impetus. And the record shows that the danger of fire increases as production increases. That means that fire, if not controlled, can be a very real danger to our defense plans. It takes an intricate industrial machine to make the weapons we need today all the agencies of manufacture, transportation and assembly must work with the precision of pistons. One bad fire in one key factory might delay for months the production of weapons which we sorely lack.

On top of that, special precautions must be taken against the arsonist and the saboteur, as our experience in other times of crisis grimly proves. Authorities expect efforts to sabotage the defense program, and fire is always regarded as a handy weapon by the purposeful destroyer.

Fire Prevention Week should be observed by all of us, every man and woman able to read and listen and learn. This is one place where all, old and young, can be of great aid to the national defense program. Do your part!

"Leto's" for the Gums

An Astringent with Antiseptic properties that must please the user or Druggists return money if first bottle of "LETO'S" fails to satisfy.

HOLMES DRUG COMPANY.

A Fight To A Finish
On Retail Price
Fixing

A fight to the finish against proposed retail price-fixing legislation was promised here today by Jim Carroll, executive secretary of the Texas Merchants Association.

"From recent developments in Texas and New York, it shouldn't be hard to expose the dangers of price fixing as it is set up under the so-called Fair Trade Act," Mr. Carroll said.

"In New York, the Federal Trade Commission, according to Time Magazine, has scared the stuffing out of the directors of the Feld-Crawford law, and that is New York's name for Fair Trade.

Right here in Austin it is being said by many who know that a vote for the Fair Trade act will be a vote against the anti-trust suits Attorney Gen. Gerald Mann has filed on the liquor interests and distillers. Mann's action complains of price-fixing methods which the so-called Fair Trade act would legalize, chief of which is allowink a manufacturer or distiller to force all retailers to sell his product at the price he names, or higher.

"Times expose of price-fixing in New York shows it took five years for the authorities to catch on to the game being played by a combination of whisky distillers and retailers. They maintained 40 per cent markup and increased their gross profits by millions of dollars. In New York this price-fixing "game" has covered almost all branded items sold at retail.

"That means multiplied millions taken out of the consumers pockets."

The other end of retail price-fixing is the Anti-Discrimination Act, a "cost plus" measure.

"Anybody who remembers the worst features of the old National Recovery Act (N. R. A.) should recognize at once the Anti-Discrimination Act and oppose it accordingly," said Carroll.

"There seems to be no earthly reason why anybody in Texas should want either of these laws. They merely make the rich richer and the poor poorer. Many merchants who want in other states thought they wanted these laws and supported their passage today are trying to get rid of them before they go broke by being caught in their own trap.

"If a merchant wants to allow an out-of state manufacturer to set the prices he must pay whole sale for his goods and allow the same manufacturer power to tell him what he must charge retail, then that Texas merchant is ready for price-fixing and also for a bankruptcy court.

If on the other hand, he wants to see his business grow as Texas grows, he ought to be against both the manufacturer's Fair Trade Act and the cost-plus Anti-Discrimination Act."

County Agent News

ROSS BRISON, County Agent

CLOSING DATE FOR COMPLETION OF FARM PRACTICES IS NOVEMBER 30, 1940

The first 1940 Agricultural Conservation applicants are being signed by Callahan producers at this time. The applications for all producers who have earned their total soil-building allowance are being typed in the county office and will be submitted for payment within the near future. The applications for the producers who have not earned their total soil-building allowance, established for the farm, cannot be submitted to the State Office for payment until after December 1st. We urge that all producers who have not earned their total allowance do so if possible in order that we can submit your application before December 1st and at the same time carry out some practice that will be of value to your farm or grassland.

All soil-building practices must be completed by November 30 in order to receive payment under the 1940 program.

CLOSING DATE FOR RANGE PROGRAM

Rangers who are participating in the 1940 Range Program have only about two months in which to complete practices under the 1940 program. We urge that each of you take advantage of this program and earn all the payments that you can. You have only until Nov.

30th to complete your work and program by this time.

Complete all work for the 1940 Program by this time.

On some ranches the prickly pears and cactus that were cut in 1938 and 1939 were piled in too small piles or were scattered by cattle, are now growing again. Before your 1940 payment can be approved, these pears must be destroyed. If you are eradicating pears this year we urge you to pile your pears in large piles or haul them off. All pears are required to be grubbed.

IMPORTANT NOTICE TO
COTTON BUYERS

Callahan County buyers, who are required by the 1940 marketing quota provisions of the Agricultural Adjustment Act to keep accurate records of all purchases will be able to do this as a part of their routine work, according to J. Lester Farmer, chairman of the county AAA Committee.

A record of purchase form producers with white marketing cards was not required in the past year. This year such a record must be maintained in addition to the records and reports which buyers during the past two years made for purchases from producers with red and blue marketing cards, and which they are also required to make this year.

Pointing out that no special records are required for white marketing cards, Farmer said that, as a general rule, the bus-

iness records ordinarily kept by the buyer will contain all the information necessary, with the possible exception of the Serial number of the producers' marketing card.

The regulations under the act required that the cotton buyer's records contain the following information: (1) the name and address of the producers, (2) date of purchase (3) original gin bale number, (4) weight of the bale or of the lot of cotton purchased; (5) amount of the penalty collected, if any; and (6) the serial number of the marketing card or certificate by which the cotton was identified when marketed.

"It is preferred that the buyer make no change in his regular record keeping system, other than to record some necessary information which he previously did not enter on his accounts, ledgers, or other records," Farmer said.

Any buyer who desires to keep a separate record of the information required can obtain the necessary forms from the county AAA office.

"The buyer must always examine the marketing card." If the producer does not show his card, the buyer must make a report to the county AAA office and remit with his report the marketing penalty of 3 cents a pound on the entire amount sold. If the card serial number is not on the record, it is assumed that

the buyer did not see the card, mit the report and to pay the and he will be required to sub- penalties due."

Again we are happy to announce
the **BROADCASTING** of Southwest
Conference Football Games

... and we invite you to follow
the **HUMBLE** route to football
games this fall—Stop for service and
continuously improved products
where you see this **HUMBLE** sign

HUMBLE OIL & REFINING COMPANY

COPYRIGHT, 1940, BY HUMBLE OIL & REFINING CO.

Announcing the big NEW FORD 1941 FORD

In some years, some cars take a big jump ahead. The Ford does that for 1941.

It has jumped ahead in size. It's the biggest Ford we've ever built, inside and out. It's wider. It has a longer wheelbase. Its seating room is wider by as much as 7 inches. It has new wide doors and semi-concealed running boards.

You'll notice also a new beauty, achieved by a skillful blending of mass with longer flowing lines. Larger windshield and windows give better vision all around.

One of its biggest advantages is the new soft ride.

New, slower-action springs give a slow, gentle, gliding movement. A newly designed stabilizer helps absorb road shocks, and maintains balance on sharp curves and in cross winds.

More rapid acceleration to match its familiar speed and power makes this new Ford an even livelier car to drive.

These are only a few of this new car's outstanding features. It represents all the rich experience gained in building more than 28 million motor cars.

Any Ford dealer can give you many good reasons for making this your 1941 car.



Get the Facts and You'll Get a Ford!

EARL JOHNSON MOTOR COMPANY

Sales  Service

BAIRD PHONE, 218 TEXAS

DALLAS
OCT.
5th-20th

Round Trip Rates
as low as

\$2.60

To DALLAS

The above rate (good on all T&P trains) will permit you to spend a full Sunday in Dallas during the Fair.

We also have attractive Round Trip rates for a week-end visit ... and for a much longer period if desired.

For High-Class, Courteous Service,
Please Call

J. A. FLORENCE — Phone 234
or ask any Texas and Pacific employee



We favor adequate preparedness
for National Defense.

PLAZA

—DOUBLE FEATURE—
FRI NITE, 10:45
**Special Football
Prevue**

THE DEAD END KIDS
—In—
**"You're Not So
Tough"**

ALL DAY SAT
**DOUBLE
FEATURE
ADMISSION**
10c and 20c

Oplin H. D. Club

Every person is born with creative ability," said Miss Edith Reid in her discussion on creative art at the meeting of the Save A Step club at Oplin, Sept 19. The displayed and explained a number of pictures, linoleum blocks and prints, stenciled lunch can set a pillow top with a number of leading cattle brands printed on it, plaques carved in wood etc.

Mrs. Annie Slough and Mrs. W. E. Ried gave a report of council meeting.

Plans are being made for achievement day to be held the latter part of November.

Election of officers for the coming year will be at the next meeting. Oct 3 Every one is urged to be present.

Those in attendance were: Mesdames. W. E. Ried, Annie Slough Wallace Johnson, Carl Macon, Mamie Johnson, C. M. Morse and Andrew Johnson.

As soon as the ticking arrives the mattresses will be finished there being some eight or ten more in this community to make.

BED ROOM—Nice, Newly Furnished Bed Room, joining bath for Working Girl. At N. H. Cushman residence. See Mrs. W. E. Paulson.

Personal

Mr. and Mrs. J. W. Hays and daughter, Miss John Faye have returned from a weeks visit with Mrs. Hays father, Mr. Askew at Marble Falls.

Cadet Russell L. Chatham, son of M. D. Chatham of Baird joined the First Baptist Church of College Station, along with 149 other cadets.

Mrs. Hattie Hughes, Mr. and Mrs. A. C. Wells of Breckenridge was in Baird the past wee end. They were en route to their new ranch home near Burnett.

Mrs. W. Zoobley who has been visiting her mother and sister, Mrs. R. A. Williams, Mrs. R. L. Keller and Mrs. Rosa Bell Pric hard for the past three months returned to her home in Seattle Washington this week.

Mr. and Mrs. E. L. Woodley and daughter and granddaughter Mrs. J. R. Parten and Nancy Jane returned last week from a ten-days trip to Cloudercroft and Carlsbad Caverns.

Morris Cooke son of Mr. and Mrs. W. L. Cooke accompanied by Sgt. Earl Netel of Wausan Wis., spent the weekend with home folks. Morris and Earl who are stationed with Headquarters Squadron, Kelly Field, have just been promoted to the rank of Sergeant Mr. and Mrs. Cooke and Maurine came up from Ranger to be with Morris.

Mrs. J. A. Jackson, left Monday for an extended visit. She will visit her granddaughter Mrs. Keith Fuller and family at Longview and her niece, Mrs. Coy Loner and Mr. and Mrs. Eddie Donaldson at Marshall. From there she will go to New Orleans where she will make her longest visit with her daughter and her longest visit her daughter Mrs. Johnnie Walsh and family.

LOST—Hub Cap. Oldsmobile car on road from Seale Ranch to Baird. Suitable reward for return to Billie Seale.

U. S. Civil Service Examination

The United States Civil Service Commission invites attention to the open competitive examinations for Senior Stenographer, \$1620 a year, Junior Stenographer, \$1440 a year, Senior Typist, \$1440 a year, and Junior Typist, \$1260 a year for employment in the Tenth United States Civil Service District, comprising Louisiana and Texas. These examinations are open to Men only, as there is ample register of female eligibles.

Applications will be received until September 30 1940.

Qualified persons are urged to file their applications immediately with the manager, tenth U. S. Civil Service District, Customhouse, New Orleans, La.

Additional information and application blanks may be obtained from the Secretary, U. S. Civil Service Board, Post office Baird, or from the manager, Tenth U. S. Civil Service District, Customhouse, New Orleans La.

WANTED—Camay Wrappers, Ivory Flakes Box Tops, 1 lb. and 3 lb. Criscoe Lables; the proceeds of same to go on the repair of the Presbyterian Church Local People, please leave them with your grocerymen or contact some Presbyterian. Out of town Friends may mail theirs to Mrs. Harry Ebert. Time expires December 2, 1940.

FOR SALE—Nortex Seed Oats, free of Johnson grass. Also Seed Barley. See Ed Henderson, Cross Plains, Texas.

American Boy Is Companion To Thousands

Hundreds of thousands of boys and young men read THE AMERICAN BOY Magazine every month and consider it more as a living companion than as a magazine.

It's as much a buddy to me as my neighborhood chum," writes one high school senior. "THE AMERICAN BOY seems to understand a boy's problems and considers them in such a sympathetic and helpful way. It gives advice and entertaining reading on every subject in which a young fellow is interested. It is particularly helpful in sports. I made our school basketball team because of playing tips I read in THE AMERICAN BOY."

Many famous athletes in all sports credit much of their success to helpful suggestions received from sports articles carried in THE AMERICAN BOY Magazine. Virtually every issue offers advice from a famous coach or player. Football, basketball, track, tennis in fact every major sport is covered in fiction and fact articles.

Teachers, librarians, parents and leaders of boys' clubs also recommend THE AMERICAN BOY enthusiastically. They have found that as a general rule regular readers of THE AMERICAN BOY advance more rapidly and develop more worthwhile characteristics than do boys who do not read it.

Trained writers and artists, famous coaches and athletes, explorers, scientists and men successful in business and industry join with an experienced staff to produce in THE AMERICAN BOY, the sort of reading matter boys like best.

THE AMERICAN BOY sells on most newsstands at 25c a copy. Subscription prices are \$2.00 for one year or \$3.50 for three years. Foreign and Canadian rates 50c a year extra. To subscribe simply send your name, address and remittance direct to THE AMERICAN BOY 7430, Second Blvd., Detroit, Michigan.

POULTRYMEN:

Worm now with VERMIDINE IODIZED WORM TABLETS. Expels both round and tape worms. Iodine content heals the intestines and prevents infection. MAKE THIS TEST:—Bring this coupon and 10 cents and receive a 25 cent package of 20 tablets; use them and see the results. Money Back Guarantee. We sell and recommend VERMIDINE REMEDIES. CITY PHARMACY, Baird.

Dr. R. A. Webster
HAS OPENED AN OFFICE AT
Holmes Drug Co.
BAIRD, TEXAS
OFFICE HOURS 2 to 6 P. M.

FOR SALE—My home in northwest Baird. Two lots six roomhouse. 9X22 cement storm cellar. Place well improved. Mrs. R. F. McQueen

WANTED—I want some one to stay with me and help with the work. Mrs. Joe Vines 5 blocks west of courthouse.

We Call It Romance

IT'S JUST a can of soup. But during a long lifetime, the man who made it found some way to advertise it. At first, just a sign over his little soup kitchen, a few newspaper ads, a few billboards. But as the advertising grew, so did the business.

Now the business employs thousands of workers, helps to support tens of thousands of retail clerks and transportation men, and gives the housewife a better, cheaper soup than she could prepare at home.

Back of every heavily advertised article is a romantic story of this kind—the kind of romance that built America.

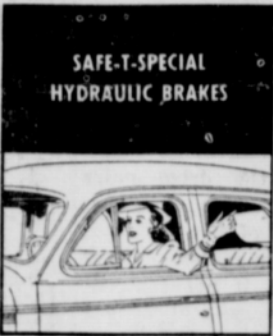
Courtesy Nation's Business

Dr. M. C. McGOWEN
DENTIST, X-RAY
Office, First State Bank Building
BAIRD, TEXAS

FEATURE BY FEATURE



FROM BUMPER TO BUMPER



YOU'LL SAY IT'S

"FIRST BECAUSE IT'S FINEST!"

MEET the new Chevrolet for '41, and we are confident you'll say, "It's first because it's finest—Again Chevrolet's the leader!"

For this car is the result and the reward of almost ten solid years of Chevrolet leadership in motor car sales... leadership that has brought with it unequalled manufacturing economies and unequalled value-giving powers... leadership that now makes it possible for Chevrolet to offer you a motor car which surpasses all previous levels of luxury in the lowest price field.

This new Chevrolet for '41 is a much bigger car in all ways—with a longer wheelbase and greater over-all length—with longer, larger, wider Fisher Bodies—with exceptionally comfortable interiors giving "3-couple roominess," or ample space for six passengers, in the sedan models.

Your Chevrolet dealer cordially invites you and your family to visit his showroom... invites you to make a thoroughgoing test of the finest motor car Chevrolet has ever built... invites you to eye it, try it, buy it—today!

Again **CHEVROLET'S** the LEADER

EYE IT... TRY IT... BUY IT!

RAY MOTOR COMPANY
Phone 33 — BAIRD, TEXAS

Now Enjoy Southern Select 3 BIG WAYS!



FAMOUS BEER GIVES BAIRD EXTRA QUALITY AND EXTRA FUN!

You'll appreciate the quality of Southern Select even more if you'll read how it's made! It is the only beer in the South brewed with distilled water! Only the finest natural all-grain beer ingredients are used! And every single drop is aged for months to full, mellow maturity! Compare it with any other beer and taste the difference! This new cap is an amazing sealing improvement! No opener—no broken tops—no rust on bottle neck! Once you P-O-P a bottle of Southern Select with the new SelecKap—and taste the marvelous flavor—you'll order it every time!

GALVESTON-HOUSTON BREWERIES, INC.
Galveston, Texas
Copyright 1940, Galveston-Houston Breweries, Inc.



Listen to SOUTHERN SELECT THE STAR REPORTER Latest News every night except Sunday at 10 P.M. WFAA - WBAP 800 on your dial.

OCT 5th - 20th

1,000,000 people can't be wrong
The 1939 attendance was 1,036,708... Come and help make it one and a half million.

The 1940 STATE FAIR of TEXAS
will present
THE WORLD'S GREATEST FARM SHOW
THE NATIONAL HEREFORD SHOW
The Greatest Livestock Show ever held south of Chicago.

ITS SECOND ANNUAL CHEMURGIC SHOW
THE CASTLE OF FOODS
and a
GREAT ARRAY OF ATTRACTIONS...

"AMERICANA," a glamorous spectacle with a cast of 150 persons, in a sensational musical revue... in front of the Grandstand at popular prices... 25c, 50c, 75c and \$1.00.

THE MEXICAN TIPICA ORCHESTRA, internationally famous musical organization, will be presented twice daily as a free attraction.

RUBIN AND CHERRY SHOWS on the Midway.

Swor Brothers' All Girl Minstrel Show... a free attraction in the Castle of Foods.

IT'S THE FAIR YOU CAN'T AFFORD TO MISS!

DALLAS
America's Greatest State Fair presents its greatest picture of Concentrated Texas