

# THE MESSENGER

HAGERMAN, CHAVES COUNTY, NEW MEXICO, THURSDAY, OCTOBER 23, 1930

NUMBER 45

Hagerman—Where the spring with healing in its waters is located.

## .: DEXTER NEWS .:

### LOCALS

Wallace Goodwin was here from Artesia Sunday.

Mr. and Mrs. Frank Bauslin were Roswell visitors Tuesday.

Mr. and Mrs. A. M. Ehret were shoppers in Roswell Saturday.

John C. Peck, democratic candidate for sheriff, was a Hagerman visitor Friday.

Frank Wortman, of Wortman's Super Service Station at Dexter was in Hagerman Monday.

Mr. and Mrs. C. J. Wilde of Artesia visited in the home of Mrs. Mary Hartline Monday night.

Mesdames Harry Cowan, Willis Pardee, C. G. Mason, W. E. Utterback and C. O. Holloway attended the Chaves county, P. T. A. at Lake Arthur last Saturday.

### LIONS CLUBS SPONSOR BOY SCOUT RALLY IN ARTESIA HOTEL TUES.

Sponsored by the Lions clubs of Artesia, Carlsbad and Roswell, a Boy Scout rally and banquet was held in the roof garden of the Artesia hotel Tuesday evening, having as special guest of honor J. P. Fitch, regional scout executive of Dallas, Texas.

Will Robinson, editor of the Cavern City Chronicle, acted as toast master for the occasion, and his sincere talk about the value of scouting to American youth revealed a deep insight and interpretation of the aims of the movement.

A harmonica duet by two Roswell scouts opened the program for the evening. Delbert Jones, of Artesia gave the address of welcome to the fathers and adult leaders, voicing the appreciation of the scouts for the interest which these men were taking in their welfare.

Following the talk of Delbert Jones, the toastmaster called upon F. A. B. McKeil, of Roswell, to deliver the response. Mr. McKeil closed his highly inspirational talk with a short interpretation of the scout oath and law.

Mr. Fitch then made the main address of the evening, stressing the value of the boy scout movement in character building, mental, and physical development. He emphasized the educational aims of the scouting program, and spoke of the use of the merit badge system with its ninety awards as a vocational guide. He summed-up the ideal of scouting development in the following word:

"The scout is taught to put God first in his life, his country second, others third, and himself last."

The regional executive praised the work of Minor Huffman in this area council, and said that it was such men of character who have made scouting what it is, adding, "Character cannot be taught to boys, but it can be caught by boys from those who have it."

The business men who were present at the rally pledged the support of their various service and business organizations to the entire program of scouting.

Those attending the rally from Hagerman were: C. G. Mason, Harold Miller, Rev. J. A. Hedges and Harold Dye.

### WILFRED McCORMICK ESCAPES DROWNING IN SANFORD LAKE SAT.

Wilfred McCormick narrowly escaped being drowned in Sanford lake Saturday when he waded out too far after a duck which he had killed.

Having waded about two hundred yards into the water, Wilfred suddenly stepped off a ledge and was forced to swim. He momentarily expected to reach shallow water but found that the water remained at a depth of about eight feet for about a hundred yards farther. He was holding the shot gun above the water in order to keep from losing it, and this wore his strength down. Finally he was forced to drop the gun, when he had become so weakened that he could hardly swim.

After about ten minutes of struggle in the water, Wilfred was able to reach shore. Sunday, the shot gun was recovered in good condition.

returned to the senate, Senator Bratton promised to take up a constructive program with reference to our oil development and to aid in giving the middle class more constructive legislation.

Messenger Want Ads pay.  
Messenger Want Ads pay.

### PRESBYTERIAN LADIES AID

The Ladies Aid of the Presbyterian church met with Mrs. L. Martin, on last Tuesday afternoon at 2:30 p. m. The following officers were elected: Mrs. E. J. Hubbard, president; Mrs. W. C. Sterrett, vice-president; Mrs. Hal Bogle, secretary and treasurer.

A delightful social hour followed the business session, during which time the hostess served delicious refreshments.

### HOME EXTENSION CLUB

The Home Extension club met at Lake Van on Tuesday. At noon a delicious covered dish luncheon was served. Mrs. O. B. Berry, president was in the chair and conducted the business meeting.

Miss Velma Borschell had charge of the program, which was, Christmas suggestions and demonstrations in making delightful Christmas gifts.

There was a large attendance and a most entertaining meeting. The next meeting will be on "Tying and Dyeing," and will be at the club house, about the middle of December.

### DEXTER GIRLS WON AT STATE COLLEGE

Dexter is indeed very pleased and proud to report the honors accorded Rosie Hubbard and Eula Marshall in the State Contest of the 4-H clubs at State College, last week.

There were about forty entries in the contest, and our girls won over all others, which gives them a trip to Denver in January, where they will put on their demonstration.

Much credit should be given Mrs. Ira Marshall and Mrs. E. J. Hubbard for the untiring effort and time they have spent assisting these two fine girls in making the grade.

Mrs. Hubbard accompanied the girls to State College, last Tuesday returning home Saturday. We feel that there will not be another team in Denver, who will be able to outshine our girls, in fact, we doubt, if another team can give a demonstration as graciously as can Rosie and Eula.

Messrs. Braerton and Brown, insurance men of Denver, Colorado were calling on their local flunky, Wednesday.

### Messenger Want Ads pay.

Messenger Want Ads pay.

### LOCALS

Mr. and Mrs. O. J. Ford were in Roswell Tuesday.

Roy Lochhead was a business visitor to Roswell Saturday.

Mr. and Mrs. W. F. Waldrop were Roswell visitors Saturday afternoon.

Mr. and Mrs. Van Sweatt, of Lovington were Hagerman visitors this week.

Orvis Atwood has been confined to his bed for the past few days with a severe cold.

Willard Dollahan has withdrawn from the Devoll Furniture Co., leaving G. B. Devoll in charge.

Rev. Arthur Morgan of Hutchinson, Kansas, preached in the Nazarene church Monday night. He was accompanied to Hagerman from Artesia by Rev. W. A. Henry.

### U. S. DEPARTMENT OF COMMERCE OPENS DIST. OFFICE IN EL PASO

Announcement has been received of the opening of a district office of the bureau of foreign and domestic commerce, a trade promotion branch of the United States Department of Commerce, with headquarters in the Chamber of Commerce building, El Paso, Texas. The territory to be served by the new office includes a large portion of West Texas, the entire state of New Mexico and nine eastern counties of Arizona. T. U. Purcell, district manager plans also to make frequent trips in state in Old Mexico for the purpose of keeping himself informed concerning current economic conditions and trade exports and new trends of trade in the southwestern part of the United States.

The district offices are known as the service stations of the federal government's department of commerce and exist for the purpose of making known to local business men in the respective territories the research findings and the merchandising aids of the department of commerce. The El Paso district office is one of the thirty-three such stations maintained at strategic points in the United States. Upon request the district office at El Paso will be glad to furnish a summary of the service performed in the interest of American business.

### "MRS. BARKER'S SMALLPOX"

Miss Pior is presenting her pupils in the school assembly program next Tuesday, October 28, at 1:00 p. m., in two short plays, the first of which is "Mrs. Barker's Smallpox," with the characters:

Mrs. Coon ----- Madeline Lattion  
Mrs. Nutt ----- Ida Bee Lemons  
Miss Miles ----- Theo Ridgley  
Mrs. Dodger ----- Essie Keeth  
Mrs. Barker ----- Bessie Burrell  
The second play is entitled, "Katie Entertains Mike," and has as characters:  
Mrs. Briggs ----- Essie Keeth  
Katie ----- Flora Hughes  
Mike ----- Joyce Watford  
Ruth Hughes ----- Piano Accompanist

### VOLCANO USED IN ROAD SURFACING

SANTA FE—A use has been found for the many tons of volcanic cinders found in various parts of New Mexico according to the State Highway Department. A section of highway US 70 in Catron county near the state line is being successfully surfaced with cinders from the chain of extinct volcanos in that region.

Test holes are dug in the terrain in the volcanic vicinity until strata of clean cinders are discovered. A simple trap is erected over these spots, the top soil stripped away, and the cinders trucked to the roadway where they are placed. The cinders make an ideal natural surfacing it has been found and will undoubtedly find future use where rock and gravel is scarce and the shipping rates too high to make transported material feasible.

### GAS FOR LOVINGTON

Construction on the gas main from Hobbs to Lovington is well underway, according to word from Lovington and gas will be available to the residents of the Lea county seat within a short time. The crew is laying the pipe at the rate of about a mile per day.

The line is being constructed by the Southern Union Gas Co., and will be under the supervision of the Consumer's Gas Co., when the merger is completed.

Messenger Want Ads pay.

### HUMBLE GETS A GOOD WELL ON WEST SIDE OF HOBBS OIL FIELD

One well among the completions in the Hobbs field during the past week, is classed as outstanding, this being the State No. 1-A of the Humble Oil and Refining Co., 2310 feet from the south line and 330 feet from the east line sec. 25-18-37, which was drilled to a total depth of approximately 4,190 feet for a proration test of 17,376 barrels daily. The finding of big production in the Humble well a test on the western edge of the field, is significant because it may lead to an important north and west extension. The well further proves that the Hobbs pool is similar to other oil areas of the southeastern portion of the state in that big production depends a great deal on the porosity of the lime.

No more producers in the Hobbs area will be retested, it was said just after the last proration period. A number of retests made to determine the relationship between permitting the wells to flow through an open casing and through a 3 inch tubing was denounced as wasteful and was discontinued by mutual agreement, it was said. Daily runs from the Hobbs field through the pipe lines were averaging approximately 31,715 barrels daily or 2,285 barrels daily under the initial proration agreement of 35,000 barrels daily. Difficulty in disposing of the oil is said to have been the major factor in the diminished oil runs. A total of 3,225,402 barrels of oil had been run through the pipe lines of this field since proration started until the end of the last proration period, October 15th.

Operators will watch closely the progress of a new wild cat near Hobbs field, the Linam No. 1 of the National Securities Co., in the S $\frac{1}{2}$  SW $\frac{1}{4}$  sec. 33-18-37. This test is on patented land.

The Continental Oil Co., is reported to have started a location for its No. 2 A. E. Meyer well, 2310 feet from the north and west lines sec. 17-21-36. The Shell Petroleum Corp., is building a rig over its Coleman No. 1, 2310 feet from the south and east lines of sec. 17-21-36.

Drilling has been suspended again on the Bill Meyer No. 1 well of the Continental Oil Co., in the SW NW sec 28-22-36, of the Eunice district after a flow of sulphur water at 3842 to 45 feet was encountered. An oil showing was found in this test at 3775 to 80 feet. It is probable that this test will be saved for a gasser, as it is capable of producing 38,000,000 feet daily it is said.

Another well in the Hobbs field will be given a test soon, this being the State No. 26 of the Midwest Refining Co., 660 feet from the east and west lines sec. 4-19-38, which was drilled to a total depth of 4190 feet. The well is capable of flowing five million feet of gas from 4030-40 feet and was heading oil from 4060-70 feet.

### P. T. A. MEETING

The members of the Parent Teachers Association met at the school house Tuesday for the purpose of electing delegates to the state convention and the officers for the coming year.

The delegates chosen were: Mesdames, Van Sweatt, Charles Michel, Ernest Utterback, the latter was appointed to attend the meeting as a local delegate because Mrs. Holloway who is president of the Chaves County Council, must be a council representative.

The new officers for this year are: Mrs. C. O. Holloway, president, Miss Jessie George, vice-president, Mrs. Hendrickson, secretary and Mrs. C. G. Mason, treasurer.

Meetings of the P. T. A. will be on the first Tuesday of each month, in the office of Supt. White. All parents are cordially invited to attend these meetings.

### HOME IMPROVEMENT MEETING

Home Improvement Unit No. 1 will meet in the home of Mrs. Willis Pardee next Monday, October 27th, at 2:00 p. m. Miss Velma Borschell, district extension agent, will be present at this meeting. All members are invited to attend this meeting.

### WALDRIP BABY DIES

Little Ruth Waldrip, eight months old daughter of Mr. and Mrs. Waldrip living east of Hagerman, died Friday morning at 3:30 of congested lungs.

The funeral was conducted in the home Friday afternoon at 4:00 o'clock by Rev. Bryan Hall. Interment was made in Hagerman cemetery.

The entire community sympathizes with Mr. and Mrs. Waldrip in the loss of their beloved babe.

## CHURCHES

### Presbyterian Church

"To testify the Gospel of the Grace of God"

NEXT SUNDAY

Sunday School ..... 10:00 a. m.  
The Sunday School is the biggest business in the world measured in dollars and cents, and infinitely more so when measured by the eternal value of souls and character. Have a part in it.  
Morning Worship ..... 11:00 a. m.  
Morning Subject for discussion—"A Look At This Business Depression."  
The congregation is invited to join the Dexter church in the evening in the dedication of their Sunday School building.

JAMES A. HEDGES, Pastor.

### THE CHURCH OF CHRIST

The Church of Christ meets for worship every Lord's Day at 10:45. Elder McGuffin preaches every second Sunday. Everyone is invited to attend these services.

### METHODIST CHURCH

Sunday school at 9:45 a. m. E. A. Paddock, Superintendent.  
Sunday is Rally Day. You will enjoy the program. The morning sermon will be included in the program.  
Epworth Leagues 6:15 p. m.  
Evening worship at 7:00 p. m. Note the change in hour. Subject for the evening hour is "What Is Required?"  
Welcome all the time.  
BRYAN HALL, Pastor.

### CHRISTIAN CHURCH SERVICES

Regular preaching services next Sunday morning at eleven o'clock. The pastor will have for his subject: "The Existence of God." He will attempt to furnish proofs of His existence which organized and blatant Atheism cannot meet. The belief in the existence of God, among rational men, is universal. Whatever is a universal belief has in it the force of a law of nature. If

you have doubts about God, created by atheistic propaganda, come out next Sunday morning. This message will be a challenge to atheism, whether it be found in Hagerman or elsewhere. Bible school will meet promptly at ten o'clock. A most cordial welcome will be extended to all who may attend the above announced services.  
C. C. HILL, Pastor.

### CHURCH OF THE NAZARENE

Sunday school 10:00 a. m., Rev. Walter Orr, superintendent.  
Morning worship 11:00 a. m.  
Evening service 7:30 p. m.  
N. Y. P. S. 6:30 p. m.  
Prayer meeting, Thursday 7:30 p. m., each week.  
Rev. Anthony of Roswell will be in charge of the services Sunday. We welcome you to all of these services. Come with us and we will do thee good.  
MARY I. HARTLINE, Pastor.

### RALLY DAY

Sunday, October 26, is rally day in the Methodist church Sunday school. Classes will meet as usual in the various departments at 9:45 a. m. At the eleven o'clock hour a rally day program will be given. (Continued on last page, column 5)

# THE MESSENGER

PUBLISHED EVERY THURSDAY AT HAGERMAN, NEW MEXICO  
MARTIN & BLOCKER, Publishers  
TELEPHONE 17

THURSDAY, OCTOBER 23, 1930.

Entered as second class matter at the post office in Hagerman, New Mexico, under the Act of Congress of March 3, 1879.

SUBSCRIPTION RATES, PAYABLE IN ADVANCE  
One Year \$2.00  
Six Months \$1.25  
Three Months .75

NO SUBSCRIPTION ACCEPTED FOR LESS THAN THREE MONTHS

Resolutions of Respect, Obituaries, Cards of Thanks, Reading Notices, and Classified Advertising, 8 cents per line for first insertion, 5 cents per line for subsequent insertions. Display advertising rates on application

HAROLD DYE, Managing Editor

## THE YEARLY WARNING

With the opening of duck season, a warning in the use of shot guns is in order. Hunters should remember that although their guns will not carry very far with killing force, there is danger in having eyes put out by the flying pellets. A companion hunter across the lake may suffer by your carelessness.

Then also, deer season is just a few weeks off. Newspapers have been trying to make as the hunters' slogan this year, "Not a man killed throughout the season." Men will be killed, if other men are careless. Do not shoot at a moving bush—its branches may conceal your best friend. Take a chance on the buck getting away, by giving yourself time to think before you pull the trigger.

The forest service is asking that all hunters be very careful of matches and lighted smokes. Break your match before throwing it away. Millions of feet of precious timber, thousands of animals and birds, as well as homes may be destroyed by a moment of absent mindedness.

On other hint should prove beneficial—Be sure that you are complying with the law in your hunting, that your license is valid and has been obtained fairly without misrepresentation, that you are killing the old man deer instead of the lady or one of her children, and you cannot be too certain at too great a distance. The game laws are going to be more rigidly enforced this year than ever before.

And last but not least, empty guns are some times discharged, be careful of the direction in which you are pointing your gun.

Allright, boys, now you may go hunting . . .

## NIGHT DRIVING

Automobile drivers are occasionally reminded that it does not pay to hurry too much and more especially at night. The reminders are oftentimes painful and some time fatal. Fast driving is never safe unless the driver has a clear vision ahead and then sometimes accidents happen. Many of our highways are constructed through the broad open ranges without fences. The driver never knows when a horse or a cow blinded by the light may step in front of his automobile. In this case an accident is almost inevitable. The animal is either killed or chipped so badly that he must be killed and the motorist is lucky if he does not wreck his car or escapes without injury to himself.

## REAL ISSUES

When the dust of the present political campaign has blown over, the average voter, who has the interest of his state at heart enough to make an effort to inform himself of the issues vital to the welfare of New Mexico, isn't going to be swayed by mud slinging. Most of us do not accept the theory that the candidates of opposite political belief are horse thieves, thugs and liars. A political party that has any self respect would not commit political suicide by assigning to a bunch of crooks the job of carrying the party standard.

The main issues of this political campaign centers around the qualifications of the party nominees, what they have done and what they propose to do. We have no quarrel with the republican party as to the manner in which the highway department has been managed and conducted and as to how the building of highways have been distributed, neither can we fuss about how the state land office has been operated. We realize that one can not expect to build and maintain good schools and build good highways without paying for them, still like every taxpayer, we would not welcome higher taxes. All of this means that the state officials who are operating the state's business, must realize one hundred cents on every dollar spent.

The condition creates a demand for real economy and places on the shoulders of the man who is to govern our state affairs a responsibility that can not be met without training and experience in the business world.

This responsibility will be increased as the population increases and as the state's resources are developed. One, two or even three years may bring radical changes. The real issue therefore, isn't what the particular candidate proposes to do, but whether he has the ability to meet and solve the problems that are brought about by the changes.

Neither is it true that a man is of no value to his constituents, who isn't a member of the political party in the majority at Washington. Ability and experience count in filling a place in the national congress, just as they count in filling the humblest precinct office. Because of his fitness and his previous service to the people of New Mexico, voters will return Sam G. Bratton to the United States Senate regardless of the numbers of his political faith in congress.

The visit of Senators George H. Moses and Fred Stewier with Senator Bronson M. Cutting in Santa Fe last week caused political conjecture to run riot in Santa Fe. Many however, believe that the visit of Senator Moses has something to do with getting Senator Cutting back in the old guard line up. It was Moses who led the children of Isael out of the wilderness and perhaps Senator Moses' visit will accomplish much.

A Roswell minister uses the expression, "Charge the battery of your soul." The spiritual life of a man may have been elevated since the advent of the automobile, but most people did not know that another element had been added.

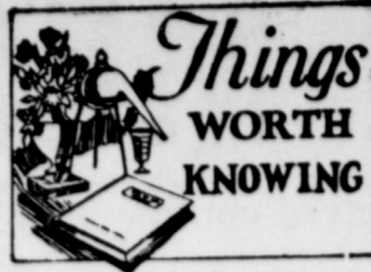
Another thing that is very good for the complexion is to let it alone.

Young children and some employees seem to contrive kindness as a sign of weakness.

Xmas is coming, says and ad in an exchange, but tax paying time is coming in the meantime, all of which is not very exhilarating thought to father.

Ben of the Lordsburg Liberal says one of the chief political issues of the coming political campaign is trying to find out who needs the jobs the worst.

Amos W. Woodcock, director of prohibition, states that the pro forces are pitifully inadequate to cope with conditions and will ask congress to increase the force 500.



Ewes should be gaining in weight at breeding time. Put them on good timothy, rape, or bluegrass pasture, if possible. Fall growths of clover are not satisfactory. Some grain may be fed as a supplement to pasture. Oats are a better supplement than corn. Pumpkins strewn over the field are excellent.

Seed corn can be protected from weevils or grain moths by storing it in tight mouseproof receptacles and inclosing one pound of moth balls or naphthalene for each bushel of corn. This will prevent damage by the insects and will not injure the seed. The corn should be thoroughly dry before storing.

Don't waste money on medicinal "Cures" for infectious abortion of livestock, warns Dr. J. R. Mohler, chief of the Bureau of Animal Industry, U. S. Department of Agriculture. Consult a competent veterinarian, or obtain publications or information from your state agricultural experiment station or the department of agriculture.

A herd of hogs can be improved by using a purebred boar and grade sow, but it can be improved much more quickly with purebred sows and purebred sire. Even with only one sow, a good sized herd can be obtained in a very short time. By starting with a purebred sow, keeping her sow pigs, and breeding them regularly, more than 300 pigs can be produced in 3 years.

A ration consisting of hay, silage and grain is a good one to feed the dairy heifer late in the fall, in winter and early spring. Well-cured legume hays such as alfalfa, clover, vetch, cowpeas, or soybeans are best, as they are high in protein and lime. Corn silage is rich in carbohydrates and is succulent and laxative. Heifers from 6 to 12 months old should get from 5 to 15 pounds of silage daily and all the good legume hay they will eat. A good rule for feeding grain to heifers is to allow about one-half pound daily for each 100 pounds of live weight. Heifers thin in flesh should get more.

You would not think of employing unskilled labor to do the work of a high class salesman—it's just as serious a matter to use only good printing. The Messenger, phone 17.

Messenger Want Ads pay.

**DR. EDWARD STONE**  
Optometrist  
Artesia, N. M.  
Located East Half J. S. Ward's Office

## High-Grade Photographs

Views, Kodaks and Finishing

Mail your films direct to us and get the New Border Prints. Same price as the ordinary print but much nicer and larger. WE PAY POSTAGE BACK

**Rodden's Studio**  
213 North Main  
Phone 1342J Roswell

**EL PASO'S FINEST**  
300 ROOMS ALL OUTSIDE and with SOFT WATER BATH \$2.50 up  
AVIATION HEADQUARTERS for the SOUTHWEST—NEW—MODERN—  
"You'll be Surprised"  
HARRY L. HUSSMANN  
PRESIDENT  
JOS. O. PARR, V. P. and Mgr.



**Bleeding Gums Healed**  
The sight of sore gums is sickening. Reliable dentists often report the successful use of LETO'S PYORRHEA REMEDY on their very worst cases. If you will get a bottle and use as directed druggists will return money if it fails—McAdoo Drug Co.

## LUMBER HARDWARE

# It Will Pay You

## TO FIGURE WITH THE

# Triangle Lumber Co.

Dexter, New Mexico

PAINT CEMENT

## Fresh Roasted Coffee

Wholesale and Retail  
GUARANTEED HIGH QUALITY PURE COFFEE

**U. S. Blend SUNSHINE**  
FOR SALE BY LOCAL MERCHANTS  
The grind is important, come in and let us talk over with you and show you this coffee.

**ROSWELL COFFEE COMPANY**  
DAN C. SAVAGE, Proprietor  
414 1/2 N. MAIN STREET ROSWELL, N. M.

## The World--- and Service

In today's complex world, more and more is the ideal of honest service coming to be recognized as the only thing worth while.

Ask others about their business relationships with us, and you will find a more accurate indication of our motivating thought . . . the desire to help

**THE FIRST NATIONAL BANK**  
Hagerman, New Mexico  
SECURITY—SERVICE

**"The Friendly Store on the Busy Corner"**  
MAKES IT A POLICY TO PLEASE YOU  
Courtesy and Service are linked with Honesty  
our business dealings  
**BAILEY'S CASH STORE**  
DEXTER, N. M.

WHEN YOU ARE IN ROSWELL, TRY OUR  
**Hot Plate Lunch**  
Served from 11:30 to 12:30  
Toasted Sandwiches are served at all hours

Ask for Kipling's Ice Cream at Teed's Confectionery and the McAdoo Drug Store.  
**KIPLING'S CONFECTIONERY, LTD.**  
ROSWELL, NEW MEXICO

## JUST KIDS—His First Love.

By Ad Carter



**NUMBER OF CHANGES MADE IN THE STATE GAME REFUGES LATELY**

**SANTA FE**—Blue Water Reservoir will be open to public fishing for a period of ten years under an agreement reached between the state commission and authorities of the irrigation district. The irrigation district has been charging a fee for fishing in the reservoir and the state game department had refused to stock it with fish unless it opened to the public.

The commission will make a further investigation of the request of Albuquerque Game Protective Association that mountain sheep be removed from the Big Hatchet mountains and planted in the Sandia

White Mountain game refuge extended about 1,200 acres to include flocks of turkeys which the sportsmen have been feeding all summer. The extension includes Eagle Creek canyon. The part of Bonito canyon was closed for shooting this fall.

The county was closed to turkey hunting for the coming season to protect turkeys recently planted in the Guadalupe mountains which are only turkeys in the county.

For the present big game season the commission will create another game refuge south of Mount Valencia county.

Quail season in Torrance county restricted to the first ten days of November with bag limit reduced to ten birds a day at the request of the Torrance county G. P.

License was withheld on the suggestion of the forest service that the Alamo refuge in Otero county be opened to hunting this fall. Otero county G. P. A. opposed suggestion. A joint investigation will be made.

Another full time deputy game warden was added, making seven for state.

**ACES COTTON NOW IN NEW MEXICO**

**S CRUCES**—New Mexico has 100,000 acres of cotton to be harvested this year according to a bulletin by E. F. Hare, state agricultural statistician. The per acre yield for the year is estimated at 100 pounds.

The average yield this year was 100 because of the enormous amount of dry farming that is to be done in the state. California and Arizona both have a larger yield than New Mexico.

From October 1, New Mexico produced 17,000 bales as compared with a four year average of 7,337. The highest previous record was made in 1927 when the ginnings on October 1 amounted to 10,628.

Storms and floods caused a loss of 2,000 bales in Chaves and Sandoval counties this year.

**TAKE TOLL OF 13 IN STATE IN MONTH**

**SANTA FE**—Thirteen out of the 140 deaths occurring in the state during September were caused by automobile accidents according to a report just issued by the state highway bureau. The number of deaths caused by auto accidents was double the average.

There were four homicides during the month. The report included deaths caused by suicide, fire, burns, mines, machines, railroad accidents, land slides, lightning, and electric shocks and undetermined causes due to external violence.

**WILL YOU TELL**

Advertisers, please, that you will not place their advertisement in The

**DYED TOPICS**

By Harold Dye

Up in my home county, San Miguel, they take their politics seriously—the House of Romero and the House of Delgado, seem to hark back to the days of frowning turrets, barred upper windows, drawbridges and moats, huge armoured figures swinging their maces, or sitting stolidly on their horses, with spears at rest and other attributes of the days of feudal supremacy. Each faction calls out its flaming hearted penitents from the remote recesses and hidden retreats of Hermit's Peak, to take up the political cry of civilization, and to scourge themselves with the cactus whips of party loyalty. These dark men of the forest and brothers of the mountain make staunch supporters of their respective heroes, and their combined strength is eagerly sought by the progressive political bosses of the county. Scattered and drifting reports filtering through the newspapers from the turbulent sector serve as a reminder that in certain localities of the state, the day of the English-American is not yet

However, we would not minimize the value of a clear thinking, assertive, honest Spanish-American in high state office. Had not these stout hearted men of years gone by taken up the Standard of Statehood and carried it on to glorious heights, our present day progress could not have been assured. Two years ago, the writer voted for the first time. In common with other first voters, the two tickets held an awesome arrangement of names with no special significance for me. Having no imperative tendency toward either party I proceeded to mutilate the respective tickets, by skipping down the line and scratching the name of every Spanish-American which was balanced by an English name. Consequently, Mr. Smith, or Mr. Brown, regardless of whether or not he was the most degenerate of villains, won my approbation, whereas Mr. Armijo, or Mr. Padilla was entirely out of luck, whether he was sincere and honest as the day is long. This insane method of voting is carried out by many new comers to New Mexico who cannot understand the high type of citizens which the educated Spanish-American represents.

In our county offices, we do not have to meet this situation to a great extent, but we shall when we begin to vote for our state officers.

**LEA COUNTY REPUBLICANS ENDORSE ONE DEMOCRAT**

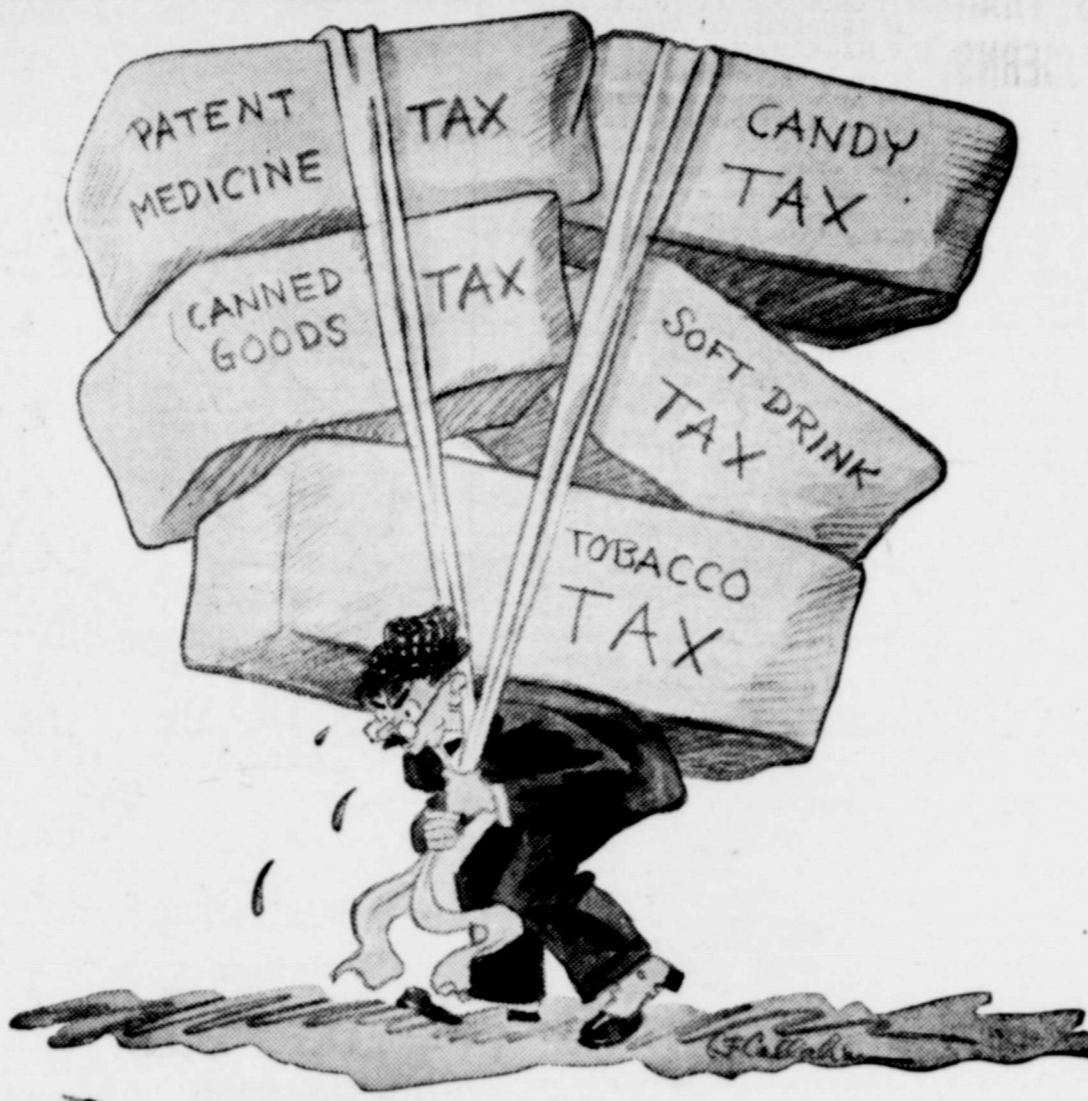
The Lea county Republicans endorsed a democratic candidate and nominated an incomplete ticket at their county convention last week at Lovington. J. G. Simpson, democratic candidate for county commissioner received the endorsement of the republicans who did not select a third commissioner. The offices of state representative, clerk, treasurer and superintendent of schools were left vacant.

The following candidates were selected on the republican ticket for the county: for sheriff, W. E. Harris; assessor, Leonard Odle; probate judge, F. G. Shepard; surveyor, V. W. Agneil; commissioner, J. P. Sullivan and W. F. Stuart.

The convention was unable to secure anyone to run for the office of county clerk.

**CAS TAX IN SUPREME COURT**

WASHINGTON, D. C.—A suit attacking the validity of the New Mexico tax of 5 cents a gallon on gasoline will be heard orally by the supreme court, which will then decide whether the case is to be reviewed.



**Will it come to this?**

**O**N November 4, the voters of New Mexico will be called upon to express their approval or disapproval of the tobacco tax recently passed by the State Legislature.

Frankly speaking, this is just another "nuisance tax"—justifiable, perhaps, in a war emergency, but now merely another burden.

The State naturally needs money—all states do—but why pick on the poor smoker?

There is no more reason for a tobacco tax than there is for a local tax on patent medicines, candies, soft drinks, or canned goods.

So watch your step, voters—there's no telling where it will stop!

**I**N New Mexico the tobacco tax calls for a state stamp of two cents on a package of twenty cigarettes, one cent on a five-cent cigar, and various rates on all other tobacco products—and this in addition to the tax now paid to the Federal Government.

In plain language, such a tax is beyond all reason.

No other commodity, necessity or luxury is so taxed.

Why single out tobacco?

Most other taxes are based on wealth and income—this one is not. It is a daily tax on you because you smoke.

Smokers, are you going to allow yourselves to become tax victims and be penalized day after day for the privilege of smoking?

**PILING IT ON THICK**

Perhaps you don't know it, but you are already paying a whacking big tribute to the Government—SIX CENTS on every twenty cigarettes.

The highest rate of tax in history is piled onto the poor man's best friend, his best-loved luxury—sometimes his only luxury.

Yet the state now proposes to pile its own tobacco tax on top of the big tax you pay to Uncle Sam.

Do you want this bill to pass?

Do you want to pay a double tax on your smokes? Is it fair to load this extra burden on smokers?

**WHY TWO TAXES?**

No fair-minded man objects to paying his fair share of expense, whether Federal, State, or local.

But why should he pay TWICE, just because he is a SMOKER?

Isn't this too much of a tax on their proverbial good-nature? Is there any logical basis for such discrimination against smokers?

**WHAT TO DO ABOUT IT**

It is up to you, Mr. Smoker. If you sit back and wait for someone else to protect your rights and your pocketbook, and if every smoker does the same, this law may become permanent.

But if enough tobacco users will register their votes against this unjust and discriminatory tax measure it can and will be defeated.

Go to the polls and vote NO!

NEW MEXICO TOBACCO DEALERS' ASS'N.

Mark ballot thus to vote NO:

For the Law	<input type="checkbox"/>
Against the Law	<input checked="" type="checkbox"/>

**GOODYEAR Pathfinder**

**Lowest Fall Prices In History! Buy Now!**

Lifetime Guaranteed  
**GOODYEAR PATHFINDERS**

Full Oversize Balloons		High Pressure
4 Ply		4 Ply
450-21	450-20	30x3 1/2 O. S.
\$7.00	\$6.90	\$5.60

Tubes Also Priced Low

**Wortman's Super Service**  
Home Owned and Home Operated  
DEXTER, N. M. TELEPHONE 22

# THE MESSENGER

PUBLISHED EVERY THURSDAY AT HAGERMAN, NEW MEXICO

MARTIN & BLOCKER, Publishers

TELEPHONE 17

THURSDAY, OCTOBER 23, 1930.

Entered as second class matter at the post office in Hagerman, New Mexico, under the Act of Congress of March 3, 1879.

SUBSCRIPTION RATES, PAYABLE IN ADVANCE  
 One Year \$2.00  
 Six Months \$1.25  
 Three Months .75

NO SUBSCRIPTION ACCEPTED FOR LESS THAN THREE MONTHS

Resolutions of Respect, Obituaries, Cards of Thanks, Reading Notices, and Classified Advertising, 8 cents per line for first insertion, 5 cents per line for subsequent insertions. Display advertising rates on application.

HAROLD DYE, Managing Editor

## THE YEARLY WARNING

With the opening of duck season, a warning in the use of shot guns is in order. Hunters should remember that although their guns will not carry very far with killing force, there is danger in having eyes put out by the flying pellets. A companion hunter across the lake may suffer by your carelessness.

Then also, deer season is just a few weeks off. Newspapers have been trying to make as the hunters' slogan this year, "Not a man killed throughout the season." Men will be killed, if other men are careless. Do not shoot at a moving bush—its branches may conceal your best friend. Take a chance on the buck getting away, by giving yourself time to think before you pull the trigger.

The forest service is asking that all hunters be very careful of matches and lighted smokes. Break your match before throwing it away. Millions of feet of precious timber, thousands of animals and birds, as well as homes may be destroyed by a moment of absent mindedness.

On other hint should prove beneficial—Be sure that you are complying with the law in your hunting, that your license is valid and has been obtained fairly without misrepresentation, that you are killing the old man deer instead of the lady or one of her children, and you cannot be too certain at too great a distance. The game laws are going to be more rigidly enforced this year than ever before.

And last but not least, empty guns are some times discharged, be careful of the direction in which you are pointing your gun.

Allright, boys, now you may go hunting . . .

## NIGHT DRIVING

Automobile drivers are occasionally reminded that it does not pay to hurry too much and more especially at night. The reminders are oftentimes painful and some time fatal. Fast driving is never safe unless the driver has a clear vision ahead and then sometimes accidents happen. Many of our highways are constructed through the broad open ranges without fences. The driver never knows when a horse or a cow blinded by the light may step in front of his automobile. In this case an accident is almost inevitable. The animal is either killed or chipped so badly that he must be killed and the motorist is lucky if he does not wreck his car or escapes without injury to himself.

## REAL ISSUES

When the dust of the present political campaign has blown over, the average voter, who has the interest of his state at heart enough to make an effort to inform himself of the issues vital to the welfare of New Mexico, isn't going to be swayed by mud slinging. Most of us do not accept the theory that the candidates of opposite political belief are horse thieves, thugs and liars. A political party that has any self respect would not commit political suicide by assigning to a bunch of crooks the job of carrying the party standard.

The main issues of this political campaign centers around the qualifications of the party nominees, what they have done and what they propose to do. We have no quarrel with the republican party as to the manner in which the highway department has been managed and conducted and as to how the building of highways have been distributed, neither can we fuss about how the state land office has been operated. We realize that one can not expect to build and maintain good schools and build good highways without paying for them, still like every taxpayer, we would not welcome higher taxes. All of this means that the state officials who are operating the state's business, must realize one hundred cents on every dollar spent.

The condition creates a demand for real economy and places on the shoulders of the man who is to govern our state affairs a responsibility that can not be met without training and experience in the business world.

This responsibility will be increased as the population increases and as the state's resources are developed. One, two or even three years may bring radical changes. The real issue therefore, isn't what the particular candidate proposes to do, but whether he has the ability to meet and solve the problems that are brought about by the changes.

Neither is it true that a man is of no value to his constituents, who isn't a member of the political party in the majority at Washington. Ability and experience count in filling a place in the national congress, just as they count in filling the humblest precinct office. Because of his fitness and his previous service to the people of New Mexico, voters will return Sam G. Bratton to the United States Senate regardless of the numbers of his political faith in congress.

The visit of Senators George H. Moses and Fred Steiwer with Senator Bronson M. Cutting in Santa Fe last week caused political conjecture to run riot in Santa Fe. Many however, believe that the visit of Senator Moses has something to do with getting Senator Cutting back in the old guard line up. It was Moses who led the children of Isarael out of the wilderness and perhaps Senator Moses' visit will accomplish much.

A Roswell minister uses the expression, "Charge the battery of your soul." The spiritual life of a man may have been elevated since the advent of the automobile, but most people did not know that another element had been added.

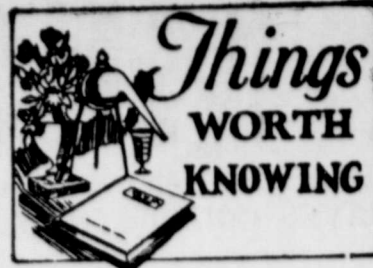
Another thing that is very good for the complexion is to let it alone.

Young children and some employees seem to construe kindness as a sign of weakness.

Xmas is coming, says and ad in an exchange, but tax paying time is coming in the meantime, all of which is not very exhilarating thought to father.

Ben of the Lordsburg Liberal says one of the chief political issues of the coming political campaign is trying to find out who needs the jobs the worst.

Amos W. Woodcock, director of prohibition, states that the pro forces are pitifully inadequate to cope with conditions and will ask congress to increase the force 500.



Ewes should be gaining in weight at breeding time. Put them on good timothy, rape, or bluegrass pasture, if possible. Fall growths of clover are not satisfactory. Some grain may be fed as a supplement to pasture. Oats are a better supplement than corn. Pumpkins strewn over the field are excellent.

Seed corn can be protected from weevils or grain moths by storing it in tight mouseproof receptacles and inclosing one pound of moth balls or naphthalene for each bushel of corn. This will prevent damage by the insects and will not injure the seed. The corn should be thoroughly dry before storing.

Don't waste money on medicinal "Cures" for infectious abortion of livestock, warns Dr. J. R. Mohler, chief of the Bureau of Animal Industry, U. S. Department of Agriculture. Consult a competent veterinarian, or obtain publications or information from your state agricultural experiment station or the department of agriculture.

A herd of hogs can be improved by using a purebred boar and grade sow, but it can be improved much more quickly with purebred sows and purebred sire. Even with only one sow, a good sized herd can be obtained in a very short time. By starting with a purebred sow, keeping her sow pigs, and breeding them regularly, more than 300 pigs can be produced in 3 years.

A ration consisting of hay, silage and grain is a good one to feed the dairy heifer late in the fall, in winter and early spring. Well-cured legume hays such as alfalfa, clover, vetch, cowpeas, or soybeans are best, as they are high in protein and lime. Corn silage is rich in carbohydrates and is succulent and laxative. Heifers from 6 to 12 months old should get from 5 to 15 pounds of silage daily and all the good legume hay they will eat. A good rule for feeding grain to heifers is to allow about one-half pound daily for each 100 pounds of live weight. Heifers thin in flesh should get more.

You would not think of employing unskilled labor to do the work of a high class salesman—it's just as serious a matter to use only good printing. The Messenger, phone 17.

Messenger Want Ads pay.

**DR. EDWARD STONE**  
 Optometrist  
 Artesia, N. M.  
 Located East Half J. S. Ward's Office

## High-Grade Photographs

Views, Kodaks and Finishing

Mail your films direct to us and get the New Border Prints. Same price as the ordinary print but much nicer and larger.

WE PAY POSTAGE BACK

**Rodden's Studio**  
 213 North Main  
 Roswell

**EL PASO'S FINEST**  
 300 ROOMS ALL \$2.50  
 OUTSIDE and with SOFT WATER BATH up



**HOTEL HUSSMANN**  
 "On the Plaza"  
 EL PASO, TEXAS

## Bleeding Gums Healed

The sight of sore gums is sickening. Reliable dentists often report the successful use of LETO'S PYORRHEA REMEDY on their very worst cases. If you will get a bottle and use as directed druggists will return money if it fails—McAdoo Drug Co.

## LUMBER

## HARDWARE

# It Will Pay You

## TO FIGURE WITH THE

# Triangle Lumber Co.

Dexter, New Mexico

## PAINT

## CEMENT

## Fresh Roasted Coffee

Wholesale and Retail  
**GUARANTEED HIGH QUALITY PURE COFFEE**

**U. S. Blend SUNSHINE**

FOR SALE BY LOCAL MERCHANTS

The grind is important, come in and let us talk over with you and show you this coffee.

**ROSWELL COFFEE COMPANY**

DAN C. SAVAGE, Proprietor

414 1/2 N. MAIN STREET

ROSWELL, N. M.

## The World---and Service

In today's complex world, more and more is the ideal of honest service coming to be recognized as the only thing worth while.

Ask others about their business relationships with us, and you will find a more accurate indication of our motivating thought . . . the desire to help

## THE FIRST NATIONAL BANK

Hagerman, New Mexico  
 SECURITY—SERVICE

## "The Friendly Store on the Busy Corner"

MAKES IT A POLICY TO PLEASE YOU

Courtesy and Service are linked with Honesty  
 our business dealings

**BAILEY'S CASH STORE**  
 DEXTER, N. M.

WHEN YOU ARE IN ROSWELL, TRY OUR

## Hot Plate Lunch

Served from 11:30 to 12:30

Toasted Sandwiches are served at all hours

Ask for Kipling's Ice Cream at Teed's Confectionery and the McAdoo Drug Store.

**KIPLING'S CONFECTIONERY, LTD.**  
 ROSWELL, NEW MEXICO

## JUST KIDS—His First Love.

By Ad Carter



LUMBER MADE IN WME REFU  
 SANTA FE—B  
 open to t  
 of ten ye  
 reached i  
 commission  
 irrigation d  
 district has  
 fishing in  
 state game  
 to stock  
 opened to  
 the commis  
 investigation  
 Albuquerque  
 that  
 referred from  
 rains and pl  
 White Mot  
 extended ab  
 flock of  
 sportsmen  
 summer.  
 Eagle Cr  
 part of E  
 for shooti  
 county win  
 for the  
 turkeys  
 turkeys  
 the present  
 commission  
 game refuge  
 in Valenci  
 in fall season  
 restricted  
 of November  
 to ten birds  
 of the Tori  
 was wit  
 of the Alam  
 opened to  
 county  
 suggestion.  
 will be made  
 full t  
 was added  
 state.  
 ACES C  
 NOW I  
 CRUCES—  
 acres of co  
 year accor  
 by E. F. H  
 statistician.  
 for the ya  
 pends.  
 average yie  
 because  
 of dry fa  
 and in the sta  
 both ha  
 than N  
 to Octobe  
 pased 17,000  
 four year  
 The high  
 made in 1927  
 October 1 a  
 storms and  
 of 2,000 bale  
 counties thi  
 TAKE TO  
 13 IN ST  
 STA FE—Th  
 violent deat  
 during Septe  
 automobile ac  
 report just is  
 bureau.  
 caused by a  
 double the a  
 were four  
 month. T  
 caused by s  
 mines, mach  
 land slide  
 electric sh  
 causes due  
 WILL YO  
 advertisers  
 their adv  
 ger.

**NUMBER OF CHANGES MADE IN THE STATE GAME REFUGES LATELY**

**SANTA FE**—Blue Water Reservoir will be open to public fishing for a period of ten years under an agreement reached between the state commission and authorities of the irrigation district. The irrigation district has been charging a fee for fishing in the reservoir and the state game department had refused to stock it with fish unless it opened to the public.

The commission will make a further investigation of the request of the Albuquerque Game Protective Association that mountain sheep be referred from the Big Hatchet mountains and planted in the Sandia

White Mountain game refuge extended about 1,200 acres to flocks of turkeys which the game sportsmen have been feeding all summer. The extension includes Eagle Creek canyon. The part of Bonito canyon was closed for shooting this fall.

The county was closed to turkey hunting for the coming season to protect turkeys recently planted in Guadalupe mountains which are mostly turkeys in the county.

For the present big game season the commission will create another game refuge south of Mount

Valencia county.

The quail season in Torrance county is restricted to the first ten days of November with bag limit of ten birds a day at the refuge of the Torrance county G. P.

was withheld on the suggestion of the forest service that the Alamo refuge in Otero county be opened to hunting this fall.

Otero county G. P. A. opposed suggestion. A joint investigation will be made.

Another full time deputy game warden was added, making seven for the state.

**ACES COTTON NOW IN NEW MEXICO**

**CRUCES**—New Mexico has 100,000 acres of cotton to be harvested this year according to a bulletin by R. F. Hare, state agricultural statistician. The per acre yield for the year is estimated at 100 pounds.

The average yield this year was 100 because of the enormous amount of dry farming that is to be had in the state. California and Arizona both have a larger yield than New Mexico.

On October 1, New Mexico produced 17,000 bales as compared with a four year average of 7,337.

The highest previous record was made in 1927 when the ginnings on October 1 amounted to 10,628.

Storms and floods caused a loss of 2,000 bales in Chaves and Sandoval counties this year.

**TAKE TOLL OF 13 IN STATE IN MONTH**

**SANTA FE**—Thirteen out of the total deaths occurring in the state during September were caused by automobile accidents according to a report just issued by the state highway bureau. The number of deaths caused by auto accidents was double the average.

There were four homicides during the month. The report included deaths caused by suicide, fire, burns, diseases, machines, railroad accidents, land slides, lightning, actual electric shocks and undetermined causes due to external violence.

**WILL YOU TELL**

Advertisers, please, that you have their advertisement in The Register.

**DYED TOPICS**

By Harold Dye

Up in my home county, San Miguel, they take their politics seriously—the House of Romero and the House of Delgado, seem to hark back to the days of frowning turrets, barred upper windows, drawbridges and moats, huge armoured figures swinging their maces, or sitting stolidly on their horses, with spears at rest and other attributes of the days of feudal supremacy. Each faction calls out its flaming hearted penitents from the remote recesses and hidden retreats of Hermit's Peak, to take up the political cry of civilization, and to scourge themselves with the cactus whips of party loyalty. These dark men of the forest and brothers of the mountain make staunch supporters of their respective heroes, and their combined strength is eagerly sought by the progressive political bosses of the county. Scattered and drifting reports filtering through the newspapers from the turbulent sector serve as a reminder that in certain localities of the state, the day of the English-American is not yet

However, we would not minimize the value of a clear thinking, assertive, honest Spanish-American in high state office. Had not these stout hearted men of years gone by taken up the Standard of Statehood and carried it on to glorious heights, our present day progress could not have been assured. Two years ago, the writer voted for the first time. In common with other first voters, the two tickets held an awesome arrangement of names with no special significance for me. Having no imperative tendency toward either party I proceeded to mutilate the respective tickets, by skipping down the line and scratching the name of every Spanish-American which was balanced by an English name. Consequently, Mr. Smith, or Mr. Brown, regardless of whether or not he was the most degenerate of villains, won my approbation, whereas Mr. Armijo, or Mr. Padilla was entirely out of luck, whether he was sincere and honest as the day is long. This insane method of voting is carried out by many new comers to New Mexico who cannot understand the high type of citizens which the educated Spanish-American represents.

In our county offices, we do not have to meet this situation to a great extent, but we shall when we begin to vote for our state officers.

**LEA COUNTY REPUBLICANS ENDORSE CNE DEMOCRAT**

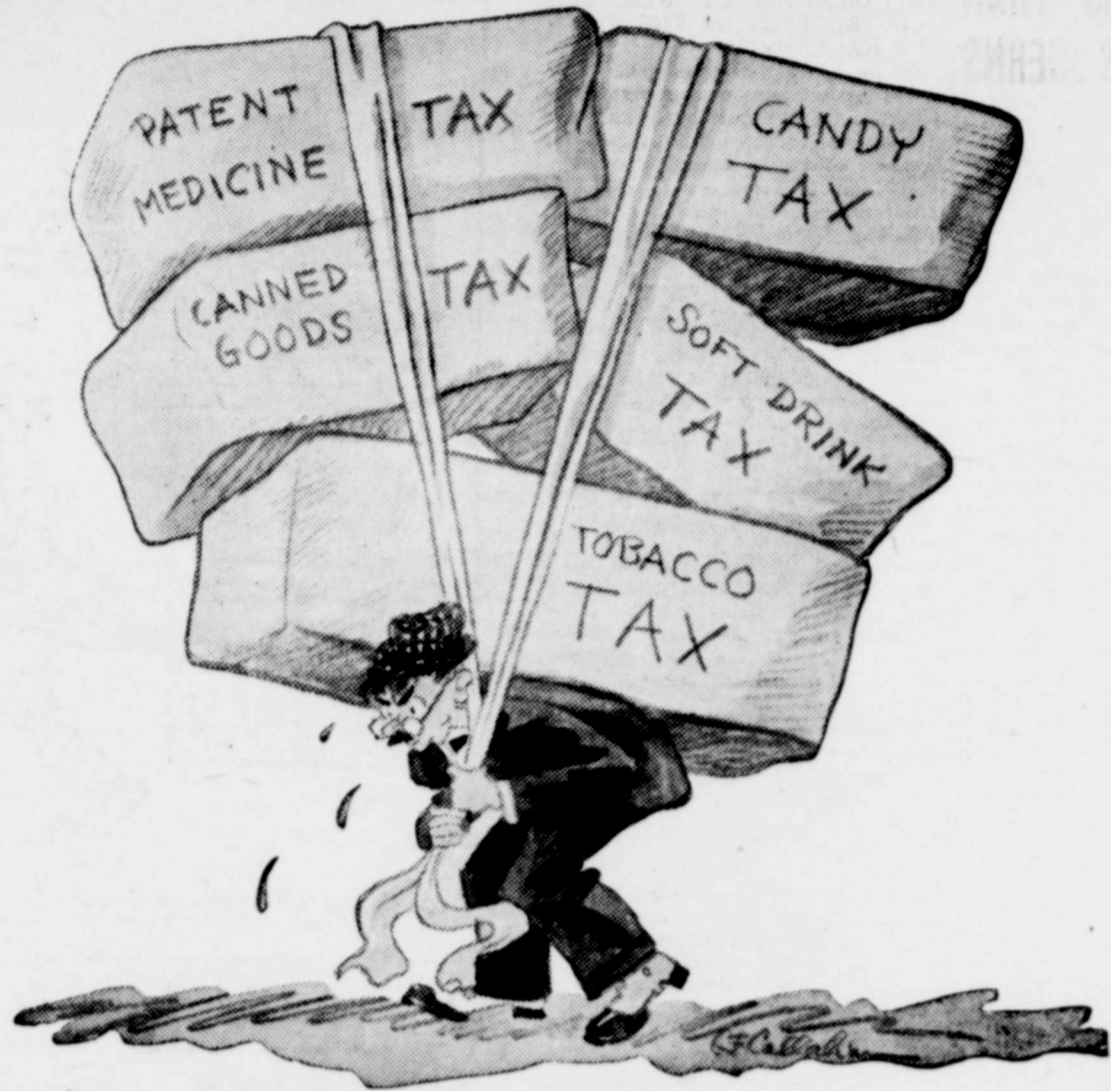
The Lea county Republicans endorsed a democratic candidate and nominated an incomplete ticket at their county convention last week at Lovington. J. G. Simpson, democratic candidate for county commissioner received the endorsement of the republicans who did not select a third commissioner. The offices of state representative, clerk, treasurer and superintendent of schools were left vacant.

The following candidates were selected on the republican ticket for the county; for sheriff, W. E. Harris; assessor, Leonard Odle; probate judge, F. G. Shepard; surveyor, V. W. Agneil; commissioner, J. P. Sullivan and W. F. Stuart.

The convention was unable to secure anyone to run for the office of county clerk.

**CAS TAX IN SUPREME COURT**

WASHINGTON, D. C.—A suit attacking the validity of the New Mexico tax of 5 cents a gallon on gasoline will be heard orally by the supreme court, which will then decide whether the case is to be reviewed.



**Will it come to this?**

ON November 4, the voters of New Mexico will be called upon to express their approval or disapproval of the tobacco tax recently passed by the State Legislature.

Frankly speaking, this is just another "nuisance tax"—justifiable, perhaps, in a war emergency, but now merely another burden.

The State naturally needs money—all states do—but why pick on the poor smoker?

There is no more reason for a tobacco tax than there is for a local tax on patent medicines, candies, soft drinks, or canned goods. So watch your step, voters—there's no telling where it will stop!

IN New Mexico the tobacco tax calls for a state stamp of two cents on a package of twenty cigarettes, one cent on a five-cent cigar, and various rates on all other tobacco products—and this in addition to the tax now paid to the Federal Government.

In plain language, such a tax is beyond all reason.

No other commodity, necessity or luxury is so taxed.

Why single out tobacco?

Most other taxes are based on wealth and income—this one is not. It is a daily tax on you because you smoke.

Smokers, are you going to allow yourselves to become tax victims and be penalized day after day for the privilege of smoking?

**PILING IT ON THICK**

Perhaps you don't know it, but you are already paying a whacking big tribute to the Government—SIX CENTS on every twenty cigarettes.

The highest rate of tax in history is piled onto the poor man's best friend, his best-loved luxury—sometimes his only luxury.

Yet the state now proposes to pile its own tobacco tax on top of the big tax you pay to Uncle Sam.

Do you want this bill to pass?

Do you want to pay a double tax on your smokes? Is it fair to load this extra burden on smokers?

**WHY TWO TAXES?**

No fair-minded man objects to paying his fair share of expense, whether Federal, State, or local.

But why should he pay TWICE, just because he is a SMOKER?

Isn't this too much of a tax on their proverbial good-nature? Is there any logical basis for such discrimination against smokers?

**WHAT TO DO ABOUT IT**

It is up to you, Mr. Smoker. If you sit back and wait for someone else to protect your rights and your pocketbook, and if every smoker does the same, this law may become permanent.

But if enough tobacco users will register their votes against this unjust and discriminatory tax measure it can and will be defeated.

Go to the polls and vote NO!

NEW MEXICO TOBACCO DEALERS' ASS'N.

Mark ballot thus to vote NO:

For the Law	
Against the Law	X

**GOODYEAR Pathfinder**

**Lowest Fall Prices In History! Buy Now!**

Lifetime Guaranteed  
**GOODYEAR PATHFINDERS**

Full Oversize Balloons		High Pressure
4 Ply	4 Ply	4 Ply
450-21	450-20	30x3 1/2 O. S.
\$7.00	\$6.90	\$5.60

Tubes Also Priced Low

**Wortman's Super Service**  
Home Owned and Home Operated  
DEXTER, N. M. TELEPHONE 22

# 1930 STATE TAXES ARE \$272,610 LESS THAN IN 1929--SAYS JOERNS

SANTA FE—The tax yield for state purposes in 1930 was \$272,610 less than in 1929, whereas the counties, cities and school districts yield showed a net increase of \$351,368, John Joerns, secretary of the state tax commission said Saturday.

"The figures indicate that the increased yield for counties, cities and school districts are the most important factors in determining the average tax rates," Mr. Joerns said, "and if it were not for the increases required by the counties, cities and school districts the average tax rate would be considerable less."

Increases were shown in the yields of the county school districts and cities. The county yield increased \$410,105; the city \$151,463; and the school districts \$62,410.

"The average tax rate for the state," Mr. Joerns said, "is arrived by taking the total valuation which in 1930 amounts to \$342,329,328 and dividing this into the total tax yield of the state, counties, cities and school districts. This determines the tax rate for 1930 amounting to \$32.93 per \$1,000 of assessed valuation. This is a reduction of \$2.31 a thousand."

"The total valuation in 1929 was \$309,862,670, indicating an increase in this year of \$32,466,658, approximately one-half of which is on corporate property."

## THIRTEENTH ANNUAL STATE CONTEST

High quality of work and an increased attendance characterized the 13th annual state club contest held at State College October 14 to 18 inclusive. Club members, chaperons and county agents from every county in the state employing extension agents met at the college and took part in the demonstrations put on by the club members. A total of 69 teams, seven stock judging teams and 62 demonstration teams, took part in the contest.

Judges were chosen from among the members of the extension force and college faculty and demonstrations were started promptly at 8:00 o'clock Wednesday morning. Demonstrations were carried on in three groups. The sewing and home furnishing teams demonstrated in the auditorium at Hadley Hall; the cooking, canning and baking teams conducted their demonstrations in the home economics department in the basement of the same building. The miscellaneous group, consisting of demonstration in crops, poultry, livestock, etc., demonstrated in the southeast room in the basement of the new agricultural building, Foster Hall. Two Indian teams gave demonstrations in pottery and basket making at Hadley Hall. These teams were from the Zuni Pueblo.

The afternoons of the three days were devoted to recreation and entertainment. Dr. Robert G. Foster, of the Washington office, who has had vast experience in club work, conducted recreation classes for the club members on Wednesday and Thursday afternoons. On Wednesday and Thursday afternoon also the visitors were taken on tours of the college campus and the experimental farm. On Friday afternoon, the club folks attended the Dona Ana county fair, which was being held at Las Cruces.

The club exhibits were on display in the basement of Foster Hall and were viewed by many interested persons. There was a notable increase over the number of exhibits last year, especially in the canning exhibit, and the quality was equal to if not superior to that of former years.

At the closing exercises Friday evening the awards of ribbon and medals were made. The right to represent New Mexico as Grand Champions at the Denver Stock Show in January, 1931, was won by the stock judging team from Lea county, composed of Edwin Byers, Graydon Caudill and Vernon Caudill; the home economics team from Chaves consisting of Rosie Hubbard and Eula Marshall, and the livestock demonstration team from San Miguel county, Richard Johnson and Ray L. Jones. The highest individual score in stock judging was won by Edwin Byers of Lea county.

Instead of the usual tour of the leading industrial firms of El Paso, the club members were given the opportunity of seeing a genuine football game. Arrangements were made whereby the club members received the courtesy of free admission to the game between the New Mexico Aggies and the Arizona Lumberjacks which took place on the athletic field at the Las Cruces High school. Many of the visitors availed themselves of this opportunity and appeared to enjoy the game immensely.

## KEIFER RETURNED TO ROSWELL

Carl E. Kiefer, charged with embezzling the sum of \$3,700 from the Daniel estate at Roswell was returned to Roswell yesterday, after he was arrested several days ago at Tracy, California.

Patronize those who advertise in The Messenger.

## ORDINANCE NO. 55 LICENSES

BE IT ORDAINED BY THE BOARD OF TRUSTEES OF THE TOWN OF HAGERMAN:

Section 1. All licenses shall be signed by the Mayor, and issued by the clerk, under his hand and the official seal of the corporation upon payment of his fees and the receipt of the sum provided and assessed by this ordinance for such license.

Section 2. The Town Clerk shall issue all licenses fixed by this ordinance. No license shall be issued for less than a quarterly payment, except as herein otherwise provided. Quarters shall begin July first, October first, January first and April first. For each part or fraction of a quarter, license shall be issued until the first of the next succeeding quarter.

Section 3. The Town Clerk shall deliver all licenses to the Town Marshal and charge him with the amount thereof; and the said Marshal shall collect such amount and deposit the same within two days with the Town Treasurer, taking his receipt therefor, and such receipt shall be filed with the Town Clerk and the Marshal credited therewith.

Section 4. It shall be unlawful for any person to conduct, pursue or carry on, in the town of Hagerman, any occupation or business named in the following section without first having paid the license fee thereon.

Section 5. All persons, firms or corporations shall be subject to and pay an annual license authorizing the pursuit or conducting of such occupation, at the rate in the amount specified in the following schedule, to-wit:

Banks	\$18.00
Wholesale and Retail Dry Goods and Grocery Store doing a jobbing business	25.00
General Merchandise Store	15.00
Retail Dry Goods Store	8.00
Retail Grocery Store	8.00
Wholesale and Retail Hardware Store	20.00
Retail Hardware Store	9.00
Jewelry Store	6.00
Drug Store	12.00
News Stand	4.00
Lumber Yard	15.00
General Feed Store	9.00
Meat Market and Groceries	10.00
Hotels of 20 rooms or more	12.00
Hotels of less than 20 rooms	8.00
Restaurant, Lunch Counter or Confectionery	6.00
Furniture Shop	12.00
Pawn Shop	4.00
Second Hand Store	5.00
Billiard and Pool Tables	5.00
Barber Shop	5.00
Street and Sidewalk Stand	10.00
Racket Store	8.00
Real Estate, Loan and Insurance, Agent, or either	8.00
Merchant Tailor Shop	4.00
Photographer	4.00
Peddler and Solicitor	25.00
Undertaker	8.00
Printing Establishment, issuing daily paper	12.00
Printing Establishment, issuing a weekly paper	6.00
Printing Establishment, not issuing a paper	5.00
Circus, first performance	12.50
Each additional performance	5.00
Tent Show, per day	5.00
Blacksmith Shop	6.00
Cotton Gin	24.00
Alfalfa Meal Mill and Alfalfa Hay	25.00
Alfalfa Hay Dealer	9.00
Automobile Service Station	9.00
Automobile Garage	6.00
Wholesale Dealers in Gas and Oils	6.00
Bakeries	6.00
Picture Shows	8.00
Bowling Alley	5.00
Miniature Golf Course	5.00
Skating Rink	5.00
Drayman with not more than two wagons or trucks	6.00
Drayman with more than two wagons or trucks	8.00
Dairy of three or more cows	4.00
Doctor	10.00
Dentist	5.00
Tourist Camp	10.00

Section 6. Any person, firm or corporation liable under section five, for the payment of any license, shall pay the same quarterly in advance.

Section 7. License for any show or theatrical performance shall not authorize the licensee to give any exhibition or performance which is against the public morals and decency and the Mayor shall have the power to revoke such license at any time.

Section 8. Any person, or persons violating any of the provisions of Sections four (4), five (5), six (6) and seven (7) of this ordinance, shall upon conviction thereof, be punished by a fine not exceeding Twenty-Five Dollars, or by imprisonment in the town jail for a period not exceeding twenty-five days, or by both such fine and imprisonment in the discretion of the court trying the case, and each days conduct of such occupation shall constitute a separate offense.

Section 9. All ordinances or parts of ordinances in conflict herewith, and more specially ordinance No. 4 of this town, are hereby repealed.

Passed and Adopted this 21st day of October, A. D. 1930.

Approved as required by law this 22nd day of October, A. D. 1930.

(SEAL) J. T. WEST, Mayor.

O. R. TANNER, Town Clerk 45-2tc

Calling Cards, 100 for \$1.75, on best grade paneled or plain stock.—The Messenger.

## THINGS THAT NEVER HAPPEN

By GENE BYRNES



## Want Ads STRICTLY CASH

RATES  
COUNT FIVE WORDS TO A LINE

Minimum Charge for first run...40c  
Subsequent runs, minimum ad...25c  
Ads over 5 lines first run, line...3c  
Ads over 5 lines 2nd run at line...5c

## FOR SALE

FOR SALE OR TRADE—80 Acres of land, house and chicken house, well, 3 miles South East Hagerman, also 100 acres 22 miles northeast of Hagerman. J. L. King, Hagerman, N. M. 45-3tp

The fellow who expects "something for nothing" sends ten cents for a system to keep down coal bills, and he gets a paper weight.

Messenger want Ads pay.

## HIS MIND RELIEVED

"I donno when I've been so relieved," said Farmer Watkins as he renewed his mortgages, buried seven starved cows, helped put out a hay fire, canceled his son's college plans, and handed his daughter a hoe, "as when I read in the papers that the government has decided we shant do so much plantin' next year."

—Yeoman Shield.

Messenger Want Ads pay.

## DR. G. W. GRISWOLD

Practice limited diseases  
Surgery  
Eye—Ear—Nose  
and Throat  
GLASSES FITTED  
Office 2nd floor White Bldg.  
Res. 403—Phones—Office 404  
Roswell, New Mexico

## Charter No. 7503—Reserve District No. 11 REPORT OF CONDITION OF THE FIRST NATIONAL BANK OF HAGERMAN, IN THE STATE OF NEW MEXICO, AT THE CLOSE OF BUSINESS ON SEPTEMBER 24, 1930.

Loans and discounts	\$148,339.60
Overdrafts	209.13
United States Government securities owned	42,700.00
Other bonds, stocks, and securities owned	8,552.01
Banking house, \$7,500.00; Furniture and fixtures, \$3,500.00	11,000.00
Reserve with Federal Reserve Bank	6,822.22
Cash and due from banks	33,237.60
Outside checks and other cash items	668.75
Redemption fund with U. S. Treasurer and due from U. S. Treasurer	1,250.00
Other assets	67.49
Total	\$252,846.80

Capital stock paid in	\$ 25,000.00
Surplus	10,000.00
Undivided profits—net	401.81
Circulating notes outstanding	25,000.00
Due to banks, including certified and cashiers' checks outstanding	3,710.58
Demand deposits	120,023.60
Time deposits	28,178.28
Bills payable and rediscounts	40,532.53
Total	\$252,846.80

State of New Mexico, County of Chaves, ss:  
I, W. A. Losey, Cashier of the above-named bank, do solemnly swear that the above statement is true to the best of my knowledge and belief.

W. A. LOSEY, Cashier.  
CORRECT ATTEST:  
WILLIS PARDEE,  
W. E. BOWEN,  
CALVIN GRAHAM,  
Directors.  
Subscribed and sworn to before me this 13th day of October, 1930.  
(SEAL) J. T. WEST, Notary Public.



## IMPORTANT!

We urgently request that you pay your account with us by the 15th of November.

## C. & C. Garage

Hagerman, N. Mex.

## Seligman Dodges Taxes; Republicans Double Road Work

—BY—

### REPUBLICAN STATE CENTRAL COMMITTEE

DEAR MR., MRS., and MISS VOTER:

We are nearing the end of the campaign. Our weekly letters have been truthful at all times. We think our conclusions from the facts have been fair. We believe we represent the best interests of the people of the state.

We have written much of the betterment of roads and schools under the Dillon administration, as compared with the previous four years of Democratic control. It so happens that the people, wherever you find them, who have the best roads and the best schools are the most prosperous and happy.

Roads and schools measure human progress, all the way from barbarism to the highest degree of civilization the race of men has been able to make.

During the four years of Democratic administration from 1923 to 1926, the following road work was done with federal aid: Graded and drained, but not surfaced, 93 miles; gravel surfaced, 819 miles; concrete 44½ miles; oil surface, none. During that period about 1,000 miles of lower type roads were constructed, reconstructed, or improved without federal aid, and about 150 miles of gravel surfacing was placed on state roads.

### ROAD WORK DOUBLES

From 1927, when Governor Dillon assumed control to the present, there has been completed or is now under construction to be completed this year, the following federal aid projects: Graded and drained, nonsurfaced, 81 miles; gravel surfaced, 584 miles; oil surfaced 101 miles; concrete, 15 miles. State construction, reconstruction and improved, 2,500 miles; gravel surfaced 500; oil surfaced, 400.

Under the Dillon administration two thousand miles more of roads have been constructed or improved than under the Hinkle-Hannett administrations. In that sum is 501 miles of oiled roads. No oiled roads until the Republicans took charge; 1084 miles of gravel roads.

Bear in mind that under the Dillon administration there was twice as much road construction as under the four years of Hinkle and Hannett, and much higher grade of construction and surfacing, and especially in the quality of bridges built.

### DEMOCRATIC PROPERTY TAX

In property taxes the cost for four years was \$1,500,000 greater under Hinkle and Hannett than under the Dillon administration, due to the fact that the gasoline tax, under the Dillon administration has grown from \$773,292.90 for the last calendar year of the Hannett administration, to \$2,270,685.66 for eight months of 1930. The gasoline tax for 1930 will be about \$2,750,000.

The increase year by year in the sale of gasoline is due to the constant improvement of the public highways, bringing tens of thousands of tourists annually into and through the State.

The schools you know about. We must have good teachers and a nine months term. The Democrats say they will reduce taxes. The only way they can cut expenses is to shorten school terms or reduce the pay of teachers, or both. There is no property tax for highway construction. The federal government and the owners of automobiles pay for the construction and upkeep of our roads.

### AS TO MR. SELIGMAN

The Democratic candidate for governor is resorting to his usual tactics in politics. He is trying to create dissatisfaction among Republicans in Spanish-American counties. Then he seeks to have the malcontents make a fusion with the Democrats of the county. In bringing about such deals Mr. Seligman makes no promises of reforms, no claim that the public will be benefited. It is just a matter of getting votes.

You may judge of how far he will go to bring about such fusions when we state that it has been charged and not denied that he is promoting and financing the candidacy of Elfege Baca for judge of the seventh judicial district.

Elfege Baca has been on trial for his life a number of times. The last trial was in El Paso only a few years ago.

As a rule New Mexico has able and honorable judges. There has been a demand in all parts of the State for judges of ability and integrity. No one knows better than Mr. Seligman the unfitness of Elfege Baca for the judgeship. But he is spending money to make successful a fusion between Democrats and disgruntled Republicans in the counties of Valencia, Socorro and Sierra. Elfege Baca, and his candidacy for the judgeship, makes the center of the fusion.

If he can get votes to help him on to the governorship, Mr. Seligman cares nothing for the mental or moral equipment of the judge of the seventh judicial district.

### AND THOSE TAXES

The fact that Mr. Seligman settled five years of taxes for twenty-eight cents on the dollar is cause to question his fitness for governor. There are people who become delinquent in their taxes because they haven't the money when taxes are due. They are delinquent because of their poverty. Mr. Seligman is rich. He has been rich for many years. He knew that if delinquent for four or five years he could force a big reduction in his already low taxes. By being delinquent five years he saved for himself seventy-two cents of the dollar. Now he asks to be elected governor. The man who refuses to pay his taxes should at least have the excuse of poverty.

We must refer again to the bank tax law he and Governor Hinkle, now the Democratic candidate for Land Commissioner, got through the Legislature. Under that law \$75,000 of the surplus in Mr. Seligman's bank is absolutely exempt from taxes.

For example, a widow lives in Santa Fe. Her sole taxable property is a house and lot assessed at \$2,000. She paid taxes in 1928, amounting to \$87.35. At the same rate Mr. Seligman's bank should have paid \$3,275.62. It paid nothing thanks to the law he and Governor Hinkle wormed through the Legislature.

You don't want an expert tax dodger elevated to the powerful position of governor.—ADV.

# Improved Uniform International Sunday School Lesson

BY P. B. FITZWATER, D. D., Mem-  
ber of Faculty, Moody Bible Institute  
(Chicago.)  
(A. 1918, Western Newspaper Union.)

## Lesson for October 26 MUTUAL WEAPONS IN A WORLD WAR (World's Temperance Lesson)

**LESSON TEXT**—Galatians 5:13-26.  
**ADDITIONAL TEXT**—And every man that  
loveth his neighbor as himself is perfect  
in all things. Now they do it to  
make a corruptible crown; but we an  
incorruptible.

**PRIMARY TOPIC**—Learning Self-  
control.  
**SECONDARY TOPIC**—The Law in One  
Word.

**INTERMEDIATE AND SENIOR TOPICS**—The Secret of Self-Control.  
**STUDY PEOPLE AND ADULT TOPICS**—Making Prohibition Effective and  
Practical.

The lesson topic is not a happy one.  
The Scripture text chosen clearly re-  
fers to the inner conflict going on in  
the believer. Having been born of the  
Spirit (John 3:6),  
there is an unceasing conflict going  
on between the two natures (Gal.  
5). The insurrection springing out of  
the carnal nature cannot be put  
down by the Law of Moses. Victory  
can only be accomplished through the  
work of the indwelling Holy Spirit.  
The committee has further design-  
ed it a "temperance lesson." It has  
bearing on temperance in that  
the only way to destroy the  
liquor business; namely, to  
bring individuals to a personal knowl-  
edge and experience of Jesus Christ.  
Having in Galatians 3 and 4 shown  
the believer is free from the law  
as a means of justification, Paul  
has practical application of this  
as follows:

It is not an occasion to the  
law (v. 13).  
Liberty is not license. The notion  
when one is free from the law he  
is free from constraint, is wickedly er-  
roneous. License of the flesh means  
merely the indulgence of the flesh  
in all material sins, but in the ex-  
ercise of a self-centered life (v. 15).  
By love serving one another (v.  
13).

Freedom from the Mosaic law means  
freedom from the law of love. Love thus  
is the fulfillment of the law—  
"thou shalt love thy neighbor as thyself" (v. 14).  
Walking in the Spirit (vv. 16-18).  
Walking in the Spirit results in:  
Loving service to others.  
Victory over the flesh (vv. 16, 17).  
The "flesh" is meant the corrupt  
nature of man expressing itself in the  
works of the flesh (v. 19).

The works of the flesh is meant  
the operation of the carnal nature.  
One who chooses to live ac-  
cording to the impulses and desires  
of the natural heart will be practicing  
the following sins:  
Sexuality (v. 19).  
The sins enumerated here, prac-  
ticed in the sphere of the body, are:  
Fornication. Fornication in-  
cludes all sexual sins in married and  
unmarried life.

Uncleanliness. This includes all  
sexual sins, open or secret, in thought  
and deed.  
Lasciviousness. This means the  
reckless indulgences in the  
practices of the flesh.  
Envy (v. 20).  
These acts take place in the realm  
of the spirit and are:

Witchcraft or sorcery. This  
includes all dealing with the occult, such  
as magical arts and spiritism.  
Sins of temper (vv. 20, 21).  
These take place in the sphere of  
the mind and are:  
Hatred. (2) Variance, which  
includes strife and contention. (3) Emu-  
lousness; jealousy. (4) Wrath; bursts  
of passion. (5) Seditious; factions  
in the state. (6) Heresies; factions  
in the church. (7) Envyings. (8).  
Rivalries.

Sins of excess (v. 21).  
Drunkenness. This means in-  
dulgence in intoxicating liquors.  
Brawlings, acts of dissipation  
under the influence of intoxicants.  
The Fruit of the Spirit (vv.  
22-23).

Love indicates action in the realm  
of the heart. The product of the Holy  
Spirit indwelling the believer.  
Love to God and man.  
Joy; glad-heartedness because of  
God's love.  
Peace with God and fellowman.  
Long suffering; taking insult and  
reproach without murmuring.  
Kindness; kindness to others.  
Goodness; doing good to others.  
Faith; believing God and com-  
mitting all to him.  
Meekness; submission to God.  
Temperance; self-control in all  
things.

**The Extraordinary**  
It is a fact that most of us are apt  
to settle down to the ordinary—God  
is the extraordinary!—Missionary  
Journal.

**Standing in Our Own Sunshine**  
The shadows of this life  
are cast by standing in our own  
sunshine.—Emerson.

**Close-Up View of Christ**  
A close-up view of Christ is not  
for far-off followers.—Christ-  
ian Herald.

## GASOLINE IMPORTS FOR 1930 DOUBLES 1929

According to figures just released  
by the United States Department  
of Commerce total imports of gaso-  
line during the first seven months  
of 1930 were 9,898,655 barrels. Dur-  
ing the corresponding seven months  
of 1929 gasoline imports were 4-  
415,506 barrels. Thus, for this seven  
month period, imports this year show  
an increase of 124 per cent over 1929.  
Gasoline imported into the United  
States comes principally from the  
Dutch West Indies with some from  
the island of Trinidad and with very  
small amounts from Venezuela and  
Canada. At present the Dutch West  
Indies is furnishing about 92 per cent  
of the gasoline imported into the  
United States.

The Dutch West Indies includes  
the two islands of Curacao and Aru-  
ba just off the coast of Venezuela.  
On the island of Curacao is the 175-  
000 barrel Dutch Shell refinery and  
on the island of Aruba are a 15,000  
barrel Dutch Shell refinery and a  
125,000 barrel Standard of Indiana  
refinery. The recent completion of  
this Standard refinery and the re-  
cent enlargement of the Dutch  
Shells' big refinery are responsible  
for the enormous increase in imports  
of gasoline. This increase, during  
the last year.

If the gasoline imported during  
the last five months of 1930 averages  
about as much as during the first  
seven months, the total for the year  
will be about 17,000,000 barrels, or  
practically twice as much as was im-  
ported in 1929.

Of the gasoline imported into the  
United States during the first seven  
months of 1930 about 8,900,000 bar-  
rels were delivered along the Atlan-  
tic seaboard from Maine to Florida.  
This is 90 per cent of the total im-  
ports of gasoline. About 760,000  
barrels or 7.7 per cent were deliv-  
ered at points on the Gulf Coast and  
236,000 barrels or 2.3 per cent were  
delivered at all other points. The  
Atlantic seaboard is therefore the  
big market for imported gasoline.  
As much of the surplus gasoline from  
the Mid-Continent and California  
looks for a market along the Atlantic  
seaboard this imported gasoline comes  
in direct competition with it.

While foreign gasoline is admitted  
into the United States "duty free"  
the importing companies must declare  
its value—and this "declared value"  
of the gasoline imported into the  
United States during the first seven  
months of 1929 was 15.0 cents a  
gallon and for the same period of  
1930 it was 8.4 cents a gallon.

It is generally understood that the  
average cost of producing a barrel  
of crude oil in Venezuela is sub-  
stantially less than in the United  
States. And it is also understood  
that the tanker rates for crude oil  
and gasoline, from the Maracaibo  
basin to New York are less than the  
combined pipeline, tank car and tank-  
er rates from oil fields and refin-  
eries of the Mississippi valley to the  
Atlantic seaboard. Regardless, there-  
fore, of the obviously incorrect "de-  
clared value" of imported gasoline,  
the Atlantic seaboard markets that  
have long drawn on the Mississippi  
valley's gasoline stocks are turning to  
"duty free" foreign gasoline.

**SIX AGES OF MAN**  
Bossed by mother.  
Bossed by nurse.  
Bossed by sister.  
Bossed by wife.  
Bossed by daughter.  
Bossed by granddaughter.

**HAPPY THOUGHTS**  
Transactions speak better than  
words.  
Burdens either broaden shoulders  
or break backs.  
The heroes of tomorrow are the  
bachelors of today.  
Footprints on the sands of time are  
not made by sitting down.  
The best way to influence a man is  
to tell him he can't be influenced.  
It's a good plan to hope for the best,  
but it's a better plan to work for it.  
If there is one thing a man doesn't  
understand about marriage it's his  
wife.

Women can keep a secret just as  
well as men, but it takes more of  
them to do it.  
Some people think sympathy such a  
good thing that they use up their en-  
tire stock on themselves.  
Opportunity knocks once at every  
man's door, but he won't wait while  
you put on a dressing gown and come  
down, yawning.

**IT WILL PAY YOU**  
To read carefully all that our ad-  
vertisers have to say.

## INSIDE INFORMATION

Cook cut celery with canned to-  
matoes. Or with an equal amount  
of thinly sliced white turnip.

Cooked cucumbers may be a nov-  
elty in your family. Pare and quar-  
ter them, and prepare as you would  
steamed squash. Serve with melted  
butter or a sauce if desired.

Try a stuffing for green peppers  
made of equal parts of fresh corn,  
cooked macaroni (in small pieces),  
and tomato, onion cooked in butter,  
salt and pepper. Any minced cook-  
ed meat on hand may be added.

Try sausage and fried canned  
pineapple. Cook sausage meat in  
flat cakes one-half an inch thick.  
Brown slices of drained pineapple  
in the sausage fat and place one  
sausage cake on each piece of pine-  
apple for serving. Have the platter  
and the plate very hot.

A baby does not need shoes until  
walking time. Shoes put on before  
then generally for appearance, do  
more harm than good. The first  
walking shoes should have flexible  
but firm soles, unpolished, prefer-  
ably slightly buffed, and broad  
enough to be a steady platform  
under each foot. Very soft soles  
curl and make more difficult the  
baby's task of learning balance.  
Stiff or boardlike soles are also to  
be avoided. The toes of the uppers  
should be full or puffy, not flat and  
cramping to the toes.

**WILL DEED RUINS TO SATE U**

**ALBUQUERQUE.**—Definite meas-  
ures for the protection of prehistoric  
ruins of the Jemez region will be  
taken by the University of New Mex-  
ico at the request of the White Pine  
Lumber company, which owns the  
land on which these ruins are located.  
The company has indicated that it  
will deed permanently to the  
university those sights, reserving  
only timber rights to the lands, in  
order that they might be properly  
conserved for their historical value.  
Pending the actual transfer of the  
titles to the university, that institu-  
tion has been given authority to  
take steps to protect and preserve  
the ruins.

Reginald Fisher of the university  
faculty has made a survey of all  
sites of the region, and his survey  
will be the basis for the title trans-  
fer.

## 1932 ALLOTMENT FOR U. S. ROADS MAYBE AVAILABLE AT ONCE

**WASHINGTON, D. C.**—Plans of  
Secretary Hyde to request congress  
to make 1932 allotments of federal  
aid money for highway construction  
immediately available to provide em-  
ergency employment in drouth states  
were announced by H. S. Fairbanks,  
assistant to the chief of the Bureau  
of Public Roads.

At the same time Fairbanks said  
the drouth states had large unexpended  
sums of appropriations made for  
previous fiscal years which they  
could spend toward road construc-  
tion between now and July 1, 1931,  
when the 1932 allotments ordinarily  
would be available.

Although Dr. C. W. Warburton  
secretary of the drouth relief com-  
mittee, had advised former Govern-  
or Harry F. Byrd of Virginia that  
the 1932 allotments already had been  
made available, it was explained by  
comptroller General McCarl that no  
appropriations made for a fiscal  
year could be spent until that fiscal  
year unless congress specifically made  
it available at a prior date.

**IT WILL PAY YOU**  
To read carefully all that our ad-  
vertisers have to say.

## SAMBO'S PHILOSOPHY



"— an den OP Miss done fill bote  
o' dem baskets plumb spang FULL!!  
Lawsy Me, who tis WOULDIN' be  
THANKFUL? Ha heeah-hah, Lawdy!"

## LECTURES ON NEW MEXICO TO 2000 PUPILS

**DALLAS, Texas.**—W. E. West, ex-  
hibit manager of the New Mexico  
exhibit showing at the Texas State  
Fair Friday lectured by request to  
2,000 Dallas school children on New  
Mexico and particularly New Mexico  
Indian life.

Mr. West will also lecture to  
the Girl Scouts of Dallas on his state  
and its people. The lecture will be  
held at the New Mexico exhibit on  
the State Fair grounds where is  
gathered together one of the finest  
traveling shows of Indian curios from  
New Mexico in existence. Beside the  
Indian curios there is a complete  
display of mining, agricultural, tour-  
ing, hunting and fishing; archaeologi-  
cal and other items from New Mex-  
ico.

Jake: "What made ye leave, Si?"  
Si: "It happened at breakfast this  
mornin', Jake, and I'd do it again  
if I had it to do over. Mrs. Brown  
was busy bakin' cakes, an' when I  
took three or four, she stopped and  
looked straight at me an' said: 'Si  
Simpkins, do you know that's the  
twenty-fifth pancake you're eatin'?'  
and it made me so mad, I jess got  
up from the table an' went off with-  
out my breakfast."

## WANT ADS PAY

**Zinc Insulated  
AMERICAN  
FENCE**

*Pays  
for itself out of  
Increased Yields and  
Better Market Prices*  
Improves appearance  
and value of the farms

Roswell Hardware Co.

## Business Directory

Conoco Germ Processed Motor Oils  
Conoco Gasoline  
Tires and Accessories  
Hagerman Service Station

Are you suffering from painful  
feet? Correct your feet and you  
will feel better all over. Examina-  
tion free.  
**DR. F. H. TERHAAR**  
Roswell  
Next door to Chamber of Commerce

**W. H. WHATLEY, Produce**  
ROSWELL, N. M.  
Always in the market with the high-  
est cash price for poultry,  
eggs and cream.

FIRST CLASS BLACKSMITH  
All Work Guaranteed  
Horse Shoeing—General Work  
**V. LOVE**  
Hagerman, N. M.

Trade at the  
**PEOPLES MERCANTILE**  
We have what you want at the right  
price. . . you will find us attentive  
to your every wish.

*Keen Enjoyment  
for Smokers  
of Pipe and  
Cigarettes*

**15¢**

NEW WATER  
RALEIGH  
Smoking Tobacco

## WANT ADS PAY

**Zonite**  
For Cuts and Wounds

Prevent infection! Treat  
every cut, wound or  
scratch with this power-  
ful non-poisonous anti-  
septic. Zonite actually  
kills germs. Helps to  
heal, too.

**DAYS OF SUFFERING  
NOW QUICKLY ENDED**  
The next time you start one of these days,  
see the instant relief you get with Dillard's  
Aspergum. Almost before you know it the pain  
disappears, your nerves suddenly relax.  
With Aspergum you chew the pain away. For  
it is the finest aspirin obtainable put up in  
chewing gum form. Now you can take aspirin  
any time, any place. No water. No bitter  
taste. No choking sensation. Because you chew  
Dillard's Aspergum the aspirin mixes thoroughly  
with the saliva so that all its soothing qualities  
are effective quickly, continuously.  
It brings quick relief from aching heads, tooth-  
ache, the pains of neuritis, neuralgia, even rheu-  
matism. If your druggist does not have Dillard's  
Aspergum, send for a free sample to Health  
Products Corporation, Dept. A, 113 North 13th  
Street, Newark, N. J.

**PROBAK  
BLADES** make your  
**DOUBLE-EDGE  
RAZOR**  
(old or new model)  
**a BETTER RAZOR**  
—or your money back  
**10¢ FOR TEN 50¢ FOR FIVE**  
Guaranteed by  
**PROBAK CORPORATION**  
AutoStop Safety Razor Co., Inc., N. Y. C.

—famous the world over  
**Pinaud's  
Shampoo**  
Leaves your hair lustrous,  
healthy, and not too dry!  
At your dealer's— or send 50c  
for full-size bottle to Pinaud,  
Dept. M., 220 E. 21 St.,  
New York. [Sample bottle free]

**Hospital Tested**  
Recommended by doc-  
tors and nurses.  
Cleansing, refreshing  
antiseptic for women.  
As a deodorant, it pre-  
vents embarrassment.  
Sold by druggists  
**Lydia E. Pinkham's  
Sanative Wash**  
Lydia E. Pinkham Medicine Co.,  
Lynn, Mass.

# Frigidaire

## \$187.50

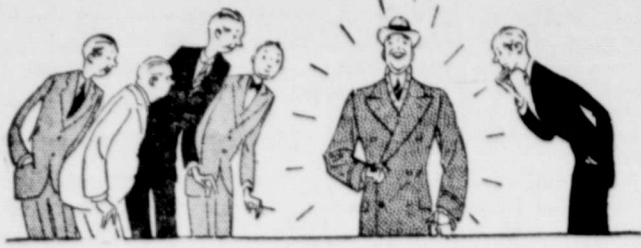
Cash Price Installed

### The Lowest Price at which an all Porcelain-on-Steel Electric Refrigerator has ever been offered

## SPECIAL TERMS

Small Down Payment --- a little each month

# Southwestern PUBLIC SERVICE Company



## Naturally You'll Like Our Overcoats

When you stand out like the young man above— one would really think he was a banker . . . But he's just a Model Man in a New Model Coat.

There's one here for you, too, in style, size and color. With a price range from \$16.50 to \$40.00 you'll find that easy.

WE AWAIT YOUR PLEASURE

### THE MODEL

ED WILLIAMS

### TURNING ON THE GAS

It will sure be bad this winter, hunting these confounded republican quack—they keep under cover so much.

A couple of us guys have decided that when we go duck hunting after this, we won't go near the water.

My wife has just informed me that she would have to get a hair cut or I would have to purchase a dog license, so will you please look on your subscription date this week and see if you owe this joint anything? Thank you.

Joe Ford, that livewire youngster of O. J. Ford's, calls my wife the Old Lady, and it makes her sore because she thinks that is what Ford himself, calls her, or what I call her, and either one makes her angry.

Two different people have almost shot a small sized German police dog near town thinking he was a coyote. The dog will run off about a hundred yards and watch you, then circle away just like his wild relative. Now, if that dog would go to the drug store and get some peroxide or whatever old lady Johnson back where we came from, used to turn her coal black hair a sickly yellow, and smear some of that on his tail to turn it blonde, he could wave that in the air, and keep anybody from shooting him.

Messenger Want Ads pay.

# Hallowe'en

FAVORS AND NOVELTIES OF ALL KINDS

Come in and let us help you plan your Hallowe'en party

OUR STOCK IS COMPLETE

Also Kings and Whitman's Candies . . . Wrapped for the occasion.

## McAdoo Drug Co.

"Hagerman's Popular Meeting Place"

### LAKE ARTHUR ITEMS

Mrs. C. L. Killen, Reporter

Rev. and Mrs. W. G. Jones and son, Joe left Tuesday for their new home at Grady.

Several of the Lake Arthur folks happened to be watching the sky when a beautiful meteor fell.

Mr. and Mrs. Clyde Nihart drove to Artesia Wednesday evening where Mrs. Nihart was fitted with glasses by Dr. Stone.

Rev. and Mrs. W. G. Jones and Joe, and Mrs. C. L. Killen visited Friday in Roswell with Rev. and Mrs. Edwards.

The truck which brought Rev. Slade's household furniture down from Grady returned Monday evening with Rev. Jones furniture.

Miss Alma Lane, accompanied by her sister, Mrs. Oscar Moore of Hope, visited in Hobbs. Their brother, Wade, returned with them.

Mr. and Mrs. Clyde Nihart entertained Rev. and Mrs. W. G. Jones and son, Joe, and Mr. and Mrs. C. L. Killen at dinner Sunday.

Mrs. James Christman and sons, Lyold and Albert, and Misses Mary and Minnie Woods of Artesia visited Rev. and Mrs. W. G. Jones Sunday evening.

Misses Ella and Millie Ohlenbusch and their brother, Bill, and Misses Mary and Ruth Nihart visited Sunday evening at the Rev. W. G. Jones home.

The first regular meeting of the local B. Y. P. U. was held at the Baptist church Sunday evening. Quite a number of the young people were in attendance.

Mrs. Bertha Ewing expects her husband and family to arrive this week from Baldwin, Kansas. They will occupy the house recently purchased by Mrs. Ollie Smith.

Rev. and Mrs. J. W. Slade and children arrived Monday from Grady. They moved into the house which has been occupied by Rev. W. G. Jones and family. Rev. Slade is the new pastor of the Methodist church.

Jim Smith won two second prizes at the Old Fiddlers' Contest at Dexter Friday night. One prize was a white gold wrist watch and the other was \$1.50 in merchandise. This is the second watch Jim has won in the last few months.

Several of the Lake Arthur residents went out to see the airplane which was forced down about five miles from town Sunday evening. The plane had made two forced landings Sunday on account of engine trouble.

The family and friends of Mrs. A. Russell gathered at her home Sunday to help her celebrate her seventy-fourth birthday. Mr. and Mrs. J. A. Griffith, Mr. and Mrs. J. B. Crook, F. M. Crook, Mr. and Mrs. C. R. Nail of Hagerman and Mrs. Ollie Smith participated in the jolly affair. The table upon which a basket dinner was served was graced by a huge angel food birthday cake.

### COUNTY COUNCIL MEET

The Chaves County Council of the Parent Teacher's Association met at the Lake Arthur school auditorium Saturday at nine-thirty o'clock. Representatives from the community P. T. A.s of Roswell, Berendo, East Grand Plains, L. F. D., Dexter and Hagerman and most of the Lake Arthur members were present at the helpful meeting. A program consisting of piano and vocal music and reading was enjoyed after the meeting had been opened by the flag salute. A covered dish luncheon was served at twelve o'clock. After lunch, Mrs. George Wilcox of Dexter president of the County Council, installed the following officers: Mrs. C. O. Holloway of Hagerman, president; Mrs. Albert Segrist of Roswell vice-president; Mrs. Glenn C. Wheeler, secretary; Clyde Nihart of Lake Arthur, treasurer. Miss McCully of East Grand Plains read the minutes of the last meeting. The minutes were approved, and Mrs. C. O. Holloway took the chair. Mrs. Wilcox conducted a round table discussion of the important characteristics of a successful P. T. A. president. An invitation was extended by the Roswell association for the State P. T. A. Convention and the next County Council to be held at Roswell. The invitation was accepted. The meeting was concluded by the crowd, which numbered about seventy, gathering around the piano and singing a number of P. T. A.

### Department of the Interior, United States Land Office, Las Cruces, N. M., October 14, 1930.

Notice is hereby given that plats of surveys have been received in this office as follows:

Twp. 13-S., R. 21-E; Independent resurvey; 17,831.74 acres vacant. Twp. 14-S., R. 20-E; Independent resurvey; 12,402.13 acres vacant. Twp. 18-S., R. 20-E; 21,935.58 acres vacant. Twp. 12-S., R. 19-E; Independent resurvey, 11,602.74 acres vacant. Twp., 13-S., R. 19-E; Dependent resurvey; 8,756.96 acres vacant. Twp. 14-S., R. 19-E; Independent resurvey; 16,639.30 acres vacant.

From December 3, 1930, to March 3, 1931, both dates inclusive, the unappropriated and unreserved land therein will be subject to homestead and desert land entry only by officers, soldiers, sailors and marines who have served in the army or navy of the United States during any war military occupation or military expedition and been honorably separated or discharged therefrom, or placed in the regular army or Naval Reserve, who may be qualified applicants under Public Resolution No. 85, approved June 12, 1930, and by those claiming rights superior to such officers, soldiers, sailors and marines, where the rights claimed are recognized by existing law. The foregoing classes of applicants may, if they wish, file their applications any time within the 20 days immediately preceding December 3, 1930, the same to be considered as filed simultaneously with those presented here at 9:00 o'clock a. m., on December 3, 1930.

For the purposes of Public Resolution No. 85, the War with Spain shall be considered to include the period from April 21 1898 to July 4, 1902.

All land remaining vacant on March 4, 1931, will then be subject to appropriation by any qualified applicant under any of the applicable public land laws. This class of applicants may file their applications any time during the 20 days immediately preceding March 4, 1931, the same to be considered as filed simultaneously with those presented here at 9:00 o'clock a. m., March 4, 1931.

The land described herein lies in the southeastern part of Lincoln county, and the southwestern part of Chaves county, New Mexico, and approximately half way between the eastern boundary of the Mescalero Indian Reservation and the Pecos River.

The area in Twp. 18-S., R. 20-E, includes the four school sections 2, 16, 32 and 36, the title to which passed to the State of New Mexico December 6, 1929, the date of approval of the survey, unless the land thereon or any part of it, was covered by a valid settlement claim initiated prior June 1, 1928, the date of the survey in the field, and lawfully maintained since.

V. E. MAY, Register.

### TO IMPROVE ROAD

Work on the cut off road between the Carlsbad-Lovington highway and Hobbs will begin about November 1st, according to an announcement from Carlsbad this week. A rock surface is to be placed on the thirteen miles of road it is said.

A southern storekeeper, who was justice of the peace, was sitting in front of his store when a colored man drove up.

"Say, Squiah," the latter announced, "dat woman you married me to las' week done got ten chillun', en' every one ob dem plays some kin' ob musical inst'ment."

"Why, that's a regular band, Mose," replied the justice. "Do you want me to send off and get you a horn too?"

"No, suh," was the dismal response, "Ah wants to git disbanded."

He had had bad luck fishing and on his way home he entered the butcher shop and said to the dealer: "Just stand over there and throw me five of the biggest of those trout."

"Throw 'em. What for?" asked the dealer in amazement. "So I can tell the family I caught them. I may be a poor fisherman, but I'm no liar."

Caller: "So your husband is lazy, is he, Mandy?" Mandy: "Lazy? Ah'll say he's lazy. Dat man been out back o' de bahn sawin' wood all mawnin' jest to get outen goin' to de stoah to git me a loaf o' bread."

songs. Every P. T. A. members is urged to attend the State P. T. A. Convention which meets at Roswell October 31st and November 1st. (The Lake Arthur reporter wishes to thank the P. T. A. publicity officer, Mrs. Ned Hedges, for an official report of this meeting).

## Overcoats

representing values never offered before at so little as

# \$14.75

Double breasted models in superior fabrics and colorings of masculine appeal . . . tailored to the exacting standards for which our clothes are noted.



## CAMEL'S HAIR COATS

# \$34.75

## J. C. Penney Co.

DEPARTMENT STORE  
Roswell, New Mexico

### CHURCHES (Continued from first page)

this program Mr. Leth R. Gee is banished by Mr. N. R. Gee. The attendance will be indicated on a mammoth thermometer. Let's put the mercury up. 175 is our goal. Come! E. A. PADDOCK, Supt.

Mrs. Frank Markl, republican candidate for county treasurer, was in Hagerman Friday renewing acquaintances.

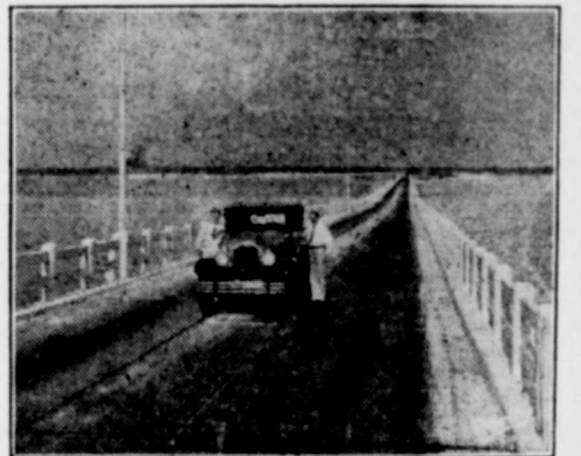
The Ben Harris family returned to Arizona Monday after a stay of a few weeks in Hagerman. They were accompanied as far as Phoenix by Mrs. Alice B. Johnson, daughter of Mr. and Mrs. R. Jennings, who has been visiting in the Jennings' home for about four months.

### TWENTY-FIVE BEAR KILLED BY INDIAN

SANTA FE—Twenty-five bear, killed on the Navajo reservation have been brought into Gallup according to State Game Warden L. Perry, who said that he believes this to be more than has been killed in all the rest of the state. Only in recent years has the Navajo Indian taken to killing bears as they attack his livestock for formerly they looked upon bear as something sacred and upon depredations were to be tolerated.

The Baptist Ladies of the W. U. will serve luncheon election day Hagerman near the polls.

Messenger Want Ads pay.



## BONDEX WINS!

Withstands 100 mile an hour sand blast for 8 hours on world's longest auto toll bridge!

In September 1926 the Florida hurricane gave Bondex Waterproof Cement Paint the most severe durability test that any paint has ever withstood.

For eight solid hours a hundred-mile-an-hour wind laden with sand and rain battered against the absolutely unprotected surface of the Gandy Bridge. After the hurricane subsided a careful inspection of this 6-mile bridge which connects Tampa and St. Petersburg, revealed the fact that the two coats of Bondex were just as brilliant white and unimpaired as they were before the storm.

That's what we call durability!

The only unfortunate part of the whole affair was that a small portion of the bridge was painted with another paint before the contractor switched to Bondex. This section of the bridge was absolutely devoid of paint after the storm!

You can beautify and waterproof at the same time by using Bondex.

We will gladly show you the 16 attractive Bondex finishes.

Reardon's

# BONDEX

WATERPROOF  
CEMENT PAINT

MABIE-JOSWY  
HARDWARE CO.

—SATURDAY, OCTOBER 25—

## Milton Sills in Jack London's "SEA WOLF"

Here's the greatest novel Jack London ever wrote and Milton Sills crowning achievement. An action thrill drama of the mighty seas.

Shows at 2:30—7:00 and 9:00

—SUNDAY—MONDAY, OCTOBER 26-27—

## "THE SILVER HORDE"

REX BEACH'S

Thrilling story of the great Alaskan gold rush days. We positively guarantee you will enjoy every minute of this two hour show.

Shows at 2:30 and 7:30