

Graves Is Buried In Littlefield

Services for Ray Graves, 69, of Littlefield, were held Thursday, October 22 in Hammons Funeral Home Chapel with the Rev. Larry Johnson, pastor of the Nazarene Church, officiating.

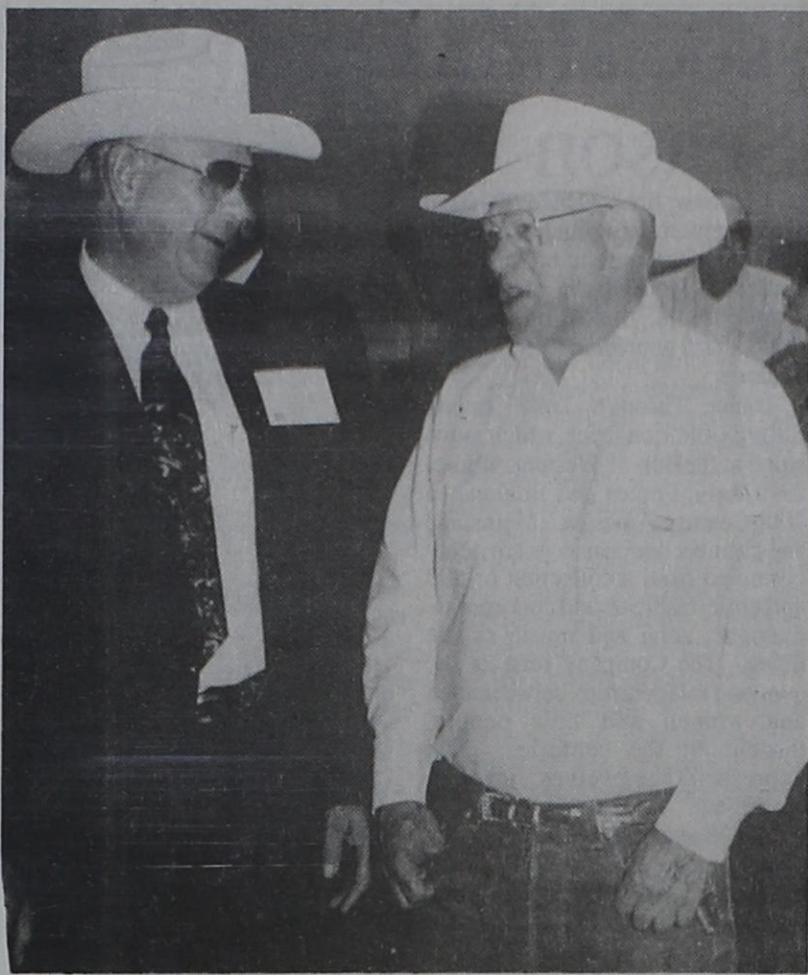
The Rev. Derrell Patterson, pastor of First United Methodist Church, assisted, and burial was in the Littlefield Memorial Park.

Graves died October 20 in Lamb Healthcare Center of injuries suffered in an automobile accident near Littlefield.

He was born in Stanton. He married Lula Dickerson on June 28, 1988, in Clovis, New Mexico. He was a farmer and an Army veteran of World War II. He was a member of the Spade Baptist Church.

Survivors include his wife; two sons, Dale and Gordon, both of Littlefield; a daughter, Elaine Williams of Ozona; a step-daughter, Janice Sokora of Littlefield; a sister, Loreana Flowers of Stanton; two brothers, Harold of Stanton and I.G. of Dumas; ten grandchildren and two great-grandchildren.

Pallbearers were Fred Cook, Meril Waller, John Parkman, Clifton Mills, K.O. Lynn and Alan Yoakum.



SWAPPING TALES.....Troy Christian, left, and C.C. "Cap" Naegle got together for a visit at the Texas Cattle Feeders meeting this week in Amarillo. Naegle, former longtime feedlot manager at Bovina, now lives in Ruidoso, N.M.

Rites Conducted For Ruth Rushing

Memorial services for Ruth Lena Rushing, 72, were conducted Sunday, October 25 at the First United Methodist Church of Friona, with Rev. Don Kirklen, pastor of Redeemer Lutheran Church officiating.

Private graveside services were held Saturday, October 24 at Friona Cemetery, under the direction of Ellis-Blackwell Funeral Home.

Mrs. Rushing passed away Friday, October 23 at her daughter Janet's home near Clovis, N.M., following a lengthy illness.

Ruth Sachs was born May 16, 1920, the daughter of George and Clara Sachs, pioneer residents of the Rhea Community. She married Eric M. Rushing December 25, 1942, in Cambridge, Massachusetts, following his graduation from Naval Supply School at Harvard University. He soon was sent overseas, spending two years in North Africa.

Eric and Ruth lived in the Clovis area where their sons Eric Vance and George Ray were born. In April, 1948, the family moved to the Rushing farm west of Friona. Their three younger children, Janet Lynn, Jane Carol, and William Thomas (Billy), were born here.

The Rushings operated a dairy farm for ten years, later renting their land and opening Rushing Insurance Co., which Eric operated until his death December 2, 1975.

Mrs. Rushing was a member of Redeemer Lutheran Church of Friona.

Survivors include two sons, Eric V. Rushing and George Rushing,

Sister Of Ladies Dies In Carlsbad

Funeral services for Elvira Granado, 69, were conducted Tuesday morning in Carlsbad, N.M. at Fox and Lake Church of Christ, with John R. Martinez officiating. Burial was in Carlsbad Cemetery.

Mrs. Granado passed away Saturday, October 24.

She was born February 2, 1923, in Carlsbad, N.M., and grew up in Fort Davis, returning to Carlsbad in 1956. She was a member of the Church of Christ.

Survivors include four brothers, Lorenzo Granado of Hereford; Porfirio Granado, Jr. of El Paso; Tony Granado of New Braunfels and Raymond Granado of Morton; and six sisters, Faye Martinez of Carlsbad, N.M., Ida Carrasco and Marcella Madrid, both of Friona; Gloria Dutchover of Ft. Davis; Leonor Granado of Morton and Hope Dutchover of Morton.

Numerous nieces and nephews also survive.

On Your Payroll

Sen. Lloyd Bentsen, 703 Hart Bldg., Washington, D.C., 20510.
Sen. Phil Gramm, 370 Russell Bldg., Washington, D.C., 20510.
Cong. Larry Combest, 1529 Longworth Bldg., Washington, D.C., 20515.

Christian Beware:

Do Not Put the Economy Ahead of the Ten Commandments.

Did you know that Governor Bill Clinton.....

- *Supports abortion on demand? (Violates Exodus 20:13, Leviticus 20:1-5)
- *Supports the homosexual lifestyle, and wants homosexuals to have special rights? (Violates Exodus 20:14; Leviticus 20:13. See also Romans 1:26, 27)
- *Promotes giving condoms to teenagers in public schools? (Violates Exodus 20:12, Colossians 3:5. See also Romans 1:28-32)

Bill Clinton is openly promoting rebellion against God's Laws. In our desire for change, do we really want as a president and a role model for our children a man of this character who supports this type of behavior?

But what about the economy?

Yes, we are in tough economic times, but God forbid that we sell out our most sacred beliefs for the hope of financial gain. Furthermore, how can we expect God to bless our economy if we plummet down a path of immorality? (Deut. 28)

The Bible warns us to not follow another man in his sin, nor help him promote sin--lest God chasten us.

(See Deuteronomy 13, Jeremiah 23, Proverbs 4:14; 11:21; 16:5; 1 Timothy 5:22)

How then can we vote for Bill Clinton?

(Paid Political Advertisement)



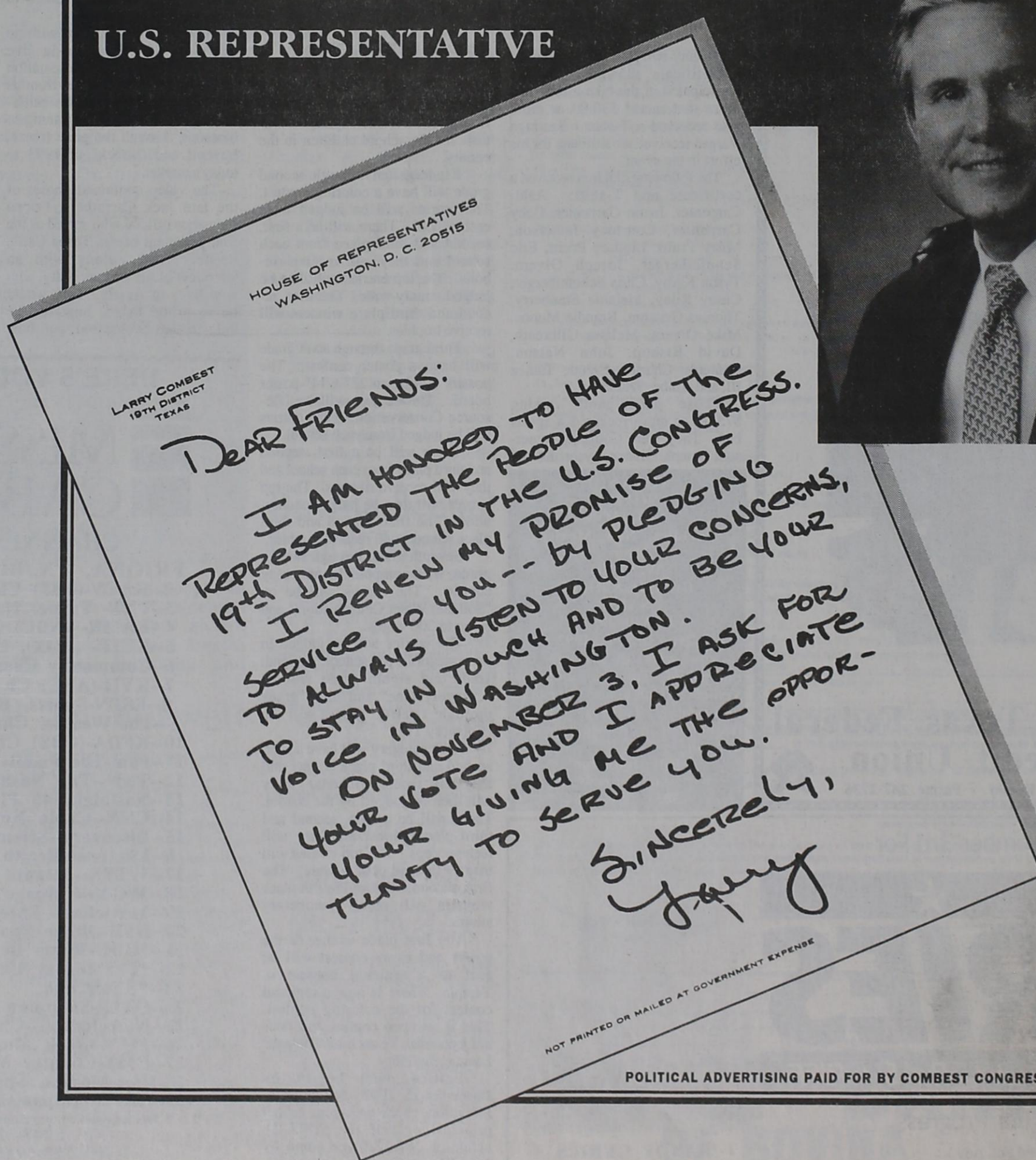
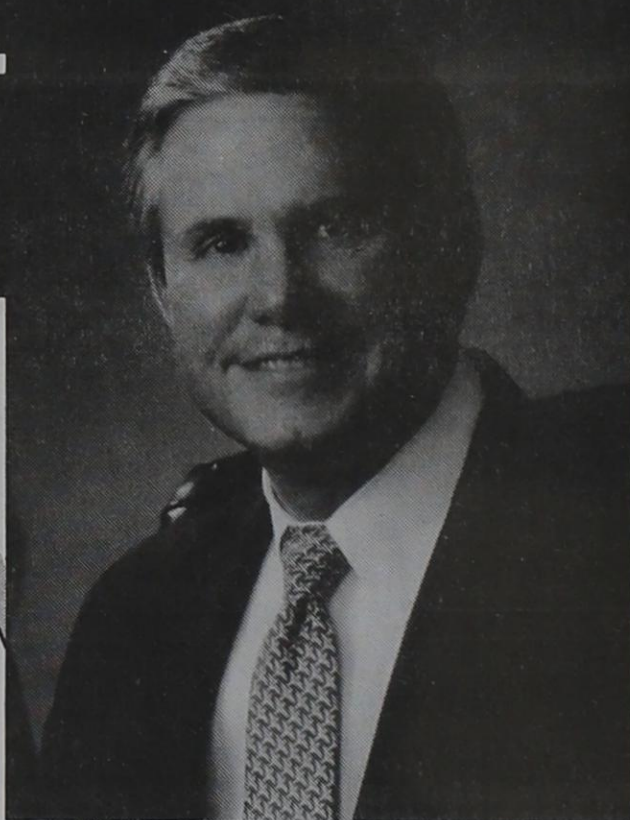
RUTH RUSHING

both of Friona; two daughters, Janet Phipps of Clovis, N.M. and Jane Rushing to Kalona, Iowa; one brother, Melvin Sachs of Farwell and one sister, Irene Gober of Farwell.

Nine grandchildren also survive. She was preceded in death by a son, William Thomas Rushing November 18, 1969.

COMBEST

U.S. REPRESENTATIVE



NOT PRINTED OR MAILED AT GOVERNMENT EXPENSE

POLITICAL ADVERTISING PAID FOR BY COMBEST CONGRESSIONAL COMMITTEE

Pumpkin Pie Recipes



BY CARLA MCKEOWN
As the green leaves of summer change into autumn's golden hues, the vegetables we've eaten for the past several months are replaced with different garden bounty. Fall and winter are my favorite seasons. I love the briskness in the air and the festiveness of the holidays.

Just as the watermelon with its bright green rind and juicy red flesh personifies summer, the pumpkin's thick orange skin and hearty meat exemplifies fall. Although pumpkin can be used to flavor everything from soup to bread to sandwiches, pumpkin pie is one of the traditional symbols of fall.

Fresh pumpkin can be cooked several ways and used in place of canned pumpkin in all recipes.

flat in the freezer.
Keep these tips in mind when baking the following pumpkin pies. (Note: a basic pastry shell recipe follows the pie recipes.)

* To make one teaspoon of pumpkin pie spice, mix 1/2 teaspoon ground cinnamon, 1/4 teaspoon nutmeg and 1/4 teaspoon ground ginger. Cinnamon and nutmeg also can be combined and used in place of pumpkin pie spice.

* Avoid a soggy pie crust by coating the pie plate with melted margarine or beaten egg white before placing the crust in the dish.

* Ensure a crispy crust by placing the unbaked pastry shell in a pre-heated 425 degree oven for six minutes. Then spoon in the filling and bake according to directions.

center of the pumpkin mixture. Bake at 400 degrees for 35 to 40 minutes or until a knife inserted off-center comes out clean. Chill. Makes 8 to 10 servings.

OLD-FASHIONED PUMPKIN PIE
3 cups pumpkin puree
1 1/2 cups sugar
4 eggs, well beaten
3 tablespoons cornstarch
1 teaspoon ground ginger
1/2 teaspoon salt
1 teaspoon vanilla
1 teaspoon butter flavoring
1 teaspoon ground cinnamon
2 8-inch pastry shells

In a large bowl, combine pumpkin, sugar and cornstarch. Fold in eggs, flavorings and spices. Pour the mixture into two 8-inch unbaked pastry shells. Bake at 425 degrees for 10 minutes. Reduce heat to 350 degrees and bake for an additional 30 minutes or until the pies are set in the center.

LITE PUMPKIN-ORANGE PIE
Non-stick cooking spray
1/4 cup gingersnap cookie crumbs
1 envelope unflavored gelatin
1/2 cup cold water
1/4 cup orange juice
1 8-ounce neufchatel cheese, softened
1 cup canned pumpkin or cooked and mashed fresh pumpkin
6 packets low calorie sweetener
1 teaspoon ground ginger
1/4 teaspoon ground nutmeg
1/8 teaspoon ground cloves
2 1.4-ounce envelopes whipped topping mix
1 cup cold milk
1 teaspoon vanilla extract

Coat an 8-inch springform pan with non-stick cooking spray. Sprinkle the pan with gingersnap cookie crumbs. Soften the gelatin in the cold water, and stir over low heat until dissolved. Add orange juice. Gradually add the orange juice/gelatin mixture to the neufchatel cheese, mixing until well-blended. Add pumpkin, sweetener and spices; mix well. Prepare topping mix according to package directions, using 1 cup milk and 1 teaspoon vanilla. Fold the whipped topping into the pumpkin mixture. Pour over cookie crumbs. Chill until firm.

Makes 8 servings.
SUGAR-FREE PUMPKIN PIE
1 9-inch pastry shell
2 cups canned pumpkin or cooked and mashed fresh pumpkin
1/2 teaspoon salt
1/2 teaspoon ground ginger
1/4 teaspoon nutmeg
3/4 cup honey
1 1/4 teaspoon ground cinnamon
1/4 teaspoon ground cloves
3 eggs, slightly beaten
12-ounce can evaporated milk

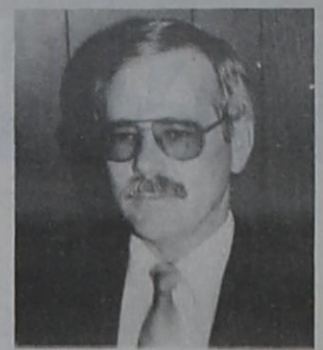
In large bowl, combine pumpkin, honey, salt and spices; mix well. Add eggs; blend well. Gradually add evaporated milk, beating on low speed of mixer until well blended. Pour the mixture into the pastry shell. Bake at 425 degrees for 15 minutes. Reduce oven temperature to 350 degrees and continue baking for 45 to 55 minutes or until a knife inserted near the center of the pie comes out clean. Makes 8 servings.

BASIC PASTRY SHELL
1 cup flour
1/3 cup vegetable shortening
1/2 teaspoon salt
2 tablespoons cold water

Sift flour and salt into a bowl. Cut in the shortening. Add the water, a little at a time. Mix the dough with a fork until the dough can be gathered into a ball. Roll out the dough on a lightly floured board or between two sheets of wax paper. Makes 1 9-inch pastry shell.

Send your favorite recipes or recipe requests to: Carla McKeown, P.O. Box 3942, Lubbock, Texas 79452.

ELECT WRITE-IN CANDIDATE



Parmer County Tax Assessor-Collector

JERRY STOVER

JERRY STOVER

Taking the time to write my name in will make a big difference, and will be appreciated!

(Paid Pol. Adv.)



Jewelry and WATCH REPAIR

- Ring Sizing 2 Day Service
- Remounting & Diamond Setting
- Full Line Watch Batteries
- Neck Chains Repaired
- Jewelry Appraised for Insurance
- Faster Service
- Diamond Re-Tipping
- Prongs Repaired

Paying Best Prices for Old Pocket Watches and Wristwatches

Holmberg Jewellery
312 Main 762-9376

To cook fresh pumpkin, cut the pumpkin lengthwise into sections and remove the seeds and fibrous strings. Wash the sections, cut them into smaller pieces and peel off the skin. Place the pumpkin into a large pot and just cover with water. Add a teaspoon of salt and boil for 30 minutes or until the pumpkin is tender when pierced with a fork. Drain and mash the pumpkin.

Small, unpeeled pumpkin pieces also can be baked on a large cookie sheet, shell side up at 425 degrees for about an hour. When the meat is tender, scrape it from the shell and mash. Sliced peeled pumpkin also can be cooked in a microwave oven for 7 to 10 minutes or until tender.

Pumpkin pies can be baked in advance and frozen. To freeze pumpkin pies, wrap the entire pie in foil and place it in a plastic freezer bag; squeeze the bag to remove any excess air, and place

CHEESE TOPPED PUMPKIN PIE
10-inch unbaked pastry shell
1 1/2 cups canned or cooked and mashed fresh pumpkin
1 teaspoon vanilla
1 teaspoon pumpkin pie spice
1 cup sugar
1/2 teaspoon salt
1/2 teaspoon ground ginger
2 eggs, slightly beaten
1 1/4 cups evaporated milk
8-ounce package cream cheese, softened
1/4 cup sugar
1 teaspoon vanilla
Dash of salt
2 eggs

Combine pumpkin, 1 teaspoon vanilla, spice, 1 cup sugar, 1/2 teaspoon salt and ginger. Add 2 beaten eggs and evaporated milk; mix thoroughly. Pour the mixture into the unbaked pastry shell. With an electric mixer, cream cheese, 1/4 cup sugar, 1 teaspoon vanilla and dash of salt. Beat in eggs, one at a time. Pour the mixture over the

NOTE
REX WILLIAMS
(Re-Election)
For Parmer County Sheriff Democrat
I Would Appreciate Your Vote, Support and Influence
On November 3
(Paid Pol. Adv.)

FIXED RATE LOAN PLAN

Long-term Rural Real Estate

Fixed Rate for First 10 Years

8.20%*

*Annual percentage rates are 8.42% to 8.58% depending on length of contract; after 10-year fixed rate period. Variable rates are subject to change.

LIMITED FUNDS AVAILABLE AT THESE RATES

- NEW PURCHASES ONLY
- LONG-TERM LOANS FULLY AMORTIZED
- ASSUMABLE
- RATE CONVERSIONS AVAILABLE AT END OF FIXED RATE PERIOD
- OTHER LOAN PLANS AVAILABLE

FEDERAL LAND BANK ASSOCIATIONS IN TEXAS
Offices Located Throughout the State

Federal LAND BANK Association

EQUAL HOUSING LENDER (TXFR9/2/92)

ALL TYPES PEPSI-COLA
12 PACK 12 OZ. CANS
\$3.29

ALL FLAVORS DORITOS® CHIPS
6 OZ. BAG
99¢

ALL FLAVORS HOT POCKETS
4 OZ. PKG.
89¢

SUNNY CREME COOKIES
32 OZ. PKG.
\$1.59

SHURFINE CHARCOAL BRIQUETS
10 OZ. BAG
\$1.59

SWANSON WHITE CHUNK CHICKEN
5 OZ. CAN
99¢

ALLSUP'S SANDWICH BREAD
1 1/2 LB. LOAF 69¢ EACH OR
2 FOR \$1

COMBO OF THE MONTH
2 SAUSAGE, EGG & BISCUIT AND A 22 OZ. CUP OF COKE
FOR ONLY
\$1.59

BREAKFAST BURRITOS
EACH
89¢

JUST FOR US WILSON HAM
2 LB. PORTION
\$5.99

ALLSUP'S

PRICES EFFECTIVE NOV. 1-7, 1992 STORE LOCATION

HOT FOODS MENU		AVAILABLE AT ALL ALLSUP'S LOCATIONS	
COOKED FRESH 3/4 PORK A DAY	BARBECUE BEEF SANDWICH	9 PIECE BOX CHICKEN	\$5.99
BARBECUE PORK RIBS (LB.)	\$3.99	BEEF & CHEESE CHIMICHANGA	\$1.19
BARBECUE WHOLE CHICKEN	\$3.99	HEAD UP PORK DOG	69¢
ALL SUP'S BURRITO	79¢	DELICIOUS HAMBURGER	69¢
BREAKFAST BURRITO	99¢	WILSON HAM	99¢
BURRITO BEEF & SALSA	\$1.19	SAUSAGE ON A STICK	\$1.39
DELICIOUS CHEESEBURGER	89¢	SAUSAGE & BISCUIT	79¢
CHICKEN FRIED STEAK	\$1.59	SAUSAGE, EGG & BISCUIT	\$1.09
3 COUNT CHICKEN STRIPS	\$1.49	SAUTEYA SAUSAGE	99¢
W/POTATO WEDGES/CHICKEN (2 PC.)	\$1.99	4 COUNT STEAK FINGERS	\$1.00

TEXACO ANTI-FREEZE GAL. **\$3.99**

SHURFINE PAPER TOWELS **69¢**

SHURFINE 20 LB. BAG DOG FOOD **\$3.99**

MAMA ANGELINA'S PEPPERONI OR COMBO PIZZA 3 PACK **\$4.99**

FITTI DIAPERS MED. OR LARGE **\$6.49**

CALL IN ORDERS WELCOME CHECK OUR WEEKLY SPECIALS

FRIONA/BOVINA DEVOTIONAL PAGE

Facts About The **BIBLE** BY JOHN LEHTI

THE JUDGES OF ISRAEL

BEFORE THE ADVENT OF KINGS THE LEADERS AMONG THE ISRAELITES WERE JUDGES. THESE WERE THE HEROES WHO GUIDED AND GUARDED THE PEOPLE FROM THEIR MANY ENEMIES. THERE WAS OTHNIEL OF JUDAH, DELIVERER OF ISRAEL FROM THE MESOPOTAMIANS, AND EHUD, WHO EXPELLED THE MOABITES AND AMMONITES, AND BARAK, WHO LED NAPHTALI AND ZEBULUN TO VICTORY AGAINST THE CANAANITES. ALL TOLD THERE WERE TWELVE OF THEM. THE PERIOD OF THE JUDGES HAS BEEN CALLED ISRAEL'S IRON AGE. IT WAS, TO SAY THE LEAST, A CRUEL AND BLOODY ERA. IN FACT, IT CAN BE SURMISED THAT A STATE OF ANARCHY EXISTED WHEN ONE REALIZES THAT MOST OF THE TALES OF THESE JUDGES WERE PREFACED BY THE STATEMENT, "IN THOSE DAYS THERE WAS NO KING IN ISRAEL, BUT EVERY MAN DID WHAT WAS RIGHT IN HIS OWN EYES." ALSO, THESE JUDGES DID NOT FORM AN UNBROKEN SUCCESSION OF RULERS, BUT APPEARED SPORADICALLY. THEY WERE OFTEN LOCAL HEROES WHOSE COURAGEOUS DEEDS SPREAD BY WORD OF MOUTH ONLY IN THEIR LOCAL DISTRICTS. FOR INSTANCE, SHAMGAR, DESTROYER OF SIX HUNDRED PHILISTINES, WAS NOT KNOWN THROUGHOUT ALL THE TRIBES ALTHOUGH HE HAS BEEN RATED A SAVIOR OF ALL ISRAEL.



122 SAVE THIS FOR YOUR SUNDAY SCHOOL SCRAPBOOK

Bill McCoy (806) 247-2272
Executive Home
Vice President 265-9621
Mobile



Toll Free (800) 633-1318
HCR 2, Box 30
(806) 295-3100 Friona, Texas 79035

FRIONA TRANSPORT, INC.
FEED AND GRAIN HAULING
HOPPERS-FLAT BEDS-PADDLE TANKERS
P.O. Box 757 Friona, Texas 79035
(806) 247-2724 Watts 1-800-242-2724

First Bank-Bovina
MEMBER, FDIC
101 North Third Ph. 238-1442

CUSTOM CATTLE FEEDERS
Bf
BOVINA FEEDERS INCORPORATED
Rt. 1, Farwell, Texas--Ph. 806-825-2103

Dudley's Auto Parts
300 Highway 60
Phone 238-1219
Bovina, Texas 79009

FRIONA FARMERS CO-OP GIN
Jerry Butman, Mgr.
Phone 265-3398

A DIVISION OF **MTX cattle co.**
806-364-8871
FARWELL FEED YARD
BOX 215 FARWELL TX 79325
Charlie James PH 806-481-3324

HI-PRO
FEED AND ANIMAL HEALTH SUPPLIES
East Highway 60
Box 519
Phone 247-2791
Friona, Texas 79035

Agri-Sprayers, Inc.
FOR QUALITY FERTILIZER
East Highway 86
Phone 238-1475 Bovina, Texas 79009

Friona State Bank
"Where People Come First"
MEMBER, FDIC
1105 Cleveland Phone 247-2706
Friona, Texas 79035

Charles Oil & Gas, Inc.
Phone 238-1284 Bovina, Texas
SUPERCLEAN
UNLEADED GASOLINES
The Clean-Up and Keep Clean Gasolines

Cattle Town, Inc. Office: (806) 357-2231
Mobile: (806) 357-9132
Summerfield
P.O. Drawer 1938 Hereford, Texas 79045

Sherley Grain Company
"Serving Texas & New Mexico Farmers The Year Round"
503 Gardner, Hwy. 60 Ph. 806-247-1521
Bovina, Texas 79009

D.L.'S **thriftway**
AFFILIATED FOODS INC. 247-3913
MEMBER STORE 247-3914
1205 Hwy. 60 West Friona, Texas

Beef'n More **HEREFORD MADE REAL BEEF DRY DOG FOOD**

Home Lumber & Supply Co.

Offering A Complete Line Of Lumber & Building Materials
We Welcome Contractors & Do-It-Yourselfers
Mon.-Fri., 7 A.M.-5 P.M.; Sat., 7 A.M.-Noon
1201 E. 1st, Clovis, N.M. (505) 763-4437

golden corral
Steaks & Buffet Restaurant
2018 Mabry Drive (505) 762-7422

CAPROCK INDUSTRIES
Steve Adams, Manager
Phone 806/225-4400
A Cargill Company
P.O. Drawer E Lot 5 Bovina, Texas 79009

Parmer County Spraying Service
Drawer GG Bovina, Texas 79009
Phone Tharp 225-4990

LEADERSHIP AT WORK
J. & H. EQUIPMENT
Hwy. 60 West Ph. 247-2741
Friona, Texas

Bovina Pump Company
1100 West Highway 86
Phone 238-1596
Bovina, Texas 79009

PACO FEED YARD
P.O. Box 956
Friona, Texas 79035
(806) 265-3433
(806) 265-3281

West Texas Rural Telephone Cooperative, Inc.
Phone 364-3331
Hereford, Texas 79045

THIS DEVOTIONAL & DIRECTORY IS MADE POSSIBLE BY THESE BUSINESSES WHO ENCOURAGE ALL OF US TO ATTEND WORSHIP SERVICES.

FRIONA CHURCHES

- | | |
|---|--|
| ASSEMBLY OF GOD | CHURCH OF CHRIST |
| FIRST ASSEMBLY OF GOD
1006 Ashland
Bill Boyd, Pastor, 247-2207 | SIXTH ST. CHURCH OF CHRIST
502 West Sixth
T. Leon Talley, Min., 247-2769 |
| TEMPLO "MARANATHA" SPANISH ASSEMBLY OF GOD
301 Grand
Rev. Daniel Hidalgo | SIXTH ST. IGLESIA de CRISTO
502 West Sixth, 247-2769 |
| BAPTIST | TENTH ST. CHURCH OF CHRIST
10th & Euclid |
| CALVARY BAPTIST
14th & Cleveland, 247-3000
Vergil T. Ichtertz, Min. | LUTHERAN |
| FIRST BAPTIST
Sixth & Summitt
Charles Broadhurst, Pastor | REDEEMER LUTHERAN
13th & Virginia
Don L. Kirklen, Min., 247-3496 |
| FIRST MEXICAN BAPTIST
904 Washington
Ruben Rivera, Min., 247-8011 | METHODIST |
| ST. ESTHER'S BAPTIST
5th & Main
I.S. Ansley, Min., 247-3148 | FRIONA UNITED METHODIST
8th & Pierce
Rev. Henry L. Salley |
| TEMPLO BAUTISTA
403 Woodland, 247-3472
Ramon Asebedo, Min. | PENTECOSTAL |
| CATHOLIC | UNITED PENTECOSTAL
5th & Ashland
Lawrence Thompson, Min., 247-3893 |
| ST. TERESA'S CATHOLIC
16th & Cleveland
Timothy Dran, Min. | OTHER |
| | IGLESIA COMPANERISMO CRISTIANO
7th & Washington
Ruben Rivera, Min., 247-8011 |
| | UNITED CHURCH OF CHRIST
Union Congregational Church
1601 Euclid--Tom Shreve, Pastor |

BOVINA CHURCHES

- | | |
|--|--|
| BAPTIST | CATHOLIC |
| FIRST BAPTIST OF BOVINA
308 Third Street, 238-1632 | ST. ANN'S CATHOLIC
401 Third Street, 238-1511 |
| MISSION BAUTISTA BELEN
238-1462 | CHURCH OF GOD |
| PLEASANT HILL BAPTIST
Pleasant Hill, New Mexico | CHURCH OF GOD OF THE FIRSTBORN |
| METHODIST | LUTHERAN |
| BOVINA METHODIST
205 Fourth, Bovina | ST. JOHN LUTHERAN
Lariat, Texas |
| PENTECOSTAL
Iglesia Getsemani,
609 Second St. | CHURCH OF CHRIST |
| OKLAHOMA LANE METHODIST
Oklahoma Lane | BOVINA CHURCH OF CHRIST
500 Avenue E, 238-1334 |

**BOVINA
CHAMBER OF
COMMERCE AND
AGRICULTURE**

1. LITTLEFIELD AT TULIA

**THE
BOVINA
BLADE**

2. FRIONA AT MULESHOE

FRIONA MOTORS
1011 Grand
Friona, TX 79035
(806) 247-2701

3. NAZARETH AT HART

**WEST TEXAS RURAL TELEPHONE
COOPERATIVE INCORPORATED**
SERVING RURAL TEXAS

4. IDALOU AT SEAGRAVES

ALL THE WAY
WITH THE
MUSTANGS!

FIRST BANK
BOVINA, TEXAS

5. TASCOSA AT PALO DURO

FOR THE BEST IN PERFORMANCE AND SERVICE



BOVINA FEEDERS INCORPORATED
PROFESSIONAL CATTLE FEEDERS

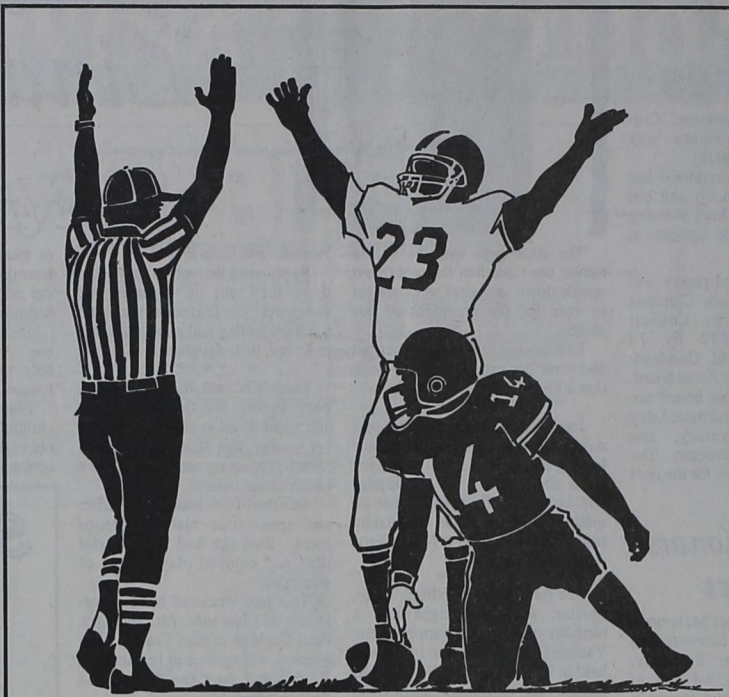
OFFICE 806-825-2103 ROUTE 1, FARWELL, TX. 79325
OKLAHOMA LANE GAIL MORRIS
GEN. MGR.

6. BOSTON COLLEGE AT NOTRE DAME

Lowe's **PAY 'n
SAVE**
"Marketplace"

800 Hwy. 86 Ph. 236-1324
Fresh Bakery Deli
Your All Purpose American Grocery Store!
Hours: 7:30 a.m. to 9:00 p.m. Monday - Saturday
Sunday: 7:30 a.m. to 7:00 p.m.

7. GEORGIA TECH AT BAYLOR



YOU CAN WIN!!

**\$10 \$7.50 \$5.00
PLUS A GRAND
PRIZE OF \$100.00!!**

1. There are 14 football games listed in ads on this page.
2. Pick the team you think will win in each game and place the WINNER'S NAME beside the corresponding number in the contest entry blank at the bottom of this page.
3. Pick the score of the tie-breaker game and place your guess in the appropriate blanks on the entry. The tie-breaker game will not count on your won-lost record. It will be used only in case of a tie.
4. Winners will be named by the Monday following the contest deadline each Friday, if possible. Cash prizes of \$10.00 for first, \$7.50 for second, and third prize of \$5.00 will be awarded.
5. Tabulation of individual entrants will be kept all season and at the end of the season the Grand Prize Winner will be named.
6. There is nothing to buy. No requirements other than to bring the entry blank, filled out, to The Blade office to 5 p.m. or postmarked by 5 p.m. Friday.
7. Only one entry blank may be submitted per individual. If more than one blank is submitted by an individual, all will be disqualified.
8. Tabulations will be available for public inspection. Members of the Blade staff will serve as judges for the contest.
9. Contestants must be 10 years old or older.
10. Everyone, except employees of this newspaper and their families, is eligible to enter.

**TURN THIS ENTRY BLANK
INTO THE BLADE OFFICE
BY 5 P.M. FRIDAY.**

**BOVINA BUSINESSES FOOTBALL CONTEST
ENTRY BLANK**

NAME

ADDRESS

- | | |
|----------|-----------|
| 1. _____ | 8. _____ |
| 2. _____ | 9. _____ |
| 3. _____ | 10. _____ |
| 4. _____ | 11. _____ |
| 5. _____ | 12. _____ |
| 6. _____ | 13. _____ |
| 7. _____ | 14. _____ |

TIE-BREAKER (PICK SCORE)

DALLAS _____ DETROIT _____

EXCEL
CORPORATION
P. O. BOX 457 • W. HWY 60

FRIONA, TEXAS 79035

Phone 295-3201

8. HOUSTON AT SMU

**A Safety
Reminder**

Please do not nail anything--posters, garage sale signs, electric fences, etc.--to Cooperative poles. Nails, tacks and staples can tear safety equipment and cause climbing hooks to slip, creating a hazard for linemen.

**Deaf Smith Electric
Cooperative, Inc.**

9. USC AT STANFORD

**NORTHSIDE
MOTORS**

*AUTO REPAIR
*IRRIGATION MOTOR SERVICE

115 GARDNER PH. 238-1555

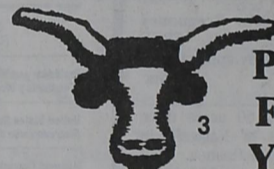
10. MINNESOTA AT TAMPA BAY

**BOVINA PUMP
COMPANY**

AMERICAN TURBINE
PUMP COMPANY

DEEP WELL TURBINE PUMPS

11. PITTSBURGH AT BUFFALO



**PACO
FEED
YARD**

P.O. Box 956
Friona, Texas 79035
(806) 265-3433
(806) 265-3281

12. SAN DIEGO AT KANSAS CITY



**CHARLES OIL AND
GAS, INC.**

24 HOUR CREDIT CARD FUEL
Fuel, Tires, Lubricants
and Anti-freeze

13. GREEN BAY AT N.Y. GIANTS

**SHERLEY
GRAIN COMPANY**
SERVING THE PARMER
COUNTY FARMERS THE
YEAR 'ROUND

PH. 238-1521

14. L.A. RAIDERS AT PHILADELPHIA