

314 W. 7TH ST. AMARILLO TX 79101

# Failed bank re-opens

Home State Bank was open for business as usual in Rochester Monday morning.

But technically, it was a new bank, with new owners, new management and even a new name.

The Home State Bank was sold Friday to a group of local investors after the State Banking Commission and the board of directors had closed the institution at 3 p.m. and turned it over to the Federal Deposit Insurance Corp.

New owners opened the bank Monday, dropping the word "The" from the name in compliance with a federal regulation which forbids the use of the same name.

Bad management and delinquent loans had brought about the downfall of the old bank. Most of the bad loans had been made to interests in southeast Texas. These loans were made while the bank was controlled by management outside the Rochester area.

It was publicly learned during the process of the closing that First State Bank of Abilene had taken possession of The Home State Bank earlier this year when it foreclosed on loans made to the Rochester bank which had used its stock as collateral.

President and chief executive officer of the new bank is Bill Parks Jr. of Jayton. Parks has been associated with a bank in Lueders most recently. Earlier, he held banking positions in Jayton and Colorado City.

Owners of the new bank are George and Sharon Mullino, Elmo Stephens Jr., Warren Short, B. O. Roberson, Bill Penman and Parks. None of them had any interest in the old bank.

No depositors lost any money in the collapse of the old bank. They automatically became depositors in the new bank. The bank had about \$8.5 million in deposits and about \$9.3 million in total assets.

The FDIC took over about \$4.8 million in loans made by the old bank and is responsible for collecting them. The better loans were retained by the new bank.

## No livestock sale this Saturday

Because of the 4th of July weekend, there will be no sale this Saturday at Haskell Livestock Auction.

Next sale will be the following Saturday, July 12.

## Mabry Brock resigns from bank position

Veteran banker Mabry J. Brock has announced that he has sold his interest in First National Bank in Haskell to other bank shareholders and has resigned as chairman and chief executive officer of the bank.

Brock was one of the bank's organizers and has served as chairman since the bank opened in January 1985.

He indicated that he will concentrate on other banking interests.

## World champions involved in wreck

# Bull riders "discover" Haskell

By Wendell Faught

It wasn't on their schedule, but some of the world's top professional cowboys made an abrupt stop in Haskell Saturday.

And while they had no complaints with the way they were treated, they would just as soon forget all about it.

Reigning world champion bull rider Ted Nuce and 1982 champion Charlie Sampson and well-known Texas bull rider Wacey Cathey were among seven persons in a van which was struck by a pickup truck on US 277 just south of town Saturday afternoon.

Also in the van were bull rider Gary Hines of Broken Arrow, Okla., bareback bronc rider Jeff Hart of Colorado and Cathey's 7-year-old

Relatives, friends honor Mabel Derr Page 2

Recording artist to play at church Page 9

Little League playoffs to begin Page 7

# THE HASKELL FREE PRESS

35¢ Plus Tax

VOL. 100--NO. 27

HASKELL, TEXAS 79521, July 3, 1986

12 PAGES--ONE SECTION- PLUS 2 INSERTS



**COOLING OFF**  
Robby Blackburn, Haskell seventh-grader, jumps into the swimming pool Monday afternoon. He's just one of a lot of youngsters who are finding the pool refreshing during these hot summer days.

## Swim classes to begin Monday

Those wishing to take swimming lessons who did not get signed up this week will have a chance to register at 9 a.m. Monday.

Swimming lessons will begin Monday and continue for two weeks, but there will not be a second session as has been the custom in the past.

Classes will be Monday through Saturday (except Friday) through July 19. Separate classes are being offered for beginners, novices, intermediates and advanced swimmers. An adult class may be offered if enough interest is shown.

Instructors are Jim Lisle, Sandy Clay and Emily Cox.

## Athletic Boosters plan meeting

A special organizational meeting of the Haskell Booster Club will be held at 8 p.m. July 10 in the high school cafeteria.

Parents, as well as all citizens of the community interested in the future growth of Haskell school athletics are urged to attend.

"We have many plans in the

works, but we need everyone's help to make them a success," said LaNell Hill. "Please come join in the fun. You will feel great when you help our kids."

Further information about the Haskell Booster Club may be obtained by calling Mrs. Hill or Coach Harold Hill at 864-3729.

## Property values reduced

All property values in Haskell County were reduced 10 percent last week by the Haskell County Appraisal District Review Board.

Board members pointed out that falling farm and oil prices prompted the action.

"We feel that due to the falling economy and lower oil prices, the values should be lowered 10 percent to stay in step with the economy," said J. B. Gibson, chairman of the board.

Affected will be all property on the tax rolls of the county, the cities, the schools, the hospital district and the water authority in Haskell County, including minerals and personal property.

Taxes for 1986 will be reflected in the new evaluations. These taxes become due Oct. 1 and are payable by Jan. 31 of next year.

Until last week's action, Haskell County had been one of only three appraisal districts in Texas which had assessed property at 100 percent of market value (the other districts being in Collin and Kenedy counties).

Members of the review board, in addition to Gibson, are F. A. Ulmer of Rule, Cole Turner of Rochester, Marvin Phemister of Weinert and Glenn Walton of Paint Creek.

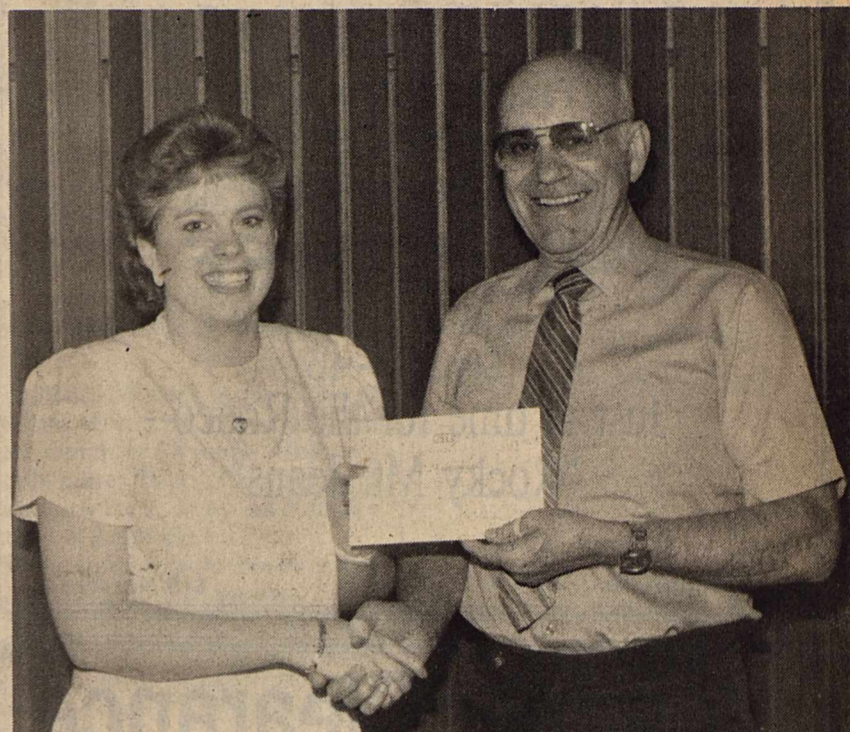
Lower evaluations do not mean that 1986 taxes will be lower. The tax rates established by the various taxing entities will determine the actual taxes assessed.

With a 10-percent reduction of the present county evaluation of approximately \$274 million, the 1986 tax rates will have to be higher to produce the same tax revenues as last year.

## June was hot and dry

June was hot and dry in Haskell. The temperature reached 99 degrees Saturday (June 28) for the top reading of the month. The month's low reading was 63 degrees on June 3, Sam Herren, local weather recorder, reported Tuesday.

Rainfall for the month came to 1.98 inches. This brought the annual moisture total to 10.85 inches, slightly less than the 11.15 normal for the first six months of the year.



**GTE SCHOLARSHIP**  
Jill Jennings receives the College Scholarship Service award, sponsored by GTE, from W.C. Wells of San Angelo, division operations manager of General Telephone Co. of the Southwest.

## Jill Jennings gets another honor

Another scholastic honor fell upon Jill Jennings last week when she was named one of the recipients of the College Scholarship Service awards given by GTE to children of company employees.

The 1986 Haskell High School graduate will receive an \$8,000 scholarship award.

She is the daughter of Mr. and Mrs. James T. Jennings. Her father is a switching technician for General Telephone Co.

This is the fourth year GTE has sponsored the program, which recognizes outstanding achievement and provides financial support for undergraduate education.

Winners were selected by the College Scholarship Service of Princeton, N.J., and were determined by overall academic record, leadership, community service, extra-curricular activities and outstanding talents and achievements.

In high school, Miss Jennings was a member of the National Honor Society, Quill and Scroll Honor Society, a twirler in the band, business manager and copy editor of the school newspaper, a member of the Future Homemakers of America, a state winner in a

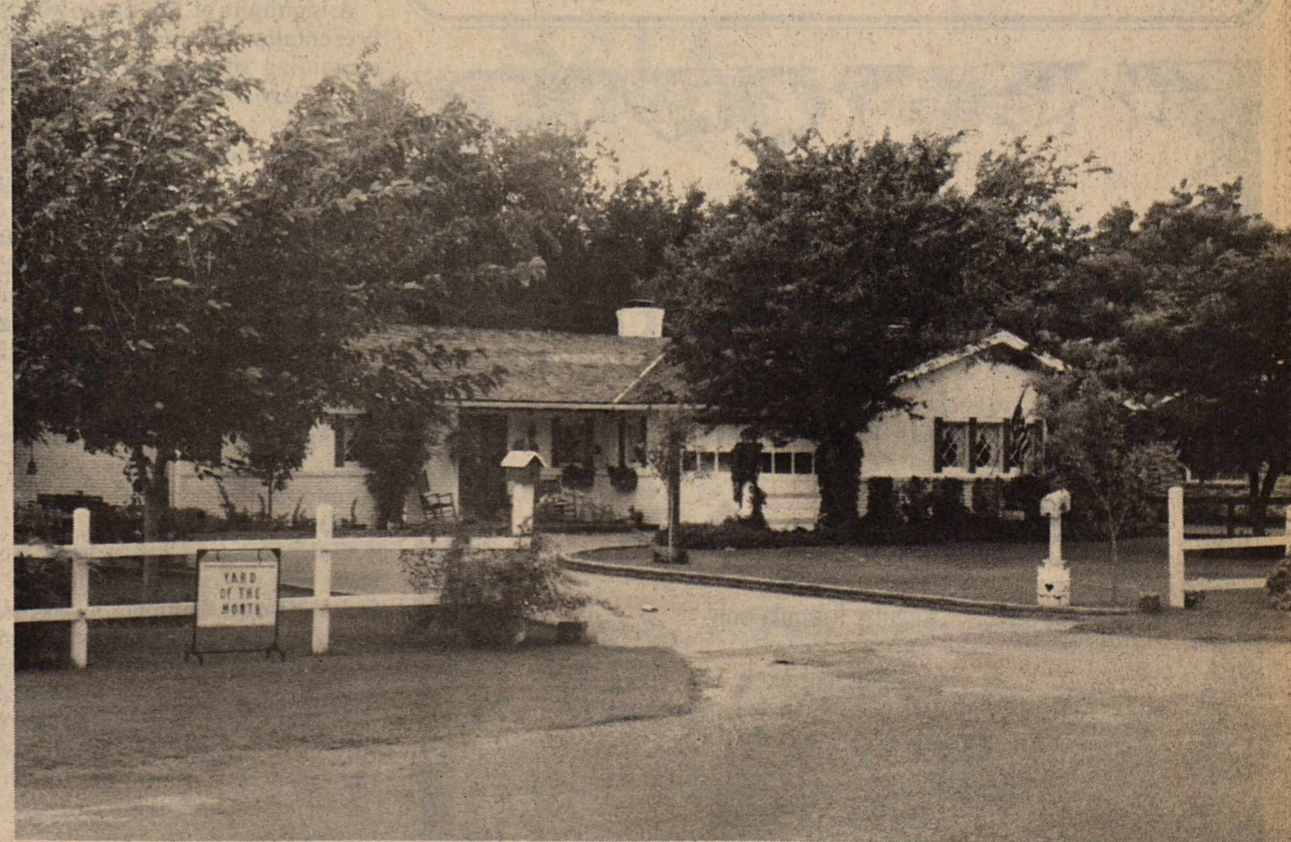
number of 4-H projects, an active member of her church youth group and was involved in numerous community activities.

She will attend Lubbock Christian College this fall.

In addition to the College Scholarship Service awards, GTE recently announced the recipients of the National Merit Scholarship awards, made to GTE employees' children who are named as finalists in the annual National Merit Scholarship competition.

GTE promotes academic excellence through these two programs by focusing attention on highly talented young people and providing financial support for undergraduate education. The GTE scholarship programs are provided by the GTE Foundation which gives financial assistance to scientific, educational and charitable institutions within the United States and its possessions on behalf of GTE and its subsidiaries.

GTE, headquartered in Stamford, Conn., develops, manufactures and markets telecommunications, lighting products and precision materials. The company has operations in 42 states, Puerto Rico and 38 foreign countries.



**YARD WINNER**  
The yard of Mr. and Mrs. Charles McCauley at 1803 N. Ave. F has been named "Yard of the Month" by the Haskell Chamber of Commerce's Community Betterment Committee. It's the second time the McCauleys have won the honor.

Continued on Page 6

## Haskell Nursing Center

We have two new residents. We would like to welcome Edith Green and Lucia Fuentes.

The Sweet Home Singers will be coming back on the 3rd of July. Our residents are looking forward to seeing them.

Monday, the First Baptist Church came out and had a birthday party. Everyone had a nice time.

Mrs. Shaw came out for manicures. She had 18 ladies come down. She also had a special treat for us. She had her granddaughters

with her. They were a real delight for us.

Wednesday, Rev. Hodge came out for an afternoon devotion and one-to-one visits. Thank you so much.

We would like to extend our deepest sympathy to the family of Bessie Poland. She was loved by all of us, and she will be missed.

We now stock ink rollers for newer adding machines & calculators. *Haskell Free Press.*

## The Clothes Closet Summer Clearance Sale

Fashionable Clothes at  
Affordable prices  
Some items as much as

### 40% off

our already LOW prices  
Sizes 6-46

Just in time for the Rodeo--  
"Rocky Mt. Jeans"

No of Pogue Gro.

115 No. Ave E

## Summer Clearance

### 1/3 OFF

regular price

all remaining shoes  
**\$10.00**

Sale Starts Sat. July 5th  
9:00 A.M.

No layaways, charges

### Kids Duds

Open all day July 4th  
for our  
**12th Anniversary  
Sale**

### 20 to 50% off

Kids clothes--includes Healthtex  
& Wrangler  
Ladies sportswear--Includes Koret and  
Donovan Galvani  
Vanity Fair lingerie  
Softsports sandals  
Jr. Clothes and dresses--includes  
That's Me and Op  
Wedding Dresses and  
Bridesmaids Dresses  
Register for free door prizes  
to be given away July 4th

### Lady Bug Shoppe

Mini Mall

Knox City

## Robbie's Beauty Salon

July special

### Perms \$20

Regular formula only

Long hair extra

**Betty & Toni**

864-2566

Tuesday - Friday



### HHS CHEERLEADERS

Attending the five-day Big Country Cheerleader Camp at Hardin-Simmons University June 23-27 were these representatives from Haskell High School. They are Lorie Alvarez, Vicky Chavez, Tammi Miller, Joy McKeever, Sheree Dumas and Mindy Smith. The instructional staff and program were supplied by the National Cheerleaders Association. About 250 participated in the camp.

## Relatives friends honor Mrs. Derr

More than 175 relatives and friends, including many former students and colleagues, attended the recent 80th-birthday celebration for Mabel Derr of Weinert.

The party, held at the Haskell Civic Center, began with a noon meal prepared by Mrs. Derr's relatives.

To commemorate Mrs. Derr's 40 years as a teacher, Joe and Caron Guess Yates of Weinert made decorations of oversized pencils and of apples with artificial worms.

Following the meal, several nieces and nephews presented a program of music and skits based on events from Mrs. Derr's "younger days." One skit, narrated by Mike Guess of Haskell, was based on an episode in which Mrs. Derr as a youngster killed a wasp by ramming her foot through the window on which the wasp was crawling.

Mrs. Derr as a girl was portrayed by her niece, Evelyn Mayfield Ricketts of Dallas. Another niece, Cristy Guess Herricks of Weinert, portrayed Mrs. Derr's mother, the late Mrs. R. B. Guess.

A second skit, narrated by Erlinda Mayfield of Weinert, depicted the time Mrs. Derr's daughter, Ann Therwanger of Munday, locked her mother in the brooder-hen house. Mrs. Ricketts again played Mrs. Derr. Little Ann was played by another of the honoree's nieces, Kim Guess Setser of Forney.

A choir of 20 nieces and nephews performed several of the songs which Mrs. Derr had taught her students for school programs through the years, including "Ten Little Indians," "Grinding Corn," "Skip to My Lou," "Hokey Pokey," "Up on the Housetop" and "Texas, Our Texas." Jennifer Guess Burgess of Haskell accompanied the choir on the piano.

A highlight of the party was the presentation of a book of memories, containing numerous letters from Mrs. Derr's former students who wrote to tell of incidents they remembered from their school years with Mrs. Derr and to thank her for positively contributing to their lives. The letters represented the span of Mrs. Derr's teaching career, all the way from her early years (Margaret Toliver Simmons, a student of Mrs. Derr, then "Miss Mabel Guess," in 1926-27 at Pleasant Valley) to her retirement (Johnny Yeary, formerly of Haskell, who was in Mrs. Derr's second-grade class at Weinert in 1968).

Congratulatory letters came from state and national headquarters of Delta Kappa Gamma Society (an organization of women educators of which Mrs. Derr has been a long-time member) and from the customer relations office of the Imperial Pure Cane Sugar Co., thanking the honoree for her continued use of their product in her cooking.

The book was made by Mrs. Derr's sister-in-law, Mary Sue Guess of Haskell.

At the end of the program, Mrs. Derr was given a gigantic banana nut birthday cake, measuring 2 1/2

by 4 1/2 feet. It was made from Mrs. Derr's own famous recipe and was baked by two sisters-in-law, Sarah Guess of Weinert and Leora Guess of Haskell, and four nieces--Couilla Mayfield Cunningham of Ransom Canyon, Erlinda Mayfield and Cindy Guess of Weinert and Mrs. Burgess.

Additional refreshments for the reception were prepared by Brenda Sanders, Wanda Vojkufka and Debbie Crump of Weinert and Dwanna Klose of Haskell.

Mrs. Derr's celebration was made complete by the many friends from throughout the area who came to wish her a "Happy Birthday." Special out-of-town guests included former pastors, the Rev. and Mrs. Steve Peace of Rotan and the Rev. and Mrs. Temple Lewis of Tye, and Mrs. Derr's college roommate from West Texas State, Estha Coffee of Loraine.

## Gardening techniques outlined

The last thing on anyone's mind in the middle of a Texas summer is tilling the soil for a fall garden. But to have a productive and bountiful harvest in the fall, planning, and even some planting, must begin in the summer.

The July/August issue of "Texas Gardener" outlines the gardening techniques necessary to be successful during the second season.

The article lists several fall vegetables from the All-Texas selections guide, also included in this issue. Careful explanation on how to plant, fertilize and control insect and disease problems are discussed.

Also featured in this issue are native plants that can be grown successfully in containers for the yard and patio.

## BIRTHS

Mr. and Mrs. Eustacio Perez Ramirez of Munday announce the birth of their daughter, Erica Renea Ramirez, born June 25, 1986 at Haskell Memorial Hospital weighing 7 lbs. 14 1/2 oz.

Mr. and Mrs. Ray Dewayne Gomez of Stamford announce the birth of their daughter, Sidney Sharee Gomez, born June 25, 1986 weighing 6 lbs. 14 oz.

Mr. and Mrs. Sebastian A. Benavides of Aspermont, announce the birth of their son, Adam Benavides, born June 29, 1986 weighing 8 lb. 14 oz.

\*\*\*

Mr. and Mrs. Danny Hartsfield of Dallas announce the arrival of their son, Ryan Scott, on June 20, 1986, at 6:12 p.m.

Young Ryan was 21 1/4 inches long and weighed 8 pounds, 5 ounces. He was born at the Margo Perot Women's and Children's Hospital in Dallas.

He was welcomed home by his 2-year-old sister, Haley. His proud grandparents are Hess and Dorothy Hartsfield of Haskell and Dr. Duwayne and Dr. Pat Carr of Elgin, Ark.

You are reading The Haskell Free Press and we thank you.

# July Clearance Sale

All Spring and Summer Merchandise

Exciting Bargains for vacation  
and Summer Fun

### 1/3 Off

Famous Brand Sportswear  
Poly & Cotton Blend  
Size 6 to 18

Missy Separates  
A great selection 4 to 14

Dresses: Casual, Special Occasion  
Skirts, Blouses, Sweaters & Culottes

Sweater Bar  
\$8.00 to \$20.00 regular to \$45.00

### 50% to 60% off

Sportswear Separates  
Sizes 8 to 16

Regular Sportswear  
Sizes 10 to 20

Cotton Sweater & Poly pants  
Great Selection of Odd & Ends

Come browse our beautiful bargains  
for Vacation and Summer Fun

THE Personality SHOPPE

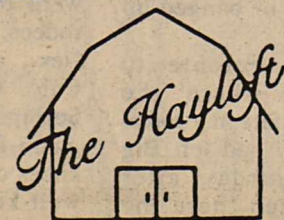
# JULY SALE

### 1/3 OFF

SWEATERS  
SKIRTS

BLOUSES  
PANTS

DRESSES  
LINGERIE



HASKELL, TEXAS

MASTER CARD & VISA  
WELCOME

# OSBORNES

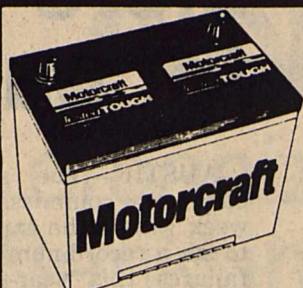
241 W. Main-Munday

301 S. Wetherbee—Stamford

## AUTOMOTIVE VALUES!



**AmaLie  
OUTBOARD  
MOTOR OIL**  
**\$1.09**  
Qt.



**Motorcraft  
50 Month  
BATTERY**  
**\$39.95**  
Ex.  
INSTALLED FREE!



**Pennzoil  
10W30  
MOTOR OIL**  
**99¢**  
Qt.



**Harvest King  
Lith-Flex  
TUBE GREASE**  
**59¢**  
Tube



**WD-40**  
9 oz. Aerosol  
No. 26-89  
**\$1.29**



**Power Brite  
Wire and Mag  
WHEEL CLEANER**  
18 oz. No. 26-476  
**\$2.69**

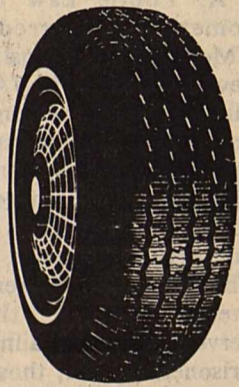
### Compare U.S. Department of Transportation Uniform Tire Quality Gradings

TIRE	TREADWEAR	TRACTION	TEMPERATURE
Michelin XH	330	A	B
Michelin XA4	310	A	B
Sears Roadhandler	310	A	B
Goodyear Vector	280	A	B
BF Goodrich XLM H/T	280	A	C
UniRoyal Tiger Paw Plus	280	B	C

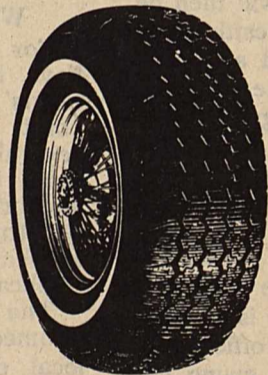
### Why Should You Buy Michelin

- FACT:** The three highest quality passenger car radials in America are made by Michelin.
- FACT:** All three tires are designed for 60,000 miles of safe, smooth, and fuel efficient service.
- FACT:** On comparable sizes, you can buy the Michelin XH or XA4 at Osbornes for less than any of the other tire styles listed above.

Given the facts, shouldn't you have the best?



**MICHELIN XH  
FOR AMERICAN CARS**  
• Advanced computer tread design.  
• Exceptional wet surface traction.  
• High mileage  
• Plush, quiet ride.



**MICHELIN XA4  
ALL-SEASON RADIAL**  
• Clings to wet roads.  
• Plows through snow.  
• Precise, accurate handling.  
• Up to 60,000 miles of tread life (with proper care).

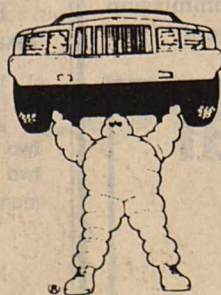
P185/80R13	\$65.00
P185/75R14	\$70.00
P195/75R14	\$73.00
P205/75R14	\$80.00
P215/75R14	\$83.00
P205/75R15	\$81.00
P215/75R15	\$84.00
P225/75R15	\$88.00
P235/75R15	\$93.00

P155/80R13	\$53.00
P165/80R13	\$58.00
P175/80R13	\$68.00
P185/75R14	\$80.00
P195/75R14	\$83.00
P205/75R15	\$91.00
P215/75R15	\$94.00
P225/75R15	\$98.00
P235/75R15	\$103.00

PRICES INCLUDE FREE MOUNTING, SPIN BALANCING, AND VALVE STEM

**MICHELIN**

BECAUSE SO MUCH  
IS RIDING ON YOUR TIRES.



"WE REDUCE PRICES... NEVER QUALITY!"

STORE HOURS: MON.-FRI. 8:00-6:00, SAT. 8:00-5:00 552-7631



Kimberly Skiles

## Miss Skiles winner in twirling

Kimberly Skiles won first place at the Texas state competition in twirling in San Antonio June 13-15. The young Haskell girl took first-place honors in her twirling solo and in Best Appearing (modeling). She also placed second in Fancy Strut and Basic March. She competed in the intermediate (0-6) age division. Kimberly said she would like to thank her twirling teacher, Roz Love of Love Baton Twirling Academy, for all the love and support she has given her. Kimberly is the daughter of Donny and Debi Skiles of Haskell.

### Hospital Notes

**ADMISSION**  
MEDICAL: Karen Abercrombie, Big Spring; Frances Blake, Haskell; Marvin Letz, Haskell; Mercedes Ramariz, Munday.

**DISMISSALS**  
Elva Kuentler, Bernadette Moore, Walter Bell, Kathleen Felker, Sam Smith, Durwood White, Capella Tsoodle, W.C. Jeter, W.M. Reid, Mary McWhorter.

## McCauleys have 'yard of month'

Winners of the "Yard of the Month" award are Mr. and Mrs. Charles McCauley, 1803 N. Ave. F. The announcement was made Monday by Grace Womack, Community Betterment chairman of the Haskell Chamber of Commerce.

Mrs. Womack also announced that Jennifer Burgess is now the coordinator for the judges, succeeding Marijane Cunningham. "We commend and thank Marijane for her outstanding service," Mrs. Womack added. "She and the judges drove several miles and gave much thought before making their decisions each month."

The McCauleys' white brick home faces east and is located in the Shook addition. Nedra and Charles do most of their own yard work because they have always liked doing it. They have lived at

this location for the past 15 years. The front and side of their house is covered in vines, and English ivy grows on the white frame fence in the front and the stockade fence in the back.

Three pecan trees are in the back yard. A weeping willow, a liveoak and a mulberry are in the front. Holly, geraniums and marigolds complete their decor.

This is the second time they have been recognized for their efforts, having won the "Yard of the Month" award several years ago.

The Chamber of Commerce invites residents to drive by the winners' home to see why they deserve this special honor.

### Around Town

Visitors last week in the home of Mr. and Mrs. J. W. Hawkins were their daughter, Yvonne Huffines and daughter Tricia of Dimmitt and grandchildren, Trey and Blake Magby of Lubbock.

They visited from Wednesday night until Friday afternoon.

Friday visitors also included Mr. and Mrs. James Hawkins and Lana, granddaughter, Deana Reams, and great-grandson, Jason Reams, all of Wichita Falls.

Durable, Dependable, Smooth writing Write Bros. Stick Ball Pens. **Haskell Free Press**

8% to maturity  
Earn this  
rate of return and  
pay no federal taxes.

Tax-free Municipal Bonds offer a solid rate of return on which you will pay no federal income taxes. None. For all the details, call me today.

DON BOOK  
118 S. Swenson  
Stamford, Texas 79553  
915-773-2709

Edward D. Jones & Co.

One Hour Photo Service offered on Film Developing & Prints  
Latest Equipment - Competitive Prices

**\$1.00 off**  
On Processing, per roll with Coupon  
Specials Good Thru July 9

Kodak and Fuji Film For Sale  
Phone 864-2951

**Johnson's Kis Photo**

OWNED & OPERATED BY LORAIN & BOBBIE JOHNSON  
West Side of Square - Haskell



HEADS OR TAILS

WESTERN WEAR

6th Anniversary  
SALE

All Roper Boots **\$79.95**  
Group Close Out Boots **\$69.95**  
All Other Boots **20% OFF**  
All Straw Hats **20% OFF**  
All Short Sleeve Shirts **20% OFF**  
All Saddles **20% OFF**

Some ropers, some straw hats, and all saddles will be at the  
Texas Cowboy Reunion July 2, 3, 4, 5.

Visit us at our booths at the  
Texas Cowboy Reunion

707 S. Ave E  
Haskell, Texas 79521

# Commentary



BY WENDELL FAUGHT

Texas native Larry King is a self-proclaimed chili connoisseur and chef.

In the current issue of Philip Morris Magazine, the author of "The Best Little Whore House in Texas" muses on the art of cooking chili, throws darts at renowned chili abusers and, for the sake of all mankind (and two thousand dollars) reveals his sacred "Better 'N Sex Chili" recipe to the hungry masses.

Here are some selected quips from his entertaining article:

**On weak chili:** "Mild chili is as useless as fat sprinters. You want mild, try cornflakes."

**The best hot stuff:** "The quality of a bowl of chili is best judged by how much it makes your head sweat. The ratio roughly should be one pint of sweat per serving."

**Chili aid:** "Chili has more uses than Band Aids or putty."

(2) If they can't stand the heat: "Sissies who complain of fiery chili deadening their tastebuds fail to understand that, to the contrary, it awakens tastebuds they otherwise might never know they had."

**No beans about it:** "Any alleged cook substituting kidney, lima or any other bean known to the mind of man should automatically qualify for the death penalty."

**"Not like mama's":** "A good chili cook who seeks culinary thrills in commercial restaurants makes about as much sense as Rembrandt joining a paint-by-numbers class."

**How good is it:** "King's chili recipe serves eight, unless King is one of them. Then it serves only two."

**On aged chili:** "Like certain authors, the older it gets, the better it becomes."

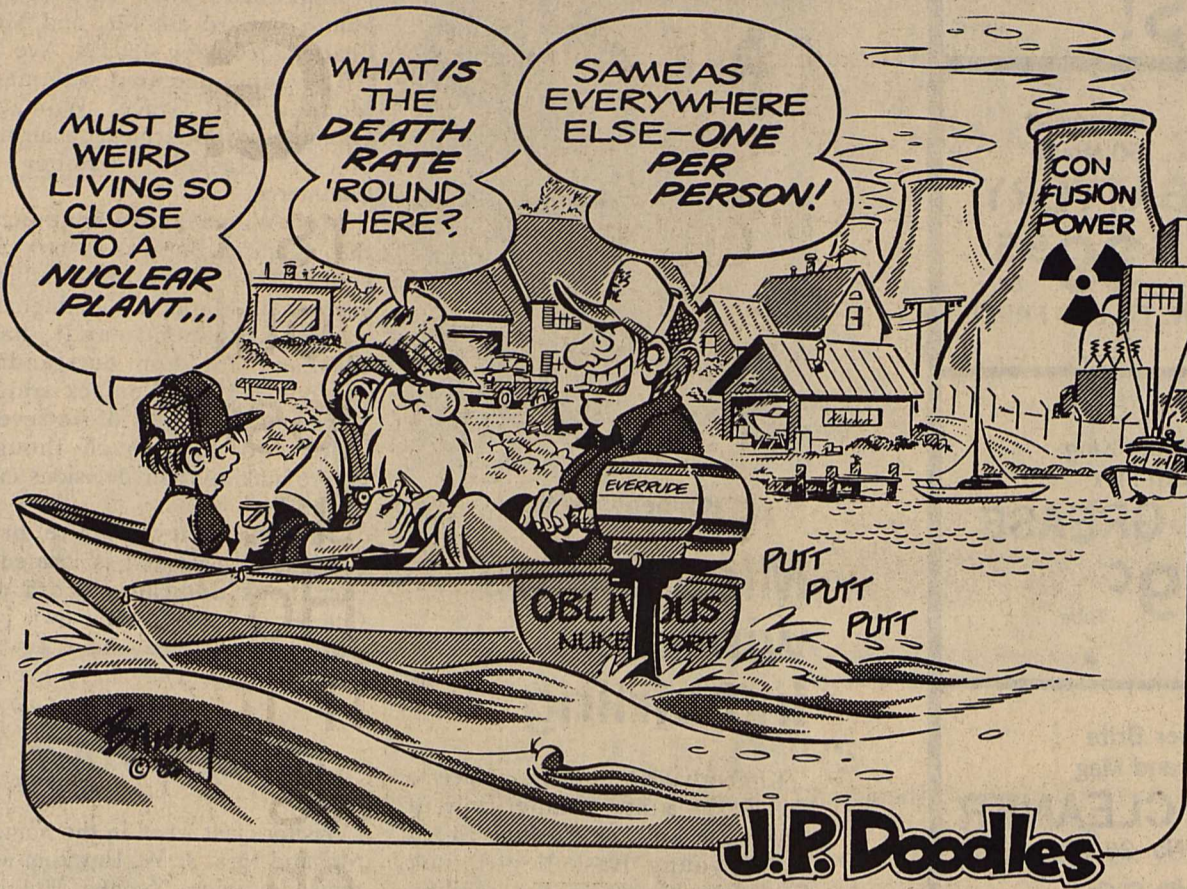
\*\*\*  
Charlie Daniels, reflecting on childhood Saturdays:

"Nobody appreciated Saturday like a country boy. It was a magical day, filled with popcorn and chocolate ice cream sodas and Roy Rogers and Gene Autry and Bob Steele. On Saturday night it was off for home to a standard supper of hot dogs, Pepsi Colas and the Grand Ole Opry."

And on farming:  
"It was a sunup til sundown proposition when you raised bright leaf tobacco for a living. I guess you could say that raising tobacco was 99 percent hard work and 99 percent hope and if that adds up to 198 percent, so be it. That's how it was."

\*\*\*  
It may not be the best of times, but the economy is not nearly as bad as the media would have you believe.

Outsiders can be forgiven if they think the only people left in Texas are those standing in line to rent the first available U-Haul.



## From Out of the Past

30 Years Ago  
July 5, 1956

The City Council has authorized a preliminary survey of a possible site for a municipal lake on the Coody Ranch east of Haskell which could be developed as a source of

## Letters

Editor: We at Western Texas College want you to know how much we appreciate your article concerning the Haskell Extension of WTC that appeared in the June 26 issue. The support we have received from you, the Haskell ISD administration and board, and others in Haskell has always been excellent. Such support is much of the reason for the success of the center.

From the beginning of the center and continuing through the current summer session, we have found the students at our Haskell center to be serious, capable students who make teaching a pleasure. Our instructors are always quite complimentary of the students and enjoy working with these men and women.

Undoubtedly, our success in Haskell is a result of the work of Bill Blakley. Without question, Bill is an outstanding coordinator who works well with both students and WTC instructors and administrators. His support and commitment to helping students are essential to our program.

From your article and my comments, it is obvious that we are all very pleased with the relationship that exists between Haskell and Western Texas College. We want to continue the most pleasant relationship.

Harry L. Krenke  
President  
Western Texas College

domestic and industrial water for the city in the future.

The first half of 1956 has been the driest in 60 years, according to records of the U.S. Weather Bureau for the past 66 years. Total rainfall for 1956, January through June, amounted to 4.6 inches, a deficiency of 7.31 inches from normal average for this period of 11.91 inches.

David H. Persons of Haskell was informed that he had been appointed a member of local draft board No. 77 at Anson to represent Haskell County. He replaces Robert L. Dumas, former board member, who has resigned.

Haskell County's drought-plagued cotton farmers will be able to qualify for several thousand dollars in additional revenue as the result of important revisions in the emergency provisions of the recently enacted Soil Bank program.

Damon Smith, minister of the Weinert Church of Christ, is in Electra where he is conducting a school of vocal music at the Electra Church of Christ.

June, the month of brides and grooms, saw 18 couples apply for marriage licenses at the County Clerk's office.

Advertisement: We make loans geared to the borrower's needs, 4 1/2 percent interest, 20 years' time, liberal pre-payment privileges. W. H. McCandless Agencies, Haskell Hotel Building.

50 Years Ago  
July 2, 1936

Contract for a new high school building to replace the structure which burned last March was awarded today by the School Board.

Forty candidates for office in Haskell County have spent a total of \$2,708.33 in placing their candidacies before the voters.

R. A. (Shady) Lane, auto salesman and manager of the parts department of Haskell Motor Co., was painfully injured Sunday afternoon when he was thrown from a horse and kicked in the left side by the animal.

Mr. and Mrs. Parks Woodson returned Tuesday afternoon from Dallas where they spent several days at the Texas Centennial exposition.

Glen Spears of Seymour has opened a feed store on the south side, in the building formerly occupied by Magnolia Service Station.

The Minneapolis-Moline implement store operated by Hallie Chapman and Riley Lewellen is now located in the Gay Building, across the street from their former location.

60 Years Ago  
July 1, 1926

J. F. Pinkerton reports a yield of 20 bushels of wheat per acre on his

home place west of town where he is operating his thresher this week.

Charlie Spurlin of the Tanner Paint community had a narrow escape last week when a bolt of lightning struck near him as he was driving a cultivator in his field during a thunderstorm. His team was stunned and knocked to the ground and Spurlin said he was momentarily stunned.

Six new brick buildings are now under construction in Rochester as that progressive city experiences a boom in business activity.

Bates Thornton of this city is visiting his uncle, T. P. Thornton of New Mexico.

Bill Richey, who has been attending Howard Payne College, is home to spend the summer with his parents, Mr. and Mrs. H. W. Richey of the Gilliam community.

Mrs. Brownie Kingston of the Howard community is still quite ill from the effects of a rattlesnake bite a few weeks ago.

80 Years Ago  
June 30, 1906

G. R. Couch, cashier of the Haskell National Bank and who is also well posted on the ranching industry of this section, reports that several ranchmen and cattle owners are holding their cattle that are now ready for shipment until the Wichita Valley Railroad reaches this place. He says it will then be possible to drive the cattle from pastures one day, load and have them in Fort Worth the following morning. This will be a great saving in time and expense.

Mr. Henderson has received his stock and opened a gents furnishing store on the north side.

Mr. and Mrs. Will McGregor, formerly of Waco, have located in Haskell. Mr. McGregor is a young lawyer and will open an office here.

Mrs. S. W. Scott is giving her Sunday School class and a few friends an all-day outing and fish fry today on Mr. Scott's ranch on California Creek southeast of town.

Misses Salome Anthony and Alice Poole visited friends in Rule Wednesday and Thursday.

G. F. Atchison and son Earl of the east side were in town Tuesday.

Mrs. Mildred Whitfield and niece, Miss Amelia Foster, of Mississippi are visiting their brother and uncle, A. C. Foster and family here this week.

### Cabooses

A ruling last week requiring cabooses on longer trains carrying hazardous materials is a good example of the Railroad commission's watchdog role in seeking out and closing potentially dangerous gaps in federal rail safety standards, says commission Chairman James. E. Nugent.

## More failures for banks predicted

AUSTIN—The state's top banking commissioner last week warned he expects Texas to see a record number of bank failures this year—maybe as many as 17.

Texas Banking Commissioner James Sexton compared the eight bank failures to date with the 12 Texas failures of 1985, and he estimated that some 60 to 70 banks are currently unable to maintain the capital level normally required by the feds.

But in the face of economic woes in the Texas oil patch and agriculture sectors, federal regulators are easing their standards for banks which make most of their loans to energy and agriculture.

Those banks can operate on as little as three percent capital-to-assets ratio if the feds determine that economic conditions, and not bad management, caused the drop.

### Unemployment Rising

Earlier in the week, Texas officials learned that job losses here are continuing in energy, construction and manufacturing.

As a result, unemployment in May increased in nearly every Texas city, with 13 of the top 28 major metropolitan areas now hitting double-digit rates.

The Beaumont-Port Arthur area had 16.3 percent unemployment. The Houston-Galveston, Longview-Marshall, Rio Grande Valley and Midland-Odessa areas also rose to over 10 percent.

### Republican Speaker?

The GOP members of the Texas House raised the eyebrows of many by discussing the Speaker's race at the weekend's State Republican Convention in Dallas.

The informal leader, Tom Craddock of Midland, denied they were plotting to unseat Speaker Gib Lewis, a Democrat whose reelection is uncertain because his district has grown into a Republican stronghold.

House Republicans say they're preparing for the years after Lewis, whether that's 1987 or later.

Some Democrats are fueling the intrigue by spreading the word that Lewis should no longer trust or reward Republicans with political plums.

### Who's Coming Back?

For four years, Republicans have been a major part of Lewis' team, arguably to the point of quietly dominating several issues. So, it was a surprise to Lewis and his GOP supporters in March when a wealthy Fort Worth developer, K. Wayne Lee, joined the Republican ticket against Gib.

The GOP state party disclaimed Lee's candidacy as a local deal, and it apologized publicly to Gib for the apparent mistake.

Meanwhile, Lee's campaign is strong enough to make Republicans and Democrats alike speculate upon Gib's uncertain fate.

### Game For Experts

It's widely assumed that if

Lewis is re-elected, his House machine won't change much.

But if Lewis falls, and if Republicans pick up more seats scattered around the state, they could dominate the conservative bloc, even to the point of running a Republican for Speaker.

They know it; Lewis knows it; the Democrats know it.

Republicans plotting to take

### STATE CAPITAL



## HIGHLIGHTS

By Lyndell Williams

TEXAS PRESS ASSOCIATION

over the Texas House: it's the political game for experts this summer.

### Prison Overcrowding

The beleaguered officials of the Texas prison system, under fire for failing to meet court-ordered reform deadlines, last week told a federal judge their crackdown on prison violence threw them off schedule.

Their testimony occurred at a hearing to determine whether the prison system should be held in contempt for missing the deadlines, as attorneys for prisoners are arguing, and perhaps fined millions of dollars.

Prison officials want U.S. District Judge William Wayne Justice to lower the standards, which he is reluctant to do, or give them more time to comply.

Prison officials said they successfully used single cells mainly for violent prisoners, which meant some retarded inmates, who are vulnerable to other inmates, couldn't live in them.

## Ask VA

Q. I understand a law has been passed that will subject veterans seeking care in VA facilities to a "means test." Are any veterans exempt from this test?

A. Public Law No. 99-272, sometimes referred to as the "Means Test" legislation, makes several changes in VA health care eligibility requirements. The law establishes a means test, or income-based test, for determining eligibility for cost-free health care for veterans with nonservice-connected disabilities.

The following are exempt from the means test: those with service-connected ailments, former prisoners of war, those exposed to certain herbicides while serving in Vietnam and to ionizing radiation in connection with atmospheric testing of nuclear weapons and in the occupation of Hiroshima and Nagasaki, those receiving VA pensions, veterans of World War I, the Spanish-American War and the Mexican border period and veterans eligible for Medicaid.

**TEXAS TRAILS**  
LONE STAR STATE HISTORY by DAN BROWN

**A LITTLE TEXAS SPREAD ...**  
The famous XIT Ranch was established in 1885 by Taylor, Babcock and Company. The ranch originally covered parts of ten western Panhandle counties and spread across some 3,000,000 acres. The ranch was so vast that it required 6,000 miles of barbed wire to fence it. By November 1886 the ranch had been stocked with 110,721 head of cattle. Thereafter, the herd averaged about 150,000 head. Not bad for a little Texas spread.

**HASKELL NATIONAL BANK**  
864-2631 • 601 N. First  
Haskell, Texas • Member F.D.I.C.

**Bob's Sheet Metal**  
HVAC  
EVAPORATIVE COOLER REPAIR  
PHONE 864-3701  
1002 N 1ST, HASKELL

**THE HASKELL FREE PRESS**  
Established January 1, 1886  
PUBLISHED EVERY THURSDAY  
P. O. DRAWER 1058 HASKELL, TEXAS 79521

Don Comedy.....Publisher  
Wendell Faught.....Editor  
Lisa Shaw.....Business Manager  
Mary Kennedy.....Production

Entered as second-class matter at the post office at P. O. Drawer 1058, Haskell, Texas 79521 under the Act of March 3, 1879.  
(USPS 237-040)  
SUBSCRIPTION RATES:  
In Haskell and adjoining counties, one year, \$12.62; six months, \$10.51; two years, \$24.18; Elsewhere in Texas, one year, \$15.77; six months, \$13.67; two years, \$30.49; (tax included); outside Texas, one year, \$17.50; six months, \$15.50, two years, \$34.00.

NOTICE TO PUBLIC—Any erroneous reflection upon the character, reputation or standing of any firm, individual or corporation will be gladly corrected upon being called to the attention of the publisher.

**TEXAS PRESS ASSOCIATION** MEMBER 1986

# ANNOUNCING

The organizing Board of Directors of Home State Bank in Rochester, Texas would like to make a statement concerning the closing of the Home State Bank in Rochester, Texas:

On June 27, 1986 at 3 p.m. the Home State Bank was closed by an order from the Texas Department of Banking. The Bank's Deposits and certain assets were purchased by Rochester Financial Corporation that afternoon. The bank opened for business on Monday morning at 9 a.m. with new management and local ownership. We would invite you to stop in during the next few weeks to get acquainted with our new officers and visit with our new directors. The bank will be stronger than ever with a good positive attitude toward the community and the surrounding rolling plains area.

Open 9 a.m. to 3 p.m. Monday - Friday

**Member FDIC**

Shareholders of  
Rochester Financial  
Corp.

Jimmy Lynn  
George Mullino  
Sharon Mullino  
Bill Penman  
Cathy Penman  
B. O. Roberson  
Warren Short  
Elmo Stephens Jr.  
W. H. Parks Jr.

**Home State  
Bank**  
743-3511  
Rochester, Texas

### Tamra Burnett gets school honor

Tamra Burnett, 16-year-old daughter of Mr. and Mrs. Charles Burnett of Haskell, has been selected as an honored member of the Society of Distinguished American High School Students.

Her parents have received a letter congratulating them on their daughter's selection.

Only those students who have demonstrated academic excellence, participated actively in civic affairs, or displayed leadership in extra curricular activities are eligible for this national honor.

Miss Burnett was selected to represent her high school and the First Baptist Church by this prominent honor society.

She will be notified later if she is selected as a semifinalist for a college scholarship.

## Bull riders visit...

Continued on Page 1

was to fly to Greeley.

Cathey, 33, who lives in Big Spring, has been one of the country's top bull riders for years. He has competed in the National Rodeo Finals eight times and is currently fourth or fifth in the standings for the world championship. He was an American Junior Rodeo Association world champion when he was in high school.

Nuce, 25, who won his title last year, is in third place in the 1986 standings. Now in his seventh year as a professional, the Manteca, Calif., cowboy won \$107,000 last year.

Sampson, 28, of Los Angeles is a 12-year veteran of the rodeo circuit. He took the world bull riding

championship in 1982 by winning "about \$90,000." Just coming off an injury which forced him to miss several rodeos, he still ranks fifth or sixth in the national standings. He said his broken collarbone will put him out of competition "for a couple of days."

Cathey, Nuce and Sampson usually travel together to rodeo events. They make about 150 rodeos a year, including the big ones, such as the Calgary Stampede, Cheyenne Frontier Days and the National Finals, which were moved last year from Oklahoma City to Las Vegas.

Sampson is the only married man of the trio. His wife and their year-old-son live in Los Angeles and he says his wife does not make any rodeos. Ms. Abercrombie accompanies Cathey to the rodeos "within driving distance," and she makes the major events in Calgary, Cheyenne, Las Vegas, etc. Nuce describes himself as "an eligible bachelor."

While all three cowboys compete in the same events, and usually at the same rodeos, they are quick to point out there is no personal rivalry. "We just compete against the bulls," says Nuce.

All three are very much in the running for this year's world championship. Although Sampson and Cathey are not certain of their exact positions in current standings since standings can change almost daily, the three cowboys know that the big payoff comes in Las Vegas at the end of the season. Nuce won \$53,000 of his \$107,000 there last year.

Cathey's parents, Bob and Ruth Cathey, and his brother Mike of Big Spring, drove to Haskell Saturday upon learning of the accident. They drove Nuce, Sampson, Hines and Hart to Dallas Saturday night.

### Cable to show "Farm aid II"

"Farm Aid II: The Picnic," the benefit concert to draw national attention to the problems confronting the American farmer, is being held in conjunction with Willie Nelson's traditional Fourth of July picnic in Austin.

The entire live 14-hour event will be telecast exclusively on VH-1/VIDEO HITS ONE, a satellite delivered music video cable channel. Harmon Cable Communications will air the live event on Channel 7 in Haskell, beginning at 9 a.m. Friday, July 4.

Grabbit. Colorful magnetic paper clip holder. Scattered clips? Pick them up with Grabbit. Ideal for pins for the seamstress, too! *Haskell Free Press.*

## Food labels are helpful to dieters

The ingredient label on food packages can be of great help when you're trying to eat a healthy diet.

Ingredient labels show the proportion of basic foods in a product, since the ingredients are listed in descending order of predominance.

For example, a canned beef stew which lists "gravy" as its first ingredient has more gravy than the beef or vegetables listed further down the list.

According to Dr. Alice Hunt, a nutritionist with the extension service, it's even more important to use ingredient labels to identify the fat, sodium and sugar in the product.

"The U.S. Department of Agriculture's dietary guidelines, along with the recommendations of most major health organizations, advise Americans to cut back on fats to avoid too much sugar and sodium," she says. "And the ingredient label is where you find out what substances are included in the food product."

## Stamford rodeo now underway

Rodeo performances at the Texas Cowboy Reunion in Stamford, which were to open Wednesday evening, will continue nightly through Saturday.

The rodeo will begin at 8 o'clock

Thursday, Friday and Saturday evenings.

Each day also will feature chuckwagon dinners at noon and 6 p.m., dances and other attractions.

**For wear on**  
**CONCRETE**



**Comfort Shoes**  
FOR WORKING WOMEN

- Glove-soft leather • Fully lined • Special insole with tiny holes to ventilate perspiration • Soft, wedge sole for foot support.

SIZES 5-12, Narrow / Medium / Wide  
(Sizes / widths vary by style)

**RED WING SHOES**  
HEIDENHEIMERS SHOES

Call  
**Nanny Plumbing**

for all your plumbing needs.  
We offer Theem H/C, Roto-Rooter and Ditch Witch Services, Plus Dependable Service  
Monday thru Friday  
7 a.m. to 5 p.m.  
Sat.-- 7 a.m. to 12 noon

301 S. Ave E864-3043

Laundry  
**BLITZ!** Financing Available

White Westinghouse SUPER VALUE  
WASHER AND DRYER



LA550 WASHER  
• Heavy-Duty  
• 2 Speed  
• 4 Water Temp  
• 4 Water Lever  
• Much More

DE 650 Dryer  
• Electric  
• Heavy-Duty  
• Auto Dry &  
• Time Dry Cycles  
• 3 Temp Selections

**\$698**  
FOR THE PAIR

**Owens TV & Electric**  
864-2536 Haskell 512 N. 1st

## Celebrate the 4th of July

### Dance at the


## Stagecoach Inn in Stamford

July 2, 3, 4, 5  
Appearing Nightly  
**"Triple Shot"**


**\$6.00 Per Person**

**Happy Birthday, America!**

Have a safe and enjoyable Independence Day.



**First National Bank**  
HASKELL TEXAS  
200 South Avenue E 864-8555 Member FDIC



**Powers Glass & Window**

814 Hickory \* Abilene, Texas  
Phone 915-676-3757

References? Call E. B. Love.

**TIMES HAVE CHANGED...  
DON'T MOVE, IMPROVE!**

WHATEVER YOUR HOME MAY NEED IN REMODELING, IMPROVEMENTS, OR REPAIRS WE CAN DO IT - TO YOUR COMPLETE SATISFACTION!



EASY FINANCING AVAILABLE.  
Terms to fit your budget.

Free attic insulation with siding job!

## Mike Cox graduates at Angelo

Mike Cox graduated magna cum laude from Angelo State University where he received his BBA degree.

He is an accountant in the Dallas office of Peat, Marwick, Mitchell and Company, a leading international accounting, tax and consulting firm.

Mike is married to the former Tami Tankersley of Haskell. He is the son of Mrs. Dee Larned of Haskell and the late Curtis Cox of Stamford.

His grandparents are Mr. and Mrs. O. W. Cox of Haskell and Mrs. Alma Allen of Rule.

## More water

Texans are using more water per person than ever—about 155 gallons per day. Every 10 years, that average has increased by about four gallons per person, according to the Texas Water Development Board.



## LITTLE LEAGUE ALL-STARS

Members of the Haskell Little League All-Stars are, back row, Coaches Ronnie Tanner and Loraine Johnson; second row, Joseph Rodriguez, Rodney Medford, Mark Jones, Mark McMillin, Johnny Rodriguez, Cody Josselet, Daren Brandon and Aaron McFadden; first row, Patrick Billington (alternate), Chris Guzman, Jeffery Brister, Stacy Martin, Chris Tanner, Jasper Munday, Lee Decker and Edger Nava (alternate).

## All-stars to play Twin Cities Monday

Haskell's Little League All-Stars will meet the Twin Cities All-Stars in Rochester at 7 p.m. Monday in a first-round game of the area playoffs.

The winner of that game will meet Stamford the following evening.

The double-elimination tournament will continue until two of the teams have lost two games. The winner will advance to the district playoffs in Iowa Park which are scheduled for the following week.

Haskell's all-stars were announced this week after conclusion of the regular Little League season. Ronnie Tanner and Loraine Johnson, coaches for the

pennant-winning Hawks, are the all-star coaches.

Team members are Joseph Rodriguez, Rodney Medford, Mark Jones, Mark McMillin, Johnny Rodriguez, Cody Josselet, Daren Brandon, Aaron McFadden, Chris Guzman, Jeffery Brister, Stacy Martin, Chris Tanner, Jasper Munday and Lee Decker. Alternates are Patrick Billington and Edger Nava.

## Oil and gas lease sale scheduled

A competitive oil and gas lease sale on 23 parcels of land in Texas, New Mexico, Oklahoma and Kansas will be held in Santa Fe, Fe, N.M., July 23.

Bid information and forms are available from the Bureau of Land office in Santa Fe (phone 505-988-6000).

# Weinert News

By Myrtle Phemister

The family of Pete Perez Sr., would like to take this opportunity to express their gratitude to all their friends for the love and concern shown them during their recent bereavement, the loss of their beloved grandfather. For the food, the flowers, the money given, for your words of sympathy and encouragement, they express their thanks and appreciation and pray for your continued support as they grieve.

Signed: Pete Perez Jr., with Edward, Louis, Becky and Jessie Reece; Besente Perez with Anna, Johnnie, Ricky, Rosa, Pete Perez III; Mr. and Mrs. Danny Herrera.

The Weinert community joins the Perez family as they mourn. Pete Perez Sr. was a long-time resident and he and his wife Mary raised their family here. His grandchildren are still a part of our school's student body where several have excelled in sports. We shall long remember Pete and Mary Perez.

Miss Emily Jean Pollastro of Austin is visiting her great-grandparents, Marvin and Myrtle Phemister this week. She is accompanied by her mother, Jennifer, and her grandmother, Lola Williams of Harlingen.

Emily was born June 4 and weighed 7 pounds, 6 ounces. Her father is attending a college reunion in Norwalk, Conn., and visiting his parents who reside there.

The Carroll family met for their annual family reunion on Sunday, June 28.

They met Saturday night and

Sunday at the Haskell American Legion Building for visiting, picture taking and eating together. Relatives from Missouri, Oklahoma, Louisiana and Texas enjoyed renewing acquaintances and meeting new members of the family. Thirty-five registered.

Mr. and Mrs. Gene Perry of Stanton were weekend visitors of her parents, Buck and Helen Turnbow.

The sick of our community includes D. I. White who suffered a heart attack last week. He is improving, but faces a long tenure of recuperation. He is a patient at Hendrick Medical Center in Abilene.

Others of our area include Mildred Guess and Agnes Winchester who are surgery patients at Hendrick.

We pray for speedy recoveries for each of them.

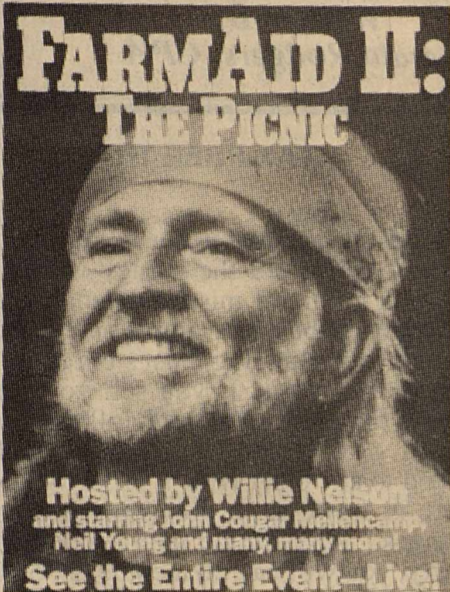
R. S. and Eddie Sanders have just returned from visiting friends and relatives in the Lockhart and Dale, Texas, area.

The Weinert Extension Club met Tuesday, July 2, in the home of Mrs. Gus Reuffer.

Latest report from Gussie Sanders is very good. He is steadily improving.

The Haskell Co. Ambulance Memorial Fund needs your support. You never know when you or a loved one will need these services. What would happen if someday they weren't there because you didn't give your fair share? Think about it...

July 4th  
Starting at  
9:00 AM  
on  
Cable  
Channel



Harmon Cable  
Communications  
Enterprise 2406

# DODGE TRUCK RODEO SALES DAYS

WE NEED  
YOUR TRADE  
IN-SEE US  
TODAY FOR  
HIGHEST  
ALLOWANCE



Special Interest Rates As  
Low as 6.8% or \$500  
Cash Rebate. Don't Wait-  
This Offer Is Temporary



\$11,360

\* RODEO  
SALES  
DAYS  
PRICE

NEW 1986 D150 Royal S.E. V8 Eng., Auto., Trans., power windows, power brakes, power steering, Air Cond., Tutone paint, speed control and Much, Much more.

DODGE RAM D150  
AMERICA'S BEST BACKED  
FULL-SIZE PICKUP



Mathews Dodge Chry. Ply., Inc.

501 W. McHarg St.  
Stamford, Texas 79553

Phone (915) 673-3612 - Stamford

Abilene - (915) 676-7434

## INVENTORY SALE

Jill doesn't want to count it,  
Lisa doesn't want to look at it,  
Mary doesn't even know what it is,

So, we're having a

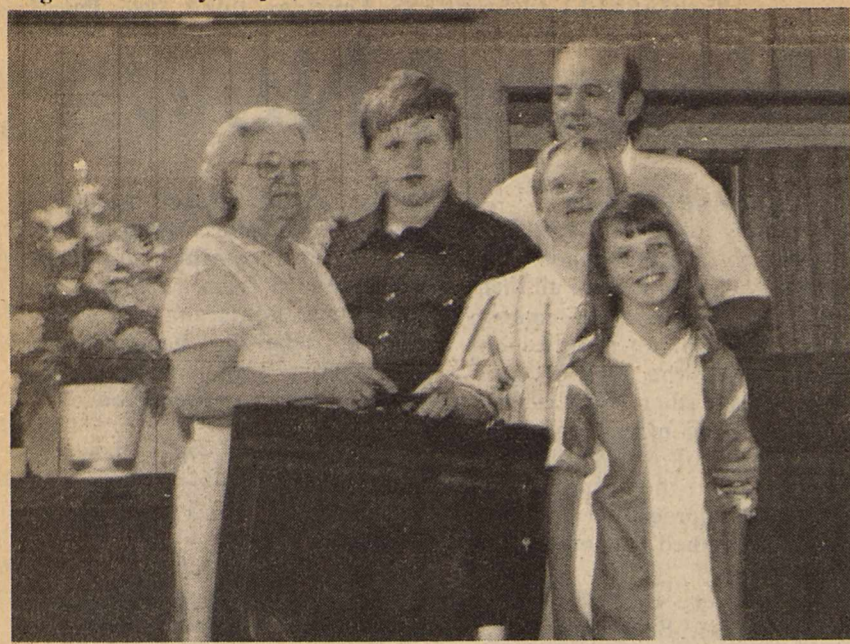
Pre-inventory  
**SALE**

Come in now and save

**25% off**  
Any item in stock!

Haskell Free Press

817-864-2686 Haskell, Texas



### FAMILY GIFT

The Rev. David Green, pastor of the Foursquare Church, and his family were presented new luggage Sunday by Mrs. Bell Flanary, left, the only founding member still attending the Haskell church. The pastor and Mrs. Green, and their children, David Jr. and Alisa, will leave Monday for Belfast in Northern Ireland to spend a vacation in their homeland. The Green family expressed their thanks to all who donated money and green stamps to the project to buy the luggage.

ALL WORK GUARANTEED  
FREE ESTIMATES

**Nichols Insulation  
Home & Commercial**

Spray On Insulation For Metal Buildings

Box 1311  
Snyder, Texas 79549

573-0571

## Conservation Viewpoints

USDA Soil Conservation Service  
Assisting  
Haskell Soil and Water  
Conservation District

A forage inventory can be used by some livestock producers to help them plan to make better use of their grassland resources.

Jim Hudson, district conservationist for the U.S. Department of Agriculture's Soil Conservation Service in Haskell, said SCS conservationists help producers make the inventories.

"In making an inventory, we study four things," Hudson said. "First, we analyze the kinds of forage available, pasture by pasture or field by field. Then we estimate the amount of forage each pasture, field and species will produce.

"Next, we analyze the quality of those forages and the season of availability of each. Some plants are more plantable and more nutritious at different times of the year and we consider that in the inventory."

Often, minor adjustment can be made in grazing management that will improve the quality and quantity of forage for livestock.

Hudson said forage inventories can also reveal the need for some kind of grazing plan that will permit some pastures to be deferred from grazing during part of the growing season.

"A grazing plan can be as simple

as closing one gate for a few weeks to give one pasture a short rest, or it can be very elaborate," Hudson pointed out. "But the point is that most grassland can be improved by a good planned grazing system."

Research has indicated that 60 to 70 percent of the total available forage is wasted in a continuous grazing system where livestock are allowed to pick and choose what they want to eat daily. Under this system, many plants are never grazed while a few are grazed repeatedly.

A simple rotational grazing system reduces the amount of wasted forage to 40 to 50 percent.

Under intensive grazing management, only 30 percent of the available forage is wasted. This is twice as efficient as continuous grazing.

"But the intensive systems are not for everybody," Hudson stressed. "They require daily supervision and not everybody has the time to watch the forage and livestock every day.

"Rotating one herd of livestock through two, three, or four pastures—over time—can greatly improve grassland and improve the efficiency of forage use."

Wildlife should always be considered in making forage inventories and in designing grazing systems, Hudson said. Sometimes, simple adjustments can be made that will greatly benefit wildlife resources.

## Rice Springs Care Home

By Judy Wolsch  
Activity Director

Calendar for July includes: Church of Christ, each Sunday; exercise, games and bingo on Monday; Methodist Ladies on second Monday.

Exercise and games, William Hodge, on Tuesdays with Methodist communion the first Tuesday and Rule Methodists coming on third Tuesday; Baptist WMU on fourth Tuesday.

Joy Simpson, exercise, shopping for residents, sewing and Bible study on Wednesdays.

Exercise, games on Thursday mornings; watermelon party on first Thursday; country band on first and third Thursdays; nail care and Sweethome Singers on second and fourth Thursdays; Eastside uncheon, the third Thursday; birthday party on fourth Thursday.

July 4 is open day. Peggy with sing along and Barbara Kile second Friday for devotion; exercise, games, crafts and sing alongs third and fourth Fridays.

TV, visiting and dominoes on Saturdays.

Birthdays for July: Mae Brock, 19th; Izetta Clark, 12th; Oran Covey, 27th; Beatrice Free, 3rd; Nattie Dippel, 29th; Lila Woodson, 12th; Della Britton, 13th.

We would like to welcome a new resident, Mollie Darden.

We extend our sympathy to the family of Gladys Richards, the Browns and Bentons.

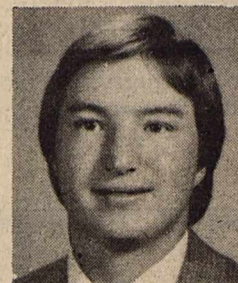
### Vivid description

An 8-year-old boy's response to the question: "Can you describe the Statue of Liberty?"

"Oh sure, she's the lady holding up the ice cream cone."

## TAX PLANNING

Written By  
Gerald Rodgers, CPA



### TAX-FREE TRANSACTIONS

"I sold my apartment house, but I don't owe income taxes because I reinvested the money within six months." Wrong! There is a common misunderstanding among even the most knowledgeable business people on this point.

This misunderstanding must stem from the tax relief provided for residential sales. If you sell your personal residence and replace it for a like amount of dollars or more within two years, you will owe no taxes on the sale. This provision is not extended to any other type of property you sell.

There is, however, a provision in the tax laws for "tax-free exchanges." If you trade your property for other "qualifying" property, you will pay no income tax on the exchange. Any tax consequences normally associated with a tax-free trade will be recognized on the ultimate sale of the new property you acquire. What you have really done is defer the taxes on the trade to some future date when you sell the property.

Tax-free exchanges can be done on property used in a business or held for investment if traded for property of "a like kind" used either for business or to be held for investment. For example, you can trade an office building for raw land or trade an apartment house for a metered parking lot.

To get the benefits of a "tax-free exchange" you must plan ahead. Once you have cleared the sale and received money or a contract in exchange for your property, it's too late to plan for a tax-free exchange.

Keep your accountant posted on what you are about to do. A tax-free exchange can save you taxes, but professional assistance is necessary to assure that the transaction is properly structured.

Sponsored By  
**JAMES E. RODGERS & COMPANY**  
Certified Public Accountant  
20 Southwest Third Street  
Hamlin, Texas

**Celebrate the Fourth with**

PRICES EFFECTIVE JULY 3-4-5, 1986 WHILE SUPPLIES LAST

Heiz Tomato Ketchup 32 oz 99¢

Chicken of the Sea Tuna 6 1/2 oz 59¢

**ALLSUP'S CONVENIENCE STORES**

30 YEARS OF SERVING YOU

SUPPORT SPECIAL OLYMPICS BY PURCHASING DECKER PRODUCTS AT ALLSUP'S

DECKER GOLD BOLOGNA, SALAMI, PICKLE LOAF, SPICED LUNCHEON, BEEF BOLOGNA

**LUNCH MEAT 8 OZ. PKG. 69¢**

**SAUSAGE ON A STICK EACH 99¢**

**Velveeta Cheese \$2.99**

**FAST-N-HOT HAM AND CHEESE SANDWICH WHITE OR RYE BREAD EACH \$1.39**

**BORDEN BUTTER-MILK 1/2 GAL. 99¢**

**ALL VARIETIES ALLSUP'S ICE CREAM 1/2 GAL. RND. CTN. \$1.49**

**ALLSUP'S ICE 8 LB. BAG \$1.09**

**Beef & Bean Burritos 2 for 89¢**

**Ruffles BRAND REGULAR, SOUR CREAM & ONION, BARBECUE, CHEDDAR AND SOUR CREAM POTATO CHIPS Reg. \$1.39 99¢**

### Around Town

Marine Lance Corporal Sterling Wayne Bradford of Camp Pendleton, Calif., has been in Haskell the past three weeks visiting his parents, Wayne and Britta Bradford, and sister, Tiffany, as well as his grandmother, Ramia Lee Frazier.

He is in electronics and teletype communications. He has now returned to Camp Pendleton.

Now Showing at the Video Vendor "Up Hill All the Way"

THE VIDEO VENDOR

## "20th Anniversary" Customer Appreciation Days

<p><b>Young Families</b></p> <p>like to shop at Johnson Pharmacy where they receive the same low prices as everyone else</p>	<p><b>Older Adults</b></p> <p>like to shop at Johnson Pharmacy where they too receive the same low prices, and where they appreciate the large selection of merchandise and fragrances.</p>	<p><b>Senior Citizens</b></p> <p>like to shop at Johnson Pharmacy where they receive prompt, courteous service, and where they have found the prices as low or lower than so-called discount pharmacies.</p>
<p><b>Charge Customers</b></p> <p>like the convenience of paying by the month at Johnson Pharmacy where they receive the same low prices whether they charge or pay cash.</p>	<p><b>Delivery Customers</b></p> <p>like to call Johnson Pharmacy because they appreciate the convenience of having their prescriptions delivered free and paying the same low prices as cash customers.</p>	<p><b>Nursing Home</b></p> <p>patients and their families like to use Johnson Pharmacy because they need to receive the same low prices as cash customers.</p>

Johnson Pharmacy wants to be your family pharmacy!

**Johnson Pharmacy**  
418 No. 1st - 864-3331

Full Personalized Service

Clip and Save

**\$2.00 off**  
any new prescription with coupon at Johnson Pharmacy  
418 No. 1st  
Haskell, Texas  
Phone 864-3331  
(Offer expires Sept 1, 1986)

Clip and save

Laundry Detergent

**Tide 42 oz \$1.89**

**Tallsups 32 oz 49¢**

**Coke, Diet Coke, Mr. Pibb 6 Pack 12 oz cans \$1.99**



# Tennis tourney set at Knox City

A tennis tournament is scheduled in Knox City for July 11, 12 and 13. The Second, Perhaps Annual, Knox City/O'Brien Tennis Open will include competition for boys and girls under 14, boys and girls 15-19, men and women 20 and over, ladies and men's doubles for all ages and mixed doubles for all ages. Entry deadline is July 10. Entry fee is \$5 per person for each event. Information is available from

Ronnie Verhalen (658-3727) or Sandra Fry (743-3208).

## "Yes" vote urged

Wheat farmers are being urged by Texas Farmers Union to vote "yes" before July 7 in an important U.S. Department of Agriculture poll on the question: "Do producers support mandatory production limits on wheat?"



### REAL ESTATE FACTS BY HESS HARTSFIELD

Hartsfield Realty  
864-2665 - 864-2004  
Selling Haskell Co. for over 25 years

#### ESTABLISH A BUFFER ZONE!

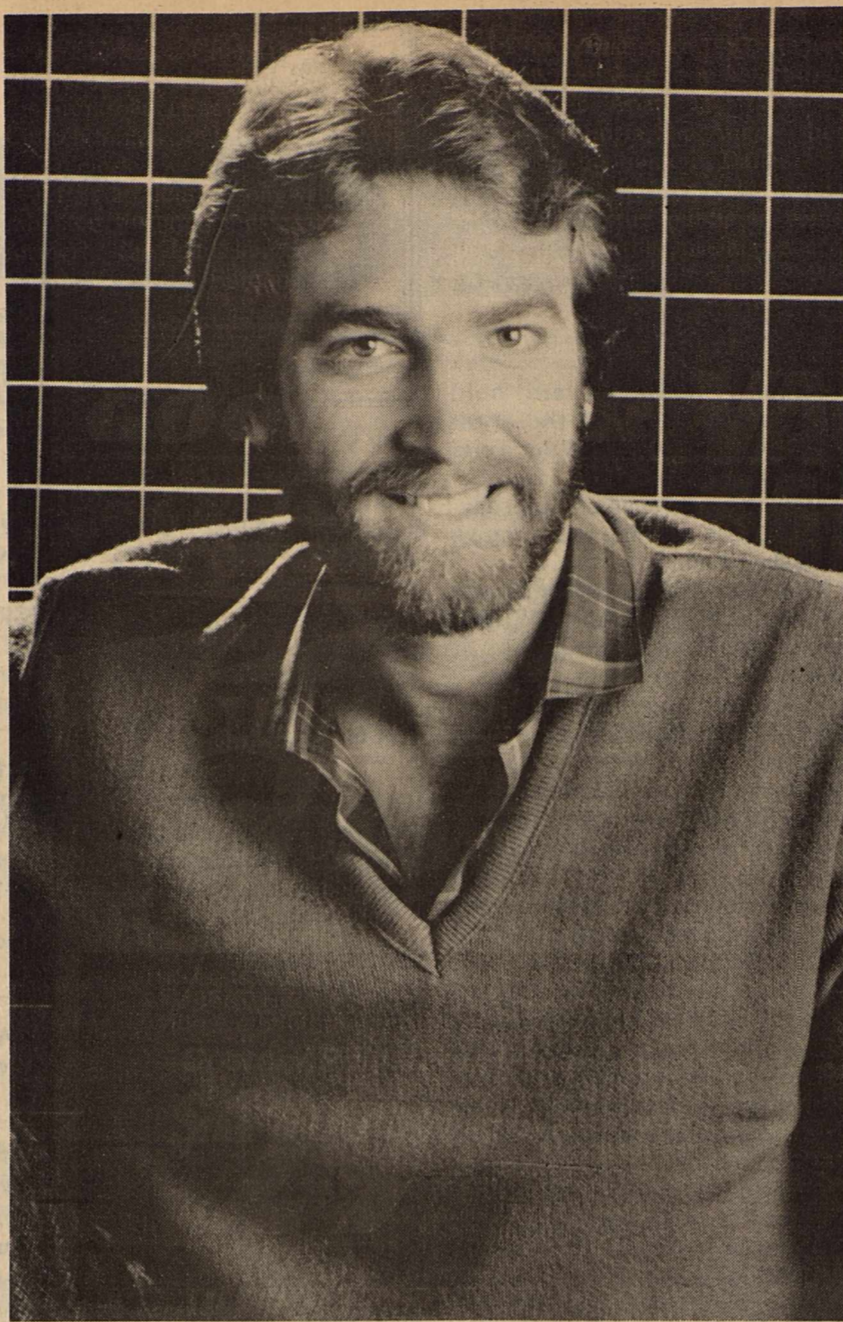
What is of primary importance to a homebuyer when negotiating for the purchase of a home? Would it be fair to say that they want the lowest price possible with the most liberal terms? And what about the sellers of a home? Would you agree that the sellers want the highest price possible with the terms most favorable to them?

Can you see, then, that the buyers and sellers in a real estate transaction each have goals which are diametrically opposed to one another? As a result, they can each become highly anxious, emotional and especially frustrated by the negotiating process. The answer: create a "buffer zone", an area in which negotiations can be carried out in a logical, businesslike and unemotional manner.

This can be accomplished through the use of a reputable real estate company and agent. Here's why! Although a real estate agent normally represents the seller in a purchase transaction, all parties must be treated fairly.

Also, not being emotionally involved in the transaction, the agent becomes an emotionally "neutral" participant, or "buffer". Thus, both buyers and sellers can make comments, offers, and counteroffers without fear of raising each others' anxiety levels. The result can be a highly rewarding home purchase and sale for buyers and sellers.

Understanding real estate dilemmas and their solutions is my business, and I'll happily share my knowledge with you. Why not give me a call at 864-2665, or drop by our office at 417 S. 1st.



Jeff Lynn  
...At East Side Church Sunday

## Recording artist to appear at church

Jeff Lynn, a Christian concert and recording artist, will be sharing his music at East Side Baptist Church Sunday evening, beginning at 7 o'clock.

Jeff is a talented songwriter and minister through music. He was formerly the lead singer for the group, "Revised Edition." He has

been a solo artist since 1983. He has recently released a new album, entitled, "Set Apart."

Jeff grew up in San Angelo, but now makes his home in Dallas.

Members of the East Side Baptist Church invite the public to come and be a part of this special concert.

# Market report

## Haskell Livestock Auction

A fully steady market greeted buyers Saturday at the weekly sale at Haskell Livestock Auction. Light stocker calves sold higher, said Carter Fore.

There was a rather heavy run of 1,126 head of cattle, three hogs and two sheep.

Butcher calves: choice 50-55; good 45-50; standard 40-45; rannies 35-40.

Cows: fat 32-37; cutters 36-42; canners 28-34; stockers 35-45.

Bulls: bologna 45-52; stockers 45-60; utility 40-45.

Stocker steer calves: choice 80-\$1; good 70-80; medium 65-70; common 60-65.

Stocker heifer calves: choice

70-80; good 65-70; medium 60-65; common 55-60.

Feeder steer yearlings: choice 55-60; good 50-55; medium 45-50; common 40-45.

Feeder heifer yearlings: choice 50-55; good 45-50; medium 40-45; common 35-40.

Cows and calves: good 500-600; plain 400-500.

There will be no sale Saturday, July 5.

While it may be true that money can't buy love it can buy life, especially when you give a contribution to the Haskell Co. Ambulance Memorial Fund. Your contribution is tax deductible, and will be useful for years to come. Don't hesitate. Make arrangements now to give. Thank you.

## Ask the Land Bank about...

money to buy land or improve your farm.

Farmers today are looking at ways to increase their productivity... buying or improving land... building or remodeling facilities.

Whatever way you choose to grow, the Land Bank can provide long-term credit to help.

So when you're looking to buy or build, stop in and talk to the long-term farm credit specialist at your Land Bank Association.

### Federal Land Bank Association of Haskell

Dale Bullinger—President  
Telephone 864-2082



July 3-4-5

**Dr. Pepper** 6 pack can **\$1.99**

Regular size  
**Kool Aid** 6 For **\$1.00**

Pork & Beans  
**Van Camp** 2 For **79¢**

Tom's Breakfast  
**Pasteries** 3 For **\$1.00**

Lipton  
**Tea Bags** 48 count **\$1.99**

**Buster's Drive-In**

## GOODYEAR VACATION TIRE SALE!



Time to check your tires before you get into heavy summer driving. Check these tire bargains for your size and price. Sale Ends Wednesday, July 16

### STEEL RADIAL SALE

The belts are steel. The name is Goodyear. And the price is right! Better shop now, while we still have your size!

Custom Polysteel Radial  
**\$29.95**

P155/80R13 Whitewall. No Trade Needed.

NOTE: Rib count and sidewall styling may vary with size.

Whitewall Size	SALE PRICE No trade needed	Whitewall Size	SALE PRICE No trade needed
P185/80R13	\$41.95	P215/75R14	\$50.95
P175/75R14	\$42.95	P205/75R15	\$51.95
P185/75R14	\$45.95	P225/75R15	\$56.95
P195/75R14	\$47.95	P235/75R15	\$59.95
P205/75R14	\$49.95		

Sale Ends Wednesday, July 16

### SAVE ON RADIALS FOR PICKUPS, VANS & RVs!



Outline White Letter Size	Load Range	FEET	SALE PRICE No trade needed
P205/75R14	C2	22	\$59.95
P215/75R15	C2	22	\$69.95
27-80R14	C2	22	\$79.95
LT235/75R15	C2	22	\$89.95
30-80R14	C2	22	\$94.95
31-105R15	C2	22	\$99.95
31-125R15	C2	22	\$119.95
33-125R15	C2	22	\$124.95

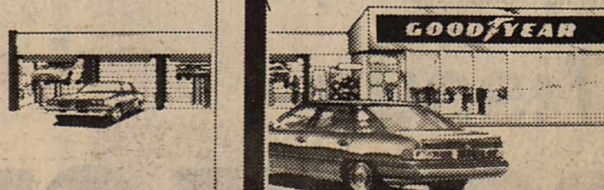
Sale Ends July 26

## GOODYEAR

DO YOURSELF A FAVOR, GO TO GOODYEAR

### 7 GOOD REASONS TO SHOP WITH US

- Customer Satisfaction
- Convenient Locations
- Tire-buying Assistance
- Full Tire Selection
- Service For Your Car Or Light Truck
- Serving Goodyear's National Accounts
- Quick Credit



QUESTION:  
HOW DO YOU SPOIL A GREAT VACATION?

ANSWER:  
DON'T TAKE TRAVELERS CHECKS

A good rule to follow is that if the trip is worth taking, so are Travelers Checks. Many trips and vacations have been ruined by the loss or theft of cash.

Don't take a chance with your money. Travelers Checks are like having a bank right in your pocket or purse. See us before your next trip.



Post Office Box 10  
Phone (817) 997-2216  
Rule, Texas 79547

# Anderson Tire Co.

206 S. Av E Phone 864-2900

# Obituaries

## Bessie Lee Piland

Funeral services were at 2 p.m. Saturday at East Side Baptist Church for Bessie Lee Piland.

Mrs. Piland, 91, died Thursday, June 26, at Haskell Nursing Center. The Rev. Darrell Feemster officiated. Burial was in Willow Cemetery, under direction of Holden-McCauley Funeral Home.

Pallbearers were Buford Cox, Chunky Tidwell, Carroll Scheets, Dent Atchison, Jess Leonard and John Sparkman.

Born June 19, 1895, in Bell County, Mrs. Piland came to Haskell County in 1905. She was the daughter of Mr. and Mrs. G. W. Henshaw, pioneer residents of Haskell County. She was married to George W. Piland in Haskell July 16, 1911. She was a Baptist. Mr. Piland died in 1965.

Survivors include three daughters, Mrs. John (Marie) Bartley and Maybelle Benton, both of Haskell, and Mrs. Ed (Maggie Lee) Melton of Abilene; three sons, M. C. Piland and Otis Piland, both of Abilene, and Grady Piland of Tyler; a sister, Callie Phillip Scheets of Amarillo; 19 grandchildren, 32 great-grandchildren; and four great-great-grandchildren. A daughter and a son preceded her in death.

## Pete Perez Sr.

Pete Perez Sr., long-time resident of Weinert, died Friday at the Wichita General Hospital in Wichita Falls.

Communion services were at 2 p.m. Monday at St. George Catholic Church. Rosary was Sunday evening. Deacon Ruben Luera officiated.

Burial, under direction of Holden-McCauley Funeral Home,

was in Weinert Cemetery.

Perez was born March 31, 1911, in Medina County. He was a member of St. George Catholic Church. He was married in Sunnyside, Texas, Sept. 29, 1934, to Maria Flores Longoria. Mrs. Perez died April 1, 1984.

He is survived by two sons, Besente F. Perez and Pete Perez Jr., both of Weinert; a brother, Fred Perez of Stockdale; four sisters, Domingo Casias of Hereford, Ritz Garza of Lubbock, Susie Gutierrez of San Antonio and Frances Gonzales of Kennedy.

He also is survived by 10 grandchildren, seven of whom were reared by Perez and his wife, Edward, Louis, Johnny, Ricky, Rosa and Anna Perez, all of the home, and Becky Ruiz of Abilene. Five great-grandchildren also survive.

## Lee Brown

Funeral services were at East Side Baptist Church Sunday afternoon for Lee Brown.

Brown, 73, a long-time resident of Haskell County, died Friday at Hendrick Medical Center in Abilene.

The Rev. Darrell Feemster and the Rev. Doyle Andrews officiated. Burial was in Willow Cemetery, under direction of Holden-McCauley Funeral Home.

Pallbearers were Ben Bingham, Howard Reding, Chester Hodgins, Jack Daniel, Chunky Tidwell, Joe Cortez, Elmer Adams and Frank Jenkins.

Brown was born Jan. 6, 1913, in Cerrigardo, Ark. He was married to La Verne Andrews Dec. 14, 1974, in Stamford.

He is survived by his wife; five daughters, Nancy Lee Cobb of Bloomfield, N.M., Gail Davis of Bangor, Calif., Sue Bingham of

Nocona, Doyle Barry of Bellevue and Debbie Gibbs of Portland, Ore.; three brothers, Calvin of Burbank, Calif., Gordon of Portland, Ore., and Milze of Abilene; two sisters, Cuba Allen of Irving and Sylvia Roberts of Haskell; 16 grandchildren and nine great-grandchildren.

## Teria P. Alvis

Funeral services were held Saturday morning at the First Baptist Church in Haskell for Teria Patterson Alvis of Katy.

Mrs. Alvis, 75, died Tuesday, June 23, in Katy. She was a native of Haskell County.

The Rev. James Densman officiated. Burial was in Willow Cemetery, under direction of Holden-McCauley Funeral Home.

Pallbearers were her nephews, Rice Alvis Jr., Jeff Bowen, Philip Bledsoe, Clint Melton, Robert Patterson and Clois Patterson.

Mrs. Alvis was born April 29, 1911, the daughter of W. Frank Patterson and Myrtis Cordelia Black Patterson. She was married to Taylor Pierson Alvis June 20, 1931, in Haskell. He died in 1980. She was a member of the Pioneer Baptist Church in Abilene.

She is survived by a daughter and son-in-law, Elaine and M. P. (Mike) Kelly of Katy; a granddaughter and husband, Jan and Stuart R. Snow Jr. of Houston; two grandsons, Mark S. Kelly of Katy and Kevin Kelly of Ocean Springs, Ms.; four sisters, Mrs. S. E. Bledsoe of Haskell, Mrs. A. A. Carrigan of Sallisaw, Okla., Mrs. Bessie Melton of San Angelo and Mrs. O. M. McLain of Dallas; a brother, P. C. Patterson of Wichita Falls; and five great-grandchildren.

## Cotton consumption

Cotton's share of fiber consumption in U.S.-produced and end-use textile products increased to approximately 27 percent in 1985.

# THE CLASSIFIEDS

**For Sale**      **For Sale**      **For Sale**      **For Sale**

**FOR SALE:** Small Kroehler sofa bed and Lazy Boy recliner in excellent condition. Zelma Price 864-3014. 27p

**FOR SALE:** 80 Del Magic Deck Boat. 115 h.p. Johnson, Tilt trim. '76 E-Z Go golf cart and charger. Call 997-2309 after 6 p.m. 27-30c

**FOR SALE:** Used couch. Cheap. Ideal for lake cabin. After 5, call 864-3545. 27c

**FREE:** 4 pups and mother dog to be put to sleep, unless they can be given away. Please call 864-2892. 27p

**LIKE NEW:** Side by side refrigerator also have one with freezer on top. Exceptional buy. Call 864-3729. 27-28p

**FOR SALE:** Several yards of good used carpet, 107 N Ave M, 864-2544. For your new carpet estimates contact Dwanna Klose associated with B & L Carpets North 1st Abilene. 27c

**FOR SALE:** 1985 Grand Margis LS. Fully loaded, 7700 miles. Excellent condition, \$12,500. Not negotiable. Call Laverne Brown 864-3139. 27-28c

**FOR SALE:** 1983 Johnson 25 horse power motor. Like new. \$900.00. Call 864-3672. 26-27p

**BEAUTIFUL AKC black Cocker Spaniel puppies.** Shots & wormed. Call (817) 989-2855 after 5 p.m. Aspermont. 25-27p

**PRESCRIPTIONS, COSMETICS, Gifts.** Shop Johnson Pharmacy where the savings are real. 43ffc

**HASKELL MEDICAL Equipment Supply.** 864-2258. Buy or lease walkers, wheelchairs, crutches, hospital beds, oxygen, etc. Medicare approved. Free deliveries. 6ffc

**FOR SALE:** 5/8-3/4-7/8 sucker rods. Call 864-2721. 38ffc

**SHAKLEE Products, 100% NATURAL VITAMINS,** herb lax, food supplements and cosmetics. Products in stock at 300 N. Av H. 864-3330. Free deliveries in Haskell. 26ffc

**WATER WELL Drilling:** House well, Stock, Irrigation Wells, Test holes. Call W. P. Hise 864-3727 Haskell, Tx. (Day or night). 7ffc

**FOR SALE:** All colors parakeets. \$7 for 1 or \$10 for 2. Grey or white Cockatiels, \$25.00 each. Easy to train. Can be seen at 708 S 10th. Also, small upright piano for sale. Call 864-2554. 26-27c

**FOR SALE:** 1973 Buick Limited. Loaded. 4 dr. good condition, almost new tires, one owner. B & B Automotive, 201 N 1st, Haskell. 817-864-2688. 26ffc

**FOR SALE:** Peke-a-Poo puppies, brown with white and brown with black. 6 weeks old. Call 658-3943.

**FOR SALE:** 1979 Chevrolet Blazer 4X4 loaded. Excellent condition low mileage. Call 658-3519 or 997-2514. 26-29c

**FOR SALE:** Less than 2 yrs. old Kenmore Washer and Dryer. Not a scratch, just like new. Call 864-3191 after 5:00. 25ffc

**FOR SALE:** 1 1/4 in. PVC pipe 160 PSI-10 cent ft. 6 cylinder Chev. engine new overhaul & starter. Welding bed for truck. 864-3727. 25ffc

**BUYING? SELLING? CHECK OUT THE...**

The HASKELL FREE PRESS

**CLASSIFIED ADS**

**BOOT • SHOE • SADDLE REPAIR**  
Handmade Belts, Billfolds & Chaps  
**HEADS OR TAILS WESTERN WEAR**  
Haskell, Texas



**INVENTORY REDUCTION**

**SALE**

**ALL MERCHANDISE AT LEAST**

**60% off or more**

STORE HRS. MON - FRI. 10 A.M. - 5:30  
SAT. 9-5:30  
No Exchanges-No refunds

**BEN FRANKLIN**  
(No VISA or Master Card)

Rib Eye	lb	<b>\$2.99</b>
<b>Steaks</b>		
Gooch	Pkg.	<b>79¢</b>
<b>Wieners</b>		
Sausage	Store Made Lb	<b>99¢</b>
Ham	3 lb can	<b>\$5.98</b>
Buns	3 For	<b>\$1.00</b>
Potatoes	5 lb Bag	<b>69¢</b>
Coke	6 CANS	<b>\$1.49</b>
Wafers	Parade 12 oz Box	<b>59¢</b>
Bullets	24 count Box	<b>\$1.99</b>
Crackers	16 oz box	<b>\$1.29</b>
Whiz	8 oz	<b>\$1.19</b>
Tissue	4 Rolls	<b>\$1.09</b>

**POGUE GROCERY**

—Extra Parking Behind The Store. Home Owned and Operated—  
113 North Avenue E Phone 864-2015 Haskell, Texas Thurs. Fri. Sat. Specials

# THE CLASSIFIEDS

YOUR TICKET  
TO  
JOBS  
HOMES  
EVERYTHING

**NOTICE**

The Haskell Free Press reserves the right to edit and/or delete all news stories and locals for length and liability and to refuse to print anything deemed not newsworthy.

**NOTICE**

The deadline for Classified Advertising is 12 noon on Tuesday.

Haskell Free Press

**For Sale**

**FOR SALE:** 14 foot flat bottom boat, \$225.00; and trailer, \$175.00. Buy both for \$350.00. Call 864-2146 or 864-3147 after 6. 103 N 1st. 27tc

**FREE:** 2 female half beagle puppies. 6 weeks old. Call 864-8063, 503 N Ave C. 27c

**FOR SALE:** One used 25 horse Evinrude motor plus extra parts, \$250. Call 864-2146 or 864-3147 after 6. 103 N 1st. 27tc

**FOR SALE:** SWB camper shell & bed unit, less than 6 months old. \$570.00. 27tc

**FOR SALE:** 14 foot used fiberglass boat, Texas Made, with 30 horse Evinrude motor with dilly trailer, \$795. Call 864-2146 or 864-3147 after 6. 103 N 1st. 27tc

**FOR SALE:** One used Shakespeare Troll motor \$50. Call 864-2146 or 864-3147 after 6. 103 N 1st. 27tc

**Garage Sales**

**PATIO SALE:** 104 S Ave H 9-3 Saturday only. Dishwasher, dresser, desk chairs, booster chairs, potty chair, dishes, misc. 27p

**GARAGE SALE:** Saturday 8:00-5:00 Refrigerator, T.V., Exercise bicycle, bathroom lavatory, tires, clothes, and misc. items. 407 N Ave B. 27p

**GARAGE SALE:** Five piece bedroom suite complete king size waterbed, decorative items, afagans, toys, and clothing. Wednesday thru Sunday, 10 a.m.-5 p.m. 503 N Ave C 864-8063. 27c

**GARAGE SALE:** Electric refrigerator, oven, dishwasher, fan, Salon hair dryer, gas Ref. air compressor, glass top table, tent, Gould pump, clothing & misc. Saturday 7:00 a.m.-5 p.m. 1107 N 7th, 817-864-3156. 27c

**FUNSTON FLEA MARKET:** July 4-5-6, 1986. We have over a hundred spaces over 70 electricity outlets, sheds, and shade trees. Crossroads Highway 180 & farm to market road 1226. For information call I.S. Sprayberry 915-823-2930. 26-27c

**CONTRACTORS NOTICE OF TEXAS HIGHWAY MAINTENANCE WORK**

Sealed proposals for a janitorial maintenance service contract at the southbound rest area located 10 miles south of Haskell on U.S. 277, Haskell County, Texas, will be received at the State Department of Highways and Public Transportation. Each completed proposal shall be placed in a sealed envelope so marked to indicate its contents, and submitted to Mr. Roger G. Welsch, District Engineer, State Department of Highways and Public Transportation, P.O. Box 150, Abilene, Texas, 79604; or, it may be hand delivered to room 225, District 8 Headquarters building, U.S. 83-84 By-Pass, Abilene, Texas. All sealed bids will be received no later than 11:00 A.M., JULY 14, 1986, and then publicly opened and read. The specifications and proposals are available at the District Maintenance office in Abilene, Texas. Usual rights reserved. 27-28C

**Miscellaneous**

**HOME DECORATORS.** Painting-Insulation. Free Estimates. Phone 743-3592 or 743-3550. V. A. Mitchell-Bobby O'Neal, Rochester. 3tc

**Lost & Found**

**LOST:** Grey billfold. Please return pictures lost in billfold. Money not necessary but would like the pictures of my grandchildren back!! Send to Jo Turnbow, Rt 1 Box 132, Haskell. 27p

**Help Wanted**

**OPENING** in parts department. Must be sales aggressive, self-motivated, neat, training available for right person, benefits, references required. Apply at Richardson Truck & Tractor 817-864-3474. 27tc

**PERSON** with medical background for part-time insurance examiner in the Haskell area. Some evening work. Must have own transportation and equipment. Begin immediately. Phone 817-776-3260 or write PMS Inc., P.O. Box 2505, Waco, TX 76702-2505. 27-30p

**Public Notice**

**PUBLIC NOTICE**  
On June 27, 1986, The Home State Bank, Rochester, Texas was closed by the Banking Commissioner of the State of Texas and the Federal Deposit Insurance Corporation (the "FDIC") was appointed Receiver thereof. Pursuant to Arts. 342-803 and 342-489 (b) V.A.T.S., notice is hereby given to all persons who may have claims against The Home State Bank, Rochester, Texas. Claims must be presented in writing within eighteen (18) months of the date of the first publication of this notice (July 3, 1986). Claims should be mailed to:  
Claim Agent  
Federal Deposit Insurance Corporation  
1910 Pacific Avenue,  
Suite 1600  
Dallas, Texas 75201  
27-39c

**Jobs Wanted**

**BOOKKEEPING,** Typing, Posting, or any other office work. Experienced in managing oil business. Call Monday-Friday, 8-5, 849-7121. 27-28p

**BABYSITTING** in home with fenced in yard. Infant up to toddler age. Any hours. Previous experience. 503 S 9th Call 864-2713. 27-28c

**TENNIS LESSONS**

BY  
**TIM JOHNSON**  
AGES: 6 YRS-15 YRS.  
CALL - 864-2951 26-27c

**Jobs Wanted**

**BEAUTIFY YOUR HOUSE.** New or remodeled. Ceramic tile. Free estimates. 915-773-2122. Stamford, Texas. 24-27p

IF you need any Johnson grass to be sprayed Call 743-3400. 27-28c

**HOUSE LEVELING** Floor bracing. Free estimates. References. Call 864-3993 or 915-942-8181 before 8 a.m. or after 5 p.m. Ask for David. 23tc

**LOT SHREDDING.** \$10.00 and up. Call Tony Williams, 864-3674 anytime. 43tc

**Card of Thanks**

**CARD OF THANKS**  
We would like to express our appreciation and gratitude during the illness and loss of our loved one. The prayers, flowers, food, visits, and cards meant so much to the family. We love all of you and your friendship means so much to us. The Lee Brown family 27c

**CARD OF THANKS**  
George and I thank all our many friends and family for all their many acts of love, kindness, concern that was shown during my recent illness in the hospital and at home. Thanks for your love, prayers, cards, food and flowers. May God bless you. Love, Lydia Moeller. 27p

**For Rent**

**FOR RENT:** 3 bedroom furnished trailer. 1 bedroom furnished duplex. Call 864-3509. 17tc

**FOR RENT:** S & S Storage 10x20 storage stalls. Call 864-2208 or come by Steele Machine. 17tc

**FOR RENT:** Storage stalls. 10x10 or 10x20. Call Lanco Insurance, 864-2629 3tc

Good Used  
**Color TV's, Stereos & Washer/Dryers**  
**Anderson Tire Co.**  
206 S. Av E/Phone 864-2900

Medicare Supplement Insurance  
Top rated Plan  
by Consumer Reports  
Final Expense Insurance  
Level premium-Increasing Benefits  
Written Ages 45-85  
Hospitalization, Individual or Group,  
Representing  
Aetna  
Travelers  
Fireman's Fund  
**Hess Hartsfield**  
864-2665 44tc

**For Rent**

**FOR RENT:** 3 bedroom house. Good neighborhood. Call 864-2870 or 864-8908. 26tc

**APARTMENT FOR RENT:** 2 bedroom apartment partly furnished or unfurnished call 997-2531. 26tc

**FOR RENT:** 2 bedroom trailer house. No children. No pets. Call 864-3320 or 864-2838. 25tc

**Real Estate**

**FOR SALE:** Four room house, detached 2 car garage on 5 acres. Joins city limits. NE of city. Selen Tompkins 915-677-7036. 22-27p

**FOR SALE** by owner: 3 bedroom, 1 3/4 bath, double car garage, large storage in garage, covered patio, 18x36 shop building, located on 1/2 block, water well, extra clean. Shown by appointment only. Call 743-3373. 11tc

**FOR SALE BY OWNER:** 3 bedroom, 2 bath, fireplace, central heat & air, on corner lot. 1007 N Ave G Call 864-3878 for appointment. 27-30p

**FOR SALE:** 2 bedroom furnished house at Lake Stamford. Includes air conditioning and workshop. House is located right on lake with dock. Call 773-2656. 26-27p

**GOVERNMENT HOUSING** - from \$1.00, you repair. Also, delinquent tax properties and foreclosure properties. For info., call (refundable) 1-315-736-1610, Ext. 149. 26-27p

If you aren't satisfied with your Health Insurance call  
**C.H. "Bud" Herren**  
864-3322 or 864-3087

**INSURANCE**

Life • Health  
Auto  
Farm • Home

**CHARLES THORNHILL**  
522 South 2nd, Haskell  
--Phone 864-2842--

National Farmers Union  
Insurance Companies

**Doyle High Real Estate**

Lots for sale in the Addison Addition starting at \$3500 per lot.

2 bedroom frame, 1 1/2 bath, living room and den with fireplace. Fenced backyard, garage, 2 pecan trees. N. Ave. H. Shown by appointment.

2 Bedroom on N Ave L. Recently remodeled. Large fenced backyard, with water well, storage shed and garden spot.

**Doyle High, broker—864-3872**  
**Betsy Nanny—864-3521**  
**Roberta High—864-2815**  
**Debbie Earles—864-2216**  
**Viola Wilcox—997-2640**

**Real Estate**

**FOR SALE:** 1 or 3 bedroom duplex for sale or rent. For info. call 864-8905 after 5 pm. 23tc

**Bob Wood Construction**

**New Residential or Commercial**  
All Phases of remodeling  
**Storage Buildings**  
Add - ons  
**Weinert, Texas**  
673-4601  
673-4581 27tc

**FOR SALE**

Several good farms. Mostly owner financed. Some irrigated, some dry. Now is the time to invest in good farm land. Give us a call.

Like new 3 bedroom, 2 bath, kitchen, den, family room, brick home. 3 car carport, work shop, cellar, water well on 2 lots. Super buy at \$60,000. 700 13th St. Rule. Shown by realtor only by appointment. Owner is being transferred. His loss is your gain. Very low interest available.

**Counts Real Estate**  
658-3211

**Buddy Tibbets Construction**

All phases of remodeling & new construction  
**Rule, Texas**  
997-2531 50tc

**Beautiful Your House!**  
New or Remodeled  
Ceramic Tile  
Free Estimates.  
915-773-2122  
Stamford, Texas 24-27p

**FOR SALE**

Frame house in Veta's Camp, carpet, DW, fireplace, evaporative cooler on two lots. Owner would carry note.

A-Frame on Stamford Lake, furnished, Microwave, storage house and boat storage.

Two bedroom frame, carpet, cellar, 2 car garage.

Two bedroom 1 bath frame on two lots.

We have three northside nice Building lots.

**ARROWHEAD MOTEL,** 20 units, managers apartment. Make a offer.

Two good Haskell County Farms.

**Frances Arend Real Estate & Insurance**  
**LIFE-HEALTH-Medicare Supplement**  
817-864-3880  
817-864-3156 27c

**SELLING HASKELL FOR OVER 25 YEARS****Hartsfield Realty**

South Side of Square

864-2665

**BUYING OR SELLING A HOME OR BUSINESS.** We have skilled realtors to help you in every way. From a market analysis to the closing. Over 25 years selling Haskell County.

**7.9 ACRES ADJOINING CITY LIMITS.** Has almost new 3 bdr. 2 bath BV dwelling with 32x40 garage and shop and good water well. Will sell with one acre or all. REDUCED

**100% FINANCING:** 3 bdr. 2 bath, BV fireplace. Two car garage, utility room. Located on one acre and only \$38,000.00 REDUCED

**NICE BUILDING** site, two lots on corner of N 12th and Ave k.

**SMALL DREAM HOUSE IN GREAT LOCATION** two bedroom, loaded with extras, including ceiling fans, window units, microwave oven, washer and dryer, range & oven, water well.

**COUNTRY ESTATE ON 12 ACRES.** This Large 3 bedroom brick, has a formal living, dining, breakfast room, two baths, extra large den, utility room, two car garage and office or sewing room, guest house, storm cellar, bomb shelter. Three bedroom tenant house and large barn also on premises. Greatly reduced.

**HASKELL STORE BUILDING.** 4,000 sq. ft. carpeted, insulated central heating & cooling. Complete with all furniture, fixtures & machinery. Going for less than one half of building replacement cost alone.

**FOR RETIRED PEOPLE.** Ideal location within walking distance to downtown stores, banks, churches, corner lot, remodeled interior, 3 bdr, with numerous built-ins, central H/C well insulated.

**CHOICE LOCATION.** This 4 bdr 2 bath brick has family room den with fireplace, ample closets and storage. Two car garage and well on corner lot.

**3 BEDROOM ON NORTH 5th St.** Going with this one is washer & dryer, 2 window units storm windows, large range with oven and good well in outside storage bldg.

**TWO BDR METAL FRAME** on N. Ave. **SOLD** inside to appreciate.

Hess Hartsfield, Broker  
Joe Bob King  
Linda King  
Mary Rike  
Dorothy Hartsfield  
864-2004  
864-2993  
864-2993  
864-2332  
864-2069

**FOR SALE:** 1 or 3 bedroom duplex for sale or rent. For info. call 864-8905 after 5 pm. 23tc

**Beautiful Your House!**  
New or Remodeled  
Ceramic Tile  
Free Estimates.  
915-773-2122  
Stamford, Texas 24-27p

**FOR SALE**

Frame house in Veta's Camp, carpet, DW, fireplace, evaporative cooler on two lots. Owner would carry note.

A-Frame on Stamford Lake, furnished, Microwave, storage house and boat storage.

Two bedroom frame, carpet, cellar, 2 car garage.

Two bedroom 1 bath frame on two lots.

We have three northside nice Building lots.

**ARROWHEAD MOTEL,** 20 units, managers apartment. Make a offer.

Two good Haskell County Farms.

**Frances Arend Real Estate & Insurance**  
**LIFE-HEALTH-Medicare Supplement**  
817-864-3880  
817-864-3156 27c

**Real Estate**

**House for sale in Rule.**  
Presbyterian manse, 2 bedroom, 2 bath.  
Reasonable.  
**Lanco Insurance**  
864-2629 16tc

**FOR SALE**

Several good farms. Mostly owner financed. Some irrigated, some dry. Now is the time to invest in good farm land. Give us a call.

**Counts Real Estate**  
658-3211

**REAL ESTATE**

LARGE LIVING AREA with fireplace. 2 bedroom, double attached garage. Good location in North part. \$35,000.

3 bedroom brick FHA. 4 miles west of Stamford on 1 acre. Only \$35,000.00.

Approx. 2000 sq. ft. home located on 6 acres inside city limits. North/West Haskell. Must see inside to appreciate.

Only 4 yrs. old, and like new, 3 bedroom, 2 bath, with formal living room and large den, large patio, also has a large detached art & craft bldg. Both house and bldg. and C/H/C on separate units. Well, located on 1/2 acre. Priced under \$60,000.

3 bedroom with double carport in Rochester. A clean house ready to live in. Sacrificed Price.

3 Bedroom 2 bath mob. home. Extra clean. \$8500.

**IN RULE.** Nice 2 bedroom, new steel siding, storm windows, fenced yard, water well & storm cellar. 903 5th Street. \$20,000. Make an offer.

Commercial...one of Haskell's largest buildings, plenty of parking. Good location, make an offer.

**COMMERCIAL:** Well constructed metal building, insulated, roll up doors, office, restrooms, 2 large corner lots like new condition. Reduced price.

Good investment property. Clean duplex with central air. Good carpet and appliances.

160 Acre Farm just East of Knox City. Has a 20 acre fruit & Pecan orchard with watering system for orchard. Good land. Priced too low.

Large 2 story rock home with guest house, pecan trees, fenced yard located on a large corner lot.

4 bedroom located on large corner lot. Utility room & double carport. A lot of house for the money.

160 acre farm located just SE of Rule. A good buy.

3 bedroom, 2 bath, with large dining room, den. Located on 2 good lots in north Haskell. Double wide with carport. A real value.

Lumber yard property on 6 lots, on Hwy in Rule, Texas. Good location, good buildings and all for only \$10,000. 1 block So. of red light.

Lovely 3 bedroom, 2 bath, with fire place. Water well, storage bldg. located on 3 lots. Has many extras. Located 305 Cardiff, Rule, Texas Sacrificed Price-Owner Moving.

Rochester: A quality built brick home on small acreage, fenced yard, water well, storage bldg., storm cellar, 2 car garage & double carport. DRASTICALLY REDUCED!  
10 acres, 3 miles west of Haskell. Stock tank barn and house all for \$15,000. **SOLD**

3 Bedroom stucco, corner lot. Just So. of hospital.

3 bdr. 2 bath, 3 car garage, storm cellar on large lot. Ready to live in under \$40,000. FHA

3 Bedroom on N. 5th with attached garage. Large trees. A clean older home ready to live in. \$18,500.

3 Bedroom on N. 6th. Clean older home with garage. Large lot and in a good location. REDUCED.

Furnished lake cabin located in Haskell. Clean and ready to use. Boat house on a choice water lot. REDUCED

In Rule 3 Bedroom, 2 bath. Has many extras. Water well, fenced yard, St. Bldg, fireplace.

Commercial Property corner of 277 and South 11th.

FOR RENT: Small Bldg. on East Side of sq. Haskell.

Clean small lake cabin located at Vedas, \$6,000.

5 yr. old House on 17 acres just N.E. of Rule. 5 bedroom, 2 bath. Rock. Plenty of Water, carport and large rooms.

Clean 2 Bedroom on water front "owned" lot at Lakeshore Sites. Large shade trees, dock and storage building.

4 bedroom, 2 bath, rock house in Rochester. Large kitchen with cabinets, utility room. A lot of house for a little money. Ready to live in. \$19,900.

**OFFERED BY JOHNSON**

Real Estate

864-2951  
HASKELL, TEXAS

**LORAIN JOHNSON, BROKER**

I am on call and ready to talk to you about your Real Estate at any time if you are interested in buying or selling please call me. I will try harder to please you.



1202 N. Ave E  
Haskell, Texas  
Phone 864-3763  
Open 8 a.m.-8 p.m.  
Sun. 8 a.m.-7 p.m.

Specials Good Thru Sunday

**DOUBLE COUPONS**  
each TUESDAY & WEDNESDAY  
at Modern Way Food Store

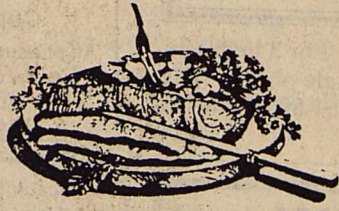
- ✓ We will redeem your manufacturer's "Cents Off" coupons for double their value, up to \$1.00, when product is purchased.
- ✓ We will double only one coupon per like item, all others face value.
- ✓ Limit one coupon per item.
- ✓ Coupon not to exceed value of the item.
- ✓ This policy does not include Free coupons, cigarette or tobacco coupons or refund coupons.
- ✓ Offer good for limited time only.

**WE GIVE & REDEEM 3-STAR COUPONS,  
DOUBLE ON TUESDAY & WEDNESDAY**



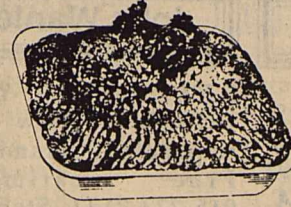
**Open All Day Friday, July 4th. Shop & Save  
at Modern Way --Your Home Town Grocer.**

USDA CHOICE HEAVY BEEF  
**Boneless  
Chuck Roast**



lb **97¢**

FAMILY PACK  
**Ground Beef**  
3 LBS OR MORE



LB **88¢**

USDA CHOICE  
BONELESS MARKET  
**TRIMMED  
BRISKET**

LB  
**\$1.29**

USDA CHOICE  
BONELESS VAC-PAC  
**BRISKET**

LB  
**79¢**

USDA CHOICE  
BONELESS  
**RIB-EYE  
STEAK**

LB  
**\$3.99**

USDA CHOICE  
**T-BONE  
STEAK**

LB  
**\$2.99**

SILVER SPUR  
SLAB SLICED  
**BACON**  
LB **\$1.49**

SHURFRESH  
**FRANKS**  
12 OZ PKG (MEAT)  
**69¢**

SHURFRESH  
**Sliced Meats**  
All Varieties Except Ham  
12 oz pkg  
**\$1.09**

SMALL LEAN & TENDER  
**Pork Spareribs**  
LB **\$1.58**

LARGE MEATY  
**Spareribs**  
LB **79¢**

USDA CHOICE  
BONELESS TOP  
**Sirloin Steak**  
LB **\$2.89**



**Coca-Cola**  
6--12 oz cans  
**\$1.38**



Kraft  
**Barbecue  
Sauce**  
18 oz  
Limit 2  
**69¢**

Shurfresh  
**Hamburger & Hot Dog  
Buns**  
3 8-count pkgs  
Limit 3  
**\$1**



Maryland Club  
**Coffee**  
1 lb can  
**\$2.83**



**Coca-Cola**  
All varieties  
2 liter  
**98¢**



**Charmin  
Toilet Tissue**  
4 roll pkg  
**98¢**

PRICE SAVER CUT	4 16 oz cans	<b>\$1</b>
<b>GREEN BEANS</b>		
SHURFINE	32oz	<b>89¢</b>
<b>CATSUP</b>		
RUFFLES 6-7 OZ	6-7 oz	<b>99¢</b>
<b>POTATO CHIPS</b>		
SCOTT	Jumbo Roll	<b>69¢</b>
<b>TOWELS</b>		
BETTY CROCKER	18 1/2 oz box	<b>89¢</b>
<b>CAKE MIXES</b>		
SHURFRESH	3 1/2 gal square	<b>\$1</b>
<b>ICE CREAM</b>		



Campbell's  
**Pork & Beans**  
3 16 oz cans  
**\$1**

Price Saver  
**Sweet Peas** 16 oz cans  
4 FOR **\$1**

French's  
**Mustard** 28 oz  
**79¢**

Lipton Family  
**Tea Bags** 24 count  
**\$1.89**

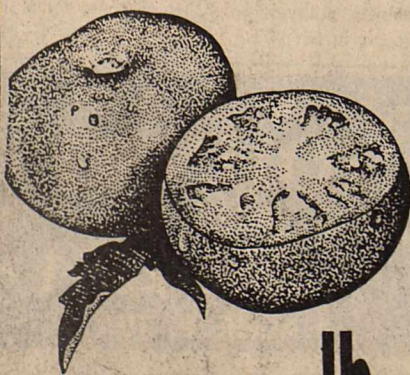
Swift 5 oz cans  
**Vienna Sausage**  
2 FOR **89¢**

Shurfresh Texas Style  
**Biscuits** 12 oz cans  
3 FOR **\$1**

Shedd's Spread  
**Margarine** 24 oz tubs  
**99¢**

**PRODUCE SPECIALS**

LARGE  
VINE-RIPE  
**TOMATOES**



**39¢**  
lb.

SOUTHEASTERN  
**PEACHES**..... lb. **49¢**

THOMPSON WHITE SEEDLESS  
**GRAPES**..... lb. **89¢**

FRESH  
**CANTALOUPE**..... lb. **29¢**

SUPER SELECT  
**CUCUMBERS**..... 5 FOR **\$1**

YELLOW  
**SQUASH**..... lb. **39¢**

FRESH  
**BROCCOLI**..... BUNCH **79¢**

BAKER RUSSET  
**POTATOES**..... 3 lbs. **\$1**

Texas Redmeat 22 lb avg.  
**Watermelons** **\$2.69**

3 STAR  
SHURFRESH  
**HOMO MILK**  
1/2 GAL.  
**59¢**  
WITH ONE FILLED SUPERSTAR BOOKLET

3 STAR  
SHURFRESH  
**BREAD**  
1 1/2 LOAF  
**9¢**  
WITH ONE FILLED SUPERSTAR BOOKLET

3 STAR  
SHURFRESH  
**MEDIUM EGGS**  
DOZEN  
**19¢**  
WITH ONE FILLED SUPERSTAR BOOKLET

3 STAR  
PRICE SAVER  
**BATH TISSUE**  
4 ROLL  
**19¢**  
WITH ONE FILLED SUPERSTAR BOOKLET

3 STAR  
SHURFINE  
**BLEACH**  
1 GAL.  
**19¢**  
WITH ONE FILLED SUPERSTAR BOOKLET

3 STAR  
PARKAY  
**MARGARINE**  
1 LB. STICKS  
**19¢**  
WITH ONE FILLED SUPERSTAR BOOKLET