

13100 86/01 00929  
BAZE BK. BINDING  
514 W 7TH ST.  
AMARILLO TX  
79101



Staff Photo by Don Comedy

## 40TH ANNIVERSARY

Many area residents visited Bill Wilson Motor Co. on Tuesday during their 40th anniversary celebration. The car dealership had several older "classic" cars on display as well as a newly remodeled showroom and office area. Visitors enjoyed old pictures and newspaper clippings on display as well as refreshments and door prizes.

# Haskell Summer Shindig Freezeoff Winners Named

BY WANDA DULANEY,  
Manager, Haskell  
Chamber of Commerce

First prize winner of the Haskell Chamber of Commerce Freezeoff was Mrs. John (Barbara) Kimbrough for her apricot/orange ice cream. Second winner was Mrs. Lynn Toliver, entering vanilla ice cream. Mrs. Ken (Nelda) Lane won third prize for Butterfinger ice cream.

Chairman, Dr. and Mrs. Ed Harris, reported that the following merchants participated in this event and the gift certificates awarded may be redeemed from any of their stores: Kids Duds, Lane Felker, Hayloft, Video Vendor, Personality Shoppe, Pizza Barn, The Drug Store, Agricultural Services, Heidenheimers, Slipper Shoppe, Ben Franklin, Lane Apparel, Heads or Tails, Music Box and Carousel.

Winners in the Youth Division were: first, Dawn Langhofer (banana split); second, Laurie Hester (Butterfinger); and third, Daniel Maura (strawberry cream).

Mrs. Lynn Toliver also won a \$25 gift certificate as the Most Experienced Contestant, and Kenny Livingston won as the youngest contestant, entering pineapple ice cream.

The Lions Club proved victorious over rival teams from the Kiwanis and Rotary Clubs in a close old fashioned crankoff. They finished just minutes ahead of their

opponents. The Lions team included Brian Burgess, Jim Crain and Ford Cole; Rotary: Ken Lane, Andy Anderson, Bob Brandon; Kiwanis: Marshall Brown, James Davis, Conrad Roewe.

Judges for the Freezeoff were Charlie Jordan, KTAB-TV Abilene; Mrs. Catherine Cauley, Lone Star Gas, Abilene; Don Walters, West Texas Utilities, Stamford, and Mrs. Layman Newton, Home Ec. Teacher, Knox City.

Dr. and Mrs. Harris expressed appreciation to the merchants, Chamber of Commerce Board of Directors and Welcoming Committee for their efforts; Jerry Don Klose for loan of his trailer; the Fair Assn., Brian Burgess for chairs, tables, steps. Dr. Harris said that the Welcoming Committee Chairman Carolyn Reynolds not only scheduled and coordinated the Chamber's Ice Cream Stand but found the three identical hand crank ice cream freezers needed for the Crankoff between the service clubs.

### HASKELL SUMMER SHINDIG A SUCCESS

Booths, concession stands, games were sponsored around the square by the Garden Club, Brazos West Art Assn., Watkins Products, Sue's Flowers and Photography, House of Lloyd from Jayton, Gonzales Welding Shop, Clements and Kelly from Rotan; Catholic Church, The Depot, Kountry Kin of

Tye, Kiwanis Club, Fire Department, Lions Club, Rotary Club.

Many items were sold at the Merchant's Auction, with customers very pleased at the many bargains at the sidewalk sales and in the stores.

KVRP broadcast its music throughout the day. Donna Wilson, chairman Retail Merchants Assn. had expert leadership from fellow merchants.

Thanks to the generosity of the First National Bank, Commodore Savings and Haskell National Bank, everyone enjoyed the live country music by the "Cane Breaks" from Abilene.

Also highly successful was the closing Cake Walk sponsored by the Track Association. The cakes were picture-perfect and were as good as they looked.

The Haskell Chamber of Commerce is grateful to every worker, every spectator who made Haskell's First Summer Shindig such a success. We especially want to thank the hundreds of out of town visitors who came for the festivities and to take advantage of all the bargains in the various stores.

## Registration For WTC Extension Classes Set

Registration for fall semester classes at the Haskell extension center of Western Texas College will be held on Aug. 22.

Students are to register between 6:30-8 p.m. in the Haskell Elementary School. Textbooks are to be available for purchase during registration.

Courses on the fall schedule are Art 236 on Tuesday nights, English 131 on Monday nights, History 131 on Thursday nights, Music Appreciation 131 on Tuesday nights, Psychology 232 on Monday nights, Human Development (Orientation) 111 on a night to be announced, and Physical Education (Aerobics) 211 on Monday nights. There will also be two hours of lab with the aerobics class and these hours will be arranged with the instructor.

Classes will begin on Aug. 29. There will be no classes on Sept. 2, Labor Day.

Additional information about the Haskell extension center classes can be obtained by contacting Bill Blakley, center coordinator, at 864-2891.

## Homemakers To Meet

The Creative Ladies Extension Homemakers of Rule and Sagerton will meet August 19 at 7 p.m. in the home of Renee Dudensing. Rural crime will be the topic of the program. All area ladies are invited to attend.

**THE HASKELL**

**30¢**  
Including Tax

**FREE PRESS**

12 Pages in One Section  
Plus Two Inserts

HASKELL—A GOOD PLACE TO VISIT. A BETTER PLACE TO LIVE.

VOLUME NINETY-NINE HASKELL, TEXAS 79521, AUGUST 15, 1985 NUMBER THIRTY-THREE

# Hale Farm, John Deere Reach Joint Agreement

Joe Pat Hale, president of Hale Farm Supply Inc. and representatives of John Deere Company announced by a letter jointly signed by both parties that Hale Farm Supply still continues to serve as the John Deere dealer in the Haskell area. This announcement is necessary since there has been some misunderstanding that Hale Farm Supply may not continue as the John Deere dealer. The joint letter states "You may be assured that when you, our John Deere customers, speak Hale Farm Supply and John Deere Company listen."

Pat stated that as a result of the Dallas meeting with John Deere, there is a renewed commitment on the part of Hale Farm Supply to serve all customers in the Haskell,

Stamford, and surrounding areas." Pat also stated, "We assure you that the service you have received in the past will continue and every attention will be given to you our customer. You are the key to the success of Hale Farm Supply. Your continued use of John Deere products will assure the success of this renewed commitment."

John Deere representatives and Pat Hale further stress that they understand the rapid change in the farm economy and the severe implications this has had for all farmers in Haskell, Jones, Stonewall, Callahan, and Stephens counties. Economic conditions have impacted not only the farmer's operations, but also has impacted the equipment dealers. As a result of

the changing economic conditions and the farm stress, Hale Farm Supply will be working closely with the John Deere Company in developing a long range business plan designed to serve more customers over a broader area.

Mr. Joe Pat Hale stated that, "Hale Farm Supply pledges that all farmers will be serviced as well as if not better than in the past and that the farmers will continue to be provided with superior product support with respect to repair parts inventory, and skilled repair technicians to repair equipment, special tools, and the facility that will afford John Deere users the highest level of service possible."



Photo Courtesy of Hess Hartfield

## JUNKET JUDGE

KTAB's Charlie Jordan was in Haskell Saturday during the Shindig activities to help with the ice cream judging. Ice cream, dunking booths, sponge throws, various sales and other activities kept those who attended entertained and refreshed during the hot afternoon.

# Comedy Named WTPA Second Vice President

Haskell Free Press Editor Don Comedy was elected second vice president of the West Texas Press Association during the 55th annual meeting of the group last weekend in Abilene.

The association is the world's largest regional press association and includes all of Texas west of Ft. Worth.

The honor puts Comedy in line to serve as president of the group in three years. It was noted during the annual awards banquet Saturday night that the chairman of the board, Brad Tooley of Canyon, President David Werst of Big Lake, and Comedy, were all second generation members of the association and that Comedy and Werst would be second generation presidents of the group. Bill Comedy, Free Press publisher, served as president of the group in 1978.

Don Comedy has served as editor of the Free Press since 1972 and is also vice president of Haskell Free Press Publishing Co. Inc. He is currently serving as president of Rolling Plains Printing Co. Inc., an offset printing company which currently prints five area newspapers with a sixth to be added soon.

Comedy is a past president of the Haskell Lions Club, has served four

terms on the board of directors of the Haskell Chamber of Commerce and is currently secretary of the Haskell Industrial Foundation. He is a member of the Haskell Volunteer Fire Dept. and is currently serving as vice president and training officer of the department.

He is married to the former Jeannine Isbell of Paint Creek. The couple has two daughters, Jennifer 8, and Jessica, 4. They are members of the First United Methodist Church.

## Car Wash

A car wash will be held Saturday, August 17, from 9 a.m. to 2 p.m. at the First United Methodist Church by the church youth. Cars, pickups, and vans will be washed inside and out.

## Cattle Seminar

A stocker cattle health seminar will be held, Tuesday, August 27 starting at 8:30 a.m. at the Extension Service-Baylor County Building in Seymour.

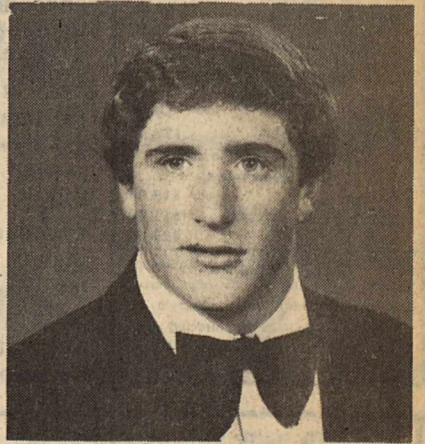
If you are interested in this meeting call the Extension office, 864-2658 before August 22 to pre-register, so a count can be made for the noon lunch on August 27th.

## Robert Ivey Plays In Greenbelt Bowl

Haskell's Robert Ivey participated in the 36th annual Greenbelt Bowl game last week in Childress. Ivey was featured on the East team, and the team was coached by Morris Mercer, former Wichita Falls Rider High School football coach.

Ivey was honored by being chosen a team captain for the game along with Brian Fayak of Altus, Oklahoma and Greg McClendon of Paducah. The West squeaked by the East 14-13 to capture the 36th annual Greenbelt Bowl victory.

Ivey rambled 21 yards for a touchdown to give the East its only lead in the game late in the third quarter. Ivey picked up 97 yards on 17 carries and was named the game's outstanding offensive back. "I was shocked when I arrived at Childress and they told me I would be playing offense and not defense. My home is defense as the Tarleton Texans plans to play me as a linebacker. I guess you could say I finished my offensive career in a good note receiving that award," Ivey said.



ROBERT IVEY

## Commodities Schedule

The Aspermont Small Business Development Center will distribute USDA Surplus Commodities at the following dates, times, and locations:

Tuesday, August 20th: Rule; 9:30-11:00 a.m. at Church of Christ  
Thursday, August 22nd: Haskell; 8:00-9:00 a.m. at Experienced Citizens Center for Ages 60 and over.

9:00-10:00 a.m. at Experienced Citizens Center for Ages 59 and under.

Each person must present identification before receiving commodities. For more information call the Aspermont Small Business Development Center, Inc., at (817) 989-3538.



T-17 and counting!

If you've read this far and are a dove hunter, you've probably been counting days for several weeks now. Dove prospects for Haskell County appear excellent and avid dove hunters are anxiously awaiting Sept. 1.

During the past year or two conditions have been less than favorable and the promise of a good bird population this year has me drooling. I've cleaned my shotguns until some of the finish has worn off and my bride just shakes her head.

It seems that after almost a dozen hunting seasons she would have gotten used to the ritual of the end second season of the year. Even before we married I tried to explain that even though the folks who wrote poetry divided the year into four seasons, there were really only two: Hunting season and waiting for hunting season.

After visiting with several other

hunters who talk of the despair they see in their wife's eyes about this time of year, we came up with several constructive ideas.

Perhaps we could form a local chapter for wives of hunters. During "waiting for hunting season" we could offer classes on how to load the perfect quail load; field dressing deer in six easy steps; or gunsmithing in the kitchen. We felt that if we could get the women involved they would be as eager about hunting season as we are.

The suggestion was offered one day last week and was met with less than enthusiasm from all the wives.

The group of hunters has now asked me instead to issue a plea to all women whose husbands do not hunt to consider adopting a "hunter's widow" from September through February. Or at least plan on sending a sympathy card to the wife of a hunter before September 1.



## Joey Kimbrough Receives 4-Year College Scholarship

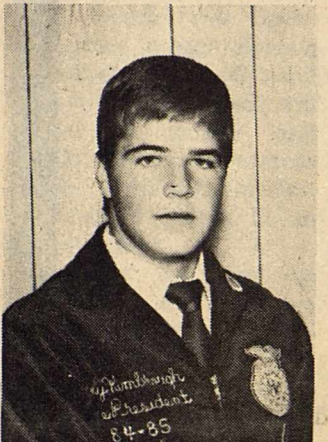
Joey E. Kimbrough, an outstanding Haskell FFA member, recently received a four-year, \$8,000 college scholarship from the Houston Livestock Show and Rodeo.

Joey, son of Joe Kimbrough (Rt. 1, Box 1290, Haskell), was an active FFA member for four years. He served his chapter as president and was also a district vice president. He participated on several award-winning judging teams, including meats and land judging, and placed as fourth high point individual in area meats judging competition.

Joey graduated second in his class and was an honor student and National Honor Society member. He was school newspaper photographer and senior class treasurer.

Joey, who plans to major in agricultural education at Texas Tech University, was one of 50 recipients of Houston Livestock Show and Rodeo scholarships presented at the Texas State FFA Convention. The Show also presented 50 four-year, \$8,000 scholarships to 4-H members during the State 4-H Round-Up in June.

Joey becomes a part of the largest agricultural scholarship program in the United States. The



JOEY KIMBROUGH

Houston Livestock Show and Rodeo is the nation's largest donor of agricultural scholarships. During the coming school year, 469 students in Texas colleges and universities will receive assistance through the annual program alone. This represents a commitment in excess of \$2 million.

The winners of Show scholarships are carefully selected from hundreds of applicants and are the best in Texas from the standpoints of leadership and academics. Winners must major in some form of agriculture at a Texas

college or university.

"These scholarships represent a most important investment in the future," said Show President Joseph T. Ainsworth, M.D. "We're proud of our continuing commitment to outstanding students like Joey, an outstanding FFA member ready to face the challenges of tomorrow with a solid education."

Ainsworth noted that the scholarship program is made possible through funding generated from the proceeds of the Show, an outstanding charity that is also an exceptional entertainment event.

## Lamesa Art Exhibit Benefits Rehab Center

The West Texas Rehabilitation Center benefited from the Lamesa Rodeo Association's third annual Western Art Exhibit and Sale recently at the Dean-Boswell Indian Canyon Ranch located east of Lamesa. WTRC's percentage of the preview auction plus additional sales when the exhibit was moved to the Lamesa Courthouse square amounted to \$7,000.

Artists exhibiting at the invitational show included Rosie Sandifer Alford and Paul Wylie of Lubbock; Jodie Boren of Abilene; Bill Chappel of South Fork, Colo.; Robert H. Duffie and Renne Hughes of Fort Worth; Jammy Huggins of Seminole; Alan Kinney of Kerrville; John Kittleston of Cody, Wyo.; Carol Molloy of Albuquerque; Ben Miller of Fluvanna; Garry Myers of Spur; Terrell O'Brien and George Schreiber of Lamesa; Robert Taylor of Snyder; Gary Ward and Jim Ward of Canyon;

Garland Weeks of San Angelo; and Justin Wells of Amarillo.

LaFrae Sharp, a founder of the benefit, said that the show spotlights the established artist and boosts the talented newcomer.

Since 1953 the West Texas Rehabilitation Center has treated handicapped children and adults without charge to the patient. More than 10,000 are not served annually on WTRC campuses in Abilene and San Angelo. Many of these patients come from area towns and more and more local organizations are choosing WTRC to benefit from annual activities such as the one by Lamesa Rodeo Association. The delivery of rehabilitation services by the Center is dependent upon contributions and fund raising activities and this "neighbor helping neighbor" concept has been the backbone of WTRC's existence.



## HAWAIIAN VISITORS

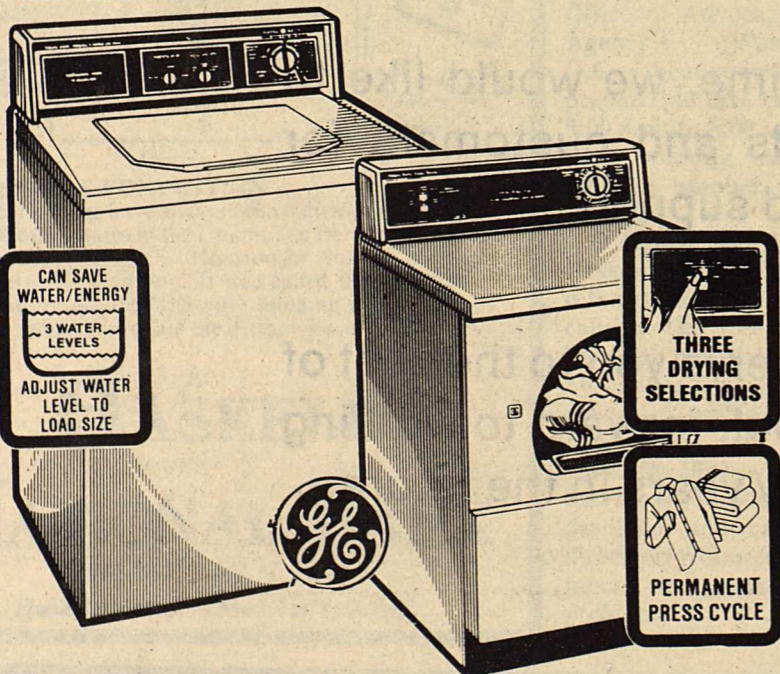
Pictured are members of the Haskell tour group who have recently returned from a 10 day trip to Hawaii. Members of the group include: E.L. and Fern Bassing, Aree & Smith, Edith Fay Booe, Jack and Joy Chapman, Toxie and Nancy Cobb, Virgil and Evelyn Cobb, Bob and Betty Dulaney, Jan and Elyse

Eastland, George and Helen Fouts, Ralph Hernandez, Tina Holland, Tom and Mary Kaigler, Weldon, Mary and Lisa Kirk, Joe and Florene Larned, John and Florence Larned, Kendall Larned, Gentry and Mavis Middleton, Claude and Madge Thomas, Keith Parrott, Jean and Keith Stanley, Faye Stiewert, H.S. and Dorothy Stovall, Wayne and Bettie Wainscott and Bailey, Nancy and Sam Toliver.

# WE AIM TO PLEASE WITH BARGAINS THAT SPELL... economy

lean center cut <b>Pork Chops</b>	\$1 <sup>59</sup> / <sub>lb</sub>	Parade, Frozen 16 oz pkg <b>Brussel Sprouts</b>	89 <sup>c</sup>
end cut <b>Pork Chops</b>	\$1 <sup>29</sup> / <sub>lb</sub>	Thompson Seedless <b>Grapes</b>	49 <sup>c</sup> / <sub>lb</sub>
Fresh <b>Pork Backbone</b>	\$1 <sup>49</sup> / <sub>lb</sub>	California <b>Strawberries</b> pint	69 <sup>c</sup>
Gooch <b>Bologna</b> sliced	\$1 <sup>19</sup> / <sub>lb</sub>	<b>Avocados</b> 4 for	\$1 <sup>00</sup>
Parade <b>Crackers</b> 1 lb box	49 <sup>c</sup>	Sunshine <b>Cake Cups</b> for ice cream	79 <sup>c</sup>
Del Monte <b>Peas</b> 17 oz can	49 <sup>c</sup>	<b>Coca Cola</b> 2 liter	98 <sup>c</sup>
Del Monte <b>Corn</b> 17 oz can	49 <sup>c</sup>	<b>Jello Pudding</b> box	39 <sup>c</sup>
Del Monte Cut <b>Green Beans</b> 16 oz can	49 <sup>c</sup>	Campbell 16 oz can <b>Pork &amp; Beans</b>	39 <sup>c</sup>
Del Monte <b>Tomato Sauce</b> 5 <sup>8 oz</sup> / <sub>cans</sub>	\$1 <sup>00</sup>	<b>Zest</b> bath bar	59 <sup>c</sup>
Nilla <b>Wafers</b> 12 oz box	\$1 <sup>39</sup>	Bounty <b>Towels</b> large roll	79 <sup>c</sup>

## Extra Large Capacity TWO-SPEED WASHER DELUXE DRYER



### WASHER

Model WWA8310G

- 2 wash and spin speed combinations.
- 3 wash/rinse temperature selections.
- 3 cycles—regular, perm press & knits, activated soak.
- 3 water level selections.
- Filter-Flo® filtering system.

WAS \$449<sup>95</sup>  
NOW \$399<sup>95</sup>  
SAVE \$50

### DRYER

Model DDE5700G—Electric

- 4 cycles including permanent press/knits.
- 3 drying selections.
- Durable porcelain enamel finish drum.
- Removable up-front lint filter.

WAS \$399<sup>95</sup>  
NOW \$349<sup>95</sup>  
SAVE \$50

GE. We bring good things to life.

Liberal Budget Terms — Low Monthly Payments  
90 Days Same As Cash

## Anderson Tire Co.

206 South Avenue E

864-2900

# POGUE GROCERY

—Extra Parking Behind The Store. Home Owned and Operated—

113 North Avenue E

Phone 864-2015

Haskell, Texas

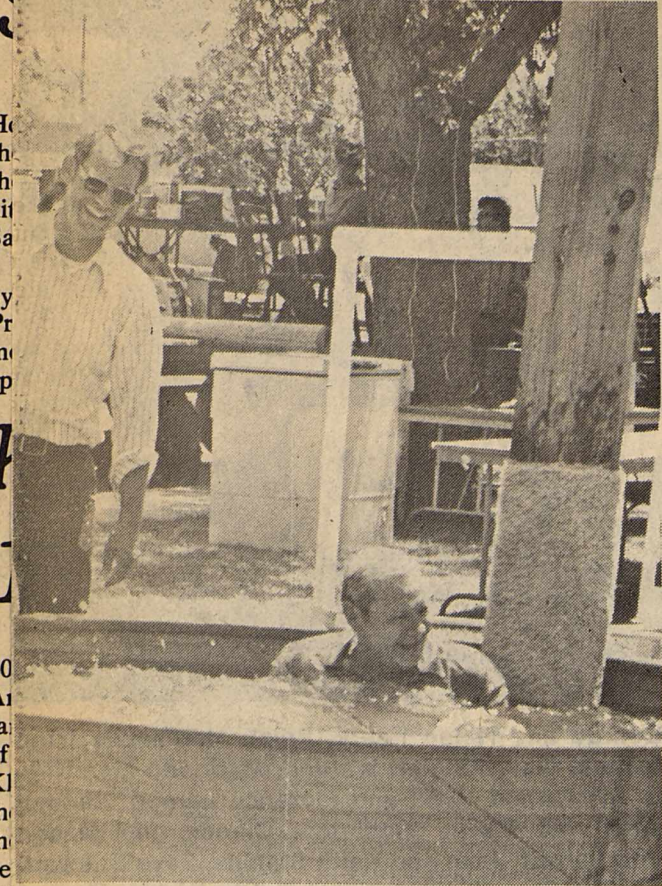


Photo Courtesy of Hess Hartsfield

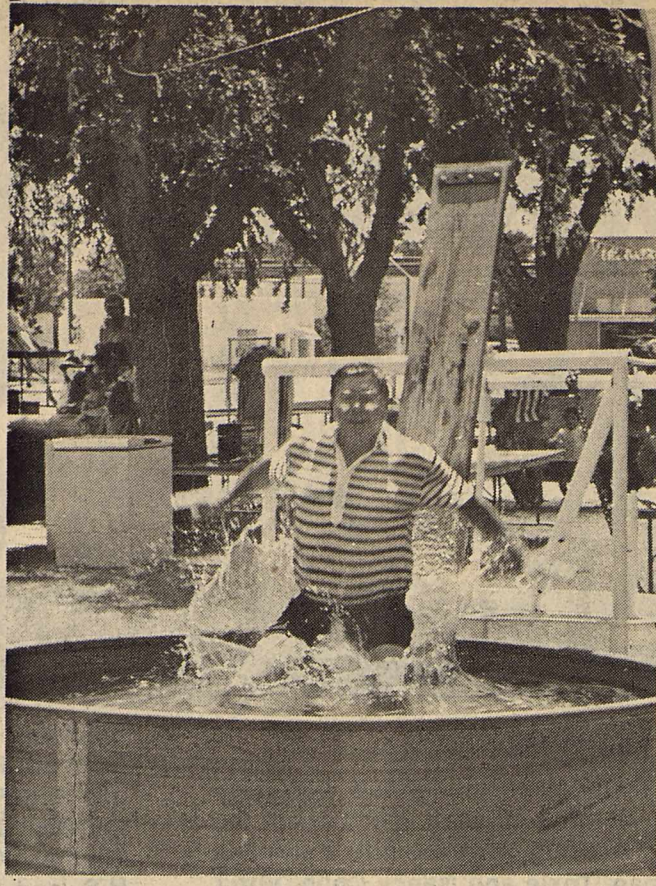


Photo Courtesy of Hess Hartsfield



Photo Courtesy of Hess Hartsfield

OFFICIAL DUNKING

THE WATER'S FINE

WINNING TEAM

# Obituaries

## 'Rusty' Roddy

Graveside services for John Elmer (Rusty) Roddy, 63, of Rule were held at 2 p.m. Thursday, August 8 in Highland Cemetery in Metamora with Novel Baize, pastor, officiating. Services were under the direction of Holden-McCauley Funeral Home. He was pronounced dead Wednesday, August 6 at 7:30 a.m. 8 miles southeast of Metamora.

Born July 30, 1922 in Colorado City, he was a farmer. He had lived in Rule for the past 12 years moving there from Tuxedo. He was a member of the First Baptist Church in Metamora.

Survivors include one daughter, a woman and a warrior that became a legend.



**Tower Drive In Theatre**  
Rule, Texas  
Fri., Sat., & Sun.  
Aug. 16, 17, & 18

son, Bob Roddy of Springdale, Ark.; four daughters, Sue Moody of Kingsville, June Cline of Rogers, Ark., and Margie Bowen of Springdale, Ark.; one sister, Mrs. Wallace (Helen) Allison of Rule; and 4 grandchildren.

Pallbearers were Jack Buske, Olan Goodman, Art Briles, Dick Frazier, Lon Goodwin and Sam Baize.

## Opal Pettiet

Funeral services for Opal Pettiet, 75, of Rule were held at 2:30 p.m. Tuesday, August 13 in Rule First Baptist Church with Rev. J.R. Williams, pastor, officiating. Burial was in Rochester Cemetery under the direction of Holden-McCauley Funeral Home.

She died Sunday, August 11 at 9 p.m. in Rice Springs Care Home in Haskell.

Born September 10, 1909 in Earth County, she was a nurses aid. She moved to Haskell County in 1922, settling in Rule in 1945. She was a Baptist.

Survivors include two brothers, T.E. Pettiet of Midland and C.C. Pettiet of Lubbock; and several nieces and nephews.

Pallbearers were Roger Pettiet, Pete Pettiet, Herman Pettiet, Jerry Pettiet, Johnnie Stuller, and Joe Menifee. Honorary pallbearers were Bob Pettiet, Joe Pettiet and Ben Pettiet.

## Children Have Individual Personalities

One summer my neighbors decided they would like to have a garden full of flowering shrubs. As a newly married couple, they approached the task with great enthusiasm.

Together they dug the soil and carefully worked it with the twenty pound bag of fertilizer they bought on sale at the local discount store. The same day they selected four shrubs that they wanted to have and carefully planted them where they would have full sun all day long. The shrubs were never thirsty because my neighbors watered them thoroughly every evening.

Within a few weeks all but one of the shrubs had died. My neighbors were distressed. Next time, they said, they would use more fertilizer, more water, and hope for more sunshine.

Fortunately, before the next summer came around, I was able to buy them a gift I knew they needed. It was titled "Basic Gardening."

They read that one of the shrubs they planted did not do well in full sun. Another did not tolerate the kind of fertilizer they used. And the third died because of too much water.

This made me reflect on how much children are like those shrubs. We sometimes try to treat them with the same dose of rewards and punishments and expect them all to react alike. We forget they have unique needs and individual personalities.

Parents have the best opportunity to know what problems their child is likely to have, what works best in helping their child handle a problem, and what is least effective in changing the child's behavior. Sharing such information with the teacher at the beginning of the school year can help establish a good parent-teacher relationship in education for the rest of the year.

The Growing Up newsletter, in which this article first appeared, follows a child's development through the school years.

Motor mileage log. Complies with new IRS record keeping requirements. **Haskell Free Press.**

# To Our Friends And Customers:

Hale Farm Supply and John Deere have reached an agreement to continue operating a John Deere dealership in Haskell.

Both Hale Farm Supply and John Deere are committed to providing our customers with the best possible service and products. We are very pleased to be able to make this joint announcement.

At the same time, we would like to thank our friends and customers for their concern and support.

We pledge to serve you to the best of our ability and look forward to working with you for many years in the future.

Pat Hale

Dusty Rhodes

## REAL ESTATE FACTS

BY: HESS HARTSFIELD

**Hartsfield Realty**

864-2665 — 864-2004

Selling Haskell Co. for over 25 years

## PUT A SMILE ON YOUR FRONT DOOR!

"We'd like to just drive by first." Does that sound like the kind of statement buyers might make when looking for a home to purchase? Whether or not the prospective buyers actually do "drive by" is something you'll probably never know - UNLESS your phone rings with a request to see the inside of your home.

What makes the buyers decide to call after driving by? It could be the "smile" on your front door. You see, there's an old expression which goes "You never get a second chance to make a good first impression."

So, as the purchasers drove past your home - what did they see in that short look, a "smile" or a "frown"?

Was the front yard freshly mowed, the hedges and walks neatly trimmed? Were all the screens and windows in place (with no broken panes of glass evident)? Have the front door and shutters been given a bright, fresh coat of paint? Have the children's bikes and toys been moved out of sight?

In short, would total strangers experience warm, positive feelings when viewing the exterior of your home for the first time? They should you know! In fact, they must feel "invited" to see more. By investing very little money, and a substantial amount of "elbow-grease" you can put the "smile" on your front door that will issue that invitation!

If you're planning to sell your home soon and would like information on its current value, give us a call at 864-2665 or come by our office located at 417 S. 1st.

# Saturday Banking

At Our Drive-In  
9:00 a.m. — Noon



**First National Bank-Haskell**

200 South Avenue E Phone 864-8555 Member FDIC

# Outlook For Cotton Market Is Not Good

It's enough to make a cotton farmer cry—the way the market is shaping up for the 1985 crop.

Although the acres planted to cotton in the U.S. are down slightly this year to 10.7 million, a good crop appears in the making. Thus the end result may be about 12.5 million bales, not much under 1985 production.

Add that to the fact that consumption may nose-dive to around 9.5 million bales and the result is a snowballing carryover of more than 7 million bales. That's close to carryover stocks following the 1982 crop year—the year preceding the government's PIK program.

All this means that farmers will be hard-pressed to find any sustained strength in the cotton market, says Dr.

Carl Anderson, economist with the Texas Agricultural Extension Service, The Texas A&M University System.

"There appears to be little chance for the 1985 crop to move on the spot market at much above the loan rate," notes the economist. "With Strict Low Middling, 1-1/16 inch cotton set at an average of 57.3 cents under the loan, the price for most Texas cotton will be somewhat

less. Farmers across the U.S. have averaged 54 cents per pound for their cotton during the first six months of the year, so a maximum deficiency payment target price minus loan rate for 1985 cotton of 23.7 cents is a real possibility."

Recent discussions about export incentives to lower the U.S. price of cotton on the world market also have had a weakening impact on futures markets, with

December 1986 futures already trading in the low 50-cent range.

What can be done to improve this deteriorating situation in which cotton farmers find themselves?

"The U.S. cotton industry must take a strong action to recover lost markets, both at home and overseas," emphasizes Anderson.

"Export incentive programs are needed to counter export subsidies of other countries

and to offset effects of the strong dollar that discourages exports and encourages imports.

"Without market recovery and development the cotton industry will face the need for much greater production cuts in 1986," adds the economist. "Based on current conditions, half as much cotton acreage as this year would be more than adequate to meet projected market needs."



## WINS 1ST PLACE

Shown is the Big Country Soccer Association American League 1st place winning team, Wings. Team members include bottom row left to right, Joshua Johnson, Jacob Pruitt, B.J. Anders, Zachary Gordon, David Register, Chuck Holden and Shane Bramblett. Top row left to right is Coach Greenwood, Ryan Hamner, Adam Adair, Philip Klazynski, Benjie Palnick, Nathan "Chip" Morris, Sam Anderson, Cory Greenwood and Asst. Coach Hamner. Not pictured is Craig Longbine. Nathan "Chip" Morris is the grandson of Mr. and Mrs. E.B. Whorton of Rule.

## West Texas Fair Parade To Be Bigger & Better

The West Texas Fair and Rodeo announced that this year's parade will be even bigger and better than ever. The fair parade is scheduled for Saturday morning, September 7th.

This year trophies and cash prizes will be awarded for the best floats in each of the four categories: Commercial and Industrial, Civic, Youth, and Open. First place in each division will receive a trophy and \$150.00. Second place will receive a trophy and \$75.00. Additional awards will be presented for first and second places in an overall contest.

Trophies will also be awarded to the top two bands in AAA, AA, and A divisions, plus first, second, and third place in the lower division.

This year's parade will be broadcast live by KTXS

Television starting at 11:00 a.m. The West Texas Fair Parade committee expects this to be the largest parade ever, easily surpassing the 135+ entries from last year's celebration.

With your entry, each participant will receive a

free pass to the West Texas Fair for Saturday, September 7th.

Come be part of the 1985 West Texas Fair Parade. Deadline for entries is August 23. Call the West Texas Fair at 677-4576 for entries and additional information.

## Hot Line Available To Small Business Owners

Present and prospective small business owners facing problems with government continue to make good use of a special free telephone hot line designed to help with those problems.

The U.S. Small Business Administration's "Answer Desk" service has received 123,000 calls since being

started in October, 1982, Philip J. O'Jibway, director of SBA's Lubbock office, said today.

SBA in October 1983 began keeping records of "Answer Desk" calls by state. From this start through June of this year, "Answer Desk" has received 3,587 calls from Texas, O'Jibway said.

"Answer Desk" was created as an important service to help small business men and women, and other persons interested in small business, deal with the complexities of government," O'Jibway said. "The continuing use of our hot line and the wide variety of questions asked reflects the value of the service and the interest in small business issues here and around the country."

Experts from SBA's Office of Advocacy in the Agency's Washington, D.C. headquarters are prepared to take calls from 9:00 a.m. to 5:00 p.m. EDT each working day. The toll-free number is (800) 368-5855.

O'Jibway said, "Answer Desk" provided help and referral services to all callers. The free hot line has been beneficial to us at SBA, too. By listening to callers' problems and questions, we become more familiar with small business issues and problems and can better direct our resources to help meet and solve those problems."

## TFU District Banquet Set In Crowell

The President of Texas Farmers Union, Joe Rankin of Ralls, is scheduled to address area family farmers at the Texas Farmers Union district banquet in Crowell Friday, August 23.

Also invited to speak is former TFU President Mike Moeller, recently appointed Deputy Commissioner of the Texas Department of Agriculture.

TFU Director Floyd Borchardt whose District is comprised of fifteen (15) counties in this area says, "We look forward to hosting Mike at your yearly banquet and I am especially pleased to have our new president to address the TFU members this year."

Joe Rankin, long-time TFU Vice-President, assumed the position as President June 1.

Texas Farmers Union represents over 10,000 family farm members in Texas and sponsors community development projects such as Green Thumb, Inc. and Senior Texans Employment Program, older worker programs designed to employ seniors in rural communities.

## Breckenridge Tennis Toumey Set Aug. 23-25

The Breckenridge Chapter of the March of Dimes is sponsoring the first Annual Amateur Tennis Tournament August 23-25 at the Breckenridge High School Courts. Ron Phipps Chairman wants this to be a fun tournament that both experienced and inexperienced players can participate in each year.

Entry fee for the tournament is \$10.00 for singles and \$18.00 for doubles. The deadline for entering is August 20, 1985 and entrants must be at least 16 years old. We ask that you limit yourself to two events and mixed doubles.

To enter send entry form with check made payable to: March of Dimes to Ron Phipps, 1108 W. Walker, Breckenridge, Texas 76024. For information call Ron at 559-8691 or 559-2543.

Enter your event according to your playing ability as follows: A for advanced - B for intermediate - C for beginning.

Proceeds from this tournament will go toward the purchase of an Apnea Monitor for the Stephens Memorial Hospital Nursery.

PETITE ROLODEX: the perfect file for telephone numbers and addresses. Typewriter spaced lines. Replacement refills. Decorator colors and styling for home and office. *Haskell Free Press*

**TEXAS TRAILS**  
LONE STAR STATE HISTORY by DAN BROWN

WELCOME DEMOCRATES

VOTE

WELCOME

**HASKELL NATIONAL BANK**  
864-2631 • 601 N. First  
Haskell, Texas — Member F.D.I.C.

**WESTERN TEXAS COLLEGE**  
Haskell Extension Center  
Fall Schedule

COURSE NO.	COURSE TITLE	DAY	TIME	INSTRUCTOR
ART 236	Life Drawing	T	6:30-9:20	Gibson, J.
ENG 131	Composition I	M	6:30-9:20	Staff
HPE 211	Aerobics	M	8:00-9:00	Tidwell, D.
	Lab Time	TBA	TBA	Tidwell, D.
	Lab Fee \$10			
HIS 131	U.S. History to 1865	Th	6:30-9:20	Pruitt, F.
HD 111	Career Assessment	TBA	TBA	Hood, M.
MUS 131	Music Appreciation	T	6:30-9:20	Hardegree, B.
PSY 232	Child Growth/Dev.	M	6:30-9:20	Staff

Registration will be held from 6:30-8 p.m. on Thursday, Aug. 22, at Haskell Elementary School. Textbooks can be purchased at registration. Classes are to begin on Thursday, Aug. 29. No classes on Sept. 2, Labor Day.

For additional information, please contact Bill Blakley, center coordinator, at 864-2891

## NATIONWIDE LANE RECLINER SALE

...a salute to the working men and women of America!

You've worked hard. You deserve a reward. Put your feet up in a Lane Wall Saver® or rocker recliner and save while you're doing it!

The Way America Takes It Easy



**Sensational selection and savings on buys that'll knock you right off your feet!**

**SAVE \$100 to \$250**

A special purchase in co-operation with the world famous Lane Company results in unusual savings for our customers, but only for a limited time. Our selection has never been larger and our savings have never been greater than right now on these attractive but durable recliners. All rocking recliners and wall hugger recliners feature a lifetime warranty on the rugged mechanism. All frames are constructed of solid oak.

This offer cannot be repeated and is limited to stock on hand. Hurry in for best selection.

- FREE DELIVERY
- CREDIT ARRANGED
- FREE LAY-AWAY
- MASTERCARD & VISA
- OVER 70 RECLINERS IN STOCK
- SAVE \$100 TO \$250

## A FEW EXAMPLES OF HOW YOU CAN SAVE:

Conventional Recliner in herculon tweed List 319.95	<b>\$179<sup>95</sup></b>
Wall Hugger Recliner in nylon velvet, rust color. List 399.95	<b>\$269<sup>95</sup></b>
Rocking Recliner in acrylic velvet. Several colors. List 429.95	<b>\$299<sup>95</sup></b>
Rocking Recliner in heavy herculon velvet. Choice of colors. List 449.95	<b>\$329<sup>95</sup></b>
Oversize Wall Hugger Recliner in heavy nylon corduroy. List 549.95	<b>\$399<sup>95</sup></b>
Rattan Frame Wall Hugger in beige nylon herringbone fabric. List 675.00	<b>\$499<sup>95</sup></b>
Top Grain Leather Wall Hugger (not vinyl) in traditional style. List 899.95	<b>\$650<sup>00</sup></b>

**STORE HOURS:**  
9:00 - 5:30 — Mon.-Fri.  
9:00-5:00 — Saturday  
PHONE: 915/773-2232

# KINNEY'S

North Side of the Square  
Stamford



# M SYSTEM

Your FRIENDLY

**AFFILIATED SUPER MARKETS**

Haskell, Texas  
Where Your Dollar Buys More

**Double days**

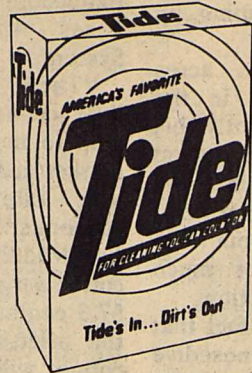
Tuesday & Wednesday  
With the purchase of \$3.00 or more.

Specials Good Thurs., Aug. 15  
thru Wed., Aug. 21

We Reserve The Right To Limit Quantities

**HONEY BOY PINK SALMON** ..... 15.5-oz. Can **1 89**

**SHURFINE STRAWBERRY Preserves** .... 18-oz. Jar **1 39**



## TIDE

Laundry Detergent

147-oz. Box, 1.00 Off Label!

# 6.99



★ **DEL MONTE** ★  
● **Green Beans**  
Cut or French Style 16-oz.  
● **Golden Corn**  
Whole Kernel or Cream Style, 17-oz.  
● **Sweet Peas** 17-oz.

MIX OR MATCH!  
**48¢**



**DELTA PAPER TOWELS**  
JUMBO ROLL

# 59¢

## DELTA TOILET TISSUE



4-Roll Pack

# 48¢

Limit one with \$10.00 or more grocery purchase

**DISHWASHER DETERGENT**  
**CASCADE** ..... 85-oz. Box **3 99**

**WELCH'S Grape Jelly** ... 32-oz. Jar **1 29**

**CLOROX BLEACH** ..... Gallon Jug **99**  
**BETTY CROCKER CAKE MIX** ..... Asst., Box **99¢**  
**DEL MONTE Fruit Cocktail** ... 17-oz. Can **79¢**  
**DEL MONTE Pineapple Juice** .... 46-oz. Can **1 19**  
**DRINKING WATER OASIS** ..... Gallon Jug **2 1 00**

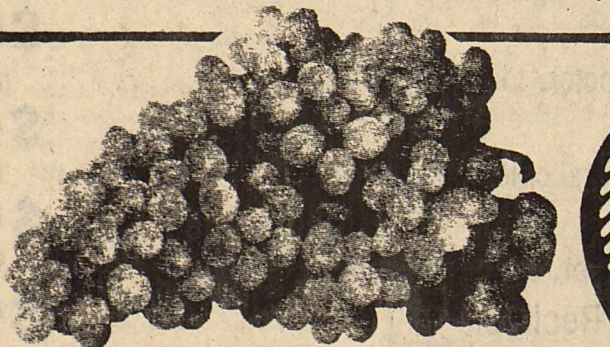
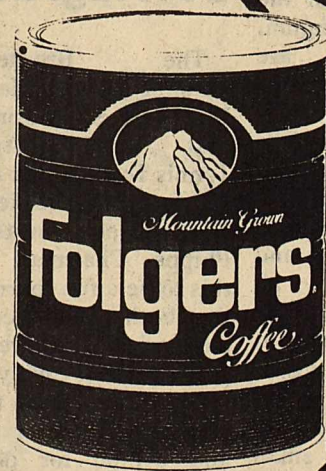
**SHURFINE ASSORTED ICE CREAM**  
Half Gal. Sq. Ctn. (Limit 2)

# 99¢



**FOLGER'S All Grinds Coffee**

# 2 59



## GRAPES

● Thompson Seedless ● Red Seedless ● Black Exotic

# 49¢

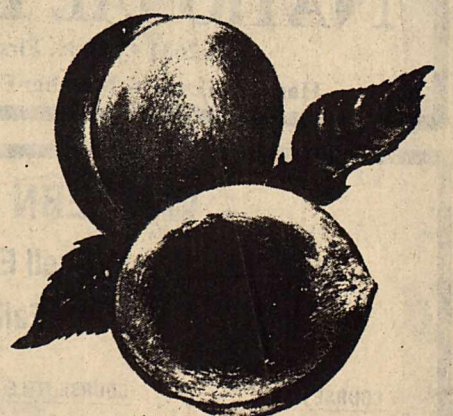
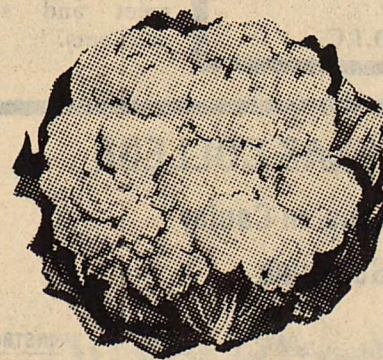
Lb.



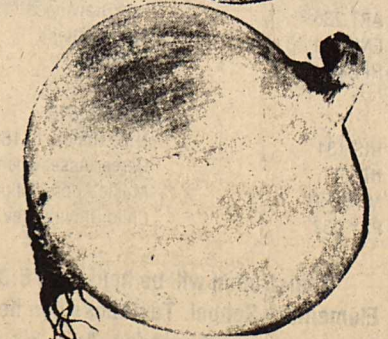
## CALIFORNIA SNOWBALL CAULIFLOWER

# 69¢

Lb.

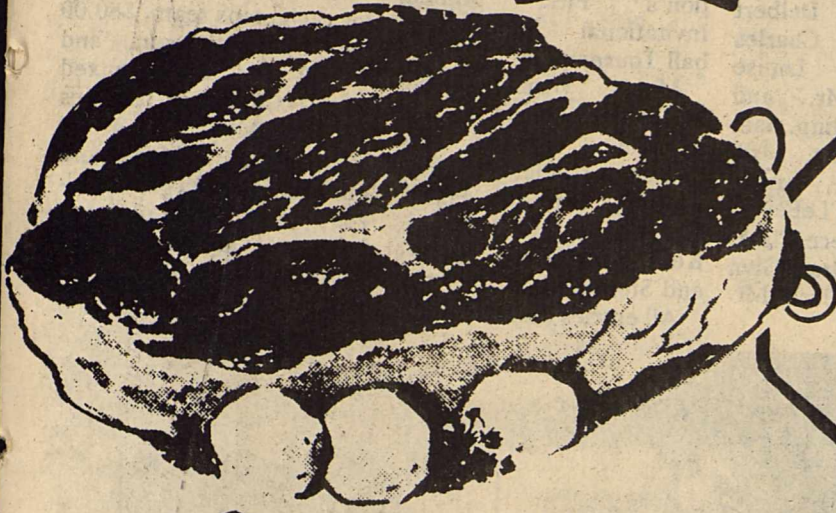


**Fancy Sweet Corn** ..... 6 Ears **1.00**  
**Fresh Carrots** ... 1-Lb. Cello **4 For 1.00**  
**Red Plums** Large Calif. .... Lb. **49¢**  
**Yellow Onions** ..... 5 Lbs. **1.00**





# BARGAINS



**YOU CAN'T BEAT!**

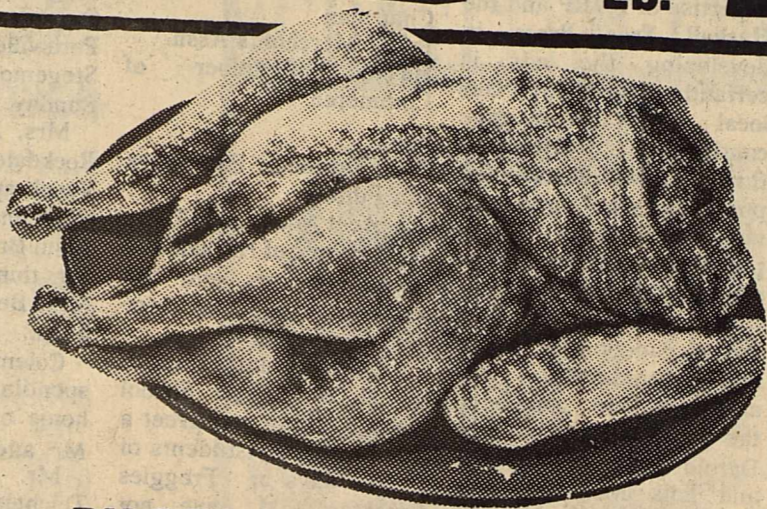
USDA CHOICE  
**BEEF RIBS**  
Lb. **79¢**

USDA CHOICE  
**CHUCK ROAST**

Lb. **1.09**

**Rib Steaks**

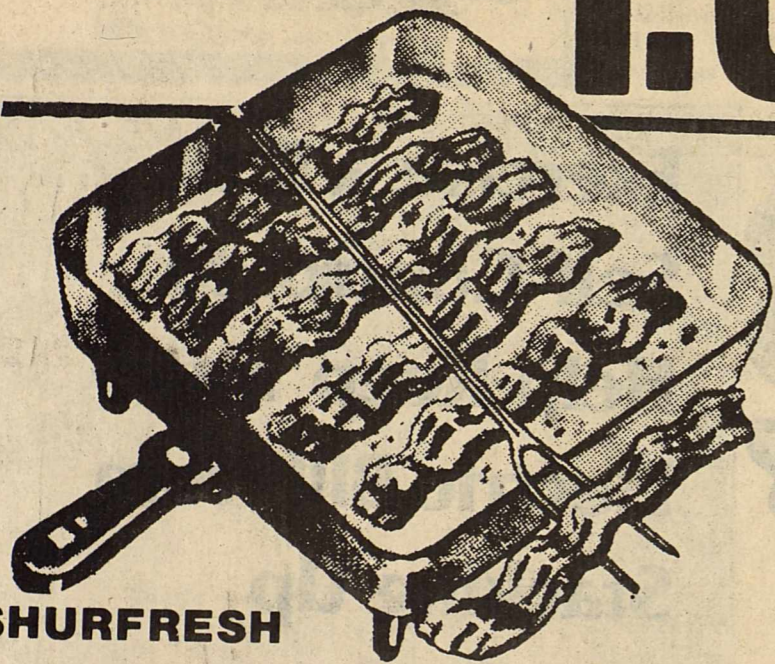
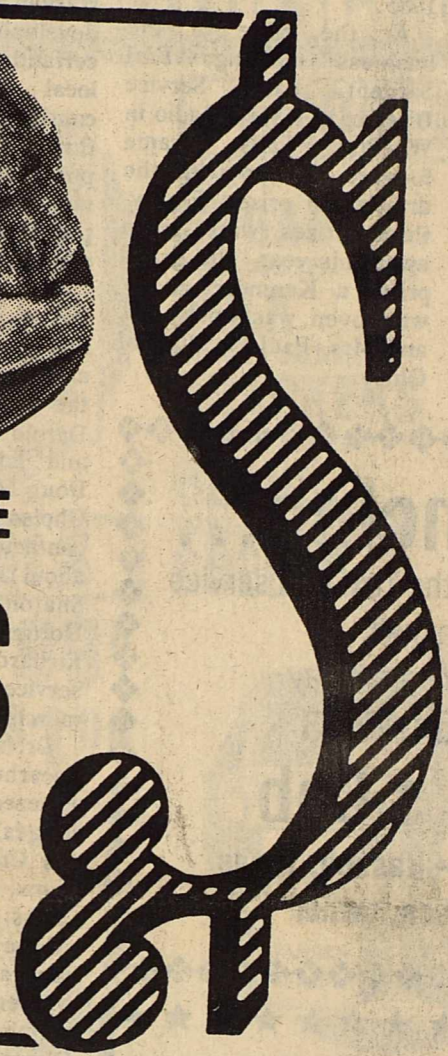
Lb. **1.69**



PILGRIM'S PRIDE WHOLE

**FRYERS**

Lb. **59¢**



SHURFRESH

**BACON**

1-Lb. Pkg.

**1.49**

SHURFRESH BONELESS  
**HAM HALVES** Lb. **1.77**

AFFILIATED NOTEBOOK  
**PAPER** ..... 150-Ct. Pkg. **3 For 1<sup>00</sup>**

KRAFT BARBECUE Assorted  
**SAUCE** ..... 18-oz. Bottle (Limit 1) **58¢**

BANQUET FROZEN  
**POT PIES** ... Assorted 8-oz. **3 For 1<sup>00</sup>**

IMPERIAL  
**SUGAR** ..... 5-Lb. Bag **1.79**

GOLD MEDAL  
**FLOUR** ..... 5-Lb. Bag **1.19**

**DOUBLE COUPONS**  
**Tuesday & Wednesday**

We will redeem all manufacturers "cents off" coupons for DOUBLE their value, up to \$1.00 in value, when the product is purchased.  
—LIMIT 1 COUPON PER ITEM—  
This policy does not include retailer (any food store) or free coupon, cigarette or tobacco coupons or refund certificates. The total redemption will not exceed the value of the item.

STAMP PRICE SPECIAL  
Shurfresh Milk  
½ gallon  
**49¢**  
WITH ONE SPS FILLED CARD

STAMP PRICE SPECIAL  
M-System Bread  
1 lb loaf  
**9¢**  
WITH ONE SPS FILLED CARD

STAMP PRICE SPECIAL  
Shurfresh Eggs  
medium dozen  
**19¢**  
WITH ONE SPS FILLED CARD

STAMP PRICE SPECIAL  
Shurtine Tuna  
6½ oz can  
**34¢**  
WITH ONE SPS FILLED CARD

STAMP PRICE SPECIAL  
Van Camp Pork & Beans  
16 oz can  
**5¢**  
WITH ONE SPS FILLED CARD



# B-K Electric Coop Holds Annual Meeting

The thirty-ninth regular annual meeting of the members of the B-K Electric Cooperative, Inc. was held Friday, August 9, 1985 in the Seymour High School Auditorium.

The doors opened with registration beginning at 6:00 p.m. Members and guests were entertained by The Westernaires' Band until the close of registration at 7:00 p.m.

Mr. John L. Grindstaff, Sr., President, then authorized the General Manager, Don Gregg, to act as Chairman and to proceed with the business meeting.

Pete Winn, Assistant to the General Manager, then asked the members and guests to stand for the invocation which was given by the Rev. Bob Harper of The Red Springs Baptist Church.

Following the recognition of special guests, directors and employees, the following employees were presented service pin awards: Stephanie Sosolik, Donny Odom, Jesse Earl Wilson, R.A. Hrcirik, Jr., Don Gregg, Jennie Campbell, Jim Donnell, Ricky Shumate, Mary Lou Albright, Attie Ryder, Jeanelle Howell, Norma Thornhill and Glenn Crawford.

Special recognition was given to John D. Graves, Line Superintendent, for forty years of service to the cooperative. He was presented with a 40 year pin and a meter lamp. Making these presentations were Don Gregg and Stanton Brown, Director.

Don Gregg then called the business meeting to order. Stephanie Sosolik, Office Manager, read the Notice of the Annual Meeting. The minutes of last year's annual meeting were approved as mailed out.

Don Gregg then gave the report of the Nominating Committee. John W. Yates and Marvin Zeissel were reelected to the Board of Directors. The members were informed that Capital Credits for the year 1985 will be paid in the fall of 1985.

At the close of the business meeting, Earl Sargent, Farm Service Director of KWFT Radio in Wichita Falls, came forward to help with the drawing of prizes. Eighty-three prizes were given away this year. The grand prize, a Kenmore microwave oven, was won by Mr. and Mrs. Paul Bernhart of Olney.

## Letters To The Editor

(EDITORS NOTE: The Haskell Free Press will publish letters to the Editor dealing with any subject. All letters must be signed but names will be withheld by request. All letters are subject to editing for length and liability.)

Dear Editor:

So many people are responsible for the success of this past Saturday's Summer Shindig that it would be impossible to name all of them. We hope the following categories will cover them collectively and that they know how much they are appreciated individually.

The Retail Merchants Association of the Haskell Chamber of Commerce sponsored this first annual Summer Shindig, and the widespread participation of merchants for special sales, the auction, their donation of prizes, decorations and work on all the other activities is especially significant.

Their individual advertising and the expertise of KVRP and the Haskell Free Press in developing the ads is certainly noteworthy. Our local media also gave continuous promotion through news releases and public service announcements.

KVRP also provided music from their station all day downtown.

Our thanks to Paul Barnett, auctioneer, and to the committee who arranged and conducted the auction: Tommy Long, Darold Roberson, Tommy and Lois Richardson; to Doug Morrison and Buster Gholson, the team who contacted all the churches about their participation; to Sharon Alves, Sandy Horton and Lois Richardson who contacted service clubs and merchants.

Dr. and Mrs. Ed Harris spearheaded the Ice Cream Freezeroff, secured the judges, and coordinated the Crankoff between the Lions, Rotary, Kiwanis Clubs. Our appreciation to all the contestants and our congratulations to the winners. We thank each member of the Board of Directors of the Chamber of Commerce and also Mattie Muriel Felker for each donated a gallon of ice cream to be sold by the Welcoming Committee, Carolyn Reynolds, chairman.

We were very honored to have Charlie Jordan, KTAB-TV, Abilene, as our celebrity judge and a welcome visitor to Haskell. Everyone enjoyed the Cane Breaks Country Band from Abilene and we again thank First National Bank, Haskell National Bank and Commodore Savings for bringing us this pleasure.

Concessions stands, arts and craft tables were operated by the Kiwanis Club, Garden Club, Pizza Barn, Sue's Photography, Catholic Church, Living Church of Aspermont, 4-H Clubs, Home Extension Service, Brazos West Art Association, Watkins Products, House of Lloyd

from Jayton, Gonzales Welding, Clements and Kelly from Rotan, The Depot, and Kountry Kin of Tye.

The Track Association is to be congratulated for their successful Cake Walk.

We are especially grateful to the Board of Directors, Retail Merchants Association and Welcoming committee—all of the Haskell Chamber of Commerce, for the countless details that preceded this celebration.

It was a hot day for all the participants, a hot day for all who came, but the community spirit far outweighed the discomfort and everyone seemed to have a good time. That's what it was all about.

Donna Wilson, Chairman Retail Merchants Assn. Haskell Chamber of Commerce

Dear Friendly Publishers and Editors:

I greet you and all the Good People of Haskell and Haskell County and the Bad ones also—if any there be, which I doubt.

Yes, I hope and expect to be at the High School Home Coming and greet a lot of the older students of former days at "Froggies Breakfast". I have not received the word where it will be, but cousin Leone Pearsey can give you the word. I had some "Cogestive Heart failure" in 84 which keeps me on a lot of pills and a pacemaker, which is ticking fine.

We expect to drive making short day stops to rest. Our plan is to go 140 to Oklahoma City and take Turnpike into Wichita Falls with a two or three day stop over at Lawton, Oklahoma for some Pictures to illustrate a story I expect to write on the colorful history and the characters who lived there including Quannah Parker and Temple Houston.

I am looking forward to this trip since I seriously doubt that even tho I live a few more years that we'll make the effort to make it again. There comes a time when "You Stay Put." At 94½ years old we are happy to have a good mind and energy to go some of each day.

I am looking forward to attending church in the United Methodist Church there Sunday Morning the 22nd. I helped dig the basement at age 16 as my contribution to the new church. Rev. Bruce Meadow was the pastor—a great man—a great minister. Haskell, the High School and the Church had much to do with my life. So once again I want to worship at its altar.

Give my love to the Giles Kemps.

Sincerely,  
Fred E. "Froggie"  
Wankan

**Play Day Set In Aspermont**

There will be a play day Saturday, August 17th at the Aspermont rodeo arena at 7:30 p.m. The age divisions will be 5 years and under, 6-9 years, 10-13 years, and 14-18 years. Trophies will be given to first place in each event and also to all-around in each age division. Everyone will receive ribbons. Entry fees are \$2.00 per event. For more information call (817) 989-3344. The play day is sponsored by the Stonewall County Livestock Association.

Highlight your life—New Bic bright liner. 4 fluorescent colors including yellow, blue, pink & green. Haskell Free Press.

# Sagerton Community News

Mr. and Mrs. Arthur Knippling, Mr. Clarence Stegemoeller, Erna and Walter Schaake played 84 in the home of Mrs. Lena Schaake Monday night.

Mr. and Mrs. Alvin Bredthauer played 42 in the home of Mr. and Mrs. Ernest Bredthauer of Rule Tuesday night.

Mr. and Mrs. Kenneth Stegemoeller spent the weekend in the home of his mother Mrs. Henrietta Stegemoeller over the weekend.

On Sunday those who had lunch in the home of Mrs. Henrietta Stegemoeller were Mr. and Mrs. Arthur Knippling, Mrs. Louise Stegemoeller, Mrs. Lena Schaake, Mrs. Betty Balzer, Mr. Larry Cornelson also Mr. and Mrs. Kenneth Stegemoeller.

Mr. and Mrs. Marvin Stegemoeller of Rochester, Mr. Clarence Stegemoeller, Mr. Leon Stegemoeller went to Pottsville for a Stegemoeller reunion on Sunday.

Mrs. Johnny Havins of Rockdale, Mrs. Bertha Vasek spent some time in the home of Mr. and Mrs. Alvin Bredthauer, trying to get things moved out of Mrs. Bertha Vasek mobile home.

Coleman Vivins is spending this week in the home of his grandparents Mr. and Mrs. Joe Clark.

Mr. and Mrs. Jimmy Teichelman, Chad and Greg ate lunch in the home of Mr. and Mrs. Herbert Teichelman Sunday.

Chad Teichelman spent one night with his grand-

parents Mr. and Mrs. Billie Wenderborn.

Those who attended the Friendship Club at the Faith Lutheran Fellowship last Thursday for the noon meal were Mr. and Mrs. Leo Monse, Mr. and Mrs. Herbert Lammert, Mrs. John L. Brooks, Rev. and Mrs. Tommy Wilson, Mrs. M.Y. Benton, Mr. and Mrs. Buster Tredemeyer, Mrs. Alvin Bredthauer, Mrs. Lillie Lehrmann, Mr. Herbert Rinn, Mr. and Mrs. Anton Teichelman, Mr. and Mrs. Delbert LeFevre, Mr. Charles Clark, Mrs. Louise Stegemoeller, Mr. and Mrs. Arthur Knippling, Sam and Mary Neinast, Mrs. Kenneth Neinst, Laura, Kate, Mr. G.W. LeFevre, Mr. and Mrs. Reece Clark, Larry Quade, Mrs. Glyn Quade, Mr. Joe Clark, Mr.

and Mrs. J.B. Toney, Stacey and Marcia Swoyer, Coleman Bivins, Mr. Clarence Stegemoeller.

Mr. and Mrs. Don Bivins, Emmalee, Tom and Coleman spent some time with Mr. and Mrs. Joe Clark recently.

Mrs. David Adler and children spent some time in the home of Mr. and Mrs. Joe Clark.

Mr. and Mrs. Reece Clark, Mr. and Mrs. Herbert Lammert, Mr. G.W. LeFevre played 84 in the home of Mrs. Ophelia Gibson in Stamford one night last week.

children spent some time in the home of Mr. and Mrs. Joe Clark.

## Jayton Softball Tourney Set

Labor Day Weekend, August 30 thru September 2, 1985 is the date of the Jayton Softball Association's First Annual Invitational "Super Softball Tournament".

Men's, Women's and Mixed teams from the following counties are invited: Cottle, Crosby, Dickens, Fisher, Foard, Garza, Haskell, Jones, Kent, King, Knox, Motley and Stonewall.

All entries must be made by August 26, 1985 and must be approved by the tournament committee prior to acceptance.

Entry fees will be \$80.00 for each mens team, \$80.00 per womens team, and \$40.00 for each mixed team. Camping facilities are available.

To enter or for more information call 806/237-2856 after 5:00 p.m. or write to Jayton Softball Association, Box 65, Jayton, TX 79528.

by August 26, 1985 and must be approved by the tournament committee prior to acceptance.

Entry fees will be \$80.00 for each mens team, \$80.00 per womens team, and \$40.00 for each mixed team. Camping facilities are available.

To enter or for more information call 806/237-2856 after 5:00 p.m. or write to Jayton Softball Association, Box 65, Jayton, TX 79528.

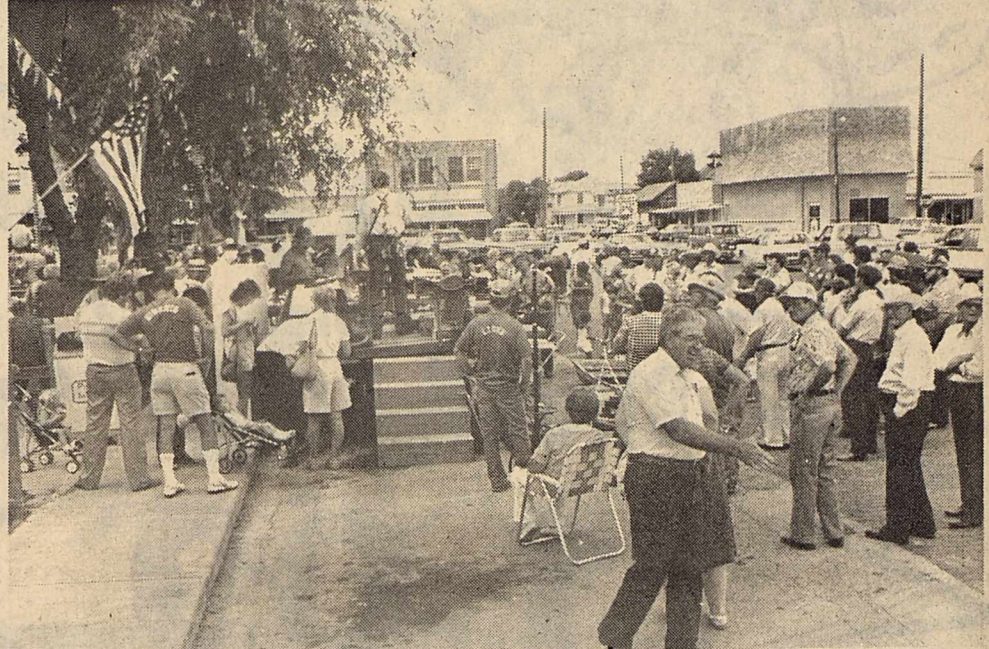


Photo Courtesy of Hess Hartsfield

AT THE AUCTION

## Announcing...

I have taken over the Taxi Cab service in Haskell.

Open 24 hours a day

Call 864-2373

### Dean's Cab

1108 S. 1st — Haskell, Texas

Royce Dean, owner

August 15, 16 & 17

6 pack can	<b>\$1.79</b>
Coca Cola	
Regular size	<b>7/99¢</b>
Kool Aid	
Parade, family size, 24 cnt	<b>\$1.39</b>
Tea Bags	
Giant Box	<b>\$1.99</b>
Tide	
Lipton Onion, pkg	<b>79¢</b>
Soup Mix	

## Buster's Drive-In

## FISH



Now is the time for Pond and Lake Stocking Hybrid Bluegill, Florida Hybrid Bass, Channel Catfish, Fathead Minnows.

The Hybrid Bluegill will REACH the weight of 2½ to 3 lbs. We furnish your Hauling Containers.

We guarantee live delivery.

Delivery will be Monday, August 19, at the times listed for the following towns and locations.

- Throckmorton—T.A.P. Dunlap 8:00-9:00 a.m. 817-849-2231
- Knox City-Benjamin Fertilizer 10:00-11:00 a.m. 817-658-3642
- Haskell-Nine Point Grain 12:00-1:00 p.m. 817-864-2011
- Anson-Mitchell Feed Store 2:00-3:00 p.m. 915-823-2871
- Abilene-D&D Feed and Supply 4:00-5:00 p.m. 915-676-3302

Call your local Feed Store to place your order or call collect: 405/777-2202

Fishery consultant and pond rotenoning available. Special Deliveries on large ponds and lake orders.

### DUNN'S FISH FARM

P.O. Box 85  
FITSTOWN, OK 74842

**Exercise a little Self-Control to Help Keep Your Electric Bill from Stacking Up This Summer.**

Sometimes we have to cut down on the things we like — that takes self-control. Self-control is important when it comes to overindulging in too many calories... or when it comes to overcooling your home. Your electric bill can stack up if you set your thermostat too low on hot summer days.

WTU recommends setting your thermostat at 78 degrees or higher. Also, clean or replace your air conditioner filter at least once a month so your unit will operate as efficiently as possible. Keep drapes closed during the heat of the day, and avoid opening outside doors frequently to help keep the cool air in and the heat out.

For more information on how you can help keep your electric bill from stacking up this summer, contact your local WTU office today.



Remember REDDY Supplies the energy— but only YOU can use it wisely!



## Rice Springs News

In this week's news, we have two new residents that we would like to welcome to home. Ray Merchant age 80, and Vergie Bledsoe age 83, both being from Haskell.

We still have our quilt being displayed at Ben Franklins. The quilt will be given away August 19th at Rice Springs at 2:30. We also want to include the names of those who pieced the quilt top: Grace McKelvain, Iva Lee Gipson, and Marie Townsend. Our apologies to anyone if you helped on the quilt and we failed to mention your name. All persons making the project possible are much appreciated and we do not

want to omit anyone. Rice Springs has really grown since 1963. We now can provide nursing care for 82 residents. A larger kitchen is being added to accommodate the home. In addition we have three new gas grills for activities.

The residents enjoy and look forward to the volunteers that provide activities from day to day. We want to thank each and everyone of you for donating your time and talents.

Birthdays for the month of August are: Herman Letz 92, Mildred Tonn 84, Ada Williamson 87, Lucy Harrell 89, John Earp 88, Alvena Holle 77, and Mary Bowan 97. Happy Birthday to you all.

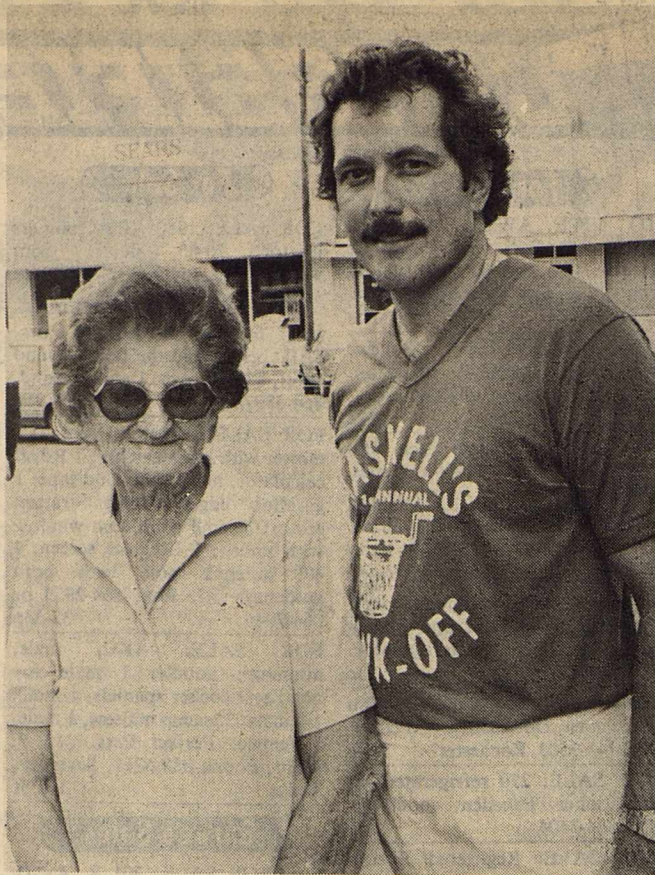


Photo Courtesy of Hess Hartsfield

**MOST EXPERIENCED**

## Businesses Can Fall Victim Of Con Schemes

Consumers are not the only ones who are taken by fraud in the marketplace—businesses just like the one you own or work for can be victims, too. Victims who have suffered at the hands of con artists and schemers range from neighborhood "Mom and Pop" stores to multi-national corporations.

In recent years, a whole new class of schemes against business has developed. These schemes are so sophisticated that most business people do not fully realize how exposed they actually are to criminal losses. When it comes to business fraud, an ounce of prevention can be worth thousands of dollars in profit.

The Council of Better Business Bureaus, in conjunction with the Benjamin Company, has published a new book, "How To Protect Your Business". The book is

organized into three broad sections.

The first deals with schemes against business such as office supply sales, phony invoicing, charity pleas, and business opportunities.

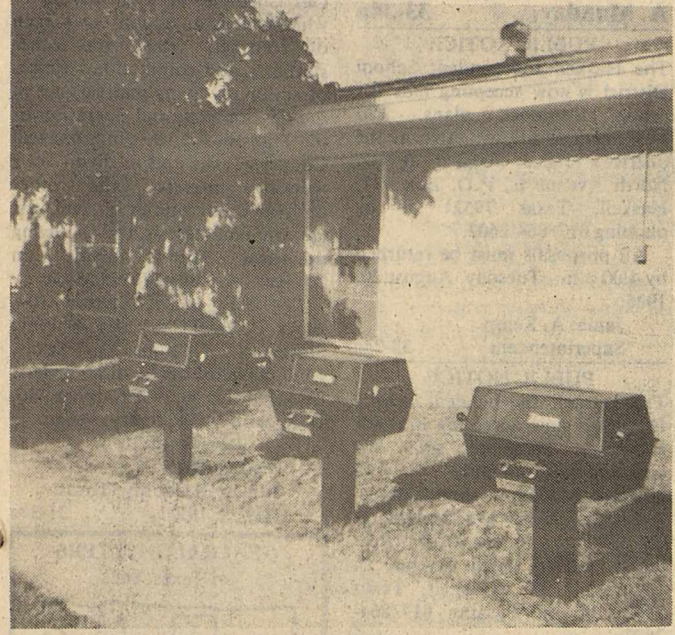
The second section deals with external crime including product counterfeiting, shoplifting, credit card and check fraud.

The last section deals with the fastest growing and most damaging type of business crime—crimes perpetrated by employees. Included in this section are such topics as embezzlement and pilferage, insurance fraud, and computer crime.

A special section deals with interviewing an employee suspected of internal theft. Senator Lowell Weicker, Jr. (R-CT), chairman of the senate committee on small business, has observed that the book "offers common-sense recommendations for protecting commercial and business entities and combating the potential for crime. For small businesses, which have fewer resources to devote to security, this publication provides a great service." Using this book, a company armed with the facts of a deal should be able to separate the scheme from the honest transaction.

"How To Protect Your Business" is available in hard cover at the Better Business Bureau Office, 1106 Brook, for \$15.00 or can be mailed to you for an additional \$1.00.

The Haskell Co. Ambulance Memorial Fund needs your support. You never know when you or a loved one will need these services. What would happen if someday they weren't there because you didn't give your fair share? Think about it....



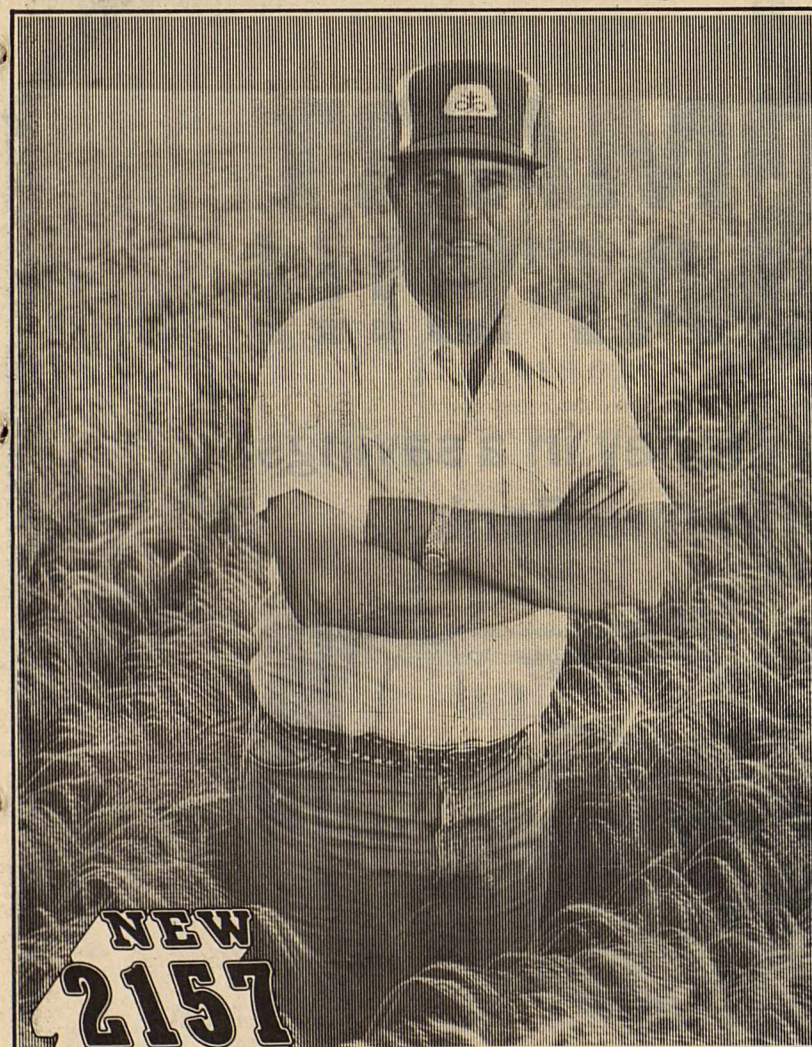
## COOK Heating & Cooling Haskell, Texas

Service & sell all brands.

Specializing in heat pumps and high efficiency equipment.

Call 864-2226

Mike Cook — Owner



**NEW 2157 2165**

Superior grain yields with a good grazing bonus. Excellent straw strength, too!

Our researchers were impressed by the tremendous pasture production and grain yields from these new varieties during testing. And now that the varieties have stood the test of actual production on many farms under many conditions, the proof is in!

They grow off well and show strong resistance to SBMV, leaf rusts, fungal leaf blights, and the Hessian fly.

• **New 2157** gives you good, early grazing, then stays with you through the winter. And the grain yields are right up there with anything you care to compare it against. Choose 2157 for dryland or limited water production.

• **New 2165** works with your irrigation program to make the most of all you put into the crop. Pasture comes on strong in the fall and grain yields are among the best you'll find, bar none.



**PIONEER BRAND SEEDS**

See your Pioneer dealer right away. He'll show you yield results and interesting new facts about the advantages of pure seed.

\*Registered trademark of Pioneer Hi-Bred International, Inc. PIONEER brand products are sold subject to the terms and conditions of sale which are part of the labeling and sale documents. Pioneer is a brand name; numbers identify varieties. ©PHB 1985

## UT Alumni Chapter To Present \$1000 Scholarship

The Jones Haskell County Chapter of the University of Texas Alumni will present Wood Smith with a \$1,000.00 scholarship to the University of Texas at Austin. The Award will be presented at an awards banquet in the Exstudent's Center in Austin Sept. 4th. This banquet will honor all scholarship awards students and allow them to get acquainted.

Wood Smith is a 1985 graduate of the Hamlin High School and plans to enroll in the University of Texas in the Fall majoring in engineering. He is the son of Ms. Margaret Smith Calhoun and Jerry Smith.

This award is presented each year to a graduating senior who plans to enroll

in the University of Texas. Those students residing in the Jones Haskell County area are eligible to receive this award.

Samuel Ferguson is Scholarship Chairman and

Ms. Anne Prewit is president of the chapter. All exstudents of the University of Texas are welcome to join the chapter.



In the original Oxford English Dictionary there is a twenty-three page essay on one word—"set"—written by Henry Bradley.

**PRICES EFFECTIVE AUG. 15-17, 1985**

**OPEN 24 HOURS A DAY GROCERIES-SOFT DRINKS-SNACKS-HOT COOKED FOODS-SELF SERVE GAS-MONEY ORDERS WHILE SUPPLIES LAST**



## 2ND WEEK BACK-TO-SCHOOL SALE



### SHELF SPECIALS

- DELSEY BATH ASSTD. COLORS TISSUE 4 ROLL PKG. **99¢**
- HI-DRI PAPER TOWELS 2 JUMBO ROLL **\$1.00**
- SHURFINE ALUMINUM FOIL 2 12x25 ROLL **\$1**
- SHURFINE SANDWICH BAGS 3 80 CT. BOXES **\$1**
- SHURFINE SALT 28 OZ. BOX **29¢**



### SCHOOL SUPPLIES

- HERLITZ RULED THEME 3-SUBJECT BOOK EACH **79¢**
- BIC STICK BLACK OR BLUE PENS 10 CT. PKG. **99¢**
- SCHOOL YEL./ASSTD. COLORS PENCILS 8 CT. PKG. **59¢**
- NOTEBOOK FILLER 10 1/2"x8" PAPER 200 CT. PKG. **59¢**

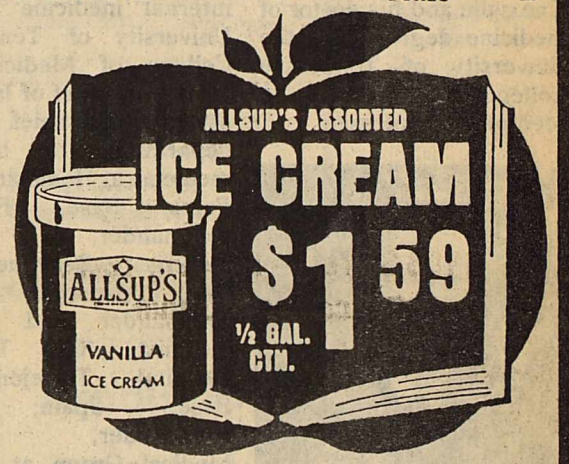


### ASSORTED/WHT. FACIAL TISSUE

- KLEENEX 175 CT. BOX **79¢**
- SYLVANIA LIGHT 60-75-100 WATT BULBS 2 CT. PKG. **\$1.19**
- BIC DISPOSABLE LIGHTERS EACH **69¢**
- BIC DISPOSABLE SHAVERS 5 CT. PKG. **69¢**

### GROCERY BUYS

- SHURFINE SUGAR 5 LB. BAG **\$1.39**
- CARNATION EVAPORATED MILK 2 12 OZ. CANS **89¢**
- SHURFINE SALTINE CRACKERS 2 16 OZ. BOXES **\$1**
- SHURFINE PORK & BEANS 4 16 OZ. CANS **\$1**
- SHURFINE MACARONI & CHEESE 5 7 1/2 OZ. BOXES **\$1**



- SHURFRESH QTRS. MARGARINE 2 1 LB. PKGS. **89¢**
- SHURFRESH IND. SLI. AMER. CHEESE 16 OZ. PKG. **\$1.59**
- KRAFT HALFMOON LONGHORN CHEDDAR OR COLBY CHEESE 10 OZ. PKG. **\$1.69**
- PETER PAN PEANUT BUTTER SMOOTH OR CRUNCHY 18 OZ. JAR **\$1.59**
- EAGLE BRAND MILK 14 OZ. CAN **\$1.25**



## 11TH ANNUAL ALLSUP'S ROADRACES

SEPTEMBER 14, 1985  
7:00 A.M.  
CLOVIS, NEW MEXICO  
MARATHON-1/2 MARATHON-10,000 METER-1 MILE

FOR FURTHER INFORMATION WRITE TO:  
ALLSUP'S ROADRACES  
P.O. BOX 1907  
CLOVIS, NEW MEXICO 88101  
OR PHONE (505)-769-2311







1202 N. Ave. E  
Haskell, Texas  
Phone 864-3763

Open 8 a.m.-8 p.m.  
Sun. 8 a.m.-7 p.m.

Specials Good Thru Sunday

**DOUBLE COUPONS**

each TUESDAY & WEDNESDAY  
at Modern Way Food Store

- We will redeem your manufacturer's "Cents Off" coupons for double their value, up to \$1.00, when product is purchased.
- We will double only one coupon per like item, all others face value.
- Limit one coupon per item.
- Coupon not to exceed value of the item.
- This policy does not include Free coupons, cigarettes or tobacco coupons or refund coupons.
- Offer good for limited time only.

**WE GIVE & REDEEM 3-STAR  
COUPONS, DOUBLE ON  
TUESDAY & WEDNESDAY**

W.I.C.



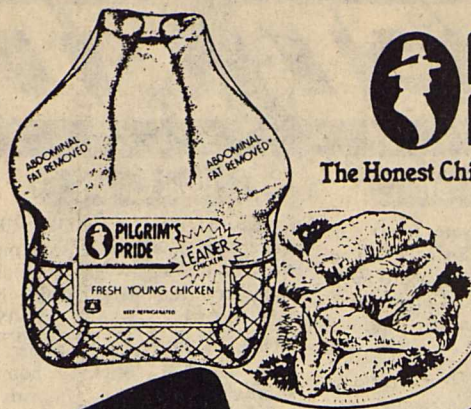
QUALIFIED

Aprobado



para W.I.C.

**CELEBRATE OUR OLD-FASHIONED VALUES STOREWIDE**



The Honest Chicken from Real Pilgrims.

U.S.D.A.  
Grade "A"

**FRYERS**  
37¢

Whole  
Lb

Shurfresh

**Boneless  
Hams**

Whole **\$1 67**  
lb

Halves **\$1 77**  
lb

Jimmy Dean

**Pork  
Sausage**

1 lb pkg **\$1 77**  
lb

2 lb pkg **\$3 53**

SWIFT'S TEND'R LEAN  
**PORK CHOPS**

Family Pack **\$1 27**  
lb

U.S.D.A. CHOICE GRAIN FED HEAVY BEEF  
**CHUCK STEAK** **\$1 87**  
lb

FRESH FROSTED  
**CHOPPED BEEF  
STEAKS OR  
GROUND BEEF  
PATTIES** **\$1 57**  
lb

EXTRA LEAN  
**GROUND CHUCK** **\$1 57**  
lb

Tyson Chicken  
**Bologna**  
12 oz pkg  
**77¢**

Silver Spur  
Slab Sliced  
**Bacon**  
lb  
**\$1 47**

Shurfresh Sliced  
**Lunch  
Meats**  
All Varieties  
**\$1 37**  
lb pkg

Hillshire Farm  
**Smoked  
Sausage**  
Reg./Beef  
**\$1 97**  
lb

Decker  
**Franks**  
Meat or Beef / 12 oz pkg  
**97¢**

Hormel  
**Little  
Sizzlers**  
12 oz pkg  
**\$1 07**

Delta  
**Bath Tissue**  
4-roll  
**48¢**  
Limit One with \$10 purchase or more

Betty Crocker  
**Cake Mixes**  
18 1/2 oz box  
**99¢**

KRAFT ASSOCTED  
**BARBECUE  
SAUCE**  
18oz. Btl.  
**58¢**  
LIMIT 1

SHURFRESH ASST'D.  
**ICE CREAM**  
1/2 GAL. SQ. CTN.  
**99¢**  
LIMIT 2

Folgers  
**Coffee**  
1 lb can  
**\$2 59**

Campbell's  
**Pork & Beans**  
16 oz cans  
3 **\$1 00**

Delta  
**Towels**  
jumbo roll  
**59¢**

Shurfine  
**Tea Bags**  
48 cnt box  
**99¢**

**PAMPERS**  
48 CT. MED. REG./SUPER  
32 CT. LARGE REG./SUPER  
66 CT. SMALL SUPER  
**\$6 99**  
LIMIT 1

All Varieties  
**Coca Cola**  
2-liter  
**97¢**

Tide  
**Detergent**  
147 oz box  
**\$6 99**

Imperial  
**Sugar**  
5-lb bag  
**\$1 79**

Gold Medal  
**Flour**  
5 lb bag  
**\$1 19**

Breast o' Chicken  
**Tuna**  
6 1/2 oz  
**63¢**

Del Monte  
**Sweet Peas, Green Beans,  
Golden Corn**  
16 oz can  
**48¢**

Shurfine  
**Instant Tea**  
3 oz jar  
**\$1 39**



THOMPSON WHITE SEEDLESS,  
RED SEEDLESS, BLACK EXOTIC  
**GRAPES**  
lb.  
**49¢**

FANCY  
**SWEET  
CORN** **\$6 11**  
EARS

CALIFORNIA  
**SNOWBALL  
CAULIFLOWER** **69¢**  
lb

FRESH  
**CARROTS** **4 11**  
1 lb PKGS

SUPER  
**SELECT  
CUCUMBERS** **5 11**  
for 1

FRESH  
**WHITE  
MUSHROOMS** **99¢**  
8oz. PKG.

LAKE CALIF.  
**RED  
PLUMS** **49¢**  
lb

**YELLOW  
ONIONS** **5 11**  
5 lbs.

Shurfine  
**Strawberry Preserves** **\$1 39**  
18 oz

Banquet  
Beef, Chicken, Turkey  
**Pot Pies** **3 11**  
8 oz

Regular or Extra Creamy  
**Cool Whip** **\$1 19**  
12 oz

Minute Maid  
**Orange Juice** **\$1 39**  
12 oz can

Mrs. Tucker's  
**Margarine Spread** **\$1 69**  
3-lb tub

Dannon  
Assorted Flavors  
**Yogurt** **2 11**  
8 oz size

**3 STAR**  
Shurfresh  
**Homo  
Milk**  
1/2 gallon  
**59¢**  
WITH ONE FILLED SUPERSTAR BOOKLET

**3 STAR**  
Shurfresh  
**Medium  
Eggs**  
dozen  
**19¢**  
WITH ONE FILLED SUPERSTAR BOOKLET

**3 STAR**  
Shurfresh  
**Bread**  
1 1/2 lb loaf  
**9¢**  
WITH ONE FILLED SUPERSTAR BOOKLET

**3 STAR**  
Shurfine  
**Drinks**  
2-liter  
**39¢**  
WITH ONE FILLED SUPERSTAR BOOKLET

**3 STAR**  
So-Dry  
**Towels**  
jumbo roll  
**19¢**  
With One Filled Superstar Booklet

**3 STAR**  
Shurfine  
**Margarine**  
1-lb sticks  
**19¢**  
WITH ONE FILLED SUPERSTAR BOOKLET