

13100 86701 00929  
BAZE BK. BINDING  
514 W 7TH ST.  
AMARILLO TX  
79101



Staff Photo by Janet Wilke

## QUAGMIRE

Workers are busy in the efforts to drain part of the creek so they can work in that area, but their efforts were hampered by the mud and water, which made the work not only messy but slick as well. Work goes on in the creek project.

# Nuckles Shoots A 139 To Take Mobley Tourney

Troy Nuckles was the winner of the Bob Mobley Invitational golf tourney, held at the Haskell Country Club, July 20-21, with the Pro-Am event held July 19.

Nuckles shot a 69-70 for a total of 139 to lead the 69 entries in the annual event. Second place went to Tom Perry who shot a 71-69 for 140, and third in the championship flight was Trey Womack, who had rounds of 71-71 for 142, with Hayden Merket fourth place in the championship flight with a total of 143, shooting a 71-72.

In the first flight, leader was Mark Bailey who had rounds of 75-69 for a total of 144, and second place in the first flight was Johnny Martin, whose rounds consisted of 74-71 for 145. Third place in the first flight was Jim Hawkins, whose score of 148 tied the fourth place finisher in the flight, Don Davis.

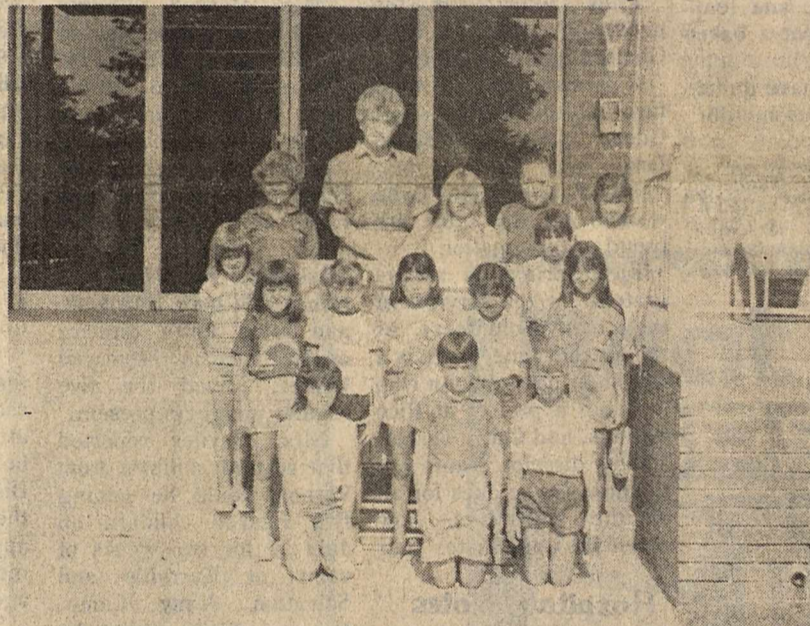
Hawkins scores were 75-73 while Davis had scores of 76-72.

In the second flight, there was a tie for winner of the flight. Joe Torres shot 80-69 for 149, Jeff Merket whose rounds of 78-71 gained him a finish with the same score as Torres of 149. In the second flight, third place finisher was Quinn Conley who shot 79-71 for 150, and fourth was Perfecto Camacho, whose scores of 78-73 gained him a total of 151.

In the third flight, the leader was Kep Nemir, with a score of 155. Tied for second were Jessie Aguirre and Mike Cameron who both shot 156, and fourth in the third flight was Kevin Smith, whose score was 157.

In the fourth flight, Bill Perry was the leader with a 161, while second was Jay Morrial with 163, third was Bennie Murillo, and fourth was Jodie Kennedy with 165.

The Haskell Country Club would like to express their thanks to the following merchants for their donations for the door prizes: First National Bank of Haskell, Heads or Tails Western Wear, The Drug Store, Heidenheimers, The Hayloft, Aladdin House, and Anderson Tire Company.



Staff Photo by Janet Wilke

## GIRL SCOUT GIFT

Shown are the members of the Haskell Girl Scouts who recently purchased a gift of a roll-away bed, then donated the bed to the Haskell Memorial Hospital. Making the presentation, are, on the front from left to right: Misty McMeans, Mandi Pope, and Crystal Pace. Second row, left to right are Jamie Johnston, Jennifer Comedy, Bonnie Silvas, Lisa Rodriguez, and Mandy Tonche. On the third row, from left to right are Nacole Lefevre, Lora Headstream, Amy Cunningham, Cynthia Halliburton, Cherri Miller, and Cynthia Rodriguez. On the top row at the back is Mrs. Thelma King who accepted the gift for the hospital.

# Girl Scouts Present Gift Of Roll-Away To Hospital

From proceeds collected by holding an aluminum can drive for the past three months, the Haskell Girl Scouts were able to purchase and donate a roll-away bed to the Haskell Memorial Hospital.

In a presentation made last Friday, the members of the organization were on hand to see the new portable bed be given to the hospital. Mrs. Thelma King, Asst. Administrator, accepted the gift from the Girl Scouts as the representative from the hospital.

About 40 girls were involved in the effort, and the bed cost the scouts approximately \$160.

According to a spokesperson at the hospital, the bed will be used to help house members of the family of the person who is hospitalized.

This addition will make the Haskell Memorial Hospital have two portable beds, and they also have some cots which are used for the same purpose.

"There is a great need for this type of thing, and we are especially grateful to the Girl Scouts for their donation of the bed to the hospital.

**THE HASKELL**

**30¢**  
Including Tax

**FREE PRESS**

14 Pages in Two Sections

HASKELL—A GOOD PLACE TO VISIT. A BETTER PLACE TO LIVE

VOLUME NINETY-NINE      HASKELL, TEXAS 79521, JULY 25, 1985      NUMBER THIRTY

# 4-H Event Held In Haskell

The 4-H Home Designer event was kicked off here in Haskell, Tuesday morning, at the WTU office, with the awards being presented Tuesday afternoon, at the Haskell National Bank Community Room.

Judges for the event included Mrs. Christi Stapleton, a 4-H leader, Mrs. Carla Long, an interior designer, and Mrs. Martha Alice Sprayberry, the agent for home economics from Jones County.

Each contestant designed what he or she wanted in the way of a room, and then they were asked to also make accessories to enhance the decor of their room.

Each contestant is asked to prepare a poster which shows what their room would be, and look, like; for example, it might be a living room. Then the contestants were required to place also on the posterboard samples of materials

which they would choose to use to furnish the room, in the way of furniture fabrics, drapery materials, etc. Each step of the process was to be explained by the contestants.

Also in conjunction with the projects there will be awarded, by WTU, an Energy Efficient Award. These awards will be presented to the contestants who displayed the most energy efficient room, by using energy saving ideas in drawing the scale of the room, by using energy efficient treatment on the walls, windows, floors, and ceilings. Also they will be judged for this award by the way they utilized energy efficient arrangement of furnishings and by the use of fabric and textures which are more energy efficient. Their accessory will also need to be energy saving.

Sue Pate, of the local WTU office, was to present the awards for the event.

The contestants are judged in three major areas: their poster presentation, their home accessory, and on their interview.

There are three categories in which the contestants may be entered: the beginner level (third grade to age 11), the intermediate level (ages 12-13) and the senior

level (ages 14-19).

It might be noted that the posters were judged last week at Texas A&M. So the scores on the posters were already tabulated when this event began here, but the final score was not to be figured until following the event today.

All of the winners will be announced in the next edition of **The Free Press**.

## Play Night Set For July 28 At Knox City

A playnight will be held at the Knox City arena at 5 p.m. Sunday afternoon, July 28, 1985.

Barrels, flags, poles, and stakes will be run in three age divisions, which include 8 and under, 9 - 12 and 13- 18, with age on January 1, 1985, determining contestant's division.

First place trophies will be awarded in each event in each age division, with ribbons given through sixth place.

A high point trophy will be awarded in each age division, also. For more information, contact Mrs. Joe Boone, 658-3916, or Leon Burkhart, 658-3772.

# All-Stars Fall In Game Against Munday

Haskell's Little League All-Stars fell in their bid to continue in the Munday tournament when they lost their second game, against the host team Munday, last Tuesday, July 16.

In a 5-3 decision, which was in Munday's favor, the Haskell team having suffered an earlier loss to Burkburnet, was out of the tourney. Chad Gibson was the pitcher in the loss, but did well, pitching 7 strike outs.

Scoring came on runs from Chad Gibson, Rusty Stocks, and Adam Coleman.

The team had not suffered a loss coming into their district tourney,

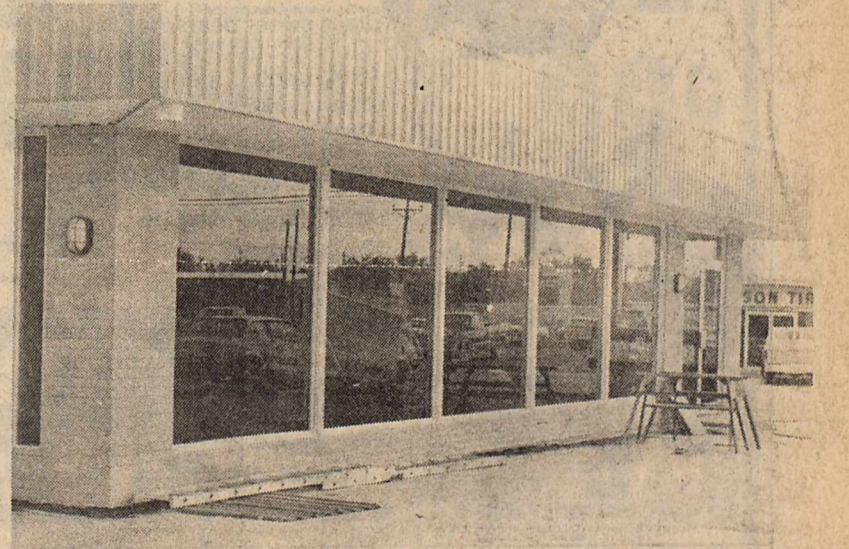
until they met Burkburnet in the Munday night game of the Munday tourney.

Haskell lost 2-1 to Burkburnet.

Team members for the All-Star were between the ages of 11 and 12.

Those who made up the Haskell All-Stars this year were Michael Rodriguez, Craig Hanson, Chad Gibson, Jay Miller, Rusty Stocks, Adam Coleman, James Espinoza, Bernie Gonzales, Johnny Rodriguez, Lee Decker, Jeremy Fuentes, Alex Casarez, Raul Chavez, and Samuel Rodriguez, with Nole Hadaway and Chris Tanner as alternates.

The team was coached by Jerry Stocks and Bobby Hanson.



Bill Wilson Motor Co.

# Bill Wilson Motors Undergoes Construction

It has taken about five weeks, but this week the new addition to the building at Bill Wilson Motor Company will at last be finished.

In the project is included 4 new offices for sales personnel, and there have been renovations done to the parking lot.

"We will have additional customer parking, because of the renovation of the lot," said Sammy

Larned of the company.

Owner of the company, Bill Wilson of Snyder, is underwriting the costs of the project for the Haskell car dealership.

Wolf Construction company of Potosi has been doing the construction work for the business.

Bill Wilson Motor Company has been in business in Haskell for the past 40 years.

# Commissioners Handle Variety Of Topics

Haskell's County Commissioners discussed a variety of topics in their regularly scheduled session, July 23.

After the preliminary business of reviewing and accepting the minutes of the previous meeting, and after the payment of bills, the Commissioners tackled the agenda, which included looking at the county's share of payment of the burials of indigent people, and reviewing the progress made on the sheriff's office upgrading to meet the Jail Commission standards.

In the discussion on the indigent funerals, the commissioners were faced with the decision to go an additional \$300 to pay for burials for those who cannot afford to pay for the funerals of their loved ones. Up until this point, the county had been contributing about \$250 per funeral for those who couldn't pay. However, the local funeral directors have approached the county, asking if it might be possible for the county to pay as much as \$550 per incident.

These cases of indigent burials have been scrutinized by the County Commissioners and are paid only in the case of extreme need, and the county usually has to pay for only two or three of these hardship cases a year.

The commissioners were also brought up to date on the status of the prison renovation. The renovations include making two female inmate cells out of former living quarters at the jail.

These were originally to be 12 foot by 12 foot rooms, with two bunks, a shower and a commode, lavatory, water fountain combination.

The departmental reports from the Experienced Citizens Center as well as other areas were also given to the commissioners.

Commissioners will be holding a budget hearing sometime in the last part of August, according to County Judge, B.O. Roberson, with the budget to be approved in the first part of September.

# James Dulaney Is Winner In Contest

James P. Dulaney, son of Mr. and Mrs. Bob Dulaney of Haskell, was the winner in the Haskell Track Association drawing, held at Bill Wilson Motor Company. He was awarded a John Deere weedeater.

The Midland man's ticket was drawn by Leiza Morales, daughter of Nancy Morales, the secretary of the Track Association. Also on hand for the drawing was president of the association, Sammy Larned.

The gasoline powered John Deere weedeater, which was valued at about \$175, was donated for the drawing by Jerry Harris and Max McMeans.

The Haskell Track Association has been active in trying to raise

funds to build a track for Haskell. They have been raising money through ticket sales for weedeater, and also for a gasoline powered John Deere riding lawnmower, which will be given away at Homecoming, in September.

This lawnmower is being donated by Hale Farm Supply.

## Reunion Set

The Haskell High School class of 1960 will celebrate their 25th class reunion Saturday, July 25 from 2 to 4 p.m. in the home of Mrs. Bill Ratliff, and will hold a dinner at the Haskell Elementary Cafeteria. Everyone in the class is urged to attend both events.

## Mullins Family Reunion Held

Mrs. Lorene Mullins, 1307 N. Avenue E, and the late Johnnie Mullins were honored by their children, grandchildren, and great-grandchildren, who hosted a three-day family reunion, July 5, 6, and 7 at Lubbock. Mr. and Mrs. J.W. Mullins, Sr. were married September 29, 1926 in Haskell and raised their five children on farms in Haskell County. Johnnie Mullins died in 1975.

Hosting the Mullins Reunion were the five children: Mr. and Mrs. John Mullins, Mr. and Mrs. Royce Mullins, Mr. and Mrs. Frank (Barbara) Clarkson, all of Lubbock,

and Mr. and Mrs. Dalton (Dale) Linton of Midland, and Mr. and Mrs. Marlin (Marie) Brown of Farmington, N.M.

Approximately fifty guests participated in boating, swimming, and water skiing at Lake Ransom Canyon and a golf tournament at Meadowbrook Golf course. A dinner

at Western Sizzler Restaurant was held to present ski and golf awards and to read the family history and the present family roster.

Activities continued on Sunday, July 7, at Stubbs Party House and Park with dinner, family pictures, and competition in softball, volleyball, horseshoes, and lawn darts.

## Sayles-Centerpoint School Reunion Set

The 18th annual Sayles-Centerpoint School homecoming will be Sunday, August 4 in the Community Room of the Haskell National Bank.

These two rural schools were situated in the south west part of Haskell County. Both schools were closed many years ago.

All ex-students, teachers and anyone having lived in these communities is invited to attend the homecoming.

A catered lunch will be served at the noon hour by the Haskell Steak House. Direct mail invitations were sent to those with distant addresses. Please call Clyde Bland president of the reunion if you live in Haskell, for tickets for the luncheon.

Saturday night at 7 o'clock a get acquainted party will be held. Refreshments will be served.

## Rochester Hobby Club

The Rochester Hobby Club met in regular session on July 18. Mattie Lou Cole was hostess for a delicious noon meal. Plates were sent to Guy and Anne Marshal and Zula Hanson. The business meeting was called at 2 p.m. by the president. Minutes were read and approved.

16 members answered roll call. Maurine Bittick was a visitor for the day.

Hostess for the Aug. 6 meeting will be Olga Alves. Homecoming was discussed, we will serve pie, cake, coffee and tea. We will also have a bake sale.

The club will have quilts on display with some for sale.

Grabbit, Colorful magnetic paper clip holder. Scattered clips? Pick them up with Grabbit. Ideal for pins for the seamstress, too! *Haskell Free Press.*



## RICE SPRINGS QUILTERS

Hazel Letz, Activities Director Cathy Threet, and Adeline Letz are shown displaying a quilt which was made by the residents of Rice Springs, with the help of volunteers from the community of Old Glory. The quilt is being displayed at Ben Franklin's variety store.

## Rice Springs News

Several of the residents of Rice Springs, along with the help of many volunteers from the Old Glory community, worked on a quilt, which will be displayed at Ben Franklin's Variety store.

Lining and thread were supplied by the volunteers from Old Glory, and those who quilted included volunteers Adeline Letz, Edna Diers, Euna Jones, Mable Sawyers, Odene Spitzer, Fannie Letz, Louise Letz, and Hazel Letz.

Bernice White donated the batting and Adeline Letz purchased the lining and thread. The quilt was quilted in the home of Mrs. Adeline Letz.

Euna Jones was the needle threader and Rose Gholson hemmed the quilt. Refreshments were furnished by Adeline Letz, Odene Spitzer, and Hazel Letz.

All of the ladies who worked on the quilt are proud of the creation. Rice Springs is always grateful for the services of their many volunteers. At the present time, there is a volunteer named John who is doing a project at Rice Springs, and Cathy Threet, activity director, wants you to know as she does for all of the volunteers, how much she appreciates your

effort and time.

All of Rice Springs would like to extend a welcome to Beatrice Free, who returns to Rice Springs from a stay in an Abilene hospital. She had been a patient there for several weeks.

Rice Springs was saddened by the death of Etta Leach, age 86, last Friday. All of the residents and staff at Rice Springs extend their most sincere sympathy to her loved ones.

## Haskell County Child Welfare Board Meets

The Haskell County Child Welfare Board met in regular session July 16, 1985 at 6:30 p.m. in the Jury Room of the courthouse. In the absence of Amelia Perry, chairman, Brian Burgess, vice-chairman, called the meeting to order. Linda Haynes, Haskell's representative, Nancy Norman, Abilene, and David Smith, director of Headstream Memorial Center, joined the five regular members present.

Mrs. Haynes reported that several children from Vernon would be joining five Haskell children on July 20 for two weeks of camp at Kerrville and Salvation Army Camp. Donated funds would be used for physical exams and camp necessities. The board was pleased to

## Dr. Bill Goff To Speak At Paint Creek Baptist

Dr. and Mrs. William E. Goff, Southern Baptist missionaries to Venezuela, will arrive in Texas this week to begin a year long furlough in the states. Dr. Goff is a professor at the Baptist seminary in Los Teques, which is an hour's drive from Caracas. Besides being a professor, Dr. Goff has been pastoring a church in Los Teques and has been the author of several Christian living articles. He wrote a Spanish textbook in 1981 that was published by the Baptist Spanish Publishing House in El Paso. The book is used in all South American countries, Spain, and other countries where

Spanish is spoken. Translated, the title of the book is **The Christian Life in Marriage and Family**. Goff also wrote the study guide for the textbook.

Mrs. Goff (Emilee) is in charge of purchasing and preparing food for the seminary kitchen. Her duties as a missionary and seminary professor's wife are numerous.

While on furlough the Goffs will reside in Abilene where Bill will be missionary in resident at Hardin-Simmons

University. Their address will be 858 Sayles Blvd. The Goffs older son, Gary, is working this summer on the island of Bonaire 50 miles off the coast of Venezuela for

TransWorld Radio. TransWorld Radio is a non-denominational Christian broadcasting station that transmits all over the Caribbean, USA, Brazil, and Argentina. There are five TWR stations in the world. Gary will return to Texas where he will be a sophomore at Hardin-Simmons University this fall.

The Goffs younger son, Sam, will be a 6th grader in Abilene this fall.

Dr. Goff will be a guest speaker at the Paint Creek Baptist Church at the morning worship service at 11:00 this Sunday, July 28. There will be a covered dish dinner at the church's fellowship hall immediately following the service. Everyone is welcome.

Emilee Goff is the daughter of Mr. and Mrs. S.L. (Sammie) Griffith of Paint Creek.

## Cannon Reunion Set

The 27th annual Cannon Family Reunion will be held Saturday and Sunday, August 3 and 4, at the Bunk House on the grounds of the Texas Cowboy Reunion in Stamford.

After light snacks at noon and in the evening on Saturday, a basket lunch will be served Sunday.

Musicians from Rockdale will entertain Saturday night. President of the reunion association is Bill Cannon of Dallas. Cloe Hughes of Stamford is historian, assisted by Beth McKeever. Dell Cannon of Tahoka is Vice-president of the association, and Sue Miller of Stamford is Secretary-Treasurer.

## Births

Mr. and Mrs. Tim Lacey of Breckenridge are proud parents of a baby girl, born July 17, 1985 in Dallas at the Central Methodist Hospital. She was named Teresa Beth, and weighed 8 lbs. A big sister, Tara welcomed her home.

Grandparents are Mr. and Mrs. Jerry Sorrells of Breckenridge, and Mr. and Mrs. Charles Burnett of Haskell. Great grandmothers are Feida Carter of Haskell and Beulah Ross of Rule.

Get Bitter About Litter

Beautify Haskell Council

The Haskell Free Press  
Published Every Thursday  
MEMBER 1985  
**TEXAS PRESS ASSOCIATION**  
BILL COMEDY—Publisher  
DON COMEDY—Editor  
Entered as second class matter at the post office at Box 572, Haskell, Texas 74542 under the Act of March 3, 1879 (USPS 237-040)  
SUBSCRIPTION RATES  
In Haskell and Adjoining Counties  
Total  
One Year ..... \$9.46  
Six Months ..... \$7.35  
Two Years ..... \$17.86  
Elsewhere in Texas  
One Year ..... \$11.55  
Six Months ..... \$9.46  
Two Years ..... \$22.08  
Price includes sales tax.  
Outside of Texas  
One Year ..... \$13.00  
Six Months ..... \$11.00  
Two Years ..... \$25.00  
NOTICE TO PUBLIC: Any erroneous collection upon the character, reputation or standing of any firm, individual or corporation will be gladly corrected upon being called to the attention of the publishers.

Thank You

The family of Ralph Merchant lovingly acknowledges the many kind expressions of care and concern that have been extended to us. We thank you for your graciousness in word, cards, prayers, and for your every gift of love. We love you.

Hospital Notes

Visiting hours at Haskell Memorial Hospital are 2 to 4 p.m. and 7 to 8:30 in the evening. No visiting hours in the morning. No children under 14.

ADMISSIONS  
MEDICAL: Velma Mansker, Haskell; Myrtle Greenhaw, Rule; Ila Bohannon, Benjamin; Lela Stewart, Haskell; Laura Overton, Haskell.

DISMISSALS  
Lorene Camp, John Letz, Juan Munoz, Jessie Parmelly, Matthew Flowers, Phillip Cockerell, Edwin Fly, Brian Huffman, Esmeralda Vilarreal.

Kretschmer Reunion Set August 3

The descendants of Christian and Ernestine Kretschmer will gather at the Irby Hall for a family reunion Aug. 3rd 1985. Registration will begin at 10:00 a.m. A pot luck lunch will be served at 1:00 p.m. Guests are welcome.

Large Selection of Clothes 1/2 off

Three \$10.00 Racks

409 South First Haskell, Texas Phone 864-2901

Whirlpool COMPACT FREEZER

24"

SIZE IT UP against the competition!!

Model EV110CXR ONLY \$410.00

THIS WEEKEND ONLY \$340.00

Model EH060FXL

Frazier's Appliance & Furniture

13 Av E Haskell, Texas Phone 864-2756

- 11.0 cu. ft. Storage Capacity
- No-fingerprint Textured Steel Door
- Space-saving 24" Width
- 6.0 cu. ft. Storage Capacity
- Convenient Slide and Store Basket
- No-fingerprint Textured Steel Lid
- Power Interruption Warning Light

Happy 50th Mom

Love, Jerry & the Kids

Grabbit, Colorful magnetic paper clip holder. Scattered clips? Pick them up with Grabbit. Ideal for pins for the seamstress, too! *Haskell Free Press.*

sale

Peanut Buster Parfait 99¢

It's a sweet deal from Dairy Queen! Just 99¢ for a cool and fudgy, super-pea-nutty Peanut Buster Parfait. Come taste one today.

Monday July 29 thru Sunday Aug. 4

Dairy Queen

"Better than ever"

Copyright 1985 Tex. D.Q. Corp. All Rights Reserved. TM Trademarks of the Tex. D.Q. Corp. \* Trademark Am. D.Q. Corp.

\$10.00 Sale

Final Reductions

Spring & Summer Shoes

All Sales Cash & Final

Slipper Shoppe

14 1/2 N. Av D 864-3051 Haskell, Texas

READY, SET, GO—

It will soon be that Time Again

Layaway Now for Christmas!

A 10% deposit holds your Christmas toys

Come in now for best selections!

415 S. 1st

# Discovery World Preschool Provides Learning Experiences

By Janet Wilke

Discovery World operates five mornings a week, with Monday morning being devoted to the 2 year olds. Tuesday and Wednesday mornings, the three year olds have class, and on Thursday and Friday, the four year olds meet. All of the classes start at 8:30 a.m., and end at 11:30 a.m. Children are given a snack in the morning, but are home, or at their babysitters, for their noon meal.

The two year old class is limited to only 12 students. Costs for the two year old session is \$7 weekly, and for the three and four year old sessions, which are twice a week, it is \$13.50 weekly.

Currently there is a change of staff taking place at Discovery World, as Mrs. Lisle will assume duties as a Kindergarten teacher in the public school this fall, and will relinquish her duties as director to Mrs. Judi Burson, a Discovery World teacher.

Being added as a teacher for the school will be Mrs. Betty Michaels, whose past experience includes being the coordinator for the Haskell First Steps program.

But, the basic philosophy of Discovery World will not change, despite the changes which are taking place.

"We want to create a positive outlook on learning, and help to build self-confidence in these youngsters. We have laid a good groundwork in the three years Judi and I have worked together, and I expect to see that type of program continue here," commented Mrs. Lisle.

More emphasis is placed upon the child's learning good social skills, than in his learning his ABC's at Discovery World.

"We want the children to be happy and feel good about themselves. It is important while coming here that they nurture their natural curiosity," commented both Lisle and Burson. Hence, the name Discovery World.

When asked if they felt that all children should attend a pre-school, all of the three women answered the question in about the same way.

Betty Michaels: "It is sometimes not possible for all children to attend a pre-school, but I certainly think that it is good for children who can attend. It is good for the children to have some type of social outlet."

Judi Burson: "I agree with what Betty said. I feel that all children need to be with other children. I chose to stay at home with my daughter, and when she was old enough to come to Discovery World, I sent her because I felt that she needed to have that social outlet. They learn the social graces here, and have to learn responsibility, and have to learn to respect others, teachers and children. Valuable social skills are learned here."

Mrs. Lisle: "All children shouldn't necessarily go to a pre-school, but a pre-school is helpful to those who come. It certainly isn't harmful to them. But, each parent has to make up his or her mind as to what they want for their child."

What is their advice to parents whose children will not be attending pre-school, in order to prepare their child for Kindergarten?

"The child needs to be exposed to a variety of experiences. He needs to learn to accept responsibility. Parents should work to make sure that the child is not leading a sheltered life," all three women agreed.

While Mrs. Lisle will be in the school system this fall, she will still be an advisor for Discovery World, and will remain as its owner.

"When I started this four years ago, it was never my intention to forever stay out of public school teaching. But, at that time, I had a pre-school aged child myself, and felt that it was necessary that I spend more time with him. So, when this job came open, and having enjoyed working with younger children, I decided that I needed to try to get that position because that chance might not present itself again," Mrs. Lisle explained.

There seems little concern about the staff change between the three who are involved because the background which Betty Michaels has will also benefit Discovery World.

For the past year, Mrs. Michaels has been the director of the First Steps Program in Haskell. This program deals with children who are shown to have, through a screening, some type of correctable learning problems. In some cases it might be a hearing, sight, or speech problem which can be corrected through therapy or training provided through the First Steps Center.

This prior training, coupled with her background in Elementary Education, should prove to be of great assistance to Mrs. Michaels as she assumes her duties as a teacher at Discovery World.

The educational background of the three women who make up the Discovery World staff high quality.

Mrs. Lisle is a certified teacher, who has an Elementary Education degree from WTSU, and who has 7 years of public school teaching experience (with most of that time in the K-2 grades).

Mrs. Burson has a B.S. from the University of Oregon, in Elementary Education, with five years of experience in grades 1-3, and one year of experience of instruction at a Kindergarten school/day care center, at the three year old age level.

Mrs. Michaels is a certified teacher, with a degree in Elementary education from ACU, who also holds a reading specialization endorsement.

Discovery World has to be licensed, just as a private Kindergarten would, but Mrs. Lisle states that they are certainly not in competition with the public school

Kindergarten program in any way.

"Our licensing procedure is the same as that for a private Kindergarten here. We want to offer other things that a private Kindergarten would not offer."

It has always been the belief of Discovery World that a child should be taken at his or her level, and set goals to achieve beginning at whatever level that child is at, rather than expect him to come up to a level above his present ability.

Because of this philosophy, there is very little absenteeism among the students at Discovery World.

However, because of the limited enrollment, the loss of money would be substantial if the student were not expected to pay if and when he missed class. However, all missed days are made up at other times, most of the time with the student being in class with other students near his own age.

Mrs. Lisle says that most of the parents who have children attending Discovery World pay for the month's attendance in advance, but she also said that they are flexible about the policy as far as when the payment is received.

This seems to work well for the Discovery World staff. Probably one reason that it does is because Mrs. Lisle and her entire staff have worked continuously to have good relations between the staff and parents.

"We have parental conferences very often, and if there is a problem with a child, we are eager to try to help find the solutions based upon the parent's suggestions," remarked Mrs. Lisle.

Report cards are sent out from Discovery World, not so much as to clue the parent in on what the child is deficient in, but rather to show them in what areas their child has excelled. The 3-4 year olds have report cards, but the 2 year olds don't.

With the exception of those students who will enter Kindergarten this fall, most all of the children who visit Discovery World will come back this fall, and most all of them have already expressed a desire to have school start soon.

If you have a child who is between the ages of 2 and 4 by Sept. 1, and are interested in enrolling your child in Discovery World, contact Rhonda Lisle, 864-3820, Judi Burson, 864-3779, or Betty Michaels, 864-3890 for information. One of these teachers will get back in touch with you about what necessary steps you need to take to get your child enrolled.

## Regional Education Service Centers Provide Materials For Public Use

All Regional Education Service centers in the State of Texas are required to provide regular opportunities for the general public to examine audio-visual items and other materials which are available for use by public schools. The review period for this quarter has been scheduled for 8:00 a.m. to 4:00 p.m. on Friday, July 26th. The public is invited to peruse materials on that day at the Region 14 Education Service Center, 1850 Albany Highway, Abilene, Texas. Although no appointment is required, an advance phone call - (915) 676-8201 - would be helpful if the reviewer is interested in examining a particular item. Every effort will be made to see that materials are available to interested persons.

**Welcome to  
Haskell High  
School  
Class  
of  
1960  
Your family  
& friends**

**REPORT OF CONDITION**  
Consolidating domestic and foreign subsidiaries of the

Farmers National Bank of Rule City

Name of Bank City

In the state of Texas, at the close of business on June 30, 1985  
published in response to call made by Comptroller of the Currency, under title 12, United States Code, Section 131.  
Charter Number 14539 Comptroller of the Currency Eleventh District

---

**Statement of Resources and Liabilities**

	Thousands of dollars
<b>ASSETS</b>	
Cash and balances due from depository institutions	1,088
Noninterest-bearing balances and currency and coin	750
Interest-bearing balances	4,791
Securities	2,100
Federal funds sold and securities purchased under agreements to resell in domestic offices of the bank and of its Edge and Agreement subsidiaries, and in IBFs	2,100
Loans and lease financing receivables:	
Loans and leases, net of unearned income	8,451
LESS: Allowance for loan and lease losses	277
LESS: Allocated transfer risk reserve	none
Loans and leases, net of unearned income, allowance, and reserve	8,174
Assets held in trading accounts	none
Premises and fixed assets (including capitalized leases)	169
Other real estate owned	85
Investments in unconsolidated subsidiaries and associated companies	none
Customers' liability to this bank on acceptances outstanding	none
Intangible assets	none
Other assets	531
<b>Total assets</b>	<b>17,688</b>
<b>LIABILITIES</b>	
Deposits:	
In domestic offices	16,555
Noninterest-bearing	2,678
Interest-bearing	13,877
In foreign offices, Edge and Agreement subsidiaries, and IBFs	none
Noninterest-bearing	none
Interest-bearing	none
Federal funds purchased and securities sold under agreements to repurchase in domestic offices of the bank and of its Edge and Agreement subsidiaries, and in IBFs	none
Demand notes issued to the U.S. Treasury	none
Other borrowed money	none
Mortgage indebtedness and obligations under capitalized leases	none
Bank's liability on acceptances executed and outstanding	none
Notes and debentures subordinated to deposits	none
Other liabilities	276
<b>Total liabilities</b>	<b>16,831</b>
Limited-life preferred stock	none
<b>EQUITY CAPITAL</b>	
Perpetual preferred stock	none
Common stock	50
Surplus	200
Undivided profits and capital reserves	607
Cumulative foreign currency translation adjustments	none
<b>Total equity capital</b>	<b>857</b>
<b>Total liabilities, limited-life preferred stock, and equity capital</b>	<b>17,688</b>

We, the undersigned directors, attest to the correctness of this statement of resources and liabilities. We declare that it has been examined by us, and to the best of our knowledge and belief has been prepared in conformance with the instructions and is true and correct.

*[Signature]* \_\_\_\_\_  
Mary Lou Landes  
Name  
Vice President & Cashier  
Title

of the above-named bank do hereby declare that this Report of Condition is true and correct to the best of my knowledge and belief.

*[Signature]* \_\_\_\_\_  
Mary Lou Landes  
Signature  
7-19-85  
Date

Directors

**Beat the Heat**

**SPECIALS**

ALL FLAVORS REG. \$2.09

**DORITOS \$1.69**

**CHIPS** EACH

**1/2 PRICE** REG. \$3.00

**WIRE RIMS, ASST. STYLES & COLORS- GLASS LENSES**

**SUNGLASSES**

**Cigarettes**

**\$8.59**

carton + tax

**10 LB. \$2.79**

**CHARCOAL**

**99¢**

KRAFT GRAPE JAM OR GRAPE JELLY 2 LB. JAR

**1 1/2 GAL. \$1.69**

BORDEN'S ASST. ICE CREAM 1/2 GAL. CTN.

**\$2.39**

REG. 79¢ LARGE TUBE TOM

**69¢**

BORDEN'S CHOCOLATE MILK QT. CTN.

**79¢**

ASST. STYLES TISSUE 17 1/2 CT. BOX

**99¢**

Brisket Sandwich

**3/\$1**

Hot Dogs

**\$2.39**

6 pack - 12 oz cans  
Coke, Diet Coke, 7-Up

**PRICES EFFECTIVE**

**JULY 25-27, 1985**

OPEN 24 HOURS A DAY  
GROCERIES-SOFT DRINKS-  
SNACKS-HOT COOKED FOODS-  
SELF SERVE GAS-MONEY ORDERS  
WHILE SUPPLIES LAST

**ALLSUP'S**

CONVENIENCE STORES



# M SYSTEM

Your FRIENDLY

**AFFILIATED SUPER MARKETS**  
 Haskell, Texas  
 Where Your Dollar Buys More

**Double days**  
**TUESDAY & WEDNESDAY**  
 With the purchase of \$3.00 or more.

Prices Good Thurs., July 25th thru Wed., July 31  
 We Reserve The Right To Limit Quantities

For Your Convenience  
 We Are Open  
 Sun. 8:30-7:00  
 STORE HOURS:  
 Monday-Saturday  
 7:30 a.m.-8:00 p.m.

# FOOD VALUES



**Kraft Barbecue Sauce**  
**Sauce**  
 18-oz. Assorted (Limit 2)  
**68¢**

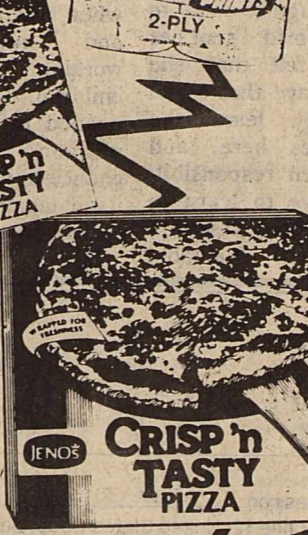


**Coronet Bathroom Tissue**  
 4-Roll Pack  
**99¢**

**TIDE**  
 Laundry Detergent

72-oz. Box  
 50¢ OFF LABEL!  
**2.95**

Limit one with \$10. or more grocery purchase



**JENO'S FROZEN Pizzas**  
 Assorted Flavors (Limit 4)  
**88¢**

- Fruit Cocktail Del Monte .... 17-oz. **79¢**
- Best Maid Pickles..... 32-oz. **1.29**
- Hunt's Tomato Juice.... 46-oz. **89¢**
- Comet Cleanser ..... 14-oz. Cans **2 For 79¢**
- Ivory Liquid ..... 32-oz., 50¢ Off! **1.69**
- Light Crust Flour..... 5-Lb. Bag **99¢**

- KOOL-AID DRINK MIXES** ..... 9 Pkgs. **99¢**
- Minute Maid Lemonade Reg. or Pink ..... 6-oz. **3 For 1.00**
- Shurfine Frozen **ORANGE JUICE**..... 12-oz. Can **99¢**

- Light Crust, yellow or white
- Cornbread Mix **5** 6 oz. **\$1.00** pkg
- Shurfine, Asst. flavors
- Drink Mixes **10** for **\$1.00** 2 qts.
- Shurfine 16 oz
- Mixed Vegetables **45¢**
- Heinz, 32 oz
- Tomato Ketchup **\$1.39**
- Del Monte Whole Peeled 14.5 oz
- Tomatoes **59¢**

**VAN CAMP'S PORK & BEANS**  
 16-oz. Cans

**3 For 1.00**

**SHURFRESH GRADE "A" LARGE EGGS**  
 DOZ. **58¢**

**DEL MONTE PEACHES**  
 Yellow Cling Sliced or Halves

**16-oz. 69¢**



**LARGE VINE RIPE**

**Tomatoes**  
 2 Lbs. **99¢**



**FRESH GREEN ONIONS or CELLO BAG RADISHES**

**MIX OR MATCH 5 For 99¢**

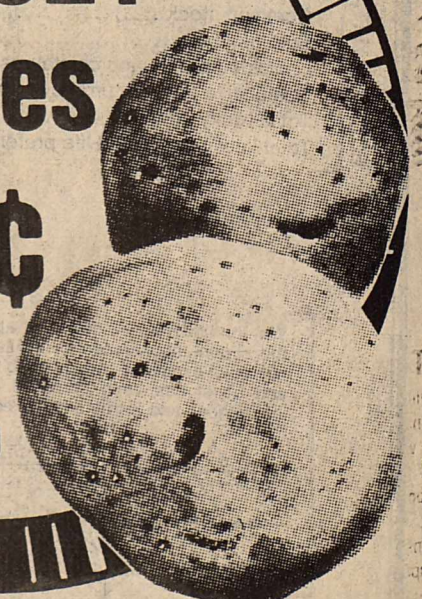
**FANCY SWEET CORN**.... 7 Ears **99¢**

**FRESH CELLO Spinach**... 10-oz. Bag **99¢**

**U.S. No.1 RUSSET**

**Potatoes**  
**99¢**

10-Lb. Bag



WE GIVE  WE GIVE  WE GIVE  WE GIVE  WE GIVE  WE GIVE  WE GIVE  WE GIVE  WE GIVE  WE GIVE 

# RUMP ROAST

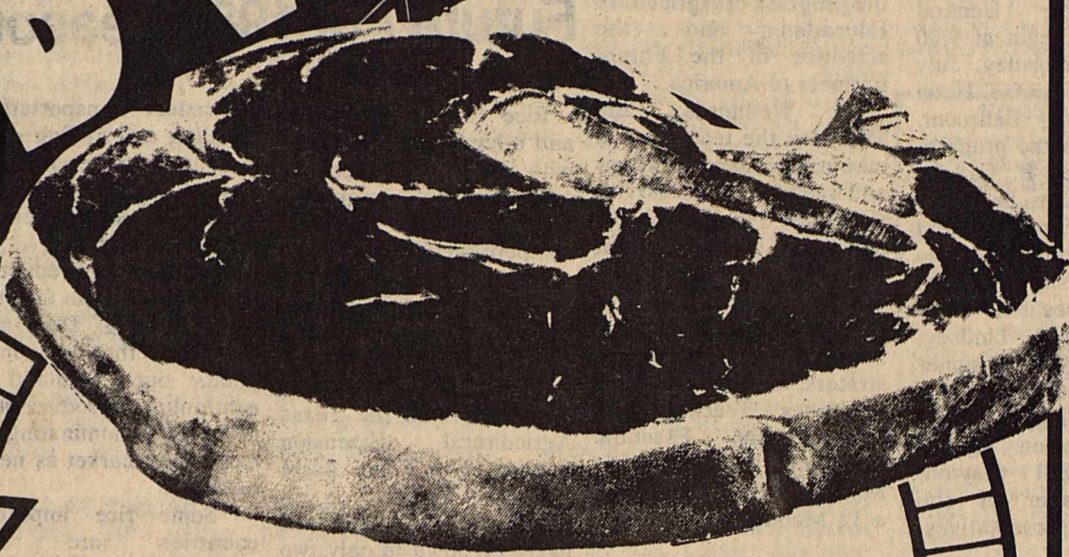
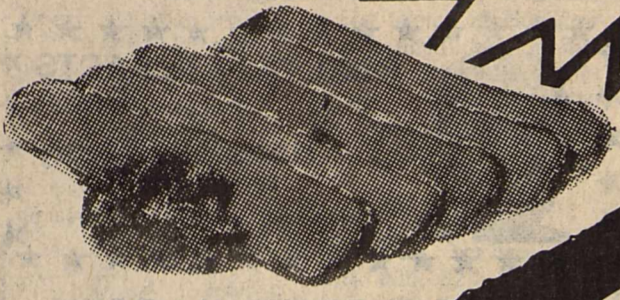
USDA CHOICE  
BONELESS BEEF

**Brisket**

VAC  
PAC  
Lb.

**78¢**

**1.88**  
Lb.



USDA CHOICE

**Sirloin Steak** \$2.49 lb

**T-Bone Steak** \$2.69 lb

FRESH  
LEAN

**Ground Beef** Lb. **79¢**

USDA CHOICE

**Round Steak** Lb. **1.99**

**Bologna** ALL MEAT Lb. **1.29**

**Velveeta** THICK SLICES 12-oz. Pkg. **1.69**

Purex, 42 oz  
**Detergent** \$1.39

Maryland Club, all grinds 1 lb  
**Coffee** can \$2.59

Zee family packed  
**Napkins** \$2.09

Kingsford, reg., 5 lb bag  
**Charcoal** \$1.49

**Crisco Shortening**

Regular or Butter Flavor



**2.45**  
3-Lb. Can

## DEL MONTE

- GREEN BEANS  
Cut or French Style 16-oz.
- GOLDEN CORN  
Whole Kernel or Cream Style  
17-oz. Cans
- SWEET PEAS  
Regu. or No Salt 17-oz.



HUNT'S 8-oz. Cans  
**Tomato Sauce**

**4 For 1.00**

**Coronet TOWELS**

Assorted  
Colors  
**69¢**



**SHEDD'S SPREAD**  
1-Lb. Pkg. Qtrs.

**59¢**

### DOUBLE COUPONS

Tuesday & Wednesday

will redeem all manufacturers "cents off" coupons for DOUBLE their value, up to \$1.00 in value, when the product is purchased.

LIMIT 1 COUPON PER ITEM

Policy does not include retailer (any food or free coupon, cigarette or tobacco coupons or refund certificates. The total redemption will not exceed the value of the item.

STAMP PRICE SPECIAL

Shurfresh  
**Sweet Milk**  
½ gallon  
**59¢**

WITH ONE EPS FILLED CARD

STAMP PRICE SPECIAL

M-System  
**Bread**  
1 lb loaf  
**9¢**

WITH ONE EPS FILLED CARD

STAMP PRICE SPECIAL

Shurfresh  
**Large Eggs**  
dozen  
**19¢**

WITH ONE EPS FILLED CARD

STAMP PRICE SPECIAL

Breast o' Chicken  
**Tuna**  
6½ oz can  
**19¢**

WITH ONE EPS FILLED CARD

STAMP PRICE SPECIAL

Triple Concentrate  
**Downy**  
21.5 oz  
**99¢**

WITH ONE EPS FILLED CARD

STAMP PRICE SPECIAL

Purex  
**Bleach**  
½ gallon  
**29¢**

WITH ONE EPS FILLED CARD

WE GIVE  WE GIVE  WE GIVE  WE GIVE  WE GIVE  WE GIVE  WE GIVE  WE GIVE  WE GIVE  WE GIVE 

# Ag Teachers Hold Meeting

Vocational Agriculture Teachers, some 1600 strong, will gather in Dallas, July 30 - August 2, 1985 for the Annual In-Service Education Workshop and Meeting sponsored by the Vocational Agriculture Education Department of the Texas Education Agency, Austin, under the direction of Jay Eudy, State Director, Vocational Agriculture Education.

Attending the In-Service Education Workshop from Haskell will be Vocational Agriculture teachers Duane Gilly and James Bevel.

The First General Session will begin at 9:00 a.m. on Wednesday, July 31st in the Amfac Hotel Enterprise Ballroom. Appearing on the program will be Lowell B. Catlett, PhD, Associate Professor Agriculture Economics and Business, New Mexico State University, National FFA Vice President 1968-69; Dr. Paul Lindsey, Associate Commissioner for Occupational Education and Technology of the Texas Education Agency and Mr. Bill Clayton, former Speaker of the House of Representatives.

Mr. Clayton has been a leading political figure in Texas for 20 years. Mr. Clayton currently is President of Capital Consultants, a political and business consulting firm in Austin. Mr. Clayton has sizable farming interest in Springlake.

On Wednesday, July 31st at 7:30 p.m. the Association will sponsor the Annual Awards program to present tenure pins to the membership and other awards to Legislators, School Administrators, individual teacher awards and to individuals who have contributed to the progress of Agriculture Education and the activities of the Future Farmers of America.

On Wednesday and Thursday the teachers will take part in Area meetings and twelve (12) In-Service Education Workshops. Some of the topics for discussion will be: Professionalism/The Image We Display, Public Relations: School Boards and Administrators; Irrigation Water Efficiency; Teaching and Testing the Essential Elements; Farm Business Management; Essentials of a 12 Month Program; and

Stress Management/Time Management.

The second and last General Session will begin at 8:30 a.m. on Friday, August 2nd. Appearing on the program will be Bob Murphey, Attorney at Law, motivational and humorous speaker. His subject is "The Power of Positive Thinking". State Agricultural Leaders will be visiting at the conference throughout the week.

A membership meeting for the VATAT will be held

on Thursday, August 1 at 6:30 p.m. in the Ballroom of the Amfac Hotel. Terry Phillips, Association President, will conduct the meeting. On Friday, August 2, the teachers will meet in area meetings and plan their in-service Education meeting for the 1985-86 school year.

Activities and entertainment are also planned throughout the four-day meeting for the spouses who will be attending the meeting.

# Rice Farmers Face Dim Future For 1985 Season

Rice farmers in Texas and other states are faced with the same situation as other producers—large crop supplies and increased competition abroad.

"Both of these factors are keeping the lid on rice prices and thus pushing acreage down," points out Dr. William E. Black, economist with the Texas Agricultural Extension Service, The Texas A&M University System.

The U.S. rice crop will likely be down to only two million acres this year compared to 2.78 million acres last year. Prices for the '85 crop should fall in the \$8 to \$8.50 per hundred-weight range.

"Farmers are still awaiting final details on this year's government rice program," says Black. "Our declining export market will become an increasing factor in production controls."

One thing that could help the struggling U.S. rice industry is an export PIK (payment in kind) program in which buyers of U.S. rice would receive bonuses of the particular commodity purchased, the economist explains.

"With the expected drop in acreage, farmers must increase productivity and yields per acre to reduce per unit costs," emphasizes Black. "They also must maintain quality

and reduce transportation, handling and milling costs to compete in the world rice market. About 60 percent of the U.S. rice crop enters the export market."

Increased production abroad is the main factor in the declining U.S. rice industry, the economist points out. Thailand is continuing to produce good crops and is dominating the world rice market as never before.

"Some rice importing countries are now exporters because of good crops," Black says. "In addition, some importers of U.S. rice are broke—they just don't have the money to pay cash. Iran, Iraq and Nigeria have stopped buying U.S. rice because of reduced purchasing power due to war or economic hardship."

The U.S. produces only 1.2 percent of the world rice crop, yet current carryover stocks represent 11 percent of world stocks. Three out of every four bushels of rice currently on hand are in government storage.

# The View From Here

by Janet Wilke

Well, I am hearing that the American steel workers are expecting to strike soon and for another large amount of money.

I wonder how the country would be felt about the farmer if they had decided to go on strike each time they could not meet their land payments?

I have little sympathy for those steel workers. Yes, I know as well as anyone how hard it is to make ends meet this day and time, but I also know that many people in this country do not even make more than \$3.35 an hour, while the steel workers are complaining that they need that much more money an hour.

I personally know several farmers who, if given the chance, would probably be willing to draw \$3.35 an hour for every hour they worked on their farm, if they thought the money was dependable. Afterall, any profit is better than none!

And, I also take exception to the fact that when the farmer came to Washington for help from the federal government, asking that the government at least call off its dogs, and let the farmer keep this land for a little longer and try to make some money so land payments could be caught up on, the comment around Washington was "the farmer caused his own problems".

But, we hear no such criticism of the steel worker, do we? Why do you think that is? Are there more lobbyists in the pockets of our elected officials who are paid by steel worker's dollars than the number of lobbyists who are in the pockets of the legislators for the farm lobby?

Most people don't realize that when the farmer goes, so does our schools, grocery stores, clothing industry, and many other areas of the society.

Farming is big business, too, my friends, and it is a business which we can ill-afford to take for granted.

# Lower Rates To Be Offered By WTU

West Texas Utilities Co. customers may receive refunds as well as slightly lower fuel rates as early as next month.

A tentative agreement was reached this past week in meetings with the Public Utility Commission staff in Austin, and the matter is expected to go before the Commission July 26 for a final order hearing. That would be just in time for the refunds to go on the August bills for all of WTU's retail customers.

The full amount to be refunded now stands at \$17.6 million. This is an increase of \$3.9 million over the amount in WTU's original request, which included only fuel costs savings achieved from August 1984 through May 1985.

The new figure includes savings made in June and an additional \$2.3 million representing a lump refund of fuel costs savings balance, plus interest,

realized before last August. Refund of those total savings had begun in mid-November and were scheduled to be completed in November 1985.

WTU estimates that the total refund now will result in a \$41 credit to the average residential customer's bill. The refund is made possible by WTU being able to spend less for power plant boiler fuel than was anticipated when fuel cost factors were set by the PUC last fall.

Former customers will not receive refunds. The reasoning is that if the former customers had been undercharged for fuel, they could not be billed in the future to make up the difference.

Any refunds will vary with the amount of electricity a customer used during the period from August 1984 through June 1985. Interest will be included.

# Stenholm Receives Award

The Coalition For Peace Through Strength recently presented Congressman Charles Stenholm with the National Security Leadership Award in recognition of his leading role on a variety of defense and foreign policy issues.

The Coalition of Peace Through Strength is a bi-partisan alliance of pro-defense leaders including 241 members of the U.S. House and Senate and 162

national organizations. The American Security Council Foundation serves as the educational coordinator of the Coalition for Peace Through Strength.

The award was presented to Congressman Stenholm by Rear Adm. Robert H. Spiro (USN Ret.), the Executive Director of the Reserve Officer's Association.

Want to buy? sell? results? Wand ads will work for you.

# Mahon To Be Honored

It has been announced by the Mitchell County Historical Commission a fund has been established to honor Congressman George Mahon.

A goal of \$16,000 has been set to fund the project and Colorado City Mayor Elmer Martin, finance committee chairman, reports private sources already have contributed in excess of \$7,000.

Sculptress Juan Dell of Santa Fe, N.M., has been commissioned to do the bronze bust. Ms. Dell previously has done busts of Congressmen Omar Burleson of Anson and Olan Teague of Waco, as well as Texas Ranger Captain Jack Hayes, whose likeness was used on the official commemorative piece for the Rangers' Sesquicentennial in 1973.

Congressman Mahon was first elected in 1934 and served in the United States Congress for 44 years. In 1964, he became Chairman of the House Appropriations Committee, a post he held until his retirement in 1978.

Friends of the Mahons who would like to make contributions to the fundraising drive for the bust can send their checks to "The Mahon Fund," Post Office Box 990, Colorado City, 79512.

★★★★★★★★★★★★★★★★★★★★

**REAL ESTATE FACTS**

BY: HESS HARTSFIELD

**Hartsfield Realty**

864-2665 — 864-2004

Selling Haskell Co. for over 25 years

★★★★★★★★★★★★★★★★★★★★

**ARE YOUR DUCKS IN A ROW?**

You've talked about it, and you're ready to buy a home! Your realtor has helped you determine the best source of financing and the approximate downpayment requirements.

You've been living in an apartment, so you have no house to be sold first. You've been saving each month and have the needed downpayment in the bank. Your bills have been paid on time - your credit is excellent. Your jobs are secure. Everything looks right. You have your ducks in a row. Or do you?

Sometimes, there's one little duck who hesitates to get in line. That duck's name is "commitment." You see, in order to effect the purchase of any real estate there are some affirmative steps which must be taken. Once a home has been selected, the first two steps are to supply an "earnest money" deposit and sign an "agreement" to purchase that home. In other words, you must be ready to commit. Once you've found the perfect place for you, don't hesitate!

You can actually enjoy additional benefits by going out of your way to demonstrate your firm commitment to a seller. For example, by offering a higher than expected earnest money deposit, you may be able to win some unexpected concessions on price or terms. Sellers recognize the value of buyers who mean business! Take advantage of it.

If you'd like to purchase a home, but feel 'out-of-touch' with what's happening in real estate, give me a call today at 864-2665 or drop by our office at 417 S. 1st.

★★★★★★★★★★★★★★★★★★★★

**NOW OPEN**

in Rule

**Mr. Upholstery**

Specializing in chairs, recliners, couches, hyde-a-beds, boat and RV seats.

For more information or free estimates

**Call 997-2494**

or come by 600 Sunny Av, Rule

Sheryll Martin & Melissa Robertson, owners

★★★★★★★★★★★★★★★★★★★★

★★★★★★★★★★★★★★★★★★★★

July 25, 26, & 27

6 pack can **\$1.79**

**Pepsi Cola**

40 count pkg **89¢**

**Paper Plates**

Generic 175 cnt box **59¢**

**Facial Tissue**

3 oz box **3 for \$1.00**

Parade family size 24 cnt box **\$1.99**

**Tea Bags**

**Buster's Drive-In**

★★★★★★★★★★★★★★★★★★★★

**Wheelchair Event Set For Veterans**

Military service veterans who are wheelchair-bound can participate in the Fifth National Veterans Wheelchair Games, August 8-10, at the University of Maryland campus near Washington, D.C., Stephen Lemons, Director of the Waco Veterans Administration Regional Office said today.

"The Wheelchair Games provide a competitive sports experience that includes track and field events, archery, bowling, basketball, billiards, swimming, and weightlifting," Lemons said. "The games illustrate competitive sports that are enjoyed by--and therapeutic for--thousands of disabled persons every year."

"Last year, there were more than 300 participants from more than 31 states," he said. The games are open to all military service veterans who are wheelchair-bound due to spinal cord injuries, certain neurological problems, and amputations.

The Wheelchair Games are sponsored by the Veterans Administration and the Paralyzed Veterans of America. All participants from last year's event, held in Brockton, Mass., have received registration information.

Those interested in competing in the 1985 Wheelchair Games may obtain registration packets from VA medical centers or local chapters of Paralyzed Veterans of America.

**July Clearance Sale**

**RED-HOT SAVINGS**

**Thursday, Friday & Saturday**

**Sleeper-Sofa**

**Bedroom Groups**

**Dining Room Groups**

**30 - 70% off on all groups**

Riverside **\$399<sup>00</sup>**

Rolltop Desk . . . . .

Pulaski **\$159<sup>95</sup>**

Curio Cabinet . . . . .

**Aladdin House**

Furniture, Gifts, Hallmark Cards

Haskell, Texas

LET US HELP YOU with all your office supply needs. Haskell Free Press







COTTON CATTLE

# THE HASKELL FREE PRESS

Section Two

HASKELL—A GOOD PLACE TO VISIT. A BETTER PLACE TO LIVE

VOLUME NINETY-NINE HASKELL, TEXAS 79521, JULY 25, 1985 NUMBER THIRTY

## Weinert History Compiled

Historical material concerning the Weinert area has been researched and is being compiled by R.D. and Betty Sanders. This history of Weinert will include the rural communities of Lone Star, Cliff, Dennis Chapel, Meyers, Pleasant Valley, Cottonwood, Ferris, Brushy/Ample, Pleasant View, and Lake Creek.

Weinert was founded in a cow pasture in 1906 and became a hub toward which each of the above communities gravitated. It was a wild and rough boom town in its infancy. Within two years of its founding there were three drug stores, three doctors and a number of other businesses. By 1910 it appeared that Weinert could become the largest city in the county.

Court records have been searched and many "old timers" have been interviewed during the past year. Thanks to the **Haskell Free Press** and the Southwestern Historical Collections at Texas Tech, which has microfilmed all existing issues of the paper, the issues from 1904 to 1933 (with the exception of two missing years) have been searched for Weinert area news.

Family histories of present and former residents (whether the family lived in the area a short time or for many generations) are needed in order to complete the book. Special family activities (of either a serious or comical nature) as well as the genealogy of the family should be included in the history. The Sanders have received approximately forty family histories and a host of historical pictures, but they urge all residents and former residents of the Weinert area to contribute their family histories to the writing of this book. Publication date is scheduled for 1986.

Family histories or information concerning them should be sent to R.S. Sanders, Box 147, Weinert, Texas 76388, telephone 673-4131.

R.S. has lived and worked in the Weinert Community all his life. He taught in the school system for three years before becoming Postmaster, a position that he held for 27 years. Betty taught in the Weinert School System for 20 years. Both are graduates of Hardin-Simmons University and are now retired.

## College News

Dennis W. Cloud, junior agricultural economics major from Rule, has earned "Distinguished Student" honor status at Texas A&M University.

Recipients of the "Distinguished Student" honor must be registered for 15 semester hours and earn at least a 3.25 grade point ratio, out of a possible 4.0 during the most recent grading period.

Emily Roe Cox from Haskell, senior biology major has earned "Distinguished Student" status at Texas A&M University.

Recipients of the "Distinguished Student" honor must be registered for at least 15 semester hours and earn a 3.25 grade point ratio, out of a possible 4.0 during the most recent grading period.

## Cheerleaders Are At Camp In Irving This Week

Haskell's junior high and high school cheerleaders are busy in Dallas this week, as they are in the big "D" to attend cheerleading camp at the University of Dallas in Irving.

This is the first time that these cheerleaders have attended the Dallas camp, and also the first time to attend a Dynamic Cheerleaders Association camp. In years past, the Haskell groups always attended the National Cheerleader Association camps.

The three junior high and six high school girls departed from Haskell for the camp Sunday afternoon, and are due to return Thursday.

In the junior high squad are Missy Phemister, Sylvia Alvarez, and Becky Cline. Originally there were five junior high girls on the squad but Dawn Langhofer and Julie Martinez moved this summer.

On the high school squad are Stephanie Browning, Kelly Wallace, who are co-head cheerleaders and seniors; Mindy Smith, a junior; Sheree Dumas, Vicky Chavez, and Lorie Alvarez, all sophomores.

The group is being accompanied on their trip by cheerleading sponsor Mrs. Cathy Bartley.

Prior to their attending this camp, the girls were being assisted in their routines by Mrs. Laura Tidwell, of the Fitness Shop, who is a former DCA cheerleader and cheerleading instructor. Her assistance with the cheerleaders made them decide to attend the DCA camp this year.

"These girls have all been working since the summer began, painting and working on their signs and locker tags, getting everything ready for football season," commented their sponsor Mrs. Bartley.

## Tax Payment Waived For Certain Groups

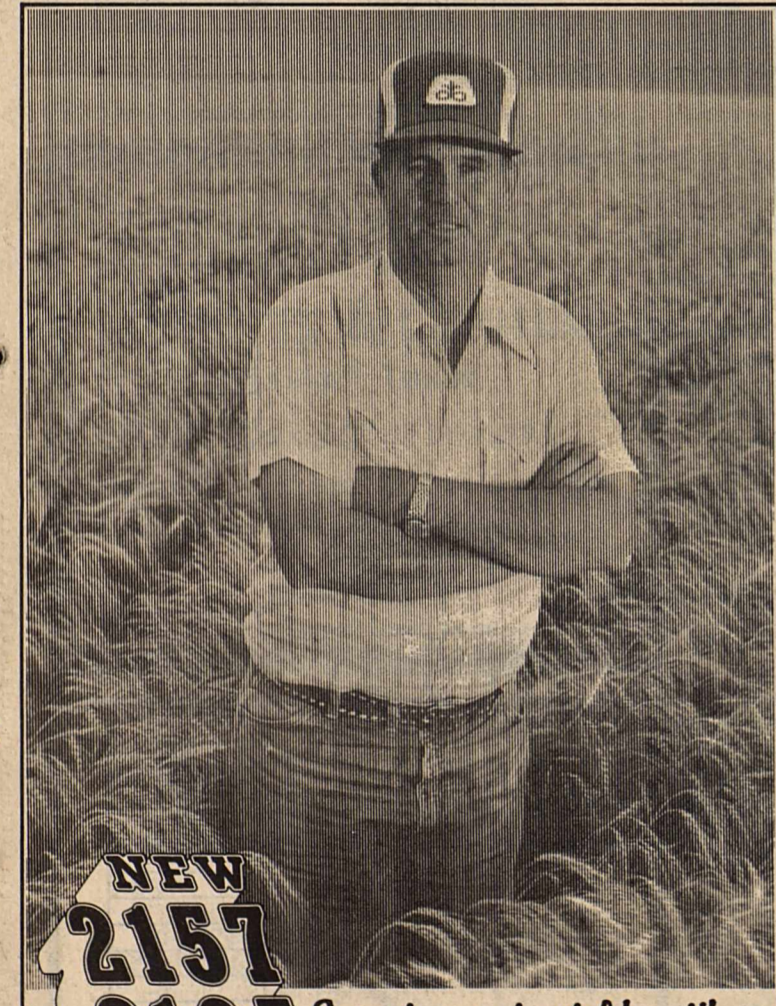
The penalty assessed for non-payment of estimated taxes required to be paid by employees of certain church or church controlled organizations is being waived for 1984, according to the Internal Revenue Service.

Certain churches or church controlled organizations that are opposed for religious reasons to the payment of employer social security taxes may have elected, under the Deficit Reduction Act of 1984, to be exempt from these taxes. Employees of these electing institutions must then generally make estimated tax payments to cover their Self-Employment Contribution Act (SECA) liability.

Many churches filed their election to be exempt from paying employer social security taxes late in 1984. This late election resulted in many church employees being unaware of the estimated tax liability for 1984.

While some affected taxpayers may be charged a penalty initially, the IRS is identifying these church employees and will adjust their tax liability to abate or recompute the penalty.

For more information, call the IRS using the number listed in the local telephone directory.



**NEW 2157 2165** Superior grain yields with a good grazing bonus. Excellent straw strength, too!

Our researchers were impressed by the tremendous pasture production and grain yields from these new varieties during testing. And now that the varieties have stood the test of actual production on many farms under many conditions, the proof is in!

They grow off well and show strong resistance to SBMV, leaf rusts, fungal leaf blights, and the Hessian fly.

- New 2157 gives you good, early grazing, then stays with you through the winter. And the grain yields are right up there with anything you care to compare it against. Choose 2157 for dryland or limited water production.
- New 2165 works with your irrigation program to make the most of all you put into the crop. Pasture comes on strong in the fall and grain yields are among the best you'll find, bar none.

See your Pioneer dealer right away. He'll show you yield results and interesting new facts about the advantages of pure seed.

**PIONEER BRAND SEEDS**

Registered trademark of Pioneer Hi-Bred International, Inc. PIONEER, brand products are sold subject to the terms and conditions of sale which are part of the labeling and sale documents. Pioneer is a brand name; numbers identify varieties. © PHB 1985

**1<sup>ST</sup> in Good Food Values**

Sirloin Steak	\$1 <sup>99</sup> / <sub>lb</sub>	Green, Colorado Cabbage	10 <sup>c</sup> / <sub>lb</sub>
Round Steak	\$1 <sup>89</sup> / <sub>lb</sub>	Red, Sweet Onions	29 <sup>c</sup> / <sub>lb</sub>
Pikes Peak Boneless Roast	\$1 <sup>79</sup> / <sub>lb</sub>	Casserole Pinto Beans	2 lb bag 49 <sup>c</sup>
Lean Ground Round	\$1 <sup>59</sup> / <sub>lb</sub>	Wholesun Frozen Orange Juice	12 oz can 99 <sup>c</sup>
No. 1 Sliced Bacon	\$1 <sup>39</sup> / <sub>lb</sub>	Heinz Ketchup	28 oz squeeze bottle \$1 <sup>49</sup>
Mrs. Tuckers	can \$1 <sup>49</sup>	Coca Cola	6 cans \$1 <sup>39</sup>
Del Monte Whole Green Beans	16 oz can 49 <sup>c</sup>	Nabisco Fig Newtons	16 oz pkg \$1 <sup>49</sup>
Parade Corn	3 <sup>303</sup> cans \$1 <sup>00</sup>	Snuggle	33 oz 89 <sup>c</sup>
Del Monte Pears	16 oz 69 <sup>c</sup>	Tide	giant size \$2 <sup>19</sup>
Ortega Taco Shells	10 count pkg 79 <sup>c</sup>	Purex	1/2 gal 59 <sup>c</sup>

**POGUE GROCERY**

—Extra Parking Behind The Store Home Owned and Operated—

113 North Avenue E Phone 864-2015 Haskell, Texas

## Sagerton News

July 4th visitors in the home of Mr. and Mrs. Sam Neinst were Mr. and Mrs. Kenneth Neinst and Laura Kate of Emory, Mr. and Mrs. Roy McEwen, Daryl, Doug and Dustin of Tuscola.

Mary and Sam Neinst spent a few days at Lake Whitney vacationing. The week of July 15th they spent 4 days at the Lake of the Pines with Isabel and Franklin Maazek.

Mrs. Theda Manske, her sister and her son in law of Richardson, visited in the home of Mr. and Mrs. Sam Neinst Saturday afternoon July 20th.

Sam's uncle Well Zander was buried Friday July 19th. He lived at Benton, Arkansas. The Will Zanders used to live here years ago.

Mrs. Henrietta Stegemoeller and Mrs. Betty Balzer visited in the home of Mrs. John L. Brooks Thursday morning.

Bill Tabor of Dallas spent the weekend with his mother Mrs. John L. Brooks and Beluah Mae

Summers.

Mrs. Lena Schaake, Mr. Clarence Stegemoeller, Erna and Walter Schaake of Stamford played 84 in the home of Mr. and Mrs. Alvin Bredthauer Wednesday night.

Mr. and Mrs. Alvin Bredthauer played 42 in the home of Mr. and Mrs. Ernest Bredthauer Thursday night.

Mr. and Mrs. Arthur Knippling, Mrs. Loudell Barbee, Mr. and Mrs. Leonard Kieke played 84 in the home of Mrs. Adela Niedieck Thursday night.

Mr. and Mrs. Kenneth Stegemoeller visited in the home of Mrs. Henrietta Stegemoeller over the weekend.

Mr. Clarence Stegemoeller visited in Knox City with Mr. and Mrs. Don Hawkins and their new daughter Sunday afternoon.

Mrs. Louise Stegemoeller, Mrs. Henrietta visited in the home of Mrs. Betty Balzer one day last week.

Mrs. Ethel Quade visited

in the home of Mrs. Lena Schaake last week.

The Hobby Club met in the home of Mrs. Alvin Ulmer Thursday at 2 o'clock. After having a business meeting the women quilted on a quilt. Those who attended were Mrs. Arthur Knippling, Mrs. Zenor Summer, Mrs. Adela Niedieck, Mrs. Johnny Teichelman, Mrs. Alvin Bredthauer, Mrs. Delbert LeFevre, Mrs. Herbert Stremmel, Mrs. Gene Teichelman, Mrs. Reece Clark, Mrs. Velma Lou Hertel, Mrs. Clarence Teichelman, Mrs. Bill Hertel. One visitor Mrs. Buster Tredemeyer. The hostess Mrs. Alvin Ulmer, served soda pop, a fruit plate, chips, dip, and cake which everyone enjoyed.

The monthly Bredthauer dinner was held in the home of Mr. and Mrs. Ernest Bredthauer in Rule Sunday. After the noon meal games of 84 and skip-o was played. Those who attended were Mr. and Mrs. Walter Bredthauer of Haskell, Mr. and Mrs. Alfred Bredthauer of Stamford, Mr. and Mrs. Alvin Bredthauer, Mrs. Adela Niedieck of Sagerton, Mrs. Rosie Scifres, Jeffery and Cheyrel of Abilene.

The funeral of Mrs. Etta Leach was held yesterday in Stamford. She was a former Citizen of the Sagerton area.

Mr. and Mrs. J.B. Toney, Rene, Bruce visited in Boling with J.B.'s parents last week.

For the past year, renovations at the County jail have been taking place, but in the near future, they will at last be completed.

The facility is in the process of converting two bedrooms of the former living quarters of the jail into two new cells for female prisoners.

According to Sheriff Johnny Mills, this was a strong suggestion by the Jail Standards Commission two years ago.

According to the Jail Standards, the female prisoners must be separated from the male

### Group To Perform Soon

Air Supply brings their 1985 "The Power of Love" tour to Six Flags Over Texas Saturday, July 27.

The duo of lead vocalist Russell Hitchcock and singer/songwriter/guitarist Graham Russell have just released an album of new material, "Air Supply," as well as a video of their latest single, "Just As I Am."

Air Supply's Six Flags concert is scheduled for 9 p.m. in the theme park's festival concert pavilion. Seating is on a paved surface.

There will be an additional \$3 charge for the show. Six Flags' regular ticket price is \$14.95. Children under 42 inches tall are admitted to the park for \$7.95. Children age 5 and under are not subject to the additional concert fee.

Six Flags' operating hours for July 27 are from 10 a.m. until midnight.

prisoners by both sight and sound. At the present time, we have them separated by sight, but not by sound," remarked Mills. The two new cells, when completed, will have two bunkbeds, a shower, a commode-lavatory-water fountain combination, a dining table, a light, and a fire smoke removal fan.

The cost for this project was budgeted at \$10,000. So far, about \$8,000 of that has been spent.

At the present time, the females are being held in two cells located at the east end of the jail, and, as Mills put it, they are separated by sight from the male inmates, but they are certainly not separated from them by sound, as inmates had several comments to make at the sight of a female reporter in their midst.

When the new cells are finished they will comply with the Jail Standards Commission regulations for steel enforced walls, cell doors, and other regulations.

According to Mills, the need for a female cell was not too great, with the county housing only 3-4 female inmates per year. And, the usual stay of the females is, by and large, shorter than the incarceration time for males, usually 3 weeks to a month, says Mills.

The Haskell County Jail is equipped to hold as many as 16 inmates, with

four of these females, and the remaining 12 males. At the present time, the jail has four inmates, all males.

According to Mills, it costs the county about \$15 per day per inmate to house in-county prisoners.

Occasionally, Haskell is asked to house inmates from other counties, and the fee for their housing is \$35 per inmate per day, as set by the County Commissioners, with each request decided on an individual basis.

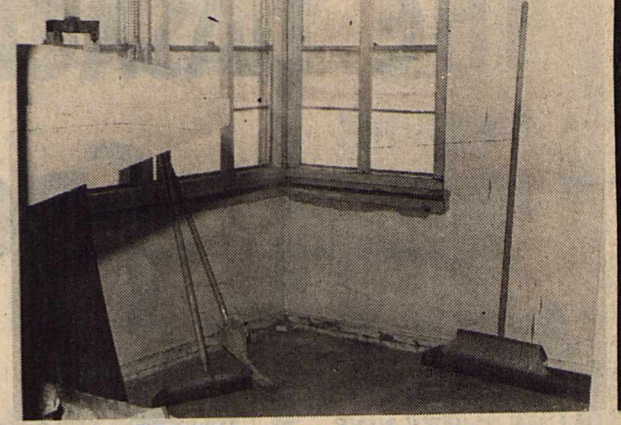
Haskell has about the same number of inmates as the other surrounding counties says Mills.

The sheriff also said that activity seems to pick up more on the weekends, and that there is more activity in the summer, but not necessarily more jailing being done.

According to Mills, County Commissioner C.A. "Bud" Turnbow, and his road crew from that precinct, are mostly responsible for the renovations which have been done to the county jail.

Comm. Turnbow and his crew have been responsible for about 99 percent of all of the work which has been done here at the jail," commented the sheriff.

At the present time, the entire facility is undergoing a new paint job, and the prisoners are doing most of the work, said Mills.



REMODELING FOR JAIL CELL

## "Rotary's Helping Hand"

To Senior Citizens Call

Chief Escobedo  
864-3631

Dickie Greenwood  
864-3179

Jeff Gregg  
864-3931

Larry Gilliam  
864-2656

### FRESH FISH & SEAFOOD SALE

Fish Day Friday, July 26th — 5-9 p.m.  
Haskell 277 South

Featuring Best & Finest Seafoods available

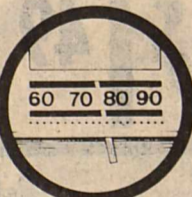
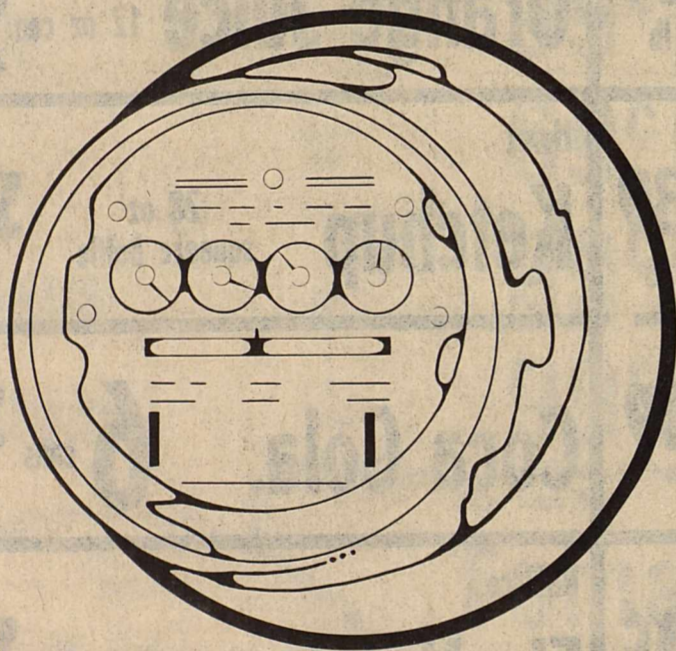
Jumbo Shrimp	\$9.95	/	Large Shrimp	\$7.50
Large Shrimp (with heads)	\$5.50	/	Frog Legs	\$4.95
Dressed Catfish	\$2.65	/	Whole Skin on Catfish	\$2.25
Fresh Flounder	\$3.25	/	Buffalo	\$1.95

And Other Available Seafoods

Simon's Seafood of Abilene

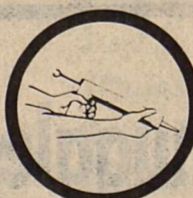
We now stock ink rollers for newer adding machines & calculators. Haskell Free Press.

## HELP SLOW YOUR ELECTRIC METER DOWN THIS SUMMER.



Set Your Thermostat at 78° or Higher.

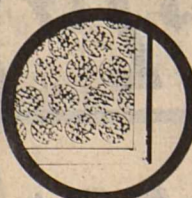
The recommended thermostat setting for summer cooling is 78° or higher. Portable fans or ceiling fans can help you feel comfortable at higher thermostat settings. Don't forget to turn fans off when you leave the room.



Tightly Seal Air Leaks in Your Home.

Make sure all cracks around windows, doors, pipes and wiring are tightly sealed with proper caulking and weatherstripping. Also, R-30 insulation in the ceiling, and R-16 insulation in the walls is recommended to adequately insulate your home.

For more information on how to help slow your electric meter down this summer, call your local WTU office.



Check Your Filter Regularly.

A dirty filter could keep your air conditioning system from operating as efficiently as possible. Clean permanent filters according to manufacturer's instructions, and replace non-permanent filters.



### REPORT OF CONDITION

Consolidating domestic and foreign subsidiaries of the

HASKELL NATIONAL BANK of HASKELL, City

In the state of TEXAS, at the close of business on JUNE 28, 1985 published in response to call made by Comptroller of the Currency, under title 12, United States Code, Section 151. Charter Number 14149 Comptroller of the Currency ELEVENTH District

#### Statement of Resources and Liabilities

	Thousands of dollars
<b>ASSETS</b>	
Cash and balances due from depository institutions	
Noninterest-bearing balances and currency and coin	2,299
Interest-bearing balances	500
Securities	25,584
Federal funds sold and securities purchased under agreements to resell in domestic offices of the bank and of its Edge and Agreement subsidiaries, and in IBFs	5,475
Loans and lease financing receivables:	
Loans and leases, net of unearned income	19,070
LESS: Allowance for loan and lease losses	451
LESS: Allocated transfer risk reserve	-0-
Loans and leases, net of unearned income, allowance, and reserve	18,619
Assets held in trading accounts	-0-
Premises and fixed assets (including capitalized leases)	547
Other real estate owned	50
Investments in unconsolidated subsidiaries and associated companies	-0-
Customers' liability to this bank on acceptances outstanding	-0-
Intangible assets	-0-
Other assets	1,069
Total assets	54,143
<b>LIABILITIES</b>	
Deposits:	
In domestic offices	49,903
Noninterest-bearing	7,813
Interest-bearing	42,090
In foreign offices, Edge and Agreement subsidiaries, and IBFs	-0-
Noninterest-bearing	-0-
Interest-bearing	-0-
Federal funds purchased and securities sold under agreements to repurchase in domestic offices of the bank and of its Edge and Agreement subsidiaries, and in IBFs	-0-
Demand notes issued to the U.S. Treasury	-0-
Other borrowed money	-0-
Mortgage indebtedness and obligations under capitalized leases	-0-
Bank's liability on acceptances executed and outstanding	-0-
Notes and debentures subordinated to deposits	-0-
Other liabilities	509
Total liabilities	50,412
Limited-life preferred stock	-0-
<b>EQUITY CAPITAL</b>	
Perpetual preferred stock	-0-
Common stock	300
Surplus	300
Undivided profits and capital reserves	3,131
Cumulative foreign currency translation adjustments	-0-
Total equity capital	3,731
Total liabilities, limited-life preferred stock, and equity capital	54,143

We, the undersigned directors, attest to the correctness of this statement of resources and liabilities. We declare that it has been examined by us, and to the best of our knowledge and belief has been prepared in conformance with the instructions and is true and correct.

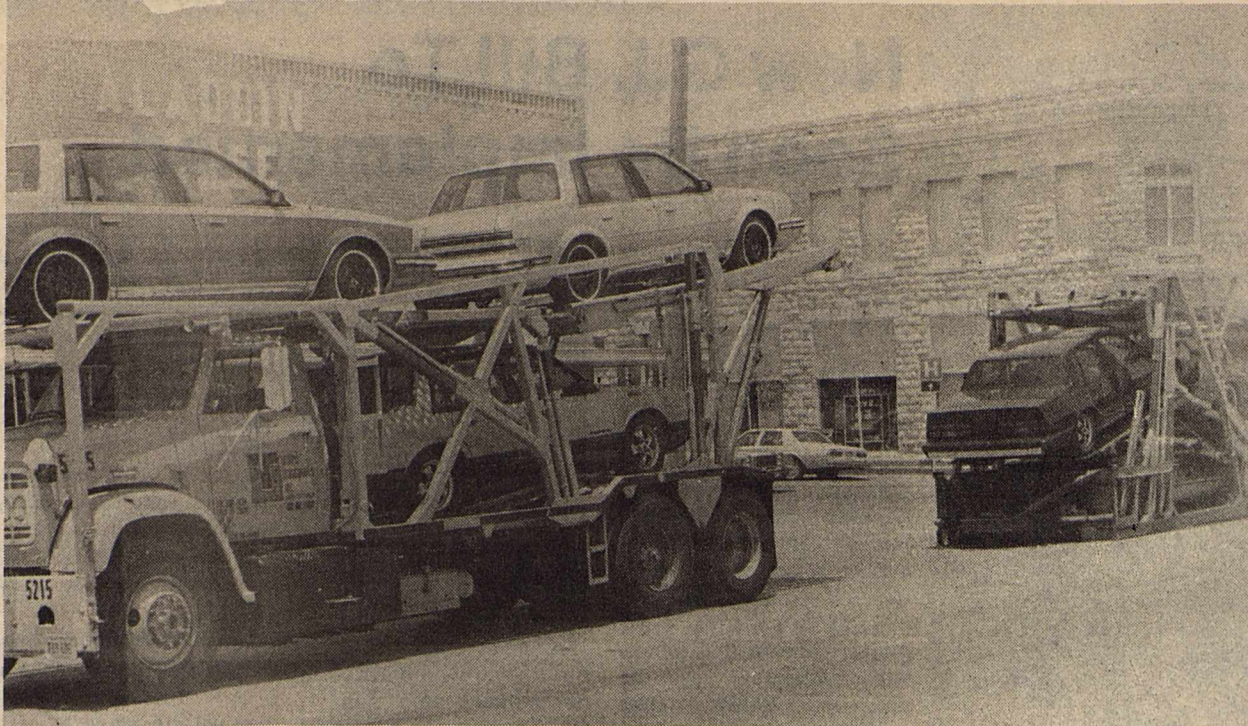
Bettie Wainscott  
Asst. Vice Pres. & Asst. Cashier

[Signatures of Directors]

of the above-named bank do hereby declare that this Report of Condition is true and correct to the best of my knowledge and belief.

Bettie Wainscott  
Signature  
July 24, 1985  
Date





Staff Photo by Don Comedy

### OOPS!

This auto transport seems to have lost something, as the rear end trailer became detached, and was left to travel on it's own, last Wednesday. Although this was a frightening occurrence for the driver (and some of the people following the transport), no one was injured in the detachment.

## Requests Top 100,000 At CIS

When the Cancer Information Service (CIS) opened its toll-free information line in 1975, its claim to be the public's link to cancer information was more a dream than reality. This July the Service celebrates the receipt of its 100,000th information request—proof positive that the dream has been realized.

The CIS of The University of Texas M.D. Anderson Hospital and Tumor Institute in Houston is one of 17 such regional services that were established to provide the public with accurate information—in laymen's terms—about cancer causes, detection, diagnosis, treatment, rehabilitation and prevention.

Ten years and 100,000 calls later the CIS continues to respond to a broad range of queries.

"No two questions are ever alike," says Jo Ann Ward, director of the CIS.

"Whether it is a 69-year-old woman with breast cancer who wants to know more about various treatment methods for her disease, a young man who needs to be reassured that cancer is not contagious, or a teenager seeking tips on how to quit smoking, CIS phone counselors can help them all."

CIS phone counselors complete an extensive, 45-hour training course and are certified by the National Cancer Institute. These counselors have access to a library of cancer information materials and educational brochures and pamphlets. When necessary, CIS counselors can rely upon consultants from M.D. Anderson Hospital for answers to callers' more technical questions.

In addition, CIS phone counselors have sent more than 300,000 pamphlets and written materials to callers hospitals and social service agencies throughout the state. In other instances, CIS counselors have relied upon their skills in psychosocial counseling to provide a sympathetic ear for callers who just want someone to talk to about their cancer concerns.

As the public has become more aware of cancer as a serious but sometimes preventable disease, Ward says, the CIS has experienced a tremendous increase in the number of calls received.

"During the first seven years of operation, the CIS received 50,000 phone calls," says Ward. "The next 50,000 calls to the service were received during the past three

years, which leaves little doubt as to the growing reliance upon the CIS as a source for up-to-date cancer information, particularly among patients and their family members, who represent more than half of the callers to the service."

Ward says the remainder of the calls are from people with symptoms, students, workers concerned about on-the-job exposure to chemicals, or health professionals seeking supplemental information for their patients or a consultation with an M.D. Anderson Hospital health professional.

In 1980 the CIS began to extend the phone service program by developing and sponsoring cancer education programs for smokers, certain minorities and rural Texans. All are groups that have been identified as at high risk for developing cancer.

Other CIS educational efforts include the sponsorship in 1984 of a statewide workshop on the prevention of the disease. The CIS brought together key administrators from city, state and private agencies to enlist their aid in reaching the public with information about cancer prevention. CIS staff also

have developed bilingual public education materials on cancer topics.

It is estimated that there will be 47,000 new cases of cancer in Texas during 1985 and that number is expected to double by the year 2000, according to Dr. Charles A. LeMaistre, UT Cancer Center president.

"If cancer is to be successfully managed during the upcoming decades, it will be necessary to provide the public with rapid, easy access to the kind of state-of-the-art cancer information that will motivate them to make lifestyle choices that could lead to a healthful future," says Dr. LeMaistre.

"The CIS has proved to be our most successful tool in reaching thousands of people through the telephone service and via specific educational programs."

The toll-free service operates from 9 a.m. to 4:30 p.m., Monday through Friday, in English and Spanish. CIS phone numbers are 1-800-4-CANCER, in Texas, or 792-3245, in Houston. No caller is required to give a name or an address unless requesting printed material.

## Stenholm Bill Passes Unanimously

"Clear Title" legislation, introduced by Congressman Charles W. Stenholm, unanimously passed the House Agriculture Committee Wednesday as part of the 1985 farm bill.

The legislation will provide greater protection for purchasers of agricultural products. Under the Uniform Commercial Code (UCC), a farm products buyer is not afforded the same protection granted to a buyer of other products. Subsequently, a farm products purchaser can actually be forced to pay twice for the same commodities. If a buyer purchases mortgaged products, and the seller defaults on his lien obligation, the seller's lender can hold the buyer responsible, whether or not he knew of the lien's existence.

"This bill corrects the inequity in this law by removing the ag products exception but still provides a mechanism through which lenders can protect their security interests," Congressman Stenholm said.

Under Stenholm's legislation, a farm products buyer will take title to farm

products free of any encumbrances, unless he has received written notice from a lender of his interest in an individual's production within one year prior to that purchase.

The measure represents many months of negotiations with banking interests. In particular, Congressman Stenholm attached an amendment which greatly facilitates lenders' ability to identify potential markets.

During the ag committee debate, two major amendments, which would have effectively killed the Stenholm bill were overwhelmingly defeated. One

of the amendments would have required these buyers to obtain a certificate from the seller on every transaction stating whether or not a lien existed on the product. Congressman Stenholm was strongly opposed to requiring buyer certification. "I just couldn't see Congress enacting federal legislation that would have required that a piece of paper be traded on every agricultural sale in the United States, if buyers wished to protect themselves." The proposal failed 3-26.

"This action by the committee will help ensure that the risk and responsi-

bility for lien defaults will be more equitably distributed among lenders, sellers and buyers alike than under the current system. I was very pleased that the committee agreed with my solution to this problem," he said.

The Stenholm proposal is now a part of the 1985 omnibus farm bill being considered by the ag committee. The bill will move to the floor of the House within the next few months, at which time these clear title provisions may be challenged.

HAVING TROUBLE with your office supply needs? Let us help you. *Haskell Free Press*

## Saturday Banking

At Our Drive-In  
9:00 a.m. — Noon



First National Bank-Haskell

200 South Avenue E Phone 864-8555 Member FDIC

# SAVE 1/3 to 1/2

## CLOSE OUT SALE

All Sizes: Twins, Fulls, Queens, Kings

Many one of a kind mattresses & box springs

Discontinued Ticks & Models  
Floor Samples  
Odds & Ends

Hurry, when these are gone there won't be any more!

**3 Days Only**  
Sale Starts  
Thursday, 9:00  
Ends Saturday at 5:00



Be certain it's Serta

Some Examples of how you can SAVE:

<b>TWINS</b>	
Serta Premier - mattress or box spring, reg. 199.95.....	\$99.95
Serta Perfect Sleeper Pillow Top, matt. or b/s, reg. 269.95..	139.95
<b>FULLS</b>	
Serta Flex - mattress or box springs, reg. 179.95.....	99.95
Serta Premier - mattress or box springs, reg. 259.95.....	129.95
Serta Perfect Sleeper Pillow Top, matt. or b/s, reg. 339.95..	169.95
<b>QUEENS</b>	
Serta Flex - sets only, both pieces, reg. 499.95.....	249.95
Serta Pedic - sets only, both pieces, reg. 549.95.....	299.95
Serta Perfect Sleeper Extra Firm, sets reg. 699.95.....	349.95
Serta Perfect Sleeper Pillow Top, sets reg. 799.95.....	429.95
<b>KINGS</b>	
Serta Flex - sets only, reg. 699.95.....	349.95
Serta Premier Luxury Pillow Top, sets only, reg. 799.95..	399.95
Serta Perfect Sleeper Pillow Top, sets only, reg. 1,099.95	549.95

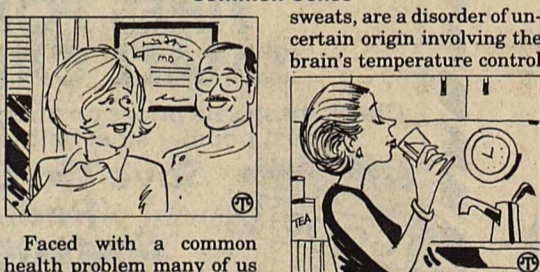
STORE HOURS: 9-5:30 Mon.-Fri.  
9:30-5:00 Sat.  
Credit Arranged to suit you  
Free Delivery  
Free Lay-Away

# KINNEY'S

North Side of the Square  
Stamford / PH. 773-2232

### Women's Health Facts and Fallacies

Common Sense



Faced with a common health problem many of us accept it and assume nothing much can be done about it. Some women experiencing menopause, the hormonal change that occurs after middle age, suffer from hot flushes. They may not know there are things they can do to lessen the symptoms.

Hot flushes, feelings of intense heat sometimes accompanied by drenching

sweats, are a disorder of uncertain origin involving the brain's temperature control

center. Minimal in most women, they generally last five minutes and can persist up to an hour. An immediate drink of ice water sometimes stops a flush. Daily exercise may combat the insomnia caused by nighttime flushes. Avoiding alcohol may also help prevent flushes. Physicians may treat severe flushing with estrogen tablets or a progestin.

## STOP LOOK LISTEN

Something is going  
to happen on

August 13

Be Ready!

## Bill Wilson Motor Co.

Haskell, Texas

## Nurse's Home Health Associates, Inc.

Joe Yates, RN  
owner/administrator

817-673-4421

Providing home health care by  
RN's, LVN's, home health aides,  
physical therapists

Serving Haskell, Baylor, Jones, King,  
Knox, Shackelford, Stonewall,  
Throckmorton





1202 N. Ave. E  
Haskell, Texas  
Phone 864-3763

Open 8 a.m.-8 p.m.  
Sun. 8 a.m.-7 p.m.

Specials Good Thru Sunday

**DOUBLE COUPONS**  
each TUESDAY & WEDNESDAY  
at Modern Way Food Store

- We will redeem your manufacturer's "Cents Off" coupons for double their value, up to \$1.00, when product is purchased.
- We will double only one coupon per like item, all other face value.
- Limit one coupon per item.
- Coupon not to exceed value of the item.
- This policy does not include Free coupons, cigarettes or tobacco coupons or refund coupons.
- Offer good for limited time only.

**WE GIVE & REDEEM 3-STAR COUPONS, DOUBLE ON TUESDAY & WEDNESDAY**



QUALIFIED

para W.I.C.

**Broasted Chicken**  
Whole 8 pc. Chicken

**\$3.99**  
each

*Your Food Dollar Does Better Here!*

U.S.D.A. CHOICE GRAIN FED HEAVY BEEF  
**BONELESS BRISKET**  
VAC PAC  
**78¢**  
lb.

Fresh Lean  
**Ground Beef**  
(Family Pack)  
3 lbs or more  
**79¢**  
lb.

U.S.D.A. CHOICE GRAIN FED HEAVY BEEF  
**BONELESS RUMP ROAST**  
**\$1.88**  
lb.  
**Bottom Round Roast** **\$1.89**  
lb.

Eckrich  
**Smoked Sausage**  
(Reg. or Beef)  
**\$1.98**  
lb.

Shurfresh  
**Meat Franks**  
12 oz pkg

**89¢**  
Boneless Top  
**Round Steak**  
**\$2.09**  
lb.

County Fair  
**Boneless Ham** (Whole) 6-8 lbs **\$1.49**  
lb.  
County Fair  
**Boneless Ham** (Halves) 3-5 lb **\$1.69**  
lb.

Swift's Family Pack  
**Pork Chops** **\$1.48**  
lb.  
Center-Cut  
**Loin Pork Chops** **\$1.88**  
lb.

Center-Cut  
**Rib Pork Chops** **\$1.78**  
lb.  
Water Thin  
**Breakfast Pork Chops** **\$1.98**  
lb.

Silver Spur  
**Slab Sliced Bacon** **\$1.59**  
lb.  
Small Lean  
**Pork Spareribs** **\$1.59**  
lb.

Crisco  
**Shortening** 3-lb can **\$2.49**  
Maxwell House  
**Coffee** 1-lb can **\$2.49**  
Nabisco  
**Crackers** 16 oz box **99¢**  
Cornet  
**Towels** jumbo roll **69¢**  
Cornet  
**Bath Tissue** 4-roll pack **99¢**  
Shurfine Frozen  
**Orange Juice** 12 oz can **99¢**

DETERGENT 50% OFF LABEL  
**TIDE**  
12oz BOX  
**\$2.99**  
LIMIT 1 W/ \$10.00 OR MORE PURCHASE

Shurfresh Grade "A"  
**Large Eggs** dozen **58¢**

B.P.I.  
**Soft Drinks** 2-liter Limit 2 **58¢**  
Del Monte  
**Green Beans** 2 16 oz cans **\$1.00**  
Del Monte  
**Golden Corn Sweet Peas** 2 17 oz cans **\$1.00**  
Van Camp  
**Pork & Beans** 3 16 oz cans **\$1.00**  
Shedd's Spread  
**Margarine** 1-lb tub **59¢**

U.S. No. 1 Russet  
**Potatoes**  
10 lb bag  
**99¢**

Large Vine Ripe  
**Tomatoes** 2 LBS **99¢**  
Fresh  
**Sweet Corn** 7 ears **\$1.00**  
Large  
**Celery** 2 for **99¢**  
Bunch  
**Green Onions** 5 for **99¢**  
Red  
**Radishes** 5 for **99¢**  
Home Grown  
**Cantaloupe** 39¢ ea  
California  
**Nectarines** 5 for **99¢**  
Large  
**Bell Pepper** 4 for **99¢**  
Fresh  
**Spinach** 10 oz bag **99¢**  
Fresh Large  
**Blueberries** **99¢**  
Yellow & Orange Meat  
**Melons** **\$1.79** ea

KRAFT ASSORTED  
**BARBECUE SAUCE** 18oz BTL. LIMIT 2 **68¢**  
ASSORTED FLAVORS  
**JENO'S PIZZAS** 10.1-10.8oz CRISP-TASTY TAZZA LIMIT 4 **88¢**

B.P.I. ASSORTED  
**SOFT DRINKS** 2 LTR. BTL. LIMIT 3 **58¢**  
REG. or GEL PUMP 20% OFF  
**COLGATE TOOTH PASTE** 4.5oz SIZE **99¢**

3 STAR  
Shurfresh  
**Homo Milk**  
1/2 gallon  
**59¢**  
WITH ONE FILLED SUPERSTAR BOOKLET

3 STAR  
Shurfresh  
**Medium Eggs**  
dozen  
**19¢**  
WITH ONE FILLED SUPERSTAR BOOKLET

3 STAR  
Shurfresh  
**Bread**  
1 1/2 lb loaf  
**9¢**  
WITH ONE FILLED SUPERSTAR BOOKLET

3 STAR  
Chiffon  
Soft Stick  
**Margarine**  
1-lb sticks  
**9¢**  
WITH ONE FILLED SUPERSTAR BOOKLET

3 STAR  
Breast o' Chicken  
**Tuna**  
6 1/2 oz can  
**29¢**  
WITH ONE FILLED SUPERSTAR BOOKLET

3 STAR  
Spillmate  
**Towels**  
jumbo roll  
**29¢**  
WITH ONE FILLED SUPERSTAR BOOKLET