











Staff Photo by Janet Wilke

**WINNERS ALL**

Shown left to right are the twirlers from Haskell High who were awarded first divisions on either a solo or an ensemble or both at the UIL twirling contest held October 20 in Stamford. At left, pictured are Shanna Mueller, solo; Lorry Geilhausen, solo and ensemble; Jill Jennings, solo and ensemble; Holli High, solo and ensemble; Kelli Gilliam, solo and ensemble; and Michelle Stout, solo. These girls will all advance to the State UIL Solo and Ensemble contest which will be held in Austin in the spring.

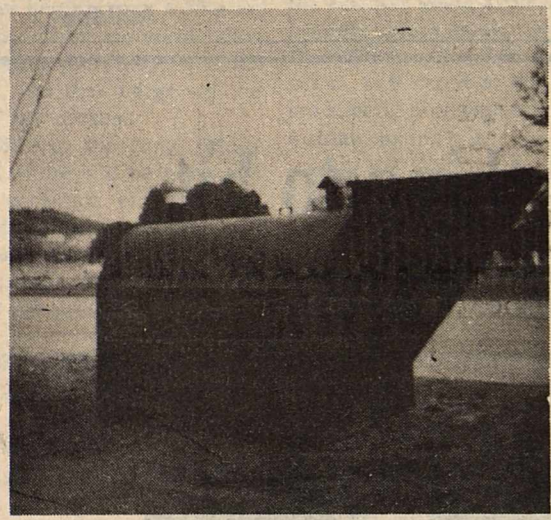
**Federal Land Bank To Increase Interest Rate**

The Federal Land Bank of Texas' variable interest rate will increase from 11.00 percent to 11.50 percent on Farm loans and from 11.50 percent to 12.00 percent on Rural Residence and Farm Related Business loans, effective November 1, 1984, said Dale E. Bullinger, president of the Federal Land Bank Association of Haskell. The increase comes as an effort to narrow the widening gap between what the Land Bank pays for money on the financial market and what it charges borrowers under the variable interest rate plan. Over the last three years, the bank's average cost of funds outstanding has been in the 12 percent range, exceeding the loan rate to borrowers. At the bank's annual stockholders meeting in

March, directors from the Federal Land Bank Association of Haskell joined other association directors and voted to forego compensation for their local association in 1984, enabling the bank to postpone an interest rate increase at the time.

"It is imperative that the bank continue to post adequate earnings to ensure that our bonds can be sold in the financial markets at the lowest possible costs, which results in lower interest rate loans for our borrowers," said James A. Rogers, president of the Federal Land Bank of Texas.

The Federal Land Bank Association of Haskell makes long-term real estate loans on farm and rural residence property in the counties of Haskell, Jones, Knox, and Baylor.



**K & K STORM CELLARS**

Complete Installation  
Just in time for the storm season!

We offer two sizes:  
6 ft. x 12 ft.      6 ft. x 8 ft.  
Our cellars are 6½ ft. tall inside.  
Set in concrete ★ Tar coated to prevent rust!

New Dealer in Aspermont  
Call 817-989-2837

AREA'S MOST POPULAR  
**The S & S DRIVE-IN**  
Snack Bar  
Stamford 773-3272  
Fri., Sat., & Sup.  
**THE KARATE KID** PG  
Tues.-Wed.-Thurs.  
XX Adults Only  
"Hot Virginia"

**American Heart Assn. Sets Turkeywalk**

The Haskell County Chapter of the American Heart Association will sponsor a Turkeywalk on Saturday, Nov. 3. The course for the walk will cover 10 miles and all ages are encouraged to participate either as a walker, sponsor or both.

Walkers may walk as much of the course as they want. Prior to the event, they will secure sponsors to make pledges based on the number of miles walked. Following the event, the walkers will collect pledges and turn the funds in to a local American Heart Association representative.

All participants will receive certificates of appreciation and walkers who collect \$50.00 will receive a t-shirt. Walkers who collect \$100.00 will receive a turkey and the two walkers collecting the most money will receive special prizes. First place will receive their

choice of a video disc player or a 9 inch color television. Second place will receive the remaining prize. Prizes have also been donated for the next six places.

All participants will meet at 8:30 a.m. on the day of the walk. In Rule, the walk will begin at the city park; in Weinert at the high school; in Rochester at the high school and in Haskell at Hale Farm Supply or Haskell National Bank.

Registration and sponsor forms are available from: Cindy Guess in Weinert; John Greeson in Rule; City Grocery and Market in Rochester and from Abe Turner or W.O. Elmore in Haskell.

In the event of bad weather, the event will be re-scheduled Nov. 10.

Prizes and refreshments have been donated by the following: Anderson Tire Co., Agriculture Services, Inc., Ben Franklin, Bill Wilson

Motor Co., Brian Burgess, Bailey Toliver Chevrolet, Busters Drive-In Grocery, Bassings, Commodore Savings and Dr. Ed Harris.

Drinnon Oil Co., Frazier's Appliances, Farmers National Bank, Haskell Free Press, Heads or Tails Western Wear, Home State Bank, Hassen's, Haskell National Bank, Jones Cox, and Co., and Kay's Cleaners.

Kiwanis Club, Kennedy Lumber Co., Kids Duds, Lane-Felker, Lonnie Tate, Lane Apparel, Bill Lane, Jr., Mike Harrell, Tax Management and Computer Services, Pogue's Grocery, Pogue's Meat Processing, Sears Catalog Store, Sandy Horton: Owner, Smitty's, Tyco Inter, The Hayloft, The Drug Store and The Personality Shoppe.

The Sweet Shop, Under the Rainbow, WTU, Weinert Gin, W.B. Guess Oil Co., Weinert Grocery.

This walk will be the first

Turkeywalk Haskell County has participated in. Chairman Phil Harris asks everyone to become part of the excitement and make it a big success.

**Super tough from top to bottom.**  
**LONG-WEARING SUPER-SOLE WORK BOOT**

- Full-grain, water-repellent Oro Russet leather
- Cushion-soft insole
- Inch-wide steel shank
- Long Wearing SuperSole

404  
SIZES 6½-14, A, B, C, D, E, EE      Sizes/widths vary by style.

**Red Wings** HEIDENHEIMER'S

**TOP QUALITY FOODS FOR LESS**  
Specials Good Thursday, Friday, & Saturday

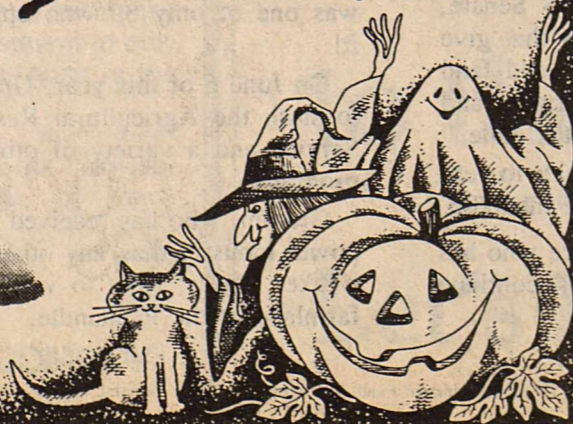
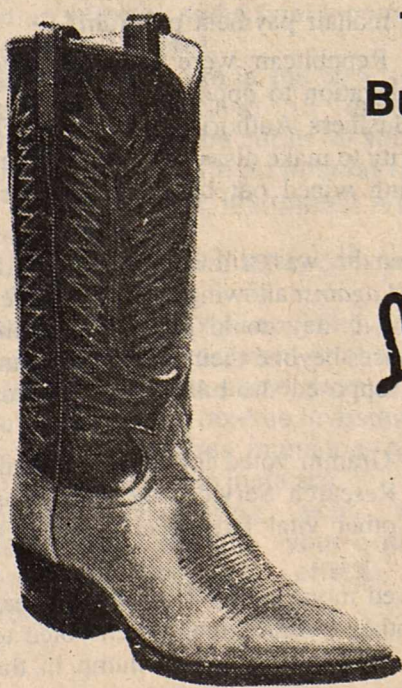
Gooch <b>Wieners</b> pkg <b>79¢</b>	No. 1 Russet <b>Potatoes</b> 10 lb bag <b>\$1 19</b>
Gooch <b>Bologna</b> lb <b>\$1 19</b>	Colorado <b>Cabbage</b> lb <b>15¢</b>
Chuck <b>Steak</b> lb <b>\$1 39</b>	Keebler Grasshopper <b>Cookie</b> pkg <b>89¢</b>
Rib Eye <b>Steaks</b> lb <b>\$3 59</b>	<b>Crisco</b> 3 lb can <b>\$2 59</b>
Candy <b>Bars</b> Your Choice      4 for <b>\$1 00</b>	Eggo <b>Waffles</b> box <b>49¢</b>
Del Monte <b>Peaches</b> No. 2½ can <b>89¢</b>	Wolf <b>Tamales</b> can <b>59¢</b>
Tree Top <b>Apple Juice</b> 32 oz <b>89¢</b>	Towie <b>Stuffed Olives</b> 5 oz. <b>69¢</b>
Heinz Keg'O <b>Ketchup</b> can <b>\$1 29</b>	Reynolds <b>Wrap</b> 25 ft. roll <b>59¢</b>
Campbell Cream of Chicken <b>Soup</b> 3 cans <b>\$1 00</b>	<b>Zest</b> Bath Bar <b>57¢</b>
Hershey <b>Chocolate Syrup</b> 24 oz bottle <b>\$1 39</b>	Hefty Tall <b>Kitchen Bags</b> 30 count <b>\$2 19</b>

**BOOT SALE!**

3 Days Only

Tony Lama  
Bullhide Boots  
**\$99 99**

*Lane* APPAREL  
FOR MEN  
Next To M-System



**POGUE GROCERY**

—Extra Parking Behind The Store. Home Owned and Operated—

113 North Avenue E

Phone 864-2015

Haskell, Texas





WE GIVE  WE GIVE  WE GIVE  WE GIVE  WE GIVE  WE GIVE  WE GIVE  WE GIVE  WE GIVE  WE GIVE 

# M SYSTEM

Your FRIENDLY

**AFFILIATED SUPER MARKETS**

Your dollar buys more at M-System Store

**Cheer DETERGENT**  
171-oz. Box

**4 59**

**DEL MONTE CATSUP**



**78¢**

32-oz. Bottle (Limit 2)

ADDITIONAL PURCHASE 99¢

**Double days**

**WEDNESDAYS**  
With the purchase of \$3.00 or more.

Specials Good Thurs., Nov. 1 thru Wed., Nov. 7, 1984

We Reserve The Right To Limit Quantities!  
For your shopping convenience M-System will be open on Sundays 9 a.m. til 7 p.m.

**GOLD MEDAL Flour**  
5-Lb. Bag

**99¢**

**DUNCAN HINES CAKE MIX**  
18.5-oz. Box

**79¢**



**RED DELICIOUS APPLES**

3-Lb. Bag **88¢**



Del Monte Golden Ripe **Bananas**

Lb. **18¢**

TENDER YELLOW **SQUASH**

Lb. **68¢**

LARGE CALIFORNIA ANGELINO **PLUMS**

Lb. **78¢**

**MORTON FROZEN DINNERS**  
Assorted Kinds EACH

**78¢**

Shurfresh HOMO **Milk**  
GALLON JUG

**1.99**



**YELLOW ONIONS**

5 Lbs. **88¢**

SHURFRESH GRADE A **LARGE EGGS**

DOZ. **53¢**

SHURFRESH **ICE CREAM**  
Half Gal. Square Ctn.

**1 29**

**STAR-KIST TUNA**  
OIL OR WATER PACK  
6½-oz. Can

**79¢**

**Crisco**  
PURE VEGETABLE OIL  
32-oz. Bottle

**1 99**

**Jewel Shortening** 42-oz. Can **1 79**

WE GIVE  WE GIVE  WE GIVE  WE GIVE  WE GIVE  WE GIVE  WE GIVE  WE GIVE  WE GIVE  WE GIVE 



WE GIVE  WE GIVE  WE GIVE  WE GIVE  WE GIVE  WE GIVE  WE GIVE  WE GIVE  WE GIVE  WE GIVE 



# FOOD SPECIALS



USDA CHOICE BEEF  
BONELESS

**BRISKET**

VAC  
PAC  
LB. **99¢**

FRESH & LEAN  
PORK ROAST **99¢**  
lb



**ROUND  
STEAK**

Lb. **1.79**

**Parkay**

MARGARINE  
(QUARTERS)

1-Lb.  
Pkg. **55¢**

ECKRICH SMOKED  
SAUSAGE

Lb. **1.89**

**Charmin**  
BATHROOM TISSUE

Assorted Colors  
4-ROLL PACK

**98¢**

Limit 1 with \$10.00 purchase.  
ADDITIONAL PURCHASE 1.19



BANQUET FROZEN

**POT PIES**

8-oz. Pkgs.

**3 FOR 1.00**

Minute Maid Frozen

**ORANGE  
JUICE**

6-oz.

**55¢**

STILLWELL BREADED

**OKRA**...24-oz. Pkg.

**1.29**

DUNCAN HINES  
READY TO SERVE

**COOKIES**

Assorted Flavors

12-oz.

**1.39**

CARNATION

**Hot Cocoa Mix**

RICH CHOCOLATE  
(12) 1-oz. Pkgs.

**1.49**

FOX DELUXE FROZEN

**PIZZA** ..... 10-oz. Assorted

**69¢**

BAMA GRAPE

**Jam or Jelly** ... 16-oz. Jar

**79¢**

Maxwell House Instant

**COFFEE** ..... 10-oz. Jar

**4.69**

LIBBY'S

**PUMPKIN** ..... 16-oz. Can

**63¢**

STAMP PRICE SPECIAL

Shurfresh  
Sweet Milk  
½ gal ctn

**59¢**

WITH ONE SPS  
FILLED CARD

STAMP PRICE SPECIAL

Shurfresh  
Grade "A" Large  
Eggs

**8¢**  
doz

WITH ONE SPS  
FILLED CARD

STAMP PRICE SPECIAL

Breast O' Chicken  
Tuna

**25¢**

6½ oz.  
WITH ONE SPS  
FILLED CARD

STAMP PRICE SPECIAL

Swift Premium  
Brown 'N Serve  
Sausage

**53¢**

8 oz. pkg.  
WITH ONE SPS  
FILLED CARD

STAMP PRICE SPECIAL

M-System  
Bread

**9¢**

WITH ONE SPS  
FILLED CARD

WE GIVE  WE GIVE  WE GIVE  WE GIVE  WE GIVE  WE GIVE  WE GIVE  WE GIVE  WE GIVE  WE GIVE 

WE GIVE  WE GIVE  WE GIVE  WE GIVE  WE GIVE  WE GIVE  WE GIVE  WE GIVE  WE GIVE  WE GIVE  WE GIVE  WE GIVE  WE GIVE 

# Chamber, Industrial Foundation Seek Expansion In Haskell

**WANDA DULANEY,**  
**Manager, Haskell**  
**Chamber of Commerce**

In an ongoing endeavor, both the Haskell Chamber of Commerce and the Industrial Foundation are continuously seeking the start or expansion of industries to locate in this area.

At the present time, the two organizations are in touch with two such prospects: one a manufacturer of a food product, the other a maker of mobil equipment.

In all such negotiations, with no exceptions, the interested parties insist that all transactions remain confidential until a decision has been made to move here.

THE INDUSTRIAL FOUNDATION was organized to solicit contributions in the 1970's for an industry, with the balance of the needed funds borrowed from the bank. According to Darold Roberson, treasurer, the Industrial Foundation has current liabilities of \$70,000 secured by a ten thousand foot building and five acres of land.

THE INDUSTRIAL DEVELOPMENT COMMITTEE OF THE HASKELL CHAMBER OF COMMERCE is headed by Abe Turner and not only tries to attract new industrial prospects via immediate follow up on all leads, along with the Industrial Foundation, but also provides training for the Industrial Teams who are the community's sales force to interest new industries to

locate here.

This past year, the Chamber of Commerce co-hosted a seminar to learn the best approaches to be used with prospects. It was co-sponsored by the West Texas Utilities Company, Lone Star Gas Co., and the Texas Industrial Commission. Experts in industrial development from the three companies were the instructors from Ft. Worth, Abilene and Austin.

Those who completed the course were; Abe Turner, Tom Watson, Sue Pate, Darold Roberson, Steve Roper, Ben McGee, Bud Lane, Dr. Ed Harris, Tom and Lois Richardson, Hugh and Sandy Horton, Ruby Turner, Dr. Wm. J. Kemp, Don Comedy, Bob and Anita Herren, R.C. and Jerrene Couch, J.B. and Iva Lee Gipson, Pat Hale, Grace Womack and Wanda Dulaney.

Prior to a meeting with a prospect, an effort is made to learn as much as possible about them: how many potential employees, will they be hired locally, what is their projected contribution to the local economy, what space and what type structure will they need, and the location they prefer.

They, in turn, will ask questions about local services, our population, housing, medical facilities, religious facilities, hotel/motel/restaurant accommodations, cultural and recreational facilities, postal services, news media, other local industries, utilities, financial

services, education, labor, transportation, etc.

One prospective industry last year said they wanted the town to donate them a building and the land, that they planned to bring into the company three out of town employees, at minimum wages, that they could foresee no expansion to add other employees locally. They also informed the local committee who met with them that they were not interested in the schools, churches, housing, shopping area or community spirit. A member from Haskell replied, "You've outlined all you want us to give you, yet you are not interested in our town or its people, do not plan to use local labor or merchandise." It is reasonable to expect something from a town's investment.

The number of industries outside the larger cities are few in number and in each case many towns will vie for each one. We heard of a decision that was made by Hagger Slacks to open a branch factory in Cisco, simply because of what a waitress in a restaurant said to them there. While eating in the cafe, they asked her why she lived in that particular town. She replied, "I wouldn't live anywhere else in the world. I had moved away for awhile and couldn't wait to move back. The people here are wonderful." Such a sales pitch, such a positive testimonial, and she influenced an industry to decide that's where they wanted to locate.

This points out the impact a service station operator, a restaurant employee, a clerk in a store or anyone else for that matter can make on a stranger, who will judge Haskell by the pride, courtesy, assistance that one contact gives him.

West Texas Utilities Co. and Lone Star Gas Co., provide community audits which are a very effective tool, along with city maps and

brochures provided by the Chamber.

The audits contain such information as the names, products, year established and total number of such industries as: Trammel Bit and Spur, 1977, horse bits, spurs and tack, 20 employees; Anderson Construction, oil field equipment, 8 employees; Strickland Bridge 1967 concrete plaster, 7 employees; Haskell Free Press 1886 newspaper 5 employees, Haskell Custom Processing 1976 meat processing 4 employees.

They further point out non-manufacturers such as West Texas Utilities 39 employees, electric generation; Haskell National Bank 30 employees; Matador Pipeline oil service, 25 employees.

Listed also are the three schools, 693 enrollment, 53 teachers. Other large enterprises include 10 peace officers, County, and with the city 35 volunteer firemen, 2 municipal police. Others with large numbers of employees are Commodore Savings, Haskell Clinic, Haskell Hospital, Haskell Nursing Center, Rice Springs Care Home and the City of Haskell.

Meetings between the prospects and the Industrial Development Committee of the Chamber and Industrial Foundation are usually held in Haskell, but out of town conferences can also be arranged when necessary.

Some cities have developed Industrial Parks, which is always a consideration here also, but thus far all prospects have had different ideas about where they want to locate: some need to be near an airport, others want to be on the railroad line, some say they have to be on a highway, with each decision based on the type of industry they propose.

Gary Vest, supervisor Area Development WTU Abilene works closely with the Haskell Chamber and Industrial Foundation in preparing flyers

on Haskell facilities for lease, including picture, floor plan and a building data sheet. These are distributed widely by WTU along with information on other availabilities in other towns in the area, included in the packets given to prospects through the Chamber and Industrial Foundation, usually in the initial contact.

The Texas Industrial Com-

mission, Austin, has also prepared a community data profile on Haskell and other cities for distribution to persons interested in establishing, branching out or relocating industries.

"It's a big team effort, one that is constantly in operation," Abe Turner pointed. "We only regret that we cannot divulge the information each time we work with

prospects, but each one emphasizes the confidentiality of such negotiations until and if they make a decision to locate here and at that time give permission to announce it."

We appreciate all leads for prospective industries and will follow through on all of them, he added. Turner reported that the Chamber is still searching for one or more

additional doctors, in cooperation with Dr. Frank Cadenhead, Dr. Joe Thigpen, Dr. Wayne Cadenhead and Dr. R.C. Colbert, looking for a general practitioner who is interested in either a group practice or a private practice. "We would like to also find an optometrist for Haskell", Turner concluded.

GET RESULTS  
 "GO CLASSIFIED"

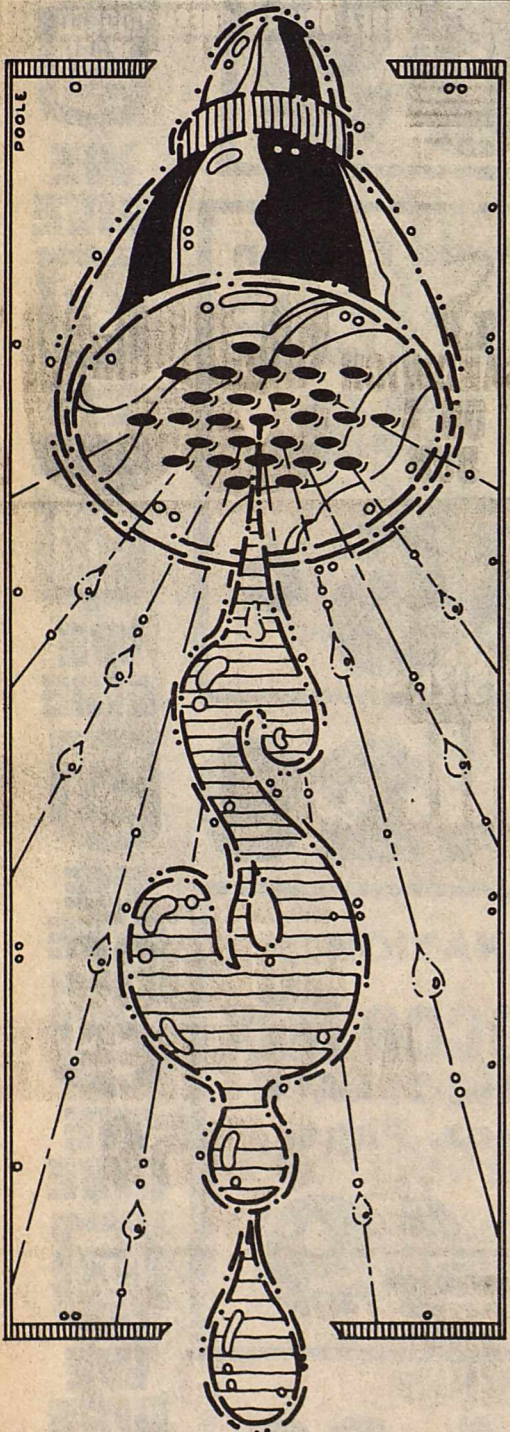
## Phil Gramm stands with us on issues important to Texas!

The differences in the U.S. Senate race are sharp. Phil Gramm will stand, fight and win for the views held by Texans. His opponent is out of step with Texans. If you don't think there are any differences, perhaps you should take another look.

Issue	Phil Gramm	Lloyd Doggett
Federal Tax Increases	Against	For (Houston Post, 4/3/84) (Houston Chronicle, 5/1/84)
Authorizing The Legislature To Pass A State Income Tax	Against	For (Four Votes, 1974 Texas Constitutional Convention)
Amnesty For Illegal Aliens	Against	For (Corpus Christi Caller, 5/16/84)
The "Gay Rights Bill" With Affirmative Action For Homosexuals	Against	For (San Antonio Express, 5/27/84) (Dallas Morning News, 8/8/84)
Probation For Violent Criminals	Against	For (Three Votes, Texas Senate, 1977)
Death Penalty For Murder Committed During Robbery, Rape Or Terrorism	For	Against (Daily Texan, 12/7/74)
Balanced Budget Amendment To The Constitution	For	Against (Abilene Reporter News, 4/29/84) (One Vote, Texas Senate, 1977)
Texas Water Plan	For	Against (Five Votes, Texas Senate, 1981) (Ft. Worth Star-Telegram, 4/28/84)
Right-To-Work Guarantees	For	Against (Three Votes, 1974 Texas Constitutional Convention) (One Vote, Texas Senate, 1975) (One Vote, Texas Senate, 1981)
President Reagan's Grenada Rescue Mission	For	Against (Houston Post, 3/3/84)
Strong National Defense With The B-1 Bomber And The MX Missile	For	Against (Dallas Morning News, 3/21/84)

For Texas PHIL GRAMM  
 For America U.S. SENATE TEXAS

Paid for by friends of Phil Gramm



## WHY POUR MONEY DOWN THE DRAIN?

Get a high-efficiency gas water heater. It heats water for half the cost of non-gas heaters. Really. But cold cash isn't the only reason you should get a gas water heater. Gas heats water fast. So fast you'll have plenty for showering, washing dishes, doing laundry and every job that takes lots of hot water. Don't drain the budget. Get a gas water heater.

**Lone Star Gas Company**  
 Get more for your money.  
 Get a gas water heater for your home.

### FREE Hearing Test

Fieldan Motel  
 Haskell

SINCE A HEARING PROBLEM AFFECTS THE ENTIRE FAMILY  
 BRING A LOVED ONE TO HELP IN THE EVALUATION

**Saturday, Nov. 3; 8 til 11 a.m.**

**Texas State Hearing Aid Center**

4201 A North 1st., Abilene, Texas 79603

915 673 4989

If unable to attend  
 Call Us For FREE in Home Testing

"Nerve Deafness" CAN be Helped!

# WE JUST GAVE OUR CABLE SUBSCRIBERS A NEW COUNTRY HOME.

Centex Cable Subscribers in Haskell and Rule will soon be treated to the all country entertainment of THE NASHVILLE NETWORK. In Rule - Starts today - Cable Channel 12



THE NASHVILLE NETWORK  
 AMERICA'S COUNTRY HOME

© GROUP W SATELLITE COMMUNICATIONS 1984

## CENTEX CABLEVISION INC.

Your New Country Home

Dial Operator-Ask for Enterprise 2406

902 N. Swenson

# Editorial

BY JANET WILKE

Well, finally it is almost here. No, I am not talking about the day of the Great Pumpkin, or of the Football game against Hawley, Friday, or even winter. I am referring to the General Election!!

This year seems to have brought out the best, and WORST, in some of us!

While the members of the media have been trying to decide, who, if anyone, really won the presidential debates, our two nominees for the U.S. Senate seat (namely Gramm and Doggett) win Academy Awards for the mud slinging act they have so busily been engaged in.

Ferraro is still trying to decide which financial statement she will stand by, and George Bush is still trying to explain just what it was that he did kick—part of Ferraro's body or the bucket, politically!!

It seems almost funny that so much money has been spent in order to say so little to so many for such a small length of time!

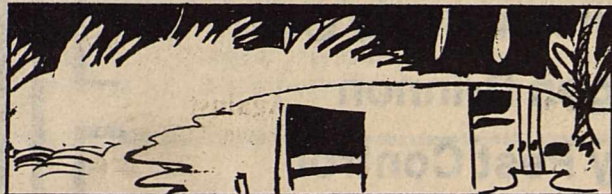
If all of the politicians would take the same amount of time they have spent mud slinging and use it to try to find answers to how to curb the national debt, feed the hungry, and find jobs for the nation's unemployed, this country would be the most prosperous, well-fed, and productive in the world!

What is even more insane is that hard working, honest people actually send their dollars to these "excavating affairs". (I refer to the dirt digging which has been going on.) Don't they know that for every dollar they send, at least 50 cents goes to hire another researcher who can find more dirt to dig and throw on the name of the opponent? And, the dirtier, the better!

Why, just today I was reading a send out from one of the local campaigns. This candidate was really lowering the boom on his opponent. He out and out called the man's campaign a lie, and even went as far as attacking the poor man's mother!!

I say enough!! There are plenty of really honest to goodness issues which need to be, and must eventually be, faced. It is high time these politicians stopped stabbing each other in the back and started discussing the problems which face our state and nation.

If both parties would just get together, and try to come to terms on some of the issues, partisanship would not be a factor. After all, does not matter what party they are in when they get to Austin or Washington, these people have been elected by you and me to serve US...not their particular party!!



Legend has it the lily plant sprang from tears.



The lilac, a native of the Orient, was not introduced into Europe until the 16th century.



Staff Photo by Janet Wilke

## CALENDAR TIME AGAIN

Shown are members of the Haskell Brownie and Girl Scout troops who are reminding everyone that soon the annual Girls Scout Calendar sales will begin. Left to right on the first row are Cynthia Rodriguez, Rebecca Unger, Laura Barbour, Carol Thornhill, and Jennifer Comedy; second row left to right are: Wendi Watson, Shelia Unger, and Marsha Moore. Sales will begin November 1 and will run throughout the entire month. The calendars are \$1.50 each and the monies raised will help the Haskell Girl Scouts. These are high quality calendars with space provided for notes, and all of the major holidays are marked. Contact any member of the Girl Scouts for more information.

## Cowboy Memoirs Published From Texas A&M

COLLEGE STATION — Old Texas cowboys get to tell their own stories in their own words in a new book from the Texas A&M University Press.

Based largely on a Depression-era oral history project to employ out-of-work clerks and writers, "Texas Cowboys: Memories of the Early Days" (233 pages, \$15.95) presents contemporary accounts of life in the Old West.

Edited by the West Texans Jim and Judy Lanning, these stories from the Federal Writers' Project archives represent how old-time Texas cowhands — black, white and Hispanic — and the women of the period felt about their life.

The book is reportedly the first publication of these particular FWP narratives.

Every story relates some bit of cowboy humor or joke, usually played on the newcomer. Sometimes the grizzled veter-

erans got it, though. One time a complete stranger approached a cowhand and said, "I've been looking for you for a long time. Here's your dollar." When everyone looked puzzl-

ed, the stranger explained, "This dollar was given to me six years ago and I was instructed to give it to the next fellow I met who was uglier than I was ... so here it is."

**TOWER**  
DRIVE-IN (HIWAY 6)  
RULE, TEXAS  
OR PHONE 87-2362

Friday, Saturday, & Sunday  
Nov. 2-4

Tom Hanks  
Adrian Zmed

An outrageous new comedy from the creators of "Police Academy" and the star of "Splash".

**BACHELOR PARTY**

## Gas Hydrates New Energy Source Discovered In Gulf

COLLEGE STATION — Texas A&M University oceanographers have reported the discovery of gas hydrates, an icelike formation of methane and water that some feel could be an alternative energy source, under the ocean floor in the Green Canyon area of the Gulf of Mexico.

In the current issue of Science magazine released this week, Drs. James M. Brooks, Mahlon C. Kennicutt II, Roger R. Fay, R. Sassen and others report the occurrence of thermogenic gas hydrates in ocean sediments retrieved during geochemical surveys in the

northwestern area of the gulf. The gases that form these hydrates have seeped up from much deeper reservoirs, Kennicutt said. The samples, he said, are the result of temperature and pressure under the ocean floor.

The temperature and pressure ranges in the sediments where the hydrates were recovered are very close to the stability limit of methane hydrates, Kennicutt said. Their recovery gives scientists the challenge of discovering what conditions allowed the existence of this frozen gas at elevated temperatures.

## Stagecoach Inn in Stamford Saturday, Nov. 3

presents  
**Roy Strange & The Texas Thrillers**

Come enjoy yourselves!

**ALLSUP'S**  
CONVENIENCE STORES

**VOTE FOR SAVINGS AT ALLSUP'S**  
PRICES EFFECTIVE NOVEMBER 1-3, 1984

WHILE SUPPLIES LAST  
PICNIC SUPPLIES-ICE  
SOFT DRINKS- FRESH COOKED  
FOODS-SELF SERVE GAS- PRODUCE-  
MONEY ORDERS

**COOKED FOOD SPECIAL AS FEATURED ON T.V.**  
BONELESS SMOKE FLAVORED PORK TRY ONE TODAY!

**ALLSUP'S RIB-B-Q SANDWICH ON A BUN** **99¢ EA**

**FRITO'S** KING SIZE OR REG. SIZE BAG  
**CORN CHIPS** REG. \$1.79 **\$1.49**

**ASSORTED FLAVORS**  
**ALLSUP'S ICE CREAM**  
VANILLA ICE CREAM 1/2 GAL. CTN. **\$1.69**

WINTERIZE YOUR CAR  
**CONOCO ANTI-FREEZE**  
1 GAL. CTN. **\$3.59**

**WHOLE AT WAREHOUSE SALE**

FULLY COOKED BONELESS **SHURFRESH HAMS** HALF OR WHOLE **\$1.89 LB.**

GRANULATED **SHURFINE SUGAR** 5 LB. BAG **\$1.49**

ALL PURPOSE **RUSSET POTATOES** 10 LB. BAG **89¢**

Campbells Chicken with Rice  
Chicken Noodle O's  
**3/\$1.00**  
10 oz

All Brands Cigarettes  
**\$8.29** + tax a carton  
Everyday Price

Ranch Style Chili  
No Beans  
**89¢**  
19 oz

Hormel Vienna Sausage  
5 oz  
**2/79¢**

**BORDEN'S HI-PRO MILK**  
**\$1.09**  
1/2 GAL. CTN.

6 Pack—12 oz Cans  
**PEPSI**  
PEPSI LIGHT, PEPSI FREE, DIET PEPSI  
**\$2.19**

The hand that feeds this little piggie could use a hand from us...



Everybody knows it takes a lot of savings to fill this little critter these days! And, as soon as he's full — he's hungry again!

If "the hand that feeds the ham that needs" could use a little money-saving helping hand too, please drop by to check out our banking expertise today! Let us help you make the right money decisions. We've more than a handful of choice, money-saving, money-making banking plans and services that will fatten up your financial future.



Post Office Box 10  
Phone (817) 997-2216  
Rule, Texas 79547



# Indian

# FOOTBALL

## 1984 FOOTBALL SCHEDULE

- Sept. 7..... Haskell 2—Munday 20
- Sept. 14..... Haskell 0—Electra 37
- Sept. 21..... Haskell 20—Seymour 7
- Sept. 28..... Haskell 21—Quanah 13
- Oct. 5..... Haskell 0—Iowa Park 42
- \*Oct. 12..... Haskell 14—Hamlin 15
- \*Oct. 17..... Haskell 26—Rotan 21
- \*Oct. 26..... Haskell 21—Stamford 26
- \*Nov. 2..... Hawley..... Here
- \*Nov. 9..... Anson..... Here

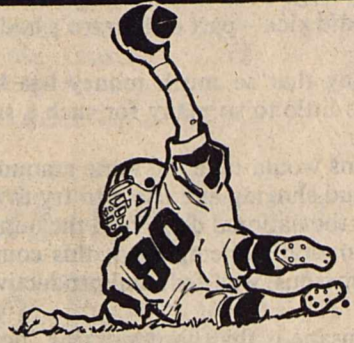
\*District Games

## Haskell Indians

vs

## Hawley Bearcats

7:30 P.M. — Here



This Page Sponsored By The Following Firms and Individuals

**Willie Faye Tidrow**  
County Treasurer

**Brian & Jennifer Burgess**  
—State Farm Insurance—

**Fieldan Motel**  
Haskell's Finest Downtown

**The Hartsfield Agency**  
Jones Cox & Co.

**Richardson Truck & Tractor**

**Haskell Free Press**

**Sherman's Carpet & Interior**

**Carolyn Reynolds**  
—District Clerk—

**Mike Harrell**

**Federal Land Bank Assn.**

**Medford Buick-Pontiac**

**Glenn & Jo Pogue**  
Pogue's Meat Processing

**The Video Vendor**

**M-System**

**Bill Wilson Motor Co.**

**Peiser Surveying & Engineering**  
864-3244

**Boggs & Johnson**

**Biggon Drinnon**

**Reddy Pest Control**  
—Bill St. John—

**Owens Radio & Electric**

**Hanson Paint & Body**

**Gilliam Oil Co.**  
—Larry Gilliam—

**Wallace's Exxon**

**Pizza Barn**

**Smitty's Auto Supply**

**Queen Roofing**

**Anderson Construction Co.**

**Centex Cablevision Corp.**

**Kiddie Kottage**  
—Director, Sandra Wallace—

**Holden-McCauley Funeral Home**

**Dean Butane Co.**

**Nanny Plumbing**

**Trussell's Tire Center**

**Haskell Livestock Auction**

**Kennedy Lumber Co.**

**Haskell National Bank**

**Under the Rainbow**

**Double A Drive In & Exxon**

**Mitchell's Porthole**

**Leon Jones Welding**

**McGee's Lumber Yard**

**Buster's Drive-In Grocery**

**Rodriquez Inn**

**Haskell Marine**

**The Sweet Shop**

**The Personality Shoppe**  
—Smart Wear for Women 864-2501—

**Sonic Drive In**

**Lane-Felker**

**Thornhill Insurance Agency**

**Kountry Kookin'**

**Modern Way Food Store**

**Guess-Munday Northside Gulf**

**Haskell Steak House**

**Haskell Co. Warehouse & Compress, Co.**

**Haskell Paint & Body**

**Bailey Toliver Chevrolet & Olds**

**Dairy Queen**

**Kids Duds**

**Elsie's Hi-Lander**

**Heads or Tails Western Wear**

**Haskell Co. Farm Bureau**  
Lonnie Tate—Agency Manager

**Steele Precision Machine**

**Commodore Savings**  
Haskell Branch—518 S. 2nd

**Jake Dusak, Jr.**

**The Back Porch**  
864-3761



### 1984 HASKELL INDIANS

NO.	NAME	POSITION	WEIGHT
10	Felipe Arredondo	B	114
11	John Castillo	TB	140
12	Todd Harris	QB	156
20	Steven Rodriguez	E	125
22	Joel Torres	B	165
25	Harry Henry	E	137
32	Michael Wallace	E	132
33	Carl Dever	B	140
35	Kendall Larned	B	151
37	Robert Ivey	B	185
40	Ruben Ozuna	E	136
54	Joey Thomas	C	190
55	Shawn Lane	C	172
60	Jimmy Burson	G	166
62	Keith Parrott	G	165
65	Sam Baker	G	190
67	Shane Gilliam	T	195
72	Seth Pace	G	185
74	Scott Schaaake	T	148
75	Joseph Perez	T	228
79	Andy Griffith	T	190
80	Randy Roewe	E	144
82	Billy McFadden	E	119
84	Ponciano Lopez	E	138
88	Ricky Rojas	E	160

MANAGERS: Mickey Dewey, Jerry Davis, David Swann, Eric Mullen, Stephen Holt

COACHES: W.L. Holt, Head/Athletic Director  
Jimmy Lisle, Defensive Coordinator  
Jim B. Mickler, Assistant  
George Martin, Assistant  
Jim D. Raughton, Assistant

SUPERINTENDENT: James Lanier  
PRINCIPAL: Clayton Neal

BAND DIRECTOR: Carl Wilke

CHEERLEADER SPONSOR: Cathy Bartley

DRUM MAJOR: Kim Lanier

TWIRLERS: Hollie High, Mitchell Stout,  
Lorry Gellhausen, Jill Jennings,  
Kelli Gilliam

CHEERLEADERS: Holly McBroom, Denise Burris,  
Stephanie Browning, Kelly Wallace, Rhonda Adams,  
Mindy Smith

# 1984

# Chad Ballard Named 4-H Gold Star Recipient

Chad Ballard, 15 year old son of Mr. and Mrs. Don Ballard, of Rochester was recently recognized as Haskell County's 4-H Gold Star Recipient for 1984. To qualify for the Gold Star Award, highest 4-H honor at the County level, a 4-H'er must be at least 14 years old, excel in leadership and citizenship abilities, be an outstanding student academically, and have responsibilities outside 4-H work in their home, church and community affairs.



Chad has been an active 4-H member for 7 years. Projects he has carried include swine, beef, livestock judging, sheep, showmanship, recreation, and leadership. He has represented Haskell County well by participating in local, county, regional, and state livestock shows, fairs, and futurities. He has also participated in judging contests, steer fitting contests, district and state 4-H roundup, and county, district, and state record book competition.

In order to learn more about fitting and showing livestock, Chad has participated in demonstrations, clinics, and symposiums at Haskell, Fredericksburg, Lubbock, Plainview, and Abilene.

Chad is very active in his local 4-H club. He is currently serving as Secretary for the Rochester 4-H club and is a junior leader for the livestock judging project group. He is also president of his local lamb project group, secretary for the swine group, delegate representing his beef group, and treasurer for the

showmanship project group.

Not only is Chad interested in his 4-H projects, but he is also interested in what 4-H'ers are doing in other project areas. He attends the county 4-H food show, and the county and district 4-H fashion shows.

Chad also enjoys the social part of the 4-H by attending countywide 4-H meetings, District Teen Leader Lab, and Texas 4-H Congress. He was instrumental in getting a share-the-fun group organized in his local 4-H Club.

Chad with his family regularly attends the First United Methodist Church in Rochester where they share church responsibilities with other members. The entire family

can also be depended on to help in all community affairs.

A sophomore at Rochester High School, Chad is very active and well thought of by his teachers and fellow students. He is outstanding academically and excels on F.F.A and band. Chad also enjoys playing the piano.

At home Chad is active in helping his family. He works hard in every aspect of his family's farming and livestock operations.

Chad is truly a most dependable and dedicated 4-H member, student, church member, community leader, and family member. He possesses all the citizenship and leadership skills that are desirable in a young person. He is a well-rounded, well-adjusted 4-H member who takes what 4-H has to offer and combines with it his desire to learn, work, and play with other

4-H members, this making him an outstanding citizen with a high moral character. He sets a good example for other 4-H members and everyone he comes in contact with.

In recognition of being chosen as the Gold Star Recipient, Chad was presented a Gold Star pin, a 4-H jacket, donated by Trammel Bit Co. and a U.S. Savings Bond, courtesy of the Home State Bank in Rochester.

For further recognition Chad and his parents will be special guest at the Haskell County Extension Homemakers Information Day in November and the District Gold Star Banquet in Benjamin also in November.

## WE, THE UNDERSIGNED, SOLICIT YOUR VOTE FOR THE NOMINEES OF THE DEMOCRATIC PARTY ON NOVEMBER 6, 1984.

Janice Pace O'Neal  
Mrs. Lynn Pace, Sr.  
Pace O'Neal  
Mr. & Mrs. Woodrow Frazier  
Glenn & Geri Darden  
John & Brenda Ledesma  
Norman Nanny  
Mrs. Norman Nanny  
Mrs. George Mullino  
Royce Adkins  
Jimmie Lou Adkins  
Charles Chapman  
Peggy Chapman  
Betty Berry  
Tommy Matthews  
Glen Sammons  
J.D. Kupatt  
Buddy Lane  
W.D. Medford  
Anita Medford  
Edwin A. Roberson  
Nolan Lees  
Callie Robison  
B.C. Chapman  
Gary D. Druessedow  
Jean Free  
Bob Free  
David Burson  
Linda Burson  
Ray Acosta  
Alicia Acosta  
Jimmy Howeth  
Cecil Pittman  
Louise Pittman  
Leon Burson  
Trey Burson  
J.W. Hawkins  
H.B. Montgomery  
Felix Mullino  
R.P. Riley  
Virgil H. Wall  
Margaret Wall  
Virgil Conner  
Julie Conner  
Lee Brown  
Laverne Brown  
T.J. Poer  
Reva Poer  
Bill Hendrix  
Sam Fought  
R.C. Cook  
J.L. Hendrix  
Ray Lusk  
Floyd O. Lusk  
J.W. Ash  
Troy Ash  
Cornell Montgomery  
Winona Mullino  
Giles Kemp  
Mary Kemp  
S.E. Bledsoe  
B.O. Roberson  
Mrs. B.O. Roberson  
Ethel Lou Shelton  
H.W. Clanton  
Johnny L. Mills  
Tim Burson  
Joe Williams  
Alene Collins  
R.A. Shaver Jr.  
Taylor Segoe  
Angelo Pisasale  
Mary C. Wyatt  
Marion Hicks  
W. H. Patterson  
Buck Townsend  
Ray McWhorter  
Warren Short  
Jerry Carver  
R.A. Shaver III  
J.L. Beauchamp  
C.A. Gauntt  
Marguerite Gauntt  
Edwin L. Fly

Frieda Fly  
Jo Evelyn Patterson  
Ira Short  
Jinx Shaver  
Anna Lou Shaver  
W.P. Ballard  
Jimmie D. Ballard  
W.M. Reid  
Claudia Faye Reid  
Reida Harris  
Jane Short  
Tennie Mae Short  
Darlene Bellinghausen  
Kenneth Newberry  
Gerri Newberry  
J.E. Muhle  
James Reid  
Marsha Reid  
Matt Reid

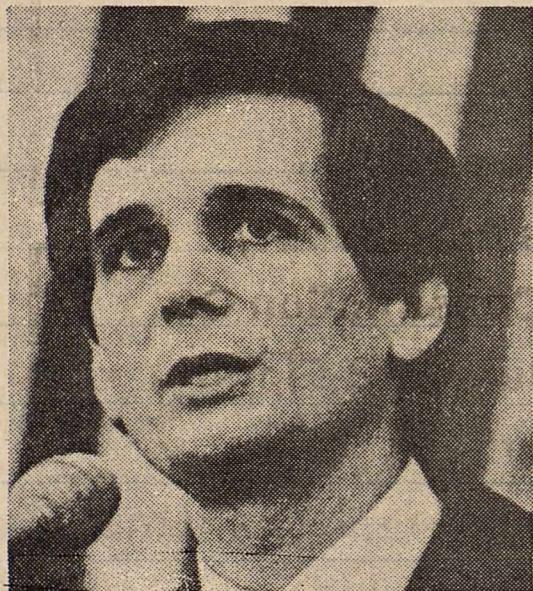
Thelma Boone  
Bruce McCain  
Marie McCain  
Melba Howard  
Bobby L. Howard Sr.  
C.W. Dunnam  
June L. White  
Boyce Foil  
A. E. Fouts  
E.L. Elmore  
Festus Hunt  
Wallace Allison  
Morris Neal  
Don W. Davis  
L.W. Norman  
P.G. Beauchamp  
Bertie Beauchamp  
James Lisle  
Jo Ruth Lisle  
Raja Hassen  
Norris Gibson  
Beulah Gibson  
Lee Brown  
Lora Mullins  
Mrs. T.W. Jetton  
Adell Thomas  
Sue Patterson  
Laura Overton  
Allen Davis  
Lorene Vernon  
Frances Arend  
W.R. Hager Jr.  
Jack P. Dunnam  
Thelma Edwards  
Rex Herricks  
David Earle  
Melvin Vojkufka  
Tom Culic  
Tom Yates  
Helen Boykin  
E.L. Adams  
Michael Adams  
R.W. Raynes

R.W. Raynes Jr.  
R.M. Walker  
J.E. Jetton  
Clifton Duncan  
Bessie Duncan  
Sue Burleson  
Debie Burleson  
A.A. Cox  
Leola Cox  
Edrie Barnard  
George Torrez  
Carlos Casillas  
Aurora Casillas  
William Penman  
Cathy Penman  
Jimmy Wilkinson  
Janie Wilkinson  
Rayland Hayes  
Jill Hayes  
Irby Carlisle

Johnnie Carlisle  
Ercel F. Simpson  
John Fouts  
Bonnie Fouts  
James H. Reynolds  
Carolyn Reynolds  
Dr. William J. Kemp  
Leslie Jones  
Berlie B. Henderson  
J.R. Miller  
Helen Miller  
C.G. Burson  
Ember Miller  
T.V. Burson  
Bob Dulaney  
Betty Dulaney  
Bobbie Collins  
Glenn & Maggie Merchant  
Don & Gayla Nanny  
Mr. & Mrs. F.A. Ulmer  
Mr. & Mrs. Joe Clark  
Kraig & Leslie Kupatt  
Mr. & Mrs. Charles E. Diers  
Mr. & Mrs. Jimmy Teichelman  
Mr. & Mrs. Fred Kupatt  
Mr. & Mrs. Ronny Denson  
Bill Hertel  
Margie Hertel  
Mr. & Mrs. Randall Denson  
E.J. Neinst  
Mrs. E.J. Neinst  
R.R. Clark  
Frances Clark  
Mr. & Mrs. Delbert LeFevre  
Guy Denson  
Melton N. Mathis  
Mr. & Mrs. Melvin Baltz  
Fred & Tami Baltz  
Herbert Stremmel  
Christine Stremmel  
Mr. & Mrs. J.C. Swofford  
Mr. & Mrs. Alvin E. Bredthauer  
Mr. & Mrs. J.J. Gellner  
Susan Turner  
Cole Turner

George Mullino  
Larry L. Beauchamp  
James L. Beauchamp  
Lewie McNiel  
Eva McNiel  
T.E. Beason  
Lorene Beason  
Danny Harris  
Jack H. Neathery  
Ermine Mullino  
John E. Hicks  
Adelaide Hicks  
Edna Adkins  
Adam Garcia  
Esabel Garcia  
Nocho Ortiz  
Johnny King  
S.F. Turner  
Cindy A. Friley  
Basilio Andrada  
Olga Alvis  
W.L. Mullins  
Mrs. G.W. Mullins  
Lula Slaughter  
Robert Slaughter  
Leon & Letha Newton  
Mr. & Mrs. C.E. Gary  
Jimmy & Helen Owens  
Mr. & Mrs. Garth Garrett  
Gentry Middleton  
Cliff Dunnam  
Jerry Hunt  
Joe & Martha Harper  
Lary Waskom  
Patsy Pate Cobb  
Wilbert & Dwanna Klose  
Olen Dotson  
Pat Henry

VOTE DEMOCRATIC NOVEMBER 6, 1984



When it came time to stand and choose, Lloyd Doggett stood *with* you.

### ELDERLY

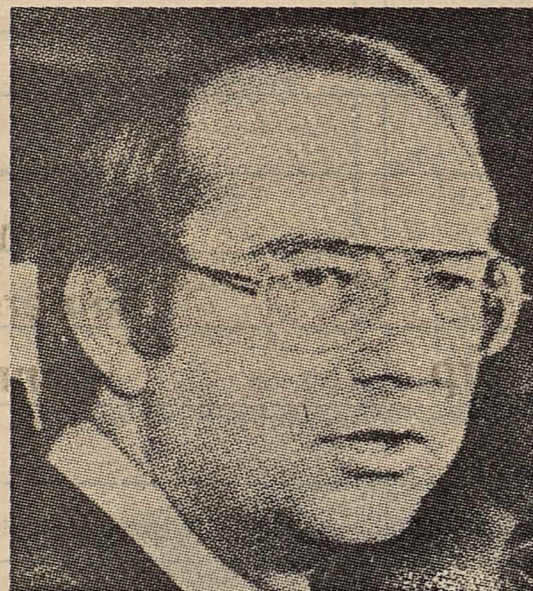
★ Lloyd Doggett fought to preserve the fiscal integrity of all Texas retirement systems and believes that Social Security "is a sacred contract we cannot turn our backs on."

### EDUCATION

★ Lloyd Doggett has always been one of Texas' leading advocates of a first class public education system. As a State Senator, he has been in the forefront of the struggle to improve the quality of teaching for our children.

### PUTS TEXAS FIRST

★ In his eleven years as a Texas Senator, Lloyd Doggett has always put the needs and concerns of Texas first and the greedy special interests last. Lloyd has written and fought to pass 125 people-helping laws, including the Consumer Protection Act, utility reform, and the Human Rights Commission.



When it came time to stand and choose, Phil Gramm stood *against* you.

### ELDERLY

★ Gramm led the fight to cut Social Security benefits out from under the most vulnerable people in our society. In fact, he has voted against Social Security on at least eight occasions.

### EDUCATION

★ Gramm has been relentless in his efforts to remove all Federal assistance to education, going so far as to exclaim that educational assistance to the handicapped "(encourages) people to be handicapped."

### PUTS TEXAS LAST

★ Gramm's record stands as a monument to callousness and insensitivity to the needs and concerns of ordinary Texans. He voted against helping drought-stricken Texas farmers and ranchers, border businesses hurt by the peso devaluation, and against loans to small businesses across Texas.

Vote Lloyd Doggett for U.S. Senate

No. 0000

# GENERAL ELECTION (ELECCION GENERAL)

(Condado de) Haskell County, Texas  
November 6, 1984 (6 de noviembre de 1984)

## SAMPLE BALLOT (BOLETA DE MUESTRA)

**INSTRUCTION NOTE: (NOTA DE INSTRUCCION:)**

Vote for the candidate of your choice in each race by placing an "X" in the square beside the candidate's name. You may vote a straight ticket by placing an "X" in the square beside the name of the party of your choice at the head of the party column. (Vote por el candidato de su preferencia para cada candidatura marcando con una "X" el cuadro al lado del nombre del candidato. Usted puede votar por todos los candidatos de un solo partido marcando con una "X" el cuadro al lado del partido de su preferencia a la cabeza de la columna para partidos.)

Candidates for: (Candidatos para:)	<input type="checkbox"/> Democratic Party (Partido Democrático)	<input type="checkbox"/> Republican Party (Partido Republicano)	Independent (Independiente)	Write-In (Voto Escrito)
resident and Vice President (Presidente y Vice Presidente)	<input type="checkbox"/> Walter F. Mondale Geraldine A. Ferraro	<input type="checkbox"/> Ronald Reagan George Bush	<input type="checkbox"/> Lyndon H. LaRouche Billy M. Davis	
United States Senator (Senador de los Estados Unidos)	<input type="checkbox"/> Lloyd Doggett	<input type="checkbox"/> Phil Gramm		
United States Representative, District 17 (Representante de los Estados Unidos, Distrito Núm. 17)	<input type="checkbox"/> Charles W. Stenholm			
Railroad Commissioner (Comisionado de Ferrocarriles)	<input type="checkbox"/> Mack Wallace	<input type="checkbox"/> John Thomas Henderson		
Chief Justice, Supreme Court (Jefe Presidente, Corte Suprema)	<input type="checkbox"/> John L. Hill	<input type="checkbox"/> John L. Bates		
Justice, Supreme Court, Place 1 (Juez, Corte Suprema, Lugar Núm. 1)	<input type="checkbox"/> Franklin S. Spears			
Justice, Supreme Court, Place 2 (Juez, Corte Suprema, Lugar Núm. 2)	<input type="checkbox"/> C. L. Ray			
Judge, Court of Criminal Appeals, Place 1 (Juez, Corte de Apelaciones Criminales, Lugar Núm. 1)	<input type="checkbox"/> Sam Houston Clinton	<input type="checkbox"/> Virgil E. Mulanax		
Judge, Court of Criminal Appeals, Place 2 (Juez, Corte de Apelaciones Criminales, Lugar Núm. 2)	<input type="checkbox"/> W. C. (Bill) Davis			
Judge, Court of Criminal Appeals, Place 3 (Juez, Corte de Apelaciones Criminales, Lugar Núm. 3)	<input type="checkbox"/> Bill White			
State Senator, District 30 (Senador Estatal, Distrito Núm. 30)	<input type="checkbox"/> Ray Farabee			
State Representative, District 64 (Representante Estatal, Distrito Núm. 64)	<input type="checkbox"/> Rick Perry			
Associate Justice, Court of Appeals, 11th District (Jefe Asociado, Corte de Apelaciones, Distrito Núm. 11)	<input type="checkbox"/> Raleigh Brown			
District Attorney, 39th Judicial District (Procurador del Distrito, Distrito Judicial Núm. 39)	<input type="checkbox"/> John Fouts			
County Judge, Unexpired Term (Jefe del Condado, Término no Completado)	<input type="checkbox"/> B. O. Roberson			
County Attorney (Procurador del Condado)	<input type="checkbox"/> Charles Chapman			
Sheriff (Sherife)	<input type="checkbox"/> Johnny Mills			
County Tax Assessor-Collector (Asesor-Collector de Impuestos del Condado)	<input type="checkbox"/> Bobby (Guffey) Collins			
County Commissioner, Precinct No. 1 (Comisionado del Condado, Precinto Núm. 1)	<input type="checkbox"/> T. C. (Tim) Burson			
Constable, Precinct No. 5 (Condestable, Precinto Núm. 5)	<input type="checkbox"/> Troy P. Brown			
Constable, Precinct No. 1 (Condestable, Precinto Núm. 1)	<input type="checkbox"/> D. L. (Jack) Speer			
Justice of the Peace, Precinct No. 6, Unexpired Term (Jefe de Paz, Precinto Núm. 6, Término no Completado)	<input type="checkbox"/> Elaine Holcomb			
Constable, Precinct No. 6 (Condestable, Precinto Núm. 6)	<input type="checkbox"/> L. V. (Sonny) Pittcock			

### PROPOSED CONSTITUTIONAL AMENDMENTS (ENMIENDAS PROPUESTAS A LA CONSTITUCION)

**INSTRUCTION NOTE: (NOTA DE INSTRUCCION:)**

Place an "X" in the square beside the statement indicating the way you wish to vote. (Marque con una "X" el cuadro al lado de la frase que indica la manera en que quiere usted votar.)

**No. 1**  FOR (A FAVOR DE)  AGAINST (EN CONTRA DE) } The constitutional amendment to provide state banks the same rights and privileges as national banks. (La enmienda a la constitución para darles a los bancos estatales los mismos derechos y privilegios que tienen los bancos nacionales.)

**No. 5**  FOR (A FAVOR DE)  AGAINST (EN CONTRA DE) } The constitutional amendment authorizing the state senate to fill a vacancy in the office of lieutenant governor. (La enmienda a la constitución autorizando al senado del estado para llenar una vacancia en el puesto oficial de vicegobernador.)

**No. 2**  FOR (A FAVOR DE)  AGAINST (EN CONTRA DE) } The constitutional amendment to create from general revenue a special higher education assistance fund for construction and related activities, to restructure the Permanent University Fund, and to increase the number of institutions eligible to benefit from the Permanent University Fund. (La enmienda a la constitución para establecer de ingresos generales un fondo especial de apoyo para la instrucción superior, para propósitos de construcción y otras actividades respecto a eso, para reorganizar el fondo de universidad permanente, y para aumentar el número de instituciones elegibles para aprovecharse del fondo de universidad permanente.)

**No. 6**  FOR (A FAVOR DE)  AGAINST (EN CONTRA DE) } The constitutional amendment to permit use of public funds and credit for payment of premiums on certain insurance contracts of mutual insurance companies authorized to do business in Texas. (La enmienda a la constitución para permitir el uso de fondos y crédito público para pagar las primas sobre ciertos contratos de seguro perteneciendo a compañías de seguros mutuales autorizadas para manejar negocios en Texas.)

**No. 3**  FOR (A FAVOR DE)  AGAINST (EN CONTRA DE) } The constitutional amendment authorizing the legislature to provide for payment of assistance to the surviving dependent parents, brothers, and sisters of certain public servants killed while on duty. (La enmienda a la constitución autorizando a la legislatura para suministrar un pago para asistir a los sobrevivientes padres, hermanos, y hermanas que dependen de ciertos empleados públicos que hayan muerto durante el cumplimiento de sus obligaciones oficiales.)

**No. 7**  FOR (A FAVOR DE)  AGAINST (EN CONTRA DE) } The constitutional amendment relating to the membership of the State Commission on Judicial Conduct and the authority and procedure to discipline active judges, certain retired and former judges, and certain masters and magistrates of the courts. (La enmienda a la constitución perteneciendo a los miembros de la Comisión Estatal Sobre Conducta Judicial y a la autoridad y procedimiento de castigar a jueces activos, a ciertos jueces retirados y a los que fueron jueces, y a ciertos asesores del juez y magistrados de las cortes.)

**No. 4**  FOR (A FAVOR DE)  AGAINST (EN CONTRA DE) } The constitutional amendment to abolish the office of county treasurer in Bexar and Collin counties. (La enmienda a la constitución para eliminar el puesto oficial de tesorero del condado en los condados de Bexar y Collin.)

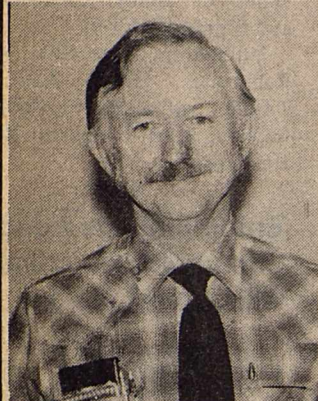
**No. 8**  FOR (A FAVOR DE)  AGAINST (EN CONTRA DE) } The constitutional amendment to provide a per diem for members of the legislature equal to the maximum daily amount allowed by federal law as a deduction for ordinary and necessary business expenses incurred by a state legislator. (La enmienda a la constitución para disponer una asignación por día para miembros de la legislatura igual a la cantidad máxima que se permite diariamente por ley federal como un descuento de los gastos de negocio ordinarios y necesarios incurridos por un legislador del estado.)





1202 N. Ave. E  
Haskell, Tx.  
Phone 864-3763

Who's Dependable?  
**ASK DWAIN!**



Dwain Wardwell, Market Mgr. that's who. He's one of the new spirits at Modern Way. Dwain runs our market and he runs it right. His job is to bring you dependable top quality meats at dependable low prices. If you live in our area or here for a visit, stop in and check it out. There's a new spirit at Modern Way, check it out...and save.

**INSIST ON QUALITY  
DEPEND ON ..... MODERN WAY**

**BONELESS BRISKET**  
(vac. pac.) **99¢** lb  
U.S.D.A. CHOICE HEAVY BEEF

Boneless Pikes Peak Roast	\$1.99 lb
Extra Lean Cube Steak	\$2.99 lb
Extra Lean Short Ribs	\$1.49 lb
Boneless Top Round Steak	\$2.28 lb
Boneless Bottom Round Steak (Tenderized)	\$2.18 lb

Swift's Pork Steak (Boston Butt)	\$1.39 lb
Silver Spur Sliced Slab Bacon	\$1.29 lb
Shurfresh Canned Ham 3 lb can	\$6.99
Shurfresh All Meat Franks 12 oz pkg.	89¢
Fresh Frosted Fryer Breast Quarters	99¢ lb

Boneless Round Steak (Tenderized \$1.98 lb)	\$1.88 lb
---	-----------

Boneless Rump Roast	\$1.99 lb
---------------------	-----------

Swift's Tend'r Lean Pork Roast (Boston Butt)	\$1.18 lb
--	-----------

Fresh Lean Ground Beef (Family pack) 3 lbs or more	\$1.08 lb
--	-----------

**DEL MONTE GOLDEN RIPE BANANAS**  
**18¢** lb

**SHOP MODERN WAY for the Best Produce in Haskell**  
**RED DELICIOUS APPLES** 3 lb Bag **88¢**

Super Select Cucumbers	28¢ lb
California Avocados 3 for	88¢
Yellow Onions 5 for	88¢
Large Red Plums	78¢ lb

Green Leaf Lettuce 2 for	88¢
Yellow Squash	68¢ lb
Sunkist Lemons 10 for	88¢
Purple Top Turnips	38¢ lb

**DOUBLE COUPONS**  
each TUESDAY & WEDNESDAY at Modern Way Food Stores  
We will redeem all manufacturer's "cents off" coupons for DOUBLE their value up to \$1.00 in value when the product is purchased.  
—LIMIT—1 COUPON PER ITEM—  
This policy does not include retailer (any food store) or free coupons, cigarette or tobacco coupons or refund certificates. The total redemption will not exceed the value of the item.

**WE GIVE DOUBLE 3-STAR EVERY TUES. & WED.**

**OPEN DAILY 8 A.M. TIL 8 P.M. SUNDAY 9 A.M. TIL 7 P.M.**

**CHARMIN BATHROOM TISSUE** 98¢  
4 Roll Pac—Limit 1 with \$10.00 Purchase

**U.S. NO. 1 Red Potatoes**  
20 lb bag **\$1.19**  
Specials good thru Sunday

**DEL MONTE CATSUP** 78¢  
32 oz.—Limit 2 thereafter 99¢

Crisco Vegetable Oil 32 oz	99¢
Bush Hominy 3 15.5 oz cans	89¢
MIX OR MATCH Bush Blackeye Peas Show Boat Pork & Beans	3 for \$1.00

Gold Medal Flour 5 lb bag	99¢
Jewel Shortening 42 oz	\$1.79
Shurfresh Ice Cream 1/2 gal square carton	\$1.29

DUNCAN HINES CAKE MIXES 18 1/2 oz box	79¢
---------------------------------------	-----

STARKIST TUNA 6 1/2 oz	79¢
------------------------	-----

SHURFRESH GRADE "A" LARGE EGGS	53¢ doz
--------------------------------	---------

MORTON FROZEN DINNERS 10-11 oz	78¢
--------------------------------	-----

PARKAY MARGARINE 1 lb quarters	58¢
--------------------------------	-----

**SHURFRESH HOMO MILK**  
1-gal. jug **\$1.99**  
SPECIALS GOOD THRU SUNDAY

**GREEN GIANT CUT GREEN BEANS SWEET PEAS GOLDEN CORN MIX OR MATCH**  
3 16 oz cans **\$1.39**  
SPECIALS GOOD THRU SUNDAY

**REG. OR SUGAR FREE DR. PEPPER**  
2-Liter **99¢**  
SPECIALS GOOD THRU SUNDAY

**3 STAR**  
Shurfresh Homo Milk **59¢**  
1/2 gal.  
WITH ONE FILLED SUPERSTAR BOOKLET

**3 STAR**  
Shurfresh Medium Eggs **1¢**  
DOZ.  
WITH ONE FILLED SUPERSTAR BOOKLET

**3 STAR**  
Shurfresh Bread **9¢**  
1 1/2 lb. Loaf  
WITH ONE FILLED SUPERSTAR BOOKLET

**3 STAR**  
Chiffon Soft Stick Margarine **9¢**  
1 lb bag  
WITH ONE FILLED SUPERSTAR BOOKLET

**3 STAR**  
Starkist Tuna **29¢**  
6 1/2 oz.  
WITH ONE FILLED SUPERSTAR BOOKLET

**3 STAR**  
Scott Paper Towels **19¢**  
Jumbo Roll  
WITH ONE FILLED SUPERSTAR BOOKLET