

Staff Photo by Don Comedy

### EXTENSIVE DAMAGE

The home of Mr. and Mrs. Bobby Parrott was almost totally destroyed by fire Monday night. When members of the Haskell Volunteer Fire Department arrived, the entire wood shingle roof was in flame. Attempts to control the fire were hampered by lack of adequate water. Cause of the fire has not been determined.

## Two Haskell Youths Injured In Explosion

Two Haskell 15 year olds were injured in an explosion which occurred at 8:15 p.m. Saturday night.

Blake Liles and Darren Wright were taken by Haskell ambulance to Hendricks Medical Center in Abilene following the detonation of what police are calling a "pipe bomb".

The two youths were apparently loading gunpowder into a pipe when something caused the explosion, which sent shrapnel through a pickup truck and a metal building at the scene, Officer Monnie Hise of the Haskell Police, said.

The explosion occurred at the Wright home, located at 504 N. Ave G. When Officer Hise arrived at the accident scene, one of the youths

had already been taken to the hospital and the other was in the process of being transported.

The pair were admitted to the Haskell Memorial Hospital for emergency treatment, then transferred by ambulance to Abilene, where they underwent surgery upon arrival.

Liles had a fractured right leg and several pieces of shrapnel in his left leg. Wright had surgery to remove shrapnel.

According to a nursing supervisor at the Abilene hospital, the Liles youth was listed in serious condition Saturday and the Wright youth's condition was not listed at the time.

Paramedic Don Glandon said the pair apparently was transported to the local hospital by personal

vehicles, as the ambulance was not summoned until it was needed to transfer them to Abilene.

Police are still investigating the incident, and have not yet been able to talk to the youths to find out what happened to cause the explosion.

According to Officer Hise, the impact of the explosion was that of a grenade going off. Hise also said he felt that the pair was "extremely lucky to be alive".

Parents of the pair are the Vernon Wrights, 504 N. Ave. G, and the Howard Liles, 1308 N. Ave. K.

The youths are expected to be in the Abilene hospital for the most part of the week.

## News Briefs

### EMT Class

An emergency medical technician class is currently underway in Haskell and the last night to register is tonight, Sept. 20.

For more information or to enroll, contact Don Glandon, 864-3945 or attend the Thursday session beginning at 6 p.m. at the Haskell Fire Station.

### HASKELL ISD 1984-85 CALENDAR

Oct. 5	End of 1st 6 weeks
Nov. 16	End of 2nd 6 weeks
Nov. 22-23	Thanksgiving holidays
Dec. 20	End of 3rd 6 weeks-semester
Dec. 21	Workday
Dec. 24-Jan. 1	Christmas holidays
Jan. 2	Classes resume
Feb. 15	End of 4th 6 weeks
Feb. 25	Inservice
March 4-8	Spring Break
April 5	Workday
April 8	Easter holiday
April 12	End of 5th 6 weeks
May 22	End of school-6th 6 weeks
May 23	Workday

### Reserve Tickets

According to Mrs. Jane Coston of the High school principal's office, there are still a limited number of season football tickets for reserve section seating, at Indian Field.

Twenty good seats are still available for \$15 each, and if anyone is interested in these, they need to go by the principal's office and make their selection as to which choice they want.

### Advance Tickets

Advance student tickets for the Seymour football game are on sale at the Haskell High School office for \$1.00. All tickets at the gate will be \$3.00.

### Band Boosters

The Haskell Indian Band Boosters have cancelled salad suppers Sept. 20 and Nov. 2.

Band boosters will have the concession stand open for Thursday and Friday night home games.

### Sales Tax Receipts Up

State Comptroller Bob Bullock today sent checks totaling \$52.4 million in local sales tax payments to the 990 cities that levy the one-percent city sales tax.

"I don't know of a city official in Texas who doesn't lick his lips this time of the month," Bullock said.

Houston received the largest check, \$8.6 million, upping Houston's yearly total to \$107 million. Dallas' check for \$6.6 million was 27 percent over their September 1983 payment. San Antonio received \$3 million, and Austin's \$2.6 million check is 64 percent more than the city received last September.

Fort Worth's check for \$2 million is 66 percent more than the September 1983 payment. The Corpus Christi payment was \$967,000, bringing the Corpus Christi total for the year to \$11.9 million.

Bullock also sent checks to the state's four Metropolitan Transit Authorities. Houston MTA received \$9.6 million, bringing the yearly total to \$124 million. DART's check was for \$8.2 million, San Antonio's VIA check totaled \$1.5 million, and the Fort Worth Transit Authority received \$480,000.

The September checks represent taxes collected on sales made in July and reported to the Comptroller by August 20.

### AREA SALES TAX

City	Payment This Period	Payment Prior Year	1984 Payments	1983 Payments	% Change
Seymour	9,690.60	6,459.35	111,406.52	104,321.65	6.79
Haskell	8,457.58	7,581.95	120,130.64	120,421.93	-0.24
O'Brien	0.00	0.00	929.97	918.69	1.23
Rochester	979.25	565.08	7,832.02	8,658.65	-9.55
Rule	699.54	603.84	13,010.63	15,012.28	-13.33
Weinert	0.00	0.00	1,372.13	1,350.72	1.59
Anson	4,294.95	2,627.17	55,779.11	54,959.21	1.49
Hamlin	4,514.49	4,273.00	70,610.90	71,905.23	-1.80
Hawley	1,136.25	0.00	13,226.04	10,205.52	29.60
Lueders	0.00	0.00	6,789.19	3,383.21	100.67
Stamford	8,543.13	10,160.61	127,462.63	118,177.96	7.86
Benjamin	0.00	0.00	2,088.43	1,850.80	12.84
Goree	0.00	0.00	3,747.31	3,564.17	5.14
Knox City	5,504.64	3,244.87	57,113.48	52,221.97	9.37
Munday	1,854.47	3,037.83	33,996.67	37,047.26	-8.23

## Chamber Sets Third Country Dinner Theater

The Chamber of Commerce third annual Country Dinner Theater is set for Saturday, October 27 at the American Legion Hall, with Tom Richardson chairman; Kay Smith in charge of food; Grace Womack, decorations and Dickie Greenwood, entertainment. Tickets will go on sale the first week in October at the Chamber office and from all Chamber Board Members, with \$5.00 covering both the meal and program. For the past two seasons the extremely popular activity has been held in the Richardson's Barn, southeast of town, but ticket sales

have had to be curtailed because of limited space versus overflow demand. The meal is traditionally a full old-fashioned country dinner, served by the Chamber Welcoming Committee who also assist the Board of Directors in welcoming the large crowd. Last year the Chamber board of directors starred in an original play "The Quilting Party", with local musicians and singers providing the entertainment the first year. The main feature of the 1984 program will be instrumental country music and the traditional audience sing-along.

**THE HASKELL**

**FREE PRESS**

25¢  
14 Pages in  
One Section  
Plus Insert

HASKELL—A GOOD PLACE TO VISIT. A BETTER PLACE TO LIVE

VOLUME NINETY-EIGHT HASKELL, TEXAS 79521, SEPTEMBER 20, 1984 NUMBER THIRTY-EIGHT

## Tribe Falls To Electra

BY SHANE HADAWAY

The Haskell Indians, playing their second number one ranked team in a row, suffered a tough 37-0 loss to the Class AA Electra Tigers.

The Tigers have been ranked number one in Class AA in one poll, and are in the top ten in many others.

The Tiger offense rolled up a whopping 474 yards total offensive; 238 yard rushing and 236 yards passing; while the Indians could only muster 102 yards total offense; 88 yards rushing and 14 yards passing.

The Tigers started off their scoring blitz with 7:59 to go in the first quarter. The touch down came on a 44 yard bomb from Tiger quarterback Royce Reynolds to split end Bradley Schlegel. The PAT by Charlie Lott was good.

The Tigers put 16 points on the board in the second quarter.

The Tigers started their scoring

serge when Lott, with 11:43 left in the half, bulled his way in for the touchdown on fourth and inches. The PAT was no good.

Lott scored again with 3:57 left in the half on a fourth and goal to goal from the three. The Tigers went for two on the PAT. Reynolds hit tight end Trace Reed for the two points.

The Tigers scored two more points in the second quarter when, with 2:26 left, the snap from center was snapped over Indian punter Todd Harris's head and the ball rolled into the end zone for a safety. This put the Tigers up 23-0 at half.

Lott scored once more. With 41 seconds left in the third quarter, Lott tip-toed in from 15 yards out. The PAT by Lott was good.

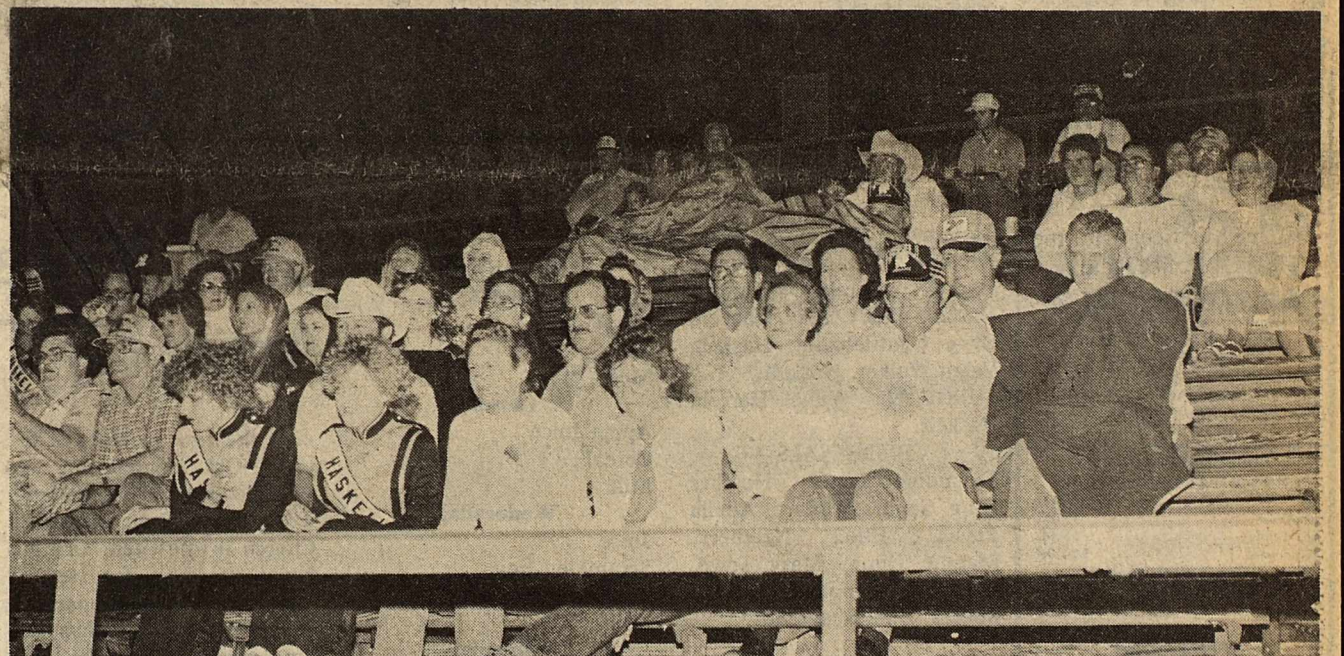
The Tiger's last touchdown came with 5:03 left in the ball game. Fullback Edward Willis scored from four yards out. The PAT by Donny Chick was good.

Defensive standout for the Indians was linebacker Robert Ivey, who led the Indians with 23 unassisted tackles.

The Indians again were hampered by injuries. Guard Keith Parrot suffered a hyperextended elbow during the ballgame, and tackle Shane Gilliam bruised some ribs. Running back Carl Dever and split end Ricky Rojas both suffered twisted knees.

The Indians play the Seymour Panthers this Friday. Game time is 8 p.m. Seymour is an old district opponent but moved to a different district this season. Last year the Indians defeated the Panthers 39-0.

Haskell	Electra
7	18
43 for 88	46 for 238
14	236
2 for 10	8 for 20
0	0
8 for 43	3 for 32
1	3
7 for 31	10 for 80
Score by Quarters:	Total
Haskell	0 0 0 0 0
Electra	7 16 7 7 37



Staff Photo by Don Comedy

### LOYAL FANS

Haskell Indian fans who traveled to Electra last Friday night were greeted by a damp norther. Throughout much of the game a light rain fell accompanied by cool temperatures. The Tribe will travel to Seymour this Friday night.

## Commissioners Remove Prect. 1 Purchasing Authority

After almost two hours discussion to find an alternative, members of the Haskell County Commissioners Court voted three to one to remove the purchasing authority of C.E. (Chunky) Tidwell, Commissioner Precinct 1.

The action came during a special meeting last Thursday afternoon called to discuss the financial position of road and bridge precinct one funds.

According to discussion during the meeting, Commissioner Tidwell has spent almost \$160,000.00 in the first eight months of 1984 and with current estimates for salaries there remains less than \$7,000.00 for

operation of the precinct during the remainder of the year.

Commissioners discussed two projects in particular, one a paving project which costs almost twice the amount planned for and another, an overhaul on two motor graders which occurred less than two weeks after instructions were given to machinery companies not to do work for Haskell County without verifying that funds were available.

Commissioners estimated and approved about \$19,000.00 for the paving job and when final bills had been received the job costs almost \$37,000.00.

According to commissioners, Plains Machinery in Abilene was notified June 11 not to do overhaul work for Haskell County without first checking with the auditor to determine if funds were available. Plains started work on two precinct one motor graders on June 21 and later invoiced the county for slightly over \$10,000.00.

During Thursday's meeting, commissioners from precinct two, three and four, each asked Tidwell to agree to check with the county auditor prior to any purchase. Tidwell said he would agree only if the other commissioners agreed to the same.

Each told Tidwell that when notified that their road and bridge accounts were dangerously low, they would follow the same

practice. Tidwell agreed to consult with the court or auditor on any purchase with the exception of fuel, gas and oil.

During discussion Tidwell told the other commissioners that he currently had four employees and did not feel that he could get by with less.

On several occasions other commissioners and the county judge asked Tidwell to verify that funds were available prior to any purchase and he would not agree unless all commissioners did the same.

After almost two hours of discussion, the court approved a motion requiring Tidwell to have written authorization from the county auditor prior to any purchase over \$50.00. Voting in favor of the motion were Commissioners J.R. (Ray) Perry, C.A. (Bud) Turnbow and Ronnie Chapman. Tidwell voted against the motion.

**weather**

August Summary  
By Sam Herren

TEMPERATURE

Hi ..... 106° ..... 21st  
Lo ..... 65° ..... 16th

RAINFALL

August total ..... 1.93  
Normal to date ..... 16.66  
Total to Date ..... 8.46

# Garden Club Urges Participation In Fair

"Let us Work and Grow Together" is the theme for the Haskell Garden Club beginning the year of 1984-1985 on September 13 with a salad luncheon in the Community Room, with our president, Mrs. John E. Robison presiding.

Mrs. Ed Fouts gave the invocation before we all filled our plates with all kinds of delicious salad.

Mrs. Robison reported on the Sesquicentennial Celebration of a wagon train and cattle drive in 1886, when Texas celebrates 150 years of freedom and progress. The Sesquicentennial Wagon Train will follow a six months 2,800 miles route around the state in 1986 with the theme, "Circle Texas for the Past and

Future". The Wagon Train is open to all persons and is expected to include some 20,000 participants riding on horseback or in wagons 1836-1986, "Happy Birthday, Texas". Mrs. Robison, Juanita Rhea, Marsha Whittemore, Juanita Bevel and Edith James will represent the garden club on the Texas Wagon Train association and the Haskell County Sesquicentennial Committee, which will be held Wednesday, September 17 in the Community Building of the Haskell National Bank. Everyone is being asked to plant a live oak tree and a yellow rose of Texas.

Mrs. J.O. Blankenship was the program director and explained the yearbook which

seemed to be very interesting. Mrs. Jacquie Nemir, one of the new members, told "why I joined the garden club". She was influenced by two of the garden club members that are living on each side of her. She thought if she joined the garden club, she would have a beautiful garden, but of course she knows that is not true. She found out, you have to work to have a beautiful garden, but she loves it. When the members toured her yard last May, she had a very interesting garden. Mrs. Nemir is interested in growing things and learning about all kinds of plants, and she knew of no better way than to become a garden club member.

"Harvest of The Big Country" is the theme for the Flower Show at the Haskell County Fair September 27, 28, 29. A workshop was conducted by Juanita Rhea, showing the members how to make arrangements. Juanita Dunnam brought maize, dried okra, dried sunflowers, dock, cattails weathered wood and flower show containers which she shared with the members.

This reporter believes the flower show will have more entries, because of the interest showed at the workshop. Everyone come and see what a good show using dried material since it has been so dry and there are no real flowers. We invite any one who wants to display house plants or arrangements for this is the County Fair not garden club. There were several horticulture specimens brought by the different members. It was surprising to see beautiful specimen as it has been so dry.

Mrs. Dewey explained how she rooted a beautiful begonia plant, since they are so hard to root. First wrap a paper towel around the stems and wet it, then wrap in a plastic bag and sit it down in a milk carton.

Mrs. Marcelina Martinez was voted as a new member. We were pleased to have our two new members present, Mrs. Edith James and Mrs. Jacquie Nemir.

Hostesses were the club officers.

Texas Garden Club Fall Convention, Brownsville, October 30, 31, November 1.

# TEHA Members To Gather In San Angelo Sept. 18-20

Members of the Texas Extension Homemakers association (TEHA) will gather in San Angelo for their 58th annual meeting, Sept. 18-20.

Dr. Arthur Hansen, Chancellor of the Texas A&M University System, and Dr. Jennie C. Kitching, Assistant Director for Home Economics of the Texas Agricultural Extension Service, will address the conference in opening ceremonies at the civic center, Sept. 19.

Other keynote speakers will include Dr. Richard Flint, Pres. of Potential NOW of West Palm Beach, Fla. State Representative Bill Sims, and District Judge Roy Hart.

Conferences participants will be invited to join the public in attending the State 4-H Fashion Show, Tues. Sept. 18 at 7:00 p.m. before beginning their conference business sessions, workshops and learning sessions on Wednesday.

Conference workshops will be held on cultural arts; family law and legal rights; electrical safety; nutrition for the family, and planning activities for the TEHA 60th anniversary in 1986.

The Committee on Citizen-

ship and Community Outreach, chaired by Ruth Taylor of Nederland, and the Committee on Family Resource Management, chaired by Elsie Stewart of Woodville, will be honored for having received 3rd place awards at the National Extension Homemaker's Council annual meeting in Louisville, KY. in August. The 32 Texas Extension Homemakers who attended the national conference workshops will also report on those activities to state members.

The Texas Extension Homemakers Association is a 23,000-member group. Over 1300 local clubs in 250 Texas counties conduct a variety of educational activities for their members.

Serving as voting delegates from Haskell County will be Frances Fischer representing the Paint Creek Club, Margaret Wall representing

the Josselet Club, and Alice Yates representing the Weinert Club.

Also attending will be Betty Sanders, Weinert, Mabel Overton, Paint Creek, Kim Crawford, Eager Housewives, and Lou Gilly, County Extension Agent-HE.

## Mrs. Tooley To Celebrate 86th Birthday

Mrs. Oscar Tooley will be honored with a reception in honor of her 86th birthday Sunday, September 23 at the Fellowship Hall of the First United Methodist Church between Sunday School and Church which will be from 10:30 to 10:45 a.m.

Mrs. Tooley will be 86 on her birthday, September 29. Everyone is invited to attend the reception.

## Annual West Texas Art Exhibit Set October 20-21

The first West Texas Annual Art Exhibit will be held on October 20 and 21 at the Expo Center of Taylor County, otherwise known as the round building, West Texas Fairgrounds, Abilene. The show is being sponsored by the Abilene Creative Arts Club with the assistance from the Abilene Cultural Affairs Council, the Texas Commission on the Arts, and National Endowment of the Arts.

Over \$4700 in prize money will be offered in a total of five categories. This includes a \$750 best-of-show award and \$200 first awards in oil/acrylic painting, watercolor painting, graphics and mixed media, sculpture, and photography. Purchase prizes and smaller merit awards will also be given.

The organizers plan to show all the works which are entered in the exhibit, which will be judged by the well-known watercolorist, Leo Smith of Dallas. Entries must

be original work done without supervision, suitably prepared for display. (Two dimensional works must be framed and wired for hanging.) Entry fee is \$5.00 per piece and each artist may enter up to three pieces, which must be hand delivered to the Expo Center between 8:00 a.m. and Noon on Saturday, October 20. The show will be open for public viewing Sunday, October 21 from 11:00 a.m. to 4:00 p.m. Work must be removed from the building by 4:00 p.m.

The Creative Arts Club of Abilene urges all West Texas artists to participate, characterizing the exhibit as a "grass roots effort with class" modeled after the show put on for many years in the Scurry County Coliseum by the Snyder Palette Club.

HASKELL Lunch Menu

Sept. 24-28 Monday

Peanut Butter Sandwich  
Vegetable & Beef Soup  
Pears  
Milk

Tuesday

Chicken Tetrazzini  
English Peas  
Pineapple Slices  
Rolls & Butter  
Milk

Wednesday

Pizza  
Corn  
Salad  
Milk

Thursday

Chicken Fried Steak-Gravy  
Creamed Potatoes  
Blackeyed Peas  
Rolls & Butter  
Milk

Friday

BBQ on a Bun  
French Fries  
Salad  
Milk

BREAKFAST Monday

Grape Juice  
Toast  
Milk

Tuesday

Apple Juice  
Cereal  
Milk

Wednesday

Juice  
Scrambled Eggs  
Toasted Roll  
Milk

Thursday

Orange Juice  
Cereal  
Milk

Friday

Juice  
Toasted Roll  
Milk

## Overeaters Anonymous To Meet On Thursday

The Haskell group of Overeaters Anonymous will be meeting each Thursday, at the Headstream Memorial Clinic, beginning at 7 p.m.

This group is open to anyone, and is free.

If there is anyone who is having trouble controlling their eating habits, and it has become a compulsion, Overeaters Anonymous is the group to help this problem. OA will provide help,

support, and encouragement to those with a compulsive eating problem, without being judgemental. OA provides an alternative to a life of compulsion.

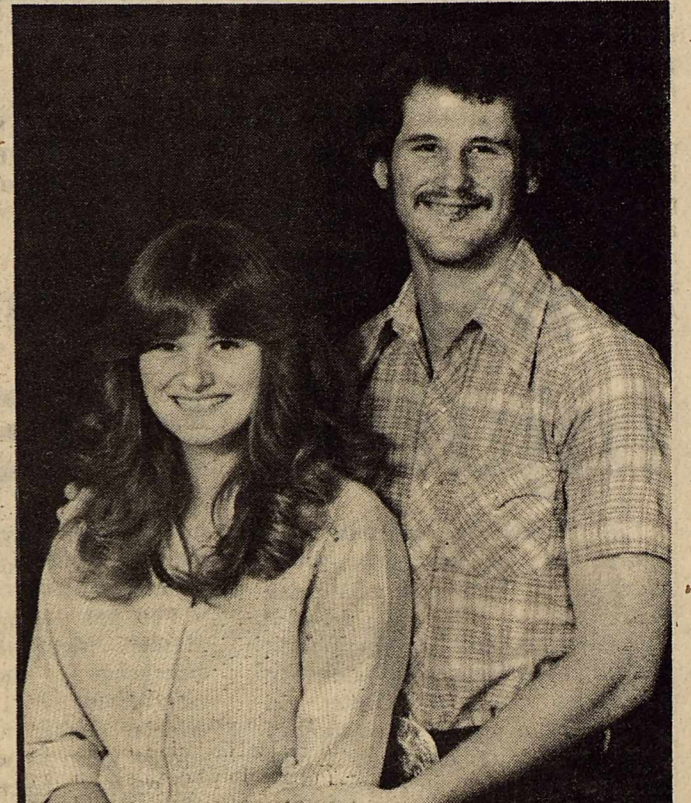
This is not a diet group, but a way to learn a new way of living by overcoming a compulsive eating habit.

If more information is needed, call David Smith at Headstream Memorial Center, 864-3472.

the group has painted on wood and glass. They have sketched animals, woven small baskets and done applique work. We are very proud of the work they have done and of the ladies who have consented to help with this project.

Winners were announced for the shawl and cape the association sold tickets for. The hand made cape was won by Sunny Reynolds and shawl was won by Anita Payne.

Other guests for the night were Jerry and Patricia Iley of Haskell, Mrs. Corley of Rule, Willie Faye Tidrow and Geraldine Hise of Haskell. Willie Faye and Geraldine also became new members.



MR. & MRS. RONNIE GREGG of Haskell announce the engagement of their daughter, Martina Karin Gregg to Mr. Jesse Jefferson Medford, son of Mr. Bobby Medford. The bride is a 1982 graduate of Weatherford and is employed by the Back Porch. The groom is a 1982 graduate of Haskell High School and is employed by West Texas Utilities Paint Creek Power Station. The couple plan to be married on October 19, 1984, at the First United Methodist Church.

## Art Assn. Discusses Upcoming Programs

The Brazos West Art Association had its first meeting of the year at which programs for the coming year and important dates for the year were discussed. Carol Sapaugh of Camram Media brought a very interesting program using three synchronized 45 projectors with audio. She also gave us a sneak preview of 3 posters which will hopefully be used

for the "150 year" celebration of Texas in "1985". Even though her company is in Clyde it has done art work for national magazines, recording artists and television commercials.

We had five very special guests who are clients of the Haskell Training Center. The art association is sponsoring monthly sessions with the Training Center clients. So far

the group has painted on wood and glass. They have sketched animals, woven small baskets and done applique work. We are very proud of the work they have done and of the ladies who have consented to help with this project.

Winners were announced for the shawl and cape the association sold tickets for. The hand made cape was won by Sunny Reynolds and shawl was won by Anita Payne.

Other guests for the night were Jerry and Patricia Iley of Haskell, Mrs. Corley of Rule, Willie Faye Tidrow and Geraldine Hise of Haskell. Willie Faye and Geraldine also became new members.

**The Haskell Free Press**  
Established January 1, 1886  
PUBLISHED EVERY THURSDAY

**MEMBER 1984**

**TEXAS PRESS ASSOCIATION**

BILL COMEDY—Publisher  
DON COMEDY—Editor

Entered as second class matter at the post office at Box 577, Haskell, Texas 79521, under the Act of March 3, 1879 (USPS 237-040)

**SUBSCRIPTION RATES**  
in Haskell and Adjoining Counties

Total	\$7.25
One Year	\$5.00
Six Months	\$5.00
Two Years	\$14.00

Elsewhere in Texas

One Year	\$8.50
Six Months	\$6.00
Two Years	\$16.00

Outside of Texas

One Year	\$10.00
Six Months	\$7.00
Two Years	\$19.00

**NOTICE TO PUBLIC**—Any erroneous reflection upon the character, reputation or standing of any firm, individual or corporation will be gladly corrected upon being called to the attention of the publishers.

**Hospital Notes**

Visiting hours at Haskell Memorial Hospital are 2 to 4 p.m. and 7 to 8:30 in the evening. No visiting hours in the morning. No children under 14.

**ADMISSIONS**  
MEDICAL: Iosa Atkinson, Munday; Ella Moseley, Rochester; Desmond Dulaney, Haskell; Versie Whitaker, Haskell; Jack Collins, Haskell; Olive Quattlebaum, Haskell; Velah Walker, Haskell.  
SURGICAL: Willie Harrell, Haskell.

**DISMISSALS**  
Secundino Lopez, Heather King, Sandra Wallace, Adella Reyna, Ethel Neathery, Maggie Gunn, Mary Lowe, Mercedis Caram, Michael Rogers, R.A. Shaver Jr.

**PETITE ROLODEX**: the perfect file for telephone numbers and addresses. Typewriter spaced lines. Replacement refills. Decorator colors and styling for home and office. **Haskell Free Press**

## Ora Childress Named Artist Of The Month

At the first meeting of the year Ora Childress was selected as Artist of the Month with an oil painting of a Church in the Glen. Ora has been painting for several years and is teaching painting at the present. Ora has also done ceramic work, and silk flower arranging. A selection of Ora's oil painting is on display thru the month of September at Commodore Savings.

Second place winner was

Sophie Hix, also an oil painting. Sophie has been painting for 14 years. Sophie started with china painting took up oil and canvas and also ceramic work. A selection of her work can be viewed at Haskell National Bank this month.

There was a tie for third between Betty Hood and Gladys O'Neal. Selections of their work can be seen at West Texas Utilities.

Get Bitter About Litter

Beautiful Haskell Council

**Folk Art Classes**  
October 2nd  
Beginners Classes.  
Lots of New Christmas things.  
Also have unpainted wood.

Doris Brueggeman  
864-2583

**The Dude**

**99¢ sale**

For Texas Taste, DQ's the place for a Golden Chicken Fried, 100% Pure Beef Sandwich Served on a toasted bun with crisp lettuce and red, ripe tomatoes. So come on by...

**Dairy Queen** Monday thru Sunday, September 24-September 30.  
\*Just keeps on getting better.\*™

Copyright 1984 Tex. D. Q. Council. All Rights Reserved. TM Trademarks of the Tex. D. Q. Council. \*Registered Trademark Am. D. Q. Corp.

**The colour of the season at Diana Esber is thee colour!**

At Diana Esber, there is no "the colour of the season" for your makeup. It's all up to you - your skintone, your hair and eye colour and all the other wonderful variables that make you - you! No dab of Cherries - this and Sun Bronzed - that will do at Diana Esber. A complete scientific analysis - individual or in group sessions - will show you how to use Diana Esber colour the way colour was meant to be worn. To your best advantage. Follow that up with all the wonderful Diana Esber Cosmetic and Skin Care Collection and give her look a good name. Yours!

Call Joan Lain at 817/864-8988 for your appointment. Gift certificates available. Remember my Fall Fashion Preview, Sept. 29.

*Diana Esber*  
BEAUTY

**Round-the-Clock and GIVENCHY Hosiery Sale**  
Sept. 13-Sept. 23

Right now you can experience famous Round-the-Clock leg luxury at fantastic savings! So, indulge in Round-the-Clock Givency Fall collection of pantyhose, stockings and knee-highs in all of your favorite colors, including the new Precious Gem colors made especially for this Fall's Fashions.

Round-the-Clock. The Luxury Leg Collection For All Times.

In our hosiery department  
**Slipper Shoppe**

East Side Square 817-864-3051 Haskell, Texas

# County Fair Queen Contest Has 38 Entries Ceremony Honors Couples

## 50th Wedding Anniversary

The Haskell County Fair Association is very pleased with the response to this year's County Fair Queen Contest. We have 38 enthusiastic entries from the various communities. We could like to thank each of these contestants and the merchants sponsoring them.

Kimla Strickland, Haskell National Bank; Rhonda Adams, Kids Duds; Holli High, The Drug Store; Tammi Miller, KVRP Radio Station; Brandie Kreger, The Porthole; Rebecca Holt, Agricultural Services Inc.; Vicky Chavez, The Sweet

Shop; Michelle Stout, The Personality Shoppe; Darla Griffis, W.B. Guess Oil Co.; Julie Roewe, Sears Merchant Store; Mindy Smith, State Farm Ins.; Jennifer Davis, Smitty's Auto Parts; Marva Holmes, The Hair Shop; Kelly Earp, Weinert Gro. and The Mane Tamer.

Denise Burris, The Slipper Shoppe; Shanna Mueller, Bassing's Jewelry; Patricia Henry, Lane-Felker Inc.; Dana Hale, Hale Farm Supply; Darlene Carroll, Murphy Photography; Jill Jennings, Haskell Free Press; Stephanie Browning, Johnson's Phar-

macy. Michelle Scoggins, Penman Propane; Barbara Spiewak, The Hayloft; Tiffany Welborn, Farm Bureau; Robyne Weaver, West Texas Utilities; Kim Lanier, Heidenheimer's Department Store; Holly McBroom, The Hayloft; Sheree Dumas, Owens Radio and Electric.



### Births

Mr. and Mrs. Carl Wilke of Haskell announce the birth of their daughter, Kimberly Anne Wilke, born September 18, 1984 at 5:25 a.m. at Haskell Memorial Hospital weighing 7 lbs. 9 1/2 oz. and was 20" long. Maternal grandparents are Mr. and Mrs. M.W. Moore of Abernathy. Paternal grandparents are Mr. and Mrs. Curtis Wilke of Wilson. Great grandparents are Mrs. Lucille German of Slaton, and Mr. and Mrs. Ben Wilke of Wilson. Kimberly has a big sister, Kathy, age 2.

Mr. and Mrs. Refugio Nunez of Rule announce the birth of a son, Miguel Nunez, born September 16, 1984 at Haskell Memorial Hospital weighing 8 lbs. 14 oz.

Mr. and Mrs. Olen Roy Cheyne of Rule announce the birth of a daughter, Shalis Cheyne, born September 15, 1984 at Haskell Memorial Hospital weighing 6 lbs. 15 oz.

Mr. and Mrs. Domingo E. Garcia of Knox City announce the birth of their son, Patrick Ralph Garcia, born September 13, 1984 at Haskell Memorial Hospital weighing 7 lbs. 8 1/4 oz.

Dr. and Mrs. Derrell Davis of Hamlin announce the birth of their son, Tyler Hill Davis, born Friday, September 14, 1984 at 6:35 p.m. in Hendrick Medical Center in Abilene weighing 7 lbs. and 13 oz. and was 20 1/2 inches long.

Grandparents are Henry and Ann Druesdow of Haskell, Lou Dell Davis of Brownwood and Hollis Davis of Dallas.

Mr. and Mrs. Gary Lynn Galle of Abilene, are announcing the arrival of their son, Travis Austin Galle, born Tuesday Sept. 11, 1984 at 3:45 p.m. at Hendrick Medical Center in Abilene.

Weighing in at 8 lbs. 15 oz., and measuring 20 1/2 inches in length, his maternal grandparents are Mr. and Mrs. Dick Godbout of Abilene and paternal grandparents are Mr. and Mrs. Glenn Galle of Eula. Maternal great grandparents, are Mr. and Mrs. Ernest Stewart of Haskell and paternal great grandparents are Mr. and Mrs. Edward Galle of Abilene, and Mr. and Mrs. Garvin Miller of Anson.

Lorry Geilhausen, Modern Way Gro.; Kelli Gilliam, Gilliam Oil Co.; Tamra Burnett, M System Grocery; Robyn Struve, Holden-McCauley Funeral Home; Kelly Wallace, Bill Wilson Motors; Lori Lane, Lanco Insurance Co.; Kay Fischer, Paint Creek Water Supply Cooperation; Dianna Jarred, Henderson Book Store; Lori Hester, Hassen's Department Store; Lynn Dewey, Martha's Beauty Center.

The first competition will be held at an afternoon tea coordinated by the Progressive Study Club this Saturday. Each contestant will be personally interviewed by our judges. Each one has completed an Information Page about herself; her school and church activities, hobbies, and some personal questions such as "What one thing do you not want the judges to know about you?" This information will aid the judges as they try to become acquainted with each girl. Each participant will receive points based upon her

personal appearance, poise and character. Saturday night, the girls will have an opportunity to learn a few basics about modeling when a professional from Abilene will be on hand for a short charm course.

The Queen Contest will take place Thursday night, September 27, at 7:00 at the Haskell Elementary Cafeteria. This should be an enjoyable evening. Each girl will be judged according to her stage appearance and poise. While the judges are deliberating, we will have the enjoyable pleasure of being entertained by Ken Smith of Dallas. This alone would be worth the effort of coming out to the school. Everyone was pleased with his music and entertainment last year. The Queen and her Court will be presented at this event.

We appreciate the help the community gives to the fair and the support to the Queen Contest. Don't forget to be at Thursday nights activities, September 27.

## Study Club Members Receive Yearbooks

The Progressive Study Club met Thursday, Sept. 13, 1984 for their first meeting of the club year.

Members and a large number of local and out of town guests from Rule, Knox City and Rochester enjoyed a delicious salad buffet, The evening meal was hosted by the social committee, composed of Mrs. Tommy Richardson, Mrs. Joe Alves, Mrs. Kenneth Patton, Mrs. Rick Perry and Mrs. Doris Reeves.

The program was directed by First Vice President, Mrs. Kenneth Quattlebaum, who presented the attractive yearbook and introduced the theme for 1984-85 "Seasons of Time: Caring, Sharing, Serving with a Smile". A skit which gave the audience a preview of PSC Heaven was presented by the yearbook committee, Mrs. Quattlebaum, Mrs. Mary Martin, Mrs. Kenneth Lane, Mrs. Michael Struve and Mrs. Mike Harrell. They were assisted by angels, Mrs. Milton Christian, Mrs. Bailey Toliver and Mrs. Elbert Johnson.

Following the skit the president, Mrs. Hugh Horton introduced Mrs. Jim (Dorothy) Drain from Stamford. Mrs. Drain is currently serving as G.F.W.C. Mesquite District President. She briefly informed the group of projects for the coming year, and invited members to attend the Mesquite District Fall

Meeting in Throckmorton on October 13th.

Other items of interest for members and the public were discussed. Mrs. Janet Strickland distributed tickets for the Chicken Tetrazzini Supper which will be held before the football game October 12th. Mrs. Brian Burgess ask for volunteers to assist with the Haskell County Fair Queens Tea and Contest. The Tea will be held Sept. 22 at 4:00 p.m. in the Courtyard of Janet Strickland's home. The club will also decorate and assist the fair committee with the Fair Queen's Contest on Sept. 27th. This event will be held in the Elementary School Cafeteria.

To complete other Federation topics, Mrs. C.O. Holt read the Federation Creed, Mrs. Mary Martin lead the group in the Federation Song and Mrs. Mildred Mancill lead the Club Collect as the benediction.

All members are reminded to be present at the next meeting "Americanism" on October 11th.

## Tidwell Reunion Held Recently

The annual D.G. and Carrie Tidwell reunion was held at the Corral Bldg. Labor Day week-end.

The four surviving children were present. They were O.J. Tidwell of Texarkana, Edna Calloway of Kaufman, Mary Jarman of Dallas and Florence Larned of Haskell.

A lot of visiting and picture taking was done. 167 family members and friends attended. The highlight Sunday afternoon was the annual auction that was enjoyed by everyone.

Family and friends attending were from Stamford, Kaufman, Port Arthur, O'Donnell, Dallas, Pasedena, Deer Park, Rosenberg, Keller, Euless, Gladewater, Hurst, San Angelo, Wichita Falls, Rule, Monahans, Potosi, Bayton, Manvel, Coleman, Canyon, Alvin and Haskell, also Texarkana and London, Arkansas. Everyone is looking forward to the 1985 reunion.

Clariss and Woodrow Jones were surprised with a wedding ceremony in honor of their 50th wedding anniversary Saturday, September 15, 1984 in Irving.

The groom was escorted to the altar by their daughters-in-law, Peggy Jones and Gail Jones. The bride was escorted by their sons-in-law, Jack Jackson and Lonnie Sturdy. Waiting at the altar were their daughters, Wanda Jackson, Janice Lauderdale and LaVern Sturdy, who served as bridesmatrons. Also waiting at the altar were groomsmen, Wendel Jones and Lewis Jones, sons of the couple.

Mrs. Jones wore a white suit and carried a silk bouquet of peach flowers. The daughters were attired in Mrs. Jones favorite colors, pastel green, yellow and peach. They carried bouquets of mixed silk flowers of the same colors.

The altar was made of golden archways containing forty-nine lighted candles. During the ceremony Mr. and Mrs. Jones lit the 50th candle. The ceremony was performed by Rev. Jerry Hays of Valwood Baptist Church of Farmers Branch.

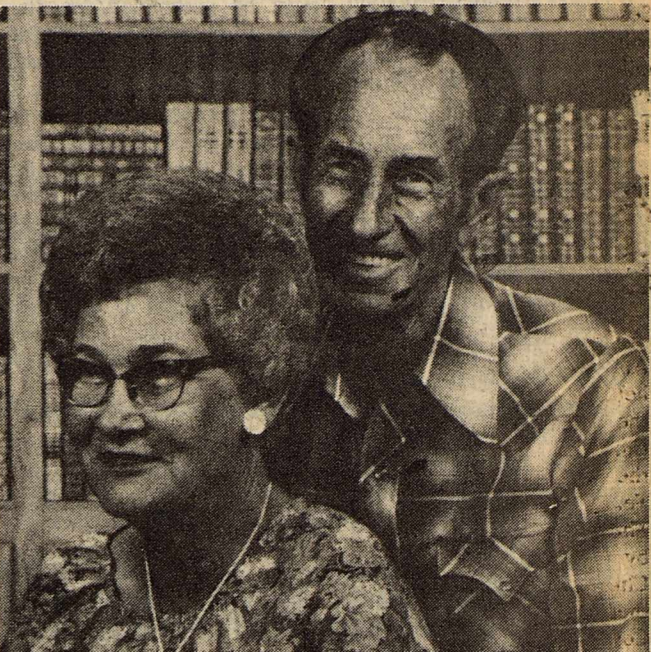
A reception immediately followed, where Mr. and Mrs. Jones went through the usual procedures of cutting the cake and toasting their future.

Those in attendance were members of the immediate family and close friends. From the fifty years of marriage, they have fifteen grandchildren and three great grandchildren.

The children of the family gave them a special gift, a patch work signature quilt, which contained embroidered signatures of each member of the family in the order they came into the family. Each son

and daughter's family were represented by a different color in the quilt.

Mr. and Mrs. Jones were married September 15, 1934 in Stamford. Mrs. Jones is the former Clariss Moon of New Hope Community. Mr. Jones retired from the Texas Highway Department in 1976. They have resided in Haskell for the last thirty-nine years and are members of the First Baptist Church.



MR. AND MRS. WOODROW JONES

## Jill Jennings Places 2nd At State 4-H Record Book Judging

Jill Jennings, 16 year old daughter of Mr. and Mrs. Ted Jennings of the Haskell 4-H club received 2nd place honors with her 4-H foods and nutrition record book recently at the state record book judging held in Uvalde.

Jill's honor is based on her outstanding accomplishments in the 4-H foods and nutrition project and other such projects as clothing, child development, rabbit, home designer, and method demonstration. Also, her enthusiasm for 4-H

and her leadership ability helped to earn her the 2nd place award in the state contest. Jill received 1st place honor at the District record book judging in July to entitle her to compete in the state judging.

Since becoming an active 4-H member 6 years ago, Jill has participated in various county, district, and state contests and activities. She is currently serving as president of her local 4-H club, president of the County 4-H Council, and delegate to the district 4-H Council.

She shares her knowledge and talents with younger 4-H members by serving as a teen leader for a foods and nutrition project group. Not only has her involvement in the foods and nutrition project fostered Jill numerous honors and awards but it has also influenced her plans for the future.

After graduation from High School in two years, she plans to major in home economics and possibly become a County Extension agent or a foods and nutrition specialist.



JILL JENNINGS

### TAX PLANNING

by Richard E. Rodgers, CPA

### DIVORCE AND TAXES

The tax aspects of divorce are somewhat simplified under the 1984 Tax Act. While its divorce provisions are not necessarily fairer than under the old law, they are considerably less vague and confusing.

Under prior law, property settlements in divorce were taxable events and could catch the divorcing taxpayer by surprise at tax filing time. A common situation illustrates the problem. A husband transferred to a wife property that he had purchased for \$40,000. If at the time of the divorce the property's market value had risen to \$100,000, the husband was liable for income tax on the \$60,000 of "gain." The wife then had a tax basis of \$100,000 in the property and had no income taxes to pay if she later sold the property for the same amount. Under the new law, such transfers will be treated as non-taxable gifts with the husband having no income tax to pay at the time of transfer and the wife having the \$60,000 of gain to recognize if she later sells the property for \$100,000.

The new law continues to treat alimony as deductible by the payer and as taxable income by the recipient. However, the "definition" of alimony changes. Now alimony must be in cash, cannot vary in amount with the status of a child (for example, the child's age or status in school), and must terminate at the payee's death. To prevent property settlements which are not deductible from being disguised as deductible alimony, alimony payments must be made for at least six years and the amounts cannot vary in any of those years by more than \$10,000.

All controversy over which parent gets the dependency exemption for a child is ended with the tax bill. The parent who has custody of the child gets the exemption unless that parent signs a waiver giving the exemption to the other parent. This waiver must be attached to the non-custodial parent's tax return.

Sponsored by

### JAMES E. RODGERS & COMPANY

Certified Public Accountants  
20 Southwest Third Street  
Hamlin, Texas

### Want to Feel Good or Lose Weight NOW

Lose 10-29 lbs Per Month  
Guaranteed or Money Back  
A Natural Herbal Formula  
is the answer to your Weight Problem  
Free Consultation  
**DON'T WEIGHT**  
Distributors Now Being Accepted  
High Earning Potential

864-3602 Leona Hanson Haskell

### PEISER SURVEYING & ENGINEERING, INC.

Hugh Peiser - Owner

Marking the path of progress PEISER SURVEYING & ENGINEERING, INC. is recognized as the registered surveying firm that does the highest order of professional work for government organizations as well as the private company and individual property owner.

Located at 1358 Petroleum Drive in Abilene, phone 915/692-6000, this reputable concern is fully equipped to handle land surveys with skill and precision. Their outstanding work record is their best recommendation and major corporations from all over this section of the state consult them on all phases of logistical problems regarding engineering reports and surveys.

They also have an office located in Haskell, phone 817/864-3244.

Aerial mapping, mineral surveys, topographical, subdivisions, construction, mortgage surveys, pipeline, oil well staking, farm and ranch boundaries, and damage surveys are just a few of the professional services PEISER SURVEYING & ENGINEERING, INC. offers their clients.

The editors of this 1984 Business Review do not hesitate in giving this experienced firm our unconditional recommendation!

### Recipes Wanted

The Celebrate Life Singers of First Baptist Church, Haskell are preparing a cookbook to sell as a project to raise money for a concert/ski trip.

This cookbook will represent the entire Haskell community and we would like your help in submitting some of your favorite recipes.

Please turn in recipes to the office of First Baptist Church, Haskell, to Lyn Goodin, or Louise Thornhill by Oct. 10, 1984. For questions, call FBC office at (817) 864-2581.

### Super tough from top to bottom.

**LONG-WEARING SUPER-SOLE WORK BOOT**

- Full-grain, water-repellent Oro Russet leather
- Cushion-soft insole
- Inch-wide steel shank
- Long Wearing SuperSole

404  
SIZES 6 1/2-14, A, B, C, D, E, EE  
Sizes/widths vary by style.

### Red Wings Heidenheimer's

### Final Clearance on ZENITH 1984 Models

Model No.	Sale Price
12" Black & White TV	Y120 \$77 <sup>00</sup>
13" Color Portable	Z1310 \$240 <sup>00</sup>
13" Color Remote Control	SZ1319W \$360 <sup>00</sup> wt
19" Color Portable	Z1908W \$325 <sup>00</sup> wt
19" Color Remote Control	SS1929W \$425 <sup>00</sup> wt
19" Color Remote Control	SZ1927W \$450 <sup>00</sup> wt
19" Color Remote Control, System 3	SZ1961W \$525 <sup>00</sup> wt
25" Color Console	S2554NK \$498 <sup>00</sup> wt
25" Color Console Custom Series, Pecan Finish	Z2508P \$575 <sup>00</sup> wt
25" Color Console Custom Series, Country American Pine	Z2510PN \$575 <sup>00</sup> wt
25" Color Console Remote Control, Pecan Finish	SS2559P \$597 <sup>00</sup> wt
25" Color Console Remote Control, Pecan Finish	S22509P \$627 <sup>00</sup> wt
25" Color Console Remote Control, System 3, Pecan Finish	S22527P \$797 <sup>00</sup> wt
25" Color Console Remote Control, System 3, Space Phone	SY2573NE \$897 <sup>00</sup> wt
25" Color Console Remote Control, System 3, Space Phone	SZ2577P \$950 <sup>00</sup> wt
VHS Video Cassette Recorders	2000 \$498 <sup>00</sup>

For a limited time—Free Membership in our Movie Club with purchase of VCR \$500<sup>00</sup> Value.

Take advantage of these Sale Prices Lay-Away for Christmas

With purchase of any 19" or 25" Remote Control TV before Sept. 23, 1984—recieve an extra remote control FREE.

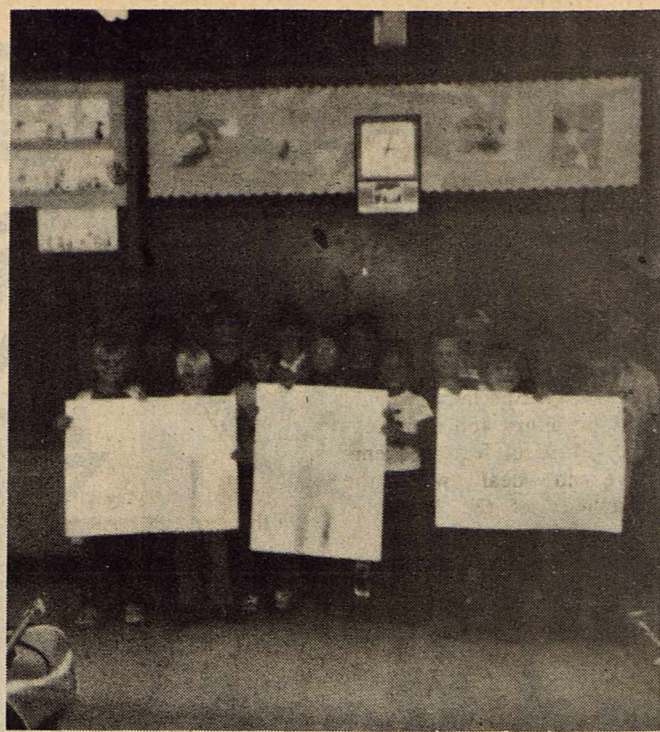
### Owen's Radio & Electric

512 N 1st 864-2536





Mrs. Trammell's 3rd and 4th graders are studying about the sun and its planets. They are also studying about meteors and meteorites. They have a real meteorite which came from Benjamin. Pictured from left: Mandy Payne, Jodie and Jason Baccus, Amanda Gulley, Allan Dinsmore, Jamie Garret.



The Paint Creek first and second graders have gotten off to a great year. They are pictured with posters they made for the Haskell Fair. They are having fun learning some simple Spanish words and phrases and playing charades. They have been watching six film strips on initial vowel sounds. The characters in these strips include Itsy Inchworm, Annie Ant, Ocean Ogre, and Uncle Ugly.

### Paint Creek FFA Building Sees Improvements

The Paint Creek School has begun improvements on the FFA building. Insulation will be blown in and other measures are being taken to help improve energy savings. A new air conditioner was installed before school started.

The students will be remodeling by closing off the windows on the North side and reducing the sizes of the other windows.

### Flag Football League Beginning

A flag football league is being developed in Stamford. Anyone interested in the organization of a team, playing or coaching should contact Lewis Alambar, 915-773-5258 for more information. Deadline for entering the league will be September 24.

\*\*\*\*\*  
 ★ ★ ★ ★ ★  
**Dance**  
 ★ ★ ★ ★ ★  
**At Rhineland**  
 ★ ★ ★ ★ ★  
**Wagon Aces**  
 ★ ★ ★ ★ ★  
**Saturday, September 22, 9-1:00 a.m.**  
 ★ ★ ★ ★ ★  
 \*\*\*\*\*

### Booster Club Hears Seymour Game Plan

Members of the Indian Booster Club enjoyed home-made ice cream before the president, Jerry Harris, called the meeting to order.

Coach Jim Bob Mickler said this is our first full football week in that all four teams will be playing. Thursday evening at 5:30, 21 seventh graders and 13 eighth graders take on Seymour's team at home.

The JV's - 22 strong - will play at about 8 p.m.

Rounding out the week will be the Varsity game at Seymour. It is the Panthers' Homecoming, but the two teams are always "ready to play each other," according to Coach Mickler.

Three Indian starters will probably be out with injuries. Ricky Rojas has a torn cartilage; Carl Dever, a swollen knee; and Shane Gilliam has bruised ribs; Keith Parrott, will possibly be

out with a hyperextended elbow.

Coach Mick pointed out that Seymour is big on the line with some quickness. James Ivy, a former Haskell Indian, is their head defensive coach.

"I think we'll play a heck of a ball game," said Coach Mickler, "and be ready to meet Quannah and then Iowa Park." Then, he felt, with two more good weeks and getting our injured players back, we'll be ready for our district competition beginning October 12 with Hamlin here.

The Haskell coach of three years said that we played better ball last week, but Electra is a very strong team. He commended the varsity squad by saying that while we made mistakes, we never did lay down and quit. "As long as we don't quit, keep our attitudes up, and the players don't feel like everyone's down on them, we'll be ok."

## Bobby Parrott Is Area Chairman For Rehab Cattlemen's Round-Up

Bobby Parrott of Haskell has been appointed an area chairman for the Cattlemen's Round-Up Crippled Children, according to Jim Alexander of Abilene, general Round-Up chairman.

Parrott is one of nearly 200 chairmen statewide helping in this 25th year for the Cattlemen's Round-Up to benefit the West Texas Rehabilitation Center in Abilene and San Angelo, said Shelley V. Smith, president/executive director of WTRC.

Other area chairmen include Tommy Boyd, Rob Brown, Jim Coker, and Billy Don Davis of Throckmorton.

Aubrey Stokes of San Angelo is CRCC co-chairman in the Southwest region.

"Cattlemen have always believed in the philosophy of neighbor helping neighbor, and the Cattlemen's Round-Up for Crippled Children is a beautiful example of that help," said Alexander.

"Livestock donated by ranchmen are collected at a designated point in each community and transported free to the auction site," he said. "The area chairman's role is to make a personal pledge, then ask friends and neighbors to join them in the annual Cattlemen's Round-Up drive."

Sales of livestock are converted to dollars and the amount provides care for about 11,000 handicapped persons throughout the Southwest at Rehab campuses.

Scheduled sales include: Cattle Sale-Sept. 24, Abilene Auction; Horse Sale-Oct. 6, Abilene Auction; Junction Sheep and Goat Sale-Oct. 8; Coleman sale-Oct. 10; Stephenville sale-Oct. 10; and Brownwood sale-Nov. 7.

Since 1960 when the late Fort Chadbourne rancher Conda Wylie first approached Smith with the idea, the Round-Up has been a major fundraiser for WTRC.

"It will take about \$4.5 million for us to treat the approximately 11,000 handicapped we'll serve in 1984," said Smith. "About 75 percent of that \$4.5 million must come from donations. The balance comes from contract and insurance payments. No federal funds are used in treatment."

At the West Texas Rehabilitation Center campuses in Abilene and San Angelo trained personnel provide top quality care in physical, occupational and speech therapy, audiology, orthotics, psychology, education and social services, all without charge to patients.

# OSBORNES

241 W. Main MUNDAY

PRICES GOOD THRU SEPT. 26

301 S. Wetherbee STAMFORD

## CASH SAVERS PAINT SALE

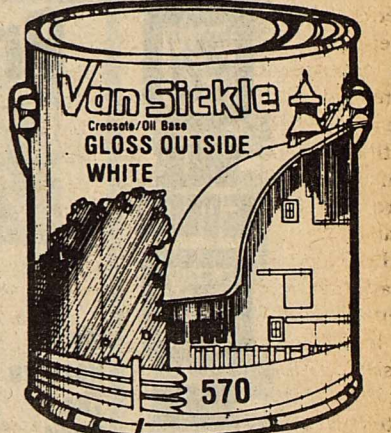


**Van Sickle**  
**INTERIOR FLAT LATEX PAINT**

Dries in a jiffy and covers most surfaces in one coat. Can be brushed, rolled, or sprayed. Cleans with soap and water. Available in white and pastel colors. Gallon.

No. 60-110 White/Pastel Base

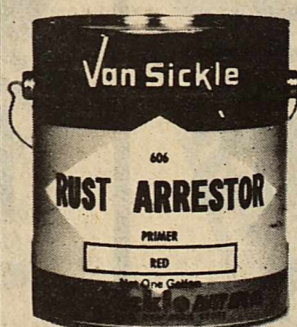
No. 60-112 Tint Base OSBORNES **\$8.95** Your Choice



**Van Sickle**  
**CREOSOTE WHITE ENAMEL PAINT**

A popular exterior white oil-base paint designed for barns, storage buildings, and fences. Lead-free formulation is harmless to livestock.

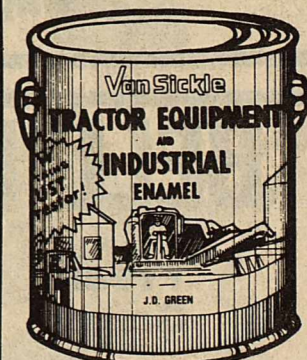
Gallon No. 60-99 OSBORNES **\$7.88**



**Van Sickle**  
**RUST ARRESTOR RED PRIMER**

Ideal primer for metal roofs, pipe fences, gutters, as well as tractors and implements. Gallon

No. 60-85 OSBORNES **\$11.88**



**Van Sickle**  
**TRACTOR AND EQUIPMENT ENAMEL**

Heavy-duty enamel that resists cracking and fading for years of protection from the weather. Meets or exceeds O.E.M. standards. Can be brushed, rolled, or sprayed. Ideal for tractors, implements, trailers, and outdoor equipment. Gallon.

No. 60-56 thru 73 OSBORNES **\$14.95**



**Van Sickle**  
**BRIGHT RED BARN PAINT**

Linseed oil-base paint seals wood against moisture and gives years of protection. Lead-free formulation is harmless to livestock. Gallon.

No. 60-94 OSBORNES **\$7.88**



**Van Sickle**  
**EXTERIOR SEMI-TRANSPARENT GRAIN STAIN**

Absorbs into wood for better protection than lower priced latex stains. Seals out moisture for years of protection. Excellent for roof trim, shutters, wood fences, and wood patio furniture. 16 colors and clear. Gallon.

No. 60-200 thru 206 OSBORNES **\$10.88**

## TIME OUT to review your banking needs



We'll treat you right with your own personal banker

It's time to ask yourself some questions about your bank. Is it helping you get the most from your money? Today's economy is changing fast. Can your bank keep you ahead of the trends? We can provide you with a personal financial counselor who will examine your banking needs. He will help you decide on the plan that's right for you and keep you up-to-date with the latest savings plans available. We offer an array of accounts and certificates which pay high dividends. Our passbook accounts earn the highest interest allowed by law. High-yield certificates of deposit pay an even higher rate. Our money market shares earn high interest at varying rates, and we feature a variety of investment certificates for longer terms. And you can plan for the future with one of our Individual Retirement Accounts. Your financial counselor has all the information you need, so come in today. Take a "time out" for higher earnings.



Post Office Box 10  
 Phone (817) 997-2216  
 Rule, Texas 79547

"WE REDUCE PRICES... NEVER QUALITY!"  
 STORE HOURS: Mon-Fri. 7:30-5:30 Sat-7:30-5:00 (817)422-4851 Munday (915)773-5006 Stamford

WE GIVE  WE GIVE  WE GIVE  WE GIVE  WE GIVE  WE GIVE  WE GIVE  WE GIVE  WE GIVE  WE GIVE

# M SYSTEM

Your FRIENDLY

## AFFILIATED SUPER MARKETS

Haskell, Texas  
Where Your Dollar Buys More

**Double days**

**WEDNESDAYS**  
With the purchase of \$3.00 or more.

SPECIALS GOOD THURS., SEPT. 20th  
THRU WED., SEPT. 26th.  
OPEN 7:30 A.M. till 8:00 P.M.

**Farm Fresh Produce**



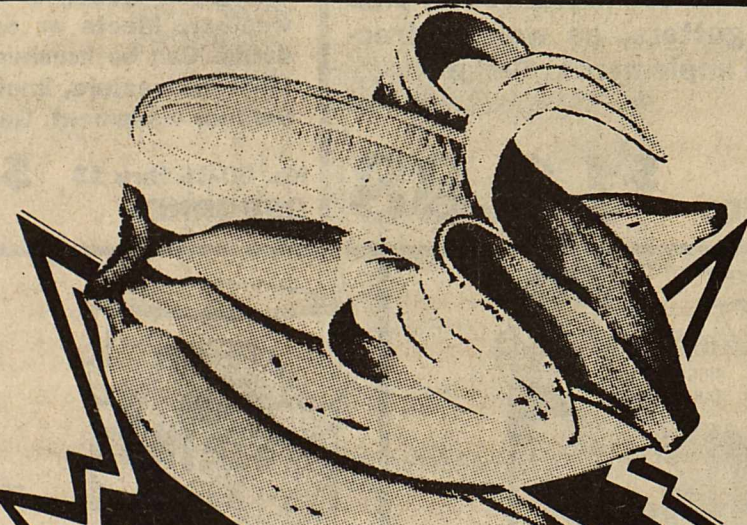
We Reserve The Right To Limit Quantities

**Fresh Spinach**

Fresh Cello Bag **99¢**

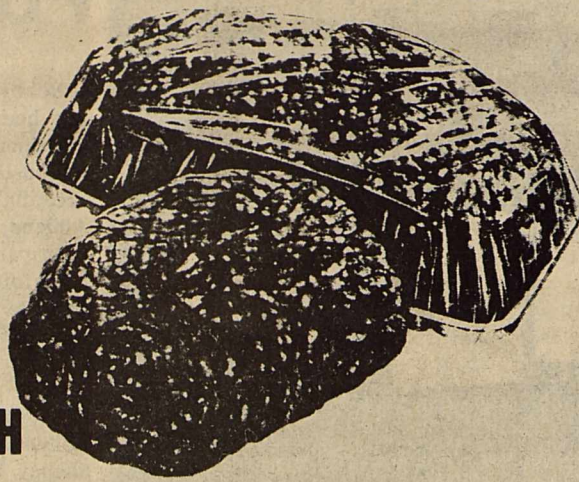
**BELL PEPPERS**

Fresh Green Lb. **59¢**



CENTRAL AMERICAN GOLDEN RIPE  
**BANANAS**

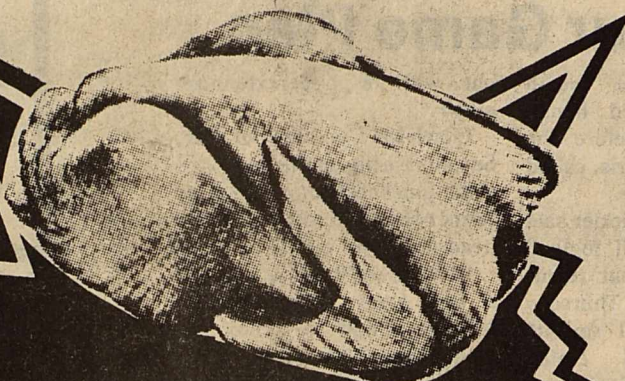
**17¢** lb



FRESH

**Ground Beef**

FAMILY PACK **95¢**  
(3-Lbs. or More) Lb.



GRADE "A" BAKING

**HENS**  
**65¢** Lb.



70-Count BAKER RUSSET

**POTATOES**  
**39¢** Lb.

**Salad Dressings**

SEVEN SEAS Assorted Kinds 8-oz. Bottle **89¢**

**WHEAT BREAD**

Mrs. Baird's Split-Top 1 1/2-Lb. Loaf **99¢**

LIBBY'S FRUIT  
**Nectar Juices**

Assorted Flavors 12-oz. Cans **2 79¢** For



AFFILIATED  
**CORN DOGS**

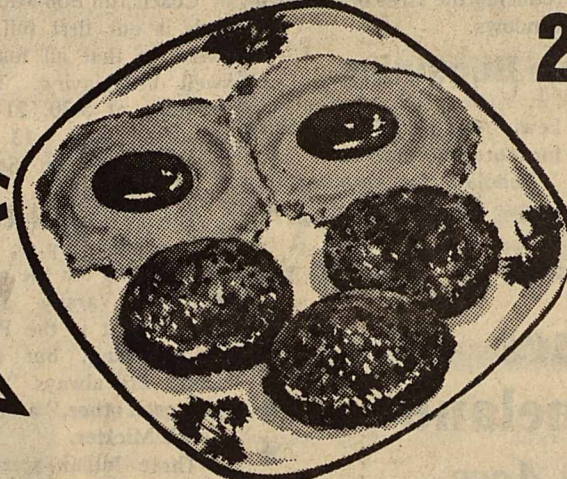
ALL MEAT 10-Ct. Pkg. **1 89**

Carl's Tasty

**SAUSAGE**

2-Lb. Bag

**2 99**



Gooch USDA Beefs

T-Bone Steaks **\$2 89** lb

Sirloin Steaks **\$2 49** lb

Mix or Match!  
**Green Onions or Cello Bag**

**RADISHES**

**5 1 00** For

**DELTA**

Paper Towels

JUMBO ROLLS

**3 FOR 1 00**



Limit 3 with \$10.00 or more purchase.  
Additional Purchase..... Each 49¢

WE GIVE  WE GIVE  WE GIVE  WE GIVE  WE GIVE  WE GIVE  WE GIVE  WE GIVE  WE GIVE  WE GIVE

WE GIVE  WE GIVE  WE GIVE  WE GIVE  WE GIVE  WE GIVE  WE GIVE  WE GIVE  WE GIVE  WE GIVE 

# FOOTBALL FEVER SPECIALS!

**HIGH SCHOOL FOOTBALL FEVER**  
"SUPPORT YOUR LOCAL HIGH SCHOOL FOOTBALL TEAM"

**FREE! FREE!**  
One 2 LITER BOTTLE REG. DIET PEPSI LITE  
WITH ONE HIGH SCHOOL FOOTBALL TICKET STUB OR YOUR SEASON PASS NO.

**AFFILIATED FOOD STORES**  
COUPON VOID AFTER SEPT. 23, 1984



SHURFINE GOLDEN  
**Corn**  
Whole Kernel or Cream Style  
16-oz. Cans (Limit 3)

**3 FOR 1.00**



EXTRA SPECIAL!  
**Affiliated Baseball Caps \$1.89** each

Shurfresh  
**Homo Milk \$1.99**  
gal jug

**PEPSI**  
REGULAR OR DIET  
2-Liter Bottle **99¢**



**CAKE MIXES**  
Betty Crocker Assorted Flavors  
18.5-oz. Box **89¢**

Shurfresh Grade "A"  
**Medium Eggs 49¢**  
DOZ.



FOX DELUXE  
**PIZZA 79¢**  
Assorted Flavors  
10-oz. Pkg.



STAR-KIST  
**TUNA 89¢**  
6.5-oz. Can



SHURFINE  
**COFFEE 2.19**  
All Grinds 1-LB. CAN



**Vlasic PICKLES**  
HAMBURGER DILLS  
32-oz. Jar **99¢**

CONTADINA TOMATO  
**SAUCE 6 FOR 1.00**  
8-oz. Cans



NABISCO PREMIUM  
**CRACKERS 89¢**  
1-Lb. Box

Shurfresh All Flavors  
**ICE CREAM 1.39**  
½-GALLON SQ. CTN.



**Purex Bleach 69¢**  
Gallon Jug

VAN CAMP'S  
**Pork & Beans 3 FOR 1.00**  
16-oz. Cans



STAMP PRICE SPECIAL  
Shurfresh Med. Eggs dozen  
**FREE**  
WITH ONE SFS FILLED CARD

STAMP PRICE SPECIAL  
2 Liter Bottle ORANGE CRUSH  
**FREE**  
WITH ONE SFS FILLED CARD

STAMP PRICE SPECIAL  
Shurfresh Sweet Milk ½ gal ctn  
**59¢**  
WITH ONE SFS FILLED CARD

STAMP PRICE SPECIAL  
Shurfine Instant Tea 3 oz. Jar  
**\$1.39**  
WITH ONE SFS FILLED CARD

STAMP PRICE SPECIAL  
M-System Bread 1½ lb loaf  
**FREE**  
WITH ONE SFS FILLED CARD

WE GIVE  WE GIVE  WE GIVE  WE GIVE  WE GIVE  WE GIVE  WE GIVE  WE GIVE  WE GIVE  WE GIVE 

## PC Pirates Defeat Woodson Cowboys, 33-22

The Paint Creek Pirates defeated the Woodson Cowboys 33-22 Friday night. The offense played well with a total of 326 yds. Leading the rushing was Greg Rowland with 96 yds., Mikeal Gonzales 47 yds. The passing was led by Ronald Campbell with 85 yds., and Mikeal Gonzales with 56 yds.

Touchdowns were made by Keith Medford with two touchdowns receptions one from Campbell and one from Gonzales. Greg Rowland also

had two - on a ten yard run, and a 60 yrd. kickoff return. Lewis Lacey caught a 29 yard TD pass from Campbell and PAT to Lacey was good.

The defense worked well holding the Cowboys to 22 points. The Pirates had a total of 72 tackles; Campbell led with 24, Gonzales 13, and Lacey with 12 tackles.

The Pirates will host the Guthrie Jaguars Friday night September 21. The Pirates hope to have another hard earned victory.

## Conservation Viewpoints

USDA Soil Conservation Service  
Assisting  
Haskell Soil and Water  
Conservation District

An election for a director to serve in Zone 1 on the Haskell Soil and Water Conservation District Board is scheduled for Tuesday, October 2 in the Rochester High School Auditorium announced R.V. Earles, chairman of the board. The election will be held at 7:30 p.m.

State law decreed that to be eligible to vote in a soil and water conservation district director's election, a person must own agricultural land within the subdivision where the election is being held. The person must also live in a county all or part of which is in the district and the voter must be 18 years old.

Legal qualifications state that a candidate for the office of a soil and water conservation district director must own land in the zone he represents, be 18 years of age and be actively engaged in farming or ranching. He must also live in a county all or part of which is in the district.

Zone 1 of the district includes an area from a line beginning at intersection of Highway 380 and Stonewall County Line then east to Rule, north on Highway 283 to its intersection with FM 2407 then 2.3 miles east to intersection with FM 2163 and north to the Knox County line, and taking in the following area: Rochester, Rule and O'Brien.

Current members of the board of directors of the Haskell SWCD are R.V. Earles, chairman, Paint Creek; Zone 3, M.W. Phemister, Vice Chairman; Zone 2, F.A. Ulmer, Secre-

tary-Treasurer; Zone 4, Dan Wadzeck, member; Zone 1, and Johnny Wheatley, member; Zone 5.

The purpose of the Haskell SWCD, with headquarters in Haskell is to promote sound soil and water conservation programs on farm and ranch lands within the district and to serve as a voice for farmers and ranchers on conservation matters and other issues affecting private property rights of landowners.

The district board of directors coordinates the conservation efforts of various local, state and federal agencies and other organizations and has authority to enter into working agreements with these governmental agencies and private concerns to carry out its purposes.

All conservation programs managed by the district are of a voluntary nature to the landowner or operator.

### Haskell ISD To Take School Pictures

School pictures for the annual will be taken Thursday, Sept. 20. The schedule for the pictures is as follows: first period—seventh and eighth grade, football, then elementary, junior high and high school, Varsity and J.V. football will follow during seventh period.

Students are encouraged to wear bright colored clothes as they will show up better in the picture.

Football pictures must be paid for in advance.

## Abortion Will Be Topic At East Side Baptist

Wednesday, September 26th at 7:30 p.m., East Side Baptist Church has invited Dr. Joe Horn, M.D. From Plainview, to speak on the controversy of Abortion. Dr. Horn is a specialist in Internal Medicine. He did his undergraduate work at the University of Texas in Austin. He received his medical education at Southwestern Medical School at the University of Texas, Dallas. He was in general practice from 1955 to 1962 after which time he returned to Baylor University School of Medicine in Houston for a three year Internal Medicine residency. He returned to Plainview in 1965 and has been practicing there since that time.

Dr. Horn states: "Since the 1973 Roe vs. Wade abortion decision by the Supreme Court of the United States which states that an unborn child is not a person entitled to protection of the right to life

by the constitution, 15 million abortions have been performed. This is 10 times the number of casualties that have been suffered in all the wars in the history of America. Each year, 1.5 million abortions are done legally in the United States. The Roe vs. Wade decision has been hailed by the critics of the Supreme Court as the worst decision that has ever been handed down by this Court. This has thrown America into a moral dilemma that is not only destroying lives of innocent children, but it is undermining the moral structure of our country as no other decision has done. It is time for the moral people of this country to wake up and stop this injustice to the unborn."

East Side Baptist Church would like to invite the public to attend Dr. Horn's presentation on abortion.

## Dr. Virginia Armstrong To Present Election Issues

Sunday evening, September 23rd from 6:00 - 8:00 p.m. Dr. Virginia Armstrong, Professor of Political Science at Hardin-Simmons University of Abilene, will be speaking at East Side Baptist Church. Dr. Armstrong has travelled from Washington, D.C. to Los Angeles with speaking engagements throughout the year. She is concerned that the people of this country be informed and educated concerning our governmental policies. For this reason Dr. Armstrong is the State Director of Research and Education for the Texas Roundtable (a public policy education organization). She is also the Executive Director of Blackstone Institute of public Law and Policy. She is visiting lecturer at Greenleaf School of Law and she has published articles in various law

journals. Dr. Armstrong is a gifted speaker and dedicated to the education of the people of our country. This is a rare opportunity to hear and learn what is happening in our government.

Dr. Armstrong will be making this presentation on the current issues of the '84 election and the controversial issue of Separation of Church and State. We would like to invite all those interested to be a part of this informative, non-partisan presentation.

ERASERMATE PEN by Papermate. Erasable ink that can be erased with any standard eraser and is refillable. Available in a variety of colors. Ideal for students. *Haskell Free Press*

Want Ads—Your Best Market Place.

Sept. 20, 21, 22, & 23

6 Pack Cans <b>Dr Pepper</b>	<b>\$1.59</b>
Clorox 1 Gal <b>Bleach</b>	<b>99¢</b>
Eatwell 15 oz Can <b>Mackerel</b>	<b>69¢</b>
Folgers 1 lb Can <b>Coffee</b>	<b>\$2.49</b>

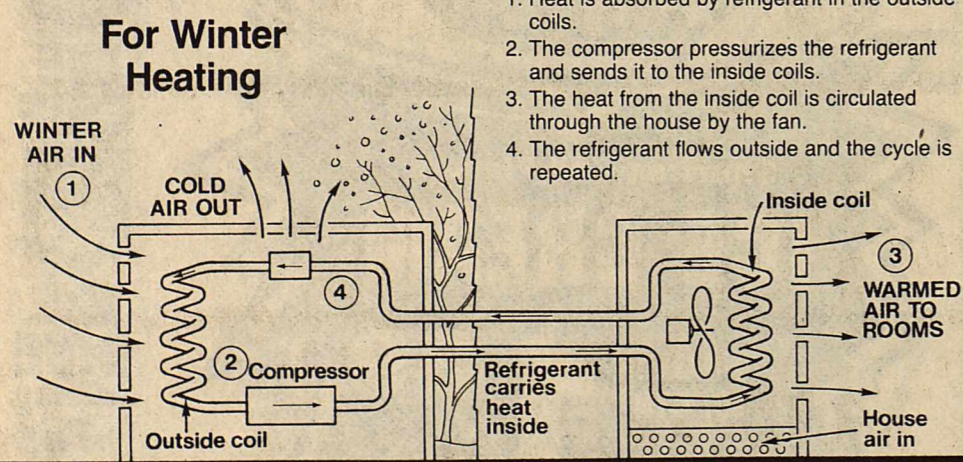
## Buster's Drive-In

# The most efficient, the most economical heating and cooling system for your home.

## THE Electric heat pump.

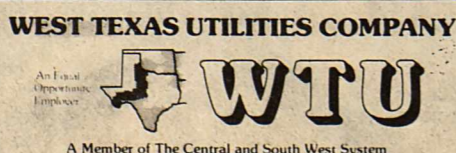
It's part of "the plan" — the Energy Saving Plan

Here's how it works:



1. Heat is absorbed by refrigerant in the outside coils.
2. The compressor pressurizes the refrigerant and sends it to the inside coils.
3. The heat from the inside coil is circulated through the house by the fan.
4. The refrigerant flows outside and the cycle is repeated.

THE ELECTRIC HEAT PUMP: It can save you money on your home energy bills. And when it's used along with other WTU-recommended energy conservation measures according to the ENERGY SAVING PLAN, you can save even more. WTU will pay YOU money when you install an electric heat pump to meet the E.S.P. requirements that add to your home's comfort and energy efficiency. That's where the ELECTRIC HEAT PUMP comes in — it's part of "the plan" because it's the most efficient system for heating and cooling. During the winter it removes heat from the outside air and pumps it into your home. In the summer it reverses the process and becomes an air conditioner, so you get even comfort year-round. CALL YOUR LOCAL WTU OFFICE OR A FACTORY-TRAINED ELECTRIC HEAT PUMP DEALER TODAY TO FIND OUT MORE ABOUT SAVING ENERGY AND MONEY ON YOUR HOME ELECTRIC BILLS.



To Qualify, Your Home must be served by WTU and meet our Energy Efficiency Requirements.

## Master Masons Invited To Confab, Sept. 22

All Master Masons are cordially invited to attend the 10th Annual Mulberry Canyon Confab, Saturday, September 22, 1984.

A delicious barbecue dinner will be served at 6:00 p.m. This will be followed at 7:00 p.m. with an outdoor Master Mason degree conferred by past Masters of the 75th

Masonic District.

This will be in the Suez Shrine Temple Childrens Park on the banks of Mulberry Canyon Creek, 9.2 miles south of Merkel on FM 126.

WEBSTER New Collegiate Dictionaries. The latest most widely approved dictionary for home, office and school. Indexed. *Haskell Free Press.*

Call  
**Nanny Plumbing**  
for all your plumbing needs.  
We offer Rheem H/C, Roto-Rooter and Ditch Witch Services, Plus Dependable Service  
Monday thru Friday  
7 a.m. to 5 p.m.  
Sat. 7 a.m.-12 noon  
301 S. Ave E 864-3043

# OSBORNES

241 W. Main MUNDAY

PRICES GOOD THRU SEPT. 26

301 S. Wetherbee STAMFORD

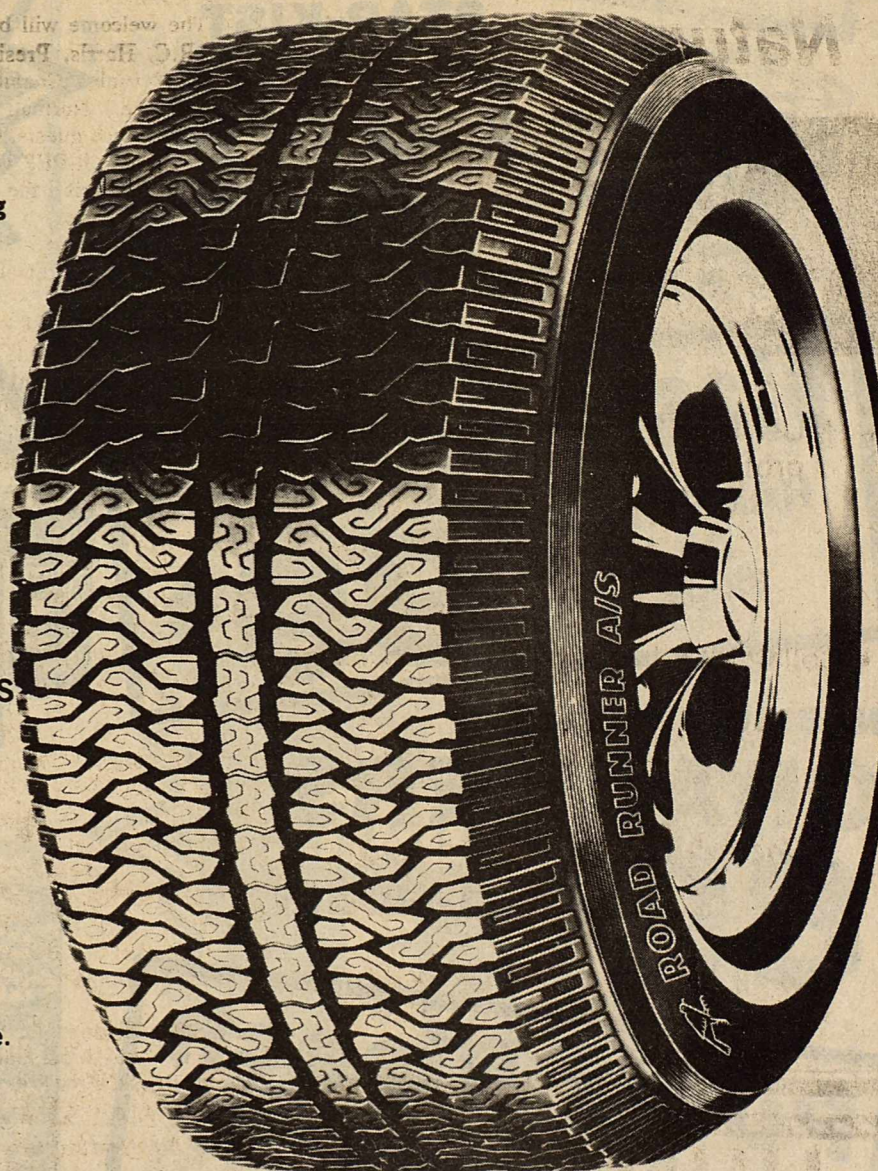
## Road Runner All-Season Radial Tire

ALL SEASON TREAD—  
\*has thousands of biting edges for traction all year round.

FUEL EFFICIENT CONSTRUCTION—  
\*P-metric sizes. Radial rubber compounds for low rolling resistance.

TOUGH FIBERGLASS BELTS—  
\*provides strength and stability.

POLYESTER CORD RADIAL BODY PLYS—  
\*for a smooth, easy ride.



SIZE	OSBORNES
P155/80R13	\$35.55
P165/80R13	\$37.30
P185/80R13	\$39.95
P195/75R14	\$42.97
P205/75R14	\$46.95
P205/75R15	\$47.95
P215/75R15	\$49.95
P225/75R15	\$53.50
P235/75R15	\$57.50

Plus Applicable Sales Tax

### PLUS OSBORNES FAMOUS LIMITED ROAD HAZARD WARRANTY

Duralon® Passenger Tires are warranted against failure due to defects in workmanship and materials and against failure due to road hazards encountered under normal driving conditions. Exceptions are as follows: Repairable nail punctures, fire, theft, front end misalignment, over inflation, under inflation, running flat and damage due to collision. Cost of the replacement tire will be based on current selling price, prorated on the remaining tread depth.

Prices On Radial Tires Include Free Installation and Computer Spin Balance.

"WE REDUCE PRICES... NEVER QUALITY!"

STORE HOURS: Mon-Fri. 7:30-5:30 Sat-7:30-5:00 (817)422-4851 Munday (915)773-5006 Stamford



# Superintendent's Views

BY JAMES LANIER  
Superintendent, Haskell ISD

(Continuation of Report on HB 72 and its local impact)

HB 72 speaks to all areas of school programs even to addressing the problem of dropouts. The Texas Education Agency will be required to develop a reporting system on dropouts including age, sex, ethnic origin, social economic status and highest completed grade level of the student dropout. The effect on Haskell ISD will be more paper work. If the dropout rate becomes too high, we may be mandated to provide programs for potential dropouts.

In order to provide the leadership required for the programs mandated by HB 72, all principals and superintendents will be required to take an inservice program in management skills. The training and education required must emphasize the methodology for general management, instructional leadership, and teacher evaluation. The TEA is mandated to develop models for these programs.

All teachers and administrators will be required to pass a competency test before June 30, 1986, to remain certified and employed. The test will be in subject matter content and educational jargon. A test of reading and writing skills is also required.

Another area addressed is in reporting requirements. HB 72 will require significant changes in accounting and reporting procedures. It appears that the Roster of Personnel report will be expanded to require campus, pupil population (grade level),

and program code information. In addition districts will be required to submit reports by programs and by campus. While the final requirements cannot be determined at this time, districts can expect to account in the following program areas: regular, special education, vocational education, compensatory education, bilingual, ESL, and gifted and talented.

Another major change is in the area of accounting for pupil attendance. Pupil attendance must be kept on a basis where it can be determined which of the four weeks of the eight weeks selected by the State Board of Education for ADA accounting purposes will be the highest weeks of attendance. School districts will continue to follow the Daily Registrar of Pupil Attendance as in the past, and for 1984-85, a supplemental record will be kept. There will be a separate accounting for ADA for bilingual and ESL pupils. Contact hours must be kept for special education and vocational education pupils. A contact hour register, corresponding with the eight chosen attendance weeks will be used. The term reports for principals and superintendents will be modified to include contact hours. This means more paperwork for the district. It also means that we will be very intensive in our efforts to encourage attendance during the designated four weeks periods in the fall and spring.

We will continue this report next week.

## Your Crops Have Natural Enemies

Wind • Drouth  
Flood • Insects  
Disease • Hail • Etc.

MULTI-PERIL CROP INSURANCE protects you against these and other natural hazards.

It also offers:

• Collateral • Individual Yield Coverage

CALL ME FOR COMPLETE INSURANCE NEEDS.

Thornhill Insurance Agency  
864-2842  
522 S. 2nd

NATIONAL FARMERS UNION  
PROPERTY & CASUALTY COMPANY

# Sagerton Community News

Mr. and Mrs. Alvin Bredthauer went to Abilene Monday afternoon to do some shopping.

Mr. and Mrs. Alvin Bredthauer attended the funeral of Mr. Chaney on Wednesday in Stamford. Got to visit with the granddaughter Holly Bredthauer.

## "Gambler" Theme of Rolling Plains Economic Program

The 1984 annual meeting of the Rolling Plains Economic Program will feature a "Gambler" theme to address issues facing the agricultural family. The annual meeting is scheduled to be held October 5, 1984, beginning at 9:30 a.m. in the Vernon Regional Junior College Auditorium, according to Max Stapleton County Extension Agent.

The day-long program will focus on solutions to problems facing agriculture and its families today. Featured speakers include Congressman Jack Hightower, "What the Cards Are", (Agricultural Policy Directions); Congressman Charles Stenholm, "What to Throw Away & What to Keep", (The Development of the 1985 Farm Bill); Dr. Zerle Carpenter, Director of the Texas Agricultural Extension Service, "When the Dealin' Done", (Challenge to Agricultural Families for the Future); Dr. Bill Dugas, Extension Agricultural Meteorologist, "The Secret to Survival" (Agriculture and Weather); Dr. Larry Cotten, Director-Vernon Center-South, "Readin' People's Faces", (Stress and the Family); Bud Leslie, District Director of Farmers Home Administration, "Never Count Your Money", (Financing Agriculture); and Robert Kensing, Extension Economists-Management, "When to Hold 'Em & When to Fold 'Em", (Economic Decisions in Agriculture).

The welcome will be given by R.C. Harris, President of the Vernon Chamber of Commerce. Norman Brints will introduce guests. Officers for the 1985 R-PEP year will be elected during the general business session.

Rolling Plains Economic Program is a regional organization sponsored by the Texas Agricultural Extension Service to promote economic growth and development and improve family living in a 30-county area. R-PEP Chairman Dick Yeager, of Vernon, and Vice chairman Jim Schur, of Seymour, will preside over the meeting.

Registration begins at 9:30 a.m. in the lobby of the College Administration Building. Coffee and donuts will be available, furnished by the Vernon Chamber of Commerce. Those wishing to attend should contact the County Extension Office, 864-2658. The \$7.50 registration fee includes lunch. Yeager urges all people interested in agriculture to plan to attend. For more information, contact the local County Extension Office.

Durable, Dependable, Smooth writing Write Bros. Stick Ball Pens. Haskell Free Press

She is the great granddaughter of Mr. Chaney.

Mrs. M.Y. Benton and Mrs. Leo Monse went to Aspermont on Wednesday.

Mrs. Zenor Summers and Mrs. M.Y. Benton went to Abilene Wednesday afternoon for Mrs. Summer to see about her glasses.

Mr. and Mrs. Leonard Kicke, Mrs. Adela Niedieck, Mr. Herbert Lammert played 84 in the home of Mr. and Mrs. Arthur Knipling Wednesday night.

Mr. and Mrs. Alvin Bredthauer, Mrs. Adela Niedieck, Mrs. Louella Barbee enjoyed playing 84 in the home of Mr. and Mrs. Ernest Bredthauer, Thursday night in Rule.

Had a nice crowd at the Friendship Club Thursday at the Faith Lutheran Church Fellowship Hall. Those who attended were, Erna and

Walter Schaake of Stamford, Mr. and Mrs. Arthur Knipling, Mr. Sam Neinast, Mr. and Mrs. Buster Tredemeyer, Herbert Lammert, Mr. and Mrs. Anton Teichelman, Mr. and Mrs. Cato Macias, Mr. Clarence Stegemoeller, Mrs. M.Y. Benton, Mrs. Ione Sheid of rule, Mrs. Izetta Clark of Haskell, Mrs. Lillie Lehmann, Mrs. Lena Schaake, Mrs. Minnie Monse, Mr. and Mrs. G.W. Lefevre, Mrs. Henrietta Stegemoeller, Mr. and Mrs. Alvin Ulmer, Mr. and Mrs. Delbert Lefevre, Mrs. Louise Stegemoeller, Mr. and Mrs. Alvin Bredthauer played 84 in the home of Mrs. Lena Schaake Sunday night.

Erna and Walter Schaake of Stamford, Mr. Clarence Stegemoeller, Mr. and Mrs. Alvin Bredthauer played 84 in the home of Mrs. Lena Schaake Sunday night.

Mr. and Mrs. Kenneth Stegemoeller came to spend the weekend with his mother Mrs. Henrietta Stegemoeller and celebrate Kenneth's

birthday while here. Those who helped him celebrate were Mr. and Mrs. Arthur Knipling, Mrs. Lena Schaake, Mr. Clarence Stegemoeller, Mrs. Betty Balzer, Mrs. Louise Stegemoeller, Mr. Larry Cornelison.

Glenda Bryan came for a brief visit with her parents Mr. and Mrs. Reece Clark. She returned to her home in San Antonio on Wednesday.

Rev. Gary Bruns and family attended church in the Faith Lutheran Church Sunday. Was so nice to see them. He was a former pastor of the church.

Erna and Walter Schaake of Stamford, Mr. Clarence Stegemoeller, Mr. and Mrs. Alvin Bredthauer played 84 in the home of Mrs. Lena Schaake Sunday night.

Mr. and Mrs. Kenneth Stegemoeller came to spend the weekend with his mother Mrs. Henrietta Stegemoeller and celebrate Kenneth's

The Small Business Administration will be distributing commodities of cheese and butter Sept. 24. The distribution will be at Faith Lutheran Church in Sagerton from 9:30-10:30. If you are not receiving the commodities but feel you may be qualified, come apply or contact Karen Lehrmann.

Erna and Walter Schaake of Stamford, Mr. Clarence Stegemoeller, Mr. and Mrs. Alvin Bredthauer played 84 in the home of Mrs. Lena Schaake Sunday night.

Mr. and Mrs. Kenneth Stegemoeller came to spend the weekend with his mother Mrs. Henrietta Stegemoeller and celebrate Kenneth's

birthday while here. Those who helped him celebrate were Mr. and Mrs. Arthur Knipling, Mrs. Lena Schaake, Mr. Clarence Stegemoeller, Mrs. Betty Balzer, Mrs. Louise Stegemoeller, Mr. Larry Cornelison.

Glenda Bryan came for a brief visit with her parents Mr. and Mrs. Reece Clark. She returned to her home in San Antonio on Wednesday.

Rev. Gary Bruns and family attended church in the Faith Lutheran Church Sunday. Was so nice to see them. He was a former pastor of the church.

Erna and Walter Schaake of Stamford, Mr. Clarence Stegemoeller, Mr. and Mrs. Alvin Bredthauer played 84 in the home of Mrs. Lena Schaake Sunday night.

Mr. and Mrs. Kenneth Stegemoeller came to spend the weekend with his mother Mrs. Henrietta Stegemoeller and celebrate Kenneth's

The Small Business Administration will be distributing commodities of cheese and butter Sept. 24. The distribution will be at Faith Lutheran Church in Sagerton from 9:30-10:30. If you are not receiving the commodities but feel you may be qualified, come apply or contact Karen Lehrmann.

Erna and Walter Schaake of Stamford, Mr. Clarence Stegemoeller, Mr. and Mrs. Alvin Bredthauer played 84 in the home of Mrs. Lena Schaake Sunday night.

Mr. and Mrs. Kenneth Stegemoeller came to spend the weekend with his mother Mrs. Henrietta Stegemoeller and celebrate Kenneth's

birthday while here. Those who helped him celebrate were Mr. and Mrs. Arthur Knipling, Mrs. Lena Schaake, Mr. Clarence Stegemoeller, Mrs. Betty Balzer, Mrs. Louise Stegemoeller, Mr. Larry Cornelison.

Glenda Bryan came for a brief visit with her parents Mr. and Mrs. Reece Clark. She returned to her home in San Antonio on Wednesday.

Rev. Gary Bruns and family attended church in the Faith Lutheran Church Sunday. Was so nice to see them. He was a former pastor of the church.

Erna and Walter Schaake of Stamford, Mr. Clarence Stegemoeller, Mr. and Mrs. Alvin Bredthauer played 84 in the home of Mrs. Lena Schaake Sunday night.

Mr. and Mrs. Kenneth Stegemoeller came to spend the weekend with his mother Mrs. Henrietta Stegemoeller and celebrate Kenneth's

The Small Business Administration will be distributing commodities of cheese and butter Sept. 24. The distribution will be at Faith Lutheran Church in Sagerton from 9:30-10:30. If you are not receiving the commodities but feel you may be qualified, come apply or contact Karen Lehrmann.

Erna and Walter Schaake of Stamford, Mr. Clarence Stegemoeller, Mr. and Mrs. Alvin Bredthauer played 84 in the home of Mrs. Lena Schaake Sunday night.

Mr. and Mrs. Kenneth Stegemoeller came to spend the weekend with his mother Mrs. Henrietta Stegemoeller and celebrate Kenneth's

birthday while here. Those who helped him celebrate were Mr. and Mrs. Arthur Knipling, Mrs. Lena Schaake, Mr. Clarence Stegemoeller, Mrs. Betty Balzer, Mrs. Louise Stegemoeller, Mr. Larry Cornelison.

Glenda Bryan came for a brief visit with her parents Mr. and Mrs. Reece Clark. She returned to her home in San Antonio on Wednesday.

Rev. Gary Bruns and family attended church in the Faith Lutheran Church Sunday. Was so nice to see them. He was a former pastor of the church.

Erna and Walter Schaake of Stamford, Mr. Clarence Stegemoeller, Mr. and Mrs. Alvin Bredthauer played 84 in the home of Mrs. Lena Schaake Sunday night.

Mr. and Mrs. Kenneth Stegemoeller came to spend the weekend with his mother Mrs. Henrietta Stegemoeller and celebrate Kenneth's

*more* for your food dollars

Specials Good Thursday, Friday, & Saturday

Blue Ribbon Beef <b>Sirloin Steak</b> \$2 <sup>59</sup> lb	California <b>Avocados</b> 5 for \$1 <sup>00</sup>
<b>T-Bones</b> \$2 <sup>79</sup> lb	Yellow <b>Onions</b> 19 <sup>c</sup> lb
<b>Round Steak</b> \$1 <sup>99</sup> lb	Parade <b>Syrup</b> 32 oz jar 89 <sup>c</sup>
Extra Lean <b>Ground Round</b> \$1 <sup>59</sup> lb	Bama <b>Grape Jelly</b> 16 oz 89 <sup>c</sup>
Gooch Sliced <b>Bologna</b> \$1 <sup>29</sup> lb	2 liter <b>Pepsi Cola</b> \$1 <sup>09</sup>
Campbell 16 oz can <b>Pork &amp; Beans</b> 39 <sup>c</sup>	<b>Mrs. Tuckers</b> can \$1 <sup>59</sup>
Contidina <b>Tomato Sauce</b> 5 CANS \$1 <sup>00</sup>	Armour <b>Treet</b> 12 oz can \$1 <sup>29</sup>
Wolf <b>Chili</b> 19 oz can \$1 <sup>29</sup>	Hormel <b>Viennas</b> can 39 <sup>c</sup>
Hunts <b>Tomatoes</b> 14½ oz can 49 <sup>c</sup>	King Size <b>Tide</b> \$3 <sup>39</sup>
Del Monte 16 oz can <b>Peas &amp; Carrots</b> 49 <sup>c</sup>	Cutrite <b>Wax Paper</b> 89 <sup>c</sup>

**HUNGER BUSTER  
FRENCH FRIES  
&  
MEDIUM DRINK**

**\$1<sup>99</sup>**

After 5 P.M.

Offer good Monday, Sept. 24 thru Thursday, Sept. 27.



864-3732

"Just keeps on getting better."™ Haskell, Texas

**POGUE GROCERY**

—Extra Parking Behind The Store. Home Owned and Operated—

113 North Avenue E

Phone 864-2015

Haskell, Texas

## Enrichment Series Offered At Church of Christ

The Church of Christ in Haskell will be hosting a four night series of enriching lessons Sunday - Wednesday, September 23-26. On Sunday night at 6 p.m., Dr. Carl Brecheen of Abilene Christian University will be speaking in the evening worship service. Dr. Brecheen is an author, educator, and speaker in the Marriage Enrichment Seminar which is now on film and distributed around the country.

On Monday night, at 7:30 p.m. Dr. Bruce Evans, who is Vice President for University Advancement at Abilene Christian University, will be speaking. Dr. Evans is a minister and sought after speaker for many various occasions.

Eddie Sharp, pulpit minister for University Church of Christ in Abilene, will speak Tuesday evening at 7:30. Eddie is a dynamic and witty speaker who will provide some very challenging thoughts for everyone present. The University church has experienced tremendous growth during the time Eddie has served as their minister.

The series will conclude on Wednesday evening at 7:30 with Terry Bell, pulpit minister for Hillcrest Church of Christ in Abilene. Bell's lesson will be entitled "From Leprosy to Life." All of these men are dynamic and powerful speakers and your friends at the Church of Christ urge you to be present one or all nights for this Enrichment Series. If you need transportation please call 864-3101 or 864-8969.

ter for University Church of Christ in Abilene, will speak Tuesday evening at 7:30. Eddie is a dynamic and witty speaker who will provide some very challenging thoughts for everyone present. The University church has experienced tremendous growth during the time Eddie has served as their minister.



Photo by Janet Wilke

## LUTHERTERIANS

Shown in the photo are the young people of the First Presbyterian and Trinity Lutheran churches, whose combined groups has coined a new name "Lutherterians". From left to right in the front row are: Steven Klose, Loutina Hadaway, Shane Hadaway, Barbara Spiewak, Christy Peiser, and Penny Peden. Second row, l to r: Robyne Weaver, Kelli Gilliam, Holly McBroom, Lori Peiser, and Tiffany Moeller. Third row, l to r: Kelly Klose, Rev. Katie Hopper, Rev. Jimmy Hopper, Rev. Rick Hahn, and Hugh Peiser, sponsor. Top: Pam Weise. Not pictured were: Shane Gilliam, Stephanie Browning, Lorry Geilhausen, Wayne Geilhausen, and Bruce Geilhausen, and sponsors Janice Browning and Barbara Peiser.

## Youth Groups Join To Form "Lutherterians"

About a year ago, the young people of the Trinity Lutheran and First Presbyterian Churches of Haskell decided to merge their respective youth groups and call themselves the "Lutherterians." This youth group now includes eighth through twelfth grades.

In a time when there seems to be more division than cooperation between denominations, the Lutherterians are seeking to offer something different. They have a sense of unity best described in Paul's letter to the Ephesians in the New Testament: "There is one body and one Spirit...one Lord, one faith, one baptism, one God and Father of us all..." The Lutherterians have come to realize that though their respective forms of worship may vary, we all still claim the same Jesus Christ as Lord and Savior.

This understanding informs

them as they plan their activities for this year. The Lutherterians meet on the first and third Sundays of each month at 6:00 p.m. in the Fellowship Hall of First Presbyterian Church. There they gather for fellowship, singing, prayer, Bible study, and discussion of various issues which confront young people today. Their plans for this Fall and early Spring include a Bake Sale September 29; a Lock-In October 13; a Mission Project in November; and a Ski Trip/Retreat in March. In addition to their November Mission Project which will be named later, the Lutherterians also have as a part of their mission emphasis the Haskell Ministerial Alliance Transient Program.

The Lutherterians extend a warm welcome to any of our young people in the Haskell

area who may not already be a part of a church youth group. Officers for the 1984-1985 school year are Shane Hadaway - President; Stephanie Browning - Vice-President; Kelli Gilliam - Secretary/Reporter; and Pam Weise - Treasurer. They are assisted by the Lutheran Pastor - Rick Hahn, the Presbyterian Pastors - Katie and Jimmy Hopper, and also their Adult Sponsors from each church: Janice Browning, and Hugh and Barbara Peiser. The Lutherterians and their sponsors are grateful for the support they receive from the Haskell community.

## Children And Farm Machinery Not A Safe Combination

"Boy Crushed Under Tractor," "Yougster Falls From Combine," "Farm Tractor Injures Child."

"The headlines point to the tragedy that can result when children and machinery mix," says Dr. Gary Nelson, safety engineering specialist with the Texas Safety Association.

"In no other industry are family members, including children, exposed to the operation of complex mechanical equipment associated with such severe injury potential as in farming or ranching," says Nelson. "Excluded from even touring most manufacturing plants, young children often use farm equipment as a playground."

Children are strongly attracted to farm machinery, notes the specialist. They play with tractor and machinery toys and delight in the chance to see the real thing in action. They also may plead for a ride. Before relenting, machine operators must remember that every "joy" ride contains the potential for "tragedy." "out of love for our children, we must often say 'no' to them," says Nelson.

The risk of serious injury can be reduced through the use of a "no riders" policy. "No seat, no rider," states Nelson. "If a rider must 'hang on,' then the risk is too high." Two things should be kept in mind about farm machinery. First, to do its job, farm machinery must be designed to perform violent movements, points out the engineer. It is designed to cut, shred, crush, grab, compact, wrap and perform similar actions. Although major improvements have been made in machine guards, many danger areas must remain open for machines to do the job for which they are intended.

Second, farm machinery is

dumb—dumb in the sense that it can't tell the difference between a stem and a finger, a stalk and an arm, a job well done or the taking of a life, Nelson notes.

So, what happens when children and machines come together?

Children fall from the operator's lap or lose their grip and fall under tractor wheels or into the path of trailing balers, shredders or other equipment. Children also may get caught in operating farmstead equipment, fall from farm buildings, or even play hide and seek in windows or other crops being harvested.

Nelson points out that these potential tragedies can be controlled through the strict

policy of keeping kids away from farm machinery and work fields and enforcing the "no riders" rule.

## Fines Collected

Geraldine Hise, Judge, City of Haskell, Haskell County, Texas reports a total of 41 convictions for the month of August, 1984. Resulting in a total of \$1467.00 in fines.

Judge Geraldine Hise, Justice Court, Precinct 1, Haskell County reports a total of 129 convictions for the month of August, 1984. Traffic and criminal cases were filed by the following Law enforcement agencies: Highway Patrol 127; Game Warden 2; Sheriff's Dept. 0, resulting in a total of \$5069.50 in fines.

## COLONIAL STOP-N-GO

SPECIALS THIS MONTH ARE:

6 Pack Canned COKES  
DIET COKES  
CAFFEINE FREE-DIET OR Reg.  
**\$1.69**

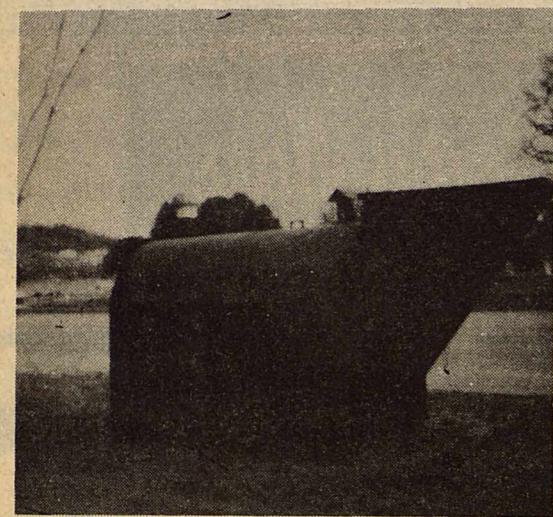
Golden State 30 WT OIL  
**59¢**

Herby's Ham & Cheese White Bread Sandwiches  
**\$1.19**

White Powdered Dolly Madison Donuts  
**3/\$1.00**

Herby's Beef Tacos  
**99¢**

Open 24 Hours for your Convenience  
Haskell



## K & K STORM CELLARS

Complete Installation  
Just in time for the storm season!

We offer two sizes:

6 ft. x 12 ft.      6 ft. x 8 ft.  
Our cellars are 6½ ft. tall inside.

Set in concrete ★ Tar coated to prevent rust!

New Dealer in Aspermont  
Call 817-989-2837

# When you say you want higher rates...

# 13.00%      10.50%

90-DAY JUMBO CD  
\$100,000 MINIMUM DEPOSIT

STARPLUS MONEY MARKET  
CHECKING ACCOUNT

RATES SUBJECT TO CHANGE WITHOUT NOTICE.

# We listen.

At Commodore Savings, highly competitive interest-earning rates are not the exception: they are the rule.

Not everyone offers attractive rates like these, because not everyone shares Commodore's commitment - a commitment to listen to our customers. Because, when you know how to listen, you know how to help with some of the fairest and most competitive rates available in the marketplace - like our \$100,000 minimum deposit 90-day Jumbos\* and our innovative StarPlus Money Market Interest-Bearing Checking Account with a minimum balance of \$2,500 (\*substantial

penalty for early withdrawal).

When you say you want higher rates, it's good to know that someone is listening...and someone is helping. Commodore Savings.

We're here to listen.  
We're here to help.

**COMMODORE SAVINGS**

## GOOD YEAR



## Special Shipment SALE

Now Through Sept. 29!  
Step Up To Goodyear  
And Pocket The Savings

### Polyester Bias Ply

**\$28** Power  
Streak II  
A78 x 13  
Whitewall.  
No trade needed.

- A very service-able choice, especially for older cars or cars not tuned for radials.
- Five-rib tread designed for traction
- Raised scuff rib helps keep whitewalls white

Whitewall Size	PRICE
E78x14	\$32.95
F78x14	\$34.95
G78x15	\$39.10
H78x15	\$41.15
L78x15	\$43.25

With Trade

### Steel Belt Radial

**\$45** Custom  
Polysteel  
P155/80R13  
Whitewall.  
NB trade needed.

- The well-known favorite that keeps its feet, even in the rain
- Double steel belts for penetration resistance and strength in the critical tread area
- The smooth ride of resilient polyester cord radial plies

Whitewall Size	PRICE
P185/75R14	\$56.85
P185/75R14	\$59.95
P205/75R15	\$63.50
P205/75R15	\$68.90
P215/75R15	\$71.90
P225/75R15	\$74.85

With Trade

### Alignment Can Help Prolong Tire Life.



**\$21**

Warranted 90 days or 4,000 miles, whichever comes first.

Make an appointment today.  
• Set front or rear wheel caster, camber, and toe on cars with adjustable suspension. Chevetttes, light trucks, cars requiring MacPherson Strut correction extra.

### QUICK CREDIT

FROM CITIBANK®  
For Goodyear Tires and Service  
Credit card convenience for automotive needs. Pick up an application now at your nearby Goodyear retailer.  
Use "The Silver Card" nationwide at participating Goodyear retail outlets. You may also use these other ways to buy: Master Card, Visa.

# GOOD YEAR

## Anderson Tire Co.

# Small Business Wants Smaller Government

**BY IVAN ELMER**  
Small business wants smaller government. America's small business community has held this unwavering position for at least the past four years. During the 1980 White House Conference on Small Business, delegates assigned their third highest priority -- out of 60 -- to balancing the budget by limiting spending to a declining percentage of the gross national product. The two top priorities involved cutting tax rates, a closely related issue. During the 1984 Small Business National Issues Conference, the small business community once again called on government to reduce the deficit by limiting spending. This time, small business gave spending control its number one priority out of 41 issues. But it has become clear

since 1980 that cutting the size of government is more difficult than it appeared then. We have had four years of effort by a popular president who had essentially packaged the small business agenda in his 1980 platform and won a landslide victory. But although he was able to achieve tax cuts and regulatory reform he was unable to dent the increase in federal spending. Now, too many business people, including small business owners, seem ready to throw in the towel and accept the doomsayers' conclusions that federal spending cannot be controlled and that we should adjust our economic policies and goals to acknowledge the "uncontrollables" in the federal budget. Nonsense! There is no such thing as uncontrollable spending. There is even widespread inability to believe the good

economic news that surrounds us. We are being bombarded with negative -- and incorrect -- explanations that the economic numbers we see do not mean what they seem to and that the positive trends cannot last. We are told to feel guilty as business people because the economic program which has helped us is "unfair." That, of course, is absurd. How can an economic program be called unfair which has produced 6.5 million private sector jobs in the past 19 months -- more than the Common Market has created in a dozen years -- and placed five million more Americans at work than ever before in our history while raising family real disposable incomes at the same time as cutting taxes and holding inflation in check. In short, we are being told that we must abandon the small business incentives of the 1981 tax bill which cut personal and capital gains tax rates and allowed for more rapid depreciation of fixed assets. These urgently needed reforms freed personal and business income for savings and investment and have brought on the greatest economic recovery in the history of this nation. Instead, this thinking goes, we must replace them with something not clearly defined but which sounds suspiciously like the system which increased federal tax collections for 20 straight years, hiked federal spending to 24 percent of GNP, brought on 14 percent inflation, created 20 percent prime interest rates and produced a stagnant economy without job opportunities.

And who could call that "fair?" There are three reasons why small business owners should take heart, reject the prophecies of doom and back congressional candidates who pledge to work to cut the size of government: • If we do not commit ourselves to the premise that federal spending as a share of GNP will be controlled, there is no basis of hope for the U.S. economy. Government costs, growing at compounded rates, will continue to take larger and larger bites, strangling the economy and small business with it. • There are workable proposals to cut spending growth. A number of organizations, including the U.S. Chamber of Commerce, have come up with scenarios which would do the job. The problem has been a lack of consistency among the plans -- a problem which is now being remedied. A coalition of the U.S. Chamber, the National Federation of Independent Business, American Business Conference, National Wholesaler-Distributors and Business Roundtable has been at work to prepare an alternative budget that focuses on spending control. • The economic record shows that the major recommendations of the 1980 White House Conference on Small Business -- lower taxes, less government spending and a reduced burden of regulation -- have worked in every respect except spending restraint. This was due not to faulty design, but to faulty execution. The results will soon be presented to Congress. Such a plan is not a pipe dream. Both the President's Private Sector

Survey on Cost Control (The Grace Commission) and the Congressional Budget Office have offered independent cost cutting proposals sufficient to wipe out deficits entirely. Among the successes of the 1981 formula have been an 8.5-percent growth in GNP during the first six months of this year, the most rapid and sustained growth since World War II; an inflation rate of 4 percent despite healthy growth; an increase in productivity in spite of rapid job growth; business investment up 25 percent in the first 18 months of the recovery, twice the rate of the previous six recoveries; personal savings up 20 percent in the first six months of 1984 over the same period in 1983; and consumer spending rising less rapidly GNP, thus preventing extreme pressure on prices. It is clear that cutting government spending is the key to continued economic growth -- rising taxes is not. When we raised taxes in 1982, revenues did not increase but spending did and the deficit turned out to be double what has been projected. But the last two times we cut taxes -- the capital gains reductions in 1978 and the personal tax rate reductions in 1981 -- revenues from those sources went up substantially. If the small business owner and operator really wants to reduce the size of the government, this Fall presents an excellent opportunity. Members of the small business community must register to vote. And they must be sure that their families, employees, friends, suppliers, and customers also register and vote. Then all of those who are interested in the survival of America's small businesses must find out where the candidates running for Congress stand on the issue of big government and support those candidates of both parties who are willing to cut the growth of government

spending. If the 17 million small businessmen and women in America will take the lead to assure that the next Congress will reverse the long-standing growth in government spending, it can be done. If not, the nation may be in for more years of the tax and tax, spend and spend policies which have been a burden on the economy -- and small business in particular -- for so many years.

## Jamaica Is Big Success

The church benefit Jamaica held at St. George Catholic Church September 16th was a great success and enjoyed by all. The members of St. George greatly appreciate the cooperation, contributions, and work of one and all. The games, food and band music in the afternoon made the day lively for everyone. "Indian-Summer" weather was delightful. Winners of the main prizes were: \$300, Alicia Chavez; \$200, John Rivera; \$100, L. Fuentes. Turkeys; Rachel Earhart, Sandra Fry, Lee Galvan; Hams: W.E. Wooten, Lupe Rosales, Harvey Croft; Raggedy Ann and Andy Dolls: Baldemar Perez; Basketball: Nancy Estrada; Cooler: Ed Walling; Cooler: Jerry Don Klose; Queen Candidates' Cake: Mary Fernandez. The Queens Race against Stamford continues until October 13th, when the winner will be announced at the dance at the American Legion Hall. Tickets for the grand prizes of \$500, \$300, and \$200 are available from members of St. George Catholic Church. WE HAVE pencil cups, stackable trays, book-ends, paper clip holders, stamp cubes and telephone files in matching colors. *Haskell Free Press*

### PAINT CREEK Lunch Menu

Sept. 20-21 Thursday	Pizza Mixed Vegetables Lettuce-Carrot-Celery Apple Crisp Milk	Monday	Biscuits Butter Jelly Juice Milk
Friday	Tuna Fish Bologna Sliced Cheese Pork and Beans Lettuce Onions Pickles Potato Chips Ice Cream	Tuesday	Cereal Juice Milk
Monday	Tacos Beans Lettuce Onion Green Chilies Cheese Fruit Cobbler	Wednesday	Cinnamon Toast Juice Milk
Tuesday	Spaghetti and Meat Sauce Green Beans Carrot-Raisin Salad Jello-Fruit Garlic Bread Milk	Thursday	Buttered Toast Jelly Juice Milk
Wednesday	Fish Portions Macaroni-Cheese Spinach Rolls Brownies Milk	Friday	Cereal Juice Milk
Thursday	Hamburgers Tater Tots Lettuce Pickles Onions Sliced Cheese Banana Pudding Milk	ERASERMATE PEN by Papermate. Erasable ink that can be erased with any standard eraser and is refillable. Available in a variety of colors. Ideal for students. <i>Haskell Free Press</i>	
Friday	Chopped Ham Pimento Cheese Lettuce Onions Pickles Sliced Cheese Potato Chips Ice Cream		
BREAKFAST Thursday	Jelly Buttered Toast Juice Milk		
Friday	Cereal Milk Juice		

**Compare & Save**  
**Sonny's**  
658-3162  
**Plumbing**  
15 Years Experience

All Work Will Conform to Southern Standard Plumbing Code

New Construction  
Industrial  
Commercial  
Residential  
Remodeling  
Repair  
Fire Sprinkler Systems  
Lawn Sprinklers

Knox City  
Goree  
Haskell  
Benjamin  
Rule  
Rochester

10% Discount for Senior Citizens

Licensed Plumber

Save This Coupon For A 10% Introductory Discount

AREA'S MOST POPULAR  
**The S & S DRIVE-IN**  
Snack Bar  
Stamford 773-3272

Fri., Sat., & Sun.  
TOM HANKS in  
**BACHELOR PARTY**

Tues.-Wed.-Thurs.  
XX Adults Only  
"Sweet Young Foxes"

**TOWER DRIVE-IN** (HIWAY 6)  
OR PHONE 937-2382  
RULE, TEXAS

FRIDAY - SATURDAY & SUNDAY  
SEPTEMBER 21-22-23

**STREETS OF FIRE**  
A Rock & Roll Fable.

Tonight is what it means to be young.

MICHAEL PARK  
DIANE LANE  
RICK MORANIS  
AMY MADIGAN

**DON BOOK**

12.00% U.S. GOVERNMENT GUARANTEED BONDS

10.50% FEDERAL INCOME TAX FREE MUNICIPAL BONDS

13.60% INVESTMENT GRADE CORPORATE BONDS

**DON BOOK**  
118 S. Swenson  
Stamford, Texas 79553  
915-773-2709

**Edward D. Jones & Co.**  
Member New York Stock Exchange Inc.  
Member Securities Investor Protection Corporation

\*Interest may be subject to state and local taxes. Rates Expressed As Yield To Maturity. VF-24-83

# Money Matters

A Series Of Informative "Plain Talk" Thoughts Regarding Your Money Matters

**Safe and Confidential**

It's a good feeling knowing that you can protect your valuables for only pennies a day.

With a safe deposit box you never need to worry about the loss of valuable items or documents from theft or fire. All items stored in safe deposit are completely confidential. No one can open your safe deposit box unless you are present.

Rent a safe deposit box today.

**We Think Money Matters!**

**HASKELL NATIONAL BANK**  
864-2631 . 601 N. First  
Haskell, Texas — Member F.D.I.C.

©1983 MICHAELS

**10TH ANNUAL ALLSUP'S ROADRACES**  
**OCTOBER 13, 1984 CLOVIS N.M.**  
FULL MARATHON, HALF MARATHON, 10K, ONE MILE  
LONG SLEEVE T-SHIRTS TO ALL FINISHERS  
TROPHY'S IN EACH CLASS- GUEST SPEAKER  
AT PRE-RACE BANQUET- NATIONALLY ACCLAIMED  
AUTHOR AND SPEAKER JEFF GALLOWAY-VISIT YOUR  
LOCAL ALLSUP'S FOR DETAILS OR CALL (505) 789-2311  
ALL PROCEEDS GO TO CLOVIS ROADRUNNERS CLUB

**COOKED FOOD SPECIAL AS FEATURED ON T.V.**  
**BARBEQUE SANDWICH** EACH **99¢** **HOT AND READY TO GO!**

**BORDEN'S ORANGE JUICE** QT. **99¢**

**BORDEN'S PUDDING BARS** 12 PACK **\$1.49**

FILLED WITH YOUR FAVORITE SOFT DRINK  
**TALLSIP** 32 OZ. FOUNTAIN DRINK **59¢**

HIGH QUALITY 22% PROTEIN  
**STRONGPOINT DOG FOOD** 40 LB. BAG **\$8.99**  
FREE SERVING BOWL IN EACH BAG

**FALL AT WAREHOUSE SALE**

PET NITZ APPLE OR CHERRY  
**FRUIT COBBLERS** **\$1.29** 26 OZ. BOX

BATHROOM TISSUE ACCENTS  
**NICE 'N' SOFT** 4 ROLL PKG. **89¢**

FAMILY SIZE  
**SHURFINE KETCHUP** 32 OZ. BTL. **79¢**

6 Pack 12 oz Cans  
**Coca Cola** **\$2.19**

**Burritos** 2 **/99¢**

**PRICES EFFECTIVE SEPTEMBER 20-22, 1984**  
WHILE SUPPLIES LAST  
**PICNIC SUPPLIES-ICE-SOFT DRINKS-FRESH COOKED FOODS-SELF SERVE GAS-SNACKS-PRODUCE-MONEY ORDERS**

**ALLSUP'S**  
CONVENIENCE STORES



# Indian

# FOOTBALL

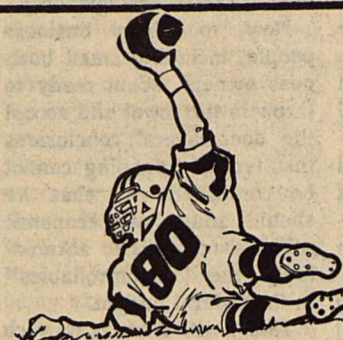
## 1984 FOOTBALL SCHEDULE

Sept. 7..... Haskell 2—Munday 20  
 Sept. 14..... Haskell 0—Electra 37  
 Sept. 21..... Seymour..... There  
 Sept. 28..... Quanah..... Here  
 Oct. 5..... Iowa Park..... Here  
 \*Oct. 12..... Hamlin..... Here  
 \*Oct. 17..... Rotan..... There  
 \*Oct. 26..... Stamford..... There  
 \*Nov. 2..... Hawley..... Here  
 \*Nov. 9..... Anson..... Here

\*District Games



## Haskell Indians vs Seymour Panthers 8:00 P.M. — There



This Page Sponsored By The Following Firms and Individuals

- |   |   |  |
|---|---|--|
| <b>Willie Faye Tidrow</b><br>County Treasurer       | <b>Brian &amp; Jennifer Burgess</b><br>—State Farm Insurance— | <b>Fieldan Motel</b><br>Haskell's Finest Downtown                |
| <b>The Hartsfield Agency</b>                        | <b>Richardson Truck &amp; Tractor</b>                         | <b>Haskell Free Press</b>  |
| <b>Jones Cox &amp; Co.</b>                          | <b>Carolyn Reynolds</b><br>—District Clerk—                   | <b>Mike Harrell</b>  |
| <b>Sherman's Carpet &amp; Interior</b>              | <b>Medford Buick-Pontiac</b>                                  | <b>Glenn &amp; Jo Pogue</b><br>Pogue's Meat Processing           |
| <b>Federal Land Bank Assn.</b>                      | <b>M-System</b>   | <b>Bill Wilson Motor Co.</b>                                     |
| <b>The Video Vender</b>                             | <b>Boggs &amp; Johnson</b>                                    | <b>Biggon Drinnon</b>  |
| <b>Owens Radio &amp; Electric</b>                   |   | <b>Reddy Pest Control</b><br>—Bill St. John—                     |
| <b>Gilliam Oil Co.</b><br>—Larry Gilliam—           |   | <b>Hanson Paint &amp; Body</b>                                   |
| <b>Pizza Barn</b>                                   |   | <b>Wallace's Exxon</b>   |
| <b>Queen Roofing</b>                                |   | <b>Smitty's Auto Supply</b>                                      |
| <b>Centex Cablevision Corp.</b>                     |   | <b>Anderson Construction Co.</b>                                 |
| <b>Kiddie Kottage</b><br>—Director, Sandra Wallace— |   | <b>Conner Nursery &amp; Floral</b>                               |
| <b>Dean Butane Co.</b>                              |   | <b>Sport-About</b>   |
| <b>Trussell's Tire Center</b>                       |   | <b>Holden-McCauley Funeral Home</b>                              |
| <b>Kennedy Lumber Co.</b>                           |   | <b>Nanny Plumbing</b>  |
| <b>Under the Rainbow</b>                            |   | <b>Haskell Livestock Auction</b>                                 |
| <b>Mitchell's Porthole</b>                          |   | <b>Haskell National Bank</b>                                     |
| <b>McGee's Lumber Yard</b>                          |   | <b>Double A Drive In &amp; Exxon</b>                             |
| <b>Rodriquez Inn</b>                                |   | <b>Leon Jones Welding</b>  |
| <b>The Sweet Shop</b>                               |   | <b>Buster's Drive-In Grocery</b>                                 |
| <b>Sonic Drive In</b>                               |   | <b>Haskell Marine</b>  |
| <b>Lane-Felker</b>                                  |   | <b>The Personality Shoppe</b><br>—Smart Wear for Women 864-2501— |
| <b>Kountry Kookin'</b>                              |   | <b>Thornhill Insurance Agency</b>                                |
| <b>Guess-Munday Northside Gulf</b>                  |   | <b>Modern Way Food Store</b>                                     |
| <b>Haskell Co. Warehouse &amp; Compress, Co.</b>    |   | <b>Haskell Steak House</b>                                       |
| <b>Bailey Toliver Chevrolet &amp; Olds</b>          |   | <b>Haskell Paint &amp; Body</b>                                  |
| <b>Kids Duds</b>                                    |   | <b>Dairy Queen</b>   |
| <b>Heads or Tails Western Wear</b>                  |   | <b>Elsie's Hi-Lander</b>   |
| <b>Steele Precision Machine</b>                     |   | <b>Haskell Co. Farm Bureau</b><br>Lonnie Tate—Agency Manager     |
| <b>Jake Dusak, Jr.</b>                              |   | <b>Commodore Savings</b><br>Haskell Branch—518 S. 2nd            |
|   |   | <b>The Back Porch</b><br>864-3761                                |

### 1984 HASKELL INDIANS

NO.	NAME	POSITION	WEIGHT
10	Felipe Arredondo	B	114
11	John Castillo	TB	140
12	Todd Harris	QB	156
20	Steven Rodriguez	E	125
22	Joel Torres	B	165
25	Harry Henry	E	137
32	Michael Wallace	E	132
33	Carl Dever	B	140
35	Kendall Larned	B	151
37	Robert Ivey	B	185
40	Ruben Ozuna	E	136
54	Joey Thomas	C	190
55	Shawn Lane	C	172
60	Jimmy Burson	G	166
62	Keith Parrott	G	165
65	Sam Baker	G	190
67	Shane Gilliam	T	195
72	Seth Pace	T	185
74	Scott Schaake	T	148
75	Joseph Perez	T	228
79	Andy Griffith	T	190
80	Randy Roewe	E	144
82	Billy McFadden	E	119
84	Ponciano Lopez	E	138
88	Ricky Rojas	E	160

MANAGERS: Mickey Dewey, Jerry Davis, David Swann, Eric Mullen, Stephen Holt

COACHES: W.L. Holt, Head/Athletic Director  
 Jimmy Lisle, Defensive Coordinator  
 Jim B. Mickler, Assistant  
 George Martin, Assistant  
 Jim D. Raughton, Assistant

SUPERINTENDENT: James Lanier  
 PRINCIPAL: Clayton Neal

BAND DIRECTOR: Carl Wilke

CHEERLEADER SPONSOR: Cathy Bartley

DRUM MAJOR: Kim Lanier

TWIRLERS: Hollie High, Miechell Stout,  
 Lorry Geilhausen, Jill Jennings,  
 Kelli Gilliam

CHEERLEADERS: Holly McBroom, Denise Burris,  
 Stephanie Browning, Kelly Wallace, Rhonda Adams,  
 Mindy Smith







**DOUBLE COUPONS**

each TUESDAY & WEDNESDAY  
at Modern Way Food Stores  
We will redeem all manufacturer's "cents off" coupons for DOUBLE their value up to \$1.00 in value when the product is purchased.  
—LIMIT—1 COUPON PER ITEM—  
This policy does not include retailer (any food store) or free coupons, cigarette or tobacco coupons or refund certificates. The total redemption will not exceed the value of the item.

**AFFILIATED**

WE HONOR ALL AFFILIATED TV ADVERTISEMENTS

Open 8 a.m. til 8 p.m. Daily  
Sunday 9 a.m. til 7 p.m.  
1200 N. Ave E.  
Haskell, Tx.

**AT MODERN WAY**

*You Don't Have to Skimp*

**TO SAVE!**

SPECIALS GOOD THRU SUNDAY, SEPT. 23

LEAN FRESH

# GROUND BEEF

FAMILY PACK  
3 lbs.  
OR MORE

# 97¢

lb.

USDA CHOICE - HEAVY-BEEF	
T-Bone Steak	\$2.97 lb
Sirloin Steak	\$2.27 lb
Boneless Sirloin Strip Steak	\$4.29 lb
Boneless Top Sirloin Steak	\$2.99 lb
Extra Lean Beef Shortribs	\$1.49 lb
Lean Beef Spareribs	97¢ lb
Lean & Tender (Family Pack) Cube Steak	\$3.29 lb
Boneless Arm Swiss Steak	\$1.88 lb
SWIFT'S TEND'R LEAN	
Family Pack Pork Chops	\$1.58 lb
Center-Cut Rib Pork Chops	\$1.88 lb
Center Cut Loin Pork Chops	\$1.98 lb

Del Monte

# Bananas

# 19¢

lb

**Farm Fresh Fruits & Vegetables**

Large California Peaches	49¢ lb
Green Onions	Mix or Match 5 FOR \$1.00
Red Radishes	
6-Pac Carton Tomatoes	99¢ ea.
Fresh Spinach	10 oz pkg 99¢
Arizona Fancy Lemons	69¢ lb
Michigan Stanley Plums	49¢ lb
Large Snowball Cauliflower	69¢ lb
Baker Russet Potatoes	39¢ lb

Shurfresh Grade "A" Medium

# Eggs

# 49¢

doz.

ASSTD. COLORS DELTA

# TOWELS

# 3.11

3 JUMBO ROLLS

LIMIT 3 W/\$10.00 MINIMUM PURCHASE  
ALL COLORS EA. 49¢

VAN CAMP'S

# PORK & BEANS

# 3.11

3 16 oz. CANS

SHURFRESH ASSTD. FLAVORS

# ICE CREAM

# 1.39

HALF GAL. SQUARE CARTON

Shurfine Golden Corn	Limit-3	3 16 oz cans	\$1.00
Del Monte Corn		2 17 oz cans	88¢
Reg., Dite, Pepsi-Lite Pepsi-Cola		2-liter bottle	99¢
Fox Deluxe Pizza		10 oz	79¢
Heinz Baby Food		8 Jars	\$1.00

Shurfresh

# Homo Milk

# \$1.99

1 gal jug

Gebhardt Chili	No Beans	99¢
Nabisco Crackers		89¢
Thrift King Dinners Macaroni & Cheese	5 7 1/4 oz box	\$1.00
Starkist Tuna	6 1/2 oz	89¢
Del Monte Tomato Sauce	5 8 oz cans	\$1.00

<p>3 STAR</p> <p>Shurfresh Homo Milk</p> <p>59¢</p> <p>1/2 gal.</p> <p>WITH ONE FILLED SUPERSTAR BOOKLET</p>	<p>3 STAR</p> <p>Shurfresh Medium Eggs</p> <p>1¢</p> <p>DOZ.</p> <p>WITH ONE FILLED SUPERSTAR BOOKLET</p>	<p>3 STAR</p> <p>Country Fresh Bread</p> <p>9¢</p> <p>1 1/2 lb. Loaf</p> <p>WITH ONE FILLED SUPERSTAR BOOKLET</p>	<p>3 STAR</p> <p>Heinz Ketchup</p> <p>79¢</p> <p>32 oz btl.</p> <p>WITH ONE FILLED SUPERSTAR BOOKLET</p>	<p>3 STAR</p> <p>2 Liter Dr Pepper</p> <p>69¢</p> <p>WITH ONE FILLED SUPERSTAR BOOKLET</p>	<p>3 STAR</p> <p>AF Filler Paper</p> <p>39¢</p> <p>150 CT.</p> <p>WITH ONE FILLED SUPERSTAR BOOKLET</p>
--	---	---	--	--	---