

C



School Taxes Can We Afford Them?

Advocating the consolidation of small schools in Haskell County is like a written request for a one-way ticket out of town. That certainly is not the purpose of this column.

Now, with that out of the way, let's look at what property owners in Rule, Rochester, Weinert, and Paint Creek will be facing under the new education reform bill.

The new law will completely change the method of funding schools in Texas and the bottom line is that large schools will get more and small schools will get less than in the past.

Basically there are two sides to the issue of small school consolidation. Small schools are not cost effective and require more dollars per student. Closing or consolidating a small school will eventually kill or severely affect the growth of a small community.

While not all information is available, it appears that the new funding law will remove so much State funding that small districts could be faced with doubling taxes as current operating surpluses are used.

Tax rates last year were: Haskell ISD, .69 cents per \$100.00 valuation; Rochester ISD, .70 cents per \$100.00 valuation; Rule ISD, .63 cents per \$100.00 valuation; Weinert ISD, .768 cents per \$100.00 valuation; and Paint Creek ISD, .57 cents per \$100.00 valuation.

The ultimate decision concerning consolidation will be whether or not property owners are willing or able

to pay the taxes necessary to keep small schools open. We've faced tax increases in the past but if current estimates are correct, nothing like those now facing property owners in small school districts.

Beginning this week and continuing for the next several weeks I will attempt to explain the new education bill and its impact on school districts in Haskell County.

The major purpose of this series will be to discuss what property owners can expect in the way of tax increases and explain major changes in our education system.

Another purpose is to educate taxpayers to the fact that local school boards and superintendents are not responsible for the tax hikes. The increases will not be optional, they will be necessary to keep the doors open.

Possible solutions to the problem are few. We can raise taxes; we can sit and gripe among ourselves; we can ask the Legislature for more funds when they meet in January or we can consolidate.

Raising taxes will create severe problems on persons living on fixed incomes and agricultural operators. The agricultural economy problems have also filtered down to other businesses who will be hard pressed to pay more taxes.

Gripping will solve nothing and it seems that many legislators are trying to force consolidation of small schools.

COTTON GRAIN CATTLE POULTRY

THE HASKELL

FREE PRESS

25¢
14 Pages in
One Section
Plus Insert

"HASKELL—A GOOD PLACE TO VISIT: A BETTER PLACE TO LIVE"

VOLUME NINETY-EIGHT HASKELL, TEXAS 79521, JULY 19, 1984 NUMBER TWENTY-NINE

Local Taxpayers To Bear Burden Of Education Bill

BY DON COMEDY
Free Press Editor

(Editors Note: This is the first in a series of articles intended to discuss the impact of House Bill 72 on local schools and taxpayers.)

First reports indicated that the changes to the education system would be funded by new State taxes. Such is apparently not the case and taxpayers in the school districts in Haskell County should get ready for a series of school tax rate hikes in the coming years. Many of the rate increases will be substantial unless either the State funding is

changed or the requirements of recently legislation are altered.

When Texas Governor Mark White appointed Dallas computer millionaire H. Ross Perot to chair a blue ribbon "Select Committee On Public Education" (SCOPE), the move was met with a placid "ho hum" from most school administrators.

Governors have been appointing blue ribbon committees to consider education reform for more years than most administrators have been in the business and this one seemed at first glance like most of the others.

Eyes started opening quickly when Perot started attacking the very basis of education in Texas by advocating the scrapping of an elected State Board of Education and replacing it with a smaller appointed board.

From there the eyes got wider and many became bloodshot as the SCOPE Committee attacked Vocational Education, athletics, extra curricular activities and even teacher competency.

Governor White, trying to save face after an election promise of teacher pay raises failed to materialize in the regular session last year, called the Legislature into special session to consider education reforms and highway funding.

Thirty days later the session ended with the adoption of a new education bill (H.B. 72), a new highway funding bill and a tax bill to pay for the two programs, or so many of the legislators said.

Now, less than two weeks after the bills were signed into law by the Governor, everyone agrees that no one understands the full impact of the new education law.

Many aspects of the Bill will go

into effect with this school year yet Superintendents, Texas Education Agency Personnel, and Legislators are still searching for ways to implement the bill.

Confusing the issue still further is the implementation of what has

Kiwanis Softball Tourney Set This Weekend

The Haskell Kiwanis Club will hold a slow pitch softball tournament this weekend. Teams from Haskell, Stamford, Anson, Seymour, Rule, Rochester and Knox City will enter. Games will be played Thursday night, Friday night and start at noon Saturday in double elimination tournament. The Haskell Kiwanis Club will have barbeque available during tournament.

Racquetball Tournament Set August 3-4

A racquetball tournament will be held August 3 and 4 at the Fitness Shop in Haskell. The tournament is divided into three divisions: men over 35; men 35 and under and women.

Registration is \$6 for members and \$12 for non-members and trophies will be awarded for first and second place.

The double elimination tournament will begin at 6 p.m. Friday night and 8 a.m. Saturday. Deadline for entries is August 1.

Men's Softball Tourney Set In Rochester

The Rochester Booster will sponsor a men's softball tournament July 25-28. The tournament will be limited to between 12 and 16 teams and will be double elimination.

Entry fee is \$80.00 per team if paid by July 23 and \$90.00 if paid on the first day of the tournament. All entries are due by July 23.

Tournament director is Bill Hester and further information is available by calling 817/743-3201 after 5:30.

Commodities Distribution

The Aspermont Small Business Development Center will be delivering USDA surplus commodities (cheese, butter, etc.) in Haskell Tuesday, July 24 from 9 a.m. til 12:00 at the Experienced Citizens Center.

Delivery to Rule will be made Tuesday, July 24 from 8:00 til 9:30 a.m. at the back door of Rule City Hall.

become known as Chapter 75. A part of Senate Bill 246, Chapter 7 contains sweeping changes in the curriculum of all schools in Texas.

According to one school administrator in a neighboring county, implementation of Chapter 75 and H.B. 72 will mandate a total of 44 new cost measurers on local schools.

Chapter 75 contains the rules and procedures for the implementation of the State basic curriculum which was mandated by the Legislature last year.

The curriculum contains essential elements of all courses from kindergarten through grade 1 which must be taught for a school system to maintain accreditation by the Texas Education Agency.

The changes mandated by Chapter 75 coupled with the reforms of H.B. 72 create a nightmare for school personnel.

One of the hardest parts of the legislation to understand is the funding formula. Prior to H.B. 72 all schools were funded on Personnel Unit System (P.U.) for Minimum Foundation Program (MFP).

The minimum Foundation Program stipulated what courses were mandatory and outline guidelines for the schools to follow. The Local Fund Assignment (LFA) was the portion of the MFP which the local district was expected to pay. All programs over the MFP were also paid with local funds.

H.B. 72 funds school entirely on formulas (many of which no data is available to compute) based on average daily attendance (ADA) Funds, called allotments, will be sent to school systems based on ADA.

The basic allotment, which will include the basis of all funding will be \$1290.00 per ADA for the first year and \$1350 for each year after. In addition to this allotment schools will receive allotments to fund: career ladder; special education allotment; compensatory education allotment; bilingual education allotment; experienced teacher allotment; and vocational education allotment.

During the next few weeks we will look at each of these allotments what they include and how school districts in Haskell County will be effected.

Bob Mobley Golf Tourney Set July 21-22

The Bob Mobley invitational golf tourney will be held this weekend July 21-22 at the Haskell County Country Club. The Pro Am will be held Friday, July 20.

Cash prizes will be awarded. A steak supper and door prizes will be included.

Extra steak tickets may be purchased for \$6.00.

For more information call Rodney Goss, 864-3995 or the Country Club at 864-3400.

Three Day Search For Barre Cox Called Off

Area law enforcement officers joined by volunteers from across much of the State searched three days for Wesley Barrett "Barre" Cox before the search was officially called off Sunday night.

Cox, 33, was enroute from Lubbock to Abilene Wednesday night. He ran out of gas about two miles from Rotan and walked to an Allsup's store where he bought gas. He was assisted by Rotan police officer Floyd Bankston who reported Cox leaving Rotan on State Highway 92 toward Hamlin about 3:45 a.m. Thursday.

His 1976 Oldsmobile was found Friday about three miles north of Tuxedo near the Jones-Haskell County line. The front and rear windshields of the car had been broken and the car had been ransacked.

Searchers were looking for Cox or a moped or small motorcycle or a small blue motorcycle helmet.

Over 100 volunteers gathered to assist in the search walking roads and fields from the location of the car to Rotan. Four helicopters and several private planes as well as a Civil Air Patrol plane also joined in the search.

The Civil Air Patrol which is organized to assist in search and rescue missions was holding a regional meeting in Abilene when the call for help came.

Cox had planned to stay in Abilene and visit friends prior to returning home to San Antonio. He left Lubbock Wednesday night following church services. He had been in Lubbock for about two weeks working on a doctoral thesis.

He had joined the Abilene Christian University staff in 1981 on a part time basis and had started full time employment with ACU in 1982 as an Admissions Counselor.

Many of the volunteers were from the Southern Hills Church of Christ in Abilene where Cox had been active while living in Abilene. Other volunteers came from Jones and Haskell Counties, elders from his church in San Antonio and a

Lubbock Christian College professor.

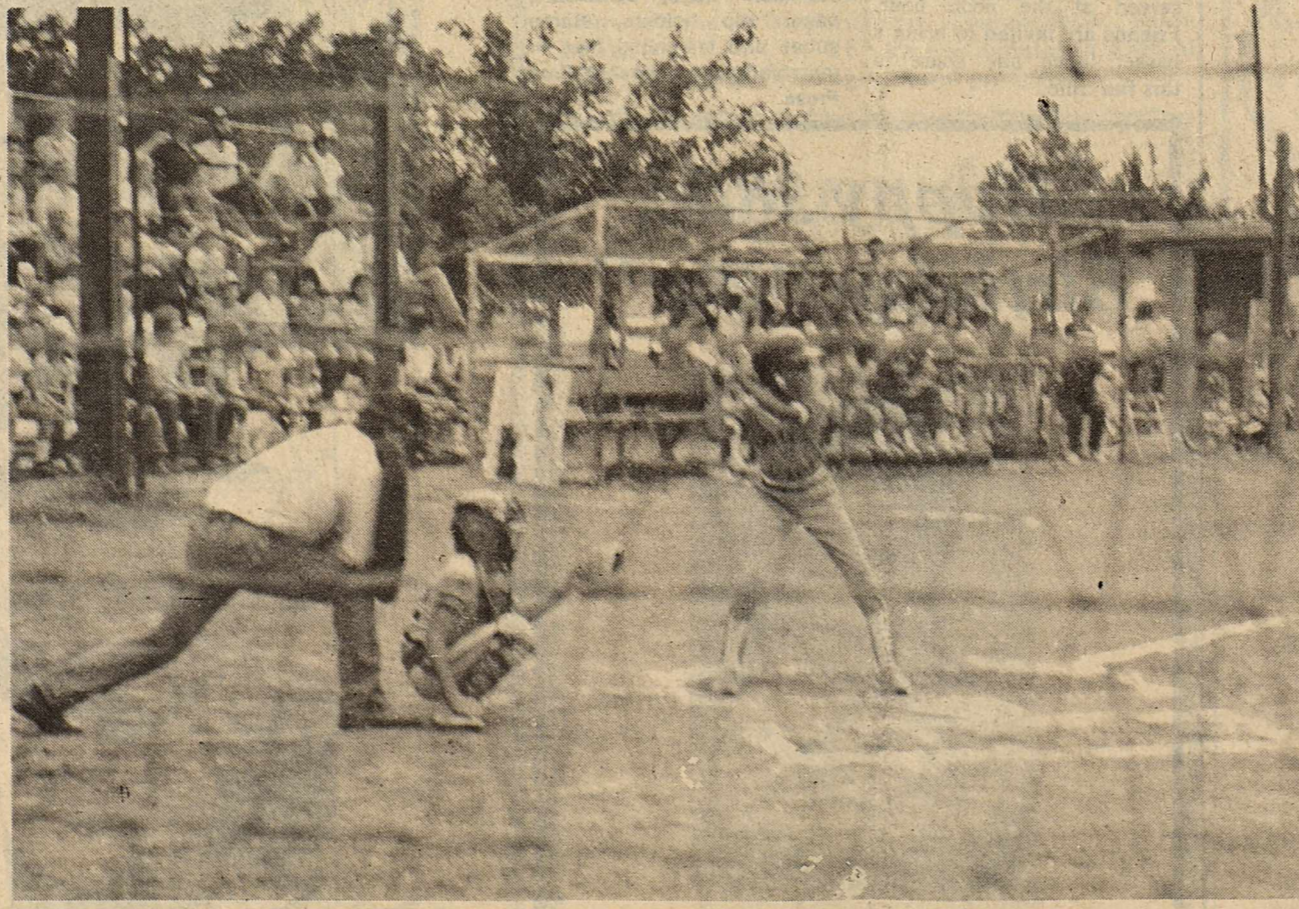
Jones County Sheriff Mike Middleton Monday told the *Free Press* that the search had been suspended until further information was available. "We've searched, double searched and gone back and triple searched, now we're backtracking trying to talk to anyone who saw or talked to him (Cox) and waiting on lab reports", said Middleton. Middleton added that he would like to talk to anyone who might have seen Cox or his car or had any information about the moped or motorcycle.

Woodrow Simmons, special investigator for the District

Attorney's Office in Jones County told the *Free Press* Wednesday that investigators were still waiting for lab reports or other information from anyone who might have seen Cox.

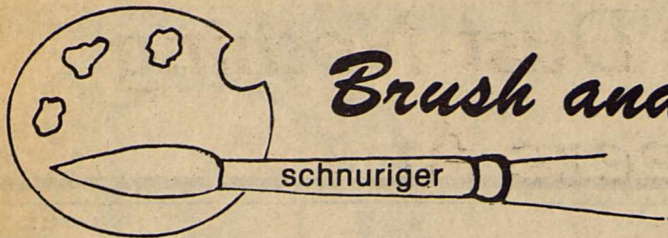
According to Simmons, a clerk in a Crowell Allsup's store identified Cox from a picture and told authorities he had purchased a pair of sun glasses Thursday morning. Another clerk in a Vernon Allsup's store says that Cox was in that store Sunday night. She also identified Cox from a photo.

Cox is 6 feet, 3 inches tall weighs 200 pounds and was last seen wearing a white shirt, blue jeans and Earth shoes.



ALL-STARS

The Haskell Little League All-Stars won the area tournament last week in Haskell and lost in the District tournament to Sheppard and Graham in Munday.



Brush and Palette

Every so often someone says to me, "Since I've begun to paint, I'm surprised at how much more I see as I drive along. Before a tree was a trunk, limbs and leaves, mostly green. Now I find myself trying to figure out what kind of paint mixture I would use to get exactly the right colors." How true this is—we even get our families involved in the new awareness of beauty around us. This is one of the side benefits of art, and no small blessing it is! Just this past week, traveling west out of Abilene, everyone in the car was amazed at the beauty of all the yellows, blues and various greens we were

viewing. Being artists, they tried to name and values of yellows, purples, etc. To come up over a hill and see a panorama of fields, woodlands, roads and streams, cattletails and distant hills stretching for miles against the beautiful sky, just makes your hands itch for a paint brush. What an exciting thing to see with the appreciative eye of an artist! Have you read Jack Clifton's "Eye of the Artist"?

Q. Are pencil sketches really good to paint from? They do not show color.

A. Yes. Many of us carry small sketch books with us at all times. Anywhere we are lucky enough to see something we can use, we make a pencil sketch to refresh our memories with later on. We put color notes at the edge of the sketch, or on the sketch itself if it is large enough. A good thing about pencil sketches is that it helps toward becoming a better draftsman. Some artists take a set of colored pencils along for sketching—try it!

Q. How do I indicate seasons in my picture?

A. This is a good question. The viewer should be able to discern the season by the general basic colors on the canvas. To make the stronger, darker greens, we leave out quite a bit of the light yellow and use more medium yellow, which will tell us that it is fall or late summer. The lighter greens and flowers indicate spring. The summer skies are often more hazy and greyer. So put a little blue mixed with orange or perhaps a little burnt umber into the clouds. Any sunshine indicated should be warmer—more golden—than in other seasons. Think "hot" for the dry summer. This will help you get the effect.

HINT: Make your strokes work for you. Strokes should be horizontal when making roads lie down.

Write your questions and hints to me, Faye Schnuriger, P.O. Box 134, Haskell, Texas 79521. I will not use your name but do want you to sign your letters.

Barefoot, Collins Wed In Hawaii

Lindy Lu Collins of Haskell and James Weldon Barefoot Jr. of Abilene exchanged wedding vows Sunday the third day of June in a sunset ceremony at Kona Village Resort, Kaupulehu, Island of Hawaii. The wedding was held on the beach of the resort with the Reverend Leon Sterling officiating.

The bride was given in marriage by her parents, Mr. and Mrs. Don W. Collins of Haskell, her maternal grandmother, Mrs. Jackie Guffey of

Graham and by her paternal grandmother Mrs. Alma Collins of Haskell. The groom was offered in marriage by his parents Mr. and Mrs. James Weldon Barefoot and his sister Miss Tammy Barefoot of Abilene.

The bride wore a white tea length gauze dress accented with layers of ruffled lace and belted with a satin ribbon. She wore a wreath of white orchids in her hair and carried a lei of pikake, the traditional wedding flower of Hawaii.

During the ceremony, the bride and groom exchanged leis of Pali leaves, a tradition in Hawaiian wedding ceremonies. Native Hawaiians played and sang Hawaiian love songs during the ceremony.

The parents of the bride hosted a champagne reception at the resort.

The bride is a graduate of Haskell High School, attended Texas Tech University and will be attending Respiratory Therapy School at Hendrick

Medical Center in Abilene in August.

A graduate of Abilene High School, the bridegroom is a graduate of Abilene Christian University where he received a degree in Accounting and Management. He is employed by Red Raider Mud Co. in Abilene.

The couple will be living in Abilene at 1351 Andy Lane.

Parties
A miscellaneous bridal shower was held in Abilene and hosted by Cindy Childers

and Kay McDonald on April 28.

On May 19 a miscellaneous bridal shower was held at the Community Room of the Haskell National Bank and was hosted by Delight Jones, Carolyn Reynolds, Sherrie Everett and Melva Everett, Pansy Harris, Peggy Adams, Willie Faye Tidrow, Geraldine Hise and Thelma King.

On May 26 a lingerie shower was hosted by Marcia Guess and Anita Perry at the home of Mrs. Perry.

3 Local 4-H'ers To Model At Paducah

Three 4-H champions from Haskell County will model apparel they have created in the annual Rolling Plains District Fashion Show, Tuesday, July 24, at the Paducah High School Auditorium in Paducah.

Members from 4-H Clubs in 21 counties will compete for honors and the right to represent their district in state competition next September, Lou Gilly and Max Stapleton, county Extension agents, said.

The theme of this year's show will be "Flying High With Fashions". Representing Haskell County will be Mindy Ballard of Rochester,

Junior Division, Michelle Scoggins of Rochester, Intermediate Division, and Jill Jennings of Haskell, Active Sportswear-Senior Division. Already these entrants have won in county competition. Contestants are judged on their sewing and construction skills, as well as overall appearance.

They will model their creations in a public fashion revue at 1:15 p.m. in the school auditorium. West Texas Utilities Co. is host for the contestants and their parents at a luncheon at 11:45 a.m.

Senior contestants will com-

pete in one of four categories of clothing; daytime tailored, daytime non-tailored, active sportswear, or evening and specialty wear. Special awards will be presented the senior exhibiting the best cotton garment or ensemble and the one modeling the best wool or mohair outfit. Awards will be presented to the best model in each age category.

Seniors, beginners and intermediate contestants will be judged in separate groups and compete for awards in their own skill classification. Only the senior winners advance to the state contest.

While the contestants are being judged, special activities will be conducted for parents and guests. At 9:30 a.m. a computer program will be conducted in the school library, Harry Campbell, 4-H specialist, and Genneane Piper, computer teacher, will conduct the program. Guests also will receive guided tours of the Paducah school facilities.



MR. AND MRS. JAMES WELDON BAREFOOT, JR.

Approximately 125 Attend Rueffer Family Reunion

Approximately 125 descendants of the late Henry Karl and Beate Rueffer gathered at the Irby Hall June 30, 1984 for a reunion. They came from Rosewell, New Mexico, Austin, Betiam, Irving, Decatur, Munday, Thorndale,

Lubbock, Kanas, Haskell, Odessa, Fort Worth, Aspermont, and Barlette.

The afternoon was spent visiting and taking pictures and a basket supper was served, followed by a dance at night.

Two of the three living children were present, Mr. Martin Rueffer and Mrs. Alma Blair. Mrs. Meta Niemsch was unable to be there.

Henry Hohenberger was elected hostess for the next reunion, which will be in two years. Everybody remember 1986.



A strain of carrots with shorter, blunter ends has been developed so that the carrots will not puncture the plastic bags in which they're packaged.

Engagement Announced

Mr. and Mrs. Jose Martinez of Haskell announce the engagement and approaching marriage of their daughter, Rosa Maria Martinez to Danny Rodriguez, son of Mr. and Mrs. Mac Rodriguez Sr. of Haskell.

The bride-elect is a 1982 graduate of Haskell High School and attended Western

Texas College LVN School. She is employed by Haskell Memorial Hospital.

The prospective bridegroom attended Haskell High School and is employed by Coca Cola Bottling Co. in Stamford.

The couple plans a September 22 wedding in St. George Catholic Church in Haskell.

Hospital Notes

Visiting hours at Haskell Memorial Hospital are 2 to 4 p.m. and 7 to 8:30 in the evening. No visiting hours in the morning. No children under 14.

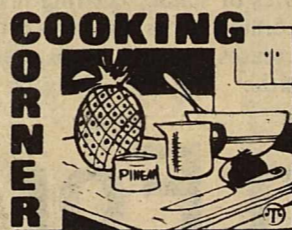
ADMISSIONS
MEDICAL: Bill Petrich, Haskell; Harmon Swinney, Haskell; Armando Rubio, Haskell; Donald Hobert, Munday.
SURGICAL: Mary Enriquez, Haskell.

DISMISSALS
Jesse Parks, Vera Keel, Betty Alvarez, Beatrice Free, William Reid, Felix Arguijo, Faye Woodson, Connie Beauchamp.

Harrell Family Reunion Set Saturday, July 21

Descendants of the late Will, Ike, Nath and Charlie Harrell will meet at the Corral Building for a family reunion Saturday, July 21, from 9 till 5.

A basket lunch will be served at the noon hour. Friends are invited to bring a basket lunch and share in this fun time.



A wonderfully refreshing party punch.

VOLCANO PUNCH

2 cans (46 oz. each) Dole Pineapple Juice
2 cans (6 oz. each) frozen limeade concentrate
2 bottles (32 oz. each) ginger ale
2 pints orange or lemon sherbet

Pour pineapple juice and limeade into a punch bowl to blend. Just before serving, add ginger ale and scoops of sherbet. Garnish with fruit, such as strawberries, pineapple chunks or orange slices. Makes approximately 50 (4-oz.) servings.

For more delicious pineapple juice recipes, send a stamped, self-addressed business size envelope to Dole, Dept. PPAJ, P.O. Box 7758, San Francisco, CA 94120.
Courtesy Dole®, Castle & Cooke.



Births

Mr. and Mrs. Cecil Mandrell of Pampa, announce the birth of their son, Christopher Shane, born July 9, 1984 weighing 7 lbs and 4 oz.

He was welcomed home by his older brother, Chad.

Grandparents are Jack Daniel Jr. of Wolford and Mr. and Mrs. Cecil Mandrell of Lubbock.

Great grandparents are Mr. and Mrs. Jack Daniel Sr. and Mr. and Mrs. T.J. Poer all of Haskell.

Mr. and Mrs. David Lee Hunt, of O'Brien, are proud to announce the arrival of their daughter, Crystal Ann Hunt, born July 11, 1984 at Haskell Memorial Hospital weighing 7 lbs and 9 oz.

Outreach Home Health Services

Health Care In Your Home as Your Doctor Prescribes thru Medicare Medicaid Champus/VA Insurance Private Pay

For additional information call:
Haskell — 864-2996
Seymour — 888-5505

JULY CLEARANCE SALE

Reduction on Sale Items

Items added to Sale
Chic Jeans — \$10.00 pr.

409 South First
Haskell, Texas
Phone 864-2901

The Haystack

Because a child needs a vacation, too.

SESAME PLACE

Give your child a vacation he'll remember for a lifetime. Give your child Sesame Place. Sesame Place has more than 40 exciting play-to-learn outdoor activities. Where he can pedal, swing, slide for as long as he wants.

Also, there are nearly 70 computer games to appeal to any and all youngsters. For parents they're easy to understand. For children they're exciting, fun, and challenging. And you adults can unwind in our "Adult Oasis." A great place to relax in the shade.

Sesame Place has exciting science exhibits, a musical review with Sesame Street's beloved Bert and Ernie, and a "theater-in-the-round" food factory where your child can learn that good food can be fun.

Come to Sesame Place. After all, your child needs a vacation, too.

Present this ad & receive one FREE adult with every full paying child.

Haskell Free Press

For more information, call: 214/445-0485, or write: Sesame Place, P.O. Box 153588, Irving, TX 75015.

Happy 38th Birthday "Bar"

With our love,
Mom & Pop

sale

Peanut Buster Parfait*

99¢

It's a sweet deal from Dairy Queen! Just 99¢ for a cool and fudgy, super-peanutty Peanut Buster Parfait. Come taste one today.

Monday, July 16 thru Sunday, July 22

Dairy Queen

"Dairy Queen just keeps on getting better."™

© Copyright 1983 Ice, Q, O, Council. All Rights Reserved. TM Trademarks of the Ice, Q, O, Council. ® Registered Trademark Am. Q, O, Corp.

"Celebration Singers" Hold 10-Year Reunion

Once upon a time 35 young people and 10 sponsors boarded a bus and travelled from First Baptist Church, Haskell to Dayton, Ohio, stopping many times along the way. They were called the "Celebration Singers" and they performed a musical about the life of Christ called "Celebrate Life."

On June 30 and July 1, this group celebrated its ten-year reunion. Total attendance was 63, including singers, their families, and sponsors. Also attending was their former youth director, Ted Burgess, and his wife, Joy, from Bakerfield, California.

Saturday evening was spent reminiscing over the laughter,

tears, and typical teenage pranks of the trip. After a supper of sandwiches and homemade ice cream, the group looked at photographs and slides from the trip. They were amused to find how the years had "improved" them.

Under the direction of Ted Burgess, the group led the Sunday morning worship service. They sang several selections from the musical "Celebrate Life" and testimonies were given.

Sunday dinner was served and everyone introduced their families and related their present occupations. A cake, resembling the one served to the group while on the trip, was made and decorated by

Pansy Harris.

Ted and Joy presented a concert for the evening service. They also told of their church and its work in California.

We would like to thank the sponsors for their love, support and hard work, both then and now. Thanks, Charles and Leatrice Swinson, Bob and Loretta Gray, Leon and Delight Jones, Charlene Therwhanger, and J.C. Yeary.

Basketball Tourney Set July 27-28

The Weinert Foursquare Youth Fund is sponsoring a 3 on 3 basketball tournament, July 27 and 28. Trophies will be awarded to 1st and 2nd places and refreshments and lunch on Saturday will be served to all players.

For rules and additional information call 817-673-4611. Entry deadline is Tuesday, July 24.



MR. AND MRS. MELVIN L. TURNBOW of Haskell proudly announce the engagement of their daughter, Leann to Kyle Davis Whittemore, son of Mr. and Mrs. C.W. Whittemore of Stamford. The couple plan to be married August 4th at East Side Baptist Church. A graduate of Haskell High School, the bride-elect is now attending Midwestern State University and is employed by Curtis Mathis Home Entertainment Center in Wichita Falls. The prospective bride-groom is a graduate of Stamford High School and attended American Commercial College in Abilene. He is now employed by American Resin & Chemical Corp. in Wichita Falls.

House Dust-Nothing To Sneeze At

You don't have to be a "white glove" housekeeper to be bothered by house dust. If you or a member of your family suffers from a respiratory problem or an allergy, house dust is more than just a nuisance.

House dust can be a major irritant to troubled breathing. Even if a person only suffers from seasonal allergies, it's wise to keep the home as dust-free as possible.

Experts estimate that one out of three people who have seasonal allergies becomes chronically allergic in a few years' time. This is especially true for children.

There's no way that even the most conscientious cleaning can eliminate all house dust. A look at the contents of your vacuum bag after a normal workout will reveal the culprit.

Besides the dust carried into the home from outside, the air inside is filled with the fine dust formed by the natural aging of your furniture, carpets, drapes and clothing.

To combat this air-borne enemy, you need to attack it where it hides and where it travels.

Take a look around your home at all of the dust traps. Bookcases, knicknack shelves,

Tumble your drapes in your clothes dryer on "fluff" every couple of weeks. Use washable throw rugs instead of carpeting in the bathrooms and the kitchen.

Avoid shag, twisted pile and looped pile rugs and carpets because they tend to hide dust and resist easy cleaning.

One of the best ways to eliminate house dust is to catch it at its source: in the air itself. A high efficiency, non-electronic air cleaner installed on your furnace will constantly clean all the air that circulates through the system.

A non-electronic air cleaner provides several important wide windowsills, picture frames, upholstered furniture . . . all provide excellent hiding places for house dust.

A few simple tricks can help reduce the unseen accumulation of dust. Consider enclosing your books in cupboards or on shelves with doors.

benefits in the home. Virtually all dust, pollen and spores will be removed as they pass through your furnace. Not only is that important for

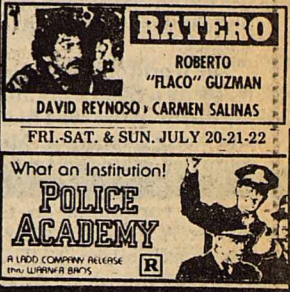
family members with breathing problems, but housecleaning is easier without so much annoying dust.

To find out other ways you can get rid of irritating dust in your home, write for a free copy of *The ABC's of Allergy Relief*. Send your request to: Mr. Floyd Carlstrom Research Products Corporation, 1015 East Washington Avenue, Madison, WI, 53701. 1467. Or call toll free 1-800-356-9652. In Wisconsin call 608-257-8801.

Tower Drive-In Theatre

Rule, Texas

THURSDAY ONLY, JULY 19



Lyle L. Brown, M.D., F.A.C.S.
Peripheral, Vascular, & General Surgery
announces the relocation of his office and vascular lab at
598 Westwood Suite 203
Abilene, Texas 79603
Office hours by appointment
Phone (915) 677-4879

'Taste Of Texas' Heads For Boston's Faneuil Hall

(AUSTIN)--Picture a Texas buckboard rumbling through the streets of Boston. Picture New England food buyers sampling Texas chili and pickled okra—rather than clam chowder and lobster. Picture the TASTE OF TEXAS Reception and Food Show in historic Faneuil Hall in downtown Boston on Wednesday, July 25.

Boston Mayor Raymond Flynn has proclaimed July 25 TASTE OF TEXAS Day. Flynn's resolution comments on "Texas" varied, but distinctive "ethnic" cuisine" and notes that residents of his city have "always been receptive to such revolutionary ideas" as "Tex-Mex" food.

So the fact that state officials from both Texas and Massachusetts will ride to the TASTE OF TEXAS gala in a cowboy-driven wagon, only to be called to dinner by New England Minute Men, hardly seems out of place on this particular evening. With a 20-foot long Lone Star Flag hanging in the rotunda of Faneuil Hall's Great Dome, country music in the background, a reception featuring Texas picante sauce, chips, nachos and tacos will seem perfectly in order.

The Texas Department of Agriculture is taking its TASTE OF TEXAS marketing campaign to food buyers and grocery retailers of New England.

Texas Agriculture Commissioner Jim Hightower will be there, along with Assistant Commissioner Susan DeMarco, whose Marketing and Agricultural Development

staff has designed the TASTE OF TEXAS program. Other Texans who are scheduled to attend are Lt. Gov. Bill Hobby, House Speaker Gib Lewis and San Antonio Mayor Henry Cisneros. From

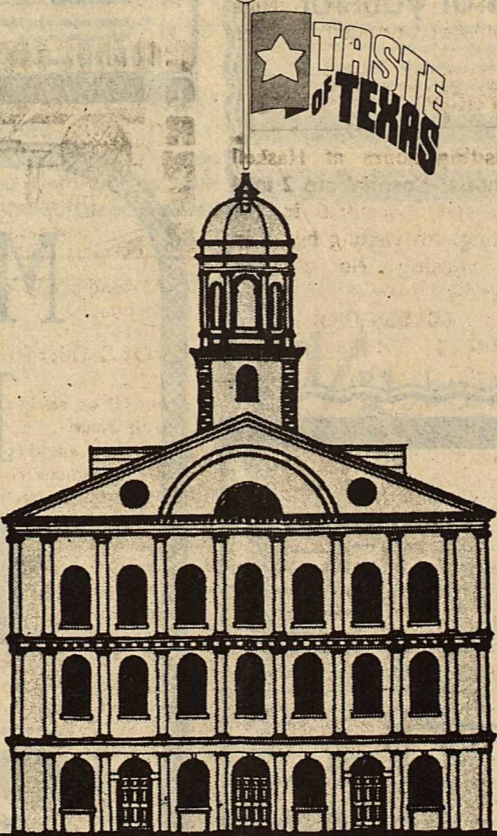
Massachusetts the invited guests include Commissioner of Food and Agriculture Frederic Winthrop, Speaker of the House Thomas W.

MaGee, Majority Leader John Murphy and Mayor Flynn.

But most of the attention will be paid to the 200 or so food buyers and grocery retailers from throughout New England who will be encouraged to try the more than 100 Texas-made food products which will be featured in the TASTE OF TEXAS Reception and Food

Show. Some 25 manufacturers and processors of Texas food products will be represented in Boston.

TASTE OF TEXAS was first launched in April, 1984 by TDA as a statewide marketing program for Texas agricultural products. The red, white and blue TASTE OF TEXAS logo—which is a trademark of TDA—has already been authorized for promotional uses by more than 50 processors and marketers of Texas agricultural products. In addition, TDA has made TASTE OF TEXAS promotional materials available to more than 1,500 retail grocery stores across the state.



THE TASTE OF TEXAS FLAG will hang high over Boston's historic Faneuil Hall on July 25. Bostonians and New England grocery retailers will have the opportunity to sample the mouth-watering delicacies that have made Texas cuisine both famous and infamous across the country. Attending the festivities in Boston will be TDA Commissioner Jim Hightower, Lt. Gov. Bill Hobby, House Speaker Gib Lewis, San Antonio Mayor Henry Cisneros and TDA Assistant Commissioner Susan DeMarco. TASTE OF TEXAS was initiated in April of 1984 to promote Texas agricultural products.

Happy 40th Birthday Daddy



UNDER THE RAINBOW
Christmas in July
1/2 Price Sale
Storewide Clearance
Big Savings for early Christmas Shoppers
3 Big Days
Thursday, Friday & Saturday
All Sales Final
No Gift Wrap
All Hallmark
20% Off
Open 9:30 to 5:30

Just Arrived ALL NEW ZENITH VHS VIDEO RECORDERS
the Smart Decks

4-Head Video Scanning MODEL VR2000.
14-day, one event programmability with precision 4-head scanning for optimum performance. 2-way picture speed search. Pause/still frame advance. Auto rewind. One-touch Instant Record, for up to 4 1/2 hrs. of automatic recording.
without affecting programmed auto record. And optional 10-function Space Command. Wireless Remote Control.
\$498⁰⁰
Owen's Radio & Electric
512 N 1st 864-2536

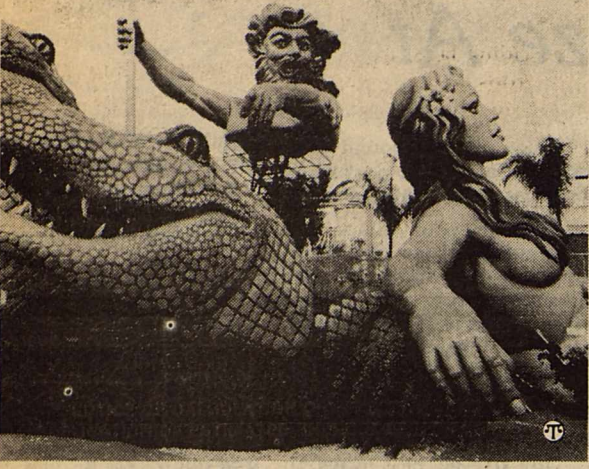
Gall's Hallmark Shop
127 E. McHarg 773-2278
OPEN 9-5:30 M-F Sat. 9:30-4:30
Come join us for our **Christmas in July Sale**
July 23-28

The spirit of Christmas lives in every heart that gives.

19 WALLET SIZE COLOR PHOTOS ONLY
99¢ NO LIMIT ON THIS OFFER
WE USE KODAK PAPER
AT
M-System
112 N. Ave. D
Thurs., July 26
ASK About Our **FREE 8x10 OFFER**
Shugart's inc.
GROUP CHARGE 99¢ per person per 19 wallets
COLOR PHOTOS
Kodak paper. For a Good Look at the Times of Your Life. TM

Robert W. Leedy, D.D.S.
and
Christie McAdams Leedy, D.D.S.
ANNOUNCE THE OPENING OF THEIR OFFICE FOR THE PRACTICE OF GENERAL DENTISTRY
215 N. AVENUE J.
ANSON, TEXAS 79501
OFFICE HOURS BY APPOINTMENT
TELEPHONE (915) 823-3268

COME TO THE FAIR



From now through November 11, 1984, a World's Fair will be in New Orleans, an historic city and an attraction any day.

The Fair is expected to show some 11 million people the best that a unique region of the nation and world has to offer.

There will be magnificent shows on the Mississippi, fireworks overhead, entertainment, commerce and science.

"The World of Rivers: Fresh Water as a Source of Life" is the theme of the 1984 Louisiana World Exposition. Many countries, states and companies have come up with fascinating variations on that theme. A gigantic international exhibition hall will house pavilions of foreign countries: The People's Republic of China, Japan, Australia, El Salvador, France, Canada, Israel, and the Vatican, among others. The United States will have an enormous pavilion, and display the Space Shuttle "En-

terprise". Don't miss the 170-foot-high offshore oil rig, or the "Wonderwall," a spectacular half-mile long structure that highlights shapes and forms of architecture from all periods.

The Fair also has industry pavilions with themes like transportation, energy, flight, and more, where visitors can get a view of the future.

Thousands of hours of entertainment are scheduled for Fairgoers of all ages. International stars including the London Philharmonic, the Oakridge Boys, the Stuttgart Ballet, Johnny Cash, Shirley Maclaine, the Osmond Brothers, Isaac Stern, the Tokyo Ballet, Bob Hope, George Burns, Tom Jones, Itzhak Perlman, Tammy Wynette, Woody Herman and Buddy Rich will perform.

Free Leaflets

For free leaflets about the World's Fair, its attractions and accommodations, you can call toll-free 1-800-445-FAIR.

Loaner Program For Child Safety Seats Offered

Texas Safety Association is launching loaner programs for child safety seats in its Austin, Dallas, and Houston locations, George R. Gustafson, Executive Vice President of TSA, announced today.

"Long-time advocates of mandatory child safety seat usage, Texas Safety Association is acting to help citizens comply with the new occupant protection law passed during the recent special session of the Legislature," said Gustafson. "The TSA loaner programs are expected to be operational within the next few weeks," he said.

In announcing the Texas Safety Association programs, Gustafson issued a challenge to other organizations in the

private sector to act swiftly to set up loaner programs to help citizens protect their young children even before the law mandating that protection goes into effect October 31, 1984.

A total of 200 seats will be available at the Texas Safety Association locations. The programs will begin with 50 at the Austin headquarters office and 50 at the Safety Council of Greater Dallas and the Safety Council of Greater Houston, which are TSA affiliates.

"Seats appropriate for both infants and toddlers have been chosen for the program. The three models available will be Century 100, Century 200, and the Questor One-Step. All

three models can be used in either the front or back seats of vehicles and in either the frontward or rearward facing position," said Gustafson.

The new law will require residents of Texas to transport children up to two years old in federally approved child safety seats and children from two up to four years old in the child safety seats or safety belts.

An offense is punishable by a fine of \$25 to \$50, and the Court shall dismiss the charge if the person shows proof of acquisition by purchase, loan, or rental within 10 days after the offense.

The law exempts violations involving a person operating a vehicle for hire and a person transporting a child in a vehicle in which all seating positions equipped with the child passenger safety seat systems or safety belts are occupied.

The law is effective October 31, 1984, but only those offenses committed on or after January 1, 1985, will be

prosecuted. Many private and public sector organizations have been active in educating parents on the proper use of child safety seats and helping them obtain the devices, according to Gustafson. Loaner programs through hospitals and citizen groups already exist in many locations in the state, he said.

"The Texas Coalition for Child Passenger Safety has been particularly active in providing education and information supporting child safety seat usage. As members of the Coalition and as a private sector non-profit organization dedicated to safety, Texas Safety Association will continue to facilitate child safety seat and safety belt usage for young children," said Gustafson.

More information about the Texas Safety Association loaner programs may be obtained by calling Austin, 512/451-7421; Dallas, 214/351-3236; and Houston, 713/523-2228.

Jeffrey Lane Competes In 4-H Clothing Event

Jeffrey Lane of Gray County's Extra Terrific 4-H Club modeled a tennis warm-up suit he made for the county 4-H Clothing Celebration, one of the first boys to participate in the annual event. Lane will represent Gray County in the

Intermediate Active Sports-wear division at district competition in Canyon later this month.

Jeffrey Lane of the E.T. Club took the top honor in the active sportswear category and will go on to district competition.

Lane was one of the first boys to pierce this almost all-girl contest.

Jeffrey is the thirteen year old son of Jerry and Mary Lou Lane of Pampa and the grandson of Mr. and Mrs. Cecil Jetton of Rochester.

Tamara Lane Named 4-H Best Model

In the Junior (age 9-11) Division, Tamara Lane of Gray County's E.T. 4-H Club was named best model and will represent the evening and specialty wear category at district in Canyon July 29, 30. She modeled a gown in Pampa.

Tamara is the daughter of Jerry and Mary Lou Lane of Pampa and the granddaughter of Mr. and Mrs. Cecil Jetton of Rochester.

Low cost Classified Ads will bring positive results fast. Try them.



In 1816, a volcano in Indonesia led to red and brown snow falling on the U.S. and Italy.

Yesterday's Trash Is Tomorrow's History

COLLEGE STATION — To most people garbage is, well, garbage. But to one Texas A&M University historian it is more than yesterday's chicken bones.

For Dr. Martin Melosi, garbage — or refuse as it is more respectfully known — is an urban problem on par with crime and unemployment.

Melosi, who doesn't mind being called the "garbage historian," has extensively researched the history of how we have created and disposed of waste in this country and has authored two books on the subject: "Garbage in the Cities" and "Pollution and Reform in

American Cities."

He believes one of the best ways to find out what the future of garbage is in this country is to study what the refuse problem has meant in the past and how city fathers and others have coped with it.

Disposal methods — incineration, open dumping, landfilling, and pyrolysis — are increasingly unable to keep up with the proliferation of waste products.

"As in all previous eras of human existence, the refuse problem is not about to disappear," Melosi said. "It has only changed in form and magnitude."

To our friends and customers:

We have operated our dry goods store in Rule for 32 years. On Saturday, July 21, we will close our business.

We wish to express our sincere appreciation to each of you for your business and support in the past.

May God bless you and yours always.

Ousley's
OF RULE
Jewel & Novis Ousley

Farm-to-Market/Flood Control Maintenance & Operation	\$	1000.00
Interest & Sinking	\$	0.00
General Fund Maintenance & Operation	\$	2432.67
Interest & Sinking	\$	0.00
Type of Tax	Rate	
1. 1983 Total tax levy from the 1983 tax roll	\$ 572.34	
2. 1983 Tax rate (M&O and S) AS	\$ 248.82	
3. 1983 Debt service (DS) levy	\$ 0.00	
4. 1983 Maintenance & Operation (M&O) levy	\$ 248.82	
5. 1983 M&O taxes on property in territory that has ceased to be a part of unit in 1984	\$ 0.00	
6. 1983 M&O taxes on property becoming exempt in 1984	\$ 0.00	
7. 1983 M&O taxes on taxable value lost because property is appraised at less than market value in 1984	\$ 0.00	
8. 1984 Total taxable value of all property	\$ 2,299,488	
9. 1984 Taxable value of new improvements added since Jan. 1, 1983	\$ 2,299,488	
10. 1984 Taxable value of property annexed since Jan. 1, 1983	\$ 0.00	
11. 1984 Tax levy needed to satisfy debt service (DS)	\$ 0.00	
12. Rate to raise 1983 tax levy due to appraisal roll errors (foot dollars divided by 1984 taxable value) (\$ 0.00 / \$ 2,299,488) = 0.0000	\$ 0.00	
13. Rate to regain taxes lost in 1983 due to appraisal roll errors (foot dollars divided by 1984 taxable value) (\$ 0.00 / \$ 2,299,488) = 0.0000	\$ 0.00	
14. 1983 M&O taxes used to regain lost 1982 levy	\$ 0.00	
Type of Tax	Rate	
1. 1983 Total tax levy from the 1983 tax roll	\$ 572.34	
2. 1983 Tax rate (M&O and S) AS	\$ 248.82	
3. 1983 Debt service (DS) levy	\$ 0.00	
4. 1983 Maintenance & Operation (M&O) levy	\$ 248.82	
5. 1983 M&O taxes on property in territory that has ceased to be a part of unit in 1984	\$ 0.00	
6. 1983 M&O taxes on property becoming exempt in 1984	\$ 0.00	
7. 1983 M&O taxes on taxable value lost because property is appraised at less than market value in 1984	\$ 0.00	
8. 1984 Total taxable value of all property	\$ 2,299,488	
9. 1984 Taxable value of new improvements added since Jan. 1, 1983	\$ 2,299,488	
10. 1984 Taxable value of property annexed since Jan. 1, 1983	\$ 0.00	
11. 1984 Tax levy needed to satisfy debt service (DS)	\$ 0.00	
12. Rate to raise 1983 tax levy due to appraisal roll errors (foot dollars divided by 1984 taxable value) (\$ 0.00 / \$ 2,299,488) = 0.0000	\$ 0.00	
13. Rate to regain taxes lost in 1983 due to appraisal roll errors (foot dollars divided by 1984 taxable value) (\$ 0.00 / \$ 2,299,488) = 0.0000	\$ 0.00	
14. 1983 M&O taxes used to regain lost 1982 levy	\$ 0.00	
Type of Tax	Rate	
1. 1983 Total tax levy from the 1983 tax roll	\$ 572.34	
2. 1983 Tax rate (M&O and S) AS	\$ 248.82	
3. 1983 Debt service (DS) levy	\$ 0.00	
4. 1983 Maintenance & Operation (M&O) levy	\$ 248.82	
5. 1983 M&O taxes on property in territory that has ceased to be a part of unit in 1984	\$ 0.00	
6. 1983 M&O taxes on property becoming exempt in 1984	\$ 0.00	
7. 1983 M&O taxes on taxable value lost because property is appraised at less than market value in 1984	\$ 0.00	
8. 1984 Total taxable value of all property	\$ 2,299,488	
9. 1984 Taxable value of new improvements added since Jan. 1, 1983	\$ 2,299,488	
10. 1984 Taxable value of property annexed since Jan. 1, 1983	\$ 0.00	
11. 1984 Tax levy needed to satisfy debt service (DS)	\$ 0.00	
12. Rate to raise 1983 tax levy due to appraisal roll errors (foot dollars divided by 1984 taxable value) (\$ 0.00 / \$ 2,299,488) = 0.0000	\$ 0.00	
13. Rate to regain taxes lost in 1983 due to appraisal roll errors (foot dollars divided by 1984 taxable value) (\$ 0.00 / \$ 2,299,488) = 0.0000	\$ 0.00	
14. 1983 M&O taxes used to regain lost 1982 levy	\$ 0.00	

MAKE YOUR MONEY WORK FOR YOU!

Get your money to work as hard as you do. Let our financial experts determine where and how to get all your assets in working order, to your best financial advantage.

Our stock investments, from passbook savings to higher yield options, make your money work for you at competitive rates of interest.

FDIC

Post Office Box 10
Phone (817) 997-2216
Rule, Texas 79547

Farm-to-Market/Flood Control Maintenance & Operation	\$	1000.00
Interest & Sinking	\$	0.00
General Fund Maintenance & Operation	\$	2432.67
Interest & Sinking	\$	0.00
Type of Tax	Rate	
1. 1983 Total tax levy from the 1983 tax roll	\$ 572.34	
2. 1983 Tax rate (M&O and S) AS	\$ 248.82	
3. 1983 Debt service (DS) levy	\$ 0.00	
4. 1983 Maintenance & Operation (M&O) levy	\$ 248.82	
5. 1983 M&O taxes on property in territory that has ceased to be a part of unit in 1984	\$ 0.00	
6. 1983 M&O taxes on property becoming exempt in 1984	\$ 0.00	
7. 1983 M&O taxes on taxable value lost because property is appraised at less than market value in 1984	\$ 0.00	
8. 1984 Total taxable value of all property	\$ 2,299,488	
9. 1984 Taxable value of new improvements added since Jan. 1, 1983	\$ 2,299,488	
10. 1984 Taxable value of property annexed since Jan. 1, 1983	\$ 0.00	
11. 1984 Tax levy needed to satisfy debt service (DS)	\$ 0.00	
12. Rate to raise 1983 tax levy due to appraisal roll errors (foot dollars divided by 1984 taxable value) (\$ 0.00 / \$ 2,299,488) = 0.0000	\$ 0.00	
13. Rate to regain taxes lost in 1983 due to appraisal roll errors (foot dollars divided by 1984 taxable value) (\$ 0.00 / \$ 2,299,488) = 0.0000	\$ 0.00	
14. 1983 M&O taxes used to regain lost 1982 levy	\$ 0.00	
Type of Tax	Rate	
1. 1983 Total tax levy from the 1983 tax roll	\$ 572.34	
2. 1983 Tax rate (M&O and S) AS	\$ 248.82	
3. 1983 Debt service (DS) levy	\$ 0.00	
4. 1983 Maintenance & Operation (M&O) levy	\$ 248.82	
5. 1983 M&O taxes on property in territory that has ceased to be a part of unit in 1984	\$ 0.00	
6. 1983 M&O taxes on property becoming exempt in 1984	\$ 0.00	
7. 1983 M&O taxes on taxable value lost because property is appraised at less than market value in 1984	\$ 0.00	
8. 1984 Total taxable value of all property	\$ 2,299,488	
9. 1984 Taxable value of new improvements added since Jan. 1, 1983	\$ 2,299,488	
10. 1984 Taxable value of property annexed since Jan. 1, 1983	\$ 0.00	
11. 1984 Tax levy needed to satisfy debt service (DS)	\$ 0.00	
12. Rate to raise 1983 tax levy due to appraisal roll errors (foot dollars divided by 1984 taxable value) (\$ 0.00 / \$ 2,299,488) = 0.0000	\$ 0.00	
13. Rate to regain taxes lost in 1983 due to appraisal roll errors (foot dollars divided by 1984 taxable value) (\$ 0.00 / \$ 2,299,488) = 0.0000	\$ 0.00	
14. 1983 M&O taxes used to regain lost 1982 levy	\$ 0.00	
Type of Tax	Rate	
1. 1983 Total tax levy from the 1983 tax roll	\$ 572.34	
2. 1983 Tax rate (M&O and S) AS	\$ 248.82	
3. 1983 Debt service (DS) levy	\$ 0.00	
4. 1983 Maintenance & Operation (M&O) levy	\$ 248.82	
5. 1983 M&O taxes on property in territory that has ceased to be a part of unit in 1984	\$ 0.00	
6. 1983 M&O taxes on property becoming exempt in 1984	\$ 0.00	
7. 1983 M&O taxes on taxable value lost because property is appraised at less than market value in 1984	\$ 0.00	
8. 1984 Total taxable value of all property	\$ 2,299,488	
9. 1984 Taxable value of new improvements added since Jan. 1, 1983	\$ 2,299,488	
10. 1984 Taxable value of property annexed since Jan. 1, 1983	\$ 0.00	
11. 1984 Tax levy needed to satisfy debt service (DS)	\$ 0.00	
12. Rate to raise 1983 tax levy due to appraisal roll errors (foot dollars divided by 1984 taxable value) (\$ 0.00 / \$ 2,299,488) = 0.0000	\$ 0.00	
13. Rate to regain taxes lost in 1983 due to appraisal roll errors (foot dollars divided by 1984 taxable value) (\$ 0.00 / \$ 2,299,488) = 0.0000	\$ 0.00	
14. 1983 M&O taxes used to regain lost 1982 levy	\$ 0.00	

The Scientists Tell Me...

Energy Plantations In Dry Rangelands May Ease Future Energy Shortages

By Robert L. Haney
TAES Science Writer

Plantations of energy plants may be one answer to help solve the problems of increasing costs of declining supplies of petroleum and other non-renewable energy sources, according to Dr. Ronald D. Newton, plant physiologist at Texas A&M University. Renewable biomass can contribute significantly to the world's energy needs and estimates of the energy potential for the United States from biomass sources is 10 to 15 percent by the year 2000.

"A substantial contribution to this potential might be derived from biomass plantations in arid regions of West Texas and the U.S.," says Newton. "Because of the wide diversity of native and naturalized plants that grow in these areas, a great number of species have the potential for relatively large biomass production because of their water use efficiency, particularly perennial shrubs, which appear to offer good potential for improved productivity on harsh arid-land sites."

For several years, Newton has been screening and researching the fuel potential of thousands of plants adapted to millions of acres in dryland areas of the West for the Texas Agricultural Experiment Station, the Department of Energy and the Center for Energy and Mineral Research. Highly productive native or naturalized plants, such as the perennial shrub commonly called fourwing saltbush, growing on millions of acres of rangelands of the western United States have great potential as a biomass energy source. These rangelands would be especially advantageous for biomass production, Newton says, because there would be little competition for irrigation

water and generally less need for fertilizer applications. Of all the plants he has studied, Newton says that fourwing saltbush is one of the most important shrubs on the western rangelands and is one of the top three or four in terms of potential for energy use. This perennial shrub has good forage value for livestock and wildlife and is used widely for range restoration, mine spoil reclamation, and for stabilizing highway rights-of-way. Evergreen shrubs such as fourwing saltbush are not common in the Trans Pecos region and its successful establishment would enhance the forage capabilities as well

as the soil stabilization properties of the land. Comparisons of several top species revealed by our research," Newton says, "including mesquite, Johnson-grass and Kochia indicate that fourwing saltbush produces more biomass than the other three species. Field trials with these plants at El Paso and Big Lake indicate that there is a tremendous genetic variability among plants successfully established at these sites. The large plant size derived from established seedlings indicates the potential productivity that this species can produce in areas of limited precipitation. The nature of the fourwing saltbush will permit mowing each year or every other year and the shrub will sprout and regenerate itself so that once established, an energy plantation will furnish biomass on a long-term basis. The plantings that we have

made in the field have been from seedlings derived from a variety of seed selected from native fourwing saltbush plants growing in the Southwestern U.S. These field data show a wide range of growth potential, (0.5 to 5.0 tons/acre), which does not appear to be associated with the environment, but instead suggests it is genetic. Therefore, through current conventional plant breeding and the 'new biotechnology', the variation that one finds in nature can be capitalized upon and utilized to produce more biomass per acre than what now exists in semi-arid West Texas. "We are in an era, for the next 20 years, in which new biotechnology is developing, allowing plant breeders to drastically modify plant characteristics. This is usually referred to as 'genetic engineering' or 'recombinant DNA' technology. This is widely talked about

as providing large returns in food crops and these techniques can also affect biomass plants. The cloning of selected and 'genetically engineered' variants for specific habitats (semi-arid Southwest) and for specific purposes (energy content) provides us with the opportunity for making biomass a reality; an opportunity that was not previously available to us. The utilization of tissue culture, cell suspensions, cell fusions, gene splicing, etc. is the developing technology that is rapidly advancing and providing opportunities for rapid modification of plant architecture and chemistry and adaptation to specific environments. There are millions of acres available in the semi-arid Southwest for energy production. If the fourwing saltbush was growing on 30 million acres in West Texas and produced 3 tons per acre per year,

(in areas of 12 to 18 inches of rainfall), this would produce over 1 quad of energy which is equivalent to 1 to 2% of our nation's energy needs. In oil equivalents, this is over 600,000 barrels per day. As a result of these pioneering feasibility studies by TAES, the Department of Energy is funding utilization research from small businesses and nurseries that will purify seed sources, investigate growing practices, and work out details of utilization. Newton gives full credit for cooperation in this research to the Center for Energy and Mineral Research at Texas A&M University, J.R. Gooding at Texas Tech University and Exxon Enterprises, Inc. Editor's Note: Any questions regarding this column should be addressed to Science Writer, Department of Agricultural Communications, Texas A&M University, College Station, Texas 77843.

Compare & Save

Sonny's

658-3162

All Work Will Conform to Southern Standard Plumbing Code

Plumbing 15 Years Experience

New Construction Industrial Commercial Residential Remodeling Repair Fire Sprinkler Systems Lawn Sprinklers



Knox City Goree Haskell Benjamin Rule Rochester

10% Discount for Senior Citizens

Licensed Plumber

No Trip Charge

Save This Coupon For A 10% Introductory Discount

Boy Scouts Preparing For 1985 Jamboree

Although the 1985 National Jamboree, held every 4 years is still over a year off, 26 Boy Scouts have already registered to attend. This leaves room for only eight more scouts. After 34 have been approved, Scouts will be placed on the alternate list in case a vacancy occurs. If there is enough demand a second troop of 34 Scouts will be formed. Since there is no assurance that there will be a second troop, it is recommended that Scouts go ahead and get registered to assure a space. Scouts already registered are from Rotan, Haskell, Sweetwater, Coleman, Clyde, Winters, Wylie, and Abilene. Dr. Charles Marier, Council Jamboree Chairman, said that if there is only one troop the adult leaders selected to attend are Ronnie Cheek of Wylie, Jack Cadenhead of Rotan, and Joe Ed Burnam of Abilene. He also said there would likely be two international Scouts going with the Chisholm Trail Council troop. The Troop will leave Abilene on July 17, 1985, and fly from D.F.W. to

Washington, D.C. the same day. They will spend 4 days in Washington touring historic places such as the White House and the Smithsonian Institute. They will spend a day in Philadelphia and visit the Naval Academy at Annapolis. They will tour Mt. Vernon and Williamsburg en route to the Jamboree site located at Fort A.P. Hill, VA. There they will join about 28,000 other Scouts from all over the world for the Jamboree activities from July 24-30. On July 31 they will fly back to D.F.W. and go by bus to Abilene. Marier said that a National Jamboree is often described as the "trip of a lifetime" for a boy as it only happens every 4 years. Several other adults and youth will also attend the Jamboree as members of the Regional staff. Visitors to the Jamboree are welcome. PLASTIC PROTECTORS, 11x8 1/2, punched 3 holes, wide reinforcing flap. Comes with black mounting sheet. Haskell Free Press

NOTICE OF CALCULATION OF EFFECTIVE TAX RATE AND PUBLICATION OF ESTIMATED UNENCUMBERED FUND BALANCES. Table with columns for item description and dollar amounts. Includes sections for calculations used to determine effective tax rate and MISBET AND BISHING (IAS) TAX RATE.

When you say you want higher rates...

13.125% 10.75%

90-DAY JUMBO CD \$100,000 MINIMUM DEPOSIT

STARPLUS MONEY MARKET CHECKING ACCOUNT

We listen.

At Commodore Savings, highly competitive interest-earning rates are not the exception: they are the rule. Not everyone offers attractive rates like these, because not everyone shares Commodore's commitment - a commitment to listen to our customers. Because, when you know how to listen, you know how to help with some of the fairest and most competitive rates available in the marketplace - like our \$100,000 minimum deposit 90-day Jumbos* and our innovative StarPlus Money Market Interest-Bearing Checking Account with a minimum balance of \$2,500 (*substantial

penalty for early withdrawal). When you say you want higher rates, it's good to know that someone is listening...and someone is helping. Commodore Savings.

We're here to listen. We're here to help.



ABILENE 440 HICKORY, (915) 676-5701 • 3800 SOUTH CLACK, (915) 695-2940 • 4601 SOUTH 14TH, (915) 698-4931 HASKELL 518 SOUTH SECOND STREET, (817) 864-3179 DALLAS 2501 CEDAR SPRINGS, (214) 871-0005 QUANAH 111 WEST FOURTH STREET, (817) 863-5388 CLYDE INTERSTATE 20 & CHERRY LANE, (915) 893-5884 STAMFORD - HOME OFFICE 122 W. MCHARG, (915) 773-2713 MEMBER F.S.L.I.C.

1/2 PRICE SALE 1/2 PRICE

These Items

1

- Short Sleeve Pullover Shirts
Shorts & Swim Trunks
Student Dress Pants
Student Dress Shirts
Student Pullover Shirts

- Short Sleeve Western Shirts
Short Sleeve Dress Shirts
Stretch Denim Jeans
Nunn Bush Shoes
Resistol Straw Hats

2

PRICE

Items Listed Plus Much More

1/2 PRICE

Lane

APPAREL FOR MEN Next To M-System

1/2 PRICE



M SYSTEM

Your FRIENDLY

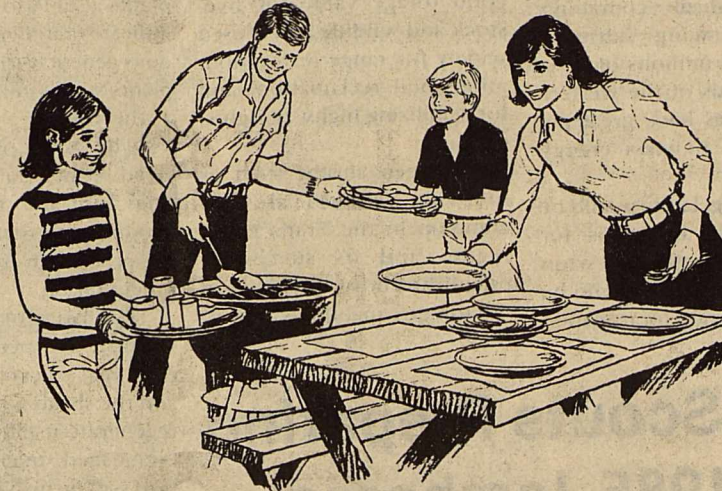
QUALITY MEATS

FOR LESS

**AFFILIATED
SUPER MARKETS**
Haskell, Texas
Where Your Dollar Buys More

Double days

WEDNESDAYS
With the purchase of \$3.00 or more.



SHURFRESH
ALL MEAT

Franks
79¢

12-oz.
Pkg.

We Reserve The Right To Limit Quantities

Specials Good Thurs., July 19
thru Wed., July 25

Garden fresh

PRODUCE

Summer
LP RECORDS & TAPES
*TOP ARTISTS *CURRENT HITS
RECORDS CASSETTES
Each \$1.99 Each \$2.49

Iceberg Lettuce
Fresh Heads **2 For 89¢**

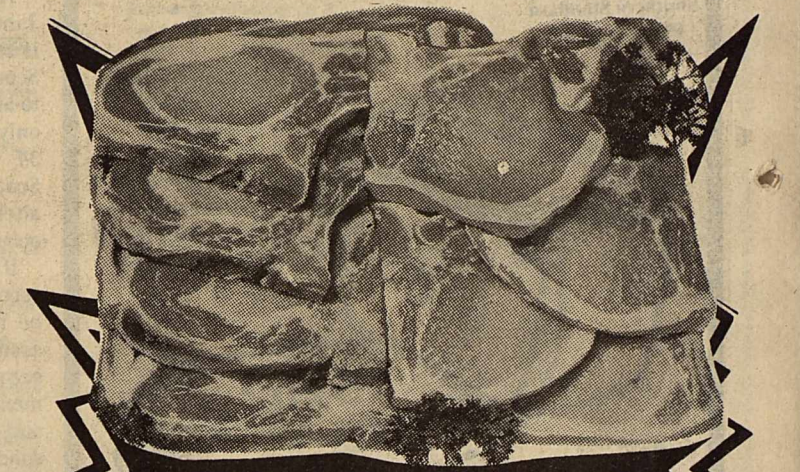
Fresh
PEACHES
Lb. **39¢**

Thompson or Red
SEEDLESS

GRAPES
Lb. **69¢**

Vine Ripe Fresh
Tomatoes Lb. **49¢**

**FRESH GREEN
ONIONS
OR CELLO BAG
RADISHES**
MIX OR MATCH
6 FOR 1.00



**PORK CHOPS
SMOKED**

Lb. **1.89**



Silver
Spur
Sliced
Slab

BACON Lb. **1.05**

**SPLIT
FRYER
BREASTS**

Lb. **1.39**

Fantastic
All Purpose Cleaner
22-oz. Trigger Sprayer
99¢

Cascade
AUTOMATIC
DISHWASHER
DETERGENT
Regular or Lemon
65-oz. Box **2.99**

**CRACKER
JACK**
Caramel Coated
Popcorn & Peanuts
1-oz. Boxes
4/1.00

**Seven
Seas**
DRESSINGS
Asst. Kinds, 8-oz.
83¢

Mrs. Smith's
Thaw & Serve Pie
Cream Pies
FROZEN
Cream Pies
13-oz. Size
Assorted Kinds.
Each **\$1.19**

PARKAY
MARGARINE
1-Lb.
Pkg.
Quarters **65¢**



WE GIVE  WE GIVE  WE GIVE  WE GIVE  WE GIVE  WE GIVE  WE GIVE  WE GIVE  WE GIVE  WE GIVE 

Summertime Food Savings

...FOR LE\$\$!



DEL MONTE
Sweet Peas or Spinach
Your Choice

2 CANS 1⁰⁰



DEL MONTE FRUIT COCKTAIL
Regular or Lite

16-oz. Can 79¢

THRIFT KING BLEACH ... Gal. Jug **59¢**



DEL MONTE Green Beans
Cut, French Style or No Salt (Limit 3)

CORN
Whole Kernel or Cream Style (Limit 3)

3 CANS 1⁰⁰



Del Monte Tomato SAUCE

6 8-oz. Cans 1⁰⁰



COKE
REGULAR, DIET or CAFFEINE FREE

2-Liter Bottle 99¢



FOLGER'S COFFEE
All Grinds

1-Lb. Can 2³⁹



Del Monte Sliced Peaches
Regular or Lite

16-oz. Can 69¢



Breast O'Chicken TUNA
Oil or Water Pack

6.5-oz. Can 69¢



Cheer Detergent
171-oz. Family Size Box

3⁸⁹
Limit one with \$10.00 or more grocery purchase

Gladiola Flour

5 Lb. Bag 89¢



Shurfresh Grade "A" MEDIUM EGGS

DOZ. 49¢



Banquet Frozen Pot Pies
8-oz. Asst. Kinds

3 For 1⁰⁰

STAMP PRICE SPECIAL

Shurfresh Milk
½ gal ctn

59¢
WITH ONE SPS FILLED CARD

STAMP PRICE SPECIAL

Shurfresh Oleo
1 lb quarter

1¢
WITH ONE SPS FILLED CARD

STAMP PRICE SPECIAL

FREE
1½ lb loaf M-System Bread

WITH ONE SPS FILLED CARD

STAMP PRICE SPECIAL

Gain Detergent
49 oz box

\$1⁷⁹
WITH ONE SPS FILLED CARD

STAMP PRICE SPECIAL

Northern Bathroom Tissue
4 roll pkg

59¢
WITH ONE SPS FILLED CARD

WE GIVE  WE GIVE  WE GIVE  WE GIVE  WE GIVE  WE GIVE  WE GIVE  WE GIVE  WE GIVE  WE GIVE 

Select The Best Paint For The Job

You can paint your home—inside or out—at a fraction of the cost of a contractor. But it will be wasted savings if you choose the wrong paint.

Paints generally come in one of two types: oil-base or latex. The oil-base paints are more durable, scrubbable, stain resistant and have better hiding properties. But, they dry slowly, have a strong smell and need flammable solvents for thinning and clean-up. Latex paints have a water base, dry quickly, are odor-free and easier to apply and clean-up. A new type of paint has recently entered the market—an exterior oil-base paint that cleans up easily with water.

Both types come in a variety of finishes. Each finish has a

different degree of protection wearability and washability. You need to consider all these in choosing the right paint for your project.

Flat finishes are soft-toned. They absorb light and reduce glare. They're preferred for woodwork, kitchens, bathrooms and children's rooms.

Semi-gloss finishes have greater washability than the flat finishes, so they're preferred for woodwork, kitchens, bathrooms and children's rooms.

Glossy finishes are highly reflective and the easiest to clean. Use them for woodwork, kitchens, bathrooms and laundry areas. If you want a bright touch for furniture or accessories, gloss works well.

When you go to a paint

store, you will face many more choices than types or finishes. Specialized paints can be just right for certain jobs.

Texture paints are for problem walls and decorating effects. You can use them to seal and decorate old, cracked or rough walls and ceilings. To get a textured effect, use a sponge, brush, roller, broom, spatula, comb or crumpled paper. The paints come ready-mixed and the oil-base is in powder form.

Enamels are available in both latex and oil-base paints.

They are high-gloss paints and extremely washable. You can use enamel aerosol spray cans to paint furniture, grills, toys and other small areas. Enamels can be specially formulated for porch and floors and can be used on wood, primed metal or concrete.

Transparent oil-base and polyurethane varnishes give a protective smooth finish for floors and furniture and they don't cover the wood grain. Finishes include clear satin, high gloss and satin luster

with a woodgrain tint.

Sealers and primers are available in both latex acrylic and oil-base forms. They stop undercolors from bleeding and seal the pores of unpainted and painted surfaces so that the top coating is smooth. You can use interior primers and sealers on drywall, plaster, interior concrete, cement, brick and porous wall paper. Exterior paint primers help preserve the surface to avoid blistering, peeling, mildew and rotting.

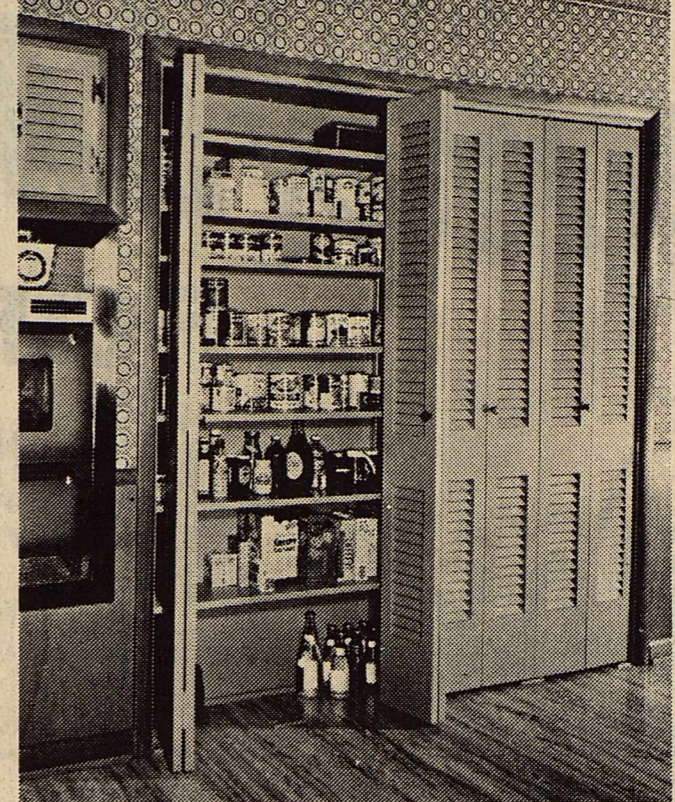
Wood Louver Doors Can Work Wonders on Closets

Decorating on a budget doesn't mean you have to settle for second best. Sometimes, it's a simple, inexpensive, extra touch that brings a room to life.

Rather than major remodeling, replacing something as

routine as closet doors can change the appearance of a room. Inexpensive sliding or folding wood louver doors, for example, add depth and dimension, while providing an attractive accent to any decor from traditional to modern.

In addition to good looks, these doors function better than ordinary closet doors, says the National Woodwork Manufacturers Association, because they take up little or no floor space. This makes them ideal for tight spaces such as foyers or narrow hallways. Because they permit the free flow of air to prevent mildew, wood louver doors also function well in baths, laundry rooms and kitchens.



Folding wood louver doors are ideal for closets in narrow hallways and foyers. But, as you can see, they also function well in kitchens where they can be used to hide unsightly groceries.

Everything You Need

Available in stock sizes at local home centers, building supply stores or lumber yards, wood louver doors come with special tracks and hardware for effortless operation as well as easy installation by do it yourselfers.

They can be purchased either fully louvered or with louvers in the top half and solid wood panels in the lower half. Wood louver doors can be painted to complement or contrast with room colors or they can be stained or varnished to bring out the warmth and richness of the naturally attractive wood grain.

For a free copy of a useful booklet entitled, "Decorate Your Home With Folding Wood Doors," write to NWMA, c/o SR&A, 355 Lexington Ave., New York, N.Y. 10017.

Bullock Announces New Rapid Deposit System For State Funds

State Comptroller Bob Bullock announced Tuesday that taxes paid anywhere in Texas today will be drawing interest in the State Treasury tomorrow with a new rapid deposit system for state funds.

Under the program, a cooperative effort between Bullock and State Treasurer

Ann Richards, motor vehicle receipts from the state's largest counties and other tax receipts collected at each of the Comptroller's 60 offices across the state, will be picked up daily by commercial courier and delivered to the Treasury the following day.

"It took about three and a

half days for the mail to deliver this money to Austin," Bullock said. "After expenses for the couriers, we'll be earning almost a half million dollars in added interest under this new system."

"We are extremely pleased Mr. Bullock has begun his own rapid deposit program," Richards said.

The Treasury has brought the Texas Department of Highways and Public Transportation into a rapid deposit system and is negotiating with other agencies to start similar programs.

"This is just a continuation of the overall goal of the Treasury to get the state's money to the bank faster so it will earn that much more interest," Treasurer Richards said.

Estate AUCTION

ARRERA AND HAROLD BEATY ESTATE

SUNDAY JULY 22, 1984 2 P.M. GOREE, TEXAS

ACROSS STREET NORTH OF GOREE SCHOOL

1962 GMC PICKUP	OLD ROCKER
RIDING LAWNMOWER	IMPERIAL GAS COOK STOVE
MISO POOLS	MAPLE DINNETTE W/4 CHAIRS
TWO EVAPORATIVE COOLERS	KENMORE WASHER & DRYER
RECLINER	ASSORTED CHAIRS
3 PIECE POSTER BEDROOM SUITE	5 DRAWER CHEST
POTS & PANS	COUCH
ASSORTED DISHES	ZENITH B/W PORTABLE TV
27" COLOR TV	FRUIT JARS
LINENS	IRON BFD
ASSORTED LAMPS	IRON COF
METAL LAWN CHAIRS	COFFEE & END TABLES

PLUS LOTS OF MISO ITEMS

JAMES POWELL & ASSOCIATES - AUCTIONEERS
888-5271 - 888-2964 - TXS 072-0225

FOOD & DRINKS AVAILABLE

K & K STORM CELLARS

Complete Installation
Just in time for the storm season!

We offer two sizes:
6 ft. x 12 ft. 6 ft. x 8 ft.

Our cellars are 6½ ft. tall inside.
Set in concrete ★ Tar coated to prevent rust!

New Dealer in Aspermont
Call 817-989-2837

Distinguished Achievement Award

Scott Schultz, field mgr., W.D. Larned, v.p., John Watson, parts, Tommy Watson, service

Bill Wilson Motor Co. of Haskell has been selected as one of the nation's outstanding Ford dealerships and will receive Ford Motor Company's Distinguished Achievement Award.

The Distinguished Achievement Award is presented "in recognition of progressive management. . . modern sales and service facilities. . . sound merchandising practices . . . high quality standards . . . and continuing interest in rendering superior service to Ford owners."

Larned has been a Ford dealer in Haskell since 1946. The dealership is located at 209 South Avenue E.

Bill Wilson Motor Co.

REPORT OF CONDITION

Consolidating domestic and foreign subsidiaries of the

HASKELL NATIONAL BANK of HASKELL City

Name of Bank City

In the state of TEXAS, at the close of business on June 30, 1984
published in response to call made by Comptroller of the Currency, under title 12, United States Code, Section 161.
Charter Number 14149 Comptroller of the Currency Eleventh District

Statement of Resources and Liabilities

		Thousands of dollars
ASSETS	Cash and balances due from depository institutions	1794
	Noninterest-bearing balances and currency and coin	100
	Interest-bearing balances	30502
	Securities	
	Federal funds sold and securities purchased under agreements to resell in domestic offices of the bank and of its Edge and Agreement subsidiaries, and in IBFs	975
	Loans and lease financing receivables:	
	Loans and leases, net of unearned income	19525
	LESS: Allowance for loan and lease losses	226
	LESS: Allocated transfer risk reserve	0
	Loans and leases, net of unearned income, allowance, and reserve	19299
	Assets held in trading accounts	0
	Premises and fixed assets (including capitalized leases)	627
	Other real estate owned	0
	Investments in unconsolidated subsidiaries and associated companies	0
	Customers' liability to this bank on acceptances outstanding	0
Intangible assets	0	
Other assets	1603	
Total assets	54900	
LIABILITIES	Deposits:	
	In domestic offices	50222
	Noninterest-bearing	13943
	Interest-bearing	36279
	In foreign offices, Edge and Agreement subsidiaries, and IBFs	N/A
	Noninterest-bearing	N/A
	Interest-bearing	N/A
	Federal funds purchased and securities sold under agreements to repurchase in domestic offices of the bank and of its Edge and Agreement subsidiaries, and in IBFs	0
	Demand notes issued to the U.S. Treasury	0
	Other borrowed money	0
Mortgage indebtedness and obligations under capitalized leases	0	
Bank's liability on acceptances executed and outstanding	0	
Notes and debentures subordinated to deposits	0	
Other liabilities	614	
Total liabilities	50836	
Limited-life preferred stock	0	
EQUITY CAPITAL	Perpetual preferred stock	N/A
	Common stock	300
	Surplus	300
	Undivided profits and capital reserves	3464
	Cumulative foreign currency translation adjustments	N/A
	Total equity capital	4064
	Total liabilities, limited-life preferred stock, and equity capital	54900

We, the undersigned directors, attest to the correctness of this statement of resources and liabilities. We declare that it has been examined by us, and to the best of our knowledge and belief has been prepared in conformance with the instructions and is true and correct.

Pauline Couch
Name
Vice President & Cashier
Title

of the above-named bank do hereby declare that this Report of Condition is true and correct to the best of my knowledge and belief.

Directors

Pauline Couch
Signature
7-18-84
Date

Rice Springs News

The folk from the Trinity Lutheran Church gave our 4th. of July party. Pastor, Rick Hahn gave a fitting patriotic program. His brother, Chris Hahn played the piano and sang several selections. Ruth Ann Klose and Pauline Dick sang a duet with Mrs. Klose at the piano. The pledge of allegiance was given. Refreshments of delicious home made

ice cream and home baked cookies was served to all residents and staff. Serving the refreshments were, Mrs. Rick Hahn, Pauline Dick, Lydia Moeller, Dora Klose, Erna Pieser, Henretti Rueffer, Annie Goebel, Frances Fisher, Lydia Klose, Lil Peiser and Ella Peiser. Many thanks goes to these people.

Wednesday night, the child-

ren of Mrs. Izetta Clark, Mr. and Mrs. Reese Clark, Mr. and Mrs. Charles Clark and Mr. and Mrs. Joe Clark of Sagerton hosted a birthday party for Mrs. Clark's 91 birthday. A beautiful decorated cake and punch was served to the residents. Then to her surprise on Thursday her friends from Sagerton along with her daughter-in-

law, Frances Clark came and brought cake and ice cream. Those attending were: Mrs. M.Y. Benton, Lillie Lehmann, Neva McKerall, Louise Stegemoeller, Lillie Mae Ray (her room mate), Alva LeFevre, Frances Clark, and a resident, Alvena Holle. On Sunday an old time friend, Sallie Adams of Holiday visited with her.

W.E. Luce of Canton visited his mother, Mrs. Lois Luce. Other visitors of Mrs. Luce were Winona and Wayne Barrett of Blythe, California.

Mr. and Mrs. Elva Hines and Sigmund Stovall of Hamlin visited Mattie Hines.

We welcome Virginia Williams and Lou Kuenstler. Visiting Mrs. Williams were her brothers, John and Roger Curry of Lubbock and visiting Lou Kuenstler were her son,

Paul A. Kuenstler and granddaughter, Sandra Green of Arizona.

Mr. and Mrs. Roger Barton of Harlingen, Cynthia and Barry Barton, Avril and Ashley of Weatherford, Mr. and Mrs. Fred Sanders of Frederick visited with Alma Cole.

Mary Beth Wyatt and Jean McDonald of Wichita Falls visited their mother, Lone Menefee.

Boyd and Jewel Allen of Stephenville visited with Mae Ray. Mrs. Ray accompanied them to Rule to visit in the home of Mr. and Mrs. Burney Camp.

Jessie Ruth Sorensen and Valeta of South Sioux, Neb., Lelia Nell and Jessie McDonald of Wichita Falls visited Mrs. Annie Jones.

Mr. and Mrs. Gary

Turnbow and girls, Nita Leggett and Shawn of Abilene visited Mae Belle Turnbow.

Mavis and J.J. Williamson of Plainview visited Ada Williamson and Nannie McCaul.

Jean Buford of College Station visited her mother, Mrs. Lelia Conner.

Mr. and Mrs. Jay Pumphrey of Fort Worth, Hazel Letz and Adeline Letz of Old Glory visited Mrs. Jonnye Pumphrey.

Dan and Betty Howard of Tulsa, Oklahoma visited Angie Mullino.

Sue and Charles Hunter of New Orleans visited her mother, Mrs. Beulah Persons. Betty and Tammy Brueggeman of Stamford visited Al Arend.

Mr. and Mrs. Jack Harper of Burkburnett, Arthur,

Barbara and Spencer McDonald of Keller visited Carrie McNulty.

Karen Strickland of Abilene, Alpha and Roy Hill of Floydada visited Mrs. Edna Collins. Mrs. Collins visited Curtis Love in the local hospital.

Sharon Brown of Abilene visited Texie Perdue.

Nettie and Raleigh Brock and grandson Wessie Brock of Fort Worth visited their parents, Mr. and Mrs. Bill Harrell and Mae Brock.

Visiting Alvena Holle were Mrs. Pearl Schwartz, Mrs. Jack Callaway, Jay and Cassie Mrs. Kenny Wood and William of Snyder, Steven Lehrmann, Lillie Lehrmann and Frances Clark of Sagerton, Gail Lehrmann of Omaha, Neb., Helen and Clancy Lehrmann, Hazel Letz

and Adeline Letz of Old Glory. Visiting Mr. and Mrs. Herman Letz were Mr. and Mrs. Kent Denton, and Chad of Mesquite, and Gail Lehrmann of Omaha, Neb., Hazel and Adeline Letz of Old Glory.

Jerry and Trish Hunt of Aspermont visited with Sarah Hunt.

Juanita and A.B. Edsell of Elbert visited Leah Winningham.

J.R. Lawson of Abilene visited with Aletha Scifres.

Mr. and Mrs. Don Bowers of Dallas visited his mother, Mrs. Mildred Tonn.

Peggy and Roland Rose of Abilene visited Charity Bradley.

Many thanks to the Rebecca Sunday School class of the East Side Baptist Church for the pretty and useful bibs.

THC Urges Preservation Of County Courthouses

County courthouses were the earliest permanent buildings to appear on public squares during the Republic of Texas. They represented organization, prosperity, and self-government, and stood as the focus of counties and communities.

Many of the earliest courthouses built in Texas were replaced in the late 19th century with more permanent and elaborate structures. Courthouses built during this time, many of which are still in use, featured statues of the goddesses of liberty or justice and included such architectural styles as Victorian Gothic, Classical, Renaissance Revival, Romanesque, and Second Empire. Architects J. Riely Gordon, W.C. Dodson, and Nicholas Clayton are responsible for many of the courthouse designs of this time, known as the "Golden Era of Courthouse Construction."

Today, more than 140 late 19th and early 20th-century courthouses still stand. Many of these courthouses, however, have been expanded, renovated, and/or remodeled to keep up with recent demands associated with growth or convenience. Inappropriate modifications often have resulted in much damage to the historical integrity and beauty of the courthouses. Neglected maintenance also has taken a toll on these fine public buildings; a \$400 leak

in the roof can become a \$40,000 repair job if neglected for 10 years. Some counties have even met modern-day demands by destroying their historic courthouses and constructing new ones in their places; approximately 30 county courthouses have been built since 1950.

The Texas Historical Commission (THC), the state agency for historic preservation, encourages counties to consider alternatives to demolishing courthouses. Nineteenth and early 20th-century courthouses were well-built, constructed with care, and designed to last. They are outstanding examples of Texas' architectural and cultural heritage, and through careful planning with professional restoration consultants, courthouses can be modernized without losing their original character or integrity. Even when new courthouses must be built, old structures can be preserved and used for other purposes.

To encourage careful rehabilitation of county courthouses with in the context of historic preservation, the state legislature has established specific laws to protect these landmarks. These laws, listed in Article 6145, Section 14, Vernon's Texas Civil Statutes, are designed to safeguard courthouses from drastic changes or modifications without review of plans by the Texas Historical Commission.

They specify that county judges and/or their architects must notify the THC 30 days before any proposed changes to a county courthouse are planned. Additional legal protections exist for courthouses that are National Register properties, State Archeological Landmarks, and/or Recorded Texas Historic Landmarks.

The THC has staff available to work with county officials when courthouses changes are anticipated. The Commission also oversees the Texas Historic Preservation Grants Program, which has channeled more than \$1 million to projects involving historic Texas courthouses and jails. The THC has a free booklet available, entitled "Texas County Courthouses," that offers more specific information on courthouse preservation. For more information, contact the THC, P.O. Box 12276, Austin, TX 78711, 512/475-3092.

Basketball Scheduled At FBC

The First Baptist Church of Haskell will sponsor a night of basketball playing with some HSU basketball players July 21. All high school or junior high youths are invited to meet at the gym of the Family Life Center to arrange teams at 6:30 p.m.

Those participating will play basketball until 9:30. Watermelon will be served at 8:30. Other games such as ping pong will be available for those not wishing to play basketball.

For more information call Lyn Goodin at the First Baptist Church office. Bring your tennis shoes!

Brightly colored — attention getting — Open-Closed Signs for your office or business. Comes complete with changeable letters in black or red. Also includes a sign for counter top use. See at the Haskell Free Press.

Call
Nanny Plumbing
for all your plumbing needs.
We offer Rheem H/C, Roto-Rooter and Ditch Witch Services, Plus Dependable Service
Monday thru Friday
7 a.m. to 5 p.m.
Sat. 7 a.m.-12 noon
301 S. Ave E 864-3043

AUCTION SALE!

OUSLEY DRY GOODS SATURDAY, JULY 21, 1984
606 NORTH 5th, RULE, TX. 9 A.M.

After 32 years of being in the Dry Goods Business at Rule, Mr. Novis Ousley is retiring and offering these goods for auction.

Jiffy Hat Steamer	Thread, Buttons, Zippers
Casual & Dress Hats	Piece Goods - Patterns
Cash Register	Ladies Pants
Adding Machines	Ladies Blouses
19" B&W TV	Sock & Tie Rack
Childrens & Adult Shoes	Jewelry, Hose
Children & Adult Levis	Baby Clothes
Casual & Dress Shirts	Lingerie
Casual & Dress Pants	Iron
(2) Pant Racks	(2) Old Telephones
Insulated Coveralls	Fan

—Many Items Too Numerous To Mention—

Ousley's of Rule
Novis & Jewel Ousley
Rule

Doyle High, Auctioneer
Terms of Sale: Cash Auctioneer-TXS-070-0055

SIZZLING SUMMER **Food Buys** 41.37 JUL '81

Boneless Real Nice Rib Eye Steaks \$3 ⁷⁹ / _{lb}	California Cantaloupes 25 ^c / _{lb}
Good Quality Hamburger Meat \$1 ¹⁹ / _{lb}	Avocados 4 for \$1 ⁰⁰
Wisconsin Red Rind Round Cheese \$1 ⁸⁹ / _{lb}	No. 1 California Lettuce head 39 ^c
Blue Ribbon Round Steak \$1 ⁹⁹ / _{lb}	Orange Crush 2 liter 79 ^c
Parkay 1 lb quarters 59 ^c	Del Monte Tomato Wedges 59 ^c
Pure Ground Black Pepper 4 oz can 49 ^c	Kool Aid makes 10 quarts \$2 ³⁹
Swanson Chicken Broth 3 cans \$1 ⁰⁰	Starkist Tuna 6 1/2 oz can 79 ^c
Wesson Oil 24 oz \$1 ⁴⁹	Gain giant size \$1 ³⁹
Towie Stuffed Olives 5 oz 69 ^c	Vanish 34 oz \$1 ¹⁹
Spam 7 oz can 89 ^c	Cigarettes \$8 ¹⁹ / _{ctn}

POGUE GROCERY
—Extra Parking Behind The Store. Home Owned and Operated—
113 North Avenue E Phone 864-2015 Haskell, Texas

Sagerton Community News

Week of July 12

John Lynn Vahlenkamp of Denton was initiated into the Alpha Lambda Delta, National Scholastic Honor Society for college and university freshman. Students must have obtained an average of B plus or better to be named for membership according to a news release from North Texas State.

John was one of 3 students from Denton initiated. He has a grade point average of 3.82. John made the Deans list in the fall and spring semester.

He is the son of Virgil and Geneva Vahlenkamp of Denton. He is the grandson of Mr. and Mrs. Leo Monse Sr. of Sagerton and the late Mr. and Mrs. August Vahlenkamp of Old Glory. He has numerous relatives in this area.

Guests in the home of Mr. and Mrs. Leo Monse Sr. recently were Mr. and Mrs. Virgil Vahlenkamp, Charles and John of Denton, Mr. and Mrs. Mark Etridge of Aubrey and Mr. and Mrs. Bud Vahlenkamp of Carrollton, Mr. and Mrs. Frank Mrazek of Aspermont and little grandson Jason Mrazek of Richmond visited in the Leo Monse home on Saturday evening. Jason had spent 2 weeks with his grandparents.

Mr. and Mrs. Virgil Vahlenkamp and all their children attended the Vahlenkamp reunion at the Sons of Hermann Hall in Old Glory on Sunday.

Mrs. Louise McEwen of Aspermont visited in the home of Mr. and Mrs. E.J. Neinast

recently.

Mr. and Mrs. Sam Neinast went to Tuscola June 16th for the birthday party of grandson Dustin who was 2 years old. They always spent Father's Day with their daughter, Mrs. Roy McEwen and family. Another grandson Daryl McEwen was 8 years old on June 27th.

Mr. and Mrs. Paul Dick of Haskell visited in the home of Mr. and Mrs. Sam Neinast recently.

Mr. and Mrs. Sam Neinast spent a few days at Possom Kingdom lake last week.

Mr. and Mrs. A.H. Teichelman spent last weekend in Wichita Falls with Mr. and Mrs. Dan Humphreys sons, Matt and Stephen.

Cindy Wood of Snyder 9 years old daughter of Kenny and Althea Wood, granddaughter of Pearl Schwartz, great granddaughter of Lillie Lehrmann and Mrs. Wood, and granddaughter of Kenneth and Trudy Wood, was elected State Sweetheart at the Texas Fireman's and Fire Marshal Association and Ladies Auxiliary that was held recently in McAllen.

Visiting for some time last weekend in the home of Lillie Lehrmann were Pearl Schwartz, Althea, her daughter Cindy and son William, William and Lanette, her son Jay and daughter Cassie all of Snyder. They were on their way to the Schwartz reunion at Haskell.

Ann and Melvin Baitz and Bill and Margie Hertel spent several days in the cool mountains of New Mexico.

While there they went to Ruidosa for the horse races.

Weekend visitors in the home of Bill and Margie Hertel were their children, Mike, Karla, Sam, Craig, Misty, Vickie, and Cindy of Lubbock and Jack Ralph of San Angelo.

Saturday afternoon was spent at Lake Stamford boat riding, skiing and visiting with Dave Browns and their daughter Annette and children.

John L. Brooks wants to thank friends and relatives who sent her cards, flowers and gifts after she had surgery. Everyone that was at the last Friendship dinner signed their name to a card for her.

Mr. and Mrs. Alvin Bredthauer, Erna and Walter Schaake of Stamford enjoyed playing 84 in the home of Mr. and Mrs. Arthur Knippling Tuesday night.

Mr. and Mrs. Alvin Bredthauer, Evelyn Kainer of Stamford, Herbert Lammert of Old Glory, Mr. and Mrs. Danny Lammert, Jonathan and Paige went to a Lammert reunion recently at Brenham which everyone really did enjoy themselves.

The Friendship Club meet in the Fellowship Hall of Faith Lutheran Church June the 28th with a lot of people missing being sick or working so it was a small group there.

Those who attended were Mr. and Mrs. Anton Teichelman, Mrs. Velma Lou Hertel, Mr. and Mrs. Delbert LeFevre, Mr. Charles Clark, Mrs. Ione Sheid, Mr. and Mrs. Reece Clark, Mrs. Neva McKerrall, Mrs. Lucy William, Mr. and Mrs. Sam Neinast, Mr. and Mrs. Glyn Quade, Mrs. Betty Balzer, Mr. Larry Cornelson, Mrs. Lillie Lehrmann, Mrs. Lena Schaake, C.E. Stegemoeller, and Mrs. Alva LeFevre.

Mr. and Mrs. Kenneth Stegemoeller visited in the home of his mother Mrs. Heneritta Stegemoeller last weekend.

Mr. and Mrs. John Alt and sons, Robert and Fred of Ohio visited in the home of Mr. and Mrs. Gene Teichelman during the 4th of July. So the Teichelmans had a supper for them, invited several people which were Mr. and Mrs. Clarence Teichelman, Mr. and Mrs. John Teichelman, Mr. and Mrs. Ernest Lowack, Mr. and Mrs. Herbert Vahlenkamp, Mr. and Mrs. Lewis Corzine, and Mr. and Mrs. Clancy Lehrmann.

Mrs. M.Y. Benton had lunch in the home of Mr. and Mrs. Charles Clark Sunday.

Mr. and Mrs. Mike Summers of Fredericksburg visited in the home of Mike's

parents Mr. and Mrs. Zenor Summers over the weekend.

Mr. and Mrs. Alvin Ulmer went to Turnersville for a Pruitt reunion over the weekend.

Stacey Whitaker of Meeker, Colo. has been visiting her grandparents Mr. and Mrs. Alvin Ulmer but has gone home now.

Mr. and Mrs. Delbert LeFevre, Larressa LeFevre, Mr. and Mrs. Alvin Ulmer, Stacey Whitaker went to visit in the home of Mr. and Mrs. Kent LeFevre for a cook-out July 4th.

Mrs. Ed Peel, Mrs. Bill Perkins, Mrs. Steve Moffeth and children visited in the home of Mr. and Mrs. Arthur Knippling, Erna and Walter Schaake of Stamford, and Mr. and Mrs. J.B. Toney recently.

Erna and Walter Schaake of Stamford, Mr. and Mrs. Arthur Knippling, Clarence Stegemoeller played 84 in the home of Mrs. Lena Schaake last week.

Mr. and Mrs. Leonard Kieke, Mrs. Adela Niedieck,

Herbert Lammert played 84 in the home of Mr. and Mrs. Arthur Knippling Wednesday night.

Mr. and Mrs. Ernest Bredthauer, Mr. and Mrs. Alvin Bredthauer, Mrs. Loudell Barbee played 84 in the home of Mrs. Adela Niedieck Friday night.

Several of the people that have been in the hospital over several weeks are at home now. Mrs. G.W. Lefevre from Lubbock, Fred Kupatt from Abilene hospital, Mrs. John L. Brooks from Haskell, and Mrs. Noma Tredemeyer from Abilene hospital. Wishing them all a speedy recovery.

All of John L. Brooks children came to be with her after she had surgery. Her children are Mrs. Maxey Thompson, Bill Tabor of Dallas, Mr. and Mrs. Jack Tabor of Austin, his granddaughter Karen Tabor of Dallas.

Mrs. Emma Raphael of Stamford visited in the home of Mrs. Buster Tredemeyer Monday afternoon.

The monthly Bredthauer Dinner was held in the home of Mr. and Mrs. Alfred Bredthauer Sunday with a nice dinner, everyone brought a dish. Those who attended were Mr. and Mrs. Ernest Bredthauer of Rule, Mr. and Mrs. Alvin Bredthauer, Mrs. Adela Niedieck of Sagerton. The afternoon was spent in playing 84.

Mrs. M.Y. Benton visited with her granddaughter and her husband and baby in San Angelo, also with her daughter Mr. and Mrs. Eldon Cook who lives in Big Springs.

Week of July 19

The A.L.C.W. met Tuesday at 2:30 o'clock with just 5 women present. Those who attended were, Mrs. Louise Stegemoeller, Mrs. Henrietta Stegemoeller, Mrs. Frieda Knippling, Mrs. Alvin Bredthauer, Mrs. Sam Neinast. After the topic refreshments was served which everyone enjoyed.

The Friendship Club met Thursday at 11:30 o'clock with

a small group attending. Those who attended were Mr. Arthur Knippling, Mr. and Mrs. J.B. Toney, Mr. and Mrs. Delbert LeFevre, Mr. and Mrs. Anton Teichelman, Mr. and Mrs. Alvin Bredthauer, Mr. Joe Clark, Mr. Herbert Lammert, Mr. Larry LeFevre, Mr. and Mrs. Reece Clark, Mrs. M.Y. Benton, Mrs. Alva LeFevre, Mrs. Neva McHerrell, Mr. and Mrs. Buster Tredemeyer, Mr. Clarence Stegemoeller, and Mrs. Louise Stegemoeller.

Mrs. Reece Clark went to San Antonio last week to help her daughter Mrs. Pete Bryan of Big Spring find a house for Mrs. Bryan who plans to move there.

Mr. and Mrs. Alvin Ulmer visited in Hamlin with Alvin's mother and his brother Mr. and Mrs. Ray Ulmer Sunday.

Mr. Grady Laughlin of Fort Worth came for a short visit in Sagerton on Saturday.

Mrs. M.Y. Benton visited in the home of Mrs. Louise Stegemoeller Sunday afternoon.

Mrs. Velma Lou Hertel had all of her children in her home

last week. Those who were there were Mr. and Mrs. Leslie Baitz of Austin, Mr. and Mrs. Melvin Baitz, Mr. and Mrs. Bill Hertel, Mr. and Mrs. Kenneth Hertel of Hamlin, Mrs. Velma Lou Hertel went to visit the Leslie Baitz in Austin for a few days.

The Hobby Club will meet in the home of Mrs. Delbert LeFevre on Thursday at 2:00 o'clock.

Mr. and Mrs. Ernest Bredthauer, of Rule, Mrs. Adela Niedieck, Mr. and Mrs. Alvin Bredthauer went to Caldwell Saturday to attend a school reunion which they attended when they lived in Caldwell years ago.

Mrs. Adela Niedieck visited in the home of Mr. and Mrs. Roy Niedieck of A&M from Thursday until Sunday then came to Caldwell to attend the reunion.

Mrs. Adela Niedieck, Mr. Herbert Lammert, Mr. and Mrs. Leonard Kieke played 84 in the home of Mr. and Mrs. Arthur Knippling Wednesday night.

Larry Quade of Kansas is visiting his parents Mr. and Mrs. Glyn Quade.

Most Destructive Fires Occurred In Residences

Destructive fire killed more than 165 Texans, injured at least 1,540 and damaged well over \$189 million in property last year, according to State Fire Marshal Ernest Emerson.

"Most of the fire-related deaths, injuries and dollar losses occurred in residences," said Emerson. "Negligence was the major contributing factor in the cause of these fires."

There were 17,274 structure fires reported last year. Nearly 75 per cent of those fires occurred in residences. The greatest percentage of residential fires (19 per cent) occurred when cooking was left unattended. Cooking-related fires were also responsible for the greatest number of injuries in residences. More than 74 per cent of all fire-related deaths occurred in residences.

"Most of the residential-fire deaths (23 per cent) occurred in fires where the cause was unknown," said Emerson. "Twenty-one per cent of the fire deaths were in fires caused by heating equipment. An additional twenty per cent of the fire deaths were in fires caused by careless smoking."

The greatest number of heating-related fires resulted when gas-fueled space heaters were placed too close to combustible wall coverings.

"But we have also learned that a number of fatal fires were caused when heating equipment malfunctioned," Emerson said.

"For instance, water heaters were the second leading

type of equipment involved in fatal residential fires. Forty-nine per cent of the water heater-related fires occurred when combustible materials were placed too close to the water heater. But 35 per cent of the fires occurred when the water heater malfunctioned, according to fire fighters at the scene of these fires," Emerson said.

Fire statistics are compiled by the State Board of Insurance, State Fire Marshal's Office on the Texas Fire Incident Reporting System (TEXFIRS). More than 260 fire departments protecting 45 per cent of the state population are currently reporting fires to the TEXFIRS.

"Fire departments are doing a brilliant job of supplying fire data to this system. For the first time in

history, we are able to identify and analyze fire problems in Texas. Our understanding of these fire problems improves as more fire departments contribute to the system," Emerson concluded.

For further information about TEXFIRS or for a copy of the TEXFIRS 1983 Annual Report, contact Dennis Gissell, State Board of Insurance, State Fire Marshal's Office (512) 475-4203.



The longest known reign in history was that of Pepi II of the sixth Egyptian dynasty. He became king at the age of six and ruled until he died 94 years later.

July 19, 20, 21, & 22

8 oz size **Spray & Wash 59¢**

TV Reg. 89¢ Size **Popping Corn 49¢**

Dove Dishwashing 12 oz size **Soap 59¢**

32 oz bottle **Gatorade 69¢**

6 pack can **Dr. Pepper \$1.59**

Buster's Drive-In

PUBLIC NOTICE

AT&T Communications has filed with the Public Utility Commission (PUC) of Texas to introduce a new intrastate, optional long distance service to begin August 1, 1984, the same date "Reach Out® America" plan will be available for interstate calls.

A new service designed to give customers the opportunity to reduce the cost of long distance in Texas has been filed with the state PUC by AT&T Communications of the Southwest, Inc.

"Reach Out® Texas" is an optional calling plan which will provide additional discounts on long distance rates for Texas customers who frequently place calls in the evening, weekend, and night time calling periods.

The new "Reach Out® Texas" plan for the first time extends the benefits of competition to many Texas consumers who previously have not had any discounted long distance service available to them.

AT&T Communications customers who choose this new optional service will pay a monthly charge of \$14 which entitles them to one hour of intrastate "Direct Dialed" (1+) calling during the weekend and night rate period.

An additional customer savings for those participating in the plan will be that any Direct Dialed calls placed during the weekend and night rate period that exceeds the one hour period will be charged at an hourly rate of \$12, or \$.20 per minute.

Customers selecting this option also receive an additional 15 percent discount for intrastate Direct Dialed calls during the evening discount rate period for a total savings of approximately 38 percent.

A one-time charge of \$6 is billed when a customer orders the "Reach Out® Texas" plan. The \$6 is collected by AT&T Communications and paid to the local telephone company to establish the service. This charge will be waived during the first 90 days that the offering is available.

AT&T Communications is proud to offer this optional service for its Texas long distance customers and will in the future continue to introduce cost cutting programs to help Texans reduce their long distance bills.

A complete copy of the "Reach Out® Texas" tariff and rate schedule is on file with the Texas Public Utility Commission at Austin, Texas.

AT&T Communications estimates that the revenue impact of this new service would be significantly less than 2.5 percent of annual gross revenues.

Persons who wish to intervene or otherwise participate in these proceedings should notify the Commission as soon as possible. A request to intervene or participate or for further information should be mailed to the Public Utility Commission of Texas, 7800 Shoal Creek Boulevard, Suite 400N, Austin, Texas 78757. Further information also may be obtained by calling the Public Utility Commission Consumer Affairs Division at (512) 458-0223 or (512) 458-0227, or (512) 458-0221, teletypewriter for the deaf.

*Customer billing for the optional calling plan will be provided for AT&T Communications through billing contracts with the local telephone companies. Therefore, the introduction of these rate plans into a specific area is contingent upon local company billing capabilities. Southwestern Bell Telephone Company has agreed to handle the billing in its service areas effective August 1, 1984.

AT&T Communications

Major Medical that's worth a Million.

Time Insurance Company's Major Medical plan offers:

\$1,000,000 in lifetime benefits per insured party.

Payment of all covered charges both in and out of the hospital. Without schedules.

A deductible you pay just once a year rather than with each medical occurrence.

And the plan is area-rated so you don't pay for higher risk areas of the country.

Call us for full details.

Lanco Insurance
Buddy Lane
(817) 864-2629

YOUR Independent Insurance AGENT
SERVES YOU FIRST

TIME INSURANCE COMPANY

EMS

EMERGENCY MEDICAL SERVICE

24 Hour Ambulance Service
Oxygen Equipped

Licensed Personnel
3 Ambulances

Complete Insurance filing for, Medicare, Medicaid, or Private Ins

Haskell Co. Emergency Ambulance Service

864-2621
EMERGENCY NUMBER

307 North 1st Haskell
Office 864-3945

CAPITOL UPDATE

John Tower
U.S. SENATOR for TEXAS
WASHINGTON, D.C. 20510



WTCC Offers Tips For Conserving Water

America is confronted today by the Soviet Union's drive to dominate the high seas. While our leaders are moving to meet this challenge, it will require nothing less than a sustained and comprehensive effort in rebuilding our nation's naval defenses.

The Soviet naval threat did not develop overnight, but is the result of a longtime build-up on the part of the Russians. To see how Soviet naval power has grown, we must look at the past.

The United States is essentially an island nation in that it relies on the seas for foreign trade. A large navy is needed to protect these sea lanes and to guard America's vast coast lines.

However, the Soviet Union has a limited number of usable seaports and imports few products. There is no need for the Soviets to maintain a sizable navy except for offensive purposes.

Following World War II and through the mid-60s, the United States enjoyed naval superiority and maintained peace and freedom of the world's waterways. The United States relied upon superior technology and better trained personnel to ensure a qualitative edge over the Soviet Union. The fleet's worldwide networks of U.S. and allied naval bases, dockyards and supply depots offered a decisive advantage.

In contrast to America's overall strength, the Soviet navy was technically unsophisticated and possessed relatively few heavy surface warships and aircraft carriers. The Soviets also were handicapped by a limited number of sea ports.

However, recently the scales tipped in favor of the Soviet Union. It extended its reach to strategic points around the globe while the United States followed a general policy of maintaining its military status quo. The Soviets also have increased the numerical superiority and diversity of its fleet while challenging, and in some cases, surpassing America's precious advantage in sophisticated technology.

For example, the U.S. fleet of ballistic missile submarines once outnumbered the Soviet fleet 31 to 0. Today that advantage has reversed with the Soviets now possessing 91 ballistic submarines compared to 41 for the U.S. Navy.

In other areas, the United States has increased its number of attack submarines to 95, but the Soviets maintain an overwhelming numerical advantage of 198. Additionally, the Soviet's growing naval air arsenal has grown to include a land-based force of an estimated 400 Bader, Blinder and Backfire bombers. The U.S. Navy's fleet of 187 surface vessels is heavily outnumbered -- 186 to 283 -- by the Soviet's growing inventory of cruisers, destroyers and frigates.

While this Soviet bid for naval supremacy went unanswered for over a decade, the U.S. Navy has begun to re-establish American maritime strength. It is clear that the American fleet is stronger and more efficient today than just four years ago, particularly in terms of combat readiness and day-to-day operations.

However, the Soviets fully intend to maintain or extend their level of naval power. For a maritime nation like the United States, national security is contingent upon a strong navy.

Congress must be willing to sustain the recent progress to bring our fleet to its necessary strength. To accept anything less would be to ignore an historical truth. As President Theodore Roosevelt once observed, "A good navy is not provocative of war. It is the surest guaranty of peace."

The water levels in many reservoirs in the West Texas Chamber of Commerce service area are at the lowest levels experienced in a decade or more. There is ample water in most to continue to provide for the needs of the people for several more months. However, it would be wise for residents of the area to begin practicing conservation to extend the life of the current supply should the drought conditions continue for several more months, according to WTCC Water Committee Chairman A. Wayne Wyatt.

During periods of extended drought, water use by city residents increases largely because of increased outdoor use. Water conservation can be practiced while providing adequate water for healthy yards, flowers, shrubs and trees.

The following hints have been compiled to help guide residents in water use outside the home with minimum waste:

1. Water your lawn early in the morning during the hot months. Much water used on the lawn can simply evaporate between the sprinkler and the grass.
2. Use a sprinkler that produces drops of water rather than a fine mist, to avoid evaporation.
3. If you use a soaker hose, turn it so the holes are on the bottom, again to avoid evaporation.
4. Water slowly for better absorption, and never on windy days.
5. Forget about watering the streets or walks or driveways. They won't grow a thing.
6. Condition the soil with compost before planting

flower beds so that water will soak in rather than running off.

7. Fertilize lawns at least twice a year for root stimulation. Grass with good root systems make better use of less water.
8. Learn how to know when your grass needs watering. If it has turned a dull grey-green and when footprints remain visible as you walk across it, it's time to water.
9. Don't water too frequently. Too much water can overload the soil so that air cannot get to the roots, and can encourage plant diseases.
10. Don't over-water. Soil can absorb only so much moisture and the rest simply runs off. A timer will help, and either your kitchen timer or an

alarm clock will do. An inch-and-a-half of water applied once a week will keep most Texas grasses alive and happy.

11. Automatic sprinkler systems should be operated only when the demand on your



One of the most malleable of metals, gold can be hammered into sheets so thin they are almost transparent.



In 1893, New Zealand became the first nation in which women had the right to vote.

town's water supply is lowest. Set the system to operate between four and six a.m.

12. Don't scalp your lawn during hot weather. Taller grass holds moisture better. Cut grass fairly often, so that only 1/4 to 3/4 inch is trimmed

off. This will produce a better looking lawn.

13. If small areas in your yard need more frequent watering (those near walks or driveways or in especially hot, sunny spots), hand water with the hose in those areas.

14. Never "sweep" your walks or driveways with the hose. Use a broom or rake.

15. When washing the car, use a bucket of soapy water and use the hose only for rinsing.

Remember that saving water also saves energy. About 50 percent of the water used in a home is hot water. Providing energy to fuel your hot water heater is a major drain on your utility bill. By saving water, you save energy and money at the same time.

SCHOOL DISTRICT: *West Independent School Dist.*

NOTICE OF CALCULATION OF EFFECTIVE TAX RATE AND PUBLICATION OF ESTIMATED UNENCUMBERED FUND BALANCES

Mr. Garrison, The Ark *William E. D.*

is accordance with the provisions of Sec. 32.09, Property Tax Code, have calculated the tax rate which may not be exceeded by more than three percent by the governing body of the district, without holding a public hearing as required by the code. That rate is as follows: \$2.52 per \$100 of value.

The estimated unencumbered fund balance for Maintenance & Operations Fund: \$ The estimated unencumbered fund balance for Interest & Sinking Fund: \$

(Name, Title/Position) _____
(Date) _____

CALCULATIONS USED TO DETERMINE EFFECTIVE TAX RATE

I. DATA	
1. 1983 Total tax levy from the 1983 tax roll	\$ 252,570
2. 1983 Tax rate (M&O and I.S.C.)	\$ 26.07 / \$100
3. 1983 Debt service (D.S.) levy	0
4. 1983 Maintenance and operation (M&O) levy	\$ 252,570
5. 1983 M&O taxes on property in territory that has ceased to be a part of unit in 1984	0
6. 1983 M&O taxes on property becoming exempt in 1984	0
7. 1983 M&O taxes on taxable value lost because property is appraised at less than market value in 1984	0
8. 1984 Total taxable value of all property	\$ 27,465,574
9. 1984 Taxable value of new improvements added since Jan. 1, 1983	\$ 13,680
10. 1984 Taxable value of property assessed since Jan. 1, 1983	0
11. 1984 Tax levy needed to satisfy debt service (D.S.)	0
12. Rate to raise 1983 tax levy due to appraised roll errors (foot dollars divided by the difference of 1984 taxable value minus 1984 over-old homesteads taxable value)	0
13. Rate to regain taxes lost in 1983 due to appraised roll errors (foot dollars divided by the difference of 1984 taxable value minus 1984 over-old homesteads taxable value)	0
14. 1983 M&O Taxes used to regain lost 1982 levy	0
15. 1984 Taxable value of over-55 homesteads with frozen taxes	\$ 19,287
16. Frozen M&O levy of over-55 homesteads with frozen taxes	\$ 30
17. Frozen M&O levy of over-55 homesteads with frozen taxes	0

II. CALCULATION MAINTENANCE AND OPERATION (M&O) TAX RATE	
1. (A) 1983 Total tax levy (Data 1)	\$ 252,570
(B) Subtract 1983 Debt service levy (Data 3)	0
(C) Subtract 1983 Taxes on property no longer in unit (Data 5)	0
(D) Subtract 1983 Taxes on exemptions (Data 6)	0
(E) Subtract 1983 Taxes on productivity valuation (Data 7)	0
(F) Subtract frozen M&O levy of over-55 homesteads (Data 17)	0
(G) Subtract 1983 M&O taxes used to regain lost 1982 levy (Data 14)	0
(H) Adjusted 1983 M&O Levy	\$ 252,570
(I) Adjusted 1983 Taxable value of all property (Data 8)	\$ 27,465,574
2. (A) 1984 Total taxable value of all property (Data 8)	\$ 27,465,574
(B) Subtract 1984 Value of new improvements (Data 9)	0
(C) Subtract 1984 Value of annexed property (Data 10)	0
(D) Subtract 1984 Value of over-55 homesteads (Data 15)	0
(E) Adjusted 1984 Taxable value for M&O	\$ 27,465,574
3. (A) Divide the Adjusted 1983 M&O Levy (I-H above) by the Adjusted 1983 Taxable value for M&O (E above) \$ 252,570 / 27,465,574	\$ 9.20 / \$100
(B) Multiply by \$100 valuation	\$ 920
(C) Effective M&O rate for 1984	\$ 9.20 / \$100

INTEREST AND SINKING (I.S.C.) TAX RATE

(A) 1984 I.S.C. Levy needed to satisfy debt (Data 11)	\$ 0
(B) Subtract frozen I.S.C. levy of over-55 homesteads (Data 17)	0
(C) Adjusted 1984 I.S.C. Levy	\$ 0
(D) 1984 Total taxable value of all property (Data 8)	\$ 27,465,574
(E) Subtract 1984 Value of over-55 homesteads (Data 15)	0
(F) Adjusted 1984 Taxable value for I.S.C.	\$ 27,465,574
(G) Divide the Adjusted 1984 I.S.C. Levy (C above) by the Adjusted 1984 Taxable value for I.S.C. (F above)	\$ 0
(H) Multiply by \$100 valuation	\$ 0 / \$100
(I) Effective I.S.C. rate for 1984	\$ 0 / \$100

APPRAISAL ROLL ERROR RATE

(A) Rate to raise 1983 levy due to appraised roll errors (Data 12)	\$ 0 / \$100
(B) Rate to regain taxes lost due to errors (Data 13)	\$ 0 / \$100
(C) Total Rate to adjust for appraised roll errors	\$ 0 / \$100

TOTAL EFFECTIVE TAX RATE FOR 1984

(A) Effective M&O rate (C above)	\$ 9.20 / \$100
(B) Add Effective I.S.C. rate (I above)	\$ 0 / \$100
(C) Add Rate to adjust for appraised roll errors (C above)	\$ 0 / \$100
(D) 1984 Effective Tax Rate	\$ 9.20 / \$100

1984 Effective Tax Rate is the tax rate published as required by Sec. 32.04, Property Tax Code.

**Will Buy & Pick-up
Old Automobiles**

Contact
Ervin Unger
864-3714
after 5 p.m.

Money Matters

A Series Of Informative "Plain Talk" Thoughts Regarding Your Money Matters

Bad Checks Are Bad For Everybody

There's no polite way of saying it: "Don't write bad checks".

Sometimes a mistake in balancing the checkbook can cause you to overdraw your account, which can in turn make it necessary for a bank to return "insufficient fund" checks.

It sometimes seems that the same people continuously write bad checks without the proper funds in the bank to cover them. This causes problems for the merchant, creates extra work for the bank, and creates a very poor impression of the person who does it.

The way a person handles his checking account is carefully considered by the bank when deciding whether or not to loan that person money.

We Think Money Matters!

HASKELL NATIONAL BANK

864-2631 • 601 N. First
Haskell, Texas — Member F.D.I.C.

TALLSUP

NEW!

BIG ENOUGH TO QUENCH ANY THIRST

59¢

32 OZ. CUP

B-B-Q SANDWICH

ALLSUP'S SOUTHWESTERN STYLE

99¢

EACH

BORDEN'S ASSTD. FLAVORS ICE CREAM

ICE CREAM

\$1.79

1/2 GAL. CTN.

BORDEN'S SOUR CREAM AND DIPS

SOUR CREAM AND DIPS

59¢

8 OZ. CTN.

WISE COTTAGE FRIED POTATO CHIPS

REG. \$1.09

89¢

BAG REG AND ASSORTED

\$2.19

6 pack 12 oz can

Charcoal

\$1.19

10 lb bag

PRICES EFFECTIVE
JULY 19-21, 1984
WHILE SUPPLIES LAST

OPEN 24 HOURS EVERYDAY
HOT COOKED FOODS- GROCERIES
ICE- MONEY ORDERS- PRODUCE
FOUNTAIN DRINKS- SNACKS

ALLSUP'S
CONVENIENCE STORES

THERE'S ONE NEAR YOU

Harell Petty Receives New Assignment At WTU

Harell Petty, district merchandise sales manager for West Texas Utilities Company's Stamford District, has been promoted and transferred to Abilene, effective July 16.

The new assignment, announced by WTU Vice President Don Welch of Abilene, gives Petty dual responsibilities as Abilene District Merchandise Sales Manager and as assistant to the manager of the Company's Merchandise

Sales Department. He succeeds Cleve Evans, who has been named Assistant Manager of WTU's Abilene District.

Welch said the transition probably will require several weeks, although Petty and his wife, a fifth grade school teacher, will move to Abilene as soon as arrangements can be made.

A replacement for Petty in Stamford will be named soon and will be announced by

District Manager James Elam.

Petty joined WTU as a merchandise salesman Nov. 1, 1971 in Stamford. He previously had been a banker, served as cashier of Farmers State Bank in Lueders from 1955-1962 and as vice president of First State Bank in Bryson from 1962-71.

He is a native of Lueders and a 1949 graduate of Lueders High School. He attended Cisco Junior College.

In Stamford, Petty is a member of the Lions Club and has served as club president and as zone chairman. He and Mrs. Petty have four children and five grandchildren. The children are Amy Barrington of Krum, Ellen Combest of San Angelo, Wade Petty of White Deer, and Nan Wiley of Elk City, OK.

New Milk Product Now Available

A new type of milk product geared to today's lifestyles is being introduced in some Texas markets, says a Texas A&M University Agricultural Extension Service nutritionist.

"Ultra high temperature (UHT) milk is real, fresh, fluid Grade A milk that is heated to 280 degrees F, quickly cooled to room temperature and then packaged in a five-layer, aseptic package," explains Dr. Dymple Cooksey.

UHT milk can now be found in the juice section of some grocery stores. "The combination of ultra high temperature processing and aseptic packaging gives the milk an unrefrigerated shelf life of months," she adds.

The UHT process does not involve adding preservatives, and neither the flavor nor the nutritional value of the milk is changed, says the nutritionist.

What has changed is the convenience. For example, the lowfat white milk could be ideal for one or two-person households or for consumers who use small quantities of milk. Once opened, it will stay fresh twice as long as refrigerated milk, Cooksey notes.

People with busy lifestyles and those who have little time to shop may also find UHT milk a convenience, since it can be stored on a shelf or kept unopened in the refrigerator for months.

UHT milk is also handy to have on hand in case you run out of milk, or for cooking and baking needs, but it's not designed to replace refrigerated milk entirely, she says.

Chocolate, strawberry or orange cream flavored lowfat UHT milks are available in half pint containers. These flavored milks could be good alternatives to other beverages for children, since they offer essential vitamins, minerals and calcium, advises the nutritionist.

Cooksey believes the availability of UHT milk may mean that more people will use milk for sack lunches, picnics, traveling and other situations where refrigeration is a problem.

It can be carried along just like other non-refrigerated beverages and quick-chilled or served over ice. Or it can be frozen the night before packing it into a lunch box. By noon it will have thawed, and the cold milk will be ready for drinking.

ERASERMATE PEN by Papermate. Erasable ink that can be erased with any standard eraser and is refillable. Available in a variety of colors. Ideal for students. *Haskell Free Press*



South American Indians called the rubber tree *cahu-chu*, which means weeping wood. The drops of oozing latex made them think of big white tears.

CONSUMER ALERT

by **Jim Mattox**
Attorney General

"SPECIAL SALES" CAN BE DECEPTIVE

Every day thousands of Texas consumers receive flyers and mailers proclaiming a "special sale" on one or many items. Newspapers are full of "spring specials" on everything from lawn and garden equipment to Easter dresses.

And many of these sales are advertised something like this: "Buy one for \$10, get the second one for half price," or "normally sells for \$59.99, our sale price now \$39.99."

COMPARISON HYPE

These are price comparison advertisements, our Consumer Protection attorneys say, and they are a widely used, effective means of promoting a product.

In price comparison advertising, current prices for goods or services offered for sale to consumers are compared with previous prices, with future prices, or with other stated values. This is to show price reductions, cost savings, or sales, and is a common form of advertising.

Price comparisons based on inflated or arbitrary prices can be misleading, and our lawyers say, could constitute violations of the Deceptive Trade Practices-Consumer Protection Act, which prohibits "false or misleading statements of fact concerning the reasons for, existence of, or amount of price reductions."

They say that while most businessmen use price comparisons to advertise legitimate cost reductions, there are a few unscrupulous merchants who treat both consumers and their competitors unfairly by misusing price comparison advertising.

For example, they may raise the price of an attractive item, then later offer "an incredible price reduction on our most popular line of power tools." Our lawyers say it's misleading and illegal if the seller raised his price on an item a short period before a sale, since the previous price must have been in effect for a reasonable period of time and must have been sold regularly at the price before the sale.

AD TRICKS

Consumers should also read sale literature carefully. Phrases such as "made to sell for \$29" or "compare at \$7.99" can be meaningless. They may not mean the merchandise actually sold at that price, or that the merchant even tried to sell it at that price. Yet they give the impression that the purchaser will be getting a real bargain.

Other phrases such as "reduced from manufacturer's suggested retail price" can also be misleading if a manufacturer customarily lists an unrealistically high "suggested price" so retailers can offer what seems to be a good buy.

And offering merchandise at "factory price," "dealer costs," or "wholesale" can be deceptive if the merchant's definition of "dealer cost" means what an item cost a dealer, plus his overhead, advertising costs, sales commissions, and other expenses.

FOR MORE HELP

For help in consumer matters, call my nearest Consumer Protection Office (in Austin, Dallas, El Paso, Houston, McAllen, Lubbock, and San Antonio). The Attorney General's Office is the people's law firm. We're here to help you.

Tamara Lane Competes In Pre-Teen Contest

Out of 69 girls entering the National Pre Teen Contest from over West Texas at Lubbock June 29 and 30, Tamara Lane of Pampa was among the top ten in the Talent Contest.

Tamara is the daughter of Jerry and Mary Lou Lane of Pampa and the granddaughter of Mr. and Mrs. Cecil Jetton of Rochester.

Carlos Jimenez, Jr.

Can sell you a new vehicle cheaper than anybody

Middlebrock Motors 773-3661
673-1611

Want Ads... the most powerful column in the world

Thank You!

We would like to thank each and every one of our friends and customers for their business.

We have leased the Kountry Kookin' to Joyce Brooks effective July 16.

We encourage our customers to continue their patronage with the new owners.

Again, we say thank you.

Bill and Stella Steele

AREA'S MOST POPULAR

The S & S DRIVE-IN Theatre

Snack Bar! Stamford 773-3272

Fri., Sat., & Sun.

What on National

POLICE ACADEMY

Tues.-Wed.-Thurs. XX Adult-Only You Must Be 18 With I.D. "Liberated Woman"

SCHOOL DISTRICT: *Haskell High School Dist*

NOTICE OF CALCULATION OF EFFECTIVE TAX RATE AND PUBLICATION OF ESTIMATED UNENCUMBERED FUND BALANCES

T. J. Brisson Tax P.A. *Haskell, T.S.D.*

In accordance with the provisions of Sec. 20.04, Property Tax Code, have calculated the tax rate which may not be exceeded by more than three percent by the governing body of the County without holding a public hearing as required by the code. That rate is as follows: \$2.1122 per \$100 of value.

The estimated unencumbered fund balances for Interest & Sinking fund: \$ _____

(Normal) (Miscellaneous) *Interest & Sinking*

(Date) *July 2, 1984*

CALCULATIONS USED TO DETERMINE EFFECTIVE TAX RATE

1. 1983 Total tax levy from the 1983 tax roll	\$ 507,762
2. 1983 Tax rate @ 2.02 M&O and \$ 2.04 I&S	\$ 24,029,100
3. 1983 Debt service (IAS) levy	\$ 26,820
4. 1983 Maintenance and Operation (M&O) levy	\$ 26,812
5. 1983 M&O taxes on property in territory that has ceased to be a part of unit in 1984	\$ -
6. 1983 M&O taxes on property becoming exempt in 1984	\$ -
7. 1983 M&O taxes on taxable value lost because property is appraised at less than market value in 1984	\$ -
8. 1984 Total taxable value of all property	\$ 74,623,026
9. 1984 Taxable value of new improvements added since Jan. 1, 1983	\$ 124,120
10. 1984 Taxable value of property annexed since Jan. 1, 1983	\$ -
11. 1984 Tax levy needed to satisfy debt service (IAS)	\$ 28,200
12. Rate to raise 1983 tax levy due to appraisal roll errors (not dollars divided by the difference of 1984 taxable values minus 1984 over-55 homesteads taxable values)	\$ - /100
13. Rate to regain taxes lost in 1983 due to appraisal roll errors (not dollars divided by the difference of 1984 taxable values minus 1984 over-55 homesteads taxable values)	\$ - /100
14. 1983 M&O Taxes used to regain lost 1982 levy	\$ -
15. 1984 Taxable value of new improvements added since Jan. 1, 1983	\$ 124,120
16. Frozen M&O levy of over-55 homesteads with frozen taxes	\$ 4,267
17. Frozen I&S levy of over-55 homesteads with frozen taxes	\$ 4,267

1984 Effective Tax Rate is the tax rate published as required by Sec. 20.04, Property Tax Code.

HASKELL COUNTY

NOTICE OF CALCULATION OF EFFECTIVE TAX RATE AND PUBLICATION OF ESTIMATED UNENCUMBERED FUND BALANCES

T. J. Brisson Tax P.A. *Haskell County*

In accordance with the provisions of Sec. 20.04, Property Tax Code, have calculated the tax rate which may not be exceeded by more than three percent by the Commissioner's Court of the County without holding a public hearing as required by the code. That rate is as follows: \$2.1122 per \$100 of value.

The estimated unencumbered fund balances are as follows:

Farm-to-Market/Flood Control		Public Road Maintenance	
Maintenance & Operation \$		Maintenance & Operation \$	
Interest & Sinking \$		Interest & Sinking \$	
General Fund			
Maintenance & Operation \$			
Interest & Sinking \$			

(Date)

CALCULATIONS USED TO DETERMINE EFFECTIVE TAX RATE

Separate calculations are performed for each type of tax levied by County in order to determine a 1984 total effective tax rate. The following guide corresponds with the calculations above: A - Farm-to-market Road/Flood Control Tax; B - General Fund Tax; C - Maintenance of Public Roads Tax

1. 1983 Total tax levy from the 1983 tax roll	\$ 553,542
2. 1983 Tax rate @ 2.025 M&O and \$ 1.85 I&S	\$ 26,812,100
3. 1983 Debt service (IAS) levy	\$ 26,812
4. 1983 Maintenance & Operation (M&O) levy	\$ 26,812
5. 1983 M&O taxes on property in territory that has ceased to be a part of unit in 1984	\$ -
6. 1983 M&O taxes on property becoming exempt in 1984	\$ -
7. 1983 M&O taxes on taxable value lost because property is appraised at less than market value in 1984	\$ -
8. 1984 Total taxable value of all property	\$ 27,082,010
9. 1984 Taxable value of new improvements added since Jan. 1, 1983	\$ -
10. 1984 Taxable value of property annexed since Jan. 1, 1983	\$ -
11. 1984 Tax levy needed to satisfy debt service (IAS)	\$ 28,200
12. Rate to raise 1983 tax levy due to appraisal roll errors (not dollars divided by the difference of 1984 taxable values minus 1984 over-55 homesteads taxable values)	\$ - /100
13. Rate to regain taxes lost in 1983 due to appraisal roll errors (not dollars divided by the difference of 1984 taxable values minus 1984 over-55 homesteads taxable values)	\$ - /100
14. 1983 M&O Taxes used to regain lost 1982 levy	\$ -

1984 Effective Tax Rate for Each Tax Levied and the Total 1984 Effective Tax Rate are the rates published as required by Sec. 20.04, Property Tax Code.

An important part of your electric bill:

You.

FORM WTU CIS 760
WEST TEXAS UTILITIES COMPANY

PRE-SORTED FIRST CLASS MAIL PERMIT NO. 611 U.S. POSTAGE PAID POST CARD RATE

ACCOUNT NUMBER	DUE DATE	TOTAL AMOUNT DUE

PLEASE RETURN THIS STUB WITH PAYMENT

ACCOUNT NUMBER	MAIL DATE	DUE DATE	RATE	MULT.	PREVIOUS	PRESENT	KWH	AMOUNT DUE

SERVICE ADDRESS

EFF. AMOUNT	FUEL COST FACTOR	FROM	TO

30 DAYS MORE INST. MDSE PREV. ELEC.

TOTAL AMOUNT DUE

APR = ANNUAL PERCENTAGE RATE

In the past, your electric bill was "just another item" in your family budget, but that is not true anymore. However, as a consumer of electricity, YOU can make a difference. How you use electricity is an individual matter — it is in your hands — and in your pocketbook.

At West Texas Utilities we are working to provide dependable service at reasonable rates. Unfortunately, the costs of producing and supplying electricity have soared. WTU has had no choice but to raise its rates to pay for the high cost of fuel to generate electricity.

We know you are concerned about your electric bill, and we suggest a few things that can help you save money and energy.

Make it a family project to learn more about conservation. Keep your thermostat set at 78 degrees or higher in the summer and 68 degrees or lower in the winter. Operate your washing machine, dryer and dishwasher only with full loads. Turn off the television and lights when you leave a room. And check around your house to find other energy-saving measures that can mean dollar savings on your electric bill.

WTU is working to ensure an adequate supply of electrical power for YOU and all of our customers, while trying to assure the most value for your energy dollars now and in the future.

WEST TEXAS UTILITIES COMPANY

An Equal Opportunity Employer

WTU

A Member of The Central and South West System

WANT ADS Work Wonders!

NOTICE
The deadline for Classified Advertising is 12 noon on Tuesday.
Haskell Free Press

NOTICE
The Haskell Free Press reserves the right to edit and/or delete all news stories and locals for length and liability and to refuse to print anything deemed not newsworthy.

For Sale
K.E.-SURFACE concrete with attractive cool epoxy and stone. Beautiful outdoor flooring for pool, patios, porches, walks, and driveways. Call for samples and free estimates. 864-2629. 12tc

FOR SALE: 1983 Fleetwood mobile home. 14x68. 2 bedroom, 2 bath. Central Heat and air, underpinning, skirting, porches. To be moved. Like new. \$19,500.00 or \$3,000.00 down and take over payments. 673-4591 or 673-4581. 23tc

FOR SALE: Barbados sheep. Just right for Barbecue. 997-2783 after 5. 20tc

FOR SALE
Pre-fabricated Concrete Cellars.
Tony Williams
864-3674 or 864-2419. 12tc

FOR SALE: 1983 Oldsmobile 88 Braughm. Low mileage, wife's car. Priced to sell. 864-2624 or 864-2470. 18tc

SHAKLEE products, 100% NATURAL VITAMINS, herb lax, food supplements, and cosmetics. Products in stock at 300 N. Ave. H. 864-3330. Free deliveries in Haskell. 26tc

FOR SALE: AKC registered Yorkshire terriers. Champion blood line. Call 864-3918. Also 2 lbs. stud service. \$125.00. 27-29p

FOR SALE: 1975 Terry Travel Trailer in good condition. Sleeps 6. Has heating and air. Self contained. Has big tub and shower. Big refrigerator and overhead oven. Call 864-2320 after 5:30. 281tc

FOR SALE: 1978 Chevy Chevette \$500.00 or best offer. Has warped head and other possible engine problems. Good paint, body and interior. Call after 5 p.m. on weekdays 673-4121. 28-30p

FOR SALE: 1979 Ford Ranchero. New tires. Perfect condition. 864-2908. 28-29c

FOR SALE: 1980 Red Lincoln Town Car. New tires, 38,000 miles, red leather upholstery. Reasonable. All power, fully equipped. Call 864-3627. 29p

FOR SALE: GMC truck 2/4 or trade for smaller truck. 801 Union in Rule. 997-2112. 29p

FOR SALE: Two black & white TVs. One 10" and One 19". Kuykendall calculator, cash register and riding lawn mower. 817-997-2268. 29-30p

FOR SALE: Pure bred Beagles. 1 male, 2 female. Call 864-2018 after 6 p.m. 29c

FOR SALE: 1981 Ford Granada, 2 door, 27,000 miles. Call 864-3724 after 5 p.m. 29c

FOR SALE: 1980 Mazda GLC station wagon, 5 speed, air conditioner, 35 plus mpg. New tires, excellent condition. Munday, 422-4796. 29c

MUST SELL: 1984 Honda CR250. Boisen reeds sidewinder sprockets, answer silencer. Excellent condition. Call 8-5, 864-2536. After 6, 864-3273. 29c

FOR SALE: Bush & Lane piano. Upright, good condition. Come by 1113 N. 5th or call 864-3371. (Parents) Mr. and Mrs. Billy W. Welyeu. 29p

FOR SALE: 15 ft. fiberglass yellow jacket boat. 25 hp Johnson Seahorse motor, pull start, drive on trailer. \$450.00 or best offer. Call 997-2377 after 6 p.m. 29p

FOR SALE: 1977 Kawasaki 400KZ metallic brown paint with matching saddlebags and fairsing. Chopper forks, curved crash bar with feet pegs and fog lights, custom touring seat, high back sissy bar with pad. \$700.00 or best offer. Call 997-2377 after 6 p.m. 29p

FOR SALE: Queen size sleeper sofa, matching swivel rocker, \$275.00; Artye flute, used 2 years, \$250.00; handmade, wooden potato bins, candle boxes, match holders. Will take orders. 864-3193. 29-30c

FOR SALE: 20 cu. ft. car top luggage carrier, used once, \$60.00, 40,000 BTU Dearborn space heater with blower \$200.00; 30,000 BTU Dearborn space heater with blower \$150.00; Sears 10" Radial Arm Saw, \$275.00. 864-3344, Darrell Smith. 29c

FOR SALE: Several extra good lawn mowers. Lawn mower repair from tune up to complete overhaul. 605 N. 6th St. 864-3590. 29-32p

For Sale
INTRODUCTORY SPECIAL. Apollo Rubber Armoured 3-9X rifle scopes. Reg. \$100.00. Now \$85.00. K P Gun & Repair. 864-2241. 28-29c

FOR SALE: Appaloosa yearling filly, solid color, well muscled. Gentle and halter broke. Call 864-8991 or 864-3763. Ask for Sam. 28-29c

FOR SALE: 1981 Glastron Carlson. Red and cream color, custom trailer inboard and outboard, 140 Mercury Cruiser. Excellent condition. Call Jackie Wilcox after 8 p.m. 817-997-2707. 28-29c

FOR SALE: 1982 Suzuki RM125. Good condition. Phone 864-2597. 28-29c

HAY FOR SALE: Red top cane, large round bales. Dennis Grand, 864-3807. 28-35p

FOR SALE: Small deep freezer, \$100.00. 35" tall, 20" wide. Call 864-3682. 26ncttc

Miscellaneous
LET US Price your next prescription. You will be glad you did. Johnson Pharmacy. 17tc

HOME DECORATORS. Painting-Insulation. Free Estimates. Phone 743-3592 or 743-3550. V.A. Mitchell-Bobby O'Neal. Rochester. 31tc

FOR PERMANENT HAIR REMOVAL call Billie Freeman, Certified Electrologist, at Martha's Beauty Center, 864-2192. Wednesday and Thursday, 1006 N. 6th. 23tc

CLEAN CARPETS the inexpensive and safe way with Blue Lustre. Rent electric shampooer. Perry Brothers'. 19tc

CHECK our prices at THE DRUG STORE. We will both be glad you did. 14tc

INSTANT CASH for good used merchandise. A little or a lot. Phone 864-3197 anytime. Lackey's Hwy 380 East, Haskell, Tx. 6tc

WATER WELL DRILLING: House well, Stock, Irrigation Wells, Test Holes. Call W.P. Hise, 864-3727 Haskell, Tx. (Day or Night). 7tc

Help Wanted
EARN \$4.87 HR. We need assistance in evaluating and responding to daily work reports submitted by our agents throughout the state. No experience necessary; Paid to complete training. Work at home. For information send self-addressed, stamped envelope 9 1/2 inches long to AWGA, Dept. E, Box 49204, Atlanta, GA 30359. 29p

POSITION MAY open soon for semi driver and loader operator. Contact Ervin Unger 864-3714 after 5 p.m. 29-30c

FEDERAL, STATE & Civil Service jobs now available in your area. Call 1-619-569-8304 for info. 24 hrs. 27-29p

AIRLINES NOW HIRING. Reservationists, stewardesses and ground crew positions available. Call 1-(619)-569-6214 for details. 24 hrs. 28-30p

SALES AGENT WANTED: Nationally known calendar manufacturer and specialty advertising company offers an opportunity for an industrious self-starter for full or part-time work. We need a sales oriented person to present our exclusive calendars, business gifts and extensive advertising specialty assortment to firms within the business community. The Thos. D. Murphy Co. is a pioneer in the advertising field since 1888, so you know we're here to stay. If you can organize your own time and determine your own success, write: Richard E. Fisher, The Thos. D. Murphy Co., P.O. Box 382, Red Oak, Iowa 51566 or call 712-623-2591, ext. 12. 28-31p

Garage Sales
MOVING SALE: Saturday, July 21. Hwy. 380 East, house across highway from Trinity Lutheran Church. Small roll top desk, 5 month old video disc player. 29c

CARPENTRY SALE: 911 N. Av K. Sat. 9 to 5. (No early sales). Sewing machine, stereo, bicycle, push lawn mower, push plow, large selection of children and adult clothes. Lots misc. 29p

GARAGE SALE: Lots of nice clothing for little boys and teenage girls. Toys and misc. Friday 8 to 6. Sat. til noon. Mary Ann McFadden at 601 N. Av L. 29p

TWO FAMILY GARAGE SALE: Friday and Saturday, July 20 and 21. Clothes: Mens (medium and large), womens (sizes 8, 16, 18), girls. White uniforms, size 8. Bed linens, dishes, gas heaters, electrical appliances, windows, much more misc. Turn East off Hwy. 6 on 13th St. to 1206 Taylor Av. Rule. 29c

GARAGE SALE: Bed frames, mattresses, sleeper sofa, refrigerator, antenna, booster for CB, clothes, toys, and lots of misc. Rochester, West end of town, last white house on left. Thurs., Fri., & Sat. 29c

Bus. Opportunity
OWN A BEAUTIFUL Children's Shop. Offering the latest in fashions. *Health Tex *Izod *Levi *Lee *Chic *Buster Brown and many more. Furniture and accessories by Gerber and Nod-A-Way. \$14,900.00 includes beginning inventory-training-fixtures and grand opening promotions. Prestige Fashions 501-329-8327. 29p

OWN YOUR OWN Jean-Sportswear, Ladies Apparel, Combination, Accessories, Large Size store. National brands: Jordache, Chic, Lee, Levi, Vanderbilt, Izod, Esprit, Britannia, Calvin Klein, Sergio Valente, Evan Picone, Claiborne, Members Only, Organically Grown, Healthtex, 700 others. \$7,900 to \$24,900, inventory, airfare, training, fixtures, grand opening, etc. Can open 15 days. Mr. Loughlin (612) 888-6555. 29p

A FUN 12 WK JOB. Ladies!!! Avg. \$7/hr. Toy demonstrators. \$300 kit. No cost, collecting or delivery. House of Lloyd Home Parties. 817-849-6222. Hiring all cities. 29-35p

WEST TEXAS Men's wear store during over \$200,000 per year for sale. Call Mr. Smith 806-374-9997. 26-29c

STRIKE IT RICH
Be a winner. Potential \$40,000-\$100,000 year commission. Must have 1 to 2 years sales experience. Do you need large income to pay for house, car, family? Needed by AAAA Corp. with 25 year track record. 100% financing, expense paid training. Call Mr. Fox 8 a.m. to 10 p.m. CST 1-800-247-2448. No investment, we invest in you. Profit paid weekly. 29p

GENERAL SHELTERS OF TEXAS, INC., the fastest growing manufacturer of portable buildings, is seeking a dealer in Haskell area for retail sales of portable buildings. Lot and small investment required. Excellent opportunity to expand existing business with low risk. Contact Mike Wulf, General Manager, at 817/422-4548. 28-31p

Jobs Wanted
CUSTOM HAY BALING. Call J. Reneau. 422-4491. 29-32p

CERTIFIED SITTER has room for 1 toddler, daytime, fenced yard, lunch and snack provided. Ginny 864-8027. 29-30c

Wanted
WANTED: Used spinet piano in good condition. Cannot use upright. Call 864-3682. 29ncttc

WANTED: Someone with good credit to take over payments on a Singer Touch-N-Sew console model sewing machine. Originally \$686.00, balance \$168.00 or \$28.00 monthly. 864-8978 or 864-3677. 29-31p

Lost & Found
FOUND: Wrenches. Describe and pay for ad. F.D. Hindsley, 1106 N. Av J. 864-2048. 29p

Public Notice
NOTICE
I am no longer responsible for any bills made by Michael McNeil. Patricia McNeil. 29p

PUBLIC NOTICE
The Board of Trustees will accept sealed bids for the purchase of computers until August 7 at 7 p.m. Specifications are available at the Administration Office. Haskell ISD reserves the right to accept or reject any or all bids. 29-30c

Card of Thanks
CARD OF THANKS
We want to thank all of our friends for your contributions, your support, cards, and prayers. All the cards we received made us feel like we were not alone through all of this. Jason is doing so well at this time. Without your prayers and love I don't think it would be possible. Randle, Malinda, and Jason Bryan. 29p

CARD OF THANKS
I would like to use this way to say to my children, neighbors and friends, thank you for the lovely birthday party that you all gave for me. Thanks for the cards, presents, flowers and telephone calls that day and since. I love you all. Mrs. E.E. Welsh. 29c

CARD OF THANKS
The family of Ruby Elmore would like to thank each and every one for the love and support shown us in our time of sorrow. Especially for the prayers, cards and the delicious meal that was served at the Methodist Church and Fidelis Class that served the meal at Marie Elmore's. Also for all the beautiful flowers. 29p

CARD OF THANKS
We would like to express our thanks and sincere appreciation for the many things that were done during our time of sorrow. The family of J.D. Holmes. 29p

CARD OF THANKS
Dear neighbors and friends: I cannot express in words the thanks and appreciation I feel to you for your many kind deeds during my hospital stay and since returning home. I especially thank you for your prayers, the delicious food, flowers, cards, gifts, phone calls and any expression of love to me during this time. May God bless each of you. Joyce Davis. 29p

Real Estate
Want a New House for less than \$30.00 a square foot?
3 bedroom, 2 baths, fireplace, patio, 2 car garage.
The Lumber Yard
864-3552
864-3431 after 5:00. 18tc

FOR SALE
3 bedroom brick home, swimming pool, 40x60 work shop, water well, bath house, fruit trees, sits on 1/4 block - Cardiff Av. 2 Bedroom Stucco house separate garage and storage on Adams Av. 2 Bedroom house on Pawnee St. Business Building, downtown Rule. 3 Bedroom house on 2 lots, Sunny Ave. 4 lots on Gladstone St. 4 Lots with 30x90 steel building. Ideal Business Location. Allison Real Estate Rule, Texas 997-2661 or 997-2632 21tc

FOR SALE
3 Bdr 2 bath on 6 lots Ave P
3 Bdr 1 bath brick. 1403 N Av L
New 2 Bdr. 1200 Blk N Av J
4 Bdr 2 1/2 bath. 605 N Av F
3 Bdr 2 bath brick Paint Creek Rd.
3 Bdr stucco 2 car garage N 3rd
3 Bdr 1 1/2 bath stucco Paint Creek Rd
4 Bdr Stucco on 7.2 acres.
2 story 3 Bdr 3 bath 901 N Av F
2 Bdr stucco. 1105 S 1st
3 Bdr stucco. South 6th
2 Bdr frame C/A 502 N Av F
2 Bdr stucco 106 S Av C
2 Bdr Frame 909 N 4th
2 Bdr stucco furnished 304 N 4th
3 Bdr rockfront 505 N Av E
3 Bdr 3 bath all extras N Av G
3 Bdr 1 bath older home 604 N 6th

FOR SALE
3 Bdr 2 bath with fireplace.
3 Bdr brick in new addition.
2 Bdr close to school.
2-2 Bdr stuccos 1000 S Adams St.
5 Bdr rock on 17 acres.
COMMERCIAL
East Side Fina with small dwelling Hwy. 380.
1 Cm. Bldg. with office 380 East
20x70 bldg just off Square.
Large bldg. on 165x160 ft. lot.
2 bldgs. with office spaces on large lot. 380 East
200 acre farm all in cultivation.
80 acre farm all in cultivation.
Choice of City Lots.
HOUSE FOR RENT 306 N 4th
Hartsfield Realty - 864-2004
Hartsfield Realty 864-2665
Loraine Johnson 864-2951
Hess Hartsfield 864-2004

FOR SALE
3 Bdr 2 bath on 6 lots Ave P
3 Bdr 1 bath brick. 1403 N Av L
New 2 Bdr. 1200 Blk N Av J
4 Bdr 2 1/2 bath. 605 N Av F
3 Bdr 2 bath brick Paint Creek Rd.
3 Bdr stucco 2 car garage N 3rd
3 Bdr 1 1/2 bath stucco Paint Creek Rd
4 Bdr Stucco on 7.2 acres.
2 story 3 Bdr 3 bath 901 N Av F
2 Bdr stucco. 1105 S 1st
3 Bdr stucco. South 6th
2 Bdr frame C/A 502 N Av F
2 Bdr stucco 106 S Av C
2 Bdr Frame 909 N 4th
2 Bdr stucco furnished 304 N 4th
3 Bdr rockfront 505 N Av E
3 Bdr 3 bath all extras N Av G
3 Bdr 1 bath older home 604 N 6th

FOR SALE
Two bath lake house in Veta's Camp, central H/A, carpet, range, D.W. 4 car carport, private channel. Nice week-end lake house in Lakeshore Camp.
Two bedroom 1 bath frame carpet, water well, 1 car garage, chain link fence & furnace heat.
Three bedroom, 2 bath frame furnace, 3 ref. air cond., carpet, range, ref., chain link fence, and large carport.
See me for your Life-Health & Medicare Insurance.
Frances Arend Real Estate & Insurance 817-864-3880 817-864-3156 29c

Medicare Supplement
No Maximum Dollar Limit
Guaranteed Renewable
Hess Hartsfield 864-2665 20tc

Billie Benavides
Potpourri Hair Fashions
Call for appointment 864-2894 28-29c

CAR WASH
Friday, July 20
from 9:00 on
Methodist Church
by Youth of Church
We are doing our all for rain! 29p

Carpentry & Cabinets
Remodeling, Painting, Repair.
All types of work!
Bobby Stickney
997-2748 Rule, Tx

REAL ESTATE LISTINGS WANTED
We Don't Just List: We Sell
I am on call and ready to talk to you about your Real Estate at any time if you are interested in buying or selling, please call me. I am full time in Real Estate and will try harder to please you.
LORRAINE JOHNSON
REALTOR-ASSOCIATE®
Bus. 864-2665 Res. 864-2951
After Hours and Weekend Welcomed
H.H. HARTSFIELD, BROKER 11tc

FOR SALE
9 unit motel.
2 bedroom house with office. Will trade for 2 or 3 bedroom house in Haskell and carry balance.
Faubion & Martin Realty 915-372-5711 26-29c

REAL ESTATE LISTINGS WANTED
We Don't Just List: We Sell
I am on call and ready to talk to you about your Real Estate at any time if you are interested in buying or selling, please call me. I am full time in Real Estate and will try harder to please you.
LORRAINE JOHNSON
REALTOR-ASSOCIATE®
Bus. 864-2665 Res. 864-2951
After Hours and Weekend Welcomed
H.H. HARTSFIELD, BROKER 11tc

FOR SALE
9 unit motel.
2 bedroom house with office. Will trade for 2 or 3 bedroom house in Haskell and carry balance.
Faubion & Martin Realty 915-372-5711 26-29c

REAL ESTATE LISTINGS WANTED
We Don't Just List: We Sell
I am on call and ready to talk to you about your Real Estate at any time if you are interested in buying or selling, please call me. I am full time in Real Estate and will try harder to please you.
LORRAINE JOHNSON
REALTOR-ASSOCIATE®
Bus. 864-2665 Res. 864-2951
After Hours and Weekend Welcomed
H.H. HARTSFIELD, BROKER 11tc

FOR SALE
9 unit motel.
2 bedroom house with office. Will trade for 2 or 3 bedroom house in Haskell and carry balance.
Faubion & Martin Realty 915-372-5711 26-29c

REAL ESTATE LISTINGS WANTED
We Don't Just List: We Sell
I am on call and ready to talk to you about your Real Estate at any time if you are interested in buying or selling, please call me. I am full time in Real Estate and will try harder to please you.
LORRAINE JOHNSON
REALTOR-ASSOCIATE®
Bus. 864-2665 Res. 864-2951
After Hours and Weekend Welcomed
H.H. HARTSFIELD, BROKER 11tc

FOR SALE
9 unit motel.
2 bedroom house with office. Will trade for 2 or 3 bedroom house in Haskell and carry balance.
Faubion & Martin Realty 915-372-5711 26-29c

REAL ESTATE LISTINGS WANTED
We Don't Just List: We Sell
I am on call and ready to talk to you about your Real Estate at any time if you are interested in buying or selling, please call me. I am full time in Real Estate and will try harder to please you.
LORRAINE JOHNSON
REALTOR-ASSOCIATE®
Bus. 864-2665 Res. 864-2951
After Hours and Weekend Welcomed
H.H. HARTSFIELD, BROKER 11tc

FOR SALE
9 unit motel.
2 bedroom house with office. Will trade for 2 or 3 bedroom house in Haskell and carry balance.
Faubion & Martin Realty 915-372-5711 26-29c

REAL ESTATE LISTINGS WANTED
We Don't Just List: We Sell
I am on call and ready to talk to you about your Real Estate at any time if you are interested in buying or selling, please call me. I am full time in Real Estate and will try harder to please you.
LORRAINE JOHNSON
REALTOR-ASSOCIATE®
Bus. 864-2665 Res. 864-2951
After Hours and Weekend Welcomed
H.H. HARTSFIELD, BROKER 11tc

FOR SALE
9 unit motel.
2 bedroom house with office. Will trade for 2 or 3 bedroom house in Haskell and carry balance.
Faubion & Martin Realty 915-372-5711 26-29c

REAL ESTATE LISTINGS WANTED
We Don't Just List: We Sell
I am on call and ready to talk to you about your Real Estate at any time if you are interested in buying or selling, please call me. I am full time in Real Estate and will try harder to please you.
LORRAINE JOHNSON
REALTOR-ASSOCIATE®
Bus. 864-2665 Res. 864-2951
After Hours and Weekend Welcomed
H.H. HARTSFIELD, BROKER 11tc

FOR SALE
9 unit motel.
2 bedroom house with office. Will trade for 2 or 3 bedroom house in Haskell and carry balance.
Faubion & Martin Realty 915-372-5711 26-29c

REAL ESTATE LISTINGS WANTED
We Don't Just List: We Sell
I am on call and ready to talk to you about your Real Estate at any time if you are interested in buying or selling, please call me. I am full time in Real Estate and will try harder to please you.
LORRAINE JOHNSON
REALTOR-ASSOCIATE®
Bus. 864-2665 Res. 864-2951
After Hours and Weekend Welcomed
H.H. HARTSFIELD, BROKER 11tc

FOR SALE
9 unit motel.
2 bedroom house with office. Will trade for 2 or 3 bedroom house in Haskell and carry balance.
Faubion & Martin Realty 915-372-5711 26-29c

REAL ESTATE LISTINGS WANTED
We Don't Just List: We Sell
I am on call and ready to talk to you about your Real Estate at any time if you are interested in buying or selling, please call me. I am full time in Real Estate and will try harder to please you.
LORRAINE JOHNSON
REALTOR-ASSOCIATE®
Bus. 864-2665 Res. 864-2951
After Hours and Weekend Welcomed
H.H. HARTSFIELD, BROKER 11tc

FOR SALE
9 unit motel.
2 bedroom house with office. Will trade for 2 or 3 bedroom house in Haskell and carry balance.
Faubion & Martin Realty 915-372-5711 26-29c

REAL ESTATE LISTINGS WANTED
We Don't Just List: We Sell
I am on call and ready to talk to you about your Real Estate at any time if you are interested in buying or selling, please call me. I am full time in Real Estate and will try harder to please you.
LORRAINE JOHNSON
REALTOR-ASSOCIATE®
Bus. 864-2665 Res. 864-2951
After Hours and Weekend Welcomed
H.H. HARTSFIELD, BROKER 11tc

FOR SALE
9 unit motel.
2 bedroom house with office. Will trade for 2 or 3 bedroom house in Haskell and carry balance.
Faubion & Martin Realty 915-372-5711 26-29c

For Rent
FOR RENT: 2 bedroom house; 2 bedroom apartment; 1 bedroom apartment. Call 864-2504. 28-29p

FOR RENT: 2 bedroom mobile home, furnished. 1007 N. Av J. Contact Dee Larned 864-2612. 28-29c

FOR RENT: Self storage. A few units, large enough for bass boats. 864-2629. 510 N. 1st St. Lanco Insurance. 12tc

FOR RENT: 3 bedroom house. 1 mile south of Rochester. \$150.00 month plus deposit. Phone 864-3985. 29-32p

Real Estate
SMALL ACREAGE FOR SALE
Approx. 2 acres adjacent to City limits. No City taxes but City facilities. Dwelling and workshop need extensive repair. Choice acreage. Located in new building area.
Shown by appointment
Cross Real Estate
Box 235
Ph. 743-3425
Rochester 29c

FOR SALE
3 Bdr 2 bath on 6 lots Ave P
3 Bdr 1 bath brick. 1403 N Av L
New 2 Bdr. 1200 Blk N Av J
4 Bdr 2 1/2 bath. 605 N Av F
3 Bdr 2 bath brick Paint Creek Rd.
3 Bdr stucco 2 car garage N 3rd
3 Bdr 1 1/2 bath stucco Paint Creek Rd
4 Bdr Stucco on 7.2 acres.
2 story 3 Bdr 3 bath 901 N Av F
2 Bdr stucco. 1105 S 1st
3 Bdr stucco. South 6th
2 Bdr frame C/A 502 N Av F
2 Bdr stucco 106 S Av C
2 Bdr Frame 909 N 4th
2 Bdr stucco furnished 304 N 4th
3 Bdr rockfront 505 N Av E
3 Bdr 3 bath all extras N Av G
3 Bdr 1 bath older home 604 N 6th

FOR SALE
Two bath lake house in Veta's Camp, central H/A, carpet, range, D.W. 4 car carport, private channel. Nice week-end lake house in Lakeshore Camp.
Two bedroom 1 bath frame carpet, water well, 1 car garage, chain link fence & furnace heat.
Three bedroom, 2 bath frame furnace, 3 ref. air cond., carpet, range, ref., chain link fence, and large carport.
See me for your Life-Health & Medicare Insurance.
Frances Arend Real Estate & Insurance 817-864-3880 817-864-3156 29c

Medicare Supplement
No Maximum Dollar Limit
Guaranteed Renewable
Hess Hartsfield 864-2665 20tc

Billie Benavides
Potpourri Hair Fashions
Call for appointment 864-2894 28-29c

CAR WASH
Friday, July 20
from 9:00 on
Methodist Church
by Youth of Church
We are doing our all for rain! 29p

Carpentry & Cabinets
Remodeling, Painting, Repair.
All types of work!
Bobby Stickney
997-2748 Rule, Tx

REAL ESTATE LISTINGS WANTED
We Don't Just List: We Sell
I am on call and ready to talk to you about your Real Estate at any time if you are interested in buying or selling, please call me. I am full time in Real Estate and will try harder to please you.
LORRAINE JOHNSON
REAL



DOUBLE COUPONS

each TUESDAY & WEDNESDAY at Modern Way Food Stores
We will redeem all manufacturer's "cents off" coupons for DOUBLE their value up to \$1.00 in value when the product is purchased.
—LIMIT—1 COUPON PER ITEM—
This policy does not include retailer (any food store) or free coupons, cigarette or tobacco coupons or refund certificates. The total redemption will not exceed the value of the item.



Quantity Rights Reserved

Specials Good thru Sunday, July 22



Open 8 a.m. til 8 p.m. Daily
Sunday 9 a.m. til 7 p.m.
1200 N. Ave E.
Haskell, Tx.

you're on a savings spree

WHEN YOU SHOP THESE VALUES

**Double 3-Star
Every Wednesday**



USDA CHOICE - HEAVY-BEEF

SILVER SPUR RINDLESS SLAB
SLICED BACON
\$1.08/lb.

Boneless Chuck Roast ..	\$1.38/lb	Boneless Arm Roast	\$1.58/lb
Boneless Chuck Steak ..	\$1.58/lb	Boneless Arm Swiss Steak	\$1.78/lb
Family Pack 3 lbs or more Ground Chuck	\$1.58/lb	Boneless (Vac Pac) Brisket.....	\$1.18/lb
Family Pack Chuck Cube Steak ...	\$2.99/lb	Hillshire Farm (Reg. or Beef) Smoked Sausage	\$2.19/lb

USDA Grade "A" Country Pride Fryer Split Breast	\$1.58/lb	USDA Grade "A" Fryer Thighs or Drumsticks	\$1.28/lb	Shurfresh (Meat or Beef) Franks	12 oz pkg 99¢	Shurfresh (Bologna, Beef Bolo, Salami or Luncheon) Lunch Meats	1 lb pkg \$1.49	Sunday House, Smoked Turkey Ham Chunks	\$1.69/lb
--	-----------	--	-----------	------------------------------------	---------------	---	-----------------	---	-----------

Perk Up Your Day .. Nature's Way
With "Sparkling Fresh" Produce From Modern Way

California Thompson Seedless White Grapes	69¢/LB	Large Vine Ripe Tomatoes	49¢/lb
Avocados	6 for \$1.00	Large Freestone Peaches	39¢/LB
California Red Plums	49¢/lb	California Calavo	6 for \$1.00
Green Onions or Red Radishes	6 for \$1.00		

DEL MONTE THE WINNING TICKET!
DEL MONTE SALT/NO SALT CREAM STYLE - WHOLE KERNEL
GOLDEN CORN
LIMIT 3
17oz. CANS \$3.11

DEL MONTE THE WINNING TICKET!
DEL MONTE SALT/NO SALT CUT-OF-FRENCH STYLE
GREEN BEANS
LIMIT 3
16oz. CANS \$3.11

THRIFT KING CATSUP 32oz. BTL.	79¢	Shurfresh Medium Eggs Dozen	49¢	DEL MONTE REG. or NO SALT SWEET PEAS 17oz. CANS	2.11	DEL MONTE CHOPPED *REG./NO SALT LEAF SPINACH 15oz. CANS	2.11
---	-----	--------------------------------	-----	--	------	--	------

Cheer Detergent 171 oz	\$3.99	Gladiola Flour 5-lb bag	89¢	Del Monte Tomato Sauce 8 oz cans	5 for \$1.00
----------------------------------	--------	-----------------------------------	-----	---	--------------

For Dishwashers Cascade	65 oz	\$2.99	Coke, Diet Coke Caffeine Free Coke Tab 2-liter	\$1.19	Wolf Hot Dog Sauce	15 oz	59¢
Tuna Breast O' Chicken	6 oz	69¢			Kraft Mayonnaise	16 oz	\$1.09
Rich N' Ready Orange & Tropical Drink	1 gal	\$1.29			Kraft Bacon & Tomato Dressing	8 oz	79¢
A.F. Filler Paper	150 cnt	79¢			Kraft Buttermilk Dressing	16 oz	\$1.39

3 STAR Shurfresh Homo Milk	59¢/½ gal	3 STAR Shurfresh Med. Eggs	49¢/doz	3 STAR Country Fresh Bread	9¢/1½ lb loaf	3 STAR Chiffon Soft Stick Margarine	9¢/1 lb pkg	3 STAR Hunt's Ketchup	39¢/24 oz	3 STAR Shurfine Tuna	29¢/6½ oz
--------------------------------------	-----------	--------------------------------------	---------	--------------------------------------	---------------	---	-------------	---------------------------------	-----------	--------------------------------	-----------