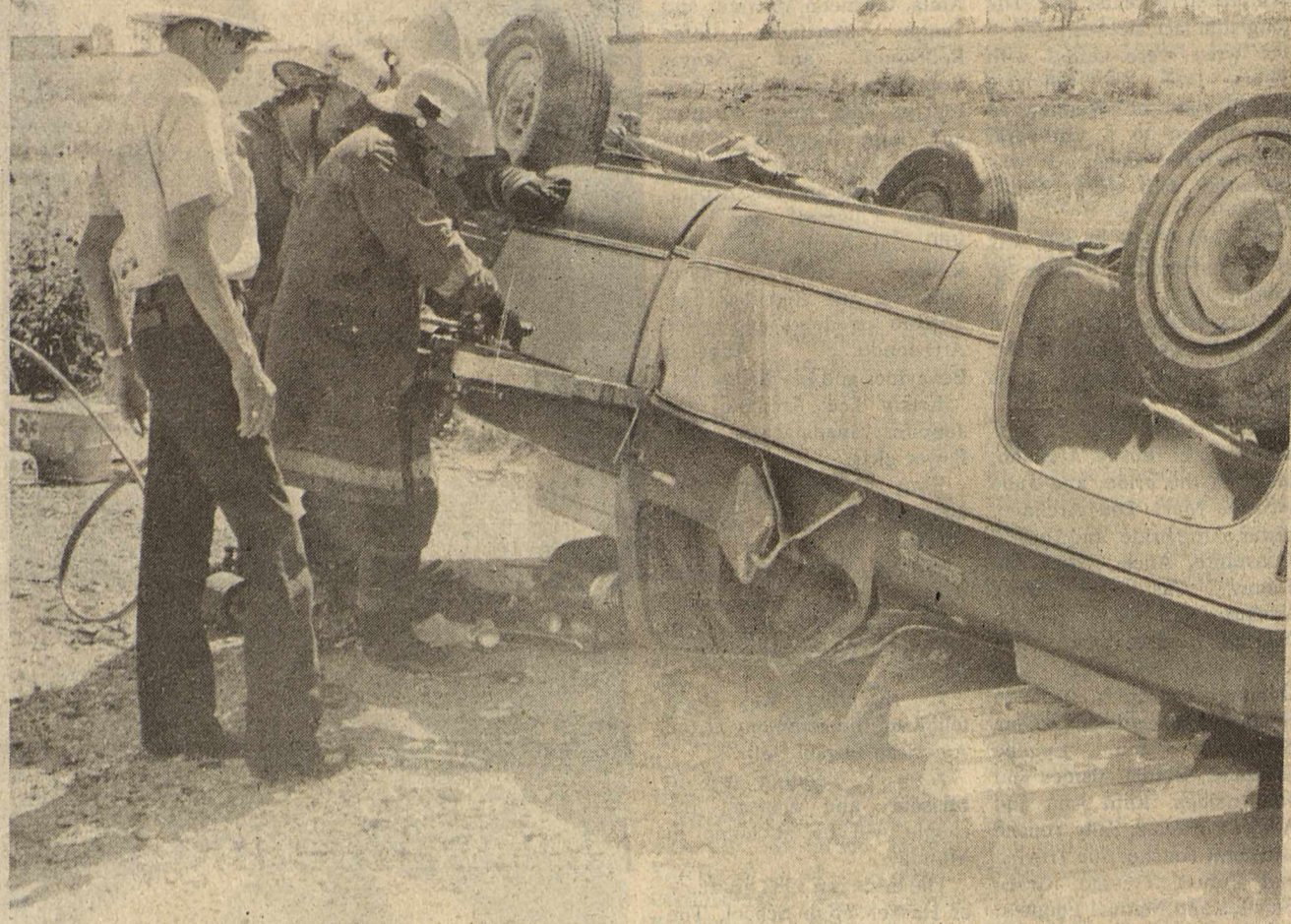


Base Book Binding
514 W. 7th St.
Amarillo, Tx. 79101



Staff Photo by Bill Comedy

GAINING ACCESS

Members of the Haskell Volunteer Fire Department Rescue Squad are shown opening a door on a 1975 Chevrolet pick-up involved in an accident last Friday. John Leek, of Haskell, was trapped in the vehicle which was northbound on US 277 about two miles north of Haskell. Leek received only minor injuries. DPS Trooper James Davis investigated the accident. Citations were issued.

Haskell Center Sets WTC Registration Record

The Haskell extension center of Western Texas College has a record enrollment this summer with a total of 285 students registered for 13 classes, Dr. Harry Krenek, WTC's Dean of Instruction, said.

Registration statistics show a total of 142 students who list Haskell County as their residence, meaning that the remaining students reside outside the county. Other counties in the Haskell area with students included in the overall count include

Knox with 31 and Jones with 55.

WTC's summer registration totals 1,144. Of these, 861 are college credit students and 55 are in the quarterly programs, cosmetology and Vocational Nursing. Two hundred twenty-eight students were enrolled in the Spring Opportunity Session and these are also counted in the summer total.

"We would like to thank everyone in Haskell who helped us plan the summer schedule and

register students," Dr. Krenek said. "It is always a pleasure to work with these people and we are pleased to be able to offer classes for residents of the Haskell area."

The tentative fall schedule for the Haskell extension center includes art, chemistry, computer programming, English, geography, government, history, law enforcement, psychology, sociology and speech. The date for registration will be announced later.

After A Year

BY DON COMEDY

Klavs Neilsen admits that when he first started planning on spending a year in the United States away from his homeland of Denmark, one of his primary goals was to get a better grasp on the English language.

Now, almost ten months later, Klavs says, "They sent me to Texas and now after almost a year what little English I knew is ruined and I've almost forgotten Danish. Now all I speak is Texan and nobody but Texans understand that!"

Since last August, Klavs has lived in the home of Duward and Gwen Campbell, graduated from Haskell High School, earned a Texas drivers license and taken advantage of virtually every opportunity which has arisen.

Klavs now looks comfortable in Levis, boots and a cowboy hat; can discuss various farm practices with more than a little intelligence; dips Skoal snuff; and chews Red Man chewing tobacco; and except for a slight accent seems to be a natural Texan.

He smiles broadly when relating a recent visit in Colorado when he was told he had a Texas accent.

In addition to the western clothes, some of the treasures Klavs plans to

Tennis Classes Scheduled To Begin June 18

Haskell High School tennis coach Greg Melton will begin summer tennis lessons June 18 for students in grades four through nine.

During the past three years as tennis coach at HHS the school has had one State qualifier; 16 regional qualifiers and three District titles.

Melton hopes the summer lessons beginning with fourth graders will strengthen the program at HHS.

For more information contact Melton at 864-3893.

take home include a football, baseball and bat, basketball, and a collection of about twenty-five caps.

At HHS, Klavs attended regular classes and received a diploma. At age 17, he had completed school in his home of Sorring, Denmark but was required to attend school as part of the requirements of the Foreign Exchange Program. He did very well according to his teachers in Haskell.

While attending classes, he also participated in extra curricular activities including serving as a manager of the football team; working on the *War Whoop* and HHS annual; participating in the off season program for football players; exhibited two lambs in the County Fair and Junior Livestock show as an Future Farmers of America project and various other events.

In the County Fair, his lambs place first and fifth and in the Junior Livestock show placed second and reserve champion. He said that he really enjoyed vocational agriculture and wished that it was offered in Denmark. When he returns home next week he plans to work on a farm and later attend college.

When Klavs came to the U.S., one rule was that he was not to drive. Living in rural West Texas with a farm family posed several problems with that rule and Gwen quickly started making arrangements with the exchange program coordinator in Brownwood to allow him to take drivers education and obtain a Texas drivers license. After several phone calls the OK was received and he successfully completed the course and passed both the written and driving tests.

His father learned at about that time that Denmark and the U.S. have a reciprocal drivers license agreement and when Klavs returns home he can exchange his Texas license for a Denmark license.

Klavs pointed out that a drivers license in Denmark costs about \$350.00 so the \$60.00 drivers ed course was a good investment.

Some of his most memorable events include getting sick on his first dip of snuff and hours of trying

to memorize various school assignments before he even knew the meanings of the words and the practice jokes.

The jokes played on him by his fellow students. Most of the jokes centered around using slang or bad

words and telling Klavs they had a meaning other than their real meaning. Klavs adds that the jokes were short lived and he quickly learned to verify definitions with someone he trusted, but went on to say the experience helped him learn

much faster.

Concerning school, Klavs says that Christi Stapleton's American History class was one of his favorites and he really enjoyed working on the annual. He added that Danish schools do not have annuals.

One of the remaining problems Klavs continues to have in the U.S. is our system of weights and measures. Feet, yards, inches, gallons, and pounds still plague him and he admits to finally giving up. He smiles and cites an example of taking his written drivers test and reading a question to which all answers were in yards. After helping with the football team he had a fair grasp of five yards and he simply looked out the window of the courthouse and visualized five yard increments along the curb until he arrived at the proper looking distance. He proudly stated that he got the question right even if his method was slightly unorthodox.

Klavs will leave next week to return home and shortly after that, Gwen and Kristen will go to Denmark to visit the family. Gwen has agreed to write about her trip and some of the highlights of Klavs' visit in the Campbell home.

Walk-A-Thon Set Saturday For Heart Assoc.

A walk-a-thon will be held June 16 to benefit the American Heart Association according to David Smith, coordinator.

The walk will include a designated 10 mile route through Haskell and all participants are asked to meet at 10 a.m. at the high school parking lot.

More information or pledge sheets are available from Smith at 864-2225.

COTTON
GRAIN
CATTLE

THE HASKELL

25¢

14 Pages in
One Section
Plus Insert

FREE PRESS

"HASKELL—A GOOD PLACE TO VISIT. A BETTER PLACE TO LIVE"

VOLUME NINETY-EIGHT HASKELL, TEXAS 79521, JUNE 14, 1984 NUMBER TWENTY-FOUR

Haskell—\$8,854.54

May Sales Tax Checks Total Over \$72 Million

State Comptroller Bob Bullock Monday sent checks totaling \$72 million in local sales tax payments to the 988 local-tax cities and four transit authorities, including the first check for collections of the new Fort Worth transit tax.

Bullock said the city checks totaled \$52 million of the \$72 million.

"So far this year, we've sent these cities a little over \$400 million, which is more than 13 percent better than what they had gotten by this

time last year," Bullock said.

Houston's check was the largest—\$8.9 million—for a total of \$72.7 million up 5 percent over last year. Dallas received \$5.8 million to push its total payment to \$48.3 million, a 15 percent increase.

San Antonio's payment of \$3 million brought its 1984 total to \$23.8 million, up 16 percent. Austin received \$2.4 million for a yearly total of \$17.1 million, a 26 percent increase.

Fort Worth's check for \$1.9

million increased total payments to \$14.7 million, up 9 percent. El Paso received \$1.1 million, bringing 1984 payments to \$8.9 million, 17 percent over last year.

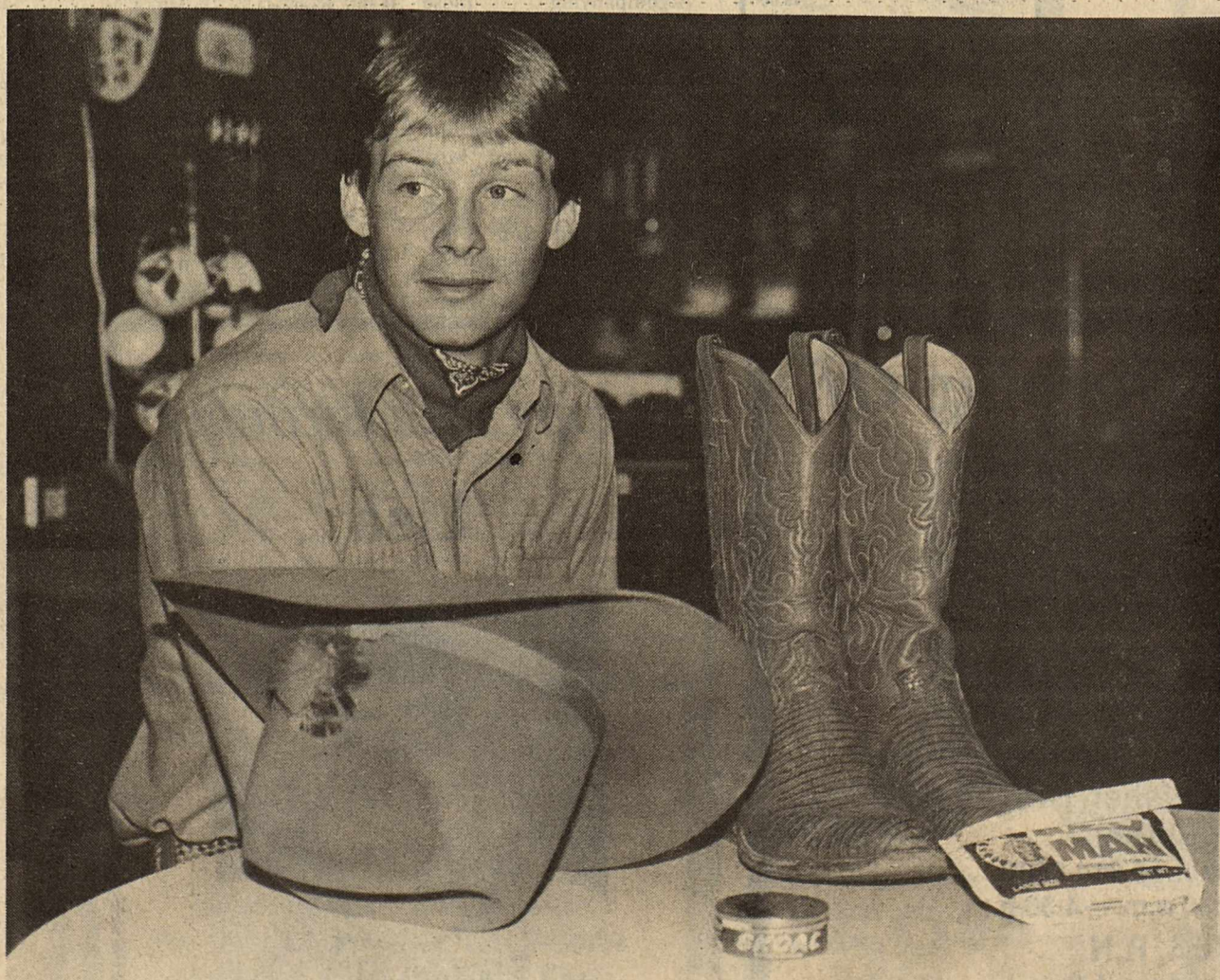
Bullock also sent checks to Metropolitan Transit Authorities in Fort Worth, Dallas, Houston and San Antonio. Fort Worth's first check from the one-quarter percent local transit tax in that city was for \$331,306. The Dallas DART check was for \$8 million and the Houston MTA got \$10 million. San Antonio's VIA check was for \$1.7 million.

June payments reflect taxes on sales made in April and reported to the Comptroller by May 20.

Area Sales Tax Receipts

City	Payment This Period	Payment Prior Year	1984 Payments	1983 Payments	% Change
Seymour	6,880.62	3,917.75	71,776.40	68,169.48	5.29
Haskell	8,854.54	5,607.70	83,903.63	83,780.90	0.15
O'Brien	0.00	0.00	695.29	623.20	11.57
Rochester	1,099.92	615.55	5,521.56	6,454.64	-14.46
Rule	804.05	872.59	8,833.60	10,798.37	-18.20
Weinert	0.00	0.00	1,091.30	834.39	30.79
Anson	4,692.16	2,815.61	37,324.18	37,183.39	0.38
Hamlin	5,666.30	3,490.00	48,446.44	49,977.61	-3.06
Hawley	837.76	550.06	7,904.61	7,082.96	11.60
Lueders	0.00	0.00	4,789.47	2,202.16	117.49
Stamford	9,345.65	7,418.79	86,199.98	77,605.97	11.07
Benjamin	0.00	0.00	1,368.99	1,338.39	2.29
Goree	0.00	0.00	2,530.48	2,460.21	2.86
Knox City	4,402.83	2,486.62	37,017.46	33,916.60	9.14
Munday	2,694.43	2,063.39	23,250.47	23,171.94	0.34

Klavs Neilsen Preparing To Return To Denmark



Staff Photo by Don Comedy

TEXAS TRANSPLANT

Klavs Neilsen of Sorring, Denmark has spent the last ten months in Haskell with the Duward and Gwen Campbell family as a foreign exchange student. Klavs will return home to Denmark next week and will arrive with a complete western wardrobe including hat, boots, Levis, snuff and chewing tobacco.

June Is National Dairy Month

In June, we observe Flag Day, Father's Day and Midsummer Day. We can even take a day to remember Custer's Last Stand, on June 25. But one celebration is important to the health of people in the United States is the annual observance of June Dairy Month.

The event has two purposes. First is to encourage the greater consumption and enjoyment of milk and other dairy foods. Second is to salute the dairy farm families whose daily work assures the continued availability of these nutritious foods.

While month-long celebrations have been established for many other foods (including soup, pickles, cherries, popcorn, hot dogs, potatoes and peanuts), June Dairy Month is one of the oldest.

This celebration began as a double-header. In the summer of 1937, grocer and drug chain store organizations sponsored National Milk Month and that fall an industry publisher set up National Milk Week. By 1939, the salute became a single month-long event promoting use of dairy foods and saluting dairy farmers. National Dairy Council (NDC) developed special materials and carried out the activities.

Since then, the activities have been carried out by a committee representing dairy farmers, processors and a leading dairy publication. Pioneer leaders were Milton Hult, National Dairy Council; Charles Holman, National Cooperative Milk Producers' Federation; R.E. Little, International Association of Milk Dealers; Charles Speaks, Milk Industry Foundation; and Lester Olsen, The Milk Dealer Magazine.

In 1940, when American Dairy Association (ADA) was organized, dairy farmers in many states selected the well-established June Dairy Month as the time for collecting ADA promotion funds. In 1955, organizational responsibility for June Dairy Month was moved from NDC to ADA. Sales promotion, advertising and merchandising were added to the strong public relations program.

Today, dairy products are promoted all year long. Dairy farmers continue to milk their cows at least twice a day. And American people enjoy dependable supplies of milk, cheese, butter, ice cream and other real dairy foods.

Geraldine Hise Attends Seminar

Geraldine Hise, Municipal Judge of Haskell, attended the Ninth Annual Seminar and Workshop of the Texas Municipal Courts Association June 6-9 at the Criminal Justice Center in Huntsville.

Topics covered were Legal Authority and Jurisdiction of Municipal Courts, Financial Administration and Management, Court Costs in Municipal Courts, Judicial Conduct, Magistrate Duties under the Mental Health Code, Pretrial Procedures, Trial Procedures, Trial Demonstration, Search Warrants, Administrative Hearings and Safety Responsibility, Recent Attorney Gen-

eral Decisions and Opinions, Constitutional Law, Contempt, Evidence, Magistrate Duties and Functions, Federal Court Relationship to Municipal Court, and Recent Legislation Affecting Municipal Courts. The workshop fulfilled 24 hours of training as required by state law for the continuing education of Municipal Court Judges.

The Texas Municipal Courts Association has two grants now pending in the Criminal Justice Division of the Governor's Office to fund future training programs for all Texas Municipal Court Judges. If approved, the two grants will provide funding for a statewide regional training program to begin in September of 1984.

PLASTIC SHEET PROTECTORS, 11x8 1/2, punched 3 holes, wide reinforcing flap. Comes with black mounting sheet. Haskell Free Press

Thumbsucking Provides Comfort For Child

Nursing from bottle or breast satisfies a deep need for an infant. A child who has not had a chance to suck sufficiently as he drinks milk may begin to suck his fingers, his thumb, or a blanket, according to Growing Child, the monthly child development newsletter.

Nursing is more than just getting milk, however. The feel of warm milk flowing into an empty stomach and the comfort of being cozily held brings emotional satisfaction as well. What started out to be a physical response soon carries deeper meanings. Sucking re-creates the contentment of being held and fed.

In most cases, the child who is going to suck his thumb begins before he has been completely weaned. If he hasn't started by then, he probably won't except for brief trials during a time of particular stress, such as the discomfort of teething or when he wants to test how it feels in imitation of a thumbsucker.

Many children will give up thumbsucking of their own accord by the age of three or four. They outgrow the need for this kind of comfort. Occasionally a child will suck his thumb when he is tired, finds himself at loose ends, or feels temporarily unsure.

A few children persist in sucking their thumbs long past the age of four. They may suck so vigorously and for so long that they push the roof of the mouth up and change the position of the upper teeth.

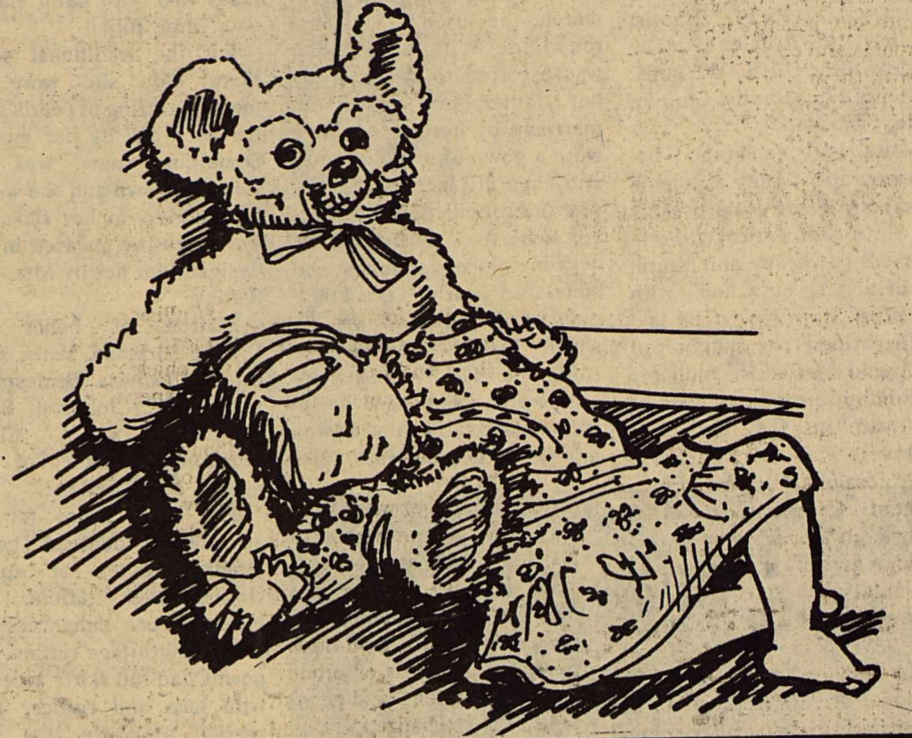
Such children usually show in other ways that they are unhappy or discouraged. It usually works better to try to discover the problem than to interfere directly with the thumbsucking. Splints, bad-tasting medicine, and mittens do not work because they intensify the child's feeling of being unloved.

Parents who object to thumbsucking may say they are worried about germs or that it looks babyish. Yet the germs that a child will get from his thumb are no more numerous than those he gets

in the usual course of his day. As far as appearance, the child is, after all, still quite young, and has years ahead to look grown-up in.

The Growing Child newsletter follows a child's development month-by-month from birth to six years old. For more information and a free sample

newsletter, write to Growing Child, P.O. Box 620N, Lafayette, Indiana 47902. Include child's birthdate when writing.



Retired Teachers Assn. Elects Officers

The Haskell County Retired Teachers Association met in their regular quarterly meeting at the Port Hole on Tuesday, June 5, 1984.

During a brief business session the officers agreed to continue for the next year: Mrs. Lena Hughey, president; Mrs. Evelyn Nichols, vice-president; Mrs. Kathleen Diggs, secretary; Mr. T.L. Wilson, treasurer; and Mrs. Mary Martin, legislative chairman. Dues were collected by the treasurer.

To be affiliated with the National Retired Teachers Association the local chapter must meet six times a year. The group agreed to meet September, October, and Nov-

ember, March, April, and May.

Mrs. Winnie Hiebert and Mrs. Ernestine Herren serve as the telephone committee.

Microwave Program Set June 14

You are invited to attend a "Microwave Magic" program, Thursday, June 14 at the Haskell National Bank Community Room. The program will be conducted at three different times: 10:00 a.m.-2:00 p.m.-7:00 p.m. Pick the time best for you to attend. Lou Gilly, County Extension Agent-H.E. will conduct the meeting. A registration fee of \$1.00 will be charged.

WTC Sets Cheerleader Camp

Western Texas College will host its annual cheerleader camp June 18-21, Mickey Baird, Student Activities Director, has announced.

Personnel from the All-Star Cheerleader Conference in Kansas City, Mo., will provide instruction for the camp, one of 100 scheduled throughout the nation this year. Cheerleaders will be trained in such areas as cheers, chants, pom pom routines, pep rally planning and uniform selection.

The camp is designed primarily for high school, middle school and junior high cheerleaders. Schools wishing to send students to the camp may contact Mrs. Baird at 915-573-8511 or 573-8389 or write her at WTC. Information can also be obtained by writing Jeff McDade, National Program Director for the ASCC, at 819 Broadway in Kansas City, Mo., 64105.

Advertise the Action Way! The CLASSIFIED WAY!

Todd's Bait Shop

Open Every Day

- Minnows \$1.00 doz
 - Med. Size Crappie \$1.25 doz
 - X-large Bass \$1.50 doz
 - Perch \$1.75 doz
 - Goldfish \$1.75 doz
 - Oxygen Bags for Live Bait
 - Worms \$1.00 box
 - Ice 10 lb 95¢ bag
 - FISHING TACKLE
 - Zebco 10/20 Spin Cast Reels \$12.99
 - Metal Minnow Buckets \$6.99
 - Cane Poles 10' & 12' \$2.49 \$3.49
 - Camp Fuel - gal \$3.75
- (Located 1 block north off Throckmorton Hwy. Look for sign across from Trussell's Tire)

Major Medical that's worth a Million.

Time Insurance Company's Major Medical plan offers: \$1,000,000 in lifetime benefits per insured party. Payment of all covered charges both in and out of the hospital. Without deductibles. A deductible you pay just once a year rather than with each medical occurrence. And the plan is area-rated so you don't pay for higher risk areas of the country. Call us for full details.



Lanco Insurance Buddy Lane (817) 864-2629

Carlos Jimenez, Jr.

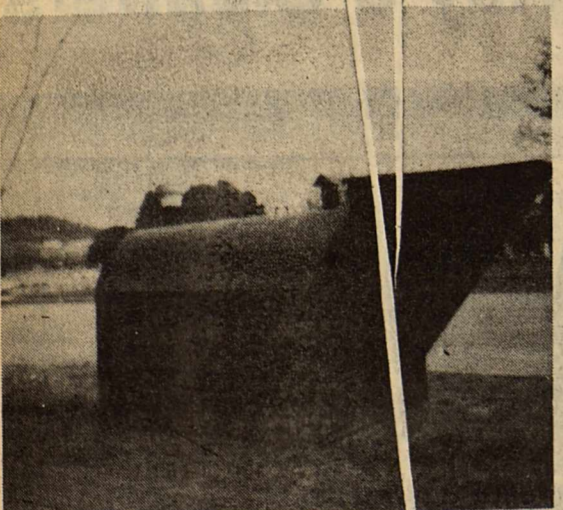
Can sell you a new vehicle cheaper than anybody

Middlebrook Motors 773-3661 673-1611

June 14, 15, 16, & 17

- 32 oz bottle Ivory \$1.59
- Handy Wipe pkg. Towels 59¢
- Havoline 30 wt., qt. Oil 99¢
- 6 pack can Pepsi Cola \$1.59

Buster's Drive-In



K & K STORM CELLARS

Complete Installation! Just in time for the storm season!

We offer two sizes:

6 ft. x 12 ft. 6 ft. x 8 ft. Our cellars are 6 1/2 ft. tall inside. Set in concrete ★ Tar coated to prevent rust!

New Dealer in Aspermont Call 817-989-2837

Remember Dad On His Day with Blue Stratos Cologne

4 1/2 oz, reg. \$9.50

\$7.50

Great Value

DOYLE HIGH'S

THE DRUG STORE

100 So. E. Haskell, Texas

STORE HOURS:

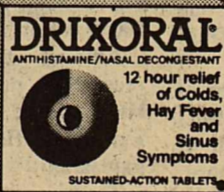
Monday-Saturday—8:00 a.m.-6:00 p.m. Sunday—8:30 a.m.-10:30 a.m.

864-2515

FREE DELIVERY

Let us price your next Prescription

Ask About: Senior Citizens Discount Look for a Great Value Ad Each Week



Drixoral

10 tablets reg. \$3.39 \$2.89

Nature's Organics Plus

Shampoo & Conditioner

16 oz, Reg. \$2.49

\$1.89



Mycitraclin

1 oz Reg. \$4.89

\$3.89

25% off All Pens & Pipes

CARDS for DAD

25% off All Watches



Esoterica Medicated

Fade Cream

Reg. \$7.29 \$4.99



Eclipse Sunscreen

moisturizing lotion SPF 15 Ultra Protection

Net 6 oz, Reg. \$9.99 \$6.99



Bayer Timed Release

Aspirin 30 tablets, Reg. \$2.69

\$1.79

Rice Springs News

Monday morning the ladies from the First Methodist Church, Haskell, brought some good singing and a very fitting devotion given by Amelia Perry. We are fortunate to have these ladies come into our home and go to the rooms and encourage and visit with them.

brought by the Trinity Baptist and the Church of Christ. Kay Baker and her children were here to visit with residents on Friday. We have been missing Kay, an Aide, who has been undergoing tests in Abilene. Davis Jones of Stamford visited with Willard Jones. Margaret Ross, Nita

Aycock, Angela and Jennifer all of Abilene visited with their grandparents, Mr. and Mrs. A.T. Cook. G.A. and Sue Bradford and Brenda, Faye and Charles Cox of Peacock, Dora Hellum, and Vicky Florence of Swenson, and Hazel Letz of Old Glory. Tommy Jo Clark and Kyle of Abilene visited their grand-

mother, Mrs. Alma Cole. Trudie Bush has been on our sick list but is better at this time. Visiting her were, Earl Ray and LaNell Smith and Laraye, Jeff Sellers, Imogene Burton, Ron and Deb Bilbrey, Lisa, Ronnie and Rodney, Ken and Shirley Hughes, Tammie and T.J. all of Abilene, Mr.

and Mrs. Hollis Rucker of Friona, Brenda, Robbie, Brandon and Josh White, Barbara Gawood, Earnest, Shirley, Bell, Keith and Cynthia all of Plainview. Frankie and Ophus Posey and Nita of Knox City visited Edna Collins. Mrs. Ollie Brown and her daughter Dixie and husband Leon of Brownfield visited Mae Ray.

Mildred Faust, Roscoe, Jean Tucker and her daughter, Cara of Abilene visited Annie Jones. Mr. and Mrs. Sammy Jones of California also visited Mrs. Jones. Visiting John Earp last week and attending the funeral of his brother, were, Mr. and Mrs. Jim Jackson, Mrs. Adele Hewett of Eastland, Mrs. Fox Middleton of Rising Star, Mrs. Blanche Cawley of Sipe Springs, Mr. and Mrs. Alfon Dunnam, Lubbock, Mr. and Mrs. Hood Earp, Pampa and Mr. and Mrs. James Nay of Monahans.

Jerry, Trish and Kelly Hunt of Aspermont visited Sarah Hunt. Mr. and Mrs. Phillip Hunt of Midland visited Mrs. Hunt also. Mrs. Jeff Hatfield of Throckmorton visited Mae Belle Turnbow. Mr. and Mrs. Billy Trussell of San Antonio was also a visitor of Mrs. Turnbow.

Robert Kirby of Burns Flat Ok., visited his great grandfather, J.R. Kirby. Visiting Charity Bradley were Mr. and Mrs. Forris Neely of Stamford, Mr. and Mrs. Roland Rose, Eudora Bradley, Elyse Eastland and Jan all from Abilene, Grady Webb and Jackie Sessions of Elk City, Ok., Mr. and Mrs. Kenneth Kirby of Houston, and Lucille Stephens of Childress.

Professional Drivers Course Available

The State Board of Insurance has granted a 10% discount, effective May 1, on liability premiums for the private passenger vehicles of drivers who complete a new Professional Driver Improvement Course now offered through Texas Safety Association, according to George R. Gustafson, Executive Vice President of TSA. "We believe that this will be welcome news for professional drivers in terms of the escalating costs for personal automobile insurance," said Gustafson. "While this discount applies to personal automobile policies, the course is a

positive option for the manager trying to control accident-related fleet costs. This is a timely management issue since rates for commercial lines have just increased 17%," he said. "The manager who is faced with this up-front high cost of accidents will be looking for ways to reduce the company's own accident incidence which carries with it an additional price tag in terms of productivity, equipment, and personnel. The specialized training of the PDIC is one of the steps such a manager can take," he said.

Approved by the Texas Department of Public Safety, the PDIC is a modular classroom program that requires only 8 hours, covering the following essential topics:

- *Collision avoidance techniques.
 - *Vehicle maintenance, care, and inspection.
 - *Driver courtesy to create goodwill.
 - *Load distribution and security.
 - *Driver awareness, alertness, and ability.
 - *Backing the big ones—how to avoid the fixed-object collision.
 - *Collision reporting procedures.
 - *Transportation of dangerous goods.
- "The Professional Driver Improvement Course, which was developed by the Canada Safety Council, is similar to National Safety Council's

time-proven Defensive Driving Course, with the advantage of instruction tailored to the needs of professional drivers," said Gustafson.

"The course is designed to help them develop the good judgment they must exercise every minute on the road. The objective is to teach the drivers to foresee problems and drive to avoid the mishaps that can endanger their lives and the company's assets," said Gustafson.

Texas Safety Association in Austin (512/451-7421) and its affiliates the Safety Council of Greater Houston (713/523-2228) and the Safety Council of Greater Dallas (214/351-3236) are offering the course.

AREA'S MOST POPULAR
The S & S DRIVE-IN
 Snack Bar
 Stamford 773-3272

Fri. Sat. & Sun.
 Get set to get wet...
UP THE CREEK

Tuesday-Wed.-Thurs.
 XX Adults Only
 You Must Be 18 With I.D.
 "Let's Talk Sex"




"The Star Spangled Banner" bore another name when it was first published in 1814—it was called "The Defense of Fort McHenry."



As many as 90 couples of African social weaver birds may join to build a huge community nest—a nest version of the modern apartment.

TAX PLANNING

Written By Gerald Rodgers, CPA



Who Needs Personal Computers?
 You've heard the sales pitch, "A home personal computer can simplify your letter writing, balance your checkbook, organize your recipes - do almost everything but wash the windows."
 Don't be misled. No one writes that many personal letters. Balancing your checkbook will probably never require anything more than a pen and a hand-held calculator, and recipes are at their best only when they come in a book with edible-looking pictures. When the personal computer does windows, it may be useful in the home. Until then, the real benefits of personal computers lie in their business applications.
 Don't let the name "personal computer" confuse you. Certain models are very powerful business machines. "Personal" simply means the computer is small enough and inexpensive enough, relatively speaking, to be used by one person. Large computer rooms and staffs are not required to operate the machine.
 If you have a business that involves the following kinds of work, you should consider a personal computer:

- 1-many repetitious, routine tasks
- 2-lots of paperwork; i.e. payroll checks, customer billings, purchase orders, mailing labels
- 3-lots of general correspondence, especially if much of it is of the same nature
- 4-written reports, contracts, newsletters, catalogs, brochures
- 5-working with large masses of data of any kind
- 6-extensive research and writing

In addition, a computer can bring your business's accounting system into the modern world-giving you timely, easily understood information for sound business management.

Sponsored by
JAMES E. RODGERS & COMPANY
 Certified Public Accountants
 20 Southwest Third Street
 Hamlin, Texas

LANE APPAREL'S 13TH ANNIVERSARY STOCK REDUCTION

CLOSING-OUT SALE

THE SAVINGS YOU'VE BEEN WAITING FOR!

Brand Names at Terrific Savings!

SALE

Items listed in this ad are just a few examples of the hundreds of items to sell out at once.

Entire Stock Walls Coats & Jackets Values from 22.00 to 110.00 Now 11.00 to 55.00 1/2 Price	Entire Stock Wembley Ties Reg. 10.00 to 15.00 as low as \$8.00	Rack of Mix & Match Shorts & Shirts by Wrangler from 14.00 to 24.95 Now \$10.82-\$19.81	Rack of T-Shirts by Career Club & Munsingwear Values from 15.00-27.00 Now \$7.67-\$21.11
Large Rack of Sport Shirts by Career Club Values to 21.00 Now as low as \$11.79	Wrangler & Levi Stretch Denim Jeans Values to 27.95 Now \$19.99	Entire Stock Levi Knit Jeans Reg. 25.00 Now \$19.99	Entire Stock Long Sleeve Dress Shirts by Career Club 1/2 Price
Entire Stock Short Sleeve Dress Shirts by Career Club 20% off	Large Group Student Western & Dress Long Sleeve Shirts Values to 17.95 Sizes 8-20 All Now \$7.99	Large Group Long Sleeve pullover & button front Sport Shirts 1/2 Price	Entire Stock Socks & Under-clothes by Interwoven & Jockey All 20% Off

Entire Stock Reduced!!

Entire Stock Short & Long Sleeve Western Shirts by H-C & Panhandle Slim Now 20% Off	Entire Stock Dress Pants by Hubbard, Haggard, & H-C All 25% Off	Western Suits 100% poly or poly wool blends by H-C or Botany 500 Reg. \$160-\$330 as low as \$99.99-\$234.99	Botany 500 Dress Suits Lots of Colors & Styles Reg. \$230.00 now as low as \$84.99
Sport Coats by Levi & H-C Popular Styles Reg. \$135.00 now as low as \$49.99	Corduroy Jeans Levi & Wrangler Entire Stock 1/2 Price	One Rack Student Shirts sizes 14-20 Pants sizes 26-30 All 20% off	Entire Stock Nunn Bush Leather Dress Shoes 1/2 Price
Hush Puppies Shoes Dress or casual Breathin Pigskin All 20% Off	Denim Levi Jeans 501 or Dura Plus Heavy Duty Denim for everyday wear Now \$15.99	Wrangler No Fault Slim or Reg. Fit Jeans Now \$14.99 Wrangler Cowboy Cut Now \$15.99	Tony Lama, Wrangler, & Texas Boots red tagged for special savings as low as \$29.99

Lane **APPAREL FOR MEN**

Next to M-System Haskell, Texas

Fresh Potatoes For Sale

at 1002 N. 7th or Call Vickie Emert

864-3933



M SYSTEM

Your FRIENDLY

**AFFILIATED
SUPER MARKETS**

Haskell, Texas
Where Your Dollar Buys More

Double days

WEDNESDAYS
With the purchase of \$3.00 or more.

Specials Good Thurs., June 14
thru Wed., June 20

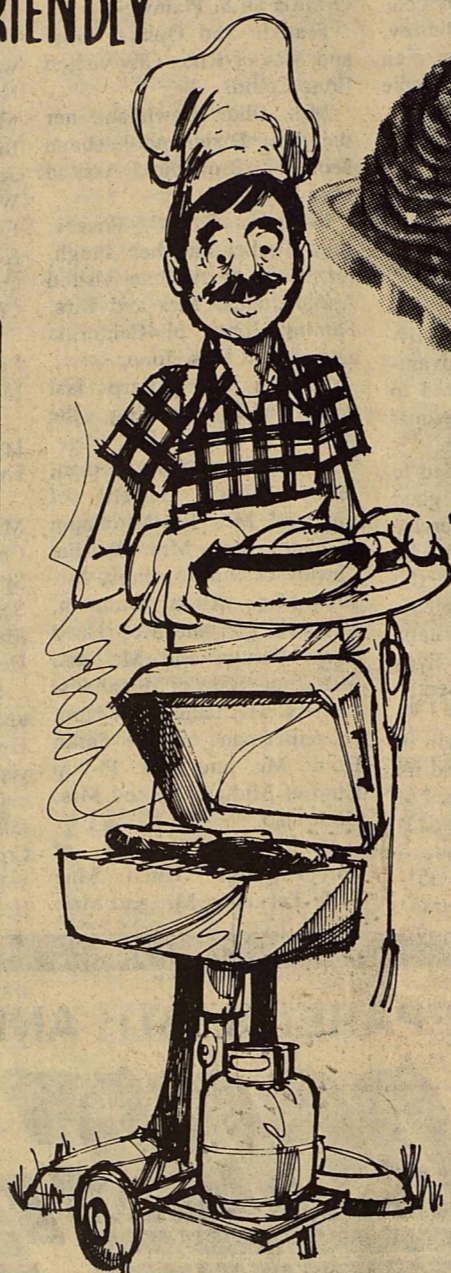
We Reserve The Right To Limit Quantities!

Seven Seas

Salad Dressing

assorted
kinds
8 oz
bottle

79¢



Cater to Dad with These FOOD SPECIALS

Fresh Ground

Beef

3-Lb. Family Pak Pkg.

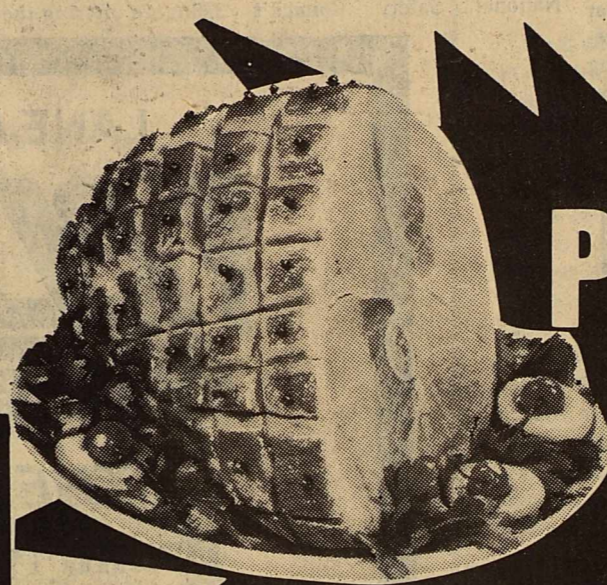
Lb. **88¢**



Kraft Colby or Cheddar

Half Moon Cheese ... 10-oz. Pkg.

1 79

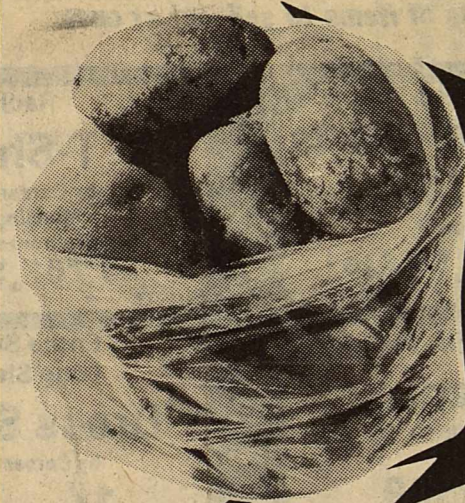


SMOKED

PICNICS

Lb. **69¢**

fresh as a June Morn PRODUCE



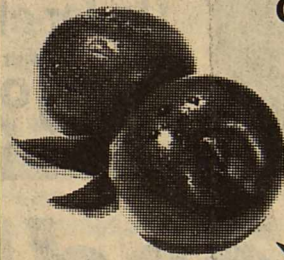
U.S. #1 Russet

Potatoes

10-Lb. Bag **1 49**

Plums

California Red



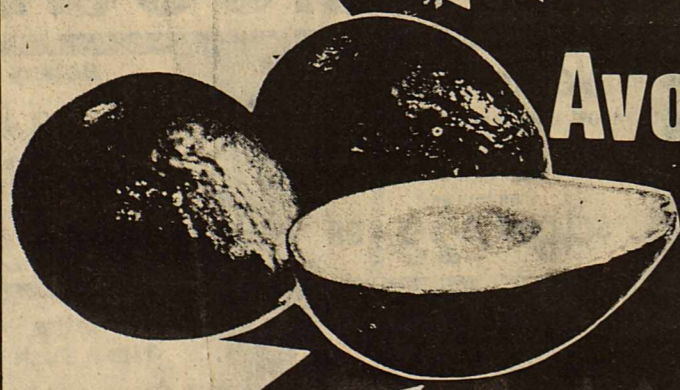
3 1 00
Lbs.

Broccoli

Fresh Bunch



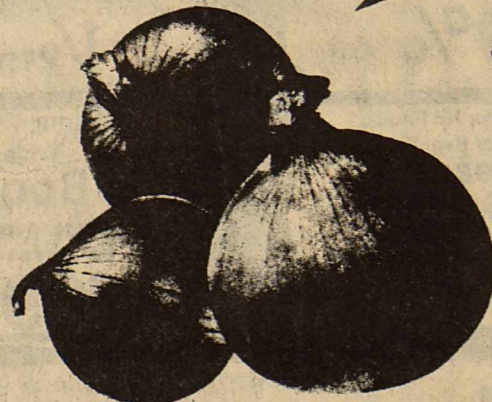
Lb. **49¢**



Avocados

Calavo

6 For 1 00



Yellow Onions

Fresh, Tender

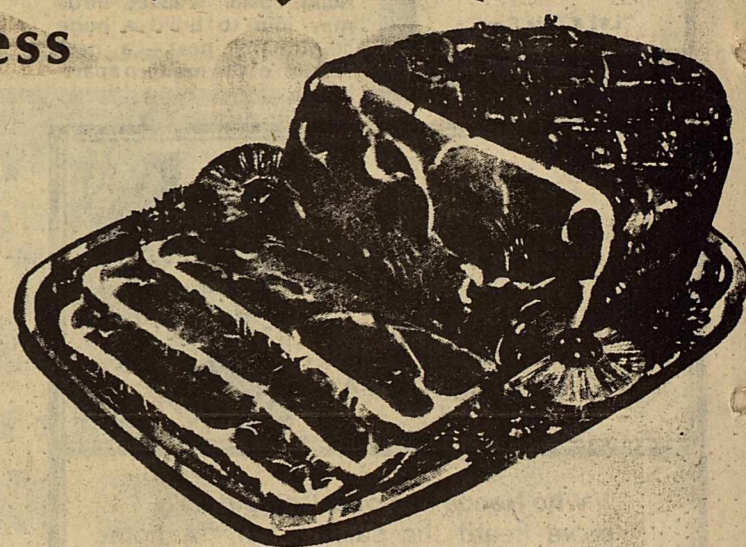
5 Lbs. **1 00**

Shurfresh Boneless

**HAM
HALVES**

1 68

Lb.



PARKAY

Margarine Quarters

1-Lb. Pkg. **45 ¢**



Mrs. Smiths Frozen

Cream Pies

Assorted Kinds

13-oz. Pkg. **1 29**

Stillwells Frozen

Breaded Okra

24-oz. Package

1.29

Electric Oscillating

FANS

12-Inch
3-Speed

19⁹⁵

HEFTY ECONO

LAWN BAGS

6-Bushel, 10-Count

Pkg.

1.89



WE GIVE  WE GIVE  WE GIVE  WE GIVE  WE GIVE  WE GIVE  WE GIVE  WE GIVE  WE GIVE  WE GIVE 

Taste of Texas... Featuring Texas Products!



NEW! Ashburn's
Ice Cream
Assorted Flavors
1/2-Gal. Ctn. **1 89**




Campbell's
SOUP
Cream of Chicken or Cream of Celery
10.75-oz. Cans
3 For 1 00

BAMA
FRUIT DRINKS
Assorted Flavors
8.45-oz. Box
5 For 1 00

Shurfine Frozen Crinkle Cut
Potatoes
5-Lb. Bag **2 39**

COMSTOCK
Cherry Pie Filling
21-oz. Can **1 49**

TEXSUN
Grapefruit JUICE
46-oz. Can **79¢**



MARYLAND CLUB
Coffee
All Grinds
1-Lb. Can **2 19**

Imperial Sugar
5-Lb. Bag **1.69**

LIGHTCRUST
FLOUR
5-Lb. Bag **89¢**



Coke
Regular, Diet or Caffeine Free
2-Liter Bottle **99¢**

DELTA PAPER
TOWELS
2 Jumbo Rolls **1 00**

DELTA TOILET
TISSUE
4-Roll Pkg. **89¢**



DEL MONTE
Green Beans
Cut, French Style or No Salt
3 16-oz. Cans **1 00**
Limit 3

Cascade
AUTOMATIC DISHWASHING
DETERGENT
85-oz. Box **3 89**

MR. COFFEE
COFFEE FILTERS
100-Ct. Pkg. **99¢**

SHURFINE
Mustard
32-oz. Jar **59¢**



Angler Broom
Angle cut design gets into corners and under counters!
Each **3 99**



SKINNER MACARONI or SPAGHETTI
All Cuts, 7-oz. Box
3 For **1 00**



Tide
Laundry Detergent
49-oz. Box **1.75**
Limit one with \$10.00 or more grocery purchase.

STAMP PRICE SPECIAL
M-System Bread
1 1/2 lb loaf
9¢
WITH ONE SPS FILLED CARD

STAMP PRICE SPECIAL
Clorox Bleach
gallon jug
59¢
WITH ONE SPS FILLED CARD

STAMP PRICE SPECIAL
Shurfresh Milk
1/2 gal crt.
59¢
WITH ONE SPS FILLED CARD

STAMP PRICE SPECIAL
Delta Paper Towels
Jumbo Roll
9¢
WITH ONE SPS FILLED CARD

STAMP PRICE SPECIAL
Shurfresh Grade A Large Eggs
49¢
WITH ONE SPS FILLED CARD

WE GIVE  WE GIVE  WE GIVE  WE GIVE  WE GIVE  WE GIVE  WE GIVE  WE GIVE  WE GIVE  WE GIVE 

Sagerton Community News

The Clark family reunion was held recently in Lockhart State Park. There were 58 descendants of the Thomas A. and Emma Hale Clark.

The members who gathered were children and members of their families from Terrell Clarks, the John Clarks, the Charles Clarks and Etta Clark Kelley.

Mrs. Ruth Kelley was honored as the oldest lady in attendance and Reece Clark as the oldest man. Mrs. Alene Clark Palmer traveled the farthest and Kellie Clark was the youngest.

Mr. and Mrs. Kirby Moore, Mrs. Cora Clark and Mr. and Mrs. Ellis Clark were hosts for the occasion.

On Saturday night June 2 Mr. and Mrs. Bill Clark had open house for the members of the family at their home in Lockhart.

The group voted to meet at Stamford in June, 1986. Mr. and Mrs. Charles Clark, Mr. and Mrs. Joe Clark, Mrs. Whit Clark, and Mr. and Mrs. Reece Clark will be hosts.

Mr. and Mrs. Harold Smith of Henrietta were honored with a reception on their 50th wedding anniversary May 26, 1984 in the home of Mrs. John Chapin, assisted by Mr. and Mrs. Bill Roberson.

Harold, the son of the late Mr. and Mrs. Walter Smith, former early day residents of Sagerton, married Juanita

Chapin May 26, 1934. They are retired and live at Henrietta.

Mr. and Mrs. Charles Clark attended the celebration.

Clark Don Terrell, son of Mrs. Pete Bryan of Big Spring and grandson of Mr. and Mrs. Reece Clark of Sagerton graduated from the University of Texas Medical Branch, May 26, 1984. Clark and his wife, Mary, will be living in San Antonio where he will begin his residency in psychiatry, July 1, 1984 and she will be teaching music.

Mr. and Mrs. Reece Clark, Mrs. Pete Bryan and his sister Kay Terrell attended the graduation held in Moody Civic Center at Galveston.

Applications For Tree City USA Now Available

Tree City USA Application Brochures are now available free of charge from the National Arbor Day Foundation.

Tree City USA, which is sponsored by the National Arbor Day Foundation and the State Foresters, provides guidelines and recognition for community forestry programs.

"In the typical town or city, half of the trees are on public

Clark is the great grandson of Mrs. John Clark and Mrs. Alva LeFevre of Sagerton.

Mrs. Joe Clark was hospitalized last week in Stamford Memorial Hospital. We are pleased to report she has returned home and is feeling fine.

On Saturday and Sunday, Joe Clark attended the Clarks family reunion held in Lockhart. 69 family members registered. Joe returned home through Austin where he met Rev. and Mrs. D.L. Adler, Anna and Christopher of the Woodlands.

Mrs. Adler and children returned to Sagerton for a weeks visit with her parents, Mrs. and Mrs. Joe Clark.

Pastor Adler remained in Austin for the week to attend a ministerial youth retreat. The retreat, held at Concordia College for high school students is sponsored annually by Texas District of the Lutheran Church Missouri Synod. Pastor Adler has been a counselor at the retreat for the past 4 years.

Christopher Adler, age 4, has discovered an interesting site here in the Sagerton area. It is located on the north side of Mr. and Mrs. Alvin Ulmer's house. Why not drive by and see if you don't agree with Christopher that the Ulmer's have a deer tree.

Friday night Mr. and Mrs. Joe Clark, Mrs. David Adler, Anna and Christopher Adler went to Abilene for supper. Afterwards Joe and Dorothy took the Adler's to the bus station where they caught a bus and returned home to the Woodlands.

Weekend before last visitors in the home of Lillie Lehmann was a daughter, Pearl Schwartz of Snyder; a daughter, Adrienne Fouts of Lubbock; and a daughter, Verneda and son-in-law, Carl Opitz of Abilene. Adrienne also visited the Aubrey Fouts.

Last weekend visitors in the home of Lillie Lehmann was a granddaughter, Lanette, a great granddaughter, Cassie, a great grandson Jay Calloway and a daughter Pearl Schwartz and great grandson, William Wood of Snyder.

Mrs. Lillie Lehmann visited her sister Alvena Halle and Mrs. John Clark last Thursday.

The monthly Bredthauer dinner was held in the home of Mr. and Mrs. Alvin Bredthauer Sunday with a sister and her husband Lonnie Kokemoor of Houston attending. Also attending were Mr.

and Mrs. Dickie Greenwood of Haskell, Mr. and Mrs. Alfred Bredthauer of Stamford, Mr. and Mrs. Ernest Bredthauer of Rule, Mr. and Mrs. Walter Bredthauer of Haskell, Mrs. Adela Niedieck, Lou Dell Barbee. After a dinner of turkey, dressing, brisket and all the trimming, the afternoon was spent playing games of 84 and double nine.

Mr. and Mrs. Lonnie Kokemoor of Houston spent Saturday night in the home of Mr. and Mrs. Walter Bredthauer. Sunday night the Kokemoors spent the night in the home of Mr. and Mrs. Ernest Bredthauer in Rule.

Mrs. Betty Balzer, Mrs. Louise Stegemoeller, Mrs. Leon Stegemoeller, Mr. Clarence Stegemoeller and Mrs. Delbert LeFevre went to Slaton Saturday to attend the wedding of Mr. and Mrs. Roland Stegemoeller's daughter.

Mr. and Mrs. Sam Neinast spent some time at Lake Whitney with some friends of theirs, the Clarks. They went to Hillsboro to visit with Mrs. Sylvia Crowe. Later on they went to Emory to visit with their son Mr. and Mrs. Kenneth Neinast and daughter.

Mr. and Mrs. Charles Clark ate dinner in the home of Mrs. M.Y. Benton Sunday.

Mr. and Mrs. Reece Clark and Mr. and Mrs. Alvin Ulmer went to Lubbock Sunday to see Mrs. G.W. Lefevre who is in the hospital there.

Dance

American Legion Hall
Rochester, Texas
to the music of
Roy Speck and the Moonlighters
Friday, June 15
8:30 p.m.
Everyone Welcome
Snack Bar Open BYOB

DON'T MISS THESE FOOD SAVINGS

Specials Good Thurs., Fri. & Sat.

Gooch Sliced Bologna \$1 ¹⁹ / _{lb}	Eggo Frozen Waffles 79 ^c
No. 1 Sliced Bacon \$1 ²⁹ / _{lb}	Borden Ice Cream ½ gal round ctm \$1 ⁸⁹
Store Made Sausage 99 ^c / _{lb}	Planter's Dry Roasted Pistachios 7 oz jar \$1 ⁴⁹
Blue Ribbon Round Steak \$1 ⁹⁹ / _{lb}	Jello 3 pkgs 89 ^c
Libby Viennas 3 cans \$1 ⁰⁰	Pitted Ripe Olives no. 300 can 79 ^c
Gold Medal Flour 5 lb 99 ^c	Del Monte Peas & Carrots 16 oz can 49 ^c
Mrs. Tuckers Shortening can \$1 ⁴⁹	Nice & Soft Tissue 4 rolls 89 ^c
Morrison Corn Kits 3 for 59 ^c	Gain giant size \$1 ⁴⁹
Kraft Halfmoon Cheese 10 oz \$1 ⁴⁹	Eveready Batteries 2 size D 69 ^c
Gatorade 32 oz 67 ^c	Vel beauty bar bath size 57 ^c

POGUE GROCERY

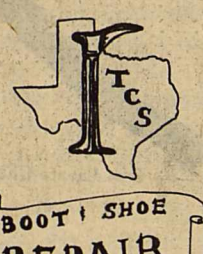
—Extra Parking Behind The Store. Home Owned and Operated—

113 North Avenue E

Phone 864-2015

Haskell, Texas

Your "Shoe Shop" Serving the Rural Towns Many years of experience in Boot & Shoe repair



TEXAS COBBLER SERVICE

Convenient Fast Quality Guaranteed Service! Pick up and Delivery Only You bring 'em We fix 'em

Your representative will be **in Haskell** at 9:45 AM at 10:45 AM on Tuesdays & Thursdays at the old Church of God Building ON AVE. E

In most cases your repaired items will be delivered back to you on the following pick-up date!

When You Buy, Build or Remodel, You Can Save Thousands of Dollars* on Your Electric Bills over the Life of Your Home if it's a WTU-Approved E.S.P. Home



Some homes on the market may seem to be energy efficient, but before you buy, build or remodel, be sure your new home earns the West Texas Utilities

"E.S.P. Award"

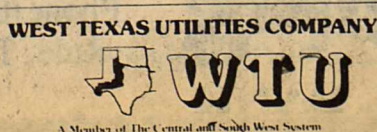
ASK YOUR REALTOR OR BUILDER ABOUT SOME OF THE MOST IMPORTANT ENERGY SAVING FEATURES:

- Ceiling insulation of R-30 and wall insulation of R-16.
- Storm windows or insulated glass.
- Weatherstripping and caulking around all doors and windows.
- Air conditioning with a Seasonal Energy Efficiency Ratio (SEER) of 8.5 or higher.
- Electric heat pump with an SEER of 8.0 or higher.
- Air infiltration control.

*COMPARE BELOW HOW MUCH MONEY AN E.S.P. HOME CAN SAVE YOU OVER A ONE-YEAR PERIOD

An average 1800 square foot home will cost approximately \$835 per year to heat and cool.
An E.S.P. HOME of 1800 square feet will cost approximately \$610 per year to heat and cool, which results in an annual savings on electricity costs of 25 percent or more.
(Energy savings may vary according to the type of construction of the home, family size and individual energy usage habits.)

Call your local WTU office for additional information on buying, building or remodeling to have an E.S.P. HOME. IT CAN SAVE YOU MONEY ON FUTURE ENERGY BILLS!



TP&WD Announces 1984-85 Early Season Migratory Game Bird Regulations

Proposed 1984-85 Early Season Migratory Game Bird Regulations are being prepared by the Texas Parks and Wildlife Department for publication in the Texas Register for the required 30-day public comment period. Final Commission action is scheduled for July 25, 1984. The early season regulations are for migratory game bird species which have hunting seasons that begin before Sept. 29. These species include doves, gallinules, rails and teal ducks.

No changes are proposed for gallinules, rails, and teal ducks. However, changes required by the U.S. Fish and Wildlife Service as well as those recommended by TP&WD, will necessitate some modification in dove regulations. The proposed changes are as follows:

1. The names of the dove hunting zones (Panhandle, Central, and Rio Grande) would be changed to the North, Central and South

Zones. These designations seem more acceptable to Texas dove hunters and should avoid the confusion that has resulted from the use of the names Panhandle and Rio Grande to describe parts of Texas not usually associated with these names.

2. The boundary between the Central and South Zones would be modified as shown on the attached map to meet U.S. Fish and Wildlife Service requirements for a delayed opening (not earlier than Sept. 20) in the South Zone. U.S. Highway 90 between Del Rio and San Antonio follows the transition zone between the Edwards Plateau and the South Plains Ecological Region while U.S. 87 between San Antonio and Port Lavaca generally follows the transition zone between the South Texas Plains Region and other ecological regions to the north and east. A number of studies have indicated that this new boundary would more accurately reflect the actual habitat related differences in mourning dove density and nesting chronology that exist between the Central and South Zones.

3. The four-day Special White-Winged Dove Season in Texas would be restricted to the shaded area shown on the map. At the present time, this is the only area of Texas thought capable of supporting a daily bag of 10 white-winged doves.

4. A limited hunting season on white-tipped (white-fronted) doves to run concurrently with both the regular mourning dove season and the four-day Special White-Winged Dove Season is proposed. White-tipped doves have increased dramatically in South Texas in recent years, and current studies indicate a limited harvest of whitetips would have no adverse effect on the population.

5. Proposed statewide bag limits during the regular mourning dove hunting season would be: 12 mourning, white-winged, and white-tipped (white-fronted) doves in the aggregate including no more than four white-winged and four white-tipped doves in possession. This modification would permit a limited harvest of white-winged and white-tipped doves while still protecting the breeding populations

of these species.

6. Proposed bag limits during the four-day Special White-Winged Dove Season would be: 10 white-winged, mourning, and white-tipped (white-fronted) doves in the aggregate including no more than two mourning doves and two white-tipped doves per day; 20 white-winged, mourning, and white-tipped doves in

the aggregate including no more than four mourning doves and four white-tipped doves in possession. This modification would greatly restrict the steadily increasing harvest of mourning doves that has occurred in recent years during the Special White-winged Dove Season when 12 mourning doves were permitted in the daily bag in

addition to 10 whitewings. This restriction is considered necessary since the number of mourning doves till nesting in South Texas in early September is greater than that found in the rest of the State.

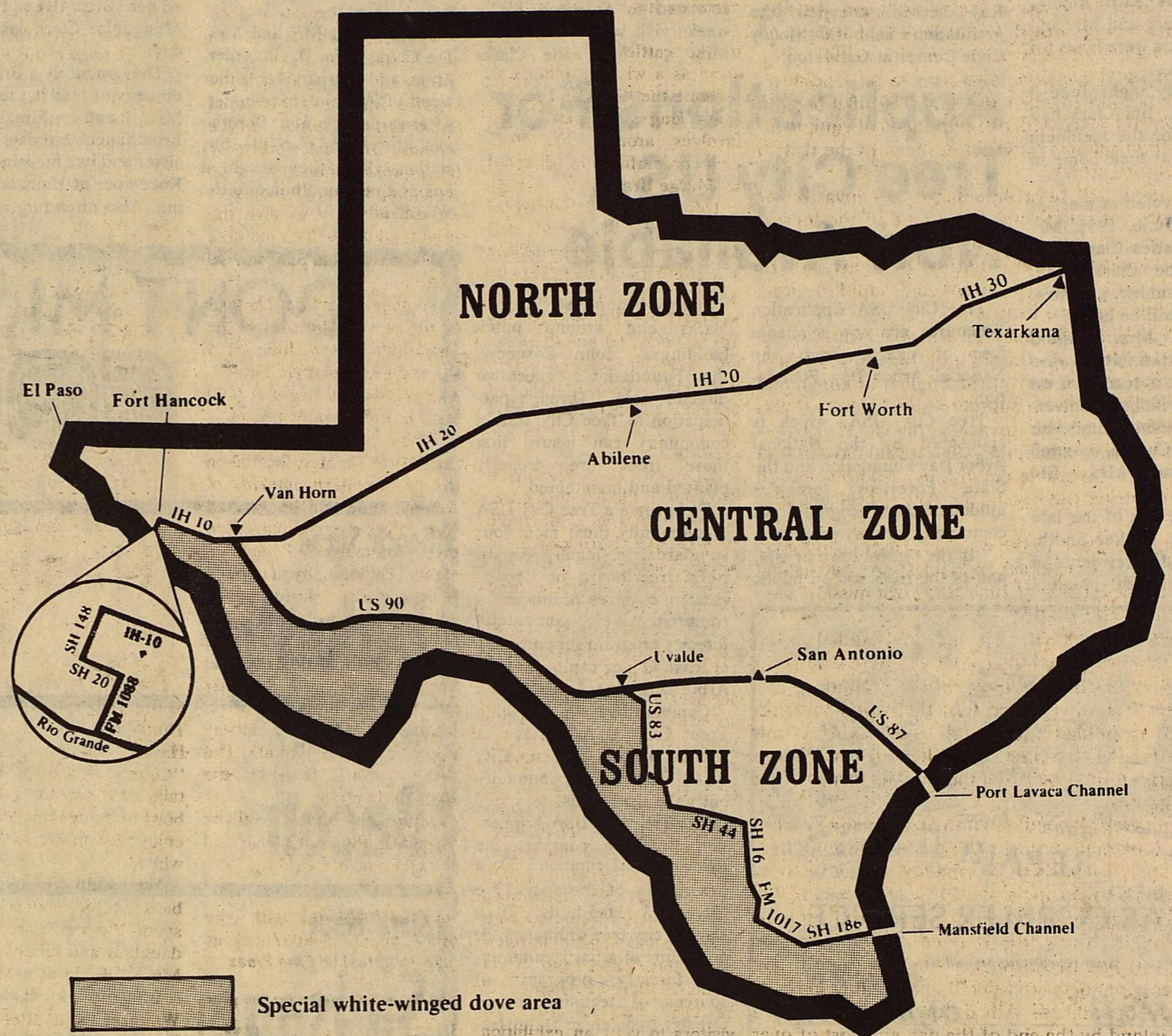
Department biologists are currently evaluating the effects of last winter's freeze on whitewing nesting habitat in the Lower Rio Grande Valley.

Citrus orchards, which provide nesting cover for approximately 50 percent of the whitewings in the Valley, were severely damaged by the freeze. Native brush, which normally supports the remainder of the nesting whitewings, does not seem to be seriously affected. Whitewing surveys scheduled for May and June may indicate the

need for a restricted white-wing hunting season in the Lower Rio Grande Valley this fall.

Persons wishing to comment on the proposed regulations may do so by writing or calling Ron George, Dove Program Leader, Texas Parks and Wildlife Department, Austin, Texas 78744 (Telephone: 512/479-4979).

PROPOSED BOUNDARIES FOR THE 1984 - 85 DOVE HUNTING SEASON



College News

Midwestern State University honor rolls for the 1984 spring semester listed 41 students on the Dean's Honor Roll and 134 students on the University Honor Roll, said Betty Bullock, registrar.

Honor Roll made a minimum grade point of 3.5 on a 4.0 scale and had no grade below a "C" for a least 15 semester hours. Students listed on the honor rolls from this area include Olivia Delhiero Andrada from Rochester.

B-K Electric Cooperative, Inc. NOTICE OF NOMINATING COMMITTEE MEETING

In accordance with the provisions of the bylaws of the Cooperative, the Board of Directors has appointed a Committee on Nominations as follows:

- David Counts, Box 338, Knox City, Texas 79529
- James Albus, Knox City, Texas 79529
- Ms. Ann Tibbets, Box 632, Knox City, Texas 79529
- Ms. Mary Ruth Higgins, Rt. 2, Box 47, Seymour, Tx. 76380
- Ms. Jeannie Hunt, Rt. 2, Seymour, Texas 76380
- Kim Martin, Rt. 3, Seymour, Texas 76380

The Committee on Nominations will meet June 19th, 1984 at 2:00 p.m. at the Seymour Office of B-K Electric Cooperative, Inc. to make nominations for directors.

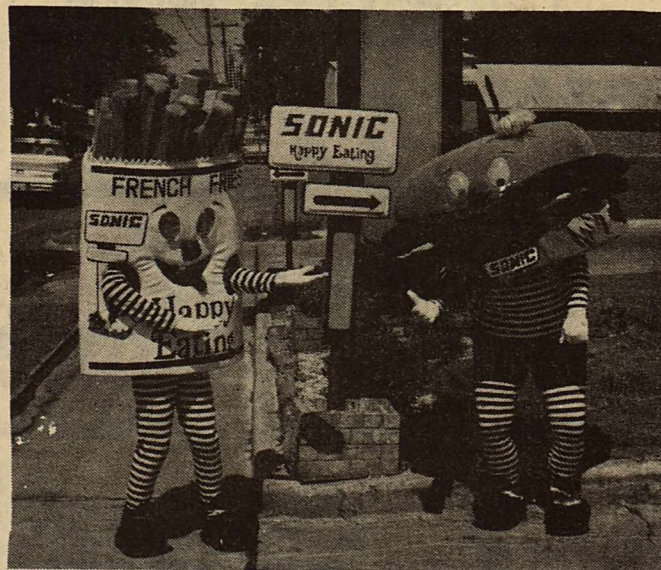
The directors' terms expiring are John L. Grindstaff, Sr., Rochester, and Charles T. Porter, Seymour.

Members of the Cooperative are hereby notified of this meeting.



There are about 326 million cubic miles of water on earth. Each cubic mile contains over a million million gallons of water.

Brightly colored — attention getting — Open-Closed Signs for your office or business. Comes complete with changeable letters in black or red. Also includes a sign for counter top use. See at the Haskell Free Press.



Freddy French Fry & Herman Hamburger
will be at the
Sonic
in Haskell

Friday 11 a.m. to 1 p.m.
5:30 p.m. to 7 p.m.

Hamburger, Fries and any size Drink \$1.99
in Celebration of our 25th Anniversary

All Drinks 25¢

Free Gifts to be Given Away — Prices Good Thur., Fri., Sat., & Sun.

1402 N. Ave. E

Ph. 864-3318


CONFUSED?

We can help


Federal banking rules and regulations seem to change almost daily, making it difficult to know which program is best for your individual financial needs.

That's why your bank keeps abreast of new programs and can help take the confusion out of your financial decisions. We have a savings or investment program that will be ideal for you.

Stop in and see one of our experts today. We'll explain our savings and investment opportunities in terms you can understand.



Each member insured to \$100,000



Post Office Box 10
Phone (817) 997-2216
Rule, Texas 79547

CAPITOL UPDATE

John Tower
U.S. SENATOR for TEXAS
WASHINGTON, D.C. 20510



Describing the turmoil of the Allied invasion of Normandy during World War II, Lt. Gen. Omar Bradley said, "Every man who set foot on Omaha Beach that day was a hero." On June 6th, 40 years will have passed since the D-Day invasion, the largest amphibious operation in the history of the world. The invasion sparked the eventual defeat of the Germany army and the end of the war in Europe.

Never before had the entire free world been united behind a single cause as they were that day. Their dedication and cooperation made the invasion successful and should be an inspiration to us today as again we face totalitarian forces in the world. Let us look at that day and the sacrifices made by free men around the world.

The Normandy invasion, also known as Operation Overlord, was not put together overnight but had been in planning for several years. Millions of pounds of equipment and over a million soldiers had been shipped to the British Isles for the future attack.

The Germans had been anticipating an invasion of Northern France for quite some time. One of the biggest secrets of the war was when and where the invasion would occur. The Germans were not counting on an invasion of Normandy and had deployed troops and supplies along other beaches in Northern France.

The invasion originally had been scheduled for May but was postponed to June. As the sixth of June approached, inclement weather moved in over the English Channel, and Gen. Dwight D. Eisenhower, Supreme Allied Commander, considered postponing the invasion plans. If such a postponement had been made, the Allies would have to wait another month for favorable conditions. Another month also could have meant the loss of the Allies' best weapon: surprise.

Anticipating a break in the weather, Eisenhower gave the order to attack. Paratroopers and gliders dropped behind German lines on the evening of June 5th. Their mission: capture chief bridges and roads.

Many men missed their drop sites and landed in the middle of German-occupied towns. Others were shot from the air by enemy machine gunners on the ground.

Soon after 6 a.m. on June 6th, the actual invasion began. Troops scrambled into landing crafts as American ships bombarded the shoreline with heavy artillery. Large waves and German fire hampered the 156,000 men landing throughout the day.

American troops landed on Utah and Omaha beaches while British, Canadian, French, Dutch and Polish soldiers went ashore on other parts of Normandy. Many of them were pinned down by machine gun fire a large part of the day. Some were trapped in the water and had to inch their way to shore under heavy fire to avoid drowning.

Fighting was intense throughout the day, and at one point Allied commanders considered abandoning parts of the Normandy beachhead. Allied forces had advanced several miles inland by the end of the day at a cost of over 10,000 lives.

Most of those brave soldiers are buried at Normandy. The American Cemetery at Omaha Beach serves as a constant reminder of the cost of freedom. They sacrificed their lives fighting fascism but never lived to enjoy the fruits of that freedom. Nothing could come closer to pure selflessness.

The heroes of Normandy are all around us. They are members of our own families and communities. On June 6th, let us remember those who are eternally at Normandy, and thank those men who did come home for the freedom we enjoy today.

Tickets For 1984 Fandangle On Sale

Tickets for the 1984 version of the Fort Griffin Fandangle, scheduled to run for six performances June 21-23 and 28-30 at the Prairie Theater, are now available to the public, according to Patsy Rose, executive secretary of the Fandangle Association.

The annual production, which was first produced in Albany almost 50 years ago, will this summer feature the "old time cowboy," depicting through song, dance and narration his life as a pioneer

in the cattle industry. The show as a whole attempts to recreate the "look and feel of times long since past," and involves around 200 local amateur performers, directed by Marge Bray.

Tickets in four different price ranges, \$7, \$6, \$5, and \$3, may be reserved by calling a special Fandangle telephone number, 762-3642, or by writing P.O. Box 185, Albany Texas 76430. Group discounts are also available. Reservations not accompanied by payment will be held only until 5:00 p.m. on the day of the performance.

Although the Fandangle itself doesn't begin until dusk, around 8:45 p.m., Fandangle visitors are encouraged to come early in order to participate in several related activities.

Barbecue will be served on the courthouse square from 5:00 to 8:00 p.m. prior to each performance. Joe Allen's Barbecue of Abilene will cater the meals, with prices set at \$5 for adults and \$3 for children, plus tax.

The courthouse, which celebrated its centennial in 1983, will remain open while barbecue is being served.

Windows in downtown stores will be decorated with antiques and Fandangle-related items, and the First National Bank of Albany will be open late in order for visitors to view an exhibition featuring three well-known western artists, Ronald Thomason, Covelle Jones and Henry W. Caylor.

The Old Jail Art Center, located one-half block east of the courthouse square, will be highlighting a photo-documentary of the "Old Stone Ranch," recently restored homestead of the Matthews-Reynolds family. The OJAC is

currently in the midst of a major expansion, but construction shouldn't cause any problems for visitors.

The 100-year-old Ledbetter Pickett House, nestled under large shade trees in the downtown Bank Park, will also be open, showing visitors what many rural homes looked like in the frontier days of this part of Texas. One block behind the Pickett House is the Jacobs House, the first permanent residence built in Albany and restored a number of years ago. Guides will be posted in both homes to answer questions.

Only a few steps away is the historic Matthews Memorial Presbyterian Church, where organist Bill Foster will play the impressive handmade pipe organ, and church members will be on hand to give the church's history. The building will be open from 5:30 to 7:30 p.m.

Another attraction, planned on the second Thursday of the Fandangle season, June 28, is the annual Fandangle Parade. The parade will begin at 6:00 p.m. in the downtown area.

When visitors drive out to the Prairie Theater, located on the northwestern outskirts of Albany, they will be greeted with calliope music played on the authentic Fandangle steam calliope by Louann George. The performances will begin each night at dusk.

Information sheets listing all activities and times will be available at the Albany Chamber of Commerce office, located in a restored railway depot near the Bank Park. The depot also houses the Fandangle office.

Additional sheets will be placed at the courthouse and the Old Jail Art Center.

HAVING TROUBLE with your office supply needs? Let us help you. *Haskell Free Press*

Nice People Do Not Litter!



Beautify Haskell Council

Texas Longhorn Sale Set

BRACKETTVILLE — Lashawn Wardlaw, "Miss Rodeo Texas," will make a guest appearance at the Shahan HV Ranch's "Texas Longhorn Sale of the Century," Saturday, June 16th. Valentino and the Shahan Express Band will be providing the live entertainment, immediately following the sale.

The sale beginning at 1 PM will be conducted at the famed, "Alamo Movie Location," on the Shahan's ranch, 7 miles north of Brackettville on Highway 674.

This is the first time ever that Texas Longhorn Breeders will have the opportunity to select their choice of the Shahan's best longhorns, selective breeding stemming from the original herd put together for the filming of John Wayne's epic, "The Alamo." Offering, along with the Hutto and Pinon Ranches, 78 cows, calves and heifers, 3 bulls and 3 trophy steers out of the most prominent pedigrees available: WR, King Ranch, Y-O, Classic, Hon-do, Texas Ranger, Bold Ruler, Yates, Wright, Scott and Shahan. The cows in this sale will average a little over 6½ years of age with combinations of bull and heifer calves at



side to choose from. There will also be an offering of the best open and bred heifers available. It will be an exciting sale in front of the "Alamo" replica.

Alamo Village is open to the public, the stagecoach will be running and mom and the kids will be able to explore the town that was built to make movies. Stepping back into the 1800's with museum type walk-ins, Cantina,

serving food and soft drinks, blacksmith shop, general store, Indian store, trading post, in a town with board walks and no pavement. There will be live entertainment consisting of music, singing and western melodrama. An "Arkansas Hillbilly," comes to the dusty streets of the town built for movies with his horse, donkey and mule named "Blue."

It will be an exciting sale in front of the "Alamo" where John Wayne filmed his movie epic. Come and take part "where history meets on June 16th." "Miss Rodeo Texas," will be there, at the "Texas Longhorn Sale of the Century," the only place in the world you may see Texas Longhorn cattle sold in front of the Alamo, on the Shahan HV Ranches, in Brackettville.

Haskell Nursing Center

Everyone is invited to come to the "ice cream social", on Thursday night at 7 p.m. at Haskell Nursing Center. The "Country Band" will entertain, so come out and enjoy a bowl of homemade ice cream, enjoy the music and visit a while.

We would like to welcome back Lector Thomason. She spent the weekend with her daughter and family, Mr. and Mrs. W.E. Jeter of Graham.

It's nice to have Versie Whitaker home after her stay in the hospital. We hope that Versie continues to improve so

she can join in on all the activities once again.

Erwin King had a nice surprise when his granddaughter paid him a visit this week. Coming up from Austin, was Carol King. From Knox City were Melody Ryon and her sons and Frances King. They had a nice time catching up on all the family news.

J.E. Sanderson was here from Brownwood to spend some time with his sister Kathryn Mitchell. The two of them had a fine time running around town and visiting.

Norris & Norris Inc.

Base, Paving
Excavation
Parking Lots
Roads & Streets
Dozer Work



35 Years Experience

FREE ESTIMATES

P.O. Box 3403 Abilene, Texas 79604
915-676-1863

OPEN 24 HOURS-EVERYDAY-ICE
MONEY ORDERS-GROCERIES-COOKED FOODS
WHILE SUPPLIES LAST

PRICES EFFECTIVE
JUNE 14-16

Money Matters

A Series Of Informative "Plain Talk" Thoughts Regarding Your Money Matters

We Don't Compete With Area Merchants

Would you believe it... There is a financial institution giving away steaks in order to get deposits. At first glance it might seem supportive of the beef industry, but when you stop to consider that local merchants who sell steaks are losing business, you realize it's just another giveaway.

You've seen it all before with crockpots, blankets, stadium jackets, cutlery, and crystal. If you can name it, somebody is using it to get deposits.

We do not compete with area merchants as an enticement to get deposits. We are not running a supermarket. We're running a bank.

We Think Money Matters!

HASKELL NATIONAL BANK

864-2631 • 601 N. First
Haskell, Texas — Member F.D.I.C.



JUNE IS DAIRY MONTH

BORDEN'S
HI-PRO MILK
\$1.09
½ GAL. CTN.

German Sausage
2/99¢
Scot Towels
59¢

Burritos
2/99¢
Nice & Soft Bath Tissue
4 roll pkg
99¢

Shurfine
Charcoal
\$1.39

6 pk — 12 oz can
Pepsi Cola
\$2.19

BORDEN'S
PUDDING BARS
\$1.59
12 CT. BOX

Obituaries



DELIA A. ASHLEY

Delia Ashley

Funeral services for Delia A. Ashley, 84, of Haskell, were held at 2 p.m. Thursday, June 7, at the First Baptist Church in Haskell.

Officiating was Rev. Mike McKinney, pastor, and interment was at the Rule Cemetery under the direction of the Holden-McCauley Funeral Home.

Born November 10, 1899 in Eastland County, she died of illness at 9:25 a.m. Wednesday, June 6, at the Haskell Memorial Hospital.

Mrs. Ashley had lived in Haskell County since her early years. She was a life-long Baptist and a member of the First Baptist Church in Haskell where she taught Sunday school classes several years ago.

She was a former Noble Grand of the now-defunct Rebekah Lodge in Haskell, a former district Deputy President of the Rebekah Assembly of Texas, and she was active in several other women's organizations. She also had been a leader in the Pinkerton-Foster Reunion Association.

She was married to Claude L. Ashley on September 5, 1917, in the Pinkerton community. A former Haskell County commissioner, he preceded her in death on March 28, 1963.

Survivors include a daughter, Nadine Harris of Whitehouse; a son, Olin Ashley of Odessa; 7 grandchildren; 4 great-grandchildren; and 1 great-great-

grandchild. Pallbearers were: Royce Adkins, Tim Everett, J.I. Trussell, and Roy Trussell, all of Haskell; and Donald M. Blaine and Donald Lee Blaine, both of Whitehouse.

Marie Owens

Funeral services for Mrs. Charles (Marie) Owens, 62, of Haskell were held at 10 a.m. June 8 in First Baptist Church with Rev. Mike McKinney, pastor, and Rev. J.C. Amburn, pastor First Assembly of God, officiating. Burial was in Willow Cemetery under the direction of Holden-McCauley Funeral Home.

Mrs. Owens died June 6 at 1:30 p.m. in Hendrick Medical Center.

Born Feb. 26, 1922 in Afton, she was a homemaker. She married Charles Owens December 12, 1942 in Lubbock. She moved to Haskell in 1971 from Roaring Springs and has been active in the operation of Owens Radio and Electric in Haskell. She was a member of First Baptist Church.

Survivors include her husband; one daughter, Charlene Dumas of Haskell and one son, Charles F. (Bo) Owens Jr. of Weatherford; one sister, Lorell Tooke of Crosbyton and 6 grandchildren.

Pallbearers were Bill Dawson, Larry Ivey, Johnny Walker, Jack Dunnam, Bobby Raynes, Jr. and Boyd Rousseau. Honorary pallbearers were members of the Businessmens Bible Class.

Mrs. Dessie Thane

Funeral services for Mrs. Dessie Thane, 79, of the Plainview Community, 8 miles Northwest of Stamford, were held at 2 p.m. June 8 in Faith Lutheran Church in Sagerton with Rev. Stanley Leaf, pastor of Bethel Lutheran Church of Ericksdahl officiating. Burial was in Highland Cemetery in Stamford under the direction of Holden-McCauley Funeral Home.

She was found dead at about 9 a.m., June 6 at her residence. Born October 19, 1904 in

Dewitt County, she was a homemaker. After her marriage to Edwin W. Thane April 10, 1928 in Sagerton, she moved south of Old Glory. They moved to the Plainview Community in 1948. He preceded her in death October 13, 1972. She was a member of Faith Lutheran Church of Sagerton.

Survivors include her daughter, Mrs. David (Leona) Letz of Sagerton; two sons, Jerry of McGregor and Leon of San Angelo; one brother, Robert Dudensing of Old Glory; 8 grandchildren and 6 great grandchildren. She was preceded in death by one sister and three brothers.

Pallbearers were LeRoy Schaake, Lynn Dudensing, Dave Letz, John Mark Thane, David Paul Thane and Joseph Thane.

B.R. Quattlebaum

B.R. Quattlebaum, 86, formally of Haskell, died June 6 in a hospital in Ulysses, Kansas. He had been in Western Prairie Care Home in Ulysses since his strokes and surgery several months ago.

He was a wheat farmer and a member of Ralla Baptist Church.

He is survived by his wife, Gladys; a son J.P. Quattlebaum of Lamar, Colorado; a daughter, Betty Frier of Johnson, Kansas; 8 grandchildren and several great grandchildren; a sister Eula Orr of Haskell and several nieces and nephews.

He was preceded in death by a son, Gerald, his father and mother and 5 brothers.

Kelly Johnston

Kelly Colleen Johnston, 15, of Houghton, La., granddaughter of Mr. and Mrs. C.A. Turnbow of Haskell, died Tuesday morning June 12 at Bossier City, La., following injuries she received in an automobile accident. Services will be at 2 p.m. Thursday, June 14 at First Baptist Church in Haskell.

The Rev. Mike McKinney, pastor, Rev. Roy Herricks, Foursquare minister and Rev.

Bill Trice, pastor First Baptist Church O'Brien, will officiate. Burial will be at Willow Cemetery, directed by Holden-McCauley Funeral Home of Haskell.

Born May 26, 1969, in Wichita Falls, she attended Houghton High School, where she was a member of the pep squad and served as treasurer of the freshman class. She also was a member of Houghton Baptist Church.

Survivors include her parents, Mr. and Mrs. John T. Johnston of Houghton, La.; a sister, Traci; paternal grandparents, Mr. and Mrs. S.E. Johnston of O'Brien; and maternal grandparents, Mr. and Mrs. C.A. Turnbow of Haskell.

Air Force Has Limited Openings

The United States Air Force has limited openings for pilots, navigators, engineers and technical positions (weather and computers), according to Master Sgt. Stucke, Air Force Recruiting Supervisor in Ft. Worth.

This is the first time in over a year that many of these positions have been open. Time is extremely critical as these choice positions will fill rapidly. There are openings for both male and female applicants in most of these jobs. The competition for these select positions is intense.

Minimum requirements for positions are at least a 2.8 grade point average on a 4.0 scale and be a recent college graduate in any discipline. Air Force officers lead a rewarding and challenging life. Good pay, opportunity for advancements additional education, excellent medical and dental care and a strong retirement system are just a few of the many positive benefits of an Air Force career.

More information about opportunities for college graduates in the United States Air Force may be obtained by contacting Sgt. Stucke at (817) 429-5079.

WTU Files For Rate Increase

West Texas Utilities Company has filed for an increase in its electric rates for retail customers.

Local Manager Sue Pate said the application was filed Friday June 8, a full year since WTU's last rate application, and is a systemwide request for higher rates. Simultaneous filings were made in all incorporated towns and with the Public Utility Commission of Texas at Austin for an increase in rural areas, unincorporated towns and in 21 municipalities which have ceded jurisdiction over electric rates.

The proposal would produce an annual increase in total retail revenue of \$30,845,695. This amounts to 12.4 per cent.

Pate said the additional revenue is necessary to carry out WTU's current heavy construction program, which includes a new coal-fired power plant at Oklaunion near Vernon.

"By the time these rates become effective, we will have spent \$167 million on the Oklaunion Power station and related projects," Pate said. "Our last rate increase was not enough to carry us through this construction program, which is essential to continued reliable electric service to our customers."

WTU had requested an increase of \$26.6 million in its filing in June, 1983. A hearing in that case was held at Austin in September, and the final PUC order granting about half the requested amount became effective January 4, 1984.

The Oklaunion plant will be completed in late 1986, almost 10 years after WTU's newest existing generating unit was completed at Fort Phantom Power Station near Abilene.

Citing a "light at the end of the tunnel," Pate said WTU's spending should taper off as the construction program nears completion. Also, since coal is much cheaper for generating electricity than natural gas or oil, the fuel cost should be more stable after the new plant comes on line. No major changes in rate

structure are included in WTU's proposal. The requested rates would mean that a residential customer using 600 kilowatt-hours a month would pay \$7.55 more each month for electricity. A commercial customer using 1,700 kWh would pay \$19.37 more. These amounts include fuel costs.

WTU serves customers in 161 separate communities, 82 of which operate as active incorporated towns. The rate case filings were made in 61 towns, while information on the rate case was made available to the 21 incorporated towns which have ceded jurisdiction, to two inactive municipalities and to two unincorporated towns.

The 21 towns which have ceded jurisdiction and now rely on the PUC to decide their cases are Albany, Chillicothe, Dickens, Eldorado, Goree, Hedley, Lakeview, Matador, McCamey, Mertzon, Moran, Paint Rock, Presidio, Roaring Springs, Robert Lee, Roby, Rotan, Rule, Shamrock, Trent, and Weinert.

The inactive municipalities are Odell and Sylvester. The unincorporated towns are Fort Davis and Ozona.

Professor predicts grocery store/bank

COLLEGE STATION — Americans may soon find themselves opening checking and savings accounts at the neighborhood grocery store, predicts a Texas A&M University finance professor.

Dr. Peter S. Rose said Texas is one of the states targeted for an experiment by two prominent supermarket chains to offer financial services at their stores.

With the deregulation of financial industries, competition will be greater than in virtually any other American industry, Rose said.

"Traditional barriers between one financial institution and another are breaking down and the traditional separations between financial and nonfinancial business are also blurred as services proliferate," he said.

THEY'RE ALL IN CLASSIFIED

For Sale

FOR SALE: 1976 Chrysler Cordoba. 817-864-3781 after 5:30. 24p

FOR SALE: 1981 Ford pickup, 1981 Ford cargo van, 1981 Buick and 1971 Oldsmobile, and assorted musical equipment. Call Andy at Haskell National Bank, 864-2631. 23-24c

FOR SALE: 1976 Impala Chevrolet, 4 door. 997-2313. 1000 Union, Rule. 24-25p

FOR SALE: 1976 Plymouth Fury 318, 4 door, air. 20,000 actual miles. Perfect condition, \$2,750.00. Call 743-3383, Rochester. 24-25p

FOR SALE: 1978 Ford TW-1C tractor. 1600 hours. Excellent condition. Phone 864-3638. 23-26p

FOR SALE: 1976 Jeep 4 wheel drive Cherokee. Mechanically sound. Call Strickland Bridge, Inc. 864-2677. 24-26c

GOV'T Surplus cars and trucks under \$100. Now available in your area. Call 1-619-569-0241. 24 hours. 24-26p

FOR SALE: 1959 Chevrolet pickup with a 1970 Pontiac motor in good shape. Almost new tires. Call 997-2495. 24p

FOR SALE: 112 J.D. lawn mower with electric lift. Variable speed comes with a tiller. Call 864-3298. 24-25p

FOR SALE: 1974 Dodge V-8 Sportsman Custom 15 passenger van. By sealed bids. First Baptist Church reserves the right to refuse all bids. Bids will be opened July 1, 1984. Send bids to Clifton Rinehart, Route 2, Rule, Texas 79547. 24-25c

FOR SALE: Used Admiral refrigerator-freezer. 20 ft. Call 864-3129. 24p

FOR SALE: 8 female, 1 bull French Charolais. Registered. Call James Story, 864-3621 or 864-3612. Pickups for sale. 24p

FOR SALE: 1 new air conditioner and 1 used air conditioner. Call 997-2743 or 997-2721. Ask for Paul. 24-25p

FOR SALE: 1970 Invader walk-through boat with 85 hp Johnson motor. Call 864-2046, after 5 call 864-3518. 24p

FOR SALE: 1979 Buick Limited 2 door, white with red interior. Low mileage and one car owner. Excellent condition. 1975 Chevrolet pickup (SNB) good, clean and low mileage. Clifford Byrd, Rochester, Texas. 743-3236 and 743-3335. 24-25c

FOR SALE: 8 h.p. JD tractor with 38" mower. 997-2665. 24-25p

FOR SALE: 1979 Honda Odyssey and trailer. All in good condition. See at 1704 N. Av H. Call 864-3414. 24-25p

FOR SALE: Wrought iron dinette set—formica top. 4 chairs. 864-2935 or 864-3432. 24c

FOR SALE: 55 gal. trash barrels. Call 864-2841 or come by 6 Av. H. after 6 p.m. 24-25p

FOR SALE: Beautiful solid oak 30" chopping block made by Walter McBroom. Call 864-2807 after 6 p.m. 24c

FOR SALE: 1979 Glastron 16 ft. bass boat. 1979 100 hp Evinrude. 12-24 trolling motor. Lowrance Graph and Depth Finder. Extra clean, will consider trade. 817-864-3662. 24p

FOR SALE: Hide-a-bed sofa; vinyl recliner, good condition; stereo, all wood cabinet; 8' metal garage door, cheap. 864-3000, after 5:00. 24p

FOR SALE: Good used 2 bedroom mobile home. 12x50. Located in Anson. Call 915-823-2125 or Seymour, 817-888-2423. 24p

FOR SALE: Tide Craft 14' bass boat. 33 hp Johnson motor, electric start. Little Dilly trailer. Good condition, \$995.00. 21" TV model, good shape, \$90.00. 864-3221. 1700 N. Av F, Haskell. 24-25p

FOR SALE: Large upright deep freeze, nearly new, used 3 months, cost \$800.00, will take \$300.00; refrigerator, \$150.00; lawn mower, \$50.00; electric cook stove, \$100.00. 5th and Pawnee, Rule. 11-6. 24c

FOR SALE: 110 year old German Bible. Call 915-773-3266. 23-24p

THE IDEAL WAY to lose weight. Ideal Snacks, possibly the miracle food of the century. They need no preparation, are delicious and satisfies all your cravings. Ideal snacks are 100% natural food specifically and nutritionally designed to set your metabolism at a peak. Get your Ideal snacks now from Brenda Griggs at Martha's Beauty Center, 1006 N. 6th, Haskell. Come by or call 864-2192. Start losing today the ideal way! 23-24c

FOR SALE: Special Moments Dress Shop in Snyder, Texas. Owner wants to devote full time to gift shop. Would consider selling wedding dept. to be relocated. Call 915-573-4802. Ask for owner. 23-27p

FOR SALE: 1976 Plymouth Fury 318, 4 dr., power, air, 20,000 actual miles. \$2,750.00. Call 743-3383, Rochester. 23-24p

I'M A 1979 model Road Ranger Travel Trailer, 26 footer with all the extras and ready to go. I have a 2 door frig., A/C, lots of storage. All I need is someone with vacation time to take me away. Come see me in Stamford or call 773-3546 after 5:30 or 773-3641 during working hours. 23-24c

Boggs & Johnson Furniture

Father's Day Special

All Recliners On Sale

Prices Start at \$139⁵⁰

All Bookshelves finished or unfinished as low as \$19⁹⁵

SPECIAL VALUES FOR HIS DAY

All Hardwood Rockers as low as \$158⁸⁸

5 Piece Metal Dinette as low as \$149⁵⁰

Hall Trees Brass, Oak or Bentwood as low as \$179⁵

Collectors Cabinet \$89⁵⁰

Ottomans from \$18⁹⁵

Big Roll Top Desk \$489⁵⁰

3 odd Night Stands 1/3 OFF Lamps

Buy one get the second for

1/2 Price

We want to be your furniture store Boggs & Johnson

East Side of Square

Haskell, Texas



EMS

EMERGENCY MEDICAL SERVICE



24 Hour Ambulance Service Oxygen Equipped

Licensed Personnel 3 Ambulances

Complete Insurance filing for, Medicare, Medicaid, or Private Ins

Haskell Co. Emergency Ambulance Service

864-2621

307 North 1st Haskell

EMERGENCY NUMBER

Office 864-3945

WANT ADS Work Wonders!

- For Sale**
- Miscellaneous**
- Garage Sales**
- Help Wanted**
- For Rent**
- Real Estate**
- Real Estate**
- Real Estate**

NE-SURFACE concrete with attractive cool epoxy and stone. Beautiful outdoor flooring for pool, patios, porches, walks, and driveways. Call for samples and free estimates. 864-2629. 12fc

FOR SALE: 1977 16' Glastron V-hull with 1981 140 hp Evinrude. Mint condition. 997-2607. 23-24p

FOR SALE: 1979 Pontiac Bonneville. Low mileage, extra clean. Call 864-3154 after 7 p.m. Joe Cothron. Reduced. 22-24p

FOR SALE: 1983 Fleetwood mobile home. 14x68. 2 bedroom, 2 bath. Central Heat and air, underpinning, skirting, porches. To be moved. Like new. \$19,500.00 or \$3,000.00 down and take over payments. 673-4591 or 673-4581. 23fc

FOR SALE: Barbados sheep. Just right for Barbecue. 997-2783 after 5. 20fc

FOR SALE: 6 row J.D. planter with 2 sets of gauge wheels and press wheels, \$1000.00; and 6 row Crustbuster slide \$200.00. 864-3154. Joe Cothron after 7 p.m. 22-24p

REPO MOBILE HOMES with low down payments 1981 two bedroom \$6,495 special 1982 Redman three bedroom \$9750. Over 30 to choose from Abilene Mobile Homes 4618 N. 1st (915) 672-6466. 21-24p

FOR SALE: 1981 Honda Goldwing. Honda line fairing and AM-FM radio, 14,000 miles. Excellent condition. \$3800.00 firm 817-989-3131. 20-24p

FOR SALE: 1983 Oldsmobile 88 Braughm. Low mileage, wife's car. Priced to sell. 864-2624 or 864-2470. 18fc

SHAKLEE products, 100% NATURAL VITAMINS, herb lax, food supplements, and cosmetics. Products in stock at 300 N. Ave. H. 864-3330. Free deliveries in Haskell. 26fc

FOR SALE: 1975 Terry Travel Trailer. 27 ft., sleeps six, has lots of storage and room, air conditioning and heating. Has a care-free awning. Call 864-2320 after 5:30. 17sl

FOR SALE Pre-fabricated Concrete Cellars. Tony Williams 864-3674 or 864-2419. 12fc

USED FURNITURE Just Traded For!!! Traditional Kroehler sofa with three cushions in perfect condition. Beige print. \$129.95. Traditional sofa in brown striped Herculon cover with two recliners, one on each end. Looks exactly like new. \$199.95. Used vinyl Simmons hyde-a-bed in brown vinyl. \$59.95. Recovered high back La-Z-Boy rocker recliner. Perfect condition. \$69.95. **Jones Cox Country Store** Haskell, Texas 24-25c

Collectibles PRECIOUS MOMENTS introductory offer. 20% off with this ad. Limited time only. Figurines, bells, picture frames and etc. Sherman Antiques. 24fc

Miscellaneous INSTANT CASH for good used merchandise. A little or a lot. Phone 864-3197 anytime. Lackey's Hwy 380 East, Haskell, Tx. 6fc

WATER WELL DRILLING: House well, Stock, Irrigation Wells, Test Holes. Call W.P. Hise, 864-3727 Haskell, Tx. (Day or Night). 7fc

LET US Price your next prescription. You will be glad you did. Johnson Pharmacy. 17fc

HOME DECORATORS. Free Estimates. Phone 743-3592 or 743-3550. V.A. Mitchell—Bobby O'Neal. Rochester. 31fc

CIRCLE "C" DECORATORS. Painting, roofing, carpents, patio covers, add-ons and redo's. The professional way. Steve Cothron, 864-3919. 21-24p

DON'T SHAMPOO dirt into your carpet, Steamex it out the professional way. Steamex pulls out dirt other cleaners can't begin to reach. Rent Steamex at Kay's Cleaners. 12fc

FOR PERMANENT HAIR REMOVAL call Billie Freeman, Certified Electrologist, at Martha's Beauty Center, 864-2192. Wednesday and Thursday, 1006 N. 8th. 23fc

CLEAN CARPETS the inexpensive and safe way with Blue Lustre. Rent electric shampooer. Perry Brother's. 19fc

CHECK our prices at THE DRUG STORE. We will both be glad you did. 14fc

Card of Thanks CARD OF THANKS We want to thank the many, many friends of Mrs. Lina Stone for the wonderful love you have shown for her during her illness and at the time of her death. Very sincerely, Juanita & Julian Perrin and family. 24p

CARD OF THANKS We would like to thank everyone for the food, flowers, prayers and other acts of kindness shown during our time of sorrow. The family of Terry Lynn Vaught. 24p

CARD OF THANKS We wish to take this means of expressing our deepest thanks to the many friends for their kind and thoughtful gestures and expressions of sympathy during our time of sadness. We are particularly grateful to Tim and Paula Everett, to Rev. Mike McKinney, to the ladies of the First Baptist Church, to Dr. Frank Cadenhead and to the nurses at Haskell Memorial Hospital, especially Gwen Unger. The family of Delia A. Ashley. 24p

CARD OF THANKS We want to thank all our friends and neighbors for their prayers, cards, food, visits and flowers during the loss of our mother. Especially the Haskell Nursing home and Dr. Frank Cadenhead. The Caddell family. 24p

Lost & Found LOST: 3 weeks ago I lost a gold watch that was a gift from my grandmother. It was lost probably on the east side of the square in Haskell. If found please call 864-3782 after 5, or 864-3622 during the day. Reward. Jill Jennings. 24jfc

Jobs Wanted I WANT TO do farm work. 20 years experience. Call 915-523-6622, Andrews, after 8 p.m. 23-26p

IF YOU NEED your yard mowed, Please call me at 864-8074. My name is Barry Tate. I live at 402 S. Av H. Thank you. 23-24p

WILL STAY with sick or elderly. Weekdays, experienced. Call 743-3383. 24-25p

REPAIR VACUUM CLEANERS, small appliances. Pick up and deliver in Haskell. Charley Redwine, 1100 N. 8th St. 864-2295. 24p

Public Notice PUBLIC NOTICE SEALED BIDS will be received in the office of the State Purchasing and General Services Commission, Centralized Services Building, 1711 San Jacinto, Austin, Texas, covering the proposed lease of space located in the City of Haskell, Texas. Invitation for Bid HEA-4576-E Department of Health, 690 Square Feet, Office Space. For information, please contact the Lease Office, State Purchasing and General Services Commission, P.O. Box 13047, Austin, Texas 78711. (512) 475-2153. 24c

Garage Sales BIG FAMILY GARAGE and yard sale: Saturday only. 8 to 6. 405 and 407 N. Av B. Everything including the kitchen sink, furniture, color TV, curtains, bedspreads, mens, womens, and teenage clothes (lots of long dresses), also new craft items. Lola, Carolyn, Melva, Nancy, Sherrie and Cindy Everett, Margaret Jones, Margaret Simmons, Willie Andress and Pat Grand. 24p

YARD SALE: 1201 S. Av F. Mens, womens and some childrens clothing, misc., 2 registered Pomeranians, 1 male, 1 female, 1980 Chevrolet Citation, 4 door. Sale lasts all week. 24p

GARAGE SALE: Sat., June 6, 8-6 at 602 N. Av H. Rhonda Lisle and Judi Burson. Many items in excellent condition. Rocking chair, pole lamp, vacuum cleaner, TV, refrigerator, air conditioner, household goods, playpen, baby changer, car seat, swing, toys, children's and infants clothes, maternity wear, ladies and men's clothes, and much more. 24p

GARAGE SALE Black Leather Couch & Chair Lots of Clothes Boots Electric Ice Cream Freezer Dishes Shoes Friday & Saturday 8 till 5 each day 806 N. 11th 24p

Garage Sale GARAGE SALE: Thursday and Friday. 9 to 6. Small appliances, toys, childrens clothes, misc. 911 Adams, Rule. 24p

Garage Sale GARAGE SALE: Thursday & Friday, June 14-15. 8 to 5. 605 Sunny Av, Rule, Texas. 24c

Bus. Opportunity A BUSINESS ALL YOUR OWN! Discover Avon. Enjoy a feeling of independence and accomplishment. Earn up to 50% of everything you sell. PLUS, earn extra money by sponsoring others as Avon Representatives. Free training/flexible hours. Call collect Doris Hale, 915-573-8625. 23-24c

Help Wanted WANTED: Boys or Girls to operate fireworks stands in Haskell. June 24 through July 4. Write Box 2013, Wichita Falls, Texas 76307. Give name, address and phone number. 21-24c

Help Wanted FEDERAL, STATE & CIVIL Service jobs now available in your area. Call 1-(619)-569-8304 for info. 24 hrs. 22-24p

Now Hiring Career Minded Women as area supervisors for nation's #1 toy party company. House of Lloyd needs ladies to train and manage demonstrators. No investment, FREE training and supplies. Details without obligation, call COLLECT 915-676-3300. Or write Nancy Rouse, 1126 Westview, Abilene, Texas 79603. 23-24p

FOR SALE NEW LISTING: Northside. Two Bedroom 2 bath frame, den, living dining combined, carpeted, furnace heat, 2 refrigerated A/C, utility, two car carport, chain-link fence and storage. 24-27c

FOR SALE Two bedroom 1 bath frame, garage, furnace, carpeted, chain-link fence. Northside. Five acres close in. 23-25c

FOR SALE ROCHESTER: Two bedroom 1 bath frame, cellar, propane heat, on .42 acre. Building Lots North 9th. Rochester Cafe, building & fixtures. 21fc

FOR SALE Office Building on northside of square, 1270 sq. ft. central H/A, carpet is leased. 21fc

FOR SALE Frances Arend Real Estate & Insurance Agency 408 North First 817-864-3880 817-864-3156 Lois Lefevre 997-2586 21fc

Want a New House for less than \$30.00 a square foot? 3 bedroom, 2 baths, fireplace, patio, 2 car garage. The Lumber Yard 864-3552 864-3431 after 5. 18fc

Quality Built Brick Homes \$32.00 per sq. ft. Custom built on your lot. All types of remodeling. Room additions and vinyl siding. Tibbets Construction Rule, Texas Call Buddy 997-2531 or Loraine Johnson 864-2665. 22-25c

FOR SALE To Be Moved A 21 unit storage building, 24x140 and a 36x20 shed. Located across from Bill Wilson Motor Co. Contact Doyle High 864-2515 21fc

Doyle High Real Estate 2 Bedroom, 2 bath, brick on North Ave. G. 3000 sq. ft. Building and contents or will sell separately. Excellent business location on North Highway 277. 2 acres just outside city limits on east side. Priced to sell. Enjoy this summer more! Own your own Lake house in Earles' Camp. 3 bedrooms; refrigerator, stove, and furniture included. Water well, dug channel and boathouse. Shady double lot. Country living northwest of Rule. 2 bedroom, 1 1/2 bath, home completely remodeled inside. Surrounded by evergreens. Water well. Large den with fireplace. Spacious kitchen includes Jenn-Aire range. Lots for sale in the Addison addition from prices starting at \$3500.00 per lot. We have other homes for sale not described here. Call us to buy or sell. Priced right. 2 bdr., 1 bath small frame home. Selling price includes washer & dryer, refrigerator & metal dinette. Excellent investment as rent property. Reduced, Ready to sell. Doyle High, broker—864-3872 Betsy Nanny — 864-3521 Roberta High — 864-2815 Debbie Earles — 864-2216 Viola Wilcox — 997-2640

RN NEEDED Throckmorton County Memorial Hospital. 11-7 shift. 7 days on. 7 days off. Full time benefits. Travel pay. Call Kathy Massey, RN. 817-849-2151. 23-24c

GENERAL SHELTERS of Texas, Inc. is seeking a dealer in Haskell area for retail sales of portable buildings. Lot and small investment required. Excellent opportunity to expand existing business with low risk. Contact Mike Wulf, General Manager 817-422-4548. 24-27p

WANTED: Couple to develop in home office. Major U.S. corporation on stock exchange. Company car, insurance, \$20,000-40,000 first year potential. Send resume to P.O. Box 236, Haskell, Texas 79521. 24-27c

FOR SALE 3 bedroom Rule 1 1/2 acres, clean and nice and priced to cheap. Barney Arnold Real Estate 200 N. 2nd St. Knox City, Texas 658-3509 23-25c

Allison Real Estate Rule, Texas 997-2561 or 997-2632 21fc

REAL ESTATE LISTINGS WANTED We Don't Just List: We Sell I am on call and ready to talk to you about your Real Estate at any time if you are interested in buying or selling, please call me. I am full time in Real Estate and will try harder to please you. LORAIN JOHNSON REALTOR-ASSOCIATE® Bus. 864-2665 Res. 864-2951 After Hours and Weekend Welcomed H.H. HARTSFIELD, BROKER 11fc

FOR SALE 3 BEDROOM BRICK on N. Av. L. Central H/C. Utility room, fenced yard, ceiling fans. Clean and immediate possession. Owner transferred. NEW 2 BDR. on N. Av. J. NEW 3 BDR. located at 712 S. 12th. ONE OF HASKELL'S BEST: Brick 4 bedroom-2 1/2 bath located on 1/4 block: 605 N. F. has hot tub and outside landscaped lights. A lot of living in a choice location in this one. Quality built with many extras. Must see to appreciate. 325 ACRE Haskell Co. farm. All cultivation. Located northeast of Stamford. EAST SIDE FINA STATION in Haskell. Small house, and extra lot goes with this property. NEW AND READY FOR OCCUPANCY. 3 bedroom, 2 bath brick with double garage and large patio. Greatly Reduced. 3 YEAR OLD COUNTRY ROCK. 5 bedroom, large den, living room, dining room, located on 17 acres of land with option lease. 12 acres pasture. Plenty of water. 8 miles northwest of Haskell or 2 1/2 miles northeast of Rule. 3 BR., 2 bath, with utility close to High School. Newly remodeled. LARGE OLDER HOUSE on N. 3rd. 3 or 4 bedroom, large living room. Has double garage and storage building. Ready to move in or would be a good one to do your own thing with. OUTSIDE CITY LIMITS. 3 bedroom, 1 1/2 bath on extra large lot. Patio, carport, garage, storage bldgs. & water well. Kitchen built-ins including microwave oven & Genaire range. NEARLY NEW, LARGE commercial building on 380 East. Has office space and rest rooms. On extra large lot. FARM 200 acres all in cultivation northwest of Haskell. 184 acre cotton allotment. COMMERCIAL BUILDING 20 x 70, just off square. A STEAL AT \$7,000. 3 bedroom stucco on South 6th. FOUR BEDROOM STUCCO on 7.2 acres. Located on FM Road 2406. BEAUTIFUL TWO STORY 3 bedroom, 3 bath, formal living with fireplace, family room, exceptional kitchen, landscaped corner lot with privacy fence. By appointment. SMALL 3 BR. on South 1st. New carpet. Storage bldg. LARGE LOT outside city limit \$3500. LARGE COMMERCIAL BUILDING IN GOOD LOCATION WITH PLENTY OF PARKING AREA. Lot size 165 x 160. Bldg. size 9180 sq. ft. Priced "too cheap." Best location available in Haskell. CLEAN 2 BEDROOM on N. Av. F. Choice location. Central H/C. 3 BEDROOM, 1 bath, located at 604 N. 6th St. A good older house on large lot. BUSINESS lot on 380 East. LARGE COMMERCIAL LOT on Hwy. 380. Has two large ICM buildings, one with 4 office spaces, many other good features. 10 acres SW of Haskell with 3 bdr. house. 2 bdr. located at 106 S. C. RULE TWO FOR ONE extra large two bedroom 2 bath with garage and storm cellar on corner lot behind Baptist Church. Also 2 bedroom stucco at same location all for 25,000. RULE 3 BEDROOM 2 bath with fireplace, fenced yard, water well, storm cellar. RULE 3 BEDROOM BRICK in excellent condition in new addition. Central H/C, drapes, extra storage. Priced to sell. In Rule. MODERN 2 BEDROOM close to school. Fenced yard. Priced right. ROCHESTER 3 BEDROOM, 1 bath, den and living room in good location. Double garage. Built in appliances in kitchen.

BUSINESS BUILDING in Rule for sale or rent. Has new roof. 997-2186. 24c

FOR RENT: House in country west of Rule. Has refrigerator, stove, storm windows. Small pasture available. City water. Storm cellar. No neighbors. 4 person limit. \$125.00 month and deposit. 997-2186. 24c

FOR RENT: 2 bedroom furnished house; 3 bedroom furnished trailer house; 1 bedroom furnished house, bills paid. Call 864-3509. 22fc

FOR SALE 3 bedroom Rule 1 1/2 acres, clean and nice and priced to cheap. Barney Arnold Real Estate 200 N. 2nd St. Knox City, Texas 658-3509 23-25c

Allison Real Estate Rule, Texas 997-2561 or 997-2632 21fc

REAL ESTATE LISTINGS WANTED We Don't Just List: We Sell I am on call and ready to talk to you about your Real Estate at any time if you are interested in buying or selling, please call me. I am full time in Real Estate and will try harder to please you. LORAIN JOHNSON REALTOR-ASSOCIATE® Bus. 864-2665 Res. 864-2951 After Hours and Weekend Welcomed H.H. HARTSFIELD, BROKER 11fc

FOR SALE 3 BEDROOM BRICK on N. Av. L. Central H/C. Utility room, fenced yard, ceiling fans. Clean and immediate possession. Owner transferred. NEW 2 BDR. on N. Av. J. NEW 3 BDR. located at 712 S. 12th. ONE OF HASKELL'S BEST: Brick 4 bedroom-2 1/2 bath located on 1/4 block: 605 N. F. has hot tub and outside landscaped lights. A lot of living in a choice location in this one. Quality built with many extras. Must see to appreciate. 325 ACRE Haskell Co. farm. All cultivation. Located northeast of Stamford. EAST SIDE FINA STATION in Haskell. Small house, and extra lot goes with this property. NEW AND READY FOR OCCUPANCY. 3 bedroom, 2 bath brick with double garage and large patio. Greatly Reduced. 3 YEAR OLD COUNTRY ROCK. 5 bedroom, large den, living room, dining room, located on 17 acres of land with option lease. 12 acres pasture. Plenty of water. 8 miles northwest of Haskell or 2 1/2 miles northeast of Rule. 3 BR., 2 bath, with utility close to High School. Newly remodeled. LARGE OLDER HOUSE on N. 3rd. 3 or 4 bedroom, large living room. Has double garage and storage building. Ready to move in or would be a good one to do your own thing with. OUTSIDE CITY LIMITS. 3 bedroom, 1 1/2 bath on extra large lot. Patio, carport, garage, storage bldgs. & water well. Kitchen built-ins including microwave oven & Genaire range. NEARLY NEW, LARGE commercial building on 380 East. Has office space and rest rooms. On extra large lot. FARM 200 acres all in cultivation northwest of Haskell. 184 acre cotton allotment. COMMERCIAL BUILDING 20 x 70, just off square. A STEAL AT \$7,000. 3 bedroom stucco on South 6th. FOUR BEDROOM STUCCO on 7.2 acres. Located on FM Road 2406. BEAUTIFUL TWO STORY 3 bedroom, 3 bath, formal living with fireplace, family room, exceptional kitchen, landscaped corner lot with privacy fence. By appointment. SMALL 3 BR. on South 1st. New carpet. Storage bldg. LARGE LOT outside city limit \$3500. LARGE COMMERCIAL BUILDING IN GOOD LOCATION WITH PLENTY OF PARKING AREA. Lot size 165 x 160. Bldg. size 9180 sq. ft. Priced "too cheap." Best location available in Haskell. CLEAN 2 BEDROOM on N. Av. F. Choice location. Central H/C. 3 BEDROOM, 1 bath, located at 604 N. 6th St. A good older house on large lot. BUSINESS lot on 380 East. LARGE COMMERCIAL LOT on Hwy. 380. Has two large ICM buildings, one with 4 office spaces, many other good features. 10 acres SW of Haskell with 3 bdr. house. 2 bdr. located at 106 S. C. RULE TWO FOR ONE extra large two bedroom 2 bath with garage and storm cellar on corner lot behind Baptist Church. Also 2 bedroom stucco at same location all for 25,000. RULE 3 BEDROOM 2 bath with fireplace, fenced yard, water well, storm cellar. RULE 3 BEDROOM BRICK in excellent condition in new addition. Central H/C, drapes, extra storage. Priced to sell. In Rule. MODERN 2 BEDROOM close to school. Fenced yard. Priced right. ROCHESTER 3 BEDROOM, 1 bath, den and living room in good location. Double garage. Built in appliances in kitchen.

FOR RENT: Self storage. A few units, large enough for bass boats. 864-2629. 510 N. 1st St. Lanco Insurance. 12fc

FOR RENT: 3 bedroom mobile home in Ruidosa. \$50.00 night, sleeps 6. Near track. Call Tom Alvis, 806-996-5321. 22-25c

Good Used Color TV's, Stereos & Washer/Dryers Anderson Tire Co. 206 S. Av E Phone 864-2900 1fc

Medicare Supplement No Maximum Dollar Limit Guaranteed Renewable Hess Hartsfield 864-2665 20fc

FOR SALE 3 BEDROOM BRICK on N. Av. L. Central H/C. Utility room, fenced yard, ceiling fans. Clean and immediate possession. Owner transferred. NEW 2 BDR. on N. Av. J. NEW 3 BDR. located at 712 S. 12th. ONE OF HASKELL'S BEST: Brick 4 bedroom-2 1/2 bath located on 1/4 block: 605 N. F. has hot tub and outside landscaped lights. A lot of living in a choice location in this one. Quality built with many extras. Must see to appreciate. 325 ACRE Haskell Co. farm. All cultivation. Located northeast of Stamford. EAST SIDE FINA STATION in Haskell. Small house, and extra lot goes with this property. NEW AND READY FOR OCCUPANCY. 3 bedroom, 2 bath brick with double garage and large patio. Greatly Reduced. 3 YEAR OLD COUNTRY ROCK. 5 bedroom, large den, living room, dining room, located on 17 acres of land with option lease. 12 acres pasture. Plenty of water. 8 miles northwest of Haskell or 2 1/2 miles northeast of Rule. 3 BR., 2 bath, with utility close to High School. Newly remodeled. LARGE OLDER HOUSE on N. 3rd. 3 or 4 bedroom, large living room. Has double garage and storage building. Ready to move in or would be a good one to do your own thing with. OUTSIDE CITY LIMITS. 3 bedroom, 1 1/2 bath on extra large lot. Patio, carport, garage, storage bldgs. & water well. Kitchen built-ins including microwave oven & Genaire range. NEARLY NEW, LARGE commercial building on 380 East. Has office space and rest rooms. On extra large lot. FARM 200 acres all in cultivation northwest of Haskell. 184 acre cotton allotment. COMMERCIAL BUILDING 20 x 70, just off square. A STEAL AT \$7,000. 3 bedroom stucco on South 6th. FOUR BEDROOM STUCCO on 7.2 acres. Located on FM Road 2406. BEAUTIFUL TWO STORY 3 bedroom, 3 bath, formal living with fireplace, family room, exceptional kitchen, landscaped corner lot with privacy fence. By appointment. SMALL 3 BR. on South 1st. New carpet. Storage bldg. LARGE LOT outside city limit \$3500. LARGE COMMERCIAL BUILDING IN GOOD LOCATION WITH PLENTY OF PARKING AREA. Lot size 165 x 160. Bldg. size 9180 sq. ft. Priced "too cheap." Best location available in Haskell. CLEAN 2 BEDROOM on N. Av. F. Choice location. Central H/C. 3 BEDROOM, 1 bath, located at 604 N. 6th St. A good older house on large lot. BUSINESS lot on 380 East. LARGE COMMERCIAL LOT on Hwy. 380. Has two large ICM buildings, one with 4 office spaces, many other good features. 10 acres SW of Haskell with 3 bdr. house. 2 bdr. located at 106 S. C. RULE TWO FOR ONE extra large two bedroom 2 bath with garage and storm cellar on corner lot behind Baptist Church. Also 2 bedroom stucco at same location all for 25,000. RULE 3 BEDROOM 2 bath with fireplace, fenced yard, water well, storm cellar. RULE 3 BEDROOM BRICK in excellent condition in new addition. Central H/C, drapes, extra storage. Priced to sell. In Rule. MODERN 2 BEDROOM close to school. Fenced yard. Priced right. ROCHESTER 3 BEDROOM, 1 bath, den and living room in good location. Double garage. Built in appliances in kitchen.

FOR SALE 3 BEDROOM BRICK on N. Av. L. Central H/C. Utility room, fenced yard, ceiling fans. Clean and immediate possession. Owner transferred. NEW 2 BDR. on N. Av. J. NEW 3 BDR. located at 712 S. 12th. ONE OF HASKELL'S BEST: Brick 4 bedroom-2 1/2 bath located on 1/4 block: 605 N. F. has hot tub and outside landscaped lights. A lot of living in a choice location in this one. Quality built with many extras. Must see to appreciate. 325 ACRE Haskell Co. farm. All cultivation. Located northeast of Stamford. EAST SIDE FINA STATION in Haskell. Small house, and extra lot goes with this property. NEW AND READY FOR OCCUPANCY. 3 bedroom, 2 bath brick with double garage and large patio. Greatly Reduced. 3 YEAR OLD COUNTRY ROCK. 5 bedroom, large den, living room, dining room, located on 17 acres of land with option lease. 12 acres pasture. Plenty of water. 8 miles northwest of Haskell or 2 1/2 miles northeast of Rule. 3 BR., 2 bath, with utility close to High School. Newly remodeled. LARGE OLDER HOUSE on N. 3rd. 3 or 4 bedroom, large living room. Has double garage and storage building. Ready to move in or would be a good one to do your own thing with. OUTSIDE CITY LIMITS. 3 bedroom, 1 1/2 bath on extra large lot. Patio, carport, garage, storage bldgs. & water well. Kitchen built-ins including microwave oven & Genaire range. NEARLY NEW, LARGE commercial building on 380 East. Has office space and rest rooms. On extra large lot. FARM 200 acres all in cultivation northwest of Haskell. 184 acre cotton allotment. COMMERCIAL BUILDING 20 x 70, just off square. A STEAL AT \$7,000. 3 bedroom stucco on South 6th. FOUR BEDROOM STUCCO on 7.2 acres. Located on FM Road 2406. BEAUTIFUL TWO STORY 3 bedroom, 3 bath, formal living with fireplace, family room, exceptional kitchen, landscaped corner lot with privacy fence. By appointment. SMALL 3 BR. on South 1st. New carpet. Storage bldg. LARGE LOT outside city limit \$3500. LARGE COMMERCIAL BUILDING IN GOOD LOCATION WITH PLENTY OF PARKING AREA. Lot size 165 x 160. Bldg. size 9180 sq. ft. Priced "too cheap." Best location available in Haskell. CLEAN 2 BEDROOM on N. Av. F. Choice location. Central H/C. 3 BEDROOM, 1 bath, located at 604 N. 6th St. A good older house on large lot. BUSINESS lot on 380 East. LARGE COMMERCIAL LOT on Hwy. 380. Has two large ICM buildings, one with 4 office spaces, many other good features. 10 acres SW of Haskell with 3 bdr. house. 2 bdr. located at 106 S. C. RULE TWO FOR ONE extra large two bedroom 2 bath with garage and storm cellar on corner lot behind Baptist Church. Also 2 bedroom stucco at same location all for 25,000. RULE 3 BEDROOM 2 bath with fireplace, fenced yard, water well, storm cellar. RULE 3 BEDROOM BRICK in excellent condition in new addition. Central H/C, drapes, extra storage. Priced to sell. In Rule. MODERN 2 BEDROOM close to school. Fenced yard. Priced right. ROCHESTER 3 BEDROOM, 1 bath, den and living room in good location. Double garage. Built in appliances in kitchen.

FOR SALE 3 BEDROOM BRICK on N. Av. L. Central H/C. Utility room, fenced yard, ceiling fans. Clean and immediate possession. Owner transferred. NEW 2 BDR. on N. Av. J. NEW 3 BDR. located at 712 S. 12th. ONE OF HASKELL'S BEST: Brick 4 bedroom-2 1/2 bath located on 1/4 block: 605 N. F. has hot tub and outside landscaped lights. A lot of living in a choice location in this one. Quality built with many extras. Must see to appreciate. 325 ACRE Haskell Co. farm. All cultivation. Located northeast of Stamford. EAST SIDE FINA STATION in Haskell. Small house, and extra lot goes with this property. NEW AND READY FOR OCCUPANCY. 3 bedroom, 2 bath brick with double garage and large patio. Greatly Reduced. 3 YEAR OLD COUNTRY ROCK. 5 bedroom, large den, living room, dining room, located on 17 acres of land with option lease. 12 acres pasture. Plenty of water. 8 miles northwest of Haskell or 2 1/2 miles northeast of Rule. 3 BR., 2 bath, with utility close to High School. Newly remodeled. LARGE OLDER HOUSE on N. 3rd. 3 or 4 bedroom, large living room. Has double garage and storage building. Ready to move in or would be a good one to do your own thing with. OUTSIDE CITY LIMITS. 3 bedroom, 1 1/2 bath on extra large lot. Patio, carport, garage, storage bldgs. & water well. Kitchen built-ins including microwave oven & Genaire range. NEARLY NEW, LARGE commercial building on 380 East. Has office space and rest rooms. On extra large lot. FARM 200 acres all in cultivation northwest of Haskell. 184 acre cotton allotment. COMMERCIAL BUILDING 20 x 70, just off square. A STEAL AT \$7,000. 3 bedroom stucco on South 6th. FOUR BEDROOM STUCCO on 7.2 acres. Located on FM Road 2406. BEAUTIFUL TWO STORY 3 bedroom, 3 bath, formal living with fireplace, family room, exceptional kitchen, landscaped corner lot with privacy fence. By appointment. SMALL 3 BR. on South 1st. New carpet. Storage bldg. LARGE LOT outside city limit \$3500. LARGE COMMERCIAL BUILDING IN GOOD LOCATION WITH PLENTY OF PARKING AREA. Lot size 165 x 160. Bldg. size 9180 sq. ft. Priced "too cheap." Best location available in Haskell. CLEAN 2 BEDROOM on N. Av. F. Choice location. Central H/C. 3 BEDROOM, 1 bath, located at 604 N. 6th St. A good older house on large lot. BUSINESS lot on 380 East. LARGE COMMERCIAL LOT on Hwy. 380. Has two large ICM buildings, one with 4 office spaces, many other good features. 10 acres SW of Haskell with 3 bdr. house. 2 bdr. located at 106 S. C. RULE TWO FOR ONE extra large two bedroom 2 bath with garage and storm cellar on corner lot behind Baptist Church. Also 2 bedroom stucco at same location all for 25,000. RULE 3 BEDROOM 2 bath with fireplace, fenced yard, water well, storm cellar. RULE 3 BEDROOM BRICK in excellent condition in new addition. Central H/C, drapes, extra storage. Priced to sell. In Rule. MODERN 2 BEDROOM close to school. Fenced yard. Priced right. ROCHESTER 3 BEDROOM, 1 bath, den and living room in good location. Double garage. Built in appliances in kitchen.

FOR SALE 3 BEDROOM BRICK on N. Av. L. Central H/C. Utility room, fenced yard, ceiling fans. Clean and immediate possession. Owner transferred. NEW 2 BDR. on N. Av. J. NEW 3 BDR. located at 712 S. 12th. ONE OF HASKELL'S BEST: Brick 4 bedroom-2 1/2 bath located on 1/4 block: 605 N. F. has hot tub and outside landscaped lights. A lot of living in a choice location in this one. Quality built with many extras. Must see to appreciate. 325 ACRE Haskell Co. farm. All cultivation. Located northeast of Stamford. EAST SIDE FINA STATION in Haskell. Small house, and extra lot goes with this property. NEW AND READY FOR OCCUPANCY. 3 bedroom, 2 bath brick with double garage and large patio. Greatly Reduced. 3 YEAR OLD COUNTRY ROCK. 5 bedroom, large den, living room, dining room, located on 17 acres of land with option lease. 12 acres pasture. Plenty of water. 8 miles northwest of Haskell or 2 1/2 miles northeast of Rule. 3 BR., 2 bath, with utility close to High School. Newly remodeled. LARGE OLDER HOUSE on N. 3rd. 3 or 4 bedroom, large living room. Has double garage and storage building. Ready to move in or would be a good one to do your own thing with. OUTSIDE CITY LIMITS. 3 bedroom, 1 1/2 bath on extra large lot. Patio, carport, garage, storage bldgs. & water well. Kitchen built-ins including microwave oven & Genaire range. NEARLY NEW, LARGE commercial building on 380 East. Has office space and rest rooms. On extra large lot. FARM 200 acres all in cultivation northwest of Haskell. 184 acre cotton allotment. COMMERCIAL BUILDING 20 x 70, just off square. A STEAL AT \$7,000. 3 bedroom stucco on South 6th. FOUR BEDROOM STUCCO on 7.2 acres. Located on



AFFILIATED
 WE HONOR ALL
 AFFILIATED TV ADVERTISEMENTS

Open 8 a.m. til 8 p.m. Daily
 Sunday 9 a.m. til 7 p.m.

1200 N. Ave E.
 Haskell, Tx.

Specials Good thru Sunday, June 17

DOUBLE COUPONS

each TUESDAY & WEDNESDAY
 at Modern Way Food Stores

We will redeem all manufacturer's "cents off" coupons for DOUBLE their value when the product is purchased.

—LIMIT—1 COUPON PER ITEM—

This policy does not include retailer (any food store) or free coupons, cigarette or tobacco coupons or refund certificates. The total redemption will not exceed the value of the item.

TEXAS BEEF JAMBOREE



LEAN FAMILY PACK
GROUND BEEF
 3 lbs. OR MORE
88¢

EXTRA LEAN + TENDER
 CUBE STEAK **\$2.99** 2 lb

Boneless Top Round Steak **\$2.39** lb

Boneless Sirloin Tip Steak **\$2.39** lb

Swift's Tend'r Lean Center Cut Loin Pork Chops **\$1.99** lb

Boneless Rump or Pikes Peak Roast **\$1.98** lb

Lip-on Boneless Rib Eye Steak **\$4.29** lb

Swift's Tend'r Lean Breakfast Thin Pork Chops **\$2.19** lb

Boneless Round Steak **\$1.88** lb
 Tenderized **\$1.98** lb

Shenandoah Turkey Franks 1 lb pkg **79¢**

Fully Cooked Smoked Picnics Sliced 89¢/lb **79¢** lb

Swift's Family Pack Pork Chops End Cuts **\$1.48** lb

Extra Lean Beef Short Ribs **\$1.48** lb

SHOP MODERN WAY FOR FRESHEST PRODUCE IN HASKELL

U.S. No. 1 Russet Potatoes 10 lb bag **\$1.59**

Hass Variety California Calavo Avocados 6 for **\$1**

Fresh Broccoli **49¢** lb

Fresh Carrots 2 lb bag **59¢**

Yellow Onions 5 lbs **\$1.00**

California Nectarines **79¢** lb

California Cauliflower **59¢** lb

Fresh Spinach 12 oz pkg **89¢**

Washington Fancy Red Delicious Apples **49¢** lb

California Red Plums 3 lbs **\$1**

Ashburn Assorted Flavors New from Affiliated!
 Ice Cream ½ gal. Round Carton **\$1.99**

DEL MONTE (SALT OR NO SALT) CUT OR FRENCH STYLE GREEN BEANS 16 oz. CANS **3 for \$1** LIMIT 3



TIDE Detergent 49 oz box **\$1.78**

Limit 1 with \$10.00 Purchase or More

Maryland Club COFFEE All Grinds 1 lb can **\$2.29**

Imperial Sugar 5 lb bag **\$1.69**

Tab, Diet Coke or Coca-Cola 2 Liter No Deposit **\$1.09**

Kraft Parkay Margarine 1-lb quarters **48¢** Limit 2

Campbell Ranchero Beans 3 15.5 oz cans **\$1.00**

Sunshine Vanilla Wafers 11 oz **\$1.09**

Skinner's Macaroni & Spaghetti 3 7 oz pkg **\$1.00**

Shurfine Mustard 32 oz **59¢**

Texsun Grapefruit Juice 46 oz **79¢**

Old Spice Shave Cream 11 oz **\$1.69**

Ziploc Food Bags 25 cnt qt **\$1.29**

Wolf Hot Dog Sauce 2 10 oz for **79¢**

Ziploc Frozen Food Bags 20 cnt **\$1.39**

Borden's Slipping Pk. Apple & Grape Juice 3 box **\$1.00**

Shurfresh Cottage Cheese 16 oz **89¢**

Delta Towels 2 rolls for **\$1.00**

Cascade For Dishwashers 8.5 oz **\$3.89**

Mr. Coffee Filters 100 cnt **99¢**

Ragu Spaghetti Sauce 32 oz **\$1.79**

Stilwell Frozen Breaded Okra 24 oz **\$1.29**

Mrs. Smith Frozen Cream Pies 13 oz **\$1.29**

Delta Bath Tissue 4-roll pkg **89¢**

Light Crust Flour 5 lb bag **89¢**

G.E. Standard Light Bulbs 60, 75, 100 Watt 4 pk **\$1.99**

3 STAR SHURFRESH MILK ½ GAL. **59¢**
 WITH ONE FILLED SUPERSTAR BOOKLET

3 STAR SHURFRESH MED. EGGS DOZ. **49¢**
 WITH ONE FILLED SUPERSTAR BOOKLET

3 STAR COUNTRY FRESH BREAD 1 ½ LB. LOAF **29¢**
 WITH ONE FILLED SUPERSTAR BOOKLET

3 STAR Nice N' Soft Bath Tissue 4 roll **29¢**
 WITH ONE FILLED SUPERSTAR BOOKLET

3 STAR Starkist Tuna 6 ½ oz can **19¢**
 With One Filled Superstar Booklet

3 STAR Shurfine Margarine 1 lb qtrs. **1¢**
 WITH ONE FILLED SUPERSTAR BOOKLET