

Amarillo, Texas 79100
 Baze Book Bin
 514 W. 7th St.
 Amarillo, Tx. 79101
 SCR Amarillo 790



Vote Saturday — May 5—7 A.M.-7 P.M.



Staff Photo by Don Comedy

STANDING ROOM ONLY

A crowd of about 200 people attended a political rally last Saturday evening in the Haskell Corral Building. The event was sponsored by the Haskell Kiwanis Club and featured local, District and State candidates and their representatives.

Absentee Votes Indicate Heavy Turnout Saturday

By noon Tuesday almost 200 persons had cast absentee ballots in the Haskell County Clerks office. The deadline to vote absentee was 5 p.m. Tuesday and the vote was one of the heaviest in recent elections.

Polls will be open from 7 a.m. to 7 p.m. Saturday for the Democratic primary. Residents will vote according to voting boxes. Box one voters will vote in the Community Building of Haskell National Bank; box two, County Library; box three, County Extension Building; box four, Justice of the Peace Office in courthouse; box five, Rule

School House; box six, Home State Bank, Rochester; box seven, O'Brien Gin Office; box eight, Weinert School; box nine, Paint Creek School; and box ten, Sagerton School House.

Voters will determine three County or Precinct races and two District races. Incumbent Jack Speer is seeking re-election as Precinct One Constable and is opposed by J.L. "Happy" Hendrix. C.E. "Chunky" Tidwell is seeking re-election as County Commissioner Precinct One and is opposed by T.C. "Tim" Burson. Five candidates are

seeking election to the office of Haskell County Sheriff. They are: Truman Therwhanger, E. "Bud" LeFevre, Johnny Mills, Jack Whorton, and Phil Coleman. Sheriff G.T. Garrett is not seeking re-election.

Voters in the 39th Judicial District will choose between incumbent Joseph Thigpen and challenger John Fouts.

Voters in the 64th Legislative District will elect a new State Representative. Rick Perry and Kenneth F. Neighbors are seeking election to the office. Sam Newcomb will be listed on the ballot but has withdrawn from the race. State Rep. Joe Hanna of Breckenridge is not seeking re-election.

Another race drawing local interest is the U.S. Senate position being vacated by John Tower. Six names will be on the Democratic ballot. David Young, Lloyd Doggett, Robert S. Sullivan, Robert (Bob) Krueger, Kent Hance and Harley Schlanger.

A sample ballot is printed in this issue of the *Free Press* for the convenience of the voters.

Kindergarten Pre-Registration Set May 4 — 1 to 2:30 P.M.

Kindergarten pre-registration will be held at Haskell Elementary School on Friday, May 4, from 1:00 p.m. to 2:30 p.m. Pre-registration will take place in the Elementary Library.

In order to be eligible for Kindergarten this coming fall, a child must be five years of age on or before September 1.

Parents will need to bring birth certificates and immunization records to registration. Children must have received immunization for mumps, polio, diphtheria,

pertussis, tetanus (D.P.T.), measles and rubella. Also they must have received a booster shot for polio and D.P.T. since their fourth birthday.

pipe
smoke



by don comedy

Voters will elect Supreme Court and Criminal Appeals Judges in five contested races this Saturday and most voters admit they don't feel qualified to make a decision.

The following recommendations come from several local attorneys and officials in Austin who have occasion to work with or study the actions of the judges and candidates.

For Chief Justice, Supreme Court, Sears McGee; Supreme Court place two, Shelby Sharpe; Court of Criminal Appeals place one, Oliver Stanley Kitzman; Court of Criminal Appeals place two, W.C. (Bill) Davis and Court of Criminal Appeals place three, Thomas B. "Tom" Thorpe.

Texas voters will also select a new U.S. Senator and local Democrats will choose between six candidates listed on the ballot.

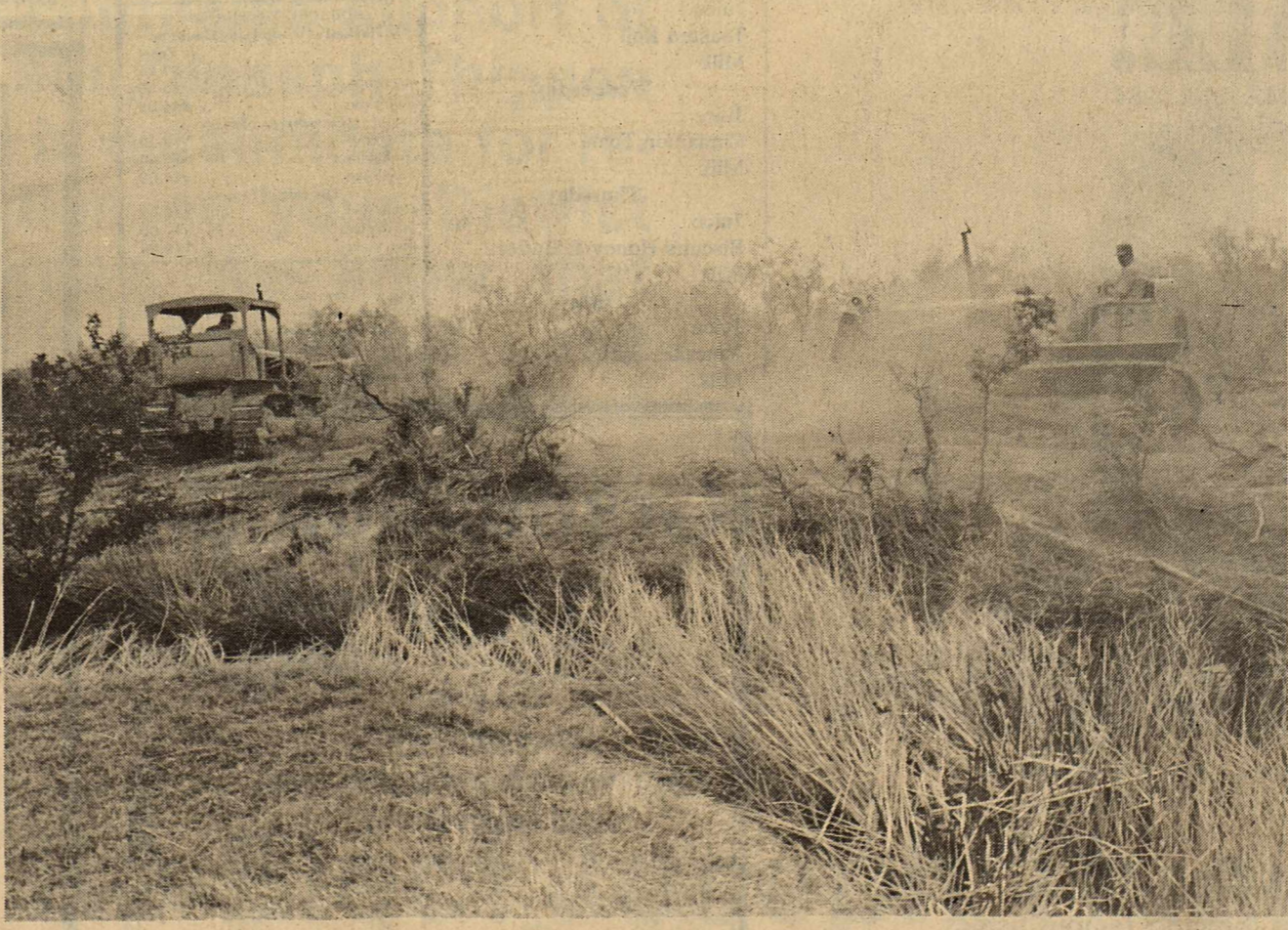
Kent Hance is familiar to many people in West Texas. He is a native

son and has served in the State Senate and as a U.S. Congressman. He has a proven background of being conservative and effective.

West Texas has benefited tremendously from his service and as a U.S. Senator, the entire State will benefit from the same hard work which has earned Hance the reputation of being fair, honest and effective.

On a more local note, voters will make decisions in contested races for Constables, Commissioner Precinct one, Sheriff, District Attorney and State Representative. These are important offices.

Casting a vote is much the same as looking at job applicants and offering a position to one applicant over several others. Let's make our choice in the same context and vote for qualified individuals we would hire if the decision was ours, because it is.



Staff Photo by Don Comedy

CREEK WORK UNDERWAY

Work on Rice Springs Creek started this week on the South end of the creek. Much of the dirt work will be done as a joint project of the City of Haskell and Haskell County in an effort to conserve funds and stretch the \$500,000.00 grant as far as possible. Work on bridges and low water crossings will be contracted.

COTTON
GRAIN
CATTLE

THE HASKELL

25¢
18 Pages in
Two Sections
Plus Insert

FREE PRESS

"HASKELL—A GOOD PLACE TO VISIT; A BETTER PLACE TO LIVE"

VOLUME NINETY-EIGHT
HASKELL, TEXAS 79521, MAY 3, 1984
NUMBER EIGHTEEN

Precinct Conventions Offer Say In Presidential Nomination

Following the Democratic Primary Saturday, everyone who votes will be eligible to attend a Precinct convention and have an opportunity to select their nominee for the office of President of the United States.

Due to a change in State Law, the candidates for presidential nomination will not be on the ballot.

Therefore the only way that Texans may participate in this election is through attendance and participation at Precinct conventions. Voters should attend the convention at the same place they vote.

Delegates chosen at these Precinct conventions will be responsible for choosing delegates for the County convention in two weeks. Delegates selected at the County convention will attend the State convention and have a voice in selecting delegates to the National convention in San Francisco.

Jump Rope Groups Raise \$4,682.35

Four school groups have recently completed jump rope for heart projects to benefit the American Heart Association. The four groups raised a total of \$4,682.35.

Two groups in Haskell raised a total of \$2,516.89 while a Rule group raised \$1,604.91 and a Weinert group raised \$561.55.

The school groups worked individually to secure pledges to raise funds in the jump rope for heart events.

The process is rather confusing to newcomers to the system, but this method of delegate selection has been a part of party politics for years.

In previous years, the names of Presidential candidates appeared on the ballot, but voting represented only an opinion poll. The delegates to the conventions chose the nominees.

The only requirement for attending a Precinct convention is that a participant must have voted in the primary.

When registering, participants

must indicate a Presidential preference or a designation of "uncommitted" may also be made.

Participation in Precinct and County conventions is vital to the Democratic Party's selection process and everyone voting in the primary is urged to attend their Precinct convention following the closing of the polls Saturday.

City Dump To Be Open On Sundays

Effective this week, the Haskell City Dump will be open each Sunday from 1 to 5 p.m.

There will be a City employee at the dump to instruct where debris and trash is to be placed.

According to City Administrator, Bob Baker, the new policy is an effort on the part of the City to provide better service to the residents of Haskell.

Mens Partnership Set May 4, 5, & 6

The Haskell Country Club will hold a Mens Partnership Scramble golf tourney May 4, 5, and 6.

Entry fees are \$80.00 per team. All prizes are cash.

For more information call 864-3400 or 864-2861.

Spring Concert Set May 6

The spring band concert will be held Sunday, May 6 at 2 p.m. in the Haskell High School gym.

Admission is free. The sixth grade, junior high and high school bands will perform.

Library To Close For Elections

The Haskell County Library will be closed Saturday, May 5, for the election in Precinct 2.

Booster Club To Elect New Officers

The Haskell Indian Band Boosters Club will hold a meeting Monday, May 7 at 7 p.m. at the Band Hall.

The club will elect new officers and conduct a business meeting.

weather

April Summary
By Sam Herren

TEMPERATURE

Hi	96°	24th
Lo	34°	5th

RAINFALL

Total	0.64
Total to Date	2.64
Normal to Date	5.50

Brush and Palette

schnuriger

Because of their proximity to civilization, wild birds often are inadvertently harmed by people. We, in the art field, enjoy the song of birds, which are many in this Big Country. Even the call of the Scrub Jay is a delight late

in the evening. Can you identify those birds; do you know how to feed them? I came across the address of a pamphlet that will tell you how to care for birds. The address is Suncoast Seabird Sanctuary, 18328 Gulf Blvd., Indian Shores, Florida 33535. Send a stamped, self-addressed envelope. You will enjoy this little pamphlet.

1920's. Zinc White has been in use since about 1830 and has been prized for its dazzling white color. It produced cooler tints and is more 'buttery'. It requires twice the amount of oil that flake white needs to make it brushable; its covering and drying capacity are inferior to Flake and Titanium. Also, the film is less elastic when dry.

I personally prefer Titanium White for its covering power. Q. When and what is the proper technique for using the fan shaped brush?

A. In sabel or sabeline, a fan shaped brush is used for blending. One artist in San Antonio, Paul Kime, uses it to blend the skies in landscapes. The bristle fan shaped brush is also used for blending but many painters use it to make grass and small vegetation. I do not believe there is a proper use for the brush, just use it the way it works best for you.

Hint: "There is a difference between looking and seeing. A difference between hearing and listening. A difference between touching and feeling. A difference between eating and tasting. The person who senses and savors that difference doubly savors life." - taken from San Antonio Watercolor bulletin.

Write your questions and hints to me, Faye Schnuriger, P.O. Box 134, Haskell, Texas, 79521. I will not use your name but do want you to sign your letters.

Hospital Notes

Visiting hours at Haskell Memorial Hospital are 2 to 4 p.m. and 7 to 8:30 in the evening. No visiting hours in the morning. No children under 14.

ADMISSIONS
MEDICAL: Carl Hamilton, Munday; Clara Rhoads, Haskell; Mildred Bowden, Munday; Florence Alexander, Rule; Gracie Moore, Haskell; William Scifres, Rule.
SURGICAL: J.C. Dunnam, Haskell; Wanda Saffel, Rule.

DISMISSALS
Zina Bells, Bertha Tanner, Shelia Hacks, Tom Whitaker, Lillie Wilson, Linda Herrera, Lina Stone, John Wayne McDermott, Fannie Johnson, Betty Minifee, Felton Hindsley.

KOTAB NEWS

Covers The Big Country—not just Abilene

7 Attend Extension Homemakers Meeting

Sociological and technical factors are changing American family life, but informed homemakers are helping to cope with these new challenges, members of Extension Homemaker Clubs from across the Rolling Plains were told here during their annual Spring meeting.

In addition to examining several of these influences and ways of coping with them, the group also was given an inside look at the state's legislative procedure, participated in a workshop on volunteer service, and elected a new district director. A luncheon, presentation of awards and entertainment by the Fisher County 4-H "Share the Fun" troupe were other features of the program in the Community Center here.

Chosen to lead the district organization for the next two years was Mrs. Fran Gerard of Welbarger County. She succeeds Mrs. Nancy Jo Boone of Baylor County.

A total of 184 club members and guests from the 21-county district participated. Haskell County was represented by 7 persons, said Lou Gilly, county Extension agent for home economics. Local participants were:

Frances Fischer, Mabel Overton, from the Paint Creek club, Dorothy Trussell, Phylecia Bailey, Mildred Robertson from Josselet club and Alice Yates and Betty Sanders from the Weinert club.

Changing family lifestyles confront us with many difficult decisions, Dr. Jennie Kitching, assistant director for home economics with the Texas Agricultural Extension Service, told the group. She cited recent books, magazine articles and studies, itemizing forces which affect families.

Among these forces, she noted, are the shift from an industrial to an information society, the trend to a "high tech-high touch" society, a new emphasis on self-help rather than institutional sup-

port, an increase in participatory democracy, and a rise in multiple-option choices which face us. She said these are among the factors presented by author John Naisbitt in his book, "Megatrends."

Other forces reshaping America, Kitching said, are medical miracles, women on the move and — of special significance in Texas — the lure of the Sunbelt.

She said Extension Homemakers already are addressing

and making a difference in facing these changes, especially in the self-help and participatory democracy areas, and as women on the move.

She noted that many Extension Homemaker Clubs have conducted community educational programs in weight control, drug abuse, retirement and other concerns. "Those programs are oriented toward self-help," she said.

Another conference

speaker, State Rep. Steven A. Carraker of Fisher County, took a "text book" diagram of how a bill becomes a law and gave an inside view of each step and the hurdles a piece of legislation may face.

He urged the audience to become an active part of the "participatory democracy," taking part in political party affairs and writing letters or telephoning their legislators with their views on issues.

A program of "certified volunteer units" in which volunteer work in the community earns recognition was explained by June Cline of College Station, Extension organization specialist. She said properly documented records of such service can bring certificates from the National Extension Homemaker Assn., earn tax credits, count toward college credits at six Texas colleges and provide personal self-satisfaction.

Fisher County Judge Marshall Bennett welcomed the conference to Rotan.

R.N.s, L.V.N.s To Be Honored

Haskell Nursing Center would like to invite all area R.N.'s and L.V.N.'s to a coffee in their honor. Monday, May 7th, 9:30 to 11:00 a.m.

Brazos West Art Assn. Calendar

May 14 -Kountry Kookin-aster Show with Scripture titles—open daily.

May-June-Members winning 1st, 2nd, and 3rd place picture of the month" hanging at Commodore Savings, First National Bank, West Texas Utilities-open daily.

May 14-7:00 p.m.-Haskell National Bank Community Building-Salad Supper with installation of Officers.

May 15-Members at Haskell Training Center-lesson on raising animals.

May 17-Frontier Days Art Festival and Bake Sale-on square beginning at 1:00 p.m.

Happy 37th Wedding Anniversary

Mom and Dad

Love,
Steve, Betty, Melanie and Kyle

Twister Beads

Diane's Beauty Salon & Boutique

for Mother's Day or for the Graduate

Diane has a large selection of Fashion Jewelry

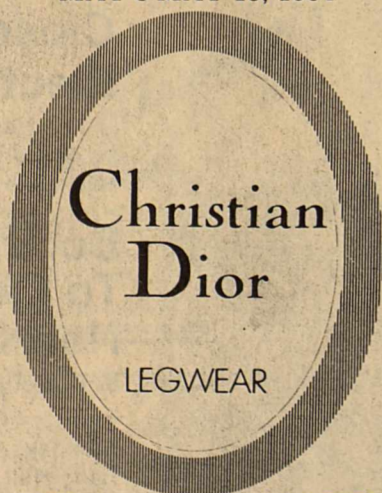
For your hair care needs or Twister Beads
Come by or Call Diane

1300 N. Ave. M

864-3232

ONCE A YEAR SALE!

MAY 3-MAY 13, 1984



1 PR. REGULAR PRICE	MULTIPLE PAIR SALE PRICE
\$1.75	6/\$ 8.70
\$3.50	3/\$ 9.00
\$4.00	3/\$ 9.60
\$4.50	3/\$10.80
\$5.00	3/\$12.00
\$6.50	2/\$11.00

2 Pair Pack \$5.00 6/\$12.60
Come in and see our assortment of legwear from one of the most famous names in fashion.

Lane-Felker

Graduation Time

For your convenience we have the graduating girls' sizes and suggestions.



409 South First Haskell, Texas Phone 864-2901

BREAKFAST	
Monday	Juice Cereal Milk
Tuesday	Juice Toasted Roll Milk
Wednesday	Juice Cinnamon Toast Milk
Thursday	Juice Biscuits-Honey & Butter Milk
Friday	Juice Pancakes-Syrup Milk

The Haskell Free Press
Established January 1, 1886
PUBLISHED EVERY THURSDAY

MEMBER 1984

TEXAS PRESS ASSOCIATION

BILL COMEDY—Publisher
DON COMEDY—Editor

Entered as second-class matter at the post office at Box 577, Haskell, Texas 79521, under the Act of March 3, 1879. (USPS 237-040)

SUBSCRIPTION RATES	
In Haskell and Adjoining Counties	
One Year	\$7.25
Six Months	\$5.00
Two Years	\$14.00
Elsewhere in Texas	
One Year	\$8.50
Six Months	\$6.00
Two Years	\$16.00
Outside of Texas	
One Year	\$10.00
Six Months	\$7.00
Two Years	\$19.00

NOTICE TO PUBLIC—Any erroneous reflection upon the character, reputation or standing of any firm, individual or corporation will be gladly corrected upon being called to the attention of the publishers.

Enter our "Draw Mom" contest!

Kids! Pick up a coloring entry form at our store, draw us a picture of YOUR MOM, and you might be a winner! Come in for contest details!

© 1984 Hallmark Cards, Inc.

Gail's Hallmark Stamford Square 773-2278

Beth's Beauty Shop
101 Ave. J East Throckmorton Hwy.

Jill Everett
Specializing in hair cuts, blow drying and perms.
Monday through Thursday 8:30-5:00
Call for your appointment now
864-2237

Sidewalk Sale

Sat., May 5th

Super Bargains

Kid's Duds
Haskell, Texas

Just Arrived ALL NEW

ZENITH VHS

VIDEO RECORDERS
the Smart Decks

4-Head Video Scanning
MODEL VR2000.

14-day one event programmability with precision 4-head scanning for optimum performance. 2-way picture speed search. Pause/still frame advance. Auto rewind. One-touch Instant Record, for up to 4 1/2 hrs. of automatic recording.

without affecting programmed auto command. And optional 10-function Space Command. Wireless Remote Control.

\$498.00

Owens Radio & Electric
Haskell, Texas

Whorton Issues Statement

To the People of Haskell County,

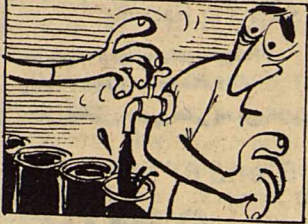
The campaigning is winding down and I would like to take this opportunity to thank each and everyone of you for your words of encouragement and support.

Let me again say, I sincerely want to be your Sheriff of Haskell County. I will work diligently and be available to all the citizens of Haskell County when any problem arises.

My promise to each and everyone of you is that I will be your full-time and not a part-time sheriff. I will be fair and impartial in enforcing the laws.

I am asking you to please exercise your right to vote in the May 5th primary.

Jack Whorton



There are twelve pints of blood in the average human body.

AREA'S MOST POPULAR

The S & S DRIVE-IN

Snack Bar

Stamford 773-3272

Fri. Sat. & Sun.

MICHAEL CAINE
JOSEPH BOLOGNA

Don't blame it on me

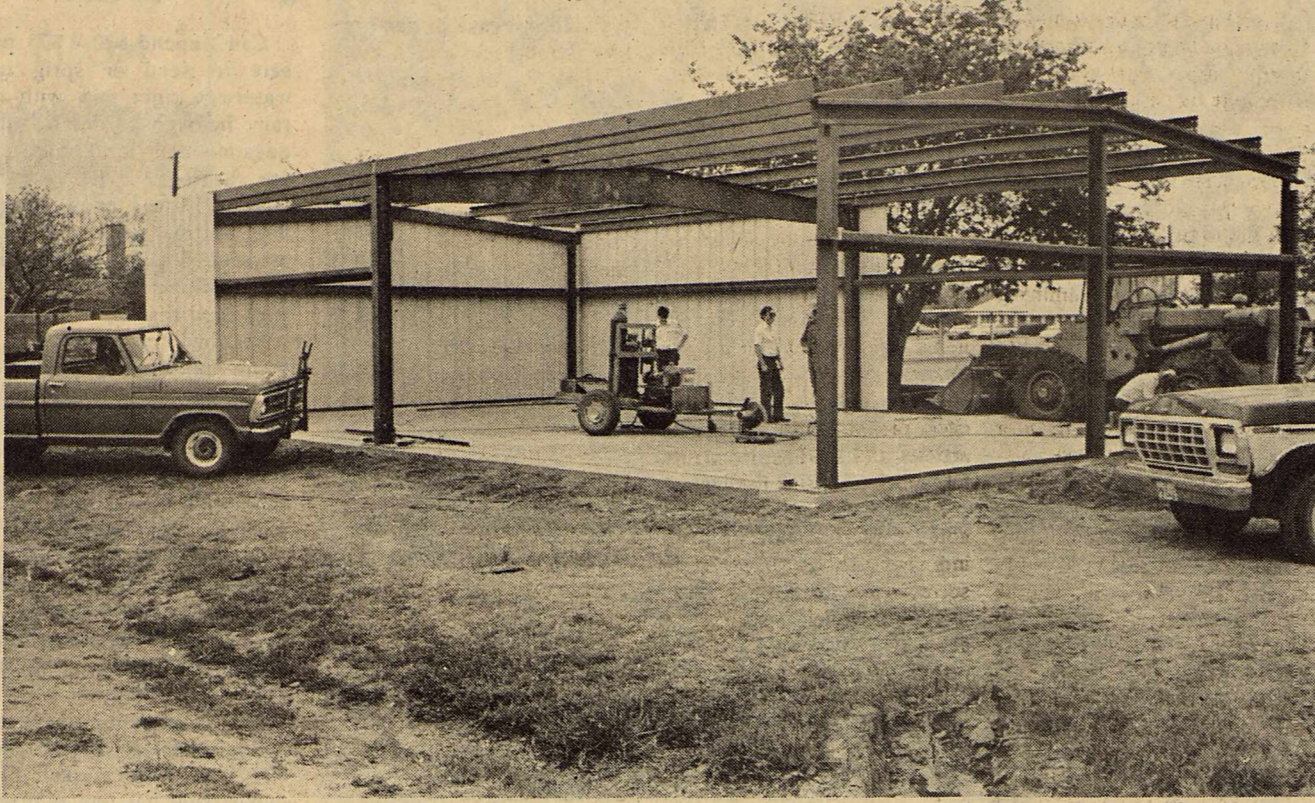
BLAME IT ON RIG

Tuesday-Wed.-Thurs.

XX Adults Only

You Must Be 18 With I.D.

"Lust Story"



Staff Photo by Don Comedy

NEW BUILDING

Haskell County Emergency Ambulance Service will soon be housed in a new building located East of Haskell Memorial Hospital. The building will include housing for the ambulances as well as offices for the service.

Haskell Nursing Center News

Our "Meet the Candidate" night was a big success. The candidates turned out in force to meet with everyone and discuss their views. A big thank you to each one of you who took the time from your busy schedule to come out. We would also like to wish each of you "good luck" in the upcoming election. A special thank you to "Sue's Flowers and Gifts" for the lovely floral arrangements that brightened everything up. Also thanks to Dorothy Cox for the delicious refreshments.

Visiting this week were, Lou Young, and Bertha Devine from Houston, visiting with Leoro Caddell. Also visiting with Mrs. Caddell were, Mr. and Mrs. Pete Ammons of Pampa, Kathy, Melissa, Emily and John Slayton of Weatherford, Penny and Harold Stone of Seymour, and

Dee and Opal Noonkester, Shirley Waters, Elizabeth Collier and Rafia Fine all of California.

Visiting with A.J. Patterson this week were, Kenneth Anderson of Rule, Gearld Anderson of Jal, New Mexico, Delores and James Ford of New Haven Missouri, Jerry Patterson of Denver City, and W.H. Patterson from Rochester.

Delephene D. Young visited with Irene Yarbrough.

Visiting with Mr. and Mrs. Ray Oliphant were Junior and Sallie Oliphant.

Patsy, Tyrone, and Tamara Williams from Rule visited with Annie Williams.

Visiting with L.C. and Pauline Williams were Pete and Naomi Williams of Abilene, and Quata Walton from Stamford.

Colene Moody spent the weekend with Mr. and Mrs.

Nolan Lees in Rule.

We would like to wish the best of luck to Margrete

Freeman on her marriage to J.R. Crane. We will miss you out here.

Todd's Bait Shop

Minnows
Worms
Goldfish

Quanah Bait Tackle
Catfish Baits

Oxygen-bagging for live bait now provided.

Located 1 block North of Trussells' Tire Center. Look for sign on highway.

PETITE ROLEX: the perfect file for telephone numbers and addresses. Typewriter spaced lines. Replacement refills. Decorator colors and styling for home and office. Haskell Free Press.

Apply Early For Social Security Numbers

People in the Big Country area who expect to need a Social Security number should remember to apply for it before they must have the number, Glyn Hammons, Social Security district manager in Abilene, said recently.

People should apply for a number at least 3 weeks before the number is needed. This length of time is down from the 4 to 6 weeks it used to take, Hammons said. The reduction in time has taken place because Social Security is in the process of modernizing its computer systems. This is one of the first results of this effort.

When applying, a person must have evidence of age, identity, and citizenship or legal alien status, Hammons said. In addition, a person 18

or older who is applying for the number the first time must appear in person.

The best evidence of age and citizenship is a public or hospital record of birth or a religious record of birth or baptism established before age 5. Only if these records do not exist should other evidence be submitted.

Evidence of identity can be any document showing identifying data such as physical description, photograph, or signature. Examples include driver's license, voter's registration, school record, report card, identification card, marriage record, divorce decree, draft card, military ID, building pass, baby's hospital wrist band, adoption record, or organization membership. People applying for a

duplicate card to replace a lost must provide evidence of identity. Also, a person who wants to change her or his name in Social Security records must provide evidence of identity under both old and new names. A person born outside the U.S. must submit evidence of current U.S. citizenship or legal alien status.

Only original documents, copies certified by the issuing agency are acceptable.

More information about Social Security numbers can be obtained at the Abilene Social Security office, located at 142 S. Pioneer. The telephone number is 698-1366.

Want Ads... the most powerful column in the world.

HOME FIX-UP TIME

Paint Up—Fix Up—Clean Up Sale

Outside Latex Paint.....	\$10.95
Inside Latex Paint.....	\$8.95
Latex Caulk.....	90¢
Ceiling Hugger Fans.....	\$90.00
3 Tulip Light.....	\$18.95

Rake \$4⁹⁵	Shovel \$4⁹⁵	Hoe \$3⁹⁵
---------------------------------	-----------------------------------	--------------------------------

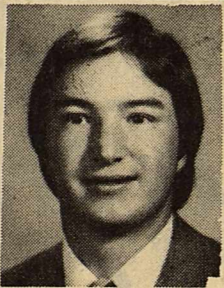
Storage Buildings..... \$795⁰⁰

McGee's LUMBER YARD

105 N. 1st864-3552

TAX PLANNING

Written By
Gerald Rodgers, CPA



COST OF YOUR RESIDENCE

It is necessary to keep track of the cost of your personal residence. This cost includes the original purchase price plus the money spent on improvements.

Even though the gain on the sale of your residence may be "deferred" because you buy a new home, a future sale of the replacement residence could be taxable. The cost of the property sold may be determined, in part, by the cost of a prior residence on which gain was deferred.

Many of the expenses on your home will be regular repairs and maintenance and cannot be added to the cost of the home. Expenditures for additions to the property such as patios, garages, sidewalks or landscaping do qualify as additional costs of the property and should be recorded. A log book used specifically for expenditures on your home is advisable. You are not entitled to include the value of your own labor, but you can include the cost of all material and labor for which you have a cash outlay.

Here is an example of the gain one may have on a sale. You purchase a home for \$50,000 and over a period of years spend \$20,000 for a garage, sidewalks, and a family room. You also put in 300 hours of your time. You sell the property for \$100,000. Your cost in the property for income tax purposes is \$70,000. Your gain on the sale is \$30,000 minus selling expenses for realtor fee, etc.

If you are buying a fixer-upper or if you are planning a major renovation of your residence, consider opening a separate checking account which is used strictly for property improvements. Since all expenditures, even those which are normally repairs and maintenance, are includable if the work is done within 90 days of the date the property is sold, keep track of all expenditures and let your accountant determine which expenditures qualify as additional house costs.

Sponsored by

JAMES E. RODGERS & COMPANY
Certified Public Accountants
20 Southwest Third Street
Hamlin, Texas

To The Voters Of The 39th Judicial District

We would like to ask each of you for your vote and continued support of our son, Joseph Thigpen who is a candidate for re-election as your District Attorney. We know that he is concerned and devoted and will continue to do a good job as your District Attorney.

Dr. & Mrs. Joe E. Thigpen



District Attorney Joseph Thigpen

Re-Elect Joseph Thigpen Your District Attorney

Where's The Beef?— On The Dinner Plate

When it comes to the American diet, that popular question "Where's the beef?" is a simple answer -- it's on the dinner plate.

Beef is clearly a staple of the American diet, says Marilyn Haggard, a Texas A&M University Agricultural Extension Service nutritionist. The American Meat Institute estimates that the average American consumes a little under 19 pounds of hamburger per year. Other studies have shown that ground beef served in 96% of all U.S. households and fresh beef other than ground beef is eaten in 97% of households, Haggard explains.

Families do, of course, vary in the amount of beef they eat, but total beef consumption has stayed about the same since 1981, says the nutritionist.

Heavy users serve beef twice a week or more, while moderate to light users serve beef one to three times during a two-week period, and others serve beef only occasionally.

From a nutritional standpoint, beef makes an important contribution to the American diet, says Haggard.

For example, a person who has a diet of 2,000 calories, gets only 8% of his calories from a 3-ounce serving of beef, but gets 57% of his protein need, 34% of his vitamin B-12, 32% of his zinc, and 21% of his phosphorus.

Many consumers have become concerned about the

amount of animal fat and cholesterol in their diets, notes Haggard. However, beef -- especially as eaten rather than as purchased at the store -- contains less fat, less saturated fat and less cholesterol than many people assume, says the nutritionist.

United States' Department of Agriculture studies show that once you trim the fat from your meat, beef is not high in fat when compared to many main dish items in Americans' diets. USDA research also shows that less than half the fat in beef is saturated fat.

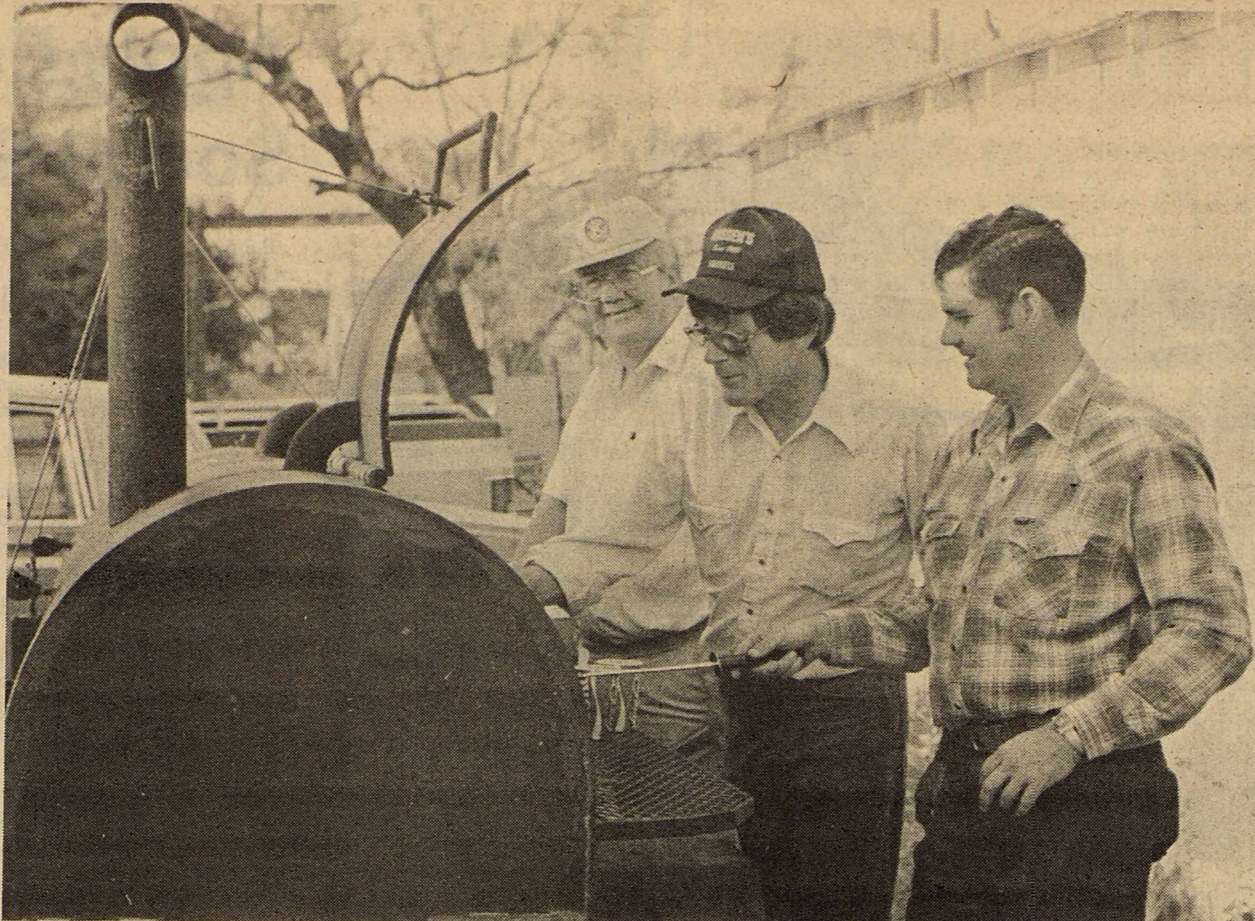
While animal sources still contribute the greatest amount of fat to American diets, vegetable sources like oils and margarine account for the increase in fat in the food supply, says Haggard.

Well-trimmed beef is part of a good balanced diet which includes other meats, fish and poultry, fruits and vegetables, cereals and grains, and dairy products, she adds.

Car Wash Set

The Presbyterian and Lutheran youth group is having a car wash Sunday, May 6, from 1:00 to 7:00 p.m. at the home of Jerry Don Klose, one block south of Allsup.

All proceeds will go to fund a trip to Six Flags for the youth. There will be no charge, but donations will be accepted.



Staff Photo by Don Comedy

KIWANIS COOKS

Members of the Haskell Kiwanis Club sponsored a political rally last Saturday night and cooked hamburgers. Several Club members assisted with the cooking chores. Pictured are: (L to R) Bailey Toliver, Bob Baker and Marshall Brown. The Club will sponsor a giant election board this Saturday night on the Courthouse lawn and will also cook.

Planting Tips For Bluebonnets

The bluebonnet, as much a Texas trademark as the Stetson and the Longhorn, can be cultivated to beautify any landscape.

Named the state flower by the Texas Legislature in 1901, the bluebonnet is an annual legume. It is usually found on less productive pasture lands and roadsides where it has little competition from other vegetation, points out Everett Janne, landscape horticulturist with the Texas Agricultural Extension Service, Texas A&M University System.

"Bluebonnets do poorly on well-managed pastures, meadows or lawns because they are such poor competitors and are easily crowded out by grass," says Janne. "Once they are established, it's best to leave them alone."

The bluebonnet must be allowed to mature and reseed itself each year to maintain a stand, the horticulturist points out. Plants tend to become weedy-looking after they flower in March and early April, and the tendency is to mow them before seeds have a chance to mature. Of course, this greatly reduces the plant population the following year.

"Under natural conditions, seeds mature and drop into the grassy undergrowth where they remain until fall when an adequate moisture supply allows them to germinate," Janne explains. "Small plants form a rosette of leaves at the soil surface and grow

very little until early spring."

Under cultivated conditions, bluebonnet seeds should be scarified to increase the germination percent. The bluebonnet seed coat is hard and will absorb little moisture without scarification, notes the horticulturist.

"One way to scarify small quantities of seed is to spread them on a concrete surface and to rub them with a brick. Seeds can also be scratched between two layers of sandpaper glued to two boards. Be careful not to remove the entire seed coat during either process," cautions Janne.

Another effective treatment, says the horticulturist, is to soak the seeds in hot water for 48 hours. Change the water every 12 hours, using tap water as hot as it will come from the tap. Changing the water is necessary to prevent oxygen depletion and "scouring" of the seed. Plant seeds immediately following this treatment.

Large quantities of bluebonnet seed can be scarified by mixing them with an equal amount of coarse sand, tumbling the mixture in a cement mixer for 15 minutes, and then immediately planting the seed.

"Plant the seed in late summer or early fall and cover with no more than one-half inch of soil," Janne says. "Bluebonnets do best in fertile well-drained soil with little competing grass. And

since bluebonnets are a legume, they tend to do better if the seed are inoculated with the proper nitrifying bacteria available from most seed companies."

Store seed in sealed containers at 35 degrees F. until planting time, he advises. When collecting seeds from native stands, always allow some to fall to the ground to insure a stand the following year.

Bluebonnet seeds require considerable labor to harvest; therefore, supplies are often limited and vary from year to year. seeds are usually available from many seed houses, nurseries and garden centers,

Janne says. Bulk quantities for roadside or meadow planting can be obtained from major seed supply houses through their local distributors.

Get Bitter About Litter

Beautify Haskell Council

Conservation Viewpoints

USDA Soil Conservation Service

Can I spend \$20 - \$75 per acre to seed or sprig my waterway right now with no rain in sight? This is the question many local producers are asking. What is the answer? True, it is getting late, but many acres of grass are seeded each year between May 1st and May 31st with very good results.

Seedbed preparation is being performed on many acres and is the single most important factor. Ground that is to be planted to grass should be clean from other vegetation and the large clods, much like planting wheat.

Seeding can be performed in many different ways. There is sprigging bermuda grass or seed can be broadcast, drilled or planted with a cultipacker. The most effective way to plant grass is using a cultipacker and the Haskell SWCD and the Haskell FFA department has one available

for rent. If you wish to rent the planter call the Haskell Vocational Agriculture Building at 864-3310 and reserve a date.

The seed used is variable depending on personal preference. Kleingrass, coastal bermuda and common bermuda are all effective at holding the soil in waterways. Giant bermuda or NK-37 that has been used in the past are no longer eligible to be used in waterways. Coastal, common or Brazos bermuda are the only bermuda grasses eligible to be used.

Seeding you waterway now, even at this late date and without rain is still the best way to keep your waterway from eroding away. For information or assistance contact the Haskell Soil Conservation Service at 510 South Second in Haskell.

Advertise where it pays in the Haskell Free Press

May 3, 4, 5, and 6

60 Count Box Pampers	\$5.00
Sausage on a Stick Del Monte 14 oz bottle	79¢
Catsup Kraft 18 oz bottle	59¢
Barbeque Sauce 2 liter bottle	89¢
Coca Cola 15 oz can	\$1.19
Mackerel	59¢

Buster's Drive-In

Dance

American Legion Hall
Rochester, Texas
to the music of
The Lost Outlaws
with Mike Norris
Friday, May 4
8 p.m.

Everyone Welcome
Snack Bar Open BYOB

911

PIONEER BRAND SEEDS

TAKING THE HEAT

Plant this pair from Pioneer for a superior grain sorghum crop in hot, dry weather.

911 Big Tonnage Forage Producer
Tropical hybrid that doesn't head under growing conditions in Southwest due to its photosensitivity response. Extremely high yield potential; has won New Mexico forage trials for the past three years. Large, strong stalks are moderately juicy and sweet; broad, dense, dark green leaves provide a forage with high feed value. Excellent disease resistance. Excellent roots and stalks provide 8' to 12' tall plants with very good standability. Plant thick in narrow rows or broadcast for hay, silage or greenchop. Plant thick in 30" to 40" rows for grazing. Plant at moderate rates for use as green manure or cover crop on set-aside acres.

877F Outstanding New Sorghum-Sudangrass Hybrid
Premium quality sorghum-sudangrass hybrid adapted to all areas of the Southwest for hay, pasture, greenchop or silage. Small, sweet stems with broad, dark green leaves produce outstanding yields. Flexible stems provide excellent standability plus outstanding baling qualities. Excellent drought tolerance and regrowth. Better disease resistance than 988, including excellent downy mildew resistance (Pathotypes 1 & 2). For hay, greenchop or silage production, broadcast or drill in narrow rows at higher populations to maximize forage yields and minimize stem size. For pasture, plant in 30" to 40" rows...your cattle will tend to walk on unplanted area between rows and field loss will be reduced.

See:
Campbell Seed Co.
864-3017

877F

PIONEER BRAND SEEDS

ELECT

PHIL COLEMAN

Candidate for
Haskell County SHERIFF

Your vote and support will be appreciated

Pd. Pol. Adv. Pd. for by Phil Coleman Campg. Treas.

HERE'S A SAFE WAY TO CURE

INSOMNIA

If you don't have any important documents, receipts, certificates, contracts, insurance policies, deeds, etc., you probably sleep well anyway. But if you often lay awake wondering if your valuables are really safe, see us about a convenient safe deposit box.

REST ASSURED - YOUR VALUABLES ARE SAFE WITH US.

Post Office Box 10
Phone (817) 997-2216
Rule, Texas 79547

LETTERS FROM

LIEUTENANT GOVERNOR WILLIAM P. HOBBY

Dear Fellow Texans,
 I want to take this opportunity to stress the importance of participating in this great democracy. This democracy is not for spectators; it is for participants. Democracy is our way of life and each of us has an interest in its future.
 On May 5, Texans will have their turn to participate in this great exercise called democracy. It is the chance to vote in the primary elections. It must be remembered that the quality of an elected official is equal to the people that voted. Your elected leaders are the product of your action and responsible to your influence expressed through a ballot box. Too many times apathy rules in decisions to vote. Assuming the role of the spectator is a potential threat to democracy. Ask yourself, "Do I want to be a spectator or a participator?"
 Participators make a difference. You can make the difference. Go to the polls and to your precinct caucus on May 5. Get involved in your county caucus, and go to your state convention. Stand up with the farmers, teachers, the business people, and become a part of the vocal majority. On May 5, your vote can make a difference.



MRS. FOSTER'S CLASS



MRS. ADAM'S CLASS

5th Graders Make Nutrition Posters For ECC "Friday Thirteenth" Party

Haskell Experienced Citizens Center honored the two fifth grade classes of Haskell Elementary School with a "Friday Thirteenth" party. Students in Mrs. Adams and Mrs. Foster's classes made posters on nutrition and put them on display at The Center. They were judged by the art class that meets each Wednesday afternoon. The winners were: Mrs. Adams class - Tiffany Bradford, first place; Geneva Lopez, second place; Maria Nunz, third place; Wendi Watson and Rod Jeter, honorable mention. Winners of Mrs. Foster's class were Robbins Harrell, first place; Sheila Unger, second place; Rusty Stocks, third place; Corie Brzozowski and Jason Davis, honorable mention. All posters received a gold star. After ribbons were given to the children they were served cookies and punch. Dorothy Stout, Assistant Cook of ECC, made the cookies and decorated each with a "13" on top.

Under the Rainbow

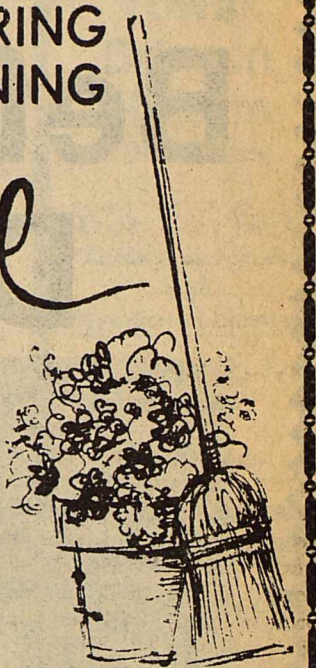
308 N. 1st St.
 Haskell, Texas 79521

- 1.) New Plush Animals
 Reg. \$4.95 Now 3.75
- 2.) Discontinued Hallmark Paper Goods & Cards
 Special Priced
- 3.) Hand Painted Miniature Pillows with sayings.
 Reg. \$9.98, Now \$6.98
- 4.) 2 Sets of Chicken Canisters
 Reg. \$24.00, Now \$16.00
- 5.) Group of Gifts
 1/2 Price

SPRING HOUSECLEANING

Sale

1/2 off table



Folk Art Applique



Regular Prices \$10.00-\$36.00
 Now \$7.00-\$25.00

TAP Test Tank Service

Knox City, Texas
 150, 210, & 300 BBL. Test Tanks

Robert Tribbey

(817) 658-3519

Roy Posey

(817) 658-3979

Great Value

DOYLE HIGH'S

THE DRUG STORE

100 So. E. Haskell, Texas

STORE HOURS:

Monday-Saturday—8:00 a.m.-6:00 p.m.

Sunday—8:30 a.m.-10:30 a.m.

864-2515

FREE DELIVERY

Let us price your next Prescription

Ask About:
 Senior Citizens Discount
 Look for a Great Value Ad Each Week

Preparation H

Hemorrhoidal Ointment

2 oz, Reg. \$5.79
 Save \$1.50

\$4.29

Soft Sense Skin Lotion

10 fl. oz, Reg. \$2.89
 Save \$1.00

\$1.89

Tegrin Medicated Soap

4.5 oz, Reg. \$2.19
 Save \$1.00

\$1.19

Chaps de Ralph Lauren Cologne

1.7 fl. oz, Reg. \$8.00

\$6.50



CARDS

Graduation & Mother's Day

le Jardin de Max Factor Toilette Spray

1 fl. oz, Reg. \$11.00

\$9.00

Johnson's Foot Spray

Cools, Dries, Deodorizes
 3 oz, Reg. \$2.59

\$1.59

For Relief of Pain & Fever Compare to Tylenol

500 mg Acetaminophen
 100 caps, Reg. \$4.69
 Save \$1.00

\$3.69

Dristan Nasal Mist

1/2 fl. oz, Reg. \$2.99

\$1.99

SUPER SAVER

Gelave Gel

Shampoo

8 oz, Reg. \$3.79
 Save \$1.50

\$2.29

ALLSUP'S CONVENIENCE STORES

THERE'S ONE NEAR YOU®



FRITOS CORN CHIPS

\$1.09

REG. \$1.39

KING SIZE, REGULAR, NEW LIGHTS

AFFILIATED FOODS SPRING FEVER SALE!

WILSON'S SLICED BACON



\$1.29

LB.

KLEENEX FACIAL TISSUE



57¢

175 CT. BOX

ASSORTED COLORS



6 PACK
 12 OZ
 CANS

\$1.99



ALLSUP'S ICE CREAM

\$1.69

ASSORTED FLAVORS

1/2 GAL. CTN.



THEY'RE BACK!
 FREEZE-BEE TRIAL SIZE

ICE CREAM CONES

10¢

EACH
 A HONEY OF A TASTE TREAT

PRICES EFFECTIVE MAY 3-5, 1984

WHILE SUPPLIES LAST
 OPEN 24 HOURS-EVERYDAY
 ICE-SELF SERVE GAS-GROCERIES
 MONEY ORDERS-
 FRESH COOKED FOODS

Johnny Mills Issues Statement To Voters

To the Citizens of Haskell County, I would like to take this opportunity to present to you a little information about myself.

I attended Haskell High School and Paint Creek High School before moving from Haskell in the late 1950's. I joined the Air Force in 1962

and served twenty years before returning to Haskell in 1982. I married Paula Greene in 1963 and we have two sons, Chris age 16 and Corye age 13.

I started to work for the Sheriff Department in January 1982. I attended the West Central Texas Council of Governments Academy in

Abilene and received my certification as a peace officer. I also am a certified jailer. I believe with my experience with the Sheriff's Office I can serve the people of Haskell County well.

I urge everyone to exercise their right and vote Saturday, May 5.
Johnny Mills

Tips For Buying Home Computers

It's a little like shopping in a foreign country where you don't know the language and you're not really sure what you want to buy. More than likely you'll wind up very confused.

Walking into a computer store when you don't know a baud from a modem or what you would do with 48 kilobytes sitting on your kitchen table can be hazardous to your pocketbook. It's smart to learn the language and decide what you want a home computer to do before you put down your money.

The Consumer Electronics Group of the Electronic Industries Association, in cooperation with the United States Office of Consumer Affairs, has prepared a buyer's primer on home computers. It addresses three basic questions: What can computers do? What kind should you buy? How much will you pay? The 52-page booklet helps you speak the special computer jargon by providing plain English definitions for over 100 "computerese" terms. You can get your copy of **How To Buy a Home Computer** by sending

.50 to the Consumer Information Center, Dept. 419M, Pueblo, Colorado 81009.

Before you run out and make a big investment, the booklet advises you to decide just what it is you want a computer to do. Do you need help in organizing files, writing letters, figuring taxes, learning another foreign language besides computerese? Are you going to be setting up your own business? Do you need to create mailing lists or charts and graphs? Are you going to be doing statistical or mathematical function? Or is the main goal to make your kids computer literate while the play games?

Then decide how much you want to spend. Consider the cost of the basic computer (the "hardware"), then add the cost of peripherals such as a printer and disk drives. "Software" programs (instructions that tell the computer what to do) add extra cost.

When you go to shop for a model, bring a computer task with you, preferably something you plan to do daily, and ask the salesperson to let you put it into the machine. You'll

know quickly whether the system is one you can live with.

Be sure the equipment you buy can accommodate the kind of software you want to use. Check with your computer salesperson for assistance.

Buying a computer is like buying a stereo or a car, the Electronic Industries Association reminds consumers. You'll want to spend time with your computer dealer, ask a lot of questions, and get free demonstrations. You may also want to read through computer magazines and talk to computer owners. And you'll want to find out about who can make repairs before you buy.

The Electronic Industries Association's primer, **How To Buy A Home Computer** (.50) is a good basic buyer's introduction. When you send for a copy, you will also receive the free **Consumer Information Catalog**. Published quarterly by the Consumer Information Center of the U.S. General Services Administration, the Catalog lists more than 200 other free and moderately priced government publication on a variety of consumer subjects.

Swollen Legs Common Problem

Swollen legs are a common, uncomfortable problem caused by a variety of conditions.

The Texas Medical Association says this disorder may result from sitting or standing for too long without moving around. Or the cause may be associated with disorders of the heart, blood vessels, kidneys, or liver, resulting in abnormal water retention in the body.

More women than men suffer from swollen legs. Women are most susceptible during the premenstrual period and during pregnancy, when the body tends to retain more fluids.

Swollen legs are more common among overweight persons and during hot weather.

At the end of the day after sitting or standing excessively, a person may have swollen legs simply because of gravity at work. Blood and other fluids accumulate at the body's lower levels.

Another cause of swollen legs is varicose veins. Because the veins are not working properly, blood stagnates in the legs. As the blood accumulates, pressure in the veins rises and fluid leaks

from the veins into the surrounding tissues, causing swelling. Abnormalities in the lymph channels throughout the legs can cause a similar swelling.

Swelling sometimes is related to use of certain medications such as cortisones, birth-control pills, and other hormones. Dosages may have to be changed.

When you notice persistent swelling, first try spending less time sitting or standing and more time lying flat or walking. Moving around keeps the blood circulating.

If you have a sedentary job, take few minutes away from your desk during the day to stand up, stretch, and walk around. While seated, elevate your legs occasionally. Support stockings can be particularly helpful if you have varicose veins or a job requiring much standing.

If there is still no relief, check with your doctor. He or she can determine if the condition is related to a disease that should be treated. Treatment involving dietary restrictions or medication that promotes urine excretion often will counteract the fluid retention and decrease the swelling.

COMPARE Before You Decide



DISTRICT ATTORNEY JOSEPH THIGPEN

Experience Actively Prosecuting Criminal Cases

John Fouts: Less than 1 Year
JOSEPH THIGPEN: Over 8 Years

TOTAL Legal Experience

John Fouts: 6 Years
JOSEPH THIGPEN: 11 Years

JOSEPH THIGPEN is

The Most Qualified
The Most Experienced
The Most Dedicated

RE-ELECT

JOSEPH THIGPEN
Your District Attorney

(Pd. Pol. Adv. Pd. for by Pam Thigpen, Campaign Treas.)

Know Your Needs Before Retirement

Retirement is often thought of as the time to quit working and enjoy the golden years. But retirement can also be a time of high stress. Unstructured days, missed colleagues, and lack of daily routines take their toll on those who have not prepared themselves.

Perhaps the most devastating effect of retirement, however, can be the sudden drop in income. Without some advance planning, the retirement dream can become the recurring nightmare of dwindling savings and diminished options.

The U.S. Congress Select Committee on Aging and the American Association of Retired Persons have jointly prepared a guidebook to help you plan for your retirement years. A **Guide to Planning Your Retirement Finances** is available for \$4.25 from the Consumer Information Center, Dept. 199M, Pueblo, Colorado 81009.

Retirees relying on Social Security payments alone will have the greatest difficulty. The Congressional Committee emphasizes that Social Security is intended only as a "floor," and that other income should supplement those benefits. The Committee's booklet provides information about Individual Retirement Accounts, annuities, pension plans, part-time employment, and investments of all types.

The first step in planning your retirement finances is to estimate how much you will need in your retirement years. Generally, expenses after retirement should be between 65 and 75 percent of pre-retirement spending. Tax breaks, reduced medical insurance expenses through Medicare, discounts on transportation, entertainment and prescription drugs, and reduced work-related expenses for commuting and clothing account for the difference, although you might spend more on travel and hobbies.

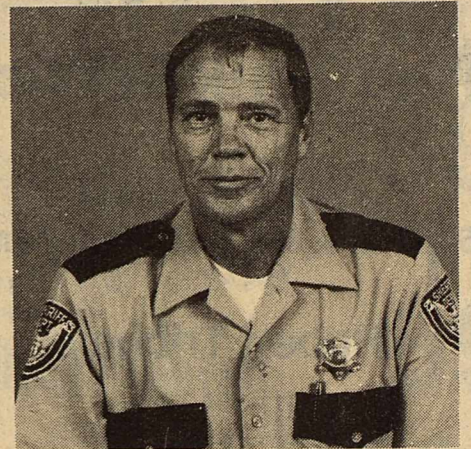
Next make a retirement budget. Write down your present income, the figure 70 percent of this amount and design a budget based on that amount. This is the rough amount you will need to maintain your present standard of living, and the goal towards which your financial retirement plan should be aimed.

Then estimate your monthly income after you retire. Your Social Security office can give you a ballpark figure of your monthly benefits, and private pension and IRA accounts can also give you estimates. After totaling up those amounts, you'll be able to estimate how close you are to that retirement goal. If you come up short, you should begin looking into opportunities for retirement income enhancement now. The Select Committee on Aging's booklet

discusses the benefits and limits of various insurance, savings, and investment options.

A **Guide to Planning Your Retirement Finances** (\$4.25) is available by writing Consumer Information Center, Dept. 199M, Pueblo, Colorado 81009. When you write, you will also receive a free copy of the **Consumer Information Catalog**. Published quarterly by the Consumer Information Center of the U.S. General Services Administration, the Catalog lists more than 200 other free and moderately priced federal booklets on a wide variety of subjects.

WEBSTER New Collegiate Dictionaries. The latest most widely approved dictionary for home, office and school. Indexed. **Haskell Free Press**.



ELECT
Johnny Mills
Sheriff
Haskell County
Your vote and influence will be appreciated

(Pd. Pol. Adv. Pd. for by Johnny Mills, campaign treasurer)

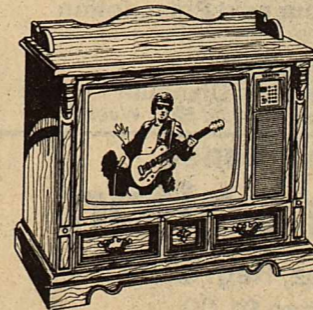
Save During

ZENITH

CLEARANCE SALE

25" Diagonal

REMOTE CONTROL



ZENITH 25" Diagonal Custom-Series Color TV • Z2510PN

- Quartz-controlled Electronic Tuning with Keyboard Touch-Command Channel Selection for "computer-precise" reception channel to channel.
- Zenith ChromaSharp 100 Picture Tube for outstanding picture sharpness and highlight detail.
- Dependable 100% Modular Z-1 Chassis for long-life reliability.
- Electronic Power Sentry protects chassis components, controls energy usage.
- Auto-Control Color System.
- Country American style, simulated grained Knotty Pine finish.



Model SZ2509P
Elegant Classic style console in rich Pecan finish. Wood and simulated wood products.

- Computer Space Command™ 2200 Remote Control with all VHF and UHF Up/Down channel scanning and direct channel access.
- Dependable 100% Modular Z-1 Chassis for long-life dependability.
- Quartz-Controlled Electronic Tuning—precise, accurate.
- ChromaSharp 100 Picture Tube features Zenith's 100° Hi-Bi Electron Guns for outstanding picture sharpness and highlight detail.

\$615⁰⁰ WT

\$660⁰⁰ WT

Owen's
Radio & Electric

512 N. 1st

(817)864-2536



Federal Land Bank Association of Haskell

Dale Bullinger—President
Lynn Cook—Vice President

Telephone 864-2062

Long-time loans on farms and ranches in Haskell, Jones, Baylor and Knox Counties.

WTU's Cheaper Fuel To Pay Off For Customers

Efforts to obtain cheaper boiler fuel for its power plants are paying off for West Texas Utilities Co. and its customers.

Through an agreement reached earlier this year, WTU is receiving 20 million cubic feet of lower cost natural gas daily for use at its Fort

Phantom Power Station near Abilene.

The savings in WTU's fuel bill this year will amount to about \$7.7 million, which will be passed along to the customers. The only hitch is that the customers will have to wait until the Company's fuel cost factor is adjusted by the

Public Utility Commission of Texas. Under new PUC rules, the fuel factor, which is the amount WTU is allowed to charge its customers for fuel, is set for a 12-month period, or until the utility's next rate case. Under the old system, the fuel factor was automatically adjusted each month to reflect the current cost of fuel.

The cheaper gas is being purchased from Central Energy Transportation Co. and pipelined from Erath County by Lone Star Gas Co., which is WTU's principal fuel supplier.

"This is only a small amount of gas, considering the total volume used at our eight power stations, but we try to take advantage of every opportunity to reduce our fuel costs," said Walter Meller of Abilene, WTU's manager of System Production.

"Deals like this help offset the higher price we must pay under our major contract for a dependable, long-range supply of natural gas," Meller explained.

The Central Energy contract runs to September 1985. Total savings to WTU through the term of the contract will be approximately \$13.7 million.

For the past two years WTU has been buying a quantity of cheaper low BTU gas and blending it with pipeline quality gas for use at its Paint Creek Power Station.

Fuel costs have risen sharply every year since the Arab oil embargo of 1973 started the world energy crisis. In recent years, fuel expenses have accounted for at least half of WTU's total annual revenue and for a major portion of customer bills.

All of WTU's existing power plants burn natural gas as a boiler fuel. The Oklahoma Power station, now under construction near Vernon, will be the Company's first coal-burning plant and also will be the largest plant in the WTU system.

CAPITOL UPDATE

John Tower
U.S. SENATOR FOR TEXAS
WASHINGTON, D.C. 20510



Military aid to friendly nations is one of the best investments America can make in our own national security. This type of aid has become more essential in light of recent Soviet military adventurism.

The most dominant and ominous development in the world security scene is the relentless and unprecedented growth of Soviet military power. There may be differences of opinion on the severity of this adverse trend, but few would disagree that the balance has been shifting in favor of the Kremlin.

While this trend is alarming, the United States also is troubled by increased Soviet ability to project military power far from the Euro-Asian land mass. Consequently, the struggle for power and influence between the United States and Soviet Union has become truly global in nature.

In Latin America, Southeast Asia, the Middle East and Northern Africa, Soviet clients are seeking to destabilize neighboring countries. This could result in serious consequences for Western interests abroad.

The task of protecting American interests -- which have grown considerably -- has become exceedingly more complex and demanding over the past two decades. Because of this, the security relationships between the United States and key nations in troubled regions have become increasingly important. It is in this context that military aid to foreign countries plays a critical role.

I view foreign military aid as a direct extension of the U.S. defense program. Secretary of Defense Caspar Weinberger has described American security assistance and arms sales programs as "the overseas counterpart of our defense effort and represents no less an investment in U.S. national security than the programs for the Department of Defense."

Providing security assistance gives us the opportunity to improve our military interests abroad. We are able to retain foreign military bases, to have access arrangements and to acquire overflight privileges for our military aircraft.

If trained and well-equipped friendly forces are available, we are less likely to need to send in our own troops if American interests abroad are threatened. When our friends and allies are capable of defending themselves, we are relieved of that burden. It is also cheaper to train and equip foreign military personnel for their own defense than it is to train and equip equivalent American forces.

Foreign military forces also act as a deterrent against aggression and are the critical first line of defense should a conflict occur. U.S. military aid enables friendly nations to handle the threat on their own without placing American lives at risk. If we should be forced to deploy American forces to a threatened area vital to us, trained military personnel of a friendly nation could supplement American forces.

Security assistance to foreign countries is not a costly investment. In recent years, funding for these programs has amounted to less than one percent of the federal budget and less than two percent when compared to the defense budget. This is a small price to pay for our national security abroad.

In short, security assistance programs are effective; they cost very little compared to their benefit; and they represent the most explicit assurance that the United States is willing to stand by our friends and allies.

I believe it is imperative that Congress continue funding for security assistance to our friends abroad.

Make Maximum Use Of Appraisal Report

You don't have to have a million dollar estate to need the services of a professional appraiser, says home economist Bonnie Piernot.

A good appraiser can be as important as a good banker, broker or lawyer if you have insurance damage or loss settlements, divorce proceedings or an IRS audit, explains Piernot, a specialist with the Texas A&M University Agricultural Extension Service.

Appraisers are not directly licensed or certified by government agencies, so you should investigate before you hire one, she advises.

Ask for and check any references provided by a potential appraiser. Past experience and client satisfaction is as important in selecting an appraiser as in any other major financial decision, Piernot says.

Knowing what you want appraised and why will help you select the best person for the job, states the specialist. For example, a skilled personal property appraiser may not have full knowledge of the value of your stamp or coin collection. Or an antique expert may not adequately

appraise your jewelry.

To find the right kind of appraiser, you can consult one of several organizations for a list of members in your area, Piernot suggests. The Society of Real Estate Appraisers includes appraisers of all types of property, art, antiques, jewelry and real estate. The Appraisers Association of America, Inc., lists its membership according to type of appraisal and geographic location.

Once you select an appraiser, request an estimate of his or her charges and ask how the fees are determined. Most appraisal societies forbid members to ask for a percentage of the appraised value as a fee, she says, since that might encourage them to over-value property to get higher fees.

Many appraisers now charge an hourly rate or a negotiable flat fee for a job, notes Piernot.

You can help your appraiser by collecting information such as bills of sale, deeds, lists of improvements and costs or previous appraisals, advises the specialist.

Since an appraisal report

can help in estimating financial net-worth, formulating your estate plan and assessing insurance needs, make maximum use of it, advises Piernot.

Brightly colored — attention getting — Open-Closed Sign for your office or business. Comes complete with changeable letters in black or red. Also includes a sign counter top use. See at the Haskell Free Press.

Truman Therwhanger Issues Statement

To the Voters of Haskell County,

You have the task of selecting the person who will be your representative of the law. It is very important for whoever you choose to remember that they are your representative and not the law themselves. Haskell County, I would like to think has no more problems than any other, but we do have some that can no longer be ignored.

Some that I feel need attention are: Drugs-

•Put a stop to the people who are selling drugs to our young people.

•Initiate and help with a drug program in all our schools.

•Do our best to help the ones who are already using them to stop.

•Be seen in all areas of the county. It is more important to prevent a crime before it happens.

•Be more attentive to all our citizens problems and give them help when called upon.

Haskell County is a great place to live. I have the experience and willingness to work for you to make it an even better and safer place for all of our citizens.

I am asking you for the job of Sheriff. I can and will do the job to the best of my ability.

Truman (Cotton) Therwhanger

YOUR VOTE AND INFLUENCE WILL BE APPRECIATED

C. E. (Chunky) Tidwell

CANDIDATE FOR

Commissioner

PRECINCT 1
HASKELL COUNTY

SUBJECT TO ACTION OF THE DEMOCRATIC PRIMARIES

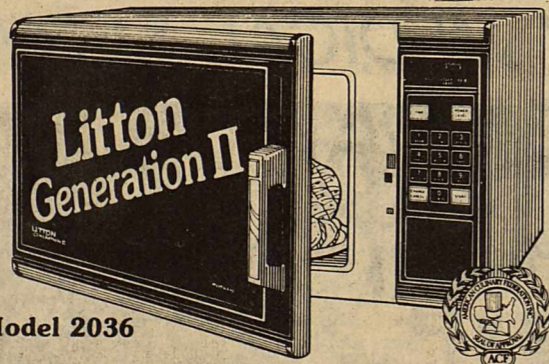
Pl. By C.E. Tidwell, Haskell, Tx

MOTHER'S DAY SPECIALS

New

Prices Start at \$199

LITTON
FULL FEATURED
TOUCH CONTROL
MICROWAVE OVENS

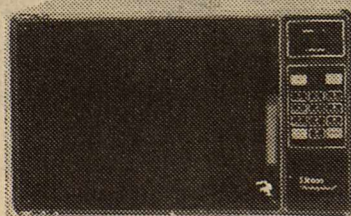


Model 2036

- ★ Electronic Touch Control
- ★ The Little Oven with the big 1.5 cu. ft. interior

Only **\$299**

Litton
"Go-Anywhere"
Touch Control



Model 1440

- ★ Saves space
- ★ Only 12 3/4" high
- ★ Goes anywhere
- ★ Only weighs 46 lbs.

Only **\$259**

Nobody Knows More About
Microwave Cooking Than Litton.

Microwave Demo — May 5th — 10:30-4:00 — Come by & taste the samples

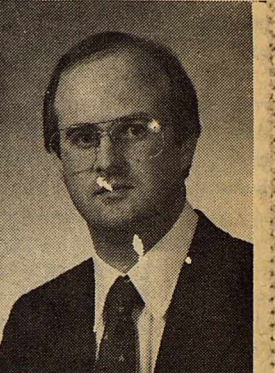
Sales & Service
Your Litton Headquarters

414 N. 1st
864-2870

THE VIDEO VENDOR

North Side
Of
Haskell Square

ELECT
JOHN FOUTS
District Attorney
39th Judicial District



Qualified * Experienced

- Born, Raised and attended school in Haskell
- A graduate of Texas Tech University School of Law
- Former Assistant Criminal District Attorney, Lubbock County
- City Attorney for the City of Haskell
- Adult Probation Officer for the 39th Judicial District
- Private Practice in Haskell
- Married, three children

Your Vote and Influence Will Be Appreciated

Pol. Adv. Paid for by John Fouts, Campaign Treasurer
P.O. Box 68, Haskell, Texas

ASSOCIATES:
KAY PATTON FLETCHER
MICHAEL J. BORKLAND

ALTON R. GRIFFIN
ATTORNEY AT LAW
P.O. Box 10337
LUBBOCK, TEXAS 79408

1318-13TH STREET
(806) 763-9696

Citizens
39th Judicial District
Throckmorton, Haskell, Stonewall
and Kent Counties, Texas

My friend and former employee, John Fouts, is a candidate for District Attorney of the 39th Judicial District of Texas.

While John served as one of my Assistant Criminal District Attorneys of Lubbock County, he was involved in every phase of criminal prosecution, including the filing of cases, trying jury cases, and handling appeals to the Court of Criminal Appeals.

John Fouts is a hard worker and capable of handling any case assigned to him in a prompt, fair and efficient manner. He did an excellent job for me and with his additional experience in the practice of law, he will make the 39th Judicial District an outstanding District Attorney.

It is my hope that John will have the opportunity to be your District Attorney. Both he and the people will be the winners if he is.

Yours very truly,

Alton R. Griffin

Alton R. Griffin
Former Criminal District Attorney
Lubbock County, Texas

WANT ADS Work Wonders!

Miscellaneous

LET US Price your next prescription. You will be glad you did. Johnson Pharmacy. 171tc

DON'T SHAMPOO dirt into your carpet. Steamex it out the professional way. Steamex pulls out dirt other cleaners can't begin to reach. Rent Steamex at Kay's Cleaners. 121tc

TO GIVE AWAY: ½ Labrador puppies. Call 864-3703. Joey Kimbrough. 18p

Garage Sales

STORAGE HOUSE SALE: Saturday, May 5, 9 to 5, located across alley from Funeral Home. Folding chairs, platform rockers, and many other old and new items. 18p

2 FAMILY GARAGE SALE: Sat. only, May 5, 9 to 4. Furniture, clothes, linens, dishes, electrical appliances, misc. 906 N. Av G. NO EARLY SALES. 181s

GARAGE SALE: CB radio and antenna, 3 speed girls bicycle, end table, coffee table, lamps, wood stove, kerosene stove, wood cook stove, Rosepoint dishes, crystal, antiques and collectibles and lots more misc. Friday and Saturday. Paint Creek Rd. around first curve. Gayla Nanny. 18p

4 FAMILY GARAGE SALE: Antiques, baby furniture, clothes, dishes, and lots of other goodies. 705 N. Av G. Friday 9:30-6. Saturday 9-2:30. 18c

2 FAMILY CARPORT SALE: Antiques, primitive tools, large floor fan, Hoover vacuum cleaner, linens, glassware, lamp, Mr. Coffee, old bottles, black and white TV with stand, clothes, shoes, picture frames, iron kettle, irons, scythe, wood pulley block with rope, well buckets and pulley. Good variety of useful and miscellaneous things. No early sales. 1206 N. Av G. Saturday, May 5th. 8 to 6. 18p

2 FAMILY BIG GARAGE SALE: Sat. 8:30-4, Sun. 1:30-5; Mon. 8:30-5; Tues. 8:30-5; Thurs. 8:30-5; Fri. 8:30-5. 605 Sunny Av. Rule. 18c

3 FAMILY GARAGE SALE & Arts & Crafts sale. Folk Art by Doris Brueggeman. Punched in primitives by Janice Browning and Peggy Adams. Saturday, May 5, 9-5. 604 S. Av G. Haskell. 18p

Jobs Wanted

NO FOOLIN' AROUND—Will do fast but thorough house/office cleaning. Call 864-8045. If no answer call 864-8078. J & R Cleaning Service. 16-18p

I WILL DO babysitting in my home. Monday thru Friday. 864-8901. 17-18c

Bus. Opportunity

OWN YOUR OWN Jean-Sportswear, Ladies Apparel, or Children's Store. 300 brand names. \$12,900 includes initial inventory, store fixtures, training and much more. Mr. Tate 704-753-4738. 18p

SATELLITE ANTENNA dealerships available. No experience required. Dealer cost for complete unit as low as \$599. Retail \$1395. CALL DAY OR NIGHT 303-574-4988. 17-20p

Help Wanted

HELP WANTED: Administrator. Immediate opening for a nursing home administrator at Haskell Care Center, Haskell, Texas. Must have a valid Texas Nursing Home license. Minimum two years experience and degree preferable in health care. Salary negotiable, excellent benefit package. Send resume to Ben Moncries, Regional Supervisor, P.O. Box 4126, Wichita Falls, TX 76708. EOE. 18-19c

HELP WANTED The City of Haskell is accepting applications for employment under the Federal Green Thumb Project. This employment is for part time only. Applicants must be at least 55 years old. Contact Robert Baker at City Hall for further details. 18c

Lost & Found

STRAYED: from Malcolm Stewart place southeast of Haskell on lake: 1-Hereford cow; 1-Brangus cow; 1-Hereford-Charolais cow cross. Branded A-block or half circle H on left side. Floyd Patton, 673-4701. 17-18p

Public Notice

PUBLIC NOTICE The Haskell County Commissioners Court is now accepting bids on 4 miles of seal coating of county roads in Haskell County, Texas. Seal coating shall include cleaning of road surface and applying one course of AC-5 asphalt at the rate of 35 gal. per sq. yd. and aggregate GR 4 applied at the rate of 1 cubic yd. per 110 sq. yds. of surface. Also to include all rolling and clean up. Bids to be accepted on the square yard basis. Bids will be opened on May 14, 1984, at 10:30 a.m. Specifications are available at the County Judge's office, Haskell County Courthouse. The Haskell County Commissioners Court reserves the right to accept or reject any or all bids. 18-19c

PUBLIC NOTICE The annual report of The J. U. & Florence B. Fields Museum is available at the address noted below, for inspection during regular business hours, by any citizen who so requests within 180 days after this publication. Fields Museum 401 N. Av E Haskell, TX 79521 Peggy Vaughter 18p

NOTICE The City of Haskell will accept sealed bids for a city tax lot located at Lot 4, Block 1 in the Clifton Addition, City of Haskell, Texas. The bids will be opened at the regular City Council meeting at 7 p.m., May 8, 1984. The City reserves the right to refuse or accept any bid. 18c

Card of Thanks

CARD OF THANKS Thank you for the yellow roses someone in Little R. loves you. 18p

CARD OF THANKS We wish to thank everyone who helped us during the death of G.H. Muegge. May God bless all of you. The G.H. Muegge family. 18p

CARD OF THANKS I would like to take this means of thanking everyone who was concerned with my wellbeing during my recent illness. I do so appreciate every thoughtful act and consideration shown me and my family. Please accept my gratitude for every expression of kindness: every word, deed, visit, prayer, and all the lovely cards and flowers. S.S. (Jack) Dozier. 18p

CARD OF THANKS We would like to express our appreciation to Dr. Wayne Cadenehead and all the hospital personnel, and to everyone who offered prayers and gifts in our behalf. A special thanks to Father Sean Moran for all his help during Joe's recent illness. Mr. and Mrs. Joe Diaz and family. 18p

CARD OF THANKS We would like to express our thanks and appreciation to the many friends and neighbors during the loss of our loved one. For the food, flowers, cards, and memorials. The M.M. Cobb family. 18p

CARD OF THANKS We would like to express our many thanks and appreciation to all our friends and loved ones for your prayers, visits, calls, flowers and cards sent during my recent surgery in Bethania Hospital. Carl and Allene Wheatley. 18p

CARD OF THANKS A special thanks to each one who helped me when I fell. And your visits were so welcome while I was in the hospital and at home. Many thanks to Dr. Thigpen, Dr. Frank Cadenehead and the nursing staff, they were so kind and faithful. Thanks to you guys, the ambulance drivers. We appreciate all of you. Correne and H.B. Montgomery. 18p

CARD OF THANKS A special thanks to each one who helped me when I fell. And your visits were so welcome while I was in the hospital and at home. Many thanks to Dr. Thigpen, Dr. Frank Cadenehead and the nursing staff, they were so kind and faithful. Thanks to you guys, the ambulance drivers. We appreciate all of you. Correne and H.B. Montgomery. 18p

For Rent

FOR RENT: 2 bedroom house. Call 864-2686 or 864-3575 after 5:30. 161tfc

SMALL HOUSE FOR RENT on dead end street. 864-2972. 18p

FOR RENT: One 1 bedroom house. One 1 bedroom apartment. Call 864-2504. 17-18p

FOR RENT: 3 bedroom house. 1 car garage, 1 bath. \$200.00 month. Jack Cline 864-3978. 171tc

FOR RENT: Self storage. A few units, large enough for bass boats. 864-2629. 510 N. 1st St. Lanco Insurance. 121tc

Durable, Dependable, Smooth writing Write Bros. Stick Ball Pens. Haskell Free Press

Real Estate

FOR SALE: 160 acres 2 miles S.E. of Rule. \$450.00 acre. 112 acres in cultivation, caliche pit and pasture, 1 oil well. See or call Harley Langford, 864-2849. 11tc

LARGE BUILDING for sale or rent on South Avenue/E. Call Jones Plumbing 915-823-2169, Anson. 141tc

Real Estate

FOR SALE BY OWNER: 3 bedroom, 1½ bath, with office. 1400 sq. ft. Outside city limits with city water and sewer. Contact Tony Hollingsworth. 743-3433. 16-19c

FOR SALE: Modern 3 bedroom house, approx. 2,000 square foot floor space. 10 miles northeast Stamford. 4 miles West Lake Stamford on FM618, call 915-773-3373. 18-22p

FOR SALE: Small house, two blocks of square. Central heating, two cooling units, lots of closet space, carport, TV antenna. Could be used for small business. 864-3131. 18-19p

HOUSE FOR SALE: REDUCED! 3 bedroom, 2 bath brick home like new. Located in new addition South of Rule. Custom drapes, 6' fenced yard, fireplace and good water well. Also storm cellar. Contact Joe Stuller 997-2119. 16-19c

COUNTRY LIVING with city conveniences. One to five acre tracts outside city limits. Three miles southeast of courthouse off Paint Creek Rd. 806 995-4510. 141tc

Real Estate

LAND: 165 irrigated acres 5 miles northwest of Rochester, will consider trade or owner finance 512-682-5020, 1201 Wisteria, McAllen, TX 78504. 16-19p

FOR SALE
3 bedroom Rule 1½ acres, clean and nice and priced too cheap.
Barney Arnold
Real Estate
200 N. 2nd St.
Knox City, Texas
658-3509
17-19p

Want a New House for less than \$30,000 a square foot?
3 bedroom, 2 baths, fireplace, patio, 2 car garage.
The Lumber Yard
864-3552
864-3431 after 5.
181tc

Real Estate

FOR SALE
2 bedroom 1 bath frame carpeted, 1 car garage, floor furnace, water well.
Two houses on corner of N. 2nd Ave. I.
18-19p

Three bedroom 1 bath frame, cellar, garage, South of Rochester on two-tenths acre.
18-19p

Building lots E. North 3rd. 81' X 140'.
18-19p

Building lots 140' X 140', North 9th.
18-19p

Rochester Cafe, bldg. & fixtures.
18-19p

Frances Arend
Real Estate & Insurance
408 North First
817-864-3880
817-864-3156
Lois Lefevre
817-997-2586
18-19p

Real Estate

FOR SALE: Two-story building, 3 bedroom, town house apartment upstairs, 7-car parking space rentals. Excellent buy. 111 N. Av D. Phone Jo Matthews, 405-255-7744. Would lease to right party. 91tc

FOR SALE IN RULE: 3 bedroom brick home, swimming pool, 40-60 work shop, water well, bath house, fruit trees, sits on ¼ block. Also 2 bedroom stucco house, 1 bath with garage and storage separate. Sits on ½ lot. Commercial property for sale. 817-594-0427. 171tc

If you aren't satisfied with your Health Insurance call
C.H. "Bud" Herren
864-3322 or 864-3087
18-19p

Painting & Dry Wall Acoustic Ceilings
Call Donnie Green
864-3114 15-18p

Tree Spraying Service—insect control and fertilizer.
Call David Tidwell
864-8933 or 864-2782
18-21c

Health insurance
For person to person health insurance, call
Brian Burgess
864-3250
18-19p

Good Used Color TV's, Stereos & Washer/Dryers
Anderson Tire Co.
206 S. Av E Phone 864-2900
11tc

PAT'S TV Service
10 Ave D
Service Calls
864-2067
25 Years Experience 15-18c

ferti-lome
Pruning Sealer
with Growth Inhibitor
Seals pruning cuts & graphs
Prevents sprout re-growth
ferti-lome
864-2926
1203 S. Ave. E
Haskell, Texas

AS1
864-2926
1203 S. Ave. E
Haskell, Texas

NOSTALGIC ROCK HOME
Has porch swing, large pecan trees, 3 bedrooms, 1 bath. Lots of storage. Good condition. Detached two car garage. Close to downtown.
Call Betsy Nanny 864-3521 after 5 or Joan Lain 864-8988
121tc

HOUSE FOR SALE
By Owner. 3 bedroom, 2 bath, large utility room, central H/A, very energy efficient, large storage building, fenced backyard, excellent neighborhood. In Haskell.
Call 997-2627
Selling Price Reduced
17-18c

Doyle High Real Estate
2 acres just outside city limits on east side. Priced to sell.
Enjoy this summer more! Own your own Lake house in Earles' Camp. 3 bedrooms; refrigerator, stove, and furniture included. Water well, dug channel and boathouse. Shady double lot.
Country living northwest of Rule. 2 bedroom, 1½ bath, home completely remodeled inside. Surrounded by evergreens. Water well. Large den with fireplace. Spacious kitchen includes Jenn-Aire range.
Lots for sale at N. Avenue H and 9th. Would consider trading for small house.
We have other homes for sale not described here. Call us to buy or sell.
Priced right. 2 bdr., 1 bath small frame home. Selling price includes washer & dryer, refrigerator & metal dinette. Excellent investment as rent property.
Doyle High, broker—864-3872
Betsy Nanny — 864-3521
Roberta High — 864-2815
Debbie Earles — 864-2216
Viola Wilcox — 997-2640
17-18c

Haskell Heating, A/C & Appliance Service
Offering complete service on all brands of appliances and air conditioners.
Call Dennis Stegemoeller at 864-8049
17-20p

Wainscott Hay Hauling
Spring Special for Haskell and Knox Counties Will haul round bales from field to turnrow at \$2.50 per bale
Baler twine available now.
For all your hauling or moving needs
Call nights 658-3123 or 864-2449.
17-20c

FUNSTON FLEA MARKET
May 4, 5 & 6
6 miles East of Anson on Hwy 180
915-823-2930
Held the first weekend of each month. 18p

Gonzales Plumbing & Repair
24 Hour Service Except for Sundays
Roto Rooter Service
Sprinkler System Repairs
Licensed Plumber
864-2190

Carpentry & Cabinets
Remodeling, Painting, Repair.
All types of work!
Bobby Stickney
997-2748 Rule, Tx

INSURANCE
Life • Health Auto Farm • Home
CHARLES THORNHILL
522 South 2nd, Haskell
—Phone 864-2842—
National Farmers Union Insurance Companies

POL. CALENDAR
The Haskell Free Press is authorized to make the following announcement for the political office in Haskell County, subject to the action of the Democratic Primaries in 1984.
Unless otherwise specified the candidates listed paid for the announcement, and have designated themselves as campaign treasurer.
All political advertising, announcements, and printing is cash in advance.

U.S. Representative, 17th Dist.
Charles Stenholm
(Pd. for by Charles Brownfield, camp. treas.)
State Senate, Dist. 30
Ray Farabee
(Re-election)
(Pd. for by Jerry K. Estes, camp. treas.)
State Representative Dist. 64
Sam Newcomb
Rick Perry
(Pd. for by Tom Watson, camp. treas.)
Kenneth F. Neighbour
District Attorney
John Fouts
Joseph Thigpen
(Re-election)
(Pd. for by Pam Thigpen, camp. treas.)
Sheriff
Phil Coleman
Johnny Mills
Jack Whorton
(Pd. for by Patrick Pace, camp. treas.)
Truman Therwanger
E. "Bud" Lefevre
County Attorney
Charles Chapman
County Tax Assessor
Collector
Bobby Collins
Commissioner Precinct 1
T.C. (Tim) Burson
C.E. (Chunky) Tidwell
(Re-election)
Commissioner Precinct 3
J.R. (Ray) Perry
Constable, Precinct 1
J.L. "Happy" Hendrix
D.L. "Jack" Speer
(Re-election)
Constable, Precinct 5
Troy Brown
Sam Basden
(Re-election)
(Pd. for by Aion Byrd, camp. treas.)
E. Gregg Hearn
(Pd. for by Kenneth P. Russel, camp. treas.)
Constable, Precinct 6
W.A. Beard
L.V. "Sonny" Pitcock
(Re-election)

CONTRACTORS' NOTICE OF TEXAS HIGHWAY CONSTRUCTION
Sealed proposals for constructing 76.355 miles of Seal Coat on various limits in District 8 in Taylor, Jones, Shackelford & Haskell Counties, on US 83, SH 6, US 180, US 277, US 180 & FM 89, covered by CSR 34-2-25, CSR 107-1-26, CSR 07-2-31, CSR 107-2-32, CSR 157-3-33, CSR 157-5-41, CSR 296-6-11 & CSR 699-1-28, will be received at the State Department of Highways and Public Transportation, Austin, until 9:00 A.M., May 8, 1984, and then publicly opened and read.
Plans and specifications including minimum wage rates as provided by Law are available for inspection at the office of Joe Higging, Resident Engineer, Abilene, Texas, and at the State Department of Highways and Public Transportation, Austin, Texas. Bidding proposals are to be requested from the Construction Division, D. C. Greer State Highway Building, 11th and Brazos Streets, Austin, Texas 78701. Plans are available through commercial printers in Austin, Texas, at the expense of the bidder. 17-18c
Usual rights reserved.

Hartsfield Realty
864-2665
THE REALTOR WITH A HEART
AFTER HOURS & WEEKENDS
Loraine Johnson 864-2951
Hess Hartsfield 864-2004

Booklet Offers Tips For Shopping For Life Insurance

Many people will go miles out of their way to save two cents a gallon on gas, but they will sign up for the first life insurance that comes along. That's not the time to stop shopping. The differences in insurance prices can be substantial over the years.

To help consumers understand what they are buying, the American Council of Life

Insurance, in cooperation with the Extension Service of the U.S. Department of Agriculture and the Consumer Information Center, has published a booklet called **A Consumer's Guide to Life Insurance**. It will help you answer these questions: What are the different types of life insurance? Which is best for your needs? How much will it cost? Is life insurance an investment? If

so, is one type a better investment than another? For your free copy of **A Consumer's Guide to Life Insurance**, send your name and address to the Consumer Information Center, Dept. 603M, Pueblo, Colorado 81009.

There are three basic types of life insurance policies: term insurance, whole life insur-

ance, and endowment policies. Term insurance covers you for a specified length of time — typically one, five, ten, twenty years or until age 65. Term insurance is attractive to many people because it provides maximum coverage at a low cost. At the end of the term, the coverage stops. When you renew, the premiums generally rise because you are older. Another type of term insurance has level payments, but the coverage decreases gradually. Insurance to pay off a mortgage is an example of this type.

Whole life insurance, or straight life, is protection that can be kept in force for as long as you live. It has higher premiums than term insurance to begin with, but the premiums are stable so that the costs are averaged out over your lifetime. One

important feature of whole life insurance is its cash value. This is the sum that builds up over the years as a result of payments and dividends. It can be withdrawn in the form of a policy loan, turned into an annuity payment when you retire, or used to offset the costs of your premiums. If you should give up the policy, you would receive this cash value.

The last type of insurance is called endowment insurance. It emphasizes the savings aspect of insurance coverage while still providing life insurance protection. After a certain number of years or at a certain age, the policy matures and pays the face value of the policy to the policy holder. Premiums for this type of insurance are higher than for the other types of coverage.

While there are many other

kinds of life insurance, according to **A Consumer's Guide to Life Insurance**, they are all variations on these three basic types.

The first step in determining the best policy is to identify your needs and priorities. Once you have done that, contact a reputable insurance agent. While all agents are licensed by the state, the personal experience of neighbors and friends is often your best recommendation. Then shop for the policy that suits your needs at the best price. And when you are shopping for a new policy, ask your agent to show you a cost index that rates and compares similar life insurance policies.

Finally, make sure you understand the policy before you buy. Read the fine print, go over the policy line by line with your agent, or another

professional who understands your financial status, and ask about anything you don't understand. Then be sure to inform your beneficiaries about the kinds and amounts of life insurance you own and where the policies are kept.

To learn more, including how to determine your current net worth and what your family's resources might be in the event of your death, send

for a copy of **A Consumer's Guide to Life Insurance** (free). At the same time, you will also receive a free copy of the **Consumer Information Catalog**. Published quarterly by the Consumer Information Center of the U.S. General Services Administration, the Catalog lists more than 200 other free and moderately priced federal booklets on a wide variety of subjects.

Now Is The Time For Planning Budgets

Is your paycheck spent before it is earned? Do you feel like the more you earn, the more you sink into debt? Do you wonder where all that money has gone?

Maybe it's time to set up a budget. No more of those good intentions, this time make it happen. To help you take the mystery out of money management, the U.S. Department of Agriculture has published a booklet called **A Guide to Budgeting for the Family**. It can help you track what you spend, plan your spending for the future, and train yourself so your spending habits meet your long- and short-term goals. It also includes charts, sample ledger sheets, and a little inspiration. For your copy of **A Guide to Budgeting for the Family**, send \$2.50 to the Consumer Information Center, Dept. 197M, Pueblo, Colorado 81009.

A budget plan doesn't necessarily start with facts and figures. It begins when

you and your family decide what you want to buy, both now and in the future. Be as specific as you can; the more defined your goals, the easier it is to plan what you will spend now and what you will save for future purchases.

The second step in the budgeting process is to determine what resources you already have. Write down the amount of your regular monthly income, such as salaries or retirement payments. Also include and other income that might come in a few times a year, such as dividends or interest from savings.

Then compare your monthly income with what you spend. To do that, add up your fixed costs, such as housing, utilities, insurance, and loans; total the checks you wrote for food over the last month; average out your medical and transportation costs; and add in anything else you might have to spend on a regular basis for work, child care, education, etc. The difference

between these totals and your total income is what you have left to cover other costs, such as savings, clothing, entertainment, and other unanticipated expenses.

If your necessities cost more than your income or leave you practically nothing for other expenses, you're going to have to cut back. This will involve all of the family so that everyone is aware of what is going on and everyone can suggest ways to save that will be followed. If you buy lunch every day, perhaps it might be cheaper to bring lunch from home. What about carpooling or riding the bus? Can you save on utilities?

After you've made the budget comes the hard part — sticking to it. But eventually you will start to have money to put aside. If you have a hard time saving, perhaps you can have some money deposited directly from your paycheck. That way you won't feel like you have had the money in your hands to spend.

A Guide to Budgeting for the Family suggest that the best way to determine whether you are meeting your stated budget goals is by keeping accurate records. But sticking to your budget also includes fine tuning it. If you find you aren't meeting your goals, check to see whether they were realistic in the first place.

After all, a budget is like a favorite arm chair; it takes a little time to break it in before it is truly a comfortable fit.

For more help, including information on which household records you can discard and which to keep, send for your copy of **A Guide to Budgeting for the Family** (\$2.50). At the same time, you will also receive a free copy of the **Consumer Information Catalog**. Published quarterly by the Consumer Information Center of the U.S. General Services Administration, the Catalog lists more than 200 other free and moderately priced federal booklets on a wide variety of subjects.

Girls Softball To Begin Season

Girls softball will get under way Monday, May 7 at 6:00 p.m. with introductions of all teams.

Abe Turner, new mayor of Haskell, will be on hand to throw in the first ball.

The minor leagues will be playing on Tuesday, Thursday, and Friday nights at 6:30 and the major league will play each Monday night.

We pack **SELLING POWER** in our **CLASSIFIED ADS**.

19 WALLET SIZE COLOR PHOTOS ONLY

99¢ NO LIMIT ON THIS OFFER

WE USE KODAK PAPER

REMEMBER MOTHER'S DAY WITH PICTURES AT

M-System

112 N. Av D
Thursday, May 10

ASK About Our FREE 8x10 OFFER

Shugart's inc.

GROUP CHARGE 99¢ per person per 19 wallets

Kodak paper. For a Good Look at the Times of Your Life. TM

ELECT

Truman (Cotton) Therwhanger

Haskell County Sheriff

*Qualified Graduate Dallas Police Academy

*Experienced over 2 years Dallas Police Dept.

*Willing to serve the citizens of Haskell County

(Pd. Pol. Adv. Pd. for by Truman Therwhanger, campg. treas.)

GREAT MEALTIME FAVORITES

Specials Good Thurs., Fri. & Sat.

Gooch German Sausage	Buy 2 and Get 1 FREE	Stilwell Frozen Cobblers	\$1.89
Chopped Ham <small>Sliced</small>	\$1.69 lb	Starkist Tuna can	79¢
Extra Lean Ground Round	\$1.69 lb	Del Monte Spinach 15 oz can	49¢
Rump Roast boneless	\$1.99 lb	Del Monte Whole New Potatoes 16 oz can	49¢
Powdered Sugar 2 lb bag	89¢	Del Monte Kosher Tiny Dills 12 oz	79¢
2-Alarm Chili Powder	\$1.29	Russet Potatoes 10 lb bag	\$1.49
Corn Kits 3 pkgs	69¢	Mexico Cantaloupe	39¢ lb
Del Monte Peas 17 oz can	47¢	Puffs 200 count box	69¢
Wesson Oil 24 oz bottle	\$1.49	Bounty Towels large roll	79¢
Del Monte 16 oz can Peas & Carrots	49¢	Cigarettes reg. price ctn	\$7.99

POGUE GROCERY

—Extra Parking Behind The Store. Home Owned and Operated—

113 North Avenue E
Phone 864-2015
Haskell, Texas

Views From City Hall

BY ROBERT N. BAKER City Administrator

Our topic this week is about our sanitary landfill or dump-ground, whichever you might prefer. The city of Haskell has been using the present site since 1908. You can imagine the problems the city encountered when the state imposed strict regulations regarding the disposition of solid waste material. This site had been an open dump for over sixty years and here we were trying to follow current rules and regulations.

One of the requirements was to bury all material with at least two feet of topsoil covering it. We had to accomplish this with the old material and at the same time take care of all the daily waste that was coming into the dump. Finally the state authorized us to burn the trash on a weekly basis. This relieved our need to dig pits as frequently.

State regulations would not permit burning of tires, therefore, all tires, metal, and other items that wouldn't burn had to be buried. The state inspectors were checking on the dump regularly. Finally, the city decided that the entire landfill was so full of trash that no further pits could be dug. As a result, a new site had to be located to get into compliance with state regulations.

On December 3, 1982, the

city entered into a contract to purchase 160 acres of land located about two miles from the present site. The total cost was for \$96,000.00. However, before the purchase could be completed a new permit issued by the state was required. All of the necessary paperwork has been completed and forwarded to the state. We are still waiting on that approval.

When the state okays the new site we can start digging pits and moving. The state will require that all trash be covered at the old site which probably will entail several months of work.

I do not intend to sound upset by all these regulations and rules, because they are necessary for the well being of our citizens, now and in the future. I do, however, want you to be aware of why it costs the city so much to operate a landfill. When the guard at the landfill tells you to separate your brush from your trash, please try to understand why this is necessary.

It cost the city \$98,868.37 to operate the Sanitation Department last year. This does not include any capital outlay, such as land or new equipment. Getting rid of our trash today is expensive! It may cost more in the future. Your help and cooperation are appreciated.



THE HASKELL

FREE PRESS

SECTION TWO

HASKELL—A GOOD PLACE TO VISIT; A BETTER PLACE TO LIVE™

VOLUME NINETY-EIGHT HASKELL, TEXAS 79521, MAY 3, 1984 NUMBER EIGHTEEN

Letters To The Editor

(EDITORS NOTE: The Haskell Free Press will publish letters to the Editor dealing with any subject. All letters must be signed but names will be withheld by request. All letters are subject to editing for length and liability.)

Dear Editor,

I am a lover of history and I have a somewhat unusual hobby. I collect old tokens used by stores, barber shops, lumber companies, saloons, forts, and other businesses years ago. The tokens were "good for" \$1.00, .50, .25, .12½ or such in trade or merchandise or "good for" loaf of bread, one drink, one shave, one ride or whatever. They were usually made of metal, and while having the general appearance of a coin, they were made in all shapes and sizes with some picturing elephants, cows, birds and buildings.

I have reason to believe that some of these tokens were used in your area and I would be most interested in obtaining some of them for my collection.

I am hoping that if you have a "Letters to the Editor" section or such in your paper that you might mention my search. I know that this request is relatively unimportant but I do get a great deal of enjoyment from my hobby and I do believe that these concrete reminders or our great heritage are worth preserving.

I would like to hear from anyone having one or more of these tokens or from anyone that might be able to help me. Any help that you can give me of any kind is greatly appreciated. My address is Travis Roberts, Box 1168, Bellaire, Texas 77401.

Thank you in advance and best wishes.

Travis Roberts

Advertise the Action Way!
The CLASSIFIED WAY!

Fandangle Sampler Set May 4

The annual Fort Griffin Fandangle Association Membership Picnic and Sampler will be held on Friday, May 4, at Reynolds Bend, located approximately 25 miles north of Albany on the historic Matthews Ranch.

The Fandangle is a community-wide effort committed to preserving the story of the settling of this area of Texas through song, dance and narration. A number of large sets, along with horses, Longhorn cattle, buffaloes, wagons, and a stagecoach are used in the summer show to recreate the town of Fort

Griffin where a frontier fort was located to protect the settlers from Indian attacks.

Members of the Association will be treated with a preview of the 1984 production of the Fandangle, which is set for six performances beginning June 21-23 and also June 28-30.

"We invite all members of the Association and their families to join us at Reynolds Bend each year for the Sampler and to bring a picnic basket or enjoy a barbecue supper that will be available," said Fandangle executive secretary Patsy Rose.

The barbecue meal is being catered by Perini Catering of Buffalo Gap and will cost \$4.00 for adults and \$3.00 for children.

"The gates will open at 6:00 p.m. so everyone will have plenty of time to eat and look around the ranch," continued Mrs. Rose. "Several Longhorns will be penned nearby, and there is also a restored ranch house next to the picnic grounds."

Memberships will be available at the gate. Members who have already paid their dues this year are asked to bring their cards to be shown at the gate.

Three types of memberships can be obtained. Pat-

rons, whose names are published in the summer program, are those who donate \$100 or more. Regular memberships can be purchased for \$25, and Associate memberships for \$10.

"Memberships are welcomed all during the year," said the secretary, "but the real benefits of being a member are attending the sampler and picnic, and being able to choose seats for the summer show before they go on sale to the general public."

Checks may be mailed to the Fort Griffin Fandangle at P.O. Box 185, Albany, Texas 76430 or brought by the Fandangle office located in the Rockwell Community Center (depot) in downtown Albany.

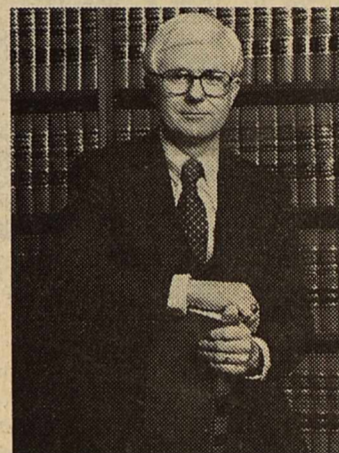
"We rely on our memberships to be able to make improvements in our facilities and to buy new equipment. If we just had the funds from ticket sales to work with we wouldn't be able to continue," she explained. "So you can see that our members are very important to us."

The Association purchased a new \$15,000 sound system this year with the proceeds from their last membership drive in an effort to improve the quality of the production.

The production was created

in 1938 by Robert Nail, an Albany playwright, and has been continued almost yearly for the past 46 years.

Fairness and Justice for ALL



Shelby Sharpe:

"I believe the Texas Supreme Court belongs to all Texans, not just the millionaire lawyers who have given more than half a million dollars to my opponent."

Get the big-bucks judge, C. L. Ray, off the court
VOTE FOR SHELBY SHARPE,
Place 2, Texas Supreme Court,
in the Democratic Primary, May 5

Paid for Shelby Sharpe Committee, Kleber C. Miller, Treasurer
220 First City Bank Tower, Fort Worth, Texas 76102-3191

ELECT RICK PERRY

State Representative
64th District

- Young
- Energetic
- Honest
- Hard Working
- Democrat

(Pd. Pol. Adv. Pd. for by Tom Watson, Campg. Treas.)

FACTS ABOUT YOUR DISTRICT ATTORNEY

PERSONAL HISTORY

- Born November 27, 1945 in Haskell, Texas
- Age: 38 years
- Son of Dr. and Mrs. Joe E. Thigpen of Haskell, Texas
- Married to Pam Burson, daughter of Mr. & Mrs. Vernay Burson of Haskell, Texas
- Two children: Joseph Justice, age 6 and Jodi Erin, age 2
- Member First Christian Church of Haskell, Texas

EMPLOYMENT BACKGROUND

- Bell Service Station, Haskell, Texas
- Farm Hand
- Texas Dept. of Highways & Public Transportation (Common Laborer)
- J.H. Strain & Sons Inc. (Heavy Equipment Operator)
- 6666 Ranch, Guthrie, Texas (Cowboy)
- Abilene Christian University (Lab Instructor)
- County of Stonewall (Assistant County Attorney 1973-1974)
- General Practice of Law in Haskell, Texas (1975-1976)
- 39th Judicial District of Texas (District Attorney January 1, 1977 to Present)



EDUCATIONAL BACKGROUND

- Attended grades K thru 12 in Haskell Schools
- Graduate of Haskell High School (1964)
- Graduate of Abilene Christian University with Bachelor of Science degree in Ag-Business
- Graduate of Texas Tech University, School of Law, with the degree of Doctor of Jurisprudence (1972)

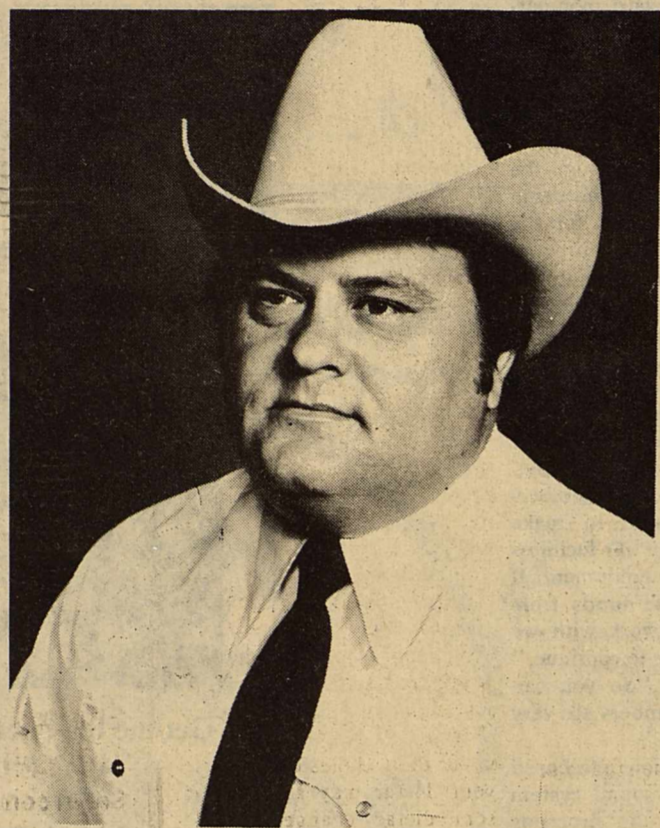
CIVIC AND PROFESSIONAL INVOLVEMENT

- Haskell Chamber of Commerce (Former Director)
- Haskell County Jaycees (Former Vice President)
- Airport Committee, City of Haskell (Chairman)
- Confederate Air Force (Col. Big Country Squadron, Abilene, Texas)
- Advisory Committee, Western Texas College, Snyder, Texas
- Instructor for West Central Texas Council of Governments in Basic Law Enforcement Certification Schools (Past 4 years)
- Texas Prosecutor Council (Chairman, Advisory Committee on Technical Assistance)
- Instructor for Texas Prosecutor Council in Law Enforcement Workshops Across Texas
- Texas District & County Attorneys Association (Member of Legislative Committee)
- State Bar of Texas (1973-Present)

RE-ELECT JOSEPH THIGPEN — YOUR DISTRICT ATTORNEY

(Pd. Pol. Adv. Pd. for by Pam Thigpen, Campaign Treas.)

VOTE FOR JACK WHORTON



Law enforcement has many facets and requires a man with knowledge and expertise in all phases of law enforcement. Jack Whorton is such a man. Jack is qualified for the position of Haskell County Sheriff for many reasons. He has eight years of law enforcement experience, serving with the Taylor County Sheriff's Office Fugitive Warrant Division and as Assistant Jail Administrator. He has served as Chief of Police of Haskell, as deputy with the Haskell County Sheriff's Office and for the last 3½ years as Criminal Investigator for the 39th Judicial District.

Jack also has over 700 hours of law enforcement training in such areas as oil field theft, homicide and violent crime, and forensic training, and drug enforcement training.

The office of sheriff demands full-time attention and concentration. If you want a man with knowledge of the law and not afraid to enforce it in a fair and impartial manner, elect Jack Whorton as Haskell County's next Sheriff this Saturday, May 5th.

FOR
Haskell County
SHERIFF

Your Vote and Influence Appreciated!

(Pd. Pol. Adv. Pd. for by Patrick Pace)

Rick Perry Issues Statement To Voters

Texas today is in the middle of a change that completely alters the way we've done business in the past.

Our population has grown by over 3 million since 1970 and nearly 60 percent of those people came to Texas by train, plane, bus or car. They weren't born here.

That is not to say they are not welcome. Texans have always believed our state was big enough for anyone who had a good heart and was willing to work hard. That comes from being a frontier state.

We're still a frontier state. But today, it is an economic frontier where we have to determine if young Texas families will be able to afford

to own their own homes and whether farmers and ranchers can pass on their heritage and livelihood to their children.

Throughout my campaign this spring, I've talked with people about what kind of Texas we want for tomorrow, what kinds of schools we will have, where our water will come from, whether our highways and farm to market roads and bridges will continue to carry the load. And, where the money is coming from to repair those roads and to pay teachers.

We need state government that acts on purpose, not by accident. And, yes, we need government that can solve problems. But we need even more — government that can

plan and prevent problems before they arise. That is the kind of government I'm interested in.

It really is time to take Texas government seriously. They're spending billions of dollars down there. They are using it to shape the future of West Texas, of all Texas.

I want to see that you have a voice, that you share in shaping Texas for tomorrow.

To do that, you need to help me and the first step is to vote for me. Plain and simple. If I didn't ask you, I would be letting us both down.

Sincerely,
Rick Perry
Candidate State
Representative
64th District

College News

Toby Villa from Haskell was among the Western Texas College students honored at the annual Awards Day held April 26.

Awards Day is sponsored by the WTC Faculty Association and awards are presented by faculty members. The students honored and their families were guests at a reception in the Student Center following the ceremonies held in the Fine Arts Theatre.

Villa was recognized for outstanding participation in the college intramural sports program and his award was presented by Lee Burke, Health-Physical Education director and Phil Spradling, Physical Education instructor.

More than 2,300 students at Texas Tech University qualified for the president's and deans' honor rolls in the university's six colleges during the 1983 fall semester.

To make the President's Honor List, a student must make a perfect 4.0 (A) grade-point average while enrolled in 12 or more semester hours of classwork. For the Deans' Honor List, a student must finish 12 or more semester hours with a grade-point average of 3.5 or above.

Students making the honor rolls included the following from Rule: Rock W. Petty, president's list; and Lisa Kaye Baird, Route 2, deans' list.

Students making the honor rolls included the following from Haskell, Cynthia Everett 405 N. Ave. B, president's list.

Pittcock Issues Statement

To the Voters of Precinct 6 and Haskell County,

I would like to take this opportunity to present this formal statement on behalf of my candidacy for this office of Constable Precinct 6.

I feel my qualifications meet the requirements for Constable. I am a certified peace officer having completed all requirements of Texas Commission of Law Enforcement Officer Standards and Education. I have served as a deputy sheriff in Haskell County, City Marshal in Rule from 1966 to July 1974 and now serving you as your Constable Precinct 6. I was elected your Constable 1968.

For the past sixteen years I have to the best of my ability to serve you as a public servant and I would like to

continue to do so. I want to thank each one who has supported me in the past.

I hold a permanent license as a peace officer from the Texas Commission on Law Enforcement.

I am a Baptist, married to the former Novis Allison. We have four children, Cynthia Wainscott of Wichita Falls, Pam Bowles of Rule, Capt. Nolan Pittcock with the Texas Department of Corrections, Jim of the home.

It has been my intention to see all you personally but I know I have missed some of you. I take this opportunity to solicit your vote in the upcoming election on May 5.

L.V. "Sonny" Pittcock

Low cost Classified Ads will bring positive results fast. Try them.

19

WALLET SIZE COLOR PHOTOS ONLY 99¢ NO LIMIT ON THIS OFFER

WE USE KODAK PAPER

REMEMBER MOTHER'S DAY WITH PICTURES

AT
M-System
112 N. Av D
Thursday, May 10

ASK About Our FREE 8x10 OFFER

GROUP CHARGE 99¢ per person per 10 wallets

COLOR PHOTOS

Shugart's Inc.

KODAK SAFETY For a Good Look at the Times of Your Life

To the voters of Precinct 1 and Haskell County:

I wish to thank you for your warm response and kindness to me while I have been campaigning for the office of Commissioner of Precinct 1. I have tried to visit with as many of you as I could these past months. It has been my intention to see all of you personally, but I know I have missed some of you. I take this opportunity to solicit your vote in the upcoming election of May the 5th.

I am prepared to work hard in this position and would like to serve you as honestly and openly as I can.

Please remember to exercise your privilege to vote on Sat., May 5th.

T.C. (Tim) Burson

Commissioner Precinct #1

Your Support and Influence Appreciated!

(Pd. Pol. Adv. Pd. for by T.C. Burson, Camp. Treasurer)

Joseph Thigpen Issues Statement To Voters

To the Citizens of Throckmorton, Haskell, Stonewall, and Kent Counties: Since my election as your District Attorney I have made several changes in your office. I want you to be aware of some of the changes and the reasons why the changes were made. I could have become your District Attorney and continued to practice law as it has been done in the past in the District. I even tried to wear two hats when I first took office. It did not and could not work because the duties and responsibilities of this office are too great and the District too vast. You could have been forced to come to my private law office and wait in line while I tended to my civil clients instead of coming to your District Attorney's Office located in the Haskell County Courthouse and seeing me

personally without delay. You could have been delayed further if I had been outside of the District tending to someone's civil problems instead of staying at home and tending to your criminal matters. I promised each and every one of you in 1976 that I would "do the job" if elected. In fulfillment of my promise to you I voluntarily gave up the private practice of law. What did I gain personally and financially from that decision? I am paid \$6,000.00 a year more for being a full-time District Attorney, rather than a part-time one. Common sense will tell you that I can earn 10 times more than \$6,000.00 a year with a private law practice. However, in order to do so I would have had to break the promise that I made to you. The promise was, "I will do the job if elected."

Today in this District there are no conflicts of interest which always arise because a lawyer tries to practice law and be a District Attorney too. The only special interest group that I represent is the people of this District.

I never have swept anything under the carpet, nor dodged controversial issues. I never will. I believe that no man is above the law and no man is below it and that rich and poor alike are entitled to the same services which are rendered by this office.

I have practiced law in this District for 11 years and have spent over 8 years prosecuting criminal cases for the people of this District. I have enjoyed meeting with and assisting the Grand Jurors in the District and I appreciate the service of the many people who have served on juries.

Today I am making each and everyone of you a promise. The promise is not that I will "do the job" rather that I will "continue to do the job." If you believe as I do "that a man is just as good as his word" I ask for your continued confidence, support and vote on May the 5th.

Respectfully yours,
Joseph Thigpen
District Attorney
39th Judicial District of Texas

Superintendent's Extension Service Offers Views Facts On Cholesterol

BY JAMES LANIER

Superintendent, Haskell ISD

I will strive to continue an explanation of Chapter 75, the curriculum bill, with this column. I will try to explain time schedules for implementation. The elementary school (grades K-6) will have to implement the time schedules (allocation of instructional time) fully beginning with the 1984-85 school year. This is a change from the past. The time schedule reinforces the return to the basics movement. For example, no less than 40% of the instructional day must be spent with English-Language Arts, 20% of the day with mathematics, physical education daily, fine arts, health, science, and

social studies weekly. In grades 1-3 no less than 120 minutes per day must be devoted to English-Language Arts (reading). Mathematics will require no less than 60 minutes per day. The student will be required to have physical education daily and fine arts and health weekly. Science and social studies will require 100 minutes per week. In grades 4-6, no less than 90 minutes per day will be required in English-Language Arts, 60 minutes per day in math, 120 minutes per week in physical education, 120 minutes per week in fine arts, 60 minutes per week in health, no less than 45 minutes per day in science and no less than 45 minutes per day in social studies.

The other required implementation for 1984-85 is the registration of 8th grade students (entering 9th graders) under the guidelines of the new graduation requirements. There will be two kinds of transcripts. The regular transcript will require 4 units of English, 3 units of math, 2 units of science, 2½ units of social studies, economics, 1½ units of physical education, ½ unit of health, and 7 electives off the approved list of courses. The advanced high school program is a much more restricted curriculum requiring 22 units for graduation. Nineteen of these units will be required.

We are having a meeting with the 8th graders and their parents on Thursday, May 3rd, at 7:00 p.m. in the secondary library to go over these requirements and to pre-register these students.

LIQUID PAPER Correction Fluid in ledger colors including pink, greens, buff, blue and yellows. Perfect for stationery, too! *Haskell Free Press*

Once again, cholesterol is in the news. Studies linking cholesterol to arteriosclerosis or heart disease, have many people wondering about their diet. At the same time, most of us don't really know what cholesterol is, how it functions in the body and whether we ought to be on a low-cholesterol diet or not.

Extension foods and nutrition specialists at Texas A&M University have provided some facts about cholesterol that might help answer some of these questions.

According to the specialists, cholesterol is a complex, waxy substance which is found in all animal cells.

It has many important functions in the body. It is an insulator of nerve and brain tissue. It is necessary in the formation of different compounds in the body including bile acids, vitamin D, and various sex and adrenal hormones. It transports fatty acids, is a structural unit of many tissues, and plays an important role in what substances pass through a cell wall.

Fortunately, our bodies insure a supply of cholesterol by making it in most tissues other than the brain. The liver is the most active cholesterol-producer. Cholesterol is also obtained from some foods. But no more than 40 percent of the circulating cholesterol in the body is gotten directly from the diet, even when it is a high-cholesterol diet.

Should you be on a low-cholesterol diet? That's a question that only your doctor can answer after checking your blood cholesterol level. If you are among the 25 percent of American adults to need to lower their cholesterol levels, your doctor may recommend some dietary changes.

But since high blood pressure, cigarette smoking, obesity and physical inactivity are also risk factors for heart disease, you may need to do

more than alter your diet. Those of us who do not need a special diet, but are still concerned about cholesterol intake can take some simple and sensible steps, say the

specialists. Those include eating a balanced diet, trimming the visible fat from meat, using low-fat or skim dairy products, and avoiding excess amounts of fried foods.

College News

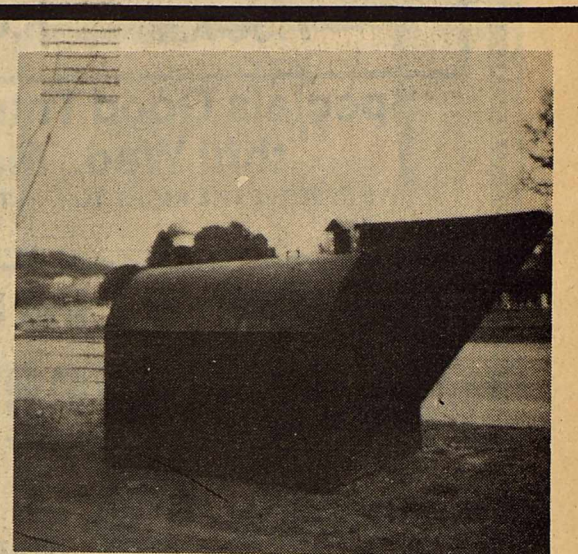
Debra K. Engle, 912 N. Fifth, Haskell, was initiated into the Alpha Nu chapter of Phi Upsilon Omicron at Oklahoma State University.

Phi Upsilon Omicron is a national honor society in home economics. Home economics students, second semester sophomore or better, are eligible for membership if they rank in the upper third of

their class and show evidence of outstanding leadership ability.

A graduate student in consumer studies, Mrs. Engle and her husband, Dr. David Engle, have one son, Jeffrey. Dr. Engle is an OSU associated professor of agronomy.

Mrs. Engle's parents are Mr. and Mrs. C.C. Campbell.



K & K STORM CELLARS

Complete Installation
Just in time for the storm season!

We offer two sizes:
6 ft. x 12 ft. 6 ft. x 8 ft.
Our cellars are 6½ ft. tall inside.
Set in concrete ★ Tar coated to prevent rust!

★ ★ ★

Call Graham 549-1340 or 549-7259

Major Medical that's worth a Million.

Time Insurance Company's Major Medical plan offers:

\$1,000,000 in lifetime benefits per insured party.
Payment of all covered charges both in and out of the hospital. Without schedules.
A deductible you pay just once a year rather than with each medical occurrence.
And the plan is area-rated so you don't pay for higher risk areas of the country.
Call us for full details.



Lanco Insurance
Buddy Lane
(817) 864-2629

3 Family Garage Sale

plus

Arts & Crafts Sale

Folk Art by Doris Brueggeman,

Punched in Primitives by
Janice Browning & Peggy Adams.

Saturday, May 5
9 a.m. — 5 p.m.
604 South Avenue G
Haskell, Texas

Seymour residents are again preparing to hang out their famous "Gone Fishing" signs, vacate the town and head for Lake Kemp to celebrate their 58th annual Fish Day.

The three-day celebration, sponsored by the Seymour

Chamber of Commerce, will begin May 5 and continue through May 7, according to Jim Vita, general chairman.

Activities will start Saturday, May 5, at 11 a.m. with the 3rd annual Fish Day Chili Cookoff, judging of the chili will be at 3 p.m. Other events scheduled for May 5 will include a frisbee contest, cow chip throwing contest, volleyball tournament and a boat parade.

A bass tournament, with \$2,000 in prize money and merchandise, will be held May 6, starting at 6 a.m. Other events scheduled for May 6 will begin at 1 p.m. and will include horseshoe tournament, washer pitching, ski show, ski contest and boat races.

May 7 the kid fishing contest will start at 10 a.m. and the final event of the three-day celebration will be the Little Miss Lake Kemp and Miss Lake Kemp contest to be held at 1:15 p.m.

The public is invited to attend and participate in the events. For pre-registration or more information contact the Seymour Chamber of Commerce at (817) 888-2921.

Money Matters

A Series Of Informative "Plain Talk" Thoughts Regarding Your Money Matters

Safe Deposit... For Your Convenience

Did you know that for only pennies a day you could rent a Safe Deposit Box?

Safe Deposit is the perfect place to store important documents and other valuable possessions. The articles you store in your Safe Deposit Box are safe from fire, theft or just plain "getting lost". Rent one today.

Safe Deposit is just one of many services we offer for your convenience. In addition to **Safe Deposit**, there's **Banking by Mail**, **Wire Transfers**, **Travelers Cheques**, **Direct Deposit**, **Night Deposit**, and many others. Use them all, after all they're For Your Convenience.

We Think Money Matters!

HASKELL NATIONAL BANK

864-2631 • 601 N. First
Haskell, Texas — Member F.D.I.C.

Grand Opening

Sat., May 5
11 A.M. - 9 P.M.

KVRP will have a Remote
from 5 p.m. to 7 p.m.

FREE
Coca Cola

Register for FREE Prize

No Purchase Necessary

with each Large

Pizza

Receive (1) one Iron-on Transfer, while supply lasts.

PIZZA BARN

900 S. AVE. E

PHONE 864-8918

Home Delivery

5-9 p.m. Daily
\$6 minimum (50¢ fee)



M SYSTEM

Your FRIENDLY

AFFILIATED SUPER MARKETS

Haskell, Texas
Where your dollar buys more

For Your Shopping Convenience
New Daylight Saving Time
STORE HOURS

7:30 A.M. — 8:00 P.M.

Specials Good Thurs., May 3
thru Wed., May 9
WE RESERVE THE RIGHT TO LIMIT QUANTITIES.



Round Up Sale



Del Monte Tomato
CATSUP
32-oz. Bottle (Limit 1) **89¢**



Del Monte Golden
CORN
Cream Style or Whole Kernel
17-oz. Can **47¢**



Del Monte Tomato
SAUCE
8-oz. Cans **5 1 00**

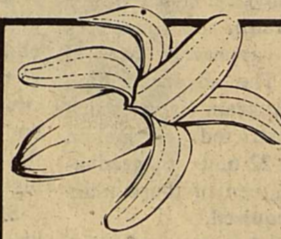


DEL MONTE
● Whole Potatoes
● Leaf Spinach ● Sauerkraut
MIX OR MATCH!
303 Cans **2 1 00**



Del Monte
Sweet Peas
Regular or No Salt
17-oz. Cans **2 1 09**

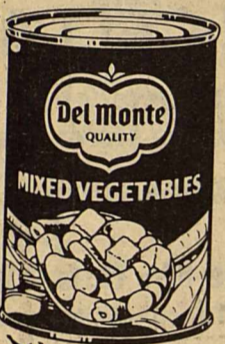
DEL MONTE WHOLE PEELED
TOMATOES..... **69¢**



BANANAS
Del Monte Golden Ripe
15-oz. Can **4 1 00**



DEL MONTE
Fruit Cocktail
17-oz. Can **78¢**



Del Monte Mixed
VEGETABLES
16-oz. Cans
For **2 1 00**

APPLES Red Delicious Lb. **39¢**
Green Onions or Radishes..... **4/1 00**
CARROTS Fresh..... 2-Lb. Bag **79¢**
CELERY Fresh Pascal Stalk **49¢**

DEL MONTE
Peaches
Sliced or Halves
16-oz. Can **69¢**



COLOR TEX BATHROOM TISSUE
4-Roll Pack
45¢
Limit 1 with \$10.00 or more grocery purchase

Pilgrims Pride Grade 'A' **FRYERS**
5 **33¢** Lb.
Whole Only

FRESH PORK CHOPS
FIRST CUT Lb. **1 39**
CENTER CUT Lb. **1 89**

Fresh Ground **BEEF**
1 **15** Lb.
3-Lb. Ctn. **1 69**
Shedd's Spread.....

AMERICAN BEAUTY **FLOUR**..... 5-Lb. Bag **79¢**
SHURFINE FROZEN MINI **COB CORN**..... (Limit 2), 8 Ear Pkg. **99¢**
OIL OR WATER PACK 6.5-oz. CAN
Chicken of the Sea Tuna..... **78¢**
DISH DETERGENT
JOY LIQUID..... 64-oz. Twin Pack **2 99**

MRS. PAUL'S FROZEN **Fish Fillets or Sticks**..... 7 or 8-oz. Pkg. **99¢**
MINUTE MAID FROZEN **ORANGE JUICE**..... 6-oz. Can **69¢**
RAINBOW HAMBURGER
DILL PICKLES..... 32-oz. Jar **1 19**
MRS. BAIRD'S **WHEAT BREAD**..... 1½-Lb. Loaf **79¢**

Shurfresh **Biscuits**
8 oz cans
5 For **\$1**

Tide DETERGENT
Giant 49-oz. Box
25¢ Off Label!
1.59
Limit one with \$10.00 or more grocery purchase.

LIBBY'S Vienna Sausage
5-oz. Can **48¢**
Potted Meat
3-oz. Cans **3 For 89¢**

FOLGER'S COFFEE
ALL GRINDS
1-LB. CAN
2 29

GLAD BAGS
10-Ct. Trash or 15-Ct. Large Kitchen Bags
Limit 2 Pkg. **99¢**



"WESTCLOX" ALARMS



- Famous Westclox Styling
- Sweep Second Hand
- Large Easy To Read Dial

Sale Priced **477**

DIGITAL ALARMS



- 24 Hour Alarm With Snooze
- Easy To Read LED Display
- 100% Solid State Operation

Sale Priced **996**

HEADPHONE RADIOS



- Receives All AM & FM Broadcasts
- Ultra Slim Shirt Pocket Styling
- Lightweight Comfortable Headphones

Sale Priced **1299**

HOW MUCH Are You Overpaying

FOR THESE FAMILY NECESSITIES?

M SYSTEM AFFILIATED SUPER MARKETS

HANSON BATH SCALES



Large Easy To Read Dial. Famous Hanson Accuracy.

Limited Time **888**

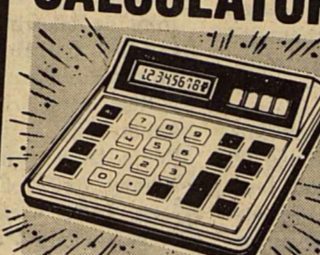
200 COFFEE FILTERS



Fits Most Major Brands. Package of 200 Filters. Stock-Up and Save.

Limited Time **88c**

DESK-TOP CALCULATOR



Solar powered — never needs batteries. Works under any light.

Low Low Priced **1299**

ANCHOR HOCKING COFFEE MUGS



- Beautiful Heavy Glass Mugs
- 10 1/2 Oz. Size, Stackable
- Top Quality Anchor Hocking

Sale Priced **99c EA.**

ONE DOZEN DISH CLOTHS



- Pkg. of 12, Waffle Weave Style
- 100% Cotton, Durable - Absorbent
- Limited Time Sale Special

12 for 399

AM/FM DIGITAL CLOCK RADIO



- 24 Hour Alarm With Snooze
- Fast Slow Time Set Buttons
- Receives AM & FM Broadcasts
- Woodgrain Styling

Limited Time Price **1988**

BIC



PACKAGE OF 12 BIC DISPOSABLE SHAVERS

Sale Priced **119** PKG.

WEST BEND Electronic Timer



- Times Up To 100 Minutes
- Easy-To-Read LCD Display
- Famous West Bend Quality

Limited Time **1496**

PKG. OF 100 PAPER PLATES



Hundred 9 Inch Diameter. Great for Microwave Ovens. Eliminates Messy Clean-Up Jobs.

Limited Time **59c**

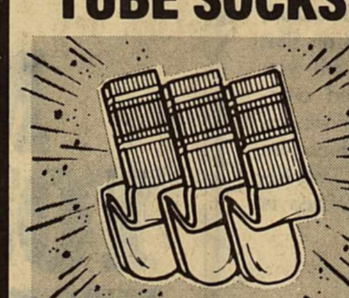
AQUA NET HAIR SPRAY



12 Ounce Aerosol Spray. Stock-Up Now and Save.

Giant 12 oz. Size Can **119**

MEN'S & BOY'S TUBE SOCKS



Over The Calf Length. Choose Men's or Boy's Sizes.

6 Prs. 499

QUALITY BOXED ENVELOPES



Box of 100 Standard Size. Box of 50 Legal Size.

Your Choice **69c** BOX

SOFT TERRY KITCHEN TOWELS



- Pkg. of 6, Striped Terry Cloth
- Long-lasting 100% Cotton Weave
- Limited Time Sale Special

6 for 499

BROWN JERSEY CHORE GLOVES



- 100% Cotton Work Gloves
- Long Lasting, Top Quality

Limited Time **88c PAIR**

LATEX RUBBER CHORE GLOVES



- Durable, Reusable Latex Gloves.
- Great for Hundreds of Chores!

Sale Priced **66c PAIR**

1200 W. FOLDING HAIR DRYER



- Lightweight, Compact, 1200 Watts.
- 2 Heats, 2 Speeds, Dual Voltage.

Special Price **1099**

MOIST WIPE TOWELETTES



- Pkg. of 160 Pre-Moistened.
- Use for Quick Cleanups Anytime!

Sale Priced **199**

"SPARTUS" KITCHEN CLOCKS



- Attractive Decorator Models
- Quartz Accuracy, Reliability
- Top Quality from Spartus

Your Choice **1288**

STAMP PRICE SPECIAL

Shurfresh Milk
1/2 Gallon
59c
WITH ONE SPS FILLED CARD

STAMP PRICE SPECIAL

Nabisco Crackers
1 lb box
29c
WITH ONE SPS FILLED CARD

STAMP PRICE SPECIAL

Thrifty King Bleach
gal jug
FREE
WITH ONE SPS FILLED CARD

STAMP PRICE SPECIAL

M-System Bread
1 1/2 lb loaf
9c
WITH ONE SPS FILLED CARD

STAMP PRICE SPECIAL

Shurfresh Medium Eggs
dozen
49c
WITH ONE SPS FILLED CARD

Phil Coleman Issues Statement

To the Voters of Haskell County,

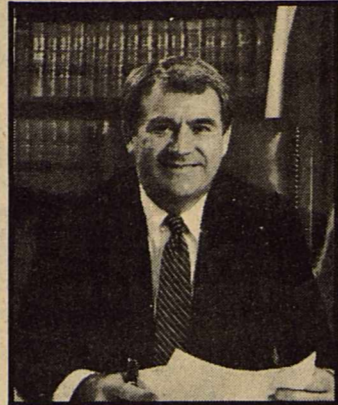
I have enjoyed this campaign tremendously. Everyone has been very receptive to me and I thank you. This has been a new experience for me. I have learned more about you and where you live and I hope you have got to know me better. This is one of the points that I have stressed through my campaign—Public Relations.

If elected I want you to contact me if and when you have a problem that you think

I could help you with. I know we have some problems in this county that need to be faced and I will work close with all other law enforcement people to help make this county a better county. I am eager to do what needs to be done and I will be professional in what I do.

If elected I will be fair and make the best decision I can at the time they need to be made.

I would very much appreciate your vote and support, Saturday May 5th.
Phil Coleman



Consumer Alert

by
Jim Mattox
Attorney General

PICKING A HEALTH SPA

In the past I have discussed some problems consumers may encounter in their quest to fight "the battle of the bulge." An increasingly popular way to become trim and fit is joining a health club.

These clubs vary as much as consumer preferences do in what they offer. Some offer no more than a place to exercise. Others offer more equipment for workouts. Some clubs offer facilities all the way up to swimming pools, racquetball courts and even ice skating rinks.

GUIDELINES

Since consumers have different preferences and needs, the wide range of health clubs should be carefully studied before making a decision to join any club. Our consumer protection attorneys warn that consumers should be careful in choosing a fitness center since numerous problems have arisen in the past. Here are some guidelines to consider.

(1) You should consider that people have different physical limitations. You may want to consult a physician about your limitations before searching for a facility.

(2) You should decide what type of activities you can and will pursue on a continuing basis. There is no use paying for facilities you won't use.

(3) Consider the location of the club. Is it convenient to your home or place of employment?

(4) What is the cost? Certainly, the least expensive club with the desired facilities and location will be an attractive choice. But be careful. Depending on the type of facilities and equip-

ment offered, the club will have operational costs which must be paid for in order to continue the club operations. If the price is not adequate to cover these expenses, then the club will not be able to continue operations and your membership will be in a closed club. Be sure to discuss this question with the club's management, not just the sales person.

(5) How crowded is the club at the times you will use it? If the price is too low, chances are many other people like yourself will be attracted to the facility. There is a limit to the capacity of any club. Investigate the club at the time of day you will use it before you sign the contract.

(6) Still another problem could arise from purchasing memberships in clubs which are not open yet. Advertising a club like this is known as a "presale." This can be a legitimate way to purchase a membership, but many times these clubs suffer unexpected delays or undisclosed problems and they do not open at the time represented, or in some unfortunate cases never open.

FOR MORE HELP

These are just a few of the problems you may encounter when joining an exercise club. If you plan to join one of these clubs, follow these guidelines. For more help, contact one of my Consumer Protection offices in Austin, Dallas, El Paso, Huntsville, Houston, Lubbock, McAllen or San Antonio. We can tell you if we have received complaints or have taken actions on a club in which you may be interested. The Attorney General's Office is here to help you.

Sagerton News

Some of the ladies of the Hobby Club went to Rice Springs Care Home in Haskell Monday afternoon to take some refreshments to the people after they got through playing Bingo. Those who went were Mrs. M.Y. Benton, Mrs. Louise Stegemoeller, Mrs. Delbert Lefevre, Mrs. Alvin Bredthauer, Mrs. J.B. Toney, Mrs. Reece Clark, Mrs. Bill Hertel, Mrs. Velma Lou Hertel. The Hobby Club women are going once a month to the rest home in this area.

Mr. and Mrs. Alvin Bredthauer, Mr. Clarence Stegemoeller, and Erna and Walter Schaake of Stamford played 84 in the home of Mrs. Lena Schaake Thursday.

The 23rd annual A.H. Tredemeyer reunion was held April 28th, 1984 at the Sagerton Community Center with 82 people registering from the following places: Mr. and Mrs. Carl Hertel, Mr. and Mrs. Alvin Hertel and Ronald of Rule, Mrs. Frieda Erdman, Robert, Cho, John, Herdi, and Robin Diers, Mr. and Mrs. Johnny Baitz of Old Glory, Lion Mae and Clifford Stegemoeller, Mr. and Mrs. Joe Clark, Mr. and Mrs. Melvin Baitz, Mr. and Mrs. Fred Baitz and Kacey and Kamie, Mr. and Mrs. Buster Tredemeyer, Mr. and Mrs. Clayton Stegemoeller, Michelle and Stephanie from Sagerton. Mrs. Rufus Schmidt of Haskell, Mr. and Mrs. Carl Druesedow of Stamford, Mrs. Edna Wahlen, Bill Diers, Mrs. Emma Raphelt of Stamford, Gary, Susie and Matthew Lovvorn, Sandy, Mike, Ron and Kimberly Lovvorn, Bob, Gail and Callie Lovvorn, and Glenn and Lydia Lovvorn of Stamford. George and Ruby Olson from Ozona, Frankie and Esther Kinnon from Fort Worth, Helga Anderson from Lueders, Paula, Shane and Michelle McLellan from Avoca, Steve and Lisa Hertel of Snyder, Sylvia and Deborah Sue Tiemann, Edgar and Clara Schmidt, Milton and Lillie Mae Schmidt from Austin, Sherry, Michelle, Michael, Labay, Annette, Eric and Amy Lane. Gwen,

Thomas and Teresa English of Cedar Park, Joyce and Weldon Tredemeyer of Leander, Mary Ann Tiemann from Victoria, Janelle and Cary Fulghan, Larry and Jeannie Letz of Abilene, Martin and Elsa Wende of Stepheville and Joe, Jancie, Mandy, Rebecca and Allison Cannon of Wichita Falls. Lillie Lehmann of Sagerton was a visitor.

New officers for the reunion will be Emma Raphelt, president; Joe Cannon, vice president; Nelga Anderson, secretary-treasurer, and Joe and Dorothy Clark, entertainment committee. The next reunion will be held Saturday 27th beginning at 10:00 o'clock at the Sagerton Community Center.

Weekend guests of Buster and Norma Tredemeyer were Mr. and Mrs. Buddy Tredemeyer of Aledo, Milton and Lillie Schmidt of Austin, Weldon Tredemeyer of Leander and Mr. and Mrs. Larry Letz of Abilene.

Mr. and Mrs. Edgar Schmidt, Mrs. Sylvia and Debra Sue Tiemann and Mary Ann Tiemann of Victoria visited in the home of Mrs. Lillie Lehmann and attended the Tredemeyer reunion.

Mr. Charles Diers is in the Aspermont Hospital after having a fire accident with his tractor.

Mr. Zenor Summers is in the Stamford hospital. The Supper Club meet in the home of Mr. and Mrs.

Delbert Lefevre Saturday night. Those who were there were: Mr. and Mrs. Ed Fouts, Mr. and Mrs. J.B. Toney, Mr. and Mrs. Cecil Lewis and Mr. and Mrs. Vernon Mahler.

Had a nice crowd at the Friendship Club last Thursday in the Fellowship Hall of Faith Lutheran Church. Had some visitors from out of town, Mrs. Elnora Scott of Hamon and Mrs. Lillie Hendrick of Albany. Others that attended were: Mr. and Mrs. Buster Tredemeyer, Mr. and Mrs. Alvin Bredthauer, Mr. and Mrs. Anton Teichelman, E. G. Neinast, Mr. and Mrs. Arthur Knippling, Larry Cornelison, Rev. and Mrs. Tommy Wilson, Mrs. Ione Sheid, Mrs. Lillie Hendrick, Mrs. Izzeta Clark, Peggy Weise, Mr. and Mrs. Glynn

Quade, Mr. and Mrs. G.W. Lefevre, Mr. and Mrs. Alvin Ulmer, Mrs. Louise Stegemoeller, Mrs. Lillie Lehmann, Mr. and Mrs. J.B. Toney, Clarence Stegemoeller, Mr. and Mrs. Delbert Lefevre, Charles Clark, Mrs. M.Y. Benton, Mr. and Mrs. Reece Clark, Mrs. Elnora Scott, Mrs. Frieda Quade and Alvena Holle.

Guests in the home of Mr. and Mrs. Kraig Kupatt on Easter Sunday were: Mrs. Pat Moore of Colorado City, Mr. and Mrs. Barry McBee and Chandra of Big Spring, Mrs. Shortie Hewett of Stamford, Kris Kupatt of Abilene and Mr. and Mrs. Fred Kupatt of Sagerton.

Mr. and Mrs. Fred Kupatt were in Dallas Tuesday for a check up for Fred at the Texas Retina Clinic.

Haskell WTC Courses Set

Fourteen courses have been scheduled for summer students at the Haskell extension center of Western Texas College.

Included on the summer schedule are Biology 248, Computer Science 232, Economics 231, English 131, 231 and 232, Government 231 and 232, History 131 and 132, College Algebra 133, Psychology 235, Sociology 232 and Conversational Spanish 131.

Registration at the Haskell center will be held from 6:30-8 p.m. on May 24. Students may purchase textbooks starting at 7:30 p.m. and will need to pay for these with a separate check. Classes begin May 30 and end July 26.

Persons wishing additional information about the summer classes may contact Bill Blakley at 864-2891 or Dr. Harry Krenek at WTC in Snyder, 915 573-8511.

CAN'T WAIT TO PUT 'EM ON.



When you get ready for work in the morning, it's a lot easier when you can step into a pair of Wolverine® boots.

It's something to look forward to because these boots are just plain comfortable. They're ruggedly built, so the comfort stays with them month after month.

Put on a pair... you won't want to take 'em off.

WOLVERINE®
Boots & Shoes

\$59⁰⁰

Style No. 01988

Hassen's
Haskell, Texas

NOW YOU CAN PICK YOUR RATE AND TERM WITH A STAR CD FROM COMMODORE SAVINGS.

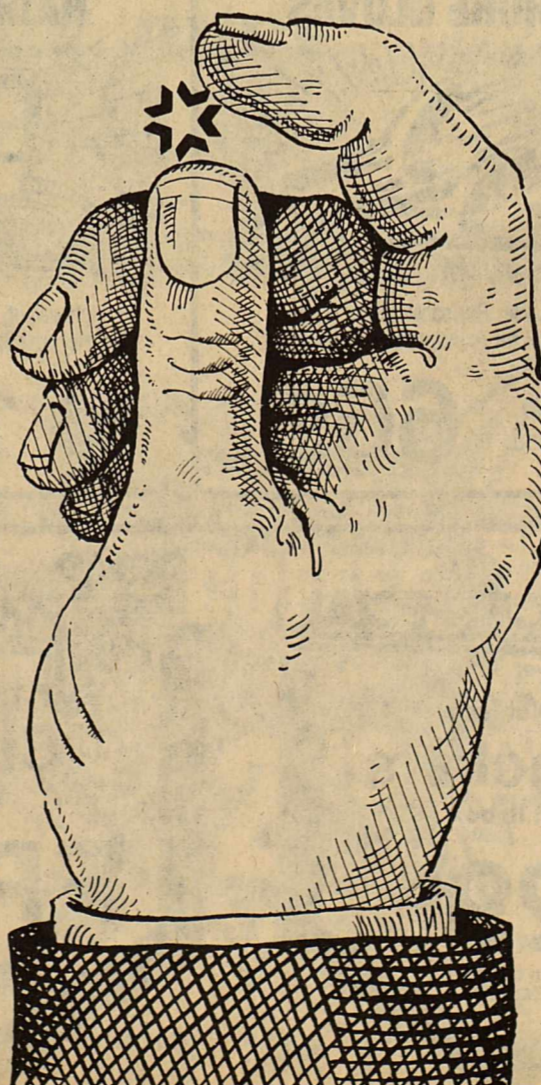
In the past, whenever you wanted to buy a Certificate of Deposit, the term of maturity was fixed. But now, things have changed. Because now, Commodore Savings announces freedom of choice: with any Commodore Certificate of Deposit — from a 32 day CD all the way up to a 5 year CD — you can pick your maturity term.

If you want a CD that matures in 7 months, just ask for it. If you want a CD that matures in 2 years and 3 months, just ask for it. If you want a CD that matures in 1,713 days, just ask for it.

From now on, Commodore will provide you with any length CD you want up to 5 years. And on each one, you'll receive the same high CD rates you can always expect from Commodore Savings:

LENGTH OF CD	INTEREST RATE
1 MONTH TO 3 MONTHS (32 thru 89 days)	10.25%
3 MONTHS TO 6 MONTHS (90 thru 179 days)	10.25%
6 MONTHS TO 9 MONTHS (180 thru 269 days)	10.50%
9 MONTHS TO 1 YEAR (270 thru 364 days)	10.50%
1 YEAR TO 2 YEAR (365 thru 729 days)	11.875%
2 YEAR TO 3 YEAR (730 thru 1094 days)	11.50%
3 YEAR TO 4 YEAR (1095 thru 1459 days)	11.50%
4 YEAR TO 5 YEAR (1460 thru 1824 days)	11.50%

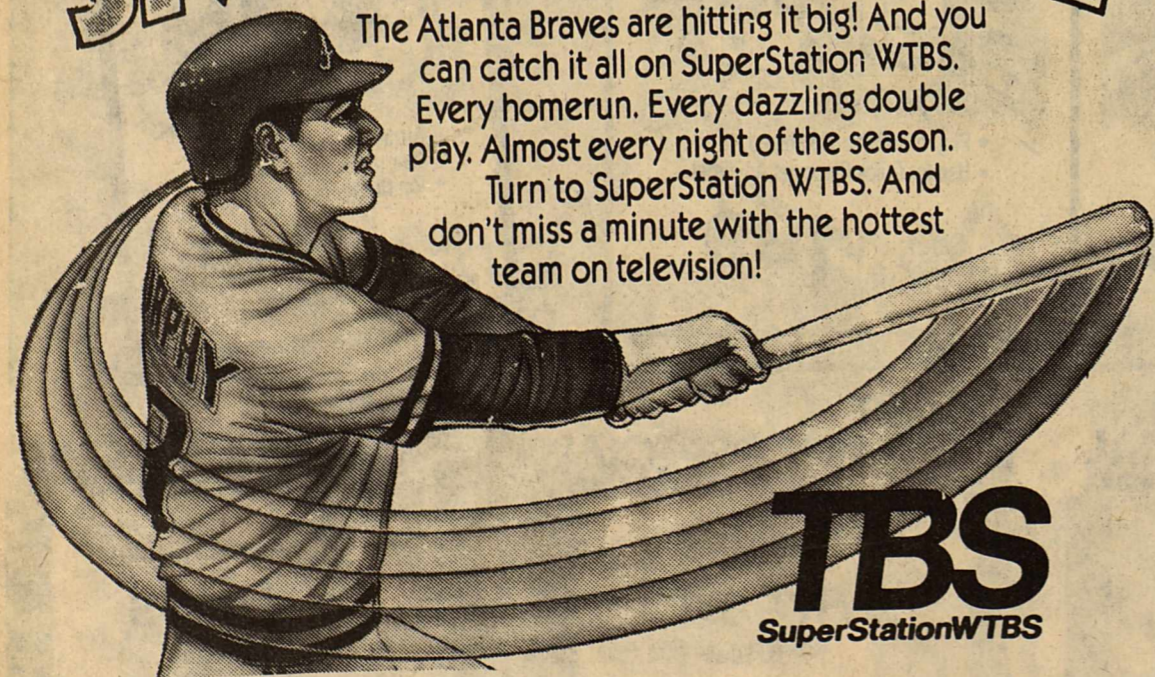
Rates are subject to change daily. Minimum for any CD is \$1,000. Penalty For Early Withdrawal "WORKING FOR YOU...WORKING WITH YOU."



COMMODORE SAVINGS

ABILENE 440 HICKORY (915) 676-5701 • 3800 SOUTH CLACK (915) 695-2940 • 4601 SOUTH 14TH (915) 698-4931 HASKELL 518 SOUTH SECOND STREET (817) 664-3179 DALLAS 2501 CEDAR SPRINGS (214) 871-0005 QUANAH 111 WEST FOURTH STREET (817) 663-5388 CLYDE INTERSTATE 20 & CHERRY LANE (915) 893-5884 STAMFORD — HOME OFFICE 122 W. MCHARG (915) 773-2713 MEMBER F.S.L.I.C.

SUMMER'S SMASH HIT!



The Atlanta Braves are hitting it big! And you can catch it all on SuperStation WTBS. Every homerun. Every dazzling double play. Almost every night of the season. Turn to SuperStation WTBS. And don't miss a minute with the hottest team on television!

TBS
SuperStationWTBS

Only with
Centex Cablevision
902 N. Swenson
Stamford
Call the Operator and ask for Enterprise 2406—
(no charge to calling party)

No. 0000

**DEMOCRATIC PARTY PRIMARY ELECTION
(ELECCION PRIMARIA DEL PARTIDO DEMOCRATICO)**

(CONDADO DE) HASKELL COUNTY, TEXAS
MAY 5, 1984 (5 DE MAYO DE 1984)

**SAMPLE BALLOT
BOLETA DE MUESTRA**

**INSTRUCTION NOTE:
(NOTA DE INSTRUCCION:)**

Vote for the candidate of your choice in each race by placing an "X" in the square beside the candidate's name. (Vote por el candidato de su preferencia en cada candidatura marcando con una "X" el cuadro al lado del nombre del candidato.)

I am a Democrat and pledge myself to support the nominees of this primary. (Yo soy Demócrata y comprometo mi apoyo a los candidatos nombrados de esta primaria.)

**United States Senator
(Senador de los Estados Unidos)**

- DAVID YOUNG
- LLOYD DOGGETT
- ROBERT S. SULLIVAN
- ROBERT (BOB) KRUEGER
- KENT HANCE
- HARLEY SCHLANGER

**United States Representative, District 17
(Representante de los Estados Unidos, Distrito Núm. 17)**

- NOEL S. COWLING
- CHARLES W. STENHOLM

**Railroad Commissioner
(Comisionado de Ferrocarriles)**

- MACK WALLACE

**Chief Justice, Supreme Court
(Juez Presidente, Corte Suprema)**

- SEARS McGEE
- JOHN L. HILL

**Justice, Supreme Court, Place 1
(Juez, Corte Suprema, Lugar Núm. 1)**

- FRANKLIN S. SPEARS

**Justice, Supreme Court, Place 2
(Juez, Corte Suprema, Lugar Núm. 2)**

- SHELBY SHARPE
- C. L. RAY
- TEXAS S. WARD

**Judge, Court of Criminal Appeals, Place 1
(Juez, Corte de Apelaciones Criminales, Lugar Núm. 1)**

- OLIVER STANLEY KITZMAN
- SAM HOUSTON CLINTON

**Judge, Court of Criminal Appeals, Place 2
(Juez, Corte de Apelaciones Criminales, Lugar Núm. 2)**

- ROY E. GREENWOOD
- W. C. (BILL) DAVIS
- BUDDY STEVENS
- GEORGE MARTINEZ

**Judge, Court of Criminal Appeals, Place 3
(Juez, Corte de Apelaciones Criminales, Lugar Núm. 3)**

- KERRY P. FITZGERALD
- HARRY HEARD
- THOMAS B. "TOM" THORPE
- WALTER BOYD
- WILLIAM B. PHILLIPS
- GEORGE ELLIS
- BILL WHITE

**State Senator, District 30
(Senador Estatal, Distrito Núm. 30)**

- RAY FARABEE

**State Representative, District 64
(Representante Estatal, Distrito Núm. 64)**

- RICK PERRY
- SAM NEWCOMB
- KENNETH F. NEIGHBOURS

**Associate Justice, Court of Appeals, 11th District, Place 1
(Juez Asociado, Corte de Apelaciones, Distrito Núm. 11, Lugar Núm. 1)**

- RALEIGH BROWN

**District Attorney, 39th Judicial District
(Procurador del Distrito, Distrito Judicial Núm. 39)**

- JOHN FOUTS
- JOSEPH THIGPEN

**County Attorney
(Procurador del Condado)**

- CHARLES CHAPMAN

**Sheriff
(Sherife)**

- TRUMAN THERWHANGER
- E. (BUD) LEFEVRE
- JOHNNY MILLS
- JACK WHORTON
- PHIL COLEMAN

**County Tax Assessor-Collector
(Asesor-Collector de Impuestos del Condado)**

- BOBBYE (GUFFEY) COLLINS

**County Commissioner, Precinct No. 1
(Comisionado del Condado, Precinto Núm. 1)**

- C. E. (CHUNKY) TIDWELL
- T. C. (TIM) BURSON

**County Commissioner, Precinct No. 3
(Comisionado del Condado, Precinto Núm. 3)**

- J. R. (RAY) PERRY

**Constable, Precinct No. 1
(Condestable, Precinto Núm. 1)**

- J. L. (HAPPY) HENDRIX
- D. L. (JACK) SPEER

**Constable, Precinct No. 5
(Condestable, Precinto Núm. 5)**

- SAM BASDEN
- TROY P. BROWN
- GREGG HEARN

**Constable, Precinct No. 6
(Condestable, Precinto Núm. 6)**

- W. A. (ALAN) BEARD
- L. V. (SONNY) PITTCOCK

**County Chairman
(Presidente del Condado)**

- MRS. GEORGE (SHARON) MULLINO

PERRYS

Haskell, Texas

**Great
Gifts
Remember
Mother's
Day
May
13th**

A. Porcelain Musical Figurines of little children with barnyard pets are simply adorable. Hand-painted in beautiful colors. 6½ inches tall. Gift-boxed, each \$7

B. "Grand Piano" Musical Jewelry Box keeps your jewelry in one place and plays a sweet tune too. Just open the lid and listen to the music. Attractively gift-boxed, each \$10

C. Porcelain Child Music Box twirls around as melodies play. Features a porcelain boy or girl set amidst colorful silken flowers. 10 inches tall. Gift-boxed, each \$10

D. Child/Flower Arrangement set under glass is sure to be the highlight of your curio collection. Includes silk-like flowers and a porcelain child. 8 inches tall. Gift-boxed, each \$5

E. "Cachette" Covered Box. Indulge in one of life's little luxuries. Our genuine 24% full lead crystal box is a timeless treasure sure to please anyone. Use to hold chocolates, keepsakes, more. It makes a wonderful gift too. Gift-boxed, each \$7

F. "Masterpiece" Footed Bowl crafted of genuine 24% full lead crystal in Europe. Gift-boxed, each \$10

G. "Sheffield" Tea Bell for a rare taste in excellence! Crafted of genuine 24% full lead crystal in Europe. Stands 7 inches tall. Gift-boxed, each \$7

H. "Satsuma" Giftware. Grace your home with the magnificence of colorful peacocks and flowers. Choose: 7 inch lotus bowl, 8¼ inch temple jar, 10¼ inch plate, 2 quart teapot, 10½ inch vase, or 6 inch covered box. Attractively gift-boxed, each \$10

J. "Okura" Bath Set. Stunning stoneware trio includes: tumbler, toothbrush holder, and soap dish. Gift-boxed, set \$6

K. Set of 7 Brass Candlesticks are lovely scattered around a room or clustered for a more dramatic effect. Heights range from 3 to 9 inches. Gift-boxed, set \$12

L. Golden Oriental Vase crafted in four slender shapes. Lovely with or without flowers. 10½ inches tall. Gift-boxed, each \$10

M. "Belle Fleur" Collection. A floral fantasy! Choose: 6 inch bowl, 8 inch temple jar, 11 inch vase, 8 inch plate, 7 inch beveled vase or 5 inch covered box. Gift-boxed, each \$10

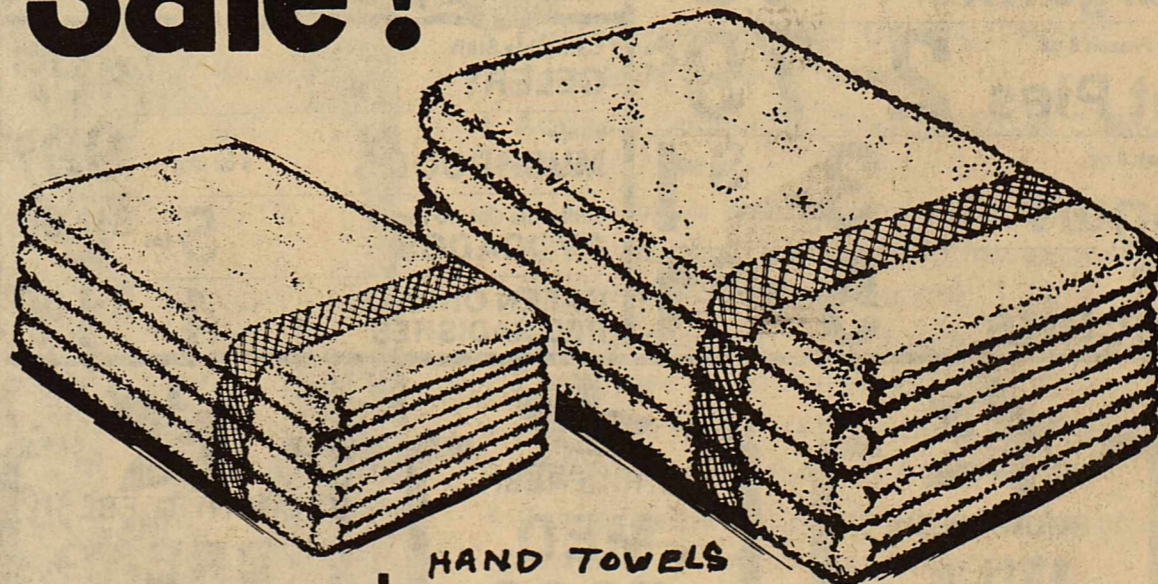


TOWELS

STOCK REDUCTION

Gift Specials
FOR MOTHER'S DAY

Sale!



HAND TOWELS
reg. \$2.27

reg. \$1.47

reg. \$4.69

SALE PRICE 1.97

SALE PRICE 97¢

2.98



AFFILIATED

WE HONOR ALL AFFILIATED TV ADVERTISEMENTS

1200 N. Ave E.
Haskell, Tx.

Open 8 a.m. til 8 p.m. Daily
Sunday 9 a.m. til 7 p.m.

Specials Good thru
Sunday, May 6

DOUBLE COUPONS

each TUESDAY & WEDNESDAY
at Modern Way Food Stores

We will redeem all manufacturer's "cents off" coupons for DOUBLE their value when the product is purchased.

—LIMIT—1 COUPON PER ITEM—

This policy does not include retailer (any food store) or free coupons, cigarette or tobacco coupons or refund certificates. The total redemption will not exceed the value of the item.

**Del Monte Round Up
Lasso A Corral Full of
Savings This Weekend
at Modern Way Foods**

PILGRIM'S PRIDE U.S.D.A. Grade "A"

FRYERS

TV Special

WHOLE Only

55¢

lb.

Pilgrim's Pride USDA Grade "A" CUT-UP FRYERS 68¢ lb	Fresh Frosted Small Meaty PORK SPARERIBS \$1.48 lb
Fresh Frosted Fryer Leg Quarters 48¢ lb	Shurfresh Smoked Sausage \$1.68 lb
Tyson Chicken Franks 58¢ 12 oz pkg	Delta Pride Farm Raised WHOLE CATFISH OR CATFISH NUGGETS \$1.98 lb

Extra Lean & Tender Beef Cube Steak \$2.98 lb	Lean Family Pack Ground Beef \$1.18 lb	USDA Choice Heavy Beef BONELESS RIB-EYE STEAK \$4.28 lb	Decker Quality Sliced Lunch Meats \$1.08 12 oz pkg
---	--	---	--

American Beauty
Flour
5 lb bag
79¢

Joy Liquid
Detergent
32 oz
2 for \$2.99

COLORTEX
Bath Tissue
4 ROLL PKG.
48¢

LIMIT 1 WITH \$10.00 PURCHASE

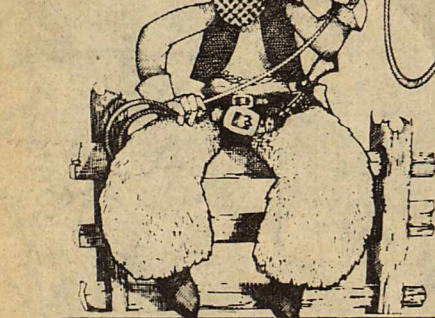
REG. MINT OR GEL
CREST
TOOTHPASTE
6.4oz. TUBE BUY 2 GET 1 FREE \$2.99

REG. SUPER SUPER UNSC. ULTRA HOLD
MISS BRECK
HAIR SPRAY
9oz. SIZE \$1.49

Del Monte
Tomato Catsup
32 oz bottle Limit One
89¢

Chicken of Sea
Tuna
6 1/2 oz
78¢

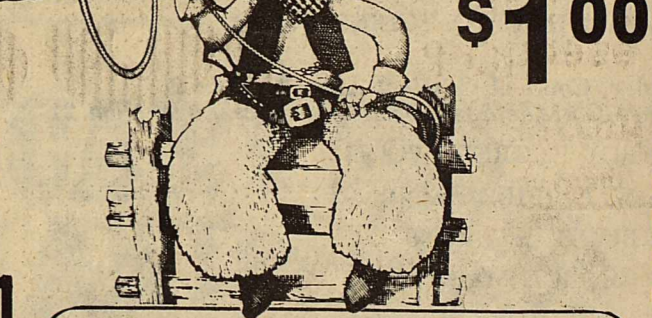
Golden Grain
Macaroni & Cheese Dinner
7 1/2 oz
3 for \$1.00



Del Monte
Tomato Sauce
5 8 oz cans
\$1.00

Del Monte
Golden Corn
Reg. or No Salt
17 oz
49¢

Folgers
COFFEE
1 lb can
\$2.39



DETERGENT
TIDE
49oz BOX
\$1.66

LIMIT 1 WITH PURCHASE OF \$10.00 OR MORE

Del Monte Whole Potatoes 2 16 oz cans \$1	Del Monte Leaf Spinach 2 15 oz cans \$1
Del Monte 17 oz Fruit Cocktail 78¢	Del Monte 16 oz cans Sauerkraut 2/\$1
Del Monte Peaches 16 oz can 69¢	Rainbo Sliced 32 oz Hamburger Dills \$1.19

DEL MONTE TOMATO
CATSUP
32oz. BTL.
89¢

LIMIT ONE

Kingsford 10 lb bag Charcoal \$2.79	Minute Maid 6 oz Orange Juice 69¢
Bluebonnet 1 lb sticks Margarine 59¢	Morton Frozen 8 oz Pot Pies 2 for 79¢
Shurfresh 8 oz Yogurt 3 for \$1	Shurfresh Biscuits 5 8 oz cans \$1

GLAD TRASH BAGS
10 count — Limit 2
99¢

Shurfresh Frozen
MINI COB CORN
8 ear pkg
99¢

HEFTY FOAM PLATES
50 count
\$1.19

FARM FRESH FRUITS & VEGETABLES
Washington Fancy Red Delicious
Apples
39¢
lb

California Stalk CELERY 49¢ ea	Sunkist LEMONS 49¢ lb
White MUSHROOMS 8 oz pkg 99¢	FRESH CARROTS 2 lb pkg 79¢
California Calavo Hass AVOCADOS 5 for \$1.00	Green CABBAGE 19¢ lb
GREEN ONIONS 4 for \$1.00	Yellow ONIONS 39¢ lb

DEL MONTE "Golden Ripe"
BANANAS
4 lbs.
\$1.00

3 STAR SHURFRESH MILK 1/2 GAL. 59¢	3 STAR SHURFRESH MED. EGGS DOZ. 49¢	3 STAR COUNTRY FRESH BREAD 1 1/2 LB. LOAF 9¢	3 STAR Color Tex Bath Tissue 4 roll pkg 9¢	3 STAR U.S. No. 1 Russet Potatoes 5 lb bag 49¢	3 STAR Bluebonnet Margarine 1 lb quarters 1¢
--	---	--	--	--	--

WITH ONE FILLED SUPERSTAR BOOKLET