

Indians Down Seymour, Face Hamlin Friday

The Haskell Indians, playing one of their best games of the season, demolished the Seymour Panthers in both team's district opener 39-0.

The Indian ground game came alive rushing for 358 yards, with Carl Dever having 125 yards, Doug Lanier, 106 yards and Robert Ivey, 70 yards. While the defense held the Panthers to only 56 yards rushing and 17 yards passing.

Ricky Rojas recovered a Panther fumble on the Panther's 21-yard line. With 8:36 left in the first quarter quarterback Todd Harris rolled around the left end for a 5-yard touchdown run. The PAT by Ivey was good. The Tribe scored its second touchdown of the first quarter on a 12-yard run by tailback Dever. The PAT by Ivey again was good. The Tribe converted 3 fourth-down plays on the drive.

Dever then scored his second touchdown of the night on a 12-yard run with 4:48 left in the second quarter. The PAT by Ivey was good. Dever's touchdown was set up by a 54-yard run by Ivey.

The Indians didn't score in the third quarter, but the Tribe came back in the fourth and scored with 5:36 left in the game. Carnell Thompson scored on a 2-yard run. The PAT was no good.

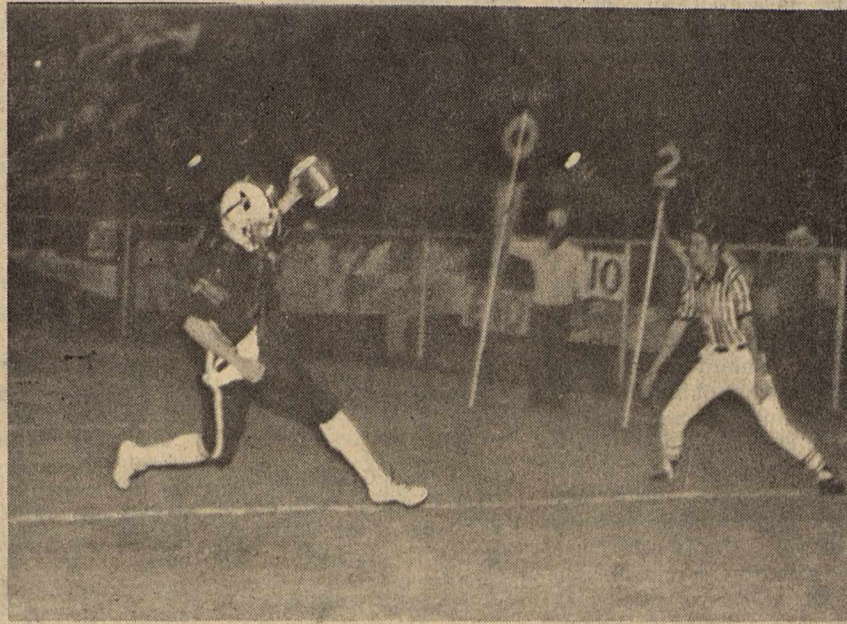
Seymour received the kickoff, and on their first play from scrimmage, Rojas picked off a pass and ran it 57 yards for the Tribe's final touchdown. The PAT again was no good.

The Tribe defense completely shut down the Panther offense. Key players were linebacker Sam Toliver, end Patrick McCoy and safety Rojas.

Friday the Tribe faces the Hamlin Pied Pipers, the No. 8 ranked team in Class AA, according to the

Associated Press. Kickoff time is 7:30 p.m. at Piper Stadium.

The Pipers have good size, their offense line averages 190 lbs., and they are quick. Running back Eddie Bolden and quarterback Jeff Lawless are the Pipers key offensive players.



Staff Photo by Don Comedy

SIX POINTS

Haskell Indian Todd Harris crosses the goal line for a Tribe score against the Seymour Panthers last Friday night. The Tribe won 39-0 with an impressive display. The Tribe offense mustered 358 yards on the ground while the defense held Seymour to only 56 yards rushing. The Tribe will travel to Hamlin Friday night to meet the Pied Pipers.

Region 14 Administrators Schedule Haskell Meeting

Region 14 Texas Association of School Administrators and Texas Association of School Boards will hold its biannual meeting in Haskell Tuesday October 18, beginning at 6:00 p.m. at the Elementary School Cafeteria.

James Lanier, Superintendent of

Haskell Independent School District who will serve as master of ceremonies said this is the first time the group has assembled here.

Official greetings will be made by Mayor Francine Johnson and Chamber of Commerce President Tom Watson.

Among those scheduled to be on program are Dr. Bill Kirby, associate commissioner in charge of Finance from Austin; Richard Veslaka, assistant executive secretary of the Texas Association of School Boards, Austin; Dr. Tom Lawrence and staff of Region XIV Service Center, Abilene. All area superintendents and school board members from this region plus some from Region IX have been invited to attend. Some 125 delegates are expected.

Following the meeting and dinner, entertainment will be provided by "The Brotherhood", Haskell's popular singing ministers, a musical group organized by the Chamber of Commerce in 1982.

In charge of decorations will be members of the Homemaking Class of Haskell High School, Jill Harris and Frances Easter, sponsors. The Welcoming Committee of the Chamber of Commerce, Grace Womack, chairman, will assist as greeters.

Oct. 9-15 Is Fire Prevention Week Who Is A Fireman?

The person who responds to society's needs with compassion;
The person who can get a cat out of a tree;
The person who has chosen "the world's most dangerous occupation";
The person who can save another's life in a physical sense, as others save in an emotional, psychological or social sense;
The person who bodily protects life and property in a country that honors intellectual achievements;
The person who is "on call" 168 hours a week;
The person that a little boy can really talk to;
The person that regularly misses birthdays, family gatherings, and other social events while responding to alarms;
The person who enters a burning building and, risking his own life in the dense smoke, searches the rooms for trapped life;
The person we forget all about---until we smell smoke.

PROCLAMATION

President Reagan has designated October 9-15 as National Fire Prevention Week, 1983.

In his official proclamation, the president said: "Each year thousands of American lives are lost, billions of dollars in property are needlessly destroyed and thousands of persons are permanently disfigured or disabled by burn injuries from preventable fires."

According to the Federal Emergency Management Agency's (FEMA) U.S. Fire Administration, more than 6,000 people die in fires annually. While fire deaths have declined significantly in recent years, the president's proclamation called the human loss from fire a "senseless and tragic waste of

COTTON
GRAIN
CATTLE

THE HASKELL

POULTRY
FREE PRESS
OIL

25¢

18 PAGES IN TWO SECTIONS
Plus 2 Inserts

"HASKELL—A GOOD PLACE TO VISIT; A BETTER PLACE TO LIVE"

VOLUME NINETY-SEVEN HASKELL, TEXAS 79521, OCTOBER 13, 1983 NUMBER FORTY-ONE

Plans Announced For 2nd Country Dinner Theatre

By Wanda Dulaney, Manager,
Haskell Chamber of Commerce

Responding to the many requests of those who attended last year's event, the Haskell Chamber of Commerce will hold its second annual Country Dinner Theater Saturday October 22 at 7:30 p.m. at the barn of Lois and Tom Richardson, Southeast of town.

TICKETS

Doris Phemister, chairman, announced that a \$5.00 ticket will cover a dinner meal, a community singsong and a one act play. Seating is limited to 300 and tickets may be purchased from any of the following Board Members or at the Chamber office: Raymond Andrada, Don Comedy, Mike Harrell, Dr. Ed Harris, Raja Hassen, Ben McGee, Doris Phemister, Tom Richardson, Steve Roper, Hank Sherman, Kay Smith, Charles Thornhill, Abe Turner, Tom Watson, Grace Womack.

FOOD

Grace Womack, chairman for food, said the menu will include: baked ham, potato salad, beans, cole slaw, cornbread and gingerbread, coffee and tea. Members of the Welcoming Committee will serve as greeters, servers and assist with ticket sales.

DECORATIONS

Kay Smith, chairman of table decorations is planning unique centerpieces and plate favors that are typical of the olden days, and will be assisted in

their construction by some members of the 4-H club.

SINGSONG

Following the meal, and again at the request of the public, a singsong will be led by Chamber president Tom Watson, backed by a quintette composed of R.C. Couch, Jr., Carolyn Everett, Carolyn Reynolds, Bro. Phil Harris, Delight Jones, accompanied by Ellen Rieger. They will lead the audience in singing Long, Long Ago, Red River Valley, Carry Me Back to Old Virginny, Home On The Range, Clementine, Sweet Genevieve, Silver Threads Among The Gold, When You and I Were Young Maggie, My Old Kentucky Home, Old Folks at Home, Down In The Valley, Froggie Went 'A Courting, Old Oaken Bucket, Darling Nellie Gray, For Me and My Gal, Tom Dooley, Shenandoah, On Top of Old Smoky, When The Saints Go Marching In, and Aunt Dinah's Quilting Party.

DRAMA

The last song will set the tone for the one-act play "The Quilting Party", written by the Chamber manager, and starring male members of the Chamber of Commerce Board of Directors playing roles of women and little girls: Charles Thornhill, as Charlotta, the hostess; Hank Sherman, as Henrietta, 7 year old daughter of Charlotta; Steve Roper as Charlotta's 5 year old daughter Stephanie; Abe Turner, as Abigail, Charlotta's mother-in-law; Dr. Ed Harris, the circuit preacher's wife Edwina; Bill Lane, Jr., the merry widow Billie; Tom Richardson, the single lady Thomasina; Raymond Andrada, the dressmaker Ramona; Gene Long (Chamber ex-officio) as Gina, lady tax collector and midwife. The setting is in the 1800's at Charlotta's home where the "girls" meet to make a quilt.

Haskell Commandry Inspection Set October 17

The annual inspection of the Haskell Commandry will be held October 17 beginning at 8 p.m. at Haskell Masonic Lodge.

The inspection will follow a meal served by members of the Order of the Eastern Star beginning at 6:30 p.m.

Official inspecting officer will be Lyle Cross, of Garland, Grand Sword Bearer of the Grand Commandry of Texas.

H.B. Berry will be the candidate. All knights are urged to attend.

Area Adult Education Classes Now Underway

The Sweetwater Adult Education Co-op has scheduled classes to begin next week in the area towns of Rule, Rochester, Weinert, Munday, and Knox City. Anyone 17 years of age or older may register for one of three levels of instruction. The basic level (grades 1-3) will be held for those persons who have little or no schooling, need English as a second language, and/or are working toward U.S. citizenship. The intermediate level (grades 4-6) will be for those who have completed the basic level and have had some formal schooling. The advanced level will involve those who have completed the intermediate level. The advanced level will help prepare the students for the General Educational Development (GED) High School Equivalency Test.

Persons may register at one of the schools according to the following schedule:

Rule classes will begin on Thursday, October 13th, from 6:00-9:00 p.m., at the Rule Elementary School. Mrs. Vida White and Mrs. Dora Torres will instruct. In addition to the three levels, Conversational Spanish will also be offered.

The Weinert Program, led by Mr. H.L. Guess and Mrs. Dolores Foster, will begin on Tuesday, October 11th, from 6:00 to 9:00 p.m., at the Weinert School. In addition to the three levels of classes, Mr. Guess will offer bookkeeping (beginning and advanced) and typing to advanced students.

The Munday classes will meet at the Munday High School on Tuesday, October 11th, at 6:00 to 9:00 p.m. Instructors will be Mrs. Ruth Ishmael and Mrs. Martha Andrade. Mrs. Ishmael will also teach bookkeeping in addition to the GED level.

The Knox City classes will begin at the Knox City High School on Tuesday, October 11th, 6:00-9:00 p.m., with Mrs. Joanna Delgado and Mrs. Lee Reeves instructing. Typing and bookkeeping are also available for advanced students.

Haskell may never be the same.

WHAT TO WEAR?

People always ask what they should wear, so may we suggest that it be anything casual that you are comfortable in. If you have any costumes you wore during the bi-centennial, it might be fun to put those on again. Blue jeans, prairie skirts, etc. This night is designed for your enjoyment and we know you'll enjoy it more in comfort.

WHERE'S THE BARN?

For those who missed the 1982 Country Dinner Theater, the Richardson Barn is off of South Sixth St. Turn South at the home of the C.O. Holts. The Richardsons live next door. It's where all the cars will be. The moon will be full to help you find your way.

School Board Accepts Bids On New Pick-up

Members of the Board of Trustees of Haskell Independent accepted the low bid on a new pick-up during their regular meeting Tuesday night.

The low bid of \$9,999.00 was submitted by Medford Buick-Pontiac of Haskell.

Board members also nominated Pat Hale to serve on the County Tax Appraisal Board and agreed to offer fingerprint identification of students to the parents.

Superintendent James Lanier said the fingerprints would be for the use and benefit of the students and parents and no copies would be kept by the school.

Training Center Receives Donation

The Haskell County Training Center recently received a \$100 contribution from the Brazos West Art Association. The Association raised the money through entry fees from their low-priced arts and craft sale two weeks ago, and presented the check to the Center last week.

"We are pleased that the Brazos West Art Association has shown such an interest in our local needs, and we are truly grateful for their gift," said Mary Jennings, director of the Training Center's sheltered workshop. She added that the money will be used for the installation of an extension telephone for the infant stimulation program, and for blinds for the windows of the Training Center building.

The Haskell County Training Center is a non-profit organization, funded by state and local government and by private contributions. It consists of a sheltered workshop for the adult handicapped in the area, and an infant stimulation program for children three years old and under who are developmentally delayed.

STATISTICS

	Haskell	Seymour
First Downs	14	3
Yards Rushing	69 for 358	28 for 35
Yards Passing	0	17
Passes	0-2	1 for 11
Passes Intercepted by	2	0
Punts, Average	2 for 44	7 for 29
Fumbles Lost	2	1
Yards Penalized	5 for 55	3 for 15

SCORES BY QUARTERS

	Haskell	Seymour
1st	14	0
2nd	13	0
3rd	0	12
4th	0	39
Total	27	39



About 25,000 to 50,000 years ago, or so state the scientists, fire was first used regularly to benefit man. Since that time the nature of fire has not changed.

It remains one of the most destructive forces known when not controlled.

In 12 B.C. a devastating fire destroyed most of Rome and Emperor Augustus organized the first fire department known to civilized man. The members of the department were also trained in fire prevention as well as protection and regularly made careful inspections of the kitchens, of the heating apparatus, and of the water supplies and every fire was the subject of judicial examination.

In 1666 the great fire of London left four-fifths of the city in ruins and gave birth to the development of fire insurance, building codes and a concentrated effort at fire prevention.

The word fire is derived from the Greek word PYR which is allied to the Sanskrit PU, which means to purify. Fire has long been recognized as an element of purification as evidenced by the many cultures that used "ordeal by fire".

If fire is a purifying element then certainly America must be among the purest countries of the world. Thousands of lives and billions of dollars in damages occur annually in America from fire.

Demonstrative of the effects of fire prevention and building code enforcement is a survey comparing fires in New York City to fires in London in the year 1855. In London there was one fire to every 323 buildings while in New York there was one fire to every 146 buildings.

In Colonial America it was the duty of every able-bodied man or boy to work to extinguish a fire. Not until Benjamin Franklin organized the first volunteer fire department in

Philadelphia in 1736 was there organization in fire fighting.

Fire prevention week in America, traditionally the second week in October, coincides with the anniversary of the Great Chicago Fire of 1871.

On the night of October 7, 1871 all 185 members of the Chicago Fire Department were called to a blaze in the west division. When the flames were extinguished, the fire had destroyed a four block area resulting in damages of about \$700,000.00 and left 30 firemen injured and three pieces of apparatus damaged.

Two nights later, October 8, a small fire started in the barn of Kate O'Leary. When the fire alarm sounded the department was directed toward the burned area of two nights earlier where embers still lit the night sky.

By the time the department backtracked to the O'Leary, the fire was out of control. High winds, and estimated 651 miles of wooden sidewalks and the massive amounts of wooden construction contributed to the fire.

31 hours after the alarm, a hard rain began to fall and the fire was extinguished.

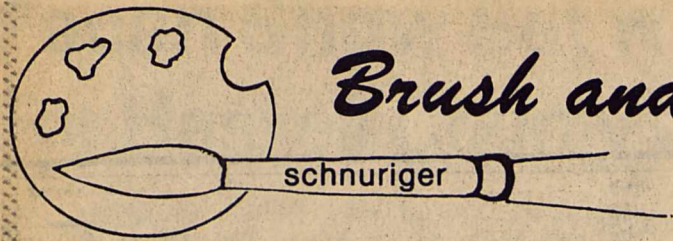
Almost 300 people died, over 100,000 were homeless yet the population soared to over 500,000 within the next eight years.

This week, October 9-15, commemorates fire prevention week.

Fire departments across the country are participating in special fire prevention programs this week. Most of these same departments work throughout the year on fire prevention.

The same dedication by all citizens would result in an untold number of lives and property being saved.

Take the time to learn how to prevent fire and work toward that goal every day.



Brush and Palette

What is the relation of the artist to the community? What good does a man's art do? There are those in the community who regard the artist a mere entertainer come with cap and bells to amuse and perform graces before a paying public. The true artist regards his work as a means of talking with people, of saying his say to himself and to others. It is not a question of willing acceptance on the part

of the public. If he is welcomed and paid it is very good, but whether or not he must say his say. Whitman was not paid for his work either in money or in appreciation at the time he did it. What we have from him, was a gift, at first - and for long after - unwillingly received. So also with other artists, either musicians or painters. Men have to give just as the bird has to sing. The artist is teaching the

world the idea of life. The artist teaches that the object of a man's life should be to play as a little child plays. Only it is the play of maturity - the play of one's mental faculties. Therefore we have art and invention. We have art in this community, which has a subtle, unconscious, refining influence. It practically means that the presence of good art will unconsciously refine a community and that poor art will do it incalculable harm. Have you enjoyed some of Haskell's good art recently?

Q. What is the scratchboard technique? that I missed at the Brazos West Art Association meeting?

A. The effects to be obtained with scratchboard are tremendously varied and, as with all other mediums, reflect both the artist's creative imagination and his technical command. Scratchboard is a line medium, that is, pure black-and-white; so a finished scratchboard drawing closely resembles a woodcut or a steel engraving. A scratchboard drawing is just a 'drawing' as any pen or brush rendering. However, instead of drawing black lines on white, the scratchboard artist creates white lines on black. The cutting is done on a special type of cardboard that is painted black and when cut into, the white lines make the design.

Q. What is a scratchboard tool?

A. A steel tool containing 7 different scratching configuration patterns. It scratches a single line, plus 4, 6 and 12 lines in different widths. It enriches scratchboard work.

HINT: "A man anxious for knowledge adds more to himself every minute." Laotse

Write your questions and hints to me, Faye Schnuriger, P.O. Box 134, Haskell, Texas 79521. I will not use your name but do want you to sign your letters.

Surprise Party Honors Mrs. Stone's Birthday

Mrs. Lina Stone was honored at her home at 606 S. Ave. E with a surprise birthday party on Tuesday, Oct. 4. She was celebrating her 91st birthday.

Twenty-five guests attended the party hosted by her neighbors and friends. Lime punch and cake was served.

The Haskell Free Press
Established January 1, 1886
PUBLISHED EVERY THURSDAY

MEMBER 1983

TEXAS PRESS ASSOCIATION

BILL COMEDY—Publisher
DON COMEDY—Editor

Entered as second-class matter at the post office at Box 577, Haskell, Texas 79521, under the Act of March 3, 1879. (USPS 237-040)

SUBSCRIPTION RATES
in Haskell and Adjoining Counties

	Total
One Year	\$7.25
Six Months	\$5.00
Two Years	\$14.00
Elsewhere in Texas	
One Year	\$8.50
Six Months	\$6.00
Two Years	\$16.00
Outside of Texas	
One Year	\$10.00
Six Months	\$7.00
Two Years	\$19.00

NOTICE TO PUBLIC—Any erroneous reflection upon the character, reputation or standing of any firm, individual or corporation will be gladly corrected upon being called to the attention of the publishers.

Evening Ceremony Unites Gray, Maupin

Miss Susan Marie Maupin and Mr. James Parker Gray exchanged marriage vows at eight o'clock in the evening, Thursday, October 6, 1983 in the home of the bride's parents, in Odessa. Rev. B.E. Stroud retired minister of the United Pentecostal Church performed the double ring ceremony.

The bride is the daughter of Mr. and Mrs. William J. Maupin of Odessa and the granddaughter of Mrs. Jack Sanders of Weinert. The groom is the son of James Gray.

The bride was escorted by her father and given in marriage by her parents. Her wedding dress was of white oriental satin with a double lace ruffled collar and long slim sleeves made in princess style. She wore a white hat of mesh woven polypropylene with polyester-organza ruffled trim. She carried a cascade of pink bridal roses interspersed with stephanotis showered with pink ribbons. Something new was the bride's dress, for something borrowed she wore a diamond necklace of her aunt Sue Cox, something old was a dime belonging to her grandmother Sanders and a Buck Rogers ring of her fathers, she wore a blue garter and a penny in her shoe minted in the year of her birth for luck.

Mrs. Renault Herrington of Cross Plains, cousin of the bride, sang "The Rose" as the bridal attendants entered the room.

Miss Loretta Lynn Maupin, sister of the bride was maid of honor and Miss Karen C. Moore was bridesmaid. They wore deep pink dresses made identical to that of the bride except with puff sleeves. They wore wrist corsages of pink carnations with pink ribbon.

Mark Bradshaw was the best man and William Mark Maupin, brother of the bride served as groomsman and usher.

Stripes of bright pink crepe paper with white and pink

wedding bells in the center and streamers with white wedding bells on either side formed the backdrop for the nuptial vows. Four large baskets of Shifolera with pink flowers completed the setting.

The bride's mother wore a street length dress of Blossom Rose Chiffon with matching lace trim and a corsage of pink carnations and rose buds.

Following the ceremony, the parents of the bride hosted a reception. The tables were covered with floor length pleated white embroidered Alencon lace with an underlay of pink. Wedding bells of pink and white with pink ribbon accented the center and corners of the bride's table. The bride's table held the three tiered wedding cake decorated with pink confection roses, white love birds and wedding bells. Dividers of white lattice posts with a flower basket holding a white cherub was between the tiers. It was topped with a bride and groom. Centerpiece was a five arm sconce with fluted votives with candles of varied hues of pink. Pink punch was served from a crystal punch bowl. Crystal compotes held nuts and mints. Miss Clarisa Calloway, Christenen Cicio and Kim Notgrass, all dressed in identical sheer nylon pink dresses, served at the bride's table. An umbrella of pink flowers hung behind the table.

The groom's table with an identical lace cloth held a carrot spice cake made in the form of a horseshoe with pink trim that said "Good Luck" - "Susan and Bud". Centerpiece was a crystal vase of fresh pink carnations and rose buds. Coffee was served. Crystal compotes held nuts and mints.

A circular table in the living room was covered with a round pink linen cloth and held the white bride's book and white plume pen where guests were registered. A crystal vase of fresh pink carnations and rosebuds was on the table.

Mrs. Jack Sanders of Weinert, Mrs. Dudley Phelps of Haskell, Mrs. Walter Cox of Daingerfield, Mrs. Darwin Slade of Eagar, Ariz., Mrs. Andy Sanders and her daughters of Cross Plains attended the wedding.

Hospital Notes

Visiting hours at Haskell Memorial Hospital are 2 to 4 p.m. and 7 to 8:30 in the evening. No visiting hours in the morning. No children under 14.

ADMISSIONS

MEDICAL: John Nelson, Munday; James Amerson, Munday; Emilio Arredondo, Haskell; Ricardo Ortiz, Haskell; Earnest Saffel, Rule; Rösie Shipman, Haskell; Alberta Crane, Haskell; Tillie Chapman, Haskell; Bernhard Letz, Old Glory.

DISMISSALS

Jerry Little, Anna Flores, Carrie Elliott, Iva Palmer, George Gable, Alex Torres, Hector Hernandez, Willie Pace, Victor Davenport, Linda Briscoe, Michele Haskin, Steve Cothron, Ona Cummings, Jessie Parmelly, Robert Pritchard, Coy Tuggle, Amber Huddleston, Michael Potect.

Anesthesia Fund

Mr. and Mrs. Bob Guess in memory of Lena Belle Nehring, Eric Bergstrom, and Gary Frierson.

Happy Birthday Tami



Ramon Rice, Santa Fe New Mexico artist with a painting entitled "Whispering Hills"

Fitness Shop To Present Art Work Of Ramon Rice

The Fitness Center, Avenue I, Haskell, will be the scene of a very special art exhibit on Saturday, October 15, beginning at 8:00 p.m. Ramon Rice, renowned artist from the Santa Fe, New Mexico area, will be in attendance at a show and sale of his very latest works, painted especially for this showing.

David and Laura Tidwell, owners of the Fitness Shop, first saw Ramon's work this past summer and immediately purchased one of his landscapes. A number of their friends were interested in seeing more of his work and in working through Galeria de Alamo in Alamogordo, New Mexico, they were able to set up this art show.

Ramon's work has taken top awards for numerous years at the New Mexico State Fair and 2 years ago, a painting of a boy with his lamb was chosen by the Governor's Commission to be on the Easter Seals Christmas Card. He was recently commissioned to do a full length painting of Mrs. Don Meredith and it was featured in a full page of the May, 1983, issue of Southwest Art magazine.

A man of endless talents, Ramon has designed furniture, interiors, has made violins, and sings opera. After

Lackey Reunion Set Oct. 16 In Haskell

The family of the late John and Beulah Lackey will hold their annual reunion Sun. Oct. 16th at the Corral Building located on the Haskell County fair grounds. Friends and relatives are welcome.

Brightly colored — attention getting — Open-Closed Signs for your office or business. Comes complete with changeable letters in black or red. Also includes a sign for counter top use. See at the Haskell Free Press

he had earned a Masters degree in Philosophy and another in Religious Philosophy at the University of Southern California, he spent numerous years traveling in Europe, learning the language and visiting the great art galleries and museums. Over a 25 year span of full

time painting, his art work has been collected by hundreds of people, including such notable art collectors as the Roy Hoeffenz of Houston, and the immediate past New Mexico Governor Jerry Apodaca.

The public is invited to attend this showing and to meet and visit with the artist.

OPENING SOON Kay's Kut & Kurl

804 North 7th
Open Tues. thru Friday
Call Now for Appointments
Kay Perry Di Anna Shortes

Sidewalk Sale

(in the happy event that it rains, come inside)

One Rack Infant & Toddler Boyswear 1/2 price and less	Bell Bottom Jeans Student & Men's Sizes \$5.00
Junior & Misses Blouses 1/3 - 1/2 off	Selections from throughout the store Dollar Table

Saturday, October 15, Only
The C&B Store
East Side Square Telephone 864-2250

Sidewalk Sale at Fraziers

Decorator Plaques 1/2 Price
Includes Mother's Day, Father's Day Grandmother & Grandfather.

LP Albums 1/2 Price
8 Track Tapes 1/2 Price
45 RPM Records 1/2 Price
Eureka-Mighty Mite Vacuum cleaners, Reg. \$129.95, on sale \$89.95

Other misc. items-reduced for Sidewalk Sale

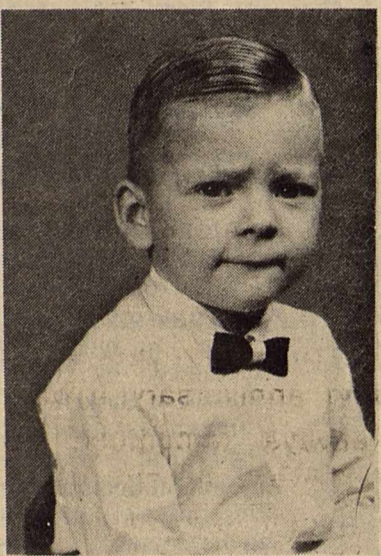
Frazier's Appliance
Haskell, Texas

Surprise Birthday Party Honors Mrs. Jack Sanders

Mrs. Jack Sanders of Weinert was the recipient of many nice and useful gifts at a surprise birthday dinner held in her home Sunday Oct. 9, 1983. Children and their families present included, Mr. and Mrs. Dudley Phelps, Haskell, Mr. and Mrs. Travis Sanders, Coleman, Mrs. Ethel Slade and Mrs. David Slade of Eagar, Ariz., Mr. and Mrs. Steve Slade and boys, Irving,

Mr. and Mrs. B.D. Kirkland, Mr. and Mrs. Jacky D. Kirkland, Mr. and Mrs. Brian Cornett and Jennifer of Ft. Worth, Mr. and Ms. Walter Cox and Junior, Mrs. Scott Sartain and Casey of Daingerfield, Mr. and Mrs. Jacky Sanders, Ricky and Rex of Irving, Mr. and Mrs. Rocky Sanders, Shawn and April of Stamford.

Happy Birthday Boss



11 x 14 Wall Portrait in Living Color

Never before offered at this Price!

AT 99¢

Plus 76¢ for handling



Compare at \$25.00!

FREE to all Senior Citizens Sat. Oct. 15th
NO EXTRA CHARGE for groups
LIMITED OFFER one per subject, one per family 10-1 & 2-4 p.m.

JEANS COUNTRY

416 N. 1st

Haskell

Grand Opening

of our expanded facilities

Thursday, October 13

10:00 a.m.

Come by for coffee and register for door prizes.



409 South First Haskell, Texas Phone 864-2901

Sidewalk Sale Sat. Oct. 15th



PAM MATHIS—KIT HORNE

"A Time For Harvest" Is HYH Program Topic

The Haskell Chapter of Young Homemakers met in the home of Mrs. Robbie Peiser Monday night, October 10th. Delicious refreshments were served by hostesses Sharon Brown, Carla Long, Karen Crain, and Charlotte Peiser.

President Rosemary Brown introduced the guest speaker Mrs. Barbara Kenley of Abilene. She spoke on the topic, "A Time For Harvest." The members were thoroughly entertained and informed on problems facing today's families.

Other items of interest were a report on the area YHT Convention by Pam Mathis. She attended the convention in Stephenville, on Oct. 1. Each member attending was required to bring a recipe book (to be exchanged among members) and a handmade name tag to be judged. Pam won first prize for her original idea and was presented a plaque by Kit Horne, Farm and Ranch supervisor for West Texas Utilities. She accepted a certificate for the chapter for being nominated for Outstanding Chapter.

Then Mrs. Gene Jeter was surprised with an apron from the chapter, to show their appreciation for all her help. It was white muslin, bearing the names of both past and present members. Mrs. Jeter has retired from teaching Homemaking after 35 years. She was the Haskell YHT advisor from Sept. of 1973 to May of 1983. She was also the area advisor for area officer Billie McKeever, from 1973-74, and state advisor for state officer Billie McKeever from 1975-77.

Mrs. Jeter was also presented a certificate from the state association, naming her Honorary Member of Young Homemakers of Texas. She has been a great asset to the Haskell Chapter.

The Young Homemakers would like to remind everyone of the upcoming Stew Supper to be held Thursday, Oct. 20 from 5:30 - 8:00 in the High School Cafeteria. Prices will be \$3.50 per person and children under 12 will pay 20 cents per year at the door.



MRS. GENE JETER

Initial Meeting Of Progressive Study Club Held

The initial meeting of the Progressive Study Club for the 1983-84 club year was held in the Haskell National Bank Community Room on October 6, 1983 at 7:30 with Mrs. Hugh Horton, president, in charge. In her opening remarks she quoted her motto for the year, "Lord, help me to be optimistic, looking always to the future-coming up with new ideas and never becoming stale." The club began its 46th year.

The yearbooks with the theme, "The Stars Are Bright

Deep In The Hearts of Texas Women," were presented by Mrs. Mike Harrell, first vice-president and yearbook chairman. She was assisted by Mrs. Brian Toliver, Mrs. Charles McCauley, and Mrs. Bailey Toliver, members of the yearbook committee. Each one presented a large star featuring a program highlight such as, conservation with Ms. Ranell Scott, community education with Mrs. Elsie McGee and a book and periodical drive for the Haskell County Library, public

affairs with Ms. Nancy Roberson in the field of aviation, Americanism featuring Mrs. Charles Stenholm, a Texas woman in politics, international friendship with Mrs. Duward Campbell, home life and health with Dr. Michele Johnson, a Texas woman in medicine, National Family Week with Mrs. Alton Byrd, a Texas minister, and Molly and Brenda, Texas

women with the art of quilting. The yearbook cover features the Texas star quilt pattern brightly colored.

Mrs. Mildred Berry, recording secretary, read the minutes of the May 5 meeting and the executive meeting on Sept. 8. Mrs. Gary Druessedow, corresponding secretary, read letters of resignations. Mrs. Mary Martin was appointed reporter to replace Mrs. Lee Bahney, who moved. Mrs. Druessedow also read an invitation from the Pierian Club of Stamford to join them in celebrating their diamond anniversary with a Twilight Reception, 7:30 p.m., October 27, 1983.

East Wells. Mrs. Brian Burgess, second vice-president, reported on the tea held for contestants in the home of Mrs. Janet Strickland for the Haskell County Fair Queen's Contest and the presentation of the queens in the elementary building. Miss Lori Landes of Rule was chosen by three out-of-town judges. The club voted to continue sponsoring these events. The club voted to enter a float in the annual community Christmas parade. Mrs. Lucille Gannaway and Mrs. Janet Strickland were elected to fill vacancies on the nominating committee. The financial report compiled by

Mrs. Virginia Jones, 1982-83 treasurer, was presented by Mrs. Elbert Johnson, treasurer. Duties for the Chicken Trazzini Supper, Oct. 28, in the high school cafeteria, were assigned by Mrs. Brian Burgess, finance chairman. Tickets to be sold were distributed. Mrs. Pete Mullins was elected to active membership. Mrs. R.W. Herren gave a brief federation counselor report.

Star cookies, sandwiches, and punch were served by Mrs. Elbert Johnson, Mrs. Mary Rosser, and Mrs. James Blankenship, hostesses. Mrs. Kenneth Patton was a guest.

Haskell VFD Auxiliary Learns Bow Tying Tricks

Members of the Haskell VFD Auxiliary met Tuesday Oct. 4 at 7 p.m. for their regular monthly meeting.

The business meeting was held by Betty Stocks, president.

Members discussed helping with a Halloween party for members of Rice Springs Care Home. The kindergarten class of Mrs. Shirley Sloan will adorn spook costumes and parade for the residents. Members will have refreshments and favors for the residents.

The Haskell Fair Olympics raised \$134.10 to benefit the Auxiliary. Members discussed the upcoming project to support Fire Prevention Week.

Doris Watson presented the program featuring lessons in bow tying. Members used their talents to make bows. Hostesses for the evening were Nene Comedy and Nancy Trussell.

SEE US for all your office supply needs: pens, ledgers, desk accessories, filing needs, etc. *Haskell Free Press*

Engagement Announced

Mr. and Mrs. Robert Yeddell of Haskell are proud to announce the engagement and approaching marriage of their daughter, Birdie Mae Jordan, to Rev. Harvey Maurice Goudeau, son of Mrs. Elna M. Talton of Wichita Falls, and the late Leonel Goudeau of Shreveport, Louisiana.

The bride-elect is a 1978 graduate of Haskell High School. Miss Jordan attended Western Texas College. She is employed by Mr. and Mrs. Gary Druessedow of Haskell. Miss Jordan is also the daughter of the late Frank James Jordan Sr. of Los

Lunas, N.M. and the granddaughter of Major Lewis, Sr.

The prospective bridegroom is a graduate of Washington High School in Lake Charles, Louisiana, and attended Bishop College in Dallas, and Mississippi Baptist Seminary in Jackson, Mississippi. He is an evangelist of 14 yrs.

The couple will be married Dec. 23 at First Baptist Church in Haskell. All friends and relatives are cordially invited.

The Rev. Filmore Johnson of Midland and Rev. Billy Joe Robinson of Wichita Falls will officiate.

HASKELL Lunch Menu

Oct. 17-21 Monday

BBQ Wieners
English Peas
Pineapple Upside Down Cake
Rolls & Butter
Milk

Tuesday

Chicken Fried Steak-Gravy
Creamed Potatoes
Peaches
Rolls & Butter
Milk

Wednesday

Pizza
Salad
Applesauce
Milk

Thursday

Meat Loaf
Mixed Vegetables
Pears
Rolls & Butter
Milk

Friday

Pinto Beans
Grated Cheese
Slaw
Pineapple Slices
Cornbread & Butter
Milk

BREAKFAST Monday

Grape Juice
Cereal
Milk

Tuesday

Apple Juice
Oatmeal
Milk

Wednesday

Grape Juice
Toasted Roll
Milk

Thursday

Juice
Cinnamon Toast
Milk

Friday

Juice
Oatmeal
Milk

Gena Whitaker Is New Western Texas Cheerleader

Gina Whitaker from Haskell has been named a cheerleader for Western Texas College for 1983-84.

Miss Whitaker is a freshman at WTC and is majoring in legal secretarial studies. She was graduated from Haskell High School where she was salutatorian of her class, a member of the National Honor Society and Basketball Sweetheart. She was named Best Actress by the Haskell High School Drama Department.

Her parents are Mr. and Mrs. Louis Whitaker.

Other cheerleaders for WTC this season will be Vicky Vargas, sophomore from

Ozona; Veda Owens, sophomore from Sweetwater; Loretta Morris, freshman from Colorado City, and Dee Dee Carter, freshman from Galveston. Vicky Lopez, Snyder freshman, is alternate. Mickey Baird, Student Activities Director, serves as faculty sponsor for the cheerleaders.

The WTC Westerners will play their first home game at 7:30 p.m. on Nov. 1 when they host the McMurry JV in the Scurry County coliseum. The Dusters first home game will be Nov. 3 when they play Weatherford College at 6 p.m. in the coliseum. The Dusters will host the second annual WTC classic Nov. 25-26 in the

coliseum. Teams playing in addition to WTC will be Cooke County, Amarillo College, Cisco Junior College, Howard College and Hill Junior College.

Naomi Class Holds Fall Social Oct. 10

The Naomi Sunday School Class, of the First Baptist Church held a fall social in the home of Mrs. Frances Lane, Monday night, Oct. 10th.

Hostesses were Frances Lane, Mattie Muriel Felker and Group 4 of the class. Mrs. Lois Stoker gave the opening prayer and the class teacher, Mrs. Billie Cadenhead brought the devotional.

Each class member gave their favorite scripture. Refreshments were served to 24 members.

Chicken Spaghetti Supper To Benefit Civic Center

The ladies of the Progressive Study Club invite you to their Annual Chicken Spaghetti Supper October 28, 1983 from 5:00 to 7:00 at the High School Cafeteria.

Once again, a delicious menu of chicken spaghetti, tossed salad, peach halves, french bread, and cake has

been planned. The tickets are \$4.00 each. Paper plates will be provided if children would like to share a ticket.

Tickets are now available from any member of Study Club. Plan now to attend this meal, which will benefit the new Civic Center.

Shower Honors Meloney Bruton

Meloney Bruton was honored with a baby shower on October 1. Guests were registered at a round table covered with a white lace tablecloth. The book was made by Frances Draper.

Refreshments were served from a table covered with a white lace tablecloth. The cake

was a blue and pink sheet cake adorned with an assortment of baby toys. Party punch and an assortment of raw vegetables, chips and dips and mints were served.

Hostesses were Kathy Perlman, Frances Draper and Karen Livingston.

START HERE FOR SAVINGS!

ARTCARVED SILADIUM® H.S. CLASS RINGS NOW WITH THIS AD **\$79.95**

ONLY PLUS up to **\$26** worth of custom features FREE!

Every ring is backed by the ArtCarved Full Lifetime Warranty. This offer expires November 30, 1983 and is to be used only for the purchase of ArtCarved Siladium® Class Rings.

ArtCarved Bassing Jewelry

404 N. 1st 864-2548 Haskell, Tx 79521 873 J-0496

BRING THIS AD

KOTAB NEWS

Bill Chaney
10 P.M.
Weather

You Can See The Difference!

Elmer J. Hawkins M.D. announces the relocation of his practice from Stamford to Fisher County Clinic and Hospital

Opening Monday, November 7

The clinic is located 3 miles South of Rotan on Texas Highway 70. Dr. Hawkins will see patients in Stamford until Saturday, October 22. The Stamford office will be open for business transactions through November 11.

Sidewalk Sale

Saturday October 15th

Everything on the Sidewalk—Bargains

- *Odds and Ends
- *Discontinued Furniture Items
- *Closeout Hardware Items

All 1/2 Price

Jones Cox & Co.
Country Store

Guess What?

Boggs & Johnson has received a new shipment of

Waterbeds!

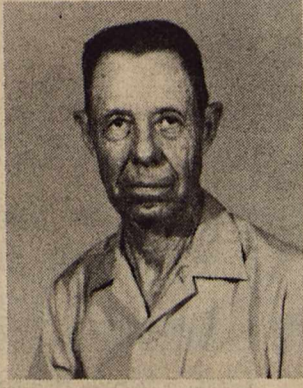
We will give **Triple Green Stamps** on any Waterbed or Waterbed accessories purchased during the week of October 12-19

GREEN STAMPS



FIRE PREVENTION

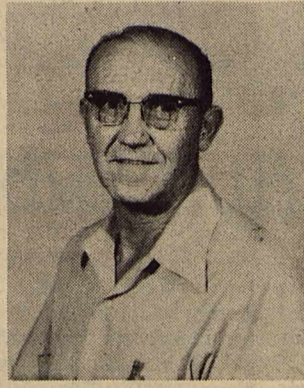
OCTOBER



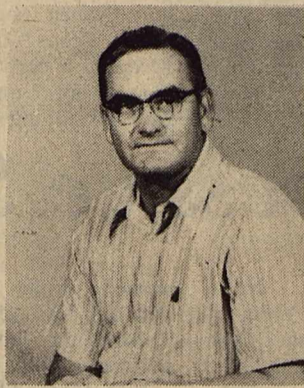
SATCH LUSK
Supervisor
1944



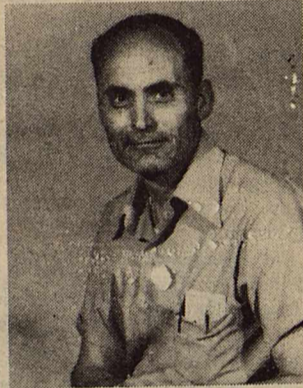
TOM WATSON
Chief
1952



CHESTER HODGIN
Assistant Chief
1954



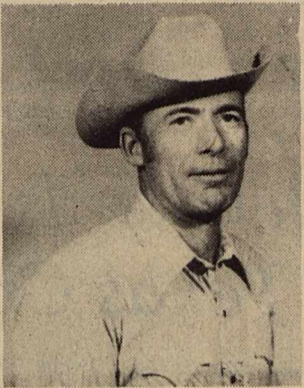
JOHN WATSON
Sec.-Treas.
1959



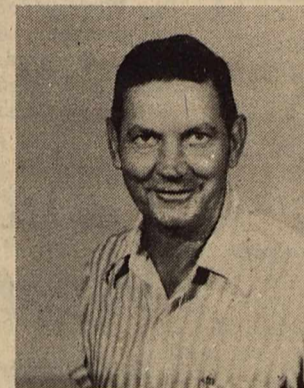
OLEN KING
1954



OLEN BARTLEY
1954

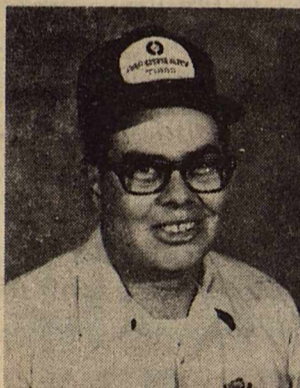


WAYNE WAINSCOTT
1960

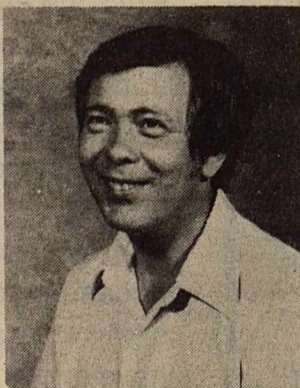


WILBERT KLOSE
1964

Not Pictured
CLIFFORD SHORT
1981



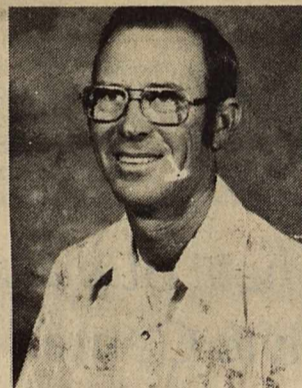
ROY TRUSSELL
1976



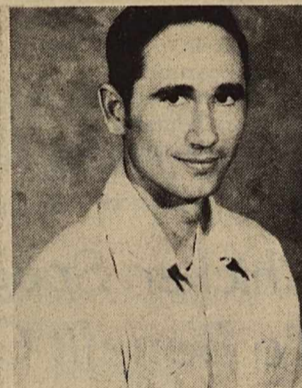
CHARLES REED
1977



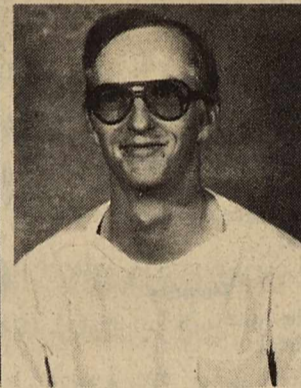
BILL LANE
1978



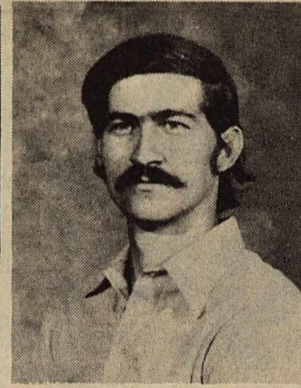
JERRY STOCKS
1978



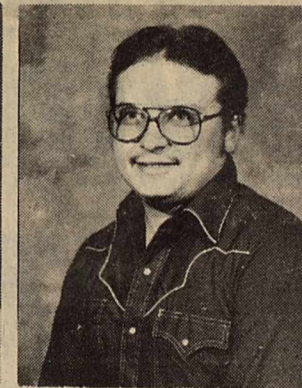
KENNY WATSON
1978



SAM WATSON
1978



PHILLIP COCKERELL
1979



JOHN ANDRADA
1981



DON C...

The following support and salute the members of the Haskell

FIRE

Jody & Betsy Bellah
R. A. Brown Ranch
Mr. & Mrs. J.H. Strain
Bill & June Perry
Melvin & Juanita Miller
James & Judy Dunlap
Sammy & Gerre Larned & boys
Gene Fischer Family
John & Gena Trice
Dale & Ruby Mae Middlebrook
The Wayne Wells Family
The Hollis Callaway Family
Max, Jeannette & Gina Calk
Kenny, Wanda & Casey Thompson
Mr. & Mrs. S.L. Griffith
Mr. & Mrs. W.B. Griffith
Jess & Lillian Mickler
Henry Druessedow
Max, Christi & Kaki Stapleton
Lewis & Joyce Thomas
Bud & Jo Turnbow
Andy & Edna Anderson
Hugh & Sandy Horton
The Jim Pope Family
Bill, Kay, Matt & Mandi Perry
Bill, Susan & Mitchell Cox
Tom & Lois Richardson
Mrs. Charlie Conner
Sharon, Kristi & Scott Alves
Agricultural Services, Inc.
Patsy Casselberry & Leone Pearsey
Steve & Laura Alsabrook
Wesley & Stephanie Alsabrook
Edith Wheatley
Frank & Roberta Jenkins
Jones Cox & Co.

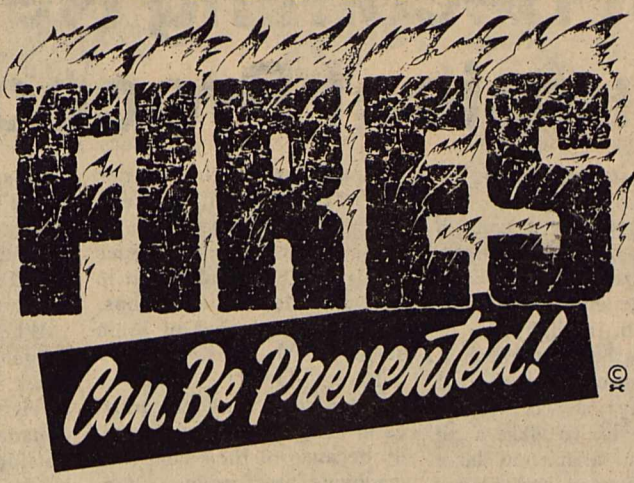
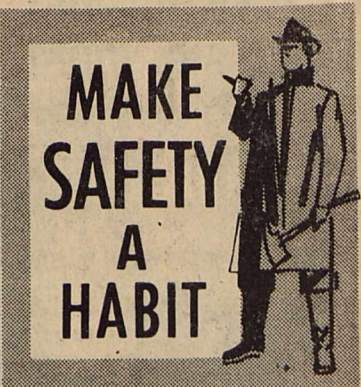
Raymond & Tommie Andrada
Grace Womack
Wayne & Dorothy Wells
The John Wallace Family
Max McMeans Family
Tom Watson, Jr.
Mary & Brownie Watson
Leon & Delight Jones
Jim & Lila Brock
Owens Radio & Electric
The Pat Haie Family
Larry Gilliam Family
Mr. & Mrs. Bill Trammell
The Charles Thornhill Family
The Jimmy Browning Family
Nene, Jennifer & J.J.
Tim, Paula & Mik Everett
Bailey & Nancy Toliver
Thelma King
Wanda Dulaney
Lyla Mary Isbell
Elizabeth Stewart
The Ronnie Reel Family
Bill Blakley Family
Ronny, Kathleen & Chris Tanner
Harlan & Jimmie Weinert
The Duane Gillys
Joetta Burnett
Dave Miller Family
Mr. and Mrs. Rick Perry & Griff
The J.C. New Family
The Bill Jones Family
Mr. and Mrs. Glenn Brzozowski
Mrs. Adams Fifth Grade
Mrs. Fosters Fifth Grade
Willie & Betsy Moeller

Joe Rodriguez & Family
E.L. & Bernice Hilliard
Ervin & Isabella Lehde
Micheal & Peggy Adams
The Kenneth Jarred Family
The Dan Griffith Family
The Jerry Hunt Family
Clifford & Thelma Thomas
The Ken Lane Family
R.V. & Violet Earles
The Bobby Watson Family
Bob, Debbie Earles & Family
Francis Blake
Gene & Mabel Overton
Bobby L. & Melba Howard
Mr. and Mrs. Nored Boone
Mr. & Mrs. John Thomas
The Ted Jennings Family
The Burl Medford Family
Buddy & Jenny Brazell
The Gary Druessedow Family
Ray & Amelia Perry
Mr. & Mrs. C.G. Burson, Jr.
Skeeter Miller & Family
Mr. & Mrs. Norman Nanny
Mr. & Mrs. Jimmy Hannsz
The Wallar Overton Family
Bob & Anita Herren
Bill & Stella Steele
Buck & Carolyn Everett
Mike, Teri & Jessica Turner
John, Betty & Betsy McDermett
Bettie Wainscott
Jim, Ann, Jimmy & Jamie Johnston
Tim, Linda, Jimmy & Pat Burson
Louetta, Shane, Loutina & Nole

Nancy, Sto
Mr. & Mrs.
Linda & Rh
Bill & Doris
Merry, Er
Dr. Wayne
Bro. Mike
Joey Grave
Joe & Joyce
Mayree Ho
Paul C. Wi
Kim Nemir
Casey Cal
Polly Ma
Marsha Gu
Ford, Don
The Roper
Sue Pate
Wilda & Ar
Joe, Sarah
L.O. & Bes
The Darrel
The Don
Rodney, L
Kenny Wa
Larry Cun
Pat Henry
Cotton & C
Sticky & J
Charles G
Twain & S
The Jim
The Doyle
Jimmy & H
Tommy Cl
CW Cattle

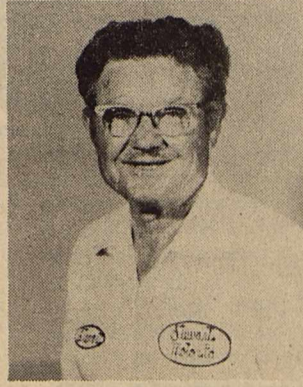
CONVENTION WEEK

SEP 9 - 15

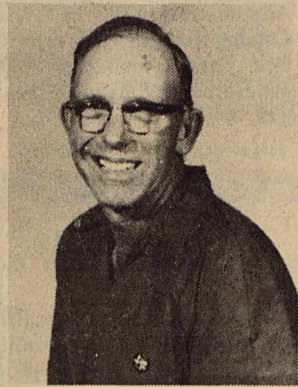


Fire Department

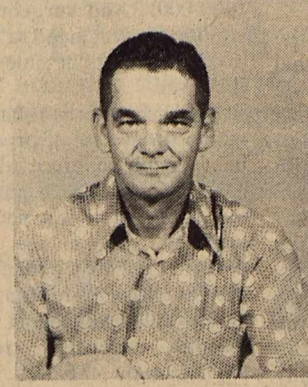
organized the Haskell Volunteer Fire Department to protect the community into two companies. The equipment consisted of two, one minute capacity each. They were equipped with 70 feet of 3/4 inch off guns. The two chemical engines were located at the fire station. The per minute pumper, three 500 GPM pumps, two rural chemical engines. Applicants being selected to fill vacancies in the 35 member company, Floyd "Satch" Lusk who lives above the fire station. He has served as Supervisor since 1949. Chester Hodgkin, Assistant Supervisor, has served as Chief since 1959. Other members include: E.J. Stewart, 1950; Sonny Reynolds, 1954; Phillip Cockerell and Sam Watson. John Watson is the longest serving member over 420 years of service to the City of Haskell. They receive over 1800 man hours of training per year. The department serves the needs of area residents, the department constructed a new fire truck (Jaws of Life) for use by the rescue squad. The department attends district conventions per year; the state convention; Texas Fire Control School and the West Texas Fair Pumper School. The department has also accepted the responsibility of spotting fires for the community. About fifteen members of the department also are not normally associated with fire fighting.



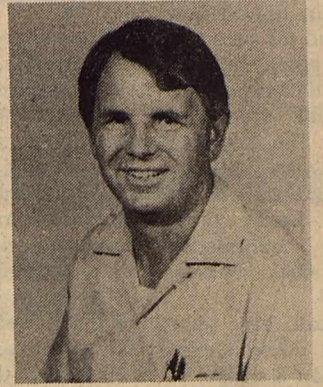
E. J. STEWART
Captain
1950



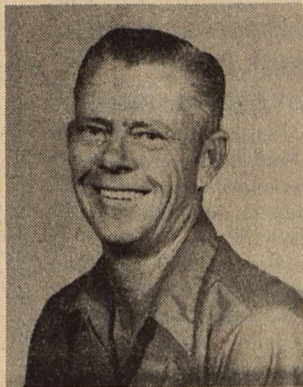
SONNY REYNOLDS
Captain
1954



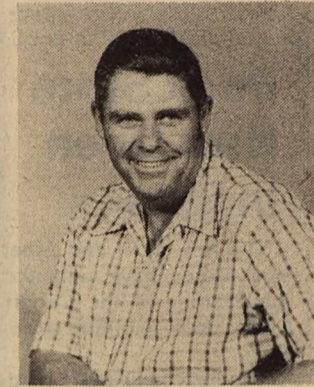
TOMMY WATSON
Captain
1961



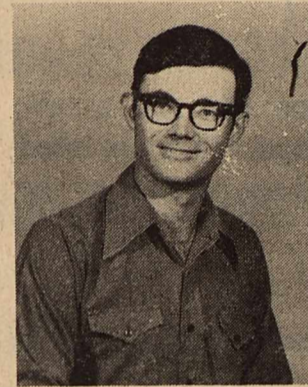
BILLY JACK RAY
Fire Marshall
1966



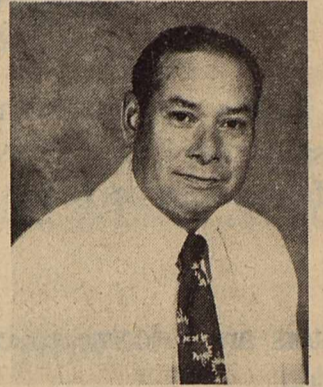
E. B. LOVE
1967



TED JENNINGS
1973



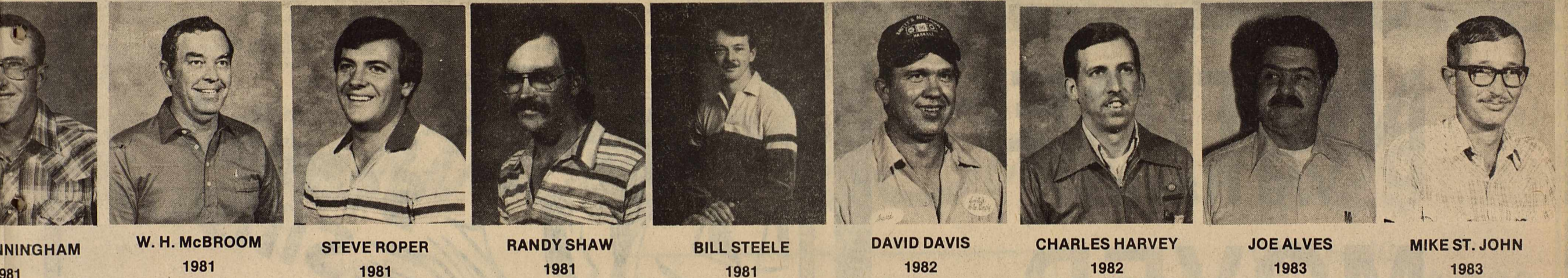
DON COMEDY
1976



JOE CORTEZ
1976

Not Pictured
MIKE NEW
1982

Will Be Used By The Ladies of the Haskell Volunteer Fire Department



ANNINGHAM 1981 **W. H. McBROOM** 1981 **STEVE ROPER** 1981 **RANDY SHAW** 1981 **BILL STEELE** 1981 **DAVID DAVIS** 1982 **CHARLES HARVEY** 1982 **JOE ALVES** 1983 **MIKE ST. JOHN** 1983

DEPARTMENT

ny & Marty
Alvin Dorner
onda St. John
St. John
& Bucky Harvey
Cadenhead & Family
Martha, Shane & Cori
s, FBC Youth Minister
e Davis
llis
hams, MT
EMT-RT
dwell, EMT-P
on
ess & Family
a, & Kerre Cole
Family
ita Medford
Sarah Ann & girls
sie Green
Feemster Family
e Green Family
sa & Nicklaus Goss
son Family
ingham Family
Family
harlene Therwhanger
eanie Raughton
bson Family
hirley Mickler
idwell Family
High Family
elen Owens
ay Family
Company

Bob & Rita Kramp
Albert, Neta, Lee & Chad Roberts
John, Belia Abila & Family
Janet & Kimla Strickland
Abe & Ruby Turner
Pam & Heather Steele
Gene & Velma Campbell
Scott, Betsy & Jason Langford
Virginia Jones
Milbert & Ladelle Opitz
Mr. and Mrs. Royce L. Williams
Mark & Tammie Wallace
Frank & Donna Markey
Danny & Connie Brueggeman
Raymond & Pauline Couch
R.C. & Jerrene Couch
Dr. & Mrs. Frank Cadenhead
Dr. & Mrs. Wayne Cadenhead
Wood Stoves of Haskell
Trey, Debi, Treci & IV Burson
Snowey & Frances Land & Family
Jerry, Melba & Missy Lowrance
Mr. & Mrs. Keith Hannsz & Family
Betty Sue & Edna
Gene, Cindy & Russ Flanary
Herbert & Ruth Williams
Carl, Jina & Doug Milburn
Betty Ann Watson & Ashley
Sandra & Debra Watson
Chester & Juanita Cunningham
David & Azile Larned
Denia Cunningham
Amy Cunningham
Mathew Cunningham
Maxine, Vickie & Cathey Judd
Chester, Rea, Latoshia & Tony Lamb

Jerry Don & Phyllis Klose
Ben, Sue, Lori & Mindy McGee
Mr. and Mrs. A.B. McDonald
Jack Daniels
Karen Isbell
Sherry & Lisa Steedley
Gary Isbell
Mr. and Mrs. Johnny Becker
Earl Lynn McDonald
Mr. and Mrs. Jesse Seets
Mr. and Mrs. Tim Judd
Ethel Lou Shelton & H.W. Clanton
Kenneth, Ann & Denice Young
Mr. and Mrs. Glenn Caddell
James & Arvella Moore
Mrs. J.A. Bynum
Lonnice, Geraldine Hise & family
Vergil & Vera Smith
Marvin & Alene Collins
Curtis & Betty Weise
Glenn & Geri Darden
Don, Bobby & Lindy Collins
S.E., Wanda & Bear Braly
Royce & Bobbie Williams
Thula Perry
Mr. and Mrs. F.A. Bryant
Mr. and Mrs. Morris Jones
Audra Holsapple
Rex & Camin Pittman
Rocky & Penny Young
Gaston & Willie Faye Tidrow
Joe & Michele Ortiz
Mr. and Mrs. Woody Frazier
Rob & Amy McKnight
Ben & Sue McGee
McGee's Lumber Yard

Jim & Marty Sampson
Barney & Ramia Lee Frazier
Shirley Jackson & Rita Williams
John & Donna Wilson
Mr. and Mrs. Norris Gibson
Raja Hassen
Mr. and Mrs. Benny Bassing
Mr. and Mrs. Billy Joe Swinney
Randy & Michelle Phemister
Betty, Rusty & Cody
Lois Howard Nursery
Mrs. Chester Hodgkin
Regenia Lane & boys
Jo Ann & Brent Watson
Mr. & Mrs. A.M. Stocks
Jake Dusak, Jr.
Jim & Scharlyn Hudson
J.W. & Sandra Wallace
Charley & Lois Redwine
Buster & Inez Gholson
Lisa & Jason Shaw
Bill & Bud Comedy
Bill, Jacque & Kacye Nemir
Juanell & B.J. Ray
Elaine, Keith, Cayce, Holly Reed
Mr. & Mrs. Bill Shaw
Southside Barber Shop
The Sammons Grandchildren
Tom & Carla Long
Gene & Jo Iva Long
The Clayton Hawkins Family
The Billy Tatum Family
Floradean & Steven
The Lee Cockerell Family
The J.W. Hawkins Family
The Sammy Decker Family
Mary Lowe

Lasers Fast Becoming Newest Tool For Surgical Procedures

Lasers may sound like they come from the world of Darth Vader. But on Planet Earth, lasers really are a part of our everyday lives. For instance, it's a laser that reads prices and other information from those printed product code bars on packages at the grocery counter. Lasers can also be used to shuck oysters and correct typing errors.

And, in the area of surgery, lasers play a very important role. To explain to you how lasers work, and the pros and cons of laser surgery, the Food and Drug Administration has a free reprint from its magazine, **The FDA Consumer**. For your free copy of **The Surgeon's Latest Scalpel is a Laser**, write Consumer Information Center, Dept. 606L, Pueblo, Colorado 81009.

A laser beam has some properties that make it even more useful than a scalpel or

other conventional surgical tool. Lasers produce a concentrated beam of pure light, usually of one color or wave length. Depending on the wave length, the light may be invisible to the human eye.

The way surgical lasers do their work is by destroying tissue or cells. To make a cut or incision, a narrow laser beam is focused and played along the path where the cut is desired.

Lasers have many benefits. For example, in conventional surgery, extra cutting may be required to open up small areas enough to use surgical tools such as scalpels. With lasers a surgeon can work in the nose, ears, mouth, throat, and other close areas, often without extensive cutting.

Lasers use heat and have minimal contact with the skin. They can maintain sterile conditions that are highly

desirable for reducing the risk of infection. With lasers, there's little or no touch or pressure contact on the tissues involved. This is important in especially delicate operations, such as some types of brain surgery.

Lasers aren't used as standard operating procedures in many hospitals, primarily because of their cost (the machines that produce them run between \$20,000 and \$100,000). And surgeons and support teams need a lot of extra training to be able to use the laser.

While lasers can be used with a great deal of precision, it is possible to injure adjacent tissue if the laser's power is too strong or if it's not used properly. There are other potential hazards both for the patient and operator that must be carefully controlled, again through extensive training and strongly enforced safety

standards. While lasers are still relatively new (they've been around only 15 years), they're valuable tools for medical treatment.

When you order **The Surgeon's Latest Scalpel is a Laser** (free), you'll also receive a free copy of the **Consumer Information Catalog**. Published quarterly by the Consumer Information Center of the General Services Administration, the free **Catalog** lists over 200 selected free and moderate cost government consumer booklets.

Fines Collected

Geraldine Hise, Judge, City of Haskell, Haskell County, Texas reports a total of 57 convictions for the month of Sept., 1983. Resulting in a total of \$2925.50 in fines.

Judge Geraldine Hise, Justice Court, Precinct 1, Haskell County reports a total of 130 convictions for the month of Sept., 1983. Traffic and criminal cases were filed by the following law enforcement agencies: Highway Patrol- 118, Game Warden- 9, Sheriff's Dept.- 3, resulting in a total of \$5166.00 in fines.

Book Store Now Open In Rule

The Rev. R.E. and Alberta Van Meter have announced the opening of the Christian Bible, Book and Gift store in Rule.

The new business is located in the completely remodeled building formerly occupied by the Bobcat Cafe.

The store, open 10 a.m. to 7 p.m. Monday through Saturday, will feature new books, Bibles and gift items and a selection of previously owned books. A reading room is planned for the future.



WINNERS

Haskell fireman, wives and children attended the 90th semi-annual meeting of the Mid-West Texas Firemen and Fire Marshalls Association last Saturday in Hamlin. In racing competition the men's teams finished first in the two man; first and second in the six man and second in the pumper. The women's team finished second in the pumper and third in the two-women race. Attending the convention from Haskell were: Mr. and Mrs. Tom Watson, Mr. and Mrs. Joe Cortez, Mr. and Mrs. Phillip Cockerell, Mr. and Mrs. John Andrada, Mr. and Mrs. Jerry Stocks, Mr. and Mrs. Charles Harvey, Mr. and Mrs. Don Comedy, Mr. and Mrs. Randy Shaw, Mr. and Mrs. Sam Watson, Mr. and Mrs. Mike St. John, Mr. and Mrs. Steve Roper, Holli and Jeffrey, Kenny Watson, and Joe Alves.

Supervisors urged to think twice when giving raises

Many supervisors ought to think twice before giving higher salaries to prize employees who threaten to quit their jobs for another offer.

"Employers will sometimes do anything to keep high performers, but there's a limit to what's fair," said Dr. Michael Abelson, a Texas A&M University management professor.

"If you give an employee a 25 percent raise to compete with an offer from another employer, chances are other employees who perform as well but don't have similar offers will resent the action. They might ask for raises themselves, or start looking for other jobs."

Consulting Petroleum Geologist

Certified, Degree, 13 years experience in Haskell and area counties.

Reasonable rates for minerals and lease evaluation.

Write: Geological Services
1004 City National Bldg.
Wichita Falls, Tx. 76301

Attention Customers of Farmers Cooperative Society No. 1

We have a Modern Lummus Cotton Gin and a new Universal Density Cotton Press. Press charges will not be billed to the farmer. Charges follow cotton and are paid for by the Buyer.

Visitors are welcome to come by and see our press in operation.

We Do Our Best Board of Directors

NOTICE We Have MOVED

To the old Trammell Bit and Spur Building on East Highway 380.

We will be open for Business at our new location.

Monday, October 10th

We Appreciate Your Business

TRUSSELL'S TIRE CENTER

Phone 864-3522

Haskell, Texas

Scared Silly...

ABOUT YOUR FINANCIAL SECURITY?

It's no easy trick these days managing to survive, let alone treat yourself to something extra special like a newer car or dream vacation trip.

Get together with us about a savings plan unique to your needs. You'll have more than just a ghost of a chance for a prosperous and happy lifestyle ahead with early and expert banking advice from us!



Post Office Box 10
Phone (817) 997-2216
Rule, Texas 79547

Indian Booster Club Fish Fry Set Tonight

The Booster Club Fish Fry to be held tonight at the Haskell High School Cafeteria from 5 until 7:30 was the main order of business at the regular meeting Tuesday night.

Ninety pounds of fresh catfish, never having been frozen, will be prepared under the direction of Tom Watson and Alton Middleton.

Other items on the menu include cole slaw, potato salad, beans, onions, pickles, tea, coffee, and homemade desserts.

Tickets for the Fish Fry at \$4 for adults or 20 cents per year for children under 12, are available at Hale Farm

Supply, Bailey Toliver Chevrolet, or at the door.

The meal will be served by high school athletes, their moms, and dads. Purpose of the event is to help pay \$1350, the Booster Club's part of the purchase of an ice machine.

Ice from the machine will be used not only by the high school cafeteria and the football teams, but also by all basketball, track, tennis teams, and golfers. The Girl's Athletic Association will use ice from this machine for their basketball concession stand.

Fourteen eighth grade girl athletes and fifteen eighth grade boy athletes were

special guests of the Booster Club at their Tuesday night meeting. They were introduced individually by coaches Jim Bob Mickler and Jimmy Lisle.

The film from the Seymour game was shown. Coach Holt gave members a run-down on the strong Hamlin team the Indians face Friday night.

LIQUID PAPER Correction Fluid in ledger colors including pink, greens, buff, blue and yellows. Perfect for stationery, too! *Haskell Free Press*

Durable, Dependable, Smooth writing Write Bros. Stick Ball Pens. *Haskell Free Press*

One Buck Limit Draws Many Inquiries

Hunters who plan to hunt white-tailed deer in more than one county this season may not be aware of the effects of bag limit restrictions on "one buck" counties.

Texas Parks and Wildlife Department officials said 91 Texas counties have a one buck limit, although most Texas counties have a limit of two.

"If a hunter gets a buck in a one-buck county, he or she must go to a county which has a two-buck limit to take the second buck," explained David Palmer, director of law enforcement operations. "However, if the hunter takes the first buck in a one-buck county, he cannot go to another one-buck county to take his second buck."

Conversely, if a hunter takes his first buck in a two-buck county, he may go to a one-buck county to get his second buck, Palmer noted.

The hunter must immediately attach the tag marked "buck or antlerless white-tailed deer tag" from his hunting license to the carcass in the field.

Department wildlife officials said on Oct. 10 they will announce dates and locations for issuance of antlerless deer hunting permits. The permits normally are issued in late October or early November at county courthouses or other public buildings in counties where deer populations are high enough to warrant harvest of antlerless deer. Landowners are urged to watch the newspapers for the scheduled issuance dates in their local areas or they may call 1-800-792-1112 for this information.



General George Washington received an honorary degree from Harvard College in 1776.



Staff Photo by Don Comedy

CELEBRITY CHEERLEADERS

Five celebrity cheerleaders attended the pep rally last Friday afternoon. They are pictured on the knees of regular HHS cheerleaders (l to r) Stephanie Browning, Denise Burris, Sheila Klose, Holly McBroom, and Kelly Wallace. The celebrities asked that their names not be released.

The Commodore Commitment. Big Returns.

DAILY MONEY MARKET	9.75%	Limited Checking. Fixed Rate. Rate subject to change weekly. \$2,500 minimum. If balance falls below \$2,500, 5 1/4% is still earned. Earn money market rates without a stockbroker and without the risk of having uninsured funds.
SUPER STARCHHECK Effective Date Oct. 12	8.25%	Unlimited checking. Fixed rate. Rate subject to change weekly. \$2,500 minimum. Earn money market interest with balance of \$2,500 and if your balance falls below \$2,500, you'll still earn 5 1/4%.
JUMBO C.D.'S	\$100,000 minimum	Fixed Rate. Rates and terms negotiated at time of issue. Interest is available before maturity. Substantial penalty for early withdrawal.



COMMODORE SAVINGS

Working for you. Working with you. Quanah, Dallas, Haskell, Stamford, Clyde, and three locations in Abilene. Member F.S.L.I.C.

ABELL AG Co.

Has SEED WHEAT available for Fall Planting.

- Select Tam 101..... \$6⁰⁰/bu.
- Certified Tam 101..... \$6⁵⁰/bu.
- Certified Tam 105..... \$6⁵⁰/bu.

We also have new HYBEX® Hybrid Wheat Seed.

Call or Come by For all your Seed Cleaning or Planting Seed Needs.

MUNDAY 422-4841

Anniversary Sale!

Oct. 15-29

SHOES

- Pony **TURF GRIPS** \$22⁰⁰
All Colors Reg. \$31.95 Now.....
- Adidas **BOSTON** \$20⁰⁰
Gray/Navy, White/Silver Reg. \$34.95
- White/Soft Pink **NIKE SPIRIT** \$18⁰⁰
Reg. \$27.95 Now.....
- Children's Velcro Shoe **NIKE PRODIGY** \$16⁰⁰
Navy/White Reg. \$26.95 Now.....
- Girls Pink/White **NIKE FLAVORS** \$14⁰⁰
Reg. \$23.95 Now.....
- All Court & Bruin Canvas **NIKE** \$15⁰⁰
Reg. \$24.95 Now.....
- Adidas **K. ABDUL JABBAR** \$25⁰⁰
white leather W/Blue stripe Reg. \$39.95
- ASSORTED SHOES** \$7⁰⁰
values from \$44.95

All Other Shoes

25% off

It's our Third

Anniversary

We want to thank everyone for their patronage the past three years.

Come in and take advantage of our sale.

On Saturday Oct. 22nd & 29th a

\$50⁰⁰

Gift Certificate

will be placed in a box of shoes. If a person buys that box of shoes he will receive the gift certificate. If by 5:00 p.m. on Oct. 15 no one has purchased the box of shoes with the gift certificate, we will hold a drawing with the names of all individuals who purchased shoes on that day & the winner will receive the gift certificate.

CLOTHING

- Assorted **Shirts & Shorts** \$3⁰⁰
Values from \$20.00
- Boys Ely Brand Cotton/Poly **Polo Shirts** \$6⁰⁰
Reg. \$10.95 Now...
- Adidas Ladies Activewear **Tennis Shirts** \$14⁰⁰
Reg. \$21.95-\$27.95 Now...
- Cap Sleeves-Scoop Neck **T-Shirts** \$6⁰⁰
Reg. \$12.00 Now...
- Socks** pr \$1⁰⁰
- Wigwam Socks** pr \$1⁷⁵

Assorted

Shirts & Shorts

Buy One-Get One Free

We have velour shirts for men and boys.

Sport About

of Haskell

CHRISTIAN NOTES

I believe there is nothing as good for any person or family as regular church attendance. Good, joyful worship and listening to Biblical preaching is a vital need in every life. Man is the only creature who cannot be satisfied apart from worshipping and knowing God in truth and in spirit. My bird dog is as happy as can be and knows nothing about worshipping God. But you and I are not that way, we need worship.

With the many fine churches in Haskell and the dedicated men who open the Bible and preach from its pages, every person ought to find some place, some congregation of belief with which to worship.

A church is never more defeated as when its people, its own members are not present on the Lord's Day. Is your church and its worship very important to you? I found the following article to be a challenge and reminder to me as a Christian, of the importance of being present when the church worships. See if it also says something to you!

Behold, a ball team went forth to play a game of baseball. Just as the umpire was saying "batter up" the catcher for the home team arrived and took his place. The center fielder didn't show up at all, but he later sent his regrets and said that he had to go to a chicken dinner at Aunt Mary's. The third baseman likewise failed to come to the game, having been up too late the night before and desired to spend the day in bed. The left fielder felt that he needed to visit another ballgame across town. The shortstop was present but left his glove at home. Two of the substitutes were away on a little weekend trip and couldn't make it, but they were there in spirit.

Verily, when the pitcher went into the box he looked around for the team mates, and low his heart was heavy, for their places were empty. But the game was announced and the visitors were in the stand and there was nothing to do but to pitch the ball and hope for the best for he had to serve as the pitcher, first baseman and third baseman. There were loud boos from the stands while the home team was beaten. It was a disgrace to the noble game of baseball. When the absent members of the defeated team heard that their team lost, a decision was made to get a new pitcher.

"But who lost the game?"
See ya in church,
Bro. Mike McKinney

Flea Market

October 15-16
Haskell, Texas
304 S. 1st
(Behind Fire Station)
Inside Booths
Outside Booths
Call 817-864-3662

For More Information
Bill Perry

Obituaries

S. W. Kelso

Funeral services for S.W. Kelso, 84, of Haskell were held at 3:30 p.m. Monday Oct. 10 in Haskell Church of Christ with Jim Crain, minister, and Rev. Kenneth Blair, pastor of Trinity Baptist Church officiating. Burial was in Willow Cemetery under the direction of Holden-McCauley Funeral Home.

Mr. Kelso died Oct. 9 at 12:45 a.m. in Rice Springs Care Home.

Born Nov. 25, 1898, he was a longtime resident of Haskell. He had lived for a few years in Ft. Worth. He married Buena Redwine Nov. 21, 1921 in Haskell. She preceded him in death Nov. 12, 1974. He later married Mildred Kennamer Aug. 3, 1975 in Haskell. He was a member of Church of Christ and Haskell Odd Fellows Lodge #525. He was a

retired merchant.

Survivors include his wife, Mildred; one daughter, Eunice Maureen Phillips of Aledo; three step-daughters, Peggy Joyce Burson and Patsy Lou Driver, both of Lubbock, and Imogene Camp of San Antonio; three brothers, L.B. of Lubbock, Howard of Bovina and Hugh of Canyon; three sisters, Fannie Mae Carrie of Waco, Leta Walker of Tulsa and Louise Jenkins of Lakewood, Colo.; 4 grandchildren, 3 great grandchildren, 15 step grandchildren and 6 step great grandchildren. He was preceded in death by one son Edgar Samuel Kelso in 1955.

Pallbearers were Raja Hassen, R.C. Couch Jr., Jim Alvis, Tommy Matthews, Wayne Phemister and Ted Jennings.

4-H Volunteers Donate Estimated \$1 Billion

Although no monetary value can be placed on the impact 4-H volunteer leaders have on the youth they work with, the value of their time and out-of-pocket expenses is estimated at about \$1 billion annually.

The recognition of volunteers and their contributions to the 4-H program are given special emphasis during National 4-H Week, Oct. 2-8. Last year more than 619,000 volunteer adult, junior and teen leaders assisted 4-H youth across the nation. Texas alone has some 22,000 adult and teen leaders.

"Volunteer leaders are the real key to the success of the 4-H program—the backbone of many 4-H events and activities," says H.T. "Tom" Davison, state 4-H leader with the Texas Agriculture Extension Service, Texas A&M University System. "They give unselfishly of their time and resources to help young people grow and develop."

The average 4-H volunteer donates 220 hours each year in preparing for and teaching youth. That means that for each hour an Extension Service staff member spends in 4-H, a volunteer spends 12 hours. The volunteer drives 300 to 400 miles for 4-H each year, in a personally-owned car, and spends \$50 to \$60 on teaching materials.

"Many of the contributions of 4-H volunteers cannot be itemized and counted," notes Davison. "Volunteer leaders have a big impact on the lives of 4-H'ers, not only in their projects and activities, but as they pursue careers often chosen as a result of 4-H experiences."

What kind of people volunteer? A 1981 Gallup poll showed that 52 percent of American adults and 53 percent of teenagers had done volunteer work that year. This volunteerism included everything from traditional hospital volunteer programs and volunteer fire departments to baking cookies for the Cub Scouts and helping neighbors with home repairs.

The survey showed that of the volunteers, 56 percent were female, 90 percent were white, 42 percent were between 18 and 24 years of age or 50 and older, 35 percent were high school graduates, and 48 percent had completed some education beyond high school. More than half the volunteers reported an annual household income of \$20,000 or more.

WE HAVE pencil cups, stackable trays, book-ends, paper clip holders, stamp cubes and telephone files in matching colors. *Haskell Free Press*

BUY-SELL-RENT-HIRE... Classified Ads

For Sale

FIREWOOD FOR SALE: Call 864-2391. 41p

REPOSSESSED SIGN! Nothing don't! Take over payments \$58.00 monthly. 4'x8' flashing arrow sign. New bulbs, letters. Hale Signs. Call Free 1-800-626-7446, anytime. 41p

FOR SALE: Long-wide bed pickup camper, excellent condition. Call or see W.F. Tredemeyer, Sagerton 997-2554. 41-42p

FOR SALE: Complete used pickup butane system. 658-3328. 41-42c

FOR SALE: Piano. Whitney by Kimbell. 864-2554. See at 708 S. 10th. 41c

FOR SALE: 12x60 3 bedroom, 1 1/2 bath. All appliances furnished, refrigerated air, central heat, window awning, patio cover, ceiling fans, must be moved. \$7,500.00. 864-3344 or 864-2240. 41tfc

FOR SALE: 1978 Delta 88, very clean. Call 864-2783. 39-41c

FOR SALE: 36 inch heavy duty screen door Deluxe trim; Wrought iron post leaf design 8 ft; living room chair (green). 901 N. 6th, Haskell. 864-2049. 41-42p

FOR SALE: Good used spinet piano. Call 864-3423. 41tfc

Garage Sales

GARAGE SALE: Desk, clothes, misc. Throckmorton Hwy, turn right at the Church of God, go 3 blocks, red brick house on right. Sandra Wallace Sat. 8:30-5:30. 41c

PATIO SALE: 702 Adams, Rule. Fri. & Sat. 10-5. 2 new doors, 32"; small and large mens & ladies clothing; avon products, reduced prices; lots of misc. 41c

GARAGE SALE: 1981 Kawasaki 550 with 3,300 miles, beautiful cream puff; large upright deep freeze, like new; large metal desk, nearly new; 10 hp Transaxle lawn mower, 36" cut, Briggs & Stratton motor, electric start, headlights. 997-2186 or see Sat. 1-6 at 5th & Adams in Rule. 41p

GARAGE SALE: Fri. 4-6. Sat. 8-4. 704 Central, Rule. 41p

GARAGE SALE: 1/2 mile West of Strickland Bridge, at end of road. Corner bookshelf, window blinds, clothing, garage door, linens, throw pillows, paperbacks and other items. Sat. only 8 a.m. to 7 p.m. 864-3000. 41p

For Sale

FOR SALE: Used 6' white porcelain metal cabinet, double sink. \$75.00 or best offer. Call 864-3393 or 864-3640. 41-42p

FOR SALE OR TRADE FOR Bantams. 6 exotic buff crested Polish chickens. 5 pullets and 1 rooster. For sale: a trio of silver crested Polish chickens. 864-3205. 40-41p

FOR SALE: Letter size multi-drawer metal cabinet 30" wide by 37" high. Tan color. Has 30 drawers 9x3x12". Regularly \$188.00. Sale price \$85.00. See B. J. Ray 864-2946 or 864-2959. 40-41p

FOR SALE: 1983 Yamaha YZ 125. Like new. 997-2782 or 997-2276. 39-41p

LET US Price your next prescription. You will be glad you did. Johnson Pharmacy. 17tfc

FOR SALE
Pre-fabricated
Concrete Cellars.
Tony Williams
864-3674 or 864-2419.
12tfc

FOR SALE: AKC male Chihuahua puppy. \$50.00. Call 817-989-2855. 41-42c

FOR SALE: One Chrysler Bass Master. Drive on trailer. Call after 7 p.m. 743-3444. 41c

FOR SALE: 1979 Electra Park Avenue. Loaded. 47,000 miles. Excellent condition. Contact Frankie SoRelle 864-2926 or 864-3977. 41p

FOR SALE: Gates fan belts, hose and clamps, Delco battery and changing oil filters, coal oil and Naptha and etc. Wilfong Texaco Station, 864-2766. 50tfc

FOR SALE: Three 8' glass counters from Fouts Dry Goods. \$100.00 each. 864-2045. 39-41c

FOR SALE: 1978 Eldorado Cadillac. Loaded with all options. Call 864-3575 after 5:30 p.m. Priced right. 24tfc

FOR SALE: '76 Chev. Caprice Estate Wagon. Fine condition. 350 engine, air, power, cruise, AM-FM CB Combination, new windshield, new battery, good rubber. 864-3344 after 12 noon 864-2233. 40-42p

FOR SALE: 15' boat, motor, trailer. 864-2058 after 6 p.m. 40-41p

FOR SALE: 30' Holiday Traveler, self contained travel trailer. Call 864-3682 after 5. dtfc

For Sale

SHAKLEE products, 100% NATURAL VITAMINS, herb lax, food supplements, and cosmetics. Products in stock @ 300 N. Ave. H. 864-3330. 26tfc

FOR SALE: Complete LP gas system with 55 gallon tank. Call Phil Johnson after 5. 422-5230. 38-41c

SEND \$1 for huge Mobile Home Parts catalog. Hundreds of hard to find parts. **THE PARTS STORE,** 4620 North First #16 Abilene, Texas 79603. 38-41p

REPO MOBILE HOMES! As low as \$480.00 down, \$202.00 a month. 20 homes, doubles too! Big discounts for CASH! Abilene Mobile Homes Lot #2 695-7270 (Closed Saturday). 38-41p

FOR SALE: 283 John Deere stripper and all metal cotton trailers 1-20', 4-28', 3-32'. Call 817-743-3378 after 4 p.m. 39-42p

FOR SALE: Alto saxophone in excellent condition. \$275.00. Call 864-3412. 34tfc

FOR SALE: Cimmaron oat in bulk. About 2000 bu. \$2.00 bu. or trade for wheat seed. 2 inch water pump with 2 hp. 115/230 volt motor. About 600 ft. of two in. sprinkler pipe. Make offer. Over head tanks with stands. J.D. 1610 Van Brunte Grain Drill, 2 row D.T. Mohawk shredder for parts only. Call Tom West, Munday 422-4660. 37tfc

FOR SALE: 1975 Ford 3/4 ton pickup. 1969 Buick - cheap. Call 864-3729 or 864-3412. 35tfc

Miscellaneous

FREE COFFEE this Sat. 10-7 at the new opening of the Christian Bible Book & Gift Store in Rule. Will be open Monday thru Saturday from 10-7 at 5th and Pawnee. Come by to see us and have a free cup of coffee. 41p

FOR CUSTOM Folk Art painting, call Gaylin at 864-8044. 37-44c

DON'T SHAMPOO dirt into your carpet. Steamex it out the professional way. Steamex pulls out dirt other cleaners can't begin to reach. Rent Steamex at Kay's Cleaners. 35tfc

CLEAN CARPETS the inexpensive and safe way with Blue Lustre. Rent electric shampooer. Perry Brother's. 19tfc

Miscellaneous

CIRCLE C DECORATORS specialize in home workshops, storage houses and rec. rooms. Call Steve Cothran for details. 864-3919. 37tfc

WATER WELL DRILLING: House well, Stock, Irrigation Wells, Test Holes. Call W.P. Hise, 864-3727 Haskell, Tx. (Day or Night). 7tfc

HOME DECORATORS: Painting-Insulation. Free Estimates. Phone 743-3592 or 743-3550. V.A. Mitchell—Bobby O'Neal Rochester. 3tfc

INSTANT CASH for good used merchandise. A little or a lot. Phone 864-3197 anytime. Lackey's, Hiway 380 East, Haskell, Tx. 6tfc

CIRCLE C DECORATING: "Interior and Exterior Renovation". See Steve Cothran for your interior or exterior painting, hanging wallpaper, paneling and siding needs. 864-3919. 39tfc

FOR PIANO TUNING or repair, \$30.00. Total piano restoration or reconditioning. Upright piano, excellent condition, \$495.00. Call Robert 915-773-3480. 38-41c

CHECK our prices at THE DRUG STORE. We will both be glad you did. 14tfc

FOR SALE: AKC registered Cocker Spaniel puppies. \$100.00 each. 817-658-3839 in Knox City after 5 p.m. week days; anytime weekends. 41p

FOR SALE: Sedders central heating unit. Like new. For more information. Call 864-3477. 41tfc

WEBSTER New Collegiate Dictionaries. The latest most widely approved dictionary for home, office and school. Indexed. *Haskell Free Press*

Get Bitter About Litter



Beautiful Haskell Council

RATH ASSORTED



LUNCH MEATS

BOLOGNA-LUNCHEON-LIVER LOAF-PICKLE LOAF-SALAMI

6 OZ. PKG.

79¢

Carnation Instant Hot Cocoa Mix \$1.19
12- 1 oz envelopes

Kraft Macaroni & Cheese Dinners 4 for \$1.00
7 1/4 oz

Del Monte Peaches 2/\$1.00
16 oz can Halvas or slices

Kool-Aid Makes 10 quarts \$1.99
30 oz can



DR. PEPPER

6 pack- 12 oz cans

\$2.29

TV COOKED FOOD SPECIAL OF THE WEEK

BBQ SANDICHES

99¢
EACH



Lay's Reg. \$1.39
Potato Chips \$1.09

Nabisco Oreo Sandwich Cookies \$1.59
20 oz.

Homogenized Borden's Milk \$2.69
Gallon

BORDEN'S NUTTY BUDDY NOVELTIES OR ICE CREAM

SANDWICHES

\$1.19
6 PACK



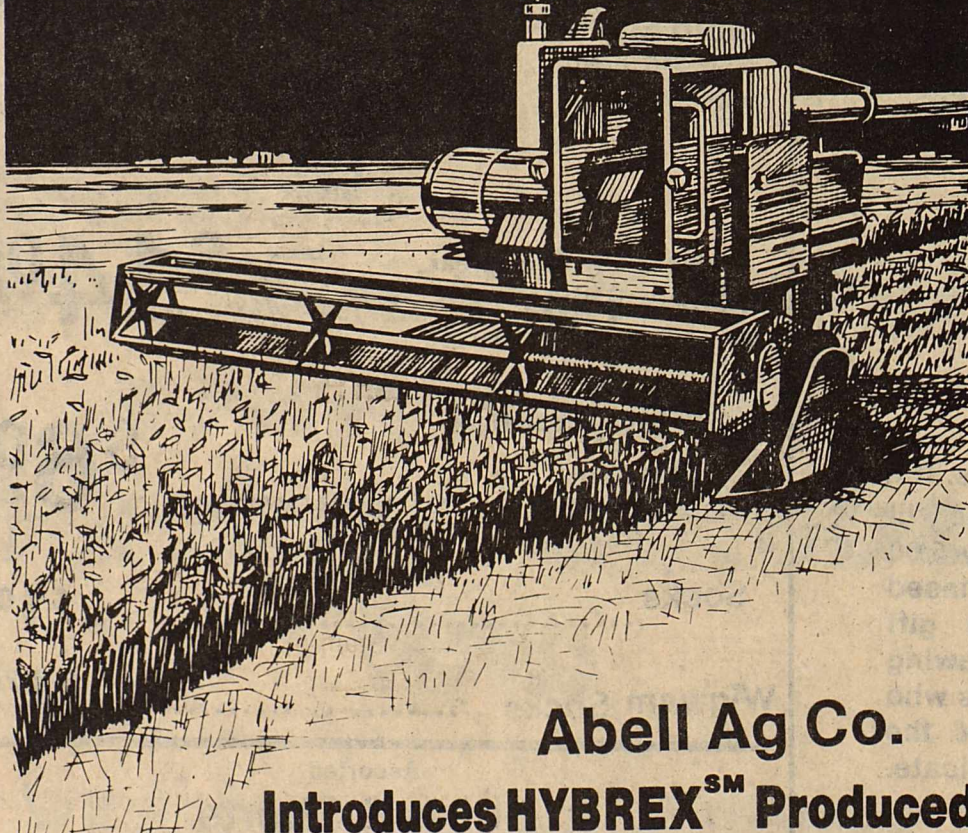
BORDEN'S ORANGE JUICE

89¢
QT.



WHILE SUPPLIES LAST!
SELF SERVE GAS
OPEN 24 HOURS
FOR YOUR CONVENIENCE
PRICES EFFECTIVE
OCT. 13-15, 1983

INCREASE YOUR YIELDS WITH HYBRID WHEAT



Abell Ag Co.

Introduces **HYBRESM** Produced Hybrid Wheat Seed

Hybrid wheats are finally here. And they out-yield conventional varieties by 20-30%. They're produced locally, using a revolutionary new technology from Rohm and Haas Company. AVAILABLE NOW!

HYBRESM is a service mark of Rohm and Haas Company

CALL OR COME BY FOR MORE INFORMATION

ABELL AG CO.

Munday

422-4841

WANT ADS Work Wonders!

NOTICE

The deadline for Classified Advertising is 12 noon on Tuesday.
Haskell Free Press

NOTICE

The **Haskell Free Press** reserves the right to edit and/or delete all news stories and locals for length and liability and to refuse to print anything deemed not newsworthy.

Lost & Found

LOST: Black cow with a T brand. Got out of Mrs. Roy Wiseman's pasture. Call Buck Townsend 743-3388 Rochester. 41p

Bus Opportunity

OWN YOUR OWN Jean-Sportswear, Infant-Preteen, Ladies Apparel, Combination, Accessories, or Large Size store. National brands: Jordache, Chic, Lee, Levi, Vanderbilt, Izod, Gunne Sax, Esprit, Britannia, Calvin Klein, Sergio Valente, Evan Picone, Claiborne, Healthtex, 300 others. \$7,900 to \$24,900, inventory, airfare, training, fixtures, grand opening, etc. Mr. Loughlin (612) 888-6555. 41p

OWN YOUR OWN jeans-sportswear; infant-preteen; ladies apparel store. Offering all nationally known brands; Chic; Lee; Levi; Vanderbilt; Izod; Gunne Sax; Ocean Pacific and 300 other brands. \$5,900.00 to \$14,900.00 includes beginning inventory; airfare for one to the Apparel Dome; training; fixtures and grand opening. Call anytime. 501-329-8327. An exclusive shop for you. 41p

Jobs Wanted

TUTORING ON Saturdays. Qualified teacher. Kathie Boatman. 864-3920. 40-43p

WILL DO MOWING and light hauling. Afternoons 5 p.m. til and Saturdays. 864-3489. Dan and Derryl Hoover. 19trc

FOOTBALL FANS: Will keep your child on Friday nights for the game in our home. Across the street from the High School. Call Melba 864-3536. 41-44c

WILL CUT DOWN TREES & haul them off. Reasonable price. 864-2575. 1406 N. Av H. 41-44p

WANTED: Will do yard work of any kind. Call after 6 p.m. 864-2093. 41-42p

Help Wanted

DIRECTOR OF NURSES needed for Haskell Nursing Center. Must be RN. Call 864-3556. 35trc

RN 9 p.m.-7 a.m. 7 on-7 off. Contact Patsy Jones, Director of Nurses, Seymour Hospital Authority. 817-888-5572. 40-41c

\$100 PER WEEK PART TIME at home. Webster, America's favorite dictionary company needs home workers to update local mailing lists. Easy work. Can be done while watching TV. All ages, experience unnecessary. Call 1-716-842-6000, Ext. 28446. 41p

WANTED: Beautician. Mini Mall, Knox City 817-658-3957. 41-43c

For Rent

FOR RENT: One 2 bedroom apartment. 864-2504. 41p

FOR RENT: House close to Stamford Lake 817-864-2860. 40-41p

FOR RENT: One bedroom furnished apartment and a 2 bedroom house. 864-3509. 39trc

Public Notice

SEALED BIDS will be received by Parks and Wildlife Department, Haskell, Texas, until 5 p.m. Oct. 20, 1983 on a 1981 Plymouth Trailduster. Contact Game Warden Steve Barbour at (817)864-3656. 41c

PUBLIC NOTICE OF ENACTED BUDGET

The Haskell County Commissioners' Court met in regular session Monday, October 10, 1983, and passed the General Revenue Sharing Budget Entitlement Period #15 October 1, 1983 thru September 30, 1984. A summary of the entire adopted budget is available for public inspection at the County Judge's Office from 8:00 a.m. to 5:00 p.m., Monday thru Friday.

GENERAL REVENUE	
General Revenue Sharing Budget Entitlement Period #15, October 1, 1983	
Thru September 30, 1984	
Public Transportation	\$30,525.00
Public Safety	7,500.00
Social Service	2,000.00
Health Service	1,000.00
Workman's Compensation	10,000.00
Capital Expenditure	8,085.00
Parks & Recreation	2,000.00
Total	\$61,110.00

Public Notice

PUBLIC NOTICE: Section 31.04 of the Penal Code of the State of Texas provides that theft of service is a crime.

CenTex Cablevision will prosecute any and all persons under this article who are availing themselves of TV cable services without the proper rental payment to CenTex Cablevision.

A person who damages or destroys any property belonging to CenTex Cablevision will also be prosecuted under Section 28.03 of the Penal Code.

Both of these offenses could be a Class A misdemeanor, which carries a fine of up to \$2,000.00 and/or confinement in jail for a term not to exceed one year. 39-44c

NOTICE OF SHERIFF'S SALE

THE STATE OF TEXAS COUNTY OF HASKELL

NOTICE IS HEREBY GIVEN that by virtue of a certain execution issued out of the Honorable District Court of Haskell County, of the 3rd day of October 1983, by Carolyn Reynolds Clerk of said District Court of Haskell County, Texas for the sum of Twenty Thousand Five Hundred Forty One and 94/100 Dollars and costs of suit, under a judgment, in favor of Oil Patch Pollution Service Inc. in a certain cause in said Court, No. 9322 and styled Oil Patch Pollution Service, Inc., Plaintiff vs. The McCoun Company and Paul C. Teas, Jr., Defendants, placed in my hands for service, I Garth Garrett as Sheriff of Haskell County, Texas, did, on the 4th day of October 1983, levy on certain Real Estate, situated in Haskell County, Texas, described as follows, to-wit: All of the oil and gas leasehold estate pertaining to the Huggins well located 641 F. N. L. and 2395 F. E. L. of the A. F. Burchard Survey No. 42, A-14 Haskell County, Texas, including but not limited to all materials, machinery and supplies situated thereon or used in connection therewith and the proceeds received from the sale of oil and gas produced from said leasehold estate and levied upon as the property of The McCoun Company and Paul C. Teas, Jr. and that on the first Tuesday in November 1983, the same being the 1st day of said month at the Court House door, of Haskell County, in the City of Haskell Texas, between the hours of 10 a.m. and 4 p.m., by virtue of said levy and said execution and judgement I will sell said above described Real Estate at public vendue, for each, to the highest bidder, as the property of said The McCoun Company and Paul C. Teas, Jr.

And in compliance with law, I give this notice by publication, in the English language, once a week for three consecutive weeks immediately preceding said day of sale, in the **Haskell Free Press**, a newspaper published in Haskell County.

Witness my hand, this 4th day of October 1983.

G. T. Garrett Sheriff Haskell County, Texas By Johnny L. Mills Deputy. 40-42c

HAVING TROUBLE with your office supply needs? Let us help you. **Haskell Free Press**

Card of Thanks

Words cannot express our appreciation for the food, flowers, words of comfort, and other acts of sympathy you showed us during our time of sorrow. Friends are our greatest asset and we will be forever grateful to you for your kindness. The family of Mavis Alexander. 41p

Card of Thanks

We would like to thank members of the Haskell Fire Dept., Rule Fire Dept. and Sagerton Fire Dept. for answering the call to a pasture fire at the Herbert Williams residence. The Herbert Williams family. 41c

Card of THANKS

We would like to thank our many relatives, neighbors and friends for their sympathy, flowers, donations, food, cards and other acts of kindness during our bereavement. The Eric Bergstrom family. 41p

CARD OF THANKS

My deepest appreciation to every person connected with Rice Springs Care Home who took over in my absence and helped make the anniversary barbeque a success. You are some terrific people. Also, our thanks for all the prayers, cards, phone calls and flowers during the time of Roy Don's surgery and hospitalization. May God bless each of you. Ruth Ann Klöse and family. 41c

CARD OF THANKS

My deepest appreciation to every person connected with Rice Springs Care Home who took over in my absence and helped make the anniversary barbeque a success. You are some terrific people. Also, our thanks for all the prayers, cards, phone calls and flowers during the time of Roy Don's surgery and hospitalization. May God bless each of you. Ruth Ann Klöse and family. 41c

CARD OF THANKS

My deepest appreciation to every person connected with Rice Springs Care Home who took over in my absence and helped make the anniversary barbeque a success. You are some terrific people. Also, our thanks for all the prayers, cards, phone calls and flowers during the time of Roy Don's surgery and hospitalization. May God bless each of you. Ruth Ann Klöse and family. 41c

CARD OF THANKS

My deepest appreciation to every person connected with Rice Springs Care Home who took over in my absence and helped make the anniversary barbeque a success. You are some terrific people. Also, our thanks for all the prayers, cards, phone calls and flowers during the time of Roy Don's surgery and hospitalization. May God bless each of you. Ruth Ann Klöse and family. 41c

CARD OF THANKS

My deepest appreciation to every person connected with Rice Springs Care Home who took over in my absence and helped make the anniversary barbeque a success. You are some terrific people. Also, our thanks for all the prayers, cards, phone calls and flowers during the time of Roy Don's surgery and hospitalization. May God bless each of you. Ruth Ann Klöse and family. 41c

CARD OF THANKS

My deepest appreciation to every person connected with Rice Springs Care Home who took over in my absence and helped make the anniversary barbeque a success. You are some terrific people. Also, our thanks for all the prayers, cards, phone calls and flowers during the time of Roy Don's surgery and hospitalization. May God bless each of you. Ruth Ann Klöse and family. 41c

Card of Thanks

We would like to thank members of the Haskell Fire Dept., Rule Fire Dept. and Sagerton Fire Dept. for answering the call to a pasture fire at the Herbert Williams residence. The Herbert Williams family. 41c

CARD OF THANKS

We would like to thank our many relatives, neighbors and friends for their sympathy, flowers, donations, food, cards and other acts of kindness during our bereavement. The Eric Bergstrom family. 41p

CARD OF THANKS

My deepest appreciation to every person connected with Rice Springs Care Home who took over in my absence and helped make the anniversary barbeque a success. You are some terrific people. Also, our thanks for all the prayers, cards, phone calls and flowers during the time of Roy Don's surgery and hospitalization. May God bless each of you. Ruth Ann Klöse and family. 41c

CARD OF THANKS

My deepest appreciation to every person connected with Rice Springs Care Home who took over in my absence and helped make the anniversary barbeque a success. You are some terrific people. Also, our thanks for all the prayers, cards, phone calls and flowers during the time of Roy Don's surgery and hospitalization. May God bless each of you. Ruth Ann Klöse and family. 41c

CARD OF THANKS

My deepest appreciation to every person connected with Rice Springs Care Home who took over in my absence and helped make the anniversary barbeque a success. You are some terrific people. Also, our thanks for all the prayers, cards, phone calls and flowers during the time of Roy Don's surgery and hospitalization. May God bless each of you. Ruth Ann Klöse and family. 41c

CARD OF THANKS

My deepest appreciation to every person connected with Rice Springs Care Home who took over in my absence and helped make the anniversary barbeque a success. You are some terrific people. Also, our thanks for all the prayers, cards, phone calls and flowers during the time of Roy Don's surgery and hospitalization. May God bless each of you. Ruth Ann Klöse and family. 41c

CARD OF THANKS

My deepest appreciation to every person connected with Rice Springs Care Home who took over in my absence and helped make the anniversary barbeque a success. You are some terrific people. Also, our thanks for all the prayers, cards, phone calls and flowers during the time of Roy Don's surgery and hospitalization. May God bless each of you. Ruth Ann Klöse and family. 41c

CARD OF THANKS

My deepest appreciation to every person connected with Rice Springs Care Home who took over in my absence and helped make the anniversary barbeque a success. You are some terrific people. Also, our thanks for all the prayers, cards, phone calls and flowers during the time of Roy Don's surgery and hospitalization. May God bless each of you. Ruth Ann Klöse and family. 41c

CARD OF THANKS

My deepest appreciation to every person connected with Rice Springs Care Home who took over in my absence and helped make the anniversary barbeque a success. You are some terrific people. Also, our thanks for all the prayers, cards, phone calls and flowers during the time of Roy Don's surgery and hospitalization. May God bless each of you. Ruth Ann Klöse and family. 41c

CARD OF THANKS

My deepest appreciation to every person connected with Rice Springs Care Home who took over in my absence and helped make the anniversary barbeque a success. You are some terrific people. Also, our thanks for all the prayers, cards, phone calls and flowers during the time of Roy Don's surgery and hospitalization. May God bless each of you. Ruth Ann Klöse and family. 41c

CARD OF THANKS

My deepest appreciation to every person connected with Rice Springs Care Home who took over in my absence and helped make the anniversary barbeque a success. You are some terrific people. Also, our thanks for all the prayers, cards, phone calls and flowers during the time of Roy Don's surgery and hospitalization. May God bless each of you. Ruth Ann Klöse and family. 41c

CARD OF THANKS

My deepest appreciation to every person connected with Rice Springs Care Home who took over in my absence and helped make the anniversary barbeque a success. You are some terrific people. Also, our thanks for all the prayers, cards, phone calls and flowers during the time of Roy Don's surgery and hospitalization. May God bless each of you. Ruth Ann Klöse and family. 41c

CARD OF THANKS

My deepest appreciation to every person connected with Rice Springs Care Home who took over in my absence and helped make the anniversary barbeque a success. You are some terrific people. Also, our thanks for all the prayers, cards, phone calls and flowers during the time of Roy Don's surgery and hospitalization. May God bless each of you. Ruth Ann Klöse and family. 41c

CARD OF THANKS

My deepest appreciation to every person connected with Rice Springs Care Home who took over in my absence and helped make the anniversary barbeque a success. You are some terrific people. Also, our thanks for all the prayers, cards, phone calls and flowers during the time of Roy Don's surgery and hospitalization. May God bless each of you. Ruth Ann Klöse and family. 41c

CARD OF THANKS

My deepest appreciation to every person connected with Rice Springs Care Home who took over in my absence and helped make the anniversary barbeque a success. You are some terrific people. Also, our thanks for all the prayers, cards, phone calls and flowers during the time of Roy Don's surgery and hospitalization. May God bless each of you. Ruth Ann Klöse and family. 41c

CARD OF THANKS

My deepest appreciation to every person connected with Rice Springs Care Home who took over in my absence and helped make the anniversary barbeque a success. You are some terrific people. Also, our thanks for all the prayers, cards, phone calls and flowers during the time of Roy Don's surgery and hospitalization. May God bless each of you. Ruth Ann Klöse and family. 41c

CARD OF THANKS

My deepest appreciation to every person connected with Rice Springs Care Home who took over in my absence and helped make the anniversary barbeque a success. You are some terrific people. Also, our thanks for all the prayers, cards, phone calls and flowers during the time of Roy Don's surgery and hospitalization. May God bless each of you. Ruth Ann Klöse and family. 41c

CARD OF THANKS

My deepest appreciation to every person connected with Rice Springs Care Home who took over in my absence and helped make the anniversary barbeque a success. You are some terrific people. Also, our thanks for all the prayers, cards, phone calls and flowers during the time of Roy Don's surgery and hospitalization. May God bless each of you. Ruth Ann Klöse and family. 41c

CARD OF THANKS

My deepest appreciation to every person connected with Rice Springs Care Home who took over in my absence and helped make the anniversary barbeque a success. You are some terrific people. Also, our thanks for all the prayers, cards, phone calls and flowers during the time of Roy Don's surgery and hospitalization. May God bless each of you. Ruth Ann Klöse and family. 41c

CARD OF THANKS

My deepest appreciation to every person connected with Rice Springs Care Home who took over in my absence and helped make the anniversary barbeque a success. You are some terrific people. Also, our thanks for all the prayers, cards, phone calls and flowers during the time of Roy Don's surgery and hospitalization. May God bless each of you. Ruth Ann Klöse and family. 41c

CARD OF THANKS

My deepest appreciation to every person connected with Rice Springs Care Home who took over in my absence and helped make the anniversary barbeque a success. You are some terrific people. Also, our thanks for all the prayers, cards, phone calls and flowers during the time of Roy Don's surgery and hospitalization. May God bless each of you. Ruth Ann Klöse and family. 41c

CARD OF THANKS

My deepest appreciation to every person connected with Rice Springs Care Home who took over in my absence and helped make the anniversary barbeque a success. You are some terrific people. Also, our thanks for all the prayers, cards, phone calls and flowers during the time of Roy Don's surgery and hospitalization. May God bless each of you. Ruth Ann Klöse and family. 41c

CARD OF THANKS

My deepest appreciation to every person connected with Rice Springs Care Home who took over in my absence and helped make the anniversary barbeque a success. You are some terrific people. Also, our thanks for all the prayers, cards, phone calls and flowers during the time of Roy Don's surgery and hospitalization. May God bless each of you. Ruth Ann Klöse and family. 41c

Real Estate

FARM FOR SALE
117 acres irrigated farm 1/2 mile South of Rochester on Hwy. 6. Solar home, large concrete cellar, steel yard fence. Small downpayment. Balance at 10% interest.

Cross Real Estate
743-3425 Rochester
Larry J. Cunningham
672-2481 Abilene. 41-42c

FOR SALE
Nice 2 bedroom home. Close to school. Reduced price 1110 Adams Ave.

Large Building on hi-way, good location. 5th St.
2 Bedroom home, completely remodeled, close in to town. 600 Pawnee.

3 bedroom home, 2 baths, waterwell, large trees, 1 block from school. 1201 Union Ave.

Allison Real Estate
Rule, Texas
Phone 997-2632 or 997-2561 1trc

New House For Sale
1800 sq. ft. brick, 2 baths, fireplace, covered patio, built ins, 2 car garage, outside City limits. Qualifies for farm loan.

Lumber Yard
864-3552
after 5 864-3431 1trc

FOR SALE
Nice homesite, 16 acres with water well. Ready for mobile home. 5 miles east of Rochester. Lots of amenities. \$20,000.

Haskell County Farm—160 acres excellent soil, 2 irrigation wells without pumps. Approximately 1 mile east of O'Brien. \$850 per acre, must sell to settle debts, loan available. Owner financing available.

14 acres all cultivated, 2 miles South of Knox City. Use your Texas Veterans. \$20,000.00.

207 acres 1 mile north of Knox City. Has assumable loan for \$60,000. Salt water disposal will pay \$100 a month. \$900 per acre.

IN ROCHESTER: Super buy. Completely remodeled, 3 bedroom, 2 bath, living room, kitchen, dining room. 2 lots. Large workshop, good neighborhood. Must sacrifice. \$29,000.00. Call on this one soon.

Counts Insurance & Real Estate
Knox City
817-658-3211

Francis Arend Real Estate & Insurance Agency
408 North First
817-864-3880
817-864-3156 37c

Counts Insurance & Real Estate
Knox City
817-658-3211

REAL ESTATE LISTINGS WANTED
We Don't Just List: We Sell

I am on call and ready to talk to you about your Real Estate at any time if you are interested in buying or selling, please call me. I am full time in Real Estate and will try harder to please you.

LORAIN JOHNSON
LICENSED SALESMAN
Bus. 864-2665 Res. 864-2951
After Hours and Weekend Welcomed
H.H. HARTSFIELD, BROKER 141trc

FOR SALE
Building to be moved. 28'x82' insulated and sealed interior with good sheet iron exterior. Located at Sagerton, Texas. Send sealed bids to Clayton Stegemoeller, Rt. 1, Sagerton, Texas by October 17, 1983. For information call

915-773-2032
Reserve right to reject any or all bids. 39-41c

Real Estate

FOR SALE: House in Stamford Lake Park. 2 bedroom, kitchen, bath, living room and carpeted. Nicely furnished. Can be moved. Call nights 928-5664, Merkel, Texas. 41-42p

FOR SALE: Corner lot located on Ave. J and 13th North side. 100 ft. front 140 ft. deep. All utilities available. \$2000.00. 864-3344 or 864-2240. 35trc

FOR SALE: Big 6 unit furnished apartments. All units presently rented. Call W. H. Real Estate 773-2620 or 773-2196 in Stamford. 40-44p

Real Estate

FOR SALE BY OWNER: 14x80 Winchester mobile home with tilt out living room. Financing available with approved credit. Extra clean. 864-3745 days or 864-3077 nights. 38trc

House wells, stock wells, test holes, large diameter irrigation wells. New pump sales. Complete water system installation.
Leonard Drilling & Pump
817-997-2132 31trc

Doyle High Real Estate

Buy a luxurious home for much less than current building costs! 3400 sq. ft. of living area. Authentic Old Chicago brick, cedar shake shingled roof, Colonial fireplace in dining area, and heatilator fireplace in den. Mexican sun porch looks out into backyard which includes an antique smokehouse, Herb garden beds, and beautiful hot tub with redwood decking. Call for appointment soon.

Green Thumb Needed to revive this beautifully landscaped yard. 3 bedrooms, 2 baths, nice spacious home for family, fenced backyard. Central heat and a/c. Reduced to sell!

West Texas shade trees cool this yard. Quality built home on north side. Amenities include, 2-car garage, storm cellar, central air and heat, bath and a half, and 3 bedrooms. Call for appointment.

Own your own Beauty Shop! Fixtures and equipment for 2 hairdressers. Graveled parking lot. Good business opportunity.

Commercial lot, over 1/2 block of highway frontage property ideal for business. Located on south highway 277.

2 acres SE of Haskell. City water available. Small older home for sale. 3-4 bedrooms, 1 bath, separate garage.

Doyle High, broker — 864-3872
Betsy Nanny — 864-3521
Roberta High — 864-2815
Debbie Earles — 864-2216

FOR SALE

WEINERT FARM. 315 acres east of Weinert, 199 in cultivation, two good stock tanks.

COUNTRY LIVING CLOSE IN Four bedroom 3 baths on 10 acres, large basement. Priced for quick sale.

NEW AND READY FOR OCCUPANCY. 3 bedroom, 2 bath brick with double garage and large patio. Only \$59,900.00.

SPACIOUS ONE BEDROOM. Good location only two blocks from square on small easy to care for lot. Walk in closets, central heat, window units. Very well arranged. \$17,500.00.

IDEAL FOR FAMILY WITH SMALL CHILDREN. 3 bedroom brick across from Elementary School. 2 baths, fireplace, central H/C. Nice barbeque and storage.

EXCELLENT BUY. Extra clean 3 bedroom 2 baths, central H/C, new carpet, patio, nice trees, fenced yard. Double carport with large concrete cellar. Good garden plot with water well. \$42,500.00.

GOTTA SEE THIS ONE TO APPRECIATE IT. 3 bedroom, 2 full bath brick, formal living, sunken den with fireplace, dining room, 2 car garage with shop. Lots of other extras.

AVENUE F. 2 bedroom, 1 bath, kitchen with dining area, ceiling fans, window units, fenced yard with storage.

OWNER FINANCING ON this four bedroom, 2 bath frame on large lot. \$16,000.00.

NORTHSIDE BRICK Two bedroom with utility room, garage and carport, 3 ceiling fans, storm windows, patio, large shop bldg., fenced yard, water well, garden plot, 7 pecan trees.

Pecan Show Set Nov. 30 For Haskell County Growers

The 1st annual Haskell County Pecan Show will be held Wednesday Nov. 30, at The Haskell National Bank Community Room. Any pecan grower in the area may submit entries to the show. No entry limit per exhibitor is made, but participants are limited to one entry of each named variety they grow. The grower may enter as many seedlings,

known hybrids or natives as he wishes. The exhibitor must be the grower.

A minimum of 40 pecans are necessary for each entry. This sample of 40 should represent the variety of individual seedling tree and be uniform in size and shell color. Mixed samples — more than one variety in an entry — are disqualified.

The grower may wish to select the heaviest pecans by weighing individual nuts. This will eliminate poorly filled pecans, but certainly isn't an entry requirement.

A varietal entry may be composed of nuts from more than one tree. For example, if the grower has 10 Choctaw trees, each tree could contribute nuts to the grower's one Choctaw entry.

Nuts should be free of dust, dirt, and shuck remnants. They should not be buffed to the extent that shape or color is altered.

Discolored shells and kernels may result from peeling pecans from the shucks too early. Pecans must be from the 1983 crop and are judged on the basis of size (number per pound), appearance, and shell color. Kernel quality is also important and is based on the percent kernel (as relative to shell), color, general appearance, texture, and taste.

The Pecan Show is sponsored by Haskell County Extension office. Members of the Pecan Show Committee are: Wallace Allison, Chairman, Hill Oates, Albert Barnett, David Tidwell, Charles Swinson, George Fouts, and Tommy Ballard.



WALLACE ALLISON

Fire Prevention Urged For Texas Churches

"Texas churches are urged to observe National Fire Prevention Week, Oct. 9-15, by recognizing a church's vulnerability to fire and taking specific steps to counter that problem," according to Hilton Gilliam, Vice President for Church Activities, Texas Safety Association.

"Because churches are not occupied all the time and because some of them are left open, fire is an acute danger for these buildings," Gilliam said.

Gilliam recommended the following steps for addressing that vulnerability: 1. ask the local fire department for assistance in identifying fire hazards and methods/procedures which will eliminate or minimize these hazards; 2. designate one person to establish and monitor fire prevention activities; 3. install fire extinguishers in key places and educate the staff/congregation about their locations and use; 4. provide the staff and congregation with information on fire prevention and safe evacuation, including a posted evacuation plan; 5. ask the staff and congregation to assume responsibility for avoiding hazards such as accumulation of flammable materials near heating systems; 6. have regular inspections of heating systems and kitchen equipment; and 7. implement security measures which will help guard against arson.

Want Ads—
Your Best Market Place.

Nice People Do Not Litter!



Beautiful Haskell Council



Staff Photo by Don Comedy

RECOGNITION

R. L. Dixon, left, Superintendent of the Atchison, Topeka and Santa Fe Railway, was in Haskell last Thursday to officially thank three Haskell residents for assistance last May. The three, Kay Roysdon, James Smart, and Sheriff G. T. Garrett were responsible for stopping a train from continuing down a washed out track. Dixon told the three "Your quick action certainly avoided what could have been a major accident".

Kwik Kar Wash

Hiway 380 East

Soft Water
Plenty of Soap
Foaming Brush
Wax
Whitewall Cleaner
Vacuums
Dry Off Bays

We have a clean facility and plenty of elbow room in our well lighted bays, and from **October 14 thru October 21, 8:00 a.m. to 8:00 p.m.**, we will wash your car, clean inside, vacuum inside, clean the windows and chamois the car off for **\$7.50**. You can wait till your car is done, or call **864-3064** and we will pick it up for you. This offer is good for all pickups, vans and cars so come by and check us out.



SAVE A BUNDLE ON YOUR FAMILY FOOD BILLS!

Specials Good Thurs., Fri., and Sat.

Slicing- No Charge Cured Ham Whole	\$1¹⁹ Lb	Hunts Tomatoes 14 1/2 Oz Can	49^c
Cured Ham Buff End	\$1³⁹ Lb	Spam 7 Oz Can	89^c
Cured Ham Center Slices	\$1⁷⁹ Lb	Van Camp Pork & Beans 16 Oz Can	39^c
Cured Ham Shank End	99^c Lb	Del Monte Green Beans 16 Oz Can	39^c
Fresh Sausage	99^c Lb	Del Monte Sweet Peas 17 Oz Can	39^c
Nabisco Nilla Wafers Box	99^c	Del Monte Spinach 15 Oz Can	39^c
Lipton Tea Bags 24 Cnt	\$1⁶⁹	Parade Corn 3 Oz Can	39^c
Mrs. Tuckers Shortening Can	\$1¹⁹	Morton Salt Box	29^c
Peter Pan Peanut Butter 12 Oz	\$1¹⁹	Endust 6 Oz	\$1⁴⁹
Morton Potato Chips 1 Lb Foil Fresh Bag	\$1⁸⁹	Kleenex 250 Cnt Box	79^c

POGUE GROCERY

—Extra Parking Behind The Store. Home Owned and Operated—

113 North Avenue E

Phone 864-2015

Haskell, Texas

THE BEST IN MEAT, CUT THE WAY YOU WANT IT

TAX PLANNING



Written by
James E. Rodgers, CPA

INVESTMENT TIDBITS

Although your investment portfolio will change from year to year, it should contain investments with which you're personally comfortable. If you have a working knowledge of real estate, you will probably be most comfortable with investments concerning real property. Others may be more comfortable in the stock market and still others with dealing in collectibles, precious metals, etc.

The following short items should be of interest to most investors:

1. Keep a detailed record of all expenses having to do with tax and investment advice to provide for maximum income tax deductions.

2. Consider investing in corporations that regularly distribute stock dividends as opposed to cash to give you capital gains on the ultimate sale of the stock as opposed to current ordinary income on the cash dividend.

3. Invest in commercial real estate to give an ordinary deduction for depreciation expense with the profit upon resale taxed as capital gain.

4. Don't "over invest" in tax exempt securities. Your tax bracket and alternative investment yields will determine the amount of tax exempt securities you should buy.

5. On year-end tax planning give proper consideration to the "alternative minimum tax." If you have large capital gains in relation to your ordinary income, you could owe alternative minimum tax.

No matter how experienced you are in any investment field, you may still want to bounce your ideas off another knowledgeable person; involve your accountant in your investment planning.

Sponsored by

JAMES E. RODGERS & COMPANY
Certified Public Accountants
20 Southwest Third Street
Hamlin, Texas

\$1,000,000.00 OF LIFE INSURANCE AS LOW AS \$595.

AGE AT ISSUE	ANNUAL PREMIUM	DEATH BENEFIT
25	595	\$1,000,000
30	615	\$1,000,000
35	635	\$1,000,000
40	805	\$1,000,000
45	1,035	\$1,000,000
50	1,305	\$1,000,000
55	1,935	\$1,000,000
60	3,295	\$1,000,000
65	5,655	\$1,000,000

This is a full coverage life policy. Even suicide is covered after two years. The death benefit stays level, but the premium increases each year. The policy is paid up at age 100. Male non-smoker rates are illustrated. Female rates are lower. *Banner Life, Policy Form IPWL 80R, an A+ Best rated company.*

HERREN INSURANCE

C.H. HERREN
BOX 761 - 115 N. AVE. E
817/864-3080 — 817/864-3322



Staff Photo by Don Comedy

NEW OFFICERS

New officers of the Haskell Kiwanis Club were installed last week during a special installation banquet. The new officers include: l to r, Abe Turner, treasurer; Gene Long, vice president; Dan Hoover, president; and Marshall Brown, secretary. Several members of the club also attended the official visit of International President of Kiwanis Monday night in Abilene. Attending from Haskell were: Raja Hassen, Bob Beauchamp, Conrad Roewe, Hoover and Turner.

Sagerton News

Mrs. Alva LeFevre visited in the home of Mrs. Etta Leach one day last week. The Altar Guild met last Tuesday afternoon at 2:30 in the Fellowship Hall of Faith Lutheran Church with the pastor having the topic. There were seven ladies present:

Mrs. Ella Druessedow, Mrs. Frieda Knipling, Mrs. Lillie Lehrmann, Mrs. Lena Schaake, Mrs. Buster Tredemeyer and Mrs. Alvin Bredthauer. Mrs. Louise Stegemoeller visited in the home of Mrs. M.Y. Benton Sunday afternoon. Mr. and Mrs. Kenneth

Stegemoeller of DeSoto visited in the home of his mother, Mrs. Henrietta Stegemoeller over the weekend. Sunday Mrs. Louise Stegemoeller, Mrs. Betty Balzer, Mrs. Lena Schaake and Larry Cornelison had lunch in the home of Mrs. Henrietta Stegemoeller.

The week of Sept. 26th through Oct. 2nd was the annual reunion of the 70th Service Squadron of World War II Air Force at Alamogordo, N.M. Mr. and Mrs. E.J. Neinast attended with about 60 other men and their wives coming from 18 different states. In 1974, they started having their reunions at various places in the states. They visited Holloman AFB, White Sands, Cloudcroft, Ruidoso, El Paso, Alamogordo, N.M. The next reunion will be in the vicinity of Washington D.C. area.

Those who gave to the cemetery fund were Emil G. Kainer of Bisbee, Ariz. and Mr. and Mrs. Reece Clark. Those who gave to the cemetery fund in memory of Leslie Cobb were: Mrs. Whit Clark, Mr. and Mrs. W.L. Fenner, Mr. and Mr. L.D. Fenner, Mr. and Mrs. Don Fenner, Mr. and Mrs. Doug Taylor, Mr. and Mrs. Bill Dennis, Mr. and Mrs. Jim Martin, Mrs. Jeannine Hodge, Mrs. Floy Welch, Mrs. Allene Palmer, Mr. and Mrs. S.L. Stone, Mr. and Mrs. Roy Weak and Mr. and Mrs. Tom Edd Simpson.

Several people have given a memorial in memory of Leslie Cobb to the Sagerton Homecoming fund. They are: Mr. and Mrs. Delbert LeFevre, Mr. and Mrs. Charles Clark, Mr. and Mrs. Reece Clark, Mrs. M.Y. Benton, Russell Whilite and Mrs. Paul Banks. In memory of T.K. Price, a former teacher here in Sagerton: Mr. and Mrs. Charles Clark and Mr. and Mrs. Reece Clark. In memory of Joe Lots: Mr. and Mrs. Reece Clark. In memory of Mrs. E.G. Stein: Mr. and Mrs. Charles Clark.

Mr. and Mrs. Clayton Stegemoeller and children visited with her parents over the weekend at Tahoka.

Mr. and Mrs. Alvin Bredthauer and Clarence Stegemoeller enjoyed playing Pinoche in the home of Mrs. Lena Schaake Sunday night.

ERASERMATE PEN by Papermate. Erasable ink that can be erased with any standard eraser and is refillable. Available in a variety of colors. Ideal for students. Haskell Free Press

THE HASKELL

Section Two

FREE PRESS

"HASKELL—A GOOD PLACE TO VISIT; A BETTER PLACE TO LIVE"

VOLUME NINETY-SEVEN HASKELL, TEXAS 79521, OCTOBER 13, 1983 NUMBER FORTY-ONE

Haskell Farmer Is Finalist In Farm Bureau Competition

The Texas Farm Bureau's 1983 Outstanding Young Farmer and Rancher, chosen from a field of three finalists, will be announced at the 50th annual TFB state convention Nov. 27-30 in Houston.

Finalists in the state-wide competition are Steven and Phoebe McGuire of Haskell in Haskell County; Barry and Linda Dickerson of Weslaco in Hidalgo County, and Bobby G. McDonald, a bachelor from Sulphur Springs in Hopkins County.

The winner will succeed Ben and Lou Ann Dieterich Jr. of Riesel in Falls County.

Steven McGuire, 27 has been farming seven years. He farms 440 acres of cotton, 120 acres of wheat, 23 acres of oats and 110 acres of milo. He is in partnership with his

brother, Mike. The McGuires also have a small cow-calf operation.

An agriculture economics graduate from Texas Tech, McGuire has served on the Texas Farm Bureau Young Farmers and Ranchers Advisory Committee and presently serves as chairman of the Haskell County YF&R Committee.

Barry and Linda Dickerson have a 920-acre farming operation on which they raise 250 acres of cotton, 400 acres of grain sorghum, 229 acres of corn and 55 acres of sugarcane.

Dickerson, 28, began farming in 1973. He has served on the nominating committee of the Valley Production Credit Association. He is a past area officer in the Young Farmers

of America.

Bobby McDonald, 26, has a 329-acre dairy farm outside of Sulphur Springs. He also raises about 100 bales of coastal bermuda hay per acre. He is a graduate of Texas A&M with a B.S. in agriculture education.

According to Jamie Gipe, Texas Farm Bureau's Young Farmer and Rancher coordinator, the finalists were chosen for achievements in farming and leadership.

All three finalists will receive an expense-free trip to the Texas Farm Bureau state convention in Houston and to the American Farm Bureau Federation Young Farmers and Ranchers Leadership Conference in February 1984 in Arlington, Va.

The winner will receive one

year's free use of a 1984 half-ton Ford F150 pickup. The pickup is being provided by Bird-Kultgen Ford Co. of Waco.

Additionally, the winner will receive an expense-free trip to the American Farm Bureau Federation convention Jan. 8-12 in Orlando, Fla., to compete in the AFBF Outstanding YF&R contest.

Warriors To Host Hamlin

The Warriors will host Hamlin here at 5 p.m. Thursday.

The seventh grade will play first with the eighth grade game beginning about 6 p.m.

Both junior high games were rained out last week.

SIDEWALK SALE

SAT. Oct. 15-Only

Misses & Jr. S/S Blouses & Knit Tops \$5-\$10

Misses Blazers \$10 to \$15

1 Fullsize, 1 Queensize, 2 King

Bedspreads \$10^{ea}

Men's Short and Long Sleeve

Shirts \$5⁰⁰

Boys

Jogger Shoes \$8 & \$10

Men's

Boots \$15⁰⁰ pr

Many more items on sale

HEIDENHEIMER'S

Great Value\$

DOYLE HIGH'S

THE DRUG STORE

100 So. E. Haskell, Texas

STORE HOURS:
Monday-Saturday—8:00 a.m.-6:00 p.m.
Sunday—8:30 a.m.-10:30 a.m.
864-2515

FREE DELIVERY
Let us price your next Prescription

Ask About:
Senior Citizens Discount
Look for a Great Value\$ Ad Each Week

Timex

Healthcheck Digital Blood Pressure Monitor

1. Easy to Read
2. Easy to Use.
3. Accurate

Sale

Reg. \$77.99 **\$59⁹⁹**

NOXZEMA SKIN CREAM

Noxzema Skin Cream

10 oz

Reg. \$3.69 **\$2¹⁹**

Dr. Scholl's

Odor Attackers

Cushion Insoles Regular & Heavy Duty

Reg. \$2.29

\$1⁵⁹

Maximum Strength PANADOL

Panadol

Fast Pain relief Contains no aspirin Tamper resistant 48 capsules

Reg. \$4.69

\$3⁶⁹

Maxi-Lash

24 Hour Mascara

Free Refill with purchase

Brownish-Black Black

VICKS NyQuil

NyQuil

NIGHTTIME COLDS MEDICINE

Relieves major cold & flu symptoms so you can rest.

Reg. \$4.19

6 fl. oz

\$3¹⁹

SIDEWALK SALE

Saturday, Oct. 15

HASSEN'S

Haskell

Civic Center Donations

IN MEMORY		Fred Brown	
Herbert Hines	1200.00	1935	1935
Cliff and Juanita Dunnam		Sarah Walling Hodge	1936
Officers, Employees Haskell		Allene Hallmark Reeves	1936
National Bank		Marvina Post Hauger	1938
Ollie Nollner Hallmark		Woody Frazier	1938
Faye Hallmark		Milbert Opitz, Mattson	1940
Gary Frierson		Hassell E. Hunter	1940
Mr. and Mrs. Floyd Lusk		Joe Thomson	1940
Bobby Lusk and Family		Buster Gholson	1940
Mr. and Mrs. J.L. Toliver, Jr.		Ben Brock	1941
Duane and Lou Gilly		Wm. J. Kemp	1941
Don Kretschmer		Sue Pate	1942
Mr. and Mrs. Pat Henry		Hess Hartsfield	1942
Pat and Dean Byford		Ladelle Welch Opitz	1942
Pearl Holmesly		Hugh Watson	1942
Quida Holmesly White		Omega Lee Stansell	1943
Mr. George Beaty		Buck Everett	1943
Mr. and Mrs. Leon Jones		Royce Adkins	1944
Adrian Lott		Wayne Adkins	1944
Bill Wilson Motor Company		Marigene Sellers Milch	1944
Mrs. Jess Drinnon		Dalton Kirby	1945
Mr. and Mrs. J.L. Toliver, Jr.		Jimmie Lous Free Adkins	1945
Mary Barnett		Verlene Klose Adkins, Mattson	1947
Mr. and Mrs. J.L. Toliver, Jr.		Carolyn Turner Everett	1947
John and Anne Darnell		Betty Oates Oman	1949
Bill Fouts		John W. Darnell	1949
Pat and Dean Byford		Grace Robison Lancaster	1949
J.L. Tolliver, Sr.		Nancy Burton Toliver	1950
Duane and Lou Gilly		Willard Mullins	1952
R.A. Lane		Mabry J. Brock	1954
Ruby Smith		James Franklin	1956
Contine Guest Penick		Boyd Adress	1958
Mary Kimbrough Ratliff		Linda Lane Jones	1959
Marvina Post Hauger		Clinton H. Herren, Jr.	1959
George V. Wimblish		Opal Furrh	1960
Leon Pike		Robert W. Herren (Bobby)	1963
Mr. and Mrs. Cecil Jetton		Clyde L. Bland for Charlotte Bland	
Bonnie Howard Wolder		Gilbreth	1965
Jack and Dorothy Melton		Harlan Miller	1966
Bruelle Reynolds		Jimmy C. Yeary, III	1966
Mr. and Mrs. Viars Felker		Paul Hiebert	1967
Mrs. R.A. Lane		Sara Yeary Hodgkin	1969
Maurice Gannaway		Susan Wainscott Pope	1970
Maurice Gannaway Family		John Fouts	1971
John E. Robison		Pam Colbert McDonald	1972
Johnny Lancaster		Bonnie Adkins Fouts	1973
IN HONOR		Tommy B. Watson, Jr.	1975
Mr. and Mrs. Manford Reid		Lisa McBroom Watson	1976
Dorothy J. Glover		John M. Yeary	1978
Olin Dotson		Don Kretschmer	1982
For his service to Haskell County		Sharla Drinnon Carver	1982
Pat and Dean Byford			
Previously reported	103,473.29		
Collections this week	3,325.00		
Total	106,798.29		
Hazel and Robert Reynolds			
Memorial	1500.00		
in memory of Hazel and Robert			
Reynolds			
J.C. and Sue Yeary, in honor of			
their children and their children's			
classes	1000.00		
James C. Yeary, III - 1966			
Sara Yeary Hodgkin - 1969			
John M. Yeary - 1978			
Royce and Jimmie Lou			
Adkins	1000.00		
in memory of Bon Adkins and			
J.H. Free			
Mr. and Mrs. Clyde Bland in honor			
of their daughter, Charlotte Bland			
Gilbreth and Class of 1966	5000.00		
Dovie Pate, Patsy Pate Cobb &			
Sue Pate	1000.00		
in memory of Lon Pate			
Doris Reeves, Pam Reeves Armstrong,			
Wayne Reeves	1000.00		
in memory of W.W. "Bill" Reeves			
Abe and Ruby Turner	1000.00		
in memory of Mr. and Mrs.			
A.M. Turner			

Medicare Starts New Payments

CPR, HMO, and EMS are often-heard medical abbreviations. A new one that is not nearly as familiar to the public is DRG, or diagnosis-related grouping.

But word about DRGs probably will spread because they began having a major impact on Medicare reimbursement for hospitals on Oct. 1, 1983, says the Texas Medical Association.

Until that date, Medicare payments had been based on the final cost of an individual's treatment. But on March 24, 1983, Congress passed a Medicare hospital payment program based on DRGs in an attempt to curb rising health-care costs.

Called "prospective payment," the new reimbursement method determines the amount Medicare will pay when the doctor diagnoses the problem, not after all treatment is completed. This is done by classifying the ailment in one of 467 DRGs, or categories of medically similar disorders with about the same anticipated length of hospital stay.

Initially, the payment amount for each DRG hinges on what region of the country the hospital is in and whether it is rural or urban. If the final cost of care for a Medicare patient exceeds the amount provided by that particular DRG, the hospital pays the difference. If the final cost is less than the amount of the DRG, the hospital keeps the remaining money. This system is intended to provide incentive for hospitals to cut costs.

When this prospective payment system begins its fourth year on Oct. 1, 1986, regional location of the hospital will not be considered in setting payment amounts. Fees for each DRG will be revised yearly.

The system applies to all hospitals participating in Medicare, except for psychiatric, rehabilitation, children's and long-term hospitals (the last having an average stay of over 25 days). In addition, separate psychiatric and rehabilitation units of regular hospitals are exempt.

Green Thumb Seminar Held In Rotan

East Side Baptist Church will be having revival services beginning Sunday, October 16 and continuing through Thursday, October 20.

Derrell Monday will be bringing the messages each service. Bro. Monday is presently pastoring at First Baptist Church, Rotan. He is 34 years old, married, and has three daughters. Bro. Monday is a graduate of Hardin-Simmons University and Southwestern Baptist Theological Seminary. During his college days, he preached revival meetings in ten different states. He has spoken to many youth camps and is an active participant in outreach ministry.

Music for the revival services will be led by W.O. Elmore. Special music will be brought each service by the talent in our own community.

Revival services will be held each week day at noon and 7:30 p.m. Sunday's services will be at 11:00 a.m. and 7:00 p.m.

East Side Baptist wishes to invite all to come and share in this time of spiritual blessing.

Revival Set Oct. 16-20 At East Side

For the hundreds of older workers in the Green Thumb senior employment program, responsibility has been a way of life, an essential part of the traditional work ethic that most older persons accept.

But as 60 Green Thumb workers meeting at the Fisher Co. Senior Ctr. in Rotan learned recently, responsibility goes beyond caring for jobs and families; it also means being responsible for your own health.

"Working hard is the most important thing in many people's lives," said Green Thumb assistant director John Willingham. "Yet what most of us don't think about is that we can't work if we aren't healthy, and to be healthy we have to take care of ourselves."

Green Thumb provides part time work in public service agencies for low-income persons 55 and over. Texas Farmers Union sponsors the program, which operates in 108 counties across the state.

Willingham emphasized that it is far better to prevent a disease than to deal with it after it has attacked the body, and in a film produced by the American Occupational Medical Association, the Green Thumbers learned how diet, exercise, and good habits can forestall the onset of disease.

Green Thumbers from Haskell attending the training session were Eula Arend, Juanita Bevel, Ellie Hennigan, Rita Rivera and Lucinda Bogard.

LET US HELP YOU with all your office supply needs. *Haskell Free Press*

1983 QUARTERLY REPORT Haskell County, Texas JULY, AUGUST & SEPTEMBER

	BALANCE JUNE 30 1983	RECEIPTS JULY, AUG. SEPT. 1983	DISBURSEMENTS JULY, AUG. & SEPT. 1983	BALANCE SEPTEMBER 30 1983
GENERAL	\$ 26,373.01	\$ 92,127.40	\$ 116,804.39	\$ 1,696.02
JURY	13,625.86	851.56	4,346.86	10,130.56
PERMANENT IMPROVEMENT	11,443.01	152.81	.00	11,595.82
OFFICER SALARY	10,898.37	69,540.40	74,830.94	16,188.91
LAW LIBRARY	106.07	490.00	919.50	323.43
ROAD & BRIDGE # 1	79,217.39	11,005.80	15,989.86	74,233.33
ROAD & BRIDGE # 2	21,602.22	10,393.99	19,942.18	12,054.03
ROAD & BRIDGE # 3	11,809.45	10,597.98	15,713.61	6,693.82
ROAD & BRIDGE # 4	29,648.30	10,394.03	11,791.83	28,250.50
LATERAL ROAD # 1	32.93	8,259.36	4,165.95	4,126.34
LATERAL ROAD # 2	188.71	8,259.36	1,952.54	6,495.53
LATERAL ROAD # 3	.74	8,259.36	3,237.12	5,022.98
LATERAL ROAD # 4	61.56	8,259.36	2,438.80	5,882.12
F M L ROAD # 1	16,916.89	1,434.73	10,171.96	8,179.66
F M L ROAD # 2	2,280.91	819.86	2,233.14	867.63
F M L ROAD # 3	1,296.44	58,524.82	67,051.05	7,229.79
F M L ROAD # 4	9,926.27	819.86	8,289.26	2,456.87
SOCIAL SECURITY	489.45	17,865.67	17,865.67	489.45
GROUP INSURANCE	81.90	222.00	222.00	81.90
CRIMINAL JUSTICE	2,486.50	1,955.00	1,921.50	2,520.00
GEN. REV. SHARING	291.36	15,299.36	15,247.51	343.21
REV. SHARING # 1	3,874.39	.00	.00	3,874.39
REV. SHARING # 2	108.62	.00	.00	108.62
REV. SHARING # 3	3,419.73	.00	1,000.00	2,419.73
REV. SHARING # 4	4,029.13	.00	.00	4,029.13
VOTER REGISTRATION	3,223.98	42.82	.00	3,266.80
LAW ENF. OFFICER	481.00	383.00	371.70	492.30
PROBATION OFFICER	1,960.10	1,823.20	1,597.95	2,185.35
COMP. TO VICTIMS OF CRIME	108.50	120.00	152.00	76.50
CO. ATTORNEY FUND	6,320.70	987.24	424.82	6,883.12
DIST. ATTY. FUND	962.00	255.00	557.50	659.50
T.C.D.R.S.	.00	17,536.66	17,536.66	.00
JUVENILE PROBATION	532.29	3,984.56	2,234.66	1,217.61
Haskell Co. School Fund	18,630.11	16,566.04	31,043.60	4,152.55
TOTALS	\$ 259,566.57	\$ 377,231.23	\$ 450,054.56	\$ 186,743.20

Investments of Haskell County, Texas

SOCIAL SECURITY FUND	
Certificates of Deposit # 14956	6 for 30 months @ 9.45%
per annum. Dated December 30, 1982 and maturing June 30, 1985	\$ 5,550.00
HASKELL NATIONAL BANK HASKELL, TEXAS	
PLEDGES SECURING COUNTY DEPOSITS	
Federal National Mortgage Association Bonds	2-10-86 \$ 265,000.00
Everman Ind. School Bond	4-01-88 45,000.00
Thurston County Washington (Escrow in U.S. Government)	100,000.00
Insurance Coverage for Time Accounts	\$ 410,000.00
Insurance Coverage for Aggregate Checking Accounts	100,000.00
	\$ 610,000.00
HASKELL NATIONAL BANK HASKELL, TEXAS	
CERTIFICATES OF DEPOSIT	
Certificated of Deposit # 7034 Criminal Justice Account	
for 6 months @ 9.25% annum. Dated July 18, 1983	
and maturing December 18, 1983	\$ 1,500.00
Certificated of Deposit # 9086 District Clerk's Cost Account	
(case set, money paid but cases not deposited of) 30 months @ 11.75% payable 6 months. Dated May 23, 1983 and maturing November 23, 1986.	\$ 3,000.00
	\$ 4,500.00

On October 10, 1983 A.D. the Commissioner Court of Haskell County, Texas met in regular session compared and examined the quarterly report for the quarter ending September 30, 1983, and found same to be true and correct.

THE REQUIREMENTS OF ARTICLE 394 P.C. HAVE BEEN COMPLIED AND A TABULAR STATEMENT HAS BEEN FILLED REQUIRED.

LET US HELP YOU with all your office supply needs. *Haskell Free Press*

We pack SELLING POWER in our CLASSIFIED ADS.

Open Dusk-Start Dark
This Area Most Popular
DRIVE-IN
Stamford 773-3272
3 Days-Fri. 14-Sun. 16
"Curse of the Pink Panther"
Tues. 18-Wed. 19-Thurs. 20
XXAdults Only
"Princess Seka"

[Signatures of Commissioners]
COMMISSIONER PRECINCT # 1
COMMISSIONER PRECINCT # 2
COMMISSIONER PRECINCT # 3
COMMISSIONER PRECINCT # 4

[Signatures of County Judge and Clerk]
COUNTY JUDGE, HASKELL COUNTY, TEXAS
COUNTY CLERK, HASKELL COUNTY, TEXAS

Public Auction City Auto Salvage

Highway 277 North, Haskell, Texas
Next to John Deere House
Saturday Oct. 15th
9:00 A.M.

PROPERTY TO BE OFFERED

COMMERCIAL PROPERTY ON 277 NORTH- Approximately 4 acres, with 940 foot frontage. There is 9780 square foot under roof. (Offices, sheds, work area).
DOWNTOWN PROPERTY ON HIGHWAY 277 NORTH- Approximately 1 1/2 acres, with 3 bedroom house (1827 sq. ft.) office bldg. (Approx. 620 sq. ft.) store (approx. 2500 sq. ft.). (2) storage buildings (approx. 962 sq. ft.).

TRUCKS & TRAILERS

1979 KW Coe 350 Cummins 13 Sp. 4.33, Tortlon bar, like new rubber; 1978 Chev. C65 366 V8 5 sp. 2 sp. axle. Lay down bed w/hydr. winch, good rubber; 1981 Chev. Truck w/heavy duty double frame, 8.2 Litre Diesel, 10:00.20 tires, air/radio, 5 sp. w/2 sp. rear end, 20 ft. steel bed w/headache rack, long wheel base, 42,000 miles.; 1979 Fontaine 49' beaver tail, 10:00x15 like new rubber; 42' 1976 Fontaine drop deck, 8.25 x 15 radials; 1959 39' float.; 1977 QMC Mustang 1700 loader w/1/2 yard bucket.; 1949 Dodge Winch Truck.; 1981 LaFont wheel crusher w/23 H.P. Kohler engine; "Firecone" 500 Alum. Forge, 1 man operation, 1 ton per day.; Forge blower; Black & Decker valve grinder.; Cee-Gee parts Washer; shop made shear; Gas 4 H.P. Air Comp. 500 Gal. butane tank; Crumbliss Alt. & Starter Tester; 3 & 5 H.P. air compressors; 40 ton Pr. Johnson Fleet Con 11-Base unit & 4 mobile units; approximately 175 junk cars; Antique 1932 Chev. 1 ton. & 1926 Model T. Truck; (2) 1937 Studebaker Coupes (restorable); (3) 1957 4 Dr. H.T. Chev. (restorable); 1955 2 DR. H.T. Chev. (restorable); 55 & 57 Chev. new water & fuel pumps; 1978 Mercury Cougar XR7; Battery charger, anvil, vises, welder, chain holts, platform scales, air tanks, rivet machine, floor jack, late model Chev. p/u bed, snap on tool boxes, chains, boomers, holts, many, many hand tools.

PARTS

Lots of front ends, radiators, alternators, starters, drive shafts, crank shafts, carbs., heads, glass sander & patterns. This will be a complete liquidation of all take out parts. Approx. \$1000.00 in new trailer parts. There will be many, many items too numerous to list. Plan now on attending this Auction Sale.

730 John Deere Tractor

8 ft. Grain Drill, 12 ft. Tandem Disc., 2 Bottom Roll-over Plow.

For More Information Call Southwest Auction Wichita Falls.

723-6171 or Keith Carey Auction. Arlington. 265-1852

Baptist Convention Set Nov. 1-13 In Amarillo

Messengers to the annual Baptist General Convention of Texas in Amarillo Nov. 1-13 will consider a proposed \$53.7 million budget for missions and transact business concerning 23 institutions and agencies.

Also, messengers from many of the 4,500 Texas Baptist churches and missions will elect a new president to succeed D.L. Lowrie, pastor of First Baptist Church, Lubbock. Lowrie has served the maximum two one-year terms.

Paul Powell, pastor of

Green Acres Baptist Church, Tyler, will deliver the annual convention sermon.

Other key speakers will include Lowrie who will give the President's Message during the opening session; William M. Pinson, Jr., executive director of the Baptist General Convention of Texas; Jose Rivas, dean for academic affairs at Hispanic Baptist Theological Seminary in San Antonio; and James Semple, pastor of First Baptist Church, Paris; Lester Collins, pastor of Tallowood Baptist Church, Houston; Richard

Jackson, pastor of North Phoenix Baptist Church, Phoenix, Ariz.

Lloyd Edler, president of the Baptist Sunday School Board, Nashville, Tenn.; and S.M. Lockridge, pastor of Calvary Baptist Church, San Diego, Calif.

The convention will also feature a presentation on Texas Baptists' partnership missions emphases in Mexico and Australia. The BGCT is working with Baptists in the two countries in the areas of evangelism, church growth, leadership training and church construction.

The Texas Baptist Public Relations Advisory Committee will present the annual Communications Award to Susan Nethery, a homemaker and author from Milam. The award is given to an individual in the communications field who has made significant contributions to the religious life of Texas through the media.

Preceding the convention will be the annual meetings of the Woman's Missionary Union and Texas Baptist Men, auxiliary missions organizations to the BGCT.

NELSON REVISED Standard Version Bibles. Featuring red letters, full color pictures and maps, dictionary, concordance, study helps, presentation page, family record and thumb indexes. Available at the *Haskell Free Press*

Superintendent's Views

BY JAMES LANIER
Superintendent, Haskell ISD

We usually think of outstanding athletes or scholars when we feature students. Too often we ignore students who accomplish commendable objectives which are not so much in the public eye. Scott Fields is such an achiever. Scott is the son of Mr. and Mrs. Tommy Matthews. Scott is a senior at HHS. His outstanding achievements are in the area of sheep and lamb production and feeding. Scott has already achieved many successes. He received his Lone Star Farmer Degree in FFA last summer in San Antonio. He also won the Area II Sheep and Goat Raisers Award last summer. He is Vice-President of the Haskell FFA Chapter this year. He was on the Farm Skills Team that placed in district and area last year. Also, he was on the Livestock Judging Team that placed at area and district. He is Ag-Mechanics this year. He also works on a part time job which provides his spending money.

All these things are excellent achievements. However, he has one ongoing achievement which sets him apart. He is a very successful sheep breeder. He has approximately forty head of breeding stock. In fact, he has some beautiful lambs that show well and do well at both local and regional stock

shows. He has shown a good profit with his breeding program. Too often, ag projects are not financially rewarding. This one has been. His older brother Wade started the project, but Scott has pressed forward to a successful program.

Scott showed 11 head of sheep at the Haskell County Show. His lambs always place high. We are proud of Scott and his project. He may not follow a career as a breeder, but he has learned a valuable lesson in the area of free enterprise and business management. We believe he has a very realistic and valuable achievement for which the school and community can be proud.

Medicare Deductibles To Increase January 1, 1984

Because of continuing increases in health care costs, payments by Medicare beneficiaries will automatically increase again in 1984, the Department of Health and Human Services announced September 30. The increases are required under 1966 Medicare law, and they affect beneficiary payment of hospital deductibles, coinsurance and monthly premiums.

Under Medicare Part A (Hospital Insurance) the deductible patients pay for hospitalization will increase from \$304 to \$356 January 1, 1984. Each Year, by law, the Medicare hospital deductible for the following year is computed to reflect the difference between average daily hospital costs for the previous year and the same costs during 1966, the year Medicare began. As the

difference between the two grows larger, the hospital deductible increases.

The rise in this deductible also increases the amount of coinsurance beneficiaries must pay if they remain in the hospital for more than 60 days during 1984. From the 61st through 90th day of hospitalization, the patient's share will increase from \$76 to \$89 a day. For stays beyond 90 days, Medicare patient's cost will go up from \$152 to \$178 a day.

For a stay of more than 20 days in a skilled nursing facility, the Medicare patient will pay \$44.50, instead of the current rate of \$38, toward the cost of the 21st through the 100th day.

Under Medicare Part B (Supplementary Medical Insurance) the basic premium will rise from \$12.20 to \$14.60 a month January 1, 1984. The

Social Security Amendments of 1983 set the monthly premium rate for calendar years 1984 and 1985 at a level equal to 25 percent of the expected average costs of SMI for aged enrollees. SMI complements Part A of Medicare by helping to pay physicians' bills and a variety of other medical expenses.

About 30 million people are covered under the Medicare Program. In 1984, the number of enrollees is expected to grow to about 30.5 million. Medicare spending is expected to increase from \$56.1 billion in fiscal year 1983 to \$64.7 billion in FY 1984.

PETITE ROLEDEX: the perfect file for telephone numbers and addresses. Typewriter spaced lines. Replacement refills. Decorator colors and styling for home and office. *Haskell Free Press*

Call
Nanny Plumbing
for all your plumbing needs.
We offer Rheem H/C, Roto-Rooter and Ditch Witch Services, Plus Dependable Service
Monday thru Friday
7 a.m. to 5 p.m.
Sat. 7 a.m.-12 noon
301 S. Ave E 864-3043

Vestal Fireplace Inserts
Keep The Heat Indoors!



Installs in minutes - no cutting, no bending. Glass or heavy cast iron doors available - removable for fireplace use. For masonry fireplaces with front openings from 29" to 43".

- Attractive brass trim
- Burns wood or coal
- Heavy gauge firebox
- Firebrick lined
- Easy spin, cast iron regulators
- Dual front-mounted blowers - 180CFM each - thermostatically controlled, easily accessible
- Brass wire handles
- Andirons included

\$689⁰⁰ plus tax
Max McMeans
864-3414

OUR PECOS BOOT IS
BUILT TOUGH!



- 1 Full-grain, oil-tanned leather
- 2 Goodyear Welt construction
- 3 Insole shapes to your foot like a footprint
- 4 Tempered steel shank
- 5 Composition sole resists tears and abrasion, exceptional resistance to oil absorption
- 6 Western walking heel

*SIZES 5-15
WIDTHS A-EEE
*Not all sizes in all widths.

Safety Steel Toe Available
RED WING
Heidenheimers

VISA MasterCard
Radio Shack
Un-Heard-Of Values on Everything in Audio!
CHARGE IT (MOST STORES)

SUPER SOUND SALE

38% Off! Compact Portable AM/FM Cassette Recorder
Minisette®-12 by Realistic

Save \$49.95
\$30 Reg. 79.95
Record Off Radio or With Built-In Mike



Cue/review helps you find tape selections in fast-forward and rewind. 2 1/2" dynamic speaker sounds great. Variable Monitor lets you listen to radio at any volume as you record. Sleep switch, tone control. #14-1012 Batteries extra

Stereo Cassette Deck With Dolby* NR Cut 27%
SCT-24A by Realistic®

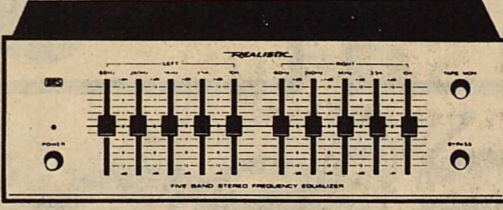
Save \$88
\$319.50 Reg. 119.95



• 2-Color, Fast-Response LED Meters
• MPX Filter for Perfect FM Recordings

High performance at a low price! Dolby-B NR extends dynamic range and reduces tape hiss. Bias and EQ selectors for metal, CrO₂ and normal tape, 3-digit tape counter. #14-613
*TM Dolby Laboratories Licensing Corp.

5-Band Stereo Graphic Equalizer
By Realistic



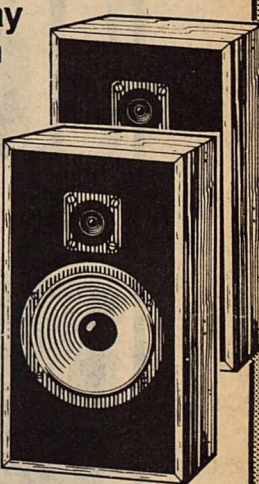
43% Off \$39.95 Reg. 69.95
Improves Any Stereo System's Sound

Ten controls boost or cut response to reduce tape hiss or record scratch and accentuate vocals or instruments. #31-1988

Save \$20 on 2-Way Speaker System
MC-600 by Realistic

Half Price
19.95 Reg. 39.95
Each Each

Real Walnut Veneer
Long-throw 6 1/2" woofer, 2 1/2" tweeter. 13 1/2 x 8 7/8 x 5 1/4". #40-1979



Battery-Powered 2-Station Intercom
By Archer®



Cut 27%
10.88 Pair
Reg. 14.95

Keep in touch at home or truck cab-to-camper. Remote can signal master, even when system is "off". #43-221 Battery extra

32-Number Phone Auto-Dialer
DU6FONE®-232 by Radio Shack



Save \$30
69.95 Reg. 99.95

Switchable Tone or Pulse Dialing
Instant dialing of frequently called and emergency numbers! LED display shows number called, duration of long-distance calls, time of day. For single-line phones. #43-282 Backup battery extra

Save Now on Great Stereo for Your Car
By Realistic



Save \$20
49.95 Pair
Reg. 69.95

Flush-Mount Speakers. 5 1/4" woofer, 2 1/2" mid-range, 2" tweeter. #12-1854

Save \$50
119.95 Reg. 169.95

In-Dash AM/FM Stereo Cassette. 24 watts total power. #12-1899 With mounting hardware

Our Best AM/FM Pocket Radio
By Realistic



41% Off
12.95 Reg. 21.95

2 1/2" speaker, high/low tone switch. With ear-phone, wrist strap. #12-714 Battery extra

Money Matters

A Series Of Informative "Plain Talk" Thoughts Regarding Your Money Matters

Investments Deciding where to invest your hard earned money can be confusing to say the least. Some investments offer a possibility of a high return but they usually contain a high risk factor as well.

If you're like most of us, you just can't take chances when it comes to securing your family's future. We have several safe, insured, profitable savings options that offer you the high return without the risk. There's IRA and KEOGH accounts for your retirement. Money Market and other high paying certificates are also available. These certificates are all insured by FDIC. To find out which investments are best for your situation come in and see us.

We Think Money Matters!

HASKELL NATIONAL BANK

864-2631 • 601 N. First
Haskell, Texas — Member F.D.I.C.

North Side Square **The Video Vendor** 864-2870 Haskell, Texas



M SYSTEM

Your FRIENDLY

AFFILIATED SUPER MARKETS

Haskell, Texas
Where your dollar buys more

Double days

TUESDAY & WEDNESDAY

SPECIALS GOOD THURS.,
Oct. 15th Thru Oct. 19th

SWIFT'S VIENNA
SAUSAGE

5-oz. Cans

2 FOR 1⁰⁰

CAMPBELL'S TOMATO

SOUP

10.75-oz. Cans

3 FOR 89¢



SHURFRESH GRADE "A"

Medium Eggs

DOZ. **65¢**

SHURFINE

TUNA

6.5-oz. Can

55¢

THRIFT KING

Bleach

Gal. Jug
Limit 2

35¢

MORTON FROZEN

Dinners

Asst. Kinds
Each

79¢

DUNCAN HINES

Cake Mix

Assorted Kinds

Each

75¢

CARNATION

MILK

13-oz. Tall Cans

2 FOR 1⁰⁰

DEL MONTE FRUIT

**COCKTAIL
or PEACHES**

16-oz. Can

69¢

RAINBOW WHOLE DILL

PICKLES

16-oz. Jar

79¢

DISHWASHING DETERGENT

CASCADE

50-oz. Box

2⁵⁹

LIQUID DETERGENT

DAWN

22-oz. Bottle

1²⁹

SHURFINE Asst. Kinds

DOG FOOD

15-oz.

4 For 1⁰⁰

BATH SOAP

DIAL

Bath Size

2 For 1⁰⁰

POST TOASTIES

Frosted Flakes

20 oz box

\$1⁸⁹



DEL MONTE
TOMATO SAUCE

8-oz. Cans (Limit 7)

7 FOR 1⁰⁰



DEL MONTE SALE!

- WHOLE GREEN BEANS, 16-oz.
- LEAF SPINACH, 15-oz.
- SWEET PEAS, 17-oz.
- WHOLE NEW POTATOES, 16-oz. MIX OR MATCH!

2⁹⁵¢
FOR

CARNATION HOT

COCOA MIX

Pkg. of 12
Envelopes

1³⁹

SHURFINE

PINEAPPLE

Crushed-Chunks-Sliced

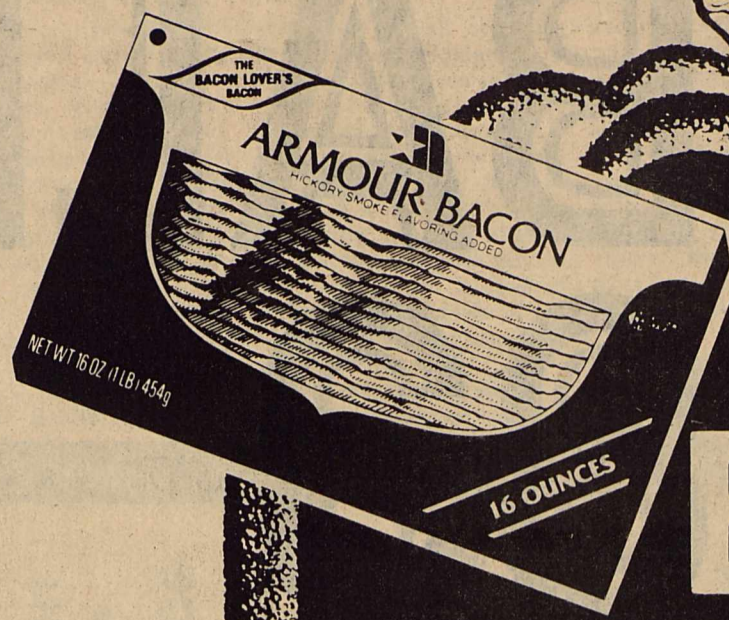
20-oz. Can

69¢





WE RESERVE THE RIGHT TO LIMIT QUANTITIES!



ARMOUR STAR BACON

1-Lb. Pkg.

1 49



BONELESS BEEF BRISKET

Lb.

1 09



SHURFRESH AMERICAN SINGLES

CHEESE 16-oz. Pkg.

1 99

Parkay
SOFT MARGARINE

1-Lb. Tub

79¢

Grade A

Fryers

Whole Only

Lb. **45¢**

SUNKIST
ORANGES
72-Count Size
4 1 00
Lbs.

SHURFRESH
Ice Cream
1/2-Gal. Round Carton
1.29

Maxwell House
Coffee
All Grinds
1 Lb. Can

1.89

Diet or Regular

Coca Colas

2 Ltr. Btl. **1.09**

RED DELICIOUS
APPLES
3-Lb. Bag **55¢**



U.S. No. 1

SWEET POTATOES

Lb.

39¢

PURPLE TOP
TURNIPS
5 Lbs. **1 00**

WHITE
ONIONS
5 Lbs. **1 00**



FOOTBALL

1983

Haskell Indians

vs

Hamlin

7:30 p.m.—There

This Page Sponsored By The Following Firms and Individuals:

Middleton Oil Co—Northside Gulf

Thornhill Insurance Agency

Haskell Co. Warehouse & Compress, Co.

Modern Way Food Store

Bailey Toliver Chevrolet & Olds

Kids Duds

Heads or Tails Western Wear

Steele Precision Machine

Willie Faye Tidrow

County Treasurer

The Hartsfield Agency

Biggon Drinnon

Reddy Pest Control

—Bill St. John—

Hanson Paint & Body

Wallace's Exxon

Smitty's Auto Supply

Anderson Construction Co.

Conner Nursery & Floral

Sport-About

Holden-McCauley Funeral Home

Nanny Plumbing

Haskell Steak House

Haskell Livestock Auction

Haskell National Bank

Double A Drive In & Exxon

Haskell Paint & Body

Leon Jones Welding

Buster's Drive-In Grocery

Haskell Marine

The Personality Shoppe

—Smart Wear for Women 864-2501—

Fieldan Motel

Haskell's Finest Downtown

Haskell Free Press

Mike Harrell

Glenn & Jo Pogue

Pogue's Meat Processing

Dairy Queen

Bill Wilson Motor Co.

Brian Burgess

—State Farm Insurance—

Richardson Truck & Tractor

Carolyn Reynolds

—District Clerk—

Medford Buick-Pontiac

M-System

Boggs & Johnson

Owens Radio & Electric

Lane Apparel

Gilliam Oil Co.

—Larry Gilliam—

Queen Roofing

Arrowhead Motel

—Completely Remodeled—

Centex Cablevision Corp.

Haskell Indians

No.	Name	Position	Weight
11	Freddie Villa	WB	140
12	Todd Harris	QB	150
22	Doug Lanier	TB	160
25	Harry Henry	E	150
32	Roger Dever	TB	165
33	Carl Dever	WB	138
37	Robert Ivey	WB	175
40	Carnell Thompson	FB	160
44	Keith Reed	FB	210
50	Fred Barnett	T	185
55	Shawn Lane	C	160
60	Jimmy Burson	G	160
62	Keith Parrott	G	155
65	Kendell Solomon	G	175
66	Sam Toliver	G	168
67	Shane Gilliam	T	185
68	Locario Constante	T	170
72	Marvin Tate	T	165
75	Joseph Perez	T	210
79	Ricky Moeller	T	160
80	Randy Roewe	E	145
82	Shane Hadaway	E	160
84	Patrick McCoy	E	190
88	Ricky Rojas	E	150

HEAD COACH: W.L. Holt

ASSISTANT COACHES: Jim Bob Mickler, Coy Payne, Jimmy Lisle, Jim Dan Raughton

MANAGERS: Paul Cox, Doug Davis, Klaus Nielson, Jerry Davis

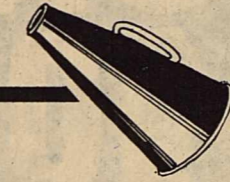
SUPERINTENDENT: James Lanier

PRINCIPAL: Clayton Neal

BAND DIRECTOR: Terry Lovett

CHEERLEADERS: Sheila Klose, Head; Marla Gonzales, Holly McBroom, Denise Burris, Stephanie Browning, Kelly Wallace

DRUM MAJORS: Jana Overton and Kim Lanier



Kiddie Kottage

—Director, Sandra Wallace—

Dean Butane Co.

Trussell's Tire Center

Kennedy Lumber Co.

Elsie's Hi-Lander

Under the Rainbow

Mitchell's Porthole

McGee's Lumber Yard

Rodriquez Inn

The Sweet Shop

Sonic Drive In

Haskell Co. Farm Bureau

Lonnie Tate—Agency Manager

Turner Laundry

Lane-Felker

Heidenheimer's

Kountry Kookin'

Commodore Savings

Haskell Branch—518 S. 2nd

Jones Cox & Co.

Sherman's Carpet & Interior

Federal Land Bank Assn.

John Wayne McDermott

—County Judge—

The Video Vendor

HOME VISITORS

Haskell 35, Jim Ned 0

Haskell 21, Cisco 10

Haskell 14, Anson 6

Haskell 20-Stamford 0

Haskell 13, Quannah 21 Here

*District Games

*Oct. 7 . . Haskell 39, Seymour 0

*Oct. 14 . . Hamlin There

*Oct. 21 . . Munday There

*Oct. 28 . . Paducah Here

*Nov. 4 Rotan Here

TIME

DOWN



State Treasurer Seeking Abandoned Account Owners

Texas Treasurer Ann Richards is looking for 150 Abilene area residents who have a total of nearly \$44,000 coming to them from abandoned accounts held in the state Treasury's Unclaimed Money Fund.

Richards said the names are among 20,000 on this year's list which were reported to her by banks, insurance companies and other businesses as the owners of at least \$50 each in accounts which have been unclaimed for the past seven

years. "We're working hard to reunite people with their lost or forgotten money," Richards said, noting that the Treasury is publishing a 24-page booklet on October 16 as part of the effort to locate missing owners. The booklet is being distributed in 35 Texas newspapers, she said, and it is also being sent to more than 600 public libraries and all of the county tax assessor-collector offices.

Under Texas law, the State

Treasurer is responsible for holding accounts and other types of property which have been unclaimed or abandoned for seven years. Richards said she is putting a high priority on returning these funds to the rightful owner.

"There is not time limit on filing a claim," the Treasurer stressed. "If we have the money, we'll give it back once we verify ownership, as the law requires."

Reports are submitted to the Treasurer each year by banks, savings and loan associations, credit unions, corporations, utility companies, department stores and other businesses. Types of property included on the reports include checking and savings accounts, utility deposits, money orders and cashiers checks, corporate dividends, mineral royalties, credit balances on charge accounts, proceeds from insurance policies and gift

certificates — all of which have been unclaimed or abandoned for seven years.

"The purpose of the Unclaimed Money Program," Richards said, "is to reunite people with their lost or forgotten money. In the past 12 months, ending in August, we were successful in returning more than a million dollars, double the rate of last year and an all-time record for one year."

Richards said about \$9.4 million in abandoned accounts

was collected this year. She pointed out that money collected that is never claimed by the owner goes to benefit all Texans by helping to pay for education, law enforcement and other state programs.

"The most important aspect," she said, "is that the more we collect, the more we'll be able to return."

Anyone who sees their name on the list, or who thinks they may have abandoned accounts from previous years,

should write to State Treasurer Ann Richards, P.O. Box 12608, Capitol Station, Austin Texas 78711; or they may call the Treasury's toll-free "hotline" after October 16 at 1-800-321-CASH.

Texas Unclaimed Money Fund For Abilene Region
Brown County, \$2,473; Callahan County, \$118; Coke County, \$344; Coleman County, \$122; Concho County, \$0; Eastland County, \$3,331; Fisher County, \$76; Haskell County, \$958; Jones County,

\$4,344; King County, \$0; McCulloch County, \$167; Menard County, \$123; Mitchell County, \$102; Nolan County, \$540; Runnels County, \$2,276; Scurry County, \$1,070; Shackelford County, \$5,790; Stonewall County, \$2,626; Taylor County, \$19,446.
Total - \$43,906.
Total # accounts- 157.
Average amount- \$279.66.
Statewide total - Accounts- 20,000
Dollar amount- \$7 million

PC Loses To Ira

Paint Creek, playing before a large Ira Homecoming crowd, played their best game of the year, losing 60-36 last Friday.

Trailing 22-14 at half-time, Paint Creek surprised Ira with an on-side kick, opening the second half. Ricky Myers recovered the kick and caught a TD pass on the next play to close the score to 22-20.

It remained a close game until 5:21 in the third period when Paint Creek received a questionable call and its defense broke down allowing two quick Ira TD's. Up until this time, the defense played its best game of the year. Ronald Campbell had 18 tackles, Keith Medford 15 tackles, and Rob Mickler 13 tackles. These three shared the Defensive Pirate of the Week Award.

Keith Medford threw 4 TD passes and made a 40 yard TD run. Medford passed for 210 yards and ran 11 times for 94 yards. Mikael Gonzales caught one TD pass and Ricky Myers caught TD passes of 32 yards, 43 yards, and 37 yards. The offensive team did the best job blocking they have done all year. Medford and Myers shared the Offensive Pirate of the Week Award. This week the Pirates play Trent at home at 7:00 p.m. Friday.

Seymour Downs Haskell JV

BY ROBERT IVEY
The JV was downed by Seymour 8-0 last Thursday.

The only score came in the third quarter on a blocked punt which Seymour recovered in the end zone.

The JV defense played well by holding Seymour to minus yardage in the second half.

The offense couldn't get untracked even though they had several opportunities to score.

"The defense played as well as they have all year, but that just wasn't enough to put the points on the board," Coach Jim Bob Mickler said.

The JV will host Hamlin at 7 p.m. Thursday.

NEW! The pen that floats across the paper, "Spinnaker," a rolling ball pen by Sanford. Available in black, blue & brown. *Haskell Free Press*

WE HAVE Cross pens and pencils and Cross soft tip pens. Available in gold and silver finishes. *Haskell Free Press*

Conservation Viewpoints

USDA Soil Conservation Service
Assisting
Haskell Soil and Water Conservation District

Johnny Wheatley of Haskell was recently re-elected to the Haskell SWCD board of directors Oct. 4, 1983. Wheatley represents zone 5 of the district.

The purpose of the Haskell SWCD, with headquarters in Haskell is to promote sound soil and water conservation programs on farm and ranch lands within the district and to serve as a voice for farmers and ranchers on conservation matters and other issues affecting private property rights of landowners.

The board of directors coordinates the conservation efforts of various local, state and federal agencies and other organizations and has authority to enter into working agreements with these governmental agencies and private concerns to carry out its purposes.

As one of five individuals serving on the district board of directors, Wheatley will be

responsible for district policies and procedures for carrying out the district program within the framework of the Texas soil conservation district law.

In other areas of leadership, Wheatley is active in American Agriculture Movement and Texas Farm Bureau. Wheatley is married to the former Helen Grand. They have 4 children, Lynn, Joe, Johnna, and David.

In Texas there are 201 soil and water conservation districts. Each is a legal subdivision of state government organized by local agricultural landowners with the assistance of the Texas State Soil and Water Conservation Board. Unlike most other legal subdivisions of state government, SWCD's do not have the powers of taxation or eminent domain. All conservation programs managed by the districts are of a voluntary nature to the landowner or operator.

When they ask

WHO'S YOUR INSURANCE AGENT?



Say
LANCO INSURANCE
Haskell, Texas 864-2629 1-800-772-0897

We've helped a lot of businessmen put together a strong foundation of insurance protection that combines maximum coverage with minimum cost. We can probably help your company answer those difficult questions.

WE'RE THE ANSWER!

Public Notice

Southwestern Bell, in accordance with rules and orders of the Public Utility Commission of Texas, hereby gives notice of its intent to re-file evidence and appropriate tariff(s) in support of a request to establish rates for the use of certain complex inside telephone wiring in the amount of \$54.5 million annually. This request was previously a part of the considerations in Docket 5141 and now has been re-docketed as Docket 5420.

Customers who do not own the Complex Inside Wire associated with their Customer Premises Systems (such as PBX and Key Systems), and who utilize Southwestern Bell's wiring after January 1, 1984, could be affected by this request. On January 1, 1984, all of the Customer Premises Systems presently provided by Southwestern Bell Telephone Company will be transferred to a subsidiary of AT&T and that subsidiary of AT&T will be almost exclusively responsible for the charges pursuant to the proposed tariff on January 1, 1984. After January 1, 1984, customers who purchase their Complex Customer Premises Equipment and do not purchase, but continue to use, Southwestern Bell Telephone Company's inside wire will be subject to the charges proposed in the tariff.

The proposed effective date for these new rates is January 1, 1984.

Persons interested in intervening in this matter should file a written motion expeditiously with the Public Utility Commission of Texas, 7800 Shoal Creek Boulevard, Austin, Texas 78757, as the Hearing on the Merits in Docket 5420 is set for November 21, 1983.



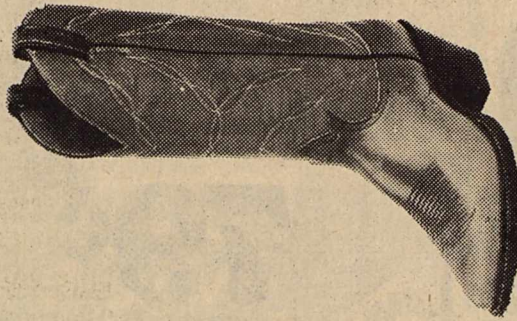
Sweaters & Sport
Shirts by Career Club
Large Group 1/2 Price

Jumpsuits
Dress Pants
Reduced

Tony Lama
Texas
Wrangler
Boots

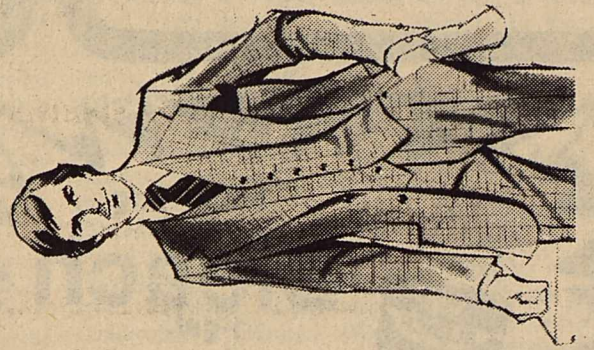
Calf Reg. \$130.00 As Low As \$79.99
Bulhide Reg. \$140.00 As Low As \$109.99
Shark Reg. \$185.00 As Low As \$129.00
Lizard Reg. \$298.00 As Low As \$224.00

Every Boot in Stock Reduced



Knit Jeans
by
Levi
Reduced

Suits by Hubbard
& Botany 500
values to \$199.00
Now As Low As \$57.00



Group of Western
Shirts
H-C & Panhandle Slim
values to \$26.00
now \$9.99
Long & Short Sleeve

Rack of Tony
Lama Belts
1/2 Price

Every item
on Sale

Wall to Wall

Semi Annual Close Out

Entire
Stock
is

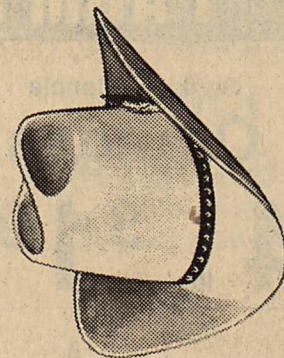
Reduced
at
Least

10%

No gimmicks
Just Great
Savings

Low
APAREL
FOR MEN

Sport Coats
P.J.'s
Reduced



Levi & Wrangler
Denim
Jeans
Reduced

Every item
on sale

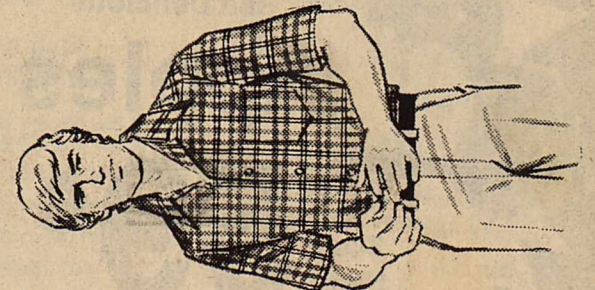
Jackets & Coats
by
Wall & Zero King
Red tagged
Values to \$140.00
as low as \$19.99

Felt Hats
by Resistol &
Langenburg
One Special Group
\$14.99

One Group of Brown
& Tan Resistol Felts
2x & 3x values
to \$80.00 now
1/2 Price

Student Jeans
and
Shirts
by Levi & Munsingwear
20% off

Large Group of
Dress Shirts
by
Career Club
\$20.00 values
now \$6.99
Long & Short Sleeve



Haskell, Texas

Next to M System



1200 N. Ave. E.
Haskell, Tx.

Budget Savings Food Buys

Specials Good Thru Sun., Oct. 2

AFFILIATED

Pilgrim Pride
USDA Grade "A"

Fryers

(Whole Only) **45¢** lb
(Cut-up) **55¢** lb

USDA Grade "A"
Split Fryer
Breast **\$1.28** lb

USDA Grade "A"
Fryer
Drumsticks **88¢** lb

USDA Grade "A"
Fryer
Thighs **88¢** lb

USDA Choice
Heavy Beef
(vac-pack)
Boneless
Brisket **\$1.18** lb

USDA Grade "A"
Fryer
Wings **68¢** lb

USDA Grade "A"
Fryer Leg
Quarters **49¢** lb

Shurfresh (Whole)
Water Added
Boneless Ham **\$1.79** lb

Lean and Tender
Chuck Cube
Steak **\$2.39** lb

Swift's Lean
Boston Butt Pork
Roast **\$1.18** lb

Swift's Lean
Boston Butt Pork
Steak **\$1.39** lb

Shurfresh (Halves)
Water Added
Boneless Ham **\$1.99** lb

Extra Lean
Family Pack
Ground
Chuck **\$1.38** lb

DOUBLE COUPONS

each TUESDAY & WEDNESDAY
at Modern Way Food Stores

We will redeem all manufacturer's "cents off" coupons for DOUBLE their value when the product is purchased.

—LIMIT—1 COUPON PER ITEM—
This policy does not include retailer (any food store) or free coupon, cigarette or tobacco coupons or refund certificates. The total redemption will not exceed the value of the item.

USDA Choice Heavy Beef Boneless
Chuck Steak

\$1.58 lb

USDA Choice Heavy Beef Boneless
Shoulder Arm
Steak

\$1.89 lb

Silver Spur Rindless Sliced
Slab Bacon

\$1.29 lb

Fresh Frosted Large Meaty
Pork Spareribs

78¢ lb

Thrift King
Bleach
1-gal.
38¢
Limit 2

79¢ EACH
with each \$5.00 purchase
THIS WEEK'S FEATURE ITEM:
DINNER PLATE

Cubic Zirconia MAN MADE DIAMONDS
Fashion Jewelry
\$9.49

Open
8 a.m. til 8 p.m.
Daily
Sunday
9 a.m. til 6 p.m.

Shurfresh
Grade "A" Medium
Eggs
Doz. **69¢**

Del Monte Whole
Green Beans 2 16 oz cans **\$1.00**

Del Monte
Leaf Spinach 2 15 oz cans **\$1.00**

Del Monte
Sweet Peas 2 17 oz cans **\$1.00**

Del Monte Whole
New Potatoes 2 16 oz cans **\$1.00**

Keebler Zesta Saltine
Crackers 16 oz box **89¢**

Duncan Hines
Cake Mixes
18 1/2 oz **79¢**

American Beauty
Flour
5 lb bag **\$1.09**

Coke, Diet Coke,
Tab, Mr Pibb, 7-up
2-Liter No Deposit **\$1.09**

Del Monte
Tomato Sauce
8 oz cans Limit 6 **\$1.00**

Shurfine
Tuna
6 1/2 oz Limit 2 **59¢**

Shurfresh
Ice Cream
1/2 gal Round Carton Limit 2 **\$1.39**

Maxwell House
Coffee 1-lb Can **\$1.99**

Asst. Oldtime Flour
Mixes 5 5.5 oz Pkg. **\$1.00**

Right Guard
Deodorant 5 oz Reg. \$2.19 **\$1.99**

Gillette Instant Shave
Foamy 11 oz Reg. \$2.79 **\$1.99**

Cricket Butane
Lighter Reg. 69¢ **49¢**

Bird's Eye
Cool Whip
8 oz **79¢**

Bridge Port White
Bread Dough
3 1 lb loaves Pkg **\$1.00**

Morton Asst. Frozen
Dinners
10-11 oz **79¢**

Shurfresh
Pure Orange Juice
64 oz CTN. **\$1.29**

FARM FRESH FRUITS & VEGETABLES

U.S. Fancy
Red Delicious
Apples
3-lb Bag **59¢**

Sunkist Valencia
Oranges
4 lbs **\$1.00**

White
Mushrooms 8 oz **99¢**

White
Onions 5 lbs **\$1.00**

U.S. No. 1
Sweet Potatoes
lb **39¢**

Zucchini
Squash lb **59¢**

Shredded
Carrots 8 oz Bag **59¢**

Squash
lb **39¢**

Purple Top
Turnips lb **39¢**

Sunkist
Lemons lb **69¢**

SHURFRESH
HOMO
MILK
1/2 GAL **69¢**
With One Filled Superstar Booklet

SHURFRESH
EGGS
DOZEN **39¢**
With 1 Filled Superstar Booklet

COUNTRY FRESH
BREAD
1 1/2 LB LOAF **29¢**
With 1 Filled Superstar Booklet

Shurfine
Towels
Jumbo Roll **29¢**
With 1 Filled Superstar Booklet

Colortex
Tissue
4 roll pkg **29¢**
With 1 Filled Superstar Booklet

Shurfine
Barbecue
Sauce
18 oz **19¢**
With 1 Filled Superstar Booklet