



Staff Photo by Don Comedy

### FIRST PERFORMANCE

A crowd of about 150 persons attended the first performance of the Haskell Community Chorus last Friday night in the Elementary School cafeteria. The chorus presented a patriotic program in observance of the Independence Day holiday.

### School Board Meets With Civic Center Group

Members of the Board of Trustees of Haskell Independent School District met with a committee from the Haskell Memorial Civic Center Tuesday night to discuss possibilities of the location of a new Civic Center.

Members of the School Board had previously considered allowing the facility to be placed on school property with the school being responsible for maintenance. Tuesday's discussion centered around other possibilities including locating the facility elsewhere with the school contracting for and providing maintenance and utilities.

Board members took the matter under advisement and requested that Superintendent James Lanier research the law concerning the possibilities.

In other action Board members voted to reject a resolution on tax split payments and approved a resolution to grant tax discount options.

The tax split payments allowed individuals to pay one-half of their ad valorem taxes in one payment and the other one-half at a later time.

The discount options would reinstate an old practice of granting discounts for early payment of taxes.

All taxing entities in the County will vote on similar resolutions and following the votes, members of the Appraisal Board will make their final decision on the two matters.

School Board members also adopted several policy changes including: beginning with the graduating class of 1986 to qualify as an honor student, a graduate

must have completed at least four years of high school English, three years of college bound science and three years of college bound math in addition to other requirements for graduation.

Board members also accepted the resignations of Rosie Arellano and James Bevel and scheduled a budget workshop for July 12.

### Fish Fry To Benefit New Civic Center

A benefit fish fry will be held next Monday from 6 to 8 p.m. at the Corral Building and all proceeds will go to the Haskell Memorial Civic Center.

The fish fry is sponsored by the Haskell Volunteer Fire Department and Ladies' Auxiliary.

The menu will be fried catfish, fried potatoes, red beans, hush puppies, cole slaw, bread, onions and ice tea.

Tickets are \$5.00 for adults and \$2.50 for children 12 and under and are available from Heidenheimers, Bill Wilson Motor Co., Lane Apparel and Haskell Free Press. Tickets are also available from any fireman or member of the Ladies' Auxiliary.

### Julie Coleman To Play With All-Stars

Julie Coleman from Paint Creek will be playing for the North All-Stars Saturday, July 9, 1983 in Lubbock. The game will be played at Coronado High School Gymnasium at 7:00 p.m.

### Chamber Directors Set Ice Cream Freeze-off

Members of the Board of Directors of the Haskell Chamber of Commerce met Tuesday evening in the back yard of Abe and Ruby Turner for an ice cream social.

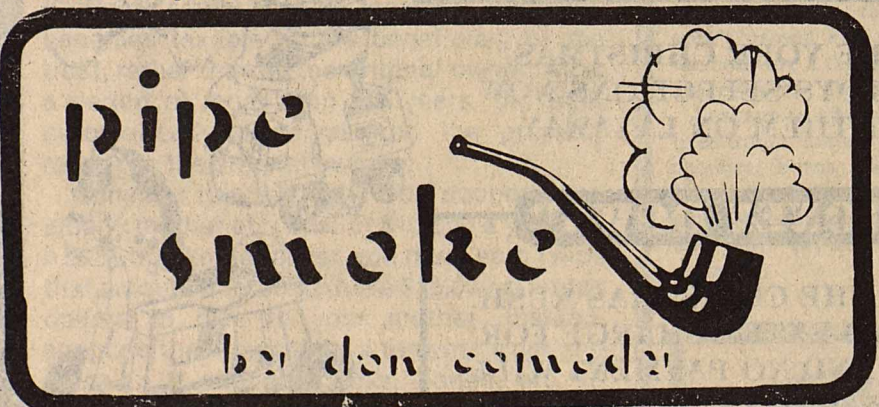
Prior to the homemade ice cream and cookies, Board members held a short business meeting.

Directors heard a report on the first performance of the Community Chorus and a report stating that the Welcome Committee is being expanded and will also expand their participation in community activities.

Directors also agreed for the Chamber to sponsor the Texas Ice

Cream Freeze-off on July 30. Complete details and other information will be available soon.

Retail Trade Committee Chairman Doris Plemister announced plans for a general meeting of the Retail Trade Committee at 10 a.m. July 20, in the Community Building of the Haskell National Bank. She said that the major topics of discussion would center around the dollar days promotions, sidewalk sales and the beginning plans for the Christmas program and urged all retail merchants to be in attendance.



This week marks the beginning of what should be a new era in emergency medical treatment in the Haskell area.

Board members of the Haskell County Emergency Ambulance Service interviewed paramedics during their regular meeting Tuesday night. Following more discussion this week, Board members hope to hire two full-time paramedics.

The move to hire individuals trained in advanced life support will give the residents of this area the benefit of the same type service that is provided in larger cities.

The change from the current system of basic life support will be slow. The new personnel will be required to prove their skills to our doctors and become familiar with the procedures of our doctors. Residents of the area should notice some changes from the very start of the system with more detailed patient assessment and more advanced care at the scene prior to transport.

During the past seven years the local service has continued to improve slowly and the change to advanced life support is the next step in the improvement of patient care.

Ambulance Board members, hospital staff and local doctors should be complimented for their continued support of the service and their dedication to provide the best possible service to the people of Haskell County.

Area residents should also keep in mind that as the move to advanced life support progresses and as local doctors gain confidence in the skills of the EMS personnel that more treatment will occur at the scene and that the service will center more and more around better patient care and less and less around providing a minimum of care and transporting as soon as possible.

Also to be complimented are Charles Harvey and a small group of other volunteers who are providing ambulance service during this time of transition.

**THE HASKELL**

**25¢**  
12 Pages In One Section  
Plus Insert

**FREE PRESS**

HASKELL—A GOOD PLACE TO VISIT; A BETTER PLACE TO LIVE™

VOLUME NINETY-SEVEN      HASKELL, TEXAS 79521, JULY 7, 1983 NUMBER TWENTY-SEVEN

## Ambulance Board Considers Hiring Two New Paramedics

Three paramedics and four emergency medical technicians attended the regular meeting of the Haskell County Emergency Ambulance Board meeting Tuesday night to interview for two positions.

During a three hour session Board members interviewed the applicants and discussed their goals for upgrading the local ambulance service.

Prior to hiring two full time ambulance employees, Board members plan to discuss the applicants with local doctors and to check references. Board members hope to make their selections by the end of this week.

The ambulance service is currently being run with emergency medical technician volunteers and Charles Harvey is acting Administrator.

Board members and applicants discussed salary, hours, and coordination of the service between the ambulance, hospital and local doctors.

Paramedics interviewing were from San Angelo, Slidell and Rotan and EMT's were from Stamford, Mineral Wells and Throckmorton.

Members of the Ambulance

Board include: Bill Lane, Bud Comedy, J.R. Perry, Charles McCauley, Bud Turnbow, Jerry Stocks, Sam Watson, and Dr. Ed Harris.

## 1985 Farm Bill Is Meeting Topic

The public is invited to an open meeting with Senator Jack Hightower and Congressman Charles Stenholm to discuss the upcoming farm bill for 1985. The meeting will be held Thursday, July 7th in the Haskell National Bank Community Room, at 7:30 p.m.

The program is sponsored by the Haskell County Farm Bureau.

At present time the 1985 Farm

Bill is being formulated and Congressman Stenholm urges all farmers to take the time to attend this meeting and discuss their ideas.

In the past short term solutions were our guidelines. Now we are looking for a long term bill that would profit all. We as farmers can see problems that Congress fail to see. This is the reason your input is of great importance.

## Week Long Singing School To Begin This Weekend

Students will begin arriving Sunday, July 10, for the eighteenth annual Haskell Singing School to be held July 11-16. The school, which is under the oversight of the elders of the Haskell Church of Christ, Haskell, is anticipating a large enrollment. Young people from all sections of the country participate regularly in the school. States represented last year were: Kansas, New Mexico and Oklahoma. Students have come from as far away as South Carolina and New Hampshire to attend the well-known school.

Holland Boring, Sr. of Bryan will direct this session of the school. He has assumed this responsibility since the school's beginning. Other instructors will be: Holland Boring, Jr., minister, Turnpike Road Church of Christ, Grand Prairie;

Bob Connell, minister, Baker Heights Church of Christ, Abilene; Paul Epps, minister from Temple.

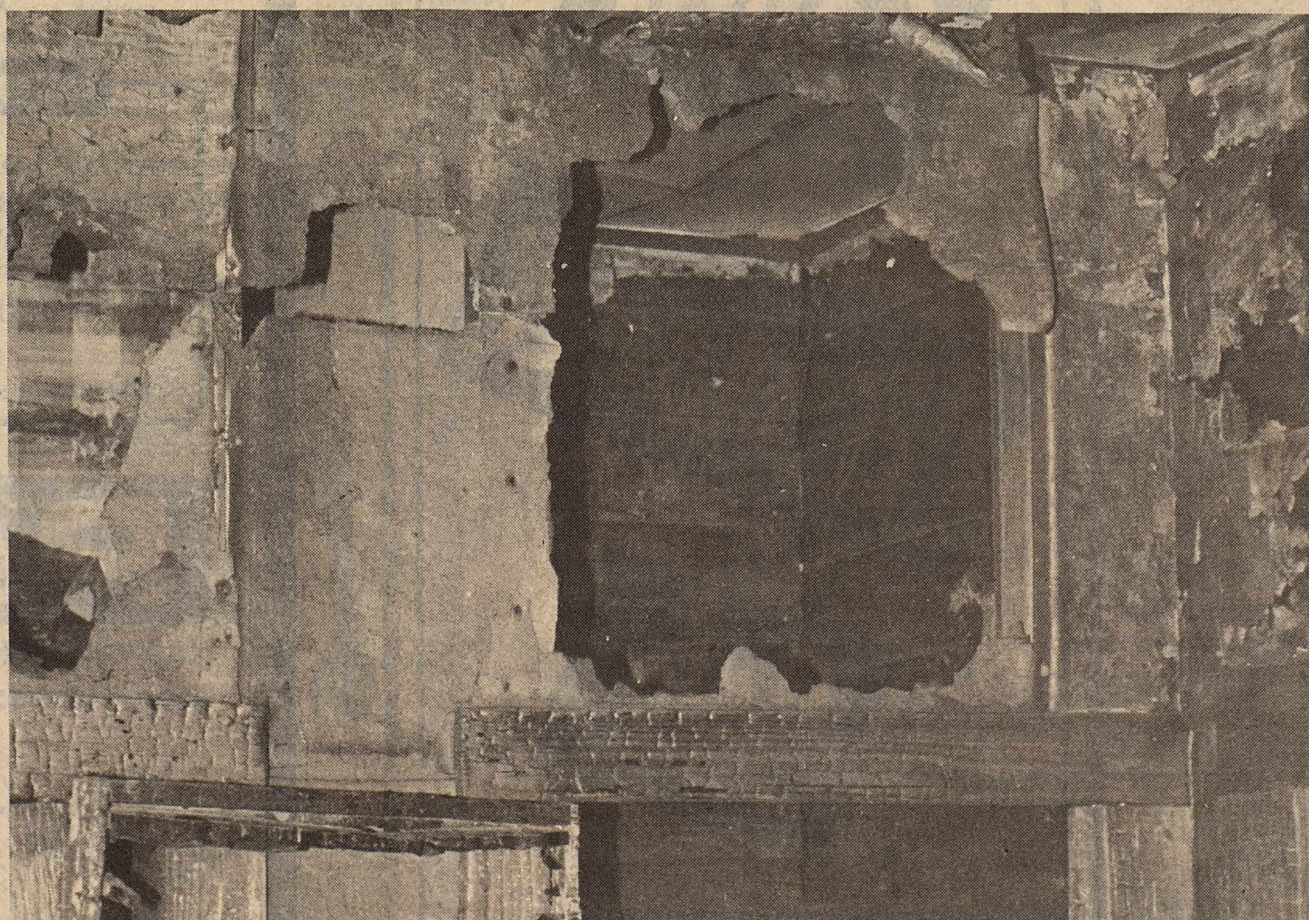
A unique feature of the Haskell Singing School is that all students are housed with local Christian families. In these individual homes they eat their morning and evening meals, rest, prepare for the following day's classes, help with assigned chores and participate in nightly devotionals. In essence, for the week they are here, they become a part of another Christian family whom they learn to love, made up of "foster-parents" and other young people. It is a concept that has proven most successful in the 18 year history of the school.

Anyone 10 years of age and older is invited to attend. The purpose of the school is to improve congregational singing by training

all Christians interested. Special emphasis is given to song leading. There are additional courses, however, in song reading, rudiments, song writing, etc. The school is for men and women, boys and girls. Cost of attending the week school is \$45.00 tuition, \$100.00 room and board and approximately \$5.00 for other materials (textbooks, etc.)

To our friends in the community, we extend a sincere and hearty invitation to visit the school any time you wish. Classes begin at 8:45 a.m. and dismiss at 4:00 p.m. Night classes are from 7:30-9:00 p.m.

Additional information or application forms may be obtained by writing Haskell Church of Christ, 510 N. Ave. E, Haskell, Texas. 79521. Telephone (817) 864-3101 or 864-8969.



Staff Photo by Don Comedy

### EXTENSIVE DAMAGE

Members of the Haskell Volunteer Fire Department responded to a structure fire last Thursday night at 700 S. Ave. E. The structure received extensive fire damage to one room and smoke and heat damage throughout. Cause of the fire is under investigation.

## 4-H Fashion Show Set Tonight

The Haskell County 4-H Fashion Show will be at the Paint Creek School in the Pat Morrison Auditorium beginning at 8:00 p.m. on Thursday, July 7.

Following the Fashion Show and presentation of awards an ice cream supper will be held for all those attending.

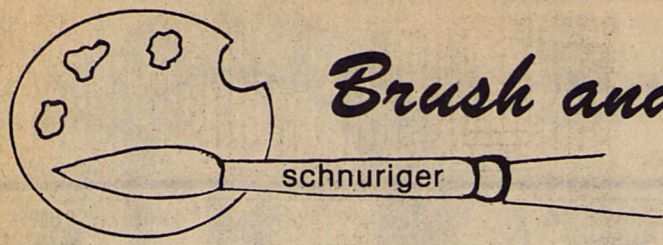
The Haskell County 4-H members and leaders would like to invite you to come to Paint Creek and see the garments the girls in the 4-H Clothing project have constructed.

## Second Session Of Swimming Lessons Set

Second session swimming lessons start Monday, July 11, 1983. With Advance-Int. at 9:45, Novice at 10:30, Beginners at 11:15.

Come by City swimming pool. Registration will be Monday at the designated time.





# Brush and Palette

schnuriger

Violet is the color of royalty. Although violet isn't as essential on your palette as red, yellow, blue and even green, it cannot be omitted because many of its variations can't be made by mixing blue and red. Violet is not easy to

deal with. It is difficult to record the strong violet color seen in many flowers, pottery, glass, etc. Sometimes the best way to be successful with violet-colored objects is to consider carefully the tone and color of the background in the picture. Knowing principles of color helps an artist substitute Nature's colors with his paints. Violet is the darkest color in the spectrum, and is only intense when used in a dark value. When white is added to violet, only a pale and faded color is achieved.

I am devoting this column to violets and the classification of each. Hope this will help you all with your color.

**CAD RED MEDIUM** - a red violet of medium intensity and medium dark in tone. When mixed with white it becomes red violet. Add Thalo Green and white and you get a more blue violet.

**THALO RED ROSE** - a red violet and the only violet that stays brilliant in its tinted mixtures.

**ALIZARIN CRIMSON** - a red violet. Makes beautiful violets when mixed with gray (black and white).

**ROSE Madder** - a red violet - same as Alizarin but not as strong a color. Its delicate red violet tints are more intense than Alizarin.

**THIO VIOLET** - a blue violet. Maintains intensity when mixed with white. Is indispensable to a floral painter. Strong covering power.

**ULTRAMARINE RED** - a blue violet. Tints out to a grey violet. It is not strong because it is transparent. Excellent for subtle violets.

**COBALT VIOLET** - a blue violet. Looks the same as Ultramarine Red in color but is more opaque.

**INDIAN RED** - a red red violet. Makes nice muted red violets when mixed with grey.

**MARS VIOLET** - a red violet. A very opaque, greyed down violet.

**HINT:** The tones and intensities of violet are altered by its mixture with grey. Nothing will brighten it more than its intensity out of the tube. To darken a violet, use a darker violet or with a touch of Ivory Black and its complementary color: green for red violets and Burnt Umber for blue violets.

Write your questions and hints to me, Faye Schnuriger, P.O. Box 134, Haskell, Texas 79521. I will not use your name but do want you to sign your letters.

**PETITE ROLEDEX:** the perfect file for telephone numbers and addresses. Typewriter spaced lines. Replacement refills. Decorator colors and styling for home and office. **Haskell Free Press**

# Wilson, Caddell United In Marriage

Linda Jean Caddell and Johnny Ray (Corky) Wilson both of Rule were united in marriage July 2 at 6 p.m. in East Side Baptist Church in Haskell with Rev. Darrell Feemster, pastor, officiating. The church was decorated with an arch of greenery. Pews were marked with white bows. Two white candles and a tall white unity candle were

featured. The bride, given in marriage by her father, wore a gown featuring a sweetheart neckline with a stand-up lace collar in back. Reembroidered lace and seed pearls adorned the skirt and fitted bodice. The long chiffon sleeves had ruffled cuffs. The cathedral train featured four lace tiered

ruffles. The circle skirt had embroidered lace motifs. The shoulder length veil was held by a beaded Camelot cap with double tiered lace edging. The veil was borrowed from Wanda Thompson of Paint Creek. The veil was also worn by the bride's sister in her wedding. She carried a cascade of pink and white roses.

Something blue was her garter. Something old and borrowed was a diamond necklace belonging to her aunt. Something new was her dress. She wore a sixpence in her shoe.

Marilyn Griffith of Abilene was Maid of Honor. Bridesmaids were Kathy Slayton, sister of the bride, of Weatherford and Sheila Swinney, cousin of the bride of Haskell. They wore pink dotted Swiss dresses that featured a fitted bodice, with a ruffle on the bottom round neckline with ruffle in neck, sleeveless with matching ruffle in sleeve. They carried nosegays of pink roses and white daisies with white and pink streamers.

Flower girl was Melissa Slayton, niece of the bride, of Weatherford. She wore a dress identical to the bridesmaids and carried a basket with pink roses and pink ribbons.

Blayne Casey, nephew of the groom of Novice, was ringbearer. He carried a white satin heart shaped pillow.

Best man was Robert Slayton, brother-in-law of the bride, of Weatherford. Groomsman were Roy Don Wilson, brother of the groom, of Rule and Roger Tinnin, brother-in-law of the groom of Lubbock. Ushers were Bill

Swinney, of Haskell and Carroll Thompson, of Loveland, Colo., uncles of the bride. They wore brown suits.

The mother of the bride wore a long pink interlocking knit dress with long chiffon sleeves and a pleated skirt. The groom's mother wore a short long sleeve mauve printed knit dress. They wore pink roses.

Sandy Casey, niece of the groom, registered guests.

Singers were Mr. and Mrs. Larry LeFevre. Selections included "Sunrise, Sunset", "The Lord's Prayer", and "The Wedding Song."

A reception was held in the fellowship hall following the ceremony. A three-tiered white wedding cake decorated with pink roses and a streamer with Johnny and Linda was featured. Mints, nuts and pink punch were served from the bride's table.

The groom's table featured a chocolate cake served with coffee.

A rehearsal dinner was held in the fellowship hall of the church hosted by the groom's parents.

### PARTIES

A shower was given by the Gleaner Sunday School Class, May 22. A personal shower was hosted by the faculty of Rule ISD in Rule on Saturday, June 18.



MR. AND MRS. TOMMIE CASEY

## Caseys To Celebrate Anniversary

Mr. and Mrs. Tommie A. Casey will be honored Saturday, July sixteenth from three to six o'clock in the Community Room of the Haskell National Bank with a fiftieth wedding reception.

Hosting the celebration will be the couple's children. Tom and Mary Casey and Anita Cotter of California. Dick and Carol Marsteller of Saudi Arabia. Brenda Glendinning and Janice Casey of Arizona and Bill and Debbie Baird of LaGrange.

The Caseys were born in Haskell county and grew up in adjoining communities in the northwest area of the county.

Invited special guests are Mr. and Mrs. Hubert H. Sego. It was in their home where the couple was married in 1933 with Reverend Sego officiating.

The Caseys moved to California in 1936 where they lived until 1967 when they returned to Haskell to make their home.

## Yard Of The Month

July is the month of gorgeous, flashy cannas and lovely daylilies. But this year due to the stormy weather and hail the flowers took a beating and it was difficult to find a colorful yard.

The yard of Mr. and Mrs. Jess Leonard, 1104 N. 8th has been chosen as yard of the month because of its beautiful display of golden cosmos against a background of red cannas. The well groomed, velvety green lawn, evergreen shrubs across the front and the pink floribunda roses add charm and distinction. In back

there is a flower bed of daylilies and geraniums and a vegetable garden of carrots, greens, squash, tomatoes and corn.

First runner-up yard goes to Mr. and Mrs. Jim Pope 219, Addison Dr. Entrance porch has planter box of red caladiums, hanging baskets of fern and rattan chair swing. Miniature Boxwood across the front for year around color. Flower bed and rose garden on each side of walk adds seasonal color. The lush, green lawn, magnolia trees, Arizona ash and weeping

willow makes this a most attractive yard.

Second runner-up goes to Mr. and Mrs. Danny Josselot Rt. 2, Paint Creek Road. They have used red lava rock instead of grass and have landscaped with native cactus. The contrast in color adds distinction. Four antique 1/2 barrels of marigolds, periwinkles, geraniums and petunias adds a touch of color. Ceramic deer and stepping stones completes the picture.

## Vincent, Fenimore

### Repeat Vows In Utah

Angela Raylene Fenimore and Richard Marion Vincent were married on Friday, the 24th of June, in a ceremony in the Salt Lake Temple of the Church of Jesus Christ of Latter-Day Saints.

Canyon Glen State Park was the setting for a wedding reception the following Saturday afternoon.

Angie, the daughter of Mr. Jerry K. Fenimore and Mrs. Jill M. Fenimore, is a 1982 graduate of Irvine High School in Irvine, Calif. and has attended Orange Coast College in Costa Mesa, Calif.

Richard, the son of Mr. Richard E. Vincent and Mrs. Jeanette Holt Vincent, is a 1980 graduate of Haskell High

School and is currently pursuing a degree at Brigham Young University in Provo, Utah.

The couple plans to reside in Provo.

### Hospital Notes

Visiting hours at Haskell Memorial Hospital are 2 to 4 p.m. and 7 to 8:30 in the evening. No visiting hours in the morning. No children under 14.

### ADMISSIONS

**MEDICAL:** Ray Merchant, Haskell; Winona Mullino, Haskell; Don Dunlap, Haskell; J.H. Amerson, Munday; David Brinlee, Haskell; Minnie Robeson, Rule; Walter Counts, Rule; Jeanette Day, O'Brien; Esther Bradford, Knox City; Mamie Lammert, Old Glory.

### SURGICAL:

Zulena Hernandez, Munday; Estle Gilleland, Haskell.

### DISMISSALS

Gladys Reed, Myrtle Townsend, Ruby Clemmer, Lena Owen, Larry Walton, Maude Rhoads, John McNeal, James Adkins, Bill Fouts, John Hisey, Kenneth Walker, Ethel Neathery.

### Food Sterilization By Nuclear Radiation Extends Shelf Life

**COLLEGE STATION** — A Texas A&M University food scientist says low-level nuclear radiation wastes could be safely used to sterilize and preserve foods.

Radiation could be used at food processing plants to keep potatoes from rotting and extend their shelf life up to a year and a half, said Dr. E. E. Burns. It might also be used to keep milk from spoiling, to preserve strawberries and other fruits and vegetables for longer periods of time, or to keep bread fresher longer.

The process would use radiation from atomic waste to kill microorganisms, such as bacteria, fungi and certain enzymes, that cause food to spoil, he said.

## PUBLIC NOTICE

In compliance with Sec. 43(a) of Art. 1446c, V.A.C.S., West Texas Utilities Company hereby publishes NOTICE that it has filed, on June 10, 1983, its Statement of Intent to make changes in its retail rates charged for electricity and services sold and rendered inside and outside municipal jurisdictions, such proposed changes to be effective July 16, 1983. Such Statement of Intent includes the proposed revisions of tariffs and schedules and a statement specifying in detail each proposed change, the effect the proposed change is expected to have on the revenues of the Company and the classes and numbers of utility customers affected. Systemwide retail adjusted annual revenues are expected to be increased 11.4 per cent by the new rates. Statements of Intent were filed with the Public Utility Commission of Texas and with the following municipalities:

Abilene	Haskell	Quannah
Alpine	Hawley	Quitaque
Anson	Impact	Rankin
Aspermont	Iraan	Rising Star
Baird	Jayton	Rochester
Ballinger	Junction	San Angelo
Balmothea	Knox City	Santa Anna
Benjamin	Lawn	Shamrock
Big Lake	Lueders	Sonora
Blackwell	Marfa	Spur
Bronte	Melvin	Stamford
Buffalo Gap	Memphis	Sterling City
Childress	Menard	Throckmorton
Cisco	Merkel	Turkey
Clarendon	Miles	Tuscola
Clyde	Munday	Tye
Cross Plains	O'Brien	Valentine
Crowell	Paducah	Wellington
Dodson	Presidio	Winters
Eden	Putnam	Woodson
Estelline		
Hamlin		

Areas affected by the filing with the Public Utility Commission of Texas are in the following:

### Municipalities

Albany	Lakeview	Robert Lee
Chillicothe	Matador	Roby
Dickens	McCarney	Rotan
Eldorado	Merton	Rule
Goree	Moran	Trent
Hedley	Paint Rock	Weinert
	Roaring Springs	

### Counties

Baylor	Fisher	Pecos
Brewster	Foard	Presidio
Briscoe	Gillespie	Reagan
Brown	Hall	Reeves
Callahan	Hardeman	Runnels
Childress	Haskell	Schleicher
Coke	Irion	Shackelford
Coleman	Jeff Davis	Stephens
Collingsworth	Jones	Sterling
Concho	Kent	Stonewall
Cottle	Kimble	Sutton
Crane	King	Taylor
Crockett	Knox	Throckmorton
Dickens	Mason	Tom Green
Donley	McCulloch	Upton
Eastland	Menard	Wheeler
Edwards	Motley	Wilbarger
	Nolan	

409 South First Haskell, Texas Phone 864-2901



## NO MONEY DOWN FOR 30 DAYS

WE WOULD LIKE FOR ALL OUR FRIENDS AND CUSTOMERS TO COME TO OUR

### "CHRISTMAS IN JULY" LAY-AWAY SALE

MAKE YOUR CHRISTMAS GIFTS & TOYS SELECTIONS NOW... PUT THEM ON LAYAWAY

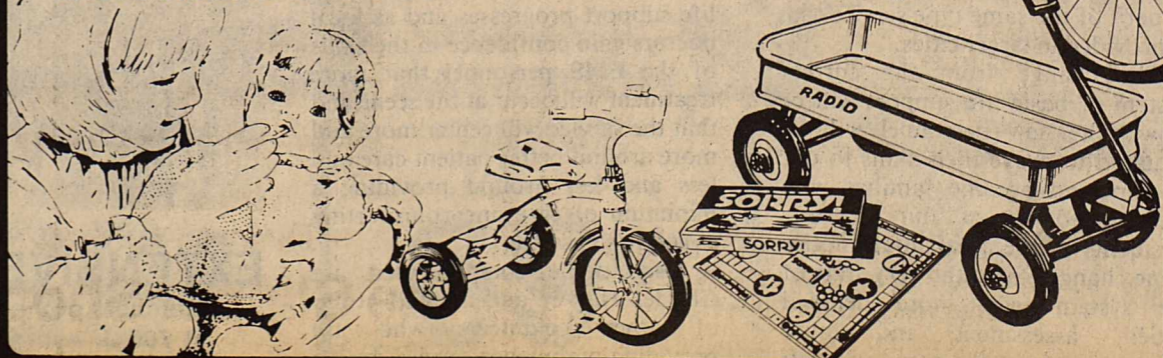
### "NO MONEY DOWN"

AND AVOID THE CHRISTMAS RUSH. THERE IS NO EXTRA CHARGE FOR LAYAWAYS, AND NO PAYMENT WILL BE DUE FOR 30 DAYS, AND WE WILL HOLD IT UNTIL CHRISTMAS.

Sales Items and Fabrics are not Included.

## PERRYS

Haskell, Texas Store Hours: 8:30-5:30



MRS. JOHNNY RAY WILSON  
...formerly Linda Jean Caddell



# Simmons, Moore Wed In Double Ring Ceremony

Marilyn Ann Moore and David Lee Simmons exchanged marriage vows Saturday, July 2 at Paint Creek Baptist Church with the Rev. John Trice officiating.

The bride is the daughter of Mr. and Mrs. Dewayne Moore of Haskell and the groom is the son of Mr. and Mrs. Tommy Simmons of Stamford.

The double ring ceremony, performed before an arch of greenery and rainbow carnations. On each side of the arch were candelabra adorned with greenery and white carnations.

A unity candle and pew markers of satin ribbon bows in rainbow colors completed the church decor.

Given in marriage by her father, the bride wore a floor length gown of white polyester organza and Chantilly lace trim and seed pearls at the neckline. The fitted bodice and long puff sleeves were also of Chantilly lace and cluster of pearls. The full skirt fell into a chapel train of

Chantilly lace and pearls. The skirt hem was finished with Chantilly lace and seed pearls. A cap of Chantilly lace leaves with seed pearls held her veil.

The bride carried a cascade of white silk roses and rainbow color flowers accented with lace and ribbons. Her garter was blue and she carried a penny in her shoe for good luck given to her by her great grandmother, Nelle Rogers.

The candlelighters were Lisa Bennett and Cathy Simmons, sister of the groom. They wore full length dresses in rainbow colors and matching hats with shoulder length veils.

Marsha Moore, sister of the bride served as flower girl. She wore a green polyester organza dress with green flowers in her hair. She carried a white lace basket with pink flowers which were strewn in the aisle. Jeremiah Ewika was ring bearer. He was attired in a full miniature light blue tuxedo similar to the grooms. He carried a white

lace pillow.

Mrs. Debra Pruett sang Endless Love, Walk By Me, and The Wedding Prayer. Accompanied at the piano by Peggy Darden.

The maid of honor was Doretha Sue Moore, sister of the bride. She wore an Empire gown of pink organza with lace trim, a matching hat and shoulder length veil. She carried a fan covered in rainbow flowers and streamers of ribbons.

Serving the groom as best man was Steven Simmons, brother of the groom. The groom wore a light blue tuxedo.

Ushers were Gregory Rowland and Jeffery Rowland of Sayle, Okla. They wore light blue tuxedos trimmed in navy.

Mrs. Donna Saffel of Rule registered guests in the foyer of the church. The table was covered with a white floor length table cloth. An

arrangement of blue roses completed the table.

The bride's parents hosted a reception honoring the couple in the Paint Creek School. The bride's table was draped in cream satin trim in lace and pink bows. A candelabra was the centerpiece. The tiered wedding cake was decorated in pink, yellow and blue roses. The tiers were separated by tall Grecian columns. Inside was a basket of rainbow colored

flowers. On top was the bride and groom ornament.

Fruit punch was laded from a crystal punch bowl by aunt of the groom. Mrs. Betty Stovall served cake. Nuts and mints were also served.

The groom's table was covered with cream satin trim in lace and blue bows. In the center a picture of his bride and candelabra complimented the table. German sweet chocolate cake with chocolate icing in the center was his initials D.L.S. in yellow. His aunt's served coffee and nuts were also served.

Rice roses were given out by Jana and Julie Saffel of Rule.

The rehearsal dinner given at Lake Stamford was hosted by Mr. and Mrs. Tommy Simmons.

The bride is a junior at Paint Creek School. The groom is a graduate from Paint Creek School. He is employed by J. Buck Construction Co. of Lubbock. Following a wedding trip to Lake Texhoma, the couple will make their home in Haskell.



MR. AND MRS. JUNIOR FORD, JR.

# Ford, Malone Wed In Outdoor Ceremony

United in marriage Friday, June 24 at 8:00 in the evening were Linda Reid Malone and Junior Ford Jr.

The wedding was at the home of the bride's parents, Mr. and Mrs. J.L. Reid of Rochester. Parents of the groom are Mr. and Mrs. H.G. Trinkner of Coleman.

The outdoor ceremony was officiated by Rev. J.C. Amburn of Haskell.

The bride chose a floor length gown of blue chiffon over satin with off the shoulder ruffles and sheer chiffon.

Bridemaids were Debra Smith of Abilene and Christie Malone of Abilene, daughter of the bride. They wore dresses of royal blue street length.

The groom wore a blue suit. Groomsman were Bill Gholson and David Smith both of Abilene.

Kayleen Muhle of Abilene was flower girl and Shannan

King of Abilene was ringbearer.

Vows were exchanged before an archway accented with greenery and blue wedding bells.

Something new was the bride's wedding gown and something blue was her garter. Something old was a ring belonging to her mother. Something borrowed was from her sister.

The wedding table was covered with white lace tablecloth and a three tiered wedding cake was served with punch. The groom's cake was chocolate served with coffee. Following a wedding trip to Oklahoma City, the couple will live in Abilene.

Brightly colored — attention getting — Open-Closed Signs for your office or business. Comes complete with changeable letters in black or red. Also includes a sign for counter top use. See at the Haskell Free Press

# Body Shaping Devices Can Be Dangerous

The ads sound appealing— "3,000 sit-ups without moving an inch...10 miles of jogging lying flat on your back."

These are claims made for electrical muscle stimulators, often promoted as "body shapers" and "passive exercise" devices.

The problem is that these claims have no known scientific basis, says the Texas Medical Association. In addition, the devices can be dangerous if misused.

Electrical muscle stimulators are used legitimately for physical therapy in treating medical problems. These uses include relaxing muscle spasms, increasing blood circulation to a part of the body, preventing muscle deterioration due to disuse, and

preventing blood clots in leg muscles or bedridden patients after strokes or surgery.

When used for these purposes and under the supervision of a licensed practitioner, electrical muscle stimulators are considered safe and effective, according to the U.S. Food and Drug Adminis-

tration. The FDA warns that the devices should not be sold through the mail or used without a prescription.

Unapproved uses for the devices include facelifts without surgery, "slimming and trimming," weight loss, "body shaping and contouring," bust development, wrinkle removal, spot reducing, and cellulite removal, says the FDA, which regulates use of the devices.

Two of the devices advertised nationwide for uses not approved by the FDA are the Rejuvatron and the Figure-Tron, both sold by the same New York company. The Rejuvatron offers the purchaser a chance to look "up to 15 years younger." According to the ad, all an aging person has to do to regain a youthful appearance is to use the Rejuvatron five or 10 minutes daily. The Figure-Tron provides "all the figure-toning of 3,000 sit-ups without moving an inch." Each of the devices costs \$19.95 plus postage and handling.

Potential hazards from electrical muscle stimulators

include electrical shocks and burns. In addition, the devices should not be used by pregnant women; persons with heart problems, particularly those with pacemakers; and people who have cancer or epilepsy. Finally, the electrodes of the devices should not be placed where a strong current could pass through the heart, brain, or spinal column.

# Around Town

Mr. and Mrs. Billy Tatum, Mr. and Mrs. Phillip Cockerell, and Joyce Hawkins visited the Johnny Hawkins at Lubbock over the weekend.

Mr. and Mrs. Kenneth Howard, David, Kathy, Becky and Greg of Wylie, and Mr. and Mrs. Lou Gardner of Wylie were weekend visitors of Mr. and Mrs. Hollis Wayne Howard, Mr. and Mrs. Leonard Howard, and Mr. and Mrs. J.W. Howard. The group went to the river and met Mr. and Mrs. Hollis Wayne Howard, Holli and Chris, of Graham. Holli and Chris returned to Haskell for a weeks visit with their grandparents Mr. and Mrs. J.W. Howard and Mr. and Mrs. Chief Escobedo.



MRS. DAVID LEE SIMMONS  
...formerly Marilyn Ann Moore

# Button Batteries Pose Hazard To Children

Progress is not without its hazards—especially to small children.

The so-called "button" batteries, which power everything from electronic wrist watches to hand calculators and toys, are being swallowed accidentally by an increasing number of small children says Dr. Mary Ann Shirer, a health education specialist with the Texas Agricultural Extension Service, Texas A&M University System.

"Each year, between 500 and 800 batteries are swallowed because of improper handling. In the case of toddlers, sheer fascination with something so small makes it a candidate for a taste," she adds.


Many batteries make it non-stop through the body's digestive system and little harm results. But those which aren't passed and remain in the body are a threat to health and even life, Shirer says.

Leakage to alkaline electrolytes from a battery can cause chemical burns and internal bleeding, she notes. Young children can become very ill and some deaths have been recorded.

Shirer recommends treating button batteries like you would old medicine when it comes to disposal. Wrap and discard them where they are not likely to be found by little hands.

The Haskell Free Press  
Established January 1, 1886  
PUBLISHED EVERY THURSDAY  
MEMBER 1983  
**TEXAS PRESS ASSOCIATION**  
BILL COMEDY—Publisher  
DON COMEDY—Editor  
Entered as second-class matter at the post office at Box 577, Haskell, Texas 79521, under the Act of March 3, 1879. (USPS 237-040)  
SUBSCRIPTION RATES  
In Haskell and Adjoining Counties  
Total  
One Year ..... \$7.25  
Six Months ..... \$5.00  
Two Years ..... \$14.00  
Elsewhere in Texas  
One Year ..... \$8.50  
Six Months ..... \$6.00  
Two Years ..... \$16.00  
Outside of Texas  
One Year ..... \$10.00  
Six Months ..... \$7.00  
Two Years ..... \$19.00  
NOTICE TO PUBLIC—Any erroneous reflection upon the character, reputation or standing of any firm, individual or corporation will be gladly corrected upon being called to the attention of the publishers

**TAX PLANNING**  
Written by  
Richard E. Rodgers CPA



**TEN-YEAR (CLIFFORD) TRUSTS**  
Here's a tax saving technique that's good for those with large investment income from stocks, bonds, real estate, etc. Properly used, it can make a big dent in the tax bill of the investor's family.  
By placing the investments in a ten-year (Clifford) trust, the income produced becomes taxable to the beneficiary of the trust, rather than to the original owner. After a period of more than ten years, the trust automatically dissolves and the property reverts to the original owner.  
Consider this example: You support your elderly mother at a cost of \$15,000 a year. As a 50% bracket taxpayer, you must earn twice that amount in order to have \$15,000 after-tax dollars to give to your mother. Instead, suppose that you set up a ten-year trust and place in it enough stocks, bonds, etc. to produce \$17,500 of income annually. The income will be taxed to your mother at a lower bracket; she'll pay about \$2,500 in taxes and have \$15,000 left for her support. You will have moved \$17,500 of income from a high bracket taxpayer to a lower bracket, and instead of your paying \$8,750 on that income, your mother will pay only \$2,500, a savings to the family unit of \$6,250.  
Should your mother die during this period, the trust automatically ends and any accumulated income is taxed to her estate. If any assets are sold by the trustee, you must report the gain or loss on your tax return.  
Be aware that a reportable gift occurs when you transfer the assets to the trust.  
A ten-year trust is not to be entered into inadvisedly, so professional guidance is an absolute must. But structured properly, this device can produce significant tax savings.

Sponsored by  
**JAMES E. RODGERS & COMPANY**  
Certified Public Accountants  
20 Southwest Third Street  
Har. lin, Texas

**\$1 Shoe Sale**  
Now In Progress **\$1**  
Buy One Pair of Shoes at regular price and get another pair for only **\$1**  
Paying the Price of the More Expensive Pair  
All Sales Cash  
No Exchanges - No Refunds  
**The Slipper Shoppe**  
East Side Square Haskell, Texas

**SIZZLING SELF-SERVE GAS**  
SAVINGS FROM ALLSUP'S! PRICES EFFECTIVE JULY 7-9, 1983  
**ALLSUP'S CONVENIENCE STORES**  
WHILE SUPPLIES LAST OPEN 24 HOURS

**LAY'S REG. \$1.39 POTATO CHIPS 99¢ BAG**

**COOKED FOOD SPECIAL**  
**BBQ Sandwiches 99¢**

**Delsey 4 roll pkg Bathroom Tissue 88¢**  
**Zee family pak, 360 ct. Napkins \$1.39**

**BORDEN'S HOMOGENIZED MILK \$2.59 GALLON**

**BORDEN'S ASSORTED ICE CREAM \$1.69 1/2 GAL. RD. CTN.**

**A TASTE OF SUMERTIME REFRESHING ALLSUP'S FRESH BREWED ICED TEA \$1.99 SM MED LRG X-LRG**

**Van Camp's 16 oz can Pork & Beans 4/\$1.00**

**Kraft 32 oz Mayonnaise \$1.19**

**ALLSUP'S ICE 99¢ BAG**

**COCA-COLA \$1.99 BTL. 6 PACK NON-RETURNABLE 57¢ SINGLE BTL.**



# Hatley, De La Cruz Repeat Vows

Norma De La Cruz and Forrest L. Hatley, III were united in marriage July 2 in Mision Bautista El Calvario in Haskell with Jimmy Garcia, pastor, officiating.

Mr. and Mrs. Joe De La Cruz of Haskell and Mr. and Mrs. Forrest Hatley of Rule.

Organist and soloist was Lanell Trussell of Rule.

Given in marriage by her father, the bride carried a

cascade bouquet of white silk roses. Her gown was made of chiffon knit with chantilly lace and a chapel train. The gown had a Queen Anne neckline. Her tricot illusion veil had a rhinestone crown.

Maid of honor was Velma De Le Cruz, sister of the bride. She carried a white lace fan adorned with blue silk lilies, baby's breath and a blue silk rose. Her dress was a white long sleeve voile, over taffeta with a V neckline and button down front.

Bridesmaids were Connie Amaro, Irma Flores, Lydia Flores, Mrs. Lucy Martinez of Alvin, Mrs. Sandra Carbajal, Mrs. Elizabeth Martinez, Mrs. Virginia Reyes of Spearman and Mrs. Cathy Hertenberger. They wore blue voile over taffeta dresses with shoulder straps. They carried white lace fans with blue lilies, baby's breath and a silk rose.

Flower girl was Mary Ann Hatley, sister of the groom of Rule.

Ringbearer was Roman Lozano of Spearman.

Best man was Leonard

Menchaca of Rule, cousin of the groom. Groomsmen were Mauricio Martinez of Alvin, Robert Munoz, Michael Martinez of Alvin, Leandro Martinez of Alvin, Ruben Carbajal of Spearman, Isabel Martinez of Spearman, Thomas Reyes of Spearman and Lane Hertenberger.

Ushers were Bobby Flores and Jimmy Bilbo of Rule.

The church was decorated with an arch trimmed with lily of the valley and two baskets of fresh white gladiolas and blue carnations.

A reception was held in the Fellowship Hall of the church. The bride's table was covered with a cloth Quiana knit with a tulle overlay trimmed with lace. The three-tiered cake featured a fountain surrounded with blue silk roses. The food table was covered with a white Quiana knit cloth and lace overlay.

The bride attended Haskell High School. The groom attended Rule High School and is employed by Hertenberger Construction.

The couple will reside in Rule.



MRS. FORREST L. HATLEY, III  
...formerly Norma De La Cruz



WENDY SMITH — DALA HARRIS

## Students Attend Four Day Twirling Clinic

Clark Twirling Academy held a 4 day clinic for students of Haskell and surrounding areas the week of June 20-23. The students were instructed in twirls, marching technique, modeling, and routines ranging from beginner to advanced. Group and private classes were offered to students from ages 6-16. The last day of the clinic the students presented an informal program to parents and friends.

Students participating in the clinic were: Wendy Watson, Lora Headstream, Pam Rowan, Traci Sanders, Jana Saffel, Heather Stewart, Kacye Nemir, Holli High,

Lorry Geilhausen, Mischele Stout, Jill Jennings, Wendy Smith, Dala Harris, and Cryst Stoval. Two special awards were given for the week, in the group division: Best Notebook—Wendi Watson. Outstanding Practice and Dedication Award—Wendy Smith and Dala Harris. Wendy and Dala were given a scholarship to attend the Abilene Clinic held July 18-22. All students received a medal for completing the summer clinic.

Another clinic is scheduled for August 8-11 in Haskell. Interested students should call Rozlyn Love 1-672-3241 in Abilene for further information.



Be a beauty bug  
Not a litterbug!

Beautify Haskell Council

## CARD OF THANKS

Our family has always been a close and loving one that grew closer and more loving as each new member was added. God chose to call home that member who was the cornerstone of our lives. One who was so loved by each of us. He touched our lives and made them special. We did not realize that he had touched so many others also. The love and words of his many friends have been of the greatest comfort during this time of sorrow. Thank you is inadequate for the feelings in our hearts for you, his friends, who have helped in so many ways to enable us to bear our pain of parting with him. We will always cherish the memories and love that you have shared with us. May God bless each of you as He has blessed us.

The family of Woodley Davis:  
Alta Faye Davis  
James & Elaine Davis & children  
Biggon & Glenda Drinnon & children  
Raymond & Anna Mae Davis

## PUBLIC NOTICE

At the request of the Office of the General Counsel of the Public Utility Commission, the Commission has established Docket No. 5113 to inquire into pressing issues involving the entire telephone industry in Texas. Docket No. 5113 will deal with many issues resulting from the impending divestiture of American Telephone and Telegraph Company and Southwestern Bell Telephone Company. Some of those issues include establishing the service areas of Southwestern Bell after divestiture and assessing the impact on other telephone companies in Texas, including General Telephone Of The Southwest, of current settlement arrangements between Southwestern Bell and those companies. Additionally, Docket No. 5113 will deal with the issues arising from the Federal Communications Commission's Final Order in Docket 78-72 (the Access Charge Docket) as they impact all telephone companies, including General Telephone Company Of The Southwest. It is anticipated that Docket No. 5113 will be evidentiary in nature. RATES FOR GENERAL TELEPHONE COMPANY OF THE SOUTHWEST MAY BE DETERMINED BY THE COMMISSION IN OR AS A RESULT OF THIS PROCEEDING. Interested parties seeking further information or desiring to participate in Docket No. 5113 are advised to write to Rhonda Colbert Ryan, Secretary and Director of Hearings, Public Utility Commission of Texas, 7800 Shoal Creek Boulevard, Suite 400N, Austin, Texas 78757 or telephone the Public Utility Commission Consumer Affairs Division at (512)458-0223 or 458-0227, or (512) 458-0221 TTY for the deaf.

General Telephone

## Sagerton News

Mrs. Bill Perkins and Mrs. Ed Peel of West Columbia are visiting in the home of their parents Mr. and Mrs. Arthur Knipling, also their sister Mrs. J.B. Toney and her family.

Mr. and Mrs. Alvin Bredthauer went to Abilene Thursday to do some shopping.

Mr. and Mrs. James Gellner had their granddaughter Debra and her husband from Houston visiting the July 4th holidays and they attended the Cowboy Reunion.

Joe Soto has been in the Stamford Hospital for a few days.

Mr. and Mrs. Willie Schroeder stopped by to see Mr. and Mrs. Zenor Summers July 4th on their way home. They had been to a Schroeder reunion in Haskell in the home of Mr. and Mrs. Andy Anderson.

Holiday visitors in the home of Mrs. John L. Brooks were her daughter and her family the Maxey Thompsons,

Cynthia and Malinda and Mike Patterson of Colleyville, Mrs. Brook's granddaughters Mrs. Larry Griffin of Frisco and Mrs. Joe Newman and son Aaron of Fayetteville, Ark. They came to go to the Cowboy Reunion.

Arthur Ruiz, son of Mr. and Mrs. Ramon Ruiz of Leander, is here visiting with his grandparents Cato and Brenda Macias and his aunt Frances. He is here for the whole summer. Last week Arthur and Frances went to Six Flags and stayed two nights with Dolores Longoria and Mary Franco. They are daughters of Cato and Brenda. Mrs. Ruiz is the former Gina Macias.

Mr. and Mrs. Arthur Knipling, Mr. and Mrs. Charles Clark and Mr. and Mrs. Sam Neinast came back Wednesday from their trip to Washington, D.C., which they said they really did enjoy.

Mrs. Etta Leach spent the 4th with her daughter in Stamford, Mrs. Wilson Gibson.

## Sodium Water May Contribute To High Blood Pressure And Heart Disease

Sodium is one of a number of factors that may contribute to high blood pressure and heart disease. As a result, many people are cutting down on salt. However, there is one part of their daily diet that most people don't think of when they are counting milligrams of sodium. Their water.

The American Heart Association and the Environmental Protection Agency recommend no more than 20 milligrams of sodium per liter of water (about a quart) for people with heart conditions or high blood pressure. Yet there are some local water systems that have more than eight times that amount. That sodium level also carries over into soft drinks and beers that

are made using the local water.

How can you find the sodium content of your water? Call your local health department or water company. They are required to test regularly for sodium levels in the water. If you have a well, you will have to get the water tested yourself. Your local health department can help with that, too.

However, even if the water from the reservoir or well is low in sodium, there still may be high salt levels in the water from your faucet if you use a water softener or conditioner. Some of them use salt to remove minerals, and that puts the salt into your water. If you do have a water softener

that is charged with salt, you might want to consider using another source of water for cooking and drinking.

Bottled water is not necessarily the answer to high sodium levels, either. Some bottled water, particularly mineral waters, may have a lot of sodium as well. However, many bottled waters list the minerals on the label so that you can select one with low sodium.

If you want to lower your salt intake, check your water. Stop adding salt at the table and when you are cooking. You can do a lot to keep foods tasty without salt by adding various herbs and spices. Also, check the labels of canned and processed foods. They can have high sodium levels even if you don't add any salt during the cooking. To help keep sodium under

control, send for a copy of the U.S. Department of Agriculture book, **The Sodium Content of Your Food**. It has a list of the sodium and condiments and their sodium content by portion, as well as a list of the sodium content of a number of common over-the-counter drugs. **The Sodium Content of Your Food** is \$4.25 from the Consumer Information Center, Dept. 138L, Pueblo, Colo. 81009.

At the same time, you will also receive a copy of the free **Consumer Information Catalog** listing more than 200 other free and moderately priced federal publications on nutrition, health, housing, and a variety of other subjects. The **Catalog** is published quarterly by the Consumer Information Center of the U.S. General Services Administration.

## Thank You

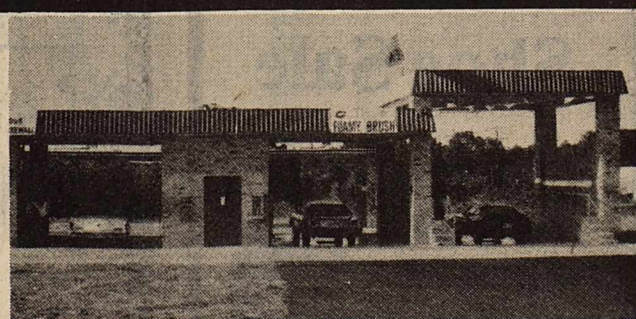
Barney & Ramia Lee Frazier wish to thank each and everyone for the fast work in bracing and enclosing the front of our building, after the storm on Sunday evening the 26th.

To the Fire Boys, and so many who worked, and to those who offered to help.

Where could a person find so many willing workers?

Nowhere but Haskell.

Thank You Again,  
The Frazier's



Look Haskell!!  
**Grand Opening**  
Saturday, July 9th

The Most Modern & Up To Date

New **Car Wash**

4 1/2 Blocks West of Square

Free Towel & Trash Bag with Car Wash

From 8 a.m. — 7 p.m.

Owned & Operated by

"S&P Enterprises" — Haskell

Terry Pringle, Tim Pringle, Bennett Shortes, Darrell Shortes

MEDICAL JOURNAL



As summer road races become more and more popular throughout the country, there have been an increasing number of runners who are contracting heatstroke.

Dr. Peter Hanson of the University of Wisconsin Center for Health Sciences offered some preventive suggestions to runners in a recent broadcast sponsored by the Columbia-Presbyterian Medical Center and The Prudential Insurance Company.

"I believe running in temperatures in the 70 to 80 degree range is dangerous, and that runners should be warned about the potential health hazards," said Dr. Hanson.

Dr. Hanson advises runners to check the temperature and humidity before a race, and to lower their personal goals on hot, humid days. He said, "I tell running participants to cut at least a minute off their normal mile pace. Muscle cramps, fatigue, disorientation, dizziness and nausea are telling symptoms. If any of these symptoms appear, the runner should walk, rest, or ask for help."

Dr. Hanson's suggestion to warm weather runners is to wear light, comfortable clothing, drink plenty of fluids at aid stations, and be constantly aware of the symptoms of heat illness.

A NEW STAR IS RISING IN WEST TEXAS

# Big Country Savings And First Security Savings Are Now Commodore Savings.

For 49 years, we've been proud to serve you as Big Country Savings and as First Security Savings. Now we're Commodore Savings. Our name is new, but our people and our commitment to you remain the same. We want to work for you and with you in bigger and better ways than ever.

## DAILY MONEY MARKET

9.75%

\$2,500 Minimum  
Rate Changes Daily

Earn money market rates without a stockbroker and without the risk of having uninsured funds.

## SUPER STARCHHECK

8.25%

Effective July 6-July 11

\$2,500 Minimum  
Rate Changes Weekly

Earn money market interest with balance of \$2,500 and if your balance falls below \$2,500, you'll still earn 5/4%.

## MONEY MARKET C.D.s

\$2,500 Minimum  
6-Month  
Rate Changes Weekly

Call us collect for our competitive rates.

The rate is subject to change at maturity. And federal regulations prohibit the compounding of interest during the term of the account. Substantial penalty for early withdrawal.

## JUMBO C.D.s

\$100,000 Minimum  
Rate and term negotiated at time of issue.  
Call us collect for our competitive rates.  
Substantial penalty for early withdrawal.

We're now \$230+ million and growing... because of you.



**COMMODORE SAVINGS**

Home Office Stamford, Texas  
Working for you. Working with you.  
Member F.S.L.I.C.



# Obituaries

## Mrs. Vena Ragsdale

Funeral services for Mrs. Vena Ragsdale, 85, of Haskell were held at 10 a.m. Friday, July 1 at Holden-McCauley Funeral Home in Haskell with Jim H. Crain, minister of Haskell Church of Christ and Elder H.V. Woodard officiating. Burial was in Dickens County Cemetery near Dickens at 2 p.m.

Mrs. Ragsdale died June 28 at 12:40 p.m. in Rice Springs Care Home.

Born Oct. 11, 1897 in Carbon, she married Horace E. Ragsdale. He preceded her in death April 21, 1981. She moved to Haskell in 1945 from Dickens. She was a housewife and a member of the Church of Christ.

Survivors include two brothers, Auto Austin of Strathmore, Calif. and Pete Austin of Placeville, Calif.; and several nieces and nephews. She was preceded in death by two sons and one daughter.

## Elsie Norman

Elsie Carmilla Norman, 89, of Munday, died at 10:25 p.m. Wednesday in a Haskell Nursing Home after a sudden illness. Services were at 2 p.m. Friday at First Baptist Church, directed by McCauley-Smith Funeral Home.

The Rev. Jim Way, pastor of First Baptist Church, and the Rev. Sam Norman of Lubbock, officiated. Burial was at Johnson Memorial Cemetery.

Born Feb. 20, 1894, in Dyer, Tenn., she married Richard T. Nolen Aug. 24, 1910, in Bonham. He preceded her in death. She married Newton Leonard Norman Oct. 23, 1925, in Seymour. He died Jan. 4, 1959. She was a member of Primitive Baptist Church.

Survivors include four daughters, Lola Owen of Avery, Hazel Ripley of Alpine, Gladys Bell of Los Angeles, Calif., and Oleta Baird of Ruler; two sons, Richard Nolen of Los Angeles, Calif., and

Leonard Norman Jr. of Idaho Falls, Idaho; two sisters, Mrs. L.P. Miller of Lubbock, and Margaret Patti of Arlington; one brother, Commodore Jones of Dallas; three stepchildren, Seymour Norman of Dallas, Horace Norman of Lorenzo, and Nellie Powell of Norman, Ark.; 28 grandchildren; 63 great grandchildren; and several great-great-grandchildren.

Pallbearers were Fred Jones, Harold Jones, Floyd Jones, L.P. Miller, Everett Miller, and Alvis Miller.

## Elaine Hawk

Funeral services for Elaine Pennington Hawk, 52, of High Rolls, N.M. were held July 6 in the Shannon South Chapel in Fort Worth at 1:30 p.m.

She died from a lengthy illness at El Paso on July 2.

Born August 13, 1930 in Haskell, she was the daughter of Mr. and Mrs. C.D. Pennington. She was the only international woman fishing guide operating in Alaska, United States and Mexico. She also operated flights for hunting and fishing parties served by Hawk Enterprises of High Rolls, New Mexico. Her professionalism was established in 1959 when she won the Texas State Black Bass Tournament at Lake Belton. She was a 1946 graduate of Haskell High School.

She is survived by her husband, Dave Hawk, whom has made their home at High Rolls, N.M. for the past 12 years; her son, Keith Vickers, wife Cindy and one grandson Ryan Van of Crowley; her stepchildren, David Curtis Hawk, Glenn Hawk and Lee Dunn; one sister Janet Syling and husband Jim, nephews Doyle and Daron; and her brother's family Dale and Carmen Pennington and nephew Shannon and her parents of Alamogordo, N.M.

## J.L. (Luther) Toliver

Funeral services for J.L. (Luther) Toliver, 94, of Haskell were held at 10 a.m. July 4 in First Baptist Church with Rev. Hubert Sego and Rev. Mike McKinney, pastor, officiating. Burial was in Willow Cemetery under the direction of Holden-McCauley Funeral Home.

Mr. Toliver died July 2 at 8:15 a.m. in Haskell Nursing Center.

Born October 22, 1888 in Bell County, he came to Haskell County in 1907 from Bell County. He married Ardonia Rachel Josselet Dec. 23, 1916 in Haskell. She preceded him in death Nov. 26, 1975. He was a deacon of First Baptist Church, a 50 year plus member of Woodmen of the World, and a retired farmer.

Survivors include three daughters, Mrs. J.P. (Eloise) Perrin, and Mrs. Harvey (Margaret) Simmons, both of Haskell and Mrs. R.H. (Lucille) Pickering of Lubbock; two sons, J.L. Toliver Jr. and Bailey Toliver, both of Haskell; one brother, Lynn Toliver of Haskell; one sister, Mrs. Josie Johnson of Irving, 14 grandchildren and 13 great grandchildren. He was preceded in death by one daughter, Mrs. Carl (Elsie) Marion.

Pallbearers were grandsons: Rex Marion, Dudley Perrin, Wayne Perrin, Brian Toliver, Joseph Toliver, Sam Toliver, David Pickering, Jay Pickering and Don Pickering.

## Azille Snider

Funeral services for Azille Snider, 83 of Llano were held at 2 p.m. Tuesday, July 5 in Waldrop Funeral Home Chapel with Gerald Kullenberg officiating. Burial was in Llano City Cemetery under the direction of Waldrop Funeral Home.

She died July 3 at 11:30 a.m. in Llano.

Born July 1, 1900 in Austin, she married Willard D. Snider May 25, 1947 in Belton. She was a member of First Baptist Church in Lampassas.

Survivors include husband Willard; two sons, Harold F. Renfro, of Brady and Bobby D. Renfro of Kingsman; three daughters, Ruth Kirkland of Haskell, Ruby Mayberry and Claudie Stephens, both of Slaton; one brother, Raymond Haynes of Austin and one sister, Ethel Kullenberg of Austin, 17 grandchildren and 28 great grandchildren. She was preceded in death by one son John E. Renfro in 1979.

Pallbearers were grandsons: Ron Swint, Hatton Moore, Claude Gordon Stephens, James Stephens, Woodie Follis and Hilton Flint.

## Mrs. Nealie Hammer

Mrs. H.G. (Nalie) Hammer, 92, of Haskell died at 5:35 p.m. Tuesday, July 5 at Haskell Nursing Center. Services are pending at Holden-McCauley Funeral Home.

Services will be at 2:00 p.m. Thursday, July 7 in the Haskell First Baptist Church.

Born May 14, 1891, in Brownwood, she married Rev. Henry G. Hammer Dec. 24, 1913, in Stamford. He died Jan. 13, 1981. She was a member of First Baptist Church and a longtime resident of Haskell County.

She was preceded in death by one son, Colin; two sisters; and two brothers.

Survivors include one daughter, Marie Elmore of Haskell; three grandchildren, Pansy Koenig of Munday, Jackie Hammer of Abilene, and W.O. Elmore of Haskell; one sister, Eva Patterson of Amarillo; six great-grandchildren; and four great-great-grandchildren.

## Scientists manipulate crop plants to produce own nitrogen

COLLEGE STATION — Soil and crop scientists at Texas A&M University are investigating methods of stimulating bacteria living among plant roots to supply extra nitrogen in soil and ultimately reduce the farmer's need for costly fertilizers.

Dr. David Zuberer of Texas A&M's College of Agriculture and other researchers here are exploring a biological process that may eventually allow food crops such as corn and wheat to produce more of their own nitrogen. Such research could one day save the natural gas needed to produce fertilizer, Zuberer said.

"Nitrogen is the plant nutrient required in greatest quantity and it is lacking in the soil of many Third World nations that can't afford fertilizer," he explained. "Developing a system in which soil bacteria could supply more nitrogen would be tremendous because nutrients could be supplied at lower costs."

# Cowboys To Compete For Braggin' Rights

More than 200 real working cowboys will compete under the banners of 14 of Texas' largest spreads for braggin' rights as this year's best ranch in Texas during the third Texas Ranch Roundup to be held August 19-20.

Plans for the annual tussle were announced today at a press conference at the North Texas Rehabilitation Center, which is co-sponsoring the event with Budweiser. The two-day schedule of events is reminiscent of a late 1800's roundup competition, upon which today's rodeos are based. The event emphasized working ranch skills.

The Moorhouse Ranch, headquartered in Benjamin and Commandeered by J.C. "Togo" Moorhouse, will return to defend the title its ranch hands won last year. The Moorhouse team will face tough competition, not only from the 12 other ranches which competed last year, but also from new-comers-hands from the Four Sixes Ranch in Guthrie.

In addition to the Moorhouse and Four Sixes Ranches, other participation ranches include R.A. Brown Ranch, Cowan & Son Circle Bar Ranch, Double U Hereford Ranch, Lewis Ranches, Pitchfork Land & Cattle Co., Scharbauer Ranches, Renderbrook-Spade Ranch, Swen R. Swenson Cattle Co., Tongue River Ranch Corporation, U Lazy S Ranch, and the W.T. Waggoner Estate.

The "best ranch in Texas" battle isn't based solely on the grit and gumption of the cowboys in the arena. A ranch queen contest, a talent contest, and a ranch cookin' contest also figure into the final tally, since they mean additional points for ranches winning these events and additional colorful Texana for spectators.

The roundup opens Friday, August 19, with the performance at 7:30 p.m. Teams of

cowboys from each ranch will compete in saddle bronc riding, team roping, team branding, wild cow milking, team penning and a wild horse race. The dance at 9 p.m. features Mountain Smoke.

On Saturday, jackpot roping and barrel racing, two events outside regular competition, will begin at 8 a.m. A ranch food cookoff, the talent contest, and the ranch queen contest are featured Saturday afternoon before the final roundup events that evening at 7:30 p.m. The Mountain Smoke band will again perform at a dance Saturday at 9 p.m.

Points will be awarded to ranch teams in each event and tallied to determine the best ranch, while team members from each ranch will cast top hand votes for individuals from competing ranches. The winning ranch will take home a traveling trophy, a bronze sculpture by Lex Graham. The top hand will receive a hand-tooled saddle.

Roundup tickets are as follows: reserved seats \$7.50, general admission, \$3.00. Tickets to the dances are \$6.00 per person each evening, and tickets to the Saturday afternoon contests are \$3.00 general admission.

Tickets will be available at

Wichita Western World, The Cow Lot, Holts Sporting Goods, Cruse Western Wear and Cuttys, all in Wichita Falls; Hughes Western Wear in Vernon, and Frontier Western Wear in Bowie.

Proceeds from the 1983 Texas Ranch Roundup will benefit the North Texas Rehabilitation Center, Wichita Falls; the West Texas Rehabilitation Center, Abilene; and the West Texas Boys Ranch, San Angelo.

For more information contact: Suzanne Monroe (214) 698-0300, or Diane Scherf (915) 949-1936.

WEBSTER New Collegiate Dictionaries. The latest most widely approved dictionary for home, office and school. Indexed. *Haskell Free Press*

Open Dusk-Start Dark

This Area Most Popular

DRIVE-IN

Stamford 773-3272

4 Days Fri. 8-Mon. 11

Marsha Mason

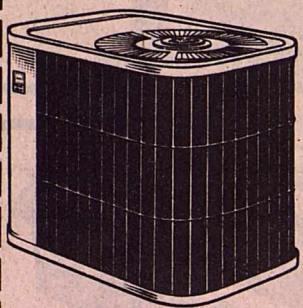
"Max Dugan Returns"

Tues. 12-Wed. 13-Thurs. 14

XX-Adults Only

"Johnny Does Paris"

## Put Your Cooling Costs On An Energy Diet.



Replace your inefficient cooling system with an energy-conscious Payne air conditioning unit.

- Engineered for quiet, efficient operation.
- Designed to deliver maximum cooling comfort without the noise and without the fat utility costs.
- Call your Payne Air Management Specialist today. Dependability is as close as your phone.

Payne

Nanny Plumbing  
301 S. Avenue E  
Haskell, Texas  
864-3043

## Public Notice

Southwestern Bell, in accordance with the rules of the Public Utility Commission of Texas, hereby gives notice of the company's intent to implement a new schedule of telephone rates in Texas, effective August 1, 1983, unless otherwise determined by the Commission.

A complete copy of the new rate schedule is on file with the Texas Public Utility Commission (PUC) at Austin, Texas, and with each affected municipality served by Southwestern Bell, and is available for inspection in each of the company's public business offices in Texas. The Commission staff has contended in the past that all rates are subject to change as a result of Southwestern Bell's rate application.

As a result of the settlement of a lawsuit brought by the U.S. Department of Justice against AT&T, Southwestern Bell, on January 1, 1984, (or as otherwise ordered by the United States District Court) will no longer be a part of the Bell System, but will be owned by public shareholders. Under the terms of the settlement, Southwestern Bell has identified 15 areas in the state within which it may provide service, and the federal court with jurisdiction of the settlement has tentatively approved these areas, called LATAs (Local Access and Transport Area). On or about January 1, 1984, Southwestern Bell can not provide service between these LATAs, and in addition, must transfer to AT&T customer premises equipment that it leases to customers.

Southwestern Bell has filed a proposed revised rate schedule with the PUC reflecting these changes. These rates would become effective August 1, 1983, if they are not suspended by the PUC; however, it is expected that they will be suspended and that the rates ultimately set by the PUC will become effective on or about January 1, 1984. If the rates were to become effective as filed, they would produce a 48.2% increase in Southwestern Bell's unadjusted test year revenues (or a 76.36% increase in Southwestern Bell's test year revenues adjusted to reflect the effect of Southwestern Bell's divestiture from AT&T). Any change in the rates for any interLATA services offered by AT&T or a subsidiary after January 1, 1984, could affect customers of Southwestern Bell Telephone Company.

### Notice to Customers of Other Telephone Companies

While Southwestern Bell has proposed no increase in rates for intraLATA interexchange toll services, any change in those rates could also affect customers of other telephone companies. Southwestern Bell is proposing changes in the structure of the present private line and foreign exchange services. Changes in these rates may affect customers of other telephone companies. Any change in the rates for any interLATA services offered by AT&T or a subsidiary after January 1, 1984, could affect customers of other telephone companies.



## Aviso Público

Southwestern Bell, en conformidad a las reglas del Public Utility Commission (Comisión de Servicios Públicos) de Texas, por la presente hace saber su intención de establecer un nuevo arancel de tarifas para servicio de teléfono en Texas, con vigencia a partir del 1o de agosto de 1983, a menos que la Comisión haga otra determinación.

Una copia completa del nuevo arancel de tarifas se ha archivado en las oficinas del Public Utility Commission (PUC, ó Comisión de Servicios Públicos) de Texas en Austin, Texas, al igual que en cada municipalidad afectada y que es servida por Southwestern Bell, y dicho arancel está disponible para inspección pública en todas las oficinas de Southwestern Bell en Texas. En el pasado, la Comisión ha sostenido que toda tarifa está sujeta a cambios cada vez que Southwestern Bell solicite un cambio en dichas tarifas.

Como resultado del arreglo judicial al cual se llegó tras el proceso legal entablado en contra de AT&T por el U.S. Department of Justice (Departamento de Justicia), Southwestern Bell dejará de formar parte del Bell System (Sistema Bell) a partir del 1o de enero de 1984 (ó en la fecha que disponga el United States District Court — Tribunal Federal de Distrito), y llegará a ser posesión de accionistas públicos. Bajo las condiciones de dicho arreglo, Southwestern Bell ha identificado 15 regiones dentro del Estado de Texas en las cuales puede proporcionar servicio, y el tribunal federal con jurisdicción en el arreglo ha dado su aprobación provisoria a éstas regiones, que se denominan "LATAs" (Local Access and Transport Area, ó Regiones Locales de Acceso y Transporte). A partir de fecha 1o de enero de 1984 aproximadamente, Southwestern Bell no podrá proporcionar servicio entre dichas LATAs, y además deberá ceder a AT&T todo equipo ubicado en premisas de clientes y alquilado a los mismos.

Estos cambios se han incluido en el propuesto arancel de tarifas de servicio revisado que Southwestern Bell ha archivado con la PUC. Dichas tarifas tendrían vigencia a partir del 1o de agosto de 1983, a menos que fueran suspendidas por la PUC; sin embargo, se espera que si seran suspendidas, y que las tarifas que en último caso establezca la PUC entrarán en vigor a partir de fecha 1o de enero de 1984 aproximadamente. Si las tarifas entrarán en vigor tal y como se han archivadas, aumentarían en un 48.2% los ingresos no-ajustados de Southwestern Bell para año de prueba (unajustated test year revenues), ó sea un aumento de 76.36% en los ingresos de Southwestern Bell para año de prueba, ajustados para reflejar el efecto del despojo de Southwestern Bell y AT&T. Cualquier cambio en las tarifas para cualquier servicio tipo-interLATA que proporcione AT&T ó una compañía subsidiaria después del 1o de enero de 1984 podría afectar a los clientes de Southwestern Bell Telephone Company.

### Aviso a los Clientes de Otras Compañías de Teléfono

Aunque Southwestern Bell no ha propuesto un aumento en las tarifas para servicios tipo "intraLATA interexchange toll", cualquier cambio en dichas tarifas también podría afectar a los clientes de otras compañías de servicio telefónico. Southwestern Bell está proponiendo cambios en la estructuración de los servicios actuales de línea privada (private line) y de intercambio extranjero (foreign exchange). Cambios en las tarifas para dichos servicios podrían afectar a los clientes de otras compañías de servicio telefónico. Cualquier cambio en las tarifas para cualquier servicio tipo-interLATA que proporcione AT&T ó una compañía subsidiaria después del 1o de enero de 1984 podría afectar a los clientes de otras compañías de servicio telefónico.

# From the horse's mouth...



a winner in any circle!



Post Office Box 10  
Phone (817) 997-2216  
Rule, Texas 79547





# M SYSTEM

Your FRIENDLY

**AFFILIATED  
SUPER MARKETS**

Haskell, Texas  
Where Your Dollar Buys More

**Double days**  
WEDNESDAYS  
With the purchase of \$3.00 or more.

Specials Good Thurs., July 7  
thru Wed., July 13

**HURRY** JULY 9 IS THE LAST  
DAY TO COMPLETE  
YOUR GLASSWARE SET.

**Crown Point**  
by ANCHOR HOOKING  
**50% OFF**  
FEATURED ITEMS!  
THIS WEEK'S  
FEATURE ITEM:  
**Juice  
Glass**  
**49¢**  
EACH  
With Each \$5.00 Purchase  
Matching Accessories Also Available.  
See Store Display For Complete Details.  
Regular Retail 99¢

We Reserve The Right  
To Limit Quantities!

**SURE JELL**  
PKG **79¢**

**DR PEPPER**  
Regular or Sugar Free  
**2-LITER**  
Limit 4  
**95¢**

**MARSHMALLOWS** ... Regular or Miniature ... SHURFINE, 10-oz. Pkg. **2 FOR 89¢**  
**PEANUT BUTTER** ... SUPERMAN 18-oz. Jar ... Regular or Crunchy ... **1.49**  
**OASIS WATER** ... DRINKING or DISTILLED ... GALLON **49¢**



SHURFINE FROZEN  
**WHIPPED  
TOPPING**  
8-oz. Ctn. **59¢**

**MR. COFFEE  
FILTERS**  
100-Ct. Pkg. **79¢**

**9 1/2-INCH  
Assorted Colors  
PLAY BALLS**  
**88¢** Each

**WOLF HOT DOG  
SAUCE**  
15-oz. Can **59¢**



SHURFINE FROZEN  
**ORANGE  
JUICE**  
6-oz. Cans (Limit 3)  
**3 FOR 1.00**



**MARYLAND CLUB  
COFFEE**  
1-Lb. Can **1.99**

**SHURFINE TOMATO  
JUICE**  
46-Oz. Can **79¢**

**POLSKI FRESH DILL  
PICKLES**  
48-oz. Jar **1.19**

**HOLSUM SALAD  
OLIVES**  
10-Oz. Jar **1.29**

**FRESH SWEET  
CORN**  
5 EARS **89¢**

**FRESH BUNCH  
Broccoli**  
Lb. **59¢**

**YELLOW  
ONIONS**  
Lbs. **7.100**

**FRESH GEORGIA  
PEACHES**  
Lb. **59¢**

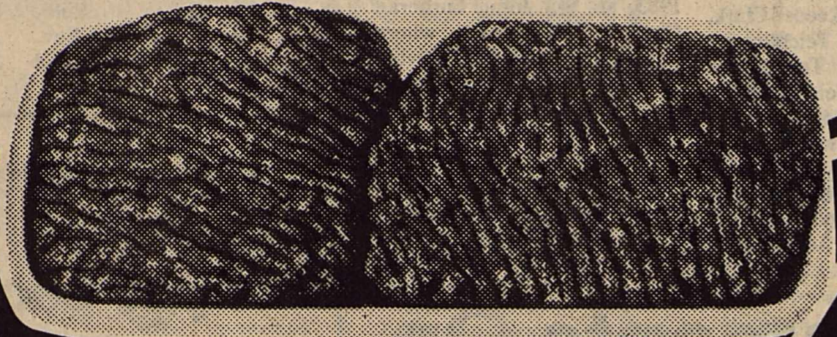
**MUNDY GROWN RED  
POTATOES**  
10-LB. BAG **1.19**





WE GIVE  WE GIVE  WE GIVE  WE GIVE  WE GIVE  WE GIVE  WE GIVE  WE GIVE  WE GIVE  WE GIVE 

# JULY SALE!



FRESHLY GROUND  
**Ground Beef**  
95¢  
Lb.

**CHIFFON**  
SOFT MARGARINE  
1-Lb. Ctn.  
(Two 8-oz. Cartons)  
**79¢**



**SHURFRESH**  
**BISCUITS**  
Sweetmilk or Buttermilk  
5 8-oz. Cans **1.00**



**DEL MONTE**  
● GREEN BEANS  
Cut or French Style, 16-oz. Cans  
● GOLDEN CORN  
Whole Kernel or Cream Style, 17-oz. Cans

Your Choice **5 FOR 1.89**

Wisconsin Red Rind Longhorn  
**CHEESE**  
Lb. **1.99**

**SHURFINE**  
**BARBECUE SAUCE**  
18-oz. Bottle  
**59¢**

**SHURFINE**  
**TOMATO CATSUP**  
14-oz. Bottle  
**49¢**

TYSON'S FROZEN  
5 LB BOX  
**DRUMSTICKS \$2.69**

HORMEL SPICED  
**LUNCHEON MEAT**  
MARKET SLICED **\$1.59**

CORONET PRINTS  
**BATHROOM TISSUE**  
4 ROLL PKG **\$1.29**

THRIFT KING 42 OZ BOX  
**DETERGENT 57¢**  
Limit 1 with \$10.00 purchase or more

SPILL MATE  
**TOWELS**  
JUMBO ROLL **79¢**

**Star-Kist**  
CHUNK LIGHT TUNA  
IN SPRING WATER  
**STAR-KIST TUNA**  
6.5-oz. Can **79¢**

**Gatorade**  
THIRST QUENCHER  
Orange or Lemon Lime  
32-oz. jar **65¢**

LIPTON'S  
FAMILY SIZE  
**TEA BAGS**  
24 COUNT BOX  
**\$1.79**

OCEAN SPRAY  
**CRANBERRY JUICE**  
32 OZ BOTTLE **\$1.25**

**12-INCH 3-SPEED**  
**OSCILLATING**  
**FANS**  
**1.89**

WE GIVE  WE GIVE  WE GIVE  WE GIVE  WE GIVE  WE GIVE  WE GIVE  WE GIVE  WE GIVE  WE GIVE 



# Sagerton Community News

The Friendship Club met in the Fellowship Hall of the Faith Lutheran Church, Thursday at 11:30. We're still having a nice group of people, could be some more come to have a nice visit. Those who attended were Mr. and Mrs. Y.W. LeFevre, Alvin Bredthauer, Mr. and Mrs. Anton Teichleman, Mr. and Mrs. Buster Tredemeyer, Mr.

and Mrs. Alvin Ulmer, Mrs. M.Y. Benton, Rev. and Mrs. Tommy Wilson, Mrs. Lillie Lehmann, Mrs. Louise Stegemoeller, Mrs. Henrietta Stegemoeller, Mrs. Lena Schaake, Mrs. Betty Balzer, Larry Cornelison, Clarence Stegemoeller, Mr. and Mrs. Reece Clark, Joe Clark, Mr. and Mrs. Arthur Knippling, Tom Bivins, Mr. and Mrs.

J.B. Toney, Mrs. Glyn Quade, Larry Quade, Vera Buck of Corpus Christi, Izetta Clark, Alva LeFevre, Ione Sheid of Rule, Mr. and Mrs. Delbert LeFevre, Jill LeFevre, Larry LeFevre, Rob Bailey, Mrs. Emma Raphael of Stamford, Charles Clark and Rene Toney.

Some of the people that came for the Morris reunion spent some time with Mrs. M.Y. Benton, Saturday. They were Mr. and Mrs. M.J. Marr of California and grandson Elson, Bill Marr of Haskell, Mr. and Mrs. Charles Clark,

Mr. and Mrs. Eldon Cook of Lubbock and grandson, Mr. and Mrs. Reece Clark, Mrs. Alva LeFevre and Jill. Mr. and Mrs. Delbert LeFevre attended the funeral of J.S. LeFevre in Coleman, Saturday.

Mr. and Mrs. Mike Bailey and family spent Tuesday night in the home of Mr. and Mrs. Delbert LeFevre. Rob spent a few more days with his grandparents.

The Methodist had a pounding Wednesday night for the new pastor Rev. and Mrs. Tommy Wilson. Mr. and Mrs. Allen Meier served the re-

freshments.

The Hobby Club met in the home of Mrs. Gene Teichleman, Thursday. Those who attended were Mrs. Aline Summers, Mrs. Frieda Knippling, Mrs. J.B. Toney, Mrs. Louise Stegemoeller, Mrs. Alvin Ulmer, Mrs. Y.W. LeFevre, Mrs. Reece Clark, Mrs. Johnny Teichleman, Mrs. Clarence Teichleman and Mrs. Billie Teichleman.

Mr. and Mrs. Alvin Bredthauer went to a wedding in Waco Saturday and came home Sunday in a big rain that hit them at Albany.

The Carl Hertels attended the 25th anniversary of their daughter in El Paso.

Rev. Raymond and Sue (Hertel) Olson celebrated their 25th wedding anniversary June 1, 1983. They renewed their wedding vows June 4, 1983 at St. John Lutheran Church, El Paso, where Raymond is currently serving as pastor. Sue is the assessor of the A.P.L. program on Fort Bliss.

Officiating at the vow renewal ceremony was Rev. Philip Berry, pastor of Mt.

Hope Lutheran Church, El Paso. Ruth Huckaby was the soloist. A reception served by the church members immediately followed the ceremony. Out of town guests who attended the celebration were Ruth Huckaby of Abilene, sister of Mrs. Olson, Mrs. Olson's parents, Mr. and Mrs. Carl Hertel of Rule. Frances Olson, sister of Rev. Olson, Maynard Olson and

Lora Oman of Stamford, Mr. and Mrs. George Olson and granddaughters Cristalle and Lena of Ozona.

Mr. and Mrs. J.B. Toney and family went to Baling to see J.B.'s family over the weekend.

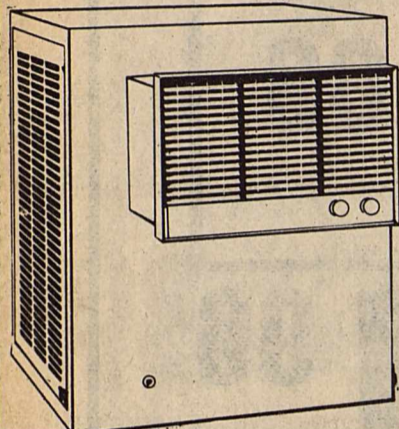
Mr. and Mrs. Charles Clark, Mr. and Mrs. Sam Neinast, and Mr. and Mrs. Arthur Knippling are spending 3 days in Washington, D.C.



**Final Clearance**

McGRAW-EDISON

**Alpine® Coolers**



3000 CFM  
Reg. \$468.00 Now  
**\$351<sup>00</sup>**  
Plus Installation

4200 CFM  
Reg. \$505.00 Now  
**\$378<sup>75</sup>**  
Plus Installation

4800 CFM  
Reg. \$620.00 Now  
**\$465<sup>00</sup>**  
Plus Installation

**Anderson Tire Co.**

206 S. Av E Phone 864-2900

## USDA Requests Comments On 1984 Feed Grain Program

Secretary of Agriculture John R. Block today called for public comment on some specifics of the 1984 feed grain program.

Block said the deadline for comments is Aug. 23 which will allow the U.S. Department of Agriculture to study the public's recommendations along with current data on U.S. and world crop conditions and crop supply and demand, before announcing the 1984 program. He said his current intentions are to announce final program provisions by the end of September which would be well ahead of the Nov. 15 statutory deadline.

Specifically USDA would like to receive comments on:

—the loan and purchase level;

—the established (target) price;

—the national program acreage;

—whether there should be a voluntary reduction percentage and, if so, what percentage;

—whether there should be an acreage reduction program and, if so, what percentage and how will the acreage bases for the acreage reduction program be established;

—whether a set-aside requirement is necessary and,

if so, what percentage;

—whether there should be a payment-in-kind (PIK) program and, if so, the PIK program provisions that should be applicable;

—whether there should be a land diversion program, and if so, the extent of such diversion and the level of payment;

—whether to require off-setting compliance if an acreage reduction program is established; and

—whether to include popcorn and waxy corn as field

corn for program purposes.

Details of program options USDA is considering are scheduled to appear in the June 24 Federal Register.

Comments will be accepted by Howard C. Williams, director, analysis division, USDA-ASCS, room 3741-S, P.O. Box 2415, Washington, D.C. 20013. The comments will be available for public inspection in Williams' office during regular business hours.

## Plans For West Texas Fair Parade Underway

The parade committee for the West Texas Fair and Rodeo is already putting together plans for this year's parade to be held Saturday, September 17th. The route and line-up procedure has been modified slightly this year to eliminate problems from years past.

All persons and groups planning to participate in this year's West Texas Fair and Rodeo Parade should request entry forms by writing, Parade, P.O. Box 5527, Abilene, Texas 79608. Entries must be returned to the committee by September 7th when it will finalize the parade line-up. Position numbers and maps will then be sent back to entrants. Late entries will be placed at the end of the parade.

Entries will be given numbers corresponding to num-

### Hermann Sons To Hold Meeting

The Haskell Sons of Hermann Lodge will hold their monthly meeting Sunday, July 10 at 4:00 with a pot luck dinner after the meeting. Members are also asked to bring a prize for bingo games.

**Major Medical that's worth a Million.**

Time Insurance Company's Major Medical plan offers: \$1,000,000 in lifetime benefits per insured party. Payment of all covered charges both in and out of the hospital. Without schedules. A deductible you pay just once a year rather than with each medical occurrence. And the plan is area-rated so you don't pay for higher risk areas of the country. Call us for full details.



Lanco Insurance Buddy Lane (817) 864-2629

**Great Value\$**

DOYLE HIGH'S  
**THE DRUG STORE**

Specials  
Good  
Thru  
7-13-83

STORE HOURS:  
Monday-Saturday—8:00 a.m.-6:00 p.m.  
Sunday—8:30 a.m.-10:30 a.m.

FREE DELIVERY  
Let us price your next Prescription

Ask About:  
Senior Citizens Discount  
Look for a Great Value\$ Ad Each Week

Sunmark Home Model 100  
**Blood Pressure Kit**  
Self-Taking  
Complete Instructions  
**\$17<sup>99</sup>**

Centrum High Potency  
Multivitamin - Mineral Formula from A to Zinc  
Bonus Offer 30 Free with 100  
**\$7<sup>99</sup>**

The No. 1 tablet prescribed for colds over the last 8 consecutive years is now available without prescription!

**ACTIFED**  
only **\$2<sup>89</sup>**  
12 Tablets

Full strength **ACTIFED** now available without prescription

**Eterna '27' Cream**  
with Exclusive Progenitin  
6 oz, \$28.50 value  
For Only **\$14<sup>50</sup>**

**REVLON**

DOYLE HIGH'S  
**THE DRUG STORE**

100 So. "E" HASKELL, TEXAS  
**PHONE 864-2515**

**Make sure your next loan is easier to pay back**



A good loan should be one you can manage on your income.

The Federal Land Bank can tailor a payment plan to fit your income patterns and cash flow. The long-term feature of Land Bank loans helps keep your payments manageable.

At the Land Bank, we want to make sure your loan is as easy to pay back as it is to get in the first place. Stop by and see how we can help.

**The Land Bank**  
*The Bank of Generations*

**Federal Land Bank Association of Haskell**

Dale Bullinger—President  
Lynn Cook—Vice President  
Offices at Haskell, Anson and Seymour  
Haskell Telephone 864-2062—Anson Telephone: VA4-1142

Long-time loans on farms and ranches in Haskell, Jones, Baylor and Knox Counties.

## Mustang Roofing

We have #1 Cedar Shakes and Cedar Shingles for sale.

**Cedar Shakes**

**\$73<sup>50</sup>**

**Cedar Shingles**

**\$78<sup>00</sup>**

FREE ESTIMATES

also given on replacing damaged roofs.

*COD Delivered to job site*

**Mustang Roofing**

Owner: Joel Nelson  
Phone 1-235-5254  
Sweetwater



# Olney Savings Converts To Stock Association

The Board of Directors of Olney Savings Association, by unanimous vote, has elected to convert the Association from a mutual to a stock association, according to Alan D. Myers, Jr., president.

Alan D. Myers, Jr., commented, "Conversion to a stock association will provide Olney Savings and the communities we serve with several key benefits. We are so excited about the oppor-

tunity." The conversion application was filed with the Federal Home Loan Bank Board in Washington, D.C. on April 28, 1983. "Due to the number of

conversion filings from all over the nation, the Bank Board has had some delay in staying current in their approval process. However, Olney Savings feels that its conversion should be approved and completed in the fall," noted Myers. The final determination of price per share and total shares issued are subject to approval by the Federal Home Loan Bank Board.

Concerning operations in the future, Myers stated, "The conversion will have no effect whatsoever on the Association and its operations. No changes in personnel or present services will occur. All savings accounts will remain insured up to \$100,000 by the F.S.L.I.C."

Conversion will allow Olney Savings' customers to become stockholders in Olney Savings. Under the adopted Plan of

conversion, existing customers will have the first opportunity to purchase stock.

Myers concluded, "Conversion will increase Olney Savings' capital position through the sale of stock. This additional strength will allow Olney Savings to meet the challenges of a changing financial industry and provide us with new investment capital, allowing us to serve more people in more ways."

Olney Savings is a \$550 million plus savings and loan association with offices in Olney, Seymour, Jacksboro, Bridgeport, Nocona, Archer City, Graham, Bowie, Brownwood, Vernon, Anson, Coleman, Cisco, Albany, Holliday, Throckmorton, Weatherford, Azle, Decatur, Boyd and Wichita Falls. Also, Ranger Savings in Ranger, Eastland Savings in Eastland, and Electra Savings in Electra. All are divisions of Olney Savings.

## Letters To The Editor

Dear Mr. Comedy:

When "Who's Who" wrote and offered to send the news about my daughter, Ginny, to my hometown paper if I would supply the name of the paper and editor, I was pleased. I sent them the information, not knowing if you would use it. You did, and I believe I was just about as thrilled when I read the item in the paper as when I saw Ginny accept the honor. This letter is to say thank you very much. I do appreciate it.

Just a little side-light—Ginny was 38 when she received her degree in December. She married right out of high school—worked five years—had two sons who are now 15 and 13—but she never gave up wanting a college degree. She did it, and at the end of August she will be a para-legal.

Sincerely,  
Freddie Johnson Potts  
Austin, Texas 78723  
1402 Corona

# Acreage Reports Due By July 15

Friday, July 15th is the final date to certify your 1983 spring seeded acreage and Conservation Use Acres (set-aside and PIK). Certify all acreage seeded, as cotton, grain sorghum, corn, guar, etc. and CUA. Sorghum planted after July 15th must be certified by September 1st but if CUA ground is required for it, the CUA must be reported by July 15th.

Farms that have whole base bids or did not plant the crop for which they have a base must certify zero "0" acres to meet your PIK requirements and/or history preservation of your base acres.

Total farm acreage reports are needed for all farms; this includes crops such as hay, grazing, guar, soybeans, sunflowers, etc. Be prepared — do some planning.

The County Office records your acreage; we do not measure them for you at the counter.

Measurement Service is available but feed grains must be measured by September 1st and cotton by September 15th. The airplane will not fly until about August 15th or so, therefore, the number of measurement services we will be able to service is limited.

Do not forget — Friday — July 15th!

NELSON REVISED Standard Version Bibles. Featuring red letters, full color pictures and maps, concordance, dictionary, concordance, study helps, presentation page, family record and thumb indexes. Available at the Haskell Free Press

# USDA Exercises PIK Option For 1983-Crop Upland Cotton

Farmers who do not have enough upland cotton under government loan to cover the amount they will receive under the payment-in-kind program will be required to obtain loans on their 1983 production, Secretary of Agriculture John R. Block said today.

Farmers who did not plant upland cotton in 1983 or who have not planted enough to cover the amount they are scheduled to receive under PIK will instead receive payment-in-kind cotton presently in government

inventory, he said.

Under PIK, the U.S. Department of Agriculture makes in-kind payments to upland cotton farmers who reduce their plantings to specified levels. Cotton farmers who agreed to reduce their 1983 planting will receive an amount of upland cotton up to 80 percent of the amount they would have produced on the PIK acreage.

Block said all producers who signed a contract to participate in the 1983 PIK program agreed to obtain a loan on their 1983 production for PIK purposes to satisfy program needs, if required by CCC. USDA decided to exercise this option after determining there is an insufficient quantity of

upland cotton currently available to USDA's Commodity Credit Corporation to meet PIK needs, he said.

Under today's announcement, producers may place eligible 1983-crop upland cotton in an approved warehouse and receive a regular price support loan for the cotton and earn storage payments for up to five months beginning on their area's availability date for in-kind cotton, Block said.

At any time during the five months, the producer may redeem the loan collateral and sell it to CCC. The producer then will be eligible to immediately receive the payment-in-kind from CCC inventory.

## Fines Collected

Judge Geraldine Hise, Justice Court, Precinct 1, Haskell County reports a total of 107 convictions for the month of June, 1983. Traffic and criminal cases were filed by the following Law enforcement agencies: Highway Patrol 97, Game Warden 9, Sheriff's Dept. 1. Resulting in a total of \$3927.50 in fines.

Geraldine Hise, Judge, City of Haskell, Haskell County, Texas reports a total of 35 convictions for the month of June, 1983. Resulting in a total of \$1839. in fines.

## Persons Can Be Eligible For SSI With Limited Income

An individual or couple can have some income and still be eligible for supplemental security income (SSI) payments, Glyn Hammons, Social Security district manager in Abilene, said recently. An individual can have countable income up to \$284.30 a month, while a couple can have up to \$426.40 a month. In July,

these amounts will rise to \$304.30 and \$456.40.

SSI provides a basic cash income to people 65 or over, or blind, or disabled who do not have much income and who do not own much real or personal property.

"If a couple has been living apart for more than 6 months," Hammons said, "each person is treated as an individual, however, if they are living together and only one member qualifies for SSI, a portion of the other person's income is treated as if it were the eligible individual's."

"Furthermore, an unmarried child under 18 who is living at home is considered to be receiving a portion of the parent's income. Allowance is made for the parents' work and living expenses, and for other children living in the home."

Additional information about the SSI program can be obtained at the Abilene Social Security office, located at 142 S. Pioneer. The telephone number is 698-1360.

Call

## Nanny Plumbing

for all your plumbing needs. We offer Rheem H/C, Roto-Rooter and Ditch Witch Services, Plus Dependable Service

24 Hr. Call

301 S. Ave. E

864-3043

## EVEN WHEN YOU'RE AWAY...YOUR HOME KEEPS RUNNING



You may naturally expect your home to use less electricity while you're away for a week or more. The reduction may not be as great as you think, however. That's because there are many factors that can affect your usage: weather conditions, billing periods and even vacation preparation.

1. Very hot weather before you leave and after you return means increased use of air conditioning; this makes it difficult to compare your bill with a previous month of milder weather.
2. Hot weather causes your refrigerator/freezer to run longer, particularly if your home air conditioning is turned off while you are away.
3. If the time you're away falls within two billing periods, the reduction you expect will be split between two bills.
4. If you didn't turn off your electric hot water heater before you left, it continued to keep your water hot 24 hours a day, even though you weren't there.

5. And don't forget... when getting ready for a vacation, you often use more electricity than usual for cleaning, washing, drying, ironing, cooking and general preparations. The same is true about your return.

### Check your meter.

If you learn to read your own meter, you can find out just how much electricity was used while you were gone. And, you'll see just how much energy you're using during the summer, the heaviest electricity consuming season, with your air conditioning operating most of the time.

WEST TEXAS UTILITIES COMPANY



A Member of The Central and South West System

Remember REDDY Supplies the energy — but only YOU can use it wisely!



# Food Buys

Specials Good Thurs., Fri., and Sat.

Cured Ham center slices	\$1.89 lb	California Lettuce head	39¢
No. 1 Sliced Bacon	\$1.39 lb	Del Monte Cut Green Beans 16 oz can	39¢
Gooch Sliced Bologna	\$1.19 lb	Del Monte Peas 17 oz can	39¢
Cured Ham shank half	99¢ lb	Van Camp Pork & Beans 16 oz can	39¢
Cured Ham butt half	\$1.19 lb	Prego 15½ oz jar Spaghetti Sauce	79¢
Extra Lean Ground Round	\$1.79 lb	Spam 7 oz can	87¢
Zesta Crackers 1 lb box	79¢	Texsun Pink 46 oz can Grapefruit Juice	79¢
Frostie Root Beer 6 cans	\$1.49	Liqua 4 5 oz	49¢
Del Monte Whole New Potatoes	39¢	Glass Plus 32 oz refill	\$1.19
Jello 12 count box Pudding Pops	\$1.99	Puffs 200 count box	69¢

# POGUE GROCERY

—Extra Parking Behind The Store. Home Owned and Operated—

113 North Avenue E

Phone 864-2015

Haskell, Texas

THE BEST IN MEAT, CUT THE WAY YOU WANT IT



# Importance Of Oral History Being Recognized

Asking questions about a parent's military experience, a grandparent's childhood, or what the neighborhood used to be like—we've all acted as informal "oral" historians through talking or listening at some time in our lives. These conversations about the past are the basis of the worldwide oral history movement—a science of reconstructing history through recorded interviews with persons able to narrate their memories.

Until a Depression-era writers' project of the Works Progress Administration focused on gathering oral accounts of past decades that oral histories were valued for their insights into previous generations. The oral history method captured the imagination of Alan Nevins at Columbia University and other historians who were looking for ways to expand their historical sources. They realized that the broad scale collection of oral histories could make an invaluable contribution to the understanding and reconstruction of the past. At the close of World War II, oral history projects were started by numerous universities

across the United States, and the movement has grown steadily ever since. The popularity of the Foxfire books and their theatrical adaptation on Broadway illustrates the wide appeal of oral history. Foxfire, a collection of oral histories focusing on Appalachian traditions and culture gathered by high school students in Georgia, also inspired a nationwide movement of oral history practice in classrooms, libraries, and museums. Literally thousands of students have had a hand in bringing history to life by using oral history techniques. Texas is a leading state in the development of oral

history in the United States, with more than 20 oral history programs in colleges and universities and numerous oral history projects in schools and towns throughout the state. The Johnson Library and Museum in Austin, for example, is conducting an oral history project on the administration of Lyndon Baines Johnson. Baylor University in Waco, which began an oral history program in 1970, has ongoing projects focusing on religion and culture, economics in Texas, and the Texas judicial system. North Texas State University is conducting an oral history project on the governors of Texas.

History for Texans, a book designed to aid in the initiation and expansion of oral history projects. With expanded involvement in oral history by the academic community, standardized recording and questioning techniques and legal and archival procedures have evolved. The Oral History Association, an international membership formed in 1966, published guidelines in 1980 governing ethical and legal concerns; tape and transcript processing; and interview content and conduct. The association seeks to ensure that interviews have lasting historical value, and that the interviewee's privacy and legal rights are protected. The Texas Oral History Association, formed in 1982, promotes oral history activity in the state through conferences, workshops, and other means. Whether the methods are employed by historians compiling an academic history or by individuals seeking information about their heritage, oral history makes the richness of the past more accessible to everyone.

In anticipation of the state's sesquicentennial celebration in 1986, Baylor University, the Texas Historical Commission, and the Texas Sesquicentennial Commission will sponsor workshops throughout the state to teach oral history techniques to local people. The sponsors hope the workshops scheduled during 1984 and 1985, will inspire citizens' groups to complete oral history projects in conjunction with the sesquicentennial celebration.

The Texas Historical Commission also encourages local oral histories by requiring the gathering of county oral histories as criteria for its Distinguished Service Awards, an annual presentation made to county historical commissions. The Commission also has published Oral

## James Berry Receives Promotion

Abilene Police Sgt. James Berry, a Haskell County native was promoted to Lieutenant in a formal service Thursday morning. Sgt. Berry scored 105 points, with 95 out of 100 on the exam and 10 points for seniority. He was one of 14 sergeants taking the exam. Berry, 32, is a 1969 graduate of Haskell High School, a graduate of Cisco Jr. College and Sam Houston State University. He has been with the Abilene Police Department since 1973 and has worked in Special Services Bureau, Safety Cruiser and Patrol Division. He was promoted to Sgt. in the Patrol Division in 1980. His present duty will be commander of the Police B Patrol shift. He and his wife, Kay, and daughter, Gena Dell, reside in Abilene. He is the son of Mr. and Mrs. H.B. Berry of Haskell.

# CLASSIFIED ADS

## For Sale

- FOR SALE: Lincoln 225 Welder \$100.00; Gas Cutting Torch with gauges \$100.00; Good Gasoline Edgers \$68.00; Good used mowers; Good Bicycle, pickup Box Trailer \$100.00. Western Auto 27c
- FOR SALE: Boat & trailer. Tidecraft fiberglass 15'. 50 hp. Mercury motor. Depth finder, trolling motor, excellent condition. 422-4493. 27tfc
- FOR SALE: Bantam chickens. Some adult and some small. 864-8955 after 6 p.m. 27c
- FOR SALE: 1976 Chevrolet Suburban. Come by 906 N. Av. K after 5. 27tfc
- FOR SALE: Clean 1972 Mobile Scout 24' travel trailer. Self-contained \$5,400.00. 864-2258. 27-28c
- FOR SALE: 30' Holiday Traveler, self contained travel trailer. Call 864-3682 after 5. dtcf
- FOR SALE: 1978 Eldorado Cadillac. Loaded with all options. Call 864-3575 after 5:30 p.m. Priced right. 24btcf
- FOR SALE: Gates fan belts, hose and clamps, Delco battery and changing oil filters, coal oil and Naptha and etc. Wilfong Texaco Station, 864-2766. 50tfc
- LET US Price your next prescription. You will be glad you did. Johnson Pharmacy. 17tfc
- REPOSESSED SIGN! Nothing down! Take over payments \$58.00 monthly. 4' x 8' flashing arrow sign. New bulbs, letters. Hale Signs. Call FREE 1-800-626-7446, anytime. 27p
- MUST SELL, traditional dining room suite—table, chairs, china cabinet, and stereo. 864-3630. 27p

## PUBLIC NOTICE

At the request of the Office of the General Counsel of the Public Utility Commission, the Commission has established Docket No. 5113 to inquire into pressing issues involving the entire telephone industry in Texas. Docket No. 5113 will deal with many issues resulting from the impending divestiture of American Telephone and Telegraph Company and Southwestern Bell Telephone Company. Some of those issues include establishing the service areas of Southwestern Bell after divestiture and assessing the impact on other telephone companies in Texas of current settlement arrangements between Southwestern Bell and those companies. Additionally, Docket No. 5113 will deal with the issues arising from the Federal Communications Commission's Final Order in Docket 78-72 (the Access Charge Docket) as they impact all telephone companies. It is anticipated that Docket No. 5113 will be evidentiary in nature. RATES FOR SOUTHWESTERN BELL MAY BE DETERMINED BY THE COMMISSION IN OR AS A RESULT OF THIS PROCEEDING. Interested parties seeking further information or desiring to participate in Docket No. 5113 are advised to write to Rhonda Colbert Ryan, Secretary and Director of Hearings, Public Utility Commission of Texas, 7800 Shoal Creek Boulevard, Suite 400N, Austin, Texas 78757 or telephone the Public Utility Commission Consumer Affairs Division at (512) 458-0223 or 458-0227, or (512) 458-0221 TTY for the deaf.

## AVISO PÚBLICO

A solicitud de la Oficina de Consejo Legal (Office of the General Counsel) de la Comisión de Servicios Públicos (Public Utility Commission), la Comisión ha establecido la Acta No. 5113 con el fin de investigar asuntos de importancia que incumben a todas las compañías de servicio de teléfono en el Estado de Texas. La Acta No. 5113 tratará con muchos asuntos que resulten del despoesimiento que está pendiente entre American Telephone and Telegraph Company y Southwestern Bell Telephone Company. Algunos de éstos asuntos incluyen el de establecer las áreas de servicio de Southwestern Bell despues del despoesimiento y el de tasar los efectos de los arreglos judiciales que estan en vigor entre Southwestern Bell y otras compañías de servicio de teléfono en el Estado de Texas. Adicionalmente, la Acta No. 5113 tratará con los asuntos que surjan del Decreto Final (Final Order) de la Comisión Federal de Comunicaciones (Federal Communications Commission) en la Acta No. 78-72 (ó sea la Acta de Cobros por Acceso — Access Charge Docket) en cuanto al efecto que tengan en las actividades de todas otras compañías de servicio de teléfono. Se anticipa que la Acta No. 5113 será probatoria. PUEDE QUE LASTARIFAS QUE COBRE SOUTHWESTERN BELL SEAN DETERMINADAS POR LA COMISIÓN EN Ó COMO RESULTADO DE ÉSTE PROCESO. A las partes interesadas que búsquen más información, ó que deseén participar en la Acta No. 5113, se les aconseja comunicarse por escrito con la Sra. Rhonda Colbert Ryan, Secretaria y Directora de Vistas, Public Utility Commission of Texas, 7800 Shoal Creek Boulevard, Suite 400N, Austin, Texas 78757, ó llamar a la Consumer Affairs Division (División de Asuntos de Consumidores) de la Public Utility Commission al (512) 458-0223, ó 458-0227, ó (512) 458-0221 TTY para aquellos que padecen de la sordera.



**TOWER DRIVE-IN**  
 Rule, Texas  
 997-2382  
 Hwy 6  
 E.B. Whorton (Owner)

Show Starts at Dusk  
 Fri., Sat. & Sun.  
 July 8-9-10

**Lone Wolf McQuade**

Chuck Norris  
 David Carradine  
 The Ultimate Showdown.  
 Rated PG

# July Clearance

Ladies & Jr.

**Sun Dresses 20% off**

1 Group Jr.

**Jeans \$10<sup>00</sup>**

Men's & Womens Boys, Girls & Jr.

**Swim Suits 30% off**

Men's

**Shorts 30% off**

Ladies & Jr.

**Shorts & Tops 20% off**

Girls

**Tank Tops 30% off**

Girls

**Dress Shoes \$4<sup>00</sup>**

Ladies

**Summer Bags \$3<sup>00</sup> & up**

# HEIDENHEIMER'S

# Money Matters

A Series Of Informative "Plain Talk" Thoughts Regarding Your Money Matters

## When We Say No

One of the most difficult times in banking are those times when you have to say no to a customers request for a loan.

All of the loans that we make are examined by professional examiners who come into the bank periodically to see that we're doing a good job in protecting the deposits of our customers.

We are forced to look at loan requests purely on a basis of facts, figures, and the applicant's credit history.

There are times when we would like to give the benefit of the doubt but when there is some element of doubt we are forced to say no.

Sometimes a customer is so involved in a situation that he loses the objectivity necessary to see that his desire for more loans is not in his own best interest. We take the responsibility of providing financial services to our community very seriously. It's easy when we say "yes" but when it comes time to say "no" we hope that it is understood that we are doing so in an attempt to do what's best for everyone concerned.

We Think Money Matters!

# HASKELL NATIONAL BANK

864-2631 • 601 N. First  
 Haskell, Texas — Member F.D.I.C.

© 1981 MICHAELS

# EMTS

## EMERGENCY MEDICAL SERVICE



24 Hour Ambulance Service  
 Oxygen Equipped  
 Complete Insurance filing for, Medicare, Medicaid, or Private Ins

Licensed Personnel  
 3 Ambulances

# Haskell Co. Emergency Ambulance Service

307 North 1st Haskell  
**864-2621**  
 EMERGENCY NUMBER

Office  
 864-3945



# WANT ADS Work Wonders!

**NOTICE**  
The deadline for Classified Advertising is 12 noon on Tuesday.  
**Haskell Free Press**

**For Sale**  
**FOR SALE**  
Pre-fabricated Concrete Cellars.  
**Tony Williams**  
864-3674 or 864-2419.  
12tc

SHAKLEE products, 100% NATURAL VITAMINS, herb lax, food supplements, and cosmetics. Products in stock @ 300 N. Ave. H. 864-3330. 26tc

\$500 DOWN. Repo mobile homes. 20 in storage. Must sell Now! Low Down Financing or best cash offers. Abilene Mobile Homes Lot #2. 915/695-7270. 26-29p

MOBILE HOME PARTS! Our store has everything your mobile home needs. Roof coating, plumbing, doors, windows, anchors, RV parts. Abilene Mobile Homes Parts Store. 672-1961. 26-29p

FOR SALE: 2 Super M Farmall tractors. Run good. Good tires. Call after 5 p.m. 915-773-3083. 26-27p

FOR SALE: 1980 silver Chevrolet Citation Hatchback. Perfect for vacation. Call 864-3250. 19tc

FOR SALE: Special 1977 Chevrolet Impala \$1395.00. Call 864-3729 or 864-3412. 1tc

MINNOWS, WORMS, TROTLINE BAIT at Hearn's Bait and Tackle 1506 N. Ave. E. See us about handmade Rattlesnake belts, buckles and hat bands. Men's Western Shirts, Ladies and children clothes made to order. 864-3822. 23tc

FOR SALE: Alto saxophone in excellent condition. \$325.00. Call 864-3412. 25tc

FOR SALE OR TRADE: 1979 GMC 1/2 ton Sierra Grande Pickup \$4350. Roy Pitman, Haskell Butane Co. 864-2424. 21tc

**Miscellaneous**

CLEAN CARPETS the inexpensive and safe way with Blue Lustre. Rent electric shampooer. Perry Brother's. 19tc

CIRCLE C DECORATING: Interior and Exterior Renovation! See Steve Cothron for your interior or exterior painting, hanging wallpaper, paneling and siding needs. 864-3919. 39tc

CHECK OUR prices at THE DRUG STORE. We will both be glad you did. 14tc

ROOFING. Seal-down and T-lock roofs. Free estimates. Warranty on workmanship. Circle C Decorators. Call Steve Cothron 864-3919. 25tc

WATER WELL DRILLING: House well, Stock, Irrigation Wells, Test Holes. Call W.P. Hise, 864-3727 Haskell, Tx. (Day or Night). 7tc

HOME DECORATORS. Painting-Insulation. Free Estimates. Phone 743-3592 or 743-3550. V.A. Mitchell-Bobby O'Neal. Rochester. 3tc

INSTANT CASH for good used merchandise. A little or a lot. Phone 864-3197 anytime. Lackey's, Hiway 380 East, Haskell, Tx. 6tc

**Garage Sales**

GARAGE SALE: Full size maple bed, nice clothing, toys and misc. Thursday and Friday. 601 North Ave. L. Mary Ann McFadden 27p

GARAGE SALE: 1410 N. Ave. K. Baby's clothes, motorcycle, some men's and women's clothes. Fri. and Sat., July 8 and 9. 27c

GARAGE SALE: Friday and Saturday only 8 til 5. 1407 N. Av. J. Mens, womens, and childrens clothing, toys, air conditioner, dishes, shoes, coats and much more!. 27p

**Card of Thanks**

CARD OF THANKS  
There are no words to adequately express the value of friends at the loss of a loved one; we are so grateful for all the food, flowers, and expressions of sympathy. May God bless each one.  
We especially wish to acknowledge with eternal gratitude, the years of patient, loving care mother received at Haskell Nursing Center, and from Dr. Frank Cadenhead. Our prayer is that every effort made on her behalf be richly rewarded. The Family of Elsie C. Norman. 27p

CARD OF THANKS  
We want to thank our friends for the food, cards, and memorials during the loss of our father and grandfather. A special thanks to the staff at Rice Springs for all your help and concern. The Family of Ben Isbell. 27dc

**Jobs Wanted**

Will babysit in my home for working mothers. Christian Church Parsonage, 607 N. 9th. 864-2445. 25-28p

HAY HAULING. 864-8093. 22-30c

FOR ALL YOUR home repair or remodeling jobs call D.W. Gordy Jr. after 5:30 p.m. at 864-2764. 21tc

WILL DO MOWING and light hauling. Afternoons 5 p.m. til and Saturdays. 864-3489. Dan and Derryl Hoover. 19tc

Want Ads  
Put 'em to work for you—  
You'll know they work!

**Help Wanted**

LVN. Wanted for part-time or full time position. Good benefits with a growing company. If interested contact Nelda at 864-2177. 24tc

HELP WANTED: HOUSEPAINTERS; men or ladies, or high school seniors. No experience necessary. Must be able to climb. Phone (Stamford) 773-5214. 26-27p

ABILENE REPORTER-NEWS is seeking news correspondent for Haskell. Responsibilities include providing information on governmental meetings, unusual happenings, and day-to-day events shaping lives of Haskell residents. Writing experience preferred, but will consider hard-working individual interested in community affairs. Pay varies—the more you work, the more you earn. For more information, call Regional Editor Marilyn Hauk, (915) 673-4271. 27c

\$100 PER WEEK Part Time at Home. Webster, America's favorite dictionary company needs home workers to update local mailing lists. Easy work. Can be done while watching TV. All ages, experience unnecessary. Call 1-716-842-6000, Ext. 6417. 27p

**Public Notice**

PUBLIC NOTICE  
THE STATE OF TEXAS  
COUNTY OF HASKELL  
In the name and by the authority of the State of Texas, notice is hereby given as follows: TO A.D. Stone et ux Martha Sue Stone; Dwight Dee Stone; Don Lee Stone; Jose Granado et ux Lola Granado; Unknown Heirs of R.D.C. Stephens, deceased; et ux Tempie Stephens, deceased; Unknown Heirs of Amma Ruth Stephens Maples, deceased; Call Maples, Jr.; Madalyn Hutcherson; Unknown Heirs of Velma Beatrice Stephens Taylor, deceased; Unknown Heirs of W.A. Massengale, deceased; Unknown Heirs of Margaret L. Parish, deceased; Mrs. John Ed Phillips, Sr.; Mrs. Chris Garver; J.A. Phillips; Jose C. Padilla AKA Jose C. Padillo; James Hill; Rhonda Hill; Lonnie Hill; Paul Solomon; T.A. Barfield; Annie Hogan; R.H. Davis; Unknown Heirs of A.B. Adkins, deceased; et ux Tina Adkins, deceased; Unknown Heirs of Hoyt Adkins, deceased et ux Ethel Bell Adkins; Billy Adkins; Ethel Tempie Adkins; Linnie Adkins Dunnam; Kent Dunnam; Unknown Heirs of Ivan Adkins, deceased; Richard Adkins; Unknown Heirs of J.C. Adkins AKA Jack Adkins, deceased, et ux Mildred Adkins; Jackie Adkins Smith; David Adkins; Eddie Harris; Unknown Heirs of Dallas Howard Adkins, deceased; Unknown Heirs of Mildred Fycheleene Adkins Sloan, deceased; Tommy Sloan; Alene Adkins Sturdy; W.O. Page; Clyde F. Elkins; Unknown Heirs of R.H. Darnell, deceased; Minnie B. Darnell; E.F. Darnell; W.H. Darnell; Mrs. Ada Viola Darnell Kuenstler; L.C. Darnell; Bill Hurt et ux Ruby Hurt; John L. Phillips AKA John L. Phillips; Lee Ella Phillips; J.L. Phillips; John Wilbert Phillips; Robert Henry Phillips; J.C. Phillips; James Thomas Phillips; Vernice Phillips; Verna Phillips; Linda Phillips; Virginia Sue Barfield AKA Virginia Sue Pate; L.K. Williams; Maggie Cobb; Maggie McKenney; Joe Irby; C.V. Payne; Boss McGregor; W.G. Pope; A.E. Pope; Unknown Heirs of P.P. Roberts, deceased, et ux Mary E. Roberts; Arthur Perce Roberts; Katie May Roberts; Unknown Heirs of Woodrow Wilson Roberts, deceased; Mrs. L.E. Scroggins; Vera Scroggins; Elva Scroggins; Putman Scroggins; J.H. Tandy; Joseph Ulrich; Margaret Ulrich; Charles Kestel if living, and if any or all of the above named defendants be dead, the unknown heirs of each or all of said above named persons who may be dead and the unknown heirs of the unknown heirs of said above named persons, and the unknown owner or owners of the hereinafter described land, and the executors, administrators, guardians, legal representatives, legatees and devisees of the above named persons, and any and all other persons, including adverse claimants, owning or having or claiming any legal or equitable interest in or lien upon the following described property,

delinquent to Plaintiff(s) herein, for taxes, all of said property being located in said County and State, to-wit:

The following property being located in the Original Townsite of the City of Haskell: Lot 4, Block 49.

The following property being located in the B&R (Brown & Roberts) Addition: Lot 2, Block 6; Lot 4, Block 19; Lots 5 and 6, Block 20; 49' x 140' of Lots 1 and 2, Block 29; South 24' of Lot 7, Block 34.

The following property being located in Clifton, a subdivision of Brown & Roberts: Lot 1, Block 1.

The following property being located in the College Heights Addition: Lots 1-2, Block 1; Lot 3, Block 4.

The following property being located in the Cottage Lawn Addition: Lot 6, Block 8.

The following property being located in the Harrell Addition: Lot 19, Block 1.

The following property being located in the Highland Addition: Lot 10, Block 7.

The following property being located in the McConnell #2 Addition: Lot 2, Block 3; Lot 3, Block 3.

The following property being located in the Patterson & Montgomery Addition: Lots 3 and 4, Block 3.

The following property being located in the Stephens Addition: Lots 11 and 12, Block B.

The following property being located in the Tandy & Pinkerton Addition: Lot 7, Block 5.

Which said property is delinquent to Plaintiff(s) for taxes in the following amount: \$5,450.77, exclusive of interest, penalties and costs, and there is included in this suit in addition to the taxes, all said interest, penalties and costs therein allowed by law up to and including the day of judgment herein.

You are hereby notified that suit has been brought by the Haskell County Central Appraisal District, Haskell Independent School District, City of Haskell, a municipal corporation, North Central Texas Municipal Water Authority, and Haskell County, Plaintiff(s), against the above named persons, as Defendants, by petition filed on the 29th day of July, 1982, in a certain suit styled the Haskell County Central Appraisal District et al vs. Hawaii Baptist Foundation et al, for collection of the taxes on said property and that said suit is now pending in the District Court of Haskell County, Texas, 39th Judicial District, and the file number of said suit is 9347, that the names of all taxing units which assess and collect taxes on the property hereinabove described, not made parties to this suit are NONE.

All parties to this suit, including Plaintiff(s), defendants, and intervenors, shall take notice that claims not only for any taxes which were delinquent on said property at the time this suit was filed but all taxes becoming delinquent thereon at any time thereafter up to the day of judgment, including all interest, penalties and costs allowed by law thereon, may, upon request therefor, be recovered herein without further citation or notice to any parties herein, and all said parties shall take notice of and plead and answer to all claims and pleadings now on file and which may hereafter be filed in said cause by all other parties herein, and all of those taxing units above named who may intervene herein and set up their respective tax claims against said property.

You are hereby commanded to appear and defend such suit on the first Monday after the expiration of forty-two (42) days from and after the date of issuance hereof, the 1st day of July, 1983, same being the 12th day of August, A.D., 1983, (which is the return day of such citation), before the honorable District Court of Haskell County, Texas, to be held at the courthouse thereof, then to show cause why judgment shall not be rendered for such taxes, penalties, interest and costs, and condemning said property and ordering foreclosure of the constitutional and statutory tax liens thereon for taxes due the Plaintiff(s) and the taxing units parties hereto, and those who may intervene herein, together with all interest, penalties, and costs allowed by law up to and including the day of judgment herein, and all costs of this suit.

Issued and given under my hand and seal of said Court in the City of Haskell, Haskell County, Texas, this 1st day of July, A.D., 1983.  
Carolyn Reynolds  
Clerk of the District Court,  
Haskell County, Texas, 39th  
Judicial District 27-28c

**Public Notice**

NOTICE OF INTENTION TO LEASE  
The City Council of Haskell, Texas, in a regular meeting held on the 14th day of June, 1983, deemed it advisable to put up for public auction to the highest and best bidder the following described land in Haskell County, Texas, for oil, gas and mineral lease, in accordance with Chapter 71, V.T.C.A. Natural Resources Code of the State of Texas.

DESCRIPTION  
All that tract or parcel of land, being 100 acres, situated in Haskell County, Texas, and known as Out Lot on Block #86, of the Brown & Roberts Addition to the Town of Haskell as the same appears on a map of said addition recorded in Vol. #20, Page #22 and #23, of the Deed of Records of Haskell County, Texas, and being a part of the I. Ramos League & Labor of land, A-351, Cert. #605, Survey #109 and patented to the heirs of John R. Cunningham on April 29th, 1870, by patent #165, Vol. #18, and Out Lot containing 100 acres of land.

This auction will be held at 7:00 p.m., at the City Hall in Haskell, Texas, on Tuesday, July 12, 1983, for receiving of bids. Such lease shall be subject to any and all local, state and federal rules and regulations covering said property and shall provide for at least 1/8 royalty.  
NOTE: The City Council of Haskell, Texas reserves the right to reject any and all bids.  
Franciene Johnson  
Mayor  
ATTEST:  
Desmond Dulaney  
Secretary 25-27c

NOTE: The City Council of Haskell, Texas reserves the right to reject any and all bids.  
Franciene Johnson  
Mayor  
ATTEST:  
Desmond Dulaney  
Secretary 25-27c

**Lost & Found**

LOST: Pickup rack. Has red plastic tire at the ton. Call collect 817-849-4221. R.E. Kirksey, Throckmorton. 27p

**FOR SALE**  
Nice 2 bedroom home. Close to school. Reduced price 1110 Adams Ave.  
2 Bedroom home, completely redone. 403 9th.  
Large Building on hi-way, good location. 5th St.  
2 Bedroom home, completely remodeled, close in to town town. 600 Pawnee.  
3 bedroom home, good location, priced for quick sale, on Union Avenue.  
Like new double wide trailer home several lots and lots can be bought separately, on Gladstone Ave.

**Allison Real Estate**  
Rule, Texas  
Phone 997-2632 or 997-2561 1tc

**True Value**  
HARDWARE STORES  
**TOOL VALUE OF THE MONTH**  
While Supplies Last **6.99**  
Master MECHANIC®  
19-C. 3/8-In. Drive Socket Set  
13 standard, metric sockets. ratchet handle extension bar more MMS-19AFM  
Quantities Limited  
**ASI**  
864-2926  
1203 S. Ave. E  
Haskell, Texas

**Jobs Wanted**

HARVEY'S Complete Remodeling and Construction. Add on's and garage conversion, cabinets, roofing, painting and Acoustical Ceilings. Free estimates (Bonded). Call 698-0563. 26-29p

**For Rent**  
FOR RENT: Trailer space. Call 864-2936, after 5:00 p.m. 19tc

**Real Estate**

FOR SALE: House in Rule on 2 lots. 864-3209. 26-28p

FOR SALE: Brick, 3 bdr., 2 bath, fireplace, double garage, storage shed, fenced yard. 1101 N. 9th. Call John or Bonnie Fouts at 864-3941 or 864-8058. 26-27c

10 x 50 mobile home with improvements. On leased lot at Lake Stamford. 915-823-2503. 27tc

**FOR SALE**  
Good neighborhood priced to sell large lot with big trees over 2000 sq. ft. in room, formal dining room, formal living room, family room, 2 bath, breakfast area, carpeted and carpeted tile. Owner ready to sell \$88,000, Best Buy in Town.  
Over 1/2 block with Hiway frontage on South 277.  
3 bedroom, 1 1/2 bath well build home on Ave. C, fully insulated, double car garage, storm windows, and many extras. See to appreciate.  
IF YOU LIKE COUNTRY LIVING, call on this one. 3 bedroom, brick, fireplace, 2 baths, ceiling fans, new carpet, heat pump, double car garage, Paint Creek Water, located on 1 acre. Priced to sell.

**Frances Arend Real Estate**  
864-3880 864-3156  
Garlene Dunnam  
864-2814 27c

**FOR SALE**  
Haskell County Farm—160 acres excellent soil, 2 irrigation wells without pumps. Approximately 1 mile east of O'Brien. \$850 per acre, must sell to settle debts, loan available. Owner financing available.  
14 acres all cultivated, 2 miles South of Knox City. Use your Texas Veterans. \$20,000.00.  
207 acres 1 mile north of Knox City. Has assumable loan for \$60,000. Salt water disposal will pay \$100 a month. \$900 per acre.

IN MUNDAY: New 14x70 mobile home. 3 bedroom, 2 bath, dishwasher, range. Excellent condition. \$15,000.00. Great buy. Shown by appointment only.

IN HASKELL: 3 bedroom, 2 bath, living room, kitchen/den. Roman brick home with 4 window units, fenced back yard and garage. Excellent buy. 902 S. 2nd. Call for appointment.

IN ROCHESTER: Super buy. Completely remodeled, 3 bedroom, 2 bath, living room, kitchen, dining room. 2 lots. Large workshop, good neighborhood. Must sacrifice. \$29,000.00. Call on this one soon.

IN ROCHESTER: Super buy. Completely remodeled, 3 bedroom, 2 bath, living room, kitchen, dining room. 2 lots. Large workshop, good neighborhood. Must sacrifice. \$29,000.00. Call on this one soon.

**More Tomatoes Earlier**  
ferti-lome  
**ASI**  
864-2926  
1203 S. Ave. E  
Haskell, Texas

**Buddy Tibbets**  
Remodeling & New Construction  
Custom Cabinets, Add-Ons, Floor Repair, Siding, Texture, Acoustic, Painting, Wall Paper, Plumbing, Electrical, Roofing  
Phone 997-2496  
Rule, Texas 25-28p

ROOFING Tar & Gravel Composition Shingles Wood Shingles Repairs  
DRYWALL Block Brick Rock Fireplaces  
MASONRY  
OLD FASHIONED QUALITY  
**DEAN GRAY & COMPANY**  
Free Estimates  
Dublin, Texas — 817-445-3258  
Seymour, Texas — 817-888-2889

**R.N. for Home Health Director**  
Management opportunity for R.N. as Director of Home Health in Haskell. Candidates must have initiative, organization ability, good nursing skills. Supervisory and home health experience helpful. Competitive salary, excellent benefits and travel reimbursement.  
Send resume to: Emily Tripp, R.N.  
Beverly Enterprises  
807 Washington Drive, Suite D  
Arlington, TX 76011  
Or call collect to: Mary Jo Reynolds  
817-274-9823

**Real Estate**

HOUSE FOR SALE: 3 bedroom, 2800 sq. ft., two story brick with basement, 1 1/2 bath, formal dining and living room, with fireplace. Sunken family room with fireplace and ceiling fan, breakfast room; kitchen with 2 self-cleaning ovens, dishwasher, garbage disposal, trash compactor, refrigerator with ice-maker, central H/A.C. 2 car garage, laundry room, guest house with 1/2 bath. Covered patio, fenced with cedar and brick pillars on double lot. Call 817-864-2532. 19tc

**FOR SALE**

Northside  
New Listing: 3 bedroom 1 bath printed brick, ceiling fans, fireplace, utility room.  
3 bedroom 1 bath frame, cellar, carport, would rent 504 N. Av. B.  
3 bedroom 2 bath Champion Double wide, central H/A, carpet, carport and Patio.  
2 bedroom 1 bath frame, furnace H, North Av. L.  
3 bedroom 1 bath stucco, North 708 N 8th.  
Large Brick Bldg., North 3rd.  
Commercial Bldg., central H/A, on square.  
Building Lots Stamford & Haskell.

**Francis Arend Real Estate**  
864-3880 864-3156  
Garlene Dunnam  
864-2814 27c

**FOR SALE**  
Haskell County Farm—160 acres excellent soil, 2 irrigation wells without pumps. Approximately 1 mile east of O'Brien. \$850 per acre, must sell to settle debts, loan available. Owner financing available.  
14 acres all cultivated, 2 miles South of Knox City. Use your Texas Veterans. \$20,000.00.  
207 acres 1 mile north of Knox City. Has assumable loan for \$60,000. Salt water disposal will pay \$100 a month. \$900 per acre.

IN MUNDAY: New 14x70 mobile home. 3 bedroom, 2 bath, dishwasher, range. Excellent condition. \$15,000.00. Great buy. Shown by appointment only.

IN HASKELL: 3 bedroom, 2 bath, living room, kitchen/den. Roman brick home with 4 window units, fenced back yard and garage. Excellent buy. 902 S. 2nd. Call for appointment.

IN ROCHESTER: Super buy. Completely remodeled, 3 bedroom, 2 bath, living room, kitchen, dining room. 2 lots. Large workshop, good neighborhood. Must sacrifice. \$29,000.00. Call on this one soon.

IN ROCHESTER: Super buy. Completely remodeled, 3 bedroom, 2 bath, living room, kitchen, dining room. 2 lots. Large workshop, good neighborhood. Must sacrifice. \$29,000.00. Call on this one soon.

**Counts Insurance & Real Estate**  
Knox City  
817-658-3211

**Buddy Tibbets**  
Remodeling & New Construction  
Custom Cabinets, Add-Ons, Floor Repair, Siding, Texture, Acoustic, Painting, Wall Paper, Plumbing, Electrical, Roofing  
Phone 997-2496  
Rule, Texas 25-28p

ROOFING Tar & Gravel Composition Shingles Wood Shingles Repairs  
DRYWALL Block Brick Rock Fireplaces  
MASONRY  
OLD FASHIONED QUALITY  
**DEAN GRAY & COMPANY**  
Free Estimates  
Dublin, Texas — 817-445-3258  
Seymour, Texas — 817-888-2889

**R.N. for Home Health Director**  
Management opportunity for R.N. as Director of Home Health in Haskell. Candidates must have initiative, organization ability, good nursing skills. Supervisory and home health experience helpful. Competitive salary, excellent benefits and travel reimbursement.  
Send resume to: Emily Tripp, R.N.  
Beverly Enterprises  
807 Washington Drive, Suite D  
Arlington, TX 76011  
Or call collect to: Mary Jo Reynolds  
817-274-9823

**Real Estate**

**New House For Sale**

1800 sq. ft. brick, 2 baths, fireplace, covered patio, built ins, 2 car garage, outside City limits. Qualifies for farm loan.

**Lumber Yard**  
864-3552  
after 5 864-3431 1tc

**INSURANCE**

**Life • Health Auto Farm • Home**  
**CHARLES THORNHILL**  
522 South 2nd, Haskell  
—Phone 864-2842—  
National Farmers Union Insurance Companies

**REAL ESTATE LISTINGS WANTED**  
We Don't Just List: We Sell  
I am on call and ready to talk to you about your Real Estate at any time if you are interested in buying or selling, please call me. I am full time in Real Estate and will try harder to please you.  
**LORAIN JOHNSON**  
LICENSED SALESMAN  
Bus. 864-2665 Res. 864-2951  
After Hours and Weekend Welcomed  
H.H. HARTSFIELD, BROKER 14tc

**WOULD YOU LIKE TO HAVE A NEW HOME? YOU CAN BE CLOSER THAN YOU THINK! LET US HAVE A LISTING ON YOUR PRESENT HOME AND SEE HOW FAST WE CAN SELL IT.**

**FOR SALE**  
SPACIOUS NEW HOME: Fireplace 1800 sq. ft. Ready to move in now.  
North Side—Large 3 bedroom, living room, den with fireplace. Large kitchen with bar, dining area, utility room.  
CLEAN 3 bedroom stucco brick one bath separate dining room close in on easy to care for lot. \$15,000.  
396 ACRES—1/2 pasture, 1/2 cultivation east of Haskell.  
Large Commercial Bldg. on Hwy. 277 with plenty of parking. Central H/A.  
NORTH AVE A two bedroom frame. Only \$5,500.  
2 Bedroom, 2 bath stucco, carport, storage bldg., fenced yard on N. 2nd.  
2 Acres East of town. City water available \$5,500.  
W.C. WINCHESTER home south of Knox City with approximately 10 acres of farm land. Three bedrooms, two full ceramic baths, living room, dining room, kitchen with spacious cabinets, double ovens, refrigerator & range, breakfast room with hutch, office, family room with fireplace, large utility & storage, two car garage, storage bldg., servants quarters, storm cellar, bomb shelter, three bedroom tenant dwelling, and two large barns go with this beautiful country home.  
CLEAN 2 Bedroom on N. Ave. L. \$12,500.  
CLEAN 2 BEDROOM 1 block North of high school. New carpet.

GOOD LOCATION: 2 bedroom, 1 bath, kitchen with dining area, window units and ceiling fans. N. Ave. F.  
NORTH AVE L: 3 bedroom, 1 1/2 bath, formal living room, den with fireplace, central H/C, ceiling fans. Many more extra's. A good house that would make you a good home.  
House on 277 3 miles South of town. 3 bdr., 3 bdr., 3 bedroom 1 bath.  
Must See To Appreciate: Large 3 bedroom brick, 2 bath, formal living room, large sunken den with fireplace, large dining room attached double garage with shop, carport. Many extras built ins. Ideal location. Over 3400 sq. ft. total.  
3 Bedroom on 277 1/2 mile with large storage bldg. 10,000.  
2 Lots on N. 3rd \$1,500.00.  
6 Lots on N. 3rd. \$3,750.00.

**FOR SALE**  
3 Bedroom brick with 5 lots, good storm cellar, carport. Very clean and ready to live in \$28,500.  
Small home in Rule on two lots, carport and storm cellar. \$9,000.  
ROCHESTER  
Large two bedroom, paneled walls large concrete storm cellar, huge pecan tree. \$10,000.  
Modern two bedroom with attached carport and storage. FHA & VA Financing 12%. See us for new Vista Homes 95% financing.

**Hartsfield Realty**  
864-2665  
REALTOR  
THE REALTOR WITH A  
AFTER HOURS & WEEKENDS  
Loraine Johnson 864-2951  
Hess Hartsfield 864-2004

**Carpentry & Cabinets**  
Remodeling, Painting, Repair.  
All types of work!  
Bobby Stickney  
997-2748 Rule, Tx.

**The One to See**  
Brian Burgess  
703 N. Ave E  
864-3250  
STATE FARM INSURANCE  
Home Offices: Bloomington, Illinois

**Electrician!!**  
Experienced  
New installations, trouble-shooting & repairs of all kinds.  
Call Joe at 864-2828  
Please leave name & phone number. 27-28p

**Good Used**  
Color TV's, Stereos & Washer/Dryers  
Anderson Tyre Co.  
206 S. Av E Phone 864-2900 1tc

**SIMPSON'S ELECTRONICS**  
10 N. Av. D  
Phone 864-3111 1tc





1200 N AVE E  
HASKELL, TEXAS  
OPEN 8 AM-8 PM  
SUN 9 AM-6 PM



**DOUBLE MANUFACTURER'S  
COUPON EVERY  
TUESDAY & WEDNESDAY**

MODERN WAY WILL REDEEM ALL MANUFACTURER'S "CENTS-OFF" COUPONS FOR DOUBLE THEIR VALUE WHEN THE PRODUCT IS PURCHASED. LIMIT 1 COUPON PER ITEM. THIS POLICY DOES NOT INCLUDE RETAILER (ANY FOOD STORE) OR FREE COUPON, CIGARETTE OR TOBACCO COUPONS OR REFUND CERTIFICATES. THE TOTAL REDEMPTION WILL NOT EXCEED THE VALUE OF THE ITEM.

ANY MANUFACTURER'S CENTS OFF  
DOUBLES YOUR BUYING POWER ON THAT  
ITEM AT MODERN WAY

PRICES EFFECTIVE JULY 6-JULY 10—QUANTITY RIGHTS RESERVED

**We Give  
3-Star  
Coupon  
Double  
Every  
Wednesday**

**FAMILY PACK  
GROUND BEEF**  
3 LBS  
OR MORE **98¢ LB**

**THRIFT KING  
DETERGENT**  
42 OZ  
BOX **59¢**  
LIMIT 1 WITH PURCHASE  
OF \$10.00 OR MORE



**USDA CHOICE HEAVY BEEF**

BONELESS CHUCK ROAST	\$1.58 LB
BONELESS CHUCK STEAK	\$1.68 LB
BONELESS ARM ROAST	\$1.89 LB
BONELESS ARM SWISS STEAK	\$1.99 LB

**FAMILY PACK  
PORK CHOPS**  
**\$1.58 LB**

**USDA GRADE "A"  
PILGRIM PRIDE MIXED  
FRYER PARTS**  
**49¢ LB**

CENTER CUT RIB PORK CHOPS	\$1.79 LB
CENTER CUT LOIN PORK CHOPS	\$1.89 LB
CENTER CUT WAFER THIN PORK CHOPS	\$2.09 LB
SILVER SPUR SLICED SLAB BACON	\$1.49 LB
SHURFRESH (REG. OR HOT) PORK SAUSAGE	1 LB PKG \$1.29 2 LB PKG \$2.57
SHURFRESH SLICED BOLOGNA	1 LB PKG \$1.59

**SHURFINE FROZEN  
ORANGE JUICE**  
3 6 OZ CAN **\$1.00**  
LIMIT 3

**DELMONTE CUT OR FRENCH  
GREEN BEANS**  
5 16 OZ CANS **\$1.99**

**RATH MEAT OR BEEF  
FRANKS**  
12 OZ PKG **99¢ EA**


**BONELESS  
BEEF BRISKET**  
(VAC-PAC) **\$1.19 LB**

**DR. PEPPER** REG. & SUGAR FREE **2 LITER 97¢**  
LIMIT 4

**DEL MONTE  
GOLDEN  
CORN**  
5 17 OZ CANS **\$1.99**  
LIMIT 5



**GEORGIA  
PEACHES**  
LB **59¢**



SHURFINE 32 OZ JAR WHOLE DILL PICKLES	99¢
SHURFINE 46 OZ CAN TOMATO JUICE	79¢
RICH & READY ORANGE OR TROPICAL 1 GAL SIZE PUNCH DRINK	\$1.19
SHURFINE 18 OZ BOTTLE BARBECUE SAUCE	59¢
SHURFINE ASST'D FLAVORS 2 LITER BOTTLE SOFT DRINK	68¢
SHURFINE 14 OZ BOTTLE CATSUP	49¢
STAR KIST CHUNK LIGHT IN OIL OR WATER TUNA 6.5 OZ CAN	89¢
FOLGERS 1 LB CAN ALL GRINDS COFFEE	\$2.29
SHURFINE 32 OZ JAR SALAD DRESSING	99¢
SHURFINE TOMATOES 2 16 OZ CAN	\$1.00
TREET 12 OZ CAN LUNCHEON MEAT	\$1.39
TOP JOB 28 OZ BOTTLE LIQUID CLEANER	\$1.89
FAB 30¢ OFF LABEL 49 OZ BOX DETERGENT	\$1.99
REG. OR SCENTED 8 OZ SIZE LYSOL SPRAY	\$2.89

**SHURFINE  
WHIPPED  
TOPPING**  
8 OZ CTN **59¢**



MORTON BEEF, TURKEY, CHICKEN POT PIES 3 8 OZ PKG	\$1.29
SHURFRESH SWEETMILK OR BUTTER MILK BISCUITS 5 8 OZ PKG	\$1.00
KRAFT 32 OZ SIZE ORANGE JUICE	99¢
SHURFINE SOFT WHITE OR INSIDE FROST LIGHT BULBS 60, 75, 100 WATT 2 PER PKG	69¢
OSCILLATING 3-SPEED, 12 IN FAN	\$18.99
JOHNSON & JOHNSON 8 OZ REG. \$1.95 BABY CORN STARCH	\$1.59
JOHNSON & JOHNSON 16 OZ REG. \$4.95 BABY LOTION	\$3.99
JOHNSON & JOHNSON 16 OZ REG. \$4.25 BABY OIL	\$3.79
COLEMAN 1 GALLON SIZE FUEL	\$3.99

10 LB BAG RED POTATOES	\$1.29	CALAVO AVOCADOS 5/\$1	CALIFORNIA BROCCOLI 59¢ LB
FRESH 2 LB BAG CARROTS 59¢	FANCY SWEET CORN 5/89¢	2 LB BAG LEMONS 99¢	
YELLOW ONIONS 7 LBS FOR \$1.00	FRESH MANGOES 69¢ EA	ACORN SQUASH 3 LBS FOR \$1.00	

<b>SHURFRESH HOMO MILK</b> ½ GALLON <b>69¢</b> With 1 Filled Superstar Booklet	<b>SHURFINE LIQUID DETERGENT</b> 22 OZ BOTTLE <b>49¢</b> With 1 Filled Superstar Booklet	<b>COUNTRY FRESH BREAD</b> 24 OZ LOAF <b>29¢</b> With 1 Filled Superstar Booklet	<b>SHURFRESH MEDIUM EGGS</b> DOZ <b>39¢</b> With 1 Filled Superstar Booklet	<b>SHURFRESH BATHROOM TISSUE</b> 4 ROLL PKG <b>69¢</b> With 1 Filled Superstar Booklet	<b>SHURFINE MARGARINE</b> 1 LB CTN <b>9¢</b> With 1 Filled Superstar Booklet
--	--	--	---	--	--