

Statewide Traffic Deaths Show 9.1% Decline

Statewide traffic deaths decreased last year for the first time since 1976, according to statistics released by the Texas Department of Public Safety.

Colonel Jim Adams, DPS director, said 4,271 traffic fatalities were reported in 1982, a reduction of 9.1 per cent compared to the previous year. The mileage death rate decreased 12.8 per cent to 3.4 deaths per hundred million miles traveled in 1982 compared to 3.9 in 1981.

Adams believes the reduction in fatalities resulted from several factors.

"Stepped-up enforcement by DPS and local officers brought about a 25 per cent increase in DWI arrests last year," he said. "The Highway Patrol has also been concentrating on speed enforcement, and this has helped bring the top speeds down on our highways."

The DPS director said public concern about DWI has contributed to the decrease in fatalities.

"Widespread attention to the drunken driving problem by the news media and citizen groups has increased the public's recognition of the seriousness of this menace," Adams pointed out. "Motorists who drink now have a greater fear of the consequences of driving under the influence of alcohol, and consequently are being more careful. Our challenge now is to

WTC Registration Set May 26

Registration for summer classes at the Haskell extension center of Western Texas College will be held from 6:30-8 p.m. on May 26 in the elementary school.

Textbooks will be available for purchase at that time.

Classes will begin on June 1 and continue through July 28.

Persons wishing additional information are invited to contact Bill Blackley in Haskell at 864-2891 or the office of Dr. Ben Brock at WTC in Snyder, 915 573-8511.

Summer classes on the WTC campus in Snyder will begin June 1 following registration on May 31. Housing on campus will be available for summer students and persons interested in details are invited to contact Dr. Duane Hood at WTC.

Swimming Pool Open

The swimming pool will be open Monday through Thurs. from 1:00-5:00 and on Sundays from 1:30-5:00. Ladies night will be on Tuesdays from 5:00-7:00. Prices are \$1.00 ages 12 and under and \$1.25 ages 13 and up. The pool will be closed every Friday and Saturday. The pool may be rented for \$20 for 2 hours plus \$1.00 per person.

Swimming lessons will begin on Monday, June 20 for beginners to advanced. Ten lessons will be taught for \$25.00. To secure a place for your child, come by the City Pool during business hours and pay the enrollment fee.

Constitutional Amendment Will Eliminate Precincts

When Texans go to the polls Nov. 8, they will vote on a constitutional amendment that would force Haskell County to eliminate as many as five of the county's six justice of the peace and constable precincts.

The Texas Senate Thursday unanimously approved the proposed amendment that would require counties with less than 18,000 population to be divided into at least one and not more than four such precincts. Counties with populations ranging from 18,000 to 30,000 persons could have two to five precincts, while larger counties would be permitted four to eight. The House approved the amendment May 3 by a vote of 134 to five.

The constitution currently permits counties to be divided into four to eight precincts, regardless of size. Sen. Bill Sims, D-San Angelo, who sponsored the proposed

sustain this public concern to help turn this temporary reduction into a lasting accomplishment. Pending DWI legislation will assist greatly in this respect."

Adams noted that 25 per cent of the statewide fatalities (1,066) were DWI related.

"We still maintain that this statistic would be in the 50 per cent range if state law required blood alcohol measurements from all drivers involved in fatal accidents," he said. "But this figure makes it plain that DWI remains one of the leading causes of traffic deaths."

Motorcycle operator and passenger deaths totaled 403 in 1982, an 8.8 per cent decrease compared with the previous year.

Holiday Safety Urged By DPS

Memorial Day weekend signals the start of the summer vacation season and increased dangers to motorists, according to the Texas Department of Public Safety.

Colonel Jim Adams, DPS director, urged drivers to exercise caution during the upcoming holiday weekend and throughout the summer.

"During the vacation season, more motorists will be exposed to

Pecan Spraying Dates Set

It appears that control measures for the pecan nut casebearer will be needed later than is the case in most years, based on pecan nut casebearer moth emergence.

The most optimum time to spray for the first generation of the pecan nut casebearer has been set for May 27-31 for Haskell County. There will probably be more than one casebearer generation. Additional spraying might be needed at seven day intervals. Malathion, Sevin, and Zolone can be used to control pecan nut casebearers.

Use these materials according to the information on the labels. Additional information on pecan nut casebearer spraying can be obtained from the County Extension Office.

Cheese & Butter Giveaway Set

Cheese and butter will be given to the needy Thursday, May 26 beginning at 4 p.m. Location of giveaway is building behind Bailey Toliver Chevrolet. Haskell Kiwanis Club is in charge of distribution.

Holiday

Most Haskell businesses, including County, State and Federal offices, will be closed Monday in observance of Memorial Day.

Four out of five of the motorcyclists killed were not wearing protective headgear when the accident occurred.

More than 98 per cent of the persons killed in passenger vehicles were not wearing seat belts.

"Although we saw a significant reduction in statewide fatalities last year, the number of persons injured in traffic crashes decreased less than one per cent to 204,666," Adams said.

According to estimates by the State Department of Highways and Public Transportation, motorists traveled 124.910 billion miles in 1982, representing a four per cent increase over 1981.

highway driving hazards," Adams said. "Heeding the traffic laws, wearing seat belts, and staying alert for drunk drivers is the best defense for avoiding an accident."

The DPS director requested the assistance of Texas drivers in minimizing traffic deaths.

"Statewide traffic fatalities are now about 13 percent below the number for the same period last year," Adams pointed out. "But we also have to remember that the potential for additional fatalities during any holiday weekend is great and we must adjust our driving habits and attitudes accordingly."

A total of 58 traffic deaths resulted from accidents during the Memorial Day weekend in 1982.

"Troopers will be on the lookout for hazardous violations over the Memorial Day weekend in an effort to prevent accidents and we do not intend to relax our efforts to arrest drunk drivers and cite speeders," Adams said. "These two violations continue to cause most of the traffic fatalities in our state."

County Fair Workers Needed

The Division Superintendents for the Haskell County Fair are busy lining up workers for the 1983 County Fair to be held September 22-24. If you would like to work during the Fair please contact, Lou Gilly, at 864-2546 or 864-3083 before June 1.

Watch For Dollar Days

About 40 Haskell merchants will sponsor the second in a regular series of Dollar Days promotions next Friday and Saturday, June 3 and 4.

Members of the Board of Directors of the Haskell Chamber of Commerce, members of the Retail Trade Committee, and many local merchants have banded together to coordinate advertising and promotion of the monthly project.

Several months ago, Chamber Director Tom Richardson suggested

THE HASKELL

FREE PRESS

25¢

10 Pages in One Section

Plus Insert

HASKELL—A GOOD PLACE TO VISIT. A BETTER PLACE TO LIVE

VOLUME NINETY-SEVEN HASKELL, TEXAS 79521, MAY 26, 1983 NUMBER TWENTY-ONE



Spring Electrical Storm

Storm Warning Time Increases With Radar

Following the installation of a color radar unit at radio station KVRP in Haskell and several modifications to the local storm watch program, area residents should get much more warning of approaching storms.

Ken Lane, of KVRP, and Tom Watson, County Disaster Coordinator, have worked for the past two weeks to coordinate a plan between radar watchers and spotters. The plan will include directing spotters to the location of severe clouds for visual verification of threatening weather. The clouds speed and path will then be plotted on the radar unit.

In the event that a tornado is confirmed and is approaching Haskell, members of the Fire Department will drive designated routes through town blowing sirens.

In the event that a tornado or severe weather is sighted which is approaching another town, officials in that town will be contacted.

During threatening weather all area residents are urged to listen to KVRP and to take cover immediately when severe weather approaches.

The key work in taking cover is 'low'. The lowest floor in any building is the safest. Small rooms, such as the bathroom or a closet in

the central part of the structure offer the best protection. If this hideout isn't available, taking cover under heavy furniture such as a tipped over couch is advised.

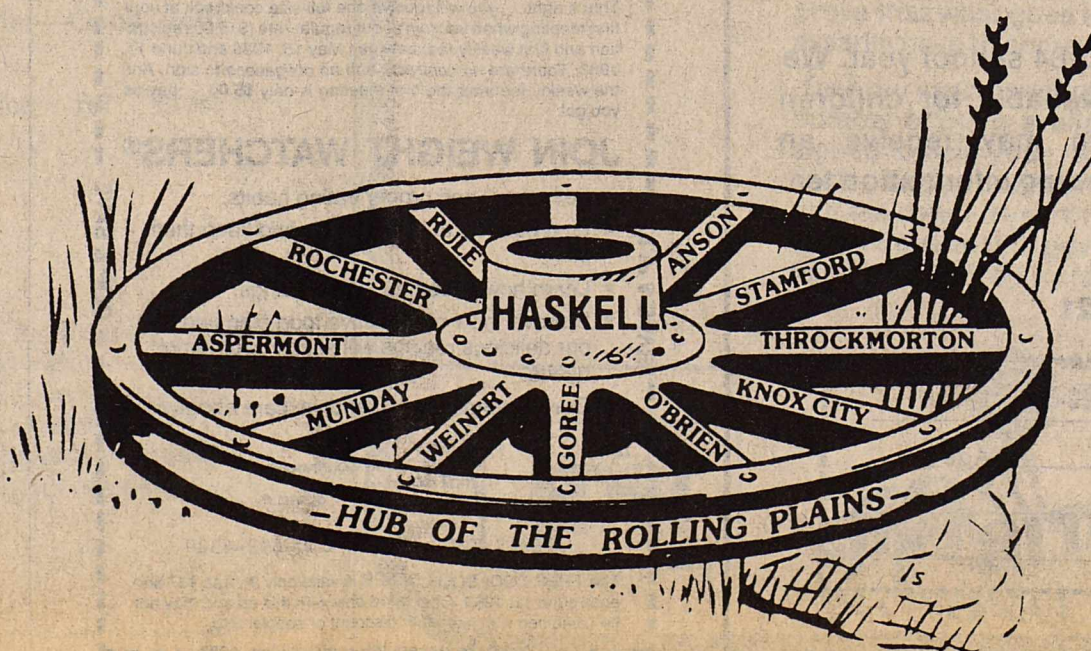
Excellent examples of the large, killer tornadoes are the Lubbock Tornado of May 1970 and the Wichita Falls Tornado of April 1979. It is estimated that some 18,000 persons were in the path of the Wichita Falls Tornado. The survival of 99.8 percent of them was due largely to their knowledge and use of safety rules.

In the open, the best shelter from a tornado is a ditch, ravine, or culvert. If none is available, move into a field alongside the road. Get down on your knees, as low to the ground as possible, and cover your head with your hands and arms. This is known as the defensive position. Do not remain in a vehicle or try to out-run a tornado. It is difficult to judge either its distance or speed.

In a building, the safest location would be a tornado shelter. Next best would be a basement. Hide under a heavy desk or stairwell. Otherwise, go to a central closet, bathroom, or small hallway on the lowest floor. These rooms are safer when away from chimneys and taller structures that may collapse on them. They have the advantages of greater reinforcement per unit volume and more walls between the occupants inside and flying debris outside. Flying debris causes most tornado deaths. When you reach the shelter, assume the defensive position.

Avoid areas with large span roofs such as cafeterias, auditoriums, and gymnasiums. They are subject to collapse. Also avoid areas with extensive glass. It is likely to be shattered by the extreme winds and flying debris. Do not waste time opening or closing windows to reduce inside pressure. The pressure change near a tornado (very low pressure) causes little, if any, structural damage. Simply make sure you and the people you are with are safe.

Fire Department officials urge all local residents to have a pre-planned place of cover, easily accessible, and to seek the shelter immediately when the local warning is issued.





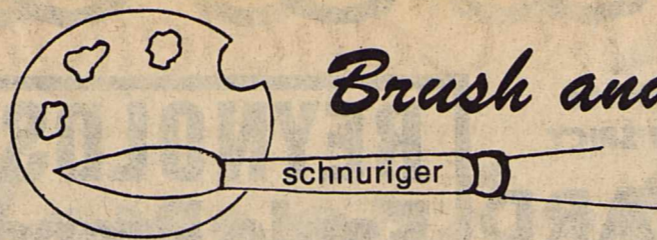
Reception To Honor Lackeys Anniversary

MR. AND MRS. CECIL LACKEY of Haskell will be honored Saturday, May 28th with a reception at Haskell National Bank Community Room from 6 to 9 p.m. in observance of their 50th Wedding Anniversary. Children and grandchildren of the couple will host the celebration. They include Mr. and Mrs. Johnny Lackey, Rob, Terri and Annette of Lubbock, Mr. and Mrs. Bobby Jenkins and Glenn Jenkins of Waco, Darrell and Kelly Jenkins and great-granddaughter Kendall of LaGrange. Mr. Lackey was born in Haskell in 1905. He spend most of his time farming and was a building contractor in Haskell until he retired. Mrs. Lackey, born in Wingate, as an infant moved with her parents to New Mexico. The couple were married May 20, 1933 in Haskell. Since their retirement, they are involved in the furniture and antique business on the Throckmorton Highway in Haskell. Everyone is cordially invited to share in this celebration.

Cadenheads Visit Dares

Last week Mrs. Frank Cadenhead spent several days in Wewoka, Ok. where she helped the Kenneth Dares with preparations for their daughter's wedding. Kristy Dare and Michael Pinion were the first couple to be wed in the new building of Midway Baptist Church of Wewoka. Kristy and Michael will live in Chickasha where Michael works for Wal Mart and both

are students at the Oklahoma College of Liberal Arts. The Dares lived in Haskell from 1970-72. Kenneth served as Music Director in First Baptist Church; Mrs. Dare, Frances, taught in the Paint Creek School and Kristy attended Paint Creek School. Dr. Cadenhead drove to Wewoka on Saturday and he and his wife returned to Haskell Sunday evening.



Brush and Palette

Is there a VTR in the house? The video revolution we've been hearing about in every category has just arrived in the art field. The May **American Artist** has such an interesting article and explains how simple our art instructions will be on cassette. The concept is exciting and if today's innovative marketers have anything to say about it, thousands of households will have video cassette units and the new instructional how-to's they are producing on a range of subjects for people of all ages and talents. Most people do not have a VTR unit and the tapes start at \$69.95 but that is

not expensive compared to the cost of many workshops and one good feature is that you can stop and start the tape when desired. This is a good program for the non-artist who always wanted to try their hand but was stymied by the various pitfalls of the classroom - group - instructor scene.

Q. Where and how did artists begin painting in oil?
A. The Italian Renaissance painter and writer Vasari wrote in his "Lives of the Artists" that Flemish painter Jan van Eyck (1385-1441) invented oil painting, but his book is a mixture of fact, myth and gossip. One way to find

out how oil painting first became important is to identify the materials actually used in Medieval and early Renaissance paintings.

Q. Some judges for shows use the term "lack of color sense and design". Please explain this term.

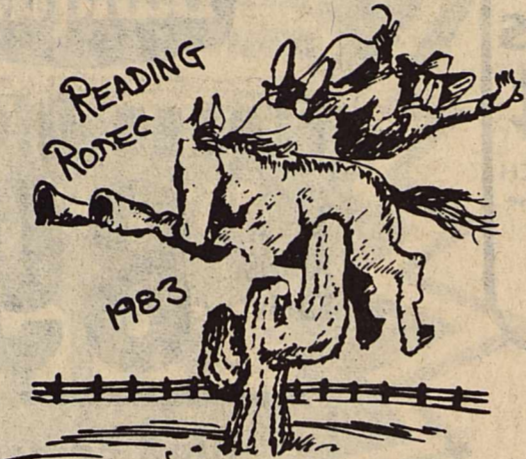
A. This is a term used to describe the artist's preference of color arrangement and "design" is the arrangement of the tones and colors on canvas. This is a matter of personal choice and taste that there is no technical information that can solve the problem. The late Maximilian Rasko said, "Painting can be taught but art can only be criticized."

Q. What am I doing wrong? I can't seem to get enough light into my pictures.

A. I wish you'd bring your picture by the studio and not seeing it, it is difficult to find a solution. However, the most common mistake that's found in paintings is that you're not painting with enough contrast of light and dark. Remember, one of the basics in oil painting is to paint light against dark and dark against light. Try this, it might help with your problem.

HINT: "Art and life ought to be hurriedly remarried and brought to live together." - Hugh Walpole

Write your questions and hints to me, Faye Schnuriger, P.O. Box 134 Haskell, Texas 79521. I will not use your name but do want you to sign your letters.



Summer Reading Program Set At Haskell Library

It's time to get back in the saddle again with the Haskell County Public Library's 1983 Reading Club, Reading Rodeo!

Special events and displays are being planned for a summer long rodeo of reading fun.

Registration starts on June 1 and the Grand Entry will begin at 1:00 p.m. on June 1. Participation in all events is free!

The library will outfit each cowboy and cowgirl with an authentic bookmark, a reading log to keep track of all books read on the trail, paper games and puzzles, and a broncobustin' certificate for all contestants who ride the rodeo to completion.

Grab your hat, buckle on your spurs and let's ride into a rodeo of fun and excitement! For more information, contact the library at 864-2747.

Vergil Conner Honored With 75th Birthday Reception

Martin Vergil Conner, lifelong resident of Haskell, was honored Saturday evening, May 14 with a 75th birthday celebration. The event was held in the home of his oldest son, Wendell Ray Conner. Born in Birdstown, Tennessee, he moved to

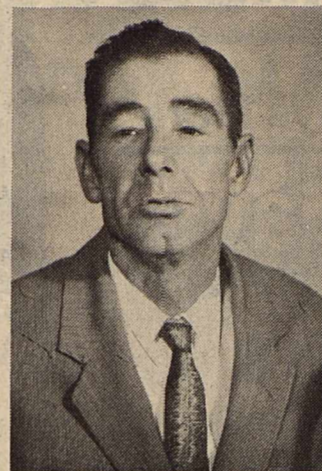
Haskell at the age of thirteen. He helped his mother raise his brothers and sisters after the death of his father.

Mr. Conner has worked as a mason and carpenter in and around Haskell. He had ten children.

After the barbecue dinner, ice cream and birthday cake were served. Family members and friends enjoyed singing, browsing through photo albums and joining in memor-

ies of the years past. Friends and family attended from Haskell, Lubbock, Stamford, San Angelo, Winters, Big Spring, Canyon, and Weinert.

Brightly colored — attention getting — Open-Closed Signs for your office or business. Comes complete with changeable letters in black or red. Also includes a sign for counter top use. See at the **Haskell Free Press**



VERGIL CONNER

LISTEN TO...
WORLD 1983
Haskell
RADIO ADVERTISING
WORKS
CALL 864-9000

BOX OFFICE OPENS AT 6:00 PM.
SHOW STARTS AT 7:30 PM.

MAY 1983
E.A. SHORTON (OWNER)
TOWER
DRIVE-IN (HIWAY 6)
RULE, TEXAS
ON PHONE 864-2282

FRIDAY-SATURDAY & SUNDAY MAY 27-28-29
TOM SELLECK BESS ARMSTRONG
HIGH ROAD TO CHINA
Fun and adventure at every turn.

the perfect gift....

Gift Certificate

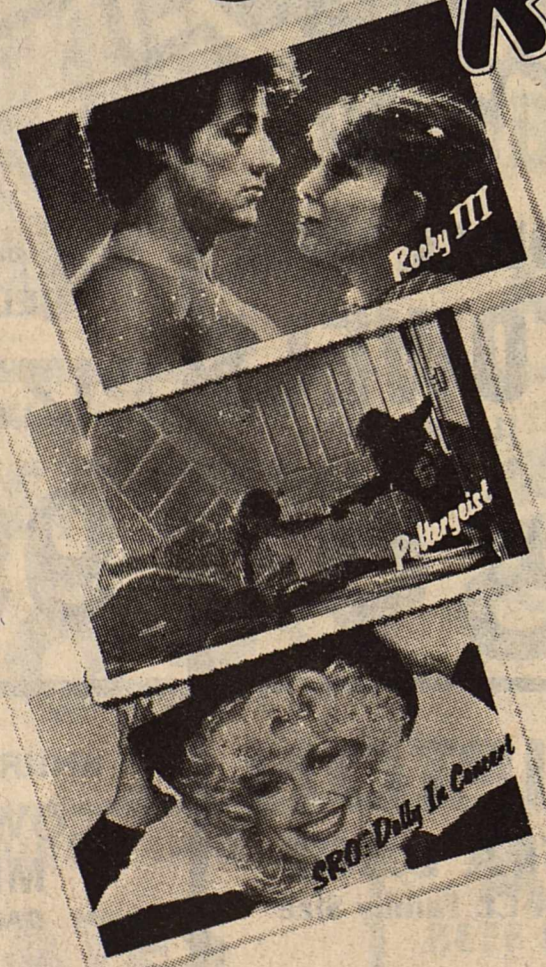
For _____ DATE _____
This certificate entitles you to select a gift of your choice which I am sure you will enjoy more than _____
FROM **the Mercantile**
TO THE AMOUNT OF _____
With best wishes from _____ AUTHOR _____

the Mercantile
est. 1981-411 S. 1st. St. Haskell, Texas-817 864-2718

Open Dusk-Start Dark
DRIVE-IN
Stamford 773-3272

4 Days-Fri. 27-Mon. 30
Tom Selleck
"High Road To China"
Tues. 31-Wed. June 1-Thur. 2
XX-Adults Only
"Anytime Any Place"

Take A Vacation From Summer Reruns...



With HBO's Fresh New Season of Great Entertainment!

Bored by summer reruns on commercial television? Then turn to HBO®—for a fresh summer season worth staying home for! You'll see first-run Hollywood hit movies like *Poltergeist*, *Rocky III*, *Missing* starring Jack Lemmon, and much more. All uncut and without commercial interruptions, 24 hours a day!

Watch HBO® all summer long for under \$20.00.
Limited time offer—Good until June 11, 1983.
Call our office for more information.

HBO® Right now, before the summer reruns get you down, add HBO to your cable TV service. Discover for yourself what over 11 million satisfied HBO subscribers already have. And take a vacation from summer reruns... forever!

Centex Cablevision Corp.
773-3391 Enterprise 2406 Stamford, Texas 902 N. Swenson



Just like the very first flight of the hot air balloon back in 1783, we'd like to prove that what goes up doesn't necessarily have to come down.
Take our savings accounts. We have a number of plans available to you designed to help your money "take off" each offering sky-high interest rates, and the down-to-earth safety of being insured by the U.S. government for up to \$100,000! Stop in for all the facts.



Post Office Box 10
Phone (817) 997-2216
Rule, Texas 79547



WE RESERVE THE RIGHT TO LIMIT QUANTITIES!

Memorial Day

WEEKEND SALE

M-SYSTEM STORES WILL BE OPEN MONDAY, MAY 30th—MEMORIAL DAY...FOR YOUR SHOPPING CONVENIENCE!!



SHURFRESH ALL MEAT

Franks

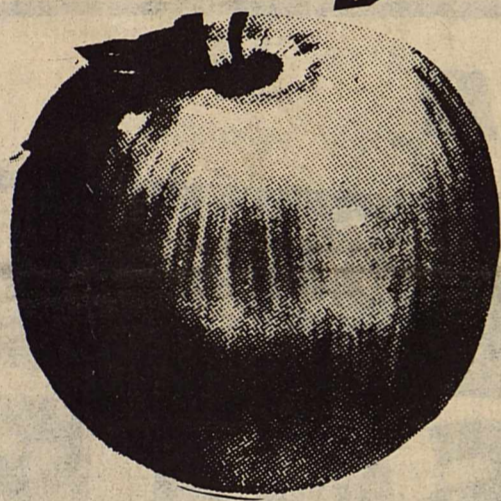
12-oz. Pkg. **89¢**



SHURFRESH BONELESS

HAMS

HALF OR WHOLE Lb. **1.89**



ROME APPLES

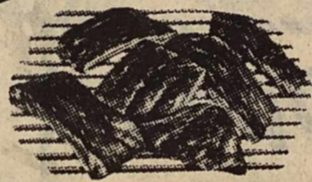
3 Lb. Bag **99¢**



FRESH GREEN

BROCCOLI

Lb. **59¢**



FRESH LEAN GREAT FOR BARBECUE!

SPARERIBS

Lb. **1.29**

GRADE A

FRYERS

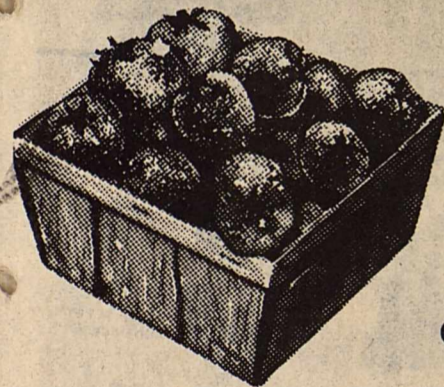
WHOLE ONLY **43¢** LB

SHURFRESH

MARGARINE

1 LB QUARTERS

49¢ each



STRAWBERRIES

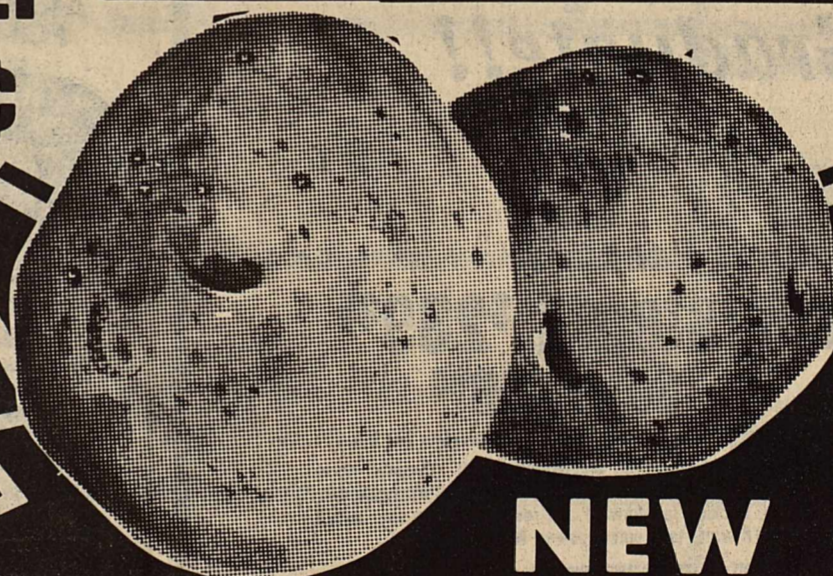
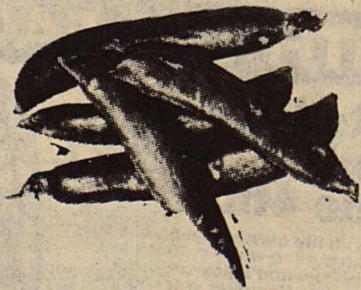
FRESH CALIFORNIA PINT

45¢

FRESH KENTUCKY WONDER

GREEN BEANS

Lb. **69¢**



NEW POTATOES

FRESH ARIZONA

3.10 Lbs.

NEW CROP

YELLOW ONIONS

15¢ LB

FRESH

GREEN CABBAGE

BLUE BIRD PAPER

PLATES

100-Ct. Pkg. **79¢**

ALPO

BEEF DOG FOOD

2 14-oz. Cans **79¢**

NEW KING'S FROZEN

Hawaiian Rolls

9-oz. Pkg. **79¢**

LIPTON

INSTANT TEA

3-oz. Jar **2.09**

15¢ LB



Little League Schedule

MAJOR
May
 Thursday, 26
 Tigers vs. Hawks
 Friday, 27
 Cubs vs. Eagles
 Monday, 30
 Hawks vs. Cubs

Tuesday, 31
 Eagles vs. Tigers
June
 Thursday, 2
 Cubs vs. Tigers
 Friday, 3
 Hawks vs. Eagles
 Monday, 6
 Hawks vs. Tigers

Tuesday, 7
 Eagles vs. Cubs
 Thursday, 9
 Cubs vs. Hawks
 Friday, 10
 Tigers vs. Eagles
 Monday, 13
 Tigers vs. Cubs
 Tuesday, 14
 Eagles vs. Hawks
 Thursday, 16
 Cubs vs. Eagles
 Friday, 17
 Tigers vs. Hawks
 Monday, 20
 Eagles vs. Tigers
 Tuesday, 21
 Hawks vs. Cubs
 Thursday, 23
 Hawks vs. Eagles
 Friday, 24
 Cubs vs. Tigers
 Monday, 27
 Tigers vs. Eagles
 Tuesday, 28
 OPEN
 Thursday, 30
 OPEN

MINOR
May
 Thursday, 26
 Cats vs. Red Horses
 Friday, 27
 Bears vs. Crows
 Saturday, 28
 Owls vs. Red Horses
 Monday, 30
 Red Horses vs. Crows
 Tuesday, 31
 Owls vs. Cats
June
 Thursday, 2
 Bears vs. Owls
 Friday, 3
 Crows vs. Cats
 Saturday, 4
 Bears vs. Red Horses
 Monday, 6
 Owls vs. Crows
 Tuesday, 7
 Red Horses vs. Cats
 Thursday, 9
 Cats vs. Bears
 Friday, 10
 Red Horses vs. Owls
 Saturday, 11
 Crows vs. Bears
 Monday, 13
 Red Horses vs. Crows
 Tuesday, 14
 Bears vs. Owls
 Thursday, 16
 Owls vs. Cats
 Friday, 17
 Red Horses vs. Bears
 Saturday, 18
 Cats vs. Crows
 Monday, 20
 Bears vs. Cats
 Tuesday, 21
 Crows vs. Owls
 Thursday, 23
 Cats vs. Red Horses
 Friday, 24
 Bears vs. Crows
 Saturday, 25
 Owls vs. Red Horses
 Monday, 27
 Bears vs. Owls
 Tuesday, 28
 Cats vs. Crows
 Thursday, 30
 OPEN
 LL scores

Eagles 12, Cubs 0
 Hawks 8, Tigers 7
 Cubs 6, Hawks 3
 Eagles 24, Tigers 5
 Red Horses 7, Crows 1
 Red Horses 7, Bears 0
 Cats 8, Owls 5

PLASTIC SHEET
 PROTECTORS, 11x8 1/2,
 punched 3 holes, wide
 reinforcing flap. Comes with
 black mounting sheet. Haskell
 Free Press

Hermann Sons Summer Youth Camp Scheduled

Two thousand boys and girls from Hermann Sons lodges across Texas, including the Haskell Lodge, are expected to attend the fraternal benefit society's youth summer camp this season in the Hill Country near Comfort. Opened by the Order of the Sons of Hermann in Texas in the summer of 1954, the camp this year will be conducting its 30th annual 11-week season for junior Hermann Sons members age 9 through 13. A brief ceremony will be held at noon Sunday, May 29, prior to the start of registration at 1 p.m. with a number of former campers and former camp directors attending. Louis B. Engelke of San Antonio, grand president of the order, will make a brief address commemorating the occasion. Located in the southeast

corner of Kerr County on the Guadalupe River, the camp will have six weekly sessions for girls, followed by five sessions for boys from July 10 to Aug. 13. Registration this spring is running ahead of last year when a record number of 1,908 attended, Engelke said. Some 1,944 junior members had registered by mid-May, with many more applications for registration forms still in the hands of parents. Four of the six sessions for girls already are filled, he said. Since the first season in 1954 attended by 196 youngsters, the camp has seen 38,358 junior members participate. The camp can be free on a merit point basis for junior Hermann Sons who earn sufficient credits by attending junior chapter meetings or by successfully recommending

new members to the fraternal order. The maximum fee those members who earn no points will pay for a one-week session is \$30, well below fees paid at comparable Hill Country camps. All junior members attending the camp must be 9 years of age and less than 14 years of age before the opening day of the 1983 season. Camp director is Debbie Krueger, a graduate of Texas Lutheran College in Seguin and a high school teacher in the Northside Independent School District in San Antonio. The camp features masonry-constructed dormitories, dining hall and kitchen and includes facilities for horseback riding, swimming, archery, tennis, softball, canoeing, soccer, trampolines, tumbling and arts and crafts.



The kitchen of a monastery in Portugal was built to accommodate the Alcoa River, which flows through it, providing a supply of fresh fish every day of the year.

Four Great Reasons To Think Big.

SUPER STARCHECK
8.00%
 Effective May 24—May 30
 \$2,500 Minimum
 Rate Changes Weekly
 Earn money market interest with balance of \$2,500 and if your balance falls below \$2,500, you'll still earn 5 1/4%.

DAILY MONEY MARKET
9.25%
 \$2,500 Minimum
 Rate Changes Daily
 Earn money market rates without a stockbroker and without the risk of having uninsured funds.

MONEY MARKET C.D.s
 \$2,500 Minimum
 6-Month
 Rate Changes Weekly
 Call us collect for our competitive rates.
 The rate is subject to change at maturity. And federal regulations prohibit the compounding of interest during the term of the account. Substantial penalty for early withdrawal.

JUMBO C.D.s
 \$100,000 Minimum
 Rate and term negotiated at time of issue.
 Call us collect for our competitive rates.
 Substantial penalty for early withdrawal.
We're now \$160+ million and growing... because of you.

BIG COUNTRY SAVINGS
 Working for you. Working with you.
 Stamford, Haskell, Quanah, 3800 South Clack, Abilene and 2501 Cedar Springs, Dallas.
 Member F.S.L.I.C.

Call
Nanny Plumbing
 for all your plumbing needs.
 We offer Rheem H/C, Roto-Rooter and Ditch Witch Services, Plus Dependable Service
 24 Hr. Call
 301 S. Ave. E 864-3043

BONUS BUYS FOR FOOD Shoppers

Specials Good Thurs., Fri., and Sat.

Sirloin Steak \$2 ³⁹ / _{lb}	Diamond Deluxe Plates 40 count pkg \$1 ⁹⁸
Pork Chops center cut \$1 ⁶⁹ / _{lb}	Texsun Orange Juice 6 oz cans \$1 ²⁹
Pork Chops end cut \$1 ²⁹ / _{lb}	Texsun 46 oz Grapefruit Juice 69¢
No. 1 Sliced Bacon \$1 ³⁹ / _{lb}	Kountry Kist Corn 2 cans 79¢
Good Quality Hamburger Meat \$1 ¹⁹ / _{lb}	Parade Pork & Beans 3 cans \$1 ⁰⁰
Premium Crackers 1 lb box 89¢	Del Monte Peas 2 cans 89¢
Nabisco Nilla Wafers box 89¢	Ranch Style Beans 2 cans 89¢
Star Kist Tuna can 89¢	Veg All 8 1/2 oz can 25¢
Del Monte Cut Green Beans 2 cans 79¢	Tide family size \$6 ²⁹
Martinelli Apple Cider 1.5 liter jug \$1 ⁷⁹	Hi Dri Towels large roll 49¢

NOW AT OWEN'S!
THE GREAT SOUNDING AUDIO LINE by SHARP.
 The GF 450: Tape-To-Tape Dubbing, AM/SW/FM Stereo Radio, AC/DC Power Too!
COMPARE...THE BEST BUY AROUND IS SHARP!

GF 450 STEREO, DUAL CASSETTE/ RADIO..... \$249⁹⁵

2-Band Portable Radio w/Cassette Recorder

- AC or opt. batteries
- Auto Stop on Play/Record
- Built-in Mic/ALC

now only... \$59⁹⁵

Owen's Radio & Electric
 Haskell, Texas

POGUE GROCERY

—Extra Parking Behind The Store. Home Owned and Operated—
 113 North Avenue E Phone 864-2015 Haskell, Texas
THE BEST IN MEAT, CUT THE WAY YOU WANT IT

We give
3-Star
Coupon

Double
Every
Wednesday



**KINGSFORD
CHARCOAL
BRIQUETS**

10 LB
BAG

1.99

LIMIT 1 WITH PURCHASE
OF \$10.00 OR MORE

STYLE 8 OZ CAN **\$1.49**
HAIRSPRAY

AIM 4.6 TUBE **\$1.19**
TOOTHPASTE

MAX. STRENGTH
TABLETS 40'S **\$2.49**
ANACIN

LIQUID 12 OZ **\$2.29**
MAALOX BOTTLE

FINISH RINSE
SHAMPOO 12 OZ BOTTLE **\$2.89**
VIDAL SASSOON



1200 N AVE E
HASKELL, TEXAS
OPEN 8 AM-8 PM
SUN 9 AM-6 PM



DOUBLE MANUFACTURER'S
COUPON EVERY
TUESDAY & WEDNESDAY

MODERN WAY WILL REDEEM ALL MANUFACTURER'S
"CENTS-OFF" COUPONS FOR DOUBLE THEIR VALUE WHEN
THE PRODUCT IS PURCHASED. LIMIT 1 COUPON PER ITEM.
THIS POLICY DOES NOT INCLUDE RETAILER (ANY FOOD
STORE) OR FREE COUPON, CIGARETTE OR TOBACCO
COUPONS OR REFUND CERTIFICATES. THE TOTAL
REDEMPTION WILL NOT EXCEED THE VALUE OF THE ITEM.

ANY MANUFACTURER'S CENTS OFF
DOUBLES YOUR BUYING POWER ON THAT
ITEM AT MODERN WAY

PRICES EFFECTIVE MAY 25-MAY 29—QUANTITY RIGHTS RESERVED

**SHURFRESH POTATO
CHIPS**

REG. OR
DIP CHIP 8 OZ
2 PAK

68¢

**SHURFINE
ASSORTED FLAVORS
CANNED
DRINKS**



8 12 OZ
CANS

1.00

LIMIT 8

Crown Point
by ANCHOR HOCKING

50% OFF
FEATURED ITEMS!

THIS WEEK'S
FEATURE ITEM:
**Beverage
Glass**

49¢
EACH

With Each \$5.00 Purchase
Matching Accessories
Also Available.
See Store Display
For Complete Details.

Regular Retail 99¢

GEBHEART NO BEANS 19 OZ CAN **\$1.09**
CHILI

JEWEL 42 OZ CAN **\$1.35**
SHORTENING

LIPTON FAMILY 24 CT PKG **\$1.59**
TEA BAGS

SHURFRESH GAL JUG **\$1.89**
LOW-FAT MILK

FOX DELUXE 10 OZ PKG **99¢**
PIZZAS

BANQUET 11 OZ **89¢**
DINNER

TREE SWEET 6 OZ CAN **59¢**
ORANGE JUICE

A1 10 OZ BOTTLE **\$1.89**
STEAK SAUCE

OCEAN SPRAY 64 OZ **\$2.09**
CRANBERRY JUICE

LIPTON (20¢ OFF LABEL) **\$2.09**
INSTANT TEA

DELTA JUMBO ROLL **59¢**
TOWEL

DELTA ASST. 4 ROLL PKG **89¢**
BATH TISSUE

GULF LITE 32 OZ **\$1.59**
CHARCOAL LIGHTER

TEXSUN 46 OZ CAN **69¢**
GRAPEFRUIT JUICE

MORTON 4 LB BOX **55¢**
ICE CREAM SALT

PET 2 13 OZ **\$1.00**
EVAP. MILK

SHURFRESH ASST.

ICE CREAM

1/2 GAL
SQ.

\$1.29

**COCA COLA, 7-UP OR
SUGAR FREE COKE**

2 LITER
BTL.

\$1.19

COUNTRY FRESH
**HAMBURGER OR
HOT DOG BUN**

2 8 CT
PKG
FOR

89¢

ASSORTED

18 OZ

68¢



LIMIT 2

**PILGRIM'S PRIDE
WHOLE**

U.S.D.A. GRADE "A"

FRYERS

LB **43¢**

FRESH
CALIFORNIA

**STRAW-
BERRIES**

PT.

49¢

PILGRIM'S PRIDE USDA
GRADE "A" CUT-UP
FRYERS

55¢
LB

PILGRIM'S PRIDE
**SPLIT FRYER
BREAST**

\$1.19
LB

PILGRIM'S PRIDE
**FRYER
DRUMSTICKS**

99¢
LB

PILGRIM'S PRIDE
**FRYER
THIGHS**

89¢
LB

USDA CHOICE HEAVY BEEF
**BONELESS
CHUCK STEAK**

\$1.79
LB

USDA CHOICE HEAVY BEEF BONELESS
**SHOULDER
SWISS STEAK**

\$2.19
LB

LEAN AND TENDER FAMILY PACK
**CHUCK
CUBE STEAK**

\$2.49
LB

USDA CHOICE HEAVY BEEF
**BONELESS
RIB-EYE STEAK**

\$4.49
LB

USDA CHOICE HEAVY BEEF
**BONELESS TOP
SIRLOIN STEAK**

\$3.29
LB

LEAN FAMILY PACK
**GROUND
CHUCK**

\$1.58
LB

TYSON 12 OZ PKG
**CHICKEN
FRANKS**

48¢

FRESH FROSTED MEDIUM
**SPARE
RIBS**

\$1.28
LB

SHURFRESH BONELESS

HAMS

(WHOLE)
5-7 LB AV. WT. **\$1.69**
LB

(HALVES)
3-4 LB AV. WT. **\$1.89**
LB

USDA CHOICE HEAVY BEEF
BONELESS

**CHUCK
ROAST**

\$1.48
LB

USDA CHOICE HEAVY BEEF
BONELESS SHOULDER

ARM ROAST

\$1.89
LB

3 LB BAG, ROME
APPLES

99¢

CALAVO 5 FOR
AVOCADOS **\$1.00**

FRESH
BROCCOLI **59¢**
LB

SUNKIST RED 5 LB BAG
GRAPEFRUIT

99¢

KENTUCKY WONDER
GREEN BEANS **69¢**
LB

ARIZONA NEW
POTATOES 3 LB FOR **\$1.00**

COUNTRY STAND PKG
MUSHROOMS **99¢**

FRESH
SPINACH **79¢**
PKG

ASST HANGING
BASKETS 6" **\$3.99** 8" **\$7.99**

SHURFRESH
**HOMO
MILK**
1/2 GALLON

69¢

With 1 Filled Superstar Booklet

COUNTRY FRESH
BREAD

29¢

With 1 Filled Superstar Booklet

SHURFRESH
MED. EGGS

DOZ **39¢**

With 1 Filled Superstar Booklet

BOWL
FRESH
3 OZ

9¢

With 1 Filled Superstar Booklet

SCOTT
TOWELS

29¢

With 1 Filled Superstar Booklet

SOFT & PRETTY
**BATH
TISSUE**
4 ROLL

69¢

With 1 Filled Superstar Booklet