

Staff Photo by Don Comedy

### SHOOTING

James Hambrick, an independent truck driver from Trent, was driving between Aspermont and Haskell February 2, when his window was apparently shot by a person in a car which he was meeting. The incident occurred just west of the Roadside Park on U.S. 380 near the Stonewall-Haskell County line. Hambrick, a driver for E.A. Holder, was not injured in the incident. He told investigators that he was meeting a car which had their headlights on bright and when about ten yards separated vehicles, glass started flying around in the cab of his truck.

## Chamber Banquet Set Friday

Only a few tickets remain for the 1983 Haskell Chamber of Commerce banquet according to ticket Chairman Joe Alves.

Due to space limitations only 300 tickets will be sold and during a special meeting of Chamber Directors Tuesday night Alves announced that approximately 275 tickets had been sold. The tickets are \$7.50 each and are available from the Chamber office, Sears, Haskell National Bank, Kids Duds and all Directors.

The special meeting was held to finalize plans for the Friday night banquet and Chairman Pat Byford reported that everything seems to be falling into place.

The banquet will begin at 7 p.m.

and the decorations and entertainment will be centered around the theme "Reach for the Stars".

The highlight of the banquet will be the presentation of special plaques to the Outstanding Man and Woman of 1982 by retiring Chamber President Gene Long. Long will also make other special awards and introduce the new Officers and Directors.

New Officers include: Tom Watson, President; Doris Phemister, First Vice President; Don Comedy, Second Vice President; and Mike Harrell, Treasurer.

New Directors include: Dr. Ed Harris, Tom Richardson, Abe Turner, Steve Roper, Kay Smith,

Grace Womack, Raymond Andrada, and Ben McGee.

Holdover Directors include: Watson, Comedy, Phemister, Harrell, Raja Hassen, Charles Thornhill and Hank Sherman.

The banquet meal will consist of broiled steak, baked potato, homemade rolls, green salad and homemade salad. All banquet food will be prepared by Board members, their wives and friends.

Special entertainment will be provided by a Rule singing group, "Faith", which includes, Ronald and Lou Landes and Larry and Susan LeFevre.

### City Council Election Set

Members of the Haskell City Council called an election for April 2, 1983 to elect three councilmen during their regular meeting Tuesday night.

The terms of Archie Jones, Guy Kennedy, and Hugh Horton will expire. All three told the *Free Press* Wednesday morning that they had not made a decision concerning filing for re-election.

Darrell Smith and Jerry Stocks have filed for places on the ballot. Deadline to file is March 2, at the Haskell City Hall.

In other action council members discussed hangar rental policies at the airport and discussed bid specifications for insurance. Bids for insurance will be opened March 8.

members, many of which are also new businesses in Haskell.

During a year of uncertain economic conditions, record bankruptcies and high unemployment, the City of Haskell remained stable and even grew in certain areas. This growth will act as a stimulus in the future toward securing further growth and improving our community.

While the banquet is an annual event, Officers and Directors feel that this particular banquet is special because it will mark the beginning of a new century in Haskell. The beginning of a new era, during which the residents of this area will an opportunity to work toward common goals such as a new Civic Center. An era in which positive thinking and concentrated effort will be required to maintain our present level of prosperity.

At the same time, this prosperity in our business community does not overshadow the problems in agriculture and certainly one of the major goals for the Chamber in 1983 must be directed toward assisting agribusinessmen as well as maintaining present retail businesses.

Friday's banquet will give you an opportunity to get involved in Haskell. While getting involved is not fashionable in many areas, it's the one thing Haskell residents have done in the past to insure that our community continues to grow and the one thing we must keep doing to prevent Haskell from going the way of too many small towns.



Friday night will mark the beginning of a new era for the Haskell Chamber of Commerce.

With the celebration of the centennial of Haskell during 1982, Chamber Officers and Directors have selected "Reach for the Stars" for the theme of the 47th annual banquet. The theme illustrates the Chamber's goals of looking toward the future, setting goals, and dreaming dreams for Haskell.

During 1982, the Chamber recorded unpredicted growth with the addition of twenty-seven new

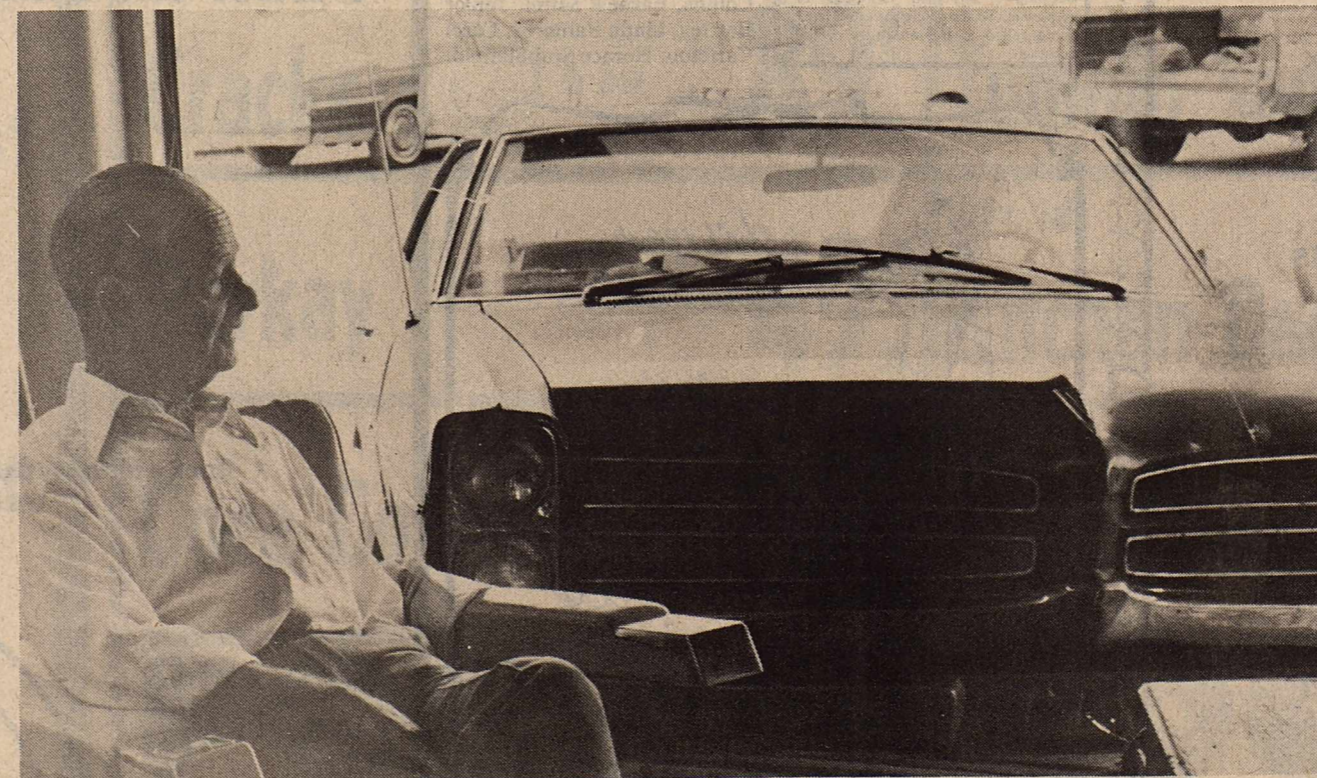
### Architect Hired For New P.O.

The U.S. Postal Service has awarded a contract to the architectural firm of Richard Buzard, Architect, and Harper-Perkins Architects, 471 Cypress, Abilene, Tex. 79601, to design the new main post office building in Haskell, Postmaster Joe V. Alves said here.

The proposed new postal-owned building will have approximately 6,480 gross sq. ft. of floor space and will be located on a one-acre (42,688 sq. ft.) tract of land on the west side of Avenue "B" between South First Street and South Second Street.

The Postal Service purchased the site in August 1981 for \$37,000.

When the architect completes the design in June 1983, the Postal Service will call for construction bids.



Staff Photo by Don Comedy

### DRIVE IN WINDOW

Haskell barber Leslie Jones sits in his barber chair at Southside Barber Shop in Haskell and looks at a car which jumped the curb and crashed through the window of the barber shop recently. Only minor damage occurred and there were no injuries. The car was driven by Mrs. Marvin Pursley of Haskell.

COTTON GRAIN CATTLE

# THE HASKELL

POULTRY

## 25¢ FREE PRESS

12 Pages in One Section

"HASKELL—A GOOD PLACE TO VISIT; A BETTER PLACE TO LIVE"

VOLUME NINETY-SEVEN HASKELL, TEXAS 79521, FEBRUARY 10, 1983 NUMBER SIX

## Haskell-Hamlin To Meet Saturday

BY ALBERT SHERMAN

The Haskell Indians will travel to Abilene Saturday night to play the Hamlin Pied Pipers to decide the district championship.

The Indians won the first half of district and the Pied Pipers won the second half, therefore a playoff game is needed. Tip off is scheduled for 7:30 p.m. in Abilene Cooper Gymnasium.

The Pied Pipers forced the playoff game by defeating the Tribe

in overtime last Friday. The Indians blew a nine point halftime lead due to a cold streak at the start of the third quarter.

The Indians were unable to score a single point for the first three minutes of the third quarter.

Fred Rike's outside sharpshooting led the Indians. He finished with 18 for the night.

We just didn't get the inside play from our posts that we had in previous games, Coach Jim Raughton said.

Tuesday, Feb. 1, the Indians hosted the Munday Moguls and

defeated them 55-48.

The Tribe held a 10-point halftime lead, but a cold third quarter allowed the Moguls to pull within three points.

The Indians came out and burned the nets up for 21 fourth quarter points to seal the victory.

The Tribe had a very balanced scoring attack led by Doug Lanier with 13, followed by Patrick McCoy and James Davis with 10 and 11, respectively.

The Indians season record is now 21-5 and 2-2 in second half of district play.

## School Board Calls Election

Members of the Board of Trustees of the Haskell Independent School District have called a regular Trustee election for April 2, 1983.

The election will be held to fill the expiring terms of Billy Mitchell and Sammy Larned. Both have filed for re-election.

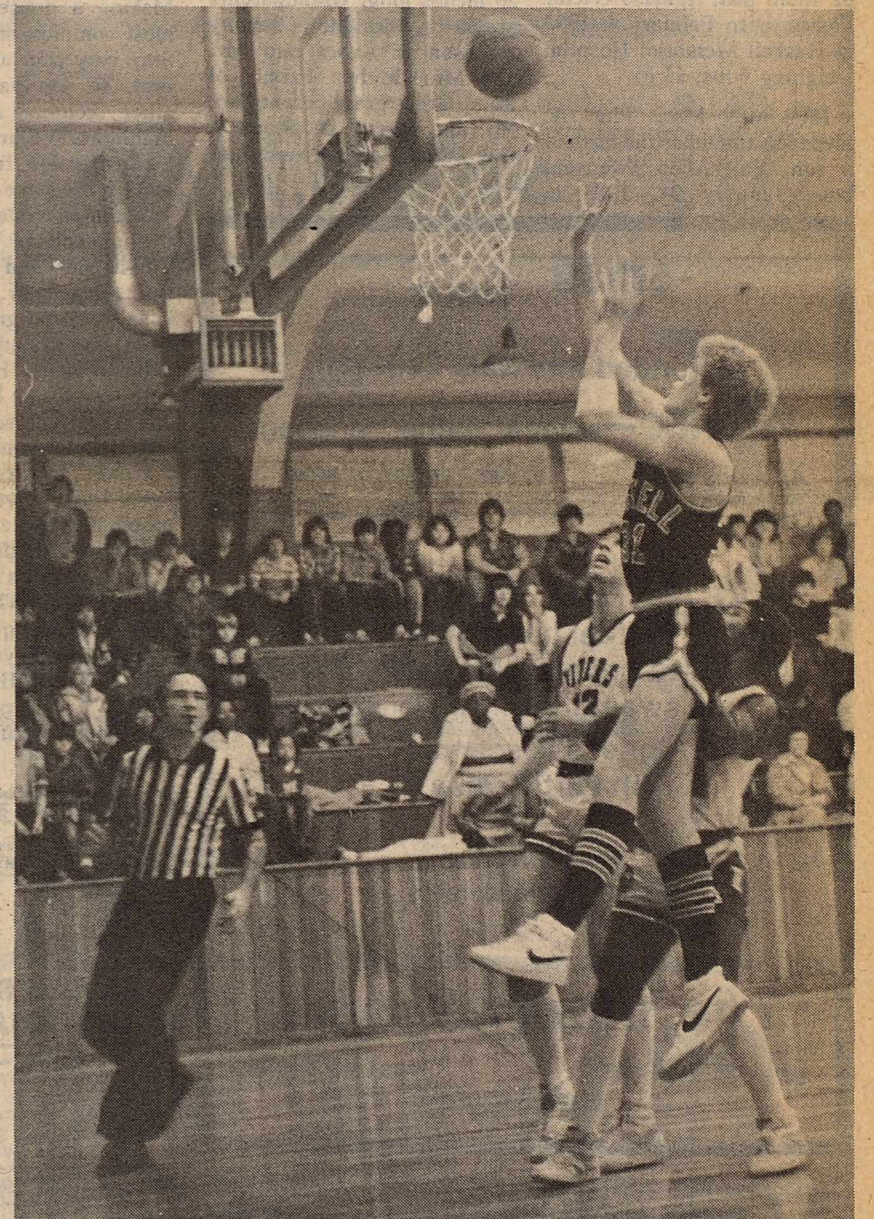
Deadline to file for a place on the ballot is March 2, at 5 p.m. in the Administration office.

During the Monday night meeting, board members agreed to re-hire principals Bill Blakely and Clayton Neal.

Board members also heard a request from a group of band boosters concerning the purchase of new band uniforms. Estimated cost of the uniforms is about \$19,000.00 according to the group. The band boosters requested that the board consider paying approximately \$11,000.00 toward the purchase and the band boosters organization would pay the remainder.

Board members agreed to consider the proposal further during their regular march meeting.

In other action, board members approved the 1983-84 school calendar and heard reports from superintendent James Lanier concerning the purchase of computers for remedial programs, a legislative report and a report on insurance on school buildings.



Staff Photo by Don Comedy

### TWO POINTS

Haskell Indian Patrick McCoy jumps high for two points against Hamlin last Friday night. The Tribe lost the contest in overtime and will meet Hamlin this Saturday night at 7:30 p.m. at Abilene Cooper Gym to decide the district championship. Haskell won the first round of district play and Hamlin won the second half.

**weather**  
By Sam Herren  
February 1-8  
TEMPERATURE  
Hi ..... 54° ..... 5th  
Lo ..... 24° ..... 7th  
RAINFALL  
Total ..... 0.22\*  
Total to Date ..... 4.34  
Normal to Date ..... 1.28  
\* Trace of sleet and snow

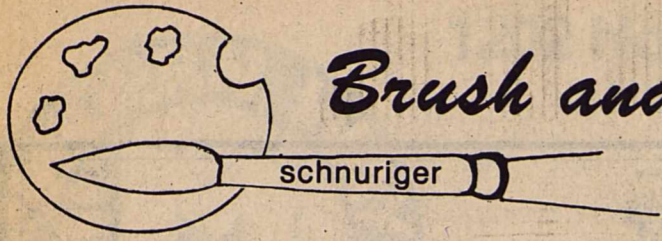
## Dickie Greenwood Named Big Country Division Manager

Big Country Savings' President and Chief Executive Officer John Harrell announced the appointment of Dickie Greenwood as assistant vice president and division manager of the Haskell branch office.

"We're very proud to have Dickie heading up our Haskell office," said Harrell. "His experience and knowledge of the area, the people and their needs will enable Big Country Savings to provide the very best service in Haskell."

Mr. Greenwood is a native of Haskell County and a graduate of Tarleton State University with a Bachelor of Science degree in Agriculture Business. Before joining Big Country Savings in May, 1982, Greenwood was an assistant emergency loan supervisor with the Farmers Home Administration in Haskell.

Big Country Savings is a \$132 million savings association with offices in Stamford, Haskell, Quanah, Abilene and Dallas.



## Brush and Palette

A landscape artist feels the wind blowing across the prairie, field or plains. The artist used the tree to express the splendid power of the wind. It is a birch, oak or mesquite tree. It is a frail tree. It bends before the wind. You see the wind's effect in the branches and leaves. Everything about the tree indicates the life and force of the wind.

Thus the tree becomes an eloquent symbol; it is the medium through which the 'idea of the wind' is expressed. Another day the artist goes on a painting trip. His mind is open to nature's beauty. Again the tree attracts his attention. This time it is the tree growing; the tree resisting the wind; the tree with its fecundity; the tree

rising and spreading from the roots, deriving its nutrition from the moisture in the ground; the tree with the twigs and the leaves and the flowering into blossoms and in this tree the wind is blowing - the wind, which is to the tree as a chasing is to the cup. Have you ever taken the time just to LOOK at a tree? You have missed so much, if you haven't seen a tree.

Q. I want to paint a tree so badly. Will you spell out some of the general rules?

A. This is something that needs repeating. The most important thing is to draw the tree well. Think about proportion, both as to size of canvas and the plane upon which the tree is standing. Make comparisons to determine the size needed for the tree. The trunk and top of the tree must be in proportion to each other. Some painters draw the trunk and main limbs first - others draw masses of foliage, or "families of leaves" - and then fit the structure of the tree to this. Try both ways and see which is easier for you. If you draw the skeleton of the tree first, don't make the mistake of dabbing the leaves along the limbs, make messages instead, not following the limbs too closely but letting them support the masses, like mushrooms. Leave plenty of sky holes. Making a dense tree is the most common mistake made. Stay very thin and sparse at first, so you have room for other colors, accents and highlights. Start with the darkest color first. Do not make it the same value all over - a common mistake! Where is the light source? You will have a light side and a dark side. But I urge you not to make your trees too green - look at trees, they are not all the same value of green. Hope this will help you. Come by the studio and I can demonstrate tree structure for you.

HINT: Any color with its complement gives an illuminated look because you are using the ingredients that are found in light's composition. HAPPY VALENTINE'S DAY! Write your questions and hints to me, Faye Schnuriger, P.O. Box 134, Haskell, Texas 79521. I will not use your name but do want you to sign your letters.

## New Ministry To Stress Decorating Of Homes

"Decorating Your Home to Please the Lord," a new ministry of East Side Baptist Church, will be presented February 15th, at 6:30 p.m. in the new fellowship hall.

A group of ladies will be sharing what they have learned about the importance of decorating your homes as Christian homemakers. This involves cleaning and spiritually cleaning your home, color coordinating and group-

ings, personal testimonies and a craft time when each participant will make their own "love knot" wreath. The only cost will be \$2.00 to cover the price of materials for the wreath.

The public is invited to share in this time. If you would like to attend please call 864-2738 or 864-3659 so necessary materials may be purchased.

## Births

Mr. and Mrs. Joe Flores of Stamford announce the arrival of their son, Ignacio Victor Flores, born February 4, 1983 at Haskell Memorial Hospital weighing 7 lbs. 15 oz.

Mr. and Mrs. Phil A. Swenson announce the birth of a son, Phil Allen Swenson, born January 24, 1983 in

Hendricks Medical Center weighing 8 lbs. 3 oz. and was 20 inches long. Grandparents are Mr. and Mrs. Johnny Swenson of Avoca and Mr. and Mrs. Melvin Fannin of Rule. Great grandparents are Mr. and Mrs. J.D. Green of Cisco and Mr. and Mrs. Jack Dozier of Haskell.



## Nursing School Presents Caps

Five students of the Jones County School of Vocational Nursing received their caps in a ceremony held recently at the First Methodist Church in Anson.

Receiving a cap marks the completion of the first six months work and the academic portion of nursing program.

Instructor Paula Murray from Anson presented caps to (left to right) Suzanne Breeding, Hawley; Becky Douglas, Haskell; Delores Fernandez, Anson; Diana Lopez, Stamford; and Julie Robbins, Anson.

The next phase of the

program will be six months of clinical work at Hendrick Medical Center in Abilene and Anson General Hospital.

Students may then take the State Board examination in October. If they pass, the students will be licensed vocational nurses (LVN's).

## Home Computers Is Topic Of Study Club Program

Joe Alves, Haskell postmaster, presented a program highlighting the uses of the home computer for the homemaker and the career woman to members and guests of the Progressive Study Club at their regular meeting, February 3.

Mr. Alves was introduced by Kay Graham and demonstrated several uses of the computer in the home. He used the Radio Shack Model III TRS 80 to show how recipes and menus for example, could be programmed into the computer, saving both time and effort for the housewife.

Mr. Alves went on to say that recipes were only one convenience. "Programs for computers and countless," he

said. The computer could be programmed to keep household expenses, store tax information, do the income tax, turn on the lights, and tell you what stock to buy. A person could inventory his household items, program it on a computer disc, store it in a bank vault, and have an accurate account of these items in case of fire or theft. Computers draw pictures and grafts and, of course, play games with the kids.

"Computers are not near as smart as most people think, however," continued Mr. Alves. "What makes computers seem so brilliant is their speed." They can work two to eight million times faster than humans, processing 2,400 words per minute on paper and 108,000 words per minute talking.

Mr. Alves told the group

that he believes that some day all homes will have computers. He also assured the group that computers are the "coming thing in the schools". A brief question and answer period followed the presentation.

Hostesses for the evening were Ruby Holt, Mildred Berry, Mattie Felker, and Mary Martin.

## Hospital Notes

Visiting hours at Haskell Memorial Hospital are 2 to 4 p.m. and 7 to 8:30 in the evening. No visiting hours in the morning. No children under 14.

### ADMISSIONS

MEDICAL: Hollis McCoy, Merkel; Charles Atkinson, Goree, Earl Little, Munday; Mitchell Reynolds, Haskell; Leita Lain, Haskell; Armando Rubio, Munday; Mary Henry, Rule; Lorena Burnison, Munday; Billie Myers, Munday; Harvie Medford, Munday; Jauna Tuggle, Munday.

### DISMISSALS

Cecil Smith, Cecil Whitt, Ardith Reynolds, J.L. Hendrix, Vera Harris, Irene Todd, Patsy Hutchinson, Elizabeth Greenwood, Lizzie Letz, Monterey Cogburn, Amanda Dean, Judy Williams, Tom Whitaker, Michael Morrison, Richard Collins, Earnest Saffel, Junior Bartley, Linda Ramorez, Carol Carleton, Horace Stubblefield.

## Cultivate Haskell



Beautiful Haskell Council

## Safety Urged In Preparation Of Custard

"Preparing Caramel custard by placing the can of sweetened condensed milk in a pan of boiling water is dangerous," says Mary K. Sweeten, foods and nutrition specialist with the Texas Agricultural Extension Service, Texas A&M University System. This risky cooking method may cause the can to overheat and explode, says Sweeten.

According to Sweeten, several popular cookbooks recently published by clubs and organizations in Texas contain recipes that recommend heating condensed milk in the can.

Numerous inquires and reported problems have prompted Extension Service home economics to warn against the use of this method.

To avoid burns as well as spattered stoves and sticky clothes, Sweeten recommends preparing the caramel custard from condensed milk as follows: Preheat oven to 425 F

and pour one can of sweetened condensed milk into an 8-inch glass pie plate. Cover with aluminum foil, place in a shallow pan of hot water and bake for one hour until the milk becomes thick and lightly caramel colored. Remove the foil, cool and use as the recipe recommends.

## Bake Sale Set Sat., February 12

The ladies of Trinity Lutheran Church will hold a Valentine bake sale on Saturday, February 12, beginning at 8 a.m. at M-System.

They will take special orders for cakes, breads, pies or favors for school Valentine parties. Orders may be placed by February 10, by calling Lois Howard, 864-3477 or Karen Faltisek, 864-2410.

Want Ads... the most powerful column in the world.

Send Your Valentine  
a  
**Balloon Bouquet**  
Delivered by our Special Valentine

**Under The Rainbow**  
864-3867 308 N. 1st

**\$9<sup>99</sup> Sale**  
extended thru Sat., Feb. 12th  
**1/2 price**—Aigner leather handbags  
*All sales cash no exchanges or refunds*

**Valentine Selections**  
Aigner leather handbags and belts  
Aigner leather and all weather blazers  
Aigner sweater (short and long sleeved)  
Aigner silk scarves  
Gift certificates

*Free Gift Wrap on reg. priced items*

**The Slipper Shoppe**  
East Side Square Haskell, Texas  
817-864-3051

**For Your Valentine**

Pangburn's Heart Shaped Box Millionaires  
14 oz. \$8<sup>95</sup> 8 oz. \$5<sup>50</sup>

Assorted Hearts \$1<sup>75</sup> — \$11<sup>95</sup>

Special Purchase limited edition Interlude \$6<sup>95</sup>

Necklaces with diamond, sapphire, cubic zirconia & amethyst drops. \$38<sup>95</sup> — \$51<sup>95</sup>

**Johnson's Pharmacy**  
—Your Prescription Center—  
418 North First Haskell, Texas Open 8:00 to 5:30 p.m. Closed Sunday Nights & Sundays Call 864-3439

**The Haskell Free Press**  
Established January 1, 1886  
PUBLISHED EVERY THURSDAY

**MEMBER 1983**

**TEXAS PRESS ASSOCIATION**

BILL COMEDY—Publisher  
DON COMEDY—Editor

Entered as second-class matter at the post office at Box 577, Haskell, Texas 79521, under the Act of March 3, 1879 (USPS 237-040)

SUBSCRIPTION RATES	
In Haskell and Adjoining Counties	
	Total
One Year	\$7.25
Six Months	\$5.00
Two Years	\$14.00
Elsewhere in Texas	
One Year	\$8.50
Six Months	\$6.00
Two Years	\$16.00
Outside of Texas	
One Year	\$10.00
Six Months	\$7.00
Two Years	\$19.00

NOTICE TO PUBLIC—Any erroneous reflection upon the character, reputation or standing of any firm, individual or corporation will be gladly corrected upon being called to the attention of the publishers.

*She's your sweetheart...*

*so give her...*

*Lovely Lingerie*

**Heidenheimers**  
Haskell, Texas

Change of Ownership from  
**Richardson Hallmark**  
to  
**Under the Rainbow**

Shirley Hudgens Donna Byrd

**30% off Entire Stock**  
excluding Candy and Cards  
**Some Selected Items 50% off**

We do catering for all occasions.  
Book a birthday party for any time this year during sale and receive a discount.  
We have balloon bouquets with special delivery.

9:00-5:30 Monday-Saturday

**Under the Rainbow**  
308 N. 1st

## Jill Druesedow Named Outstanding Young Woman

The Board of Advisors for the Outstanding Young Women of America Awards Program announced today that Jill Druesedow has been

selected for inclusion in the 1982 edition of **Outstanding Young Women of America**. The Outstanding Young Women of America program is

designed to honor and encourage exceptional young women between the ages of 21 and 36 who have distinguished themselves in their homes, their professions and their communities. Accomplishments such as these are the result of dedication, service and leadership - qualities which deserve to be recognized and remembered.

This is the goal of the many leading women's organizations, college alumni associates and public officials who nominate deserving young women to participate in the program. Serving as Chairman of the Program's Advisory Board is Mrs. Dexter Otis Arnold, honorary president of the General Federation of Women's Clubs.

Mrs. Druesedow, along with approximately 23,000 fellow Outstanding Young Women of America from across the United States, will be presented in the prestigious annual awards volume. In addition, they are now being considered for one of the fifty-one state awards to be presented to those women

who have made the most noteworthy contributions in their individual states. From these fifty-one state winners, the Ten Outstanding Young Women of America will be chosen. The ten national winners will be honored at the annual awards luncheon held in Washington, D.C. The Board of Advisors and

Editors salutes all those honored as Outstanding Young Women of America. We take great pride in bringing their accomplishments to the attention of the American public.

Mrs. Druesedow, the wife of Gary Druesedow, is a teacher at Haskell High School.

## Sen. Farabee Receives Family Health Award

State Senator Ray Farabee (D-Whichita Falls) has received the 1983 Family Health Award from the Texas Association for Marriage and Family Therapy. The award was presented January 29 in a ceremony citing the Senator's legislative efforts promoting the areas of human services and family life.

"The family is a vital component of life in Texas. I think that most of us are fortunate to be a part of a

family, and those relationships enhance our everyday lives. Any legislation which strengthens the family unit is of great benefit to our state, and I am delighted to think that I have been able to make some contributions in this area.

"I am very pleased to have been presented with this award, and would like to thank the Association for this great honor. I would also like to take this opportunity to commend the Texas Association for Marriage and Family Therapy on the excellence of the efforts of their members," Farabee said.

Senator Farabee has already introduced family-related measures this session including those calling for better enforcement of child support and visitation rights and the provision of court-ordered family counseling in juvenile delinquency cases.

## Mary Rike Presents Program On Stenciling

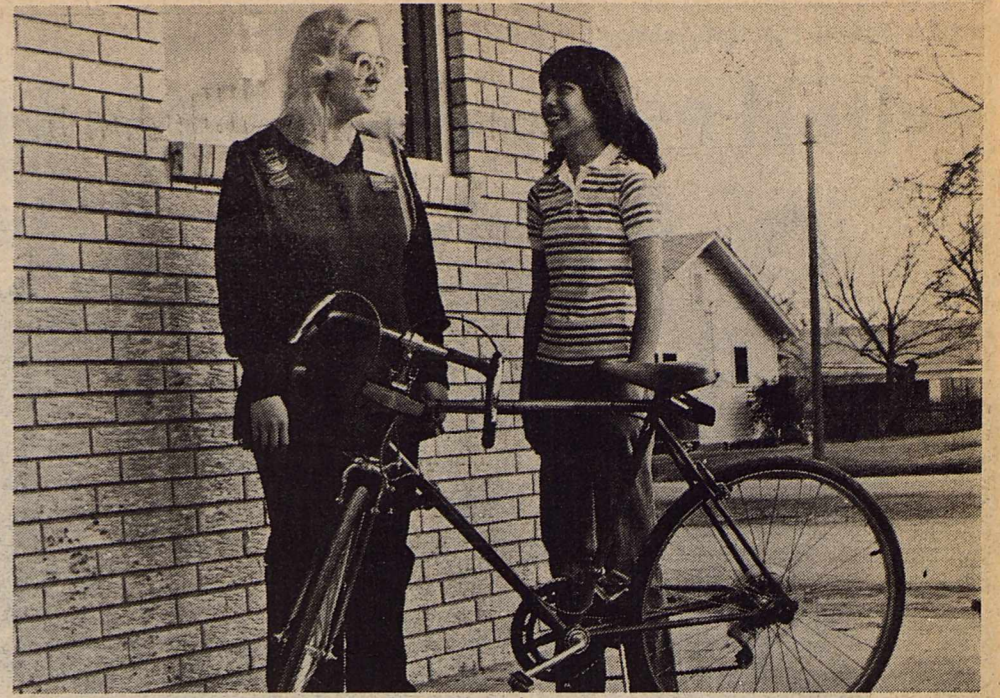
The Haskell VFD Auxiliary met Feb. 1 for their regular meeting at the Fire Station. The program was presented by Mary Rike.

Mrs. Rike presented a program on stenciling. She showed members how to use a stencil and special techniques to paint objects on fabric.

Hostesses for the program were Regenia Lane and Jo Ann Watson.

A business meeting was held immediately following the program conducted by Lisa Shaw, president.

The next meeting will be held on March 1.



### BIKE WINNER

Priscilla Turner, right, is shown with local Colonial manager Sharon Turner with her new bicycle. The bicycle was given to Priscilla as eighth prize in the recent Rehab Rangers contest held for the West Texas Rehabilitation Center. Priscilla raised over \$300.00 for the Center.

Staff Photo by Don Comedy

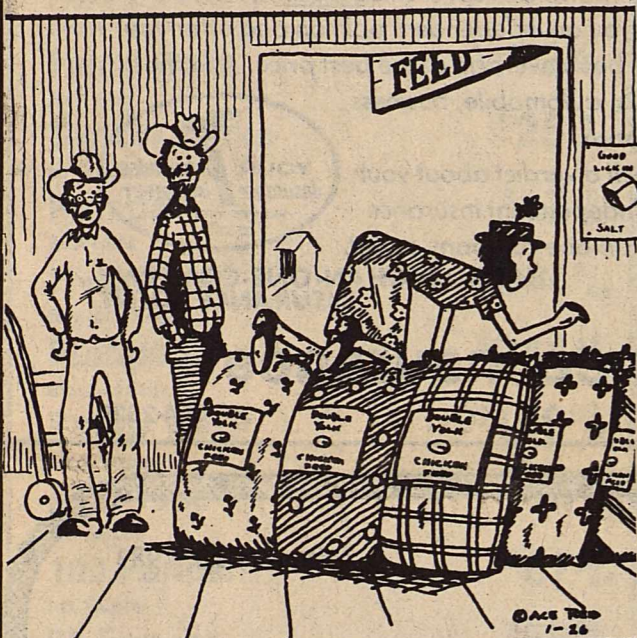
Nice People Do Not Litter!



Beautify Haskell Council

### COWPOKES

By Ace Reid



"She's lookin' fer somethin' psychedelic!"

## Haskell National Bank

Your Independent Bank

Haskell, Texas  
IBA, IBAT, FDIC

### HASKELL Lunch Menu

Feb. 14-18  
Monday

Chicken Patties  
Scalloped Potatoes  
Pork n Beans  
Rolls & Butter  
Milk

Tuesday

Beef & Spaghetti  
Corn  
Lime Jello  
Mixed Fruit  
Rolls & Butter  
Milk

Wednesday

Beef Stew  
Cheese Sticks  
Pineapple  
Cornbread & Butter  
Cinnamon Rolls  
Milk

Thursday

Turkey Slices- Gravy  
Creamed Potatoes  
Green Beans  
Rolls & Butter  
Milk

Friday

Fish- Tarter Sauce or Ketchup  
Potato Salad  
Spinach  
Cornbread & Butter  
Milk

BREAKFAST

Monday

Orange Juice  
Cereal  
Milk

Tuesday

Grapefruit Juice  
Biscuits & Butter  
Milk

Wednesday

Orange Juice  
Cereal  
Milk

Thursday

Juice  
Toasted Roll  
Milk

Friday

Scrambled Eggs  
Juice  
Toasted Roll  
Milk

## SPECIAL FOOD BUYS

Specials Good Thurs., Fri., and Sat.

Rib Eye Steaks \$3<sup>69</sup>/<sub>lb</sub>

No. 1 East Texas

Yams

29<sup>c</sup>/<sub>lb</sub>

Beef

Sweetbread

\$1<sup>49</sup>/<sub>lb</sub>

Texas

Green Cabbage

10<sup>c</sup>/<sub>lb</sub>

Rump Roast

\$1<sup>69</sup>/<sub>lb</sub>

Kraft Bacon & Tomato Dressing

79<sup>c</sup>

Extra Lean

Ground Round

\$1<sup>59</sup>/<sub>lb</sub>

Del Monte

Fruit Cocktail 17 oz

69<sup>c</sup>

Prices Pimiento

Cheese 14 oz ctn

\$1<sup>79</sup>

Parade

Peaches 2 1/2 can

69<sup>c</sup>

Kraft Mild 8 oz

Cheddar Cheese

\$1<sup>19</sup>

Imperial

Brown Sugar 2 lb bag

89<sup>c</sup>

Best Quality

Pressed Ham

\$1<sup>49</sup>/<sub>lb</sub>

Armours

Treet

12 oz can

\$1<sup>09</sup>

Zesta

Crackers 1 lb box

89<sup>c</sup>

Hunt's

Tomato Sauce 4

8 oz cans

\$1<sup>00</sup>

Parkay

49<sup>c</sup>/<sub>lb</sub>

Hefty, Tall

Kitchen Bags

36 count

\$2<sup>19</sup>

Coca Cola 2 liter bottle

\$1<sup>19</sup>

Alpo

Beef Chunks 3

cans

\$1<sup>19</sup>

## POGUE GROCERY

—Extra Parking Behind The Store. Home Owned and Operated—

113 North Avenue E

Phone 864-2015

Haskell, Texas

THE BEST IN MEAT, CUT THE WAY YOU WANT IT

## Fouts Dry Goods

7 Ave E Haskell

After 65 Years in the same location,  
we are

Going Out Of Business!

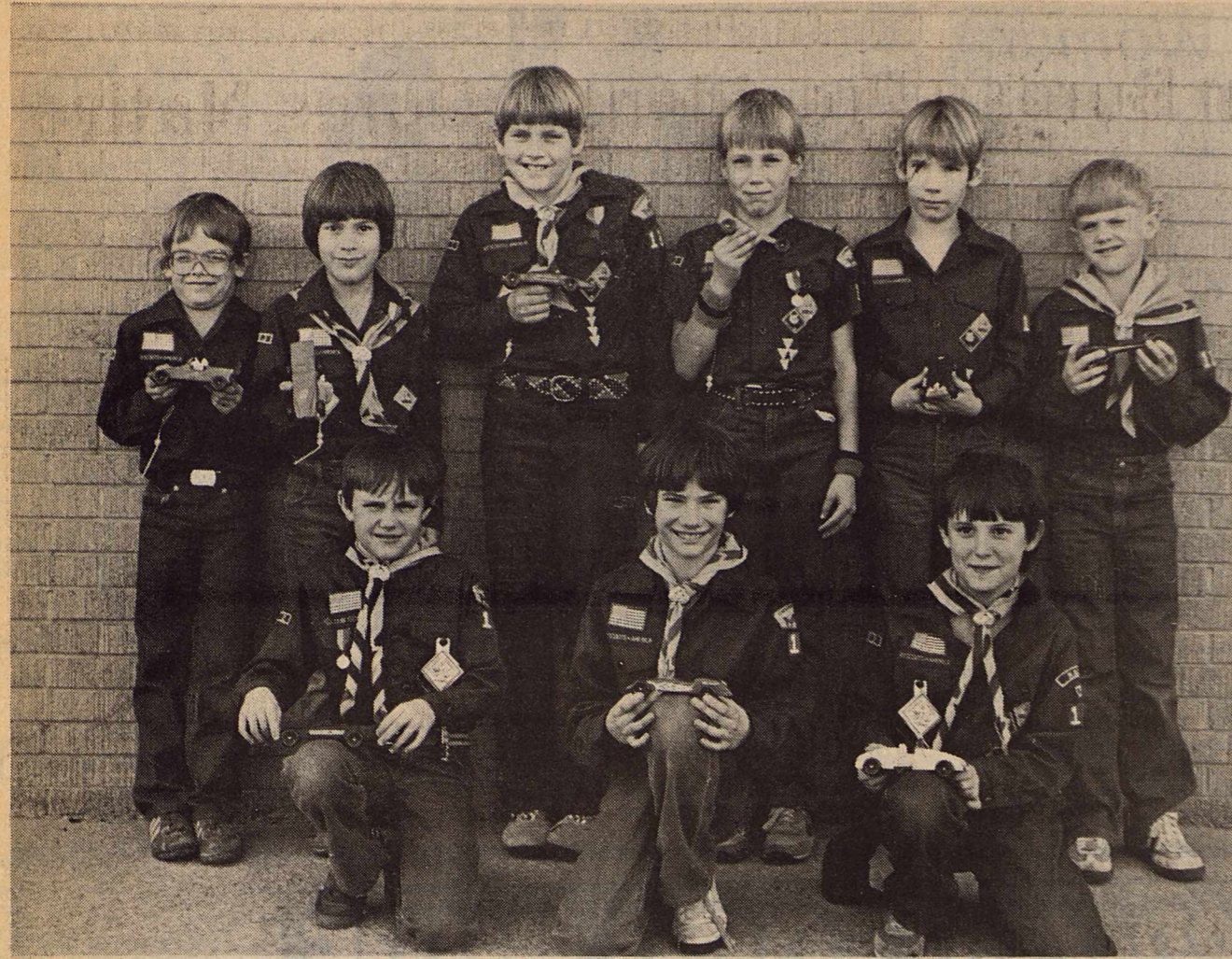
Close Out Sale On All  
Merchandise

20% to 50% off

Sale will begin

Thursday, February 10

If you are interested in buying this  
business, come by or call.



Staff Photo by Don Comedy

### DERBY WINNERS

Winners in last week's Pinewood Derby include: (back row, l to r) Shannon Langford, Jeffrey Brister, Rusty Stocks, Aaron Bahney, Eric Gardner, and Marty Mitchell. Front row, Craig Hanson, Morgan Kreger, and Billy Dale Bennett.

## Pinewood Derby Winners Named

Cub Scout Pack 136 of the Chisholm Trail Council staged its annual Pinewood Derby race Feb. 6 at the Haskell Elementary School. Donnie Rieger and Eddie Hester rated the models while Shane Gilliam and Shane Hadaway

judged the finish line. Best Design award went to Morgan Kreger; Best Looking to Craig Hanson; Most Unique to Billy Dale Bennett.

In the third grade division Marty Mitchell placed first,

Jeffrey Brister took second, and Shannon Langford came in third. In the fourth grade division Aaron Bahney won first, Craig Hanson placed

second, and Eric Gardner and Rusty Stocks tied for third.

Overall Mitchell won first; Bahney second; Brister third; and Hanson fourth. These boys are now eligible to compete in the district Pinewood Derby race to be held in Sweetwater next Sunday.

## Walsh Rescues Neighbors From Fire

Joe Walsh did just about all one man could do, rescuing his neighbors when an explosion and fire destroyed their north Denver home and badly burned them Monday.

But Walsh wished he could have done more.

He was sorry he wasn't able to save more of the belongings of Frank and Hazel Crowe, whose small frame home at 4452 Vrain St. was flattened by the blast, blamed by fire officials on a natural gas leak.

It was about 40 minutes after midnight that Walsh, 30 owner of an Engelwood auto parts store, and his wife were awakened by the explosion. Walsh's wife called authorities. Walsh ran out of the house.

"I looked over next door. It didn't hit me at first. All the lights were on in the Crowes' house, but the walls weren't there," Walsh said.

Walsh said he "climbed up" into what was left of the Crowe home, found the 77-year-old Crowe in the living room under a piece of ceiling and pulled him out. He then went to the aid of Mrs. Crowe, 71, who was caught under a hutch-type cabinet in the kitchen. He lifted the cabinet, freeing her.

She asked him for some water so he got her some, then started to throw water on the fire in the living room. He could see it was "a hopeless cause," he said, so he returned to Crowe.

At that point, Walsh said, firemen arrived. He handed Crowe to firemen, then went to tell Mrs. Crowe that help had arrived. He found the kitchen ceiling on fire so he picked up Mrs. Crowe, carried her to the side of the house and handed her to firemen.

"Then I got the hell out of

there," said Walsh. Within minutes, the whole house was in flames.

The Crowes were taken to University Hospital. Crowe was reported in serious condition late Monday with burns over 15 percent of his body, and his wife, who was burned over 50 percent of her body, was listed in critical condition.

One of the few belongings that was saved, Walsh said, was the couple's 50th wedding anniversary book. The book, brought out by a fireman, was

singed, but the photographs were intact, Walsh said.

Fire department officials said the Crowes apparently smelled gas and thought the pilot light had gone out on the kitchen range. The explosion apparently occurred when Mrs. Crowe struck a match to relight it, they said.

Assistant Fire Chief Barry Burkhardt said a connecting pipe apparently had broken, allowing the house to fill with gas.

Joe Walsh is the grandson of Hershel Allen of Haskell.

## A JURY SHOULD BE IMPARTIAL. SO SHOULD AN INSURANCE AGENT.



That's why for over 25 years I've done business only with an Independent Agent... the more-than-one-company agent.

You see, your Big "I" Independent Agent doesn't work for just one insurance company. He represents several.

So he can give you an independent opinion and offer you expert advice on the best coverage at the best price. And that goes for homeowners, automobile, business, life and health insurance.

Before you reach a verdict about your insurance, see your Independent Insurance Agent... the more-than-one-company agent.



THE MORE-THAN-ONE-COMPANY INSURANCE AGENT.

### Lanco Insurance

BUDDY LANE

864-2629

## Changes Announced In Crop Insurance

Major changes have been announced in crop insurance policies available to Haskell County cotton growers for 1983, according to Ross Smith, District Director of the Federal Crop Insurance Corporation.

One significant improve-

ment, according to Mr. Smith, is an increase in the amount of the indemnity paid to policyholders whose cotton crops are damaged or destroyed early in the growing season. Previously, if a loss occurred before the crop had shed its blossoms,

the grower was paid as little as 40 percent of the amount the crop was insured for. Under the new provisions, the indemnity payment will be 60 percent of the total insurance amount.

A related change provides for a 100 percent indemnity payment if an insured crop is lost at any time after the blossoms have been shed or 50 or more days after the final planting date for the crop.

Still another change, Mr. Smith says, will enable cotton growers with a history of above-average yields to obtain increased insurance protection at no additional cost. By providing at least three years of acceptable production records, policyholders can obtain insurance guarantees based on an assumption of ten years of higher-than-average yields. Information about the program, known as Individual Yield Coverage, will be available from the ASCS office

in Haskell.

Federal Crop Insurance policies are sold and serviced by private insurance agents who have successfully completed the intensive training and testing program required to obtain FCIC Certification. The policies are written and fully backed by the FCIC which also pays up to 30 percent of the premium cost. A list of local agents is available by calling 1-800/447-4700.

### Valentine Dance Set Feb. 11

Haskell Lodge #241 is having a Valentine Dance, Friday, Feb. 11, from 8 to 12 o'clock. Casual or formal, your choice. Roland Smith Band is playing for the dance. Valentine Sweetheart will be crowned. Members and guests welcome.

Durable, Dependable, Smooth writing Write Bros. Stick Ball Pens. *Haskell Free Press*

**SOUTHWEST INSULATION CO.**

*Insulation In Your Attic Will Reduce Your Utility Bills*

CALL FOR FREE INSPECTION OF YOUR ATTIC

**Derrell Marion**  
ROCKWOOL CELLULOSE 817-658-3614 SPRAY-ON FOR METAL BLDG.

**The Best Western Texas Rebel** invites you on:

**"The Best Little Holiday in Texas!"**

Enjoy 3 days and 2 nights of gracious Texas hospitality on the beach at Port Aransas...

**Plus**  
a Deep Sea Fishing Trip ... all for a price that will make you jump for joy!

1 person - \$99.95  
or  
2 people in the same room for \$139.95

**COMPLIMENTARY Continental Breakfast** included each morning.

For details, call the Best Western Texas Rebel at 512/749-4105

This offer good thru February, 1983.

Sandcastle Drive At Gulf of Mexico  
P.O. Box 519, Port Aransas, Texas 78373

Love is ...

... sharing with people who need help.

**The Cozy Warm Grand Theatre Stamford 773-3181**

Open 7:30-Start 8:00  
Come No Later Than 8:45  
To See Complete Show

Fri. 11-Sat. 12-Sun. 13  
Clint Eastwood  
"Honky Tonk Mau"

**Drive-In Stamford 773-3272**

Open 7:00-Start 7:30  
Close 8:30

Tues. 15-Wed. 16-Thurs. 17  
XX-Adult Only  
"Fire Below"

February 10, 1983

Dear Customer,

We at Farmers National Bank feel that it is important that you are made aware of recent legislation which will affect your interest earnings beginning in July 1983.

The new law will require all banks and savings institutions to withhold 10% of all interest earned by you. Although you are now required to pay income tax on these earnings, the new law will require you to pay in advance.

This legislation seems to be inequitable for the following reasons:

1. Withholding will cut the amount of cash you have available during the year from your interest income.
2. The amount withheld may not be correct for you tax bracket. If overwithholding occurs, you will have to file for a tax refund to get back your own money.
3. Your total interest earnings will be reduced because of less income from reinvestment and compounding.
4. Elderly persons and low income individuals (including children) will have to file an exemption certificate for each and every account they have in order to avoid withholding. If the next year—or the withheld money will be forfeited to the government.

If you feel as we do concerning this legislation, please write your congressman. The bottom portion of this letter may be used for that purpose.

Sincerely,

Patrick Pace  
President

To: Congressman Charles Stenholm  
House of Representatives  
Washington, D.C. 20515

Please support legislation to repeal withholding on interest and dividends! It's harmful because it takes away from the income that I count on during the year; it's unfair to those of us who have always paid our share of taxes on interest; and, it's a burden to the elderly and low income persons, including children. It will discourage savings in this country, and that's bad news for the economy.

May I count on your support to repeal this rule before it goes into effect on July 1, 1983?

Your Constituent,  
\_\_\_\_\_(Name)  
\_\_\_\_\_(Address)  
\_\_\_\_\_(City, St., Zip)

Post Office Box 10  
Phone (817) 997-2216  
Rule, Texas 79547

# New Farm Bureau President Is Goree Native

The new president of the Texas Farm Bureau believes the American farmers and ranchers will survive the current economic crisis facing agriculture because, like himself, they share an optimistic attitude about the future.

S.M. True Jr. of Plainview, elected in December at the Texas Farm Bureau convention in Dallas, recalled that he faced three options as a young man just returning home in 1945 after service as a Navy fighter pilot in World War II.

True could have become a civilian pilot, finished his college education at Texas Technological University which he began prior to the war, or followed in his father's footsteps as a farmer in Hale County on the South Plains.

He chose farming, a business which blossomed for him in the succeeding 37 years. True produces cotton, grain sorghum, soybeans, wheat on his 960-acre farm near Plainview.

A native of Goree in Knox County, True was one of eight children. The family moved to Hale County in 1933. He

graduated from Plainview High School. After returning from World War II, True entered farming. He joined the Texas Farm Bureau in 1952, rising to the ranks of secretary-treasurer, vice president and president of the Hale County Farm Bureau.

True was elected to the TFB Board of Directors in 1975. He served two years as secretary-treasurer and was in his third year as vice president when elected president.

True serves on the Cotton Board, a quasi-government body empowered by Congress to administer the cotton's research and promotion program. He is a member of the boards of directors of Southern Farm Bureau Life and Casualty Insurance companies.

As TFB president, he is president of the Texas Farm Bureau Mutual Insurance Company, Texas Agricultural Marketing and Development Association, Texas Agricultural Service Company and the TFB Rural Health Association, Inc.

Locally, True serves as chairman of the Hale County Program Building Committee of the Extension Service, secretary of the Hi-Plains Hospital Board of Directors, president of the Hale County Fair Board and as a member of the Plainview Federal Land Bank Association. He is a past member of the Board of Directors of United Farm Industries, a local grain cooperative.

Just as his own farming career has proven highly successful, True believes the future of the family remains promising. True sees the incentive inherent in family farming as a clear advantage over corporate farming operations.

Whereas corporate farm employees merely seek a

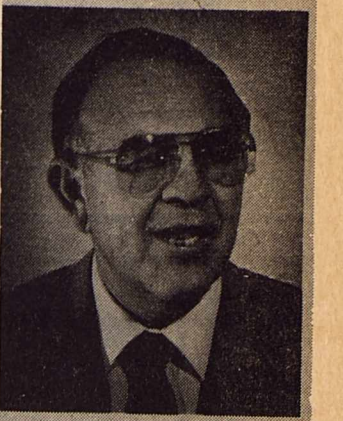
salary, the family farmer seeks for both a profit and the challenge of outdoing his neighbor, True observed.

The competitiveness of a free enterprise system remains the stimulus for the family farm, True believes.

A challenge facing True as he begins office is maintaining Texas Farm Bureau's newly-achieved number one status among state Farm Bureaus with 306,359 member families. TFB reached that plateau in 1982 with a gain of 30,112 member families.

True is married to the former Anna Jean Roberts. They have one son, David, of Dumas, and a young grandson, Blaine. The Trues are active members of the Plainview First United Methodist Church.

The Trues were named Hale County Farm Bureau "Family of the Year" in 1964. True was chosen 1979 "Man of the Year" in agriculture by the Texas County Agents Association.



S.M. TRUE



Steve Verette (left front), Crosby Co. Farm Bur., Chairman of State Advisory Committee on Cotton and Tim Burson (right front), Haskell Co. Farm Bureau, Chairman of State Advisory Committee on Wheat, visit during the State Leadership-Commodity Meeting in Austin Jan. 23-25. Burson, Pres. of Haskell Co. Farm Bur., and wife, Linda, represented Haskell Co. at the meeting. Four other Farm Bureau members from other counties join him to make-up the committee.

## Clif Cobb Attends PCA Presidents Conf.

R.C. "Clif" Cobb, president among farm credit officials of Rolling Plains Production throughout Texas who gathered in Austin for the 1983 Credit Association, was

annual PCA Presidents Conference, February 3-4.

According to Cobb, the meeting serves as a place for PCA presidents to exchange ideas and gather information on the status of the Tenth Farm Credit District. Presentations revolved around the theme "Growing Stronger in this Economic Crisis."

Sessions ranged from area and committee progress reports to the prospective use of microcomputers in handling agricultural financing.

Rolling Plains PCA is a member-owned agricultural finance cooperative which served the credit needs of 1,085 farmers and ranchers in Briscoe, Childress, Collingsworth, Cottle, Dickens, Donley, Foard, Hall Hardeman, Haskell, Jones, Kent, King, Knox, Motley, Shackelford and Stonewall counties.

In 1982 the association loaned approximately \$103 million to area farmers and ranchers. Cobb said loans made last year were down from the 1981 figure of \$119 million due to adverse trends in the state's agricultural economy, which reduced loan demand.

Rolling Plains PCA is one of 30 PCAs in Texas. Collectively they serve more than 16,600 agricultural producers and aquatic harvesters. Last year more than \$2 billion was loaned through Texas PCAs.

PCAs have been a source of agricultural loans since 1933. Nationally they serve the credit needs of more than 380,000 farmers, ranchers and commercial fishermen, with more than \$22 billion in loans outstanding.

## Soil Testing Urged For Cultivated Land

Heavy snows, wet soils and cold weather has delayed soil sampling for Rolling Plains producers. Soil sampling and fertilizing was also delayed by the government finally establishing the PIK program. Do not let these delays raise your 1983 production cost this year, cautioned Max Stapleton, county Extension agent in Haskell County.

"Our farm economics is such that producers can not afford to blindly add fertilizer for the 1983 crop," Stapleton said. "There is still time and the laboratories have computerized their reporting systems for faster sample turn around."

The best time for sampling is just before the field is dry enough to handle tractor traffic. Later everyone will be in a dead run to get their land prepared, so be ready to start your PIK production acres on the right foot, he cautioned.

To get a good soil test, a good soil sample is essential. Obtain 10 to 15 samples taken from the surface down to six inches deep. Mix these samples in a plastic bucket. Then take about two-thirds to three-fourths of a pint of the sample soil and mail to the soil testing laboratory for testing.

Be sure to complete a crop information sheet on each soil sample, notes Stapleton. This aids the soil chemist to generate a better fertilizer recommendation for your farm.

Information sheets, sample bags for mailing and addition-

al information on soil testing is available at the county Extension office.

WE HAVE pencil cups, stackable trays, book-ends, paper clip holders, stamp cubes and telephone files in matching colors. *Haskell Free Press*

### Attention Farmers:

We can take care of your insecticide, herbicide and fertilizer needs with one application with our "No Trac Pac" Big Wheels application.

Call or come by  
Knox Prairie Seeds, Inc.

Munday, Texas  
Phone 422-4554  
or 422-4914

### Stock Reduction Sale

Feb. 9th thru 16th

Round Bale	
Hay Feeders	\$102 <sup>00</sup> ea
Priefert Blue	
Head Gate	\$172 <sup>80</sup> ea
Bull Dog	
Swivel Jacks	\$25 <sup>15</sup> ea
KP Barrell	
Pumps	\$17 <sup>25</sup> ea
Ace #204	
Hyd. Pump	\$244 <sup>31</sup> ea
Banjo Transfer	
Pumps 2"	\$241 <sup>44</sup> ea
Manual Sump	
Pump 1/3 HP	\$149 <sup>50</sup> ea
Ace Pumps	
PTO 1000	\$166 <sup>64</sup> ea
Int. Super	
100 Fencer	\$67 <sup>38</sup> ea
Int. Super	
98 Fencer	\$59 <sup>84</sup> ea
Int. Super	
12 Fencer	\$41 <sup>32</sup> ea
Holdem 57	
Fencer	\$50 <sup>60</sup> ea
Holdem 69	
Fencer	\$45 <sup>49</sup> ea
Parmak Solar	
Magiz Fencer	\$238 <sup>16</sup> ea
Parmak Solar	
AK 6 Fencer	\$131 <sup>63</sup> ea

ALL SALES CASH AND SUBJECT TO STOCK ON HAND

**Farm & Ranch Supply**  
303 South First Haskell, Texas

## GOOD YEAR

# NATIONWIDE TIRE SALE

Over 500,000 Goodyear Tires On Sale Coast-To-Coast — At Savings That Prove We Mean Business! Sale Ends Feb. 26

### SAVE WHITEWALLS FOR OLDER CARS

Power Streak II... Bias ply dependability; great economy for rear wheel drive cars

\$31<sup>95</sup> 778-13 plus \$1.78 FET NO TRADE NEEDED!    \$40<sup>45</sup> 778-14 plus \$1.78 FET NO TRADE NEEDED!    \$45<sup>35</sup> 778-15 plus \$2.38 FET NO TRADE NEEDED!

### SAVE MILEAGE AND ECONOMY

Cushion Belt Polyglas... Double belted strength, long-wearing squirm-fighter tread

\$44<sup>50</sup> 678-13 Whitewall plus \$1.78 FET NO TRADE NEEDED!    \$53<sup>50</sup> 778-14 Whitewall plus \$2.28 FET NO TRADE NEEDED!    \$61<sup>40</sup> 778-15 Whitewall plus \$2.66 FET NO TRADE NEEDED!

### SAVE ALL SEASON STEEL RADIALS

Tiempo... 10,000 biting tread edges for traction, the strength of steel and polyester

\$41<sup>00</sup> P155/80R13 Blackwall plus \$1.61 FET NO TRADE NEEDED!    \$69<sup>65</sup> P205/75R14 Whitewall plus \$2.28 FET NO TRADE NEEDED!    \$84<sup>40</sup> P235/75R15 Whitewall plus \$2.90 FET NO TRADE NEEDED!

### SAVE STEEL BELTED NEW CAR RADIALS

Custom Polysteel... Gas-saving radial construction in a tire that offers outstanding wet traction

\$55<sup>95</sup> P175/80R13 Whitewall plus \$1.61 FET NO TRADE NEEDED!    \$60<sup>60</sup> P185/75R14 Whitewall plus \$1.78 FET NO TRADE NEEDED!    \$68<sup>00</sup> P205/75R14 Whitewall plus \$2.28 FET NO TRADE NEEDED!    \$69<sup>00</sup> P205/75R15 Whitewall plus \$2.90 FET NO TRADE NEEDED!

### SAVE FOUR WHEEL DRIVE RV/LIGHT TRUCK TIRES

Tracker AT... Outline vletter tire that's all terrain, all wheel position, all Goodyear

\$87<sup>00</sup> 9.15 LR B plus \$3.74 FET NO TRADE NEEDED!    \$91<sup>00</sup> 10.15 LR B plus \$4.34 FET NO TRADE NEEDED!    \$94<sup>00</sup> 11.15 LR B plus \$4.94 FET NO TRADE NEEDED!

NO TRADE NEEDED.

### WHEEL ALIGNMENT \$19

WARRANTED 90 DAYS OR 4,000 MILES WHICHEVER COMES FIRST

• Inspect all four tires correct air pressure • Set front or rear wheel caster, camber, and toe to proper alignment • Inspect suspension and steering systems: Most U.S. cars and imports with adjustable suspension. Includes front-wheel drive, Chevrolets, light trucks, and cars requiring MacPherson Strut correction extra. Parts and additional services extra if needed.

Liberal Budget Terms—Low Monthly Payments

## Anderson Tire

206 South Ave E Phone 864-2900

## Public Notice

In order to implement prior orders of the Public Utility Commission of Texas in Docket No. 3957, notice is hereby given of Southwestern Bell's proposal to implement a new schedule of intrastate long distance rates, effective April 1, 1983, unless otherwise determined by the Commission.

It is expected that the proposed rate schedule will not increase the company's net intrastate revenues, but rather, the increased rates will offset increased settlements paid to certain other telephone companies.

A complete copy of the new rate schedule is on file with the Public Utility Commission at Austin, Texas, and is available for inspection in each of the company's public business offices in Texas.

### Notice to Customers of Other Telephone Companies

Changes in intrastate long distance rates would also affect customers of other telephone companies because such companies provide intrastate long distance service in accordance with rates specified in Southwestern Bell's tariffs.

## Aviso Público

Southwestern Bell, con el objeto de cumplir con el decreto previo del Public Utility Commission (Comisión de Servicios Públicos) del Estado de Texas, Acta No. 3957, por la presente hace saber su intención de establecer un nuevo arancel de tarifas para servicio intraestatal de larga distancia, con vigencia a partir del 1o de abril de 1983, a menos que la Comisión haga otra determinación.

Se espera que el nuevo arancel de tarifas que Southwestern Bell se propone establecer no aumentará sus ingresos netos intraestatales, sino que servirá para compensar el aumento de los ajustes que se le paga a algunas otras compañías de teléfono.

Una copia completa del nuevo arancel de tarifas se ha archivado en las oficinas del Public Utility Commission (Comisión de Servicios Públicos) en Austin, Texas, y esta disponible para inspección pública en todas nuestras oficinas en el Estado de Texas.

### Aviso a los Clientes de Otras Compañías de Teléfono

Cambios en las tarifas para servicio intraestatal de larga distancia también afectarían a clientes de otras compañías de teléfono porque dichas compañías proveen servicio intraestatal de larga distancia en conformidad a tarifas especificadas por Southwestern Bell.

## Southwestern Bell



# M SYSTEM

Your FRIENDLY

**AFFILIATED  
SUPER MARKETS**

Haskell, Texas  
Where Your Dollar Buys More

**Double days**

TUESDAYS &  
WEDNESDAYS

With the purchase of \$2.50 or more.

Specials Good Thurs., Feb. 10th  
thru Wed., Feb. 16th

COLORTEX TOILET  
**TISSUE**  
4-Roll Pack **49¢**  
Limit one with \$10.00 or more  
grocery purchase!

DEL MONTE LEAF  
**SPINACH** FOR **298¢**  
15-oz. Cans.....

DEL MONTE TOMATO  
**CATSUP** **119**  
32-oz. Bottle.....

SHURFINE  
VEGETABLE  
**Shortening**  
3-Lb. Can **129**

**TAKE A GOOD LOOK!**  
This week, let your children take  
a good look at Volume 6 of

THE  
**SESAME STREET  
LIBRARY**

Volume 1  
only **99¢**

VOLUMES 2-15  
**\$2.69**  
each

Remember—M-System in Haskell is  
Now Giving  
**Double S&H Green Stamps**  
on Tuesdays & Wednesdays

JENO'S FROZEN  
**PIZZAS**  
ASST. KINDS **\$1.09**  
EACH

DEL MONTE  
**GREEN BEANS**  
Cut or French Style  
16-oz. Can (Limit 3)

**3 For 1.00**

**FOR YOUR  
SPRING  
GARDENING  
WE HAVE...**

**ONION PLANTS  
SEED POTATOES**  
And Good Supply of  
**GARDEN SEEDS**

**FRESH GREEN  
Cabbage**  
Lb. **7¢**

Shop Our Produce Dept.  
for the Finest and Freshest in  
Fruits and Vegetables

PURPLE  
TOP **TURNIPS**  
**3** Lbs. **1.00**

**ONION PLANTS**  
WHITE, YELLOW or RED  
**3** Bunches **1.00**

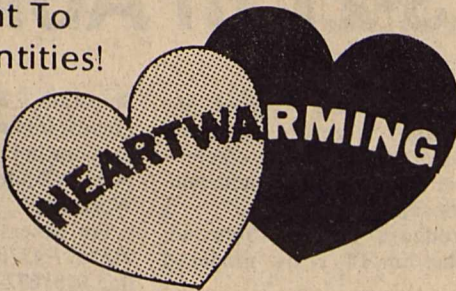
**FRESH HEAD  
Cauliflower**  
Ea. **99¢**

U.S. No.1 RUSSET  
**POTATOES**  
70-Ct. Size  
**4** Lbs. **1.00**

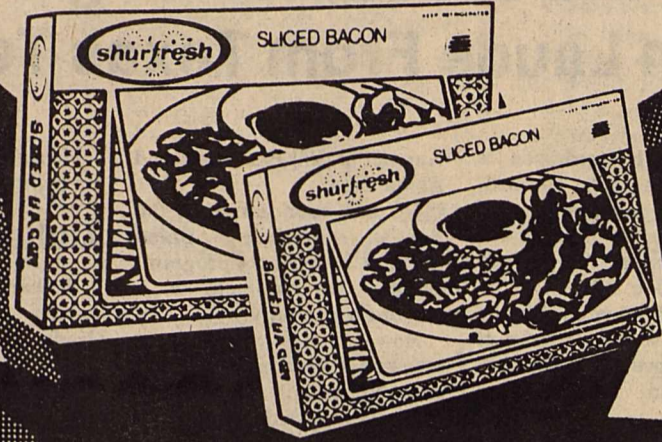




We Reserve  
The Right To  
Limit Quantities!



# Food Specials



Shurfresh Sliced

## Bacon

1-Lb. Pkg. **1.79**



SHURFRESH

## BISCUITS

Sweetmilk or Buttermilk  
8-oz. Cans

7 For **1.00**



SHURFRESH

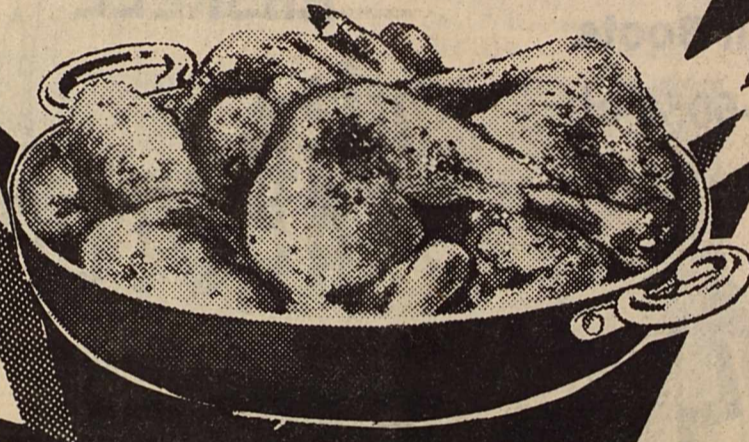
## SOFT Margarine

1-Lb. Tub **59¢**

## Round Steak

First Cut **\$1.69** lb

Center Cut **\$1.99** lb



PILGRIMS PRIDE  
MIXED FRYER

## PARTS

Lb. **38¢**



Del Monte  
TOMATO SAUCE

4 8-oz. Cans **1.00**



SHURFINE  
BLEACH

1/2 GAL JUG **39¢**

WOLF **CHILI** 15-oz. Can **99¢**

DEL MONTE  
SWEET PEAS  
17-oz. Cans  
2 For **79¢**

MISS BRECK  
HAIR  
SPRAY  
9-oz. Aerosol, Asst. Holds  
**99¢**



SHURFRESH  
GRADE "A"

## LARGE EGGS

Doz. **59¢**

LIPTON TEA 3.6 BONUS PACK..... **2.39**

MAXWELL HOUSE COFFEE 10 OZ JAR..... **5.69**

FRUIT COCKTAIL Del Monte ..... 17-oz. Can **69¢**

TOMATOES Del Monte (Peeled or Stewed) ..... 14.5-oz. Can **69¢**

DRIED APRICOTS Del Monte ..... 6-oz. Pkg. **1.99**

Shurfine CANDIES Assorted Kinds..... 2 Pkgs. **1.00**

MR. JUMBO  
TOWELS  
ORCHIDS

2 ROLLS **\$1.00**





GIB LEWIS—REP. JOE HANNA

## Hanna Receives Gavel From Lewis

State Rep. Joe Hanna, D-Breckenridge, accepts the gavel as Chairman of the House Energy Committee from Speaker Gib Lewis in recent ceremonies.

Rep. Hanna, who is serving his seventh term in the House, was also appointed by Lewis as a member of the House Ways and Means Committee for the current session.

The committee has jurisdiction over all proposed legislation bearing on the state's oil, natural gas and other energy resources, mineral deposits, their production, mining and transportation.

"Rep. Hanna has served as

chairman of this committee for five of the seven terms that he has been a member of the House," Lewis said in announcing the reappointment.

"In that time he has become recognized as one of the foremost authorities in the field of energy resources and conservation in the Legislature, respected by his legislative colleagues and all who have dealings before his committee.

"There's no substitute for experience and expertise and Rep. Hanna provides this in abundance" to this vital committee," Lewis concluded.

## Taxpayers Workshop Set In Weinert

The Taxpayers Education Workshop, sponsored by the Adult Education Co-op of Weinert, will be offered free of charge to all persons in the area on Thursday, February 17; Monday, February 21; and Tuesday, February 22, from 6:30-9:30 p.m., at the Weinert School. Under the direction of H.L. Guess, the three-night

program is designed to help taxpayers become more knowledgeable in preparation of their income tax returns.

Persons interested in attending the meetings should preregister before February 17 by calling H.L. Guess at 673-2401 or Mrs. Betty Davis, Adult Education Supervisor, at 864-2848.

**Each day, more than 180,000 adults in the Big Country rely on *The Abilene Reporter-News* for their local news and sports, as well as a complete package of national and world news, special features and leisurely entertainment. Join the thousands who receive and enjoy the *Reporter-News*. For home delivery contact your home-town *Reporter-News* agent today.**

### HASKELL

Serving residents North of N. 6th  
Mrs. Mary Lowe, 864-2254

Serving residents South of N. 6th  
Debra Gibbs, 864-2914

**By Carrier:**  
ONE YEAR, morning & Sunday \$87.00  
ONE YEAR, morning only ..... \$69.00

**Order your mail subscription by writing to *The Abilene Reporter-News*, Circulation Dept., P.O. Box 30, Abilene, Tex., 79604, or by phoning (915) 673-4284.**

**By Mail**  
ONE YEAR, morning & Sunday ..... \$102.00  
ONE YEAR, morning only ..... \$92.40

**The Abilene Reporter-News**  
There's something in it for you.

# "Sesame Jamboree" Set Feb. 23-27 In Abilene

Come on everybody sing along! Dance to the music, clap your hands, count to three! Join our "Sesame Jamboree" opening Feb. 23-27th, at the Taylor County Coliseum for 6 great big foot-stompin', tub-thumpin' performances of the brand new edition of *Sesame Street Live*. With its cast from America's most famous thoroughfare, it promises to be the biggest country western show north of Nashville.

Big Bird, Bert, Ernie, Grover, Cookie Monster, Prairie Dawn, Count Von Count and Oscar the Grouch welcome two brand new *Sesame Street Live* monster Muppets; Woolly Nelson and Furlin Wailin, conductor and lead singer, respectively, of The Blue Fur Mountain Band. The band claims center stage to perform arrangements of time-honored standards from pioneer days. Some of the group's musical instruments

also date from that period: jugs, git-fiddles, wash tubs and boards. But there's also an appropriately monstrous harmonica and a banjo that looks suspiciously like a chocolate chip cookie!

In trading *Sesame Street*'s familiar cityscape for the wide open spaces of the prairie, the cast often involves the audience in its songs, dances and comedy routines. Kids are invited to prompt Forgetful Jones, a memorable character who makes his debut in this season's presentation. They also provide assistance to Simon the Sound Man when he recalls his life on the farm and the animals he tended in those by-gone days.

Throughout the two-act arena variety show, the audience joins the cast in a sing along, musical chairs and a "simple dance" that involves a few challenging gyrations.

Since much of the action takes place on a mini-stage

projected into the first several rows, the audience feels personally involved in the merriment. And when Cookie Monster enters from the rear of the theater, kids are afforded a close up look at one of their best television friends.

"No one is expected to sit still at a 'Sesame Jamboree' performance, according to Vincent E. Egan, president of VEE Corporation and the executive producer of *Sesame Street Live*. "In fact, the more the audience participates, the more they enjoy the show. Our productions are staged purely for the entertainment of the entire family. They appeal to the young at heart; chronological age really isn't important," he added.

The one and one-half hour show is written by Jon Stone, former executive producer and head writer of "Sesame Street". Its director and choreographer is Emmy nominee Miriam Nelson, whose list of credits extends to

feature films, television productions and commercials, and night club acts. Her first professional affiliation with the Muppets was choreographing the network television special, "Julie Andrews and the Muppets."

Jim Henson created the *Sesame Street* Muppets for the original Children's Television Workshop production. "Sesame Jamboree" is produced by Bob Shipstad, who for 14 years produced

Shipstad & Johnson Ice Follies. It is presented by VEE Corporation in cooperation with Children's Television Workshop. For tickets information call: 915/677-4376, Group information 915/672-4350.

## Howard Graduates Magna Cum Laude From Texas Tech

Erik Alan Howard, son of Mr. and Mrs. E.A. Howard, Jr., of Post, and grandson of Mrs. H.L. Terrell of Stamford, graduated from Texas Tech University Dec. 17.

Howard graduated Magna Cum Laude with a Bachelor of Science degree in Ag Economics and a minor in Finance.

He is a member of three honorary fraternities, Phi

Kappa Phi, Phi Eta Sigma and Alpha Zeta.

He has been active in the Baptist Student Union summer mission program, serving two summers as a student missionary.

Howard has received a research fellowship to attend graduate school and plans to continue his academic studies in finance and computer science.

He also made the Deans List for eight semesters.

### College News

William Ratliff, Jr. has been chosen as the Outstanding Graduate Student at Texas Tech University for 1982.

Ratliff received a B.A. degree from the University of Texas and his field at Tech is Modern European History.

ALL FEBRUARY

All Boots  
20-50% off

HEADS OR TAILS  
HASKELL TEXAS  
WESTERN WEAR

No Refunds

No Layaways

Large Selection  
B Widths

CLEARANCE SALE

### ALL MEN'S BOOTS 20-30% OFF

Item	Discount	Price Range
<b>Justin</b>		
2498 Redwood Calf	20% off	\$122.95—\$98.36
2499 Walnut Calf	20% off	119.95—95.96
3802 Roper	20% off	87.95—70.36
9065 Beige Lizzard	20% off	253.60—202.88
2531 Wheat Calf	30% off	115.99—81.19
1649 Grey Calf	20% off	119.95—95.96
9090 Chocolate Lizzard	30% off	253.60—177.52
K4247 17" Top Walnut Calf	20% off	149.95—119.96
<b>Adam's</b>		
220X Mule Work Boot	20% off	99.20—79.36
220L Leather Sole Mule	20% off	99.20—79.36
290 Tall Top Mule	20% off	115.95—92.76
256 Walnut Calf	30% off	112.00—78.40
288 Red Tripunta Calf	20% off	112.00—89.60
272 Chocolate Calf	30% off	117.95—82.57
<b>Nocona</b>		
C3607 Tan Water Buffalo	20% off	107.95—86.36
5006 Grey Water Buffalo	20% off	99.95—79.96
5018 Black Water Buffalo	20% off	103.95—83.18
5021 Grey Bullhide	30% off	121.00—84.70
J9995 Choc. Boa Constrictor	30% off	185.95—130.17
<b>Brahma</b>		
502 Bone Tall Top Bull	20% off	104.00—83.20
504 Brown Tall Top Bull	20% off	104.00—83.20
604 Chocolate Shark Skin	20% off	112.00—89.60
<b>Renegade</b>		
1033 Hickory Eel Skin	20% off	151.95—121.56
1063 Camel Eel Skin	30% off	151.95—104.37
1313 Grey Calf	30% off	99.95—89.97
1433 Oats Tripunta Calf	30% off	104.95—73.47
<b>Wrangler</b>		
5922 Work Boots	30% off	54.95—38.47
5950 Work Boots	20% off	59.95—47.96
5951 Work Boots	20% off	47.95—38.36
5959 Work Boots	20% off	51.95—41.56
17548 Steel Toe	20% off	60.95—48.76

### ALL LADIES BOOTS 20-50% OFF

Item	Discount	Price Range
<b>Justin</b>		
L3802 Roper	20% off	87.95—70.36
L4128 Redwood Calf	30% off	115.99—81.19
L4127 Wheat Calf	30% off	97.20—68.04
<b>Nocona</b>		
C3611 Tan Water Buffalo	20% off	107.95—86.36
L502 Grey Water Buffalo	30% off	93.95—65.77
<b>Wrangler</b>		
4375 Brown Calf	20% off	55.95—44.76
4183 Tan Calf	20% off	55.95—44.76
4340 Tan Suede	50% off	61.95—29.95
4348 Blue Suede	50% off	61.95—29.95
4424 Redwood Calf	30% off	55.20—38.64
4442 Grey Calf	30% off	58.95—41.27
4472 Grey Tall Top Calf	30% off	64.80—47.88

### CHILDREN'S BOOTS 20-30% OFF

Item	Discount	Price Range
2232 Grey Calf	20% off	31.95—25.56
3232 Grey Calf	20% off	37.95—30.36
2146 Tan Roughout	20% off	23.99—19.19
3146 Tan Roughout	20% off	27.20—21.76
2984 Roper	20% off	26.95—21.56
3984 Roper	20% off	30.95—24.76
2286 Ostrich Print	30% off	23.99—16.79
3286 Ostrich Print	30% off	31.95—22.37
2377 Red Calf	30% off	27.95—19.57
3377 Red Calf	30% off	31.95—22.37
2375 Brown Calf	20% off	31.95—25.56
3375 Brown Calf	20% off	37.95—30.36

### WRANGLER JEANS

Item	Discount	Price Range
<b>Men's</b>		
13 MWZ Cowboy Cut		Reg. \$16.95—Now \$14.95
935 DEN Slim Fit		Reg. 15.95—Now 13.95
945 DEN Boot Jean		Reg. 15.95—Now 13.95
938 DEN 50x50 Perm. Press		Reg. 15.95—Now 13.95
13C Tan & Grey Corduroy Cowboy Cut		Reg. 17.95—Now 11.95
349 Black 50x50		Reg. 17.95—Now 14.95
1W125 Black, Blue & Brown 100% Poly.		Reg. 18.95—Now 13.95
<b>Students</b>		
410 SNVR Cowboy Cut		Reg. 15.95—Now 13.95
401 SWNR Straight Leg		Reg. 15.95—Now 13.95
400 SNVR Boot Jean		Reg. 14.95—Now 12.95
210 SCHR Grey Corduroy Cowboy Cut		Reg. 15.95—Now 11.95
310 SBKR Black 50x50		Reg. 14.95—Now 10.95
<b>Boy's</b>		
401 BWNR(S) Straight Leg		Reg. 13.95—Now 12.95
400 BNVR(S) Boot Jean		Reg. 12.95—Now 11.95
280 BCHR(S) Grey Corduroy		Reg. 12.95—Now 10.00
<b>Levis</b>		
Remaining Men's & Students Levis		Reg. 17.50—Now 10.00

All Comfy & Tempco Goosedown Coats & Vests	30% off
All Wrangler Denim Coats & Vests	30% off
All Remaining Leather Vests	30% off
All Men's 3-Piece Western Suits	20% off
All Western Ties	50% off
All Men's Long Sleeve Shirts	25% off
All Men's Flannel Shirts	Reg. \$15.95—Now \$10.00
All Men's Cowboy Cut Denim Shirts	Reg. \$17.95—Now \$12.95
All Student's Shirts	25% off
All Student's Flannel Shirts	Reg. \$11.99—Now \$8.95
All Ladies Blouses	40% off
All Remaining Denim Skirts	Reg. \$16.95—Now \$9.95
Boot Socks	Reg. \$3.50—Now \$1.95
All Felt Hats (Resistol & Head or Tails)	30-50% off
All Straw Hats	50% off
All Summer Caps	Reg. \$4.95—Now \$2.95
All Leather Belts	25% off
All Nylon Belts	Reg. \$15.95—Now \$12.95
All Buckles	25% off
All Hat Bands	30% off
All Brass Spittons	30% off
All Boot Jacks	30% off
All Knives (Old Timer, Uncle Henry, & Schrade)	20% off
All Billfolds	30% off

### SADDLES

TEX TAN 1348I 15" Seat, Roper	Reg. \$695—Now \$495
TEX TAN 55I 15" Seat, Pleasure	Reg. \$295—Now \$220
TEX TAN 1410I 15 1/2" Seat, Hand Tooled	Reg. \$795—Now \$595
TEX TAN 1353I 15 1/2" Seat, All Around	Reg. \$695—Now \$495
TEX TAN 1352I 15" Seat, Roper	Reg. \$695—Now \$495
TEX TAN 996I 15" Seat, Barrel	Reg. \$525—Now \$425
POTTS 1062 Lynn McKenzie 14" Barrel, Bullhide Covered Tree	Reg. \$975—Now \$695
Used TEX TAN 16" Seat, Roper	\$295

### TACK

6" Scotch Combs	Reg. \$8.95—Now \$5.50
#2 Wool Card	Reg. 29.95—Now 18.95
Quick Shed Blades	Reg. 6.75—Now 4.50
Hot Shot Cattle Prod (36" Shaft)	Reg. 39.00—Now 22.95
Leather Whips	Reg. 12.50—Now 8.95
Lynn McKenzie Saddle Pads (100% Wool)	Reg. 49.95—Now 32.95
Orthopedic Saddle Pads	Reg. 24.95—Now 19.95
Saddle Blankets	Reg. 35.00—Now 25.00
Leather Saddle Bags	Reg. 49.95—Now 39.95
Adam's Rope Bags	Reg. 38.95—Now 25.00
Horse Blanket Link Buttons	Reg. 1.50—Now .90
3517H Stainless Steel Bits	Reg. 21.95—Now 13.95
3514H Stainless Steel Snaffle Bits	Reg. 30.50—Now 17.80



# 1983 Haskell Youth Basketball Schedule

Monday Feb. 14:  
Runts and YoYo's  
Apaches and Mohawks  
Tues. Feb. 15:  
Roadrunners and Jokers  
Braves and Chiefs  
Thurs. Feb. 17:  
Robins and Maidens  
Warwhoops and Sioux  
Fri. Feb. 18:  
YoYo's and Ghost  
Comanches and Tomahawks  
Blackhawks and Kiowas  
Sat. Feb. 19:  
Roadrunner and Hearts  
Braves and Warwhoops  
Apaches and Warriors  
Mon. Feb. 21:  
Chiefs and Comanches  
Mohawks and Blackhawks  
Tues. Feb. 22:  
Runts and Ghosts  
Sioux and Tomahawks

Thurs. Feb. 24:  
Jokers and Robins  
Kiowas and Warriors  
Fri. Feb. 25:  
Maidens and Hearts  
Braves and Comanches  
Apaches and Blackhawks  
Sat. Feb. 26:  
Roadrunner and Robins  
Chiefs and Warwhoops  
Mohawks and Kiowas  
Mon. Feb. 28:  
Runts and YoYo's  
Sioux and Comanches  
Tues. March 1:  
Jokers and Maidens  
Blackhawks and Warriors  
Thurs. March 3:  
Robins and Hearts  
Braves and Tomahawks  
Fri. March 4:  
YoYo's and Ghost  
Chiefs and Sioux

Warwhoops and Comanches  
Sat. March 5:  
Roadrunners and Maidens  
Chiefs and Tomahawks  
Apaches and Kiowas  
Mon. March 14:  
Jokers and Hearts  
Braves and Sioux  
Tues. March 15:  
Warwhoops and Tomahawk  
Mohawks and Warriors  
Thurs. March 17:  
Runts and Ghosts  
Braves and Chiefs  
Fri. March 18:  
Roadrunners and Jokers  
Warwhoops and Sioux  
Apaches and Mohawks  
Sat. March 19:  
Robins and Maidens  
Comanches and Tomahawks  
Blackhawks and Kiowas  
Mon. March 21:

Runts and YoYo's  
Roadrunners and Hearts  
Tues. March 22:  
Braves and Warwhoops  
Apaches and Warriors  
Thurs. March 24:  
Jokers and Roadrunners  
Chiefs and Comanches  
Fri. March 25:  
Maidens and Hearts  
Sioux and Tomahawks  
Mohawks and Blackhawks  
Sat. March 26:  
YoYo's and Ghosts  
Braves and Comanches

Kiowas and Warriors  
Mon. March 28:  
Roadrunners and Robins  
Chiefs and Warwhoops  
Tues. March 29:  
Sioux and Comanches  
Apaches and Blackhawks  
Thurs. March 31:  
Jokers and Maidens  
Braves and Tomahawks  
Mohawks and Kiowas  
Fri. April 1:  
Runts and Ghosts  
Robins and Hearts  
Chiefs and Sioux

Sat. April 2:  
Roadrunners and Maidens  
Chiefs and Tomahawks  
Blackhawks and Warriors  
Mon. April 4:  
Braves and Sioux  
Warwhoops and Comanches  
Apaches and Kiowas  
Tues. April 5:  
Jokers and Hearts  
Warwhoop and Tomahawks  
Mohawks and Warriors  
Tournament—  
April 7, 8, 9  
All games will start at 6-7-8.

## Superintendent's Views

BY JAMES LANIER  
Superintendent, Haskell ISD

Friday, February 11th, is an inservice day. What is inservice beyond a holiday for students? Some schools have had inservice days for many years. Approximately 12 years ago, the state legislature decided that inservice was vital to the education of students and made it a compulsory part of the school year. Since that time, the number of days required have varied and types of programs have changed, but inservice and the philosophy of inservice has remained with us. We now require five days of inservice plus three work days.

Inservice is a method or program by which a teacher should be able to keep abreast of current trends in education. Just as in any other thing, the teachers will get out of the program only in proportion what he puts into it. Small schools have a difficult time providing programs that will benefit all teachers. We have worked in co-ordination with other school districts in our area to improve programs. The Regional Service Center is charged with the responsibility of providing assistance in this area. They are looking at the possibility of providing

programs at satellite or area centers around the region at nominal fees. The purpose is to combine numbers and finances to improve quality of programs.

In recent years, we have spent a great deal of time in planning instruction with the main thrust being scope and sequence planning for all facets of instruction. The state agency through its accreditation division has determined that this is of great educational benefit. It is one of the principles and standards mandated by the State Board of Education. Progress in the program has been slow but steady in Haskell. We have slowed the process somewhat due to the fact that the legislature passes a curriculum bill HB 246, which will provide new guidelines and state requirements in curriculum.

The above information is a very brief description of what occurs on inservice. It may be a holiday for the students but not one for teachers.

PETITE ROLEDEX: the perfect file for telephone numbers and addresses. Typewriter spaced lines. Replacement refills. Decorator colors and styling for home and office. *Haskell Free Press*

**For All Your Office Needs:**  
Office Furniture  
Calculators & Equipment Supplies  
Record Keeping Supplies  
Office Accessories  
Printing  
Rubber Stamps  
We Give S&H Green Stamps



HOME FURNITURE

8:30-5:30 Haskell 864-3181

**JV Girls**  
BY MELINDA BLAKELY  
The JV girls placed second in the Haskell Tournament losing to the Seymour Pantherettes, 25-36, in the finals Saturday.

Gina Kuykendall led the team with 7 points. In the opening round of the tournament, the JV defeated Stamford, 27-20. Holly McBroom led the team with 11 points.

The team finished their season Tuesday against Paducah, but scores were unavailable at press time.

**Maidens**  
BY MELINDA BLAKELY  
Munday defeated the varsity Maidens, 55-51 last Tuesday. Sheila Randle and Melinda Blakely led the team with 12 and 10 points, respectively.

The Maidens also were defeated by Hamlin 48-39. Blakely and Randle combined for 23 points with 12 and 11, respectively.

The Maidens travelled to Paducah Tuesday to face the Dragonettes for the final game of the season, but scores were unavailable at press time.

**JV Boys Win First**  
BY DOUG RICHARDSON  
The junior varsity took home first place as they defeated Stamford and Seymour in the Haskell Tournament last week.

The opening game of the tournament pitted the Stamford Bulldogs against the Indians.

Cornell Thompson and Steven Boyd had 13 points apiece in a big win with the final score 54-18.

In the championship game the JV played their big rival the Seymour Panthers. When

**Fresh Girls Finish 2nd**  
BY GENA WHITAKER  
The freshmen girls team ended their season with a second place finish in the Haskell Tournament.

The girls defeated Stamford 45-10 to advance to the finals in the tourney. The leading scorer was DeShawn Lewis with 20 points.

In the finals the girls were defeated 14-20 by the Knox City Houndettes. Lewis was high point with six points.

Everything ORDERED SOLD to the BARE WALLS

# QUITTING BUSINESS Sale

ONLY ONCE IN Your LIFETIME.....  
Colossal, Terrific, Nerve-Tingling, Price Smashing VALUES

Save 20% TO 50% AND MORE

<p>LADIES ROBES AND GOWNS</p> <p>Reg. 10.50 \$6<sup>30</sup> Reg. 14.95 \$8<sup>97</sup> Reg. 21.25 \$12<sup>75</sup> Reg. 35.50 \$21<sup>30</sup></p>	<p>MEN'S LEVIS SHRINK TO FIT (501)</p> <p>\$14<sup>99</sup></p>	<p>LEVIS BENDOVERS</p> <p>\$13<sup>33</sup> Reg. up to \$28.00</p>	<p>RIDGE T SLACKS</p> <p>Reg. 22.50</p> <p>\$13<sup>50</sup></p>
<p>LADIES BLOUSES Levis, Ridge T, Jona, Joren</p> <p>22.98 \$12<sup>84</sup> 25.00 \$13<sup>75</sup> 28.00 \$15<sup>40</sup></p>	<p>ALL LADIES SWEATERS</p> <p>1/2 Price</p>	<p>LADIES COATS</p> <p>60% Off Reg. Price</p>	<p>CHILDREN'S COATS</p> <p>60% Off Reg. Price</p>
<p>TOWELS</p> <p>Reg. 7.30 \$4<sup>38</sup> Reg. 10.00 \$6<sup>00</sup> Reg. 12.98 \$7<sup>78</sup></p>	<p>BLANKETS</p> <p>Reg. 10.95 \$6<sup>57</sup> Reg. 12.75 \$7<sup>65</sup></p>	<p>SHEETS</p> <p>Reg. 10.50 \$6<sup>30</sup> Reg. 12.95 \$7<sup>78</sup></p>	<p>3 PIECE BATH SETS</p> <p>Reg. 11.75</p> <p>\$6<sup>99</sup></p>
<p>LADIES DRESSES</p> <p>60% Off Reg. Price</p>	<p><b>Family Boutique</b> 110 Central St. Knox City, Texas Open 8:30 to 5:30</p>		<p>ALL CHILDREN'S WEAR</p> <p>40% to 60% Off Reg. Price</p>



IT'S HAPPY VALENTINE'S DAY FEB 14

FRESH COOKED CORN DOGS 3 FOR \$1

NEW!! BREAKFAST AT ALLSUP'S  
HAM-EGGS-CHEESE ON A MUFFIN  
WITH SMALL ALLSUP'S COFFEE  
CANADIAN BACON-CHEESE ON A ROLL  
WITH SMALL ALLSUP'S COFFEE  
VISIT ALLSUP'S FAST FOOD-CENTERS ANYTIME!!  
\$1.79 VALUE \$1<sup>29</sup> EACH

PRICES EFFECTIVE FEB. 10-12, 1983 WHILE SUPPLY LASTS

LARGE SELECTION VALENTINE CANDY ASSORTED SIZES ASSORTED PRICES TO CHOICE FROM

LASTING BEAUTY FOR VALENTINE'S DAY SCENTED, ASSORTED COLORS WOOD ROSES HANDSOME DECORATOR STANDS \$5<sup>98</sup> EACH

Shurtline 46 oz Tomato Juice 69¢  
Del Monte Mix or Match Green Beans or Corn 17 oz can 3/1<sup>05</sup>

2/8 oz sleeves Shurfresh Soft Margarine 3/1<sup>00</sup>  
All Grinds Shurfine 1 lb can Coffee 1<sup>79</sup>

ALLSUP'S ASSORTED FLAVORS ICE CREAM \$1<sup>59</sup> 1/2 GAL. RND. CTN.

BORDEN'S HI PROTEIN MILK \$2<sup>19</sup> GAL. CTN.

## Letters To The Editor

(EDITORS NOTE: The Haskell Free Press will publish letters to the Editor dealing with any subject. All letters must be signed but names will be withheld by request. All letters are subject to editing for length and liability.)

Dear Editor:

Since the **Abilene Reporter News** did not see fit to give proper coverage on the Haskell Christmas Night Parade, a small newspaper did.

The **Twin Cities News**, Rule and Rochester's newspaper published excellent articles and pictures of Wanda's parade and then went to Austin with the Rochester High School Band and were featured in the inaugural parade for Gov. Mark White. Welcome Rochester signs greeted them on each side of Congress Avenue as they marched to the Capitol.

I am enclosing a copy of a Letter to the Editor of the **Twin Cities News** which I would like to see published in my old home town paper. I am also enclosing a gift for the building fund of the new Haskell Civic Center in memory of Lon Pate.

Yours very truly,  
Ed Sprowls  
Briarstone Manor  
Anson, Texas

Dear Editor:

My only sister, Mrs. Cecil Jetton Rt. 1 Rochester brings me your paper which I enjoy reading very much. I read with interest in the issue of Oct. 14 in your letters to the editor column the letter by one of your big boosters Bonnie Strickland who had some real nice things to say about the **Twin Cities News**. I certainly agree with her. A little pat on the back doesn't hurt anyone.

You are giving your communities of Rule and Rochester a real newspaper. I feel that the **Twin Cities News** will be the driving force that will keep Rochester and Rule out in front, alive, growing and progressing if your business men will just give you their support and I am sure they will because the business man in this modern day can see what newspaper advertising has done for others.

I will remember the hand set **Rochester Reporter** published by James Greer back in the twenties which took many tedious hours and the burning of much midnight oil to

produce. Mr. Greer moved the newspaper and he loved Rochester and the Rochester people. When Mr. Greer would attend the West Texas Press Association meetings all of the publishers wanted to talk with him about that hand set paper which thrilled him of course. None of them left the convention without knowing that Rochester was located in Haskell County.

This hand set newspaper was printed on a 22 inch job press purchased from the **Haskell Free Press**. When Mr. Greer and two Rochester men came for the press, I helped them load it on the truck.

At that I was Printers Devil and Linotype Operator on the **Haskell Free Press** whose owner and publisher was Sam Roberts and the editor was Lon Pate, a self-made man if there ever was one.

I am an old time printer who still has printer's ink in his blood and I have seen it all from Hand Set to Off Set.

Former owner, Editor and Publisher of the **Happy Herald**, **The Tulla Herald**, and the **Anson Western Observer**  
Ed Sprowls  
Briarstone Manor  
Anson, Texas

## Bertis White To Speak Sunday

Announcement was made this week that Bertis White of Abilene would be preaching at the Christian Church of this city next Sunday, February 13, and will continue thereafter as an interim minister until a located minister is available.

Mr. White is a native of Haskell and is a graduate of Dallas Christian College and has many years experience as a preacher. His wife, the former Chan King, also a native of Haskell, will accompany him to Haskell. The public is cordially invited to hear him.

WE NOW have zipper portfolios that are perfect for important papers, music, and etc. **Haskell Free Press**

## More Homeowners Turning To Heat Pumps

The heat pump, first marketed in the late 1950's, is receiving increased attention in the Southwest as heating energy costs increase.

A heat pump is a refrigeration device that can be used for both heating and cooling, explains Dr. Bill Stewart, agricultural engineer with the Texas Agricultural Extension Service, Texas A&M University System. It can either collect heat in a home and pump it to the outside in summer or collect heat in outside air and pump it into the home in winter.

Heat pumps may remove heat from air or other fluid such as well water. Heating efficiency varies with the temperature of the air or fluid, increasing as the temperature increases, says Stewart.

When winter temperatures are above 30 degrees F.—quite common in Texas—a typical heat pump can provide two-and-a-half or more times as much heat energy per kilowatt of electric power consumed as an electric resistance furnace.

Research at Oklahoma State University and Louisiana State University indicates that water source heat pumps may operate with seasonal efficiencies that are 25 percent or

more above those using air as the heat source, says the engineer.

Heat pumps are available as single packaged units for window or through-the-wall installation, or as split systems where the compressor is mounted outside and a heat exchanger and blower are mounted inside. Most central residential air conditioners are installed in a similar manner.

Most heat pump installations will require a supplemental source of heat—electric or gas—in winter when outside temperatures drop below about 30 degrees F.

Heat pumps provide a competitive heat source in most areas where propane or wood are the alternative heating energies, Stewart points out. However, heat pump installation and servicing requires special training above that for conventional refrigeration system service.

Be sure adequate service is available before choosing this type of system, he cautions.

PLASTIC PROTECTORS, SHEET 11x8 1/2, punched 3 holes, wide reinforcing flap. Comes with black mounting sheet. **Haskell Free Press**

## ROTC Scholarship Available

Two and three year Reserve Officer Training Corps scholarships, for freshmen and sophomore collegians are available, paying tuition and book expenses, for those selected, according to Capt. Robert Lively, assistant professor of military science at Hardin-Simmons University.

Both men and women are encouraged to inquire, he said.

"A US Army ROTC scholarship pays for one's college tuition and a flat rate from which one may purchase textbooks, equipment and supplies, as well as on campus laboratory fees and other related academic expenses for the period of the scholarship," said Capt. Lively.

Recipients receive a tax-free subsistence allowance of \$100 per month for 10 months each academic year that the schol-

arship is in effect. "An Army ROTC scholarship can be worth many thousands of dollars, depending on the college and major selected," according to Capt. Lively. Room and board are not provided.

Basic requirements relate to character, U.S. citizenship, age (be at least 17 and no more than 25), motivation, officer potential, medical, curriculum, academic. Certain extensions are granted to veterans, reservists and active duty personnel.

Upon completion of the program, a young man or woman, receives a commission as a second lieutenant upon graduation and serve four years of active duty or serve with the local National Guard or reserve unit.

Salaries of up to \$18,000 are offered to today's newly

commissioned lieutenants, Lively said. In four years and a promotion to captain, the salary climbs to in excess of \$30,000.

Lively said deadline for submitting papers on a two-

year scholarship is Feb. 19, and for a three-year scholarship, April 4.

More information can be obtained from Capt. Lively, HSU ROTC, 915-677-7281, ext. 344.

## College News

James E. Cloud of Rule, junior agronomy major, has earned "Dean's Honor Roll" status at Texas A&M University.

Recipients of the "Dean's Honor Roll" must earn at least a 3.75 grade point ratio, out of a possible 4.0, during the most recent grading period.

## Hermann Sons To Hold Meeting

Haskell Sons of Hermann Lodge #241 will hold their regular monthly meeting Sunday Feb. 13 at 3:00 at the Lodge hall.

The entertainment committee will serve a stew supper for \$2.00 a bowl or all you can eat. Members are asked to bring crackers and sweets. Tea and coffee will be served.

**SAVINGS**

## Galindo's

**Wednesday Night  
2 for 1**

**Beef or Chicken Enchiladas  
served with rice, beans, salad,  
homemade tostadas and  
picante sauce.**

**\$6<sup>99</sup>**

**Extra 50¢ off with this coupon**

**Orders to go—864-2322**  
**Hours 5:30 p.m.—9:00 p.m.**  
**No longer open on Sunday**

**SAVINGS**

# Hitch Your Wagon To Our Star!

With Super Starcheck You'll Earn Fully-Insured Money Market Rates With Only \$2,500.

# 9.25%

Now you can have daily access to your money and earn high-yielding money market rates, insured up to \$100,000 by the F.S.L.I.C., all at one time with Big Country Savings' new account—Super Starcheck.

\$2,500 will open your account.

With a balance of \$2,500 or more you will earn interest at the rate listed above. And if your balance drops below \$2,500, you'll still earn 5 1/4%.

We're eager to serve you better. So hitch your wagon to a Star. And open your Super Starcheck account today.



## BIG COUNTRY SAVINGS

Stamford, Haskell, Quanah, 3800 South Clack, Abilene and soon 2501 Cedar Springs, Dallas.

Member F.S.I.C.

## TAX PLANNING

Written by  
Richard E. Rodgers, CPA



## FARMER FILING DEADLINES!

Quarterly tax estimates are required for most non-salary individuals; however, these rules do not apply to farmers. According to tax law, a farmer for purposes of filing a 1982 "Form 1040" is an individual whose gross income from farming is at least two-thirds (66 2/3%) of his total gross income from all sources for 1982 or 1981.

For calendar year farmers there are two methods for avoiding penalties. First, a seldom used alternative was for the farmer to estimate his tax for 1982 and file and pay at least 66 2/3% of his total tax liability on or before January 15, 1983. If you paid this amount, then you have until April 15, 1983, to file your 1982 tax return. However, if you, like most farmers, did not file the January 15th estimate, then your only procedure for avoiding penalties on a 1982 "Form 1040" with a tax liability of \$200.00 or more is to file by **March 1, 1983**, and pay the entire tax due on the return. Many farmers do not realize that the only reason they have been paying penalties year after year in addition to the taxes is because they have not filed and paid the taxes by March 1st.

The penalty for farmers underpayment of estimated tax is 16% that begins January 15, 1983, and runs until the 1982 taxes are paid.

Many taxpayers at this time of year may be uncertain if they are considered a "Farmer" and if so, when should they file their return to avoid penalties. With I.R.S. interest rates at 16% presently, the only safe alternative for avoiding penalties is to see that your "Form 1040" is prepared and the balance due on your return is paid on or before March 1, 1983.

Sponsored by

**JAMES E. RODGERS & COMPANY**  
Certified Public Accountants  
20 Southwest Third Street  
Hamlin, Texas

# WANT ADS Work Wonders!

**NOTICE**  
The Haskell Free Press reserves the right to edit and/or delete all news stories and locals for length and liability and to refuse to print anything deemed not newsworthy.

**NOTICE**  
The deadline for Classified Advertising is 12 noon on Tuesday.  
**Haskell Free Press**

**For Sale**

FOR SALE: Gates fan belts, hose and clamps, Delco battery and changing oil filters, coal oil and Naptha and etc. Wilfong Texaco Station, 864-2766. 50tc

FOR SALE: Special 1977 Chevrolet Impala \$1395.00. Call 864-3927 or 864-3412. 11tc

LET US Price your next prescription. You will be glad you did. Johnson Pharmacy. 17tc

FOR SALE: 1-1000 gal. Fiberglass tank mounted on tandem trailer. Call 864-3423, or see at Haskell Butane. 23tc

AT STUD: Fee \$300.00. Thoroughbred son of the Great Rocket Bar Speedhorse. Also bred to run a mile. Dam Spring Mist. 100% producer. Victory Farms, Victor A. Davenport. Standing 1 mile west of Rochester, Texas 1-817-743-3493. 4-7p

PORTABLE CORRAL PANELS \$'x20' six bar panel \$45.00 delivered. Call 405/662-2046. 4-7p

FOR SALE: 1981 Ford 150 pickup, air, 4 speed, 2 tone paint. 3 year old App. Gelding, good broke, handles well. \$700.00. Call after 6 p.m. 864-2386. 4-7p

FOR SALE: Extra clean 1977 Buick Limited Landau. Call after 6 p.m. 864-3536. 5tc

DIRECT FROM FACTORY—Southwestern Brick in Snyder offers wholesale prices on 10 new Brick designs. ASTM Rated \$158.00 per thousand delivered. Call 915/573-5741. 6-7p

STANDING AT STUD. Flying Wonder AQHA sorrell. Wonderline and Flying Bob bloodlines. Breeding fee \$100.00 to approved mares only. (915) 773-2542 or (915) 773-5123. 6-9p

FOR SALE: 4020 John Deere LP, and double tool bar. Phone 864-2467 after 6 p.m. 6-8p

FOR SALE: 4430 John Deere with air conditioner. 4218 hours. 17' chisel plow. 15' chisel plow with 2-1' extensions. L.M. Patterson 422-4903, Munday. 6-8p

YOU KNOW A SOUND MONEY decision when you see it and designer jeans are the perfect investment. Just right for any occasion. Register for Valentine Heart of assorted chocolates. Master Card and VISA accepted. Jean Country. Northside of Square. 6c

FOR SALE: Pioneer Centrex stereo. AM-FM, 8-track, turntable, 2 speakers. Like new. 864-2425. 6htfc

FOR SALE: New Silver Royal Show Saddle. \$500.00. Also 1975 Lincoln Continental \$300.00. See at 202 S. Av. C. Haskell. 6-7p

FOR SALE: 1978 Ford Ranger XLT 3/4 ton. Runs good. Can be seen at 402 S. 12th after 8 p.m. or Sunday. Call 864-3594. 6p

FOR SALE: Shelled pecans. \$3.00 lb. 997-2561. 6-7c

FOR SALE: 45 piece set Noritake China. Donegal pattern. Never used. 817-422-4302. 6c

FOR SALE: Set of World Book Encyclopedia with two large dictionaries. Excellent condition. Call 997-2675. 6-7c

FOR SALE: 2300 cc 4 cylinder motor. 12.00 miles. Fits many Mustangs, Pintos and Couriers. Cheaper than overhaul. 673-2951 or 673-2151 and leave message. 6-7c

**Miscellaneous**

ATTENTION LAND OWNERS if your land is not leased for oil, Call 817-864-3087 or 817-864-2290. 31tc

FOR ALL YOUR CARPENTRY work, repairs, etc., Call 864-2127. Leland Thane. 5-8p

MOBILE HOME MOVING. Local or long distance. E.G. Edwards. 864-3837. 5-8p

WATER WELL DRILLING: House well, Stock, Irrigation Wells, Test Holes. Call W.P. Hise, 864-3727 Haskell, Tx. (Day or Night). 71tc

CHECK our prices at THE DRUG STORE. We will both be glad you did. 14tc

CIRCLE C DECORATING: "Interior and Exterior Renovation". See Steve Cothron for your interior or exterior painting, hanging wallpaper, paneling and siding needs. 864-3919. 39tc

HOME DECORATORS. Free Painting-Insulation. Estimates. Phone 743-3592 or 743-3550. V.A. Mitchell—Bobby O'Neal. Rochester. 31tc

**Miscellaneous**

NOTICE: Rochester Cafe is now open seven days a week from 5 a.m. to 8 p.m. Monday thru Saturday. 5 a.m. til 3 p.m. Sunday. Tuesday from 11 a.m. till 8 p.m. will be a Spanish Buffet. \$3.50 per plate. Friday-Catfish, same hours and price. 5-6p

GARDEN & YARD TILLING by Troy Bilt tiller. Also sharpen chain saws. Call Alvin Bredthauer 817-997-2366. 4-9p

INSTANT CASH for good used merchandise. A little or a lot. Phone 864-3197 anytime. Lackey's, Hiway 380 East, Haskell, TX. 6tc

WE NOW HAVE ready to go fruit and shade trees, grape and strawberry vines, bulk and package garden seed, onion plants and sets, seed potatoes. Cabbage, broccoli, cauliflower, brussell sprouts, tomato and pepper plants will be ready soon. Gann's Greenhouse, Rule. 997-2169. 6-7p

INCOME TAX SERVICES: Nights and weekends. Reasonable rates. 506 N. Av. D. 6-7p

LIQUID PAPER Correction Fluid in ledger colors including pink, greens, buff, blue and yellows. Perfect for stationery, too! Haskell Free Press

**Lost & Found**

LOST: Red cross-bred cow with white face. Has red sneaks on face and heifer calf one month old. Strayed from northeast of Stamford. Call 915/773-3180 5-7c

**Bus. Opportunity**

STEEL BUILDING DEALER for International Manufacturer. High profits, opportunity for company expansion. 1-800-525-9240. 5-8p

OWN YOUR OWN Jean-Sportswear, Infant-Preteen or Ladies Apparel Store. Offering all nationally known brands such as Jordache, Chic, Lee, Levi, Vanderbilt, Calvin Klein, Wrangler over 200 other brands. \$7,900 to \$16,900 includes beginning inventory, airfare for one to Fashion Center, training, fixtures, grand opening promotions. Call Mr. Loughlin at (612) 888-6555. 6p

**Help Wanted**

WANTED: Need a hairdresser for 3-4 1/2 days a week. Call Robbie at 864-2566 for more information. 5-6c

MAJOR U.S. NUTRITION Corporation needs independent contractors in this area to introduce revolutionary new safe weight loss program. Training classes starting now in Abilene, weekday evenings or weekends. Car, incentive travel, insurance, medical benefits, available. Part-time income \$500-\$1200 first month. Full time income potential \$25-50,000 plus first year. Call 915-692-6233 for appt. or write Box 6401, Abilene, 79608. 6-7p

HELP WANTED: Two openings for a Green Thumb worker. 24 hours a week \$3.35 an hour. Years 55 and above. Experienced Citizens Center. 6-7c

NOTICE: The Haskell Post Office is trying to identify interested bidders for a cleaning services contract. All cleaning supplies will be furnished by the Post Office. This would make an excellent part-time job and could even be performed by a high school student if contracted by the parents. If you are interested, or know of someone who would be interested in bidding on this contract, please contact the Postmaster at 817-864-2811 for further details and placement on the bidder's list no later than one week from the date of this announcement. 6-7c

**For Rent**

FOR RENT: 1 bedroom furnished apartment. Call 864-3509. 11tc

FOR RENT: 3 bedroom unfurnished house. Good location. John Larned. 864-2504. 6c

FOR RENT: 2 bedroom house at 402 N. 4th. Contact 200 N. 3rd. 6p

**Collectibles**

COLLECTIBLES  
Victorian Tilt-Top Table, Pie Safe, Gramophone, Cakestands, Hall Trees, Coal Boxes, Bookcases, Biscuit Barrels, Wall Cabinets, Drowleat Tables, Tea Trolley, Marble Top, Washstands Tobacco Jars, Music Boxes, Norman Rockwell plates, Hummel plates, figurines. SHERMAN S ANTIQUES

**Real Estate**

FOR SALE: Approximately 162 ac. farmland 6 miles north of Stamford. Call 214-221-3374. 3-6p

FOR SALE BY OWNER: 2 bedroom, one bath, fireplace, large fenced backyard, excellent neighborhood. Priced to sell. Call for appointment after 5, 864-3531. 49tc

FOR SALE OR LEASE: Large building at 400 S. Av. E. Phone 864-3010 or Anson 915-823-2169. 41tc

LA ESCONDIDA building for sale. Moved off the lot. Call 503 Av N East. 864 80 1. 6p

**Public Notice**

RATE INCREASE—B-K Electric Cooperative's rate increase will be reflected on the February 28th, 1983 billing to its consumers. If there are any questions please call the cooperative. 6-7c

NOTICE: The Knox City Greyhounds want to borrow or buy a recording of the KVRP broadcast of the Knox City vs. Meridian Bi-district football game at Graham and/or the Knox City vs. Vega Area game at Childress. Either an 8 track or cassette will do. Contact Mrs. Whitley at the Knox City High School. 658-3521. 6c

**Real Estate**

**FOR SALE**

2 1/2 miles south of Rochester on west side of Hwy. 6. 4 bedroom country rock home. Super price. \$30,000.00. Shown by appointment only.

2 Bedroom, Vinyl Siding. Needs a lot of work but priced to sell. Excellent lot. 1110 N. 5th. Haskell.

Haskell County Farm—160 acres excellent soil, 2 irrigation wells without pumps. Approximately 1 mile east of O'Brien. \$850 per acre, must sell to settle debts, loan available.

14 acres all cultivated, 2 miles South of Knox City. Use your Texas Veterans. \$20,000.00.

175.3 acres Haskell County. 4 1/2 miles west of O'Brien. Approximately 80 acres cultivated, 80 acres wooded and crossed fenced. \$340.00 per acre.

207 acres 1 mile north of Knox City. Has assumable loan for \$60,000. Salt water disposal will pay \$100 a month. \$900 per acre.

74 acres 2 miles south of Knox City. Irrigation well, good land. \$1,000 per acre.

Knox County, Texas. 120 acres excellent farm land, irrigation water available. 1 mile south-east of Knox City. \$1,200 per acre with minerals negotiable.

**Counts Insurance & Real Estate**  
Knox City  
817-658-3211  
Call  
Charlene Brothers  
864-3832

**FOR SALE**

ADDISON DRIVE three bedroom on large lot two baths, large closets, family room with beautiful fireplace, lots of built ins, two car finished garage, ceiling fans, good water well with underground pipes. Extra large storage & shop bldg. with boat port. By appointment only. Please.

Choice Building Lots in new built up addition.  
CLEAN 3 bedroom stucco brick one bath separate dining room close in on easy to care for lot. Priced Right.

EXTRA SPECIAL beautiful 3 bedroom, 3 bath, on 3 acres, just off Highway 277 has sunken den with fireplace, built in cabinets more. Will consider trade for house in Haskell.

Two bedroom 1982 Mobile Home 14x60. Equity & Assume.

SIX BEDROOM with 3 baths on black top road. Large basement. Located on 10 acres.

SUPER BUY—South side 3 bedroom brick with 2 baths separate den & ceiling fans. FHA Approved.

3 BEDROOM BRICK one bath, utility room, carport fenced yard N. Av. L \$33,500.

EXCELLENT LOCATION on this large one bedroom frame, completely redone on inside. Includes Range & Refrigerator.

GAINES COUNTY FARM 320 acres with 2 bedroom house. 100% allotments. 3 tractors with 6 row equipment. 3 wells with stripper & deep plows. 4 sideroll irrigation units. 1 mile highway frontage one side. 1/2 mile highway frontage on one side. Owner would trade for farm or dwelling in Haskell County or sell and carry paper.

**FOR SALE**

Three bedroom 1 bath stucco, South 9th.

Three bedroom one bath frame, cellar, carport, North Ave. C.

Lake house in Earl's camp, central H/2 A/C, carpet, range, private channel.

Large lake house in Veta's camp, central H/A, carpet, 3 car carport, on water.

Church Bldg. 300 N. Av. C. Building Lots. Haskell & Stamford. List With Us!

**Frances Arend Real Estate**  
408 N. First  
864-3880 864-3156

**FOR SALE**

New listing good neighborhood priced to sell large lot with big trees over 2000 sq. ft., 3 bedroom, formal dining room, formal living room and family room, 2 bath, breakfast area, draperies and carpeted throughout.

3 bedroom, 1 bath 1/2; efficiency kitchen; formal living room; large den with beamed ceiling and fireplace; utility room, new carpet, large shade trees and good water well; ceiling fans and new gas cookstove; attached garage and carport in back. Excellent neighborhood. Appointment only.

New listing under \$20,000. 2 bedroom, 1 bath, new carpet, large rooms, older home.

3 bedroom imitation brick, 1 bath, living room, den redwood paneling, garage, patio, and outbuildings. 201 South Ave. N. Owner financing to right person. Owner needs to sell this one.

If you like country living, call on this one. 3 bedroom, brick, fireplace, 2 baths, ceiling fans, new carpet, located on 1 acre. Priced to sell.

We Have Several Lots.

WE NEED LISTINGS!

**DOYLE HIGH REAL ESTATE**  
864-3872 or 864-2515  
after 5:00 and 12-1 p.m.  
Call  
Betsy Nanny 864-3521  
Doyle High 864-2815

**Card of Thanks**

CARD OF THANKS  
We would like to thank each one of the Naomi Sunday School class for the food they have cooked and brought to our house this week. Mrs. Ardith Reynolds. 6p

CARD OF THANKS  
We thank everyone who expressed sympathy by phone calls, food, cards, visits, donations, flowers and your prayers in the loss of our sister, Cleo Harris. Juanita Lewis, Berlie B. Henderson, Eloise Diles, Lee A. Henderson. 6p

CARD OF THANKS  
Thanks to Dr. Frank Cadenhead for five or six more years of Cleo (Henderson) Harris life on the dialysis and others. Mrs. Cliff Dunnam has helped in many ways food, clothes, flowers and donations. Thanks to the First Baptist Church for the van for transportation for Rev. E. Flanders and the members to Marlin, Texas for her funeral. The family spirit did rejoice in a way to see them there. May God's blessing forever be with all of you all. The family of Cleo Harris. 6p

CARD OF THANKS  
To each and everyone of the wonderful people who helped me get through a bad time, a very sincere and heartfelt thank you, for your prayers, gifts, beautiful cards and pot plants which I am still receiving. Thanks to Dr. Thigpen and Dr. Cadenhead and all nurses of the hospital, and also the staff at the Haskell Nursing Center, each nurse and aide, helpers of any kind were so good to me. Then I especially want to thank my wonderful children, for the care they gave me and the sacrifices I know they made for me and the rest of my family. Then last but not least my pastor Bro. Mike and the entire church and other churches for prayers and visits. Again thank you all, we will never forget you. Clara Holt. 6p

**New House For Sale**

1800 sq. ft. brick, 2 baths, fireplace, covered patio, built ins, 2 car garage, outside City limits. Qualifies for farm loan.

Lumber Yard  
864-3552  
after 5 864-3431 1tc

**MOBILE HOME SUPPLIES**

The Big Country's most complete mobile home and RV supply store is at ABILENE MOBILE HOMES. Open all day on Saturday.

ROOF COATING  
DYTON white plastic roof coating is the best sealer on the market.

Covers 250 sq. ft. on metal roof.

\*SPECIAL 5 Gallons \$68.00

ANCHORS

**Abilene Mobile Homes**  
Call 915/672-6466 We ship too!  
4618 N. 1st Abilene, Texas

**Gonzales Plumbing**

204 N. Ave. A  
Electric Sewer Machine, Repair Gas & Water leaks. New jobs and remodeling, Sewer leaks.  
Licensed Plumber  
864-2190

**WANTED LVN:**

Someone special needs you!  
Try Geriatric nursing. Will be a rewarding experience. Position available from 7-3. Excellent pay with paid holidays. Excellent major medical and life insurance.  
Apply in person at  
1000 N. Broadway  
Aspermont or Call  
817-989-3526

**Card of Thanks**

CARD OF THANKS  
I would like to express sincere thanks to everyone for the thoughtfulness shown us during my recent stay in the hospital. To those who came to be with my family during my surgery, to those who visited me later and thanks to those who sent cards and beautiful pot plants. A special thanks to Dr. Joe Thigpen, Dr. Frank Cadenhead and the nurses at the hospital. Jesse Dean and family. 6c

CARD OF THANKS  
Your continued kindness and concern have inspired and comforted us throughout Mike's illness. We wish to express our sincere gratitude to all who have helped us through these difficult times. The family of Mike Bland, Cindy and Michael Bland, Mrs. Buck Bland, Mark and Dana Gibson. 6p

WE HAVE Riverside Family Reference Bibles. These large Family Bibles include presentation page, complete family record section, Biblical Cyclopedic Index, Study Helps, Great Bible Truths, Beautiful Illustrations, full page maps, padded cover with velva-gold edges. Haskell Free Press

**HOMEOWNERS POLICY**  
Call:  
Brian Burgess  
703 N. Av. E.  
864-3250  
State Farm Fire and Casualty Company

**Medicare Supplement**  
available at  
The Hartsfield Agency

**Gardener's Planting Guide**

14-15  
potatoes  
16-18  
corn, celery spinach,  
mustard  
C&G Feed & Seed  
300 N. 1st 864-2725

**SIMPSON'S ELECTRONICS**  
10 N. Av. D  
Phone 864-3111

**PUMPS**  
Irrigation-Domestic  
Formation Testing  
Well Drilling  
We pull & repair all makes.  
REA PUMP CO.  
Haskell, Texas  
Call 864-3372 after 6 p.m.

**Good Used Color TV's, Stereos & Washer/Dryers**  
Anderson Tire Co.  
206 S. Ave E Phone 864-2900

**Allstate**  
You're in Good Hands

**Hess Hartsfield**  
417 S 1ST BOX 607  
HASKELL, TEXAS 79521  
(817) 864-2665

**PAINTING CONTRACTORS**  
Residential or Commercial  
Inside or Out  
New and Remodel  
Reasonable Competitive Rates  
Phone 422-5398  
after 5 p.m. 6-9p

**ASI**  
1203 S. Ave E  
864-2926

**LINDSEY ELECTRIC**  
ALL TYPES ELECTRICAL SERVICES  
COMMERCIAL, RESIDENTIAL,  
OIL FIELD TROUBLE SHOOTING,  
AND IRRIGATION WELLS  
817/743-3218  
ROCHESTER, TX  
BARRY LINDSEY, OWNER

**Jones Plumbing**

If you call our number in Haskell 817-864-3010, you will probably get a recording. Please leave your message on it and we will call you back. If you have an emergency, call the Anson number 915-823-2169.

Haskell  
817-864-3010  
61tc

**FOR SALE**

We are now showing the W.C. Winchester home south of Knox City with approximately 10 acres of farm land.

This fine home has three bedrooms, two are extra large, two full ceramic baths with vanities, living room, dining room, kitchen with spacious cabinets, double ovens, refrigerator & range, breakfast room with hutch, office, 22'x22' family room with fireplace and large built in bookcase and entertainment center, large utility & storage, two car garage. There is a 10'x12' outside storage bldg. on a slab and a guests or servants quarters, large storm cellar and also an underground bomb shelter. A three bedroom stucco tenant dwelling and two large iron clad barns go with this beautiful country home.

For Appointment Call  
**The Hartsfield Agency**  
864-2665  
Loraine Johnson  
864-2951  
Haskell, Texas

**INSURANCE**

**Life • Health Auto Farm • Home**  
CHARLES THORNHILL  
522 South 2nd, Haskell  
—Phone 864-2842—  
National Farmers Union Insurance Companies

**USE NOW**

**ferti-lome WEED and FEED SPECIAL**

Kill winter weeds Prevent spring weeds

**ferti-lome ASI**  
1203 S. Ave E  
864-2926

**THE HARTSFIELD AGENCY**  
INSURANCE-REAL ESTATE  
LOANS  
817-864-2665  
417 S. FIRST ST. HASKELL



1202 North Avenue E



STORE HOURS:  
SUN. 9 A.M.—6 P.M.  
MON.-SAT. 8 A.M.—8 P.M.

PRICES EFFECTIVE FEB. 9-13, 1983—QUANTITY RIGHTS RESERVED

SILVER SPUR  
SLAB SLICED  
**BACON**

**\$1.79**  
LB

SHURFRESH  
CANNED

**HAMS**

3 LB **\$6.59**



PILGRIM'S PRIDE  
GRADE "A"  
MIXED

**FRYER PARTS**

**38¢**  
LB

Now For The First Time...

**THE SESAME STREET LIBRARY**

Volume 1 only **99¢**

VOLUMES 2-15 **\$2.69** each

Make Learning Fun For Your Children!

USDA Choice Heavy Beef BONELESS ROUND STEAK	<b>\$1.78</b> lb
Tenderized	<b>\$1.98</b> lb
BONELESS RUMP ROAST	<b>\$1.99</b> lb
BONELESS SIRLOIN TIP STEAK	<b>\$2.69</b> lb
BONELESS TOP ROUND STEAK	<b>\$2.19</b> lb
Extra Lean and Tender CUBE STEAK	<b>\$2.99</b> lb

PILGRIM'S PRIDE USDA "A" FRYER DRUMSTICKS	<b>98¢</b> LB	BREAST	<b>\$1.18</b> LB
FRYER THIGHS	<b>88¢</b> LB	WINGS	<b>68¢</b> LB

COLOR TEX

**BATH TISSUE**

ASST. 4 ROLL PACK

**49¢**

DEL-MONTE

**GREEN BEANS**

CUT OR FRENCH STYLE

3 **\$1.00**

16 OZ CAN

JENO'S ASST'D PIZZAS

Crisp 'n Tasty PIZZA

10.1-10.8 OZ PACKAGE

**\$1.09**

SHURFRESH EGGS

GRADE A LARGE

**59¢**

DOZ

SHURFRESH BISCUITS

10 Ready to bake BISCUITS

**\$1.00**

7 8 OZ CAN

LIMIT 7

CHIFFON SOFT STICK MARGARINE

1 LB CAN

**49¢**

DEL MONTE TOMATO SAUCE

4 **\$1.00**

8 OZ CAN

TRAIL BLAZER DOG FOOD

25 LB BAG **\$4.29**

HEAD & SHOULDERS REG. OR CONDITION SHAMPOO

11 OZ **\$2.49**

CLEAR EYE 5 OZ EYE DROPS

**\$1.59**

WOLF PLAIN 15 OZ CAN CHILI

**99¢**

MR. JUMBO TOWELS

2 FOR **\$1**

FRESH GREEN CABBAGE

**7¢**  
LB

U.S. NO. 1 D'ANJOU PEARS

**49¢**  
lb

CHILE NECTARINES

**89¢**  
LB

RED, WHITE AND YELLOW ONION PLANTS

3 BUNCHES **\$1.00**

WASHINGTON EXTRA FANCY GOLDEN DELICIOUS APPLES

**39¢**  
LB

SHURFRESH HOMO MILK

1/2 GALLON

**69¢**

With 1 Filled Superstar Booklet

FARM FRESH BREAD

24 OZ LOAF

**29¢**

With 1 Filled Superstar Booklet

SHURFRESH MED. EGGS

DOZEN

**39¢**

With 1 Filled Superstar Booklet

SHURFRESH MARGARINE

1 LB CTN

**29¢**

With 1 Filled Superstar Booklet

GOLD MEDAL FLOUR

5 LB BAG

**69¢**

With 1 Filled Superstar Booklet