

Staff Photo by Don Comedy

## IT'S FOOTBALL TIME

The Haskell Indians will open the 1982 season this Friday night hosting Jim Ned. The Tribe has scrimmaged Cisco and Merkel and coaches are pleased with improvements, but are still fine-tuning the team. Jim Ned runs a veer offense and a split-six defense. Game time is 8 P.M.

# Lone Star Files For Rate Increase

Lone Star Gas Co. Manager, Steve Roper, today filed an application for a rate increase which would raise the average residential customer's monthly bill in Haskell about \$2.54 in the winter and \$2.54 in the summer.

Based on Lone Star's rate application, a residential customer who uses an average of eight thousand cubic feet of gas a month paid \$36.36 for gas service in the winter. Under the requested rate, that same customer would pay \$38.90.

Commercial gas customers' rates would also increase under the requested rate schedule.

"Our customers are accustomed to dependable natural gas service," says Roper. "This rate increase is necessary to continue a high performance level and for other necessary expenses, such as maintaining and improving the local pipeline distributor system, which are vital to dependable service."

Lone Star's last rate increase in Haskell became effective February 1981.

"Since that time, every business, including Lone Star, has experienced increased operating expenses," says Roper. "And, of course, unlike other businesses that can raise their prices as expenses go up, we must apply to the city council for a rate increase. No one likes rising prices, but any business must

earn enough money to meet operating expenses and still achieve a reasonable profit. Even though our expenses have gone up, Lone Star still has one of the lowest average operating costs per customer when compared to any of the other major gas utilities in Texas."

# Local Game Warden Seeks Cooperation

Steve Barbour, local warden with Texas Department of Parks and Wildlife, has asked for the cooperation of all local hunters and residents during fall hunting seasons.

With the opening of dove season September 1, Barbour told the *Free Press* that hunters need to brush-up on their awareness of game laws.

Several relatively new laws which Barbour asked hunters to remember

include:

\*Spotlighting from a road is unlawful;

\*Limits for dove are 12 per day and 24 in possession;

\*Trespassing laws include penalties of up to 180 days in County jail and/or a fine of up to \$1,000.00 for persons found guilty of trespassing without a firearm and up to one year in the County jail and/or a fine of up to \$2,000.00 for persons found guilty of trespassing with a firearm.

According to Barbour, the majority of citations during dove season include violations of the following game laws:

Dove season opens 30 minutes before sunrise and closes at sunset; hunting over a baited area is unlawful; birds killed by several hunters may not be pooled; no hunter may transport more than 24 birds; hunters may not shoot from a vehicle or shoot across, along or

from a public road; all shotguns must be plugged to accept no more than three shells; each bird is a separate offense; and weapons may be confiscated and held until final disposition of the case.

Barbour requests the assistance of all area persons in making this a fun, successful and safe hunting season. He can be reached by phone at his home, 864-3656, or by radio by contacting the Sheriff's office, 864-2345.

## Sunset Community Homecoming Set

The Sunset Community Homecoming of 1982 will be held at the Munday High School on Sunday, September 5th. Registration will begin at 9:00 a.m.

A catering service is planned for the noon meal on Sunday. There will be a fee charged for the meal.

Rev. Mart Hardin will conduct the morning services at 11 a.m.

For more information call Mrs. Myrtle Partridge Everett, 422-4020 or Mrs. Winters Groves Matthews, 422-4666.

## After Game Fellowship

The First Baptist Church will sponsor a Fellowship after the football game Friday night, in the Church Fellowship Hall. Entertainment will be provided. Students in grades 7-12 are invited.

## Boy Scouts To Hold Roundup

The Boy Scouts of America will hold a Roundup at 7 p.m., Tuesday, September 7, in the Haskell Elementary School.

New this year is Tiger Scouts, designed for 7 year old boys or those in second grade.

Cub Scouts is open to boys in grades 3-5 and Boy Scouts is open to boys in the sixth grade.

All parents of interested boys should attend the meeting.

## Young Homemakers To Get Acquainted

The Haskell Young Homemakers are having a "get-acquainted" ice cream sundae party for present members and prospective members.

The fun begins at 7:30 Thursday night at the Haskell National Bank Community Room.

All women from college-age to 35 are invited to come enjoy the ice cream and learn more about the club.

## Retired Teachers To Hold Meeting

The Haskell County Retired Teachers Association will meet in regular session at 12:00 o'clock on Tuesday, September 7, at the Porthole.

President H.E. Charles will briefly discuss legislation that applies to the retired teacher.

All retired teachers are urged to attend this meeting.

involve alcohol.

"Some people tend to drink more during the holidays and then attempt to drive. By doing so, they show a low regard for the well-being of themselves, their passengers and other motorists. Drunk driving is obviously one of the most dangerous risk factors facing motorists today," he said.

DPS statistical reports show 23 percent of traffic deaths reported last year involved alcohol. However, Adams said, "About 50 percent or more of the traffic deaths in Texas are alcohol related."

"State law does not provide for mandatory blood alcohol testing on drivers who were believed to have been drinking. When we compare accident reports and national statistics, it is easy to estimate the number of accidents which involve the drinking driver," he said.

Last year during Labor Day, 50 persons were killed in urban and rural traffic accidents. Eight more persons died later as a result of injuries suffered from accidents which occurred during the 78-hour holiday.

"Local highway patrol commanders will assign the additional troopers as they deem appropriate to assist the holiday traveler and to watch for drivers who violate traffic laws," said Adams.

The Labor Day holiday is traditionally one of the last holidays of the summer vacation period and extensive travel and heavy traffic can be expected.

## Band Boosters To Meet Tonight

All band parents are urged to attend a very important business meeting tonight, September 2, at 7 p.m. in the Band Hall.

The purpose of the meeting is to discuss and plan various Band Booster activities and to decide on projects for the coming year.

The Band Boosters organization is dedicated to serving and assisting Haskell School Bands and all parents are urged to participate.

# Cattlemen's Round-Up Chairman Named

Bobby Parrott has been appointed Haskell County chairman for the Cattlemen's Round-Up for Crippled Children, according to Jim Alexander, a general Round-Up chairman. The Cattlemen's Round-Up for Crippled Children benefits the West Texas Rehabilitation Center with campuses in Abilene, San Angelo, and Snyder, stated Shelley V. Smith, WTRC's Executive Director.

"Livestock donated by ranchmen are collected at a designated point in each community and transported free to the auction site," Alexander explained. "The county chairman's role is to make a personal pledge, then ask friends and neighbors to join them in the annual CRCC drive."

Sales of livestock are converted to dollars and the amount provides care for about 10,000 handicapped persons throughout the Southwest at Rehab campuses.

Scheduled sales include Abilene Auction, September 27; Abilene horse sale, October 2; Junction

sheep and goat sale, October 4; Coleman sale, October 6, and Brownwood sale, November 3.

Jim Franklin of San Angelo is CRCC co-chairman in the Southwest region. Midwest Feedyards in San Angelo serves as the regional collection point.

CRCC is now 22 years old. The idea began in Bronte on the late Conda Wylie's Fort Chadbourné Ranch. He came to Smith with the suggestion that 20 top steers be cut from his herd and sold to help defray operational expenses of WTRC.

The results speak for themselves. Today WTRC reaches out to all handicapped in the Southwest. With a goal for treating the whole patient rather than just the handicap, services offered include physical therapy, social services, psychology, orthotics, diagnostic services, educational, adaptive equipment shops, audiology, medical clinics, genetic counseling and transportation.



Congratulations this week to Mary Watson who successfully completed the cliché contest and was the first to decide that it was impossible to enter the contest according to the rules.

Mary called the office a couple of days after the contest was announced and said, "number one, it's not possible to have a letter postmarked after midnight and number two, there will not be a September 1, issue of the *Free Press*."

Right on both accounts and again, congratulations to Mary for being the first to figure out, "there isn't any way".

In all, about 30 entries were submitted and no one got all of the

answers as submitted by the author. Several missed only number 21, which incidentally also had a typographical error which added to the confusion.

Several sidelights to the contest: received an entry from Barbara Kimbrough which had a note written in Spanish attached to the bottom which has still not been translated and also received an entry from Glenda Drinnon's Speech I class, who began the school year studying periphrastics (that's the word that means "fancy word clichés"). Attached to their entry were eleven more phrases.

Printed below are the answers to the contest and I hope you will look forward to the next big contest.

2. Look before you leap.
3. Birds of a feather flock together.
4. Beauty is only skin deep.
5. Don't cry over spilt milk.
6. Cleanliness is next to Godliness.
7. The pen is mightier than the sword.
8. You can't teach an old dog new tricks.
9. Spare the rod and spoil the child.
10. A watched pot never boils.
11. All that glitters is not gold.
12. Where there's smoke there's fire.
13. Beggars can't be choosers.
14. Too many cooks spoil the broth.
15. Charity begins at home.
16. Dead men tell no tales.
17. People who live in glass houses should throw no stones.
18. Beginner's luck.
19. All work and no play makes Jack a dull boy.
20. Rolling stones gather no moss.
21. The last chance is your best chance.
22. Nothing ventured, nothing gained.
23. Sticks and stones may break my bones, but words will never harm me.

**THE HASKELL**

**FREE PRESS**

25¢  
16 PAGES  
Plus Insert

"HASKELL—A GOOD PLACE TO VISIT: A BETTER PLACE TO LIVE"

VOLUME NINETY-SIX HASKELL, TEXAS 79521, SEPTEMBER 2, 1982 NUMBER THIRTY-FIVE

# Alcohol-Speed Cause Most Holiday Deaths

Although motor vehicle fatalities are down by five percent statewide as compared to the same time last year, the Texas Department of Public Safety is estimating 47 traffic deaths over the forthcoming Labor Day weekend.

DPS Director Colonel Jim Adams said he is not optimistic that the holiday period would reflect any fewer deaths than anticipated. However, he said that drivers could help limit the number of fatalities by using seat belts, maintaining a safe speed and refraining from drinking while driving. He said about half of the holiday deaths would probably

involve alcohol. "Some people tend to drink more during the holidays and then attempt to drive. By doing so, they show a low regard for the well-being of themselves, their passengers and other motorists. Drunk driving is obviously one of the most dangerous risk factors facing motorists today," he said.

DPS statistical reports show 23 percent of traffic deaths reported last year involved alcohol. However, Adams said, "About 50 percent or more of the traffic deaths in Texas are alcohol related."

"State law does not provide for mandatory blood alcohol testing on drivers who were believed to have been drinking. When we compare accident reports and national statistics, it is easy to estimate the number of accidents which involve the drinking driver," he said.

Last year during Labor Day, 50 persons were killed in urban and rural traffic accidents. Eight more persons died later as a result of injuries suffered from accidents which occurred during the 78-hour holiday.

from a public road; all shotguns must be plugged to accept no more than three shells; each bird is a separate offense; and weapons may be confiscated and held until final disposition of the case.

## Sunset Community Homecoming Set

The Sunset Community Homecoming of 1982 will be held at the Munday High School on Sunday, September 5th. Registration will begin at 9:00 a.m.

A catering service is planned for the noon meal on Sunday. There will be a fee charged for the meal.

Rev. Mart Hardin will conduct the morning services at 11 a.m.

For more information call Mrs. Myrtle Partridge Everett, 422-4020 or Mrs. Winters Groves Matthews, 422-4666.

## After Game Fellowship

The First Baptist Church will sponsor a Fellowship after the football game Friday night, in the Church Fellowship Hall. Entertainment will be provided. Students in grades 7-12 are invited.

## Boy Scouts To Hold Roundup

The Boy Scouts of America will hold a Roundup at 7 p.m., Tuesday, September 7, in the Haskell Elementary School.

New this year is Tiger Scouts, designed for 7 year old boys or those in second grade.

Cub Scouts is open to boys in grades 3-5 and Boy Scouts is open to boys in the sixth grade.

All parents of interested boys should attend the meeting.

## Young Homemakers To Get Acquainted

The Haskell Young Homemakers are having a "get-acquainted" ice cream sundae party for present members and prospective members.

The fun begins at 7:30 Thursday night at the Haskell National Bank Community Room.

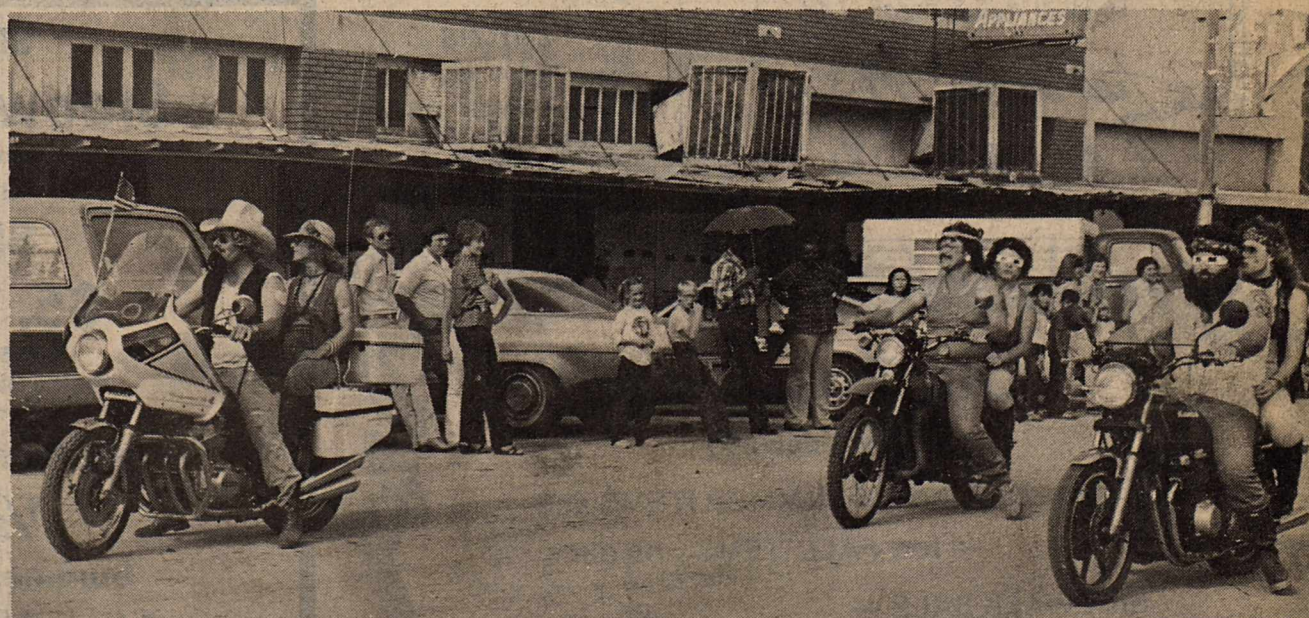
All women from college-age to 35 are invited to come enjoy the ice cream and learn more about the club.

## Retired Teachers To Hold Meeting

The Haskell County Retired Teachers Association will meet in regular session at 12:00 o'clock on Tuesday, September 7, at the Porthole.

President H.E. Charles will briefly discuss legislation that applies to the retired teacher.

All retired teachers are urged to attend this meeting.

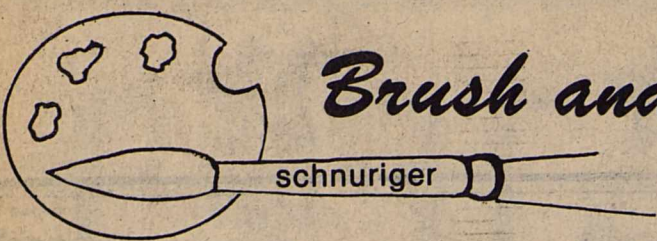


Staff Photo by Don Comedy

## DISGUISED

Three Rule couples, Mr. and Mrs. Robert Turner, Mr. and Mrs. Lynn Dale Dudensing, and Mr. and Mrs. Tommy Davis, appeared near the end of the Rule Jubilee Parade last Saturday. The parade was followed by music, entertainment and a giant barbecue in the park, highlighting the special activities of the day.





## Brush and Palette

Jean Parrish (daughter of Maxfield Parrish) uses Masonite to paint on because it allows her the freedom to cut off any unpleasing parts and save the salvagable. She likes the option of cropping so she starts with a large masonite panel and perhaps salvages a 12 x 16 or 9 x 12. How many times have you had a part of a canvas that did not make good composition and wished you could do something about it? Masonite panels are excellent foundations so perhaps you could do what Miss Parrish did. To do this and determine the size you can salvage, make a cardboard mat the size you think is the good part of the picture, then cut away the undesired portion.

Q. Is there some kind of protective finishing glaze or varnish for paintings that doesn't leave a sheen?

A. Yes, all varnishes that are labeled "matte" will not leave a gloss. Windsor & Newton makes Liquin that will produce a velvet coating, which is non-glossy.

Q. Is there anything that I can do to take away the shine or gloss?

A. A very light rubbing with 000 sandpaper over the entire picture to take away the very top pigment and then apply the Liquin or matte varnish, should take away the gloss.

Q. How can I repair a hole in a canvas?

A. Good luck! This is usually a process for professionals. First, dampen all threads around the puncture. A small hole or puncture can be repaired by weaving a few strands of linen (or cotton) threads to make the size of the hole. Then place them back of the hole and impregnate thoroughly with Rabbit Skin Glue. Follow instructions to cook the glue on the container. The glue will begin to gel and dry soon. Then cover it with

wax paper and place a weight on it. Let this set 24 to 36 hours. Some light sanding might be necessary before you apply your paints.

Another method is to use a piece of the same canvas (making sure that all threads match those in the puncture) and place on the back of the canvas, attaching with the glue as above. Very small holes can be plugged with Gesso and only a few tiny threads laid across it. Let dry under weight. For more details on larger holes, refer to "Ralph Mayer's Handbook".

HINT: Marshall Joyce said, "My next picture is going to be my best."

Write your questions and hints to me, Faye Schnuriger, P.O. Box 134, Haskell, Texas. I will not use your name but do want you to sign your letters.

## Garden Club Holds Salad Luncheon

A salad luncheon will open the first meeting of the Haskell Garden Club, Sept. 9, at 11:30 a.m. in the Community Room. Mrs. Herbert Basse of Stamford will conduct a workshop on flower arrangements. She is a National Flower Show Judge and has judged many flower shows all over the state including several for Haskell.

The Year Book theme is, "Listen to Our Garden Sing". The first song, "Over the Rainbow" begins the new year with the luncheon and everyone interested in learning arrangements is invited to attend.

A preview of the flower show coming in September at the Fair is the theme: "Tis the Season".

One division will use all fresh flowers.

"Old Time Echoes"; "Tis Harvest Time" (using vegetables, fruits and flowers); "Country Kitchen"; Using all dried materials; "Falls Last Fling"; "The Winds of Autumn"; "To Everything There Is a Season".

In the creativity division, all dried material can be used; all fresh; or dried and fresh together.

"Western Horizon"; "To tomorrow's Dreams"; "It Takes a Heap of Doing For The Season".

We invite people all over the county to make one or more arrangements. The more the bigger and prettier the show. You do not have to be a Garden Club member, although we would love to have you as a member or a visitor any time.

## Nancy Sims To Speak To WAF

The Aspermont chapter of Women's Aglow Fellowship will meet on Thursday, Sept. 9, at 7:30 P.M., in The New Place, in Aspermont.

Speaker for this meeting will be Nancy Lee Sims of Weatherford. Nancy moved to Ft. Worth, from Albion, New York, in 1977. She has ministered in music in many different capacities in Texas,

Oklahoma, and Montana. Nancy worked with Carolyn and Jerry Saville in 1977; has ministered in prisons in Oklahoma; to Teen-Challenge groups, Aglow Fellowships, revivals and many other groups. She plays several musical instruments and is music teacher at Gospel Outreach A.C.E. Academy, Azle.

Nancy attended Christ for The Nations Institute during the summer 1982 session, studying piano, drums, guitar and voice. She is secretary for Cowboys for Christ Evangelical Association and is married to comboy/preacher Arlie Sims.

Women's Aglow Fellowship extends a special invitation to all interested women of the area to come and share in the blessings of Nancy Sims musical ministry.

**Births**

Mr. and Mrs. Arturo Marentes Puebla of Sagerton announce the birth of a daughter, Eugenia Rodriguez Puebla, born August 25, 1982 at Haskell Memorial Hospital weighing 7 lbs. 12 1/2 oz.

# Around Town

Mr. and Mrs. Waller Overton were in Abilene last week visiting in the home of Mr. and Mrs. Benny Young. The group all attended the John Denver Special which was given as a benefit performance for the West Texas Rehabilitation Center.

1982 Haskell High School graduates who left this week to begin their Freshman school year at Tarleton State University in Stephenville included: Cam Klose, daughter of Mr. and Mrs. Wilbert Klose; Aaron Weaver, son of Mr. and Mrs. Robert Weaver; Monty Moeller, son of Mr. and Mrs. Roger Moeller; Mynea Jones, daughter of Mr. and Mrs. Leon Jones; Bernie Holder, son of Mr. and Mrs. Joe Holder; and Paul and Tom Barnett, twin sons of Mr. and Mrs. Tom Paul Barnett. Sharon Turner, daughter of Mr. and Mrs. Abe Turner, is entering her sophomore year at T.S.U.

Mrs. Harvey Croft, Mrs. Bobby Parrott, and Ms. Martha Brown, of Woodson, have returned home after a week's vacation in Ruidoso, N.M.

Bryan Middlebrook, son of Mr. and Mrs. Billy G. Middlebrook, of Paint Creek, returned this week to Abilene Christian University in Abilene, where he will be a sophomore student. D'Anne Burris, daughter of Mr. and Mrs. Dale Burris, has entered her Freshman year at A.C.U.

Scott Montgomery, of Atlanta, Ga., son of John Carlos Montgomery, former Paint Creek resident, was here last week visiting in the home of his grandmother, Mrs. J.H. Montgomery, and in Stamford with another grandmother, Mrs. Woodrow Smith. Scott

was enroute to College Station where he will be a Junior student at Texas A&M University.

Mr. and Mrs. Joe Martin, Mr. and Mrs. Glen Cox, and Mr. and Mrs. Jack Martin, all of Haskell, and Mr. and Mrs. George Martin, of Stamford, were in Albany Sunday afternoon to attend the 87th birthday celebration of the Martin's mother, Mrs. Dewey Wood. Mrs. Wood, nee Bessie Martin, formerly of Stamford, and Dewey Wood, of Albany, were married two years ago in Albany where the couple now reside in their newly constructed home. The occasion was observed in the Albany Youth Center with approximately 50 in attendance.

Mr. and Mrs. James Merle [Stickey] Raughton, were in Bronte over the weekend visiting in the home of Mr. and Mrs. Ed Alexander. They were joined there by their daughter and family, Mr. and Mrs. Nelson Coulter, Summer Lynn, and McKenzie, of Rankin.

Western Texas College at Snyder will have as students from H.H.S. this year, Jonnie Hise, son of Mr. and Mrs. Lonnie Hise, Freshman; and Sophomores, Tommy Croft, son of Mr. and Mrs. Harvey Croft; Carl Mayfield, son of Mr. and Mrs. Vernay Teague, and Elliott Cox, son of Mr. and Mrs. Wallace Cox, Jr.; Linda Fischer, a 1982 Paint Creek High School graduate, and the daughter of Mr. and Mrs. Walter E. Fischer, will enter her Freshman year at W.T.C.

Mr. and Mrs. Arthur [Ott] Watson were in Coldspring over the weekend visiting in the home of Mrs. Watson's twin brother and his wife, Mr. and Mrs. Weldon E.

Smith, former Haskell residents. The group also enjoyed several outings on nearby Lake Livingston.

Students from this area who will be attending Texas Technological University in Lubbock for the fall term are Joseph Browning, son of Mr. and Mrs. Jimmy Browning and Cindy Everett, daughter of Mr. and Mrs. Felton Everett, both Sophomores; Sonja Tidrow, daughter of Mr. and Mrs. Gaston Tidrow, Junior; Becky Buerger, daughter of Mr. and Mrs. Walter Buerger, Senior; and Julie Patty, daughter of Mr. and Mrs. Dee Shay Patty, Freshman.

Mrs. Louie Kuenstler, of Paint Creek, had as guests in her home this weekend her son and daughter-in-law, Rev. and Mrs. Truett Kuenstler, of Rochester.

Attending West Texas State University at Canyon as Freshmen students this semester will be Randy Campbell, son of Billy Joe Campbell, and Curtis Forehand, son of Mr. and Mrs. C.B. Forehand. Cynthia Jones, daughter of Mr. and Mrs. Leon Jones, received her Bachelor's Degree in Physical Education this May from W.T.S.U., and will begin work toward her Master's Degree this Fall term.

Bud Mapes with his son Larry Mapes and grandson Damon Kennedy were in Haskell last week. Mr. Mapes left here in 1944 and is back for a Mapes Reunion which will be held at Glen Rose. He still resides in Atascadero, Ca.

Mr. and Mrs. Richard Riley have returned home after a pleasant week in Ruidoso enjoying the races and visiting with friends they meet each year. On the way home they visited in Jal, N.M. with their son and family, Larry, Bettie, Patrick and Shannon Riley.

Karen Croft, was one in a class of ten students who completed a year's training in the specialized field of Oncology last week at the M.D.

Anderson Hospital. Ms. Croft, daughter of Mr. and Mrs. Harvey Croft, graduated from Haskell High School, attended Texas Technological University in Lubbock, and graduated from a Registered Nurse from John Sealy Hospital (University of Texas - Medical Branch) in Galveston. She makes her home in Houston where she is employed by the I.C.U. Department at M.D. Anderson Hospital.

Mr. and Mrs. Boyd Cathy, of Grand Prairie, spent the weekend at their farm, and visited in the home of her aunt, Mrs. J.H. Montgomery.

Guests in the home of Mr. and Mrs. Wayne Wells over the weekend were their two daughters, Linda and Debra, students at McMurry College in Abilene. Linda, who is a sophomore student majoring in Elementary Education, and Debra, a senior student, majoring in Accounting, were Valedictorians of their respective graduating classes at Paint Creek High School, and both also have made the Dean's List each semester at McMurry.

For the first time in ten years, Blanch and Hoie Harrell enjoyed a full weekend of visiting with all their children and grandchildren recently. Visiting were their four children: Mr. and Mrs. Mrs. C.A. Reed of Tallahassee, Fla. Visiting grandchildren included: Kim Ottmers, Karen and Jeff Long, Shawn, Genny and Matthew Reed. Also, visiting were: Mr. and Mrs. Steve

Harden and Melissa of Midland; Mr. and Mrs. Kevin Smith of Houston; Mr. and Mrs. Edd Smith of Dallas; and Mr. and Mrs. C.D. Anderson of Buffalo Gap.

## Area Screening Services Set

The Texas Department of Health Region 4 will hold screening services for area towns. The public is invited to attend, and there will be no charge for these services. Any abnormal findings will be referred to the client's private physician.

Services offered will be for diabetes, high blood pressure, anemia, vision, hearing, weight and urinalysis. Immunizations will also be given.

Anson, at the Assembly of God Church, 401 N. Commerce from 10 a.m. to 12 noon on September 8th.

Aspermont, Senior Citizens Bldg., on September 1st from 10 a.m. to 3 p.m.

Haskell, Experienced Citizens Center, N. Ave. N on Sept. 2nd, and Sept. 22 from 10 a.m. to 3 p.m. Immunization clinic will also be held at the Experienced Citizens Center on Sept. 16th from 1-3 p.m.

Hawley, Lions Building, Sept. 27th from 10 a.m. to 12 noon; and immunizations will be given from 1-3 p.m.

Stamford, Stamford Library Building, 600 E. McHarg, on Sept. 15th from 10 a.m. to 12 noon, and immunizations from 1-3 p.m.

## HASKELL Lunch Menu

Sept. 6-10  
MONDAY

No School  
Pepper-Tomato Steak over Rice  
Green Beans  
Peaches  
Rolls and Butter  
Milk

WEDNESDAY

BBQ Weiners  
English Peas  
Creamed Potatoes  
Peanut Butter Bars  
Bread  
Milk

THURSDAY

Pizza  
Salad  
Pears  
Milk

FRIDAY

Pinto Beans  
Cheese Stick  
Slaw  
Strawberry Jello-Fruit Cocktail  
Cornbread  
Milk

BREAKFAST MONDAY

No School

TUESDAY

Apple Juice  
Cereal  
Milk

WEDNESDAY

Grape Juice  
Toasted Roll  
Milk

THURSDAY

Orange Juice  
Cinnamon Toast  
Milk

FRIDAY

Juice  
Sugar and Cinnamon Rice  
Milk

## Feemsters Present W.O.O.'s Program

The W.O.O.s (Senior Adults) met Thursday evening at six thirty in the Fellowship Hall of the First Baptist Church for a salad supper and program with the Sunshine Group of senior Adults of the East Side Baptist Church as special guests. The serving tables were filled with salads, ham, relishes, desserts, coffee, and tea. Tables where members and guests were seated were centered with English Ivy and multi colored summer flowers trailing the entire length of the tables. The meal was served buffet style following the invocation by Ford Cole.

Following the supper each person was asked to introduce themselves. Two of the W.O.O. members who had been absent following surgery were welcomed back - Maye Bell Taylor and Morris Haynes. Rev. and Mrs. Darrell Feemster of the East Side Baptist Church presented a most enjoyable musical program. Sixty-one senior adults attended.

Opportunities for the Senior Adult Groups coming soon include Sixty Plus Camps at both Latham Springs and Leuders and a bus trip to the zoo.

## Baby Shower Honors Mrs. Jeff Brock

Mrs. Jeffrey Brock was complemented with a pink and blue shower in the home of Mrs. Mark Jackson on Friday, August 27. Due to the unexpected arrival of Jeffrey James on Friday afternoon, Mrs. Brock was unable to attend. In her absence, Mrs. Jim Brock opened gifts from the gift table which was covered in a pastel yellow floral cloth and centered with a pink and blue floral baby arrangement. The hostess gift was a diaper pail filled with an assortment of baby needs. The honoree was also presented a corsage made of baby socks.

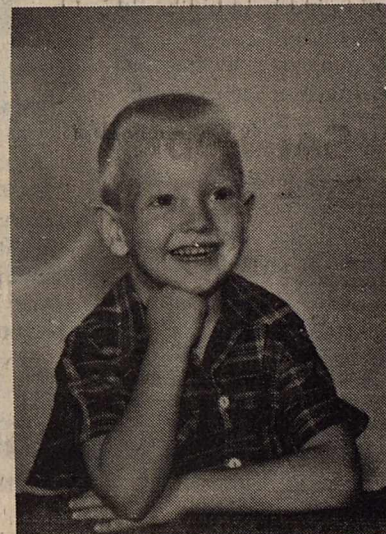
Refreshments were served from a table covered with a yellow cloth and topped with a hand crocheted tablecloth. The centerpiece was also an arrangement of pink and blue flowers. Pink and blue home-made mints, pecan tassies, thumbprint cookies, Hawaiian Fudge and pineapple sherbert punch was served. As favors, guests received floral pastel nut cups in the shape of a diaper, pinned with a gold safety pin. Hostesses were Mrs. Peggy Mathis, Mrs. Anita Free, Mrs. Deb Warren, Mrs. Jerry Jackson and Mrs. Georgia Jackson.

## Hospital Notes

**ADMISSIONS**  
MEDICAL: Charlette Arendall, Haskell; Love Russell, Goree; John Gibson, Rule; Bessie Evans, Haskell; Hassie Couch, Haskell; Beulah Hosea, Munday; Ruth Brewer, Rule; Rachel Dunn, Haskell; Judy Williams, Rule; Laura Cousins, Haskell; Terry Hilliard, Rule; Herman Lacey, Haskell; Benjamin Kittley, Rule.  
SURGICAL: Mary Bassing, Haskell; Juanell Ray, Haskell; Bailey Taylor, Haskell.  
DISMISSALS  
Maggie Cagle, Barney Ross, Celia Sanchez, Glen Walton, James Franklin, Leroy Diaz, Bessie Hanson, Bobbie Meinzer, Yvonne King, Susie McDonald, Edna Machen, Paul Allen, Bessie Evans, Joe Warren, Stannie Orsals, Jeanette Day.

## Happy Birthday

little boy  
blonde



Wanted

Can he be trusted?

LET'S GO TO SCHOOL...  
...With FAYE

Continuous classes:

Monday—Landscape Oil Painting  
9:30-11:30 a.m.  
Wednesday—Basic Drawing  
9:30 to 11:30 & 7 to 9 p.m.  
Thursday—Basic Drawing  
7 to 9 p.m.

Call (817) 864-8956 for reservation  
Classes Limited

FAYE'S ART CENTER  
304 South H St.  
Haskell, Texas 79521



## Births

Mr. and Mrs. Arturo Marentes Puebla of Sagerton announce the birth of a daughter, Eugenia Rodriguez Puebla, born August 25, 1982 at Haskell Memorial Hospital weighing 7 lbs. 12 1/2 oz.

## Out They Go

(To The Sidewalk)

Large selection of SUMMER ITEMS and  
a few FALL ITEMS on our

SIDEWALK SALE —

SATURDAY, SEPTEMBER 4th

409 South First  
Phone 864-2901



Sizzling  
Sidewalk Sale  
Saturday Only  
Group of  
Shoes

\$5, \$7, \$9

Inside Sale Continuing  
Group

Bass, Bernardo Sandals

1/3 off

Summer Handbags

1/2 off & more

Slipper Shoppe

East Side of Square

Haskell, Texas

Phone 864-3051

**Hanes**  
**Alive Support SALE**  
Sept. 9-18

Alive Support Pantyhose ... \$1.10 off  
regular suggested retail

Alive Support Stockings ... \$ .75 off  
regular suggested retail

THE Personality SHOPPE





**TWIRLERS**

Photo by Bill Blankenship

Indian Band Twirlers for the 1982-83 season are (left to right) Holli High, Lori Geilhausen, Michele Stout and Rochie Reddell. Drum majors are Kim Lanier and Jana Overton.



**CHEERLEADERS**

Photo by Bill Blankenship

1982-83 Indian Cheerleaders are (front row, left to right) April Turner, Tina Morris (middle row) Marla Gonzales, Holly McBroom, (back row) Shannon Lane and Sheila Klose.

**Annual Frierson Reunion Held Recently In Haskell**

The annual Frierson Reunion began with a "get together" Saturday night at the Community Room of the Haskell National Bank

hosted by the local members. Visiting, recounting the happenings of the year since last reunion, with a bit of photo showing and picture taking

followed by games of eighty-four and forty-two made up the evenings entertainment. Sandwiches, chips, cookies, coffee and punch were served throughout the evening.

On Sunday, the Friersons who could make the trip in a day began arriving at the Country Club. By nine-thirty, the younger set enjoying the swimming pool and the game room. Immediately following

the Church service, a bountiful lunch was served, each family having brought their favorite dishes. The invocation was given by Loyal Cameron.

Ervin Frierson, president presided for the business session, hearing the reports of the secretary, the treasurer, with the Cook Book Committee reporting number of books on hand since last printing. Blanche Frierson Evans was

given arousing ovation for book just received from printers. "The Haskell County Friersons" - updating the family history through the year 1981. Phillip Coburn was recognized as the youngest present. Blanche Frierson Evans for her seniority. The Byron Friersons covered one thousand miles in the round trip to and from Reunion. The descendants of Felix Frierson

were present in the largest number with the Paul Friersons next. Both the David Frierson and Bill Steele families each had only one member of their respective family absent.

Incoming officers for 1982-83 are David Frierson, president, Stella Steele, vice president, Gwen Frierson, secretary, Ronnie Frierson, treasurer. The next reunion will be held in same locations at approximately the same time with the Saturday night meeting preceding. Sixty adults signed the register. Movies were made throughout the day. Upon the suggestion of Betty McDermott, a scrap book will be kept which will be in evidence next year along with the movie and slides made at previous reunions.

**PUBLIC NOTICE**

Lone Star Gas Company, in accordance with Section 43(a) of Article 1446c V.A.T.C.S., hereby gives notice of the Company's intent to implement a new schedule of rates including a cost of service adjustment clause for natural gas service to be charged to the residential and commercial consumers in the City of Haskell, Texas

effective **October 1, 1982**  
The rate schedule is expected to furnish a 8.07 percent increase in the Company's revenues from residential and commercial customers in the City of Haskell, Texas

A Statement of Intent has been filed with the City of Haskell and is available for inspection at the Company's business office located at 304 North First Street, Haskell, Texas.

**Lone Star Gas Company**

**Sidewalk Sale**

**Kids Duds & Richardson Hallmark**

**Sat. Sept. 4**

**One Rack Jeans**  
girls-pre-teen & Junior Sizes  
**\$15<sup>00</sup> each**  
values to \$28<sup>00</sup>

**One Rack Fall Blouses**  
girls-Pre-teen & Junior Sizes  
**\$10<sup>00</sup> each**

**Winter Coats 20% off**

Register Saturday for a \$34.95 Ceramic Cooler with faucet, to be given away at 4 p.m. Need not be present to win.

**Yard Of The Month**

After the scorching, hot temperatures of August, the following yards have done the next to impossible - survived with beauty.

The yard of the month goes to Mr. and Mrs. Drey Lowe 1004 N. Ave. F. The main attraction is simplicity and attention to detail. The whole place is meticulously groomed. The pampus grass in full bloom, the black antique washpot of houseleek, the hanging basket of fantasia at the front entrance are attractive features.

The side gate seems to beckon and invite. And when you enter you can hardly believe your eyes. It is so perfect, you find yourself in an enclosed, private world that is special. Jack bean vines cover the fence. There are two martin houses where the blue martins come every year to hatch their young. The fiber glass and bamboo lattice top that covers the patio keeps out

rain and filters in sunlight for the many hanging baskets. Many black antiques are displayed against the white background wall of the patio, a table and floral chairs complete the patio area. A border of seasonal flowers around the fence add color and interest.

The yard of Mr. and Mrs. Ken Lane, 1102 N. Ave. G. has a yard with real eye appeal. It has a spectacular display of vivid, brightly hued flowers in a unique, circular planter balanced by three huge trees that shade and cool.

Mr. and Mrs. Henry Harris, 312 Addison Dr. have an interesting yard. The flowing spacious, overall design is most impressive. Many beautiful trees pine, pecan, magnolia, mulberry, and weeping willow add color, shade and contrast in texture to the landscape. Two ligustrum poodle trees emphasize the entrance and seem to say welcome.

The backyard is the typical "great American backyard" so popular for living and entertaining. The 80 ft. veranda with its redwood furniture and hanging baskets add a festive note. The antique rose brick waterwell is a point of interest.

Mr. and Mrs. Bob Guess, Route 2, have an interesting yard designed for easy maintenance. The circular rock garden with marigolds for color has rocks they collected on vacations others for sentimental value brought in from their farm. Tall mulberry and pecan trees shade the house from the west sun. Crepe Myrtles bloom profusely throughout the summer.

All the yards are so interesting and pretty. It was hard to select one above the other.

**HASKELL COUNTY CENTRAL APPRAISAL DISTRICT**

817-864-3805  
P. O. BOX 411  
604 NORTH 1ST  
HASKELL, TEXAS 79521

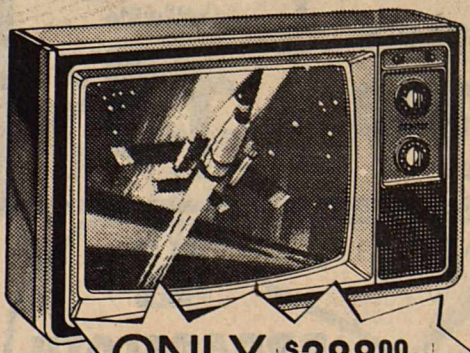
**NOTICE**

The Haskell County Appraisal District expresses its apology for placing the following name in the notice of delinquent tax payers. The taxpayer does not owe any delinquent taxes in Haskell County.

**J. C. Lewis**

**SPECIALLY DEVELOPED COLOR TV**

**ZENITH FACTORY SPECIALS**



**19" TABLE TV**

- Super value!
- Reliable Z-1 Chassis
- Chromasharp Picture Tube
- Super Video Range Tuning
- Auto-Control Color System

**ONLY \$388<sup>00</sup> WT**

**DON'T MISS THESE EXCEPTIONAL VALUES**

**Owens Radio & Electric**

HASKELL, TEXAS

The Haskell Free Press  
Established January 1, 1886  
PUBLISHED EVERY THURSDAY

**MEMBER 1982**  
**TEXAS PRESS ASSOCIATION**

BILL COMEDY—Publisher  
DON COMEDY—Editor  
Entered as second-class matter at the post office at Box 577, Haskell, Texas 79521, under the Act of March 3, 1879 (USPS 237-040)

**SUBSCRIPTION RATES**  
In Haskell and Adjoining Counties

Total	
One Year	\$7.25
Six Months	\$5.00
Two Years	\$14.00
Elsewhere in Texas	
One Year	\$8.50
Six Months	\$6.00
Two Years	\$16.00
Outside of Texas	
One Year	\$10.00
Six Months	\$7.00
Two Years	\$19.00

NOTICE TO PUBLIC—Any erroneous reflection upon the character, reputation or standing of any firm, individual or corporation will be gladly corrected upon being called to the attention of the publishers.



## USDA to permit dried whey in meat products

AUSTIN—Effective Aug. 17 the U. S. Department of Agriculture (USDA) will permit dried whey and certain modified whey products—all protein-rich derivatives of milk or cheese—to be used in some meat products.

USDA will allow meat processors to use these additives as binders and thickeners in sausages, bockwurst, chili con carne and pork and beef with barbecue sauce. Binders are added to products to hold ingredients together; thickeners give products a denser texture.

"This change will benefit both consumers and the food industry," said Donald L. Houston, administrator of USDA's Food Safety and Inspection Service. "These additives are plentiful, relatively low-priced protein sources."

Dried whey, reduced lactose whey, reduced minerals whey and whey protein concentrate can now make up three and one-half percent of sausages and bockwurst and up to eight percent of chili con carne and pork or beef with barbecue sauce.

Although USDA first proposed using whey and modified whey products in 1976, in response to a petition by the Whey Products Institute, USDA deferred action on the matter until the Food and Drug Administration (FDA) completed an evaluation on the safety of these additives, Houston said. In September 1981 FDA classified whey and its by-

products "Generally Recognized As Safe."

Although the 1976 proposal also included sodium caseinate as a potential additive, FDA has not yet completed its evaluation of this substance and USDA will not address its use in meat or poultry products until FDA makes a decision on the safety of that substance.

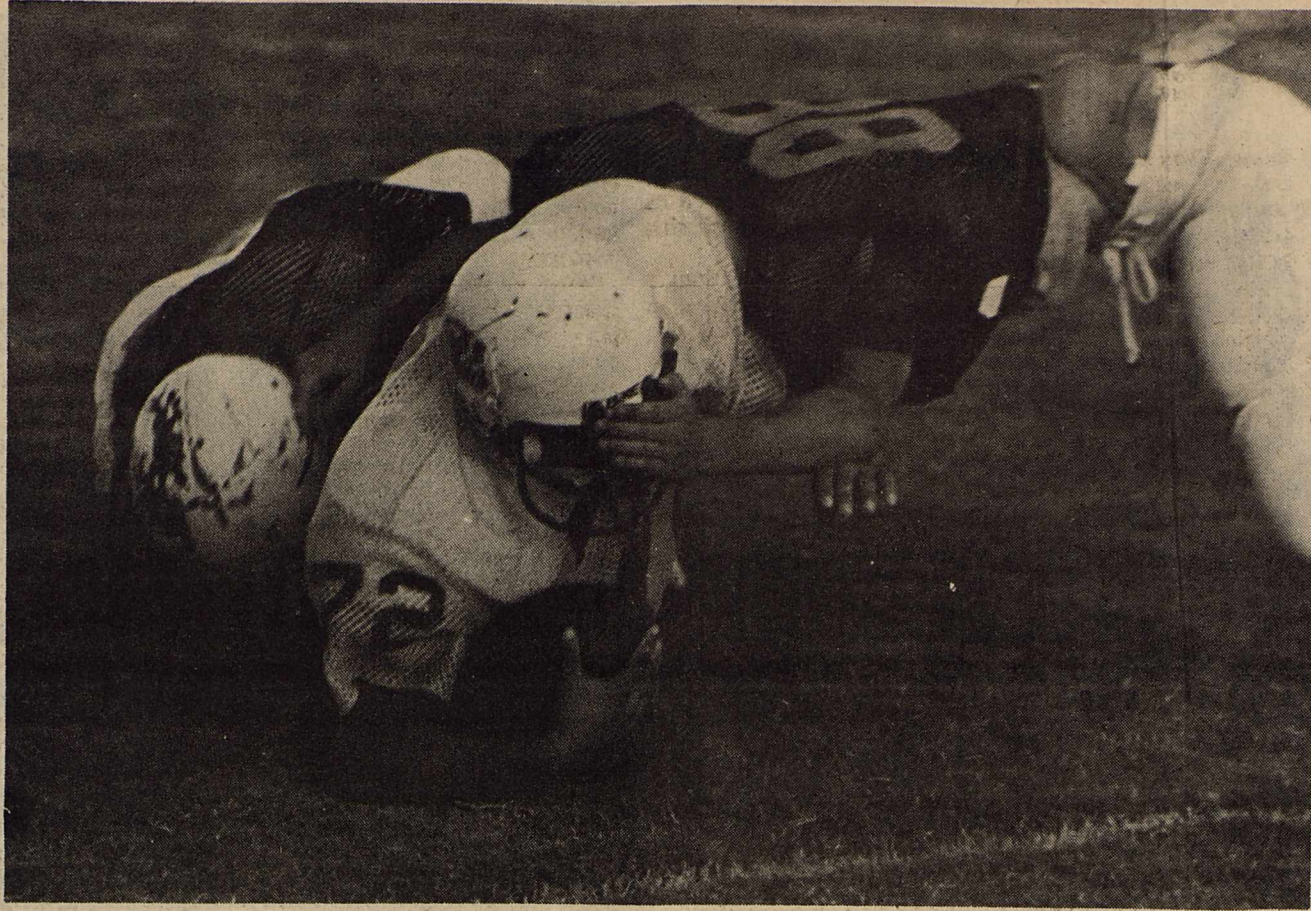
After FDA's approval, one company and two food industry groups submitted petitions to USDA requesting a final ruling on the 1976 proposal.

USDA received 30 comments on the 1976 proposal, 23 from the food industry supporting the new rule. Seven commenters opposed or expressed concern about the proposal, offering varying reasons from health matters to ingredient substitution.

"USDA considered and answered all objections and concerns, determining that the additives are safe and the proposal should be made a final rule," Houston said.

USDA is responsible for ensuring that meat and poultry products processed in federally-inspected plants are safe, wholesome and accurately labeled.

NELSON King James Version Reference Bible. Features center reference, red letters, concordance, 8 pages of maps, family record and presentation page, ribbon marker. Thumb indexed. Available at the *Haskell Free Press*



Haskell-Merkel Scrimmage

## Other states nuclear waste coming to Texas

Three Houston residents and two citizens groups have asked the Texas Department of Health to investigate new instances of nuclear waste being brought into Texas.

The complaint states that Nuclear Sources and Services Inc. (NSSI) has begun handling out-of-state low level radioactive waste at its facility at 5711 Etheridge in Houston and is threatening to open up a new site in Leon County. The complaint also states that NSSI's actions are a direct violation of the Texas Radioactive Materials Control Act.

According to Norris Haynie, chairman of the Leon County citizens group, "It was just two years ago that many Texans became outraged to learn that a Todd Shipyards in Galveston was handling nuclear waste from all over the U.S. including radioactive waste from a nuclear power plant in California."

Mr. Haynie added, "The Health Department sued

Todd, and Governor Clements publicly stated that Governor Jerry Brown of California and other states can keep their wastes and that as Governor of Texas he would stop radioactive waste from coming into Texas.

"Now the Health Department will let NSSI set up the same kind of nationwide nuclear waste operation" Haynie said.

As a result of the concern over Todd Shipyards and several other nuclear waste handlers, the Legislature amended the Radiation Law in 1981 to state that a waste operation in Texas "may not accept radioactive waste generated in another state for processing or disposal." Senator Kent Caperton of Bryan, one of the sponsors of that amendment, has said that "I introduced that amendment to stop Texas from becoming a major storage site for the nation's nuclear waste."

"One of the major reasons to stop the importation of out-of-state waste was that the Texas sites were filling up with out-of-state waste leaving a crisis for management of the nuclear wastes generated in Texas from medical uses." Senator Caperton said "The law prohibits what NSSI intends to do."

Representative Jim Turner from Crockett, whose district includes Leon County, also announced today that the law was meant to stop radioactive waste from coming into Texas. He said, "The importation issue was the major concern of many legislators, and the set of amendments would not have passed without that out-of-state restriction."

David Rossi is one of the three Houston residents who are organizing their neighbors to fight NSSI's expansion plans in Houston. He said, "Despite the Governor's promise and despite the fact that for the last year the Health Department has read the law as restricting out-of-state waste, the Department has now reversed its position and cleared the way for NSSI to bring in out-of-state nuclear waste." NSSI in-

tends to store and process the waste and then send it back out of state for disposal.

Mr. Rossi added "If the Health Department won't help us, we will ask Governor Clements. If he won't help, we'll ask Attorney General White. If he won't help, we'll ask the courts."

Filing a complaint with the Health Department is a prerequisite to suing for violation of the Radiation Law.

## VRJC Classes Still Open In Munday

Classes are still open for Vernon Regional Junior College's Continuing Education in Munday. Classes beginning in September are: Drawing 9-12 noon and 6-9 p.m. Sept. 7-28. Intermediate Oils 1-4 p.m. Sept. 7-28. Bookkeeping I 6:30-9:30 p.m. Sept. 13-Dec. 21. Typing I 6:30-9:30 p.m. Sept. 13-Dec. 20. Welding for Farmers 7-10 p.m. Sept. 14-Oct. 12. Acrylics for Senior Citizens 9-12 noon Sept. 22.

These classes are non-

college credit courses, but persons who complete the course will receive a certificate and have a permanent record at VRJC. No grades are given. People who are interested in learning new skills, brushing up on old skills, or wanting to take arts and crafts classes are urged to enroll. For further information concerning fees, supplies and location of classes contact Paula Schur, Box 10, Munday, Texas 76371, phone 422-4631.

## Fines Collected

Geraldine Hise, Judge, City of Haskell, Haskell County, reports a total of 30 convictions for the month of August, 1982. Resulting in a total of \$1414.00 in fines.

Judge Geraldine Hise, Justice Court, Precinct 1, Haskell County, reports a total of 126 convictions for the month of August, 1982. Traffic and Criminal cases were filed by the following law enforcement agencies:

Highway Patrol 110, Game

Warden 9, Sheriff's Dept. 7, resulting in a total of \$4501.00 in fines.

WE HAVE Riverside Family Reference Bibles. These large Family Bibles include presentation page, complete family record section, Biblical Cyclopedic Index, Study Helps, Great Bible Truths, Beautiful Illustrations, full page maps, padded cover with velva-gold edges. *Haskell Free Press*

PEN & PENCIL Sets by Papermate. *Haskell Free Press*

## CLAY-WATSON Cattle Co.

For cattle order buying and forward contracting

Call

817-864-3741 or 817-864-8955

If you have an accounting degree and want to live close to Olney, call us for an interview. We are a progressive, growing public accounting firm with an opening on our professional staff for a college graduate with up to three years experience.

Russell Altmiller & Co.  
Olney, Texas  
817-564-5643

## Sidewalk Sale

We will be on the Sidewalk Saturday Only September 4

A Few Summer Items & A Few Winter Items including:  
Hats Suits  
Long Sleeve Shirts Shorts  
Belts Shoes

### INSIDE THE STORE

One Large Rack of Pullover Short Sleeve Shirts  
**1/2 price**  
Values to \$20.00 priced as low as \$6.00

Entire Stock of Short Sleeve Dress Shirts  
**1/2 price**  
Values to \$20.00 priced as low as \$6.00

Entire Stock Short Sleeve Western Shirts  
**20% off**

Entire Stock of Straw Hats  
**1/2 price**

Large group of Felt Hats  
**1/2 price**

Tony Lama Boots —3 Days Only—  
**20% off**  
Values to \$660.00 priced as low as \$100.00

Entire Stock of Dress Suits —3 Days Only—  
**20% off**  
Values to \$200.00 priced as low as \$145.00

**Lane Apparel** for Men  
Next to M-System  
Haskell, Texas

## College News

Tarleton State University awarded degrees to 110 undergraduate and 117 graduate students at summer commencement on Aug. 15. Two associate degrees in nursing were also awarded.

Receiving a MED in Secondary Education was Lou Ann Gilly of Haskell.

Retiring TSU president Dr. W.O. Trogon was commencement speaker. He will complete 16 years as Tarleton's chief executive officer on Aug. 31, but will remain at Tarleton as a faculty member on a part-time basis in the Department of Agriculture.

Dr. Frank W.R. Hubert, who will retire as chancellor of The Texas A&M University System on Aug. 31, brought greetings to the graduates from the system. Clyde H. Wells, member of the board of regents of The Texas A&M University System and a former TSU student, was a special guest for commencement.

Summer commencement was held in Wisdom Gymnasium on the TSU campus.

Advertise the Action Way! The CLASSIFIED WAY!

Brightly colored — attention getting — Open-Closed Signs for your office or business. Comes complete with changeable letters in black or red. Also includes a sign for counter top use. See at the *Haskell Free Press*

## PERRYS September

# EYE POPP'N



## 3 BIG DAYS. Specials

**HI-DRI JUMBO ROLL TOWELS**  
PERRY'S SALE PRICE **47¢**  
LIMIT 2 ROLLS ROLL

"Iso-So" Rubbing Alcohol  
**2/\$1**

22 oz Plastic Cereal Bowls  
**3/\$1**

Large 200-Count Notebook Paper  
**99¢**

**COLGATE TOOTHPASTE**  
Colgate  
PERRY'S SALE PRICE  
4.6 OZ. GEL 5 OZ. REGULAR  
YOUR CHOICE **99¢**

"Sparta" 100% Polyester Blankets  
**\$5.88**

**ASSORTMENT MAGNETIC GADGETS**  
IDEAL FOR KITCHEN DECOR  
PERRY'S SALE PRICE  
2 CARDS FOR **88¢**

Men's Lined Nylon Wind-Breakers  
**\$8.88**

Pellon Interfacing 18" wide  
**15¢** yd

Comfort Top Knee Hi's  
**49¢**

100% POLYESTER **SUEDE**  
60" Wide...A fantastic assortment of colors...Wash and wear...D/R on bolts...3" value!  
**\$1.77** YD.  
PERRY'S SALE PRICE

**FLAT FOLD 45 INCH SOLID BROADCLOTH**  
All solid colors... Poly/Cotton Blend... Wash and tumble dry in your machine. Ideal weight for quilting, tops, etc. '1" value!  
PERRY'S SALE PRICE **88¢** YD.



# Chamber Offers Suggestions To "Take A Trip Around The World"

**WANDA DULANEY**  
Manager, Haskell  
Chamber of Commerce

Many people would like to take a trip around the world. Two things usually prevent their doing so - lack of time and lack of money.

Yet, with a little imagination and the formation of their own "Tour Group", it can be done without even leaving town.

First, organize a SUPPER

CLUB of four couples or eight individuals to meet once a month. Each twosome would be responsible for three dinner parties over a period of a year, rotating as hosts with the other members.

Either place the names of the twelve countries to be "visited" on pieces of paper and draw from them, or let the members choose the ones they prefer to prepare. All are easy. All can be made with ordinary ingredients readily available at most grocery

stores. They can be made as they are, or as ideas for a theme that can be expanded or replaced by other foods typical of that country.

Just eating the foreign dishes will be fun and adventurous, but if you really want to get into the spirit of the occasion, plan a centerpiece and a table setting that sets the mood for the visit to each country. Play an album or tape to fit the theme. If so desired, the host couple can

dress the part. Show slides that tell of the country, and its customs, let the group do its native dance or perhaps sing some of its songs.

To launch your Supper Club, why not have an ALL-NATIONS DINNER at a public meeting place with each couple assigned to prepare and bring two dishes from the following menu: Swedish meatballs, Canadian bacon, German potato salad, French green beans, Spanish rice, Italian zucchini with tomato sauce, a tray of Swiss cheese, Polish pickle spears, Spanish olives, Black old world bread, Italian cream cake and Brazilian Coffee. Serve buffet style. Place a world globe, etc. on serving table.

The the Supper Club can meet the following month at the home of the first host couple and continue throughout the year from one house to

another. Check the libraries, book stores, your own cookbooks and those of your friends and relatives to find your recipes, and ideas.

When all of the scheduled countries have been toured, plan a "welcome home" dinner, again at a public meeting place or park with such American food as barbecue, pinto beans, potato salad, stuffed eggs, cole slaw, onions, pickles, tomatoes, lemonade and apple pie or watermelon, depending upon the season.

The only passport or visa you will need for this imaginary journey is a group of compatible friends who enjoy being together.

Here are some menu suggestions:

GERMANY: Baked German sausage, potato pancakes, sauerkraut, caraway rolls, stewed tomatoes, German chocolate cake.

CHINA: Chicken chow mien, rice, egg rolls, snow peas, mandarin oranges with cocoanut and ginger, hot tea, almond cookies for dessert, fortune cookies for fun.

FRANCE: Onion soup, veal cordon bleu, fresh spinach salad with French dressing, fluffy rice, French green beans with almonds, French bread, assorted French pastries.

RUSSIA: Borsch, beef straganoff, flat noodles, cucumbers in sour cream, apple dumplings.

HAWAII: Sweet sour pork, rice, peas with macademia nuts and banana, pineapple, cocoanut cream parfait.

HUNGARY: Goulash, buttered noodles, sweet sour cabbage, rye bread, apple nut strudel.

EGYPT: Lamb and mushroom shish kabob, saffron rice, eggplant casserole, Cairo

salad (sliced oranges, bananas and romaine lettuce) sesame rolls, individual date cakes.

HOLLAND: Veal cutlets, blended mashed potatoes with cooked mashed yellow turnips, baked on a greased cookie sheet then sprinkled with chopped green onions; Edam cheese, pumpernickle bread, Dutch chocolate cake.

INDIA: Chicken curry, rice, stuffed squash, orange and raisin sauce over custard served in orange rind halves.

ENGLAND: Beef Wellington with mushroom gravy, whole browned potatoes, creamed English peas with tiny onions, tomato aspic, toasted English muffins, steamed pudding with rum sauce.

MEXICO: Gazpacho soup, beef enchilladas, guacamole salad, refried beans, jalapeno peppers, tortillas, pralines.

ITALY: Minestrone soup, chicken tetrazzini, Italian

green beans, Caesar salad, antipasto tray of marinated artichoke hearts, mozerella cheese, cherry tomatoes and broiled mushrooms stuffed with ground meat and ripe olives; pistachio ice cream or spumoni.

The above plan is not limited to an organized group. Any housewife who enjoys variety at her table can serve these meals to her family. Study Group can rotate host duties, with presentations toward further knowledge about the world, its people, and its customs. SENIOR CITIZENS can explore new horizons. YOUNG PEOPLE with imagination can gain valuable experience in variety cooking and serving.

So there's really no need to concede to the hum-drum, to lament lack of funds and lack of time to travel. YOU, TOO, CAN GO AROUND THE WORLD.

## Prevent Foot Problems With Proper Care

The average adult travels an estimated 1,000 miles a year by foot. It's no wonder, then, that feet hurt at times.

In addition to years of wear and tear, problems also can result from disease, ill-fitting or poorly designed shoes, poor circulation to the feet, or toenails improperly trimmed.

Corns, calluses and bunions are common foot problems. In each, the pain is caused by shoe pressure on an area with a prominent bone. The skin over the area becomes thickened, irritated and tender. Sandals, shoes with extra toe depth, and doughnut pads can help, but sometimes surgery is necessary.

Using a razor blade or acid preparation on corns and calluses is unwise and risky. The thickened skin protects the foot from shoe pressure. If too much of the skin is removed, an ulcer can develop

and lead to infection and serious problems.

The foot also is susceptible to infections by viruses, fungi and bacteria. Viruses cause warts. Fungi cause thickened nails and athlete's foot. Bacteria can infect any area of the foot where the skin is broken.

Foot infections are particularly dangerous for diabetics. They have a loss of protective sensation in the foot and can develop foot ulcers and infection easily. Diabetics also have a lower resistance to infections. Individuals with circulation problems also develop infections. These two groups should bathe, powder and inspect their feet daily for breaks in the skin. They should not use heat on the foot when circulation is impaired and should avoid going barefoot where the feet might be injured.

A common infection among many people is the ingrown toenail. The corner of the nail can penetrate the skin and allow infection to develop. To prevent this, toenails should be cut straight across so the corners remain exposed.

Shoes are important in foot care. A good pair has room for the toes to move freely and a snug fit in the heel. A one-half to three-quarter-inch heel is best. A high heel crowds the toes, and a flat shoe or "negative" heel can strain the arch of the foot. Where foot protection is not needed, it is healthy to go barefoot. This exercises the muscles and joints of the feet.

WE HAVE Pencil cups, stackable trays, book-ends, paper clip holders, stamp cubes and telephone files in matching colors. *Haskell Free Press*

THE OIL PATCH® BY GORDON BANKSTON

Joint Venture for Crippled Children Oilfield Equipment & Services Sale  
Moved to Wednesday, December 1, 1982  
Abilene, Texas

POOR BOY OIL CO.

Now, that's one outfit that needs all of our help!

### ROOFING

Need a new roof? We have all your roofing needs. Free estimates.

New Shipment  
**CEILING FANS**  
All Wood Blades

- 3 blades \$59<sup>50</sup>
- 4 blades \$115<sup>00</sup>
- \$140<sup>00</sup>
- \$190<sup>00</sup>

New House for Sale: 1700 sq. ft., covered patio, 2 car garage.  
Also Lots available in two locations.

## McTid's

Phone 864-3552 Haskell, Texas

## THRIFTY/NIFTY FOODS

Specials Good Thursday, Friday and Saturday  
We will be closed Monday, Labor Day

Gooch Sliced	Ruffles reg \$1.29 pkg
<b>Bologna</b> lb \$1 <sup>29</sup>	<b>Potato Chips</b> 99 <sup>c</sup>
Gooch	No. 1 Russet
<b>Wieners</b> 12 oz pkg 89 <sup>c</sup>	<b>Potatoes</b> 10 lb \$1 <sup>59</sup>
boneless, excellent for cook out	Colorado No. 1
<b>Rib Eye Steaks</b> lb \$3 <sup>49</sup>	<b>Cabbage</b> lb 10 <sup>c</sup>
<b>Hamburger Meat</b> lb \$1 <sup>19</sup>	California
<b>Parkay</b> lb 49 <sup>c</sup>	<b>Bell Peppers</b> 6 for \$1 <sup>00</sup>
Sunkist	Ranch Style
<b>Orange 7-Up</b> 6 cans \$1 <sup>49</sup>	<b>Beans</b> no. 300 can 39 <sup>c</sup>
Club	Mazola
<b>Crackers</b> 1 lb box 99 <sup>c</sup>	<b>Oil</b> 24 oz \$1 <sup>09</sup>
Gladiola	Swanson Chunk White
<b>Flour</b> 5 lb 79 <sup>c</sup>	<b>Chicken</b> 5 oz can 69 <sup>c</sup>
Honey Boy	French
<b>Salmon</b> tall can \$1 <sup>29</sup>	<b>Mustard</b> 24 oz jar 79 <sup>c</sup>
	Every Day Low Price
	<b>Cigarettes</b> ctm \$6 <sup>19</sup>

## POGUE GROCERY

—Extra Parking Behind The Store. Home Owned and Operated—  
113 North Avenue E Phone 864-2015 Haskell, Texas

THE BEST IN MEAT, CUT THE WAY YOU WANT IT



# Sagerton Community News

Mrs. Etta Leach and Mrs. Alvin Bredthauer visited Barney Ross of Stephenville in

Haskell Memorial Hospital and then went to the rest home to see several people.

Mrs. Bertha Vasek and Mrs. Alvin Bredthauer went to Haskell Tuesday afternoon for

Mrs. Vasek to go see the doctor.

Mr. and Mrs. Alvin Bredthauer, Mrs. Ladain Anderson of Houston, Larry Cornelson played 84 in the home of Mr. and Mrs. Delbert LeFevre, Tuesday night.

Mrs. M.Y. Benton came home from Lubbock after having visited with her daughter and husband, Eldon Cook.

Mrs. Charlie Clark and Mrs. M.Y. Benton visited Mrs. John Clark who is making her home in Rice Springs Care Home in Haskell now. She had been in the hospital in Stamford for a few days.

Mrs. Etta Leach and her daughter Mrs. Wilson Gibson went to Waco for the weekend.

Guests in the home of Mr.

and Mrs. Leo Monse Sunday were Mr. and Mrs. Franklin Mrasek of Aspermont, Mrs. Norvell Lehrmann of Rule, Mr. Fred Monse from Dudley, and Ted Monse.

Hazel Grantham and Vera Mae Denson helped Mrs. James Gellner celebrated her birthday also James who birthday was the 20th of Aug., Mrs. Gellner was the 25th of Aug., with a dinner at the Cliff House.

Mrs. Shortie Hewett of Stamford, was a guest in the home of Mr. and Mrs. Fred Kupatt and Kris last weekend Mr. and Mrs. Kraig Kupatt joined the group for lunch on Sunday.

Pastor and Mrs. Fred Scheffel of San Antonio visited in the home of Mr. and Mrs. Fred Kupatt Sunday after-

noon. Mr. and Mrs. Fred Kupatt went to Lubbock last Tuesday to help Kris move into the dorm at Texas Tech University where she will be a Junior this year majoring in Elementary Education.

Eric Barbee, son of Mr. and Mrs. Donny Barbee was honored on his 6th birthday Monday evening August 23, at their home in Rule. A hamburger supper was served to his grandparents.

Mr. and Mrs. Jack Monse, Mr. and Mrs. J.R. Barbee his great grandparents, Mr. and Mrs. Leo Monse Sr. his uncles. Dewayne Monse, Larry Barbee and his sister Mitzi.

Eric also entered the first grade in Rule Monday. Mr. and Mrs. Jack Monse

and Mr. and Mrs. Leland Thane were in Amarillo last weekend while there they attended the musical "Texas" in Palo Duro Canyon.

There was a family night at Faith Lutheran Church Sunday at 6 o'clock with a nice crowd. Everyone brought ice cream, sandwiches, chips and desserts. Everyone enjoyed playing games after eating.

Mrs. Bertha Vasek played Skip Bo in the home of Mr. and Mrs. Alvin Bredthauer several nights of last week.

Mr. and Mrs. Kenneth Stegemoeller and Diane and a friend of DeSoto visited in the home of Kenneth's mother Mrs. Henrietta Stegemoeller over the weekend and also attended the Stegemoeller reunion.

Mr. and Mrs. Alvin Ulmer

visited in Colorado with their daughter Mrs. Jana Whitaker and husband and grandchildren.

Mr. and Mrs. Arthur Knippling ate lunch in the home of Mr. and Mrs. J.B. Toney Sunday.

The descendants of F.W. and Bertha Stegemoeller held their annual reunion in the Sons of Herman Hall Saturday, Aug. 28.

Next year's reunion will be held in Slaton.

The congregation of the Sagerton Methodist Church were proud to have Al Fincher and Mrs. Fincher with them the last two Sundays in the absence of their pastor, David Hestand, who is on vacation. Al Fincher of Aspermont is a lay speaker for the Methodist Church.

## Try This Trio Of Olive Kabobs

Snacks are a big part of our modern way of life, perfect for parties, between-meal appetites and as small meals for people on the go.

This trio of olive kabobs and special dips can be prepared ahead and kept waiting in the refrigerator until serving time. The Big Dipper, for example, is a tasty combination of pitted ripe olives, ham cubes and cherry tomatoes skewered on long cocktail kabobs. The crunchy sour cream based dip is made extra special with the addition of water chestnuts, sesame seeds and green onion.

Olive Kabobs and Creamy Italian Dip are reminiscent of delicious antipasto trays served in Italian restaurants. Provolone cheese, salami and anchovy-stuffed ripe olives give these kabobs their dis-

tinctive flavor. Dill Dip Delicious is a more subtle combination of ripe olives, cooked shrimp and cucumber wedges, ready to dip into a dill weed sour cream sauce.

The Big Dipper  
1/2 cup sour cream  
1/2 cup mayonnaise  
1/4 cup finely chopped parsley  
1/4 cup finely chopped water chestnuts  
1/4 cup toasted sesame seeds  
1/4 cup chopped green onions, green tops included  
Salt

15 pitted California ripe olives  
15 cubes of ham  
15 cherry tomatoes  
Mix together sour cream, mayonnaise, parsley, water chestnuts, sesame seeds, green

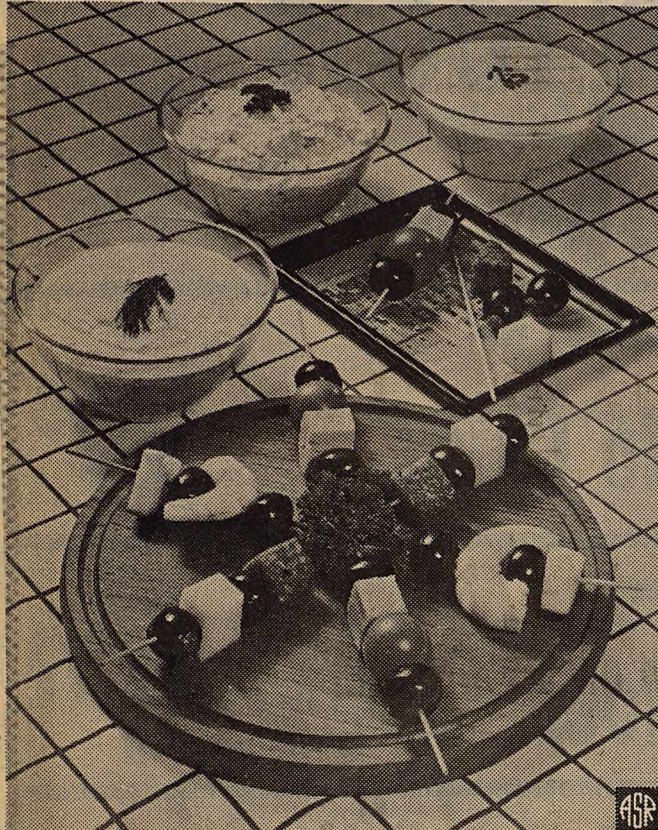
onions and salt to taste. Thread olives, ham and cherry tomatoes on wooden skewers. Serve with dip.

### Creamy Italian Dip With Olive Kabobs

- 1 cup sour cream
  - 2 teaspoons Italian salad dressing mix (packaged)
  - 15 pitted California ripe olives, stuffed with anchovies
  - 15 cubes of Provolone cheese
  - 15 small chunks of salami
- Combine sour cream and Italian salad dressing mix. Thread anchovy-stuffed ripe olives, cheese and salami on wooden skewers. Serve with dip.

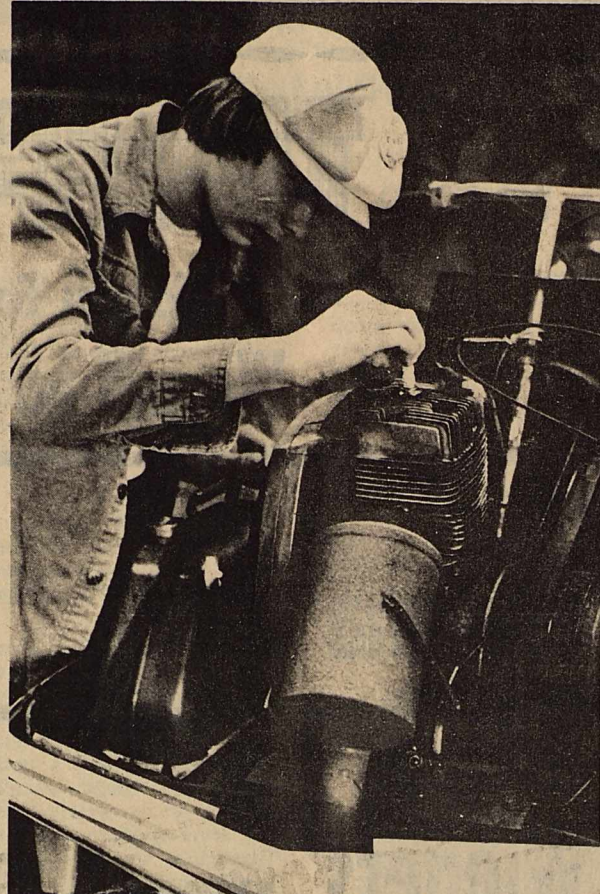
### Dill Dip Delicious

- 1/2 cup sour cream
  - 1/2 cup mayonnaise
  - 1 teaspoon dill weed
  - 1/2 teaspoon beau monde seasoning
  - 15 pitted California ripe olives
  - 15 medium cooked shrimp (peeled and deveined)
  - 15 cucumber wedges
- Mix together sour cream, mayonnaise, dill weed and beau monde seasoning. Thread olives, shrimp and cucumber wedges on wooden skewers. Serve with dip.



Get Bitter About Litter

Beautify Haskell Council



4-H'ers learn to earn and supplement family income by using skills from their lawn maintenance and small engines projects. Some 4-H'ers even own and operate repair shops.

## 4-H'ers Use Project Skills For Business Endeavors

Thousands of industrious young people are taking the economic climate in stride as they turn the skills learned in 4-H to productive pursuits.

Long recognized for its practical approach to life skills, 4-H is proving increasingly valuable as a means for gaining part-time employment or developing small business ventures to supplement family income or provide funds for future education.

For example, a 19-year-old California coed is helping to finance her education by giving advice on clothes selection and coordination to college friends. She also offers a clothes mending service.

In Indiana, a 4-H'er not only raises and sells prize-winning Shetland sheep dogs, but also operates a boarding service for dogs of neighbors and friends.

A Montana youth earns extra money by operating a

small engine repair shop in his home. Other youths are learning to earn through lawn maintenance jobs. 4-H'ers across the country operate roadside stands to sell produce from their gardens, as well as honey from their bee keeping projects, or crafts from their wood-working efforts.

Agricultural projects have always been a good source of income for 4-H members as they develop techniques for profitable production of beef, sheep or swine, dairy cattle and poultry.

Still other 4-H'ers parlay their skills in photography to run portrait studios, or their cooking skills to sell specially decorated cakes or to develop small catering businesses.

Helping young people to become productive citizens in today's world is a major objective of the 4-H youth program, conducted by the Cooperative Extension Ser-

vice and the U.S. Department of Agriculture.

Support for these efforts comes from thousands of corporations, businesses, foundations and individuals who provide incentives for excellence and achievement in a broad range of 4-H projects. The private sector also is involved in helping 4-H'ers learn more about the world of work and career opportunities.

At the national level, this private support is channeled through National 4-H Council, making possible such activities as citizenship and leadership training at the National 4-H Center in Chevy Chase, Md.; international exchanges; educational aids; publication of National 4-H NEWS, a magazine for volunteer leaders; and incentives and recognition leading toward National 4-H Congress in Chicago, Ill., Nov. 28-Dec. 2, 1982.

Contact your county Extension office for information on 4-H programs.

No Hassle No Gimmicks

## Invoice Sale

On Any

# New Car or Truck

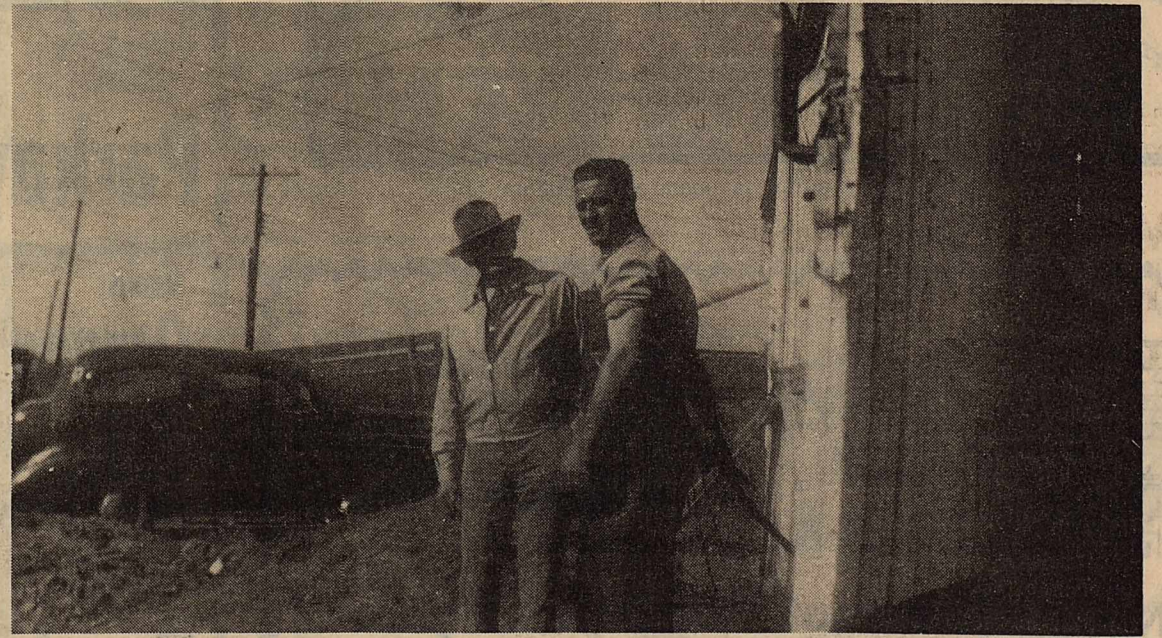
In Stock

We Now Have 12 Employees to Better Serve You!

# Bailey Toliver Chevrolet & Oldsmobile

517 N. 1st / 864-2626

## Remember When



For your convenience, we are now open during the noon hour.

Where We Care About You, Not Just Your Money!

Come In and See Patrick or Lou for All Your Banking Needs.



Farmers National Bank

Rule, Texas





### The Consumer Alert

by Mark White  
Attorney General

AUSTIN—Summer in Texas means swimming, waterskiing, boating, tennis and other outdoor sports. Some outdoor enthusiasts may decide during the shorts and swimsuit season that it's time to concentrate on physical fitness, perhaps even take off a few pounds.

Texas has hundreds of health spas ready to help, ranging from small exercise rooms and reducing salons to multi-million dollar facilities complete with gymnasiums, swimming pools, jogging tracks, saunas, steam rooms, and whirlpool baths.

Our Consumer Protection Division attorneys receive complaints about some health spas or studios that pursue the goal of making money more vigorously than getting you in shape, with the use of deceptive or misleading business practices.

These may range from exaggerations of the amount of figure reshaping or weight loss you can expect, to misrepresenting the facilities that are available, to high-pressure sales pitches.

Our lawyers urge all persons who are considering joining a health spa to make sure it is a reputable one, and to realize that the degree of personal commitment can determine the results you obtain. The best equipment, facilities, and exercise instructors can't help you if you don't use them regularly. If you have made that commitment, though, a reputable health spa may be useful. Here are some suggestions about how to find one:

1. First, consider low-cost alternatives to a spa, including any facilities provided by your city's recreation department, those offered by colleges, universities, or even

secondary schools in off-hours or during the summer, and those available at many YMCA's or YWCA's.

2. Check with your local Better Business Bureau and with regional offices of our Consumer Protection Division to determine if complaints have been received about a spa you are considering, and analyze the nature of those complaints.

3. Always inspect a spa's facilities carefully for cleanliness and safety, and compare those at several spas before making a decision.

While you are inspecting, talk to members and find out their opinions of the place and the personnel.

4. Try to enroll for a short time or on a "pay as you go" plan to see if you like the place and if you are really serious about an exercise program.

5. Be especially cautious if spa personnel attempt a "hard sell." Always resist any urging to sign a contract without thinking it over for at least 24 hours.

6. Examine carefully anything you are asked to sign. Some consumers have signed what they thought was an "application", only to learn later that it was really a binding contract. Make sure any contract is completely filled in, with no blank spaces. Check to see that any promises made to you are spelled out in writing.

Our attorneys say this is especially important if you have been assured that you can quit at any time and receive a prorated refund. If spa personnel resist, or tell you it's not necessary to have it in writing, don't sign.

If you have a complaint about a spa, contact our Consumer Protection Division regional office nearest you.



Rule Jubilee Parade

## Field Day Set Sept. 8 In Munday

Alternatives to traditional crops will be the main course on the menu for those attending the Vegetable Research Station field day in Munday, September 8. Field day headquarters will be the Texas Agricultural Experiment Station for Vegetable Research at 821 N. Ivy Ave. Dave Nagel, Assistant Professor and Superintendent at the station, said the field day will begin at 9:30 a.m. with registration and will end at about 3:00 p.m.

Following registration and a welcome by Resident Director of Research, Dr. Earl Gilmore, the group will begin a tour of demonstration plots at the Center. "These plots include carrots, paprika, peanuts and pinto beans," said Nagel. "We offer these as something people can turn to other than throwing money away trying to grow cotton."

Following a lunch provided by local businessmen, the group will leave by bus for Goree to see evaluation plots

of short season, insect resistant cotton varieties which are still in the experimental stage. Also seen will be furrow diking, a method of water conservation which has produced up to 100 percent greater yields on grain sorghum in the Chillicothe area.

The Texas Agricultural Experiment Station and the Texas Agricultural Extension Service co-sponsor the field day.

### Bertis White To Speak At Christian Church

In the absence of a regular minister it was announced this week that Bertis White of Abilene will be preaching again at the Christian Church next Sunday. There will be no evening service.

The public is cordially invited to hear Mr. White. Bible School is at 9:45 a.m., morning worship and communion at 10:45 a.m.

# This LABOR DAY

All Roads Lead to—

## SONIC

Drive Safely...and Remember, You can get these Mouth-Watering Specials **ALL** Week-end!

Thursday & Friday  
September 2 & 3

**HAMBURGERS—99¢**  
**CHEESEBURGERS—\$1.19**

Saturday & Sunday  
September 4 & 5

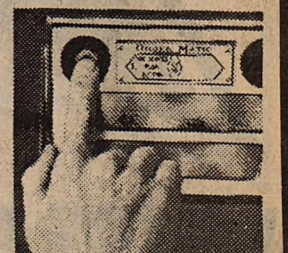
**BAR-B-Q—\$1.09**

Monday, September 6

**1/2 price Drinks**

## SONIC

We don't start cookin'til we hear from you.



Nice People Do Not Litter!



Beautify Haskell Council



The first wristwatch of which there is any record dates from 1790, and is itemized in the accounts of the Swiss watchmakers Jaquet-Droz and Leschot of Geneva as "a watch to be fixed on a bracelet."

### Make sure your next loan is easier to pay back



A good loan should be one you can manage on your income.

The Federal Land Bank can tailor a payment plan to fit your income patterns and cash flow. The long-term feature of Land Bank loans helps keep your payments manageable.

At the Land Bank, we want to make sure your loan is as easy to pay back as it is to get in the first place. Stop by and see how we can help.

**The Land Bank**  
**The Bank of Generations**

Federal Land Bank Association of Haskell



DALE BURRIS—Manager

Offices at Haskell, Anson and Seymour  
Haskell Telephone 864-2062—Anson Telephone: VA4-1142

Long-time loans on farms and ranches in Haskell, Jones, Baylor and Knox Counties.





# M SYSTEM

Your FRIENDLY

**AFFILIATED  
SUPER MARKETS**

Haskell, Texas  
Where Your Dollar Buys More

**Double days**

**WEDNESDAYS**

With the purchase of \$3.00 or more.

Specials Good Thurs., Sept. 2  
thru Wed., Sept. 8

Tyson's USDA Grade "A"

**Fryers**

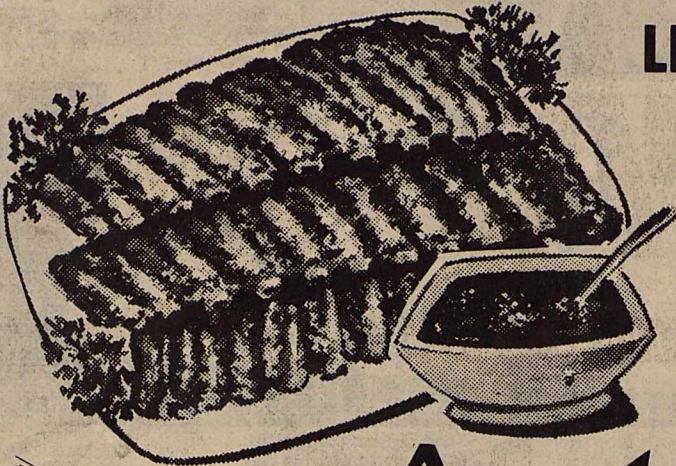
Whole Only

**47¢**  
lb

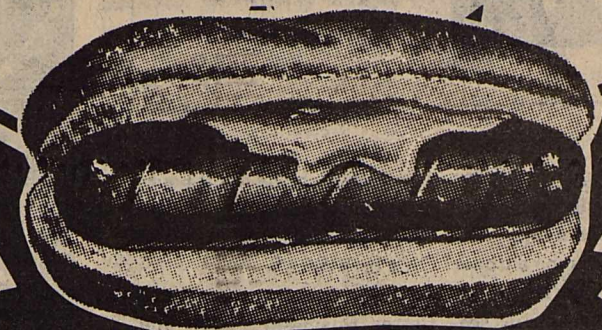
M-System Store Will Be Open Monday, Sept. 6th,  
Labor Day For Your Shopping Convenience!

## SPARERIBS

LEAN, MEATY



**1.59**  
Lb.



**Franks**

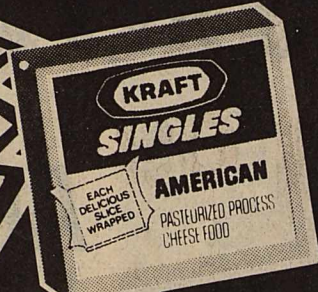
Gooch's  
12-oz.  
Pkg.

**89¢**

KRAFT SINGLES

**Cheese**

American or  
Pimento  
8-oz. Pkg.



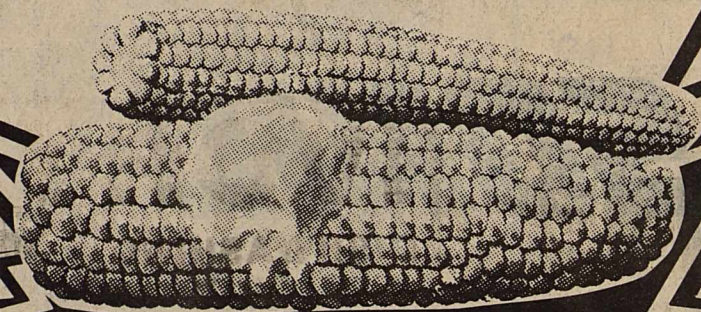
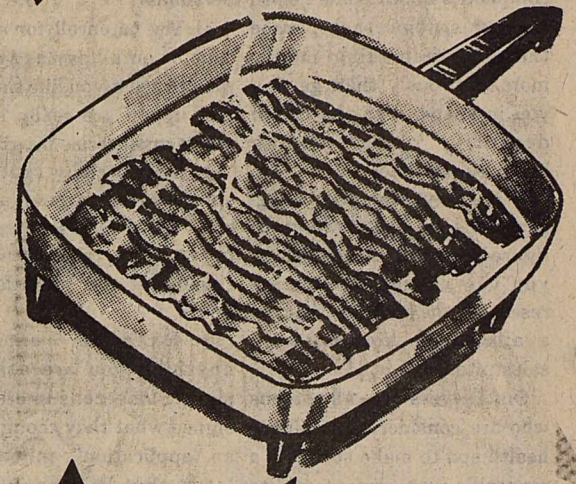
**1.19**

Sliced Slab

**Bacon**

**1.89**

Lb.



FRESH SWEET EAR

**CORN**

EARS

**7.100**



Cello Bag

**RADISHES Or  
GREEN ONIONS**

MIX  
OR  
MATCH!

**5 FOR 1.00**

MRS. BAIRD'S

**Donuts**

PKGS.

**4.100**

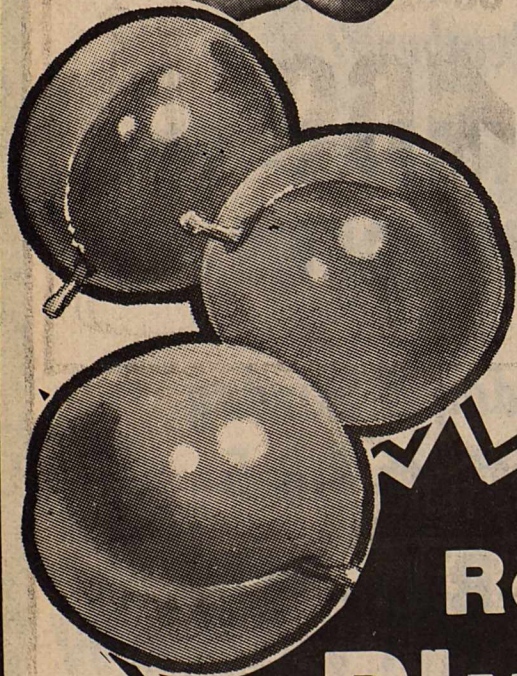


**BELL PEPPERS**

FRESH  
GREEN

Lb.

**49¢**



Red

**Plums**

Lb.

**69¢**



LIBBY'S

**Vienna  
Sausage**

5-oz. Cans

**2 FOR 1.00**

KRAFT  
BARBECUE  
SAUCE

18-oz. Bottle

**69¢**



BLUE BIRD 9"  
**PAPER  
PLATES**

100-Ct.  
Pkg.

**79¢**

New! Superior Products  
**Shampoo or  
Hair Conditioner**

Large  
64-oz.  
Bottle

**1.39**

Town Talk

**Buns**

Hamburger or Hot Dog

8 count pkg

**37¢**

We Reserve The Right To  
Limit Quantities!







We Reserve  
The Right  
To Limit  
Quantities!

# TAKE A BREAK FROM HIGH FOOD PRICES...

Scott  
Towels  
**79¢**  
Jumbo Roll

# LABOR DAY SPECIALS



**Kingsford  
Charcoal**

10 lb bag **2<sup>49</sup>**

GLADIOLA  
**Pouch  
Mixes**  
● BISCUIT  
● CORNBREAD  
● PANCAKE  
6-oz. Pkgs.

**5 For 1<sup>00</sup>**



**EAGLE BRAND  
MILK**  
14-oz. Can **1<sup>09</sup>**

SHURFRESH  
**POTATO  
CHIPS**  
8-oz. Twin Pack

Limit 2  
**58¢**



**KOOL-AID  
DRINK MIX**

Assorted Flavors  
10-Quart Can  
Pre-Sweetened

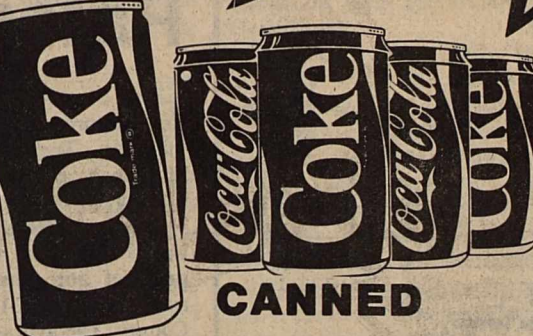


**2<sup>79</sup>**

Shurfresh Assorted Flavors

**Mellorine**

1/2-Gal. Ctn.  
Limit 2  
**58¢**



**COKES**

12-oz. Cans  
6-Pack **1<sup>39</sup>**

**IVORY**

DISHWASHING  
LIQUID  
32-oz. Bottle

**1<sup>89</sup>**



VLASIC  
Hamburger Sliced  
DILL  
**PICKLES**

32-oz.  
Jar



**99¢**

**FOLGER'S  
COFFEE**

Drip or Regular  
1-Lb. Can



**2<sup>19</sup>**



**COKE**  
2-Liter Bottle

**89¢**

**WESSON**

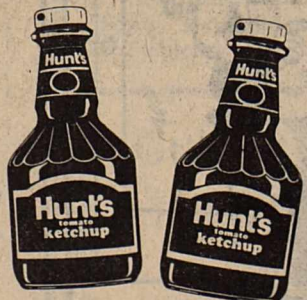
PURE VEGETABLE  
OIL  
38-oz. Bottle

**1<sup>69</sup>**



**LIPTON  
Instant Tea**  
3-oz. Jar

**2<sup>39</sup>**



**HUNT'S TOMATO  
Ketchup**  
24-oz. Bottle

**99¢**

Light Crust  
**FLOUR**  
5-Lb. Bag

**88¢**

BETTY CROCKER  
**Cake Mix**  
Assorted Knds  
BOX



**79¢**





## Evelyn Silva To Receive Scholarship

Miss Evelyn Silva, granddaughter of Mrs. Rosa Silva of 1010 Ave. D. is to receive a three hundred dollar Academic



EVELYN SILVA

Scholarship for 1982-83 academic year from the Biology Department at Sam Houston State University in Huntsville, to continue her studies at SHSU with a major in Biology.

Miss Silva is a member of Beta Beta Beta, national honorary society in Biology and Alpha Lambda Delta.

She was on the National Dean's List and a recipient of SHSU Freshman Leadership Scholarships.

Upon graduation from Sam Houston State University, Miss Silva plans to go into Biological research.

Want Ads  
Put 'em to work for you—  
You'll know they work!

## Marriage Licenses

Marriage licenses issued during the month of August included:

Michael Edward Green and Cynthia Ann Matthews, Haskell.

Nefro Rios Gonzales and Patricia Ann Anderson, Knox City.

Michael Madison Cauley, Seagraves, and Lissa Denise Hunt, Haskell.

Alberto Macias Enriquez and Ruth Ann Guadalcacer, Haskell.

John Manuel Pachicano and Rosalinda Saucedo, Rochester.

Theodore Robert Whitley, Haskell, and Brenda Louise Sedberry, Rule.

Donnie Joe Childress, and Connie Lavelle Bell, of the Stamford.

## SSI, Social Security Checks Increase

Low-income aged, blind and disabled people who get a federal Supplemental Security Income (SSI) check and who also get Social Security, actually have received more than this year's 7.4 percent cost-of-living increase for July and August. But Social Security officials say, the September SSI checks will be reduced for these "dual-entitled" persons, so that both checks combined will be no more than 7.4 percent higher than the combined checks in June.

According to Glyn Hammons, manager of the Abilene Social Security office,

the two month bonus came about because a 1981 law provides that changes in an SSI recipient's other income won't affect the amount of the SSI check in most cases for two months. So, two months after the Social Security benefit increased, the SSI check must be adjusted.

"I would like to assure those people who are getting both Social Security and SSI that, although the September SSI check will be reduced somewhat, the total of both checks will be 7.4 percent higher than what they were getting in June," Hammons said.

## House Dust Is Nothing To Sneeze At

You don't have to be a "white glove" housekeeper to be bothered by house dust. If you or a member of your family suffers from a respiratory problem or an allergy, house dust is more than just a nuisance.

House dust can be a major irritant to troubled breathing. Even if a person only suffers from seasonal allergies, it's wise to keep the home as dust-free as possible.

Experts estimate that one out of three people who has seasonal allergies becomes chronically allergic in a few years' time. This is especially true for children.

There's no way that even the most conscientious cleaning can eliminate all house dust. A look at the contents of your vacuum bag after a normal workout will reveal the culprit.

Besides the dust carried into the home from outside, the air inside is filled with the fine dust formed by the natural aging of your furniture, carpets, drapes and clothing.

To combat this air-borne enemy, you need to attack it where it hides and where it travels.

Take a look around your home at all of the dust traps. Bookcases, knickknack shelves, wide windowsills, picture frames, upholstered furniture... all provide excellent hiding places for house dust.

A few simple tricks can help reduce the unseen accumulation of dust. Consider enclosing your books in cupboards or on shelves with doors.



Tumble your drapes in your clothes dryer on "fluff" every couple of weeks. Use washable throw rugs instead of carpeting in the bathrooms and the kitchen.

Avoid shag, twisted pile and looped pile rugs and carpets because they tend to hide dust and resist easy cleaning.

One of the best ways to eliminate house dust is to catch it at its source: in the air itself. A high efficiency, non-electronic air cleaner installed on your furnace will constantly clean all the air that circulates through the system.

Non-electronic air cleaner provides several important

benefits in the home. Virtually all dust, pollen and spores will be removed as they pass through your furnace. Not only is that important for family members with breathing problems, but housecleaning is easier without so much annoying dust.

Ask your local heating and air conditioning dealer about installing a high efficiency, non-electronic air cleaner, or call toll free: 1-800-356-9652.

If you cut down on the number of hiding places for dust in the home, as well as clean it out of the air itself, you and your family will breathe a whole lot easier.

## Caution Urged At RR Crossings

Across Texas, school is back in session. "Once again, adults will be responsible for the most precious cargo they can carry -- the lives of our children," says James P. Bearden, Texas Safety Association Vice President for Railroad Transportation. "Not only parents taking kids to school, but all bus drivers and teens who drive themselves and friends, must be alert to the rules and signals at

railroad crossings." Bus drivers are required by law to stop 15-50 feet from the nearest rail at every crossing, open the bus doors, and look and listen for approaching trains. Passengers should help by being quiet so the driver can hear clearly.

Motorists, too, are responsible under the law, to obey crossing signals and to exercise caution at crossings. The old saying, "Stop, Look and Listen" is still the best crossing safety message there is -- whether or not the signals are flashing. "Many accidents occur at familiar crossings that motorists pass daily. Habit

makes it difficult to remember that 'any time is train time' and caution is necessary at all times."

Lower the volume or turn off the radio and roll down the windows if necessary. Keep all passengers reasonably quiet. Look and listen. If the way is clear, proceed. "Don't race the train," continues Bearden, "It can't swerve off the tracks to avoid you if you get in the way. A train may look big and slow, but your eyes can fool you. Are your children's lives, the lives of your friends, or your own life, worth risking to save a few minutes?"

**Wanted:**  
**Farm & Ranch Work**  
Strong Back & Mind  
Not Afraid of Work  
Contact:  
**Robert Simpson- 864-8952**  
Looking For Long Term Employment

### NOTICE OF CALCULATION OF EFFECTIVE TAX RATE AND PUBLICATION OF ESTIMATED UNENCUMBERED FUND BALANCES

I, Kyle G. Wilfong, Chief Appraiser for the Haskell County Appraisal District in accordance with the provisions of Sec. 26.04 of the Property Tax Code, have calculated the tax rate which may not be exceeded by more than three percent by the governing body of City of Rule without holding a public hearing as required by the code. The rate is as follows:  
\$.16834 per \$100 of value.  
The estimated unencumbered balances for Maintenance & Operation fund: \$-0-  
The estimated unencumbered balances for Interest & Sinking fund: \$-0-.

Kyle G. Wilfong  
Chief Appraiser  
30 August 1982

#### I. ASSUMPTIONS

1. 1981 Total Tax Levy from the 1981 Tax Roll	\$ 25,728.13
2. 1981 Tax Rate (\$.40 M&O and \$.00 I&S)	\$.40 /\$100
3. 1981 Debt Service (I&S) Levy	\$ -0-
4. 1981 Maintenance and Operation (M&O) Levy	\$ 25,728.13
5. 1981 Taxes Levied for Maintenance and Operation (M&O) on Property in Territory that Has Ceased to be a Part of the Unit in 1982	\$ -0-
6. 1981 Taxes Levied for Maintenance and Operation (M&O) on Taxable Value of Property Becoming Exempt in 1982	\$ -0-
7. 1981 Taxes Levied for Maintenance and Operation (M&O) on Taxable Value of Property Lost Because Property is Required to be Appraised in 1982 at Less than Market Value	\$ -0-
8. 1982 Total Taxable-Value of All Property	\$ 15,372,327.
9. 1982 Taxable Value of New Improvements Added Since January 1, 1981	\$ 88,759.
10. 1982 Taxable Value of Property Added Since January 1, 1981, by Annexation of Territory	\$ -0-
11. 1982 Tax Levy Needed to Satisfy Bonded Indebtedness or Debt Service (I&S)	\$ -0-

#### II. CALCULATION

##### MAINTENANCE AND OPERATION (M&O) TAX RATE FOR 1982

1. (A) 1982 Total Taxable Value of All Property (Assumption No. 8)	\$ 15,372,327.
(B) Subtract 1982 Taxable Value of New Improvements Added (Assumption No. 9)	\$ 88,759.
(C) Subtract 1982 Taxable Value of Property Added by Annexation (Assumption No. 10)	\$ -0-
(D) Adjusted 1982 Taxable Value for Calculation	\$ 15,283,568.
2. (A) 1981 Total Tax Levy from the 1981 Tax Roll (Assumption No. 1)	\$ 25,728.13
(B) Subtract 1981 Taxes Levied for Maintenance and Operation (M&O) on Property in Territory that Has Ceased to be a Part of the Unit in 1982 (Assumption No. 5)	\$ -0-
(C) Subtract 1981 Debt Service (I&S) Levy (Assumption No. 3)	\$ -0-
(D) Subtract 1981 Taxes Levied for Maintenance and Operation (M&O) on Taxable Value of Property Becoming Exempt in 1982 (Assumption No. 6)	\$ -0-
(E) Subtract 1981 Taxes Levied for Maintenance and Operation (M&O) on Taxable Value of Property Lost Because Property is Required to be Appraised in 1982 at Less than Market Value (Assumption No. 7)	\$ -0-
(F) Adjusted 1981 Tax Levy for Calculation	\$ 25,728.13
3. (A) Adjusted 1981 Tax Levy for Calculation (2F above)	\$ 25,728.13
(B) Divided by Adjusted 1982 Taxable Value for Calculation (1D above)	\$ 15,283,568.
Multiplied by \$100 Valuation	X \$100
(C) Calculated Maintenance and Operation (M&O) Rate For 1982	\$ .16834 /\$100

##### INTEREST AND SINKING RATE FOR 1982

4. (A) 1982 Tax Levy Needed to Satisfy Bonded Indebtedness or Debt Service (I&S) (Assumption No. 11)	\$ -0-
(B) 1982 Total Taxable Value of All Property (Assumption No. 8)	\$ -
(C) Divide the Adjusted 1982 Tax Levy for Debt Service (I&S) (4A above) by the Adjusted 1982 Taxable Value for I&S (4B above)	\$ -
(D) Multiplied by \$100 Valuation	X \$100
(E) Calculated Interest and Sinking (I&S) Rate for 1982	\$ -0-
5. (A) Calculated Maintenance and Operation (M&O) Rate for 1982 (3C above)	\$ .16834 /\$100
(B) Add Calculated Interest and Sinking (I&S) Rate for 1982 (4E above)	\$ -0-
(C) Calculated 1982 Effective Tax Rate	\$ .16834

1982 Effective Tax Rate is the tax rate published by the tax assessor, as required by Sec. 26.04 of the Property Tax Code. See sample form on page 18.

#### III. MAXIMUM TAX RATE

1. (A) Calculated 1982 Effective Tax Rate (5C above)	\$ .16834 /\$100
(B) Multiplied by Three Percent (3%)	X .03
(C) Equals Amount of Increase Allowed by Code	\$ .00505
(D) 1982 Maximum Tax Rate (1A + 1C, above)	\$ .17339 /\$100

1982 Maximum Tax Rate is the tax rate which, if exceeded, triggers the public notice and public hearing requirements of Sec. 26.06 of the Property Tax Code

## Auto Insurance Rates To Increase

The State Board of Insurance approved a 9.1 percent increase Tuesday in auto insurance rates in Haskell County.

Figures released by the board show that the average price of auto insurance will rise by about \$31 in Haskell County. The average premium now costs \$340. Effective Nov. 1, the average premium will cost \$371.

The figures used reflect the price of insuring a low priced 1982 model Chevrolet, Ford, or Plymouth driven to and from work with no male drivers under 25, or female drivers under 21.

Insurance used for the figures includes minimum liability coverage with a \$200 deductible collision policy.

The board approved an overall statewide average increase of 14.8 percent, rather than the 33.2 percent the industry had asked for.

David B. Irons, spokesman for the insurance industry, said he was dismayed at the decision. He added that there are some 400 companies which will have to decide for themselves how they are

going to handle the rate increase.

William P. Daves, insurance board chairman, said the increase was necessary because of the rising costs, especially hospitalization.

"People are also paying less attention to the 55 mph speed limit and that has increased the cost of insurance and the frequency of accidents," Daves said.

The insurance companies had also sought to increase their underwriting profit (the profit companies make from writing policies, rather than the profit they make from investments).

Rather than getting the 5 percent profit margin the insurance industry sought, the board reduced the underwriting profit to 0.26 percent.

A SUBSCRIPTION to The Haskell Free Press is an ideal gift for any occasion. We do all the work. Just come by and give us the name and address and we'll send a gift certificate in your name. Haskell Free Press

**COWPOKES**  
By Ace Reid

"Now, my cattle lost money... but, I sold my feed sacks!"

**Haskell National Bank**  
Your Independent Bank  
Haskell, Texas  
IBA, IBAT, FDIC

### NOTICE OF CALCULATION OF EFFECTIVE TAX RATE AND PUBLICATION OF ESTIMATED UNENCUMBERED FUND BALANCES

I, Kyle G. Wilfong, Chief Appraiser for the Haskell County Appraisal District in accordance with provisions of Sec. 26.04 of the Property Tax Code, have calculated the tax rate which may not be exceeded by more than three percent by the governing body of Haskell I.S.D. without holding a public hearing as required by the code. The rate is as follows:  
\$.6707 per \$100 of value.

The estimated unencumbered balances for Maintenance & Operation fund: \$-0-.

The estimated unencumbered balances for Interest & Sinking fund: \$3,000.00.

Kyle G. Wilfong  
Chief Appraiser  
30 September 1982

#### I. ASSUMPTIONS

1. 1981 Total Tax Levy from the 1981 Tax Roll	\$ 496,618.71
2. 1981 Tax Rate (\$.82 M&O and \$.03 I&S)	\$ .8500 /\$100
3. 1981 Debt Service (I&S) Levy	\$ 26,000.00
4. 1981 Maintenance and Operation (M&O) Levy	\$ 470,618.71
5. 1981 Taxes Levied for Maintenance and Operation (M&O) on Property in Territory that Has Ceased to be a Part of the Unit in 1982	\$ -0-
6. 1981 Taxes Levied for Maintenance and Operation (M&O) on Property Becoming Exempt in 1982	\$ -0-
7. 1981 Taxes Levied for Maintenance and Operation (M&O) on Taxable Value of Property Lost Because Property is Required to be Appraised in 1982 at Less than Market Value	\$ -0-
8. 1982 Total Taxable Value of All Property	\$ 78,237,003.
9. 1982 Taxable Value of New Improvements Added Since January 1, 1981	\$ 830,179.
10. 1982 Taxable Value of Property Added Since January 1, 1981, by Annexation of Territory	\$ -0-
11. 1982 Tax Levy Needed to Satisfy Bonded Indebtedness or Debt Service (I&S)	\$ 27,000.
12. 1982 Taxable Value of Over-65 Homesteads with Frozen Taxes	\$ 5,905,061.
13. Frozen Maintenance and Operation (M&O) Tax Levy of Over-65 Homesteads with Frozen Taxes	\$ 16,472.97
14. Frozen Interest and Sinking (I&S) Tax Levy of Over-65 Homesteads with Frozen Taxes	\$ 1,328.99

#### II. CALCULATION

##### MAINTENANCE AND OPERATION (M&O) TAX RATE FOR 1981

1. (A) 1982 Total Taxable Value of All Property (Assumption No. 8)	\$ 78,237,003.
(B) Subtract 1982 Taxable Value of New Improvements Added (Assumption No. 9)	\$ 830,179.
(C) Subtract 1982 Taxable Value of Property Added by Annexation (Assumption No. 10)	\$ -0-
(D) Subtract 1982 Taxable Value of Over-65 Homesteads with Frozen Taxes (Assumption No. 12)	\$ 5,905,061.
(E) Adjusted 1982 Taxable Value for Calculation	\$ 71,501,763.
2. (A) 1981 Total Tax Levy from the 1981 Tax Roll (Assumption No. 1)	\$ 496,618.71
(B) Subtract 1981 Taxes Levied for Maintenance and Operation (M&O) on Property in Territory that Has Ceased to be a Part of the Unit in 1982 (Assumption No. 5)	\$ -0-
(C) Subtract 1981 Debt Service (I&S) Levy (Assumption No. 3)	\$ 26,000.00
(D) Subtract 1981 Taxes Levied for Maintenance and Operation (M&O) on Taxable Value of Property Becoming Exempt in 1982 (Assumption No. 6)	\$ -0-
(E) Subtract 1981 Taxes Levied for Maintenance and Operation (M&O) on Taxable Value of Property Lost Because Property is Required to be Appraised in 1982 at Less than Market Value (Assumption No. 7)	\$ -0-
(F) Subtract Frozen Maintenance and Operation (M&O) Tax Levy of Over-65 Homesteads with Frozen Taxes (Assumption No. 13)	\$ 16,472.97
(G) Adjusted 1981 Tax Levy for Calculation	\$ 454,145.74
3. (A) Adjusted 1981 Tax Levy for Calculation (2G above)	\$ 454,145.74
(B) Divided by Adjusted 1982 Taxable Value for Calculation (1E above)	\$ 71,501,763.
Multiplied by \$100 Valuation	X \$100
(C) Calculated Maintenance and Operation (M&O) Rate for 1982	\$ .6352 /\$100

##### INTEREST AND SINKING RATE FOR 1982

4. (A) 1982 Tax Levy Needed to Satisfy Bonded Indebtedness or Debt Service (I&S) (Assumption No. 11)	\$ 27,000.00
(B) Subtract Frozen Interest and Sinking (I&S) Tax Levy of Over-65 Homesteads with Frozen Taxes (Assumption No. 14)	\$ 1,328.99
(C) Adjusted 1982 Tax Levy for Debt Service (I&S)	\$ 25,671.01
(D) 1982 Total Taxable Value of All Property (Assumption No. 8)	\$ 78,237,003.
(E) Subtract 1982 Taxable Value of Over-65 Homesteads with Frozen Taxes (Assumption No. 12)	\$ 5,905,061.
(F) Adjusted 1982 Taxable Value for I&S	\$ 72,331,942.
(G) Divide the Adjusted 1982 Tax Levy for Debt Service (I&S) (4C above) by the Adjusted 1982 Taxable Value for I&S (4F above)	\$ .0355
Multiplied by \$100 Valuation	X \$100
(H) Calculated Interest and Sinking (I&S) Rate for 1982	\$ .0355 /\$100
5. (A) Calculated Maintenance and Operation (M&O) Rate for 1982 (3C above)	\$ .6352 /\$100
(B) Add Calculated Interest and Sinking (I&S) Rate for 1982 (4H above)	\$ .0355 /\$100
(C) Calculated 1982 Effective Tax Rate	\$ .6707

1982 Effective Tax Rate is the tax rate published by the tax assessor, as required by Sec. 26.04 of the Property Tax Code. See sample form on page 18.

#### III. MAXIMUM TAX RATE

1. (A) Calculated 1982 Effective Tax Rate (5C above)	\$ .6707 /\$100
(B) Multiplied by Three Percent (3%)	X .03
(C) Equals Amount of Increase Allowed by Code	\$ .0201
(D) 1982 Maximum Tax Rate (1A + 1C, above)	\$ .6908 /\$100

1982 Maximum Tax Rate is the tax rate which, if exceeded, triggers the public notice and public hearing requirements of Sec. 26.06 of the Property Tax Code.



# CAPITOL UPDATE

*John Tower*  
**U.S. SENATOR for TEXAS**  
 142 RUSSELL OFFICE BUILDING  
 WASHINGTON, D.C. 20510



From the earliest days of our republic, international trade has been one of the mainstays of our economic prosperity. As the world has shrunk in this century, the free movement of goods and services across national boundaries has become more critical than ever. We depend on foreign markets to supply us with important materials, and to purchase our products.

Agriculture accounts for one-fifth of our export trade. U.S. farmers are the most productive in the world. They produce three times more during each work day than they did as recently as in 1960. As a result, we are the best-fed nation in history, and still have sufficient production to be a major food supplier to the rest of the world.

Were it not for the substantial contribution of agriculture to the positive side of our balance of payments, we would be hard-pressed to finance the import of other vital materials. Without agriculture exports in 1980, our trade deficit would have been double the \$23.4 billion we recorded. Our agriculture surplus is sufficient alone to pay one-third the cost of our oil imports. For this year, it is projected that there will be a surplus of over \$26 billion in agriculture trade.

President Reagan recently announced that we will explore the possibility of a one-year extension of the Russian grain agreement which is scheduled to expire October 1. I have long supported offering U.S. agricultural commodities to any reasonable purchaser. In leadership conferences with the President, I have consistently stressed the need for a stable world market for the sale of these commodities, since uncertainty in the availability of our agricultural commodities simply causes potential purchasers to pursue other suppliers and our farmers bear the brunt of the lost sales. For this reason, I have always taken the position that a limited embargo is neither an effective foreign policy tool nor an equitable burden when borne only by the agriculture sector.

The President has also authorized Secretary of Agriculture Block to consult with the Soviet Union on the subject of additional grain sales beyond the minimum purchase levels of the current agreement. These minimum purchase levels are three million metric tons of wheat and an equal amount of corn.

While I support the extension of the existing agreement and the possibility of additional wheat and corn sales to the Soviets, I have joined with several other Senators in asking President Reagan to direct Secretary Block and our negotiators to explore the possibility of including rice in any extension of the Russian grain agreement.

About two-thirds of the U.S. rice crop is currently exported, and Russia is one of the largest importers of rice in the world. However, none of Russia's rice imports now come from the United States.

U.S. farmers produce top-quality rice, and they can meet almost any market demand because of the many different types of rice which they produce. If U.S. rice farmers could gain even minimal entry into the Russian market they would then have an important opportunity to expand the export markets which are so vital to this important crop.

For this reason, I am hopeful that the existing grain agreement with the Soviet Union will be expanded to include rice. I think it is important that our negotiators, with direction from the President, do everything possible to secure the inclusion of rice in the grain agreement extension with the Soviets. I shall continue to work to insure a healthy, stable international sales market and will continue to pursue this matter both within the Senate and with the Administration.



Rule Jubilee Parade

## Cost-cutting Essential For Cattle Producers

Cost-cutting is essential if cattle producers are to survive the present cost-price squeeze, according to a livestock specialist with the Texas Agricultural Extension Service, Texas A&M University System.

Dr. Robert A. Rupp of Weslaco emphasized that for many producers, it is costing more to produce a pound of calf than the calf will bring at sale time.

"Producers with a high level of equity in their land and cattle—and who can delay large capital expenditures—are in much better situation for survival," Rupp told cattlemen attending the International Ranchers Roundup held recently in Del Rio.

Costs which are not cost effective should be eliminated, but it is also essential to

incur production costs which do increase net profits or reduce losses, Rupp said.

"Lowering production costs per pound of calf sold is the key for evaluating production practices or alternatives. To measure production cost efficiency, multiply the number of calves produced (calving percent) by the weight of calves sold (weaning weight) by the market price per pound received (calf equity) and subtract the cost of producing these calves—total costs involved in keeping cows, bulls and calves," he said.

Some of the management or production practices ranchers may want to evaluate for cost include supplemental feeding, mineral supplementation, vaccinations, parasite control, pregnancy testing, breeding

soundness evaluation of bulls, use of growth stimulants (implants) and performance testing, Rupp said.

"Every rancher should make cost projections for his or her individual ranch operation. When cost relationships are determined, the management practice can be best selected to either reduce production costs or increase production for the same costs," Rupp added.

Another speaker, Dr. John Merrill of Texas Christian University, said there has been a loss of about 100,000 beef producers per year since 1977. The cattle business may and should be better for the survivors, he added.

"The average size beef herd in the U.S. is composed of 24 head, and the operator is a

major factor in our business. People with the most problems currently are those 'in between' the large rancher and the small producer—but it would be well to keep an eye on the large rancher and the small producer—but it would be well to keep an eye on the small producer to decide if what he is doing will have an impact on your operation," Merrill said.

In bad times, it is harder to get back what one spends, Merrill added, but the trick is to identify savings that can be made which do not cost money in the long run or cut production below optimum.

"Don't overlook profit opportunities that always come with hard times. Figure every move carefully, but don't sell your saddle," Merrill said.

## Plan Now For Landscaping

Although it may seem a bit early to plan for next year, planning is the key to successful landscaping.

A well-planned, simple landscape design keeps down labor costs and time-consuming maintenance, says Max Stapleton, county agent with the Texas Agriculture Extension Service, Texas A&M University System.

Space is an important factor in planning, not only the initial

space occupied by the plant but that needed as it matures.

If a plant constantly needs pruning to keep it in the space allotted, Stapleton suggests finding another plant.

Soil and climate should be considered, too.

Selecting plants suited to a given area is a lot easier than trying to modify the soil and environment to a given plant, Stapleton notes.

Many times native and adapted plants provide more pleasure and enjoyment to the gardener than exotic plants because native plants tend to require less care and attention.

Stapleton suggests eliminating unnecessary borders along drives and walks since border plantings emphasize rather than eliminate these elements.

Having one or two small, well-kept annual flower beds is often preferred to a number of beds requiring constant work.

"Plan your landscape to enjoy it, not to be a slave to it," Stapleton adds.

**Cultivate Haskell**

Beautiful Haskell Council

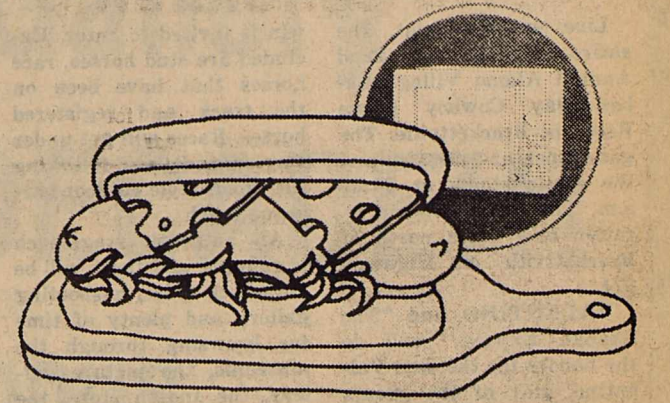
Open Dusk-Start Dark

**DRIVE-IN**  
 Stamford 773-3272

Fri. Sept. 3-Sat. 4-Sun. 5  
 It Knows How to Scare You  
 "Poltergeist"

Tues. 7-Wed. 8-Thurs. 9  
 XX-Adults Only  
 "American Desire"

## Microwave Sandwichery...



### And Other Fast Feasts

Hot and hearty sandwiches-in-a-hurry are a real microwave oven specialty! Reuben Franks, Sloppy Joes, Barbecued Beef, Toasted Cheese — all easy to assemble — are quick to heat in the microwave.

The newly revised recipe and information booklet, "Microwave Cookery From Kraft," features recipes for these old favorites plus recipes for every other course in the menu from appetizers to desserts.

Developed by the Kraft Kitchens staff, the booklet offers time-saving cooking tips plus a wide variety of information about microwave cooking. For a free copy of the booklet, write: MICROWAVE COOKERY FROM KRAFT, Box 826, Dept. MR, South Holland, IL 60473

Additional copies are available at \$.50 each.

Reuben Franks

Sauerkraut, drained	Frankfurters, split
Kraft thousand island dressing	Kraft Swiss cheese slices, cut crosswise into quarters
Frankfurter buns, split	

Combine sauerkraut and enough dressing to moisten, spoon onto bottom half of bun. Top with frankfurter, cheese and top half of bun. Wrap in paper towel. For each sandwich, microwave on High 1 to 1 1/4 minutes or until hot.

## FREE Hearing Test

Fieldan Motel  
 Haskell

SINCE A HEARING PROBLEM AFFECTS THE ENTIRE FAMILY  
 BRING A LOVED ONE TO HELP IN THE EVALUATION.

Friday, Sept. 3rd 9:30-to-1:30

Texas State Hearing Aid Center

4201 A-North 1 st., Abilene, Texas 79603

915 673 4989

If unable to attend  
 Call Us For FREE in Home Testing

"Nerve Deafness" CAN be Helped!

# LABOR DAY SALE

ALLSUP'S WILL BE OPEN LABOR DAY

**FALL WAREHOUSE SALE**

DECKER FRANKS 12 OZ. PKG.	79¢
ATKINS HAMBURGER SLICED DILL PICKLES 16 OZ. JAR	59¢
REFRESHING COCA-COLA 2 LITER BTL.	89¢

**HOME FOR THE HOLIDAYS SPECIALS**

BORDEN'S HI-PROTEIN MILK 1/2 GAL. CTN.	\$1 09
BORDEN'S ORANGE JUICE QUART	99¢
LADY BORDEN ASSORTED FLAVORS ICE CREAM 1/2 GAL. RD. CTN.	\$2 29

PRICES EFFECTIVE  
 SEPT. 2-4, 1982  
 WHILE SUPPLIES  
 LAST!

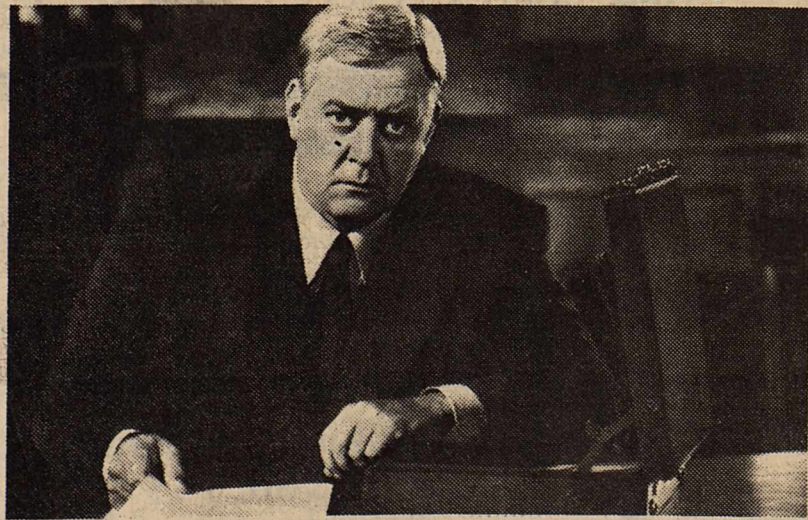


WE RESERVE THE  
 RIGHT TO LIMIT  
 QUANTITIES.  
 LIMITED SUPPLIES!

**HEY KIDS! JOIN THE ALLSUP'S DOORBELL BRIGADE FOR MDA! SEPTEMBER 5 AND SEPTEMBER 6, 1982**

COME BY YOUR LOCAL ALLSUP'S CONVENIENCE STORE AND PICK-UP AN ALLSUP'S COKE CUP TO COLLECT MONEY FOR JERRY'S KIDS. BRING YOUR CUP IN AND TURN IN YOUR COLLECTION AND RECEIVE A FREE COKE! COMPLIMENTS OF ALLSUP'S CONVENIENCE STORES! GOOD SEPT. 5-6, 1982.

## ARE YOU GETTING ALL THE FACTS FROM YOUR INSURANCE AGENT?



When you're in a courtroom you want all the facts. When you buy insurance it's equally important to have all the facts, too.

That's why for over 25 years I've done business only with an Independent Insurance Agent...the more-than-one-company agent.

You see, your Big "I" Independent Agent doesn't work for just one company. He represents several. So he can weigh the facts and give you expert advice on the best coverage at the best price. And that goes for home, auto, business, life and health insurance.

Before you reach a verdict about insurance, get the facts. See your Big "I" Independent Insurance Agent. Do it today.



THE MORE-THAN-ONE-COMPANY INSURANCE AGENT.

**Lanco Insurance**

BUDDY LANE

864-2629



## Family Fun— Labor Day

Live entertainment, the entire day at the 22nd Annual Alamo Village Labor Day-Cowboy Horse Races in Brackettville. The gates open at 9:00 a.m. and the music starts at 10:30 a.m. The famous movie location is 7 miles north of Brackettville on Highway 674.

VALENTINO and "The Shahan Express" will do the honors for the day. Valentino, star of the group, plays fiddle and lead; followed by Johnny Shackelford with the comic and bass; Rocco, employs the drums with an Italian flare and Glen Shankle supports with hot licks on the steel. Eddie Thompson and the Alamo Village Sparklers will be spotlighted during the musical cascade and will be delighting the youngsters with western melodrama and shoot-outs. Velvet Williams, Florida; Frank McKinnon, and Scooter Bullard, New Mexico; Myra Pearce, Washington; Ballan Grant, Bandera and Debbi Davenport, Del Rio magnify the entertainment program.

Cowboy horse races at the annual Labor Day celebration mark the highlight of the season. Any cowboy or cowgirl riding western saddle who feels their horse can

win is invited to enter. Excluded are stud horses, race horses that have been on the track and registered horses. Races will get underway immediately following the Texas style outdoor barbeque lunch.

An authentic stagecoach is running and there will be horseback rides, a shooting gallery and plenty of time for browsing through the museums, the picture gallery, the Indian store, the General store, the Trading Post. The Cantina will be open serving food and soft drinks.

When the stagecoach rolls down the street of this famous western movie location and stops to let its passengers out, they are just as apt to be genuine movie stars as they are genuine tourists. Labor Day week-end is homecoming for many Alamo Village stars so, look for Terry Bullard, K. K. Schroeder, Terri Marsh, Calvin Wallen, Linda Davis, Vince Kavanaugh and Denise Meek. So, if you want to see what the West was really like and show the family a good time, come out to Alamo Village in Brackettville on Labor Day.

For more information you are welcome to call Alamo Village, 512/563-2580.

## Centex Cablevision Announced Changes In Program Line-Up

Sammy Decker, Manager of Centex Cablevision, announced today that the company is going to change its program line-up. It will soon offer three new satellite programming networks. The new programming services will consist of Cable News Network, WGN Chicago and The Entertainment and Sports Programming Network. These will replace the two Dallas broadcast stations, KERA and KTVT, currently being brought in by microwave. The changes are scheduled to go into effect Sept. 15th.

According to Decker, the change is necessary because Times Mirror Cable Television's Microwave Division raised its microwave tariff nearly 100% this past April. "Since that time, we have absorbed the increase and have been talking with other cable operators in the area trying to decide which way to go. Many operators have already dropped the service because of the rate increase. The Systems in Anson and Hamlin dropped the service in July," Decker said.

The company explored several possibilities including installing their own microwave system. "After weighing all

the factors our alternatives finally got down to raising our rate substantially to cover the increase, or to replace the service," Decker said. "We felt that given the state of the economy and uncertainties regarding the future of the microwave service in the area, it was best to replace the stations with three top line cable networks."

Decker indicated that the Abilene cable system is also looking for alternatives to the Times Mirror microwave service. "If they drop the service our rates would skyrocket as they are the biggest user in the area. Another possibility if Abilene drops the current microwave service, is that the microwave company might discontinue the service to Stamford and Haskell. We would be one of the last users in the area and it would be very expensive for them to

serve us alone" Decker said.

"We are excited about the addition of the new services," Decker noted. WGN out of Chicago presents a format of major league sports, movie classics and the most popular TV shows. ESPN is the country's first all sports network. It covers a broad spectrum of sporting events, including many NCAA championships, the NBA and beginning next spring, coverage of the United States Football League. Cable News Network is Ted Turner's 24 hour-a-day news service, that has won national acclaim for its in depth coverage of all aspects of the news.

The company also indicated that it will be replacing the ABC affiliate out of Lawton, Oklahoma. The change will only affect subscribers in Haskell and Rule. Decker said that there have been some

problems in getting a consistently good picture from Lawton. "We also felt that Cable News Network would be very well received in place of the Lawton station", he said. The Lawton Station is an ABC affiliate and provides a great deal of programming already seen on KTXS the ABC affiliate out of Sweetwater.

New channel cards and a letter explaining the change are to be sent to each subscriber in Stamford and Haskell.



The shortest lived U.S. coin was the twenty-cent piece, issued regularly only in 1875 and 1876. They were too easily confused with quarters.

## Tips To Prevent Dehydration

LOU GILLY  
County Extension  
Agent

If you're an athlete, make sure you drink enough water during strenuous exercise when profuse sweating occurs.

If not, you could dehydrate. Dehydration causes fatigue, poorer performance, higher body temperature, reduced body fluids and urinary volume, a lower blood volume, lower blood pressure, a higher pulse rate -- and collapse.

How much water should you drink?

Usually thirst is a guide to the need for water. However, during competition, there is increased tension and anxiety with large sweat losses, and that keeps thirst from being an adequate gauge.

Athletes need replacements of greater amounts of water until they are acclimated to the strenuous exercise.

So, here's the guide on how

much to drink:

Experts recommend regularly weighing athletes before and after games or competition to find out how much fluid they need to replace after the strenuous exercise.

Athletes need to drink one pint of fluid for each pound of weight loss -- in other words, put back "weight for weight of fluid."

Be careful, though -- DO NOT drink too much too fast. Drink NO MORE than one liter per hour.

Drinking small amounts of cool water (three to seven ounces or 100-200 ml.) every hour or so is better than drinking large quantities at one time, because gastric emptying time is limited to one liter per hour.

PLASTIC SHEET PROTECTORS, 11x8 1/2, punched 3 holes, wide reinforcing flap. Comes with black mounting sheet. Haskell Free Press

## Senator Lloyd Bentsen Watching Washington



There are tens of thousands of older Texans who are not able to cash their Social Security checks and see that the money is spent in a responsible manner.

Unfortunately, because of budget cutbacks last year and deficient accountability procedures, these very vulnerable citizens are the potential victims of fraud.

In seeking to protect the rights and interests of persons unable to manage their benefit payments, the Social Security Administration permits the appointment of "representative payees" to handle the financial affairs of Social Security recipients. They can be family members. When there are no family members to take on the responsibility, though, a representative payee may be appointed from individuals or employees of an agency with an interest in the recipient.

The representative payee cashes the recipient's benefit checks, pays the recipient's bills and makes sure all needs are taken care of.

In December, I asked the General Accounting Office to look into the situation and explain to me how representative payees are monitored. GAO advises me that, for all practical purposes, many are not.

According to the GAO report, there are some 1.5 million elderly, enfeebled or retarded Americans who don't have any family to look to, and need a representative payee to take care of their financial affairs. In Texas alone, there are 93,000. Benefits sent in care of representative payees could run from \$12 billion to \$20 billion a year.

There is, they concluded, a tremendous potential for fraud. I am satisfied that the vast majority of representative payees are honest, concerned and dedicated to the welfare of those whose finances they handle. In fact proven cases of fraud are few and far between. But with no effective monitoring, the potential for abuse and exploitation could hardly be more obvious.

GAO research showed that the Social Security Administration does not know the number or location of some beneficiaries for whom non-family members act as representative payees.

Social Security also does not use a separate category on its computers for benefit checks sent to representative payees, so it can keep track of overpayments and other problems.

I found the situation disturbing, so I am proposing legislation to toughen up on penalties against such fraud. First offense fraud by representative payees would be raised to one year in jail and a \$5,000 fine. Second offense would be increased to five years and a \$25,000 fine.

My bill would also set a six month time limit and provide funding for developing an effective monitoring system. We must make sure that these payments are being used to benefit the persons for whom they were intended, the elderly and infirm.

### NOTICE OF CALCULATION OF EFFECTIVE TAX RATE AND PUBLICATION OF ESTIMATED UNENCUMBERED FUND BALANCES

I, Kyle G. Wilfong, Chief Appraiser for the Haskell County Appraisal District in accordance with the provisions of Sec. 26.04 of the Property Tax Code, have calculated the tax rate which may not be exceeded by more than three percent by the governing body of Weinert I.S.D. without holding a public hearing as required by the code. The rate is as follows:

\$.71186 per \$100 of value.

The estimated unencumbered balances for Maintenance & Operation fund: \$-0-

The estimated unencumbered balances for Interest & Sinking fund: \$-0-

Kyle G. Wilfong  
Chief Appraiser  
30 August 1982

#### I. ASSUMPTIONS

1. 1981 Total Tax Levy from the 1981 Tax Roll	\$ 207,148.45
2. 1981 Tax Rate (\$.24 M&O and \$.00 I&S)	\$.94 /\$100
3. 1981 Debt Service (I&S) Levy	\$ -0-
4. 1981 Maintenance and Operation (M&O) Levy	\$ 207,148.45
5. 1981 Taxes Levied for Maintenance and Operation (M&O) on Property in Territory That Has Ceased to be a Part of the Unit in 1982	\$ -0-
6. 1981 Taxes Levied for Maintenance and Operation (M&O) on Property Becoming Exempt in 1982	\$ -0-
7. 1981 Taxes Levied for Maintenance and Operation (M&O) on Taxable Value of Property Lost Because Property is Required to be Appraised in 1982 at Less than Market Value	\$ -0-
8. 1982 Total Taxable Value of All Property	\$ 29,957,988.
9. 1982 Taxable Value of New Improvements Added Since January 1, 1981	\$ 744,230.
10. 1982 Taxable Value of Property Added Since January 1, 1981, by Annexation of Territory	\$ -0-
11. 1982 Tax Levy Needed to Satisfy Bonded Indebtedness or Debt Service (I&S)	\$ -0-
12. 1982 Taxable Value of Over-65 Homesteads with Frozen Taxes	\$ 118,339.
13. Frozen Maintenance and Operation (M&O) Tax Levy of Over-65 Homesteads with Frozen Taxes	\$ 30.36
14. Frozen Interest and Sinking (I&S) Tax Levy of Over-65 Homesteads with Frozen Taxes	\$ -0-

#### II. CALCULATION

##### MAINTENANCE AND OPERATION (M&O) TAX RATE FOR 1982

1. (A) 1982 Total Taxable Value of All Property (Assumption No. 8)	\$ 29,957,988.
(B) Subtract 1982 Taxable Value of New Improvements Added (Assumption No. 9)	\$ -744,230.
(C) Subtract 1982 Taxable Value of Property Added by Annexation (Assumption No. 10)	\$ -0-
(D) Subtract 1982 Taxable Value of Over-65 Homesteads with Frozen Taxes (Assumption No. 12)	\$ -118,339.
(E) Adjusted 1982 Taxable Value for Calculation	\$ 29,095,419.
2. (A) 1981 Total Tax Levy from the 1981 Tax Roll (Assumption No. 1)	\$ 207,148.45
(B) Subtract 1981 Taxes Levied for Maintenance and Operation (M&O) on Property in Territory that Has Ceased to be a Part of the Unit in 1982 (Assumption No. 5)	\$ -0-
(C) Subtract 1981 Debt Service (I&S) Levy (Assumption No. 3)	\$ -0-
(D) Subtract 1981 Taxes Levied for Maintenance and Operation (M&O) on Taxable Value of Property Becoming Exempt in 1982 (Assumption No. 6)	\$ -0-
(E) Subtract 1981 Taxes Levied for Maintenance and Operation (M&O) on Taxable Value of Property Lost Because Property is Required to be Appraised in 1982 at Less than Market Value (Assumption No. 7)	\$ -0-
(F) Subtract Frozen Maintenance and Operation (M&O) Tax Levy of Over-65 Homesteads with Frozen Taxes (Assumption No. 13)	\$ -30.36
(G) Adjusted 1981 Tax Levy for Calculation	\$ 207,118.09
3. (A) Adjusted 1981 Tax Levy for Calculation (2G above)	\$ 207,118.09
(B) Divided by Adjusted 1982 Taxable Value for Calculation (1E above)	\$ 29,095,419.
Multiplied by \$100 valuation	\$ X \$100
(C) Calculated Maintenance and Operation (M&O) Rate for 1982	\$ .71186 /\$100

##### INTEREST AND SINKING RATE FOR 1982

4. (A) 1982 Tax Levy Needed to Satisfy Bonded Indebtedness or Debt Service (I&S) (Assumption No. 11)	\$ -0-
(B) Subtract Frozen Interest and Sinking (I&S) Tax Levy of Over-65 Homesteads with Frozen Taxes (Assumption No. 14)	\$ -0-
(C) Adjusted 1982 Tax Levy for Debt Service (I&S)	\$ -0-
(D) 1982 Total Taxable Value of All Property (Assumption No. 8)	\$ -0-
(E) Subtract 1982 Taxable Value of Over-65 Homesteads with Frozen Taxes (Assumption No. 12)	\$ -0-
(F) Adjusted 1982 Taxable Value for I&S	\$ -0-
(G) Divide the Adjusted 1982 Tax Levy for Debt Service (I&S) (4C above) by the Adjusted 1982 Taxable Value for I&S (4F above)	\$ -0-
Multiplied by \$100 Valuation	\$ X \$100
(H) Calculated Interest and Sinking (I&S) Rate for 1982	\$ -0- /\$100
5. (A) Calculated Maintenance and Operation (M&O) Rate for 1982 (3C above)	\$ .71186 /\$100
(B) Add Calculated Interest and Sinking Rate (I&S) for 1982 (4H above)	\$ -0- /\$100
(C) Calculated 1982 Effective Tax Rate	\$ .71186

1982 Effective Tax Rate is the tax rate published by the tax assessor, as required by Sec. 26.04 of the Property Tax Code. See sample form on page 18.

#### III. MAXIMUM TAX RATE

1. (A) Calculated 1982 Effective Tax Rate (5C above)	\$ .71186 /\$100
(B) Multiplied by Three Percent (3%)	X .03
(C) Equals Amount of Increase Allowed by Code	\$ .02136
(D) 1982 Maximum Tax Rate (1A + 1C, above)	\$ .73322 /\$100

1982 Maximum Tax Rate is the tax rate which, if exceeded, triggers the public notice and public hearing requirements of Sec. 26.06 of the Property Tax Code.

## WASPS!

— Trichogramma Wasps for Bollworm  
and Corn Earworm Control —

1. Single Application - \$1.75 (Approximately 5000 wasps/acre)
2. Double Application - (Recommended when worm egg lays are 25% or greater) - \$3.00/acre
3. Wasps delivered for Customer Application - \$1.25/acre

Lady Bugs also available

Compare Prices Before You Buy!

Jerry Don Klose  
Haskell, Texas  
817-864-3680

J. L. Hunter  
Munday, Texas  
817-422-4674

Don W. Smith  
2107 Emerson Ln.  
Denton, TX 76201  
817-387-5126

## Reddy Pest Control

has moved from

505 N. 2nd  
to  
307 N. Ave. G.  
in Haskell

## Try Our Big, Money-Making Ideas.

### MONEY MARKET C.D.S.

\$10,000 Minimum  
6-Month  
Rate Changes Weekly

The rate is subject to change at maturity. And federal regulations prohibit the compounding of interest during the term of the account. Substantial penalty for early withdrawal.

### STARCHECK

Pays 5 1/4%

Special bonuses on this account include free bank-by-mail envelopes, free Check Safekeeping, free deposit of government or payroll checks, free travelers checks; free money orders, free notary services and free automatic transfer of your funds to and from other savings accounts.

### JUMBO C.D.S

\$100,000 Minimum  
Rate and term negotiated at time of issue.  
Call us collect for our competitive rates.

Substantial penalty for early withdrawal.

### 30-MO. C.D.S

\$100 Minimum  
Compounds Continuously  
Rate changes every 2 weeks.

The rate is subject to change at maturity. Substantial penalty for early withdrawal.

### MISC. SERVICES

- All types Savings Accounts
- Automatic Payments/Deposit
- Passbook Savings
- Direct Deposit
- Small Savers
- Travelers Checks
- Star Savers (All Savers)
- Home Improvement Loans
- Retirement Accounts

We're now \$99 + million and growing...  
because of you.



## BIG COUNTRY SAVINGS

Stamford, Haskell, Quanah and 3800 South Clack, Abilene

Member F.S.L.I.C.



# Bynum Furniture Gallery

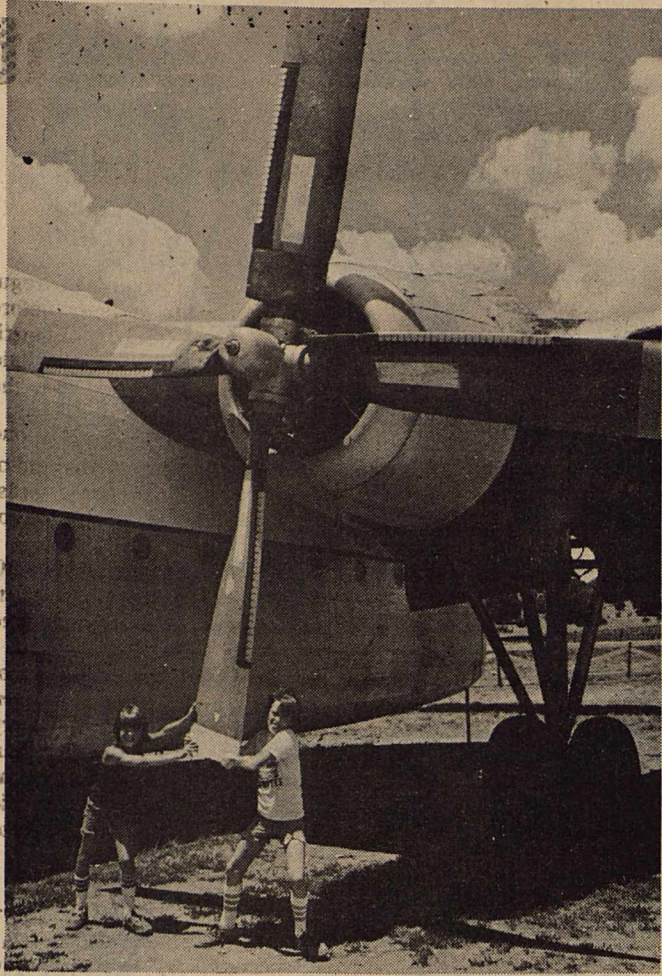
Sale Starts Thursday 8:30 Ends Saturday

## THE SALE OF THE DECADE!!!

BROUGHT TO YOU BY BYNUM FURNITURE

**DUE TO THE TREMENDOUS QUANTITIES OF QUALITY HOME FURNISHINGS COMING IN FOR THIS SALE, WE PASS ON TO YOU THESE FANTASTIC SAVINGS.**

We have purchased manufacturers overstock, discontinued items and many, many special buys that have not been seen in many years. NOW IS THE TIME FOR you to buy that living room, bedroom or dining room you have always wanted!!! See these tremendous values on brand names like: Broyhill, Berry, Michael James, Southwind, Schweiger, Pilliod, Universal, Action Lane, Furtorian, Sealy, Resonic, and many more. Here is a listing of a few of the Fantastic values!!!



Two youngsters try their hand at spinning a prop on one of the aircraft located at the Pate Museum of Transportation near Fort Worth. In addition to military aircraft, the museum has vintage and classic cars, an antique railroad car, a minesweeper and other exhibits and displays. The museum is 14 miles southwest of Fort Worth on U.S. 377. TTDA Photo by Michael Murphy.

### Superintendent's Views

BY JAMES LANIER  
Superintendent, Haskell ISD

In this column, I am going to change direction from the budget to new personnel. Our new band director is David Mooney. Mr. Mooney has been working hard with his band for several weeks. He faced the difficulty of replacing the very popular and highly successful director of the past two years, Barry Crudginton. However, his enthusiasm and musical knowledge is helping him gain confidence of the students and peers so it looks like the band program will continue on the same high plane where we have traversed the past several years. Mr. Mooney graduated from Burk Burnett High School and Midwestern University with the B.M.E. degree. He has 20 hours toward a Masters Degree. He was junior high band director in Iowa Park from 1971-73. He was high school band director at Iowa Park from 1973-79. He then sought greener pastures than the field of education. He served a tour of duty in the army with an overseas tour in Germany. Upon being discharged, he decided that his life would not be complete without returning to the field of his first love, music and band direction.

James Bevel is our new Vo-Ag teacher replacing Calvin Powers. Mr. Bevel is a graduate of Rio Hondo and Texas A&I with a B.S. degree. He has taught the past 20 years in La Pryor. Mr. Bevel

has served on numerous state wide committees and in various positions. He is well thought of on the stock show circuit as both a judge and showman. In fact, the ag people at Texas A&M told me they used his program at La Pryor for a model for small schools. We are very fortunate to have Mr. Bevel come to us. I am sure he and Mr. Gilly will make our ag department into a top flight program second to none in our area.

Mrs. Melodee Christian has been employed to replace the retiring Mrs. Christine Speer. Mrs. Christian graduated from Stamford High and received her B.S. degree from North Texas State University. She has the M.S. degree from Abilene Christian University. She has a varied teaching career. She taught one year in Fort Worth and then, nine years in Moreno Valley in California. She interrupted these years with one year teaching in Okinawa. She taught the past five years in Stamford. With this background, Mrs. Christian brings to us some varied experiences which should benefit our entire elementary staff.

These three people are our new professional personnel. We feel their varied experiences and expertise will help us to achieve our goal of making Haskell ISD the best school possible. We are looking forward to working with each of them.

### Comptroller Begins Clamp Down On Bingo

State Comptroller Bob Bullock said today the party is over for unlicensed bingo games in Texas.

"Turn out the lights and throw away the numbers," Bullock said. "If voters in your area haven't approved legal bingo and you haven't got a license to conduct your game, then we're looking for you."

Bullock said the state's new Bingo Enabling Act, which took effect last November, gave voters in every Texas community three chances to petition their local governments to have an election this year.

"Their last chance was last Saturday. We have given seven months grace to some games in this state, making sure they had every chance the law allows to get legal. We intend to file gaming charges against those who have not fully complied with the law. We will be working with local law enforcement authorities and the Attorney General and we will also be checking to see if there are other back taxes these illegal games might owe," Bullock said.

George Garland, director of the Comptroller's Bingo Regu-

lation Division, said allowing unlicensed games to continue would be unfair to groups and organizations who "went to the trouble of getting their petition signed, calling an election, getting licenses and doing things the right way."

Garland pointed out that because 1982 is a general election year, voters will not have the opportunity to vote on the bingo question in any other year.

"This is one of the problems with the bingo law," Garland said. "There are some others and some provisions that need to be changed. Some people think that we made all this up and that they should be able to just go back to playing illegal bingo the way they used to. We tell them we're only doing what the Legislature told us to do when they passed this law. If they want to change the law, we tell them to go back to the Legislature."

LIQUID PAPER Correction Fluid in ledger colors including pink, greens, buff, blue and yellows. Perfect for stationery, too! *Haskell Free Press*

#### UPHOLESTRY

4 only...Sofa and loveseat By Michael James - in a beautiful herculon plaid

**\$739<sup>00</sup>**

Reg. 1099.90

3 only...Sofa and chair By Economy Furniture

**\$599<sup>00</sup>**

Reg. 938.95

2 only...Pit groups By Day Mfg.

**\$999<sup>00</sup>**

Reg. 1319.95

2 only...Sofa By Michael James in a stripe herculon

**\$449<sup>00</sup>**

Reg. 649.95

2 only...Sleepers By Benchcraft in a brown vinyl

**\$499<sup>00</sup>**

Reg. 799.95

10 only...Berry Wood Trim, Sofa, Chair, Rocker, 2 end tables and ottoman cocktail table

**\$799<sup>00</sup>**

Reg. 1139.70

1 only...Michael James Sofa and loveseat in a blue & beige stripe herculon

**\$849<sup>00</sup>**

Reg. 1238.90

3 only...Benchcraft sofas brown vinyl HI back

**\$399<sup>00</sup>**

Reg. 616.95

1 only...Sofa, chair and ottoman

**\$699<sup>00</sup>**

Reg. 1325.85

3 only...Smith sofa and loveseat in a beautiful velvet.

**\$749<sup>00</sup>**

Reg. 1073.90

#### RECLINERS

24 No. 820 Recliners in gold tone

**\$119<sup>00</sup>**

8 only...No. 1065 Action-Lane Recliners

**\$239<sup>00</sup>**

10 only No's 1417 and 1817 - YOUR CHOICE Wall saver or rocker-recliner

**\$199<sup>00</sup>**

8 only...Heater - vibrator Recliners

**\$249<sup>00</sup>**

6 only...Furtorian corduroy recliners with pop-up headrest...

**\$288<sup>00</sup>**

6 only...Rust color tall man's recliners

**\$288<sup>00</sup>**

6 only...Furtorian Beige velvet recliner pop-up headrest

**\$288<sup>00</sup>**

3 sets only...Broyhill table - 6 side chairs

**\$499<sup>00</sup>**

6 sets only...Pine table - 6 side chairs

**\$899<sup>00</sup>**

2 only...Universal table, 6 side chairs, lighted china

**\$1399<sup>00</sup>**

2 only...Broyhill oval table - 6 side chairs lighted china

**\$1099**

3 only...Broyhill dresser, mirror, chest, nitestand, and bed

**\$1099<sup>00</sup>**

3 only...Broyhill dresser, mirror, chest, nitestand, and bed

**\$1099<sup>00</sup>**

SAVINGS... HOURS OF THE SALE WILL BE: THURSDAY 9:00 A.M. UNTIL 5:30 P.M. - FRIDAY 9:00 A.M. 5:30 P.M. - SATURDAY 9:00 A.M. TO 5:30 P.M.

#### DINING ROOM

3 only...Table with 4 roller chairs

**\$299<sup>00</sup>**

4 only...Table with 4 roller chairs

**\$349<sup>00</sup>**

4 only...Universal oak and glass table with 4 chairs

**\$499<sup>00</sup>**

9 only...pilliod tables Your Choice - cocktail or ends

**\$59<sup>00</sup>**

21 only...YOUR CHOICE Cocktail or end tables By Pilliod or Broyhill

**\$115<sup>00</sup>**

6 only...Pilliod tables YOUR CHOICE Cocktail or ends

**\$88<sup>00</sup>**

9 only...Broyhill glass and cane tables, YOUR CHOICE Cocktail or end

**\$129<sup>00</sup>**

#### BEDROOM

4 only...Armstrong dresser, twin mirrors, door chest, nitestand, and headboard

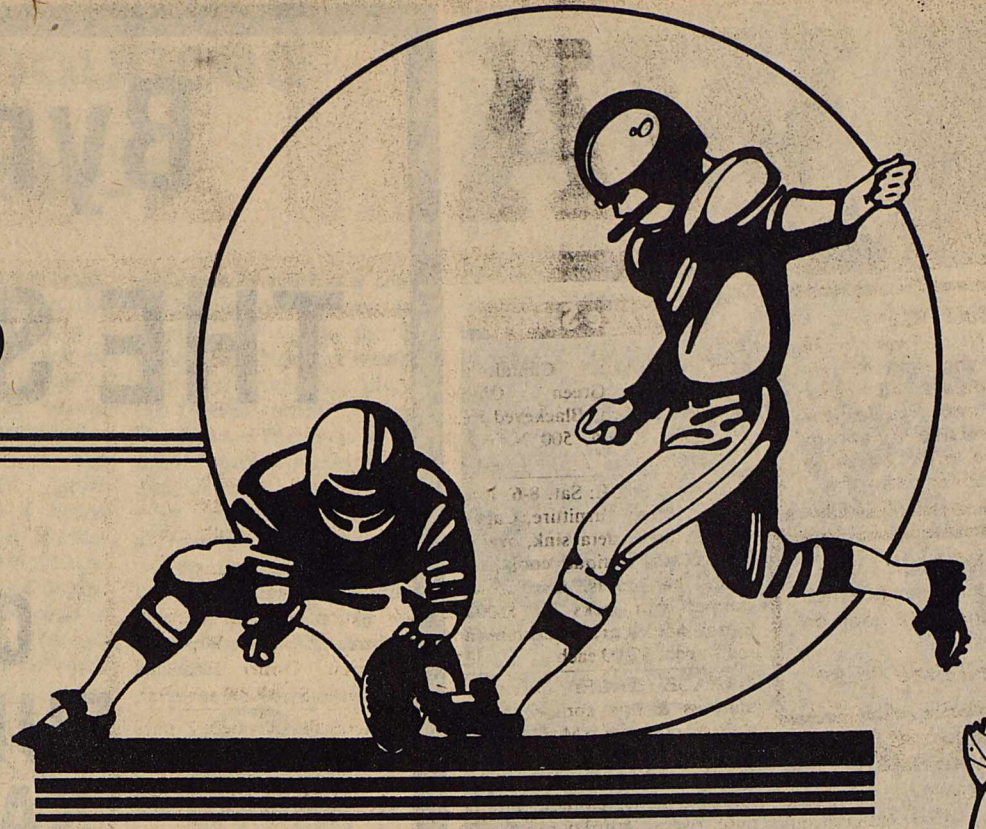
**\$899<sup>00</sup>**

3 only...Broyhill dresser, mirror, chest, nitestand, and bed

**\$1099<sup>00</sup>**



# Let's Go INDIANS



## Haskell Indians

vs

## Jim Ned

8:00 P.M. — Here

This Page Sponsored By The Following Firms and Individuals:

Middleton Oil Co—Northside Gulf  
Thornhill Insurance Agency  
Haskell Co. Warehouse & Compress, Co.  
Modern Way Food Store  
Bailey Toliver Chevrolet & Olds  
Kids Duds & Richardson Hallmark  
Heads or Tails Western Wear  
Steele Precision Machine  
Willie Faye Tidrow  
County Treasurer

Haskell Co. Farm Bureau  
Lonnie Tate—Agency Manager

The Hartsfield Agency

Gray's Laundry

Biggon Drinnon

Reddy Pest Control  
—Bill St. John—

Hanson Paint & Body

Wallace's Exxon  
Smitty's Auto Supply  
Anderson Construction Co.  
Conner Nursery & Floral  
Sport-About  
Holden-McCauley Funeral Home

Hammer Laundry  
Nanny Plumbing

Haskell Steak House  
Haskell Livestock Auction

Haskell National Bank  
Centex Cablevision Corp.

Kiddie Kottage  
—Director, Sandra Wallace—

Double A Drive In & Exxon

Haskell Paint & Body

Lane-Felker

Heidenheimer's

Buster's Drive-In Grocery

Haskell Tractor Service

The Personality Shoppe  
—Smart Wear for Women 864-2501—

Big Country Savings Assn.  
Haskell Branch—518 S. 2nd

Tower Drive In Theatre  
—Rule, Texas—

Kay's Cleaners  
Haskell & Munday

The Music Box

Haskell Free Press

Mike Harrell

Jones Cox & Co.  
Sherman's Carpet & Interior  
Dairy Queen  
Bill Wilson Motor Co.  
Brian Burgess  
—State Farm Insurance—  
Federal Land Bank Assn.  
Richardson Truck & Tractor  
Carolyn Reynolds  
—District Clerk—  
John Wayne McDermott  
—County Judge—

Medford Buick-Pontiac

M-System  
Boggs & Johnson

Owens Radio & Electric

Lane Apparel

Gilliam Oil Co.  
—Larry Gilliam—

Dean Butane Co.

Trussell's Tire Center

Kennedy Lumber Co.

Haskell Trailer Builders

McTid's, Inc.

Elsie's Hi-Lander

Bynum's

Hassen's

Mitchell's Porthole

Queen Roofing

### Haskell Indians

No.	Name	Position	Weight
10	Doug Richardson	QB	150
11	Albert Sherman	HB	150
12	Mark Bailey	QB	175
22	Doug Lanier	HB	145
28	Clovis Dever	WB	125
32	Roger Dever	TB	160
33	Toby Villa	TB	135
35	Shane Welch	TB	195
37	Andy Rodriguez	E	125
40	Keith Reed	HB	215
50	Fred Barnett	C	17554
54	Lonnie Hise	T	190
55	Lee Lane	C	185
60	Joseph Toliver	G	200
62	Robert Geilhausen	G	140
65	Clifton Brister	G	150
66	Sam Toliver	G	150
68	Barry Tidrow	T	175
72	Danny Griffith	T	190
74	Eddie Martinez	G	155
75	Joseph Perez	T	190
79	Ricky Moeller	T	150
80	James Davis	WB	150
82	David Wheatley	E	140
84	Patrick McCoy	E	175
88	Steven Bird	E	145

MANAGERS: Paul Cox, Mickey Dewey, Chris Mills, Jerry Davis, Locarie Constante  
COACHES: W. L. Holt, Coy Payne, Jimmy Lisle, Jim Bob Mickler, Jim Dan Raughton, Greg Melton  
SUPERINTENDENT: James Lanier  
PRINCIPAL: Clayton Neal  
BAND DIRECTOR: David Mooney  
CHEERLEADERS: Shannon Lane, April Turner, Sheila Klose, Tina Morris, Marla Gonzales, Holly McBroom  
TWIRLERS: Rochie Reddel, Miehchell Stout, Hollie High, Lorry Geilhausen  
DRUM MAJORS: Kim Lanier, Jana Overton

Sept. 3.... Jim Ned..... Here  
Sept. 10... Cisco..... Here  
Sept. 17... Anson..... There  
Sept. 24... Stamford... Here  
Oct. 1.... Quannah... There  
\* Oct. 8.... Seymour.... There  
\* Oct. 15... Hamlin..... Here  
\* Oct. 22... Munday.... Here  
\* Oct. 29... Paducah... There  
\* Nov. 5.... Rotan..... There  
\* District Games





# WANT ADS Work Wonders!

**NOTICE**  
The Haskell Free Press reserves the right to edit and/or delete all news stories and locals for length and liability and to refuse to print anything deemed not newsworthy.

**NOTICE**  
The deadline for Classified Advertising is 12 noon on Tuesday.  
**Haskell Free Press**

**For Sale**

FOR SALE: Gates fan belts, hose and clamps, Delco battery and changing oil filters, coal oil and Naptha and etc. Wilfong Texaco Station, 864-2766. 50tfc

FOR SALE: 2-80 gal electric water heaters Call 864-2621. 14tfc

FOR SALE: 1973 CJ5 Jeep, fair top, great body. Contact Monty Booe. 422-4500. 34-35p

FOR SALE: City block in Haskell, located on Ave. I between 12th & 13th Street. 864-3344. 30tfc

LET US Price your next prescription. You will be glad you did. Johnson Pharmacy. 17tfc

FOR SALE: 1-1000 gal. Fiberglass tank mounted on tandem trailer. Call 864-3423, or see at Haskell Butane. 23tfc

FOR SALE: GE no-frost refrigerator, Whirlpool portable dishwasher, white wooden baby bed and mattress, call 864-2058 after 4 p.m. 34-35c

FOR SALE: Hale, 2 horse trailer with brakes. Excellent condition. Call 997-2638. 34-35c

FOR SALE: Mobile home, furnished 10x50. \$3700.00. Also all steel bed for one ton truck with small winch-\$650.00; one axle low boy dozer trailer-\$2200.00. See at 1209 S. 3rd in Haskell or call after 6 p.m. 864-2511. 34-35p

BOAT FOR SALE: runabout, with trailer. 40hp motor—must sell \$400.00. 864-8935. 34-35p

FOR SALE: Irrigated coastal \$1.75 a bale in the field. Phone 864-2867. 35p

FOR SALE: '78 Chevy 3/4 ton van. 350 V-8 PS, PB, Air, Cruise, AM/FM Stereo w/CB in dash. Excellent condition 46,500 miles. \$4,000, call 817-864-8908. 35p

FOR SALE: '75 Impala Custom, loaded, tape deck. Phone 864-2326, 604 N. Ave. C. W.A. Dutton. 35-36p

FOR SALE: One used 15.5x38 rear tractor tire. Phone 864-2736. 35p

FOR SALE: 1981 Suzuki Rm 125x water cooled, good condition. After 6:00 call 864-2775. 35-36p

FOR SALE: 1971 Chrysler 15 ft. boat with 45 horse power engine and trailer, runs excellent, good condition \$1800, or best offer. 864-3318. 35-36p

ROOSTERS FOR SALE: \$1.50 each—all colors, sizes, descriptions. Maximum age 4 months. All serviceable, but most to admire for plumage. For information call 864-3349. 34-35p

FOR SALE: Catalina Evaporative 1 rm. cooler. Like new. 864-3346. 35p

FOR SALE: Good heavy Nora seed oats. Tiffen Mayfield, 673-2901. 35-36c

FOR SALE: 2 self propelled lawn mowers. One with grass catcher attached. 2 push mowers. Come see. 911 N. 4th St. Phone 864-3212. 35p

FOR SALE: Refrigerated window air conditioner \$150.00. Call 864-3572. 35p

FOR SALE: Sugar pears now ripe. Small but good. \$5.00 bushel. You pick it. Call 743-3269. Hodgin. 35c

**Miscellaneous**

ATTENTION LAND OWNERS if your land is not leased for oil, Call 817-864-3087 or 817-864-2290. 31tfc

FREE: Precious puppies. Call 864-2807 after 6 p.m. 35c

INSTANT CASH for good used merchandise. A little or a lot. Phone 864-3197 anytime. Lackey's, Hwy 380 East, Haskell, Tx. 6tfc

GOT TERMITE PROBLEMS. Get Chlodane. Farm & Ranch Supply 303 South First. 32-35c

I HAVE A WELDER and will do any kind of welding. Call 864-3583. 34-35p

HOME DECORATORS. Painting-Insulation. Free Estimates. Phone 743-3592 or 743-5550. V.A. Mitchell—Bobby O'Neal. Rochester. 31tfc

WATER WELL DRILLING: Farm well, Stock, Irrigation Wells, Test Holes. Call W.P. Hise, 864-3727 Haskell, Tx. (Day or Night). 7tfc

NOW IN STOCK Chlodane. Half Gallons & Gallons. Farm & Ranch Supply. 303 South First. 32-35c

CHECK OUR prices at THE DRUG STORE. We will both be glad you did. 14tfc

**Garage Sales**

FOR SALE: Cantaloupes, Tomatoes, Green Chilies, Jalapenos, Okra, Blackeyed Peas, Fri. Sept. 3, 9-6, 500 N. Av F, Lorie Johnson. 35p

GARAGE SALE: Sat. 8-6. 106 N. Av M. Mostly furniture, Captains bed, pictures, metal sink, oval rug, old rocker, antique cook stove, tables, bar stools. Also cab-over camper with jacks for \$500.00. Spring horse, green machine and red wagon. \$7.00 each. 35p

GARAGE SALE: queen size mattress & box springs, Maytag washer, portable AM/FM radio & cassette recorder/player, vacuum cleaner, many beautiful pictures (old and new), clothes, antiques, misc. Every Saturday (only). 10-6. Rule. 5th and Adams. 35p

NOW OPEN! This N That, 300 N. First in Haskell. New and used merchandise. Come in Browse. 35c

**Collectibles**

COLLECTIBLES  
Victorian Tilt-Top Table, Pie Safe, Gramophone, Cakestands, Mail Trees, Coal Boxes, Bookcases, Biscuit Barrels, Wall Cabinets, Drowleat Tables, Tea Trolley, Marble Top, Washstands, Tobacco Jars, Music Boxes, Norman Rockwell plates, Hummel plates, figurines. SHERMAN'S ANTIQUES

**Bus. Opportunity**

YOU CAN HAVE a pleasant and profitable career selling custom made lubricants to industrial, commercial, and farm accounts in your area. Company paid training program. No investment or overnight travel. Must have experience with diesel equipment. Call collect, 1-214-638-7400. 35p

**Jobs Wanted**

LOVING CHRISTIAN mother has one opening for babysitting prefer 2-4 year olds. No phone. Contact Vicki Emert at 1002 N. H St. 35-36p

**Wanted**

WANTED: Christian lady to babysit newborn in my home. Call Lila Brock 864-3724 after 5 p.m. 35-36p

**Help Wanted**

LVN's: Come to work with us! Please write or call Haskell Memorial Hospital, 1 N. Ave. N, Haskell, Texas or 864-2621. 28tfc

CRUISE SHIP JOBS! All occupations. Great income potential. For information call 602-998-0426 Dept. 0237. Phone call refundable. 34-35p

**For Rent**

FOR RENT: Office Space west of Lone Star Gas Contact Lanco Insurance 864-2620. 14tfc

FOR RENT: 1 bedroom furnished apt. Bills paid. Call 864-3509. 24tfc

FOR RENT: 3 bdrm, unfurnished house. 1 mile south and east of Rochester. 864-3985. 35p

FOR RENT: 2 bedroom house. Contact after 7 p.m. Bobby Busby 864-3684. 35c

**Real Estate**

FOR SALE: 2 bdrm house, garage, waterwell, nice location 864-3348 or 864-3727. \$19,000. 35p

**FOR SALE**

New Listing: Northside, 2 bedroom 1 bath frame, garage.

Furnished Lake House in Earles Camp. Central H/2 air cond., carpet, Majestic Heater, channel.

In Stamford 2 bedroom 1 bath frame, range, carpet & utility.

Northside: 2 bedroom 1 bath Stucco, furnace heat, new carpet & paint.

Northside: 3 bedroom 1 bath frame, cellar, carport.

**Frances Arend Real Estate**

408 N. 1st  
817-864-3880  
817-864-3156

**BOB DULANEY**  
817-864-3336

**SIMPSON'S ELECTRONICS**

Magnavox & All Major Brands Repaired.

Located at 10 N. Av. D East Side of Square TV & Stereo Repair

VHF & UHF Antennas Phone 864-3111

**FOR SALE**

Haskell County Farm—160 acres excellent soil, 2 irrigation wells without pumps. Approximately 1 mile east of O'Brien. \$850 per acre, must sell to settle debts, loan available.

207 acres of excellent land, 2 irrigation wells, 2 bedroom house. 1 mile West of O'Brien. Owner financing available. \$1,000.00 per acre.

14 acres all cultivated, 2 miles South of Knox City. Use your Texas Veterans. \$20,000.00.

175.3 acres Haskell County. 4 1/2 miles west of O'Brien. Approximately 60 acres cultivated, fenced and crossed fenced. \$340.00 per acre.

207 acres 1 mile north of Knox City. Has assumable loan for \$60,000. Salt water disposal will pay \$100 a month. \$900 per acre.

74 acres 2 miles south of Knox City. Irrigation well, good land. \$1,000 per acre.

Knox County, Texas. 120 acres excellent farm land, irrigation water available. 1 mile south east of Knox City. \$1,200 per acre with minerals negotiable.

326 acres 9 miles West on Hwy 222.3 bedroom brick home with 3 baths, large living area, 2 car garage, 238 acres cultivated, balance in pasture. Lots of good out buildings. Shown by appointment only. \$240,000.00.

**Counts Insurance & Real Estate**

Knox City  
817-658-3211 5tfc

**FOR SALE**

3 bedroom, 1 bath 1/2; efficiency kitchen; formal living room; large den with beamed ceiling and fireplace; utility room, new carpet, large shade trees and good water well; ceiling fans and new gas cookstove; attached garage and carport in back. Excellent neighborhood. Appointment only.

2 bedroom, 1 bath, frame on large lot. Excellent neighborhood. Needs some work, but would be well worth the effort. 506 North 11th.

3 bedroom brick home, 2 bath, paneled and carpeted throughout, new linoleum in kitchen, one car garage, new chain link fence on large lot. 902 South 2nd.

3 bedroom imitation brick, 1 bath, living room, den redwood paneling, garage, patio, and outbuildings. 201 South Ave. N. Owner financing to right person.

12 acres in town. Perfect building site. Come and check this out.

**FOR SALE**

WE NEED LISTINGS!  
**DOYLE HIGH REAL ESTATE**  
864-3872 or 864-2515  
after 5:00. Call  
Cary Headstream 864-3776  
Betsy Nanny 864-3521  
Doyle High 864-2815

**FOR SALE**

Large 3 bedroom and bath home. Well located. No danger ever of flooding. Cement cellar, horse shed, steel backyard fence. Priced at a bargain for quick sale. Exclusive listing.

**CROSS REAL ESTATE**

Box 235  
Phone 743-3425  
Rochester, TX 79544

**FOR SALE**

COUNTRY LUXURY Beautiful 3 bedroom 3 bath sets on 3 acres, 3 miles from town. Has sunken den with fireplace. Large game room plus many other extras.

GOOD BUSINESS LOCATION 50x30 Masonry Bldg ideal for office and residential combination. Assumable loan at 12%.

SECLUDED LOT with large pecan trees. 3 bedroom, 2 bath with basement and large garage, water well & storage bldg. FHA approved.

3 BEDROOM BRICK with fenced yard \$33,500.

Home Land: 496 acres at \$425.00 per acre.

Immediate Possession: Large two bedroom two bath mobile home. Original location on wooded lot with lots of extras.

**FOR SALE**

Excellent southside location: 3 bedroom 2 bath brick, ceiling fans, separate den with large utility. Fenced.

NEAR ELEMENTARY SCHOOL: 3 bedroom brick, two full baths, H/A, fireplace, patio with fenced yard.

3 BEDROOM on 2.8 acres with large shop and storage. Priced for Quick Sale.

SIX BEDROOM 3 bath brick on 10 acres. Large basement, close to town.

REMODELED new carpet, new bath, new garage, heat pump. This three bedroom 2 bath on 100x150 ft. lot is ready for immediate occupancy. Price negotiable.

**THE HARTSFIELD AGENCY**  
INSURANCE-REAL ESTATE  
LOANS  
(817) 864-7665  
4175 FIRST ST. HASKELL

**INSURANCE**

**Life • Health Auto Farm • Home**

**CHARLES THORNHILL**  
522 South 2nd, Haskell  
—Phone 864-2842—

National Farmers Union Insurance Companies

**Public Notice**

Notice of Intention to Lease

The City Council of Haskell, Texas, in a regular meeting held on the 10th day of August, 1982, deemed it advisable to put up for public auction to the highest and best bidder the following described land in Haskell County, Texas, for oil, gas and mineral lease, in accordance with Chapter 71, V.T.C.A. Natural Resources Code of the State of Texas.

**DESCRIPTION**  
All that certain lot, tract or parcel of land lying and being situated in Haskell County, Texas and being the South Twenty (20) acres of Subdivision 25, of the James Scott Survey No. 118, Abstract 368, Haskell County, Texas.

This auction will be held at 7:00 p.m., at the City Hall in Haskell, Texas, on September, fourteenth, 1982, for receiving of bids. Such lease shall be subject to any and all local, state and federal rules and regulations covering said property and shall provide for at least 1/8th royalty and contain unitization privileges.

NOTE: The City Council of Haskell, Texas reserves the right to reject any and all bids.

Francine Johnson, Mayor  
ATTEST:  
Desmond Dulaney, Secretary  
33-35c

**Card of Thanks**

WE would like to thank all our friends and relatives, who sent flowers, food, cards and telephone calls at the passing of our Mother, Bertha Bennett.

We were especially grateful for the prayers and visits. A Big Thanks to each one who took care of her at Leisure Lodge, including our good Dr. Frank Cadenhead. May God Bless each one. Mr. and Mrs. E.S. McGuire and family, Mr. and Mrs. L.A. Bennett and family, J.B. Bennett and family. 35p

**Real Estate**

**FOR SALE**  
Large 3 bedroom and bath home. Well located. No danger ever of flooding. Cement cellar, horse shed, steel backyard fence. Priced at a bargain for quick sale. Exclusive listing.

**FOR SALE**

WE NEED LISTINGS!  
**DOYLE HIGH REAL ESTATE**  
864-3872 or 864-2515  
after 5:00. Call  
Cary Headstream 864-3776  
Betsy Nanny 864-3521  
Doyle High 864-2815

**FOR SALE**

Large 3 bedroom and bath home. Well located. No danger ever of flooding. Cement cellar, horse shed, steel backyard fence. Priced at a bargain for quick sale. Exclusive listing.

**CROSS REAL ESTATE**

Box 235  
Phone 743-3425  
Rochester, TX 79544

**FOR SALE**

COUNTRY LUXURY Beautiful 3 bedroom 3 bath sets on 3 acres, 3 miles from town. Has sunken den with fireplace. Large game room plus many other extras.

GOOD BUSINESS LOCATION 50x30 Masonry Bldg ideal for office and residential combination. Assumable loan at 12%.

SECLUDED LOT with large pecan trees. 3 bedroom, 2 bath with basement and large garage, water well & storage bldg. FHA approved.

3 BEDROOM BRICK with fenced yard \$33,500.

Home Land: 496 acres at \$425.00 per acre.

Immediate Possession: Large two bedroom two bath mobile home. Original location on wooded lot with lots of extras.

**FOR SALE**

Excellent southside location: 3 bedroom 2 bath brick, ceiling fans, separate den with large utility. Fenced.

NEAR ELEMENTARY SCHOOL: 3 bedroom brick, two full baths, H/A, fireplace, patio with fenced yard.

3 BEDROOM on 2.8 acres with large shop and storage. Priced for Quick Sale.

SIX BEDROOM 3 bath brick on 10 acres. Large basement, close to town.

REMODELED new carpet, new bath, new garage, heat pump. This three bedroom 2 bath on 100x150 ft. lot is ready for immediate occupancy. Price negotiable.

**THE HARTSFIELD AGENCY**  
INSURANCE-REAL ESTATE  
LOANS  
(817) 864-7665  
4175 FIRST ST. HASKELL

**Obituaries**

**Mrs. Earl Daniels**

Funeral services for Mrs. Earl (Eula) Daniels, 77, of Haskell will be held today (Thursday) Sept. 2 at 10 a.m. in East Side Baptist Church with Rev. Darrell Feemster, pastor, officiating. Burial will be in Willow Cemetery under the direction of Holden-McCauley Funeral Home.

Mrs. Daniels died Aug. 30 at 9 a.m. at Haskell Clinic.

Born July 7, 1905 in Brentwood, Ark., she came to Haskell in early childhood. She married Earl C. Daniels Nov. 12, 1921 in Haskell. He preceded her in death April 25, 1967. A member of East Side Baptist Church, she was a housewife.

Survivors include her son, Jack Daniels of Haskell; two sisters, Vila Young of Fallbrook, Calif., and Alta Thompson of Galt, Calif.; one grandson, Jackie Daniels of Lubbock; 3 great grandchildren and 1 great great grandchild.

Pallbearers will be Glenn Merchant, Bill Marr, T.J. Poer, Chester Hodgkin, Howard Reding and Wayne Phemister.

**Emory McIver**

Services for Emory McIver, 60, Coos Bay, were held at 11:30 a.m. Tuesday at Sunset Memorial Park.

Arrangements were by the Coos Bay Chapel.

Mr. McIver was born July 22, 1921, at Haskell, and died July 16 at Coos Bay. He had been a resident of Coos Bay since 1966, and had retired after 20 years in the U.S. Navy, serving in both World War II and the Korean War. He later retired from working for Weyerhaeuser Co., and was an active member of the U.S. Naval Fleet Reserve.

He is survived by his wife, Genevieve McIver of Coos Bay; stepdaughter, Joyce Leuthold of Coos Bay; stepsons, Lyle McGuire of Allegany, Merle McGuire of North Bend, and Dean McGuire of Newport; and a brother, Roy McIver of Euleus.

**ERASERMATE**

Pen by Papermate. Erasable ink that can be erased with any standard eraser and is refillable. Available in a variety of colors. Ideal for students. Haskell Free Press

**Allstate**

You're in Good Hands

**Hess Hartsfield**

417 S 1ST BOX 607  
HASKELL, TEXAS 79521  
(817) 864-2665

**Bill's Barber Shop**

In Rule  
Open 8 to 5 Tues.-Fri.  
8 to 2 Saturdays  
Bill Elmore, Operator

**Health Insurance**

For person to person health insurance, call  
**Brian Burgess**  
864-3250

**J & M Insurance**

701 N. Av E • 817-864-3536  
Haskell, Texas 79521 30tfc

**Pump Windmill Sales & Service**

Anson 823-2169  
Backhoe & Trenching  
Install & Pump Out Septic Tanks  
Master License Haskell 864-3010  
20 years Experience

**Jones Plumbing**

P. O. Box 782 400 S. Ave. E  
Anson 823-2169 Haskell 864-3070

**You Can Buy This Home**

**23,382**

Set on Your Lot and Foundation

We furnish all lumber and siding in place, plumbing and electrical, kitchen cabinet, sheet rock and insulation.

We arrange financing. We will finish complete or do part and you finish. "We do the Hard, you do the Easy."

**TEXAS HOMES INTERNATIONAL**  
5050 East Hwy. 80

Come See The Quality Built In.

Abilene, Texas 79601  
(915) 677-2633

**What's Your Opinion?**



**3 STAR**  
Shurfresh  
**Homo Milk**  
½ gallon  
**59¢**  
With 1 Filled Superstar Booklet

**3 STAR**  
Farm Fresh  
**Bread**  
24 oz loaf  
**19¢**  
With 1 Filled Superstar Booklet

**3 STAR**  
Light Crust  
**Flour**  
5 lb bag  
**69¢**  
With 1 Filled Superstar Booklet

**3 STAR**  
Blue Bonnet  
**Margarine**  
1 lb ctn  
**29¢**  
With 1 Filled Superstar Booklet

**3 STAR**  
Spillmate  
**Towels**  
Jumbo Roll  
**43¢**  
With 1 Filled Superstar Booklet

**3 STAR**  
Shurfresh Medium  
**Eggs**  
Dozen  
**29¢**  
With 1 Filled Superstar Booklet



**We Give  
3-Star  
Coupons  
Double  
Every  
Wednesday**

*Specials Good Sept. 1-Sept. 5  
Specials in Our Monday Circular Still Good*

USDA "A" Grade  
**Fryers**  
Whole Only **48¢** lb  
Cut Up **59¢** lb

USDA "A" Grade  
**Fryer  
Buckets**  
(mixed Fryer Parts) **48¢** lb

USDA Grade "A"  
**Fryer  
Breast** **\$1.18** lb

USDA Grade "A"  
**Fryer  
Drumsticks** **88¢** lb

USDA Choice (Lip-on)  
**Boneless Rib-Eye  
Steak** **\$4.29** lb

USDA Choice  
**Boneless Shoulder  
Swiss Steak** **\$1.99** lb

USDA Grade "A"  
**Fryer  
Thighs** **78¢** lb

Tyson 12 oz pkg  
**Chicken  
Franks** **58¢** lb

USDA Choice  
**Boneless  
Chuck Steak** **\$1.68** lb

Family Pack Lean  
**Ground  
Chuck** **\$1.58** lb

Farm Fresh  
**Hot Dog or  
Hamburger Bun**  
6 pak  
**38¢**

Energy  
**Charcoal**  
20 lb bag  
**\$1.79**  
Limit 1 with \$20.00  
or more purchase

Shurfine Asst. Flavors  
**Drinks**  
12 oz can  
**10¢**  
Limit 10 with \$20.00  
or more purchase

**We Stand Behind Everything  
We Sell and That's a Promise**

**Your Friendly Affiliated Store**

**\$37,000**

**Give Away**

During Affiliated's 37th  
Anniversary Celebration

**"Fabulous  
Free Prizes"**

To be given away by Affiliated Food Stores Inc. September 12 2 p.m. at 9001 Ambassador Row  
Dallas. Register each time you visit an Affiliated Food Store.

**Open 8 a.m. til 8 p.m.**

**Sunday 9 a.m. til 6 p.m.**

Light Crust 5 lb bag  
**Flour** **88¢**

Show Boat  
**Pork & Beans** 3 <sup>15 oz</sup> can **99¢**

Scott Jumbo Roll  
**Towel** **79¢**

Kraft 18 oz bottle  
**Barbecue Sauce** **69¢**

Gebhearts  
**Hot Dog Sauce** 3 <sup>10 oz</sup> can **\$1.00**

Blue Bird Bone 9 in 100 ct  
**Paper Plates** **79¢**

Shurfresh 8 oz twin pack Limit 2  
**Potatoes** **58¢**

Tab or 7-Up 2 liter bottle  
**Coca-Cola** **99¢**

California Iceberg  
**Lettuce**  
3 Heads **\$1.00**

Green Onions  
or  
Cello Red Radishes  
Mix or Match  
**5/\$1.00**

Oreida  
**Crinkle Cuts**  
5 lbs  
**\$2.69**

**FARM FRESH  
PRODUCE**

Thompson Seedless  
**Grapes** **79¢** lb  
Fresh Green  
**Cabbage** **12¢** lb  
Red Delicious  
**Apples** **79¢** lb  
Yellow  
**Onions** 6 lbs **\$1.00**

Del Monte  
**Bananas** 3 lbs **99¢**  
1 lb pkg  
**Carrots** **4/\$1.00**  
Casselman  
**Red Plums** **69¢** lb  
Large California  
**Bell Peppers** **49¢** lb  
Large California  
**Bartlett Pears** **49¢** lb

Shurfine asst.  
**Mellorine** **58¢** ½ gal  
Shurfine 6 oz  
**Pink Lemonade** **4/1.00**  
Pet Rit asst. 14 oz  
**Cream Pies** **99¢**