



County Fair To Open Today

Providing something for everyone will be the goal of the 1981 Haskell County Fair Directors as the sixteenth annual event opens September 24.

The three day event will include a wide variety of events aimed at providing entertainment and education for the entire family.

Admission will be \$2.00 for adults and \$1.00 for children.

Judging of all exhibits in the Exhibit Hall will be held beginning at 9:30 a.m. September 24. Judging of sheep and rabbits will begin at 10 a.m. and beef cattle judging will begin at 1 p.m. September 26.

The Queen Contest will be held September 24 at 7:30 p.m. at the Fair Grounds.

A country and western band will provide entertainment Friday night from 7:30 to 10 p.m. and gospel and quartet singing will be held Saturday night during the same hours.

Exhibits will include the youth division, women's division, arts and crafts, old things and collectables, professional and amateur art, flower show as well as crops and livestock.

A midway will also be open nightly for the enjoyment of those attending the fair.

Climaxing each night's activities

Screening Set For Early Childhood

Early childhood screening tests will be given at the Haskell Elementary School on Sept. 29, 30, and Oct. 1. Infants and children through age four will be tested to determine if they need a developmental program. Personnel from the Haskell Early Childhood Program and Infant Stimulation Program will do the screening in the Nurse's Office. To make an appointment call 864-2891.

Spaghetti Supper Set Friday

Members of the Haskell Rotary Club will host their annual Spaghetti Supper this Friday from 5:30 to 7:30, prior to the Haskell-Stamford football game.

The supper will be held in the High School Cafeteria and all proceeds will go toward the club's scholarship fund.

Tickets are \$3.00 for adults and \$1.50 for children under 12. Tickets are available from all club members or may be purchased at the door.

Salvation Army Fund Drive Set

The kickoff meeting for the Haskell Salvation Army Service Unit fund drive was held at 10 a.m. on September 17 in the Community Room of the Haskell National Bank, according to Buddy Lane, local Service Unit chairman. Lane and his wife, Peggy, will head up the fund drive.

Lane noted that the goal of \$1,500 will be used to pay for The Salvation Army's services to the less fortunate in the area. The campaign is to be concluded on October 1. "We are confident that our community will support the fund drive as generously as they have in the past. The Salvation Army has long been a valuable asset to our town," Lane commented.

The Service Unit committee,

will be the presentation of \$100.00 in cash in a special drawing.

In addition to regular fair activities, the Haskell Chamber of Commerce will sponsor a special project on the courthouse lawn Saturday afternoon beginning at 2 p.m.

The event, titled the Haskell Fair Olympics, will feature area cheerleaders and twirlers in competition for a giant traveling trophy.

A total of eight events will be held

including competition such as: egg toss, paper wrap, three legged race, scavenger hunt, hula hoop race, spoon race, balloon shaving and tug-a-war.

Between events Chamber members will hold a series of drawings and award merchandise to spectators attending the competition.

Fair Association President Billie Jack Ray urges everyone to enjoy and participate in all aspects of the fair.

Demonstration Set For 'Jaws Of Life'

Members of the Haskell Volunteer Fire Department invite everyone to attend a free demonstration of the Hurst Rescue Tool, "Jaws of Life", at the Haskell Rodeo Arena Saturday at 6 p.m.

The department is beginning a fund raising drive to purchase the tool and related auxiliary equipment to better serve the citizens of this area.

The demonstration will show the uses of the tool and give local residents an opportunity to witness first hand the benefits of ownership.

Total cost of the tool and necessary auxiliary equipment is approximately \$8,000.00.

The tool is used primarily for the rapid removal of accident victims from wrecked autos, but is also

useful in many other rescue situations.

Jr. Class Selling Mums For Homecoming

The Junior Class is now selling mums for homecoming. The cost of the basic mums will be \$7.50 with each additional streamer costing \$1.50 extra. The luck charms will be 75¢ a piece. These include the helmet, horseshoe, rabbit foot and cow bell.

In the past years the mums were sold by the Booster Club.

To order a mum contact a Junior Class member. The chairmen of this project are Melinda Blakely, Clifton Brister, Danny Griffith, Lee Lane, Leann Turnbow, Walter McBroom and Gena Whitaker.

The money raised will help pay for the Junior-Senior Banquet. The mums will also be sold at the gate of the homecoming football game, Oct. 16.

composed of business and civic leaders, carries out a year-round program of aid to people with emergency needs. Acting on behalf of The Salvation Army, the committee arranged for food, lodging or other basic necessities that a family or individual might require in a crisis situation. The Service Unit committee also acts as liaison with The Salvation Army's statewide programs: such as summer camp for deserving youngsters; help for paroled offenders; and emergency relief during disasters.

Contributions may be sent by mail by making checks payable to The Salvation Army, and sending them in care of Buddy Lane, P. O. Box 686, Haskell, Texas 79521.

Persons attending the fair will be given tickets to re-enter the fair following the demonstration and persons who wish to view the demonstration only may do so by entering the rodeo arena from the South.

Fire Dept. To Sponsor LPG School

The Haskell Fire Department in cooperation with Ranger Insurance Company will sponsor a liquid petroleum gas fire control school next Wednesday, September 30 at 7 p.m.

The school will begin with an hour of classroom instruction and continue at 8 p.m. at the City Park with a butane fire fighting demonstration.

The public is invited to view the firefighting portion of the school, but are asked to watch from the City Park side of the creek. The firefighting will take place on the parking area southwest of the swimming pool.

Residents who reside near the park should not be alarmed when the pressure relief valve vents causing a loud report.

Girl Scout Registration Scheduled

All girls in grades one through twelve who are interested in Girl Scouts are asked to register September 24 at 4:30 p.m. in the Fellowship Hall of First United Methodist Church.

Parents are welcome and the registration should take about 30 minutes. A fee of \$3.00 will be charged to cover national dues.

COTTON
GRAIN
CATTLE

THE HASKELL

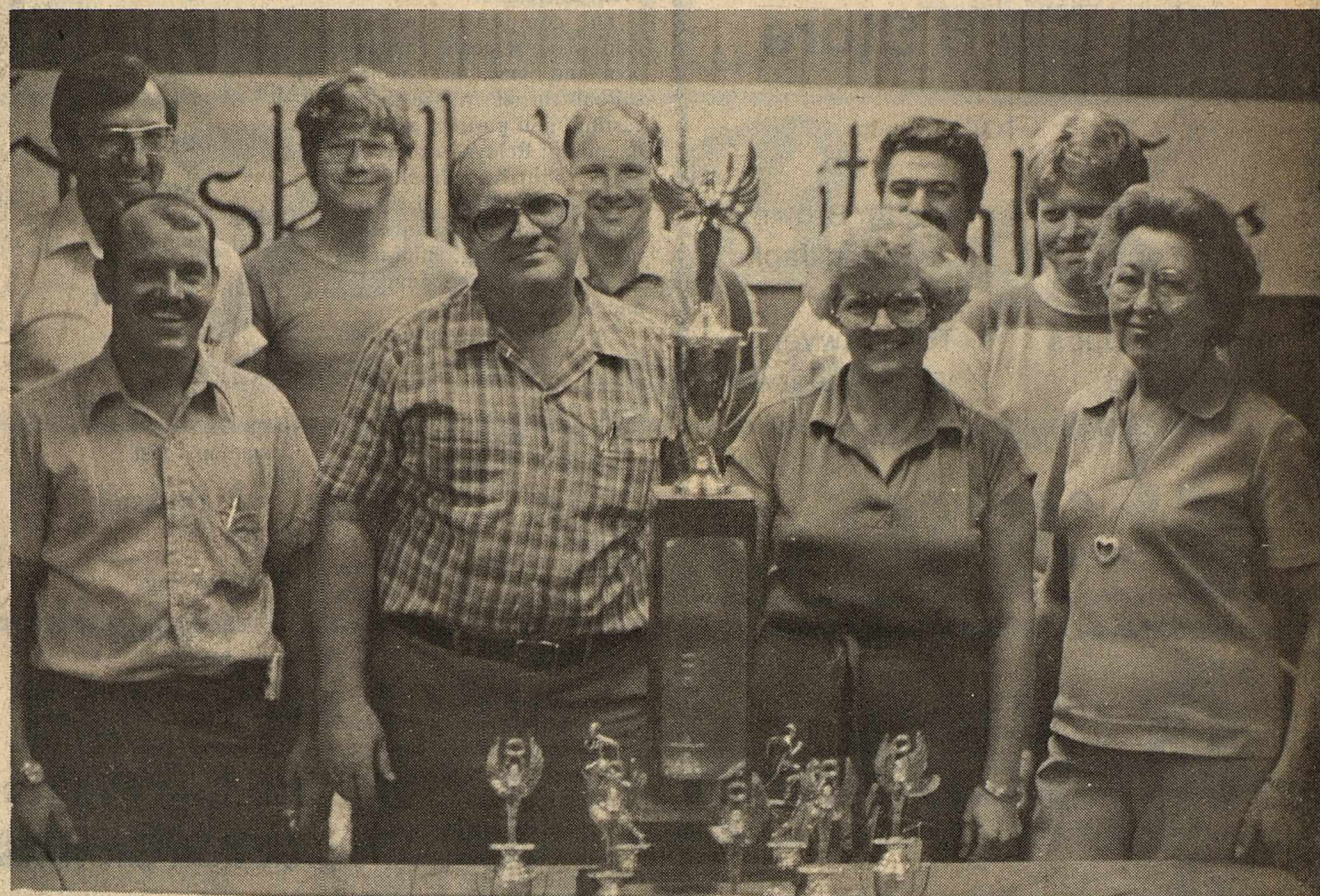
25¢

16 PAGES

FREE PRESS

"HASKELL—A GOOD PLACE TO VISIT; A BETTER PLACE TO LIVE"

VOLUME NINETY-FIVE
HASKELL, TEXAS, 79521, SEPTEMBER 24, 1981
NUMBER THIRTY-NINE



Staff Photo by Don Comedy

READY
Haskell Chamber of Commerce Directors are shown with trophies to be presented during the Haskell Fair Olympics this Saturday evening at 2 p.m. The competition will feature area cheerleaders and twirlers. Individuals who wish to watch the competition will also be asked to register for free door prizes which will be given away between events by Haskell merchants.

Final Countdown Set For 14th Biennial Homecoming

The countdown has begun for the 14th Biennial Homecoming of Haskell and Mattson Ex-Students. After hearing final committee reports on Monday, Homecoming President John S. Rike, III, says that this promises to be the liveliest homecoming ever. There will be more activities and more entertainment than ever before. Pre-registration is ahead of schedule indicating that interest is high.

The theme of this Homecoming is "Yesterday's Memories Build Tomorrow's Dreams". Building on this theme the program committee has planned a feature attraction

made up of children and grandchildren of ex-students.

Individual class reunions are being scheduled and a full list of these activities is being compiled by Dorothy Hartsfield. All classes who plan to meet should call or write Dorothy so that this information can be publicized. Dorothy's address is 405 North Avenue H and she can be reached by telephone at 864-2004 or 864-2665.

Official homecoming functions begin on Friday, October 16th, and continue through the afternoon and evening of October 17th. Promising a wide variety of activities and

entertainment, the Homecoming Committees and Officers join in urging "Don't miss it!"

Bread Fair Set Oct. 7

If you would like to learn the art of bread making, register now for the Bread Fair to be held October 7 at 2:00 p.m. in the Haskell National Bank Community Room. The Bread Fair is sponsored by the Haskell County Family Living Committee.

Lou Gilly, County Extension Agent-Home Economics, will discuss the role of bread in the diet and demonstrate while you make a loaf of Honey Whole Wheat Bread to take home and bake.

Pre-registration is a must. To pre-register mail a check for \$2.00 along with your name, address, and phone number to Lou Gilly, Box 693, Haskell, Texas 79521. Make checks payable to Haskell County 4-H Council. If you would like, you can come by the Extension Office and pre-register. There will be no refunds and no registration at the door. The absolute deadline for registering is 5:00 p.m., Thursday, October 1.

Each participant should bring an apron and rubber spatula. For further information contact Lou Gilly, 864-2546.

AAM To Meet Monday

There will be a meeting of the Haskell American Agriculture Movement Monday, September 28 at 7:30 p.m. in the Community Building of Haskell National Bank.

Those attending are asked to bring homemade ice cream.

Although the main purpose of the meeting is social, business will be discussed and new officers will be elected.

City Council Holds Regular Meeting

Members of the Haskell City Council met in regular session Tuesday night and approved the audit for fiscal year 1980-81, prepared by Lee Bahney.

In other action, the Council members agreed to provide office space for the Haskell County Emergency Ambulance Service. The service is presently being run by Wes Strickland who was recently hired by the Ambulance Board.

Strickland is an Emergency Medical Technician and will also be in charge of billing and collections. The ambulance is dispatched by the

Haskell Memorial Hospital. The telephone number to call when the ambulance is needed is 864-2621.

Council members also held a public hearing on project performance of the Avenue A paving project. The project was completed in mid July and was paid for by a federal grant. Funds expended on the project up to August 31 amounted to \$485,048.56.

Mayor Royce Williams reported to the Council that the City had received a sales tax check in the amount of \$5,440.90.

It was also reported that David Hart, formerly of Plainview had been hired as a City Policeman effective September 16. Hart is married and has three children. His family will move to Haskell as soon as housing has been located. He was hired to replace Bill Pannell who resigned in August.

Council members also discussed rules and policies concerning the rental of hangars at the City Airport. Airport Commissioner Joe Cortez was asked to determine if all rules and policies were being followed.

EMERGENCY PHONE NUMBERS

Ambulance.....	864-2621
Fire Department.....	864-2222
Police Department.....	864-2323
Sheriff's Office.....	864-2345
Highway Patrol.....	864-3356

Senior Olympics Set In Abilene Oct. 9

A senior olympics will be held for senior citizens in the 19-county region of West Central Texas Council of Governments on Friday, October 9, 1981. The aging department of the West Central Texas Council of Governments is sponsoring the event.

The senior olympics will begin with the opening ceremonies at 9:30 a.m. in Rose Park on the north side of the Rose Park Senior Center. Special guests, state and local elected officials will be on hand for this senior citizen event.

volunteers through-out the days activities. An emergency medical care facility will be available in the park for the day's events. KEAN radio will be broadcasting live from noon until the conclusion of the olympics.

Bronze, silver, and gold medals will be awarded to the winners of the events. Teams will receive trophies for winning the team events and all participants will be receiving a participant badge. Winners will be announced from the review stand on the patio of the Rose Park Senior Center.

Senior citizens through-out the region will be participating in their own competition in preparation for the olympic event in October.

The competition will include: Tournaments—domino, pool, and horseshoes; Skills—softball throw, frisbee throw, casting, golf putting, and nail pounding; Relays—coffee cup stack, shuttle, wheelchair, balloon, and dress-up; Fun—ugly face, bubble gum blowing, shoe finding, mini-mile; Exhibitions—cheerleading and square dancing.

Participants may bring their own picnic lunch or make reservations with the Rose Park Center for a lunch by October 1. If reservations are made for a lunch at the Rose Park Center, a \$1.00 donation will be requested. Contact Walter Graham, director of the Abilene Senior Citizens project for lunch reservations on October 9.

All participants of the senior centers in the 19-county region, all residents of the nursing homes in the region, and any older person who is 60 years of age, have been invited to enter the senior olympics. Registration to participate should be made with Dot Vanderslice, director of the Aging Department of West Central Texas Council of Governments, who is chairman of the event.

"A truly exciting day is taking shape and I will be looking forward to seeing each of you at the senior olympics on October 9!" says Dot Vanderslice.



The first jukebox was installed at the Palais Royale Saloon, San Francisco, on November 23, 1889. It consisted of an electrically operated Edison phonograph with four listening-tubes, each controlled by a separate nickel-in-the-slot device.

HASKELL Lunch Menu

Sept. 28-Oct. 2 MONDAY

Barbeque on a Bun/cheese wedge

Slaw

Tater Tots

Banana Pudding

Milk

TUESDAY

Pinto Beans

Macaroni & Cheese

Spinach

Peaches

Cornbread & Butter

Milk

WEDNESDAY

Chili Cheese Dogs

Ranch Style Beans

Lime Jello with Pineapple

Milk

THURSDAY

Chili con Carne

Tossed Salad

Corn

Cornbread & Butter

Milk

FRIDAY

Fish portions

Mixed Vegetables

Slaw

Peaches

Rolls & Butter

Milk

BREAKFAST

MONDAY

Orange Juice

Cereal

Milk

TUESDAY

Apple Juice

Toast

Milk

WEDNESDAY

Grape Juice

Cinnamon Toast

Milk

THURSDAY

Orange Juice

Toast

Scrambled Eggs

Milk

FRIDAY

Apple Juice

Cereal

Milk

Rolling Plains Cotton Growers To Meet

The annual membership meeting of the Rolling Plains Cotton Growers, Inc. will be held in Stamford at the Stamford Country Club on Monday, September 28, beginning at 10:00 a.m. Mr. A.D. May of Rule, president of RPCG for the past three years, has extended an invitation to all cotton growers and related industries in the 32-county area to attend this meeting.

Congressman Charles Stenholm, representative of the 17th District, will be the featured speaker for the meeting, bringing late developments in the farm program from Washington. Also in attendance will be Charles Bragg, presently with the National Cotton Council and former executive vice president of RPCG, will be on hand with a noted economist from the Council. Others expected to be present will be Herman A. Propst, former chairman of the Producer Steering committee, along with representatives from the Cotton Board and Cotton, Inc.

Lunch will be served at 12:30 after which a short business session will be held. New officers for the coming year will also be elected. Present officers and directors other than Mr. May are Weldon Rodgers, Steve Piper and Doyle Parnell, all of Paducah, Neuman Smith of Ballinger, secretary, Bill Golden of Seymour, J.B. Cooper, Jr. of Roscoe, R.H. Whorton of Roscoe, Jack Young of Stamford, Norris Anders of Rule, D.M. Smith of Colorado City, B.H. DeBusk of Anson and Edward Ekdahl of Avoca.

The Haskell Free Press
Established January 1, 1886
PUBLISHED EVERY THURSDAY

MEMBER 1981
TEXAS PRESS ASSOCIATION

BILL COMEDY—Publisher
DON COMEDY—Editor

Entered as second class matter at the post office at Box 577, Haskell, Texas 79521, under the Act of March 3, 1879 (USPS 237-040)

SUBSCRIPTION RATES
in Haskell and Adjoining Counties

	Total
One Year	\$7.25
Six Months	\$5.00
Two Years	\$14.00
Elsewhere in Texas	
One Year	\$8.50
Six Months	\$6.00
Two Years	\$16.00
Outside of Texas	
One Year	\$10.00
Six Months	\$7.00
Two Years	\$19.00

NOTICE TO PUBLIC: Any erroneous reflection upon the character, reputation or standing of any firm, individual or corporation will be gladly corrected upon being called to the attention of the publishers.

William F. Buckley Jr. To Speak At Hardin-Simmons

William F. Buckley, Jr., one of the most eloquent and influential spokesmen for the conservative viewpoint in the world, will speak at 8 p.m. Thursday (Sept. 24) in Woodward-Dellis Recital Hall at Hardin-Simmons University.

The speech is free and open to the public.

Buckley, 61, has been a major force in American journalism and politics for years. He founded the *National Review* in 1952 after having earlier served as associate editor of the old *American Mercury*. He began his weekly syndicated column

"On the Right" in 1964 and expanded it to three times a week in 1964. It now appears in over 300 newspapers across the country.

In 1966 he began hosting a weekly television show, "Firing Line" that is now seen on Public Broadcasting Service as well as commercial television. Guests have included Muhammed Ali, Truman Capote, Jimmy Carter, Bernadette Devlin, James Dickey, Allen Dulles, Daniel Ellsberg, Gerald Ford, Valery Giscard d'Estaing, Barry Goldwater, Billy Graham, Hugh Hefner, Hubert Humphrey, Jesse Jackson, Timothy Leary, Norman

Mailer, Groucho Marx, Eugene McCarthy, George McGovern, Richard Nixon, Otto Preminger, Ronald Reagan, B.F. Skinner, Margaret Thatcher, George Wallace and Dame Rebecca West.

He has written 15 books, edited three others (including *American Conservative Thought in the Twentieth Century*) and contributed to nine more. He has contributed articles to "most American periodicals" among them *Atlantic, Esquire, Life, Look, Harpers, Playboy, McCalls, Saturday Evening Post, The New Yorker* and *Motor Boating*.

He was a *Time Magazine* cover story in 1967 and has been featured in *Esquire, Playboy* and *National Observer*.

His work as a journalism has won numerous honors including a television Emmy for "Outstanding Program Achievement"; a Cleveland Amory (TV Guide) for Best Interviewer/Interviewee on Television; "Best Columnist

of the Year"; and a Distinguished Achievement Award from the University of Southern California.

He has received honorary doctorates from 16 American colleges and universities (including Notre Dame, Syracuse, Lehigh, and Saint Bonaventure).

Buckley earned a B.A. with honors from Yale University and served (1969-72) as a Presidential appointee to the five-member Advisory Commission on Information of the United States Information Agency and (in 1973) was appointed by President Nixon as the Public Member of the United States delegation to the 28th General Assembly of the United Nations.

In 1965 he ran for mayor of New York City on the Conservative Party ticket and received 13.4 per cent of the vote. His political feelings are so strong that he lists the fact that he is a "registered Republican" on his resume.

His appearance at HSU is being funded by the Cullen Fund for Faculty Enrichment.

Vickie Wallace Elected FHA President

Vickie Wallace was elected president of the Haskell Future Homemakers of America at the first meeting Sept. 14.

Other officers elected were Donna Hill, v.p. programs; Laurie Reynolds, v.p. encounter; Terry Kuykendall, v.p. projects; D'Anne Burris, v.p. recreation; Kristie Hannsz, v.p. public relations;

Terri Welsh, secretary; Elaine Acosta, treasurer; Patsy Butler, historian; Sylvia Garcia, parliamentarian; Velma Delacruz, sargent-of-arms and Kim Griffith, pianist.

The chapter dues were set at \$5 per member. Vicki Judd, sophomore won the door prize, a strawberry scented candle.

FAIR Specials

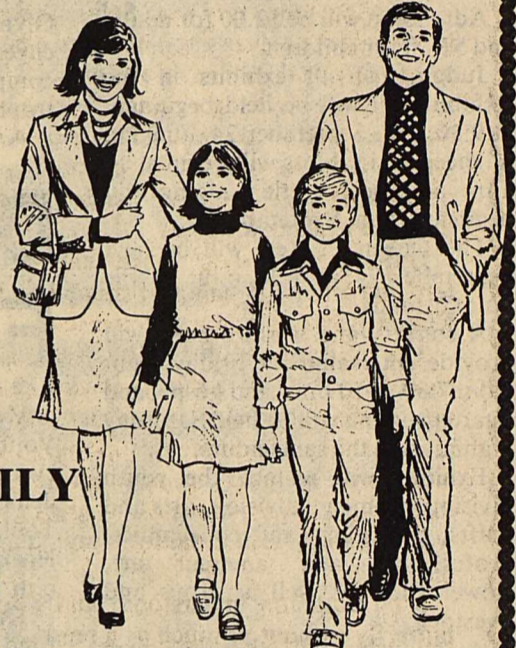
20% off

Bass Dexter Nickels

Givenchy Round-the-Clock Hose
Sept. 24-Sept. 26

Slipper Shoppe

FUN FOR ALL THE FAMILY



at the

HASKELL CO. FAIR
Haskell Tractor Service

BE SURE TO ATTEND THE

Haskell Co. Fair
Sept. 24-25-26

DON'T MISS THE FUN

Northside Gulf

Texas Farmers Union

Welcome to the

Haskell County

FAIR

Come by and Visit Our Booth

National Farmers Union Insurance Companies

Charles Thornhill

Offering Complete Multiple-Line Insurance Service

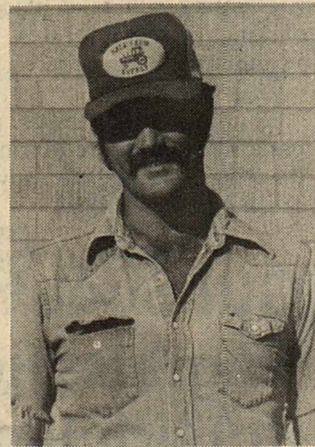


One-Stop Insurance Service for Home, Family and Farm

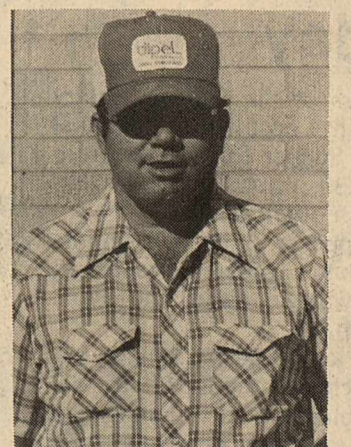
Farmers Union Working For You

Announcing...

Rolling Plains Flying Service



STEVE HICKMAN
864-3958



JAMES DAVIS
864-2720

is now ready for business!

Complete Aerial Applications

- * Insecticides
- * Weed & Brush
- * Defoliation

See Us for Price Quotes or Information

Welcome to the Haskell



Sept.
24-25-26

Come & Bring the Whole Family!

**Steele
Precision Machine**
Haskell, Texas

Superintendent's Views

BY JAMES LANIER
Superintendent, Haskell ISD

This column will be a pot-pourri type as we have several items of a short nature to pass on to the readers.

First, I will pass out accolades to some kind people who have performed some service or contributed something to our program. Hank Sherman of Sherman's Carpet spent the majority of one afternoon padding and covering our water outlets on the Indian Football field. It is not likely for a player to hit one of these outlets, but it could happen. Therefore, the padding and covering is a necessary precaution. The Kiwanis Club contributed a vacuum cleaner for the athletic field house. This instrument will greatly aid in keeping the field house clean and sanitary. The Booster Club has provided money to purchase a new 7 man sled. All these items save the taxpayers money and help the program. We appreciate all of these contributions and would like to use this media to say a public "thank you".

Excitement is beginning to grow among students as the date of homecoming approaches. While Homecoming is primarily for the exes, it also creates a special excitement for the student body. Since so many of our teachers are exes, excitement will probably reign supreme

4H CLUB

The Haskell 4-H Club met for the first time Sept. 15th in the Extension Office.

Officers for this year include: president, Rebecca Holt; vice-president, Tamara Burnett; secretary, Dalyn Gilly; reporter, Missy Davis; and Jill Jennings and Sandra Thornhill were elected as council delegates.

The club discussed the County Food Show which will be held in Rochester Nov. 7.

The Awards Banquet has been set for Oct. 26th in Weinert. The time has not been set.

WE HAVE Cross pens and pencils and Cross soft tip pens. Available in gold and silver finishes. *Haskell Free Press*

Grand Champion Ewe Shown By Scott Fields

The West Texas Fair added two new divisions to its Scramble Show this year. In the past, the show has been made up of nothing but heifers, but this year heifers, ewes and gilts represented all three of the livestock divisions.

The 4-H Club and FFA youths caught a calf during one of the West Texas Fair Rodeo performances in 1980. Although calves were used for every scramble, the type of

animal the youths scrambled for was designated each night before the rodeo performance.

In the Scramble Ewe Show classes there were only eight entries. Scott Fields of Haskell County FFA was awarded the banner for the Grand Champion Ewe. Scott's entry was a Hampshire ewe. He was sponsored by Joe Allen's Pit Barbecue of Abilene. Scott is a sophomore in Haskell High School and is the son of Mr. and Mrs. Tommy Matthews.

Have A Good Time

at the

Haskell Co.



Sherman's Carpets & Interiors

Haskell, Texas

DANCE TO THE MUSIC OF

The Wagon Aces

AT RHINELAND GYM

Sat.

Sept. 26

Funny or Unfunny

THE EGO OF MAN

One fine, sunny day King Solomon was strolling in his palace gardens when he heard a butterfly say to its mate, "With one stroke of my wing I could knock down the King's palace." Whereupon King Solomon said to himself, "This is terrible!" Then he hurriedly summoned his counselors and chief officers of state, and commanded them to bring the butterfly into his court.

Quickly they went forth and brought the terrified butterfly, pale and trembling, before the King, who charged him with treason.

The butterfly pleaded guilty, but begged, "Oh, great King, you are a much-married man. Cannot you understand why I said it? My wife was unusually insubordinate this morning, and it was necessary, in order to maintain some sort of discipline, to boast to her of my great power. That was why I said that dreadful thing, your ineffable majesty!"

King Solomon understood, and dismissed the butterfly without so much as a reproof. But when the butterfly returned to his home, his wife asked, "Well, dear, what did the King say?" The butterfly wiggled his wings jauntily, and replied, "He begged me not to do it!"

Credit Cheer

**Smitty's
Auto Supply**
Haskell, Texas U.S.A.

INFLATION FIGHTER



Food Buys

Specials Good Thursday, Friday and Saturday

Family Style Steak	\$1 ³⁹ / _{lb}	Prices 14 oz Pimiento Cheese	\$1 ⁶⁹
Gooch Sliced Bologna	\$1 ²⁹ / _{lb}	Utah New Crop Delicious Apples	49 ^c / _{lb}
No. 1 Sliced Bacon	\$1 ²⁹ / _{lb}	California Tomatoes	49 ^c / _{lb}
Red Rind Wisconsin Round Cheese	\$1 ⁸⁹ / _{lb}	No. 1 Russet Potatoes	10 lb bag \$1 ⁶⁹
Beef Ribs	98 ^c / _{lb}	Folgers or Maryland Club Coffee	1 lb can \$2 ¹⁹
Hamburger Meat	\$1 ¹⁹ / _{lb}	Morton Potato Chips	1 lb Foil Pkg \$1 ⁴⁹
Ranch Style No. 300 can Blackeyed Peas	37 ^c	Del Monte Catsup	14 oz 49 ^c
Coca Cola 7-Up Mr. Pibb	32 oz bottle 39 ^c	Ragu Sauce	15 1/2 ounce 89 ^c
Green Giant Niblets Corn	10.5 oz can 47 ^c	Spray & Wash	16 oz \$1 ³⁹
Del Monte Pitted Prunes	12 oz bag 97 ^c	Country Garden Napkins	140 Count Pkg 79 ^c

POGUE GROCERY

—Extra Parking Behind The Store. Home Owned and Operated—

113 North Avenue E

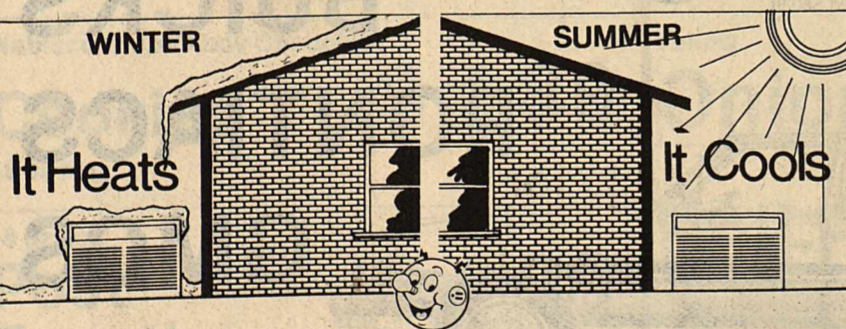
Phone 864-2015

Haskell, Texas

THE BEST IN MEAT, CUT THE WAY YOU WANT IT.

The heat pump

"THE ELECTRIC SAVINGS MACHINE"



Stretch your energy dollars—
install an energy-efficient
electric heat pump

A heating system that's more than 200% efficient may seem like something out of the future. But it isn't. It's yours today, with the electric heat pump. Because when correctly installed in a properly insulated home, the heat pump produces two units of heat for each single unit of electricity it uses. It transfers heat that's always present in sun-warmed outside air into your home during the winter. And reverses the process, pumping heat outdoors during the summer.

WEST TEXAS UTILITIES COMPANY



A Member of The Central and South West System

If you have plans to buy, build, or remodel, or are looking for a new heating and cooling system for your home, call a local FACTORY TRAINED heat pump dealer or talk with WTU. We will arrange for a WTU heating and cooling specialist to contact you. Learn more about the easy-to-install, economical electric heat pump—your most energy-efficient heating and cooling system buy.

Attend the Haskell County Fair

COME TO THE FAIR!



THURS., FRI.
& SAT.
Sept. 24-25-26

Don't Miss The Fun and Excitement

Haskell County Fair

Double A Drive In

Donald Cunningham, Mgr.

Rule Hwy. Ph. 864-2466

it's all here AT THE

Haskell County

FAIR

Sept. 24-25-26

Hanson Paint & Body

Haskell, Texas



Staff Photo by Don Comedy

WINNER

Henry Withers was the recent winner of \$400.00 given away by Modern Way Food Store. Mr. Withers is shown receiving the check from Modern Way Manager Jack Schreiber.

Registration Underway For Girl Scouts

All West Texas Girl Scout Council troops are registering now for the 1981-82 membership year. National dues of \$3.00 brings a membership in the largest voluntary organization for girls (international, national, and local)—the World Association of Girl Guides and Girl Scouts, the Girl Scouts of the U.S.A. and the West Texas Girl Scout Council, Inc. The West Texas Council Board of Directors and Board Committees (Camp, Field, Program) have regrouped; orientation and training has started for new Brownie Leaders, new Junior Leaders, Cadette and Senior Leaders. All Service Units, Service Teams and Service Unit chairmen are in a state of re-organization. Reservations are in order for scheduled girl events at Camp Boothe Oaks. If you see an encircled R listed on the W.T.G.S. Council general calendar, it means: Registration required 1 week prior to event.

October is Calendar sale month. Registered troops sell the 1982 Girl Scout 70th

Birthday Calendar for \$1.00 each. The profit goes to the troop for program supplies. The National Girl Scout Convention will be in Houston, October 25-28, 1981. A Craft Workshop is scheduled for October 19th and 20th at the Abilene Service Center. Camping events will be October 2-3-4. Junior Badge Workshop, October 10 Cadette/Senior Canoe Event, October 17 "Do Your Own Thing" troop event, and October 17th. Frantic Leader Treat. Brownies from Area 1 (Abilene) will also visit Camp Boothe Oaks on October 17th.

Celebration for Juliette Gordon Low's Halloween birthday October 31 will be in honor of the Founder of Girl Scouts, U.S.A. (1912). A custom of Girl Scouts of today is to give a dime for "Daisy" Low to the World Friendship Fund created in her honor in 1927 at the Thirteenth National Council meeting in New York.

The West Texas Girl Scout Council is a participating agency of the United Way.

Paint Creek Homecoming Schedule

October 24, 1981

- 1 P.M. Registration
- 3 P.M. Business Meeting
- 5 P.M. Pep Rally
- 6 P.M. Bar-Be-Que Supper Sponsored by Senior Class
- 8 P.M. Football — Paint Creek vs Goree

Homecoming Queen and Coming Home Queen will be crowned at Half-time.

Supper \$5.00 per Plate—Reservations must be made at School by October 10.

Family Living Committee Selects 1982 Activities

The Family Living Committee, a subcommittee of the Haskell County Extension Program Building Committee met September 14 at 2:00 p.m. in the Extension Office Kitchen. Five Committee members and two visitors were present. Committee members attending were: Mrs. MC. Cunningham and Mrs. Tom Yates from Weinert, Mrs. Martin Coleman and Mrs. Paul Fischer from Paint Creek, and Mrs. Carl Bailey from Haskell. The visitors present were Mrs. Mildred Robertson, Haskell and Mrs. M.E. Overton, Paint Creek.

This program area committee, composed of representatives from each precinct in the County, is responsible for planning, implementing and evaluating educational programs in the area of Home Economics. Lou Gilly, County Extension Agent—Home Economics, is advisor to the committee and assists the committee in carrying out its responsibilities.

The purpose of this committee meeting was to select the county-wide activities the committee will sponsor in the in-depth area, Family Resources Management, for 1982. The activities the committee chose to sponsor are: a news series entitled "Be a Smart Shopper," an appliance energy newsletter, a seminar which will include

small appliance demonstrations, a clutter clinic, and an exhibit about the new energy saving label on appliances.

The committee also finalized plans for the Bread Fair they will be sponsoring on October 7.

Small towns face water shortages, A&M experts warn

COLLEGE STATION — Small to mid-sized communities are in danger of losing their fresh water reserves to aggressive big cities scrambling to provide water for their booming populations, warns a Texas A&M University sociologist.

"Our smaller cities are losing out to the major metropolitan areas for water rights to nearby rivers and lakes because they haven't the foresight of the larger cities and usually cannot afford the kind of political expertise available to the big cities," said Dr. Ruth Schaffer.

Schaffer said the nation's largest cities are scraping for water rights in regions several hundred miles away. They are seeking ways to build dams, reservoirs and transport systems that would allow them to import surface water from other areas for aquifers that are being depleted faster than they are being replenished.

Welcome to the Haskell County Fair

Fun for the Whole Family

Sept. 24-25-26

Gray's Laundry

George & Faye Gray

SEE YOU AT THE FAIR

Thurs., Fri. & Sat. Sept. 24-25-26

Ya'll Come!

Star Building Systems

Strickland Bridge, Inc.

Hwy. 277 South
817-864-2677
Haskell, Texas

SEE THE EXHIBITS

At The Haskell Co. Fair
Sept. 24-25-26

Anderson Construction Co.

Announcing...

I have sold Westside Texaco Station to Sam Rodriguez effective Sept. 13.

I wish to express my Thanks to all my customers for their business and invite them all to continue to trade with Sam.

It has been my pleasure to serve you.

Again, let me say
Thank You!
Jerry Don Klose

Westside Texaco

HAVE A GOOD TIME AT THE HASKELL CO. FAIR

Sept. 24-25-26

Elsie's Hi-Lander

THERE'S FUN

for EVERY MEMBER OF THE FAMILY

—AT THE—

Haskell County Fair!

McTid's Inc.

Haskell, Texas

YOU ARE INVITED TO COME IN & SEE THE 1982 BUICKS PONTIACS GMCS

New Intermediate Pickup

Electra Limited Sedan

Bonneville

REFRESHMENTS

THURS.-FRI., SEPT. 24-25

WE STILL HAVE A GOOD SELECTION OF 1981 CARS AND PICKUPS LEFT AT GOOD PRICES

MEDFORD BUICK-PONTIAC & GMC

HASKELL, TEXAS



1202 N. Ave. E
Haskell, Texas
Phone 864-3763
WE'RE WHAT YOUR
FOOD STORE REALLY
OUGHT TO BE

Open
8 a.m. til 8 p.m.

Sunday
9 a.m. til 6 p.m.

Double 3-Star Coupons
Every Wednesday
Redeemable for
3-Star Specials Each Week

Specials Good Thru Sunday, Sept. 27

Quantity Rights Reserved

<p>3 STAR Shurfresh Milk 1/2 gallon 59¢ With 1 Filled Superstar Booklet</p>	<p>3 STAR Shurfresh Medium Eggs Dozen 19¢ With 1 Filled Superstar Booklet</p>	<p>3 STAR Shurfresh Bread 1 1/2 lb loaf 9¢ With 1 Filled Superstar Booklet</p>	<p>3 STAR Shurfresh Salad Dressing Quart 39¢ With 1 Filled Superstar Booklet</p>	<p>3 STAR So-Dry Towels Jumbo Roll 1¢ With 1 Filled Superstar Booklet</p>	<p>3 STAR Gooch Franks 12 oz 39¢ With 1 Filled Superstar Booklet</p>
---	---	--	--	---	--

USDA Choice Heavy Beef Boneless Chuck Roast
lb **\$1.38**

Family Pack Tender Lean Boston Butt Pork Steak
lb **\$1.38**

Extra Lean Ground Chuck
lb **\$1.48**

Heavy Beef Boneless Chuck Steak \$1.69 lb	Heavy Beef Boneless Arm Roast \$1.79 lb	Heavy Beef Boneless Top Sirloin Steak \$2.48 lb	Decker Meat or Beef Franks 12 oz \$1.09
Lean and Tender Family Pac Chuck Tender Steak \$2.49 lb	Heavy Beef Boneless Sirloin Strip Steak \$3.99 lb	Heavy Beef Boneless Rib Eye Steak \$4.49 lb	Silver Spur Sliced Slab Bacon \$1.29 lb

Crisco Shortening
3 lb can **\$1.88**
Limit 1 with \$10.00 purchase

Wolf Brand Chili
19 oz can **99¢**
Limit 2

Del Monte Tomato Catsup
32 oz bottle **99¢**

Glad Lawn Clean Up

Bags 10 Count Pkg	\$1.79
Betty Crocker Cake Mixes 18 1/2 oz box	88¢
Shasta Drinks 2 Liter	89¢
Nabisco Chips Ahoy Chocolate Cookies 19 oz pkg	\$1.89
18 oz box Post Toasties	\$1.09
Welch 32 oz Grape Jelly	\$1.59

FARM FRESH FRUITS & VEGETABLES

Tokay Red Grapes lb 59¢	New Crop Wash. Golden Del. Apples lb 49¢	Large Persian Limes 3 lbs \$1
Fresh Broccoli lb 59¢	Large Heads Cauliflower ea 98¢	Italian Purple Plums 3 lbs \$1
Yellow Onions 5 lbs \$1	Bell Peppers lb 59¢	Lemons lb 89¢

Del Monte Cream & Whole Kernel Corn 2 16 oz can	83¢
Del Monte Sweet Peas 2 16 oz can	83¢
Del Monte Whole Green Beans 2 16 oz can	83¢
Del Monte Sliced Carrots & Spinach 2 16 oz can	83¢
Maxwell House Coffee 1 lb can	\$1.99
Lucky Leaf Peach Pie Filling 22 oz	99¢

Borden's Buttermilk
1/2 gal. **\$1.19**

DRUG BUYS

Shurfine Protein Conditioner 16 oz	99¢
Shampoo Reg. \$1.25	99¢

Regular or Sugar Free
Dr. Pepper
2 Liter Plastic each **\$1.09**

FROZEN FOOD BUYS

Asst. Jeno Pizza 11.75-12.5 oz	99¢ Limit 4
Kraft La Cream Topping 9 oz	88¢

About 70 Attend Progressive Study Club Supper

Approximately seventy members and guests of the Progressive Study Club entered the gate of the "PSC Ranch" to enjoy a meal at the old chuck wagon, Sept. 17.

The bank community room was transformed to simulate a ranch, complete with the chuck wagon, laden with barbeque, beans, slaw, and peach cobbler. Behind an

open campfire, where coffee brewed, hung branding irons and rope, and an old windmill stood behind the piano in anticipation of the evening's entertainment. Tables, covered with red and white cloths and bandana napkins, held lantern and ivy centerpieces. Fruit jars and tin cans for tea provided an extra western

touch. Following the supper, Sandy Horton, first vice-president, welcomed everyone and expressed regret that President Anita Herren was ill and could not be present. Guests were introduced, beginning with special guests Brooks Middleton and Nancy Kay Munday. The Yearbook Committee distributed yearbooks to members with the announcement of the dedication to the late Bebe Middleton for "her love for family, students, friends and God, her cheerfulness and courage during illness, her

faithfulness to the club and its members." Pat Byford introduced the Rule-ettes, consisting of Lou and Ronnie Landes and Susan and Larry LeFevre. This group, having performed together for the past three years, has entertained widely throughout the Haskell area. They sang western songs ranging from old favorites like "Leaning on the Old Top Rail," "Tumbling Tumbleweeds," and "Cool Water" to modern hits, including "Country Roads" and "Do You Know You Are My Sunshine." The audience

joined in for "I'm an Old Cowhand" and "The Crowded Song." The group concluded the program with religious songs "King of Love," "Through It All," and "One Less Day to Go." Following the program, a short business meeting was held to propose four names for membership. They were Leesa Toliver, Peggy Payne, Julia Harrell and Sue Yearly. These names will be voted on at the next meeting, Oct. 1. Hostesses for the evening were the Social Committee members and the Yearbook Committee members.

Welcome to the Haskell County
FAIR

Sept. 24-25-26

"Every guest is a VIP to us."

Dial Phones
Movies on HBO

Arrowhead
Motel

Owens, Dan & Sandy

ANNOUNCING!



The Haskell County Fair

See You There!

HASSEN'S

Haskell, Texas

SEE YOU AT THE **FAIR**

Get On The Band Wagon

and come to the

Haskell County Fair

Sept. 24-25-26

Lyles Jewelry

14 N. Avenue D — Haskell, Texas

Pueschels Honored By Reception

Mr. and Mrs. Justin Pueschel were treated to a surprise 25th Anniversary reception September 6th at the Community Building. The couple's children and grandchildren hosted.

Mr. and Mrs. Pueschel were married Sept. 2, 1956 in Haskell.

They are members of the Trinity Lutheran Church.

Mr. Pueschel is a Brangus cattle breeder and Mrs. Pueschel is a homemaker. The couple reside in the Irby community east of Haskell.

Hospital Notes

ADMISSIONS
MEDICAL: Mavis Alexander, Weinert; Raymond Lusk, Haskell; Ora Baugh, Rule; Madgie Allison, Rule; Nannie Winter, Haskell; Lizzie Letz, Old Glory; Carrie Elliott, Munday; Bertie Dumas, Haskell; J.L. Toliver, Jr., Haskell; Charles Grisham, Goree.
SURGICAL: Jim Garcia, Haskell.

DISMISSALS
Lillian Cole, Loyd Patterson, Raymond Lusk, Lewis Snelling, Terry Tomlinson, Tillie Chapman, Daisy Bates, Eugene Bittick, J.H. Amerson, Dudley Ellis, L.J. Adams, Johnny Lacey.

Around Town

Mr. and Mrs. Lynn Toliver, Dorothy and Hess Hartsfield and Buck Callaway were in Mineral Wells Friday to attend the funeral of Norman Hines, husband of Dorothy Lewellan Hines. Dorothy Hines is the sister of Mrs. Lynn Toliver.

Mr. and Mrs. Lee Roy Cockerell, Melissa, Chris and Wesley of Breckenridge visited in the home of his parents, Mr. and Mrs. Lee Cockerell this weekend.

Mr. and Mrs. C.E. Tidwell spent the weekend in Denton visiting with his sister, Mr. and Mrs. J.W. Romine. Joining them there was Dan Burson from Arlington.

Vivian Haley of Tulsa, Oklahoma is visiting in the home of Mr. and Mrs. R.M. Walker of Weinert and Colene Moody of Haskell.

TOWER DRIVE-IN THEATRE Rule, Texas

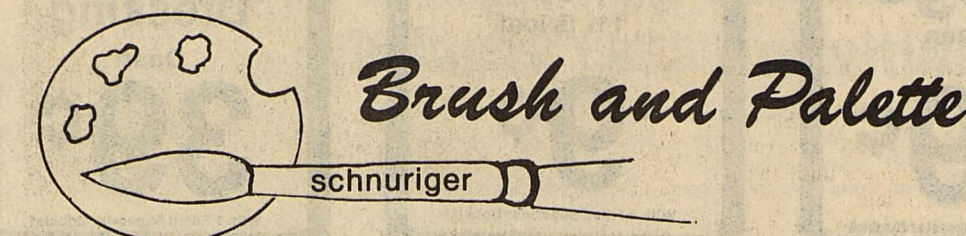
Fri.-Sat.-Sun. Sept. 25-26-27

"Superman II"

Gene Hackman
Christopher Reeve
Ned Beatty

Rated PG

Box Office Opens 8:00
Show Starts at 9:30



Beginners, Amateurs or Professional Painters are challenged by the ever-changing moods of nature. We have the changes in atmosphere, the trees, the flowers and migration of birds. We see the natural environment and possibilities for use of style and techniques. We think of technique as being the way materials are used, the manner in which paint is applied; the pencil or pastel is blended or the ink is stroked on the surface. Style can be classified in several ways: realistic, super-realistic, abstract, semi-abstract, impressionistic, surrealistic, romantic, classic, loose and free, tight and restrained and so on. Some painters employ a variety of styles while others see everything through one style and one kind of design. It is up to you to select, evaluate and determine what is best for you.

Q. What medium is used to make water look wet, such as puddles?

A. It is not the medium used, it is the brush strokes and the application of the paint. There is no medium that can make pictorial effects such as wet water or shiny glass. A wet area reflects its surroundings. The puddle brush strokes should be vertical, repeating the sky, tree, fence, etc., all in vertical strokes. Then, using a soft brush, lightly brush across the puddle horizontally, right to left, then left to right,

wiping brush after each complete stroke. Use a very light touch with this procedure or you will take off too much paint and will not get the wet look. A large body of still water is treated in this same manner.

Q. What can I do to make highlights in a still life brighter?

A. Always paint from dark to light in oil painting. Where there is to be a highlight, only paint up to that area. Example: If you paint a china cup, start at the shadowed side with the darker color, progress in values to medium values up to the highlight. You can also paint on over the entire surface of the cup, raising values to almost the lightest and then add a spot or brush stroke of the lightest color as the extreme highlight. This is called "adding a jewel".

Q. How can I paint grass without painting every blade?

A. First, who is to say what is good art? Is your picture and if you want to paint every blade of grass, go to it! Remember, paint cannot become grass and can only give the appearance with the manipulation of the brush. The contrast of light and dark is the secret to the appearance of anything - this is the whole story of oil painting - light against dark - dark against light. To give the appearance

of grass, start with a darker green, like Windsor Newton Olive mixed with a bit of Ultramarine Blue and set in the area of grass. Then using a medium value of green, start brush strokes that look "grasslike" using the side of the brush in an up-and-down motion. Finally, determine your light source and add some highlights in a lighter green. There should be some earth tones in the grass to add some Raw Sienna and Umbers here and there to avoid monotony.

HINT: "A man must not undertake the profession of an artist if he has not discovered in himself a real passion for Nature and a resolute temperament that will enable him to persevere without losing heart" - Unknown.

Write your questions and hints to me, Faye Schnuriger, P.O. Box 134, Haskell, Texas 79521. I will not use your name but do want you to sign your letters.



Births

Mr. and Mrs. David Larry White II of Stamford announce the birth of a daughter, Stacey Lynn White, born September 21, 1981. She weighed 6 lbs., 9 1/2 ozs.

Mr. and Mrs. William Gerald Myers of Goree announce the birth of a daughter, Amanda Marie Myers, born September 20, 1981. She weighed 7 lbs., 6 1/2 ozs.

Mr. and Mrs. Hugh Allen Beaty, Jr. of Munday announce the birth of a son, Eric Allen Beaty, born September 17, 1981. He weighed 8 lbs., 7 1/2 ozs.

Mr. and Mrs. Reynaldo Garcia of Lueders announce the birth of a son, Michael Anthony Garcia, born September 15, 1981. He weighed 7 lbs., 1 oz.

Marcia Kendall To Speak In Abilene

The Abilene Chapter of Women's Aglow Fellowship will meet at 9:30 a.m. Thursday, October 1, 1981, at Starlite Inn, Abilene.

Marcia Kendall of Garland will be the speaker. Mrs. Kendall was "Woman of the Year" in Dallas for 1976. She has had fifteen foster children plus four of her own, and is presently in full-time ministry with her family, traveling nation-wide and even overseas to women's groups, seminars, churches and conventions. Mrs. Kendall speaks the "Word of God" in teaching and music thru the gifts of the Spirit.

All interested women of the area are invited to attend and

hear this exciting speaker. Aspermont Women's Aglow Fellowship will have their next meeting at "The New Place" in Aspermont, October 8, at 9:30 a.m. Speaker for this meeting will be announced October 1, 1981.

Paint Creek Junior Class Sets Bake Sale

The Paint Creek Junior Class will be having a bake sale on Saturday, Sept. 26 in front of M-System. It will start at 9 a.m.

GRAND Stamford 773-3181

Fri. 25-Sat. 26-Sun. 27
Open 8:00 - Start 8:30
One Showing
"Superman II"

DRIVE-IN Stamford 773-3272

Open Dusk-Close 9:45
Fri. 25-Sat. 26-Sun. 27
Bo Derek
"Tarzan the Ape Man"
Tues. 29-Wed. 30-
Thurs. Oct. 1
XX-Adults Only
"Practice Makes Perfect"

Welcome to the Haskell County
FAIR
Trussell's Tire Center
1304 N. Ave. E Phone 864-3522

It's What's Happening Baby...The Haskell Co. Fair

Sept. 24-25-26
Ya'll Come!
The Sweet Shop
Haskell, Texas

LET'S FACE IT... THIS HAS GOT TO BE THE GREATEST FAIR EVER!
Owen's Radio & Electric
—Your ZENITH Dealer—
We Service All Makes TV's

FAIR Special
Kids Duds & Richardson Hallmark
Buy a T-Shirt Get Your Transfer FREE!
Just Arrived!
Boxed Christmas Cards 20% off
Saturday Only

FUN FOR EVERYONE HASKELL COUNTY
FAIR
September 24-25-26
Lane-Felker

Welcome to the **FAIR**
Special Discount Sale for Fair Saturday
10% to 50% off
Draw for your discount to be used with your cash purchase.
There will be modeling in our window from 10:00-12:00. Come by and see our pretty models, and oh yes, the beautiful clothes.

409 South First
Haskell, Texas
Phone 864-2901

75 Head Of Cattle Donated To CRCC

Seventy-six head of cattle from all over Texas are leading the parade of donations to the Cattlemen's Round-up for Crippled Children.

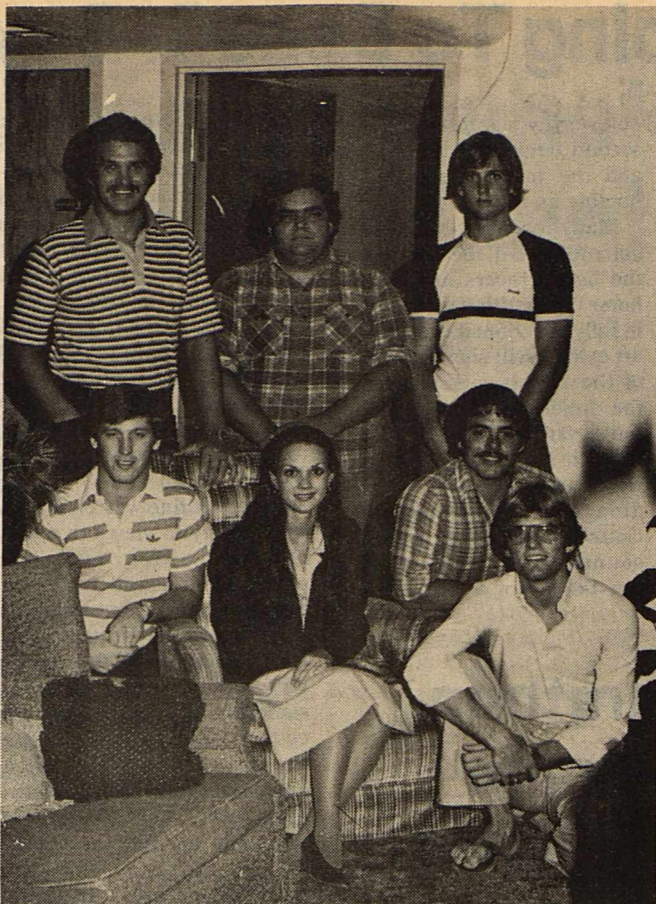
Area chairmen are working busily to secure many more donations before the first sale on Sept. 28 at Abilene Auction. The series of CRCC sales benefit the West Texas Rehabilitation Center which has campuses in Abilene, San

Angelo and Snyder. Among the early donations have been Simmental and Charolais bulls. Also among the livestock donated are several horses, which will be sold at the horse sale on Oct. 3, also at Abilene Auction.

Other sales scheduled are the sheep and goat sale, Oct. 5, at Junction Stockyards; special sales at Coleman Livestock Auction, Oct. 7, and Brownwood Cattle Auction, Nov. 4; and a farm equipment sale on Nov. 7 at Sweetwater. The arrangements committee with the Taylor County area chairmen met to distribute more than 1100 cards, representing area cattle operations which will be asked to contribute.

The work of the area chairmen, 188 across the state, continues until the day of the last sale.

To donate to the Cattlemen's Round-Up for Crippled Children, contact the Central Office of the West Texas Rehabilitation Center, 4601 Hartford, Abilene, Texas 79605, or call (915) 692-1633. Transportation for the donated livestock will be furnished without charge.



Resident Advisors and Dorm Parents for Southwestern Oklahoma State University's Jefferson Hall Men's Dormitory are (top row l to r) James McCoy, Haskell; Rick Jones, Claremore, Okla.; Andy Slagle, Duncan, Okla. (Bottom row l to r) Chris Barker, Quapaw, Okla.; Debbie McCoy, Abilene; Richard Phillips, Goodwell, Okla.; and Clay Scott, Duncan, Okla.

College News

Some 1,034 students were awarded degrees Aug. 15 at the North Texas State University summer commencement ceremonies.

In addition to 582 bachelor's degrees, the university granted 401 master's and 51 doctorate degrees, during ceremonies in the NTSU Coliseum.

A Haskell student among the NTSU graduates was Deanna Robertson, the daughter of Mrs. Mildred I. Robertson, 1706 N. Ave. H. She received the master of library science degree in library science.

THE COMPLETE modular organizer, the handsome and efficient addition to your desk that ends desk clutter and keeps desk essentials at your fingertips. *Haskell Free Press*

Diamonds, Precious Gems, Fine Fashion Jewelry 14 K Gold. Guaranteed Merchandise At Affordable Prices

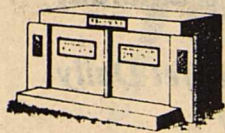


CLASSIQUE CREATIONS

DORIS RIAL
Bond 33429
Master Jeweler
3333 So. 7th
Abilene, TX 79605

PUBLIC SHOWING
Mon. Sept. 28
9:30 a.m. — 4:30 p.m.
Drawings for Door Prizes
At

The Little Gallery
107 N. Swenson Stamford, Texas



Serving West Texas for 20 Years...

Martin Memorials

PERSONALIZED SERVICE
CERTIFIED STONE
WORKMANSHIP GUARANTEED
CEMETERY CRUSHED STONE

915-773-2721
807 S. Columbia, Stamford

GROUP MEDICAL INSURANCE FOR TEXAS FARM BUREAU MEMBERS AND THEIR DEPENDENTS

IN THE EXPANDED GROUP MEDICAL INSURANCE PROGRAM WITH TRAVELERS INSURANCE COMPANY

A limited open enrollment will be available to Texas Farm Bureau members not participating in the old Group Program. To be eligible, you must have been a member as of July 22, 1981. You will be accepted without medical evidence and you will be restricted for pre-existing conditions for 12 months. You must enroll and pay premium at your County Farm Bureau Office by September 25, 1981.

Persons with questions about Texas Farm Bureau Group Medical Insurance Program PLANS AND RATES may see the Texas Farm Bureau Insurance Agents in the County Farm Bureau Office.

Haskell Co. Farm Bureau

817-864-2647



Steer Roping Set Oct. 2-4 In Post

Some 6,000 western fans are expected to attend the 11th annual OS Ranch Steer Roping and Art Exhibit near Post Oct. 2-4.

They will have the opportunity to watch 36 of the nation's top steer ropers in action Sunday afternoon, 50 of the west's best calf ropers Saturday afternoon and view western art as exhibited in the OS ranchhouse by 37 of the top artists from eight western states both days.

Barbeques will be served at the ranch both days.

Other events of the weekend include an Old Fiddlers Contest, a girls WPRA barrel race, NCHA championship

and non-pro cutting horse contest, a team roping Friday afternoon, the OS Art Preview party at the ranch Friday night with entertainment by Red Steagall & Coleman County Cowboys, a Saturday night dance with Steagall, some fiddle playing by Johnny Gimble, a Sunday morning brush arbor worship service, a colt sale with 18 ranches cosigning colts, and a washer pitching contest which was added this year for the first time.

The big "OS weekend", which is a benefit for West Texas Boys Ranch in San Angelo, raised in excess of \$275,000 for the boys ranch in its first decade.

FAIR DAYS

are here again!

Join all your friends & neighbors

at the

Haskell County Fair
September 24-25-26

Hale Farm Supply

TAX FREE

STARSAVERS CERTIFICATE

BIG COUNTRY SAVINGS' ALL SAVERS CERTIFICATE

SPECIAL BONUS #1

Beginning October 1, you can convert your 6-month Money Market C.D. to the STARSAVERS CERTIFICATE with **interest paid to date** of your conversion and with **no penalty**.

SPECIAL BONUS #2

If you convert your money market certificate or take out a new STARSAVERS CERTIFICATE in October, 1981, you will realize a **3 month tax saving for 1981**.

We want to help you make the very most of your money. Come in or phone us and we'll answer any questions about the STARSAVERS CERTIFICATE. It helps you where it counts... on the bottom line.



BIG COUNTRY SAVINGS

Stamford, Quanah, Haskell, Abilene



PRICES EFFECTIVE SEPT. 24-26, 1981 WHILE SUPPLIES LAST



COCA-COLA
2 Liter
\$1.39

TRIAL SIZE
NEW FREEDOM
ONLY **25¢**

SUNSHINE KRISPY CRACKERS
1 LB. BOX **89¢**

Peter Pan 18 oz
Peanut Butter **\$1.99**

BORDEN'S ICE CREAM SANDWICHES
6 CT. PKG. **89¢**

SUNSHINE VANILLA WAFERS
11 OZ. BOX **89¢**

BORDEN'S NUTTY BUDDIES
6 CT. PKG. **99¢**

MORTON DINNERS
11 OZ. PKG. **89¢**
TURKEY/SALISBURY STEAK/MEATLOAF/WESTERN

MORTON FRIED CHICKEN 2 LB. BOX **\$3.49**

GLADIOLA YELLOW/WHITE MIXES CORNBREAD 6 OZ. PKGS. **4 \$1**

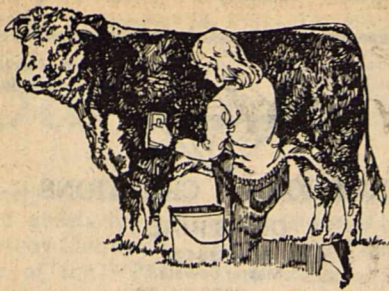
BORDEN'S COTTAGE CHEESE 12 OZ. CTN. **79¢**

SCHILLING BLACK PEPPER 4 OZ. CAN **\$1.39**

REAL TEXAS CHIPPED **BBQ SANDWICHES**
\$1.49
ONLY BUY ONE AND GET A 24OZ. COCA-COLA FREE!



ALLSUP'S
CONVENIENCE STORES
"THERE'S ONE NEAR YOU"



Visit The Haskell Co. Fair

Sept. 24-25-26

and have lots of fun!

Wallace's Exxon

Steer Roping To Benefit Boys Ranch

The eleventh annual OS Ranch Steer Roping and Art Exhibit to benefit The West Texas Boys Ranch gets underway October 2, 3 & 4th near Post and many of the country's top ropers, cutting horses, barrel racers, artists, and musicians will be on hand to help kick off the week-end of fun and excitement that has become a tradition in the Southwest.

Event chairman and OS Ranch operator, Jim Prather, expects around 6,000 roping and western art fans to gather for the festivities the first weekend in October. This year's event is especially

noteworthy as it begins the second decade of the roping, and the talent assembled is notable as well.

Many former world champion ropers will be there and the barrel racers and cutting horse competitors will perform in fully sanctioned events. The art exhibit will showcase some of the finest works depicting the American West. Country music fans will have a special treat in store again this year with appearances by Red Steagall and his Coleman County Cowboys and the country music associations' top fiddler of 1978 & 1979,

Johnny Gimble, and if that were not enough, an old time fiddler's contest and a Saturday night dance are also on the schedule. Naturally, there will be plenty of food with pit cooked barbeque being served at noon Saturday and Sunday.

The activities get started with a team roping to be held on the Bassinger Ranch 12 miles north of Post at 2:00 Friday afternoon. Following at 5:00 is the art preview party in the OS Ranch House, giving admirers of fine western art an opportunity to view the works on display for sale that weekend. A special auction of autographed collectors stamps will be offered at the party that evening. At 8:00 Saturday national cutting horse association sanctioned and non-pro cutting horse contests begin the days' events with GRA approved barrel racing following at 9:00. At 9:30 some of the areas top fiddlers square off in a Texas Fiddlers Association contest. 10:00 will

mark the official opening of the art exhibit and sale. At 11:30 pit cooked barbeque will be served and the price of a plate will cover lunch time entertainment by Red Steagall.

Afternoon action starts at 1:30 as the Invitational Calf Roping gets underway, followed in short order by the finals in the barrel racing and team roping. A Saturday night dance featuring Red Steagall and Band closes the days activities at 9:00. Sunday at 8:00 an old timers breakfast will be served and worship services conducted by the Rev. Jim Fullingim will be held at 8:45. A colt sale will be held at 9:45 on the OS Ranch. At 11:30 barbeque and fiddle playing at its best takes place as Johnny Gimble entertains the noon time crowd. The weekend gala closes at 1:30 with the Invitational Steer Roping and finals in the Championship Cutting Horse competition.

Bluebonnet Cafe

DOWNTOWN RULE

Open 7 Days a Week

5 a.m. - 10 p.m. Daily
Wed. & Sun. Closed at 2 p.m.
Open late Friday & Saturday

Serving Noon Buffet Daily

—Night Specials—

MONDAY—Hamburger, French Fries, Red Beans

TUESDAY—Mexican Food Buffet plus Steaks

& Shrimp

THURSDAY—Catfish Buffet

FRIDAY—Steaks & Shrimp

Allsup's Marathon To Feature Some World Class Runners

The Allsup's Marathon will feature some world class runners this year on October 3rd, its 7th annual running.

Topping the list is a pair of brothers, Al and Stan Waquie, both from Jemez Pueblo, New Mexico. Al was last year's winner of the half marathon in Clovis, N.M., and he recently took the 1981 Pike's Peak Marathon in Colorado Springs, with a time of 3:24:00. Enroute to his winning, he set a new ascent record as well as an over-all record on the full run. His brother, Stan, holds a personal best time 1:09:00 in the half marathon and took second place in the 5,000 meter Los Alamos Mini Marathon.

Over 500 runners are expected to enter the race in Clovis, N.M., to include: Matthew Sequera, with a personal best time of 29:19:00 in the 10 kilometer and 2:20:00 in the full marathon; Dennis Williams, former track and field standout with Eastern New Mexico University and first place winner of the 1975 Fiesta Bowl Marathon; Jack Anderson, first place winner of the 1980 Navajo Nation Cross Country Championship; Web Loudat, winner of the old Santa Fe Trail Run earlier this year, and Marlow Eldridge, who took first place in the 1981 AAU 15 kilometer run.

The Allsup's Marathon, sponsored by Allsup's Convenience Stores, Inc., is sanctioned and certified by the Amateur Athletic Union (AAU) and will offer runners a choice of three courses: 26.2 mile marathon, 11 mile course, and a 10 kilometer race.

Persons interested in participating in the race may obtain a registration form by writing to Royce Jones, 3532 Brynhurst Court, Clovis, N.M. 88101, or by calling (505) 762-5010. Registrations may be made through October 2nd.

Water problems may change park scene

COLLEGE STATION — Texans may soon have to change their ideas of what a park should look like, or even the appearance of their lawns, suggests a parks and recreation professor at Texas A&M University.

"As the water tables continue to drop and cities, as well as rural areas, continue to be concerned about increasing water demands, we're going to have to look at alternative methods of conservation," said Dr. Joanne Westphal. "One viable alternative might be for us to change our perceptions of what our lawns or parks should look like by using types of groundcover, trees and shrubs that can withstand reduced amounts of water and require less care."

COWPOKES

by Ace Reid



"If it wuzn't fer pore land, no rain, grasshoppers and worms, I bet you'd have a purty garden!"

Haskell National Bank

Your Independent Bank

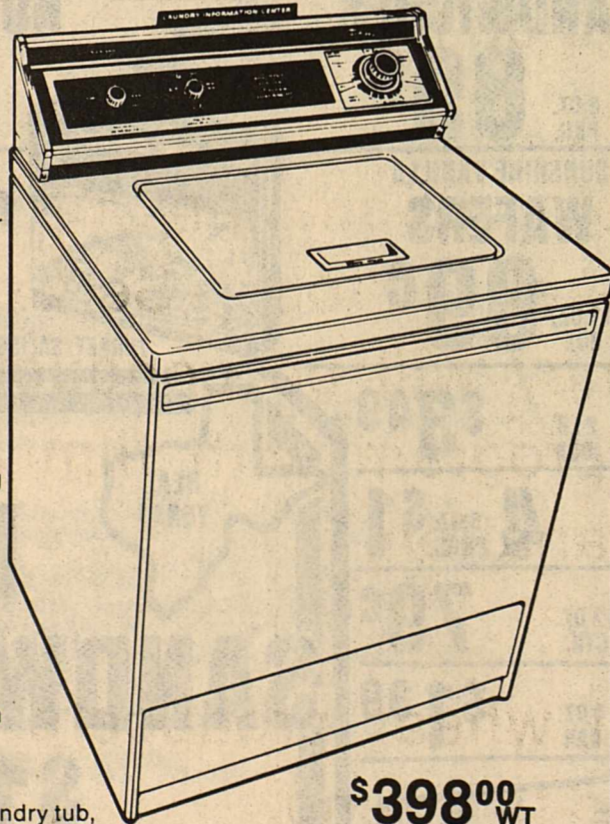
Haskell, Texas
IBA, IBAT, FDIC

Welcome to the FAIR

with a quality
Whirlpool[®]
HOME APPLIANCE

Model LHA 6700

- Family-size capacity
- 5 automatic cycles: REGULAR/HEAVY, PERMANENT PRESS, KNITS/GENTLE, SOAK, PRE-WASH
- Super SURGILATOR[®] agitator
- Automatic cool-down care to help reduce wrinkles in Permanent Press garments
- Energy-saving water temp selector with 4 wash/rinse combinations
- Water-saving load size selector with "infinite" settings
- MAGIC CLEAN[®] self-cleaning lint filter*
- Bleach and fabric softener dispensers
- 2 wash and spin speeds for proper fabric care
- Porcelain-enameled top, lid, inner basket and outer tub
- Heavy-duty ½ h.p. motor
- Bac-Pak Laundry Information Center
- Available in decorator colors



\$398⁰⁰ WT

If your washer drains into a laundry tub, periodically check the drain strainer since lint accumulation could clog the laundry tub drain.

3 Days — Thursday, Friday & Saturday Only

Frazier's Appliance

Haskell, Texas

DON'T MISS THE



Haskell Co. Fair

Sept. 24-25-26

Gilliam Oil Co.

Larry Gilliam

WELCOME FAIR VISITORS



Visit Us

While You

Are In Town!

Dairy Queen

864-3732

IT'S ALL THERE!



The Officers and Directors, along with the hundreds of other residents who work so diligently to make our HASKELL COUNTY FAIR the biggest and best, are to be commended.

OUR FAIR...Bigger and Better every year...is a fine example of a community working together to improve their town and its economy.

We here at Haskell Livestock Auction take this opportunity to salute these people who put so much time and effort into the Fair...We are proud to be a part of this progressive agricultural community.

AND A SPECIAL TRIBUTE TO A. C. PIERSON FOR WHOM

THIS YEAR'S FAIR CATALOGUE WAS DEDICATED.

Hog Sale 10 a.m. Cattle 11:00 Each Saturday

Haskell Livestock Auction

HASKELL, TEXAS — PHONE 864-2624

Tom & Tommie
Nix

Bobby & Joanna
Parrott

Tommy Clay
Yard Manager

Hey, Honey...
Going My Way?



This Way—That Is...
to the
Haskell Co. Fair
Lee Bahney
TAX CONSULTANT
314 N. 1st — Haskell

Dual-Earner Households Need Financial Planning

Financial concerns of dual-earner households must be faced and dealt with so they don't offset the family's economic progress, advises Linda McCormack, a family resource management specialist.

McCormack, on the home economics staff of the Texas Agricultural Extension Service, The Texas A&M University System, says dual-income households are here to stay—with numerous financial effects and problems.

One immediate effect is that dual-earner families have incomes 30-40 percent higher than one-earner families.

Dual-earner families also have more expenses than one-income families. Many expenses are work-related, including meals away from home, child care, transportation, recreation, personal grooming items, convenience appliances, more services and housing.

Time is limited for dual-earner families due to competing demands from the job

and family, so these families buy many goods and services to alleviate these time constraints. Often this means there is less time for "shopping" to evaluate competing products before the actual purchase, the specialist continues.

MAKING A FINANCIAL PLAN

Making a financial plan will help dual-income families protect their incomes and avoid financial dangers that can easily become reality in the hectic pace of today's lifestyles, McCormack says.

First, it's important to realize that dual-income financial planning is different from traditional single-income planning.

Couples may have the feeling that two incomes allow them to buy anything and everything they want, only to find out too late they don't have as much money as they thought.

A coordinated spending plan should be of primary importance—with specific goods and prices decided, the

specialist emphasizes.

SAVINGS A 'MUST'
Consider saving as an essential part of the "expenses" for any spending plan, since dire financial consequences may result if one income is lost, either due to unemployment or health disability, McCormack warns.

A liquid cash reserve of three or six months salary often is recommended as the amount to keep on hand for emergencies—both planned and unplanned.

Failure to plan for emergencies, such as car repairs, major dental costs, taxes, uninsured losses and unexpected medical costs frequently cause a financial crisis for many families, the specialist adds.

SEPARATE FUNDS

Working couples are advised to establish separate lines of credit, with each partner having a savings account and separate charge cards—so these conveniences are already "in place" for each in case the need for them arises, McCormack says.

In addition, with both spouses working, both are likely to have company benefits.

Check the types of coverage, and fill in the gaps, if need be, by purchasing additional life, property or medical insurance.

SEEK ADVICE

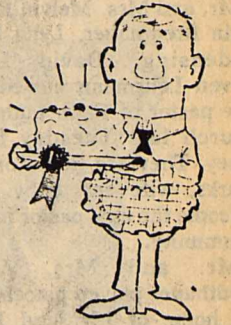
Dual incomes, plus inflation, have pushed many couples into tax brackets once reserved for the rich, to say nothing of the marriage penalty and its special tax rates, McCormack says.

To ease the tax burden, dual-income partners should seek experienced financial and legal counsel.

Estate planning is of great importance to the working couple, too, the specialist stresses.

Time spent consulting experts—in banks, savings and loan associations, stock brokerages, insurance companies and tax offices—is usually beneficial in developing a sound family financial plan, McCormack adds.

EVERYBODY
CAN'T WIN A
**BLUE
RIBBON**
But You
Can Be



A Winner If
You Go To The Fair!

Conner's Nursery
Haskell, Texas

COME TO THE
FAIR

Sept. 24-25-26

And

Have lots of Fun!

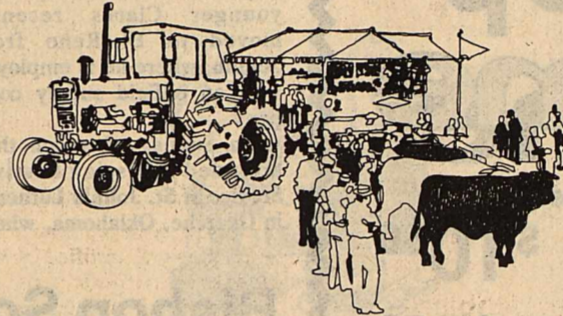
**Nanny
Plumbing**
Haskell, Texas

**FAIR
DAYS**

Are Here!

Haskell Co. Fair
Sept. 24-25-26

Queen Roofing



Join Friends & Neighbors
at the
Haskell County Fair
Sept. 24-25-26

Dean Butane

**FAIR
DAYS**

Don't Miss 'Em

Thurs., Fri. & Sat.

Sept. 24-25-26

**Haskell County
Fairgrounds**

Federal Land Bank

A Big Reddy
WELCOME

To The
**Haskell
County
Fair**



WEST TEXAS UTILITIES COMPANY

An Equal
Opportunity
Employer



WTU

A Member of The Central and South West System

There will be a meeting concerning All Risk Federal Crop Insurance on wheat in Haskell National Bank Community Room, Tuesday, Sept. 29th at 7:30 sponsored by Lanco Insurance.

Tom Buchanan of the Federal Crop Servicing Agency will be conducting the program with film and explanation.

All wheat producers are urged to attend.

Sagerton Community News

Mr. and Mrs. Melvin Baitz, Alvin Bredthauer, Lynn Dale Dildensing, David Letz, Steven Lehrmann moved the new pastor of Faith Lutheran Church last Tuesday from Pusey. They are Rev. Tommy Sparks, wife and baby. We welcome the new pastor in our community.

Mr. and Mrs. Alvin Bredthauer played pinochle in the home of Mr. and Mrs.

Alfred Hertel Tuesday night. Mrs. Alvin Bredthauer went to Haskell Monday to visit her mother Emma Lammert who lives in the Rice Springs Care Home.

Mrs. Louise Stegemoeller visited Mrs. Emma Lammert in Rice Springs Care Home Tuesday.

Mrs. Lillie Lehrmann visited in the Rice Springs Care Home Wednesday with

several people who make their home there.

Mrs. M.Y. Benton and Mrs. Etta Leach went to Stamford Tuesday to do some shopping. Miss Lillian Neinast visited in the home of Mrs. Leo Monse Wednesday afternoon.

Mrs. Wilson Gibson of Graham visited in the home of her mother Mrs. Etta Leach one day last week.

Mr. and Mrs. Alfred Hertel visited in Benjamin recently with Mrs. Nora Hertel and Mrs. Nora Duke.

The Hobby Club met in the home of Mrs. Delbert LeFevre Thursday with Mrs. Joe Clark telling and showing pictures she took on her recent trip to Europe, Germany, Switzerland and France. There were several visitors and members present. Mrs. Velma Lou Hertel, Mrs. Arthur Knipping, Mrs. Mike Hertel, Mrs. M.Y. Benton, Mrs. Alvin Ulmer, the visitors were Mrs. Alvin Bredthauer, Mrs. Louise Stegemoeller, Mrs. Larry Cornelison, Mrs. Fred Kupatt, Mrs. Dorothy Stark, Mrs. John Clark, Mrs. Fred Schonstedt.

Mr. and Mrs. Maxey

Thompson and daughters, Malinda and Cynthia of Colleyville, Mr. and Mrs. J.C. Thompson of Dallas visited with Mrs. John L. Brooks and Miss Beulah Mae Summers over the weekend.

Mr. and Mrs. Clayton Stegemoeller and daughter, Stephanie of Lubbock, Mr. and Mrs. Calvin Stegemoeller's son, Eric of Duncan, Oklahoma, visited in the home of Mr. and Mrs. Leon Stegemoeller over the weekend.

The Sagerton Volunteer Fire Department met Monday September 14th at 8:00 o'clock in the Community Center. A very good crowd attended. Fire chief, Allen Meier, urges everyone in the Sagerton Community to put these telephone numbers in your phone book or near your phone in case you have a fire at night. Allen Meier, 997-2615. During the day call Zenor Summers, 997-2545 or Alvin Bredthauer 997-2366.

Charles Clark took Mrs. John Clark and Mrs. Alva LeFevre to see Reece Clark who is in the hospital in Abilene.

Mrs. Joe Clark and her mother, Mrs. Emma Raphael of Stamford, spent the weekend in El Reno, Oklahoma visiting with Mr. and Mrs. Ray Clark and Phillip. The younger Clarks recently moved to El Reno from Seguin, where he is employed with an oilfield supply company.

On Sunday afternoon they attended a mission Festival Service at St. John's Lutheran in Okarche, Oklahoma, where

the guest preacher was Eugene Juergensen. Pastor Juergensen is the son of the late Rev. Carl F. Juergensen, former pastor in Sagerton. Mrs. Clark visited briefly with Mr. and Mrs. Alvin Vieth of Kingfisher, Oklahoma. They had traveled with her on her recent trip to Europe.

Next Sunday the congregation of the Sagerton Methodist Church will go to Rule Methodist Church for the 11 a.m. service. No church will be held in Sagerton. The new Bishop Louis Schowengerdt will be the speaker and the new District Superintendent, Rev. Weldon McCormick will also be present after the service. Lunch will be served and everyone is asked to bring a covered dish.

Wednesday night of this week, September 23, Rev. and Mrs. Patterson of Knox City will be at the Sagerton Methodist Church to speak and show pictures of their trip to Hawaii last summer for the Methodist World Conference. A sandwich supper will be served at 6:30 p.m.

Mr. and Mrs. Alfred Hertel, Erna and Walter Schaake of Stamford, played 84 in the home of Mr. and Mrs. Arthur Knipping Friday night.

Mr. and Mrs. Walter Bredthauer of Haskell hosted the Bredthauer family monthly dinner at their cabin at Lake Stamford Saturday and Sunday. Those who spent the night were Mr. and Mrs. Alvin Bredthauer and Mrs. Herbert Nierdieck enjoyed playing Uno. Sunday the other people were Mr. and Mrs. Ernest Bredthauer of Rule, Mr. and

Mrs. Alfred Bredthauer of Stamford. Had a hamburger supper Saturday night and Sunday a steak dinner. Mr. and Mrs. Walter Bredthauer, Mrs. Herbert Nierdieck, Mr. and Mrs. Alvin Bredthauer attended church in Haskell at Trinity Lutheran Church.

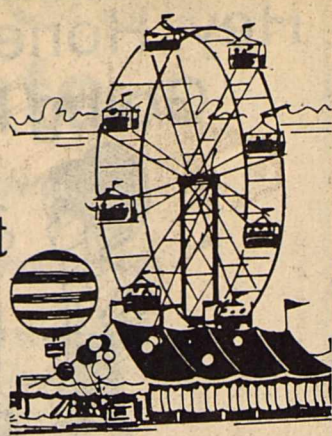
Mr. and Mrs. Herbert Lammert of Old Glory, visited in the home of Mr. and Mrs. Leonard Kieke Sunday night.

Mr. M.Y. Benton and Mrs. Alvin Bredthauer visited in the home of Mrs. Loil Young Friday afternoon.

Mrs. Lena Schaake, Clarence Stegemoeller, Erna and Walter Schaake of Stamford, played 84 in the home of Mr. and Mrs. Alvin Bredthauer Friday night.

Mrs. Sandra Hulls of New Mexico, visited in Sagerton recently. Sandra used to live in Sagerton.

MORE
Fun
★
MORE
Excitement



More Everything!

AT THE

Haskell Co. Fair

Sept. 24-25-26

Hammer Laundry

Phone 864-8997 — 207 N. Ave. D
Bobby & Lena Tidwell — Owners

NOTICE!

Effective October 1, at Old Glory Lodge No. 228 There will be no admission to private dances at Old Glory Lodge unless invited by member. Dances are private and are for all Hermann Sons local members and from other lodges and their guest only.

It's Paint-Up

Fix-up time

White Latex
Caulking

95¢ each

Colored Latex
Caulking

\$1.40 each

Our Best

Outside Latex \$10.50

Inside Latex \$8.50

Semi-Gloss Oil \$13.50

Semi-Gloss Latex \$11.95

All Brushes 10% discount

Good stock Ceiling Fans still at good prices

from \$69.95 ea. to \$190.00

McTid's

Haskell, Texas

Bishop Schowengerdt To Speak At Rule FUM

The members of the First United Methodist Church of Rule would like to invite the public to their service September 27, 1981 at 11:00 p.m. when Bishop Schowengerdt of the Northwest Texas Annual Conference will be preaching.

This is a great opportunity to come and hear one of the leaders in the United Methodist Church.

Bishop Schowengerdt graduated from the Perkins with his Divinity degree. He also has a Doctor of Ministry in Pastoral Care and Counseling. He was a full member of the Missouri West Conference where he was Conference Youth Coordinator, a District Superintendent, and before he was elected Bishop he was program director of the Conference Council of Ministries.

Again the members of the First United Methodist Church of Rule extends an invitation to all those persons in the surrounding area to come and hear Bishop Schowengerdt preach. A covered-dish lunch will also follow in the fellowship hall after the service.

Auto Insurance for Non-Drinkers

UP TO 25% off to qualified nondrinkers thru...

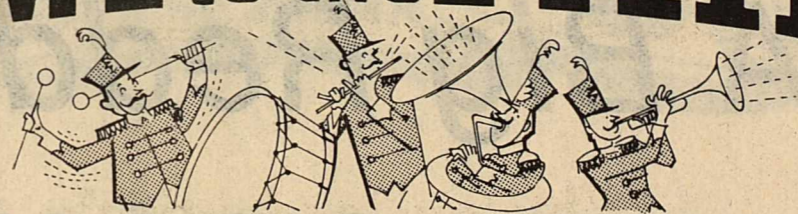
MIDWEST MUTUAL — a member of
Preferred Risk INSURANCE GROUP

CALL YOUR PREFERRED RISK AGENT TODAY TO SEE IF YOU QUALIFY

Herren Insurance Agency

115 N. Ave. E
Haskell, Tx 79521
864-3322

COME to the FAIR



Thurs.-Fri.-Sat.

Sept. 24-25-26

Come...

Join the Fun

The Fair is for the Whole Family!



In Haskell County...A time when all our Good Friends and Customers join together to compete with their Skills in Rural Living...Handwork, Arts and Crafts, Canning and Baking...Raising Prize Crops and Prize Animals...with all the skill and knowledge to feed a Nation.

WE SALUTE ALL WHO ENTER THE HASKELL COUNTY FAIR...OUR BEST CUSTOMERS

See Us for All Your Feed and Seed Needs!

Farm & Ranch Supply

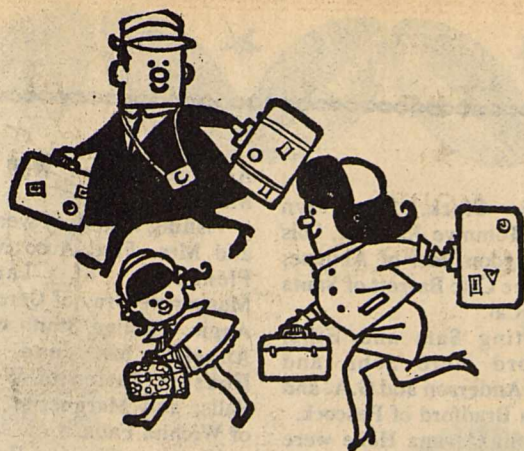
Haskell, Texas

Phone 864-3255 or 864-3279



Farmers National Bank

Rule, Texas



Come Any Way You Can...

BUT COME TO THE
HASKELL COUNTY FAIR!

Mitchell's Porthole

—Fish & Chicken—

IT'S FAIR TIME

...SO...



KICK UP YOUR
HEELS AND HAVE
A GOOD, GOOD
TIME!

Haskell County Fair

Sept. 24-25-26

If you are planning on building or repairing—we offer you a complete line of building material.

**KENNEDY
LUMBER CO.**

Glenda Gayle Chapman Assumes New Position

Glenda Gayle Chapman, a native of Haskell, has been named as commercial advertising salesperson for the Texas Farm & Ranch News, San Antonio. Publisher, Pat McCarty has announced.

Chapman, 26, was born and raised on a farm and ranch in Haskell, and is familiar with all facets of the agricultural industry. She graduated from Haskell High School in 1973 and received a bachelor of business administration degree from Texas A&M University in 1980.

She reigned as "Miss Rodeo Texas" in 1976, where she promoted the sport of

rodeo at her own expense. During her college career, she was named "Miss Rodeo Texas Tech" in 1975 and "Miss Rodeo Texas A&M" from 1978-1980. While at A&M she was the treasurer of the Rodeo Club, and a member of the Management Society.

Chapman's previous work experience includes buying and selling cotton for Moore Cotton Company in Haskell, public relations work for both the Texas State Senate Personnel Office and the Comptroller of Public Accounts in Austin, and working as general manager of the Slipper Shoppe in Haskell.

"I'm looking forward to my work here with the Texas Farm & Ranch News," Chapman said, "because farmers and ranchers are my kind of folk. It seems when they talk—it comes from the heart. You know what I mean, just real, genuine, down-to-earth people."

Chapman will be responsible for selling and servicing commercial advertising accounts. She assumed duties September 1.



GLENDAY CHAPMAN

LIQUID PAPER Correction Fluid in ledger colors including pink, greens, buff, blue and yellows. Perfect for stationery, too! *Haskell Free Press*



For Kids of All Ages

SUPPORT YOUR

Haskell Co. Fair

Sept. 24-25-26

Boggs & Johnson

Look Here First and Find What You Want.
Phone 864-2346 — Haskell, Texas

Anesthesia Fund

Mr. and Mrs. W.B. Guess, in memory of Hooper T. Wilkinson and Arlos Weaver.

The Rex Herricks Family, in memory of Hooper Wilkinson.

Mr. and Mrs. Roy Herricks, in memory of Hooper Wilkinson.

Mr. and Mrs. W.B. Guess, in memory of Jody Lea Tankersly and Mrs. J.A. Sanders.

Honoring Mr. and Mrs. W.B. Guess on their 50th Wedding Anniversary: Harvie and Robbie Furrh, Mr. and Mrs. Henry Rueffer, Agnes Ann Winchester, Robert and Dorothy Rascoe, Mr. and Mrs. H.M. Bledsoe, Osborne and LaVera Hummel, Elmer and Ethel Dougherty, Vance Lebkowsky, Mr. and Mrs. Hugh Miller, Mr. and Mrs. Jerry Hester, Mr. and Mrs. Eddie Sanders, The Rex Herricks Family, Mr. and Mrs. Roy Herricks, Mr. and Mrs. Marvin Phemister, Tillie Chapman, Mr. and Mrs. Bill Lane, Mr. and Mrs. Joe Thomson, Mr. and Mrs. Harlan Weinert, The Jack P. Dunnam Family.

Mary Jane Short Celebrates First Birthday

Mary Jane Short of Rochester, daughter of Mr. and Mrs. Larry Short, turned a year old on September 9. Helping her celebrate this special event were Ronald, Edith, Jarred and Jason Hilliard of Odessa, Kenneth, Cinda, Nicole and Chessa Hilliard of Brownfield and grandparents E.L. and Bernice Hilliard of Haskell. Each guest enjoyed Mary Jane's teddy bear cake, homemade ice cream and watermelon.

Around Town

Visiting the E.L. Hilliards during the Labor Day weekend were Mr. and Mrs. Kenneth Hilliard, Nicole and Chessa of Brownfield and Mr. and Mrs. Ronald Hilliard, Jarred and Jason of Odessa.

Want to buy? sell? results? Want ads will work for you.

Live It Up... At The Fair



Sept. 24-25-26

Ya'll Come!

**Haskell
Steak House**

Visit The COUNTY FAIR

EXHIBITS • 4-H CLUB ACTIVITIES • GAMES • SHOWS

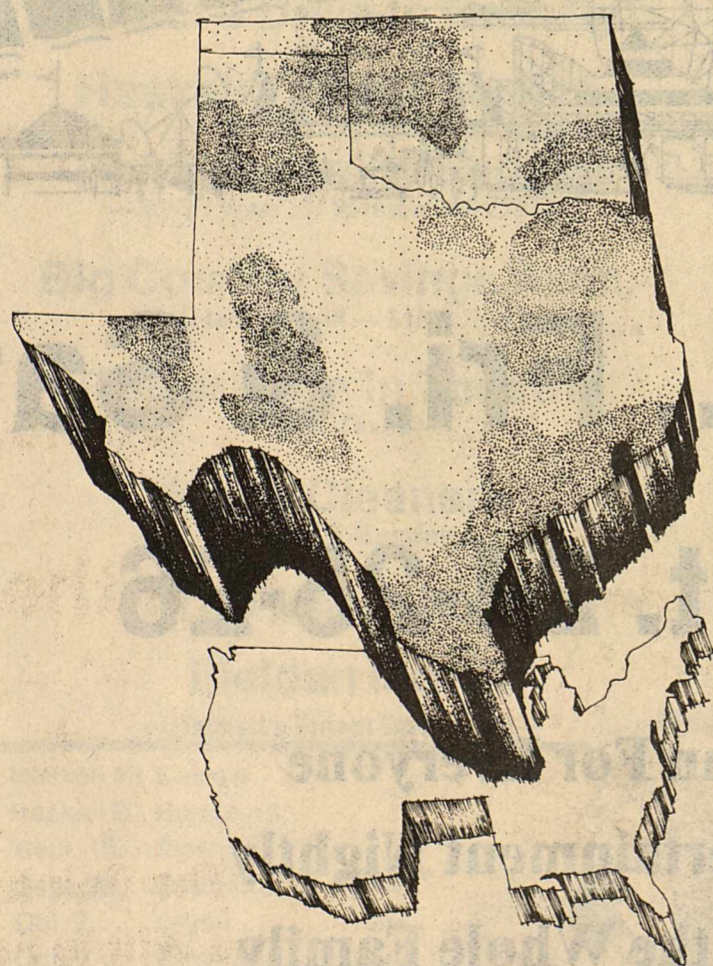
Sept. 24-25-26



**Hunt Ford
Tractor**



Why gas is plentiful:



50% of the Gas

There are thousands of square miles of natural gas formations in these nine basins. Industry experts estimate that these basins hold 50% of the nation's remaining onshore reserves. Lone

Star's pipeline system extends to eight of them, which should give you a nice warm feeling for many a long winter. It's another reason to be glad you're served by the Lone Star system.

Gas. It's plentiful, efficient and right for the times.



Lone Star Gas Company



HASKELL NATIONAL BANK

P. O. BOX 667 • PHONE (817) 864-2631
HASKELL, TEXAS 79521

offers

THE NEW ALL SAVERS Certificate of Deposit

Effective October 1, 1981

You may invest \$8,000.00 per person, or \$16,000.00 per man and wife and receive \$2,000.00 tax free interest for one year.

**MINIMUM CERTIFICATE OF DEPOSIT
\$500.00**

Rate October 1, 1981 will be 12.61%

HERE'S THE TAX RELIEF WHEN YOU NEED IT MOST!

The interest rate to be paid on the TAX-EXEMPT Certificate of Deposit will be the maximum rate allowed by law, fixed for one year, at 70% of the prevailing rate on 52-week U.S. Treasury Bills.

In October of 1981, it will be 12.61%, TAX-FREE, with the following taxable equivalent yields:

- 50% tax bracket will yield 25.22% for one year
- 40% tax bracket will yield 21.02% for one year
- 35% tax bracket will yield 19.40% for one year
- 30% tax bracket will yield 18.01% for one year

There will be a substantial interest penalty for early withdrawals.

PLEASE CONTACT US FOR YOUR FINANCIAL NEEDS.

ABE TURNER, President

Haskell National Bank

Your Independent Home Owned Bank
Member FDIC, IBAT, IBAA

Rice Springs News

Thank you Mindy Elmore, Peggy Darden, Mary Ann Turner, Joan Meier, Priscilla Turner, and Lori Darden for helping to make our Grandparents' Day Celebration a success.

We would like to thank the ladies from East Side Baptist Church for the love and care, and the good food that you so kindly shared with us this past week.

We have enjoyed having the Trinity Lutheran Church and the Church of Christ for Sunday morning and afternoon services.

Our volunteers this month were Maxine Grand, William Hodge, Mattie Bell, Jo

Simpson, W.J. Patton, Peggy Darden, Lori Darden, Kyle Darden, the Rule Methodist UMW, the Haskell First Baptist WMU, The Haskell Methodist UMW, The Sweet Home Baptist Singers, the Country Band and the Church of Christ ladies.

We have two new residents this month; Bettie Taylor and Vera Harris.

Visiting Edna Collins were Mr. and Mrs. Curtis Cross of San Antonio; Omigene Hollingworth of Hamlin; Mr. and Mrs. James Cassity of Hobbs, New Mexico; and Mrs. Thulah McGee of Rochester.

Mrs. Monty Holmes of Odessa visited Nannie

McCauley.

Mr. and Mrs. Frank Fouts of Stamford visited Harvey Webb.

Suzie Monroe of Irving visited Lillie Spitzer.

Visiting Lena Stiewert were Mr. and Mrs. Alvin Stiewert of Lubbock and Belinda Browning of Clovis, New Mexico.

Mr. and Mrs. C.O. Sparkman of Amarillo and Mr. and Mrs. Frank Kiser of Comanche, Oklahoma visited John Sparkman.

Visiting Emma Lammert were Mrs. Herman Nquert of Stamford and Lena Boedeker of Sagerton.

Visiting Bettie Taylor were

Mr. and Mrs. T.S. Hollis of Kingsland; Mr. and Mrs. Clarence Brown and Ronnie; and Mr. and Mrs. Lee Patterson.

Marlin and Oleta Scruggs of Glen Rose visited J.C. Hargrove.

Jay and Betty Pumphrey of Ft. Worth visited Jonnye Pumphrey.

Visiting Beatrice Barnett were Mrs. Max Brown of Abilene and Mrs. Donna Haddix of Lake Kiowas.

Visiting Hazel Branch were Mr. and Mrs. Batch Burson and Mr. and Mrs. Howard Melton of Wills Point; Ronny Burson of Hollywood, Cal. and Mr. and Mrs. Menquerez of Dallas.

Mrs. Glen Pierce visited Elizabeth Yakey and Johnny Pumphrey.

Visiting Myrtle Orr were Juanita and A.B. Edsall, and Josie Phemister of Weatherford; Leah Winningham of Throckmorton; and Moyelle Reece of Apple Valley, Cal.

Doris Slater, Nettie Brock, and Billie Roberts of Ft. Worth visited Bill Harrold. Mr. and Mrs. Roy Angley

and Bonnie Kingery of Odessa visited Mamie Angley.

Visiting Mae Bell Turnbow were Pat Jarmon of Dallas; Sue Wolfe of Potosi; Francis Jarmon, Tobie Davis, and Tammy Goddner all of Pasadena; Virginia, Billy and Patty of San Antonio; Dalphine Mrpka of Dan Park; Darline Parker of Fairfield; Mrs. Jorman and Rachel Jorman of Dallas; Mr. and Mrs. Monty Holmes of Odessa; and Charlotte, Gary, Ginger, Christy and Molly Turnbow of Abilene.

Visiting Mary Smith were her nephew, Merrill Flenniken of Lamesa; Pauline Ruben and Billie Hubbard of Weatherford; Mr. and Mrs. Clyde Floyd of Penkerton; and Mr. and Mrs. Ed Swaner of Arlington.

Visiting June Smith were her two nephews, Claude Crandal of Pittsburgh, Penn. and John Crandal of Long Beach, Cal.

Visiting A.C. Boggs were Corsey Fields of Lubbock; Col. Jack Harris of San Antonio; and Joe Foster of Stamford.

Johnny Earp of Wienert visited John Earp.

Visiting Dutch and Jim Cross were Grace and Sam West of Lubbock; Olan Webb of Arizona; Mr. and Mrs. Curtis Cross of San Antonio.

Visiting Trudy Bush were W.M. and Bertie Mae Smith of Denver City; Maurine Ellison of Aspermont; Dorothy and Timmy Bilbrey of Sweetwater; Barbara Garwood and Dean Johnson of Lubbock; Meda Dickerson of Athens; Lois McBeth of Andrews; Jane Cole Barrett of Santa Anna, Cal.; Mr. and Mrs. Hollis Rucker of Friona; Dara Holt, Ada and Horace Snyder of Seymour; and Shirley and Tammie Hughes of Abilene.

Visiting Alma Cole were Francis Clark, Evangelyn Clark, Tommy Jo Clark, Lois and Gaydon Post of Abilene; and Jane Cole Barrett of Santa Anna, Cal.

Visiting Sam and Ethel Bradford were John and Jewell Anderson and G.A. and Brenda Bradford of Peacock. Visiting Alvena Holle were Helen Lahrman of Old Glory; Gail Lahrman of Nebraska; Althea Woods and her son William Woods of Snyder; Lena Boedeker and Ella Nauert of Stamford.

Melba Stowe of Olney and Floyd Stewart of Seymour visited Eunice Stewart.

Mr. and Mrs. Fred Accock, Angela and Jennifer of

Abilene visited A.T. and Mattie Cook.

Visiting Lois Gray were Mr. and Mrs. Fred Acco Merrill Flenniken of Lamesa; Marquittie Gray of Goree and Angie; Pauline Smith of San Angelo; Mr. and Mrs. Houston Patton of Wichita Falls; and Marguerite Butler of Wichita Falls.

Visiting Charity Bradley were Eudora Bradley of Abilene; Lavern Papp of Arizona; Mr. and Mrs. Bob Bradley of Houston; Mrs. Maude Kittle of Stamford; Mrs. John Clark of Sagerton; Roland Rose of Abilene; Jane Cole Barrett of Santa Anna, Cal.; Ada Snyder and Dora Holt of Seymour.

Abilene visited A.T. and Mattie Cook.

Visiting Lois Gray were Mr. and Mrs. Fred Acco Merrill Flenniken of Lamesa; Marquittie Gray of Goree and Angie; Pauline Smith of San Angelo; Mr. and Mrs. Houston Patton of Wichita Falls; and Marguerite Butler of Wichita Falls.

Visiting Charity Bradley were Eudora Bradley of Abilene; Lavern Papp of Arizona; Mr. and Mrs. Bob Bradley of Houston; Mrs. Maude Kittle of Stamford; Mrs. John Clark of Sagerton; Roland Rose of Abilene; Jane Cole Barrett of Santa Anna, Cal.; Ada Snyder and Dora Holt of Seymour.

AUCTION

COMPLETE CLOSEOUT OF — Philpot's Plumbing, Heating & Air Conditioning

402 North First — Haskell, Texas

78 Chev. ¼ ton Van
77 Chev. Heavy ½ Ton Van
71 Chev. ¼ Ton Van
V-30 Ditch Witch
Ditch Witch, Walking Type
Int. Tractor W/Backhoe and Front End Loader, 14x24 Bucket, 12 & 6 In. Cutters
Elec. Power Head
Pipe Vise & Stand
4 In. Vise — Bench Grinder
100 Ft. ¼ in Sewer Tape
Sears Water Softner
Air Compressor
3 Pipe Fittings Bins
Elec. Hammer — Angle Drills
Pipe Cutters & Threads
Big Lot Hand Tools
Breaker & Fuse Box
Time Controls
Rain Proof Mounting Box
220 Plugs & Breakers
Fuses & Rubber Plugs
Lamp Holders — Toggle Switch
Door Chimes — Wall & Ceiling Boxes

Saturday, Sept. 26th — 10:00 a.m.

Conduit & Fittings — Faucet Seats
Knobs & Handles — Floor Flanges
Lab. Cut Off — Comode Repair Parts
P & M Repair Kits
Valley Faucet Repair Kit
Big Assortment Copper Fittings
Kohler Valves
Rheem 40 Gal. Elect. Water Heater
State 30 Gal. Gas Water Heater
Light Fixtures — Elect. Wall Heater
Bath Ceiling Heaters
Big Asst. Faucet Sets
Rain Suit — Cement Uni-Weld
Dresser Couplings — Gate Valves
Aqua-Pure Water Filters
Boiler Drains — Thermostats
2 Printed Circuit Boards
Asst. of Relays & Switches
Big Asst. Black & Galv. Pipe Fitt.
Asst. of P & S Traps — Hose Bibs
Thermo Couplings — Gas Valves
Water Repair Clamps
Stop & Waste Valves — Pillow Blocks
Fire Place Log Lighter Burner

Bell Transformers, Midgitrol Mark II, 1½ & 1¼ in. Extensions (Plumbing) El. Heater Elements, Water Tank Floats, G.E. Oven Parts Range Shields, Cappallary H & C Thermostats, Thermostats for State Heaters, El. Gas Valves, Diffuses & Resistors, El. Caloric Cook Top, Sink Rims, Supply Lines, Commode Seats, Garbage Disposals, Bath Room Asst., Sewer Pipe, Duct Pipe & Fittings, Vent Pipe, Gas Pipe, CPVC Water Pipe, Copper Tubing, Big Lot of Filters, Misc. El. Wire, ¾ & 1 in. Plastic Pipe, DWV No. 40 Sewer Pipe & Fittings, PVC Pipe & Fittings, Misc. Copper Sweat Fittings, 7 used Commercial Commodes, Used Space Heaters, Misc. El. Motors, Fuse Boxes, MANY ITEMS NOT LISTED.

AUCTIONEERS NOTE — THIS IS A VERY GOOD SELECTION OF SUPPLIES & PARTS.

Gerald Lawrence Auction Co.

2613 N. TREADAWAY • ABILENE, TEXAS • AC/915 676-2332 or 673-8527

LICENSE NO. TXS-012-0108

Welcome

To The

Haskell County
Fair

Sept. 24-25-26

Heads or Tails
Western Wear

707 S. Ave E
Haskell, Texas
864-3320



Sport About

of Haskell



ATTENTION

For businesses, Teams, Organizations or other groups, we can customize your caps.

Come in and check with us for the best deals on these caps. We will help you with your logos or emblems.

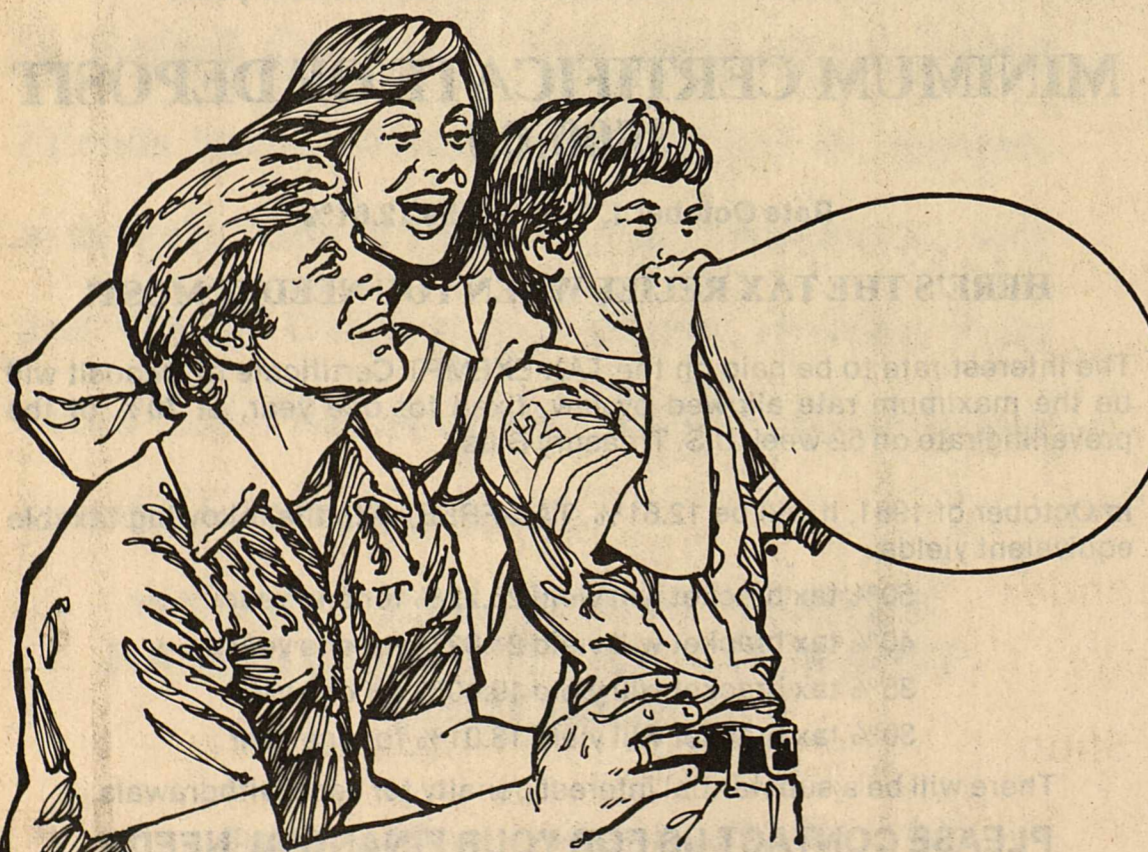
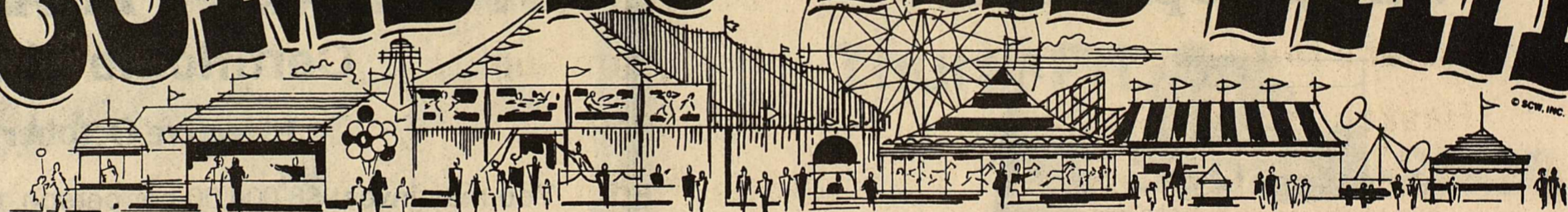
Also custom transfers on T-Shirts, Blazers and etc.

707 South E
Phone 864-3320

behind Heads or Tails Western Wear

HI HO!

COME TO THE FAIR



Thurs., Fri. & Sat.

Sept. 24-25-26

Fun For Everyone
Entertainment Nightly
For the Whole Family

Ya'll Come!

HASKELL COUNTY FAIR ASSOCIATION

INDIAN FOOTBALL 81

Sept. 25, 1981 — Here Indians vs Stamford

This Page Sponsored By The Following Firms and Individuals:

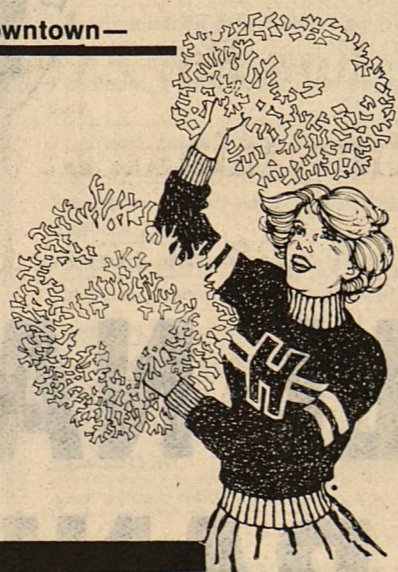
- Hammer Laundry
- Nanny Plumbing
- Haskell Steak House
- Haskell Livestock Auction
- Haskell National Bank
- Centex Cablevision Corp.
- Kiddie Kottage
—Director, Sandra Wallace—
- Double A Drive In
- Hunt-Ford Tractor Co.
- Arrowhead Motel
Dial Telephones—Movies on HBO
- Haskell Paint & Body
- Lane-Felker
- Heidenheimer's
- Advertising Specialties
—Richard Albus 864-3860—
- Buster's Drive-In Grocery
- Haskell Tractor Service
- The Personality Shoppe
—Smart Wear for Women 864-2501—
- Big Country Savings Assn.
Haskell Branch — 518 S. 2nd
- Tower Drive In Theatre
—Rule, Texas—
- Kay's Cleaners
Haskell & Munday
- The Music Box
- Fieldan Motel
—Haskell's Finest Downtown—

- Jones Cox & Co.
- Sherman's Carpet & Interior
- Dairy Queen
- Bill Wilson Motor Co.
- Brian Burgess
—State Farm Insurance—
- Federal Land Bank Assn.
- Haskell Co-op Gin
- Richardson Truck & Tractor
- Carolyn Reynolds
—District Clerk—
- John Wayne McDermott
—County Judge—
- Medford Buick-Pontiac
- Cliff's Garage
- M-System
- Boggs & Johnson
- Hale Farm Supply
- Nine Point Grain
- Owens Radio & Electric
- Lane Apparel
- Gilliam Oil Co.
—Larry Gilliam—
- Dean Butane Co.
- Trussell's Tire Center
- Kennedy Lumber Co.
- Haskell Trailer Builders
- McTid's, Inc.
- Elsie's Hi-Lander
- Bynum's
- The Sweet Shop
- Sears Catalogue Store
- Hassen's
- Mitchell's Porthole
- Queen Roofing

- Middleton Oil Co — Northside Gulf
- Thornhill Insurance Agency
- Haskell Co. Warehouse & Compress, Co.
- Modern Way Food Store
- Bailey Toliver Chevrolet & Olds
- Kids Duds & Richardson Hallmark
- Heads or Tails Western Wear
- Lee Bahney Tax Consultant
—314 N. 1st—
- Steele Precision Machine
- Willie Faye Tidrow
County Treasurer
- Geraldine Hise
J. P. Precinct 1
- Gray's Laundry
- Biggon Drinnon
- Reddy Pest Control
—Bill St. John—
- Hanson Paint & Body
- Wallace's Exxon
- Haskell Co. Farm Bureau
Lonnie Tate—Agency Manager
- The Hartsfield Agency
- Smitty's Auto Supply
- Anderson Construction Co.
- Conner Nursery & Floral
- Sport-About
- Holden-McCauley Funeral Home

- Haskell 19, Cisco 6
- Haskell 20, Hamlin 15
- Sept. 18... Open
- Sept. 25... Stamford..... Here
- Oct. 2..... Clyde..... There
- Oct. 9..... Electra..... There
- *Oct. 16... Seymour..... Here
- *Oct. 23... Crowell..... There
- *Oct. 30... Munday..... Here
- *Nov. 6... Paducah..... There
- *Nov. 13... Quanah..... Here

*District Games



Haskell Indians

No.	Name	Position	Weight
10	Joe Benavides	HB	165
11	Albert Sherman	QB	140
12	Mark Bailey	QB	165
20	Curtis Forehand	TB	150
25	Monte Moeller	WB	144
32	Aaron Weaver	WB	137
33	Toby Villa	WB	128
35	Jonnie Hise	TB	162
37	Casey Hannsz	HB	166
50	Robert Rojas	T	165
54	Lonnie Hise	T	190
55	Jay Druessedow	C	185
60	Joseph Toliver	G	195
62	Randall Frierson	G	150
65	Kendall Strickland	G	162
66	Will Pace	G	144
68	Barry Tidrow	T	165
72	Jim Roberts	C	190
74	Paul Barnett	T	170
75	Domingo Villa	G	180
77	Randy Campbell	T	280
78	Tom Barnett	T	180
80	James Davis	E	150
81	Tino Gonzales	E	160
82	David Wheatley	E	135
84	Joe Ortiz	E	165
88	Steve Bird	E	135

COACHES: W. L. Holt, Head Coach; Jimmy Lisle, Coy Payne, Jim Dan Raughton, Jim Bob Mickler
BAND DIRECTOR: Berry Crudgington
DRUM MAJOR: Sharla Drinnon
CHEERLEADERS: Terri Welsh, Emily Cox, Shannon Lane, D'Anne Burris, Tina Morris, April Turner
TWIRLERS: Kim Griffith, Rochie Reddell, Sheila Moeller, Holli High, Melissa Brown
SUPERINTENDENT: James Lanier
PRINCIPAL: Frank Pulattie

Game Time 8:00

Haskell Free Press

Sales Tax Law Changes Implemented

State Comptroller Bob Bullock Friday said persons and businesses who buy and sell items subject to the state's sales and use tax should be aware of changes in the law that are now in effect.

He said persons who have issued a resale certificate or an exemption certificate to

acquire an item can now donate the item to a non-profit charity, religious or educational organization and not be liable for the sales tax on the item.

"This means a merchant can take items from inventory and give them to any organization that's exempt

from the sales tax and the merchant doesn't have to report the gifts as taxable purchases when they file their sales tax return," Bullock said.

Bullock pointed out that the Legislature expanded the categories of organizations that qualify for an exemption from sales tax if they are exempted from Federal taxes by the Internal Revenue Service.

Provided the organization has a letter from the IRS saying it is exempt from federal taxes, Bullock said the categories now exempt from the state's sales tax include:

—Organizations such as Rotary, Optimists, Kiwanis, Junior Chambers of Commerce, Lions and Garden Clubs and some property owner associations that are exempt from federal taxes under Section 501 (c) (4) of the Internal Revenue Code (IRC).
—Fraternal societies such as Masons, Elks, Moose, Knights of Columbus, DeMolay and the Eastern Star that are exempt under Section 501 (c) (8) or Section 501 (c) (10) of the IRC.

—Organizations formed to benefit veterans such as the Air Force Association, American Legion, Veterans of Foreign Wars and Disabled American Veterans that are exempt under Section 501 (c) (19) of the IRC.

Bullock said another change in the state law affects the amount of tax due when a person has issued either a resale or an exemption certificate to purchase an item and then uses the item for personal benefit for some period of time.

Instead of tax being due on the purchase price of the item, the amount of tax due will be equal to the amount that would be due if the person had rented the item for the period of time it was used for personal benefit, he said.

STOCK MARKET

The market at Haskell Livestock Auction was steady to stronger on a run of 1583 head of cattle at its sale Sept. 19, 1981 according to Tommy Clay, reporter.

Butcher Calves: choice, 50-55; good, 45-50; standard, 40-45; rannies, 35-40.

Cows: fat, 38-43; cutters, 42-47; canners, 35-40; stockers, 45-55.

Bulls: bologna, 50-55; stockers, 60-70; utility, 45-50.

Stocker Steer Calves: choice, 75-85; good, 70-75; medium, 65-70; common, 60-65.

Stocker Heifer Calves: choice, 60-65; good, 55-60; medium, 50-55; common, 45-50.

Feeder Steer Yearlings: choice, 60-65; good, 55-60; medium, 50-55; common, 45-50.

Feeder Heifer Yearlings: choice, 53-58; good, 48-53; medium, 43-48; common, 38-43.

Cows & Calves: good, 550-650; plain, 450-550.

SEE US for all your office supply needs: pens, ledgers, desk accessories, filing needs, etc. *Haskell Free Press*

Ag Groups Support Amendment Five

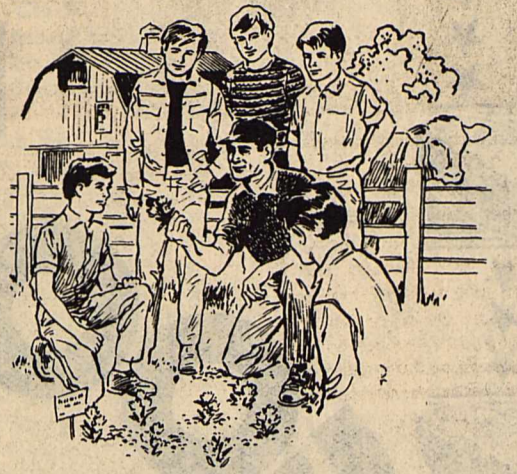
State Rep. Susan McBee (D-Del Rio) today announced the formation of an unprecedented, united statewide movement comprised of nine separate agricultural groups to push for passage of Proposition Five in the November 3 election.

The "Vote for 5 Committee" will be urging support for a measure which seeks to include livestock and poultry with other farm products already exempt from property (ad valorem) taxation. McBee, author of the proposed Constitutional Amendment, was elected chairman of the committee.

"This will be an organized effort to inform the public and build grass-roots support for passage of this important amendment," McBee said. "We want to make sure the general public understands that this amendment may well affect the price which people will pay for groceries in the future, and that it is to every consumer's benefit for Texas voters to pass this amend-

ment." McBee pointed out that while the tax represents a minute portion of revenues to local taxing authorities (about one-fourth of one percent of revenues, statewide), its inconsistent administration represents an inequity for Texas meat producers. She says the clarifying amendment is necessary because of a 1976 Attorney General's opinion which held that livestock and poultry are not "farm products."

The committee is comprised of representatives from the Texas Farm Bureau, Texas Farmers Union, Texas Cattle Feeders Association, Texas & Southwestern Cattle Raisers Association, Independent Cattlemen's Association, Texas Sheep and Goat Raisers Association, Texas Poultry Federation, Texas Pork Producers and Associated Milk Producers Inc. It is the first time in history that these diverse organizations have undertaken such a joint effort.

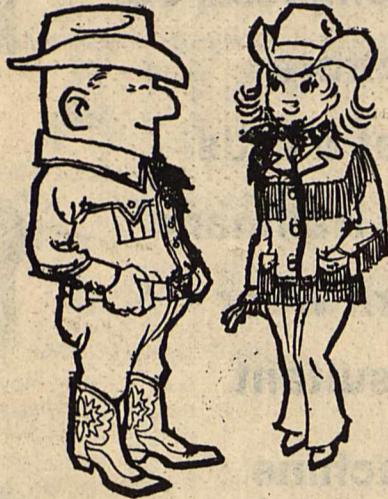


Visit The **Haskell Co. Fair**
See the Farm Exhibits & Machinery

Haskell County Farm Bureau

Lonnie Tate — Agency Manager

Hey, You...



Let's Mosey on Over to the

Haskell County Fair

Sept. 24-25-26

Smitty's Auto Supply

Low Rent District — Haskell

Community Dialog Inspiration #14

There are six major areas in which meaningful evidence is found supporting the idea that the scriptures are the inspired word of God:

1. The scriptures claim to be inspired.
2. The influence of the Bible is an evidence that it is from God.
3. The unusual style of scripture suggests inspiration.
4. The unity of the scriptures is evidence of inspiration.
5. The fulfilled prophecies indicate inspiration.
6. The scientific foreknowledge of the Bible suggests inspiration.

Mike Strawn

510 N. Ave E

Have a question?

STOCK REDUCTION SALE "YEARS LOWEST PRICES"

Frames & Prints 20% — 50%

10% — Art Supplies

Prices Good Sept. 28-Oct. 3

The Little Gallery

107 N. Swenson

TRAILER AUCTION

SATURDAY ★ SEPTEMBER 26TH ★ 11:00 A.M.
ROTAN GIN CO.

LOCATION: Rotan Gin Co. Yard, Rotan, (Fisher County) Texas. The gin is located in the South edge of town on Hwy. 70 (Roby Hwy.)

COTTON TRAILERS

50-75 Steel Trailers
(32 ft. • 24 Ft. • 20 Ft.)
(Blg 12 • Coby • Etc.)
(wire • Expanded Metal)

TRACTORS-STRIPPERS-EQUIP.

1-1978 Case 2590, Cab, Diesel, Air, Radio, Wts. (Less than 1700 hrs.)
1-1973 Case 1270, Cab, Air, Radio, Wts.
1-JD 282 Stripper (Late style), # 70 Basket
1-INC #90 Strippers, Blg Basket, Row Sensors
1 - Cotton Ricker

AUCTIONEER'S NOTE: This will be a nice offering of tractors and cotton trailers. Everyone should like this sale. More consignments are expected by Sale Day, so plan to be with us.

BURNS HUTSON

WHERE SELLING IS PERFORMANCE
TXS-012-0934

DANNY BURNS
915/235-9639
KEVIN HUTSON

AUCTIONEERS-REALTORS
SALES MANAGERS
1806 East Broadway • Sweetwater, Tx. 79556
915/235-9639

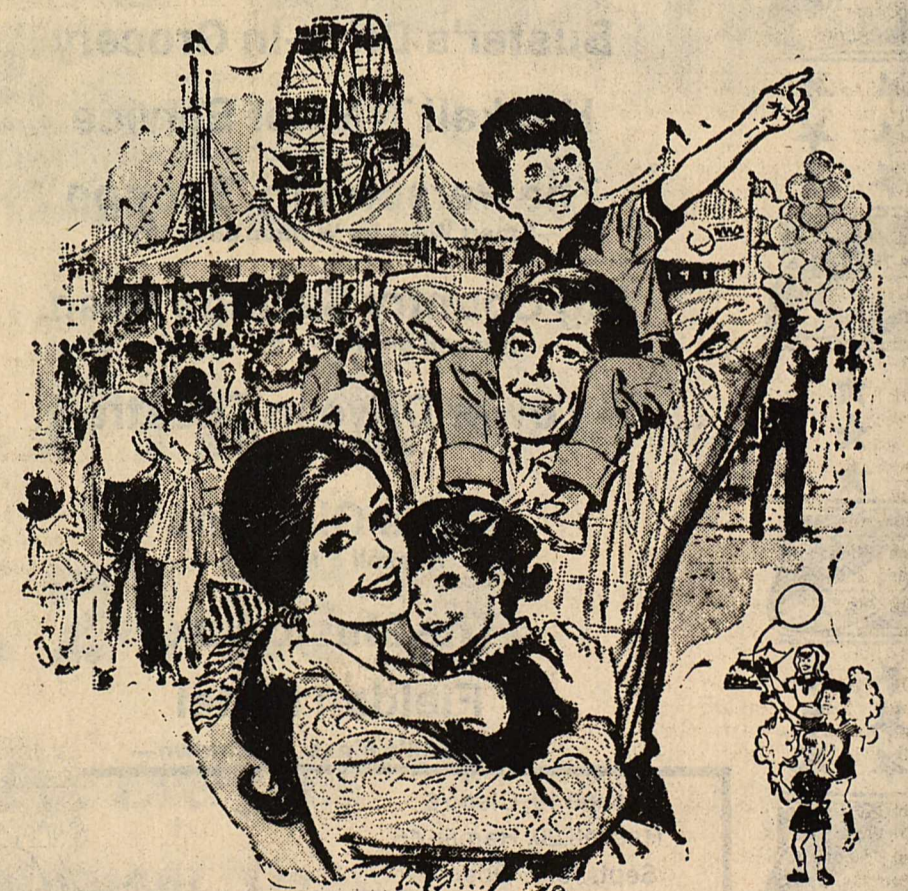
FAIR DAYS

Haskell County FAIR

Sept. 24-25-26

Fun & Entertainment for the Whole Family!

We'll See You There!



HASKELL NATIONAL BANK

MEMBER FDIC

ATTENTION FARM BUREAU MEMBERS

Haskell Co. Farm Bureau's Annual Convention and Barbecue Saturday, Sept. 26, 1981 Haskell Elementary School 6:30 P.M.

FREE BARBECUE TO MEMBERS ONLY

Travelers Health Ins. Rep.
7:45 P.M. — John French

GUEST SPEAKER

Charles Stenholm
Congressman of the 17th District

EVERYONE IS INVITED AND WELCOMED TO HEAR MR. STENHOLM
8:00 P.M.



M SYSTEM

Your FRIENDLY

It's HAPPENING now

VALUES SAVINGS VALUES SAVINGS VALUES

AFFILIATED SUPER MARKETS

Haskell, Texas
Where your dollars buy more

Double days

WEDNESDAYS
With the purchase of \$2.50 or more.

Specials Good Thurs. Sept. 24
thru Wednesday, Sept. 30

Del Monte
Tomato Sauce
5 8 oz cans \$1



BONELESS
Chuck Roast
\$1 38
Lb.

Shurfresh Sliced
Bacon.....1-Lb. Pkg. **1 39**
Hillshire Farms Smoked
Sausage.....Lb. **1 99**

MARGARINE
Fleischmann's 1-Lb. Qtrs. **99¢**
Velveeta
KRAFT 2-Lb. Box **2 99**

Shurfine
Tomato Catsup
32 oz bottle
89¢



Kraft Real Mayonnaise
32-oz. Jar
1 59



Finest Vegetable Shortening
Crisco
3-Lb. Can **1 88**



Limit 1 with \$10.00 grocery purchase or more.

JENO'S Assorted Kinds
Pizza
99¢ Ea.
LIMIT 4



PAGE'S Hot or Mild
PICANTE SAUCE...8-oz. **59¢**
Purina Beef 10 lb bag **\$2 89**
PUPPY CHOW
SUPER ODOR KILLER
RENUZIT.....7.5-oz. Size **59¢**
ZEE PAPER 60-Ct.
NAPKINS.....2 For **79¢**
Shurfine 46 oz can
Grapefruit Juice **89¢**
100-TABLETS
BUFFERIN.....3.79 Value **2 99**
VICKS COUGH MIXTURE
FORMULA 44...3-oz., 2.19 Value **1 89**
2 Liter Plastic Bottle
COKES **\$1 19**

Post Toasties CEREAL
18-oz. Box
1 09



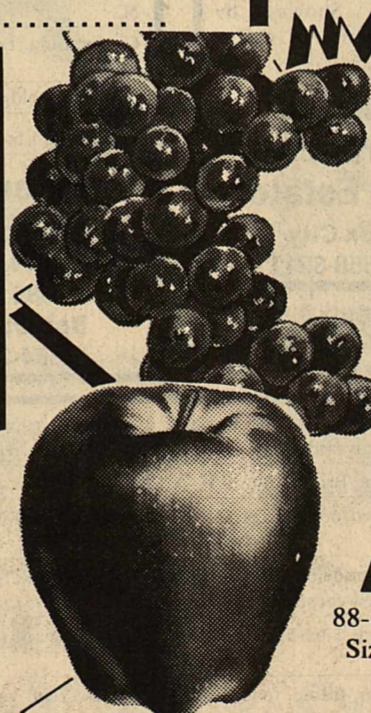
Nice'n Soft Bathroom
Tissue
4-Roll Package
1 09



ZEE PAPER
Towels
JUMBO ROLL
69¢



Spray'n Wash
16-oz. Aerosol Can **1 59**



GRAPES
FRESH TOKAY
Lb. **59¢**

YELLOW ONIONS...5 Lbs. **1 00**

Shurfine
Cornbread Mixes
6 pkgs **\$1**

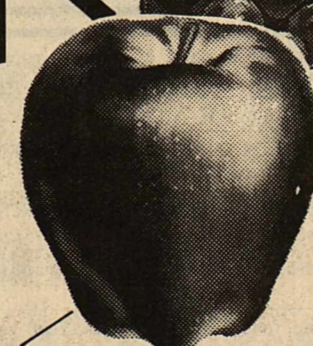
GLADIOLA
FLOUR
5-Lb Bag **89¢**

PREMIUM
SALTINE CRACKERS
1 lb box **79¢**



Green Giant
Whole Kernal or Cream Style
CORN
3 16 oz cans **\$1 09**

GOLDEN DELICIOUS
APPLES
88-Ct. Size Lb. **49¢**



FRESH
BROCCOLI Lb.... **59¢**

ITALIAN PRUNE
PLUMS.....3 Lbs. **1 00**

FRESH HEAD
Cauliflower Ea. **98¢**

