

Alvin Jenkins To Speak In Haskell

Alvin Jenkins, a dynamic speaker from Campo, Colorado, will address farmers and agribusinessmen in Haskell, Monday night, March 9.

Jenkins' speech starts at 7 p.m. at the Haskell elementary school cafeteria. Refreshments will be served and door prizes given away. Admission is free.

Jenkins recently spoke to a bankers convention in Detroit. He likened agriculture to an old sow with 10 pigs, and they were all sick. The vets (the experts, the trade advisors, the economists, the task forces) were called in, and they doctored the pigs until they were up and frisky, but they didn't doctor the old sow. When the pigs nursed the old sow, they got sick again and some died. "Bankers, we're the old sow—the largest industry in America, and we're sick," Jenkins told them.

Jenkins personally got presidential candidate Reagan to

commit to appointing a board of producers to advise the USDA on farm policy.

Jenkins was asked to address the Democratic state convention in Alabama and also the Republican state convention in Michigan.

Jenkins is a moving force behind one of the first cooperative fuel alcohol plants in the United States. Baca Food and Fuel in his hometown will produce alcohol for fuel and high protein byproduct for food—all from locally grown crops.

Alvin Jenkins is one of the five founding fathers of the American Agriculture Movement. He held American Ag meeting number 1,000 at Guymon, Oklahoma on February 26.

It's a long way from being a farmer and filling station operator in the tiny southeast Colorado town to being the feature of an Ann Landers column, but Alvin spanned that chasm when Ann printed his "Farmer's Prayer" in her column

last November. Jenkins wrote the prayer in 1978. It was printed in the *American Agriculture News*, then picked up and reprinted in hundreds of newspapers and magazines throughout the US and foreign countries. Paul Harvey featured it on one of his broadcasts.

Alvin is probably unique in that he discusses the price of gold and the shape of the economy with customers at his AJ66 service station in Campo while he fills up the car and washes the windshield.

COTTON
GRAIN
CATTLE

THE HASKELL

FREE PRESS

25¢
12 PAGES

"HASKELL—A GOOD PLACE TO VISIT; A BETTER PLACE TO LIVE"

VOLUME NINETY-FIVE
HASKELL, TEXAS, 79521, MARCH 5, 1981
NUMBER TEN

Directors Plan Chamber Banquet

Directors of the Haskell Chamber of Commerce completed plans for the 45th annual banquet during their regular meeting Tuesday night.

The banquet will be held March 27 at 7 p.m. in the elementary school cafeteria.

Brent Scott and Bishop Powell will present a variety and entertainment act that promises to be a delight to all attending the banquet.

During March, directors are also conducting a survey that will present guidelines for the Chamber during the coming year.

Tickets for the banquet are available at the Chamber office, West Texas Utilities, Lane-Felker, and the Haskell Free Press. All directors also have tickets.

Tickets are \$6.50 and can be purchased at the door.

The survey is in the final stages of planning and will be distributed soon.

Other activities and projects for the Chamber were discussed during the meeting and directors voiced excitement about the coming year for the organization.

Nine Students Qualify For State

Nine HHS band students recently qualified for the state solo and ensemble contest in Austin next June. They displayed their musical

ability by receiving first division ratings on class I solos and ensembles.

Private Pilot Ground School Scheduled

A private pilot ground school is coming to Haskell next week. All student pilots or those interested in beginning to learn about the world of flying, are encouraged to attend the preliminary meeting.

B. R. Winchester of Munday will meet Thursday evening, March 5 at 7 p.m. in the Chamber of Commerce office room to make plans for an immediate private pilot ground school. Mr. Winchester, a pilot himself, holds a Masters Degree and is a superb teacher.

The purpose of the Thursday evening meeting is to make plans with all interested for day and time of subsequent school lessons. Plan to attend this first meeting so all concerned may benefit from the opportunity. Even if you never plan to actually fly an airplane, the school will be of interest and benefit to anyone.

The two first division ensembles are a B-flat clarinet ensemble played by D'Anne Burris, Shannon Lane, Laurie Reynolds and Paul Williams and a mixed clarinet ensemble played by Kristie Alves, Cindy

Everett, Kim Lane and Sheila Moeller.

Shannon Lane, sophomore, also received a first division on a class II clarinet solo and a second division on a piano solo.

Two other ensembles participated at the recent contest. A flute trio, consisting of Sharla Drinnon, Kristie Hannsz and Janet Wallace, received a second division. A saxophone quartet, consisting of Kristie Alves, Terri Kuykendall, Sheila Moeller and Cloa Tatum, received a third division.

Those qualifying for state join seven girls who qualified last fall with twirling solos and ensembles.

PROCLAMATION

America faces many challenges as the decade of the 80's begins. We face a serious energy crisis. We are challenged as a nation to remain a leader in the search for world peace. And we are challenged to conserve and use wisely all of our many natural resources.

Among the most valued natural resources we possess are the skills, talents and capabilities vested in our older citizens. To meet the economic and social challenges of the 80's, this nation must conserve, nurture and assure that these resources are used wisely.

Older Americans have only recently begun to see on the horizon: to see that their country view them as valuable, treasured resources. Older Americans want to stay in the mainstream of the economic and social development, they want to be active partners in the challenge of the 80's.

To hasten this enlightening and to assist older Americans in bringing their vast experience and skills to the marketplace,

NOW THEREFORE, I John Wayne McDermett, Haskell County Judge, of Haskell, Texas do hereby proclaim the week of March 8-14, 1981, as Hire The Older Worker Week.

I urge all state and local officials and citizens to join me in this effort to increase public awareness of the employment needs and concerns of older workers and to assist those persons in finding meaningful, and gainful employment opportunities in our communities.

Norris Anders Is Ginner Of Year

Norris Anders, manager of Rule Coop Gin, was named Cooperative Ginner of the Year by the Texas Cooperative Ginners Association February 16 in Houston.

Anders was selected to receive the award by a statewide committee.

The award was presented by J. D. Kupatt of Rule, a former president of the Texas Cooperative Ginners Association and a member of the board of directors of Rule Coop Gin.

The award recognizes Anders for distinguished ginning service, superior and ethical business practices, significant contributions to the cotton industry and distinctive community leadership.

Anders has been an employee of the gin since 1958 and has served as manager since 1971. He is a past president of Rule Chamber of Commerce, past president of Rule Rotary Club and a past president of the Rule Booster Club. He is active in all three organizations and the Rule First Baptist Church.

New Machine Shop Now Open In Haskell

Steele Precision Machine is now open at 605 N. 16th. The shop manufactures and repairs metal parts for household items, automobiles, farm and oil field equipment and other implements.

The shop is equipped to perform welding, lathe work and mill work. Examples of items worked on include rollers, bushings, axles, drive shafts, fly wheels, gears, key ways, shanks, brake drums and pumps.

The shop features 24 hour service. Owner and operator is W. E. (Bill) Steele.



RECEIVES AWARD

Norris Anders, manager of the Rule Coop Gin is shown with a plaque naming him Cooperative Ginner of the Year. The award was presented during the annual meeting of the Texas Cooperative Ginners Association. J. D. Kupatt, right, past president of the organization, made the presentation.



Staff Photo by Don Comedy

ISOLATED SHOWER

Two days before the Haskell area received up to four inches of rain, the southeast corner of the square received a preview of coming attractions. A construction crew accidentally severed an underground line which controls the automatic mechanism supplying water to Haskell. When the line was cut, pumps automatically turned on and for about an hour, the water tower overflowed. Two days later rains of up to four inches fell over the area.

Property Tax Pamphlet Available

James Lanier, Superintendent for the Haskell School District, announced today the availability of a 12-page pamphlet which may help district residents save on their property taxes.

According to Lanier, the pamphlet explains how the property tax system in Texas operates and highlights possible tax savings available to citizens.

The publication was developed by the State Property Tax Board in accordance with the provisions of the Property Tax Code, which was passed by the 66th Legislature in 1979.

Lanier added that resident

homeowners are eligible for a \$5,000 school homestead exemption and that certain disabled persons and those aged 65 or older may qualify for an additional \$10,000 exemption from the value of their property.

"Taxpayers who were 65 or older on January 1 of this year are also entitled to a school tax freeze on the tax bill for their house and yard. The elderly must make application to get the freeze in 1981 or retain one acquired in 1979 or 1980," the school assessor added.

Also, farmers and ranchers have the option of having their agricultural land taxed on its productivity rather than market value.

To qualify for exemptions and productivity valuation, however, application should be made to the school tax office before the district's rendition period ends on April 1.

"District residents are encouraged to review the pamphlet and make application for all tax relief to which they are entitled before the rendition period ends," Lanier said.

weather

By Sam Herren
February Weather Summary
TEMPERATURE
Hi 88° 20th
Lo 7° 11th
RAINFALL
Total 2.39
Total to Date 2.58
Normal to Date 2.14



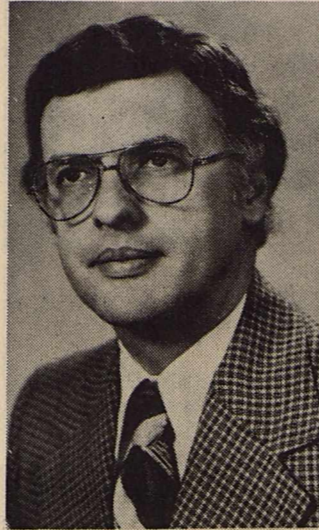
Staff Photo by Gina Jennings

TINY TEXANS

Kindergartners thrilled parents Tuesday night with a "down-home" Texas program which began the Open House at Haskell Elementary School. A large crowd of parents and friends of elementary students was on hand to tour the school and view students work.

Methodist Set Missionary Conference

The First United Methodist Church will be having a Missionary Conference Mar. 6-8, 7:00 p.m. Friday and Saturday nights and on Sunday morning. The Mis-



MIKE MURPHY

sonaries are: Stella Taylor and Mike Murphy. Stella Taylor is with the Central American Mission, and Mike Murphy is with OMS International, Inc. Both of these mission organizations are independent mission boards.

Stella Taylor is no stranger to Haskell, as she has spoken here before. She and her husband are retired missionaries. They had been on the Mission field in Spain and other Spanish speaking nations. She is an old and dear friend to many of us.

Mike Murphy, together with his wife Lorena and family, has spent several terms as a missionary with OMS International in Brazil.

Like most others who minister in this largest country of South America, Mr. Murphy sees Brazil as one of the greatest open opportunities for missions of our day.

The fast-growing population is very receptive to the gospel, and Brazil's church is one of the fastest growing in the world.

Mr. Murphy's ministry has taken him to the vast coffee plantations, and also to the huge industrial cities. His ministries have been as varied as the people he serves. In addition to evangelism, church planting, and teaching in the OMS Seminary, Mr. Murphy has pioneered an exciting telephone counseling ministry, and in sponsoring Christian coffee houses and travelling musical groups to reach the youth who constitute over half of Brazil's population. His talents in music and photography have been used in providing audio-visual materials for fellow missionaries, and he has directed an OMS radio ministry which has touched much of the country.

Mr. Murphy is well-known to many homeland friends and churches for his sponsoring of a talented and dedicated choir of young Brazilians in a presentation across the United States of the transforming power of the gospel in the lives of those in lands where Christ is still unknown to so

many.

OMS International, formerly the Oriental Missionary Society, is an undenominational faith mission with work encircling the globe. It specializes in evangelism, training nationals, and planting churches.

Harrell Appointed

John W. Harrell, president of Big Country Savings Association, Stamford, has been appointed to the 1981 Personnel Committee of the United States League of Savings Associations.

The appointment was announced by Rollin D. Barnard, president of the League and president of Midland Federal Savings and Loan Association, Denver, Colorado.

The U.S. League is the principal trade organization for the savings and loan business and represents over 4,400 associations throughout the country.

Savings and loan associations are the second largest type of financial institution in America and specialize in attracting savings accounts for investment primarily in home mortgage loans.

Tractor Pull Scheduled

An array of free and exciting events will take place during the 1981 Southwest Farm Show and Championship Tractor Pull, March 6, 7 and 8 in the Tarrant County Convention Center.

According to R.B. Allen, Executive Vice President, Southwest Hardware and Implement Association, more than 250,000 square feet of farm and ranch equipment, valued at well over \$7 million is expected to be on display during the three-day Farm Show.

The equipment show is free and open to the public, he pointed out.

Other free events include: Future Farmers of America

Tractor Mechanics Contest; Natural Fibers Fashion Review; and a Garden to Gourmet program in addition to the mammoth Farm Show.

The finals of the FFA contest will be held prior to the Friday night tractor pull and tickets are required.

Held in the 2,500-seat Convention Theater, the Natural Fibers Fashion Review will feature apparel made of cotton, wool or mohair, and will be modeled by each home designer. Entertainment will be provided by special groups from Texas Woman's University for this Saturday event.

Texas fruits and nuts will be featured in the Garden to Gourmet Show held each day.

Varieties, production techniques and recipes for the table will be presented by agents and specialists from the Texas Agricultural Extension Service.

A "New World of Agriculture" forum will be held on opening day, Friday, March 6. The theme is "Weather and Agriculture", and tickets for the forum are \$6 per person, which includes lunch.

Tickets for the three nights of tractor pulls are on sale at Ticketron offices throughout the Fort Worth/Dallas area.

All seats are reserved and orders for persons from out of town may be made by calling Fort Worth, 817/265-0708.

Alexander Breaks Own Record

Everyone said John Alexander's state record for largemouth bass would be broken before long. But nobody figured Alexander himself would do it.

In what could be considered one of the state's premier fishing accomplishments, the Richardson resident caught back-to-back state record largemouth bass in a month's time.

He gained more fame than most anglers will ever enjoy Jan. 10 when he caught a 14-pound, 3½-ounce bass from tiny Lake Echo near Athens. Saturday (Feb. 7) he landed a 15-pound, eight-ounce monster from the same private lake, and on the same type lure—a black jig with pork rind trailer.

Jim Kimbell got the state record derby running Feb. 2, 1980, with a 14-pound, 1½-ounce fish taken from Lake Monticello near Mount Pleas-

ant. His fish broke a 37-year dry spell in the largemouth bass category.

Echo Lake's bass production has been phenomenal of late, with several in the 12-pound-plus category taken this spring. Alexander also caught a 12-pounder Saturday, and his boat partner caught an 11.3. A third fisherman also landed an 11-pound, six-ounce bass the same day, according to Texas Parks and Wildlife Department biologist Charles Inman of Tyler. All three record bass caught since Feb. 2, 1980, have been Florida strain largemouths introduced by the department.

Lake Echo's success can be partly explained by the fact that it received an experimental stocking of Florida largemouths in 1972 shortly after impoundment. Thus it got a headstart on many other Texas reservoirs.

Anglers who fish public reservoirs should take heart, however, because Inman and other fisheries biologists believe 15-pounders currently exist in Monticello and possibly Lake Calaveras near San Antonio.

Florida bass look exactly like native largemouths, and the difference can only be determined by counting the scales along the lateral line or by laboratory tissue analysis.

Alexander's new record fish was 25½ inches long and 23 inches in girth. It was caught at 9:30 a.m. at 22- to 25-foot water depth.

Fines Collected

Geraldine Hise, Judge, City of Haskell, Haskell County, reports a total of 37 convictions for the month of February, 1981, resulting in a total of \$1,899.00 in fines

FOOD SAVINGS AT LOW FOOD PRICES

Specials Good Thursday, Friday & Saturday

Sliced Bologna	99¢ lb	Purple Top Turnips	19¢ lb
Gooch Hot Links	99¢ lb	Russet Potatoes	10 lb bag \$1.99
Boneless, Fully Cooked Ham	2-3 lb Pieces \$1.89 lb	Arizona Carrots	3 Bags \$1.00
Best Quality Pressed Ham	\$1.39 lb	Town Talk Bread	Large Loaf 59¢
Chili Meat	\$1.49 lb	Morton Frozen Pie Crust	pkg 69¢
Hamburger Meat	\$1.29 lb	Motts Apple Juice	40 oz 89¢
Casserole Pinto Beans	2 lb bag 89¢	Hormel Spam	12 oz can \$1.39
Morton Potato Chips	Reg. \$1.09 Twin Pack 89¢	Armour Potted Meat	4 cans \$1.00
Zesta Crackers	1 lb box 69¢	High Point Decaffeinated Coffee	1 oz Trial Size Jar 49¢
Libby Ripe Olives	Can 69¢	Tuff 'N Ready Towels	Large Roll 79¢

If you choose liquids, choose us.



We've got the know-how, the equipment, and the right liquid fertilizers to cover your acres quickly, evenly and efficiently. Saving you time and manpower. And remember, one of the big reasons our liquids work better for your crops is you're dealing with folks who'll work harder for you.

Brister & SoRelle

1201 South Avenue E • Haskell, Texas 79521
(817) 864-2926 or 864-2619

POGUE GROCERY

—Extra Parking Behind The Store. Home Owned and Operated—

113 North Avenue E

Phone 864-2015

Haskell, Texas

Ball, Oman Repeat Vows In Austin

Miss Tena Beth Oman and William Wesley Ball were united in marriage Saturday, February 21, at Tarrytown United Methodist Church in Austin with Dr. Calvin W. Froehner as officiating minister.

Parents of the couple are Mr. and Mrs. Charles Wilton Oman of Wichita Falls and Mr. and Mrs. Wesley Ball, Jr., of Austin. Grandparents of the bride are Mr. and Mrs. Hill Oates of Haskell and Mr. and Mrs. Frank Oman of Haskell and the late Thelma Oman.

The bride wore a gown of original design by Priscilla of Boston executed in ivory

English bridal net over satin and appliqued with jeweled Alencon motifs. Cut to an empire silhouette, the molded bodice rose to a high Queen Anne collar above a sweetheart neckline, and had long fitted sleeves buttoned at the wrist over lace cuffs, intricately jeweled with pearls, crystals and iridescent paillettes. The gently A-line skirt flowed to soft fullness at center back waist and fell to a luxuriant chapel train hemmed all around with the wide jewel incrustated Alencon lace in scalloped design.

Matching Alencon lace fashioned her Juliet cap holding a long illusion veil

edged in deep scallops of lace. Serving as maid of honor was Mary Fowler of Austin, with bridesmaids Liz Tucker and Janiece Ball, both of Austin. Amy Schaaf was junior bridesmaid. The bride's attendants wore long gowns of fuschia taffeta fashioned with open sweetheart neckline extending to romantic bows to cover the fitted bodice to natural waist, belle shaped skirt ending in ruffled flounce at hem and tiny sweep train.

The groom was served by Cavanaugh O'Leary of Austin as best man while groomsmen were Brady Oman, Wesley Ball and Chad Oman. Ushers included Michael McGinnis, Cass Caspary, Mike Pickens, Victor Ayad, Roger Pringle, and Steven Foulard.



MRS. WILLIAM WESLEY BALL

Christian Missionary Society Holds Devotion

Eula Faye Crawford and Helen Mabel Fouts co-hosted the Christian Missionary Society in the Fouts' home, Monday evening, March 2, with ten members present.

The president, Suzanne Pollard, conducted a short, but important business ses-

sion. Merilan Sue Holt gave an inspiring devotion on "Let our Lights Shine." Judy Lanier directed the lesson study from "In Search of God's Ideal Woman" by Dorothy R. Pape. The hostess served delicious refreshments.

Special music for the ceremony was presented by harpists from the University of Texas Music Department.

Among the out-of-town guests attending the wedding were: Mrs. Ruby Smith and Mrs. Helen Oates, aunts of the bride; and Mr. and Mrs. Hill Oates and Mr. and Mrs. Frank Oman; all of Haskell.

A reception followed hosted by the brides parents at Green Pastures in Austin.

Parents of the groom hosted the rehearsal dinner which was held at the Headliners Club in Austin.

A graduate of the University of Texas at Austin, the bride holds a BBA in Marketing and was a member of the Posse Organization.

The bridegroom is also a graduate of U.T. and holds a BBA in Finance.

The bride and groom followed the wedding with a trip to Tahiti and other Society Islands.

Melanie Whitley To Hold Art Show

Knox City artist Melanie Whitley is having a solo show at the Citizens State Bank in Knox City through March. It is a 10 year retrospective show featuring paintings owned by local people.

Mrs. Whitley began painting in 1970 with oil classes under Henrietta Loft of Rule. Her next instructor was John Crump, owner of the Station Studio and Gallery in Anson,

who taught oil glazing. About four years ago, she became interested in watercolors and taught herself the technique.

The show contains her first oil painting, a stillife owned by her aunt, Lillian B. Verhalen, and painting #3, an oil landscape belonging to her son, Chad Whitley. Her latest paintings include watercolors "Emmeline" a young old-fashioned girl, a portrait

"Audra" granddaughter of Mr. and Mrs. John L. Grindstaff, Jr., a calico cat, and an old house on Wildhorse Creek.

Banking hours are from 9 a.m. to 3 p.m. with the show open to the public. The artist expresses special appreciation to these area art lovers and especially her family who have been her best critics, encouragement and patrons.

Local Musician Performs During WTSU Recital

The Department of Music at West Texas State University presented two senior recitals featuring Mona Bledsoe and Sabra Hacker, on Monday, March 2, in Mary Moody Northen Recital Hall.

Bledsoe, a pianist, is a Haskell senior while Hacker, a soprano of Hereford, will be accompanied by Elbert Hensley, Pampa junior, on the piano.

The program for Bledsoe's recital, was presented at 4 p.m. including "Prelude and Fugue in G minor," by J.S. Bach; "Sonata in E flat major, Hob. XVI/49," composed by Joseph Haydn; "Scherzo in E major, Op. 54," by Frederic Chopin; and "Six Dances in

Bulgarian Rhythm (Mikrokosmos, Vol. VI)" by Bela Bartok.

Hacker, who was presented at 8:00 p.m. performed works by G.F. Handel, Franz Schubert, Gabriel Faure featuring selections from "Trois Chansons," Edvard Grieg, Ernest Gold and John Sacco.

Bledsoe, who is the daughter of Mr. and Mrs. Earl Smith of Star Route, Haskell, is a member of the WTSU Band, WTSU Jazz Band, University

Chorus, Mu Phi Epsilon, Phi Eta Sigma and Alpha Chi honor societies.

NOTICE

Residential Homestead Exemptions, Exemptions for taxpayers over 65, and farms to qualify for Agricultural use are now available in the Tax Office at the City Hall in Rule. Taxpayers of Rule School District are urged to come in and sign these forms before April 1, 1981.

Pat Harris Mickler
is back permantly at

Linda Wallace's The Beauty Parlor
will be working Tues.-Fri.

706 North 13th Street and North Avenue H

864-3767

TOWER DRIVE-IN Fri.-Sat.-Sun. March 6-7-8
RULE, TEXAS

A love story about women's rights...and lefts.

Mac Davis
Cheaper To Keep Her

Coming next week for 7 days
CLINT EASTWOOD IN
"Any Which Way You Can"
Starts March 13

The Haskell Free Press
Established January 1, 1886
Published EVERY THURSDAY

MEMBER 1981
TEXAS PRESS ASSOCIATION

BILL COMEDY—Publisher
DON COMEDY—Editor

Entered as second-class matter at the post office at Box 577, Haskell, Texas 79521, under the Act of March 3, 1879.
(USPS 237-640)

SUBSCRIPTION RATES
In Haskell and Adjoining Counties

One Year	\$7.25
Six Months	\$5.00
Two Years	\$14.00

Elsewhere in Texas

One Year	\$8.50
Six Months	\$6.00
Two Years	\$16.00

Outside of Texas

One Year	\$10.00
Six Months	\$7.00
Two Years	\$19.00

NOTICE TO PUBLIC—Any erroneous reflection upon the character, reputation or standing of any firm, individual or corporation will be gladly corrected upon being called to the attention of the publishers.

The Complete Cooking Center . DIMENSION 3
MICROWAVE/CONVECTION OVEN

NE-9900

- Cook by microwave, convection, or both!
- Six variable power levels plus Temperature Probe
- Two combination microwave/convection settings: one for meats, one for poultry
- COOK-A-ROUND Magnetic Turntable continuously rotates foods as they cook
- Included cookbook, warming/baking rack, cookie sheet, spatter shield, cooking tray, upper rack for 2-level warming/baking

PLUS MUCH MORE!

Panasonic
just slightly ahead of our time

Bynum's Furniture & Carpets
Haskell, Texas

Further Reductions
Here is a few examples.

Donovan Rilde T& Koko Knitt was 50% off now 60% off	Dresses Mr. Minch, Kimberly, etc. Was 50% off now 60% off
Bendovers \$14⁰⁰	Many others like City Girl was 50% off now 60% off
Men's 2 & 3 pc. year-round NuLook Suits was 50% off now 60% off	Mixed Levis was 50% off now 60% off
Reg. & Big Bells \$11⁰⁰ pair	

No Refunds, No Return No Free Gift Wrap

Family Boutique
Knox City

Extension Homemakers Council Holds Meeting

Eleven Haskell County Extension Homemakers Council members met February 18 for their regular monthly meeting.

College News

Lynn Pace O'Neal has been awarded recognition on the Dean's List at St. Edwards University in Austin.

Criteria for selection is to maintain a 3.50 grade point average while enrolled in no less than 12 semester hours.

This honor was achieved while enrolled in Greek Intellectual History, American Ethnicity, Early British Literature, and a Seminar on The American Civil War.

O'Neal is majoring in History and English and is also working toward a Teaching Certificate at the parochial school.

Mrs. Carl Bailey, Council Chairman, presided over the meeting. The chairman of each standing committee gave their reports. The Education Committee is organizing an educational tour to Abilene.

A special committee consisting of Mrs. Tom Yates from Weinert, Chairman; Mrs. W.H. Manns, Haskell; and Mrs. Burl Medford, Paint Creek was appointed to make plans for the new cookbook the Extension Homemakers are going to make this year.

The agent announced that the two newly organized clubs had a combined membership of 18 and are still growing.

She also reminded everyone of the Microwave School March 10, 17, and 24 and of the Lingerie Workshop to be held March 31.

Two important dates were announced: April 14 is Tri-County Rally Day and April 23 is the District Extension Homemakers meeting in Vernon. Mrs. Adell Thomas, Mrs. M.E. Overton, and Mrs. J.D. Roberts were elected as voting delegates to the District Meeting. Mrs. Earnel Bevel and Mrs. Tom Yates were elected as alternates.

The meeting was adjourned for refreshments served by the Paint Creek members.

Wrangler
colored pants
jeans
blouses
knit tops

Junior Sizes 3-15 Missy Sizes 6-18

The Haystack
HASKELL, TEXAS

409 South First
Phone 864-2901

PERRYS WELCOME SPRING SALE

Store Hours: 8:00-5:30
Lois Howard, Mgr.

All Hanging Baskets
Reg. \$7⁹⁹
\$8.99
3 days only
Thurs.-Fri.-Sat.

Patio Tomatoes 59¢ each **Asst. Cactus Plants** \$1³⁹

3" Pots for Hanging Baskets Asst. of Flowers & Ivys 99¢ **Geraniums** \$3⁹⁹ for Potting & Hanging Baskets

PERRYS

Lane Apparel's
RAINY DAY SPECIALS

Drizzler by McGregor
20% off

Odd & End COATS 1/2 price	Sweaters 20% off	Denim Jackets 1/2 price
	Nylon Quilted Jackets Fiber Filled 1/2 price	Nylon Quilted Vests Fiber Filled 1/2 price

Lane APPAREL
FOR MEN
Next to M-System

Low Scorers Host Rule Bridge Club Winners

The Monday Night Bridge Club met at 7:00 p.m. February 23, 1981 in the home of Mrs. A.D. May for the bi-annual entertainment when the six low scorers host the six high scorers at dinner. The group enjoyed brisket, beans, potato salad, cabbage slaw, relishes, hot rolls, cobbler, and tea and coffee.

After dinner the group played bridge, then the winners were presented token gifts of covered coat hangers made by Mrs. Easther May of Knox City for their great bridge playing the past six months.

Hostesses for the occasion

were Margie Fannin, Joy Jones, Tomi May, Frances Campbell, Allene Whorton, and Allene Wilson. Honorees were Maxine Hertenberger, Helen Pinkard, Geraine Pool, Nan Simpson, Joyce Turner and June White.

This club is possibly the oldest continuous bridge club in Rule, having organized in 1946 or 1947 as a supper club. At one time they named themselves Just-A-Mere Bridge Club, but the name, Monday Night Club, was the one that stuck. It has always met on alternate Monday nights, but in recent years has become a dessert and coffee

rather than a supper club.

There are still two charter members of the original twelve who have held continuous membership, Frances Campbell and Allene Whorton. Tomi May became a member during the club's first year and has held active membership since that time.

Other charter members were Elsie Bell, Judy Dyer, Henrietta Lott, Jane McAdoo, Reba McCandless, Jane O'Pry Theron Plasek, Jo Simpson, Jean Sollock, Betty Louise Van Cleave. As these ladies moved away over the years others took their places, and some of the present members have played in this club for 20 years.

The club still plays party bridge and the hostess gives prizes for high score and bingo. The members have discussed going Duplicate, but whatever this group decides to play it will surely by a "Party," for friendly fellowship continues to be a prime objective of every get-together.

This philosophy may not develop good bridge players, but it surely develops great friendships. And that's the best part!



Engagement Announced

MR. AND MRS. HENRY W. HARRIS of Fort Worth announce the engagement of their daughter, Pamela Denise, to Rickey Lee Andress of Stamford, son of Mr. and Mrs. Winfred L. Andress of Haskell. The couple plans an April 18th wedding at Burton Hill Baptist Church in Fort Worth.

New Weight Loss Plan Includes Favorite Foods

A New Food Plan developed by Weight Watchers International was just unveiled. Favorite foods that were once the nemesis of many reducing schemes are now allowed on the famous weight-loss program. The addition of formerly taboo foods such as wine, beer, raisins, honey, popcorn and peanut butter, in conjunction with the total, time-tested Weight Watcher Program, give real hope to the weight-conscious.

"The new foods on the plan eliminate some of the frustration associated with losing weight," says Adele McGinty, Area Director for Weight Watchers in Lubbock. "When you know you can have popcorn, sweet potatoes, olives or a glass of champagne, the motivation to remain on your food program is certainly enhanced."

According to Mrs. McGinty, the overall food program was re-evaluated to make it more compatible with today's lifestyles and with the latest information in the nutrition field. Toward that end, for

example, the amount of complex carbohydrates like bread, cereals, fruits and vegetables was increased and protein intake reduced. (This was cited as one of the major Dietary Goals for the U.S., published by the U.S. Senate Select Committee on Nutrition and Human Needs, as well as in the "Dietary Guidelines for Americans," released jointly by the U.S. Department of Agriculture and HEW.)

"A member of a test class for the New Foods Plan told me that she hardly realized she was on a weight loss program. Her exact words were, '...For the first time I felt like a real person.' When she went to parties or out to dinner, she had a glass of wine. She ate a sandwich in a coffee shop with friends and she was the only one not taking off the second slice of bread. The new choices made it possible for her to stay on this program until she reached goal weight. She looks terrific."

In addition to the new foods,

Early Detection Vital For Toxic Shock

You can reduce your chances of getting toxic shock syndrome by avoiding the super-absorbent varieties of tampons, but if you use any kind of tampon at all, you should still know how to recognize the signs of the disease.

According to a new booklet by the U.S. Food and Drug Administration, the symptoms can look a lot like flu. During your period, you may develop a sudden fever—usually 102 degrees or higher. You might also experience vomiting or diarrhea. Either of these two symptoms is a sign that you should immediately remove the tampon and see a doctor at

once. Toxic shock syndrome must be treated quickly. To learn more, send for a free copy of "Toxic Shock Syndrome and Tampons," from the Consumer Information Center, Dept. 636J, Pueblo, Colorado 81009.

Other signs of the disease are severe muscle aches, bloodshot eyes, and a sore throat. It's also possible to develop a rash that looks like sunburn. And within a day, there may be dizziness or a sudden drop in blood pressure than can lead to shock.

Patients suffering from toxic shock syndrome are usually placed in intensive care units, where they are

given large amounts of intravenous fluids to prevent dehydration, and treated with drugs to help raise their blood pressure. Antibiotics don't appear to be able to cure the disease, although they may be helpful in keeping it from returning.

Studies have shown that toxic shock syndrome affects between 3 and 15 out of every 100,000 menstruating women per year. While it's more likely to occur in women under 30, cases of it have even been reported in men and boys. Researchers know that it's brought on by the presence of bacterium *Staphylococcus aureus*, which produces a toxin, or poison, which in turn causes the disease. What remains unexplained is why toxic shock syndrome is associated with tampons.

Still, all tampons have been associated with cases of the disease. For this reason, one of the surest ways of preventing it is by not using tampons. You can also reduce your risk by alternating use of sanitary napkins and tampons during your period.

One thing you should not be worried about is getting toxic shock syndrome from somebody else. At this time, there is no evidence that the disease is contagious.

When you order a copy of "Toxic Shock Syndrome" (free), you'll also receive a copy of the free "Consumer Information Catalog." Published quarterly by the Consumer Information Center of the General Services Administration, the Catalog lists over 200 free or low-cost booklets of consumer interest.

Around Town

Mrs. John Hisey of Rule, Mrs. Louie Kuenstler and Roy A. Overton of Paint Creek, Karolyn Oman and Allen Overton of Haskell, and Mrs. Johnny Childress of Stamford attended the funeral services for Valentine "Bill" Kuenstler in Odessa last Friday, February 28.

Mr. and Mrs. Curtis Ray of Floresville visited Mr. and Mrs. Archie Jones last Tues-

day afternoon.

Lt. Col. [Ret.] James Lundy underwent brain surgery for a massive brain blood clot in Oklahoma City last week. He has developed pneumonia and is seriously ill. He is married to the former Suzy Redwine. The Lundys have two children, Chad and Jennifer. They are staying with their uncle and aunt, Mr. and Mrs. Vern Foreman.

Cooking School Begins With "Microwave Munchies"

"Munchies from the Microwave" will be the topic for the first session of a microwave school sponsored by the Haskell County Family Living Subcommittee, Haskell County Extension Service and West Texas Utilities.

Carolyn Schur, Electric Living Consultant with WTU will be conducting the lessons. The first session will be March

10 from 7:00 p.m. until 9:00 p.m. at the Haskell National Bank Community Room.

Door prizes will be given and displays of different microwave ovens will be set up by local merchants.

The other two sessions will be March 17, "Out of the Frying Pan, Into the Microwave" and March 24, "It's

More Than Baked Potato."

The cost of attending will be \$2.00 per person due at the first session. If you are unable to attend the first session, the price will be 75c per lesson.

If you are interested in attending, please contact the Extension office at 864-2546 so an estimate for a seating arrangement can be made.

BIG SAVINGS ON CREDIT LIFE INSURANCE

(50-60% Rate Reduction)

Compare with us on Credit Life rates 864-2647 on your SBA, FHA, and Farm Loans

Eddie Chambers Ike Neal Steve Cothron

Haskell County Farm Bureau

Serving Haskell Counties Leading Industry...Agriculture



Remember Now So You Can Remember Then.

A Professional 8 x 10 Color Portrait For 88 Cents

In addition to our Regular Offer, Now You Can Get An Exciting 10x13 Dual-Image Portrait! Ask photographer for details.



Portraits Back in Time For Easter

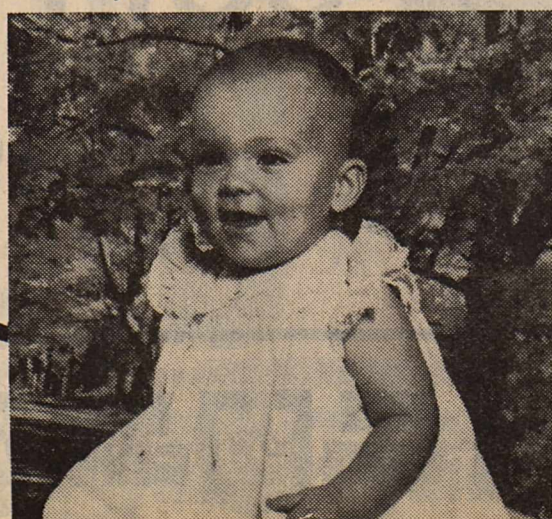
THESE DAYS ONLY Thurs. Mar. 5 Fri. Mar. 6 Sat. Mar. 7

Daily 10 a.m.-5:30 p.m. Saturday 10 a.m.-4:30 p.m.

PERRYS

11 N. Av E — Haskell, Texas

88¢ per sitting. No charge for additional group subjects. One special per person. Backgrounds may occasionally change. Remember, children must be accompanied by parent. Satisfaction always or your money cheerfully refunded.



At Big Country, watch the little get big. And the big get bigger.

Effective March 5-18	Effective March 5-11
12.000% Annual rate	14.383% Annual rate
12.940% Annual yield	15.116% Annual yield
Earned on the \$100 minimum, 2½ year C.D.	Earned on the \$10,000 minimum, 6 month C.D.
BIG COUNTRY SAVINGS	
<small>This is an annual rate. The rate is subject to change at maturity. Substantial penalty for early withdrawal.</small>	
<small>Stamford, Haskell, Quanah and 3800 South Clark, Abilene. (Formerly First Federal of Stamford.)</small>	
<small>This is an annual yield. The rate is subject to change at maturity. And federal regulations prohibit the compounding of interest during the term of the account. Substantial penalty for early withdrawal.</small>	

Announcing...

We are now the authorized dealer for Formby's Furniture Refinishing & Care Supplies

Ceiling Fan Specials

All Wood Blades

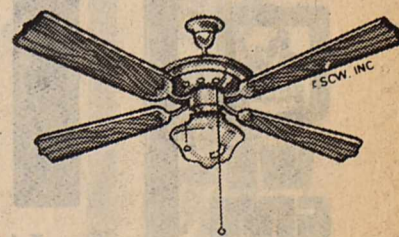
3 Blades \$69⁹⁵

4 Blades \$115⁰⁰

\$155⁰⁰

\$190⁰⁰

Free Light Kit with the above 3 fans



McTid's

Haskell, Texas



M SYSTEM

Your FRIENDLY

AFFILIATED SUPER MARKETS

Haskell, Texas
Where your dollar buys more

Double days

WEDNESDAYS

With the purchase of \$2.50 or more.

Specials Good Thurs. March 5 thru Wed. March 11

ON SALE THIS WEEK!

STONEWARE FROM
The Woodhaven Collection

CHOOSE FROM THREE BEAUTIFUL PATTERNS.

BREAD & BUTTER PLATE

ONLY **89¢** EACH With each \$5.00 purchase.

PUREX BLEACH
Half Gallon Jug

59¢

SHURFINE **SUGAR**
5-POUND BAG

1.78

Limit 1 with 10.00 grocery purchase or more

KRAFT VELVEETA
PASTEURIZED PROCESS CHEESE SPREAD

2-LB. BOX **3 39**

RIGHT RESERVED TO LIMIT

Country Fair Boneless **HAMS**
Lb. **1.89**

WRIGHT'S SLICED SLAB

BACON Lb. **1.19**

SHURFRESH

FRANKS 12-oz. Pkg. **99¢**

FRESH CALF

LIVER Lb. **99¢**

SHURFRESH SOFT **MARGARINE**
1-Lb. Pkg. (2 Tubs)

Limit 2 **48¢**

- Hamburger** **99¢** lb
Chuck Roast \$ **1 39** lb
Arm Roast \$ **1 59** lb
Club Steaks \$ **1 99** lb
Beef ribs **99¢** lb

Hi Dri Paper
Towels
Jumbo Roll

58¢

Kraft Miracle Whip
SALAD DRESSING
Quart Jar

\$1 29

Folger's
COFFEE
1 LB CAN

\$2 29

Shurfine
FACIAL TISSUE
200 Count Box

59¢

Shurfine
TOILET TISSUE
4 Roll Package

78¢
Limit 2



WE GIVE  WE GIVE  WE GIVE  WE GIVE  WE GIVE  WE GIVE  WE GIVE  WE GIVE  WE GIVE  WE GIVE 

get more than you bargained for

with these food values!




Del Monte Golden Whole Kernel or Cream Style
CORN
17-oz. Cans
2/79¢

Del Monte Sweet
PEAS
17-oz. Cans
2/79¢




TEXAS JUICE
ORANGES
5 Lb. Bag **98¢**

FRESH GREEN
CABBAGE... Lb. **9¢**



FRESH CELLO BAG
Carrots..... 2-Lb. Bag **49¢**

GLADIOLA
FLOUR..... 5 LB. BAG **82¢**

DEL MONTE
PEACHES
SLICED or HALVES
16-oz. Can
59¢



FRESH PASCAL
CELERY
36-Ct. Size
3 1⁰⁰

70-Ct. Size
AVOCADOS
For **5 1⁰⁰**



FRESH DANGO
PEARS
Lb. **49¢**



HEALTH and BEAUTY AIDS
ULTRA BRITE TOOTHPASTE
6-oz. Family Size Tube
Regular 1.79 Value
1 59

STYLE DEEP CLEANING SHAMPOO
16-oz. Bottle
Regular 2.59 Value
1 89

Shurfine Medium
EGGS .. DOZEN **69¢**
Powdered Detergent
PUREX..... 42-oz. Box **1 29**

Morton Frozen Fried 2-Lb. Box **2 99**
CHICKEN.....
Del Monte Fruit 17-oz. Can **65¢**
COCKTAIL.....

DEL MONTE
TOMATO SAUCE
8-oz. Cans
5 FOR 1⁰⁰

SHURFRESH
Buttermilk
1/2-Gallon Carton
99¢

GLADIOLA
POUCH MIXES
CORNBREAD, BISCUIT or PANCAKE (Limit 6)
6 Pkgs. For 1⁰⁰

SEVEN SEAS
DRESSINGS
Cream of Bacon or Green Goddess
Large 16-oz. Bottle
1 39

WE GIVE  WE GIVE  WE GIVE  WE GIVE  WE GIVE  WE GIVE  WE GIVE  WE GIVE  WE GIVE  WE GIVE  WE GIVE  WE GIVE  WE GIVE  WE GIVE  WE GIVE 

WE GIVE  WE GIVE  WE GIVE  WE GIVE  WE GIVE  WE GIVE  WE GIVE  WE GIVE  WE GIVE  WE GIVE 

Balanced Diet Essential To 'Pep Up' For Spring

**By Lou Gilly
County Extension Agent**
With spring approaching our thoughts turn to a lot of out-of-doors activities and bouts with "spring fever." However, your spells of "spring fever" may be nothing more than poor eating habits.

March has been declared National Nutrition Month. This year's theme is "Pep Up Your Prime Time, Exercise... Eat Right...Enjoy."

During the month I will have a series of news articles concerning the four food groups. To have a balanced diet and avoid that "run down" feeling, you need to be familiar with these four food groups.

The first group we are going to discuss is the Bread and Cereal Group.

Nutritional Value

Foods in the bread and cereal group furnish protein, iron, several B-Vitamins and food energy. Eat four servings of whole grain, enriched or restored breads and cereals every day. Read the label to insure that these products are enriched or restored. Enriched describes the addition of the B-Vitamins and iron to white flour, macaroni, rice and cornmeal. Whole grain means that all the nutrients found in the grain are there. Restored is defined as total replacement of certain nutrients lost in the processing or refining of food.

Buying Tips

Compare the cost per serving of ready-to-eat cereal with to-be-cooked cereal. Generally, you can save money by buying the to-be-cooked instead of the dry cereal. Sugar-coated products cost more. You can add sugar at home for less.

Longer cooking, short-grain rice is less expensive than instant or converted rice. Noodles, macaroni and rice can be used as a meat extender.

The cost of prepared mixes should be compared with that of homemade mixes, and home-prepared yeast bread with commercially baked bread. Often is saved by preparing these mixes and breads at home instead of buying them at the supermarket. However, it is helpful to watch for specials on bakery products at the supermarket.

Leftover bread can be used for bread pudding, croissants, French toast or bread crumbs for making stuffing, topping casseroles or coating croquettes.

In order to help stretch the food dollar, start making more pancakes, waffles, muffins, cornbread and biscuits, which add taste as well as nutrients to meals. Extra waffles or muffins can be frozen and reheated.

Preparation

When cooking breakfast cereals, noodles, pastas and rice, use the proportions of ingredients and the recommended cooking times on the

package.

Breads may be prepared at home from commercial mixes or by using yeast or other chemical agents such as baking powder or soda. Breads leavened by yeast are known as yeast breads; breads by chemical agents, quick breads. Yeast breads should be mixed and kneaded to develop the gluten to insure a high-quality product.

In preparing quick breads such as cornbread or muffins, follow the recipe. Too much mixing will toughen quick breads.

Crusty Bread

1 cup cooked black-eyed peas
1 cup white cornmeal
½ cup flour
1 tablespoon soda
2 eggs
1 cup buttermilk
½ cup corn oil
½ pound grated cheese
1 chopped onion
2 chopped jalapenos
¾ cup creamed corn
1 pound browned and drained ground beef
Mix together all ingredients. Add cheese last. Pour into greased pan and bake at 350°F. for 45 minutes. Serves eight.

Garden Rice

1 cup uncooked rice
½ cup chopped onion
½ cup margarine
2 cups milk (use dry milk)
½ cup grated cheese, optional
1 cup cooked carrots or
1 cup cooked chopped greens
1 teaspoon salt

pepper

Saute rice and onions in margarine in saucepan until onions are tender and rice is slightly browned. Add milk, vegetables and seasoning. Bring to a boil, stir once. Cover, reduce heat and simmer 14 minutes or until rice is tender and liquid is absorbed. If desired, sprinkle cheese on top. Serves six.

Oatmeal Cookies

1½ cups flour
3 tablespoons dry milk
2 teaspoons baking powder
½ teaspoon salt
½ teaspoon cinnamon
2 cups rolled oats
1 cup raisins
½ cup fat
1 cup sugar
2 eggs
½ cup water
Sift together flour, milk, baking powder, salt and cinnamon; stir in oatmeal and raisins. Cream fat, gradually add sugar and cream until smooth, add eggs and beat well. Add water and flour to oatmeal mixture and mix well. Drop from teaspoon on greased cookie sheet. Bake at 375°F. about 15 minutes. Makes 36 cookies.

A&M Coffee Cake

1½ cups flour, sifted
1 teaspoon baking powder
½ teaspoon salt
¾ teaspoon cinnamon
½ cup shortening
¾ cup brown sugar
1 egg
½ teaspoon soda
½ cup buttermilk

¾ cup Texas pecans (optional)
Sift flour, baking powder, salt and cinnamon together. Cream sugar and shortening

together until light and fluffy. Add eggs and continue to mix until well blended. Combine soda and buttermilk. Add the flour mixture and liquid alter-

nately to the sugar mixture. Blend; pour into greased cake pans; sprinkle nuts on top. Bake at 325°F. for 40 minutes. Serves six.

Next week look for my article about the Fruit and Vegetable Group.



Staff Photo by Gina Jennings

GREEN THUMBS

March 8-14 is Older Worker Week and the Experienced Citizen Center salutes their "Green Thumb" workers (l-r) Rita Rodriguez, Eula Arend and Juanita Bevel. The Green Thumb Program stresses the value of the Older Worker and helps place them in community jobs in 107 counties.

Older Workers Saluted

Older Worker Week is encouraging employers to recognize their older workers according to the U.S. Department of Labor. Texas Farmers Union Green Thumb, Inc. is

encouraging employers to recognize their older workers during this week. Evidence that the older worker is a high-quality employee is mounting. According to a survey made recently among some of America's largest corporations, 84% of the personnel directors queried thought that older employees are more productive. Older workers were also more satisfied with their jobs than younger workers, according to the survey conducted by the Corporate Committee for Retirement Planning. Older workers were found to have better attendance and lower accident rates as well.

Green Thumb is a rural older worker employment program funded through the Department of Labor and is working to eliminate the unfounded prejudice against older workers.

Green Thumb directly hires nearly 1,000 workers 55 years of age and older, on a part-time basis. Green Thumb employees are placed in community jobs throughout the 107 county area in which the program operates. These workers not only demonstrate the value of accumulated experience and wisdom acquired with age, but also contribute services that their communities might not otherwise afford.

Green Thumb Director Diane Parrish urges both public and private employers to recognize their older employees during this Older Worker Week. "I've found that formal education and chronological age have nothing to do with one's ability," said Parrish. "During their years of work they have learned a great deal, have gained invaluable experience and have come to appreciate and be proud of doing a good job. We should remember, especially during this week, that capability, not age, is the true measure of a workers worth."

Green Thumb is an equal opportunity employer and is one resource for locating older jobseekers. For more information, employers may contact the Texas Employment Commission in their area or write to the Texas Green Thumb office at: P.O. Box 7898-Waco, Texas 76710; or call 817-776-4700.

Funny or Unfunny

MAN BITES DOG. Out in Westland, Michigan, an attorney for hundreds of black homeowners says he may appeal a City Council decision that will allow "low-income whites" to move near the suburban Detroit neighborhood. "I have no objections to whites," says home-owner Arthur Warren, "but let's face it, these are going to be lower-class whites...You wouldn't want a \$15,000 home next to your \$50,000 house, would you?"

Credit Spotlight

"Brown volunteered to lend me money."
"Did you take it?"
"No. That sort of friendship is too good to lose."

SIDE STEP

Young Tommy told his father that when he grew up he wanted to drive a big army tank. "Well, son," said his dad, "if that's what you want to do, I certainly won't stand in your way."

Smitty's Auto Supply

The Dairy Queen is Across The Street
Haskell, Texas

CAMPBELL INSURANCE AGENCY

P. O. BOX 99
RULE, TEXAS 79547
TELE. 817-997-2322

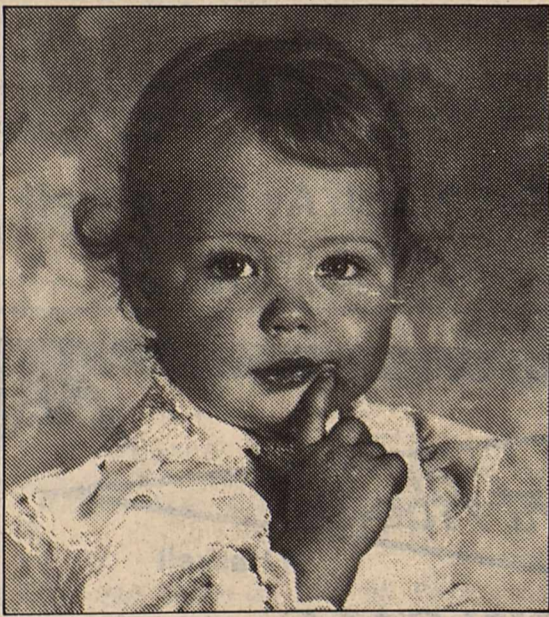
Campbell Insurance Agency of Rule, Texas will offer the same services it has for the past forty seven years.

All companies and policies will remain the same.

We have appreciated your business in the past and look forward to serving you in the future.

Frances Campbell, owner
Bertha McQuinn, owner-agent
Donna Saffel, solicitor

love
doesn't
cost a dime



and this beautiful 8x10 color portrait is yours absolutely

FREE!

• BABIES, CHILDREN, ADULTS plus family groups.
• Choose from different backgrounds and custom poses. Limit: One per subject, one per family. • Additional portraits available in all sizes at reasonable prices. • Persons under 18 must be accompanied by parent or guardian. • Finished portraits delivered at store.

2 Days Only

Friday & Saturday
March 6 & 7

Daily 10-1 2-5

Bill's Dollar Store

1201 North Avenue E
Haskell, Texas

REAL HICKORY SMOKED

BARBEQUE BEEF SANDWICHES

BUY ONE GET ONE

FREE!

QUARTERS
KRAFT PARKAY
1 LB. PKG. **89¢**

Shurline 32 oz
SALAD DRESSING 79¢

BEEF/CHICKEN
MORTON'S POT PIES 3 \$1.00

HUNTS 32 OZ
Ketchup 89¢

ASSORTED FLAVORS
BORDEN'S ICE CREAM
½ GAL. RD. CTN. **\$1.59**

AF AFFILIATED FOODS INC.
MEMBER STORE
We're proud to give you more!

ALLSUP'S
CONVENIENCE STORES
"THERE'S ONE NEAR YOU"

PRICES EFFECTIVE
MARCH 5-7, 1981
WHILE SUPPLY LASTS
OPEN 24 HOURS A DAY
365 DAYS A YEAR
WE ACCEPT FOOD STAMPS

Crisco
3 lb can
\$2.09

BORDEN'S
CHOCOLATE MILK 69¢
qt.

GREAT FOR BAKING
GLADIOLA FLOUR 99¢
5 LB. BAG

SCHILLING'S
BLACK PEPPER 1.49
4 OZ. CAN

2 LITER BOTTLE
Coke, Tab, Mr. Pibb, Sprite
\$1.39



DRIP/ELECTRIC PERK/REGULAR

FOLGER'S COFFEE

1 LB. CAN

\$2.49

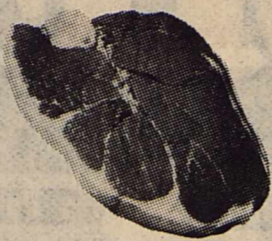


Haskell, Texas
 "We're what your Food Store really ought to be"

AFFILIATED

Specials Good
 March 5-11

MODERN WAY features U.S.D.A. Choice Heavy Beef



Tender Full Cuts
Round Steak lb **\$1.78**

Tenderized
Round Steak **\$1.98** lb

Extra Lean **\$2.79** LB
Cube Steak.....
 Family Pac **\$1.28** lb
Ground Beef.....
 Boneless **\$1.98** lb
Rump Roast.....
 Extra Lean Eye of the **\$2.98** lb
Round Steak.....

County Fair **\$1.69** lb
Boneless Hams.....
 Center Cut **\$1.69** lb
Pork Chops.....
 Family Pac **\$1.39** lb
Pork Chops.....
 Family Pac **\$1.09** lb
Pork Steak.....
 Tyson 12 oz **59¢**
Chicken Franks.....

Silver Spur
Sliced Slab Bacon **88¢** lb

Del Monte Whole Kernel

Corn

303 can

2/78¢



Shurfine
Toilet Tissue

4 roll pkg

78¢

Limit 2 with \$10.00 Purchase

Lipton 3 oz jar Instant **\$1.89**
Tea.....

Tang Orange Flavored Breakfast **\$1.99**
Drink..... 27 oz

Del Monte 303 can **2/78¢**
Sauerkraut.....

Hy Top 303 can **3/\$1**
Potatoes.....

Austex 15 oz can **75¢**
Chili With Beans.....

Austex 15 oz can **89¢**
Chili Without Beans.....

Ritz 16 oz box **\$1.09**
Crackers.....

Kraft 6 1/4 oz Mini **3/\$1**
Marshmallows.....



Shurfresh 2/8 oz tubs

Soft Margarine **48¢**

Limit 2

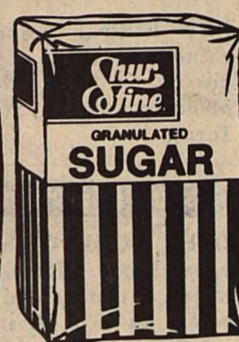
Shurfine

Sugar

5 lb bag

\$1.78

Limit 1 with \$10.00 Purchase



Del Monte
Tomato Sauce

8 oz can

4/\$1

Gladiola Cornbread
Pouch Mixes

6/\$1

Limit 6 with \$10.00 purchase

DR. PEPPER

6 Pack — 1 Liter

\$1.89

PLUS DEPOSIT



Gladiola

Flour

5 lb bag

88¢

Limit One with \$10.00 Purchase



Del Monte

Sweet Peas

303 can

2/78¢



Cabbage

9¢ lb

2 lb bag

Carrots

49¢



Oranges

5 lb bag

98¢

36 ct

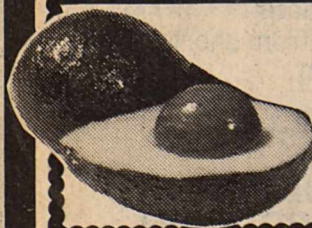
Celery

3/\$1

D'Angou

Pears

49¢ lb



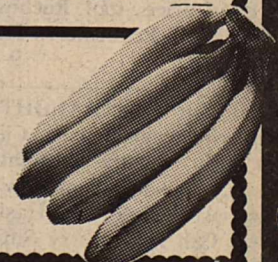
Avocados

5/\$1

Del Monte

Bananas

3/\$1 LBS



formerly JRB

Watch for Our Grand Opening

Coming Soon!