



Staff Photo by Gina Jennings

## BUSY SCOUTS

Boy Scouts representing the Northern District of the Chisolm Trail Council demonstrated various scouting skills and displayed some of their work Saturday at the Corral Building during the annual Boy Scout Show. The event provided an opportunity for citizens to view the Scouts activities as well as helping raise funds for the organization.

## Tornado Season Approaching

With the coming of spring months in West Texas comes the threat of possible tornadoes.

The tornado warning system in Haskell is a cooperative effort of local law enforcement agencies and the Haskell Fire Department.

Officers from various law enforcement agencies are stationed around the city anytime there is threatening weather. In the event any officer spots a tornado, the fire department is notified and the siren

at the station is blown for about two minutes. In addition, volunteer firemen drive designated routes throughout town with sirens.

This warning is activated only upon sighting a tornado and all residents are urged to take shelter immediately when hearing the siren.

The key word in taking cover is 'low'. The lowest floor in any building is the safest. Small rooms, such as the bathroom or a closet in the central part of the structure

offer the best protection. If this hideout isn't available, taking cover under heavy furniture such as a tipped over couch is advised. Neither a mobile home nor building with wide, free-span roofs, such as auditoriums, are desirable shelters.

Fire Department officials urge all local residents to have a pre-planned place of cover, easily accessible, and to seek the shelter immediately when the local warning is issued.

## Don Flippin Resigns Post

Don Flippin, Head Coach at Haskell High School for the past three years, submitted his resignation last Wednesday to accept a position as first assistant coach at Wichita Falls Rider High School.

The Board of Trustees of the school met Friday night and officially accepted the resignation of Flippin, who began his new employment in Wichita Falls this Monday.

During the past three years, the Haskell Indians, under the direction of Flippin, have amassed a record of three district championships and advanced to regional twice and semi-finals once. During the three years the teams won 30 games, lost 6 and tied 2.



DON FLIPPIN

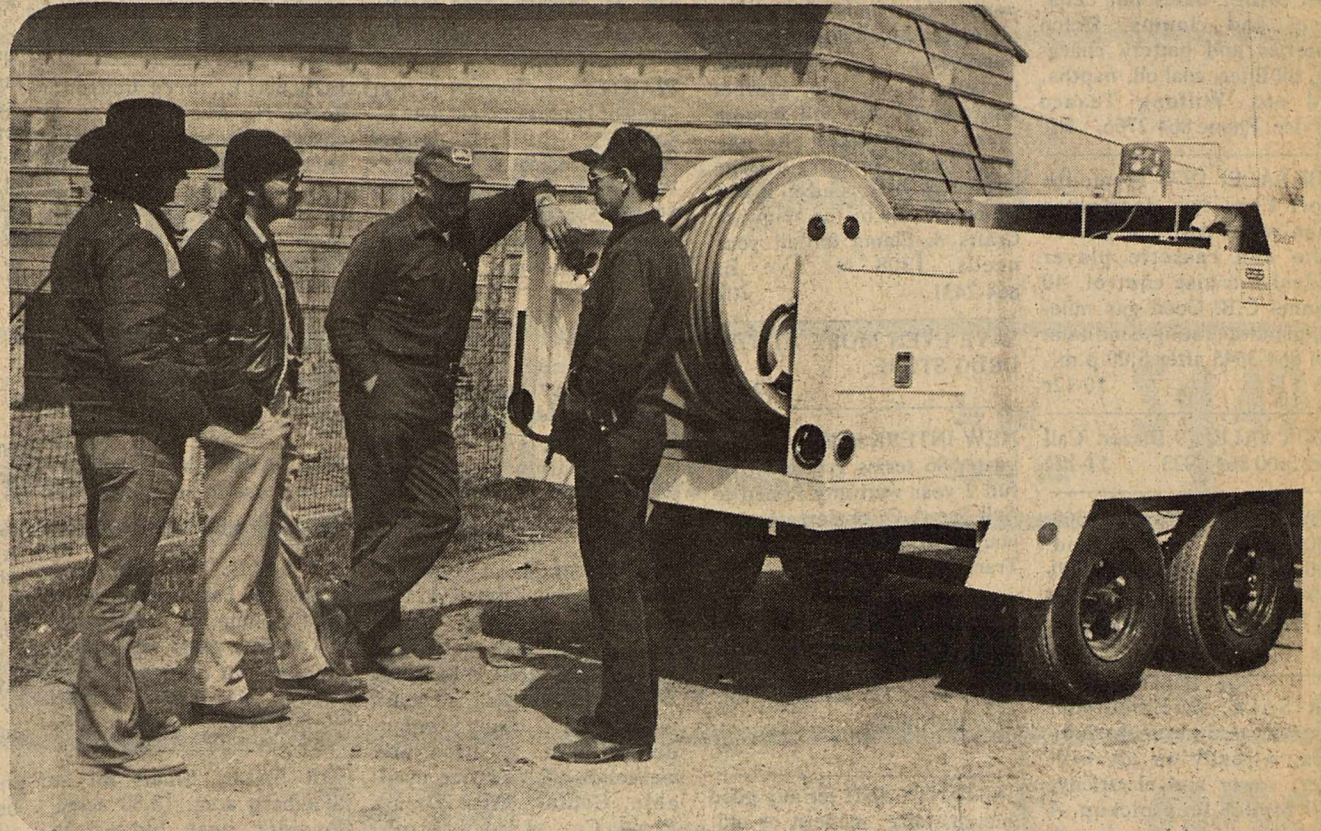
## Seven Attend Food Show

On Saturday, March 8, seven Haskell County 4-H'ers and their parents journeyed to Wichita Falls to participate in the District Food Show.

The competition was held in Sikes Senter with each 4-H'er exhibiting the winning dish they entered in the County Food Show.

The Haskell County 4-H'ers: Kristen Campbell, Marcy Davis, Rebecca Holt, Janette Holmes, Jill Jennings, Sonja Tidrow and Lynn Weatherly all earned blue ribbons in the competition.

In addition to this, Rebecca Holt placed 1st in the Junior Side Dish Division and Marcy Davis placed 2nd in the Junior Breads and Desserts Division.



Staff Photo by Don Comedy

## NEW MACHINE

The City of Haskell accepted delivery on a new sewer machine Tuesday. The new machine will be used to unstop sewer lines using high pressure water and should greatly cut down on the time required to unstop the blockages.

## Water Authority Meets State Approval Requirements

The North Central Texas Municipal Water Authority has received notification from the Texas Department of Health that water supplied by the authority has met all requirements for "State Approval."

Notification came in the form of a letter which authorized the placement of signs stating, "Public Water Supply Approved", to be located at the Authorities facilities.

The letter also stated that the

approval only applied to the Authority and that the recognition did not apply to the cities served by the authority.

The letter added that member cities will be considered for "State Approval" on their own merit.

In releasing the information, Authority General Manager also supplied the *Free Press* with a recent laboratory analysis of water supplied by the Authority.

The analysis showed that compared to a similar analysis of water supplied from wells used by the City of Haskell prior to the completion of Miller Creek Lake, all chemicals normally found in water were substantially less in the lake water.

The total hardness of the water now used in Haskell is over seven times "softer" than the previous well water. Nitrate in the well water was listed at 140 milligrams per liter and the lake water analysis showed nitrate at .03 milligrams per liter. Total dissolved solids in the analysis of the well water was 1880 and for the lake water was 179.

## Conservation Comments Requested

The 1977 Resource Conservation Act was the topic of discussion Tuesday night when about 70 interested persons attended a meeting to learn more about the act.

The act was explained by representatives of the Soil Conservation Service and Agriculture Stabilization and Conservation Service.

The public has until March 28 to send comments on the proposals to the U. S. Dept. of Agriculture.

Outlined in the meeting were seven alternative strategies which ranged in scope from the present voluntary conservation program now in use to mandatory programs.

The primary concern of most of those present at the meeting was that if nothing is done, land owners may be forced to adopt expensive conservation practices which possibly might not accomplish anything.

Most of those present agreed that letters should be sent requesting a continuation of the present program with additional funding.

The letters must be sent prior to March 28 to: USDA RCA-Response Analysis Center, P. O. Box 888,

Athens, Georgia 30603.

The RCA proposals and summaries of them are available at the ASCS and SCS offices.

During a discussion of the proposals it was pointed out that some of the conservation practices were not economically feasible and some were not physically possible.

An example cited was that of soil erosion by wind. If soil erosion by wind exceeds a certain point, the land owner could be penalized for not preventing the erosion. The example went on to cite sandy soil

during a wind storm. A loss of five tons of soil per acre (minimum allowed by the proposal) could occur in a short time in high winds and there is no known method of stopping the erosion to this point.

The basic opinion of most of those present was that conservation practices are better today than ever before and the program should continue as it now stands. Everyone present was opposed to forced Government intervention into a free enterprise system.

Several persons stated the need to

send comments on the proposals and added that everyone is eligible to comment on the program, not just producers. Since much of the costs would be provided by consumers, they are also invited to comment.

Those present agreed to send their comments and urge their friends and neighbors to do likewise. They also emphasized the fast approaching time deadline and would like to invite everyone to act promptly in responding to the request for comments.



Staff Photo by Don Comedy

## RCA PROGRAM

About 70 persons attended a meeting Tuesday night to learn about USDA proposals concerning conservation. Those present agreed that most of the proposals would do more harm than good and agreed to solicit comments on the proposals. The comment must be sent to USDA prior to March 28.

## Jaycee Bass Tournament Scheduled

The Haskell County Jaycees have set their annual Bass Tournament for March 29 and 30. Headquarters will be at the Anchor Marina. Fishing will start Saturday the 29th at daylight and weigh in will be between 2 and 3 p.m. The same hours will be in effect for Sunday the 30th.

The tournament was to be a live release, but due to the fact we could not get a biologist to dip the fish, all fish will be cleaned.

The top three places in the tournament will be cash money with prizes through 15th place. First place will pay \$150.00, second \$100.00 and \$50.00 for third place.

Entry fee will be \$15.00 for both days and \$10.00 for only one day.

## Study Club To Host Program

Members of the Progressive Study Club are sponsoring an educational program dealing with Cancer research and development March 20, at 7:30 p.m. in the Community Building of the Haskell National Bank.

John Bush, a representative of the development department of M. D. Anderson in Houston will present a film and discussion concerning the cancer work at M. D. Anderson.

Members of the Progressive Study Club invite all interested persons to attend the meeting.

## ECC Hosts Open House

St. Patrick's Day marked a special Open House celebration at the Experienced Citizens Center in Haskell Monday.

Highlight of the day was the noon meal, prepared as a part of the recently instituted nutrition program at the center.

A capacity crowd was on hand for the meal and County Judge John Wayne McDermott spoke briefly to those gathered about the history and accomplishments of the center. He also told of the growing success of the nutrition program.

Marsha Whittemore, director of the center, introduced special guests including: Jim Compton, program developer of West Central Texas Council of Governments; Mayor Pro Tem Franciene Johnson; Commissioners, C. E. Tidwell and Thelma Edwards; and Bud Hicks of the Texas Department of Human Resources.

## NOTICE

City employees will begin flushing fire hydrants in Haskell this week and residents are cautioned that water may temporarily be discolored. The project is required by state insurance codes and the City will attempt to minimize any problems.

## weather

By Sam Herren

March 11-17

TEMPERATURE

Hi ..... 79° ..... 12th

Lo ..... 36° ..... 13th

RAINFALL

Total ..... 0.00

Total to Date ..... 1.52

Normal to Date ..... 2.74

**BUYING?  
SELLING?  
CHECK OUT THE...**

**CLASSIFIED ADS**

**NOTICE**

The Haskell Free Press reserves the right to edit and/or delete all news stories and locals for length and liability and to refuse to print anything deemed not newsworthy.

**For Sale**

FOR SALE: Bucher calves for sale. We deliver to locker plant. Haskell County Feeders Supply. Phone 864-2011. 41tc

FOR SALE: Gates fan belts, hoses and clamps, Delco batteries and battery charging, oil filter, coal oil, naphtha, and etc. Wilfong Texaco Service, Phone 864-2766. 1tfc

FOR SALE: 1977 Plymouth Sport Fury two door-extra clean-with: AM-FM Stereo radio and cassette player (indash), cruise control, 40 channel C.B. Good gas mileage-good operating condition. Call 864-3845 after 5:00 p.m. 10-12c

FOR SALE: 79 Blazer. Call after 5:00 864-3923. 11-12c

FOR SALE: 76 Yamaha 360. 7,000 miles, runs good. \$800.00. Call 864-3474 7:30-5:30 Monday-Friday or see at 903 N. Ave E, near Allsup's. 11-14p

FOR SALE: One bedroom trailer located on Lakeshore Sites. Already on lot with water, sewer and electricity. 1970 Model Jeep pickup, 4 wheel drive, make good work truck. Phone 864-2242. 11-12p

FOR SALE: 1974 Chevrolet pickup 1/2 ton, 1972 1600 Loadster International with 20 barrel tank. Contact Darel Anderson, Anderson Construction Co., Hwy 380 West. 11-13c

FOR SALE: 69 Chevrolet pickup, long-wide bed, good work truck. \$800.00. 864-2800. 12tfc

FOR SALE: Suzuki 75 dirt bike, runs good. \$200.00. 864-2800. 12tfc

FOR SALE: 75 Grand Prix, extra clean, loaded. 71,000 miles. 864-2800. 12tfc

FOR SALE: Alfalfa Hay. E.L. Elmore, Rule 12-13p

FOR SALE: Sears gas stove with two ovens. Can be seen at 605 N. 9th. 12c

FOR SALE: 1977 Camper, 11 1/2' overhead, fully self-contained, extra nice. Call 864-3683. 12tfc

FOR SALE: 1979 Buick, full power, low mileage. Call 864-3683. 12tfc

FOR SALE: Little girls used clothing, some like new, in time for Easter. Also good clothing for boys, High School age, beautiful shirts. See at Frazier's Appliances. 12c

FOR SALE: 1974 Buick Electra 4 door Limited, 58,000 miles, loaded, good tires. 1 used gas cook stove. Call 817-864-2872. 12tfc

**FOR SALE**

1979 1/2 ton Ford Explorer Super Cab Pickup. Power and air, tilt wheel, 460 motor, 10 ply tires, 140 gal. gas tank, tool box. 22,000 actual highway miles. Like new. Solid business, don't need pickup. Phone 817-864-3805 Haskell, Texas 12p

**Miscellaneous**

PORTABLE WELDING: Oil Field insured. 24 hour service. Patterson Welding. Nathan (Pat) Patterson—Owner. 1407 N. Ave. E, Haskell. 864-2264 Res. 864-2204. 23tfc

LET US Price your next prescription. You will be glad you did. Johnson Pharmacy. 17tfc

**Miscellaneous**

CUSTOM TREFLAN APPLICATION. Contact Jim Pace, 864-3938 or 864-3242. 11-13p

FARM RAISED CATFISH. Open February 15th. Alive, dressed or you catchum. Booking orders for Catfish Fingerlings. Douglass Catfish Farm, Sylvester. 915-993-4644. 7tfc

WE NOW HAVE Formby's Refinishing Products, Village Bath, Pot Pourri, Foroy Candles and Aladdin lamp parts. Handmade gift items, oil paintings and all kinds of handicrafts. Instruction classes, in oil, toile, crochet and acrylic. We will custom make your frames and any wood item. We carry a large selection of ready made frames. Come by the Wigwam Crafts & Plants for all your needs. 1308 N. Ave E, 864-2431. 2tfc

SAVE EVEN MORE AT THE DRUG STORE. 24tfc

NEW INTERNATIONAL Harvester 86 series Tractors with full 2 year warranty—Priced to Sell—See A.C. or Jerry before you buy—Richardson Truck and Tractor 864-3474. 11tfc

WATER WELL DRILLING: House well, Stock, Irrigation Wells, Test Holes. Call W.P. Hise, 864-3727 Haskell, Tx. (Day or Night). 7tfc

INSTANT CASH for any good merchandise, modern or old. Phone 864-3197 anytime. Lackey's, Throckmorton Highway, Haskell, Texas. 36tfc

I WILL PAY \$20.00 for silver dollars if they are 1935 or before. Also, 15 to 1 for pre 1964 halves quarters and dimes. See Doyle or Jean Baugh, 997-2186. 11-13c

IF YOU NEED HELP with herbicide application, please contact Donnie King, 422-4795. I intend to use a 21 foot field cultivator. I have a 21 foot tandem. 11-12p

BUILD YOUR CARPORT before the hail season hits. Contact Arnold Grupe, Grupe Welding Service, 864-2461 after 5:00 p.m. 11-14p

Shop our shelves of EVERYDAY LOW PRICES at Johnson Pharmacy where low overhead means low prices. 11tfc

WANTED: Good used furniture and appliances. We buy and sell. Lee Used Furniture 120 N. Swenson St. (one block north of red light on highway 277) Stamford, Texas. Phone 773-5608. 42tfc

Spring GARANIMALS and HEALTH TEX children's wear have arrived at BEN FRANKLIN Sizes 9 mo. to 7 yrs. 12-14c

TAKE soil away the Blue Lustre way from carpets and upholstery. Rent electric shampooer. \$1. Perry Bros. 12c

CRANE'S SAW Sharpening Service. Replace and sharpen carbon tips. Corner of Ave BE and N. First. 817-864-2443, Haskell, Texas 79521. 12-13p

WE WILL BE selling burritos, chalupas and tamales Saturday the 22 at 106 N. 3rd St. or call 864-3973. 12p

WATER WELL DRILLING: House wells, stock well, test holes and irrigation wells. Pump sales and repairs of all types. Leonard Drilling and Pump Service, Rule, Texas. Call after 5:00 p.m. 817-997-2132. 12tfc

CUSTOM TREFLAN INCORPORATED. Call 997-2202 or see John Allison. 12-13c

Come see the new spring and summer TERRY TOPS at BEN FRANKLIN Bright and shiny colors affordably priced. 12-14c

**Wanted**

WANTED: Rotor-tilling, gardens and yards. Call 864-3919. 10-13c

WANTED TO BUY: Royalty or minerals producing or non-producing and leases. Houston Pearson, 3120 50th St., Lubbock, Tx 79413. Phone 806-795-0601. 11-14p

WANT TO BUY lot in North part of Haskell in City Limits. Call 817-923-1326 or write A.D. Hudson, 4232 Galway Ave. Ft. Worth, Texas 76109. 9-12p

WANTED: To buy 50 to 100 acres of land. Call 864-3087 or 864-3322. 5tfc

WANTED LIVE RATTLE-SNAKES. All sizes—\$3.65 per pound. Skins \$1.50 per foot, 30 inch minimum. Free pick up service. Call Derrel Beesinger, Windthorst, Texas (817)423-6697. 11-14p

**Help Wanted**

SECRETARY WANTED. Full-time. Position requires a person who is happy with people and who enjoys responsibility. To apply, submit an autobiographical sketch to: Box 2, Haskell, Texas 79521. 9tfc

TRUCKERS and WELDERS WANTED. We train, 40 hours guaranteed, hospitalization-dental plan, vacation and weekends off, overtime available. Contact Mike Davis, Rigid Co., Throckmorton, Texas 817-849-7321. 11-12c

HELP WANTED: Experienced in oil field construction. Contact Darel Anderson, Anderson Construction Co., Hwy 380 West. 11-13c

**Bus. Opportunity**

YOUR OWN AGENCY LIFE, auto, property Carrier Opportunity in national company offering multi-line insurance products seeking agent with or without experience. Up to \$300 a week plus 100 percent commission. Fringe benefits. Call Ed Waltko 817-766-4702 or after 6 p.m. 817-692-5318 or see beginning February 8 each Friday at office located 10 N. Ave D from 10 a.m. 9-12c

HAVE A HIGHLY profitable and beautiful Jean Shop of your own. Featuring the latest in Jeans, Denims and Sportswear. \$16,500.00 includes beginning inventory, fixtures and training. You may have your store open in as little as 15 days. Call any time for Mr. Kosticky (612) 432-0676. 12p

MONEY MAKING OPPORTUNITIES. \$356.00 Weekly possible in only 2 hours work daily at home. Start immediately. Free. LaVerne Burkhalter, P.O. Box 655, Springtown, Texas 76082. 12c

HAVE A HIGHLY profitable and beautiful Jean Shop of your own. Featuring the latest in Jeans, Denims and Sportswear. \$16,500.00 includes beginning inventory, fixtures and training. You may have your store open in as little as 15 days. Call any time for Mr. Wilkerson 501-329-8326. 12p

**Collectables**

Spittoons—Brass, iron, china & enamel. Spurs, Nutcrackers, Boot Jacks—new & old. Ceiling fans in stock again. Music boxes & Hummel Figurines. SHERMAN'S ANTIQUES Northwest corner of square Phone 864-2491

**Garage Sales**

HOUSE SALE: 505 N. Ave L. Everyday except Sunday and Monday. 3 bikes—\$10 ea., 1 bike—\$12.50, clothes, dishes, misc. 12p

**For Rent**

FOR RENT: One bedroom furnished apartment. Call 864-2484. 12c

**Bluebonnet Cafe** Rule, Texas Mexican Food Buffet Every Tuesday Night Catfish Buffet Every Thursday Night

**Real Estate**

WILL TRADE three bedroom brick in Lubbock for farm. Phone 806-792-3603. 3tfc

FOR SALE: 115 Acres in edge of City Limits. Call Lanco Ins. 8tfc

LARGE RESIDENTIAL lot in Middleton Edition for sale. Bob or Debbie Earles. 864-2216. 11-13p

NEED A LOT for your new house? We have several. Call 864-2461 after 5:00 p.m. 11-14p

FOR SALE: three bedroom home N. Ave E, close to churches and schools. Contact Lanco Ins. 864-2629. 5tfc

LOTS FOR SALE. 81'x141' North 3rd and Ave H East. Patterson Addition. Call 864-2785. 12tfc

FOR SALE: 1 or 2 bedroom house in Rule. Ideal location. Call 915-773-3803. 12-15p

FOR SALE: Three bedroom farm house to be moved. Call 864-3386. 12-13c

FOR SALE: Two Adjoining cabins on Lake Stamford at Veda's Camp, on paved road, city water, good deep boat channel, or mail and telephone route. Call 817-864-3258. 5tfc

FOR SALE: Small lot in Rhomberg area. 18.80 acres. Consider best bid. N.D. Miers, Rt. 2, Rotan, Texas 79456 or phone 735-2807. 12-15p

HOUSE FOR SALE. Two bedroom, corner lot, good part of town, two pecan trees, double carport and plenty of closet space. Call 864-8997 daytime or 864-2878 nights. 12c

**FOR SALE**

Steel lake house, 2 baths, central H/A, dishwasher, range, 15 ft. private channel. Stamford lake house, new roof, new paneling, new carpet, shower bath, 1 bedroom, screened sleeping porch and dock. Furnished Stamford lake house, air conditioner, 1 bedroom, large sleeping porch, family room, shower bath, dock and shed.

**We need listings.**

Frances Arend Real Estate 864-3880 864-3156

Brick two story, three bedroom, three bath with apartment. Corner lot. 1307 N. Avenue F. Large three bedroom, corner lot, two fireplaces, cellar, storage shed and garage. Fenced in backyard. Shown by appointment.

**WE NEED LISTINGS.**

**DUNCAN REALTY** Doyle High 864-2515 The Drug Store 100 S. Avenue E 24tfc

**FOR SALE**

160 acres of the best farmland in Haskell County. Two irrigation wells without pumps. \$1,000.00 per acre with 1/2 minerals. Close to O'Brien. 400 acres, sub-irrigated, all cultivated. 1/2 minerals now with the return of the other 1/2 in a few years if no production. East of Rochester.

Count's Insurance & Real Estate Knox City 817-658-3211

**Public Notice**

NOTICE OF ELECTION \*County Water District No. 1 County of Haskell, Texas To All Whom This May Concern:

It is hereby ordered, and notice is hereby given, that there will be an election on Saturday the 5th day of April A.D. 1980, in Election Precinct No. 8 of County Water District No. 1, County of Haskell, State of Texas, for the purpose of electing Directors.

All persons who are legally qualified voters of this State and of this County, and this said Water District shall be entitled to vote at this election, at the Weinert Community Center.

Chet Forehand President, Board of Directors Haskell County, Texas Attest Joe A. Yates Secretary, Board of Directors 12-13c

**NOTICE OF ELECTION**

Notice is hereby given that a school trustee election for the Paint Creek Independent School District will be held on April 5, 1980 for the purpose of electing to the Board of Trustees of said school district three members.

That said election shall be held at the Paint Creek School with Albert Thane as presiding judge.

Absentee voting will be held in the Superintendent's office beginning March 17 and continuing through April 1 between the hours of 8:30 a.m. and 3:30 p.m. on regular school days. Mrs. Jenny Brazell will be absentee clerk. 12c

**Card of Thanks**

**CARD OF THANKS**

The Family wishes to say thank you for the many things you did during the illness and loss of our loved one. A special thank you to each at the Rice Springs Home for the love and care you gave her while she stayed at the home. Thank you to the ones that brought food to our home. A special thanks to the ladies of the East Side Baptist Church wonderful food and to the pastor for his message. Also to the many who sent flowers or memorials. We say thanks. The Family of Ida Cross Brinlee. 12p

**CARD OF THANKS**

I want to thank everyone for their prayers, visits, cards, flowers and calls while I was in General Hospital in Wichita Falls. All of this made my 28 days much easier. It's good to be home. Carl Wheatley. 12p

**CARD OF THANKS**

I wish to express my appreciation for all the calls, flowers, cards and my nice neighbors during my stay in the Wichita Falls Hospital and at home. Mary Zelisko. 12p

One of America's most recognized foods—the Hamburger—is the subject of 41,000 federal and state regulations. A U.S. News and World Report article noted that many of these regulations stem from 200 laws and 111,000 court cases which set precedents.

Classifieds Small ads...Big Results

**PUMPS** Irrigation-Domestic Formation Testing Well Drilling We pull & repair all makes. REA PUMP CO. Haskell, Texas Call 864-3372 after 8 p.m.

**QUALITY NEW HOMES** Construction Have lots to build on East Part of Town Tommy McAdams Builder Call 864-2785

Used Color TV's For Sale Cheap Anderson Tire Co. 206 S. Av E 864-2900

**Public Notice**

NOTICE Paint Creek Independent School noted that homeowners are eligible for a \$5,000 school homestead exemption, and that certain disabled persons and those aged 65 or older may qualify for additional exemptions from the value of their property.

Also, farmers and ranchers have the option of having their agricultural land taxed at its productive rather than market value.

To qualify for exemptions and productivity valuation, however, application must be made to the school tax office before the district's rendition period ends on April 1, 1980. 11-13c

**NOTICE**

Haskell Independent School District noted that homeowners are eligible for a \$5,000 school homestead exemption, and that certain disabled persons and those aged 65 or older may qualify for additional exemptions from the value of their property.

Also, farmers and ranchers have the option of having their agricultural land taxed at its productive rather than market value.

To qualify for exemptions and productivity valuation, however, application must be made to the school tax office before the district's rendition period ends on April 1, 1980. 11-13c

**Health Insurance**

For person to person health insurance, call Brian Burgess 864-3250

**Real Estate**

**FOR SALE**

Two houses and nine lots on S. Av E. Joins the Steak House property. \$19,000.

Three bedroom, two bath B.V. on corner lot, 1806 N. Av H, \$50,000.

Two bedroom stucco south of hospital. Owner will carry part of paper. \$8,500.

Large brick on 10 acres. 4 bedroom, 2 bath, with garage apartment. \$100,000.

Two houses and four choice lots on N. Av H. 400 acre stock farm on paved road. \$200,000.

**Furr's Real Estate** 409 1/2 S. 1st Phone 864-2576 Open from 9 a.m. to 4 p.m. 1tfc

**FOR SALE**

3 bedroom brick on one acre. Two full baths, fireplace, 2 car garage, central H/A. Priced to sell.

New 3 bedroom brick, two baths, double garage, fireplace. One acre. 43,000. Large 3 bedroom stucco, \$9,000.

Small frame house on Brick St. (Av F).

Large lot 100x300 on Highway 277 with mobile home and double garage.

**FOR SALE**

12 lots all together. West part of Haskell.

2 bedroom, 2 bath, mobile home at Lakeshore Sites. Furnished and ready for occupancy \$10,000.

3 bedroom brick on two acres, two baths, fireplace, cellar, water well and barns. Reduced to sell.

A work saver home with closets for all. 3 bedroom brick with 1 1/2 baths, central heat & air on 100x140' lot. \$42,000. THE HARTSFIELD AGENCY INSURANCE-REAL ESTATE LOANS (817)864-2665 417S. FIRST ST. HASKELL

New & Used Color & BW TV Amonett & Amonett Radio & TV 864-2870 Haskell

ELECTRIC SEWERROOTER Cleans clogged pipes, drains, sewers. No digging. No damage. Philpot's Supply & Service 402 North 1st 864-3010

WANTED Sewing Machine Operators. No experience necessary. Starting pay \$3.20 per hour. Apply in person. Russell-Newman Manufacturing Company Stamford, Texas 12-13c

WANTED CONCRETE JOBS Will do driveways, patios, sidewalks, house add-on foundations, also garden curbing or driveway curbing. CALL ANDY LOPEZ 864-2064 after 7 p.m. For Free Estimates

Public Auction FOR SMALL BUSINESS ADMINISTRATION 11 A.M. FRIDAY, MARCH 21, 1980 1204 N. Swenson - Stamford, Texas AUCTION OF COMPLETE INVENTORY OF HALE'S BOOT CO. INCLUDES: 305 Pr. Boots, 235 Leather Belts, Office Equipment, T-Shirts, Belt Buckles, Western Paintings and Prints, Straw Hats, Felt Hats, AM/FM Stereo And More Items. TERMS: Cash or Check With Bank Letter Of Guarantee. For Information Contact: Jack Faulks Auctioneers (806) 763-4919 • P.O. Box 5701 • Lubbock, TX 79417 TXE-11-0053. Bonded.

K-TEL Special SALE AS ADVERTISED ON TV TAPES 7.99 ALBUMS 6.99 PERRY'S PRICE ON TAPES ONLY 3.99 PRICE ON ALBUMS ONLY 3.49 YOU SAVE \$2.99 YOU SAVE \$2.49 Cassettes \$4.99 You Save \$3.00

Simpson's Electronics Located in Boggs & Johnson East Side of Square TV & Stereo Repair VHF & UHF Antennas FOR SALE 19" portable B&W Color TV Phone 864-2346

Tel Sales Co. Metal Buildings, Grain Bins & Equipment, Motors, Pumps Call 817-442-4491 Munday, Texas

McTid's Inc. Lumber & Construction "Quality Construction For Less" Building Sites Available Check with us for the best price on all your home improvement needs. This Month's Special Outside Latex House Paint No. 1240 \$8.99 per gallon 105 N. 1st St. Haskell, Texas Ph. 864-3552 or 864-3592

# Rice Springs News

March has sure been giving us fits as far as wind and sand is concerned. I'm looking forward already to April showers and sure hope they settle the dust so maybe we can finally get all of it out of our craws. By the time this is read, Spring will officially be here. I think most everyone here is looking forward to Spring and can hardly wait until the grass and trees start to green up and the flowers start to bloom. We have several here at the home who say that they already have Spring fever, but I'm afraid that mine is just plain old laziness, because I seem to have it all the year through.

We have only had one to celebrate their birthday this past week and that was Edna Collins. Her birthday was on the 11th. We are sure she had a good day and hope she has many more healthy, happy birthdays.

Our deepest sympathy goes to the family of Ida Brinlee who passed away on March 7th. Ida wasn't a resident at Rice Springs too long, but during her short stay here, we all learned to love her and appreciate the brave person that she was. She will be missed by everyone.

We were glad that May Cook got to feeling well enough to come back to the home after having to spend

several days in the Haskell Hospital.

Again our thanks go to all our regular volunteers who come each and every week. Also we want to say that we appreciated the ladies and Rev. Putnam of the Haskell First United Methodist Church coming on March 10th, and presenting some good gospel music and a devotional on "Worship." We also appreciated the Sweet Home Singers coming on Thursday night, even though Cooter Boles couldn't come and lead them.

By the time this is read, St. Patrick's day will already have come and gone. We hope no one here in the home or out there is too black and blue from all the pinches you got on that day for not having something on that was green.

We had several visitors the past week and we thank all of them for coming and sorry that we are not permitted to put everyone's name in the paper. The out-of-county visitors were as follows:

Coming to see Sam and Ethel Bradford were their son and granddaughter, G.A. and Brenda Bradford of Peacock.

J.A. and Dean Bush of Plainview visited his mother, Trudie Bush. Trudie was taken to Abilene on Tuesday by her daughter and son-in-

law, Earlene and Raymond Smith, to see her eye specialist and she returned with a pretty good report.

Emma Lammert was taken to Stamford on Sunday, March 9th by her daughter and son-in-law, Alice and Alvin Bredthauer, to the Christ Lutheran Church who was having its 25th anniversary on that day.

J.C. and Pearl Schwartz of Snyder visited her aunt, Alvena Holle.

Mr. and Mrs. C.T. Gunnels of San Antonio came to help his mother, Edna Collins celebrate her birthday a few days early. They also took her to Knox City to visit her daughter and family, Mr. and Mrs. Ophus Posey.

Evelyn Green of Fort Worth came to see her aunt, Ora McCollough.

Coming to see Emma Puschel was her great grandson, Stephan Peiser.

Nettie and Raleigh Brock of Fort Worth visited her father, Bill Harell.

Visiting Dovie Gregory were her children, Marie Hobbs and G.M. Gregory, both of Stamford.

Mrs. Herman Nauert and Lena Boedeker of Stamford visited their mother, Mary Schonestedt.

Mona Gibson of Old Glory and Irene Roa and children of Fort Worth visited Jonnyne Pumphrey.

Visiting Jim and Dutch Cross were their sister and brother-in-law, Mr. and Mrs. Sam West of Lubbock and their nephew, Curtis Cross of Cibolo.

Mr. and Mrs. Milton Reeves of Knox City came to see her brother, Joe Teague.

Recent visitors of Maggie Martin were Opal Howe and her two grandchildren of

Clyde.

Jack Sessions and Mr. and Mrs. Jack Sessions, Jr. and their two children, all of Elk City, Oklahoma visited Ethel Rose and Charity Bradley. Also visiting Charity were her nephew, Mr. and Mrs. Bill Leflar and their two children of Midland.

Visiting Alma Cole were her sister and brother-in-law, Lois and E.G. Post of Abilene.

J.D. Marcus of the Sunset School of Preaching in Lubbock came to see A.C. Boggs.

J.C. Hargrove was visited by his wife, Fannie B. Hargrove of Throckmorton.

Thanks again to our visitors and we urge all of you to keep coming.

"Resident of the Week"

The resident that I would like you to meet this week is John Earp. He was born on August 15, 1897 to John Wesley and Edna Mae (Holleyman) Earp close to

Rising Star. He had six sisters and five brothers, but only two sisters and one brother are still living. They are Bernice Jackson of Eastland, Ruth Middlebrook of Rising Star, and Joe Perry Earp of Knox City.

John attended the Grisby School near Rising Star and later a school in Rising Star.

At the age of twenty one, John married Ruth Smith, also of Rising Star, on Dec. 29, 1918 in Rising Star. Their first two children, now Elizabeth Hisskell of Pampa and Wilburn Earp, now of Pampa also, were born while they still lived at Rising Star, where John farmed for a living.

In 1923, John moved his family close to Knox City, where he farmed for one year. The family then moved close to the Lone Star School, which was located five miles Northwest of Weinert and later on to a farm about five and a half

miles west of Weinert, where they lived the next twenty years on the Bettis farm. After they moved to the Weinert area, the Earps had two more children, Johnny Earp, still of Weinert, and now Darlene Dunnam of Lubbock.

Mr. Earp not only farmed all those years, he also worked in the grocery store in Weinert which was first owned by Payne Hattox, then by M.L. Raynes, and later by J.A. Mayfield.

The Earps later moved into Weinert where Mrs. Earp died on June 2, 1969. John remained living in Weinert until he came to make Rice Springs his home on November 17, 1977.

John enjoys attending all the different church services and musical programs that we have here. He still likes to sing along as the different ones sing, and may we say that he is still a good singer.

John is still a member of the Weinert First Baptist Church and he really enjoys his pastor, as well as his old friends, coming to the home to visit him.

Mr. Earp is the proud grandfather of eleven grandchildren and thirteen great grandchildren.

Until next week, let's all think "Spring."

\*\*\*\*\*  
 ELECT  
**Thelma Edwards**  
 (unexpired term)  
**Commissioner Precinct 2**  
**Haskell County**  
 \*\*\*\*\*

**TOWER**  
 DRIVE-IN  
 RULE, TEXAS  
 Fri.-Sat.-Sun. March 21-22-23

*Leo and Loree*  
 United Artists  
 DONNY MOST  
 LINDA PURL PG

**The Haskell Free Press**  
 Established January 1, 1886  
 PUBLISHED EVERY THURSDAY

**MEMBER 1980**  
**TEXAS PRESS ASSOCIATION**

BILL COMEDY—Publisher  
 DON COMEDY—Editor

Entered as second-class matter at the post office at Box 577, Haskell, Texas 79521, under the Act of March 3, 1879.  
 (USPS 237-040)

**SUBSCRIPTION RATES**  
 In Haskell and Adjoining Counties

	Total
One Year	\$7.25
Six Months	\$5.00
Two Years	\$14.00
Elsewhere in Texas	
One Year	\$8.50
Six Months	\$6.00
Two Years	\$16.00
Outside of Texas	
One Year	\$10.00
Six Months	\$7.00
Two Years	\$19.00

NOTICE TO PUBLIC—Any erroneous reflection upon the character, reputation or standing of any firm, individual or corporation will be gladly corrected upon being called to the attention of the publishers.

**Booster Club Is Selling Jackets**

The Indian Booster Club is selling school jackets in black oxford nylon. They will have a Haskell Indian emblem with an Indian head insignia printed on the front or back of the jacket. They come in three styles: windbreaker at \$13.95; medium weight with flannel lining at \$21.95; and a pile lined jacket with quilted interlined sleeves at \$26.95. The jackets, designed with raglan sleeves, elasticized wrist, and snap fronts are guaranteed for 90 days after receipt of merchandise.

Samples can be seen at the Elementary or Junior High Schools. All three styles come in sizes youth 6-8; 10-12; and 14-16 or adult sizes X-small (30-32), small (34-36), medium (38-40), large (42-44), X-large (46-48), XX-large (50-52). Buy one today to boost school pride and school spirit. Call Tommy McAdams, James Davis, Jimmy Browning or Geraldine Hise and order yours today.

Booster Club Moms are working on Wednesday and Thursday nights at the Reading building at the Haskell Elementary School at 7 p.m.. Anyone may come paint and glue decorations for the All Sports banquet May 17, 1980.

**Spring Parade OF VALUES!**

Blue Ribbon Beef	<b>\$1.99</b> lb	Bordens	<b>\$1.49</b> ½ gal. round ctn
Round Steak	<b>\$1.79</b> lb	U.S. No. 1	<b>39¢</b> Head
Rump Roast	<b>\$1.29</b> lb	Green	<b>5 for 99¢</b> Bell Pepper
Hamburger Meat	<b>\$1.29</b> lb	Colorado	<b>15¢</b> lb Yellow Onions
Best Quality	<b>\$1.29</b> lb	Imperial	<b>\$1.79</b> 5 lb Sugar
Parkay	<b>59¢</b> lb Quarters	Folgers	<b>\$2.99</b> 1 lb can Coffee
Keebler	<b>79¢</b> 12 oz box	Town Talk	<b>59¢</b> Large Loaf Bread
Schillings	<b>89¢</b> 4 oz	Club	<b>89¢</b> box Crackers
Black Pepper	<b>\$1.49</b> 6 cans	Bama	<b>\$1.39</b> 12 oz can Spam
Coca Cola	<b>\$1.49</b> 3 lb jar	Campbells Chicken Noodle	<b>89¢</b> 3 cans Soup
Grape Jelly	<b>\$1.79</b> 12 oz can	Lysol	<b>\$1.79</b> 12 oz can Room Spray

**POGUE GROCERY**  
 —Extra Parking Behind The Store. Home Owned and Operated—  
 113 North Avenue E Phone 864-2015 Haskell, Texas

**99¢ SALE**

**The Dude**

Drop on in for a Dude. Texas tastin' good. Golden chicken-fried meat, lettuce, tomato, done up fancy on a toasty bun. The Dude. For the Good Times, and a great price.

**This Monday March 17 thru Sunday March 23 only.**

**Dairy Queen**

Offer good only at Texas Dairy Queen Trade Association Participating Stores

# W.O.O.'s View Swinson's Slides Of Russian Trip

Charles and Leatrice Swinson showed colored slides of their trip to Russia when the W.O.O. of First Baptist Church met Thursday evening in Fellowship Hall. Comments on the beautiful buildings, the stonework, their wares offered for sale, the food and how it was served, their farm implements and even their street sweeping were most interesting.

Members and their guests, Jeanette Taylor, Marguerite

Jordan, and Lewis McCollum were seated at tables carrying out the St. Patrick's Day theme. The tables were centered with green top hats filled with Bells of Ireland ivy and shamrocks. Small cut-out shamrocks were scattered the length of the tables.

John Therwhanger called the meeting to order and following prayer and the reading by secretary of a note of thanks from the Bradshaws

for Kimberly Ann's gift, the meeting was turned over to the Swinsons.

During the social hour, discussion of the film continued with Charles and Leatrice answering numerous questions about the trip. The hostess committee composed of Margaret Wall, Lola Henshaw, Ozelle Frierson and Eula Therwhanger served sandwiches, cheese balls, and doughnuts with coffee and hot chocolate to the members and

their guests.

Each member brought Easter eggs, Easter grass or light-colored crepe paper to send to Abilene State School. Any who were unable to attend Thursday may take their gifts to the church office by March 30th.

## Christian, Quade Wed

Melodee Quade of Stamford, daughter of Mrs. Lee R. Vanderworth and the late Edgar Quade, and Milton Christian of Haskell were united in marriage Sunday, March 16 in the Amerson Chapel at St. John's Methodist Church in Stamford. Dr. Cyril Stone and Rev. Hubert Segio officiated.

The bride was given in marriage by Lee Roy Vanderworth. Betty Murpree was Miss Quade's matron of honor and George Christian of Houston was his brother's best man.

Guests were relatives and close friends of both families. The groom's family hosted the rehearsal dinner at the Cliff House Restaurant.

After the wedding ceremony, a reception was held in the church parlor.

Following a trip to the Big Bend area, the couple will be at home at 1318 Landon in Stamford.

# Fine Arts Festival Set In Breckenridge

The Breckenridge Woman's Forum will hold its annual Fine Arts Festival April 18, 19, and 20 at the Woman's Forum Building, 1700 West Walker. The show hours are Friday, 10 a.m.-7 p.m., Saturday, 10 a.m.-8 p.m. and Sunday, 1 p.m.-5 p.m.

The Festival, open to

children and adults, will accept sculpture and works in oil, watercolor, acrylic, pencil, and pen and ink. Miniatures, 5X7 and under, will be accepted for exhibit and sale but will not be judged.

Prize monies will be awarded in Novice, Regular, and Professional divisions with Best of Show receiving \$200.00 and three runners-up receiving \$100.00 each. Best works by a Novice, Regular and Sculpture will receive \$25.00 each.

A Patio Art Sale will be featured in which artists may sell their framed or unframed

work, with no work being priced over \$50.00.

All prices should be inclusive of a 20% commission received by the Forum.

Entries will be accepted Sunday, April 13, 1:30 p.m. to 5:00 p.m. and Monday, April 14, 10:00 a.m. to 4:00 p.m. at the Forum Building. Entry entry, limit three, and entry fee for adults is \$3.00 per entry, limit three. Entry fee for miniatures is \$2.00 per three with no limit number of entries.

For more information contact: Mrs. Parks Sloan, 817-559-8392, or Mrs. David Clark, 817-559-2364.

## Around Town

Mrs. Claude Ashley has returned home after a 2 week visit in the home of her son, Olin Ashley, and family in Odessa. Mrs. Ashley also attended the funeral of her sister, Mrs. Evin P. Lawson, in Midland. Mrs. Lawson died at Seminole, but was a former resident of Midland. Funeral services for Mrs. Lawson was held in Ellis Funeral Home and burial was in Sunset Memorial Gardens in Midland.

Mr. and Mrs. Kenneth Hilliard, Nicole and Chessa of Brownfield, visited his parents, Mr. and Mrs. E.L. Hilliard over the weekend. Other visitors were Ellen Hilliard and Jean Ballard of Abilene and Mr. and Mrs. Larry Short of Rochester.

## Young Homemakers Hear Book Review

The Haskell Young Homemakers met Monday, March 17, 1980 at the home of Marijane Cunningham. It was a lovely country setting for a

large turnout.

Mrs. Jerry Schultz from Abilene gave a delightful book review on a book called "Forty Acres and No Mule." In addition, Mary Jennings, who works with slow and retarded children from birth to 3 years of age, talked with the Young Homemakers about developing young children's motor skills. Both speakers were enjoyed and the Homemakers wish to express their appreciation to both ladies.

## BIRTHS

Mr. and Mrs. Pedro Perez of Weinert announce the birth of their son, Timothy Dwayne Perez, born March 15, 1980 at Haskell Memorial Hospital weighing 8 lb 2 1/2 oz.

Mr. and Mrs. Johnny Glenn Spencer of Breckenridge announce the birth of their son, Jacob Wayne Spencer, born March 11, 1980 at Haskell Memorial Hospital weighing 8 lb 3/4 oz.

Mr. and Mrs. Robbie Peiser of Haskell announce the birth of their daughter, Robin Breann Peiser, born March 12, 1980 in Stamford Memorial Hospital weighing 8 lb 1 1/2 oz and measuring 19". Welcoming her home were her grandparents, Mr. and Mrs. Jimmy Hannsz, Mr. and Mrs. Wayne Peiser, and aunts and uncles.

Hostesses for the March meeting were Marijane Cunningham, Bonnie Fouts, Elizabeth Hairgrove, Gerre Larned and Louise Thornhill.

As some delicious cookies and punch were served the Homemakers discussed various club matters. Committees were appointed to organize future projects and to execute club business. Good food and conversation were enjoyed by all.

## Homemakers Attend Rally Day

Seven members of the Weinert Extension Homemakers Club attended the Tri-County Rally Day in Seymour on March 12. Baylor, Haskell, and Knox County Extension Homemakers get together once a year for a fun-filled day. This year it was Baylor County's turn to have the Rally Day.

The morning session included a devotional, a group sing-song, a crafts show-and-tell time, and musical entertainment presented by Brother and Mrs. McIntosh.

After the morning session everyone enjoyed a delicious covered dish lunch.

The afternoon session found the clubs presenting skits and participating in a short business meeting. The Rally Day ended with everyone receiving a door prize.

Those attending from Weinert were: Mrs. M.C. Cunningham, Mrs. Bailey Guess, Mrs. J.D. Roberts, Mrs. Gus Rueffer, Mrs. Hazel Smith, Mrs. Floyd McGuire, and Mrs. Tom Yates.

**GRAND**  
Stamford 773-3181

Fri. 21-Sat. 22-Sun. 23  
Open 7:30 - Starts 8:00  
One Showing Only  
Robert Redford - Jane Fonda  
"Electric Horseman"

**DRIVE-IN**  
Stamford 773-3272

Fri. 21-Sat. 22-Sun. 23  
The Ultimate Terror  
Has Arrived!  
"The Visitor"

Wed. 26-Thurs. 27  
XX-Adults Only  
No One Under 18  
"Sophomore Sensations"

**Spring and Brights go together**

Wangler  
STRAIT LANE  
Lady Bayard  
Personal  
That's Me  
HEBY KNITS  
KORET OF CALIFORNIA  
Joe Frank  
CENTER STAGE  
The Playlife  
409 South First  
Phone 864-2901  
HASKELL, TEXAS

**Dallas Christian College Choir**  
March 23, Sunday 10:45 a.m.  
Everyone Welcomed to Share in this Service of PRAISE.

**WEEKEND PREACHING RALLY**  
March 28-29-30  
Bro. Mike Abbott of Ft. Worth - Preaching  
The Abbott family will be in charge of the entire services.  
Friday Night at 7:30 p.m.  
Saturday Night at 7:30 p.m.  
Sunday Morning at 10:45 a.m.

Everyone is welcomed to share in all of these services and receive a SPIRITUAL BLESSING

**Haskell Christian Church**  
107 N. F  
A Bible Believing Church  
A Bible Preaching, Teaching Church  
A Missionary Church  
A Free Church  
The Church with the SWEET SPIRIT OF GOD

**ODD CHALKING**

MORE THAN A FIFTH OF ALL LIGHT HOUSES IN THE U.S. ARE ON THE GREAT LAKES...

ALL HOUSES ON OUR RESIDENTIAL PROPERTY LIST. Get MORE PROFESSIONAL ATTENTION And We Can HELP YOU Get MORE For Your SELLING DOLLAR!

**THE HARTSFIELD AGENCY**  
INSURANCE-REAL ESTATE-LOANS  
(817)864-2665  
4179 FIRST ST. HASKELL



MR. AND MRS. GEORGE E. BURRUS of Dallas announce the engagement of their daughter, Linda Kay Burrus, to David Ray Hill, son of Mr. and Mrs. Melvin Hill of Haskell. The couple is planning to marry July 19, 1980 in the Casa View Baptist Church in Dallas. The bride-elect is a graduate of Bryan Adams High School in Dallas and will graduate in May from Hardin-Simmons University with a bachelor's degree in elementary education. A graduate of Haskell High School, the prospective groom will also be graduating in May from Hardin-Simmons University with a bachelor's degree in church music.

## Mrs. Jacobs Presents Garden Club Program

The Haskell Garden Club met Thursday, March 13th, at 2 p.m. in the Bank Community Room with the president, Mrs. K.H. Thornton, presiding.

Mrs. Charles E. Jacobs of Albany was guest speaker for the meeting. She presented a lovely program on Artistic Arrangements with twelve decorated tables depicting a most unusual and interesting arrangement for each month of the year.

Hostesses for the meeting were Mrs. Otho Nanny, Mrs. C.J. West, Mrs. C.B. Rhea and Mrs. C.T. Jackson who served refreshments to 21 members and 23 guests.

DALLAS CHRISTIAN COLLEGE presents  
**Revelation**  
"... a joyous celebration ..."  
DALLAS CHRISTIAN COLLEGE presents  
**Revelation**  
"... a joyous celebration ..."  
DALLAS CHRISTIAN COLLEGE presents  
**Revelation**  
"... a joyous celebration ..."

**Haskell Christian Church**  
March 23, 10:45 a.m.

**introducing**

**BRENT GRAVES**  
★ 2 year Graduate of Texas State Technical Institute in Waco, Texas

Now Associated With

**Amonett & Amonett TV**  
414 N. First — Haskell  
Call 864-2870 For Fast Service — All Brands

**PERRY'S** 'Pre-Easter'

Store Hours 8 til 5:30 Monday through Saturday Lois Ann Howard, Mgr.

**FABRIC SALE**

**TERRY KNITS**  
\$3.49 yard  
PERRY'S SALE PRICE  
• Our Regular \$4.49  
• 60" Wide  
• Beautiful Spring Solids  
• Save \$1.00 per yard

**Pellon Interfacing**  
PERRY'S SALE PRICE  
**29¢** YARD

**CLIP DOTS**  
• Poly Cotton  
• 45" Wide  
• Easy Care  
• Regular \$2.29  
PERRY'S SALE PRICE  
**\$1.66** yard

**Harmon Air Prints**  
• Fashion Prints  
• 45" Wide Poly/Cotton  
• Machine Wash  
• Regular \$2.29  
**\$1.66** yard  
PERRY'S SALE PRICE

**EYELET**  
• White, Red, Blue  
• 45" Width  
• Poly/Cotton Blend  
• Regular \$3.99  
**\$2.97** yard  
PERRY'S SALE PRICE

**GINGHAM CHECKS**  
**\$1.47** yard  
PERRY'S SALE PRICE  
• Famous Dan River Quality  
• 45" Wide Poly Cotton  
• Assorted Sizes and Colors  
• Save This Week Only

**Spring Prints**  
• Excellent for Easter!  
• 45" Wide Poly/Avril  
• Assorted Spring Prints  
• Regular \$2.29  
**\$1.66** yard  
PERRY'S SALE PRICE

# Sagerton News

Mrs. Jack Monse and Dewayne were in San Angelo several days last week, where they attended the San Angelo livestock show. Dewayne showed two lambs in this show. They also visited with Mr. and Mrs. George Mullins, Belinda and Sheralyn and Mr. and Mrs. Dave Letz and April of Abilene. They also spent some time with his parents, Mr. and Mrs. David Letz.

Mrs. M.Y. Benton, Mrs. Alva LeFevre took Mrs. Etta Leach to Stamford Friday to take a bus to Waco to see her brother who is ill in the hospital.

Mr. and Mrs. Roy McEver and sons of Tuscola visited last weekend with their parents, Mr. and Mrs. Sam Neinast.

Mr. and Mrs. Melvin Baitz, Mr. and Mrs. Bill Hertel and Mr. and Mrs. Kenneth Hertel of Hamlin were in Fort Worth for a farm show March the 8th.

Mr. and Mrs. Delbert LeFevre went to Stephenville to see their daughter play basketball with McMurry, where she is attending school. The team won the regional title. They will play at Abilene Saturday night against Tarleton.

Mr. and Mrs. Delbert LeFevre went to the farm show at Fort Worth the 8th of March.

Mr. and Mrs. Alvin Bredthauer, Clarence

Stegemoeller of Sagerton and Mrs. Emma Raphael of Stamford enjoyed 84 games at the home of Mr. and Mrs. J.A. Hertel in Stamford.

Lillian Neinast is at home now after a stay in the Stamford Hospital. Fred Kupatt is home from the Wichita Falls Hospital.

Mrs. Alva LeFevre, Mrs. Etta Leach, Mrs. Luoise Stegemoeller and Mrs. Alvin Bredthauer went to Haskell Tuesday to Rice Springs Care Home to visit with several people.

Mr. and Mrs. Buster Tredemeyer visited in Sweetwater with their son, Charles, and wife over the weekend.

Jill Jennings of Haskell is visiting her grandparents, Mr. and Mrs. Buster Tredemeyer during spring break from school.

Mr. and Mrs. David Letz visited in Brownwood with their daughter, Cindy and Richard Peterson, and the grandchildren who just moved to Brownwood recently.

Lyndel and Larry Quade were home this weekend to visit their parents, Mr. and Mrs. Glyn Quade.

Marla Lehrmann was home this past week with her parents, Mr. and Mrs. Norvell Lehrmann.

Mr. and Mrs. Alvin Ulmer hosted a dinner in their home for some of their family Sunday. Attending were Mr. and Mrs. Odell Shelton, Mr.

and Mrs. Monroe Blackwell of Stamford, Mr. and Mrs. Al Arend of Haskell, Mr. and Mrs. Randy Arend and children of Cleburne and Mrs. Betty Bruggeman of Stamford.

Mr. and Mrs. Alvin Ulmer visited with Mrs. Essie Frizell of Ralon, New Mexico, in Stamford where she was sick.

Mr. and Mrs. Herbert Niedieck hosted the Bredthauer family dinner in their home Sunday. Those attending were Mr. and Mrs. Alfred Bredthauer of Stamford, Mr. and Mrs. Walter Bredthauer of Haskell, Mr. and Mrs. Ernest Bredthauer of Rule and Mr. and Mrs. Alvin Bredthauer of Sagerton, Tommy Cook and family of Hawley, Tommy Niedieck and family of Abilene and Dicke Greenwood and Melissa Niedieck of Stephenville.

Winston and son, Brad, of San Antonio stopped to visit with Mr. and Mrs. Alvin Ulmer before going to Lubbock for Brad to attend a student day at Tech College.

## Trust Fund Started For Paula Hill

Paula Hill, granddaughter of Mr. and Mrs. W.B. Hill and Mr. and Mrs. J.H. Kreger, was admitted to High Plains Baptist Hospital in Amarillo in January. A brain tumor was found to be malignant, and she is now in a comatose condition. Recently Paula was moved to St. Anthony's Hospital to undergo chemotherapy and radiation treatments.

Paula is an applied music major at West Texas State University. She accumulated senior hours and completed student teaching in 2½ years of college. Paula is Projects Chairman and Executive Council member in Tau Beta Sigma, President of Lambda Chi Alpha Crescents and Scribes, Friendship Corner Chairman of Mu Phi Epsilon, and member of Alpha Chi and Phi Eta Sigma. Paula is also a flutist in the W.T.S.U. symphonic band and orchestra.

After many requests from the surrounding community, a trust fund has been jointly set up by Tau Beta Sigma and Lambda Chi Alpha Crescents. If you would like to help Paula, gifts may be sent to: Paula Hill Trust Fund, West Texas State Bank, 1700 4th Ave., Canyon, Tx. 79015.

NEW ERASER-MATE Pens by Papermate. The only pen that erases mistakes. Now available at the Haskell Free Press.

# GE COLOR TELEVISION CASH REBATES

**\$50 CASH REBATE** ON ALL GE 1980 25" DIAGONAL VIR II REMOTE CONSOLES AND 6 HOUR PROGRAMMABLE VCR

**\$25 CASH REBATE** ON ALL GE 1980 25" DIAGONAL VIR II NON REMOTE CONSOLES

**MARCH 3 TO APRIL 30, 1980**

DIRECT FROM GENERAL ELECTRIC

CHOOSE FROM A WIDE SELECTION OF GE VIR II COLOR CONSOLES

**\$50 CASH REBATE**

- VIR II Broadcast Controlled Color Television
- Keyboard Quartz Precision Electronic Tuning
- Dual Mode Remote Control
- Cabinets constructed of a combination of hardwood solids and simulated wood.

**GENERAL ELECTRIC VIR II** when you change channels it adjusts the color for you, automatically.

The VIR Color System

- The broadcaster transmits a VIR signal with the color picture, on many programs through the communication system.
- The VIR signal lets the broadcaster monitor and maintain realistic color while transmitting the picture.
- GE VIR sets use this signal to automatically adjust the color picture in your home.

**\$25 CASH REBATE**

- VIR II Broadcast Controlled Color Television
- Quartz Precision Electronic Tuning
- Room Light Sensor
- Cabinets constructed of a combination of hardwood solids and simulated wood.

**QUARTZ PRECISION ELECTRONIC TUNING**

America's true colors come through on GE

GENERAL ELECTRIC

# Anderson Tire Co.

206 South Av E

864-2900

## Funny or Unfunny

Federal auditors say the computerized bill-paying system at the General Services Administration is an easy mark for electronic robbery. To test the security of the system, the auditors secretly fed the computer a fake purchase order from a phony company. Then they billed GSA \$95,256 for the nonexistent purchase and received the money almost immediately, less a discount for prompt payment. The watchdogs say that a couple of hundred federal workers around the country have access to the computer and could pull the same trick.

Conservative Digest

### EASY DOES IT

Weatherman to radio announcer: "Better break it to 'em gently. Just say, 'Partly cloudy, with scattered showers followed by a hurricane'."

### COMPLAINT

Two Labor leaders were in a hotel lobby in Washington following a conference, and watched as two pretty girls met and kissed each other.

"There's another thing that isn't fair," remarked one. "What's that?" asked the other. "Women doing men's work!"

If You Don't Trade At

## Smitty's Auto Supply

We Both Lose Money

Haskell, Texas

## Thank You Sale! 10% Discount To Show Our Appreciation

All Fresh New Spring Stock



### HATS

Entire Stock  
All Resistol  
Western & Dress  
2 5/8 to 4 inch  
Brim

### SUITS

Entire Stock

Botony

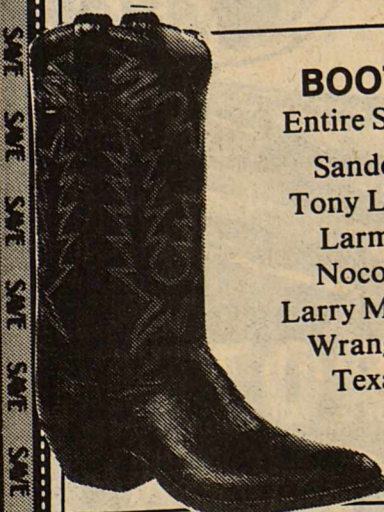
H-Bar C

Merit

Prestige

West

etc.



### BOOTS

Entire Stock  
Sanders  
Tony Lama  
Larmie  
Nocona  
Larry Mahan  
Wrangler  
Texas

## Lane APPAREL FOR MEN

Next to M-System

Come and let us Thank You for Your Business!

# M SYSTEM

Your FRIENDLY

**AFFILIATED SUPER MARKETS**  
Haskell, Texas  
Where your dollar buys more



**WE HAVE THE NEW 1980 GREEN STAMP CATALOGUE!**



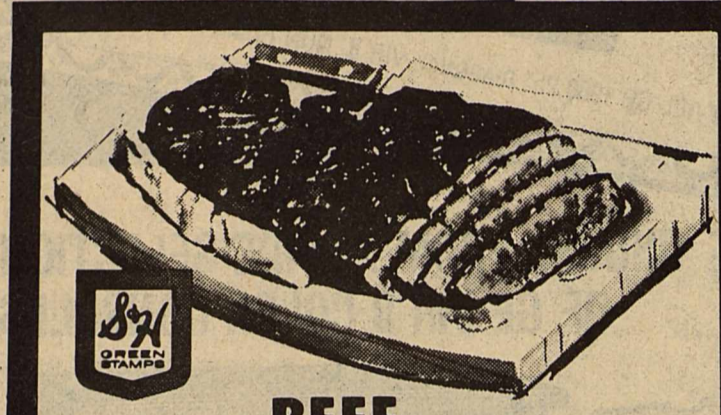
**DOUBLE S & H GREEN STAMPS WEDNESDAYS**  
With The Purchase Of \$2.50 Or More

Specials Good  
**Thurs. March 20**  
thru **Wed. March 26**

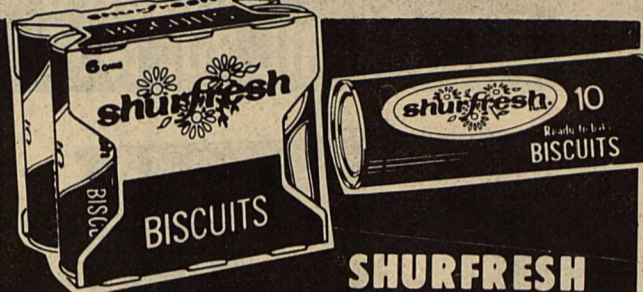
Shurfresh Soft  
**OLEO** 1 lb Tub **59¢**

Hormel Little Sizzlers  
12 oz pkg **\$1.09**

Shurfresh Cinnamon Rolls  
9.5 oz can **63¢**



**BEEF BRISKET**  
LB. **\$1.28**



**SHURFRESH BISCUITS**  
Buttermilk or Sweetmilk  
EACH LIMIT 6 **10¢**

Shurfresh Lunch Meats  
6 oz pkg **69¢**

Shurfresh Halfmoon Colby or Cheddar Cheese  
10 oz pkg **\$1.29**

**BEEF CUTLETS**  
lb **\$1.69**

Shurfresh Asst'd. Yogurt **29¢**  
8 oz ctn  
Shurfresh Cottage Cheese **89¢**  
16 oz ctn.

Shurfine Crinkle Cut Potatoes  
5 lb bag **\$1.79**

Shurfine Whipped Topping  
8 oz ctn. **59¢**

Assorted Shurfine Pizza  
12 oz size **99¢**

Shurfine Waffles  
10 oz ctns. **99¢**

Shurfine Glazed Donuts  
14 oz size **85¢**

Shurfine Frozen Orange Juice  
6 oz can **39¢**

Shurfine Frozen Pie Shells  
pkg of 2 9 inch Shells in Pans **59¢**

**HEALTH & BEAUTY AIDS**  
HEAD & SHOULDERS  
**LOTION SHAMPOO**

7-oz., **1.49**  
\$1.79 VALUE

**SEA BREEZE**  
ANTISEPTIC FOR THE SKIN  
10-oz., **1.99**  
\$2.79 VALUE

**BAN ROLL-ON**  
DEODORANT  
1½-oz., **1.39**  
\$1.61 VALUE



Sylvania Soft White

**Light Bulbs** 60-75-100 Watt 2 pk **99¢**

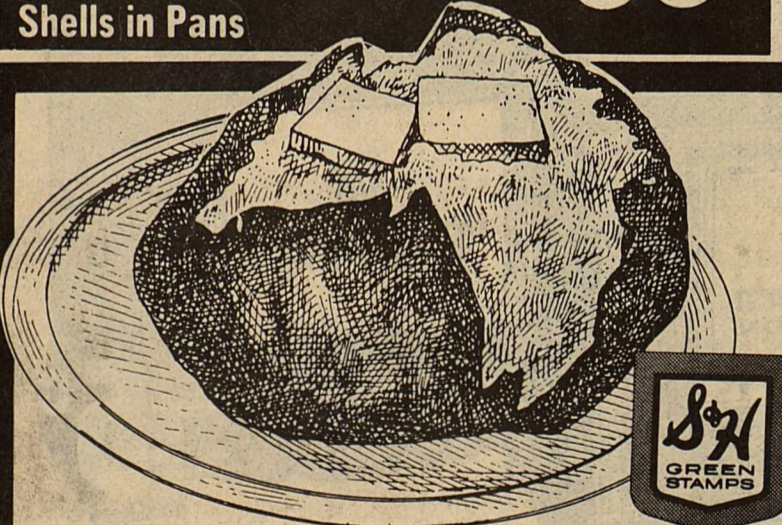
Shurfine Dog Food With Gravy  
5 lb bag **99¢**

Shurfine Aluminum Foil  
12 in x 25 ft. r. **2 for 89¢**

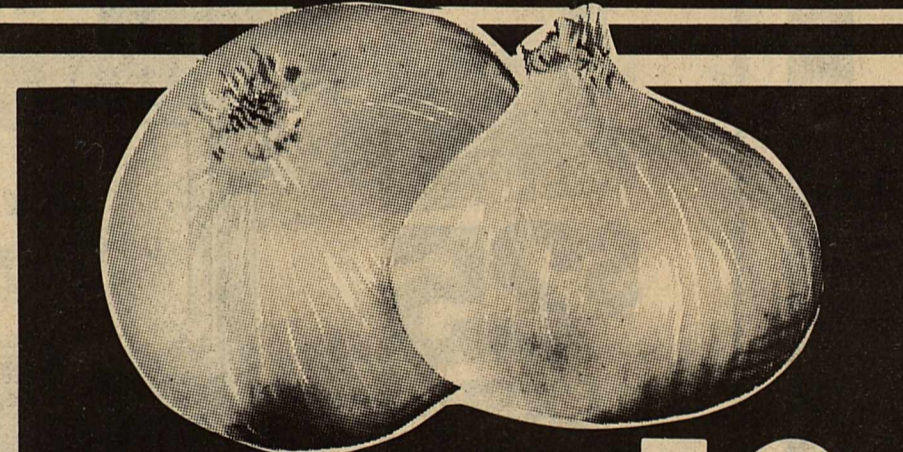
Shurfine Tall Kitchen Bags  
15 ct. pkg. **99¢**

Shurfine Pink/Lemon Detergent  
22 oz Liquid **69¢**

Shurfine 150 Ct. Pkg. **Sandwich Bags 69¢**



U.S. NO. 1 RUSSET  
**POTATOES**  
10-POUND BAG **98¢**



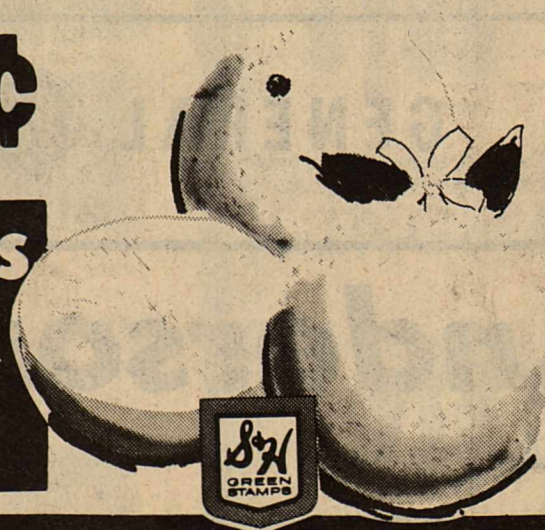
**WHITE ONIONS** LB. **19¢**

**TANGELOES**

SUNKIST  
**3** LBS. **\$1.00**



**Rutabaga Turnips**  
POUND **15¢**



SUNKIST NAVEL  
**ORANGES**  
56-COUNT  
**4** LBS. **\$1.00**

**FRESH CARROTS**  
2-POUND BAG **39¢**



# SHURFINE SPRING SAVINGS SALE!!

Shurfine Cut  
**Green Beans**  
4 16 oz cans **\$1**



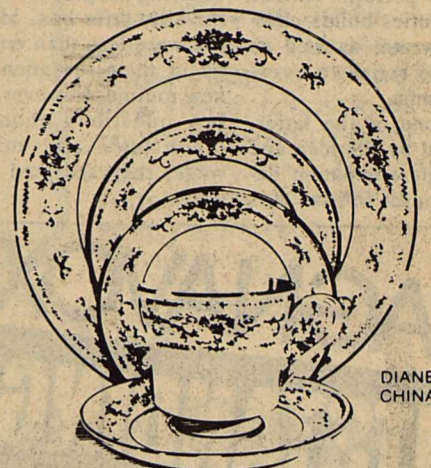
Shurfine  
**Tomatoes**  
Whole Peeled  
4 16 oz cans **\$1**



Shurfine  
Sliced or Halves  
**Peaches**  
16 oz can **38¢**



**ON SALE NOW!**  
Beautiful, Fine  
Porcelain China




DIANE CHINA

Now you can collect a beautiful set of china through this exclusive offer. Each week a different place setting piece will be featured at this special price and purchase requirement.  
Matching accessories are also available to complete your collection. Each accessory is available throughout the program with no purchase requirement!

**THIS WEEK'S FEATURE ITEM:**  
CUP **89¢** EACH  
with each \$3.00 Grocery Purchase

Shurfine  
**BLEACH**  
Gallon Jug **48¢**




Shurfine  
**Fruit Cocktail**  
16 oz can **49¢**



Shurfine Vac Pack Whole Kernel  
**Gold Corn**  
12 oz cans **3/\$1**



Shurfine Chunk Light In Oil or Water  
**TUNA**  
6.5 oz can **69¢**



Shurfine  
**Pork & Beans**  
16 oz can **29¢**



Shurfine  
Macaroni & Cheese  
**Dinners**  
4 Boxes **\$1**



Shurfine Mustard/Turnip Chopped  
**Green**... 16 oz can **29¢**  
Shurfine  
**Sauerkraut** 16 oz can **3/\$1**  
Shurfine Cherry  
**Pie Filling** 21 oz **\$1.39**

Shurfine Instant Orange Breakfast  
**Drink**... 18 oz size **\$1.19**  
Shurfine Medium Grain  
**Rice**... 2 lb size **69¢**  
Shurfine Seedless  
**Raisins** 15 oz size **\$1.29**

Shurfine Instant  
**Milk**... 20 QT. Size **\$5.29**  
Shurfine Cream of Chicken  
**Soup** Cream of Mushroom cans **3/85¢**  
Shurfine  
**Grape Jam** 18 oz jar **69¢**

Shurfine Saltine  
**Crackers**  
2 16 oz boxes **\$1**



Shurfine  
French Style  
**Green Beans**  
3 15.5 oz cans **\$1**



Shurfine  
Reg. or Self-Rising  
**Flour**  
5 lb bag **79¢**



Ranch Style  
**Beans**... 15 oz cans **3/\$1**  
Shurfine  
**Black Pepper** 4 oz size **79¢**



Shurfine  
**Salad Mustard**  
16 oz jar **39¢**

Shurfine  
**Peas & Sliced Carrots**  
16 oz can **39¢**




Shurfine Hamburger  
**Dill Slices**  
32 oz jar **89¢**

Shurfine  
**Tomato Sauce**  
8 oz can **19¢**

Shurfine  
**Apple Butter**  
28 oz jar **69¢**




Shurfine  
**Catsup**  
14 oz bottle **43¢**



Shurfine  
**Tomato Juice**  
46 oz can **69¢**



Shurfine Maraschino  
**Cherries**  
6 oz size **55¢**




Shurfine  
**Peach Preserves** 18 oz jar **89¢**  
Shurfine Strawberry  
**Preserves**... 18 oz jar **99¢**  
Shurfine  
**Waffle Syrup**... 32 oz jar **89¢**

Shurfine Sandwich  
**Spread**... 16 oz jar **63¢**  
Shurfine Sliced  
**Beets**... 16 oz size **3/\$1**  
Shurfine Sliced  
**Pimientos**... 2 oz glass **39¢**

Shurfine Graham  
**Crackers**... 16 oz box **69¢**  
Asstd. Choc., Vanilla, Shurfresh Sandwich  
**Cookies**... 20 oz pkg **79¢**  
Mrs. Bairds Pull-Apart  
**Bread**... 16 oz pkg **69¢**

Shurfine Whole  
**Sweet Pickles**  
22 oz size **99¢**



Shurfine  
**Tomato Paste**  
4 6 oz cans **\$1**



Shurfine  
**Quick Oats**  
18 oz pkg **59¢**

Shurfine Whole/Sliced  
**Irish Potatoes**  
2 16 oz cans **59¢**



Shurfine  
**Apple Sauce**  
16 oz size **39¢**



# Character—Who Needs It?

**By Gina Jennings**  
I thought I had finally found a child psychologist who was on my side. According to this well-intentioned expert, it is time to put children back onto the domestic work force. She gave excellent reasons for allocation of chores to both older children and even toddlers (a friend used to call them "rug-rats"). Being responsible to perform various household duties builds character, she wrote, as well as giving some relief to over-worked parents. I, being one of the latter, was charmed by the idea and with quick determination decided I would follow this

sagacious advice. Since my children would be home the whole week for spring break, I was absolutely sure that it was an ideal time to begin building character and start passing out a little more responsibility. Had I know what was to follow, it probably would have been me who passed out. They were really rather simple tasks; emptying trash, watering the garden, dumping the kitty-litter box. My children were less than enthusiastic in their reception of our new routine. However, after a few questions about child labor laws and minimum wage, they accepted it fairly well.

No matter how short-lived, it was a thrill to return from work that first day to find the bathrooms freshly cleaned and sparkling, the trash baskets empty and the dishes washed and piled in the drainer. I loudly announced my pleasure to the boys who glowingly informed me that even at that very moment their sister was out watering the garden. Surely I had done the right thing for once. My offspring already seemed to be exuding more character than they had a few hours earlier. What a delight to realize that I was seeing responsible citizens in the making...

And I, wise mother that I was, could relax and slip into the tub after a long day at work. Ever sit down in a bathtub that has been cleaned with powdered cleanser—and not rinsed out? Try scooting a peice of rough grade sand paper over bare skin. Yep, that's the idea. There must be some kind of bleach in that stuff too. Three or four freckles that have been with me for life completely disappeared. I tried not to say anything about it. I didn't expect perfection the first time. Although after that abrasive bath I could have been accused literally of being "thin-skinned." Emerging from the bathroom, I was greeted by my puzzled husband who asked me if there had been a parade in town today. "No. Why?" Because, he said, there is confetti blowing all over the yard. I looked. Since when do they throw paper towels and orange juice cans at a parade? Calling my sons front and center, their only explanation was, "I guess we missed the barrel." I suppressed my irritation (after all, no one told me building character would be easy) and started on supper. Jerking a glass from the dish drainer, the shock of cold water slapping across my face



Staff Photo by Don Comedy

## BIG RATTLES

Bobby Howard is shown with two large rattlesnakes he killed last weekend. The largest of the snakes was 55 inches long. With warming weather the reptiles are beginning to move and caution is urged by persons who frequent likely places.

## Bank Promotes Spicer

The St. Louis County Bank in Clayton, Mo., has announced the promotion of R.H. Spicer to the position of assistant vice president and trust officer of the bank.

Born in Stamford, Spicer is the son of two former residents of Haskell County. His mother is Mrs. LaVerne Spicer, formerly LaVerne Cosstephens of the Rule area, now residing in Florissant, Mo. and father Mr. Carl Spicer who resides in Popular Bluff, Mo.

The bank also announced the promotions of J.R. Albach and S.M. Brown to positions of assistant vice president and trust officer.

## Fees Collected

A monthly report of fees collected in the County Clerks Office of Haskell County by Rhonda Moeller, County Clerk, for the month ending February 1980 included: Recording Fees, \$1,409.00; Chattel Mortgage Fees, \$388.00; Marriage License Fees, \$22.50; Copies, \$385.75; Criminal Court Fees, \$60.00; Criminal Justice Planning Fund, \$20.00; Law Enforcement Education Fund, \$4.00; Comp., \$30.00; Probate Court Fees, \$268.00; Letters Testamentary, \$12.00; Judge, Sheriff, County Attorney Fees, \$218.00; Bonds \$170.00; Fines, \$710.00; Law Library, \$80.00; and Trial Fees, \$4.00; for a total of \$3,781.25.

## LITTLE LEAGUE

Haskell Little League will hold its organizational meeting Wednesday night, March 26 at 8:00 at the City Hall. All previous coaches, officers, ladies auxiliary and any other interested organized sports group for young folks are urged to attend. Previous coaches please check your equipment before this meeting.

The only requirement that is needed is a willingness to help and the only pay you will receive is satisfaction.

## HASKELL Lunch Menu

**March 24-28 MONDAY**  
Spanish Dumplings  
Buttered Spinach  
Cornbread Butter  
Pear Halves  
Peanut Butter and Crackers  
Milk

**TUESDAY**  
Chicken Salad Sandwiches  
Tater Tots Catsup  
Cheese Sticks Pickles  
Brownie  
Milk

**WEDNESDAY**  
Pizza  
Buttered Corn  
Apple Wedge  
Jello with Topping  
Milk

**THURSDAY**  
Chicken and Rice  
Seasoned Green Beans  
Hot Rolls Butter  
Applesauce Cake  
Milk

**FRIDAY**  
Tacos Catsup  
Grated Cheese  
Shredded Lettuce  
Spanish Rice  
Vanilla Wafer Pudding  
Milk

**Breakfast Menu MONDAY**  
Orange Juice  
Cereal  
Milk

**TUESDAY**  
Apple Juice  
Cereal  
Milk

**WEDNESDAY**  
Fruit wedge-apple  
Cinnamon toast  
Milk

**THURSDAY**  
Tomato Juice  
Cereal  
Milk

**FRIDAY**  
Mixed Fruit Juice  
Buttered Biscuits  
Peanut Butter Whip  
Milk

## Statement of Intent To Change Rates

General Telephone Company of the Southwest, in accordance with the Rules of the Public Utility Commission of Texas, hereby gives notice of the Company's intent to implement a new schedule of rates in Texas effective April 1, 1980.

The proposed changes in rates will affect all customer classes and are designed to increase the Company's gross annual revenue derived from local service by 37%.

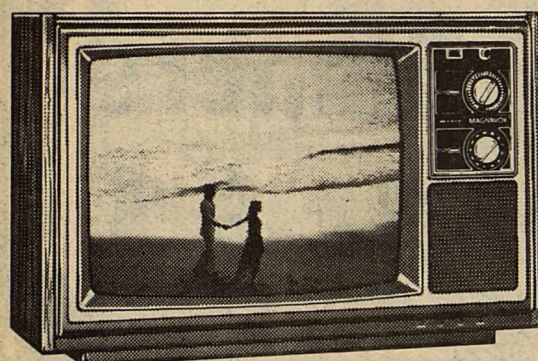
A complete set of revised rate schedules has been filed with the Public Utility Commission at Austin, Texas, and is available for public inspection in each of the Company's Business Offices in the State of Texas. A summary of the Company's rate filing has also been sent to the Mayor's Office of each affected municipality.

**GTE GENERAL TELEPHONE**

# MAGNAVOX

## OUTSTANDING VALUE COLOR TV

This Magnavox Portable with AUTOMATIC FINE TUNING...



Model 4168 — with 19" diagonal 100° in-line picture tube. **\$399<sup>95</sup>** W.T.

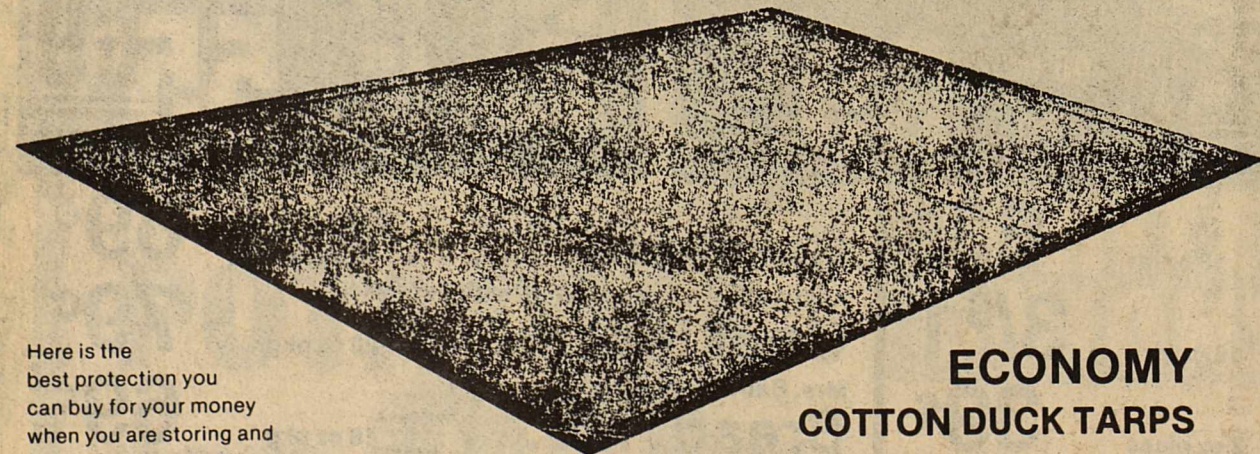
will bring you accurately tuned pictures — on any channel.

Enjoy hours of viewing pleasure with this outstanding Magnavox Color TV. It offers you big set performance in a compact, portable size — at surprisingly low cost. Special circuitry "locks-in" station signals to bring you accurately tuned pictures on UHF or VHF channels. Other features include a highly reliable 100% solid-state chassis, precision 100° in-line picture tube, plus, electronic voltage regulation to provide stable operating conditions — even in "brownout" situations.

QUALITY IN EVERY DETAIL  
**MAGNAVOX**  
WE MAKE STAYING HOME FUN

**Boggs & Johnson**  
SALES & SERVICE

# Cotton Module Tarps



Here is the best protection you can buy for your money when you are storing and transporting your cotton.

**ECONOMY COTTON DUCK TARPS**

Economy Cotton Duck Tarps are field tested and approved. Made of 10 oz. per sq. yd. (before treatment) Single Filled Cotton Duck treated to 16 oz. per sq. yd. (after treatment) with Canvak water and mildew resistant finish. Sewn with heavy duty rot resistant thread. All seams and hems are double-lock stitched and **seams run the short way across the width of the cover for added strength.** Hemmed on all four sides with metal grommets 3'-4' apart all around. Cotton Duck Tarps breathe avoiding condensation problems. They last longer giving you several years of trouble free service. Most important Cotton Duck Tarps do a better job of protecting your Cotton which means the lowest actual cost to you.

Check with me for sizes to fit your needs.  
PLACE YOUR ORDER EARLY FOR SURE DELIVERY.

—CONTACT—

**Richard Albus**

Phone 817-864-3860  
P. O. Box 72, Haskell, TX 79521

## Political Calendar

The Haskell Free Press is authorized to make the following announcement for the office in Haskell County, subject to the action of the Democratic Primaries in 1980. Unless otherwise specified the candidates listed paid for the announcement and have designated themselves as campaign treasurer. All political advertising, announcements, and printing is cash in advance.

**U.S. REPRESENTATIVE 17TH CONG. DISTRICT**  
Charles Stenholm  
(re-election)  
(Pd. for by Stenholm for Congress Comm. Charles Brownfield, Treasurer)

**STATE REPRESENTATIVE DISTRICT 101**  
W. S. (BILL) HEATLY  
(re-election)

**DISTRICT ATTORNEY**  
JOSEPH THIGPEN  
(re-election)  
Pd. for by Pam Thigpen

**COUNTY ATTORNEY**  
CHARLES CHAPMAN  
(re-election)

**SHERIFF**  
G. T. GARTH GARRETT  
(re-election)  
RICKI RUSSELL  
Pd. for by Tony Hollingsworth  
TRUMAN THERWHANGER

**COUNTY TAX ASSESSOR-COLLECTOR**  
BOBBY COLLINS  
CHARLENE BROTHERS

**COUNTY CLERK**  
RHONDA HEWITT MOELLER

**COMMISSIONER PRECINCT 1**  
W. J. (JACK) MARTIN  
C. E. (CHUNKY) TIDWELL  
(re-election)  
FRANKIE SORELLE

**COMMISSIONER PRECINCT 2**  
(expired term)  
THELMA EDWARDS  
MRS. BOBBY L. (MELBA) HOWARD SR.  
Pd. for by Lloyd & Dolly Feemster

**COMMISSIONER PRECINCT 3**  
J. R. (RAY) PERRY  
(re-election)  
V. W. (VERNAVY) HOWARD

**CONSTABLE PRECINCT 1**  
D. L. (JACK) SPEER  
(re-election)  
BILL HENDRIX

**CONSTABLE PRECINCT 5**  
SAM BADSEN  
Pd. for by Alton Byrd

**\$5.00 Clearance Sale**  
**Slipper Shoppe**

**Planting Time Is Here!**

Get Ready With

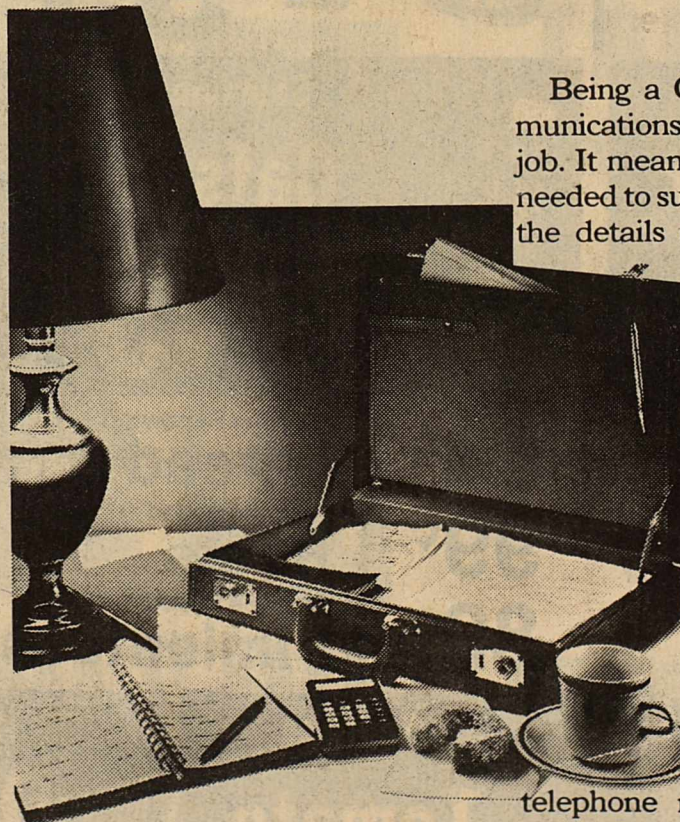
3.5 H.P. Hustler Tiller **\$199.00**  
5.0 H.P. Hustler Tiller **\$269.00**  
Murray Riding Lawnmower **\$429.00**  
Bedding Plants **6/79¢**  
Vegetable & Flower Seed  
Fertilizer **\$3.29**  
Decorative Bark **\$2.99**  
New Arrival of Indoor Plants

See all our Picnic Tables, Charcoal Grills, Ice Chests & Lawn Chairs

Get Ready for Easter with Baskets, Candy, Bunnies & Fashion from

**Bill's Dollar Store**  
Haskell, Texas

# When you see how hard our consultants work for you, you'll be glad there's no charge.



Being a General Telephone Communications Consultant is a full-time job. It means taking as much time as needed to survey, plan and discuss all the details of a business customer's phone installation.

But they don't stop there. They are also busy looking for ways to show customers how to use their phones more efficiently. Sometimes they can show them how to save money and maybe even how to make money.

Sound like good people to know? They'll be happy to meet you anytime and make a survey of telephone requirements. Call your local General Telephone business office and make an appointment today. And remember there's never an extra charge for their services.

We keep you talking.

**GTE**



# Concert Set At Christian Church

Dallas Christian College would like to invite you to join the Concert Choir for a concert of Christian music. This inspirational program will be presented on March 23 at 10:45 a.m. and is sponsored

by the Christian Church, Haskell.

Featured on the concert will be "Harvest," a stirring missionary cantata. "Harvest" is a reflection of the overwhelming need for devoted servants in the kingdom of God, especially in the field of missionary work. It is an inspiration to Christians who feel God's calling in strengthening their commitment and to go into the world to make the Word known.

"The field is the world; the good seed are the children of the kingdom." One song in particular, "Blessed Are the Eyes," emphasizes our need to look through the eyes of Jesus and see not what we are but what we ought to be. The "Harvest" is now!

Also included on the program will be contemporary Christian selections performed by two select ensembles, "Promise of Love" and "Revelation."

The Concert Choir is directed by Douglas Phelps and accompanied by Dinelle Frankland. Available at the concert will be material concerning D.C.C. and the prospective student. The public is cordially invited to attend.

## WTC Enrolls 1,122

Students from 68 Texas counties are included in the student body at Western Texas College this spring.

There are also 26 students from states outside Texas, bringing total enrollment to 1,122. Freshmen are in the majority, numbering 773, with 250 sophomores and 99 students unclassified.

Scurry County had the largest enrollment with 509 students. Nolan County is second with 133. Other area counties represented include Mitchell with 78, Crosby with 63, Haskell with 44, Fisher with 38, Taylor with 29, Jones with 24, Garza with 18, Dickens with 14, Knox and Hubbard with 10 each, Kent with 8, and Runnels with 6.

Western Texas College is offering courses at extension centers in Sweetwater, Haskell and Crosbyton in the spring semester in addition to classes on the Snyder campus.

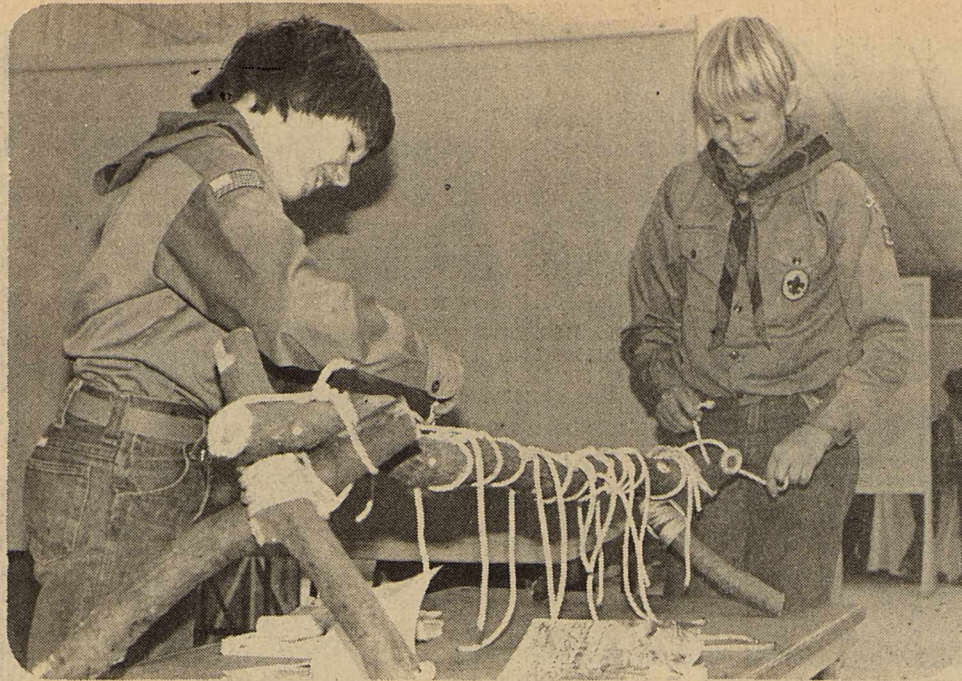


Photo by Gina Jennings

## HOW MANY KNOTS?

A demonstration in knot-tying skills was one exhibit at the Boy Scout Show held at the Corral Building on Saturday. Other exhibits and activities included campfire skills, finger painting and potato printing, ring painting, puppet-making, model races and frying "possum-fritters." Scouts representing the Northern District of the Chisolm Trail Council participated in the event.

## Conservation Viewpoints

USDA Soil Conservation Service  
Assisting  
Haskell Soil and Water Conservation District

Rule and Weinert Future Farmers of America Chapters placed in the 1980 annual Land and Pasture Judging Contests sponsored by the California Creek and Haskell Soil and Water Conservation Districts.

Contestants gathered Tuesday, March 11, in Stamford. Teams participating represented FFA chapters from Haskell SWCD were Haskell, Paint Creek, Rule, and Weinert, and from Anson, Hawley, Leuders-Avoca, and Stamford in the California Creek SWCD.

Rule FFA Chapter placed second in the Land Judging contest, scoring 569 out of a possible 840 points. The Rule team was composed of Rock Petty, James Cloud, Donald Adkins, and Dan Stephens.

Weinert FFA Chapter placed third in the Pasture and Range Judging Contest, scoring 355 out of a possible 945 points. The Weinert team consisted of Jeff Robertson, Greg Turnbow, and Danny McGuire.

Jim Hudson  
Soil Conservationist

## Softball Assn. Workday Set

The Haskell Softball Association will have a work day on Saturday beginning at 8 a.m. at the ball field. All those who plan to play softball this year are asked to come and help prepare the field for this season.

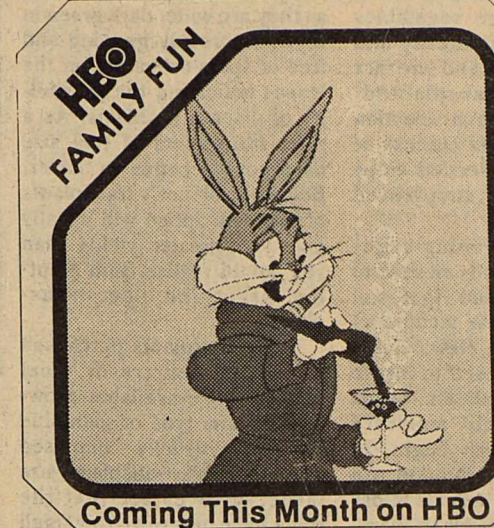
## Bass Tournament Set March 23

The Haskell Bass Club will hold its monthly Bass Tournament March 23 at Miller Creek Lake. Fishing will begin at 7:00 and weigh-in will be at 3:00.

There have been reports of some fine fish being caught recently from Miller Creek. All members are encouraged to attend the tournament and

anyone wanting to join the club and fish are invited to attend.

The next club meeting will be April 7 at the Haskell City Hall at 7:30.



## THE BUGS BUNNY/ROAD-RUNNER MOVIE

Get ready for hilarious calamity. It's Bugs Bunny, Road-Runner, Daffy Duck, Wile E. Coyote, Elmer Fudd, and Pepe Le Pew, the amorous skunk— together again to claim your affection... and your funny bone. Your whole family will love it.  
© 1980 Warner Bros., Inc.

## Centex Cablevision Corp.

ENTERPRISE 2406

WE RESERVE THE RIGHT TO LIMIT PRICES EFFECTIVE MARCH 17-29, 1980 SPECIALS GOOD WHILE SUPPLY LASTS - LIMITED SUPPLY

# TWO BIG WEEKS!

# Save into Spring SALE

<p>SHURFRESH BUTTERMILK SWEET MILK BISCUITS 7 8 OZ. CANS <b>\$1.00</b></p>	<p>SHURFRESH HALFPOND COLBY LONGHORN CHEESE 10 OZ. PKG. <b>\$1.09</b></p>
<p>SHURFINE QUARTERS MARGARINE 2 1 LB. PKGS. <b>79¢</b></p>	<p>SHURFINE CUT GREEN BEANS 3 16 OZ. CANS <b>\$1.00</b></p>
<p>SHURFINE FLOUR 5 LB. BAG <b>69¢</b></p>	<p>SHURFINE CREAM STYLE/WHOLE KERNEL GOLDEN CORN 5 17 OZ. CANS <b>\$1.00</b></p>
<p>SHURFINE TOMATO SAUCE 6 8 OZ. CANS <b>\$1.00</b></p>	<p>SHURFINE ELECTRIC PERK REGULAR COFFEE 1 LB. CAN <b>\$2.39</b></p>
<p>SHURFINE SALTINE CRACKERS 2 16 OZ. BOXES <b>\$1.00</b></p>	<p>SHURFINE FRUIT COCKTAIL 2 16 OZ. CANS <b>89¢</b></p>
<p>SHURFINE SPINACH 3 15 OZ. CANS <b>\$1.00</b></p>	<p>SHURFINE GROUND BLACK PEPPER 4 OZ. CAN <b>79¢</b></p>
<p>BORDEN'S HI-PROTEIN MILK 1/2 GAL. RD. CTN. <b>99¢</b></p>	<p>COOKED FOOD SPECIAL Hot Fresh Burritos <b>49¢</b></p>
<p>ALLSUP'S ASSORTED ICE CREAM 1/2 GAL. RD. CTN. <b>\$1.39</b></p>	<p>BORDEN'S SOUR CREAM 8 OZ. CTN. <b>59¢</b></p>

There's something new to discover at your Ben Franklin store! It's a whole new department... a store-within-a-store! It's Ben Franklin's new Home Accent Shop, and it's full of exciting ways to help you create decorative accents for your home — like lovely flower arrangements. The Home Accent Shop has silky polyester and dried flowers, pots & vases, wicker accessories, ribbon— everything just waiting for your creative touch! Discover Ben Franklin's Home Accent Shop — everything for the creative spirit in you.

## Ben Franklin

We Bring Variety to Life

# GREAT VALUES

### MARCH SPECIALS

Johnson & Johnson  
**Dental FLOSS**  
50 yds. Only **73¢**  
Waxed

NATIONAL DENTAL HEALTH MONTH OFFER  
Preventive Dentistry Special  
Get a **\$100 REFUND** by mail when you buy:  
• One (1) JOHNSON'S Dental Floss  
• Three (3) REACH® Toothbrushes (any type)  
• One (1) Tube of Fluoride Toothpaste (any brand)  
See Your Store Display For Details

**REACH** Toothbrush from Johnson & Johnson  
**78¢**  
Available in Soft or Medium Bristle Brush

Pleasant Tasting Cepacol Mouthwash  
12 oz. Bottle  
**\$1.09**  
Only  
KILLS GERMS THAT CAUSE BAD BREATH

Easter Clip-Ons  
**99¢**

ultra brite TOOTH PASTE with Fluoride  
With 25% Off  
**\$1.00**  
6 oz.

L'OREAL Ultra Rich Your Choice Only  
**\$1.29**  
Conditioner or Shampoo  
16 oz.

Geritol TABLETS  
100's with 14 Free  
Only **\$4.89**  
114 Tablets

Playtex Deodorant Tampons  
**97¢**  
• Reg  
• Super  
16

Mighty Match.  
by Scripto  
2 for **59¢**  
disposable butane lighters.

# DOYLE HIGH'S THE DRUG STORE

100 S. AVE. E      OPEN 8:00-6:00      864-2515

# Hints For Spring Garden Projects

"To plant or to transplant—that is the question! It is far better to have planted and failed than to have never planted at all." This is a quote from some "seedy" (bad pun!) gardener of olden days which is still applicable for growers in the twentieth century. Every spring many gardeners become confused about whether the vegetable crop should be planted from seed or transplanted. The use of transplants insure a reliable plant population and will usually produce earlier than crops planted from seed. The main disadvantages of transplants is cost per plant, says Max Stapleton, County Extension Agent.

Because of the cost involved, only certain vegetable crops should be transplanted. Whether or not a crop should be transplanted or seeded directly into the garden depends on (1) cost of seed, (2) plant population needed, (3) earliness of crop maturity desired, and (4) convenience. Vegetables which should always be transplanted in the spring include eggplant, onions, pepper, sweet potatoes and tomatoes. Those vegetables which can be directly seeded into the garden in early spring or transplanted later include broccoli, cabbage and cauliflower.

All other vegetables should be seeded directly into the garden area and are not economically transplanted. Timing and varietal selection will determine the success of failure of direct seeded crops as well as of transplanted vegetables.

Success in seeding vegetable crops depends on several factors such as seed vigor, soil moisture, planting technique, and soil fertility. New, viable seed should be used to insure a good plant population. Seeds need to absorb moisture before growth can begin. In order to insure adequate soil moisture during periods of dry weather, water prior to planting seed. When planting, be careful not to cover the seed with too much soil. Generally a seed is planted two and one-half times as deep as it is wide, so large seed such as beans, corn, cantaloupe, okra, peas, pumpkin, squash and watermelon can be planted up to two inches deep. Smaller seed of broccoli, cabbage, carrots, collards, lettuce, mustard, parsley, radishes, spinach and turnips are planted one-fourth inch deep by gently raking seeds into the soil. Soil fertility and especially the availability of phosphorus is very important. The use of high phosphorous, starter solutions and/or placing a line of super-phosphate fertilizer (1 tablespoon per linear foot of row) one inch below planted seeds have increased vegetable yields two fold.

Bigger is not the same as better when selecting transplants for your spring garden. Research conducted by universities and institutions has confirmed what commercial growers have suspected all along—the age and size of seedling or transplant when set in the garden can make a striking difference in yield.

Research has shown that you generally get the best result when you set out 6-to-8-inch tall transplants that have 5 to 7 leaves. The transplants should be about as tall

as they are wide, dark green in color, vigorously growing and free of spots or lesions on the leaves indicating the possibility of disease problems. As a rule, transplants of this size have not yet begun to flower. Believe it or not, transplants of this description will usually give you greater yields than you would realize from planting larger and older transplants.

Most transplants purchased at garden centers or local nurseries are available growing in some type of plantable container, usually composed of peat. If the transplants are large, chances are that the roots have outgrown the small container and their growth has been affected. This early "stunting" will usually show up at harvest time.

What can you expect if you set out larger transplants in your garden, that might even be blooming or might even have set a few small fruit? Chances are the first mature fruit, although early, will often be small and misshapen. These first early fruit may cost you dearly as total yield can be seriously reduced.

To obtain early production, it is highly preferable to select smaller plants of an early maturing variety, rather than using large, older transplants of a later maturing variety.

You may have difficulty in finding the ideal transplants at local garden centers or nurseries. But this year take time and look around and find good transplants of the right varieties. Remember it is always great to have the first vegetables in the neighborhood, but those first few fruit could be the bulk of your harvest.

## Auction Set In Knox City

The Knox City Ambulance service will hold an auction this Saturday to raise funds to purchase a new ambulance.

The auction will begin at 10 a.m. at the fire station in Knox City and Gerald Lawrence will serve as auctioneer.

Items to be sold will include items donated to the ambulance service for the sale. To donate items contact: Knox City Hall, 658-3313, John Turner, 658-3414, or the Knox County News, 658-3142.

## Tournament Schedules

Knox City Country Club Golf Club Tournament Schedule for 1980.

April 26 & 27-Two-man Texas Scramble.

May 10-Women's Partnership, Rain date-May 17.

May 31 & June 1-Guys & Dolls Two-Person Scramble.

July 4, 5, & 6-Annual 4th of July Men's Partnership.

August 16 & 17-Guys & Dolls Two-Person Scramble.

Call for information: Keith Offut, Munday, 422-4060; Earl Albus, Rochester, 743-3585; or Matt Verhalen, Knox City, 658-3780.



Staff Photo by Don Comedy

## WRECK

Lupe DeLaCruz of Stamford, driver of this Chevrolet El Camino, was hospitalized March 12, following a one-car accident. Francisco Gomez and Cecil Martinez, both of Stamford, were treated and released at Haskell Memorial Hospital following the accident. The accident occurred on a county road in the Paint Creek Community when the vehicle apparently left the road and overturned several times.

## Obituaries Bill Pate

Funeral services will be held for Mr. Bill Pate, 46, of McKinny on Thursday, March 20, at the Mormont Chapel in Plano. Burial will be under the direction of Restland Funeral Home of Dallas.

Mr. Pate died March 17 as the result of an accident at Texas Institute at Sherman where he was employed.

Born Dec. 24, 1933, Mr. Pate was a 1962 graduate of North Texas State University. He married Myrtle Smith of Haskell, daughter of Weinert resident Mrs. Hazel Smith. He was a member of the Church of the Latter Day Saints.

Survivors include: his wife; three daughters, Mrs. Robert Gibbons of McKinney, Mrs. Ed Mopphet and Renea and Rodney of the home; and three grandchildren.

## Fire Station Donations

- Lone Star Gas Co. . . . \$300.00
- Mr. and Mrs. Mauryce Price . . . . . \$50.00
- Mr. and Mrs. Harry G. Koehler . . . . . \$40.00
- Mr. and Mrs. Lee Brown . . . . . \$20.00
- Mr. and Mrs. Leroy O'Neal . . . . . \$30.00
- Mr. and Mrs. Herman Henry . . . . . \$100.00

## Health Affected By Diet & Life-Styles

Our life-style and dietary habits appear to be responsible for a majority of health problems: cancers, heart diseases, and blood sugar problems, to mention a few. By modifying our way of life and eating habits, a large percentage of human illnesses can be eliminated.

Increased awareness and identification of risk factors through serious study, adoption of a balanced daily diet, and engaging in regular exercise will hasten the day when every American not only lives longer, but will gain useful

longevity, unencumbered by the costly, destructive effects of chronic illnesses. No illness has been eradicated by therapy; the ultimate triumph lies not in cure but in prevention through moderate, but adequate, nutrition.

If you would like information on balanced diets or special diet problems, contact the County Extension Office at 864-2546 or 864-2658.

WE HAVE Cross Pen and pencils and Cross soft tip pens. Available in gold and silver finishes. Haskell Free Press.

## DANCE TO THE MUSIC OF Kenny & Susan Mayo, Vocalists Raymond Edwards, Fiddler AT RHINELAND GYM

Saturday March 2 Admission \$5.00

At First Federal, watch the little get big. And the big get bigger.

Effective March 1-31

**12.00%** Annual Rate

**12.94%** Annual Yield

Earned on the \$100 minimum, 2 1/2 year C.D.

Effective March 20-26

**14.950%** Annual Rate

**15.687%** Annual Yield

Earned on the \$10,000 minimum, 6 month C.D.

## First Federal Savings & Loan of Stamford

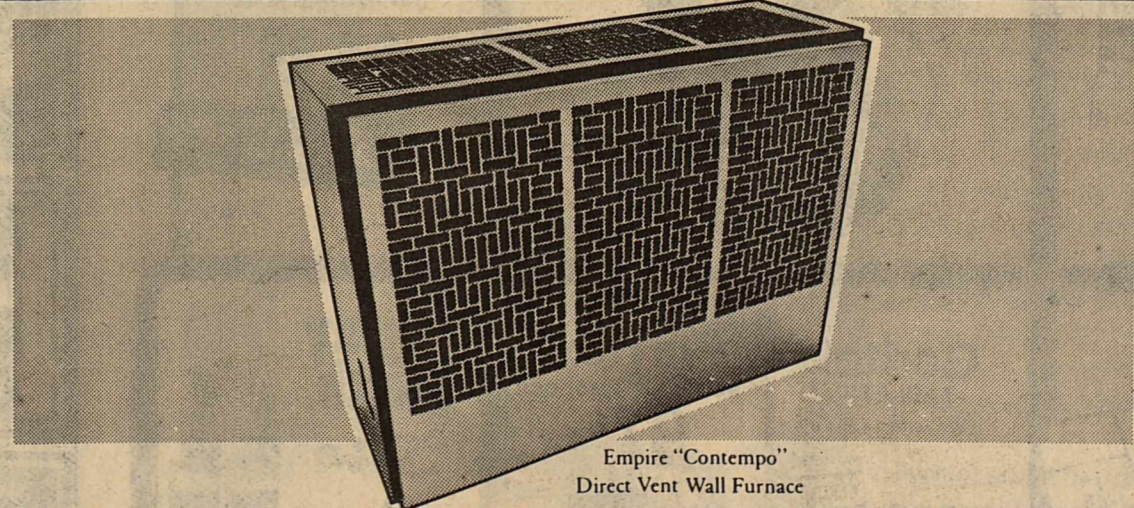
Stamford, Haskell, and now Abilene Also Quana Federal Savings & Loan, a division of First Federal of Stamford

This is an annual yield. The rate is subject to change at maturity. And federal regulations prohibit the compounding of interest during the term of the account. Interest penalty for early withdrawal.

## Dependable. Efficient. Versatile. Direct-Vented Gas Heaters.

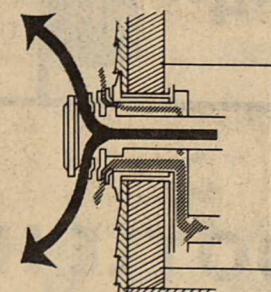
Designed for installation on outside walls, these reliable gas heaters require no chimneys or special flues. They vent directly outside, and their sealed systems use only outside air for combustion. Ideal for add-on rooms, remodeled areas, or as replacement units, these

heaters are the answer when you need a source of economical, controlled heat. Let us help you select the model and size for your needs. Just drop by the Energy Savings Center at Lone Star Gas Company or give us a call. Terms are available.



Empire "Contempo" Direct Vent Wall Furnace

Direct vent heaters require only an outside wall through which concentric tubes vent products of combustion and allow air to enter for the support of combustion. No heated room air is vented to the outside.



### Fresh Fish & Seafood Sale

**Sat., March 22, 2-7 P.M.**

Rock Shrimp Tails \$6.95 lb  
Rock Lobster Tails \$8.50 ea

Bull Drum Fish (12-20 lbs) **\$1.50 lb**  
Ideal for BBQ, Baking & Broiling

Oysters in Shells \$3.50 dozen

Jumbo Shrimp \$9.50 lb Large Shrimp \$7.50 lb

Oysters \$4.95 pint Buffalo \$1.35 lb

Freshwater Whole Catfish \$1.85 lb

Fillet of Sole \$2.75 lb

Due to your tremendous response, we are returning for a second sale this month.

### Simon's Seafood

of Abilene

We Appreciate Your Patronage

Food Stamps Accepted



## THIS IS ONE BREAK OUR CUSTOMERS DON'T DESERVE.

"When a storm knocks down a line it can put thousands of people out of contact with the world. That's where I come in...twenty-four hours a day. As I tell my friends, 'When a line comes down, they get me up. But I don't mind it. It makes me feel I'm an important part of providing the best telephone service possible. That's why I'm proud to be one of the people General Telephone is talking about when they say 'We keep you talking.'"



James R. Sartor,  
Lineman,  
Plano, Texas  
One of the  
100,000 GTE  
professionals who  
are working to  
bring you better  
and more efficient  
telephone service.

**Lone Star Gas Company**  
Gas. It's plentiful, efficient and right for the times.

# Dairy Queen To Participate In Shriners Fund-Raising Event

"Have a Treat! Help a Child!" will be the theme when nearly 500 Dairy Queen restaurants across Texas dedicate Saturday, March 29, to helping severely burned children. Among the DQs participating will be the Chapman Fast Foods Dairy Queen in Haskell.

This day—Saturday, March 29—is the one Texas Governor William P. Clements, Jr., has proclaimed "Shriners Hospitals for Crippled Children Benefit Day" for 1980. More than 60,000 Shriners from the 13 Shrine Temples in Texas will be involved in the day's activities, an annual event for raising funds in behalf of the state's three Shriners Hospitals for Crippled Children.

To assist the Shriners in the fund-raising efforts March 29, the local Chapman Fast Foods Dairy Queen and all other participating members of the Texas Dairy Queen Trade Association will donate their entire day's net profits to the benefit of the youngsters who receive free treatment at the

Burns Institute of the Shriners Hospital for Crippled Children in Galveston.

The Texas Dairy Queen Trade Association is the first organization outside of the Shrine itself to become identified with the raising of funds for the state's three Shriners Hospitals for Crippled Children on their annual Texas "Benefit Day," an event proclaimed each year by Texas's governor. The state's three Shriners Hospitals include two orthopedic units in Houston and Dallas and the Burns Institute in Galveston.

The Burns Institute was founded in 1963 and was established in its own permanent hospital building in 1966 at Galveston. This hospital was the first of three such Shriners hospitals in the United States. The other two Burns Institutes are located in Boston and Cincinnati.

The work of the Burns Institute of the Shriners Hospital for Crippled Children—to be benefited by the Texas Dairy Queen Trade Association—is unique and the sole service of its kind in the world.

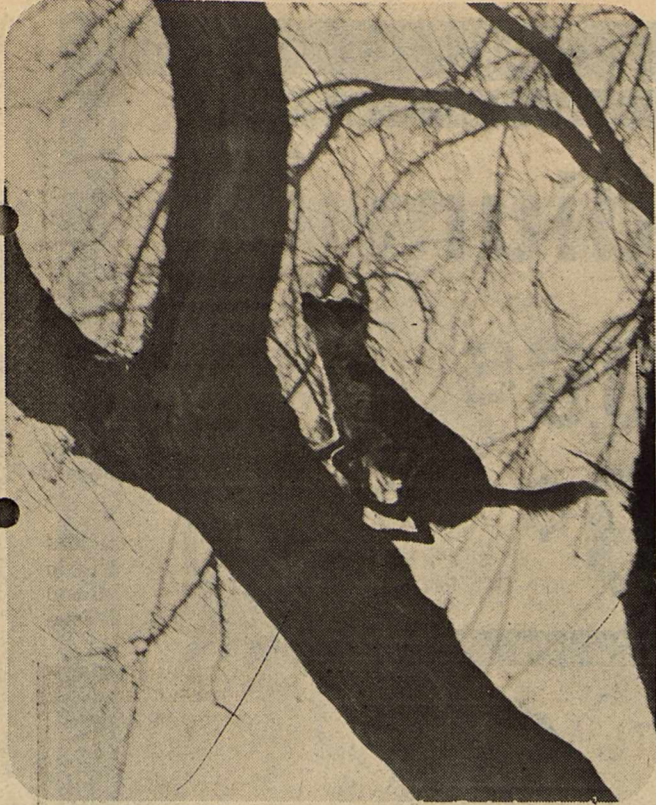
Since its inception, it has treated more than 8,000 severely burned youngsters. Last year alone, the Burns Institute in Galveston treated approximately 400 severely burned children (with only one fatality.)

The Shriners Burns Institute gives its treatment and care to all burned children of all races and creeds with absolutely no cost to patient or parent. The Burns Institute in Galveston is one of America's 21 Shriners Hospitals for Crippled Children. Eighteen of these hospitals are orthopedic units.

Once the individual "Have a Treat! Help a Child!" Day contributions from each of the participating Dairy Queen restaurants have been assembled, Doris Richeson of Graham, 1980-81 president of the Texas Dairy Queen Trade Association, will present this gift from TDQTA to Charles J. Claypool of Dayton, Ohio, the Shrine's current Imperial

Potentate; C. Victor Thornton of Fort Worth, the chairman of the Shrine's Board of Trustees and Gene Bracewell of Atlanta, Ga., the imperial oriental guide on the national Imperial Divan. This will be done in a formal ceremony at the Burns Institute of the Shriners Hospital for Crippled Children at Galveston.

The Chapman Fast Foods organization has 46 Dairy Queens participating in the March 29 "Benefit Day" project, more than any other TDQTA member. Also, the project was originated and adopted when James L. Utley of Clyde—executive vice-president and chief operating officer of two of the three Chapman Fast Foods Dairy Queen corporations, Dairy Queen of West Texas, Inc., and Dairy Queen of Taylor County, Inc., whose headquarters are in Abilene—was president of the Texas Dairy Queen Trade Association during the past TDQTA year of 1979-80.



Staff Photo by Gina Jennings



Staff Photo by Gina Jennings

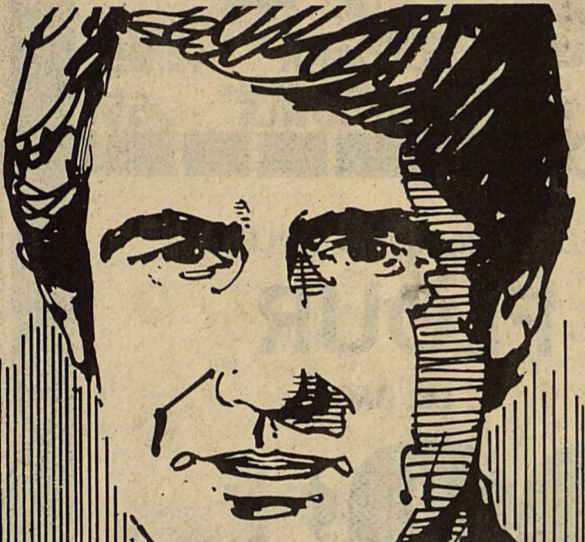
## GOING UP?

Nobody bothered to tell "Freckles", that it is traditionally understood that dogs don't climb trees. There are a few guinea hens in the top of this particular tree that probably wish someone would though. Both the climbing canine and the flustered guineas belong to the J. N. Larned family.

## PROUD POSE

As a polite gesture to the photographer, "Freckles" pauses about 20 feet up for a perfect pose, complete with smile, then resumes bounding through the branches in search of the hens. When this dog trees her bird, she doesn't bother to point, she just goes after it.

"My old tax service didn't double-check everything. I should have come here last year."



We make sure we thoroughly understand your tax situation before we prepare your return. And then we double-check every return for accuracy.

**H&R BLOCK**  
THE INCOME TAX PEOPLE

115 North Av E, Haskell  
Open 9 a.m.-5 p.m. Weekdays  
Phone 864-3322 or 864-3087



Staff Photo by Gina Jennings

## GOING DOWN

Everything that goes up has got to come down and that includes "Freckles". The dog's owner, J. N. Larned apologized for her lazy climb of only about 25 feet. It seems that "Freckles" has just had nine pups and is a "bit out of shape."

## ANDERSON TIRE CO.

COOL CASH  
**FACTORY REBATE**

**\$50** **\$35**

PAID DIRECT TO YOU BY GENERAL ELECTRIC

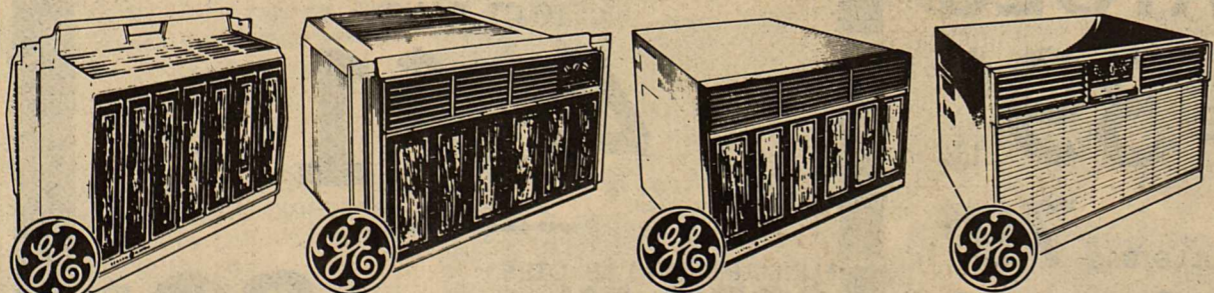
**\$20** **\$15**

ROOM AIR CONDITIONER

## BUY NOW REBATES

UP TO \$50 Offer good for retail purchases March 17 through April 27, 1980. Paid direct to you from General Electric.

\*Built-in Models do not qualify



**\$15** FACTORY REBATE\*  
4,000 BTU  
6,999 BTU models

**\$20** FACTORY REBATE\*  
7,000 BTU  
18,499 BTU models

**\$35** FACTORY REBATE\*  
18,500 BTU  
24,500 BTU models

**\$50** FACTORY REBATE\*  
27,000 BTU  
32,000 BTU models

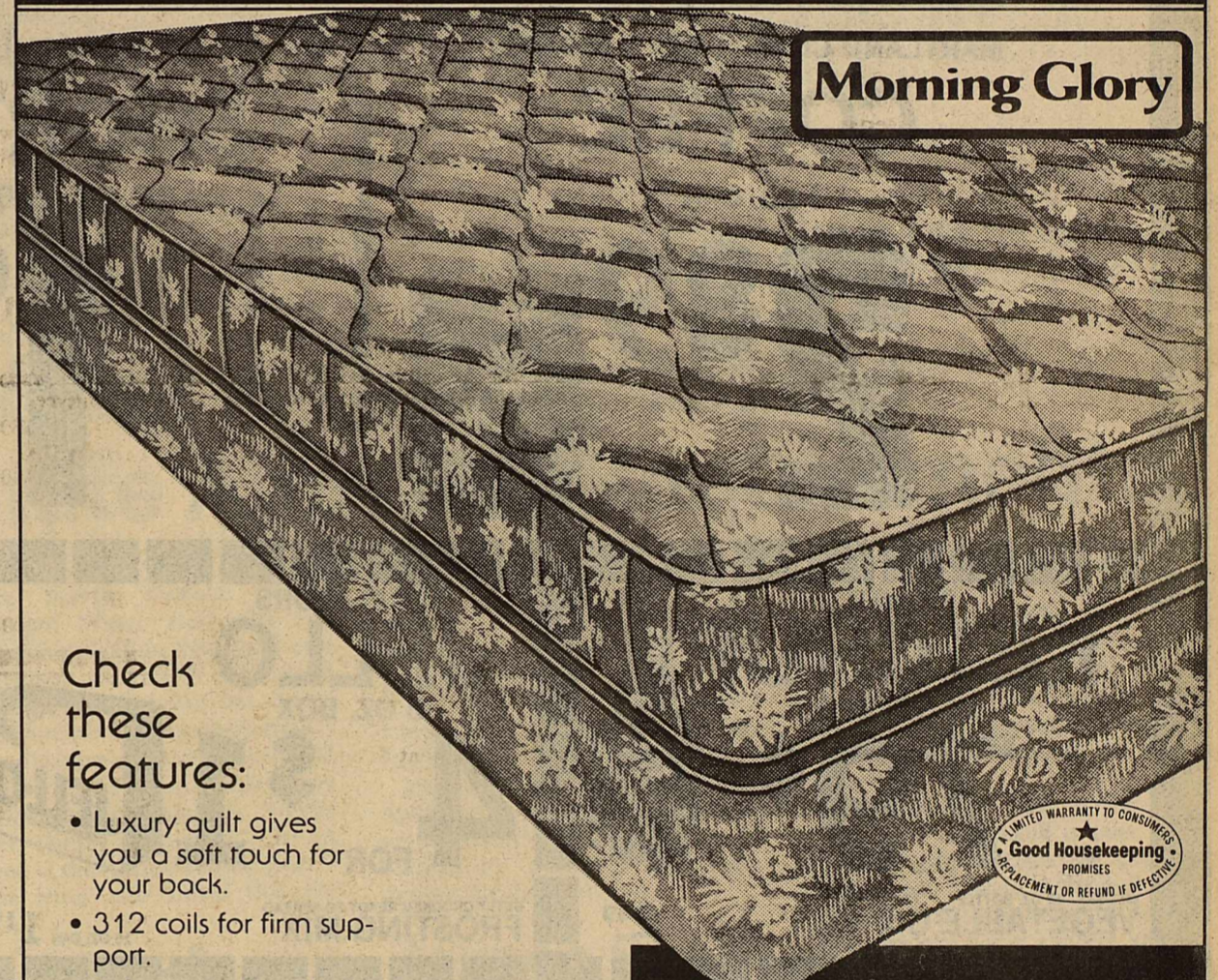
## Anderson Tire Co.

206 South Av E

864-2900

## New Luxury Quilt Morn-o-Pedic

at affordable prices



Morning Glory

Check these features:

- Luxury quilt gives you a soft touch for your back.
- 312 coils for firm support.
- Multi-needle quilted to a rich damask cover.
- Thick layers of cotton felt.
- Good Housekeeping Seal of Approval



### Morning Glory Back Relief®

... always your best buy for firm support and a good night's sleep!



TWIN SIZE  
MATTRESS AND  
BOX SPRINGS

REG. \$119.95 VALUE **\$99<sup>95</sup>** Each Piece

FULL SIZE  
MATTRESS AND  
BOX SPRINGS REG. \$149.95 VALUE **\$119<sup>95</sup>** Each Piece

QUEEN SIZE  
MATTRESS AND  
BOX SPRINGS REG. \$359.95 VALUE **\$289<sup>95</sup>** Set

KING SIZE  
MATTRESS AND  
BOX SPRINGS REG. \$499.95 VALUE **\$399<sup>95</sup>** Set

## BYNUM'S Furniture & Carpets

Haskell, Texas

# JRB

## SUPERMARKETS

ALBANY, BROWNWOOD, COLEMAN, CROSS PLAINS, ABILENE, RANGER, WICHITA FALLS, LLANO, STAMFORD, SPRINGTOWN, NEWARK, BRIDGEPORT, HASKELL, DUBLIN, GOLDTHWAITE, GATESVILLE, OLNEY, ELECTRA, IOWA PARK, BURKBURNETT, CISCO, EASTLAND, DE LEON, BRADY AND BOWIE.  
NO SALES TO DEALERS.  
We reserve the right to limit quantities.  
We honor food stamps.

<p>ARMOUR GOLDEN STAR BONELESS</p> <h3>TURKEY</h3> <p>4-7 LB. AVERAGE</p> <p><b>\$1 89</b> LB.</p>	<p>JRB "OUR VERY BEST"</p> <h3>PORK SAUSAGE</h3> <p>1 LB. ROLL HOT OR MILD</p> <p><b>\$1 29</b></p>
--	---

## Medium Eggs

**59¢** DOZEN

Specials Good March 20-26

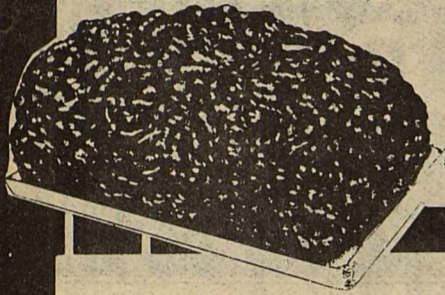
# MORE CHANGE FROM YOUR

# Food Dollars

FAMILY PAK

## GROUND BEEF

**1 29** LB.



7-BONE CUT FAMILY STEAK	LB.	1 49
ARM ROUND BONE CUT SWISS STEAK	LB.	1 59
BLADE CUT CHUCK ROAST	LB.	1 29
USDA INSPECTED HEAVY BEEF TENDA FED ARM ROAST	LB.	1 59
LEAN BONELESS STEW MEAT	LB.	1 79
FARMLAND BACON	12 OZ. PKG	1 09

ARMOUR STAR—PAN SIZE BACON	12 OZ. PKG	1 19
WRIGHT—ENDS & PIECES BACON	3 LB. BOX	1 29
ARMOUR STAR—ALL MEAT HOT DOGS	12 OZ. PKG	1 09
OSCAR MAYER—ALL MEAT WIENERS	1 LB. PKG	1 59
OSCAR MAYER—BEEF FRANKS	1 LB. PKG	1 79
DECKER—JUMBO FRANKS	1 LB. PKG	1 39

JRB "OUR VERY BEST" MILD PORK SAUSAGE		<b>2 55</b>
LEAN GROUND BEEF	LB.	<b>1 79</b>

ARMOUR STAR—ALL MEAT BOLOGNA, BEEF BOLOGNA, PICKLE LOAF, LIVER CHEESE & SPICED LUNCHEON—6 OZ. PKG	79¢	OSCAR MAYER—ALL MEAT BOLOGNA 8 OZ.	99¢
DECKER—FINE FOR SEASONING SALT JOWLS	LB.		69¢

DOUBLE STAMPS EVERY WEDNESDAY AND SATURDAY

MARYLAND CLUB—LIMIT 1 PLEASE

## COFFEE

1 LB. CAN

**2 89**



CRISCO—LIMIT 1 PLEASE

## SHORTENING

15¢ OFF LABEL—3 LB. CAN

**1 99**



GOLD MEDAL—LIMIT 1 PLEASE

## FLOUR

5 LB. BAG

**99¢**



## HUNTS KETCHUP

24 OZ. KEG

**79¢**



## ALL FLAVORS JELLO

3 OZ. BOX

**4 FOR \$1**



## HUNTS FRUIT COCKTAIL

300 CANS

**2 FOR \$1**



## HUNTS TOMATOES

300 CANS

**2 FOR \$1**



WESSON—48 OZ. BOTTLE

VEGETABLE OIL

2 49

BETTY CROCKER READY-TO-SPREAD FROSTING MIX

16 OZ. CAN 1 19

BETTY CROCKER LAYER—ALL VARIETIES CAKE MIX

10-19 OZ. BOX 89¢

BOUNTY DESIGNER—WHITE & DECORATED TOWELS

JUMBO ROLL 79¢

## RANCH STYLE CHILI

15 OZ. CAN

**89¢**

PARADE—64 OZ. BOTTLE

APPLE JUICE

1 69

## PARADE WITH MEATBALLS SPAGHETTI

15 OZ. CAN

**59¢**

KLEENEX FACIAL TISSUE

280 CT. BOX 99¢

## HUNTS TOMATO SAUCE

8 OZ. CANS

**5 FOR \$1**

TEXSUN PINK GRAPEFRUIT JUICE

46 OZ. CAN 75¢

Dairy & Frozen Foods

JRB—ALL FLAVORS

## MELLORINE

1/2 GAL. CTN.

**79¢**

Health & Beauty Aids

Produce

CLOSE UP—12¢ OFF LABEL

## TOOTHPASTE

4.6 OZ. TUBE—REG. 1 07

**89¢**



BRONZE DEODORANT—3 OZ. CAN

RIGHT GUARD

REG. 1 07 **89¢**

PEPSODENT ADULT—SOFT OR MED.

TOOTH BRUSHES

REG. 2/88' **59¢**

## TOMATOES

LARGE SIZE **39¢** LB.



RUSSET POTATOES 8 LB. BAG **79¢**

GREEN ONIONS 4 BUNCHES **\$1**

TEXAS RUBY RED GRAPEFRUIT LB. **29¢**

MEDIUM SIZE CUCUMBERS LB. **29¢**

ONE POUND CELLO CARROTS 2 PKGS **39¢**

## TEXAS STYLE BISCUITS

10 CT. CANS

**4 FOR \$1**

FLEISCHMANS—1 LB. QTRS

CORN OIL MARGARINE

**89¢**

MORTONS—ALL VARIETIES

POT PIES

8 OZ. SIZE **3 FOR \$1**

MORTONS—APPLE OR PEACH

FRUIT PIES

20 OZ. SIZE **99¢**