



TWO SISTERS were among County and District officials who received the oaths of office Tuesday. Shown are Willie Faye Tidrow, left, elected County Treasurer and Geraldine Hise newly elected J.P. Prec. 1. They are shown with their mother Lena Petrich. (Staff Photo)

Swink Sentenced To 45 Years In TDC

Roy Glenn Swink was formally sentenced to 45 years in the Texas Department of Corrections last Thursday in the 39th Judicial District. At the time of sentencing, Clifford Brown, attorney for Swink, filed a motion for a new trial which was denied by District Judge William P.

Ratliff. Brown also served notice of appeal and filed a paupers affidavit which stated that Swink was unable to hire an attorney for the appeal procedure and requested that Stonewall County pay for the attorney. Judge Ratliff took no action at that time on the paupers

affidavit. Haskell County Sheriff G.T. Garrett took Swink Friday morning and began the transfer to Huntsville. While in Temple, Swink fled officers and escaped confinement for about 30 minutes. According to District Attorney Joseph Thigpen, escape is a felony offense with a possible sentence of 2 to 10 years.

Thigpen said Tuesday that he would contact the District Attorney's office in Bell County regarding filing criminal escape charges. Thigpen also said that there is a legal question concerning Swink's right to appeal following escape. Thigpen said that he would request the State's Attorney, (Attorney General) to file a motion to dismiss the appeal because of the escape.

Council Raises Water Rates

A special meeting of the Haskell City Council was held last Thursday to discuss water rates for all local customers.

With Mayor Royce Williams presiding at the meeting and all members of the council present, about three hours of discussion was held before setting new water rates. The new rates will go into effect Jan. 1 and are the result of the City purchasing water from Miller Creek Lake instead of producing the local supply from wells.

The new rates for all customers inside the city limits will be \$6.00 for the first 3,000 gallons and \$1.65 for each 1,000 thereafter. Customers outside the city limits will pay \$12.00 for the first 3,000 gallons and \$2.00 for each 1,000 thereafter.

The council also revised the free water policy of the city. All full time city employees and all active volunteer firemen will receive 3,000 gallons per month free per household. Where two or more members of the same household are city employees or firemen or a combination, only 3,000 gallons will be free. Previous rates were \$4.50

Teams Back In Action

The Haskell Junior High Maidens and Warriors will be back in action on Thursday, January 4 in Indian Gym. The 7th girls will start at 4:00 followed by the 7th boys, the 8th girls and 8th boys. They will play the Anson Cubs.

The 7th grade girls have a 1-3 record. The 7th grade boys are 3-1. The 8th grade girls are 4-1 and the 8th boys are 2-3.

The 7th and 8th grade girls and the 8th boys will also play January 8 in Munday starting at 5:00 p.m.

for the first 3,000 gallons and 50c for each 1,000 thereafter for customers in the city limits. Customers outside the city limits were previously paying \$7.00 for the first 3,000 gallons and 50c for each 1,000 thereafter.

Registration Set For WTC Classes

Registration for spring semester classes at the Haskell extension center of Western Texas College will be held from 6:30-8 p.m. Tuesday (Jan. 9) in the high school library.

Classes will begin on Jan. 17.

Academic courses tentatively scheduled during the spring semester for students at the Haskell center are Chemistry 142, Economics 232, English 132, Physical Education 234, History 131, Math 136, Sociology 231 and Sociology 232.

Occupational Technical courses are Management 233 (Marketing), Management 239 (Management Seminar), and four internship courses, Management 135, 136, 237

REBEKAHS

All members of the Haskell Rebekah Lodge #42 are requested to meet at the Haskell IOOF Hall on the second Monday, Jan. 8, at 7 p.m. for a regular business and lodge meeting. The meeting time has been changed from the first to the second Monday night of each month.

4-H MEETING

Haskell 4-H Club will meet Monday Jan. 8 in the Co. Extension office at 4:00 p.m. Everyone is welcome.

and 238.

Persons wishing details about the extension center offerings are invited to contact Bill Blakley, coordinator of the center, or the office of Dr. Duane Hood, Dean of Student Services and registrar, at WTC in Snyder, AC 915-573-8511.

Special Services Scheduled At Foursquare Church

Hugh and Lola Dean Harris will be conducting special services at the Haskell Foursquare Church Fri.-Sun. Jan. 5-7.

Services will begin at 7:30 p.m. evenings and 11:00 a.m. Sun. morning. Mr. & Mrs. Harris are from Brownfield, where they are cotton farmers. God has given them ability to sing as well as preach. The public is invited.

BRAZOS WEST ART

The Brazos West Art Association will host John Crump this Monday, Jan. 8. The meeting will be at 7 p.m. in the Community Building of Haskell National Bank. He will demonstrate painting on linen with acrylic.

COTTON
GRAIN
CATTLE

THE HASKELL

POULTRY

20c
per copy

10 PAGES

FREE PRESS

"HASKELL—A GOOD PLACE TO VISIT; A BETTER PLACE TO LIVE"

VOLUME NINETY-THREE

HASKELL, TEXAS, 79521, THURSDAY, JANUARY 4, 1979

NUMBER ONE

Farmers To Receive Ag Census

The 1978 Census of Agriculture gets underway this week with the mailing of report forms to all farms and ranches in the 50 States, the Bureau of the Census, U.S. Department of Commerce, announced today.

Farmers and ranchers are being asked to report on their agricultural operations during 1978. This 1978 census, the Nation's 21st farm census in a series that started in 1840, will update data most recently obtained in 1975 for 1974 operations. Information will be sought on all agricultural operations.

With report forms for the 1978 census drastically reduced from the 22 pages of the last census, most agricultural operators will receive a four-page form in the mail, and about 20 percent will receive a five-page version. The overall time required by farmers to complete the form has been reduced by more than one-third.

The census will continue to monitor trends in domestic ownership and control of land. The last census showed a five-year gain in the number of U.S. corporate farms from

22,000 to 29,000; the amount of acreage they farmed rose from 80 to 97 million acres, and the value of their farm products rose from \$6 billion to \$14 billion.

The census asks whether the farm is operated by a family or individual, a partnership, a family-held corporation, an investor-owned corporation with more than 10 stockholders, or some other legal entity such as cooperative, estate or trust, grazing association, etc.

The apparent increase in foreign ownership of land has raised questions in the Congress and with business and agricultural groups. In 1974 a Department of Commerce survey showed about 5 million acres of the Nation's one billion acres of farm land were owned by foreign interests, or less than one-half of one percent of the total. The new farm census will measure the increase.

As in earlier censuses, information obtained about farming operations will be published for each of more than 3,000 counties with agricultural operations, for each State and for the entire Nation.

Each report form will have a control number printed on the address label. Because response is required by law (Title 13, U.S. Code), each control number must be accounted for by the Bureau of Census. Follow-up letters will be sent to non-respondents. Everyone who receives the agriculture census report form should answer the first four items and as much more of the report as applies, and return it, so that it will not be necessary to spend more tax money on obtaining a response.

Despite careful screening of the mailing lists used, some persons not engaged in agricultural activities will receive report forms. Those persons should return the form with that fact noted in order to stop additional mailings.

The 1978 Census of Agricul-

ture will be conducted as follows:

--All respondents will be asked to report either from their records or by estimate, the following information: amount of farm acreage by type of ownership; land use; acreage, production, and sales of crops; inventory, number sold, and sales value of livestock and poultry; and selected characteristics of farm operators and farm management.

--About 20 percent will receive an additional page seeking answers to: value of land and buildings; selected production expenses; selected farm equipment; hired farm labor; fertilizer and pesticide use; and petroleum fuel usage and storage capacity.

Congress and Federal agencies, as well as agricultural and business organizations, universities and other groups rely on this information to develop and revise farm programs. Individual farmers may benefit from a railroad allocating storage cars during grain harvest, or from farm machinery or bulk fertilizer dealerships being located in new areas of farm development.

Stressing that publication of its data will be accomplished

No Bills Presented To Grand Jury

The January term of the Haskell County Grand Jury was selected Tuesday. There were no bills presented at that time but the grand jurors will serve until April 16.

Selected to serve on the grand jury were: Jerry Harris, Gene Hale, Chief Escobedo, Jerry Hadaway, Tim Burson, Ronnie Adams, Duward Campbell, John Ben Glover, Lennis Tibbitts, Royce Speck, Norris Anders, and Jane Short, foreman.

more speedily in this census. Bureau officials are setting October 1979 as the beginning data issuance deadline for more than 3,000 individual counties. They expect to publish the additional volumes of statistical information for the State and Nation within the following two years.

Census officials also point to these features of the 1978 census:

--A second copy of the report form which the respondent can complete and keep for his own records.

--The option of receiving major county data merely by checking a box on the form.

--A time extension which will be granted farmers who request it.

--An improved mailing list, and a "Were You Counted," campaign for any farmer inadvertently omitted.

The law which requires farmers to answer the census items also protects the privacy of answers. Since 1900, census report forms have been confidential by law. They may be seen only by sworn Census employees and may be used only for statistical totals. Even other government agencies cannot obtain or use the reports made by any farm operator. Neither can anyone use legal means to obtain a copy of the report retained by the operator in his files.

Farm operators who do not receive a form during the first week of January should request one from the Bureau of the Census, 1201 East 10th Street, Jeffersonville, Indiana 47132.

weather

By Sam Herren
December Summary

TEMPERATURE

Hi.....79°.....19th

Lo.....14°.....9th

RAINFALL

Total.....0.62

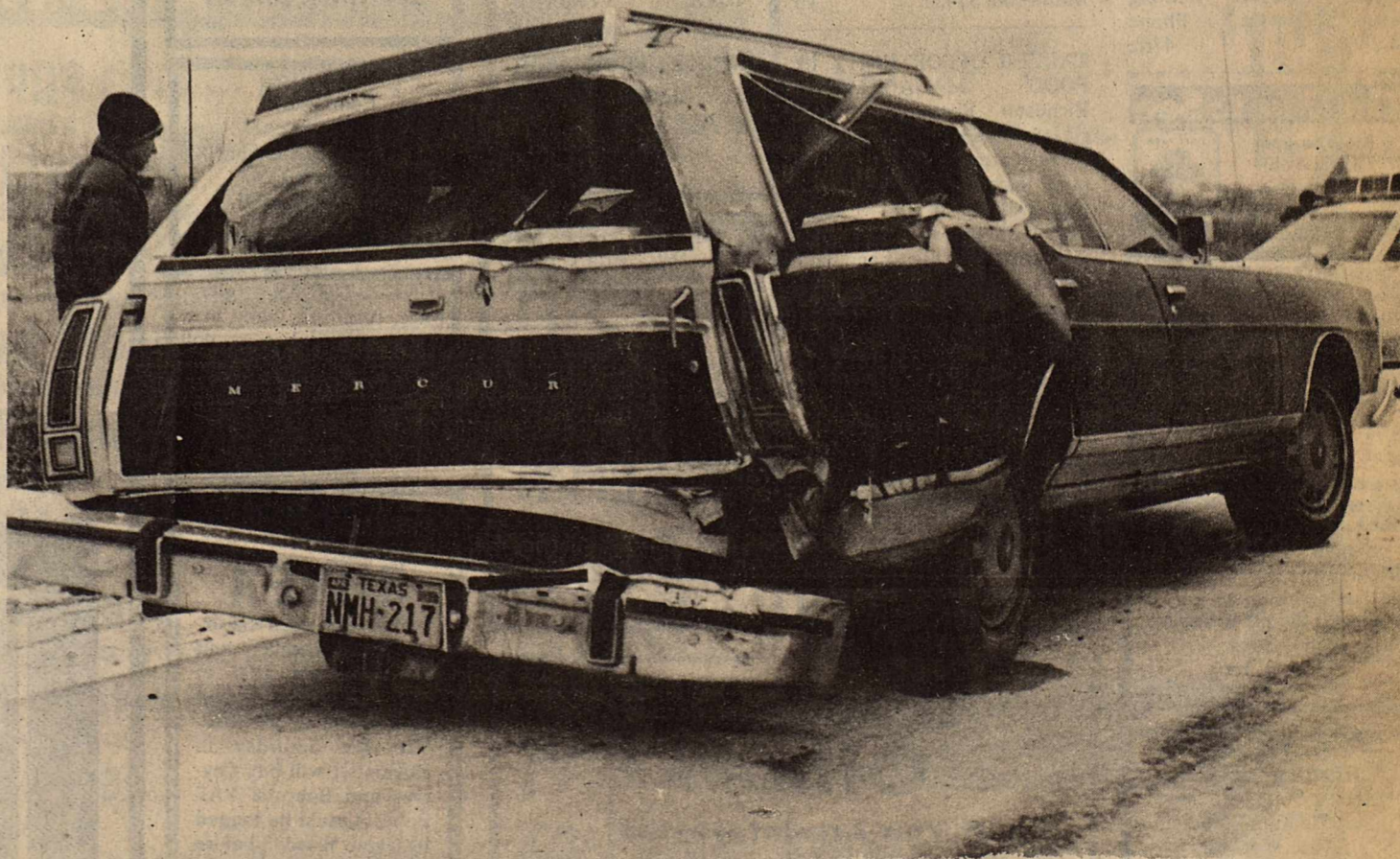
**Total to Date.....29.81

Normal to Date.....24.14

*Snow, Sleet & Freezing Rain.

**On ground 2 inches, low

Jan. 2, 7°.



ONE OF SEVERAL... Several accidents were reported during the past week as all streets and highways were completely covered with ice. This 1976 Mercury Station wagon was involved in an accident Saturday at about 2:45 p.m. about one-half mile south of Haskell on U.S. 277. Also involved in

the accident was a 1978 Ford van. Shortly after the accident occurred, an ambulance arriving at the scene slid into a parked police vehicle and knocked the police car into the front of the station wagon. During the ice storm, City Police and DPS Troopers investigated approximately 15 accidents.

(Staff Photo)

CLASSIFIED ADS

NOTICE
The Haskell Free Press reserves the right to edit and/or delete all news stories and locals for length and liability and to refuse to print anything deemed not newsworthy.

NOTICE
Due to the bookkeeping involved and the high postal rates, we ask that you please remember that classified ads are Cash in Advance unless you are a business firm or have an established credit with the Haskell Free Press. Either mail your ad with check or if you need assistance in writing it we will be happy to help you. Rates are 5c per word or a minimum of \$1.50.

NOTICE
Please notify us of your change of address. If you do not, the Post Office charges us 25c for each time the Haskell Free Press is returned to us, this plus the cost of stencils, time and labor can make your move costly to us. In the future, failure to notify us will result in one month being deducted from your subscription.

For Sale
MCCOLLOCH CHAIN SAW HEADQUARTERS. A saw for every job. See new. Woodard Farm Sale. 7ffc

WOODARD FARM SALES—Ford tractors, equipment, long harrows, Lilliston-Heston-Oliver plow parts. 4ffc

NEW INTERNATIONAL Harvester 86 series Tractors with full 2 year warranty—Priced to Sell—See A.C. or Larry before you buy—Richardson Truck and Tractor 864-3474. 11ffc

FOR SALE: Wheat seed, Triumph 64, cleaned & treated, in bulk. \$4.50 a bu. Call Ken Lane at 4-2597 or 4-2984. 50ffc

FOR SALE: Wheat Seed-Bulk. Triumph 64 or Tam 101. Kenneth Sanders, 673-2762. 50-53p

FOR SALE: 77 Blazer Cheyenne package. Black, tilt & cruise, AM/FM Tape, rally wheels, sliding rear windows. Call 997-2389. 51ffc

"WORM GROWERS NEEDED!" Monthly income! Buy-back contract! Management opportunities! Free brochure. (Call Toll-Free 1-800-448-4511, operator 381), Worms, Box 4169 Jackson, Ms. 39216. 51-2p

FOR SALE: Good used water softener less than 1 year old and bathroom lavatory. Call Cliff Dunnam at 864-2008. 52-1p

FOR SALE: Gates fan belts, hoses, tractor belts, car, lawn mower, etc. Delco battery & batteries charged. Wilfong Texaco Service. Phone 864-2766. 47ffc

The One to See
Brian Burgess
111 N. Av. E.
864-3250
STATE FARM INSURANCE COMPANIES
Home Offices: Bloomington, Illinois

PHILPOT'S DITCHING SERVICE
Plastic pipe & fittings, sewer pipe. Water & gas lines run. Call Philpot's Supply & Service. 864-3010. 402 N. 1st. 15ffc

ELECTRIC SEWERROOTER
Cleans clogged pipes, drains, sewers. No digging. No damage.
Philpot's Supply & Service
864-3010
402 N. 1st. 41ffc

HOT WATER HEATER HEADQUARTERS
Electric State with Sand Hog Heating Element
5 Year Warranty
Gas State with 5 yr. Warranty on Tank
2 Yr. on Controls
Philpot's Supply & Service
402 N. 1st. 864-3010. 37ffc

Miscellaneous
WANTED: Good used furniture and appliances. We buy and sell. Lee Used Furniture 120 N. Swenson St. (one block north of red light on hiway 277) Stamford, Texas. Phone 773-5608. 42ffc

Shop our shelves for EVERY-DAY LOW PRICES at Johnson Pharmacy where low overhead means low prices. 11ffc

WATER WELL DRILLING: House, Stock, irrigation well, test holes. House well \$7 a ft. Call W.P. Hise, 864-3727 day or night. 26ffc

LET US Price your next prescription. You will be glad you did. Johnson Pharmacy. 17ffc

INSTANT CASH for any good merchandise, modern or old. Phone 864-3197 anytime. Lackey's, Throckmorton Highway, Haskell, Texas. 36ffc

WANTED: Any type of welding, portable rig, oil field insured. Call Nathan "Pat" Patterson (817) 864-2264 res. 864-2204 104 N. Av. D. Haskell, Texas. 22ffc

FROM wall to wall, no soil at all, on carpets cleaned with Blue Lustre. Rent an electric shampooer, \$1.00 Perry's. 1c

FRAME SALE CONTINUES 20 to 50% off. Frames for portraits, paintings and samplers. Byrd's Studio. 104 N. Ave. D Haskell. 11ffc

Help Wanted
"HOMEWORKERS needed in this area to lace leather goods at home. Earn \$150.00 per week. No experience necessary. Send \$1.00 (refundable) and long stamped envelope to: Davis Enterprises, 1100 1/2 Oak Street, Kingsport, Tennessee 37660." 51-1p

TEXAS REFINERY CORP. offers PLENTY OF MONEY plus cash bonuses, fringe benefits to mature individual in Haskell area. Regardless of experience, write A.P. Pate, Pres., Texas Refinery Corp., Box 711, Fort Worth, Texas 76101. 1c

OFFICE HELP NEEDED: Apply in person at 202 S. Ave. B. Friday 19 and Sat. 20 until noon. Haskell Chiropractic Office. 1-3c

Bus. Opportunity
RESPONSIBLE PERSON: Wanted to own and operate candy and confection or horoscope routes. Haskell and surrounding area. Pleasant business. High profit items. Can start part-time. Age or experience not important. Requires car and \$1650 and up depending on number of accounts you wish to service. For details write and include your phone number: Eagle Industries, 3938 Meadowbrook Rd., Minneapolis, Minnesota 55426. 1p

CAREER OPPORTUNITY IN FOOD MANAGEMENT. Richeson Restaurant, very clean. Need manager trainees to relocate. Excellent salary plus insinuitive bonus, put you well up in the 5 digit salary category. Company insurance, free meals and paid vacations. Male or female, mature adults. Need no experience in food. Learn in our training school. Must be willing to learn speed cooking as well as management. Phone 817-549-5041. Hours 9 to 4 weekdays. 1-4p

H.F. LANGFORD
Sand and Gravel
Caliche and Fill
RULE HWY.
WEST HASKELL

IF WE CAN HELP YOU SELL OR BUY REAL ESTATE. PLEASE CONTACT US.
WE NEED LISTINGS.
DUNCAN REALTY
Doyle High 864-2515
The Drug Store
100 S. Av. E. 34ffc

FOR SALE
Texas Theatre Building, with or without equipment, in Haskell. Call 817-997-2124. 49ffc

Used Color TV's For Sale Cheap
Anderson Tire Company
206 S. Av. E. 864-2900. 16ffc

New & Used Color & BW TV
Amonett & Amonett Radio & TV
864-2870 Haskell. 13ffc

JUNK-A-TIQUES, glassware, furniture, baby bed, books, dishes, bottles, doll Kleenex box, dolls, misc. We buy, sell or trade. We trade books. 1704 N. First St. Mrs. Harley Langford.

FUR BUYER
Will buy each Saturday in December and January from 1:00 to 2:00 p.m. on the west side of the Courthouse. The last Saturday in November will buy Coyotes and Bobcats. "All Bobcats must be tagged by Game Warden before they can be sold".
H&H Fur Co.
Vernon Hayden
817-559-5720

Need An Office?
If You Are Interested, Call or Contact
Jim Bynum
864-3181 or 864-3869

Wanted
HAVE A Female Pomeranian. Need a Male Pomeranian to breed by. If anyone has one, please contact Kelly Hughes, 915-773-2557. 1-3c

Real Estate
FOR SALE: Bob's Shoe Shop in Haskell. Large main building, two bedroom house, six small buildings some rented at this time, lots of square feet. 1 1/2 acres of land. \$28,000. Counts Real Estate. 658-3211. 46ffc

FOR SALE: Beauty Shop Building in Rochester. Would make a great lake cabin. Will sell to move or with lot. Good buy. Counts Real Estate. 658-3211. 46ffc

TRAILER HOUSE for Sale. Rule, Texas. \$3,500.00. Phone 997-2531. 52-1p

Real Estate For Sale
3 Bedroom 2 Bath on N. 6th Priced for Quick Sell.

3 Bedroom with Den, Good Concrete Storm Cellar, Central Heat & Air.

3 Bedroom with utility porch & garage reduced to \$5,500.00.

Nice 3 Bedroom Brick with fenced yard, Central Heat. Clean and ready for occupancy.

Extra nice large 3 Bedroom on N. 6th St., Wood Fence.

3 Bedroom Frame with Carport & Fenced Yard.

Still have good selection of 2 bedroom dwellings.

We Give Green Stamps For Exclusive Residential Listing.

The Hartsfield Agency
417 South 1st
Phone 864-2665

Quality New Homes Construction
Have lots to build on East Part of Town Tommy McAdams Builder
Call 864-2785. 13ffc

FOR ALL YOUR GENERAL PLUMBING NEEDS
Call Philpot's Supply & Service Center.
864-3010
402 N. 1st. 41ffc

Used Color TV's For Sale Cheap
Anderson Tire Company
206 S. Av. E. 864-2900. 16ffc

New & Used Color & BW TV
Amonett & Amonett Radio & TV
864-2870 Haskell. 13ffc

JUNK-A-TIQUES, glassware, furniture, baby bed, books, dishes, bottles, doll Kleenex box, dolls, misc. We buy, sell or trade. We trade books. 1704 N. First St. Mrs. Harley Langford.

FUR BUYER
Will buy each Saturday in December and January from 1:00 to 2:00 p.m. on the west side of the Courthouse. The last Saturday in November will buy Coyotes and Bobcats. "All Bobcats must be tagged by Game Warden before they can be sold".
H&H Fur Co.
Vernon Hayden
817-559-5720

Need An Office?
If You Are Interested, Call or Contact
Jim Bynum
864-3181 or 864-3869

Obituaries

A.B. Warren
A.B. Warren, 85, of Munday died December 30, 1978 after suffering a heart attack. Funeral services were held December 31 at 2:30 p.m. in First Baptist Church in Munday. The Rev. Jack Mints officiated and burial was in Johnson Memorial Cemetery under the direction of McCauley-Smith Funeral Home.

Real Estate
LOTS FOR SALE: Six cemetery lots in Rule. Contact Mrs. Faye Jones, 800 Beech St., Plainview, Tx. 1c

FOR RENT: One 2 bedroom apt., furnished, bills paid. One 1 bedroom apt., furnished bills paid. Contact Dee Larned at 864-2409. 1-2c

FOR SALE: Three bedroom, two bath brick veneer. Carpeted, built-ins. Three lots. Phone 864-3730. 1-4ffc

FOR SALE: Approximately 6 acres on the north edge of Haskell, Hwy. 277. Large two bedroom house, den, one bath kitchen, small rent house, garage, 3 water wells. Shown by appointment only. Counts Real Estate, Box 338, Knox City. Phone 817-658-3211. 1ffc

Public Notice
STOCKHOLDERS MEETING
Notice is hereby given that a meeting of the STOCKHOLDERS OF THE FARMERS NATIONAL BANK, Rule, Texas, will be held in the office of said bank, in the City of Rule, State of Texas, on the second Tuesday of January A.D. 1978, the same being the 9th of January, 1978, at 3 o'clock in the afternoon, for the purpose of electing a Board of Directors for said bank, and the transaction of any other business that may properly come before said meeting.
Morris Neal, President. 52-1c

Alfred McIver
Alfred McIver, 61, of Ft. Worth, formerly of Haskell, died December 24, 1978 at the VA Hospital in Dallas after a lengthy illness. He was a disabled Navy veteran. Services were held at Shannons Funeral Home in Ft. Worth with DAV burial at Laurel Land in Ft. Worth. Born August 11, 1917 in Mineola, he moved to Haskell with his family. Survivors include his wife, Helen; a son Jimmy of Garland; two daughters, Mary of Austin and Carolyn of Irving; five grandchildren; his mother, Mary McIver of Haskell; two brothers, Emory of Coos Bay, Oregon, and Roy of Haskell.

GRAND
Stamford 773-3181
Fri. Jan. 5-Sat. 6-Sun. 7
Jane Fonda
"Comes A Horseman"

DRIVE-IN
Stamford 773-3272
Fri. Jan. 5-Sat. 6-Sun. 7
Ryan O'Neal
"The Driver"

Wed. 10-Thurs. 11
XX on XX Rated XX
Adults Only
"Stag Party"

TDA Directory Provides Export Information

AUSTIN--The Texas Department of Agriculture's 1979 Texas Agricultural Export Directory will be available to the public in January, it has been announced. The Export Directory is a book containing valuable information for those who wish to export or import Texas agricultural products, according to Agriculture Commissioner Reagan V. Brown. There are over 300 listings of Texas companies interested in exporting their products, as well as information on Texas ports and transportation support services. Also included is a list of Texas commodity boards. For a free directory write: Commissioner Reagan V. Brown, Texas Department of Agriculture, P. O. Box 12847, Austin, Texas 78711.

For faster results Use The WANT ADS GET RESULTS "GO CLASSIFIED"

College News
Charles Scott McDonald, a 1969 graduate of Haskell High School, was a December 17, graduate of TWU with a BS in Nursing. He is the son of Mr. and Mrs. Claude McDonald of Hamlin. He will begin employment soon at Westgate Hospital in Denton.

CHRISTMAS PARTY
The St. Georges Church's Christmas party was celebrated Dec. 21 in the Parish Hall. Outstanding feature of the party was the second grader's nativity play. The play was produced by Lupe Perez, second grade religion teacher. A "New Angle On Christmas" was also presented by the High School students and sixth grade students. Santa Claus also paid the group a visit and had something for everyone.

The Haskell Free Press
Established January 1, 1886
PUBLISHED EVERY THURSDAY
MEMBER
1979
TEXAS PRESS ASSOCIATION

BILL COMEDY—Publisher
DON COMEDY—Editor
Entered as second-class matter at the postoffice at Box 577, Haskell, Texas 79521, under the Act of March 3, 1879.

SUBSCRIPTION RATES
In Haskell and Adjoining Counties

One Year	\$6.25
Six Months	\$4.00
Two Years	\$12.00
Elsewhere in Texas	
One Year	\$7.50
Six Months	\$5.00
Two Years	\$14.00
Outside of Texas	
One Year	\$9.00
Six Months	\$6.00
Two Years	\$17.00

NOTICE TO PUBLIC—Any erroneous reflection upon the character, reputation or standing of any firm, individual or corporation will be gladly corrected upon being called to the attention of the publishers.

Why Settle For Less Than The Maximum Interest You Can Earn On Your Savings Account!

ANNUAL RATES		*ANNUAL YIELDS
8.00%	8-Yr. Cert. \$1,000.00 Min.	8.33%
7.75%	6-Yr. Cert. \$1,000.00 Min.	8.06%
7.50%	4-Yr. Cert. \$1,000.00 Min.	7.79%
6.75%	2 1/2-Yr. Cert. \$1,000.00 Min.	6.98%
6.50%	1-Yr. Cert. \$1,000.00 Min.	6.72%
5.75%	90-Day Cert. \$500.00 Min.	5.92%
5.25%	Passbook Account Open For \$5.00 or More	5.39%

IF INTEREST IS LEFT TO COMPOUND CONTINUOUSLY FOR 12 MONTHS A SUBSTANTIAL INTEREST PENALTY IS REQUIRED FOR EARLY WITHDRAWAL FROM CERTIFICATES.

44 Years Young
\$63.8 Million Strong

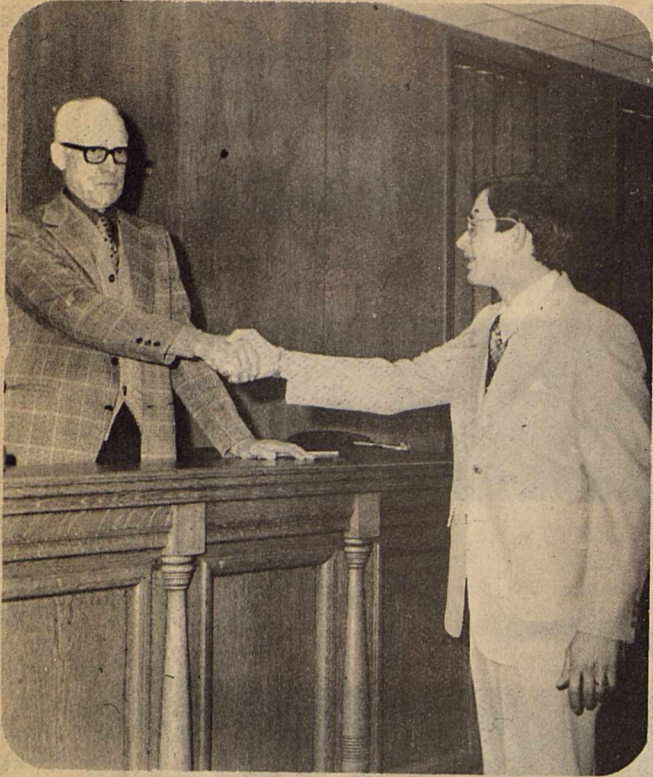
FIRST FEDERAL SAVINGS AND LOAN ASSN. OF STAMFORD

Home Office: 122 W. McHarg P. O. Box 511 Stamford, Texas 79553 915-773-2714

Branch Office: #3 Avenue D P. O. Box 444 Haskell, Texas 79521 817-864-3179

Division Office: Quannah Federal Savings and Loan 313 South Main St. Quannah, Texas 79252

Think MORE
More for your Money



NEW COUNTY AND DISTRICT OFFICIALS received the oath of office Tuesday morning from retired District Judge Ben Charlie Chapman, left. Judge Chapman is shown here congratulating newly elected County Judge John Wayne McDermott. Other new officers who received the oath were: District Judge Joe Williams, County Clerk Sue Fincher, County Treasurer Willie Faye Tidrow, and J.P. Prec. 1 Geraldine Hise. (Staff Photo)

Leisure Lodge News

We want to express our thanks to each volunteer and individual that helped in so many different ways to help make our year a more enjoyable one. We are hesitant to name them for fear of leaving someone out but we do sincerely thank all the Church groups, singing groups, schools, clubs, Volunteer groups, and each individual, and certainly welcome you back.

We want to express our sympathy to the families of Clarence Butler also to Mrs. Mary McIver who lost a son, Albert McIver of Ft. Worth. We are happy that Carrie Edwards is slowly improving after being in the local hospital for about a month. Her daughter and husband, Mr. & Mrs. Bill Grant were at her bedside but have returned home to Wickett. Also visiting Mrs. Edwards were Mr. & Mrs. Bob Cole of Dallas, Mr. & Mrs. Leon Grant of Riverside, Wyoming and Mrs. Ramona Cole and children of Snyder.

The following went out or had company over the holidays: Mr. Sam Parks was over

to his daughters for lunch, Mrs. Fave Stiewert and family. Visiting him were Mrs. Edna Adkins of Rochester, E.C. Burson of Wills Point, Terri Martin of Sweetwater, Jerry Stiewert of Mineral Wells, and Jack and Minta Lea Whitaker of Albuquerque, N.M. Mr. W.O. Lewis had lunch with the Derrells Sorrells family in Rule and with his sister, Florene Sorrells. Visitors of Mr. Lewis were Mr. & Mrs. G.C. Brockett of Weinert and Mr. & Mrs. Pete Brockett of Odessa and Buster Coffman of Goree. They were also visitors of Mr. & Mrs. Jeff Smith.

Elsie Mitchell ate lunch with her sister, Mrs. Ralph Merchant and husband. Mrs. Bruce Lee and daughter of Odessa and Betty Ruth Basden of Rochester visited with Myrtle Russell.

Mr. & Mrs. Archie Jones of Houston were here for several days visiting with his mother, Mrs. Maude Jones. Gussie Stone ate with the Glenn Caddells. Visiting Mrs. Stone were Mr. & Mrs. Charles Oman and family of Wichita Falls, Mr. & Mrs. Scotty Oman and family of Lubbock., Mrs. Clarence Searcy of Munday, Mr. & Mrs. Buford Westmoreland of Rule and Mrs. Ray Carter also of Rule visited with Mrs. Donna Westmoreland. Visiting with Mrs. Nolberta Flores were her daughter, Mrs. Susie Granado of Homestead, Fla., Mrs. Anita Comacho and Eddie of Abilene.

Mr. & Mrs. Albert Schmidt spent the day with Mr. & Mrs. Rufus Schmidt in Haskell and one day with Mr. & Mrs. Lynn Carlton in Stamford. Mr. & Mrs. Walter Rinehart of Rule visited with Mrs. Ophelia Medford and Mr. Arthur Lee. Others visiting Mr. Lee were Burt Cox, Pearl Rinehart, Mrs. Alvin Norman all of Rule, Mr. & Mrs. Connie Ramos and children, Cynthia and Michael of Clyde and Mr. & Mrs. Archie Jones of Houston.

Eldon Sanderson of Brownwood visited his sister, Kathryn Mitchell.

Owen Akin of Rochester was over visiting several residents. Mr. & Mrs. Newton Westmoreland of Rule visited with Mrs. Lummie Westmoreland. Visiting Mrs. Clara

Hendrix were Tammy, Boyd and Susann Petrich of Iowa Park, Capt. Roy Petrich of New Orleans, La., Leona Edwards of Ft. Worth and Mr. & Mrs. Delbert Howell of Rule. Mabel Golting, Georgia Brewer and Wanda Brewer all from Winters visited Mrs. Carrie Edwards. Mr. & Mrs. Hubert Wilson of Rochester visited Mrs. Nancy Howard. Mr. & Mrs. T.A. McCarty of Midland visited with Dee Phillips.

Mr. J.A. Wright ate lunch with the Dee McFadden's. Mary Stover from Montague visited him. Mrs. Medford ate lunch with Mr. & Mrs. Herbert Klose. Elsie Norman was over at Rule with her daughter, Oleta Baird and family.

Holiday visitors of Gussie Stone were Mr. & Mrs. Kirk LeMay and children of Highland, Ca., Mr. & Mrs. Joe Davis Gainesville, Fla., Joan Hurst and family of Abilene, Mr. & Mrs. Larry Caddell of Springtown and Mrs. W.A. Dutton of Weinert.

Mrs. Lillie Bradley visited her daughter, Mrs. Ola Lewis for a few days and was visited there by her grandson, Mr. & Mrs. Jerry Bradley and Curt from Ft. Worth and her son, Mr. & Mrs. Lloyd Bradley of Goree. Visiting Mr. Joe Larned were his sons, Kenneth Larned of Port Arthur and Mr. & Mrs. Jerry Larned of Monahans and

Hospital Notes

ADMISSIONS
MEDICAL: Erma Watson, Ruth Whittaker, Haskell; Velma Gann, Rule; R.W. Bailey, Haskell; Hughy Shaw, Lubbock; Richmond Andrews, Rule; Frank Markey, Artie Burkett, Haskell; and Lillian Garner, Old Glory.

DISMISSALS
Clarence Martin, Gwen Unger, Vera Ragsdale, Argie McFadden.

Messenger Is New Drilling Technician

Stephen R. Messenger with Exxon Company, U.S.A., Midcontinent Production Division, has been promoted from operator to drilling technician and transfers from the Midland District, Cordona Lake area near Crane, to the Drilling Organization, Midland.

In June 1977, he joined the Company in the Bateman area, Midland District, and moved to Crane in February of this year.

His hometown is Haskell. He and his wife, the former Barbara Muhle, are parents of a son, Brandon and a daughter, Jennifer.

BIRTHS

Mr. and Mrs. Donnie Raymond Green of Haskell announce the birth of a daughter, Michelle Rene Green, born in the Haskell Memorial Hospital on December 28, 1978, weighing 6 lbs. 2 ozs.

Mr. and Mrs. Trinidad Rodriquez of Haskell announce the birth of a daughter, Jessica Lynn Rodriquez, born in the Haskell Memorial Hospital on December 26, 1978, weighing 7 lbs. 12 1/4 ozs.

NOW AVAILABLE at the Haskell Free Press, Slide Rules.

January Clearance

- 1 Group Suits values to \$140.00 \$80.00
- 1 Group Suits values to \$105.00 \$70.00
- Selected Group Suits values to \$140.00 \$50.00
- 1 Group Sport Coats values to \$80.00 \$35.00
- Boys Suits and Sport Coats 1/4 Off
- Boys long sleeve shirts 1/2 Price
- Men's long sleeve shirts 1/3 Off
- Boys Winter Coats 1/3 Off
- Men's Vinyl Coats 1/3 Off

ALL SALE MERCHANDISE CASH
ALTERATION EXTRA

NEW SUITS NOT INCLUDED ON SALE

The Dad 'N Lad Shop

411 South First Street

Haskell, Texas

Western Texas College

ANNOUNCES

SPRING REGISTRATION

HASKELL CAMPUS REGISTRATION THURSDAY,

JANUARY 9, 1979; 6:30-8:30 P.M.

HASKELL HIGH SCHOOL LIBRARY

CLASSES BEGIN WEDNESDAY, JANUARY 17, 1979

SCHEDULE OF CLASSES

CHILD CARE & DEVELOPMENT CCD 223	6:30-9:20 Thurs.	J. Barkowsky
REAL ESTATE PRINCIPLES RET 131	6:30-9:20 Wed.	TBA
CHEMISTRY CHEM 142 Fund. of Chemistry	6:30-9:20 Mon. & Tues	Stovall
ECONOMICS ECO 232 Prin. of Economics	6:30-9:20 Mon.	N.C. Smith
ENGLISH ENG 132 Comp. II	6:30-9:20 Mon.	Jill Drusedow
PHYSICAL EDUCATION P.E. 234 P.E. for Elem. Ed. Teachers	6:30-9:20 Tues.	Gary Drusedow
HISTORY HIST. 131 U.S. Hist. To 1865	6:30-9:20 Thurs.	Krener
MATHEMATICS MATH 136 Concepts of Math II	6:30-9:20 Tues.	Holt
SOCIOLOGY SOC. 231 Intro. to Soc. SOC. 232 Contemporary Social Problems	6:30-9:20 Tues. 6:30-9:20 Mon.	G. Fleeer Ruth Fleeer
MANAGEMENT Management 233 Marketing Management 239 Management Seminar Management 135 Internship I Management 136 Internship II Management 237 Internship III Management 238 Internship IV	6:30-9:20 Thurs. 6:30-9:20 Wed. TBA TBA TBA TBA	Hays Schuchert Hays Hays Hays Hays

HEY KIDS!

REX ALLEN JR. SAYS— "Join Colonial Food Stores— "REHAB RANGERS" & WIN GREAT PRIZES

TOP PRIZES—

GRAND PRIZE
PINBALL MACHINE

1ST PLACE PRIZE
10 SPEED BIKE

2ND PLACE PRIZE
10 SPEED BIKE

3RD PLACE PRIZE
MOTOR CROSS
BICYCLE

4th thru 9th
PLACE
PRIZES
REHAB WATCHES

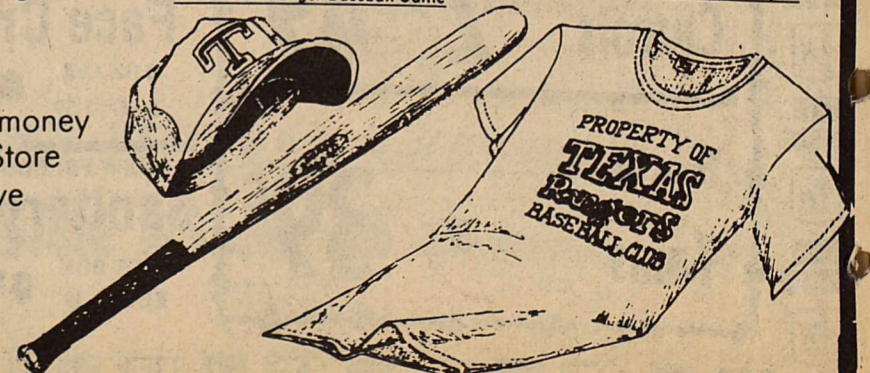
HERE'S HOW TO JOIN!

"It's simple to join—just go to your nearest Colonial Food Store, sign up for the Colonial Rehab Rangers & start collecting money for the WEST TEXAS REHABILITATION CENTERS between now & January 6. On Jan. 6, you can turn your money in at any local Colonial Food Store & find out what prizes you have won.



—OTHER GREAT PRIZES—

For every Colonial Rehab Ranger collection \$25 or more Texas Ranger T-Shirt
For every Colonial Rehab Ranger collection \$50 or more Texas Ranger T-Shirt and Texas Ranger Cap
For every Colonial Rehab Ranger collection \$100 or more Texas Ranger T-Shirt, Texas Ranger Cap, and Texas Ranger Baseball Bat
For every Colonial Rehab Ranger collection \$250 or more Texas Ranger T-Shirt, Texas Ranger Cap, Texas Ranger Baseball Bat, and all expense paid trip to see a Texas Ranger Baseball Game





A FAMILY OF SANTA FE RAILROAD MEN...J.E. Sanderson (second from right) is pictured with his four sons and grandson. Sons Dennis, brakeman, Marc and Gary, engineers, and Alvin, a conductor are shown left to right. Far right is grandson Curtis a brakeman.

3 Generations Serve Railroad

J.E. Sanderson is a locomotive engineer in Brownwood with 36 years of service and he still works regularly. But he is not the only Sanderson with railroad interests.

His four sons, Alvin, Gary, Marc and Dennis all follow in their dad's footsteps of railroading. And recently grandson, Curtis, joined the family group.

Alvin, the oldest son, is a conductor working out of Temple. Marc and Gary are engineers in Brownwood. Dennis, the youngest, is a brakeman in Brownwood. Curtis works in Temple on Santa Fe as a brakeman.

"Railroading has kind of taken over the Sanderson family", J.E. says. J.E. is the son of Mrs. Velma Sanderson who resided in Haskell until her death in 1962. He graduated from Weinert High School in 1938. He went to work in July 1942 as a fireman and was promoted to engineer in 1945. He operated trains with steam locomotives for 10 years.

During the years of 1944-1946 he served in World War

II as a Non-Com on a Bomber crew. J.E. and his wife, Lola Bell, have spent over 40 years in active worship in the Assemblies of God Churches in Haskell and Brownwood. He is also a member of Full Gospel Business Mens Fellowship International. J.E. served on the Early School Board of Trustees for 7 1/2 years and as secretary of a local lodge. He and his sons and grandson are all members of The United Transportation Union.

J.E. also has two nephews working on the Santa Fe. Lewis J. Gifford, Jr. is a conductor and W.E. (Eddy) Rice is an engineer. Both work out of Brownwood.

Lola Bell Sanderson is the daughter of the late Mrs. Marsella Gifford who many years ago lived in Haskell but now resides in Brownwood.



Some people once believed that mountains were formed by an enormous underground serpent moving about.

Bluebonnet Cafe

Rule

Noon Buffet 11:00-1:30

5:30 P.M. Buffet

Tuesday night Mexican Buffet

Thursday night Catfish Buffet

Army To Offer Two-Year Enlistment

The Army's test two-year enlistment with a \$5,400 education program is now being offered for the first time here to selected high school graduates.

This limited enlistment option was announced today by Lieutenant Colonel Harlin L. Fenn, Jr., Commander of the U.S. Army Dallas District Recruiting Command. Only one of 10 district commands in the Army's Southwest Recruiting Region is involved in this particular option.

"All openings are for certain skill positions in Europe," the Colonel said. Qualified two-year volunteers may enroll in the Veterans Education Assistance Program (VEAP) option.

The VEAP, commonly called the peacetime GI Bill, matches a soldier's educational savings two-for-one up to a certain amount.

Colonel Fenn pointed out that this special offering appears simple on the surface. "But," he added, "some rather complex requirements exist for the limited openings." Further information and application assistance he said, can be obtained at the nearest Army Recruiting Station.

This special option is being offered in addition to the normal three-year and longer enlistments currently in effect.



In 1935, Carl Magee patented the first coin-operated parking meter.

"Sitting Around" No Way To Market Farm Products

AUSTIN—"You never get anywhere by just sitting around" is the salesman's familiar line on the TV commercial, but the Texas Department of Agriculture is showing that this philosophy can pay off in the real world of foreign agricultural trade.

As part of the continuing effort to get more Texas agricultural products onto overseas markets, Agriculture Commissioner Reagan V.

Gossip can keep people from coping with personal anger and insecurity, points out Jenny Reinhardt, family life education specialist with the Texas Agricultural Extension Service, The Texas A&M University System.

Don't use good knives to cut string or wire or as screw drivers or levers, advises Linda McCormack, family resource management specialist with the Texas Agricultural Extension Service, The Texas A&M University System.

Brown recently completed a 10-day mission to Europe to meet with government officials, trade representatives, agricultural specialists and potential customers. The prime objective was a stopover in Paris to discuss possible sales of Texas food and fiber at SIAL, one of the world's largest international food and trade shows.

Other stops included London to meet with American agricultural attaches and potential buyers; the Netherlands to visit the offices of Great Plains Wheat and the U. S. Feed Grains Council; and Bonn, West Germany to meet with U. S. embassy officials.

"Our agricultural industry has long been aware of the vast potential that trading with other countries offers," Brown noted. "The Texas Department of Agriculture has been, and will continue to be, a major factor in the steady growth of foreign agricultural trade."

"This trade is of tremendous benefit to Texas and American farmers, who now harvest one out of every three acres for shipment to other countries," Brown noted. "But foreign sales of agricultural goods also boost the general economy by helping offset the staggering U. S. trade deficit. In addition, it is estimated that over one million jobs in this country are directly tied to farm exports."

Brown noted that Texas agricultural exports increased some 16 per cent in 1977 over the previous year, and totaled nearly \$1.2 billion. Major export goods included cotton, grain sorghum, wheat, rice and soybeans.

The Texas Department of Agriculture has long been involved in helping market the state's farm goods, and, realizing the importance of foreign markets, recently strengthened its efforts in this area with the addition of two international trade specialists.

These professionals of China (Taiwan) agreed to purchase some \$11 million worth of Texas corn.

SALE

1/3 & 1/2

off

On All Winter Merchandise

Kids' Duds

Haskell, Texas

TAKE HOME SAVINGS

with Our Lower-Priced Quality Foods

Fresh Store Made Sausage	89¢ lb	Morton Honey Buns	Box 49¢
Small Lean Pork Spareribs	\$1.19 lb	Washington Golden Delicious Apples	39¢ lb
Hamburger Meat	89¢ lb	Texas Ruby Red Grapefruit	5 For \$1.00
Chuck Roast	\$1.19 lb	North Carolina Yams	29¢ lb
Chili Meat	98¢ lb	Wagner Orange	Quart 47¢
Hunts Whole Tomatoes	2 No. 300 Cans 89¢	Vlasic Dill Pickles	Quart 89¢
Van Camp Hominy	4 Cans 98¢	Hunts Tomato Sauce	4 Cans 89¢
Mrs. Tuckers Shortening	Can \$1.49	Bama Peach Preserves	18 oz 79¢
VIP Peanut Butter	12 oz 69¢	Del Monte Catsup	2 14 oz bottles 89¢
Hunts Snack Pack	4 can pkg 79¢	Hunts Prima Salsa Spaghetti Sauce	2 lb jar 59¢
Kraft Squeeze A Snack Cheese	69¢	Pinesol	15 oz 89¢

JANUARY Clearance Sale

On All Fall & Winter Merchandise

Coats-Plain & Fur-trimmed
Blouses
Sweaters
Skirts
Jr Dresses
Jr Sportswear
Jr Fleece Sleepwear
Regular Dresses
Regular Sportswear
Pant Suits Reg. & Half Sizes
Fleece Robes & Sleepwear

1/3

off

Group Better Sportswear
Group Better Dresses
Jr Co-ordinates
Satin Vests & Pants
Formals & Long Dresses
Bridal Gowns- A Select Group

1/2

off

THE *Personality* SHOPPE

POGUE GROCERY

—Extra Parking Behind The Store. Home Owned and Operated—

113 North Avenue E

Phone 864-2015

Haskell, Texas

Measle Epidemic Possible

Evidence that another measles epidemic may have begun in Texas has prompted State Health Department officials to recommend stringent immunization measures—especially for those who are of school age.

"We know of measles epidemics occurring in eight other states, as well as those measles cases occurring in our school children—especially in junior high school and high school students in East Texas," said Dr. Jerome H. Greenberg, Deputy Commissioner for Preventable Diseases with the Texas Department of Health.

Positive and vigorous steps must be taken now to prevent a violent resurgence of measles after the holidays since there is reason to believe that measles may spread to other parts of Texas.

Dr. Greenberg urged all school systems to review immunization records for elementary, junior high school and particularly high school students to pinpoint: 1. those who have not been immunized with live virus measles vaccine or cannot provide certification by a physician that they have been adequately immunized prior to that time; and 2. those who were immunized against measles prior to the month which included their first birthday.

Once identified, susceptibles must be immunized with

deliberate haste. Epidemic situations may warrant prudent reimmunization of any child or adolescent originally immunized before 1970.

Linda Chandler, R.N., Director of the Communicable Disease Surveillance Program, requests that cases of measles, suspected or diagnosed, be reported to local health authorities in order that high risk populations be identified and subsequently immunized.

Immunization of every child and adolescent is imperative. It is recommended that health authorities, civic leaders, school administrators and parents publicize the measles problem. Infants 6-12 months of age are candidates for immunization (during local outbreaks). However, these children will need to be reimmunized upon reaching 15 months of age. Adults may also need protection in some cases. Family members of measles victims should be immunized or have ascertained whether they are adequately protected. Schools can help guard against outbreaks by maintaining accurate immunization records of all enrolled students, said Mrs. Chandler.

If measles develops in a school age child, all children in that student's class should be immunized or

reimmunized unless valid immunization records can document that proper immunization has established immunity. Parents may check with their family physicians or public health clinics to ascertain whether proper immunization has been affected.

In junior and senior high schools, where students circulate more widely from class to class, the occurrence of one case of measles should be followed with insistence that every child in that school is adequately protected, said Dr. Greenberg.

He added that exclusion of unimmunized students from school until they have been immunized is recommended when a local epidemic is in progress. This recommendation is currently outlined by the national Center for Disease Control in guidelines for terminating outbreaks and increasing rates of immunization quickly.

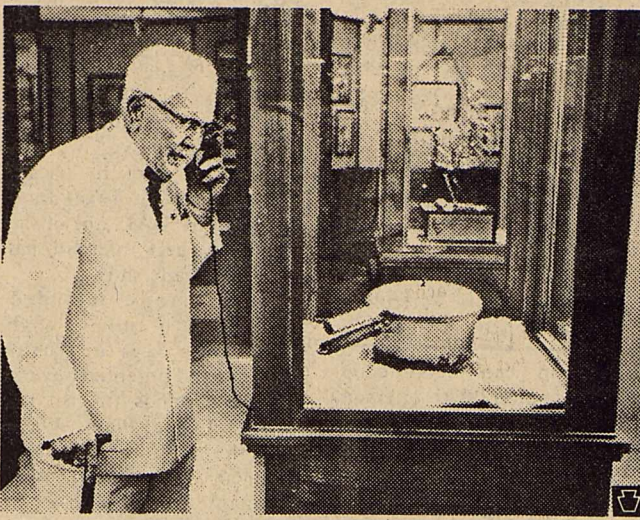
"We recognize," said Dr. Greenberg, "that there are few priorities more important than the proper education of our school children. Of course, a prevailing priority is the prevention of death and brain damage due to measles."

Encephalitis occurs in approximately one of every 1,000 reported cases, with survivors often having permanent brain damage and mental retardation. "Death, due predominantly to respiratory and neurologic causes, occurs in one of every 1,000 reported measles cases," reports the Center for Disease Control. Risks of encephalitis and death are known to be greater in infants and suspected to be greater in adults than in children and adolescents.

In making recommendations on the urgency of measles immunizations, Dr. Greenberg notes that live measles vaccine should not be given to females known to be pregnant. This precaution is based on the theoretical risk of fetal infection, which applies to administration of any live virus vaccine to females who might be pregnant or who might become pregnant shortly after vaccinations. Private physicians can give guidance on this matter.

Museum Honors . . .

America's Most Famous Colonel



It was the "pot heard 'round the world." At first glance, it looks like any other pressure cooker used in the 40's, but upon closer inspection, the public will find it was the vehicle that launched the fast food industry . . . today an estimated \$17.5 billion a year business.

This charred four-quart pressure cooker pot is among the dozens of artifacts now housed in the Colonel Harland Sanders Museum which opened recently in Louisville, Kentucky. The facility was dedicated by Kentucky Fried Chicken in honor of the Colonel's 88th birthday.

An entire new era in food service is recorded on the Museum's walls, in the display cases and through specially-designed videotape programs. The facility aptly reflects the contribution made by THE pioneer in the quick service restaurant field — a man who personally changed the eating habits of America, affected

millions of lives and thousands of business people — Colonel Harland Sanders.

"I'm genuinely honored by the establishment of this museum," the sprightly octogenarian noted. "This is the best birthday gift I've ever had—and that's saying a lot since there've been 88 of 'em."

The Colonel Harland Sanders Museum is open to the public free of charge Monday through Friday from 9:00 a.m. to 5:00 p.m. It's located on the ground floor of the Kentucky Fried Chicken headquarters building, 1441 Gardiner Lane, Louisville, Kentucky.

Employers Should Use Revised 1978 Form W-2

Employers should remember that there's a new way to report employees' wages for social security purposes, Mr. Hammons, social security district manager in Abilene, said today.

There's also something new to read those reports—a machine called an optical scanner that translates the reports to the magnetic tape language that a computer can understand.

Mr. Hammons said the Social Security Administration is concerned because some early reports are being received in a format the optical scanner can't read—and that means more expensive manual processing.

Beginning with 1978 wages, employers are to use Form W-2 (Wage and Tax Statement) to report their workers' earnings. Form W-2 has been revised for 1978 so it can be read by the scanner.

The Form W-2's are printed three to a page, and Copy A of the form is to be submitted to social security in just that way—three to a page.

Some employers are going to the trouble of cutting the forms apart, which means they cannot be processed by the optical scanner.

Other employers are sending the Form 941's that were used previously for earnings reports. And some are using older Form W-2's. Those forms cannot be processed by machine either.

Employers should use only the 1978 Form W-2, he emphasized. And the entire page must be sent in even if one or two of the forms are blank.

The changeover is part of the switch to annual reporting of employees' earnings, Mr. Hammons explained. Reports

were submitted quarterly in previous years.

All Forms W-2 should be submitted with Form W-3 (Transmittal of Income and Tax Statements).

The forms are available from local Internal Revenue Service offices or from private printers.

The deadline for submitting the forms is February 28, 1979.

Detailed instructions for completing the forms are given in the December 1977 Circular E (Supplement), Employer's Tax Guide. Employers who don't have a copy of Circular E can get one from the nearest Internal Revenue Service office.

Capitol, culture and Longhorns in Austin

BY GORDON M. QUARNSTROM

AUSTIN—When the Texas football team has a Saturday game, this capital city gets a touch of gridiron madness. When the game is at home, the cavernous stadium scene might just be out of a movie. You have to see it to believe it.

Yes, Austin is a sports-minded city, and rooters had much to cheer about last year with championship football and basketball teams.

But there is more to the University of Texas, that oil rich institution, than sports. The Super Drum, a drum-shaped structure opened last year for basketball, actually is a multi-purpose structure, and here are presented on a year around basis some of the finest singers, dancers and musicians.

There is a Symphony Square, too. Four limestone buildings were saved from extinction, a 500-seat amphitheater was added, and now the city has an urban restoration project that provides a home for an excellent symphony orchestra. The revitalization halted the decline of a downtown city area. There are concerts and other presentations, for children as well as adults.

Texas' Capitol is an imposing structure, second in size among such buildings only to the U.S. Capitol in Washington. Nearby is the Governor's Mansion, which also is open during certain hours for visitors who want to see rooms and furnishings in the historic structure. The University of Texas is home to the Lyndon B. Johnson Library, which brings scholars from all over the nation, and all world. It houses a spectacu-

lar collection of presidential papers and political memorabilia and truly is an imposing structure, one which I have visited time and time again.

Austin is proud of its country western music, including that of Willie Nelson, acclaimed on a national magazine cover for his talent. The Austin Sound became popular around the world some years ago and remains big, with many musicians in various halls and clubs. Austin has excellent hotel and motel facilities, but the fact the city is growing so rapidly and attracting so many visitors means that advance reservations are suggested, especially during a home sports event.

An excellent new hotel is the Marriott just off the expressway north of the city. It opened in 1978 with 300 deluxe rooms and four suites and became an immediate success. The hotel has free parking for more than 500 cars, a unique dining room called Diamond Lil's, 13 meeting and banquet rooms, Austin's largest hotel ballroom, a swimming pool and sauna, and many other features. It is within 10 minutes of the busy Austin airport, the University and downtown. The hotel is built of native stone and brick, reflecting its Texas hill country surroundings.

Other hotels include the Hilton Inn, Sheraton-Crest, a pair of excellent Holiday Inns, the venerable (but restored) Driskill in downtown Austin. There are excellent motels, including the Quality Inn at the south entrance to the city on the highway leading from San Antonio.

The Austin Chamber of Commerce can furnish information about the city and its accommodations, while you can get full data about the entire state by writing to Dept. GW, Texas Tourist Development Agency at Box 12008, Austin 78711.

For full information about Texas you should ask for "Texas-Land of Contrast", a 160-page illustrated book.

If your time permits, do visit Barton Springs, which I consider one of the finest recreation pools in the U.S. Springs feed the giant pool, which during the summer attracts swimmers and sunbathers of all ages, and which has the same water temperature, 68 degrees, all year around. This permits use by hardy bathers even in the winter months. Texas Parade recently had a fine feature on Barton Springs, saying "Young and old, rich and poor, naked and demure all mingle in peace at the best place to swim in America, and a few even swim there."

Well, I saw the Texas Parade photo of the braless young nymph beside the pool, but on my visits I have seen nothing more revealing than bikinis. And I have seen hundreds of swimmers in the crystal clear water. The pool is located in a great public park, with play and picnic areas only two miles from the Capitol in the city's heart.

Austin is served by several airlines. There is Amtrak service on the Inter-American, slicing through mid-America from Chicago on the north to Laredo at the Mexican border. There is bus service, and if you drive, you'll find Austin about four hours south of Dallas-Fort Worth and about two hours north of San Antonio on wide expressways.

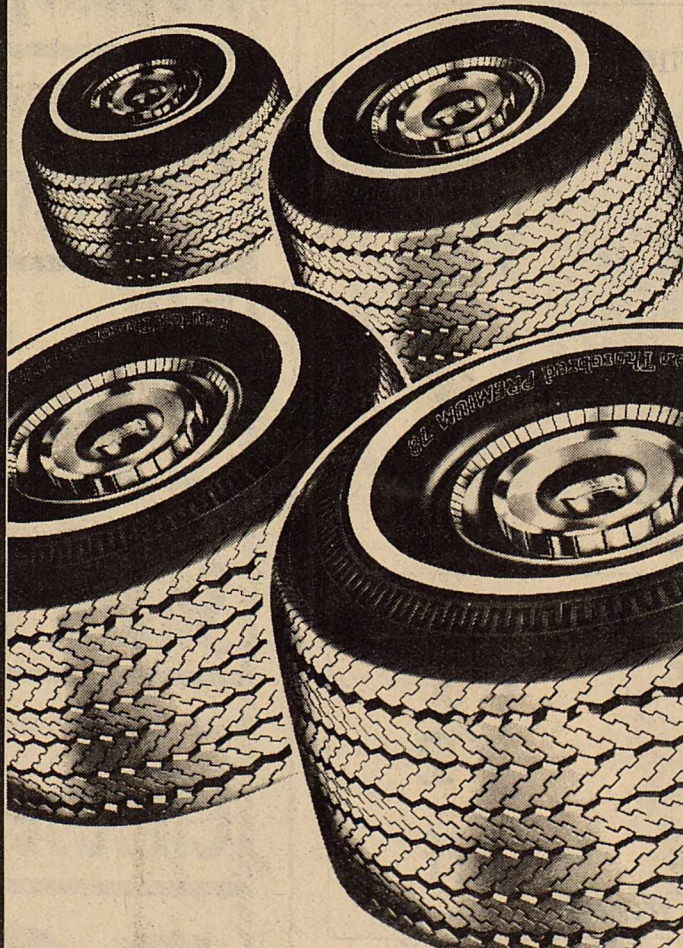
Use Classified Ads

PRICES SLASHED!

Dayton PREMIUM* 78 WHITEWALLS

4 FOR \$122.00

Regularly \$34.25 Each



SIZE	WAS	NOW ONLY	FED. EX. TAX
G78X14	\$36.11	\$31.97	\$2.42
G78X15	\$36.89	\$32.50	\$2.45
H78X15	\$38.78	\$33.89	\$2.65
L78X15	\$41.65	\$35.95	\$2.93

We have in stock 116-HR70X15 Dayton

Steel Belted Blems

at \$44.80

Plus \$3.27 tax & old tires. Reg. Price \$77.60

- No thump 4 ply polyester cord body
- Tough, aggressive long mileage tread
- Bold, sparkling white stripe sidewall

*Premium is our designation. No industry-wide standards exist for premium tires.

Don't forget, the safety of your tires is affected by air pressure, wear, load and operating conditions.

Anderson Tire Co.

206 S. Av E

864-2900



January clearance sale

GIRLS' COATS

1/4 Off

One group reduced even more.

GIRLS

Denim Skirts

Mostly size 7-14, some 4-6x

1/2 Price

Juniors and Misses

JEANS TOPS

Large group Knit tops, S-M-L

1/2 Price

Girls' and Boys'

SWEATERS

Cardigans, pull-overs, knit capes, etc.

1/2

Price

SELECTED GROUP

BOOTS

Special group western boots by Acme and Texas, all sizes, reduced to clear incomplete runs.

25%

Off

Men's and Boys'

JACKETS

20% Off

One Table

MEN'S SHOES

reduced

1/3—1/2

Men's and Boys'

KNIT SHIRTS

(Does Not Include Wranglers) Sizes 4-20, S-XL

1/4 Off

The C & B Store

East Side Square

Telephone 864-2250

Jones, Dudensing Wed

Peggy Dudensing and Gene Jones both of Stamford were united in marriage December 30, 1978 in Bethal Lutheran Church in the Ericksdahl Community. Rev. Stan Leaf, Bethal Lutheran Church pastor, officiated.

The bride is the daughter of Mr. and Mrs. Clement Dudensing and the groom is the son of the late Mr. and Mrs. Chris Jones.

Organist was Becky Nauert of Stamford. Pianist was Becky Buerger of Stamford.

Soloist was Sherry Tarrant of Dallas.

She was given in marriage by her parents.

Matron of Honor was Janet Bryan of Stamford. Maid of Honor was Quala Buerger of Hart. Kay Johnson of Amarillo was bridesmaid.

Candlelighters were James and Tiffany Allday of Abilene. Ring Bearer was Jon Ivy of Hale Center.

Danny Ivy of Hale Center was best man. Groomsmen were Glenn Dudensing, brother of the bride, of Stamford; and Kenneth Dudensing, brother of the bride, of Sweetwater. Ushers were Joe Kretschmer of Haskell and Jackie Hogan of Wichita Falls.

A reception hosted by the bride's parents was held in the Church Fellowship Hall.

A rehearsal dinner hosted by the groom's brothers and sisters was held at the Cliff House in Stamford.

The couple will reside at 326 Hawthorn in Abilene.

The bride is a graduate of Texas Tech with a B.S. degree in Food and Nutrition. The groom is employed at Schlumberger Well Service in Abilene.



MRS. GENE JONES
...formerly Peggy Dudensing

HASKELL Lunch Menu

- January 8-12
- MONDAY**
- 1&2 Beef Stew
 - 3 Grilled Cheese Sandwiches
 - 4 Peach Cobbler
 - 5 Milk
- TUESDAY**
- 1 Turkey Tetrazzini
 - 2 Blackeyed Peas
 - 3 Hot Rolls Butter
 - 4 Apple Crisp
 - 5 Milk
- WEDNESDAY**
- 1 Chili Con Carne with Beans
 - 2 Seasoned Greens
 - 3 Cornbread Butter
 - 4 Diced Peaches
 - 5 Milk
- THURSDAY**
- 1&2 Pizza
 - 3 Buttered Corn
 - 4 Pear Halves
 - 5 Milk
- Extra Peanut Butter and Crackers
- FRIDAY**
- 1 Chicken Croquettes
 - 2 Mashed Potatoes
 - 3 Seasoned Green Beans
 - 4 Hot Rolls Butter
 - 5 Milk
- Extra Applesauce Cake
- Breakfast Menu**
- MONDAY**
- Orange Juice
Cereal
Milk
- TUESDAY**
- Apple Juice
Oatmeal
Milk
- WEDNESDAY**
- Grape Juice
Cereal
Milk
- THURSDAY**
- Orange Juice
Toasted Biscuits
Milk
- FRIDAY**
- Apple Juice
Steamed Rice
Milk

Around Town

Mr. and Mrs. Tommy Harris of Boulder, Colo. visited the Sam Herren's Thursday & Friday. While here, they also visited Mr. and Mrs. Virgil Wall. Tommy & Virgil were in the CB in the Pacific during World War II. Mrs. Tommy Harris and Mrs. Sam Herren were old college buddies.

Louise & Bill Archibald and children Will, Kellie & Joe of Oklahoma City, spent Christmas with the Sam Herren's.

Mr. and Mrs. Kevin Allmon & Jennifer of Denton visited with her parents, Mr. and Mrs. J.W. Howard & Leonard over Christmas & with Buck Allmon of Lake Stamford on Tuesday.

Mr. and Mrs. J.W. Howard & Leonard, Mr. and Mrs. Hollis Wayne Howard & Chris & Mr. and Mrs. Hollis Howard were weekend visitors of the Kenneth Howard family in Wylie. They were joined there by the Hollis Howard's daughters & families: Mr. and Mrs. James Andress of Sand Springs, Okla., Mr. and Mrs. Elliot Wolder & Sal of Carrollton, & Mr. and Mrs. Mike Grand & Misti of Ada, Okla. Sal Wolder returned to Haskell for a week's visit with the Hollis Howards.

Visiting Christmas Day through Tuesday with their parents, Mr. and Mrs. Hollis Howard & Mrs. Alice Howard & other relatives were Mr. and Mrs. James Andress of Sand Springs, Okla.

Mr. and Mrs. Elliot Wolder of Carrollton were weekend guest of her parents, the William Hollis Howards & other relatives. They came to pick up their son, Sal who spent the week with the Howards.

Cliff Dunnam had all of his children and grandchildren home for Christmas, except the oldest grandson, Mr. and Mrs. Mike Grand & Misti. The others were Mr. and Mrs. Gene Grand & Cliff of Ada, Okla., Kippie Grand of Lubbock, Mr. and Mrs. Charles Gibson, and Brett of Burlington, Iowa, Mr. and Mrs. R.L. Good, Brandi & Berry of El Paso, Mr. and Mrs. Jack Dunnam, Tanya & Jeffery of Weinert, Mr. and Mrs. Ross Dunnam, Emily & Matt of Abilene and Mr. and Mrs. Troy Schwartz, Nikki, Corey & Ross of Hewitt.

Gene Hester of Houston visited his mother, Mrs. Cliff Dunnam and sisters, the W.H. McBroom family and the Jimmy Browning family and brother, Eddie Hester family.

Visitors in the home of Mrs. Jack Sanders of Weinert during the Christmas Holidays were Mr. and Mrs. B.D. Kirkland, Jr., Jackie & Tammy of Ft. Worth, Mr. and Mrs. Oman Sanders & Darrel of Coleman, Mr. and Mrs. Rocky Sanders, Shawn, & April, Mr. and Mrs. Jackie Sanders & Kickey, Mrs. Eva Hardman & John, all of Irving, Mr. and Mrs. Walter Cox, Brenda, Deborah & Jr. of Dangerfield, Mr. and Mrs. Dudley Phelps, Scarlet Brazil, Edwin & Teresa, Mr. and Mrs. Kenneth Campbell & Karen all of Haskell, Mr. and Mrs. Darwin Slade & David of Eager, Ariz., Stacey Slade of Buckeye, Ariz., Mr. and Mrs. Steve Slade of Oklahoma City, Okla., Andy Sanders of Cross Plains, Mr. and Mrs. Bill


Maupin, Suzie & Loretta of Odessa, Dean Stewart of Haskell and a friend of Jackie Kirkland of Ft. Worth.

Holiday visitors in the home of Mamie Vaughn were Mr. and Mrs. Clifton Vaughn of Post, Mrs. Dewayne Vaughn of Anson, Mrs. Jerry Bennett of Omaha, Nebraska and Mrs. Don Jones & son, Jay J of Denver City.

Mr. and Mrs. E.L. Hilliard were in Bryan Sat., Sun. and Mon. visiting with Mr. and Mrs. Gary Shaw, Dawn, Karen, Laren & Marshall. Mr. and Mrs. Ronald Hilliard, Jarred & Jason of Lockhart came to visit & spend the night with the Shaws & Hilliards in Bryan.

Classifieds
Small ads...Big Results

NEW YEAR GREETING



Once again I want to express my appreciation to voters of the 101st District for honoring me with a commission to represent them in the House of Representatives for the ensuing two years.

I sincerely hope that one and all will find happiness and success during 1979 and always. Please call on me for any service you desire. This applies to the individual citizen, school district, city or county.

W. S. HEATLY
Representative 101st District

Political advertisement paid for by W. S. "Bill" Heatly, substitute campaign manager, Drawer 1, Paducah, Texas, 79248

Letters To The Editor

Dear Editor,

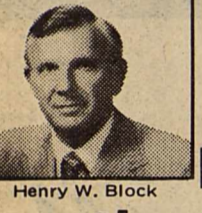
I would like to express my most sincere 'thank you' to everyone who called, sent cards, donations, visited and prayed for my friends and myself!

Never before the McCauley bus-truck wreck did I realize how much compassion exists between the communities and the people who live in them in this part of the country!

I would especially like to 'thank' everyone who remembered that my parents, Gene and Thelma Dunlap (who have lived in Haskell off and on all of their lives) had a daughter that would be about my age and who were concerned. And also, those people who contacted my brother, James Dunlap (who now lives in Haskell and works for the DPS) and asked about my condition.

There is no way we can ever 'thank you' enough but maybe I should just start with 'thank you' and God bless.

Anita Kaye Dunlap
McCauley Senior



"We'll take all the time needed to do the job right."

We ask the right questions. We dig for every honest deduction and credit. We take the time needed because we want to be sure you pay the smallest legitimate tax. That's another reason why H&R Block should do your taxes... whichever form you use, short or long.

H&R BLOCK
THE INCOME TAX PEOPLE
11 North Ave. E
Open 9 a.m.-6 p.m. Weekdays, 9-5 Sat.
Phone 864-3322

SHOP ALLSUP'S AND SAVE!!

ALLSUP'S
CONVENIENCE STORES

PRICES EFFECTIVE JANUARY 7-9, 1979

INVENTORY CLEARANCE SALE!

Shurfine Halves or Sliced Peaches 4/\$1	FOLGER'S FLAKED COFFEE 13 OZ. \$2.29	Del Monte Peeled Tomatoes 3/\$1
Ranch Style Beans 4/\$1	ALLSUP'S ICE CREAM 1/2 GAL. RD. CTN. \$1.19	Del Monte Tomato Sauce 5/\$1
Shurfine Cranberry Sauce 4/\$1	Shurfine Whole Sweet Potatoes 2/\$1	Del Monte Sliced Peaches 2/69¢
Del Monte Pear Halves 2/69¢	Del Monte Fruit Cocktail 2/69¢	

January Sale

Up to 50% Off On

- Coats Selected Group
- Dresses
- Jr. Dresses
- Pant Suits
- Sportswear
- Jr. & Misses
- Formals Long & Short
- Long Dresses
- Large Group 1/2 off

Lane-Felker

Conservation Viewpoints

USDA Soil Conservation Service
Assisting
Haskell Soil and Water
Conservation District

The application of cotton burs to the soil surface, commonly known as mulching, has a five-fold purpose. Any one or all five purposes can be met with a single application:

- (1). Conserve moisture.
- (2). Prevent soil surface compaction or crusting.
- (3). Reduce runoff and erosion.
- (4). Control weeds, and
- (5). Help establish plant cover.

Cotton bur mulch is usually applicable on soils subject to erosion on which low-residue-producing crops, such as cotton, is grown; on critical areas subject to wind erosion; and on soils that have a low infiltration rate, such as the heavy clay soils.

The usual rate of application is five tons per acre, depending on the efficiency of the applicator equipment. Application time usually starts with ginning season and lasts until all the burs have been disposed of or carried away from the gin.

General rules for handling cotton bur mulch for the greatest benefit is to (1), spread burs evenly over the soil surface, (2), anchor burs to the soil surface with a light disking operation or a chiseling operation, (3), protect mulched areas from fire, and (4), apply ten (10) pounds of nitrogen fertilizer per ton of burs to offset the natural nitrogen tie-up in bur decomposition.

J.C. Yeary, Jr.
District Conservationist

Roanne Mullino Tax Service

510 N. 1st, Haskell
Phone 864-3019

Five years Tax Experience
BBA Degree in Accounting

Sagerton Community News

It would seem that even those who have not developed the knack of remembering dates, would have no trouble recalling 1978. There were many memorable events in the year just past but none so astounding as the diversity of West Texas weather that occurred.

The year started with three months of bitter cold weather. It snowed at least once in each of five consecutive weeks in January and February. With the exception of the minor precipitation in these winter storms and a slight amount of rainfall in early May, the first two-thirds of the year were disastrously dry. To add to the misery the mercury reached 114 degrees during the hot summer months.

Little did we know that the year would turn out to be probably the wettest on record! In the last third of 1978 we received somewhere between 32 and 40 inches of rain. In the latter days of December record high temperatures were recorded just after two weeks of abnormally cold weather. It was not surprising that the year should end under a blanket of snow and ice.

During the year we lost several dear friends and relatives but life goes on and this was evident by the

baby boom we experienced. Despite the unpredictable Texas skies, local farmers did salvage some crops. The Sagerton gin has already ginned around 1500 bales of cotton with many more still on the yard and in the fields waiting.

The mother of several local residents celebrated a belated Christmas with her stepchildren. Mr. and Mrs. Herman Raphelt Jr. of Lubbock, Mr. and Mrs. Willie Raphelt of Sonora, Mrs. Lillie Mae Reed of Roby, and Mr. and Mrs. Garland Raphelt and son of Grand Prairie were guests in the home of Mrs. H.C. Raphelt of Stamford. Also joining them were Walter and Erna Schaake of Stamford.

Guests in the home of Mr. and Mrs. Leon Stegemoeller, Carl and Clifford on Christmas Eve were Mr. and Mrs. Clayton Stegemoeller and Stephanie and Clyde Stegemoeller of Lubbock and Mr. and Mrs. Calvin Stegemoeller of Duncan, Oklahoma. Mrs. H.C. Raphelt also joined them later.

The Stegemoellers just mentioned and Mr. and Mrs. Marvin Stegemoeller, Brenda and Dennis of Rochester, Mr. and Mrs. Mac Hearn and Leslie of Rochester, Miss Susan Stegemoeller of Lubbock, and Rober Ace Turner of Rule were Christmas supper guests in the home of Mr. Clarence Stegemoeller.

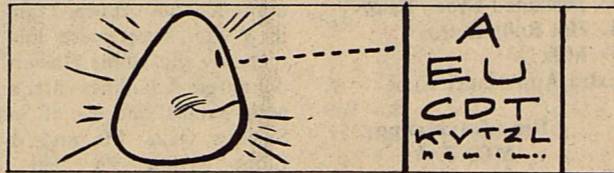
Mr. and Mrs. Fred Baitz and Kacy and Johnny Baitz

spent New Year's Eve night in the home of Mr. and Mrs. Melvin Baitz.

We want to welcome Mr. and Mrs. Steve Lehrmann into our community. They were married Saturday in Clyde. Both are graduates of Texas Tech University in Lubbock.

Sagerton residents attending the wedding were Mrs. Odene Dudensing and children, Lyn Dale and Carol, Johnny Baitz, and others from this area.

There were no services at Faith Lutheran Church Sunday due to the treacherous driving conditions.



The opal was considered good for strengthening the eyes.



The Great Pyramid of Cheops in Egypt is so large that St. Peter's and Westminster Cathedral could both be tucked away in it with room to spare.

Nationally Advertised

Morning Glory

Back Relief Mattresses
famous for Quality since 1903

BYNUM'S
HASKELL, TEXAS

HEALTH TIP

AFTER YOU SEE
YOUR DOCTOR,
BRING YOUR
PRESCRIPTIONS TO:

DOYLE HIGH

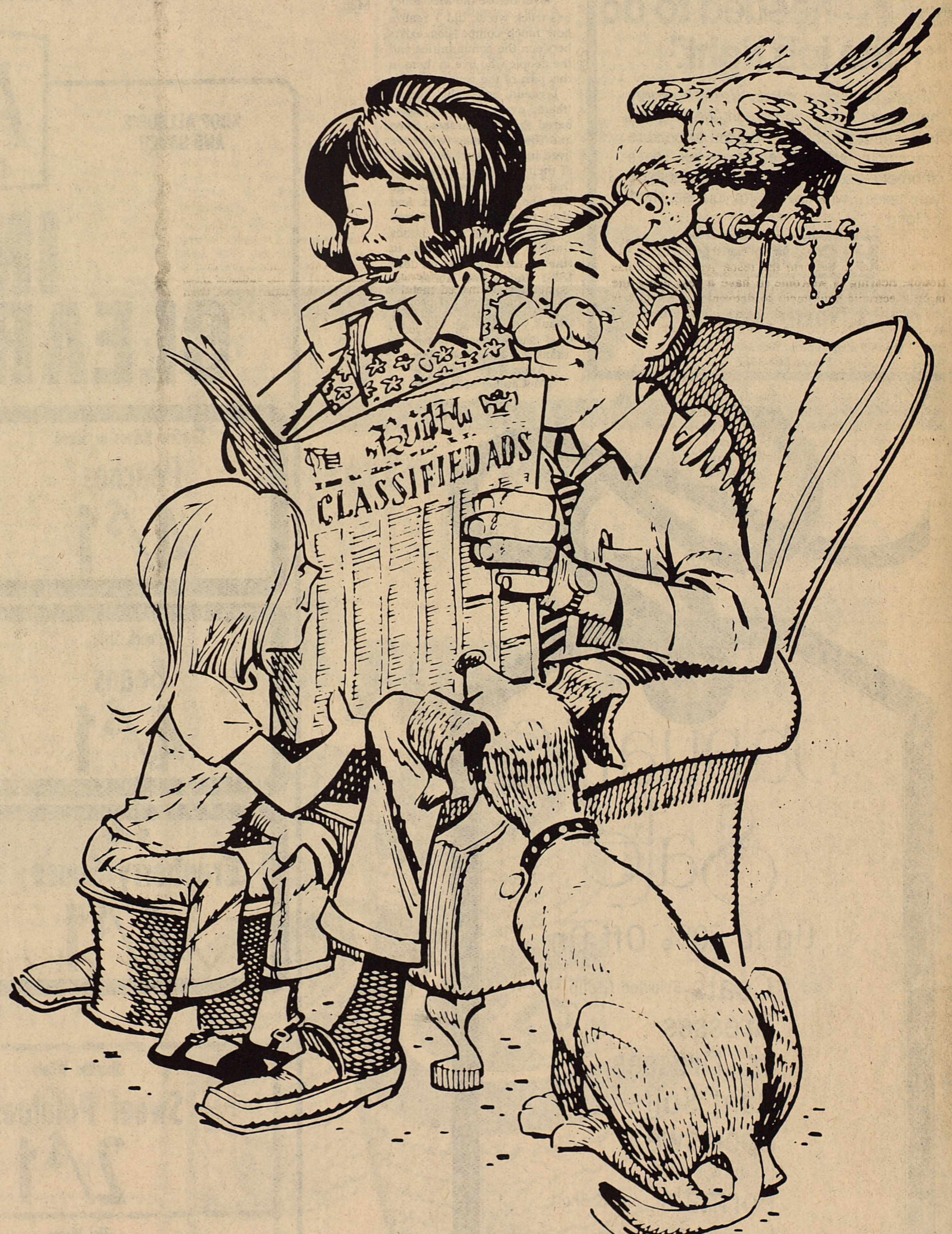
KENNETH JONES

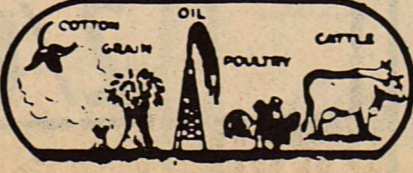


DOYLE HIGH'S
THE DRUG STORE
100 SOUTH "E"
HASKELL, TEXAS
PHONE 864-2515

YOU CAN ALWAYS TELL A "BEST SELLER"

The entire family reads it.
And, why not? There's
something for everybody
in the classified pages in
The Haskell Free Press
Whether you're buying,
selling, renting, leasing,
looking for a job or
services, you're sure to get
quick results from the
classified pages!



THE HASKELL  FREE PRESS

American Agriculture News

BY BETTYE McBROOM
The following is an excerpt from the American Agriculture News, January 2, 1979, and was written by editor Micki Nellis.

The American Agriculture Movement was conceived in adversity, born in despair, nurtured with hope, grew with participation, and lives with determination.

That determination is the key to whether the family farm will be saved, and since the family farm will determine the future of the nation, it also is

agri-facts

Pat Hale

... Ever grow a gallon of gasoline? Lots of folks are taking a hard look at that very thing. Well... not gasoline... but fuels distilled from grain. Not unlike the legendary white lightning... a 200 proof product that will give nearly anything a start. There's no secret about the ability of alcohol to power combustion engines (the four cycle engine was invented for it) but the cost spread between alcohol and gasoline has made such uses obsolete for several years. Lately that spread has been noticeably thinner. Thin enough for a serious experiment with a product called gasohol carried out around Holdrege, Nebraska to get national attention. Use of gasohol (90% gasoline - 10% alcohol) in the Holdrege tests resulted in reports of 7% better mileage, better starts in cold weather, and exhaust emissions no worse than regular gasoline. Looks like the choice could come down to taking a drink or a drive.

HALE FARM SUPPLY
Phone 864-2697

the key as to whether the nation itself will be saved the pains of a terrible depression.

Two hundred years ago, most of our nation's citizens were farmers. We have seen that number dwindle, good or bad, to less than 3%. We are now tottering on the brink of losing another 2,500,000! If this comes to pass, American Agriculture will no longer be a family enterprise, but instead will be a mass of corporate giants who will most certainly dictate food prices at cost of production plus an unreasonable profit.

DETERMINATION! That is the word! We must be determined to do whatever it takes to win this battle for survival. We must be determined to once again carry our message to the people of this nation and to our elected representatives in the Congress of the United States. That is why we must not fail to make our National Tractorcade the largest, most graphic protest movement this nation has ever known.

Why return to Washington D.C.? We must realize that we live under laws, laws that are passed by an urban controlled congress, and administered by an urban controlled administration. Laws which can help

Haskell's Market Place
The Classified Ad Page

DANCE IRBY HALL

Fri. Night Jan. 5
8:30 - 12:30

Wes King and the Stampede
Everyone Welcome

us, or which can destroy us! Last year we failed to get new, constructive legislation passed. The present farm bill, passed in 1977, will be the law of the land until 1980. Congress demonstrated to us that it does not intend to change that law before 1980.

Consequently, the national delegate body of AAM has been working feverishly since April to establish direction and methods whereby the family farm can be saved.

During the period of 1943 to 1953, the agriculture industry was protected by a little known law called the Stegall Amendment. This law established 90% parity loan rates on all basic, storable agriculture commodities. Because of this law, agriculture prices averaged 99.6% parity during this ten year period. Not only was the agriculture industry viable and stable during this ten year period, but the national economy was prosperous, inflation was stabilized, and unemployment was nil. In 1953, this law was replaced with the sliding

parity formula, and agriculture has suffered low prices consistently. Evaluation of the 1977 Farm Act, which Congress and the Administration have praised as being the best farm bill in history, reveals basically the same income protection provisions as the Stegall Amendment, yet these provisions HAVE NOT been implemented!

The Secretary of Agriculture has the authority to establish LOAN prices at levels of 90% of parity on all basic commodities, as well as to establish set-aside provisions which will influence market prices on those commodities at levels equal to or above the loan level.

Since Congress demonstrated to the farmers last winter that it intends to pass no new farm legislation BEFORE 1980, it has been determined by the national delegate body that the best course of action at this time will be to seek IMPLEMENTATION of the present Farm Bill to its MAXIMUM

provisions. Many congressmen have indicated that they will support and fight for this goal. Pride in their legislation demands that they make all effort to prove that they HAVE NOT made a mistake! This, then, should be the goal of the American Agriculture Movement for 1979; to aid congress in forcing implementation of

the present farm bill to its maximum provisions by the Carter administration. Thousands of tractors traveling the nation's interstate highways to Washington D.C. will help achieve this goal!

Congress will convene on January 15, 1979. It has been determined that the national tractorcade should depart on January 22 from eight different rally points across the Great Plains states. Travel time, approximately 100 miles per day, will be 16 days with two additional days for Sunday worship and rest. These 18 days will give Congress sufficient time to make positive steps to solve this grave agricultural crisis. The news media will keep the nation and the government aware of the fact that our protest is under way. As we travel through nearly every major city on the interstate highways, we will be highly visible with our signs and flags and support vehicles and our tractors! We will carry our message to the urban dwellers daily and Washington D.C. will hear the cry "The tractors are coming!!!"

provisions. Many congressmen have indicated that they will support and fight for this goal. Pride in their legislation demands that they make all effort to prove that they HAVE NOT made a mistake! This, then, should be the goal of the American Agriculture Movement for 1979; to aid congress in forcing implementation of

TIPS FOR THE MOTORIST



How To Deal With Highway Surprises

Highway emergencies can happen to anyone, anytime.

Think about the unexpected, from other drivers or your car.

And be prepared to act. The "Driving Emergency" and "Emergency Repair" books can help you handle many highway surprises.

Think, React, Live!
Panic is your enemy. It can kill you.

The "Driving Emergency" book gives examples of seven highway emergencies with suggested responses from the National Safety Council.

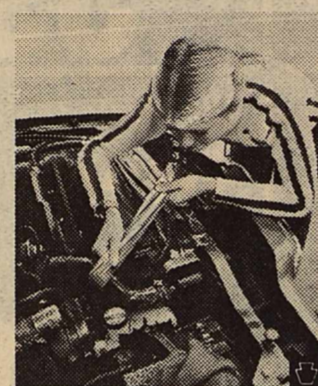
Example: brake failure. Pump the brake pedal. Use the parking brake (but don't jam it on hard if you're in a curve—that can cause a spin.) Shift into a lower gear (or lower range on your automatic.) The drag of the engine will slow you down. As your last resort, sideswipe something. Damaged metal is better than damaged people.

Other examples include blow-outs, vehicles coming at you in your lane, stuck accelerators, skids, sinking, and popped-up hoods. Each suggested reaction gives ideas for life-saving action.

Simple Fix-Ups For Breakdowns

You can handle some common car problems yourself. You just have to know where to look, what to look for, and what to do when you find it.

Be prepared with an emergency kit. Pack it with jumper cables, working flashlight, siphon pump, distress flag, flares, duct tape, wire, paper clip, tire inflator, plastic water bag, screwdrivers, and adjustable pliers. The whole kit should cost



less than \$18. If it saves you one towing charge, it could pay for itself.

Here's an example. Your car's temperature light goes red. The engine has overheated. Pull off the road, turn on your flashers and turn off the key. First, look for a water leak. If you find a small leak in the radiator hose, wait for the engine to cool, then tape it up, if you can. Loosen the radiator cap a notch to relieve pressure and drive slowly to the nearest service station.

If a broken hose isn't the problem, when the radiator is cool enough to touch, check the level of coolant. If it's low and you have water handy, fill 'er up.

Or check the fan belt. If it's broken, but the radiator is full and the cap is on tight, drive slowly until the warning light comes on again. Stop, and let the engine cool again. You'll be able to limp far enough this way to get help.

More Tips... Free
For your free copies of these or other Answer Books, write Answer Books, Shell Oil Co. P.O. Box 4315, Dept. A-3, Houston, Texas 77001.

Looking For Some Relief From Income Taxes????

A Retirement Plan May Be The Answer

The Haskell National Bank can provide you with a choice of plans. You may qualify for a plan that will permit you to set aside as much as \$7500.00 or 15% of your income (tax free) for your retirement years.

DON'T WAIT!!

You have until your 1978 tax return is filed to set up and contribute to your retirement account.

Plan I Individual Retirement Account
\$1500.00 - 15% of Income

Plan II - Individual Retirement Account
\$875.00 - qualified worker
875.00 - non-working spouse
\$1750.00 - Total

Plan III - Keogh - Self-Employed Plan -
\$7500.00 or 15% of income

Your investment will earn 8% interest.

Haskell National Bank

MEMBER FDIC

Hearing Test Set For Haskell

Free Electronic hearing tests will be given at the Fieldan Motel, 115 S. Av E, Haskell, Tx, Friday, January 5, 9 a.m.-1 p.m.

Factory-trained hearing aid specialists will be at the Fieldan Motel to perform the tests. Anyone who has trouble hearing is welcome to have a test using the latest electronic equipment to determine if his loss is one which may be helped. Some of the causes of hearing loss will be explained; and diagrams of how the ear works will be shown.

Everyone should have a hearing test at least once a year if there is any trouble at all hearing clearly. Even people now wearing a hearing aid or those who have been told nothing could be done for them should have a hearing test and find out whether the latest methods of hearing correction can help them hear better. The free hearing test will be given at the Fieldan Motel, Haskell, Texas. If you can't get there on Friday, call 864-2251 and arrange for an appointment at another time. In home testing is also available.

All former Scott Hearing Aid customers are welcomed to our service.

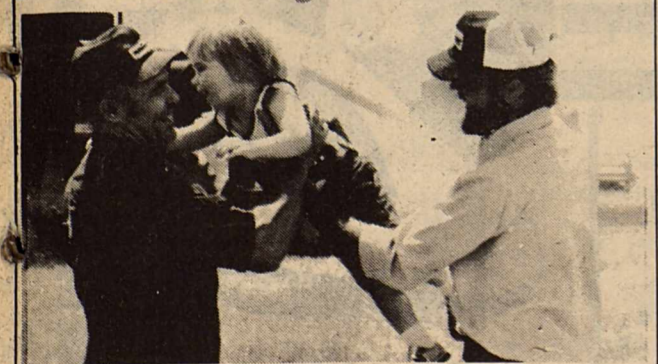
Belton Hearing Aid Center

4201 N. 1st Abilene, Texas 79601 Phone 915/673-4989

The Land Bank ...money to keep the farm in the family

One of agriculture's toughest challenges is keeping the farm in the family. It takes long-term planning and, often, long-term credit. For more than three generations, the Land Bank has helped farm families pass along what they have worked so hard to build. We may be able to help you, too.

The Bank of Generations



Federal Land Bank Association of Haskell



JOE HARPER—Manager

Offices at Haskell, Anson and Seymour
Haskell Telephone: 864-2062—Anson Telephone: VA 4-1142

Long-time loans on farms and ranches in Haskell, Jones, Baylor and Knox Counties

ZENITH YEAR END SALE

BUY NOW...SAVE NOW!

Giant Screen color TV. Your choice...\$598.

Early American
The HINDEMITH
K2320PN

Mediterranean
The LALO • K2318P

Transitional
The MAHLER • K2314E

of four beautiful styles at one low, low price!

BLACK & WHITE TV

12" DIAGONAL

\$98

The MANILA • K120C
Compact portable. Charcoal Brown cabinet. 100% Solid-State Chassis. Quick-on Sunshine® picture tube.

SENSATIONAL LOW PRICE

Owens Radio & Electric

Haskell, Texas

M SYSTEM

Your FRIENDLY
SUPER MARKETS

Haskell

Where your dollar buys more

Food Values

JAN. 20, 1979-IS THE LAST DAY TO REDEEM POT LUCK COUPONS

DOUBLE S & H GREEN STAMPS WEDNESDAYS
With The Purchase Of \$2.50 Or More

Specials Good
Thurs. Jan. 4
thru Wed. Jan. 10

SHORTENING
SHURFINE
3-LB. CAN **1.49**

DEL MONTE (In Juice) PINEAPPLE
CRUSHED-SLICED-CHUNKS
2 15-OZ. CANS **99¢**

DEL MONTE GOLDEN WH. KERNEL CR. STYLE CORN
3 17-OZ. CANS **1.**

DEL MONTE CUT GREEN BEANS
3 16-OZ. CANS **1.**

LIPTON INSTANT TEA
3-OZ. JAR **1.89**

SHURFRESH SOUR CREAM
8-OZ. CTN. **39¢**

LIGHT CRUST FLOUR
5-LB. BAG **69¢**

SHURFINE BLEACH
GALLON JUG **38¢**
LIMIT 2

Vienna Sausage
Swifts 5 oz can **39¢**

Fabric Softener
Always Soft 64 oz size **\$1.89**

NOTEBOOK FILLER PAPER 200-CT. PKG. **69¢**
NYQUIL COLD REMEDY 10-OZ. 3.87 VALUE **2.69**
HEAD & SHOULDERS LOTION SHAMPOO 11-OZ. \$2.54 Value **1.89**
ALKA-SELTZER FOIL Pack 36-Ct. **1.49**

SHURFINE TUNA
FLAT CAN **59¢**

Shurfine Catsup
24 oz bottle **59¢**

Del Monte Sweet Peas
3 303 can **\$1.**

Coffee
Shurfine Instant 10 oz jar **\$3.59**

Detergent
Arm and Hammer King Size 115 oz box **\$1.99**

SHURFINE COFFEE
LB. CAN **1.68**
Limit 1 with \$10.00 grocery purchase or more

SHURFRESH BUTTERMILK
HALF GALLON **69¢**

SHURFINE SOUP
TOMATO OR CHICKEN WITH STARS
5 10-OZ. CANS **1.**

SHURFINE TOMATO JUICE
46-OZ. CAN **59¢**

PATIO DINNERS
EA. **38¢**
LIMIT 6

FROZEN ASST. KINDS

SHURFRESH FRANKS
12-OZ. PKG. **89¢**

Wilson's All Meat Bologna
lb **99¢**

FRESH CALF LIVER
LB. **59¢**

Silver Spur Pork Sausage
2 lb pkg **\$1.29**
Limit 2 bags please

Food King Biscuits
6 10 ct cans **79¢**

FRESH PORK ROAST
LB. **1.19**

LONGHORN CHEESE
LB. **1.59**

U.S. NO. 1 RUSSET POTATOES
Baker size lb **19¢**

CUCUMBERS
Fresh Green **29¢** LB.

Celery
Stalk **29¢**

Texas Juice ORANGES
88 SIZE 5 lb bag **69¢**

AVOCADOS
70-CT. 5 FOR **1.**