

20¢  
Per Copy

# THE HASKELL



# FREE PRESS

"HASKELL—A GOOD PLACE TO VISIT; A BETTER PLACE TO LIVE"

VOLUME NINETY-TWO

12 PAGES

HASKELL, TEXAS, 79521, THURSDAY, JULY 27, 1978

NUMBER THIRTY



THE SIGNS OF PEACE CHOIR from the Southwestern Assemblies of God College in Waxahachie will lead the singing for the Haskell Area Wide Crusade that begins Sunday, July 30 at 8 p.m. in Haskell Indian Stadium. The Crusade will last through August 2. All faiths invited to attend.

## Crusade Starts July 30th

This Sunday night at 8 p.m. the Haskell Area Wide Crusade kicks off in the Haskell High School Football Stadium. Haskell Churches and cooperating churches in area cities will meet together for this evening worship service.

Heading up the Crusade

### Veterans Training Extended

Veterans of World War II and later periods of military service, who have serious service-connected disabilities, may still qualify for vocational rehabilitation training under laws administered by the U.S. Veterans Administration. According to E.H. Herren, Service Officer for Haskell County, the statutory deadline dates which previously prevented some of these veterans from getting additional training have been abolished.

Until 1977, veterans generally had nine years from the date of their discharge or release from service to take advantage of this kind of training. The Congress enacted legislation which eliminated the termination date for certain seriously disabled veterans. As a result, veterans who were discharged from service before January 1, 1969, and who have serious service-connected disabilities, should consider applying for training if they are unemployed or working in an unsuitable job and need education or training to obtain suitable work.

The Congressional action last year provides an open-ended eligibility for veterans who need vocational rehabilitation training. VA Forms 22-1900, will be individually considered as received. Eligible veterans who are found to be in need of training will be provided VA counseling to help them plan and pursue a program of rehabilitation training that will lead to suitable employment. Those veterans who feel they are eligible, and are in need of additional training, may obtain the application form at any VA office, or at their Veterans Service Office.

### Local 4-H'er To Visit Wisconsin

Thirty-five 4-H'ers from ten counties in District 3 will leave July 27 for an interstate exchange trip to Wisconsin according to Mrs. Nancy Lehman, Area 4-H Specialist. The 4-H'ers will be traveling to Barron, Wisconsin and staying with host families in Polk, Barron and Rusk counties.

Through this family exchange Texas 4-H'ers will have a chance to experience 4-H things other teenagers do, see another view of agriculture and have fun. Activities in Wisconsin will include a county fair, floating on the Apple River in innertubes and visiting dairies.

Wisconsin 4-H youth visited Texas homes in 1977 beginning the exchange of visitations. Forty-five 4-H'ers stayed in District 3 farm homes and experienced rural activities with their Lone Star hosts.

4-H members from Haskell County participating in the trip will be Kay Campbell.

Traveling with the group will be Mr. and Mrs. Jim Leham of Vernon, Mr. and Mrs. Duward Campbell of Haskell and Mrs. Hollis Burgess of South Bend in Young County.

Texas 4-H ambassadors will get to know others from their area better and share part of Texas with their Wisconsin host families.

Evangelistic team is Rev. Dwight Thompson, distinguished international evangelist, television personality, and recording artist. Be watching Friday and Saturday evening for information on television.

The music for the crusade will be led by The Signs of Peace Choir from Southwestern Assemblies of God College in Waxahachie. This unique choir ministers to both the hearing and the deaf. They sign with their hands what they sing from their hearts.

Plans are now complete. Nursery will be provided by First Assembly of God, First United Methodist, and First Baptist. Brother Jimmy Griffith, head of transportation, can direct you to a ride if you don't have one. Just call 864-2738. The Haskell Jaycees have graciously offered to supply ice water and lemonade during the open-air crusade. In case of rain the Crusade will move into the auditorium at First Baptist.

Remember the words of Jesus' parable of the great supper, "Come, for all things are now ready." What a great feast the Lord has prepared and desires earnestly that you come and partake of its goodness.

### Commissioners

#### Court Holds Regular Meet

The special session of the Commissioners Court was held Tuesday, July 25 with all members present.

Following the approval of the minutes, bills and the quarterly report the court allowed \$500.00 to the Emergency ambulance fund to be taken out of general fund.

Other action was to purchase two adding machines for the tax office, and to expand \$1,000.00 for the purchase of Christmas lights for the courthouse. This was to come out of Permanent Improvement Fund. They also voted to issue an order requesting Haskell County's share of Lateral Road Funds.

9:00 July 31, was set for county officials to present their needs for 1979 to the Court.

The Court agreed to authorize Haskell National Bank to substitute U.S. Treasurers Note in the amount of \$110,000, to mature 5-15-81, to Federal Bank bond in the same amount, also to invest amount, also to invest \$20,826.00 Revenue sharing fund to C.D. #5300 for three months at 5 1/2 percent.

The next regular meeting will be August 14.

### Water Rationing Still Needed

Haskell Mayor Royce Williams stated Wednesday morning that the city water rationing program still needs to be carried out. He stressed that we are not out of danger, but the rationing program is helping. He also asked that all residents with wells, please use them only on the day set aside for their Prec. This will help.

The city is cleaning the well west of the tower behind the Free Press. They are having to pump the well and clean it out before it can be used, if you

### JUNIOR RODEO

The Stamford Junior Sheriff's Posse Youth Rodeo will be held August 3, 4, and 5. Stock will be furnished by Runt Sloan.

For general information you may call Dianna Muehlstein at 915-773-2001. Books will close Monday, July 31 6 p.m.

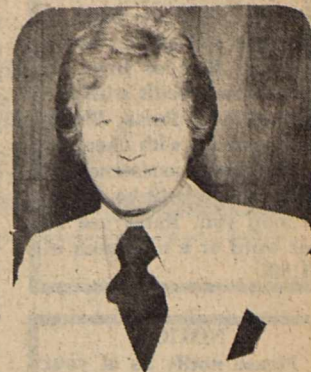
There will be events for boys and girls 8 and under and boys and girls 9-12, boys and girls 13-14 and 16-18. Entry blanks are available at the Chamber of Commerce office, Stamford.

### HASKELL WINS

In the Senior Teenage League the Indians coached by Sgt. Frank Jirick were the winners of the Haskell-Clyde game, Monday night.

With a final score of 3 to 2, Clyde had 4 hits with 0 errors; with Haskell having 5 hits and 5 errors.

Winning pitcher was Mark Wallace and losing pitcher was Larry Young.



REV. DWIGHT THOMPSON  
Crusade Evangelist

### Paint Creek Sets Election

The Paint Creek Rural High School District has called an election to convert their Rural High School District to an Independent District. The election will be August 12th (Saturday) at the Paint Creek School. Polls will be open from 7 a.m. to 7 p.m. Absentee voting will be in the office of the Superintendent at Paint Creek from Monday through Friday of each week from 8 a.m. to 4 p.m. The absentee voting will close on Tuesday August 8th.

The legislation that the state legislature passed in 1977 was not clear so the Attorney General ruled that Rural High School District that had less than 150 scholastics would not become independent as was expected unless the district vote to go independent. Probably the next legislature will pass legislation that will be clear enough to make all 12 grades school system independent.

Since the office of the County School superintendent will become inactive as of January 1st, 1979, the Paint Creek School District feels that it would be better to start the new school year as an independent school district than wait for future legislation or the County Superintendent Office is to be phased out.



By Sam Herren  
TEMPERATURE  
Hi..... 106° ..... 18th  
Lo..... 70° ..... 24th  
RAINFALL  
Total..... 0.00  
Total to Date..... 6.05  
Normal to Date..... 14.07

### BRAZOS WEST ART ASSOCIATION

Pauline Norman was selected as Artist of the Month for August. Her paintings will be on display at Iva Lee's Fabric Shop 416 N. Ave. F. The public is invited to come by and see the paintings.

### Grand Jury Returns 14 Indictments

Haskell County Grand Jury returned 14 true bills in a special session Friday, July 21. Indicted were:

Joe Jay Weaver, Aggravated Kidnapping; Joe Jay Weaver, Aggravated Kidnapping; David Charles Wiggins, Possession of a controlled substance; Methamphetamine with intent to deliver; Tina Jeanene Blankenship, Possession of a controlled substance; Methamphetamine with intent to deliver.

Paul Wayne Stovall, Possession of a controlled substance; Methamphetamine; James Bryce Opsahl, Possession of a controlled substance; Methamphetamine; Steven Paul Philpot, Possession of a controlled substance; Methamphetamine; Duane Winston Roberson, Possession of a controlled substance; Methamphetamine; Laura Leigh Johnson Stovall, Possession of a controlled substance; Methamphetamine.

Richard Vasquez Rodriguez, Criminal Mischief; Maria Ozuna, Criminal Mischief; Raymond Rodriguez Herrera, Criminal Mischief; and John Reed Dornberger, Theft over \$200 (re-indict).

Serving on the grand jury for the special session were: Billie Jack Ray, foreman, Eddie Chambers, Paul Garza, Keith Hannsz, Mrs. Frank Jenkins, Mrs. Lupe C. Perez, David Jim Strickland, Jessie Silba, Ira Townsend, Mrs. Hollis Wolf, and Kenny Tanner.

### Light Fund Over \$6,000

Another plateau was reached this past week in the "Light Up Your Life with New Christmas Lights" fund drive, as the total collected and pledged passed the \$6,000.00 mark. The Haskell County Jaycees, Jaycee-ettes and Chamber of Commerce joint

### Haskell Tigers See Rangers Play Ball

The Haskell Little League Tigers won a Dairy Queen-sponsored trip to the Texas Rangers baseball game in Arlington, Saturday night (July 22).

The boys sold more than 450 Dairy Queen coupon books to win a contest staged by the Haskell Dairy Queen for Little League teams.

As their prize, the Tigers--18 strong, including manager, coach and bat boy--saw the Rangers play the Milwaukee Brewers in the regular major league game. As a special bonus, the boys saw an Old Timers' game that preceded the Ranger-Brewer match-up. The Old Timers' game featured such all-time baseball greats as Ernie Banks, Yogi Berra, Bill Dickey, Bob Feller, Don Larsen, Bob Lemon, Mickey Mantle, Eddie Mathews, Willie Mays, Pee Wee Reese, Enos Slaughter and Warren Spahn.

Woody Frazier is manager of the Haskell Dairy Queen that awarded the trip prize, and Bob Hanson is manager of the Tigers winning team.



GARY BILL WOMACK, 13 year old handicap champion of Haskell gets his card punched by W.E. Wooten (right) from the 18 yard to the 18 1/2 yard for a 48 x 50 at the Haskell Trap Club Sunday. Louis Boynton of Vernon won the doubles 48 x 50 and the high overall 141 x 150. (Photo by Dan Hoover)



THE HASKELL JR. LEAGUE WARRIORS: Front row (L-R) Randle Frierson, Domingo Villa, Monty Moeller, Toby Villa, Doug Lanier, Joe Benavides, James Davis, Kerry Therwhanger. Back row: Mgr. Truman Therwhanger, Jonnie Hise, Kirk Markey, Bill Flannery, Kevin Strickland, Mgr. James Davis, Joe Browning, Carl Mayfield, Jackie Escobedo, Mgr. Chief Escobedo. The Warriors lost to Stamford Monday night 6-4 at Colorado City. They played Colorado City Tuesday afternoon. (Staff Photo)



# \* CLASSIFIED \* ADS \*

**NOTICE**  
The Haskell Free Press reserves the right to edit and/or delete all news stories and locals for length and liability and to refuse to print anything deemed not newsworthy.

**NOTICE**  
Due to the bookkeeping involved and the high postal rates, we ask that you please remember that classified ads are Cash in Advance unless you are a business firm or have an established credit with the Haskell Free Press. Either mail your ad with check or if you need assistance in writing it we will be happy to help you. Rates are 5c per word or a minimum of \$1.50.

**NOTICE**  
Please notify us of your change of address. If you do not, the Post Office charges us 25c for each time the Haskell Free Press is returned to us, this plus the cost of stencils, time and labor can make your move costly to us. In the future, failure to notify us will result in one month being deducted from your subscription.

**For Sale**  
McCOLLOCH CHAIN SAW HEADQUARTERS. A saw for every job. See new Woodard Farm Sale. 7tfc

**WOODARD FARM SALES**—Ford tractors, equipment, long harrows, Lilliston-Heston-Oliver plow parts. 4tfc

**FOR SALE:** Gates fan belts and hoses. Also, heater hose, Delco Batteries and etc. stuff. Texaco gas and other oil and service. M.C. Wilfong, phone 864-2766. 2tfc

**FOR SALE:** Illustrated Price Guide Books on all antiques. Sherman Interiors and Antiques, northwest corner of square. 6tfc

**NEW INTERNATIONAL** Harvester 86 series Tractors with full 2 year warranty—Priced to Sell—See A.C. or Larry before you buy—Richardson Truck and Tractor 864-3474. 11tfc

**BABY CHICKS** \$35 per 100. Also started chicks and fryers at Ganstead Gardens just West of Rule. Call 997-2469. 26tfc

**FOR SALE:** Four 5 Hole 9 1/2" Wheels. Will fit Half Sizes. Call 864-3388. 26tfc

**FOR SALE:** Living Room Suite, Gray Chair, upholstered chair, Recliner, Console Record Player and Radio. Call Mrs. George Free at (915) 773-5568. 26tfc

**FOR SALE:** 1975 Honda 750 with fairs. Call 864-3427 or 864-2624. 26tfc

**FOR SALE:** Westinghouse Golf Cart, new batteries, Good tires, excellent condition. Call 864-3181 or 864-3662. 27tfc

**FOR SALE:** 4 Door Buick Skylark, Good Condition, Factory air and heating, power steering, power brakes. See at 1100 N. 8th or Call Charley Redwine, 864-2295. 281rtfc

**FOR SALE:** 1976 Ford Pickup—Automatic, power, air. See at JRB or 864-3851 after 5:30. 29-30p

**FOR SALE:** 74 V.W. Acapulco Thing, White with Blue Strips—Removable Hard Top. Call 658-3957 or 658-3807. 29-30c

**FOR SALE:** 1968 400 KZ Kawasaki, 6 speed transmission, like new, 201 miles, fairs, saddle bags, luggage rack - \$1600.00 - Call 817-422-4315, Munday. 29-30c

**FOR SALE:** ORGAN IN STORAGE—Beautiful! 1978 Home Model stored locally. Dual Keyboard, Automatic Rhythm, Walking Boogie Base, etc. Responsible party can assume low payment balance. Write: National Keyboard Inc. Credit Dept. 6720 1/2 Shirley, Austin, Tx 78752. 29-30p

**For Sale**  
**FOR SALE:** 1974 Ford 1 ton winch truck, 1968 580 Case back hoe and trailer, 1974 Chevrolet 1/2 ton pickup and 1972 International 2 ton truck. 817-864-2721. 30tfc

**FOR SALE:** 1974 Suzuki 100. 1600 actual miles, good condition. \$400.00. Call 864-3632. 30-31p

**FOR SALE:** 1976 Coleman Camper Trailer—Valley Forge—has Stove, Table, Ice Box, Sink, Water Tank, Spare Tire, Sleeps Six. \$1595.00. Can be seen at South Av. H or call 864-3404. 30p

**FOR SALE:** 1975 Ford Maverick. Low Mileage. Have to see to appreciate at 1206 N. 9th. 30p

**FOR SALE:** Refrigerator—Cheap. Call 864-2894 or be seen at 606 N. 6th St. 30c

**FOR SALE:** Whirlpool Washer \$50.00 and Whirlpool Dryer—\$100.00; Room Size Green Shag Rug with Pad—\$50.00. Call 864-3436 after 5. Gary Mayfield. 30c

I WILL be selling again my Mexican food Saturday the 29th. I will have Tamales, Burritos and Chalupas and Mexican Plates at 106 N. 3rd. 30p

**FOR SALE:** Used Gas Range—\$20.00. Call 997-2586 30p

**FOR SALE:** 15' Fiberglass Boat with top and cover for boat, 85 hp Johnson Motor that has 10 hours of use, Depth finder, Dilly Walk Around Trailer. Call 864-3814. 30-31p

**FOR SALE:** 40 White Leghorn Pullets—12 weeks old. Take one or more—\$1.75 each. Call 997-2480. 30p

**FOR SALE:** Camper Top \$125.00; nice girls' bicycle 26", \$35.00; Fedder 220v Air Cond. \$50.00; Johnson CB \$50.00; Sewing Machine \$35.00; Friden Adding Machine \$100.00; Refrigerator \$50.00; 30" Gas Stove \$50.00; Rollaway Bed \$20.00; Electric Dryer \$65.00. Western Auto. 29-30c

**WANTED:** Good used furniture and appliances. We buy and sell. Use Used Furniture 120 N. Swenson St. (one block north of red light on hiway 277) Stamford, Texas. Phone 773-5608. 42tfc

Shop our shelves for EVERYDAY LOW PRICES at Johnson Pharmacy where low overhead means low prices. 11tfc

**MOVED** to new location My Lawnmower Shop is now located at my home at 300 S. Av. H. Phone 864-2194, James Adkins. 28-31p

**INSTANT CASH** for any good merchandise, modern or old. Phone 864-3197 anytime. Lackey's, Throckmorton Highway, Haskell, Texas. 27tfc

Classifieds  
Small ads...Big Results

## Houses for Sale

Owner Transferred  
This Nice 3 Bedroom 2 Bath Brick is available for immediate occupancy. Has Central Heat & Air, 2 Car Garage; Extra Large Utility & Storage Rooms.

New and Beautiful  
This 3 Br. 2 Bath Brick has large master bedroom with dressing area away from other bedrooms; Corner fireplace; Lots of closet space.

Good location on two, two bedroom older homes; one on extra large corner lot; one \$10,500, one \$9,000.

Excellent Location on Corner Lot, 3 Bedroom, 2 Bath, Central Heat & Air, Utility Room, Nice Back Yard, Water Well & Nice Pecan & Other Shade Trees.

Solid 2 Bedroom Frame on 9 Lots. Good Highway Frontage.

**90% Loans Available**  
**Hartsfield Agency**  
Phone 864-2665

29-30c

**Miscellaneous**  
CLEAN expensive carpets with the best. Blue Lustre is America's favorite. Rent shampooer \$1. Perry Brother's. 47c

**TO GIVE AWAY:** Want to give away a 3 1/2 yr. old AKC Registered Male Saint Bernard to a good home. Call 864-3809. 30p

**THE DALLAS COWBOYS** are at training camp. To keep up daily with what's happening, Read the Dallas Morning News. Call Kelly Wallace for delivery at 864-3509. 30-31c

**FRANCES' BEAUTY SALON,** 1107 N. 7th St., Haskell, Texas. For appointment call 864-3156. Open Tuesday thru Friday. Frances Arend-Debra Gibbs. 30p

**Lost & Found**  
LOST: 2 dogs; 1 bird; 1 Border Collie. Lost between Haskell and Stamford in the country near the Howeth House. Call 864-2894 or come by 606 N. 6th St. 30c

**NOTICE**  
I will be closed July 27-August 4 Lee Bahney Bookkeeping and Tax Service 30-31c

**For Sale**  
3 Bedroom Brick Veneer on 1 1/2 Acres in the Rochester Area, Known as the Mrs. W.S. Taylor Estate, Has Central Cooling and Heating is a Real Buy.

Real Nice 3 Bedroom B.V. Priced To Sell On N. Ave. E

Help-U-Self laundry, on N. 1st. Worth The Money.

One Good Brick Building with three Bedroom on Second Floor, First Floor has nice Offices, Located Just Across from M-System

Cleaners For Sale, A Real Business For Some Young Couple.

Concrete Building on Throckmorton Highway, But in City Limits of Haskell.

3 Bedroom Frame, on N. Third, Known as the Central Baptist Parsonage.

3 Bedroom Frame—505 N. Av B, Real nice, priced to sell.

We Have Several Lots For Sale.

We need more listings, (See us we sell)

**Furr's Real Estate**  
Stanley Furr 864-2576  
Frances Arend 864-3156  
Garlene Dunnam 864-2814  
Betsy Nanny 864-3626 30c

**Garage Sales**  
**EVERYDAY YARD SALE:** Located on N 277 1/2 mi. from City Limits of Haskell. Have lots of Childrens Clothes, from size 3 to 10; Boys Shirts sizes 3-7, a few 15's; pants for Boys and Men, Ladies Shoes, and many more items. 29-30c

**SUPER GIANT SAIL:** Bargains for Everyone. Some wrought iron left. Beds—New and used—1 Queen Size Mattress, One Half Bed, Steel cots, 1 Bar Stool, 2 Round Tables, 4 Oak Chairs, Misc. Tools—odds and ends, bridal and bits—old. Trailer hitch, nuts and bolts and the Kitchen Sink. Ice Skates, peacock feathers, and lots more. Sluefoot. Highway 6—Rochester. P.S. Seeds—Grow Your Own Weird But Lovable Egg Tree—White eggs, Yellow eggs, and Gold eggs. 30c

**Garage Sale:** Sat. July 29, Corner of 12th & North Av. 1 Books, Radio, Cassette player—recorder, Lawnmower, guitars camper, and more. 29-30p

**Garage Sale:** Baby bed and swing, sewing machine, glass, clothing, large size womens pants, clocks and misc. 905 N. 4th. St. 30p

**Shop Haskell First**  
**The Haskell Free Press**  
Established January 1, 1886  
PUBLISHED EVERY THURSDAY

MEMBER  
**TEXAS PRESS ASSOCIATION**

**BILL COMEDY—Publisher**  
**DON COMEDY—Editor**  
Entered as second-class matter at the postoffice at Box 577, Haskell, Texas 79521, under the Act of March 3, 1879

**SUBSCRIPTION RATES**  
In Haskell and Adjoining Counties

	Total
One Year	\$6.25
Six Months	\$4.00
Two Years	\$12.00
<b>Elsewhere in Texas</b>	
One Year	\$7.50
Six Months	\$5.00
Two Years	\$14.00
<b>Outside of Texas</b>	
One Year	\$9.00
Six Months	\$6.00
Two Years	\$17.00

**NOTICE TO PUBLIC**—Any erroneous reflection upon the character, reputation or standing of any firm, individual or corporation will be gladly corrected upon being called to the attention of the publishers.

## ARE YOU BURDENED WITH COSTLY PRESCRIPTIONS?

YOU MAY SAVE AS MUCH AS 50% on some medicines by writing to this address for more information:  
**Economy Drug, Inc., P.O. Box 1063, Big Spring, Texas 79720**  
Please include the name, strength and quantity of each medicine you are taking so **ECONOMY DRUG, INC.** can send you a price quotation as soon as possible!

## FOR SALE

Two bedroom on corner lot, garage, carport, fenced in backyard. 1108 N. Dav. L.

Large two bedroom house on N. Av. D., fenced back yard, priced to sell.

4 acres on the Throckmorton Hwy. in the city limits. Ready for developments.

5 section ranch, Stonewall county. \$125.00/acre.

**WE NEED LISTINGS. IF WE CAN HELP YOU SELL OR BUY REAL ESTATE. PLEASE CONTACT US.**

**DUNCAN REALTY**  
Doyle High 864-2515  
The Drug Store  
100 S. Av. E.

**CITY TAXI**  
Bill Pennington  
Owner  
Call 864-3787 Day  
864-3721 Night til 11:30  
28-30c

New & Used Color & BW TV  
**Amonett & Amonett Radio & TV**  
864-2870 Haskell 13tfc

**ADDRESS ROOFING**  
Winfred Address  
Residential & Commercial  
713 S. 10th St.  
P.O. Box 463  
Ph. 864-3078  
Haskell, Texas 31tfc

**Quality New Homes**  
Construction  
Have lots to build on East Part of Town  
Tommy McAdams  
Builder  
Call 864-2785 13tfc

**HOUSE TO BE MOVED**  
6 Rooms and Bath With Very Good Hard Wood Floors. 1/2 mi. West and 1/2 South of Traffic Light in Munday. Tele. 422-4300 or can be seen after 5 p.m. 30p

**H.F. LANGFORD**  
Sand and Gravel  
Caliche and Fill  
**RULE HWY.**  
**WEST HASKELL**

**PHILPOT'S DITCHING SERVICE**  
Plastic pipe & fittings, sewer pipe. Water & gas lines run. Call Philpot's Supply & Service.  
864-3010  
402 N. 1st 15tfc

**FOR ALL YOUR GENERAL PLUMBING NEEDS**  
Call Philpot's Supply & Service Center.  
864-3010  
402 N. 1st 41tfc

**HOT WATER HEATER HEADQUARTERS**  
Electric State with Sand Hog Heating Element  
5 Year Warranty  
Gas State with 5 yr. Warranty on Tank  
2 Yr. on Controls  
Philpot's Supply & Service  
402 N. 1st 864-3010 37tfc

**PUMPS**  
Irrigation-Domestic  
Formation Testing  
Well Drilling  
We pull & repair all makes.  
**REA PUMP CO.**  
Throckmorton Highway  
Haskell, Texas  
Call 24 hrs.—864-3372 41tfc

**ELECTRIC SEWERooter**  
Cleans clogged pipes, drains, sewers. No digging. No damage.  
**Philpot's Supply & Service**  
864-3010  
402 N. 1st 41tfc

**JUNK-A-TIQUES,** glassware, furniture, baby bed, books, dishes, bottles, doll Kleenex box, dolls, misc. We buy, sell or trade. We trade books. 1704 N. First St. Mrs. Harley Langford.

Used Color TV's For Sale Cheap  
**Anderson Tire Company**  
206 S. Av. E. 864-2900 16tfc

## Stamford Floral IS BEING OFFERED FOR SALE

### Everything Goes At One Price

**New Buildings on 3 lots of land. Commercial Building 20'x60'. Greenhouse 96'x30'. Office Equipment, Inventory and Accounts ALL GO!**

**Owner Says He Will Stay for One Month for Consulting and Breaking In. Owner Says this Business Grosses \$10,000.00 per Quarter. Quarterly Report will be available upon request with appointment. This Business is affiliated with FTD and FloraFax.**

**For Complete Information Call THE DENISON CO. in Aspermont**  
**Collect 817-989-2938**

## THE DENISON CO., REALTORS

Call Collect Aspermont 817-989-2938

**RULE RESIDENTIAL—**  
2 BEDROOM HOME, large lot, newly remodeled inside, huge trees. \$14,500.00.

**BUILDERS, DEVELOPERS OR PERSONS INTERESTED IN BUILDING**—In Rule 2 lots on paved street. \$2900.00 total for both lots.

**ASPERMONT RESIDENTIAL—**  
NICE 2 BEDROOM HOME in Aspermont. An excellent place to remodel and do it your way. Prices at \$7,500.00.

CONVIENCE is the word on this excellent 2 bedroom home. Owner will paint. Near church, schools and business area. Excellent for young couple. \$18,500.00.

**FIX THIS ONE YOURSELF.** Old house on one lot in Swenson, Texas. \$4900.00.

**ABILENE RESIDENTIAL—**  
NORTHSIDE NEAR HENDRICKS. Nice 3 bedroom home, newly remodeled inside and out, trees, corner lot with central air and heat. \$25,500.00.

**DALLAS RESIDENTIAL—**  
MOVING TO DALLAS? Call about an excellent value on Forest Lane. 4 bedroom home with largest trees on the block.

**RECREATIONAL TRACTS—**  
EXCELLENT HUNTING & FISHING—1 Texas Veteran tract with over 20 acres, also tracts of 10 and 15 acres, 1 deer hunting tract, 40 acres, stock tank. Excellent land near Oak Creek Reservoir and Lake Spence on Highway 277, 5 mi. N. of Bronte, Texas. Rawland prices. Texas Vets, we handle all the paper work! Call now.

**FARM AND RANCHES—**  
1166 ACRE WORKING RANCH, 12 mi. N.E. of Aspermont. Four stock tanks, minerals, old house, one-quarter mile river frontage, 190 acres in cultivation, 1 well. Excellent investment.

**We have many more properties listed than we can afford to advertise. Call us about them.**

Anyone who qualifies for Social Security should contact our office. We are offering a 20 percent reduction in commission fees for person who qualify on our in house listings on housing. The Denison Co. cares about your particular needs. Call us.

**Bob M. Denison, Broker**  
Member of the Farm and Land Institute of the National Association of Realtors. For more information, phone 817-989-2938. The Denison Co., Aspermont, Texas. We handle listings and sales throughout West Texas. Call us for all of your Real Estate needs.

## Phone 817-989-2938



# classified ads get the job done

## Help Wanted

OPENING For Mechanic. Apply Richardson Truck & Tractor, Throckmorton Hwy. Call 864-3474. 25tc

## Wanted

WANTED TO LEASE, RENT or Buy Your Grass or Farm Land. Will buy equipment, and cattle. Phone (817)864-2564 or (815)997-2185. 28tc

FOR SALE: By Owner 220 Acres of Land 6 miles South of Stamford. Call 773-2872, or see at Rt. 3 Box 66, Stamford, Texas. 28-31p

## Jobs Wanted

WANTED: Any type of welding, portable rig, oil field insured. Call Nathan "Pat" Patterson (817) 864-2264 res. 864-2204 104 N. Av. D. Haskell, Texas. 22tc

WATER WELL DRILLING: House, Stock, irrigation well, test holes. House well \$7 a ft. Call W.P. Hise, 864-3727 or 864-2124 day or night. 26tc

LET US Price your next prescription. You will be glad you did. Johnson Pharmacy. 17tc

WANTED: Repair and remodeling work for any home improvement needs. Call Mike Cook, 864-3481. 6tc

We will feed your pets while you are on vacation in your home or ours. Call Lee Lane at 864-2704. 29-30c

HAVE MOVED my lawn mower shop to my house due to drought will work on mowers-tillers after five o'clock and weekends. Bent shafts my specialty. No job too large or too small. Clyde Hunt, Rt. 1, Haskell or Call 864-3570. 29-30p

## For Rent

FOR RENT: Small furnished house for rent. One or two people ONLY. Call 864-3150. 30p

Try the new "Sharpie" pen. Permanent on most surfaces. Ideal for labeling frozen food packages. In 8 Colors. Only 49c. Haskell Free Press.

Mon. July 31-Aug. 4  
**FREE Grease Job with Oil Change**  
**Ron's East Side Mobil**  
 864-3610 100 N. 1ST

## Real Estate

FOR SALE: 2 Houses on one lot, at 901 N. 2nd and Av. I. \$3500.00. Call Stamford 915-773-5167 for more information. 30-31p

FOR SALE: 100 acres irrigated land, plenty of water with 2 bedroom house near Rule, Phone Bill Dension 817-989-2938. 30-31c

FOR SALE: 2 bedroom brick home; built-ins, carport, fenced backyard. 1004 N. Av. L, Phone 864-3083. 29-30p

FOR SALE: 2 Bedroom House, newly remodeled, fully carpeted. Call 997-2328. 27tc

## Public Notice

### LEGAL NOTICES

In obedience to an order of the Board of Equalization, regularly convened and sitting, notice is hereby given that said Board of Equalization will be in session at its regular meeting place at the office of North Central Texas Municipal Water Authority, 135 N. Munday Ave., in the town of Munday, Texas at 9:00 a.m. on Thursday, August 10, 1978 for the purpose of determining, fixing and equalizing the value of any and all taxable property situated in the taxing jurisdiction of North Central Texas Municipal Water Authority, in Knox and Haskell Counties, Texas for taxable purposes for the year 1978, and any and all persons interested or having business with said Board are hereby notified to be present.

BY ORDER OF BOARD OF EQUALIZATION  
 Secretary to Board of Equalization  
 North Central Texas Municipal Water Authority 30c

I Mary Sorrells, Tax Assessor-Collector for the Haskell Independent School District, in accordance with the provisions of Section 20.03 (c) of the Texas Education Code have calculated the maximum tax rate which may be adopted by the Board of Trustees of the Haskell Independent School District without holding a public hearing as required by Section 20.03(d) of the Texas Education Code. That rate is as follows: \$1.57 per \$100 of assessed value.  
 Mary Sorrells  
 Tax Assessor-Collector  
 July 24, 1978

The foregoing statement is published to comply with requirements set forth in Section 20.03 "Truth in Taxation" of the Texas Education Code. The Board of Trustees of the Haskell Independent School District will set a tax rate of \$1.50, which is the same as the 1977 tax rate. 30-31c

Want ads--Your Best Market Place.

## Public Notice

I, Nona Norwood Tax Assessor-Collector for the Rule ISD, in accordance with the provisions of Section 20.03 (c) of the Texas Education Code have calculated the maximum tax rate which may be adopted by the Board of Trustees of the Rule ISD without holding a public hearing as required by Section 20.03 (d) of the Texas Education Code. That rate is as follows: \$1.00 per \$100 of assessed value.  
 Nona Norwood  
 Tax Assessor-Collector  
 7-25-78 30-31c

I, Irene Stewart Tax Assessor-Collector for the Weinert R.H.S. ISD, in accordance with the provisions of section 20.03 (c) of the Texas Education Code have calculated the maximum tax rate which may be adopted by the Board of Trustees of the Weinert R.H.S. ISD without holding a public hearing as required by Section 20.02 (d) of the Texas Education Code. That rate is as follows: \$1.54 per \$100 of assessed value (Tax rate will be \$1.50 because of the legal.  
 Irene Stewart  
 Tax Assessor-Collector  
 7-24-78 30-31c

I, Irene Stewart Tax Assessor-Collector for the Paint Creek R.H.S. in accordance with the provisions of Section 20.03 (c) of the Texas Education Code have calculated the maximum tax rate which may be adopted by the Board of Trustees of the Paint Creek R.H.S. ISD without holding a public hearing as required by Section 20.03 (d) of the Texas Education Code. That rate is as follows: \$1.48 per \$100 of assessed value.  
 Irene Stewart  
 Tax Assessor-Collector  
 7-24-78 30-31c

## RESTRICTED CHEMICALS OK'ED

Haskell County has been added to the list of counties cleared for use of five restricted pesticides for use on cotton due to extensive bollworm-budworm destruction. According to Agriculture Commissioner Reagan V. Brown, cotton producers in Haskell County have been given clearance to use the pesticides Bolstar, Ambush, Pounce, Pydrin and Curacron. "This area has met requirements set by the Environmental Protection Agency of five percent minimum infestation," Brown said. Under the emergency regulations, farmers must show that the pests cannot be controlled with conventional sprays. An entomologist from TDA or Texas A&M University must check the fields before the restricted chemicals will be released. Brown said TDA is responsible for authorizing purchase of the chemicals and supervision of spraying.

# Obituaries

## Mrs. Daisy Cartwright

Mrs. Daisy Cartwright, 56, of Haskell, died at 12:50 a.m. Saturday in Haskell Memorial Hospital after a brief illness. Services were at 3 p.m. Sunday in First Baptist Church. The Rev. Dudley Bragg, pastor, officiated. Graveside services were at 3:30 p.m. Monday in Green Meadow Cemetery at Atoka, Okla., with the Rev. Larry Murry, pastor of First Baptist Church of Lane, Okla., officiating, directed by Holden-McCauley Funeral Home in Haskell. Born Aug. 22, 1921, in Jones County she married Sam F. Cartwright Dec. 17, 1943, in Haskell. They lived in McAlester, Okla., from 1946 to 1963 and in Fort Smith, Ark., from 1963 until 1965. They lived in San Antonio from 1965 until 1974. Her husband preceded her in death March 12, 1973. She was a member of the Haskell First Baptist Church.

Survivors include a son, Sam F. Cartwright Jr. of Chickasha, Okla., a daughter, Mrs. Karen Fay Tate of Channelview; her mother, Mrs. Zephyr Brown of Stamford; five sisters, Mrs. Estelle Turnbow and Mrs. Bertie Mae Dumas, both of Haskell, Mrs. Helen Whitworth of Stamford, Mrs. Ruthie Lee Vassar of Knox City, and Mrs. Geneva Joe Stem of Odessa; and two grandchildren. She was preceded in death by Dale and Dorothy Brown a triplet brother and sister, and her father, Addley Brown. Pallbearers were: Sherman A. Bledsoe, Steven Stem, Norman Whitworth, Vick Milliman, Rit Milliman, Bill Dumas, Roger Vassar.

## Mrs. Herman Zohn

Funeral services for Mrs. Herman Zohn were held July 18 at 10:30 a.m. She died July 14 at Lake Park, Minn. Survivors include her husband; one son, Gene Farley, Ontonagon, Mich.; one step son, Jerry Zohn, Haskell; one step daughter, Amelia Elliott, Vanceberg, Ky.; 11 grandchildren, and one great granddaughter. She is a sister-in-law to Alma Merchant of Haskell.

LIQUID PAPER Correction Fluid in ledger colors including pink, greens, buff, blue and yellows. Haskell Free Press

# EXPERIENCED SEWING MACHINE OPERATORS!

Experienced Single Needle Operators On Jackets, Blouses or Dresses

1. High Piece Rates
2. Opportunity for Overtime
3. Free Hospitalization
4. Paid Holidays & Vacation
5. Modern, Clean Air Conditioned Bldg.
6. Plenty Free Parking
7. Full Work Week--No Layoffs
8. Will Consider Training Home Sewer

Apply in Person To  
**Margie Huss at**  
**Herman Marcus, Inc.**  
 Hwy 380 West, Haskell  
 Phone (817) 864-3625

## REPORT OF CONDITION

THE FARMERS NATIONAL BANK of RULE City, TEXAS, at the close of business on JUNE 30, 1978 published in response to call made by Comptroller of the Currency under title 12, United States Code, Section 161. Charter number 14539 National Bank Region Number 11

Statement of Resources and Liabilities		Thousands of dollars
		THOUSANDS
ASSETS		
Cash and due from banks		797
U.S. Treasury securities		851
Obligations of other U.S. Gov't. agencies and corps		245
Obligations of States and political subdivisions		705
Other bonds, notes, and debentures		450
Federal Reserve stock and corporate stock		5
Trading account securities		
Federal funds sold and securities purchased under agreements to resell		600
Loans, Total (excluding unearned income)	1,153	
Less: Reserve for possible loan losses	12	
Loans, Net		1,141
Direct lease financing		
Bank premises, furniture and fixtures, and other assets representing bank premises		116
Real estate owned other than bank premises		
Investments in unconsolidated subsidiaries and associated companies		
Customers' liability to this bank on acceptances outstanding		1
Other assets		
<b>TOTAL ASSETS</b>		<b>4,911</b>
LIABILITIES		
Demand deposits of individuals, prtshps., and corps.		2,433
Time and savings deposits of individuals, prtshps., and corps.		1,812
Deposits of United States Government		84
Deposits of States and political subdivisions		249
Deposits of foreign govts. and official institutions		
Deposits of commercial banks		74
Certified and officers' checks		
<b>TOTAL DOMESTIC DEPOSITS</b>		<b>4,582</b>
Total demand deposits	2,627	
Total time and savings deposits	1,955	
Total deposits in foreign offices		
<b>TOTAL DEPOSITS IN DOMESTIC AND FOREIGN OFFICES</b>		<b>4,582</b>
Federal funds purchased and securities sold under agreements to repurchase		
Liabilities for borrowed money		
Mortgage indebtedness and liability for capitalized leases		
Acceptances executed by or for account of this bank and outstanding		
Other liabilities		?
<b>TOTAL LIABILITIES (excluding subordinated notes and debentures)</b>		<b>4,584</b>
Subordinated notes and debentures		
Preferred stock No. shares outstanding (par value)		
Common stock a. No. shares authorized		
b. No. shares outstanding (par value)		50
Surplus		123
Undivided profits		154
Reserve for contingencies and other capital reserves		327
<b>TOTAL EQUITY CAPITAL</b>		<b>4,911</b>
<b>TOTAL LIABILITIES AND EQUITY CAPITAL</b>		<b>4,911</b>
Average for 30 calendar days ending with report date:		
Cash and due from banks		521
Fed. funds sold and securities purchased under agreements to resell		753
Total loans		1,152
Time deposits of \$100,000 or more in domestic offices		
Total deposits		4,662
Fed. funds purchased and securities sold under agreements to repurchase		
Liabilities for borrowed money		
<b>TOTAL ASSETS</b>		<b>5,106</b>
MEMORANDA		
Standby letters of credit (outstanding as of report date)		
Time certificates of deposit in denominations of \$100,000 or more (outstanding as of report date)		
Other time deposits in amounts of \$100,000 or more (outstanding as of report date)		

HENRY TOWNSEND

CASHIER

of the above-named bank do hereby declare that this Report of Condition is true and correct to the best of my knowledge and belief.

Henry Townsend  
 Signature  
 July 21, 1978  
 Date

We, the undersigned directors attest the correctness of this statement of resources and liabilities. We declare that it has been examined by us, and to the best of our knowledge and belief is true and correct.

B.O. Carothers  
 Hilda Vera Neal  
 Morris Neal  
 Directors

## agri-facts

Pat Hale

If LACIE is the answer, then what is the question? Well... it might end up as the answer to "How can the government spend a lot of money?", or it could be the answer to "How can we accurately predict crop results without on-sight inspection?". Scientists are hoping it answers the second question since, if so, planning for U.S. farmers could be greatly simplified. LACIE is the fast way of saying Large Area Crop Inventory Experiment. Purpose of the experiment is to determine better ways of obtaining information on growing crops by satellite surveillance. Specifically, the tests involve a special kind of "photography"... using instruments which measure the amounts and intensities of heat or light reflected from the land. Researchers say there is a good chance the new devices can become sophisticated enough to accurately report crop conditions not only in the United States, but from any place in the world.

HALE FARM SUPPLY  
 Phone 864-2692

# AVAILABLE NOW the NEW Super C Original Equipment Type Mufflers

Free Estimates

Wheel Balancing

Wheel Alignment

Mufflers

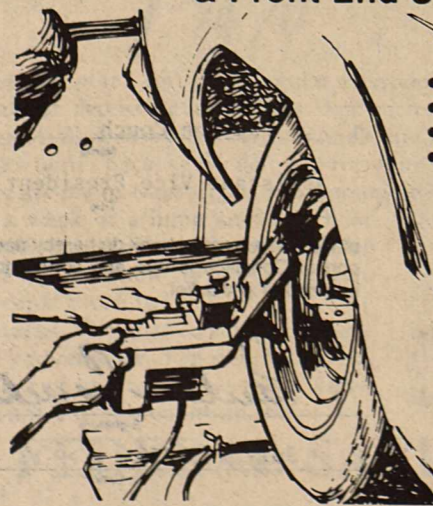
Tail Pipes

Shocks

Batteries

Tires

Repaired



- Set camber, caster
- Set toe-in, toe-out
- Check steering
- Road test the car

**\$12.50**

Most American Cars  
 Cars with Air-conditioning add \$2.00

**Nootens** ★★

Service Center

307 SOUTH AVENUE E HASKELL, TEXAS PHONE 864-3696



# Lehrmann, Worley Repeat Vows

Carla Sue Worley and Ricky Alden Lehrmann were united in a double ring ceremony Sat. 22, at 7:30 p.m. with Bill Heston, minister, officiating in the First Baptist Church.

The bride is the daughter of Mr. & Mrs. Wayne Worley of Brownwood. The bridegroom is the son of Mr. & Mrs. Norvell Lehrmann of Rule.

Twila Helms of Brownwood registered the guests. The church altar was decorated with two spiral candelabra's entwined with greenery which flanked each side of the

arch candelabra. Clusters of pink caladium leaves and ferns centered with cathedral candles, decorated the windows along the side of the sanctuary. Similar clusters marked the family pews.

Mrs. Rex Bessent of Brownwood and Mrs. Bobby Smith, sister of the groom, from Rule provided organ and piano selections while guests were being seated. Jana Allison of Lubbock sang "Annie Song" and "If Ever I Would Leave You". Accompanied by Mrs. Smith at the piano.

Mrs. Otto Lehrmann, paternal grandmother of the groom, and Mr. and Mrs. Leo Monse, Sr., maternal grandparents of the groom, were escorted by Bobby Smith, brother-in-law of the groom.

The groom's mother, escorted by Bobby Smith, wore a floor-length dress of peach shades in floral print. The dress featured a chiffon overlay. She wore a corsage of yellow carnations and tropical roses.

The brides mother was escorted by Gary Worley, brother of the bride. She chose a floor length dress of dusty rose Qiana. The bodice was detailed with tiny pleats accenting the soft belted waist line. The bride's mother wore a corsage of pink carnation & pink bridal roses.

Kathy Breedlove of Quanah served as the bride's Maid of Honor. Mrs. Gary Worley, sister-in-law of the bride, was matron of honor. Bridesmaids were Marla Lehrmann, sister of the groom, Janet Rutman and Julie Harty of Dallas. They wore identical dresses of champagne pink Qiana. The full length spaghetti strap dresses were accented by a jacket with deep ruffles at the neckline & waist. Each bridesmaid carried longstem pink carnations and roses bound together with flowing ribbons. They also wore necklaces, gifts from the bride.

Sara Worley, sister of the bride, served as flower girl. She carried a white basket with shades of pink flowers and baby's breath. Jennifer Worley, niece of the bride, was train bearer. She wore a cluster of pink carnation in her hair. They wore similar dresses to the bridesmaids made of floral print and shades of burgundy and pink.

The groom wore a burgundy, tailed tuxedo with a white ruffle shirt, trimmed in burgundy. Randy Lehrmann served as his brother's best man. Groomsman were Dewayne Hertel of Dallas, Tommy Mrazek, cousins of the groom, Lyndale Dudensing of Sagerton and Vernon Pruitt of Lubbock.

Their tuxedos of burgundy with pink ruffles shirts. Kent Lemons of Brownwood served as ring bearer. He wore a tuxedo identical to that of the groomsman.

The bride given in marriage by her father, was attired in a white floor-length gown of Satalustre organza trimmed with French Chantilly lace. The gown featured a high neckline, long fitted sleeves, and a soft full skirt with a deep ruffled flounce. It was trimmed with French Chantilly lace applique over the entire gown. Her veil was of three tiered floor length of Chantilly lace trim and appliques caught by a camelot headpiece. She carried semi crescent bouquet of a white cattleya orchid, white miniature carnations and Hawaiian pine greenery. For something old, the bride wore a diamond lavaliere that was given to the brides maternal grandmother by her husband in 1916. It had been worn in other weddings of the family members. Something blue was a blue garter belonging to her mother and something borrowed was her

mother's diamond stud earrings. As the bride was given away Miss Allison sang "Sometimes" accompanied by Mrs. Bobby Smith and the ceremony close with the "Lord's Prayer" accompanied by Mrs. Bessent.

A reception was held immediately following the ceremony on the church patio. Serving at the bride's table were Sally Holmes of Lubbock, Valerie Kilgore of Dallas, Twila Helms of Brownwood, and Jana Allison of Lubbock.

The table was covered with white satin cloth trimmed with lace. A center piece arrangement of shades of pink carnations and white daisies decorated the table. The bride's white cake, tiers separated by Grecian columns trim in pink flowers and was topped with a nosegay of pink and white flowers.

The groom's table was laid with floor length cloth of dusty pink crepe and had an arrangement of fresh flowers. German chocolate cake and coffee were served by Mrs. Tommy Mrazek of Dallas and Carla Mink of Sweetwater.

Sara Worley and Jennifer Worley distributed rice bags before the couple departed on their honeymoon trip.

The couple will reside in Lubbock.

Out of town guest were from Oklahoma City, Lubbock, Abilene, Haskell, Dallas, Irving, Rule, Denton, Quanah and Sweetwater.

The rehearsal dinner was held by the groom's parents Friday night at Underwood's

## Harrell Reunion

The descendants of the late, Will, Ike, Nathan, and Charlie Harrell families, met for a family reunion July 22 & 23 in Haskell, at the Corral building.

They started registering at 1:00 on Sat. Supper was served at 6:00 from well filled baskets which was like an old fashion dinner on the ground. The noon meal on Sunday was served at 12:00 noon in the same order.

A lot of visiting took place and picture taking, then the business meeting was held. Officers for the next year were elected. They include president, Tommy Harrell, Rule; vice-president, Violet Allen; secretary, Imogene Dobbs, Abilene; treasurer, Daisy Smith, Abilene. The meeting closed with a welcome to all friends and relatives who attended. 149 people registered.

Children of the late Will Harrell attending were: Bill Harrell, Viola Tidwell, Minnie Holt of Haskell; Jerry Harrell of Rule; and Eudella Goode of Rochester.

Children of the late Ike Harrell attending were: Hoie Harrell, Haskell; Violet Allen, Haskell; Dovie Carroll, Hale Center; Emmalee Boen, Brownfield; Clyde Harrell, Plainview; Rollo Harrell, Plainview.

Children of the late Nathan Harrell attending were: Joe Harrell, Monterey, Calif.; Ardella Corzine, Fontana, Calif.; Martha Russ, Ft. Worth; Nathan Jr. Burk Burnett.

Children of the late Charlie Harrell attending was Barney Harrell of Hanford, Calif.

A host of other relatives and friends attended. Towns and states represented were: Rochester, Rule, Haskell, Hale Center, Odessa, Brownfield, Plainview, Burkburnett, Abilene, Richardson, Arlington, Lubbock, Ft. Worth, Houston, Amarillo, Stephenville, Katy, Pasadena, Porter, Sweetwater, Brownwood, McKenny, Shepard, Dallas, Seymour, Christova, Hurst, Euless and Spring. Out of state were: Oklahoma, Calif. and Kansas.

All of descendants of the older group were raised in the Foster Community and they attended the old Foster School.

## ROBERTSON REUNION

The annual reunion for the descendants of the late Addison Robertson's was held in the American Legion Hall in Haskell on July 9th.

For those arriving early, a fish fry was enjoyed at Callaway's cabin at Lake Stamford on Saturday night.

A buffet luncheon was served at noon Sunday and the afternoon was enjoyed by visiting and taking pictures.

Those attending were from New Mexico, Okla., and Texas.

The next reunion will be the second Sunday in July 1979 at American Legion Hall in Haskell.

## FRAZIER REUNION

Mrs. Flossie Fraziers home was the scene of a Frazier Reunion Sunday, July 16 in Rule. There were 83 in attendance with 59 of them being Fraziers.

The furthest away came from Van Horn. Others came from: Amarillo, Clifton, Montanas, Clayborn, Duncanville, Graham, Aspermont, South Bend, Abilene, Stamford, Abernathy, Haskell, Old Glory Moran, Odessa and Rule.

## Jaycee's Has Ladies Night

The Haskell County Jaycee's held their monthly Ladies Night last Thursday (July 20), at the Haskell City Park. 14 members, one guest, and special guests Jake & Pat Dusak, who did the cooking attended. Host for this months ladies night was

Gwynn Bulter.

The Jaycee's held a short business meeting following the meal. The Jaycee's Board of Directors monthly meeting will be July 26 at the Chamber of Commerce Building. Coming events were discussed. July 25, Knox City Charter Banquet will be held, July 24 The Donkey soft ballgame will be held at Munday, beginning

at 7:30 p.m., July 27, Aspermont will have their Charter Banquet, July 28 thru 30 The Summer Board of Texas Jaycees will meet at Fort Worth. It will be at this meeting that the Five Outstanding Young Texans will be selected. The Haskell Jaycees will begin their membership drive on Aug. 3.



MRS. RICKY ALDEN LEHRMANN  
...formerly Carla Sue Worley

## ANNOUNCEMENT

The **Fash-N-Aire** Beauty Salon would like to announce that **Kay Morris**

will now be working with us. Diane and I would like to welcome Kay and all her friends to The Fash-n-aire. Please feel free to call for an appointment. Drop ins are always welcome. Also, we have special prices for Ladies with a limited income.

Call 864-3760 or  
Come by 407 N Ave. D

# Summer Sale

CONTINUES

Final Reductions on All Summer Merchandise

REGROUPED AND REDUCED FURTHER FOR GREATER BARGAINS.

1/2 Price

and LESS on many, many items.

Shop every department for Bargains you are sure to enjoy.

THE *Personality* SHOPPE

**TOWER**

DRIVE-IN  
RULE, TEXAS

Friday & Saturday  
July 28 & 29  
"The One and Only"  
Rated PG

Sunday & Monday  
July 30-31  
"Street Girls"  
Rated R

## REPORT OF CONDITION

Consolidating domestic subsidiaries of the

Consolidating domestic subsidiaries of the

Haskell National Bank of Haskell City  
Name of Bank  
In the state of Texas at the close of business on June 30, 1978  
published in response to call made by Comptroller of the Currency, under title 12, United States Code, Section 161.  
Charter number 14149 National Bank Region Number 11

Statement of Resources and Liabilities		Thousands of dollars
		THOUSANDS
<b>ASSETS</b>		
Cash and due from banks		2,909
U.S. Treasury securities		565
Obligations of other U.S. Gov't. agencies and corps.		5,296
Obligations of States and political subdivisions		5,581
Other bonds, notes, and debentures		1,140
Federal Reserve stock and corporate stock		18
Trading account securities		NONE
Federal funds sold and securities purchased under agreements to resell		500
Loans, Total (excluding unearned income)	9,168	
Less: Reserve for possible loan losses	138	
Loans, Net		9,030
Direct lease financing		NONE
Bank premises, furniture and fixtures, and other assets representing bank premises		541
Real estate owned other than bank premises		NONE
Investments in unconsolidated subsidiaries and associated companies		NONE
Customers' liability to this bank on acceptances outstanding		NONE
Other assets		423
<b>TOTAL ASSETS</b>		26,003
Demand deposits of individuals, prtshps., and corps.		7,350
Time and savings deposits of individuals, prtshps., and corps.		13,398
Deposits of United States Government		58
Deposits of States and political subdivisions		1,653
Deposits of foreign govts. and official institutions		NONE
Deposits of commercial banks		NONE
Certified and officers' checks		130
<b>TOTAL DOMESTIC DEPOSITS</b>		22,589
Total demand deposits	8,242	
Total time and savings deposits	14,347	
Total deposits in foreign offices		NONE
<b>TOTAL DEPOSITS IN DOMESTIC AND FOREIGN OFFICES</b>		NONE
Federal funds purchased and securities sold under agreements to repurchase		NONE
Liabilities for borrowed money		NONE
Mortgage indebtedness and liability for capitalized leases		NONE
Acceptances executed by or for account of this bank and outstanding		NONE
Other liabilities		1,205
<b>TOTAL LIABILITIES (excluding subordinated notes and debentures)</b>		23,794
Subordinated notes and debentures		NONE
Preferred stock No. shares outstanding NONE (par value)		NONE
Common stock a. No. shares authorized 60,000 (par value)		300
b. No. shares outstanding 60,000 (par value) \$.50		300
Surplus		1,309
Undivided profits		300
Reserve for contingencies and other capital reserves		2,209
<b>TOTAL EQUITY CAPITAL</b>		26,003
<b>TOTAL LIABILITIES AND EQUITY CAPITAL</b>		26,003
Average for 30 calendar days ending with report date:		
Cash and due from banks		2,659
Fed. funds sold and securities purchased under agreements to resell		886
Total loans		8,995
Time deposits of \$100,000 or more in domestic offices		255
Total deposits		22,728
Fed. funds purchased and securities sold under agreements to repurchase		NONE
Liabilities for borrowed money		NONE
<b>TOTAL ASSETS</b>		25,409
Standby letters of credit (outstanding as of report date)		3
Time certificates of deposit in denominations of \$100,000 or more (outstanding as of report date)		NONE
Other time deposits in amounts of \$100,000 or more (outstanding as of report date)		255

I, Pauline Couch  
Name  
Assistant Vice President & Cashier  
Title

of the above-named bank do hereby declare that this Report of Condition is true and correct to the best of my knowledge and belief.

*Pauline Couch*  
Signature

July 20, 1978  
Date

We, the undersigned directors attest the correctness of this statement of resources and liabilities. We declare that it has been examined by us, and to the best of our knowledge and belief is true and correct.

*John S. Pike, III*  
*John S. Pike, III*  
*John S. Pike, III*  
Directors



### Around Town

Mr. and Mrs. Albert Sharp were in Bryan Sat. July 15 and Sun. the 16th, visiting his mother, Maggie Simmons, who is in the Rest Home.

Mr. and Mrs. Miller Montgomery were in Red Springs and Seymour on Friday July 21 attending the funeral of Ernest Welch. He was the



MR. AND MRS. BOBBIE PIERSON of Sweetwater announce the engagement and approaching marriage of their daughter, Carla Mink, to Randy Lehrmann, son of Mr. and Mrs. Norvell Lehrmann of Rule. The bride is a 1974 graduate of Sweetwater High School and attended Licensed Vocational Nursing School and is now employed in the respiratory therapy department at Rolling Plains Memorial Hospital in Sweetwater. The prospective bridegroom is a 1974 graduate of Rule High School and attended Western Texas College one year. He graduated from Cogdell Memorial Hospital School of Radiologic Technology in Snyder. He is employed at Rolling Plains Memorial Hospital in Sweetwater in the Radiology Department. The couple plans an August 12 wedding in Faith Lutheran Church in Sweetwater.

father of Mrs. Bud Montgomery of Olney.

Mr. and Mrs. Billy Bob Shaw & Druann, of Abilene were in Haskell last Sunday to attend the funeral of Mrs. Shaw's aunt, Mrs. Daisy Cartwright.

Sara Hodge met her son and family, Mr. and Mrs. Harold Hodge of Arlington at Possum Kingdom Lake Saturday July 22nd. The big event was to watch her 6 year old grandson water ski.

Mr. and Mrs. William A. Lewis of Brooksville, Florida were visitors for a week in the home of their daughter and son-in-law, Bob and Debbie Earles.

They came to see their new grandson Aaron Robert Earles who born July 12. Also visiting was Debbie's sister and her husband, Kathy and Roy Churchill from Cross Plains.

Youth Dept. of the East Side Baptist Church spent the weekend in Abilene. On Saturday they swam, played miniature golf, bowled and went to the show. On Sunday they went to early services at the Pioneer Drive Baptist Church, then traveled on to Abilene State Park for a picnic and recreation. Sponsors were Billy & Deborah Mitchell, Ben & Sue McGee and Albert & Neta Roberts.

Mr. and Mrs. Dewayne Moore, Marilyn, Doretha and Marsha were in Arlington last weekend to see Six Flags. They spent the day and returned home that evening. While going through Weatherford, they stopped off to visit Mrs. Moore's cousin and family, the Charles Stanton's.

### STOCK MARKET

The market at Haskell Livestock Auction was active on a run of 1011 head of cattle, 151 hogs, and no sheep and goats at its sale Sat. July 22, 1978, according to James Powell reporter.

Other comments: Hogs \$1.50 higher; Packer cows \$1.52 lower; Stocker Steers, \$3.55 higher, and Feeder cattle, steady.

Butcher calves: choice, 52-55; good, 50-55; standard, 46-50; rannies, 40-46.

Cows: fat, 33-36; cutters, 28-34; canners, 23-28; stockers, 30-40.

Bulls: bologna, 40-45; stockers, 45-50; utility, 35-40.

Stocker Steer Calves: choice, 75-80; good, 68-75; medium, 60-68; common, 50-60.

Stocker Heifer Calves: choice, 55-60; good, 50-60; medium, 45-50; common, 40-45.

Feeder Steer Yearlings: choice, 58-64; good, 53-58; medium, 48-53; common, 40-48.

Feeder Heifer Yearlings: choice, 54-57; good, 50-54; medium, 47-50; common, 40-47.

Cows & Calves: good, 375-450; plain, 300-375.

Top on Hogs: 43-44.

Sows: 34.50-37.

Boars: 25-30.

Shoats: 10-43 hd.

### College News

Joanne Phyllis Cloud, a 1978 graduate of Rule High School has been awarded a \$750 Clark Foundation scholarship by the Texas Interscholastic League Foundation. The Clark Foundation provided funds for 60 of the \$750 grants this year to be administered by the TILF.

Miss Cloud earned eligibility for the scholarship by participating in the University Interscholastic League journalism contest, in which she finished first at the state meet this past spring in the headline writing event.

She also participated in the prose reading, number sense, spelling, editorial writing, and science contests, as well as being a member of the

school's one-act play and being named to the district all-star cast.

Valedictorian of her senior class with a 98.58 grade point average, Joanne was active in 4-H activities, Future Homemakers of America, the yearbook and newspaper staffs, and athletics. She earned district honors in basketball and track, was

elected Football Sweetheart and was a member of both the Society of Distinguished American High School Students and Who's Who Among American High School Students.

She plans to attend the University of Dallas but is undecided on a major.

"We're proud to have Joanne as a Clark Foundation

scholar," said Dr. Rhea H. Williams, TILF secretary. "She has an excellent background of academic and extracurricular achievements and is, without doubt, among the finest graduates of this year's high school graduates in Texas."

It pays to advertise...

## \$ NEW DOG \$ BREEDERS NEEDED

Be your own boss - your own business at home. Possible to turn one-half acre into an excellent income. We assist all new breeders, if qualified. Start small or large.

RAISE QUALITY PUPPIES FOR

### PROFITS

Over 5,000 buyers get highest east coast prices. For information and qualifications



Call 218-834-5536

or write: Kennels

P.O. Box 1-95

Edwards, Mo. 65326

(Include Phone Number)

**Puppies Mean Profits**

## The Quality You Want ...AT PRICES YOU'LL LOVE...

Fresh Water, Frozen <b>Cattfish</b>	98¢ lb	California <b>Nectarines</b>	49¢ lb
Gooch <b>Wieners</b>	89¢ pkg	California <b>Avocados</b>	3 for \$1.00
Gooch <b>German Sausage</b>	\$1.19 Each	<b>Lettuce</b>	Head 39¢
Wilson <b>Bologna</b>	98¢ lb	Mortons <b>Honey Buns</b>	Box 49¢
Fresh Store Made <b>Sausage</b>	89¢ lb	Bordens <b>Ice Cream</b>	½ Gallon Round Carton \$1.29
Chuck 7-Bone <b>Steak</b>	\$1.19 lb	Duncan Hines <b>Cake Mix</b>	Box 69¢
Bordens <b>MILK</b>	1 Gallon Plastic \$1.79 BEST QUALITY AT A LOWER PRICE	Del Monte <b>Catsup</b>	14 oz Bottle 39¢
Armour's <b>Viennas</b>	Can 39¢	Kraft <b>BBQ Sauce</b>	18 oz 69¢
Heinz <b>White Vinegar</b>	Quart 47¢	Tuf 'N Ready <b>Towels</b>	3 Ply Large Roll 69¢
Del Monte <b>CORN</b>	3 Cans \$1.00	Johnsons <b>SHOUT</b>	Can 89¢
Kraft Creamy Cucumber <b>Salad Dressing</b>	57¢	<b>TIDE</b>	Giant Size \$1.39

### BARGAINS!!

Did you ever have a favorite product that you couldn't get any more because they quit making it? We have cleaned house and put all discontinued items on for

1/2 price

Come in and browse through the boxes while they last.

**Johnson Pharmacy**

418 North First—Haskell, Texas  
—Your Prescription Center—  
Open 7:30 to 6 p.m.—Closed Sunday  
Nights and Sundays call 864-3439 or 864-2128

### Hospital Notes

#### ADMISSIONS

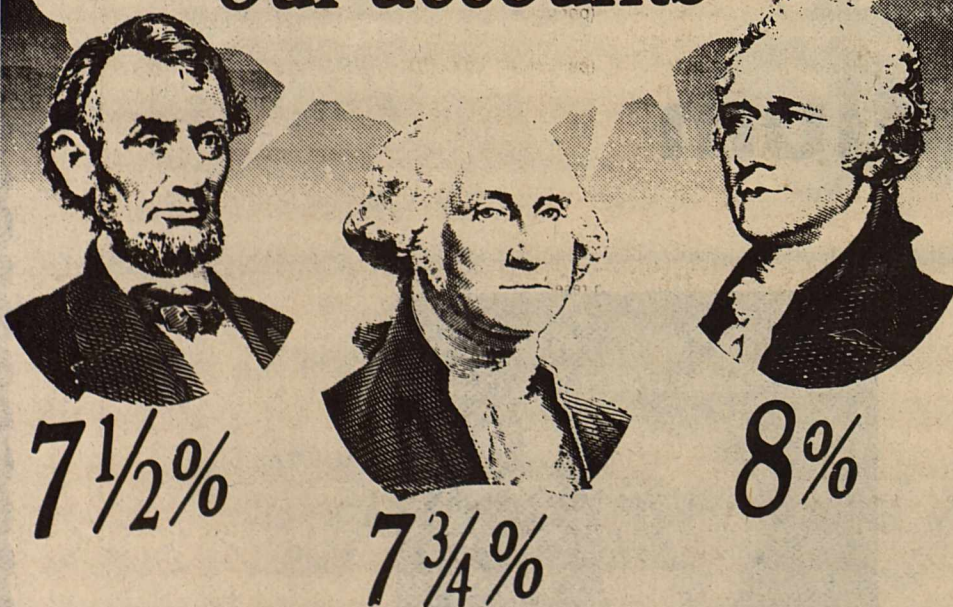
MEDICAL: Eddie Harris, Wanda Watson, Willie Baccus, Haskell; Nannie McCaul, Peggy Kittley, Mary Barker, Rule; Lois Gray, Munday; Kenneth Sams, Haskell; Dorothy Hollingsworth, Stamford; Joe Mathis, Rule; Artie Bradley, Haskell.

#### DISMISSALS

Darlene Carter, Betty Helweg, Opal Dunnam, Benjamin Tuggle, Velma Hatfield, Lorian Camp, Mary Henry, Flora Josselet, Curtis Jennings, A.B. Warren, Cynthia Thomas, Archie Jackson, Alice Muegge, Enie Dozier, James Raughton, Albert Schmidt.

GO BACK TO CLASS WITH CLASS. Shop for your school supplies at the Haskell Free Press. Pens, pencils, notebooks, dictionaries, high intensity lamps, file boxes, pencil sharpeners, rulers protractors, you name it, we have it.

## Earn MORE on our accounts



We've got plans for you. Regular passbook and several certificate-of-deposit savings plans. And each pays the highest interest allowed by law. Any money you can make, we can make better because we do more for your money.

There are many ways to put your money to work whether it's \$5 a week or a lump sum of ten or twenty thousand dollars. But we believe that the combination we offer will give most people more for their money. The high returns. The insured safety. The all-around convenience. The peace of mind. Come in and find out about them. Open an account you can count on, more.



## FIRST FEDERAL SAVINGS AND LOAN ASSOCIATION

Division Office  
Quanah Federal Savings and Loan  
313 South Main St  
Quanah, Texas 79252  
817-663-5388

Branch Office  
#3 Avenue D  
P O Box 444  
Haskell, Texas 79521  
817-864-3179

Home Office  
122 W. McHarg  
P O Box 511  
Stamford, Texas 79553  
915-773-2714

# POGUE GROCERY

—Extra Parking Behind The Store. Home Owned and Operated—

113 North Avenue E

Phone 864-2015

Haskell, Texas



# Leisure Lodge News

We are happy to have Mr. Albert Schmidt back with us after being in the Haskell Memorial Hospital for several days last week.

Mr. & Mrs. Jake Edwards of Matador, Jerry Westmoreland, Mrs. Newton Westmoreland, Oleta Jackson of Rule visited Mrs. Lummie Westmoreland.

Barbara Kile, Oleta Jackson of Rule, Mardell Roberson, Mr. & Mrs. W.R. Roberson of Rochester, Mr. & Mrs. D.I. White of O'Brien and their grandson, Todd Hackney of St. Louis, Mo. and Janis Roberson of Abilene visited Mrs. Eva White.

Mrs. Ila Corley and Mrs. Manford Reed, of Rochester, Ms. Olen Bogard of Rule, Harold Harris of Whitney visited Mrs. Sarah Beth

Harris.

Mr. & Mrs. G.C. Brackett of Weinert, Mr. Tommy Sorrells of Rule & Miss Twyla Turnbow of Weinert visited Mr. W.O. Lewis recently.

Visiting Mary Alice Smith were Lynn Gray, Ft. Worth, Mr. & Mrs. Hoyt Gray of Munday, Tommy Sorrells of Rule, Mrs. Georgia Turnbow & Twyla Turnbow, Mr. & Mrs. George Gray of Weinert.

Mrs. Sandra LaFevre & daughter of Ft. Worth visited Mrs. Minnie Brady.

Visiting Carrie Edwards were Mrs. Faye Jones & daughter, Marilyn Kay Hayes of Plainview, Lillian Evins, Amarillo and Frances Downer of B'klyn, N.Y.

Mrs. Bobby Whitt of Abilene and Mrs. Eunice Strickland of Rochester visited Mrs.

Cecil Whitt.

Visiting Raymond Wheeler were his sisters, Frances Downer of Brooklyn, N.Y. and Lillian Evins of Amarillo.

Mr. and Mrs. Ford Waldrop and Madge Osborn of Knox City visited Miss Myrtle Russell and Mrs. Lummie Westmoreland.

Mr. and Mrs. Lloyd Bradley of Goree visited Mrs. Lillie Bradley.

Mrs. Travis Smith of Stamford, Gayle Kay and daughter of Lubbock visited Ms. Alpha Dyches.

Mr. and Mrs. Herbert Ray of Waco, Mrs. Estelle Norma and Mrs. Adele Bogard of Rule visited Mary Ray. Mrs. Velda Green of Denton visited Mr. Juel Mitchell.

Mrs. Lynn Carlton and Bobby Schmidt of Stamford visited Mr. & Mrs. Albert Schmidt.

Mr. & Mrs. Roger Ripley & children of Ft. Stockton visited Mrs. Elsie Norman.

Visiting Mr. Erwin King were Mrs. Dan Massey, Amarillo, Ervalene Beason, Glenda Day & Mrs. King of Knox City.

Tom Watson singers were enjoyed on Tuesday night and Sunday Services by the First Christian people at 9:30.

Want to buy? Sell? Results? Want ads will work for you. Haskell Free Press

## Conservation Viewpoints USDA Soil Conservation Service Assisting Haskell Soil and Water Conservation District

Although the hot dry weather has slowed the production of crops and hastened the sale of livestock for this year, many people are looking ahead. We've had dry years before and as usual we will have dry years again. We always come out of these droughts, generally with large amounts of water. Several county farmers and ranchers are taking advantage of this year and making it work for them. It always seems to be hard to find a good time to work in building terraces, cleaning out or building a pond or just culling cattle. This is an ideal year for that type work.

Some people ask, why terrace in a dry year like this? We all know the reason for terraces is to hold water. In dry years there is little to no moisture in the ground so you don't have the soil compaction that normally comes with terracing, and you will be ready to hold that rain when it does come. Terraces have been completed on John Paul

Perrin, R.C. Frankie and A.C. Knipling, and are under construction on Joe Kimbrough, Duward Campbell, and Rex Murray.

We seldom think about our water supply until it is threatened. Well, it sure has been threatened this year and right now it doesn't look like the threat is leaving. When dry times like these arrive, many people think ahead and prepare for the next "dry spell." Some area stockmen are digging new ponds that will furnish deep water for a longer time and carry them thru. Ponds have been completed on Tom Yates, Kenneth Sanders, Johnnie Earles and Allen Overton, and are under construction on Raymond Medford, J.R. Perry, Clyde Mayfield, Larry Blackwell and Mrs. Violet Frazier.

Grassed waterways have been built on Dan Griffith, James Raughton and Joe Davis with work to begin soon on Pat Henry, Shelby Harris and Billy Hughes. Edwin Mueller and Dan Griffith have started work on shaping critical areas that will be seeded to grass next spring.

Irrigation pipelines, for the more efficient transfer and use and conservation of water and energy, are being installed on Danny Josselet, Dan Wadzeck, Keith Fry, Richard Mathis, Merle Tankersley and W.H. Patterson.

These practices are being cost-shared thru either the Agricultural Conservation Program or the Great Plains

Conservation Programs with technical assistance furnished by the Soil Conservation Service. The conservation of your soil and water may cost you now, but if the right practices are applied at the right time, you can and will save time and money in the future. Call or come by the SCS office in Haskell.

**JAYCEES LOSE GAME**  
The Haskell Jaycees traveled to Munday, Monday night to play in a Donkey Baseball Game. They were defeated 1-0 by Munday. Jaycees going were: Eddie Hester, Bud Howeth, Charles Thornhill, Rickey Lee Andress Jim Pace, Jack Rueffer, Ronnie Hise, Gwynn Butler, Gene Butler, Mike Jordan and Ervin Unger, Bill Holly Jr.

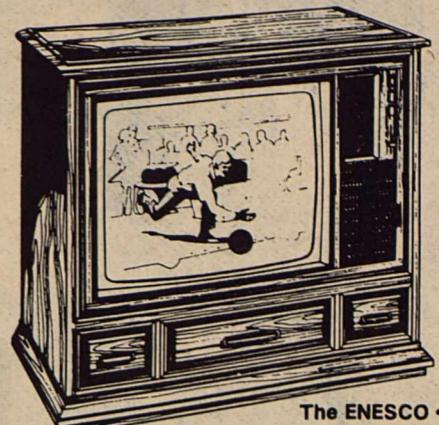
A few of the wives went over to see the Jaycees try and ride the Donkeys.

**GRAND**  
Stamford 773-3181  
Fri. 28-Sat. 29-Sun. 30  
"Close Encounters of the Third Kind"

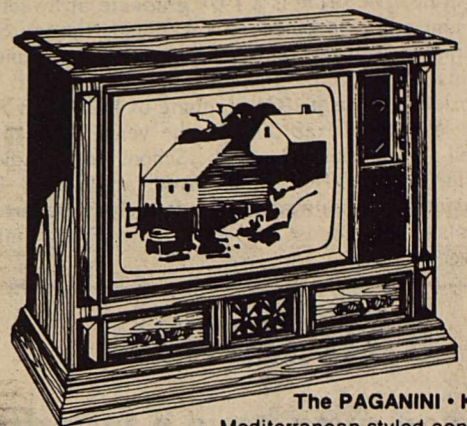
**DRIVE-IN**  
Stamford 773-3272  
Fri. 28-Sat. 29  
"Buckstone County Prison"  
Sun. 30-Mon. 31  
The Fonz in  
"The One and Only"  
Tue. Aug. 1  
One Day Only  
All Spanish Show  
\$4 a Car  
"El Cuatro Dedos"  
Wed. 2-Thurs. 3  
XX Rated XX  
Adults Only  
"Sweet Punkin"

**NOTICE**  
B.D. "Bill" Elmore is now working in my shop, any favors extended to him will be appreciated.  
On Saturday, Frank Jenkins and Bill will be here.  
Thanks  
Dick Bischofhausen  
"Dick's Barber Shop"

## NEW ZENITH CHROMACOLOR II 25" CONSOLE TV featuring Chromatic One-button Tuning convenience



The ENESCO • K2504P  
Modern styled console. Pecan wood-grained finish applied to durable wood products on top and ends. Front and base of simulated wood. Casters.



The PAGANINI • K2508  
Mediterranean styled console. Wood-grained finish applied to durable wood products on top and ends. Front and base of simulated wood. Dark Oak color (K2508DE) or Pecan color (K2508P) Casters.

Your Choice \$675<sup>00</sup> w.t.  
**Owens Radio & Electric**  
Haskell

**Back to School SALE**

Sale Starts Fri. July 28 thru Aug. 5.

One Rack  
**Pants, Shorts & Shells**  
**\$5.00**

Grab Racks  
Values to \$50.00  
**\$10 & \$15**

**20% off**  
Reg. Price on all Merchandise  
"Cash Only"

Close out on  
**Country Set**  
**1/2 price + \$1**  
Alterations extra

**Winona's**

HERE'S TO YOUR HEALTH  
from **DOYLE HIGH**

A correct bed was rated the most important household article by 98% of physicians in a survey. Since health depends so greatly on adequate rest, and since 1/3 of our lives are spent in bed, there's nothing more important than a good bed. A mattress and spring that are swaybacked like a hammock is the worst kind, as it distorts the spine. A mattress too soft can cause low back pains and muscle fatigue - too hard, it will lack 'give' for body contours. The correct mattress gives a firm but comfortable feeling of no-sag, natural body alignment. It has surface softness to 'cradle' the body contours, but firmness to relax body muscles and tensions.

**DOYLE HIGH'S**  
**THE DRUG STORE**  
100 SOUTH HASKELL, TEXAS  
PHONE 864-2515

# Haskell Area Crusade

## July 30 & 31 - Aug. 1 & 2

### 8 p.m. Nightly

### Haskell Indian Stadium

North 8th & Avenue D



**Signs of Peace Choir**  
Waxahachie, Texas



**Dwight Thompson, Evangelist**  
California

# ALL FAITHS WELCOME



# Sagerton News

Although we did not get much rain from the clouds on Saturday and Sunday, the cool weather sure feels good!

Word was received of the death of one of our former residents, Mrs. Runita (Spizer) Gebhard, in Wichita Falls. Runita grew up here in Sagerton and her parents and grandparents were among early settlers of this community. She had lived in Wichita Falls after she married and her family moved there in the 1940's when her father, who died earlier this year, retired from farming. She is survived by her husband, one daughter, her mother, two brothers

and three sisters. Those from here attending the funeral were: Mr. and Mrs. Glyn Quade, Mr. and Mrs. Leonard Kieke, C.E. Stegemoeller, Mrs. Ladain Anderson of Houston, Mrs. Becky Hill of Aspermont, Mrs. Lillie Handrick of Albany, and Mr. and Mrs. J.E. Walling of Haskell.

Mrs. Cliff LeFevre and her sister, Mrs. Ladain Anderson of Houston, who is visiting here, visited their cousin, Ernest Nugent and his family, at Sundown Monday and with Mr. and Mrs. Gary Laughlin in Lamesa Tuesday.

Mr. and Mrs. F.A. Stegemoeller attended the wedding of their granddaughter, Diane, at DeSoto last weekend. She is the daughter of Mr. and Mrs. Kenneth Stegemoeller. Others going were C.E. Stegemoeller and Ladain Anderson.

Mrs. M.Y. Benton spent last week in Abilene visiting with Mr. and Mrs. Bob Clark and family.

Mr. and Mrs. Joe Clark and Mr. and Mrs. Melvin Baitz and Mr. and Mrs. George Olson of Ozona are vacationing in Colorado.

Kraig Kupatt, son of Mr. and Mrs. Fred Kupatt, was in Fort Worth last week attending the Texas 4-H Youth Congress. He and Tonya White of the Rule 4-H, represented District III. The theme of the three day meet was "Western Heritage".

Mr. and Mrs. Si Curry of San Antonio, Mr. and Mrs. Dale Curry and Michelle of Dallas and Mrs. B.H. Spaw and daughters of Midland were all here this past weekend and brought Mrs. B. Kupatt of Rice Springs Care Home in Haskell here for a visit. Also present for lunch on Sunday were Mrs. Fred Kupatt and Kris and Mrs. J.D. Kupatt and Karla.

The Luther Leaguers of

Faith Lutheran Church, accompanied by Pastor and Mrs. Ritter and Mr. and Mrs. Tommy Manske, enjoyed bowling in Abilene Sunday afternoon.

The youth of the Sagerton United Methodist Church are attending camp this week at Camp Butman near Merkel. Those going are Charles New, Wayne and Rhonda Stremmel, Melissa Meier, and Phillip DeBusk from Sagerton and Lisa Baird and Julie Lee of Rule.

Mrs. Herbert Stremmel and her granddaughter, Rhonda, visited in Dallas recently with Mr. and Mrs. Ray Hendricks and daughter.

The congregation of the Sagerton United Methodist Church were entertained with an ice cream supper at the Herman Baitz Park in Sagerton Wednesday evening of last week, hosted by Mr. and Mrs. Allen Meier.

Kevin Meier, and Tom and Coleman Bivins and Mike Fouts enjoyed getting to go to Arlington last weekend to see the Rangers play. Their Little League coach, Earl Spyras, of Rule took them.

Those from Sagerton who attended the wedding of Rickey Lehmann and Carla Worley at Brownwood on Saturday were: Mrs. Otto Lehmann, Mr. and Mrs. Leo

Monse, Sr. and Mr. and Mrs. Jack Monse and DeWayne. Others were: Mr. and Mrs. Franklin Mrazek and Dana and Bubba of Aspermont, Mr. and Mrs. Norvell Lehmann and Marla of Rule, Mr. and Mrs. Bobby Smith and Mr. and Mrs. Donny Barbee and Eric of Rule, and Mr. and Mrs. Clancey Lehmann and Steve of Old Glory, and Mr. and Mrs. Virgil Vahlenkamp, Charles, Bud, and Mr. and Mrs. Mark Ethridge of Denton and John Vahlenkamp, who spent two weeks here with his grandparents, the Leo Monse.

The Golden Age group met at the Sagerton Community Monday afternoon with Mrs. Charles Clark and Mrs. David Letz as hostesses.

Those enjoying games of 84 and bingo were: Mrs. B. Kupatt and Mrs. Alvina Holle from the Rice Springs Care Home of Haskell, Mrs. Clara Hines and Mrs. Lucy Williams of Rule, Mrs. Alice Newton, Mrs. Emma Lammert and Miss Christine Ender of Stamford, Mrs. John Clark, Mrs. Will Stegemoeller, Mrs. G.A. Leach and Mrs. A.C. Knippling all of Sagerton and Mrs. Marie Kahout of Stamford, and Mrs. Bob Mathis of Sagerton.

Mrs. Elmer Boedeker and Mrs. F.A. Ulmer and Mrs. Si Curry of San Antonio were guests.

Happy birthday was sung to Mrs. John Clark and Leona

Letz who had birthdays in July.

Mr. and Mrs. Jerry Kaines of San Antonio visited Mrs. Eddie Kaines last weekend.

Kevin, Coleman and Phillip DeBusk all made the All-Star team and got to play in the game against Stamford at Haskell Monday night of last week.

Haskell's Market Place  
The Classified Ad Page

## Use Classified Ads

### Blackstocks Studio

Is now open for business at our new location.

408 N. 1st Street

Thanks to everyone for being patient while we were closed after the fire.

## 1978 QUARTERLY REPORT HASKELL COUNTY, TEXAS APRIL, MAY, JUNE

On JULY 25, 1978 A. D. the Commissioners Court of Haskell County, Texas met in regular session, compared and examined the quarterly report for the quarter ending JUNE 30, 1978 and found same to be true and correct.

	BALANCE MARCH 31 1978	RECEIPTS APR. MAY JUNE 1978	DISBURSEMENTS APR. MAY, JUNE 1978	BALANCE JUNE 30 1978
GENERAL	\$ 127,069.26	\$ 9,318.78	\$ 53,806.72	\$ 82,581.32
JURY	6,780.42	253.88	2,502.47	4,531.83
PERMANENT IMPROVEMENT	2,808.10	54.72	-0-	2,862.82
OFFICER SALARY	5,708.77	38,513.13	42,225.10	1,996.80
LAW LIBRARY	260.93	258.80	268.12	251.61
ROAD & BRIDGE # 1	48,432.49	12,525.14	10,885.46	50,072.17
ROAD & BRIDGE # 2	20,534.39	15,313.98	13,881.19	21,967.18
ROAD & BRIDGE # 3	34,862.16	10,196.83	8,915.60	35,743.39
ROAD & BRIDGE # 4	36,501.26	15,191.40	13,928.55	37,764.11
LATERAL ROAD # 1	5.55	-0-	-0-	5.55
LATERAL ROAD # 2	334.58	-0-	334.58	.03
LATERAL ROAD # 3	13.43	-0-	-0-	13.43
LATERAL ROAD # 4	2.45	-0-	-0-	2.45
FML ROAD # 1	36,027.04	435.98	6,535.51	29,927.51
FML ROAD # 2	28,234.76	249.13	3,110.27	25,373.62
FML ROAD # 3	16,958.89	311.41	10,344.24	6,926.06
FML ROAD # 4	14,195.36	249.13	3,922.09	10,522.40
RIGHT OF WAY	-0-	-0-	-0-	-0-
SOCIAL SECURITY	489.45	9,679.35	9,679.35	489.45
GROUP INSURANCE	-0-	435.20	420.20	15.00
CRIMINAL JUSTICE	2,656.53	1,657.50	1,869.12	2,444.91
GEN. REV. SHARING	14,973.64	20,826.00	12,050.40	23,749.24
REV. SHARING # 1	17,666.81	-0-	1,001.46	16,665.35
REV. SHARING # 2	14,987.42	-0-	8,189.72	6,797.70
REV. SHARING # 3	3,884.34	-0-	3,104.56	779.78
REV. SHARING # 4	18,326.80	-0-	12,289.45	6,037.35
39th SPEC. INV.	852.53	-0-	579.54	272.99
VOTER REGISTRATION	880.31	1,784.80	1,427.58	1,237.53
LAW ENFORCEMENT	52.15	645.00	-0-	697.15
M-H BLDG FUND	-0-	500.00	-0-	500.00

\$ 453,099.82 \$ 138,400.16 \$ 221,271.25 \$ 570,228.73

### INVESTMENTS OF HASKELL COUNTY, TEXAS

SOCIAL SECURITY FUND  
Certificate of Deposit # 905  
Dated 6-24-78 and maturing 6-24-79 \$ 5,500.00

#### WARRANTS OF HASKELL COUNTY, TEXAS 1978

HASKELL NATIONAL BANK  
Warrants dated April 11, 1977 and due December 15, 1979 @ 1/4 % (Precinct # 3) \$ 18,408.43

HASKELL NATIONAL BANK  
Warrant dated March 13, 1978 and due April 20, 1979 @ 6% (Precinct # 2) \$ 5,000.00

HASKELL NATIONAL BANK  
Warrant dated March 13, 1978 and due April 20, 1979 @ 6% (Precinct # 4) \$ 5,000.00

#### HASKELL NATIONAL BANK HASKELL, TEXAS PLEDGES SECURING COUNTY DEPOSITS

Federal National Mortgage Association Bonds 2-10-86 \$ 265,000.00  
U. S. TREASURER NOTES Matures 5-15-81 \$ 110,000.00  
\$ 375,000.00

INSURANCE COVERAGE FOR PUBLIC FUNDS \$ 140,000.00  
\$ 515,000.00

#### HOME STATE BANK ROCHESTER, TEXAS PLEDGES SECURING COUNTY SCHOOL DEPOSITS

School District Fund Deposited with Continental National Bank, Fort Worth, Texas and Houston National Bank, Houston, Texas

Receipts No 20028 Houston Bank, US Treasurer Bonds \$ 100,000.00  
Receipts No 87642 Continental Bank, US Treasurer Bonds \$ 100,000.00

\$ 200,000.00

ON JULY 25, 1978 A.D. the Commissioners Court of Haskell County, Texas met in regular session, compared and examined the quarterly report for the quarter ending June 30, 1978 and found same to be true and correct.

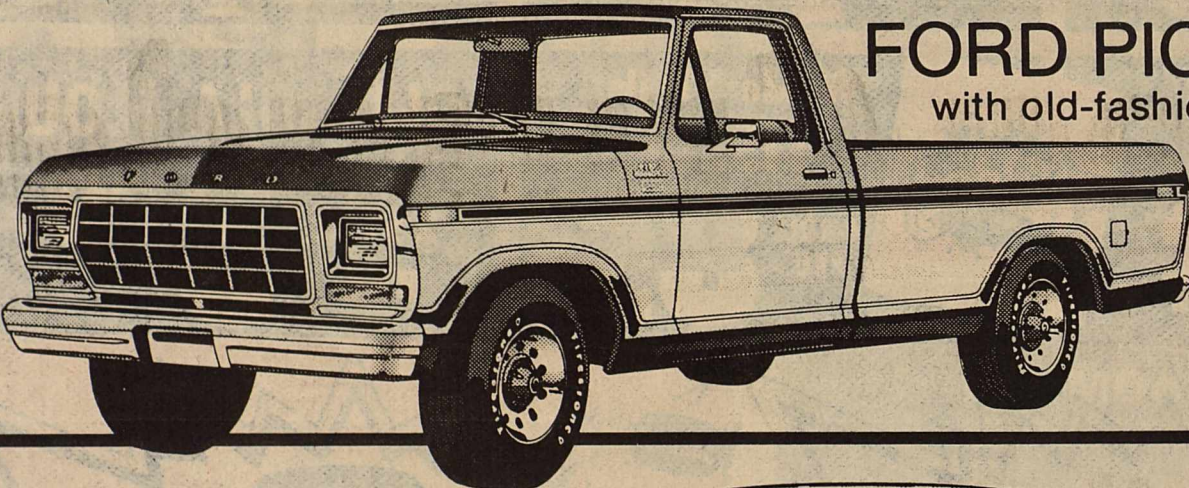
THE REQUIREMENTS OF ARTICLE 394 P.C. HAVE BEEN COMPLIED AND A TABULAR STATEMENT HAS BEEN FILED AS REQUIRED.

*John T. Schell*  
COMMISSIONER PRECINCT # 1

*R. C. Schell*  
COMMISSIONER PRECINCT # 2

*L. D. King*  
COMMISSIONER PRECINCT # 3

*C. C. Lumban*  
COMMISSIONER PRECINCT # 4

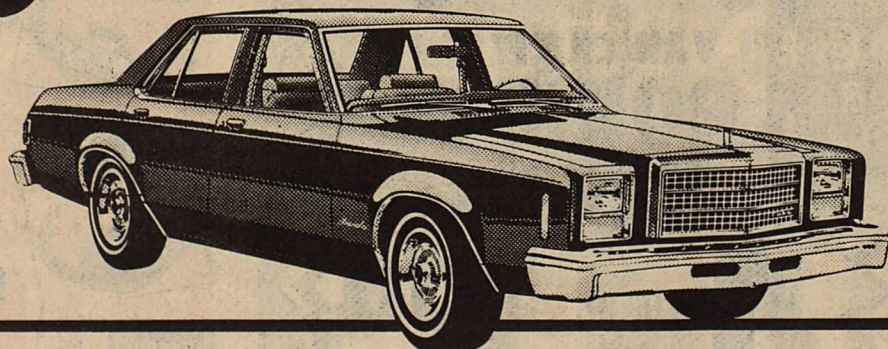


### FORD PICKUPS

with old-fashioned prices  
Pick up big clearance savings on America's No. 1 pickups.

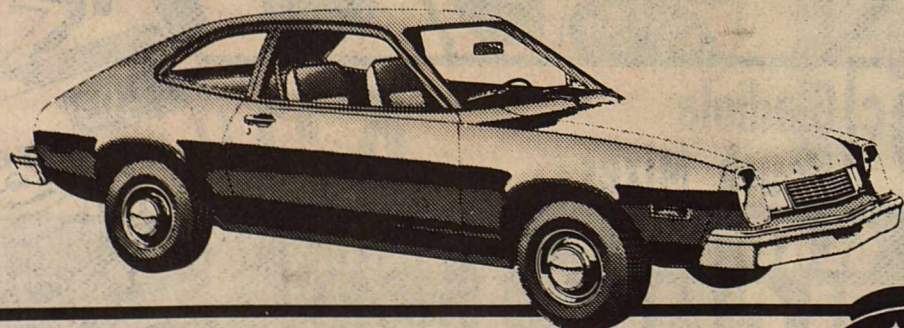
### GRANADAS

with Good Buy year-end savings  
Save on quiet, stylish Granada that looks and rides like a Mercedes for a third of the price.



### PINTOS

at penny-pinching prices  
Gallop off with America's economy champ at the lowest prices of the year.



Prices will never be so low again  
You know what's happening to prices. You know you'll save if you buy now. And you know your Texas Ford Dealer always reduces prices at Clearance Time. So you save even more. Two big reasons to say Hello to the savings at your Texas Ford Dealer's Goodbuy Clearance Sale. Hurry, step on it, don't wait, get going to your Texas Ford Dealer now!



Hello Low Prices!

**Ford** and Texans go together.

# Bill Wilson Motor Co.

209 S Av E

Haskell

864-2611

*B. A. Robinson*  
COUNTY JUDGE, HASKELL COUNTY TEXAS

*John Brock*  
COUNTY CLERK, HASKELL COUNTY, TEXAS



# M SYSTEM

Your FRIENDLY  
**SUPER MARKETS**  
 Haskell  
 Where Your Dollar Buys More



**AFFILIATED**  
 IT'S OUR SIZZLING  
 DOLLAR STRETCHERS  
 WE DAILY ACCEPT  
 \* FOOD \*  
 \* STAMPS \*  
 QUANTITY  
 DISCOUNTS

## Sale

FRESH FROSTED  
**FRYER BREAST**  
 5 lb. BOX **4.29**  
 WITH IN-AD COUPON

**DOUBLE S & H GREEN STAMPS WEDNESDAYS**  
 With The Purchase Of \$2.50 Or More  
 Specials Good Thurs. July 27 thru Wed. Aug. 2

DO SOME GROCERY CHAINS MAKE YOU FEEL GUILTY ABOUT ASKING FOR A SPECIAL CUT OF MEAT? NOT AT AFFILIATED!!  
**We work harder... to make you happy**  
 OUR MARKET PERSONNEL ARE NOT JUST THERE TO PUT MEAT ON DISPLAY... THEY'RE THERE TO MAKE SURE THAT WHAT YOU BUY IS WHAT YOU WANT IN QUALITY, PRICE AND SERVICE.

Shurfresh All Meat  
**Bologna** 1 lb pkg **\$1.29**

Fresh  
**Spareribs** LB. **99¢**

Krafts Velveeta Cheese Food  
 1 lb box **\$1.29**

Krafts Miracle OLEO  
 1 lb pkg **65¢**

FRESH BEEF CUTLETS  
 LB. **1.09**

KRAFT HALF MOON SLICED CHEDDAR CHEESE  
 10-OZ. PKG. **1.09**

ARMOUR'S STAR BACON  
 LB. PKG. **1.39**

**MAALOX LIQUID** 12 OZ. BOTTLE **1.59**  
 36-CT. FOIL PACK 1.56 VALUE  
**ALKA-SELTZER** 1.29  
 FAMILY SIZE 1.32 VALUE  
**AIM TOOTHPASTE** 1.19

KRAFT BAR-B-Q SAUCE  
 18 OZ. BOTTLE **59¢**

KRAFT MACARONI & CHEESE DINNERS  
**3/1.**

LIPTON INSTANT TEA  
 3 OZ. JAR **1.89**

**KRAFT MIRACLE WHIP**  
 QT. JAR **88¢**

ScotTowels  
 Jumbo Roll **59¢**

MRS. BAIRD'S PINEAPPLE ROLLS  
 PKG. **79¢**

SHURFINE PEACHES  
 29 OZ. CAN **49¢**

Arm & Hammer Detergent  
 7 lb 3 oz box **\$2.09**

LUCKY LEAF APPLE JUICE  
 32-OZ. JAR **59¢**

Waldorf Toilet TISSUE  
 4-ROLL PKG. **85¢**

GLADIOLA FLOUR  
 25-LB. BAG **3.29**

FRESH CARTON **TOMATOES**  
 3-Pak Ctn. **4 for 1.**

Van Camp's PORK & BEANS  
 16 OZ. CANS **4 for 1.00**

Banquet Frozen POT PIES ASSORTED KINDS  
**3/89¢**

**YELLOW SQUASH** 3 lbs. **1.**

**GREEN BEANS** Kentucky Wonder LB. **49¢**

Wesson Oil 24 oz bottle **99¢**  
 ADMIRATION COFFEE POUND CAN **2.59**

Gladiola Pouch Mixes 6 pkgs **\$1.69**  
**GLADIOLA FLOUR** 5-LB. BAG **69¢**

Shurfine TEA BAGS 48-CT. BOX **79¢**

U.S. NO. 1 RUSSET Potatoes 8 lb bag **99¢**

**Lemon-Limes** NEW! LB. **49¢**

SHURFRESH Ice Cream ASST. FLAVORS-LIMIT 3 HALF GAL. **79¢**

PAGE BATHROOM TISSUE 8 ROLL PACK **99¢**

Shurfresh 8oz. POTATO CHIPS **59¢**





# JRB

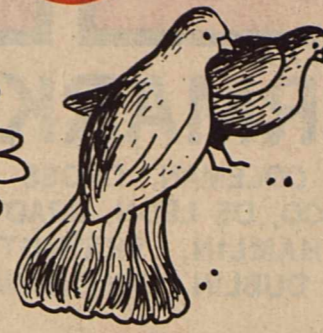
## SUPERMARKETS

BROWNWOOD, COLEMAN, CROSS PLAINS, ABILENE, RANGER, EASTLAND, CISCO, DE LEON, BRADY, WICHITA FALLS, STAMFORD, LLANO, HAMLIN, ALBANY, SPRINGTOWN, NEWARK, HASKELL, BRIDGEPORT, GOLDTHWAITE, DUBLIN, GATESVILLE, OLNEY, AND ELECTRA.

NO SALES TO DEALERS  
WE RESERVE THE RIGHT TO LIMIT QUANTITIES

**WE HONOR FOOD STAMPS  
DOUBLE STAMPS  
EVERY WEDNESDAY AND SATURDAY**

# DEL MONTE GARDEN SHOW



PARADE - LIMIT 1 PLEASE

## FLOUR

5 Lb. Bag

# 49¢

JRB - LIMIT 1 PLEASE

## SUGAR

5 Lb. Bag

# 89¢

DEL MONTE

## CORN

WHITE OR GOLD  
No. 303 Can

# 3 \$1.00

For

JRB

## SHORTENING

3 Lb. Can

# \$1.29

DEL MONTE SWEET

## PEAS

No. 303 Can

# 3 \$1.00

For

DEL MONTE  
Cut or French Style

## GREEN BEANS

No. 303 Can

# 3 \$1.00

For

DEL MONTE SLICED

## CARROTS

No. 303 Can

# 3 \$1.00

For

DEL MONTE

## SPINACH

No. 303 Can

# 3 \$1.00

For

RUSSET

## POTATOES

8 Lb Bag

# \$1.29

DEL MONTE

## TOMATO SAUCE

8 Oz. Can

# 5 \$1.00

For

HOLLY FARM

## FRYERS

USDA GRADE A  
WHOLE ONLY

# 49¢ Lb.

# PEOPLE SERVING PEOPLE



# J R B

## SUPERMARKETS

ALBANY, BROWNWOOD, COLEMAN, CROSS PLAINS, ABILENE, RANGER, EASTLAND, CISCO, DE LEON, BRADY, WICHITA FALLS, LLANO, STAMFORD, HAMLIN, SPRINGTOWN, NEWARK, BRIDGEPORT, HASKELL, DUBLIN, GOLDTHWAITE, GATESVILLE, OLNEY AND ELECTRA.

NO SALES TO DEALERS.  
We reserve the right to limit quantities. We honor food stamps.

**DOUBLE STAMPS  
WEDNESDAY AND SATURDAY**

ARMOUR CAMP FIRE  
**FRANKS** 12 Oz. Pkg.

**69¢**

ARMOUR STAR (Bologna, Pickle, Olive & Liver)  
**LUNCHEON MEAT** ..... 6 Oz. Each **69¢**

DECKER QUALITY Market Sliced  
**BOLOGNA** ..... Lb. **\$1 19**

DECKER QUALITY CHUBS Not Sliced  
**BOLOGNA** ..... Lb. **\$1 09**

FARMLAND  
**BACON** ..... 12 Oz. Pkg. Each **\$1 19**

GOOCH EXCELLENT FOR BAR B-Q  
**HOT LINK** ..... Lb. **\$1 19**

GOOCH GERMAN  
**SAUSAGE** ..... 12 Oz. Package Each **\$1 29**

DECKER QUALITY Excellent for Seasoning  
**SALT PORK** ..... Lb. **99¢**

TYSON  
**CORN DOGS** ..... Lb. **\$1 19**

TYSON CHICKEN  
**FRANKS** ..... 12 Oz. Package Each **79¢**

JRB HALF MOON LONGHORN  
**CHEESE** ..... 8 Oz. Each **99¢**

# PRODUCE

RUSSET  
**POTATOES** ..... 8 Lb. Bag **\$1 29**

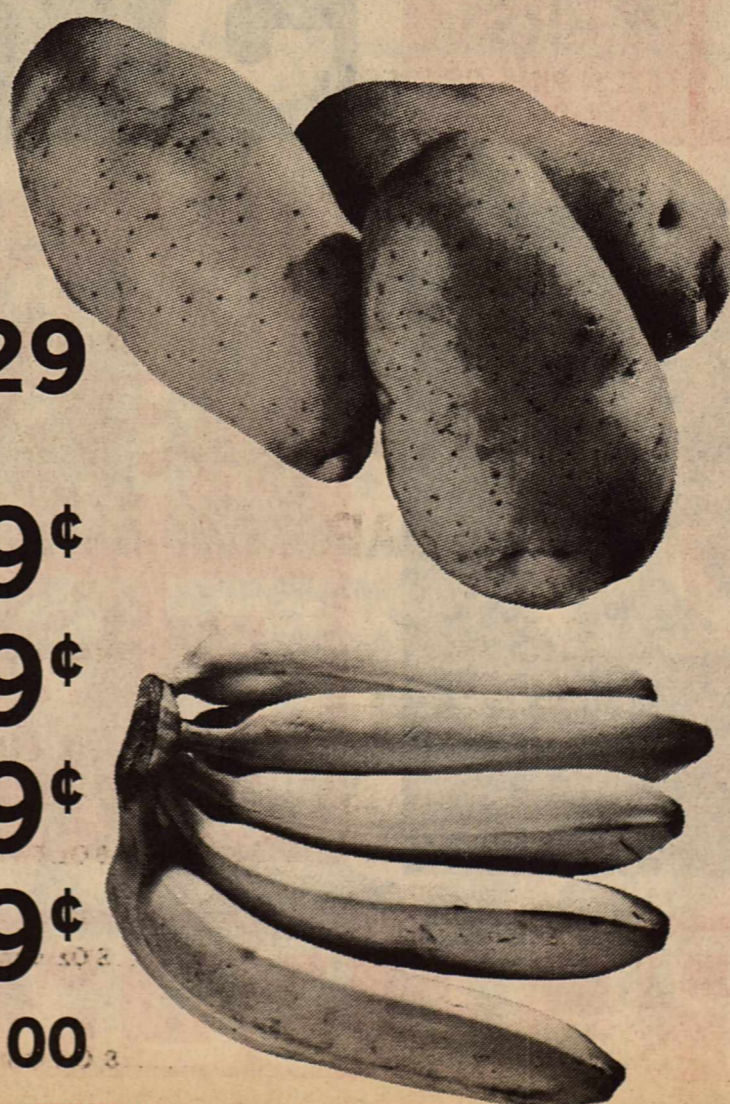
YELLOW  
**ONIONS** ..... 2 Lbs. For **49¢**

SANA ROSA  
**PLUMS** ..... Lb. **39¢**

NEW CROP  
**PEACHES** ..... Lb. **49¢**

FRESH  
**NECTARINES** ..... Lb. **49¢**

GOLDEN RIPE  
**BANANAS** ..... 4 Lbs. For **\$1 00**

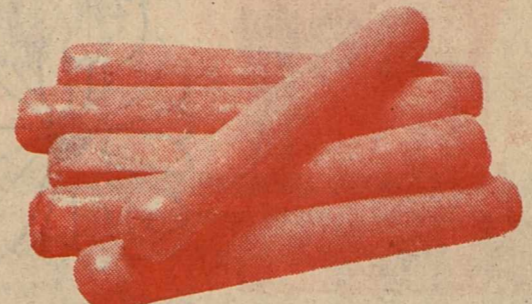


# Quality MEATS

FAMILY PACK GROUND  
**BEEF** 3 Lb. or More Lb. **\$1 09**

WILSON SLICED SLAB  
**BACON**

**\$1 29** Lb.



EXTRA LEAN  
**GROUND BEEF**  
**\$1 39** Lb.

OSCAR MAYER Beef, Reg. or Thick  
**BOLOGNA**  
**\$1 39** 12 Oz. Package

USDA INSPECTED HEAVY BEEF  
**SIRLOIN STEAK**  
**\$1 79** Lb.

USDA INSPECTED HEAVY BEEF  
**T-BONE STEAK**  
**\$2 19** Lb.



HOLLY FARM USDA GRADE  
**FRYER**  
MIXED PARTS **49¢** Lb.



- ADAMS BEST VANILLA EXTRACT
- ALPO BEEF DINNER DOG FOOD
- PARADE BURGER Plain or w/cheese DOG FOOD
- PARADE MOIST All Varieties CAT FOOD
- PARADE OVEN CLEANER
- MINUTE MAID LEMONADE
- MINUTE MAID Pink or Regular LEMONADE
- BLACKBURNS WAFFLE SYRUP
- FISHER MIXED NUTS
- LA CHOY SOY SAUCE
- LA CHOY CHOW MEIN NOODLES
- DEL MONTE SWEET PICKLES
- DEL MONTE in Syrup or Juice All Styles PINEAPPLE
- DEL MONTE Whole or Sliced BEETS
- DEL MONTE Whole New POTATOES
- DEL MONTE Whole Sour PICKLES
- DEL MONTE Whole Dill PICKLES
- DEL MONTE Sweet PICKLES
- GILBERT WITH LIDS CONTAINERS
- GILBERT WITH LIDS CONTAINERS
- GILBERT WITH LIDS CONTAINERS
- GILBERT WITH LIDS TUMBLERS
- GILBERT w/Handle MUGS
- BEEF FLAVORED JERKY TREATS
- HEFTY SMALL WASTE TRASH BAGS
- HEFTY TALL KITCHEN TRASH BAGS
- HEFTY 2 Ply TRASH BAGS



<b>GORTON</b> THE NAME IN FROZEN SEAFOOD	
<b>CATFISH</b> ..... 1 Lb. Pkg.	<b>\$2<sup>09</sup></b>
<b>BATTERED FISH PORTIONS</b> ..... 24 Oz. Pkg.	<b>\$2<sup>89</sup></b>
<b>BATTERED FISH STICKS</b> ..... 14 Oz. Pkg.	<b>\$1<sup>89</sup></b>

<b>LIPTON INSTANT TEA</b> 4 Oz. Can <b>\$2<sup>49</sup></b>	<b>LIPTON LO CAL TEA MIX</b> 6 Oz. Jar <b>\$2<sup>29</sup></b>
<b>PURINA HI PRO DOG MEAL</b> 25 Lb. Bag <b>\$6<sup>59</sup></b>	<b>PURINA CAT CHOW CAT FOOD</b> 4 Lb. Bag <b>\$1<sup>95</sup></b>
<b>CALGONITE DETERGENT</b> 35 Oz. Box <b>\$1<sup>33</sup></b>	<b>AJAX DISH LIQUID 13¢ OFF LABEL DETERGENT</b> Giant Size <b>88¢</b>
<b>IVORY PERSONAL SIZE 3¢ OFF LABEL BAR SOAP</b> 4 Bar Pack <b>66¢</b>	<b>ZEST 8¢ OFF LABEL BAR SOAP</b> Bath Size <b>35¢</b>
<b>CHEER 10¢ OFF LABEL DETERGENT</b> Giant Size <b>\$1<sup>53</sup></b>	<b>ERA HEAVY DUTY 10¢ OFF LABEL DETERGENT</b> Giant Size <b>\$1<sup>37</sup></b>
<b>IVORY LIQUID 10¢ OFF LABEL DETERGENT</b> Giant Size <b>89¢</b>	<b>BIZ 20¢ Off Label PREWASH</b> King Size <b>\$1<sup>89</sup></b>

HOLLY FARM  
USDA GRADE A

**FRYERS**

**49¢**  
Lb.

Whole Only

**JRB MIX OR MATCH**

8 Oz. Bottle	<b>\$1<sup>89</sup></b>
25 Lb. Bag	<b>\$6<sup>39</sup></b>
72 Oz. Pkg.	<b>\$2<sup>29</sup></b>
12 Oz. Pkg.	<b>59¢</b>
14 Oz. Can	<b>99¢</b>
12 Oz. Can	<b>49¢</b>
6 Oz. Can	<b>4 \$1<sup>00</sup></b>
32 Oz. Bottle	<b>89¢</b>
12 Oz.	<b>\$1<sup>79</sup></b>
10 Oz.	<b>69¢</b>
3 Oz.	<b>43¢</b>
12 Oz. Jar	<b>85¢</b>
No. 1½ Can	<b>57¢</b>
16 Oz. Jar	<b>49¢</b>
No. 303	<b>37¢</b>
22 Oz. Jar	<b>89¢</b>
22 Oz. Jar	<b>89¢</b>
12 Oz. Jar	<b>85¢</b>
32 Oz. Capacity Pkg.	<b>79¢</b>
16 Oz. Capacity Pkg.	<b>69¢</b>
64 Oz. Capacity Pkg.	<b>79¢</b>
9 Oz. Pkg.	<b>59¢</b>
3 Ct. Pkg.	<b>\$1<sup>69</sup></b>
1 Oz.	<b>39¢</b>
30 Ct. Box	<b>93¢</b>
30 Ct. Box	<b>\$2<sup>13</sup></b>
20 Ct. Box	<b>\$2<sup>59</sup></b>

PARADE No. 303 Can <b>GREENS &amp; TURNIPS</b> ..... 3 For <b>\$1<sup>00</sup></b>	VEG-ALL..... 8 Oz. Can <b>3 For \$1<sup>00</sup></b>
VAN CAMP WHITE <b>HOMINY</b> ..... No. 2 Can <b>3 For \$1<sup>00</sup></b>	V-8 VEGETABLE <b>JUICE</b> ..... 12 Oz. Can <b>4 For \$1<sup>00</sup></b>
PARADE FRESH CREAM <b>PEAS</b> ..... No. 303 Can <b>3 For \$1<sup>00</sup></b>	SNAP-E-TOM <b>JUICE</b> ..... 6 Oz. Can <b>4 For \$1<sup>00</sup></b>
PARADE No. 303 Can <b>SAUERKRAUT</b> ..... 3 For <b>\$1<sup>00</sup></b>	HORMEL POTTED <b>MEAT</b> ..... 3 Oz. Can <b>4 For \$1<sup>00</sup></b>
HUNT'S TOMATO <b>PUREE</b> ..... 10½ Oz. Can <b>3 For \$1<sup>00</sup></b>	GLADIOLA <b>BISCUIT MIX</b> ..... 6 Oz. Pkg. <b>4 For \$1<sup>00</sup></b>
3 RING NAVY <b>BEANS</b> ..... 15 Oz. Can <b>3 For \$1<sup>00</sup></b>	GLADIOLA White or Yellow <b>CORNBREAD Mix</b> ..... Pkg. <b>4 For \$1<sup>00</sup></b>
3 RING PINTO <b>BEANS</b> ..... No. 303 Can <b>3 For \$1<sup>00</sup></b>	STRONGHEART Chicken, Beef or Liver <b>DOG FOOD</b> ..... 15 Oz. <b>4 For \$1<sup>00</sup></b>
PARADE UNPEELED HALVES <b>APRICOTS</b> ..... 8 Oz. Can <b>3 For \$1<sup>00</sup></b>	PARADE <b>CLEANSER</b> ..... 14 Oz. <b>4 For \$1<sup>00</sup></b>
PARADE HALVES <b>PEARS</b> ..... 8 Oz. Can <b>3 For \$1<sup>00</sup></b>	WORLD FAIR ROUND <b>TOOTHPICKS</b> ..... 250 Ct. Box <b>4 For \$1<sup>00</sup></b>
TEXUN PINK GRAPEFRUIT <b>JUICE</b> ..... No. 2 Can <b>3 For \$1<sup>00</sup></b>	SILK WHITE BATHROOM <b>TISSUE</b> ..... Roll <b>4 For \$1<sup>00</sup></b>
3 RING SWEET <b>PEAS</b> ..... No. 303 Can <b>3 For \$1<sup>00</sup></b>	LITTLE TRAVELER <b>KLEENEX</b> ..... 70 Ct. Pkg. <b>4 For \$1<sup>00</sup></b>
PARADE GREEN <b>LIMA BEANS</b> ..... 8 Oz. Can <b>3 For \$1<sup>00</sup></b>	PARADE TOMATO <b>SAUCE</b> ..... 8 Oz. Can <b>5 For \$1<sup>00</sup></b>
SOFTY <b>POT CLEANER</b> ..... 1 Ct. <b>3 For \$1<sup>00</sup></b>	BETTY CROCKER BISQUICK <b>PACKETS</b> ..... 6 Oz. Pkg. <b>5 For \$1<sup>00</sup></b>
LAVA <b>HAND SOAP</b> ..... Reg. <b>3 For \$1<sup>00</sup></b>	HUSKY <b>DOG FOOD</b> ..... 15½ Oz. <b>5 For \$1<sup>00</sup></b>
<b>KLEENEX</b> ..... 100 Ct. Box <b>3 For \$1<sup>00</sup></b>	PARADE TUNA <b>CAT FOOD</b> ..... 6 Oz. <b>5 For \$1<sup>00</sup></b>
SUNBEAM All Flavors <b>COOKIES</b> ..... 8 Oz. <b>3 For \$1<sup>00</sup></b>	IDEAL PLASTIC 8 Ct. Box <b>SPOONS &amp; FORKS</b> ..... <b>5 For \$1<sup>00</sup></b>
DEL MONTE French Style or Cut <b>GREEN BEANS</b> ..... 8 Oz. Can <b>3 For \$1<sup>00</sup></b>	GLADIOLA <b>PANCAKE MIX</b> ..... 6 Oz. Pkg. <b>5 For \$1<sup>00</sup></b>
PARADE CUT <b>WAX BEANS</b> ..... 8 Oz. Can <b>3 For \$1<sup>00</sup></b>	BUFFALO TOMATO <b>PUREE</b> ..... 4¾ Oz. <b>6 For \$1<sup>00</sup></b>
PARADE <b>SPINACH</b> ..... 8 Oz. Can <b>3 For \$1<sup>00</sup></b>	Q & Q <b>VERMICELLI</b> ..... 5 Oz. <b>6 For \$1<sup>00</sup></b>



# J R B

## SUPERMARKETS

BROWNWOOD, COLEMAN, CROSS PLAINS, ABILENE, RANGER, EASTLAND, CISCO, DE LEON, BRADY, WICHITA FALLS, STAMFORD, LLANO, HAMLIN, ALBANY, SPRINGTOWN, NEWARK, HASKELL, BRIDGEPORT, GOLDTHWAITE, DUBLIN, GATESVILLE, OLNEY, AND ELECTRA.

NO SALES TO DEALERS  
WE RESERVE THE RIGHT TO LIMIT QUANTITIES

WE HONOR FOOD STAMPS  
DOUBLE STAMPS  
EVERY WEDNESDAY AND SATURDAY

### PRICES EFFECTIVE:

July 28-Aug. 2, 1978—Albany, Bridgeport, Dublin, Electra, Gatesville, Goldwaite, Hamlin, Haskell, Llano, Newark, Olney, Springtown and Stamford.

July 31-Aug. 5, 1978—Abilene, Brady, Brownwood, Cisco, Coleman, Cross Plains, Eastland, Ranger & Wichita Falls.

Aug. 2-Aug. 8, 1978—De Leon.

### SUPPLEMENT TO:

Wichita Falls Times and Record News	Springtown Epigraph	Albany News
DeLeon Free Press	Hamlin Herald & Aspermont Star	Cisco Press
Brady Standard	Bridgeport Index	Gorman Progress
Brady Herald	Abilene Reporter-News	Saginaw Sentinel
Cross Plains Review	Eastland Telegram	Chico Texan
Brownwood Bulletin	Ranger Times	Dublin Progress
Coleman Democrat	Llano News	Dublin Progress
Coleman Chronicle	Olney Enterprise	Goldthwaite Eagle
Llano Grocery Bonanza		Haskell Free Press
Stamford American News		Gatesville Messenger
Stephenville Empire-Tribune		Electra Star-News

## HEALTH & BEAUTY AIDS

### PRELL LIQUID SHAMPOO

7 Oz. Bottle **89¢**  
Reg. \$1.39

### CREST Regular or Mint TOOTHPASTE

7 Oz. Tube **\$1 09**  
Reg. \$1.19

### CURITY SOFT PUFFS COTTON BALLS

260's  
Reg. 89¢

**49¢**

### SECRET SPRAY DEODORANT

4 Oz. Can **99¢**  
Reg. \$1.49

### BUFFERIN PAIN RELIEVER

100 Ct. Bottle **\$1 69**  
Reg. \$2.29

### ARTHRTIS FORMULA PAIN RELIEVER

40 Ct. Bottle **\$1 09**  
Reg. \$1.59

### JOHNSON'S BABY OIL

10 Oz. Bottle **\$1 99**  
Reg. \$2.29

### PARADE HAIR NET HAIR SPRAY

8 Oz. Bottle Reg. \$1.39

**\$1 09**

### STAY FREE MAXI SANITARY PADS

12 Ct. Box Reg. \$1.06

**99¢**

### KLEENEX SUPER DRY TODDLERS DIAPERS

12 Ct. Box Reg. \$1.79

**\$1 69**

### KLEENEX SUPER DRY Daytime or Extra Absorbent DIAPERS

Box Reg. \$2.79

**\$2 69**

PARADE Sliced or Whole

**BEETS** No. 303 Can **3 For \$1 00**

GOLD RIBBON

**OLEO** 1 Lb. Solids **3 For \$1 00**

WHOLE SUN ORANGE

**JUICE** 6 Oz. Cans **3 For \$1 00**

3 RING No. 303 Can

**PORK & BEANS** 4 For **\$1 00**

PARADE MIXED

**VEGETABLES** No.303 Can **4 for \$1 00**

PARADE SWEET MILK OR BUTTERMILK

**BISCUITS** 10 Ct. Can **9 For \$1 00**

DEL MONTE SLICED OR HALVES

**PEACHES** No. 2 1/2 Can **59¢**

PARADE GRAPEFRUIT

**JUICE** 46 Oz. Can **59¢**

DEL MONTE

**CATSUP** 32 Oz. Bottle **79¢**

GANDY OR OAK FARM Asst. Flavors

**ICE CREAM** 1/2 Gal. Ctn. **99¢**

BOUNTY

**TOWELS** Jumbo Roll **69¢**

CHARMIN BATHROOM

**TISSUE** 4 Roll Pkg. **89¢**

PARADE SHEETS FABRIC

**SOFTENER** 60 Ct. Box **\$2 69**

PARADE

**DOG FOOD** 5 Lb. Bag **99¢**

NABISCO RITZ

**CRACKERS** 16 Oz. Box **89¢**

PARADE SMOOTH OR CRUNCHY

**PEANUT BUTTER** 28 Oz. Jar **\$1 49**

PARADE All Flavors

**COOKIES** 20 Oz. Pkg. **79¢**

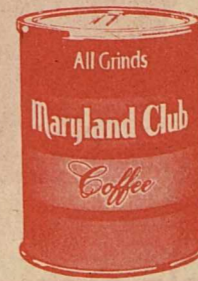
GANDY or OAK FARM SOUR CREAM

**DIPS** 8 Oz. Ctn. **39¢**

GANDYS or OAK FARM SOUR

**CREAM** 8 Oz. Ctn. **39¢**

SHOP EARLY FOR  
SCHOOL SAVINGS



MARYLAND CLUB All Grinds

**COFFEE**

1 Lb. Can

**\$2 79**

FILLER **PAPER** 200 Ct. Pkg. Reg. 89¢ **59¢**

BIG CHIEF **TABLETS** Reg. 75¢ **39¢**

INTEGRITY **PENCILS** Reg. 3/12¢ **6 For 19¢**

CRAYOLA **CRAYON** 24 Ct. Box Reg. 70¢ **49¢**

CRAYOLA **CRAYON** 48 Ct. Box Reg. \$1.45 **89¢**

BIC - Med Point - All Colors **PENS** Reg. 25¢ **19¢**

WATER **COLORS** 8 Ct. Reg. 99¢ **69¢**

ELMERS Regular or School **GLUE** 1 1/4 Oz. Size Reg. 43¢ **29¢**

CHALLENGE RULED **TABLETS** 100 Page Reg. 69¢ **49¢**

COMPOSITION **BOOK** 40 Page Reg. 59¢ **39¢**

PRIMARY GRADE 1 **TABLETS** 36 Page Reg. 49¢ **29¢**

BLUE CANVAS **BINDER** 3 Ring Reg. \$1.98 **\$1 29**

SEE THRU **BINDER** Reg. \$3.19 **\$1 99**

POINTED OR BLUNT **SCISSORS** Reg. 59¢ **49¢**

PLASTIC **RULERS** Reg. 15¢ **9¢**

TWIN Reg. 35¢ **PENCIL SHARPENER** **29¢**

DUO TANG w/Pocket **FOLDERS** Reg. 35¢ **29¢**

ZIPPER POUCH **CARRY ALL** Reg. 45¢ **39¢**

ANCHOR HOCKING All Colors 23 Oz. Capacity

## TEA GLASSES

Reg. 39¢ **4 For \$1 00**

HARTMAN **HAIR DRYER** Reg. \$11.95 **\$9 39**

PRESTO **FRY BABY** Reg. \$18.99 **\$15 99**

PRESTO **FRY DADDY** Reg. \$22.88 **\$18 99**