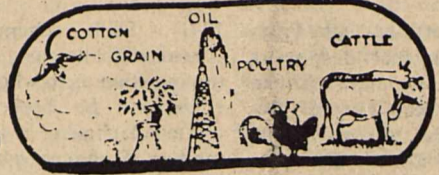


20¢  
Per Copy

# THE HASKELL



# FREE PRESS

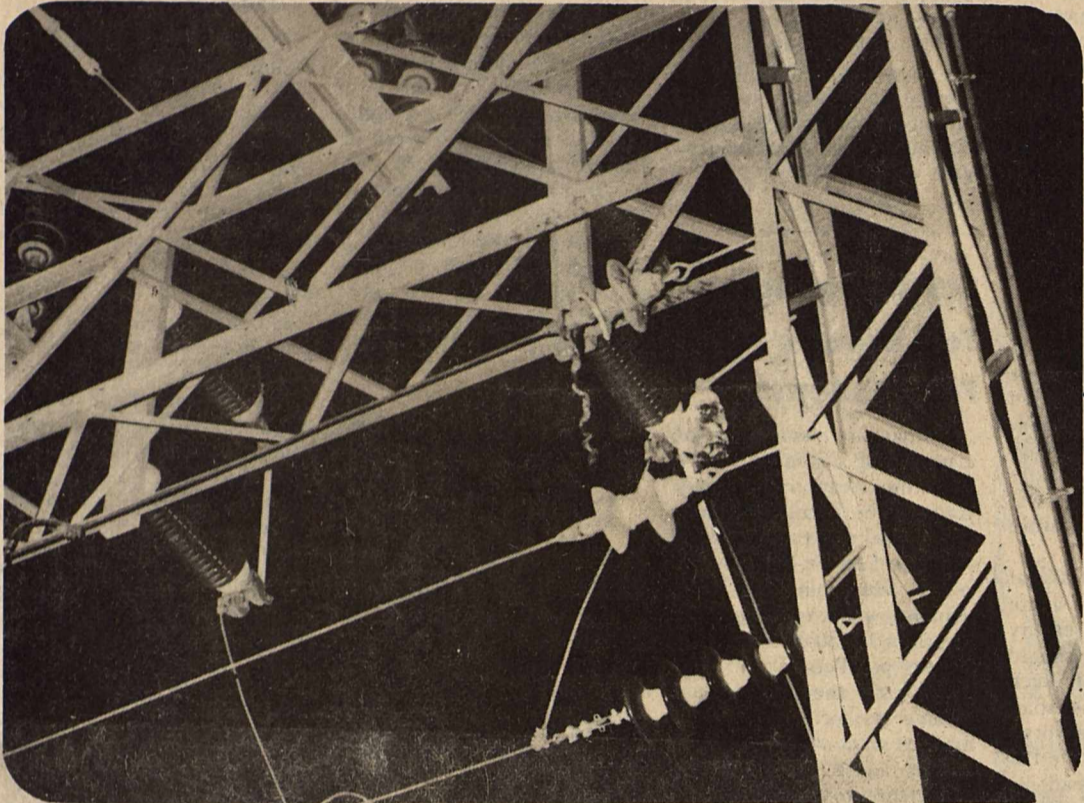
HASKELL—A GOOD PLACE TO VISIT: A BETTER PLACE TO LIVE

VOLUME NINETY-TWO

8 PAGES

HASKELL, TEXAS, 79521, THURSDAY, JULY 6, 1978

NUMBER TWENTY-SEVEN



A SMALL BULL SNAKE caused a power failure for about two and one half hours Monday night when the snake shorted out two 12,500 volt lines at the West Texas Utilities substation at the Haskell Fair Grounds. The snake was near the top of the substation and is shown in the photo above. Residents of Haskell, Weinert, Josselet REA, Texas Co., Munday and Rule were without power for varying time up to two and one half hours before WTU crews for Haskell, Rule and Stamford could repair the damage. (Staff Photo)

## 1,771 In Donations Received For Lights

The Haskell County Jaycees, Jaycee-ettes, and Chamber of Commerce 'Light Up Your Life With New Christmas Lights' fund drive, only one week old is well under way with donations to date totaling \$1,771.00.

Although well short of the \$8,500.00 goal, project leaders are enthused at the response given by merchants, organizations, and individuals.

Christmas in July with 100 plus temperatures is quite a contrast, but funds are needed now to secure the lights which will be erected in just over four months.

Letters were mailed this past week to some 200 merchants, Chamber members and organizations in an effort to secure donations as soon as possible.

A list of the donations to date includes: Owens Radio and Electric, \$150; Fouts Dry Goods, \$25; Boggs and Johnson Furniture, \$10; Jones Cox & Co., \$100; American Legion, \$100; Johnson Pharmacy, \$100; Personality

Shoppes, \$100; Heidenheimers \$100; M-System, \$100; The Drug Store, \$100; Hassen's \$100; Lane Apparel, \$101; City Cafe, \$25; Centex Cablevision, \$25; Frazier's, \$75; Federal Land Bank, \$25; Winonas \$25; Iva Lee's, \$50; \$25; Lanny Beauchamp, \$10; Bassings, \$25; Iva Lee's, \$50; Western Auto \$50; Kids Duds, \$50; G.T. Garrett, \$25; Dennis Ratliff, \$50; Farmers Coop #1 \$25; and Lane Felker \$200.

Project leaders ask that everyone do their part to brighten up Haskell during the coming Christmas Season. Donations can be given to any Jaycee, Jaycee-ette, or the Haskell Chamber of Commerce, or at the Haskell National Bank.

### SONS OF HERMANN

Haskell Sons of Hermann Lodge #24 will hold their regular monthly meeting Sunday, July 9 at 3:00. Sandwiches, cake and coffee will be the meal.

## Little League All-Stars Announced

The 1978 Little League Baseball All-Stars have been named according to Bill Lane, player agent.

The All-Stars and their regular season teams are: Mark Segura, Hawks, Keith Ree, Robert Lehrer, Ricky Dunnam, and Gary Isbell, Cubs, Joel Griffith, Patrick McCoy, Sam Toliver, Paul Cox, and Todd Harris, Rams, Val Bragg and Fred Barnett, Lions, Fred Rike and Robby Steadham, Tigers, and Ricky Moeller, Eagles.

Manager will be Charles Reed and Coach will be Jimmy Griffith. Assistant coaches will be Mike Beeman, Jerry Dunnam, and Maurice Mahoney. Alternates will be Freddie Villa and Shawn Lane.

## Millionth Visitor Expected

The millionth visitor will enter the Pioneer Amphitheatre this summer to marvel at the grandeur of the Palo Duro Canyon and the musical drama, "Texas". He will find the canyon almost recovered from the recent storm, and the theatre high and dry where it was not damaged at all. "Texas", written by the Pulitzer prize-winner, Paul Green and arranged by Isaac Van Grove is entering its thirteenth season. Among the 140 company members are some with connections in your community.

They will perform nightly except Sunday until August 26, with a special performance on July 2. The enclosed excerpts from the Souvenir Program describe them. For ticket information write: "Texas", Box 268, Canyon, Texas or call 806-655-2182. It is well to make reservations in advance.



By Sam Herren  
TEMPERATURE  
Hi ..... 105° ..... 26th  
Lo ..... 63° ..... 10th  
RAINFALL  
Total ..... 1.19  
Total to Date ..... 6.05  
Normal to Date ..... 12.15

## City Water Rationing To Begin

Effective July 7, a rationing program will begin and local residents will be allowed to water lawns and gardens every fourth day, according to which county precinct they reside in. A schedule of the rationing program is published below.

JULY	PREC. #
7	1
8	2
9	3
10	4
11	1
12	2
13	3
14	4
15	1
16	2
17	3
18	4

The rationing program will continue as long as necessary and schedules will be published as they are announced by the City.

## Singing School Set July 10-21

Students will begin arriving soon for the 13th annual Haskell Singing School to be held July 10-21. The school, which is under the oversight of the elders of the Haskell Church of Christ, Haskell, is anticipating a record enrollment. Last year's enrollment was one of the largest with approximately 150 students. Young people from all sections of the country participate regularly in the school. States represented last year were: Texas, Oklahoma, Florida,

Idaho, Arizona, New Mexico. In past years, students have come from as far away as New Hampshire, California & Virginia to attend the well-known school.

Holland Boring, Sr. of Bryan will direct this session of the school. He has assumed this responsibility since the school's beginning. Other instructors will be: Holland Boring, Jr., minister; Grand Prairie; Bob Connell, minister

from Abilene, and Tom Chapin, minister from Amarillo.

A unique feature of the Haskell Singing School is that all students are housed with local Christian families. In these individual homes they eat their morning and evening meals, rest, prepare for the following day's classes, help with assigned chores and participate in nightly devotions. In essence, for a two-week period, they become a part of another Christian family whom they learn to love, made up of "foster-parents" and other young people. It is a concept that has proven most successful in the 13 year history of the school.

## SS Changes Affect Eligibility

Glyn Hammons, manager of Abilene Social Security Office reminds people that amendments to the Social Security Act passed in December 1977 have changed many things pertaining to eligibility to social security benefits. For Example, Hammons says in the past everyone who had filed for social security retirement benefits was allowed to work and earn a certain amount of money or was allowed to work a certain number of hours per month if self-employed without losing any social security benefits. Now, this standard monthly allowance has been eliminated, and there are two

separate annual earnings tests—one for beneficiaries age 65 and over and one for beneficiaries under age 65.

A person age 65 and over may earn up to \$4,000 in 1978 without any loss of benefits. People under age 65 are allowed to work and earn \$3,240. In either case, after these amounts are exceeded, \$1.00 in benefits is withheld for each \$2.00 earned over the allowed amount. Prior to 1978, Hammons says benefits could be paid, regardless of total yearly earnings, for any month in which a beneficiary neither earned wages of more than the monthly exempt amount nor rendered substantial services in self-employment. But, under the 1977 Amendments, the monthly earnings test has been eliminated except for one year. That one year is the first year in which a beneficiary has a month of entitlement in which he does not render substantial services in self-employment nor earn over the monthly exempt amount. In that one year only, the monthly test applies and benefits may be paid for any month in which the person does not exceed the money or time limits. Once the monthly earnings test has been applied in a particular year, benefits in all other years will be paid strictly on the basis of total yearly earnings.

The people at the Abilene Social Security Office will be glad to answer any questions concerning the new earnings test or any other questions you may have regarding Social Security, Supplemental Security Income (SSI) or Medicare. Just give them a call at 698-1360.

Anyone 10 years of age and older is invited to attend. The purpose of the school is to improve congregational singing by training all Christians interested. Special emphasis is given to song leading. There are additional courses, however, in song reading, rudiments, song writing, etc. The school is for men and women, boys and girls. Cost of attending the two-week school is \$35.00 tuition, \$55.00 room and board and approximately \$5.00 for other materials (text books, etc.). Anyone of the community is invited to attend.

Additional information or application forms may be obtained by writing Church of Christ, 510 N. Ave. E., Haskell, Texas 79521. Telephone (817) 864-3101 or 864-2772.

## Savings Bond Report

May sales of Series E and H United States Savings Bonds in Haskell County were reported today by County Bond Chairman R.W. Herren. Sales for the five-month period totaled \$35,773 for 22% of the 1978 sales goal of \$165,000.

Texas sales during the monthly amounted to \$25,166,570, while sales for the first five months of 1978 total \$130,175,129 with 42% of the yearly sales goal of 306.6 million achieved.



FIRST DONATION...Charles Owens of Owens Radio and Electric, second from left, is shown presenting his \$150.00 donation to the Christmas Lighting Fund. Receiving the check are: Charles Thornhill, Laura Andress, and Diana Owens. To date a total of \$1,771.00 has been received for the new lights. Total cost of the decorations is approximately \$8,500.00. (Staff Photo)



HASKELL CITY OFFICIALS inspected City Water wells Monday afternoon in an effort to gain more information about the current water shortage. They observed that the water table is about five feet lower than normal, and announced the continuance of a rationing program which will begin July 7. Pictured while in one of the City Wells is, Bob Philpot, Water Commissioner, Noble G. "Snowy" Land, City Secretary Desmond Dulaney, and Mayor Royce Williams. (Staff Photo)



# American Ag News

By Betty McBroom

(Genne Ridgway has addressed women's groups in Maryland, New Hampshire, Dallas, Houston, Austin, and Corpus Christi explaining the concerns of America's farmers and rancher. The following article appears in JULY'S CATHOLIC WOMAN, THE AMERICAN AGRICULTURE NEWS.) by Sammie Franklin Genne Ridgway

Genne Ridgway  
Our Future is Up to You  
Is history repeating itself: Is the nation in general and agriculture in particular faced with a replay of the disaster of the 30's?

Are the sophisticated, well-read, well-educated American people being propagandized down the same avenue of economic disaster which their parents and grandparents trod? In short—are we being brain washed? Yes!!

Unpalatable as they are, the cold hard facts say that the very basis of America's economy-agriculture-is being sold down the river as a bunch of well-meaning dolts who can't keep from producing too much and who protest when their government chooses to let other countries overburden the US markets with poor quality imports.

In the 1930's when the United States as well as the rest of the world were in the throes of the "great depression," the government blandly told its citizens that "surplus supplies are piling up," all the while killing livestock which could have fed our people. This made production control necessary, and then adding that there are just too many farmers." Farm income was at an all-time low at that time, history books read, and farmers were in dire circumstances because of "overproduction."

This statement was not true, and the government's own records prove that it was not true. During that period when the government was screaming "overproduction" as an epithet at the farmer, foreign countries were flooding our shores with tonnage more than double our domestic output. Government records show that sixty percent of what was imported during that period could have-and should have-been grown by American farmers and ranchers.

In 1977, one million pounds of live, on-the-hoof beef, and two billion pounds of fresh and frozen meats were imported into the U.S. under conditions

that would send the average American housewife into shock.

While our Environmental Protection Agency wrings its hands over the pesticides and herbicides used by the American farmer, they (the FDA and the USDA) simply look the other way as foreign nations, who could care less about the use of such chemicals, export into our country millions of pounds of beef fed on forage laden with pesticides and other chemicals.

By the same token, foreign nations export into the US millions of tons of fruits and vegetables grown under similar uncontrolled conditions. Our farmers must dump thousands of gallons of milk if a trace of chemical shows up in the analysis.

Sierra clubbers and other environmental groups picket and protest if the American farmer dares to use pesticides to control voracious insects-but they willingly eat whatever is imported.

Would you believe that during one day alone, we counted over 500 trailer trucks of produce and meat crossing the Rio Grande River into the US? The produce and forage all sprayed with chemicals that have been banned for use by the American farmer. Add to this all the other ports of entry.

Please take into account the constant barrage sent out by the government charging the American farmer with "overproduction. Why? So more foreign foodstuffs may be imported while a vital and important segment of our society withers and dies?

Few stories in American history are more parallel than the story of the farmer during the 30s and that of the farmer during the 70s.

Again, why???? Could it be that rural people, the most independent, self-reliant group of our population, are the hardest to control? Is that perhaps why, at the outset of the Russian Revolution, six million Russian farmers were driven from their farms and slaughtered because they refused to bow down to the Bolsheviks? Was that action by the Revolutionists to set a pattern for future Machiavellian government leaders who would seek to undermine and eventually destroy the most stable segment of American Society-agriculture?

Could it be, in order to control a people, those in power must control the food supply, and in order to control the food supply, must control

the hardy God-fearing people who till the soil?

Many agriculturalists think it's possible. Look at the facts. Since the 30s when the government successfully convinced the American people that the farmer's plight was his own fault for producing so much and causing the depression which unbalanced the economy of the world, it has striven relentlessly to bring the farmer under control.

Nonsense, you say. How could this be possible in our free world?

With the propaganda machine, the government turned the farmer's natural market-the consumer-into an enemy, building on the natural resentment the human feels when forced to support another who he feels should be able to support himself. Gradually controls tightened. Congress, many of its members with great landholdings, forced through bills to "help the farmer" which tied millstones around his neck while fattening the pockets of the politician landholders. The farmer no longer was allowed to operate in the open market where the natural law of supply and demand would be in the farmers favor, his most effective control. Never again would he be allowed to plant what he wanted, as much as he wanted, how he wanted, nor would he be allowed to sell where he chose. Every phase of his farming operation would be closely watched by Uncle Sam's agencies.

The contrived schism between the farmer and the consumer is now so complete that the average consumer cannot understand why the farmer is up in arms. The American consumer thinks the farmer receives the lions share of the high food prices he puts in the nation's supermarkets. February 1978 figures disclose that while the cost of food bought by the consumer rose by \$41 during 1977, the farmer received by \$2 of that, and he had to spend that \$2 plus more for production costs with no profit at all.

Not only is the American farmer being harassed and bankrupted by foreign imports, he is being priced out of working equipment by the very people who should want to see him do well-the energy, equipment and chemical industries. A farmer could buy a tractor for \$9,000 in 1966. Today, 12 years later, that same tractor costs him \$32,000. In 1966, diesel to run that tractor cost sixteen cents a gallon, now the farmer pays forty-four plus cents a gallon.

Can you see why in the past eighteen months over a half million farmers have left the land? They can no longer afford to buy the fuel to farm the land that they cannot afford to own because tax evaluators insist on getting agricultural land valuations at the same price as other real estate. Thousands of acres of America's richest, most productive farm land has been purchased by foreign powers. In 1930, the farm population was 35 percent of its total...in 1977, less than 4 percent.

Alarming? You should be scared to death.

What happens now? Who will provide the cheap food

formerly produced by the American farmer? What happens when the production from those foreign owned acres are no longer used for Americans?

The change has already begun. More and more agricultural land is being purchased by large corporations, many of them foreign owned. Food prices are beginning the upward spiral. The day of cheap food in America is over. Once the larger Corporate Farms get going, the average American will no longer pay only 17 percent, as is done in every country. Mr. Wage Earner will remember with great nostalgia the day of the small family farmer, but too late-too late.

Paradoxically, if the farmer were freed from the chains imposed by the federal government, the industry could continue to feed the American people and half the world, and do it with efficiency. It could provide countless jobs.

My dear fellow Americans, much of what your future

holds depends on the outcome of the farmer's plight. Choose to let the farmer go down the national drain, then you have sentenced yourself and your family to a bleak, inflation-ridden tomorrow. If you help yourself by aiding the farmer, then we still have a chance.

It's up to you, and the time grows short.

## Learn to learn

AUSTIN, Texas (Spl.) — A new course to be offered by The University of Texas will help freshmen learn how to learn more effectively.

The idea of the course is to catch people before they get into bad habits in studying and learning.

Developed by Dr. Claire Weinstein in the Educational Psychology Department, the course on individual learning skills will help freshmen gain more control over their academic lives. Dr. Weinstein believes the ability to process information and to learn efficiently can be taught.

## Medicare Rates Increase

Starting with July 1978, the basic premium for the medical insurance part of Medicare will increase to \$8.20 a month, up from the \$7.70 it has been since July 1977. Glyn Hammons social security dis-

tribut manager in Abilene said today.

People who pay the premium directly will notice the increase in their bills. But, Hammons said, people who have the premium deducted from their social security check may not notice the change because the 6.5% increase in their social security check as a result of the cost of living increase that goes into effect with July checks.

Some people pay a higher amount than the basic premium. This is because there was a period of 12 months or

more that they were eligible for medical insurance but were not enrolled for this protector. The increase in the basic premium amounts to 10 percent for each such 12-month period.

Even with this slight increase, medical insurance represents a real buy, Hammons said. This is because the people pay only about 30 percent of the cost while the Federal Government pays the remaining 70 percent from general revenues.

The basic premium will remain \$8.20 a month through June 1979.



ADAM SANCHEZ is a newcomer to the "TEXAS" hospitality crew. He is a graduate of Haskell High School, Haskell, Texas, Vernon Regional Junior College and is presently at the University of Albuquerque. Adam has a long list of credits including "The Night Thoreau Spent in Jail," "Godspell," and "The Taming of the Shrew," for which he received Delta Psi Omega Super Star Awards. Adam was given the Performing Arts Award in Theatre from the University of Albuquerque and was president of Phi Theta Kappa and Delta Psi Omega there.

## DANCE TO THE MUSIC OF

EDWARD MELTON  
AND THE  
KOUNTRY KINGS  
FEATURING  
GARY LATHAM

AT RHINELAND GYM

Saturday  
9:30-1:30

July 8th  
Adm. \$4

# FOOD BUDGETS Thrive

ON OUR GREAT VALUES

Blue Ribbon <b>Round Steak</b> lb	\$1 <sup>69</sup>	California <b>Lettuce</b> Head	29 <sup>c</sup>
Blue Ribbon <b>Rump Roast</b> lb	\$1 <sup>29</sup>	Yellow <b>Onions</b> lb	15 <sup>c</sup>
Blue Ribbon <b>Pikes Peak Roast</b> lb	\$1 <sup>29</sup>	Hormel <b>Potted Meat</b> Cans	5 <sup>98</sup>
Extra Lean <b>Ground Round</b> lb	\$1 <sup>29</sup>	Del Monte <b>Kraut</b> 3 <sup>16 oz</sup> cans	\$1 <sup>00</sup>
Kraft <b>Parkay</b> lb	49 <sup>c</sup>	Del Monte <b>PEAS</b> 3 <sup>303</sup> cans	\$1 <sup>00</sup>
Bordens <b>MILK</b> 1 Gal. Plastic	\$1 <sup>79</sup>	Del Monte <b>CORN</b> 3 <sup>303</sup> cans	\$1 <sup>00</sup>
Mrs. Bairds Large Loaf <b>Town Talk Bread</b>	49 <sup>c</sup>	Swansons <b>Boned Chicken</b> 5 oz can	59 <sup>c</sup>
Nabisco <b>Nilla Wafers</b> 12 oz box	59 <sup>c</sup>	Welch's <b>Grape Jelly</b> 3 lb jar	\$1 <sup>29</sup>
Vlasic Polish Dill <b>Pickles</b> 32 oz jar	79 <sup>c</sup>	Heinz <b>Keg 'O Ketchup</b>	89 <sup>c</sup>
Velveeta <b>Cheese</b> 2 lb box	\$2 <sup>39</sup>	<b>Spray &amp; Wash</b> 22 oz Plastic Bottle	\$1 <sup>39</sup>

BEST QUALITY AT A LOW PRICE



**\$50 OFF**  
**TERMITE JOB**  
WITH THIS AD  
915/673-3791  
Abilene, Texas  
ANSON-STAMFORD  
915/773-5278  
Haskell  
817/864-3530

**Termites**  
Call the Redd Man®  
Good for what's buggin' you.



## NOTICE

**There Will Be A**  
**Sale This Weekend**  
at  
**Haskell Livestock**  
**Auction**  
**Hogs at 11 a.m.**  
**Cattle at 12 noon**  
**Haskell Livestock Auction**  
**James & Sue Powell**

# POGUE GROCERY

—Extra Parking Behind The Store. Home Owned and Operated—  
113 North Avenue E Phone 864-2015 Haskell, Texas

**Hospital Notes**

**ADMISSIONS**  
 MEDICAL: J.R. Gaines, Munday; Raymond Melton, Haskell; Nora Mitchell, Rule; Margret McDonald, Bessie Copeland, Haskell; Roberta Flores, Rule; Robert Slaughter, Rochester; Lee Corzine, Haskell; Janet Myers, Munday; Gaston Hattox, Haskell; Pearl Alexander, Weinert; Arnie Bradley, Haskell.

**SURGERY:** Linda Rodriguez, Haskell and W.O. Lewis, Haskell.

**DISMISSALS**  
 Oakley Roberts, Vodie Harrell, Jean Elliott, Carl Wilhelm, Mary Frances Lusk, Vonnie Hise.

Use "Paper Power"  
 Advertise in the Want Ads

**TOWER**  
 DRIVE-IN THEATRE  
 Friday and Saturday July 7 and 8  
 "Looking For Mr. Goodbar"  
 Diann Keaton & Tuesday Weld  
 Rated R  
 Sunday and Monday July 9 and 10  
 "The Van"  
 Robert Carradaine Jennifer Ashley  
 Rated R

**Receives Award**



**TERRY BYNUM COLLET**

At a recent Delta Pi Epsilon meeting in Fort Worth, Terry Bynum Collet received the Vernon V. Payne Award for her outstanding contribution to Business and Office Education.

Terry is Curriculum Specialist for Vocational Office Education at East Texas State University where she is involved in writing and revising instructional materials for office education programs in Texas. Concurrently, she is working toward her doctoral degree in vocational administration and counseling at North Texas State University.

Mrs. Collet is the daughter of Mr. and Mrs. Thurmond Bynum and the granddaughter of Mrs. Thelma Vogel-sang of Fort Worth, former Haskell residents.

**Around Town**

The Cecil Bowers, and Bill Marrs of Haskell and the J.A. Nichols of Hurst have just returned from a 10 day vacation in Tenn. They saw many country music stars at the Grand Old Opry and Opry Land. Also visited Loretta Lynn's Dude Ranch at Hurricane Mills, Tenn.

Mr. Marr took his dialysis treatments at the V.A. hospital in Nashville.

Corsie White and two friends, Beulah Parsons, of Haskell, and Essie Zackary, of Stamford have returned home from a weeks visit in the home of Corsie's daughter and

son-in-law, the Joe and Dori McReynolds of Fort Smith, Arkansas.

Attending Mountain View Youth Camp in Jacksonville, from the Assembly of God Church last week were: Ruffy Escobedo, Frankie Moeller, Leisha Solomon, Shelia McFadden, Karen Campbell, Jonathan Wilson, Christi Whitfield, Terry Allen, and Kim Allen.

Mr. and Mrs. Frank Laywell and Melanic of Duncanville, and Mary Jo Gilleland of Lubbock visited in the Dudley Pheleps home.

Mr. and Mrs. Billy Bob Shaw and Druann of Abilene were in Haskell last weekend.

Mr. and Mrs. Dean Stocks, Chris & Amy of Burleson were in Haskell last weekend visiting relatives.

Mr. and Mrs. Joe Thomson from Fort Worth and Mr. Craig Thompson visited Mr. and Mrs. Hollie Chapman.

**Engagement Announced**



Mr. and Mrs. Roy Amonett announced the engagement and approaching marriage of their daughter, Derinda, to Jack Brock of Knox City. He is the son of Mr. and Mrs. Jim Brock of Haskell.

The bride elect is a 1976 graduate of Haskell High School. She attended McMurry College and is attending WTC College extension classes. She is employed as educational secretary at the First Baptist Church in Haskell.

The prospective bridegroom is a 1971 graduate of Louisiana High School and attended the University of Southwestern Louisiana at Lafayette. He is employed by Sweetwater Pump & Supply in Knox City. The couple plans a July wedding.

**Brown County Woman Looking For Resident**

A Brown County woman would like to have the name and address of a Haskell County lady who was visiting a daughter in Santa Anna the week of June 4. The woman wishes to get information concerning treatment for light sensitivity the Haskell woman referred to while shopping in a Brownwood health food store. The Brown County woman has a similar problem and is seeking treatment.

Anyone knowing with whom the Haskell woman was visiting, her name or other information is asked to call the Haskell Free Press office and leave their name and telephone number which will be referred to the Brownwood lady.

**Senior Citizens Hold Meeting**

The Senior Citizen Club met Wednesday afternoon with twenty members and one visitor present. Oscar Tooley presided during the absence of the president. Newly elected officers will take over the next meeting in July.

Games were played until four o'clock and a covered dish meal was served.

**BIRTHS**

Mr. and Mrs. Eugene Pruitt, Stamford, announce the birth of a daughter, Cathy Jo Pruitt, born July 1, 1978, weighing 7 lbs. 7 ozs., at the Haskell Memorial Hospital.

**Gas Bill Contains New Info**

Read your gas bill carefully this month. If you are one of more than a million Lone Star Gas customers in Texas, you'll find some new information on your bill stub.

It will show a record of current and previous meter readings and the dates on which they were taken. It will also provide more information on the gas cost adjustment rate. This is a charge that varies from month to month, depending upon the fluctuating cost of gas purchased by Lone Star. The stub will reflect the gas cost adjustment rate in effect in a particular community and the amount the customer pays in gas cost adjustment based on the amount of gas used during the current billing period.

The new bill was redesigned to give Lone Star's residential and commercial customers in Texas additional information about their gas usage.

The following is a list of definitions of terms appearing on a monthly gas bill:

**RATE CODE:** This three-digit code represents the rate in effect in a particular community.

**CURRENT READING AND DATE:** The meter reading on the date indicated.

**PREVIOUS READING AND DATE:** The meter reading at the end of the previous billing period. Subtract this figure from CURRENT READING AND DATE to determine how much gas in hundred cubic feet (CCF) has been used. One CCF = 100 cubic feet of gas.

**CCF CONSUMPTION:** Gas used (number of CCF) in the current billing period.

**DAYS SERVICE:** The number of days from Previous Date to Current Date.

**BASE COST OF GAS SERVICE:** Cost of the amount of gas used, measured in CCF, before the GCA, other amounts and taxes are added.

**PREVIOUS BALANCE:** Amount unpaid, if any, from previous billing period.

**GAS COST ADJUSTMENT RATE/CCF:** Current gas cost adjustment rate in effect for a particular community per 100 cubic feet.

**GAS COST ADJUSTMENT (GCA) AMOUNT:** GCA Rate multiplied by total gas (number of CCF) used during the current billing period.

**SALES TAX:** State and City (if applicable) sales tax amount, based on the billing amounts.

**OTHER AMOUNTS:** Amount of special service charges due Lone Star Gas.

**TOTAL GROSS AMOUNT:** Includes Gross Cost of Gas Service, GCA, Other Amounts and Sales Tax.

**TOTAL NET AMOUNT:** Amount due if paid promptly. Prompt payment rates are not included in city ordinances in some communities.

Lone Star Gas customers will also receive bill inserts explaining the new format.

For The Best Price On  
**CHAIN LINK FENCES**  
 Call Us  
 864-3552  
**McGee-Tidrow Builders Supply**  
 Haskell, Texas

**Get more out than you put in**

How much more you get out of our savings and loan depends on you.

It all depends on how much you want to save and how long you give us to work with it.

As the amount that you deposit goes up — and as the duration of deposit goes up — dividends increase.

In return from one of our high yield savings plans, you can expect something more . . . much more.



8% Certificate Yields 8.33% \$1,000 Minimum and Matures in 8 years.  
 Money Market Certificate \$10,000 Minimum Issued for 6 Months with a Yield 1/4 % Higher than the Weekly Average Auction Yield on 6 Month Treasury Bills

Other Savings Plans Are Available  
 A substantial interest penalty is required for early withdrawal.

**FIRST FEDERAL SAVINGS AND LOAN ASSOCIATION**



Home Office  
 122 W. McPherson  
 P. O. Box 311  
 Stamford, Texas 75353

Branch Office  
 No. 13 Avenue D  
 P. O. Box 444  
 Haskell, Texas 75321  
 Phone 864-3776

Division Office  
 Quannah Federal Savings  
 and Loan  
 113 South Main St.  
 Lumberton, Texas 75221  
 J. S. Gilliland, Manager



**the warwick**  
 In New Orleans

**POP \$30**

\*POP means you pay one price for the entire family (up to 4) per day, just \$30.

Private dressing rooms, walk-in closets and two telephones in all rooms and suites; free valet parking. Great location; 2 blocks to the Superdome, 1 block to Medical Center, 3 blocks to Central Business District, 6 blocks to French Quarter and the Civic Center and Oil Center are right across the street.

While They Last—Reserve Now  
 Every guest on our \$30 summer special will receive a free ticket to Pontchartrain Beach valid for admission to all the rides and shows. Hurry!



1315 Gravier Street  
 New Orleans, La. 70112  
 (504) 586-0100  
 Toll Free: 1-800-535-9141

MAIL COUPON FOR BROCHURES AND SPECIAL PACKAGE INFORMATION.

NAME \_\_\_\_\_  
 ADDRESS \_\_\_\_\_  
 CITY \_\_\_\_\_  
 STATE, ZIP \_\_\_\_\_

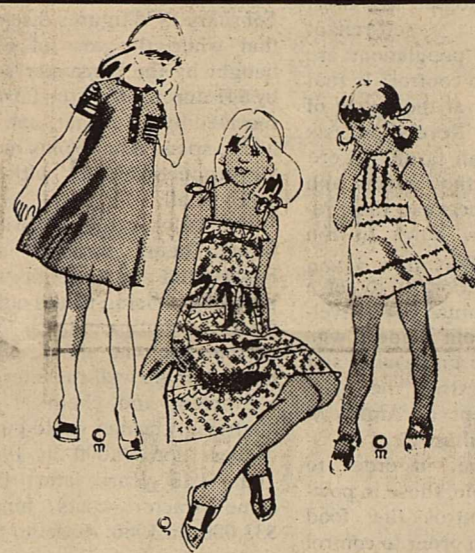
**Use Classified Ads**

*Summer*  
**CLEARANCE DRESSES**



The right time . . . the right price! Come to our place for great savings on dresses. Summer's most popular styles and fabrics. All your favorites. . . Right Now.

**1/3 OFF**



CHILDREN'S

**SUMMER DRESSES**

**1/3 OFF**

Big Reductions on Mens  
**SUMMER SUITS**  
 Reg. \$99.95 Values in Pastels  
 Now **\$69.95**

LADIES' SUMMER  
**SHOES**  
 REDUCED

**1/3 OFF**

LARGE SELECTION  
 GIRLS SUMMER  
**SANDALS**

**1/2 PRICE**

These **1/3 OFF**

prices are for every **SWIM SUIT** in our ready to wear dept.  
 Childrens Sizes all the way from 2 to 14 and ladies 34 to 40.

**All Reduced**

**SPORTSWEAR**



**CLEARANCE**

JUNIORS AND MISSES'

**SUMMER SHORTS**

Terries, Polyesters and blends

**1/3 OFF**

**HEIDENHEIMER'S**

# M SYSTEM

Your FRIENDLY  
SUPER MARKETS  
Haskell  
Where your dollar buys more



Folgers Ground



**COFFEE**  
1 lb can \$2<sup>79</sup>

We work harder...  
to make you happy

EVERY EMPLOYEE IS ENCOURAGED AND TAUGHT WHERE VARIOUS PRODUCTS ARE AND THEY WANT TO HELP YOU IN ANY WAY THEY CAN... EVEN IF IT MEANS STOPPING WHAT THEY ARE DOING.



RIGHT RESERVED TO LIMIT

**DOUBLE S & H GREEN STAMPS WEDNESDAYS**  
With The Purchase Of \$2.50 Or More

Specials Good  
Thurs. July 6  
thru Wed. July 12

American Beauty **FLOUR** 5 lb bag **65¢**

Purina **Dog Chow** 25 lb bag **\$5<sup>49</sup>**

**2 QUARTS OF COKE**



**FREE...** With purchase of 4 quarts ALL SIX BOTTLES of Mr. Pibb

**1.29**  
PLUS DEPOSIT

**MORTON FROZEN Dinners**  
**59¢** ASST. KINDS EACH

**Armour Treet**  
12-OZ. CAN **1<sup>09</sup>**

**PALMOLIVE**  
LIQUID 22-oz. Bottle **89¢**

**SHURFRESH BACON**  
**1<sup>19</sup>** LB. PKG.

**Fresh Chicken Breasts**  
**1<sup>09</sup>** lb.

**PARKAY OLEO**  
LB. QTRS. **49¢**

Boneless **Chuck Roast**  
lb **\$1<sup>09</sup>**

FRESH CALF **LIVER**  
**59¢** lb.

Food King **Biscuits**  
9 Cans **\$1**

SHURFINE **TEA BAGS** 100-CT. PKG. **1<sup>49</sup>**



SHURFINE **Pork & Beans**  
**4/99¢**

SHURFINE **VEGETABLE OIL** 38-OZ. BOTTLE **1<sup>29</sup>**

French's **Mustard** 24 oz jar **59¢**

**Jello** 4 3 oz pkgs **89¢**

**SMOKED PORK CHOPS**  
**1<sup>69</sup>** lb.

Affiliated Chopped **Beef Steaks**  
5 lb box **\$5<sup>69</sup>**

**LIPTON INSTANT TEA**  
3-oz. JAR **1<sup>89</sup>**

**RUBBING ALCOHOL**  
PINT BOTTLES **3/1.**

**TRAC II RAZOR BLADES**  
5-CT. PKG. 1.60 VALUE **1.09**

**SHURFRESH BUTTER**  
1-LB. QTRS. **99¢**

SHURFRESH **Buttermilk** HALF GALLON **69¢**

WISHBONE **ASSORTED DRESSINGS** 8-oz. BOTTLE **49¢**

**HEAD & SHOULDERS LOTION SHAMPOO** 7-OZ. 2.07 VALUE **1.49**

**Aqua-Velva AFTER SHAVE LOTION** 6-OZ. 2.09 VALUE **1.49**

**DUNCAN HINES CAKE MIXES**  
LAYER OR PUDDING IN IT BOX **65¢**

SHURFINE **DETERGENT** GIANT BOX LIMIT 2 **48¢**

El Chico Frozen **MEXICAN STYLE PIZZAS** ASST. KINDS **99¢**

**FROZEN POPS** ASST. FLAVORS 6-CT. CARTON **49¢**

**CLOROX BLEACH** HALF GALLON **59¢**

**FRESH Green Onions or Cello Radishes**  
**2 FOR 29¢**

**SANA ROSA PLUMS**  
**39¢** lb.

**CALIFORNIA ORANGES**  
**3 LBS. 1.**

**PERSIAN LIMES**  
DOZEN **69¢**

**POTATOES**  
RUSSET 8-LB. BAG **99¢**



# Leisure Lodge News

The monthly birthday party was given on Monday by the Adult IV Sunday School Dept. of the First Baptist Church. Claudia Mae Bland was chairman. After birthday cake and punch was served with plate favors of paper butterflies, Mrs. Frank Cadenhead Jr. brought a very impressive devotional. She read the poem, "The Old Violin", and sang, "He Touched Me", and another poem sang, "Help Somebody To-day". Mrs. Carl Bailey accompanied her at the piano. Mrs. Cadenhead also sang a composed by a resident, W.O. Lewis titled, "Praise God". Having birthdays were, A.C. Jeter, Minnie Brady, Bert C. Butler, Bessie Piland and Agnes Schmidt.

Mr. & Mrs. Jack Hendrix has returned to Tucson, Ariz. after visiting with his mother, Mrs. Clara Hendrix. Also visiting Mrs. Hendrix, were, Captain Roy Petrich, of New Orleans, La., and his children, Tammy, Boyd and Susan from Iowa Park and Mrs. Al Lehman and Jamie of Kamay. We welcomed Mr. David Smart and Mrs. Mollie Jarred. Mr. W.O. Lewis under went minor surgery at Haskell Memorial Hospital on Thursday morning and is reported to be improving at this time. Mr. Oakley Roberts is also a hospital patient. Mr. & Mrs. Menard Field from Floydada visited his sister, Mrs. Mary Ray.

Little Miss Sheri Wilde from Munday visited her great-grandmother, Mrs. Ophelia Medford. Mr. & Mrs. Leroy Medford of Pearsall was also a visitor of Mrs. Medford.

Janice Lauderdale and Sean of Dallas has returned home to Dallas after visiting Ruby Moon. Hazel Nolan from Abilene visited Mrs. Elsie Mitchell.

Ora Baugh, Gladys Dyches and Mrs. Warren Doyle of Rule visited Miss Alpha Dyches. Visiting Eva White were,

Mardell Roberson of Rochester, Mr. & Mrs. Durwood White, O'Brien, Mr. & Mrs. Wiley Bean of Plains, Mr. & Mrs. Floyd White of Ft. Worth, Sammy White of Knox City, Ruth Eaton, Peggy Kittley and Ione Sheid of Rule.

Mr. & Mrs. Newton Westmoreland, Gladys Dyches, Mrs. Warren Doyle, Ella Franklin, Oleta Jackson, Mr. Ed Verner and Mrs. Ione Sheid of Rule visited Mrs. Lummie Westmoreland.

Mr. & Mrs. Archie Jones of Houston visited his mother, Mrs. D.A. Jones. Visiting Mrs. Mary Smith were Mrs. Judy Hicks, Kevin and Michael, Mrs. Georgia Turnbow & Greg, Mr. & Mrs. George Gray of Weinert, Mr. & Mrs. Clyde Floyd of Pickton.



This picture of "Cycle Guide" Editorial Assistant Jeff Karr crossed-up on an RM-250 motorcycle won a "Best Picture Award" from Suzuki as the most outstanding recently published photograph of a Suzuki product in action.

Most people find that when you ride a Suzuki you may discover yourself. Karr seems to have discovered an interesting bend in his personality. The shot, snapped by Art Friedmar, appears on the cover of a recent "Cycle Guide" issue.



KRIS KUPATT of Sagerton was the Haskell County delegate to the recent National 4-H Citizenship Short Course and Heritage Tour in Washington D.C. Kris is shown with other Texas delegates while visiting with

Congressman Omar Burleson. These delegates visited with the Congressman at length about the workings of our Government.

## Washington As It Looks

From Here  
OMAR BURLESON  
Congressman — 17th District

ANYONE WHO EVER SERVED IN THE NAVY is familiar with the saying that, "if it moves, salute it-if it doesn't, paint it."

THE IDEA MAY WELL APPLY TO SOME GOVERNMENT PROGRAMS. Too many projects seem to be undertaken in a spirit of "why not", rather than "why".

THE FEDERAL HIGHWAY ADMINISTRATION HAS A PRETTY GOOD RECORD of building and managing our interstate road system. It has, in most instances, cooperated with State highway departments and, particularly, with those who have a good system such as Texas.

THE HIGHWAY ADMINISTRATION HAS NOW, HOWEVER, COME UP WITH A STUDY which seems to be a sort of scholarly exercise that makes illiteracy look good by contrast. It has awarded a contract for \$222,000 to a private think-tank which proposes to ask a couple of thousand automobile drivers at nine sites in three States their opinion on such matters as side splash from trucks on wet roads. They want to know if it is a problem. They want to know if large trucks block a driver's view. Are big trucks too slow going up hills and too fast coming down, they ask.

MOST DRIVERS OF AUTOMOBILES CAN READILY ANSWER THESE QUESTIONS and would likely respond more forcefully if they had just gone through any one of these exasperating experiences. Usually, however, their impatience and temper may have subsided after a short period of time.

THE PURPOSE OF SUCH A SURVEY ON QUESTIONS

of the relations between passenger vehicles and commercial trucks seem to focus on the human factors involved.

IT APPEARS, HOWEVER, that the reason for asking these questions is that they have not been asked before. Can it be that they have not been asked because the answers are not worth knowing? This seems to be the question nobody has asked at all.

READING A BRIEF DESCRIPTION OF WHAT THIS STUDY is supposed to do makes you wonder if people involved might be better employed by popping bubble gum. Instead they went to graduate school to learn to talk about developing a "multi-dimensional attitude measurement device" and "collect sufficient behavioral data to relate each attitude dimension to its associated behavioral correlates." It goes on to use some other descriptive words which probably only those who wrote them know what they were trying to say.

THIS IS TO NOT MAKE FUN AT THE ACADEMICS and their wonderful ability with words. The question is whether the expenditure of \$222,000 of public funds serves a useful end. It is difficult to relate this expenditure of public money to the "why&" of such a program but easier to see it as a "why not?"

## Behavior Modification

BY AUBREY HEADSTREAM  
DIRECTOR, MENTAL  
HEALTH CENTER

Current literature and voice opinions indicate an increasing dissatisfaction and disenchantment with the traditional ways of approach to deviant in our society behaviors. The one most popular alternative to the traditional Model is the use of behavior modification approach. However, it becomes rapidly obvious that there can never be sufficient school, or home, or clinic personal, to perform this function, so a new method for community must be devised for I know that behaviors are maintained by environmental circumstances.

Then what can community do? First we can clarify expectations, a behavioral approach to truancy means that Billy understands he must attend school at least 90 percent of the time for the next ninety school days, we need to drop vague advice like "make good grades; to the point of saying I want a B" this semester. A lot of deviant behavior is caused because the person did not understand the expectations. Concrete achievement can only be obtained and rewards earned when there is clear expectations set forth.

Second, make clear good things happen to people who

do good things, and bad things happen to people who do bad things and be consistent with this feedback. Inconsistency causes deviant behavior. The "getting away with it" is not rewarding good behavior. A bad act is a bad act; a good act is a good act and should be treated as such by all the community. The saying "Saints want Justice, but the people want Mercy" is a truth, however awarding a bad act is not mercy.

Third, care enough to count. Don't pass off bad behavior in our community as "I know his family—they are all sorry," or "I knew he was spoiling that kid when he bought her that car," when you use these copouts you don't count. Care enough to except responsibility for each other. Enough to say "Hey friend, your behavior is just not acceptable here."

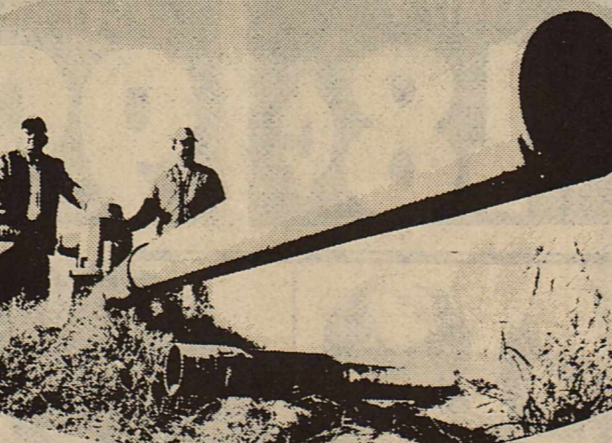
Four, it is easier to act your

### GIVE YOURSELF A PART-TIME JOB BEFORE YOU GRADUATE.

If you're a high school senior you can join the Army Reserve before graduation. You can learn a skill and earn about \$50 for 16 hours of work a month. Call your local Reserve unit. It's listed in the white pages of the phone book under "U.S. Government."



THE ARMY RESERVE.



### Need Water?

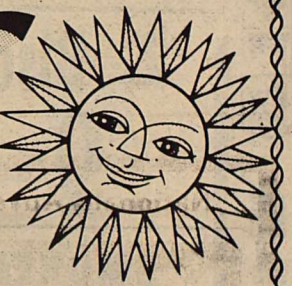
Call Me!

I am your Jacuzzi J-man and I can give you the best service... because I am experienced and I handle pumps and water systems that are Certified to be Right... because I am backed by the widest network of branch warehouses in the industry... because I have a Hot Line to Jacuzzi for instant action on your most urgent problems. For water—call me, your Jacuzzi J-man.

LYNN ELECTRIC  
MOTOR CO., INC.  
658-3511

We care about you and your water system

## Summer Savings



All Current Season Regular, Junior, & Half Size Dresses & Pant Suits

25% off

(Nothing Held Back)

One Group Ladies' Dresses & Pant Suits

1/2 Price & Less

Our Entire Selection of Seasonal Sportswear for Ladies

25% off

All Summer Handbags

1/3 off

## HASSEN'S - HASKELL

HERE'S TO YOUR HEALTH  
from DOYLE HIGH

There still is no cure for the common cold, but some drugs, such as antihistamines can ease your discomfort. You can ward off a cold by keeping your resistance high with a balanced diet including citrus fruit, and sufficient sleep—also by avoiding persons with colds. Colds are spread by direct personal contact thru talking, coughing and sneezing. One sneeze can spray thousands of infectious droplets which may float in the air more than an hour.

DOYLE HIGH'S  
**THE DRUG STORE**  
100 SOUTH 1ST ST. HASKELL, TEXAS  
PHONE 864-2515

### The Land Bank ...money to keep the farm in the family

One of agriculture's toughest challenges is keeping the farm in the family. It takes long-term planning and, often, long-term credit. For more than three generations, the Land Bank has helped farm families pass along what they have worked so hard to build. We may be able to help you, too.

The Bank of Generations

Federal Land Bank Association of Haskell

JOE HARPER—Manager

Offices at Haskell, Anson and Seymour  
Haskell Telephone: 864-2062—Anson Telephone: VA 4-1142

Long-time loans on farms and ranches in Haskell, Jones, Baylor and Knox Counties

### Bill Fisher Addresses Tax Revolt

Bill Fisher, candidate for Congress in the 17th District, recently reacted to the people's tax revolt in California. He said, "The voters, in essence, said to government, 'we will cut taxes if you won't. And government had better listen to the people.'"

Proposition 13 came about, Fisher said, because the people were saddled with taxes they didn't need, want or ask for. They are fed up with taxes, he added. Fisher pointed out that he advocated tax relief and lower tax rates long before it was a popular subject. Many since then have "jumped on the bandwagon" in support of lower taxes and tax rates.

Fisher commented that California's handling of the situation is foolish. The state is cutting out essentials, like some education, instead of non-essentials that the people intended to be cut out, he said. The state government is using this action "as a hammer over the people's heads."

Fisher suggested that Proposition 13 may even offer the people an incentive to improve their real estate, now that property taxes are low. This would lead to more growth, and in the long run, would do the state much good.

Fisher advocates a 30 percent tax rate reduction that will relieve the tax burden of all taxpayers. This is part of a program of responsible tax reform that is becoming more and more popular all across the country.



