

15¢
Per Copy

THE HASKELL



FREE PRESS

"HASKELL—A GOOD PLACE TO VISIT; A BETTER PLACE TO LIVE"

WEATHER SUMMARY
By Sam Herren
Feb. 1-14
TEMPERATURE
Hi 57 4th
Lo 20 10th
PRECIPITATION
Total 1.72*
*Snowfall 2" on 10th

VOLUME NINETY-TWO

10 PAGES

HASKELL, TEXAS, 79521, THURSDAY, FEBRUARY 16, 1978

NUMBER SEVEN



CAROLYN REYNOLDS purchases a ticket to the Haskell Chamber of Commerce Banquet from incoming president John Rike. Speaker of the Texas House of Representatives, Bill Clayton, will be the principal speaker. Tickets are available from officers and directors of the Chamber or at the Chamber office. (Staff Photo)

Chamber Banquet Set Friday

The 42nd annual Haskell Chamber of Commerce banquet will be held this Friday night in the Elementary School cafeteria beginning at 7:30 p.m.

Featured speaker for the banquet will be the Honorable Bill Clayton, Speaker of the Texas House of Representatives.

He was elected to the House of Representatives in 1962 and was elected speaker in 1975. A graduate of Texas A&M University with a degree in Agricultural Economics, he is 49 years old.

Since his election he has maintained a farming operation near his hometown of Springlake.

He is currently serving as chairman of the Council of State Governments and is past chairman of the Southern State Speakers Conference and the Southern Legislative Conference.

He is widely recognized as an expert on water legislation, most of which he helped to

pass. He has received numerous awards both in Texas and nationally for his dedicated work.

As speaker, he has introduced many innovative ideas to aid the legislative process. The modernization of the House has given members better access to information, provided quicker and easier methods for handling bills, and a strong interim committee program is helping develop legislation to present to the next legislative session.

He and his wife, Delma, have two children and two grandchildren.

Master of Ceremonies at the

banquet will be retiring president Wayne Lehrer. The invocation and benediction will be given by the Rev. Harvey Friedel, pastor, First Presbyterian Church.

Royce Adkins will introduce guests and dinner music will be provided by the Haskell High School Stage Band directed by Wendell Gideon. Introduction of officers and directors will be by Wayne Lehrer and Chamber Manager Rex Felker will give special recognitions.

Haskell County Treasurer John Wayne McDermott will introduce Bill Clayton.

New officers will be John Rike, president; Aubrey

Carroll, 1st vice president; Jim Bynum, 2nd vice president; Mrs. Elbert Johnson, treasurer; and Rex Felker, manager.

New directors will be Dr. Tom Hairgrove, Charles Thornhill, Genelle Overton, Mike Jordan, and Bob Beauchamp.

Retiring officers and directors are John McDermott, Joe Cortez, Gene Long, Don Comedy, and Buster Gholson.

Banquet chairman is Edith Wheatley, Mr. and Mrs. Jim Bynum will register guests and dinner will be served by Haskell Homemaking Department, directed by Mrs. Edwin Jeter.

City Council Holds Regular Meeting

The regular meeting of the Haskell City Council was held Tuesday night in the Haskell City Hall.

Belton Duncan called the meeting to order and Councilman Guy Kennedy gave the invocation.

Elementary school principal Bill Jones met with the council to discuss a traffic problem at the Elementary School. The council authorized school personnel to barricade Ave G between South 3rd and South 4th streets. Members of the council also instructed Joe Williams, City Attorney, to draft an ordinance creating a 15 mph school zone between South 3rd and 5th streets on Ave. G. and H. The ordinance should be adopted at the next council meeting.

Dr. T.W. Williams met with the council and requested that his residence be placed on City sewer. Councilman Bob Philpot agreed to study the possibilities. There is a problem with the elevation of the property and Philpot stated that the would look for alternate routes for the connection to be made.

Eva Speer was appointed by the council to assess unrendered taxes for 1978.

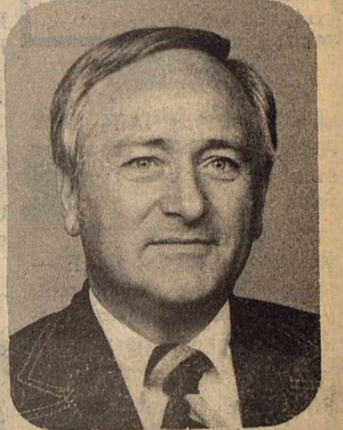
Mayor Duncan reported the collection of \$547.00 collected from the room occupancy tax; \$805.08 from the Housing Authority in lieu of taxes (to be divided: 40% to City; 33 1/3% to School; and 26 2/3% to County); final WTU franchise payment of \$3,329.82 for a 1977 total of \$15,868.86; and Centex Cable franchise payment of \$1,446.65 for 1977.

Members of the Council of City Officials met for April 1. The terms of Mayor Duncan, Councilman Earl Proctor and Councilman E.J. Stewart will expire. Proctor has filed for re-election. Stewart has announced for Peace Justice Prec. 1, and Mayor Duncan has stated that he will not seek re-election. Royce Williams has stated that he will announce for the Mayor's post. Deadline to file is March 1.

Members of the Council authorized the Mayor to sign approval on the final documents of the new sewer plant.

Chief of Police Wayne Merchant met with the council and presented an area survey of pay and benefits of nearby police departments.

The next regular meeting of the council will be held Feb. 27.



BILL CLAYTON

Study Club To Hold Public Meeting

The Public Is Invited to attend a special program Thursday, February 16, at 7:30 p.m. called "Hands Up!" or "Lady Beware!" Sergeant Harold Emerson, Abilene Police Detective, will be in the community room of the Haskell National Bank. His program will show women how to avoid being criminally violated. The Haskell Progressive Study Club has planned this program; Mrs. Irma Liles of Weinert is the director. Hostesses for the program are Mesdms. Garvin Foote, R.A. Lane, Mildred Mansell, and Kenneth Parker.

County Youth To Show At Houston

Stanley Hager, Russ Lewis, Mark Lewis, Donna Gilleland, Mike King, Joe Wilfong, Kris Kupatt, Wesley Strickland, Sam Toliver, Joseph Toliver, Kerry Therwhanger, Nicki Hunt, Kraig Kupatt, Ronnie Oliver, and David Lisle will represent Haskell County in the 1978 Houston Livestock Show and Rodeo, February 22-March 5. With more than 22,500 expected livestock entries, the Houston Show will once again be the largest in the world.

For junior exhibitors from throughout the state, the Houston Show is the culmination of a year's hard work of preparing their animals for the toughest of show ring competition. It is hard work that often pays off: open show and junior exhibitors will vie for \$470,210 in prize monies and premium auction prices above market value.

From a spectator's point of view, the young exhibitors are center-stage in a two-week extravaganza that begins when Houston, the fastest growing city in the nation, takes a step backwards in time and brings a bit of western heritage to its busy streets.

Horse, buckboards and stagecoaches take to the concrete and businessmen don western hats and boots to welcome the largest civic event in the history of this bustling oil and space flight capital.

More than 6,000 trailriders

journeying as far as 200 miles will join city officials and bands as the annual rodeo parade winds through the canyons of downtown streets at 9:15 A.M. on Friday, February 24.

Following the parade, the action moves farther out Main Street to the Astrodome and the adjoining Livestock Exposition facilities where the rodeo will open with a matinee performance in the Astrodome at 2 p.m.

The livestock show begins a week earlier with open show competition on Feb. 22. Professional breeders and ranch owners from some 35 states will bring in the best in breeding stock to compete in breeding beef, dairy, swine, poultry, sheep, Angora goat and rabbit shows.

Junior show exhibitors take over the 22.3 acre livestock exposition facility for the second week of the livestock show, with judging beginning on March 2. Each exhibitor knows he is up against the best in livestock, with much riding on the decision of the most experience livestock judges in the nation.

Junior shows include breeding beef heifers, dairy, breeding sheep, Angora goats, beef and dairy scramble heifers, commercial steers, breeding rabbits, market lambs, market poultry, market swine and market steers, including a carcass contest.

In addition to the premium

awards and trophies, exhibitors of market animals know that a grand championship in their market division at Houston can translate into the stake for a future cattle herd or college diploma.

The Houston Livestock Show and Rodeo holds the world's record for prices paid for all five junior market animals--Grand Champion Steer, \$50,000; Grand Champion Barrow, \$23,000; Grand Champion Lamb, \$14,500; Grand Champion Turkey, \$10,500; and Grand Champion Pen of Broilers, \$10,800.

More importantly, community involvement and civic support from thousands of individuals and businesses alike combine to assure junior exhibitors that their animals selling in the market auctions will bring premium prices. Show officials estimated that 35 per cent of animals entered in market competition make the auction sales.

Thousands of junior exhibitors are also competing in livestock and dairy judging

9 Exhibit At Wichita Stock Show

Nine Haskell County youth exhibited animals at the recent Wichita Falls Junior Livestock Show and brought home several ribbons and trophies.

Stanley Hager exhibited the Champion Angus Steer, and reserve champion of the show; the 1st place Junior Heifer, and 1st place Winter Heifer.

Mike King received 2nd place in the senior heifer show, 3rd place in the summer heifer show and 3rd in the middleweight Hereford steer class.

Richard Shaver placed 2nd in the Junior Heifer class and 9th in the middleweight Hereford steer class.

Dennis Carver placed 6th in the Heavyweight Hereford steer class, and Julie Patty exhibited the 6th place Hereford.

Donna Gilleland placed 4th in the crossbred steer class.

Mikeana Wilcox exhibited the 1st place crossbred steer, Zackary Wilcox received 3rd and Mindy Wilcox, placed 7th

NOTICE

Letters to the editor of the Haskell Free Press must be signed to be published. Recently several letters have been received which were not signed and were not run for that reason.

Farm Survey Underway

Production expenditures nationwide averaged just over \$32,000 per farm in 1976, according to a survey conducted by the U.S. Department of Agriculture and the Texas Crop and Livestock Reporting Service. The total outlay to raise crops, livestock, and poultry ran up a bill of \$89 billion.

The major expenditure was for feed, which accounted for over \$14 billion. Next came rent cost of \$8 billion; interest and taxes of \$7.9 billion; wages at \$7.4 billion; and purchases of fertilizer, lime, and soil conditioners at a cost of \$7.2 billion.

The Texas Crop and Livestock Reporting Service, with help from producers, participated in developing this information.

Production expenditure information is a major ingredient in determining net farm income and is used as a guide in computing the parity index and other factors about the

farmer's position in the national economy.

In order to update these expenditure figures, Dwanna Klose of the Texas Crop and Livestock Reporting Service will be contacting several farmers in Haskell County during February and March in an effort to establish expenditure levels for 1977. Some producers will be asked a series of questions about their marketing practices for livestock, field crops, fruits, and vegetables.

All answers secured during the interviews will be confidential and used only in state and national summaries.

PLAYOFF GAME

The Boys Bi-District Basketball playoff game between Baird and Crowell will be held in Haskell February 21, at 7:30 p.m. Baird will represent district 8A and Crowell will represent district 7A. Tickets for the game will be \$2.00 for adults and \$1.00 for students.



STANLEY HAGER, 15 year old son of Mr. and Mrs. W.R. Hager Jr. of Weinert, exhibited the Reserve Champion of the Wichita

Falls Junior Steer Show Feb. 9. The animal was judged by Randall Grooms, of Texas A&M University, who is also pictured.

LOOKING FOR A JOB? LOOKING FOR HELP?

SEE THE

Wanted Ads

NOTICE
The Haskell Free Press reserves the right to edit and/or delete all news stories and locals for length and liability and to refuse to print anything deemed not newsworthy.

NOTICE
Due to the bookkeeping involved and the high postal rates, we ask that you please remember that classified ads are Cash in Advance unless you are a business firm or have an established credit with the Haskell Free Press. Either mail your ad with check or if you need assistance in writing it we will be happy to help you. Rates are 5c per word or a minimum of \$1.50.

NOTICE
Please notify us of your change of address. If you do not, the Post Office charges us 25c for each time the Haskell Free Press is returned to us, this plus the cost of stencils, time and labor can make your move costly to us. In the future, failure to notify us will result in one month being deducted from your subscription.

For Sale

McCOLLOCH CHAIN SAW HEADQUARTERS. A saw for every job. See new Woodard Farm Sale. 7fc

WOODARD FARM SALES—Ford tractors, equipment, long harrrows, Lilliston-Heston-Oliver plow parts. 4fc

FOR SALE: Iron at wholesale prices. Rounds, flats, sheets, square tubing, channel etc. Haskell Trailer Builders. 20fc

PECAN TREES, Fruit Trees, Roses, shrubs, flowering shrubs, Evergreens, FRUIT-LESS MULBERRIES now ready at GANSTEAD GARDENS, just West of Rule, 997-2469. 52fc

FOR SALE: Gates fan belts and hoses. Also, heater hose, Delco Batteries and etc. stuff. Texaco gas and other oil and service. M. C. Wilfong, phone 864-2766. 2fc

FOR SALE: Illustrated Price Guide Books on all antiques, Sherman Interiors and Antiques, northwest corner of square. 6fc

FOR SALE: 16' Cardinal self-contained trailer in A-1 condition. Billy Middlebrook, 915-773-3995. 7-10p

FOR SALE: An outside door and screen. Call 864-2812 after 5. 7c

FOR SALE: A 1970 Ford two ton tandem, A 1964 Ford two ton tandem; A 1961 GMC two ton tandem; A 1959 Chevrolet 1 1/2 ton; A Grainger and mixer Gehl. Two hog bush hay loaders. Call 997-2697. 7-8p

WE HAVE several good used washers and dryers for sale at Frazier's Appliance. 7c

FOR SALE: Gas Range with grill, practically new Evaporative Air Conditioner; Also, a Good Antenna. John E. Robison, 1101 N. Ave. D, Haskell; Phone 864-3766. 7p

FOR SALE: Full blood Boston Terrier Bulldog Puppies, 6 weeks old. Phone 997-2458. 7p

TAKE UP Payments on 1977 Jeep CJ-7 Golden Eagle. Phone 997-2144, Rule. 7p

FOR SALE
Our home at 1007 N. Av. G. Approximately 2000 sq. ft., 4 bedroom, 2 bath, Den and fireplace, recent 4 ton heating and cooling unit, water well, fenced, large pecan trees. See to appreciate. The A.C. Richardsons. Call Bus. phone 864-3474, or res. phone 864-3417. 47fc

Miscellaneous
INSTANT CASH for any good merchandise, modern or old. Phone 864-3197 anytime. Lackey's, Throckmorton Highway, Haskell, Texas 27fc

WANTED: Good used furniture and appliances. We buy and sell. Lee Used Furniture 120 N. Swenson St. (one block north of red light on hiway 277) Stamford, Texas. Phone 773-5608. 42fc

BRING ARTS, crafts, antiques, new merchandise, garage sales, pecans, candies, collectors items, furniture, hardware, junk or anything of value to Haskell Trade Mart on the Throckmorton Hwy. for 9 a. m. to dusk each Saturday and noon to dusk each Sunday. 51fc

FREE Cardui Calendar and Lady's Birthday Almanac while supply lasts at Johnson Pharmacy where low overhead means low prices. 7c

WATER PILLS and laxatives may deplete your body's essential Potassium-ask for K Forte' Johnson Pharmacy. 7-8p

REDUCE EXCESS Fluids with Fluidex tablets-Bonus pill box in every package \$2.39. Johnson Pharmacy 7-8p

"NEVER Used anything like it", say users of Blue Luster Cleaner. Rent electric shampooer \$1. Perry Brothers. 7c

TO GIVE AWAY: Puppies who make small dogs. See at 806 N. 14th St. 7c

Bus. Opportunity
HAVE A Highly profitable and elegant dress shop, of your own featuring over 135 Nationally known brands, with great savings to your customers. \$15,500.00 includes Beginning Inventory, Training & Fixtures. Have your store open and established within 15 days. Call any time for Mr. Wilkerson (501) 847-4050. 7p

Lost & Found
LOST: Diamond and sapphire oval shaped pin approximately 1 1/2 inch wide and one inch long. Open work with leaf motif inside. Reward offered. Call 864-3185. 6-7p

Wanted
WANTED: Good homes for adorable German Shepherd Pups, and mother. Call 864-2198 or See at 106 So. Ave. C. 7p

WANTED: Farm Work. Experienced, See Marvin Hector 103 1/2 N. Ave. F. 7p

Jobs Wanted
WANTED: Repair and remodeling work for any home improvement needs. Call Mike Cook, 864-3481. 6fc

Help Wanted
COLONIAL FOOD STORE now taking applications for full or part-time help. Apply between 7 and 4 daily. 6-7p

For Rent
FOR RENT: One bedroom furnished, bills paid apartment. Also, two bedroom trailer house, furnished for rent. Contact Dee Larned, 864-2409. 6-7c

Mobile Homes For Sale
FOR SALE: Double-wide mobile home, three bedrooms, two baths, central heat. Includes two refrigerated air conditioners, stove and refrigerator. Located at 404 N. Av B in Haskell. Call 997-2197. 4-7p

HOT WATER HEATER HEADQUARTERS
Electric State with Sand Hog Heating Element 5 Year Warranty Gas State with 5 yr. Warranty on Tank 2 Yr. on Controls Philpot's Supply & Service 402 N. 1st 864-3010 37fc

Real Estate
FOR SALE: Two bedroom house to be moved. \$2,000. Pat Henry, 864-3276. 5-7p

FOR SALE: Three bedroom, living room with fireplace, bath, kitchen and dining area with utility room. Call after 5:00 on weekdays, 997-2433, 600 Sunny Av, Rule, Texas. 1fc

HOUSE FOR SALE at 205 N. Av D. Has 2 bedrooms. Call 864-2681 or 864-2420, or see Jesse Dean at Dean Butane Co. 52fc

FOR SALE OR RENT: Three bedroom, 1 1/2 bath Town and Country Mobile home. Central heat and air, carpeted, located on large lot. Call 864-2204. 3fc

FOR SALE: 5 acres of land in new addition on Paint Creek road. For more information call 318-984-3008. 5fc

FOR SALE: 468 acres of rich farm land, 358 cultivation, 110 pasture, some improvements, immediate possession, three miles from Haskell, \$450 acre. Call 915-853-2707. 6-7c

FOR SALE: Small one bedroom-furnished house. Small down payment, finance the rest. Call 864-2491. 6fc

FOR SALE: Two bedroom home, 715 S 11th, 864-3797 after 5. 6-7p

The One to See
Brian Burgess
111 N. Ave. E
864-3250
AUTO FINANCING

The Haskell Free Press is authorized to make the following announcement for the office in Haskell County, subject to the action of the Democratic Primaries in 1978.

Unless otherwise specified the candidates listed paid for the announcement, and have designated themselves as campaign treasurer.

All political advertising, announcements, and printing is cash in advance.

U.S. REPRESENTATIVE 17TH CONG. DIST.

A. L. (Dusty) Rhodes Pd. for by John Allen Chalk Campaign Treasurer

Charles W. Stenholm Pd. for by Charles E. Brownfield Campaign Treasurer

Fike Godfrey Pd. for by Dwight L. Kinard Campaign Treasurer

Jim Snowden Pd. for by Vera Inman, Campaign Treasurer

STATE SENATOR 30TH SENATORIAL DIST.

Ray Farabee Pd. for by Jerry K. Estes Campaign Treasurer

STATE REP. DISTRICT 101 W. S. (Bill) Heatly (Re-election)

Pd. for by R. A. Nichols Campaign Treasurer

DISTRICT JUDGE 39TH JUDICIAL DISTRICT

Joe Williams Pd. for by Grace Williams Campaign Treasurer

William P. Ratliff **DISTRICT CLERK**

Carolyn Reynolds (Re-election) **COUNTY JUDGE**

John Wayne McDermott Pd. for by Betty Sue McDermott Campaign Treasurer

B. O. Roberson (Re-election) **COUNTY CLERK**

Jenny Brazell (Re-election) **Sue Fincher**

COUNTY TREASURER Peggy (Blair) Darden

Willie Faye Tidrow Laquita (Young) Liles Pd. for by Wayne Liles Campaign Treasurer

COMMISSIONER PREC. 4 C. A. (Bud) Turnbow (Re-election)

COMMISSIONER PREC. 2 R. L. (Jiggs) Edwards (Re-election)

Mrs. Bobby L. [Melba] Howard **J.P. PRECINCT 1** Geraldine (Petrich) Hise E.J. Stewart

Legal Notices
NOTICE
Sealed bids are now being accepted for the sale of one used IBM model Selectric Electric typewriter. The typewriter may be examined at the Texas A & M University Vegetable Research Station, 821 N. Ivy, Munday, Texas during normal working hours. Deadline for receiving bids is 10 a.m. Monday, February 27, 1978. 7-8c

Card of Thanks
We wish to express our appreciation to each and everyone who helped us so much during the illness and death of our Mother and Grandmother, Stella Josselet. We would like to especially thank Bro. Bragg and the ladies who brought food and served it at the church. Also a special thank you to the staff and nurses at Rice Springs Care Home who were so kind and attentive to her, she loved all of you. Mr. and Mrs. Marion Josselet, Sarah Josselet, Carolyn and James Norman. 7c

Card of Thanks
We would like to express our sincere thanks to our friends and neighbors for all their calls, visits, food, flowers, cards and prayers at the loss of our loved one. May God Bless each of you. The family of Jess Matthews. 7p

Card of Thanks
I wish to thank everyone for the food, flowers, cards and the kind hospitality shown us during the illness and death of my wife, Lois Berry. May God Bless each of you. Carl Berry. 7p

Card of Thanks
We would like to express our thanks to everyone for their kindness shown to us during our sorrow at the loss of our beloved Mother and sister. Also, the beautiful flowers and cards. A very special thanks to Brother Roy Herricks, Rev. Barton, Shirley Hudgins and the women of Weintert for the delicious food. The Children of Allene Garrett, Addie Counts, Ben Vickers. 7p

Card of Thanks
We would like to express our sincere thanks and appreciation to everyone for the flowers, food, prayers and concern everyone showed during the loss of our loved one. The Family of Kirby White. 7c

Card of Thanks
We would like to express our sincere thanks and appreciation to everyone for the flowers, food, prayers and concern everyone showed during the loss of our loved one. The Family of Kirby White. 7c

Card of Thanks
We would like to express our sincere thanks and appreciation to everyone for the flowers, food, prayers and concern everyone showed during the loss of our loved one. The Family of Kirby White. 7c

Card of Thanks
We would like to express our sincere thanks and appreciation to everyone for the flowers, food, prayers and concern everyone showed during the loss of our loved one. The Family of Kirby White. 7c

Card of Thanks
We would like to express our sincere thanks and appreciation to everyone for the flowers, food, prayers and concern everyone showed during the loss of our loved one. The Family of Kirby White. 7c

Card of Thanks
We would like to express our sincere thanks and appreciation to everyone for the flowers, food, prayers and concern everyone showed during the loss of our loved one. The Family of Kirby White. 7c

Card of Thanks
We would like to express our sincere thanks and appreciation to everyone for the flowers, food, prayers and concern everyone showed during the loss of our loved one. The Family of Kirby White. 7c

Card of Thanks
We would like to express our sincere thanks and appreciation to everyone for the flowers, food, prayers and concern everyone showed during the loss of our loved one. The Family of Kirby White. 7c

Card of Thanks
We would like to express our sincere thanks and appreciation to everyone for the flowers, food, prayers and concern everyone showed during the loss of our loved one. The Family of Kirby White. 7c

Card of Thanks
We would like to express our sincere thanks and appreciation to everyone for the flowers, food, prayers and concern everyone showed during the loss of our loved one. The Family of Kirby White. 7c

Card of Thanks
We would like to express our sincere thanks and appreciation to everyone for the flowers, food, prayers and concern everyone showed during the loss of our loved one. The Family of Kirby White. 7c

Card of Thanks
We would like to express our sincere thanks and appreciation to everyone for the flowers, food, prayers and concern everyone showed during the loss of our loved one. The Family of Kirby White. 7c

Card of Thanks
We would like to express our sincere thanks and appreciation to everyone for the flowers, food, prayers and concern everyone showed during the loss of our loved one. The Family of Kirby White. 7c

Card of Thanks
We would like to express our sincere thanks and appreciation to everyone for the flowers, food, prayers and concern everyone showed during the loss of our loved one. The Family of Kirby White. 7c

Card of Thanks
We would like to express our sincere thanks and appreciation to everyone for the flowers, food, prayers and concern everyone showed during the loss of our loved one. The Family of Kirby White. 7c

Card of Thanks
We would like to express our sincere thanks and appreciation to everyone for the flowers, food, prayers and concern everyone showed during the loss of our loved one. The Family of Kirby White. 7c

Card of Thanks
We would like to express our sincere thanks and appreciation to everyone for the flowers, food, prayers and concern everyone showed during the loss of our loved one. The Family of Kirby White. 7c

Card of Thanks
We would like to express our sincere thanks and appreciation to everyone for the flowers, food, prayers and concern everyone showed during the loss of our loved one. The Family of Kirby White. 7c

Card of Thanks
We would like to express our sincere thanks and appreciation to everyone for the flowers, food, prayers and concern everyone showed during the loss of our loved one. The Family of Kirby White. 7c

Card of Thanks
We would like to express our sincere thanks and appreciation to everyone for the flowers, food, prayers and concern everyone showed during the loss of our loved one. The Family of Kirby White. 7c

Card of Thanks
We would like to express our sincere thanks and appreciation to everyone for the flowers, food, prayers and concern everyone showed during the loss of our loved one. The Family of Kirby White. 7c

Card of Thanks
We would like to express our sincere thanks and appreciation to everyone for the flowers, food, prayers and concern everyone showed during the loss of our loved one. The Family of Kirby White. 7c

Card of Thanks
We would like to express our sincere thanks and appreciation to everyone for the flowers, food, prayers and concern everyone showed during the loss of our loved one. The Family of Kirby White. 7c

Card of Thanks
We would like to express our sincere thanks and appreciation to everyone for the flowers, food, prayers and concern everyone showed during the loss of our loved one. The Family of Kirby White. 7c

Card of Thanks
We would like to express our sincere thanks and appreciation to everyone for the flowers, food, prayers and concern everyone showed during the loss of our loved one. The Family of Kirby White. 7c

Card of Thanks
We would like to express our sincere thanks and appreciation to everyone for the flowers, food, prayers and concern everyone showed during the loss of our loved one. The Family of Kirby White. 7c

Card of Thanks
We would like to express our sincere thanks and appreciation to everyone for the flowers, food, prayers and concern everyone showed during the loss of our loved one. The Family of Kirby White. 7c

Card of Thanks
We would like to express our sincere thanks and appreciation to everyone for the flowers, food, prayers and concern everyone showed during the loss of our loved one. The Family of Kirby White. 7c

Card of Thanks
I would like to express my sincere thanks to everyone for the visits, flowers, cards, calls and prayers shown me during my surgery. A special thanks goes to all of my family, the doctors and nurses at Haskell Memorial Hospital and Brother Griffith for their kindnesses. May God Bless each of you. Linda Bartley. 7p

Card of Thanks
We deeply appreciate your kindness and sympathy shown during the loss of our beloved Bobby. Although there can be no consolation for the grief we share, may God's richest blessings be yours for your sympathetic understanding. For the food, flowers, sympathy cards, the kind words spoken, phone calls and prayers, we say 'thank you' the Family of Bobby Tankersley. 7c

Card of Thanks
I wish to express my thanks and appreciation to each of you for your thoughtfulness, prayers, flowers, cards, calls, visits and good deeds, since my accident. Special thanks to the Sophomore class for the football vase of ivy. Jeff Hatfield. 7p

Card of Thanks
We would like to express our sincere thanks and appreciation to everyone for the flowers, food, prayers and concern everyone showed during the loss of our loved one. The Family of Kirby White. 7c

Card of Thanks
We would like to express our sincere thanks and appreciation to everyone for the flowers, food, prayers and concern everyone showed during the loss of our loved one. The Family of Kirby White. 7c

Card of Thanks
We would like to express our sincere thanks and appreciation to everyone for the flowers, food, prayers and concern everyone showed during the loss of our loved one. The Family of Kirby White. 7c

Card of Thanks
We would like to express our sincere thanks and appreciation to everyone for the flowers, food, prayers and concern everyone showed during the loss of our loved one. The Family of Kirby White. 7c

Card of Thanks
We would like to express our sincere thanks and appreciation to everyone for the flowers, food, prayers and concern everyone showed during the loss of our loved one. The Family of Kirby White. 7c

Card of Thanks
We would like to express our sincere thanks and appreciation to everyone for the flowers, food, prayers and concern everyone showed during the loss of our loved one. The Family of Kirby White. 7c

Card of Thanks
We would like to express our sincere thanks and appreciation to everyone for the flowers, food, prayers and concern everyone showed during the loss of our loved one. The Family of Kirby White. 7c

Card of Thanks
We would like to express our sincere thanks and appreciation to everyone for the flowers, food, prayers and concern everyone showed during the loss of our loved one. The Family of Kirby White. 7c

Card of Thanks
We would like to express our sincere thanks and appreciation to everyone for the flowers, food, prayers and concern everyone showed during the loss of our loved one. The Family of Kirby White. 7c

Card of Thanks
We would like to express our sincere thanks and appreciation to everyone for the flowers, food, prayers and concern everyone showed during the loss of our loved one. The Family of Kirby White. 7c

Card of Thanks
We would like to express our sincere thanks and appreciation to everyone for the flowers, food, prayers and concern everyone showed during the loss of our loved one. The Family of Kirby White. 7c

Card of Thanks
We would like to express our sincere thanks and appreciation to everyone for the flowers, food, prayers and concern everyone showed during the loss of our loved one. The Family of Kirby White. 7c

Card of Thanks
We would like to express our sincere thanks and appreciation to everyone for the flowers, food, prayers and concern everyone showed during the loss of our loved one. The Family of Kirby White. 7c

Card of Thanks
We would like to express our sincere thanks and appreciation to everyone for the flowers, food, prayers and concern everyone showed during the loss of our loved one. The Family of Kirby White. 7c

Card of Thanks
We would like to express our sincere thanks and appreciation to everyone for the flowers, food, prayers and concern everyone showed during the loss of our loved one. The Family of Kirby White. 7c

Card of Thanks
We would like to express our sincere thanks and appreciation to everyone for the flowers, food, prayers and concern everyone showed during the loss of our loved one. The Family of Kirby White. 7c

Card of Thanks
We would like to express our sincere thanks and appreciation to everyone for the flowers, food, prayers and concern everyone showed during the loss of our loved one. The Family of Kirby White. 7c

Card of Thanks
We would like to express our sincere thanks and appreciation to everyone for the flowers, food, prayers and concern everyone showed during the loss of our loved one. The Family of Kirby White. 7c

Card of Thanks
We would like to express our sincere thanks and appreciation to everyone for the flowers, food, prayers and concern everyone showed during the loss of our loved one. The Family of Kirby White. 7c

Card of Thanks
We would like to express our sincere thanks and appreciation to everyone for the flowers, food, prayers and concern everyone showed during the loss of our loved one. The Family of Kirby White. 7c

Card of Thanks
We would like to express our sincere thanks and appreciation to everyone for the flowers, food, prayers and concern everyone showed during the loss of our loved one. The Family of Kirby White. 7c

Card of Thanks
We would like to express our sincere thanks and appreciation to everyone for the flowers, food, prayers and concern everyone showed during the loss of our loved one. The Family of Kirby White. 7c

Card of Thanks
We would like to express our sincere thanks and appreciation to everyone for the flowers, food, prayers and concern everyone showed during the loss of our loved one. The Family of Kirby White. 7c

Card of Thanks
We would like to express our sincere thanks and appreciation to everyone for the flowers, food, prayers and concern everyone showed during the loss of our loved one. The Family of Kirby White. 7c

Card of Thanks
We would like to express our sincere thanks and appreciation to everyone for the flowers, food, prayers and concern everyone showed during the loss of our loved one. The Family of Kirby White. 7c

Card of Thanks
We would like to express our sincere thanks and appreciation to everyone for the flowers, food, prayers and concern everyone showed during the loss of our loved one. The Family of Kirby White. 7c

Card of Thanks
We would like to express our sincere thanks and appreciation to everyone for the flowers, food, prayers and concern everyone showed during the loss of our loved one. The Family of Kirby White. 7c

Card of Thanks
We would like to express our sincere thanks and appreciation to everyone for the flowers, food, prayers and concern everyone showed during the loss of our loved one. The Family of Kirby White. 7c

Card of Thanks
We would like to express our sincere thanks and appreciation to everyone for the flowers, food, prayers and concern everyone showed during the loss of our loved one. The Family of Kirby White. 7c

Card of Thanks
We would like to express our sincere thanks and appreciation to everyone for the flowers, food, prayers and concern everyone showed during the loss of our loved one. The Family of Kirby White. 7c

Obituaries
Mrs. Robertson
Funeral services for Mrs. Pinkie Robertson, 80, of Haskell were held Feb. 12 at 2:30 p.m. in the First Baptist Church, Haskell, with Rev. Dudley Bragg, pastor, officiating. Interment was in Willow Cemetery, under the direction of Holden-McCauley Funeral Home.

Mrs. Robertson died Feb. 10 at 7:15 p.m. in the Haskell Memorial Hospital.

Born June 30, 1897 in Comanche, she married James Leon Robertson May 5, 1918 in Afton. He died Feb. 23, 1963. She had been a resident of Haskell since 1942. She retired in 1962 as a retail saleslady due to ill health.

Survivors include one daughter, Mrs. J.B. (Iva Lee) Gipson of Haskell; one son, Randolph Robertson of Brownwood; one sister Mrs. Lula Mae Haney of Afton; and 3 brothers; George Hicks and Biddie Hicks, both of Muleshoe, Ed Hicks of Friona; 6 grandchildren and 6 great grandchildren.

Ballbearers were John Miller, Buster Gholson, Jim Alvis, Raja Hassen, Charles Swinson, Floyd Lusk, Walter Kretschmer, and R.C. Couch Jr.

Steven Smith
Steven Smith, 28, of 1135 McDonald Ave., Missoula, Montana died January 23, 1978 of a sudden illness.

Mr. Smith was born May 10, 1949 in Fowler, Kansas. He attended schools in Kansas, Texas and New Mexico and served in the Army from 1969 to 1973. He attended college in Washington and Oregon before moving to Missoula in 1976.

Survivors include his mother, Wanda Smith, his brother Kelly Smith, his sister Vicki Le Plane and his grandmother, Ruby Spencer, all of Missoula, and his father, Ray Smith of Liberal, Kansas. Other survivors include one nephew and several aunts, uncles and cousins.

Recent aerial counts of ducks and geese in the Panhandle and on the South Plains by Texas Parks and Wildlife Department personnel furnished no surprises as most of the natural playa lakes remain dry.

"Our counts were down 75 percent over last year and the lack of water is the main reason," said Max Traweck, waterfowl biologist.

"Normally, the plains of Texas has over 6,500 playa lakes with enough water to hold waterfowl during the winter months, but only 250 lakes with water were counted on our most recent survey," Traweck continued.

Lack of rain last fall



MRS. JOHN V. (HILDA) NEUMANN of Old Glory, announces the engagement and approaching marriage of her daughter, Beverly Marilyn, to Thomas Edward Davis, son of Mr. and Mrs. Jack Glenn Davis of Rule. Miss Neumann is a 1975 graduate of Old Glory High School, attended Texas Tech University two years, and is now a junior at Abilene Christian University, majoring in Elementary Education. Mr. Davis is a 1972 graduate of Rule High School and is self-employed as a custom harvester in Rule. The couple plan an April 1 wedding at Faith Lutheran Church in Sagerton.

Hospital Notes

ADMISSIONS
 MEDICAL: Mack Boykin, Weinert; Matias Tonche, Haskell; Pauline Carmack, Haskell; Rita Hoover, Haskell; Brice Weaver, Rule; Louis Tucker, Haskell; J.L. Toliver Sr., Haskell; Wesley Adams, Rochester; Archie Cox, Haskell; Ira Harrington, Haskell; Shirley Ellis, Throckmorton; Artie Peek, Goree; Jack Neathery, Rochester; Lillian Cole, Rule.

DISMISSALS
 Emilio Arredondo, Inez Gholson, Thomas Bird, Ben Isbell, Jada Powell, Jim Benton, Shelby Harris, Sisto Malina, James Lewis, Lupe Grandado, Valine Beaty, Lyla Mary Isbell, William Russell, Ruth Russell, Frankie Thrapp, J.C. Montgomery, Melissa Berryhill.

BIRTHS

Mr. and Mrs. Patrick Pace of Friona, announce the birth of a son, David Matthew, born February 2, 1978 weighing 7 lb 2 oz. He has a big brother Joseph James, age 4. Grandparents are Mr. and Mrs. Lynn Pace, Jr. and Mr. and Mrs. Willie Burger, all of Haskell. Great-Grandparents are Mrs. Lynn Pace, Sr. of Haskell and Mr. and Mrs. Fred Burger of Stamford.

4-H CLUB

Liven up life with a 4-H Clothing Project that will be started in March.

4-H Clothing Projects help members to search out new things to sew, to knit, to buy, to use, to wear and to enjoy. There's new ways of putting things together, like seams and zippers, shiny fabrics and plush colors in shirts and sweaters and pants. There's special activities and tours for everyone.

The Clothing Project is a part of 4-H club work conducted by the Texas Agricultural Extension Service. 4-H members who participate in the project attend six educational activities conducted by adult and/or junior leaders. At the completion of the project, members participate in the county dress revue. Members may progress to the District, State, and National Review.

Members may register 4-H Clothing Project at their February 4-H project meeting.

An ideal gift for kids of all ages, the Froggy by Papermate. It's a fun and bouncy pen holder with a fine quality, Papermate pen, perfect for home, school, or office. The Haskell Free Press.

Haskell's Market Place
 The Classified Ad Page

College News

Junanne Brock, a sophomore at Western Texas College, has been cast in the female lead role of "Barefoot in the Park," the dinner theatre production set for March 9-11 and March 16-18 in the WTC Student Center.

Miss Brock, a transfer from Texas Christian University, was last seen in the title role of "Medea" at WTC in the fall. In "Barefoot in the Park," she plays the role of Corie Bratter, a lovely, flighty young bride.

Working toward majors in theatre and radio/TV broadcasting, Miss Brock has numerous acting credits, including roles in "I Remember Mama," "The Skin of Our Teeth," "The Tempest," "Blood Wedding," "No, No, Nanette," "Story Theatre," "Hello From Bertha," and "Texas" in Palo Duro Canyon. She had a dual role in "Texas" and did the lead female role as an understudy last summer. While in Snyder High School, she won Best Actress honors at all levels—district, regional and state—in University Interscholastic League competition.

At the completion of this semester, Miss Brock will study at the American Conservatory Theatre in San Francisco. She will continue her studies at San Francisco State University and the University of California at Los Angeles.

Miss Brock is the daughter of Dr. and Mrs. Ben Brock of Snyder and the granddaughter of Mrs. R.L. Brock of Haskell. "Barefoot in the Park," written by Neil Simon, played on Broadway 1,532 performances. The comedy, under the stage and technical direction of Jeanne Kobuszewski, is one of the most spectacularly successful comedies in recent American stage history.

Miss Kobuszewski recently directed WTC's highly successful season opener "Medea," her first production in Snyder. "Barefoot in the Park" is her thirty-third directing credit. Prior to coming to Western Texas College, Miss Kobuszewski chaired the drama department at Glenville State College in Glenville, W.Va., for four years. Some directing credits include "Never Too Late," "The Wizard of Oz," "Of Mice and Men," "Winnie-the-Pooh," "The Miracle Worker," "Picnic," and "You Can't Take It With You."

Tickets for the dinner theatre are \$8 per person. Two performances are sold out, and reservations are now being accepted for the other four performances. Information about reservations may be obtained by calling the WTC Fine Arts Division office at AC 915 573-8511, extension 234.



JUNANNE BROCK

Your Recipe Could Be Chicken Contest Winner

The chicken you're serving your family tonight could win \$10,000 for you in the 1978 National Chicken Cooking Contest.

That's the top prize for the best recipe in the 30th annual chicken cook-off to be held July 26 in Tampa, Florida. An additional \$10,000 in prizes will be shared by four runners-up.

Anyone may enter, according to the National Broiler Council, sponsor of the contest, and there's no limit to the number of recipes you may submit. Just write your name, address and telephone number on each and mail before the April 1 deadline to: Chicken Contest, Box 28158 Central Station, Washington, DC 20005.

Recipes will be judged on four basic points: taste, appearance, interest and simplicity. Chicken is the only required ingredient and a whole bird or any part or parts may be used. Total preparation time (including marinating, boning, etc.) should not exceed three hours. Recipes should be written for approximately four servings.

Fifty-one finalists, one from each state and the District of Columbia, will receive a trophy and an expense-paid trip to Florida for the national cook-off. A panel of nationally-known food experts will be the judges. The contest is one of the nation's oldest cooking competitions, dating back to 1949.

Former Rule Teacher Honored

Houston Cleve Walkup, former vocational agriculture teacher at Rule, was elected February 2, 1978 to membership of Gamma Sigma Delta the honor society of agriculture at Texas A & M University of College Station. Walkup taught at Stamford 1952-55, at Rule 1955-57, and at Azle 1957-67. He was cited for his outstanding service to agricultural science in conducting over 300 adult farmer, short courses in farm wiring and electrical safety at vocational agriculture departments across Texas. One of those was at Haskell in 1976.

He coached a farm radio team at Rule composed of Benny Allison, Sonny Whorton, Elton Higgs, Winston Ulmer, and Doug Davis that won first place in the state FFA leadership contests in 1955.

College News

Students making the A and B honor rolls and the Distinguished Students list totaled 603 for the 1977 fall semester at Tarleton State University, according to TSU registrar John Whiting.

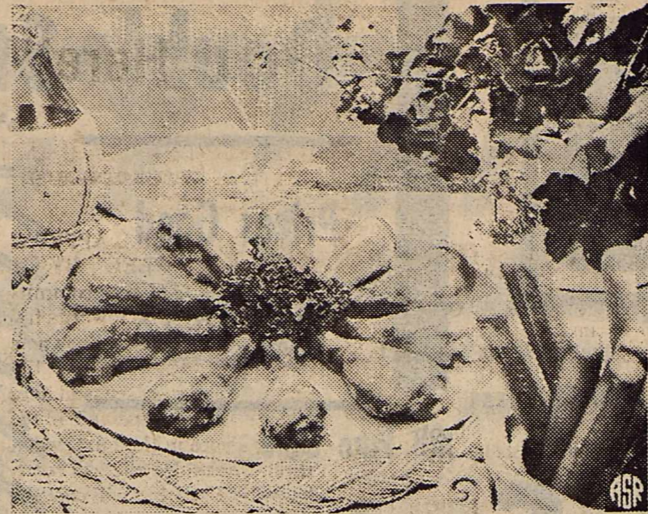
Students listed on the A honor roll must have a 4.0 grade point ratio on the 4.0 system and be taking a minimum of 12 hours. Students on the B honor roll have a grade point ratio between 3.00 and 3.99 with no grade lower than B. Distinguished Students have a GPR of 3.25 to 3.99 with no grade lower than C.

Named to the B honor Roll were Susan Hopkins of Haskell and Jana Easterling of Rochester.

agri-facts

Pat Hale

Branding with confetti is making things rougher for grain thieves. Grain producers are picking up the old practice of marking small slips of paper with identifying numbers and mixing the confetti with their stored grain crop. According to producers who have been using the confetti method for some time, it takes only about seven pounds of the paper to adequately mark and identify 50,000 bushels of grain. Although the small slips of paper are virtually impossible for thieves to separate from the grain, mill operators report they have no problem in removing the confetti during their washing process. Agricultural authorities in areas where the grain identification program is used extensively report a remarkable decline in the number of grain thefts.



There's almost no limit to the number of different ways chicken can be prepared. Let your imagination take over and come up with an entirely new dish. Or send in the recipe that is your family's favorite.

An example of a creative way chicken can be served is "Pizzaria Chicken" (below). Try it, then start thinking of your own best recipes. You may be the next \$10,000 prize winner.

- Pizzaria Chicken**
- 10 broiler-fryer drumsticks
 - 1 cup tomato sauce
 - 3/4 cup canned pizza sauce
 - 1/2 teaspoon dried basil, crushed
 - 1/2 teaspoon parsley flakes
 - 1/2 teaspoon oregano

- 1/2 teaspoon garlic salt
 - 1/4 cup grated Parmesan cheese
 - 1/2 cup mushrooms, minced
 - 4 slices (3" x 3") mozzarella cheese
- Place drumsticks in a shallow baking pan. Bake, uncovered, at 375° for about 40 minutes or until brown. In large bowl, mix together tomato sauce, pizza sauce, all the spices and garlic salt. When chicken is browned, sprinkle each drumstick with Parmesan cheese and mushrooms. Pour mixed sauce over chicken. Cut mozzarella cheese into strips and place over drumsticks. Return to 375° oven and bake, uncovered, about 10 minutes or until cheese is melted and fork can be inserted in chicken with ease. Makes 4 servings.



MR. AND MRS. CHARLES R. MCCAULEY of Haskell announce the engagement of their daughter, Melisa, to Tim Simpson, son of Mr. and Mrs. Darold M. Simpson, of Abilene. The bride-elect is a graduate of Haskell High School and is now attending McMurry College. The prospective bridegroom is a graduate of Cooper High School, of Abilene, and is attending McMurry College. The couple plans a May 27 wedding at The First United Methodist Church in Haskell.

The Fash-N-Aire Beauty Salon

407 N. Ave. D 864-3760
Special
 We are having special prices on all Permanent Waves Feb. 16-28
 Call for an appointment or Drop In's are welcome
 Frances Bennett Sharon Turnbow & Diane Newberry

BYNUM'S

19 N. AVE. E 864-3181

Now that tax time is on us again maybe it's time to get your records in order. We have file cabinets in all sizes and prices, as well as printing calculators, desks, file folders, and all other bookkeeping supplies.

File Cabinets

Good

4 Drawer Letter size
 Hon File Cabinet 18" Deep
 Reg. \$69.95

Our Price \$59.95

Better

4 Drawer Legal Size
 Hon File Cabinet 25" Deep
 Full Suspension
 Reg. \$119.10

Our Price \$99.95

Best

For Your Permanent Records
 Murphy - Insulated Files carrying UL Classification "D". Each drawer a safe - insulated between drawers

2 Drawer Legal/W Lock
 Reg. \$442.00

Our Price \$389.95

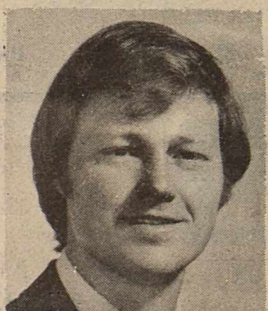
4 Drawer Legal/W Lock
 Reg. \$696.00

Our Price \$579.95

Ask me about Life Insurance for Today's Families

I offer a total program to help protect your family's way of living and build financial security for your retirement years. Call me for details.

Brian Burgess
 111 N. Ave. E
 864-3250



State Farm Life and Accident Assurance Company
 Home Office: Bloomington, Illinois



JUNANNE BROCK

agri-facts

Pat Hale

Branding with confetti is making things rougher for grain thieves. Grain producers are picking up the old practice of marking small slips of paper with identifying numbers and mixing the confetti with their stored grain crop. According to producers who have been using the confetti method for some time, it takes only about seven pounds of the paper to adequately mark and identify 50,000 bushels of grain. Although the small slips of paper are virtually impossible for thieves to separate from the grain, mill operators report they have no problem in removing the confetti during their washing process. Agricultural authorities in areas where the grain identification program is used extensively report a remarkable decline in the number of grain thefts.

STP OIL
 Quart
98¢

STP Carburetor Spray Cleaner
 13 oz.
\$ 1.29

STP Gas Treatment
 12 oz.
69¢

STP Oil Treatment
 12 oz.
98¢

Prices Good Thru February 28, 1978

Smitty's Auto Supply
 LOW RENT DISTRICT WHERE PRICES ARE LOWER
 HASKELL

NOTICE

We Will Be Closed Monday, February 20, 1978

WASHINGTON BIRTHDAY CELEBRATION

We Urge Our Patrons to Transact All Necessary Business Accordingly

Haskell National Bank

HALE FARM SUPPLY
 Phone 864-2692

Godfrey Comments On Federal Spending

Democratic Congressional Candidate Fike Godfrey began stepping up his campaign this week with a warning that inflation spurred by wasteful federal spending could mean disaster for the nation.

"Most people have limited incomes and we cannot afford to spend more than we make, year after year, the way the federal government is doing," said Godfrey. "President Carter's proposed \$500 billion budget, with a \$60 billion deficit, will fan the flames of inflation—and that amounts to robbing the poor to help pay for wasteful government spending."

Godfrey, a Kent County rancher and Abilene businessman, noted that several veteran congressmen who have tried to hold government spending to sensible levels are retiring this year. They include U.S. Rep. Omar Burleson of Anson, whom Godfrey hopes to replace.

"We cannot afford to let the voices of Texas common sense go silent," Godfrey declared. "We cannot afford to replace men of Omar Burleson's caliber with people who think the government owes everyone a living."

"Personally, I think that government owes everyone an opportunity to make a good living—and the chance for an education that will enable people to get and hold good jobs. But it also must provide business with the opportunities and incentives that will help it to create plenty of jobs in the private sector."

Jobs in the private sector provide additional tax revenue while public service "make work" jobs merely gobble up more of the taxpayers' money, Godfrey noted.

Most of our federal taxes should be used in dealing with problems which only the federal government can solve," he said. "Foremost on this list, of course, is national defense—and I am alarmed by the massive gains the Soviet Union reportedly has made on

us in both weapons and military manpower.

"The best insurance against war is for the United States to maintain the strongest military might in the world," Godfrey declared. "We have no desire to dominate the world, nor do we even have designs on any other country. But the Soviets have been outspoken about their objectives and we must never let them gain the upper hand."

Godfrey said he hopes the voters will study the issues and the qualifications of the candidates carefully between now and the Democratic Primary May 6th.

"Now that the list of candidates is complete, I am confident that any objective appraisal will conclude that I am best-qualified, by training, judgement, philosophy and experience, to represent the people of the 17th District in Congress," he said.

STOCK MARKET

The market at Haskell Livestock Auction was fully steady on a run of 291 head of cattle, 68 hogs, and no sheep and goats at its sale Feb. 11, 1978 according to Bill Dennis reporter.

Run was light due to weather conditions. Market was very active, with good demand for all classes of cattle. Top on hogs \$48.75.

Butcher calves: choice, 40-42; good, 38-40; standard, 36-38; rannies, 32-36.

Cows: fat, 31-35.50; cutters, 29.50-31.00; canners, 27-29.50 stockers, 30-36.50.

Bulls: bologna, 36-39; stockers, 40-48.00; utility, 35-40.

Stocker Steer Calves: choice 53-60; good, 50-53; medium, 47-50; common, 43-47.

Stocker Heifer Calves: choice, 43-46; good, 40-43; medium, 37-40; common, 34-37.

Feeder Steer Yearlings: choice, 48-52; good, 44-48; medium, 41-44; common, 38-41.

Feeder Heifer Yearlings: choice, 42-44.50; good, 40-42; medium, 38-40; common, 36-38.

Cows & Calves: good, 32.5-39.5; plain, 27-32.5.

Top on Hogs 48.75.

Bulk of Butcher Hogs 46.00-48.75.

Boars 27.00-30.00.

Sows 39.00-42.00.

Feeder Shoats 38.00-50.00.

Pigs by the Head 10.00-38.00.

Hearing impairments can strike persons of all ages, warns the Beltone Crusade for Hearing Conservation. Young persons who believe they need not be concerned about their hearing ability until reaching senior citizen status can be headed for trouble, the Crusade officials stress.

A SUBSCRIPTION to The Haskell Free Press is an ideal gift for any occasion. We do all the work. Just come by and give us the name and address and we'll send a gift certificate in your name. Haskell Free Press.



FIKE GODFREY

DANCE IRBY HALL

Friday, February 17
Bob Burks and the Westerners
8:30 to 12:30
Adm. \$3
Everyone Welcome

Reasons I enjoy long weekends:

"Gives me more time to rest and gives me more time to spend with my little girl."
Linda Lopez

"Gives me more time to enjoy my grandchildren and to do the things I want to do."
—Nadine Bell

For more information about a job call
915-773-5371

Stamford Manufacturing Co.

104 E. Hamilton

Stamford, Texas

A 1 EXTERMINATING

To rid your home or property of noxious insects, pests, call the experts at the A 1 Exterminating in Haskell, phone 864-3733, Stamford 915-773-5360! These qualified professionals will eradicate all types of harmful and dangerous insects including termites, roaches, fleas, ants, spiders, beetles and ticks. Rodent pests such as mice and rats are also taken care of in a safe, efficient manner. This is one firm that offers guaranteed results!

Call these professionals for your F.H.A. or state termite inspection. They will be glad to advise you as to the condition of your home and what means will be necessary to rid yourself of any pests that are present. You will have the peace of mind that exists with professional application and proper safety procedures. They are licensed and bonded, of course.

For complete eradication of all insects and rodents, call the A 1 Exterminating! They'll do a great job AND they offer areawide service, also Foundation repair and tree pruning.

The writers of this Consumers Message suggest that you contact this reliable firm for ALL types of pest control!

WASHINGTON "As It Looks From Here"

Omar Burleson
Congressman — 17th District

WASHINGTON, D.C.—AS HAS BEEN POINTED OUT IN THIS SPACE BEFORE, certain types of legislation have a germination period before finally being enacted into law. It took twelve years for Medicare and Medicaid to finally get on the books.

A NUMBER OF PROPOSALS FOR VARIOUS TYPES OF SOCIAL PROGRAMS have been around for years and will be around for a few more. One of these which has, at various times, come up for a vote has been the so-called "Consumer Protection Agency." In the beginning, this was the title. A later version was called the "Agency for Consumer Protection."

Finally, the legislation to create the new agency was entitled "Office of Consumer Representation." The Country was done a favor last week when the bill with this latter title was defeated. The result of turning down this proposal by a vote of 227 to 189 was a defeat for the Carter Administration, the leadership of the House of Representatives, the crusader-Ralph Nader, and an assortment of consumer groups.

THE MEASURE WAS SUPPOSED TO PROTECT THE CONSUMER against something or the other, even though we have the Consumer Product Safety Act and a half dozen other offices in various agencies which are supposed to do this very thing.

AS A MATTER OF FACT, THIS NEW AGENCY, aside from imposing another costly bureaucratic layer on the people of this Country, could be harmful to consumers by increasing the cost of doing business and driving up prices. It would have created additional Federal red-tape and tied up Government decisions in the Courts.

IT IS TO BE CONCLUDED THAT THE MAJORITY of the Members of the House of Representatives finally heard the voices of the American people who are weary of too much Government, too much protection and too much of what other people think is good for them. It is a victory for the Nation that this legislation was defeated. Hopefully, it will stay in the deepfreeze for quite a time to come but, of course, this idea seems to have more lives than a cat and could crop up again under another name.

OTHER BILLS WHICH SHOULD BE PUT TO REST, the fate of which has yet to be determined, are still on the burner. Among these is President Carter's "welfare reform" which has been approved by a Subcommittee. Anything called "reform" is attractive to a lot of people because it suggests something better than what we have. The reform bill by the Administration would add, by the year 1982, when fully effective, \$21 billion to existing welfare programs. It proposes to give outright cash grants to recipients to take the place of what we now have, including food

Writers, writing AUSTIN, Texas (Spl.) — Edgar Allan Poe's doorbell. The death mask of George Bernard Shaw, and a few clippings from his beard. A portrait of T.S. Eliot.

Those are among some of the memorabilia and art works pertaining to writers and writing that are in the Iconography Collection of The University of Texas Humanities Research Center.

Although the HRC is internationally known for its literary collections, its Iconography Collection of some 12,000 items helps bring the personalities of noted authors to life.

Conservation Viewpoints

USDA Soil Conservation Service
Assisting
Haskell Soil and Water Conservation District

"Only 5 Acres Lie Between You and Starvation" [Excerpted from "The Secret of Affluence, USDA]

"Our country is blessed with a good agricultural climate, ample resources distributed from one end of the nation to the other, and a large acreage of good farmland. But these assets are finite—they are not growing. Population is.

Fifty years ago, there was an average of more than 10 acres of cropland per person in the United States. Thirty years ago, it had declined to 8 acres; 15 years ago, to 6 1/2 acres.

There is now just over a billion acres of farmland in the United States. That is an average of 5 acres per person. So, each of us depends on 5 acres of land for our food and

some of our clothing and lumber.

"How much is 5 acres? Well, the playing boundaries of a football field cover just over an acre. So, 5 acres is slightly less than five football fields. But the 5 acres you depend on aren't all flat and suited for growing crops. Just over 2 of the football fields—2.2 acres—are cropland.

"If we are going to maintain our affluence—or increase it—we must somehow make our farm acreage more productive to keep up with the growth in population and demand.

"It takes 37 gallons of fuel and 185 kilowatts of electricity to produce the food and fiber on your 5 acres of farmland. Any interruption of this flow of fuel and power can affect your food supply."

HANDIER THAN a pocket knife. Slip-N-Snip. The Original Folding Scissors. Ideal for gifts, purse, hunters, fisherman and hobbyists. Haskell Free Press.

Want ads... the most powerful column in the world.

Nationally Advertised

Morning Glory

Back Relief Mattresses
famous for Quality since 1903

BYNUM'S
HASKELL, TEXAS

save more of your
FOOD DOLLARS
HERE



Sausage 2 lb bag \$2.69

Longhorn Cheese Kraft 10 oz pkg \$1.09

Sliced Bologna 88¢ lb

Hamburger Meat 69¢ lb

MILK 1 Gallon Plastic \$1.79

Crackers Ritz 1 lb box 87¢

Cherry Pie Filling Comstock Can 99¢

SOUP Campbells Chicken Noodle 4 Cans 95¢

Keg 'O Ketchup Heinz 97¢

CRISCO 3 lb can \$1.69

Keebler **Vanilla Wafers** 12 oz box 67¢

Mrs. Bairds **BREAD** 1 1/2 lb loaf 49¢

Red Emperor **GRAPES** 39¢ lb

Texas **Oranges** 5 lb bag 79¢

Green **Bell Pepper** Each 10¢

Kraft **Miracle Whip** Pint 69¢

Wolf **Tamales** Can 39¢

Kraft **Wrapples** pkg 69¢

Del Monte **Sweet Peas** 3 17 oz cans \$1.00

Clorox 1/2 Gallon 59¢

Johnsons **Pledge** 14 oz can Lemon or Reg. \$1.49

Johnsons **SHOUT** 12 oz can 93¢

POGUE GROCERY

—Extra Parking Behind The Store. Home Owned and Operated—

113 North Avenue E

Phone 864-2015

Haskell, Texas

Heart Month

Today's Pacemakers Are Like The Heart They Control-Their Rate Can Be Changed

February, Heart Month, is perhaps a fitting time to take a closer look at some of the technological advances that have occurred in cardiac pacing since we first began reading about it in the newspapers nearly 20 years ago. Hardly a novelty anymore, nearly 400,000 people

worldwide wear implantable pacemakers today. Still, exciting developments continue to happen.

One recent pacemaker development lets doctors intentionally do what lovers did unintentionally — change the rate at which the heart beats. And the doctor can do it

simply by pushing a button.

Doctors like this pacemaker feature because it lets them fine-tune the device to meet the patient's individual needs. And the patient likes it too because it will probably mean fewer pacemaker replacements over the patient's lifetime.

The reason for this is that pacemakers were originally only used to treat a malady called "complete heart block," a condition occurring usually in the elderly which results in a very slow heart rate. If left untreated, the person experienced such symptoms as recurring blackouts, shortness of breath, dizziness, and lapses in memory.

The implanted pacemaker eliminated these symptoms by speeding up the heart rate to normal levels. It did this by sending electrical impulses at a steady rate through an insulated wire which was either attached directly to the heart muscle or inserted through a vein inside the heart.

In most cases a rate of 70 or 72 pulses per minute was adequate to successfully treat the condition. Symptoms disappeared as long as heart

planted treat an array of heart rhythm disturbances besides "complete block." Approximately 156,000 people, or one out of every 1,300 Americans, has an implanted pacemaker. Each year an additional 60,000 Americans receive one. In many of these people the heart functions normally most of the time and only needs the assistance of a pacemaker occasionally.

Whereas the typical patient once was a 68 to 70-year-old man or woman, today the pacemaker patient ranges in age from the infant several hours old to the centenarian. The spectrum includes housewives, businessmen, famous political figures, hunters, swimmers, gardeners — the list is endless. Each requires a pacemaker that will enable a normal, productive, unrestricted lifestyle as is possible.

Pacemakers with an adjustable rate allow the physician to tailor the device to an individual's special pacing needs. To change rates, the physician simply dials the desired rate on a hand-held rate programmer, holds it over the implanted pacemaker, and pushes a button. The entire procedure takes minutes at most. No anesthetic or surgical intervention is necessary.

What does this mean for the patient? Variations in heart rate exist across the entire population. Men, for example, typically have a heart rate as much as ten beats per minute slower than women. Also, depending on a person's condition, there may be a narrow rate range in which the heart pumps blood most efficiently. Rate adjustability means the pacemaker can be set at a rate that comes closest to the heart's most comfortable and efficient rate.

A rate adjustable capability is ideal for pacing in children.

Infants are born with a very rapid heart beat, about 120 beats per minute, which decreases steadily through age 12, leveling off into adulthood. Implanting a rate adjustable pacemaker means the rate can be changed to duplicate the normal decrease in the maturing person's heart rate.

Modern pacemakers may last as long as ten years before replacement is necessary and an individual's pacing needs may change during this lengthy period. A rate adjustable unit allows the physician to tailor the pacemaker to meet the patient's changing condition. For example, a pacemaker may initially function as a backup device for a patient whose heart beats naturally most of the time. If the condition of the heart should deteriorate over a period of several years, the rate of the pacemaker can be adjusted to provide more assistance and better health.

Rate adjustability is certainly not a cure-all for the many heart rhythm disturbances treatable by pacing. Yet, it is a significant step closer in meeting the particular needs of each pacemaker patient.

Reagan To Support Fisher

The arrangements and final details are moving to completion for Governor Ronald Reagan's visit on Thursday, February 23. Governor Reagan will endorse Bill Fisher, the conservative candidate in the Congressional race.

Bill Fisher, candidate for Congress in the 17th District will host the former California governor in noon activities. These activities include a noon luncheon and a reception at the Abilene Civic Center.

Tickets for the luncheon are being sold throughout the district. The general public is welcome to attend the luncheon with Governor Reagan.

Tickets are being sold for \$50 each and may be bought from anyone associated with the Fisher for Congress Campaign. In Haskell County that is Bobby Watson. He can be contacted at 864-3741 - Haskell. For further ticket information, call (915) 673-2569 or write: Bill Fisher for Congress Committee, Box 21, Abilene, Texas, 79604.

Hermann Sons Workshop Set

Approximately 40 key officers from 10 West Texas area Hermann Sons lodges will attend a one-day workshop at the Holiday Inn in Sweetwater Sunday, Feb. 19. Grand President Louis B. Engelke of San Antonio has announced.

Preparing for the order's traditional March membership campaign will be 18 membership representatives, six secretaries and 18 presidents, vice presidents, corresponding secretaries, and treasurers from the following lodges:

Lubbock Lodge No. 16, Odessa Lodge No. 38, Abilene Lodge No. 50, El Paso Lodge No. 133, San Angelo Lodge

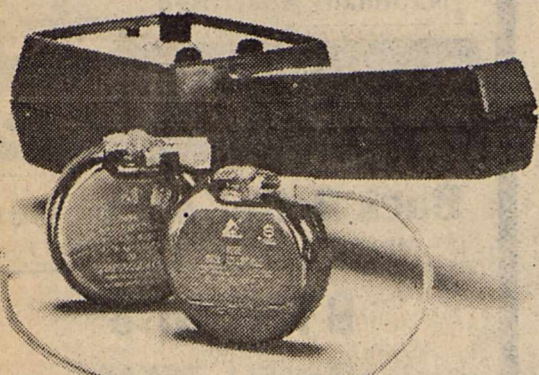
No. 177, Rowena Lodge No. 216, Old Glory Lodge No. 228, Haskell Lodge No. 241, Hermleigh Lodge No. 256, and Roscoe Lodge No. 257.

The workshop, one of six such symposiums scheduled in different parts of Texas in February, will begin with lunch at 11:30 a.m. Special sessions are scheduled at 12:30 p.m. for membership representatives and financial secretaries. Lodge officers will attend later afternoon sessions which will bring them up to date on broad perspectives of lodge leadership.

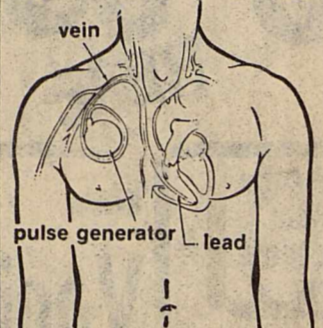
Hardy A. Mosel of Fredericksburg, first grand vice president of the statewide fraternal benefit society, will address the session concerning the upcoming membership campaign. Hermann Sons

currently has some 74,500 members in 156 lodges throughout the state.

Chairman of the workshop will be Edwin F. Stahl of Odessa. Grand Lodge district supervisor. Taking part with him and Mosel will be Marvin O. Gold of San Antonio, grand guide and Grand Lodge district supervisor; Louis R. Hoog, Jr. of San Antonio, grand secretary-treasurer; LeRoy Flach of Comfort, member of the Grand Finance Committee; Benjamin C. Boyd of San Antonio, member of the Home for the Aged Committee; Evelyn Harborth of New Braunfels, member of the Youth Activities Committee; and Harold W. Engelhardt and Ottmar E. Vogel, both of San Antonio, who are Grand Trustees of the order.



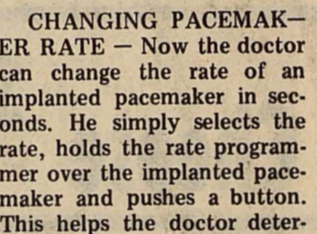
NEW ARRIVALS — What's new in heart pacing is rate programmability; now doctors can change the rate at which pacemakers make the heart beat. Foreground: Two rate adjustable implantable pacemakers. Background: A hand-held rate programmer is used to change the rate of the pacemaker after it has been implanted in the human body.



HOW A PACEMAKER IS IMPLANTED — The lead, an insulated wire which carries the signals from the pacemaker to the heart, is passed through a vein to the inside of the heart. The pacemaker which sends out the timed electrical impulses which make the heart beat, is connected to the lead and implanted underneath the skin, usually in the upper chest. This is called an endocardial implant. Sometimes the lead is attached directly to the muscle of the heart. This is called a myocardial implant.

function was maintained by the pacemaker.

Today, however, more than half of the pacemakers im-



CHANGING PACEMAKER RATE — Now the doctor can change the rate of an implanted pacemaker in seconds. He simply selects the rate, holds the rate programmer over the implanted pacemaker and pushes a button. This helps the doctor determine the best heart rate for the patient's condition and lets him change the rate should his patient's condition require it.

After Four Years of serving you as

COUNTY TREASURER

I, would like to ask for your continued support. The faith you placed in me by electing me County Treasurer was deeply appreciated. Now I am asking you to elect me to a second term in County Government, but this time as County Judge.

Elect John Wayne McDermott Haskell County Judge

(P.D. POL. ADV. PD. FOR BY BETTY SUE McDERMOTT, C.M.P.G. TREAS.)

Bluebonnet Cafe

Rule

Noon Buffet 11:00-1:30
5:30 P.M. Buffet

Tuesday night Mexican Buffet
Thursday night Catfish Buffet

HERE'S TO YOUR HEALTH from DOYLE HIGH

Headaches are never normal. Headaches that recur and are not relieved adequately by aspirin should be promptly investigated by a physician. It is the body's way of signaling that something is wrong and needs to be corrected. In this scientific age, a wide array of medications is available to the physician for treating and preventing headaches. The problem can be serious and corrective measures should not be postponed.

DOYLE HIGH'S
THE DRUG STORE
100 SOUTH HASKELL, TEXAS
PHONE 864-2315

Surflan

plantin' time herbicide for Blackland cotton.

Caught wet and counting on cotton. Or just looking for a plantin' time herbicide that works all season on those fine Blackland soils. Either way, you're covered with Surflan.

Surflan controls your hurrah grass, seed johnsongrass, crabgrass and carelessweed . . . and keeps on working 'til the lint is in the gin.

Surflan won't leach out like some plantin' time herbicides. Banded or broadcast, Surflan's reliable in fair weather or foul.

This year, ask your farm chemical supplier for Surflan.

ELANCO
Surflan

Elanco Products Company
A Division of Eli Lilly and Co.
Indianapolis, Indiana 46206

(Surflan®—oryzalin, Elanco Products Company)

For best results, always read and follow label directions.

THE SALE OF THE YEAR!

ON AMERICA'S 1ST CHOICE IN WAGONS OVER THE PAST TWO YEARS PLYMOUTH VOLARE.

SAVE UP TO \$250 ON VOLARE WAGON VALUE PACKAGES.

Now, you get America's first choice in wagons over the past two years. And with it you get \$663 worth of popular options for only \$413! You save \$250 off the sticker price!

*Value Bonus Package requires optional power steering.

4 REASONS WHY IT'S AMERICA'S 1ST CHOICE OVER THE PAST TWO YEARS.

- HIGH RESALE VALUE.** Volare Wagon's resale value is higher than all its Ford and GM competition.**
- PASSENGER ROOM.** Gives more passenger room than all the new down-sized GM intermediate wagons based on eight key interior dimensions.
- BIG CAR RIDE.** The only wagon in its class with front isolated transverse suspension.
- LOW PRICE.** Compared to GM competition . . . Volare's low price will surprise you.

**% of return of original sticker price for one year old wagons on a competitive model basis. Based on recent Automotive Market Report publication.

SAVE UP TO \$250 ON VOLARE COUPES AND SEDANS, TOO!

You get up to \$663 worth of options like AM radio, digital clock, and more . . . at \$250 off the sticker price! A real Volare Value.

28/20*
MPG HWY MPG CITY

*Based on EPA estimates for sedan and coupe with 6-cylinder, 1-bbl. engine with manual transmission. Your actual mileage may differ depending on your driving habits, the condition of your car and its optional equipment.

IT'S A GREAT TIME TO SAVE AT YOUR CHRYSLER-PLYMOUTH DEALER!

Perry Motor Co.

304 S. 1st Haskell, Texas 864-2550

Hager To Participate In Houston Calf Scramble

Stanley Hager, a 15-year-old Haskell County 4-H member, will participate in the beef calf scramble at the 1978 Houston Livestock Show and Rodeo.

Stanley, son of Mr. and Mrs. W.R. Hager, Jr. of Weinert, will "scramble" during the Feb. 26 matinee rodeo performance in the Astrodome. Not only will he have the opportunity to catch a calf, he will be a part of the Sunday afternoon entertainment package that includes the best rodeo contestants in the world and feature entertainer, Charlie Rich.

Always a favorite with rodeo audiences, the calf scramble begins as an athletic event in the rodeo arena. However, for the contestants who manage to catch a calf, halter it and drag it across a finish line, the scrambling is only the start of year-long educational experience.

Each winner in the calf scramble receives a \$275 calf purchase certificate which enables him to produce a pure-bred, registered heifer that he agrees to feed, fit, groom and return to the Houston Livestock Show the following year.

Each winner also agrees to

Gross Sales Up According To Comptroller

State Comptroller Bob Bullock said Wednesday that reported gross sales in Texas for the third quarter of 1977 totaled \$41.4 billion, a 20 percent increase over the same three-month period the previous year.

The sales totals for July, August and September bring the nine-month total for last year to \$118.6 billion. Gross sales for 1976 totaled \$142.4 billion, Bullock noted.

The third-quarter figures are based on reports filed by some 245,000 business outlets.

"When gross sales for the fourth quarter of 1977 are tabulated, we expect the total sales for the year will show a substantial increase over 1976", Bullock said.

The figures are contained in two computer analyses released by Bullock's office. One breaks down gross sales by county and the other by Standard Metropolitan Statistical Area (SMSA).

Totals for the 25 SMSA's are further divided into 21 different classes of sales, such as agriculture, mining, manufacturing and retail.

Harris County led the state in gross sales for the third quarter with a total of \$10.3 billion, up 20.2 percent over the same period of 1976.

Gross sales in Dallas County for the third quarter totaled \$6.4 billion, while Tarrant County recorded \$2.5 billion and Bexar County \$1.9 billion.

keep accurate monetary records, submit monthly progress reports both to the livestock show and to his individual sponsor, photographically chronicle the progress of his calf and prepare a 500-word essay on his project.

Every performance of the 1978 Rodeo will feature a calf scramble (either beef or dairy) as its fourth event. In each beef scramble, 24 boys will compete for 12 calves and in each dairy scramble 28 boys will compete for 14 calves. Through the 1977 show, winners in the calf scrambles have received \$1,452,375 to purchase 7,940 quality animals.

Most heifers become the

Sen. Farabee Receives Award

State Senator Ray Farabee has been unanimously selected as "Man of the Year" in Texas Agriculture by the members of the District III Texas County Agricultural Extension Agents Association.

Every year each of the seven districts in the State of Texas nominates the person in their district that they feel has made the greatest contribution to agriculture and to the agricultural economy of the State. The nominees are then voted on by the Association. These are the only awards presented by the extension agents to those who are not employees.

Senator Farabee said, "I am truly honored to have been selected to receive this award. Texas ranks third in the nation in total value of crops and livestock produced by farmers and ranchers. The research and assistance provided by the county extension agents of Texas play an invaluable role in making this kind of production possible."

The award will be presented at the Man of the Year banquet held during the Texas County Agricultural Agents Association's annual meeting to be held at Lufkin in August.

Fees Collected

A Monthly Report of Fees collected in the County Clerks Office of Haskell County for the month ending January included: Recording Fees: \$1207.00; Chattel Mortgage Fees: \$268.00; Marriage License Fees: \$7.50; wills, \$5.00; annual statements \$12.00; \$17.00; Copies: \$195.00; Criminal Court Fees: \$65.30; Probate Court Fees: \$75.00; Miscellaneous Fees: Notaries \$4.00; Sheriff, \$51.50 Co. Atty. \$96.00; Co. Judge \$35.00; \$182.50; Fines \$219.00 Law Library \$30.00; Law Enforcement \$3.00; Comp. \$20.00; for a total of \$2,293.30

basis for future cattle herds; thusly, a one-year learning partnership is stretched into a life-time career. For those youngsters who decide not to continue their cattle program, the learning experience is invaluable and many times serves to stimulate a career in some other agricultural occupation.

The Livestock Show opens Feb. 22 and runs through March 5, with rodeo performances in the Astrodome beginning Feb. 24.

The 1978 Rodeo will spotlight the world's top professional cowboys and cowgirls as they compete for one of rodeo's richest purses—more than \$150,000. Rodeo audiences will be entertained by this exciting line-up of TV and recording stars: Mac Davis, Feb. 24; Charley Pride, Feb. 25; Charlie Rich, Feb. 26; Crystal Gayle and Mickey Gilley, Feb. 27; Kenny Rogers and Lynn Anderson, Feb. 28; Johnny Cash, March 1; Conway Twitty and Loretta Lynn, March 2; The Osmonds, March 3 & 4; Dolly Parton, March 5.

B&PW Club

To Observe

Federation Week

The Business and Professional Women's Club of Haskell, will observe INTERNATIONAL FEDERATION WEEK in their meeting February 21. The meeting will be held in the Community Room of the Haskell National Bank, at seven o'clock.

The Executive Committee will serve as hostess for this very important meeting. Members are urged to attend and bring guests.

Mrs. Robbie Pitman will be guest speaker for this meeting.

4H CLUB

Haskell 4-H'ers got an inside track on Guns and Gun Safety at the Corral Building Monday afternoon, at their regular meeting when Charles Thornhill of Haskell explained the different types of Shot Guns used in shooting trap.

Thornhill explained that shooting trap is fun as well as a competitive sport, and that many people shoot trap as a recreation.

4 H boys and girls will receive a safety course and a chance to try on the sport at the Haskell Trap Club, Thursday, March 16th, at 4 p.m.

E. J. Stewart Announces For J.P.

E.J. Stewart has authorized the Haskell Free Press to announce his candidacy for Justice of Peace Precinct 1, subject to the action of the Democratic Primary.

Mr. Stewart stated that he would issue a formal statement to the voters at a later date.

Time. Money. Blood.
We need all you can spare.

Red Cross is counting on you.

GRAND
Stamford 773-3181
Fri. 17-Sat. 18-Sun. 19
Disney's "Darby O'Gill & The Little People"

DRIVE-IN
Stamford 773-3272
Fri. 17-Sat. 18-Sun. 19
2-Big Thrillers-2 "Schoolgirl In Chains" "Summer School Teachers"
Wed. 22-Thurs. 23
2-XX Rated Features Adults Only "Reunion" Plus "Wild Honey"

Ratification Of Treaty Opposed By WTCC

The West Texas Chamber of Commerce has voiced strong opposition towards possible ratification of the Panama Canal Treaties pending before the Senate.

Joe A. Kloesel, Chairman of the WTCC National Affairs Committee stated, "that the Chamber's Executive Committee at its regular quarterly meeting held in Odessa adopted the position firmly believing that proposed ratification would not be in the best interest of the United States."

In a resolution the WTCC called attention to the fact that the Panama Canal has provided and continues to provide a significant service to the United States, Panama and countries throughout the world. The Canal, since its completion, has been vital to the security and economy of the United States.

The Chamber pointed out that a valid concern regarding

ratification is the question of Panama's ability to properly manage and maintain the Canal.

The WTCC resolution questions the contentions of some treaty proponents that giving up the Canal would promote great improvements in good-will towards the United States.

SALAD LUNCHEON

Junior Mothers will sponsor a salad luncheon, Wed. Feb. 22 from 11:30 until 1:30 p.m. at the Corral Building. Tickets will cost \$2.50 and may be purchased from junior students or Wanda Lankford and Jeanette Frierson.

COFFEE

Preston Smith will be in Haskell on Thursday, Feb. 23 for a Coffee. The Public is invited. Time 4:15 to 5:00 p.m. in the Community Room of the Haskell National Bank.

Trinity Lutheran Announces Time Changes

Trinity Lutheran Church wishes to announce a time change in the Worship service for the period February 1978 ending Jan. 31, 1979.

The new change puts Sunday morning worship at 8:30 a.m. and Sunday School following at 9:45 a.m. Trinity Lutheran is also observing the Lenten season with Lenten Services beginning at 7:30 p.m. each Thursday night.

Christ Lutheran Church of Stamford and Trinity Lutheran Church of Haskell are a dual parish and are following an agreement where as they alternate on a yearly basis for an early service, with this year Christ Lutheran having the 11:00 a.m. service. The public is invited to worship with either congregation. Rev. Don Marquart, Nell, and son Pat reside at the church parsonage just east of Trinity Lutheran Church, having moved here from Stamford in Nov. 1977.

Melba Howard Announces For Comm.

Mrs. Bobby L. (Melba) Howard has authorized the Haskell Free Press to announce her candidacy for Commissioner, Precinct 2, Haskell County, subject to the action of the Democratic Primary.

Mrs. Howard stated that she would issue a formal statement to the voters at a later date.

The Haskell CowBelles will meet Feb. 20th, at 7:30 p.m. at the Haskell National Bank Building. The program "The Question of Beef-Imports & Exports" will be given by Mrs. Bob Free and Mrs. R.L. Morales. "Where Your Tax Dollars Go" by Mrs. Bobby Howard.

This is an open meeting and anyone interested in Beef is invited to attend. All new officers will be hostesses.

Slaughtering by appointment Tuesday and Thursday

Excellent facilities for Processing and Flash Freezing-

Kirksey's Inc.

Throckmorton, Texas 76083
Telephone 849-3051



WASHERS and DRYERS

New Models on the way in - must make room! Hurry!

CURRENT MODELS

NOW ON SALE AT CLOSEOUT PRICES!

SAVE up to \$30⁰⁰ on GE Washers
Prices start at \$269⁹⁵

SAVE up to \$20⁰⁰ on GE Dryers
Prices start at \$199⁹⁵



ANDERSON TIRE CO.

PHONE 864-2900 206 S. AVENUE E

Too late to think about CAR INSURANCE!

Once an accident has happened, it's too late to wonder if your automobile insurance gives you the protection you need.

Be sure you have enough coverage—and the right kind! Bring in your policy and talk it over with us. No obligation, of course.

The HARTSFIELD AGENCY

EVERYTHING IN INSURANCE

HASKELL PH. 864-2665

PROFIT RAISING EARTHWORMS

Can You Answer "YES" to These Questions?

1. Do you like raising livestock?
2. Do you want a business of your own?
3. Do you need retirement or extra income?
4. Do you have a back yard or other land?

PERHAPS YOU CAN BECOME A WORM GROWER!

IF ACCEPTED AS A PRODUCER, WE OFFER

- * Professional Guidance
- * Marketing Service
- * Exchange Membership
- * Complete Supplies

ACT TODAY! SEND FOR YOUR FREE BROCHURE!

Send name, address, phone, description of facilities to:

NATIONAL WORM GROWERS EXCHANGE, INC.

615 "A" STREET • SMYRNA, TENNESSEE 37167 • (615) 254-7327

do it... **NOW!**

Subscribe Today

...and SAVE

Effective May 1, 1978

The Free Press single
copy price will go to 20¢.

Year's Subscription Only \$6.25
(In Haskell & Adjoining Counties)

Elsewhere in Texas \$7.50

Outside of Texas \$9.00

THE HASKELL  FREE PRESS

CANCER ANSWER LINE

American Cancer Society
M. D. Anderson Hospital
and Tumor Institute

Know Warning Signals For Childhood Cancers Advise Medical Experts

Though cancer is relatively rare among children, striking 11 out of every 100,000, it remains a serious childhood disease to be conquered.

Next to accidents, cancer is the leading cause of death among children 1 to 14 years of age.

Fortunately, in recent years the outlook for children with cancer has improved dramatically. While childhood cancers once were generally considered fatal, today slightly more than half of those children with cancer are being cured.

Because cancer knows no rules or age limits, parents should be attuned to cancer's danger signals for their children as well as themselves.

Below are four of the most common types of cancer among children and their warning signals.

LEUKEMIA — The most common childhood cancer, leukemia is characterized by rapid production of abnormal white blood cells. As the abnormal white cells replace the normal cells of the bone marrow, production of normal cells is disrupted. Children with leukemia often exhibit anemia causing them to tire easily, be irritable and appear pale. They may also develop serious infections that do not respond promptly to appropriate therapy, may bruise easily or have prolonged bleeding from injuries.

BRAIN TUMORS — Second only to leukemia in incidence among children, brain tumor symptoms vary depending on factors such as size of the tumor, its location, rate of growth and age of the child. The most common symptoms are headache and vomiting without associated nausea caused by increased

pressure within the head. Other symptoms include behavioral changes (decrease in intellect, personality changes and changes in the state of consciousness). Double vision and loss of coordination are also frequent.

LYMPHOMA — Cancer of the lymph nodes is usually classified as Hodgkin's or Non-Hodgkin's lymphoma. More common among teens, Hodgkin's disease is most often first seen as an enlarged lymph gland, usually in the neck, that is painless and exhibits no discoloration. Non-Hodgkin's lymphomas may involve the lymph nodes or other sites such as the bowel, liver or spleen. Tumors arising in the abdomen may be noted by abdominal enlargement, cramping, dark stools, constipation or diarrhea.

BONE TUMORS — The two most common bone tumors are osteosarcoma and Ewing's sarcoma. Occurring most frequently in the teens, both usually begin as painless swelling of the affected bone. In time, the swollen area becomes painful — especially following an injury.

Because many symptoms of childhood cancers often resemble symptoms of many other childhood ailments, it is always wise to seek a medical opinion for proper diagnosis.

Do you have further questions? Call your local unit of the American Cancer Society or call M. D. Anderson Hospital & Tumor Institute's Cancer Information Service, 1-800-392-2040 toll-free in Texas, 792-3245 in the Houston area.



ANN TIBBETS of Rochester, left, shakes hands with Charles Stenholm, candidate for Congress from the 17th Congressional District, following her appointment as Haskell County Finance Chairman for the Stenholm for Congress Campaign.

Sagerton News

The sun came out Monday and it felt good after many days of being cloudy, damp, and cold which brought us ice, snow and rain. The moisture was very nice, and we are thankful indeed. Now it would be good to get some good soaking rains.

The laides of the L.O.C. Home Demonstration Club have their educational tour this week on Thursday. They will go to Abilene and tour the new medical facilities of Hendrick Memorial Hospital, a health spa and the Rehabilitation Center. This is part of their in depth program on health for 1977-78 club year which ends in June. The topic they will take up next year will be housing improvements and planning. The club is open to anyone who would like to join or visit. The L.O.C. ladies will join ladies from other clubs in Haskell County for the tour.

Butch DeBusk was surprised with a birthday party by his wife, Joyce Sue, Sunday evening at the home of her father, Whit Clark. His birthday was February 15.

Mr. and Mrs. Larry Jordan and children of New Branfels visited with Mr. and Mrs. Harvie Jordan last weekend.

The youth of the Sagerton United Methodist Church were guests at a Sweetheart Banquet on Valentine's Day, February 14, at the church.

Mr. and Mrs. Charles Clark had Mr. and Mrs. Bob Clark and family of Abilene as their dinner guests on Sunday for a birthday dinner since both their birthdays come this week. Other guests were Mrs. John Clark and Mrs. M.Y. Benton and her granddaughter, Sharon and her husband, from San Angelo.

Guests in the home of Mrs. J.N. Huggins for dinner on Sunday were: Mr. and Mrs. R.H. Connell of Abilene, Tim Huggins and son, Allen, of Abilene, and Mr. and Mrs. Wayne Huggins and Darrell

Huggins and Michael and Lisa Huggins all of Sagerton and George Hanson of Stamford.

Mrs. Larry LeFevre entertained members of her Canasta Club at her home Tuesday evening of last week.

We still have quite a few people sick with colds and flu, and many said that they did not get out of their houses all week because of the ice and snow and they are looking forward to spring time, when they can be out-of-doors.

Rev. Sammy Ellis, pastor of the Sagerton and Rule United Methodist Churches, will be gone on a trip with the church youth next weekend, and Bo Jones of Rule will be the lay speaker in both churches, at the regular time next Sunday morning. He is a native of Stamford, a McMurry graduate, and is a teacher and assistant coach at Rule High School.

The Sagerton "Hee-Haw" cast, under the direction of Mrs. Joe Clark, Mrs. Pat Bivins, and Mrs. Leland Thane, have been practicing and the musicians have been tuning up their instruments, and the stage hands have been working on props to make this year's performance better than ever. Reserve seats will be available this year. For these you should see Mrs. Charles Clark or Mrs. Joe Clark.



The Consumer Alert

by John L. Hill
Attorney General

AUSTIN—Many Texas real estate developers are providing our citizens with quality developments tailored to fit a variety of needs and pocketbooks.

But there are also unscrupulous speculators who are advertising the stuff that dreams are made of, without any intention of backing up their claims.

They flood the mails and tie up telephone lines with misleading sales pitches, and many disappointed consumers have registered complaints about them with our Consumer Protection Division attorneys.

The "free vacation" gimmick is one abuse that has caused our office to take action on behalf of Texas consumers. The scheme is to offer prospects free "vacations" in return for visiting a development project. It's only later that the consumer discovers he has to travel at his own expense, buy his own meals, and get to see only a bare lot. The "free vacation" was a come-on, nothing more.

Deceptions of this nature come under the heading of misleading advertising and some speculators have been taken to court by our office to stop this practice.

Another tactic used by these unscrupulous speculators is the high pressure telephone sales pitch. One consumer recently reported to our office that he had received 15 telephone calls in one evening from the company of one of these speculators urging him to buy some land "for investment purposes." The telephone pitches usually consist of telling the consumer that the land being sold is rich in minerals or oil, or that it has a plentiful supply of water for agricultural use. In fact, the land may have none of these and may be worthless for investment.

Still another tactic used by some speculators is to send the consumer a \$500 "check",

advising that the "check" will reduce the price of the land by that amount. It is not uncommon for reputable developers to sell their first lots at a lower price, so they can accumulate more money for additional development, but no reputable or sensible developer can consistently mark his property down to less than it is worth. Prospective buyers who use the \$500 "check" may find out too late that the land was worth \$500 less than the advertised price all along.

Our Consumer Protection Division lawyers and the Texas Real Estate Commission advise prospective land buyers always to check out the developer's claim carefully, never commit yourself to anything by telephone, make an on-site inspection, talk to long-time residents in the area, and show the contract to your attorney before you sign anything.

If you have a complaint about a land fraud scheme or any other possible fraudulent practice, contact our Consumer Protection Division in Austin, Dallas, San Antonio, Houston, El Paso, Lubbock, or McAllen. If you live outside these areas, call toll-free: 1-800-252-9236.

Latin leaders

AUSTIN, Texas (Spl.) — Improving the skills of mid-career Latin Americans who bear promise of future leadership in their countries is the goal of a new program in the Lyndon B. Johnson School of Public Affairs at The University of Texas.

The U.S. State Department has selected the LBJ School as the site for its Fulbright-LBJ Program for Visiting Fellows. Only one other program like it exists in the U.S.

Beginning next fall, 10 Latin American professionals and managers will come to the campus to spend nine months pursuing studies in their areas of interest.

Leisure Lodge News

Several activities were called off this week due to bad weather, but it didn't stop some of the residents going out to eat.

We are so thankful that not any of our residents have the flu at this time.

Mr. and Mrs. George Callaway from Eureka, Calif., Mrs. Pauline Turnbow from Ft. Sumner, N.M., and Annie Fry from Abilene visited their sister, Nannie Cobb.

Services Sunday were by the First Presbyterian Church and were greatly enjoyed.

Mr. and Mrs. Bill Grant from Wickert, Mr. and Mrs. Manford Reid from Rochester visited Mrs. Carrie Edwards and took her out to eat on Sunday.

Mr. and Mrs. Ed Melton from Abilene, Mr. and Mrs. M.C. Piland also from Abilene visited their mother, Mrs. Bessie Piland.

Mr. and Mrs. Hubert Wilson from Rochester and Mr. and Mrs. Silas Wilson from Big Springs visited their mother, Mrs. Nancy Howard.

Alton and Mildred Sanders along with the G.A.'s from Weinert sang at Leisure Lodge this week. The girls were: Keyy Earp, Donna Griffis, Darla Griffis, and Stacia Adams and Laurie Hester. Thank you girls and do sing for us again.

Mr. and Mrs. Alton Sanders and girls visited Mr. W.O. Lewis and he recorded a number of songs.

Wednesday morning Adm. Lorene Beason, Activity Director, Anna Lee Tribbey and Cook, Marie Branch, were

surprise by kitchen staff with gifts, cake and coffee for all three having birthdays recently.

HASKELL Lunch Menu

February 20-24
MONDAY

- 1 Braised Beef over Rice
- 2 Seasoned Green Beans
- 3 Hot Rolls Butter
- 4 Cherry Cobbler
- 5 Milk

TUESDAY

- 1 & 2 Hamburgers
- 3 Lettuce, Tomatoes, Onions, Pickles
- 4 French Fries Catsup
- 5 Milk

Extra Applesauce Cake

- WEDNESDAY
- 1 Beef and Spaghetti
- 2 Buttered Corn
- 3 Cabbage Slaw
- 4 Hot Rolls Butter
- 5 Milk

Extra Fruit Jello

- THURSDAY
- 1 Fish Portions
- Catsup or Tartar Sauce
- 2 Potatoes in Cheese Sauce
- 3 Hot Rolls Butter
- 4 Peach Halves
- 5 Milk

Extra Cinnamon Crispies

FRIDAY

- 1 Barbecued Weiners
- 2 Potato Salad
- 3 Hot Rolls
- 4 Apple Crisp
- 5 Milk

Haskell's Market Place
The Classified Ad Page

OUR COFFEE IS NOW 25c A CUP

THURSDAY

Home Made Steak Fingers \$1.75
Salad French Fries or Baked Potato
Tea or Coffee

FRIDAY

Mexican Dinner \$2.35
Two Beef or Cheese Enchiladas \$1.50
Toasted Tortillas
Tea or Coffee

SATURDAY

Tender Dinner Steak \$2.65
Salad French Fries or Baked Potato
Tea or Coffee

All Served 5 - 8 P.M.

City Cafe

FOR SALE
Have some new listings. Have some bargains. We are ready to get down and trade with you. Come see us.
LIST YOUR PROPERTY WITH US, WE SELL.
Furrh's Real Estate
510 North 1st, Haskell
Stanley Furrh
864-2576, or call,
Garlene Dunnam Betsy Nanny Frances Arend
864-2814 864-3626 864-3156

Truck Load Sale

Denim! Denim! Denim!

Hundreds of Pairs Irregulars

Wrangler 14 oz. Denim No-Fault

1. Shrinkage Control for Perfect Fit
2. Out of the dryer - Ready to Wear
3. Wrinkle Free - Pucker Free
4. Fades Great

\$10⁹⁵ ea.-3 pr. \$30⁹⁹-6 pr. \$59⁹⁹

Save 5.00 to 6.00 a pair

Bring A Friend


Lane APPAREL
FOR MEN
Next to M-System

<h1>PERRY'S</h1>	
Gladiola Bulbs 10 for \$1.59	Yellow Pink Scarlet Red/Yellow
Newborn Pampers \$1.93	Dotted Swiss Spring Colors \$1.89 No. 246
Toddler Pampers \$1.57	Overnight Pampers \$1.43
Kitchen Hand Towels Assl. Prints 99¢	
Cannon Bath Towels \$1.47	Wash Cloths 43¢
We have Garden Seed and Flower Seed	Khaki No. 461 \$2.99 yd
Unbleached Muslin No. 224 89¢ yd	Latest In Fabric Interlock Solids & Prints to Match No 166 No 167 \$2.69 \$2.99 yd yd
Extra Absorbant Daytime Pampers \$2.37	
<h1>PERRY'S</h1> 11 North Avenue E 864-2751	

M SYSTEM

Your FRIENDLY
SUPER MARKETS

112 N. Av. D
Haskell
Where your dollar buys more



All Vegetable
CRISCO 3 lb can **\$1.57**

DOUBLE S & H GREEN STAMPS WEDNESDAYS
With The Purchase Of \$2.50 Or More

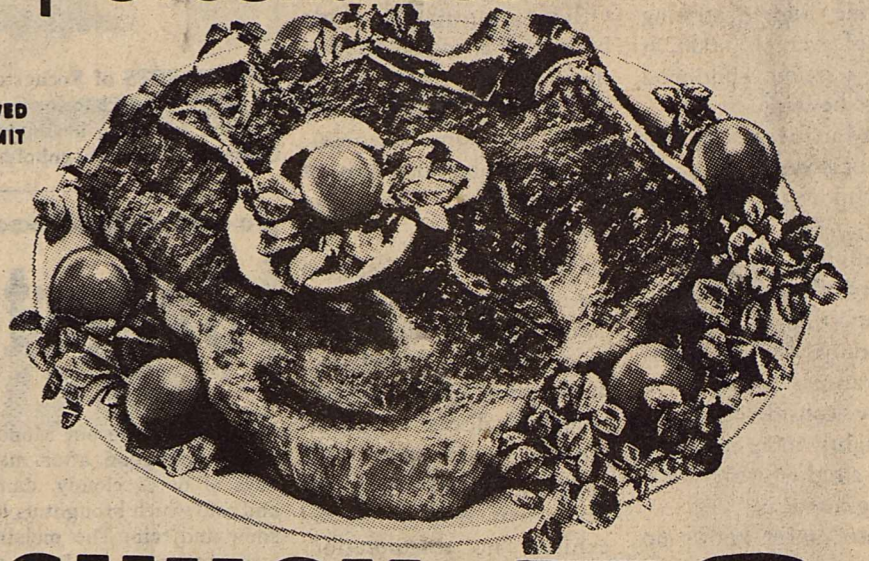
Specials Good
Thurs. Feb. 16
thru Wed. Feb. 22



Try M-System
For The
Finest
Beef!

Arm Roast.....lb 98¢
7-Bone Roast.....lb 89¢
Ground Beef.....2 lb pkg \$1.38

RIGHT RESERVED TO LIMIT



Harvest Collection STONEWARE
This Week's Feature
Cereal Bowl 69¢
BONUS VALUE THIS WEEK
Covered Casserole \$10.99



KRAFT MIRACLE WHIP
QT. **78¢**
LIMIT ONE

WITH PURCHASE OF \$10.00 OR MORE
EXCLUDING CIGARETTES & TOBACCO

CLUB STEAKS
LB. **\$1.39**

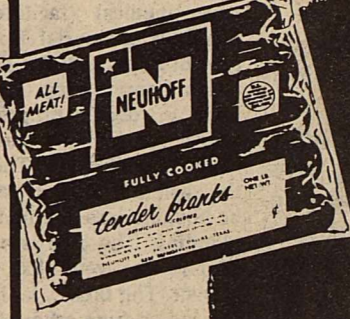
CHUCK ROAST LB **79¢**

GEBHARDT
CHILI WITH BEANS
15 OZ CAN **49¢**

CANDY
BABY RUTH OR BUTTERFINGER
6-Bar Pkg. **69¢**



Betty Crocker Asst.
CAKE MIXES
BOX **57¢**



NEUHOFF ALL MEAT FRANKS
12-OZ. PKG. **65¢**

HUNT'S KETCHUP
14 OZ. BOTTLE **39¢**



FOX FROZEN ASST. KINDS PIZZA
1-LB. PKG. **79¢**

ARROW PINTO BEANS
1-LB. PKG. **29¢**

BAMA
GRAPE JELLY 3 LB JAR **99¢**

GREEN GIANT
KITCHEN SLICED
GREEN BEANS 3 16 OZ CANS **89¢**

RATH PURE PORK SAUSAGE
LB. BAG **79¢**

TABBY CAT FOOD
ASSORTED FLAVORS
4 6 1/2 OZ. CANS **\$1.**

GREEN GIANT WH. KERNEL or CR. STYLE
GOLDEN CORN 4 303 CANS **\$1.**

PINE-SOL CLEANER
15-OZ. BOTTLE **79¢**

WAGNER FRUIT DRINK
32-OZ. JAR **39¢**



SHURFRESH SWEET MILK
GALLON PLASTIC JUG **\$1.79**

DOWNY FABRIC SOFTENER
64 OZ BOTTLE **\$1.69**

RENUZIT SOLID ROOM DEODORANT
6-OZ. PKG. ASSORTED FLAVORS **39¢**

FAULTLESS SPRAY STARCH
22-OZ. CAN **79¢**



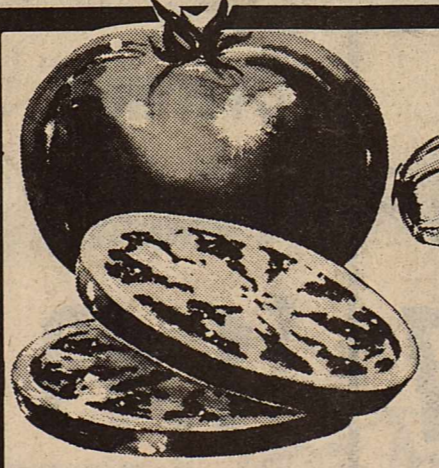
LADY SCOTT'S TISSUE
2 ROLL PAK **49¢**

TANG
BREAKFAST DRINK 27 OZ DECORATOR JAR **\$1.79**

ARROW
POPCORN 1 LB BAG **19¢**

SOFT PARKAY OLEO
1-lb. PKG. **69¢**
KRAFT HALF MOON CHEESE 10-oz. PKG. **99¢**

SCOTT PAPER TOWELS
JUMBO ROLL **49¢**



CELERY
LARGE STALK-Ea. **29¢**

D'ANJOU PEARS
3 lbs. **\$1.**



EFFERDENT 40-ct. box \$1.40 value **\$1.19**
Denture Powder
FLEX NON-AEROSOL 8-ounce \$1.39 value **89¢**
Hair Spray
24 TABLETS \$1.64 value **\$1.39**
Dristan

Tomatoes
3 CTNS. **\$1.**

SALAD MIX
FRESH CELLO
3 PKGS. **\$1.69¢**

Potatoes
US NO 1 RED
10 LB BAG **69¢**