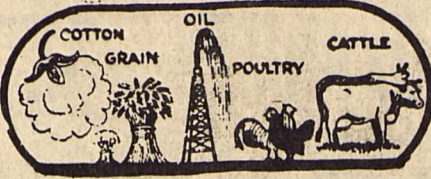


15c  
Per Copy

# THE HASKELL



# FREE PRESS

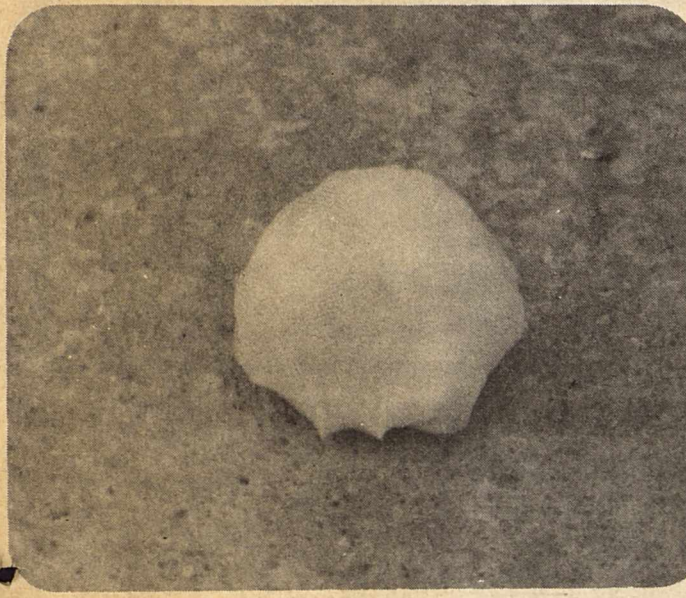
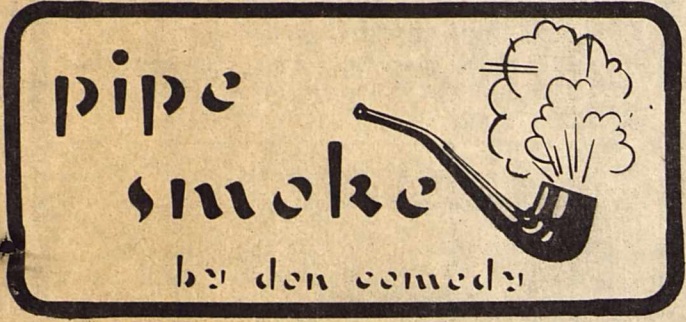
"HASKELL—A GOOD PLACE TO VISIT; A BETTER PLACE TO LIVE"

VOLUME NINETY-ONE

14 PAGES

HASKELL, TEXAS, 79521, THURSDAY, JANUARY 13, 1977

NUMBER TWO



### As Promised

Remember about a month ago when there was a hard luck story here about trying to photograph a snowstorm? That article contained a promise that the next time it snowed in Haskell there would be a picture. Well, it snowed last Saturday night and after searching over most of the county, we could find only one snowball which we thought was attractive enough to photograph.

Admittedly, it's probably not the most artistic or creative photo ever printed, but we guarantee that it is a snowball.

And speaking of snow, did you notice the sign at 'The Drug Store'? It says, "Ski Lift, One Block North, 370 Miles West."

## Commissioners Court Holds All Day Session Monday

Members of the Commissioners Court of Haskell County met Monday in an all day session for their first meeting of 1977. The agenda contained many time consuming items which occur only once each year. Following the approval of monthly and quarterly reports, members of the court made several appointments including: Dr. T. W. Williams as County Health Officer; members of the County Historical Committee; members of the salary grievance committee; Community assessors; and Commissioner Jiggs Edwards as County Judge Pro-Tem.

## CB Radio Fees Suspended

You have your new Christmas CB set. In the carton is the application for a permanent license and for the temporary license. The permanent license form says send it in with \$4. Don't send the money. Effective January 1, 1977, the Federal Communications Commission has suspended the collection of all license fees. This is a result of a court decision based on four suits against the Commission.

The court said that the Commission must justify all of its fees. While they are deciding the cost basis for the fees, they have decided to suspend collection of all fees. This does not mean that there will not be fees in the future. But for now, you can get your CB license without cost. And while you're at it, use the money you have saved to pay for the "CB Rules and Regulations." They are available for \$1.50 from the Consumer Information Center, Dept. 97E, Pueblo, Colorado 81009.

## Film To Be Shown At 1st Methodist

"CORRIE: Behind the Scenes with THE HIDING PLACE," a new full-length color release from World Wide Pictures, will be shown at the First United Methodist Church of Haskell on January 16th. A single showing is scheduled to begin at 6 p.m.

This show will also be shown at East Side Baptist Church at 7:00 p.m.

THE HIDING PLACE, a true story filmed in Holland and other European locations, is based on the experiences of Corrie ten Boom, who, with her father, sister, and brother, provided refuge for countless Jewish families. A secret room was constructed in their home as a hiding place for use during Gestapo raids. The ten Boom's activities were discovered, and they were sent to prisons and concentration camps.

According to Kenneth Bliss, Director of Distribution for World Wide Pictures, THE HIDING PLACE has been extremely well-received, both by audiences and film critics. "CORRIE was produced to give people who have seen THE HIDING PLACE or read her many best-selling books an opportunity to hear her share many of her memories about her life in Holland, her family, and her lifetime of service to others."

Bliss added that the film "offers a great lesson in the perseverance of a personal faith in a very dark and trying period of world history. Corrie ten Boom, now in her eighties, has a tremendous vitality, a deep spiritual commitment, and a profound love for her fellow man. We believe we have succeeded in transmitting a part of her zest, personality, and source of strength through this film."

Bliss noted that the film includes "interesting side-lights on the experiences of the cast and crew during the filming of THE HIDING PLACE."

## Haskell Teams Lose Four

The Haskell Indians and Maidens had a difficult week losing to both Crowell and Paducah. The Junior Varsity boys lost to Crowell by a score of 65-52 with Greg Gideon and Gabriel Capetillo getting 11 points each. The Junior Varsity girls defeated Paducah 30-24 with Debra Morris the leading scorer with 14 points.

The Haskell Maidens lost to the fine team from Crowell 53-30 with Kem Kemp leading the Maiden point makers with 11. On Friday night, the Maidens lost to Paducah 66 to 60. The Maidens fell behind 38 to 20 at half time but staged an exciting second half rally as Sarah Cox banged home 28 points including 17 points the last half. Sherry Everett played a good defensive game especially the last half.

The Indians lost to Crowell by a count of 71 to 40 with Vonnie Hise the leading scorer with 9 points. On Friday night, Paducah defeated the Indians 56 to 29 with Rex Pittman the top scorer with 10 points.

One Jayvee team and both Varsityes will be in action against Knox City on Friday night at home. Then, on Tuesday, January 17, all four teams will be at home against Aspermont. The Haskell Junior Varsity tournament will begin Thursday, January 22, with the Junior Varsityes from Wylie, Aspermont, and Albany to be hosted by the Haskell boys and girls. Games will start at 4 o'clock.

Stats on Page 2

## County Stock Show All Set To Go

Things are ready to roll at Haskell County Fair Grounds, when the 1977 edition of the Haskell County Livestock Show will get underway today (Thursday). All entries must be in the show barns by 8:00 p.m. tonight, so that judging in some categories can begin at 9:00 a.m. Friday.

General Livestock Superintendent Tom Kutch and all his helpers will be at the barns for the most of this afternoon, helping FFA and 4-H club members get their animals in stalls and pens, ready for the judging which begins at 9 a.m. Friday, with the poultry and rabbits.

Immediately thereafter, the swine and lamb division will be judged.

Beef judging will be first on the agenda Saturday morning,

beginning promptly at 9 a.m. in the show barn. There'll be plenty of seating room. Everyone is invited to attend the judging.

Concession stand operations will be manned by members of the Haskell County 4-H Council, and they always have plenty of hot coffee and cold drinks, plus a lot of good, homecooked food for those of you who want to spend the day and enjoy all the activities.

The Sale will be held in the show barn, and everyone is urged to come out and support this effort.

For the second year the sale will be set up on Premium only. Instead of bidding on so much per pound for the animal, a person will bid a premium only. He does not have to pay the difference

between the floor price and what he bids. For an example, you want to bid \$100 premium on a steer, that \$100 is all it will cost you. You will know the amount it will be when you finish bidding. James Powell will be the auctioneer again this year and the sale will be held at the Show Barn starting at 2 p.m.

This is the only way our county youngsters can meet the expenses of raising and caring for their projects, and everyone's support is greatly appreciated.

Don't miss the 1977 edition of Haskell County Livestock Show. We'll see you at the show barns, Friday and Saturday.

## Donkey Ballgame Set In Rule

The Rule Lions Club is sponsoring a Donkey Basketball game on Friday night, January 14, at 7 p.m. in the Rule Gym. All proceeds will go to the Briles Memorial Fund. Advance tickets may be purchased from any Lion Club member and are 75c for grades 1 through 8, \$1.25 for grades 9 through 12, and \$1.75 for adults. Tickets at the gate will be \$1.00 for ages 6 through 14 and over 14 will be \$2.00.

The donkeys will be furnished by the Godfrey Donkeys, Inc., of Crescent, Oklahoma. In Godfrey's donkey basketball rules, each player is provided with a donkey to ride and all plays must be made from the back of the donkey. To start the game the ball is tossed up at the center and the two centers stand on the floor and hold to the reins of their donkeys and jump for the "tip-off."

When the ball is on the floor any player may dismount to get the ball but he must hold to the reins of his donkey while getting the ball and the first player to pick the ball up,

or have firm possession of the ball, is entitled to get on his donkey without interference from another player. The player must be on the donkey to shoot at the basket or pass to another player and the defensive plays must also be made from the back of the donkey. There are no personal fouls and a player may take the ball away from another player or knock it out of his hands, but both players must be mounted.

There are no "out-of-bounds" and as long as the ball stays inside of the building it is still in play. If a player throws the ball from the floor that is a foul and the ball is given to the other team and if a player leaves his donkey to get the ball and attempts to put it into play without holding the reins of his donkey that is a foul and the ball goes to the opponent. Following a basket the ball is given to the other side. There are no "free shots" and in event of a tie score the game starts over at the center and the first team to score is the winner.

## City Council Holds Meeting

The Haskell City Council met in regular session Tuesday night with the following members present: Mayor Belton Duncan, Councilmen Guy Kennedy, E. J. Stewart, Loraine Johnson, and Earl Proctor. Others attending were Desmond Dulaney, Joe Williams, Marvin Collins, Jim Toland, Curtis Jennings, and Watt Fuller.

Following the call to order and invocation by Loraine Johnson, the minutes of the last meeting were read and approved.

Watt Fuller, representing Fuller Supply Company, presented the council with information concerning water meters.

City Police Chief Jim Toland presented the council with a summary of the last six months of 1976. He stated that

a total of 295 cases had been filed. A partial breakdown of the cases filed included: 91 speeding violations; 43 driving while intoxicated; 20 drinking in public; 21 unsafe driving; and two prohibited weapons.

Curtis Jennings of Lone Star Gas met with the Council and presented information concerning Lone Star's request for a rate increase. The Texas Railroad Commission had already approved the increase and the Council approved an increase averaging 9.16%.

Mayor Duncan reported a revenue sharing deposit of \$9,936.00. He also reported that the total sales tax received during the calendar year 1976 was \$79,044.18.

Members of the council also approved an ordinance concerning glue sniffing which will be published in the Free Press next week.

## Gourmet Foods County Show Theme

Gourmet Foods was the theme of the 1977 Haskell County 4-H Food Show held on Saturday, January 8th, 1977 in the Meeting Room of the Haskell National Bank.

Approximately forty-five 4-H members exhibited either a Main Dish, Side Dish, Snack and Beverage or a Bread and Dessert in the Show.

The room was decorated in yellow and white by the Haskell 4-H Club. Fresh vegetable and fruit arrangements were used on the head table and serving table. Mrs. Jack Watson of Stamford did the arrangements.

From the attractive serving table, punch and cookies were served by Mrs. Duward Campbell of Haskell.

The 4-H members were judged on their nutritional knowledge, day's menu and their food exhibit by County Extension Agents and Adult Leaders from Jones, Young and Stonewall Counties.

The scores of the Show were tabulated by Mrs. Max Stapleton, Mrs. J. P. Perrin and Mrs. Carl Bailey.

The Food Show Program included Rod Townsend as Master of Ceremonies; Sheila Moeller-Motto and Pledge; Welcome-Kim Hager; Introduction of Adult Leaders; Joe Wilfong; Announcements-Gena Fischer and closing remarks by Kim Campbell.

The Gourmet Cookbooks containing each of the 4-H recipes were compliments of the Farmer's National Bank in Rule.

The following 4-H members participated and placed in the show as follows:

Junior Side Dishes: 1st

place-Ember Miller, Haskell 4-H; 2nd place Kathy Kemp, Haskell 4-H; and Missy Briscoe, Haskell 4-H. Other participants: Kay Carmack, Rochester 4-H; Leigh Ann Greeson, Rule 4-H; Holli High, Denise Burris, and Donna Gilleland all of Haskell 4-H.

Junior Main Dishes: 1st place-Linda Fischer, Paint Creek 4-H; 2nd place-Sheila Moeller, Haskell 4-H; and Holly McBroom, Haskell 4-H. Other participants: Janette Holmes and Teresa Jenkins, Rochester 4-H; and Lisa Baird of Rule 4-H.

Junior Breads and Desserts: 1st place-Julie Patty, Paint Creek 4-H; 2nd place (tie) Laurie Reynolds and Melinda Blakley, both of Haskell 4-H; 3rd place-Kami Madina-Haskell 4-H. Other participants: Denise Young and Donna Kemp, both of Haskell 4-H; Becky Medford, Paint Creek 4-H; and Chris Dean of Rule 4-H.

Junior Snacks and Beverages: 1st place-Kathy Campbell, Haskell 4-H; 2nd place-Mikeanna Wilcox, Rule 4-H; 3rd place-Shannon Lane, Haskell 4-H. Other participants: Mindy Wilcox, Rule 4-H and Shawna Welch of Haskell 4-H.

Senior Side Dishes: 1st place-Kerry Kemp, Haskell 4-H; 2nd place-Tauniya White Rule 4-H; 3rd place-Karon Gray, Haskell 4-H. Also participating was Linda Wells of Paint Creek 4-H.

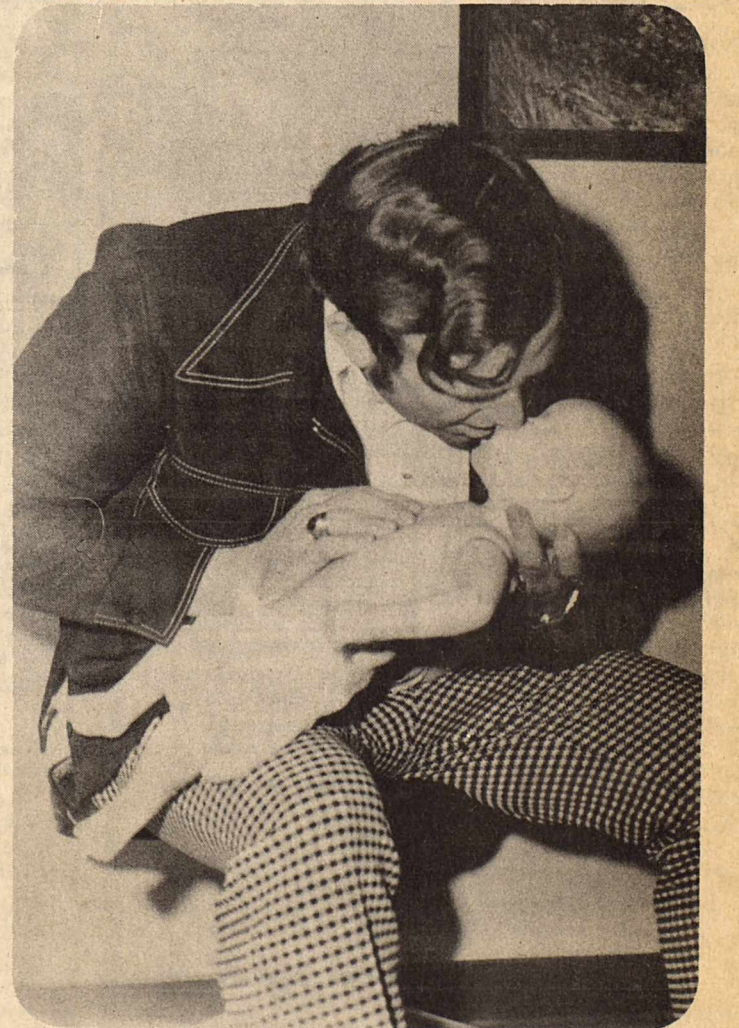
Senior Main Dishes: 1st place Kay Campbell, Haskell 4-H; 2nd place-Debra Wells, Paint Creek 4-H; 3rd place-Sonja Tidrow, Haskell 4-H. Also participating was Tommie Whittemore of Rule 4-H.

Senior Breads and Desserts: 1st place-Gena Fischer, Paint Creek 4-H; 2nd place-Joanne Cloud, Rule 4-H and 3rd place-Lynn Weatherly, Haskell 4-H.

Senior Snacks and Bever-

ages: 1st place-Kim Campbell, Haskell 4-H; 2nd place-Kris Kupatt, Rule 4-H.

The first place winners will participate in the District Food Show on January 22nd in Wichita Falls.



A NEW TRAINING AID was received at the Haskell Memorial Hospital this week. Shown is Administrator Jerry Weatherly practicing CPR (Cardio-pulmonary resuscitation) with the new training aid, Rususi-Baby. The training aid was presented to the Hospital by the Haskell CowBelles, and will be used in training Hospital personnel and local citizens. (Staff Photo)

### WEATHER SUMMARY

By Sam Herren

January 1-10

TEMPERATURE

Hi ..... 66° ..... 3rd

Lo ..... 7° ..... 8th

PRECIPITATION

Precipitation ..... 0.23 in\*

\*Normal to Date ..... 0.30

Total to Date ..... 0.24

\*2.5 inches snow and sleet



# SELL IT FAST! BUY IT RIGHT! USE WANT ADS!

**NOTICE**  
Due to the bookkeeping involved and the high postal rates, we ask that you please remember that classified ads are cash in advance unless you are a business firm or have an established credit with the Haskell Free Press. Either mail your ad with check or if you need assistance in writing it we will be happy to help you. Rates are 5c per word first insertion, 4c thereafter or minimum of \$1.50

**NOTICE**  
The Haskell Free Press reserves the right to edit and/or delete all news stories and locals for length and liability and to refuse to print anything deemed not newsworthy.

**NOTICE**  
Please notify us of your change of address. If you do not, the Post Office charges us 25c for each time the Haskell Free Press is returned to us, this plus the cost of stencils, time and labor can make your move costly to us. In the future, failure to notify us will result in one month being deducted from your subscription.

**FOR SALE \$55**

**FOR SALE:** Baled hay. Call at night 817-658-3868. 2-7p

**MCCULLOCH CHAIN SAW HEADQUARTERS.** A saw for every job. See new. Woodard Farm Sale. 7fc

**WOODARD FARM SALES—** Ford tractors, equipment, long harrows, Lilliston-Heston-Oliver plow parts. 4fc

**FOR SALE:** Iron at wholesale prices, Rounds, flats, sheets, square tubing, channel etc. Haskell Trailer Builders. 20fc

**DUE TO ILL HEALTH** am selling 4020 JD tractor & full line of 6 & 7 row equipment; Ford tractor; Danuser post hole digger. T. B. McMeans, 3 miles SW of Rule. 53-5c

**FOR SALE:** 75 Ford 250 pickup, loaded 5,500 actual miles; 72 Ford 250 pickup, 38,900 miles. Must sell one. Boat & trailer, \$195.00. Western Auto 1-2c

**HAMSTERS FOR SALE:** Call April Turner after school. 864-3284. 1-2c

**FOR SALE:** Fertilized Coastal hay. R. G. Walton, call 864-3172. 2-3p

**MISCELLANEOUS**

**FOR THE FINEST** in portraits wedding photographs, commercial photography, outdoor portraits and weddings also done. We also offer photographs on canvas. Blackstock Studio. 2c

**BEATEN** down carpet paths to when Blue Lustre arrives. Rent electric shampooer \$1.00. Perry Bros. 2c

**TO GIVE AWAY:** Three ¾ pound German Shepherd puppies. 6 weeks old. 864-2118 2p

**THE NORTHEAST DOOR** will be open Tuesdays & Saturdays from 9:00 until 5:00. Will sell on 50% commission or will buy outright. Mill ends, zippers, patterns, etc. Good quality new and used clothing. Behind Christene's Beauty Salon, 208 N. Av E, Haskell. 2c

**DON'T** wet that carpet. See HOST Dry Cleaner. Sherman's Carpets & Interiors. 33fc

**GIFT ITEMS:** Rock and gem stone jewelry. Makes excellent gifts. Can be seen at 306 N. First. Haskell Credit Bureau. 52-2c

**WANT THE WORLD** always at your fingertips? You can have it with a 16" Replogle Globe from the Haskell Free Press.

**MISCELLANEOUS**

**WANTED:** Good used furniture and appliances. We buy and sell. Lee Used Furniture 120 N. Swenson St. (one block north of red light on hiway 277) Stamford, Texas. Phone 773-5608. 42fc

**LET US SHOW** you State Farm's Hospitalization and Disability Policies. 6% New Car Financing. 15% deviation on auto. 20% on Home Owner's and Fire. 75% Dividend on Life Insurance the 23 year. Leo Fetsch Insurance, 422-4259. 38fc

**JOBS WANTED**

**PAINTING,** interior, exterior. Reasonable rates on paint & labor. Willie Baccus, Phone 864-3362, Haskell, Texas. 2p

**HELP WANTED**

**TRACTOR MECHANIC** needed. Must have tractor experience. Apply in person. Woodard Farm Sales, 1107 N. First, Haskell, Texas. 48fc

**BUSINESS OPPORTUNITY:** Mobil Station at 904 N. 1st St. Haskell, Texas For Rent. For more information Contact Bigdon Drinnon at Mobil Oil 103 N. 1st or call 817-864-2146. 52fc

**WANTED:** Responsible, dependable person to care for 6 month old baby and do light housekeeping. Call 864-3451 after 4:30, Mondays, Wednesdays, and Thursdays. 2c

**\$200.00 WEEKLY** Stuffing Envelopes already stamped and addressed. Free supplies. Send self addressed, stamped envelope to: Diversified, 1206 Camden Drive, Richmond, Virginia 23229 2-3p

**WANTED**

**WANT TO LEASE FOR OIL DRILLING:** 200 acres near Jud, was leased for 2 years, but turned back without drilling. Has enough oil under it to float a battleship. If interested see L. B. White at Leisure Lodge, 864-3337 or Ben Charlie Chapman. 2-5c

**REAL ESTATE**

**HOUSE FOR SALE:** in Rule 2 bedroom, paneled. 102 N. 2nd 2-5p

**FOR SALE:** 40 acres with 6" irrigation well, 4 bedroom home. 5 miles west of O'Brien. Call 658-3239. 1-3p

**HOUSE FOR SALE** by owner. 2 bedroom, paneled. 102 N. 2nd 2-5p

**FOR SALE** by owner, well built 3 bedroom brick home, double oven stove & dryer, large cellar. Good quiet neighborhood, convenient to school and town, 704 N. Av F. By appointment only, 864-2434 after 5:00. 2c

**FOR SALE:** House at 205 N. Av F. If interested contact O. T. Johnson, 864-2354. 2tfc

**H.F. LANGFORD**

Sand and Gravel  
Caliche and Fill  
**RULE HWY.  
WEST HASKELL**

**XEROX COPIES**

**Haskell Abstract & Title Company**  
10 N Av D  
Haskell, Texas  
**864-3610** 1tfc

**GIBBS PAINTING**

Acoustical ceilings; Paneling; All wood shingle roofs; Small repairs. Ph. 915-773-5488. 1-8p

**MOBILE HOMES FOR SALE**

**EXCELLENT OPPORTUNITY** 14x64 mobile home for sale. Must see to appreciate. For more information call 864-3630. 1-2p

**FOR SALE:** 1974 Buddy Mobile home, 12x60, some furniture. Call 817-743-3378. 1-2p

**FOR RENT**

**FOR RENT:** 2 bedroom house. Call 864-3195. 1-2p

**Public Notices**

**CARD OF THANKS**

We would like to express our sincere thanks to our friends and neighbors for their prayers, visits, flowers, food and the many other acts of kindness shown us during the illness and death of our loved one. Our special thanks to the doctors, hospital, Holden-McCauley and the special care which was given her in the Rice Springs Care Home. May God bless each of you is our sincere prayer. The family of Lola Medford.

**CARD OF THANKS**

We would like to express our sincere thanks to everyone for their thoughtfulness, prayers, visits, cards and flowers, and food given to us in our time of sorrow. We especially thank the doctors, nurses, Bro. Bragg, Bro. Culpepper and those that provided the music at the service. May God bless each of you is our sincere prayer. The Harold R. Spain family. 2p

**CARD OF THANKS**

We would like to express our sincere thanks to our friends and neighbors for their prayers, visits, flowers, food and many acts of kindness shown us during the illness and death of our loved one. May God shower his richest blessings on each of you. The family of Mrs. T. J. Rousseau. 2c

**CARD OF THANKS**

I would like to thank my friends who attended my birthday party and those who sent cards and gifts. A very special thanks to the hostesses. I will remember all of them, always, as my very dear friends. Beulah Persons. 2c

**ELECTRIC MOTOR** repair & service. New & used motors in stock. Philpot's Supply & Service 864-3010 21tfc

**PUMPS**  
Irrigation-Domestic  
Formation Testing  
Well Drilling  
We pull & repair all makes.  
**REA PUMP CO.**  
Throckmorton Highway  
Haskell, Texas  
Call 24 hrs.—864-3372 41tfc

**HOT WATER HEATER HEADQUARTERS**  
State-Rheem-Phillips  
A. O. Smith (Glascote)  
Gas or Electric  
Philpot's Supply & Service 864-3010 15tfc

**ELECTRIC SEWEROOTER**  
Cleans clogged pipes, drains, sewers. NO digging. NO damage.  
Philpot's Supply & Service 864-3010 41tfc

**INSTANT CASH** for any good merchandise, modern or old. Phone 864-3197 anytime.  
**LACKEY'S**  
Throckmorton Highway  
Haskell, Texas 21tfc

**FOR ALL YOUR GENERAL PLUMBING NEEDS.** Call Philpot's Supply & Service Center. 864-3010 41tfc

**OBITUARIES**

**D. C. Wester**  
Funeral services for D. C. (Dee) Wester were held Wed. January 11 at Satterwhite Chapel of Grace. Interment was in Wayland Cemetery, southeast of Breckenridge.

Mr. Wester died enroute to Stephens County Hospital Monday of injuries received in a one car accident near Breckenridge. Wester apparently lost control of his car due to icy road conditions.

Born October 25, 1941 in Olney, he graduated from Haskell High School in 1959. He had been employed with National Life and Accident Company in Breckenridge since July 1969.

Survivors include his widow Jenny, a son, Dewight, a daughter, Deann of the home, his mother, Mrs. Dewie Wester, Haskell, a sister, Jo Fry, Abilene, his paternal grandmother, Maude Wester, Ft. Worth and his maternal grandparents, Mr. and Mrs. H. F. Weatherby of Olney.

**STOCK MARKET**

The market at Haskell Livestock Auction was lower on a run of 1537 head of cattle, 210 hogs, and no sheep and goats at its sale Sat. Jan. 8, 1977 according to James Powell reporter.

Packer cows and Bulls 1-2 lower, Feeder steers and Heifers 1-3 lower; pairs and stockers steady as feed lot buyers and fat cattle showed decline during week.

Butcher calves: choice, 28-30; good, 26-28; standard, 24-26; rannies, 20-24.

Cows: fat, 21-24; cutters, 18-21; canners, 12-18; stockers, 21-25, 160-210.

Bulls: bologna, 27-32; stockers, 26-33; utility, 23-27.

Stocker Steer Calves: choice 35-37; good, 33-35; medium, 30-33; common, 25-30.

Stocker Heifer Calves: choice, 28-30; good, 26-28; medium, 24-26; common, 20-24.

Feeder Steer Yearlings: choice, 34-36; good, 32-34; medium, 30-32; common, 25-30.

Feeder Heifer Yearlings: choice, 28-30; good, 26-28; medium, 24-26; common, 20-24.

Cows & Calves: good, 250-290, plain, 170-250.

Top on Butcher Hogs, 38; bulk of Butcher Hogs, 35.50-37.50; Sows 24-27; Boars, 12-22; Feeder Shoats 28-33; Pigs by head 5-15.

**PENNSYLVANIA DUTCH**  
Candies for those with more good taste than money. Sassafras Drops 59c pkg. Root Beer Sticks, 49c pkg.  
**Sherman's Interiors & Antiques** 44tfc

**JUNK-A-TIQUES**, glassware, furniture, baby bed, books, dishes, bottles, doll Kleenex box, dolls, misc. We buy, sell or trade. We trade books. 1704 N. First St. Mrs. Harley Langford.

**FOR SALE GOING BUSINESS CAR WASH**  
Lot 100x288  
NE 1st St.  
Haskell, Texas  
**HERREN INSURANCE**  
PHONE 864-3322 27tfc

**Need a New Light Switch? More Wall Plugs?**  
For all kinds of Electrical Work  
Call 864-2464  
If no answer call 864-3653 1-2p

**PHILPOT'S DITCHING SERVICE**  
Plastic pipe & fittings, sewer pipe. Water & gas lines run. Call Philpot's Supply & Service. 864-3010 15tfc

**HASKELL Lunch Menu**

**January 17-21 MONDAY**  
Beef Stew  
Grilled Cheese Sandwiches  
Cabbage Slaw  
Peach Cobbler  
Milk

**TUESDAY**  
Barbecued Weiners  
Potato Salad  
English Peas  
Hot Rolls Butter  
Pear Halves  
Milk

**WEDNESDAY**  
Spanish Dumplings  
Baked Potatoes  
Seasoned Greens  
Cornbread Butter  
Sliced Peaches  
Milk

**THURSDAY**  
Fish Portions  
Catsup or Tartar Sauce  
Potatoes in Cheese Sauce  
Seasoned Green Beans  
Hot Rolls Butter  
Plum Cobbler  
Milk

**FRIDAY**  
Enchilada Casserole  
Buttered Corn  
Cabbage Slaw  
Hot Rolls Butter  
Fruit Jello  
Milk

**Entries Up For Ft. Worth Stock Show**

Six of the 20 performances of the World's Original Indoor Rodeo Jan. 28 through Feb. 6 have been sold out, and livestock entries of cattle, sheep and swine for the accompanying 81st annual Southwestern Exposition and Fat Stock Show are about 6 percent ahead of last year.

The dual announcement as made this week by W. R. Watt Jr., Stock Show and Rodeo general manager.

"Rodeos at 8 p.m. on the two Fridays, Saturdays and Sundays have been sold out," Watt said. "Good selection of seats can be purchased for the weekday matinee and evening rodeo performances. We encourage rodeo fans to purchase their tickets early for better selection."

The rodeo ticket office is located in the lobby of Will Rogers Memorial Coliseum. Sales counters are open from 9 a.m. until 6 p.m. daily, including Sunday. Mail order tickets can be obtained by writing P. O. Box 150, Fort Worth, Tx 76101. Tickets for 2 p.m. weekday matinees are \$3 each, and all other rodeos are priced at \$4. All seats are reserved.

Watt said total entries in the cattle, sheep and swine divisions will show a record 8,805 head, compared to 8,269 posted at the 1976 Stock Show. Entries for all divisions last year totaled a record 14,292.

"Horse entries are still being processed," the general manager said, "and we anticipate high figures in this department. The deadline for rabbit, pigeon and poultry entries is Jan. 15. Indications are that our small stock division will be as great as the

**ADDRESS ROOFING**  
Winfred Address  
Residential and Commercial  
713 S. 10th St.  
P. O. Box 463  
Ph. 864-3078  
Haskell, Texas 31tfc

**NOTICE HUNTERS & TRAPPERS BIG DEMAND FOR COON AND OTHER FURS**  
Fur Company Buyer will be in Haskell from 12:15 till 1:00. Every Sat. in Dec. & Jan. West side of Court House  
Your buyer is  
**Vernon Hayden**  
Phone 817-559-3584  
Red & Loresta  
Veale Fur Co.

**Route 3 Ranger, Tx 76470**  
Phone 817-647-1906  
"You Catch 'em and We will Stretch 'Em  
Traps for Sale  
Baits for Sale

record of 4,118 head entered in 1976."

"Generally, all categories of the three reporting divisions posted gains," Watt continued. He said breeding cattle showed one of the largest increases with 1,337 head and another, 1,140 set to show in the pen division for commercial Hereford and Angus females and performance tested Angus bulls. Entries at last year's show in these classes totaled 2,153."

Junior show groups gained overall by 4 percent for a total junior entry of 4,274, including steer, beef breeding heifers, dairy cattle, breeding sheep, lamb and barrows.

"The healthiest gains in the junior show were noted in the dairy department with 216 head, and in the barrow section where the entry increased to 868," Watt said. Other junior show entries included 1,129 steers, 919 breeding heifers, 225 breeding sheep and 872 lambs.

Opening performance of the rodeo is at 8 p.m. Friday, Jan. 28. Saturday, Jan. 29, will feature rodeos at 10 a.m., 2 p.m., and 8 p.m. Then through Sunday, Feb. 6, rodeos will be held at 2 p.m. and 8 p.m. daily.

Featured entertainment at the 20 rodeo performances will be country and western singing and recording star Red Steagall and his band, the Coleman County Cowboys. Rodeo stock will be provided by the Mike Cervi Championship Rodeo Company of Sterling, Colo. Rodeo prize money will be added to entry fees for an estimated \$138,000 total purse.

The 1977 Stock Show and Rodeo will be kicked off with an all-western parade through downtown Fort Worth at 2 p.m. Friday, Jan. 28. Termed the "World's Largest All-Western Parade," the parade does not allow any motorized vehicles. Participants are required to ride in a horse-drawn vehicle, sit a saddle or march.

Riding clubs, school bands and marching units and horse-drawn wagons, carts, surreys, etc., are invited to participate. Parade information is available by contacting Mrs. Beverly Peterson, special events director, in the Stock Show Office.

**WHAT CAN YOU DO WITH AN EXTRA INCOME?**

Use it for school, savings, travel, camping gear, loan payments, home improvements, stereo equipment. That's what some Army Reservists are doing. While they do an important job for their community and country. To find out if you can qualify for an extra income and a good part-time job, call your Army Reserve unit today. We're in the White Pages of the phone directory under U.S. Government.



**THE ARMY RESERVE. PART OF WHAT YOU EARN IS PRIDE.**

**REAL ESTATE FOR SALE** 3 bedroom near Elementary School. Good storm cellar, fruit & shade trees.

3 bedroom near High School.

8 room on FM road near Lake. 2 car garage & concrete cellar.

Commercial bldg. with 3 lots on highway.

The Hartsfield Agency 864-2665 2-3c

**The Haskell Free Press**  
Established January 1, 1886  
PUBLISHED EVERY THURSDAY

MEMBER  
**TEXAS PRESS ASSOCIATION**

**BILL COMEDY—Publisher**  
**DON COMEDY—Editor**

Entered as second-class matter at the postoffice at Box 577, Haskell, Texas 79521, under the Act of March 3, 1879.

**SUBSCRIPTION RATES**  
In Haskell and Adjoining Counties

|            | Sub     | Tax | Total   |
|------------|---------|-----|---------|
| One Year   | \$ 5.00 | .25 | \$ 5.25 |
| Six Months | \$ 3.00 | .15 | \$ 3.15 |
| Two Years  | \$ 9.50 | .48 | \$ 9.98 |

Elsewhere in Texas

|            | Sub     | Tax | Total   |
|------------|---------|-----|---------|
| One Year   | \$ 6.00 | .30 | \$ 6.30 |
| Six Months | \$ 4.00 | .20 | \$ 4.20 |
| Two Years  | \$11.50 | .58 | \$12.08 |

Outside of Texas

|            | Sub     | Tax | Total   |
|------------|---------|-----|---------|
| One Year   | \$ 8.00 |     | \$ 8.00 |
| Six Months | \$ 4.50 |     | \$ 4.50 |
| Two Years  | \$15.50 |     | \$15.50 |

**NOTICE TO PUBLIC**—Any erroneous reflection upon the character, reputation or standing of any firm, individual or corporation will be gladly corrected upon being called to the attention of the publishers.

**Jr. Hi. Games Cancelled**

The Haskell Junior High basketball teams were not able to travel to Rotan because of inclement weather. All four Junior High teams will be in action on Thursday and Saturday as they travel to the Aspermont tournament. On Thursday, the 7th girls play at 11:00 and play continuous for Haskell through 4 games. On Monday the Warriors play Aspermont there, with all 4 teams in action.

Junior High tournament will be on January 27 and 29, with teams from Knox City, Seymour, Aspermont, and Haskell participating. Games will start at 10:15 a.m. each day. A complete bracket will be in next week's Free Press.

MR. SKETCH—Instant water colors. Each color has a different fragrance, non-toxic, safe for children. For coloring books, murals, maps, hand-crafts, many uses, nothing to mix or spill. No clean up. \$3.90 set of 8 or 49c ea. Haskell Free Press.

The second annual Haskell

**Statistics**

|                             | INDIANS | PF | FTA | FTM | FG |
|-----------------------------|---------|----|-----|-----|----|
| Haskell                     | 9       | 10 | 10  | 11  | 40 |
| Crowell                     | 24      | 18 | 11  | 18  | 71 |
| Leading Scorer: Hise, 9     |         |    |     |     |    |
| Haskell                     | 9       | 5  | 8   | 8   | 29 |
| Paducah                     | 10      | 20 | 16  | 10  | 56 |
| Leading Scorer: Pittman, 10 |         |    |     |     |    |
|                             | MAIDENS | PF | FTA | FTM | FG |
| Haskell                     | 6       | 9  | 8   | 7   | 30 |
| Crowell                     | 18      | 14 | 14  | 7   | 53 |
| Leading Scorer: Kemp, 11    |         |    |     |     |    |
| Haskell                     | 6       | 14 | 14  | 25  | 60 |
| Paducah                     | 12      | 26 | 14  | 14  | 66 |

**YOU ARE IN GOOD HANDS!**

When you insure your automobile with an Independent Insurance Agent that uses several national companies, Grandad Represents a bunch. Allstate, too. Kyle

**The HARTSFIELD AGENCY**  
EVERYTHING IN INSURANCE  
HASKELL PH. 864-2665



## Rice Springs News

A new year has started at Rice Springs and we are looking forward to new hopes, dreams, and adventures and we are sure many will come true as the wonderful community of Haskell has never let us down. We so appreciate the churches, clubs, schools, organizations and kind people who help brighten our lives here at Rice Springs. For example a sweet lady came into the home last week and we could hardly see her as she carried such a huge stack of lap quilts. When asked who had made all of these lovely hand-pieced and sewn quilts, she replied she didn't want any publicity or anyone to know. She finally admitted she had made all but two. Our heartfelt thanks to these ladies. This is not the first

time they had done this for us. This is just one example. Kind things are done all time without any publicity.

Mr. and Mrs. Russ Canfield from Stamford visited Mrs. Martha Collins.

Mrs. Pauline Medcalf from Ft. Worth, Mr. and Mrs. Wesley Almond and Joyce Williams of Arlington, Mrs. Myrtle Wood from Munday and Mrs. Hazel Almond from Rule visited Mrs. Bertha Yarborough.

Bro. Friedel came out for Communion Wednesday night and presented a very inspiring service.

Mrs. Jewel Havran from Munday visited her mother, Mrs. Annie Vokufka.

Mrs. Tom Lowery, Mr. and Mrs. Jim Marion from Colorado visited Mrs. Dessie

Marion.

Mrs. Mary Chandler spent Christmas in San Angelo with her daughter, Mrs. Elaine Cox and girls.

Bernard Phillips from Muleshoe visited his mother Mrs. Berdie Phelps.

Leslie Weinke from Robert Lee, Dutch Cross from Rule and Lee Roy Vanderworth visited Oscar Vanderworth.

We welcome Mrs. Parish back after having surgery and being in the hospital in Abilene for several weeks. Her daughter Josephine Arterbury from Corpus Christi is spending some time with her.

We extend our heartfelt sympathy to the family of Mrs. Lola Medford, who passed away January 5, 1977. Mrs. Medford had been a resident at Rice Springs since August 1976.

Mr. and Mrs. Wesley Almond and Robbe from Arlington visited Mrs. Charity Bradley.

Mr. and Mrs. Bob Walker and family from Plano and Eddie Stewart from Lubbock visited Mrs. Irene Stewart.

Morris West and Lewis West from San Angelo visited Mrs. Daisy West.

Mr. and Mrs. Grady Bristow, Cleo Bush from Rule, Mrs. D. Bush and Debbie from Plainview visited Mrs. Trudie Bush.

Mr. and Mrs. John McGuire from Cisco visited Mrs. Maggie McGuire.

Mr. and Mrs. Clarence Neinst from Littlefield, Mrs. Mamie Glenn and Wilhelmina Stagner from Houston visited Mrs. Lillie Spitzer.

Mr. G. A. Bradford and Brenda from Peach visited Mr. and Mrs. Sam Bradford.

The ladies from the First Baptist Church in Rule came Monday afternoon and led the residents in a devotional and singing.

Tom Watson and his gospel singers came Tuesday night. The singing was enjoyed by all the residents.

Mr. and Mrs. Wallace Stark from Snyder visited his mother, Mrs. Susie Stark.

Mr. and Mrs. W. J. Turnbow from Waynesville, Mo., Mr. and Mrs. Leroy Leggett from Abilene, Mr. and Mrs. Billie Trussell and family from San Antonio, Mr. and Mrs. Gary Turnbow from Clyde, Mr. and Mrs. Irby Wolf from Potosi, Mr. and Mrs. Danny Story and baby from Abilene, visited Mrs. MaeBell Turnbow.

Mrs. M. R. Benton from Sagerton visited Velda Carter.

Mr. and Mrs. C. E. Rodger from Goree visited Mrs. Annie Moeller.

The residents have really been enjoying the new organ when Mrs. Klose plays for them. We are becoming addicted to that pretty music when she plays for us.

Visiting Mr. and Mrs. Herbert Klump were Mr. and Mrs. Bristow from Rule, Emma and Cecil Klump and Hazel Letz from Old Glory.

Mrs. Helen Boykin and Marvin Pheaster from Weir visited Mrs. Ida Pheaster.

Mr. and Mrs. James E. Frierson from Bryan visited Mrs. Kretschmer.

Mr. and Mrs. C. B. McQuinn, from Colorado City visited Mrs. Fanny McQuinn.

Don and Bea Peavy from

Houston visited Mrs. Mattie Peavy.

Mrs. Cliff LeFevre, Mrs. Etta Leach and Mrs. M. Y. Benton visited friends this week.

Our hearts were saddened this week from the loss of our mailman. He brightened our lives so many times especially during the holidays when he came in with so many packages. He always had time for smiles, hand shakes and kind words for everyone he saw. We shall really miss Harold Spain as we had come to love and need him. He did so many kind deeds for our residents all year long, little things that were far beyond the call of duty. Our only consolation is that our Lord wanted him now, to reward him with blessings.

Mr. and Mrs. Richard Thomas Huerta of Stamford announce the birth of a daughter, Heather Stephanie Huerta, born January 5, 1977 at Haskell Memorial Hospital weighing 7 lbs. 14 oz.

Mr. and Mrs. Larry Thomas Simpson of Rule announce the birth of a daughter, Heather

Leigh Simpson, born January 5, 1977 at Haskell Memorial Hospital weighing 6 lbs. 6 1/2 oz.

Mr. and Mrs. Ramon Castorena of Weinert announce the birth of a daughter, Guadalupe Castoreno, born January 8, 1977 at Haskell Memorial Hospital weighing 7 lbs. 5 oz.

Mr. and Mrs. R. W. Greenwood, Jr., of Knox City, announce the birth of a son, Eric Lee Greenwood, born January 6, 1977 at Haskell Memorial Hospital weighing 7 lbs. 10 oz.

Mr. and Mrs. Richard Thomas Huerta of Stamford announce the birth of a daughter, Heather Stephanie Huerta, born January 5, 1977 at Haskell Memorial Hospital weighing 7 lbs. 14 oz.

Mr. and Mrs. Richard Thomas Huerta of Stamford announce the birth of a daughter, Heather

Leigh Simpson, born January 5, 1977 at Haskell Memorial Hospital weighing 6 lbs. 6 1/2 oz.

Mr. and Mrs. Ramon Castorena of Weinert announce the birth of a daughter, Guadalupe Castoreno, born January 8, 1977 at Haskell Memorial Hospital weighing 7 lbs. 5 oz.

Mr. and Mrs. R. W. Greenwood, Jr., of Knox City, announce the birth of a son, Eric Lee Greenwood, born January 6, 1977 at Haskell Memorial Hospital weighing 7 lbs. 10 oz.

Mr. and Mrs. Richard Thomas Huerta of Stamford announce the birth of a daughter, Heather Stephanie Huerta, born January 5, 1977 at Haskell Memorial Hospital weighing 7 lbs. 14 oz.

Mr. and Mrs. Larry Thomas Simpson of Rule announce the birth of a daughter, Heather

Leigh Simpson, born January 5, 1977 at Haskell Memorial Hospital weighing 6 lbs. 6 1/2 oz.

Mr. and Mrs. Ramon Castorena of Weinert announce the birth of a daughter, Guadalupe Castoreno, born January 8, 1977 at Haskell Memorial Hospital weighing 7 lbs. 5 oz.

Mr. and Mrs. R. W. Greenwood, Jr., of Knox City, announce the birth of a son, Eric Lee Greenwood, born January 6, 1977 at Haskell Memorial Hospital weighing 7 lbs. 10 oz.

Mr. and Mrs. Richard Thomas Huerta of Stamford announce the birth of a daughter, Heather Stephanie Huerta, born January 5, 1977 at Haskell Memorial Hospital weighing 7 lbs. 14 oz.

Mr. and Mrs. Larry Thomas Simpson of Rule announce the birth of a daughter, Heather

Leigh Simpson, born January 5, 1977 at Haskell Memorial Hospital weighing 6 lbs. 6 1/2 oz.

Mr. and Mrs. Ramon Castorena of Weinert announce the birth of a daughter, Guadalupe Castoreno, born January 8, 1977 at Haskell Memorial Hospital weighing 7 lbs. 5 oz.

Mr. and Mrs. R. W. Greenwood, Jr., of Knox City, announce the birth of a son, Eric Lee Greenwood, born January 6, 1977 at Haskell Memorial Hospital weighing 7 lbs. 10 oz.

Mr. and Mrs. Richard Thomas Huerta of Stamford announce the birth of a daughter, Heather Stephanie Huerta, born January 5, 1977 at Haskell Memorial Hospital weighing 7 lbs. 14 oz.

Mr. and Mrs. Larry Thomas Simpson of Rule announce the birth of a daughter, Heather

Leigh Simpson, born January 5, 1977 at Haskell Memorial Hospital weighing 6 lbs. 6 1/2 oz.

Mr. and Mrs. Ramon Castorena of Weinert announce the birth of a daughter, Guadalupe Castoreno, born January 8, 1977 at Haskell Memorial Hospital weighing 7 lbs. 5 oz.

Mr. and Mrs. R. W. Greenwood, Jr., of Knox City, announce the birth of a son, Eric Lee Greenwood, born January 6, 1977 at Haskell Memorial Hospital weighing 7 lbs. 10 oz.

Mr. and Mrs. Richard Thomas Huerta of Stamford announce the birth of a daughter, Heather Stephanie Huerta, born January 5, 1977 at Haskell Memorial Hospital weighing 7 lbs. 14 oz.

Mr. and Mrs. Larry Thomas Simpson of Rule announce the birth of a daughter, Heather

Leigh Simpson, born January 5, 1977 at Haskell Memorial Hospital weighing 6 lbs. 6 1/2 oz.

Mr. and Mrs. Ramon Castorena of Weinert announce the birth of a daughter, Guadalupe Castoreno, born January 8, 1977 at Haskell Memorial Hospital weighing 7 lbs. 5 oz.

Mr. and Mrs. R. W. Greenwood, Jr., of Knox City, announce the birth of a son, Eric Lee Greenwood, born January 6, 1977 at Haskell Memorial Hospital weighing 7 lbs. 10 oz.

Mr. and Mrs. Richard Thomas Huerta of Stamford announce the birth of a daughter, Heather Stephanie Huerta, born January 5, 1977 at Haskell Memorial Hospital weighing 7 lbs. 14 oz.

Mr. and Mrs. Larry Thomas Simpson of Rule announce the birth of a daughter, Heather

Leigh Simpson, born January 5, 1977 at Haskell Memorial Hospital weighing 6 lbs. 6 1/2 oz.

Mr. and Mrs. Ramon Castorena of Weinert announce the birth of a daughter, Guadalupe Castoreno, born January 8, 1977 at Haskell Memorial Hospital weighing 7 lbs. 5 oz.

## BIRTHS

Mr. and Mrs. Ramon Castorena of Weinert announce the birth of a daughter, Guadalupe Castoreno, born January 8, 1977 at Haskell Memorial Hospital weighing 7 lbs. 5 oz.

Mr. and Mrs. R. W. Greenwood, Jr., of Knox City, announce the birth of a son, Eric Lee Greenwood, born January 6, 1977 at Haskell Memorial Hospital weighing 7 lbs. 10 oz.

Mr. and Mrs. Richard Thomas Huerta of Stamford announce the birth of a daughter, Heather Stephanie Huerta, born January 5, 1977 at Haskell Memorial Hospital weighing 7 lbs. 14 oz.

Mr. and Mrs. Larry Thomas Simpson of Rule announce the birth of a daughter, Heather

Leigh Simpson, born January 5, 1977 at Haskell Memorial Hospital weighing 6 lbs. 6 1/2 oz.

Mr. and Mrs. Ramon Castorena of Weinert announce the birth of a daughter, Guadalupe Castoreno, born January 8, 1977 at Haskell Memorial Hospital weighing 7 lbs. 5 oz.

Mr. and Mrs. R. W. Greenwood, Jr., of Knox City, announce the birth of a son, Eric Lee Greenwood, born January 6, 1977 at Haskell Memorial Hospital weighing 7 lbs. 10 oz.

Mr. and Mrs. Richard Thomas Huerta of Stamford announce the birth of a daughter, Heather Stephanie Huerta, born January 5, 1977 at Haskell Memorial Hospital weighing 7 lbs. 14 oz.

Mr. and Mrs. Larry Thomas Simpson of Rule announce the birth of a daughter, Heather

Leigh Simpson, born January 5, 1977 at Haskell Memorial Hospital weighing 6 lbs. 6 1/2 oz.

Mr. and Mrs. Ramon Castorena of Weinert announce the birth of a daughter, Guadalupe Castoreno, born January 8, 1977 at Haskell Memorial Hospital weighing 7 lbs. 5 oz.

Mr. and Mrs. R. W. Greenwood, Jr., of Knox City, announce the birth of a son, Eric Lee Greenwood, born January 6, 1977 at Haskell Memorial Hospital weighing 7 lbs. 10 oz.

Mr. and Mrs. Richard Thomas Huerta of Stamford announce the birth of a daughter, Heather Stephanie Huerta, born January 5, 1977 at Haskell Memorial Hospital weighing 7 lbs. 14 oz.

Mr. and Mrs. Larry Thomas Simpson of Rule announce the birth of a daughter, Heather

Leigh Simpson, born January 5, 1977 at Haskell Memorial Hospital weighing 6 lbs. 6 1/2 oz.

Mr. and Mrs. Ramon Castorena of Weinert announce the birth of a daughter, Guadalupe Castoreno, born January 8, 1977 at Haskell Memorial Hospital weighing 7 lbs. 5 oz.

Mr. and Mrs. R. W. Greenwood, Jr., of Knox City, announce the birth of a son, Eric Lee Greenwood, born January 6, 1977 at Haskell Memorial Hospital weighing 7 lbs. 10 oz.

Mr. and Mrs. Richard Thomas Huerta of Stamford announce the birth of a daughter, Heather Stephanie Huerta, born January 5, 1977 at Haskell Memorial Hospital weighing 7 lbs. 14 oz.

Mr. and Mrs. Larry Thomas Simpson of Rule announce the birth of a daughter, Heather

Leigh Simpson, born January 5, 1977 at Haskell Memorial Hospital weighing 6 lbs. 6 1/2 oz.

Mr. and Mrs. Ramon Castorena of Weinert announce the birth of a daughter, Guadalupe Castoreno, born January 8, 1977 at Haskell Memorial Hospital weighing 7 lbs. 5 oz.

Mr. and Mrs. R. W. Greenwood, Jr., of Knox City, announce the birth of a son, Eric Lee Greenwood, born January 6, 1977 at Haskell Memorial Hospital weighing 7 lbs. 10 oz.

Mr. and Mrs. Richard Thomas Huerta of Stamford announce the birth of a daughter, Heather Stephanie Huerta, born January 5, 1977 at Haskell Memorial Hospital weighing 7 lbs. 14 oz.

Mr. and Mrs. Larry Thomas Simpson of Rule announce the birth of a daughter, Heather

Leigh Simpson, born January 5, 1977 at Haskell Memorial Hospital weighing 6 lbs. 6 1/2 oz.

Mr. and Mrs. Ramon Castorena of Weinert announce the birth of a daughter, Guadalupe Castoreno, born January 8, 1977 at Haskell Memorial Hospital weighing 7 lbs. 5 oz.

Mr. and Mrs. R. W. Greenwood, Jr., of Knox City, announce the birth of a son, Eric Lee Greenwood, born January 6, 1977 at Haskell Memorial Hospital weighing 7 lbs. 10 oz.

Mr. and Mrs. Richard Thomas Huerta of Stamford announce the birth of a daughter, Heather Stephanie Huerta, born January 5, 1977 at Haskell Memorial Hospital weighing 7 lbs. 14 oz.

Mr. and Mrs. Larry Thomas Simpson of Rule announce the birth of a daughter, Heather

Leigh Simpson, born January 5, 1977 at Haskell Memorial Hospital weighing 6 lbs. 6 1/2 oz.

Mr. and Mrs. Ramon Castorena of Weinert announce the birth of a daughter, Guadalupe Castoreno, born January 8, 1977 at Haskell Memorial Hospital weighing 7 lbs. 5 oz.

Mr. and Mrs. R. W. Greenwood, Jr., of Knox City, announce the birth of a son, Eric Lee Greenwood, born January 6, 1977 at Haskell Memorial Hospital weighing 7 lbs. 10 oz.

Mr. and Mrs. Richard Thomas Huerta of Stamford announce the birth of a daughter, Heather Stephanie Huerta, born January 5, 1977 at Haskell Memorial Hospital weighing 7 lbs. 14 oz.

Mr. and Mrs. Larry Thomas Simpson of Rule announce the birth of a daughter, Heather

Leigh Simpson, born January 5, 1977 at Haskell Memorial Hospital weighing 6 lbs. 6 1/2 oz.

Leigh Simpson, born January 5, 1977 at Haskell Memorial Hospital weighing 6 lbs. 6 1/2 oz.

Dr. and Mrs. William J. Kemp Jr. of Houston announce the arrival of an 8 lb. 13 oz. baby boy, William James Kemp III on January 4, 1977. Great grandparents are Mr. and Mrs. Giles Kemp and grandparents are Dr. and Mrs. William J. Kemp, all of Haskell.

## YOU LOSE.

Each time a Southern forest is criminally burned. Report woods arsonists. Wildfire. It's a crime against you.

Ad Council  
A Public Service of This Newspaper  
& The Advertising Council

## RUSS AGRICULTURE FLYING AERIAL SPRAYING

WORMS — GREEN BUGS

Russ Matthews, Owner

Call 864-2035

Haskell, Texas

"He who hesitates is sometimes saved." James Thurber

**Sensational Value!**

**GIANT-SCREEN 25" COLOR TV**

1977 **ZENITH** 100% SOLID-STATE CHROMACOLOR II

**New from Zenith! COLOR SENTRY™**  
The automatic picture control system Controls the color picture when the scene changes, or the channel changes, even when the roomlight changes.

**ELECTRONIC VIDEO GUARD TUNING SYSTEM**  
One-Knob VHF and UHF Channel Selection.

**The FARNHAM H2544M**  
Early American styled console. Casters. Genuine Maple veneers and select hardwood solids on top and ends. Decorative gallery, front and base of simulated Maple.

**The AVILA H2548P**  
Mediterranean styled console. Casters. Genuine Pecan veneer parquet top. Genuine Pecan veneers and select hardwood solids on ends. Front and base of simulated Pecan.

Choose **ZENITH**...your best color TV value!

**Owens Radio & Electric**  
HASKELL

**LANE APPAREL'S SEMI-ANNUAL STOCK REDUCTION**

**CLOSING-OUT SALE**

**THE SAVINGS YOU'VE BEEN WAITING FOR!**

**Giant Clearance On Year Around And Winter and New Spring Items**

**SALE**

- Strictly Cash
- Alterations Extra
- All Sales Final
- No Exchanges
- No Approvals
- No Refunds
- No Lay-Aways
- Gift Wrap Extra

Items listed in this ad are just a few examples of the hundreds of items to sell out at once.

**TANK TOPS, Fancy T Shirts and Rugby Knits** to wear with Jeans. The most unusual patterns, cuts, and trims for a whole new look. **ALL 20% OFF**

**Red Tags Leisure Suits!** Through our all new stock of the best and most attractive Leisure suits & Jackets. Reduced for this sale. Reg. 60.00. **Sale Priced From \$22.95 to \$32.00**

**Hundreds of JEANS** all the big three brands—solids—patterns & checks slim regular-straight flare legs—plenty of long lengths. Stock up at this bargain. Values to \$15.50 **Sale Price \$8.88.**

**FANCY SHIRTS, padded yokes, scrap, floral patterns, fancy trim, short and long sleeve. All our big stock 20% OFF**

**TIES** of all polyester. The famous name of Wemblon, one to match anything. Assorted colors & patterns. Reg. 6.50. **SALE PRICE \$2.50**

**Entire stock LONG SLEEVE WESTERN SHIRTS** Wrangler, TemTex, Mesquite & H Bar C. Choose your color & patterns. **ALL 20% OFF**

**JEAN KNIT SLACKS** Dressy jean comfort in nice colors & fabrics. The big three makes em all. Look trim & feel good. **ALL 20% OFF**

**DRESS SUITS** Red Tags. 100 to choose from on sale. This is the time to lay in fresh life to your wardrobe. All new and lively styles & colors Reg. values to \$185.00 **As low as \$52.50**

**FANCY SHIRTS** in Quina nylon and ultrasa styled for today's easy going look to go with Leisure Wear. Finest selection anywhere. **ALL 1/2 PRICE**

**1 LARGE LOT** Shirt Jackets and Leisure suits in Perma Press, knit and brush denim and fancy styles for the young man. A great opportunity to stock up **ALL AT 1/2 PRICE**

**WESTERN SUITS** Red Tags. 50% of our large entire stock of western suits will be at 1/2 Price or less. First come, first choice. Browse. No approval or Lay-a-way. Please!

**Close out large lot KNIT SLACKS.** Values to \$30.00 These are extra ordinary good values at a great loss to us since we are over-stocked in Dress Knit Slacks. **SALE PRICED \$8.99**

Serving Haskell shopping center with undisputed quality at a great savings you will want to take advantage of. (Cut prices to the bone!) We have gone through the store and have completely disregarded original costs. Whatever you need in the way of men's apparel, you can buy cheaper at Lane's during the Semi-Annual Closeout Sale. Sale starts Thursday. Be here early!

**CLOSE OUT** All medium and heavy coats and jackets in cord, vinyl, denim, genuine leather, fleece lined, zip-in linings and etc. Great selections in all sizes. Close out entire stock at **1/2 REG. PRICE Hurry!**

**CLOSE OUT** Our entire stock Felt Hats in the best of Beaver Fur felts. Values from \$55.00 to \$30.00. **YOUR CHOICE 20% off Western & Dress Styles**

**CLOSE OUT** All sweaters, crew necks turtle necks, V necks, button fronts, leather trims. All at **1/2 REG. PRICE**

Sport coats, blazers, and finished leisure suits in darker and new spring colors. The very finest available anywhere in great styles. **ALL 20% OFF**

Levi, Wrangler & Lee 13 oz. Denim Jackets All Haskell cotton, sanforized. A jacket for work or play. Reg. 18.95 **SALE PRICE \$10.95**

Levi, Wrangler & Lee Denim Flare Legs You won't believe these prices. Reg. factory price 14.00. **SALE \$8.88** Limit 2 to customer. Please.

Light quilted **NYLON JACKET**, easy care, washable, perfect for work, school, or play. Tan, Blue, Gold and Brown. **SALE \$14.95**

**KNIT LEISURE SUITS** Beautiful styles and colors, plaids, solids, tweeds. Mix & Match with our Leisure Shirts. Great buys on these suits most are machine washable. Red tagged from 20% to 50% OFF

**CLOSE OUT SHOES** Dress & casual. Latest styles & colors. From our regular stock. All 1/2 Factory Price.

**ALL OUR STOCK SHOES—Red Tags** large bins of our reg. stock. Jarman, Florsheim & Nunn Bush. All 20% off factory price

**TONY LAMA Children's** Boots (Ladies wear 'em too). Caribou, Elephant print, Water Buffalo, Cap Toe—Great tough leathers for school. **ALL 20% OFF**

**ODDS & ENDS** Jumpsuits 20% OFF Khaki pants 1/2 PRICE Khaki Shirts 1/2 PRICE Turtle neck shirts 1/2 PRICE

Close out Boots **TEXAS IMPERIALS** 59.95 Brown \$33.00 37.95, Tan, \$21.95 37.95, Shark, \$21.95 21.95, Tan boys, \$17.95 **Come see all the selection**

**TONY LAMA** \$68, Cham. Lancer \$42. \$68, Coffee Lancer \$38. \$53.95 Buffalo \$42. \$135, Peanut Liz. \$88. \$79.95 Shark Cap \$48. Odd & Ends \$38.

**NOCONA** 56.50 Benedictine \$42.00 68.95 Natural Cow \$46.00 44.50 Oil Tan \$36.95 **Many Other Styles To Choose From**

**ALL BOOTS** in our entire large stock are reduced 10% from our factory price for the first three days of this sale only.

**TAXPAYER NOTICE**

FOR CONVENIENCE TO THOSE THAT ARE NOT CURRENT ON PAYMENT OF TAXES, AND WISH TO MAKE PAYMENTS BEFORE THE DELINQUENT DATE OF

**FEBRUARY 1, 1977,**

PERSONNEL FROM THE TAX DEPARTMENT OF NORTH CENTRAL TEXAS MUNICIPAL WATER AUTHORITY WILL BE AT

**CITY HALL ANNEX IN HASKELL, ON TUES. JANUARY 18, 1977**

FROM 9:00 A.M. UNTIL 4:30 P.M.







WE GIVE  WE GIVE  WE GIVE  WE GIVE  WE GIVE  WE GIVE  WE GIVE  WE GIVE  WE GIVE  WE GIVE  WE GIVE  WE GIVE

# CASH IN

# M SYSTEM

Your FRIENDLY  
SUPER MARKETS

112 N. AVE. D HASKELL, TEXAS  
"WHERE YOUR DOLLAR BUYS MORE"

ON M SYSTEMS BETTER FOOD BUYS!

DAD'S OLD FASHION

**ROOT BEER**  
REGULAR OR DIET

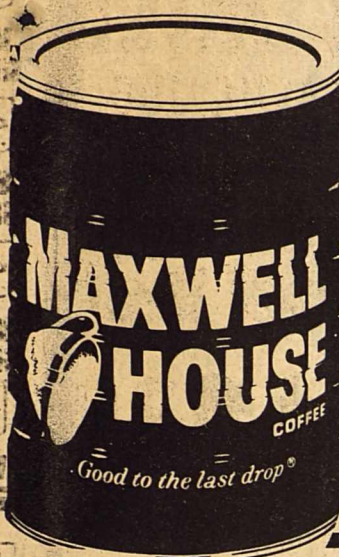
64 OZ BOTTLE

**59¢**

Shop Here  
And Save  
Every Day

SPECIALS GOOD  
January  
13-19

**DOUBLE  
S & H GREEN STAMPS  
WEDNESDAYS**  
With The Purchase  
Of \$2.50 Or More



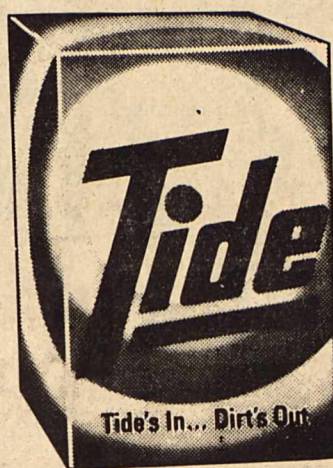
MAXWELL HOUSE

**COFFEE**

GOOD TO THE  
LAST DROP

1 LB CAN

**\$2.19**



**Tide**  
GIANT BOX

**\$1.19**

BANQUET FROZEN  
**DINNERS**

**2** 11 oz. PKGS. **89¢**

(ASSORTED KINDS)



**DIAMOND PEACHES**

**2** 2 1/2 CANS **89¢**

GORTON'S  
**FISH STICKS**

15 OZ PKG

**99¢**

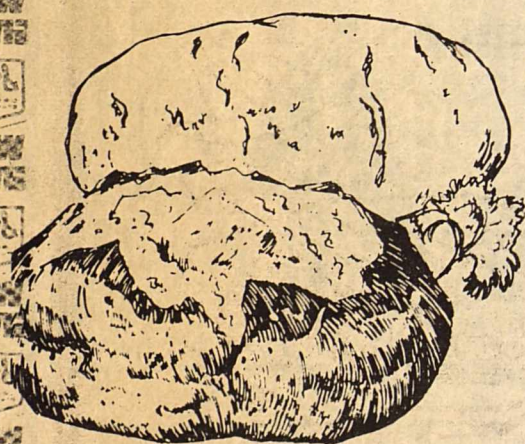
THRIFTY MAID  
**PINEAPPLE**

**2** 2 1/2 CANS **99¢**

**BIG "K" FLOUR**  
5-LB. BAG **59¢**

**ASTOR FRUIT COCKTAIL**  
3 15-OZ. CANS **\$1.00**

M System's Finest Fresh Produce



U.S. NO. 1 RUSSET  
**POTATOES**

**20** LB. BAG **\$1.29**

**PEANUT BUTTER** DEEP SOUTH 28 OZ JAR **99¢**

**COCOA MIX** HERSHEY'S INSTANT 2 LB CAN **\$1.69**

**TRASH BAGS** GLAD 8 COUNT 20 GAL SIZE **89¢**

**RICE** COMET LONG GRAIN 28 OZ BOX **59¢**

WASH. EXTRA FANCY DELICIOUS  
RED OR GOLDEN **APPLES**

**4** LBS. **\$1.00**

SUNKIST NAVAL  
**ORANGES**

**5** LBS FOR **\$1.00**

BIG K  
**FLOUR**  
25 LB BAG **\$2.49**

NABISCO OREO  
**COOKIES**  
12 OZ PKG **79¢**

Yellow Squash **LB. 29¢**

Purple Top Turnips **LB. 19¢**

Vine Ripe Tomatoes **LB. 49¢**

RED OR GOLDEN  
**DELICIOUS APPLES** 3 LB BAG **79¢**

KOLD COUNTRY  
**Orange Juice**  
6 6 OZ CANS **\$1.29**

SUNBEAM  
**Vanilla Wafers**  
3 10 OZ PKGS **\$1.00**

WE GIVE  WE GIVE  WE GIVE  WE GIVE  WE GIVE  WE GIVE  WE GIVE  WE GIVE  WE GIVE  WE GIVE  WE GIVE  WE GIVE  WE GIVE  WE GIVE  WE GIVE  WE GIVE  WE GIVE  WE GIVE



### Guide To Budgeting Now Available

This time of year budgets are a common topic. No matter how careful we try to be, the after holiday slump usually includes a case of the budget blues. There's no better time to decide to handle money more carefully from now on.

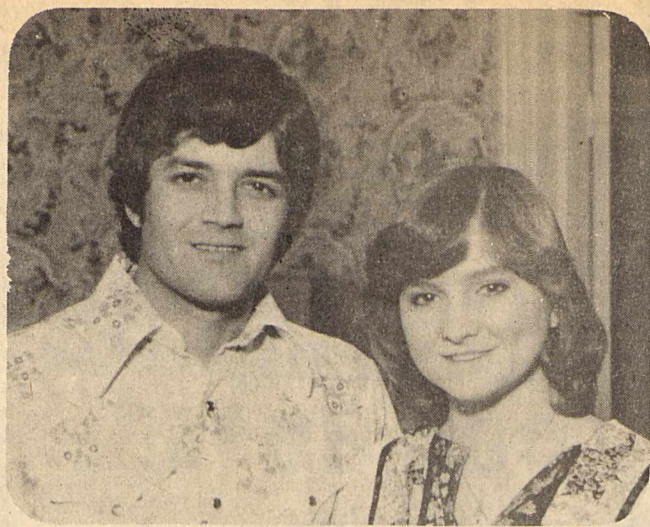
"A Guide to Budgeting for the Family" is an updated publication from the U. S. Department of Agriculture designed to help you work out a budget. It includes worksheets and a section on using

consumer credit. For your copy of "A Guide to Budgeting for the Family," send 35 cents to the Consumer Information Center, Dept. 81E, Pueblo, Colo. 81009.

It's a good idea to actually write down where your money goes. First, make a list of your fixed expenses—rent or mortgage, utilities, loan payments and any other regular payments you make. This will show you how much you have left that's flexible income, where cuts can be made. You may discover you spend much more than you thought on lunches and coffee breaks, driving to work, and dry cleaning. You'd be amazed at

how much you can save even with small shifts in your habits—like taking your lunch part of the time, bringing snacks from home, taking the bus instead of driving, and checking care labels to see if you can't safely wash some of those clothes you've been having dry cleaned. Look at your shopping habits and be very critical—do you need all the things you buy? Even if it's on sale, it's not a bargain unless you really need it.

And be careful about your use of credit. It's so painless to use "plastic," that is until you get that big bill. One way to control this kind of spending is to keep a record of



MR. AND MRS. D. E. BRAZELL announce the engagement of their daughter Connie Sue Brazell to Warren Neil Abbott. Connie is a 1975 graduate of Paint Creek High School. She is a sophomore at West Texas State University. Warren is the son of Mr. and Mrs. Fred Abbott of Kress, Texas. He is a 1970 graduate of Kress High School and a senior at WTSU. A wedding is planned for March 12.

everything you charge. After you've figured out where some of this "flexible" money goes, you might just come to the conclusion that if you have it, you've got a tendency to spend it. So, plan ahead to keep yourself "straight". Have savings deducted from your check before you get it. You'll be amazed at the discipline it forces upon you—and you'll learn you really can get by on less.

Plan your large expenses so they are spaced at intervals your budget can handle. If your son gets a suit this year, your daughter may have to wait until next year for a winter coat. New curtains may have to take turns with baby needs, weekend trips, or a TV set.

If your income is quite low, you'll need to plan carefully to take care of your immediate needs and pay your current bills. You can get help with your budget plans from your extension home economist. In many cities and counties, community service organizations also offer this service.

"A Guide to Budgeting for the Family" (35 cents) is one of over 200 selected Federal consumer publications listed in the catalog, "Consumer Information." The free catalog is published quarterly by

the Consumer Information Center of the General Services Administration. For a copy, send a postcard to the Consumer Information Center, Pueblo, Colo. 81009.

### Costs Up: Prices Down

In a time of plunging farm prices and increasing cost of production, issues of agricultural policy in this new year will undoubtedly come to critical turning points. With a new administration in Washington and a new farm bill slated for draft to replace the expiring 1973 act, agricultural policymaking is top priority among those collective voices which speak for the farmer.

Already, agriculture commissioners from 11 Midwest and Plains states have gathered in Denver in order to determine what requests should be made of Agriculture Secretary-designate Bob Bergland. Among them was Texas Agriculture Commissioner John White. The meeting, however, turned out to be a political exercise in futility as the eleven state leaders agreed that agriculture is in "dire straits" but could not agree on specific immediate recommendations.

At the core of the meeting was a vote to request Bergland to raise wheat price support loans from the present disastrous level to one 50-cents higher and closer to cost of production. But six of the commissioners, including White, voted against requesting a modest \$3 per bushel level.

"The biggest mistake of that meeting to begin with is the fact that politicians and political appointees have no business deciding what is best for the farmer," said Jay Naman, President of the Texas Farmers Union. "Most of the state commissioners are so far removed from the working farmer, that there is no way for them to know the economic reality of bankrupt prices for sweat-grown commodities," Naman continued. "It is rather the place of a well-respected group of farmers themselves who work from a grass-roots level of communication with their neighbors to send policymaking messages to the lawmakers and NOT a politician-politician system."

Such a message to the new administration will in fact be formulated when the Texas Farmers Union convenes its annual state-wide convention in Amarillo, January 21-22. During that time, the organization of almost 10,000 family farmers will officially adopt its 1977 policy, the result of several months of work from county level to a policy drafting committee and finally to the entire body of delegates. It is that policy which will be placed on the desks of congressmen, legislators, ad-

ministrators and all other agriculture policymakers.

Several of those congressmen and legislators will attend the TFU convention, among them Senator John Tower, Congressman Jack High-tower, Texas Senator Max Sherman and others.

"The Texas Farmers Union takes great pride in its history of protecting the family farmer," says Naman. "Our 1977 policy will be a complete and comprehensive statement on behalf of farmers concerning almost all farming and rural matters. Its adoption lies at the heart of what we think will be our biggest and best convention in this most important year for agriculture."

### Engagement Announced

Mr. and Mrs. Coy Hewitt, of O'Brien, announce the engagement and approaching marriage of their daughter, Rhonda, to Allen Moeller.

Moeller is the son of Mr. and Mrs. Frank Moeller of Haskell.

The couple plan a February 9, wedding in the O'Brien First Baptist Church.

The prospective bride is a graduate of O'Brien High School and the prospective groom is a graduate of Haskell High School.

Report your COMINGS and GOINGS by calling 864-2686.



THE Personality SHOPPE presents

## Hanes Winter Wonderful Sale

Start off your new year right with this bargain blizzard on famous Hanes® hosiery.



**Alive® PANTYHOSE**  
Regularly \$5.95  
**NOW ONLY 4.95**  
You save 1.00



**Ultra Sheer PANTYHOSE**  
Regularly \$3.00  
**NOW ONLY 2.50**  
You save .50



**Everyday® PANTYHOSE**  
Regularly \$1.95  
**NOW ONLY 1.60**  
You save .35

ALL OTHER STYLES INCLUDED  
Get your Winter Hosiery Wardrobe Now.  
Sale lasts January 14 - 22 • In our Hosiery Department

THE DRUG STORE THE DRUG STORE THE DRUG STORE THE DRUG STORE THE DRUG STORE

# DOYLE HIGH'S THE DRUG STORE

100 S. AVE. E

864-2515

PLEASANT TASTING  
**CEPACOL Mouthwash**

20 oz bottle

**\$1.27**



**KILLS GERMS THAT CAUSE BAD BREATH**

Refreshing  
Mint  
Flavor



**EVERY NIGHT**  
8 OUNCE  
**SHAMPOO**  
LEMON  
STRAWBERRY

**\$1.13**

You Ask  
For It  
Now We've  
Got It

HERE'S TO YOUR HEALTH  
from Kenneth Jones

Every year we read of deaths of young lovers or hunters who parked the car and left the motor and heater running. If the car stands in tall grass, snow, or is backed against an embankment, the poisonous carbon monoxide from the exhaust gradually rises through the floor into the car and asphyxiates the occupants. Leaky mufflers or exhaust pipes will only hasten the death dealing process.

**KOLANTYL GEL**

12 OZ

Antacid Medication

**\$1.29**

**BAREFACE**

3 OZ

Reg. \$2.49

**\$1.73**



THE DRUG STORE THE DRUG STORE THE DRUG STORE THE DRUG STORE THE DRUG STORE THE DRUG STORE THE DRUG STORE THE DRUG STORE THE DRUG STORE THE DRUG STORE

## JANUARY SALE

**CHILDREN'S COATS**

**1/3 off**

Boys' and Girls' coats now reduced. Many styles, fabrics and colors. Buy now and save!



**Girl's SPORTSWEAR**

**1/3 off**  
One group of girls' sportswear now reduced to clear.

**Girl's DRESSES**

**1/2 off**



One group of dresses in assorted styles and colors.

**LADIES ROBES**  
LONG STYLES  
QUILTED & FLEECES  
**1/2 Off**

### January Clearance

**ONE GROUP LADIES**

**SPORTSWEAR**

Now . . .



**LADIES PANTS**

**1/3 off**

**LADIES PANT SUITS**

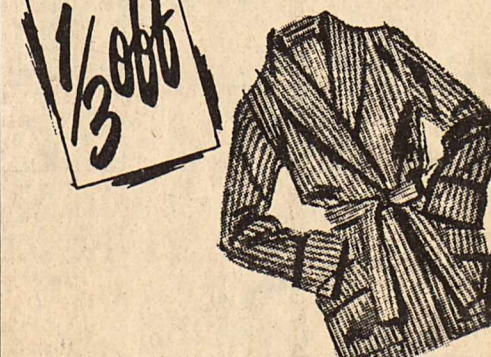
**1/3 off** Assorted Styles



**LADIES SWEATERS & TOPS**

**1/2 off**

Assorted Styles



**HEIDENHEIMER'S**

**GRAND**  
Stamford 773-3181  
Fri. 14-Sat. 15-Sun. 16  
"Creature From Black Lake"  
**DRIVE-IN**  
Stamford 773-3272  
Fri. 14-Sat. 15-Sun. 16  
Clint Eastwood  
"Outlaw Josey Wales"  
Wed. 19-Thurs. 20  
XX-Adults Only  
No One Under 18  
"Hollywood She Wolves"  
Nude Color



**CONSERVATION VIEWPOINTS**  
USDA Soil Conservation Service

Assisting  
**California Creek and Wichita-Brazos**  
Soil and Water Conservation Districts

**ANNUAL REPORT OF ACTIVITIES FOR 1976**  
"We need more visible conservation on the American Landscape," reported Mel Davis, Soil Conservation Service Administrator. "Visible conservation is getting conservation on the land."  
During 1976, 225 cooperators with the California Creek and Wichita-Brazos Soil and Water Conservation Districts,

Haskell County portions, applied chemical or mechanical control on over 10,000 acres of mesquite brush, over 14,000 acres of conservation cropping systems were installed, 8 farm ponds for livestock water were constructed, 89 acres of grassed waterways were constructed and vegetated, over 1400 acres of minimum tillage systems were started, 5728 acres of wildlife habitat were

established, over 88,000 feet of standard level contour terraces, nearly 447,000 or parallel terraces and 7400 feet of diversion terraces were constructed.

These conservation measures can be seen as one drives through our Districts. These are the visible signs of conservation applied.

What you don't see is the 18,800 feet of underground irrigation pipeline installed, or the 6000 acres of land that was adequately treated with all measures needed. 479 landowners and operators were furnished 1330 technical services, either in planning or applications, or both. 23 new cooperators were added to the District's programs covering 20,529 acres of land. 32 cooperators revised their existing conservation plans on 64,849 acres. 44 other land users were given technical assistance in the form of inventories and evaluations. 11 units of government in Haskell County were serviced, resulting in 3 resources plans and/or inventories. One site for public facility, a sanitary land fill, was studied and selected for Rochester. Swenson Land and Cattle Company initiated nearly 18,000 acres in planned grazing systems, a method used for the improvement of native rangelands.

Robert Aycock, son of Mr. and Mrs. J. W. Aycock, of Haskell, joined the staff of the Haskell Field Office of SCS. Bob will serve part time and will continue with his farming operations. He replaces David Hill who resigned to return to college to further his education. Bob is a graduate of Tarleton State University at Stephenville. Bob's wife is the former Pam Duryea of Abilene. They have one son.

Both Soil and Water Conservation Districts sponsored land and grass judging contests, poster contests, and essay contests for students of our schools. The Board's of Directors feel that these contests are most important and beneficial in teaching conservation to our young people.

This column, sponsored by both Districts and prepared weekly by the staff of the Haskell Field Office, SCS, is published in the Haskell Free Press and the Rochester Roundup. For this service we express our gratitude and appreciation.

Our Motto is "Treat every acre according to its needs and within its capabilities."  
J. C. Yeary, Jr.  
District Conservationist

**GED Tests To Be Given In Haskell**

The General Educational Development (GED) Tests will be given at the Haskell High School Official Testing Center, in Haskell, Texas, on Saturday, January 15, 1977, beginning at 8:00 A.M. The fee for the battery of five tests is \$20.00.

The GED Program provides a means for determining the educational level of adults who have not completed a formal high school education. A certificate of high school equivalency may be issued to adults who successfully com-

plete the GED examination, verifying that the holder has demonstrated a level of competence on the examination which is equivalent to that of a high school senior.

The program is administered nationally by the American Council on Education, Washington, D. C. The Texas Education Agency authorizes accredited high schools and institutions of higher education to serve as testing centers. The centers administer the GED tests to adults who are eligible and report the scores of successful examinees to the Texas Education Agency, which issues certificates of high school equivalency free of charge.

The test has five parts: Correctness and Effectiveness of Expression, Interpretation of Reading Materials in the Social Studies, Interpretation of Reading Materials in the Natural Sciences, Interpretation of Literary Materials, and General Mathematics Ability. The test questions are multiple choice. There is no time

limitation but most examinees take approximately eight hours to complete the test battery.

Persons eligible for testing must:

—be a resident of Texas or a member of the Armed Forces stationed in Texas;

—be at least 17 years of age and officially withdrawn from school for one calendar year. (Applicants who have attained their 17th birthday and will enter the Armed Forces may test immediately after withdrawing from school.)

—be 18 years of age and officially withdrawn from school.

To receive a certificate of high school equivalency, the examinee must:

—complete the examination with a minimum standard score of 40 on each of the five tests OR an average standard score of 45 on all five tests;

—have attained at least their 17th birthday prior to date of testing and be out of school for one calendar year;

—have attained their 18th

birthday and be officially withdrawn from school.

Applicants must wait six months before retesting. If the applicant is tutored by a certified teacher or participates in an adult education program, retesting may occur when the instructor determines the applicant is prepared.

Applicants are advised to bring their Social Security Number and their driver's license as proper identification.

continued eligibility for VA pensions, which are based on financial need. More than 2.7 million veterans and survivors are on the VA pension rolls.

Those who failed to return the questionnaire by January 1, will, in lieu of receiving their January check on February 1, receive a letter from the VA explaining why their pension payments have been suspended.

Pensions are paid to veterans and widows of veterans with non-service-connected disabilities. Amount of the monthly stipend is based on the annual income of the recipient, according to law.

Annual income limitations also govern amounts of dependency and indemnity compensation payments to certain parents of veterans who died of service-connected causes.

Pensioners 72 years of age or older, who have been on the VA rolls for two successive years, are exempt from filing the annual questionnaire. These persons are required to

report income changes as they occur. Coker explained.

Some beneficiaries who ordinarily are exempt from filing will receive questionnaires because of cost-of-living increases in annuities, Coker added.

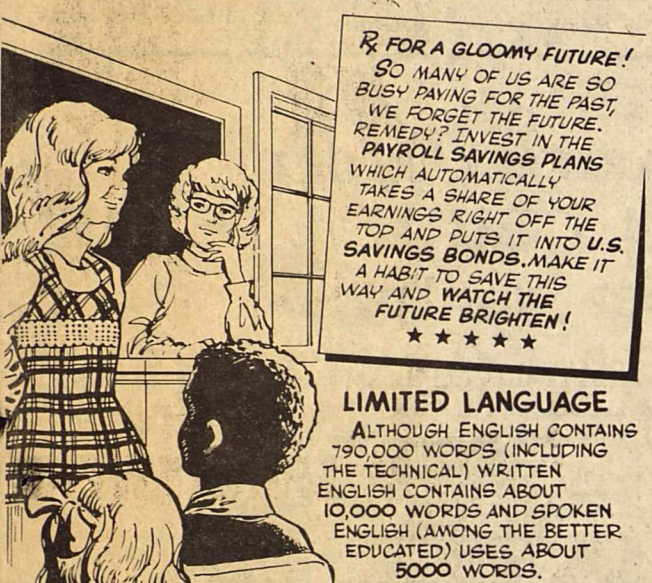
Complete information on the VA pension program is available from any VA office, veterans county service officer or veterans organization service officer.



John Adams lived longer than any other President, according to World Book Encyclopedia. He died just 5 months before his 91st birthday on July 4, 1826, the same date that Thomas Jefferson died.

**THAT'S A FACT**

**MODERN?**  
IF YOU THINK AIR MAIL IS A RECENT DEVELOPMENT YOU'RE WRONG! 991 YEARS AGO AN EGYPTIAN NOBLEMAN SENT A RUSH ORDER OF CHERRIES TO THE CITY OF BAALBEK-VIA 600 PIGEONS!



**FOR A GLOOMY FUTURE!**  
SO MANY OF US ARE SO BUSY PAYING FOR THE PAST, WE FORGET THE FUTURE. REMEDY? INVEST IN THE PAYROLL SAVINGS PLANS WHICH AUTOMATICALLY TAKES A SHARE OF YOUR EARNINGS RIGHT OFF THE TOP AND PUTS IT INTO U.S. SAVINGS BONDS. MAKE IT A HABIT TO SAVE THIS WAY AND WATCH THE FUTURE BRIGHTEN!  
\*\*\*\*\*

**LIMITED LANGUAGE**  
ALTHOUGH ENGLISH CONTAINS 790,000 WORDS (INCLUDING THE TECHNICAL) WRITTEN ENGLISH CONTAINS ABOUT 10,000 WORDS AND SPOKEN ENGLISH (AMONG THE BETTER EDUCATED) USES ABOUT 5000 WORDS.

**Dayton BLUE RIBBON 78 STEEL BELTED RADIAL**



**STEEL BELT RADIAL BLEMS**

|         |            |
|---------|------------|
| GR78X14 | TAX \$2.85 |
| GR78X15 | \$2.90     |
| HR78X15 | \$3.11     |
| JR78X15 | \$3.27     |
| LR78X15 | \$3.44     |

Master Charge  
Our Easy Credit Plan  
**ANDERSON TIRE CO.**

**agri-facts**  
Pat Hale

Most city folks still don't know the facts of life... facts of life about farming at least. This lack of knowledge is considered by some to be the most serious educational crisis in the United States. According to a report issued last year by a group of Kansas educators researching political and economic aspects of the issue, the country faces possible economic disaster if this situation is not corrected. Central to the problem is the attitude of many of those away from farming that agricultural products are natural resources... same as oil or coal. Little appreciation is shown for the work and costs that go into production of crops or livestock. Put most simply, there's a lack of savvy in the city... they don't understand if the farmer doesn't grow it... nobody's going to eat it. Officials releasing the special report in Kansas urged all agricultural groups to work toward enhancing consumer education.

**HALE FARM SUPPLY**  
Phone 864-2692

Haskell, Texas - We Reserve the Right to Limit - Home Owned

# Parker's Super Market

506 North Second USDA Food Stamps Coupons Gladly Accepted Phone 864-3454

|  |   |   |
|--|---|---|
| <b>TASTE THE DIFFERENCE... QUALITY-MEATS SAVE THE DIFFERENCE</b> | <b>ALL PURPOSE</b>  | <b>FINE FARE PURE</b>                       |
| <b>FRESH GROUND BEEF LB 69¢</b>                                  | <b>GLADIOLA FLOUR 5 LB BAG 59¢</b>                            | <b>VEGETABLE SHORTENING 3 LB CAN \$1.29</b> |
| <b>WISC LONGHORN CHEESE LB 1.29</b>                              | <b>WHITE SWAN SMALL POTATOES WHITE WHOLE 4 16 OZ FOR \$1.</b> |   |
| <b>SLICED SLAB BACON LB 89¢</b>                                  | <b>WHITE SWAN EARLY GARDEN Luncheon Peas 4 16 OZ FOR \$1.</b> |   |
| <b>USDA "CHOICE" CHUCK ROAST LB 79¢</b>                          | <b>WHITE SWAN Leaf Spinach 15 OZ 4 FOR \$1.</b>               |   |
| <b>TV DINNERS BANQUET FROZEN ASST KINDS 49¢</b>                  | <b>HUSKY CANNED DOG FOOD 8 FOR \$1.</b>                       |   |
| <b>POTATOES HANDY PAK FROZEN CRINKLE CUT 5 LB BAG \$1.09</b>     | <b>DEL MONTE TOMATO CATSUP 32 OZ 79¢</b>                      |   |
| <b>PET-RITZ PREMIUM 2 COUNT, 9" SIZE PIE SHELLS 43¢</b>          | <b>BATH SIZE 5 1/2 OZ BAR ZEST SOAP 3 FOR \$1.</b>            |   |
| <b>WHITE SWAN 100% PURE INSTANT TEA 3 OZ 1.09</b>                | <b>JUMBO ROLL GALA TOWELS 59¢</b>                             |   |
| <b>WHITE SWAN 1 LB SALTINE BOX CRACKERS 43¢</b>                  | <b>NOTEBOOK FILLER PAPER 300 COUNT 89¢</b>                    |   |
| <b>17 OUNCE DOWNY 37¢</b>  | <b>POTATOES RUSSET 10 LB BAG 69¢</b>                          | <b>EAST TEXAS YAMS POUND 25¢</b>            |
|  | <b>BANANAS GOLDEN RIPE POUND 19¢</b>                          | <b>FRESH AVOCADOS 5 FOR \$1.00</b>          |



# Farm-facts

A Weekly Report Of Agri-Business News

Compiled From Sources Of The  
TEXAS DEPARTMENT OF AGRICULTURE  
John C. White, Commissioner

Oink, Oink . . . Wheat Acres Decline . . . Crop Reports On The Way.

Texas hog producers apparently see some dangers ahead in expanded pork production as they are planning to cut back on sow farrowings during the first half of this year.

The Texas Crop and Livestock Reporting Service notes that from now through May, Texas farmers intend to farrow 91,000 sows. This is two per cent less than the same period a year ago.

The December-February quarter is expected to show an increase of four per cent from a year ago, but the March-May quarter is expected to see a decline of nine per cent compared to a year ago.

Nationwide, by comparison, U.S. hog producers intend to farrow 6.1 million sows through May. This would be an increase of five per cent from a year ago.

As of Dec. 1, the inventory of all hogs and pigs in Texas was 850,000 head. This is nine per cent more than a year ago, but is ten per cent less than two years ago.

The number of market hogs totaled 731,000. This is 11 per cent more than a year ago. The breeding herd was 119,000 head. This is two per cent less than a year ago.

Across the nation, hog and pig numbers totaled 55,100,000. This is 11 per cent more than a year ago. The number kept for breeding, at 8,000,000, is five per cent more than a year ago.

The 1976 pig crop was 19 per cent higher than a year ago, which explains some of the reason for the drop in prices for hogs to producers.

**STEADY SIX-YEAR INCREASE** in wheat acres nationwide has come to an end. But there still will be plenty of wheat.

The Texas winter wheat acreage expected for harvest in 1977 is now estimated at 6,150,000 acres. This is down five per cent from last year.

Based on Dec. 1 conditions, production is expected to total 98,400,000 bushels; this would be down five per cent from last year, but is still close to the 100 million bushel production for Texas that has been exceeded only twice since 1866.

Wheat seeding is complete in the state. Too much rain in some parts of the state prevented some farmers from completing planting. Cold weather has also reduced growth and has reduced the quantity of forage available for pasture.

Winter wheat acreage for the nation is set at 55,800,000 acres. This is a three per cent decline from last year. Based on Dec. 1 conditions, this would produce 1,438,000,000 bushels, which is about twice the amount that would normally be used in this nation.

**CROP REPORTS** coming out in the near future include the Jan. 17 annual crop summary. On Jan. 21, look for the prospective plantings for 1977 as of Jan. 1 intentions.

April 14 will be the date of the prospective plantings for 1977 based on April 1 intentions. May 10 is the date for the winter wheat production based on May 1 conditions. And June 8 is the date for the winter wheat production forecast based on June 1 conditions.

## Letters To The Editor

Dear Bill:  
Thought you might be interested in the article published by the Texas Parks and Wildlife News the last week of December 1976. I caught the catfish on December 9, 1976 with a model 22 Zebo reel. I was pastor there at First Baptist for 7 years and left there on June 1, 1973.

Troy Culpepper  
DALLAS—A 170 lb hook is hardly designed for landing 23 lb. channel catfish. However, Dr. Troy Culpepper, pastor of Kaufman Baptist Church, did exactly that recently at a private lake near Granbury.

As might be expected, he was pleasantly surprised by this large catch—the state record is 36 lbs. 8 oz.

Although his fish was not large enough to set a new record, it did qualify for the Big Fish Awards Program sponsored by the Texas Parks & Wildlife Department. The minimum requirement for channel cats is 12 lbs.

Kaufman County game warden Raymon Wood provided him with an application form and witnessed the weigh-in on certified Department of Agriculture scales.

"After the application is mailed to our offices in Austin, Dr. Culpepper will receive a certificate he can frame," said Wood. "In return, our department gains valuable information about fisheries management."

Other eligible freshwater species and minimum pounds include: largemouth bass, 7; crappie, 3; white bass, 3; striped bass, 15; hybrid striped bass, 6; blue cat, 35; flathead cat, 50; walleye, 6; rainbow and brown trout, 2.

Any fish caught since Jan. 1, 1974, will qualify if it was taken by hook and line in Texas waters. The person applying must have hooked, fought and landed the fish by himself.

For applications or additional information, contact the nearest game warden of P&WD office. In Dallas, the address is 3727 Dillido, Suite 132 and Fort Worth, 100 N. University.



Stuffed pork chops are a perfect cure for those post-holiday cooking blues. Pork is plentiful in Texas markets with supplies now at their seasonal peak. The peanut stuffing also provides a protein boost to the tasty main dish, while an alternate stuffing contains both protein-rich pecans and plentiful Texas rice. Add the tangy taste of a Texas citrus fruit salad to enhance flavor and provide important vitamins.

## From the TAP Kitchen

Texas Department of Agriculture - John C. White, Commissioner

### PORK CHOP DELIGHT

- 1/2 cup uncooked rice
- 3 cups cold water
- 1 tsp. salt
- 2 Tbsp. chopped fresh parsley
- 1/3 cup chopped pecans
- 1 (1 3/8 oz.) package onion soup mix
- 1 Tbsp. salad oil
- 2 (1 1/2 inch) Texas loin pork chops

Combine the uncooked rice with 2 cups cold water and salt. Bring to a boil. Simmer until rice is tender. Add and mix chopped fresh parsley and chopped pecans. Set aside. In another pan bring to a boil 1 cup water and add the onion soup mix. Set aside. In 10 in. skillet, heat salad oil and broiler the pork chops. Cut pockets on side of chops and allow to cool. Stuff with rice mixture and place in a 2-quart casserole. Pour onion soup mixture over chops and sprinkle with pepper. Cover and bake at 350 degrees F. for one hour or until pork chops are tender. Yield: 2 servings.

### PEANUT-STUFFED PORK CHOPS

- 6 pork rib chops, cut 1 1/2 inches thick
- 2/3 cup coarsely crushed shredded wheat wafers
- 1/2 cup shredded cheddar cheese
- 1/2 cup chopped peanuts
- 1/2 tsp. garlic salt
- 2 Tbsp. lard or drippings
- Salt

Make a pocket in each chop by cutting into the chop along the bone. Mix together shredded wafers, cheese, peanuts, and garlic salt. Fill pocket in each chop with 3 to 4 Tbsp. stuffing. Brown chops in lard or drippings and place in baking dish. Season lightly with salt. Cover and bake in moderate oven (350 degrees F.) for 30 minutes. Remove cover and bake 30 minutes longer or until done. Yield: 6 servings. (Note: Bite-sized cereal plus 3 Tbsp. melted butter can be substituted for shredded wheat wafers in the stuffing.)

## Hospital Notes

**ADMISSIONS**  
MEDICAL: Hillery Stone, Haskell; T. V. Burson, Haskell; Jessie Cooper, Haskell; Morris Jones, Haskell; Annice Parish, Haskell; Mattie Harris, Haskell; Lela Rose, Rule; John Weathersby, Rule; Ethel Johnson, Haskell; Irma Smith, Rule.  
SURGICAL: Richard Fagan, Haskell; Howard Liles, Weibert; William Glanville, Throckmorton.

**DISMISSED**  
Katy Casey, Wilda Medford, Lillian Schenck, Wesley Spells Bertha Humphrey, Gary Shaw Tammy Greenwood, Robert Geilhausen, Trudy Bush, Lupe Castorena, Garth Garrett, Steven Underwood.

A SUBSCRIPTION TO The Haskell Free Press is an ideal gift for any occasion. We do all the work. Just come by and give us the name and address and we'll send a gift certificate in your name. Haskell Free Press



Harvesting of oysters in the coastal waters of Texas is in full swing, and purchasers of the delicacy should have no qualms about eating them, provided the oysters come from certified sources, says the Texas Department of Health Resources.

State health authorities are asking the public to help eliminate the troublesome and dangerous traffic in "bootleg" oysters by buying only those shellfish products known to be produced under the Texas

Department of Health Resources certification.

The reason for concern is that bootleg oysters may have come from waters of questionable quality, have been opened under unsanitary conditions, stored in unclean containers without adequate refrigeration and peddled by spurious dealers from house to house or at roadside stands.

Consumers are urged to insist on knowing the source of the oysters offered for sale and to refuse them if they

were not harvested and processed under the certification program. Legitimately canned or packaged oysters can be quickly identified by a certification number issued by the Department of Health Resources. On gallon cans, the number is embossed in the metal on the side of the can. On smaller containers, such as jars, the certification number is printed on the lid.

Shellfish (oysters, clams and mussels) if contaminated, can present a high potential health hazard to the consumer because (1) of the shellfish's ability to filter and concentrate pathogenic microorganisms and toxic substances present in the environment, (2) shellfish are packed whole and alive and are often consumed either raw or only partially cooked, and (3) harmful substances can be introduced into the shucked meats if this operation isn't carried out in controlled sanitary surroundings.

All water-borne diseases, including typhoid fever, gastroenteritis and infectious hepatitis, can be transmitted by contaminated oysters. But the risk can be virtually eliminated if consumers refuse to buy uncertified products.

Processors and consumers are reminded that the Texas Shellfish Sanitation Law of 1965 makes it unlawful for any person to take, sell, offer, or hold for sale, any shellfish (oysters, clams or mussels) from an area declared by the

Director of Health Resources to be polluted. The law also specifies that it is unlawful to sell, offer, or hold for sale, any shellstock or shucked shellfish which have not been handled and packaged in accordance with specifications fixed by the Commissioner of Health.

The State Health Department's shellfish activities are carried out by its Shellfish Sanitation Control Division. The program is evaluated by the Federal Food and Drug Administration to determine if the program is conducted to assure that consumers receive only quality products.

The Department's certification program includes the classification of oyster growing waters in accordance with their ability to produce safe, edible shellfish, and a continuing processing plant inspection program designed to assure sanitary processing and packaging.

This is a big undertaking. Texas has more than a million and a half acres of estuarine waters which are surveyed and classified. Almost 80 percent of these waters—1.2 million acres—are open for oyster harvesting.

These oyster waters—covering 3,359 tidal shoreline miles—extend from Port Isabel near the southern tip, to Sabine Lake adjacent to Port Arthur.

In a normal year, about 80 per cent of oyster production comes from Galveston Bay, which contains 341,000 acres of oyster waters. And, the

heaviest concentrations of oyster plants are found in the Galveston Bay area.

Sampling procedures are used to determine if coastal waters meet the strict standards prescribed for oyster production. A total of 430 bacteriological sampling stations are located along the coast—160 of these stations in Galveston Bay. Some also double as sampling stations for such things as heavy metals, radioactivity, pesticides, marine toxins, oil and hydrocarbons.

Each of the processing plants—which may vary from 70 to more than 100 depending on the availability of oysters—is inspected at least once a month to determine that water supply is safe and adequate, sewage disposal is present, and that all food contact surfaces are acceptable. An evaluation also is made of cleaning procedures, bacteriological levels, refrigeration, attention to health of personnel and plant records for sources of shellfish.

Your Department of Health Resources is hoping that all residents enjoy these bountiful gifts from the sea and it is working constantly to ensure the highest quality possible.

NOW IN STOCK: Extra large type Bibles, King James Version, Red Letter Edition, 12 page family record, 16 full color reproductions of religious masterpieces. Only \$14.95. Haskell Free Press.

## 1977 QUARTERLY REPORT HASKELL COUNTY, TEXAS OCT., NOV., DEC.

ON JANUARY 10, 1977 A.D., the Commissioners Court of Haskell County, Texas met in regular session, compared and examined the quarterly report for the quarter ending December 31, 1976 and found same to be true and correct.

| FUND                  | BALANCE Oct. 1, 76 | RECEIPTS Oct., Nov., Dec | DISBURSEMENTS Oct., Nov., Dec. | BALANCE DEC 31, 1976 |
|-----------------------|--------------------|--------------------------|--------------------------------|----------------------|
| GENERAL               | \$ 10,382.36       | \$ 169,352.37            | \$ 57,373.89                   | \$ 122,360.84        |
| JURY                  | OD 815.96          | 9,830.85                 | 2,906.72                       | 5,108.17             |
| PERMANENT IMPROVEMENT | 2,272.68           | 2,352.73                 | —                              | 4,625.41             |
| OFFICER SALARY        | OD 1,880.23        | 44,691.93                | 40,748.62                      | 2,063.08             |
| LAW LIBRARY           | 172.01             | 120.00                   | 327.59                         | OD 35.58             |
| ROAD & BRIDGE         | # 1 24,767.81      | 18,032.34                | 9,046.74                       | 33,753.41            |
| ROAD & BRIDGE         | # 2 3,196.28       | 6,989.71                 | 8,461.04                       | 1,724.95             |
| ROAD & BRIDGE         | # 3 7,693.63       | 11,339.98                | 6,149.44                       | 12,884.17            |
| ROAD & BRIDGE         | # 4 21,293.39      | 6,998.53                 | 9,046.17                       | 19,245.75            |
| LATERAL ROAD          | # 1 3,844.39       | —                        | 3,836.71                       | 7.68                 |
| LATERAL ROAD          | # 2 5,434.98       | —                        | 2,753.28                       | 2,681.73             |
| LATERAL ROAD          | # 3 4,461.53       | —                        | 4,238.75                       | 222.78               |
| LATERAL ROAD          | # 4 5,460.77       | —                        | 6,048.94                       | OD 588.17            |
| FML ROAD              | # 1 6,037.77       | 24,351.56                | 1,383.39                       | 29,005.94            |
| FML ROAD              | # 2 6,128.16       | 13,915.17                | 14.75                          | 20,028.58            |
| FML ROAD              | # 3 OD 329.45      | 17,393.97                | 926.98                         | 16,137.54            |
| FML ROAD              | # 4 OD 1,093.44    | 13,915.17                | —                              | 12,821.73            |
| RIGHT OF WAY          | —                  | 5,000.00                 | —                              | 5,000.00             |
| SOCIAL SECURITY       | 490.46             | 8,550.02                 | 8,550.02                       | 490.46               |
| GROUP INSURANCE       | 9.01               | 492.99                   | 506.80                         | OD 4.80              |
| AVAILABLE SCHOOL      | —                  | —                        | —                              | —                    |
| PERMANENT SCHOOL      | —                  | —                        | —                              | —                    |
| CRIMINAL JUSTICE      | 1,740.90           | 690.00                   | 1,068.75                       | 1,362.15             |
| GEN. REV. SHARING     | 11,176.24          | 7,907.00                 | 1,000.00                       | 18,083.24            |
| REV. SHARING          | # 1 13,982.21      | 5,000.00                 | —                              | 18,982.21            |
| REV. SHARING          | # 2 12,633.17      | 5,000.00                 | 4,750.03                       | 12,883.14            |
| REV. SHARING          | # 3 5,000.00       | 5,000.00                 | —                              | 10,000.00            |
| REV. SHARING          | # 4 11,896.29      | 5,000.00                 | 10,644.03                      | 6,252.26             |
| 39th SPEC. INV.       | 1,170.89           | 2,553.98                 | 1,644.23                       | 2,080.60             |
| VOTER REGISTRATION    | 1,314.01           | —                        | 136.58                         | 1,177.43             |

\$ 156,439.86 \$ 384,478.25 \$ 181,563.42 \$ 359,354.70

## INVESTMENTS OF HASKELL COUNTY, TEXAS

SOCIAL SECURITY FUND  
Certificate of deposit # 905  
Dated 6-24-76, Maturing 6-24-77 \$ 5,500.00

ON JANUARY 10, 1977 A. D., the commissioners Court of Haskell County, Texas met in regular session, compared and examined the quarterly report for the quarter ending December 31, 1976 and found same to be true and correct.

THE REQUIREMENTS OF ARTICLE 394 P.C. HAVE BEEN COMPLIED AND A TABULAR STATEMENT HAS BEEN FILED AS REQUIRED.

COMMISSIONER PRECINCT # 1  
COMMISSIONER PRECINCT # 2  
COMMISSIONER PRECINCT # 3  
COMMISSIONER PRECINCT # 4  
COUNTY JUDGE, HASKELL COUNTY, TEXAS  
COUNTY CLERK, HASKELL COUNTY, TEXAS

**General Electric**

# SALE DAYS

**WASHER-DRYER PAIR** Buy Both for only **\$489<sup>95</sup>**

**WWA 5500P**

- 3 wash/rinse temperature combinations
- 3 water level selections
- Permanent Press Cycle
- Activated Soak Cycle

**DDE 5300P**

- 3 heat selections
- Manual selection of drying time up to 130 minutes
- Separate Start Switch
- Removable "Up-Front" lint filter

**Anderson Tire Co.**

### STATEMENT OF NONDISCRIMINATION

Stamford Electric Cooperative, Inc. has filed with the Federal Government a Compliance Assurance in which it assures the Rural Electrification Administration that it will comply fully with all requirements of Title VI of the Civil Rights Act of 1964 and Rules and Regulations of the Department of Agriculture issued thereunder, to the end that no person in the United States shall, on the ground of race, color, or national origin, be excluded from participation in, be denied the benefits of, or be otherwise subjected to discrimination in the conduct of its program and the operation of its facilities. Under this Assurance, this organization is committed not to discriminate against any person on the ground of race, color or national origin in its policies and practices relating to applications for service or any other policies and practices relating to treatment of beneficiaries and participants including rates, conditions and extension of service, use of any of its facilities, attendance at and participation in any meetings of beneficiaries and participants or the exercise of any rights of such beneficiaries and participants in the conduct of the operations of this organization.

"Any person who believes himself, or any specific class of individuals, to be subjected by this organization to discrimination prohibited by Title VI of the Act and the Rules and Regulations issued thereunder may, by himself or a representative, file with the Secretary of Agriculture, Washington, D. C. 20250, or the Rural Electrification Administration, Washington, D. C. 20250, or this organization, or all, a written complaint. Such complaint must be filed not later than 180 days after the alleged discrimination, or by such later date to which the secretary of Agriculture or the Rural Electrification Administration extends the time for filing. Identity of complainants will be kept confidential except to the extent necessary to carry out the purposes of the Rules and Regulations."



# Townsend, Stegemoeller Repeat Wedding Vows

Cherri Lynn Townsend became the bride of Calvin Lynn Stegemoeller in a candlelight ceremony Saturday, January 8, 1977 at 6 p.m. in the First Baptist Church of Rochester. Bud Adkins, pastor of Central Baptist Church of Hamlin, officiated for the double ring ceremony.

The bride is the daughter of Mr. and Mrs. R. B. Townsend of Rochester and the groom is the son of Mr. and Mrs. Leon Stegemoeller of Sagerton.

Given in marriage by her father, the bride wore a candlelight gown of silk organza over bridal satin. The gown was fitted at the waistline and was accented with a long train edged with Venice lace. The chapel length 3-tiered veil was held with a satin bandeau edged with matching lace. The full sleeves were trimmed with lace cuffs. She carried a long bouquet of burgandy and pink roses, a small orchid, accented with greenery and baby's breath on a white lace bible.

For something old, the bride carried a lace handkerchief of the groom's grandmother, for something new, her wedding dress, for something borrowed, diamond earrings of the bride's grandmother, and the traditional blue garter.

Matron of honor was Mrs. Wayland Moore of Wheelock. Bridesmaids were Misses Susan Stegemoeller, cousin of the groom, and Susan Mullino of Rochester, and Melinda Corley, cousin of the bride from Midland. The bridesmaids wore long pale pink empire dresses with a short, long sleeved burgandy velvet jacket.

Michelle Scoggins of Rochester was flower girl and carried a basket of rose petals. She wore a dress matching the bridesmaids.

Mrs. Marvin Stegemoeller played wedding selections and accompanied Mrs. Bud Adkins, soloist, who sang "His and Hers," "The Lord's Prayer," and "Whither Thou Goest."

Clayton Stegemoeller of Lubbock served as his brother's best man. Groomsmen were Kent Beck of Seymour, Clyde and Carl Stegemoeller, brothers of the groom from Sagerton.

Ushers were Rod Townsend, brother of the bride of Rochester and Johnny Baitz, cousin of the groom of



MRS. CALVIN STEGEMOELLER  
...formerly Cherri Lynn Townsend

Sagerton. Candlelighter was Clifford Stegemoeller, brother of the groom from Sagerton.

Mrs. Mac Hearn, cousin of the groom, registered guests in the Bride's Book.

Following the wedding ceremony, the parents of the bride hosted the reception in the Fellowship Hall of the Church.

The bride's table was laid with a pink and burgandy blend tablecloth. Centered on the table was a white candelabra with pink candles surrounded by bouquets of the bride's and bridesmaids.

Atop the 3-tiered cake was the traditional bride and groom which was also used on the bride's parents cake 25 years ago.

The groom's table was laid with a burgandy tablecloth. Both the floral arrangement and the cake were arranged in a double T. Serving appointments were crystal and silver.

Serving guests were Mrs. Charles Zachry, Camey Glover, Brenda Stegemoeller of Rochester, Mrs. Randy Hines, Mrs. Clayton Stegemoeller, Donna Draper of Lubbock,

Carol Gardner of Tahoka, Kandy Grindstaff of Abilene, Kim Drinnon of Haskell, and Mrs. Danny Hisey of Rule. Other members of the house party were Mrs. Jonny Scoggins, Mrs. John Ben Glover, Mrs. Warren Short, Mrs. Clarence Gaunt, Mrs. George Mullino, Mrs. Dick Robertson, Mrs. Jalea Glover, Mrs. Cindy Reeves, Mrs. James Reid, all of Rochester and Mrs. Sidney Corley of Midland.

The bride is a 1974 graduate of Rochester High School and is a Sr. Physical Education major at Texas Tech University. She is Recording Secretary of Phi Beta Rho. The groom is a 1973 graduate of Rule High School and is a Sr. Agricultural Engineering major also at Texas Tech and will graduate in May.

Following a wedding trip to San Antonio, the couple will be at home at 2404 10th in Lubbock.

The groom's parents hosted the rehearsal dinner at the City Cafe in Knox City.

## Mrs. Persons Celebrates 90th Birthday

Mrs. Beulan Persons was honored with a tea on her 90th birthday, Jan. 9th at the home of Mr. and Mrs. W. H. Pitman.

Entertaining rooms were made festive by the many flowers and pot plants sent by her friends.

Table appointments were crystal and silver. The table was centered with a tall silver candelabra decorated with English ivy, baby's breath and pale yellow candles. The two layer cake was trimmed with pastel rose buds and topped with pink carnations.

In spite of the extremely cold weather and hazardous streets almost fifty of her friends attended.

Serving in the dining room were Mrs. Corsie White, Mrs. Wallace Cox, Jr., Mrs. Richard Bischofhausen and Mrs. Clay Smith. Others in the house party were Mrs. Oscar Tooley, Mrs. W. D. Reed, and Mr. and Mrs. C. F. Hunter of Riverridge, La.

## Matrons Club Holds Meeting

The Weinert Matrons Club met January 6 in the Community Center. Mrs. Vern Derr, president, called the meeting to order.

Minutes of the two previous meetings were read and approved.

Mrs. Floyd McGuire, Sr., gave the treasurer's report in the absence of the treasurer.

Mrs. Bill King led the group in prayer. Then Mrs. Derr spoke on the subject "Profile of the Future." Her talk covered possibilities of the future during the next hundred years. She touched on such areas as outer space, education, science, law, government, crime and even fashions.

A letter of appreciation from Mrs. R. W. Raynes, Jr., was passed among the members to read.

The club members were dismissed by giving the Club Pledge.

Acting as hostesses in the absence of Mrs. Henry Smith were Mrs. Floyd McGuire, Sr., and Mrs. Russell Rainey.

## Family Living Subcommittee Holds Meeting

Members of the County Program Building Family Living Committee met on Friday, Jan. 7th at 9:30 a.m. in the Meeting Room of the County Extension Office.

The purpose of the meeting was to select the Home Economic Indepth Area for 1977-78 year. The committee studies Haskell County along with Specialist Projections in the areas of Family Clothing, Health, Housing, Leadership, Consumer Concern and Family Relations.

After studying each area it was decided that the Home Economic Indepth Area for the County will be Family Health in 1977-78.

The members present were Mrs. Delbert LeFevre, Mrs. Adell Thomas, Mrs. Tom Yates, and Mrs. Mildred Robertson.

## Weinert HDC Holds Meeting

The Weinert Home Demonstration Club met Jan. 4 in the home of Mrs. M. W. Phemister.

Roll call was answered by six members and one visitor. Mrs. Barbara Elliott with "Why I Use Accessories."

Mrs. Barbara Elliott, County Extension Agent, brought a very interesting and informative program on wearing accessories. Two members served as models. Mrs. Elliott demonstrated how to dress up and dress down, a garment with the use of scarves and points on how to select slenderizing lines. How to wear belts and type to wear and also how to shorten long beads.

## Brueggeman, Haynes Vows Are Read

Linda Faye Brueggeman and Anthony James Haynes were married Friday, December 31st at 8 p.m. with a double ring ceremony at the Trinity Baptist Church in Haskell.

The parents of the bride are Mr. and Mrs. Lewis F. Brueggeman and the bridegroom's parents are Mr. and Mrs. James L. Haynes all of Haskell.

The bride was given in marriage by her father.

The Rev. Kenneth Blair, pastor, officiated. Mrs. Curtis Darden, aunt of the bride was organist.

The bride wore a floor length white crepe dress with a train, accented with white lace at the neck and empire waist. The long sleeves were gathered and puffed at the wrist. The long white veil was made of soft, white net and accented on the sides and bottom by white lace. She carried white daisies accented with white lace and ribbon.

The Maid of Honor, Freda Stockbridge of Mason wore a floor length royal blue crepe dress accented at the waist by two rows of lace and carried a small bouquet of white daisies accented with ribbons. Flower girl was Lori Darden, cousin of the bride.

The best man was Danny Brueggeman, brother of the bride.

The reception was held in the Fellowship Hall of the church. Caren Haynes, sister of the groom and Peggy Darden, aunt of the bride served.

The bride is a graduate of Paint Creek High School and a 1974 graduate of Angelo State University, San Angelo. The groom attended Haskell High School and served in the United States Marine Corps.

The couple will make their home at 903 N. 5th St. in Haskell where she is employed at Ben Franklin and he is employed at McGee and Tidrow Builders Supply.

## Around Town

by Lois and Lisa

Guests in the E. G. Graham home during the Christmas holidays were her children, grandchildren and relatives and friends. They were Mr. and Mrs. Alan Brewer, Pampa; Mr. and Mrs. J. L. Blackard and Brandy, Leveland; Mr. and Mrs. Donnie Blackard, Sue Conner, Wayne Ammons, Joe and Thresa, Lubbock; Mr. and Mrs. Curtis Graham, LaNell and Randall, Houston; Mr. and Mrs. Jerome Humphrey, Dianna, Debra and Kenneth, Lefars; Mr. and Mrs. Eddie Brewer, Denver Colo.; Rev. and Mrs. J. C. Amburn, Olivia, Brenda and Nola, Bertha Pelsue, and Mrs. Gilbert Ammons all of Haskell.

Pam Armstrong, Houston and Cindy Armstrong, Lake Jackson, daughters of Mr. and Mrs. Bob Armstrong, Lake Jackson, and nieces of Mr. and Mrs. Jetty Clare and Mr. and Mrs. Alfred Hinds spent last week in Haskell. Pam is a Junior at the University of Houston and Cindy is a freshman in Brazos Port Jr. College in Lake Jackson.

Mr. and Mrs. Bill Shaw Mr. and Mrs. Randy Shaw and Mollie Jarred went to Abilene Sunday and brought Duann Shaw to Haskell to spend the week.

A GIFT WITH ANY PURCHASE FROM

FRESH COVER

The complete Beauty Care Program that lets skin breathe.

TRY NEW

FRESH COVER

COOLING TONER

Refreshing, Oil Cutting Astringent Lotion

4 oz.

\$3.00

HELENA RUBINSTEIN THE SCIENCE OF BEAUTY

JOHNSON PHARMACY

YOUR PRESCRIPTION CENTER

418 North First—Haskell, Texas  
Open 7:30 to 6 P.M.—Closed Sunday  
Nights and Sundays call 864-3439

## DOES YOUR INSURANCE INCLUDE FAST CLAIM SERVICE?

Whether you have auto, fire or personal liability insurance you can depend on our FAST claim service. We are Independent Insurance Agents serving YOU! For fast, courteous help call us today... you can depend on our agency!



LANE DURHAM AGENCY  
510 N. 1st St.  
Phone 864-3216  
Haskell, Texas



# HASSEN'S

## January Clearance

on

Men's, Ladies, Children's Apparels and Shoes.

Merchandise Reduced by 33 1/3 % to 60 % Store-wide!

Additional current season Apparels has been added to the Clearance Sale.

# HASSEN'S

Haskell

# Lane-Felker

Greater Reductions in all Categories

such as:

dresses—long dresses—formals  
pant suits—long skirts—jr. dresses  
jr. long dresses—jr. jump suits

1/4 — 1/3 — 1/2 off

and many less

sportswear

pants—blouses—jackets—sweaters  
skirts, gauchos—vests  
big selections to choose from

1/4 — 1/3 — 1/2 off

and many less

accessories

bags—gloves—scarfs—jewelry—belts

1/3 — 1/2 off and less

robes

long robes—short robes—long kaftan  
short kaftans—hostess dresses

1/4 to 1/2 off and less

coats

fur trim—tailored—classics—short coats  
all weather—soft kid leathers

1/4 to 1/2 off and less



Henry W. Block  
President

"The simpler your return, the less we charge."

Reason No. 2 why H&R Block should do your taxes.

Block didn't become America's largest income tax preparer by charging high prices. For example, if you qualify for the short form, we charge a very low price. Even if your return is more complicated, Block's fee is still very reasonable.

**H&R BLOCK**  
THE INCOME TAX PEOPLE

115 N. Ave E 864-3322

OFFICE HOURS 8:00 to 5:00  
Monday Through Friday



# Sagerton News

The very cold weather over the weekend kept many at home, however it did not keep them from making plans for upcoming events.

Friday, January 14—Our community residents will be interested in attending the donkey basketball game at Rule High Gym, at 7:00 p.m. There will be a girls game and a boys game. It is sponsored by the Lions Club as a benefit show for the Dennis and Wanda Briles Memorial Fund. Prices will be \$2.00 for adults and \$1.00 for students. Some of our local Sagerton kids will probably be riding the donkeys.

January 20—The Sagerton Methodist Church are delighted to have Dr. Bray, the Methodist missionary to Japan come and be their guest for a pot luck meal at the Sagerton Community Center. He is expected then to tell about his many years since World War II in Japan as a missionary. Dr. Bray has met with us before when he was in the United States on furlough, and we really enjoyed him. Anyone who would like to hear and visit with him is cordially invited. Just bring a covered dish and join the group.

January 22—This date has been selected for our "Sagerton Hee-Haw" production. A large group met at the Community Center last week and started making plans and the parts were handed out by director, Mrs. Joe Clark. It was decided to have a carnival before the "Hee-Haw" and Mrs. Alvin Ulmer and Mrs. Allen Meier are in charge of this. Mrs. Delbert LeFevre is chairman of the food booth. Other chairmen will be announced next week. If you would like to help, please tell one of these ladies.

January 24—The Golden Age group will meet at the Community Center at 2 p.m. Hostesses this month will be Mrs. Lorene Huggins, Mrs. Jimmy New, and Mrs. J. A. Hertel. All Golden agers from this area are urged to come because they have not all got together since November.

January 24—The Sagerton Water Corp. will hold their annual meeting at the Sagerton Community Center at 7 p.m. All members are urged to attend.

Kris Kupatt, daughter of Mr. and Mrs. Fred Kupatt, entered in the Senior Division of the Haskell Co. Food Show at Haskell last Saturday. She placed second in the Snack division of Gourmet foods with her Swedish Rosettes.

Kris and her brother, Kraig are both looking forward to the Haskell Co. Livestock Show on Friday when they will show their swine. Marc and Jeff Thane will also show at Haskell in the County Show. The Kupatts also plan to show at Abilene Monday of next week for the Regional Livestock Show. They are a bunch of busy kids this week.

Sagerton has another fire truck. It is one handed down to us from the Rochester Fire Dept., but we are very proud of it because it will hold more water and is easier to drive than the old one. Fire Chief Zenor Summers states that the hoses from the other truck will need to be put on the new truck before it will be ready for

use. He also states that it takes at least two men to handle the truck and the hose. The man from Rochester has promised to come down and give instructions in the use of the new truck.

Let us remember that in case of fire in Sagerton, call 997-2545, and that the fire siren is located on the water tank behind the Gulf Station. The CB radios in our area have been very helpful in time of emergency.

The members of the L.O.C. H.D. Club should show signs of being better dressed after the program given by County Extension Agent Barbara Elliott at the home of Mrs. Fred Schronerstedt last Thursday. She gave tips for deciding which styles are best suited for the ladies shapes and coloring. Each lady was given the opportunity to analyze herself and what she should wear. Then Mrs. Elliott gave some tips on wearing scarves. Mrs. Eddie Briles of Rule was a guest.

Mrs. Lorene Huggins was elected as the club's candidate to be Haskell County's representative at Jayton soon at a District Family Living Workshop.

Mike Bailey and Trent Dittamore of Hurst visited in the home of Mr. and Mrs. Delbert LeFevre Friday evening.

Delbert LeFevre accompanied Supt. of Schools Lavon Beakley to Austin last week where they attended the Texas Equitable Taxation Meeting and the annual meeting for School Administrators and School Board members.

Mr. and Mrs. Lewis Corzine and Mr. and Mrs. Wallace Dudensing are getting away from the cold weather this week. They left Monday

morning from Amarillo on a trip to Acapulco, Mexico with a Farmland Industries group. We hope they soak up enough warm sunshine to last them awhile.

Faith Lutheran Church will hold its annual meeting following services Sun. Jan. 16. This meeting was to have been held Jan. 9, but postponed because of bad weather. A pot luck dinner will be held following the meeting in the Fellowship Hall.

## Hermann Sons To Install New Officers

Old Glory Hermann Sons Hall will be the scene of an installation ceremony for the officers of nine West Texas Hermann Sons lodges at 2 p.m. Sunday, Jan. 23.

The installing officer will be Marvin O. Gold, San Antonio, grand guide of the Order of the Sons of Hermann in Texas, assisted by Marchel Nauert,

Aspermont, member of the Grand Lodge Laws Committee; and Clarence Teichmann, Stamford-Old Glory fraternalist.

Officers of the following lodges will be inducted: Lubbock Lodge No. 16, Odessa Lodge No. 38, Abilene Lodge No. 50, San Angelo Lodge No. 177, Rowena Lodge No. 216, Old Glory Lodge No. 228, Haskell Lodge No. 241, Hermleigh Lodge No. 256 and Roscoe Lodge No. 257, all with men and women members.

Old Glory Lodge will host the event.

The 73,000-member Sons of Hermann order, established in Texas by German pioneer settlers, is famed for its insurance for its members, plus many social and fraternal benefits. The society operates free dancing schools for its junior members in a number of communities, as well as a modern youth summer camp, and a home for its aged members who find themselves in need in their twilight years. The camp and the home are

both in Hill County at Comfort, Texas. Home offices of the society are in San Antonio. There are more than 150 Hermann Sons lodges across the state.

## IRS News

### FINAL TAX PAYMENT DUE FOR SOME, IRS SAYS

Many people who do not have enough taxes withheld are required to pay their final installment of 1976 estimated Federal income tax no later than Monday, January 17. Also due the same day are amended estimates from those whose 1976 income changed substantially during the last quarter.

Many taxpayers first met the requirements for filing a tax declaration during the last three months of 1976, according to the Internal Revenue Service. Taxpayers are generally required to file an estimate if they owe the IRS more than \$100 not covered by withholding. The estimates in

this case are due January 17. There is one exception to this rule, the IRS said, and that's when taxpayers file their returns and pay all taxes due by January 31. In that case the final 1976 installment is not required, the amended declaration is not required nor is an original January 17 declaration required.

IRS Publication 505, "Tax Withholding and Declaration of Estimated Tax," provides additional information and may be obtained free from local IRS offices.

### TAX FORM DUE FROM FARMERS

Farmers who have not filed their 1976 declaration of estimated Federal income tax must file and pay that tax by Monday, January 17. The sole exception to this rule is if they file their income tax return and pay the total tax due by March 1, the Internal Revenue Service said today.

Farmers are defined as those persons who earned at

least two-thirds of their 1976 gross income from farming. IRS Publications 225, "Farmer's Tax Guide," and 505, "Tax Withholding and Declaration of Estimated Tax" provide additional information and are available free at local IRS offices.

## Savings Bond Report

October sales of Series E and H United States Savings Bonds in Haskell County were reported today by County Bond Chairman R. W. Herren. Sales for the nine-month period totaled \$121,064 for 90% of the 1976 sales goal of \$135,000.

Texas sales during the month amounted to \$21,175,451 while sales for the first nine months of 1976 totaled \$232,326,820 with 85% of the yearly sales goal of \$272.4 million achieved.

# Buy Now AND SAVE!

BORDENS CHEDDAR CHEESE 9 OZ PKG 97¢

SLICED BOLOGNA LB 69¢

HAMBURGER MEAT LB 59¢

STORE MADE SAUSAGE LB 69¢

CHILI MEAT LB 88¢

KRAFT PARKAY LB 49¢

MRS. BAIRDS BREAD LARGE LOAF 39¢

DEL MONTE SPINACH 303 CAN 29¢

SUNSHINE 11 OZ BOX Vanilla Wafers 49¢

3 MINUTE OATS 18 OZ BOX 49¢

PORK BOX Shake & Bake 33¢

CALIFORNIA AVOCADOS EACH 19¢

TEXAS RUBY RED Grapefruit 7 FOR \$1.

EAST TEXAS YAMS LB 29¢

WILSON VIENNAS 3 CANS \$1.

KOUNTY KIST CORN 12 OZ CAN 29¢

LIBBY 16 OZ CANS Sliced Beets 3 FOR \$1.

POST 20 OZ BOX RAISIN BRAN 98¢

FRANCO AMERICAN SPAGHETTI CAN 23¢

200 COUNT BOX KLEENEX 55¢

JOHNSONS SHOUT CAN 89¢

BATH SIZE DOVE BAR 39¢

JOHNSONS 14 OZ CAN Lemon Pledge 1.49

# POGUE GROCERY

—Extra Parking Behind The Store.

Home Owned And Operated—

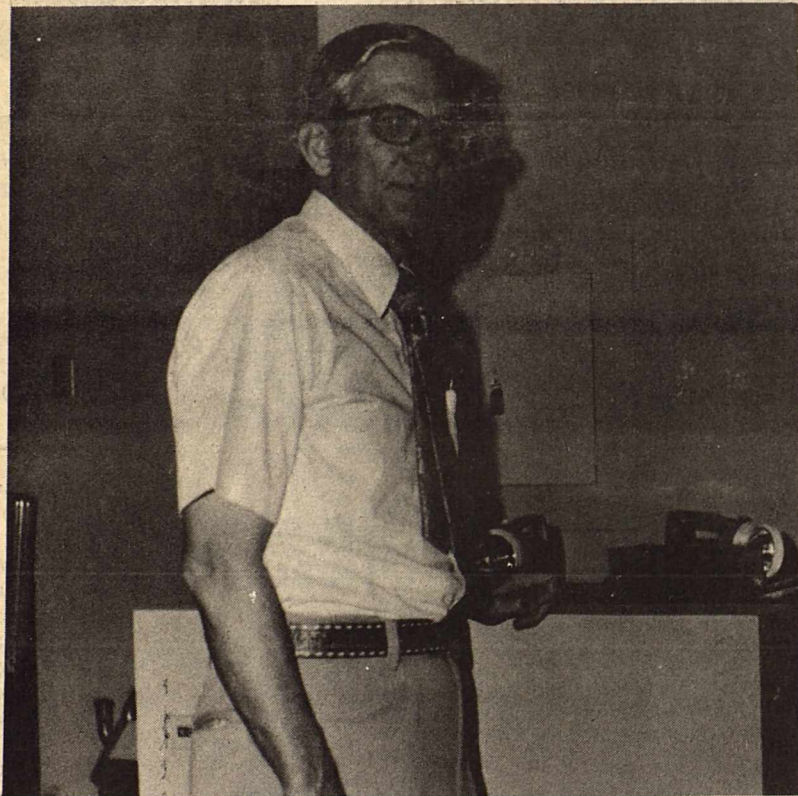
113 NORTH AVENUE E

PHONE 864-2015

HASKELL, TEXAS

## SO YOU CAN KNOW US BETTER

INTRODUCING...



## TO SERVE YOU BETTER

Sam Hugh Smith in Haskell National Bank's very newest employee, having started work in November of 1976. The present trend of young people returning to the small cities of their origins, is a very welcome and helpful, factor in their strength and economy. Due to a steady growth over the past several years, H.N.B. has progressed to the point of needing a "night shift." Sam Hugh presented himself at just the right time, and H.N.B. has a "new man for a new job." It became increasingly apparent several months ago, that more machine time was needed than just the usual work-day hours, to keep all the various departments working systematically, and efficiently producing their full potential. The bookkeepers began taking "turns" coming to work at six in the mornings, to get an early start on the daily work load. The decision was then made to persuade Sam Hugh to help H.N.B. implement a new concept in "split-shift" banking, and apply his mentality, and well organized skills to its advantage. He is proving to be a very conscientious worker, and a much needed addition to the bookkeeping staff.

Sam is a "good ole Haskell boy", born and raised here. He is the son of Mr. and Mrs. Clay Smith, of 300 North Second St. in Haskell, and graduated with honors from Haskell High School, and West Point. He is married to the former Charlotte Frost, a Weinert High School graduate, and presently employed at Lane-Felker's. Upon graduation from West Point, he was commissioned an officer in the U. S. Air Force, and resigned a Major after serving in many theaters of operations. He then began a career with Lockheed Air Craft Corporation as Safety Engineer, in Marietta, Georgia, where the Smith family lived for nearly seventeen years. Sam also worked for a year at the Naval Weapons Station in Newport News, Virginia, before deciding to return to his native Haskell. The Smiths had invested in farm land here, with an eye to returning to the "small town" life again.

Sam and Charlotte have two children, a son, Clay, of the home, and a daughter, Mrs. Samee Ellerbee. Samee is a registered pharmacist, and lives in Thomaston, Georgia.

The Smiths live on some farm property on Route 2, out of Rule, and are members of Haskell's First United Methodist Church.

# HASKELL NATIONAL BANK

- Automobile Loans
- Boat Loans
- Consumer and Personal Loans
- Home Improvement Loans

MEMBER F.D.I.C.

A Full Service Bank



## RULE ROUND-UP

BY OLETA CORNELIUS

Phone 997-2167 With Your News

### BULLETIN BOARD

Jan. 13 Busy Bees  
Jan. 14 Donkey Basketball 7 p.m.  
Jan. 16 Family Dinner Recreation Club 12:30  
Jan. 17 Jr Hi hosts Weinert 6 p.m.; AARP 6 p.m.  
Jan. 18 UMW 2 p.m.  
Rule at Goree 7 p.m.  
Jan. 20 Phil. Club 2 p.m.  
Jr Hi at Knox City Tourn.  
Jan. 21 Rule at Rochester 7 p.m.  
Jan. 24 Jr Hi hosts Goree 6 p.m.; Lions Club  
Jan. 25 UMW 2 p.m.; Rule hosts Weinert 7 p.m.  
Jan. 28 Rule hosts Goree 7 p.m.

### FHA COOKBOOKS

The Rule Future Homemakers of America Chapter has published a chapter and community cookbook. The cookbook features a variety of recipes as well as basic kitchen information. The cookbook may be purchased from any FHA member for \$3 and is called Cook's Delight. Jill LeFevre is cookbook chairman and Mrs. Becky Baker is FHA Advisor.

### OBITUARIES

Funeral services for Cora M. Gallaway, 54, of San Antonio, were held Wednesday, January 5, in Zizik-earns Funeral Home in San Antonio. Rev. Sam Todd, Methodist minister officiated. Mrs. Gallaway died Monday, January 3 in the Bexar County Hospital in San Antonio.

Born July 18, 1922, in Lamesa, she married Walter Gallaway. She was a former employee of the American Red Cross.

Survivors include her husband; a son, John L. Hannum of San Diego, California; a

sister, Mrs. Ethelyn Forbis of Rule; and two brothers, Lloyd Marr of Kell Allegro and J. A. Marr of Boulder, Colorado.

Funeral services for Mrs. Bertha Dean Yarbrough, 91, were held Monday, January 10, in the First Baptist Church of Rule. Rev. J. R. Williams pastor, officiated. Burial was in the Rule Cemetery. Mrs. Yarbrough died at 7:45 a.m. Saturday, January 9, in the Rice Springs Nursing Home in Haskell after a short illness.

Born Bertha Dean on September 12, 1885, in Letonia, Arkansas, she had lived in Rule for the past 53 years. She was a member of the First Baptist Church of Rule, a charter member and until her illness, an active member of the Rebekah Lodge of Rule.

Survivors include three daughters, Mrs. Hazel Almond of Rule, Mrs. Myrtle Wood of Munday and Mrs. Pauline Metcalf of Fort Worth; a son, Clarence Yarbrough of Modesto, Calif.; a sister, Mrs. Ethel Myers of West Helena, Arkansas; 16 grandchildren, 33 great-grandchildren and eight great-grandchildren.

### BOUNCING BALL

Hosting Lueders-Avoca Tuesday night, January 4th, Rule boys and girls took both games. The boys score was 68-40 and the girls was 60-29. They hosted Paint Creek Tuesday night, January 11th and will journey to Goree the 18th and to Rochester the 21st.

The junior high journeyed to Paint Creek on the 3rd of January and split their games with the boys winning and the girls losing. The boys score was 49-15 and the girls was 40-43. They journeyed to

Goree the 6th and took both games. The boys winning score was 41-19 and the girls was 31-27. They will host Weinert on the 17th and play in the Knox City Junior High Tournament at O'Brien on January 20, 21 and 22nd.

### LUNCHROOM MENU

January 17-21  
MONDAY  
Beef & Spaghetti  
Green Beans  
Lettuce & Tomato Salad  
Rolls & Butter  
Peach Cobbler  
Milk

TUESDAY  
Fish Squares  
Catsup or Tartar Sauce  
Pinto Beans  
Steamed Cabbage  
Cornbread & Butter  
Fruit Cup  
Milk

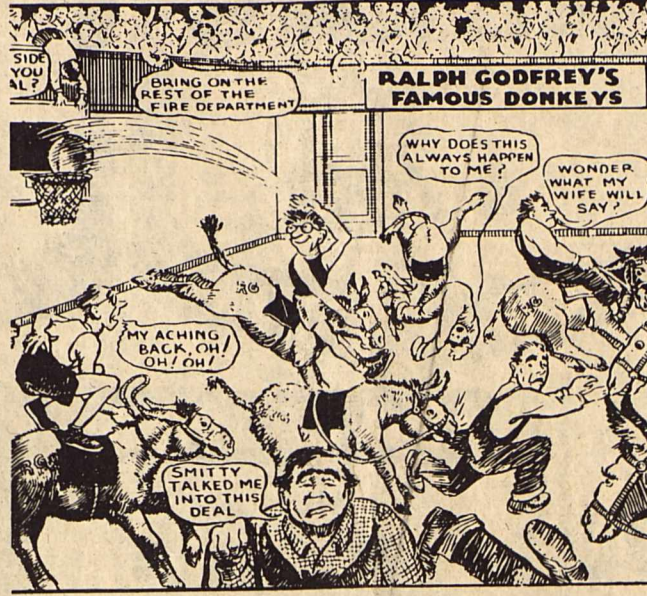
WEDNESDAY  
Fried Chicken  
Gravy  
Mashed Potatoes  
Lettuce & Tomato Salad  
Rolls & Butter  
Peanut Butter Cake with  
Peanut Butter Icing  
Milk

THURSDAY  
Barbecue on Buttered Buns  
French Fries with Catsup  
Cabbage & Pepper Slaw  
Chocolate Peanut No-Bake  
Cookies  
Milk

FRIDAY  
Meatloaf with  
Tomato Topping  
Corn  
Green Salad with Dressing  
Rolls & Butter  
Cinnamon Crisps  
Milk

### GARDEN CLUB

Members of the Rule Garden Club met on Wednesday, January 5, at 2 p.m. in the



RULE LIONS CLUB to sponsor a Donkey Basketball game, Friday night, January 14, at 7 p.m. in the Rule Gym.

home of Mrs. Ed Cloud with Mrs. Cloud and Mrs. W. D. Payne as hostesses.

Mrs. R. O. Carothers, club president presided over the meeting. Committee reports for the year were reviewed. Members reported on the planting of their tree or trees and shrubs each member planted for the new year.

Director for the day was Mrs. Clyde Grice. Mrs. Bill Gann presented a talk on pruning of trees and shrubs. She suggested they be pruned right after bloom, in January or February. All limbs turned down should be cut off in order to help the tree in the bearing of fruit.

Following the program, members were served cookies, nuts, mints, spiced tea and coffee.

Members will meet next in the home of Mrs. W. S. Cole on Wednesday, February 2, at 2 p.m.

### LOCAL

Recent guests in the home of Mrs. H. H. Hines were Mr. and Mrs. Connie Hines and family of Clyde, Ricky Stanley of Abilene, Mrs. Gladys Martin of Stamford and Mr. and Mrs. J. C. McGee of Knox City.

### AARP

The Rule Chapter of AARP will meet on Monday night, January 17, at 6 p.m. in the Rule Recreation Clubhouse. Hostesses for the meeting will be Elisha Mason, Ola Mae Lisle and Estelle Norman. Installation of officers for the new year will be held at this meeting.

## Leisure Lodge News

The residents at Leisure Lodge had the traditional blackeyed pea lunch on New Year's Day. We are sure this will bring us good luck during 1977—we hope.

The Presbyterians will bring our Sunday Worship period at 9:30 each Sunday morning during the month of January. Ben Charlie Chapman brought a very interesting devotional.

The ladies from the Assembly of God Church brought our

### TEXAS

HASKELL 864-2003  
"Dixie Dynamite"  
Warren Oates  
Christopher George  
Rated PG  
Color

### TOWER

RULE PHONE 997-2124  
Thurs. Jan. 13  
\$3.00 Carload!  
"La Trensá"  
All Spanish Show

Fri. 14-Sat. 15  
Sam Elliott  
Anne Archer  
"Lifeguard"  
In Color  
Rated PG

Monday, Jan. 16  
"Karen The Love Maker"  
Rated R In Color

Goree visited Mr. Ples Rounton.

Mr. and Mrs. Hubert Wilson from Rochester visited his mother, Mrs. Nancy Howard.

Etta Leach, Alva LeFevre of Sagerton, Jean Hayne from Munday, and June White from Rule were Mr. L. B. White's visitors.

Grady Bristow, Helen Pierce from Rule visited Mrs. Olga Tribbey.

We surely do thank the anonymous lady from Rule who made the lovely lap throws and donated to our people. We appreciate them and will enjoy using them.

Maintenance man, Ray Webb whose birthday was right after Christmas had made the remark that he had never had a birthday cake since it was so near Christmas, so here came a very nice person with a delicious birthday cake, punch and candy and surprised Ray, and invited all the employees. Maybe we can think of someone else having a birthday! We will even keep their age a secret.

### WASHINGTON

"As It Looks from Here"

OMAR BURLESON  
Congressman—17th District

WASHINGTON, D. C.— WITH THIS FIRST RELEASE OF THE YEAR and the beginning of the 95th Congress, perhaps it is well to explain again that this is not meant to be a professional effort. The purpose is an attempt to maintain as close as possible a relation between a large Constituency and their Representative in Washington.

NOT LONG AGO, THE 17TH DISTRICT was composed of 12 counties and 290,000 people. The Congress was not continuously in session as it has been in the last several years and continues to be almost constantly. Today there are 33 counties with approximately 467,000 people which makes it impossible to keep the sort of personal relationship which should exist under our system of representative Govern-

ment. THE PURPOSE IN THE PAST has been an attempt to discuss those things not usually a matter of daily mention in the news media. It is intended to be a background of events, either past or present, and opinions of what may occur in the immediate future.

PROBABLY AT NO TIME DOES THE FLOWER OF "REFORM" bloom more fully in the Washington garden than at the present. The snows seem only to nourish it. Some of the buds which appeared two years ago have faded but others take their place. It seems that the term "reform" is assumed to be for the better, but some might be more correctly defined as just change. At the beginning of the last Congress seventy-five new Democrats were conditioned to the idea that there should be many changes and that experience is an excuse for control and authority. In this Congress just beginning, another 47 new Democratic members have arrived. More changes are demanded—some good—some probably not so good. There are not many things which cannot be improved upon and the best system has some faults about it. Times demand change but not necessarily alone for the sake of change.

THE CONGRESS IS VERY MUCH LIKE A CORPORATION. In fact, it is the biggest corporation in the world and represents over 200,150,000 people who are affected by what it does. It should have the most experienced and dedicated individuals to be found anywhere to conduct the

affairs of the Nation. It is called "representative" because Members come from every corner of the Nation but with wide varying interests. To arrive at legislation those interests many times must be legislatively compromised in order to achieve anything. None can have his own way entirely.

PROBABLY AT NO TIME IN OUR HISTORY has the Congress faced more challenges than at the present time. The incompatibility of inflation and recession at the same time creates unprecedented problems—coping with one can easily further complicate the other.

NO MATTER HOW LONG ONE MAY HAVE SERVED IN CONGRESS, or how imbued with zeal the newly elected may feel, all face a most consequential year. People deserve and expect the most dedicated efforts at coping with the challenges ahead. Scrutiny and observation should and will be intense. Stakes in our performance during the months and years immediately ahead will be enormous.

### College News

Judy Cleo Lehde of Haskell was one among 180 Angelo State University students who completed degree requirements at the conclusion of the fall 1976 semester.

Ms. Lehde completed work on a bachelor of arts degree. Of the 180 graduates, 16 were awarded masters degrees, 46 bachelors of arts, 40 bachelors of business administration and 78 bachelors of science.

Diplomas will be mailed to students after they are received from the engraver. Students wishing to take part in formal commencement exercises may do so, upon request, in May.

## Bluebonnet Cafe Rule

Noon Buffet 11:00-1:30  
5:30 P.M. Buffet

WED. MEXICAN FOOD THURS. STEAK NIGHT  
FRI. CATFISH CHUNKS

## 25TH ANNIVERSARY SALE

25 YEARS OF SERVING HOME FOLKS  
AND WE HAVE SINCERELY ENJOYED EVERY YEAR.  
4 BIG DAYS — THURSDAY, JANUARY 13  
THROUGH MONDAY, JANUARY 17.

House Cleaning of Quality Double Knits Sale Priced from \$1.98 yd. All patterns regardless of price Sale Priced 89c

One Rack Ship N' Shore Blouses 1/2 Price

Kayser Lingerie Quilted & Heavy Robes in some cases gowns to match 1/2 Price

One Selection Slips & Half Slips 1/2 Price

One selection of Bikinis or regular panties \$1.00 pair

Beauty Mist Panty Hose Reg. \$1.69 \$1.00 Pair  
Beauty Mist Hose Reg. \$1.50 Sale \$1.00

One Barrel of Hidden and Invisible Zippers. 1/2 PRICE

One selection of Buttons 1/2 Price Majorette 79c yd.

Rayon Sheath Lining 4 yds. \$1.00

Gross Grain or Satin ribbon & lace 1/2 Price

Buster Brown Long Sleeve Turtle Necks Sizes to 14 1/2 Price

All Knee Sox Reg. \$1.00 79c pair Reg. \$1.50 & \$2.00 \$1.29 pair

One group Towels Reg. \$4.98 Sale \$2.98 etc.

Sheets One new shipment J. P. Stevens Percalé Sheets Reg. \$9.32 Sale \$4.79  
Matching Pillow Cases Sale \$3.39

Bedspreads large selection Reg. & Queen sizes Reg. \$39.95 \$23.95 ETC.

Electric blankets 2 year guarantee Dual Control, Double Reg. \$39.95 \$27.95

Blankets Reg. \$10.95 \$7.69

Men A Ten Dollar Cash discount on Entire stock of Western Felts. Free Steam Shaping. Sizes 6 1/4 to 7 1/4, 4 styles.

All Hanging Shirts 1/2 Price

Mens Heavy Jackets Reg. \$24.95 \$17.50

Entire Stock Mens dress pants Values to \$20.00 pair. (does not include Westerns) \$11.95 pair

Toboggans and Face Masks Reg. \$3.49 \$2.49 etc.

Regular Coveralls Sale \$12.95  
Quilted Coveralls Values to \$32.95 \$21.95

Mens Doubleknit Jump Suits 18 pairs Sale \$19.95

Mens dress shoes. Sizes 7 to 12. Values to \$24.95 Sale \$13.95

Boys Turtle Neck Shirts (good for girls too) 1/2 Price

Boys Pajamas Sizes 2 to 16 Special Sale Price \$3.98 Buster Brown \$4.98

Boys Dingo Boots 1/2 Price

Acme Pull on work boots Reduced to \$18.95 pair

Nationally advertised Boys Jeans. Sizes 2 to 14. Slims & Regulars Permanent Press. Reg. \$9.80 \$7.98  
Reg. \$7.25 \$5.89  
Reg. \$8.30 \$5.98

Outdoorsman Brand 6 inch top Work Shoes. One piece toe, one piece heel, steel shank. E widths only. Reg. \$24.95 Sale \$15.95

Nice Selection Student Levis. Waist 25-30 Reg. \$16.00 \$10.95 Pair

Drawing for one piece of Samsonite luggage will be held Monday, Jan. 17 at 4 p.m. Register Daily during the Sale. You do not have to be present to win. No Purchase Necessary.

VISIT OUSLEY'S 25TH ANNIVERSARY SALE FOR TREMENDOUS VALUES.

ALL SALES CASH

NO REFUNDS

# Ousley's OF RULE

NO EXCHANGES

ALL SALES FINAL

We appreciate your business!

Telephone 997-2223



Like Your Family

## ROLLING PLAINS PCA HAS GROWN

Finance provided by Rolling Plains Production Credit Association has grown. There must be a reason for:

- 30 percent increase in outstanding loan volume over 1975.
- 25 percent reduction in interest rate in the last two years.
- Increased capital, surplus and reserves.
- More farmers and ranchers being served.

PCA can meet your financial operating requirements, plus your capital investment and other needs.

Yes, there's a reason why Rolling Plains PCA has grown. Find out how you can grow, too. Check with a neighbor who is a PCA stockholder. Or come in and talk to any of our professional staff in

Stamford 915/773-3644  
Childress 817/937-2553  
Matador 806/347-2226  
Munday 817/422-4323  
Spur 806/271-3361



Serving farmers and ranchers in Briscoe, Childress, Collingsworth, Cottle, Dickens, Donley, Foard, Hall, Hardeman, Haskell, Jones, Kent, King, Knox, Motley, Shackelford and Stonewall counties.

The Go Ahead People!



# J R B

## SUPERMARKETS

PRICES GOOD JANUARY 13 THROUGH JANUARY 19

**LOW, LOW PRICE!**  
 PARADE  
**GREEN BEANS**  
 303 CAN  
**4/\$1**  
 PLUS DOUBLE VALUE BONUS STAMPS

**UNBEATABLE VALUE**  
 3 RING  
**PINTO BEANS**  
 300 CAN  
**4/\$1**  
 PLUS DOUBLE VALUE BONUS STAMPS

**LOW, LOW PRICE!**  
 HOMEFOLK WITH OR WITHOUT SNAPS  
**BLACK EYE PEAS**  
 NO 300 CAN  
**4/\$1.**  
 PLUS DOUBLE VALUE BONUS STAMPS

**HEALTH & BEAUTY AIDS**

**Red Heart Yarn**.....SKEIN.....**99¢**

**Listerene**.....14 OZ BOTTLE REG. \$1.55.....**\$1.09**

**Tylenol Tablets**.....100 COUNT BOTTLE REG. \$1.79.....**\$1.39**  
3 OZ SIZE REG. \$1.99

**Ban Basic Deodorant**.....**\$1.39**  
REGULAR OR BABY SCENT

**Desitin Lotion**.....10 OZ REG. \$1.49.....**\$1.09**

**LOW, LOW PRICE!**  
 MEDIUM,  
**EGGS**  
 DOZEN  
**59¢**  
 PLUS DOUBLE VALUE BONUS STAMPS

**LOW, LOW PRICE!**  
 KRAFT PEACH  
**Preserves**  
 18 OZ JAR  
**79¢**  
 PLUS DOUBLE VALUE BONUS STAMPS

**LOW, LOW PRICE!**  
 PARADE  
**CATSUP**  
 32 OZ BOTTLE  
**79¢**  
 PLUS DOUBLE VALUE BONUS STAMPS

**LOW, LOW PRICE!**  
 CLING FREE SHEETS  
**Fabric Softener**  
 54 COUNT BOX  
**\$2.79**  
 PLUS DOUBLE VALUE BONUS STAMPS

**LOW, LOW PRICE!**  
**Biz Prewash**  
 KING SIZE  
**\$1.89**  
 PLUS DOUBLE VALUE BONUS STAMPS

**DEL MONTE SPINACH**

**4 \$1.**  
 303 CANS

Del Monte Quality Early Garden Spinach

**Tomato Juice** PARADE 46 OZ CAN **55¢**

**DEL MONTE Sauerkraut** 303 CAN **3/\$1**

**Cat Food** PARADE 300 CAN **8/\$1**

**Cookies** NABISCO OREOS 15 OZ PKG **79¢**

**Orange Juice** PARADE 46 OZ CAN **55¢**

**Beets** PARADE SLICED 303 CAN **29¢**

**LOW, LOW PRICE!**  
**Mr. Clean Cleaner**  
 15¢ OFF LABEL  
 GIANT SIZE  
**\$1.08**  
 PLUS DOUBLE VALUE BONUS STAMPS

**LOW, LOW PRICE!**  
 GIANT SIZE  
**Comet Cleanser**  
 2¢ OFF LABEL  
**31¢**  
 PLUS DOUBLE VALUE BONUS STAMPS

WE WELCOME FOOD STAMPS

**PARADE CUP-A-SOUP**

**SOUP**

ALL FLAVORS  
 4 ENV. BOX  
**3/\$1**

BONUS SPECIALS

ARMOUR 12 OZ PKG **FRANKS 1¢**  
 PLUS ONE SUPER DISCOUNT BOOKLET

BONUS SPECIALS

HOMO MILK JRB 1/2 GAL **19¢**  
 PLUS ONE SUPER DISCOUNT BOOKLET

BONUS SPECIALS

JRB 1/2 GALLON **Mellorine 9¢**  
 PLUS ONE SUPER DISCOUNT BOOKLET

BONUS SPECIALS

RUSSETT 10# BAG **Potatoes 69¢**  
 PLUS ONE SUPER DISCOUNT BOOKLET

**PRODUCE VALUES**

**RUSSET Potatoes** 15 LB **\$1.29**

**CALIFORNIA ORANGES** 3 LBS **\$1**

**TOMATOES**.....LB.....**49¢**

**AVOCADOS**.....**4/\$1**

**Grapefruit**.....LB.....**10¢**

**APPLES**.....DELICIOUS 3 LB.....**3/\$1.**

**LOW, LOW PRICE!**  
 MRS. BAIRDS  
**Diet Bread**  
**53¢**  
 PLUS DOUBLE VALUE BONUS STAMPS

**LOW, LOW PRICE!**  
 HI-C ALL FLAVORS  
**FRUIT DRINKS**  
 46 OZ CAN  
**49¢**  
 PLUS DOUBLE VALUE BONUS STAMPS



**LOW, LOW PRICE!**  
 PARADE GOLDEN  
 WHOLE KERNEL  
 OR CREAM STYLE  
**CORN**  
 303 CAN  
**3/\$1.**  
 PLUS DOUBLE VALUE BONUS STAMPS

**LOW, LOW PRICE!**  
 DEL MONTE  
 SLICED OR HALVES  
**Peaches**  
 #2 1/2 CAN  
**55¢**  
 PLUS DOUBLE VALUE BONUS STAMPS

**LOW, LOW PRICE!**  
 DEL MONTE  
**Fruit Cocktail**  
 303 CAN  
**39¢**  
 PLUS DOUBLE VALUE BONUS STAMPS

**J R B**  
**SUPERMARKETS**  
 WE RESERVE THE RIGHT TO LIMIT QUANTITIES  
 DOUBLE STAMPS WEDNESDAY & SATURDAY

SAVE SAVE SAVE  
**-Double Value Stamps-**  
 Use on Food Purchases as a Discount  
 Redeem for Cash or Save  
 for Special Bonus Items

**PARADE**  
**SHORTENING**  
 3# CAN  
 LIMIT 1  
**\$1.09**

**Zesta** KEEBLER  
**ZESTA SALTINES**  
**CRACKERS**  
 1# BOX  
**49¢**

**Ground Beef** FAMILY PAK 3 LBS OR MORE LB **69¢**

|                        |                                       |        |               |
|------------------------|---------------------------------------|--------|---------------|
| GROUND BEEF            | SMALL PKG                             | LB     | 79c           |
| GROUND BEEF            | LEAN                                  | LB     | 99c           |
| CALF LIVER             | MARKET SLICED                         | LB     | 49c           |
| T-BONE                 | USDA INSPECTED HEAVY BEEF             | LB     | \$1.79        |
| STEW MEAT              | LEAN BONELESS                         | LB     | \$1.09        |
| BACON                  | DECKER 12 OZ PKG                      | EACH   | \$1.09        |
| BACON                  | ARMOUR STAR SLICED SLAB               | LB     | \$1.09        |
| BACON ENDS & PIECES    | ARMOUR SWANEE 3# BOX                  | EACH   | \$1.19        |
| BEEF LIVER             | MARKET SLICED                         | LB     | 39¢           |
| SAUSAGE                | ARMOUR 1# PKG SMOKED, POLISH KULBASSY | EACH   | \$1.49        |
| BEEF STEAKS OR FINGERS | TENDER MADE                           | LB     | 99c           |
| CATFISH                | FRESH FROZEN                          | LB     | \$1.39        |
| BOLOGNA                | DECKER JUMBO MARKET SLICED FAMILY PAK | 2 lbs. | \$1.69        |
| FRANKS                 | DECKER JUMBO 1# PKG                   | EACH   | 99c           |
| FRANKS                 | ARMOUR CAMPFIRE                       | LB     | 99c           |
| SALT PORK              | ARMOUR FINE FOR SEASONING             | LB     | 69c           |
| SALT PORK              | DECKER 12 OZ PKG                      | EACH   | 59c           |
| <b>Sirloin Steak</b>   | USDA INSPECTED HEAVY BEEF             | LB     | <b>\$1.49</b> |

JRB MEATS ARE U. S. GOVERNMENT INSPECTED. IF FOR ANY REASON YOU ARE NOT SATISFIED WE WILL CHEERFULLY REFUND YOUR MONEY.

**DAIRY & FROZEN FOODS**

**BISCUITS** PILLSBURY BUTTERMILK OR COUNTRY STYLE 8 OZ CAN **8/\$1.00**

**Margarine** PARKAY 1# QUARTERS **49¢**

JRB **BUTTERMILK** 1/2 GALLON CARTON **69c**

PILLSBURY **COOKIES** ALL VARIETIES **99c**

**STRAWBERRIES** TROPHY 10 OZ CARTONS **3/\$1**

GANDYS OR OAK FARMS QUALITY CHECK **ICE CREAM** ALL FLAVORS 1/2 GALLON **\$1.29**

SARA LEE **POUND CAKE** **99c**

MRS. SMITH BUDGET STRETCHER **PIE SHELLS** 2 PER PAN 10" SIZE **43c**

EASY JACK PLAIN, BLUEBERRY OR BUTTERMILK **PANCAKE BATTER** 17 OZ **59c**

**Margarine** MIRACLE 1# BOWL **67¢**

**Spaghetti** SKINNERS ITALIAN 16 OZ **57¢**

**Spaghetti Sauce** PARADE ALL VARIETIES 16 OZ JAR **49¢**

**Garlic Powder** PARADE 1 7/8 OZ JAR **59¢**

**Garlic Salt** PARADE 4 3/4 OZ JAR **49¢**

**GOLD MEDAL FLOUR**  
 5# BAG  
 LIMIT 1  
**69¢**



**PURINA TENDER VITTLES GOURMET CAT FOOD**

CHICKEN/LIVER, SALMON/TUNA, BEEF, TUNA, LIVER

6 OZ **37¢** | 12 OZ **69¢**





# Be Sure You Support and Attend HASKELL'S ANNUAL LIVESTOCK SHOW

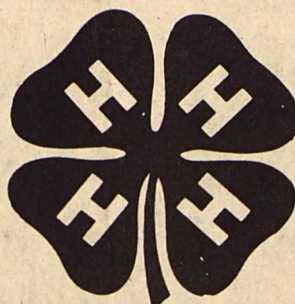
## JAN. 14 & 15

HELD AT  
**Haskell County Show Barn**

SALE AT:  
**HASKELL COUNTY SHOW BARN SATURDAY AFTERNOON**

WE URGE YOU TO ATTEND AND SUPPORT HASKELL'S ANNUAL LIVESTOCK SHOW AND SALE REPRESENTING 4-H AND FFA CLUBS FROM HASKELL COUNTY. BOTH OF THESE OUTSTANDING CLUBS ARE MADE UP OF ENTHUSIASTIC SCHOOL BOYS AND GIRLS THAT ARE BUILDING FOR THE FUTURE!

WE EXTEND A WARM AND HEARTY WELCOME TO THE VISITORS ATTENDING HASKELL'S ANNUAL JUNIOR LIVESTOCK SHOW AND SALE!



THE FOLLOWING FIRMS SALUTE THE BOYS AND GIRLS OF THE HASKELL FFA AND 4-H CLUBS FOR THEIR PARTICIPATION IN THIS ANNUAL EVENT!

**Haskell National Bank**

—Member F.D.I.C.—

**Farmer's Co-op Gin**

— "We Do Our Best" —

Haskell, Texas  
Vergil Smith, Mgr.

**Farm & Ranch Supply**

Haskell, Texas

**Federal Land Bank Association of Haskell**

**Woodard Farm Sales**

Phone 864-2401 — Haskell, Texas

**Haskell Co. Feeder Supply**

Haskell, Texas

**Wallace's Exxon Station**

Haskell, Texas

**Rule Co-op Gin**

Rule, Texas

**Hale Farm Supply**

—Your John Deere Dealer—  
Pat Hale, President  
Phone 864-2692 — Haskell, Texas

**Haskell Livestock Auction**

—Sale Every Saturday—  
Haskell, Texas

**The Hartsfield Agency**

Haskell, Texas

**Hanson Paint & Body**

Haskell, Texas

**Perry Gulf Station**

Phone 864-2651 — Haskell, Texas

**Haskell Free Press**

Haskell, Texas

**Haskell Co. Farm**

Haskell, Texas

**Farmers National Bank**

Rule, Texas