

Robertson, Former Haskellite, Prominent in State, Dies

Prominent Abilene oilman and longtime state Democratic Party worker French M. Robertson died at 1:30 p.m. Saturday at Hendrick Memorial Hospital after becoming ill at his home at 881 Highland.

Mr. Robertson, descendant of a pioneer West Texas family, had been in ill health since suffering a stroke in October 1974. He died of a massive heart attack. He was 74.

Mr. Robertson served a total of 19 years on three state boards. He served on the University of Texas Board of Regents, the Texas Board of Corrections and the Board for State Hospitals and Special Schools. He served at times as chairman of the Board of Corrections and the hospital board.

Services were held at 1:30 p.m. Monday at Episcopal Church of the Heavenly Rest. The Rev. Edward P. Dentzer, rector officiated. Graveside services were held at 3 p.m. Monday in Willow Cemetery directed by Holden-McCauley Funeral Home and North's Funeral Home of Abilene.

Mr. Robertson was born July 4, 1901, in a dugout on a Stonewall County ranch to Mr. and Mrs. John E. Robertson. His father was a general merchandise businessman and cotton raiser who became an independent oil operator in his later life. Earlier members of the Robertson family migrated to Fort Griffin in 1870 from Kosse and Navarro County.

An ancestor, Sterling C. Robertson, was a signer of the Texas Declaration of Independence and the holder of a Mexican land grant which later became Robertson County.

Mr. Robertson finished grade school in Haskell County, graduated from high school at Mineral Wells and attended the University of Oklahoma one year and Baylor University two years. He earned a law degree from the University of Texas and was admitted to the State Bar of Texas in August 1927.

Returning to Haskell, Mr. Robertson was elected Haskell County attorney in 1928 and reelected in 1930. He went into private practice after his second term expired and established Robertson Oil Co. as an independent oil operator in 1937. He continued to practice law in Haskell until August 1942, when he was commissioned a captain in the Army Air Corps. He was given the Legion of Merit for service in training Chinese air and ground students. He was discharged in March 1946 with the rank of lieutenant colonel.

Mr. Robertson and his wife, the former Mary Louise Loew of De Leon, were married March 4, 1927, in De Leon. Always active in politics, he was chairman of the state convention of Young Democrats in the late 1930s. He returned from the war to be chosen state committeeman from the 24th Senatorial District, serving the State Democratic Executive Committee many years.

One of the milestones in his life was his 1961 appointment to the University of Texas Board of Regents to fill the unexpired term of the late Joe C. Thompson. The term expired in 1964.

Mr. Robertson's public service also included membership on the Texas Board of Corrections from 1947 to 1957, the last four years as chairman and on the Board for State

(Cont. on page 7)

WTC Hosts BB Tourney

Western Texas College will host the second annual Region V National Junior College Athletic Association (NJCAA) women's basketball tournament Feb. 26-28, with plenty of action on tap.

Region V is considered to be one of the four strongest regions in the country, Dr. Sid Simpson, WTC Athletic Director and women's coach, said. The winner of this tournament will be a heavy favorite in the national women's tournament scheduled March 8-10 in Kansas City.

All games in the tournament will be played in the Scurry County coliseum. Tickets will be available at the door.

Play will begin at 1:30 p.m. Thursday (Feb. 26) when Ranger Junior College meets Clarendon College. At 6 p.m., South Plains will meet McLennan Community College. Howard County will play Weatherford College at 8 p.m.

The WTC Dusters, seeded first in the tournament, drew a bye in the opening round and will meet the winner of the Ranger-Clarendon game at 8 p.m. Friday (Feb. 27). Winners of the Thursday games are scheduled to play at 6 p.m. Friday.

The championship game is set for 7:30 p.m. Saturday (Feb. 28).

The WTC Dusters clinched the conference title for the second consecutive year when they defeated South Plains 76-58 on Feb. 16. The Dusters have a 22-3 record for the season.

Debbie Young, daughter of Mr. and Mrs. Jackie Young of Haskell is on the Dusters roster.

Debbie Young Nominated At WTC

SNYDER—Debbie Young of Haskell was one of five nominees for the title of Miss Trailhand 1975-76 at Western Texas College recently.

Students at the college elect Mr. and Miss Trailhand each year in a contest sponsored by Phi Theta Kappa, national honor fraternity for two-year college students.

Winners of the Trailhand titles were Stacy Payne of Stanton and Darryl Smith of College Park, Ga.

Miss Young, a graduate of Haskell High School, is the daughter of Mr. and Mrs. Jackie Young. A freshman physical education major at WTC, she serves as a cheerleader and is a member of the Dusters, women's basketball squad.

Other nominees included Ronnie Wilcox of Hamlin, a sophomore Electromechanical Technology major at WTC.

FEBRUARY WEATHER SUMMARY	
TEMPERATURE	
Hi	90°
Lo	24°
RAINFALL	
5th	trace
7th	trace
Feb. total	trace*
Total to Date	0.02
Normal to Date	2.14
*Trace is recorded as no rainfall by U.S. Weather Bureau	

County Youths Competing In Houston Show

Six members of Haskell FFA will be competing in the 1976 Houston Livestock Show and Rodeo to be held February 25 through March 7. Entering market barrows are Brian Toliver, Joseph Toliver, Mike Turner and Sharon Turner. Calvin Wilfong and Joe Wilfong will enter beef heifers and Calvin Wilfong will also enter a market steer. Their teacher is Duane Gilly.

Thirteen members of the Haskell County 4-H will be competing in the Houston Show. Entering market steers are Mikeana Wilcox, Joe Wilfong, Cindy Thomas, Reid Mullino, Kim Hager, Stanley Hager, and Tammy Herricks. Beef heifers will be entered by Calvin Wilfong, Joe Wilfong, Cindy Thomas, Reid Mullino, Kim Hager and Stanley Hager. Mark Lewis and Russ Lewis will enter market lambs. Market barrows will be entered by Kerry Therwhanger, Terri Therwhanger and Kris Kupatt. Their teacher is Max Stapleton.

The competition in the junior events is set for the second week of the show when 4-H and FFA boys and girls from all sections of the state will be vying for top premiums and prizes.

This is the largest junior livestock show in the country. These young people will join adult exhibitors in seeking premiums of more than \$445,500 a new record for the Houston show. Approximately 20,000 entries are expected.

J. M. Comedy

J. M. Comedy, 75, of Coleman died at 5:15 p.m. Sunday, Feb. 29 at Overall-Morris Memorial Hospital. Services were held at 3:30 p.m. Tuesday in Stevens Memorial Chapel. The Rev. Ed Bigham officiated. Burial was in the Coleman City Cemetery.

Born June 28, 1900, in Rockwall, he married Willie Belle Smith April 3, 1921, in Coleman. He lived in Coleman since 1908 and was retired. He was a member of Central Baptist Church and a life member of the Coleman Volunteer Fire Department.

Survivors include his wife; two sons, William M. of San Angelo, and Billy M. of Haskell, publisher and owner of the Haskell Free Press; a brother, Grady of Irving; four grandchildren, one grandson Don Comedy, partner in the Haskell Free Press; and two great-grandchildren.

Pallbearers were Mark Griffith, Hap Aston, Jimmy Driskell, Ed Greaves, George Robey and Abb Faulkner.

Members of the Coleman Fire Dept. were honorary pallbearers.

Indians Place 5th In Meet

The Haskell Indian Track Team opened the season by placing 5th among 13 class A and AA teams at Iowa Park Saturday.

The team scored 42½ points for the meet. Individual scoring was as follows: Kelvin Marshall, 13½ points. He placed 1st in the 440 yd. dash, 5th in the long jump, 5th in the high jump, and 5th in the Mile Relay.

Johney Lamed, 12 points. He placed 3rd in the 120 yard high hurdles, and 3rd in the 330 intermediate hurdles.

Jimmy Browning had 8 points. He placed 2nd in the 880 yard run.

Carlos Villareal had 4 points with 4th place in the mile run.

Other individuals who scored one point in the meet were Lynn Brueggeman, Randy Phemister, Frank Jordan, and Archie Crim.

There were several boys who were unable to compete this week because of injuries and illness. The Indians are looking forward to a good track season this year.

SCHOOL BOARD

Running for reelection on the School Board to be held Sat. April 3 are: Joe Kimbrough, Kenneth Lane (incumbent), Bobby Whisenhunt, Doyle High, Frank Markey, and Lonnie Hise.

Deadline for those wishing to run for election to the three vacant seats is today, Mar. 4.

Explosion Destroys Local Ranch Home



An explosion apparently triggered by butane gas injured five members of a rural Haskell County family Sunday night.

Injured were Mr. and Mrs. Arnold E. Grupe Sr.; Mr. and Mrs. Arnold E. Grupe Jr.; and 3-year-old Mark Grupe, son of Mr. and Mrs. Grupe Jr.

Grupe Jr. and his son were treated and released at Haskell Memorial Hospital, where Mrs. Grupe Jr. was in satisfactory condition with second and third degree burns on her legs, a hospital spokesman there said. Mr. and Mrs. Grupe Sr. were reported in satisfactory condition at Stamford Memorial Hospital Sunday night with cuts and bruises caused by flying debris, a hospital spokesman said.

The explosion, which Haskell Fire Chief Tom Watson said occurred about 9 p.m., completely destroyed the farmhouse about a mile east of U.S. 277 and about 6 or eight miles southeast of Haskell.

"The house was blown out from under us," Grupe Sr. told Stamford Fire Chief Bill Lawson in the emergency room of Stamford Memorial Hospital.

Watson said firemen have not determined the exact cause of the explosion, but said he thought it was caused by butane gas.

The Grupes were moving into the house Saturday and Sunday, Watson said.

Watson said he thought "some kind of a misconnection" might have allowed some butane to leak causing the explosion.

The 500-acre ranch is owned by Dr. David Ballard, a Stamford veterinarian. Mrs. Ballard Sunday night said the Grupe family had just been moving into the ranch house.

She said the butane truck was "out back" of the one-story, stucco ranch house that had been in her husband's pioneer Haskell County ranching family since the early days of Haskell County.

The ranch is known as the Bar O. She said the house was "a typical old ranch house."

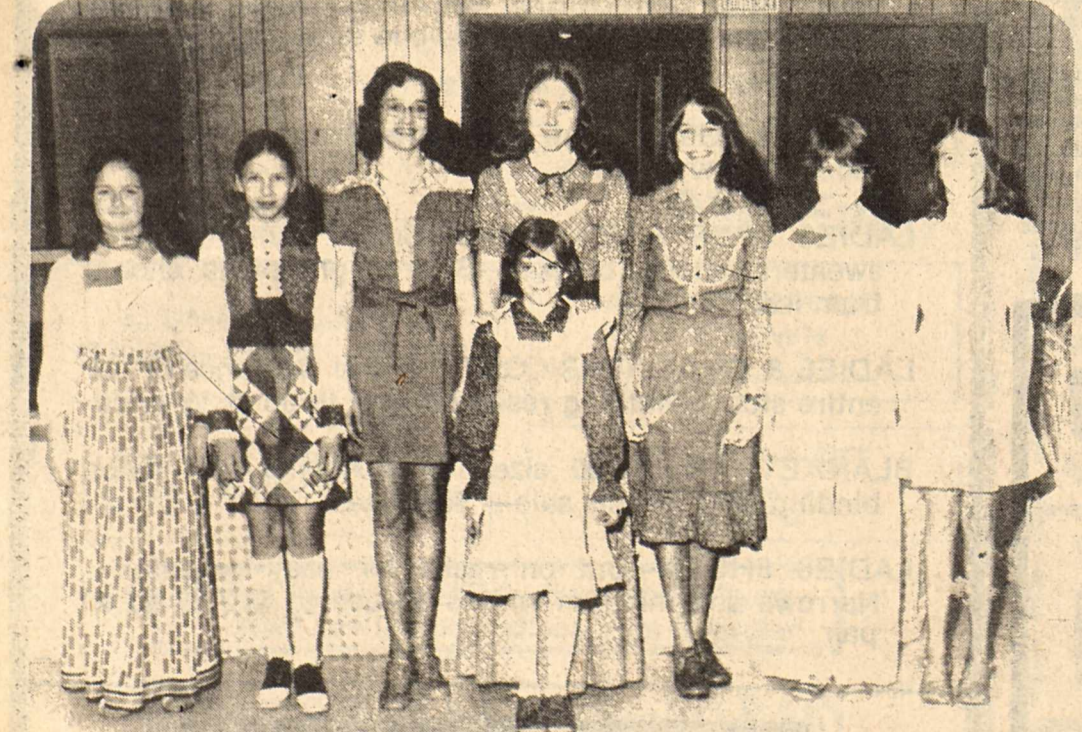
When asked about damage, she said, "I don't have the least idea."

Watson said the fire was out of control when firemen from Haskell arrived. The house burned to the ground, he said. Two units of the Haskell Fire Dept. and 15 men answered the fire call. A unit from Stamford was sent to the scene, but was called back before it arrived when Haskell firemen arrived at the scene.

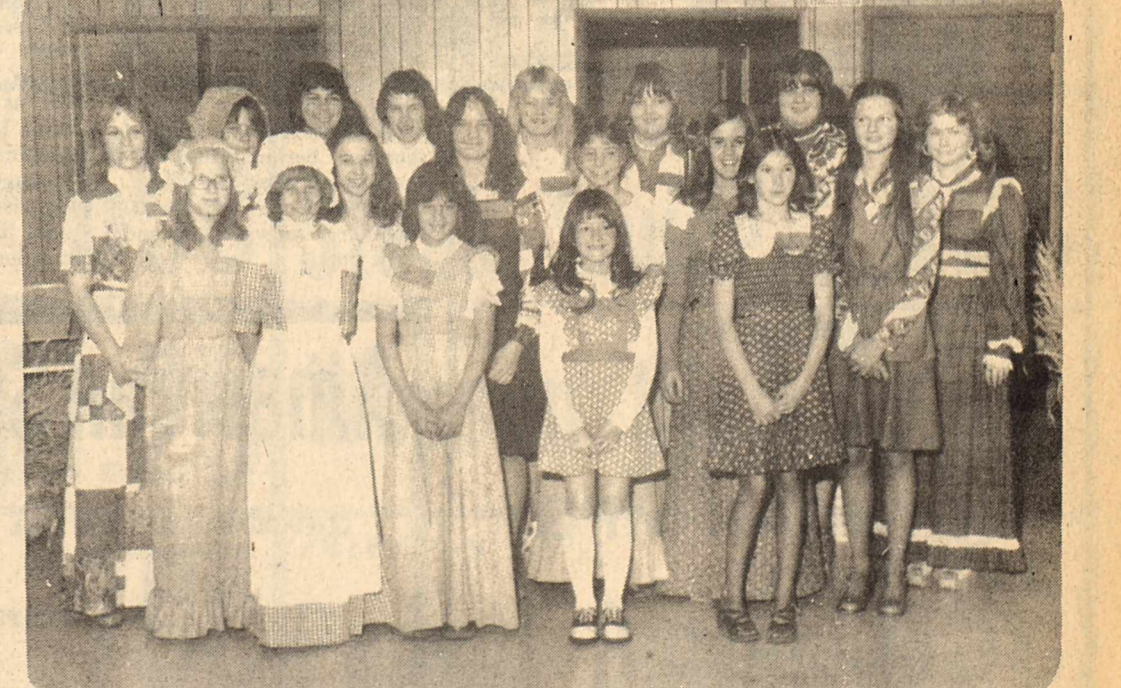
Ed. Note: Those wishing to help the Grupes may contact the Hustlers' CB Club, Box 645, Stamford, Texas. For more information call 773-2207 or 773-5408, in Paint Creek call 773-2071. Contributions of money, clothing, furniture, etc. would be greatly appreciated.

Haskell FHA To Hold Fashion Show

The Haskell Future Homemakers of America will be presenting "Fashion Wise Gals and Guys" style show on Monday, Mar. 8 in the Haskell Elementary Cafeteria at 7:30 p.m. The models will be modeling fashions from Aunt Betty's Rags and Lane Apparel. The tickets are only 75c and may be bought from any FHA members. Refreshments will be served after the style show. Everyone is welcome.



CO. FOOD SHOW—Snacks and Beverage Division: Ember Miller, Linda Wells, Karon Gray, Debra Wells, Sonja Tidrow, Cheryl Wise, Gena Peel and standing in front is Holly McBroom.



CO. 4-H SHOW—Breads and Desserts Division: Back row: Susan Swofford, Donna Kemp, Kay Campbell, Lynn Weatherly, Tauniya White, Teresa Jenkins, Janette Holmes, Cam Klose, Cindy Williams, Kristie Hannsz, Toni Williams, Debra Carver and Kris Kupatt. Front row: Leigh Ann Greeson, Kathy Kemp, Tina Morris, Michelle Briscoe and Kay Carmack.

Royal Lipizzan To Be In Abilene

The world-renowned Royal Lipizzan Stallion Show will be at 8:00 p.m. March 5 in Taylor County Coliseum.

Incredibly graceful and white as polished marble, 20 Lipizzans will be here with Morgans, Andalusians, Saddlebreds, Thoroughbreds,

Haskell

SCHOOL LUNCH MENUES
March 8-12

MONDAY

Beef Stew
Grilled Cheese Sandwiches
Cabbage Slaw
Apricot Cobbler
Milk

TUESDAY

Frito Pie
Pinto Beans
Seasoned Greens
Cornbread Butter
Pear Halves
Milk

WEDNESDAY

Swiss Steak with Tomatoes
Potatoes in Cheese Sauce
English Peas
Hot Rolls Butter
Apple Crisp
Milk

THURSDAY

Fish Portions Catsup or Tartar Sauce
Mashed Potatoes
Seasoned Green Beans
Hot Rolls Butter
Peanut Butter Cookies
Stewed Prunes
Milk

FRIDAY

Braised Beef over Rice
Blackeyed Peas
Garden Salad
Hot Rolls Butter
Cake with Pineapple Topping
Milk

Arabians, Palominos and Western horses as more than 40 horses and riders from 20 countries entertain.

West Texas Rehabilitation Center is sponsoring the show and sharing in the proceeds.

Tickets are \$3.50, \$4.50, and \$5.50 and are on sale now at Sears and the coliseum box office in Abilene.

Known as "The Wonderful World of Horses, Featuring the Royal Lipizzan Stallion Show," it is on its seventh national tour and has played in Mexico and Canada and throughout the United States.

Among the tricks the stallions perform are the "levade", maintaining a haunched position at a 45-degree angle to the ground, and the "capriole," a high leap from a standing position off all four hooves at once.

Lipizzans date back to the 16th century and were developed from a fusing of the Arabian, and Andalusian and the Vilanos.

They are trained today in Charleston, W. Va., where the American touring show is based, and at the Spanish Riding School in Vienna, Austria, where the breed was developed.

The school was disbanded and the breed threatened during World War II, and the Lipizzan legend grew with the intervention of Gen. George S. Patton in 1945 to allow Col. Alois Podhajsky to rescue the breeding herd from Czechoslovakia.

Lipizzans are born dark and do not attain their coloring until they are from 3 to 7 years of age.

Slow to mature, they are not put in "school" until the age of 4 and are not fully trained until they are 8.



AS THIS ONE SHOWS, the Royal Lipizzan Stallion is one of the most beautiful horses in the world. Twenty of the milk-white Austrian horses will perform an astounding assortment of tricks with more than 20 horses of other breeds at 8 p.m. Friday, March 5, in "The Wonderful World of Horses, Featuring the Royal Lipizzan Stallions," in Taylor County Coliseum in Abilene. Tickets are \$3.50, \$4.50, and \$5.50. West Texas Rehabilitation Center is the sponsor.

your national parks

Right Around Home

By BEN MOFFETT

THERE'S A BIG, FRIENDLY LAKE WHERE THE RIO GRANDE AND PECOS MEET. Some of the snow that melts on the steep slopes of the Sangre de Cristo Mountains in northern New Mexico flows westward into the Rio Grande. Some of it trickles away from the Rio and forms the headwaters of the Pecos.

The two rivers, whose magic names spell excitement to every kid who ever watched a western movie, are only a few miles apart in these mountains.

But the Rio Grande and Pecos take vastly different routes to get to the same place, wandering hundreds of miles apart as they move toward the Gulf of Mexico.

Finally, they head back together and meet in a rush just above the sun-baked cities of Del Rio, Tex. and Ciudad Acuna, Mex., forming Amistad Reservoir, a big, friendly body of water that qualifies as the world's third largest man-made international lake.

At conservation level, the reservoir extends up the Rio Grande for some 74 miles, up the Pecos for 14 and up the Devils River for 25. The primary purposes of Amistad Dam and Lake are flood control and water conservation. But more than a million people last year found this desert oasis to be a barrel of fun.

The National Park Service manages the recreational facilities and programs on the United States side of the lake, which is the catalyst for myriad activities, including hunting, fishing, scuba or skin diving, swimming, hiking, boating, camping, enjoying nature and taking advantage of the international flavor of the area.

But if you're planning a trip to Amistad, don't worry about elbow room with a combination of almost 1,000 miles of shoreline between the U.S. and Mexico sides of the lake. There are more than 100 square miles of water and land in the park.

The diving fraternity is particularly enamored with the lake because of its clear, blue water that allows for maximum visibility. "It's the cleanest water I've ever seen," commented the representative of a diving organization during an international championship held at the lake in 1975.

Divers at the lake must adhere to strict rules, according to park superintendent Edward C. Rodriguez, Jr. "Divers must have certification from an approved organization, a diving buddy and display a diving flag," he said.

Fishing at the lake is also outstanding. Although best during the early spring and summer, it's a year-round sport.

Champion bass tournaments have been held on the lake in the past. Other fish likely to find their way into your creel are channel and yellow catfish, crappie, sunfish, ocean striped bass and walleye. A Texas fishing license is required and state regulations enforced; in Mexican waters, a Mexican license is necessary.

Hunters, too, will enjoy Amistad. There is a special bowhunting season for deer, dove, quail and waterfowl may be hunted with shotguns in accordance with Texas state law.

Swimmers will discover a public beach on the east end of the dam and the facilities are being painted a bright red, white and blue for the Bicentennial. There is a diving float, beach shelters, tables and restrooms. There is also a place for small children to wade.

Camping is permitted along the shoreline and there are several commercial campgrounds along Highway 90 West as well as at Rough Canyon Marina.

Visitors should also take advantage of a variety of audio-visual programs presented in and around the recreation area and guided

tours on the lake where a ranger patrol boat will guide your boat to points of interest.

Boaters, whether fishing, sightseeing, or water-skiing, will find themselves in beautiful country. Dozens of interesting canyons offer such sights as strange rock formations and wildlife including deer and javelina.

Social Security News

Residents of this area who received social security benefits in 1975 must file a report of their 1975 earnings with the Social Security Administration if their earnings exceeded \$2,520.00. The deadline for filing this earnings report is April 15, 1976, according to Glyn Hammons, District Manager in Abilene.

The filing of a Federal income tax return with Internal Revenue Service does not relieve the person of filing the earnings report with the Social Security Administration.

Only those persons who were 72 years old or older during all months of 1975 or did not exceed \$2520.00 in earnings for the year are not required to file this report, Hammons said.

Only earnings from wages and from self-employment activities are counted as earnings for social security purposes. Excluded are such items of income as rentals, interest, and dividends.

Failure to file the report of earnings by April 15, 1976, when required, could result in a penalty of up to one month's benefit.

Early detection of hearing losses among young children is extremely important according to the Beltone Crusade for Hearing Conservation. Crusade officials point out language acquisition and speech development occurs between ages two and six. If a child can not hear properly at that time of its life, the disability can affect its learning to speak clearly.

Leisure Lodge News

Marvin Hall of Stamford, visited with Mrs. Alwilda Reese.

Visiting with Mrs. Sarah Howard were her son, Mr. and Mrs. Murle Howard of Albany.

Visiting with Mrs. Ivy Massie was Mrs. Clyde Mayfield from Weinert.

Mr. Morris Haynes from Paint Creek visited with Pat Weaver. Mrs. Clyde Mayfield also was a visitor of Mr. Weaver.

We welcome Mr. Lavrene (Shorty) Flesher from Weinert to our Home.

We extend our sympathy to the family of Mr. D. D. Pitman in the loss of their loved one.

Kathryn Mitchell helped the ladies from the Assembly of God Church make donuts, Thursday.

Mr. Vaughn Cox from Lubbock visited his mother, Mrs. Della Cox over the weekend.

Jewel Strickland and Freddie Potts from Austin have returned home after visiting their mother, Mrs. Edna Johnson.

During 1974-75, Texas public school enrollment figures showed the following ethnic breakdown of students in all grades: Anglo and "other," 60.6 percent; Spanish surname, 23.6 percent; Negro, 15.5 percent; Oriental, 0.2 percent; and American Indian, 0.1 percent.

Want ads—Your best Market Place, Haskell Free Press

GRAND OPENING

The Fashion Box

134 W. Main, Munday

LADIES APPAREL

March 6

2 PRIZES TO BE GIVEN AWAY

Owner Mrs. Charles R. (Jennie) Smith

SIDEWALK SALE SATURDAY ONLY

Welcome Out-of-Town Jaycees!

MENS VINYL COATS—4 only left — Fur collar Reg. \$29.95 to clear \$15.00 ea.

100% POLYESTER—Full bolts — 16 patterns to choose from compare at \$3.98 yard Special \$1.29 yd

TALL MENS SHIRTS—Entire stock reduced for quick clearance values to \$10.95 Now \$5.00 ea.

MENS WINTER CAPS Values to \$2.99 to clear \$1.00 ea

MENS DOUBLE KNIT PANTS—One large group to select from values to \$20.00 now \$10.00 pair.

MENS SPORTCOATS—Our entire stock—24 left in this group nothing reserved — 1/2 price

MENS DRESS SUITS—21 suits in this group — Values to \$79.95 for fast clearance \$40.00

MENS LEISURE SUITS—22 suits grouped for easy selection buy the whole suit for less than you would expect to pay for the pants — 1/2 price

MENS SHIRTS—Leisure type prints as well as solids and fancy patterns—Values to \$7.95 Now \$4.99

SHEETS—Twins or fulls florals and stripes—Buy matching set of sheets and get \$3.98 pillowcase Free.

GIRLS DRESSES—Final clearance of size 2 thru 12's. Take your choice at 1/2 price

LADIES AND CHILDRENS BRUSHED Nylon Pajamas and Gowns—Final clearance—one large rack to clear 1/2 price.

LADIES BLOUSES—One Rack better blouses drastically reduced Now 1/2 price

LADIES SPORTSWEAR—Jane Colby pants, jackets, sweaters, shells, blouses—3 large groups to choose from less 1/3

LADIES & CHILDRENS COATS—Final clearance of our entire stock—Nothing reserved—All to go at 1/2 price

BLANKETS Big 72x90 size 100% Acrylic—All nylon binding save on this sale—\$5.00 ea.

LADIES SHOES—Out on racks for easy selection—Narrows and medium widths Values to \$12.95 \$3.00 pair

HEIDENHEIMER'S

NOTICE TO VOTERS

You should receive your new voter Registration Certificate this week. If you have not returned your voter registration application I mailed you in January we would appreciate you doing this so we can update our voter registration records. If you haven't voted in the last three years you will need to come by the County tax office and register to qualify to vote in the 1976 elections. You must register 30 days before any election you wish to vote in.

JIMMY OWENS

Tax Assessor Collector
Haskell County Texas

NOW HIRING

Immediate Openings
for permanent full time

Sewing Machine
Operators

No Experience
Necessary

**RUSSELL
NEWMAN MFG.
CO.**

ANSON HIGHWAY,
NEXT TO RODEO GROUNDS
STAMFORD, TEXAS

American Sandblasting Co.

CLIFFORD BANNER—HASKELL
817-864-3505

DANNY WALSWORTH—ALBANY
817-762-3359

BOB PUTMAN—ABILENE
915-692-0524

AMERICAN SANDBLASTING CO.

Box 596 Albany, Texas 76430

Farm-facts

A Weekly Report Of Agri-Business News

Compiled From Sources Of The
TEXAS DEPARTMENT OF AGRICULTURE
John C. White, Commissioner

It Already Hurts . . . Two To One . . . Be On The Alert.
Even if the state were suddenly blessed with ample rainfall, the dry weather of the past several months has already hurt crops and seriously curtailed livestock grazing.

The Texas Crop and Livestock Reporting Service in its weekly weather roundup notes that very little grazing has been available from the state's wheat, oats, and other small grains. Many wheat fields are dying for lack of rain and prospects for a grain crop are diminishing rapidly.

The dry weather is also putting a damper on spring planting plans. Cotton planting is underway in extreme South Texas as is sorghum planting. But the continued lack of moisture is putting farmers further behind in their spring field work.

TWICE AS MANY CATTLE AND CALVES were shipped out of Texas during January than the total of a year ago. According to health certificates from the Texas Animal Health Commission, Texas producers shipped 261,767 cattle and calves to other states. A year ago there were 132,445 cattle and calves shipped out of Texas.

Coming into Texas during the same month were 125,539 cattle and calves. This is about 80,000 less than a year ago.

Cattle and calves marketed through auctions in the state was 15 per cent more than a year ago, although it was 10 per cent less than a month ago.

January hog sales totaled 34,000 head; this is 26 per cent less than a year ago. Sheep and lamb sales at livestock auctions throughout the state in January totaled 64,000; this is 23 per cent above a year ago and 21 per cent above a month ago. Goat sales were 45 per cent higher than a year ago and almost 25 per cent more than a month ago.

LIVESTOCK PRODUCERS throughout the state are being warned again to be on the outlook for scabies. Four outbreaks of cattle scabies were confirmed in three states, including Texas, during January.

The outbreaks in Texas were found in Taylor and Hudspeth counties. Quarantines were placed on all affected and exposed cattle. The quarantines were lifted, however, after cattle were treated, reinspected, and found free of scabies mite infestations.

Cattlemen are reminded that scabies eradication can be reached only by locating the few remaining infested animals. Livestock producers are requested to inspect their herds regularly for signs of scabies and report suspected scabies to their veterinarian, state or federal animal health official, or county agent.

Scabies is caused by tiny, parasitic mites that puncture the skin of cattle. Mites cause economic losses from hide damage and reduced feed efficiency, but they do not affect the wholesomeness of meat.

Meanwhile, screwworm eradication officials at Mission are also alerting cattlemen that a new screwworm infestation season is approaching for the state.

Continued vigilance for this pest will also be needed to keep the infestations at the lowest possible levels.

Canvas sneakers can be washed and dried in your washer and dryer, and then sprayed with a thin film of starch to keep clean.

Sagerton News

Some dates to remember on our community calendar are:

March 3—Ash Wednesday Lenten services will begin at Faith Lutheran Church at 7:30 p.m. They will celebrate the Lord's Supper at the first service.

March 4—L.O.C. Home Demonstration Club will meet at the home of Mrs. Lewis Corzine.

March 10—All farmers are invited to a farm chemical program and supper at the Community Center.

Mr. and Mrs. Reece Clark hosted the family night for the Methodist Church at their home Wednesday of last week. Fellowship and games of dominoes were enjoyed.

The Sagerton "Hee-Haw" group was delighted at the large crowd that came out to see and hear them at Haskell last Saturday night and thank them for their support and the donations that came in for the Rehab Center at Abilene. Although they are amateurs, it is always nice to have a full house.

Clyde Stegemoeller, who is a junior at Rule High School and a member of Mr. Kutch's horticulture class, has begun his own greenhouse at his home. He has hanging baskets started, bedding plants, and potted plants such as mums, and hopes to have a small business started. By the time the danger of frost is past, he plans to have bedding plants for sale. Our unusual weather is kind of throwing him off, because he is having to install air-conditioners before he had planned to.

Mr. and Mrs. Fred Kupatt, Kris and Kraig and Mr. and Mrs. Leland Thane, Jeff and Marc are all in Houston this week at the Houston Fat Stock Show with their swine. Kris, Kraig, Jeff, and Marc will all show their swine in the show. Good luck kids!

Mr. and Mrs. J. B. Toney and Bruce and Rene went to Boling and West Columbia last week end.

Mr. and Mrs. Fred Kupatt took a group of 4-H girls to Texas Tech in Lubbock last

Thursday. They went through the Home Economics Dept. with a special film viewing on Foods and Nutrition. They saw flour that had been made in the Experimental Dept. of milo, cotton seed and triticale, and heard a Professor tell how these products were being used.

One of the most interesting things were experimental rats that had been fed on different diets and they saw how well the ones that were fed a balanced diet progressed and grew compared to the others who lacked proper nutrition. They were taken through the Animal Science Bldg. and were told how animals were fed, butchered and packaged for consumers.

The trip was a very interesting and educational one for the 40 4-Hers who went and their leaders. Those going from Mrs. Kupatt's group were: Kris Kupatt and Toni and Chei Williams.

Susan Swofford's name was omitted last week from the list of winners at the Haskell County Food Show. She tied for second place in the Bread and Cereal Group with her mincemeat cake.

R. R. Clark is attending a Farm Meeting in San Antonio this week along with other County Committeemen from Haskell County and the A.S.C.S. Office. Secretary of Agriculture, Earl Butz, and other top men in Agriculture are supposed to be at this meeting.

Guests in the Bill Hertel home Sunday for dinner were the following: Mr. and Mrs. Tom Smith and Charlotte, Mrs. Gladys Martin, and Mr.

and Mrs. Sam Smith and Craig, all of Stamford, Mr. and Mrs. Kenneth Hertel and Gail of Hamlin, Mr. and Mrs. J. A. Hertel, Mr. and Mrs. Melvin Baitz and Johnny and Fred of Sagerton. The special occasion was a baptismal dinner for Craig's sponsors, Vicki and Kenneth Hertel, and also a birthday dinner for Karla and Vicki who had a birthday February 28 and Sam whose birthday is March 2.

Mr. and Mrs. Alvin Ulmer went to Hamlin Sunday to visit with Mrs. D. A. Ulmer, who returned to her home in Hamlin recently after spending some time with her daughter in Florida.

Boys and young men are preparing for their future fatherhood in growing numbers, according to figures compiled by the Texas Education Agency. More than one third of the public school students in home and family living courses are male, as are one fifth of the students studying child development.

RUSS AGRICULTURE FLYING AERIAL SPRAYING

Green Bugs Spraying Plan-T-4 Applications on Wheat

Russ Matthews, Owner

Call 864-2035

Haskell, Texas

USE YOUR SEAT BELT



WHIP INFLATION!

SLAB SLICED NO. 1 GRADE BACON LB \$1.19	CALIFORNIA Lemons 3 FOR 19¢
PORK LIVER SLICED, LB. 39¢	CALIFORNIA DELICIOUS Apples LB 25¢
WISCONSIN ROUND CHEESE AGED & SHARP LB \$1.19	CALIFORNIA CELERY STALK 29¢
SLICED BOLOGNA LB 79¢	BURLESON NATURAL Honey 24 OZ JAR \$1.19
McBETH EGGS LARGE SIZE, DOZEN 69¢	GEBHARDT TAMALES 15 OZ CAN 39¢
I.G. GALLON PLASTIC MILK \$1.59	GRIFFIN Barbecue Sauce 18 OZ 59¢
CLUB CRACKERS 1 LB BOX 69¢	LIBBY 16 OZ CAN Sliced Beets 29¢
FIRESIDE CREME COOKIES 3 PKGS \$1.	KRAFT DINNER MACARONI & CHEESE BOX 29¢
COMSTOCK APPLE Pie Filling 21 OZ CAN 69¢	HEINZ Steak Sauce 5 OZ 49¢
MRS. TUCKERS 3 LB CAN SHORTENING \$1.29	Wesson Oil 38 OZ \$1.39
GOLD MEDAL FLOUR 5 LB BAG 79¢	PETER PAN 12 OZ Peanut Butter 69¢

POGUE GROCERY

—Extra Parking Behind The Store.

Home Owned And Operated—

113 NORTH AVENUE E

PHONE 864-2015

HASKELL, TEXAS

Bargain Days At Smitty's

99¢ Each SALE

IF YOU ARE HANDY WITH TOOLS BUY WHILE SUPPLY LASTS — 99¢ EACH

\$2.05 Value
SCREWDRIVER
Set of 4

IGNITION WRENCH AND SCREWDRIVER SET
13 Pieces

BATTERY BOOSTER CLIPS—PAIR

STEELCRAFT BLOCK PLANE
Single Blade

4 Piece
WARD FILE SET—Flat Round and Square

101 Piece
SPRING ASSORTMENT

99c Each

99c Each

ALUMINUM LEVEL PLUMB—LEVEL—MITRE

AUTO TRUNK LID TIE DOWN
2— Spring Loaded Chains

TRI SQUARE WITH LEVEL—EASY TO READ

COTTER PIN SET
144 Pieces With Remover Tool

5 Cell Plastic Flashlight from Radio Shack
Steel Laminated Padlock from Guardian

WHILE SUPPLY LASTS—NO RAIN CHECKS

Smitty's Auto Supply

Low Rent District

Haskell

Band Members Receive Top UIL Ratings

This year the Haskell Indian High School Band received several top ratings in the U.I.L. Solo and Ensemble Contest held Feb. 28 in Abilene.

Among those participating who received top ratings in the Solo Competition are: Freshmen—Connie Frierson-I, Sarah Cox-I, Mary Lou Gonzales-I, Greg Gideon-I, Thomas Long-I, Patricia Arrendondo-I, Terri Therwanger-II, Kay Campbell-II, and Sharon Gray-II; Sophomores—Elizabeth Wilson-II, Jill Adkins-II, Gail Howard-III and Kim Campbell-IV; Juniors—Rosemary Kimbrough-I, Kem Kemp-II, Sarah Cortez-II and David Gray-II; Seniors—Brenda Hill-IV.

Among the ensemble participants those receiving top ratings were a flute trio placing first, with a brass quartet and sax quartet both placing second.

Around Town

by Lois and Lisa

Mrs. Sandra LeFevre and daughter, Melissa Kay of Ft. Worth, spent the week with her parents, Mr. and Mrs. Nolan Lees, and grandmother, Mrs. Bill Lees and Mrs. Albert Address.

Mrs. Paul Josselet and Mrs. V. P. Terrell visited Mrs. Eunice Claborn in Lubbock last week.

45 Adult Leaders and members of the Haskell County 4-H Club attended an educational tour at Texas Tech, Friday, Feb. 27. The group toured the Fruits and Nutrition Lab, the entire Homemaking Dept. and the Meat Lab.

Haskell's Senior Citizens met Wed., Feb. 25 at 2:30 in the Community Room. Vice President presided in the absence of president, O. W. Tooley. A film was shown by Jan Hopper on what is being done in Abilene for Senior Citizens. After games of 42 and 84, a covered dish dinner was served. There were

several visitors present. All senior citizens are invited to attend these meetings. The next one will be March 10, at 2:30 in the Community Room.

Mr. and Mrs. Hallie Chapman and Mr. and Mrs. Bobby Watson were in Abilene Sat. to attend a bridal shower honoring their granddaughter, Carol Thomson and Danny Mark Davis. The shower was held in the Petroleum Club. The serving table was covered with a shrimp covered cloth and serving appointments were crystal and silver.

Mr. and Mrs. H. R. Greene spent Sat. in Eules with Mr. and Mrs. Jack Cline and family, then went to Mt. Vernon on Sunday to visit Mr. and Mrs. L. D. Pitkin and saw grandson, Jeffrey play in a Jr. High School Band Concert on Sun. afternoon.

Mart C. Sherman of Wichita Falls, an uncle of Alvin and Kenneth Sherman and brother of the former Mrs. Joe Lee Ferguson of Haskell was buried Monday at Crestwood Cemetery in Wichita Falls. Attending the funeral from Haskell were Mr. and Mrs. Alvin Sherman and they were accompanied by a nephew, Jim Ferguson of Lubbock.

The Jaycees will have their regular meeting, Thursday night at the City Hall.



MISS JANET LANDRETH

Engagement Announced

Mr. and Mrs. A. L. Landreth of Rule announce the engagement and approaching marriage of their daughter, Janet, to Gary Brannon of Abilene.

Miss Landreth is a 1973 graduate of Rule High School and is a graduate of Stamford Hospital Nursing School. She is presently employed at Hendrick Hospital in Abilene. Brannon is the son of Mr. and Mrs. Roy Brannon Jr. of Comanche. He is a graduate of Comanche High School and is now employed with Keith Produce in Abilene.

A May 1st wedding is being planned in the Sweethome Baptist Church in Rule.

College News

Four students from Haskell County attending the Tarleton State University in Stephenville, Texas have been named to the "B" Honor Roll and the Distinguished Student List for the fall semester 1975. They are: Timothy C. Kreger, Music Major from Haskell, Jo Nell Overton, Elementary Ed. Major from Haskell, Kenneth E. Brown, Agricultural Ed. Major from Haskell, and Randy C. Hines, Animal Science Major from Rochester.

The "B" Honor Roll consists of those students who carry at least 12 semester hours and have no grade below "B".

A distinguished student must post a semester grade point average of at least 3.25 on Tarleton's 4.0 system.

Jerry Allan Darden was named one of the 200 McMurry College students on the fall Dean's List released by Dr. Allen Cordts, vice president for academic affairs and dean of the college.

Jerry had a 3.5 grade point average for the fall semester at McMurry College.

Jerry's parents are Mr. and Mrs. Orville Darden of Haskell. Jerry graduated in 1970 from Haskell High School.

Jerry is a Junior student, majoring in Business.

Janie Lou Henderson was named one of the 200 McMurry College students on the fall Dean's List released by Dr. Allen Cordts, vice president for academic affairs and dean of the college.

Janie had a 3.6923 grade point average for the fall semester at McMurry College.

Janie's parents are Mr. and Mrs. Arthur R. Henderson of Haskell. Janie graduated in 1974 from Haskell High School.

Janie is a Sophomore student, majoring in Elementary Education.

HOSPITAL NOTES

Admissions
MEDICAL: Victoria Garcia, Knox City; Emma L. Banner, Haskell; Lottie O. Hix, Haskell; Annie Sorenson, Haskell; Lillian Cobb, Rochester; Frank Hernandez, Haskell; Bill Lane, Haskell; Grace Mobley, Aspermont; Sharon Lynne Turner, Haskell.
SURGICAL: Shannon Mueller, Abilene
ACCIDENT: Pawnee Grupe, Haskell.

Dismissed
Victoria Garcia, Shannon Mueller, Lillian Cobb, Frank Hernandez, Pawnee Grupe.

LOOK WHO'S NEW IN THE CRIB SET
Mr. and Mrs. Billy Joe Reynolds of Guthrie announce the birth of a son, Branton Jeffrey, born Feb. 26, 1976 weighing 11 lbs., 7 oz.

Mr. and Mrs. Patrick Joe Garcia of Knox City announce the birth of a daughter, Eva, born Feb. 27, 1976, weighing 6 lbs., 10½ oz.

Mr. and Mrs. Larry Derrick Lovell of Haskell announce the birth of a daughter, Tiffany Diane, born Feb. 27, 1976, weighing 6 lbs., 13½ oz.

Mr. and Mrs. Eddie Earl Chandler of Stamford announce the birth of a daughter, Crystal Gale, born Feb. 24, 1976, weighing 7 lbs., 3½ oz.

Otosclerosis, a disorder of the bones of the middle ear, is one of the most common causes of hearing losses among persons in early middle age, according to the Beltone Crusade for Hearing Conservation. This malady causes one or more of the tiny bones in the middle ear to stiffen and become immobilized.

Little Dribblers Results

Junior League	
Redmen	4 8 5 7 24
Braves	8 4 7 9 29
Chiefs	FORFEIT 1
Sioux	FORFEIT 0
Chiefs	2 2 2 4 12
Braves	10 4 8 10 32
Sioux	0 0 4 6 10
Redmen	2 0 9 0 11

Major League	
Kiowas	2 4 4 4 14
Mohawks	2 4 6 0 12
B-Hawks	4 2 8 7 21
Warriors	2 4 1 4 11
Kiowas	6 6 6 2 18
Apaches	4 0 2 9 15
Warriors	0 10 4 4 18
Mohawks	4 6 8 8 26

LEAGUE STANDINGS

Junior	
W	L
Braves	6 0
Redmen	3 2
Chiefs	2 2
Sioux	0 6
Major	
W	L
Kiowas	4 0
Apaches	3 1
Mohawks	3 2
Blackhawks	1 3
Warriors	0 5

HERE'S TO YOUR HEALTH
from Roberta High

In event of a head injury, if the victim is unconscious, do not try to arouse him. Avoid turning the body, if possible. If face is flushed, raise head and shoulders—if ashen or normal, keep the body flat. If the victim vomits, lay him abdomen down, face sidewise. Do not administer stimulants, such as coffee or ammonia—get prompt medical help.

OATES
Drug
PHONE 864-2515 HASKELL

Rain-Maker!

[Sidewalk Sale]

We're moving boots, shoes, shirts, ties, suits, pants and a lot of miscellaneous items with discounts up to 70% off. You like Bargains? Come out in the rain and look.

Lane Apparel FOR MEN

Next to M-System

Girl Scout News

Girl Scout Week will begin with all girls attending the church of their choice in uniform. The troops will be recognized during the morning worship services.

A Mother-Daughter Tea will be held in the HNB Community Room at 3:00 p.m., Sunday, March 7th. The girls will present the songs and skits which will be given at the Father-Daughter Banquet. Mrs. Lynn McKinney, Field Director from Abilene will be a special guest.

The Father-Daughter Banquet will be held Friday, March 12th at 7:00 in the Haskell Elementary School. Mrs. Cleatus Drinnon and Mrs. Kenneth Lane are co-chairmen of this event which will feature a Bicentennial theme.

A special ceremony "Flames of Freedom" will be observed. March 12th is the founding day of Girl Scouts in America and Scouts all over the land will light candles marking the 64th birthday of Girl Scouts in our country's 200th year.

Wider Opportunities
A council sponsored trip to Washington, D. C. for Cadette and Senior Scouts who will be at least 14 years old by June 1, 1976. The trip dates are July 20-August 4, 1976. Travel will be by chartered bus accommodating up to 36 girls and 4 adult sponsors. The group will be based at Rockwood National Girl Scout Center in Maryland while touring in and around Washington D.C. The cost is \$275 which covers all expenses of the trip except souvenirs and incidentals. An application must be in the Council Office by March 15th. Mrs. Cleatus Drinnon, Service Unit Chairman has application forms. The trip will be an historical, cultural, fun experience. Haskell girls sign up!

Cookie Sale Success
55 Brownie and Junior Scouts representing 5 troops sold 1488 boxes of Girl Scout cookies this year.

24 Scouts sold 42 boxes or more which entitles them to an

Hairdressers Meet

Texas Hairdressers and Cosmetologist Affiliate No. 11 met in Christene's Beauty Salon Monday March 1st at 7:00.

President Julie Wallace called the meeting to order. Hazel Trice gave the treasurer's report.

Models were Diane Newberry who got a frost. Hazel Trice, Frances Arend, and Frances Davis were models for hair styles.

Julie Wallace, Christene Greene, Frances Bennett and Diane Newberry were stylists for the evening.

Next meeting will be April 5th at Frances Arend's Beauty Salon.

Marriage License

Marriage licenses issued during the month of February 1976 by County Clerk Jenny Brazell were:

Ronnie Dail McNeil and Deanna Kay Moore both of Haskell.

Joe Roy Hewson of Spokane, Washington and Anna M. Heflin of Haskell.

Kenneth Farron Ivey of Munday and Tamarie Love Bishop of Rule.

Robert Dewayne Aycock of Haskell and Pamela Jo Davis of Abilene.

Jerrell Lee Gray of Weinert and Pamela Ann Conner of Haskell.

Billy Milton Comedy and Audrey Lee Cook both of Haskell.

attractive cookie patch which can be worn on the Junior badge sash, windbreaker or jacket. Pictures of the winners will be in next week's paper.

\$223.20 was earned for local troop treasures. The new flavor this year, peanut butter pattie, was well received. Mrs. Kenneth Lane, Cookie Chairman, on behalf of troop leaders, Scouts and mothers expressed appreciation to all in the community who supported this annual cookie sale.

the look ... & the shoe that goes with it.

Underneath you should read like a book... smooth and just a little bit spicy! Try it with this stacked heel sandal. Smart, sophisticated, but young enough to swing!

Colors white. Navy & Red

30 works

Slipper Shoppe

Sidewalk Sale Specials

\$5.00 RACKS Values to \$36.00

Long Dresses 1 rack \$10. Value \$60.00

1 rack of dresses & pant suits 1/2 Price

WINONA'S

Haskell, Texas

Shop Our Sidewalk Sale

PLENTY OF BARGAINS

SEE OUR BIG \$1.00 TABLE

C & B STORE

Sidewalk Sale Bargains

Ladies Better Ready-to-Wear Famous Brands Drastically Reduced

Check our sale tags on sidewalk merchandise and save money.

ONE GROUP MEN'S SHIRTS values to \$12 **1/2** Price

Sweaters values to \$18

Mens Sport Coats

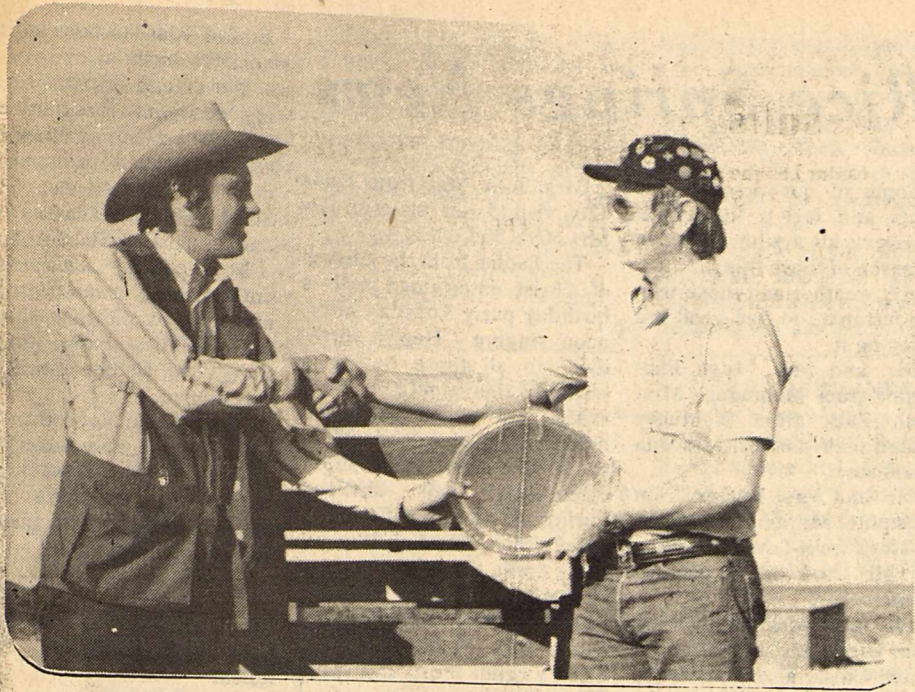
Regulars and long values to \$60

close out at

\$23

HASSEN'S

OF HASKELL



VIC MILLIMAN left, of 1404 North Ave. L. Haskell receives the Championship trophy from All American Trap Shooter Neal Crausbay for his performance at the Haskell Trap Club Sunday. (Photo by Haskell Trap Club)

Accent ON HEALTH

Texas Department of Health Resources
Fratris L. Duff M.D., Director

Some people have it, and some people who don't have it don't want it.

What is it? Allergies, which affect about half the adult population in one form or another. This half may sneeze or sneeze, itch or wheeze, suffer intestinal disturbances or other uncomfortable symptoms, says the Department of Health Resources.

If you have burning, scratchy eyes and a running nose during ragweed season, it may be little consolation that some 13 million people in the United States have hay fever. About a half of adults and a third of our children are allergic to something—something they eat, smell, or contact. Some people have been found to be affected by a certain color.

In some people, allergies occur only at certain seasons of the year, such as ragweed season. In Texas, thousands upon thousands time their allergies by the pollinating of cedar trees, which begins around Christmastime each year. It may last a month or longer. Others are bothered in early spring by the blooming of trees and flowers. Grasses later in the spring and summer affect others.

The very unfortunate individual may have some form of allergy on a daily basis.

When the allergy-producing substance enters your system and comes in contact with the antibodies in the cell, that union produces dramatic effects. The best known of the results of these miniature explosions is the release of the chemical histamine from the cell. Normally, presence of histamine stimulates production of adequate amounts of

antihistamine which would of course cause no symptoms to develop. Sometimes enough antihistamine is not produced to counter the levels of histamine.

Histamine is perfectly harmless when inside the cell, but once released outside the cell it produces undesirable changes. It dilates and congests blood vessels so that fluids from your blood stream leak out into the tissue, causing swelling.

If this change takes place in the skin the result is hives. If this reaction occurs in the nose, the membrane swells and you have a condition known as hay fever or "sinus". Another action of histamine is to contract or put into spasm involuntary muscle fibers—muscles not controlled by your own will, such as stomach, intestine, urinary bladder, or the uterus. If this muscle effect takes place in the muscle fibers around the bronchial tubes, asthma is the result; in the intestine, cramps and diarrhea may be the effect.

At least one in three Texans who have untreated hay fever will develop asthma. In many cases, seasonal asthma may fail to subside with the end of the season and may become chronic, says the Department of Health Resources.

Among the most common forms of respiratory allergy is "pollinosis"—a respiratory reaction to pollens. The severity of hay fever varies in different parts of the country, from season to season and day to day.

Molds commonly grow on plant life and are particularly prevalent on grains, such as wheat, oats, rye and corn.

Next to pollen, molds are the most common causes of seasonal hay fever and asthma.

Then there is contact dermatitis. Poison ivy dermatitis is one of the best known examples of this kind. But many other plants and common substances in use in the house can produce this disease, says the Department of Health Resources.

Three factors may play a part in the production of allergic illness. Susceptibility is one. Only certain people have the ability or the background to become allergic. Granting you have this background, you still must become sensitized to a special substance and then be re-exposed to it. If you avoid either of these steps, you will have no allergic illness. A third factor is what might be called contributing factors. Various conditions—temperature, chemical irritants, dust, emotional disturbances, etc.—may aggravate allergies or trigger their attacks. But by themselves they do not cause allergic symptoms.

If there is a family history of an allergy either on the father's or mother's side, then the disease frequently manifests itself in the offspring. But the allergy they develop will not necessarily be the same type as their parents'.

Specific allergy tests can be given by your doctor to discover the substances to which you are reacting. Specific desensitizing treatments may be given to build up immunity gradually. Prevention and avoidance of the offending substance, if possible, is the most effective means of dealing with an allergy.

Resist the urge to "top off" the car's gas tank. Gasoline is wasted by spilling over or dribbling out of the overflow pipes when driving away from the gas station. Mrs. Linda McCormack, family resource management specialist with the Texas Agricultural Extension Service, The Texas A&M University System, says.



The Consumer Alert

by John L. Hill
Attorney General

AUSTIN—Sometimes it's hard to say "no" to a door-to-door salesman, even one selling something you don't particularly need or want.

And many Texas consumers find only after that persuasive sales pitch has ended and the salesman has departed with a signed contract that they could have bought the same or a similar item in stores all over town, sometimes at a much lower price than they had agreed to pay.

But our Attorney General's Consumer Protection attor-

neys point out that there is an important protective device for Texans who find they made a mistake in purchasing goods or services in their home. It's the Texas Home Solicitation Act, passed by the Legislature in 1973 and amended in 1975.

Under this law, a consumer who is solicited at his home by someone selling goods or services that cost \$25 or more, or real estate costing \$100 or more, has a chance to change his mind.

The act gives consumers the right to cancel a home solicitation transaction until mid-

night of the third business day following the day the contract was signed.

The person soliciting the sale must furnish the consumer with a copy of the contract or a fully completed receipt before leaving the premises. In it, the date of the transaction, name and address of the seller, and a notice of the right to cancel must be printed in large, dark type near the spot on the contract reserved for the buyer's signature.

In addition, the law requires that a completed "notice of cancellation" be attached to the contract or receipt for the consumer to use if he decides to cancel the sale. If the seller receives such a cancellation from the consumer, he must return any payment or contract within 10 business days.

One important point for the thousands of Spanish-speaking Texans is that the contract or receipt, the notice of right to cancel, and the completed can-

cellation notice must be in the same language the salesman used for his sales pitch. In other words, if the salesman spoke Spanish, everything must be written in Spanish.

The act also states that the seller cannot transfer your contract to a finance company or other third party until midnight of the fifth business day after your contract was signed. Additionally, the seller must pick up any merchandise or title to realty he sold you within 20 days after cancellation or you can keep them with no obligation.

However, our attorneys point out that consumers who want to cancel a home solicitation sale also have some obligations under the law. To cancel such a sale, a purchaser must mail or deliver a signed, dated copy of the cancellation notice or his own written notice, or must send a telegram to that effect to the seller no later than midnight of the third business day after

the sale. Our lawyers recommend sending a registered letter or a telegram so you have proof the seller received the notice.

And protection under this law does not extend to purchase of farm equipment; insurance regulated by the State; real estate sales where the buyer is represented by his lawyer or where the transaction is made by the licensed real estate broker; sales made according to a preexisting retail charge account or agreement; or sales where the two parties had previously met and negotiated at a business office where the goods or services were offered or displayed.

Our attorneys point out that a violation of the Home Solicitation Act is also a violation of the Deceptive Trade Practices Act, and that a person who believes such a violation has occurred should contact our Consumer Protection Division, the county or district attorney, or a private attorney.

Haskell, Texas Home Owned

-We Reserve the Right to Limit-

Parker's Super Market

506 North Second Phone 864-3454

-Just West of Telephone Building-

USDA Food Stamps Coupons Gladly Accepted

<p>HORMEL VIENNA 5 OZ CAN</p> <p>SAUSAGE 3 FOR \$1.</p> <p>WHITE SWAN BLACKKEYE</p> <p>Peas WITH OR WITHOUT SNAPS 15 OZ CAN 4 FOR \$1.</p> <p>DEL MONTE</p> <p>SPINACH 15 OZ CAN 4 FOR \$1.</p> <p>"HUSBAND PLEASIN"</p> <p>BEANS RANCH STYLE 4 FOR \$1.</p>	<p style="text-align: center;"><i>TASTE THE DIFFERENCE...</i></p> <p style="text-align: center;">QUALITY-MEATS</p> <p style="text-align: center;"><i>SAVE THE DIFFERENCE</i></p> <p>SLAB BACON 99¢ LB "CENTER CUT" SLICED</p> <p>BEEF FRESH GROUND LB 79¢</p>
<p>Franco American</p> <p>Spaghetti 4 FOR \$1.00 15 OZ CAN</p> <p>ROUND CARTON ASST. FLAVORS</p> <p>BORDEN ICE CREAM \$1.19 1/2 GAL</p>	<p>SUNSWEEP PRUNE JUICE 40 OZ SIZE 69¢</p> <p>DEL MONTE FRESH WHOLE DILL 26 OZ SIZE 47¢</p> <p>INSTANT NESTEA 3 OZ SIZE \$1.39</p> <p>JEWEL PRE-CREAMED SHORTENING 42 OZ CAN \$1.19</p> <p>BORDEN HOMO MILK GAL. PLASTIC JUG \$1.59</p>
<p style="text-align: center;"><i>SPARKLING FRESH</i></p> <p style="text-align: center;">PRODUCE</p> <p>POTATOES 89¢ RUSSET 10 LB BAG</p>	<p>6 BOTTLE CARTON</p> <p>Diet-Rite COLAS 10 OZ BOTTLES 59¢ PLUS DEPOSIT</p> <p>SWANSON'S POT PIES 3 FOR \$1 ASST.</p> <p>EGGO WAFFLES 10 OZ PKG 59¢</p>
<p>YELLOW ONIONS MEDIUM LB 15¢</p> <p>CRISP CELERY GARDEN FRESH STALK EA. 29¢</p> <p>Delicious Apples EXTRA FANCY RED LB 25¢</p>	<p style="text-align: center;">GIANT SIZE</p> <p>CHEER 49 OZ SIZE \$1.19</p> <p>DAWN 22 OZ 79¢</p>
<p>McBETH'S GRADE "A"</p> <p>Medium Eggs DOZ. 59¢</p>	<p>WHITE SWAN SWEETMILK OR BUTTERMILK 10 CT CAN</p> <p>Biscuits 10 FOR \$1</p>

perry's WALK IN! RUN IN! DRIVE IN!

STARTS THURSDAY

<p>POTTED PLANTS</p> <p>Reg. 65c 35c</p> <p>Reg. \$1.75 \$1.25</p>	<p>CLOSE-OUT SAT ONLY</p> <p>25% 50% 75%</p> <p>Fringe & Lace Paint Blouse Boy Socks Buster Brown Clothes Asst'd Items</p>
<p>COTTON BLENDS</p> <p>per yd. reg. 99c 69¢</p>	<p>JEWELRY 2/\$1.00</p>
<p>Rose Bushes</p> <p>3 pk — \$1.97 2 pk — \$2.29 \$1.00</p>	<p>SIMPLICITY PATTERNS 1/2 Price</p>
<p>DOTTED SWISS ONLY -99c</p> <p>per yard reg. \$1.49</p>	<p>GINGHAM CHECK NOW 99c</p> <p>Per yard. Reg. \$1.59</p>



Haskell Bicentennial Happenings

By Roxie Parker

Mr. and Mrs. Sam Herren furnished us with a publication that has interesting information on the part the Masonic Lodge played in the lives and events connected with the American Revolution.

The Dallas Scottish Rite Herald for January revealed that Peyton Randolph, who presided over the first Assembly of the Continental Congress, was Provincial Grand Master of Virginia.

The Boston Tea Party was organized in St. Andrews Lodge and every member that threw tea into the harbor was a member of that Lodge. Paul Revere was Junior Warden of the St. Andrews Lodge.

Fifty of the 56 signers of the Declaration of Independence were members of the Masonic Fraternity.

Richard Henry Lee, who moved the resolution of Independence in the Continental Congress, and the members of his committee, Thomas Jefferson, Benjamin Franklin, John Adams, Roger Sherman and Robert R. Livingston, were Masons.

The American flag was made by the widow of John Ross, a Mason, and was placed in the hands of Washington, who was elected Grand Master of Virginia, but did not accept because his duties as Commander-in-Chief of the American Army absorbed all his attention and energies.

Washington took the oath of office as President of the United States upon the Bible

brought from St. Johns Lodge No. 1 of New York.

The Governors of every one of the original thirteen states at the time Washington was inaugurated were Masons.

Washington demanded that Lafayette of France and Von Steuben of Austria be made Masons. (This arouses my curiosity—was this demanded of these two men themselves, or did Washington demand the organization to admit them? Does anyone know?)

All of Washington's Brigadier Generals except one were Masons.

The Constitution of the United States was written by Masons.

Free speech, free religion, and free schools were the gifts of Masonry to America and these were opposed by all anti-Masonic institutions. (I am quoting from the publication and would like for some Mason to clarify this for us.)

Another publication we have enjoyed reading is one that has been preserved at First Baptist Church here in Haskell.

Dated April 2, 1922 is "The Summit", whose editor was the church's pastor, McHenry Seal; the associate editor was Miss Bernice Harris and the subscription price was 25c per year.

Included was a schedule of activities and reports of different organizations of the church, with advertisements from Haskell businesses, as well as the Stamford Steam Laundry and Waco Boiler

Works. One eye-catching ad proclaimed: "IT IS FLY TIME" and pointed out that screen doors, paints and wall paper could be found at R. B. Spencer and Company.

Interspersed among the items of social interest and news of the sick were such tidbits as these: "We will run a program of the Fifth Sunday meeting in the Summit if the pastor at Hood does not forget to mail us one in time for the press", and "Our large church lawn will look good when leveled up and set in bermuda grass. The ladies are planting flower seeds around the front and south side of the church. What are the men doing?"

Aren't you glad someone saved that for us to read 50 years later?

At our house we save everything and will probably be found someday buried under a ton of papers, magazines, clippings and letters. Our collection of National Geographics from 1947 and love letters from World War II take up a lot of space!

My oldest son once quipped that burying me would be no problem; "Just lay Mother out with the Dallas Morning News folded in her hands."

What a way to go!

VA Payments Exempt From Taxation

Recipients of benefits from the Veterans Administration are reminded that these payments generally are exempt from taxation and need not be reported on federal income tax returns.

Major tax-exempt VA benefits include compensation, pension and educational assistance, including subsistence payments to vocational rehabilitation trainees.

Also exempt are grants to military service-disabled veterans for specially-adapted homes and automobiles and clothing allowances paid to service-disabled veterans whose prosthetic devices result in undue wear and tear on clothing.

Interest accrued on government life insurance dividends left on deposit or credit with the VA is not exempt and must be reported on federal income tax returns, Jack Coker, Director of the Waco Veterans Administration Regional Office, added.

Dividends and proceeds from government life insurance policies are exempt from federal income tax, but the proceeds are subject to federal estate tax, Coker added.



FIT FOR A SPECIAL OCCASION—Nothing beats a tender, juicy baked ham for an easy-to-prepare elegant meal. One of the things cooks like about ham is that it nearly always yields leftover meat which can be used in casseroles or for breakfast. Watch for special prices on many cuts of pork during February and March, advises the Texas Department of Agriculture home economist.

Nutritious Texas Pork Lends Variety to Meals

AUSTIN—Have the mid-winter doldrums hit your meal planning? Then perk up your family's taste buds by serving tasty, nutritious pork.

In addition to those breakfast favorites bacon and sausage, look for pork chops, roast, ribs and ham to add interesting variety to meals.

During February and March, the Texas Department of Agriculture and the Texas Pork Producers Association are reminding cooks to include pork often in hearty winter meals.

According to Agriculture Commissioner John C. White, today's Texas pork is superior to the pork of horse and buggy days, thanks to scientific research, selective breeding and careful feeding.

A comparison of 100 grams (about 3½ ounces) of cooked pork then and now reveals that new pork has 28.5 grams of protein, 13.1 grams of fat and only 240 calories, compared with 23.3 grams of protein, 30.7 grams

of fat and 377 calories for the pork of yesterday.

Pork also supplies essential vitamins and minerals, as well as high-quality protein. Pork is an excellent source of thiamine, the vitamin associated with a healthy nervous system, and contains significant amounts of

Rice Springs News

Some of our people have colds and feel a little bad. Guess we always have to have a season of those things. Such pretty weather and those who are fortunate to feel good are enjoying it.

Mr. and Mrs. Hugh Phe-mister from Montague, Mrs. Ruth Zuck from Kentucky visited their mother, Mrs. Ida Phe-mister.

Mr. and Mrs. Burson from Mesquite, Mr. and Mrs. E. A. Jinkins from Levelland visited Mr. and Mrs. Manley Branch.

Mr. and Mrs. Sam West from Lubbock visited Jim and Dutch Cross, also Mrs. Daisy West.

Jana Gayle, Hazel, and Betty Letz from Old Glory and Mr. and Mrs. Finis Franklin from Vernon visited Mr. and Mrs. Herbert Klump.

Tootsie White from Fluvanna visited Mrs. Verna Tatum. Sherrie Alvis from Old Glory visited Mrs. Mattie Gipson.

Elaine Cox and Shelia from San Angelo visited Mrs. Mary Chandler.

Mrs. Karl McGregor from Abilene visited her brother, Gene Tonn.

Mrs. Lorene Lewellen from Dallas, Mr. and Mrs. Herman Edwards and Euna Essex from California visited Mrs. Ethel Edwards.

riboflavin, niacin and iron.

The Texas Department of Agriculture home economist advises grocery shoppers to look for especially good pork buys during February and March. And continuing good supplies of pork in coming months can be expected since Texas hog producers have indicated that farrowing should increase during the next six months.

Ethel Edwards who celebrated her 90th birthday.

We extend our thanks and appreciation to the many ones who visited with us this month and entertained or brought a devotion and to the Grace Sunday School Classes who mailed cards to the residents.

Mrs. Ruth Ann Klose entertained the residents one afternoon by showing slides of the Valentine Party, then a film, "The Golden Twenties" was shown.

Mrs. Pinkie Robertson and Mrs. Annie Sorenson are patients in the Haskell Memorial Hospital. We miss them and hope for them a speedy recovery.

NOW AVAILABLE at the Haskell Free Press, Slide Rules.

SIDEWALK SPECIALS SHOES

Regular value to \$20.95 choice for

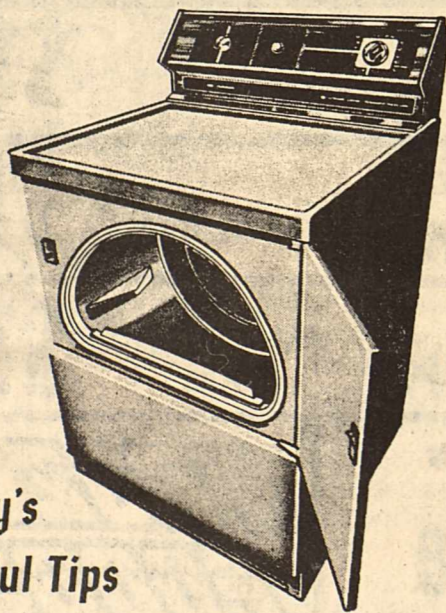
\$1.00 AND \$1.95

The Slipper Shoppe



Use your Electric Clothes Dryer Wisely...

AND SAVE



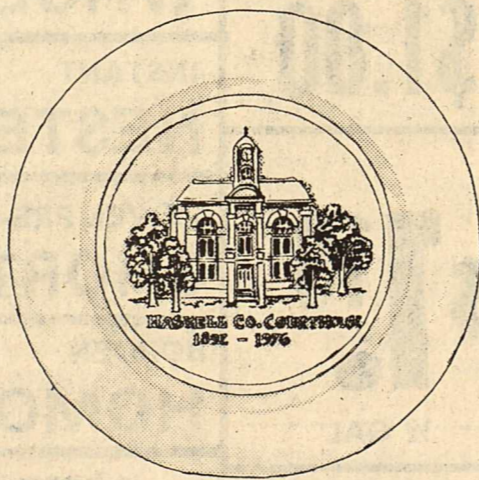
Reddy's Helpful Tips

- ★ Operate your dryer with a full load.
- ★ Do not over-dry. Over-drying any fabric increases wear and tear and causes yellowing, in addition to using more energy.
- ★ Use leftover heat to dry light synthetic garments and only partially dry items which are to be pressed immediately.
- ★ Keep lint filter clean. A dirty lint filter can lengthen the drying time and present a fire hazard.
- ★ Vent your dryer to increase its efficiency. Occasionally check the vent to make sure it is not clogged. A clogged vent can cause your dryer to consume needless energy and presents a potential fire hazard.

Pick up your FREE copy of "ENERGY CONSERVATION" Booklet from Frigidaire Home Environment Division of General Motors.

West Texas Utilities Company An Equal Opportunity Employer

Remember REDDY Supplies the energy—but only YOU can use it wisely!



FREE

To the first 10 people who purchase \$200.00 worth of furniture during our sale we will give you one of our 11"

Haskell County Courthouse Plates.

March Furniture Clearance SALE

March 4 through 18th March Sidewalk Sale Saturday!!!

JONES COX & COMPANY COUNTRY STORE

—Established in 1905—

Hardware, Fine Furniture and Gifts Box 458 Haskell, Texas 79521

Introducing your new ACCO Feeds Dealer.

We would like to take this opportunity to acquaint you with the new ACCO Feeds dealer in your area.

When it comes to selecting the proper feed, you'll find that he can be a big help. Because he has the experience and a complete line of quality ACCO feeds to do it with.

For example, ACCO makes a wide variety of range feeds, hog feeds, horse feeds, dairy feeds, poultry feeds, sheep feeds, rabbit feeds and specialty feeds. And they're all nutritionally balanced specifically for livestock here in the southwest.



ACCO has just about everything you need in the line of animal health products, too. Our ACCO Life line includes everything from antibiotics and wormers to fly sprays.

So, if you're in the livestock business, stop by soon and get acquainted.

A Division of Anderson, Clayton & Co.

Your new ACCO dealer is

HASKELL COUNTY FEEDERS SUPPLY

HARVEY CROFT, OWNER P. O. Box 482, Haskell, Texas

201 SOUTH SECOND ST. Haskell, Texas

PHONE 864-2011

Rochester, Texas

PHONE 743-3424

CARD OF THANKS

May we express our sincere appreciation to our many friends and neighbors who showed their love and concern during the illness and passing of our loved one.

To the staff of the Leisure Lodge in Haskell, a special thanks for the attention and care given to Granny during her illness.

Thanks to Hob, Paul,

Johnnie Mae, and the entire Funeral Home staff for the special attention and consideration given before and during the services.

We are especially grateful for the visits, flowers, food, memorials, and other acts of kindness shown us. May God richly bless each of you.

The family of Alma Reid. 10p

CARD OF THANKS

We would like to express our sincere thanks for everyone at Leisure Lodge, to Bro. Bragg, the First Baptist Church and everyone who brought food, flowers, and helped in any way. L. C. Killion, Mr. and Mrs. Jack S. Sisk, Mrs. Robert Maiville, Joe Killion and Marion Killion. 10p

CARD OF THANKS

The family of D. D. Pitman would like to take this method of saying thank you to our friends for the many kindnesses extended to us at the home going of our loved one.

For the food, flowers, messages of sympathy, to the staff at Leisure Lodge for their patient loving care for so many years to the staff at Holden-

McCauley Funeral Home for very consideration and especially do we want to thank Bro. Headstream and Raundolph for their beautiful tributes to his memory and to Nelda for her messages in music.

That each of you will find the same unselfish aid extended to you if ever the need arises is our sincere prayer.

CARD OF THANKS

I wish to express my thanks and appreciation to the wonderful nurses and doctors for their care while I was in the hospital. Thanks also to Bro. Bragg for this prayers and visits and to all my friends for their visits, cards, prayers, and beautiful flowers. Your thoughtfulness meant so much to me. Mrs. T. A. Rhoads 10p

Former Haskell

(Cont. from page 1)

Hospitals and Special Schools, later the Texas Department of Mental Health and Mental Retardation, from 1957 to 1963, part of that time as chairman.

Friend of many Texas governors, he was appointed to the prison board by Gov. Beauford Jester and re-appointed by Gov. Allan Shivers. He also was a friend of Govs. John Connally, Price Daniel and Preston Smith and of Lt. Gov. Ben Barnes.

Mr. Robertson was a longtime friend of the late President Lyndon B. Johnson.

Prominent in oil and gas industry circles, he was past president of the Texas Mid-Continent Oil and Gas Assn. and a member of other industry organizations.

Statewide, he was perhaps remembered best for his work on the Texas Prison Board, later the Texas Board of Corrections.

When Gov. Jester appointed him in 1947, the Texas penal system as it was then has been termed by leading penologists as one of the worst in the country.

"The prisoner has been removed from society because he finds it impossible to get along with society," he said then. "It is our job to restrain, house and rehabilitate him for this return to society."

Legislators gave the board some \$2 million to work with and millions more after that, and Mr. Robertson initiated a cleaning and rebuilding program among the prisoners themselves.

A 75,000-acre farm was converted to use modern farming methods, and laundries, dormitories, chapels, mess halls and recreational areas were built.

The system now is ranked among the best in the nation.

In addition to his oil and gas interests, Mr. Robertson had extensive interests during his lifetime in residential and industrial real estate. In 1965 he helped found TV Cable Service of Abilene and served as president and general manager before he divested his interest in the venture.

Robertson was vice president of Spacious Properties, Inc., which developed the Stonegate Addition of Abilene. The president is L. G. (Dusty) Rhodes.

He was named "Outstanding citizen" of Abilene in 1957.

He also was president of the Abilene Chamber of Commerce in 1952 and a longtime leader in the chamber; past president of the Abilene Community Theater; past

president of the West Central Texas Oil and Gas Assn.; past vice president of the Texas Independent Producers and Royalty Owners Assn.; Civil Defense planning director for Texas, Louisiana, New Mexico and Arkansas for several years until his resignation in 1954; a delegate to the Democratic National Convention in 1948; first president of the Haskell Lions Club; a past director of the Central West Texas Fair Assn.; a member of the Texas Philosophical Society; a member of the American Legion; past vice president of the Chisholm Trail Council of the Boy Scouts of America; and a Mason.

Survivors include his wife Mary L.; two daughters, Mrs. Gus (Marinda) Vietas of Malibu, Calif., and Mrs. Bill (Mary Lou) Braymer of 2801 Darrell in Abilene; two sisters, Mrs. Hazel Womble of 2001 S. 5th St., Abilene; and Mrs. Lelta Welsh of Texas City; and five grandchildren, Stephen Vietas, a student at the University of Southern California, David and Courtney Vietas of the Vietas home, and Scott and Martel Braymer of the Braymer home.

A daughter, Emily, and two brothers, Sam and William preceded him in death.

LIMITED SUPPLY of 1976 Calendars, desk, wall & pocket.

Trout For Brazos River

WICHITA FALLS—The Brazos River below Possum Kingdom Lake received the second in a series of rainbow trout drops scheduled this year for the big river.

According to Roger McCabe, fisheries district management supervisor, 13,300 trout were released Feb. 17 & 18 between the Possum Kingdom Dam and Hwy. 16 bridge. McCabe said the fish were in splendid condition and ranged in size from five to 10 inches and would average eight inches.

Many fishermen have been attracted to this scenic area on the Brazos between the cities of Graham and Mineral Wells to fish for trout.

Rainbow trout fisheries are successful in the Guadalupe River below Canyon Lake near San Marcos and in Boykin Springs Creek located 40 miles southeast of Lufkin. The state record rainbow trout, caught in the Guadalupe River, weighed 4 3/4 pounds. The Brazos River record is 2 1/2 pounds, taken last summer eight miles below the dam by a Wichita Falls resident.

There is no closed fishing season for the rainbows. Bag limits are five per day with no more than 10 in possession.

Sidewalk Sale

- H78-15 LPS ww \$32.95 — 3 ea
- G78-15 LPS ww \$29.95 — 1 ea
- E78-14 LPS ww \$26.95 — 1 ea
- B78-13 LPS ww \$24.95 — 4 ea
- F78-14 LPS bw \$25.95 — 4 ea
- H78-14 4 + 2 ww \$34.95 — 4 ea

Western Auto

PULL-ON PECOS COMFORT

NO LACES!
LARGE SELECTION OF SIZES AND WIDTHS

RED WING

Try them on at

Heidenheimer's



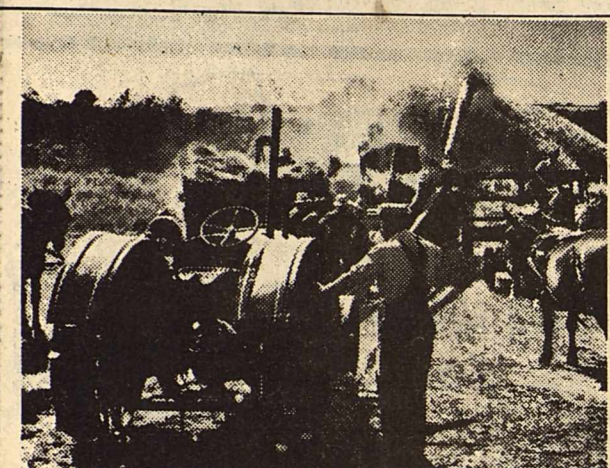
Sure cure for 5 o'clock feet



THE NEW THE USED and THE OLD

Think Antiques ... Look to A Good Investment!

SHERMAN'S FLOORS AND INTERIOR
101 N. E. Upstairs



No segment of the economy has ever changed so fast and so completely as has agriculture during the past 60 years. When these changes have required capital, your Federal Land Bank has been a primary source of funds. There will be more changes: But we believe that a free agriculture—based on the family-operated farm or ranch—will continue to flourish in any new environment.

We are banking on the farm family and on the family farm.

Federal Land Bank Association of Haskell



JOE HARPER—Manager

Offices at Haskell, Anson and Seymour
Haskell Telephone: 864-2062—Anson Telephone: VA 4-1142

Long-time loans on farms and ranches in Haskell, Jones, Baylor and Knox Counties

Insur-mation

HERREN INSURANCE AGENCY
PHONE 864-3322



How does life insurance affect Social Security benefits?

Life insurance and Social Security work hand-in-hand to provide an adequate income for future needs. Potential benefits from Social Security, alone, may fall short of providing sufficient income for family and retirement needs. Social Security laws say, in effect, that if a person receiving benefits wants to or is forced to continue working for a living, his benefits will be taken away... unless he is content to work for a relatively small income. Life insurance supplements Social Security with an income... without carrying the penalty of loss of benefits. Taken as an annuity, life insurance will not affect your Social Security benefits... enabling you to retire with enjoyment.

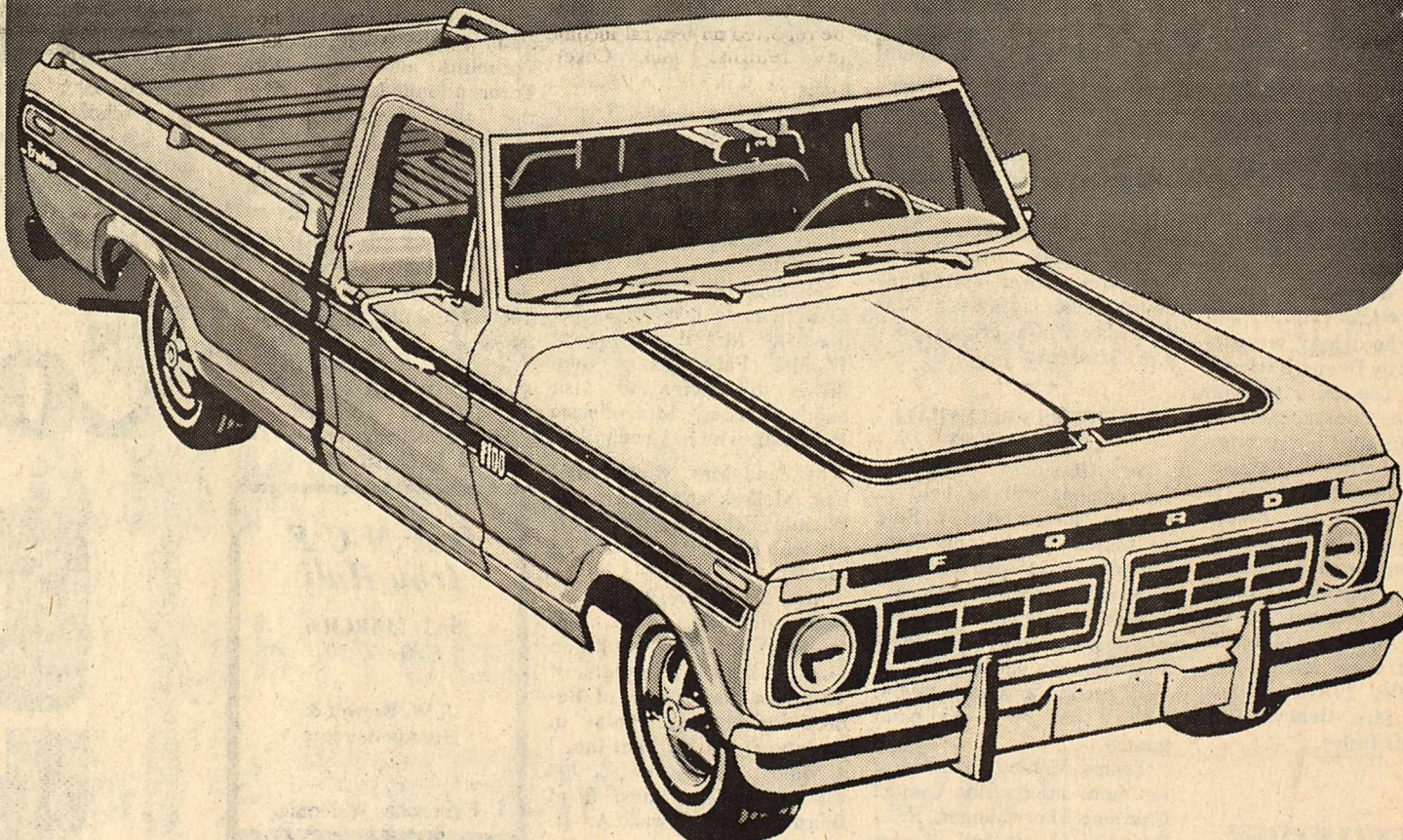
SIDEWALK SPECIALS

- 1 Group mens suits values to \$120.00 \$69.95
- 1 Group suits values to \$100.00 \$59.95
- Broken sizes suits values to \$120.00 \$25.00
- Mens sport coats values to \$80.00 \$25.00
- 1 Rack men and boys suits and sport coats choice .. \$10.00
- Boys long sleeve shirts 1/2 price
- 1 Lot mens knit pants values to \$25.00 \$8.00

All Sale Merchandise Cash Alterations Extra

The Dad 'N Lad Shop

UP TO
\$201*
OFF
ON...



Limited Edition Ford Explorer Specials

- Special metallic paint: jade, green and copper.
- Distinctive Explorer tape stripes, bright moldings.
- Special color-keyed interior trim.
- Bright box rails or rope tie-downs.
- Bright swing-lock mirrors.
- Special wheel covers.
- Bumper guards and rub strips.

Now—major discounts on Limited Edition Explorer Pickups equipped with the features you want. Choice of regular cab, SuperCab, 4-wheel drive. Plus Ranchero and Bronco. All the features shown above—and more—are included with every Ford Explorer Special Pickup. Then you add the options you want: power steering and Cruise-O-Matic... air conditioning and tinted glass. Altogether, you can get a total of \$201 off list price on Explorer Special models. Buy now for extra value at your Ford Dealer Limited Edition Sale. Quantities are limited.

*Price reductions are based on manufacturer's suggested retail prices for options purchased separately compared to special package prices.



Ford Pickups. Built Texas-Tough.

Bill Wilson Motor Co.

HASKELL, TEXAS

RULE ROUND-UP

BY OLETA CORNELIUS

Phone 997-2167 With Your News

BULLETIN BOARD

Mar. 4, 5, & 6th 5th & 6th BB Tournament
 Sat. Mar. 6 Boys track at St. Jo.
 Mon. Mar. 8 Lions Club
 Tues. Mar. 9 U.M.W. 2 p.m.; Book Exchange, 2 p.m.; Mrs. O. Grice
 Thurs. Mar. 11 Busy Bees, 2 p.m.
 Fri. Mar. 12 Jr. Play, 7:30 p.m.
 Sat. Mar. 13 Girls track at Olney; Boys track at Spur
 Mon. Mar. 15 AARP, 6:30 p.m.; Young Homemakers, 7:30 p.m.
 Tues. Mar. 16 U.M.W. 2 p.m.
 Thurs. Mar. 18 Phil. Club, 2 p.m.
 Mar. 18, 19 & 20 Outsiders Volleyball Tourn.
 Fri. Mar. 19 Girls track at Spur
 Sat. Mar. 20 Boys track at Albany

CLASS PLAY

The Rule Junior Class will present their annual class play entitled, "The Whiz Kids" on Friday, March 12, at 7:30 p.m. in the Rule High School auditorium. Admission will be \$1.00 for adults and 50c for students.

The scene of this uproarious farce is a gloomy old mansion which the handsome bachelor, Wes Kittley inherited with a purse containing one worn nickel. Archer feels that he has to support his dead twin brother's family, the flighty romantic widow, Amy played by Betty Kittley, her seventeen year old daughter Noralee, Wynette Williams and her thirteen year old twins, Buck and Bunny played by Clyde Stegemoeller and Colleen Townsend. The twins are determined to vanquish Unky's girlfriend, "Glad" played by Cynthia Sorrells and mama's boyfriend, the undertaker, Burwell, played by Stephen Hertel. Archer writes a proposal of marriage to his Glad and it gets into the hands of his boss Lola Lovejoy, played by Rosie Spurek. Lola's constant darling is played by Larry Denson who has a lisp. Noralee breaks her engagement to young Dade Darnell, Robert Ace Turner and the twins prevail on Dade to court their mother in order to switch her affections from Burwell the gloomy mortician. Amber and Calomel, the negro servants are played by Donna Burselon and Terry Lee are a scream. Sarah, the housekeeper, is played by Cindy Thompson is a dismal cockney "housekeeper" who threatens to quit when all the riotous happenings begin to occur.

Following the play the class will be selling home made pies, coffee and milk in the cafeteria. All proceeds to into the Junior Class fund. Sponsors of the 1975-76 Junior Class are Mrs. Geneva Alvis and Dennis Briles.

COMMUNITY SERVICES

The Fifth Sunday Night Community Church services held at the Sweet Home Baptist Church last Sunday night were well attended with a full house. Following the singing and announcements, Don Laing, missionary from Rio De Janeiro, Brazil, spoke and showed slides. Laing works in the publishing house in Rio, employing 150 Brazilians. His talk and slides included the living conditions of the people in Rio and the work being done there by the Southern Baptist.

Following the slide presentation, cookies and punch were served in a Fellowship hour.

LUNCHROOM MENU

March 8-12
MONDAY
 Beef with Gravy
 Creamed Potatoes
 Tossed Salad
 Rolls & Butter
 Pineapple Cobbler
 Milk
TUESDAY
 Hot Dogs with Mustard
 Blackeyed Peas
 French Fries with Catsup
 Buns & Butter
 Chocolate Pudding
 Milk
WEDNESDAY
 Turkey Roll with Gravy
 Peas & Carrots
 Lettuce & Tomato Salad
 Rolls & Butter
 Prune Cake with Creme Icing
 Milk
THURSDAY
 Fish Square with Catsup or Tartar Sauce
 Buttered Corn
 Mashed Potatoes
 Rolls & Butter
 Peanut Butter Cake with Peanut Butter Icing
 Milk
FRIDAY
 Spanish Rice with Meat
 Pink Beans
 Cole Slaw
 Cornbread & Butter
 Fruit Cup
 Milk

COMMERCE BANQUET

The Rule Chamber of Commerce will hold their annual banquet on Tuesday, April 13, in the Rule High School cafeteria with the Rule Junior Class catering the meal. Speaker for the event will be Don Newbury of Fort Worth. Tickets at \$3.50 may be purchased from any Chamber of Commerce member or at the door.

The Chambers work for the past year will be reviewed and new officers for the in-coming year installed.

TOURNAMENT

The Junior Class of Rule High School is sponsoring a 5th and 6th grade boys and girls basketball tournament this weekend in Connor Horton Gym. Admission is 75c for adults and 25c for students. A concession stand will be open for the tournament.

Teams entered include Jayton, Munday, Aspermont, Rochester, Goree and Rule. Tournament play starts at 2:30 Thursday, 2 p.m. Friday and 3 p.m. Saturday.

OUTSIDERS VOLLEYBALL TOURNAMENT

An Outsiders Volleyball Tournament will be held in Connor Horton Gym in Rule on March 18, 19 and 20th. Entry fee is \$15 per team. All entries must be in by Monday, March 8. Individual trophies will be awarded in both men's and women's competition for first, second and consolation. Best 2 out of 3—15 point games.

Teams wishing to enter or for more information contact Charlene Therwhanger, Rt. 1 Box 120 C, Haskell, Texas, 79521. Phone 864-2845, home; 864-2692 Office. Entries may be mailed to Charlene Therwhanger, Box 57, Haskell, Texas, 79521

BUSY BEES

Mrs. J. J. Wheeler was hostess for the members of the Rule Busy Bee Club which met in her home on Thursday, February 26, at 2 p.m.

Mrs. E. O. Morgan presented the opening exercises with a reading entitled "Legend of the Rain Drop". Mrs. H. H. Hines presided over the meeting and business part of the program. Members answered the roll call with helpful garden hints and the minutes which were read by Mrs. J. J. Wheeler, club secretary, were approved.

Mrs. Cameron Sprayberry read "Chapel In My Heart." A total of 56 visits were reported by members to the sick and shut-ins and a total of seven dishes were carried to the sick and lonely.

Handcraft displayed by the members included two different styles of hanging baskets, a tissue holder, sack holder, art form cat, a hanging basket made from a bleach bottle, watermelon crocheted hot pads, pillow cases, scrap or filling for quilts, crocheted pin cushion and ornamental rock art of a frog and owl.

Following the showing of craftwork, the hostess served refreshments of cake, lemonade, roasted nuts and chips from a table laid with a yellow cloth and a fruit arrangement in the center of the table.

Attending were Mmes. Emmitt Eakins, H. H. Hines, C. E. Franklin, W. R. Mason, E. O. Morgan, Cameron Sprayberry, M. L. Powell, Arthur Williams and W. V. Almond.

Members will meet with Mrs. Arthur Williams on Thursday, March 11, at 2 p.m.

LOCALS

Mr. and Mrs. Vernon Mahler visited last Sunday with Mr. and Mrs. S. G. Mahler of Olney and Mrs. W. P. Manuel of Elbert.

Mrs. Frances Hills and Miss Laura Hills of Denton, visited last week with Mr. and Mrs. W. S. Cole and Mrs. L. W. Jones.

Attending a Texas School Bus Drivers Training Course in Haskell last Thursday and Friday was Jasper Wilson, Bobby Lusk, John Greeson, Aline Summers and Oleta Cornelius.

Visiting with Mr. and Mrs. Elvin Kinney last week was her sister, Mrs. Eulice Booe of Wichita Falls. They then drove to Bovina to visit another sister, Mrs. Jessie Waltman, who has been ill.

Mr. and Mrs. Paul Cornelius, Melissa and Jeffrey, of Wichita Falls, visited Saturday with Mr. and Mrs. Vernon Mahler.

Mrs. Opal Grice, Mrs. J. A. Lisle and Mr. A. E. Ball attended a district workshop for the Rule Chapter of American Association of Retired Persons last Friday in Abilene at the Starlight Inn.

Mmes. Cecil Lewis, Joe Mathis, H. H. Hines, Boyd Baird, O. G. Lewis, A. R.



YOU'LL BE FAMOUS FOR THIS FRIED CHICKEN--Fried chicken is always a favorite dish, but if you want to try a new variation of it, the Texas Department of Agriculture home economist recommends the Texas Chicken Dinner. A crunchy cornflake-peanut crust and mushroom sauce add special appeal to this recipe.

from the TAP kitchen

TEXAS CHICKEN DINNER

- 1 (2½ to 3 lb.) Texas broiler-fryer
- 3 beaten eggs
- 3 cups cornflakes, crushed
- 1 cup ground peanuts
- 1 cup melted butter
- 1 tsp. lemon juice
- 1 cup sliced mushrooms
- 1 cup chicken stock
- 2 Tbsp. flour
- 3 Tbsp. sour cream
- 3 cups cooked rice
- 1 (2½ oz.) jar pimiento, chopped
- 1 Tbsp. parsley

Cut up the broiler. Sprinkle with salt and pepper. Dip chicken in beaten eggs. Combine cornflake crumbs and ground peanuts. Dip chicken in peanut-cornflake mixture. Brown chicken in butter. Cook until tender. In lemon juice saute sliced mushrooms. Add chicken stock, flour and sour cream. Cook and stir until smooth. To serve place chicken on rice. Pour mushroom sauce over chicken and rice. Add pimientos and parsley. Yield: 6 servings.

For additional chicken recipes, write Commissioner John C. White, Texas Department of Agriculture, P.O. Box 12847, Austin, Texas 78711.

Eaton, Ollis Macon, J. N. Cornelius and Rev. Allen Forbis attended a workshop at the United Methodist Church in Haskell last Wednesday night.

Guests in the home of Mr. and Mrs. J. N. Cornelius last Sunday was Mr. and Mrs. Paul Cornelius, Melissa and Jeffrey of Wichita Falls, and Miss Derinda Amonett of Haskell.

CHALK BOARDS, 18"x22" and 12"x18." Erasers and Playtime colored chalk. The Haskell Free Press.

DANCE

Irby Hall

SAT. MARCH 6
 8:30—12:30

J. W. Brewer & His Auctioneers

Everyone Welcome

equipment operators!



Here's a man's boot every step of the way! Rugged, handsome, ready for a rough day's work anytime. Easy on the feet, too. Stop in — try on Pecos.

RED WING
Ousley's
 OF RULE

Phone 997-2223

The "Comfort" Value



"for people who are on their feet a lot"

LINER
 *M2254 Black Smooth Calfskin
 *M2259 Brown Grain Welt, Leather Sole, Cushioned Flange Insole, Rubber Heel, Wesford Last
 *Sizes 6½-12

Ousley's
 OF RULE

997-2223

Texas Taxes



By BOB BULLOCK, State Comptroller

Texas Sales Tax laws provide an exemption for goods purchased in the State for export to other states and countries.

It has been technically difficult for the Comptroller's Office to prove or disprove whether sales exempted from the tax for this reason are actually shipped from Texas and whether delivery is actually taken in another state or country.

Although it is impossible to estimate precisely, we are confident that the State of Texas is losing millions of tax dollars each year because of bogus exports.

For these reasons, the Comptroller's Office has issued a new ruling requiring more specific proof of export.

The problem of fraudulent export exemptions is especially significant in those sales of goods ostensibly bound for export to Mexico.

The new regulations require proof that the items sold were actually shipped out of state and that delivery was taken on them by the purchaser in another state or country.

The Texas merchant or sales tax permittee must keep on file for inspection all documents such as shipping records, truck logs, and receipts in connection with tax-exempt exports.

For goods shipped to Mexico, the merchant must keep in his or her files for inspection by the Comptroller's Office a copy of the shipper's export declaration bearing the U.S. Customs proof of export stamp or the pedimento de importaciones formal entry document properly stamped by Mexican Customs.

Failure to maintain these records as proper, documented proof of export will cost the merchant the tax exemption, and he or she will be required to pay the State the sales tax on the items reputedly exported out of State.

The new ruling tightens the definition of "forwarding

agent" and makes it as plain as possible that the purchaser may not claim the exemption if he or she takes possession of the goods in Texas.

"Forwarding Agents" can only act as middlemen between the seller and the carrier, and will not be allowed to deliver the tax-exempt goods directly to the purchaser.

Exports to foreign countries are exempted from State taxation by the U.S. Constitution. However, there is no federal or State regulation of shipping or surface transportation to Mexico through Texas border cities, and, therefore, there is no accurate way to verify those documents previously required for the exemption.

We have found many cases of retailers selling goods over

one end of the counter and a "forwarding agent" stamping them as exports at the other end. The purchaser then walks out with the goods on the Texas side of the border and the taxpayers of Texas are cheated out of sales tax revenue.

We are hopeful that the new regulations will prevent fraudulent export exemptions in the future.

NEW TESTAMENT and Psalms. Fits pocket or purse. King James Version, presentation page. Haskell Free Press

TOWER
 DRIVE-IN Theatre
 RULE, TEXAS

Fri. Sat. Mar. 5-6

Burt Reynolds
 Catherine Deneuve
 "Hustle"
 Rated R

Sun-Mon-Mar. 7-8
 "Peter's Pets"
 Rated R

Get That New Car Out Of Your Dreams and onto your driveway F-A-S-T

With A Low Cost Auto Loan From Our Bank

Farmers National Bank

Rule, Texas Member FDIC

Country Basket

SALE 99¢



A Great Country Meal, and a Good Deal.

You get both, with the 99¢ Country Basket Sale. The Country Basket, with chicken-fried meat strips, golden fries, Texas toast, and country gravy. That's a stick-to-your ribs country meal at a real country store price. Don't miss this sale. It's a delicious deal.

Dairy Queen

MONDAY THROUGH SUNDAY only
 MARCH 1-7
 at participating stores.

Reg. U.S. Pat. Off. D. Q. Corp.
 Copyright 1976 Texas Dairy Queen Trade Assoc.
 "Country Basket" is a Trademark of the Texas Dairy Queen Trade Assoc.



ONE OF THE FREEDOM TRAIN'S 20-pair of artifact windows is seen in the early morning twilight. The windows are lighted for dramatic portrayals of different decades in America's history at night viewing while en route or on sight.

Freedom Train Comes Your Way

The American Freedom Train will be leaving Dallas, Texas, March 5, at 2:00 a.m. scheduled to arrive at 12:00 noon in Wichita Falls, at Sheppard Air Force Base. As it visits its 68th city in its 28th state, the American Freedom Train will have already traveled 14,201 miles of its 20,000 mile epic journey across the United States.

Hosted by the Wichita Falls American Freedom Train Ad Hoc Host Committee, the American Freedom Train will be making its last stop in the State of Texas. Local committee persons have agreed that the American Freedom Train's visit to Wichita Falls is the largest event ever to take place in the immediate area. What started as a dream by

Ross Rowland many years ago has turned out to be the only national Bicentennial project of its kind. By the time the tour finishes in December of 1976, the train will have visited all 48 contiguous states, stopping in over 140 cities, and viewed by over 8 million persons.

During its 3 day visit to Wichita Falls, the American Freedom Train can readily accommodate 50,000 persons. Although scheduled display hours are from 8:00 a.m.—10:00 p.m., the American Freedom Train will remain open until every person in line has the opportunity to view the exhibit cars. School reservations have been secured from 8:00 a.m.—3:00 p.m. on Monday so all other

persons are encouraged to visit the train both before and after those hours to avoid long lines.

The Freedom Train will be pulled into Wichita Falls by the powerful Southern Pacific GS4449 steam locomotive. This special Bicentennial train consists of 10 display cars housing over 550 priceless artifacts and documents and 2 exterior showcase cars lodging the Freedom Bell, the 1904 automobile, "Old Scout" and the Lunar Rover.

Dedication Ceremonies will begin at 10:00 a.m. Saturday March 6 and continue for approximately 30 minutes. Daily entertainment will be provided for those waiting in line to see the exhibit during the entire engagement. Tickets are available at the box

office gate at Sheppard Air Force Base during the train's visit.

This unique Bicentennial American Freedom Train is truly a ONCE-IN-A-LIFETIME production and everyone is strongly urged to participate. The American Freedom Train will be here only once and this is your chance to join in the celebration of our country's 200th birthday.

The American Freedom Train is a non-profit, privately funded without any government funds, tax-exempt, non-political and non-commercial foundation with headquarters in Bailey's Crossroads, Virginia.

GET RESULTS
"GO CLASSIFIED"

Mental Retardation

Editor—This is one of a series of articles about Mental Retardation prepared by Mrs. Eugene Cochran and the Public Education Committee of the Texas Association for Retarded Citizens.

TONY ORLANDO—NARC HONORARY CHAIRMAN

Tony Orlando, the popular singer, who has his own phenomenally successful CBS TV show "Tony Orlando and Dawn" has been named Honorary Chairman for the National Association for Retarded Citizens. In accepting the nomination, Orlando made it very clear that his acceptance was not to be just "one more celebrity lending a name to a cause". "If I thought all that NARC wanted from me was to have my picture taken with some kids or make a few radio and television spots, I wouldn't be interested. But NARC has assured me I can be part of the overall movement and that's very important to me. This is a dream I have had for a long time."

"My sister Rhonda," continued Orlando, "was born profoundly retarded. I've always wanted to be able to help her and the rest of the 6½ million mentally retarded people in this country, and to help them in a meaningful way."

"However, my sister died in August of this past year and since then my interest has become even more important and imperative to me. I loved my sister deeply, but I wouldn't want any other family in the world to go through what we went through, just giving her the care and help she needed to survive as long as she did, though many other families do, I'm sure."

"Now by serving as national chairman for NARC, I can work with the 300,000 members who have similar interests. I'm going to contribute something to our country's mentally retarded citizens, and do everything I can to underwrite the reduction of the numbers of babies born mentally retarded. Perhaps then, I'll have assisted with something meaningful . . . both to myself and the mentally retarded."

Orlando is vitally interested and concerned with research

in the area of prevention as noted in the previous statements. Many noted individuals are becoming involved, Orlando with mental retardation and RESEARCH, others with other areas of special concern. What a privilege it is to be able to choose how and where we can and do become involved. . . . just another Bicentennial tribute to those who helped establish and maintain right through the past 200 years . . . with Liberty and Justice for ALL!

Producers Oppose Legislation

During a joint meeting of peanut producers from Oklahoma, Texas, and New Mexico held at the Holiday Inn in Sherman, Texas the following is the text of the policy statement adopted at the Peanut Producer Meeting in Sherman, Texas on February 26.

We, a group of peanut producers representing southwest production areas in Texas, Oklahoma and New

Mexico, meeting today under the sponsorship of Oklahoma and Texas Farmers Union at the Holiday Inn in Sherman, Texas, approve a policy concerning the future of the Federal Peanut Program as follows:

(1) We oppose any change in current peanut law that destroys the supply-management provisions of the present program. Open end planting and double-price standards are seeds of destruction of a program that has served the nation's producers, middlemen—processors and consumers fairly and equitably since 1938.

(2) We call for a full congressional investigation of the administration by Secretary of Agriculture Butz of the

peanut program under which program costs have increased from \$3.5 million for the 1973 crop to approximately \$150 million for the 1974 crop.

We call for the reinstatement of the bid procedure in the marketing of peanuts produced in excess of edible requirements.

(3) We call upon the leadership of peanut growers in the southwest to take immediate action to reject compromise legislative proposals which have developed as a result of heavy pressure from Secretary of Agriculture Butz with the support of some processors and middlemen.

Need "COOL" Cash Use Classifieds

FINAL CLOSE OUT
SALE RACKS
\$3, \$5, \$7, \$10, \$12, \$15
Values to \$35.95

We Give S&H
Green Stamps

Fouts Dry Goods

SEE AN INSURANCE PRO
SEE OUR AGENT



He's an Independent Agent who represents many outstanding insurance companies. He selects from literally hundreds of coverages the insurance program which meets your particular needs. Since he represents more than just one company . . . you get choice . . . not chance!

Lane Durham Agency

510 N. 1st St.
Phone 864-3216
Haskell, Texas



NINE-POINT GRAIN, Inc. & HASKELL COUNTY FEEDERS SUPPLY

LEE CARROLL - HARVEY CROFT, OWNERS

THANK YOU

In celebration of our 10th Year in business, we are going to have an APPRECIATION DAY

FRIDAY, MARCH 5, 1976

Everything in our store will carry a 10% discount off our regular prices.

Now is the time to get your lawn and garden supplies for the summer. We carry a complete line of Fertlome Products.

Purina & Paymaster Feeds—Insecticides—
Fertilizer—Health Products.

Come in and register for a free door prize.

A Portable TV Set

Coffee to be supplied by Dekalb Seed. Co.
The originators of Green Bug Resistant Milo Seed.

201 South 2nd Street - Haskell, Texas - 864-2011

CONSERVATION VIEWPOINTS
USDA Soil Conservation Service

Assisting
California Creek and Wichita-Brazos
Soil and Water Conservation Districts

Wind erosion damage during the week of February 16-21, resulted in approximately 10,000 acres of land being blown severely. The full extent of the damage can not be determined until later. In checking several general locations in the Haskell Field Office work area, it was noted that even some small acreages of winter small grains were either completely covered or severely blown out to the point that the small grain in these areas was totally destroyed. Emergency tillage oper-

ations have been in full swing. However, as long as it remains dry, and the winds continue to be strong, we will be faced with the problem of controlling blowing soil. The use of a "sand fighter" or listing in the coarse textured soils will furnish good control as long as either method can form clods on the soil surface. Medium textured soils will respond to rotary hoes, stalk cutters or sand fighters. Listing, chiseling or pitting will also help control blowing medium textured

soils. Fine textured soils such as clay loams and clay can be protected by most any available equipment that can roughen the soil surface.

Emergency tillage is only a temporary control, and should not be depended upon for lasting effects. Any emergency tillage operation should be performed generally at right angles to the prevailing winds. These operations must result in ridges and furrows with sufficient cloddiness on the surface.

This past January was the driest January since 1970, and February was the driest month that we have on record since 1960 when SCS started keeping rainfall records. From all indications March will continue to be dry with relatively high winds. So take all necessary precautions to protect your land from blowing.

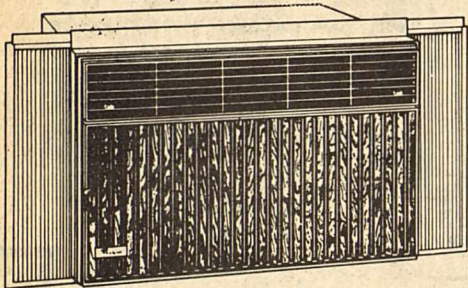
It was noted this past week, that fields with adequate cover of sorghum residues were not blowing. This is indicative of the protection afforded by leaving residues on the soil surface.

J. C. Yearly, Jr.
District Conservationist

BEAT THE HEAT WITH PRESEASON SPECIALS ON AIR CONDITIONERS.

Whirlpool
higher efficiency
air conditioners cost less to operate 'cause they use less energy!

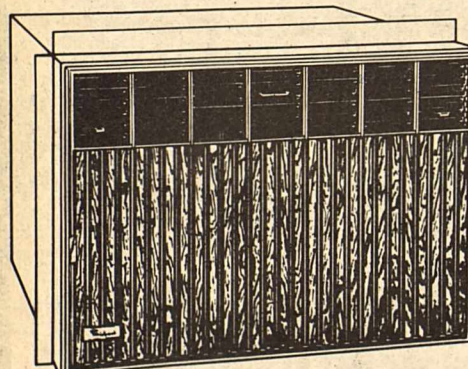
Each provides greater BTU/Hr. capacity per watt of electricity consumed compared to other Whirlpool models of similar BTU/Hr. capacity!



model AXFP85-2

5,500 BTU/Hr. to 11,000 BTU/Hr. models
(8.3 E.E.R. to 8.1 E.E.R.)

- SUPER COOL setting
- Comfort Guard® control
- 2-way air direction control (right/left)
- Air changer control (exhaust)
- 3-speed fan
- Insta-Mount for easy installation



model AXFlo2

13,000 BTU/Hr. to 21,000 BTU/Hr. models
(9.4 E.E.R. to 7.4 E.E.R.)

- Comfort Guard® control
- 4-way air direction control (right/left; up/down)
- 2-way air changer control (exhaust/fresh air)
- 3-speed fan with SUPER COOL setting
- All weather, rust-resistant cabinet

Hurry — come in, buy today!

Frazier's Appliance

TEXAS FARM BUREAU

OFFICIAL MEMBERSHIP CARD
THIS CERTIFIES THAT

JOHN Q. FARMER
ROUTE-1
FARMVILLE, TEXAS 76703
IS A MEMBER OF

YOUR COUNTY FARM BUREAU AND
MEMBERSHIP

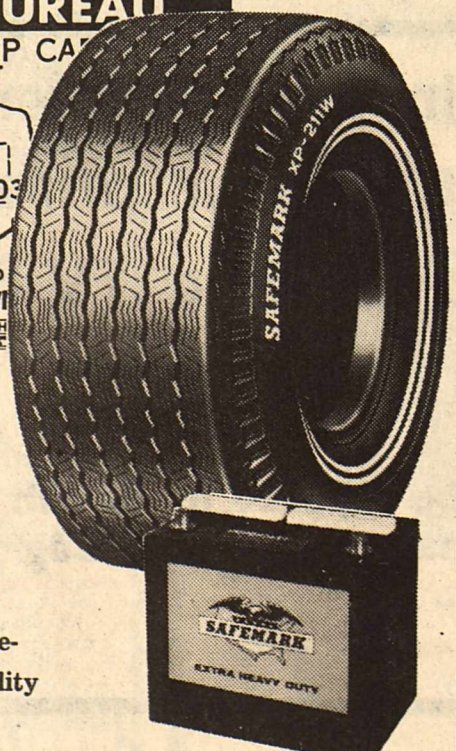
This Card Entitles You to Purchase SAFEMARK®

tires and batteries. Another service-to-member program offering a quality product at low cost.

FOR ADDITIONAL INFORMATION, CONTACT:

JAY I. TRUSSELL
Northside Mobil

(BE SURE TO HAVE YOUR MEMBERSHIP CARD WITH YOU)



*Trademark Registered by Farm Bureau



TOP NOVICE Tommy Harrell of Haskell took the top honors at the Haskell Trap Sunday in the Novice event.
(Photo by W. E. Wooten)

WASHINGTON

"As It Looks from Here"

OMAR BURLESON
Congressman—17th District

WASHINGTON, D.C.—THE BARRAGE OF LETTERS, TELEGRAMS and petitions against the proposal, officially entitled the "Child and Family Services Act", is proving effective. For the time at least it is bottled up in both House and Senate Committees. Hopefully it will remain there.

A SIMILAR BILL WAS BEFORE THE CONGRESS IN 1972 and was the subject of this release on August 3 of that year. (Should anyone wish a "re-run" of that article please let us know.)

SOME INFORMATION BEING CIRCULATED ACROSS THE COUNTRY is not entirely accurate concerning the provisions of this proposal but it is bad enough without exaggeration. If enacted, when HEW got through issuing rules and regulations it might be about like some of the things being said about it. The Bill itself says that the service shall be given only to the children "whose parents request them" but should the bureaucracy get its hands on this it might not be recognizable in operation.

IN THE FIRST PLACE IT WOULD DUPLICATE AN enormous complex of authorities and programs already financed by Federal funds at a cost of more than \$13 billion a year. This measure would set up yet another layer of bureaucracy at a cost of \$1 billion a year.

IN THIS SPACE IN 1972 WE SAID, "...THE ACCUMPTION of those who promote and support these ideas seems to be that an institution, run by a impersonalized staff, can substitute for parental love and care.

"AS DR. ERNEST VAN DEN HAAG, NEW YORK UNIVERSITY psychoanalyst testified, 'the assumption that social science has as yet produced a tested theory of child rearing is sheer fantasy.



TRAP SHOOTER left, Larry Hardng of Snyder is congratulated by H. G. Bishop also of Snyder for winning a trap shooting event at Haskell Trap Club.
(Photo by W. E. Wooten)

Only a few variables have been detected and they suggest that family care should be encouraged, not replaced.

"NO ONE ARGUES THAT THERE IS NOT A NEED for remedial services for disadvantaged and neglected children. There are programs already in effect for this purpose. The whole concept appears to be that the Government and its agents know how to provide 'healthful and stimulating development' of children. Dr. Van Den Haag further testified: 'If the government has such knowledge it is a well kept secret of which the scientific community is quite unaware.'

"MR. GEORGE GILDER IN A RECENTLY PUBLISHED ARTICLE had this to say: 'When these havens (family and home) are eliminated, where does one go to find love and individual affirmation—to be accepted for who one is, rather than for what one does or how much money one makes? Where can one find meaning and a sense of the

future—of human transcendence? Not in a day-care center, I trust.'

"THE CONCEPT OF COMMUNAL CHILD REARING is alien to America and would deeply affect the traditional values found in the family unit.

"THE 'STANDARDIZING' OF CHILDREN has historically been the practice of totalitarian countries. Probably Communist China has the most far-reaching of any in modern times. Political and social direction are the principal motives. This sort of regimentation just does not represent the American family life which has been the mainstay of the moral fiber of our Nation.

"THE GREATEST OBJECTION OF ALL TO THESE PROPOSALS is the simple proposition of substituting a building for a mother's image."

CORVYN'S Letter Size clip folded. Pure durable vinyl. Inside pocket. \$2.10. Haskell. Free Press.

Antique Car Show To Be Held In Vernon

The north Texas Model A Ford Owners Association's 2nd annual Swap-Meet of Antique Cars and parts will be held in Vernon, Texas March 27th and 28th at the Wilbarger County Exhibit Building. Hours will be daylight to dark.

This year there will also be an antique car show with 14 trophies awarded. Entry fee for the auto-show will be \$5 per vehicle with every entry to receive a courtesy plaque.

The car show general chairman is Jim Bradford, Rt. 2, Vernon, Texas whose Phone Number is 817-552-7892.

The Swap-Meet general chairman is Rev. Gerald Thiele, Rt. 3, Vernon, Texas whose phone is 817-552-2038. Swap-Meet spaces will be \$5 each in the heated building with plenty of outside space for the same price. A concession stand will be in operation for the entire weekend event.

Admission to the meet and car show is free to the public.

with HEW." Health, Education and Welfare will be represented in areas such as social security, vocational education and training, occupational safety and health, health maintenance organizations, health systems agencies and small contracting with HEW. Other Federal Agencies will cover topics such as: employee pension plans, employment taxes, management assistance business and industrial loans, where to find needed financing, minimum wage, regulations on manufacturing safe consumer products, and many others.

The conference exhibit area will be over 14,000 sq. ft. of "Aisle to Aisle" shopping, where the small business person may accumulate all the data they need for one price of \$19.50. This registration fee includes seminars, brochures and pamphlets, exhibit area, film presentations, one-to-one counselling and two lunches.

For further information and registration forms, contact your local social security office. To insure participation, please return registration form and check by March 9th. The Abilene Social Security Office is located at 142 S. Pioneer; telephone number is 698-1360.

agri-facts



Pat Hale
Saving 400 million dollars worth of cotton has been the result of a special program on the Texas Plains. For nearly 12 years the High Plains Boll Weevil Control Program has worked to promote mass spraying of weevil-infested crop areas. Estimating the 400 million dollar saving were members of the Entomology department at Texas A&M. In making the estimate they took into consideration reductions in quality losses, increases in yield and lowered control costs. Through last year, total cost of the program was estimated at 12 million dollars. Funds for the spraying (which involved the eastern edge of the cotton area) have been provided by cotton producers, the United States Department of Agriculture and the Texas Department of Agriculture. One of the outstanding things about the program has been the fact that all producer funding has been collected on a voluntary basis.

HALE FARM SUPPLY
Phone 864-2692

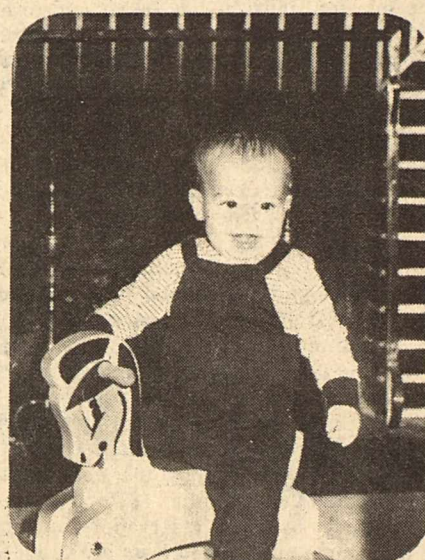
Small Business Conference Mar. 16-17

If you are a small business person in Region VI, which consists of Texas, Arkansas, Louisiana, Oklahoma, and New Mexico, you will have a chance to do some "shopping around" at a unique two-day conference sponsored by fifteen Federal Agencies.

For the second year, these fifteen Federal Agencies will sponsor, "The Government Assistance to Small Business Conference," March 16-17, at the Fairmont Hotel in Dallas, Texas. The conference, which will run daily from 8:00 a.m. to 6:00 p.m. will attract approximately 2000 small businessmen and women.

"This is an opportunity to talk face-to-face with fifteen Federal Agencies. Most businesses deal with at least half of the Agencies on a day to day basis," stated Stuart H. Clarke, HEW Regional Director, Region VI. Clarke continued, "In one way or another, HEW actually touches the lives of almost everyone in the United States. To further our philosophy that opportunities for minority and small business be greatly increased, during this conference HEW will provide helpful information to assist individuals and firms—small business or otherwise—as well as institutions both profit and non-profit in doing business

"GOOD INSURANCE GIVES YOU PEACE OF MIND"

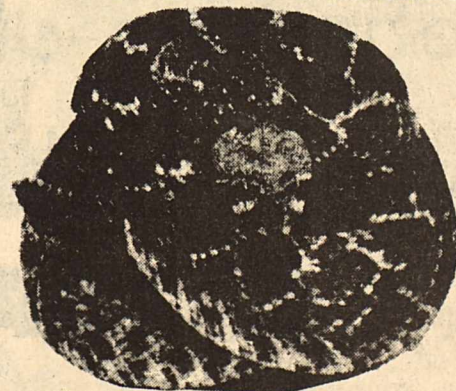


An independent insurance agent is not the captive employee of one insurance company—instead he is free to insure you with several insurers. He represents you, not the company, in collecting your loss claim. Insure with The Hartsfield Agency, local independent agent. Kyle

The HARTSFIELD AGENCY

EVERYTHING IN INSURANCE
HASKELL PH. 864-2665

Haskell Co. Jaycee Annual Rattlesnake Roundup



HASKELL, TEXAS
MARCH 6-7, 1976

BRING YOUR SNAKES EARLY

35¢ per pound Saturday
25¢ per pound Sunday

Snakes Will Be Purchased From Registered Hunters Only

TROPHIES FOR THE WINNERS

- Most pounds of snakes
- Smallest Rattlesnake
- Largest Rattlesnake
- Largest Number of rattlers

All Snakes entered in competition become the property of Haskell Jaycees

Entry Fee \$5.00 per hunter, meals included.

SCHEDULE OF EVENTS

Saturday, March 6—Haskell Co. Show Barn
2 P.M. to 6 P.M.—Hunters Registration, Weigh-in Pit and Purchasing of Snakes
Handling Demonstrations of Live Rattlesnakes
5 P.M. Rattlesnake Meal—\$2.00

Sunday, March 7—Haskell Co. Show Barn
2 P.M. to 4 P.M.—Hunters Registration, Weigh-in Pit and Purchasing of Snakes
Handling Demonstration of Live Rattlesnakes
4 P.M. Rattlesnake Meal \$2.00
4 P.M.—Awarding of Trophies

HANDLER—BARNEY BARNETT, Wichita Falls

ATTEND THE CHAMBER OF COMMERCE SIDEWALK SALE IN HASKELL—SATURDAY

Dance Sat. night—to be announced at registration
Show and exhibit \$1.00 adult, 50¢ students, age 10 and under free.

Arthritis, Rheumatism Sufferers! Time Proven ICY-HOT PUTS PAIN TO SLEEP "Without taking Pills"

If you're one of the many folks who have "tried everything"—taken pills by the thousand, capsules until you've gagged on them, spoonfuls of evil-tasting liquids until you can't stand the sight of your medicine cabinet, then it's time you get ICY-HOT!

ICY-HOT has been making friends for just about 50 years. You don't "take" ICY-HOT. Instead you just rub its creamy balm over the affected joints or muscles. That's all there is to it. ICY-HOT must get you the results you want—blessed temporary relief from the pain of arthritis, bursitis, rheumatism, soreness, stiffness. You begin to sleep peacefully again. You can actually feel the pain lessening. If you don't have relief in 24 hours, we'll return your money.



Yes, you must be 100% thrilled with the speed with which ICY-HOT puts pain to sleep, or we'll return the purchase price without question. \$3.00 for 3 1/2 oz. jar, or \$5.00 for 7 oz. jar.



AVAILABLE FROM:
JOHNSON PHARMACY
Your Prescription Center
418 North First—Haskell, Texas
Open 7:30 to 6 P.M.—Closed Sunday
Nights and Sundays call 864-3439

Advertise the Action Way! The Want Ad Way!

CLASSIFIED ADVERTISING RATES

5c per word first insertion; 4c per word for each subsequent insertion without change of copy. Minimum, \$1.50 per week. Classified display rate, \$1.50 per line.

NOTICE

The Haskell Free Press reserves the right to edit and/or delete all news stories and locals for length and liability and to refuse to print anything deemed not newsworthy.

FOR SALE: Gates fan belts & hose; Delco batteries, posts on top, or side; gas, oil and service. Texaco Station, M. C. Wilfong, pho. 864-2766. 5tfc

FOR SALE: Amaryllis Red lilies \$2.00 each. Lester Vance, 864-2967, 910 N. 4th St. 9-11c

WORMS: Big African Night crawler fishing worms—retail or wholesale. Have good supply fishing tackle; also have Calcutta poles & Pheasant bait. Trade Center, Throckmorton highway, phone 864-3278, Haskell, Tx. 9-13p

FOR SALE: Breeder Rabbits and Fryers. Pick-up truck comes on Sunday, March 7, 8:30. 201 S. Av N. Haskell. 10p

FOR SALE: Black AKC Miniature poodles, 2 males, 3 females, Mrs. Buddy Lane, 864-2704. 10c

FOR SALE: 1974 Ford Pickup, 18,000 miles, with 460 engine. Call 997-2675. 10-12p

FOR SALE: One hay truck, Model 57 Chev., one Hay Loader, one 57 Chev. Pick-up for sale. Call 817-849-5321 or see Abb Weaver in Throckmorton, Tex. 10-11p

FOR SALE: 2 twin bed mattresses and coiled springs. Call 864-2266, after 6:00 call 864-2276. Hortense Leas. 10p

FOR SALE: Firewood, mesquite, \$35.00 cord. Stacked in Haskell. 864-2471. 10-11p

FOR SALE: Bicentennial Bonnets. Mrs. Dalton Hindley. Rochester, Tx. Ph. 743-3561. 10-11p

FOR SALE: 1969 Catalina Pontiac, \$500.00. Can be seen at 901 N. F. or call 864-2532. 10c

FOR SALE: Coppertone dishwasher, white gas range, and baby crib with mattress and bumper. 864-3649 10p

FOR SALE: One large chest type freezer frigidaire. See at 604 North Ave. 1. Phone 864-3364 10p

FOR SALE: Bailing Wire, C&I. Special \$29.95. Woodard Farm Sales. Haskell. 864-2401. 1tfc

FOR ALL YOUR GENERAL PLUMBING NEEDS. Call Philpot's Supply & Service Center. 864-3010 15tfc

ELECTRIC SEWEROOTER Cleans clogged pipes, drains, sewers. NO digging. NO damage. Philpot's Supply & Service 864-3010 15tfc

FOR SALE GOING BUSINESS CAR WASH Lot 100 x 288 NE 1st St. Haskell, Texas HERREN INSURANCE PHONE 864-3322 40 tfc

MISCELLANEOUS

WOODARD FARM SALES—Ford tractors, equipment, long harrows, Lilliston-Heston-Oliver plow parts. 4tfc

GARAGE SALE: Washing machine, cook stove, furniture, baby clothes, dishes, dolls, bicycles, boys, girls, men, & women's clothes, many misc. items. 1207 N. Ave. C., Haskell Wed. through Friday. 10p

CARPOR SALE: Friday & Saturday, 300 S. Ave. H. 10c

ATTENTION FARMERS
Hamm's Custom Combining
Quality work at reasonable rates
4 new 760 MF
Contact us now for arrangements
HAMM BROS.
Manitoba, Canada
Pho. 204-822-4961
Wichita, Kan. 316-942-7684 4-12p

TAX SERVICE OFFICE now open. Have had extensive training, 10 yrs. experience. Office hours 1:00 p.m. to 6:00 p.m. or by appointment. 700 Elm Ave. Rule, 997-2138. 5tfc

Let us show you State Farm's Hospitalization and Disability Policies. 6% New Car Financing including service Life Insurance. 15% deviation on auto. 20% on Home Owner's and Fire. 75% Dividend on Life Insurance the 23 year. Leo Fetsch Insurance, 422-4259

WATER WELL DRILLING irrigation and domestic. Portable Welding. Call W. P. Hise, 864-3727. 29tfc

KELLY DITCHING SERVICE: 18", 12", and 6" ditch. Plastic pipe, fittings. Sewer pipe. Bleed lines and septic tanks. Phone 915-773-3939. Box 376, Stamford, Texas 45tfc

WHAT? It won't cut? Let me sharpen it. Knives, mower blades, scissors, shears, hand saws, circle saws, chain saws. J. R. Crane, 864-2443, N. First & Av BE, Haskell Tx. 7-10c

McCULLOCH CHAIN SAW HEADQUARTERS. A saw for every job. See new Woodard Farm Sale. 7tfc

NEED EXTRA MONEY? Earn \$100.00 a week plus. Wearing & showing SARAH COVENTRY JEWELRY. Kit furnished free. For more information about buying & selling, please call 743-3480. 9-11p

GANN'S GREENHOUSE and Nursery in Rule has blackberry, onion, cabbage and hedge plants. Also a large assortment of evergreen shrubs, flowering shrubs and roses in buckets. Pecan Trees for \$6.25 and fruit trees for \$2.85. See us at 309 Amity of call 997-2169. Open 6 1/2 days a week. 7tfc

FAMILY REUNIONS, anniversaries, as well as weddings and general photography are our speciality. For fine quality work, contact Blackstock Studio. 10c

IT'S inexpensive to clean rugs and upholstery with Blue Lustre. Rent electric shampooer \$1.00. Perry Bros. 10c

COME BROWSE through our complete arts & crafts shop. While there, sign up for Macrame classes beginning March 15, new Tole painting classes begin March 15. Wigwam Drive-In & Craft Corner. Ph. 864-2431. 10-11c.

BOB'S SHOE SHOP
Phone 864-3678
We Repair All Shoes and Boots. Open from 9 to 1-2:30 to 6:00.
BOB WALDON, Owner
306 South First 40tfc

REAL ESTATE FOR SALE

FOR SALE: 12 acre block joining Haskell City Limits. Call Harley Langford, 863-3529. 2tfc

FOR SALE: 2 bedroom, kitchen, 1 bath, living room stucco house, fully carpeted. Call 864-2870 before 6 p.m. for appointment. 9-10c

FOR SALE: 100 acres near Rule, good terms; 300 acres near Haskell. Bill Denison, Realtor, 817-989-2938. 9-10c

FOR SALE
168 acre farm, 4 1/2 miles west of O'Brien, Tx. on FM road, 40 acres cotton allotment, 20 acre milo allotment. 1/2 minerals go with it. \$300.00 per acre.

Have a few houses left in Haskell.

FURRH REAL ESTATE
864-2576

REAL ESTATE FOR SALE

One of Haskell's finer 3 bedroom brick homes located on full one half block. 2600 Ft. of living area. To be shown by appointment only. 3 bedroom close in on corner lot. Real Nice.

3 bedroom lake cabin at Veda's Camp. Furnished including 3 air conditioners \$3,000.
HARTSFIELD AGENCY
864-2665 10-11c

Talley's Painting Service
Commercial, Residential
Tape-Bed-Textone
Paneling & Sheetrock
Installed
Roofing & House Repair
Call 864-2459 10 17p

AVON
I'll show you how 4 hours a day can earn you more than you thought possible. Call for details: 915-673-0745 evenings collect. No obligation. 10-13c

H. F. LANGFORD
Sand and Gravel
Caliche and Fill
RULE HWY.
WEST HASKELL

INSTANT CASH for any good merchandise, modern or old. Phone 864-3197 anytime.
LACKEY'S
Throckmorton Highway
Haskell, Texas 21tfc

PUMPS
Irrigation-Domestic
Formation Testing
Well Drilling
We pull & repair all makes.
REA PUMP CO.
Throckmorton Highway
Haskell, Tx.
Call 24 hrs.--864-3372 41tfc

PHILPOT'S DITCHING SERVICE
Plastic pipe & fittings,
sewer pipe. Water & gas lines run. Call Philpot's Supply & Service. 864-3010 15tfc

ELECTRIC MOTOR repair & service. New & used motors in stock.
Philpot's Supply & Service
864-3010 21tfc

FOR SALE
Business Bldg. 42' x 24' on lot 150' x 50'.
HERREN INSURANCE
864-3322

WANTED

WORKING MOTHERS: Would like to keep your children in my home. 864-3649 10p

WANTED: To buy a farm near Rule from 40 acres to 100 acres. If you have a farm for sale, send full details to Douglas Foster, 5610 Elm Valley Lane, Dallas, Texas 75232. 9-10p

HELP WANTED
HELP WANTED: LVN needed, good pay. Call 864-2177 between 8:00 a.m. & 5:00 p.m. 8-11c

NEED BABYSITTER. Must be able to work on some Sundays & some holidays. Call 864-2289. 9tfc

NEED yard man regularly. Contact Mrs. Buddy Lane, 864-2704. 10c

POL. Calendar

The Free Press is authorized to make the following announcements for office in Haskell County, subject to the action of the Democratic Primaries in 1976. All political advertising, announcements, and printing is cash in advance.

OBITUARIES

Lottie Reed

Mrs. Lottie Reed of Carrollton, Texas, formerly of Haskell County, died Sunday February 29 in a Dallas Hospital after a brief illness. Funeral Services are pending in Dallas.

CARD OF THANKS

I am taking this means of thanking my loved ones as well as my friends of Haskell and Stamford for their thoughtfulness during my illness in the hospital in Stamford. The telephone calls, cards and flowers were very much appreciated. Again, I want to thank Dr. Hokin and also Dr. Bunkley and the hospital staff of nurses for the care they gave me during my stay in the hospital. May God be with all of you. Mrs. I. T. Briscoe. 10p

Henry Block has 17 reasons why you should come to us for income tax help.

Reason 12. There are major changes in the tax laws that could affect your return. Our people are specially trained to help you take advantage of these new laws. We'll do our best to make sure you pay the right amount of tax. No more, no less.

H&R BLOCK

THE INCOME TAX PEOPLE
115 N. Ave. E.
8-5 Mon.-Fri.
864-3322

PAUL'S TAMALES BOX

Mexican Food
Effective March 1
Hours 6 p.m. to 11 p.m.
Sat. 10 a.m. to 1 a.m.
Ave BE & 6th St.
Haskell 4tfc

CARD OF THANKS

I want to thank each one of the flowers, prayers, visits and cards while I was in the hospital. Especially do we want to thank the Doctors and Nurses for their care over me. May God bless each one is our prayer. Mr. and Mrs. Boyce Foil. 10p

Pol. Calendar

The Free Press is authorized to make the following announcements for office in Haskell County, subject to the action of the Democratic Primaries in 1976. All political advertising, announcements, and printing is cash in advance.

XI. POLITICAL ADVERTISING—[b] No political advertising shall be accepted for printing, publication, or broadcasting unless a copy of the matter to be printed or published, signed by the individual contracting therefor and showing his full address and, if he is acting as an agent, showing also the name of the candidate, political committee, or business entity he represents, is deposited with the printer, publisher, or broadcaster accepting the advertising. The person accepting the advertising shall preserve the signed copy for a period of one year after the date of the election to which the advertising relates, and shall permit any interested individual to inspect the signed copy at any time during business hours, but only after the advertising has been printed, published, or broadcast. Such advertising shall be labeled as political advertising in the advertisement as printed, published, or broadcast. Any printed or published political advertising shall also have printed on it the name and address of the person paying for the advertising."

FOR TAX ASSESSOR COLLECTOR:

Jimmy Owens (re-election)

FOR SHERIFF:

G. T. (Garth) Garrett (Re-election)
Leon Newton

FOR COMM. REC. 3

Allen Isbell
J. R. (Ray) Perry (Re-election)

FOR COMM. REC. 1

C. E. (Chunky) Tidwell
Q. D. Byrd (Re-election)

FOR CONSTABLE REC. 1

D. L. (Jack) Speer (Re-election)
R. C. (Dick) Wohnus

FOR CONSTABLE REC. 6

Melton Stapp
L. V. (Sonny) Pittcock (Re-election)

DISTRICT ATTORNEY

39th Judicial District
Joseph Thigpen
Royce Adkins (Re-election)

COUNTY ATTORNEY

Charles Chapman (Re-election 2nd term)

STATE REP. DISTRICT 101

W. S. (Bill) Heatly (Re-election)

ORDER AND NOTICE OF ELECTION

I, J. E. Jetton, Mayor of the City of Weinert, Texas, by virtue of the power and authority vested in me by law, do hereby order, that an Election be called in the City of Weinert, Texas on Saturday April 3, 1976, that being the first Saturday thereof, for the purpose of electing three (3) Aldermen for a term of two years each.

That said election to be held at the Community Center in the City of Weinert, Texas. The City Secretary of the said city of Weinert, Texas, is hereby directed and instructed to post a properly executed copy of this Order and Notice of Election at the Community Center in the City of Weinert, Texas, where this Election will be held, and this Notice shall be posted not less than thirty (30) days before the date of said Election.

Signed and executed this 2nd day of march, 1976.
J. E. JETTON, Mayor
City of Weinert, Texas
ATTEST:
R. M. Walker,
City Secretary 10-11c

PUBLIC NOTICE

I will not be responsible for debts incurred by anyone other than myself as of March 4, 1976. Lee Gray 10-11p

NOTICE

Notice is hereby given by the Parks and Wildlife Department that a public hearing will be held at 2 p.m. on

JUNK-A-TIQUES,

glassware, furniture, baby bed, books, dishes, bottles, doll Kleenex box, dolls, misc. We buy, sell or trade. We trade books. 1704 N. First St. Mrs. Harley Langford.

The Haskell Free Press

Established January 1, 1886
PUBLISHED EVERY THURSDAY
MEMBER
TEXAS PRESS ASSOCIATION

BILL COMEDY—Publisher

Entered as second-class matter at the postoffice at Box 577, Haskell, Texas 79521, under the Act of March 3, 1879.

SUBSCRIPTION RATES

	Sub	Thx	Total
One Year	\$ 5.00	.25	\$ 5.25
Six Months	\$ 3.00	.15	\$ 3.15
Two Years	\$ 9.50	.48	\$ 9.98

Elsewhere in Texas

One Year	\$ 6.00	.30	\$ 6.30
Six Months	\$ 4.00	.20	\$ 4.20
Two Years	\$11.50	.58	\$12.08

Outside of Texas

One Year	\$ 8.00		
Six Months	\$ 4.50		
Two Years	\$15.50		

NOTICE TO PUBLIC—Any erroneous reflection upon the character, reputation or standing of any firm, individual or corporation will be gladly corrected upon being called to the attention of the publishers.

WEEK END SPECIALS

THURS., FRIDAY & SATURDAY
GERMAN CHOCOLATE CAKE \$2.00
\$2.75 reg. — Sale

LEMON SHERBET TART CAKE \$2.00
\$2.60 reg. — Sale

The SWEET Shop

Haskell, Texas

FOR SALE

Martha Washington Geraniums, just beginning to bloom. Angel Wing Begonias, Hanging Baskets, Rooted Cuttings for pots and baskets.
No sign:
Just a flower house

ANDERSON FLOWER HOUSE

1802 N. First St. Rule Highway
Haskell, Texas

RCA SUPER VALUE DAYS!



What a buy!
Deluxe 19" fully featured table model!
Only \$469.95

Once again! But only once a year!
The RCA Super Value Days here's a real big chance to save at RCA! For a limited time only, we're offering you a special price on a wide selection of RCA Super Value Days. It's the best time to buy!

Amonett & Amonett TV
Authorized RCA Dealer 414-N. First, Haskell & Service Center 864-2870

