

1965 NEWS PAPER ASSOCIATION CONTESTS PRIZE WINNER

The Bovina Blade
 Second-Class Privileges Authorized at Bovina, Texas, 79009
 Published at Bovina, Texas, Every Wednesday

Dolph Moten . . . Publisher & Editor
Sandra Johnson . . . Women's News

Whitlin-
 (Continued from Page 1)
 body talks about except Willie Williams, and he writes about it, was beautiful and Spring-like over the weekend. If it continues, it's going to be so nice farmers here won't like it -- because of the lack of moisture.

A good rain now might save some pre-watering of row crops or make the same pre-watering be more beneficial.

But then, this country never did have much of a reputation for its abundant rainfall.

A chamber of commerce and

agriculture banquet ticket is a good \$2.50 investment. If it's not too late, make said investment, use the ticket, and see if you don't agree with us.

Re-Locate--
 (Continued from Page 1)
 Kesler's businesses are presently located further east on Main Street.

The move is scheduled to be made over the weekend with the businesses open in the new location Monday morning. Kesler recently purchased the building into which he is moving the business from Charlie Steelman.

Bond Election--
 (Continued from Page 1)
 stand the reasons for calling the school bond election to be held Saturday, April 2, 1966. The information is also given with the hope that each taxpayer will fully inform himself concerning the issue prior to the election. If the following does not answer all your questions, you are invited to let us know in order that we may provide the answer to your questions.

Several months ago, the school board decided that additional facilities were needed if a proper program of education was to be carried on in the years ahead. In an attempt to determine the proper course of action to follow in the development of the facilities, a study was made to determine the pattern of growth and the need of the school for the next 25 years.

The study that was made indicates that the school enrollment will probably increase by an average of thirty to forty students each year, such that the total enrollment by the year 1990 will be between 1500 and 2000 students; of this enrollment approximately 1100 will be in grades one thru six and 650 will be in grades seven thru twelve. On the basis of this enrollment, the study recommends that the present facilities be retained for Junior High and High School and that new facilities be provided for Elementary School students. The present school facilities can and do provide for the present enrollment of approximately 650, and with some improvements and additions, can provide all the needed facilities for Junior High and High School for the next 20 to 25 years. If additional classrooms are added to the present buildings to take care of the immediate increase in enrollment, such classrooms would prevent the necessary improvements to the athletic facilities and would also be an excess when it became necessary to move the elementary students to a new school. Therefore, the study concludes that the most economical course to take is to build the first unit of an elementary school on the new site as soon as the enrollment exceeds the capacity of the present buildings. This first unit will care for the first three grades only. This first unit may be needed by September, 1967. The first unit anticipated will include 12 classrooms, plus cafeteria, library and offices.

The study further indicates that certain improvements are needed to the athletic facilities such as, additional stadium seats, lighting for football field, track, field house and dressing rooms for the elementary gym. All of these improvements, plus a new gymnasium, can be provided on the present site. The primary reason for making sure that the usefulness and adequacy of the present facilities and site are not destroyed for a Junior-Senior High School, is to avoid the tremendous cost of relocating these facilities in the future.

The \$600,000 bond issue is an estimate of what will be required to take care of the building needs for the next five to 10 years. It should be clearly understood that all these improvements will not be made immediately, but will be made as the need for each phase of development clearly exists. As an example, certain improvements to the football field would be made this summer, then, if the school enrollment this fall dictates the need for additional classrooms by September, 1967, plans will be made for the first unit of an elementary building, if not, such plans will be deferred.

The taxes you will pay, will be based on the amount of bonds the school district sells and not on the amount of bonds voted. It is anticipated that the maximum increase in taxes on present property will not exceed 22 per cent over the present taxes.

The two main advantages in voting \$600,000 in bonds now, rather than having several elections for smaller amounts, is that the school can do better and more orderly planning and development if every step in the development is not contingent upon a bond election, and secondly, better interest rates on the bonds can be achieved if there is some latitude in the time in which the bonds may be offered for sale. There is also some saving in cost by having one election, rather than several.

deposit from school land, oil and gas leases, says Paul Matthews, chairman of the investment committee.

APPOINTMENTS -- Gov. John Connally named John L. Hill as Secretary of State. He replaces Crawford C. Martin of Hillsboro who resigned last week to devote full time to his campaign for attorney general. Hill is an outstandingly-successful Houston civil trial attorney. He has tried cases in district courts in most areas of Texas during the past 19 years. His term will run until next January.

Connally named L. D. (Red) Webster and reappointed Al Badger, both of Dallas, to the Texas Commission on Alcoholism.

Also reappointed were Robert E. Gilmore of Dallas and W. E. (Buck) Tinsley of Austin to the Water Development Board.

House Speaker Ben Barnes appointed Reps. Gene Fondren of Taylor, George Cowden of Waco, Ralph W. Scoggins of El Paso, Rayford Price of Franks-ton and Lee Duggan Jr. of Houston to serve on a key election law study committee.

Lt. Gov. Preston Smith earlier had named Sen. Tom Creighton of Mineral Wells, Don Kennard of Fort Worth, Ralph M. Hall of Rockwall, Jack Hightower of Vernon and Abraham Kazen of Laredo to that panel.

COURTHOUSE NOTES
 March 7 thru 12, 1966
 WD, Preston Collins, James W. Guinn, Lot 13 Blk 61 OT Friona
 WD, Raymond R. Hughes, Jerry D. Johnson, Lot 1 Blk 1 Staley Add, Friona
 Power of Atty., Albert Cannon, Alma Lou Cannon, S.R. DT, A. S. Grubbs, Northwestern Mutual Life Ins. Co., N/2 Sect 1 Blk R, J. J. Sullivan Sub.
 WD, C. C. Steelman, F. S. Pounds, Lots 9 & 10 Blk 21 OT Bovina
 WD, C. C. Steelman, Jack Kesler & James Roach, W 22 ft. 10 inches Lot 12 Blk 116 OT Bovina
 Deed, Veterans Land Board, D. L. Beran, E 30 a of Lot 13 Sect 32 T9S R1E
 WD, D. L. Beran, Elmer Har-grove, E 30 a of Lot 12 Sect 32 T9S R1E
 Abst. Judg., Government Employees Cr. Union, Charlene I. Trewitt, S.R.
 WD, George C. Taylor, Jr., James C. Howell, Lots 1 & 8 Blk 1 Drake Rev. Sub, Friona
 DT, James C. Howell, First Federal Sav. & Loan, Lots 1 & 8 Blk 1 Drake Rev. Sub, Friona
 DT, William Oscar Brown, Hi-Plains Savings & Loan, Lots 9 & 10 Blk 10 OT Friona
 ML, Tuck N. Monk, Jr., Heathington Lumber Co., Part of what was Lot 4 Blk 74 OT Bovina
 WD, J. B. Ginnings, Edith May Olivera & James Seaton, N/2 Sect 13 T10S R2E
 DT, Edith May Olivera & James Seaton, J. B. Ginnings, N/2 Sect 13 T10S R2E
 DT, Edith May Olivera & James Seaton, Thomas Beauchamp, N/2 Sect 13 T10S R2E
 Abst. Judg., F.N.B. Hereford, Ted Carthel, S.R.
 DT, Carl R. Schlenker et ux, Jesse M. Osborne, S/2 Sect 36 Rhea C
 WD, Inez Gober, Frank Carson et al, NW/4 Sect 9 T10S R2E
 WD, Ross Terry et ux, Wm. Oscar Brown, Lots 9 & 10 Blk 10 OT Friona
 DT, B. L. Marshall, Prudential Ins. Co., Part W/2 Sect 15 T6S R3E; Pt. SE/4 Sect 12 T7S R2E; Lot 7 & S 15 ft. Lot 8 Blk 1 Ridgelea Sub, Bovina
 DT, J. M. Readhimer, Green Mch. Co., Sects 5 & 6 Syd B.
 DT, R. Q. Silverthorne, Prudential Ins. Co., Sects 17 T5S R4E; N/2 Sect 25 T3S R3E
 Bill of Sale, Orval L. Blake,



NEW BUSINESS -- Birkelbach Machine and Pump Co., opened for business here this week in this new building on Highway 86 west. The firm specializes in irrigation well service and is a dealer for Peerless Pumps.

Craig B. Silverthorne, W/2 Sect 15 T5S R4E
 WD, Orval L. Blake, Craig B. Silverthorne, W/2 Sect 15 T5S R4E
 DT, Virginia Morris, Tri-County Sav. & Loan, N 60 ft.
 Lot 22 Blk 4 Ridgelea Bovina
 WD, J. G. McFarland, Elroy Wilson, Lots 13 thru 20 Blk 62 OT Friona
 DT, Wesley Ferguson et ux, Federal Land Bank, NW/4 & SE/4 Sect 11 T10S R2E
 WD, Helen Elizabeth Atkins et al, First Baptist Church, Friona, W/2 Lots 10, 11 & 12 Blk 73 Friona
 DT, St. G. Darling, American Amicable Life Ins. Co., N/2 Sect 16 T1N R4E

Highlights and Sidelights FROM your State CAPITOL

AUSTIN -- Texas School districts are receiving speedup orders on desegregation.

Integration of facilities, as well as student bodies, is the aim of federal authorities in laying down new guidelines for compliance with the civilrights act of 1964.

Both the Texas Education Agency and the State Board of Education received the policy statements and promptly scheduled meetings over the state to post local school administrators as to the requirements.

Primarily concerned are 600 districts that submitted voluntary desegregation plans to the U. S. Office of Education for the 1965-66 school year to assure that they remained eligible for federal aid.

Districts already fully integrated, those whose assurances of compliance have been accepted and those operating under court desegregation orders are not immediately affected by the revised policies.

U. S. Commissioner of Education Harold Howe II estimates that revisions will result in doubling integration in 11 Southern states.

Guidelines provide that "race, color or national origin may not be a factor in hiring or assignment of teachers and other professional staff." State

Education Agency officials said evidence of compliance with this requirement is expected to be shown by next September. Districts which have submitted desegregation plans, including those with geographical school attendance zones, just file by April 15 a form agreeing to observe the new guidelines. Office of Education will review spring reports and schools judged to have shown no reasonable progress will be ordered to take further steps before fall.

School systems also must eliminate segregation in such programs as transportation, athletics and extra-curricular activities.

Where faculty members are displaced as a result of desegregation, staff vacancies later occurring must be filled by these ousted teachers if they qualify.

In other action the State Board of Education directed local school districts to raise their contributions to the foundation school program by \$6,100,000 next year. Local fund assignment for 1966-67 is \$138,000,000 compared with \$132,500,000 for 1965-66. Total cost of minimum foundation education program for the state this year is estimated officially at \$649,326,890. Legislature set local school districts' contribution for 1966-67 and thereafter at 20 per cent of the total cost of the preceding year's program. State puts up the other 80 per cent.

Board also approved investment of about \$7,000,000 from the State Permanent School Fund. Some \$3,000,000 will be placed in common stocks, another \$3,000,000 in corporate bonds and an estimated \$1,000,000 in short-term Treasury bills.

Investment money will come from maturing Treasury bills, bonds and the regular monthly

STRENGTH FOR THESE DAYS
 from The Bible

I will instruct thee and teach thee in the way which thou shalt go. — (Psalms 32:8)

Every problem has its perfect answer in the Mind of God, but we must be quiet all our thoughts long enough so that we hear the answer. God is always speaking the perfect word of guidance for each moment as it comes, but we must listen for this guidance.

Volleyball--
 (Continued from Page 1)
 superintendent's or high school principal's office.

Trophies will be awarded to teams finishing first and second in each division. Also, consolation winners will be awarded trophies.

Admission charge for each session of the meet will be 50 cents for adults and 25 cents for children, students and players.

Entry fee is \$6 per team. A team may consist of a maximum of eight players, according to tournament rules.

Games will consist of two 10-minute halves with the team with the higher score at the end of the 20 minutes playing time declared the winner.

Stone said this week that he hoped to have 10 teams in each division.



In farmers fields and official tests . . .

PIONEER® sorghums
 BRAND

PROVE THEIR YIELDS

Farmers like these know Pioneer sorghums yield. That's why you see more fields marked with Pioneer signs every year.

If you check official test results for proof-of-yield, you'll want to plant Pioneer brand sorghum, too. Hybrids 846 and 820 made bang-up yields in the 1964 High Plains Texas A&M tests. These two winners, along with Pioneer's other grain-type hybrids -- 882, 844, 848, 865, and 885 -- cover a wide maturity range.

Pioneer also offers forage-type sorghum, 931 . . . sorghum-sudangrass hybrid, 985, plus five corn hybrids for grain or silage. They'll help your acres produce more feed. Order now.

JIM HEMKE
 Phone: Pleasant Hill 389-2336

First State Bank Presents-- COW POKES
 By Ace Reid

"I wanted to be a cowboy, but I wuz so clumsy at dehornin' I had to give it up fer barberin'!"

Bank Services That BEAT The BAND

HOP ON THE First State BANDWAGON

1ST STATE BANK OF BOVINA
 --Member FDIC--

The Old Timer

"Automation—man's effort to make work so easy that women can do it all."

THE HOE CAN GO

Only Treflan® helps cut the cost of growing cotton by controlling weeds

- * Controls Over Two Dozen Broad-leaf Weeds And Grasses
- * Keeps Working Longer Than Other Cotton Weed Killer
- * Reduces Need For Temporary Field Labor . . . Saves Cultivations
- * Gives Dependable Results. Treflan Isn't Affected By Irrigation Or Rain-Or The Lack Of It
- * Can Be Applied Well Ahead Of Planting

—Custom Application—
Generalgas
 Highway 60 East
 Bovina

NOTICE

We will be in Bovina to register Motor Vehicles

Thursday, March 17 at City Hall & Friday, March 18 at City Hall

9:00 a.m. to 4:30 p.m. each day

BE SURE TO BRING YOUR TITLE AND LAST YEAR'S LICENSE RECEIPT.

NOTE-All Title and Transfer Cases must come to the Courthouse Office, Thank You.

HUGH MOSELEY
 Parmer County Tax Assessor-Collector



PUBLIC SCHOOL WEEK VISITORS -- Visiting school last week, which was Public School Week in Texas, and having lunch in the cafeteria were Mr. and Mrs. M. H. Carson, left, and Mr. and Mrs. Dan Murphy. In the background, Gene Ezell and Superintendent Otis Spears are conversing.

Reflections From The Blade

TEN YEARS AGO . . . March 14, 1956
The first annual FFA Project Show, with 34 animals entered, was called a "success" by Roy M. Crawford, vocational agriculture instructor of Bovina High School and advisor to the boys who put on the show. Winners in the shows' six divisions were Ramey Brandon, George Baca, Don Bandy, Dickie Steelman, Mike Barraza and Elmer Snodgrass.

E. T. Ford, vice-president and membership chairman of the Parmer County Farm Bureau, announced at the Bureau's membership Victory Meeting Monday night that 220 new and renewal members had joined the Bureau during the previous week to make a total of 732 members paid up at present in the organization. The meeting was held in the Bovina school auditorium.

Bovina area farmers interested in Farmers Union heard Richard Alexander, secretary to the directors of Texas Farmers Union, speak Friday night in the American Legion Hall in Bovina. The meeting was held to find out if Bovina farmers were interested in forming a local chapter of the organization.

SIX YEARS AGO . . . March 17, 1960
Marion Carson and B. L. Marshall have been chosen by the group advocating a write-in campaign to run for school board positions in the April election. "We plan an active campaign of personal contacts and advertising to help these men get elected," said a spokesman for the group that expressed dissatisfaction recently over the list of nominees submitted by a nominating committee.

"We have been practicing every night for three weeks and the cast will be ready to perform Friday night," says James McLeroy, co-director of the senior play. "Jeepers Creepers" is the production's title.

For the second year in a row, Lee Terry, son of Mrs. Fieta Terry, was overall winner of the annual Science Fair Friday at Bovina Schools. He won over 67 other entries with his tesla coil. Lee is in the fifth grade.

City election was officially scheduled and details on city trash disposal were worked out at a Wednesday meeting of the city commission.

Office of mayor will be filled in the April 5 election. A. B. Wilkinson was designated election judge and George Turner will be clerk.

Father Declan Gilligan is new resident priest for St. Ann's Catholic Church in Bovina. Father Gilligan is the first resident priest in the church's history.

Bovina FFA members have 23 animals entered in Parmer County Junior Livestock Show at Friona this weekend. All the animals were exhibited at the local chapter's project show here March 5.

During February --

County Has 10 Rural Accidents

The Texas Highway Patrol investigated 10 accidents on rural highways in Parmer County during the month of February, according to Sergeant W. E. Wells, Highway Patrol Supervisor of this area.

These crashes resulted in three persons injured and an estimated property damage of \$9,479.00.

The rural traffic accident summary for this county for the first two months of 1966 shows a total of 16 accidents resulting in no persons killed, 5 persons injured, and an estimated property damage of \$12,239.00.

Only one month remains for some 2,340,000 vehicles regis-

tered in Texas to secure the 1966 safety inspection sticker. The period set by law for securing the 1966 sticker ends at midnight, April 15. The Sergeant stated, "Any motorist whose vehicle bearing Texas license plates that does not display the 1966 sticker after April 15 is subject to arrest by any Sheriff, Deputy Sheriff, City Policeman or any Officer of the Department of Public Safety and upon conviction will be subject to a fine not to exceed \$200.00."

The people of Texas and the United States use upwards of 453 pounds of paper and paper board products per capita each year.

Welcome

To **Q** Pool
The **Q** Snooker
Dominoes

Thursday Night Is Family Night
Fun For All The Family!

On East Main Street

Mr. and Mrs. Fred Langer
Come On In-The
Playing's Fine!

Phone-- 238-8421

SAVE FOOD DOLLARS HERE!

Shop These Specials At WILSON'S Thursday, Friday, and Saturday. Many Continue Through Wednesday, March 23

1 Lb. Can
4¢ Off Label
Folgers' Coffee
Mountain Grown
73¢

Kleenex
DINNER NAPKINS 50ct. Box
25¢

... AND YOU ALWAYS GET GUNN BROS. STAMPS WITH EACH PURCHASE OF SHURFRESH MILK

Shurfresh **OLEO** Corn Oil Lb. **29¢**

Shurfine **Peaches** No. 2 1/2 Cans
Elberta - Slices or Halves **35¢**

Tender Crust **VANILLA WAFERS**
Reg. 39¢
1 Lb. Bag **29¢**

Spring Produce

US No.1 Colorado Russet **Potatoes**
Lb. Bag **10 49¢**

California Sunkist Navel **Oranges**
Lbs. **7 \$1**

Central American **Bananas** Lb. **10¢**

California Crisp **Lettuce** Head **15¢**

Austex **Spaghetti & Meat Balls** No. 300 Can **25¢**

Hunt's **Tomato Sauce With Cheese** 2 8 Oz. Cans **29¢**

Delsey **Toilet Tissue** 4 Roll Pack **39¢**

Shurfine Red Alaska **SALMON** No. 1 Tall Can **89¢**

Shurfine Vac Pak Whole Kernel **CORN** 2 12 Oz. Cans **39¢**

Shurfine **Bartlett Pears** 2 No. 303 Cans **59¢**

Borden's **Sherbet** Assorted Flavors
1/2 Gal. Round Carton **69¢**

Listerine 20 Oz. Bottle **98¢**

Shurfine **Pineapple Juice** 2 46 Oz. Cans **69¢**

Tender Crust **PEANUT BUTTER** 18 Oz. Jar **49¢**

FROZEN FOOD SPECIALS FOR QUICK-FIX MEALS

Sarah Lee All Butter **COFFEE CAKE** 13 Oz. Size **69¢**

Morton Reg. 41¢ **DONUTS** 10 Oz. Pkg. **29¢**

Mead's **ROLLS** 2 Doz. Pkg. **25¢**

Sea Star **Fish Sticks** 8 Oz. Pkg. **19¢**

SALE of Fine Meats At Wilson's

USDA Choice **Chuck Roast** Lb. **49¢**

USDA Choice **Arm Roast** Lb. **59¢**

Top Hand **Sausage** 2 Lb. Bag **98¢**

USDA Choice **Beef SHORT RIBS** Lb. **29¢**

Reynolds **Aluminum Foil** 25 ft. Roll **33¢**

Skinner's **Vermocelli** 10 Oz. Cello Bag **25¢**

Shurfine **Stewed TOMATOES** 2 No. 303 Cans **45¢**

Bama **Strawberry Preserves** 18 Oz. Tumbler **49¢**

Double Gunn Bros. Stamps Each Wednesday With Purchase Of \$2.50 Or More

WILSON'S

PARMER COUNTY'S FINEST SUPER MARKET Bovina

Phone 238-4781



FHA STATE DEGREE WINNERS -- Left to right, Connie Vaughn, daughter of Mr. and Mrs. Richard Vaughn, Gwen Christian, daughter of Mr. and Mrs. Wendol Christian and Mary Dane, daughter of Mr. and Mrs. J. W. Dane, were Bovina High's winners of state FHA degrees for 1966.

Vaughn, Christian, Dane --

Three Bovina Students Win State FHA Degree

Three senior girls at Bovina High who have applied for State FHA Degree have won the honors.

Connie Vaughn, Gwen Christian and Mary Dane will be presented certificates for State Degree at the Area IFHA meet-

Shots For Preschoolers In Muleshoe

A free immunization clinic will be held at the county courthouse in Muleshoe Saturday from 1 to 5 p.m.

Mrs. Katherine Lockhart, school nurse, reports that all pre-school age children are welcome to go to Muleshoe for the free inoculations.

It is necessary for all children to have these shots before they can start to grade school.

Club Sets Hat Sale Thursday

Bovina Women's Study Club will sponsor a hat sale Thursday.

Also featured at the sale will be shift dresses and occasional cards.

Over 2,000 original hats, eight different colors, from the Personality Shop in San Antonio will be for sale. There are to be no two hats alike, and the price is \$3.98 each. Price of the dresses is also \$3.98, a club spokesman says.

The Study Club sponsored a similar sale in October and they reported that these hats are of exceptional quality for this price.

The hats will be on display at the Club House from 9 a.m. to 5 p.m. Refreshments will be served.

For A More Beautiful You see Myrtle McCormick Sales Representative For Viviane Woodard

Cosmetics Also Medicated Beauty Care For Teenagers Call 225-4562 For A Free Demonstration

COMMUNISTIC BIOLOGY Question in a Biology test. Name the small bones in the inner ear. Answer. The stirrup, anvil, hammer, and sickle.

REPAIR! REMODEL! Nothing Down - 60 Months To Pay Complete Line Building Supplies Cicero Smith Lumber Co. 238-2671 Bovina

Phone ahead long distance for reservations. Make sure the "No Vacancy" sign doesn't apply to you. A phone call ahead will take care of it. And long distance rates are lowest after 8 PM and all day Sunday. GENERAL SYSTEM

Of Interest To THE WOMEN

Christians Parents Of Baby Boy

A baby boy was born to Mr. and Mrs. Troy Christian March 8 at Clovis Memorial Hospital. Russell Todd Christian weighed seven pounds and four ounces at birth.

Maternal grandparents are Mr. and Mrs. Hubert Ellison of Truth or Consequences, N. Mex. Paternal grandparents are Mr. and Mrs. C. C. Christian of Farwell.

Shower Fetes Mrs. Ferguson

Mrs. Marlin Ferguson was honored with a pink and blue coffee Thursday in the home of Mrs. B. L. Marshall.

The table was decorated with a white table cloth featuring a stork and a pink centerpiece.

The hostesses served hot spiced tea and coffee from a silver coffee service. They also served spudnuts.

Among the out-of-town guests were Mrs. Roy Warren, Mrs. Ferguson's mother; Mrs. Donnie Powell and Mrs. Clyde Johns, sisters of Mrs. Ferguson; and Mrs. Wesley Ferguson, the honoree's mother-in-law.

Mrs. Marshall, Mrs. Levi Johnson and Mrs. Billy Johnson hosted the coffee.

Courtesy For Kents

Mr. and Mrs. A. B. Kent will be honored with a going-away party Friday night at 7:30 in the community room of First State Bank.

Hosts invite all friends of the couple to attend.

Hosting the courtesy are Mr. and Mrs. Arnold Hromas, Mr. and Mrs. Howard Looney, Mr. and Mrs. J. D. Stevens, Mr. and Mrs. Lawrence Jamerson, Mr. and Mrs. T. J. Hopingardner, Mr. and Mrs. Allen Cumpston, Mr. and Mrs. Charles Hawkins and Mr. and Mrs. M. H. Carson.

School Menus

March 21-25 MONDAY

Corndogs, baked beans, cheese slices, cornbread with butter, apple pie, orange juice.

TUESDAY

Fried chicken, macaroni and cheese, green beans, hot rolls with butter, grapefruit sections, milk.

WEDNESDAY

Beef on a bun, pickles, buttered corn, cabbage slaw, rice pudding, milk.

THURSDAY

Red beans, tamales, lettuce and tomato, cornbread with butter, apricots, milk.

FRIDAY

Runa pie, English peas, pineapple and cottage cheese salad, hot rolls with butter, apple sauce cake, milk.



BIRTHDAY SURPRISE -- B. L. "Mutt" Graham was surprised on his birthday Friday when employees at his Bovina Restaurant presented him with this combination Happy Birthday, Happy St. Patrick's Day and Happy Easter cake. The cake was green in the shape of a four leaf clover with decorations of easter eggs and happy birthday greetings. The birthday surprise was presented by Rose Hopingardner and Mary and Gloria Maurietta. Graham is owner-manager of Bovina Restaurant.

At SC Meet --

Hilburn, Sorley Talk Education

Paul Hilburn, superintendent of Dimmitt schools, was guest speaker at meeting of Bovina Woman's Study Club Thursday afternoon.

Hilburn explained the history of Federal Aid to Education and some of the programs which are available. Dimmitt was a pilot school in early 1965 along with Dallas, Beeville, Corpus Christi, Victoria and Big Spring when the first money was made available under the president's vocational program. There are presently over 100 of these programs available to Texas schools.

Also as a part of the program, Grady Sorley, member of Bovina school board, explained the forthcoming bond issue to those present.

Other guests were Durward Bell and Mr. and Mrs. B. L. Marshall, Bell and Marshall are also members of the school board.

Hosting the meeting were Mrs. Earl Stevenson and Mrs. Harry J. Charles.

Mrs. Bob Estes was in charge of the program.

Community Conversation

Mr. and Mrs. Joe Pinner and their daughter, Toni, and Meloney Marshall, daughter of Mr. and Mrs. B. L. Marshall, were in Ruidoso, N.M. for the weekend to ski.

Mr. and Mrs. Thomas Rhodes Jr. and family visited over the weekend with Rhodes' parents, Mr. and Mrs. Tom Rhodes, in Duncan, Okla.

Mr. and Mrs. Levi Johnson returned to Bovina Saturday after spending the week with their daughter and family, Mr. and Mrs. Harold Lee Lowrie, in Oklahoma City, Okla. They were accompanied by their grandson, Scotty Johnson.

Mr. and Mrs. Bud Crump spent the weekend in Memphis. Mrs. Crump's father had suffered a severe heart attack earlier in the week. They were accompanied by their daughter, Mrs. Billy Richards of Reserve, N. Mex.

Mr. and Mrs. Richard Roberts were in Clayton, N.M. over the weekend. They attended the funeral of Roberts' cousin.

Connie Ware Celebrates Eighth B'day

Connie Ware, daughter of Mr. and Mrs. Leon Ware, recently celebrated her eighth birthday with a skating party.

Mrs. Ware served refreshments of birthday cake, which was made by Connie's grandmother, Mrs. E. M. Ware, ice cream, chocolate cupcakes and punch.

Those children attending were Allen Rhodes, Rita and Rhonda Nuttall, Dennis Willard, Ginger Guber, Johnny Caldwell, Butch McCain, Greg Corbin, Jerry Ware, Mike Ware, Cathie Trimble, Diane Roming, Leona Hise and Wendy and Wayne Stancell of Muleshoe, who are cousins of the honoree.

The children were accompanied by Mrs. Vernon Willard, Trudy Skjerve, Mrs. Leamon Stancell and Mrs. Ware.

Thrifty Club In Charles Home

Thrifty Club met recently in the home of Mrs. Wilbur Charles.

The women embroidered for the hostess.

Refreshments of party sandwiches and pineapple icebox cake were served with coffee, tea and cokes.

Those present were Mrs. G. A. Bandy, Mrs. O. H. Jones, Mrs. L. M. Grissom, Miss Lola Grissom, Mrs. P. O. Dixon, Mrs. Owen Patton, Mrs. Bill Bradshaw, Mrs. Howard Kelso, Mrs. Frank Smith, Mrs. E. M. Ware, Mrs. Cecil Sisk, Mrs. J. D. Stevens and the hostess.

Willingham Speaks At WSCS Meet

Dr. R. L. Willingham, pastor of First Methodist Church in Clovis, was guest speaker at the recent luncheon meeting of WSCS of Bovina Methodist Church.

Dr. Willingham discussed the meaning of the Lenten season and Easter with the women. Among the guests were Mrs. Willingham, Mrs. Herbert Sikes and Rev. J. B. Fowler Jr.

Bookmobile's Comin'

High Plains Bookmobile from Muleshoe will be in the Bovina area Thursday, Friday and Saturday.

On Thursday, it will be at Oklahoma Lane from 9:35 to 10:20 a.m., Rhea Community from 11:15 a.m. to 12 p.m. It will stop at Friona I from 1:15 to 1:45 p.m.

It will be at Hub from 8:45 to 9:45 a.m. on Friday. Also, the bookmobile will stop at Lazbudie from 12 to 1 p.m. and at Clay's Corner from 1:15 to 2:15 p.m. on Friday.

Saturday the bookmobile will be at Farwell from 8:45 to 9:45 a.m. and at Friona II from 1 to 4 p.m.

Guadalupe Plan Meet In Hereford

Plans for the spring meet of the Plainview Denery was main topic for discussion at a recent meeting of Guadalupe Society of St. Ann's Catholic Church.

The convention will be March 30 at Hereford. As affiliates of the Amarillo Council of Catholic Women, the Guadalupe Society will send four delegates to the Spring Meet. Delegates are Mrs. Ben Rejino, Mrs. Pete DeLeon, Mrs. Seferino Vilalareal and Mrs. Celia Fragosa.

Also at the meeting, Fr. Claver informed the women of the estimated number of children who will be making their first Holy Communion and the number to receive the sacrament of confirmation in May. A project of the Guadalupe Society is to make gowns to be worn by the children as they receive their holy sacraments.

Brother Dennis of St. Anthony's Catholic Church in Hereford was featured speaker for the afternoon. He showed colored slides and gave a narrative of places in Spain and Italy which he visited during his seven-year stay in Rome.

Hosting the meeting were Mrs. Fragosa and Mrs. Jesus Cano.

Announcing Ricki Pullig As A Beautician At Fantasy Beauty Salon Beginning Wednesday, Mar. 16. Mrs. Pullig, formerly of Dimmitt, will be available for appointments each Wednesday, Thursday, Friday and Saturday. She will accept Saturday appointments until 2:30 p.m. Fantasy Beauty Salon South Eighth Street - Pho. 238-3541 Loral of Paris Cosmetics Lillian Rogers Juanita Sims

A SAVINGS INSTITUTION DEDICATED TO THRIFT AND HOME OWNERSHIP



First Federal Savings & Loan Association of Clovis

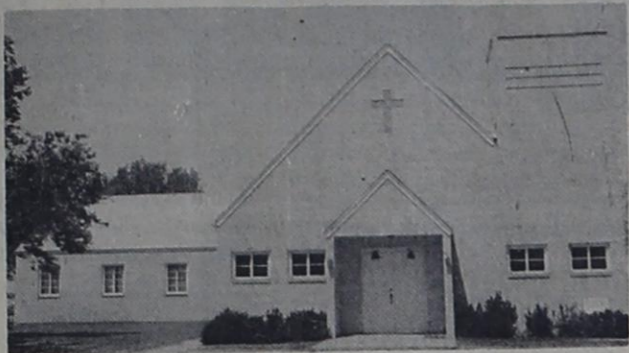
HOME OFFICE 4th & Pile Sts. Clovis, N. Mex. BRANCH OFFICE 2nd & Abilene Portales, N. Mex.

Current Dividend 4 1/2% PAID OR COMPOUNDED QUARTERLY

THRIFT AND HOME OWNERSHIP SAFEGUARDS TO AMERICAN LIBERTY

Grain Fed Baby Beef 52¢ Cut, Wrapped and Frozen. Half or Whole Guaranteed Satisfaction Thur.-Fri.-Sat. Specials Fresh, Lean Hamburger 3 Lbs. \$1 Fine Quality Bacon 2 Lbs \$1.60 Fresh Pork Sausage Lb. 55¢ FULLER & SON Custom Processing WHOLESALE & RETAIL MEATS First St. - Bovina - Pho. 238-4281

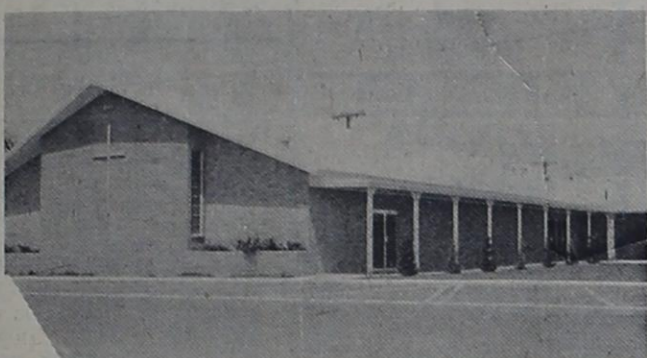
ST. JOHN LUTHERAN CHURCH



St. John Lutheran Church, Lariat, Texas H. F. Peiman, Pastor

Sunday School - 9:30 a.m. Morning Worship - 10:30 a.m.

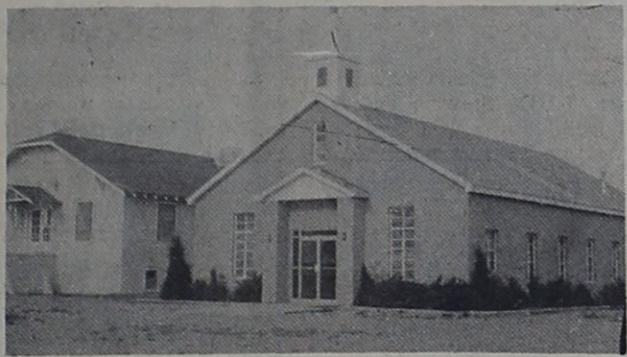
BOVINA CHURCH OF CHRIST



Bovina Church of Christ Don Stone

WEDNESDAY Devotional and Classes - 8 p.m. SUNDAY SERVICES Classes 9:45 a.m. and 5:30 p.m. Worship 10:45 a.m. and 6:30 p.m.

OKLAHOMA LANE BAPTIST CHURCH



Oklahoma Lane Baptist Church Rev. Wayne Baldwin

Sunday School - 10 a.m. Training Union - 6 p.m. Morning Worship - 11 a.m. Evening Worship - 7 p.m.

BOVINA METHODIST CHURCH



Bovina Methodist Church J. B. Fowler Jr.

Sunday School - 9:45 a.m. Evening Worship - 7:00 p.m. Morning Worship - 11:00 a.m. Choir Practice - M.Y.F. - 6 p.m. Wednesday - 8 p.m.

BOVINA PENTECOSTAL HOLINESS CHURCH



Bovina Pentecostal Holiness Church Rev. Leon Bird

Sunday School - 10 a.m. Evening Worship - 7 p.m. Morning Worship - 11 a.m. Wednesday Prayer Meeting - 8 p.m. Lifeline Service - 6:30 p.m.

Attend The Church Of Your Choice

This Sunday

Church Chuckles by CARTWRIGHT



"Maybe God does love everybody, but if He had to live five minutes with Henry Travers . . .!"

Christ's Peace, Best of All My Peace I give unto you, John 14:27

At an inaugural ball a diamond necklace may seem more important than the food which is served. However, on a life-boat tossed for days on the turbulent Atlantic, an orange or a crust of bread has far greater value than a \$10,000 diamond ornament.

Jesus stressed the importance of sensing the value of things. Oxen and filled barns meant little to Him. The one thing needful is the peace of God in our heart, which is ours only through Christ, who gave His life on Calvary to reconcile us to God.

Conscience, sin, and Satan conspire against us to fill our heart with a despairing fear of judgment to come. No matter what we do, we cannot undo the past.

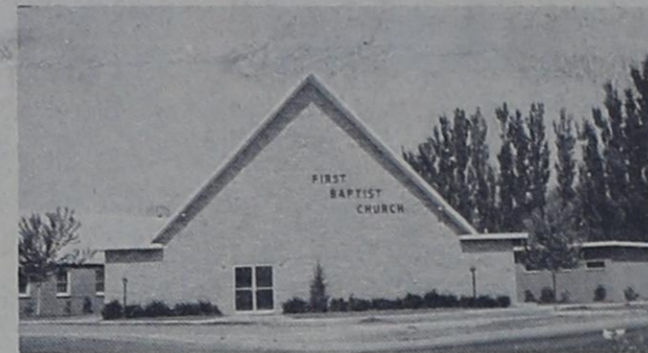
Only Jesus can help us by giving us His Peace. To give us this peace, He went to the cross and by the shedding of His innocent blood paid in full for our many sins. These are no longer counted against us. They are blotted out.

Through faith in Jesus' sacrifice we find peace with God. This puts our mind at ease. We know that there is "No condemnation to them who are in Christ Jesus." This peace of Jesus permits us to go on with confidence, knowing all is well with our soul because the joy of forgiveness is in our heart. So, "we walk together, my Lord and I."

Prayer: Gracious Savior, embrace me with Thy love and fill my soul with Thy peace, now and evermore. Amen.

Herbert F. Peiman, Pastor, Lariat Lutheran Church

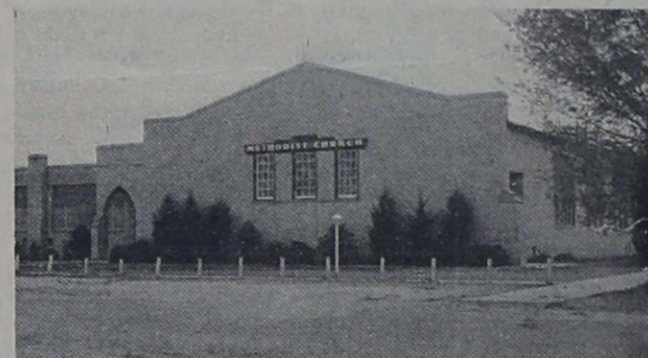
FIRST BAPTIST CHURCH OF BOVINA



First Baptist Church of Bovina Rev. Ralph Aday

SUNDAY - Sunday School - 9:45 a.m. Morning Worship - 10:55 a.m. Training Union - 6 p.m. Evening Worship - 7 p.m. WEDNESDAY - Teachers and Officers Meeting 7 p.m. Prayer Meeting 7:30 p.m. Adult Choir - 8:30 p.m.

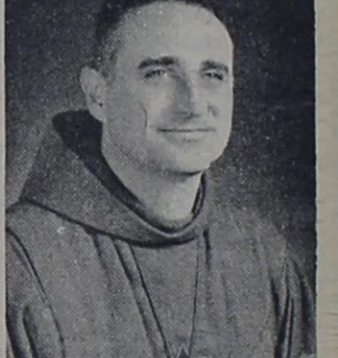
OKLAHOMA LANE METHODIST CHURCH



Oklahoma Lane Methodist Church Rev. Hardy Cole

Sunday School - 10 a.m. Morning Worship - 11 a.m. Evening Worship - 7 p.m.

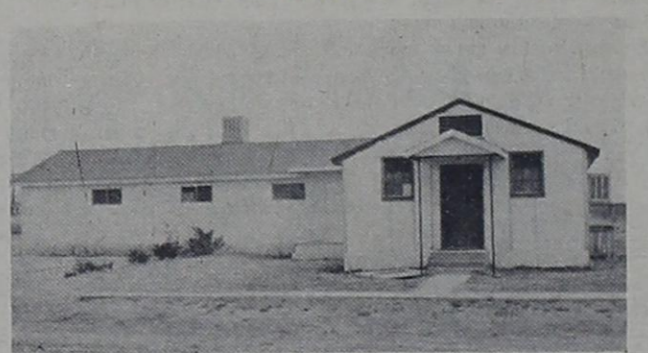
ST. ANN'S CATHOLIC CHURCH



St. Ann's Catholic Church - Bovina Fr. Claver Giblin S.A.

Masses: Sunday 8:30 & 10:30 a.m. Confessions: Saturday 4-5 p.m. Weekdays 8:30 a.m., Daily Except 7-8 p.m. Tuesday 8 p.m. Before-Masses First Friday 8 p.m. Baptisms: 8 p.m., Sunday Holy Days 10 a.m. & 6:30 p.m.

MISSION BAPTISTA MEXICANA



Mission Bautista Mexicana Rev. Ramon Delgado

Eseuela Dominical 9:45 a.m. - Mensa Je 11:15 a.m. - Union de Preparacion 6 p.m. - Miercoles 8 p.m. Estudio de la Biblia

Church Page Sponsors:

Friona Motors

"Your Parmer County Ford Dealer" - Friona -

Bovina Chamber Of Commerce & Agriculture

Reeve Chevrolet Co. Since 1938 - Friona -

Bovina Insurance Jim Ware

Cicero Smith Lumber Company In Bovina Since 1904

Western Ammonia Corp. - Bovina -

Bovina Auto Parts - Hwy. 60 -

Claborn Funeral Home

Phone 247-2801 Friona, Texas

Hartzog Seed Farms A. L. Hartzog

Bi-Wize Drug Phone 247-3010 - Friona -

Bovina Wheat Growers "We Serve To Serve Again"

Bovina Implement Company Your Massey-Ferguson Dealer

S and S Department Store - Downtown Bovina -

Wilson's Super Market - Gunn Bros. Stamps -

Sherley Grain Company "Serving Parmer Co. Farmers The Year 'Round'"

First State Bank of Bovina - Member FDIC -

Paul Jones Texaco Firestone Tires

Charles Oil Company Phillips 66 Tires, Batteries

Bovina Dry Goods Mr. and Mrs. Edward Isaac

Gaines Hardware Company "Nothing Knocks On Bovina But Opportunity"

Union Compress and Cotton Warehouse - Bovina -

McCallum Real Estate Dean McCallum

The Bovina Blade

Wilson - Brock Insurance "All Kinds Insurance"

St. John Lutheran Church Lariat

Bonds Oil Company Gulf Distributor

C & S Chemical FERTILIZER

Bovina Pump and Drilling Irrigation and Domestic Wells

Bell Brothers Electric Of Bovina Electrical Contractors

Corn's Farm Store - Charles Corn -

Bovina Glass & Paint Company Hwy. 60 - Ed Dendy, Mgr.

Western Auto Store - Friona -

Bovina Junior Chamber Of Commerce

Kerby Welding A Deal The Year o

Bill Goldsmith's Bovina Welding Works

Barbee Cleaners The Most In Dry Cleaning

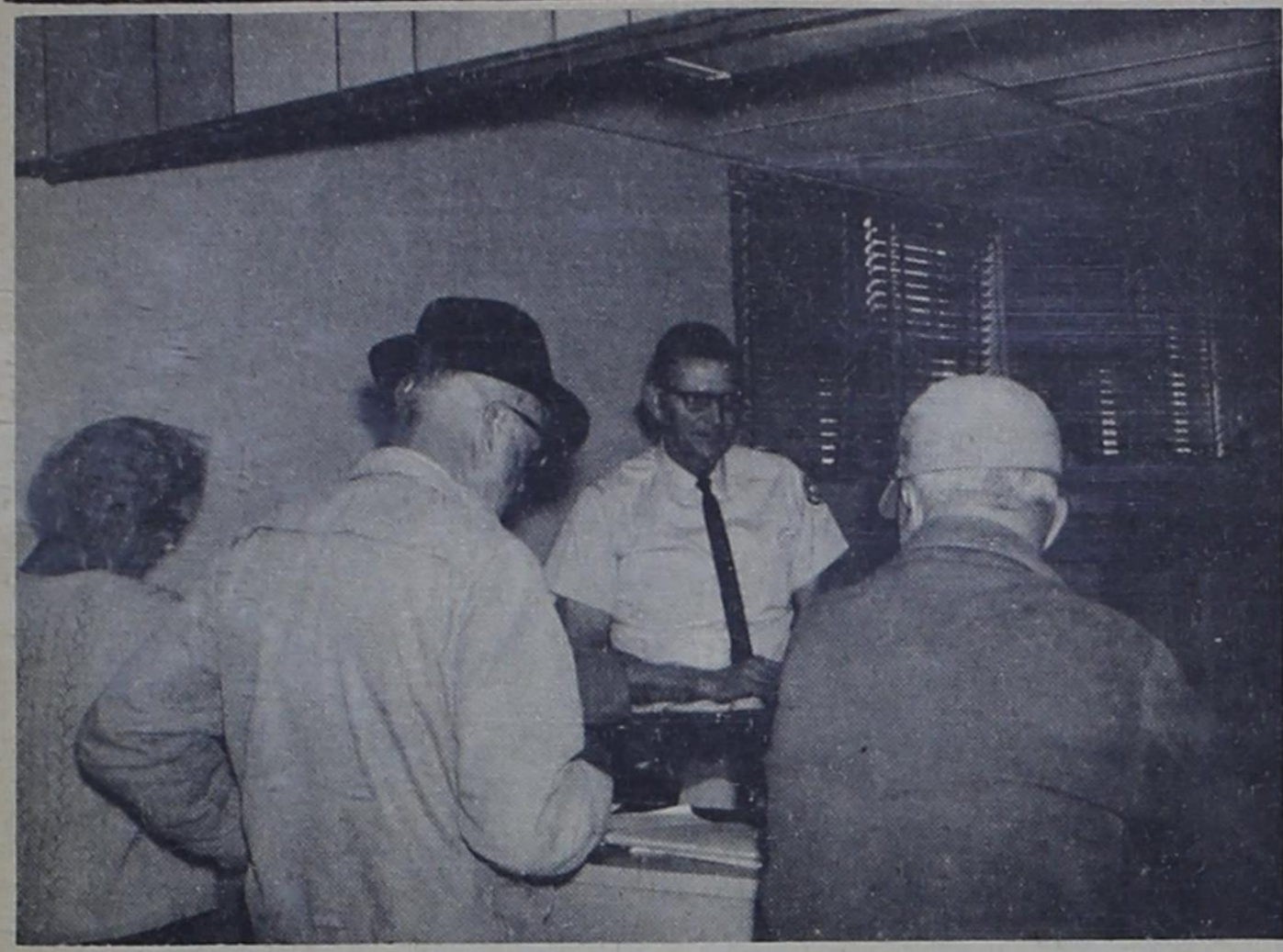
Rowland-Gordon Farm Chemicals Complete Fertilizers

Oklahoma Lane Farm Supply And Gin

Sudderth and Sudderth

Gateway Produce Company - Bovina -

Bovina Restaurant The Mutt Grahams



WINDOW SERVICE -- Postmaster Gene Ezell is shown assisting postal patrons at the service "window" of Bovina's new post office. Left to right are Mrs. J. R. Caldwell, Bedford Caldwell and T. J. Hopingardner.

LEGAL NOTICE

NOTICE TO BIDDERS
Sealed proposals for the construction of certain water additions and improvements consisting of the following approximate quantities: 1 Water Well, 1 Storage Tank (ground), 1 Pump Station together with necessary water lines and appurtenances incidental to the construction of the above, approximately 3200 feet of 8" A.C. Water lines, 1400 feet of 6" A.C. water lines together with gate valves, wet connections, etc., will be received by the Honorable Mayor and City Council of the City of Bovina, Texas, until 2:30 P.M. Central Standard Time of the 18th Day of March, A.D. 1966, at which time and place the Proposals will be pub-

licly opened and read aloud and considered by the City Council. Any bid received after closing time will be returned unopened. No bid submitted may be withdrawn before thirty (30) days have elapsed after date of Submission. Copies of the plans, specifications and contract documents are on file in the Office of the City Secretary at Bovina, Texas, and are open for public inspection. A set of such documents may be obtained from DOUGLAS ENGINEERING COMPANY, 210 S. 1st Street, P. O. Box 781, Muleshoe, Texas upon deposit of \$15.00 which shall be returned to each bidder upon return, in good condition, within ten (10) days from the date bids are received. A Cashier's or Certified

Check payable without recourse to Boyd Gilreath, Mayor, or an acceptable Bidder's Bond in the amount of at least 5% of the total amount bid must accompany each bid as guaranty that, if awarded the contract, the bidder will promptly execute a performance bond and enter into a contract on the forms provided. Checks must be issued by a Texas Bank satisfactory to the City and Bidder's Bond by a reliable Surety Company licensed to do business in the State of Texas. A performance and payment bond in an amount not less than the amount of the award, conditioned upon the faithful performance of the Contract and the payment of all persons supplying labor or furnishing materials or other supplies or services, will be required from a Surety Company holding a permit from the State of Texas to act as surety on bonds of principal.

The City reserves the right to reject any and/or all bids and to waive informalities, except no bid received after closing time and hour will be considered. The Contractor will be paid in cash from the proceeds of bonds, and bids are to be made on a cash basis.

The attention of the bidders is called to the special provisions concerning minimum wage rates and hours of employment included in the specifications and proposals to insure compliance with House Bill No. 54 of the 43rd Legislature and House Bill No. 115 of the 44th Legislature of the State of Texas, and all Federal Wages and Hours Legislation, including non-discrimination in employment if applicable. The general prevailing wage rates which have been established by the City are as follows: Skilled, \$1.50 to \$2.50 per hour; semi-skilled, \$1.25 to \$1.75 per hour; unskilled \$1.25 per hour.

Boyd Gilreath, Mayor
City of Bovina, Texas
ATTEST: Mary Ruth Martin
City Secretary 35-3tc
(SEAL)

Political Calendar

The Blade is authorized to make the following political announcements, subject to the Democratic Primary Election, May 7, 1966.

- COUNTY JUDGE & ED-OFICIO SCHOOL SUPT. Loyde A. Brewer (re-election)
COUNTY CLERK Bonnie Warren (re-election) Joyce Haseloff
DISTRICT CLERK Dorothy Quikkel (re-election)
COUNTY TREASURER Mabel Reynolds (re-election)
COUNTY COMMISSIONER PRECINCT NO. 2 Charlie Jefferson (re-election)
JUSTICE OF THE PEACE PRECINCT NO. 3 Lucille Killough (re-election) Harley Sherich
STATE SENATOR 30TH DISTRICT Jack Hightower (re-election)

Small ownerships prevail in the forest land ownership pattern in East Texas. There are approximately 120,000 owners of commercial forest land in East Texas.

WANT ADS

LONG TERM
Low Interest Rate Money To Loan On Good Farm Land Or Good Town Property. Contact O. W. Rhinehart
GLASSCOCK REAL ESTATE
Phone 238-3231
Bovina, Texas 33-tfnc

*CBS*NBC*ABC
Get All Three
Major Networks
To Perfection
Get On Cable, TV Now!
*Low Tie-On Fee
As Low As \$12. Down
*Low Monthly Rates
Clearview Company
Of Bovina
Phone Bovina 238-3592
Or Friona 247-3271
FOR SALE
Quarter section of land, close in to Bovina. All in cultivation and all just as tops as land can be. Waters perfectly from one ditch. Has new pump in irrigation well. Good allotments including 30 A. of cotton. The government payments are more than the loan payments. Price \$450 per A. Including a nice three-bedroom house and the wheat which has been fertilized and watered.
Contact O. W. Rhinehart at Glasscock Real Estate
Office phone 238-3231
Night phone 238-4452
Bovina, Texas

FOR RENT -- Three-bedroom home in Bovina. Call 238-3751 or see Mrs. Tom Hartwell at Bovina Restaurant. 37-2tc
FOR SALE -- Baled wheat straw. See Jim Hemke or phone Pleasant Hill, 389-2336, 29-tfnc
FOR SALE -- 1961 Comet 4-door or 1961 Ford Econoline pickup. Both in good condition. Call Dean Hastings, 238-4372. 35-3tc

FOR SALE -- Cakes for all occasions. Cakes are homemade and I can decorate them any way you want them. Call Geraldine Ferguson at Friona 247-2462. Located one half mile north on cemetery road. 37-4tc
FOR RENT -- Two bedroom unfurnished house in Bovina, located at 802 Avenue G. Plumbed for washer and dryer. Call Barbara Merriman in Clovis, 763-3373. 37-4tc

PAINT
Polyvinyl
and
Aluminum
Guaranteed 10 Years
BOVINA
ELECTRIC
Odis White - Ph. 238-3871

NOTICE -- To whom it may concern - If Elzie Godsey owed anyone in the Bovina community, please contact Charleg Steelman, C11 North Prince, Clovis, N.M. 37-1tc
HOUSE FOR RENT -- Carpeted. Located at 706 Avenue B. Call 238-6081. 36-2tc
FOR SALE -- Alfalfa hay. Call Tharp 225-4588 or see Jimmie Cockerham. 29-tfnc
FOR SALE -- Home in Bovina, 4 bedrooms, 1 1/2 baths, extra large livingroom and den. Located one block from school. See Travis Lloyd or call 238-6862. 37-tfnc

WILSON DRILLING
--Muleshoe--
Cess Pools, Pter Holes, Construction Man Holes, Boat Pits, Test Holes, Sizes from 36" to 9' in width and up to 50', deep. Phone Muleshoe
Day - 3-0962
Night - 3-1480 or 3-5910

Need reliable party in Bovina area to take over payments on a late model Singer sewing machine in a drawer walnut cabinet. Automatic zig-zagger, will buttonhole, blind hem, fancy designs, etc. 5 payments at \$5.49 or \$30.00 cash. Write Credit Manager, 1114 19th Street, Lubbock, Texas. 35-tfnc

CUSTOM CATTLE SPRAYING
See Curtis Miller or Phone 238-4531. 34-tfnc

CARD OF THANKS
I want to thank my friends and neighbors for all their kindnesses, flowers food and visits, during my illness.
I pray that God will bless each of you.
Mrs. Zemry Boozar

Ditching
Service
Gas and
Water Lines
Buddy Stowers
Phone 247-3140
-Friona-

Ask About:
Ball-Point Fabric
Painting Course
April 1 thru
April 29
Jeane Coker
Phone 247-2586
35-5tc

Am interested in making loans and buying first and second lien notes secured with farm and ranch lands.
J. J. Steele
Citizens Bank Building
Clovis, New Mexico
Dial: 763-4471 or 763-6455 37-4tc

BANK RATES
AUTO LOANS
TRUCK LOANS
COMPLETE INSURANCE
Call 762-4777
Res. 763-9590
Cal Blochberger
Agency
115. E. 6th Clovis tfnc.

FOR SALE -- Fine stationery. Attache cases, books, gifts. Graphic Arts, Friona. 35-4tc

Twentieth Century welders, no points, condensers, rheostats or resistors, 20 year warranty, free trial. Welding supplies. Bovina Wheel Growers 35-5tc

FOR SALE -- United States flags. Bovina Woman's Study Club is selling these 2 ft. x 3 ft flags with holders for \$3 each. Contact Mrs. J. R. Caldwell. Flags will be delivered upon request. 35-3tc

FOR SALE -- Nice, two-bedroom home, well located on pavement. A place where you would like to live. Must be seen to be appreciated. Contact O. W. Rhinehart at Glasscock Real Estate
Office Phone 238-3231
Night Phone 238-4452
Bovina, Texas

Gibson greeting cards for all occasions. On display at Graphic Arts Stationery, Friona. 35-4tc

JUST ARRIVED -- Ideal's Easter publications. See at Graphic Arts Stationery, Friona. 35-4tc

FOR ALL KINDS OF insurance and farm loans, see Jim Ware at Bovina Insurance in First National Bank Building or phone 238-4382.

THE amazing Blue Lustre will leave your upholstery beautifully soft and clean. Rent electric shampooer, \$1. Super Saveway

PIANO IN STORAGE
Beautiful spinet-console stored locally. Reported like new. Responsible party can take at big saving on low payment balance. Write Joplin Piano, 315 South 16th, Waco, Texas. 37-1tc

FOR SALE -- Three bedroom, 2 bath, brick, paved street, central heat and air cond, fully carpeted, solid ash paneling, fenced yard. See J. E. Sherrill or phone 238-2671 or 238-4711. 37-2tc

FOUND -- 3M copying machine and supply dealership. Inquire at Graphic Arts Stationery, Friona. 35-4tc

Need party with good credit in Bovina area to take over payments on late model Singer sewing machine in 5 drawer walnut cabinet. Will zig-zag, buttonholes, fancy stitches, etc. \$31.50 cash or \$4.95 a month. Write Credit Manager, 1114 19th Street, Lubbock, Texas. 24-tfnc

FOR SALE -- Seven black Angus bulls. Call 225-4595 at night or 238-2671 during the day. 35-tfnc

Dilger's
CLEANERS
Parmer County's
Finest Cleaning
Gunn Bros. Stamps
BOVINA, TEXAS

FOR SALE -- Power lawnmower with grass catcher. All in good condition. It's yours for \$45. Floyd Coates, phone Tharp 225-4386 or 225-4382. 37-tfnc

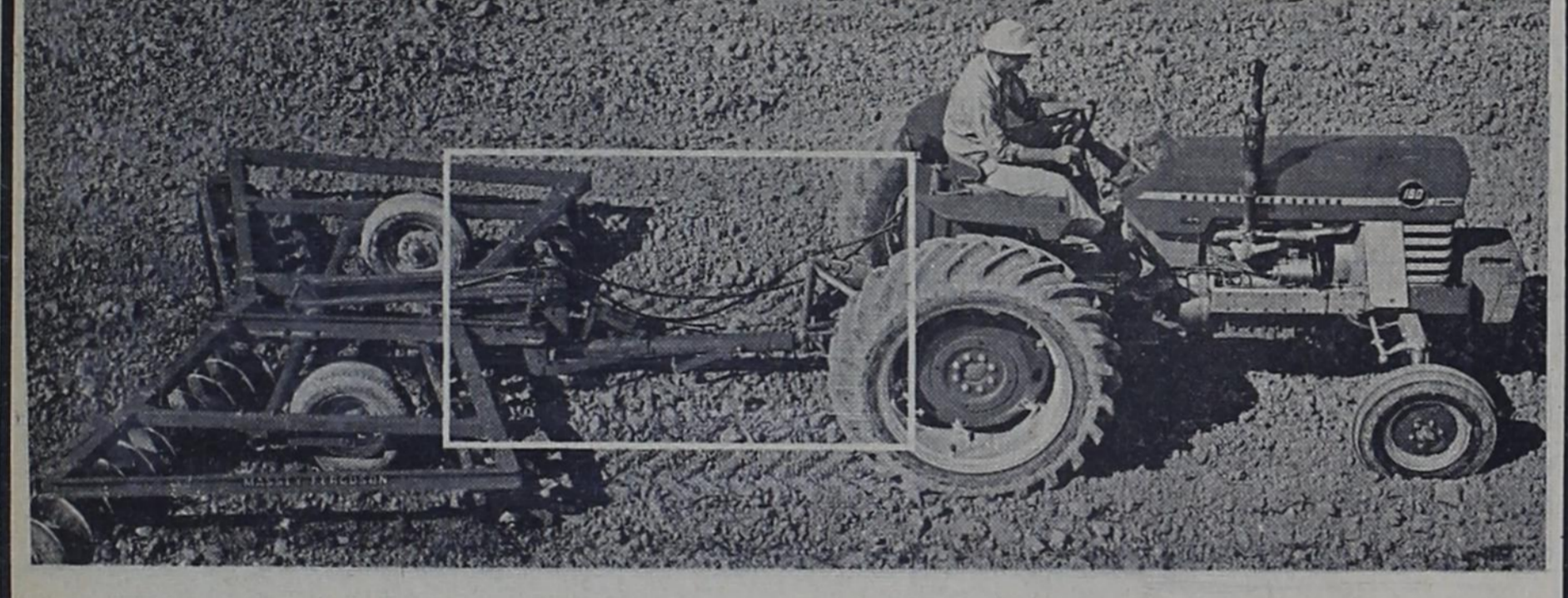
BUY YOUR AT BOVINA
KRAUSE IMPLEMENT CO.
BOVINA IMPLEMENT CO.
Hwy. 60-238-2541

PARTY GOODS -- Gibson-Par-Kay party goods -- complete sets, plates, centerpieces, bridge favors. Graphic Arts Stationery, Friona. 35-4tc

Now Renting
NEW
BOVINA
Apartments
One & Two
Bedrooms
★ Paneled
Walls
★ Wall-To-Wall
Carpeting
★ Furnished or
Unfurnished
Phone 238-6551
Or
225-4430

The
4-C's
CLOVIS
CATTLE
COMMISSION
COMPANY
TUESDAY &
Cattle Sales Every THURSDAY
Horse Sale Every Other Monday--Next Sale March 14
HAROLD THOMAS, Owner
Jimmy Hardgrove, Manager of Horse Sales
CLOVIS, NEW MEXICO
P. O. Box 671 Phone 763-5522

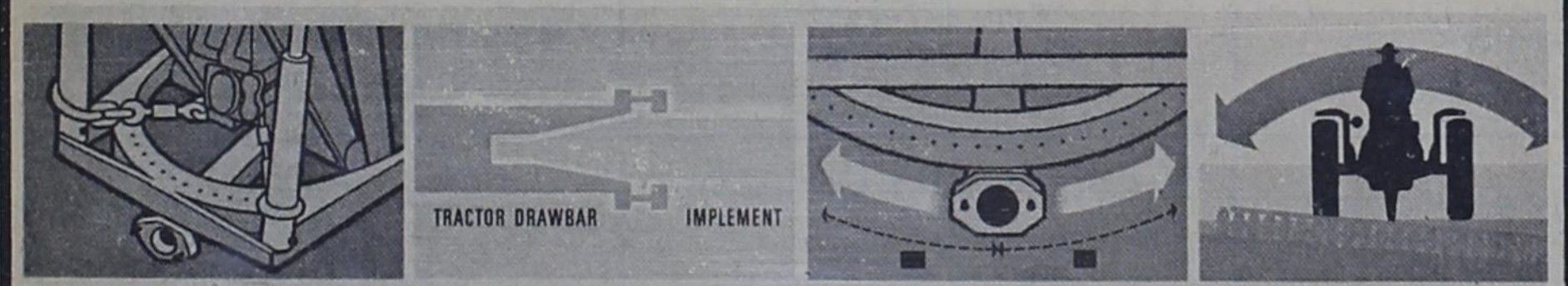
Massey-Ferguson's New Pressure Control
first major breakthrough in tractor hydraulics since the original Ferguson System



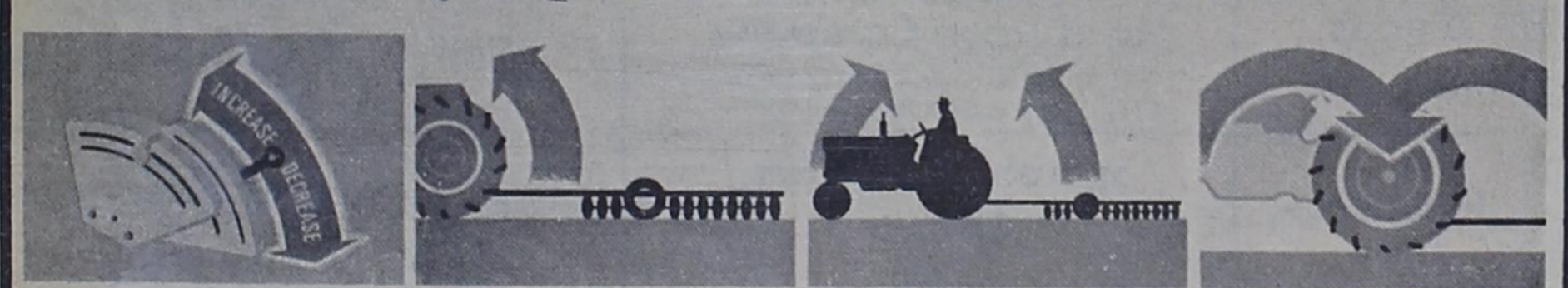
Weight is transferred from the disc harrow to the rear wheels of the MF 180 through the Pressure Control hitch.

How the Pressure Control hitch works...

- 1. Pressure Control socket is mounted on the sturdy drawbar. Hydraulic cylinders can raise and lower the socket as required for easy hitching and weight transfer.
2. Cone-shaped tongue on the implement fits snugly inside the socket and locks with a rotating latch. Tongue can be used on other make implements, with modifications.
3. Drawbar is free to move from side-to-side as you make turns at the end of the field. You can handle wide implements with this convenient arrangement.
4. Tongue rotates in the socket to permit independent movement of the implement and the tractor. Implements can follow the contour of the ground.



This is the way it provides more traction...



- 5. Upward force of the drawbar is controlled by a lever at the operator's side. Moving this lever exerts pressure on the drawbar. You can get the exact amount needed to minimize wheel spinning. Reduce pressure when traction improves.
6. When pressure is applied, the tongue and socket transfer the weight of the implement as if on a rigid arm. A portion of the weight is transferred to the tractor rear wheels. Heavy duty power actuated socket can lift thousands of pounds.
7. Lifting action also tends to reduce weight normally carried on the front wheels of the tractor. Rolling resistance at the front end is cut down, requiring less power. Steering is easier, too.
8. Weight from both sources is transferred to the rear wheels of the tractor. You get increased traction to pull through without wheel weights or costly tractor dead weight.

Ask about Massey-Ferguson's new pressure control . . .
. available on all Massey-Ferguson tractors.

Massey-Ferguson
Bovina
Implement Co.
-- Your Massey-Ferguson Dealer --
Highway 60 Phone 238-2541

Cotton Saver
Seedling diseases of cotton used to mean skips in rows, and replanting costs. Not now. There's Lanstan. Niagara's highly effective new soil fungicide. Rhizoctonia, Pythium, Thielaviopsis, Fusarium (sore shin, damping off, nub root, root rot)--Lanstan controls them. Try it. Granular, or in combination with PCNB--directly in the furrow. For a good even stand.
Lanstan
FARMER CHEMICALS - NIAGARA CHEMICAL DIVISION - MIDDLETOWN, N.Y.

In Or Out? --

Feed Grain Program Discussed By Mills

(EDITOR'S NOTE: The following article, prepared and written by Prentice Mills, Parmer County ASCS office manager, concerns the 1966 Feed Grain Program. It can be helpful to individual farmers as they make their decisions in regard to their participation in this year's program. DM)

By Prentice L. Mills
Approximately 40 per cent of the farmers in Parmer County

have signed up to participate in the 1966 Feed Grain Program as of this date. A number of farmers are undecided as to whether to participate and, if so, to what extent.

The following examples may be useful in assisting a farmer to "weight out" the program for his farm; in these examples we use an average farm in Parmer County. The normal yield for the farm is 92 bushels of grain sorghum. The base acreage is 200.

The price support payment is \$27.31 per acre and the diversion rate is \$52.44 per acre.

Example #1A - The price of milo is \$1.70 per hundred, producing cost is estimated to be \$45.00 per acre, the farm does not participate in the program and 200 acres of milo is grown on the farm. We assume that the production is 6000 lbs. per acre. 6000 lbs. at \$1.70 per cwt. X 200 acres = \$20,400.00 Gross
200 Acres X \$45.00 = \$9,000.00 Expense
Gross Net \$11,400.00

Example #1B - Same data as Example 1A but farm participates in program by making 20% diversion of 40 acres and plants 160 acres of milo.

Price Support Payment is 100 a. X \$27.31 = \$2,731.00
6000 lbs. at \$1.70 X 160 acres = \$16,320.00
Gross \$19,051.00
160 acres X \$45.00 = \$7,200.00 Expense
Gross Net \$11,851.00

Example #2A - The data is the same as in Example 1A: Except, we assume that the price received for milo is \$2.00 per hundredweight.

6000 lbs. at \$2.00 per cwt. X 200 acres = \$24,000.00 Gross
Expense is same as Example 1A = \$9,000.00
Gross Net \$15,000.00

Example #2B - Data is same as Example 1B with a milo price of \$2.00 per cwt.

6000 lbs. at \$2.00 per cwt. X 160 acres = \$19,200.00
Price Support Payment (always same) = \$2,731.00
Gross \$21,931.00
160 acres X \$45.00 = \$7,200.00 Expense
Gross Net \$14,731.00

Example #3A - Same as preceding examples 1A & 2A with a milo market price of \$1.90 per cwt.

6000 lbs. at \$1.90 X 200 acres = \$22,800.00 Gross
Expenses same as other examples = \$9,000.00
Gross Net \$13,800.00

Example #3B - Same as Examples 1B & 2B with a milo market of \$1.90 per cwt.

6000 lbs. at \$1.90 X 160 acres = \$18,240.00
Price Support Payment (same) = \$2,731.00
Gross \$20,971.00
Expenses same as 1B & 2B = \$7,200.00
Gross Net \$13,771.00

In the examples above we have assumed milo prices which are considerably above the loan rate which is \$1.50 per hundredweight for 1966. One person's guess is as good as another as to what the price may be for grain sorghum at harvest time next fall.

We have given no examples where an additional acreage (above 20%) is diverted under the program. Farmers can decide for themselves as to whether it is profitable to sign up for a diversion of acreage above the 20% minimum. The sign-up period extends thru the last day of this month (March). Farmers who intend to participate are urged to come in and sign up at their earliest convenience in order to avoid the "last-minute" rush.

by a 1964 sedan driven by Lawny Dale Cannon of Muleshoe, according to Highway Patrolman Carl Davis, who investigated the accident.

Johnson received a broken rib and a cut on his neck in the collision.

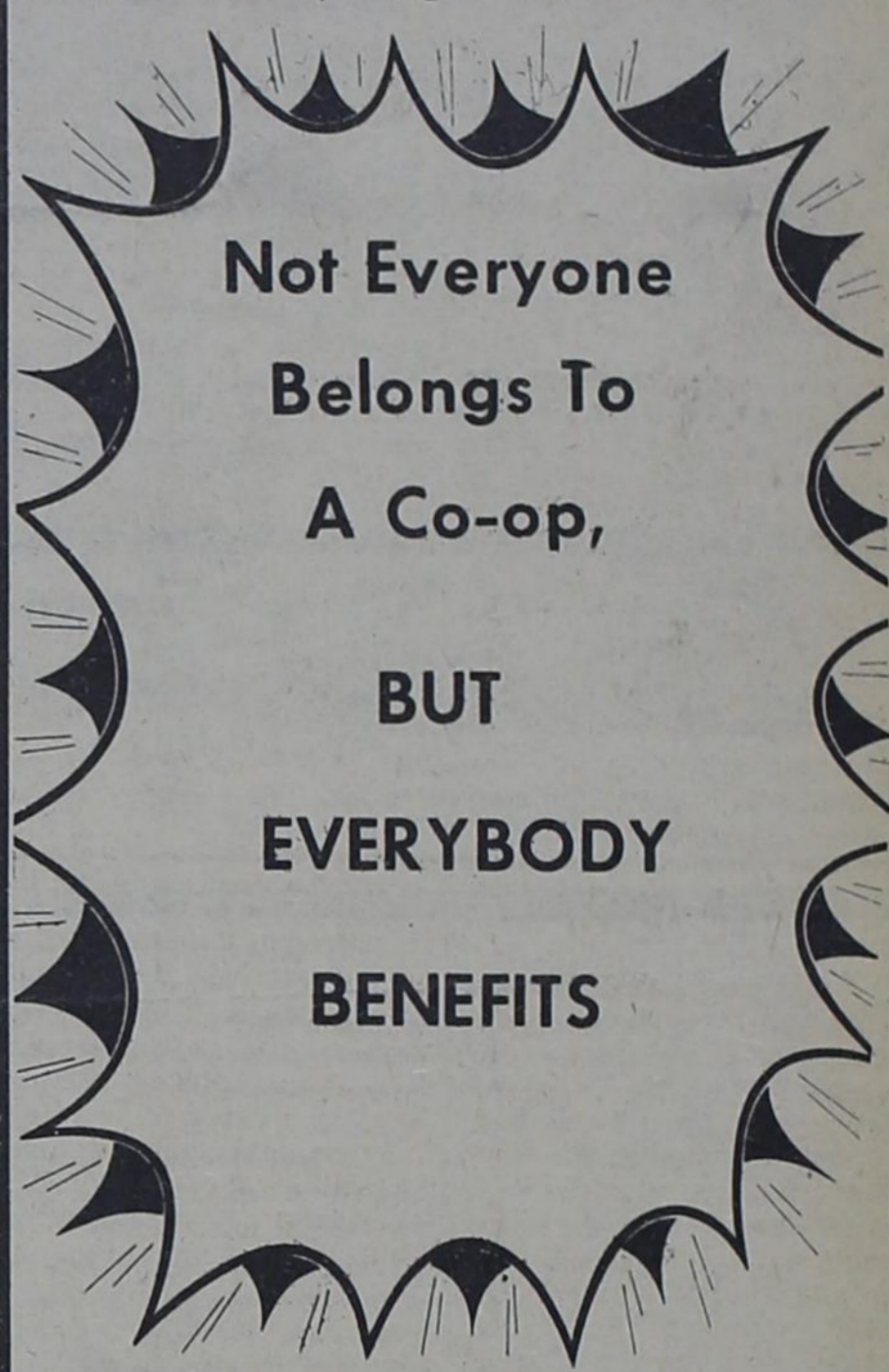
The three occupants of the Cannon car, which was traveling east on Highway 60, were uninjured.

Damage to the car was estimated at \$850 and to the pickup at \$500 by Davis. The left front of the car struck the right front of the pickup.

Johnson was taken to Parmer County Community Hospital in Friona for treatment.

BOVINA WHEAT GROWERS, INC.

Jim Russell, Mgr. - Pho. 238-2691



Not Everyone
Belongs To
A Co-op,
BUT
EVERYBODY
BENEFITS

See Us Now For Your
1966 Fertilizer Needs
Now Booking
Hybrid Milo Seed
Including Pioneer
For '66 Planting

Bovina And Rhea !

The SPOTLIGHT'S On
Quality Grain Sorghum Seed At
OKLAHOMA LANE FARM SUPPLY
This Season We Are Offering A Selection
Of The Best Milo Seeds On The Market.
Come Into Oklahoma Lane Farm Supply
And Make Arrangements For Your
Planting Seed Today!



**OKLAHOMA LANE
FARM SUPPLY**
Phone Tharp 225-4386

Roy Allen Cyanamid Manager

Roy Allen has been named manager of the new Cyanamid Farm Supply Center west of Bovina.

Allen, who has farmed north of Bovina for the past three years, began his duties with the farm supply business the latter part of last week.

George Baca has also been named a member of Cyanamid's staff here.

Allen is a native of McAadoo. He moved to Bovina from Muleshoe where he farmed five years. He will continue his farming operations here as well as manage the new business.

Allen will direct the overall operations at the new plant which offers fertilizer formulations blended to meet specific soil requirements. Also, plans call for the business to offer lines of insecticides, herbicides and animal medical products.

The plant is scheduled to be open by April 1, Allen says.

A grand opening date for the new business will be announced soon, he says.

Johnson Hurt In Accident

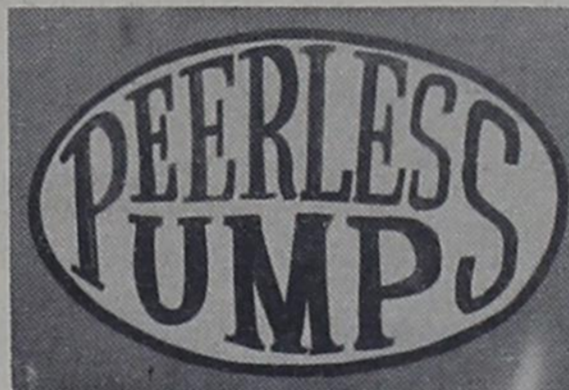
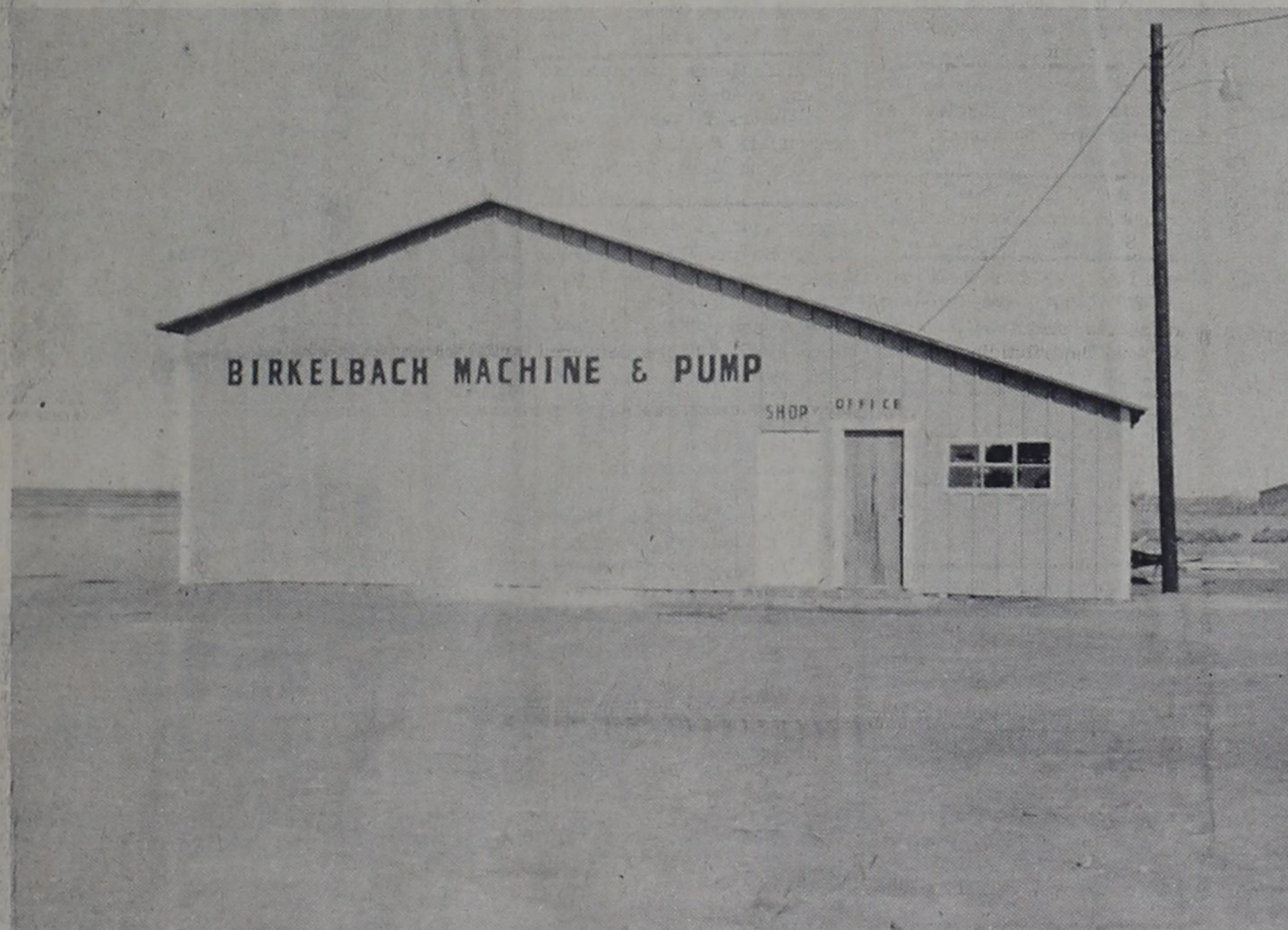
E. F. Johnson, who farms west of Bovina, was injured in a two-vehicle collision Monday of last week.

The accident occurred on Highway 60, near the state park west of Bovina.

Johnson, driving a 1962 model pickup, was making a U-turn from the hard ditch onto the highway when the pickup was struck

NOW OPEN in Bovina

to serve YOU!



We Specialize in Gearhead
and Pump Repair, Well Bailing,
Machine Work and Welding.

Come to us for . . .

Peerless Pump Sales and Service

We Feature Turnkey
Jobs and Irrigation
Sales FINANCING

BIRKELBACH Machine & Pump

Phone 238-3591

Located West on Hiway 86
in Bovina

P. O. Box 486

