







# EXTRA!

## 10,000 POUNDS OF FRESH FRUITS

Direct from the grower to the consumer . . . Only 48 hours from the orchard till it reaches your table. Hauling in refrigerated trucks from the largest fruit grower-center in the world.



# EXTRA!

## 10,000 POUNDS OF FRESH VEGETABLES

Every variety of fresh vegetable on the market. We guarantee the vegetables to be the finest that can be found anywhere. Money has not been spared to get our customers the best for this week-end. We want to please you and we are proud to offer the finest vegetables in town for this special occasion.

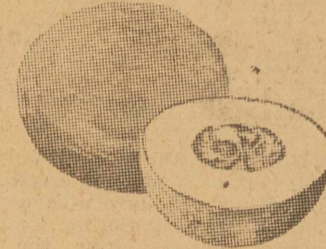


HOME-GROWN CORN  
From R. B. Preston Farm  
Large Ears **3c** Large Ears EACH



VINE RIPENED, EXTRA LARGE

## CANTALOUPE



### PEACHES

FREESTONES. Just try some of these for a wonderful flavor.

Pound **9c** Pound

**3** NICE ONES for **14<sup>c</sup>**

### NECTARINES

New crop, and they are absolutely delicious.

Pound **9c** Pound

### GRAPES

THOMPSON SEEDLESS

Pound **10c** Pound

### PLUMS

SANTA ROSAS

Pound **10c** Pound

### CHERRIES

BLACK BINGS

The last time this year

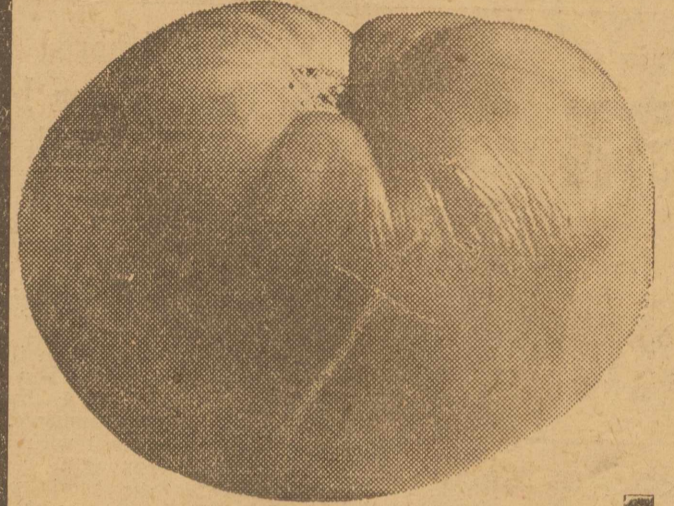
Pound **12c** Pound

### APRICOTS

CALIFORNIA TILTONS

Do not miss this bargain

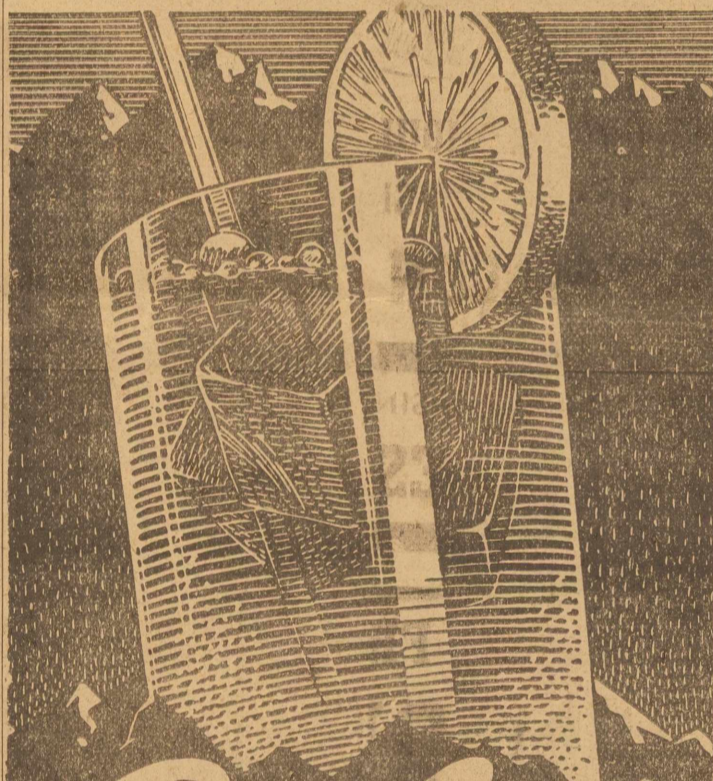
Pound **12c** Pound



## TOMATOES

Large home-grown ones, vine ripened and with a delicious flavor. Be sure and come early Friday morning and buy some of these wonderful tomatoes while they are fresh.

Pound **6c** Pound



# Cooling

...and Healthful too  
Cold Lemonade  
or Iced Tea with

## Sunkist Lemons

360 Size **23<sup>c</sup>** 360 Size DOZEN



FRESH GREEN LIMA

## BEANS

Here Is Really a Bargain

lb. **9c**

KENTUCKY WONDER GREEN

## BEANS

This is the finest bean on the market

lb. **9c**



RHUBARB

Pound

**5c**



ICE COLD MELONS

Served every day at our fountain. Try a slice for

**15c**

Also melons for only

**39c--49c**

& **50c**



ENGLISH PEAS

Pound

**9c**



WHITE ONIONS

Pound

**3c**

## Avocados

EXTRA LARGE SIZE

**2 for 19<sup>c</sup>**

## CELERY

NICE LARGE WELL BLEACHED STALKS FROM VENICE, CALIFORNIA

Each **10c** Each



CUCUMBERS

Pound

**9c**



EGG PLANT

Pound

**9c**



CAULIFLOWER

Pound

**15c**

## Lettuce

SALINAS CALIFORNIA ICEBERG

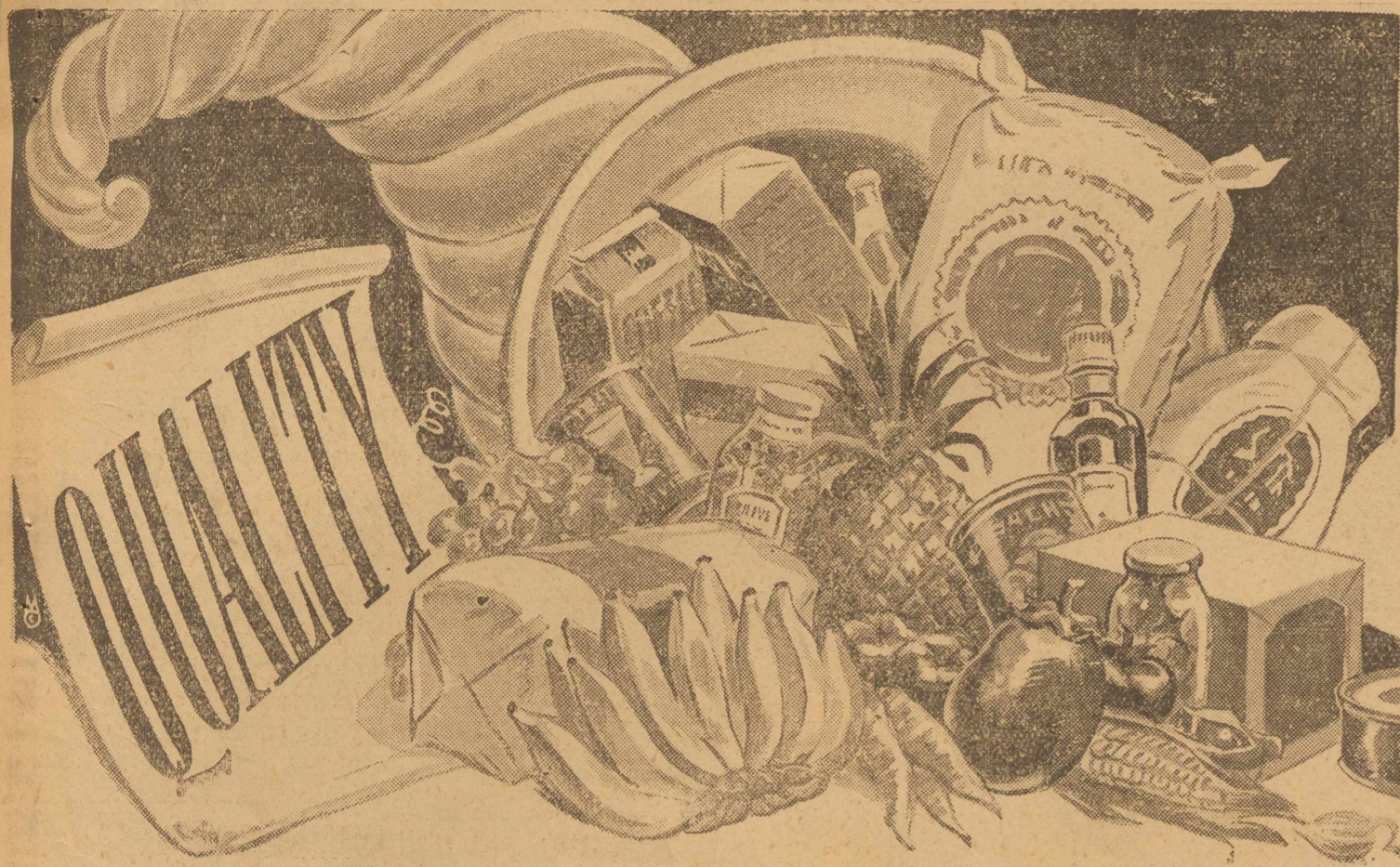
**2 for 15<sup>c</sup>**

# CONNER BROS. PIGGLY WIGGLY

MIDLAND

Specials for Friday and Saturday, July 14th and 15th

TEXAS



# GROCERY SALE PIGGLY WIGGLY

Midland, Texas--Specials for Friday and Saturday, July 14th and 15th

PRIMROSE  
**CORN** No. 2 Can  
2 for **25c**

DEL MONTE GREEN  
**BEANS** No. 2 Can  
Early Garden **14c**

POWDERED, OR BROWN  
**SUGAR** Pkg. **8c**

DEL MONTE  
**PEARS** No. 2 1/2 Can  
Each **19c**

ALL FLAVORS  
**JELLO** Pkg. **5c**

RANCH STYLE AND FIRESIDE  
**BEANS** 2 for **17c**

**RED SEAL SHOESTRING POTATOES--3 FOR ... 25c**

**PECAN VALLEY FRESH BLACKEYED PEAS** No. 1 Can **9c**

**Hearts Delight Fruit for Cocktail** No. 1 Can  
2 for **25c**

**PIGGLY WIGGLY SALAD DRESSING** QUART **32c**

**C. H. B. No. 1 Can TOMATO Juice** EACH **7c**

**No. 2 Can STANDARD PACK TOMATOES** EACH **6c**

**LAMB WHITSON NEW POTATOES** No. 2 1/2 Can  
EACH **9c**

**No. 2 Can TEXAS GRAPEFRUIT JUICE** EACH **5c**

**DEL MONTE PINEAPPLE JUICE** 46-OZ. CAN **27c**

**WHITE SWAN FRESH PRUNES** No. 2 1/2 Can  
2 for **25c**

**Sliced or Crushed Del Monte Pineapple** No. 2 1/2 Can **20c**



LARGE SIZE PKG. **21<sup>C</sup>** LARGE SIZE PKG.

ARMOUR'S VEGETOLE  
**COMPOUND** 4-lb. Carton **37c**

PARD  
**DOG FOOD, 2 for . 15c**

PIGGLY WIGGLY  
**COFFEE** POUND PACKAGE **20c**

POST  
**TOASTIES, pkg. . . . 9c**

TEXAS No. 2 Can  
**BLACKBERRIES** **9c**

DEL MONTE  
**PEACHES** No. 2 1/2 Can **16c**

## WEEK-END MEATS

PICNIC MEATS

COLD CUTS

We have the most complete assortment of picnic meats and cold cuts in West Texas. Over 100 varieties of these meats to make your selections from. See us and plan your picnic now.

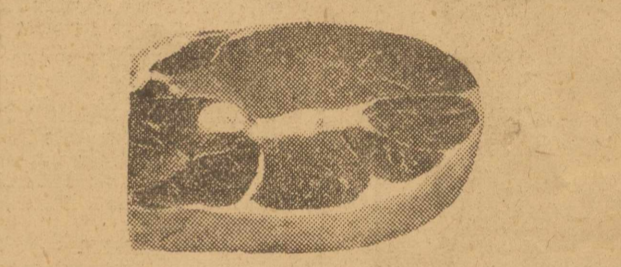
**ASSORTED LUNCH MEATS** POUND **23c**



ARMOUR'S STAR  
Sliced  
**BACON** lb **27c**



SWIFT'S PREMIUM  
QUICK SERVE  
Cooked and Ready to Eat  
**HAMS** 1/2 or Whole lb **30c**



SWISS ROUND  
**STEAK** lb **29c**

WISCONSIN LONGHORN  
**CHEESE** lb **20c**

SUGAR CURED SLICED  
**BACON** **19c**

FROM CHOICE, CORN FED, WELL AGED, BABY BEEF  
**PRIME RIB ROAST** BONED ROLLED TIED lb. **35<sup>c</sup>**

FROM GENUINE SPRING LAMB NOT MUTTON  
**LEG-O-LAMB** lb. **25<sup>c</sup>**  
**LAMB SHOULDER ROAST** BONED ROLLED TIED lb. **23c**

Plenty of Our Own MILK FED  
**Fryers**  
DRESSED WHILE YOU WAIT  
**25<sup>C</sup>** POUND

Plenty of Fresh DRESSED  
**HENS**  
EVERY ONE GUARANTEED  
**20<sup>C</sup>** POUND





