

The **BIG NEWS** *You've Been Waiting for!*

Texas ...

VALENCIA ORANGE SALE!

NEW CROP
MORE JUICE
SWEETER, TOO, I BETCHA

Texsun Valencia
Extra Sweet!

Texsun Valencia
Oranges 176 Size Dozen **19^c** 5 Doz. **89^c**

Grapefruit Texas Seedless 64 Size 4 for 15^c	Cauliflower Head 10^c
Fresh Lettuce 2 Lg. Heads 15^c	Fresh Carrots 2 Bunches 5^c
Fresh Tomatoes lb. 10^c	Potatoes Idaho Rurals 10 lbs. for 19^c

Hot House Rhubarb
Fresh Tasty lb. **10^c**

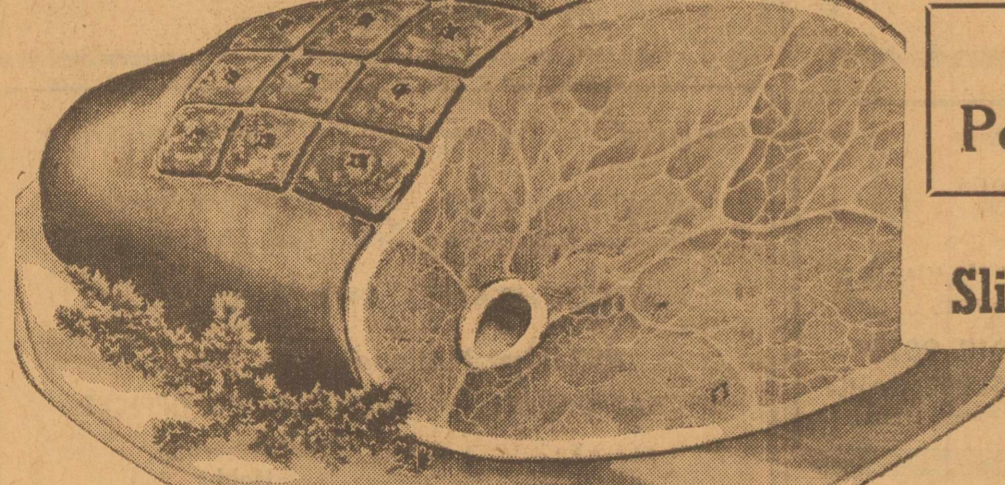
Strawberries
Fancy Quality Florida Berries Pt. Box **15^c**

Frontier Brand
Peanut Butter Quart Jar **25^c**

Clabber Girl
Baking Powder 2-lb. Can **19^c**

Vanilla Wafers lb. Bag 15^c	A. Y. Bread 24-oz. Loaf 12^c
C. H. B. Pickles 6-oz. Jar 10^c	Waverly Cocoa 2 lb. Can 15^c
Durkee's Black Pepper 1 1/2-oz. Can 5^c	Syrup Sleepy Hollow Pt. Tin 17^c
Borax Washing Powder Sml. Box 5^c	Hot Cake Flour Big Hit 3 lb. pkg. 10^c

Sugar Cured HAMS



Whole or Half
Pound 20^c

Armour's Star
Sliced Bacon lb. 27^c

Fleischmann's
Yeast
2 Cakes **5^c**

Milk Fed—Dressed and Drawn
Frying Chickens each **49^c**

Large Fat Hens Dressed and Drawn each **59^c**

Cottage Cheese lb. 10^c	Sirloin Steak lb. 27^c
Pork Chops Lean Loin lb. 19^c	Beef Roast Seven Cut lb. 19^c
Mixed Sausage lb. 12 1/2^c	Pork Roast Shoulder Cut lb. 18^c
Bologna Sliced or Piece lb. 10^c	Roast Thick Short Rib lb. 15^c

Mission Flakes
TUNA 2 1/2 Size Cans **25^c**

Flour Kitchen Craft 6-lb. Bag **23^c** 24-lb. Bag **65^c**

Sugar Fine Granulated 10 lb. Bag **49^c**

Maximum Milk 3 Tall Cans **19^c**

Coffee Airway 3 lb. Pkg. **42^c**
Edwards lb. **21^c**

Lady Betty
Potato Salad 14-oz. Can **10^c**

Meal Mammy Lou 10-lb. Bag **25^c**

Dreft Large Box **22^c**

Wheaties 2 Pkgs. Wheaties All Three **25^c**
1 Pkg. Corn Kix

Purity Brand
Oats Pan-Toasted Sml. Box **5^c**

Libby's
Corned Beef 12-oz. Can **17^c**

A Scot Product
Waldorf Tissue 4 Rolls **15^c**

White King
Granulated Soap 24-oz. Box **19^c**

Crisco For All Purpose Baking 3 lb. Can **50^c**

Pork and Beans Van Camp's 3 Giant Cans **25^c**

Lipton's Tea 1/4-lb. Pkg. **23^c**

Camay Soap 3 reg. Bars **17^c**

White King Soap reg. Bar **5^c**

February Has Many Tasks for Alert Garden Maker

The following suggestions for the gardener in February are reprinted here through courtesy of Mrs. Hal Peck, on behalf of the beautification committee of the chamber of commerce:

Prune all trees and shrubs, except those that bloom in early spring. Prune worthless and dead wood from rambler, briar and pillar roses, but do not prune your roses generally until early in March, as they start growing immediately after pruning and the new growth may be killed by cold.

If you have not already planted your roses, trees, shrubs and evergreens do so now—the quicker the better. The sooner they are established the longer time they will have in which to grow root systems before the arrival of hot, dry weather.

Ventilate frames and hot beds on warm days. Prepare cold frames and enrich. Purchase your seeds for the coming season and test them. Plant annual flower and vegetable seeds indoors. Study the plant catalogs. Nurserymen are offering many new and interesting plants together with the old dependables.

Time for Gladioli. Plant gladioli bulbs if you did not set them out in January, that you may have the earliest bloom possible. Plant six inches or more apart and the same depth in rich, well-drained soil.

Change locations for plants that have root-crowding tendencies. Mulch and enrich idle flower beds, keeping this program away from beds that have plants and flowers, other than those containing pansies and other winter-bloomers, for fear of starting new growth. Grow a new plant, tree or shrub this year.

Experiment with your shrub branches by bringing sprays indoors and immersing them in water. Swelling buds may surprise you with new beauty, if placed in vases in a warm room. Every backyard or vacant lot these days contains specimens of latent beauty, if one has the eye to see it. One observing woman recently placed a tender green plant, known as Beggar's Ticks, which she found on her lawn, in a glass bowl and discovered it to be a pleasing decoration for her breakfast table.

Watch Out for Bugs. Dahlia and canna tubers should be examined. If very dry they may be placed in a moist cellar. If decaying, give more ventilation to dry out. Throw away all dead ones. Soon they may be planted, the cannas out of doors and the dahlias in the conservatory for a while.

Pansy plants may be set out. They should have been planted in early fall. They will give good results even yet, if good plants are used, bought from reliable dealers. Plant in rows, six inches apart each way, in rich, sandy loam, giving full sun.

Watch for aphids (tiny green or black bugs) just as soon as your sweetpeas are up. Much damage can be done very quickly by these little pests. A nicotine spray will control them.

Look after your houseplants, giving them sunshine which they are needing just now. Watch them for insects and blight, coeleus and begonias being especially susceptible. Fresh air and even-moisture are also favorable factors.

The best time to fertilize your plants is while they are growing. Liquid manure is efficacious for house plants. Prepare this fertilizer by placing a shovelful of the manure into a large container and cover with water. Before using, thoroughly mix with the water, then add to plants as needed.

Winter is the time to set out hardwood cuttings. Tie twigs, of six to eight inch lengths, in bundles of 10 or 12 (preferably branches of "Y" shape), and place in the ground, which has been well loosened, in a sheltered spot, leaving about two inches of stems above ground.

By spring a number should have taken root. These may be planted in a permanent place after danger of freeze or frost is past.

Remember to plant bulbs in holes twice the diameter of the bulbs, and more than three inches in depth. At the bottom of the hole place some good fertilizer, taking care to cover this well with loam before placing the bulb, as the fertilizer must not be in direct contact with the bulb. The use of fertilizer will coax root growth to go deeper, making a firmer and sturdier plant with straighter and better roots—more able to combat the blustery winds of spring.

If transplanting must be done, try to hold as much earth to the roots as possible, taking care to transport with the plant a generous portion of the surrounding soil, that it may not greatly be disturbed.

Don't Clean Fishponds. If you plan to plant snowballs, the north side of the house is the best place for this climate. A hard freeze will help to make the roots sturdier, keeping back top nurture. Some of the syringas, the mock orange and the lilac, might do well in such a location also, although the lilac, like the crepe myrtle, is subject, with degrees, to mildew.

Do not clean out lily pools where fish are kept in the springtime, as the spawn is likely to be destroyed. Better do this in the summer, or fall.

Go over your junipers and cedars, carefully removing remnants of the bagworm. Many still cling to the branches, a hangover during the mild winter. Sack and burn all bags as these will soon begin to hatch for renewed attacks.

The Chinese have an old proverb which runs: "If you would be happy for three hours, get drunk; If you would be happy for three days, kill a pig and eat it; If you would be happy for three months, get married. But if you would be happy all your life— Become a gardener."

VICKS aids to symptomatic control of **COLDS**

Vicks VA-TRO-NOL helps PREVENT colds from developing. Specially designed for nose and upper throat where most colds start. Put a few drops up each nostril at first warning of sniffle or sneeze.

Vicks VAPORUB RELIEVES MISERY of developed colds. A family standby in most homes all over the country. Massage it on throat, chest, and back. No dosing, no stomach upsets.

WORLD'S MOST WIDELY USED MEDICATIONS OF THEIR KIND

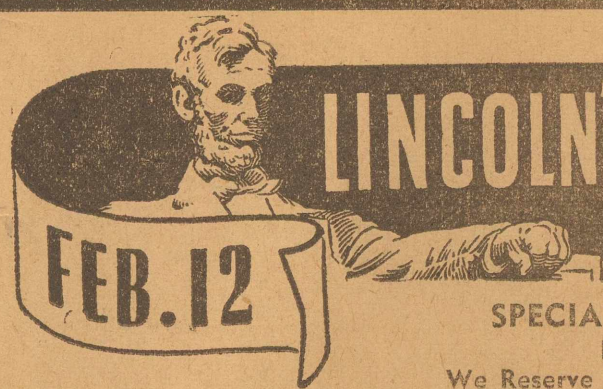
MILK—
The Universal Food
BANNER MILK
Absolutely Unexcelled
Properly Pasteurized
Frigid Filtration
for Better
Flavor!

Banner CREAMERY

We Reserve the Right To Limit Quantities. None Sold to Merchants

SAFEWAY

117 North Colorado
Telephone 1288



LINCOLN'S BIRTHDAY

FEB. 12

SPECIALS FOR FRI. & SAT., FEBRUARY 10-11
We Reserve the Right to Limit Quantity

FOOD



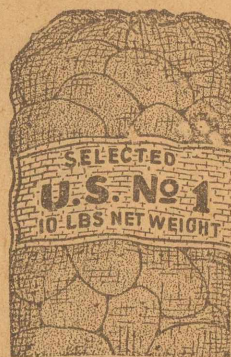
POTATOES

IDAHO WASHED MUG

RUSSETS

IN MESH BAGS

10 LBS. 29c



Strawberries 2 BOXES 25c

Lettuce, 2 heads 9c Cabbage, pound 3c

Oranges SUNKIST 220 SIZE DOZ. 25c

GRAPEFRUIT 96 Size DOZEN 25c Celery Large Well Bleached Stalks, 2 for 25c

APPLES

138 Winesaps Ex. Fancy, Doz. 29c 150 Delicious Ex. Fancy, Doz. 25c

ORANGES

DOZ. 289 SIZE SUNKIST 10c

VEGETABLES



THE BEST OBTAINABLE

Fresh-Attractive

3 LARGE BUNCHES 10c

MIRACLE WHIP

SALAD DRESSING

QT. 37c



NO BETTER COFFEE MADE

FOLGER'S COFFEE

CHOICE OF MILLIONS



IT'S MOUNTAIN GROWN

POUND 27c

MOST DELICIOUS TASTE

DREFT

Large Box

22c

Works Wonders in Hard Water



BANNER BUTTER
POUND 28c

SAVE

FRESH COUNTRY EGGS
GUARANTEED DOZEN 15c

SAVE

PURE CANE SUGAR
CLOTH BAG 10 LBS. 50c

SAVE

LINEN MOPS
EACH 25c

LIGHT CRUST FLOUR

6-LB. SACK 29c 12-LB. SACK 49c
24-LB. SACK 82c 48-LB. SACK \$1.61

- Pecan Valley Green Beans, No. 2 10c
- Pinto Beans, 2 pounds 15c
- Pickles, sour or dill, qt. 15c
- Paper Napkins, pkg. 5c
- Rip Rap Wax Paper, 40 ft. roll 6c

KRAFT'S DINNER

A MEAL FOR 4 IN 9 MINUTES 16c

- No. 2 Can Primrose Corn, 2 for 25c
- Brer Rabbit Syrup, No. 2 1/2 can 22c
- Northern Tissue, 3 rolls 19c

BROOMS EACH 25c

LIQUID WAX Johnson's Pint size 55c

- Del Monte Catsup, 14-oz. 15c
- Red Seal Shoe String Potatoes, tall can 9c
- Salmon, 16-oz. can 12c
- Pure Maid Peanut Butter, qt. 25c
- 5 lbs. Soap Chips 33c
- P. & G. Soap, 6 bars 22c
- Crackers, 2 lbs. 15c

GRAPEFRUIT JUICE 46-OZ. BESTEX 18c

Pure Maid Tamales, 16-oz. can. 13c
Pure Maid Chili, 16-oz. can. 17c

Jergen's Unwrapped Hardwater Soap, 6 bars 15c
Worth Brand Maple Flavored Syrup, 21-ounce can 16c

SHOULDER ROAST
ARMOUR'S BABY BEEF
LB. 16c

∴ Market Specials ∴

BACON HAND SLICED LB. 20c

ARMOUR'S STAR BACON
SLICED
LB. 27c

FRYERS FRESH DRESSED LB. 28c · **HENS** SMALL DRESSED LB. 18c

ROAST BONELESS PORK--LB. 23c **MEAT LOAF** 1/3 PORK FRESH GROUND 2 lbs. 29c

STEAK PORK CUT FROM LOIN--LB. 20c **ROUND STEAK** lb. 29c

ROAST CHUCK & SEVEN--LB. 16c **CHEESE** RED RIND WISCONSIN AGED lb. 35c

QUALITY MEATS LOIN STEAK POUND . . 27c **QUALITY MEATS**

WES-TEX FOOD MARKET

MIDLAND, TEXAS



**! HOUSEWIVES !
DO NOT FORGET
CONNER BROS.**



**PIGGLY WIGGLY
MIDLAND TEXAS IS THE PLACE**

Yes, Conner Bros. is **THE PLACE!** Day in and day out, you will receive the most for your money spent by shopping at the Piggly Wiggly. So get the habit and buy your week-end specials at Conner Bros.

**SPECIALS FOR FRIDAY & SATURDAY,
FEB. 10th & 11th**

SUGAR PURE CANE 10 POUND CLOTH BAG FOR 49^c

CHECK THIS LIST

- SCOTTOWELS PKG. 9c
- SCOTTISSUE--2 ROLLS 15c
- PARD DOG FOOD--3 FOR 23c
- GRAPE JUICE Monarch Pts. 17c
Qts. 31c
- Ranch Style Beans--2 FOR 17c
- Dole's Pineapple No. 1 Tall Can 10c
- PEARS Hearts Delight No. 1 Tall Can 2 FOR 22c
- PEAS Dinner Club No. 2 Can, Extra Sifted 2 FOR 25c
- GREEN BEANS Yacht Club No. 2 Can 10c
- Blackeyed Peas Fresh Snapped and Shelled 2 for 15c
- Sour or Dill Pickles Qt. 2 for 25c
- GREEN RIPE OLIVES CAN 22c
- FRENCH MUSTARD 6-oz. 9c
9-oz. 12c
- Our Darling Corn No. 1 can--3 for 25c
No. 2 can--2 for 25c
- TOMATOES No. 1 Yacht Club 9c
- Old Dutch Cleanser--2 FOR 15c
- Shoe String Potatoes--3 FOR 25c
- CHOCOLATE PUFFS POUND PKG. 14c
- Heinz Tomato Juice No. 1 Tall Can 2 for 15c
- SUN-RAY CRACKERS 2-lb. Box 13c
- RIPPLED WHEAT PKG. 9c
- KLEENEX 200 Sheets--2 for 25c
500 Sheets--2 for 55c
- MOTHER'S OATS PKG. 24c
- Sanka or Kaffee Hag--lb. 37c

FOLGER'S COFFEE, lb. 28c

MRS. TUCKER'S SHORTENING, 4-lb. Carton . . . 39c

SHELLED PECANS, lb. 39c

BALLOON SOAP FLAKES

5 LB. BOX

34c SPRY

3 lb. 49c
6 lb. 97c

Pet MILK

3 Large or 6 Small Cans for

20c

AUNT JEMIMA CORN MEAL 5 lbs. for 16c

ALL-SWEET OLEO One glass free with each pound 20c

Sioux Bee HONEY 12-oz. for 34c

HERSHEY'S BAKING CHOCOLATE 1/2-Pound Bar 12c

FLOUR LIGHT CRUST

24

lbs. for

76c

48

lbs. for

\$1.45

FRESH

FRUITS & VEGETABLES

- California Sunkist Lemons 360 Size Dozen 25c
- Texas Oranges 252 Size Dozen 10c
- FRESH RUTABAGAS lb. 6c
- AVOCADOS EACH 5c

Extra Special

- FRESH FLORIDA TOMATOES--2 LBS. FOR 25c
- LETTUCE--2 FOR 9c
- CELERY--2 FOR 29c
- RHUBARB--lb. 8c
- IDAHO RUSSET POTATOES 10 lb. Mesh Bag 29c
- IDAHO RUSSET POTATOES 10 lb. Paper Bags 19c
- ROME BEAUTY OR WINESAP

APPLES DOZ. 25c

FOUNTAIN NEWS

Not "SLOWLY BUT SURELY" but "BY LEAPS AND BOUNDS" our "FOUNTAIN DEPT." is becoming the most popular spot in town to eat and get your favorite fountain drink.

Ladies, here is an idea. Why worry with cooking breakfast on Friday and Sat. when we have our "SPECIALS" on in the grocery and meat department? Send your husband down and let him have a nice breakfast with us. You can sleep a little longer, get up, come down, have your breakfast with us, "DO YOUR SHOPPING IN THE SAME STORE." Back home early, and house cleaning is a pleasure. Suggest to your husband that he eat breakfast here several times a week.

WE ALSO HAVE YOUR FAVORITE MAGAZINE!

WEEK-END MARKET VALUES

Genuine Spring LAMB--NOT MUTTON

- LAMB LEG POUND 25c
- LAMB Shoulder Boned, Rolled and Tied POUND 23c
- ARMOUR'S BANQUET SLICED BACON LB. 26c
- ARMOUR'S STAR CURED HAM 1/2 or whole POUND 23c
- CHOICE BABY BEEF CHUCK ROAST LB. 15c
- DRESSED HENS Every one guaranteed and they are fresh dressed POUND 20c
- Our Own Pure Pork Sausage in the Bag LB. 20c
- PORK CHOPS, Nice and Lean POUND 19c
- PORK SHOULDER ROAST POUND 17c
- SWIFT'S PREMIUM SLICED BACON LB. 30c
- Swift's Brookfield Pattie Sausage POUND 19c

Plenty of our own milk-fed fryers, dressed while you wait.
Fresh Fish—Shrimp—Oysters

TOMATOES

No. 2 Standard Can

EACH 6^c

