



DON'T MISS THESE HIGH QUALITY **FOODS** AT OUR LOWER PRICE LEVELS

**SAVE** ON

this list of Bargain  
**GROCERIES**

Offered You Friday and Saturday, April 29-30!  
BY THE TWO  
**PIGGLY WIGGLY STORES**  
DOWNTOWN & SHOPPING VILLAGE  
BILL & ELLIS CONNER  
We Reserve the Right to Limit Quantity

**meat**  
QUALITY VALUES

CANADIAN  
**BACON** PER POUND **47c**

ARMOUR'S STAR OR SWIFT'S PREMIUM  
**Sliced Bacon** PER LB. **32c**

ROAST FROM CHOICE CORN-FED  
BABY BEEF:  
**Rolled, pound 18c**  
**Seven, pound 16c**

PURE PORK  
**Sausage** In the Bag, lb. **21c**

NICE & LEAN  
**Pork Chops** PER LB. **27c**

WISCONSIN  
**LONGHORN CHEESE, lb. 23c**

PHILADELPHIA  
**CREAM CHEESE** 2 Pkgs. **15c**

**Picnic Hams** PER LB. **19c**

HOME  
**Sliced Bacon** PER LB. **27c**

CURED  
**Ham Ends** PER LB. **19c**

GENUINE SPRING LAMB: (LB.)  
**LEG 27c CHOPS 33c PATTIES 21c**

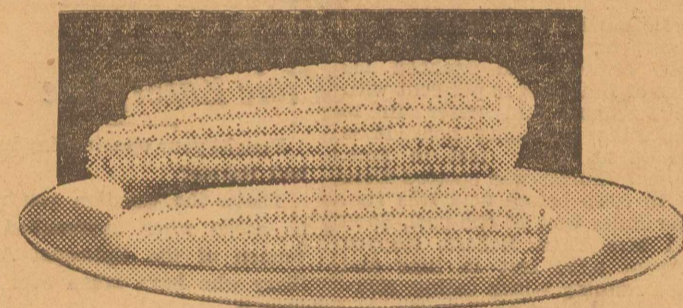
**PRODUCE**

GREEN BEANS FANCY FLORIDA, POUND **10c**  
FRESH BLACKEYED PEAS, LB. **7½c**

**TOMATOES**

FRESH POUND **10c**

**ROASTING EARS**



6 REAL NICE ONES FOR **25c**

FANCY NEW POTATOES, LB. **4c**  
252 SIZE CALIFORNIA ORANGES, DOZEN **17c**

FANCY YAMS POUND **5c**  
200 SIZE TEXAS ORANGES, DOZEN **25c**

SEEDLESS GRAPEFRUIT, 6 FOR **21c**  
BUNCH VEGETABLES, 3 FOR **10c**

125 SIZE WINESAP APPLES, DOZEN **25c**  
150 SIZE DELICIOUS APPLES, DOZEN **19c**

FANCY BELL PEPPERS, LB. **9c**  
CUCUMBERS: NICE SIZE, LB. **7½c**

FRESH FIRM CABBAGE, LB. **3c**  
LELAND'S BEST FRESH ASPARAGUS, BUNCH **10c**

GOLD MEDAL OR LIGHT CRUST FLOUR, 48-lb. \$1.85; 24-lb. **95c**  
PECAN VALLEY FRESH BLACKEYED PEAS, No. 1 can, 3 for **25c**

SPAM, a new Hormel meat, 12-oz. **29c**  
CRUSHED OR SLICED DEL MONTE PINEAPPLE, No. 1 flat, 2 for **16c**  
WILSON TAMALES, in glass, shuck wrapped, 1-lb. jar **19c**

WHEATIES, telescope free, 2 for **23c**

MANY BRANDS OF DOG FOOD  
Be sure to see our display and special prices  
A REAL BARGAIN IN CASE LOTS

**Banner Butter**  
**Lb. 26c**

SPUDS NO. 1 IDAHO 10 POUNDS **19c**  
**CAMAY, 3 Bars . . 20c**

Marvelous New Suds  
**Odreft** 1 SMALL-1 LARGE **22c**

FRESH PRUNES, White Swan, 2½ can, 2 for **25c**  
SUGAR, pure cane, cloth bags, 10 lbs. **52c**

**FOLGER'S COFFEE LB. CAN 25c**

SNOWDRIFT, 6 lbs. \$1.01, 3 lbs. **53c**  
FRESH OREGON APPLE JUICE, 3 for **25c**  
KRAUT, fancy quality, 2½ can **10c**  
EXTRA SIFTED DINNER CLUB PEAS, No. 2 can **10c**

(Plymouth Maid 12c)  
JOHNSON'S GLO COAT, Pt. **49c**  
(FREE—39c can with purchase of 1 pint)

GEBHARDT'S SANDWICH SPREAD, Delicia brand, 2 for **15c**  
BROWN'S VANILLA WAFERS, 13½-oz. **19c**  
CALUMET BAKING POWDER, lb. **19c**  
PALMOLIVE SOAP, 2 for **11c**  
BAKER'S COCOANUT, Premium, ¼-lb. **7c**  
FANCY CORN, whole kernel, cream style, No. 2 **10c**

**GALLON VEGETABLES**

WHOLE KERNEL CORN **47c**  
GOLDEN BANTAM CORN **42c**  
EARLY JUNE PEAS **39c**  
FANCY TOMATO CATSUP **47c**  
FRENCH LICK TOMATO JUICE **36c**

**GALLON FRUITS--FANCY OREGON PACK**

APPLES **37c**  
PEARS **47c**

HEINZ FRESH CUCUMBER PICKLES, New Octagon, jar **16c**

**EGGS, ABSOLUTELY FRESH, DOZ. 17c**

MIRACLE WHIP, pint **21c**  
(FREE—Small bottle French Dressing with each pint bought)  
OLD DUTCH CLEANSER, 2 for **13c**

**LIPTON'S TEA**

1-lb. **79c** ½-lb. **40c** ¼-lb. **21c**

Glass FREE with each ¼-lb.

GEBHARDT'S SPICED BEANS, 2 for **17c**  
JOHNSON'S PASTE WAX, lb. **57c**

39c can FREE with lb. purchase  
GOLD BAR ORANGE JUICE, 15-oz. can, 2 for **23c**  
HEINZ PEANUT BUTTER, lb. 27c; 6-oz. **12c**

SAYMAN'S SOAP, 2 for **14c**  
Best for the baby, hair, skin and complexion

FLIT FLY SPRAY, Pint **17c**

BIG 4 OR BALLOON SOAP FLAKES, Giant Size **32c**



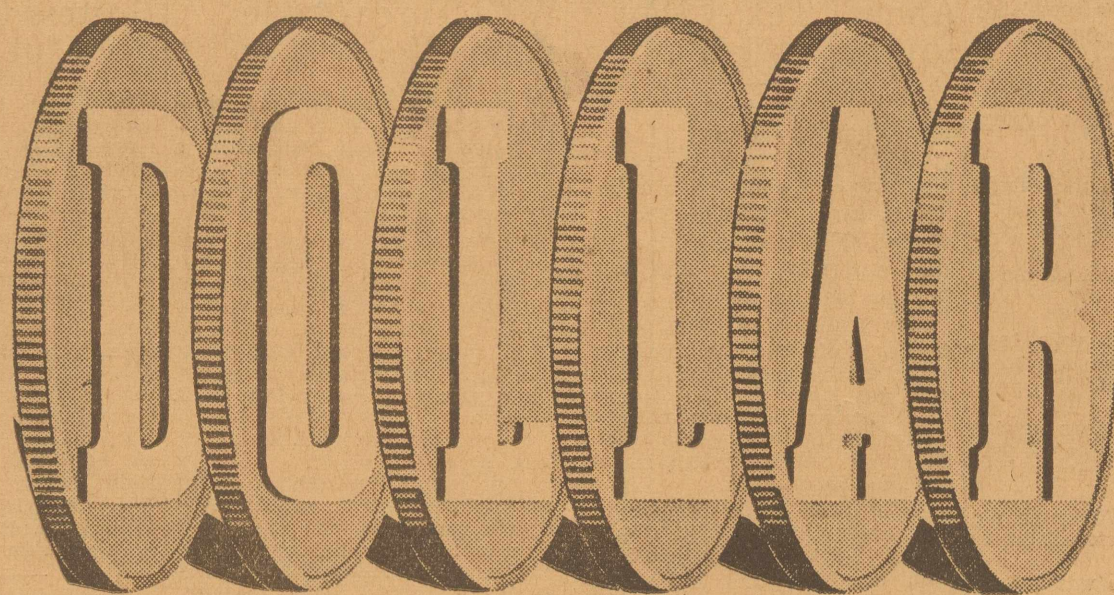
**6 BARS 23c**

SHELL SALMON, Pink, 2 for **25c**  
MONARCH SHRIMP, in glass **29c**



# RHOADS' WES-TEX FOOD MARKET

Offers These Outstanding



# SAVING SPECIALS

FOR  
FRIDAY & SATURDAY, APRIL 29-30  
We Reserve the Right to Limit Quantity  
MIDLAND, TEXAS

**FREE! FREE! FREE!**



GET A FREE SAMPLE OF  
KRAFT'S FRENCH DRESSING  
WITH EACH  
QUART OF MIRACLE WHIP  
AT  
**35c**

KELLOGG'S CORN FLAKES

**3 for 23c**



ARMOUR'S STAR CORNED BEEF	<b>21c</b>
DREFT, LARGE BOX	<b>23c</b>
HERSHEY'S 1-LB. CHOCOLATE SYRUP	<b>9c</b>
GRAPE JUICE, QUART	<b>29c</b>

**SUGAR** 10 Pounds **52c**

WAX PAPER, 2 FOR	<b>13c</b>
PAPER NAPKINS, 2 PKGS.	<b>15c</b>
DURKEE'S WORCESTERSHIRE SAUCE	<b>15c</b>
JELLO, ANY FLAVOR	<b>5c</b>
DURKEE'S 8-OZ. FRENCH DRESSING	<b>17c</b>
GALLON TOMATO JUICE	<b>44c</b>
BLATZ 12-OZ. GOLD STAR GINGER ALE	<b>6c</b>
KLEENEX, 200 SIZE 13c; 500 SIZE	<b>29c</b>
FLIT, QUART	<b>37c</b>

GOLD MEDAL OR PILLSBURY'S **FLOUR**

6-LB. SACK	<b>29c</b>	12-LB. SACK	<b>54c</b>
24-LB. SACK	<b>98c</b>	48-LB. SACK	<b>\$1.84</b>



SO FLAVORFUL—YOU USE  
1/4 LESS OF FOLGER'S



ONE POUND CAN  
**25c**

**EGGS** FRESH DOZ. **17c**

TOMATOES No. 2 Cans 2 for	<b>15c</b>
GREEN BEANS No. 2 Can 2 for	<b>15c</b>
BROOMS, EACH	<b>29c</b>
CRISCO, 3-LB. PAIL	<b>59c</b>
PINK SALMON, PER CAN	<b>14c</b>
10 LBS. MEAL	<b>29c</b>
NO. 2 1/2 PEACHES IN HEAVY SYRUP	<b>17c</b>
GIANT OXYDOL	<b>69c</b>
P. & G. SOAP 6 BARS	<b>23c</b>
NO. 2 SPINACH, 2 FOR	<b>15c</b>

*Nationally Advertised Brands*

## Dried Bean Sale

3 LBS. PINTO BEANS  
1 1/2 LB. LARGE LIMA BEANS  
2 LBS. SMALL LIMA BEANS  
2 LBS. NAVY BEANS

**19c**

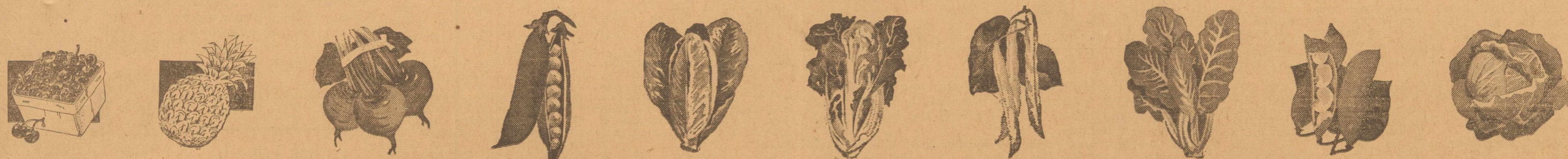
DEL MONTE	
<b>TOMATO JUICE, 2</b>	<b>15c</b>
LIBBY'S NO. 2 TINY SIZE PEAS	<b>19c</b>
PINEAPPLE JUICE, 12-OZ.	<b>10c</b>
STRAWBERRY PRESERVES 2-lb. Jar	<b>47c</b>
APPLE BUTTER, QUART	<b>19c</b>
SOAP CHIPS, 5 POUNDS	<b>35c</b>
GRAPE NUT FLAKES, BOX	<b>10c</b>
HEINZ TOMATO KETCHUP 14-OZ. BOTTLE	<b>21c</b>
SOUR OR DILL PICKLES, QT.	<b>19c</b>

**BANNER BUTTER**  
Pound **26c**



MA BROWN JELLY, 13 OUNCES	<b>19c</b>
HEINZ PEANUT BUTTER, 6-OZ.	<b>14c</b>
HEINZ CUCUMBER PICKLES, 24-oz	<b>24c</b>
CORN Libby's No. 303 Fancy Country Gentleman	<b>14c</b>
8-LB. CARTON LARD ARMOUR'S VEGETOLE	<b>84c</b>
PORK & BEANS Libby's 16-oz., 3 for	<b>19c</b>
JUSTO VINEGAR 25 OUNCES	<b>12c</b>
GRAPE JAM, 2-LB. JAR	<b>21c</b>
CORNED BEEF HASH, 16-OZ. LOYAL	<b>14c</b>
GREEN LIMA BEANS, LIBBY'S NO. 2	<b>18c</b>
DEL MONTE WHITE ASPARAGUS NO. 2 CAN	<b>24c</b>
DEL MONTE TUNA, FLAT CAN	<b>19c</b>

LIPTON'S **TEA**  
1/4 LB. GLASS FREE **23c**  
1/2 LB. 2 GLASSES FREE **44c**



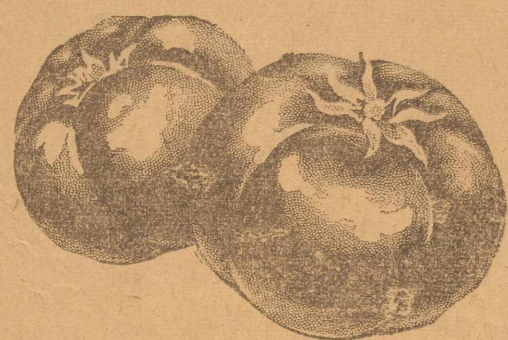
*The Greatest Array of Fine Produce in West Texas*

BROUGHT TO YOU BY  
**RHOADS'**  
**WES-TEX**  
**FOOD MARKET**

SPECIALS FOR  
 FRIDAY & SATURDAY, APRIL 29-30  
 MIDLAND, TEXAS

We Reserve the Right to Limit Quantity

**TOMATOES**



2  
 POUNDS  
**15c**

**SPINACH lb. 5c**

BLACKEYED

**PEAS 2 LBS. FOR 11c**

**White Onions PER LB. 5c**

**Green Beans 2 lb. 13c**

**Cucumbers 2 POUNDS 13c**

**New Spuds 6 POUNDS FOR 25c**

**LEMONS LARGE SIZE SUN-KIST — DOZEN 25c**

**YAMS PER POUND 5c**

**CELERY HEARTS 2 BUNCHES 15c**

CALIFORNIA

**Oranges doz. 25c**

WINESAP

**Apples doz. 25c**

WHITE OR YELLOW

**Squash PER POUND 5c**

**CORN**

ON THE COB

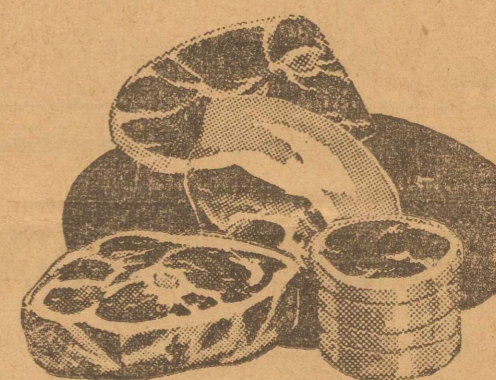
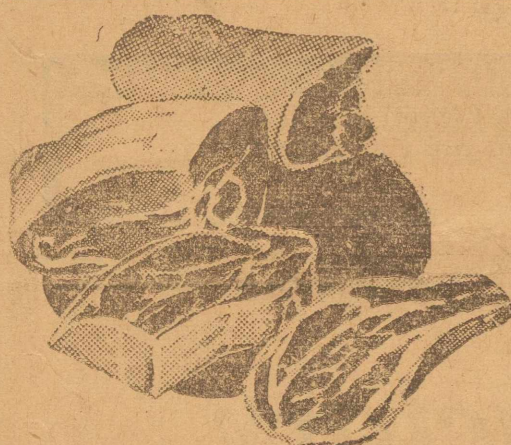
**6 Ears 19c**



**Market Specials**

WE FEATURE THE

*Finest Government Stamped Meats*



**Large Bologna**

2 POUNDS FOR **25c**

WES-TEX PURE

**Pork Sausage**

IN CLOTH BAGS, LB. **24c**

ARMOUR'S CLIMAX

**BACON** SLICED 1-LB. PACKAGE **26c**

CORN FED BABY BEEF

**Chuck Roast** PER POUND **18c**

BABY BEEF SHOULDER

**Arm Roast** PER POUND **23c**

**Armour's Star Bacon lb. 33c**

**No. 7 Steak** PER POUND **19c**

We Have Plenty of Fresh  
 DRESSED FRYERS AND HENS

RATH'S BLACK HAWK

**Canned Hams**  
 Each **89c**

**Lamb Shoulder Roast lb. 20c**

**LAMB CHOPS lb. 37c**

**Large Sour Pickles each 3c**

**Asst. Lunch Meats lb. 22c**

**Sliced Cat Fish lb. 38c**

**DELICATESSEN MENU**

- SPARE RIBS & DUMPLINGS, PINT . . . . . 25c
- VEGETABLE BEEF LOAF, POUND . . . . . 30c
- BREADED VEAL CUTLETS, POUND . . . . . 40c
- FRIED CALF LIVER & ONIONS, POUND . . . . . 30c
- BAKED SHORT RIBS, POUND . . . . . 25c
- BARBECUED BEEF, POUND . . . . . 35c
- WEINERS & NOODLES, PINT . . . . . 25c
- CORNBREAD STICKS, EACH . . . . . 1c
- TURNIPS & GREENS, PINT . . . . . 15c
- NEW POTATOES, PINT . . . . . 20c
- CARAMEL SWEET POTATOES, PINT . . . . . 20c
- GREEN BEANS, PINT . . . . . 20c
- BUTTERED SUMMER SQUASH, PINT . . . . . 20c
- APPLE CRUM PIE, PINT . . . . . 20c
- POTATO SALAD, PINT . . . . . 20c
- CHICKEN SALAD, POUND . . . . . 35c
- FRUIT JELLO, PINT . . . . . 20c
- PIMIENTO CHEESE SPREAD, POUND . . . . . 35c
- HAM SPREAD, POUND . . . . . 35c

Fairy Tales Alay Fright. SCHEENECTADY, N. Y. (U.P.) — Mrs. C. C. Herskind recited fairy stories to quiet her two "imprisoned" children. The youngsters had locked themselves in the bathroom of their home. While the mother recited the stories, firemen bored a hole through the door and snapped the lock, freeing the children.

are not for the modern room. Use plain net or some of the new sheer acetates for glass curtains and straight, simple hangings of floor or shorter length as you prefer.

Happy Contrasts.

Harmonious contrasts lend charm to a room. Hence, one that has plain floor coverings and plain walls or furniture can use, with good effect, figured or striped drapes of contrasting shades.

Tailored Modern.

Lacy ruffles and intricate drapes

The PAYOFF

By JESS RODGERS.

If you see the Midland Cardinals play any of their first three games, it will cost you just exactly \$1.10. That means that the tickets will be priced the same Friday, Saturday and Sunday. The decision was made by members of the baseball council at a meeting last night and resulted only after arguments for dropping the price after the opener had been heard.

In view of the fact all money taken in the first three days (up to \$2,000) is to be returned to the merchants, members of the council felt that the merchants would have a better chance of recovering a large percentage of what they put in if the same price was designated for all of the series with Big Spring.

They pointed out that the merchants who underwrote the team were almost certain to suffer a loss up to 25 per cent on their investment, and voiced the opinion the fans would not be averse to paying the \$1.10 when they realized this. One member declared that if some of the merchants were willing to take a chance on losing \$100 or more the fans should not "gripe" over being out an extra \$1.50 to see three games.

After the Sunday game, the price will drop to 50 cents, with purchases of three tickets at a time costing only 40 cents. Members of the council strongly declared that if there were any criticisms to be voiced over the admission price they wanted them directed at the council and not at the club president Fincher Withers. They said Withers had offered to charge at the gate only what the council agreed should be charged—even if it was only a dime.

Frankly, we believe—and argued that way at the meeting—that the hold over of the \$1.10 admission price for two days will hurt, and that there will not be half as many people pay that amount as would pay 50 cents. In particular, it is likely to keep Big Spring fans from following their team over here Sunday. Their small opening day crowd was blamed exclusively on the fact \$1.10 was being charged.

No doubt a lot of fans had planned on missing the first game and turning out for the second or third one when the price would be some what less than half price. And they can't be blamed. But there is nothing that can be done about it now. The baseball council is the group that has the last say-so and they feel their decision was the best for the club and all concerned. It is now in the hands of the fans to support their decision.

The chief difference between a crocodile and an alligator is in the shape of the head, and the manner in which the teeth are placed in the lower jaw.

WTCC Convention Ends With Address By Sen. Connally

WICHITA FALLS, April 28 (AP). — Election of H. S. Hilburn of Plainview as president and an address by Senator Tom Connally praising recovery measures of President Roosevelt brought to an end Wednesday the annual convention of the West Texas chamber of commerce. Senator Connally told delegates the administration of President Roosevelt had been distinguished by heroic efforts looking toward recovery, and has been given to the humble and lowly as well as to business and commerce.

"Under the president's leadership," he said, "America will vindicate our concept of constitutional democracy." Connally warned America must be prepared to defend herself against international outlaws and land-grabbing dictators and to do this wisely was building a navy capable of defeating an enemy before it reached American shores. "The building by the United States of an adequate navy involves no ambitions of conquest," he said. "It serves simply as a warning to arrogant, swash-buckling, defiant dictators and international outlaws, that in America we purpose to live our own lives under the sanction of our own institutions and constitutional guarantees."

"It is a warning that we are prepared to defend those rights and our material resources and our resources of citizenship and democratic institutions against aggressors from wherever they may come." Dorothy Marie East of Childress won first place in the "My Home 'Town'" speaking contest for high school students, with Charles Garner of Mineral Wells annexing second and Virginia Vaught of Burkburnett third place honors.

In the activities contest for chambers of commerce, the Denton chamber was declared to have the best 1938 work program, while the Breckenridge chamber was cited for the best 1937 accomplishments. Senator Connally told delegates the administration of President Roosevelt had been distinguished by heroic efforts looking toward recovery, and has been given to the humble and lowly as well as to business and commerce.

War Drum of 1812 Owned. CONNEAUT, O. (U.P.). — Police Chief K. A. Pounds owns a tenor field drum used during the War of 1812 by a drummer boy named Clark. Miss Heppy Clark, daughter of the drummer, gave the drum—with sheepskin heads and still in good condition—to Chief Pounds, one of her relatives.

Girl Lives After Heart Stops. BRISBANE (U.P.). — A young Brisbane girl's heart stopped beating during an operation for appendicitis. The doctor immediately made an incision and started massaging the heart. Seven minutes later it started to beat again and the girl recovered.

ASK FOR BANNER PRODUCTS AT YOUR GROCER'S

HOW'S YOUR STOMACH? Oklahoma City—Mrs. Lydia Russell, 310 S.W. 11th St., says: "After eating I would belch gas. Food didn't seem to nourish me, I had no appetite, and I was thin and weak. After using Dr. Pierce's Golden Medical Discovery I enjoyed my meals and had no stomach distress. I felt much stronger, my complexion was clearer and I gained weight." Buy it at your drug store.

SPRING CLEARANCE SALE Your Choice of ANY USED RADIO ONLY \$1.00 DOWN And \$1.00 Per Week ASK ABOUT FREE RADIO BLUE TAG SALE on 1938 MODEL PHILCO RADIOS Floor Samples & Demonstrators ASK ABOUT FREE RADIO Used Ice Boxes & Coolerators As Low As 50¢ DOWN and 50¢ As a Week ASK ABOUT FREE RADIO GENUINE MAYTAG WASHERS Only \$5.00 Down Free Radio Ask Us About It CARNETT'S 210 East Wall

DRINK JAX "THE BEST BEER IN TOWN"

SAY IT WITH FLOWERS And Be Sure They Are BUDDY'S FLOWERS MEMBER F. T. D. 1200-A West Wall—Phone 1083

ASK FOR BANNER PRODUCTS AT YOUR GROCER'S

QUALITY DRY CLEANING PETROLEUM DRY CLEANERS PHONE 1010

Control Most Modern Throughout In keeping with the Cosden policy of maintaining the highest possible standards in the quality and uniformity of its products, no item has been overlooked by the Cosden engineers in installing the most modern equipment known in the oil refining industry. For the past 6 years a constant and consistent program of improvement and enlargement has been followed. Only recently the refinery completed the installation of newest type hot oil charging pumps, which are driven with improved gas engines. This improvement has proven very satisfactory, increasing the capacity of the cracking unit, and improving the quality of the products. Another new installation which has proven very satisfactory is the new continuous treating system, which has recently been installed. And now, Cosden is spending another \$680,000 in addition to the improvements on its great refinery at Big Spring to still further increase the volume and quality of production of COSDEN HIGHER OCTANE GASOLINE Stop at the sign of the COSDEN TRAFFIC COP

Quality Grocery Specials FOR FRIDAY & SATURDAY, APRIL 29 & 30 We Reserve the Right to Limit Quantity SPUDS No. 1 Idaho Russetts 10 pounds 25¢ PEACHES 2 1/2 heavy syrup table, 2 for 35¢ TOMATO JUICE No. 1 tall 3 cans 25¢ LAUNDRY SOAP 6 bars 23¢ PRESERVES 2-lb. Monarch in glass 39¢ SANDWICH SPREAD Gebhardt's deviled 10¢ MEAL Quaker in packages 2 for 19¢ MARSHMALLOWS 1-lb. pkg. 16¢ BARTON'S DYANSHINE SHOE POLISH Liquid 19¢ SHOE POLISH Oil Glow liquid 12¢ SUGAR 10 pounds pure cane in bags 56¢ EGGS Fresh infertile yard, dozen 17¢ SOUP Monarch lg. cans, all flavors, 2 for 25¢ PARD DOG FOOD A meat product 3 for 25¢ MELO Water softener large box 18¢ MARKET SPECIALS BACON Armour's Star or Wilson's, pound 33¢ HAM ENDS pound 19¢ HAM HOCKS pound 14¢ CHEESE Cream pound 20¢ PHILADELPHIA CREAM CHEESE 2 for 15¢ ROAST Baby beef chuck pound 17 1/2¢ ROAST Round bone baby beef, pound 23¢ DRY SALT PORK pound 18¢ PRIME RIB ROAST lb. 25¢ LAMB SHOULDER ROAST lb. 19¢ BUY QUALITY MERCHANDISE—IT PAYS!

Free Delivey WE FILL YOUR ORDERS MOST CAREFULLY 100 PER CENT MIDLAND OWNED M SYSTEM SAVES FOR THE NATION WE SOLICIT 30-DAY ACCOUNTS PHONE 562

MILD, MELLOW, AND TASTY— THAT'S WHAT THEY ALL SAY ABOUT P.A. THE "MAKIN'S" TOBACCO THAT'S GUARANTEED! THE NATIONAL JOY SMOKE PRINGE ALBERT BONDED INSURED MOVE SAFELY THE ROCKY FORD WAY Operating in California, Arizona, New Mexico, Colorado, Oklahoma, Kansas, Louisiana & Texas STORAGE PHONE 400

SPECIAL 50 Feet GARDEN HOSE \$3.50 Lawn Sprinklers & Other Accessories Reasonably Priced. LINCOLN PAINTS A & L HOUSING & LBR. CO. 201 North Carrizo—Phone 149

See Us for MONEY Pay Back in Monthly Payments We lend on automobiles, shotguns, diamonds, and other collateral. MOTOR FINANCE CO. 114 N. Main—Phone 20

FLOWERS See Midland Floral Company's large assortment of seasonal cut flowers—artistically arranged for all occasions. Also, a large variety of blooming plants. MIDLAND FLORAL COMPANY Phone 1286 1705 W. Wall FRED FROMHOLD, Owner Member of Florist Telegraph Delivery Assn.

Introductory Offer On Our LUBRICATION JOBS UNDER THE DIRECT SUPERVISION OF OUR SHOP FOREMAN, WHO IS FACTORY TRAINED. FOR A LIMITED TIME WE OFFER: 2 Thorough Lubrication Jobs and the Beautiful Lawn Chair Shown Below for Only \$2.85 (It's a \$3.50 Value) Know that your car is thoroughly lubricated—Don't take chances—Bring it to us. Our modern equipment and rigid supervision assure you of an A-1 job. Enjoy The comfort of this lawn chair this summer. It is a \$1.50 chair that you get for only 85¢ and two lubrication jobs at \$1.00 each. VANCE ONE-STOP 223 East Wall—Phone 1000



# CARDINALS TO OPEN HOME SEASON TOMORROW

## Game Scheduled To Start 2 P. M.; Neighbors to Hurl

The Midland Cardinals, after losing their first game of the year in Big Spring yesterday, will make their first home appearance tomorrow afternoon when they tackle the Big Spring Barons again. The two

clubs are playing the second game of the series today in Big Spring. All stores will be closed up tomorrow afternoon shortly after 1:30 p. m. and remain closed until four o'clock, in order that all employees who wish to do so may see the game.

A short parade through town of the members of the Midland and Big Spring teams will be held at 12:30. Mayor M. C. Ulmer is scheduled to introduce the boys on the team, make a short address and throw the first ball. Just who the batter and catcher will be hasn't yet been decided. The game will start immediately afterwards, and unless something goes wrong, it will be exactly at 2 o'clock.

Long Cliff Neighbors, speed ball artist of the Cardinals, is due to take the mound for the Cardinals in the opener here. In pre-season games, the righthander has been unbeatable and manager Withers believes he will be able to tame the Barons.

To get back to yesterday's game: The Cards simply kicked the game away. Everything they did was backwards, and mental errors caused more damage than physical errors. They threw to wrong bases, turned their backs on Big Spring runners and let them score, got picked off base, and looked just exactly what they were—a bunch of kids over-

## Yucca Last Times Today



STARTS FRIDAY

Froschauer started on the mound for the Red Birds and was doing all right until the infield fell apart in the third and he was removed for Franklin. The Indian was taken out at the end of the seventh and Parks finished the game.

Midland	A	B	R	H	P	O	A	E
Brown, m	4	1	2	1	0	0	0	0
Zemck, ss	4	0	1	1	3	1	0	0
Morris, L	3	0	1	2	0	0	0	0
Suytar, 1	5	0	2	2	2	1	0	0
Ringer, r	4	0	1	1	0	0	0	0
Dosdoorian, 2	5	0	0	1	0	0	0	0
Larrieu, 3	4	0	0	0	0	0	0	0
Bales, c	4	0	0	8	1	0	0	0
Froschauer, p	1	0	0	0	0	1	0	0
Franklin, p	2	1	1	2	3	0	0	0
Parks, p	0	0	0	1	0	0	0	0
x - Orloff	1	0	0	0	0	0	0	0
Totals	32	2	8	24	9	3	0	0

union with Northern Methodists, decry by opponents as likely of church destruction, was commended today by the Methodist church, south, in a history making address from the college of bishops.

Read by Bishop Hoyt Dobbs, Shreveport, the address embodied recommendations of bishops to the general conference and commended the unification plan, to be formally presented tomorrow, as worthy of consideration and such action as is befitting the most important matter before the church since its organization followed a split in 1844 over slavery.

Two retired bishops, Collins Denny, Richmond, and Warren Candler, Atlanta, did not agree with the plan and did not sign the address.

## Explosion in Mine Fatal to 7 Miners

POTTSVILLE, Pa., April 28 (AP).—Seven men died Wednesday and 10 were seriously burned in the nation's second major mine disaster in less than a week.



SEE—QUICKLY! Don't let cracked Auto door Glass impede your vision for that split-second of time that may be long enough to cause an accident. Why delay replacing—when we fit New Auto Glass so quickly, at so moderate a cost? Avoid broken-glass discomfort, cracked-glass danger! Stop here for New Auto Glass without further delay.

SOUTHERN BODY WORKS 210 So. Main—Phone 477

BOOKS CLOSED! Purchases Payable June 1st.



## SHOE CLEARANCE



LIKE THIS \$3.95 to \$7.50

## SPRING FOOTWEAR

Blacks... Blues... Grays Browns... Tans... Combinations \$2.95

Addison Wadley Co. A Better Department Store Midland, Texas

**INSURE YOUR HOME**

And It's Furnishings Adequately—See Us—

**SPARKS & BARRON**  
General Insurance & Abstracts  
107 West Wall—Phone 79

WE CARRY A COMPLETE STOCK OF TRUSSES

ALL SIZES  
**PALACE DRUG**  
PHONE 38  
MIDLAND, TEXAS

ASK FOR **BANNER** PRODUCTS AT YOUR GROCER'S

# FOOD SPECIALS

For Friday and Saturday, April 29-30

PURE CANE SUGAR CLOTH BAG 10 LBS. <b>49c</b>	ARMOUR'S VEGETOLE 8-lb. Carton <b>84c</b>	U. S. No. 1 White SPUDS 10 LBS. <b>15c</b>	ANY BRAND MILK 6 Small or 3 Large <b>22c</b>
FOLGER'S 1-LB. COFFEE 2-LB. <b>27c</b> <b>53c</b>	FRESH COUNTRY EGGS DOZEN <b>15c</b>	BANNER BUTTER POUND <b>28c</b>	BANNER OLEO POUND <b>15c</b>
PEANUT BUTTER QUART <b>27c</b>	HEINZ CHOW CHOW QUART <b>29c</b>	A-1 CRACKERS 2-LB. BOX <b>19c</b>	RED & WHITE TOMATO JUICE 3 NO. 1 TALL CANS <b>25c</b>
SELECT PINK SALMON 1-LB. CAN <b>15c</b>	CORN MEAL 5 LB. SACK <b>15c</b>	P & G SOAP 6 BARS <b>23c</b>	LIGHT CRUST 24-LB. SACK <b>87c</b>
FLOUR 48-LB. SACK <b>\$1.71</b>	GOLD BAR OR RED & WHITE PEACHES NO. 2 1/2 CAN <b>19c</b>	GOLD BAR FRUIT COCKTAIL NO. 1 TALL <b>15c</b>	COUNTRY GENTLEMAN CORN NO. 2 CAN <b>13c</b>
SPINACH 2 NO. 2 CANS <b>15c</b>	TOMATOES 3 NO. 2 CANS <b>25c</b>	HOMINY NO. 2 1/2 GOBLIN <b>10c</b>	OUR VALUE PEAS NO. 2 CAN <b>10c</b>
VAN CAMP'S PORK & BEANS 2 1-LB. CANS <b>15c</b>	1/2-LB. LIPTON'S TEA 2 GLASSES <b>47c</b>	WHEAT KRISPIES BOX <b>11c</b>	

**MEATS**

LONGHORN CHEESE POUND <b>17c</b>
MORRELL PALACE SLICED BACON POUND <b>25c</b>
ASSORTED LUNCH MEAT POUND <b>23c</b>
NO. 1 DRY SALT POUND <b>13c</b>
CHUCK OR SEVEN BEEF ROAST POUND <b>15c</b>
PORK CHOPS POUND <b>23c</b>

**Fruits & Vegetables**

FIRM CRISP LETTUCE 2 HEADS <b>15c</b>
FIRM FRESH TOMATOES POUND <b>10c</b>
NO. 1 RED NEW POTATOES POUND <b>4c</b>
SUN-KIST LEMONS SIZE 360—DOZEN <b>19c</b>
GOLDEN YELLOW BANANAS LARGE SIZE—DOZEN <b>15c</b>
CALIFORNIA ORANGES SIZE 288—DOZEN <b>19c</b>

LEE DUCKWORTH'S

## RED & WHITE FOOD STORE

BE ECONOMICAL!

Buy all your grocery needs from us next month and watch the cost of living go down.

Pay Cash---Pay Less---and Save! Free Delivery on \$3.00 or More Purchase

## Union of North and South Methodists Urged by Bishops

BIRMINGHAM, April 28 (AP).—

**RITZ** Today Only What a cute little fixer-upper he is!

**'CUPID' PARKER...** THE PEOPLE'S CHOICE FOR MAYOR GANGLAND'S CHOICE FOR A PINE BOX!

**VICTOR MOORE** THIS MARRIAGE BUSINESS ALLAN LANE VICKI LESTER

—Also— "Pictorial" & "Hold That Ball"

## Better Vision

**Better Vision**

CORRECTIVE OPTOMETRY—THE SOURCE OF VISUAL EFFICIENCY

**Dr. W. L. Sutton** OPTOMETRIST

208 West Texas Office Ph. 146—Res. Ph. 1146-J

# NOTICE WE Guarantee To Save You MONEY

200 Nationally-Known Drug Items at Deep Cut Prices

FRIDAY-SATURDAY-SUNDAY SHOP AT OUR STORE SALE ITEMS Plainly Marked and Displayed

## Midland Drug Company