

Bids Opened for New Office Building

Suspect In Frome Case Being Held

Woman Taken from Bus in Oklahoma Being Questioned

ARDMORE, Okla., April 19 (P). — A brown haired woman taken from an El Paso bus was questioned today by Ardmore police in the torture-slaying of Mrs. Weston Frome and her daughter, Nancy, near Van Horn.

Police Chief Elmer Bird said the woman bought a ticket from San Diego on April 16, and was enroute to Portsmouth, New Hampshire.

EL PASO, April 19 (P). — Fort Bliss troops on their way to maneuvers near Balmorhea found an abandoned 1937 black Chevrolet coach Monday not far from where the bodies of Mrs. Weston G. Frome and her daughter were discovered. Brig. Gen. Ben Lear, first cavalry division commander, wireless Sheriff Chris P. Fox early last night.

The abandoned car, with Oklahoma license plates, was found three-fourths of a mile north of the highway between Van Horn and Plateau, General Lear's message said. Air was still in the tires. A dirty gray hat was in the car. Plateau is 20 miles east of Van Horn. The bodies of Mrs. Frome and Nancy were found six miles east of Van Horn.

General Lear said the soldiers who found the car did not examine it. They had been instructed to touch nothing they found which might have bearing on the Frome case.

The troops were deploying for the maneuvers when they ran across the abandoned car.

The 20-day-old murder case centered earlier on a fugitive ex-convict already wanted on the Pacific coast for another slaying.

Sheriff Fox, director of the investigation, started a nation-wide search for Leo Wahler, described as a "killer" and confirmed narcotic addict, as the suspected torture-slayer March 30 of Mrs. Frome of Berkeley, Calif., and her daughter. Sought with Wahler is a blonde woman companion, reported with him when he fled Los Angeles March 22 following the holdup killing of a Los Angeles tavern keeper.

Wahler's two companions in his flight, Harry Groves and Johnny Rodriguez, were captured in Kansas City April 4 and at that time tipped officers Wahler separated from them to go toward El Paso with the woman.

Groves and Rodriguez are now in jail in Los Angeles under a murder indictment—charged jointly with Wahler—for the tavern slaying, and Sheriff E. W. Biscuit was requested by Fox to grill the prisoners in an effort to determine Wahler's probable hideout.

"The Frome murders were the brutal type that would have been done by a narcotic addict and a natural killer," said Fox.

Good Will Trippers Of Fort Worth Will Arrive Here Today

More than 100 Fort Worth tourist leaders, on a good will tour through West Texas and Eastern New Mexico, are scheduled to arrive in Midland this afternoon at 3:15 aboard their 10-car special train.

The trippers will meet with local business men in the crystal ballroom of the Hotel Scharbauer and mutual trade problems will be discussed and the facilities of Fort Worth as well as the city's good will and hospitality will be offered to solve the problem.

While here, the visitors will distribute booklets containing pictures and biographies of each of the men aboard the train, pictures of the old and new Fort Worth, a letter of greeting from Gaylord Stone, president of the Fort Worth Chamber of Commerce, and a sketch of the trip itinerary. The booklets will set forth the "trading post" idea, that Fort Worth still is a bartering place where West Texas and New Mexico residents may sell their products as well as buy Fort Worth's.

The stop here will be the fifth of 28 that will be made by the party on its tour. From here, the group will make stops in Odessa, Monahan and Pecos before starting their swing into New Mexico.

Father of Midland Woman Dies Monday

Mr. and Mrs. Earl Moran and their daughter, Mary Nell, left this morning for Tyler upon receipt of news of the death of Mrs. Moran's father Dr. G. K. Talley, Dr. Talley, a resident of Tyler for the past several years, succumbed last night to a heart attack.

Funeral arrangements had not been announced today.

Hello, Ft. Worth

It's a big day at Midland! The privilege of being host to Fort Worth's leading business executives doesn't happen every day and has been looked forward to by Midland people with great expectation.

The Midland Reporter-Telegram joins the 10,000 citizens here in extending a warm West Texas welcome. You are our kind of folks and should feel at home as our people do when they visit Fort Worth.

Relationships between the big town and the little one always are most favorable. Never yet has Midland failed to receive 100 per cent cooperation from Fort Worth in any undertaking.

Fort Worth representation at the annual Midland Rodeo ranks favorably in numbers with that of the nearest towns. Valuable gifts and prizes are donated by Fort Worth business institutions and individuals. The same spirit of friendliness and kindred interest is manifested in various other undertakings during the year.

It is the hope of Midland people that our own support is of some value to Fort Worth and that in some measure the little town may be able from time to time to aid the big town.

Special hosts today are the five junior calf ropers from Midland who recently appeared at your Southwestern Exposition and Fat Stock Show. They represent the friendly feeling of the entire citizenship. This copy of Midland's daily newspaper is yours, with compliments of the publishers.

Institute Polo Team to Arrive Saturday For Two-Game Series with Midland Four; Cecil Childers to Aid Team at Midland

Plans were well along today for the two-game series of polo between Midland and the fast collegate New Mexico Military Institute team from Roswell to be played here Sunday and Monday afternoons at Midland Fair park.

The cadets, fresh from winning series with the University of Southern California and the University of Arizona, expect to meet their strongest opponents of the season at Midland, playing against individual stars whose greatest handicap will be lack of playing as a unit.

Captain Jay Floyd of the Midland team and Rip Smith, trainer at the fair park, will be aided by Sheriff Gus White of Lamesa and the famed high goal player, Cecil Childers, of Abilene. Smith, who has just returned from tournaments at San Antonio and will leave immediately after these games to coach a country club team at Kansas City; and Gus White, who has been playing in games of the West Texas circuit, are in top training. Floyd and Smith, although in the saddle several hours each day while training their young horses, have not appeared in games since the series here three months ago with the Panhandle foursome.

The Institute team, however, has had one of the strongest seasons in its history by reason of its stellar team work. Colonel Norton, coach of the team, is working toward having the cadets selected, as on last year, as the best collegate team in the west, thereby getting to meet the best eastern team. He will

take his youngsters soon to meet Oklahoma University and Oklahoma Military college.

Playing No. 1 for the Institute is Jimmy Taylor. The No. 2 is handled by John Bannister. No. 3 by Captain Jack Shirley and No. 4 by Midland's own Franklin Cowden, son of Mr. and Mrs. J. Frank Cowden here. The utility man is Bybee, an all round player. Cordie Means, grandson of Mr. and Mrs. E. P. Cowden, who was injured last year and has kept out of games, may be here to referee the series. Colonel Norton and Mrs. Norton will accompany the team members.

Cadets' horses will be trucked here Saturday. Bringing about three horses each, local ranchmen, including Frank Cowden and Clarence Scharbauer, will furnish them additional mounts, their horses having been under Rip Smith's tutelage for the past week.

The polo field will need only a light harrowing prior to the games. Marion Plynt, president of the Midland Polo Club, said yesterday. Wind has blown off most of the loose dirt, leaving a fast surface which is desirable. The field is east and northeast of the rodeo arena, visible from the large steel grandstand but more easily watched from parking room around the race track. Spectators may see the game from either location, officials announced. Loud speaking equipment will be set up so that plays will be announced to keep spectators informed of the standing of the game at all times.

Japanese Army Is Defeated In Major Battle in China

SHANGHAI, April 19 (P). — Chinese military leaders reported today the recapture of a 20-mile stretch of the Grand canal in the second setback to the Japanese within 24 hours.

The section of canal extends east and west in southern Shantung province between Hangchow and Tientsin, where 10 days of fierce fighting was said by the Chinese to have blocked the Japanese offensive southward along the Tientsin-Pukow railway.

The Chinese advance along the canal was preceded by capture of Hangchow, spearhead of the Japanese drive southward toward Suchow.

A new migration of hundreds of refugees into Shanghai brought reports that nearly 500 Chinese villages of the surrounding countryside had been levelled by flames as the Japanese applied their own "scorched earth" version in retaliation against Chinese guerrilla attacks.

Hangchow, at the junction of the Tientsin-Pukow railway and the Grand canal 27 miles north of Suchow, has been the scene of bitter fighting since the Japanese

occupied it a month ago. It is 32 miles northwest of Tientsin, where the Japanese suffered an overwhelming defeat April 6.

This development came as the Japanese navy was reported preparing to throw its support behind the new Shantung drive, which is expected to determine success or failure of the invasion.

Foreign travelers arriving in Shanghai said they had seen Japanese aircraft carriers stationed along the Shantung coast.

From these carriers, it was presumed, mass warplane attacks will be launched into the interior to cover the advance of the reinforced Japanese army, estimated to have as many as half a million men.

While both sides awaited, reinforcements for the big battle, fierce fighting continued over the 60-mile front in southern Shantung.

At Lin, 80 miles northeast of Suchow, the opposing armies were locked in a crucial battle, precipitated when fresh Japanese troops launched an attack on the defense lines built by the thousands of Chinese who have marched into the sector in the past few days.

VISITS MOTHER.

Mrs. W. A. Smith of Tucson, Ariz., visited her mother, Mrs. W. J. Glenn, on her way to Missouri to visit a daughter.

ABILENIAN HERE.

J. W. Bateman is here today from Abilene on a business trip.

GIRL BORN TO WHITSONS.

Mr. and Mrs. Dick Whitson are the parents of a daughter born Sunday in a Midland hospital.

SON TO LEWISES.

Mr. and Mrs. E. M. Lewis are the parents of a son born in a Midland hospital Sunday.

Bank's New Office Building, Three of Its Officers.



Bids for construction of the new eight story office building of the First National Bank, architect's drawing shown above, were opened at noon today, with expectation that construction will begin at once. Facing north on Wall street, the new edifice will join the present First National Bank building which will be remodeled to conform in architecture and also is just east of the six-story, 350-room Hotel Scharbauer. The new building is expected to relieve the demand for office space with both the twelve-story Petroleum Building and the six-story Jno. B. Thomas Building now filled to capacity. Officers of the bank are shown below the picture of the building, including Clarence Scharbauer, president; "Uncle John" Scharbauer of Midland and Fort Worth, vice-president, and M. C. Ulmer executive cashier.

Early Preacher of Baptist Church Dies at El Paso

Death of the Rev. L. R. Millican, 86, veteran Baptist preacher of Texas, at El Paso last night was reported to friends here today. He was the second pastor of the First Baptist church of Midland, coming here November 6, 1887, and leaving February 4, 1894.

Funeral services will be held at Palsano Camp ground, between Alpine and Marfa in the Davis Mountains, at one o'clock Wednesday afternoon. The Rev. Millican was director of the annual encampment there and was one of the founders.

The picturesque former circuit rider had been here on numerous occasions, even in the past few years, and was active in his ministry up to a short time before his death.

Survivors include his wife, who lives in El Paso, and one son Elliott Millican of the same city. The Rev. Millican was a first cousin of late Mrs. B. W. Lee of Midland. Relatives today advised Mrs. Mollie Ramsey, daughter of Mrs. Lee, of the preacher's death.

The Palsano encampment had grown and developed under the Rev. Millican's direction, being held each summer at a beautifully shaded, mountainous spot, the highest point on the Southern and Pacific railroad. The veteran preacher had expressed a desire to be buried there, where the last years of his active ministry had been centered.

Stenographer, Oil Company Official Wounded by Broker

OKLAHOMA CITY, April 19 (P). — J. R. Porter, Vice-President of the Watchmen Petroleum company, and his stenographer were shot and wounded after an argument with a lease broker in the company's office.

Porter and the stenographer, Miss Willa Mae Simmons, were reported to be in a serious condition.

Sam Bennett, 68, was booked at the police station for investigation. He gave Fort Worth as his home.

Paving Project May Extend to 95 Blocks Under City's Plan

First of the city's new equipment and machinery for street paving has arrived, with probability that the bulk of it will be received late this month, city officials said this morning. Included in the equipment will be a complete rock crushing plant, capable of turning out any size rock desired; a new Ingersoll-Rand compressor, or jack hammer; a mixing plant to use native soil in composition with asphalt for base, in place of caliche; a bulldozer for moving dirt ahead of maintainers and street graders, also for moving and cleaning up the city dump ground at the east edge of the city.

Approximately 95 blocks of pavement are to be planned in the first project, in which WPA labor will be used, city officials said, the amount paved depending on action of property owners in signing up and paying for the street improvements at the low price to be made possible by use of city owned machinery and of WPA labor. No bond issue will be necessary in connection with the project, it has been announced.

Definite costs to property owners will be announced as soon as final figures are prepared, wage scales worked out and all details completed, so that petitions may be prepared by which property owners may sign up segments of city streets.

Fort Worth Officers Seek Pierson After He Is Reported Seen

FORT WORTH, April 19 (P). — Officers kept a close watch here today for Howard Pierson, who escaped from an insane hospital at Austin where he was sent after slaying his parents in 1935.

Officers said they were informed a Hillsboro filling station operator who knew Pierson saw the youth twice shortly before dawn today. Each time, Pierson, wearing a two-day growth of beard, disappeared before police arrived.

The Hillsboro man, William T. Jacobs, reported seeing Pierson first in a Fort Worth cafe and later on Main street.

Government Troops Surrender to Rebel Groups at Tortosa

TORTOSA, Spain, April 19 (P). — Large detachments of government troops, including international brigade units were captured south of Tortosa today after Erbo river bridges were dynamited by the government to hold back the insurgent movement to encircle this strategic southern Catalan city.

From Perpignan, France, came a report government troops in the Aran valley just below the French border had surrendered without a battle.

SLIGHTLY IMPROVED.

Condition of G. B. Scarborough, grand son of W. F. Scarborough, who is critically ill in a Bryan hospital from complications following an appendectomy, was reported slightly improved this morning. The boy is a son of Mr. and Mrs. Hollis Scarborough, formerly of this city.

Denver-Wasson Area Well Is Flowing 46 Barrels Hourly

By FRANK GARDNER.

Record well for the area linking the Denver-Wasson pools of north-west Gaines and southern Youkum was in evidence today as A. G. Carter No. 2 McCarty Moore, 440 feet from the north, 1,320 feet from the west line of section 45, block AX, public school land, flowed 46 barrels of oil hourly after first stage of acid, with 1,000 gallons. Operators were planning to re-treat with 3,000 gallons. The No. 2 McCarty Moore, bottomed in lime at 5,001 feet, had gauged flow of 35 barrels an hour before acidizing.

In the Denver field proper, extending production on the north end a quarter-mile west, T. L. Wynne No. 2 Fairman flowed 217.88 barrels a day after treating with 3,000 gallons at total depth of 5,070. It topped lime pay at 4,800. Location is 1,980 feet from the north and east lines of section 797, block D, J. H. Gibson survey.

Also in the Denver pool, Denver Producing & Refining Company No. 7 Whittenburg, 1,980 feet from the north, 660 feet from the west line of section 831, block D, offsetting the pool opener to the south, flowed 74.76 barrels a day for com-

8-STORY PROJECT TO COST \$250,000

Bids for construction of the eight story office building of the First National Bank of Midland were opened at noon today, officers and directors of the institution immediately going into conference with Architect Wyatt C. Hedrick of Fort Worth on an analysis of base bids and the various alternates to determine lowest bidders. Lowest possible cost, it was indicated, will exceed \$250,000.

Bids were taken on general contract of the eight story building, on remodeling of the present bank building and on a combination of the two. Separate bids then were taken on air conditioning, plumbing and heating and on combination of these installations. Other bids taken included those for electric wiring and for installation of elevators.

Without taking into account the alternates, which were being studied by the bank officials, lowest combination bid for construction of the

New Elevated Water Tank to Be Started When Site Announced

Construction on the new 300,000 gallon elevated storage tank to supplement the city's present reserve water supply will be started as soon as all levels are taken and site definitely announced, city officials said today after a conference with the contractors.

Situated on a tower of 100 to 105 feet in height, the new tank will bring the total storage capacity of the city's water system to 1,900,000 gallons, besides that in the mains themselves.

Five wells are fully equipped with pumping machinery at the Cloverdale plant, with a sixth well ready to equip on short notice if needed. The wells have capacities ranging from 300 to 500 gallons per minute. Storage at the plant consists of a 1,000,000 gallon concrete reservoir. A 500,000 gallon concrete reservoir is located at the booster station at the east city limits and the elevated tank at the city hall property holds 100,000 gallons. The new 300,000 gallon tank will be located near the business section to provide greater water pressure and better fire protection.

Midland ranks among the top cities of Texas for per capita consumption of water and this summer is expected to use around 2,500,000 gallons daily. The new elevated tank was purchased to prevent shortage of pressure during the late hours of the afternoon when lawns are being watered and the elevated storage was crowded to keep up with consumption.

Lowest combination bid for air conditioning, plumbing and heating for both office building and bank

Committee Halts Work Without Any Compromise Voted

WASHINGTON, April 19 (P). — A joint conference committee seeking to adjust differences between the senate and house revenue bills recessed today until Friday, still firmly deadlocked.

The committee started sessions last week but thus far has taken no action to compromise differences between the senate and house tax revision measures.

Italy and France Agree to Parleys On Settling Fuss

ROME, April 19 (P). — Italy and France agreed today to begin conversations immediately to re-establish their traditional friendship, shattered by the Ethiopian war.

Italy's readiness to bury the hatchet was expressed to Jules Blondel, French charge d'affaires, by Foreign Minister Galeazzo Ciano.

Blondel Saturday asked Ciano if Italy were prepared to open negotiations and an affirmative answer was handed Blondel today.

Finance Campaign Of Scouts Started In Midland Today

At a meeting of Midland district scout leaders last night at Boy Scout headquarters here, plans were made for conducting a Midland district finance campaign starting today.

George Abell, independent oil operator, was elected to serve as chairman of the campaign committee.

Attending the meeting last night at which plans for campaign were made were the following: Guy Brennan, Ben Black, Fred Fromhold, Roy McKee, Raymond Upham, W. C. Waxwell, P. A. Nelson, S. M. Vaughan, Luther Glover, I. J. Prager, Dr. W. L. Sutton, L. T. Boynton, Claude Crane, John P. Howe, George Abell.

The purpose of the campaign is to subscribe the Midland district share of Council expenses and to provide funds for local use. This Council is part of the Buffalo Trail Council which serves a territory of fifteen counties from Sweetwater to Pecos. More than 1350 Scouts are enrolled. Of this number 225 are in the Midland district.

The council budget provides the salary and traveling expenses of three executives and an office secretary who serve the needs of many volunteer leaders of troops, packs, districts, and the council.

The council budget provides funds for camp administration, Scout leader training, troop service, Scout records, awards, badges and insignia for the Scouts, supervision of activities, organization, promotion and development of all council-wide activities, courts of honor and similar Scout projects. Extension of Scouting to more boys is made possible in institutional contacts, recruiting, training of leaders and a program of interesting activities that appeal to the Scouts. Darold Wilson, field executive is assigned to the Midland district.

George Abell, campaign chairman, announced this morning that the town has been divided into eight zones, with the following named as zone leaders: zone 1, Upham, H. S. Collings; zone 2, Crane, Black, and R. C. Conking; zone 3, Howe, Fromhold, W. G. Epley and J. E. Hill; zone 4, Prager, Nelson, Thomas Inman and Jack Kelly; zone 5, Boynton, Abell, Sutton, Bob Hamilton and Dr. Waldo Leggett; zone 6, Maxwell, W. F. Heil, Charles McClintic, and Gordon Holcomb; zone 7, Glover, Barney Greathouse, Bob Scruggs, and Luther Tidwell; zone 8, Herbert King, Percy Bridgewater, and J. L. McGrew.

THE REPORTER-TELEGRAM

Evenings (except Saturday) and Sunday Morning
MIDLAND PUBLISHING COMPANY, PUBLISHERS
112 West Missouri, Midland, Texas

T. PAUL BARRON, Publisher

Entered as second class matter at the postoffice at Midland, Texas, under the Act of March 30, 1879

Subscription Price: Daily, by Carrier or Mail; Per Year \$5.00; Per Month 50¢. Advertising Rates: Display advertising rates on application. Classified rate, 2¢ per word; minimum charge 25¢. Local readers, 10¢ per line.

Any erroneous reflection upon the character, standing or reputation of any persons, firm or corporation which may occur in the columns of The Reporter-Telegram will be gladly corrected upon being brought to the attention of the firm.

Behind the Scenes in Washington

Editor's Note: The opinions expressed in this article are those of Mr. Dutcher, NEA-Reporter-Telegram Washington correspondent, and are not to be construed as expressing the editorial policy of The Reporter-Telegram.

WASHINGTON, April 19. — One immediate aim of the new Roosevelt spending-lending program is the creation of another inflationary boom which will revive business activity.

Obvious already is the fact that Mr. Roosevelt is not going to get the united front against the depression which he hoped to align behind this program. His consistent enemies will be reinforced by an army of as yet indeterminate strength which is composed of those who believe that pumping more federal money into the economic system is not a way to end the depression.

Some See Boom. At one extreme are critics who argue that the new Roosevelt program is sure to put the country on the rocks and at the other are New Dealers who confidently anticipate a really spectacular boom. In the latter category, for instance, are one or two members of the SEC who have anticipated such a rapid stock market rise that they have been discussing amendments to the SEC rules.

But whatever happens in the next few months seems most likely to be based on good or bad psychology, since any effect of the program's monetary maneuverings admittedly will be a psychological effect and the first real big new money to get into the stream of purchasing power will be that involved in the public works phase, which can hardly get operating before late summer or fall.

Seeking to avoid undue pessimism or undue optimism this writer can report government economists believe the program's chief immediate effect will be to halt deflationary forces which until now have been spiraling at an alarming degree.

This group happens to include those who accurately foresaw the present depression. Members of the group also thought there would be a "spring rise" in business and when that failed to materialize went running to the higherups to urge inflationary action to prevent what they feared might be a real panic.

Hope for Leveling. THE most these experts really hope for in the next few months is that there may now be some "corrections" in certain lines of business which will level off the previously down-curving chart-lines of business activity and employment.

Business customarily has an upturn in the spring and a downswing in the summer as a result of what are called "seasonal" factors. But instead of an upturn in March,

business actually took a dip.

The hard-headed boys now hope that, as a result of the spending-lending program, the traditional summer downswing can be avoided. Even that, they believe, would be a real gain and would leave a better foundation for the pickup which nearly everyone in the administration fondly anticipates in the fall.

If nothing had been done to avert it, the economists are sure, the summer slump would have been quite pronounced. The outlook for retail trade and extremely important factor in the business picture, was especially bad.

Program Psychological. AND of course if the spending-lending program is not in any way effective, the obvious inference is that business will keep right on slumping into the summer.

But the economists interviewed by this writer think that many industries will be infected by the hope of new business, that many plants which might soon have been on the verge of closing will take new heart and that administration promises of reinforced purchasing power will keep business off a lower bottom until new PWA contracts begin to affect the situation.

All this assumes that Congress will pass those items of the new program which require its approval. The chances are that it will. But chances of the Supreme Court plan, the reorganization bill and wage-hour legislation also were, at one time or another, very bright.

NYA Will Start Training Project

AUSTIN, April 18. — J. C. Kellam, State Youth Director, has announced that the National Youth Administration will start a Resident Training Project for 150 boys from rural areas on May 2 at Buchanan Dam. The Lower Colorado River Authority is sponsor for the project and will provide facilities for housing the boys and for a training program in subsistence agriculture and farm mechanics.

As the work project, the 150 boys will begin construction of a federal fish hatchery on lands now owned by the Authority. The lands will be leased to the Federal Bureau of Fisheries, and the hatchery will be built under its supervision. It is also planned that boys will construct a stone administration building near Buchanan Dam.

Plans for this project were completed in Washington following Mr.

Jack and Jill in Another Attempt



Kellam's conference with Congressman Lyndon Johnson, in whose district the Colorado River Authority properties lie, members of the CRA board and representatives of the Bureau of Fisheries.

The boys selected for this project must be between 18 and 25 years of age and must be eligible for employment on the NYA Work Program. They will be transported to Buchanan Dam, and during their stay will work about half time, earning enough wages to enable them to pay for their subsistence and to have about \$8 a month left for their own use. During the other half of their time the boys will attend training classes. A camp recreation program will be developed by the project supervisor, Mr. Kellam said.

The Buchanan Dam project will be the seventh Resident Training project put in operation this spring by the Texas Youth Administration. Mr. Kellam said. Others are at Southwest Texas State Teachers College in San Marcos, the Luling Foundation Farm, Texas Technological College at Lubbock, at Prairie View, and at Center point.

Enlistments in the Army Being Taken

PORT SAM HOUSTON, Texas. — Enlistments for one year in the Regular Army, for the specific purpose of attending West Point Preparatory Schools, have been authorized for candidates for appointment to the United States Military Academy, according to announcement from Eighth Corps Area headquarters.

Applicants for enlistment under this authority must be between the ages of 19 and 22 years on July 1, 1939, date of entering the military academy if appointment is secured, and enlistment in the Army must be effected on July 1, 1938. This arrangement provides for a year of service in the Army, one of the conditions for appointment of enlisted men to West Point. Candidates also must have high school educations or the equivalent.

Applicants who enlist for this purpose do so with the positive understanding that failure to qualify for attendance at the preliminary schools, or for appointment to the Military Academy, does not constitute grounds for discharge, and that they will be held in service for the one year period of enlistment. Preparatory schools will be conducted at Fort Sam Houston, Texas, Fort Hill, Oklahoma, Fort Bliss, Texas, and Fort Francis E. Warren, Wyoming, and the enlistments must be completed at one of these stations. Applications, however, may be



The Jown Quack

Wave at them is now OUT. The car in which two women in the front seat waved at the soldiers has been proven to have been another vehicle, he said. What's more, there was a third woman in that car and it was a Buick, not a Packard like the Frome car.

Van Horn folks believe the murders were committed for robbery, pure and simple and that a man lurked the Promes off the road in some way or other while his woman companion drove up and down along the highway while he did the murder. People are remembering things they saw that day which connect in some way with the mystery. Maybe somebody will have a real idea before it is over.

The Fort Worth visitors who are stopping here for an hour this afternoon are a welcome group. Midland citizens never go anywhere without going first to Fort Worth to get started. They use Fort Worth as a place for getting out of town and away from their troubles. As an oil man remarked a while back, when he was behind on exercise, he was going to have to start riding his horse or go to Fort Worth, one or the other. When Frank Cowden was about sixteen years old, he left here to visit Fort Worth and Dallas. A few days later he was back telling what all he saw in Fort Worth. Somebody remembered that he had expected to go to Dallas too and asked him about that city.

"I didn't get over there," Frank said. "I didn't even meet everybody in Fort Worth."

A man out there who has been close to officers making the investigations says the report that soldiers near Balmorhea saw the women filled at any army post or recruiting station within the Eighth Corps Area.

Corps Area recruiting authorities pointed out that applications for enlistment for this purpose should be made sufficiently in advance of July 1, 1939, to insure opportunity for an administrative determination of the mental, moral and physical qualifications of candidates for enlistment, and for the preparation or consent papers from parents or legal guardians as in some instances the enlistments will be of young men less than 21 years of age.

One expert says that the feet and ankles of American women are growing larger as the result of a combination of athletics and high-heeled shoes.

Treasure Hunt On Old Sunken Packet Is Made

ST. LOUIS (UP)—Appearance of the hulk of the old City of Providence, once queen on the St. Louis to New Orleans river packets, in the Mississippi river during a low water period started a search for hidden treasure.

The boat sank in 1914 just after it had been converted into an excursion steamer. When the mud-covered hulk appeared above the low water enterprising workers began digging into it. A slot machine containing \$48 was found, also two bottles of good whisky, several antiquated beer mugs and scrap metal.

The boat belonged to the Columbia Excursion company. In 1914 it was laid up for the winter at the mouth of a stream feeding the Mississippi. An ice gorge broke suddenly and shoved the City of Providence high and dry on the bank. When attempting to refloat the boat a carpenter left a hatch open and it sank.

Platt National Park Gaining Recognition

SULPHUR, Okla. — Platt National Park, almost in the center of the Arbuckle Mountains, is noted for its medicinal springs and attractive facilities for swimming, fishing, hiking, and camping. Though one of the smaller links in a chain of twenty-six National Parks, it ranked ninth in attendance during the last travel year, with over 258,000 visitors.

About eighty miles from Oklahoma City, the park is within holdings of the Choctaw Nation of the Old Indian Territory. It contains many springs, including sulphur, iron, and bromide. These mineral waters, known to the early day Indians because of health-giving qualities they were believed to contain, have been piped to drinking fountains in the Bromide Pavilion, to where thousands of people try annually. Many of the visitors bring large containers to take water home.

This mineral water is believed to come from the same geological formation as the Wilcox sand that produces the immense quantities of oil in the Southwest. The water is thought to fall as rain in the hills east of the park, pass downward by gravity, and absorb sulphur and other minerals from the asphalt contained in the Wilcox. The water finds its way to the surface along fissures and faults, and issues in the form of sulphur and bromide springs.

Most of the park area is hilly and well wooded, traversed by picturesque streams, and contains small waterfalls and cascades. Dams have been placed in the streams to form naturalistic swimming pools. The 1938 swimming season will be formally inaugurated next week with the annual water carnival that will feature a Bathing Beauty Parade.

Campgrounds are equipped with modern facilities, including provision for auto trailers. Many of the families whose members are scattered through Oklahoma, Texas, and Arkansas, come here for their annual reunions. From the summit of Bromide Hill, known locally as "Robbers' Roost," there is a view of the entire park, the Arbuckle Mountains, and the Washita River Valley. The principal medicinal springs in the park issue from the base of this hill.

Wildlife is not nearly so abundant as in the proposed Big Bend National Park in Texas, but includes a small herd of buffalo, a few deer, and some of the smaller mammals, such as raccoon, muskrat, red squirrel, and opossum. Water fowl and shore birds frequent a lake in the buffalo range, and there are many species of other birds throughout the park. Fish in Travertine and Rock Creeks include bass, croppie, blue gill and perch.

Established in 1902, five years prior to Oklahoma Statehood, as the Sulphur Springs Reservation, the greater part of the land was purchased from the Indians. The name was changed to Platt National Park in 1906, in honor of the late United States Senator Orville Hitchcock of Connecticut, to

Hold Everything!



"Next on the program we have a real novelty number—Butch McGluck and his musical hacksaw!"

memorialize his services to the Indians, as a member of the Senate Indian Affairs Committee.

Cotton Allotments Increased by AAA

COLLEGE STATION. — Amendments to the new farm act provide a reserve 4 per cent which will be added to the cotton acreage allotment of each state and that farm cotton allotments in necessary cases shall be raised to a minimum level, according to Geo. Slaughter, Wharton, chairman of the Texas Agricultural Conservation Committee.

The total increase in allotments due to the amendment may exceed 2 million acres, he said. The original acreage allotment for 1938 was 26,300,000 acres. In Texas the additional allotment will amount to around 380,000 acres.

The 4 per cent reserve will be used to assure minimum allotments to small cotton farms, provide additional acreages for farms on which allotments were materially reduced because of an unusually large number of small farms in the county, and to provide representative allotments to counties or farms which otherwise would receive allotments which are low in comparison with the amounts allotted to producers in similar areas and in comparison with their usual cotton acreages.

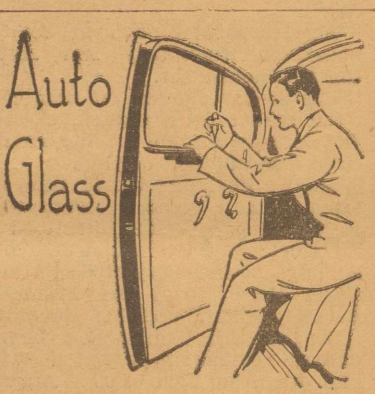
The amendments also provide that if the allotment to any farm is less than 50 per cent of the sum of the 1937 cotton acreage plus diverted acres, the allotment shall be increased to 50 per cent, provided that the increase does not bring the allotment up to more than 40 per cent of the tilled land on the farm.

Pupils' Defects Classified.

VICTORIA, B. C. (UP)—British Columbia school doctors last year examined 99,763 pupils and found 5,504 suffering from malnutrition, 23,767 with defective teeth, 5,791 with defective vision and 1,013 with defective hearing.

Make Soap From Coal. BERLIN (UP)—Germany is making soap from coal. Prof. Franz Fischer, head of the Muelheim Coal Research Institute, revealed in a lecture to the German Chemists' Society. The fats are extracted by an improved process from paraffin, which in turn is produced from brown coal.

Hexagonal Rooms Advocated. MINNEAPOLIS (UP)—John E. Berry of Minneapolis believes he has solved the low-cost housing problem with the invention of an "hexagonal" room. He proposes houses consisting of just as many eight-sided rooms as a man wants or is able to buy. The rooms would be all alike.



SEE—QUICKLY!

Don't let cracked Auto door Glass impede your vision for that split-second of time that may be long enough to cause an accident. Why delay replacing—when we fit New Auto Glass so quickly, at so moderate a cost? Avoid broken-glass discomfort, cracked-glass danger! Stop here for New Auto Glass without further delay.

SOUTHERN BODY WORKS
210 So. Main—Phone 477

Veteran Soldier

HORIZONTAL

1 Head of American forces in the World War.

12 To wander.

13 Eagle's nest.

14 Inlets.

16 Always.

17 To feel one's way.

18 Unoccupied.

19 Dogma.

21 Fish.

22 Asiatic.

23 Mollifies.

26 Sells to the consumer.

30 Call for help at sea.

32 To oust.

32 Man who repairs teeth.

35 Auto.

37 Mining shack.

38 Social insect.

39 Shoulder blade.

43 To regret.

44 Mohammedan judge.

ANSWER TO PREVIOUS PUZZLE

ROBIN HOOD
ALONE ABA
LORE LIT O
MA ODAL HAD
A LASS B W
RAID T SUBA TUCK
ICE ARCHERS SAIL
AT ERA R DAM PS
NARGILE ESCAPES
AGA DAP SPA
PODS MELON STAR
ANI MENACED IDE
YEOMAN SHERWOOD

15 He was to Mexico in 1916.

20 Genus of wheat.

22 Maintained.

24 Ell.

25 Toward.

27 Night before.

28 Baking dish.

29 To perform.

33 Sun.

34 Bonnet.

35 Pertaining to the wrist.

36 God of the sky.

37 To make rough.

40 Anxiety.

41 Related by blood.

42 Heap.

46 Either.

48 Tatter.

49 Era.

50 Matter.

51 To devour.

53 Musical note.

54 Sixth note in scale.

VERTICAL

1 Jupiter.

2 Kiln.

3 At this place.

4 Barb.

5 Hazards.

6 To corrode.

7 Becomes mature.

8 To observe.

9 Colored part of eye.

10 Breeding places.

11 Festival.

12 He from service in 1924.

1	2	3	4	5	6	7	8	9	10	11
12	13	14	15	16	17	18	19	20	21	22
23	24	25	26	27	28	29	30	31	32	33
34	35	36	37	38	39	40	41	42	43	44
45	46	47	48	49	50	51	52	53	54	55
56	57	58	59	60	61	62	63	64	65	66

Courteous Service

ANNOUNCING OPENING OF

Barnsdall

SERVICE STATION

We Solicit Your Patronage

2 Blocks East of Main on Highway 80

P. L. CRAWLEY J. W. LOCKLAR

FATHERS

Who carefully shield their little children TODAY often forget that TOMORROW these same children may have to face the world alone.

Protect their future by investing in a

PRÆTORIAN JUVENILE EDUCATIONAL POLICY

A Policy for Every Need

J. WRAY CAMPBELL, Dist. Mgr.

201 Petroleum Bldg. — P. O. Box 1662
Phones Office 111, Res. 859-J Midland, Texas

MOVED

MIDDLETON'S

CLEANERS & DYERS

We are pleased to announce that we have moved to our

NEW LOCATION

AT 109 SOUTH CARRIZO ST.

Just half a block south of the highway and five blocks west of the court house.

DRIVE RIGHT UP TO THE DOOR ANY TIME OF THE DAY

We are equipped to give you better work and better service than ever before.

OUR PHONE NUMBER IS STILL 30

And we still call for and deliver

THE WHOLE NEIGHBORHOOD LOOKS BETTER SINCE WE PAVED WITH CONCRETE

"I WISH we had put concrete on our streets long ago. Aside from being the best to drive on, it keeps itself clean, looks better, and has made our neighborhood more desirable. Property values are up."

That's not half the story. Your own experience tells you that concrete helps you to drive safely; that it effectively checks skidding; that its light-grey surface helps you see at night.

And concrete saves you money because it is moderate in first cost, low in upkeep and long lasting.

Be guided by your experience and observation. When your streets come up for paving—insist on concrete.

For complete pavement facts, write to

PORTLAND CEMENT ASSOCIATION

1301 Norwood Bldg., Austin, Texas

A national organization to improve and extend the uses of concrete through scientific research and engineering field work.

CONCRETE IS THE REAL LOW-COST PAVEMENT

SOCIETY NEWS SECTION

Forty-Two Women Attend Methodist Missionary Group

Circles of the Methodist missionary society met at the home of Mrs. S. P. Hazlip, 1007 W. Tennessee, Monday afternoon, with the Laura Haygood circle in charge of the program and the Young Women's circle as hostesses for the social hour.

Mrs. Jess Barber, chairman of the Laura Haygood circle, was program leader.

The opening prayer was offered by Mrs. N. G. Oates.

Mrs. C. E. Nolan brought the devotional in the form of one of the talks given at the general council meeting of missionary work at Tulsa, Oklahoma.

A resume of the council bulletin concerning the Oklahoma gathering was presented by Mrs. H. C. Barnes.

The importance of the council meeting was discussed by Mrs. J. M. Frothro, missionary society president.

Mrs. S. H. Hudkins and Mrs. J. M. Frothro were named delegates to the missionary council meeting opening at Snyder today and continuing through Wednesday and Thursday.

As a special feature, the boys' quartet of the high school sang two numbers, directed by Mrs. De Lo Douglas.

In the social hour following the program, the hostesses served a party plate to 42 women.

Present were: Mmes. Clyde Gwyn, C. E. Pepper, Geo. Glass, T. A. Polard, J. M. Flanagan, S. H. Hudkins, Jess Barber, A. B. Stickey, C. E. Nolan, Frank Frothro, T. A. Pannin, E. J. Voliva, H. S. Tate, M. M. Fisher, W. A. Black, J. H. Rhoden, M. V. Coman, Everett Klebold, N. G. Oates, P. A. Nelson, Ellis

Conner, J. R. Day, B. F. Haag, H. C. Barnes, C. P. Lancaster, Roby Fagg, W. C. Hinds, Mmes. Terry Elkin, C. T. Vicellio, A. H. Fishery, J. M. Frothro, J. F. Nixon, J. Y. Lott, Dave Harmon, Karl Ratliff, Oliver Haag, A. B. Cather, Effie Sanders, W. T. Beauchamp, Phil Scharbauer, Luther Tidwell, and the hostess, Mrs. Hazlip.

Baptist WMU Hears Royal Service Program Monday

A Royal Service program was presented by the Martha Holloway circle at the meeting of the Baptist WMU for which Mrs. Ella Youngblood was hostess at her home, 202 S. Marienfeld, Monday afternoon at 3:30 o'clock.

Following the singing of "Bringing in the Sheaves," Mrs. B. C. Girdley offered the opening prayer.

Mrs. Chas. Skinner brought the devotional, with Mrs. H. S. Collings presiding in the absence of the president, Mrs. Myrtle Smith.

As program leader, Mrs. Skinner was assisted by Mrs. A. W. Wyatt and Mrs. H. R. Braezeale in a discussion of "Africa," after which she brought the dismissal prayer.

A social hour followed, with 21 women present.

Hen Causes Traffic Jam

BAKERSFIELD, Calif. (UP).—A country hen hitch-hiked on the runningboard of O. E. Thompson's car for a three-mile ride to town. Once in the city, the hen wandered off, jammed Chester avenue and held up all traffic for a few minutes.

Chic for the Races Is - - -



Designed especially for days at the races, this handsome, new bag of morocco leather, has a long, slender strap which can be worn across the shoulder or knotted and carried in the hand. Another strap is stretched across the top of the bag to hold a racing program. Three rooms, separate compartments close with a single button, giving a pleated effect. It's practical, extremely chic, perfect with any sports or tailored costume and comes in red, green, navy and lighter blue as well as in black and white.

Miss Clemens and Dewitt Carr Are Wed Saturday

Another in the trio of weddings which marked last Saturday as of special interest to Midland circles, was the marriage of Miss Elvyn Clemens of this city, daughter of Mr. and Mrs. E. J. Clemens of Longview, and Dewitt Carr, son of Mrs. Kate Carr, which took place in the Presbyterian manse Saturday evening at 8:30 o'clock with Rev. W. J. Coleman reading the single ring ceremony.

Miss Yvonne Clemens of Odessa was her sister's maid of honor.

Others present for the wedding were the bridegroom's mother, Mrs. Kate Carr, and the bride's sister and brother-in-law, Mr. and Mrs. L. F. Joplin.

The bride wore a navy sheer crepe dress with white trim and accessories of white and navy.

The couple is at home at 1307 W. Holloway.

Mrs. Carr is a graduate of Kelson high school and has lived in Midland for more than a year, being employed in the offices of the Southwestern Bell Telephone company.

Mr. Carr was reared in Midland and is a graduate of the high school here. During his high school course, he played in the band for four years. He is now employed by the Stanolind Oil and Gas company.

The 'Summer Girl'-1938



Lillian Gish, star of stage and screen, is looking forward to hot weather already. She recently displayed her summer wardrobe, and prominent in it was the charming outfit above, consisting of a dress of white silk, with matting design in brown, and a sailor hat of violet felt.

Truck Smashed; Eggs Safe

ORLAND, Cal. (UP).—The driver of an egg truck here is convinced that the day of the unbreakable egg has at last arrived. He cracked up against an abutment of a bridge. Only one egg out of 75,000 was broken, and that merely because a workman let it slip through his fingers, while the cases were being transferred to another truck.

Mrs. Park Sings At Meeting of Rijnhart Circle

As a special feature of the song service opening the meeting of Rijnhart circle held at the First Christian church Monday afternoon was a solo by Mrs. M. A. Park, "The Man of Galilee."

Mrs. J. E. Pickering offered the opening prayer.

The Bible lesson on the first and second chapters of the Gospel of St. Luke was taught by Mrs. Geo. Ratliff.

One visitor was present, Mrs. C. I. Kuykendall of Lubbock.

Attending were the following members: Mmes. S. P. Hall, J. R. Jones, Ella Ragsdale, Geo. Ratliff, Glenn Brunson, B. W. Stevens, S. E. Mickey, J. E. Pickering, M. A. Park, L. B. Pemberton.

St. Thomas Club Meets Monday

Mrs. Henry Wolcott was hostess to St. Thomas Study club Monday afternoon at 3:30 o'clock. Mrs. W. T. Walsh was leader for the afternoon, the lesson period being devoted to a continuation of the study of the history of the church.

Present were: Mmes. Sara Dorsey, Walsh, Allen Tolbert, Ben Dansey Jr., C. C. Duffey, Jas. H. Chapline, and the hostess.

Next meeting will be with Mrs. Walsh.

YWA Begins Study Of Missionary Text

Study of the new missionary text, "European Missions in Texas," was initiated at the meeting of the YWA with Miss Doris Tidwell, 316 S. Big Spring, Monday evening.

Mrs. L. P. Stark taught the lesson.

Present were: Misses Freddie Lou Barber, Ferrel Pickle, Jane Walker, Kathryn Beauchamp, Marcella Strawn, Jane Doran, Alta Merrell, Helen Ruth Merrell, Martha Tidmore, Ruth Tidmore, Mrs. Loyce Douglas, Mrs. Stark, and the hostess.

The group will meet next Monday evening at 8 o'clock at the Baptist church.

Pre-Historic Teeth Found

MUNDEN, Kas. (UP).—Two 6-inch teeth, evidently from a prehistoric animal, were found by Clarence Havel, a farmer, in a sand pit on the bank of Mill Creek near here. Lying near the teeth were two tusks, which crumbled to dust when removed.

Tax System Worries City

ST. JOHN, N. B. (UP).—Legislation is being sought by the city of St. John whereby the temporary system of collecting taxes through employers would become permanent. The present temporary arrangement expires soon.

Presbyterian Women Elect New Circle Officers Monday

Election of officers was the high point of the meeting of the Rachel circle of the Presbyterian auxiliary for which Mrs. D. G. Stookey, circle chairman, was hostess at the home of Mrs. O. R. Jeffers, 1901 W. Wall, Monday afternoon.

Officers elected were: Vice chairman, Mrs. Butler Hurley; treasurer, Mrs. Harry Adams; secretary and reporter, Mrs. Bob Clarke; corresponding secretary, Mrs. T. D. Kimbrough; devotional leader, Mrs. John Drummond; program chairman, Mrs. E. C. Crab.

A lengthy discussion of purposes and projects for the year was given by members and suggestions brought forward to insure enthusiastic meetings and undertakings.

In the social hour which followed the business session, refreshments were served to 19 women.

Announcements

WEDNESDAY.

Siam club will meet with Mrs. J. B. Lacy, 605 N. Loraine, Wednesday afternoon at 2 o'clock.

Modern Study club will meet with Mrs. F. C. Cummings, 1002 W. Missouri, Wednesday afternoon at 3 o'clock.

Wednesday Afternoon Sewing club will meet with Mrs. John Klatt, 902 S. Loraine, Wednesday afternoon at 2 o'clock.

Junior Woman's Wednesday club will meet with Miss Georgia Goss, 1704 W. Missouri, Wednesday afternoon at 4 o'clock.

Play Readers club will meet with Miss Agatha Bruner Wednesday afternoon at 3:30 o'clock at the home of Mrs. L. B. Lancaster, 1705 W. Indiana, Mrs. Fred Wilcox will read "Amphitryon 38", by Jean Giraudoux.

Mrs. John P. Butler, Mrs. Geo. Kidd, and Mrs. R. E. Kinsey will be hostesses for a benefit bridge coffee at the Country Club Wednesday morning from 9 o'clock until 11 in the interest of their church's building fund. Piousness reservation may be made at 50 cents a person or two dollars a table by communicating with the hostesses. Reservations for individuals should be made in the same way. All reservations should be made by Tuesday night. The public is invited.

Fine Arts club will not meet this week as previously announced in the calendar through an error in the yearbook date.

THURSDAY.

Thursday Sewing club will meet with Mrs. H. R. Braezeale, 304 W. Florida, Thursday afternoon at 3:30 o'clock.

FRIDAY.

Belmont Bible class will meet Mrs. R. Chanslor, 110 South D, Friday afternoon at 3:30 o'clock. Study of First Corinthians will be begun.

Stitch and Chatter club will meet Friday afternoon at 2 o'clock at the home of Mrs. L. M. Hedges, 406 E. Tennessee.

WELCOME

Fort Worth

TRIPPERS

COME TO SEE

US WHILE IN

MIDLAND

WILSON

DRY GOODS CO.

LADES! Are you becoming to your husband or sweetheart? If not, you had better be coming to us.

THE IDEAL BEAUTY SHOP

Permanents\$1.95, \$2.50, \$3.50, \$5.00 and \$7.50
 Shampoo, Set and Dry 35¢
 Oil Shampoo, Set and Dry 50¢
 Set and Dry 25¢
 Manicure (The Revlon Way) 35¢
 Clairol and Luxoil Dyes \$2.50
 Lash and Brow Dye and Arch 50¢

Operators—
VERA PAGE—MARGIE ATCHISON—BEE RICH
BOBBY'S BARBER SHOP
 117 SOUTH MAIN STREET
 PHONE 85

FLOWERS

See Midland Floral Company's large assortment of seasonal cut flowers—artistically arranged for all occasions.

Also, a large variety of blooming plants.

MIDLAND FLORAL COMPANY

Phone 1286 1705 W. Wall

FRED FROMHOLD, Owner
 Member of Florist Telegraph Delivery Assn.

INSURE YOUR HOME

And It's

Furnishings

Adequately

—See Us—

SPARKS & BARRON

General Insurance & Abstracts
 107 West Wall—Phone 79

QUALITY

DRY

CLEANING

PETROLEUM

DRY CLEANERS

PHONE 1010

Better Vision

CORRECTIVE

OPTOMETRY—

THE SOURCE

OF

VISUAL EFFICIENCY

Dr. W. L. Sutton

OPTOMETRIST

208 West Texas

Office Ph. 146—Res. Ph. 1146-J

Movie Actress

Never Sees Pay

June Travis, leading woman in Warner Bros. movies, never sees her own salary checks. The studio sends them directly to her parents, Mr. and Mrs. Harry Grabner in Chicago, who in turn send June a \$75 weekly allowance. She meets all her expenses from that.

Yet, the Grabners are a very wealthy family; Papa, among other interests, is vice-president of the Chicago White Sox. June is currently in the feminine lead of "The Kid Comes Back," a prize-ring drama which comes to the Ritz theatre for a two-day engagement starting today.

MOVE SAFELY

BONDED

INSURED

Operating in California, Arizona, New Mexico, Colorado, Oklahoma, Kansas, Louisiana & Texas

MIDLAND STORAGE PHONE 400

NOTICE

I HAVE MOVED TO

314 WEST TEXAS AVE.

HALF BLOCK WEST OF PETROLEUM BLDG.
 Repair Service on Typewriters—Adding Machines—Guns—Locks—Novelties, etc. Keys Made.

MIDLAND TYPEWRITER SERVICE

L. H. TIFFIN—PHONE 166

Mrs. Kidd Speaks On Buddha Before Episcopal Group

Third in a series of studies on great religious leaders of the world was the discussion of Buddha presented by Mrs. Geo. Kidd who was in charge of the program for the Episcopal auxiliary meeting with Mrs. F. E. Lewis, 101 Butler, Monday afternoon.

During the business session, Mrs. J. P. Butler announced final plans for the benefit bridge coffee at the Country Club Wednesday morning.

Samples for the new altar hangings were displayed.

Mrs. J. L. Crump will send the monthly donation for young people's service to Lubbock.

Mrs. Dalas Dale was a new member and Mrs. C. L. Griffin was a guest.

Mrs. C. H. Green, an active member of the auxiliary, has moved to Dallas.

Eighteen members were present including: Mmes. John Adams, Cary P. Butcher, J. P. Butler, J. L. Crump, I. E. Daniel, J. D. Dillard, E. H. Ellison, R. W. Hamilton, Allan Hargrave, Geo. Kidd, R. E. Kinsey, Erle Payne, Don Sivalis, C. D. Ver-trees, H. D. Vigcon, E. M. Miller, Dalas Dale, and the hostess.

January was named for the Roman god, Janus. He was god of the day and the beginning of the year, and was pictured with a head that looked two ways.

Dairyland

Pasteurized

DAIRY PRODUCTS

for

HEALTH & HAPPINESS

Banking

Notice

APRIL 21

SAN JACINTO DAY

WILL BE OBSERVED AS A

LEGAL HOLIDAY

BY THE UNDERSIGNED BANKS

Please bear this in mind and transact your banking requirements accordingly.

THE FIRST NATIONAL BANK

THE MIDLAND NATIONAL BANK

Remember--

MOTHER'S DAY—MAY 8

Have That Special Picture Made Now

—AT—

KINBERG STUDIO

109 SOUTH MAIN

I WANT CHICK STARTENA!

PURINA CHICK STARTENA

COMPLETE ALL-WASH

Williams & Miller

Phone 83

WISDOM

Yes, it's wise to rid yourself of laundry worries. It's our business to worry about your laundry worries.

— TRY THE —

Midland

Steam Laundry

PHONE 90

Prompt, Efficient, Courteous Service

CLASSIFIED ADVERTISING

NOTICE
 Classified advertising is CASH WITH ORDER except to business establishments with an accredited rating. Please do not ask us to deviate from this regulation.

RATES AND INFORMATION
 2¢ a word a day.
 4¢ a word two days.
 6¢ a word three days.
 MINIMUM charges:
 1 day 50¢.
 2 days 1.00.
 3 days 1.50.
 4 days 2.00.
 5 days 2.50.
 6 days 3.00.
 7 days 3.50.
 8 days 4.00.
 9 days 4.50.
 10 days 5.00.
 11 days 5.50.
 12 days 6.00.
 13 days 6.50.
 14 days 7.00.
 15 days 7.50.
 16 days 8.00.
 17 days 8.50.
 18 days 9.00.
 19 days 9.50.
 20 days 10.00.
 21 days 10.50.
 22 days 11.00.
 23 days 11.50.
 24 days 12.00.
 25 days 12.50.
 26 days 13.00.
 27 days 13.50.
 28 days 14.00.
 29 days 14.50.
 30 days 15.00.
 31 days 15.50.
 32 days 16.00.
 33 days 16.50.
 34 days 17.00.
 35 days 17.50.
 36 days 18.00.
 37 days 18.50.
 38 days 19.00.
 39 days 19.50.
 40 days 20.00.
 41 days 20.50.
 42 days 21.00.
 43 days 21.50.
 44 days 22.00.
 45 days 22.50.
 46 days 23.00.
 47 days 23.50.
 48 days 24.00.
 49 days 24.50.
 50 days 25.00.

WANTED
 WANTED to buy: West Texas oil royalty and leases; also ranches. Box 1386, Midland, Texas. (32-24)

FOR SALE
 2

SACRIFICE
 1936 Dodge Truck; Good Shape \$300.00
 1935 C-35 Int. Truck \$400.00
 1935 Chevrolet Truck; Stake Body \$350.00
 1935 C-30 International; a Bargain for \$300.00
 1936 V-8 Truck \$300.00

Livestock
 Good horses, extra good mules. Also a few good cows priced to sell. 50 bushels Kash Cotton Seed.

Willis Truck & Tractor Co.
 110 South Baird Street

CAN save you 10% to 25% on builders' material, new lumber; any grade or length desired; direct from Arkansas mills; practically complete stock on hand. King Feed & Implement Co., Stanton, Texas, phone No. 7. (35-3)

1937 MODEL GMC pickup; new condition; terms. Phone 1056-7. (31-6)

3 FURNISHED APTS. 3
 TWO-ROOM and one-room apartment; utilities paid. 1201 North Main. (35-1)

NICE apartment for couple wanting quiet home; utilities paid. 101 East Ohio. (35-1)

ONE large room; private entrance; connecting bath; also two-room apartment; well furnished; price reasonable. 315 North Baird. (34-3)

THREE rooms and private bath; utilities paid; 2 blocks from courthouse; couple only. Upham Apartments, 201 South Main Street. (33-3)

FOR RENT: 3-room furnished apartment; utilities paid; adults only. 614 West Missouri. (33-3)

4 UNFURNISHED APTS. 4
 UNFURNISHED apartment in brick duplex; 706 North Carrizo. For information, phone 100. (34-3)

5 UNFURNISHED HOUSE 6
 TWO-ROOM unfurnished house south of cemetery gate. Apply 401 West New Jersey. (35-2)

10 BEDROOMS 10
 LARGE room; adjoining bath; private entrance; close in. 307 North Marienfeld. (35-3)

FRONT bedroom; adjoining bath; garage; also modern garage room. 506 North Big Spring. (35-3)

BEDROOM, four blocks north of postoffice; telephone, connecting bath. 110 West Michigan. (35-1)

BEDROOM; close in; adjoining bath. 206 South A. (33-3)

15 MISCELLANEOUS 15
 ROUNTREE'S Private Boarding House; menus changed daily; monthly rates on meals without room. 107 South Pecons, phone 278. (4-15-38)

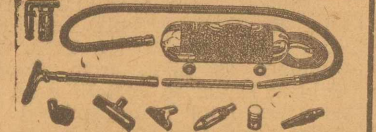
FOR SALE
 WELL-ROTTED BARNYARD FERTILIZER
SCRUGGS DAIRY
 PHONE 9000

15 MISCELLANEOUS 15

WILL MAKE
5% F. H. A.
 GOVERNMENT LOANS
 For
HOMES
 BUILT IN
ELMWOOD
 — Also —
 See me before buying your new home or homesite.
BARNEY GRAFA
 Field Office on Addition
 City Office Over
 First National Bank
 Phone 106

We Make 5% F. H. A. Government
LOANS
 Also Straight 6% Life Insurance Loans
 To Build or Remodel Homes
 See Our Listings for Bargains in Homes, Residential and Business Lots.

MIMS & CRANE
 A Complete Insurance Service
 205 West Wall
 Phone 24 or 366

Magic Aire \$69.50 Complete

 Eureka Vacuum Cleaners \$44.75

PARTS & SERVICE
 FOR ALL MAKES
 Cleaners Displayed at
 Texas Electric Service Co.
 By G. BLAIN LUSE

Cover that floor now with one of
"FIRTH'S"
 Rugs or Broadloom Carpets
 We are showing many new patterns just off the looms.

Twist Yarns in plain colors.
Provincial Home-spuns.
International Hooks.
Perfect Naturals.
Textstyle Friezes.
Swedish Primitives.
Farmhouse Collection.
 —these and others styled by "FIRTH."

We can furnish most any size or pattern you might require in 24 hours. And the price—VERY REASONABLE!
 Use our samples to work out your color schemes.

UPHAM FURNITURE COMPANY
 201 South Main St.
 Phone 451

I HAVE A BUYER FOR YOUR PROPERTY! HOUSES--LOTS FARMS
 List it with me! If you are looking for property to buy, see me for bargains.
A. B. COLEMAN
 Office at Sparks & Barron Phone 79
 Residence Phone 303-J

Political Announcements

(No refunds made to candidates who withdraw)
 All Announcements Cash
 Subject to the action of the Democratic Primary election Saturday, July 23, 1938.

For District Judge: (70th Judicial District)
CECIL C. COLLINGS
 (Of Howard County)

PAUL MOSS
 (Ector County)
CLYDE E. THOMAS
 (Of Howard County)

For District Attorney: (70th Judicial District)
WALTON MORRISON
 (of Howard County)

BOYD LATOHLIN
 (Of Midland County)

DONALD D. (Don) TRAYNOR
 (Midland County)

MARTELLE McDONALD
 (Of Howard County)

For District Clerk:
NETTIE C. ROMER
 (Re-Election)

For Representative: (88th Legislative District)
JAMES H. GOODMAN
 (Midland County)

GERALD B. HALLMAN
 (Midland County)

A. T. FOLSOM
 (Winkler County)

For County Judge:
E. H. BARRON
 (Re-Election)

For Sheriff, Tax Assessor & Collector:
A. C. FRANCIS
 (Re-Election)

C. C. COBB
 For County Clerk:
SUSIE G. NOBLE
 (Re-Election)

For County Treasurer:
LOIS PATTERSON
 (Re-Election)

For County Attorney:
MERRITT F. HINES
 (Re-Election)

For County Commissioners:
 (Precinct No. 1)
JOHN C. ROBERTS
 (Re-Election)

(Precinct No. 2)
B. T. GRAHAM
 (Re-Election)
J. C. BROOKS
B. T. HALE
W. V. JONES

(Precinct No. 3)
TYSON MIDKIFF
 (Re-Election)

(Precinct No. 4)
A. G. BOHANNON
J. L. DILLARD

For Justice of the Peace:
 (Precinct No. 1)
J. H. KNOWLES
 (Re-Election)

For Constable:
 (Precinct No. 1)
R. D. LEE
A. C. BLACKBURN

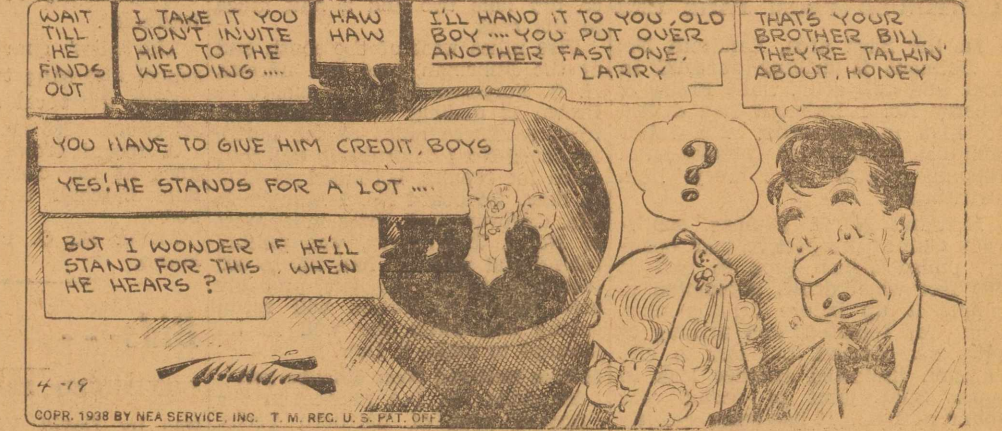
KING ROGERS TILE CO
 Bath Rooms—Drain Boards
 115 So. Main—Phone 43
 Midland, Texas

Output Near All-Time High For Olive Oil
 ROME (UP).—The European production of olive oil during the 1937-1938 season was the largest since the record year of 1930, according to an official statement issued by the International Institute of Agriculture.
 The total oil production of Europe's major olive growing countries, namely Italy, Portugal, Yugoslavia and Greece, is as high as 1,065,000 tons.
 Production has been exceptional in all countries. In Greece and Cyprus it is a record, while in Italy and Portugal it approaches the previous maximum reached in 1930.
 Owing to the excellent production, the Institute of Agriculture forecasts that Cyprus and even the Italian colony of Libya, which are usually of small importance in the field of international oil trade, will be exporters this year.
 The report of the institute adds that owing to the general situation in the export trade of olive oil will be in serious difficulty if the importing countries do not demand larger amounts than usual.
 The major importing countries of olive oil are the United States, Argentina, France and England.
 Traffic in the Panama Canal is lightest in August and heaviest in December.
 Table forks have been in use for about 300 years.

BOOTS AND HER BUDDIES



By EDGAR MARTIN



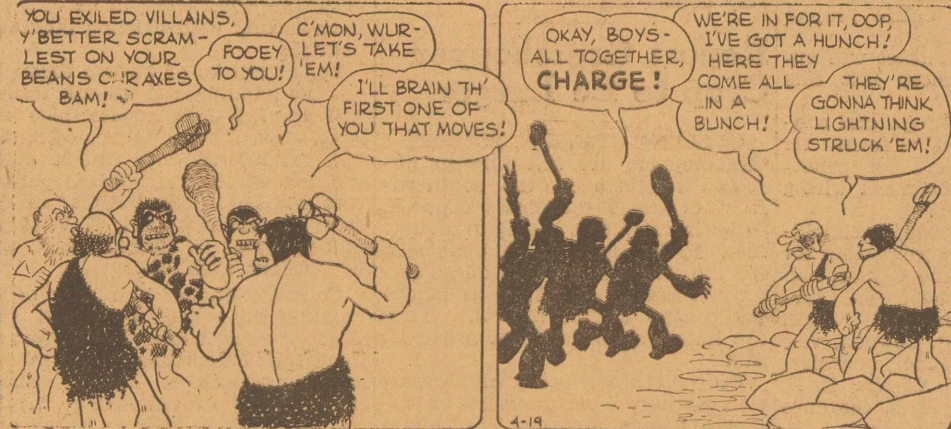
WASH TUBS



Wash Is in the Dough



ALLEP OOP



Speaking of Lightning—



MYRA NORTH, Special Nurse



The Curse Spreads



FRECKLES AND HIS FRIENDS



Monkey Suits



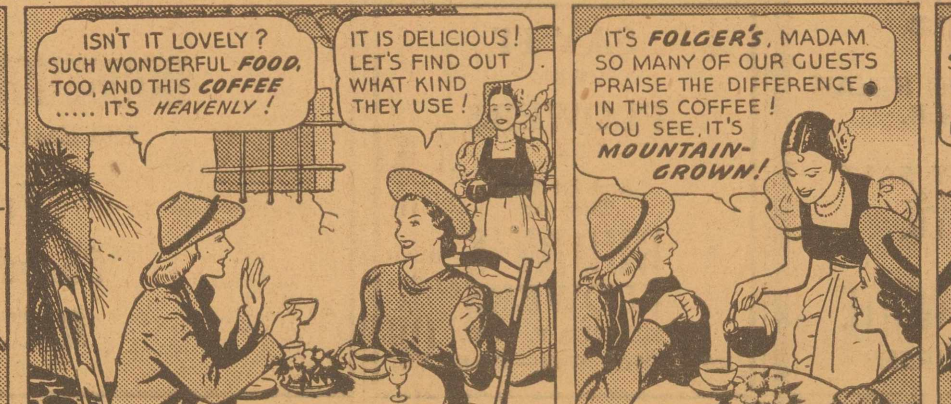
OUT OUR WAY



OUR BOARDING HOUSE



HARRIET AND MAE



take home a secret about Coffee!!



Oil News-

CONTINUED FROM PAGE ONE

In the Kirk area, Landreth No. 1 Dalmont is drilling at 4482 in lime and anhydrite, while Finley & Cherry No. 1 Dalmont had drilled to 4175 in anhydrite. The latter well has commanded interest since topping brown lime very high structurally.

Eastland No. 1 Dumber, south-west Gaines prospective pool opener, pulled 7-inch pipe in two at 500 feet when driller attempted to nipple it up before drilling plug. This was repaired, and drilling of plug was started, but loss of circulation indicated another leak in pipe. Split joint of casing was found at 1,023. It has been cemented, but an additional three days delay will result while new cement hardens. Plug will not be drilled until Friday. The 7-inch pipe was set at 4,290. Total depth of the well is 4,483 in lime.

Sinclair Moss Plug Back. Sinclair-Prairie No. 1 Paul Moss, Ector test, plugged back with gravel from 4,265 to 4,240, then drove lead wool to 4,236. Operators are balling and testing for shutoff of sulphur water encountered in the bottom 20 feet. They will shoot upper pays from which was bailed from 15 to 20 barrels of oil daily.

Sand line measurement corrected total depth of 4,640 to 4,631 in H. C. Wheeler No. 1 F. E. Gardner. Andrews prospect two and a half miles west of the Means pool. Bailing test is being made today. The well has been making between one and two barrels of free oil hourly together with some salt water coming from uncessed upper formation. Walter J. Donnelly No. 1 University, test in the Shafter Lake area of Andrews five miles west of the Wheeler well, is drilling at

4,450 in lime. Solid lime was topped at 4,290, about 25 feet higher than in Mid-Continent No. 1 Fish-er, dry hole two and a half miles to the east.

Five miles west of the south end of the Furman pool in Andrews, H. S. Forgeron No. 1 Lockhart & Brown is drilling at 3,140 in anhydrite. Three miles to the north, Seaboard No. 1 Thornberry was shut down for repairs, bottomed at 4,313 in lime. Seaboard No. 1 Munger & Nix, discovery well three miles west of No. 1 Thornberry, was pulling tubing and rods. It had 300 to 400 feet of water in the hole, probably acid water. Operators will rerun tubing and swab the well in an attempt to make it flow.

McKee Believed Near Ellenberger. Magnolia No. 1-A McKee, in the imperial area of northern Pecos, was coring this morning at 5,614 feet. Core will be pulled at 5,520, and results of its analysis will be closely watched, since the well is believed to be nearing top of Ellenberger, lower Ordovician. At 5,600 it was still in Simpson.

Humble No. 1 Lewis & Wardlaw, Ordovician test in western Tom Green, is drilling at 7,586 feet in dolomite and lime.

Humble No. 1-T Tubb, western Crane test, is drilling at 2,654 feet in lime.

In eastern Crane, Magnolia No. 1 University is drilling unchanged at 3,411 in brown, crystalline, saccharose dolomite.

Junior Musicians Entertain Class

Junior string ensemble of the Watson school of music played a special number, "Alpine Echoes" by Ben Norman, at the meeting of the Men's Bible class in Hotel Scharbauer Sunday morning. Ned Watson directed and Miss Lydie G. Watson accompanied the number. Playing in the ensemble were: John Perkins, Doyle DeArman, Charles Barron, Lewis Wingo, Edward Clark, Joyce Vaughan, Dor-

othy Fay Lynch, Anna Lois Campbell, Roxy Ruth Friday, Edith Rae Collings, Betty Jo Joplin, Marcelle Ramsauer.

The girls' quartet of the high school also sang two numbers.

Both the vocal and instrumental selections were neatly received. A record crowd was in attendance at the class, with the Midland baseball team present in a body.

Mayor M. C. Ulmer taught the lesson.

Bids--

CONTINUED FROM PAGE ONE

water by David Vickers of Sweetwater, with \$46,209. Lowest bid for air conditioning alone was by W. F. Kamm and Son, Dallas, with \$31,698. Lowest bid for plumbing and heating alone was by Vickers, with \$14,870. Bid of \$35,887 was filed by Lydiek-Barman Co. for air conditioning and heating, without plumbing. Various alternates, with deductions or additions, also could affect the awarding of contract in these divisions.

Lowest base bid for electric wiring was by the Sale Electric Supply Co. of Longview with the figure of \$9,195. Bids ranged as high as \$14,888.

Lowest base bid for furnishing and installation of elevator was by the Ois Elevator Co. with the price of \$15,395. Under an alternate proposal, their bid also was low, with \$13,605.

Summing up the various low bids, without consideration of deduction or additions for alternate plans, the lowest cost for the entire project would be \$258,746.

Awarding of the contract was expected to be announced late this afternoon.

Eighteen bids for the general contract were received, fifteen for plumbing, heating and air conditioning, twelve for electrical wiring and four for elevators.

Officers, directors and stockholders of the bank who were present for the letting, held in the Crystal ball room of Hotel Scharbauer were Clarence Scharbauer, president; John Scharbauer and E. P. Cowden, vice presidents; M. C. Ulmer, cashier; Frank Cowden, J. L. Crump, E. B. Dickenson, directors; Mrs. Clarence Scharbauer, stockholder, and J. P. Butler, assistant cashier.

To Enhance Skyline

Midland's skyline will be greatly enhanced by the new eight story structure which will be situated immediately east of the six story Hotel Scharbauer. Situated at the west portion of the lots on which the First National Bank and Everybody's store buildings are located, it will front north and will have ground dimensions of 52 by 75 feet. The present building of the bank will be remodeled and faced with brick to harmonize with the eight story building. Architecture and trim will harmonize with existing structures nearby. The bank will have its lobby space increased by approximately thirty feet in length going away with the sandstone pillars at the front and carrying the east wall to the line of the sidewalk, also taking in the present directors' room and the vault space.

A full basement underneath the eight story building, will house the bank's safety deposit, coupon and check exchange conference room for customers, heating plant and compressors for air conditioning equipment which will be installed throughout the office building and the bank. The new safety deposit vault service will be on a par with that of any banking institution in Texas, Mr. Hedrick said.

The first floor of the new building will have a north entrance, with lobby leading to elevators, to the bank lobby, to the Everybody's store building and to buildings on the first floor of the new structure. These will include cigar counter, three store spaces and one space at the rear of the elevator suitable for a small store or office.

The elevator will be of the signal control, micro-leveling type, and the most modern piece of elevator equipment obtainable at present, the architect said.

Each of the upper floors will contain ten air conditioned offices, systematically arranged, with modern equipment, rest rooms for men and women, sound proof walls,

Midland Geologist Goes to Abilene

Fred M. Haase, assistant district geologist for Shell Petroleum Corporation at Midland for the past year, left this morning for Abilene, accompanied by Mrs. Haase and their son and daughter. He will be resident geologist at Abilene for Shell, having 30 counties in the West Central Texas territory under his surveillance.

Haase succeeded as assistant district geologist in the Midland office by Gordon W. Heid, who has been on the Shell geological staff at Midland for more than a year.

Open House Honoring Teachers Postponed

The open house in honor of the junior high school faculty and Supt. W. W. Lackey, which was scheduled for tonight at the home of Mrs. Paul A. Schlosser, has been indefinitely postponed on account of illness in the hostess' family, officials for Junior High PTA announced today.

The PTA was sponsoring the entertainment, to which patrons of junior high school were invited.

Yankees Defeat Red Sox Today

BOSTON, April 19 (AP).—Charles Ruffing's pinch single in the ninth inning drove in the winning run today as the New York Yankees whipped the Boston Red Sox, 5-3, in the morning game of the Patriots' Day double-header.

Report Grasshopper Crop to Be Larger

COLLEGE STATION, Texas (AP).—Grasshoppers are hatching in immense numbers in the southernmost of the 104 counties expected to be infested this spring and summer, R. R. Reppert, entomologist for the Texas Agricultural Experiment Service and state grasshopper control leader, reports. They are hatching earlier than usual, he said.

Federal entomologists and extension workers have prepared an intensive control program. The federal part will be administered from Minneapolis, Minn., with Dr. W. E. Dove in charge. Federal materials for poison mash will be supplied on Reppert's direction, but farmers who receive such materials will be required to furnish an amount of weathered sawdust to add to the effectiveness of the mash, Reppert said.

Regional Library Planned at Center

CENTER, Texas (AP).—Ways and means to create a four-county regional state library, proposed by Judge R. N. Stripling of San Augustine, were considered at a meeting here recently of county judges and school superintendents. Others present were Mrs. Dorothy C. Journey, field workers of the Texas State Library, Austin, and Cagle Smith, District Supervisor of WPA Library work, Marshall.

The proposal is for a regional motorized library for Shelby, San Augustine, Sabine and Nacogdoches counties. If established it would be the first of its kind in the state. The idea was suggested by Mrs. Journey after it developed the counties could not support one of the library projects alone.

A committee was appointed to ascertain the total cost of the project and the amount required from each county to finance it. The committee also was instructed to recommend additional sources of revenue for the project. The body will report at a meeting at Bland Lake in San Augustine county, to which the commissioners' courts of the four counties, together with civic organizations and clubs interested will be invited.

GOES TO VIRGINIA.

Miss Vesta Deaton, employe of Sparks & Barron, has gone to Roanoke, Va., where her father is seriously ill.

TO HAVE PARTY.

Boone Bible class of the Methodist church will have a party at the home of Mrs. Fred Wemple, 504 N. Lorraine, Thursday evening at 8 o'clock.

A rat entered a bottle when it was a baby, at Meridian, Miss. Now it is full-grown and too large to get out of its glass house.

handsome trim and other admirable features.

The building will be fire proof throughout, with the lowest fire insurance rate obtainable from the standpoint of construction. The

SAY IT With FLOWERS

And Be Sure They Are BUDDY'S FLOWERS MEMBER F. T. D. 1200-A West Wall—Phone 1083

Howdy FORT WORTH WEST TEXAS' OUTSTANDING DEPARTMENT STORE Welcomes You To Midland Addison Wadley Co. A Better Department Store Midland, Texas

frame work will be of reinforced concrete, the exterior of the walls faced with Texas limestone, with granite base, the other walls to be of brick harmonizing with existing buildings nearby.

Floors will be of terrazo throughout the building and window frames will be metal, alternate bids for wood frames being taken. Alternate bids for interior trim will be taken for oak, birch and steel. Architecture will be strictly "Texas" in design, Mr. Hedrick said. C. V. Head, of the Wyatt C. Hedrick staff, will be construction architect.

Construction of the new office building will relieve a crowded condition experienced for several months by oil companies, professions and those making use of office space. Many of the offices in the new building have been leased and floor plans have been furnished several major companies and individuals wanting locations here as soon as space is available.

With the erection of the building will be a continuation of residence construction, business leaders predict, the active program having been under way without cessation for more than two years. Building permits last year ran over the \$800,000 mark, principally for home construction. This year the rate has been much larger per month, with virtual assurance that the total will be well above \$1,000,000 by the end of 1938.

At present a new \$65,000 high school gymnasium is under way, to be completed in time for occupancy in September. Also will be included band rooms and manual training departments, the gymnasium proper to provide adequate facilities for physical education for both boys and girls. Two homes to cost approximately \$20,000 each are now under construction by Midland oil men, with a score of houses ranging in price from \$2,000 to \$12,000 under way.

Erection of the office building, besides providing employment for those engaged in the building crafts, is expected to be a stabilizer of real estate values, benefiting every owner of business or residence property in Midland.

Officers and directors of the bank have received high praise for their foresight in providing the badly needed office facilities here without calling on citizens for subscription to a stock company or otherwise placing the venture on a "bonus" basis.

Nance Thoroughbred Claimed at Caliente

Tom Nance's three year old colt, Johnny Brigade, which has been in the money steadily at Agua Caliente track during recent weeks, was claimed Sunday afternoon while running in a \$1,400 claiming race. The horse had the misfortune of breaking down in the race, finishing last. Nance had not learned the name of the claimer but received a telegram from Trainer D. J. Drake of the sale. Drake was returning here today with the John Dublin filly, Hilda Mae, which also had been under his training.

Kansas City Buyers Ship Steers Monday

Shipment was made late Monday of 348 head of steer yearlings sold by the Scharbauer Cattle Co. to J. H. and Duden of Kansas City. The steers were driven from Scharbauer's Crowley place ten miles west of Midland and shipped from the local pens. Bob Duden is here personally to buy cattle in this section.

BACK FROM DALLAS.

W. J. Sparks returned last night from a week-end trip to Dallas.

VISITS RELATIVES.

Mrs. C. I. Kuykendall of Lubbock is visiting her sister, Mrs. Raynee Carroll, and other relatives here.

Welcome Citizens of Fort Worth HOUSEHOLD SUPPLY CO. 123 East Wall—Phone 735 Frigidaire Chambers Ranges R. C. A. Radios

Special from Dorothy Perkins! \$1.00 Bottle of Dorothy Perkins Eau de Cologne and 75c DeVilbiss Atomizer... both for \$1.20 Limited time only Addison Wadley Co. A Better Department Store MIDLAND, TEXAS

To Feature Negro Health Week in Program Broadcast

In observance of negro health week, Malinda Holland, chairman, will discuss activities of the colored population in health and educational observance of the week, as the chief feature of the health program to be broadcast over station KRLH Wednesday morning at 11 o'clock. A colored quartet will sing.

Five Landings At Airport Today

Five landings were reported by Sioan Field officials up to one o'clock this afternoon. Included were: A C-33 flown by Pilot Erwin on route from Fort Bliss to Brooks Field a TOP, with Chamber as pilot, from Hensley Field at Dallas to Fort Bliss an observation land plane, piloted by Cook, from Fort Bliss to Hensley Field a BT-9 under Pilot Kimmmer from Hensley Field to Fort Bliss; and a B-10 flown by Mayhew on route from Fort Bliss to Brooks Field.

TO HOLD PARTY.

Members of the local carpenters' union, No. 1428, will honor their families tonight at 8 o'clock with an ice cream party in Labor Temple.

Dancer Plunges to Death from Window

NEW YORK, April 19 (AP).—Thil Giroux, 26, Broadway specialty dancer, fell to her death from a fifth floor hotel room today after telling friends she was "sick and tired of it all."

All Divisions of Declaimers Compete In Meet at Alpine

A telegram was received today from Regional Director, General J. C. Coleman, at Alpine, addressed to Superintendent Lackey, director general of the Midland District, to the effect that all classes and divisions in declamation will be eligible to compete in the regional meet at Alpine. This is a new ruling, since the rules of the League specify that only Junior and Seniors of the high school are eligible for the regional meet. The new ruling will permit the two ward pupils, Frances Ellen Link, and Allen Wemple, to compete in the regional meet. It will also admit junior rural school declaimers, who won in the district, to compete at Alpine.

Yucca Last Times Today DONALD DUCK CARTOON & News Starts Tomorrow THE BATTLE OF THE CENTURY! BETWEEN TWO BOSOM TOWS 'THE KID COMES BACK' 'ISLAND IN THE SKY' 'Uncle Sol Solves It' and News

SPECIAL 50 Feet GARDEN HOSE \$3.50 Lawn Sprinklers & Other Accessories Reasonably Priced. LINCOLN PAINTS A & L HOUSING & LBR. CO. 201 North Carrizo—Phone 149

THIS WEST TEXAS INSTITUTION GREET'S Fort Worth AND Its Representatives MIDLAND HARDWARE AND FURNITURE CO.

Food Specials Monday to Friday BUNCH CARROTS OR BEETS 3 for 10c BANNER BUTTER Lb. 28c WHITE SPUDS 10 LBS. 19c CANE SUGAR 10-Pound 53c CLOTH BAG 53c CARNATION MILK 6 Sm. or 23c 3 Large 23c FOLGER'S COFFEE 2-lb. Can 49c ARMOUR'S SLICED BACON 23c LB. FANCY LOIN STEAK 27c LB. NO. 1 DRY SALT JOWLS 13c LB. RED & WHITE "OF COURSE"

FOR SALE New two-story stucco. Hardwood floors, rock-wool insulation, plastered throughout. Two bedrooms, bath, dressing room, and sun-deck upstairs, and an unusually large living room, and all service rooms downstairs. East front location in the best residential section. The rock-wool insulation throughout is a very good feature for proper temperature. Truly it will make a wonderful home. Price \$4000. \$500 down. Shown by appointment only. 90% F. H. A. AL JAMES & CO. Loans Real Estate Insurance LOANS 90% F. H. A. Phone 111 221 Petroleum Bldg.