

THE REPORTER-TELEGRAM

Evenings (except Saturday) and Sunday Morning
MIDLAND PUBLISHING COMPANY, PUBLISHERS
112 West Missouri, Midland, Texas

T. PAUL BARRON, Publisher

Entered as second class matter at the postoffice at Midland, Texas, under the Act of March 30, 1879

Subscription Price
Daily, by Carrier or Mail
Per Year \$5.00
Per Month 50¢

Advertising Rates
Display advertising rates on application. Classified rate, 2¢ per word; minimum charge 25¢. Local readers, 10¢ per line.

Any erroneous reflection upon the character, standing or reputation of any persons, firm or corporation which may occur in the columns of The Reporter-Telegram will be gladly corrected upon being brought to the attention of the firm.

Rural Schools

Pleasant Valley.
(Reported last Saturday).
Primary room pupils at Pleasant Valley have made a health poster about the puppet show they saw last month and the intermediate grades wrote a story.
Other health posters and language booklets were made by the primary pupils. These will be exhibited at the County Fair to be held in Midland soon.

After the sandstorms are over, it is planned to plant flowers on the school grounds.
A. L. Stewart Jr. was at Odessa last Thursday and Friday exhibiting his 4-H club calf.

Earl Baldon went to the fair in Odessa last Friday.
Othelia Wilson was absent one day last week because of illness.

Prairie Lee.
Many were present for the chapel exercises and program on Friday, April 1, at Prairie Lee. At the noon hour the picnic dinner was spread at the "lake" south of the schoolhouse in the J. M. King ranch.

In the afternoon ball games were played on the school courts, the outsiders (including some of the men and women) matching the school team.

Mrs. Hollingsworth did not teach her class of club girls last Friday

as the April First program and picnic was in progress.

In the recent league playground ball and volley ball meet at Warfield, Prairie Lee won forty of the total of sixty points made by all the schools, Prin. A. M. Bryant reported. This brings the total points made by Prairie Lee to 117. In the tennis meet, Prairie Lee won three second places.

Preparation is under way for the closing exercises of the school year which will be presented in a month. Sunday school, church and BTU services at Greenwood were well attended Sunday and Sunday night.

Claude Crane of Midland spoke at the church Sunday night on "Growing a Great Sunday School."

Sewing Club Completes Quilt

Ten members of the Wednesday Afternoon club met at the home of Mrs. Bill Carson, 306 E. Kentucky, for a sewing session Wednesday afternoon.

A Dutch Doll quilt was completed for the hostess.

Mrs. J. W. Crowley was a visitor. Refreshments were served at tea time to Misses, E. L. Reagan, A. E. Dixon, W. C. Moore, S. O. Dixon, J. N. Miller, J. D. Rogers, J. W. Crowley, Fred Klatt, John Klatt, George Hardin, and the hostess.

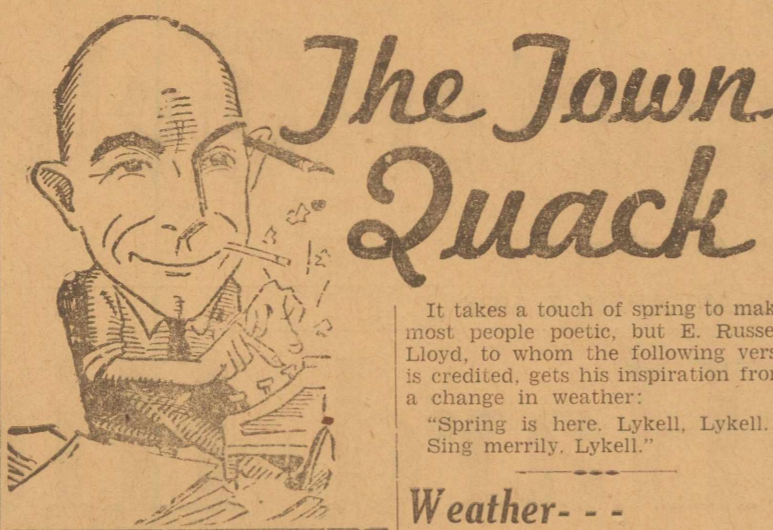
The club will meet next Wednesday with Mrs. Hardin, 901 W. California.

It is estimated 200,000,000 tons of iron ore await mining in the hills of Cass county. More than 15 carloads were shipped from Atlanta this year, railroad officials say.

Read the Classifieds.

DRINK JAX

"THE BEST BEER IN TOWN"



The Town Quack

Most anybody will tell you that you can't eat your cake and have it too. And most any old timer in West Texas will tell you that you can't have spring time in the winter and then expect a continuation of the ideal weather right on through the spring.

When we were enjoying those warm days in February, with green grass springing up, trees budding out and all signs pointing to an early summer, it was hard to feel like a blizzard could creep up under cover of darkness and set back all that has been developed.

But the old timers just shook their heads. Last Saturday morning there was a little frost and ice here, and up northwest the shinnery and mesquites were set back. And then last night we got what the old boys had been expecting—sand, snow, ice and then a layer of dust. Tom Wingo said if we could have added a little cement to that mixture, we could have formed a crust which would keep down the weeds and sand from now on. The ice company reported temperature of 24 degrees. I don't know whether they meant outside or in the vaults, but I believe that is too low for the vaults so it must have been outside.

Many people set out their grass seed in February, others in March, yet some old timers held out until April. A few of them got their seed in the ground too early in April, after waiting that long.

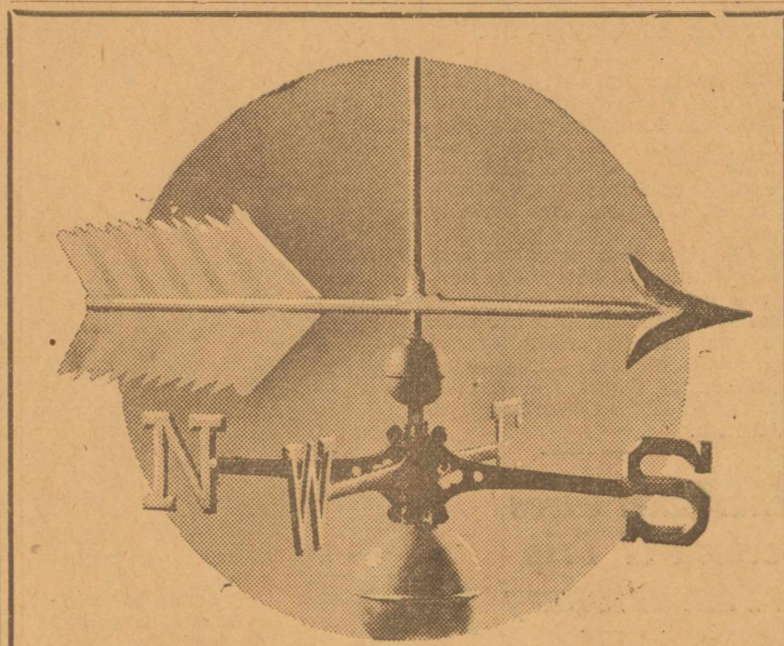
A visitor at the Glenn Brunson lake, where Charley Blalock peddles the fishing rights, was heard to say that if he didn't "get him" tonight, he would swap his rod for a shotgun. The next morning his victim lay in a tent, stretched out stiff and cold. Sure enough the guy had caught his fish.

Weather - - -

CONTINUED FROM PAGE ONE

dicted. Fair weather Friday, with slowly rising temperatures in the west and north central portions and livestock warnings near the east coast, was forecast.

West Texas was expected to have generally fair skies, with colder temperatures in the extreme south-east, a hard freeze in the north and freezing temperature in the south tonight. Friday's prospects were for slowly rising temperatures.



No Matter How the Wind Blows..

It's always fair weather ahead for those who send their laundry to . . .

Midland Steam Laundry

PHONE 90

Prompt, Efficient, Courteous Service

NEWEST IN DALLAS MAYFAIR HOTEL
'Close to Everything'
Ross at St. Paul Highway 75
TEN FLOORS OF COMFORT
ALL PRIVATE BATHS
With tub or tub and shower
Single or Double
Two Guests \$2.00 and One Price \$2.50

"Button Campaign" Donations Asked

Sponsoring a "button campaign" for buttons to be used in sewing room work at the welfare office, City-County Federation members are asked to bring button donations to the regular business meeting of the Federation to be held in the county courtroom Friday morning at 10:30 o'clock. Club representatives are asked to bring buttons donated by their groups.

Buttons may also be left at the chamber of commerce office to be delivered to the welfare office.

All Federation members are urged to be present for Friday's meeting. The monthly luncheon is being omitted.

Goering - - -

CONTINUED FROM PAGE ONE

lings in the many departments he rules.

By about 9:30 p. m. he calls it a day and comes home for a supper after which, with his wife, he is likely to go to the opera house or to the theatre which he bosses and which is not under Goebbels

control. Often by the time he gets there, only one act remains to be seen, but he enjoys it and afterwards, with his actress wife, likes going back on the stage and joshing with his artists. Then home, a last look at important documents, a sandwich and so to bed.

West Texas goose eggs keep step with the wide open spaces. Mrs. C. C. Tate, living near Snyder, recently found one produced by her

flock measuring 11 3/4 inches long and 8 1/2 inches in circumference. "It is the biggest I ever saw," allowing she had gathered "some big eggs in my time."

F. I. Townsend, pioneer writer, orator and farm leader of Snyder, is preparing to write a history of Scurry county. He asks persons residing in the county more than 30 years to contribute their recollections.

Grocery Specials

FOR FRIDAY & SATURDAY, APRIL 8 & 9

We Reserve the Right to Limit Quantity

SUGAR 10 Pounds Pure Cane	56¢
TOMATO JUICE 1/2 Gallon Monarch	23¢
TOMATO JUICE 1 Gallon Welch's	45¢
COFFEE 1 Pound Maxwell House	29¢
GRAPEFRUIT JUICE No. 1 Tall Monarch 3 for	23¢
TOMATOES No. 2 Yacht Club Fancy 2 for	19¢
SOUP Large Size Monarch, All Flavors, 2 for	25¢
TUNA FISH Yacht Club	16¢
SANI-FLUSH Large Size	18¢
MELO Ideal Water Softener Large Size	18¢
BIG FOUR WASHING POWDER	35¢
SPUDS 10 Pounds No. 1 Idaho Russets	25¢
PRESERVES 1-Pound Glass Welch's Grape	22¢

MARKET SPECIALS

BACON, Armour's or Wilson's, pound	33¢
HAM ENDS, pound	21¢
LEG OF LAMB, pound	28¢
SHOULDER LAMB ROAST, pound	20¢
PAN SAUSAGE, 2 pounds for	25¢
CHUCK ROAST, Baby Beef, pound	16¢
KRAFT PACKAGE CHEESE, 2 for	35¢
CHEESE, Longhorn, pound	20¢

Free Delivery

WE FILL YOUR ORDERS MOST CAREFULLY



WE SOLICIT 30-DAY ACCOUNTS



PHONE 562

LADIES! Are you becoming to your husband or sweetheart? If not, you had better be coming to us.

THE IDEAL BEAUTY SHOP

Permanents	\$1.95, \$2.50, \$3.50, \$5.00 and \$7.50
Shampoo, Set and Dry	35¢
Oil Shampoo, Set and Dry	50¢
Set and Dry	25¢
Manicure (The Revlon Way)	35¢
Clairoil and Luxoil Dyes	\$2.50
Lash and Brow Dye and Arch	50¢

—Operators—
VERA PAGE—MARGIE ATCHISON—BEE RICH
BOBBY'S BARBER SHOP
117 SOUTH MAIN STREET
PHONE 85

Who can tell what the future will bring? You can make it bring security—by taking out a combination life insurance-and-annuity plan policy! Investigate our offer now!



SPARKS & BARRON

General Insurance & Abstracts
107 West Wall—Phone 79

GENUINE OLD PIT STYLE BARBECUE

Delicious Home-Made Sauce
Plates, Sandwiches, Special Orders
Beef, Pork, Ham & Spare Ribs

THE LOG CABIN

W. C. King, Mgr.
Curb Service, Too!
Catering to the Better Element

A Few Blocks West of Town

On The Highway

SAVE 25c On Each Dress or Suit—By Cash and Carry

"Growing with Midland"

"QUAKER OATS is a Splendid Breakfast"

says Ruth Harkness, Great American Explorer, who captured Su-Lin, only Giant Panda in captivity!



What a bargain in breakfasts! Quaker Oats, majority of millions costs only 1/2 cent per serving—yet it's exceedingly rich in food energy, and in flavor! Every serving contains abundant Vitamin B—the precious vitamin you need every day to combat nervousness, constipation and poor appetite. Order the one and only Quaker Oats at today's special prices, which many grocers feature.

Thrills Had to Be Real in This New Tarzan Film

Thrill scenes in motion pictures frequently call for technical tricks to produce a desired effect but in "Tarzan's Revenge", the Twentieth Century-Fox release which comes to the Yucca theatre tomorrow, the exciting exploits of Tarzan (Glenn Morris) and his mate (Eleanor Holm) defied reproduction by anything but real risks to those involved.

When Eleanor Holm swam to safety among a pool full of crocodiles, there was no one who could swim faster or more capably under those conditions than Eleanor herself. When Glenn Morris, acclaimed as America's greatest athlete in the 1936 Olympics, had to swing Eleanor Holm under his arm and leap out of danger in the perfect Tarzan manner, Morris was the only one able to do it. When dozens of wild animals were turned loose in a scene no one knew when natural hatreds would start them off on an unscheduled killing orgy.

Business Men - -

CONTINUED FROM PAGE ONE

ler Brothers, County of Dallas—2, Dallas Chamber of Commerce—2, Dallas Gas Company, Dallas National Bank, Dallas News-Dallas Journal, Dallas Wholesale Merchants Association, Dorsey Company, Dr. Pepper Company, Dun-Bradstreet Inc., Employers Casualty Co., First National Bank in Dallas—2, Graham-Brown Shoe Co., Great Southern Life Ins. Co., Higginbotham-Bailey-Logan, Co., Higginbotham Millinery Co., Lorch Mfg. Co., Magnolia Petroleum Co., McKesson-Crowder Drug Co., Mercantile National Bank, Moore-DeGrazier Co., Padgett Brothers, Red

Governor Buys Easter Seals



After formally proclaiming Crippled Children's Week in Texas, April 4 to 11, Governor James V. Alford's first official act was to buy Easter Seals to aid crippled children. The tiny salesman, shown in the picture with the governor, is three-year-old Margaret Jones of Austin. Little Margaret is particularly interested in Easter Seal sales because they will help her older sister, Inez Jones, now under corrective treatment at a San Antonio crippled children's hospital. The Texas Society for Crippled Children expect to raise \$50,000 in this campaign for Easter Seal sales in behalf of unfortunate Texas children in need of hospital treatment and vocational education.

United States. Applying the average rate of temperature increase to the 4,000 miles to the center of the earth, he estimates the earth's center has the incredible temperature of 443,000 degrees, compared with 11,000 degrees on the surface of the sun.

Regardless of the soundness of the theory, the statement says, earth temperature is important to oil producers. Crude oil becomes more fluid in the higher temperatures and flows more easily. More oil, therefore, is obtained from a well.

Increased warmth causes petroleum and gas underground to expand and to exert greater pressure. There are other factors causing pressure in oil wells, notably water, and probably the effect of temperature in creating pressure is second in importance only to water. Although high pressures in wells add to drilling difficulties, they also eliminate the cost of pumping the oil to the surface.

Some oil wells have initial pressures as high as 2,000 pounds to the square inch. Drilling tools weighing half a ton have been pushed out of the well casing by gas pressure. If terrestrial temperatures were lower, the well pressures would also be lower. Mother Earth, by warming the petroleum, makes its production easier and cheaper. Oil pressures often are further increased through the gasification of the volatile substances in the

crude oil. The lighter substances boil off at temperatures considerably below the boiling point of water, and when in the gaseous state mix with the natural gas and intensify the pressure. Gas in most high-pressure oil wells contains a substantial percentage of these substances of high volatility, which are recovered for use in motor fuel. The gas is cooled and compressed, and the vapors condense out as "natural" gasoline. Several gallons of "natural" gasoline may be obtained from 1,000 cubic feet of gas. In 1937 approximately one-tenth of the total gasoline produced in the United States was obtained in this way, the statement says.

Farmer-stockholders in the cooperative gin at Afton, Dickens county, cut a melon this year. After announcement that approximately 5,000 bales was ginned in the 1937-38 season, a dividend totaling \$14,000 was declared. In some cases the dividend was almost equal to the profit on the stockholder's cotton crop.

We Still Have Some of That Good Lumber at LOW PRICES

ALL OTHER BUILDING MATERIALS ON THE SAME BASIS.

NOW IS THE TIME TO BUILD.

LET US HELP YOU WITH YOUR FINANCING.

ANDERSON

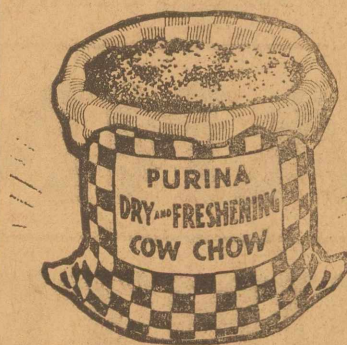
LUMBER COMPANY

311 South Marienfeld St.

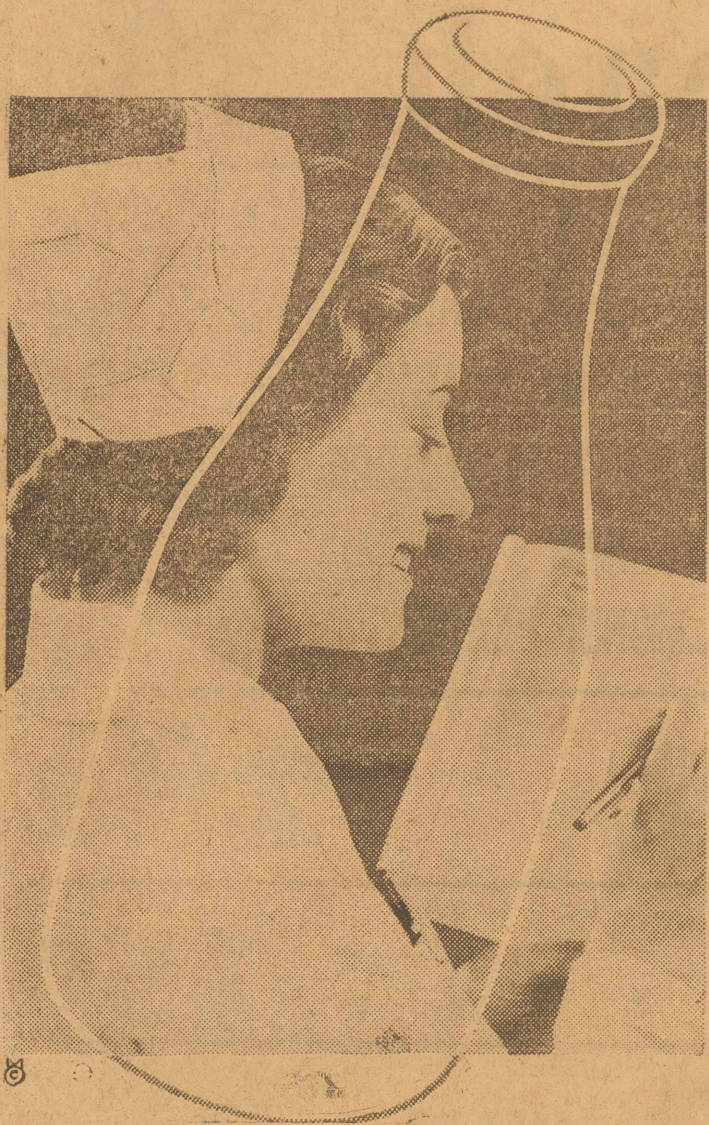
Phone 497



Builds up the cow and makes her a better milk producer when she freshens.



Williams & Miller
Phone 83



it's the Doctor's ORDERS

MILK is an important food in a child's growth and development. It's equally important to the adult—and physicians demand it for convalescents. Don't wait for illness—drink milk now! But if you are suffering from a cold or other illness—be sure to drink milk generously—a quart a day! And be sure it is properly pasteurized.

Ask for It at Your Grocer's

Banner CREAMERY

WE DELIVER—PHONE 1137

Magic Aire \$69.50 Complete

Eureka Vacuum Cleaners \$44.75 And Up
PARTS & SERVICE FOR ALL MAKES
Cleaners Displayed at Texas Electric Service Co.
By G. BLAIN LUSE

QUALITY DRY CLEANING

PETROLEUM DRY CLEANERS

PHONE 1010

Dress up your car for Easter

GOOD EASTER-IDEA!

Remember, Fenders to a Car, are what a Hat is to a woman—a shave to a man! We can spruce-up your Car's Easter looks lots, with New Fenders. What's more, they'll keep up your Car's "respectability" appearance throughout the year and longer! Ask for our low price.

SOUTHERN BODY WORKS
210 So. Main—Phone 477

Ball Motor Freight Lines, Republic National Bank of Dallas—2, Schoolkopf Company, Southern Supply Company, Southwestern Drug Corp.—2, Southwestern Division Incandescent Lamp Dept., General Electric Co., State Fair of Texas, Texas Employers Insurance Ass'n., Texas Power & Light Co., Times-Herald, Floyd West & Co., W. F. A. A.

Press Agent Thinks Jinx Ridded After 12 Years of Worry

Probably one of the most optimistic men in the world was at work in Midland today.

He is Roy E. Stein, advance agent for the T. J. Tidwell show and carnival which is scheduled to open a week's engagement here Monday.

Stein made his rounds today despite the severe weather which can be called anything except carnival weather. He was happy and displayed a cheerful smile.

"Cold weather ahead of the show means nice weather when the show arrives next week," Stein said. "For twelve years now our show has exhibited in Midland—and every time we appear here the weather turns out bad. This time, however, it looks like we'll get a break."

The show which is now appearing in Big Spring will probably be closed there for the day, Stein said. "People in West Texas think they

have more than their share of un-puly days but that is not true. West Texas weather on the year as a whole is much nicer than the weather experienced in other parts of the country."

Temperatures Under Ground Considered In Oil Production

NEW YORK (AP)—Terrestrial temperatures, says a statement by the American Petroleum Institute, have an important bearing upon the production of petroleum and tend to lower the price of gasoline. In one section, says the statement, petroleum has been found as hot as boiling water at a depth of about a mile. An increase of one degree in warmth for every 45 feet has been encountered in some drilling, although the increase usually ranges about one degree for every 60-70 feet.

In studying the temperature of oil wells, the statement continues, a scientist ascertained the temperature increases in the last 1,000 feet of the deepest oil wells in the

HAPPY RELIEF FROM PAINFUL BACKACHE

Caused by Tired Kidneys

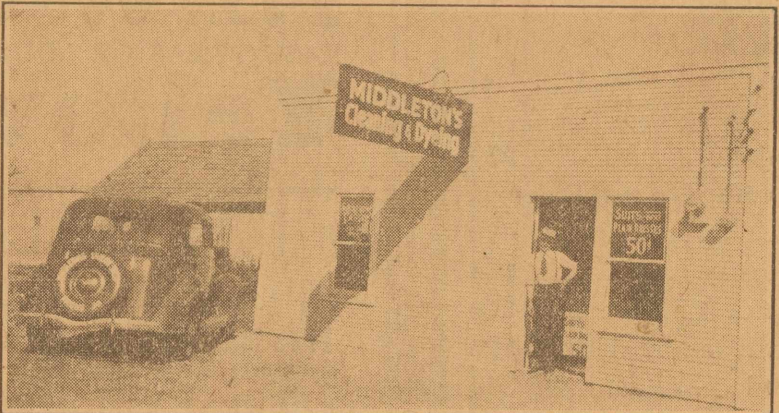
Many of those gnawing, nagging, painful backaches people blame on colds or strains are often caused by tired kidneys—and may be relieved when treated in the right way.

The kidneys are Nature's chief way of taking excess acids and poisonous waste out of the blood. Most people pass about 3 pints a day or about 2 pounds of waste.

If the 15 miles of kidney tubes and filters don't work well, poisonous waste matter stays in the blood. These poisons may start nagging backaches, rheumatic pains, loss of pep and energy, getting up nights, swelling, puffiness under the eyes, headaches and dizziness.

Don't wait! Ask your druggist for Doan's Pills, used successfully by millions for over 40 years. They give happy relief and will help the 15 miles of kidney tubes flush out poisonous waste from the blood. Get Doan's Pills.

Moved



We are pleased to announce that we have moved to our
NEW LOCATION
AT 109 SOUTH CARRIZO ST.
Just half a block south of the highway and five blocks west of the court house.
DRIVE RIGHT UP TO THE DOOR ANY TIME OF THE DAY
We are equipped to give you better work and better service than ever before.
OUR PHONE NUMBER IS STILL 30
And we still call for and deliver

MIDDLETON'S

CLEANERS & DYERS

NO SQUAT NO STOOP NO SQUINT

with the 1938
AUTOMATIC TUNING PHILCO

Walk up to this new Double-X Philco. See how the incline of its Inclined Control Panel enables you to tune with ease and grace . . . sitting or standing! Note how one twirl of the Automatic Tuning Dial brings in your station . . . instantly, perfectly! Finer foreign reception . . . glorious tone . . . gorgeous cabinet . . . everything you could wish for!

PHILCO 4XX*—with Inclined Control Panel, Automatic Tuning, Inclined Sounding Board, Concert Grand Speaker, 4-Point Tone Control, Philco Foreign Tuning System, Beautiful hand-rubbed walnut cabinet.

TRADE-IN ALLOWANCE UP TO \$50 On Some Models

CARNETT'S

Phone 133—210 East Wall

YOU GET MORE WATER! WITH AN Improved AERMOTOR 50 YEARS OF LEADERSHIP

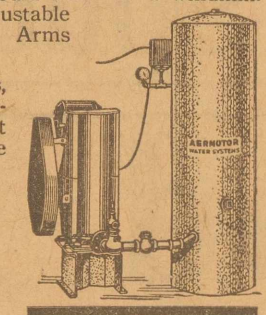
THERE is always plenty of water when an Improved Aermotor does the pumping. It supplies more water because it pumps in winds too light for others. It has earned the reputation of "the windmill that runs when all others stand still".

Bringing you the latest advancements first is the reason Aermotor leads the field. Look at these details . . . all that you could want in a windmill: Auto-Oiling, Double Gears, Outside Furling, Adjustable Stroke, Perfect Regulation, and Screw-In Wheel Arms that cannot work loose.

There's a difference in electric water systems, also . . . a big difference . . . in quality and performance. That's why discriminating buyers select Aermotor. Then they're sure of quieter, more economical operation.

Get the facts today.

PLISKA & HUNDLE
Phone 524—Texas & Baird



ARMOUR'S VEGETOLE 8 POUND CARTON 84c

IDEAL DOG FOOD _{3 for} 23c	STRAWBERRY PRESERVES _{2-lb. Jar} 47c	MA BROWN PICKLES _{Sour or Dill Quart} 18c	TINY SIZE PEAS _{Libby's No. 2 Can} 18c
MEXICAN STYLE BEANS _{3 for} 25c	MA BROWN APPLE BUTTER _{2-lb. Jar} 19c	TASTY QUEEN OLIVES _{3-oz. Jar} 10c	NO. 2 CAN TOMATOES _{3 for} 25c
8 OZ. HEINZ JELLY _{Jar} 15c	14 OZ. HEINZ KETCHUP _{Each} 21c	25 OZ. HEINZ BEANS _{Can} 16c	NO. 2 CAN GREEN BEANS _{Each} 9c

PURE CANE SUGAR 10 Pound CLOTH BAGS 47c

QUART MIRACLE WHIP each 39c

LARGE BOX DREFT _{Each} 23c	NO. 1 TALL SALMON _{Can} 14c	NORTHERN TISSUE _{3 for} 19c	SNOWDRIFT _{3-lb. Pail} 57c
GREEN LIMA BEANS _{Libby's No. 2 Can} 18c	ANY FLAVOR JELLO _{Package} 5c	WAX PAPER _{2 for} 13c	HEINZ 12 OZ. BEANS _{Each} 9c
3 BEE STRAINED HONEY _{1 lb.} 24c	D. M. TOMATO JUICE _{3 for} 23c	LIBBY'S PORK & BEANS _{3 for} 19c	HEINZ 12 OZ. SPAGHETTI _{Each} 9c
WAFERETTE CRACKERS _{2-lb. Box} 17c	GRAPE-NUT FLAKES _{Package} 10c	CORNED BEEF HASH _{16-oz. Can} 13c	GALLON TOMATO JUICE 46c
VANILLA WAFERS _{15c Bag for} 12c	KRAFT FRENCH DRESSING _{8-oz.} 17c	YACHT CLUB CHERRIES _{No. 2 R. S. P.} 19c	P & G SOAP _{6 Bars} 23c
CHEAP BROOMS _{Each} 29c	LIBBY'S 303 CORN _{Country Gentleman} 12c	GIANT SIZE OXYDOL _{Package} 69c	DEL MONTE PEACHES _{No. 2 1/2 Can} 19c

FRESH BANNER Butter PER POUND 28c

FRESH COUNTRY EGGS per dozen . . . 15c

HILLS BROS. COFFEE POUND can 25c

EVERLITE FLOUR, 24 POUND SACK for . . . 47c

Pound Package BANNER OLEOMARGARINE 13c

FRESH QUALITY MEATS

DRESSED HENS Per Pound **18c**

DRESSED FRYERS

BABY BEEF ROAST Armour's Star Chuck Pound **16c**

Hand Sliced **BACON** Pound **25c**

PORK CUTLETS _{Pound} **38c**

LOIN STEAK _{Armour's Star Pound} **27c**

PORK CHOPS _{Pound} **23c**

BACON _{Armour's Star, hand sliced, rindless, pound.} **29c**

PORK SAUSAGE _{2 Pounds for} **25c**

LUNCH MEATS _{Assorted Pound} **22c**

SLICED BOLOGNA _{Two Pounds for} **25c**

HAMS _{Armour's Star, half or whole, pound} **25c**

COOKED HAM _{Morrell's, can, Each} **67c**

ROAST _{Lamb Shoulder Pound} **20c**

DELICATESSEN

MENU

Spare Ribs and Dumplings, pint	25c
New England Baked Ham with Glaced Pine-apple, pound	49c
Vegetable Veal Loaf, pound	30c
Braised Short Ribs, pound	25c
Hot Tamales, dozen	25c
Barbecued Young Beef, pound	35c
Weiners and Spaghetti, pound	25c
A Variety of Five Vegetables.	
Cornbread Sticks, each	1c
Chicken Salad, pound	35c
Potato Salad, pint	20c
Fruit Jello, pint	20c
Pimiento Cheese Spread, pound	35c
Fresh Strawberry Short Cake, each	10c

FRESH GARDEN PRODUCE

FRESH DUG NEW RED

POTATOES, lb

JUST PICKED—FRESH

GREEN BEANS, lb

FRESH HOME-GROWN

Green Spinach, lb

WHITE OR YELLOW

NEW SQUASH, lb

EAST TEXAS OR LOUISIANA

Yellow Yams, lb



FRESH TOMATOES _{Pound} **10c** BELL PEPPERS _{Pound} **10c**

WASHINGTON APPLES _{Dozen} **25c** 200 SIZE ORANGES _{Dozen} **25c**

360 SIZE LEMONS _{Dozen} **25c** 344 SIZE ORANGES _{Dozen} **15c**

LARGE CELERY _{2 for} **27c** AVOCADOS _{3 for} **25c**

U.S. No. 1 Spuds, 10 Pounds for **17c**

Rhoads' Wes-Tex Food Market

MIDLAND We Reserve the Right to Limit Quantity Specials for FRIDAY & SATURDAY, APRIL 8th & 9th TEXAS

SOCIETY NEWS SECTION

Bride-Elect Honored at "Conversational" Coffee at Home of Mrs. E. W. Cowden

Honoring Miss Ida Elizabeth Cowden whose approaching marriage to Donald Oliver has been the inspiration for a series of social gaieties, Mrs. E. W. Cowden entertained with a "conversational coffee" at her home, 111 North F street, Wednesday morning at 10 o'clock. Guests for the occasion were girlhood chums and intimate friends of the honoree, with her mother, Mrs. Elliott F. Cowden and her fiance's mother, Mrs. R. B. Oliver Jr. of Cape Girardeau, Missouri, as special guests.

Informality was the keynote of the gathering which took place in rooms decorated in April fashion with carnations and daisies.

Mrs. R. B. Oliver Jr. presided at the coffee service, pouring at a table spread with an embroidered cloth, with appointments of crystal and silver. The centerpiece was an

unusual flowerholder, consisting of six vases of varied sizes, filled with carnations, daisies, and other spring blossoms.

At the close of the coffee hour, a ring at the door heralded the entrance of a boy delivering an "express" package which proved to contain intimate gifts for Miss Cowden, who apparently was taken completely by surprise at this feature of the party.

Guests were: The honoree and Mmes. Barron Kidd, Ben Black, H. L. Straghan Jr., Nancy Stevens, Hugh West, Alf Reese, E. I. Bailey, Louise Thomas, W. M. Blevins, F. Miller, Ed Watts, Thomas Lee Speed, J. B. Wilkinson, Ralph Geister, John M. Speed Jr., Conn Thomas, Tom Sealy, W. M. Holmes, Misses Margaret Miles, Lucile Thomas, Helen Hodges, Mary Maude Sparks, Lily Freeman of Booneville, Missouri, Mmes. Oliver and Elliott F. Cowden.

Fredda Hunt, of the Decorators Studio of Luoooa, and representative of Anderson Furniture Studios of Dallas, will be in Midland this Thursday and Friday in the junior dining room of Hotel Scharbauer, with a showing of draperies, slip covers, rugs, lamps, wall papers and other home accessories. Mrs. Hunt has recently returned from Chicago Maris. The public is cordially invited. (Adv.) (21-6)

VETERINARIAN
WALLACE E. BROWN, D. V. M.
Large and small animal hospital
MIDLAND DOWNS
Phones 1135 and 258

RETURNS HOME.
Mr. and Mrs. R. E. Gile, and children Charles and Richard have returned from a trip to Minneapolis, Minn. They visited in Tulsa, Kansas City and Dallas.

She's WTCC Convention Hostess



Miss Elizabeth Huff has been named "Miss Wichita Falls" at the West Texas Chamber of Commerce convention, in Wichita Falls, April 25, 26 and 27. A granddaughter of Judge R. E. Huff, pioneer Wichitan, and a city founder, Miss Huff will be the official hostess to other West Texas beauties when they vie for the convention crown. Miss Huff will be the "Oil Queen" for the convention pageants, on Monday and Tuesday nights during the sessions, when the beauty nominees for Queen will be presented. Representing the host city, however, she will not compete for the title as "Her Majesty, Miss West Texas."

Mrs. Hale Hostess For Three-Table Bridge Party

Mrs. A. D. Hale entertained for the Slam club and a group of guests with three tables of bridge at her home, 103 E. Ohio, Wednesday afternoon.

An Easter motif was featured in tallies for the bridge games in which high score prize for guests went to Mrs. W. D. Dobson, high score for club members to Mrs. Bonner Lacey and second high for club to Mrs. R. L. Bailey. Mrs. W. G. Attaway won the prize in the bingo games which were also a feature of the afternoon.

Playing guests were: Mmes. G. A. Lamb, Walter Sparra, R. L. Cline, W. D. Dobson.

Guests who did not play were Mrs. M. G. Uechl and Miss Bobby Hayes.

A refreshment course was served at tea time to guests and the following club members: Mmes. W. G. Attaway, Joe Dobson, Bonner Lacey, R. L. Bailey, R. R. Richter, W. J. Stewart, R. L. Stewart, D. W. McCormick, and the hostess.

The club will meet next week with Mrs. Joe Dobson at her home at the Atlantic Tank Farm.

Play Readers Will Have Annual Guest Day on May 4

Date of the annual guest day of Play Readers club was set as May 4 at the regular meeting of the club with Mrs. R. D. Seruggs, 605 N. Pecos, Wednesday afternoon.

Miss Anna Bruner read "Having Wonderful Time" by Arthur Kober, followed by a round table discussion of the comedy.

Visitors were: Mrs. Leonard Proctor, Mrs. E. H. Powers, Miss Theresa Klapproth, and Mrs. J. B. Richards.

Members present were: Mmes. E. W. Anguish, E. H. Barron, W. H. Bryant, Jack Hawkins, Wallace Irwin, Chas. L. Klapproth, W. L. Miller, Fred Wilcox, Miss Wilda Brickell, and the hostess.

Problem of Youth Is Discussed by Modern Study Club

Mrs. F. R. Schenck, 1002 W. Kentucky, was hostess and Mrs. P. F. Bridgewater was program leader at the meeting of the Modern Study club Wednesday afternoon.

Program numbers developed the general subject of "Progress of the Youth Movement."

Roll call was answered with the names of C. C. C. projects over the country.

Mrs. R. C. Crabbs discussed "Facing the Problems of Youth."

Mrs. L. W. Leggett spoke on "Protecting Youth from Narcotic Drugs."

"Crime Prevention Through Recreational Activities" was the subject of a talk by Mrs. E. P. Lamar.

Allen Wemple read a selection, "In the Near Future," by Edgar A. Guest.

Mrs. Bridgewater discussed "Opportunities Offered Youth by the C. C. C."

Mrs. T. M. Switzer and Mrs. Geo. Taggart were visitors.

Members present were: Mmes. R. H. Biggs, Bridgewater, Jas. H. Chapple, Crabbs, F. C. Cummings, J. M. Haygood, E. P. Lamar, Leggett, L. C. Link, H. E. McRae, A. H. Riley, Tom Sealy, J. W. Skinner, S. S. Stinson, Fred Turner, P. A. Nelson, and the hostess.

A rubber balloon set adrift by an airplane concern at Ohlton, N. J., was picked up by Alton Webb on his farm near Glendon the last week of March. Bearing the release date of Dec. 10, 1937, the balloon had drifted three months to a landing more than 2,000 miles away.

Religions of Orient, America Compared By Speaker

Junior Woman's Wednesday club met with Mrs. W. M. Blevins, 807 W. Kansas, for celebration of the annual Bible day Wednesday afternoon.

Mrs. Alma Thomas was guest speaker, presenting a comparison of the religions of China and Japan and that of America. She illustrated her lecture with miniature shrines and shrine gates showing the architecture of houses of worship in the Orient.

Mrs. R. B. Oliver Jr., of Cape Girardeau, Missouri, was a guest of the club.

Refreshments were served after the program to Mmes. Oliver and Thomas and the following club members: Mmes. Ben Black, Ralph Geister, W. M. Holmes, Frank Miller, Alf Reese, Louis Thomas, Jack Wilkinson, Thomas Lee Speed, Misses Ida Beth Cowden, Margaret Miles, Lucile Thomas, and the hostess.

Couple Celebrates Anniversary With Dinner Party

Celebrating their eleventh wedding anniversary, Mr. and Mrs. C. J. McNeal entertained with a dinner at the Log Cabin Inn Wednesday evening.

Anniversary gifts were presented to the couple.

Poppies and sweetpeas were used on the dinner table where covers were laid for five couples including: Mmes. and Messrs. C. E. Richardson, Ira Proctor, J. K. Kelley, A. E. Cameron, and the host and hostess.

Later in the evening the group went to Heidelberg Inn.

R. A. Group Has New Member

Billy Howze was a new member present at the meeting of the R. A. in the basement of the Baptist church Monday evening at 7 o'clock. Ray Blackburn, sponsor, was in charge.

Songs were sung and the program for next week was planned by Glenn Murray and Billy Howze.

Boys present were: Robert Williams, Glenn Murray, Jimmie Vel-

Beta Sigma Phi Has Model Meeting on Tuesday Evening

Beta Sigma Phi held a model meeting at Hotel Scharbauer on Tuesday evening, with Miss Norene Kirby, sorority president, presiding and opening the meeting with a welcome to visitors attending.

The significance of Beta Sigma Phi was discussed in talks by Misses Willette Duncan, Ruth Pratt, Maedele Roberts, and Mrs. L. C. Link.

On the program for the evening, Miss Lucille McMullan spoke on "Music Is an Art and an Inspiration." Miss Marguerite Bivens discussed "Music in Every Day Life," and Mrs. Frances Stallworth talked on "Prominent Musicians of Today."

Following the program meeting, the group adjourned to the home of Miss Pratt for an hour of entertainment and refreshments.

Present were the following sorority members: Mrs. Link, Misses Kirby, Bivens, McMullan, Pratt, Duncan, Roberts, Mrs. Juanita Potter, Mrs. Stallworth.

Guests attending were: Misses Mary Maude Sparks, Ellen Pearson, Lou Annice Reeves, Elizabeth von Golen, Septima Barlow, Ellen Potter, and Mrs. Juanita Sherrod.

vin, Ula Tisdale, Tom Tisdale, Billy Howze and James Kerr.

The group will meet at the same time and place next Monday evening.

New Spring Merchandise Arriving Daily
From infants up to 10
KIDDIES' TOGGERY
First Door North of Pemey's

ARE YOU Weak, Pale?
Houston, Texas—Mrs. Emily Plaster, 5106 Schuler St., says: "A relative was so weak and nervous she could hardly get around. Dr. Pierce's Favorite Prescription strengthened her so well. Not long after using it she was as well as ever." Buy it in liquid or tablets at your drug store today. See how much calmer and stronger you feel after using this tonic.

FLOWERS
See Midland Floral Company's large assortment of seasonal cut flowers—artistically arranged for all occasions.
Also, a large variety of blooming plants.
MIDLAND FLORAL COMPANY
Phone 1286 1705 W. Wall
FRED FROMHOLD, Owner
Member of Florist Telegraph Delivery Assn.

Remember--
MOTHER'S DAY—MAY 8
Have That Special Picture Made Now
—AT—
KINBERG STUDIO
109 SOUTH MAIN

Former Resident to Conduct Lecture Series Here
Mrs. L. C. Majors, religious educational director for the Synod of the State of Texas, Presbyterian church, will arrive in Midland Friday to conduct a series of meetings at the church, officials announced today.
Mrs. Majors was formerly a resident of Midland and will be remembered by a circle of friends here.

She is now located in Dallas.
She will conduct meetings each afternoon at 3:30 o'clock and each evening at 7:30 o'clock from Friday April 8 to Tuesday April 12, inclusive.
Although her primary object is Sunday school organization, Mrs. Major's lectures will hold much general information and help for those interested in church work, those sponsoring the meetings said.
The lectures will be given in the Sunday school auditorium at the church.

Wesley Bible Class Has Monthly Social At Allen Home
Meeting at the home of Mrs. Stacy Allen, 720 W. Storey, Wesley Bible class of the Methodist church held its monthly social Tuesday afternoon with Mrs. M. J. Allen as hostess.
Mrs. L. C. Stephenson brought the devotional, reading from the first chapter of Psalms.
Mrs. W. C. Hinds led in prayer.
Special feature of the afternoon was a Bible questionnaire conducted by Mrs. M. V. Coman. Prize in this contest went to Mrs. Mary S. Ray who was presented with a bouquet of flowers.
A refreshment plate was served to: Five visitors, Mmes. S. L. Alexander, Jackson, McKintey, M. L. Wyatt, Stacy Allen; class members, Mmes. Melba Stewart, I. H. Wolfe, J. E. Feeler, J. M. Hughes, M. D. Johnson, Mary S. Ray, J. M. Reising, S. H. Gwyn, T. A. Fannin, F. H. Wilmoth, W. A. Black, and the hostess.

Easter Bridge Party Compliments Midweek Club
Easter flowers and figures of Easter bunnies formed a seasonal decorative motif for the Easter bridge party which Mrs. John House complimented the Midweek club at her home, 610 W. Kansas, Wednesday afternoon.
High score in the afternoon's play went to Mrs. Don Sivals and cut to Mrs. W. L. Brown.
A party plate was served at the tea hour to: Mmes. J. M. Armstrong, I. E. Daniel, J. L. Greene, Allan Hargrave, Frank Johnson, J. B. Leonard, Sivals, M. C. Ulmer, W. E. Wallace, Fred Wright, W. L. Brown, and the hostess.

The Picture for Easter
Easter Morn
\$1.98 And \$2.98
YOU'LL lead the Easter Parade with a fine, free stride in a pair of these smart new Spring shoes. Your choice of many gay colors and new materials, Sandals, Oxfords and Straps.
Our Easter Offering All Wool, Fleece
"TOPPERS"
A \$6.98 Value Special
\$3.98
The Season's Outstanding Value
The UNITED
Get Ready for **EASTER**

EASTER DRESSES
\$3.98 AND \$6.98
Printed Pleated Draped Sashed
Easter flowers and figures of Easter bunnies formed a seasonal decorative motif for the Easter bridge party which Mrs. John House complimented the Midweek club at her home, 610 W. Kansas, Wednesday afternoon.

Dairyland
Pasteurized DAIRY PRODUCTS for HEALTH & HAPPINESS

SAY IT With FLOWERS
And Be Sure They Are
BUDDY'S FLOWERS
MEMBER F. T. D.
1200-A West Wall—Phone 1083

A SAFE FOUNDATION
MISSION CONCEPCION at San Antonio
The State of Texas had its foundation in the missions and settlements surrounding them, and Concepcion, at San Antonio, played its part... The Duncan Coffee Company is wholly a Texas institution, and ADMIRATION a coffee blended and roasted for Texas tastes. It has a rich, winey flavor that has become the most popular coffee flavor in the Southwest. People drink Admission because they like it.
ADMIRATION COFFEE
A product of the Duncan Coffee Company
DRIKUT • STEEL CUT • Glassdrip

More **FOOD SPECIALS** for Greater Savings

FOR FRIDAY & SATURDAY, APRIL 8 & 9

We Reserve the Right to Limit Quantity



GREEN BEANS, PER POUND	7½c
TOMATOES, PER POUND	10c
CABBAGE, PER POUND	3c
NEW POTATOES, POUND	4c
SQUASH, WHITE OR YELLOW POUND	7c
LEMONS, 360 SIZE, DOZEN	21c

ORANGES NICE SIZE, TEXAS, DOZEN	17c
APPLES, MEDIUM SIZE, DELICIOUS, DOZ.	21c
GRAPEFRUIT MARSH SEEDLESS, 6 FOR	19c
ONIONS, WHITE OR YELLOW LB.	5c
YAMS, PER POUND	5c
FRESH COUNTRY BUTTER, POUND	21c

BANNER BUTTER, lb. 29c — SPUDS NO. 1 IDAHO RURALS 10 lbs. 17c

KRAFT CHEESE, ALL KINDS, 2 PKGS. 37c

PLYMOUTH MAID
CORN GOLDEN BANTAM, No. 2 2 CANS 18c
BUY A CASE—YOU WON'T REGRET IT

ELASTIC STARCH, 2 10c Packages For 15c

PARD DOG FOOD, 3 CANS 22c

TOMATOES, 2 No. 2 Cans Yacht Club for 18c

BALLOON SOAP FLAKES, 5-LB. PKG. 31c

LACHOY PRODUCTS:

6½-oz. Soy Sauce 18c No. 2 Vegetables 25c
13-oz. Chop Suey 19c No. 2 Bean Sprouts 8c

OLD DUTCH CLEANSER 2 FOR 13c

PRINCE ALBERT, CAN 10c

Marvelous New Suds
Odreft 1 LARGE & 1 SMALL 23c

DINNER CLUB SIFTED
PEAS, PER CAN 10c

JOHNSON'S FLOOR WAX:

ONE-LB. PASTE 54c ONE-QT. LIQUID 84c

MAXWELL HOUSE COFFEE

ONE POUND 25c THREE POUNDS 71c

BLISS COFFEE, 1 POUND 18c

NO. 2 STANDARD PACK
TOMATOES, 2 FOR 15c

JOHNSON'S GLO COAT, PT. 49c, QT. 84c

SANKA OR KAFFEE HAG, CAN 34c

REX LYE, 2 FOR 15c

RITZ, POUND PACKAGE 22c



ARMOUR'S STAR GENUINE SPRING MILK FED LAMB:

LEGS PER POUND 29c

LOIN OR T-BONE CHOPS, LB. 33c

ARMOUR'S STAR SLICED BACON, LB. 30c



ARMOUR'S STAR CURED HAM

Half or Whole

LB. 27c

PHILADELPHIA CREAM CHEESE, 2 PKGS. 15c

WISCONSIN LONGHORN CHEESE, LB. 23c

CHOICE BABY BEEF
CHUCK ROAST, POUND 15c

SHORT RIBS OF BEEF, fine for baking, lb. 10c

PICKLED PIG FEET, EACH 5c

ASSORTED LUNCH MEATS, LB. 21c

CHOICE CORN FED BABY BEEF
SIRLOIN STEAK, POUND 29c

DRIED BEEF, 2 PKGS. 15c

WE HAVE PLENTY OF

MILK FED

FRYERS

HOME RAISED

Sugar 10 lbs. 45c

PURE CANE—CLOTH BAG—With Additional \$2.50 Purchase

ARMOUR'S MILK, 3 LG. OR 6 SMALL 20c

FRENCH LICK NO. 1
TOMATO JUICE, 3 CANS FOR 13c

ONE-LB. HERSHEY'S
CHOCOLATE SYRUP 3 FOR 25c

BLISS TEA, ¼ LB. 12c, ½ LB. 22c

GALLON FRUITS, PEARS 45c, APPLES 34c

MA BROWN

Preserves

PEACH, PLUM, 19c
APRICOT, LB. JAR
STRAWBERRY, CHERRY,
RASPBERRY, LB. JAR 21c

RIPPLE WHEAT 9c

FANCY KRAUT, NO. 2½ SIZE 9c

TEXAS NO. 2 CAN
GRAPEFRUIT JUICE, 3 FOR 23c

HEINZ TOMATO KETCHUP 14 OZ. 17c, 8 OZ. 12c

AMERICAN ACE MATCHES, CART. 20c, PKG. 4c

MRS. TUCKER'S
COMPOUND, 8 LB. CART. 88c, 4 LB. 44c



6 BARS FOR

22c

WHITE KING
GRANULATED SOAP, GIANT 43c, REG. 20c

DEL MONTE NO. 1 FLAT CRUSHED OR SLICED
PINEAPPLE, 3 FOR 27c

GOLD BAR OR DEL MONTE, SIZE 2½, SLICED OR HALVES
PEACHES, 2 FOR 35c

GINGER SNAPS, BULK, POUND 11c

REAL OLD-FASHIONED TASTE

EGGS
FRESH
MIDLAND COUNTY
DOZEN . . 16c



BILL & ELLIS CONNER

NO. 1 DOWNTOWN—SHOPPING VILLAGE ON WEST WALL

FOLGER'S
COFFEE
Pound 25c

