



THE REPORTER-TELEGRAM

Evenings (except Saturday) and Sunday Morning MIDLAND PUBLISHING COMPANY, PUBLISHERS 112 West Missouri, Midland, Texas

F. PAUL BARRON Entered as second class mail at the postoffice at Midland, Texas, under Act of March 30, 1879

Advertising Rates Display advertising rates on application. Classified rate, 2¢ per word; minimum charge 25¢. Local readers, 10¢ per line.

CROWDING NATURE

Every school boy knows that America's fields and forests are no longer as rich with wild life as they were a few generations ago.

But a reminder that much of this crowding out has been quite needless is voiced by Frederick F. Jordan, under whose direction there is being formed a national movement to save and restore our wild life resources.

"Today," he says, "once wooded mountains and hills stand as scarred and barren monuments of a nation's neglect. Streams once fertile now are choked with the refuse of industry or the sewage of cities, and aquatic life has been killed off. It has not been alone the march of civilization that has scarred and destroyed these resources. It has been wanton carelessness and ignorance."

The undeniable truth of this assertion should spur us to support the wild life conservation movement with all our energy.

SELF-CONTROL IN UNION

Action of the United Automobile Workers' Union in outlawing "wild-cat" strikes and pledging its members to scrupulous observance of all labor contracts is a welcome step in the direction of responsible trade unionism.

The auto workers won surprising victories in plants that had never before dealt with unions. The wave of unauthorized, sporadic strikes that followed, however, did the union much harm; for what employer cares to sign a labor contract if he has as much labor trouble afterward as he did before?

Apparently the union has done a sensible job of self-discipline. By realizing its responsibilities, it has put itself in shape to play a permanent part in the automobile industry.

Behind the Scenes in Washington

This is the last of four columns by Rodney Datcher on the President's "Brain Trusters." Washington, Sept. 30. Harry Hopkins of WPA, author of "Spending to Save," is Number One Man among the president's advisers today—the only real general adviser in the sense that Moley and Tugwell were.

'All Chinese Look Alike To Me'



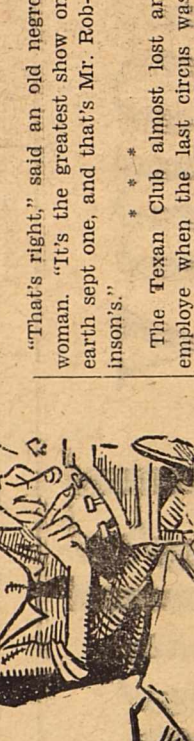
the split in the Democratic party, however, there is much doubt whether he could get far with a similar policy is the idea that the economic system can be controlled and adjusted through use of taxation to break up monopolies and huge concentrations of wealth and economic power by a tax system which would divide and individual incomes for the benefit of the "lower one-third," whose increased purchasing power theoretically would help keep the economic system in balance.

Want Prices Down. Power, it kept held must be raised and kept at a fairly constant level. Thus the administration group wants to encourage lower industrial prices and discourage high profit margins. The New Dealers theoretically would like to keep prices down and wages up. Furthermore, they would like to remove all limitations on industrial production, which order to keep the profit rate up. They would discourage price-fixing. Roosevelt, never a consistent practitioner of any involved economic theory, already has compromised by signing, although denounced, a national law passed in "ridic-

er" form) legalizing price-fixing. Coyle, closely associated with Eccles and others mentioned, believed by some to be writing of the enduring economic philosophy of the New Deal. Business men seeking to learn administration trends should read his recently written "Why Pay Taxes?" which follows his "Brass Tacks" and "Age Without Fear."

It's too early to say how much of this theory will go into an administration new tax program. MEANWHILE, the President's closest advisers seem well entrenched here. Hopkins, his favorite, commands as much Capitol Hill respect as any New Dealer. He was with Roosevelt in his old Albany association. Roosevelt thinks he has done a great administrative job on an impossible task. Hopkins is a good politician, too. Eccles has kept his head down, but his real job is to direct the general lines of New Deal economic policy. The Treasury Department, contrary of the Treasury Department, sees business cycles as fluctuations of optimism and pessimism, with government the only potential balance wheel.

The Jawn Quack



It's circus day, and if you don't know where the tent is, it's just north of the Hughes Tool Co. in west Midland.

I never have seen the Seal Bros. and don't know a thing about them, but we didn't have to hunt them up to collect the advertising bill. Their business manager was waiting for us to open up this morning so we could get the money.

There used to be a circus which toured the old south and it was known as Robinson's Circus. The negroes all thought it was the only big show in the state. It was owned by Ringling Bros. and the address was in the old city of New Orleans. A man went around posting these bills: "Ringling Bros., Greatest Circus on Earth, Sept. 1."

More distinctly live stock districts, however, the actual farm cash income in this district during August was about 10 per cent more than one-fourth of the total for the State. District 10-A is composed of the four counties in the Lower Rio Grande Valley. An unusually large cotton crop in this district, which was marketed before the sharp break in cotton prices, caused the sharpest rise in the farm cash income of any region of the State. The actual computed farm cash income in total for four counties during August totaled \$5,226,000, compared with only \$1,564,000 during August, 1936.

Old Timber Trails To Be Modern Roads. MUNISING, Mich. (U.P.)—The almost obliterated remains of the lumbering days are being refashioned into a Lake Superior highway for swift motorized travel.

The new "Gitchie-Gumee" high-scenic woods, with stretches of plain, river and old logging sites. The drive will start from the Sault Ste. Marie steamship locks and lead to the open pit mines and lumber industries of western Upper Michigan.

Calling old clothes! Calling old clothes! If you haven't contributed to the old clothes drive, get up a take them to the old clothes store. It will help so many young 'uns go to school, or help his folks get out of the workhouse.

Are you remembering that week is this week? Be a gentleman now to get a gentlemanly from some inspector.

From Red River, where countless cattle herds once started their land drives from the Red River, Texas, where the cattle were loaded into freight cars for the journey to the northern markets.

John Miller, Enid, president of the association, said the wagon train would stop at all points along the trail and speakers would erect a memorial to Jesse Chisholm, half-breed who blazed the trail.

Among the former cowboys who will join the caravan are E. G. (Parsons) Barnard, Enid, author of "Riders of the Cherokee Strip," Jim Nelson, Breckenridge, and Frank Eaton, Perkins.

Miller said the exact date for the start of the wagon train would be announced soon.

Will Hold Parade Along Chisholm Trail

ENID, Okla. (P) — The Chisholm Trail, symbol of a vanished era Oklahoma history, will echo once more to the cracking of the cover wagon wheels.

Memorial Association, organized here recently among cowhands who once followed the great trail herds from Texas to the north, announced today plans for a covered wagon parade over the old trail in typical old Western style.

Said wagons were being secured from old-timers in the 2nd and 3rd areas and would be shipped by train to Red River, Okla., starting point of the caravan.

From Red River, where countless cattle herds once started their land drives from the Red River, Texas, where the cattle were loaded into freight cars for the journey to the northern markets.

John Miller, Enid, president of the association, said the wagon train would stop at all points along the trail and speakers would erect a memorial to Jesse Chisholm, half-breed who blazed the trail.

Among the former cowboys who will join the caravan are E. G. (Parsons) Barnard, Enid, author of "Riders of the Cherokee Strip," Jim Nelson, Breckenridge, and Frank Eaton, Perkins.

Miller said the exact date for the start of the wagon train would be announced soon.

Hay Fever

Get relief from Hay Fever with Lycar. Get relief from Hay Fever with Lycar. Get relief from Hay Fever with Lycar.

Hay fever, the most annoying of ailments, is caused by pollen grains which are blown about by the wind. Lycar is a powerful antihistamine which relieves the symptoms of hay fever.

Lycar is a powerful antihistamine which relieves the symptoms of hay fever. It is a powerful antihistamine which relieves the symptoms of hay fever.

Lycar is a powerful antihistamine which relieves the symptoms of hay fever. It is a powerful antihistamine which relieves the symptoms of hay fever.

Lycar is a powerful antihistamine which relieves the symptoms of hay fever. It is a powerful antihistamine which relieves the symptoms of hay fever.

Lycar is a powerful antihistamine which relieves the symptoms of hay fever. It is a powerful antihistamine which relieves the symptoms of hay fever.

Lycar is a powerful antihistamine which relieves the symptoms of hay fever. It is a powerful antihistamine which relieves the symptoms of hay fever.

Lycar is a powerful antihistamine which relieves the symptoms of hay fever. It is a powerful antihistamine which relieves the symptoms of hay fever.

Lycar is a powerful antihistamine which relieves the symptoms of hay fever. It is a powerful antihistamine which relieves the symptoms of hay fever.

Ready for Fall

Let us dry clean those fall and winter garments now. You'll be agreeably surprised at their "newness."

REMEMBER: CASH AND CARRY SAVES MONEY. PETROLEUM CLEANERS. First Door North Phone 1010

Let us dry clean those fall and winter garments now. You'll be agreeably surprised at their "newness."

REMEMBER: CASH AND CARRY SAVES MONEY. PETROLEUM CLEANERS. First Door North Phone 1010

Let us dry clean those fall and winter garments now. You'll be agreeably surprised at their "newness."

REMEMBER: CASH AND CARRY SAVES MONEY. PETROLEUM CLEANERS. First Door North Phone 1010

Let us dry clean those fall and winter garments now. You'll be agreeably surprised at their "newness."

REMEMBER: CASH AND CARRY SAVES MONEY. PETROLEUM CLEANERS. First Door North Phone 1010

Let us dry clean those fall and winter garments now. You'll be agreeably surprised at their "newness."

REMEMBER: CASH AND CARRY SAVES MONEY. PETROLEUM CLEANERS. First Door North Phone 1010

Let us dry clean those fall and winter garments now. You'll be agreeably surprised at their "newness."

REMEMBER: CASH AND CARRY SAVES MONEY. PETROLEUM CLEANERS. First Door North Phone 1010

Let us dry clean those fall and winter garments now. You'll be agreeably surprised at their "newness."

Free Home Trial

Free Home Trial during PHILCO WEEK plus SPECIAL EASY TERMS BIG TRADE-IN ALLOWANCE

Philco is a powerful antihistamine which relieves the symptoms of hay fever. It is a powerful antihistamine which relieves the symptoms of hay fever.

Philco is a powerful antihistamine which relieves the symptoms of hay fever. It is a powerful antihistamine which relieves the symptoms of hay fever.

Philco is a powerful antihistamine which relieves the symptoms of hay fever. It is a powerful antihistamine which relieves the symptoms of hay fever.

Philco is a powerful antihistamine which relieves the symptoms of hay fever. It is a powerful antihistamine which relieves the symptoms of hay fever.

Philco is a powerful antihistamine which relieves the symptoms of hay fever. It is a powerful antihistamine which relieves the symptoms of hay fever.

Philco is a powerful antihistamine which relieves the symptoms of hay fever. It is a powerful antihistamine which relieves the symptoms of hay fever.

Philco is a powerful antihistamine which relieves the symptoms of hay fever. It is a powerful antihistamine which relieves the symptoms of hay fever.

Philco is a powerful antihistamine which relieves the symptoms of hay fever. It is a powerful antihistamine which relieves the symptoms of hay fever.

Philco is a powerful antihistamine which relieves the symptoms of hay fever. It is a powerful antihistamine which relieves the symptoms of hay fever.

Philco is a powerful antihistamine which relieves the symptoms of hay fever. It is a powerful antihistamine which relieves the symptoms of hay fever.

Philco is a powerful antihistamine which relieves the symptoms of hay fever. It is a powerful antihistamine which relieves the symptoms of hay fever.

Philco is a powerful antihistamine which relieves the symptoms of hay fever. It is a powerful antihistamine which relieves the symptoms of hay fever.

Improvement in Industry, Trade is Expected to Fall Short of Record

Improvement in industry and trade in the country at large this year is now expected to fall short of the record set last year.

All of the companies mentioned in the survey are expected to show a change in the trend of business activity but, if sufficiently prolonged, may actually contribute to a decline.

It has frequently been pointed out that rising costs, especially in the case of raw materials, are the chief business improvement. Whether the present slowing down in business is a result of the rise in costs or a result of the decline in demand for goods, it is not clear.

Improvement in industry and trade in the country at large this year is now expected to fall short of the record set last year.

All of the companies mentioned in the survey are expected to show a change in the trend of business activity but, if sufficiently prolonged, may actually contribute to a decline.

It has frequently been pointed out that rising costs, especially in the case of raw materials, are the chief business improvement. Whether the present slowing down in business is a result of the rise in costs or a result of the decline in demand for goods, it is not clear.

Veterinarian

WALLACE E. BROWN, D. V. M. Large and small animal hospital MIDLAND DOWNS. Phones 1135 and 248

WALLACE E. BROWN, D. V. M. Large and small animal hospital MIDLAND DOWNS. Phones 1135 and 248

WALLACE E. BROWN, D. V. M. Large and small animal hospital MIDLAND DOWNS. Phones 1135 and 248

WALLACE E. BROWN, D. V. M. Large and small animal hospital MIDLAND DOWNS. Phones 1135 and 248

WALLACE E. BROWN, D. V. M. Large and small animal hospital MIDLAND DOWNS. Phones 1135 and 248

WALLACE E. BROWN, D. V. M. Large and small animal hospital MIDLAND DOWNS. Phones 1135 and 248

WALLACE E. BROWN, D. V. M. Large and small animal hospital MIDLAND DOWNS. Phones 1135 and 248

WALLACE E. BROWN, D. V. M. Large and small animal hospital MIDLAND DOWNS. Phones 1135 and 248

WALLACE E. BROWN, D. V. M. Large and small animal hospital MIDLAND DOWNS. Phones 1135 and 248

WALLACE E. BROWN, D. V. M. Large and small animal hospital MIDLAND DOWNS. Phones 1135 and 248

WALLACE E. BROWN, D. V. M. Large and small animal hospital MIDLAND DOWNS. Phones 1135 and 248

WALLACE E. BROWN, D. V. M. Large and small animal hospital MIDLAND DOWNS. Phones 1135 and 248

WALLACE E. BROWN, D. V. M. Large and small animal hospital MIDLAND DOWNS. Phones 1135 and 248

Martyred Maid

Answer to Previous Puzzle

1 France's heroine, pictured here 8 To fawn. 13 Ready. 15 Mover's truck. 14 Sound of. 16 Father. 17 Myself. 18 To affirm. 19 To affirm. 20 Portion of month. 21 Fence bar. 22 Told an untruth. 23 Grated. 24 Rabbit. 25 To slip sideways. 26 Greek letter. 27 Once more. 28 To coil. 29 M. coal note. 30 Sanctions. 31 Ascends. 32 Night birds. 34 She was called the "Maid of. 35 Wood demon. 36 Avenue. 37 ELL.

1 France's heroine, pictured here 8 To fawn. 13 Ready. 15 Mover's truck. 14 Sound of. 16 Father. 17 Myself. 18 To affirm. 19 To affirm. 20 Portion of month. 21 Fence bar. 22 Told an untruth. 23 Grated. 24 Rabbit. 25 To slip sideways. 26 Greek letter. 27 Once more. 28 To coil. 29 M. coal note. 30 Sanctions. 31 Ascends. 32 Night birds. 34 She was called the "Maid of. 35 Wood demon. 36 Avenue. 37 ELL.

1 France's heroine, pictured here 8 To fawn. 13 Ready. 15 Mover's truck. 14 Sound of. 16 Father. 17 Myself. 18 To affirm. 19 To affirm. 20 Portion of month. 21 Fence bar. 22 Told an untruth. 23 Grated. 24 Rabbit. 25 To slip sideways. 26 Greek letter. 27 Once more. 28 To coil. 29 M. coal note. 30 Sanctions. 31 Ascends. 32 Night birds. 34 She was called the "Maid of. 35 Wood demon. 36 Avenue. 37 ELL.

1 France's heroine, pictured here 8 To fawn. 13 Ready. 15 Mover's truck. 14 Sound of. 16 Father. 17 Myself. 18 To affirm. 19 To affirm. 20 Portion of month. 21 Fence bar. 22 Told an untruth. 23 Grated. 24 Rabbit. 25 To slip sideways. 26 Greek letter. 27 Once more. 28 To coil. 29 M. coal note. 30 Sanctions. 31 Ascends. 32 Night birds. 34 She was called the "Maid of. 35 Wood demon. 36 Avenue. 37 ELL.

1 France's heroine, pictured here 8 To fawn. 13 Ready. 15 Mover's truck. 14 Sound of. 16 Father. 17 Myself. 18 To affirm. 19 To affirm. 20 Portion of month. 21 Fence bar. 22 Told an untruth. 23 Grated. 24 Rabbit. 25 To slip sideways. 26 Greek letter. 27 Once more. 28 To coil. 29 M. coal note. 30 Sanctions. 31 Ascends. 32 Night birds. 34 She was called the "Maid of. 35 Wood demon. 36 Avenue. 37 ELL.

1 France's heroine, pictured here 8 To fawn. 13 Ready. 15 Mover's truck. 14 Sound of. 16 Father. 17 Myself. 18 To affirm. 19 To affirm. 20 Portion of month. 21 Fence bar. 22 Told an untruth. 23 Grated. 24 Rabbit. 25 To slip sideways. 26 Greek letter. 27 Once more. 28 To coil. 29 M. coal note. 30 Sanctions. 31 Ascends. 32 Night birds. 34 She was called the "Maid of. 35 Wood demon. 36 Avenue. 37 ELL.

1 France's heroine, pictured here 8 To fawn. 13 Ready. 15 Mover's truck. 14 Sound of. 16 Father. 17 Myself. 18 To affirm. 19 To affirm. 20 Portion of month. 21 Fence bar. 22 Told an untruth. 23 Grated. 24 Rabbit. 25 To slip sideways. 26 Greek letter. 27 Once more. 28 To coil. 29 M. coal note. 30 Sanctions. 31 Ascends. 32 Night birds. 34 She was called the "Maid of. 35 Wood demon. 36 Avenue. 37 ELL.

1 France's heroine, pictured here 8 To fawn. 13 Ready. 15 Mover's truck. 14 Sound of. 16 Father. 17 Myself. 18 To affirm. 19 To affirm. 20 Portion of month. 21 Fence bar. 22 Told an untruth. 23 Grated. 24 Rabbit. 25 To slip sideways. 26 Greek letter. 27 Once more. 28 To coil. 29 M. coal note. 30 Sanctions. 31 Ascends. 32 Night birds. 34 She was called the "Maid of. 35 Wood demon. 36 Avenue. 37 ELL.

1 France's heroine, pictured here 8 To fawn. 13 Ready. 15 Mover's truck. 14 Sound of. 16 Father. 17 Myself. 18 To affirm. 19 To affirm. 20 Portion of month. 21 Fence bar. 22 Told an untruth. 23 Grated. 24 Rabbit. 25 To slip sideways. 26 Greek letter. 27 Once more. 28 To coil. 29 M. coal note. 30 Sanctions. 31 Ascends. 32 Night birds. 34 She was called the "Maid of. 35 Wood demon. 36 Avenue. 37 ELL.

1 France's heroine, pictured here 8 To fawn. 13 Ready. 15 Mover's truck. 14 Sound of. 16 Father. 17 Myself. 18 To affirm. 19 To affirm. 20 Portion of month. 21 Fence bar. 22 Told an untruth. 23 Grated. 24 Rabbit. 25 To slip sideways. 26 Greek letter. 27 Once more. 28 To coil. 29 M. coal note. 30 Sanctions. 31 Ascends. 32 Night birds. 34 She was called the "Maid of. 35 Wood demon. 36 Avenue. 37 ELL.

1 France's heroine, pictured here 8 To fawn. 13 Ready. 15 Mover's truck. 14 Sound of. 16 Father. 17 Myself. 18 To affirm. 19 To affirm. 20 Portion of month. 21 Fence bar. 22 Told an untruth. 23 Grated. 24 Rabbit. 25 To slip sideways. 26 Greek letter. 27 Once more. 28 To coil. 29 M. coal note. 30 Sanctions. 31 Ascends. 32 Night birds. 34 She was called the "Maid of. 35 Wood demon. 36 Avenue. 37 ELL.

1 France's heroine, pictured here 8 To fawn. 13 Ready. 15 Mover's truck. 14 Sound of. 16 Father. 17 Myself. 18 To affirm. 19 To affirm. 20 Portion of month. 21 Fence bar. 22 Told an untruth. 23 Grated. 24 Rabbit. 25 To slip sideways. 26 Greek letter. 27 Once more. 28 To coil. 29 M. coal note. 30 Sanctions. 31 Ascends. 32 Night birds. 34 She was called the "Maid of. 35 Wood demon. 36 Avenue. 37 ELL.

It's Here The 1938 PACKARD AND IT'S A BEAUTY — See It at — Midland Motor Co. 107 SOUTH COLORADO—PHONE 118

For That Good SCRUGGS DAIRY MILK PHONE 9000

VETERINARIAN WALLACE E. BROWN, D. V. M. Large and small animal hospital MIDLAND DOWNS. Phones 1135 and 248

PHILCO 3XX. Come in—see, hear and test a Philco before you buy. Philco is a powerful antihistamine which relieves the symptoms of hay fever.

Martyred Maid Answer to Previous Puzzle. 1 France's heroine, pictured here 8 To fawn. 13 Ready. 15 Mover's truck. 14 Sound of. 16 Father. 17 Myself. 18 To affirm. 19 To affirm. 20 Portion of month. 21 Fence bar. 22 Told an untruth. 23 Grated. 24 Rabbit. 25 To slip sideways. 26 Greek letter. 27 Once more. 28 To coil. 29 M. coal note. 30 Sanctions. 31 Ascends. 32 Night birds. 34 She was called the "Maid of. 35 Wood demon. 36 Avenue. 37 ELL.

# SOCIETY NEWS SECTION

## Robyn Club Has Election Of Officers At First Meeting

### Music Pupils Give Studio Program

Faye and Doris Ray Lynch, Alberta Smith, Elaine Hedrick, Joyce Dameron, Pauline Wingo, Dorothy Barron, Jean Walsh, and Betty Jo Johnson, Robyn Club officers.

Mrs. Watson gave an interesting biography of Bach and the pupils presented the following program: "The Old Refrain," (Kresler), Charissa Mann; "Minuet In G," (Beethoven), Eileen Eiland; "Knight Rupert," (Schuman), Virginia Cousins; "The Vale of Song," (Rolfe), Doris Ray Lynch; "Valse In E Flat," (Chopin), Pauline Wingo; "The Soldier's Song," (Williams), Wilma D. Yang; and a mandolin solo by Maxine Neill.

The meeting was concluded by the group repeating the motto, "Musicians are artists. They paint their colors in tones. The canvas upon which they paint is silence and the audience must furnish that."

## Pupils Chart Their Own Life Course In Ford's Sawmill Village School

Ordinary discipline of the classroom is relaxed for these practical studies, and the students are encouraged to use all their originality in choosing their tools and the jobs they wish to carry out.

In household work, the students in the high school are given vocational-technical training in the home and indirectly lighted in the modern manner, has facilities for learning almost any craft, a youngster might need to fit him with practical equipment in later life.

L. L. Close, the school's superintendent, has a faculty of six, all of whom under their own guidance children are allowed to choose their own courses and projects.

For the boys there are the manual arts, modern furniture building, jig saw craft, and machine work, equipment for which is housed in the factory service building in the mill yard.

## HELP KIDNEYS PASS 3 LBS. A DAY

Doctors say your kidneys contain 15 miles of tiny tubes which help to purify the blood. If they become clogged, you pass about 3 pints a day or about 100 pints a week. Frequent urination with something wrong with your kidneys or bladder.

An excess of acids or poisons in your blood, which is caused by the kidneys, may be the cause of nagging backache, rheumatism, pain, hiccups, leg pains, loss of pep and energy, and a general feeling of weakness. Under the eyes, headaches and dizziness. Don't wait! Ask your druggist for Doan's Backache Kidney Pills. They give happy relief and will help the kidneys pass their load of poisons and wastes from your blood. Get Doan's Pills.

## Twenty-seven Attend St. League Party

Mrs. N. G. Oates entertained last night at her home, 30 Korin Main, for the twenty-seven members of the League of the First Methodist church of which she is assistant counselor.

Mrs. E. L. Phillips is the counselor for the year. Assisting in the hostess in the conducting of games were her sister and brother, Bob and Flo Roderick.

After a short business session, a refreshment table was served. Those following: Alvin Patterson, Charles Patterson, Doris Tutwell, Cleo Tidwell, Charline Savage, Flo Roderick, Loyce Nuckols, Lois Guffey, Helen Barber, Jessie Lee Barber, Bob Roderick, Cleta Dee Tate, Kathryn Hucknick, Dorothy Nell Mockett, Rebecca Epps, Kathryn Beauchamp.

## Bowed Head



Velvet ribbon bows in wine red, bright blue and light green on a black grosgrain skullcap compose this youthful formal toque designed by Rose Valbois.

## World Owes Pasteur Lasting Honor

When death came to Louis Pasteur 42 years ago this week at Villeuve d'Etang, near St. Cloud, France, he never knew that pure milk and pasteurization were destined to be synonymous in millions of households. Pasteur was 72 when he died September 28, 1895, but his process had yet to be applied to milk.

Today thousands of modern sanitarians, with their germ-killing pasteurizers and gleaming equipment, and community health records prove that pasteurization saves lives and reduces mortality rates.

Pasteur's great discoveries were spurred by a desire to protect the wines of France and to appease French navy rats who complained that their wine was "rotten."

As Pasteur was concerned with the first clean milk campaign, Mary Jane Walker, Clyde Pate, Ernest Name, Luther Meeks, Marvin Douglas, Freddie Barber, Bessie Flournoy, Billie Schaffner, Elwyn Clemens, Carolyn Oates and Jane Doran.

## PERSONAL LOANS

For Your Needs

Why worry? See us!

Personal Loans

\$5 to \$50

FIRST FINANCE CO.

D. L. Reynolds, Mgr.

211 Thomas Bldg.

Phone 1250



Consult us freely about the Great Day. We know how to make the Autumn bride and her attendants okayed by every onlooker.

507 W. TEXAS  
AMERICAN BEAUTY SHOPPE  
5 CHARBAUER BEAUTY SALON  
HEZAMINE HOTEL  
SCHARBUR HOTEL  
TEL. 531  
TEL. 807

## Hints Offered On Skill Test For Waitresses

ST. LOUIS (UP)—If John B. O'Meara, trainer of hotel employees, has his way, "business and mechanical" tests of food will spring up in their place.

Next time you're in a restaurant, he says, ask the waitress what chicken a la king is. If she answers indifferently, "Old chicken and gravy and stuff fixed up," she's a waitress unimpressible by a menu-chandler of food if she answers courteously, "It's chicken cubed in rich cream gravy with plums, mangoes and mushrooms added. We're serving it today in flaky pastry shells."

O'Meara's first lesson for waitresses concerns "how to describe it in a pared and how to describe it in a way that will make the stomach tingle expectantly."

The course advances to the proper way to take an order and proceeds to kitchen vocabulary. Definitely out are such instructions as "take a chance" for an order of hash, or "six in the grease" for a half-dozen fried oysters.

## Woman Takes 'Tuck-Pointer' Job as Hobby

CARLISVILLE, Ill. (UP)—Mrs. W. A. Ush claims the distinction of being the only woman "tuck-pointer" in the United States.

Mrs. Ush joined her husband in her trade five years ago. She said the action, however, was prompted by an artistic sense rather than by necessity.

"Tuck-pointing" is one of the building trades. It is the re-arranging of the exterior of a brick or tapered mortar with a new tuck, then, coating the surface with a white wash.

The middle-aged alone now exhibit the ugly neck set. The hunch-backed, whose vertebral column collapsed because of the destruction wrought by tuberculosis have practically disappeared. Finally, no longer are to be seen the tragic children whose bent spines and hips forced them to be onlookers while the world owes, Pasteur, lasting honor as thousands now live who would have died but for his genius.

## Bedding for Needy People Is Asked

Have you done your part in making the old clothes drive a success? The City and County Federation of Women's Clubs is sponsoring the "Tuck-Pointing" campaign. People who are entirely dependent and who have contributed bedding and if others can do so it will be gratefully received.

Phone your cleaners or 159 and they will collect the bundle free of charge.

## Shirred Bosom Dress Right for Informal Afternoons

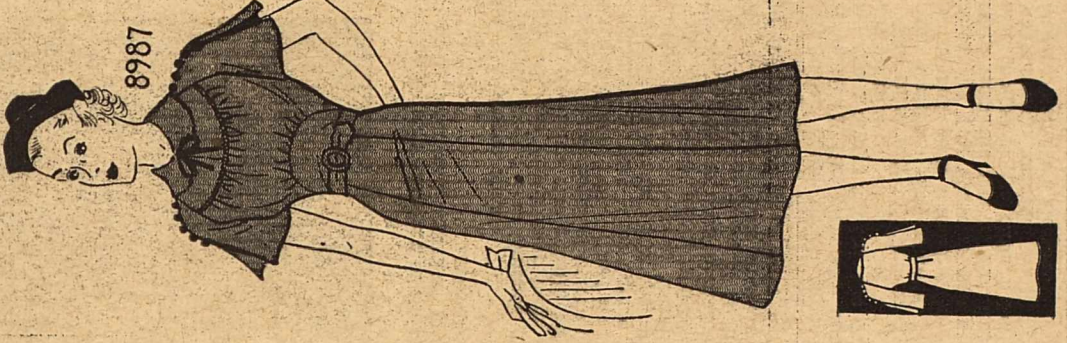
BY CAROL DAY

ONE of the important new fashions is the dress with shirred, full bosom, cleverly interpreted in Pattern 8987. You'll find it a flattering style, particularly if you are small-bosomed. This casual daytime dress has button trimming, here used to give height to the kimono sleeve. Note also the rounded inset at the waistline to give an illusion of flat drapery and a pencil slim lines fullness at hem being achieved by the center panel.

Make this pretty bridge and luncheon frock in a lovely silk crepe. The pattern includes a complete sewing guide that tells you what to do every step of the way.

Pattern 8987 is designed for sizes 12, 14, 16, 18, 20 and 40. Size 14 requires 3 1/4 yards of 39 inch material, with short sleeves as pictured. With 3-4 length sleeves 3 3/4 yards.

The new Fall and Winter Pattern Book is ready for you now. It has 32 pages of attractive designs in every size and every occasion. Buy it today. The dresses being worn in these patterns will enjoy. Let the charming designs in this new book help you in your sewing. One pattern in your new Fall and Winter Pattern Book, 15 cents. Fall and Winter Book alone, 15 cents. Fall and Winter Book, 15 cents. For a PATTERN of this attractive model, send 15c in COIN. YOUR NAME, ADDRESS, STYLE NUMBER and SIZE to TODAY'S PATTERNS, 115 N. W. 11th St., STERLING PLACE, BROOKLYN, N. Y.



## Fashion Cleaners

Here Is Your Dress, Madam!

Dry cleaned in our modern plant—so that color, fabric and smartness are actually improved.

Phone 989  
412 W. Texas

## Announcements

**FRIDAY.**  
The Belmont Bible Class will meet at the home of Mrs. W. L. Kessinger, 905 West Missouri.

The Jole de Vie club will meet at 2:30 Friday with Mrs. Charles Brown.

Ladies Golf Association members will meet at 8:30 Friday morning at the club, for regular play.

The Children's Story Hour is extended Saturday morning in the children's court, from 10-11 a. m.

## TIP FOR 1938



## BARGAINS

6-Ft. Porcelain FRIGIDAIRE; used but in A-1 condition. \$87.50

1—1936 Model DeLuxe 5 1/2-Ft. NORGE; brand new and a bargain at \$169.50

1—4 1/2-Ft. 1937 Master Model NORGE; slightly used and a real buy at \$139.50

2—18-Gallon NORGE WASHERS; slightly used; the price includes tubs; each \$79.50

10% DISCOUNT allowed on the foregoing if cash is paid.

We have other bargains in new and used equipment.

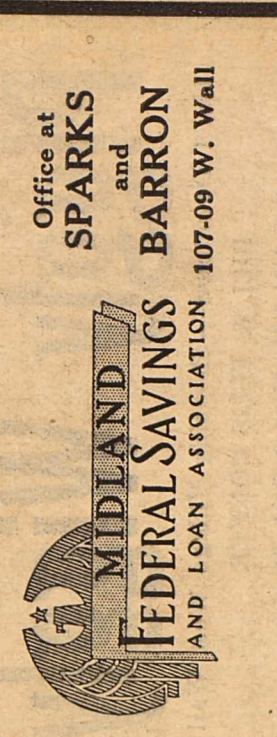
UNIVERSAL NORGE CO.  
122 North Main—Phone 642

## INVEST SAFELY

This organization is an instrumentality of the United States Government... each investor's account up to \$5,000 is insured against loss in eligible home-financing institutions of the savings and loan type. You pay a premium for this insurance against loss... it is paid by this institution. Your investment will pay you neat dividends and will greatly help in affording more available cash to lend for those who wish to build homes in Midland.

Interest and No More — That's all the interest you pay on a building loan through F. H. A.

6%



# Shiva Temple Expedition Shatters Another "Lost World" Legend

BY JAMES E. KINTNER.  
NEA Service Special Correspondent  
GRAND CANYON, Ariz., Sept. 30

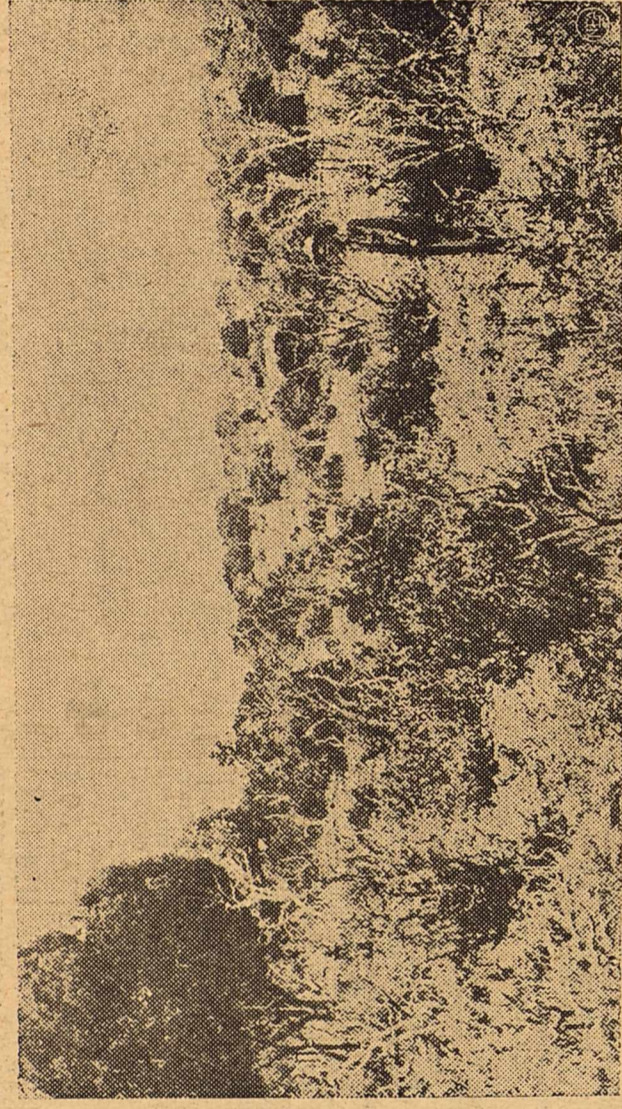
—Many an old prospector along the rim of the Grand Canyon is shaking his head today and muttering, "I told you so."

The rabbits, white-footed mice, chipmunks and the like which have made up most of the "catfish" drive out of the American Southwest. He is just about what Shiva Temple had expected would be found. For old-timers insist they themselves had sealed Shiva Temple as early as 1916. The "temple," a flat-topped mesa, once part of the canyon wall, but carved off from it perhaps many, many years ago, is only a few feet above the "sky" in the distance.

Dan Hogan, last of the real prospectors of the canyon area, believes that canyon between Hermit Creek and Chuar Plateau that some of us haven't visited looking for one mountain sheep turned back.

So to Dan Hogan and others like him, the hope that a "lost world" would be found in the isolated Shiva Temple or its vicinity was a slender one. Little difference so far.

Dr. Harold D. Anthony, curator for the American Museum of Natural History, Edwin D. McKee, chief naturalist and geologist of the national park, and the others of their party continue to set traps in the hope of finding animals distinctly different from those found



The surface of a "Lost World" that appears to have been found before. Here amid the profuse cacti and the pinon and juniper trees atop Shiva Temple is M. R. Tillison, superintendent of Grand Canyon National Park, one of the exploring party. Among these growths are set the traps which, from yielding specimens of the animals atop the isolated mesa, up to now little different, however, from those on the "mainland."

## Paralyzed Girl Walks After Accident Shock

BRADFORD, Eng. (UP) — Cured by the shock of an accident, Anita Butler, 22, who has been paralyzed for four years, can walk again. Miss Butler fell down steps at the mill where she was employed in 1932 and severely injured her spine. She lost the use of both legs. Her doctors held out little hope for her recovery.

Last November a truck ran into the spinal carriage in which her niece was wheeling her to a theatre. Since then her progress has been steady. Today she can walk about unaided.

river, tantalizes with its view of No. Water on Wolan.

Prince photos who have continued to be taken by the expedition. The water on Wolan's Throne, either in years of flying at all hours of the day, they have learned to spot every bit of living water in the canyon by its reflection in the sun. But Wolan's Throne, has revealed none, and it is expected that this mesa still supplies even water will have to be dropped to them in parachutes from planes.

This it now seems likely that while data of strictly scientific interest may be hidden on the tops of Shiva Temple and Wolan's Throne, you will still have to go to the museum to see the tracings and the dioramas.

AN ORDINANCE DEFINING AND REGULATING THE USE OF TOURIST CAMPS, AUTOMOBILES, TRUCKS, TRAILERS OR HOUSE CARS WITHIN OR ADJACENT TO THE CORPORATE LIMITS OF THE CITY OF MIDLAND, PROVIDING FOR A LICENSE, FOR VIOLATIONS, PENALTIES, AND ENACTING THE NECESSARY PROVISIONS INCIDENT TO THE OBJECTS AND PURPOSES OF THIS ORDINANCE, WHETHER MENTIONED IN THE CAPTION OR NOT, AND DECLARING AN EMERGENCY.

## CITY COUNCIL OF MIDLAND, TEXAS

### SECTION I: DEFINITIONS.

(A) An "automobile tourist camp" or "court" is defined to be any lot, tract or parcel of land used in whole or in part where parking facilities and accommodations are provided by day, week, or for a longer period, for the use of two or more units for the use of human habitation for living or sleeping purposes incident thereto.

(B) "Unit" is any place, plot or parcel of ground located within where apartments, rooms, tourist trailers or automobile trailers are erected or maintained or placed, used, intended or designated to be used as a living and sleeping quarters by a single family.

(C) The word "automobile, truck, trailer, or house-car" shall mean any structure intended for or capable of being used for the transportation of persons or property, or power supplied by its own power attached or to be attached.

(D) The term "owner" shall be construed to mean any person, firm, partnership, association, partnership, corporation, who has control, direction, management, or possession of an automobile tourist camp or trailer, or house-car, or otherwise.

(E) The term "person" shall include both singular and plural and shall mean and embrace any individual, firm, corporation, association, partnership, or any of their agents, servants or employees.

twenty feet in length, for a longer than two hours on any highway, way, street, alley or public park, and only outside of the fire and business zones of said City, and then only off of designated highways and paved streets of said City.

Further, said automobile, truck, trailer, trailer-car or house-car shall be parked on a level surface, parallel to and within six inches of the right hand curb and off the main traveled portion of the said street, and facing in the direction that traffic shall be designated to travel.

No person shall park or place any automobile, truck, trailer, house-car or house-car on any parcel of land owned by any person, for a longer period than two hours except in licensed tourist camps or herein designated and provided for in this ordinance or Midland.

(C) No person shall park, place or locate any automobile, truck, trailer, trailer-car or house-car, on any lot, tract or parcel of land, owned by any person, for a longer period than two hours, except in a licensed tourist camp as herein designated or provided for in this ordinance.

1. The person in charge of said automobile, truck, trailer, trailer-car or house-car, shall obtain the written consent of the adjacent owner, householder, and adjacent householder of the lot where-in said house-car is to be located.

2. The person in charge of said automobile, truck, trailer, trailer-car or house-car shall upon obtaining the written consent, apply to the city secretary for a temporary permit for temporary occupancy of said lot, which permit shall only be issued after inspection and approval of the health, sanitary and police departments of said City.

3. The applicant shall show the name and address of the applicant; name and address of all parties who will occupy said automobile, truck, trailer, trailer-car or house-car; the approximate time he intends to occupy the said location and the forwarding address of said applicant.

4. That applicant agree to vacate at any time upon complaint of the adjacent property owner, householder or at the will of the constituted authorities on violation of any rules and regulations of said City or expiration of his temporary permit.

5. Upon filing application for temporary occupancy of said lot, the applicant shall pay to the city secretary a fee of \$1.00, which shall be returned to the applicant upon the expiration of the temporary permit.

6. The application shall show the name and address of the applicant; name and address of all parties who will occupy said automobile, truck, trailer, trailer-car or house-car; the approximate time he intends to occupy the said location and the forwarding address of said applicant.

(A) No automobile tourist camp or court shall be located within or adjacent to the corporate limits of the City of Midland unless the owner shall file an application for a permit in writing, setting forth the name and address of the parties to be in charge; proper descriptions of the location of said tourist camp or court, which shall not be located in restricted zones, as set forth in this ordinance. The applicant shall file a plan showing the dimensions and location of the lot, including the location of sanitary units with specifications and plans which shall be reviewed in detail after approval by the respective city authorities, which shall comply with all sanitary, health, utility and police rules and regulations of said City.

(B) Each automobile tourist camp or court shall be located in a lot of not less than twenty-three feet in width and thirty-two (32) feet in length, marked off in rectangular shape and designated on said plat of said camp and registry, said plat of which shall be at all

times on file with the City Secretary, and in the camp office. Each unit shall be served by utilities; running water; with sanitary sewage connections and sanitary garbage disposals in each unit. Each unit shall be well drained so all surplus water will be carried off from the camp.

(D) The owner or operator of said camp shall, at all times, be responsible for the maintenance of trash and garbage, and if not immediately removed upon notification by the City, it shall be removed by the City, at the expense of the owner.

(E) Separate toilets, baths and wash rooms for each section in ratio of one for every ten units or fraction thereof, which shall be separated, tiled, fly screened openings and constructed of moisture proof material, permitting satisfactory cleaning, and floors of concrete or similar material with floor drains, shall be maintained.

(F) No camp shall accommodate Caucasian and other races in the same camp.

SECTION IV: LOCATION. Automobile tourist camps or courts, which structure is being used for human habitation for living and sleeping quarters incident thereto, shall not be located in or adjacent to the corporate limits of the City of Midland, except as hereinafter provided for.

Automobile tourist camps or trailer-car courts or tourist courts, automobiles, trucks, trailers, trailer-cars or house-cars, used for human habitation or sleeping quarters, shall be permitted only in zones as hereinafter set forth, to wit:

Be No. 11. East edge of the fire limits of the City of Midland, in the middle of Fort Worth Street on State Highway No. 1 and U. S. Highway No. 80. Thence East along Front Street to the City limits.

Be No. 12. At a point at the Southeast corner of the business district of Midland in the center of the intersection of South Baird Street and Florida Street. Thence East along Florida Street to the City limits.

Only the abutting blocks or adjacent abutting blocks, within six feet of the street, shall be considered within the permitted district.

SECTION V: RULES AND REGULATIONS. It shall be the duty of the owner and manager to prescribe rules and regulations for the management for the use of the camp, which shall be of same. A copy of which shall be displayed in the office of the camp and given to each user of any unit upon registration. Said regulations must have the approval of the City Health Officer.

It shall be the duty of the owner to keep a register requiring the signature of the registrant, including names of the persons, their home address and description of their automobile and other vehicles; and their intended duration of stay; their forwarding address, which shall at all times be open for inspection for all regulatory authorities. It shall be unlawful to use one unit for the use of the cottage, trailer, trailer-car or house-car as living and sleeping quarters.

The City Secretary, upon approval of the permit to the applicant upon payment of application and license fees as here set forth, shall issue to the applicant a permit to use any of the rules and regulations of said Ordinance, notify said owner in writing that said permit is cancelled, which shall be effective five days from date. The applicant or owner has a right to appeal to the Board of City Adjustment, if taken within a ten day period, appeal shall be by written petition filed with the said Honorable Board. If not then satisfied, it can be further appealed to the City Council of the City of Midland in the same manner, whose decision is final.

SECTION VI: GENERAL PROVISIONS FIXING PENALTY. Any person, firm, corporation, association, partnership, or individual, failing any provision of this Ordinance, shall be deemed guilty of a misdemeanor, and upon conviction thereof, shall be punished by a fine not less than \$5.00 nor more than \$100.00 and every day such violation continues shall constitute a separate offense.

SECTION VII: SAVING CLAUSE. If any section or provision of any section of this Ordinance shall be held to be void, ineffective or unconstitutional for any cause whatsoever, it shall not affect the validity of the remaining sections and provisions of this Ordinance. REPEALED.

SECTION VIII: ORDINANCES. All Ordinances or parts of Ordinances in conflict herewith, shall be and are hereby repealed. SECTION IX: CUMULATIVE. This Ordinance shall be cumulative of all the Ordinances of the City of Midland, and of all laws of the State of Texas. SECTION X: EMERGENCY. Whereas, an emergency is apparent for the immediate preservation of order, good government and public health, that requires this Ordinance to become effective at once. Therefore, upon the passage of this Ordinance, by a vote of four-fifths of the City Council, it shall be effective from and after the date of its passage as made and provided by the Ordinances of the City of Midland, and laws of the State of Texas.

PASSED AND APPROVED, this 16th day of Sept., A. D. 1937. Mayor.

Attest: J. C. Hudman, City Secretary Approved as to Form: Jas. H. Goodman, City Attorney (Copy of Original)

**ANTIQUE PHILIP**  
BOB WEBB  
Decorator & Designer  
Furniture Refinished  
Antique White  
Bone Wood & Platinum  
Stretches Made  
Call for Estimates  
204 North Marterfield—Phone 752  
Sander's Furniture & Paint Shop

**We Can Serve You Better and More Promptly In Our Enlarged and Remodeled Quarters**

See Us for GENERAL INSURANCE and ABSTRACTS

**SPARKS AND BARRON**  
107 West Wall  
— Phone 79 —  
Wolan Even More Remote.

**Dr. Dafeo Reports Dionne Quins Thiving on Quaker Oats!**

Famous Doctor Prescribes Breakfast of Great Americans for Dionne Quins, Now in Their 4th Year!

"TODAY OUR HEALTHY DIONNE QUINS HAD QUAKER OATS"

Dr. Allan Roy Dafeo

**QUAKER OATS**  
BRACES-UP NERVES & DIGESTION!

**Real Quality Specials**

For Friday & Saturday, Oct. 1 & 2  
We Reserve the Right to Limit Quantity

**FRESH TOMATOES** POUND **7c**

Iceberg Lettuce, large heads, each **5c**  
Cucumbers, lb. **6c**  
Green Beans, lb. **8c**  
Squash, white or yellow, lb. **4 1/2c**  
Cabbage, lb. **3c**  
Yellow Onions, lb. **3c**  
Tokay Grapes, lb. **6c**  
Apples, fancy Delicious, large size, dozen **17c**

**SUGAR**  
Pure Cane, Cloth Bag **10 Pounds 49c**

**POTATOES**  
Colorado No. 1 **10 Pounds 13c**

**BLACK PEPPER** Bee Brand **4c**  
2-oz. can, each

Sugar, powdered or brown, 2 pkgs. **15c**  
Tomatoes, No. 2 can, 4 cans **29c**

**PINEAPPLE** Del Monte, No. 2 1/2 can, 2 for **39c**

Kellogg's Corn Flakes, large pkg. **10c**  
Wheaties, 2 pkgs. **21c**

**BANNER BUTTER** Pound **35c**

**FOLGER'S COFFEE** Two 2-lb. cans **99c**

Salad Dressing, Bestyett, pt. **15c**; qt. **24c**  
Corn, Our Darling, fancy Country Gentleman, 2 No. 2 cans **25c**  
Soap Chips, Clean Quick, 5-lb. box **31c**  
P & G Soap, giant bars, 6 for **21c**  
Palmolive Soap, 6 bars **29c**  
Dreft, large package **19c**  
Gold Medal Flour, 6 lbs. **26c**; 12 lbs. **49c**  
Toilet Tissue, Ambassador, 3 rolls **10c**  
Pecans, shelled, halves, 1/2-lb. **25c**; lb. **49c**  
Mrs. Tucker's Compound, 4-lb. cart. **91c**  
Dressing, S. P. K. French, 8-oz. bottle **17c**  
Flour, Ohoma Brand, 24-lb. **69c**; 48-lb. **\$1.33**

**Market Specials**

Round Steak, choice baby beef, lb. **28c**  
Canadian Style Bacon, lb. **49c**  
Swift's Brookfield Pattie Sausage, lb. **30c**

Oysters, genuine Chesapeake Bay, medium size, pt. **39c**  
Sliced Bacon, Swift's Premium or Armour's Star, lb. **40c**  
Roast, pork loin in cuts, lb. **23c**  
Pork Chops, nice and lean, lb. **29c**  
Chuck Roast, choice baby beef, lb. **16c**  
Ground Meat, no cereals or water added, 2 lbs. **25c**  
Rib Stew Meat, lb. **12c**

**Piggly Wiggly**  
No. 1 Downtown — Shopping Village West Wall  
BILL & ELLIS CONNER  
Specials Effective at Both Stores

<b>PILLSBURY'S BEST FLOUR</b>	
6 Pounds	29¢
12 Pounds	51¢
24 Pounds	87¢
48 Pounds	\$1.71
<b>PORK &amp; BEANS</b> Van Camp's, 16-oz. 2 for	13¢
<b>CARROTS</b> No. 2 Can	7¢
<b>CORN</b> No. 2 Can	7¢
<b>TOMATOES</b> No. 2 Can	7¢
<b>SPINACH</b> No. 2 Can	7¢
<b>PRIMROSE CORN</b> No. 2 Can 2 for	25¢
<b>DATE &amp; NUT BREAD</b> Grosse & Blackwell 1 Can	15¢

### CRISCO

Three Pound PAIL **52¢**  
Three Pound PAIL

### DELICATESSEN SPECIALS

Barbecue, lb.	35¢
Braised Short Ribs, lb.	25¢
Italian Meat Balls, lb.	20¢
Smothered Round Steak, lb.	25¢
<b>FISH</b>	
Mustard Greens, pt.	15¢
Okra and Tomatoes, pt.	20¢
Lima Beans, pt.	20¢
Spanish Spaghetti, pt.	15¢
Fruit Salad, pt.	20¢
Potato Salad, pt.	20¢
Tomato Aspic, pt.	20¢
Fresh Fruit Cobbler, pt.	20¢
Wafer Pudding, pt.	20¢

<b>PEANUT BUTTER</b> Tasty 12-oz. Mugs	19¢
<b>PICKLES</b> Ma Brown Bread and Butter 15-oz. Jar	15¢
<b>STUFFED OLIVES</b> Tasty 13-oz. Jar	39¢
<b>PAPER NAPKINS</b> 2 for	15¢
<b>LINEN MOPS</b> Each	15¢
<b>VINEGAR</b> Heinz Quart	18¢
<b>JELLY</b> Ma Brown 12-oz. Jar	14¢
<b>PRESERVES</b> Ma Brown, Peach, Apricot, Pineapple or Raspberry—2-lb. Jar	41¢
<b>BLACKBERRIES</b> No. 2 Can	10¢

### BLATZ

12-OZ. Ginger Ale or Gold Star Water	10¢
25-OZ. Ginger Ale or Gold Star Water	15¢

## Special Dried Fruit Dried Bean Sale

### ONE & 1-4 lb. PACKAGE

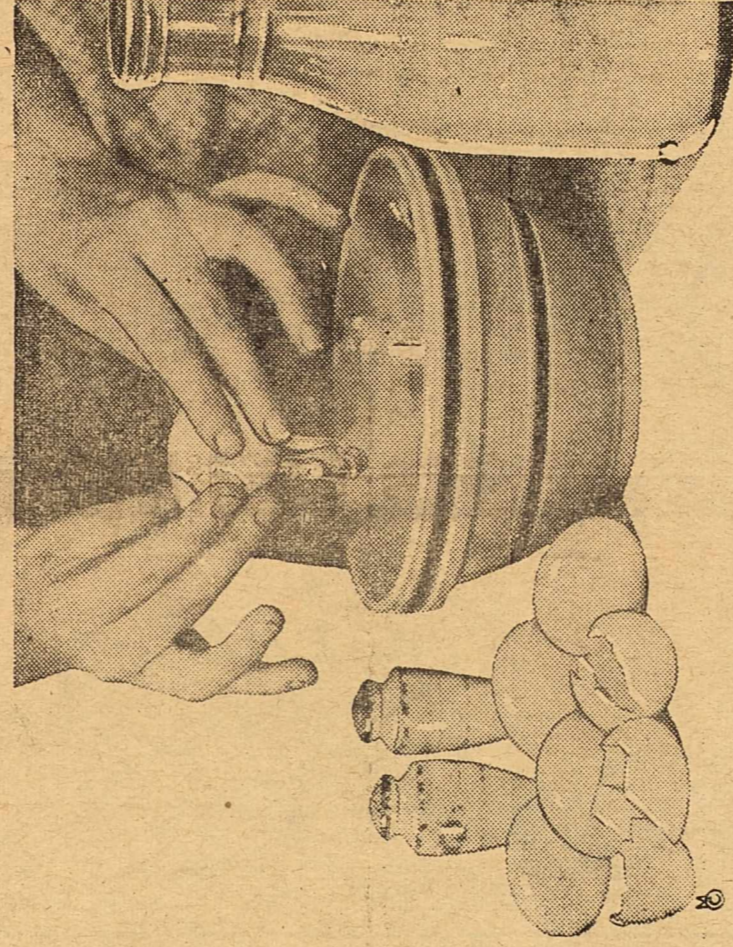
OF DRIED PEACHES, APPLES OR APRICOTS

1 1/4-Pound	<b>19¢</b>	1 1/4-Pound
<b>PINTO BEANS</b> 2 1/2-Pound Package	19¢	
<b>DRIED PRUNES</b> 2 1/2-Pound Package	19¢	

### Two-Lb. Package

OF DRIED LARGE LIMA BEANS, SMALL LIMA BEANS, SMALL NAVY BEANS, LARGE NAVY BEANS

Two Pound Package	<b>19¢</b>	Two Pound Package
<b>BULK RICE</b> 3-Pound Package	19¢	



## E G G S

DOZEN	<b>21¢</b>	DOZEN
-------	------------	-------

### Fruits & Vegetables

White or Yellow <b>SQUASH</b> Pound	5¢	Crisp Stalks <b>CELERY</b> Each	9¢
Fresh <b>CUCUMBERS</b> Pound	5¢	Mountain <b>CABBAGE</b> Pound	2¢
Fresh <b>GREEN BEANS</b> 2 Lbs.	15¢	Sweet Yellow <b>ONIONS</b> 3 Pounds	10¢

### SPUDS

U. S. NO. 1 10 POUNDS FOR **13¢**

Flame Tokay <b>GRAPES</b> 2 Pounds for	9¢	Golden Yellow <b>PEARS</b> Dozen	19¢
Sun-Kist <b>LEMONS</b> 2 Doz. for	23¢	Fresh <b>TOMATOES</b> 2 Lbs.	9¢

## COFFEE

SCHILLINGS

One Pound Can **22¢**  
One Pound Can

<b>CORN FLAKES</b> Kellogg Package	9¢
<b>WHEATIES</b> Package	9¢
<b>DOG FOOD</b> Ideal 2 for	15¢
<b>BEANS</b> Whitson's Mexican Style 16-oz. Can — 2 for	15¢
<b>PINEAPPLE</b> Del Monte No. 2 Can	17¢
<b>PEARS</b> Del Monte No. 2 1/2 Can	21¢
<b>PEAS</b> Mission No. 2 Can	14¢

### EL FOOD SALAD DRESSING

<b>QUART JAR</b>	25¢
<b>PINT JAR</b>	17¢
<b>1/2-PINT JAR</b>	11¢

### MARKET SPECIALS

<b>CALF BRAINS</b> POUND	14¢
<b>LUNCH MEAT</b> Assorted POUND	19¢
<b>BEEF ROAST</b> Armour's Star POUND	15¢
<b>BACON</b> Armour's Star or Wilson's Certified POUND	39¢
<b>PORK SAUSAGE</b> 2 POUNDS	35¢
<b>CURED HAM</b> Boneless, 2 to 3-lb. average POUND	29¢
<b>BACON</b> Dold Buffalo Brand (The kind we slice) POUND	33¢
<b>FISH</b> Fillet or Haddock POUND	25¢
<b>CHEESE</b> Philadelphia Cream 2 Packages	15¢
<b>BULK MINCE MEAT</b> POUND	25¢

<b>DYANSHINE PASTE</b> 2 for	15¢
<b>WAX PAPER</b> Cut-Rite 2 for	15¢
<b>SOAP</b> P & G 6 for	23¢
<b>MATCHES</b> carton	19¢
<b>CHIPSO</b> Large Size	21¢
<b>CAMAY SOAP</b> 3 Bars	17¢
<b>SOAP</b> Kirk's Hard Water Castile 6 for	25¢
<b>OXYDOL</b> Giant Size	59¢
<b>PEACHES</b> No. 1 Tall Can	12¢

### ARMOUR'S VEGETOLE

Four-Pound Carton	41¢	Eight-Pound Carton	81¢
-------------------	-----	--------------------	-----

# RHOADS' WES-TEX FOOD MARKET

MIDLAND

SPECIALS FOR FRIDAY & SATURDAY, Oct. 1 & 2

(We Reserve the Right to Limit Quantity)

TEXAS

# YANKEE INFELDERS OUGHT TO PAY ADMISSION TO WORLD SERIES

## Only Gehrig Does Share in Winning Pennant This Year

This is the second of three stories analyzing the League champions, and their prospects and plans for the forthcoming world series, starting Oct. 6.

By RICHARD MCCANN,

NEA Service Sports Writer, NEW YORK, Sept. 30.—With the exception of Mr. Lou Gehrig, one of our oldest inhabitants, they ought to charge the Yankee infielders accordingly, by the lads have done little to earn their way into the park.

They have been, with negligible in the field and negligible at the bat. Yes, at the bat. They are, to be sure, members of the famed and fierce Murderer's Row, but judging from the records you could hardly accuse them of slaughtering the opposition.

Take Mr. Red Rolfe, the Yankee third baseman, for example. His batting average is an anemic .270 or-so and is exceeded by six other third basemen in the league. The only fellow tradesman he is outdoing is poor old rhotumatic Tony.

Five third basemen also have driven home more runs than Hankland Cliff of St. Louis, for instance, has driven home twice as many.

Rolfe's inferiority out in the field has been just as pronounced. At least four rivals are better than Cliff St. Louis, Philadelphia, Boston, and Lewis of Washington.

So much for Rolfe.

Crosetti Slumping Badly at Plate.


AT shortstop, the Yankees have a man who is being outbid by five infielders. Washington, Cronin of Boston, Appling and Chicares of Cleveland, and Kaiserbacher of St. Louis boast better-nourished averages than Frankie Crosetti's skimpy .240-or-so. In addition, all four have driven home more mates than Frankie.

Sul Ross Tangles With Flyers Sat.

ALPINE, Sept. 30.—The Sul Ross Lobos will see action next Saturday, October 2, at 3:30 against either the already scheduled Kelly Field Flyers or the Mustangs of the University of Kansas. The Sul Ross team will be able to attend the game, but the fact that Bo Manuevas, so in case they can not attend the 'B' team and the Varsity will have their annual Intra-squad game on this date.

The game will add greatly in preparation for the state championship game with the Mustangs of Javelinas from Kingville, the following Saturday. Since the opponent will be the Varsity, tangles with the 'B' team.


Out today



HUMBLE SERVICE STATION

FOOTBALL NEWS

MOVE SAFELY



THE ROCKY FORD WAY

I. C. C. Permit Operating in 7 States

STORAGE--MRS. J. B. FORD--Phone 400

Feeds and Seeds

We are featuring a complete line of

PURINA PRODUCTS

For your stock, poultry, and pets

Better seeds of all kinds

Choice hay

WE DELIVER

WILLIAMS & MILLER GIN CO.

Phone 83

SICKNESS and ACCIDENT

NEVER TAKE A HOLIDAY!

Lifetime disability policies insure income to employed men and women while disabled.

MUTUAL BENEFIT, HEALTH AND ACCIDENT ASSOCIATION

United Benefit Life Insurance Company Issues All Forms of Life Insurance

J. G. HARPER

District Manager—213 Petroleum Building

Phone 830 — Midland, Texas

## The Laddie K nown as Lou



Lou Gehrig

Crosetti, sometimes spectacular and the Yankees averaged about one win-killing a game with Don Redlin. It was a hand fracture that put Tony out of the lineup and while languishing on the bench Tony allowed as how he thought it was time for him to quit. However now that the hand has mended he has returned to the lineup and Joe McCarthy plans to use him throughout the world series.

Lazzeri is being outbid by six other infielders. Tony Lazzari, his partner around the keystone sack, as the boys call it, is just about done for as a regular player. He has been slow, unsteady, and brittle this year. His slowness undoubtedly affected Crosetti's work. As a result, the Yankees have made less double plays than they should have. The fact that it must be Lazzari's fault was proved when he was taken out of the lineup for a month.

for Saturday has not been determined. Coach Graves has not announced his starting lineup, but it is probable that every man on the squad will play. Red Tipps from this year will weaken the backfield to some extent, but the fact that Bo Graham will be able to duplicate Archer's triple threat achievements will go a long way in offsetting this loss.

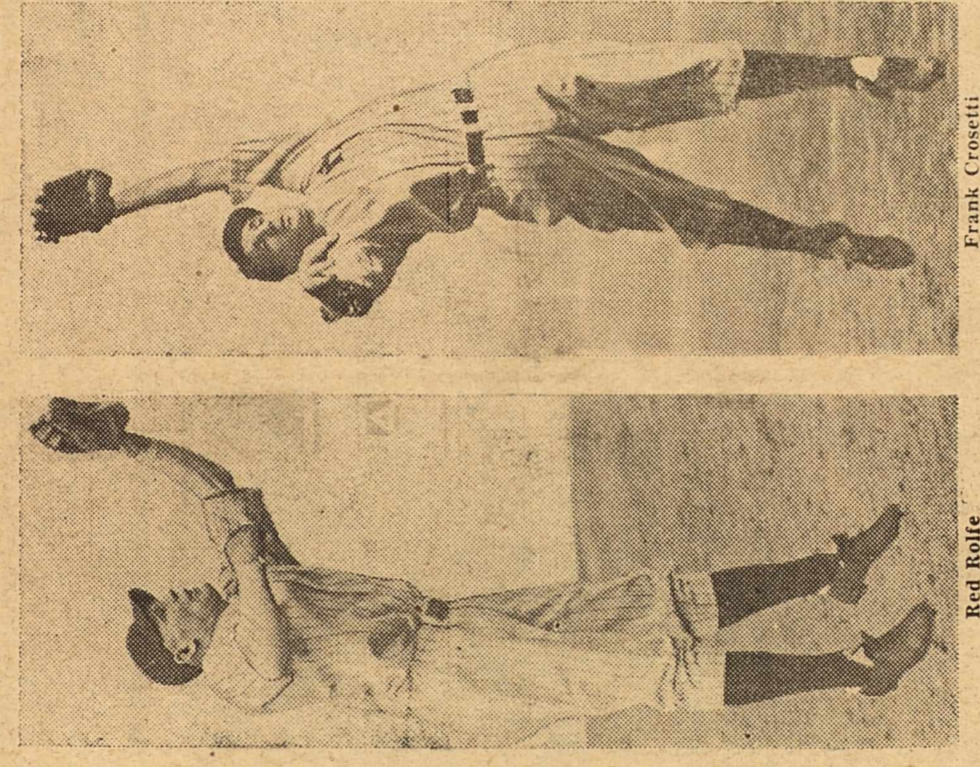
The admission will be 40 cents if the opponent and 25 cents if the Varsity tangles with the 'B' team.

## Tony Still Pooshes 'Em Up



Tony Lazzari

## Charge 'Em to Get In



Red Rolfe

Frank Crosetti

## Arkansas Favored By Grubbs to Take The Title Again

FORT WORTH, Texas, Sept. 30.—Southwest sports writers and fans have been predicting that Arkansas will again win the conference football flag. Howard Grubbs, T. C. U. athletic director, who scouted the Razorbacks last Saturday, now casts his vote with the writers and the fans!

"This Robbins and Sloan of Arkansas can really toss the leather," Hamilton reports. "And Benton and the boys will be in to get a taste of the medicine we prescribed for others last year."

Coach Dutch Meyer has put the Ohio State defeat behind with these words: "We looked better at Columbus than we did at Lubbock last year. We'll come along to win a few ball games, I expect, and out!"

There will undoubtedly be a few shifts in the Frog lineup this week. Based on the Ohio State play, a fair conclusion is that Snow and Horner will be the starting ends. Instead of Mabry and Hensch. Little Davey O'Brien had small chance to use the air game in the game with the Frogs. Meyer still thinks the Frogs will have a fair passing game. Meyer was frankly disappointed in the power showing and will work a lot this week on that department.

"Anyway, we have no reason to pat ourselves on the back and figure we are doing better," Meyer commented. "We are going to get a big job out of them in Fayetteville Saturday. We hope that that will furnish just the right incentive."

Liners of the big transport plane companies now carry supplies of baby bottles for the use of babies who travel by air.



## IMPROVEMENT

The school boy and girl whose eyes are corrected by wearing glasses, show immediate improvement in their studies. How about your child?

Dr. W. L. Sutton

OPTOMETRIST  
208 West Texas  
Office Ph. 146—Rec. Ph. 156 M

## Naval Picture at Yucca Fri., Sat.

The training ground where Uncle Sam's future naval officers are educated, the U. S. Naval Academy at Annapolis, Maryland, and the training line for the U. S. Marine Corps in "Annapolis Salute", with his heroes a group of cadets and its welfare director, explains that with the rising food prices she feels that "only" \$2,733,000 may not be sufficient for the gastronomic needs of the state's wards.

## Prison Busy Producing Trailer License Plates

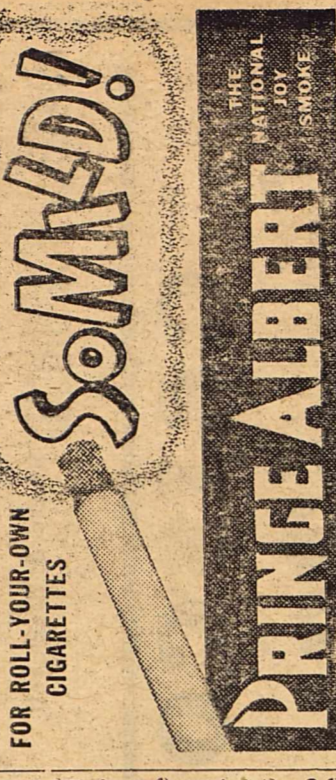
AUBURN, N. Y. (UP)—Production of trailer license plates at Auburn Prison is "booming", prison officials report. In October 1936, the prison produced 10,000 plates. The year 1937, the production of plates and is expected to increase before the end of the year.

## Ohio Prison Population Goes Over 36,000 Mark

COLUMBUS, O. (UP)—Ohio has a large "family" to feed three times a day. The "family" number more than 36,000 and reports series the prison population of the state.

Mrs. Margaret Allman, state welfare director, explains that with the rising food prices she feels that "only" \$2,733,000 may not be sufficient for the gastronomic needs of the state's wards.

FOR ROLL-YOUR-OWN CIGARETTES



PRINCE ALBERT

THE NATIONAL JOY SHOW

REAL MEXICAN DISHES

Try

EL CAMPO CAFE

AT EL CAMPO MODERNO FOR

Real Mexican and Chinese Dishes

PHONE 80

For

- Prompt
- Efficient
- Courteous

Cab Service

CITY CAB CO.

# TULLOS

## Dyers and Cleaners

L.A. TULLOS Prop. MIDLAND, TEX. CALL 600

"SAVE 25c On Each Dress or Suit—  
By Cash and Carry

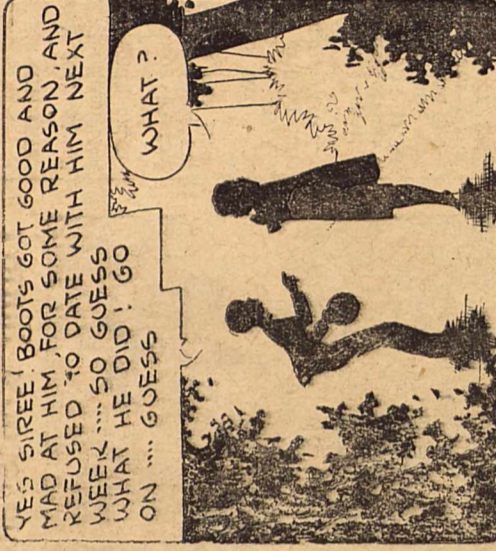
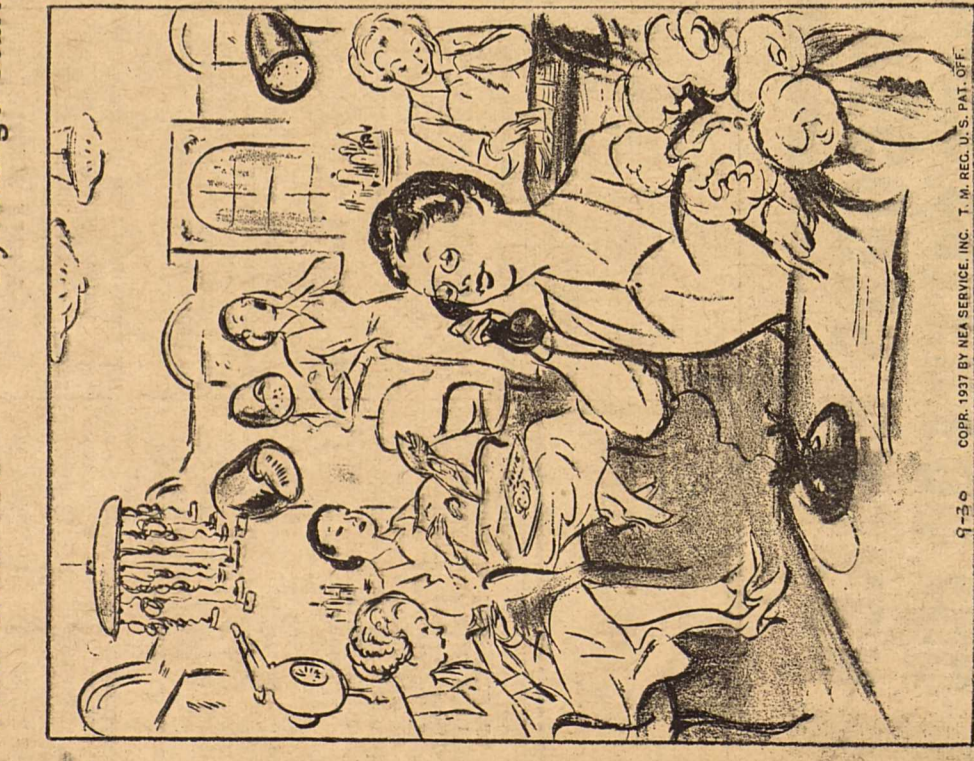
"Growing with Midland"

SIDE GLANCES

BOOTS AND HER BUDDIES

The Very Idea!

By MAKILIP



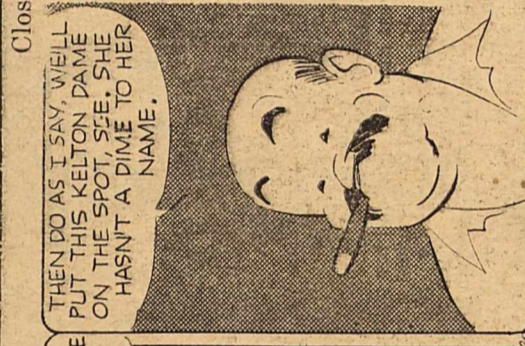
HERE'S NO DOUBT OF IT...HE'S THE MEANEST FELLOW IN THE WHOLE DOGGONE WORLD WHO?

HORACE HORACE? WHAT?

YES SIR! BOOTS' BOOTS GOT GOOD AND MAD AT HIM FOR SOME REASON AND REFUSED TO DATE WITH HIM NEXT WEEK...SO GUESS WHAT HE DID? GO ON...GOEYS

JUST BECAUSE HE COULDN'T GET ANYWHERE HE SNITCHED HER DATE BOOK AND GLOED ALL THE PAGES FOR NEXT WEEK, TOGETHER SO HE COULDN'T GET A DATE NO OOO

WASH TUBBS



SPEAK UP, YOU GUYS! DO YOU WANTA WORK FOR A FRIZZLE-HEADED FOOL-WOMAN, OR ME?

WHY, WE WANTA WORK FOR YOU, COURSE WE DO.

THEN DO AS I SAY, WE'LL PUT THIS KILTON DAME ON THE SPOT, SEE, SHE HASTN A DIME TO HER NAME.

WELL, MISS, SINCE YOU DISCHARGED ME, YOU CAN PAY UP MY CONTRACT TO THE TUNE OF \$2,840. GRAND TOTAL: \$5,840! GOOD HEAVENS!

Bank Clerk Inherits Old English Baroncy

SYDNEY, N. S. W. (UP)—A 17th century baroncy has passed on to a Sydney bank clerk, Frederick Farland Trollope, a grandson of the Victorian-era novelist, Anthony Trollope.

Classified Advertising

24 a word a day. 46 a word two days. 66 a word three days. MINIMUM charges: 3 days 25c. 5 days 50c. CASH must accompany all orders. Each ad must be accompanied by specified number of days for which it is to be inserted.

WANTED: Boy to help on milk delivery. Scruggs Dairy, phone 3400. (174-0)

PERSONAL -14 MADAM RUSSELL, readings daily; business, marriages, love affairs, past, present and future. 307-60 Wall. (176-6)

MISCELLANEOUS 15 \$100.00 REWARD will be given for information leading to the arrest and conviction of the party who placed poison in my yard. LUM DAUGHERTY 311 North Big Spring (176-1)

NURSERY NOTICE 5% off on all orders for fall delivery. WEST TEXAS NURSERY Rt. 2, O. W. Highway At Cher Park on W. Highway 10 Years in Midland 10-29-37

WIMPY'S CONFECTIONERY North of Kitz Theatre Your Patronage Appreciated 10-16-37

Bargains in USED GAS & ELECTRIC RANGES Many Kinds Frigidaires & Other Electric Refrigerators Vacuum Sweepers Household Supply Co. Bob Lile, Mgr. 113 East Wall 10-3-37

MODERN MATTRESS RENOVATING Ask our moderate charge for re-making your mattress. The same quality as your present mattress with the added benefit of being renovated and re-building. We re-look at all the original comfort and looks at a small cost. Ask us for an estimate without any obligation. Upham Furniture Company Phone 451 201 South Main St.

16 to 18 Months To Pay On Used Cars We Buy Good Used Cars and Pay Cash WILKS NEW CARS Driskell-Freeman, Inc. 309 W. Wall—Ph. 1185 10-1-37

10 BEDROOMS FURNISHED bedroom; hot and cold water. 1500 South Lorraine. (175-6)

WE QUIT I WE THERE EES A LITTLE ITEM, SIGNORITA, OF \$1,800 DUE ON THE MORTGAGE TODAY. GRAND TOTAL: \$5,840! GOOD HEAVENS!

WE QUIT I WE THERE EES A LITTLE ITEM, SIGNORITA, OF \$1,800 DUE ON THE MORTGAGE TODAY. GRAND TOTAL: \$5,840! GOOD HEAVENS!

THE ONLY THING THAT SAVES US IS IT WAS SO DARK I DIDN'T RECOGNIZE US, BUT I LEARNED STEADY US CHASE GUY WE WERE TWO - AN' ONE WAS A GIRL.

LOOK, THERE'S SOMEONE OUTSIDE THE WINDOW - DR. JASON - BUT I SHALL BE GLAD TO EXPLAIN THE FINE POINTS, LATER.

I THINK HE GOT US INTO THIS...AND IT WOULD JUST BE TERRIBLE IF WE DIDN'T DO SOMETHING ABOUT IT! HAVE YOU THOUGHT OF THAT?

HAW, W'DEAR SHE WAS ALWAYS CLOWNING! SHE'S ALWAYS CLOWNING! SHE'S ALWAYS CLOWNING!

YOUR SISTER IS COMING TO VISIT US? WHERE IS SHE? I HEARD YOU MENTION A SISTER, ONCE - IS THIS THE SAME ONE WHO SAYS THAT ALL THE HOOPLES ARE SQUIRRELLY, AND WHO ALWAYS CARRIES A LADDER DOWN OUT OF THE TREES?

HORACE HORACE? WHO?

WHY, WE WANTA WORK FOR YOU, COURSE WE DO.

MEBBE I'LL BUST 'IM RIGHT ON TH' SHOOTS! AH THERE HE IS NOW TH' MANGY OL' COOT! NEMBODY'S LOOKIN' TH' COAST IS CLEAR! NOW THIS VERSION OF THIS I'LL HEAR!

A RUSH CALL FOR Von Boden

THAT'S WHAT I FIGURED, IF YOU ASK ME THE ONE WHO BE TOO BAD TO SAY US! IF HE COULDN'T PLAY THIS YEAR!

WHAT'S HIS INKWE'LL DOIN' HELP IT INTO AREN'T WE WRITIN' NOW -

BORN THIRTY YEARS TOO SOON

HERE'S NO DOUBT OF IT...HE'S THE MEANEST FELLOW IN THE WHOLE DOGGONE WORLD WHO?

WHY, WE WANTA WORK FOR YOU, COURSE WE DO.

MEBBE I'LL BUST 'IM RIGHT ON TH' SHOOTS! AH THERE HE IS NOW TH' MANGY OL' COOT! NEMBODY'S LOOKIN' TH' COAST IS CLEAR! NOW THIS VERSION OF THIS I'LL HEAR!

A RUSH CALL FOR Von Boden

THAT'S WHAT I FIGURED, IF YOU ASK ME THE ONE WHO BE TOO BAD TO SAY US! IF HE COULDN'T PLAY THIS YEAR!

WHAT'S HIS INKWE'LL DOIN' HELP IT INTO AREN'T WE WRITIN' NOW -

BORN THIRTY YEARS TOO SOON

HERE'S NO DOUBT OF IT...HE'S THE MEANEST FELLOW IN THE WHOLE DOGGONE WORLD WHO?

WHY, WE WANTA WORK FOR YOU, COURSE WE DO.

MEBBE I'LL BUST 'IM RIGHT ON TH' SHOOTS! AH THERE HE IS NOW TH' MANGY OL' COOT! NEMBODY'S LOOKIN' TH' COAST IS CLEAR! NOW THIS VERSION OF THIS I'LL HEAR!

A RUSH CALL FOR Von Boden

THAT'S WHAT I FIGURED, IF YOU ASK ME THE ONE WHO BE TOO BAD TO SAY US! IF HE COULDN'T PLAY THIS YEAR!

WHAT'S HIS INKWE'LL DOIN' HELP IT INTO AREN'T WE WRITIN' NOW -

BORN THIRTY YEARS TOO SOON

HERE'S NO DOUBT OF IT...HE'S THE MEANEST FELLOW IN THE WHOLE DOGGONE WORLD WHO?

WHY, WE WANTA WORK FOR YOU, COURSE WE DO.

MEBBE I'LL BUST 'IM RIGHT ON TH' SHOOTS! AH THERE HE IS NOW TH' MANGY OL' COOT! NEMBODY'S LOOKIN' TH' COAST IS CLEAR! NOW THIS VERSION OF THIS I'LL HEAR!

A RUSH CALL FOR Von Boden

THAT'S WHAT I FIGURED, IF YOU ASK ME THE ONE WHO BE TOO BAD TO SAY US! IF HE COULDN'T PLAY THIS YEAR!

WHAT'S HIS INKWE'LL DOIN' HELP IT INTO AREN'T WE WRITIN' NOW -

BORN THIRTY YEARS TOO SOON

