

THE REPORTER-TELEGRAM

Evenings (except Saturday) and Sunday Morning
MIDLAND PUBLISHING COMPANY, PUBLISHERS
112 West Missouri, Midland, Texas

T. PAUL BARRON Publisher
Entered as second class matter at the postoffice at Midland, Texas, under the Act of March 30, 1919

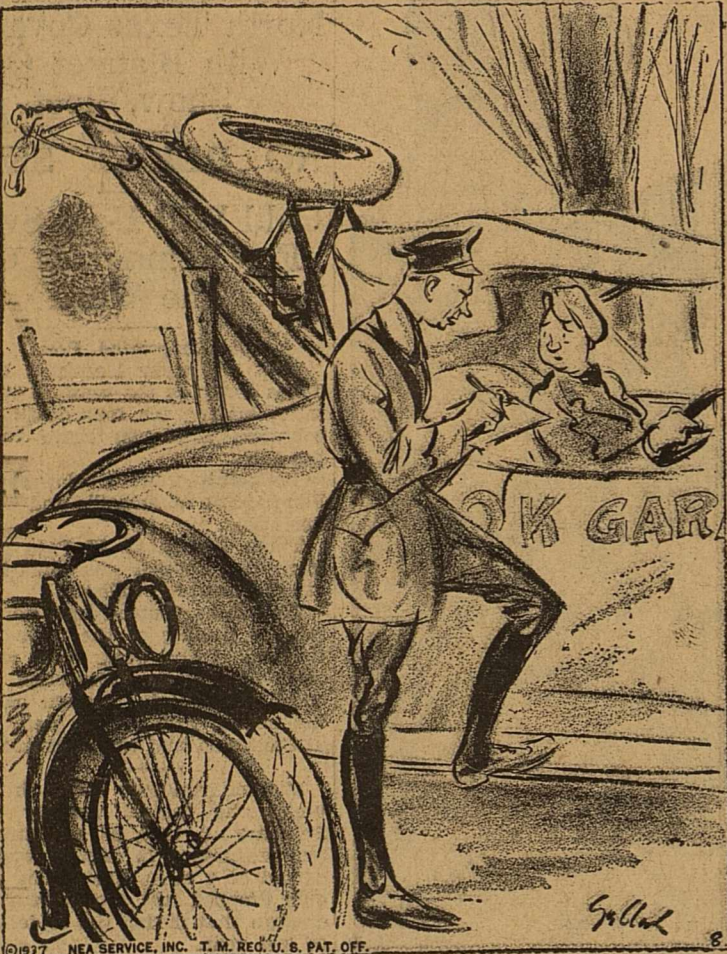
Subscription Price
Daily, by Carrier or Mail
Per Year \$5.00
Per Month 50¢
Advertising Rates
Display advertising rates on application. Classified rate, 2¢ per word; minimum charge 25¢. Local readers, 10¢ per line.

Any erroneous reflection upon the character, standing or reputation of any persons, firm or corporation which may occur in the columns of The Reporter-Telegram will be gladly corrected upon being brought to the attention of the firm.

BURGLARS KNOW COINS
NEW YORK (U.P.) — Burglars who cracked the safe of the New Netherlands Coin Co., took \$20,000 worth of rare domestic silver and gold coins, but they passed up trays laden with foreign silver coins. Among the pieces stolen was the rare Oregon Beaver \$10 gold piece, estimated to be worth about \$1,800.

SOON TO HAVE CHERRY JUICE COCKTAILS
SHELBY, Mich. (U.P.) — An effort to make all America cherry juice cocktail conscious has been started by a local manufacturing concern. If experiments now being conducted prove successful, cherry juice cocktails will be placed on the markets next summer.

SIDE GLANCES By George Clark



"Did you ever stop to think what might happen to you, going at that speed on the wrong side of the road?"

A South American

HORIZONTAL
1. The President of Argentina.
2. Diagonal.
3. Clay.
4. Seaweed.
5. To impel.
6. Monkeys.
7. Thought.
8. Electrical term.
9. Mollifies.
10. Form of "be."
11. Impartial.
12. Often.
13. Music drama.
14. Water wheel.
15. Ulcer.
16. Eccentric wheels.
17. Wiser.
18. Unable to speak.
19. Finely cut fodder.
20. Quaking.
21. Court.
22. His military title.
23. Company.

Answer to Previous Puzzle
CARRIE LOUDER
LOUISIANA
WED. STET. O.M. BOND
E. AP. ED. ALA.
ADORED. AGITATED
LOWED. ONE. INJURE
TENS. PRY. SCENE S
H. SOB. THA. KA
YAPPED. CURL. DOS
HOUR. PALI. OAT
SERRA. ERIN. ARIA
AMERICA. PERFECT

country.
Aires.
13 Curse.
15 Treeless plains in his country.
20 Inlet.
21 Male child.
23 Brutal.
24 Amphitheater center.
26 Central point.
27 Vagabond.
29 Sane.
31 Idiot.
33 To crawl.
36 Ounce.
37 Pigeon pea.
38 Fragment.
40 Stem joints.
43 Dozes.
44 Night before.
45 Back.
46 Like.
49 Encountered.
50 Work of skill.
52 Part of circle.
53 Hurrah!
55 Southeast.
57 Upon.

VERTICAL
1 Melodies.
2 Forcible restraint of speech.
3 Custom.
4 Animal trainer.
5 Heathen god.
6 Not any.
7 Joke.
8 Kind of snow shoe.
9 To scatter.
10 Olive shrub.
11 Capital of his

BEHIND THE SCENES IN WASHINGTON

By RODNEY DUTCHER
Reporter-Telegram Washington Correspondent

WASHINGTON, Jan. 7. — Holiday conferences of President Roosevelt, some of his closest advisers, and certain labor leaders who really count at the White House resulted in several decisions of major importance as to forthcoming proposals for labor-industrial legislation:

1.—Instead of seeking to legislate a national maximum work week of 30, 35, or 36 hours, as proposed by various labor leaders, the administration will support a bill to delegate to a board or commission the power to set maximum hours and minimum wages in industries whose business obviously is of interstate character.

2.—The administration proposal will be exclusively a "labor bill," in that it will cover only wage and hour regulation. It will have no provisions as to anti-trust law exemptions, price-fixing, or trade practices such as characterized the NIRA.

3.—Roosevelt is now willing to meet the U. S. Supreme Court issue head-on. The new wage-hour law, if passed by Congress will be the gage of battle. The administration will not participate in any movement to obtain a constitutional amendment or otherwise to curb the court's power pending a supreme court ruling on that measure.

If the court should declare the law unconstitutional, Roosevelt — judging by the way he is now leaning—would summon the power of organized labor behind him and attempt to jam through a constitutional amendment with all possible speed.

Aim at Major Industries
The conferees agreed that it would be impractical to try to make an arbitrary wage-and-hour standard apply to all industries. They believe that it would be unwise at this time to attempt federal regulation of wages and hours in small towns, local industries, and the service trades, after the manner of ill-fated NRA.

But the steel, automobile, coal, textile and other major industries will be regulated if the administration has its way.

Any legislation passed with administration approval will aim at ending a condition under which

"sweatshops" frequently leap across state lines to obtain cheaper labor. Roosevelt has in mind a federal agency governing wages and hours which would be modeled along the lines of the New York state minimum wage board. The law under which that board operates (applying only to women and children) has been declared invalid by a 5 to 4 U. S. Supreme Court decision and the reasoning of the court in various cases has indicated that, barring a change of attitude, any federal legislation of similar type would also be declared unconstitutional.

Nevertheless, it has been pointed out that in the last 20 years 10 justices have voted for minimum wage legislation and only seven against, the seeming paradox being due to the fact that liberal justices have come and gone faster than conservatives on the court.

Congress to Redefine Trade
A redefinition by Congress of "commerce among the states," as referred to by the Constitution, is part of the plan. Under narrow court interpretations, interstate commerce comes to include little more than railroads with tracks running across state lines and production is regarded as "local."

The procedure of definition would be similar to that under which Congress, with "intoxicating liquors" banned in the Constitution, for legislative purposes defined "intoxicating liquors" to be anything with more than half of 1 per cent alcohol—a definition accepted by the court.

One definition which is being or will be seriously considered reads as follows:

"Commerce among the several states, under Section 8, Article I, of the Constitution of the United States, is hereby defined to apply to and include every transaction relating to the production (including, but without limitation, agriculture, manufacture, or mining), processing, refining, transportation, and distribution of any commodity or merchandise of any kind, use of which is not limited to the state in which it is produced, or use of which occurs in more than one state, whether or not such transaction takes place within one or several states."

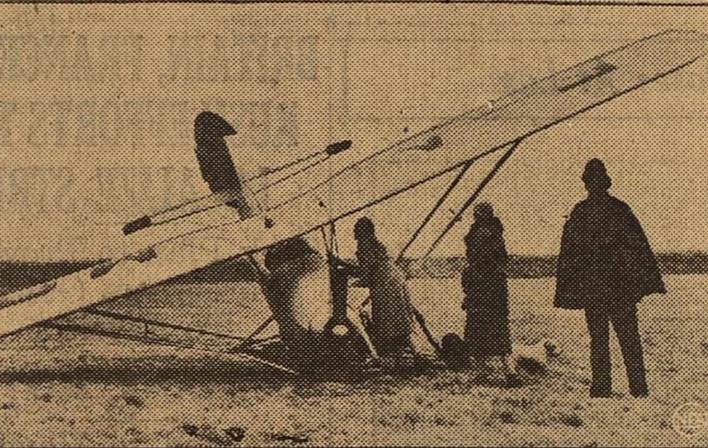
142 Clothing Manufacturing Plants in State Operating at End of Year 1936

AUSTIN, Jan. 8. — At the close of 1936, there were 142 clothing manufacturing plants operating in Texas, according to data gathered from manufacturers by Clara H. Lewis, editorial assistant in the University of Texas Bureau of Business Research. These data reveal that Texas continued to hold first place among the states in the production of men's work clothing and that Texas factories are now supplying much of the demands of local markets for many lines of women's wear. The clothing industry in this state faces a favorable future, Mrs. Lewis declared.

"Since the beginning of the clothing industry in Texas, the development has followed certain general lines," Mrs. Lewis said in an article for the Texas Business Review, published by the Bureau. "For example, Texas is a large producer of men's work clothing, certain classes of women's clothing, and children's clothing, particularly, of the type requiring hard work. There has been a considerable increase during the last three years both in types and number of establishments manufacturing women's clothing, and at present Texas factories are able to supply much of the demands of the local markets for many lines of women's wear. A total of 23 factories in Texas manufacturing women's clothing report Southwest or nationwide distribution."

"In the production of men's work clothing, Texas continues to hold

Aviatrix Held in Mad Escapade



Twice recklessly risking her life in a mad aviation escapade and escaping unhurt, Mme. Marie Schmeder Chapellut, top left, was held in England pending action on a French extradition request. She was accused of shooting Pierre L'Allemand, top right, while their plane was over Paris, in a fit of rage when she learned he was to be married. L'Allemand, wounded in the neck, managed to land the plane, and Mme. Chapellut then took off alone, crossing the Channel and crashing on the English coast. There she was arrested.

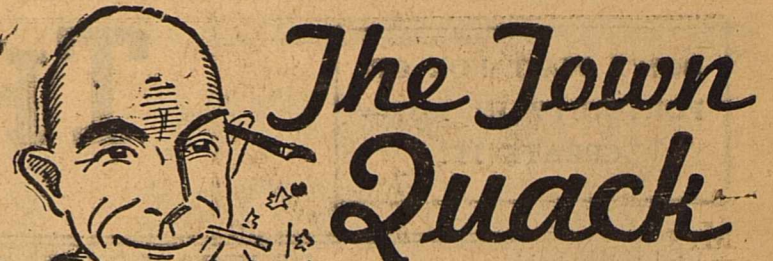
products had increased to \$272,896,000, representing more than 4,000 factories and employing 84,575 persons. There were 25 plants producing men's clothing in the year 1909 and the value of products was estimated at \$1,759,000. Up to this time no figures are available on the manufacture of women's clothing in Texas.

"Approximately 60 per cent of the 142 factories included in this study report national distribution for their products, as well as serving Texas and the Southwest. Several manufacturers produce goods for the Southwest market only, and a few export to foreign countries."

"While the clothing industry in Texas has developed principally in the large cities of the State, it is especially interesting to note the gradual increase in number of the plants located at points distant from the larger commercial areas. The principal factors that contribute to the development of the clothing industry in the smaller cities of Texas, parallel in general the changes evident for the country as a whole. These factors include the continued increase in demand for ready-made clothing, lower production costs often possible in the less crowded sections of the country, and the greater efficiency of modern distribution methods. Today it is estimated that about 30 per cent of the total number of clothing manufacturing plants in Texas are located outside the larger cities of the State."

"One of the most important factors to be considered in plant location is the availability of labor supply without loss in efficiency usually accompanying a change in environment. For example, the large amount of handwork usually required in the production of infants' and children's wear, make it necessary to have not only abundant but skilled labor if he is to compete successfully with manufacturers who possess the advantages of large-scale production methods and a well established trade. Because of the significance of this type of labor, Texas towns and cities of the Southwest sections of the State and along the Mexican border have proven advantageous locations for plants manufacturing products which require a large supply of laborers skilled in needlework."

"Texas is particularly fortunate in having within its southwestern cities and adjacent to its factories along the border, a large supply of Mexican labor skilled in needlework. Mexico has for centuries produced workers who are adept in the are of needlework, and today, these laborers constitute a valuable resource for the Texas manufacturer in the production of a distinctive and high-grade class of articles. The present day fashion demands for large amounts of hand work in the making of infants' and children's clothing have furnished employment for many of these Mexican people. There are possibilities that a wider market for their art will be created, and it is hoped that labor conditions will improve sufficiently to encourage the continued training of these needleworkers and insure the future supply of this type of worker for Tex-



The Town Quack

(Reserves the right to "quack" about everything without taking a stand on anything).

wave forecast.

A plumber confided in me this morning that people are getting too well educated. Most of them turned off the water in time to prevent bursted pipes.

Somebody over at the depot mailed me a few good cracks which he had clipped. Among them was the one about the man who was giving his son a definition of the term "college bred." They make college bred, my boy, from the flour of youth and the dough of old age."

And then he sent one about a constable who stopped a motorist, saying: "Did you knock that man over?" And the motorist replied: "No. I pulled up to let him cross the street and he fainted."

I guess you read about the worker at the machine plant who backed into the gears and got a little behind in his work.

Romantic thoughts of a reporter walking to town:
Ah! The beauties of nature, the grandeur of the icicles dangling from the trees, the music of the rustle of the breeze, the romance of the rising sun on the tinsied surface of Mother Earth "froze over"—ouch! One of those icicles hit me on the cold ear. What a day! Won't we ever have warm weather and sunshine? Drat the beauties of nature! Where are my summer wages? Give me some temperature.

The cold snap recovered for The Reporter-Telegram's weather man his fast waning reputation. He had forecast two or three wintry spells which failed to produce "over-coat weather." When "this forecast" was published Wednesday, the whole newspaper staff had misgivings. But we finally got one. The steaming radiators, frozen hydrants and slippery sidewalks are proof that we have hit right for once on a cold

Parent-Teachers

Continued On Page Four

a Children's Code Commission; matching of Federal Funds for child Welfare in order to secure such benefits as will aid dependent children, and additional appropriations for the State Division of Child Welfare to secure development of the program and permit the continuation of Social Security Funds for child welfare services in rural areas.

There are 40 miles of bicycle paths in Chicago.

DEER TRAFFIC CONSCIOUS

SPRINGFIELD, Mo. (U.P.) — The drive for traffic safety has reached the deer of the Ozarks. A hunter returning here reported he saw a doe emerge from the forest with two fawns. The doe made the little ones stay behind while she looked in all directions and went across the road. Then she turned her head and the fawns dashed across after her.

of Texas-made garments. The increased distribution of Texas-made products through the efforts of the retail merchants of the State reflects the confidence of the merchants and consumers in locally-manufactured products. This confidence in Texas-made clothing expressed in dollars and cents is based on the comparative merit of the Texas products with goods bought in other markets, and constitutes the most important factor which makes up the present favorable outlook of the clothing industry in this State."

SPECIAL
2 PLAIN DRESSES
Cleaned and Pressed
60¢
2 MEN'S SUITS
Cleaned and Pressed
60¢
1 MAN'S SUIT
AND
1 LADY'S PLAIN
DRESS
Cleaned and Pressed
60¢
HATS Cleaned 50¢
Blocked 50¢
Cash and Carry

**PETROLEUM
DRY CLEANERS**
210 North Colorado
First Door North of Yucca
Theatre
Phone 1010

"TOUR" EUROPE with this New 1937 PHILCO!

Here's your radio guide through Europe—South America—the whole world of colorful foreign reception. It's the amazing Philco Color Dial—which names and locates foreign stations in color... and it's a part of the Philco Foreign Tuning System of this new 1937 Philco 630X*. Other big features, too! Come in for free demonstration.

*Sold only with Philco High-Efficiency Aerial to insure greatest foreign reception.

LIBERAL TRADE-IN

A Complete Typewriter Service
Authorized Underwood Sales and Service
L. H. TIFFIN
118 W. WALL PHONE 168

As 'Sitdowns' Closed Auto Plants



Typical of the sitdown strikes paralyzing production in plants stretching halfway across the continent, leading to a showdown with the gigantic General Motors Corporation, is this scene in the huge Fisher Body plant in Cleveland, O., where 2000 suddenly ceased work. Apparently unworried over the outcome, the employees play cards and read to while away the time as they await a decision. Full power of the C. I. O. has been placed back of the auto unionists by John L. Lewis.

Buddy's FLOWERS
MIDLAND, TEX.
PHONE 1083
1809 W. Wall

Extra Values in High Grade DIAMOND RINGS
Special 1/4 carat diamond set in beautiful new ten stone mounting, only \$75.00
And other values like this one!
The birthstone for January is the Garnet. See one of these gleaming gems at
Inman's Jewelers
Midland, For 35 Years

CARNETT'S RADIO SALES
210 East Wall—Midland

Society and Clubs

Mrs. C. M. Goldsmith Entertains 1928 Club Thursday with Bridge

Suggestive of the spring, a color motif of green and yellow was used Wednesday afternoon by Mrs. C. M. Goldsmith when she entertained the 1928 club with four tables of bridge at her home.

Prize packages wrapped in the selected colors were presented to Mrs. J. B. Thomas, who won high score for the club, to Mrs. Ed M. Whitaker for second high, and to Mrs. Hal Peck for guest high.

Club guests were Mrs. Hal Peck, Mrs. Fred Turner, and Mrs. R. W. Paterson.

An attractive salad course was served to the guests and the following club members: Mmes. Frank Cowden, Elliott Cowden, J. M. Caldwell, John House, Johnson Phillips, J. B. Thomas, Clarence Scharbauer, W. B. Simpson, Harvey Sloan, J. L. Crump, Roy Parks, Ed M. Whitaker, Don Sivalis, and the hostess.

Farm Food Supply Work Discontinued By H. D. Clubs Here

The Valley View Home Demonstration club met at the home of Mrs. Doyel Lester on Jan. 5, 1937.

As the county is not going to sponsor a farm food supply demonstration as a major project after 1937, the Home Demonstration Agent, Mrs. Hollingsworth, outlined for the club members a plan to be followed for several years. This plan is carried on according to the demonstrations given in previous years and also for the coming year 1937. As outlined each farm home should have a well balanced diet as well as being very nutritious.

It is planned to put on bedroom demonstration to take the place of the Farm Food Supply. These demonstrations should be very instructive as well as being very beneficial to the farm home-maker, and Mrs. L. B. Stewart was named as the demonstrator for Bedrooms in this club, the work beginning in August 1937 as other demonstrations already started must be completed before another is begun.

Toeing Mark for Opera Role



When she sings the Queen in Rimsky-Korsakov's opera, "Le Coq d'Or" at the Metropolitan Opera House, Lily Pons isn't going to even try to fake the spectacular dance the role calls for. Here she's being instructed by Michael Fokine, famed New York ballet master, in the proper steps.

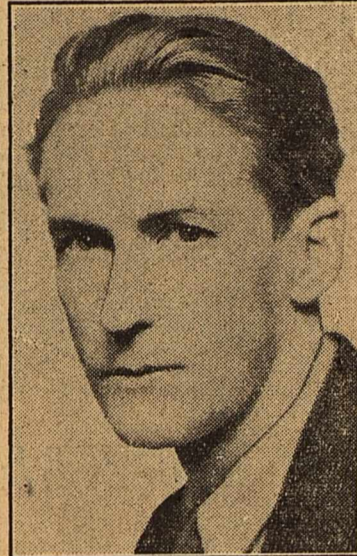
Mrs. G. L. Wright Hostess to Home Art Club Thursday

Mrs. George L. Wright was hostess to the Home Art club Thursday afternoon, which was called to order by the president, Mrs. Guy Brennehan for a brief business meeting.

Mrs. J. B. Neill opened the program with a paper on "Color Schemes," after which Mrs. Carl Ratliff talked about the "Coverings of Floors." Mrs. M. D. Cox closed the program with a paper on "My Sampler Speaks."

A salad plate was served to Mmes. John Dunning, L. A. Arrington, S. C. Cummings, and Miss Gordelia Taylor, guests, and the members, Mmes. Iris Bounds, Guy Brennehan, Julia Flound, M. D. Cox, Ernest Neill, J. B. Neill, Ray Parker, Carl Ratliff, and the hostess.

Glorifies Music



Presenting popular music in glorified form, Rex Chandler, shown above, conducts a 45-piece orchestra on the new Ford Dealers' "Universal Rhythm" broadcast heard over the NBC blue network on Friday nights. The music is distinguished by unusual arrangements.

Practicality Rules Beauty Accessories

BY ALICIA HART

Many of the 1937 beauty preparations, displayed on cosmetic counters which have been stripped of their red ribbons and holly, are as practical as they are handsomely packaged.

A perfectly beautiful manœuvre case for instance, with pale blue covering of simulated leather, holds everything that is needed for a complete home manicure. There is oily remover which takes off polish but doesn't dry out your cuticle, hand cream, cuticle oil, nail white, files, emery boards, glass orange stick for delicate cuticle, two shades of lacquer—one dark for evening and one natural, and a stick of powder polish.

The sides of the manicure case open out flat, and the files and orange stick are attached to them. The bottles fit neatly into a center compartment and are held in place with fine, large buffer. Experts now agree, you know, that nails should be buffed lightly before liquid polish is applied.

A new perfume container to carry in your purse takes up no more space than a pencil and is guaranteed not to leak. There is a tiny metal ball in the end of the opening and you release the perfume by pressing the metal ball against your neck or wrist or ears. It is not expensive and makes a fine small bridge prize.

TREE YIELDS RELIC

SAN LEANDRO, Cal. (U.P.) — Fifty years ago, William Brazelle, Parisian emigrant farmer to California, hung his maul in a tree and left it there. The tree grew around it until it was embedded. Recently it has been cut out and will be preserved by the Brazelle family as it had been forged by hand by the original Brazelle owner.

Mrs. Carl Mitchell Entertains Bien Amigos at Party

Mrs. Carl Mitchell was hostess, Thursday afternoon to the Bien Amigos club at her home at 2:30.

Mrs. J. M. Haygood won high score, and Mrs. J. D. Chambers cut high.

Mrs. A. H. Thompson was guest for the afternoon.

A party plate was served to Mmes. J. D. Chambers, F. F. Winger, James H. Chapple, J. M. Haygood, Preston Bridgewater, Joe Ballonfonte, F. E. Weaver, and the hostess.

Resume of Play, 'The Laughing Woman'

The play, "The Laughing Woman" was reviewed by Mrs. De Lo Douglas at the Play Readers club Wednesday January 6, and the following is a brief resume of it by the reviewer:

"The Laughing Woman," by Gordon Daviot was first presented in England by Howard Wyndham and Bronson Albery at the New Theatre on April 7, 1934. The idea of the play was suggested by the life of Henri Gaudier, the French sculptor and of Sophie Brzeska, the Swedish author. The author has naturally altered the nature as well as the events of their lives so the characters are not to be taken as portraits.

The story concerns one Rene Latour, a young painter and sculptor who becomes interested in and infatuated with a woman twice his age, Ingrid Rydman. They meet in Paris in 1912 but go to London soon. Ingrid, who is called Frik is a good influence for Rene and his

work improves although she neglects her writing. Soon she realizes she will never write a great book so she sells her old home in Sweden and with the money she invests her future happiness in Rene's success. After experiencing dire poverty they meet some influential people who indirectly start Rene on the road to fame. However, the career of this turbulent young man is halted in 1914 by the World War in which he enters in the French Infantry.

Before he goes to France he models and sells a beautiful head of Frik done in pale stone. She is smiling, her chin tilted upwards as if at any moment that secret amusement might burst into laughter.

In the epilogue we find and old, shabby and unexpected woman sitting in a national art gallery in London. She sits in front of the head of Frik and simply stares at the floor. Sadly one realizes that her mind is gone and that she is the shadow of the lovely woman in stone. Guests in the Museum read of the statue from the guide book: "The Laughing Woman" by Rene Latour. Born Dijon, December 3, 1894, killed in France, June 1915 as a sargeant of the French Infantry.

Read The Classified Ads

Actually medicated with throat-soothing ingredients of Vicks VapoRub.

VICKS COUGH DROP

MISS OLLIE SNEED

Who specializes in permanent waving, is now with the Gladys Beauty Shoppe.

— Reduced Prices for January —

Finger wave — 25¢

\$3.50 Permanent wave \$2.00

Or 2 waves for — \$3.00

GLADYS BEAUTY SHOPPE

Phone 438

Read The Classified Ads

EVERY WOMAN FACES THIS QUESTION

How do I look to other people? So many women risk their beauty by neglect of constipation. It often causes loss of pep, sallow skins, dull eyes, poor complexions.

Yet common constipation can be ended so easily. Just eat two table-spoonfuls of Kellogg's ALL-BRAN with milk or fruits every day, three times daily in severe cases. This delicious ready-to-eat cereal supplies the "bulk" needed to exercise the system—and vitamin B to help tone up the intestinal tract.

Within the body, ALL-BRAN absorbs more than twice its weight in water, gently sponging out the intestines. It never causes the artificial action of pills and drugs, that often prove ineffective.

Kellogg's ALL-BRAN, you see, is a food—not a medicine. It relieves common constipation the way nature intended—so its results are safe. Buy it at your grocer's. Made and guaranteed by Kellogg in Battle Creek.

DR. E. O. NELSON

Osteopathic Physician And Surgeon

Announces Opening of Offices at 207 Thomas Bldg.—Ph. 818

Hours: 9 a. m. to 1 p. m.—2 to 6 p. m.

J. A. Seymour to Review Book, 'The Many Mizners'

Book review, Friday, January 15th District court room, County court house; Mr. J. A. Seymour reviewing "The Many Mizners" by Addison Mizner. This is the story of Addison Mizner, his many brothers and one sister. Written in a witty, original style, he seems to summarize his philosophy with an epigram of his brother, Wilson: "Be pleasant to the people you meet on the way up—they are the ones you will be meeting on the way down."

Animals at African waterholes step aside when the ostrich comes down to drink.

Monkeys search through their hair, not for fleas, but for a salt which exudes from their pores.

CHURCHES

ST. GEORGE'S CHURCH
The Rev. Edw. P. Harrison, O. M. I. Sunday morning mass for English speaking people at 10 o'clock and for Mexicans at 8 o'clock. Sunday evening services at 7:30 o'clock. Daily mass will be held at 2 o'clock.

GRACE LUTHERAN CHURCH
Services will be held on Sunday at one thirty p. m. at the Episcopal church west of the high school. Sunday School will meet immediately after the service. All are cordially invited to attend. T. H. Graalman.

ing room of the Scharbauer Hotel at 11 o'clock a. m. The public is cordially invited to attend.

CHURCH OF CHRIST
800 W. Tennessee
James M. Camp, Minister
9:45 a. m. Bible drill.
10:00 a. m. Classes for all ages.
11:00 a. m. Sermon.
11:45 a. m. Communion.
7:00 p. m. Training class.
7:30 p. m. Sermon.
Week Day Services
3:00 p. m. Tuesday Ladies' Class.
7:30 p. m. Wednesday. Midweek Service.

FIRST METHODIST CHURCH

9:45 Sunday School.
11:00 a. m. Morning worship. Sermon by the pastor.
6:30 p. m. World Friendship club meets at the church under direction of Mrs. Frank Prothro.
Young People's Fellowship and League services.
7:30 p. m. Evening worship. Sermon by the pastor.

NAOMI CLASS
The Naomi (inter-denominational) class for women will meet at 9:45 o'clock in the private dining room of the Hotel Scharbauer. Mrs. J. Howard Hodge is teacher.

TRINITY CHAPEL
Protestant Episcopal
P. Walter Henckel Minister in Chg. Richard E. Gile, Lay Reader
Lay Readers service by Mr. R. E. Gile will be held at the chapel at 11:00.
All communicants and visitors are urged to attend.

MEN'S CLASS
Hotel Scharbauer
The Men's Class will meet at 9:45 a. m. in the Crystal ballroom. Mayor M. C. Ulmer is teacher.

CHRISTIAN SCIENCE CHURCH
Regular Sunday morning service will be held in the private dining

FIRST BAPTIST CHURCH

Rev. Winston F. Borum, Pastor
We will continue to use our building this Sunday, so that all classes, departments etc., will meet as heretofore.

9:45 Sunday School, Fred Middleton, Supt.
11:00 Morning worship, Sermon by the pastor, "Prayer and the Church."
6:15 Training Union, Dick Denham, Director.
7:30 Evening worship, old fashioned congregational singing; sermon by the pastor, "A Little Man Up a Tree."
The church celebrates this Sunday the fifty first anniversary of its existence, having been organized January 10th, 1886, by a faithful band of Christians. The service Sunday morning will be dedicated to that faithful group. Let every member be present to rejoice in both the backward and forward look. The public is cordially invited.

FIRST CHRISTIAN CHURCH
J. E. Pickering, Pastor.
H. G. Bedford, Supt. Bible School
Mrs. Lee Cornelius, Director
Music
9:45 a. m. Bible School.
10:50 a. m. Worship. Sermon subject, "Jesus, The Savior of Men."
4:00 p. m. Junior Endeavor.
5:00 p. m. Intermediate Endeavor.
6:30 p. m. Senior Endeavor.
7:30 p. m. Sermon by the pastor, "Trusting in God Brings Peace."
3:30 p. m. Monday. Misionary meeting.
7:30 p. m. Wednesday choir practice.

MIMS & CRANE
COMPLETE INSURANCE SERVICE
BONDS
TELEPHONE 14
111 W. WALL ST. MIDLAND, TEX.

Sherlock Holmes might be able to untangle a burglary for you, but Burglary, Theft and Larceny Insurance repays your loss. Burglars never take vacations, so, see us and be safe.

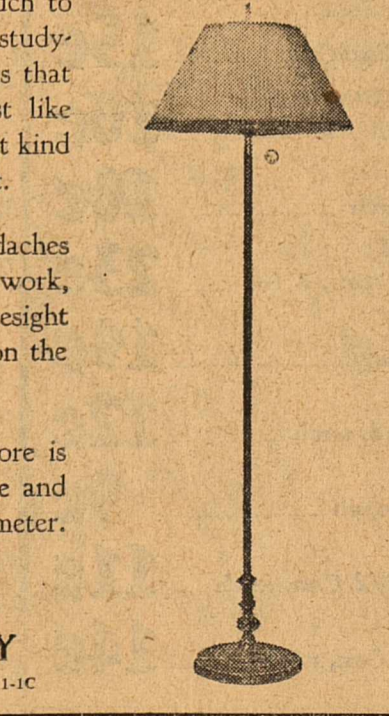


IT ALL DEPENDS ON THE Lighting!

Scientists have learned a lot about light that means much to people who use their eyes a great deal. They know that studying, reading a newspaper, sewing and other seeing tasks that require close concentration, consume body energy just like manual labor. They also know that seeing under the right kind of light requires less energy than seeing under a poor light.

Here, then, is the answer to much of the fatigue, headaches and other troubles that result from studying or other eye work, and whether these discomforts are to be endured and eyesight endangered by constant strain, depends almost entirely on the lighting.

To be sure that the lighting in your home, office or store is adequate for easy and comfortable seeing, call our office and a trained man will make a careful check with a light meter. This service is free and places you under no obligation.



This Lamp Makes Seeing Easier

The I. E. S. Better Sight Lounge Lamp is specially designed to provide the right kind of glareless light for easy and comfortable seeing. See these lamps at our store or at department stores, furniture stores and other lamp dealers.

GOOD LIGHT COSTS LITTLE

Only a penny or two a day may be the cost of having a good light for easy seeing, above what you are paying for just "ordinary" light. Your electric rate is so low that good light for the average family costs only a few cents a day.

TEXAS ELECTRIC SERVICE COMPANY
R. L. MILLER, Manager

The Kaydelle Shop's Annual Clearance January

AMMUNITION CLEARANCE

Is Now On

Winter COATS AND SUITS AT 1/2 PRICE

Fall and Winter Dresses
Silks, Woolens and Knitted Wear at 1/2 PRICE

A Special Assortment of Dresses at \$4.95

ALL WINTER HATS
Placed in Two Groups
\$1.00 and \$1.95

All Underwear, Robes And Pajamas Greatly Reduced

BAGS
\$1.95 Values For \$1.25
\$2.95 Values For \$1.95
\$4.95 Values For \$2.95

SWEATERS
Values up to \$2.95 reduced to **\$1.39**

Kaydelle SHOP
First Door North of Post Office

MIMS & CRANE
COMPLETE INSURANCE SERVICE
BONDS
TELEPHONE 14
111 W. WALL ST. MIDLAND, TEX.

Start the New Year with **QUALITY GROCERIES** at these **LOW PRICES**

1937 TO BE A BOOMING YEAR

The fact that business is expanding, salaries are increasing and leaders from all over the world are predicting more prosperous times, have caused a sharp advance in wholesale prices, especially in the grocery line. So WE ARE OFFERING TO YOU THIS WEEK-END A LARGE VARIETY OF CANNED GOODS AT REDUCED PRICES . . . EVEN IN THE FACE OF WHOLESALE ADVANCES. STOCK UP NOW BEFORE PRICES ADVANCE!



Balance your Budget with **QUALITY**

FOODS

R. H. ROADS' WES-TEX FOOD MARKET

MIDLAND,

TEXAS

25c	CHILI SALMON	WOLF'S NO. 2 CAN	EACH	25c	BABY FOOD	HEINZ	3 FOR	25c
	SARDINES	NO. 1 TALL CAN	2 FOR		PORK & BEANS	CAMPBELLS, 16 OZ. CAN	3 FOR	
	BEANS	NO. 1 TALL CAN	3 FOR		TOMATO JUICE	CAMPBELL'S	3 FOR	
	TOMATOES	CHUCK WAGON—MEXICAN STLYE	3 FOR		PEAS	EL FOOD, Fresh, Snapped and Shelled	3 FOR	
		NO. 2 CAN	3 FOR		MACARONI & SPAGHETTI		6 FOR	

DRIED FRUIT SALE



DRIED PRUNES 3 Pound Package **25c**



DRIED PEACHES 1 1/4 Pound Pkg. **21c**



DRIED APPLES 1 1/4 Pound Pkg. **21c**



DRIED APRICOTS 1 Pound Pkg. **19c**



RAISINS 2 Pounds **16c**
4 Pounds **29c**

BANANAS

South American Golden Yellow Bananas. Here is a real buy and look at the price!

EACH **1c**

TOMATOES

These tomatoes are fresh from the gardens of the valley. They are not cold storage but vine ripened, blood red tomatoes.

3 POUNDS FOR **25c**

SPINACH FRESH TENDER 3 POUNDS FOR
ONIONS YELLOW SWEETS 3 POUNDS FOR
SQUASH WHITE OR YELLOW 3 POUNDS FOR
LETTUCE CRISP HEADS 3 FOR

10c

All of these items are garden fresh. Stock up now on our vegetables while we are offering you these low prices.

TREE RIPENED TANGERINES Texas Sweets -- Full-O-Juice

EACH **1c**

CALIFORNIA AVOCADOS EACH **5c**

Celery LARGE, CRISP STALKS WELL BLEACHED

11c

EGG PLANT Pound **9c**

APPLES LARGE SIZE WINESAPS -- DOZ. **39c**

GRAPEFRUIT Texas Seedless Marsh 3 for **8c**

MARKET SPECIALS

LOIN STEAK	BABY BEEF, POUND	25c
BACON	ARMOUR'S STAR, POUND	35c
FRESH SPARE RIBS	POUND	20c
PORK LIVER	2 POUNDS	25c
BEEF ROAST	POUND	15c
LARGE BOLOGNA	2 POUNDS	25c
DRY SALT JOWLS	POUND	15c
SAUSAGE	2 POUNDS	35c
HAND SLICED BACON	POUND	30c
PICNIC HAMS	6 to 8 POUNDS, PER POUND	23c

PRESERVES	Ma Brown 4 pound jar	74c
PEACHES	No. 2 1/2 Can Del Monte	17c
PINEAPPLE	No. 2 1/2 Can Del Monte	23c
CHILI	Wolfs No. 1 Can Each	15c
SPINACH	No. 2 Can Each	10c
CORN	No. 2 Can Standard, each	10c
DOG FOOD	Ideal No. 1 can, 3 for	23c
SOAP	Jergens, 4 for	19c
COCOA	Hershey's One Pound, each	12c
CORN	Primrose No. 1 can, each	9c
HOMINY	No. 2 1/2 Can, each	11c
KRAUT	No. 2 1/2 Can, each	14c

BORDEN'S MILK	3 Small or 6 Large Cans	23c
SOUP	2 Small Cans	15c
	2 Large Cans	25c

SYRUP Louisiana Pure Rib-bon Cane, it's delicious **63c**

PINTO BEANS 3 LBS. 3 FOR **23c**

FLOUR

GOLD MEDAL	6 LBS.	31c	24 LBS.	\$1.01
	12 LBS.	59c	48 LBS.	\$1.95

HOMINY GRITS	Quaker Box 2 for	23c
COCOANUT	Baker's 3 oz. 2 for	9c
GREEN BEANS	No. 2 can, each	10c
SANDWICH SPREAD	El Food, c	31c
APRICOTS	Gallon can	54c
PEACHES	Gallon Can	57c

DELICATESSEN

BAKED HEN AND DRESSING	POUND	25c
ROAST PORK AND BROWN GRAVY	POUND	40c
MEAT BALLS WITH TOMATO SAUCE	POUND	20c
CANDIED YAMS	PINT	15c
BUTTERED SQUASH	PINT	15c
FRUIT CAKE AND STRAWBERRY	POUND	50c
BAKED RIBS OF BEEF	POUND	25c
EGG CUSTARD	PINT	20c
FRESH BLACK EYED PEAS	PINT	15c
PIGS IN BLANKET	POUND	20c

WAS YOU EVER DRUNK? DEFENDANT ASKS JUDGE

CLEVELAND. (AP) — Mrs. Emma Johnson, arraigned on a charge of intoxication, countered questions of Judge Louis Petrash with a question of her own:

"Weren't you ever drunk yourself, Judge?" she queried. The judge explained he'd never been intoxicated and Mrs. Johnson was sent to the workhouse for 10 days.

HIGH SCHOOL OPENS EMPLOYMENT AGENCY

RAVENNA. (AP) — Ravenna high school has opened an odd job student employment agency.

The purpose of the bureau is to provide the community with capable young people to do part time and odd jobs. It was originated by David Kiesbach, faculty member.

THUNDER STICK TELLS ORIGIN OF DANCE

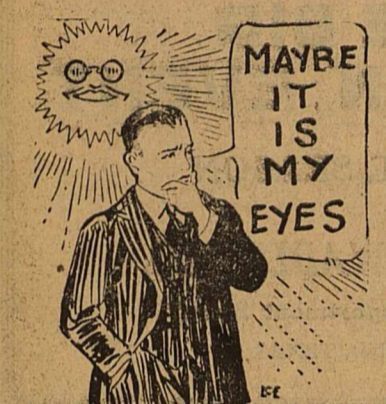
AUSTIN. (AP) — A carved "thunder stick" in the University of Texas anthropology museum tells the origin of the snake dance of the Navajo and Pueblo Indians.

The stick was carved to symbolize the jagged lightning which Indians thought was a snake in the rain clouds. The fetish was applied to the snake on the ground, and thus the snake dance came into being, museum officials say.

1934 Pontiac 6 wheel coach. Motor reconditioned. New paint. Good oversize tires. Freestone in radiator. This car exceptionally clean throughout.

Also: 1936 Ford pickup; 1934 Ford pickup; 1934 Ford four-door sedan; 1931 Ford coupe.

Our cars can be bought with small down payment on easy General Motors monthly payments. See and drive these cars at



MYSTERY SPEED CAR BUILT

LONDON. (AP) — Somewhere in a back street of London, Capt. George Eyston, racing motorist, is secretly experimenting with a new car with which he hopes to attack next year the world's record of 300 miles per hour held by Sir Malcolm Campbell. "I am hoping to build a car faster than anything I have yet produced," Eyston declared.

A swarm of bees that has left a hive continues to be the owner's property as long as he can keep it in sight, according to the laws of Blackstone.

9 — AUTOMOBILES — 9

BARGAINS In Used Cars

FRANK ADAMS MOTOR CO.

First Door South of Post Office
Phone 784 1-8-37

AUTOMOBILES

Here Are Some of the Best Used Car Bargains Of The Year

1936 Plymouth Deluxe Coupe; good as new; new tires.

1936 Master Chevrolet Coach; runs and looks like new; with radio.

1933 Master Chevrolet four-door sedan; Cleanest '33 Chevrolet in town; a real bargain.

1936 Dodge Coach with radio and heater; a real bargain and looks like new.

2-1935 Deluxe Ford Coaches; look and run like new.

2-1934 Plymouth Deluxe coaches; good tires and good paint; real bargains.

1932 Chevrolet Sedan; has been reconditioned; good tires.

We have some real bargains in lower priced cars such as Model A Fords and '29 and '30 Chevrolets. All on easy terms and will allow liberal prices on your present car.

SCRUGGS MOTOR COMPANY
114 East Wall Phone 644 1-81-37

13 CARD OF THANKS 13

14 PERSONAL 14

15 MISCELLANEOUS 15

MADAM Russell—Daily readings; know the truth! 305 East Wall Street. (261-3)

For That GOOD SCRUGGS DAIRY MILK PHONE 9000

WE will grind your feed at your location or at R. O. Taggart's located north of Midland. (260-3)

CLASSIFIED ADVERTISING

RATES AND INFORMATION

RATES: 2c a word a day. 4c a word two days. 6c a word three days. MINIMUM charges: 1 day 25c. 2 days 50c. 3 days 80c. CASH must accompany all orders for classified ads, with a specified number of days for each to be inserted. CLASSIFIEDS will be accepted until 12 noon on week days and 6 p. m., Saturday for Sunday issues. PROPER classification of advertisements will be done in the office of The Reporter-Telegram. ERRORS appearing in classified ads will be corrected without charge by notice given immediately after the first insertion. FURTHER information will be given gladly by calling 7 or 8.

0 WANTED 0

WANT furnished apartment at once. Call Daugherty at 89. (258-6)

2 FOR SALE 2

WARM overcoat, size 35 or 36, cast \$40 new. Sell for \$10. Middleton's Tailor Shop. (260-1)

FOR SALE: Fryers and pigs. J. L. Humble; 1 mile northwest Country Club. (260-3)

CORNER LOT: enough lumber for house; hardwood floors. See Sheiton, 115 South Main, phone 43. (258-6)

160-ACRE farm and 4 room house; Well and windmill; immediate possession. See Mrs. L. A. Denton, 407 North Loraine. (259-3)

LOTS for sale: Corner property consisting of lots at 1500 College Ave. Address Classified Box B, Reporter-Telegram. (261-5)

3 FURNISHED APTS. 3

Covered Buttons Made To Order

Mail Orders Promptly Filled

Mrs. Horace Newton
110 E. Dakota
Phone 635-W
MIDLAND, TEXAS

11 EMPLOYMENT 11

WANT: Lady interested in permanent business for home town. Apply at 800 West Storey. (259-2)

TYPewriter RIBBONS

Sold by us are delivered and installed free in the business section of Midland. Call us for this added service.

West Texas Office Supply
Phone 95

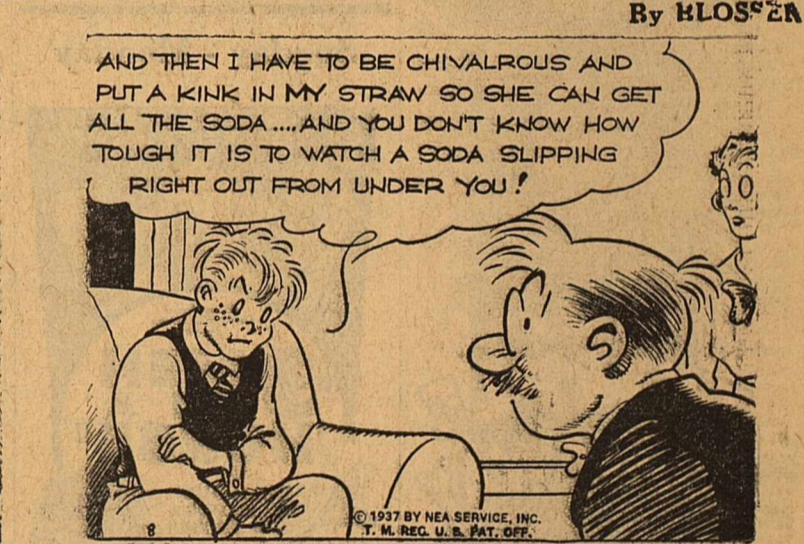
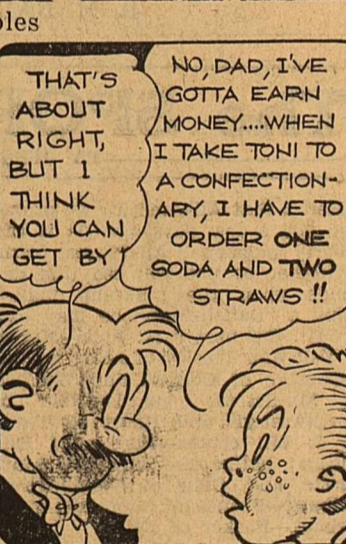
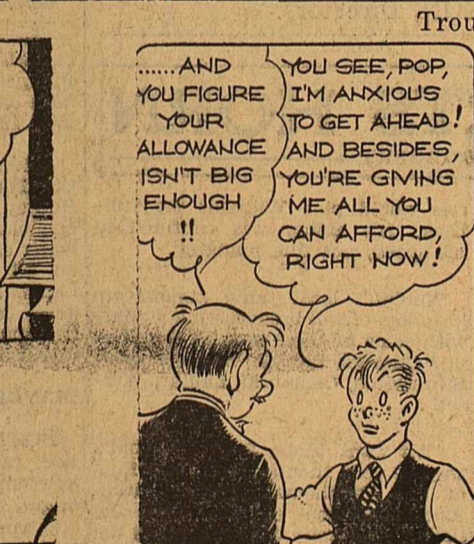
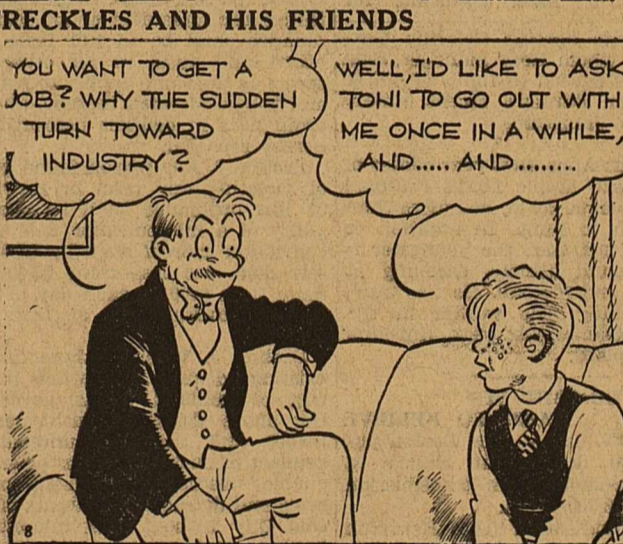
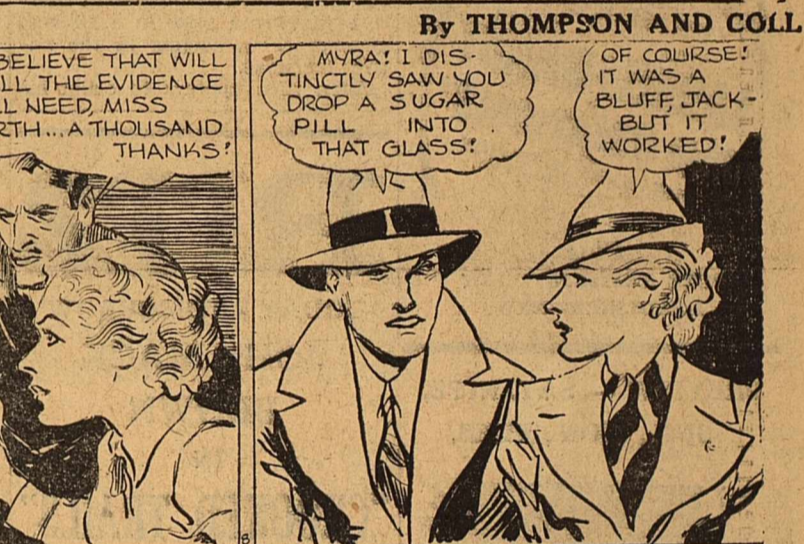
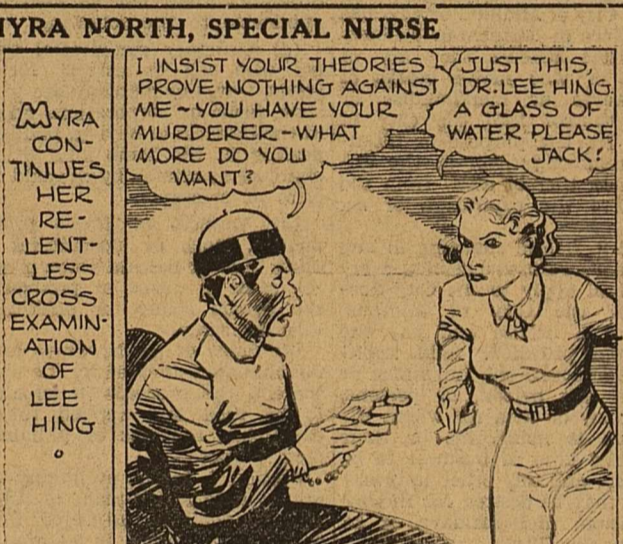
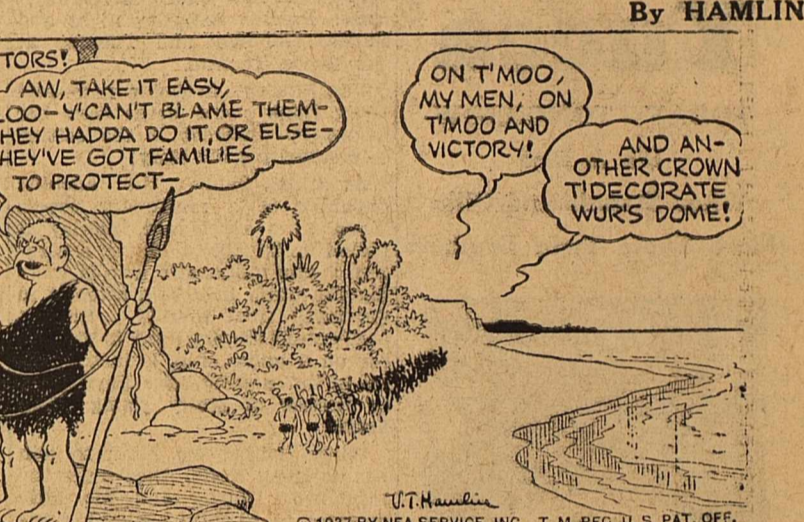
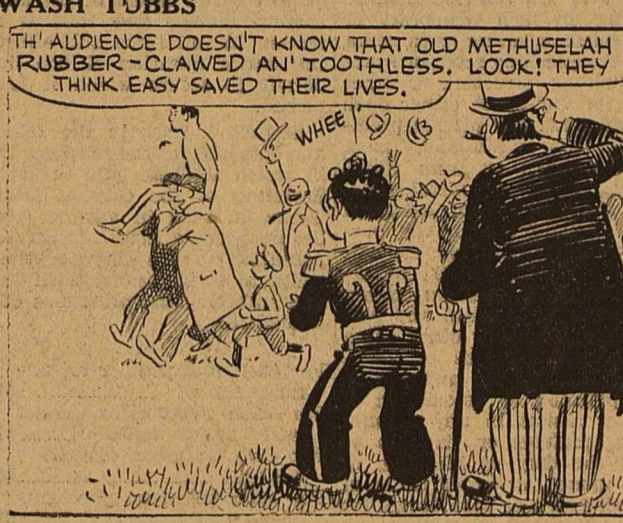
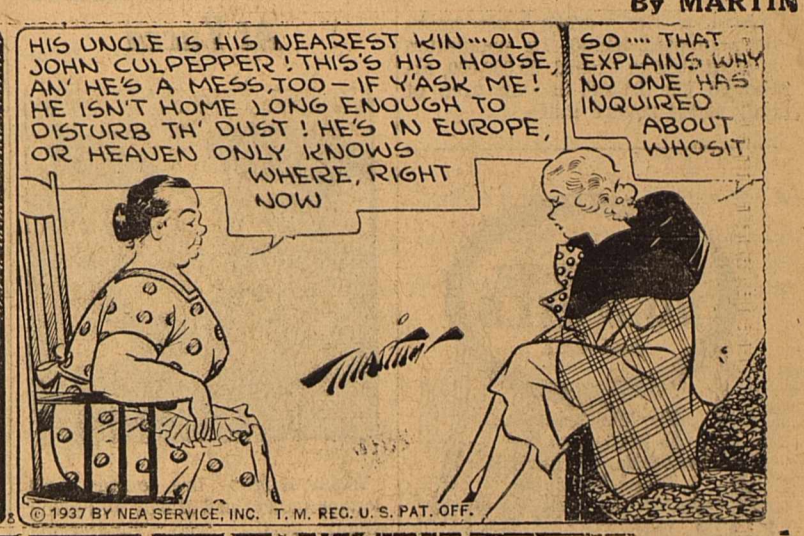
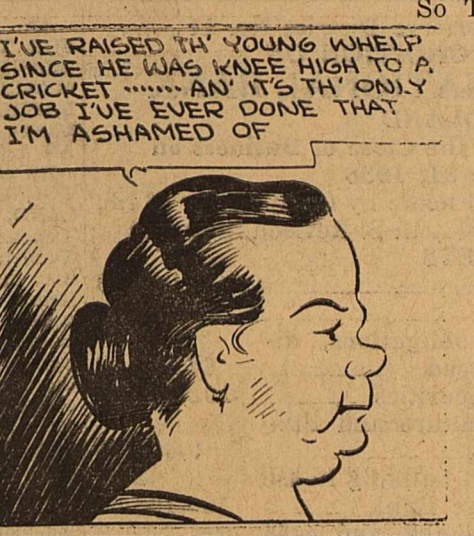
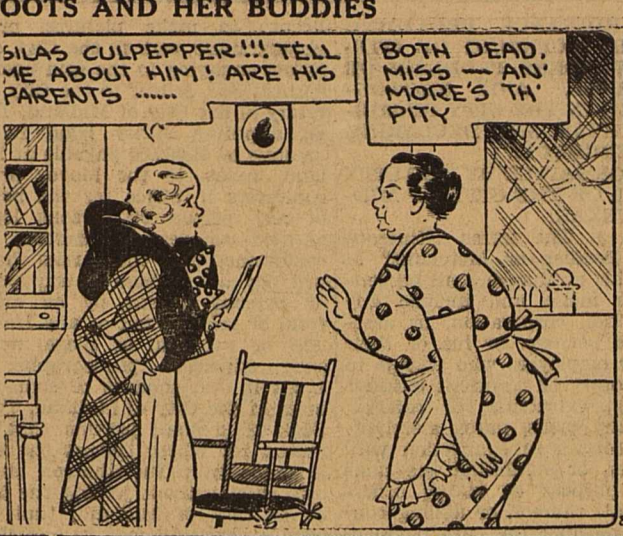
More For Your Money

When we tell you that we can give you more QUALITY and more QUANTITY in Furniture, Stoves, Linoleum, Mattresses, etc., than the average dealer, WE CAN PROVE IT.

We buy our merchandise right; we take every cash and quantity discount available; we have a lower margin of profit. The owner of this business gives every transaction his personal supervision, and the saving is passed on to the customer. We appreciate your patronage... Figure with us before you buy...

Mattress Renovating
One day service

UPHAM FURNITURE COMPANY
615 W. Wall Phone 451



1937 BY NEA SERVICE, INC. T. M. REG. U. S. PAT. OFF.

1937 BY NEA SERVICE, INC. T. M. REG. U. S. PAT. OFF.

1937 BY NEA SERVICE, INC. T. M. REG. U. S. PAT. OFF.

1937 BY NEA SERVICE, INC. T. M. REG. U. S. PAT. OFF.

1937 BY NEA SERVICE, INC. T. M. REG. U. S. PAT. OFF.

1937 BY NEA SERVICE, INC. T. M. REG. U. S. PAT. OFF.

