

50¢

NEWS
PHOTOS
EDITORIAL

THE Devil's River NEWS

SINCE 1890

Volume 107 • Issue 45

SONORA, TEXAS

Thursday, November 7, 1996

Patriotic Program Honoring Veterans

submitted

A patriotic program will be held in honor of our veterans on Monday, November 11, at 10:30 a.m. in the Intermediate School Auditorium. Don Sessom will serve as the Master of Ceremonies.

The guest speaker will be Army Recruiter, Sgt. Robert

Toungate, and special music will be furnished by the choir directed by Mr. Frank Conlon.

Mrs. Charlotte Wilson will accompany the group singing of several patriotic songs. Veterans from the community will present the United States and Texas Flags and lead us in the pledges. Again this year, lapel flags

have been donated by Mrs. Ruth Espy and Mrs. Maxine Locklin for the students and school staff to wear.

All interested citizens are invited to attend and pay tribute to our veterans. All veterans who can attend are requested to be present because this program is in honor of you!



SISD Announces Superintendent Candidates

Sonora ISD recently announced the five final applicants for the position of superintendent of schools. They are David Bullion of Lytle, Ernesto Martinez Jr. of Ft. Davis, Steve Miakell of Baird, Wayne Milligan of Alpine, and Roger Huber of Anson are the finalists. The school board will make a decision this month.

The DRN Briefs Cub Scouts Food Drive

Cub Scouts will start their annual Food Drive on Saturday at 9:30 a.m. Scouts will be in uniform collecting door to door. Goods will be donated to the Ministerial Alliance for the needy families of Sonora. If you have any questions, call the committee chairman, Todd Munn at 387-3731.

Thanksgiving Dinner

The Knights of Columbus & Columbian Squires of St. Ann's Parish will host a Thanksgiving Dinner November 17th for all senior citizens of Sutton County.

4th Annual Rose Sale

Your Someone Special Rose Sale is underway by the West Side Lions Club. Prices are \$15 - dozen, \$10 half dozen. Members will contact the community or orders may be placed with Todd and Pam Munn (387-3736, 387-2721, 387-3731). Roses will be delivered Thursday, November 14. Order a dozen for your someone special today.

Office Closed

The Sutton County Historical Society will be closed during the recuperation of secretary, Jo-Ann Palmer.

Bake Sale

The Boy Scouts of Troop 19 will hold a bake sale on Friday, Nov. 1st, beginning at 3 p.m. at Food Center. The scouts invite everyone to stop and shop for delicious homemade goodies!

Social Security Bulletin

Garland Gregg, representative for the San Angelo Social Security Office, has scheduled his November visit to Sonora. He will be at the County Courthouse from 9:30-10:30 on Tuesday, November 26. Anyone who wants to file a claim for benefits, get information, or transact other business with the Social Security Administration may contact him at the time.

Distribution Of Tickets Begins At Local Retailers

The Annual Sonora Merchants Christmas promotion began Friday, November 1 when participating merchants began distributing tickets for each dollar spent in their respective businesses. Watch for participating merchant fliers in local retail shops and begin collecting your tickets now. Participating merchants include: Vallree's

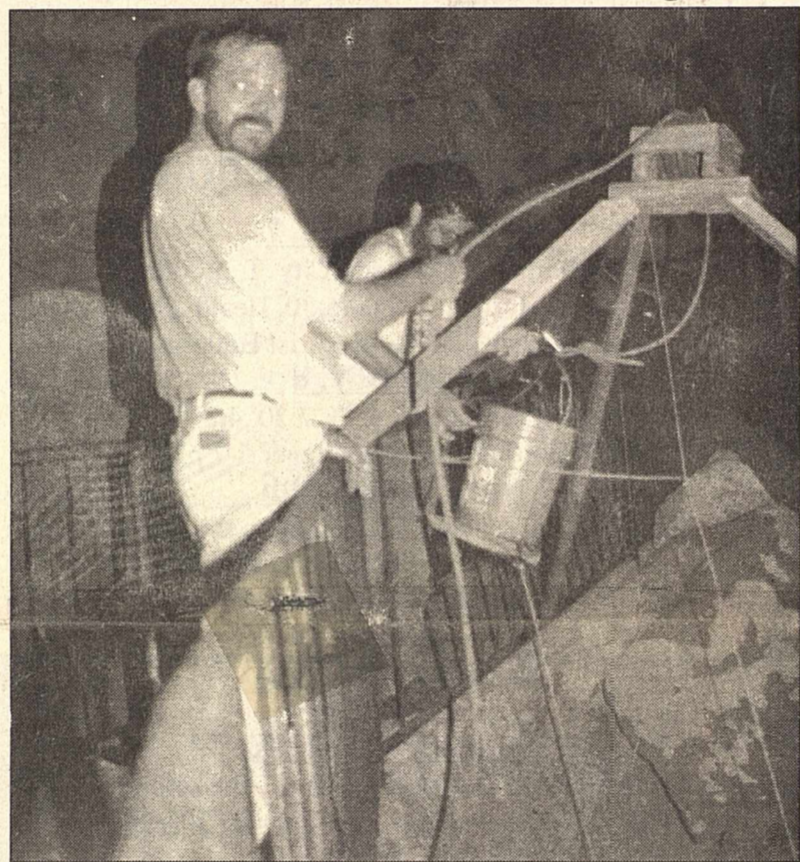
Bright Spot, Tedford Jewelry, Ol' Sonora Trading Co., Image, Sonora Sports & Supply, The Craft Cottage, Perry's, Doran's Furniture, PM Office Supply, Rodeo Wild, Cox Drug, Chelle's, B&C Dept. Store, Lisa's Flowers by Lori, Devil's River Auto Parts, The Country Closet, Steve's Exxon, and Merle Norman & Gifts.

Cavern's Annual Restoration Project

The Caverns of Sonora had a "spring" cleaning on Saturday, November 2, despite it being November! Every year for the past several years, volunteers and employees under the guidance of a specialist roll up their sleeves and pitch in to beautify Sonora's major tourist attraction. Sixty-eight volunteers and nineteen employees and local citizens rolled into the Cavern's grounds Friday evening to help with this annual restoration project.

George Veni, hydrogeologist and biologist from San Antonio, coordinates the clean-up each year setting up a rotation line of workers that hauls out rubble from a certain targeted area of the cave. The assembled workers fill buckets with debris and rotate from the front of the line to the back. Veni says the average person who tours the cave usually does not notice the tons of rubble in the cave, but the rubble should be removed for aesthetic reasons. This year the crew focused on eliminating 18 tons of rubble located near the entrance of the cave just past the Devil's Pit.

Veni provides consultation



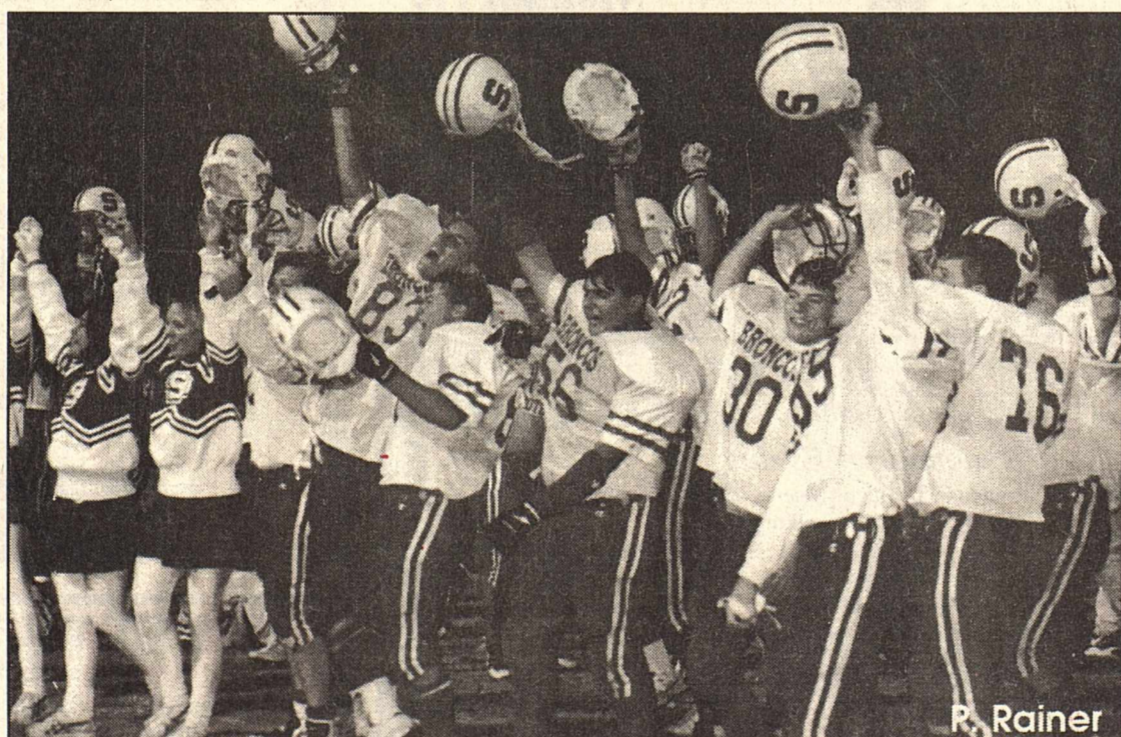
Seco Mayfield and George Veni hard at work during the annual restoration at the Caverns.

to help cave owners and has assisted Cascade Caverns, Cave Without a Name, and Longhorn Cave as well as the Caverns of Sonora. The Caverns served

three meals on Saturday to treat everyone who volunteered their time in keeping the cavern one of the prettiest show caves in the world.

Broncos Swoop Past Rangers 28-21

Playoff "Hopes" Alive and Kicking



Broncos celebrate a great win over Greenwood.

submitted

The Mighty Sonora Broncos proved just how tough they are in District 4-3A last Friday night in Greenwood. On the road again, the Broncos pulled it all together in the final minutes of the game to keep their hopes alive for a trip to the playoffs. If the Broncos defeat the Colorado City Wolves in Bronco Stadium this Friday night, their dream becomes reality. The kickoff time is 7:30 p.m., and the Broncos will take the field ready to repeat the final outcome of last week's bout--another District victory!

Sonora racked up 12 first

downs, rushed for 265 yards, passed for 115 yards, and scored 28 big points. The Greenwood Rangers made 15 first downs, rushed for 260 yards, passed for 90 yards, and scored 21 points. The stats show the matchup between these two football teams. Greenwood held Sonora to a scoreless first half and even added 14 points to the scoreboard. Michael Otho threw to Michael Miller and Scott Reed kicked the extra point with 9:09 minutes on the clock in the first quarter: Greenwood 7, Sonora, 0. The second touchdown by the Rangers was during the second quarter with Otho running it in

from 19 yards out. Nikki Smeltzer, the Ranger's female kicker, added the extra point, and Greenwood led the way going into the locker room at the half: Greenwood 14, Sonora, 0.

After the halftime break, the Broncos came out ready to even the score. To show their true spirit, the Broncos rallied. Anthony Gibson crossed the goal with 9:13 remaining in the third quarter: Greenwood 14, Sonora 6. Steven Gandar was the next Bronco to add six more points for the Mighty Broncos. At this point in the game, the third period showed 2:11 on the

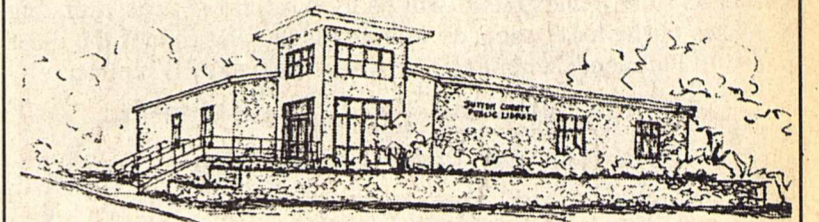
clock, and Caleb Barker's two point conversion tied it all up: Greenwood 14, Sonora 14.

The fourth quarter began with a cold hard fact for Sonora's side because the Rangers were not conceding the game to the fighting men from Sonora. Otho and Reed added 7 more points: Greenwood 21, Sonora 14. But, Sonora wasn't through playing either or ready to load up and go back home. The Broncos showed their opponent that they have what it takes--up to the final buzzer. With 6:13 remaining, Raymond Rainer snagged a Caleb Barker pass and Anthony Renfro added one with his PAT proving to the Greenwood Rangers that the Broncos had come to town to play ball and to win! Caleb Barker saw the opportunity that his team needed with 1:59 minutes left in this district thriller. He ran 42 yards to put the Broncos on top: Greenwood 21, Sonora 27. Renfro put the ball through the uprights, and the final score was history: Greenwood 21, Sonora 28. The Broncos continue the fight for victory, and this Friday night plan to defeat Colorado City to clinch their spot in the 1996 playoffs. Come out and support the Red Hosses. Cheer them on to victory--Go Broncos, Beat Colorado City!

New Sutton County

Public Library to Open

A ribbon cutting ceremony is planned for Tuesday, November 12, 1996, at 5 p.m. to open the new library. Visitors may tour the library until 7 p.m. Regular operating hours will start at 9 a.m. on Wednesday.



The Commissioners of Sutton County
Judge Carla Garner

and
The Sutton County Public Library Committee

request the pleasure of your company

at the ribbon cutting of the new

Sutton County Public Library

306 East Mulberry

Sonora, Texas

Tuesday, November 12, 1996

Five o'clock P.M.

Fall Health Fair Nov 7th

The Sonora Fall Health Fair will be held Thursday, November 7, from 11:00 a.m. to 3:00 p.m. at the Outreach Church of Christ, located at the corner of Hwy. 277 and Glasscock.

Dr. Rick Holdridge will be offering free spinal consultations. The following Sonora health agencies would like everyone to come by and utilize the free services being offered: Cornerstone Home Health, Dr. Pajestka, Dr. Gutierrez, Hudspeth Hospital and Nursing Home, Westerman Drug, Sutton County EMS, County Extension Agent, and Dr. Rust.

Cholesterol checks will be offered for \$5.00, flu shots for \$4.00 and glucose testing for \$3.00.

Sutton County Election Results

President/Vice President

Republican: Dole/Kemp 688
Democratic: Clinton/Gore 508
Libertarian: Browne/Jorgensen 1
Natural Law: Hagelin/Tompkins 1
U.S. Taxpayers: Phillips.Titus 2
Independent: Perot/Campbell 102

U.S. Senator

Republican: Gramm 796
Democratic: Morales 501
Libertarian: Bird 7
Natural Law: Huff 6

U.S. State Representative, District 23

Republican: Bonilla 864
Democratic: Jones 372
Natural Law: Caswell 20

Railroad Commissioner

Republican: Rylander 763
Democratic: Uribe 432
Libertarian: Draheim 17
Natural Law: Pigue 13

Chief Justice, Supreme Court

Republican: Phillips 711
Democratic: Kupper 413
Libertarian: Parker 22

Justice, Supreme Court, Place 1

Republican: Cornyn 654
Democratic: Barron 477
Libertarian: Stults 24

Justice, Supreme Court, Place 2

Republican: Baker 674
Democratic: Kelly 402
Libertarian: Flume 18

Justice, Supreme Court, Place 3

Republican: Abbott 772
Libertarian: Hawley 42

Judge, Court of Criminal Appeals, Place 1

Republican: Holland 655
Democratic: Perkins 494

Judge, Court of Criminal Appeals, Place 2

Republican: Womack 628
Democratic: Holcomb 501

Judge, Court of Criminal Appeals, Place 3

Republican: Price 661
Democratic: Maloney 470

State Senator, District 25

Republican: Wentworth 592

State Representative, District 73

Democratic: Turner 850

Chief Justice, 4th Court of Appeals District

Democratic: Hardberger 787
District Attorney, 112th Judicial District

Democratic: White 865

County Attorney

Republican: Wallace 897

Sheriff

Democratic: Webster 969
County Tax Assessor-Collector

Democratic: Sharp 1038

County Commissioner, Precinct No. 1

Republican: Sol Mayer 71
Democratic: Villanueva 256

County Commissioner, Precinct No. 3

Democratic: Keel 360

Constable

Democratic: Baker 938

Card of Thanks

To my readers, I miss doing the column as much as you miss reading it. As soon as the doctors say O.K. I'll be back to writing. Now I am limited to lifting less than 5 lbs. and going from bed to chair or wheelchair. I'm still too weak to even cook. Rick's living out of cans except for a couple of meals that some kind ladies brought him. Me; I'm on bland, baby food type meals or an occasional regular meal with little fiber content. You definitely don't want to eat Thanksgiving dinner here this year.

I would like to thank those of you who have sent cards, flowers, plants, or called. A very special thank you to Rev. Meyers, the visits at the hospital, and sitting with Rick through the surgery are deeply appreciated. Also thank you all for remembering me in your prayers. With the length of this surgery and the odds, I know they made the difference and are still helping me to heal-Thank you all.

Jo Ann Palmer

Card of Thanks

The Boy Scouts of Troop 19 would like to thank the community for its support of their recent Bake Sale. Thanks also go to the many hunters in town that day who stopped to buy from us! In particular, we would like to thank Food Center for allowing us to hold our bake sale in its store. Funds raised will be used toward general operating expenses of the local troop, as well as for sending five of the older scouts to Philmont Camp in northern new Mexico next summer.



Eagle Scouts, Matt Routh and Edward Maskill

Routh/Maskill Receive Eagle Scout Honors

Matt Routh and Edward Maskill of Sonora's Boy Scout Troop 19 were awarded Scouting's highest honor, the rank of Eagle Scout, during ceremonies at the Presbyterian Church of the Good Shepherd Sunday afternoon.

Both Scouts are sophomores at Sonora High School. Matt serves as a trainer for the Bronco football team. Eddie is a member of the Bronco band and the choir.

Edward is the son of Joe and Mary Maskill of 106 Sinaloa 3rd St., and Matt is the son of Mike and Beverly Routh of 1012 SE Concho.

Cooking with Food Center

This column will appear each week as a courtesy to our customers by Town & Country Food Center & The Devil's River News. We hope you enjoy the recipes.

Bacon & Venison Liver

- 4 pounds young tender deer liver cut into 1/2 inch thick slices
- 1 cup flour
- 1 tablespoon pepper
- 2 sticks of butter
- 16 slices of bacon
- milk to cover liver slices

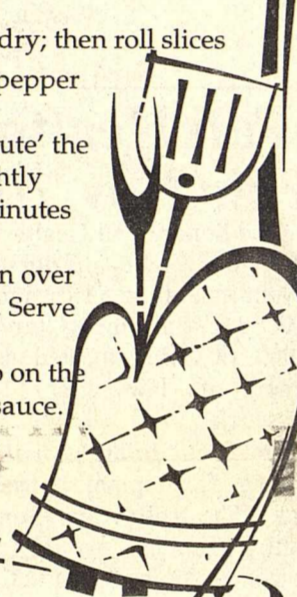
In a large bowl soak liver slices in milk overnight in refrigerator.

Drain off milk and pat liver dry; then roll slices in mixture made with flour, pepper & salt.

Melt butter in skillet and saute' the slices over high heat until lightly browned. This is about 5-7 minutes on each side.

In another skillet cook bacon over low heat till crisp, then drain. Serve bacon on top of liver slices.

Serve with lettuce & tomato on the side and a slice of cranberry sauce. This makes about 6 servings.



Sonora Church Directory

NEW LIFE ASSEMBLY OF GOD
James Lee, Pastor
306 N. 4th Street
387-2898

THE CHURCH OF THE GOOD SHEPHERD PRESBYTERIAN
Lewis Allen, Pastor
319 NE Mulberry
387-2616

PRIMERA IGLESIA BAUTISTA
504 Santa Clara
387-2035

OUTREACH CHURCH OF CHRIST
Hwy. 277 S. Glasscock

CHURCH OF CHRIST
Tim Dobbs, Minister
304 W. Water
387-3190

PENTECOSTAL CALVARY TEMPLE
Willie West, Pastor
509 Amistad
387-3236

FIRST BAPTIST CHURCH
Rev. Jim Stephen, Pastor
404 NE Oak
387-2951

ST. ANN'S CATHOLIC CHURCH
Father William DuBuisson, O.M.I.
229 SW Plum
387-2278

ST. JOHN'S EPISCOPAL CHURCH
Rev. J. Monte Jones, Rector
404 NE Poplar
387-2955

JEHOVAH'S WITNESS
310 St. Ann's Street
387-5658 or 387-5518

FIRST UNITED METHODIST CHURCH
Rev. Ron Myers, Pastor
201 NW Water
387-2466

NEW HOPE BAPTIST CHURCH
Don Sessom
511 Cornell
387-5215

Attend the church of your choice, this Sunday.

JERUSALEM ASAMBLEA DE DIOS
St. Ann's Street
387-3600

Cornerstone Home Health Agency
116 N Concho
(915)387-2505 (915)387-2506

HOPE LUTHERAN CHURCH
Rev. Charles Huffman
417 E 2nd St.
387-5366

Kerbow Funeral Home
387-2266

Our Sympathy

Elizabeth Thurman

Rebecca Elizabeth Thurman, 103, died Thursday, Oct. 31, 1996. Service was held on Sunday at 2 p.m. at the First Presbyterian Church with burial in Rest Haven Cemetery. Arrangements were by Heritage Funeral Home. She was born Oct. 16, 1893 and had been a resident of Menard since 1911.

She was a schoolteacher and a member of First Presbyterian Church and the Order of the Eastern Star.

Survivors include a brother, Ben Peterson of Brady; three grandsons, Charles Thurman of Hattiesburg, Miss., John Casparis of Sonora, and Bob Casparis of Vanderpool; four great-grandchildren, Donna Thurman of Hattiesburg, Johnell Casparis of Sonora, Toby Casparis and Jody Casparis, both of Vanderpool; and numerous nieces and nephews.

Roy Campbell

Roy Campbell, 59, died Tuesday, Oct. 29, 1996, at his residence. Graveside service was at 2 p.m., Friday, in Miles Cemetery. Arrangements were by Rains-Seale Funeral Home.

He was born April 6, 1937, in Ballinger. He was a Navy veteran and a truck driver.

Survivors include his wife, Glenda Lou Campbell of Ballinger; two sons, Craig Campbell of Carrollton and Dean Campbell of Framingham, Mass.; a daughter, Sherry Campbell of Carrollton; his mother, Florene Campbell of Ballinger; four brothers, Douglas Campbell of Sonora, Lloyd Campbell of Brooks, Ore., Jack Campbell of Hobbs, N.M., and J.E. Campbell of Midland; and two sisters, Jean McCampbell of Midland and Mildred Tabor of Miles.

BIRTHDAY

- November 5th
Kylie Johnson 8th
Cole Cearley
Jacob Lipham
Dustin Martin 9th
Elpidio Torres
Katie Russell
Louis Balas
Jason Moore 10th
Joe Oliden
Clay Carta
Michael Luttrell
Terri Sherrod 11th
Sara Dela Garza
Valree Draper 12th
Callaway Hall
Anthony Noriega

- Betty Price
Baldo Castaneda III
Maurice Vickers 13th
Erica Kerbow
Tony Adkins
Mike Burris
Christian Lujan
Randy Dunn
Ek Hernandez

Happy Anniversary

- November 6th
Freddy and Lula Casillas 11th
Danny & Suzanne Reinhardt
Carlos & Faye Gamez
Luan & Bennie King 13th
Shane & Christi Adams

November 7-13 Community Calendar

Thursday, Nov. 7

JV & Freshman vs Colorado City T 5:00/6:30, 7th & 8th vs. Ozona T 5:00/6:30, Health Fair at the Outreach Church of Christ Building

Friday Nov. 8

Varsity vs. Colorado City H 7:30, 4th Annual Choir Booster Mexican Dinner 5-7 p.m.

Nov. 7th and 9th

Play "Lost In Yonkers", 7:30 p.m. in the Sonora High School Auditorium

Friday Nov. 9th

28th Annual Game Dinner

Monday Nov. 11th

Veterans' Day

Tuesday Nov. 12th

Library Grand Opening 5:00 p.m., Basketball-JV & Var. Girls vs. Mid. Lee-There-5:30/7:00, Sutton County Soil and Water Conservation District meeting, FNB annex 7:00

Wednesday Nov. 13th

Early Release day 1:00 p.m.

The Community Calendar is made possible by:

First NATIONAL BANK
Member FDIC
102 N. Main 387-3861

SCNB
Member FDIC
207 Hwy 277 N
387-2593

SENIOR CENTER

Calendar of Events

- November 11- Bingo!, Veteran's Day
- November 12- C.O.A. meeting 5:30,
- November 13- Blood Pressure Checks, Housecalls Health Program
- November 14- Crafts
- November 15- Birthday Party for Nov!

Lunch Menu

- Friday, November 8**
Steak Fingers w/Gravy, Mixed Vegetables, Mashed Potatoes, Wheat Rolls, Brownie w/ Nuts
- Monday, November 11**
Pimento Cheese, Potato Chips, Tomato Soup, Wheat Bread, Jello w/Fruit
- Tuesday, November 12**
Sweet and Sour Pork, Carrots, Tossed Salad, Wheat Rolls, Butterscotch Pudding
- Wednesday, November 13**
B-B-Q Beef w/Sauce, Scalloped Potatoes, Tomato Slices, Buns, Sweet Pickle Relish, Peanut Butter Cookie
- Thursday, November 14**
Chicken Corn Creole, Green Beans, Wheat Rolls Pear w/Cheese, Rice Crispy Squares
- Friday, November 15**
Fried Catfish, Corn 'O'Brien, Okra Gumbo, Cornbread, Rice & Raisin Pudding

Guest Meals are \$4.00.
Suggested donation for Senior Citizens is \$1.75.

School Lunch Menu



All meals served with milk

BREAKFAST and LUNCH

- | | | |
|--|---|--|
| Monday, Nov. 11
Malt-o-Meal,
Cinnamon Toast,
Juice | Tuesday, Nov. 12
Sausage, Biscuit
w/Gravy, Fruit | Wednesday, Nov. 13
Grilled Cheese
Sandwich, Tater Tots |
| Pizza, Veggie Sticks,
Corn, Pear Halves | Chicken Fried Steak,
1/2 Baked Potato,
Pineapple Chunks,
Roll | Soft Taco (Beef-n-
Cheese), Pinto
Beans, Taco Salad,
Oatmeal Raisin
Cookie |
| Thursday, Nov. 14
Breakfast Burrito, Fruit | Friday, Nov. 15
Muffins, Egg, Juice | |
| Fish Nuggets, w Tarter
Sauce, Macaroni-n-
Cheese, Carrot Salad,
Mixed Fruit | Cheese Burgers,
Burger Salad, Pickle
Slices, ABC Fries,
Lime Jello w/Topping | |

THE DEVIL'S RIVER NEWS

USPS (155-920)
every Thursday at 228 East Main Street Sonora, Texas 76950
Phone: (915) 387-2507 FAX (915) 387-5691
Second class postage paid at Sonora, Texas

Cam Longley Campbell, Publisher
Stephanie Campbell, Editor
Susie Casillas, Advertising Manager

\$18 per year (\$15 for senior citizens) in county
\$22 per year (\$18 for senior citizens) out of county
Attn. POSTMASTER: Send address changes to The Devil's River News, 228 East Main St., Sonora, TX 76950

Copy and Ad deadline - Monday, 5:00 p.m.
Any erroneous reflection upon the character, standing or reputation of any person, firm, or corporation which appears in the columns of this paper will be corrected upon due notice given to the Editor of this publication.

TPA MEMBER 1996
TEXAS PRESS ASSOCIATION

Ask The Historical Society



very seldom cracks a smile, while old Goering is laughing and joking among his comrades all the time. Some of them are dressed in civilian clothes while others still wear their old Nazi uniforms. This session, which began at 1 o'clock and ended at 5 o'clock, dealt entirely with the prosecution of Von Papen, in that he was one of Hitler's best men and had to do with closing of the churches in Germany. The prosecutor was from England.

"All during the prosecution Rudolph Hess did not put on his ear phones once. He does not seem concerned with what is being said at all, while the other 19 Nazis listen attentively and take notes for use in their own defense when they will each take the stand toward the end of the trials. There were at least 15 interpreters who interpreted all that was said from the speaker's stand. You see, there are American, English, French, Polish, Russian, and German visitors, as well as lawyers, judges, prosecutors, press, etc. all there at the trials to represent all these different nations. There too, at this session we had a very distinguished guest who sat in the visitors gallery with us. It was the Secretary of War, Patterson, accompanied by Lt. General Truscott, commander of the Third Army here in Germany.

"This palace of Justice is well guarded by American First Division M.P.S. as well as Russian honor guards, at all entrances. We had to show our identifications and passes a dozen times before we actually got to the visitor's gallery. Of course, all this precaution has to be taken. I hope to attend these trials again during the time in which these criminals take the stand in their own defense. I must be the only person from Sonora who has had the opportunity to witness these trials."

From Our Men In The Service The Devil's River News February 15, 1946

The following letter was written by J.C. Norris from Nurnberg, Germany, where he is a civilian employee of the government. He completed a tour of overseas duty in the European theater before receiving his discharge and returning to work for the government there.

"The past two weeks have been pretty busy weeks for me. That is to say, I've attended several shows and the like. Last week I had quite a bit of dental work done.

"This week I attended a G.I. show at the Opera House (Hitler's favorite opera house) in Nurnberg. It's a very old and pretty place. I really enjoyed the play. I went with another civilian, an officer and his girl.

Yesterday I had the grand opportunity and pleasure of attending the 79th session of the War Crimes Trials in the Palace of Justice in Nurnberg. I had a real good pair of field glasses and really got a close-up of the world's 20 greatest war criminals. It was really fascinating to watch them and all the great judges and interpreters of the world. Hess really looks bad - just as if he were really sick and hadn't much longer to live. He

Enserch Seeks First RRC Rate Increase In 14 Years

For the first time in 14 years, Lone Star Pipeline Company has asked the Texas Railroad Commission Friday to increase the rate it charges to transport gas to the 550 Texas cities it serves.

The new combined rate, for purchasing, storing, and transporting gas to cities, would increase about 18 cents per thousand cubic feet (Mcf) or about 90 cents per month for the typical residential customer. This represents about a 3% increase for the typical customer. It is proposed to be effective November 29, 1996. The average monthly cost to a typical residential customer over a 12-month period ending June 1996 is \$2.20 lower than the same period the year before because of a decline in the purchase cost of gas.

As part of a program to hold down costs, improve reliability and maintain safety, \$420 million has been invested in the Lone Star Pipeline system since the last such increase. The pipeline company has added two large underground salt dome storage caverns, which doubled withdrawal capacity. The company has also added three major compressor stations and has constructed interconnects with other pipelines to give Lone Star Gas greater supply options to lower gas costs and enhance supply reliability.

"We cannot predict what will happen to natural gas costs but we will continue aggressive action to reduce those costs to the lowest prudent level. The storage capacity we added assists in meeting Lone Star's peak winter demands from its residential and commercial customers and in lowering gas costs. Lone Star is able to buy gas for storage at seasonal prices

that are much lower than market prices prevailing in the middle of the winter," said Mike Hunter, president of Lone Star Pipeline.

Lone Star Pipeline Company is operationally separated from Lone Star Gas Company. The Railroad Commission regulates what Lone Star Pipeline Company charges to transport gas to cities. Individual cities regulate what Lone Star Gas Company charges to distribute gas to customers. Natural gas costs are determined contractually and in the market and are adjusted monthly.

Dick Williams, president of Lone Star Gas, which acquires gas in the field and distributes it, said the company is determined to make natural gas costs as affordable as possible for its customers.

"Lone Star rates for storing, transporting, and distributing gas are very competitive, and we are working hard to lower our natural gas costs. We still have some high-priced contracts, dating back to the energy shortages of the late 1970's, but we are wringing virtually all those out of our system within the next three years," Williams said.

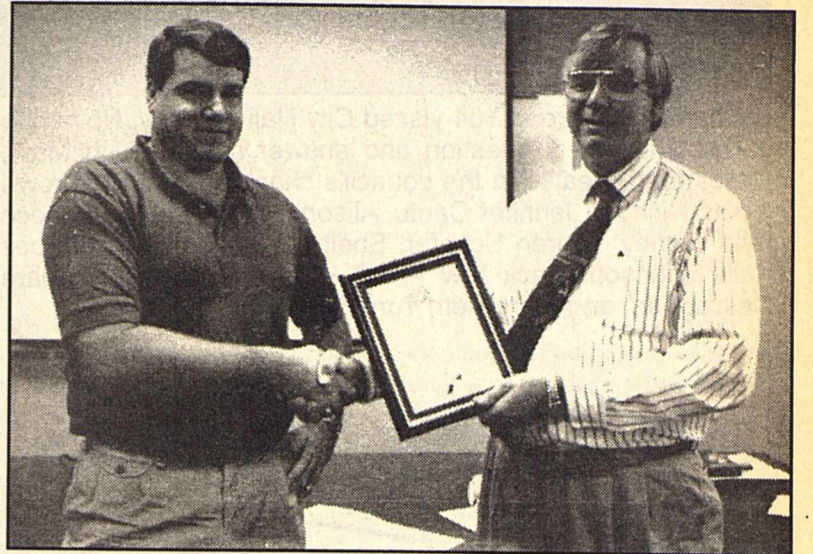
"According to a recent survey of 25 cities around the country, rates in Dallas, our largest service area, were lower than in 17 of those cities, which is good but leaves room for improvement. Our increase in storage capability and the end of an era of high-priced gas purchase contracts should combine to improve Lone Star's ranking," Williams said.

According to the U.S. Bureau of Labor Statistics, inflation has driven up the cost-of-living 60% since 1982, the last time Lone Star sought a rate increase from the Railroad Commission. A GMC pickup

that cost \$8,651 in 1982 is priced at \$22,500 today and the cost of a pound of ground chuck at Tom Thumb has increased from \$1.28 to \$1.99.

"We believe our request for a rate increase is fully justified

by the substantial increases in the cost of doing business over the past 14 years and by the substantial investment we have made to control costs, improve reliability and maintain the safety of our system," Hunter said.



Paul Chevalier received a 10-year service award from Texas Department of Transportation San Angelo District Engineer Walter McCullough. Also receiving service awards were Kenneth Harrison, maintenance supervisor 15-years and David Sanchez, construction inspector 10 years.

Rosie's Cafe and Catering

Lunch 11:00 a.m. - 2:00 p.m.

Thursday, November 7th

Ribeye

Friday, November 8th

Catfish

711 E. Glasscock
387-5552

Special Bouquet of Loose Flowers

\$7.50

Cash and Carry

Flowers by Irene

312 Railroad St. 387-3914

Tedford Jewelry

Bridal Gift Registry

Marty Lisa Martinez & Michael Ortiz

Ronnie Cox

would like to be your pharmacist.

Christmas is just around the corner!

Support your local Health Occupations Students of America with the purchase of a beautiful 6" poinsettia with "hats" (red foil covering with bow). These students will be your future health care providers...treat them well!! The poinsettias are grown in the East Texas plant farms. You can be assured of freshness and beauty. HOSA members will be taking orders immediately. Support your local high school programs. The proceeds will go towards area competition in El Paso.

ORDER EARLY!! THE SHIPMENT WILL ARRIVE THE SECOND WEEK OF DECEMBER and can be delivered to your home for a 50¢ delivery fee/per order

Quantity Discounts Available

Price for 1-9 poinsettias-----\$6.75 each
Price for 10-19 poinsettias-----\$6.00 each
Price for greater than 20 poinsettias--\$5.00 each

Hunting for
gifts or fashions
for your
DEAR?



Valltree's
Bright Spot
214 Main St.
387-5918

Veterans' Day Bank Closing Notice

The Sutton County National Bank and The First National Bank of Sonora will be closed on Monday, the 11th of November, and will resume regular banking hours on Tuesday, the 12th of November.

Member FDIC

The Man In Your
Life Is Making a
List And
Checking It
Twice!

Wallets • Hat Bands
• Thermos •
Watches • Money Clips

OL' SONORA TRADING Co.

New Store Hours
Mon.-Fri. 10:00 a.m.-5:30 p.m.
Sat. 10:00 a.m.-3:00 p.m.
204 North Hwy. 277 • 387-5507



Brownies from Troop 104 visited City Hall Monday, November 4. The girls had a question and answer session with Mayor Margaret Cascadden. Seated in the council's chambers are front row l-r: Kari Nichols, Jennifer Cantu, Alison Carroll, Kathy Pacheco, Kyla Turney, Lauren Schafer, Shelby Johnson, Laura Lopez, Kalie Johnson. Back row l-r: C.J. Turney, Mayor Margaret Cascadden, and Mary Beth Turney.

MY CHRISTMAS WISH LIST

Shop With Discovery Toys
Developmental Toys, Books,
Games and Software
For All Ages
Call Bonnie Lou Campbell
Educational Consultant

- Home Demonstrations
- Catalog & Phone Orders
- Part-Time & full-Time Opportunities

(915) 387-3174

Bronco J.V. Pounds Greenwood J.V. 30-13

submitted

It was a dark and stormy night, on Halloween in Sonora, at least that's how the Greenwood Rangers JV will remember it, as they absorbed a 32-13 pounding at the hands of the Sonora Broncos JV.

Did every one of the Sonora JV footballers' girlfriends dump them last week? Whatever the reason, the little Red Hoses showed up in a surly mood. At game's end, a pretty good Ranger team looked like a guy who had tried to take a pork chop away from a pit bull.

Sonora received the opening kick-off with Demetrio Castro returning it out to the Bronco 35. Three straight carries by Anthony Luna earned 39 yards. Then Lupe Ramon added 15 on two carries. David Mayer rolled out over right end for an apparent touchdown, but the play was called back due to illegal motion. An incomplete pass on 3rd down set up a 30 yard field goal attempt by Michael McLaurin. The kick was a knuckle ball that chinned itself over the crossbar with inches to spare. Sonora led 3-0.

Sonora's defensive domination began from the outset. After the touchback, Riffin Glasscock and Jeremy Shaffer dropped the halfback for a 3 yard loss, Luna chased the quarterback out of bounds for a gain of 2, and a pass to the flanker gained 8. A fake-punt attempt, short snap to the upback, was slammed behind the line of scrimmage. Sonora took over on the Ranger 26.

Seven plays later, including a weaving 10 yard run by Mayer on a quarterback option, Luna

punched in for the first of his 3 touchdowns. McLaurin's point-after kick was good, giving Sonora a 10-0 lead with 2 minutes left in the 1st quarter.

Greenwood flashed back with a quick pass to the tight end who split the Bronco secondary and apparently rambled for an 85 yard touchdown. But an illegal block downfield cut the gain to but 26 yards. After Shaffer slung down the quarterback like a sack of grain for a 7 yard loss, a scene that was repeated several times during the night, Greenwood was forced to punt.

Two plays later, a fumble in the Bronco backfield was recovered by the Rangers. A short drive later, Greenwood's tailback shrugged off several hits, dragging tacklers into the end zone from the six. The extra point kick was good, cutting Sonora's lead to 3.

After the kick-off, Sonora drove from its 26 to the Ranger 32, but a Mayer pass was picked off and returned all the way down the left sideline. With 3 minutes to go in the half, the Rangers took the lead 13-10. The PAT kick was no good.

The Rangers took the second half kick-off out to midfield, but Ramon, Andy Castilleja, and Shaffer jolted the fullback after a 3-yard pick-up. Will Allen stopped a quarterback option for 4 yards, and McLaurin tipped and almost swiped a quick pass to the tight end. On 4th down, Ramon belted, then Shaffer and Glasscock finished off a quarterback option for no gain.

Ramon suffered a twisted ankle while carrying the ball to near midfield. On 3rd down Luna zipped through a gap and outran the secondary for 51 yards. McLaurin's kick gave the Red a 17-13 lead with 6:56 in the quarter.

Two plays later, McLaurin got the jump on the quick pass to the tight end, picking it off at a full run and cruising 45 yards down the right sideline for a touchdown. His PAT kick widened Sonora's margin to 24-

13.

Once again, when Greenwood's drive bogged down near midfield the Rangers attempted to convert a 4th down play. But Kevin Gann dragged down a wingback counter for a gain of one.

However, the Rangers got the ball back three plays later, recovering a fumbled center snap. Bobby Salinas and Blaine Wilkinson creamed one running play, Castro slapped down a wobbly pass, Glasscock and Wilkinson smeared a tailback

delay, Gann and Glasscock got all over a quarterback draw on 4th down. But a Bronco offside penalty gave Greenwood, in the announcer's words, 5th and 7. Luna slung the tight end out of bounds short of the sticks.

One first down and change later, Luna scampered 37 yards on the wingback counter to give Sonora a commanding 30-13 lead. The center snap on Sonora's point after attempt skittered along the ground into kicker McLaurin's hands. He coolly

continued on page 7

WTU Names Area Business Manager

submitted

Blake Burchard has been named West Texas Utilities Company Area Business Manager for Eden, Menard, Junction, Sonora, and Eldorado.

"In this new position, Blake will play a key leadership role in community and business development activities for WTU in this area," said WTU President Floyd Nickerson.

"This appointment is part of WTU's stronger focus on economic growth and improved customer service. Blake brings a wealth of experience to these communities. We are in the process of reshaping our business to meet the changing needs of our customers in an increasingly competitive marketplace. Blake will provide the local leadership which will help us build upon our tradition of customer satisfaction while moving in new directions to improve the value we deliver to the customers and communities we serve. During that time, he has worked for WTU in San Angelo, Sterling City, and Eden, where he has been area manager. He sits on the Eden City Council, vice president of the industrial foundation, the 4-H executive board, secretary-treasurer of the Concho County Saddle Club, and president of the Heart of Texas Leadership Alumni organization. The Midland native attended Angelo State University.

Burchard and his wife, Paula, have one child, Haden.

"I'm looking forward to the opportunity to continue to serve our customers in this region of West Texas," Burchard said. "WTU has a strong commitment of helping our communities grow and prosper. I'm proud that I can be a part of that effort and I am looking forward to working with our friends here."

WTU is an affiliate company of Central and South West Corp. CSW is a public utility holding company based in Dallas. The corporation owns four electric utility subsidiaries in the United States and non-utility subsidiaries involved in independent power production, telecommunications, energy efficiency, and financial transactions. It also has a major ownership position in SEEBOARD plc, a regional electricity company in the United Kingdom.

Look What's New

Calvin Klein
second skin sheers

MERLE NORMAN

so sheer they might as well not be there

112 N Concho Sonora, TX
M-F: 9:30 - 5:30 Sat 10:00 - 2:00

Don't Give Up!

If you or someone in your family has been denied Social Security/SSI Disability Benefits contact:

JOHN J. INGRAM
& ASSOCIATES

Administrative Advocates

Call for an appointment

1-800-299-6809

Your call is Toll-Free

No consultation charge.
No fee unless your claim is successful.

JOHN J. INGRAM
& ASSOCIATES

Social Security Disability Specialists

¡No Te Rindas!

Si le han negado a usted o a alguien en su familia sus derechos de beneficios de incapacidad del Seguro Social/ SSI Llame a:

JOHN J. INGRAM
& ASSOCIATES

Defensor Administrativo

Para una consulta llame al

1-800-299-6809

Su llamada es Gratis

No hay costo para consultar
Cobramos solo si ganamos

JOHN J. INGRAM
& ASSOCIATES

Especialistas en Desabilidades de Seguro Social

Look for us to be in your area:

Every other Thursday
Starting Oct. 3, 1996.

Sutton County Senior Center
106 Wilson St.
Sonora, Texas

Westerman
Drug
Bridal
Registry

Michelle Barker
and
Tracy Crites
§
Lisa Martinez and
Michael Ortiz
101 NW
Concho
387-2541

If your loved one is in need of more care than you can give, but you resist a nursing home, Lillian M. Hudspeth Memorial Hospital has a "long term" program that might be just the right thing for you! For more information about taking advantage of 24-hour nursing care in the hospital call 387-2521

NAPA®
Auto Parts

UNDER NEW OWNERSHIP

Bennie Frazier
and
Espy Whitehead
Sales Manager - Kirk Joy

Business Hours
Monday-Friday 7:30-5:30
Saturday 9:00-12:00

387-5167 or 387-5243
501 South Crockett

Reaching A New Level In Communication ...



With Convenience ...



With Security ...



With Dependability

In today's world of instant communications, people on the go look for a cellular company that offers convenient, dependable, secure service. Plateau Cellular Network is that company. With an ever expanding, dependable coverage area and convenient, affordable pricing plans, Plateau Cellular Network is the cellular service provider of choice in the Southwest. From the oil fields of the Permian Basin to the dairy farms of the Llano Estacado, Plateau Cellular Network is "reaching a new level in communication."

To get the convenience, security and dependability of Plateau Cellular Network Service, see:

Cellular Resources
114 NE Concho
Sonora, TX
387-3592

Plateau Cellular Network
101 S. Betty
Monahans, TX
1-800-658-9577

Plateau Cellular Network

SENIOR CENTER NEWS



by Juanita Mesa

Seniors at our center were entertained by Carolyn Earwood and her little dancers (4 and 5 year old girls) on Wednesday, October 30, during our Halloween party. Games played were the balloon throw, cake (cupcake) walk, and bingo! Orange punch was served with treats, cookies, cupcakes, and popcorn. Seniors who won prizes for their costumes were Kathleen Moore and Espy Samaniego!

I would like to say thanks to all who came and to those who helped out. Thanks to: Carolyn Earwood and her dancers (enjoyed dancing the macarena), to Westerman Drug and Ol' Sonora Trading Co. for great prizes for bingo, Cattleman's for the cake walk and the balloon game, to Terry Surridge and the nursing home residents for decorating our brown bags for our Meals on Wheels, to Daisy Troop #102 for the Halloween plate decorations (real cute and scary), to all of you who took the time to make cupcakes and donate to our party (Iris Garza, Carmen Sanchez, Jeanne Davenport, Terry Surridge), extra Bingo prizes from Vicenta Lopez, Eloida Galindo, Olivia Longoria, and Jeanne Davenport. Thanks to those who stayed to help with games: Tita Zurita, Vivian Crites, Carmen Sanchez, Elorida Galindo, Wilma Jones, Marie Allen, and everyone else, especially my co-workers: Pete Samaniego, Amelia Ramos, and Lilia Flores.

Everyone had a good time, and we had a full house. I heard several people say we were outgrowing the Center because of the large crowd, but I guess this is good. Now we need to get ready for the holidays!

Sutton County Senior of the Month for September '96 was Arturo Trevino. Arturo enjoys the company of the other citizens as well as the meals. In addition, he likes the activities and the wonderful, hardworking staff. Arturo was married to Carmena Perez on July 9, 1955. They have one daughter, Sandra, and three grandchildren, Cammie, Molly, and Marc.

Sutton County Senior of the month for October '96 was Marie Allen. Marie moved to Sonora three years ago. She has one daughter, Gloria who is married to Royce Mjears, one great-granddaughter, Danielle, and one grandson. Marie enjoys her friends at the Center, the good meals, the health programs, and everything that is celebrated especially the parties! Everyone in Sonora is very friendly, says Marie.

submitted

This past Thursday, the seventh grade traveled to Wall to play the young Hawks. After a very tough opening game with this same team, the Colts were expecting a rematch of equal proportions. The game proved to be just that. The Colts behind the running of Sean Fields were able to gain 99 rushing yards to the Hawks 62 yards. In the passing department, the Hawks were able to gain an advantage with their 111 yards to the Colts 94 yards. The biggest statistic that proved to be the deciding factor was in the turnover department, with the Hawks having 4 to the Colts 0. This gave the advantage to the Colts on the scoreboard: Colts 28-Hawks 16.

The game began with the Hawks receiving the opening kick-off. On a hard lick provided by several Colts, the ball came loose with Stetson Hall recovering his first of two fumbles. The Colts set up shop on the Hawk 13 yard line. It only took one play; William Renfro took the pitch right behind excellent blocking and waltzed into the end zone untouched. On the two point conversion, Renfro once again went right with the same exact results. With only 13 seconds gone off of the clock the Colts took the lead; Colts 8-Hawks 0. The Hawks once again took the kick-off and after 4 plays, the Colts once again had the pigskin deep in Hawk territory. The Colts' second possession began on the Hawk 35 yard line. On the third Colt offensive play of the afternoon, Renfro took the pitch right. However, this time he threw the ball down field to a wide open Stetson Hall, who with the help of some timely down field blocks was able to ramble into the end zone for the second score of the afternoon. Brandon Adkins added the two point conversion to make the score Colts 16-Hawks 0. The next two series found neither team able to mount much offense. Both defenses stiffened.

7th Grade Colts Get Seventh Win

The Colts were led by Chance Armke, Joey Quiroz, James Elliott, and Brandon Adkins.

As the 2nd quarter got under way, the Hawks put the ball on the ground for the second time, and Stetson Hall recovered his second fumble of the afternoon. However, the Colts were not able to capitalize on this one and had to turn the ball over on downs. The young Hawks seemed to gain some momentum and began a small march of their own, but just as many times before, the Colts bent but did not break. James Elliott, from his defensive end position, was able to jar the ball loose for the third time of the afternoon, and Lionel Cervantez pounced on the ball to give the Colts the ball on their own 30 yard line. After a holding penalty moved the ball back to the 20 yard line, a thing of football beauty occurred. The called play was 30 trap, and every lineman

did his job to perfection. Stetson Hall turned the defensive end out, Baldemar Hernandez executed a near perfect trap block on the defensive tackle, Joey Quiroz pulled around to get the on side linebacker, Beau Hughes reached the backside linebacker, a hustling Chance Armke and Joey Quiroz provided excellent down field blocking, and the result was an 80 yard touchdown run by Sean Fields. The two point conversion failed and the Colts took a commanding 22 to nothing halftime lead.

The second half saw the Colts receiving the kick-off, but they were not able to sustain a drive and had to give the football up. The Hawks' next possession saw the Hawks running the ball three times and throwing it twice to cover 52 yards and gaining their first score of the game, Colts 22-Hawks 8. Not to be out done, the Colts took the ball on 2

runs by William Renfro and a 50 yard pass play from James Elliott to Sean Fields to notch the final Sonora score, Sonora 28-Wall 8. The Hawks would not give up and on their next possession tallied their second score of the evening to make the score, Colts 28 and Hawks 16. With time running out in the game, the Hawks would get one more chance. The Colt defense rose to the occasion and forced the fourth turnover of the game. On a second and long, the Hawks' quarterback lofted one into the air only to find Brandon Scott waiting to get his second interception of the year. The Colts were content to run out the clock and preserve a 28 to 16 victory.

The Colts will travel to Ozona this Thursday to close out their season. Hope you can make the trip to help the Colts close out a very successful football season.

BEAT THE WOLVES

★ any regular size fries, tater tots or onion rings

FREE
side order...
with any Sonic sandwich and a large Dr Pepper* at regular price.

(* other large soft drink)

SONIC
America's Drive-In™

Offer good November 1-30, 1996. Not valid with Wacky Pack Meal or any other offer.

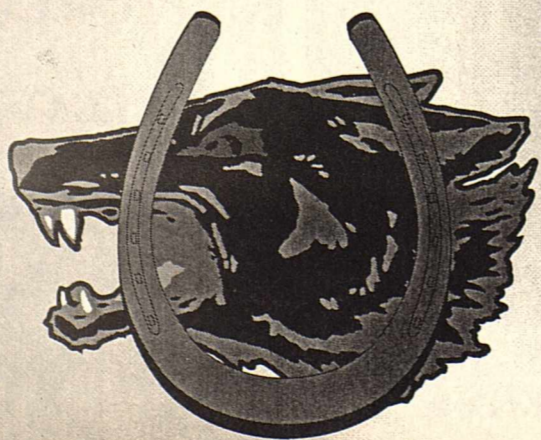
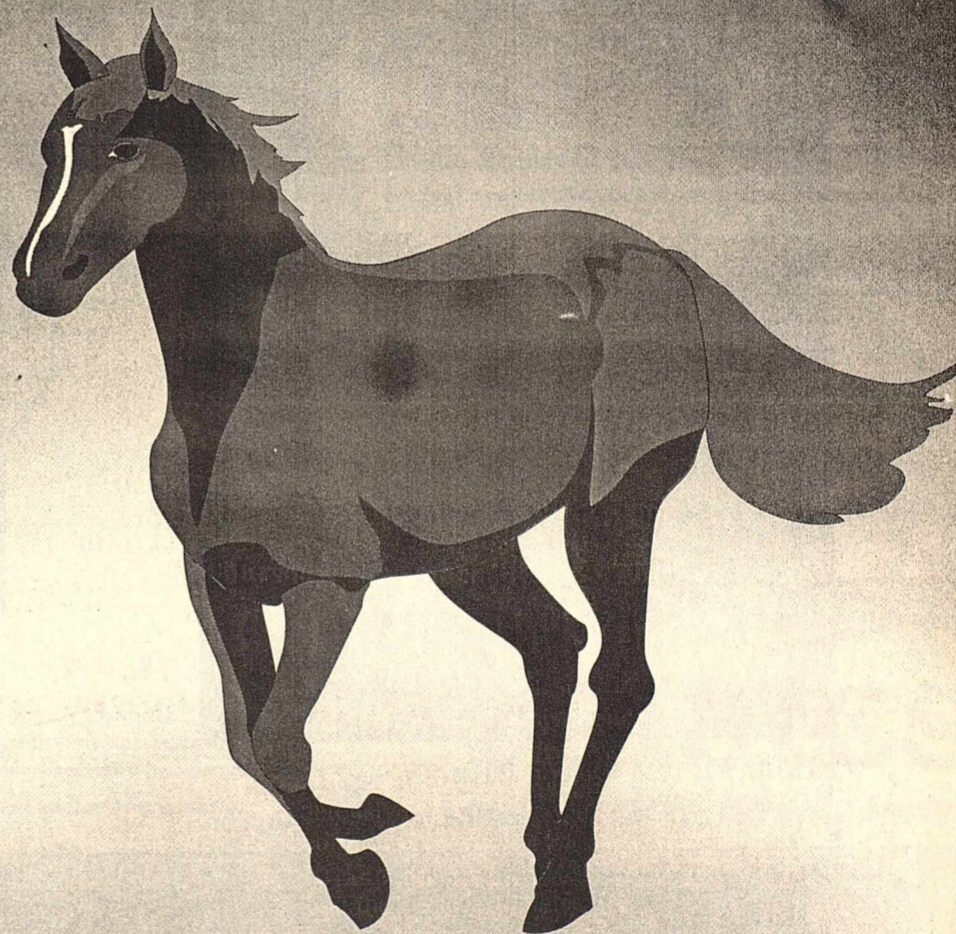
202 HWY 277 S.
387-5292

© DR PEPPER, DR AND PEPPER are trademarks of Dr Pepper/Seven-Up Corporation, Dallas, TX 1996.

THE BRONCOS

WILL BEAT

THE WOLVES FRIDAY NIGHT



Sponsored by:

SONIC
America's Drive-In™

1996 CHEERLEADERS



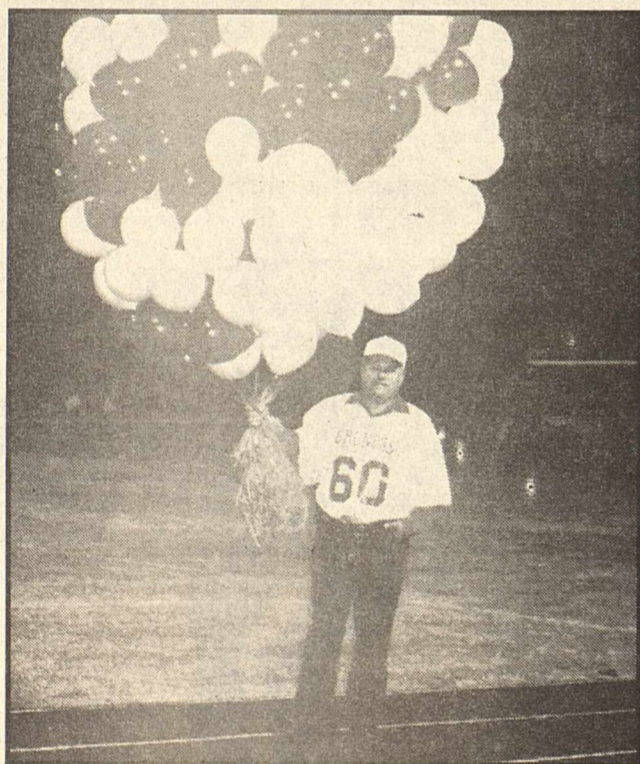
(Front Row, L-R) Sandi Trevino, Jamie Teasley; (Back Row, L-R) Laura Castilleja, Robin Conner, Liza Ramirez



(Back Row, L-R) Stefany Davenport, Karla Gonzales, Ashley Henson, Johnna Adams; (Front Row, L-R) Michelle Cramer, Camille Marshall, Katie Cooke, Kenley Black



Photo by Patti Ranier



Eddie McReynolds, Mighty Bronco Supporter
Photo by Patti Ranier



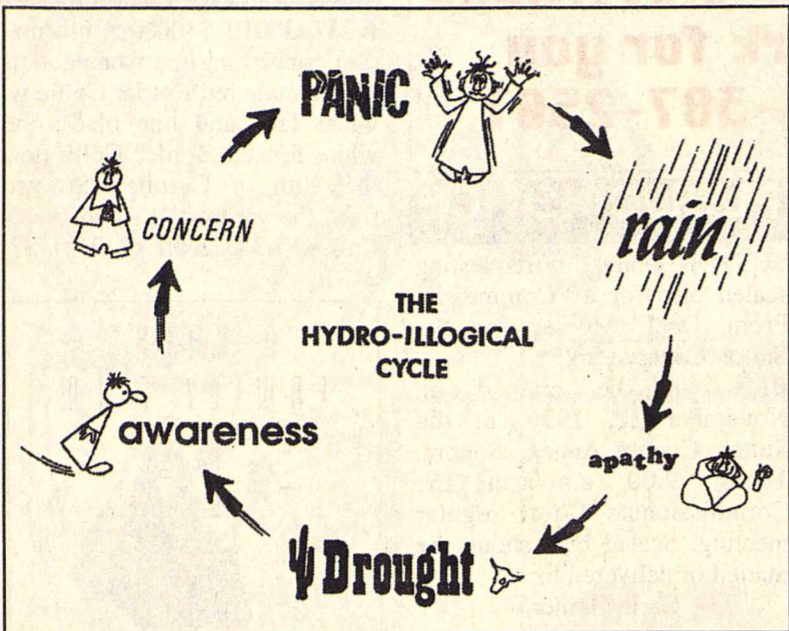
(Back Row, L-R) Anthony Gibson, Justin Eaton, Jeff Surber, Kris Wood, Ray Rainer, Jason Geske, Andy Mirike, Ed Carrasco; (Middle Row, L-R) Caleb Barker, Kelly Morrow, Justin House, Joey Gandar, Walker Wallace, Mike McReynolds, Michael Barthelemy, J.R. Sanchez; (Front Row, L-R) Kenley Black, Karla Gonzales, Michelle Cramer, Johnna Adams

This Page Sponsored by the Following Businesses

ACTIVE CHRISTIAN TEENS OF SONORA
B&C DEPARTMENT STORE
BRONCO FORD
CHELLE'S
DAYS INN DEVIL'S RIVER
DEVIL'S RIVER AUTO PARTS
DR. RICK HOLDRIDGE
FIRST NATIONAL BANK
I-10 AUTO RANCH

JIMCO ENTERPRISES
KERBOW FUNERAL HOME
OL' SONORA
SHOT'S 5&6
SONORA CHAMBER OF COMMERCE
SONORA SPORTS AND SUPPLY
SON-TEX RATHOLE SERVICE
STEVE'S PRO SHOP

SONIC
SUTTON COUNTY NATIONAL BANK
SUTTON COUNTY STEAK HOUSE
TEAFF OIL COMPANY
THORP'S LAUN-DRY
VALLREE'S
VIDEO STORE
VIVIAN'S



submitted by Mike Smith, Manager Sutton Co. UGWCD

On a recent trip to Austin, I found this cartoon. Unfortunately, it depicts many people's views of the water cycle. Please be aware that the drought is not over in the state. Conservation and preservation needs to be applied at all times.

Due to the draught conditions around the state, I believe "Texas Water Policy" will change during the upcoming legislative session beginning in January. Many thoughts and ideas are being thrown around in Austin which may affect your future water rights (private prop-

erty rights). At present, we as individuals have a "right of capture" of the water beneath our property. As long as you do not commit waste, and it's for a beneficial use, you have this right.

We hope to keep you informed on this issue and other important issues confronting us as a water district. As your water district, we hope to have some input on state water issues, as a member of the Texas Alliance of Ground Water Districts (TAGD).

If you have any ideas or questions concerning this matter, please contact me at 915-387-2369 or come by 222 N. Main, Suite 101.

AGRIBUSINESS

Ag Calendar

November
 11 Sutton County FSA Office closed in observance of Veterans' Day
 12 Edwards Plateau Soil & Water Conservation District work group meeting, 7:00 p.m. FNB Annex
 22 COC Election ballots mailed to producers

Local SWCD To Initiate A Resource Needs Assessment 1996 Farm Bill Gives Local SWCD New Responsibilities

"As a result of the 1996 Farm Bill, the Edwards Plateau Soil and Water Conservation District (SWCD) with headquarters in Sonora, along with 3,000 other SWCDs in the nation, has been given the charge to lead the way in developing programs and initiatives to improve soil and water resources at the local level," said Judy McDonald, chairman of the Edwards Plateau SWCD.

"After years of applying top-down program management approaches in federal conservation programs, the new 1996 Farm Bill establishes a locally driven process, coordinated by

conservation districts, to guide the state and nation's agricultural conservation efforts. It provides tremendous opportunities for local people to become involved in assessing local resource needs, setting priorities, developing conservation policy, providing technical support, accepting program applications, and approving conservation plans upon which cost-sharing will be based," McDonald added.

According to McDonald, the process deals with developing a list of priority areas and concerns for the long range Farm Bill program for Fiscal Year 1998 and beyond.

Junction Stockyards Market Report

Junction Stockyards had a light run of cattle on Friday, October 25, 1996. Calves selling steady to \$1 lower. Slaughter cows and bulls \$1 lower. Stocker cows were steady.
 The sheep and goat sale on Monday, October 28 sold 3065 head of goats and sheep. Lambs selling \$2-3 lower. Slaughter ewes \$2 lower. Stocker Angora goats steady to \$3 higher. Slaughter Angora \$2-3 higher except the nannies and mutttons steady. Fat Spanish kids and yearlings \$4-5 higher. Slaughter mutttons and billies \$5-6 higher. Spanish nannies steady.

To enact the Farm Bill on the local level, the Edwards Plateau SWCD, in partnership with the USDA Natural Resources Conservation Service, will conduct a work group meeting with its conservation partners and interested persons or organizations on November 12, 1996, at 7 p.m. at the First National Bank Annex meeting room on Main Street in Sonora, Texas.

The purpose of the meeting is to conduct a local conservation needs assessment, establish local priorities, and make program recommendations on what problems the SWCD should

address in future years. Local recommendations will then flow to the state level where the district's various technical issues, resource priority areas, and program policies will be reviewed and integrated into a state, regional, and national program.

"We are really excited about the opportunities the new Farm Bill offers because Congress is seeking our leadership to assist our community in carrying out a cooperative, locally driven, incentive-based conservation program that wisely invests public resources to protect local natural resources."

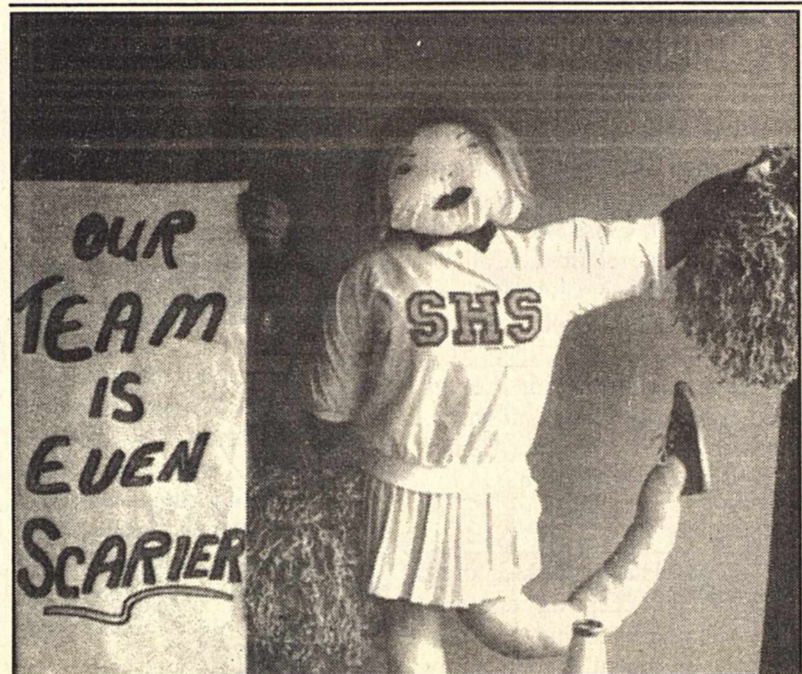
Chief's Corner

City Police responded to a "unauthorized use of a motor vehicle" Saturday, November 2. The vehicle was taken without the knowledge of the owner at approximately 4:30 a.m. from the golf course, the case is still under investigation.

Chief of Police, Chris Croy urges the public to bring their address up to date with the new

911 code. The case may arise when you need emergency assistance and you will want the responding units to arrive at the correct address. If possible, officers would prefer that you use reflective numbers when you install your 911 address.

If you are unsure of your new address, contact Jim Garrett at the city hall 387-2558.



Virgel Plocek poses with "Muffy" the winner of the Sonora Merchants Association scarecrow contest.

SONORA TAXIDERMIST STUDIO
 TIM DOBBS
 915-387-6106
 SONORA, TEXAS

TEXAS RECYCLES

Baker Performance Chemicals
 a division of Baker Performance Chemicals, Inc.

BPCI

A complete line of production, pipeline, drilling and completion chemicals

Ken McMullin
 Sales Representative
 387-2889

Brad Childress
 Sales - Service
 Mobile 650-5872

Doyle Morgan INSURANCE
 217 E. Main

Independent Insurance Agent.

Yvette Samaniego Sue Hosford
 Guy Cauthorn

P.O. Box 1216 387-3912
 Sonora, Texas 76950 1-800-753-0102

JV Broncos

continued from page 4

picked it up, rolled right and flipped a pass to Shaffer, good for 2 points and the final 32-13 score.

Luna had his finest night of the season, rushing for 195 yards and 3 touchdowns on 20 carries. The Bronco offensive line-Gann, Wilkinson, Salinas, Allen, Jacob Mendez, Homer Lozano, with McLaurin and Shaffer splitting time at end, and wingback Greg Hughes carved the Ranger

defense like a jack-o-lantern, allowing Bronco runners to gain 276 yards on the ground. Meanwhile, Sonora's defense swarmed all over Greenwood's rushing attempts, holding the Rangers to 50 yards on 29 attempts. The Rangers picked up 57 yards on 5 of 10 passing attempts.

The Bronco JV goes into its final game against Colorado City with a 5-2-1 record.

WANTED

Information on Cal Fisher - born someplace in Texas in 1864. His father and mother were killed by Indians in a raid on a wagon train somewhere near the Pecos River, know as the "Howard's Well" massacre, when Cal was about 6 or 7 years old in 1870-1872. A rancher in the Pecos River area took Cal and his sister to live with his family. I do not know much about this rancher, but I think I have heard mentioned the name Mr. Tardy or Tarde. If you know of any information on Cal Fisher or the raid please contact:

B.E. Foster
 2301 C.B. Lewis Rd.
 Columbia, MO 65202

Any information you can give to me, his grandson, would be greatly appreciated.

Free Blood Pressure & Blood Sugar checks every Wednesday from 11:30 a.m. to 12:30 p.m. at the Senior Center.

HouseCalls provides nursing care, Aide assistance with personal care and Physical Therapy services to those who are "Homebound". For more information call our office and speak with one of our nurses.

At HouseCalls we care about you and your health

HouseCalls Health Care Services
 853-2525 1-800-588-1470

MULTI-CHEM INC.

Providing A Full Line Of Production, Drilling, and Completion Chemicals

GARRY HARRISON 226-3381
DANNY TIDWELL 650-4436
JAMES ARCHER 650-6112
PETE GUERRERO 226-3638
RANDALL HERRINGTON 277-0321

OFFICE (915) 387-2585

TORRES
 Lawn and Trimming Service

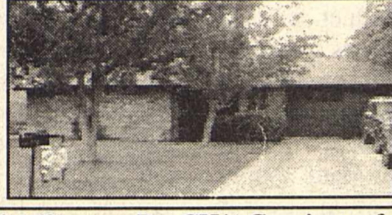
Tree Trimming & Leaf Raking

For Professional Consultation and Service in Seed Application Tree Trimming Grub Control, Weed Control and Fertilizer Applications

Annual Contracts Available
 Call Now For Your Appointment and Estimate
 387-6022 or 650-2157

REAL ESTATE

Bobbie A. Smith *Real Estate*



Don Sessom
Salesman
387-5797

Bobbie A. Smith
Broker
387-2728

•3BR, 2B, brick/Sawyer Dr, CH/AC, privacy fenced - Priced in the low 70's, Seller will pay up to \$2000 of Buyers closing costs.
•3BR, 2B, frame - 37,500
•Back on market at reduced price - 4 BR, 3B, CH/AC w/appt & storage - \$74,500

Anita Balch Hudson, Broker

PRICE REDUCTION

802 CONCHO \$47,500 \$40,000
Wonderful location, near school 3 BR, 2B, carport & garage; great potential

712 CONCHO \$25,000 \$22,500
Large lot, great location, fixer upper

OR EVEN BETTER
A packaged deal on both properties listed above
802 CONCHO AND 712 CONCHO \$60,000
Investment opportunity-Live in one & lease the other

"Serving Your Real Estate Needs"
Residential • Ranch • Commercial

(915) 387-6115

Wayne Munn Real Estate

Office Located at 203 E. Chestnut
915-387-2171 Sonora, TX

"We're in the business of helping people...Making your move a lot easier!"

718 E. Second-3 bed, 2 bth **SOLD**
1310 Crockett-3 bed, 1 bth **SOLD**

Listings

925 E. Second- 3 bed, 2bth.....	\$72,500.00
107 Sawyer Ct.- 4 bed, 3 bth, Swmg. pool.....	\$120,000.00
700 E. Poplar- 3 bed, 2 bth.....	\$45,000.00
921 E. Second- 3 bed, 2 bth.....	\$75,000.00
1013 Concho- 2 bed, 1 bth.....	\$55,000.00
1011 Concho- 3 bed, 2 bth.....	\$55,000.00
500 Martin- 3 bed, 2 bth.....	\$26,500.00
1101 S Crockett- 3 bed, 2 bth.....	\$69,000.00 neg.
308 E. Pecan- 3 bed, 2 bth.....	\$45,000.00
926 NE Second- 1.56 acre-Building lot.....	\$16,995.00
Deerwood- 1 building lot.....	\$5,500.00

Ask about our business opportunities or acreage!!

• HOMES • COMMERCIAL • ACREAGE •
• ASK ABOUT BUSINESS OPPORTUNITIES •

REALTOR® AGENTS
ANNA MUNN 387-2171 **PAM MUNN 387-3731**
Come by our office or call today for information on our listings!

EMPLOYMENT
EMPLOYMENT NOTICE: Lillian M. Hudspeth Nursing Home now hiring CNA'S, NA'S (eligible for CNA classes) and LVN'S. We offer a competitive salary and the following benefits: shift differential for evenings and nights (CNA/LVN), paid employee health insurance, paid sick leave, annual vacation, 7 paid holidays, retirement plan. Call Sarah Kennell, RN, DON or apply in person 310 Hudspeth Street Sonora, TX 76950 (915) 387-2521, ext. 274, tfn(2-1-96)b

HELP WANTED: All shifts, starts above minimum wage, benefits. Contact Mitzi Mathews from 9-5 at Amigos Texaco. 601 Hwy. 277 N. tfn(9-19-96)b

Help Wanted: Help wanted-experienced waitresses or waiters over age 18. Come by Beto's 104 Glasscock. tfn(10-10-96)

TEXAS REFINERY CORP. needs mature person now in SONORA area. Regardless of training, write W.B. Hopkins, Dept. W-76950, Box 711, Ft. Worth, Tx. 76101-0711. 2(10-31-96)b

OILFIELD
Ex-Dowell drivers or experienced men needed for oilfield jobs. No need to relocate must be able to travel. Class A CDL with endorsements required. Call 1-800-750-7295 2(10-31-96)b

Crockett County Care Center needs liscensed CNA's all shifts. Please come by the Care Center to pick up an application. 2(11-7-96)b

Lillian M. Hudspeth Memorial Hospital is accepting applications for housekeeping position. Must be bilingual. Please apply in person to Martha Hernandez at the hospital. E.O.E. tfn(11-7-96)b

PERSON WANTED to OWN and operate retail cand shop in Sonora area. Low investment. For information call Mrs. Burden's Gourmet Candy Company, Dallas, TX. (972) 991-8239. 2(11-7-96)b

FOR RENT
Sonora Court Apartments- 2 bd / 2 bth \$525. Electric & water paid. Call 387-5556 after 6 p.m. 2(10-31-96)b

For Sale or Rent-2 bedroom, 1 bath mobile home with fenced yard, 1309 Orient. Call Juanita Mesa day 387-5657 or evening 387-3410 1(11-7-96)p

FOR SALE
CRAFTSMAN 19.5 HP RIDING MOWER: 3 year parts & labor warranty, 46" deck w/mulching kit & bagger, 6 speed. Like new. Call 387-6022.

Let the Classifieds work for you
915-387-2507

FOR SALE
For Sale: 1984 double wide mobile home. Newly replumbed. Fireplace, carport, sprinkler system on lot, storm windows. masonite siding. Three bedroom, two baths, large family room with cathedral ceiling, large kitchen, breakfast area and separate dining room. \$30,000 J&V Lot #69A 387-5207 tfn(9-17-96)

For Sale: 1985 Chevy Impala 4-door, good condition, 387-2635 2(11-7-96)p

For Sale: Washer, dryer and refrigerator, excellent working order. 387-5020. 2(11-7-96)p

Big Screen TV- Take on small monthly payments. Good credit a must. Call 1-800-398-3970. 2(11-7-96)p

For sale by owner- 3BR, 2B, brick, CH/AC, fireplace, 2 car garage, automatic sprinkler system, storage building. This home sits on a large lot. Good neighborhood. Call 387-2813 for appointment to see. tfn(11-7-96)b

MOBILE HOMES

For Sale: 1984 double wide mobile home. Newly replumbed. Fireplace, carport, sprinkler system on lot, storm windows, masonite siding. three bedroom, two baths, large family room with cathedral ceiling, large kitchen, breakfast area and separate dining room, \$30,000 J&V Lot #69A 387-5207 tfn(9-17-96)

Like New 1996 Crestridge four bedroom mobile home. \$23,500. Will finance and move. (915) 653-2332 1(11-7-96)smh

SERVICES AVAILABLE

McGEE MECHANICAL Commercial/Residential A/C-Heating-Refrigeration
Sonora-387-5685 Junction-446-2124
Call us for all your heating & cooling needs. Over 25 yrs. experience in service and installation of all brands of Heating & Cooling systems & Refrigeration units. Call 387-5685.....or come by 110 North 3rd St. TACLA009850E/TACLB01048 6R/LP GAS 07876 tfn(10-10-96)b

Trash to Treasure, antiques collectables, gifts. Wed. thru Sat. 10-5 Main St., Christoval, next to Mi Casa Restaurant. 4(10-31-96)p

PUBLIC NOTICE

SUTTON County is requesting sealed bids for a Commercial Front Deck Mower for the Sutton County Park. Bids will be opened on November 11, 1996, at the Sutton County Annex, Sonora, Texas, 9:00 a.m. at the Commissioners Court regular meeting. Sealed bids should be mailed or delivered to: Carla Garner, County Judge P.O. Box 1212 Sonora, Texas 76950

For further information on specification, please call or write to the Sutton County Auditor: Charles R. Graves County Auditor Box 16 Sonora, Texas 76950 915/387-5380 2(10-31-96)b

Lillian M. Hudspeth Memorial Hospital is an Equal Opportunity Employer. The hospital offers equal employment opportunity to all qualified applicants regardless of race, creed, sex, physical handicap, national origin, age, marital status, or any other category protected by law.

Lillian M. Hudspeth Nursing Facility is an Equal Opportunity Employer. The hospital offers equal employment opportunity to all qualified applicants regardless of race, creed, sex, physical handicap, national origin, age, marital status, or any other category protected by law.

Lillian M. Hudspeth Nursing Facility follows a non-discriminatory admissions policy. It is the admission policy of Lillian M. Hudspeth Nursing Facility to admit and provide services to all eligible nursing facility candidates regardless of race, creed, sex, physical handicap, national origin, age, marital status, or any other category protected by law.

LOST

REWARD!!! \$100 for information concerning the whereabouts of one male red Border Collie w/ white face and one black and white female Border Collie lost the 20th of October. Strayed from the yard of Dr. John Fields Call 915-387-2754 or 915-387-2481.

A GREAT FAMILY FILM

POWER PLAY

FIRST BAPTIST CHURCH
111 N.E. OAK
Sunday November 10th
7:00 p.m.
Free will offering will be taken
FMI call 387-2951

A World Wide Pictures Presentation

SOUTHWEST 7
3590 Knickerbocker 949-9984

Starts Friday

Sleepers - R
1:30 4:50 8:00
✓Thinner - R
1:50 4:10 7:25 9:40
Ghost and the Darkness-R
2:10 4:45 7:20 9:55
Set It Off-R
1:15 3:50 7:15 10:00
The Long Kiss Goodnight-R
1:45 4:30 7:10 9:45
✓**High School High PG-13**
2:20 4:25 7:30 9:30
Michael Collins-R
1:00 4:20 7:00 9:50
times subject to change

SUNSET 4
1066 Sunset Mall 944-3390

Starts Friday
Dear God - PG
1:50 4:10 7:10 9:30
Larger Than Life - PG
2:15 4:40 7:15 9:40
That Thing You Do! PG
1:45 4:15 7:00 9:20
First Wives Club - PG
2:00 4:25 7:25 9:50
times subject to change

\$3.50 SHOWS STARTING BEFORE 8 P.M.
\$3.50 SENIOR CITIZENS AT ALL TIMES.

PUBLIC NOTICE

NOTICE TO BIDDERS

The Williamson County Commissioner's Court invites the submission of sealed bids for the sale of the following described surface lands in Sutton County, Texas, which form a part of the Williamson County School Lands. Bids must be received by 10:15 a.m., Tuesday, Nov. 26, 1996, at which time the bids will be opened in open court on the 2nd floor of the County Courthouse in Georgetown, Texas. Any bids received after that time will be returned unopened. Williamson County, Texas owns a one-half undivided interest in the lands described below. The Commissioners Court reserves the right to reject any or all bids received. For further information please contact County Judge John Dowler, Williamson County Courthouse, 710 Main St., Suite 201, Georgetown, Tx 78628. (512-930-4456)

DESCRIPTION OF TRACTS

Survey	Abstract	Owner	Approximate Acreage
55	731	Williamson County	640.405
		1/2 undivided interest	
56	1,114	Williamson County	290.404
		1/2 undivided interest	
61	734	Williamson County	90.859
		1/2 undivided interest	
62	1,112	Williamson County	258.956
		1/2 undivided interest	

Sonora Electric Company
Electric Repair
Construction Farm & Ranch
Commercial/Residential
Arnold Hosford
915-387-3677

Kasey's Korner Apartments
Luxury Living at its best!
• 1, 2 & 3 Bedroom Units
• Fully Carpeted
• All Appliances
• Laundry Room
• Convenient to all schools
Please call for further information.
387-2104
103 Dollie • Sonora, TX

MISSION SALES
For All Your
Tupperware Needs
call your local representative
Call 387-5280

George Thorp
Waterwell Service
GEO. "JENKY" THORP
915-387-5104
MOBILE: 915-650-4752
502 W. Mulberry • Sonora, TX

MARY KAY
Kathy A. Hearn
Independent Beauty Consultant
915-387-2096

TEAM GRAPHICS
CUSTOM SCREEN PRINTING
T-Shirts • Caps
Marla Percifull
915/387-5017 Sonora, TX

JIMCO
ENTERPRISES, INC.
SONORA, TEXAS
Complete Jimmy Condra
Oilfield Service (915)387-3843

Red Hoss Feeds
Your Local Purina Dealer
387-3621
801 Glasscock

Doran's Furniture
Hrs: M-F 10am - 6pm SAT. 10am - 4pm
Sonora • 387-3131 or 1-800-335-2733
Special Orders and Financing Available

CHARLES HOWARD CONSTRUCTION, INC.
General Oilfield Contractor
387-3093

The Bright Spot Beauty Shop
Total Hair Care for the whole family
Mon-Fri 8-5 387-2460
214 1/2 Main Sonora, TX

Knox Floor Covering
Carpet-Vinyl-Tile
392-2180
201 Ave I Ozona, TX

New Image Plus, Formula One & Beauticontrol
Call Shelly Briscoe at 387 - 3433

Dunes Mini Storage
now leasing
387-2104

CREEK STORAGE RENTALS
HWY 277 S. SONORA, TX
387-3295 387-5938

Carl J. Cahill, Inc.
OILFIELD CONTRACTOR
(915)387-2524
Sonora, TX

Public Notice

Pursuant to Tex.Rev.Civ.Stat. Ann. art. 1446e, § 5.08 (1996) Lone Star Gas Company and Lone Star Pipeline Company, Divisions of ENSERCH Corporation, and ENSAT Pipeline Company (collectively referred to as "Applicant") hereby give notice of intent to change the city gate rate of Lone Star Gas Company established by Order of the Railroad Commission of Texas in Gas Utilities Division Docket No. 3543.

Applicant proposes a Monthly City Gate Rate Calculation (MCGRC) to replace the rate approved in GUD 3543. The MCGRC recovers the costs of purchasing, storing, and transporting gas to the city gates, including an adjustment provision to recover the carrying cost of working gas in storage. Applicant also proposes transportation and storage rates for city gate deliveries with tracking clauses to recover fuel and lost and unaccounted for gas.

The proposed effective date of the change is November 29, 1996. The change is a major change, and will result in an increase in annual revenues of approximately \$24.2 million or 4.8 percent (4.8%). The customers affected are the 1.3 million residential and commercial customers in Texas served by Lone Star Gas Company under the rates established by the local regulatory authorities in the municipalities and the Railroad Commission in the environs areas.

A statement of Intent to make such change has been filed with the Railroad Commission of Texas in GUD 8664 and is available for inspection at the Commission's office in Austin, Texas and at the offices of the Applicant in Dallas, Texas.



The Town & Country Difference . . .

TIRED OF CAMP GRUB?

Try our DELI or a SUB!!


Two Sonora Locations.....



DELI

805 N. Crockett

We Put The DELicious in DELI

- Old fashioned, Juicy Hamburgers (Sonora's BEST)
- Crispy, Golden Fried Chicken 
- Burritos, Chimichangas, Corn Dogs
- French Fries (Steak or Spicy)
- Cold, cold beer, soft drinks and water
- Fresh, hot coffee

Plus, our Town & Country Store has plenty of deer corn and camp fixin's to make your hunting camp seem like a 'home away from home.'



**Good Value.
Great People.**



at your Town & Country Store
610 S.E. Crockett

Where FRESH is the TASTE.

- Famous 6" or Foot-Long Subs
- Chips 'n snacks
- Famous fresh-baked cookies
- Only the freshest fixin's in every SubWay Sub
- Cold, cold beer, soft drinks and water
- Fresh, hot coffee

Plus, this location also has deer corn and all the goodies that you've come to know and trust from Town & Country.

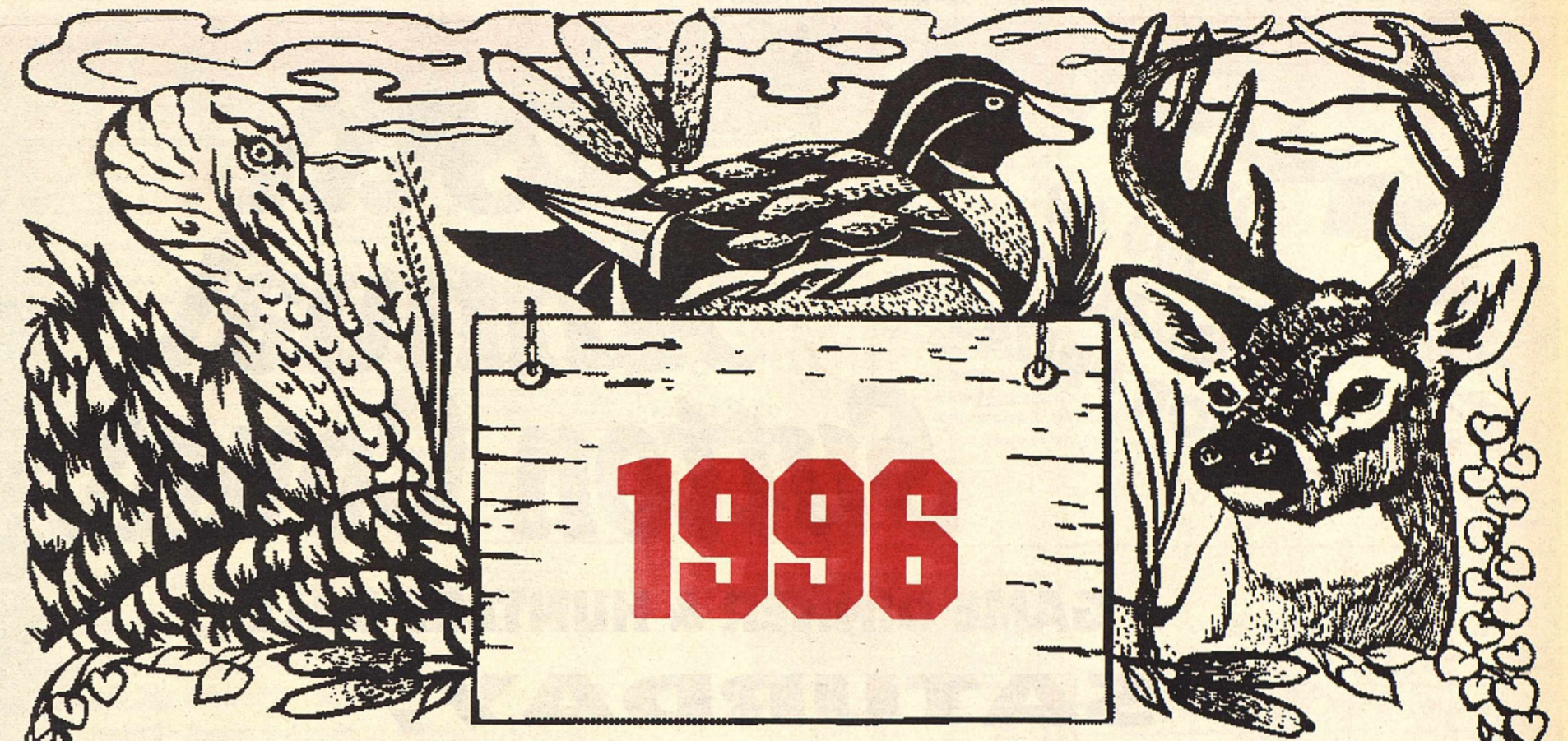


**Good Value.
Great People.**

Find out why over a million people every week experience....

"The Town & Country Difference"

805 N. Crockett 387-2169 Phone Orders Welcome! 610 S.E. Crockett 387-6181



SUTTON COUNTY HUNTERS GUIDE

THE Devil's River NEWS

NOVEMBER 7, 1996

**OVER
\$25,000.00
IN "QUALITY"
DOOR PRIZES**

28th Annual Sutton County

GAME DINNER & HUNTERS BALL

**SATURDAY,
NOVEMBER 9, 1996**

Admission: \$6.00 includes meal & one DOOR PRIZE CHANCE.

(Children under 10 FREE)

Hunter's Ball: 9 to 1

PRIZES

35 plus Quality Rifles and shotguns worth over \$15,000
Fishing & Hunting Equipment
Scopes
Binoculars
Tackle Boxes
Camping & Outdoor Equipment
Television
Ice-chests
MANY, MANY MORE

MENU

Turkey Fries
Fried Turkey Breast
Venison
Smoked Turkey
Wild Boar
Beef-o-Lo
Barbados
Dove

Chili
Mountain Oysters
Son-of-a-Gun Stew
and our own...
Sutton County Sausage
With Beans,
Cole Slaw
and Cobbler



You do not have to be present to win.

SPONSORED BY: SUTTON COUNTY GAME DINNER ASSOCIATION

The Whitetail's Cycle

A deer's daily life cycle revolves around eating and sleeping. Therefore, it spends most of its day traveling between the areas where these activities take place. As it travels, a deer uses wind currents for an alarm system.

I've found that deer most often travel into the wind in the early morning as they move from their evening feeding or bedding areas to their daytime bedding areas. By traveling into the wind, deer can detect predators in their bedding

areas. Once in the bedding area, a whitetail will make a small loop and position itself with the wind at its back. This allows the deer to use its eyes and ears to scan its original trail, and use its nose to detect danger from behind. A whitetail, however, changes its approach later in the morning. After temperatures rise and thermal air currents begin moving uphill, a deer's back-trail scent fades, making it hard for

predators to stalk bedded deer. While watching its back trail, a whitetail can also take advantage of rising air currents. Deer often use these conditions to their advantage by repositioning themselves to better scan the bedding area with their eyes, nose and ears.



When temperatures drop in the evening, thermal currents reverse directions and begin moving downhill. And, as a whitetail moves downhill, it will typically move with the wind at its back, depending on its eyes to watch for dangers. As it nears the feeding area, the whitetail slows down and remains positioned with the wind at its back trail. Of course, a whitetail doesn't wait around to see what will happen when it detects an out-of-place odor from its back trail. For example, I once watched as a large buck fed peacefully in a field. Suddenly, he popped his head up, looked at his back trail and bolted from the opening.

About a minute later, two black bears burst out of the woods and followed the buck's scent across the opening.

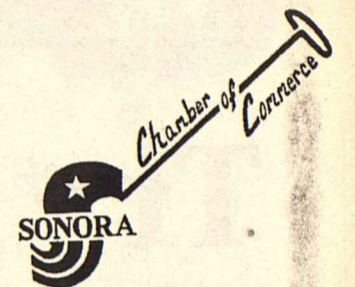
Alternative Feeding Areas

During my years of research, I've found that whitetails not only rely on several feeding areas, they'll only use those that they can enter when the wind is at their backs. That explains why deer sometimes appear to travel at random. However, the fact is, whitetails travel with purpose. For example, during the 1995 gun season, I was scouting a new hunting area when I located an area with numerous trails and plenty of fresh tracks leading from heavy cover to a 3-year-old clearcut. I knew an old buck would probably not enter the clearcut until well after dark, but I figured I might get lucky if I positioned my stand 300 to 400 yards from the clearing. I didn't have to wait long. Shortly after the sun had settled on the horizon, a large buck came slowly walking down one of the trails that leads to the clearcut. He was walking with the wind to his back, stopping occasionally to check the wind and eye his back trail. I killed him when he walked within 19 yards of my stand.

Although whitetails respond differently to various temperatures and weather conditions, their bedding and feeding behavior can be easily patterned in relation to the wind.

By continually analyzing the wind direction in your favorite hunting spots, you will learn how to consistently outsmart bucks.

However, you must first discard preconceived theories on deer and the wind. Once you do, you'll be able to place your stands more carefully, and put more venison on the table and racks on the wall.
Boyd Iverson, Deer & Deer Hunting



Attention Hunters!!

For Available deer lease information, contact or come by the Sonora Chamber of Commerce
707 N. Crocket
915-387-2880

WELCOME HUNTERS
TO SONORA AND
SUTTON COUNTY

Sonora SPORTS & SUPPLY
FOR ALL YOUR SPORTING NEEDS

915-387-5978

RUSSELL GREEN

CELLULARONE
AUTHORIZED DEALER

- Deer Stands
- Knives
- Feeders
- Red Wing Boots
- Ammo

303 So. Crockett Sonora, Tx.



Welcome Hunters, to Sonora & Sutton County

THORP'S
LAUN-DRY

Serving Sonora since 1948

LAUNDRY & CLEANERS

LINEN SUPPLY • UNIFORMS • DUST CONTROL

SONORA • OZONA • ELDORADO

113 W. Plum 387-2666 Sonora, TX

Monday-Friday

7:30 a.m.-5:30 p.m.

Whitetails and Wind

It's time we rethink our beliefs on how deer respond to wind direction. Contrary to what we've read and been told for years, deer do not always bed, feed and travel with the wind at their faces.

Does that sound like hearsay evidence? Well so be it. The fact is, in certain situations, deer purposely position themselves with the wind to their backs.

Of course, I was skeptical when I first observed this habit among whitetails. However, after a five-year study, I realized whitetails develop certain habits depending on weather conditions and wind variables.

The deer I observed lived in a rolling woodland setting, and they routinely traveled from a hill side bedding area to various "benches" that served as feeding areas. They varied their feeding patterns depending on wind direction, and they almost always entered the feeding location with the wind at their backs, not in their faces. In fact, not once did I see deer enter the feeding areas unless the wind was blowing at their backs.

At first, I thought the behavior was a fluke. Now, after observing this "isolated incident" more than 300 times over eight years, I have accepted it as the rule rather than the exception. And, I have used this knowledge to position myself to take numerous large bucks.

Always Playing Defense

Although moving with the wind might seem like a foolish approach to a feeding area, it really isn't. In fact, it's a wise approach, given the whitetail's highly tuned senses. Whitetails use this technique to further enhance their ability to sense danger. Until being removed from most of the whitetail's range, predators such as cougars, coyotes and wolves were among the whitetail's main enemies. These predators rely on precise stalking tactics to kill their prey. For this reason, a deer's back trail and bedding sites are vulnerable positions. However, a whitetail is even more vulnerable when it feeds because its sight and hearing are hindered.

With the wind to its back, a feeding whitetail can use its infallible sense of smell and acute hearing to sense danger from behind. While feeding, a deer will suddenly pop up its head every few seconds while grazing or browsing to scan the area with its eyes. It will often stop feeding to listen, rotating its ears like miniature radar dishes. A feeding whitetail, of course, relies on its nose more than its ears. Have you ever tried listening to someone whisper while you're chewing? It's not easy. For these reasons, whitetails pick bedding areas that allow them to position themselves with the wind blowing from their back trail to their faces.

KEY FACTS:

• Each day, sportsmen contribute more than **\$3 million** to wildlife conservation efforts. This amounts to more than **\$1.5 billion** per year.

• To date, hunters and fishermen have contributed a total of **over \$17 billion** for **wildlife conservation**.

• Hunters contribute over **\$14 billion** to the U.S. economy each year, supporting **more than 380,000 jobs**. For every **50 hunters**, enough economic activity is generated to create **one job**.

• Through over 10,000 private groups and organizations (such as Ducks Unlimited, Pheasants Forever and the Rocky Mountain Elk Foundation), sportsmen contribute an additional **\$300 million** each year to wildlife conservation activities.

• For every taxpayer dollar invested in wildlife conservation, sportsmen contribute **nine dollars**.

WHITE-TAILED DEER

In 1900, less than half a million white-tailed deer remained in the nation. Today, conservation programs have returned the whitetail population to more than 18 million.

THEN 500,000
NOW 18,000,000



CANADA GOOSE

Habitat destruction reduced Canada goose populations to a low of some 1,110,000 in the late 1940's. Today, there are more than three times that number.

THEN 1,110,000
NOW 3,760,000



ROCKY MOUNTAIN ELK

In 1907, only about 41,000 elk could be counted in the U.S. Today, populations in ten western states total approximately 800,000.

THEN 41,000
NOW 800,000



WILD TURKEY

By the early 1900s, encroaching civilization and habitat loss may have reduced the wild turkey population to under 100,000. Today, conservation programs have restored the population to some 4.5 million birds.

THEN 100,000
NOW 4,500,000



PRAIRIE ANTELOPE

About 50 years ago, the total U.S. population of pronghorn was only about 12,000. Today, conservation programs have helped increase the population to more than one million.

THEN 12,000
NOW 1,000,000



Season and Bag limit for Sutton County

Whitetail Deer: 4 deer, limit 2 bucks; Archery, September 28 - October 27;

West Texas Mule Deer: November 30 - December 15

Panhandle Mule Deer: November 23 - December 8

General: November 2 - January 5; Muzzleloader Antlerless only, January 11-19th.

Javelina: No closed season; 2 per year.

Squirrel: No closed season; no bag limit.

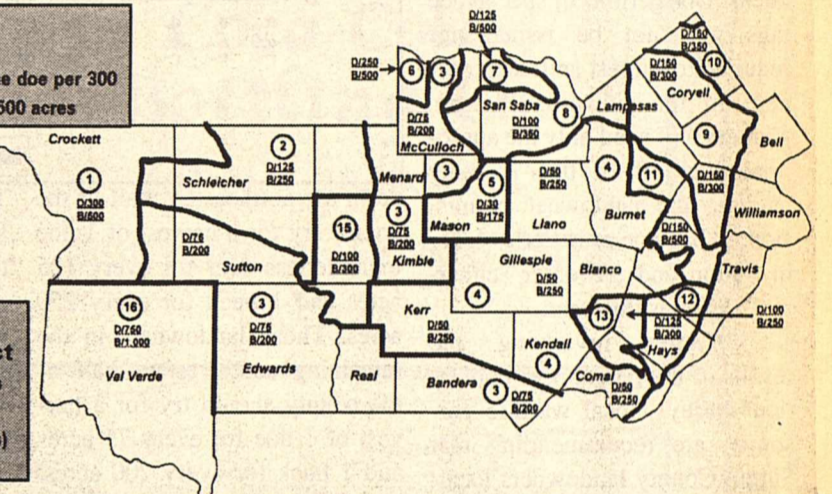
Turkey: Limit 4 per license year; **General:** November 2 - January 7, either sex.

Spring Season: April 5 - May 11

1996
Sutton County Game Dinner November 9th, 6:00 p.m.
Gun List

Model	Cal.	Qty
Rem. 700 ADL Syn. Stk	243	4
Rem. 700 ADL Syn. Stk	270	11
Rem. 700 ADL Syn. Stk	30-06	9
Rem. 700 ADL Syn. Stk	308	4
Rem. 700 ADL Deluxe	270	2
Rem. 700 ADL Deluxe	308	2
Rem. 700 ADL Deluxe	25-06	2
Win. Classic 70 Feather WT.	22-250	1
Win. Classic 70 Feather WT.	270	1
Win. Model 70 Classic Sporter	270	2
Win. Model 70 Classic Sporter	30-06	1
Brwn A-Bolt Hunter W/O Boss	22-250	3
Brwn A-Bolt Micro-Medallion	22-HORNET	1
Brwn A-Bolt Medallion W/O Boss	308	1
Brwn A-Bolt Medallion W/O Boss	30-06	1
Ruger 10-22	22	4
Ruger 77R	25-06	2
Ruger 77R	257 Roberts	2
		Total 53

Example:
Crockett County, (1)
Suggested harvest of one doe per 300 acres and one buck per 500 acres



Welcome Hunters!



Federal
LAND BANK
Association

**Federal Land Bank
Association of Sonora**

221 E. Main 387-2777 Sonora, TX

Welcome Hunters to
Sonora and Sutton County!

**BILLY GREEN
WATER SERVICE**

305 Hightower Sonora, Tx. 76950
387-2205

Victor's Auto & Truck Parts

Your Complete Parts Store

WAGNER **WIX**

AMERICAN EXPRESS VISA DISCOVER MasterCard

Ruben Garza, Sales Manager

OPEN 7 DAYS
MON-SAT 7:00 a.m.-6:00 p.m.
SUNDAY 10:00 a.m.-1:00 p.m.

301 HIGHWAY 277 NORTH
SONORA, TX 76950

Diana & Victor Virgen
Owners

OFF: 915/387-2088
PAGER: 278-5131

504 N. Crockett Ave.
Off. (915) 387-5746
Fax (915) 387-2598

Victor's Automotive & Muffler Shop

24 HOUR WRECKER SERVICE

Our staff includes mechanics experienced and licensed in:

- Vehicle inspection
- D.O.T. inspection
- Air condition technician
- Farm equipment service and repair
- Foreign car service and repair
- Diesel engine service and repair
- Oilfield equipment service and repair

• Flat Rate • Road Service • Wrecker Service • We'll make you and your car smile!

All work guaranteed
Fast, Fair, Friendly Service

Diana & Victor Virgen
Owners

504 N. Crockett Ave.
Off. (915) 387-5746
Fax (915) 387-2598

D&V ROUSTABOUT

PIPELINE CONSTRUCTION

Fully Insured • 24 Hour • Radio Equipped

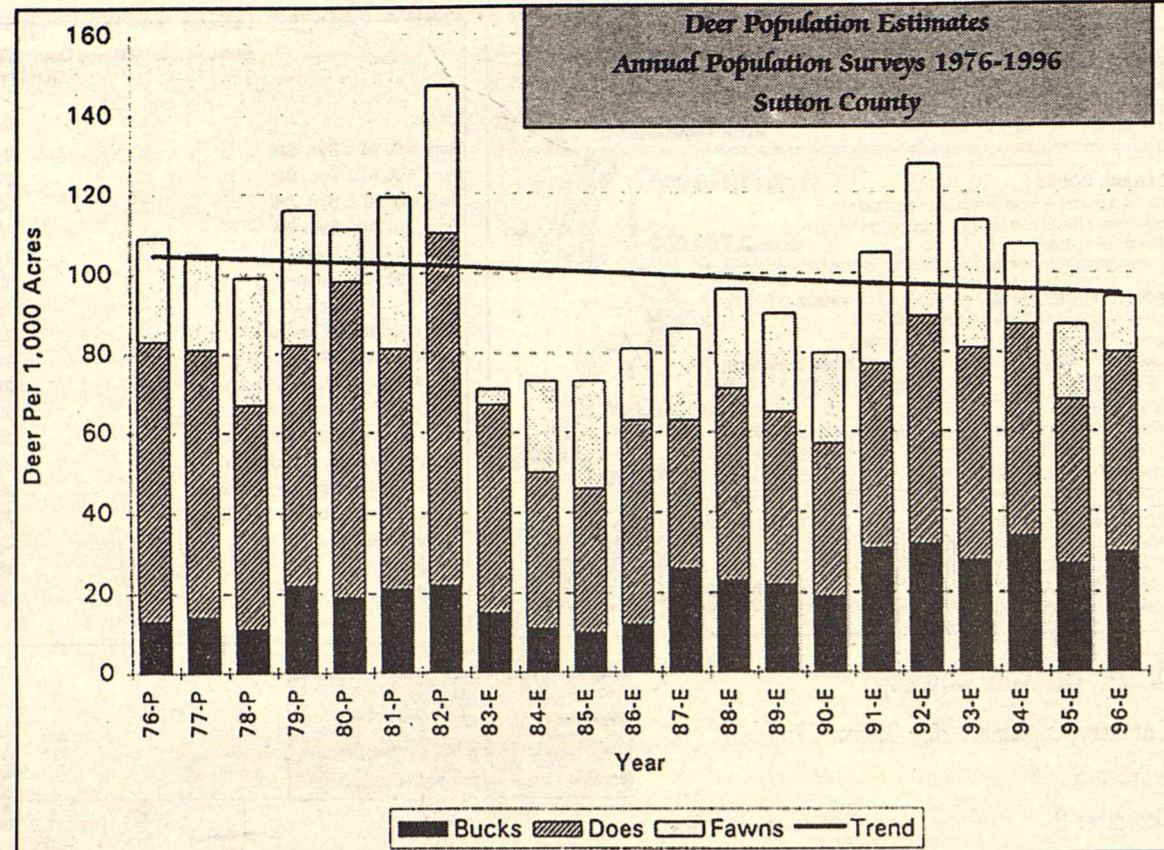
D&V ROUSTABOUT SERVICE
301 HWY 277 NORTH
(915)387-5315
FAX (915) 387-2598
SONORA, TEXAS 76950

SONORA (915)387-5315
OZONA (915)392-5678

Diana & Victor Virgen
Owners

504 N. Crockett Ave.
Off. (915) 387-5746
Fax (915) 387-2598

TPW DEER POPULATION SURVEY (SUTTON COUNTY)



Wildlife personnel with the Texas Parks and Wildlife Department recently completed annual deer population surveys here in Sutton County. The counts resulted in an estimate of 95 deer per 1,000 acres or about 87,300 deer county wide. This year in Sutton County the deer season opens on Saturday, November 2, and runs through Sunday, January 5. The bag limit is the same as last year - 4 deer, no more than 2 antlered bucks. Doe permits or special doe tags will not be issued nor required to harvest antlerless deer here in the Edwards Plateau. Hunters will need only the appropriate tag off of their hunting license, and landowner permission, to bag doe or antlerless deer in Sutton and the other "either-sex" counties this year.

After reviewing the results of the recent deer population surveys, local wildlife personnel are recommending that Sutton County landowners locat-

ed in the northeastern half of the county try for a harvest of 1 doe or antlerless deer for every 125 acres and 1 buck for every 250 acres. Those landowners in the remaining southwestern half of the county should try for a harvest of 1 doe for every 75 acres and 1 buck for every 200 acres.

The recommended rates result from the need to better balance the sex ratio observed in the herd and from a desire to produce a healthier deer population that is properly matched to the existing supply of deer foods in the county.

These harvest rates are

based on compartment averages derived from survey lines located in this and several other surrounding counties. Therefore, the recommended rates may not be completely suitable for each individual ranch in the county. In general, if your acreage shows signs of overpopulation (a lack of

brush and weeds available at and just above ground level, less than optimal deer weights and poor quality buck antler development within each age class, low fawn survival, etc.), then you probably need to harvest your deer population at a higher rate and/or reduce livestock grazing pressure by reducing numbers or rotating your stock. On the other hand, if you have good deer habitat and an adequate supply of quality deer foods available, but seem to be short on deer numbers, then possibly you should harvest at a lighter rate than that recommended for the county.

Landowners interested in closely managing their local deer herd need to conduct their own on-site fall population surveys, with resulting harvest recommendations that meet their specific management objectives. Texas Parks and Wildlife Department wildlife personnel are available to assist with more specific wildlife recommendations for individual tracts of land.

Unloaded Guns kill!

ated with windmills and earthen livestock waterings have expanded turkey distribution. Several studies indicate that standing water is important to nesting turkeys with most nests located within one mile of water; however, nests are often located as close as 1/4 mile of water. Watering sites located not more than 2 miles apart appear to be advantageous for the wild turkey. Research studies have reported significant increases in turkey populations as a result of an increase in watering sites that were constructed for livestock operations. This may be in the form of dirt tanks or troughs at windmills.

Habitat Assessment

When attempting to enhance existing habitat or to provide adequate habitat requirements, a land manager must assess existing food, cover, and water conditions, or lack thereof.

The location and protection of all winter roost sites is of extreme importance. These sites must be preserved! The taking or shooting of turkey from a roost is unlawful. Location of hunting blinds adjacent to roost sites should not be permitted. Any human disturbance of roost sites during late evening or at nighttime can cause the birds to move, sometimes permanently. The manager needs to be aware of the types of use turkey are making of given areas. Which areas provide heavy use and why? Are certain areas being used primarily for nesting? Do other areas provide no use because

woody vegetation such as cedar, shinoak, or whitebrush is too dense to provide suitable habitat; if so, selective clearing may be desired. The manager must also make a mental inventory of food producing plants and seasonal food availability. If year round food supplies are not available, artificial food plots or supplemental feeders may be helpful.

Water availability is an important habitat consideration. Many turkey populations have become established in close proximity to permanent water provided by creek and river drainages. Standing, drinking water is important but the abundance and diversity of plant and insect foods as well as cover which is found in association with permanent water is also desirable.

DRN 1891

At Del Rio, Sept. 22nd, George Pfeffer, and Tony Reynolds were shooting cigars out of each other's mouths. The weapons used were target rifles. The light was failing and the men were drunk. At the fifth shot Pfeffer fired too high and to the left. The bullet entered Reynold's brain. He is dead. He was 28 years old, unmarried and of a jovial disposition.

Devil's River News, 1891.

WELCOME HUNTERS

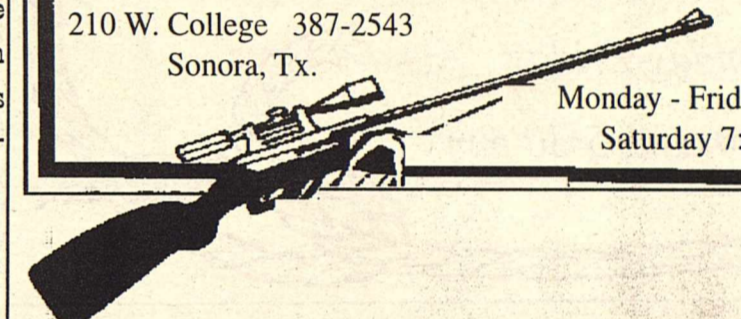
to your HUNTING HEADQUARTERS!

- Blinds
- Walls Jackets & Coats
- Gel Cel Feeder Batteries
- Solar Panels
- Corn
- Deer Blocks
- Deer & Game Feed
- Camping & Cooking Supplies
- Ammunition

SONORA WOOL & MOHAIR

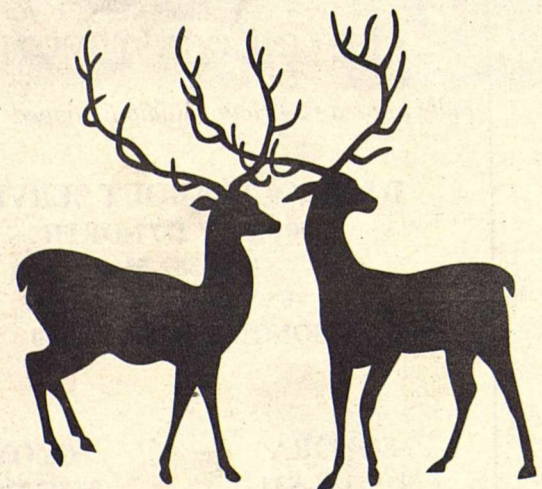
210 W. College 387-2543
Sonora, Tx.

Monday - Friday 7:00-5:00
Saturday 7:00-12:30



HUNTER'S

If you have a case of cold feet, come to Ol' Sonora Trading Company for MOHAIR SOCKS



OL' SONORA TRADING CO.

204 N. HWY 277 387-5507

Hunters we have
6 volt and 12 volt
deerfeeder batteries in stock

NAPA
Auto Parts
505 S. Crockett Avenue
387-5167

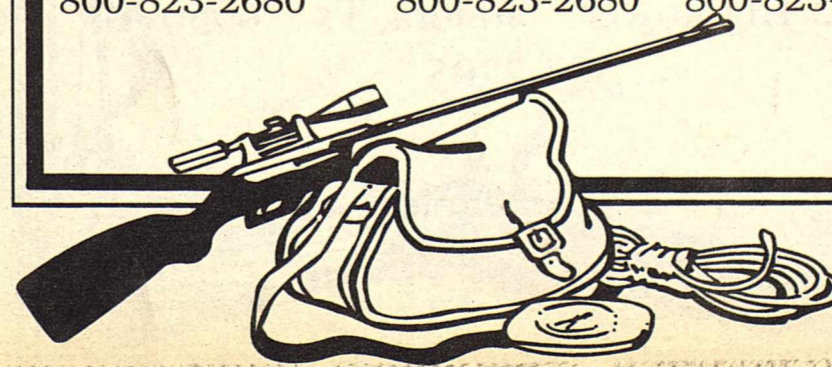
NIBLETT'S

OILFIELD SERVICES

Welcome Hunters

Charlie Niblett Ashley Niblett
Leo Rodriquez

Eldorado	Ozona	Sonora
915-853-2521	915-392-2734	915-387-6006
800-823-2680	800-823-2680	800-823-6006



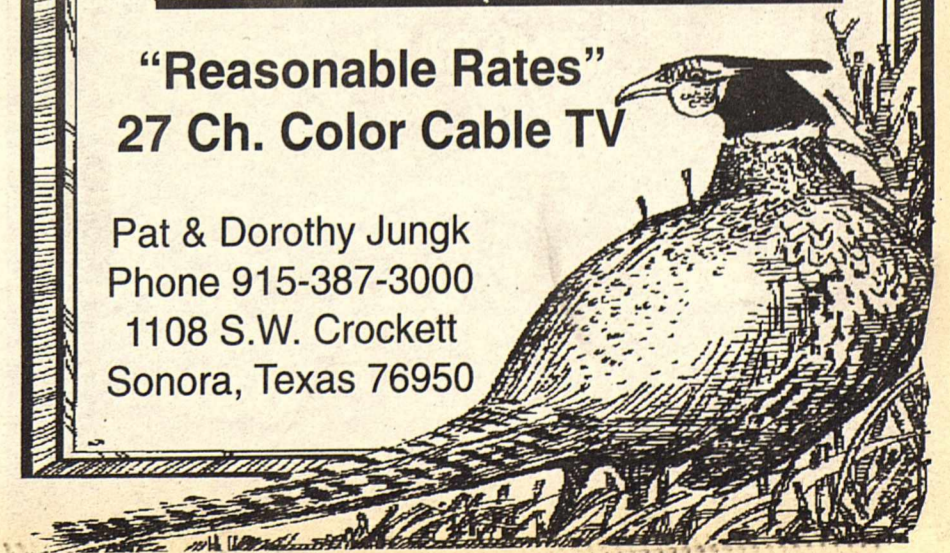
HUNTERS
come stay with us at



ZOLA'S MOTEL

"Reasonable Rates"
27 Ch. Color Cable TV

Pat & Dorothy Jungk
Phone 915-387-3000
1108 S.W. Crockett
Sonora, Texas 76950



available when other food items are scarce during late winter. Agricultural crops which are considered as grasses, such as wheat, rye, or oats, appear to be of major importance to the birds when available.

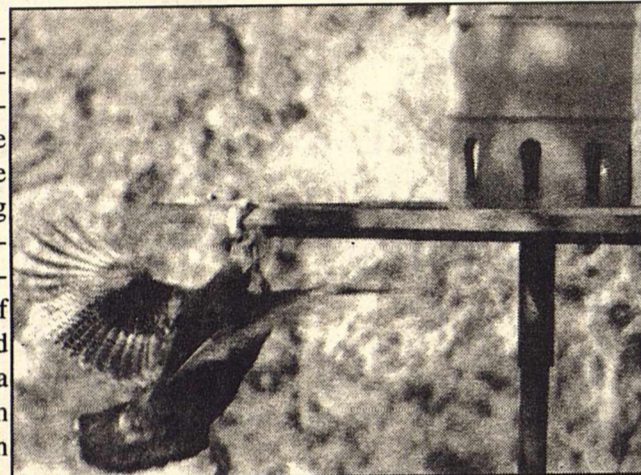
Utilization of browse plants includes fruits, berries, beans, and acorns produced by trees, shrubs, and vines. These items are important when available but they are seasonal and availability is usually of short duration. Important browse plant and fruit producing species are: acorns from many oak species (liveoak, Lacey oak, Spanish oak, shin oak, and post oak); berries produced by hackberry trees; elm seeds; fruit of Texas persimmon; mesquite beans; fruit and seeds of pricklypear and tasajillo; wild grape; chittum berries; agarito berries; and wild blackberry.

Use of forbs or weeds is also of importance to wild turkey. The birds utilize the green leaves and fruits of these plants but use is seasonal because forb growth and production is dependent on rainfall and temperature. Forb usage is at its peak during the winter period.

Supplemental Feeding

In addition to cultivated crops, artificial feeders can provide a supplemental food supply. The Texas Parks and Wildlife Department, when stocking wild-trapped birds in unoccupied turkey habitat, recommends the placement of supplemental feeders to aid in holding the birds in a given area and to give them the opportunity to establish themselves. The more common foods utilized in feeders are shelled corn, milo, wheat, oats, rye, and high-protein pellets.

Basically, any type of feeder which allows the birds "free-choice" accessibility to the feed is acceptable. Feeders should be fenced to exclude livestock, deer, and exotics. A 4-wire or S-wire, barbed wire fence placed relatively close to a feeder will deter deer



use. Platform feeders are helpful to limit use by deer and "varmints". If high protein pelleted feed is used, it is often necessary to mix milo or corn with the pellets until the birds become accustomed to the pelleted feed. In several documented instances turkey have become established, with a consequent increase in numbers, where high protein pelleted feeds were available.

Cover

As with other game species, a diversity of cover is important for maintaining a prolific and healthy turkey population. Vegetative cover is required for escape, loafing, screening, nesting, and roosting. Turkey do venture out into cleared areas to feed but must have escape cover nearby in which they can hide. Shrubs, weeds, vines, and grasses provide cover required for nesting as do agricultural crops such as alfalfa, wheat, and oats. Ground cover over 18 inches in height is desired by nesting turkey. Oftentimes, in the Edwards Plateau, these conditions are found only in highway rights-of-way and many nesting attempts are successful in these areas.

Turkey spend the night roosting off the ground to escape the danger of predation. Normally, they will use tall trees as roost sites; however, in extreme cases they have used electrical poles and other man-made structures. The birds prefer roost areas with low-growing brush both under the tall roost trees and along the approach to the roost site. This low brush or screening cover is extremely important and provides cover as the birds enter and leave the roost site. Turkeys customarily spend time in the loafing areas of the roost sites before ascending to the trees for the night.

Water

Availability of surface water is a requirement of good turkey range. Turkey distribution is frequently associated with streams and river bottoms. This is thought to be not only a function of standing water but the more plentiful food supply associated with the deeper soil types normally found along these drainage systems. However, the increase in watering sites associ-



TPWD Observations

1996 has been one of those years when people go around shaking their heads in disbelief at the weather patterns we have experienced and what might happen next. Persistence of droughty conditions early in the year affected everything: Rio Grande turkey poult production was poor to spotty-at-best, quail production and survival was reduced for both scaled quail and bobwhites, white-tailed buck antler production will probably be poor, and livestock stocking rates have been reduced in many areas to meet the lowered carrying capacities of the range. Much-needed rains finally fell late in the summer to pull the habitat out of stressed conditions and lead us into fairly decent shape for the autumn months; however, the harsher winter months may show the true effects the drought had on the habitat this summer.

The Texas Parks and Wildlife Department local biologists and technicians have recently completed county-wide white-tailed deer population surveys in Sutton County. There are 916,497 acres of available deer range with an estimated 10.5 acres of range per deer in 1996 for a total of 87,285 deer in the county. Our surveys showed a county-wide buck:doe ratio of

1:1.68, and a low fawn crop of 0.29 fawns per doe. Overall numbers of deer have actually increased since last year as surveys showed 11.4 acres per deer or a county total of 80,394 deer in 1995.

The only major change in the population this year is a lowered fawn crop and an increased doe population.

These survey results give general, county-wide averages and therefore are not indicative of specific pieces of property. Some areas of Sutton County received more rainfall, some areas received less. Some areas of Sutton County probably lost deer due to droughty conditions, some areas may not have lost many deer at all. No big deer die-offs were reported. Some deer looked in bad shape through the summer due to droughty conditions, but the majority of the populations maintained themselves rather well through the tough times. Unfortunately, they were probably subsisting on what should have been saved for the harsher winter months -- their natural winter browse.

Pea-sized acorns were falling off of oak trees in mid-August due to the drought. Then, in most areas of the county, we experienced an onslaught of rains in late August and through-out September that brought the habitat into such good shape that the intense green of it hurt the eye.

Deer have semi-sequestered themselves to oak mottes and are not moving

cont. on page 6

Welcome Hunters!



Coca-Cola Bottling Co.

69 N. Chadbourne
San Angelo, Texas 76903
655-6991

HUNTERS WELCOME TO SONORA!



SONIC

America's Drive-In

202 N HWY 277 387-5292

At the end of the hunting day, don't forget to unload and lock up your guns!

First NATIONAL BANK
SINCE 1890

P.O. BOX 798 - SONORA, TEXAS 76950

(915) 387-3861

Member FDIC

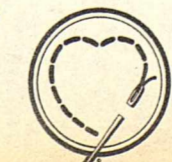
102 N. Main

THE CRAFT COTTAGE
Judy Edmondson
Unique handcrafted gifts for all occasions.

- T-Shirts • Children's Clothing
- Wood Work • Stuffed Toys
- Dolls • Candles • Earrings
- Collectibles • Dolls • Aprons
- Holiday Decorations • DMC
- Cable T.V. Payments
- GTE Payments



209 West 5th Street
Sonora, TX 76950
(915) 387-3964



Good Luck, Hunters!



JIMCO
ENTERPRISES INC.
SONORA, TEXAS

Complete Oilfield Services

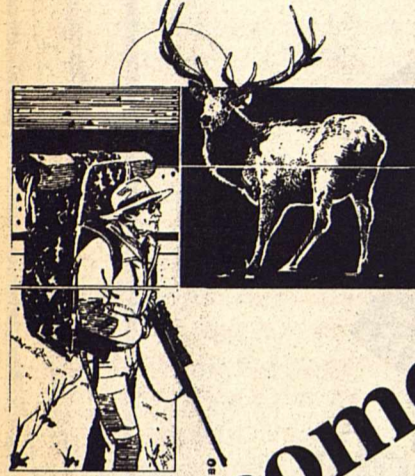
387-3843

Sutton County Steakhouse

IH-10 & Golf Course Road

387-3833

(next door to the Devil's River Inn)



Welcome Hunters!

Day's Inn Devil's River

IH-10 & Golf Course Road

387-3516

(next door to the Sutton County Steakhouse)

much during archery season to the point that bow hunters believe we have experienced the biggest die-off in history.

Preliminary reports of the few deer harvested during Archery Season: Does are in pretty good shape and the bucks actually have fat reserves on them.

Deer are currently not coming to the corn feeders very well. It is tough hunting out there right now. If the deer populations did consume most of their winter browse during the past, tougher summer months, they will most likely be on the move later in the season searching for available forage. Droughty conditions usually lower the habitats carrying capacity, so the attempt should not be made to stock-pile deer numbers. Based on responses from a statewide postcard survey, Sutton County had 5,086 total hunters in 1995 and they harvested 3,104 bucks and 2,287 does for a total harvest of 5,391 deer or 6.7% of the total herd. On-site fall population surveys can be conducted on individual ranches to assist landowners in achieving harvest recommendations that meet their specific management objectives. Adequate numbers of deer can then be harvested to improve the quality of the populations while reducing the populations to the carrying capacity of the range.

The Texas Parks and Wildlife Department is still hosting the Texas Big Game Awards Program for first deer/prong-

cont. from page 5

horn antelope entries and scored entries on white-tailed deer, mule deer, and pronghorn antelope. For official scoring or more information about our game species in Sutton County, please contact TPWD Game Technician IV Mary Humphrey in Sonora, at 387-2818.

Hunting Tips

Scented Smoke Attracts Both White Tail and Mule Deer Very Readily

The Objibway Indians did almost all of their deer hunting with the use of scented smoke. They used dried bearberries of wild aster roots to create a scented smoke. Actually nearly any incense such as jasmine, sandalwood, or rose scented, will bring in deer very easily. Deer are very curious about strange perfumed smoke and will follow the odor right to its source. It works very easily every time if the deer are not scared from being run by dogs or too heavily hunted.

DRN 1890

Try Echo Springs Whiskey. It is a strictly hand made sour mash and can be depended upon in sickness and for family use. Satisfaction guaranteed. It can be had at the Bank Saloon. *Devil's River News, 1890.*

Rio Grande Turkey

Rio Grande turkey are distributed throughout the central portion of Texas from the northern high plains to the southern gulf coastal prairies. The occurrence of this species becomes less frequent as they approach far west Texas and they are not found in deep east Texas.

The popularity of the Rio Grande turkey as a game bird has increased markedly in recent years; primarily due to the acceptance of the spring gobbler hunting season by hunters and landowners alike.

Although many birds are harvested during the fall season, these birds are generally taken incidental to deer hunting. The spring gobbler season presents a unique hunting experience when the birds can be called within close range and during a time when there is very little other hunting opportunity.

Through proper management, land managers can establish or enhance huntable turkey populations which not only provide an additional source of hunting income, but increases man-days of hunting opportunity for the hunting public.

Food

Rio Grande turkey have the same basic habitat requirements as other wildlife

species in that they require food, cover, and water. The distribution and availability of these basic environmental components is important. Food requirements for Rio Grande turkey greatly influence the distribution of these birds and seem to determine their population levels. Year round food supplies apparently are the major requirements necessary to establish and maintain turkey in any given area.

Food habit studies in Reagan and Sterling Counties of Texas indicated that turkey utilized the following food items on an annual basis by percent volume in their diets: grasses -36%, insects -29%, browse 19%, and forbs - 16%. Turkey need a reliable source of food which is available on a daily basis. These mentioned food groups then become of major importance due to their seasonal availability.

Insects are highly preferred turkey foods. Peak utilization period of this food source is during summer and fall when insects are most numerous. Insects are consumed in large quantities when available and searched out when less available. Turkey actively search out insects such as beetles during the dormant winter period.

Grasses are utilized throughout the year but peak use of these food items occur during the winter, spring, and fall. Rescuegrass is frequently eaten by turkey with the birds taking green seeds, leaves, and dried seeds. These food items are often

AMERICAN SALES & SERVICE



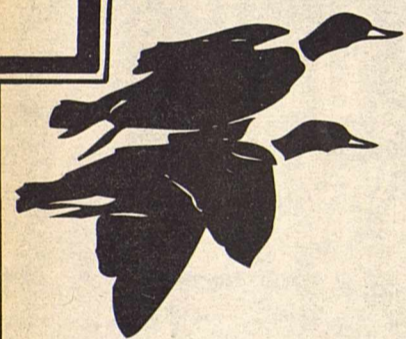
SALES
RENTAL
CHEMICAL
SERVICE
PARTS

HIGH
PRESSURE
WASHERS
STOCK
SPRAYERS

ALKOTA

387-3641

SONORA, TX.



Hunter's-
Welcome to
Sonora

G&L TOOL CO.

603 N Crockett
387-3177



PM OFFICE SUPPLY

FAX SERVICE AVAILABLE
GREETING CARDS
BUSINESS CARDS
LARGE ASSORTMENT OF PENS
AND PENCILS
204 MAIN • 387-3774,
FAX 387-6124

HAPPY HUNTING



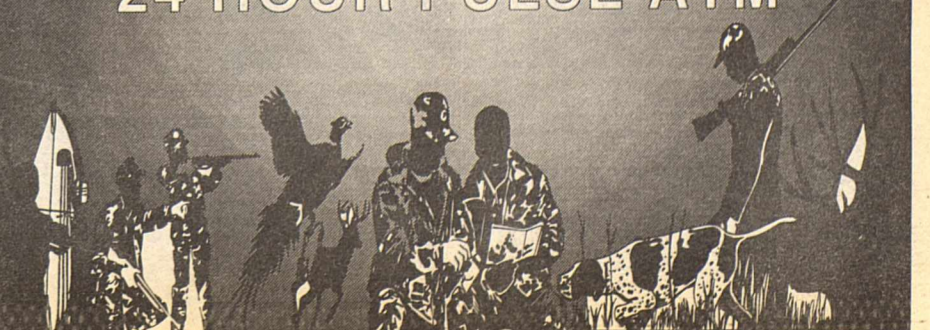
For all your auto service needs
Broncho Ford
115 N Concho Av. 387-2549
1-800-944-2459

SERVING SONORA AND SUTTON COUNTY



Member FDIC

207 HWY 277 NORTH
SONORA, TEXAS
24 HOUR PULSE ATM



cont. from page 13

blood lines are quickly absorbed into established genetic pools and no improvement in quality is noticed. Inferior quality or small deer result from poor range conditions or insufficient preferred forage and will not be improved by bringing in new bucks. **What are some of the most important limiting factors affecting white-tailed deer?**

Rainfall is an important limiting factor. Extended periods of severe drought during the late summer and fall are especially harmful to fawns, yearlings and very old deer. Coyotes are a limiting factor in South Texas and in portions of Southeast Central Texas. However, natural predators, such as coyotes, bobcats or eagles presently pose no serious threats to established deer herds of Texas. Efforts to control these predators are usually expensive and ineffective with regard to white-tailed deer.

What about hunting?

Legal hunting can be a limiting factor but is not currently a threat to deer populations. In fact, regulated hunting is the best way to crop the deer herd annually, much like a farmer rancher would crop his herds of domestic livestock. Properly controlled and regulated, hunting is the most reasonable and humane method of maintaining and utilizing the extensive deer populations of Texas.

Will deer move great distances?

Not normally. A deer chased by dogs may run several miles, but will often circle and end up close to home. During the breeding season, some bucks will trail female deer out of their normal home range but will later return. Movement studies and radio-tracking research in Texas indicated that most deer spend their lives within about 1.5 miles of their birthplace.

Would it help to feed the deer some supplemental feed?

If deer take large quantities of supplemental feed (corn, etc.), there probably is a shortage of their natural preferred foods. The best solution to the problem is to improve availability of natural foods. Obviously, this cannot be achieved quickly and will result only from proper range management practices (grazing moderately, rotation grazing systems, etc.).

If artificial feeding is necessary, deer should be supplied high quality (14 to 16 percent protein) 3/16" pellets instead of corn, which is about eight percent protein. Marked improvement in body size and antler development should not be expected from artificial or supplemental feeding.

SOUTHWEST CHRISTMAS GIFT SPECIAL

from

Rainbow Mt. Ranch Productions

12 GIFTS FOR ONE LOW PRICE

\$95.00 plus tax and shipping

- 1 Dream Catcher w/Legend
- 2 Dream Ships w/Legend ; *Dream Ship-A Dream Catcher woven into a dried and lacquered Martyniaceae*
- 3 Pair arrow head earrings, your choice, Flint or Obsidian
- 3 pair feather earrings
- 3 polished stone chip necklace and earring sets, *genuine semi-precious stones, strung on double waxed beading thread, with sterling silver clasp and glass seed beads as spacers. Earrings have surgical steel French hook wires. Available stones are: Lapis, Malachite, Howlite, Amethyst, Flourite, Clear Quartz, Tiger Eye Aventurine, & Snowflake Obsidian.* Save shipping and C.O.D. charges by sending payment with order to Rainbow Mt. Ranch Production, P.O. Box 63, Roosevelt, Tx. 76874, or call 915-446-4382. Orders must be received by Nov. 29, and will be shipped no later than Dec. 6, 1996. Please list choice of Flint or Obsidian for arrowhead earrings and type of stone for necklaces.

White-tailed Deer & Domestic Livestock

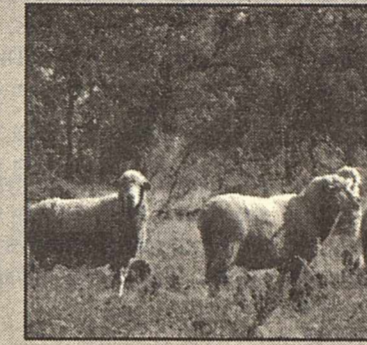
Dr. Ken L. Risenhoover, Dept. Wildlife & Fisheries Sciences, TAMU

White-tailed deer have shared rangelands with domesticated livestock in the Edwards Plateau since European man settled this area in the late 1800's. Lifestyles and standards of living for residents of this region have been shaped by the livestock industry, and especially by sheep and goats. Wool from sheep and mohair from goats are major sources of income for producers in this region. More recently the economic value for white-tailed deer and other wildlife have been recognized, and many landowners earn an additional \$2-\$7 per acre annually from the sale of hunting leases.

Because of similarities in body size, morphology and feeding habits, there is considerable concern among landowners, resource man-

agers and sportsmen regarding the potential for forage competition among white-tailed deer and domestic livestock. Previous studies conducted in this region have demonstrated that cattle and sheep are "grazers"

and consume primarily grasses. In contrast, deer are selective "browsers" and feed primarily on forbs and the foliage and fruits of woody plants. Goats appear to be "intermediate" to grazers and browsers, and seem capable of utilizing grasses, forbs and woody browse. Consequently, where



deer and goats occur together, dietary overlap between these species may occur and may result in forage competition.

Some important unanswered questions surrounding this controversy include, "Does dietary overlap result in competition between deer and domestic livestock?" And, if it does, "Who's winning?" It's

important to realize that dietary overlap, by itself doesn't necessarily mean that there will be a negative impact on animal performance and productivity, for competition to exist, it must be a limiting resource." Forage supply can certainly be a limiting factor on rangelands where stocking rates are high and range condition is poor. However, under such conditions, competition among goats or among deer

failure. If competition is occurring between deer, goats or deer and goats, it should be negatively affecting the way these animals obtain food. Mutual use of a food in short supply will reduce its abundance and will alter its pattern of distribution of the range. Changes in food abundance or distribution will alter patterns of forage selection and can reduce the rate of nutrient intake. Dietary shifts which reduce diet quality negatively impact digestive efficiency and nutrition. If this impact continues over time, it will lead to loss of weight and body condition, and reproductive failure.

WELCOME HUNTERS!

Check Out Those Bucks With

Ray-Ban
SUNGLASSES BY RAY-BAN

Westerman Drug
101 N Concho • Sonora, Texas
387-2541

Welcome Hunters

WEST TEXAS UTILITIES COMPANY

An Equal Opportunity Employer

WTU

A Member of The Central and South West System

Red Hoss Feeds

Owned by the Holekamp Family
Managed by Johnston Holekamp

We carry Willard Calf Ropes and Willard Nylons

ALL TYPES OF TACK

LIVESTOCK DRENCHES AND SPRAYS

PURINA FEEDS

GARDEN SUPPLIES

PET FOODS

ANIMAL HEALTH PRODUCTS

Glasscock Road Sonora, Texas 915/387-3621

Greetings Hunters

Have a Safe Hunt!

SONORA FAMILY MEDICAL CLINIC

Dr. Charles R. Pajestka, MD

Dr. Alvin L. Gutierrez MD

Sonora's Board Certified Family Physicians

301-A Hudspeth Avenue • 387-6557

Sonora, Tx. 76950

Blue Cross & Blue Shield Participant,
Medicare & Medicaid Patients Welcome
Insurance Filed
Knowledgeable, Friendly, Health Care
Professionals

Lyme Disease

WHAT IS IT?

It is a disease which can cause skin, joint, heart and nervous system problems. It may affect people of all ages, possibly continuing months or years if not adequately treated. It was named after the town of Lyme, Connecticut where it was first described in 1976. In 1984 the disease was found to be present in Texas and it is now the most frequently diagnosed tick insect-borne disease in the country. Illness usually begins in the spring or summer and is typically divided into three different stages, often with apparent recovery between stages. The different stages may overlap but can occur independently.

WHAT CAUSES IT?

It is caused by a specialized type of bacteria called a spirochete. It is usually transmitted by the bite of an infected tick or flea, although other insects which feed on animal blood may be involved.

SYMPTOMS

STAGE I

(Skin lesions and associated "Flu-like" Symptoms)

"Flu-like" Symptoms - A variable time (as few as 3 days or as many as 28 days) after exposure, symptoms which mimic the common flu appear. They may include many of the following: fatigue; lethargy; headache; fever and chills; stiff neck; myalgias (generalized muscle aches, sometimes with severe cramping); joint pain; backache; sore throat; enlarged lymph nodes; abdominal pain; nausea; vomiting; dizziness and non-productive cough. Except for the

fatigue and lethargy, which are often constant and can be incapacitating, the symptoms tend to be intermittent and changing. Fever is usually of a low grade, but sometimes becomes high, especially in children. This stage of the disease may last for months with one set of symptoms predominating for a while only to change to another very different manifestation.

Primary Skin Lesion(s) - Along with the "flu-like" symptoms, many victims (about 35%) develop an unusual skin lesion. The small red area around the insect bite begins to expand. The generally circular area may be as large as 14 inches, but often is smaller than 1 inch. The lesion may become lighter colored in the center leaving a red ring on the outside, and may be confused with "ringworm". Sometimes the center remains intensely red and hard, occasionally even forming blisters which later burst and form a heavy dark scab. This type lesion could easily be mistaken for a spider bite. Sometimes the lesion does not expand at all but fails to heal and repeatedly scabs and drains for several weeks.

Secondary Skin Rashes - Nearly 80% of people with Lyme disease develop other rashes. The secondary rash may appear at the same time as a primary skin lesion or may appear later. Often these rashes recur periodically. The character of the rash may vary from one time to another and can often change in appearance rather quickly. The rash may at times look like hives, poison ivy, chicken pox, or insect bites. The rash may also appear as splotchy areas, circular areas or irregular areas of redness.

STAGE II

(Nervous System and Heart Involvement)
Nervous System - Early Lyme disease

How many white-tailed deer are legally harvested by sportsmen in Texas each year?

An estimated 500,000 whitetails are harvested by sportsmen in Texas annually--more than any other state.

Isn't that too many?

No. Current harvest rates account for only about ten percent of the herd annually. Research indicates that about 20 percent of most populations should be removed annually by sportsmen. Biologically sound harvest rates and habitat management programs are necessary in Texas to prevent waste due to overpopulation, to achieve maximum utilization of this valuable natural resource and to insure the whitetail's continued survival. For example, since the initiation of the program in 1953, more than two million antlerless or doe deer have been harvested from the established deer herds in the state.

What do deer eat?

Deer eat mostly browse (leaves, twigs, young shoots of woody plants and vines) and forbs (weeds and other broadleaved flowering plants). They eat some grass, but only when it is green and succulent. Sheep, goats and foreign big game species compete directly with the whitetail for preferred deer foods. Deer food shortages usually occur during late summer and winter months. Adequate forage is usually available during spring and fall seasons. A variety of foods and habitat types is essential to good deer production and survival.

The following plants are examples of some good native deer foods in Texas which are readily taken by deer when and where they are available.

Browse: oak leaves and acorns, yaupon, greenbriar, prickly pear and fruit, hackberry, mulberry, rattan or supplejack, sumac, mesquite beans and dried leaves, hawthorns, poison oak, American beautyberry, wild cherry and plum, wild grape, honeysuckle, dogwood, elm, blackberry and dewberry, gum elastic (chittum), acacias (catclaw), ephedra, walnut, guayacan, wild chinaberry, kidneywood, Brasil and other condalias. Grasses: rescue grass, Texas wintergrass, Ozarkgrass, fali witchgrass, panic grasses, sedges and rushes. Forbs: bundle flower, euphorbia(s), whorled nodviolet, bayflower, oxalis, wooleywhite, tickclovers, filaree, clover, verbena, arrowleaf sida, wild lettuce, wild onions, old man's beard, wildbean, snoutbean, lespedezas, spiderwort, vetches (milkvetch, etc.) lamb's quarters, plantain, groundcherry, pigweed or carelessweed and partridge peas.

How long do deer live?

Deer in controlled situations have been known to live 15 to 20 years. It is

unusual, however, for a deer in the wild to live more than 10 years, because its teeth usually wear out during the eighth or ninth year.

What happens to the antlers each year?

Buck deer shed their antlers following the mating season each year. Antler shedding is triggered by the cessation of production of a hormone which also terminates the breeding season. Most bucks in Texas shed their antlers during late January and February. Shed antlers quickly deteriorate or are eaten by rodents and other animals for their calcium content. New antlers start growing and become noticeable "in velvet" during May and June. Good nutrition during this period is critical for good antler growth.

Shouldn't spike bucks be protected since they are young and will be the breeding bucks of the future?

Not necessarily. Most spike bucks are young deer, but if range conditions are poor, there may be spikes of any age. If a herd contains many spikes, the deer probably did not have sufficient quality forage during antler-growing season (May August). It would serve no logical purpose to protect the spike buck. Research conducted on the Kerr Wildlife Area has shown that all young spike bucks do not develop into the same quality of buck as do most yearling bucks with forked antlers. Some young spikes will produce very good antlers later in life, but the chances for massive antlers is not as good as with forked antlered yearlings. Spikes should be harvested based on the intensity of management desired by each landowner or group of hunters. Spikes should never be protected from hunting. The idea that the removal of spikes is a cure-all for antler development has little merit.

What is a good buck-doe ratio?

The buck-doe ratio in most of Texas is about one buck per three to five does (adult deer) which is satisfactory for good production and hunting. This ratio is not a major problem in Texas deer herd management at this time. An adequate harvest of antlerless deer would help maintain a good ratio of both sexes. It is recommended that game managers and landowners strive for a ratio of 2.5 does per buck.

Won't the deer become smaller due to inbreeding if we don't bring in some new blood lines?

No. The deer of Texas are direct descendants of isolated deer herds of many years ago. Inbreeding may occur in the wild, but it apparently is no problem. New cont. on page 14

WELCOME TO SONORA

The Sonora Chamber of Commerce is pleased to welcome you to our area. If we can assist you with local information, please call or come by our office.

Sonora Chamber of Commerce
706 S. Crockett 387-2880
Sonora, Tx.



SONORA TAXIDERM STUDIO



TIM DOBBS

915-387-6106

SONORA, TEXAS

Divian's Modern Way

Owned and Operated by Divian Mears

- Groceries
- Fresh Meat
- Ammunition
- Texas Lotto
- Movie Rentals
- Lottery Tickets
- Hunting License
- Beer
- Cold Drinks

HOURS:

Monday, Tuesday, Thursday & Friday: 6 a.m. - 7 p.m.
Wednesday & Saturday: 6 a.m. - 10 p.m.

Closed Sunday

210 Hwy. 277 S. 387-5406 Sonora Tx.



Money Gram

FACTS ABOUT WHITETAIL

1972.

submitted by TPW

Exploration and settlement of the American frontier would have been extremely difficult without the white-tailed deer. Early colonists and explorers utilized the meat and skins of these animals extensively, and deer hides later served as a medium of exchange between trappers, frontier scouts, Indians and traders.

Deer were even more important to the American Indians prior to settlement of the nation, providing clothing and food. Deer were also an important factor in the folklore and religion of native tribesmen.

Indiscriminate slaughter by commercial meat and hide hunters and ignorance of the deer's habitat requirements almost caused its extermination near the end of the 19th century. It was reported, for example, that an early Texas trader operating in Indian country at Trading House Creek (near present site of Waco) shipped approximately 75,000 deer skins from 1844 through 1853.

Public concern for survival of the species brought about a series of protective measures by the Texas Legislature near the turn of the century. A five-month closed season during which deer could not be hunted was enacted in 1881. The bag limit was established at six bucks per season in 1903 and was reduced to three bucks per season in 1907.

The first hunting licenses were sold in Texas in 1909. In 1919, six game wardens were hired to patrol the entire state. Additional interest and protection by landowners, sportsmen and law enforcement personnel helped deer populations increase steadily during the 1930s and 1940s. Statewide trapping and restocking programs established deer herds in previously uninhabited areas. Sales of hunting licenses increased dramatically—382,249 in 1955, 571,058 in 1964 and over one million in



The white-tailed deer is now the most numerous big game animal in Texas and in the United States. Aesthetically and emotionally, the whitetail holds a place of distinction in the hearts and minds of many Texans.

Research and management projects concerning the whitetail and its habitat requirements are conducted by wildlife biologists of the Texas Parks and Wildlife Department, federal agencies, many universities and several private research establishments in Texas.

Research activities by the wildlife biologists of the Texas Parks and Wildlife Department are 75 percent funded from federal excise taxes on firearms and ammunition. Deer are of primary importance on several of the 119 wildlife manage areas (900,000 acres) operated by this department.

Research activities also are conducted on National Wildlife Refuges, National Forests and Department of Defense lands. The Texas Parks and Wildlife Department game warden field force now numbers some 460 officers. These highly skilled and trained officers provide law enforcement services essential to continued survival of the whitetail.

The whitetail is one of the most researched, observed, sought after, cussed and discussed of all wildlife species in Texas. Few of us, however, are aware of the basic principles which rule this majestic animal's life. Following are some of the most frequently asked questions about white-tailed deer in Texas.

How many deer are there in Texas?

Texas has more white-tailed deer than any other state. Population estimates in recent years range from three to four million. Current census data indicate that there are more than four million whitetails in Texas. Population estimates vary from year to year, depending upon reproduction, survival and losses due to malnutrition and disease.

Hunters should know . . .

Co-Op facilities are never in season

Hunting season is a much anticipated time for many Texans - but often a dreaded time for electric co-op linemen.

Each year hunting season brings with it an increase in vandalism of electric facilities. Whether by accident or intent, insulators, poles, transformers, power line, meters, and other hardware often become "targets for hunters."

Not only is the damage expensive to repair, it can also create an extremely dangerous condition. A damaged insulator can cause a power line to fall posing a risk of electrocution and fire. Damaged facilities also present a substantial risk for linemen who must work to repair the damage.

And the danger doesn't stop there. Loss of service to a home with life-support equipment can quickly create a life-threatening situation. An outage can also affect traffic signals and security lighting.

Southwest Texas Electric Cooperative wants this hunting season to be a good one for you and your Co-Op. So, please take careful aim before you shoot and be certain that there is nothing between you and your target - and that your target is in season!

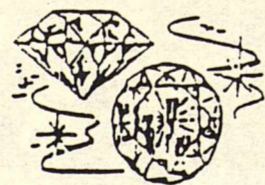


Southwest Texas Electric Cooperative

P.O. Drawer 677 • (915) 853-2544 • Eldorado, Texas

Tedford Jewelry

The Finest in
Diamonds,
Colored
Gemstones,
Watches and
Exceptional Gifts



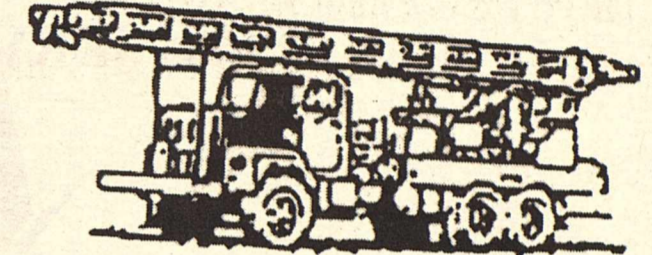
Sonora's
Fine Jewelry
and Gift Store.
China,
Crystal,
Silver, Collectibles

Jewelry and Watch Repair
Complete Bridal Registry Service
Hallmark Cards
Stores in Sonora and Ozona

107 NW Concho
Downtown Sonora
387-3839

910 11th St.
Ozona
392-5537

WELCOME HUNTERS



SWABBING & ROUSTABOUT SERVICE, INC.

- Swab Units • Roustabout Service •
- General Dirt Construction •
- Contract Pumping • Anchor Setting •
- Sandbasting/Painting •
- Water Transport Service • Steam Cleaning •

MAIN OFFICE

P.O. Box 361 - Hwy 277 S.

Sonora, Texas 76950

(915) 387-5938

(800) 299-5938 (915) 387-3295

FAX (915) 387-6008

Luther M. Creek President

Tony Rameriz
Dirt Construction

Steve Thorp
Dirt Construction

Taylor King
Roustabout/Construction Supv.

Poncho Castillo
Well Servicing Supv.

Jerry Creek
Water Transports



FOOD CENTER

"WE SERVE YOU BETTER"



Custom Cut Meats
 Deli
 Bakery
 Deer Corn
 Hunting & Fishing
 Licenses
 Money Orders
 Western Union

Store Hours:

Mon. - Sat. 7:00 a.m. - 9:00 p.m. Sun. 8 a.m. - 8 p.m.
 600 SOUTH CROCKETT AVE. SONORA TX. 76950

387-3438

387-5616



cont. from page 8

is often manifested by excruciating attacks of headache and neck pain or stiffness sometimes lasting for hours. About 15% of infected people develop more severe neurological problems such as: sleep disturbances; difficulty concentrating; poor memory; emotional instability; irritability; double vision; numbness-weakness in extremities or face; eye pain and/or ear pain.

Heart - Within several weeks of infection about 10% will have heart involvement which is usually temporary (one to six weeks) and rarely recurs. Most commonly this involves episodes of an unusually forcible, rapid or irregular heart beat.

STAGE III

(Joint and Nervous System Involvement)

Joint Involvement - About 60% will develop arthritis evident as intermittent joint pain, usually involving larger joints. Onset of arthritis may be weeks or months (rarely up to 2 years) after initial infection. Attacks last for a few days, and may recur a few weeks later. In about 10% of cases, the arthritis becomes chronic.

Nervous system involvement - Some patients may develop neurologic symptoms such as chronic fatigue, psychiatric problems or a multiple sclerosis-like illness.

DISEASE SPREAD

Lyme disease is spread by tick or flea bites. Tick or flea infestations may result in more than one person becoming ill at the same time. A pregnant woman can transmit the disease to her unborn child.

DIAGNOSIS

1. The appearance of a typical prima

ry skin lesion (an expanding lesion with a lighter colored center following a tick or flea bite) is considered diagnostic for Lyme disease.

2. Without a primary lesion the diagnosis must be made on clinical signs and symptoms plus positive results from a blood test available from the Texas Department of Health in Austin.

TREATMENT

If you think you may have Lyme disease, see your doctor immediately. Treatment is more successful when initiated early.

DRN 1891

Garrett Bean came in Wednesday and deposited with the county clerk a panther scalp. The brute was killed near the Huffman Ranch in the western portion of the county and from the size of the scalp it must have been a large one. He was treed by dogs and shot, and thus ends the career of another wild western marauder.

Devil's River News, 1891.

Test Drive your Ford from
 Broncho Ford
 115 Concho 387-2549

HUNTERS- SEE
 US FOR DEER
 STORAGE AND
 GAME
 PROCESSING



BRANDING IRON
 SMOKEHOUSE
 204 S. WATER

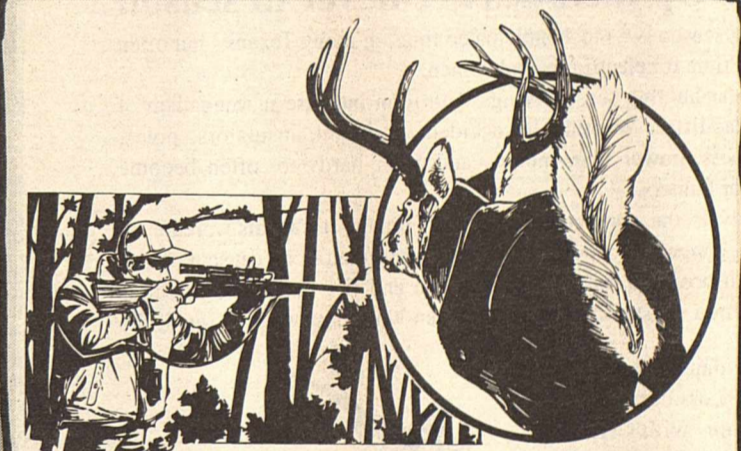
WELCOME HUNTERS!



Doyle Morgan
 Insurance Agency



213 East Main Post Office Box 1216 Sonora, Texas
 76950
 Telephone 915-387-3912



WELCOME TO SONORA
DEVIL'S RIVER AUTO PARTS



105 CROCKETT • SONORA, TX. 76950
 OWNER MARTY PARKS
 915-387-3255 OR 387-5769
 RESIDENCE 387-5502