

(115-920)

2007272 123199
BAZE BOOKBINDING
514 W 7TH
AMARILLO

TX 79101

Published in Sonora, Texas • Capitol of the Stockman's Paradise

Vol. 99 No. 5 February 2, 1989

Sonora, Texas 76950

Bad Company on the move

by Dedra Jennings

Bad Company Rodeo is rapidly growing due to its complete package of enthusiasm, outstanding livestock, promotion, color and sportsmanship toward the rodeo cowboys and the fans. The Sonora based stock contractor combines ideas from the past and present to improve the future of rodeo.

The National Finals Rodeo in Las Vegas saw numerous wild rides on Bad Company Stock including a go-round win by Monty "Hawkeye" Henson on "Rose Garden". Henson received a \$9100 check and "Rose Garden" earned a gold and silver Gist Belt Buckle for her performance.

Bad Company Rodeo ended the 1988 season at the Texas Circuit Finals in Fort Worth. Twenty-two head of bucking stock were selected from the Bad Company herd. Bucking bulls like "Bad to the Bone", "Hot Stuff", "Happy Hour", and "Taking Care of Business" created excitement in the Cowtown Coliseum. Broncs and bulls were not the only things from Sonora at Fort Worth. Mack Altizer qualified in the Team Roping and Steer Roping and Arnold Felts won the Steer Roping Average. Jimmy Powers was elected President of the Texas Circuit.

For the first time, Bad Company will furnish part of the stock for the Fort Worth Stock Show and Rodeo and the Southwestern International Rodeo in El Paso. The addition of

this stock promises to liven things up.

The 1989 Bad Company Rodeo Tour will kick off in George West on March 17 and 18. Plans are

finalizing for the Sonora PRCA rodeo during Sutton County Days.

For further rodeo news and information, keep reading the Devil's River News.



Arnold Felts of Sonora winning the Steer Roping Average at the Texas Circuit Finals in Fort Worth. Photo courtesy of Jennings Photography.



And the winner is . . .

Pat Brown was the lucky winner of the half beef raffled by the West Side Lions Club. Mela San Miguel drew the winning ticket as Maray Cearly of the Firemen's Auxiliary and Harold Martinez of the West Side Lions look on. The proceeds of the raffle go to benefit the Firemen's Auxiliary. The West Side Lions extends their sincere appreciation to all supporters. Staff photo/Ann Cates.

New publication focuses on 10

April will see the advent of a brand new publication designed to showcase the small communities along IH-10 to travelers of the 500 mile stretch between El Paso and San Antonio.

Principals of the yearly publication entitled *Interstate-10 Traveler* are Scott Campbell, publisher of the San Angelo based *Ranch Magazine*; Jack Cowan, a featured columnist for the *San Angelo Standard Times*; and Jimmy Cahill, owner of Cahill Construction and Ol' Sonora Trading Co.

The concept for the magazine came into being after discussions with various community leaders along the route in which unofficial counts listed the number of vehicles traveling IH-10 to be between 5,000 and 9,000 per day.

Motorists traveling the interstate see little of the communities from the highway and thus usually have little reason to alter their route.

Localized stories in the *Interstate-10 Traveler*, event schedules and advertisements will inform travelers of sights, goods and services they previously weren't aware of,

creating an interest that otherwise would not exist.

Distribution of the magazine will be handled primarily through Chambers of Commerce and Tourism Departments in the communities along the way but will also be distributed at ports of entry, camp grounds, restaurants, and motels.

Response to the tourism-oriented publication has been tremendous as West Texans have become more attuned to the value of tourism on local economy.

Exposition to highlight Texas wildlife and hunting

Kerrville will be the site of the 1st Annual Texas Wildlife Exposition which will be held on February 25 and 26 at the Hill Country Youth Exhibition Center.

The event has been designed to promote Texas wildlife as an industry and a family sport while recognizing that proper education of the public will develop a greater respect of the wildlife resources available on a state-wide basis.

The show promises an attraction for everyone whether you hunt with a gun, rod n' reel, bow or camera.

Exhibitors and participants will be comprised of representatives of the Texas Parks and Wildlife Department and the Department of Agriculture, fish and game associations, colleges and universities, rifle associations, gunsmiths, land owners, and other professional societies involved with hunting and wildlife.

Demonstrations and clinics will include field and hunting safety instructions, preparation and cooking of game, programs designed for youngsters, buck rattling and duck, goose and varmint calls, exotic game tasting

as well as a bowhunters marksman and a rifle marksman competition and demonstrations.

Saturday evening will feature a "Bluegrass Shindig" and Sunday's musical entertainment will include Bluegrass and Cloggers. Drawings for door prizes will be sprinkled

throughout the two-day event.

Proceeds of the exposition will benefit the Texas Lions Camp.

For additional information contact the Texas Wildlife Exposition, P.O. Box 1955, Kerrville, 78029 or call (512)257-4112.

Election and vote to change limit

Texas wheat producers will vote in late February and early March to elect five board members. Producers will also decide on a proposal to change the wheat check-off assessment limit to one cent per bushel for research, market development, and service.

To learn more about the upcoming election and assessment vote, producers in Sutton and surrounding counties will want to attend an informational meeting sponsored by the Texas Agricultural Extension Service on February 2 at Abilene, says Preston Faris, county Extension agent. The meeting will be at the Old County Courthouse

and will start at 10 a.m.

Producers will hear from an Extension economist regarding the current wheat situation, outlook and changing wheat production trends in the state, says Faris. Also, the mechanics and timing of the voting process will be presented.

Following these discussions, Texas Wheat Producers Board representatives will report on the current use of assessment funds and plans for the future. There will be ample time for questions and input from producers regarding the program.

For additional information, please contact the county Extension office.

Briefly

When they meet . . .

City Council-Tuesday, February 21, 9 am in the Council Chambers at City Hall.

County Commissioners-Monday, February 13, 9 am in the Courthouse.

Hospital Board-Monday, February 13, 7 pm in the Board Meeting Room at Hudspeth Hospital.

School Board-Tuesday, February 14, 7 pm in the School Administration Office.

Breakfast by Band

The Mighty Bronco Band and the Band Boosters will be serving breakfast at Fiddler's Restaurant from 10 pm until the last person is fed on Fling Ding night, February 4.

Members will also offer a baby sitting service at the Fire Hall on this evening.

For additional information or to make your reservations, please call 387-2457 or 387-3507.

Dinner at Center

There will be a delicious Mexican Dinner served at the Senior Center on Sunday, January 29 from noon to 2 pm. The donation is \$4 per person and \$2 for Senior citizens and children under 12.

Tickets are available from Advisory Board members and also at the door. Take out orders are prepared at your convenience.

The Center is located at 106 Wilson.

Attention landowners

Shooting Preserve Record Books need to be turned in by March 1, 1989. The books may be left at the dispatcher's office at the Sutton County Jail or given to the local Game Warden.

If you have any questions, call 387-3068 or 387-5159.

Advisory meeting

The Sutton County Senior Center Advisory Board will meet at 5:30 pm on Tuesday, February 14 at the Senior Center.

All board members are urged to attend.

ICA meeting

Sutton County ICA monthly business meeting and dutch treat dinner will be at the Sutton County Steakhouse on Monday, February 6 at 6:30 pm.

All members are urged to attend.

Little League elections

A meeting to elect new officers for the upcoming 1989 Little League season will be held on Thursday, February 2, 7 pm at the EMS Building, 211 E. 3rd.

Everyone interested in Sonora's youth baseball program and it's leadership is asked to come and show support by voting for this year's officers.

SS representative

Garland Gregg, representative for the San Angelo Social Security will be at the County Courthouse in Sonora on February 16 between 9 and 10:30 am.

Anyone who wants to file a claim for benefits, get information, or transact other business with the Social Security Administration may contact him at this time.

Lodge meeting

Dee Ora Lodge #715 stated meeting is the third Thursday of every month with a meal served at 6:30 pm and the meeting following at 7:30.

Cookies on sale

Girl Scout cookies will be on sale beginning January 13. To place an order, please call 387-5617.

Mother's Day out

Mother's Day Out at the Methodist Church will be running regularly on Friday's from 8 am to 4 pm.

If you would like to bring your child, please call Molly Zimmerman at 387-2304 or call the church office at 387-2466 for more information.

Attention ranchers

The 1989 Hunting Guide, compiled by the Sonora Chamber of Commerce, is in process and requests are already being received for available leases. If you would like to have a listing in the guide, please call the Chamber office at (915)387-2880.

Over 5,000 of the 1988 edition were distributed.

The Hunting Guide works! And it could be working for you!

Fibers showcase

Entry forms are available at the Sutton County Extension office for the Natural Fibers Showcase. The contest will take place at Amon G. Carter Exhibit Hall Round-Up Inn in Fort Worth on Saturday, March 4, 1989. The purpose of the contest is to promote cotton, wool and mohair industries.

There are five competitive divisions. All entries are due no later than February 6, 1989.

For more information, please come by the Sutton County Extension office and pick up a copy of the form.

EMT class scheduled

An Emergency Medical Technician Course will begin in February in Sutton County.

This course is 100 hours of classroom and practical training in the field of emergency medicine. A Texas Department of Health EMT license will be issued if the student successfully completes the course and passes the state written exam.

The classes will be held on Tuesday and Thursday nights. For more information call 387-5132 weekdays from 9 am to 4 pm.

Predator problems

Ranchers of the area need to be aware of an increasing predator problem in some areas.

If you would be interested in joining a trapping club or if you have questions regarding predator control call John Wade at 387-2908.

Al-Anon meetings

Al-Anon meets in Sonora on Thursday nights and in Eldorado on Tuesday nights. Ozona also meets every Tuesday night.

For more information on the organization or on the meetings call 387-5775.

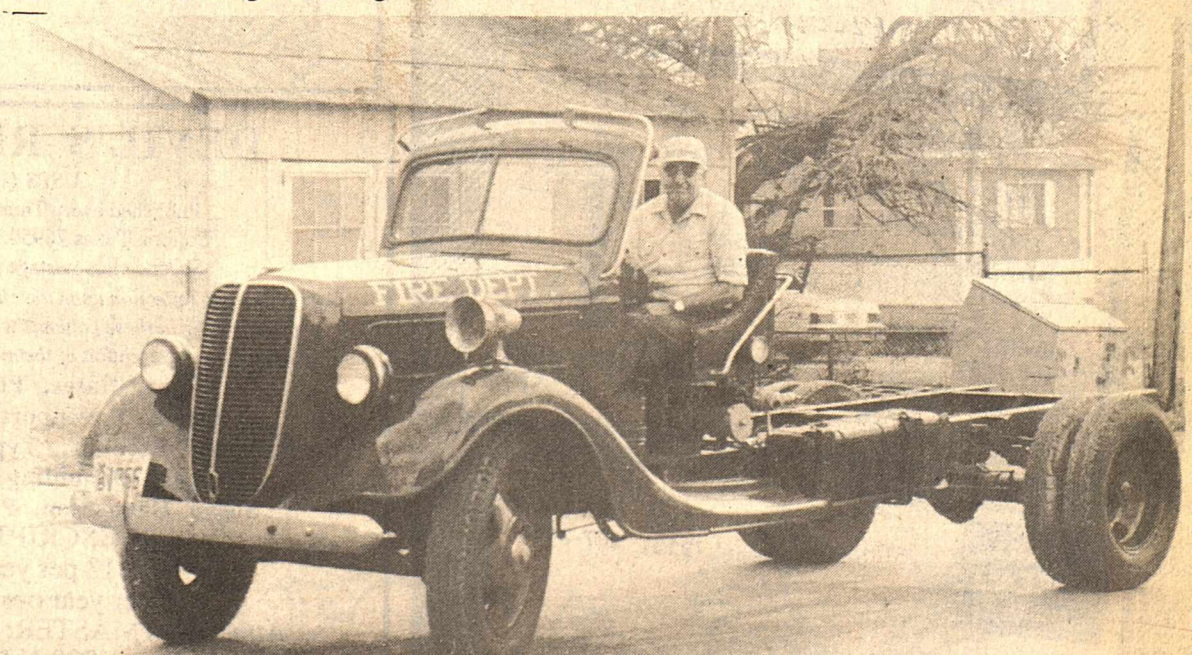
Have you adopted?

Adopt one square foot of the old Santa Fe Depot roof for just \$4. All donors names displayed in the Stationmasters Office. Make checks to SCHS-Depot Roof and mail to Depot Roof, Box 885, Sonora, Texas 76950 or drop your contribution by Westernman Drug or the Devil's River News.

Domino Tournament

The Childress Volunteer Fire Department of Childress is hosting the Official Texas State Championship Domino Tournament April 1, 1989.

Persons interested in participating may receive information by contacting the Childress Volunteer Fire Department, P.O. Box 126, Childress, Texas 79201



Where's the fire . . .

Sam Odom sits proudly in the drivers seat of the Historic Society's Fire Engine which is in the process of being restored.

The beautiful condition of the truck represents many hours of work by Sam and others. When work on the truck is completed, the Devil's River News will carry a picture of the before and after, names of those doing the work and hopefully, a history of the truck's service with the Sonora Fire Department. Staff photo/Susan Henderson.

Section 89: employer's nightmare

DEAR COMMISSIONER NABERS: I heard that the feds have passed legislation which is going to make the administration of company benefit plans one long continuous Excedrin headache. Do you have any information on this?

G.J.
Rockwall, Texas

Commissioner

Mary Scott Nabers



Texas Business Today

discriminatory benefit plans, but it will require the reporting as TAXABLE INCOME of any benefits enjoyed under such a plan. Employers must also meet qualification standards under Section 89 and file annual compliance reports with the Internal Revenue Service. Failure to comply could result in:

- All of your employees having hundreds-perhaps thousands-of dollars added to W-2 forms.

- Additional income being reported to IRS for your highly compensated employees.

- Your company being subject to fines and nondeductible excise taxes.

Employers have all of 1989 to familiarize themselves with Section 89 and comply with its

requirements. The Texas Business Today column simply does not lend itself to a thorough discussion of the complexities of this law, but I will be covering it in more detail in my monthly newsletter. I will gladly send you a copy.

DEAR COMMISSIONER NABERS: I am a non-smoker, but work in an office where many of my coworkers smoke. This has begun to bother me to the point of quitting my job. Would I be disqualified from receiving unemployment benefits if I quit for this reason?

M.M.
Mason, Texas

DEAR M.M.: The Commission has yet to have before it on appeal a claim involving exactly the circumstances you describe, so I cannot give you a definite "yes" or "no". A claimant who has voluntarily quit employment has the burden of proving the quit was for good work connected cause. You complaint involves the workplace so it is clearly work connected. The Commission will inquire into efforts you made to notify the employer of this problem so that action could be taken to meet your needs. If you have already done this and the employer has made no effort to accommodate you, I think you would have a pretty strong case.

Ms. Nabers represents 336,000 employers throughout Texas. If you have any questions you want answered, please write Commissioner Nabers at: TEXAS BUSINESS TODAY, 614 Texas Employment Commission Building, 15th and Congress, Austin, Texas 78778.

Birthdays

February 2
Wayford Tyler, Jr.
Shanna Patton

February 3
J.D. Mirike
Angie Stewart

February 4
Lenor Sentena
Tate Fincher

February 5
Noelia Escobar
Emma Fuller

February 6
John Henry Strauch
Chacho Cahill

February 9
Ruth Spaulding



For Details call
853-2777

In order to serve the Municipal Court in a more efficient manner, I have decided to hold Court every Wednesday of the month, from 2:00 p.m. until 5:00 p.m., beginning the first week of February.

Court will be held in the Council Chambers, upstairs, at the City Hall, 201 N.E. Main Street.

I feel this will also enable students to come after school with plenty of time to be heard.

I will greatly appreciate everyone's help by bringing your Citation to the City Hall at this designated time and your assistance in putting the new Municipal Court time into effect.

Maxine Locklin,
Municipal Court Judge

DEVIL'S RIVER NEWS

USPS (155-920)

Published every Thursday at 220 NE Main
Sonora, Texas 76950. Phone (915)387-2507

Second class postage paid at Sonora, Texas

Any erroneous reflection upon the character or standing of any persons or firm appearing in these columns will be gladly and promptly corrected upon calling the attention of the management to the article in question.

Ann Cates, Publisher/Editor

Jeanne Davenport, Office Manager

Noema Escobar, Typesetting/Distribution

Ruth Spaulding, Sales Director

Susan Henderson, Part-time Production

SUBSCRIPTION RATES

\$13 per year in county

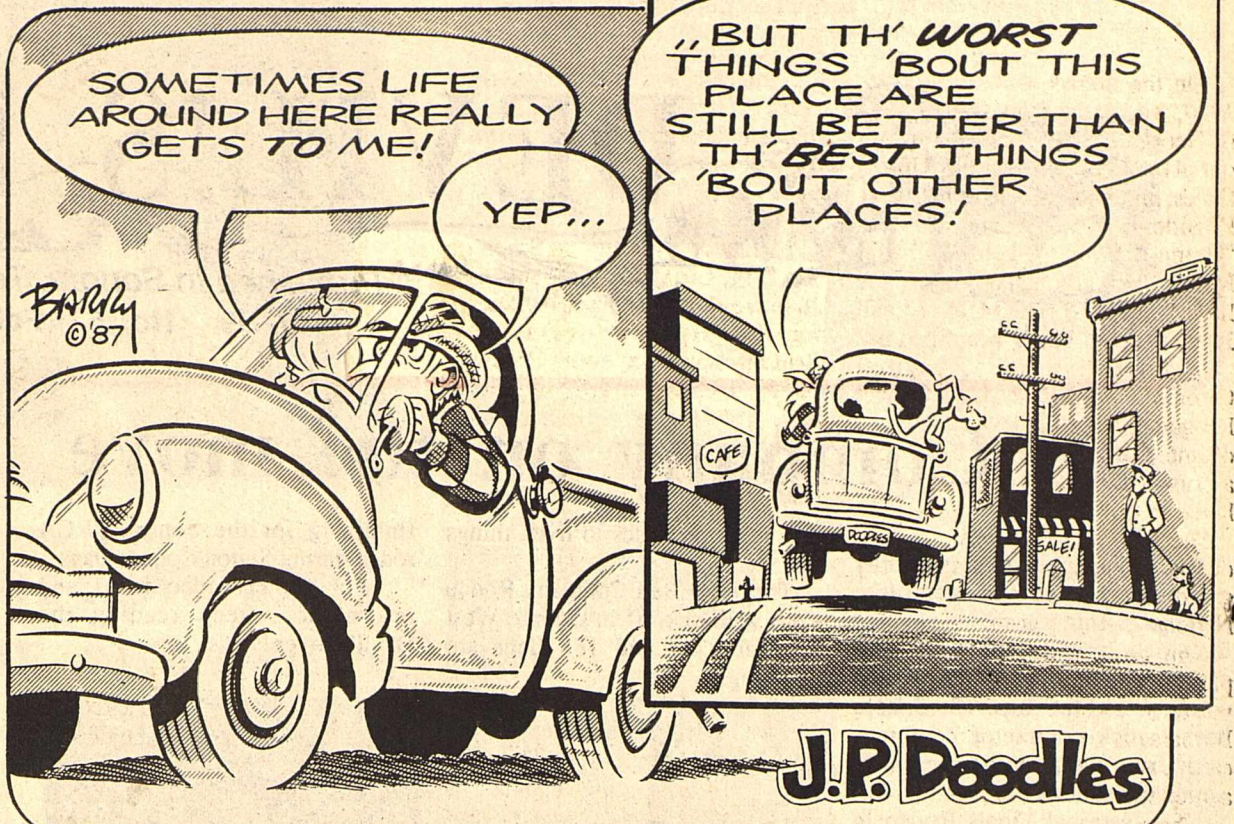
\$16 per year out of county or state

Attn. POSTMASTER: Send address changes to
Devil's River News, 220 N.E. Main, Sonora, Texas 76950



MEMBER 1988

TEXAS PRESS ASSOCIATION



ONE MAN'S OPINION

by T. Driskell

A week of confinement with bronchial pneumonia and a prolonged exposure to a word for word digestion of three new magazines and a national television diet of news from early morning to late at night leave one wondering if recovery is worthwhile.

About the only thing that one can be sure of is the ability of Congress to achieve a consensus of opinion and positive timely action in one area--the raising of Congressional Pay. It must also be noted that the Speaker of the House (a Texan, Jim Wright) utilized his position to prevent any representatives who did not favor the pay raise from having their opinion being made a matter of record.

The media indicates that President Bush had a fairly easy week; a conclusion which makes it evident that the media is not projecting its observations very far into the future. First, the president stuck a blow against women's rights by his implied support for reversal of the Supreme Court's Wade vs. Roe Decision. Looking at our problems which loom over this nation the aura of absurdity is enhanced by our top executive advocating replacing safe abortions with dangerous ones.

Bush launched a "Hindenberg" as what he called a trial balloon. The proposal was to put a surcharge; three-tenths of one percent on all savings in banks and thrifts to pay for the Federal Deposit Insurance on savings. It would put on the savers of this nation the responsibility to

pay for the mismanagement or outright criminal fraud of Savings and Loan operators. Introductions of such a bill into Congress will cause a run on the savings in both banks and thrift institutions. The alternative is to put another fifty-five (or is it seventy-five billion) load on the taxpayers to remove a malignant invitation to unregulated fraud.

We must reserve an opinion, and wonder if we have simply replaced a bunch of Californians with a bunch of Texans, but until the Bush Cabinet becomes functional the effect cannot be evaluated. We can only hope that the removal of the Cabinet Drug Enforcement Post does not forebode a less effective war on drugs.

Snips, Quips and Lifts

When you can think of yesterday without regrets and tomorrow without fear, you are near real contentment.

Fear of what is called consequences keeps most of us sober, true and DULL.

We are like beasts when we kill, We are like men when we judge, We are like God when we forgive.

If freedom is important when we don't have it, why shouldn't it be just as important when we do have it?

Don't let the future frighten you-- you only face it a little at a time.

The young people of the United States squander over ten billion dollars a year on games of chance.

This does not include weddings, starting a business, passing cars on a hill, or buying a Television set.

A visitor to Las Vegas received the "cook's tour"--he was baked in the sun, stewed at the bar, and burned at the crap tables.

From the amount that some people give to the Lord, they must be positive that it's the little things that count.

Many men hire someone to mow their lawn so they can play golf for exercise.

The reason some people can't mind their own business is because they have very little mind and no business.

Separation of church and state could hardly be more complete. The church teaches that money isn't everything and the government keeps

telling us it is.

Grandparents are people who come to your house, spoil the children, then go home.

Knowledge has to be improved, challenged, and increased constantly or it vanishes.

Middle age is when you have given up all your bad habits and still don't feel good.

Serious trouble comes when the New Year's resolutions collide with the old year's bad habits.

Happiness is not something you have in your hands; it is something you carry in your heart.

A LIFT FOR THE WEEK

To be happy do not add to your possessions, but subtract from your desires.

Food program offered

The Texas Department of Human Services (DHS) announces the availability of the Summer Food Service Program to eligible organizations next summer.

The program provides meals to children from needy areas when schools are closed for vacation. The program is to be offered without discrimination due to race, color, national origin, sex, age or handicap.

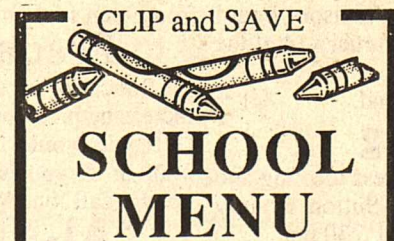
Service institutions eligible to sponsor the program include public or non-profit private schools, residential summer camps, and local, municipal or county governments. Service institutions must contact DHS by February 28, 1989, for more information. Applicants should be received by April 15, 1989.

Service institutions may also subcontract with food service management companies to provide meals. To be eligible to bid for contracts for the Summer Food Service Program, these companies must be registered with DHS. Applications will be mailed to companies that were registered in the last two years. Applications for registration must be received by March 15, 1989.

Organizations interested in sponsoring the program should call Rick Gresser at (512) 450-3356 or write: Texas Department of Human Services, Food Services Program 560-W, P.O. Box 2960, Austin, Texas 78769, Attn: Rick Gresser.

Personal Interest

The deduction for personal interest is being phased out. This deduction is limited to 40 percent in 1988, 20 percent in 1989, and 10 percent in 1990. No deduction will be allowed thereafter. Personal interest generally includes interest on car loans, credit cards, personal loans, and on most tax deficiencies of individual taxpayers. More information on changes to itemized deductions can be found in free IRS Publication 17, "Your Federal Income Tax." Call 1-800-424-3676 to order.



SCHOOL MENU

Monday, February 6-
Hamburger, French Fries,
Lettuce, Tomatoes &
Pickles, Pumpkin Cake,
Milk

Tuesday, February 7-
Turkey Pot Pie, Parsley
Potatoes, Cranberry Salad,
Orange, Milk

Wednesday, February 8-
Pork & Cheese Roll, Peas
w/Carrots, Hominy,
Pineapple Pudding, Milk

Thursday, February 9-
Scalloped Chicken, Okra,
Nachos, Peach Cobbler,
Milk

Friday, February 10-NO
SCHOOL

Here's my card

GREGORY C. LIND, M.D.

301 B HUDSPETH PLAZA
SONORA, TEXAS
(915)387-6565

RESIDENTIAL
COMMERCIAL
OILFIELD

POLELINE CONTRACTORS
OILFIELD ANCHORS



SUTTON SPECIALTY ELECTRIC, INC.

510 CROCKETT - SONORA, TEXAS 76950
P.O. BOX 836
(915-387-6516)

ELECTRICAL SUPPLIES

WATER HEATER REPAIRS

Office Hours By Appointment



CHARLES R. PAJESTKA, M.D.

Family Practice
301-A Hudspeth Avenue
Sonora, Texas 76950

Telephone: (915) 387-6557

IBM

SWINTEC

Sales

Rentals
Supplies

Service

Typewriters Etc.

Barry B. Barnston
Bus. (915) 655-8375
Home (915) 653-3929

1109 West Beauregard
San Angelo, Texas 76901

Bernard Rust, D.D.S.

Open Mon.-Fri.
Saturday Appt.
Available

901 Crockett
Sonora, TX
(915)387-2659

Emergency: (915)387-2043

WINDMILLS PUMPS SERVICE

JIMMY HARRIS
Windmill Service

Affordable • Dependable • Experienced
SATISFACTION GUARANTEED



JIMMY HARRIS
387-2622
470 E. Poplar
Sonora, Texas 76950

GEO "JENKY" THORP
387-5104



Bus. (915) 387-6504
Home (915) 387-3136

Jane Alexander
AGENT

• Life • Fire • Auto • Liability • Health
• Business Insurance • IRA Annuity

203 Hwy. 277 N.

Sonora, Texas

"Over the Hill Gang"

Hudspeth Nursing Home News
by Doris Cahill

On the morning of January 20, 1989, we watched the inauguration of George Herbert Walker Bush as our 41st President of the United States, and Dan Quayle as his Vice-President, while Ilene Stewart, "Granny" Webb, Ethelda Holland, Mandy Turk, Rhonda McIntyre, and little helpers Christi McIntyre and Jenny Cramer, busily beautified us.

Following the Inaugural Ceremony, former President Ronald Reagan and his wife Nancy, soared off into the wild blue yonder aboard a trusty helicopter to make their home in California.

The spectacular Inaugural Parade during the afternoon hours was "the grand-daddy of them all." So is our National Debt.

Our new president is a "south-paw" and prefers country and western music. His first lady, Barbara, is described as "down to earth", and her favorite adornment is a three strand pearl chocker.

There were birthday ladies all over the place during January. Cordie Drennan, Esther Loeffler, Dixie Jacobson, Ada Mae Neal, and Ruby Brotherton were feted at the Hudspeth Hospital Auxiliary Party on the 25th and *Happy Birthday* was sung by hostesses Martha Wallace and Sammie Jean Espy, along with our A.D., Lilia, H.A., Mr. G, and Lab Tech, Hector Escalera. Refreshment of punch, ice cream and Clara Brooks' famous cake were served.

While enjoying refreshments, I was startled to see a man scramble up and seat himself on no less than six chairs with, in his own words, "the biggest piece of cake with the most icing on it." Chewing happily away, he informed me he wanted to be recognized in this column, so since his name is never in the paper, I am complying--"Scott Gilmore, Hospital Administrator."

Five generations of 97 year old Ruby Brotherton's family attended the party; her daughter, Ruth Luckett, two grand-daughters, Camille Green and Ann Fagen, great-grand-daughter, Angela Crittenton, and young Will Crittenton, great-great-grandson.

The exterminator appeared one day last week, much to everyone's vexation, and while he was waiting for the "all rooms clear" signal, he was beckoned to a ladies side and asked if he was the man who had come to spray. "Yes, Ma'am," he answered politely. The impatient lady asked, "Why aren't you spraying then instead of standing around doing nothing? I want to go back to bed," and started an epidemic of smiles!!

Dude, looking at a coiled rope: "What do you use that for?"

Cowboy: "I use it to catch cattle."

Dude: "What do you use for bait?"

Classes for Job

Work-related educational expenses may be deductible. Generally, to claim a deduction for most qualifying work-related educational expenses, a Form 2106, "Employee Business Expenses," must be completed and attached to the Form 1040. Only those educational expenses reimbursed by an employer and reported on Form W-2 or a Form 1099 may be deducted as an adjustment to gross income. Any expenses in excess of such reimbursed amounts generally may be claimed as a miscellaneous deduction on Schedule A (Form 1040). However, miscellaneous deductions are deductible only to the extent the total exceeds two percent of adjusted gross income. More information can be found in the free IRS Publication 508, "Educational Expenses," available by writing the IRS or by calling the IRS toll-free number, 1-800-424-3676.

Bouncing the beach ball is good exercise, especially for Lilia, and in "targets" she is hard to resist. Her favorite expressions, frequently heard, are "Be kind now," and "Please be nice."

So many "won big" at Bingo on the 18th, Lilia became concerned about running out of prizes. Scores for the past two weeks were: Bruton, one; Cox, four; Drennan, three; Rodriguez, two; Hinijsa, one; Cahill, four; Mazcua, two; Brotherton, two; and Mendez, three.

Recent "Hymn Sings" have been gala, with participants visiting everyone in the Nursing Home, spreading cheer, getting acquainted, and then settling down to raising their voices in joyous song. Josh Akins and Josh Hunt brought new friends Jason and Kim Geke along, with Rhonda Akins and Sheila Harris on the 17th. And on the 24th, Sheila and Starla Harris, Mandy Turk, Heather Floyd, and Gertrude Webb were here. Gertrude played the piano, and Starla and Heather sang a duet *He's Still Working One Me*.

Even tho' the clouds that have hung heavy with unfallen rain for several days finally opened up, Ethelda Holland, Mandy Turk, Gertrude Webb and Phyllis Jones risked melting (they claim to be neither sugar or salt) on Friday morning to pursue their endeavors of making pretty ladies out of us in the beauty shop.

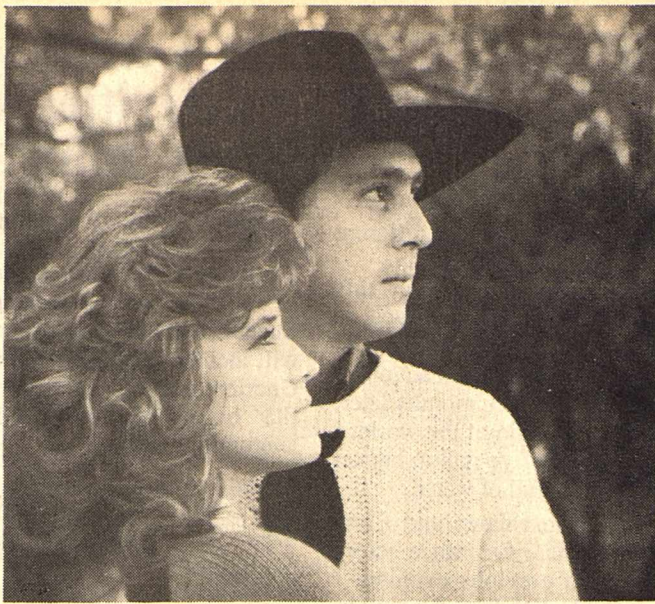
We are pleased that Viola Sansom is back from Hudspeth Hospital, and extend thanks to Rosa De La Garza for the delicious cookies she baked for the residents and staff, and to Jane's Floral for the complimentary arrangement and we also want to thank the nice lady (who chooses to remain anonymous) for flowers brought from the First United Methodist Church.

Welcome visitors from here and there were: Guggles Thorp, Marie Aldwell, Mary Earwood, Peggy Street, Martha Wallace, Kim Whitehead, Kristen, Kolby and Kalen, Lena Belle Ross, Wilma Patrick, Lois McCalmont, Ruth Lee Eaton, Bobbie Smith, Monica DuRussell, Frank Bond, Jewel and Buster Jennings, Maxine Locklin, Erma Lee Turner, Louise Hearn, Si Loeffler, Barbara Snodgrass, Nancy Taylor, Joyce and Becca Chalk, Smith Neal and Chris, "Hot Shot" Crittenton, Dorothy Baker, Joan Cusenbary, Gretta Smith, Lydia Galindo, Ralph and Bobby Lou Mayer, Courtney Chandler, Guila Vicars, Robert Hocutt, Rev. Kent Kepler, Gabriel Mata, Mary Maskill, Jerry and Eddie, Juanita Herrera, Carmen Ramirez, Margaret Mesa, Carmen Villerell, Esedra Castro, Maria Chavez, Mr. and Mrs. Dan Carter Cauthorn, Camille and Cenisa, Mrs. Ora Riggs-Sanderson, Mr. and Mrs. Kent Carpenter-Silverton, Mrs. Dan Eaton and Tom-San Angelo, Nancy Groom and Diana Terrell-Fort Worth, Mrs. Gene Simon-Junction, Rev. Charles Huffman-Ozona, Mr. and Mrs. Arturo Juarez-San Angelo, Mrs. "Blondie" McMillan, Blanche West and Bill Ray-Eldorado, Pierce Hoggett-Midland, also Mr. and Mrs. Lee Carpenter and Cheryl Lock.

The Lenten Season is upon us. Spring cleaning of the soul is what Lent is all about, so do some deep cleaning, refreshing, and renewing!

The following sign was seen on a church bulletin board-"Interested in going to Heaven? Apply here for flight training!"

Bueno Bye until next time, and Happy Valenheart's Day!



SHANNON SHACKELFORD and RONNIE WRIGHT

Shackelford, Wright engagement announced

Jean Kirby and H.W. Shackelford of Arlington are pleased to announce the engagement of their daughter Shannon of Arlington to Ronnie Wright, also of Arlington. Wright is the son of Don and Mary Lou Wright of North Richland Hills.

The wedding is planned for June 10 in the First Baptist Church of Arlington.

Bradley, Barton exchange vows

Glenda Bradley, daughter of Mr. and Mrs. Brady Mills of San Angelo, became the bride of James Barton in the home of the bride's parents on January 28. Retired Baptist Pastor Chester Sylvester officiated. The bride was given in marriage by her father.

The groom is the son of the late Mr. and Mrs. J.T. (Brother) Barton.

Matron of Honor was Mrs. Judy Adams of Ozona with John

The bride is a graduate of the University of Arlington and is employed as a high school teacher.

The prospective bridegroom attended school in Sonora prior to moving to Euless where he graduated from Trinity High School and attended the University of Arlington for two years.

He currently works as a lab assistant for Mary Kay Cosmetics.

Casparis of Sonora serving as Best Man.

The bride is a graduate of Bronte High School and Angelo State University and is employed by the Sonora Independent School District as a teacher.

The groom attended Comstock High School and works for Dono Oil Company.

The couple will reside in Sonora.

HOME EC BRIEFS

by Micki Miller, CEA-HE

You have to work at living alone

Whether you're divorced, widowed, or single by choice, living alone takes concentrated effort. You have to learn to be both the giver and recipient in your own life. You develop rituals, schedules, habits and social graces just like any other household.

Living alone may, at first, feel strange. You have to feel civilized when you live alone. You need

Galvan completes training

Marine Pvt. Javier B. Galvan, son of Carmen Galvan, has completed recruit training at Marine Corps Recruit Depot, San Diego, California.

During the eleven week training cycle, Galvan was taught the basics of battlefield survival. He was introduced to the typical daily routine that he will experience during his enlistment and studied the personal and professional standards traditionally exhibited by Marines.

He participated in an active physical conditioning program and gained proficiency in a variety of military skills, including first aid, rifle marksmanship and close order drill. Teamwork and self-discipline were emphasized throughout the training cycle.

A 1988 graduate of Sonora High School, he joined the Marine Corps in September, 1988.

IRS "Office of Last Resort"

Most federal tax problems can be solved by writing or calling the Internal Revenue Service. However, sometimes a problem is not resolved through these channels. There is a solution. If previous contacts with the IRS have not solved the problem, perhaps the Problem Resolution Program (PRP) can.

Each IRS district has a PRP office to help taxpayers who have already tried to solve their tax problems through normal channels. PRP has the authority to cut through red tape to handle problems quickly. Generally, the taxpayer deals with one person and, if the problem will take awhile to solve, is kept informed of the case's progress.

The most common problems handled by PRP involve missing refunds, mixed-up social security numbers, incorrect billings by IRS, and mistakes

made by the taxpayers. In addition to solving taxpayer problems, PRP tries to prevent problems from occurring in the future. Any trends noted while working PRP cases are brought to the attention of the appropriate IRS function.

The IRS stresses that Problem Resolution is an "office of last resort." It should not be used as a substitute for normal procedures because most problems can be resolved without PRP. In addition, PRP can not be used to solve problems which are the responsibility of some other federal, state or local agency, or for which there are established administrative procedures.

Taxpayers can contact PRP by calling the IRS number listed in local phone directories and asking for "Problem Resolution."

Tedford Jewelry

Bridal Gift Registry

Melanie M. Miles, bride-elect of Robert S. Mayer
Nancy Benson, bride-elect of Gary S. Law
Lynn Marie Virgen, bride-elect of Felipe Onofre

Downtown Sonora 387-3839

P M Office Supply

Everything you need for your office and more!

Christian Greeting Cards
Seasonal and Occasional

205 Hwy. 277 S. Sonora, Texas
387-3774

This Valentine's Day

Remember Your Sweetheart

\$69⁹⁵

Give her the Sweetheart ring, from the Embrace Collection.™ A sparkling full-cut 2 pt. diamond set in 10k yellow gold.

Hill's JEWELRY 204 NE Main Sonora, Texas
387-2755

Exclusively by R. JOHNS, LTD.

"The Tasteful Gift to Give"

Russell Stover
CANDIES

One pound red satin heart and one pound red foil heart available at

Westerman Drug

COX DRUG, INC. Sonora
101 NW Concho
387-2541

Candlelight Dinner
February 14, 1989

Steak Dinner for Two

Includes your choice of soup or salad, potato and Texas toast **14⁹⁵** plus tax

Call early for reservations
387-3833

Sutton County Steakhouse
IH-10 and Golf Course Road
next door to the Devil's River Inn

'SELF' CONTROL

by J. Michael Fish

Differences-Difficult Medicine to Swallow

Is it so difficult to tolerate the shortcomings and idiosyncrasies of others that we can make our own lives miserable as a result?

Have you taken the time to notice the intolerance that comes from within? That is all around us? Have you seen a mood swing as a result of an individual's negative reaction to another's statement or action? Didn't it seem ridiculous, especially when your reaction would have been quite different?

Have you ever harmed another person because you didn't approve of a physical attribute or the manner in which they conducted their life?

Spring of 1971 found me stationed at Fort Devens, Massachusetts. Almost every Friday night I would travel the thirty miles to Boston for part-time

work busing tables at the Playboy Club to earn money for my vices and entertainment.

Leaving the club one evening, I was propositioned by a homosexual. I declined of course, but was propositioned again an hour later at the bus station while awaiting a bus back to base. Irritated, I became very angry and abusive.

The incidents plagued my thinking during the trip and the days that followed to the point that I discussed the matter with two of my closest friends, "B.J." and "Stoney", seeking suitable avenues to vent my anger.

A plan was formulated that the three of us would make our weekly trip to Boston but this time to teach those people a lesson.

Our opportunity arose. As "B.J." shoved the fellow into the alley, we unleashed our anger and animosity. Taking his wallet from his pocket thinking we wanted to rob him, he begged us not to kill him.

Leaving him bleeding, as we walked away we felt proud of ourselves—we had struck a blow for heterosexuals everywhere.

To my surprise, "Stoney" produced our victim's wallet and we split it's contents—\$152—before discarding the wallet in a nearby trash can.

Several weeks passed before I realized the gravity of the crime we had committed. We were nothing more than criminals; thugs and thieves. What was the fellow's

crime against us? He was different from us.

The shame I felt from this incident has been with me since, as strong today as it was on the realization of our criminal actions.

Approximately six months later, on the opposite side of the world, I was sitting on a five-gallon bucket in a trench half-full of water.

It was almost dawn and I had been there, under fire, since before midnight the previous evening. I was miserable with fear, the chill of darkness and had been soaked with water through the night. Fatigue was so great that I dozed falling backward a few inches onto the back of a man whom I wasn't aware was even there.

Startled awake, I turned to see the man's face. It was Charlie, a Black man from my unit previously ignored because of his color.

Something happens to misguided assumptions and unfounded hatred when your life is on the line and you are depending on those individuals for your survival and protection.

A few moments and a lot of thought passed before I turned to Charlie and said, "Charlie, til now I've never had a Black man as a friend, but I'm mighty glad you're there."

Our friendship lasted throughout Viet Nam and into our next assignment in Germany where we were stationed after the war.

A spoon full of tolerance and understanding helps the differences go down.

Lenten activities at St. John's

Each Wednesday evening during Lent, beginning with Ash Wednesday, February 8, there will be a celebration of the Holy Eucharist at 7:15 p.m. The service will include the Sacrament of Holy Unction, prayers for healing with the laying on of hands and anointing with oil.

Also, Morning Prayer will be read each Monday through Friday at 7:15 a.m., beginning Monday, February 13.

Everyone is invited to these services, and all baptized Christians are welcome to share with us in Holy Communion.

If you have been looking for a special way to keep Lent, or a way to deepen your relationship with God, the Rector and people of St. John's Episcopal Church invite you to join us during this time of reflection and renewal.

Applications being accepted for Miss Texas U.S.A. Pageant

Applications are now being accepted for entrance into this year's Miss Texas U.S.A. Pageant to be held in August in San Antonio. The Miss Texas U.S.A. Pageant, a Guyrex and Associates production, is the official state preliminary to the Miss U.S.A. Pageant.

Carla Agnew, area director for the pageant, is accepting application until March 11, 1989 from young ladies between the ages of 17 and 24 who reside in the following

Rafaela M. Tambunga, 92, died Sunday, January 29, 1989 in St. John's Hospital in San Angelo.

Services were held at 1 p.m. Tuesday in St. Ann's Catholic Church with the Rev. Bernard Gulley of San Angelo officiating. Burial followed in Sonora Cemetery, directed by Kerbow Funeral Home.

She was born September 8, 1896, in Mexico. She was a homemaker, a lifetime resident of

Sonora and a Cursillista at St. Ann's Catholic Church.

Survivors include two sons, Saragosa Beserra of Sonora and Pedro Tambunga of San Angelo; two daughters, Petra Rodriguez of Abilene and Elida Galindo of Sweetwater; two brothers, Julio Martinez and Anastacio Martinez, both of San Angelo; one sister, Francisca Contreras of San Angelo; 25 grandchildren; and numerous great-grandchildren and great-great grandchildren.

Robert Gariepy

Robert C. Gariepy, 77, died Friday, January 27, 1989 in St. John's Hospital in San Angelo.

Services were held at 3:30 p.m. Monday in the Kerbow Funeral Home chapel with burial in Sonora Cemetery.

He was born April 24, 1911, in Casco, Ill. He had lived in Sonora

since 1970 and was an oilfield air jammer and a Baptist.

Survivors include two sons, Fred A. Gariepy of Odessa and Robert C. Gariepy jr. of Evansville, Ind.; one sister, Edrie Weibert of Hutchinson, Kansas; two grandchildren and one great-grandchild.

counties: Howard, Sterling, Irion, Coke, Sutton, Crockett, Schleicher, Runnels, Concho, Menard and McCulloch.

Applications and qualified applicants will be interviewed and from these interviews, young ladies will be selected to represent their respective home towns. Each young lady who is selected to attend the state competition will be responsible for her own expenses as well as her entry fee into the

pageant. The Miss Texas U.S.A. Pageant is the largest state pageant in the United States, fielding over one hundred contestants each year. Since 1985, the state winner has gone on to win the title of Miss U.S.A.

To send for an application, write Carla Agnew, area director, 3207 Cumberland Drive, San Angelo, Texas 76904 or call 944-7883 or 655-5696 after 6 p.m.



HEALTH CARE

by Scott Gilmore, Hospital Administrator

Fingernails: Facts at your fingertips

Marvelous things, fingernails. They help protect the ends of the fingers, help make fingertips more sensitive to touch, provide a handy device for scratching, and, in emergencies, double as screwdrivers.

Human nails, like human hair, are made of a tough protein called keratin and are formed from the nail matrix—special cells under the base of the nail near the cuticle. part of this matrix is visible on the larger nails as the "white moon" above the cuticle.

Brittle nails may result from factors as varied as age, anemia, or

poor circulation, but the most common culprit is water. When immersed in water, the nails swell; out of water they dry and shrink. Frequent swelling and shrinking damage the structure of the nail, causing it to break easily.

While malnutrition may have an effect on nails, experts agree that there is no magic diet to improve them. Some years ago, notes for Food and Drug Administration, many women fell prey to the myth that eating gelatin would give them strong beautiful nails. But it is only a myth.

Tax Counseling for the Elderly (TCE)

Seniors can receive free help in preparing their own income tax returns as well as free tax counseling with assistance from a special IRS-sponsored program, the Internal Revenue Service says.

Through the program, Tax Counseling for the Elderly (TCE), specially trained volunteers are available in local communities during tax time to help taxpayers 60 years or older complete their own federal tax forms. Volunteers will also answer questions on estimated tax for individuals, the special treatment of the gain on the sale of a home, reporting taxable pension income and other tax matters of interest to older persons.

Individuals who need help should bring the 1988 tax packages they received in the mail plus their wage and earnings statements (Form W-2), and statements for recipients of periodic annuities, pensions and retirement pay (Form W-2P), or IRA payments (Form 5498). They should also bring along interest statements from financial organizations (Form 1099-INT) and dividend statements (Form 1099-DIV), and other relevant information on income and expenses.

For more information, interested persons should call their local IRS office or call toll-free, 1-800-424-1040, and ask for the Taxpayer Education Coordinator.

First Baptist Church invites everyone to a movie

CRY FROM THE MOUNTAIN, a World Wide Pictures production, will be shown at 5:30 p.m. on February 12, 1989 at the First Baptist Church. It is an adventure film set in the majestic wilderness of Alaska by screenwriter Daniel L. Quick. Scene after scene portrays the beauty and wildlife of this "last frontier" state.

The story centers around the Sanders family. Larry Sanders takes his 10-year old son Cal on a camping trip where is to break the news that he and his wife Carolyn are getting a divorce. Meanwhile Carolyn, filled with bitterness and unable to forgive her husband for an affair he has had with a woman in his office, considers the option of having an abortion. Through a life-threatening

accident and an old hermit living in a deserted mining camp, the course of events is changed for the Sanders.

The principal roles in CRY FROM THE MOUNTAIN are played by four outstanding performers.

JAMES CAVAN play Jonathon, the old hermit who is the caretaker of a deserted mining camp, and who lives alone with his dog Jake. The old man resents the intrusion of Larry and Col Sanders, but eventually comes to share his Christian faith.

WES PARKER play Larry Sanders whose marriage is on the brink of disaster because of his unfaithfulness and his wife's unwillingness to forgive.

RITA WALTER is Carolyn Sanders who is unable to forgive her husband and contemplates having an abortion.

CHRIS KIDD plays 10-year old Cal Sanders. When his father is seriously injured in a kayaking accident, Cal seeks the help of the old hermit, Jonathan.

BILLY GRAHAM appears as himself with a message of hope.

Notable in the supporting cast is Coleen Gray, who plays the mother of Carolyn Sanders.

"Ronnie Cox would like to be your pharmacist"

John 8:12

Light Electronics

Sales and Service
Computer Systems
(IBM Compatible)
Two-way Radios
Friendly Home Town Service
Competitive Big City Prices
John Henry Strauch
608 SE Concho • Sonora • (915)387-2273

Get the maximum refund you're entitled to.

The income tax laws are ever-changing. Put H&R Block's experienced preparers to work for you.

Shell of Sonora
704 W. Crockett • Sonora • 387-6092

H&R BLOCK DON'T SETTLE FOR LESS!

Church Directory			
Church of Christ Minister-Don Jones Bible School-10 am Worship-11 am Sunday Night-6:30 pm Wednesday Night-7 pm	The Church of the Good Shepherd Presbyterian Worship Service-10 am Church School-11 am Communion first Sunday of each month Fred L. Campbell, Pastor	Somebody Cares Ministry Rev. Louis Halford Sunday Adult Bible Hour-9:30 am Super Son Bible Hour-9:30 am Morning Service-10:45 am L.I.F.E. (youth)-3 pm Evening Service-6 pm Wednesday Bible Study-7 pm	First Baptist Church Rev. Jim Stephen Sunday School-9:45 am Morning Worship-11 am Church Training-6 pm Evening Worship-7 pm Wednesday Service-7 pm
Primera Iglesia Bautista Sunday School-9:45 am Worship Service-11 am Training Union-5 pm Evening Service-6 pm Wednesday Service-7 pm W.M.U.-Sunday-2 pm Between Santa Clara & Chestnut	First United Methodist Church Kent L. Kepler Sunday School-9:45 am Worship-10:55 am KVRN 98 AM-11 am Children's Choir-Wed. 4:30 pm UMYF-Wednesday 6 pm Chancel Choir-Wednesday 7:30 pm	Hope Lutheran Church Sunday School-10 am Worship Service-11 am Thursday: Adult Bible Class-8 pm Charles Huffman, Pastor	St. Ann's Catholic Church Rev. Lawrence D'Mello Saturday Night Mass 7 pm English Sunday Mass 8 am Spanish 11 am English Holy Day Mass-7 pm
Sonora Tabernacle United Pentacostal Rev. Kenneth Doyle, Pastor Sunday School-10 am Worship-11 am Evening Worship-7:30 pm Wednesday Service-7:30 pm	Jehovah's Witness 310 St. Ann's 387-2679 or 387-3947 Spanish Meeting Public Talk-1 Sunday Watchtower Study-1:55 Sunday Theocratic Ministry-7:30 pm Tue. Service Meeting-8:15 Tuesday Bible Study-7:30 Thursday	Jehovah's Witness 310 St. Ann's 387-2679 or 387-3947 English Meeting Public Talk-10 Sunday Watchtower Study-11:55 Sunday Theocratic School-7:30 pm Wed. Service Meeting-8:15 Wednesday Bible Study-7:30 Monday	St. John's Episcopal Church 404 NE Poplar Holy Eucharist-Sunday 8 & 11 am Sunday School-9:45 am Holy Eucharist w/Prayers for Healing, 1, 3, & 5 Wed., 7 pm Daily Morning Prayer-M-F 8:45 am Rev. J. Monte Jones, Rector

The following businesses urge you to attend the church of your choice

Westerman Drug COX DRUG, INC. 387-2541	SW Texas Electric Co-op 853-2544	Food Center Home owned and operated 387-3438	Kerbow Funeral Home 387-2266
---	--	---	--

VARIABLE RATE LOANS

9.95%*

RURAL REAL ESTATE

10.20%*

RURAL RESIDENCE

Rates effective August 1, 1988

- LONG-TERM FINANCING UP TO 35 YEARS
- PRE-PAYMENT WITHOUT PENALTY
- ONE POINT CLOSING FEE
- FUNDS HELD ACCOUNTS AVAILABLE
- FIXED RATE LOAN PLANS ALSO AVAILABLE

We are strongly committed to real estate lending in Texas.

FEDERAL LAND BANK ASSOCIATIONS OF TEXAS Offices Located Throughout the State

Jack B. Smith, Jr., President
217 NE Main • Sonora • 387-2777

* Annual percentage rates range from 10.06% to 10.42% depending on length of contract.

COWBOY ASTROLOGY



By Mary Ellen Doty

VIRGO (Aug 23-Sept 22)
"Ladies touch cowboys like a banker touches gold. And cowboys touch ladies somewhere deep down in their souls," sayeth Whalen Jennings. Well, this week touch and be touched by a lady. She's waiting. Watch for Scorpio.

LIBRA (Sept 23-Oct 22) You don't turn the bulls out in December and you don't feed in July. **AND** you don't try to "harvest" that business deal now if you're smart. Wait 2 weeks.

SCORPIO (Oct 23-Nov 21) The ramrod's got his eye on you whether you know it or not. This is no time to stand around with your nose in the roses. Shake a leg, pard. This good a chance to improve your lot won't come again for 4 more months.

SAGITTARIUS (Nov 22-Dec 21) You old Sag's tend to be on the visionary side anyway. But this week all of 1989 jumps into view like a Charlie Russell sunset. Write to an astrologer for the details!

CAPRICORN (Dec 22-Jan 19) You're ridin' in a fog 'til February 5th, cowboy. After that, if The Boss approves o' your plans things go smooth as ma's puddin'! If He don't, you'll have t' take some lumps.

AQUARIUS (Jan 20-Feb 18) Lady Luck is a ridin' your shirt-tail this week. Aquarius. You old boys get what you want if you only ask - includin' that darlin' blue eyes. **ASK!**

PISCES (Feb 19-March 20) You'll be cozy as a toad under a cabbage leaf next summer if you start your financial plan-nin' now. Put it off and you'll lend up broke and sad as a tick - fevered dogle.

For private readings on tape or by phone contact:
Mary Ellen Doty
Rte 1, Box 4781
Luther, MT 59051
(408) 448-1252

©1989

ARIES (March 21-April 19) Normally Aries is just like a loose hoss, full of cockle burrs, and always lookin' for new pastures. This week your ambition is especially high. You'll do well to direct it in improvin' a skill rather than raisin' cane!

TAURUS (April 20-May 20) Ole Taurus doesn't like t' move off the home place at all, much less off his range. But there is dealln's to do with the neighbors over next summers' pasture. Guess you'll need to invite 'em over. Treat 'em good with food 'n' drink - you'll get a square deal.

GEMINI (May 21-June 20) Romantic interests seem to have captured your mind like Sittin' Bull got Custer. A little indulgin' won't hurt ya. Dress up and go for it. Try a Leo.

CANCER (June 21-July 22) Ever notice how you Cancers always want folks to do things your way? Cavortin' round this subject can make you downright ill, never mind lonely as a preacher on pay night. You been given advice to somebody who ain't askin'. Don't.

LEO (July 23-August 22) Old Leo, why, he's all heart. And this week some poor soul's plight makes you sad as a blood-hound's eye. Now, it's gonna squeeze ya together inside 'til it hurts unless you help out!

Your right to know

Employee training and information are key components of OSHA's hazard communication standard. Employers must train employees when they are initially assigned to work with hazardous chemicals and whenever new hazards are introduced.

Employers must discuss the hazard communication standard, their own written program and operations involving hazardous chemicals and tell employees where to find the plan, lists of hazardous materials and material safety data sheets.

Employers also must train their employees to read and interpret information on labels and material safety data sheets. Employers must discuss hazards of chemicals in the work area, measures employees can take to protect themselves, and work practices and personal protective equipment required by the employer. Ways to detect the presence of hazardous chemicals, such as appearance or smell, must also be presented. For a more detailed explanation, send a self-addressed mailing label to OSHA/HAZCOM, Rm. N3647, U.S. Department of Labor, Washington, D.C. 20210.

Jobless rate lowest since 1984

The number of unemployed Texans has not been this low in the last four years according to Mary Scott Nabers, Commissioner at the Texas Employment Commission. "We have seen a continuous decline in recent months and our latest statistics place the state rate at 6.2% in mid-December. That's the lowest rate Texans have seen since December of 1984," Nabers said.

By way comparison the September rate was 7.1%; October statistics indicated 6.8%; November's rate was 6.6% and in December a decline to 6.2%. The last time the rate was below 6.2% was in December 1984, when it was 5.6%.

The total number of jobless Texans dropped by just over 33,000 in December, to a level of 518,900. The over-the-month decrease was encouraging, but unemployment has been gradually declining throughout most of 1988. Total employment decreased moderately over the month but was still almost

100,000 above the year-ago estimate.

The majority of the 27 Metropolitan Statistical Areas (MSA's) in Texas for which statistics were currently available mirrored the Statewide pattern, with unemployment decreasing in December. Only four major areas had rates which rose over the month, while one MSA's jobless rate remained unchanged. The current rates for four MSA's were slightly above their December 1987 rates, and one area's rate was the same as the year-ago rate. All other MSA's had lower rates this December than they reported a year earlier.

had December rates of 5.2%.

Only three MSA's had rates in December 1988 above 10%-McAllen-Edinburg-Mission's current rate was 16.4%, the highest among the MSA's. Laredo's December rate was 12.6%, and the Brownsville-Harlingen MSA's rate was 10.8%. Rates in these border areas generally tend to be higher than average, and unemployment normally increases in the winter months due to migrant workers returning to their homes there.

Areas with the lowest unemployment rates included: Bryan-College Station, with a 3.9% rate in December; the Dallas PMSA, at 4.8%; and Austin, with a 5.0% rate. Three areas tied for fourth-lowest rate: Amarillo, Fort Worth-Arlington, and Lubbock all

Water Well Drilling
Delbo West
Mertzon, Texas
853-4291

Necessary steps to help prevent measles outbreak

Texas educators are urged to review the immunization records of all students who were immunized against measles before their 15th month or before 1980 to counter the spread of illness among school-age children.

The Texas Department of Health has confirmed 344 measles cases, 35 percent of which have occurred in school-age children. The outbreak began in the Houston/Harris County area, where 10-15 measles cases were confirmed.

The Health Department recommends that all students who received the measles vaccine prior to 1980 be reimmunized if an outbreak of measles occurs on their campus. School officials also should determine high-risk groups of students who should be reimmunized by taking into consideration busing patterns and extracurricular activities participation, both of which may expose students to situations where they could contract measles.

School officials are advised to work with their local health authorities to obtain the most current information and advice about the measles outbreak.

If the local health authority decides to implement a reimmunization program, single antigen measles vaccine should be used. Schools where a reimmunization campaign is implemented should consider excluding students at risk of contracting the illness from class until they are reimmunized or until two weeks have elapsed without a case of measles in school.

If reimmunization of all students who were immunized before 1980 is not possible, districts could target only those students who were immunized before they were 15 months old as an alternative means of controlling a measles outbreak.

Teachers and other school employees younger than 32 also should be immunized against measles. Those born before 1957 are likely to have naturally acquired immunity to measles and generally need not be considered susceptible to the illness. Pregnant women who are susceptible and have been exposed to measles should contact their doctors to determine what steps to take to prevent contracting the illness. Also, anyone who received inactivated measles vaccine or a vaccine of an unknown type

IRS Tax Guide helps

"Farmer's Tax Guide," Publication 225, highlights and consolidates tax laws that apply specifically to the farmer and rancher. Order this free IRS publication by calling the toll-free number, 1-800-424-3676, or by using the order blank provided in the tax package.

WATCHIN' and WONDERIN'

with Zeke Smith

Howdy! If I didn't know better, I'd say it ain't ever gonna rain. The way I'm feeding, I'll need \$150 per lamb to break even--except the government is gonna help with that feed program.

Speakin' of government, politics seems to be the hot topic round the coffee shop right now--with a new President and folks meetin' in Austin and all. Everybody seems to have an opinion--which is good--as long as you voted. If you didn't vote, you got no right to think nothin' in my opinion.

Anyway, I set in on a conversation last week with Slim, Jim and Farley. Now they are the best of friends, but they shore do disagree on politics. Jim, who's quite a bit more "in the money" than his friends, hates the government period. He says we don't need any of it and can get pretty fired up expressin' his opinion. He especially got riled when Slim asked him how come he signed up for the feed program since

he don't believe in government. He never answered that.

Slim never says much and doesn't care much. He says he's always happy if the folks representin' him are more effective than a steer in a breedin' program. He doubts that they are considerin' there's not enough country folks in office to do much good, but he expects 'em to try.

Farley, he's into politics. He reads books, magazines, writes his congressman, writes letters to the editor--the whole nine yards, so to speak. But the good thing about Farley is, while he's bull-headed as all git out, he's nice about it. Always ends every speech with "in my opinion." And if you disagree with him, it's okay, just as long as you know why and have a good reason.

Guess that's why they stay friends. Slim don't care enough, and Farley always makes peace after his tirade. Personally, I just find it all interesting and will tell you more about their talks later.

Shurley selected as Director of the Year

The National Association of Home Builders recently selected Jerry Shurley of Royce Homes the 1988 Marketing Director of the Year for Region Twelve.

Citing his achievements in sales and marketing and contributions to his industry and community, Shurley was chosen from nominees across the state.

A native of the West Texas town

of Sonora and a graduate of the University of Texas at Austin, Shurley has been involved with the building industry for thirteen years. Since joining Royce Homes, Shurley has initiated innovative marketing techniques that have elevated Royce Homes to one of Houston's largest home builders and one of the City's greatest success stories.

La Mexicana
Hwy. 277 N.
will be open
Fling Ding Night
until the last customer is served
American and Mexican Food
Reservations Available by calling **387-3401**
New at La Mexicana
Homemade tamales and tortillas, imported beers and margaritas.

Add a distinctive touch on Valentine's Day for that special someone or for someone special with a personal message in our

Valentine Ads

Happy Valentine's to my best girl
Love George

Mary, I would have sent a new car, but this is cheaper.
Sam

Miss J...
You are a wonderful teacher
We love you!
Your Class

Ad with message, no flower 4.95
Ad with message, one carnation-delivered 6.95
Ad with message, one rose-delivered 8.95

Print your message in the space provided below and return with a check for the appropriate amount to 220 N.E. Main or call your ad to 387-2507.
All ads must be paid before publication.

Deadline for Valentine Ads is 5 p.m. Monday, February 6 and ads will appear in the February 9th edition of the Devil's River News

Tax Season Blues?

Let Sonora Ford save you money with these Service Specials

Tune-Ups
4 Cyl. 31⁹⁹ 6 Cyl. 35⁹⁹ 8 Cyl. 39⁹⁹
Plus tax. Replace plugs, check plugwires and choke.

Front End Alignment \$32 Wash Job 18⁵⁰
any parts additional

Rotate Tires \$16 Balance Front Tires \$10

Oil, Filter Change & Grease
Gas Engine 12⁵⁰ plus tax Diesel Engine 22⁵⁰ plus tax

Prices good through April 15

Sonora Ford FORD Sales

115 NW Concho 387-2549

Oilfield Directory

<p>CARL J. CAHILL, INC. OILFIELD CONTRACTOR (915) 387-2524 SONORA, TEXAS 76950</p>	<p>Sonora-Ozona Oil Company Exxon Products (915) 387-2400</p>
<p>Atlas Wireline Services 302 East 5th St., Sonora 387-3531</p>	<p>Your ad could be in this space Call 387-2507 for details</p>
<p>CHARLES HOWARD GENERAL OILFIELD CONTRACTOR 387-3093 • 387-2270 • 387-2551 216 Hudspeth Sonora, Texas</p>	<p>Complete Oilfield Services JIMCO Jimmy Condra 387-3843 ENTERPRISES INC. Jimmy Trainer 387-3179 SONORA, TEXAS</p>

HONOR ROLL

Sonora High School
3rd Six Weeks
Seniors
 All A's
 Wheless Baker
 Anna Balch
 Kim Cooke
 Chuck Harris
 Mitzi Joy
 Cynthia Kepler
 Charla Kramer
 Jesse Lynch
 Rosa Madera
 Anna Mesa
 Daymon Skains
 Norma Sosa
 Michelle Villanueva
All A's -1 B
 Russell Chalk
 Patsy Herrera
 Michelle Perez
Juniors
 All A's
 Todd Keller
 Tracy Love
 Christi Spain
All A's-1 B
 Tammie Adams
 Christie Adkins
 Debbie Harris
 Mikal Martin
Sophomores
 All A's
 Vicky Anderson
 Amie Gibson
 Catherine Kepler
All A's-1 B
 Allison Schwiening
 April Spiller
 Angie Stewart
Freshman
 All A's
 Blake Adkins
 Brian DeWitt
 Susen McCleery
 Robert Gallion
All A's-1 B
 Dana Evans
 Adam Youngblood
Sonora High School
Fall Semester
Seniors
 All A's
 Anna Balch
 Russell Chalk
 Chuck Harris
 Cynthia Kepler
 Jesse Lynch
 Rosa Madera
 Brad Morgan
 Daymon Skains
 Michelle Villanueva
All A's-1 B
 Wheless Baker
 Kim Cooke
 Mitzi Kramer
 Michelle McEwen
 Michelle Perez
 Norma Sosa
Juniors
 All A's
 Todd Keller
 Tracy Love
 Christi Spain
All A's-1 B
 Christie Adkins
 Christina DeLuna
 Leticia Gomez
 Bruce Morgan
Sophomores
 All A's
 Liza Allen
 Vicky Anderson
 Amie Gibson
 Catherine Kepler
 Angie Stewart

All A's -1 B
 John Russell
 Allison Schwiening
Freshman
 All A's
 Blake Adkins
 Brian DeWitt
 Dana Evans
 Susen McCleery
 Adam Youngblood
All A's -1 B
 Chris Hazelton
Sonora Junior High
Third Six Weeks
Sixth Grade
 All A's
 Farah Gee
 Sandra Gonzalez
 Amy Love
 Vicky Richardson
All A's-1 B
 Callie Moore
 Jason Morley
 Chris Neal
 Cody Schenkel
 Serina Torres
 Ruben Yorba
Seventh Grade
 All A's
 LeAnn Barnes
 Amber Beebe
 Dawn Beebe
 Cindy Chavez
 Beverly Cooper
 Cole Crenwelge
 Gloria Escalera
 Laura Hearn
 Kelly Kiowski
 Tina Kohutek
 Narciso Lira
 Bobby Joe Mogford
 Audrey Neel
 Kim Owings
 Jenny Purvis
 Pam Ramos
 Alma Sanchez
 Patricia Sanchez
 Tabby Sanchez
 Rena Smalling
 Wade Spain
All A's-1 B
 Anthony Brown
 Joel Cox
 Genny Finn
 Lena Flores
 Brandon Gryder
 Deandra Moore
 Cherie Morrow
 Amy Patton
 Jose Salinas
 Felicia Sentena
 Jody Trainer
 Shawn Wallace
Eighth Grade
 All A's
 Daniel Anderson
 Carmen Burch
 Jesse Burnham
 Leslie Carrasco
 Lance Castro
 Whitney Condra
 Kathy Cooke
 Vicki Downing
 Brian Faris
 William Haltom
 Glen Hocutt
 Roy Ivy
 Shane Keller
 Sarah Lind
 Lorna Olenick
 Jessica Ortiz
 Cristina Ramirez
 Stephany Roberts
 Priscilla Sanchez
 Matthew Smith

Joanna Teaff
 Esmeralda Zamora
All A's-1 B
 Carmen Chavez
 Tracy Crites
 Shannon Escalera
 Eric Geske
 Gina Perez
 Pete Perez
 Ray Pierce
 Michelle Pruitt
Sonora Junior High
First Semester
Eighth Grade
 All A's
 Daniel Anderson
 Carmen Burch
 Jesse Burnham
 Leslie Carrasco
 Whitney Condra
 Kathy Cooke
 Vicki Downing
 Shannon Escalera
 Brian Faris
 William Haltom
 Glen Hocutt
 Roy Ivy
 Shane Keller
 Sarah Lind
 Lorna Olenick
 Jessica Ortiz
 Cristina Ramirez
 Stephany Roberts
 Priscilla Sanchez
 Matthew Smith
 Joanna Teaff
 Esmeralda Zamora
All A's-1 B
 Lance Castro
 Tracy Crites
 Kelly House
 Gina Perez
 Pete Perez
 Ray Pierce
Seventh Grade
 All A's
 Amber Beebe
 Cindy Chavez
 Beverly Cooper
 Gloria Escalera
 Laura Hearn
 Kelly Kiowski
 Tina Kohutek
 Bobby Joe Mogford
 Deandra Moore
 Audrey Neel
 Jenny Purvis
 Pam Ramos
 Alma Sanchez
 Patricia Sanchez
 Tabby Sanchez
 Felicia Sentena
 Wade Spain
 Jody Trainer
All A's-1 B
 Dawn Beebe
 Anthony Brown
 Cole Crenwelge
 Narciso Lira
 Rebecca Lumbreras
 Kim Owings
 Amy Patton
 Rena Smalling
Sixth Grade
 All A's
 Farah Gee
 Sandra Gonzalez
 Amy Love
 Callie Moore
 Chris Neal
 Vicky Richardson
 Serina Torres
All A's-1 B
 Shane Deal
 Jodi Johnson
 Sara Reston
 Hadley Smith
 Jeromy Yager
 Ruben Yorba

BRONCO TAILS

by Cynthia Kepler

As far as I can tell, the most exciting place to be nowadays has got to be Sonora High! We've got some really outstanding students who are doing a really outstanding job representing Sonora High. I hope that you are remembering to encourage all of them!

The top story at Sonora High this week is the varsity basketball season. The teams finished their first round of District play this past week. I'd like to present a Team Spirit and Perseverance Award to the Bronco Varsity team. They ended a twenty-seven District game losing streak last Friday night when they beat Llano 77-64. Michael Harris was the top scorer in the game with twenty-four points, but all the boys played great basketball. Coach Carter told me, "That was one of our goals this year--to win a District game." This win came off a 55-44 loss to Brady last Tuesday night. In that game, Michael Harris was the high scorer with twenty-two points. The Varsity boys now have a season record of 8-15. Their district record is 1-2.

The girls have gone through their

first three games without a scratch. They came back from a 15-3 score that favored Fredericksburg to a 43-22 victory. They showed a lot of determination and concentration. Wheless Baker was the high scorer in that game with fifteen points. On Friday, the girls pulled out a close game with Llano, but defeated them 52-50. High scorer in that game was Christie Adkins with ten points, but again, all the girls contributed greatly to the victory. When asked about the girls' chances of going on to Bi-District, Coach Dukes said, "We're sitting in a nice spot, but we're not assured of anything yet." Congratulations to both teams--you've really had outstanding seasons!

In JV action Friday night the girls defeated Llano 67-36. The JV girls have a good reason to be proud--as far as I know, they've lost two games this entire season. The JV boys also won with a score of 63-34.

Also competing this weekend was the UIL Math and Science team. The team got up at the ungodly hour of 4:00 to travel to Andrews. Results are: Calculator-

Cynthia Kepler, Senior., 3rd; Number Sense-Jesse Lynch, Senior. 8th; Cynthia Kepler, Senior. 4th; Math-Blake Adkins, Freshman, 3rd; Cynthia Kepler, Sr. 2nd, Jesse Lynch, Sr., 1st; Science-Blake Adkins, Freshmen 1st, Trini Sentena, Sophomore 6th, Todd Keller, Junior, 7th; Tracy Love, Junior, 2nd; Cynthia Kepler, Senior, 5th, and Jesse Lynch, Senior, 4th; Overall, Sonora took 2nd place in the Math division and 2nd place in the Science division. In Small Schools, Sonora finished 4th All Around. This weekend, the academic team will be going to Del Rio to compete. A few speech and drama people will be attending a practice meet in Snyder. Good luck to all the participants.

I put in a plea in the last article, and I'll repeat it now! WE NEED JUDGES!! Mr. Marrs must fill over 600 judging places in the tournament, and we need people to backup just in case. If you haven't been contacted, but would like to judge, contact Terry Marrs. The Sonora Tournament is one of the oldest tournaments in Texas. This will be its 45th year. Most of the teams that attend stay overnight, so businessmen, this could be a way for you to give a little to the tournament that supports your businesses! If you're scared about judging, just remember, no judge is perfect. You can usually tell who won a round just from your experience. We especially need debate judges.

Seniors would like to thank Mrs. Fields for helping put together a career day. Last Thursday and Friday, seniors listened to people come talk about their future. On Friday, the library was opened to Seniors to find out from career people just what a certain career could mean.

The band is really gearing up the Band Solo and Ensemble District contest on February 18. Also beginning their seasons are tennis and track teams.

That's about it for this week--keep your head up.

COLT TAILS

by Vicki Downing

Eighth Grade Girls

Monday, January 23, the Sonora eighth grade girls basketball team played Ozona here. The high point scorers of the game were Anna Teaff with four points, Jessica Ortiz with three points, Kelly House with two points, Annette Gamez with two point and Cenisa Cauthorn with two points. The girls lost to Ozona 13-16. They had a Reagan County Tournament Thursday and Saturday January 26 and 28.

Seventh Grade Boys

Monday January 23, the Sonora seventh grade boys went to Ozona and played. The high point scorer of

the game were Jamie Espinosa with ten points, John Lopez with six points and Danny Gomez with six points. The boys lost to Ozona 24-40.

Seventh Grade Girls

Monday, January 23, the seventh grade girls basketball team played Ozona here. The high point scorers of the game were Yvonne Mata with five points, Amy Patton with four points, and Laura Hearn with four points. The Sonora girls beat Ozona 18 to 14. Monday, January 30 was their last game to be played in their hometown.

All last games are in Iraan, February 6, at 5:00 p.m.

Sonora teams over run Llano

by C. Sorenson

Friday night Sonora Varsity and JV Girls and Boys teams made the long trip to Llano for their third district game.

Entering Friday's game the Lady Bronco's and Llano were tied in district at 2-0, both having beaten Brady and Fredericksburg. When the dust cleared Sonora came out on top 52-50.

High point scorers for Llano was Cobb with 19 points; Christie Adkins was leading scorer for Sonora with 10 points, making six free thows in the fourth quarter. Deborah Harris and Traci Teaff each scored nine points with seven of Traci's points coming in fourth quarter. Kay Williams had seven points with Kay and Traci each making one three point shot. Mitzi Joy had six points, Anna Balch had five points and 13 rebound. Wheless Baker had four points, Donna Pierson 2 points.

Sonora varsity girls won the first

half of district competition with a 3-0 record, Llano 2-1, Fredericksburg 1-2, Brady 0-3.

The Varsity boys won their first district game 77 to 64. The boys played real well with a complete team effort.

Harris was high scorer with twenty-four points; Mirike, twelve points; Lira, twelve points; Keller, eight points; Capuchina three points; Perez and Hulsey each two points; and McGee, with one point; with Harris and Capuchina each shooting three point shots.

High point scorer for Llano was Brascom with seventeen points; and Hatfield with thirteen points.

Friday night February 3rd the Bronco's travel to Brady to start the second half of district play. Games begin at 6:00 p.m., on February 7th with the teams traveling to Fredericksburg and on February 10th they will be back at home against Llano.

Public Notice

SUTTON COUNTY COMMISSIONERS' COURT ORDER ESTABLISHING SUBDIVISION REGULATIONS

On this 8th day of February, A.D. 1982, came on to be considered by the Commissioner's Court of Sutton County, Texas, a proposal to establish regulations over the subdivision of land located in unincorporated areas of Sutton County, Texas; and the Court having heard argument of such proposal, is of the opinion that certain regulations are needed in order to accommodate more easily the amount and kind of traffic over all streets and roads within subdivisions in unincorporated areas of the County; to provide adequate drainage system within said subdivisions; to facilitate the identification of land within said subdivision for purposes of placement on the tax roll; to prevent the Sutton County Road and Bridge Department from being burdened with substandard streets and roads in the future; and to provide for adequate and sanitary sewage disposal and water wells within the subdivisions;

IT IS THEREFORE ORDERED, ADJUDGED AND DECREED by the Commissioner's Court of Sutton County, Texas on this 8th day of February, A.D. 1982, that the following REGULATIONS are established concerning the division of land in Sutton County, Texas, situated outside the corporate limits of any city or town, said regulations to become effective on the 1st day of March, 1982.

Every owner of any tract of land situated without the corporate limits of any city in Sutton County, Texas, who divides the same into two (2) or more parts for the purpose of laying out any subdivision of any such tract of land, or an addition without the corporate limits of any town or city, or for laying out lots or building lots, and for the purpose of laying out streets, alleys or parks or other portions intended for public use, or the use of purchasers or owners or lots fronting thereon or adjacent thereto or for any other purpose or use as described in Section One of Article 6626a V.A.C.S., as amended, shall be subject to the following rules and regulations and such amendments or alterations thereof or additions thereto as shall be adopted by the Sutton County Commissioners from time to time.

cont'd. on page 7

First National Bank of Sonora to offer Low-Cost Texas Card

The First National Bank of Sonora will soon offer customers a MasterCard or VISA Credit Card with no annual fee and a 14% annual percentage rate.

Called the **Texas Card**, the new credit card program will begin March 1, 1989 and is available to Texas residents only, through First National Bank and Texas Independent Bank, a "banker's bank" providing marketing and support services to help independent banks compete with the state's largest financial institutions.

For the consumer, this is a great opportunity. At 14%, the **Texas Card** annual percentage rate is well below the 18% to 22% outside credit cards are charging in Texas. And while most of them have an annual fee of \$20 to \$40, there's no annual fee at all for the **Texas Card**.

The **Texas Card** also features a 25-day interest-free grace period on purchase balances paid off in full each month.

Development of the **Texas Card** bucks a trend in recent years of large Texas banks moving their credit card operations to states where they can charge annual fees and higher interest rates than Texas law allows. **First National Bank** and others offering the low-cost **Texas Card** encourage customers to pay off higher-interest credit card balances and transfer them to the **Texas Card** at 14% APR. Texas Independent Bank President, Mr. Gayle Earls, has emphasized the new card will also help keep money and credit card jobs in Texas. "When the large banks took their credit card operations out of Texas to states like South Dakota and Delaware, they took jobs and money with them. Not only is the **Texas Card** a far better deal for consumers, it's also a chance to help keep banking business in Texas."

According to Mr. Earls, Texas Independent Bank developed the **Texas Card** after a survey of 1400 independent Texas financial institutions showed strong support for a credit card program geared to the community bank.



First National Bank of Sonora

Your locally owned Independent Bank serving the "Stockman's Paradise" since 1900.

102 N. Main
 387-3861

AT&T ANNOUNCES PRICE CHANGES FOR LONG DISTANCE CALLS WITHIN TEXAS

AT&T announces April 1, 1989, price changes for Long Distance Service (MTS) within Texas. AT&T's prices for long distance calling within Texas will be increased by two cents per minute for calls under 82 miles in distance and one cent per minute for calls that are 82 miles or greater in distance. AT&T's current discounts of 25% for evening calls and 40% for night and weekend calls will remain in effect. The price increases are expected to produce approximately \$22.8 million, which is nearly 2.9% of AT&T's annual revenues for Texas Long Distance Service.

This represents the first AT&T price increase for long distance calls within Texas. AT&T's long distance prices for calls within Texas have been reduced overall by about 12% since 1986.

The Long Distance Service price changes will also impact AT&T's PROSM WATS Texas offering, which offers subscribers a 10% discount on all long distance calls within Texas. These price changes are expected to produce approximately \$661,000, or about 3.5% of the annual revenues for AT&T's PROSM WATS Texas offering.

Prices for AT&T's REACH OUT[®] Texas offering will also change. The price for initial hour usage will increase from \$12.55 to \$12.95; the additional hour price will increase from \$11.40 to \$12.00. These price increases are expected to produce approximately \$364,000, or about 2.1% of the annual revenues for AT&T's REACH OUT[®] Texas offering.

AT&T's tariffs implementing these changes will be filed with the Public Utility Commission of Texas on March 1, 1989, with an effective date of April 1, 1989. The combined price increases are expected to produce approximately \$23.9 million, which is approximately 2.4% of AT&T's annual revenues for all Texas intrastate services.

If you have questions regarding these price changes please call AT&T's service consultants at 1-800-222-0300 for residential customers or 1-800-222-0400 for business customers. Persons who have questions regarding this tariff filing may also contact the Public Utility Commission of Texas in writing, at 7800 Shoal Creek Blvd., Suite 450N, Austin, Texas 78757, or by calling the Public Information Office at 512-458-0223, or 512-458-0227, or 512-458-0221 teletypewriter for the deaf.

SM Service Mark of AT&T
 ® Registered Trademark of AT&T



cont'd. from page 6

SECTION I-PRELIMINARY PLAT:

One (1) print of a preliminary plat of any proposed subdivision shall be submitted to the County Judge and one (1) print of a preliminary plat of any proposed subdivision shall be submitted to all Sutton County Commissioners at least seven (7) days before the meeting at which approval is asked. The preliminary plat shall show or be accompanied by the following information:

- (a) The proposed name of the subdivision and the names of adjacent subdivisions;
- (b) The names of the Owner and/or Owners of the proposed subdivision and the name of the Engineer or Surveyor responsible for the survey and design. Also, a letter submitted to the Court as to what name the property will be sold under and a billing address.
- (c) The location of boundary lines and their relation to established survey lines or fractional survey lines.
- (d) The location and width of existing and proposed streets, roads, lots and alleys, building lines, easements, parks, schools sites and other features relating to the proposed subdivision. The plans shall show the outline of adjacent properties for a distance of at least one hundred (100) feet and how the street, alleys or highways in the proposed subdivision may connect with adjacent land or with adjacent subdivisions which are of record.
- (e) The preliminary plat must show the physical features of the property, including water courses, ravines, bridges, culverts, 100 year flood plain, present structures, and other features of importance of lot and street layout and water drainage. The appropriate acreage of the property shall be indicated. Topography of the tract shall be shown on the preliminary plat by means of contours of ten (10) foot intervals tied to USGS datum.
- (f) Designation of the proposed uses of land within the subdivision whether for residential, commercial, industrial or public use, such as parks, churches, etc.
- (g) North Point, scale, and date.
- (h) The preliminary plat shall be drawn to a scale not exceeding one (1) inch equals three hundred (300) feet. Preliminary plats shall be presented on standard size sheets of 18"x 24". If the proposed subdivision is too large to be accommodated by a single standard size sheet, then two or more sheet may be used, with match lines clearly shown.
- (i) The Owner(s) must submit, by letter, along with the preliminary plat, a statement as to his plan for providing utility service within the proposed subdivision, i.e., water and sewer service.

SECTION II-FINAL PLAT

After the preliminary plat has been approved by the Commissioners' Court, a final plat for recording shall be prepared and submitted to the Commissioners' Court at least fifteen (15) days prior to the meeting at which approval is asked. The recording plat shall be on a sheet size of 18" x 24" only and shall be to a scale not exceeding one (1) inch equals three hundred (300) feet. The recording plat shall be on linen, plastic, reinforced blue line, mylar, or other permanent type material and must be reproducible. If the recording plat is a photographic reduction of a larger scale original, then the scale shall be shown in graphic form. All figures and letters shown must be plain, distinct, and of sufficient size as to be easily read, and must be of sufficient density to make a lasting and permanent record. Two (2) prints of the recording plat shall be submitted to the Commissioners' Court at the time the recording plat is submitted, one copy of which will be given to the Sutton County Tax Appraisal Office.

The recording plat shall show the following information:

- (a) The name of the subdivision, scale and North point;
 - (b) The name of adjacent subdivisions, if any, and the names of streets within the subdivisions, the number of linear feet of roadway to be constructed or maintained, and the lot, block and section numbers within the subdivision. The plat shall show at least one hundred (100) feet of the adjoining property;
 - (c) The perimeter boundary of the subdivision shall be shown with bearings and distances, referenced to survey lines or fractional survey lines and shall be described by metes and bounds.
- THE ACREAGE IN EACH SURVEY MUST BE SHOWN.** A copy of the plat must accompany the field notes. The plat copy will be retained by the Sutton County Tax Appraisal Office. The signed field notes shall be submitted to the Commissioners' Court at the time of final approval;
- (d) The 100 year flood plain shall be shown and all lots or any part of a lot that lies within the 100 year flood plain shall show the elevation of the said lot at the point of proposed construction of a residence;
 - (e) Location of lots, streets, roads, public highways, utility easements, parks and other features, shall be shown with accurate dimensions in feet and decimals of feet and bearing, with the length and radii of all curves, and with all other information necessary to duplicate the plat on the ground;
 - (f) The location of building set-back lines on all streets, and the location and dimensions of utility and drainage easements and other public rights-of-way or access;
 - (g) Certification by the Owner of his dedication of all streets, public highways, alleys, utility easements, parks and other land intended for public use, signed and acknowledged before a Notary

Public, by said Owner and by all other parties who may have lease rights, mortgage and lien interest in the property.

(h) Certificate of approval signed by the designated representatives of the City having extraterritorial jurisdiction over the area in which the subdivision is located, if any.

(i) Certification by a Registered Public Surveyor or a Registered Professional Engineer to the effect that the plat correctly represents a survey made by him, and that all the lot corners and boundary markers are correctly placed as shown thereon. Markers shall be of metal or concrete firmly placed in the ground so as to be permanent.

(j) Spaces shall be provided for the County Judge and County Commissioner to sign, indicating their approval of the plat.

A subdivision may be recorded by Sections, or the entire subdivision may be recorded, and, in either case, that portion to be recorded shall be accompanied by a set of field notes describing that portion which is to be recorded. Field notes and dedications to be filed separate from the plat on 8 1/2" x 11" paper, signed and acknowledged by the owner.

A copy of the restrictions imposed within the subdivision by the Owner shall accompany the final plat. If sewage disposal is to be done by means of individual septic tanks, the restriction shall clearly indicate the length of lateral lines to be imposed as a minimum on each lot within the subdivision and require that the sewage systems meet minimum recommended specifications. The lateral lines and sewage system design and specifications shall be in accordance with the book, "Construction Standards for Private Sewage Facilities," published by the Texas State Department of Health and shall be approved by the County Sanitarian or County Health Officer. The Commissioners' Court may, at its own discretion, appoint a Registered Public Surveyor and/or Professional Engineer as the designated representative of the Court to examine the subdivision on the ground to assure itself that the plat and related documents accurately represent the subdivision.

After examination of the final plat, the Commissioners' Court shall indicate to the Owner as to its intent to approve or disapprove the plat. It shall be clearly understood, however, that no plat will be finally approved for recording until such time as all streets, culverts, utilities, etc., have been installed and inspected within the subdivision and/or the bond required in Section III (j) filed and approved. It shall be the responsibility of the Commissioner in whose precinct the subdivision is located, or his designated representative to make the inspection of streets, culverts, utilities, etc., and he shall report his findings to the Commissioners' Court. If the construction of the above-mentioned items is satisfactory to the Commissioners' Court, then the Owner shall appear before the Commissioner's Court and request that the plat be filled for record and the Commissioners' Court shall at that time sign the plat indicating its approval.

SECTION III--GENERAL REQUIREMENTS

General Requirements pertaining to subdivision within Sutton County, Texas, having been considered by the Commissioners' Court shall be as follows:

- (a) Street Arrangement: Unless otherwise approved by the Commissioners' Court, provision must be made for the extension of existing topography as nearly as possible, in order that drainage problems may be reduced. Streets should, wherever possible, follow valleys or depressions so as to form a collection system for surface water.
- (b) Street Design: Main Artery Streets.
 1. Provide for the right-of-way on main artery streets or roads within the subdivision of a width of not less than sixty (60) feet nor more than one hundred (100) feet.
 2. The street cut on main arteries within the right-of-way shall be not less than twenty (20) feet nor more than thirty-five (35) feet. All streets shall have at least a six (6) foot shoulder and six (6) foot back slope.
 3. Street Construction Standards. Unless prior permission is granted by the Commissioners' Court to deviate from the standards herein imposed, all streets shall be constructed in accordance with Attachment "A". Owner is advised to contact the Commissioners' Court regarding street construction

standards imposing requirements of caliche road construction and permission to use these caliche road requirements.

ATTACHMENT A

- 1. Primer Coat--shall be applied at a temperature between 50° F and 150° F by means of a pressure distributor, at a minimum rate of .30 gallons per square yard.
- 2. First Seal Coat--to be applied according to County specifications no sooner than twenty-four (24) hours after the Primer Coat nor later than seventy-two (72) hours after the Primer Coat.
- 3. Second Seal Coat--to be applied according to County specifications no later than forty-eight (48) hours after the First Seal Coat.
- 4. Asphalt--applications to the road bed shall not be permitted at temperatures below sixty (60) degrees Fahrenheit in the shade.
- 5. Crown Gradient--shall be one inch (1") in ten feet (10').
- 6. Road Bed Linear Gradient--shall not exceed four (4) degrees on main artery roads and eight (8) degrees on secondary streets and roads.

4. Where a County Road abuts the subdivision, the Owner shall set back the subdivision line thirty (30) to fifty (50) feet from the centerline of the existing County road, depending on the area.

(c) Street Design: All other streets.

- 1. Provide for rights-of-way on all other streets or roads within the subdivision of not less than forty (40) feet nor more than fifty (50) feet.
- 2. The street cut on all other streets to be not less than twenty (20) feet nor more than thirty (30) feet.
- 3. Street Construction Standards. Unless prior permission is granted by the Commissioners' Court to deviate from the standards herein imposed, all streets shall be constructed in accordance with Attachment "A". Owner is advised to contact the Commissioners' Court regarding street construction standards imposing requirements of caliche road construction and permission to use these caliche road requirements.
- (d) Street right-of-way width, street cut width, and construction standards to be followed in the subdivisions will take into consideration the amount and kind of travel over said streets. No standards of streets shall be less than the State law requires. Any streets standards changed by the State shall change County standards accordingly.
- (e) Dead-end Streets: Except in very unusual cases, no dead-end streets will be approved unless such dead-end streets are provided to connect with future streets on adjacent land, but cul-de-sacs may be permitted where the form or contour of the land makes it difficult to plat with connecting streets. Such cul-de-sacs shall provide proper access to all lots, and a turnaround shall be provided at the closed end, with an outside street line radius of at least fifty (50) feet.
- (f) Adjoining Streets and Land: The system of streets designated for the subdivision except in very unusual cases, must connect with streets already dedicated in adjacent subdivision; and where no adjacent connections are platted, must be continued to the boundaries of the tracts subdivided, so that other subdivisions may connect therewith.
- (g) Lots: All lots so far as practicable, shall have the side lines at right angles to the street on which the lot faces, or radial to curved street lines. All lot corners, angle points, point of curve, etc., shall be marked with steel rods or concrete markers all securely fastened in the ground. Lots must have at least seventy-five (75) feet of frontage on a street.
- (h) Building Lines: Building setback lines shall be shown on all lots intended for residential use, and shall provide for a minimum setback distance of at least thirty (30) feet. If the lots within the subdivision are large, a greater setback distance should be considered.
- (i) Utility Easements: Utility easements of not less than ten (10) feet shall be provided on each side of lot lines.
- (j) Drainage Easements: Where drainage within the subdivision may create a problem, provisions shall be made for drainage easements to allow for proper control of drainage, and for future maintenance within the easement area.
- (k) Construction: Prior to beginning any construction within the subdivision, the Owner shall contact the Commissioner in whose precinct the subdivision is located. The Commissioner or his designated representative shall go over the construction plans of the Owner. Any reasonable changes in the plans required by the Commissioner shall be

implemented by the Owner. All installations and work in any subdivision must be approved by a majority of the Commissioners' Court to be final. All streets shown on the plat must meet the following specifications unless prior permission for variation hereto is granted by the Commissioners' Court:

- 1. The Landowner or Developer will grade up the road bed to an approved level and said road must have V-type bar ditches sufficient to insure proper drainage.
- 2. The main artery road beds, after they have been graded, compacted and approved in an on-site inspection by the Commissioner or his designated representative, will be covered with a minimum width of twenty (20) to thirty-five (35) feet of good grade base material six (6) inches in depth after compaction to form a solid base. All other streets after being graded, compacted and approved in an on-site inspection by the Commissioner or his designated representative will be covered with a minimum width of twenty (20) to thirty (30) feet of good grade base material six (6) inches in depth after compaction to form a solid base. Before application of base material, the Commissioner or his designated representative in whose precinct the subdivision is located must approve the base material.
- 3. Seal Coatings: When white rock base material is used, it must be primed with an asphalt primer coat the full width of the bed, applied at a minimum of .30 gallons per square yard. Said primer coat must be of approved type by the Commissioners' Court (mc-0, mc-1, etc.)
- a. Prior to the application of any sealing material, the road bed must be graded and smoothed and rubber tire rolled to eliminate any irregularities in the surface. To insure an acceptable surface, water must be used in the rolling and bedding process.
- b. Asphalt Specifications: Asphalt used shall be AC-10 or equivalent or heavier.
 - (1) Seal coat width on main artery road shall be not less than 20 feet nor more than 35 feet.
 - (2) Seal coat width on secondary streets shall be not less than 20 feet nor more than 30 feet.
 - (3) Seal coat shall be two applications as set out below:
 - (a) First coat shall be #3 grade crushed rock or #3 grade washed gravel, or industry equivalent to make a 3/4 inch surface (approximately one cubic yard to 65 square yards). The rock shall be imbedded by a rubber tire roller in asphalt (AC-10 or heavier) applied at a rate of .30-.45 gallons per square yard at a minimum temperature of 350° Fahrenheit.
 - (b) Second coat shall be of 5 grade crushed rock or #5 grade washed gravel or industry equivalent applied to make a 7/16 inch surface (approximately one cubic yard to 110 square yards). The rock shall be imbedded by rubber tire roller in asphalt (AC-10 or heavier) applied at a rate of .15-.25 gallons per square yard at a minimum temperature of 350° Fahrenheit.
 - (c) Prior to application of primer and seal coat, the Owner/Developer shall contact the Commissioner of that precinct or his designated representative, for an on-site inspection of the road bed.
- 4. All of the grading and gravel must meet the inspection and approval of the Commissioner in whose precinct such addition or development is located, or his designated representative.
- 5. The Landowner or Developer will be required to contact the Commissioner in whose precinct the addition and/or development is located, or his designated representative, for an on-site inspection prior to the commencement of any work in the development or addition, in order that the Commissioner or his designated representative may make specific recommendations as to any drainage structures that may be required for the addition, or other recommendations concerning the subdivision.
- 6. The Landowner or developer will be required to install culverts on all entrances and across draining areas of sufficient size to permit proper drainage, and shall consult with the Commissioner on the size and installation.
- (l) Landowner or Developer's Bond: The Landowner or Developer desiring to construct any of the improvements covered by these Subdivision Requirements and who has not constructed the streets and drainage structures required prior to approval of the Final Plat, shall execute a cash bond or a Corporate Surety Bond, made payable to the County Judge and his successors. The bond shall be in such an amount as may be determined by

the Commissioners' Court not to exceed the estimated cost of constructing roads or streets. Upon approval by the Commissioners' Court, a cash bond is to be filed at the office of the County Treasurer; a surety bond is to be filed at the office of the Public Works Administrator; conditioned that the principal on the bond will faithfully comply with all the requirements of the Commissioners' Court concerning the building of streets, drainage facilities, culverts and entrances, and the correction and repair of all defects in said streets and drainage structures for the period of construction. After construction is completed, the owner shall apply as set out in SECTION III(m) below for release of his construction bond and shall substitute a maintenance bond which shall be made payable to the County Judge and his successors in the sum of One Dollar per foot of street, to be approved by the Sutton County Commissioners' Court and filed with the County Treasurer or public works administrator conditioned that the principal on the bond will, for one (1) year from the time the Construction Bank is released, repair and correct any defect in street and drainage structures thereon. Where the Owner or Developer has constructed the streets and drainage structures required by this minute prior to approval of the Final Plat, he shall execute a Corporate Surety Bond, made payable to the County Judge and his successors in the sum of One Dollar (\$1.00) per foot of street, to be approved by the Sutton County Commissioners' Court and filed with the County Treasurer or Public Works Administrator conditioned that the principal on the bond will, within one (1) year from the time the Final Plat is approved, repair and correct any defect in said street and drainage structures thereon.

(m) The release of any bond shall be by a minute of the Commissioners' Court. To request a release, the Landowner or Developer, who posted the bond in question shall, in writing, request the release of said bond. The request shall contain a statement by the Landowner or Developer of compliance with the Subdivision Rules and Regulations of Sutton County, Texas, and the date the bond was originally accepted by the Commissioners' Court. The written request for release of bond shall be sent to the County Judge and a copy of said request shall be sent to the Commissioner of the precinct in which the subdivision is located, allowing said Commissioner sufficient time to make a final on-site inspection of the subdivision before the release of bond is heard by the Commissioners' Court.

(n) If any section, subsection or paragraph of this minute of the Sutton County Commissioners' Court, or the application thereof, is held invalid for any reason, such invalidity shall not affect any other provisions of this minute which can be given effect without the invalid provisions or application and to this end, this minute is severable.

APPROVED this the 8th day of February, 1982.

Charles Sherrill, County Judge
Preston Love, Commissioner Precinct 1
Billy Galbreath, Commissioner Precinct 3
Juan C. Gonzales, Commissioner Precinct 4

SEALED BID SALE

The Texas Engineering Extension Service will be accepting sealed bids for the following item until 1:00 p.m. on February 14, 1989.

Chevrolet Astro Small Cargo Van, 1986. Serial number 1GCM15E4GB173482, license number 489 930 (odometer reading 55,613). Vehicle was in a one vehicle rollover and suffered body damage.

The vehicle can be inspected at the Cecil Atkisson Chevrolet dealership in Sonora, Texas, located at I-10 & Golf Course road, the telephone number is (915) 387-2529. Bids sheets will be available at Cecil Atkisson Chevrolet.

If additional information is needed please contact: Clark Benson, Division Head, Water & Wastewater Training Division, (409) 845-6247.

PUBLIC NOTICE

The Outdoor Drama Group, Sonora, Texas, invites bids for food catering at the "Covered Wagon Dinner Theater." Bid specification packets may be obtained at the Devil's River News during regular hours.

cont'd. on page 8

cont'd. on page 8

cont'd. on page 8

cont'd. on page 8

cont'd. on page 8

cont'd. on page 8

cont'd. on page 8

cont'd. on page 8

cont'd. on page 8

cont'd. on page 8

cont'd. on page 8

cont'd. on page 8

cont'd. on page 8

cont'd. on page 8

cont'd. on page 8

cont'd. on page 8

cont'd. on page 8

cont'd. on page 8

cont'd. on page 8

cont'd. on page 8

cont'd. on page 8

cont'd. on page 8

cont'd. on page 8

cont'd. on page 8

cont'd. on page 8

cont'd. on page 8

cont'd. on page 8

cont'd. on page 8

cont'd. on page 8

cont'd. on page 8

cont'd. on page 8

cont'd. on page 8

cont'd. on page 8

cont'd. on page 8

cont'd. on page 8

cont'd. on page 8

cont'd. on page 8

cont'd. on page 8

cont'd. on page 8

cont'd. on page 8

cont'd. on page 8

cont'd. on page 8

cont'd. on page 8

cont'd. on page 8

cont'd. on page 8

cont'd. on page 8

cont'd. on page 8

cont'd. on page 8

Buy, Sell or Trade
CALL
387-2507
to place your ad

CLASSIFIED ADS

PUBLIC NOTICE

NOTICE is hereby given for the request for bids for the Sutton County Road Department for approximately 360 cubic yards of concrete to be delivered to Owenville Rt.

Specifications may be obtained at the County Auditor's office in the County Courthouse, Sonora, Texas, 915/387-5380, Box 16, Sonora, Texas, 76950. Please deliver or mail sealed bids to Judge Carla Fields, Box 1212, Sonora, Texas 76950. Final receipt of bids will be at 9:00 a.m. o'clock, February 13, 1989, at the County Courthouse. At such time bids will be opened and accepted or rejected by the Sutton County Commissioners Court.

SUTTON COUNTY LOW WATER CROSSING UPGRADING FEBRUARY 1989

NOTICE TO BIDDERS
Sealed proposals addressed to Charles R. Graves, County Auditor, Sutton County Courthouse, Sonora, Texas, P.O. Box 16, Sonora, Texas, 76950 will be received by Sutton County, Texas in the office of the County Auditor until 9:00 A.M. on Monday, February 13, 1989 for the construction of the "Sutton County Low Water Crossing Upgrading" project.

The project includes the construction of a reinforced concrete overlay and the widening via a reinforced concrete surface for two low water crossings, the construction of three reinforced concrete drainage structures, the construction of reinforced concrete footings and the cleaning of each feature of three existing drainage structures.

Bid and Contract Documents, including specifications, may be obtained in the offices of:

Charles R. Graves
Sutton County Auditor
Sutton County Courthouse
P.O. Box 16
Sonora, Texas

Greystone Engineering, Inc.
3321 Foster Street
San Angelo, Texas 76904

Instructions to Bidders are included in the Bid Documents and bid security in the amount of 10% of the price bid will be required.

PUBLIC NOTICE

NOTICE is hereby given that the Sutton County Hospital District, will receive bids for depositary of the District's funds for the period commencing February 14, 1989, and ending December 31, 1991. Any banking organization qualifying under the laws of the State of Texas to as depositary of municipal funds, which desires to act as such depositary for Sutton County Hospital District, shall submit a written application, sealed and marked on the outside "Application for Depositary of Sutton County Hospital District Funds." Such application shall be received in the office of Harold McEwen, President of the Board, at P.O. Box 798, Sonora, Texas 76950. Bids will be open at 7 p.m., February 13, 1989, at the District's regular meeting in the conference room of the Hospital, Sonora Texas.

The Sutton County Hospital District's Board of Directors shall have the right to accept the application which offers the most favorable terms and conditions for handling of the District's funds and shall have the right to reject any or all applications and to waive informalities.

HAROLD MCEWEN,
PRESIDENT
SUTTON COUNTY HOSPITAL
DISTRICT

Rent/Lease

4 Bedroom, 2 bath-\$375.00, 2 Bedroom Mobile-\$125.00.
Doyle Morgan Real Estate
Anna & Wayne Munn, 387-2171.
18-2tp

Spacious apartment-total electric.

CH/AC covered car parking all bills paid. Luxurious living. Hunt Apts. 102 Sonora Drive 387-3672 or 387-2040. 21-tfn

Shurley Enterprises Mini-Storage, 8x12-\$25 monthly and 12x24-\$50, monthly. Please call 387-3619, 9:00 a.m. to 12:30 p.m. Monday through Friday. 22-tfc

Real Estate

505 College..Behind Junior High. Part of Lot 6 and 8, City of Sonora, Sutton County, TX
\$21,000.00

302 S. Crockett...2 story, across from O'Bryan's. Lot 1, Block T, Sonora, Sutton County, Texas
\$60,000.00

See JoAnn Jones, Mike Hale or Harold McEwen at



or call (915)387-3861

3 bedroom, 1 bath, Interior remodeled, on 2 lots. \$19,500. 418 College behind Junior High School. Phone Alfred Sykes on Mobile phone 387-3733 plus 28 after dial tone after 5 p.m. Daytime call 387-2518 or 387-3023 (Barbara Sykes) 4tp

3 bedroom, 2 bath with fireplace & kitchen built-ins. Great location on 1 acre bordering city limits and high school, \$50,000. Contact Jack Hearn, Jr. (817) 594-0388. 26-tfc

Call Agents: Anna & Wayne Munn 387-2171

Doyle Morgan Real Estate We offer:
• Personal Service
• Property Management
• Rental Services

Prospect: Nice 3-2, carport, storage. Call for details.
Poplar St: Rolo says sell. 3-2, carport. \$39,500.
Garage: Good location. Price reduced. \$11,000.
Lots for mobile homes or to build. Good location. Call.

2nd Street: Extra large 3-2, den, carport. \$60,500
Deerwood St. 3-2-2, fireplace, store room \$55,000.
Good Location: 3 room house with 2 car garage. \$16,000.
3rd St. 3 B, 1 B, large lot. Good financing. \$27,000.
Mobile Home Lot: 100 x 100 corner lot, storage building. Call today!

Taylor St. 4 BR home with nice large mobile home.
Deerwood St. Beautiful 3-2-2, sprk. sys., lg. lot. fireplace \$64,000.
Sawyer Dr. 3 BR, 2 B, Brick \$59,000.
Water St. 4 BR, 3 B, was \$85,000 now \$75,000.
Taylor St. 4 BR, 2 B, Stone const. \$1,500 paid in closing. Bargain \$26,900.
Crockett Ave. Brick, 4 BR, 2 B. \$52,700.

Deerwood St. 3 BR, 2 B, Brick-Relo Co. pays up to \$3,000 in closing. \$46,900.
Taylor St. Nice 2-1 home. Lots of trees + a mobile home to rent. \$20,000 Cash
Glasscock St. 3 BR, 2 B, Good buy Mid \$30's.
Crockett Ave. 3 BR, 2 B, Great Buy \$28,200-\$24,900.
College Ave. 2 BR, 2 B, Garage \$39,000.
Glasscock St. Nice 2 B, 1 B w/apt. \$30,000.
College Ave. 3 BR, 2 B, Carpet, Stucco \$18,000.
DeBerry: Custom Built 4 BR, 3 B, Many extras, 6.85 acres.
Cahill: 10 Acre-Custom built home 3/2. Dbl. car garage & carport, satellite.

Mobile Homes
Mobile Home for sale. 2 bdrm, 1 bath. Very reasonable. Call 387-3020 or 387-3907 after 5. 4tp

Very nice 1983 14x80, 3 bdrm., 2 bath, Cameo Mobile Home. No money down-just take up payments. Must be moved. 387-2010 after 5. 4tp

Autos for Sale

1966 Volkswagen-completely restored, excellent condition, 387-3278, 387-5189. 15-tfc

'85 Jeep Wagoneer, loaded. One owner, 387-3278, 387-5189.

Kate's 1985 Red Fiero, 17,000 miles, new Michelin tires, perfect condition. Call 387-2114 or 387-2455. 15-tfc

1966 Volkswagen-completely restored, excellent condition, 387-3278, 387-5189. 15-tfc

'85 Jeep Wagoneer, loaded. One owner, 387-3278, 387-5189.

Kate's 1985 Red Fiero, 17,000 miles, new Michelin tires, perfect condition. Call 387-2114 or 387-2455. 15-tfc

Previously Owned

86 Chev. Astro C/L Van-Tan
86 Chev. IROC Z 28 Camaro-Red
86 Olds Cutlass Supreme-Gray
86 Olds Delta 88 4 Dr. Sedan-Gray
86 Olds Delta 88 4 Dr. Brod. Lt. Blue
85 Olds 98 Regency Brougham-Silver
83 Olds 98 Regency Sedan-Drk. Green
86 Buick Park Ave.-Silver
86 Ford F 350 Crewcab-Tan and Blue
78 Prowler 5th Wheel 32 ft. Camper
73 Starcraft Pop up Camper
Call Pete or Jerry for details and prices
G.M.A.C. Financing Available

Cecil Atkission
Chevrolet, Oldsmobile, Buick and Pontiac, Inc. IH-10 and Golf Course Road 387-2529

Help Wanted

ANYONE CAN APPLY!
Guaranteed Visa/MC, US Charge. Even with bad credit. No one refused. Call (213) 925-9906 ext. U 3492 4tp

Sutton County is taking applications for Superintendent of the Road and Bridge Department. The job consists of supervision of all phases of construction and maintenance of County roads and any projects associated therewith, and also requires actual labor at the job sites. Applicants should be familiar with and able to operate all types of heavy equipment associated with road construction, and should have extensive knowledge of techniques and methods used in constructing and maintaining both paved and unpaved roads. Salary will be commensurate with experience. All qualified persons may obtain applications at the office of the County Auditor in the Sutton County Courthouse during regular business hours. All such applications should be returned to the County Auditor's office by February 6, 1989.

Sutton is an equal opportunity employer.

Immediate opening for an LVN, full time, with small hospital experience or be willing to train. Good salary and benefits. Contact Director of Nurses at Hudspeth Hospital at 387-2521 or P.O. Box 455, Sonora, Tx. 76950. 37-tfc

For Sale

New and Rebuilt Maytag Washers and Dryers at Sonora Electric. 211 N.E. Main. Phone 387-2714. 15-6tc

Bob Caruthers Real Estate
Ranch Real Estate Sales
P.O. BOX 1507 • SONORA, TEXAS 76950 • (915) 387-3279

Martha Valliant McLain
Member of Sonora Chamber of Commerce
387-5060
Castle Hills-- 4 BR-3 B, FP, wonderful kitchen, timed sprinklers front & back, office, art studio, utility room, unbelievable storage, tile baths, wool carpets. A gracious home priced to sell.
Poplar Street--For Sale or Lease on Lease/purchase option or possible owner finance. 3 BR, 2 B, LR, Huge den, Utility RM, roomy, a home for a family, make an offer.
Let me sell your property!
Call to buy or sell
387-5060
Member M.L.S.

Flat Bed Gooseneck 28' Tandem/Dual axles. Brakes on all four wheels. Good rubber, \$4850.00. Bruton 2 Horse/Single axle. Completely enclosed, \$3,250.00, 387-3279.

Wanted
Cash paid for Ram Skulls with horns. Serious inquiries. Call collect (915)643-4861 15-5tp

Year round deer & turkey lease, from 6 to 10 guns. Call Dr. Thomas Miller. Lake Charles, La. (318) 478-6172. 18-3tc

ATTENTION RANCHERS
I am looking to lease a large ranch for deer hunting in the Sonora/Del Rio area. Call S. Price at (214) 434-2015. 24-4tc

We Buy Sheep Horns
Skulls not needed. McKissack Handcrafted Knives. 902 S. Concho, 387-3253. 15-tfc

Personal
Professional Mary Kay Beauty Consultant Janet Warnock, 853-3711. 4tp

Experienced seamstress, will do alterations, mending and sewing. Call 387-2757 for appointment. 4tp

Services

Need some painting done? Couple will do interior/exterior house painting and light repairs. Call 387-2304 for free estimate. 4tp

VIDEOTAPING AVAILABLE
Weddings, birthdays, reunions, sports, parties, recitals and more. Reasonable rates. 387-2227 Kathy Hardgrave. 12-tp

Maytag Sales and Service, check our prices at Sonora Electric Co., Main Street. Phone 387-2714. 15-6tc

Randy Repairs
Television and Appliance Repair All Brands
Call 387-5223 15-tfc

Firewood

Live Oak and Mesquite picked up or delivered. Call 387-3347. 8tp.

Business Opportunities

Own your own Apparel or Shoe Store. Choose from: Jean/Sportswear, Ladies, Men's, Children/Maternity, Large Sizes, Petite, Dancewear/Aerobic, Bridal, Lingerie or Accessories Store. Add Color Analysis. Brand Names: Liz Claiborne, Healthtex, Chaus, Lee, St. Michele, Forenza, Bugle Boy, Levi, Camp Beverly Hills, Organically Grown, Lucia, over 2000 others. Or \$13.99 one price designer, Multi tier pricing discount or family shoe store. Retail prices unbelievable for top quality shoes normally priced from \$19. to \$60. Over 250 brands 2600 styles. \$18,900 to \$29,900: Inventory, Training, Fixtures, Airfare, Grand Opening, Etc. Can open 15 days. Mr. Loughlin (612) 888-4228. 1tp.

cont'd. from page 7
Sealed bids must be returned by February 8, and will be opened at the noon meeting of the Outdoor Drama Group on February 9. The meeting will be held at the Presbyterian Church.

The Outdoor Drama Group reserves the right to reject any or all bids.

PUBLIC NOTICE

Lillian M. Hudspeth Memorial Hospital is now accepting sealed bids for a portable x-ray machine. Bids will be opened at 7:00 p.m., February 13, 1989 in the meeting room of the hospital at the regular meeting of the Board of Directors. Bids should be addressed to: BIDS% MR. GILMORE, P.O. BOX 455, SONORA, TX. 76950.

PUBLIC NOTICE

Lone Star Gas Company, in accordance with the Gas Utility Regulatory Act, hereby gives notice of the Company's intent to eliminate the Rate Schedule for Public Schools-N and to implement a new schedule of rates for natural gas service to be charged to the residential and commercial customers in the City of Sonora, Texas effective February 10, 1989.

The rate schedule is expected to furnish a 1.61 percent increase in the Company's revenues from residential and commercial customers in the City of Sonora.

A Statement of Intent has been filed with the City of Sonora and is available for inspection at the Company's business office located at 111 W. Twohig St., San Angelo, Texas.

NOTICE OF INTENTION TO EXCHANGE REAL PROPERTY

Notice is hereby given that the Commissioners Court of Bee County at a regular meeting of the Commissioners Court to be held at the Bee County Courthouse, Commissioner's Court Room, on March 13, 1989, at 9:00 a.m. will consider offers to exchange real property for the real property described on Exhibit "A" hereto which is owned by Bee County, Texas. This notice is given pursuant to Section 263.006 of the Local Government Code of Texas, which states that the notice must be published once a week for three consecutive weeks before the date of the exchange, with the date of the first publication being before the 20th day before the date of the exchange."

EXHIBIT A THE SURFACE ESTATE ONLY

BOBBIE SMITH REAL ESTATE
We've got a home to fit your price range- Call Today! 387-2728
Jim Cusenbary, Agent 387-2093
Still looking for your dream home? Call for details.
Prices have been reduced on nearly all models with a variety of sizes and price ranges available.
New Listing...Country Home on 10 acres, Cahill Addition, 3 BR, 2 B, FP, deck, storage, water well...must see!
Want a Scenic View and a Lovely Home? See this one which features a pool. Priced in the 50's.
Bargain Hunter... check on this large 3 BR home located on corner lot. In the 40's.
Large 2 BR, 2 bath brick home. Sprinkler system, huge trees, close to school and hospital. Low 40's.
Large 2 story stucco home. 1112 Tayloe 3 BR, 2 B, Balcony, garage. corner lot. \$75,000.00
Businesses For Sale
Have you ever wanted to own your very own business? Opportunities are available with a variety of locations:
"Putt-Putt" Miniature Golf Course with 18 greens and club house. Space for video games and refreshments. Property is fenced and lighted with covered picnic area. Great for family entertainment! Priced at \$28,500.00.
Shell Service Station. Complete with gas pumps, wash and grease racks. Refreshment center, office space and rest rooms. Located on busy Crockett Ave. \$65,000.00.
Large, re-modeled dress shop building on Main Street. Show window, rest room, office space and roomy basement storage area. Priced at \$50,000.00.
U-Lock-It Storage buildings located in town for easy access. Available at a very reasonable price of \$15,000.00.