

Help clean up Sonora this Saturday !!!

HOAG & SONS BOOK BINDG  
127 RAILROAD ST  
SPRING PORT MI 49284

# The Devil's River News

(155-920)

Published Weekly in Sonora, Texas — "The Capital of the Stockman's Paradise"

25¢

94th year

Sonora, Texas 76950

Wednesday, July 25, 1984

Phone 387-2507

10 Pages

## Parallel parking in Sonora "bombs out"

by Becky Collins

Parallel parking really bombed out in Sonora. In an effort to prevent hazardous parking by the local citizens, the Sonora City Council recently passed an ordinance to redesignate all parking areas in the downtown business district. A couple of weeks ago, city crews marked off the new parking areas with parallel parking designated for the area on Main Street beside Westerman's Drug and in front of the San Angelo Savings Association.

In their regular meeting Tuesday, the Sonora City Council was informed of the problems such parking designations have caused both the businesses and their customers.

According to Westerman Drug manager Ron Cox, the confusion of his customers and the complaints by the same have caused his business to be penalized unfairly. "The parallel parking has not enhanced the flow of traffic on Main street," "Because they have to drive around the block a couple of times looking for a parking space. The elderly and sick people in need of medication are pretty upset by the time they get in the door of my business," Cox added.

The business neighboring Westerman's owned by John Tedford had also been hurt by the new parking restrictions. According to Tedford, the parking spaces in front of his jewelry store are constantly full with cars of drugstore customers, who would rather park diagonally than parallel. "Of course people are supposed to know how to park parallel, but that's one of the things they despise," "They could live in Dallas or anywhere else for that matter, but they live in Sonora because they don't have to live with the same

restrictions that they would have to have if they lived in a large city," Tedford commented. He also noted that the acute angles marked for diagonal parking in front of his store provide for more driving space on Concho Street. Tedford added that there had been a total of 2.5 million dollars spent in that block of the downtown business district since 1976. He added that the Council had acted unfairly by not personally informing the businessmen of the ordinance was passed.

According to City Manager Jim Dover, in 1976 Main Street was designated for parallel parking only, but at that time evidently the City didn't have the money for paint, and thus the parking designations were never parked. He alluded to parking problems on Concho and Oak streets as the main cause of instituting the Uniform Traffic Codes adopted by the city in 1976. As of May, 1984 the City Police department had no justification for citations without lines designating parking areas. The rules pertaining to parking could not be enforced. Dover called the Council decision a "Catch-22" situation, stating that the decision was the only way to safely address the problem. He noted that the new parking designations were not the "ideal solution," but felt that the Council had been acting in the best interest of the City of Sonora.

Police Chief Brent Gesch related to the gathering that he had experienced problems with people driving across the center lines of the streets and because people were taking up more than one parking space in the downtown area. He requested that the Council come up with a solution. He noted that the streets of Sonora were not designed for vehicles of today, that

they are very narrow and thereby pose many traffic hazards to the unsuspecting driver. He added that on the first day after the new parking designations were marked, no one parked parallel and very few have since then in that block of Main Street where it is so designated.

Rosemary Mathews, San Angelo Savings branch manager noted that instead of easing the problems, the parallel parking has caused even more as the street was widened through parallel parking, the speed of traffic has increased, thereby causing dangers to the pedestrian crossing Main Street. She also noted that at the present time there is not a double line to indicate no crossing on that section of the street.

Some Council reaction was heard by gathering with Lemuel Lopez stating that he sympathized with the loss of parking space for the businesses as he also had parking problems for his restaurant customers. James Trainer called the areas in question a "prime Parking corner", and related an incident in which he had become confused with the parallel parking designation. Hershel Davenport made a motion to change the parallel parking designation on that corner of Main Street to diagonal parking once again and also to designate the area beside the Methodist Church for parallel parking except on Sunday when diagonal parking will be allowed. In addition, he requested that a double center stripe be painted along the length of Main Street. Seconded by James Trainer, the motion was approved through unanimous acclamation by the Council.

The Council also discussed the possible connection of Cornell street with Sinaloa thereby relieving traffic

congestion on Hwy. 277 S. and providing access to the new high school. Information from both the County and City governments will be forthcoming on the possible connection of the streets.

The City Council also requested that Sonorans practice voluntary conservation methods in their use of water. According to City Public Works Director Gene West, Sonora uses some 2 million gallons of water daily. Because of the lack of rain, the aquifer from which our water comes had not been recharged. Although the situation is temporarily in good shape, without a rainfall, we could be in trouble. Some guidelines for water voluntary conservation include changing the location of water sprinklers often, being sure that the water you use is not going in the street, and watering during the early morning hours or in the late evening.

The Council has set the second public hearing concerned the annexation proceedings of the land on which the new high school will be built for August 7 at 9 a.m. in the Council Chambers. The following Tuesday during their regular monthly meeting, the Council hopes to finalize and pass the annexation ordinance.

Joyce Jimenez, A.G. Black, and Gloria Badillo were appointed by the Council to the Sutton County Committee on Aging.

City Manager Jim Dover presented to the Council a draft of the budget for the 1985 fiscal year. Dover stated that the proposed budget basically addresses last year's expenditures. The Council studied the proposed budget and the new tax rulings that will be implemented in the near future.

## Clean up set Saturday

A massive undertaking on the parts of all of the citizens of Sonora will begin Saturday, July 28. The residents of our community will be involved in the first annual Great American Clean-up, Sonora Style.

The Chamber of Commerce Sonora Industrial Commission is sponsoring the event, and needs all the help that we can give. Many local companies have volunteered trucks and men to help out in the job. More hands are needed however, as we spruce up our city for the big Sutton County Days celebration.

All participants will be guests of the local merchants for a good old fashioned watermelon feast on the Courthouse lawn. Free bumper stickers will be given to each helper, and prizes will be awarded in

several categories.

Look around your neighborhood. Is there something that you'd just as well not see? If it can be loaded up and hauled away, you also can be a participant. If you have a pick-up or trailer and a little bit of time Saturday, you also are needed.

If you have an area to be cleaned, let us know. Dial the Chamber of Commerce office before Friday at 5 p.m. at 387-2880. We'll get someone out to help.

Cleaning up all of our city will probably take more than one day - and keeping it clean will take attention every day after that. This is an opportunity to put back into our community what we take out. Come on Sonora, show your community spirit, PITCH IN!!!

## Gramm due here Tuesday at 8:30

Sutton County Republican Party Chairman John Tedford has announced a press conference between the local media and U.S. Rep. Phil Gramm, candidate for the U.S. Senate.

The local press conference has been set for 8:30 a.m. at Joe Berger Field in Sonora on Tuesday, July 31. The main topic of discussion will be Gramm's candidacy for the U.S. Senate. Gramm is a proponent of a balanced federal budget, lower taxes, greater economic opportunity for the working people of this country, and a strong national defense.

Gramm will be facing Democratic opponent Lloyd Doggett in the November General Elections for the Senate seat vacated by John Tower.

The public is invited to attend the press conference.

## Lee Ann Sims recalls memories

by Lee Ann Sims, Miss Sutton County

Last year about this time I was wondering who I would sell my next ticket to. Those tickets were such a bother, but on August 24 those bothersome tickets paid off. I, Lee Ann Sims, was crowned Miss Sutton County 1983-84. I was so surprised along with being more than a little bit excited. The crown, the roses, and the banner are all my memories of the Miss Sutton County queen's contest.

The great responsibility that faced me has proven to be a very rewarding experience. I have met so many people and have had the advantage of working with many of them.

There were many events throughout the year in which I participated. I assisted in the ticket drawing of the 15th annual Game Dinner given by the Sutton County Days Association. At the annual banquet of the Chamber of Commerce, I helped in decorating and registering the guests. There were many other small events I helped with during the year.

In the latter part of April, I competed as a finalist in the 13th Annual Miss West Texas National Teen-Ager Pageant held in Odessa. At this pageant I met many new girls and thoroughly enjoyed myself. I presented a speech on What's Right About America, got in the finals, and received second runner-up in the essay portion of the pageant.

Being Miss Sutton County 1983-84 has been a very rewarding experience, and I would not hesitate to do it all over again.

I know the girls sponsored this year will have as many happy memories as I hold for myself. I sacrificed much of my time and Miss Sutton County played a great role in my life. I wish the best of luck to all the Miss Sutton County queen candidates competing this year.



LEE ANN SIMS

## Candidates to meet

Candidates for the 1984 Miss Sutton County Days queen are reminded of the party tomorrow (Thursday) night at 7 p.m. in the meeting room of the Sutton County Steakhouse.

Mothers of the contestants are urged to attend with their daughters so that all contest rules and a schedule of events may be thoroughly discussed.

Contestants are requested to wear casual attire suitable for black and white photographs. They are also to come prepared to fill out a questionnaire for the Devil's River News article to follow.

Remember the party, sponsored by Marilyn McEwen and Linda Love, at the Sutton County Steakhouse at 7 p.m. tomorrow night. All contestants need to be present.

## Weather Watch

Date	High	Low	Rain
16	98	70	0
17	102	64	0
18	99	70	0
19	99	68	T
20	98	69	0
21	99	65	.07
22	100	70	0

COMPILED BY PAT BROWN

## 12 Candidates listed

Twelve Sutton County girls grades 9 through 12 will compete for the title of Miss Sutton County Days this year.

Competing this year will be Margarita Valdez sponsored by the Los Amigos Club, Carla Jungk sponsored by Robert Brown's Hurry Up, Lori Webster sponsored by First National Bank, Carrie Sorenson sponsored by the Devil's River News, Michelle McCleery sponsored by Sutton County National Bank, Debbie Bible sponsored by Downtown Lions Club, Patsy Perez sponsored by San Angelo Savings and Loan, Debbie Shannon sponsored by Sonora Ford Sales, Kate Mathews sponsored by Sutton County Historical Society, Gina Black sponsored by Spain's Department Store, and Shelly Lykins sponsored by the Ladies Golf Auxiliary.

The girls will start selling rodeo tickets August 1 and the top five ticket salespersons (dollar wise) will be in the finals. Three out-of-town judges will then pick a girl to reign as Sutton County Queen for the 1984-85 year. The queen and her runners-up will be chosen for poise, personality, and appearance.

The girls grossed \$9,399.75 on rodeo ticket sales last year. Each sponsor receives 10 percent of the sales made by their candidate and non-profit organizations are allowed to keep the proceeds. Local businesses are required to donate the proceeds to a non-profit organization.

The new Miss Sutton County for 1984 will receive 10 percent of her sales to keep herself.

Candidates, sponsors, relatives and friends may sell as many rodeo tickets as possible and the five contestants making the most money from sales will advance to the finalist category. Donations may also be taken by contestants.

The actual selection of the queen will be performed

by a panel of out-of-town judges. In addition to the queen, there will be a first, second, third and fourth runner-up selected.

It will be the new queen's responsibility to be present at any function requiring Sutton County or Sonora representation and/or upon the request of the Sonora Chamber of Commerce.

In the event that the new queen is unable to be present, it is her responsibility to inform the chamber of such and it is then the next runner-up's responsibility to attend.

The rules set up for the candidates are: to be present at all called meetings of contestants and to be present for all Sutton County Days events.

They also have certain dress requirements that have been established to insure proper representation of the sponsors. The girls will be required to wear formal attire for the parade to be held Friday, August 24, they may wear western wear to the rodeo and barbeque and daytime dress apparel Saturday when they circulate throughout the crowd on the courthouse lawn.

For the queen crowning, the girls must return in formal wear and western wear will be allowed for the dances.

During the parade, each contestant will be riding on a vehicle driven by her sponsor with both fully recognizable. Each vehicle is to have the candidate's and sponsor's name visible on both sides. The vehicles for the 1984 parade will be provided by Chaparral Motors of Sonora.

Remember that the girls will begin ticket sales Wednesday, August 1, so be ready to help the candidates of your choice get to the finals. And be sure to be on hand for the Sutton County Days festivities and the crowning of the 1984 queen by 1983 Miss Sutton County LeeAnn Sims.

## School supply list

Following is the school supply list for students through grade five in the Sonora Independent School District. (It's just about that time again, parents!)

### Kindergarten Supply List

- 1 Box Kleenex (large)
- 1 Box Crayons (8 count only)
- 1 Pkg. of large assorted construction paper
- 1 Large bottle of glue
- 1 Resting mat - FIRST DAY PLEASE!
- PARENTS, PLEASE PUT YOUR CHILD'S NAME ON ALL SUPPLIES!

### First Grade Supply List

- 2 Thick pkgs. assorted construction paper 45-50 sheets per package
- Sharp pointed scissors
- 4 oz. Elmer's glue
- 2 boxes Kleenex
- 6 Husky pencils
- Box of 16 crayons
- 1 Large eraser
- Box for supplies
- Box of watercolors
- \*\*2 Aladdin tablets #2112
- \*\*1 Big Chief tablet
- \*\*These are the supplies that will be used in first grade. Please do not make substitutions on tablets.
- PARENTS, PLEASE PUT YOUR CHILD'S NAME ON ALL SUPPLIES!

### Second Grade Supply List

- Scissors - Sharp-pointed
- Ruler
- Pencils - Number 2
- Tablet - #2225
- Crayons - pkg of 24 or 49
- Crayola Watercolor Markers (Package of 8)
- Watercolors
- Glue (Not Paste)
- Kleenex (2 Boxes)
- Box for supplies
- Construction Paper - 9X12 (Assorted)
- PARENTS, PLEASE PUT YOUR CHILD'S NAME ON ALL SUPPLIES!

### Sonora Middle School Supply List

#### Third Grade

- 2 Tablets - Nos. 225 or 2225
- 2 - #2 pencils
- Crayons (16 or 24 count)
- White glue - 4 oz.
- Eraser
- Water Colors
- Ruler (optional)
- Scissors with point
- Construction paper - 1 pkg - smallest size
- Large box Kleenex
- Please do not buy notebooks and/or notebook paper for your child. The teachers will send word when these will be needed.

#### Fourth Grade

- Ruler - inches & metric system
- Large Scissors
- 3 Folders with pockets
- 1 box map colors
- Pencils - No. 2
- Notebook paper
- 2 boxes Kleenex (200 Count)
- Glue
- Assorted Construction Paper
- Scotch tape
- 1 box Crayons (24)
- NO NOTEBOOKS!!!!
- NO SPIRALS!!!!

#### Fifth Grade

- 2 Pencils, No. 2
- 1 box Glue
- 1 Glue in plastic container
- 1 pair scissors, pointed
- 1 rubber eraser (no artgum)
- 2 boxes facial tissue
- 1 looseleaf notebook
- Notebook paper
- 1 ruler - 12"
- 1 red lead pencil
- 1 box map colors
- 5 folders with pockets



## Community Calendar

Thursday, July 26  
District 13 Fashion Show 10:30 a.m. Sonora Junior High School

Saturday, July 28  
The Great American Clean-up Sonora Style begins at 8:30 a.m. on the courthouse lawn!!!!  
Party honoring Mrs. A.C. Elliott to be held at the First Baptist Church fellowship hall.

Monday, July 30  
Family Shelter Representative to be in Sonora at the county courthouse beginning at 10:00 a.m.

Tuesday, July 31  
8:30 a.m. Phil Gramm, candidate for U.S. Senate to hold press conference at Berger Field

Wednesday, August 1  
Senior Registration 9:00 - 11:30 a.m. at Sonora High School  
Junior Registration 1:30 - 3:30 p.m.

Community Calendar brought to you by...



Sutton County National Bank

207 Hwy. 277 N., Sonora, Texas 76950, (915) 387-2593  
A member of Westex Bancorp, Inc.

## Rena Elliott to be party honoree

A reception honoring Mrs. A.C. (Rena) Elliott will be held on Saturday, July 28 at the fellowship hall of the First Baptist Church.

The reception in honor of Mrs. Elliott's eightieth birthday is being hosted by her family.

All of Mrs. Elliott's friends are invited to join in wishing her a very happy birthday, but are being asked to bring ONLY their love and best wishes for her happiness.

## Local PTA leader attends Austin forum

Ruth Ann Dickenson of Sonora Parent Teachers' Association was among several PTA leaders who attended the Texas PTA 1984 Summer Leadership Seminar July 15-17 in Austin.

Featured greeters and speakers included Texas First Lady Gale White, motivational speaker Jack Jackson, and Su Ellen Fried of the Kansas Chapter of the National Committee for the Prevention of Child Abuse.

PTA State President Laura Tynes of Waco brought greetings and presided.

Meetings of the PTA state board of managers and state committees preceded the seminar.

Seminar participants attended workshops on such topics as child abuse, computer literacy, seat belt safety, nutrition and behavior, the dropout problem, drugs, alcohol, teenage sexuality, dropouts, and one-parent families.

## Energy Report



The threat of new or increased taxes on the petroleum industry in 1985 has again been raised.

In Texas, Comptroller Bob Bullock and the Chairman of the House Ways and Means Committee, Stan Schlueter told the Dallas Times Herald that "the state may have to adopt personal and corporate income taxes within a decade...and, another tax increase may be necessary as soon as next year."

Since the legislature passed the one-eighth percent sales tax increase instead of the originally proposed one percent increase, there will be about 585 million fewer dollars going to Austin than there would have been with a one percent increase.

The Oil and Gas Journal editorial of July 9th says, "next year could be devastating. The pressures to raise taxes will be far greater than they were in 1984. One of the prime targets will probably be oil."

And, with the so-called windfall profits tax runnint between forty and fifty percent below original estimates, the pressure will be even greater. Through 1983, \$33.3 billion had been raised by the WPT. The General Accounting Office is estimating that only \$57.4 billion will be raised through 1986 and that's a shortage of \$69 billion from earlier projections.

The G.A.O. says that 56 of that 69 billion dollars is the result of lower than expected oil prices and production levels.

Under the law, the WPT will start a 33 month phase-out in January, 1991, if it doesn't reach \$277 billion by January, 1988.

And, the Canadian gov-

price controls on natural gas exports, which could cut the price of Canadian gas by as much as 30 percent. The new floor price is \$3.10 per cubic

thousand feet.

The Permian Basin rig count for this week is 344. Last week 330 and one year ago 213.

The deer family includes about 60 species, ranging in size from the huge Alaska moose down to the Chilean pudu, which is almost as small as a rabbit.

## SCHLEICHER COUNTY MEDICAL CENTER

Eldorado, Texas

Weekend Clinic

Saturday 9 A.M. & 6 P.M.

Sunday 9 A.M. & 6 P.M.

Register in Person at Hospital Clinic

8:30 A.M. to 9:00 A.M.

5:30 P.M. to 6:00 P.M.

\$25.<sup>00</sup> Basic Office Call

24 Hour Emergency Room Service still offered at \$57.<sup>50</sup> basic call ★ for acute emergencies.

★Medication, Lab, X-Ray & Procedures may be added if necessary.

For additional information call 853-2533

## School registration is set

Summer is on the wane, and its nearly that time again. Registration times and dates for students in grades 6 through 12 have been announced by an administrative spokesman of the Sonora Independent School District.

Sonora High School will register its incoming students on Wednesday and Thursday, August 1 and 2. Seniors will register from 9 a.m. until 11:30 a.m. on August 1, juniors that afternoon from 1:30 until 3:30.

Thursday, August 2 will see the sophomores registering in the morning from 9 a.m. until 11:30, and the freshmen will register from 1:30 until 3:30 in the afternoon.

Those high school students who are new to the district should go by the high school office during the day on Monday and Tuesday, August 6 and 7, and are asked to bring with them any records from a previous school which they might have including health records, report cards, etc.

Students in the 6th, 7th, and 8th grades will register at Sonora Junior High on Thursday and Friday, August 9 and 10. Eighth graders will register on Thursday morning, August 9th, 7th graders that afternoon, and 6th graders on Friday morning.

Students new to the district who will be in the 6th 7th or 8th grades are asked to go to the junior high on

Friday afternoon, August 10. They too should bring with them any records from their previous school which they might have.

The 1984-85 school year will begin on Monday, August 20, at 8:15 in the morning. All buses will be on regular schedule that day. Additional information may be obtained at the time of the registration of your



In some parts of the Sahara Desert are underground streams. People digging for water can sometimes catch fish.



The word idiot comes from the Greek word for private person, one not engaged in any public office, and therefore, to the ancient Greeks, probably an ignorant, uneducated person.

## Sonora Clean-up is Saturday

by Edith James

The "Clean-Up Sonora" drive will commence Saturday, July 18 at 8:30 a.m. on the Courthouse lawn. Several coordinators will be on hand at the courthouse lawn to give instructions on the drive.

Local companies and the City of Sonora and County vehicles will be made available to assist in this clean up drive, however, any and all persons, young and old are necessary and welcome to come and help with this venture.

This is an all-out effort by the Industrial Clean-Up Committee to assist people in cleaning up their yards and trash that needs to be hauled off, also vacant lots and any unsightly sites.

The City of Sonora crew has been busy sprucing up the downtown area, and it is certainly looking good. Also several other sites have been cleaned up, all of

which makes the town much more attractive. We have a beautiful town which deserves a helping hand.

A bumper sticker will be given to anyone helping with the drive. This can be a lot of fun as well as a time to accomplish a much needed undertaking.

Everyone is welcome to join in the biggest little drive in Sonora. A watermelon feast will follow at the courthouse lawn. DON'T MISS THE CLEAN UP DRIVE...YOU ARE NEEDED AND WANTED!!!

## Family Shelter rep sets local meeting

Irene Page, the Sutton County liaison for the San Angelo Family Shelter will be in Sonora on July 30 all day to speak with interested people about domestic violence and the services of the family shelter.

The meeting will begin at 10 a.m. in the district courtroom of the county courthouse.

Ms. Page noted that she will be visiting Sutton County at least once a month and hopes to set up a volunteer program with seminars offered on domestic violence and the services of the shelter.

## Appliance care

Microwave Ovens

The microwave oven does a big job for such a little appliance. It can help you prepare all kinds of foods quickly and easily. And yet, because of its clean cooking ability, it requires very little cleaning attention.



According to home economists from Whirlpool Corporation, a microwave oven can be kept looking "as good as new" by simply wiping out the interior with warm sudsy water, and a soft cloth or sponge after using it.

For stubborn soil, they suggest boiling a cup of water in the oven for two or three minutes to let the steam soften the soil—then simply wipe it out. Be sure to clean the areas where the door and oven frame touch when closed, and then rinse well.

The home economists caution against using abrasive cleaners or steel wool pads as they can damage the control panel and elec-

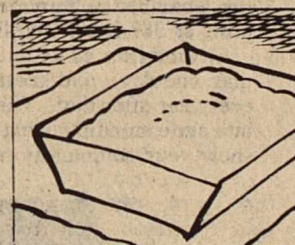
tronics. The exterior of your microwave oven may be cleaned with a soft cloth or sponge and mild detergent or spray glass cleaner.



There are fifty thousand rooms, or cells, in the average honeybee hive.

"A day is a miniature eternity."

—Ralph Waldo Emerson



If a baked cake sticks to the pan, try placing the pan on a cloth wrung out in hot water. It may help remove the cake from the pan.

"Decisions are what a man makes when he can't find anyone to serve on a committee." —Fletcher Knebel

## Hill's Bridal Registry

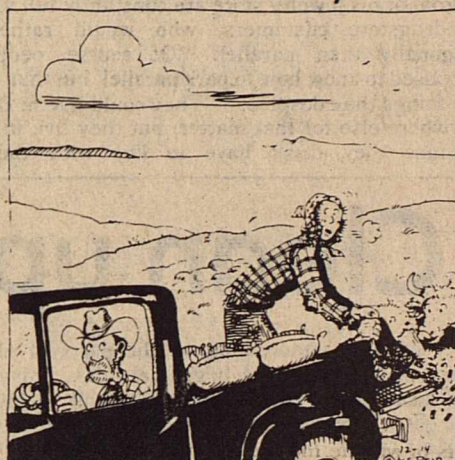
Mrs. Savell Shannon, nee Shelly Hofackett  
Mrs. Lyndon Bradley Johnson, nee Jana Harris  
Mrs. Reuben Lira, nee Nina Mata  
Joana Phillips, bride-elect of Randy Wuest  
Melanie Kelly, bride-elect of DeVoe Smith

## Hill's Jewelry

Downtown Sonora 387-2755

COW POKES

By Ace Reid



"Whatta you mean, the hard times are nearly over, I never knew we'd ever had good times!"

## Doyle Morgan Insurance



213 E. Main 387-3912

Here in the heart of the Stockman's Paradise, First National Bank of Sonora continues to keep LOCAL dollars to help strengthen our LOCAL economy. We continue our fast service because we don't have to go OUT-OF-TOWN for answers!

## Remember

We're your locally owned, independent bank serving the Stockman's Paradise since 1900.

Come in & join our family!

Your locally owned, independent bank serving the Stockman's Paradise since 1900.



MEMBER FDIC



## West Texas Business

By Jerry Lackey



Rain and how it changes a desert into a paradise is a continuous study conducted by the agri-businessman in West Texas. Although the answer is never really found as to how to make it rain during dry times, the search goes on.

Pat Ryan of Marfa tells about leaving for several weeks vacation in Arkansas and Oklahoma and seeing all the green country. When he returned home to find it had rained around 15 inches, a transformation from bare earth to a paradise of green was a big surprise. Alpine and the Davis Mountains with the pine trees and all now appear like Colorado.

In my travels the last week or so, I can assure you not all of West Texas is in that kind of shape. San Angelo to Abilene and into the Hill Country, stock tanks are low or dry...worse than the drought of the 1950's.

In Mason County, the green is mainly restricted to irrigated peanut farms. The pastures are not without grass, however as some showers have hit in strips.

There is an area in Llano County from the town east to the lakes which is very lush. But otherwise, evidences will verify a drought is very much holding grip.

A good inch rain graced Junction proper and out to

Copperas Creek last week. Certain parts of Kimble County appear in good shape.

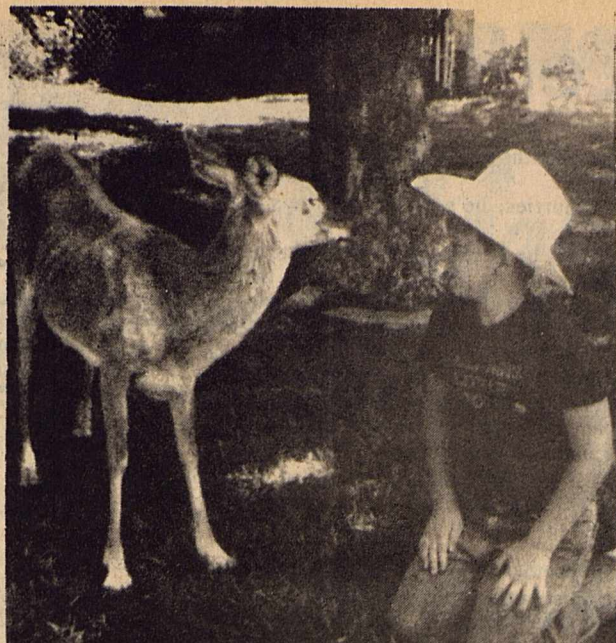
Livestock trailers loaded with livestock continue to line the streets for several blocks on sale day in many towns as ranchmen sell cattle and sheep. It is the only salvation in some areas to keep from daily feed rounds.

Jake Landers, Extension range specialist, says ranchmen in four or five counties around San Angelo have gone to burning pricklypear for feed. "You know it is really dry when a ranchman has to resort to pear burning in the hot summer time."

I can remember when we burned pear in the 1950's. However, it was mainly in the winter time. It was usually so cold, we welcomed the morning chore because we could keep warm by the pearburner.

Cities large and small across Texas have gone to water rationing. It is not only a sign of short supply but that the cycle for a dry period is at hand. It is different from the 1950's with dams and lakes—although low—granting a water source to citizenry in addition to wells.

Our greatest hope is good general rains to break the drought. With August approaching, the possibility of seasonal storms of the Gulf could provide that answer.



William B. Lamb has been visiting his grandparents, Buster and Jewell Jennings of Sonora. He is pictured above at the Caverns with Old Maggie, an all-time favorite with the tourists. The 23 year old doe has been taking handouts of cookies and other treats for over 20 years as the official greeter at the Caverns. (Contributed Photo)



In some parts of the country it is believed that if a butterfly lands on you, you will get a new dress.

### Tedford Jewelry Bridal Registry

Denise Burnett, bride-elect of Humberto Villarreal  
Kelly Ward, bride-elect of Rapheal Holder  
Melanie Kelly, bride-elect of DeVoe Smith  
Martha Gonzales, bride-elect of Arnaldo Acosta  
(San Angelo)

Joana Phillips, bride-elect of Randy Wuest  
Mrs. Lyndon Bradley Johnson, nee Jana Harris  
Mrs. Savell Shannon, nee Shelly Hofacket  
Mrs. Craig Hudson, nee Joan Schrier  
15th Celebration  
Prissy Samaniego

107 N.W. Concho

387-3839

## Ranch Roundup set

Once again, the descendants of the Wild West will gather together to compete in traditional contests in the fourth annual Texas Ranch Roundup, scheduled for August 17-18, at the Wichita County Mounted Patrol Arena in Wichita Falls.

More than 200 real working cowboys, wagon bosses, cooks, and immediate ranch family members will pit their skills against each other in roundup competition, which features events patterned after activities on a working ranch. The roundup will benefit three state charities.

The roundup opens Friday, August 17, at 7:30 p.m. Teams of cowboys from each ranch will compete in saddle bronc riding, team roping, team branding, wild cow milking, team penning, and a wild horse race. A country and western dance will begin at 9 p.m.

On Saturday, jackpot roping and barrel racing, two events outside regular competition, will begin at 8 p.m.

A ranch food cookoff, talent contest, and the first lady contest will be held Saturday afternoon before the final roundup events begin at 7:30 p.m. Another dance will begin at 9 p.m., with the awards ceremony getting underway at 10:30 p.m. in the arena.

Roundup tickets are available for \$9.00, reserved seats, and \$4.00 general admission. Tickets to the dances are \$5.00 per person per evening. Tickets to the Saturday afternoon contest are \$4.00 for adults and \$1.00 for children.

Tickets may be obtained by writing Falls Distributing Co., 3811 Tarry, Wichita Falls, Texas 75308, 817/692-9011.

The roundup is co-sponsored by the NOrth Texas Rehabilitation Center, Wichita Falls; the West Texas Rehabilitation Center, Abilene; and the West Texas Boys Ranch, San Angelo.

## SCA scholarships still available

Hundreds of millions of dollars of college scholarships and loans go unused each year. The student's problem is to find the specific awards for which they qualify.

Student College Aid, a nationwide, computerized, scholarship locator service, suggests if you earn less than \$27,000 a year and do not know how to apply for governmental college aid, send \$3.00 for booklet #100, "How to Apply for Governmental College Aid". Many families are eligible for this aid, but do not seek it.

If you earn too much to qualify for governmental aid, you should order booklet #300 for \$5.00, "How Students of Middle Income Parents Get Governmental College Aid". This explains how to qualify for college financial aid by deducting expenses not requiring cash outlay and by moving some assets to suitable instruments. This is necessary reading for parents of all

students.

SCA has \$500,000,000 of nongovernmental awards in its databank. They find scholarships and loans for which students should apply. Send \$3.00 for the bulletin #200, "Non-governmental Awards and Personalized Dataform". SCA guarantees to furnish at least 5 sources of refund payment. The average number of awards listed is 12 valued at \$1,000 each.

SCA has a "Graduate School Award Locator Service", bulletin #250 for \$3.00. The service cost \$49.00 and guarantees at least 3 sources.

Considerable financial aid is available at many colleges for students who are good but not necessarily great athletes. This aid is reserved for athletes through designated scholarships or awarded as part of a financial need package.

There are 40,000 scholarships out there and 10,000 of them are for women. The awards are not limited to ability in the big sports; 39 sports in all are covered.

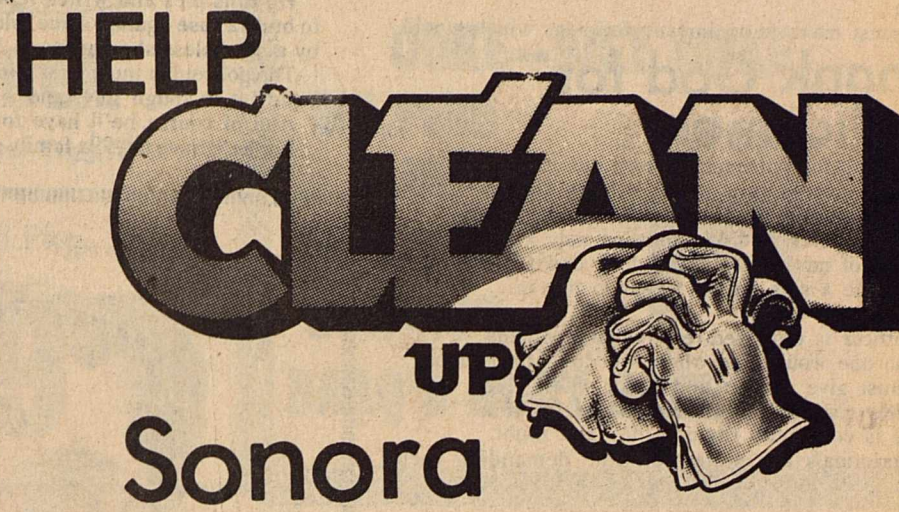
To receive consideration for this type of aid, the student athlete must show determination in marketing his or her talents. If athletics is your forte, request the Athletic Award Locator Form. When you return the form, the fee is \$10.00.

If the student has difficulty deciding what four-year college to attend, SCA has a computer program to match the student to the appropriate college. Request Four-Year College Matching Form. When you return the form, the fee is \$10.00.

Write student College Aid, 3641 Deal, Houston, Texas 77025 for booklets, bulletins and forms. Payment for booklets or bulletins is deducted from the cost of service #200 or #250.

## Water: What A Bargain!

The second most important substance in our lives (next to air) is water. Yet, it's so cheap most people pour it everywhere without concern. We wash with it, play in it, fight fires with it, scrub floors, water gardens, shine cars and clean dirty clothing with it. When we're done, we use it to flush the family wastes away into the sewer system. We do all these things with water that has been carefully collected, filtered, treated and tested to be safe and tasty for drinking. What a bargain! On average, Americans pay \$1.03 for 1,000 gallons of drinking water delivered 24 hours a day to their homes and business places.



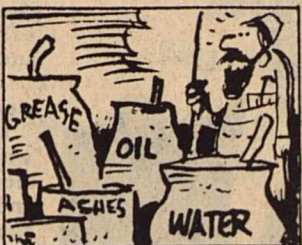
Bring your pick-up, trailer, friends, neighbors, kids and anyone else who can help.

If nothing else - bring yourself.

Watermelon feast afterwards.

Court House - Sonora 8:30 a.m.

Saturday, July 28th



The ancients are believed to have washed themselves with ashes and water, which was followed by an application of oil or grease to relieve the irritation caused by the ashes.

## Ask Your Dental Hygienist

The next time you have your teeth cleaned, don't let the dental hygienists do all the talking. By asking your hygienist the right questions, you can learn a lot more about maintaining your dental health. Commonly asked questions are:

Q: How often should I replace my toothbrush?

A: A worn-out toothbrush will not clean your teeth properly. Replace your brush every three to four months.

Q: What type of toothbrush should I use?

A: Generally, a brush with a soft, rounded-end or polished bristles should be used. Hard bristles can injure your gums. Children need smaller brushes than those designed for adults.

Q: What type of toothpaste should I use?

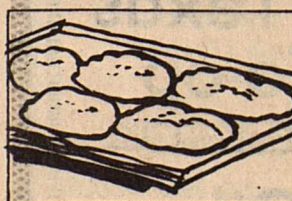
A: Fluoride toothpaste is your best bet. The fluoride in the toothpaste unites with the tooth enamel making it more resistant to decay.

Q: Is it necessary to rinse after brushing and flossing?

A: You can rinse your mouth with plain water every time you brush and floss. A fluoride rinse can also be used after brushing. Rinsing is not a substitute for brushing and flossing.

Q: What are the basic rules of good dental health?

A: Clean your teeth thoroughly with a brush and floss at least once a day; or more often if your dental hygienist recommends it. Eat well balanced meals and limit snacks; use fluoride toothpaste or mouthrinse; visit your dental hygienist and dentist on a regular basis; and be kind to your dental hygienist.



Cookies bake best on sheets that are shiny on the top, dull on the bottom. Dark sheets can lead to over-browned cookies.



In the old days, when falconry was in favor, first class birds were sold to European kings for the equivalent of thousands of dollars a bird.

**TEDFORD JEWELRY'S**

# Summer Sale

of Fine Jewelry

## 33 1/3% OFF

ONE ENTIRE SHOWCASE  
FULL OF OUR FINEST  
DIAMOND AND 14K GOLD DESIGNS

To make room for our new fall shipments, we are offering 1/3 of our entire fine jewelry inventory at 1/3 off. (Some items will be discounted even more!)

DINNER RINGS	EARRINGS
BRIDAL SETS	WEDDING BANDS
MEN'S RINGS	NECKLACES
COIN MOUNTINGS	TEEN RINGS

**YOU'LL FIND OTHER BARGAINS  
THROUGHOUT THE STORE  
DINNERWARE — GIFTWARE — ACCESSORIES**

**CASH SALES ONLY AT THESE SPECTACULAR PRICES  
NO CHARGES, LAYAWAYS, OR GIFTWRAPS**

**ONE WEEK ONLY**  
Monday, July 30 through Saturday, August 4

**TEDFORD JEWELRY**  
Downtown Sonora 387-3839

**DRIVE ONE OF THESE**

*The popcorn's in the lobby. The nuts are on the screen.*

**Burt Reynolds**  
Dom De Luise · Dean Martin · Sammy Davis, Jr.  
Jamie Farr · Marilu Henner · Telly Savalas  
and Shirley MacLaine

**CANNONBALL RUN II**

WARNER BROS./GOLDEN HARVEST present An ALBERT S. RUDDY Production  
A HAL NEEDHAM Film "CANNONBALL RUN II" SUSAN ANTON · CATHERINE BACH · JACKIE CHAN  
RICHARD KIEL · FRANK SINATRA Music Supervision SNUFF GARRETT Music by AL CAPPS  
Executive Producers RAYMOND ANDRE MORGAN Written by HAL NEEDHAM & ALBERT S. RUDDY & HARVEY MILLER  
RUDDY Directed by HAL NEEDHAM (HEAR THE MENUDDO HIT "LIKE A CANNONBALL")

**Admission: Sat & Sun Show Times: 7:30 and 9:45**  
Children: \$2.00  
Adults: \$3.50  
**Matinees: 1:30 and 3:45**

# The Ritz



# Tributes to policemen

Editor's Note: The following article was given to the Devil's River News by a local citizen last week.

In a recent column Mr. Harvey, a noted commentator and journalist, strongly defended the law enforcement officer. With his permission the Bulletin reprints this message which we think will be of interest to our readers.

Don't credit me with this mongrel prose; it has many parents; at least 420,000 of them: Policemen.

A policeman is a composite of what all men are, a mingling of saint and sinner, dust and deity.

Culled statistics wave the fan over the stinkers, underscore instances of dishonesty and brutality because they are "news." What that really means is that they are exceptional, unusual, not commonplace.

That's a better average than you'd find among clergymen.

What is a policeman made of? He, of all men, is at once the most needed and the most unwanted.

He's a strangely nameless creature who is "sir" to his face and "fuzz" behind his back.

He must be such a diplomat that he can settle differences between individuals so that each will think he won.

But... If the policeman is neat, he's conceited; if he's careless, he's a bum.

If he's pleasant, he's a flirt; if he's not, he's a grouch.

He must make in an instant decisions which would

## Thank God for Policemen

Thank God for policemen across our land, For they give to us a strong helping hand. They are seldom thanked for their lonely task, So why do they do it? - someone may ask. Because of motivation found deep down within, To provide a safe nation for us to live in.

The officer is criticized-rejected-condemned, But no one would live where we don't have them; We must give respect and honor where due, For they risk their lives for me and for you; Crime is constantly raging - day and night, And criminals are protected while demanding their rights.

All crimes are committed-murder, robbery, and rape. When criminals are punished, folks are bent out of shape; But in the line of duty-a policeman dies, Hardly a comment-very few cries! But their family has lost a loved one so dear, And part of America is no longer here.

In the Bible-Romans 13: one through seven, Some valuable instructions from God are given; He tells us to respect our authorities as we should, For God sends them for us for our own good; Police protect us as through life we trod, And this chapter tells us they are "Ministers of God."

So to each officer on this Appreciation Day, May God be with you, we want to say. We thank you for what you're doing and have done, And each of you behind the badge and gun, Keep up the good work you're assigned each day, For we are behind you-each step of the way!

This poem, by Chaplain Tommy Robertson, was dedicated to the officers of the Lancaster, Texas, Police Department on Officer Appreciation Day, May 1, 1983.

require months for a lawyer.

But...

If he hurries, he's careless; if he's deliberate, he's lazy.

He must be first to an accident and infallible with a diagnosis.

He must be able to start breathing, stop bleeding, tie splints and, above all, be sure the victim goes home without a limp.

Or expect to be sued.

The police officer must know every gun, draw on the run, and hit where it doesn't hurt.

He must be able to whip two men twice his size and and half his age without damaging his uniform and without being "brutal."

If you nit nit, he's a coward; if he hits you, he's a bully.

A policeman must know everything - and not tell. He must know where all the sin is - and not partake.

The policeman must, from a single human hair, be able to describe the crime, the weapon and the criminal and tell you where the criminal is hiding.

But...

If he catches the criminal, he's lucky; if he doesn't, he's a dullard.

The policeman must chase bum leads to a dead end, stake out 10 nights to tag one witness who saw it happen - but refuses to remember.

He runs files and writes reports until his eyes ache to build a case against some felon who'll get dealt out by a shameless shamus or an "honorable" who isn't. The policeman must be a minister, a social worker, a diplomat, a tough guy, and a gentleman.

And of course he'll have to be a genius... For he'll have to feed a family on a policeman's salary.

A squirrel has no color vision, it sees only in black and white.



The decimal system was invented in ninth century India.

Devil's River News

Published every Wednesday Serving Sonora and Sutton County Since 1889 Carol Jones Publisher

The Devil's River News (155-920) is published each Wednesday by West-Com, Inc., 220 N.E. Main, Sonora, Texas 76950.

Second class postage is paid at Sonora, Texas.

POSTMASTER Send address changes to the Devil's River News, 220 N. E. Main, Sonora, Texas 76950.

1984 MEMBER TEXAS PRESS ASSOC.

Alabama has the highest percentage of registered boats. There are 2.2 boats registered per resident.

## Home Satellite Television Systems 100% Bank Rate Financing No Money Down No Collateral Needed

all parts and labor guaranteed for three years under warranty

**DRAKE**  
ESH 324 Receiver  
100 Degree LNA  
10' Dish with Polar Mount  
Polarotor I  
LNA Cover  
100' Cables  
MTI 2100 Motor Drive

\$2995 plus tax installed

**DRAKE FULLY REMOTE**  
ESR 240 Receiver  
100 Degree LNA  
10' Dish with Polar Mount  
Polarotor I  
LNA Cover  
100' Cover  
Tracker IV Motor Drive

\$3325 plus tax installed

**W & W Satellite Sales Co.**  
San Antonio Sonora  
(512) 658-3344 387-5562 (after 4 p.m.)

# Morals of Today



MINISTER DON JONES,  
CHURCH OF CHRIST

People are no worse today than they have ever been. The difference is that we know what is going on around the world every day, and because we know about so many different things we begin to think people are more wicked than ever. So many people that are involved with today's modern view on morals ask others to change but they will not budge one inch from their view.

What we all need to do is look to God for guidance and understanding of right or wrong.

Let us look at the problem of homosexuality, today's view vs. God's view.

Liberals are trying to tell us there is nothing wrong with this practice, and anyone who stands against this idea is wrong. They say that due to the change of time and man that this is now the accepted way. If we stand against these people we violate their rights, this is the cry of modern ways.

Let us listen to what God has to say.

Scriptures from the New American Standard Version.

Leviticus 18:22, "You shall not lie with a male as one lives with a female, it is an abomination.

Leviticus 20:13, "If there is a man who lies with a male as those who lie with a woman, both of them have committed a detestable act; they shall surely be put to death. Their blood guiltiness is upon them.

From these two passages alone one can tell that God completely condemns those who practice such vile acts against God and our society.

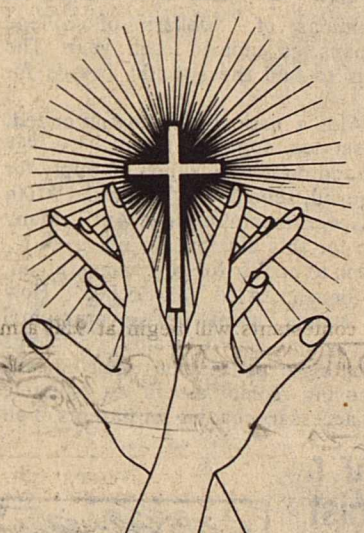
1 Kings 14:24, "And there were also male cult prostitutes in the land. They did accordingly to all the abominations of the nations which the Lord dispossessed before the sons of Israel."

It was a practice of all nations that God caused to fall before Israel. Therefore, just because it is a practice of so many does not make it legal. It was then and is today an abomination to God. As we saw in Leviticus 20:13

the punishment for those who practice such sins was death. God does not tolerate the practice of such acts in any society. One might look in Genesis 19 to see how God dealt with those people and then asked, are we any better than they?

Romans 1:18-32 Read carefully verses 24, 25, 26, 27. Paul tells us that even in his day that God still did not accept what seems to be so popular among the people. Can it be any different today?

Each citizen needs to know our Nation's Leaders stand on issues such as this because history will repeat itself and our great nation might be the one that falls next. Where do you stand? With God or with man?



**OFFERING**  
A full line of office supplies and delivery for your convenience.  
AUTHORIZED XEROX SALES AGENT  
Come by for a FREE demonstration  
**P.M. Office Supply**  
Barbara Varner Faye McCoy  
205 Hwy. 277 S. 387-3774

**Enjoy!**

The Circle Bar Truck Corral invites all of their Sutton County neighbors out to sample some of the finest cooking in West Texas!

While you're here, have a free drink on us!

Clip and Save the Coupon Below

Coupon

Good for one FREE drink in the dining room

Coupon

<p>Jehovah's Witnesses Sunday Public Talk 10 a.m. Watchtower Study 10:50 a.m. Tuesday Theocratic School 7:30 p.m. Service Meeting 8:30 p.m. Thursday Bible Study 7:30 p.m.</p>	<p>Sonora Tabernacle United Pentecostal Rev. Kenneth Doyle, pastor Sunday School 10 a.m. Worship 11 a.m. Evening Worship 7:30 p.m. Wednesday Services 7:30 p.m.</p>	<p>The Church of the Good Shepherd Presbyterian Minister-Rick Runge Church School 10 a.m. Fellowship 10:45 a.m. Worship Service 11 a.m. (Communion first Sunday of each month.) PCUC/UPCUSA</p>	<p>St. John's Episcopal Church Sunday Holy Eucharist 8 a.m. Holy Eucharist 11 a.m. (2nd and 4th Sunday MP) Wednesday Holy Eucharist 7 p.m. Holy Days as announced</p>
<p>Church of Christ Minister-Don Jones Bible School 10 a.m. Worship 11 a.m. Sunday night 6:30 p.m. Wednesday night 6:30 p.m.</p>	<p>Hope Lutheran Church Charles Huffman, lay minister Sunday School 10 a.m. Worship Service 11 a.m. Wednesday Youth Classes 6 p.m. Adult Classes 7:30 p.m.</p>	<p>Church of Jesus Christ of Latter Day Saints Bishop-Bryan Galloway Priesthood 9 a.m. Primary 9 a.m. Relief Society 9 a.m. Sunday School 10 a.m. Sacrament meeting 11 a.m.</p>	
<p>St. Ann's Catholic Church Rev. Bernard L. Gully Saturday Vigil Mass 7 p.m. Sunday Mass 11 a.m. Holy Day Mass 7 p.m.</p>	<p>First Assembly of God Rev. Louis Halford Sunday School 9:45 a.m. Morning Worship 11 a.m. Evening Service 6 p.m. Wednesday Service 7 p.m.</p>	<p>Live Oak Baptist Church Donall Provines, Pastor Sunday services 10:30 a.m. and 7 p.m. Wednesday 7 p.m.</p>	
<p>First United Methodist Church David W. Griffin, Pastor Sunday School 9:45 a.m. Worship 10:55 a.m. KVRN 98 AM-11 a.m. Children's Choir 5 p.m. UMYF 6 p.m. Wednesday Chancel Choir 7 p.m.</p>	<p>Primera Baptist Church Rev. Cresencio Rodriguez Sunday School 9:45 a.m. Worship 11 a.m. Training Union 6 p.m. Worship 7 p.m. WMU Wednesdays-1 p.m. Wednesday Church Service 6 p.m.</p>	<p>First Baptist Church Rev. Jim Stephen, Pastor Sunday School 9:45 a.m. Morning Worship 11 a.m. Church Training 6 p.m. Evening Worship 7 p.m. Wednesday Service 7 p.m.</p>	

The Sonora Church Directory has been brought to you by the following sponsors:

<p><b>Food Center</b> 387-3438</p>	<p><b>Carol's Merle Norman</b> 387-2036</p>	<p><b>Dicon Enterprises</b> 387-3843</p>
<p><b>Jimco Enterprises</b> 387-3843</p>	<p><b>Kerbow Funeral Home</b> 387-2266</p>	<p><b>Chuck Wagon</b> 387-2491</p>
<p><b>Hershel's Foodway</b> 387-3708</p>	<p><b>Spain's Inc.</b> 387-3131</p>	<p><b>Southwest Texas Electric Co-op</b> 853-2544</p>
<p><b>Westerman Drug</b> 387-2541</p>	<p><b>Sonora Ford Sales</b> 387-2549</p>	<p><b>Teaff Oil</b> 387-2770</p>



## Delinquent tax rolls to appear

1983 delinquent school, city and county taxes will be turned over to the delinquent tax attorneys for collection in July.

The names of property owners and the amount of 1983 delinquent taxes will be printed in the paper the last of July or first of August.

Please come by the office at 222 N E Main St., Sonora, Texas, and check if you have any doubt about your taxes being paid.

Don Wootan is chief appraiser, Sutton County Appraisal District contract collector for all taxing units in Sutton County.

## Class reunion set

The Class of 1974 will be having its 10-year reunion during Sutton County Days August 24 and 25. Any addresses of class members need to be given to Ruthie Bounds at 387-5189 or 387-2409 or mailed to Ruthie, 1006 SE Concho Ave. Sonora, Texas.

## Bean cookoff is August 18

A first for Eden Festivals will be the bean cook-off planned for Festival 102, August 18.

Clara Marie Turner, chairperson for the cookoff, says that each contestant will be provided two pounds of beans. Cooking will start at 9 a.m. and judging will be at 4 p.m.

Contestants are to provide their own secret ingredients, clever surroundings, and a \$10 entry fee.

Trophies will be awarded

to the first-, second- and third-place bean cooks and first- and second-place campsites. Participants also receive entry gifts.

Deadline for applications is August 6 so that the cookoff committee will be able to reserve places for all contestants and provide for gas or electricity, if needed.

Entrants need to send their name and address and entry fee to Mrs. Turner at Box 595, Eden, TX 76837. An application form will be sent by return mail.

## District Fashion show slated

Four-H champions from Sutton County will model apparel they have created in the annual District Fashion Show here. The show will be held at 10:30 a.m. Thursday, July 26 at Sonora Junior High School.

Members will be competing for honors and the right to represent their district in state competition. These entrants have already won in county competition and will be judged on their sewing and construction skills, as well as overall appearance.

Each contestant will compete in four categories: daytime tailored, daytime non-tailored, active sportswear, or evening and specialty wear. Special awards will be presented to the senior exhibiting the best cotton garment or ensemble and the one modeling the best wool or mohair outfit.

Senior, beginners and intermediate contestants will be judged in separate groups and compete for awards in their own skill classification. Only the senior winners advance to the state contest.

Registration of contestants will begin at 9:30 a.m.



Apples keep longer if they don't touch one another.

## BEER BUST

All the tap beer you can drink!

\$5.00 at the door  
8:00 p.m. July 28

Ladies' pool tournament  
every Sunday at 7:30

Men's pool tournament  
every Thursday at 7:30 p.m.

5:30-6:00 Mon-Fri

Come in and have a beer on us!

Free Chili Beans will be served August 1st.

### The Back Door

407 SE Concho 387-9924  
Jimmy & Jean Chatham, owners

### MODEL HOME SALE! STOCK LIQUIDATION OF ENERGY EFFICIENT HOMES PRESENTLY ON LOT

- 1,056 Sq. Ft. 3-Bedroom, 1 1/4-Bath
- 1,232 Sq. Ft. 2-Bedroom, 1 1/4-Bath
- 1,400 Sq. Ft. 3-Bedroom, 1 1/4-Bath
- 1,412 Sq. Ft. 3-Bedroom, 1 1/4-Bath
- 1,456 Sq. Ft. 3-Bedroom, 1 1/4-Bath
- 1,568 Sq. Ft. 3-Bedroom, 2-Bath

THESE HOMES ARE READY FOR YOUR INSPECTION

CONVENTIONAL - FHA - VA  
30 YEAR FINANCING

MODELS CONTAIN CATHEDRAL  
CEILING, FIREPLACE, FHA  
QUALITY CARPETS, APPLIANCES  
CENTRAL HEAT & AIR

### READI-BILT HOMES

1700 N. Park Drive  
SAN ANGELO  
653-6965  
Open: Mon.-Fri. 8am-5pm  
Sat. 8am-12pm



# GIBSON'S DISCOUNT CENTER

301 Hwy. 277-N. SONORA 387-3523

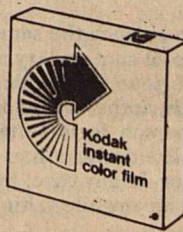
Prices Good Wed. July 25 thru Tues. July 31



**HAVOLINE MOTOR OIL**  
ENGINE PROTECTION YOU CAN TRUST

30W Quart

**1.00**



**KODAK INSTANT COLOR FILM**

2-Pack  
Reg. 10.09

**8.99**



**BANNER**

Bathroom Tissue

4-Roll Pkg.

**99¢**



**COKE--DIET COKE**  
**MR. PIBB** 2-Liter Bottle  
**7-UP**  
**DIET 7-UP**  
**SUNKIST**  
**BARQ'S ROOT BEER**

2-Liter Bottle

**1.00**

## UNDEROOS

Children's Underwear  
2-Pc. Set

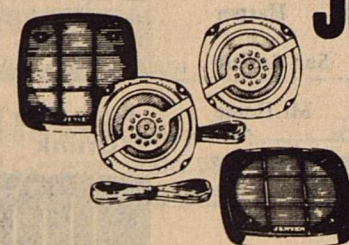
**4.88**



## LADIES' BRIEFS

100% Cotton  
Reg. 4.79 Pkg.

**3 PAIR PKG. 3.99**



**JENSEN 5 1/4" COAX 2-WAY SPEAKERS**

For Cars

45 Watts  
20-oz. Magnet  
No. J1077

**49.99**



## NO NONSENSE

Regular Sheer To  
Waist Queen Size

Reg. 1.59

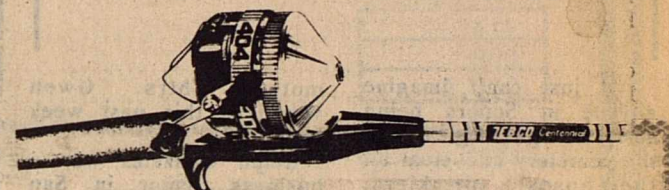
**1.29** Pr.



**FUN FOUNTAIN**

Reg. 16.97

**13.99**



Zebco® 1545 Combination  
Zebco® 404 Reel/ 5'6" Medium Action Rod

Reg. 16.47

**14.99**

New! Fashion

## JELLEY SHOES

Reg. 4.79

**4.19**

American Fleece Wear

## SWEAT PANTS & TOPS

Reg. 8.99

**6.88**



foamy gel  
7 oz.

**1.49**



MR. CLEAN

28 oz.

**1.69**



**RAVE**

Soft Hair Spray

4-oz.

**1.89**



**LIQUID-PLUMR**

Drain Opener

32-oz.

**1.19**



**DOWNY**  
Fabric Softener

64 oz.

**2.19**



**RAVE**

12-oz.

**1.99**



**AJAX**

Dishwashing Liquid

22-oz.

**1.09**



**BLACK FLAG**

Flying Insect Killer

1.99

12-oz.

## 4-IN. PLANTS

Reg. 1.99

**2 FOR 3.00**



## LAWN CHAIRS

Keller Aluminum

Reg. 9.29

**7.99**



**LISTERMINT**

24-oz.

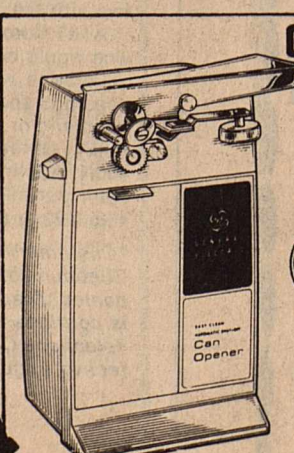
**2.59**



**ARMOR ALL**  
PROTECTANT

4-oz.

**1.59**



**GE ELECTRIC CAN OPENER**  
(EC32)

• "Hands Free" operation.  
Automatic shut-off. "Easy Clean"  
cutter and pierce lever assembly.  
Magnetic lid holder.

Reg. 15.49

**13.99**



# Junction sale proves success

Editor's Note - On July 13, a high dollar calf and yearling sale was held at the Junction Stockyards. The results of that sale have been submitted for our readers.

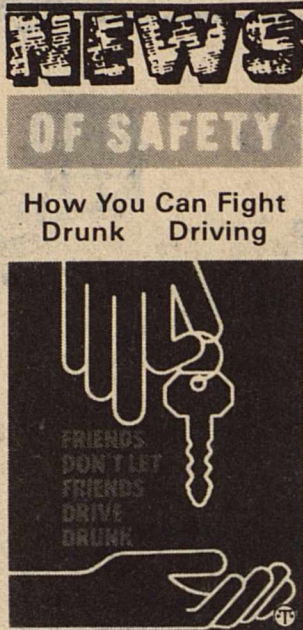
From all reports, buyer attendance was good and quite active. The market was quite good with heifers selling \$1 to \$5 higher.

The results of the sale are as follows:

Pen 5 Steer Calves			
5 Brangus steers	James River Ranch	Harper	
5 Brangus steers	James River Ranch	Harper	
517# at 66.00 or 341.22	per head		
Pen 5 Yearling Steers			
5 Crossbred steers	Frank Powers	Mt. Home	
514# at 66.25 or 340.53	per head		
7 Angus steers	Ruth Espy	Sonora	
453# at 69.75 or 315.86	per head		
5 Brangus steers	M & F Ranch	Junction	
444# at 69.50 or 308.58	per head		
6 Crossbred steers	Raymond Kothmann	Menard	
412# at 71.00 or 298.79	per head		
Pen 10 Steer Calves			
10 Crossbred steers	Ft. Terret Ranch	Sonora	
523# at 71.00 or 371.68	per head		
10 Brangus steers	James River Ranch	Harper	
495# at 70.00 or 346.50	per head		
10 Crossbred steers	Ft. Terret Ranch	Sonora	
447# at 71.50 or 319.60	per head		
10 Crossbred steers	John Whitworth	Rocksprings	
435# at 72.00 or 313.20	per head		
13 Crossbred steers	Cal McGowan	San Angelo	
419# at 74.50 or 312.04	per head		
Pen 20 Steer Calves			
20 Crossbred steers	Cal McGowan	San Angelo	
470# at 71.50			
Pen 5 Heifer Calves			
5 Charolais cross heifers	Douglas Phillips	Hext	
551# at 56.25 or 309.54	per head		
5 Crossbred heifers	Albert Maner	Haper	
473# at 58.50 or 276.71	per head		
5 Simmental Cross heifers	Shannon Harber	Telegraph	
477# at 57.50 or 274.28	per head		
5 Brangus heifers	C.C. Phillips	Harper	
450# at 60.75 or 273.38	per head		
5 Black Whiteface heifers	Elizabeth Patterson	Junction	
421# at 59.00 or 248.39	per head		
Pen 10 Heifer Calves			
12 Crossbred heifers	John Whitworth	Rocksprings	
482# at 58.00 or 279.37	per head		
17 Brangus heifers	James River Ranch	Harper	
426# at 60.50 or 258.01	per head		
16 Crossbred heifers	Cal McGowan	San Angelo	
435# at 56.50 or 245.95	per head		
14 Angus heifers	Lanny Leinweber	Mt. Home	
429# at 57.00 or 244.53	per head		
16 Brangus heifers	James River Ranch	Harper	
363# at 59.00 or 214.43	per head		
Pen 20 Heifer Calves			
21 Crossbred heifers	Cal McGowan	San Angelo	
476# at 56.00 or 266.67	per head		

Pen 5 Yearling Steers			
6 Crossbred steers	Baskett Ranch	Mason	
705# at 64.00 or 451.20	per head		
5 Crossbred steers	John Henderson	Lufkin	
654# at 63.00 or 412.02	per head		
Pen 10 Yearling Steers			
10 Red Whiteface steers	Mrs. E.B. Love	Mt. Home	
724# at 61.00 or 441.94	per head		
10 Crossbred steers	Calvin Johnson	Ozona	
641# at 64.00 or 410.56	per head		
10 Red Whiteface steers	Robert Love	Mt. Home	
621# at 62.00 or 385.00	per head		
Pen 5 Yearling Heifers			
5 Crossbred heifers	Raymond Kothmann	Menard	
642# at 56.75 or 364.34	per head		
7 Black Whiteface heifers	Clifton and Johnson	Brady	
569# at 59.25 or 337.30	per head		
7 Brangus heifers	W. R. Allen	Junction	
626# at 52.50 or 328.88	per head		
6 Angus heifers	Ruth Baker	Rocksprings	
595# at 52.00 or 309.40	per head		
5 Black heifers	Harvey Ringer	Brady	
435# at 59.75 or 259.91	per head		
Pen 10 Yearling Heifers			
15 Crossbred heifers	Clifton & Johnson	Brady	
555# at 58.50 or 324.87	per head		
14 Crossbred heifers	Clifton & Johnson	Brady	
542# at 58.75 or 318.37	per head		
11 Black Whiteface heifers	Harvey Ringer	Brady	
419# at 61.25 or 256.97	per head		
11 Angus heifers	Bill Baker	Rocksprings	
479# at 53.00 or 252.34	per head		
Pen 20 Yearling Heifers			
21 Crossbred heifers	Clifton & Johnson	Brady	
549# at 58.25 or 319.82	per head		
30 Crossbred heifers	Clifton & Johnson	Brady	
544# at 58.50 or 318.24	per head		
20 Angus heifers	Bill Baker	Rocksprings	
579# at 54.25 or 314.24	per head		
40 Angus heifers	Bill Baker	Rocksprings	
569# at 55.00 or 313.09	per head		

We would like to thank the Junction Stockyards for submitting these results for our readers.



Restauranters urge their guests to arrange safe transportation when they order drinks. In a large party, one person can be the "designated driver" and stick to nonalcoholic drinks. Otherwise ask the waiter to call you a taxi.

The National Restaurant Association, on behalf of its 10 thousand members, has taken several steps to help reduce incidents of drunk driving. These steps include:

- Developing an education program for servers and bartenders.
- Calling on all food service operations which serve alcoholic beverages to arrange alternative transportation programs for impaired guests and to eliminate all bar promotions or practices which put more than one drink in front of a guest at one time.
- Since the ultimate responsibility for accidents caused by drunk drivers lies with the consumer—not the server—of alcoholic beverages, the restaurant group will work with national groups which are attempting to warn the public of the dangers of drunk driving.

# Headlines for Homemakers



by Pam Young,  
Sutton County  
Extension Agent  
Home Economics

**HEAT CRAMPS** The person most likely to get heat cramps is someone in good physical shape who overexerts during a heat wave. The victim sweats profusely, then doubles up with pain—which can vary from dull pain in the abdomen and tingling sensation in the arms and legs to intense crampy pain in the abdomen, arms, and legs. The victim usually is unable to function.

The key to treatment of heat cramps is salt replacement, but don't try salt tablets; they will only increase nausea. Get the patient to a shady spot or into a cool room and give him salty liquid. A teaspoonful of salt in a quart of lemonade is effective and palatable. Or try one of the flavored, commercial available saline solutions such as Gatorade or Take Five.

Don't massage the muscles to "work out" the cramps; they aren't that kind. The patient will respond promptly to salt replacement.

Anyone who has had heat cramps should rest for at least 12 hours before resuming normal activity; if any further symptoms develop, he should have medical attention immediately.

**HEAT EXHAUSTION AND HEATSTROKE** Consider these together because the most important aspect of first aid is telling them apart. Heat exhaustion needs care, but is not usually life-threatening; heatstroke is rare, but it's definitely life-threatening and you need to go into action fast.

In both conditions, the victim collapses.

In heat exhaustion the skin is pale, cool, and moist. But in heatstroke the person's skin is reddened, fiery hot to the touch, and dry; his temperature may be 106 degrees F. or more. With either condition the victim will be desoriented at best and probably unconscious, especially with heatstroke.

Early treatment of heat exhaustion is much the same as for cramps: Move the victim to a cool spot and try to get him to drink salty liquid. Also, remove his clothing and cool him off by bathing him with cloths soaked in cool water or alcohol. Usually the person feels better promptly, but if he seems fatigued, is elderly, or had a chronic disease, he should see a doctor. In any case, he should take it very easy for 2-3 days, meanwhile salting his food heavily.

If the person is obviously feverish, it's probably heatstroke, and minutes count. You must get his temperature started down or he's in real trouble. Call for an ambulance, then strip off his clothes and start cooling with whatever means you can find. A bath in a tub of cold water and ice is ideal, but a massage with ice cubes or ice packs is more likely to be practicable. Rub the victim's arms and legs with handfuls of ice cubes. Get others to help if possible.

If you can, get a rectal temperature reading so the ambulance crew or the doctor at the hospital can tell whether the temperature is dropping. The patient should be rushed to the hospital emergency room as

# Around Town

I just can't imagine anyone in Sonora being sorry enough to go out to the cemetery and steal all the hoses, sprinklers, flowers and vases. What do they do with all the things they steal? They can't possibly use all the hoses and sprinklers. Last week 5 hoses were stolen that I know of. I have bought 6 hoses since the first of the year and 5 of those have been stolen. How sorry and bad can anyone be to steal from the dead. If this does not stop there will have to be some thing done. Sure would hate to lock the gates again or have the fence charged, or have guards to patrol the grounds. But if the people stealing don't stop, there will have to be some changes. We buy our hoses and sprinklers, the cemetery don't. They have theirs. But we take our hoses out to water our lots. We want to keep the trees and grass alive during this drought. So please, who ever is taking these things please quit. Let us keep our cemetery beautiful.

mother, Mrs. Gwen Wardlaw; this past week end.

Ralph Gonzales was a business visitor in San Antonio this week.

Restaurant owners throughout the nation are joining concerned citizens in a battle against drunk driving.

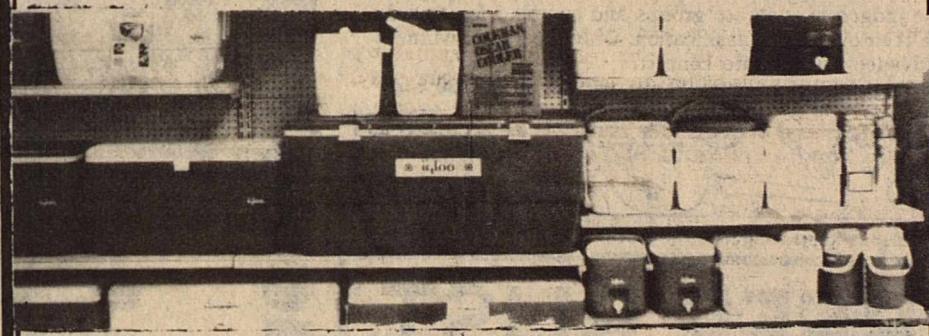
Save  
General Tires  
Michelin  
Fina Gasoline  
R.S. Teaff  
Oil Company

387-2770

Sonora

Lawnmower  
and spraying  
machine repair  
now available at  
**Sonora Auto  
Parts**  
105 W. Crockett  
387-3255  
★ State Inspection Station

We've got that heavy duty water can or ice chest you've been looking for. Plus a complete line of replacement parts.



**igloo**  
built to survive the real world  
Sonora Wool and Mohair Co.  
210 SW College 387-2543

# PUBLIC NOTICE

AT&T Communications has filed with the Public Utility Commission (PUC) of Texas to introduce a new intrastate, optional long distance service to begin August 1, 1984, the same date "Reach Out® America" plan will be available for interstate calls.

A new service designed to give customers the opportunity to reduce the cost of long distance in Texas has been filed with the state PUC by AT&T Communications of the Southwest, Inc.

"Reach Out" Texas is an optional calling plan which will provide additional discounts on long distance rates for Texas customers who frequently place calls in the evening, weekend, and night time calling periods.

The new "Reach Out" Texas plan for the first time extends the benefits of competition to many Texas consumers who previously have not had any discounted long distance service available to them.

AT&T Communications customers who choose this new optional service will pay a monthly charge of \$14 which entitles them to one hour of intrastate "Direct Dialed" (1+) calling during the weekend and night rate period.

An additional customer savings for those participating in the plan will be that any Direct Dialed calls placed during the weekend and night rate period that exceeds the one hour period will be charged at an hourly rate of \$12, or \$ .20 per minute.

Customers selecting this option also receive an additional 15 percent discount for intrastate Direct Dialed calls during the evening discount rate period for a total savings of approximately 38 percent.

A one-time charge of \$6 is billed when a customer orders the "Reach Out" Texas plan. The \$6 is collected by AT&T Communications and paid to the local telephone company to establish the service. This charge will be waived during the first 90 days that the offering is available.

AT&T Communications is proud to offer this optional service for its Texas long distance customers and will in the future continue to introduce cost cutting programs to help Texans reduce their long distance bills.

A complete copy of the "Reach Out" Texas tariff and rate schedule is on file with the Texas Public Utility Commission at Austin, Texas.

AT&T Communications estimates that the revenue impact of this new service would be significantly less than 2.5 percent of annual gross revenues.

Persons who wish to intervene or otherwise participate in these proceedings should notify the Commission as soon as possible. A request to intervene or participate or for further information should be mailed to the Public Utility Commission of Texas, 7800 Shoal Creek Boulevard, Suite 400N, Austin, Texas 78757. Further information also may be obtained by calling the Public Utility Commission Consumer Affairs Division at (512) 458-0223 or (512) 458-0227, or (512) 458-0221, teletypewriter for the deaf.

\*Customer billing for the optional calling plan will be provided for AT&T Communications through billing contracts with the local telephone companies. Therefore, the introduction of these rate plans into a specific area is contingent upon local company billing capabilities. Southwestern Bell Telephone Company has agreed to handle the billing in its service areas effective August 1, 1984.



Breakthrough

Watch for it!

SAU

Our newspaper will be adopting the national Standard, featuring a six column format.

**The Devil's River News**

Watch for it.

Mrs. Lena Belle Ross entertained the Tuesday night bridge club at her home, July 17th. A dessert was served to Mrs. Vestal Askew, Mrs. R.A. Halbert, Mrs. Guila Vicars, Mrs. Metha Trainer, Mrs. W.O. Crites, Mrs. Jo Nell Johnson, and Mrs. Ruth Shurley, club members. Mrs. Ada Wynn was a guest. Mrs. Adkew won the high score prize, Mrs. Vicars won second high and Mrs. Ruth Shurley won the bingo prize.

Mrs. Maysie Barker, of Carrizo Springs, Mrs. Betsy Wynn, of Corpus, and Jimmy Morriss of Dallas are all visiting Mr. and Mrs. James Morriss over the past weekend.

Mrs. Guila Vicars and Mrs. Hazel McClelland were in San Angelo Friday to attend the funeral of Mrs. Carrie Bell Roark.

Mrs. Johnny McClelland and sons, Trey and Jesso of Houston were here over the week visiting Mr. and Mrs. John McClelland.

Jeffery Morris was here several days last week visiting his grandparents, Mr. and Mrs. James Morriss.

Mr. and Mrs. Matt Shannon of Big Lake was here this weekend visiting their parents, Mr. and Mrs. A.L. Armentrout and Mr. and Mrs. Charles Shannon.

Mr. and Mrs. Gene Ponton, Carolyn and James of Corpus Christi were here visiting Mrs. Ponton's



# Water Conservation practices told



The first city to be illuminated by gas lights was Baltimore, in 1817.

The water levels in many reservoirs in the West Texas Chamber of Commerce service area are at the lowest levels experienced in a decade or more. There is ample water in most to continue to provide for the needs of the people for several more months. However, it should be wise for residents of the area to begin practicing conservation to extend the life of the drought con-

tinue for several more months, according to WTCC Water Committee Chairman A. Wayne Watt. During periods of extended drought, water use by city residents increases largely because of increased outdoor use. Water conservation can be practiced while providing adequate water for healthy yards, flowers, shrubs and trees.

The following hints have been compiled to help guide residents in water use outside the home with minimum waste:

1. Water your lawn early in the morning during the hot months. Much water used on the lawn can simply evaporate between the sprinkler and the grass.
2. Use a sprinkler that produces drops of water rather than a fine mist, to avoid evaporation.
3. If you use a soaker hose, turn it so the holes are on the bottom, again to avoid evaporation.
4. Water slowly for better absorption, and never on windy days.
5. Forget about watering the streets or walks or drive ways. They don't grow a thing.
6. Condition the soil with a compost before planting flower beds so that water will soak in rather than running off.
7. Fertilize lawns at least twice a year for root stimulation. Grass with good root systems makes better use of less water.
8. Learn how to know when your grass needs watering. If it has turned a dull grey-green and when footprints remain visible as you walk across it, it's time to water.
9. Don't over-water. Soil can absorb only so much moisture and the rest simply runs off. A timer will help, and either your kitchen timer or an alarm clock will do. An inch-and-a-half of water applied once a week will keep most Texas grasses alive and happy.
10. Automatic sprinkler systems should be operated only when the demand on your town's water supply is lowest. Set the systems to operate between four and six a.m.

12. Don't scalp your lawn during hot weather. Taller grass holds better. Cut grass fairly often, so that only 1/2 to 3/4 inch is trimmed off. This will produce a better looking lawn.

14. Never "sweep" your walks or driveways with the hose. Use a broom or rake.

15. When washing the car, use a bucket of soapy water and use the hose only for rinsing.

Remember that saving water also saves energy. About 50 percent of the water used in a home is hot water. Providing energy to fuel your hot water heater is a major drain on your utility bill. By saving water, you save energy and money at the same time.

"Cheerfulness is the spice of all truth."  
Pestalozzi

## Lloyd Bentsen Reports

Texans historically have paid more into federal coffers in gasoline taxes than they have received back in highway funds.

From the time the Federal Highway Trust Fund was established in 1956 until last year, our state received at the most 76 cents for every dollar it paid in federal gasoline taxes.

When the President requested an increase of these taxes in 1982, I insisted on and won a guarantee that each "donor" state get back at least 85 percent of the money it pays out in gasoline taxes.

A formula was devised to ensure that states receive all the money they are entitled to under this 85 percent guarantee.

I recently discovered, though, that there is a loophole in this formula that keeps some "donor" states from a full 85 percent return on their money in highway funds.

The formula did not include calculations for funds disbursed at the discretion of the Secretary of Transportation or funds for demonstration highway projects.

The loophole would cost Texas \$65.5 million in highway funds during fiscal 1985, which begins October 1.

It clearly thwarted the intent of my 1982 legislation, and certainly was not fair to Texas and other "donor" states.

When the Senate Transportation Subcommittee, on which I am ranking member, considered highway legislation this year, I insisted that the loophole be closed.

My amendment provides for including demonstration funds and discretionary funds in the 85 percent guarantee formula. With this change, Texas would receive \$294.8 million in guaranteed funds during 1985, rather than the \$230.3 million it is now scheduled to receive.

My amendment also makes a technical correction specifying that the guarantee be permanent, as intended, rather than expire at the end of the current highway program in 1986.

The Subcommittee and the full Environment and Public Works Committee both have approved my amendment. I would hope that the Senate acts quickly on the highway bill and that it wins swift final Congressional approval.

This is a question of fairness, equity and logic. It makes no sense to have the guarantee and then exclude some of the programs from the formula it's based on.

After all, the guarantee was set up in the first place to ensure that states like Texas received an equitable return in highway funds for the gasoline taxes they pay to the federal government.

In all fairness, the formula must be as accurate as possible. And fairness is all we Texans ask.

## Reyna visits family

Petty Officer Johnny Reyna, son of Mrs. Frances Reyna is home on leave visiting his family after spending a year in Guatemala Bay, Cuba. Reyna will be stationed for another year in Iceland.

"Custom is lord of all mankind."  
Pushkin

### Custom Painting

"Specializing in customer satisfaction"

Call 387-5952 Sonora, Texas 76950

**Holiday Host**  
Pool Open to the Public  
10am to 4pm  
Very Clean & Well Taken Care Of.

*Cecil Westerman Would Like To Be Your Pharmacist*

LUXURY 'AT ITS BEST!  
NOW LEASING

**KASEY'S**

"Rates lowered once again"

1-Bdrm.	\$250.00
1-Bdrm. w/dining	\$300.00
2-Bdrm. 2-Bath	\$350.00
3-Bdrm. 2-Bath	\$400.00

ALL ELECTRIC KITCHENS

Corner of Dollie & Tayloe Sonora

For Lease Agreements & Information - Come by or  
Kasey's Komer  
call 387-2104 Apt. D-2 Debbie 387-2214

## Flowers by Irene

will be closed for vacation from July 23 until August 17.

Shop will reopen Monday, August 20th.

308 Railroad Street



This form is for use by National Banks only. It should be used for publication purposes only, and should not be returned to the FDIC. (Must be published in local newspaper by August 9, 1984.)

Comptroller of the Currency  
Administrator of National Banks

### REPORT OF CONDITION

Consolidating domestic and foreign subsidiaries of the

Sutton County National Bank of Sonora City

In the state of Texas, at the close of business on June 30, 1984 published in response to call made by Comptroller of the Currency, under title 12, United States Code, Section 161. Charter Number 17585 Comptroller of the Currency Eleventh District

#### Statement of Resources and Liabilities

		Thousands of dollars
<b>ASSETS</b>	Cash and balances due from depository institutions	411
	Noninterest-bearing balances and currency and coin	900
	Interest-bearing balances	2,736
	Securities	965
	Federal funds sold and securities purchased under agreements to resell in domestic offices of the bank and of its Edge and Agreement subsidiaries, and in IBFs	4,924
	Loans and lease financing receivables:	- 37
	Loans and leases, net of unearned income	NONE
	LESS: Allowance for loan and lease losses	4,887
	LESS: Allocated transfer risk reserve	NONE
	Loans and leases, net of unearned income, allowance, and reserve	1,102
Assets held in trading accounts	NONE	
Premises and fixed assets (including capitalized leases)	NONE	
Other real estate owned	NONE	
Investments in unconsolidated subsidiaries and associated companies	NONE	
Customers' liability to this bank on acceptances outstanding	NONE	
Intangible assets	291	
Other assets	11,292	
<b>Total assets</b>	<b>11,292</b>	
<b>LIABILITIES</b>	Deposits:	9,842
	In domestic offices:	1,124
	Noninterest-bearing	8,718
	Interest-bearing	NONE
	In foreign offices, Edge and Agreement subsidiaries, and IBFs	NONE
	Noninterest-bearing	NONE
	Interest-bearing	NONE
	Federal funds purchased and securities sold under agreements to repurchase in domestic offices of the bank and of its Edge and Agreement subsidiaries, and in IBFs	NONE
	Demand notes issued to the U.S. Treasury	NONE
	Other borrowed money	NONE
Mortgage indebtedness and obligations under capitalized leases	NONE	
Bank's liability on acceptances executed and outstanding	NONE	
Notes and debentures subordinated to deposits	144	
Other liabilities	9,986	
Total liabilities	9,986	
Limited-life preferred stock	NONE	
<b>EQUITY CAPITAL</b>	Perpetual preferred stock	750
	Common stock	750
	Surplus	1,941
	Undivided profits and capital reserves	NONE
	Cumulative foreign currency translation adjustments	1,306
<b>Total equity capital</b>	<b>11,292</b>	
<b>Total liabilities, limited-life preferred stock, and equity capital</b>	<b>11,292</b>	

We, the undersigned directors, attest to the correctness of this statement of resources and liabilities. We declare that it has been examined by us, and to the best of our knowledge and belief has been prepared in conformance with the instructions and is true and correct.

/s/A. W. Bishop

/s/Walter C. Pope, III

/s/John R. Tedford, Jr.

Directors

I, Ray Smith Name  
Vice President & Cashier Title

of the above-named bank do hereby declare that this Report of Condition is true and correct to the best of my knowledge and belief.

/s/Ray Smith  
Signature

July 23 1984  
Date

### Public Notice

Southwestern Bell Telephone Company has filed a tariff with the Public Utility Commission of Texas that will allow Centrex customers to control the number of access lines to the exchange network. Customers electing service under this proposed offering will be charged for exchange access based on the number of access lines rather than on the number of Centrex station lines.

The new offering, called Centrex III, is scheduled to become effective on August 10, 1984, unless the Commission suspends the effective date. The Commission has assigned the matter to Docket 5573.

The net effect of the Centrex III tariff will be a decrease in total billing.

Persons who wish to intervene or otherwise participate in these proceedings should notify the Commission as soon as possible. A request to intervene, participate or for further information should be mailed to the Public Utility Commission of Texas, 7800 Shoal Creek Boulevard, Suite 400N, Austin, Texas 78757. Further information may also be obtained by calling the Public Utility Commission Consumer Affairs Division at (512) 458-0223 or (512) 458-0227, or (512) 458-0221 teletypewriter for the deaf.

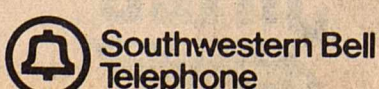
### Aviso Público

Southwestern Bell Telephone Company pone en conocimiento de los usuarios que ha registrado una nueva tarifa ante la Comisión de Servicios Públicos de Texas, lo que permitirá a los abonados del servicio Centrex controlar el número de líneas de acceso a la red central. A los clientes que adopten la opción propuesta mediante esta oferta, se les cobrará por el acceso a la red central en base al número de líneas de acceso y no en base al número de líneas de estaciones Centrex.

La nueva opción, llamada Centrex III, entrará en funcionamiento el día 10 de agosto de 1984. (Esta fecha está sujeta a cambio, dependiendo de la decisión final de la Comisión.) Se ha registrado la tarifa bajo el Docket 5573.

El efecto real de la nueva tarifa Centrex III se verá en la reducción del costo total de las facturas.

Los usuarios de Southwestern Bell Telephone Company que estén interesados en participar en esta reunión, o que requieran mayor información, deben dirigirse por escrito a: Public Utility Commission of Texas, 7800 Shoal Creek Blvd., Suite 400N, Austin, Texas 78757. También se puede obtener información adicional llamando a Public Utility Commission Consumer Affairs Division al 512/458-0223, al 512/458-0227, o al 512/458-0221 si requiere teletipo para sordos.





# CLASSIFIED ADS sure to get results

## PUBLIC NOTICES

SISD invite bids on supplying and installing approximately 1300 ft of 11 gauge chainlink fence. Contact school administration office 807 S. Concho, Sonora, or call 387-2220. Bids accepted until July 30, will be awarded that night. SISD reserves the right to refuse any or all bids.

**PUBLIC NOTICE**  
The city of Sonora is accepting bids for equipment necessary to furnish electrical service to the New Sonora Independent District High School. For further information and specifications please contact Jim Dover, City Manager, 201 N.E. Main, Sonora, Texas 76950 or call (915) 387-2558. Bids will be accepted until August 8, 1984, at 11:00 a.m. and will be awarded at the regular scheduled City Council Meeting on August 21, 1984. The City of Sonora reserves the right to accept or reject any or all bids submitted.

**Notice of Public Hearing**  
The Board of Trustees of Sonora Independent School District will hold a Public Hearing on the proposed 1984-85 District budget on Thursday, August 9, 1984, at 7:00 p.m. in the Board Room of the School Administration Building, 807 South Concho, Sonora, Texas.

All interested persons are hereby notified and invited to be present at the Public Hearing.

**Public Notice**  
**SUTTON COUNTY APPRAISAL DISTRICT** is accepting applications for Chief Appraiser for 1985. Applicants should send resume listing experience qualifications and education. They must be able to appraise, assess, collect and be familiar with computer operations. Send resume and application to Don O. Wootan, 222 NE Main St., Sonora, Texas, 76950. Telephone (915)387-2809.

**NOTICE OF PUBLIC HEARING ON CONTEMPORANEOUS ANNEXATION NOTICE IS HEREBY GIVEN TO ALL INTERESTED PERSONS THAT:**

The City of Sonora, Texas proposes annexation proceedings to enlarge and extend the boundary limits of said city to include the following described territory, to-wit:

13.63 Acre Tract Survey No. 54 Abstract No. 809 & 762 Survey No. 85 Abstract No. 315 H.E. & W.T.R.R. Co. Block B

Sutton County, Texas Being 13.63 acres of land of which approximately 9.31 acres are out of and a part of Survey No. 54, Abstract No. 809, approximately 3.95 acres are out of and a part of Survey No. 54, Abstract No. 1762, and approximately 0.37 of one acre is out of and part of Survey No. 85, Abstract No. 315, all in the H.E. & W.T.R.R. Co. Block B, lying and being situated in Sutton County, Texas. The said 13.63 acre tract also being the same lands described in a Deed from Joe R. Valera, et ux, to the Sonora Independent School District dated 29 December 1982 and recorded in Volume 140, page 128, of the Deed Records of Sutton County, Texas. The said 13.63 acre tract being more particularly described by metes and bounds as follows:

BEGINNING at an old corner fence post having coordinates on the Texas Coordinate System, Central Zone, of Y= 324,479.84 feet and X=1,904,819.26 feet, taken to be the northeast corner of Abstract No. 809 and the northwest corner of Abstract No. 1762, in the north line of Survey No. 54, for the reentrant northeast corner of this tract;

THENCE S 89 degree 37' 29" E generally along the presently existing fence a distance of 322.48 feet to a corner fence post set in concrete for the most easterly northeast corner of this tract;

THENCE S 00 degrees 07' 15" E generally along the presently existing fence a distance of 368.38 feet to a steel railroad spike, marked "X", set in rock, for the north corner of a tract described as 1.23 acres in a Deed from M.S. Clarkson, et ux, to Jack M. Hearn, Sr. dated 15 August 1978 and recorded in Volume 119, page 705, of the Deed Records of Sutton County, Texas;

existing fence, at 69.95 feet passing a steel railroad spike, marked "X", set in rock, found for the southwest corner of a 0.90 of one acre subdivision of the said 9.65 acre tract as described in a Deed from Jack M. Hearn, et al, to Jack M. Hearn, Jr. dated 13 June 1978 and recorded in Volume 119, page 801, of the Deed Records of Sutton County, Texas, in all a distance of 364.03 feet to a 5/8" iron rod set in the northeast right of way line of F.M. Highway No. 1691 for the southwest corner of the said 9.65 acre tract and the most southerly corner of this tract;

THENCE N 30 degrees 48' 10" W with said right of way line, at 127.10 feet passing a concrete highway right of way marker, in all a distance of 416.98 feet to a 5/8" iron rod found for the south corner of a tract described as 2.00 acres in a Deed from M.S. Clarkson, et ux, to Frank Adkins dated 21 March 1974 and recorded in Volume 105, page 192, of the Deed Records of Sutton County, Texas;

THENCE with the southeast and northeast lines of the said Adkins 2.00 acre tract as follows, N 59 degrees 05' 34" E a distance of 208.71 feet to a steel railroad spike set in rock found for corner, N 30 degrees 48' 09" W a distance of 417.26 feet to a 5/8" iron rod found for corner in the southeast line of Block 25-A of the South Heights Addition to the town of Sonora;

THENCE N 59 degrees 27' 11" with the southeast line of said block and across the end of Crockett Avenue a distance of 136.39 feet to a found 1/2" iron rod for the south corner of a tract described in a Deed from Intratec Gas Co. to Oasis Pipeline Co., dated 1 October 1981 and recorded in Volume 132, page 754, and the west corner of a tract described as 1.00 acre in a Deed from M.S. Clarkson, et ux, to J.P. Cooper dated 16 May 1974 and recorded in Volume 105, page 826, both references in the Deed Records of Sutton County, Texas;

THENCE with the lines of the said Cooper 1.00 acre tract as follows, S 31 degrees 09' 49" E a distance of 208.68 feet to a 5/8" iron rod set for its south corner, N 59 degrees 27' 11" E a distance of 208.68 feet to a 5/8" iron rod set for its east corner, N 31 degrees 09' 49" W a distance of 208.68 feet to a 5/8" iron rod set for its north corner in the southeast line of the above mentioned Oasis Pipeline Co. tract;

THENCE S 00 degrees 33' 08" E generally along the presently existing fence a distance of 138.91 feet to the point of BEGINNING and containing 13.63 acres of land.

Courses and distances recited herein are Lambert Grid. Theta angle at the beginning corner of this tract is -00 degrees 09' 21". Combined grid factor is 0.99980509.

Surveyed in March 1983 by: C.B. Thomson Registered Public Surveyor No. 1503

0.654 Acre Tract Survey No. 54 Abstract No. 809 H. E. & W. T. R. R. Co. Block B

Sutton County, Texas Being 0.654 of one acre of land (28,478 square feet) out of and a part of the E. & W. T. R. R. Co. Survey No. 54, Block B, Abstract No. 809, lying and being situated in Sutton County, Texas. The said 0.654 of one acre tract also being out of and a part of the lands described as 2.00 acres in a Deed from M.S. Clarkson, et ux, to Frank Adkins dated 21 March 1974 and recorded in Volume 105, page 192, of the Deed Records of Sutton County, Texas. The said 0.654 of one acre tract being more particularly described by metes and bounds as follows:

BEGINNING at a railroad spike set in rock found for the most easterly corner of the above mentioned Adkins 2.00 acre tract and a reentrant west corner of the lands described as 14.86 acres in a Deed from Joe R. Valera, et ux, to the Sonora I.S.D. dated 29 December 1982 and recorded in Volume 140, page 128, of the Deed Records of Sutton County, Texas, from which an old fence corner taken to be the northeast corner of Abstract No. 809 out of Survey No. 54 bears N 35 degrees 03' 24" E a distance of 719.1 feet;

THENCE S 59 degrees 05' 34" W with the line between the said Adkins and Sonora I.S.D. tracts a distance of 208.75 feet to a 5/8" iron rod found in the northeast right of way line of F.M. Highway No. 1691 for the most southerly corner of the Adkins tract and the most southerly west corner of the Sonora I.S.D. tract;

THENCE N 30 degrees 48' 10" W with the northeast right of way line of F.M. Highway No. 1691 a distance of 136.42 feet to a 5/8" iron rod set for the

most westerly corner of this tract from which a concrete highway right of way marker bears N 30 degrees 48' 10" W a distance of 278.63 feet;

THENCE N 59 degrees 05' 34" E through the said Adkins 2.00 acre tract a distance of 208.75 feet to a 5/8" iron rod set for the most northerly corner of this tract in the northeast line of the Adkins tract and a southwest line of the said Sonora I.S.D. tract from which a 5/8" iron rod found for the most northerly corner of the Adkins tract bears N 30 degrees 48' 09" W a distance of 280.92 feet;

THENCE S 30 degrees 48' 09" E with the line between the said Adkins and Sonora I.S.D. tracts a distance of 136.42 feet to the point of BEGINNING and containing 0.654 of one acre (28,478 square feet) land.

Bearings recited herein are Lambert Grid. Surveyed 16 November 1983 by C.B. Thomson Registered Public Surveyor No. 1503

**ORDINANCE NO. 270**  
**GENERAL RESTRICTIONS ON OPERATION OF COMMERCIAL VEHICLES; TRUCK ROUTES; USE OF COASTERS\* ETC.; UNLAWFUL RIDING; OPERATION WITH CLINGING OBJECTS; PARKING OF TRAILERS; OPERATION OF UNREGISTERED MOTOR VEHICLES; DRIVING UNDER THE INFLUENCE; VEHICLES LADEN WITH SAND ETC.; RECKLESS DRIVING.**

Whereas, the City of Sonora desires to provide for the welfare of its citizens and to prevent accidents and injuries.

Whereas, operation of motor vehicles should conform with set standards to avoid accidents and injuries.

**NOW, THEREFORE, BE IT ORDAINED BY THE CITY COUNCIL OF THE CITY OF SONORA, TEXAS,**

SECTION 1: General restrictions on operation of commercial vehicles; truck routes.

a) Through commercial vehicles. It shall be unlawful for any person to operate a through commercial vehicle upon any

street, boulevard, avenue or alley within the limits of the City, except that such commercial vehicle may travel or be operated upon any street, boulevard, or avenue designated as a U.S. or State Highway or as a Truck Route.

b) Local commercial vehicles. It shall be unlawful for any person to operate any local commercial vehicle upon any street, boulevard, avenue or alley within the limits of the City, except on a designated U.S. or State Highway or a designated truck route. A local commercial vehicle may leave any designated U.S. or State Highway or a designated truck route and travel on any street, boulevard, avenue or alley within the City for the purpose of delivering or picking up goods, wares, materials and/or merchandise, or returning to its established place of business or home.

When a local commercial vehicle enters a street, boulevard, avenue or alley as herein permitted, such vehicle shall enter such street, boulevard, avenue or alley at the intersection nearest the point of pick-up or delivery or its established place of business or home and return to the truck route by the nearest route. Where more than one pick-up or delivery is required, additional pick-up or delivery may be made, and the vehicle shall not be required to return to the truck route after each individual pick-up or delivery but shall return to the truck route upon the completion of all pick-ups or deliveries. Maximum speed of said vehicle shall be limited to 20 miles per hour.

c) Truck routes established. Every U.S. and State Highway and Farm and Market Road within the limits of the City is hereby designated as truck route under the terms of this section, and the following streets, roads and highways are hereby designated truck routes by name as follows:

d) Marking of truck routes. All truck routes established herein shall be marked by erection of suitable signs.

SECTION 2: Use of coasters, roller skates and similar devices. No person upon roller skates, or riding

in or by means of any coaster, toy vehicle or similar device shall go upon any roadway, except while crossing a street or crosswalk.

SECTION 3: Unlawful riding on vehicles. The operator of a motor vehicle shall not carry any person on the fenders, running boards or bumpers of a vehicle, and no person shall ride on any motor vehicle on that portion not designed or intended for the use of passengers.

SECTION 4: Operation of vehicles with motorcycles, bicycles, etc. clinging thereto. It shall be unlawful for any person to operate a vehicle upon a roadway while any person riding upon any motorcycle, coaster, sled, roller skates or toy vehicle has attached the same or himself or herself to such vehicle.

SECTION 5: Parking of trailers. No person shall park on any city street or alley for a period longer than seventy-two (72) continuous hours any trailer, semi-trailer, boat-trailer, trailerhouse or other non-motorized device or equipment designed or intended to be towed upon public streets by means of attachment to a motor vehicle or other self-propelled vehicle or equipment; nor any motorized, self-propelled motor home or any other motor vehicle containing or intended to contain permanently installed sleeping

facilities and/or human sanitary treatment or disposal facilities.

SECTION 6: Operation of non-registered motor vehicle. No person shall operate a non-registered motor vehicle on any street, alley, boulevard or road within the city limits.

SECTION 7: Driving under the influence of liquor or drugs. It shall be unlawful for any person to drive or operate any vehicle upon any street or alley within the city while such person is in any degree under the influence of intoxicating liquor or narcotic drugs.

SECTION 8: Vehicles laden with sand, etc. Materials not to spill. No person shall intentionally or knowingly operate, or cause to be operated, on any paved public or paved public alley, any vehicle so loaded with sand, gravel, rock, earth or other particles in bulk, including metal and that any such material is likely to fall or be thrown upon such street or alley.

SECTION 9: Reckless driving. It shall be unlawful for any person to drive any vehicle on any street or alley in the limits of the City in willful or wanton disregard of the rights of safety of others or without due caution or circumspection, or at a speed or in a

CLASSIFIEDS CONT. ON PAGE 9

**Bobbie A. Smith**  
*Real Estate*  
Bobbie A. Smith (915) 387-2728  
Broker After 5:00 P.M.

**Homes, Homes !!!!**  
★ All sizes, shapes, and Price Ranges ★  
**We have one to fit you !!**  
**Call For Details**

★ **COMMERCIAL PROPERTY** ★  
Large building, Carpet, 2 offices, highway frontage.  
2 Large lots on Hwy. 277 North.

LISTINGS  
Bobbie Smith 387-2728 Bill Savell 382-2062

**Business & Professional Directory**

<b>MI Ranchito</b> Fine Mexican Food Open Daily 7am to 10pm Breakfast 7am to 11am Owners: Ruben and Sylvia Garcia 608 S. Crockett	<b>Upholstery Refinishing</b> Fabric Dolls Custom Draperies Installation and accessories Elizabeth Taylor 103 College Street Sonora
<b>THE OAK GROVE</b> Desserts, Cakes, Bread Wash. Trays Phone 387-2748	<b>CAMBRIDGE PRODUCTS</b> Sewing Machine Accessories Sewing 387-3433 387-2228
<b>Marriage and Family</b> Counseling and Therapy Call 387-2836 P.O. Box 1768 Ozona 76943	<b>Used Furniture</b> Appliances, Antiques New Items Carpentry, Welding 387-3008
<b>Childers</b> Appliance Service Ken Childers Route 1 Box 295 Mertzon, Texas 76941 (915) 835-3711	<b>A.V. CONSTRUCTION</b> Fencing Oilfield Painting Roustabout work Welders available Fully equipped with two-way radio (915) 387-2138 Sonora
<b>Joe Lozano's Remodeling</b> General Construction (additions, roofing, concrete, masonry) Phone 653-3087 or 387-5272	<b>Patlos-Drives-Cellars</b> Sidewalks and etc. G&S GENERAL CONSTRUCTION CO. Sonora No. (915) 387-5326
<b>THE TRAVELERS III</b> (915) 387-2586 403 Hwy. 277 No. Sonora, Texas 76950 Mary Ann Davis, Manager	<b>SONORA FLORAL</b> & GIFTS 413 E. Second St. Sonora, Tx. 76950 "We Can Care For All Your Floral Needs"
<b>Pat Walker's</b> figure perfection salon program to suit the individual Rosemary Vickers, Mgr. 387-3874 Hwy 277 N.	<b>FOR SALE</b> <b>387-2507</b>

**oilfield directory**

THE FOLLOWING COMPANIES SUPPORT AND APPRECIATE YOUR PATRONAGE IN HELPING SONORA GROW

<b>LIGHT ELECTRONICS</b> TWO WAY RADIO SERVICE JOHN HENRY STRAUCH Telephone No. 608 S. Concho 915/387-2273 Sonora, Texas 76950	<b>HAYNIE Construction Inc.,</b> Experience Roustabout Service Johnny Yarbrough (Yard forman) call (915) 387-5008	<b>Morriss Brothers</b> 387-3846 Construction Co. GENERAL OILFIELD CONTRACTOR 2-Way Radio Dispatched Hwy. 277 S. P.O. Box 1211 Sonora
<b>Oilfield-Water Hauling</b> RRC Pipehauling Jimmy Condra Jimmy Trainer DICON ENTERPRISES, INC. SONORA, TEXAS 387-2843	<b>Sonora Wool and Mohair</b> Tools, steel, pipe, fencing, welding supplies 210 S.W. College 387-2543	<b>CHARLES HOWARD</b> General Oilfield Contractor 387-3093 387-2270 387-2551 216 Hudspeth Sonora, Tx
<b>Reese Welding</b> & Construction 387-2167 387-2687	<b>HENRY CHANDLER</b> <b>CANYON</b> INC. AIR DRILLING Home 387-5679 MOB. No. 387-3964	Tel. (915) 387-2524 Sonora, TX, 76950 <b>CJL, INC.</b> CARL J. CAHILL, INC. OIL FIELD CONTRACTOR
<b>Dresser Atlas</b> 387-3531 Bill Laxton, Manager	<b>MOTOROLA</b> Tom Parlow Communications Consultant 387-5973 Sonora, Texas 76950	<b>WESTEX COMMUNICATIONS</b> DIRECT DIAL MOBILE PHONE LAND MOBILE RADIO SYSTEM 387-3831
<b>TREY TRUCKS INC.</b> 24 Hour Service 853-2186	Home Cooked Food! 387-9926 <b>BIG TREE RESTAURANT</b> 24 Hour Service for 24 Hour A Day Working People <b>SAM DECHEARO</b> Owner	Sonora 387-3526 <b>Oilfield Services</b> <b>DS</b> San Angelo 658-7019 Acidizing-Fracturing-Cementing Sand Control Products-Tool Casing Hardware
<b>Son-Tex</b> 387-2480 <b>Rat Hole Service</b>	<b>Sonora-Ozona</b> Oil Company (915) 387-2400 Exxon Products	<b>JIMCO</b> Complete Oilfield Services Jimmy Condra 387-3843 Jimmy Trainer 387-3179 ENTERPRISES INC. SONORA, TEXAS



**CLASSIFIEDS CONT. FROM PAGE 8**

manner so as to endanger a person or property, and to do so shall constitute the offense of reckless driving.

**SECTION 9A: Penalty.** Any person or persons violating any of the terms or provisions of SECTION 1 through 9 shall be guilty of a misdemeanor upon conviction, shall be fined not less than twenty dollars (\$20.00) and not more than two hundred dollars (\$200.00) and each and every day any such violation exists shall constitute a separate and distinct offense.

**SECTION 10:** All ordinances or parts of ordinances in conflict herewith shall be and are hereby repealed to the extent of conflict herewith.

**SECTION 11:** This ordinance shall be published by caption once in a newspaper of general circulation in Sutton County, Texas and in the City of Sonora.

**SECTION 12:** If for any reason any section, paragraph, subdivision, clause or provision of this ordinance shall be held invalid by final judgement of a court of competent jurisdiction, it shall not affect any valid provisions of this or any other ordinance of the City of Sonora to which these rules and regulations relate.

**SECTION 13:** The necessity of public safety creates a public necessity requiring suspension of the rules that no ordinance or resolution shall be passed unless read at three separate meetings of the City Council, and the Mayor having declared that such necessity exists, and having requested suspension of the rules of three readings and that the ordinance be passed finally on the date of its introduction and to take effect and to be in full force and effect from and after its passage and publication, IT IS ACCORDINGLY ORDAINED.

**PASSED AND APPROVED** this the 17 day of July 1984.

Mayor, Billy Gosney

A public hearing will be held by and before the City Council of the City of Sonora, Texas on the 7th day of August, 1984 at 9:00 o'clock in the City Council Chamber of the City Hall of the City of Sonora, Texas, for all persons interested in the above proposed annexation. At said time and place all such persons shall have the right to appear and be heard. Of all said matters and things, all persons interested in the things and matters herein mentioned, will take notice. By order of the City Council of the City of Sonora, Texas this the 17th day of July, 1984.

Mayor, City of Sonora-Billy Gosney

**FOR RENT/LEASE**

Shurley Enterprises Mini Storage. 8x12, \$20 monthly. Phone 387-3619 or 387-5409.

Check our new rates at Casey's Korner. Call 387-2104.

N.L. McCollough Building, Sonora, Texas IH-10 Frontage Road, 5000 sq. ft. Truck boys and offices; to be kept clean and neat. Phone 387-3044.

For Rent: 3 bedroom, 2 bath Mobile Home. Best location in town. Call 915-336-2416.

**REAL ESTATE**

Devil's River 239 acres with 1000' fronting on crystal clear Devil's River. Some high country, building sites, good hunting.

San Saba River 92 acres mostly pecan bottom with 1/2 mile San Saba River. Good hunting, excellent fishing.

300 acres with 1 1/4 miles of San Saba River frontage. One of the most beautiful pecan bottoms around. Excellent hunting and fishing.

London Texas 200 acres of rolling land with large live oak and some cedar and mesquite. Excellent small ranch operation. Lots of deer, turkey, and quail.

3R Realty Inc. Don Sessom - Agent A.C. 915-392-3533 or 915-597-3684

**EDGEFIELD TRACTS**  
In Eldorado Town Lots \$4500 1 Ac. Tracts \$3500 -Financing Available- 10 percent down 3 years

880 acres, 40 miles North of Del Rio. Rough 4-wheel drive canyon country with 2,000 ft. Devil's River. \$295 per acre. 1-800-592-4806.

20.2 acres Hill Country hunting land. \$995 per acre. 20 year owner financing at 9 3/4 simple interest. Deer, turkey and javelina. 1-800-292-7420.

For Sale: 1120 acres, 30 miles southeast of Sonora, off Interstate 10. For more details call (817)533-2447 or (817)533-2277.

5 acres in beautiful Davis Mountains. Average temperature 65 degrees. 7 miles NW of Ft. Davis on highway 118. Down \$498.75 monthly \$89.93. Call 1-800-592-4806.

For Sale: Residential lots in Juniper acres, located on the old Merton Hwy. adjacent to Sunset Acres. For more information call J&R Properties 915/853-3345 in Eldorado or 512/896-7016.

Pepper Land and Investment Real Estate Company, Clayton, N.M., would like to help you find a New Mexico Ranch Investment. Call 505-374-9479 or 374-8137. J.W. Pepper, Broker.

**BUSINESS OPPORTUNITIES**

Own your own Jean-Sports-wear, Ladies Apparel, Combination, Accessories, Large Size store. National brands: Jordache, Chic, Lee, Levi, Vanderbilt, Izod, Esprit, Britannia, Calvin Klein, Sergio Valente, Evan Picone, Claiborne, Members Only, Organically Grown, Healthex, 700 others. \$7,900 to \$24,900, inventory, airfare, training, fixtures, grand opening, etc. Can open 15 days. Mr. Loughlin (612) 888-6555.

**MOBILE HOMES**

House For Sale, 514 E. 2nd. 3brdm, 1 bth, wood-burning stove, ceiling fans, privacy fence, good neighborhood. Excellent condition. \$45,000. 387-2449.

3 BR-2 Bath in Eldorado. All Electric, brand new, attractively designed and larger than you think. VA and FHA available if qualified. \$54,500.00

In Sonora-Condominium, 2 BR-2 Bath, double carport, den, central air-heat, fireplace, storage. Worth the money. \$77,500.00

Home: By Owner, 2000 plus sq. ft., 3 bedroom, 1 1/2 bath, dining room, game room, lovely two story home. Low interest, assumable loan, 2 years old. 387-5675.

3 bedroom house, central heat-air, carpeted, many extras. Property includes 2 lots and a small apartment. Priced to sell, call 387-2843 or 365-2044.

For Sale: 3 bedrooms, 1 3/4 bath, 2 living areas, fireplace, utility room, garbage disposal, ceiling fans. Central heat and air, carport, storage buildings, fenced back yard, 20'X30' shop with 12'X30' carport attached. Call 387-5411 after 5:30 p.m. and weekends by appointment only.

**HOME FOR SALE**  
Beautiful landscaped 3 br, 2B brick. Large country kitchen with Jenn Aire range. Family room has cathedral ceiling, skylight and massive rock fireplace with heatilator. Foram dining room. Custom drapes and ceiling fans. Brick barbeque on patio. All electric, energy efficient. R.E. Kemper Real Estate 512-775-8837 or call 387-2477 for appt.

For Sale by Owner: 3 bedroom, 2 bath, Brick Home. Energy efficient, ceiling fan, fireplace, cathedral ceilings, lots of extras. 5.37 acres of land. 4 miles toward Ozona. Call 387-6031.

For Sale by owner - Custom built 3 bedroom, 2 bath brick. Raised ceilings, fans, dishwasher, patio room, many extras. Only \$77,500. 387-2208 for appointment.

House for sale. 3 brdm, 2 bath with separate dining room. Large master brdm. Lots of closets. Carport storage building in rear. Good location. Priced to sell. Call 387-3444, 512-367-5787 or 512-238-4502.

House For Sale: 3 bedroom, bath and 1/2, Big pecan trees, 1 1/2 blocks from school. Priced to sell. Phone 387-3759.

**MOBILE HOMES**

For Sale or Rent, 1978 two bedroom, two bath mobile home. Phone 387-2261.

Have Credit problems - No Credit - or BAD Credit But you need a home. We may be able to help you. Come see our wide selection of new & used Mobile Homes, and talk to one of our finance consultants. We have NEW & USED & REPOS 700 N. Grandview Odessa. 333-3212, Circle B Mobile Homes.

Joined the Navy, going overseas, must sacrifice 1984 3 brdm, 2 bath, 14 X 80 fully furnished with ceiling fan, fireplace, shingle roof, free set up and delivery only \$315 per month, includes 3 year insurance, 15.5 APR, 180 months. Call Connie collect at 915-366-5239.

Why Pay Rent  
New 3 brdm, 2 bath, peach-tree mobile home, delivered to your location for \$17,751. Includes central heat and air, 3 yrs. insurance, Masonite siding, cathedral ceilings and hook-up for ceiling fan. Pay \$233.24 monthly with 10 percent down. 180 months, total price \$41,983.20 deferred payment \$43,663.20. Call (915) 685-2712. Ask for Terry.

1983 14 X 72 Ridge-mont, 2 Brm, 2 bath. Low equity, assume payments of \$285.69. Call 387-2543 or 387-5252.

For sale or rent! Cheap 2 bedroom, 1 1/2 bath, 1972 Melody Mobile Home - 14x64. Call 387-2409 or 387-2877.

1979 Titan Double-wide home for sale. Measures 48' X 24', 3 bedroom, 2 bath, large living room, large kitchen, dining area central air and heating, best spot in Sonora, partially furnished J&V Trailer Park, lot 70 call 387-5284.

Good little or no Credit  
39 late model 2 and 3 brdm repos to choose from. Only \$500 down and low monthly payments. Free set up and delivery. Financing available, 14.65 APR, 145 months. Also 75 new homes in stock at reduced prices. Call Connie collect at 915-366-5206.

For Sale: Town and Country mobile home in excellent condition. 14'X82' 3 bedroom, 2 bath, central heat and air and all appliances. Includes 60'X130' lot across from school. Call 387-2269.

**AUTOMOTIVE**

1979 Jeep Wagoneer. 4-wheel drive, \$4,900. Call 387-3665.

1977 Ford Pickup Club-Cab automatic, power, and air. Good worktruck. 203 Hudspeth, 387-2644.

1972 Dodge Charger and 1977 Camaro for sale. Call 387-5907 or see at 1305 Orient Avenue.

For Sale: 1976 Chevy crew-cab \$1,700 or assume note at bank. 1973 Vega car, standard shift, \$400 or best offer. Call 387-6170 after 6 p.m.

1978 Ford Pickup, F150 Ranger XLT, call 387-3097.

1980 Lincoln Continental, low mileage, extra clean. Call 387-5663.

**FOR SALE**

Fertilizer hay grazer for sale, \$4 delivered. Call 869-6151.

Needing to build a fence or carport? We've got the structural pipe for sale. 387-2348.

Commercial property for sale. Well established, good location with direct access to the interstate. Send inquiries to the Devil's River News (Box 55X) 220 N.E. Main, Sonora, Texas 76950.

18 ft. Shasta travel trailer. Excellent condition. \$2500 cash. See at 405 E. Second. 387-3226.

1971 Mobil Scout 8X15, sleeps 6. Very good condition. \$3,000 dollars. Can be seen in the county park, trailer house in rear of 4-H Center, or call 387-5545.

**MISCELLANEOUS**

Free mail-order sheet music and song book catalogs. Write Alpha Music Center, 611 West 29th St. Austin, Texas 78705. Call 512/477/5009."

Livestock hauling, Jamie Newbury, call 387-6107.

Two family garage sale. 208 Chestnut from 8 a.m. until ? Saturday, July 28. Lots of very good children's clothes, good misc.

Christoval Park Gigantic Flea Market. Set up \$11.00 for two days. Welcome everyone Saturday and Sunday, July 28 and 29, Christoval, Texas

**JOBS WANTED**

Would you like to have your lawn mowed? I have the mower, trimmer, and fuel. All that is needed is your yard. Reasonable rates. After 5 p.m. call 387-6019.

**HELP WANTED**

Now taking applications for LVN's at Lillian M. Hudspeth Nursing Home. Openings for all shifts. Contact the Director of Nurses or Administrator. 915-387-3030.

Excellent income for part time home assembly work. For info. call 504-641-8003 Ext. 8218.

Now taking applications for route man at Thorp's Laundry. Call 387-2666.

Taking applications for a substitute teacher and afternoon aid. (1:30 p.m.-6:00 p.m.) Call for appointment. 387-5016, S.E.E. Center.

Part time person at Twin Oaks Motel. Morning hours salary open - apply in person.

Outreach Home Health Services need contract O.T. S.T., M.S.W., for home health visits in Sutton and surrounding counties. 7711 Louis Pasteur no. 404, San Antonio, Tx. 78229 (512) 691-0223.

The first lighthouse in America was erected by the Province of Massachusetts in 1716 on Little Brewster Island.

**NYSE is world of its own**

BY JERRY LACKEY

The Association of Area Business Publications is a national organization with 84 united members like West Texas Business magazine in virtually every important economic region in the United States and Canada represented.

We just returned from our publishers' summer meeting...this year in New York City. And what a perfect place for a group of business publishers to open our meeting...the board room of the New York Stock Exchange.

Over the years of my journalism career I have been constantly challenged with interpreting the stock market. Ten years at the Standard-Times, the two pages of small type which made up our daily report to the readers had to be compiled and proof in hot type days. Towards the end of my newspaper career, all of that information ceased to be fed by way of punched tape through the Associated Press wires. It now comes through the computers.

The NYSE trading floor with its video screens, specialists and clerks at each specialist position sorting current information from market centers around the world is very much what we see on the TV evening news. Except for appearing much like red ant den on a West Texas summer day with considerable more noise, I would describe the scene to be much what I expected it to be.

The story of the NYSE is interwoven with the life of New York City and the nation. In 1790, the U.S. was a new nation with four million citizens living in 13 states.

By 1865, war, negotiation and purchase had expanded the continental boundaries from the Atlantic to the Pacific, encompassing 35 million people living in 36 states and half dozen territories. By 1980, 255 million lived in 50 states.

In less than 200 years, a rural community of farms and small towns became an urban industrial society and numbered among the most technologically advanced countries in the world. The U.S. has benefited greatly from its earliest years in having all the necessary factors for economic development: plentiful natural resources, a growing rail system, a diverse labor force, aggressive entrepreneurs, and financial institutions to funnel capital into investments. These institutions to concentrated in New York City, and the NYSE became a leader among them in channeling capital into industry.

By the late nineteenth century, it was the leading exchange in America; by the 1920's, the center of international finance. Today, the New York Stock

Exchange continues to play a principal role among the world's financial institutions, contributing significantly to the growth of enterprise. The finest facilities, services and leadership, combined with the Exchange's long rich historical tradition, contribute toward making the NYSE the world's foremost securities marketplace.

The growing impact of modern technology on traditional trading methods soon indicated that even the improved NYSE systems were not likely to meet projected service demands of the 1980s. Thus, in 1979, the Exchange launched a comprehensive long-range modernization plan. Trading floor facilities were completely overhauled. The 50-year-old trading posts were replaced with newly designed units that would accommodate the vast array of advanced electronic systems and modern equipment needed to maintain a modern securities marketplace. The capacity of existing systems was greatly expanded and new ones designed.

Goals of the modernization efforts were to assure the ability of the NYSE to handle peak trading volumes of 150 million shares per day and sustained periods in which volume might average 90 to 100 million shares a day.

Sam Alward, a NYSE vice-president, told our group the test came sooner than expected. Volume on the Exchange topped one billion shares during a two-week period in August 1982. That was nearly as many shares as yearly volumes prior to 1961. And in the fall of 1982, volume exceeded 149 million shares-establishing a new record and prompting the Exchange to push ahead with programs to handle 200-, 250- or 350-million-share days with equal facility.

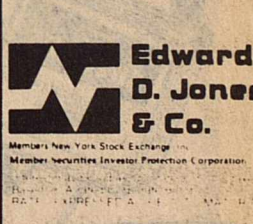


The loganberry is a cross between the raspberry and blackberry, and named for Judge Logan of California who was the first to cultivate it.

**"My Edward D. Jones & Co. broker just gave me six good reasons to invest through him."**

- U.S. Government Guaranteed Bonds 12.70%
- Federal Income Tax Free Municipal Bonds 10.75%
- Investment Grade Corporate Bonds 14.25%
- Insured Federal Income Tax Free Municipal Bonds 10.25%
- Preferred Stocks 13.00%
- IRA and KEOGH Retirement Plans 14.25%

**DON FOSTER**  
2705 SHERWOOD WAY  
SAN ANGELO, TEXAS  
CALL COLLECT FOR INFO.  
942-8578



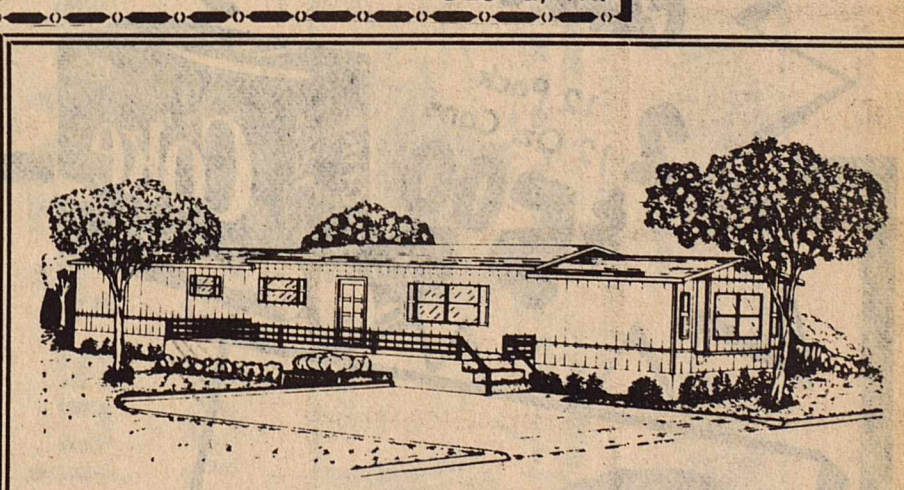
**Carpet care**  
**Professional Carpet Cleaning**  
COMMERCIAL OR RESIDENTIAL  
**STANLEY OR VONDA FLANAGAN** P.O. Box 1575  
Phone 392-3879 OZONA, TEXAS 76942

**Big State Movers**  
Mobile Home Moving and Leveling  
House Moving and Leveling Permit No. 1-785  
Big State Movers  
J.D. Bishop (Owner)  
Junction, Texas 76849  
915-446-3678

**Classifieds get results! Call 387-2507**  
The Devil's River News

**Sales & Service**  
**Ozona Butane Co.**  
**Complete Propane Tank Sales & Installation**  
Ozona - 392-3013 Sonora - 387-2352  
P.O. Box 1068  
Ozona, Tx.

**Need Electrical Work Don't Wait, Call Ken's Electric Licensed Bonded Insured 387-5510**  
Residential Commercial Oilfield Ranch Industrial & much more  
**Owner Ken Zortman 24 Hr. service**



**BARGAIN TIME**  
This is the time to buy your new or used Mobile Home at Mustang. We are in the process of clearing out our stock and getting ready for the new models. We have reconditioned our used homes and have them ready to sell at bargain prices. We have a home for everyone, we have new homes from \$10,900 to \$49,900. We have used homes from \$4,500 and up. We have a nice selection of new and used travel trailers and motor homes. You will like our large parts department and we have the best service department in the Big Country. Try the good guys at Mustang for a bargain.  
**Mustang Mobile Homes**  
2610 North Chadbourne  
653-8235 San Angelo, Tx 653-4561

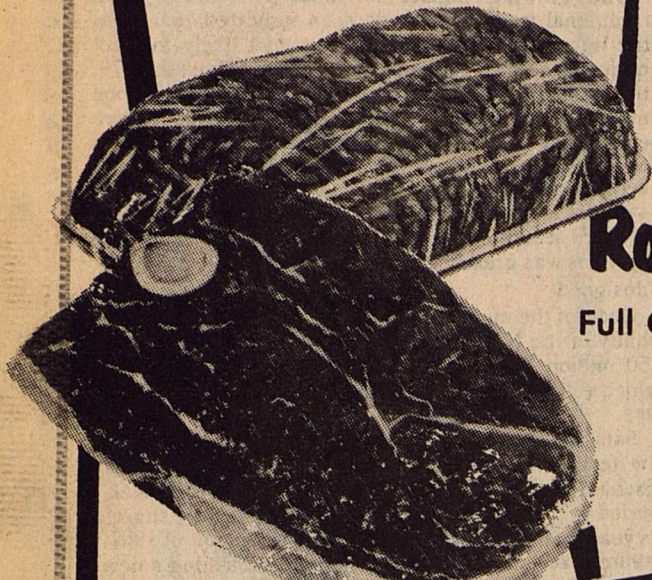
**MOTHER MARIE HEALER AND ADVISOR**  
1004 S. Abe San Angelo, Texas 76901 (915) 655-3936  
Hours: 9 A.M. to 9 P.M. - Daily and Sunday  
The Southern Born Spiritualist who brings to you the solutions to the mysteries of the Deep South. seeks to help many thousands of people who have been Crossed Hare Spells, Can't Hold Money, Want Luck, Want Their Loved Ones Back, Want To Stop Nature Problems, or Want To Get Rid of Strange Sickness. If you are seeking a sure-fire woman to Aid in Peace, Love and Prosperity in the home, you need to see this woman of God today! She Tells You All Before You Utter a Word. She can bring in the Spirit of Release and Control your every affair and dealings. Are You Suffering From Illness or Disease that You Can Not Cure? There is a doctor of all doctors. This doctor is God. Thousands of people are amazed at the results gotten by Mother Marie. \$15 READING FOR \$5 WITH THIS AD



**Ground Beef**

U.S.D.A.  
Lean

**\$1.29**  
Lb.



**Round Steak**

Full Cut U.S.D.A. Beef

**\$1.69**  
Lb.

**Sugar**

5 Lb. Bag

**\$1.69**



**Flour**

5 Lb. Bag

**89¢**



**Sliced Cheese**

6 Oz., 8 Ct. Pkg.

**79¢**



**Coke or 7Up**

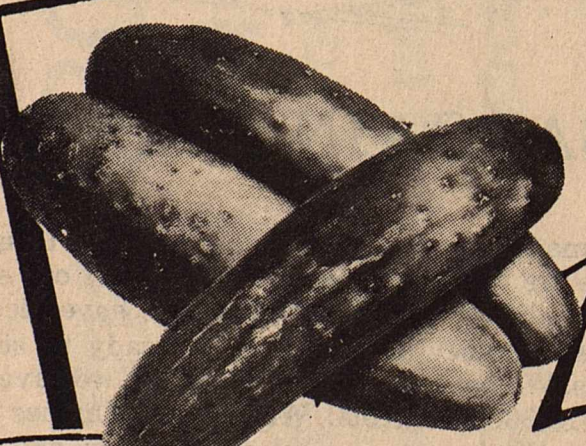
2 12 Pack  
12 Oz. Cans

**\$5.00**



**Cucumbers**  
North Texas

4 For  
**88¢**



**Round Steak**

Boneless U.S.D.A. Beef

**\$1.79**  
Lb.

**Rump Roast**

U.S.D.A. Beef

**\$1.99**  
Lb.

**Round Steak**

Tenderized U.S.D.A. Beef

**\$1.89**  
Lb.

**Arm Roast**

U.S.D.A. Beef

**\$1.49**  
Lb.

**Sirloin Tip Steak**

U.S.D.A. Beef

**\$2.69**  
Lb.

**Beef Liver**

U.S.D.A. Beef

**49¢**  
Lb.

**Sirloin Tip Roast**

U.S.D.A. Beef

**\$2.59**  
Lb.

**Ground Beef**

U.S.D.A. Extra Lean

**\$1.59**  
Lb.

**MAGIC MONEY  
SPECIALS**

**Toilet Tissue**

Parade 4 Roll Pack

**89¢**

**Flavorice**

24 Count Pkg.

**\$1.19**

**Paper Towels**

Parade Jumbo Roll

**59¢**

**Pop Ice**

12 Count Pkg.

2 Pkgs. For **\$1.00**

**Liquid Dish Soap**

Palmolive 22 Oz. Btl.

**99¢**

**Flavoraid**

Drink Mix

16 Pkgs. For **\$1.00**

**Pinatas**

Large Assortment Each

**\$6.79**

**Tortillas**

La Unica

3 12 Ct. Pkgs. **\$1.00**

**Spam**

Luncheon Meat 7 Oz. Can

**79¢**

**Roll Or Bread Dough**

Rich's Frozen Dough

**79¢**

**Picante Sauce**

Galante 16 Oz. Jar

**99¢**

**Beer**

Meister Brau 6 Pack 12 Oz. Cans

**\$1.69**

This Week's **MAGIC MONEY** \$100.00 Winner

**Pam Bolt**

**INSTANT-WIN PRIZES**

Prize	Quantity	Odds for 1 Visit	Odds for 26 Visits
\$20	8	1 in 8,000	1 in 308
\$ 5	16	1 in 4,000	1 in 154
\$ 2	64	1 in 1,000	1 in 38
\$ 1	600	1 in 107	1 in 4.1
Total	688	1 in 93	1 in 3.6

Other Winners Include:

Cynthia Schaefer, Josie Emiliano,  
Kyle Donaldson, Rosario Ibarra,  
Armandina Gutierrez,  
Susan Noriega,  
Mrs. Dewey Macon,  
Elida Martinez, Irene Miars,  
Sylvia Noriega, Harva Cooper,  
Oralia Trevino  
and  
Ann Rogers

*Hershel's*

Prices Effective Wed., July 25 thru Tues., July 31

**FOODWAY**

We Accept  
USDA  
Food Stamps

Locally Owned and Operated

**387-3708**

"If our Produce was any Fresher, you'd have to pick it!"

**Green Onions or Radishes**

MIX OR MATCH

**3** For **\$1.00**

**Peaches**

San Saba Large Size

**49¢**  
Lb.

**Carrots**

Fancy Clip Top

**4** 1 Lb. Cello Bags **\$1.00**

**Bananas**

Central American

**3** Lbs. For **\$1.00**

**Potatoes**

U.S. No. 1

**5** Lb. Bag **\$1.39**



# More than 80 years of service to Sonora and Sutton County

...That's a lot of good service to a lot of good people and we're just as eager to serve the newcomer



Eager to serve and growing all the time--our services now include office space, expanded drive in facilities, a convenient First Cash Plus ATM machine, and much more.



Your independent, locally owned bank serving the Stockman's paradise since 1900.

# The DEVIL'S RIVER NEWS

Serving Sonora and Sutton County since 1890.

Wednesday, July 25, 1984

Welcomes Newcomers  
to the

Stockman's  
Paradise...

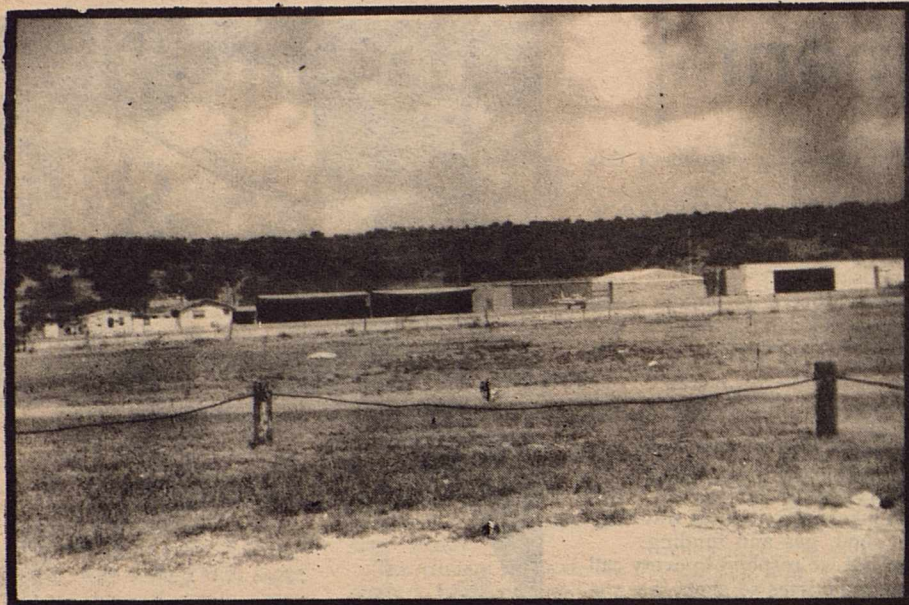
Sonora and  
Sutton County

The best community in West Texas!









BERGER FIELD

### Local airport stays busy

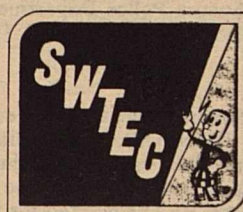
Over 2,000 people gathered on October 19, 1958 to witness the opening and dedication of Berger Field. Donated by the Berger family for the purpose of an airport, the field was built almost entirely through local donations of time, money, and materials. The airport then had 900 feet of runway, but was shortened to 3,860 with 50 of overrun. The city has complete control over the airport now.

A new taxiway was built four years ago at the facility and the runway was resurfaced three years ago. The Airport Authority serves as an advisory board for the City Council. The subject of relocating and building a new airport has been discussed quite a bit during the last few years. This is mainly due to the length of the runway and the safety factor of both approaching aircraft coming in through the hills

and taking off over a populated area. Having as much as 90 percent of a new facility financed through grants from the Texas Aeronautical Commission and Federal Aviation Administration is also a possibility.

**Welcome neighbor**

Southwest Texas  
Electric  
Co-op  
Serving Rural Areas

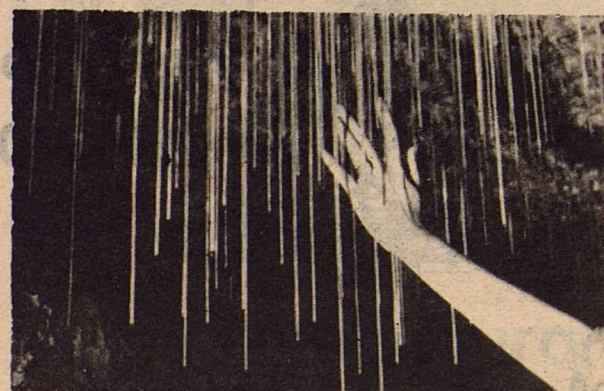


24 Hour Service

Phone: 853-2544  
853-2546

## The Incomparable Caverns of Sonora

*"The most beautiful cave in the world"*



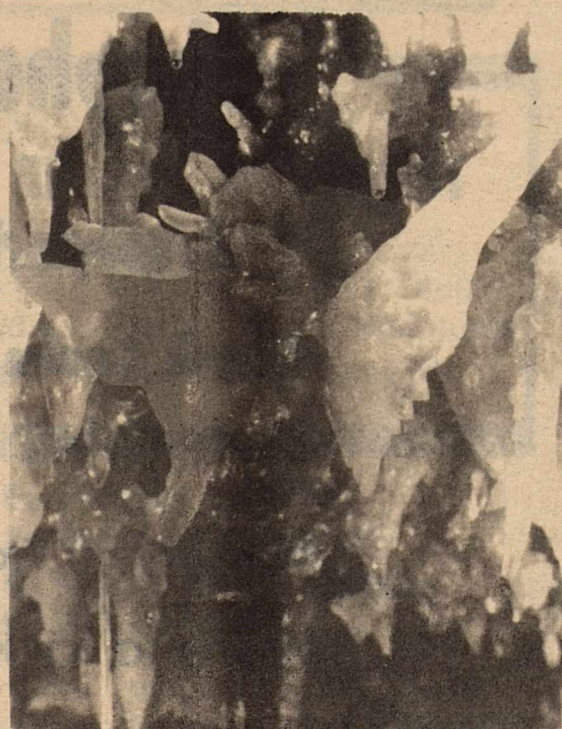
*Delicate Hollow "soda straws"*

*Offering:*

*Guided tours*

*Souvenir Shop*

*Campgrounds*



*The still active Butterfly formation*

*This marvelous cave is still active.*

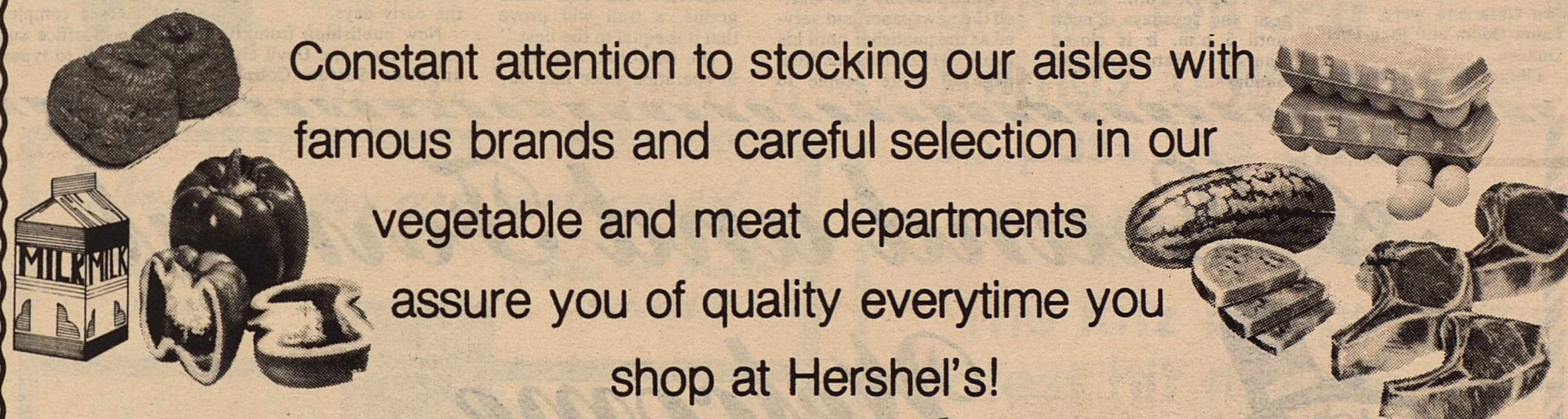
*Guided tours regularly throughout the day.*

*Take I-10 West and follow the signs.*



# WELCOMES Newcomers and Visitors to Sonora and Sutton County!

You'll always find the Welcome Mat out at Hershel's Foodway...where our working days are spent in an effort to bring you premium quality foods at sensible prices.



Constant attention to stocking our aisles with famous brands and careful selection in our vegetable and meat departments assure you of quality everytime you shop at Hershel's!

Our management policy... We're dedicated to serving the Sonora Community as good merchants, good citizens, and good neighbors.

*Hershel's "If Our Produce Was Any Fresher, You'd Have To Pick It Yourself!"*

# FOODWAY

STORE HOURS  
7:30 a.m.-6:30 p.m.

Locally Owned and Operated

387-3708

We Accept  
USDA Food Stamps



## County library serves many

The Sutton County Library was founded by the Sonora Women's Club in a building across the street from the United States Post Office, but later moved to the upstairs of the present city hall.

About five years ago Rev. and Mrs. Lea Roy Aldwell donated the present building in memory of his parents. The library is now located at 210 S.E. Concho Street.

The county of Sutton redid the outside of the building and the Women's Club paid for and did the remodeling of the interior.

While the library was housed in city hall, the county took over the running of it and still aids financially. The Women's Club has not stopped though. It is still very active in raising funds for the library.

Sandra Cooper, the present certified librarian, has held her position for the past five years and was involved in the remodeling of the building. The other two librarians were, first Laura Odom and then Lois Duncan.

Library board president

is Doris Rousselot and members of the board include Isael Perez, Lura Sawyer, John Tedford, and Lemuel Lopez.

The Sutton County Library is a member of the Texas State Library Association whose membership is based upon the number of books and the amount of local backing, among other requirements. The library is also required to have a certified librarian. Because of this membership, the library receives approximately \$2000 extra per year and has workshops available from the state.

At this time, the library has approximately 7000 volumes (not including any paperback books), filmstrips, records, film, and micro film.

There are five magazines subscriptions as well as three newspaper subscriptions. The newspapers are national, state, and local.

The hours for the library are Mondays, Wednesdays, and Fridays, 9 a.m. until 5 p.m. and Tuesdays 12 noon until 5 p.m. It is closed Thursdays, Saturdays, and Sundays.



## D R N history re-capped

October 18, 1890, the first issue of Sonora and Sutton County's newspaper the Devil's River News, was printed, filled with stock news, social events, and some outright bragging.

Mike Murphy who started the newspaper and served as the publisher until his death in 1922 used his front page to invite people to

"Come to the stockman's paradise".

Boosting his home and county and town, Murphy wrote on... "Sutton County as a grazing country cannot be equaled in the United States and as for sheep, we draw the line at nowhere, even for fruits and small grains, a trail will prove that it is equal to the best."

The Devil had continued in operation since that day

in 1890 and is the oldest continuously operated business in Sutton County and in this period of 91 years, has had only ten owners.

The "Devil" which started out as a four-page, once a week newspaper, still boasts of the same folksy, home-spun news as it did in the early days.

Now publishing from 10 to 12 pages, the Devil also supplies Sutton County

with its commercial printing needs, servicing business persons and individuals with commercially printed envelopes, statements, letterheads, and all the other items of this nature.

The Devil also offers its customers a complete and full line of office supplies, from pencils to typewriters and calculators.

## Gesch makes statement

My name is Brent Gesch and I am the Chief of Police of the City of Sonora, Texas Police Department. I would like to take a small amount of your time to let you meet some of the people that make up your Police Department.

Maxine Locklin is the Secretary for the Sonora Police Department and has held that position since fall of 1976. Maxine answers the telephone, dispatches radio calls to officers, types and files reports, issues permits, collects fines for the court, and assists the Municipal Judge as a clerk every Monday through Friday from 8:00 am until 5:00 pm. After 5:00 pm and on Saturdays, Sundays, and holidays all Police Department and City trouble calls are answered by dispatchers at the Sutton County Sheriff's Office located in the new jail building.

Sonora Police Department Sergeant is Bill Ware. Bill has worked for the City since August 24, 1978 when he moved from Odessa, Texas where he worked for the Ector County Sheriff's Office. Bill is married and he and his wife have a daughter.

Patrolmen for the City of Sonora Police Department are Woodie B. Howell, Michael House, and Tim Wilson.

Woodie Howell came to Sonora from Crane, Texas where he worked as a City Police Officer. Woodie is married and he and his wife also have a daughter. Woodie is currently on Departmental leave due to injuries received while on duty. He has worked for the City of Sonora since September 22, 1982.

Michael House came to Sonora from Kermit, Texas where he worked for the Reeves County Sheriff's Office as a jailer in Pecos, Texas at that time Mike was traveling several miles daily just to have a job in the Law Enforcement field. Mike began working for the City of Sonora on February 25, 1983. Mike is married and he and his wife have three children, two boys and a girl.

Tim Wilson came to Sonora from Clyde, Texas. Tim is married and he and his wife have two children a boy and a new baby girl. Tim received part of his law enforcement training while in the military and has been employed by the City of Sonora since September 14, 1983.

We are the Law Enforcement officers of the City of Sonora Police Department. Our job responsibilities are

the service and protection of you the citizens of this city.

The policemen for the City of Sonora, Texas are here to help you, the citizen of this city in any way we can. We are called on from time to time to do a very wide variety of jobs and services.

Citizens have requested officers to unlock their vehicles because the citizen was in a hurry and left their vehicle engine running for "just a second" while he or she went into the store. We have been called to close patrol a residence because a citizen is having a problem with his or her boyfriend, girlfriend, husband, wife or mother-in-law. We have been called on suspicious persons that are hanging around businesses or residences most of which are later found to be hitch hikers or criminals traveling Interstate 10 looking for food, gas and funding.

The list goes on and on but we respond to every call and that response time is sometimes so short that the caller is truly amazed that the Police arrives so quickly.

We as citizens are fortunate to live in Sonora, Texas for numerous reasons.

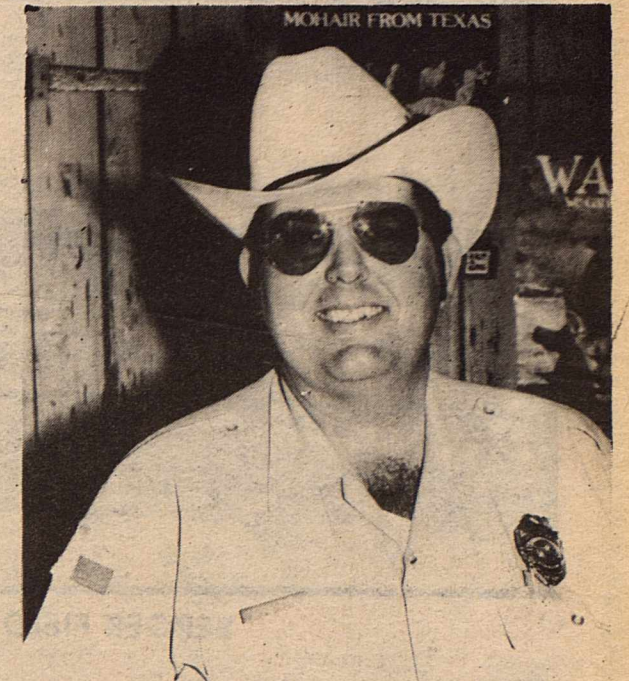
But have you thought about the citizens of San Ysidro, California where on July 19, 1984 James Oliver Huberty entered the San Ysidro McDonald's restaurant and fired round after round of bullets at bystanders. Huberty killed twenty-one people Thursday before he was killed by Police Sharpshooters. Those people ranged in age from a baby 4-6 months old to a 74 year old man.

Yes, we are fortunate. However, we are not immune to crime here in Sonora, Texas. It goes on every day and you as citizens see it and help control it by calling the Sonora Police Department and reporting it.

You as citizens have feelings about suspicious persons or actions and if you report these things to the Police Department you may prevent a crime from being committed and prevent a fellow citizen from being a victim.

If you wish your name to be kept confidential, please call me personally at 387-3889 and ask to speak only to me. If I am out of my office leave only your telephone number.

Do not identify yourself to any dispatcher or secretary if you are calling to give confidential information regarding crimes or criminals.  
R.B. Gesch



Police Chief Brent Gesch

Dear Newcomer:

The newcomer coming to Sutton County will find himself or herself in some of the finest hunting country in Texas. With a deer population of about one deer to every ten to twelve acres, Sutton County's hunter success rate is very high. Hunters also, have very little trouble finding a turkey gobbler to put in their freezer. Other native game to be found here include javelinas, doves, and quail. For the hunter who wants something a little different several of our local ranchers offer exotics for hunting. These include axis deer, sitka deer, fallow deer, barbado sheep, mouflon sheep, and even elk.

So if the man or the woman likes to hunt; the newcomer has come to the right place--Sonora, Texas.

Rodney A. Knight

Game Warden II

# A Grand and Formal



Welcome  
to all newcomers from

## P.M. Office

# Supply

Keaton Kolor Film Processing

Offering a complete line of supplies and services for your office and school needs.

Mellow Smellow Stickers

387-3774

School Supplies

Barbara Varner

Deliveries

Faye McCoy

295 Hwy 277 P

## Welcome to the Church of the Good Shepherd

Presbyterian

Church Service 11:00 a.m.

Sunday School 10:00 a.m.

Mulberry off Water St.

Reverend Rick Runge

387-3793

Manse

387-2616

Church

## Bud's Welding & Machine Works, Inc.

Bus. Phone  
387-2073



Res. Phone  
387-2707

### Machine Work -24 Hour Service- Shop & Field Welding

205 Tayloe

P.O. Box 1062  
Sonora, Texas 76950



# Welcome to Sonora

Editor's Note: The following information is compliments of the Sutton Chamber of Commerce "Welcome to Sonora" Brochure.

Sonora is the County Seat of Sutton County, and is located on the Edwards Plateau, 65 miles south of San Angelo and 94 miles from Del Rio.

The countryside is beautiful, with rolling hills, large oak trees and usually green grass. Several highways service Sonora, with Interstate 10 being completed within the last decade; also Highway 277 leads south to Del Rio and Lake Amistad which is frequented often by the people of Sonora. Interstate 10 leading to San Antonio is a beautiful drive through the Hill Country.

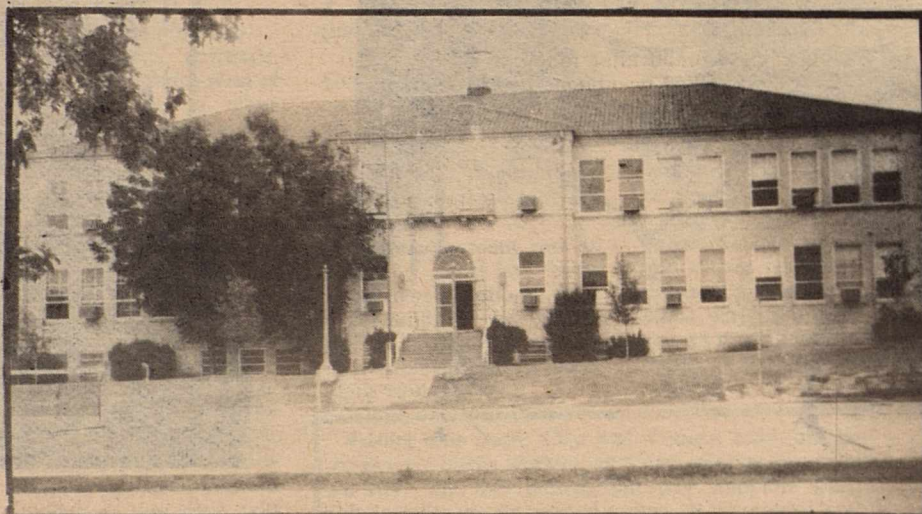
Sutton County is primarily ranch country, however, the past several years have brought the oil industry into Sutton County and the growth in population and industry has been tremendous. This area is noted for deer and turkey hunting, and each year numerous hunters enjoy the hospitality of citizens of Sutton County and the excellent hunting that is available.

The Caverns of Sonora are known throughout the

country and are said to be among the most beautiful in the world, most of the cavern is still growing and very beautiful.

Sonora is a very progressive community, the citizens work together for a better future. They are a friendly people, always ready with a greeting and a minute to visit and pass the time of day.

The climate is ideal, the country beautiful, and the hospitality great—people with a friendly smile and a warm handshake...THAT IS SONORA!



SONORA HIGH SCHOOL

## S I S D expands facilities

The Sonora Independent School District encompasses all of Sutton County, an area of approximately 1,000 square miles. Its Board of Trustees, places one through seven, is elected on an at-large basis for three year terms. The present seven member board is truly representative of the community they serve. Represented by the board is the business, oil and gas, and ranching industries of Sutton County.

With the start of the oil and gas boom in the area about ten years ago, the facilities of the school district began overflowing within a few years. A new junior high school completed in 1979 now houses grades six, seven and eight and is filled to capacity. Smith Neal provides guidance for the junior high school as principal, a position he has held for ten years.

Due to the foresightedness and wisdom of Sutton County voters, a new high school complex will be constructed to replace the old one in use since 1931. The old high school has been overcrowded for many years, with space juggling a common occurrence in order to accommodate all of the classes. The new high school will encompass some 105,000 feet of floor space and is designed for easy addition in case of an influ of

students. Construction on the new complex is set to begin in September, with a completion date for the new high school projected for December 1985.

Heading the high school staff this year is newcomer Jack Asbill, who comes to the Sonora ISD from Garden City. Asbill was principal of the Garden City High School for two years, and for six years prior to that he served as the principal of Bronte High School.

By far the oldest building on campus is the Middle School, which is comprised of grades three, four and five. The old rock building on the south side of the campus block adjacent to College Street has been in use since 1903. Heading the staff of the Middle School is Miguel Ramos, a native of Fort Stockton, who came to the Sonora ISD last year.

Sonora Elementary School, under the leadership of Clay Cade, houses kindergarten through the second grade and faces Concho Avenue. The expanded school population in the lower grades has been handled to a certain extent by the use of metal buildings for the overflow.

The school system has outstanding extra-curricular programs. State championships have come to Sonora in football, Drama, Speech, and the "Mighty Bronco Band" is consistently in first division in UIL competition. The annual Speech Meet, the oldest high school speech meet in the State of Texas, is held during the month of February each year and attracts schools from as far away as Waco.

Specialized services for the student body include career and personal counseling and all-level testing. Mrs. Jeryl Fields, beginning her tenth year with the district handled all counseling in the past, but with the increased student population, Mrs. Alice Taylor was added to the Counselor Staff last year. Both counselors are bi-lingual.

The district has a fully accredited Bilingual program beginning in Kindergarten. It also has a gifted and talented program beginning in the fourth grade for those students who are gifted in a particular area. On basic skills tests required by the Texas Education Agency, Sonora students have been among the top scorers in West Texas for the past several years.

There are more than 150 employees of the district, all of whom are dedicated to serving the educational needs of the nearly 1,400 school-age young people in Sutton County.



STATE OF TEXAS  
OFFICE OF THE GOVERNOR  
AUSTIN, TEXAS 78701

July 17, 1984

MARK WHITE  
GOVERNOR

As Governor of Texas, I am pleased to welcome you to Sonora and Sutton County.

Sonora and Sutton County has played an important part in the growth and development of our state. Not only is this area culturally significant but, as an agricultural, stock and production center, Sonora and Sutton County plays a significant role in the economy of Texas.

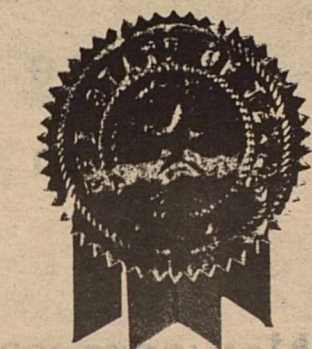
I am certain you will enjoy the small-town atmosphere and economic stability this area has to offer and I know the citizens of Sonora and Sutton County will make you feel welcome.

Sincere best wishes as you begin your "new" life in Sonora and Sutton County. When you have visited the Caverns of Sonora, you will be ready to visit other uniquely interesting and varied areas of Texas.

Yours truly,

*Mark White*

Mark White  
Governor of Texas



## The Grandeur of THE



### SEE A MOVIE

The Ritz welcomes all newcomers and invites them to come relax at the movies... popcorn and soft drinks, fun and friends, a great way to pass the time.

### ANY MOVIE

The Ritz brings in the latest hit movies of all sorts, to thrill you and chill you and make your feet tap.

Indulge and please yourself at

# THE RITZ

Show times subject to change

Show times: 7:30 and 9:30  
Sat and Sun Matinees: 1:30 and 3:30

## Mexican Food

### The Commercial Restaurant

Vibrant, hot, exciting! We serve traditional favorites from South of the Border. Come experience Mexican food prepared the way it was meant to be. Free parking.

## Take Out Available 387-9928

## Newcomers of Sonora...

**WE CORDIALLY INVITE YOU!**  
**THE CHURCH OF CHRIST**  
304 West Water St.  
Where God's Word is not only Taught and Studied, But Where His Scriptures are Respected and obeyed!

**No BOOK but the BIBLE;**  
**No CREED but the CHRIST;**  
**No CHURCH but HIS CHURCH;**  
**No WAY but HIS WAY!**

Calling Bible Things by Bible Names;  
Doing Bible Things in Bible Ways!

**Welcome to all Services**

*Newcomers are welcomed.*

*Bill Pavell*  
392-2062

*Bobbie A. Smith*  
387-2728

*Bobbie Smith Real Estate has homes and commercial property to suit your needs.*

## *Bobbie Smith Real Estate*



# DRN retells how Sonora and Sutton County grew

In its earliest years, Sonora experienced trouble with bands of surrounding Indians. In fact, the Comanche Trail, the path of the Comanches for raids of horses and captives ran right through Sonora and on down into Mexico.

Today, however, the only signs of the "Indian troubles" of the past can be seen in the forts that were built across West Texas to protect the settlers.

Fort McKavett, probably the best-known to Sonora residents, lies 40 miles to the east and is a state historic site. Located at the headwaters of the San Saba river, just over the Menard County line, it was one of a line of army posts that stretched across Texas. Except for a few years during the Civil War, the fort was active from 1852 to 1883.

Fort McKavett has been partially restored by the Texas parks people who have also done an interpretive exhibit of photographs, diagrams of the old fort, illustrations, and some 200 artifacts. The old hospital, barracks, headquarters, bakery, school, and officers' quarters have been restored to their original state and a picnic area has been added for visitors.

Fort Lancaster, 60 miles to the west, which is now in ruins near the Kimble

County line, also served as protection for pioneers and stationed cavalry troops.

The city of San Angelo owes its establishment to Fort Concho, located 60 miles to the north. And although troops are no longer stationed there, the fort has been painstakingly restored and is open to the general public. Many exhibits and artifacts are available and on display.

All four of these surrounding forts contribute to the taming of the West Texas frontier. They remain today as striking reminders of an important aspect of the pioneer days and of Sonora's earliest beginnings.

October 13, 1894--Stock News

It is reported that a large clip of wool sold in San Angelo last week at 9 cents a pound.

O.T. Word of Sonora bought from D.S. Babb 3000 head of sheep at \$1.15 a head after shearing.

October 6, 1894--Woodford (1881) wiskey is the finest article that has ever sailed over the San Angelo bars. No headache guaranteed. For sale only at the Corner Saloon, San Angelo (adv.)

December 1, 1894--Wood Wanted. Twenty cords of wood wanted at the Devil's

River News office on subscription. If you haven't \$2, bring in a load of wood.

Nov. 10, 1906--Free! Free! Free!

One graphophone will be given away absolutely free to each family making a cash purchase of \$25. Ask for your coupons. E.F. Vander Stucken Co.

Sept. 15, 1906--More rain, more rest. We are not complaining about the rain nor do we have any serious objections to "the rest". But as a result of the heavy rains the arrival of our new goods will be delayed a few days. A part of them have been loaded out from San Angelo and we hope to have them in and ready for your inspection soon. Sonora Mercantile (adv.)

The town of Sonora presents the story of a community with a unique history and potential for a dynamic future.

Sonora, as the rest of the Edwards Plateau, was rather late in developing. Most of the early settlers were sheepherders who drifted in from the east and drifted back as the grass supply ran low.

The area was not readily adaptable for the other livestock because of the lack of water and the fact that they could not survive on the moisture found in

sheep could.

The drilling of water wells in the late 1880s was probably the most significant reason for the migration of permanent settlers to the area.

The fact that most wells were of limited capacity combined with a misconception of most ranchers that cattle would not survive on well water stalled their advancement into the area.

Luckily, a dramatic price rise due to a heavy demand of Texas beef in northern markets gave a boom to the area's growth.

It was around on of these wells that the town of Sonora was built. Charlie Adams in his book, "Forty Years a Fool", says that Sonora was founded when he decided that the well he drilled cost too much and in order to break even he would have to sell lots and start a town.

The city's beginnings proved to be one of its more embarrassing moments. Adams said he filed on a section of school land, made payments, and he began selling lots--on land that actually belonged to a New York firm.

For the next two years, Adams sold lots and the town grew steadily. At this point, the mistake was discovered and there was nothing the citizens of Sonora could do but pitch in and try to buy the town

back.

A trip was made to New York where the owning firm suspected the land must have some extraordinary value or why would anyone try to buy it? So the New York firm decided to reserve everything under the surface. By the terms of the contract, Sonora had actually cut itself off from its water supply.

Lot sales ended until 1890. At this time, R.W. Callahan went to New York and for \$640 secured two deeds to Section 85 form Edward Tracy and the estate of James Russel. The deeds, dated May 17, 1890, declared "full rights, no restrictions--underground or otherwise".

Adams' wife reserved the right of naming the town after a faithful employee from the state of Sonora in Mexico.

Sutton County had just been formed three years before when the Texas legislature passed and act creating Sutton and Schleicher counties out of Crockett County. The county encompassed 1,500 square miles of territory and compares favorably in size with several states.

At the time of its settlement, the area was blanketed with high grass and the mesquite and other brush that now covers the terrain was nowhere to be seen.

However, a combination

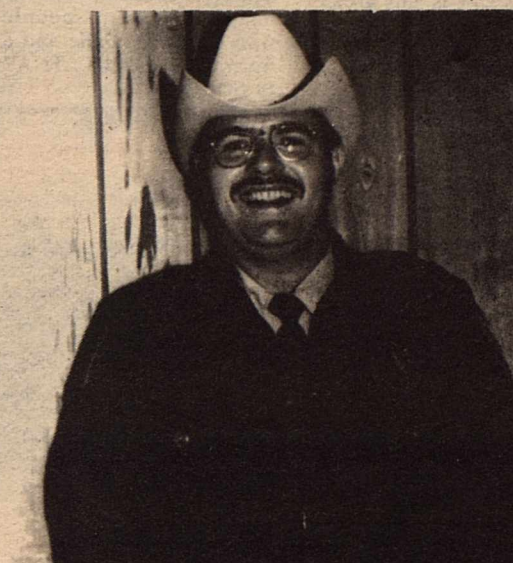
## Welcome to Sutton County Newcomers

### Sonora Police Department

#### Here To Serve

The Sonora Police Department officers and dispatcher are here to serve the citizens of Sonora. Under the leadership of Police Chief Brent Gesch, the officers are from left Bill Ware, Michael House, Maxine Locklin, Tim Wilson, and Woodie Howell. The officers of the local police force are ready and willing to serve you no matter what time day or night.

To reach the Police Department, dial 387-3888.



### "Shurley Enterprises"

Industrial sites- oil and gas  
Mini storages

Welcomes  
All Visitors and  
Newcomers to  
Sonora

Hwy 277 South  
387-3619  
or  
387-5409

### Triangle Tire Service



"If you need us, call us, & we'll be there"

- ★ 3 Trucks On Call
- ★ 24 Hour Road Service

### Day or Night

Tubes-Wheels & Tires

387-2808 Hwy 277 South



# Greetings, Newcomers!

from the  
**Sonora Chamber  
of Commerce**

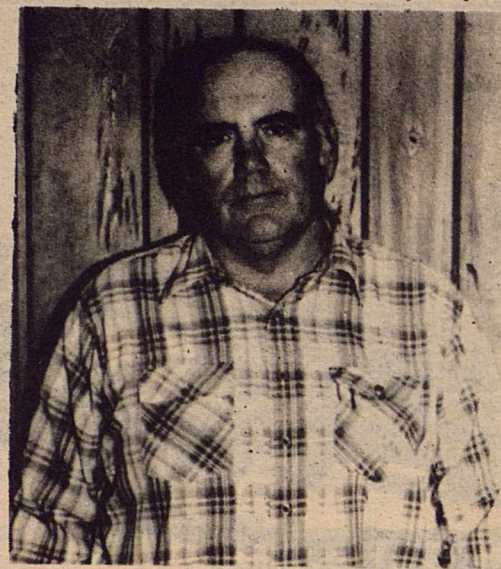
- Board of Directors:  
A.W. Bishop, president  
Earnest Lykins  
Jeanne Jackson  
Bruce Kerbow  
Harold McEwen  
Preston Love  
Roberta James  
Ronnie Cox  
George Wallace  
Sam Dillard

*you're one reason we're here!!!*

## 387-2880

## 706 SW Crockett





MAYOR BILL GOSNEY

## Mayor extends warm welcome

As Mayor of the City of Sonora, I would like to take this opportunity to extend to you a warm welcome to the city.

We are complimented that you selected Sonora in which to establish residency, and feel confident and proud that Sonora, with its fine environment, exceptional educational facilities, and efficient City departments, will provide the type of living conducive to the welfare and happiness of your family.

Sonora adopted the Aldermanic form of government with five aldermen and Mayor elected at large. Serving as aldermen are Lemuel Lopez, Margaret Cascadden, James Trainer, and Hershel Davenport. City Manager, Jim Dover is appointed by the City Council.

Other departments ready to assist you in a wide range of services including water, sewer, electricity, and sanitation services. Gene West, Public Works Director is over water and sewer operation. James Dickason manages the light and power department, while James McLaughlin supervises maintenance and

and extension of the city streets.

Other city officials include City Secretary Becky Covington, City Attorney David Wallace, City Health Director Dr. Fredric Taylor, and Senior Citizen Director Estella Acosta.

Brent Gesch heads the Sonora Police Department with four officers and an animal control officer.

The Sonora Volunteer Fire Department consists of twenty-three members with Louis Olenick as Chief and Gene West as Fire Marshal. This department is composed of men who volunteer their services to the community.

Ruby Kirby supervises utility services with Joyce Jimenez, Marilyn Adkins, Linda Tankersley, and Karen Bailey ready to serve and assist you at all times in the various departments.

Once again, may I say welcome and invite you to come by and get acquainted.  
Mayor, City of Sonora  
Billy C. Gosney

## Local economy is healthy

During the energy crunch, Sonora experienced such a boom that its population increased 100 percent from 1970-1980 according to the 1980 preliminary census reports, although a lack of adequate housing facilities had slowed down the growth by a large margin. Several private groups have made arrangements to build, or complete some recent housing developments.

As Sonora grew so did its popularity. In 1960 a wonder tourist attraction was opened called the Caverns of Sonora. This happening created the beginning of Sonora's third

major industry--tourism.

The caverns entrance, which is eight miles west of Sonora, leads to what experts of geology says is "the most exquisitely beautiful cave and formations in the world". Thousands of visitors tour this underground heaven each year. The opening of the new sections of the cavern in 1979 has increased the popularity of the tours even more.

Sutton County is further aided in tourism by its abundance of wildlife. Each hunting season brings a swarm of outside hunters to our area to test their skill with the great populations of white-tail deer, turkey,

quail, and the javelina hog

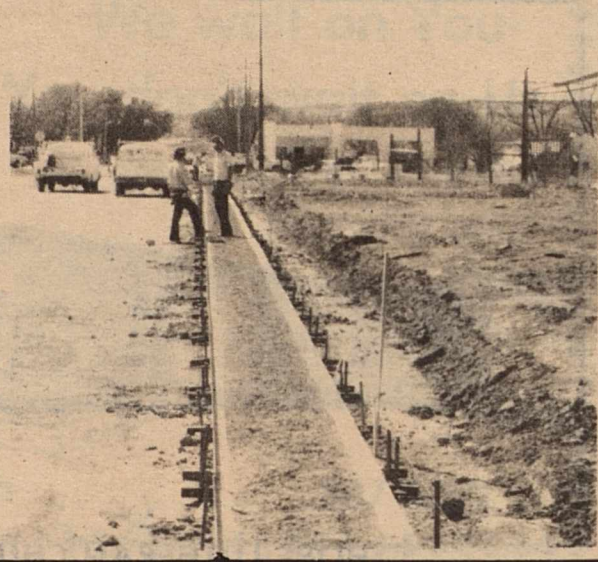
Texas in general and Sonora in particular have a strong business atmosphere, one that continually promotes growth and prosperity with a minimum of government taxation and interference.

The employment rate is very low and has been lower here in Sonora. With the abundance of oilfield related jobs there is usually no trouble finding a good place to work.

Shopping? Well you will have no problem in finding a good place to do your shopping. A five minute drive will put you in the comfort of any store that you wish to patronize here in Sonora.

The residents here in Sonora believe in our town and we are sure that it will not take you long to understand why. We hope that you as a newcomer will be happy and at home here in Sonora.

Earlier this year, City and County road building crews were busily working on a new intersection within our city. The new intersection, now complete and in use provides much needed access to the school area, and is expected to relieve much of the congestion in that area when school starts this fall.



FIRST UNITED METHODIST CHURCH



KINGDOM HALL OF JEHOVAH WITNESSES

# DOWELL/ SCHLUMBERGER

welcomes newcomers to  
Sonora and Sutton County.

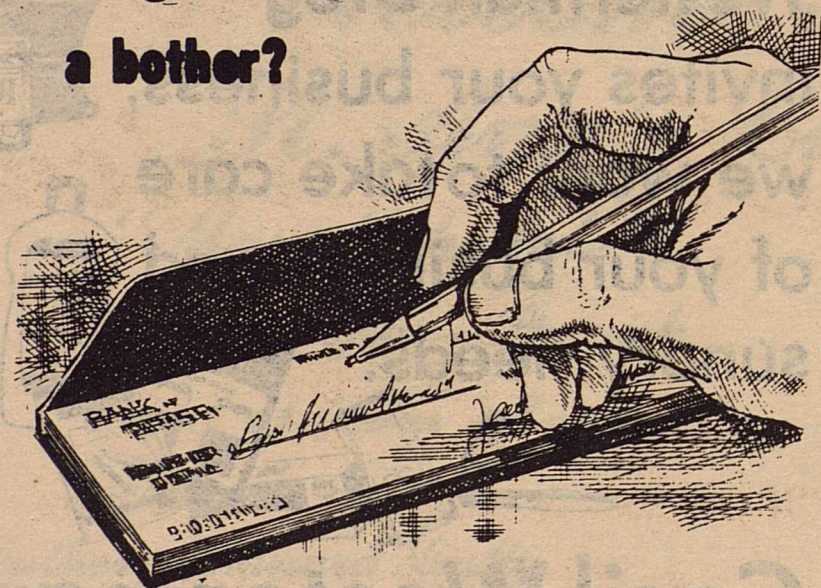


ACIDIZING-FRACTURING-CEMENTING  
SAND CONTROL PRODUCTS  
TOOL CASING HARDWARE

Sonora  
387-3526

San Angelo  
658-7019

Writing checks  
a bother?



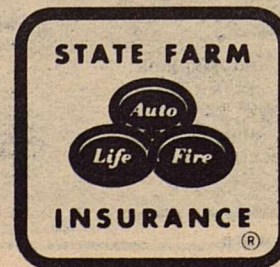
Then don't write more than you have to.  
Combine your monthly utility bills into one.  
Save time...money...checks and writer's cramp

**City of Sonora**  
201 N.E. Main 387-2558  
**Public Utilities**

Electricity Water Sewer Garbage

Like a good neighbor,  
State Farm is there.

See me for  
car, home,  
life and health  
insurance.



Mike Kropp

State Farm Insurance Companies • Home Offices:  
Bloomington, Illinois

UPGRADE YOUR LIVING

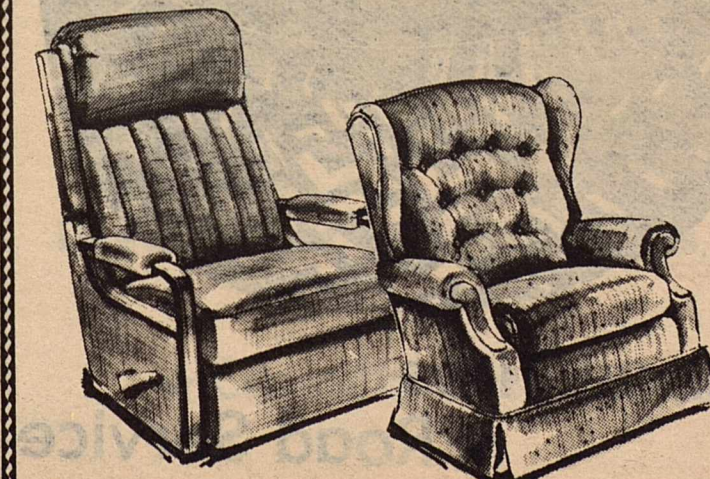
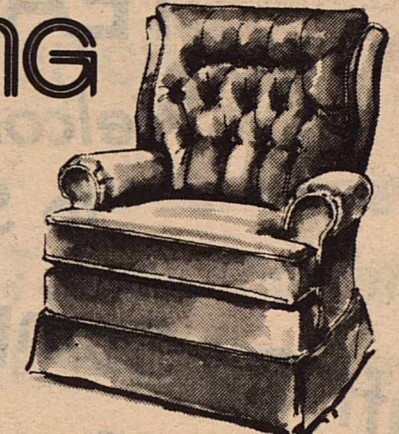
We welcome newcomers...let  
us make your new place  
your own space with  
furniture from

# KERBOW FURNITURE

214 NE Main  
Downtown Sonora.  
387-5500

KERBOW  
FURNITURE

LA-Z-BOY®  
CHAIR COMPANY





**Loeffler  
welcomes  
newcomers**

Dear Friends:  
I join the many outstanding citizens of Sutton County in welcoming you to an area which offers excellence in living, working, raising a family, and making new, enduring friendships.

You will find, as I have, that Sutton County is rich in diversity, opportunity, and the great solid Texas values and aspirations.

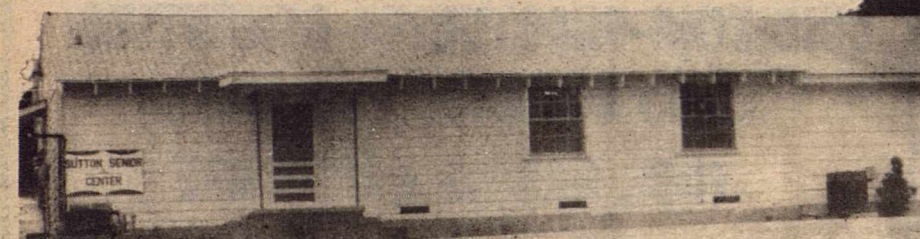
I wish you the very best as you settle into the community and join many neighbors in rallying around the Bronco tradition of Sutton County!

Welcome to Sonora -- and to the 21st Congressional District of Texas.

Sincerely,  
Tom Loeffler



CONGRESSMAN TOM LOEFFLER

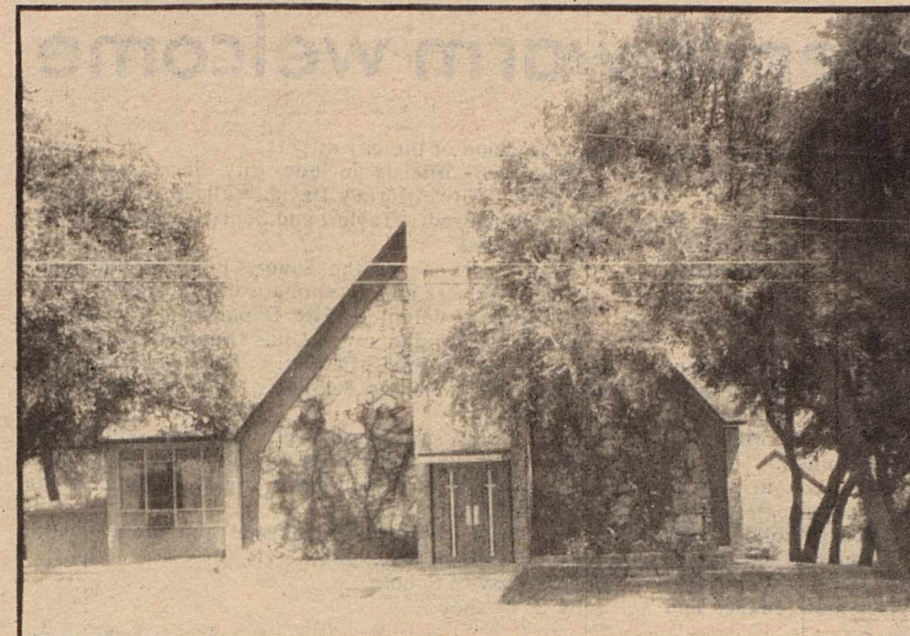


SUTTON SENIOR CENTER

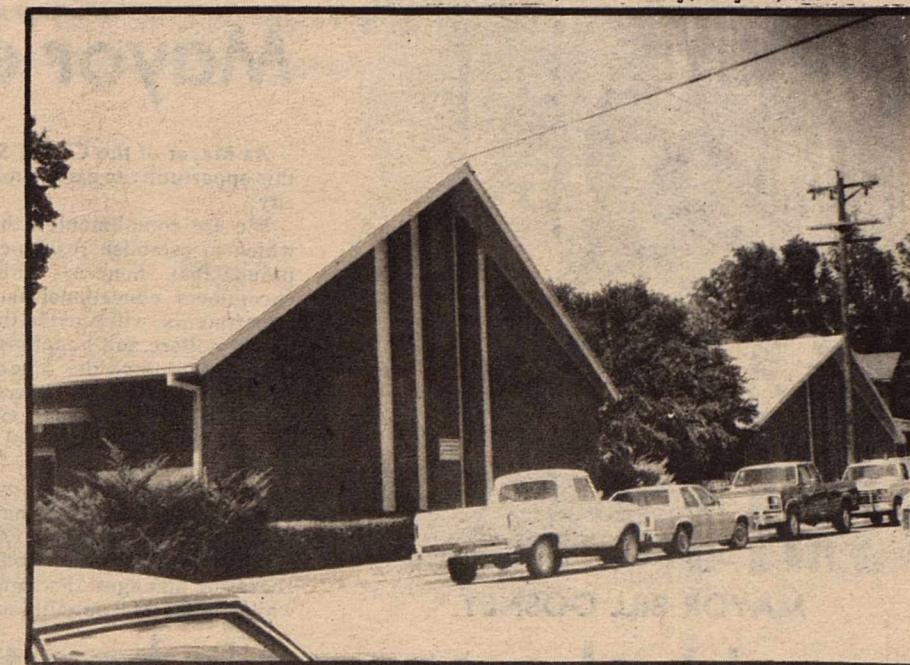
**CANYON**  
AIR DRILLING INC.  
P.O. BOX 552 SONORA, TEXAS 78950 915-387-5679

**High Pressure  
Rotary  
Compressors  
Single Stage And  
Two Stage  
Boosters**

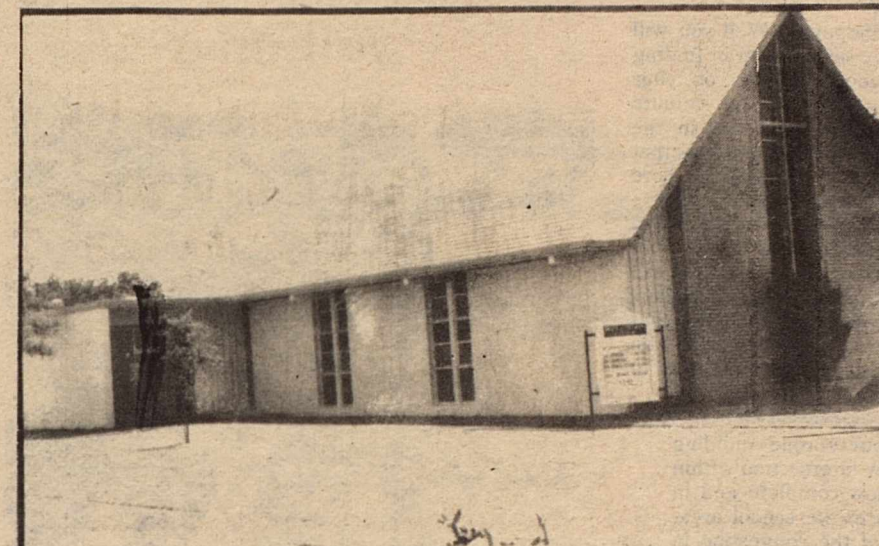
Mobile  
Henry Chandler 915-387-3727



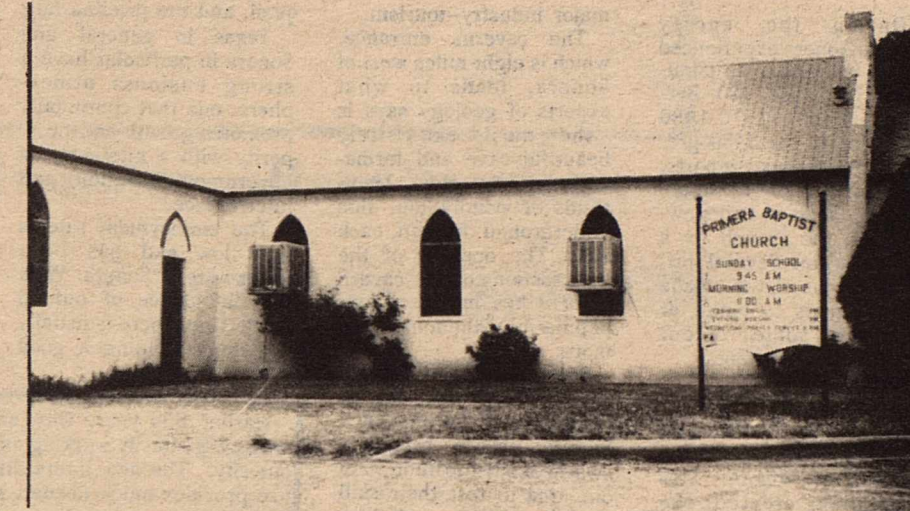
ST. JOHN'S EPISCOPAL CHURCH



FIRST BAPTIST CHURCH



HOPE LUTHERAN CHURCH



PRIMERA BAPTIST CHURCH

**TEAFF OIL COMPANY**

Welcomes Newcomers and Visitors  
to Sonora and Sutton County!

**Teaff Oil Company**  
where  
"Service is our Business"  
is more than a motto

**General Tires**

**Road Service**

387-2770  
204 West 3rd

James Blackman, manager    Carl Teaff, owner

*Tedford Jewelry*

The finest in Diamond Jewelry

Diamonds, Colored Gemstones, and Gold Jewelry  
Incomparable Seiko Watches, Seiko and Bulova Clocks  
Silver and Stainless: Gorham, Kirk, Oneida, Heirloom,  
Towle, International, Lunt

China and Casual Dinnerware: Lenox, Wedgwood,  
Coalport, Spode, Royal Worcester, Bernardaud,  
Villeroy & Boch, Denby, Franciscan

Crystal: Lenox, Wedgwood, Galway, Tiffin,  
Villeroy & Boch

Limited Edition Porcelains, Pewters, Bronzes,  
Collector's Plates

Collectibles: Hummels, Kaiser Porcelains, Schmid  
Porcelains, Swarovski Crystal

Museum Quality Oil Paintings (17th-20th Century)

Brass, Wood, Unusual Gifts, Place Mats and Napkins  
Picture Frames, Trifari Fashion Jewelry

Our Men's Department includes Buck and Gerber  
knives, English leather billfolds, executive gifts,  
writing instruments

Hallmark Cards, Stationery, Partyware  
Candles, Albums  
Film Developing  
Complete Bridal Registry

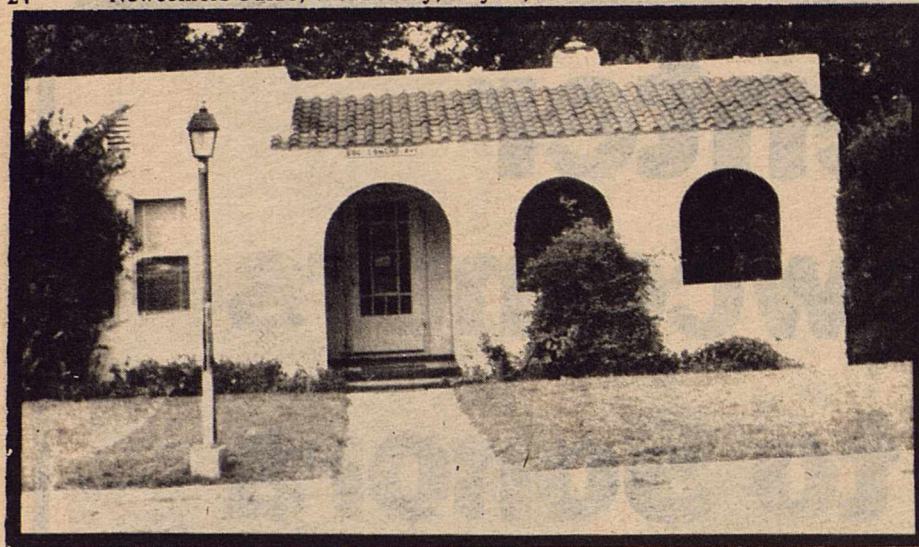
107 NW Concho    Downtown Sonora    387-3839

Westerman Drug  
invites your business,  
we want to take care  
of your business and  
sundry needs.

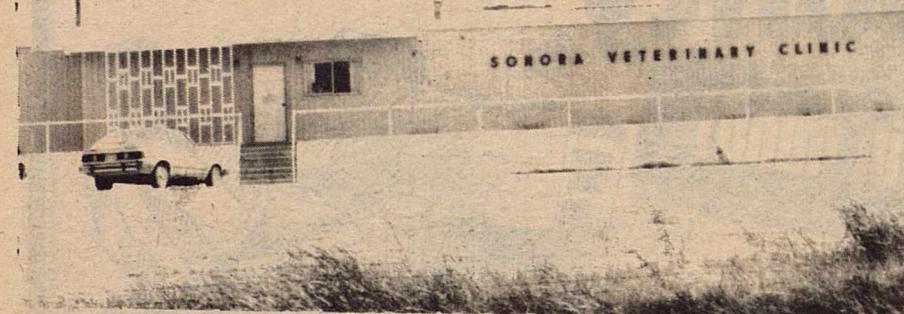
Cecil Westerman  
would like to be  
your pharmacist.

101 N.W. Concho Ave.    387-2541





ANIMAL CARE CLINIC



SONORA VETERINARY CLINIC

Call 387-2507

to subscribe to  
The Devil's River News

# Newcomers



HAMBURGERS  
ONION RINGS



Hwy. 277 North

We are here to serve You  
Check our daily specials.

We wait on You-  
You don't wait on Us

10 a.m.-11 p.m.

Thursday and  
Sunday

10 a.m.-12 p.m.

Friday and Saturday

387-5292



Along with friendly, helpful service, offers its customers:

## Checking Accounts

- Regular Checking
- Regular NOW Accounts
- Westex-limited (money market account)
- Westex-unlimited (super NOW account)

## Savings Accounts

- Regular Savings
- Certificates of Deposit
- IRA (Individual Retirement Account)

## Loans

- Agriculture
- Real Estate
- Business
- Personal
- Automobile
- Mobile Homes
- Home Improvements

## Banclub

24 Hour Advantage  
Automatic Teller Machine  
More Bank For Your Money!

## Other services available include:

- Safe Deposit Boxes, Mastercard and Visa, American Express Traveler's Checks, Bank Money Orders ,
- Direct Deposit, Cashier's Checks, and Series EE Bonds

★ Complimentary Shoe Shine ★



Sutton County National Bank  
A Member of Westex Bancorp, Inc.

207 Hwy. 277 North, Sonora,  
Texas 76950 (915) 387-2593

# Welcome Newcomers St. Ann's Catholic Church

## "Mass Schedule"

Sat.: 7:00pm - Spanish

Sun.: 11:00am - English

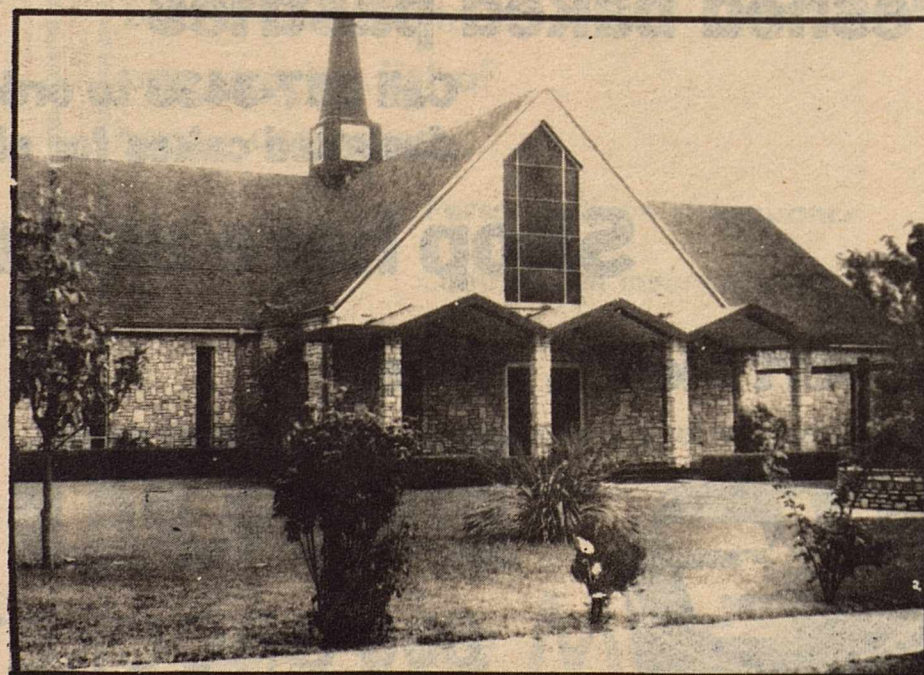
Father: Bernard Gully

Deacon: Chapo Pamaniego

Sister Lelia Martinez M.C.D.P.

Rectory: 387-2278

Residence: 387-5966

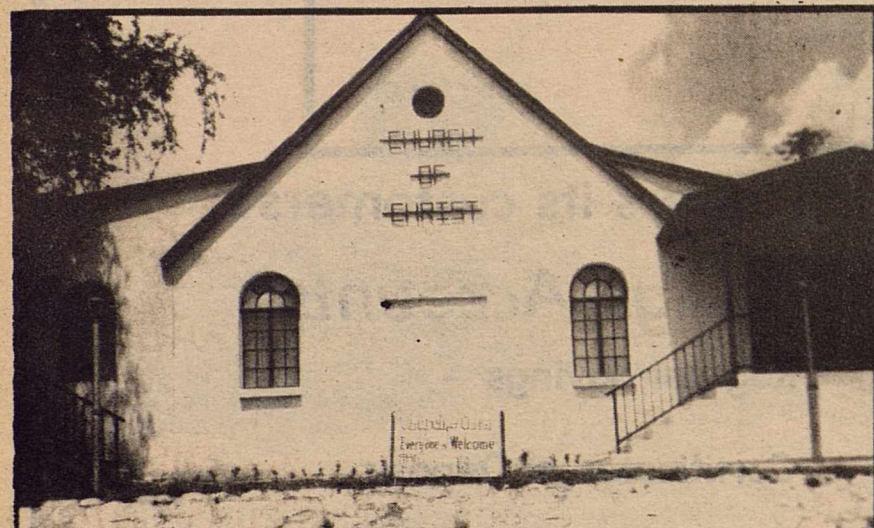


St. Ann's Catholic Church  
229 Plum, Sonora





UNITED PENTECOSTAL CHURCH



CHURCH OF CHRIST

# Charles Howard Construction

Welcoming newcomers to Sonora

- ★ Roads    ★ Locations
- ★ Pits     ★ Loaders
- ★ Dozers   ★ Maintainers

387-3093

387-2270

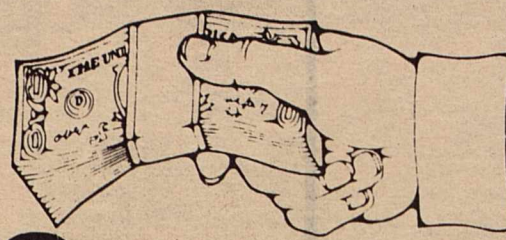
216 Hudspeth

387-2551

Call Day or Night

WTU offers a

## CASH BONUS PLAN...



FOR INSTALLING RESIDENTIAL ENERGY EFFICIENT ELECTRIC AIR CONDITIONERS, HEAT PUMPS, AND HEAT RECOVERY UNITS IN A NEW OR EXISTING SINGLE FAMILY HOME.

### E. S. P.

(Energy Savings Plan)

NOW WTU WILL PAY YOU TO SAVE ENERGY. WHEN YOU BUY ENERGY EFFICIENT EQUIPMENT YOU NOT ONLY GET A CASH BONUS, YOU ALSO SAVE MONEY ON FUTURE ENERGY BILLS. WTU WANTS YOU TO BUY ENERGY EFFICIENT EQUIPMENT BECAUSE IT HELPS TO HOLD DOWN DEMAND FOR ELECTRICITY, AND LESS DEMAND HELPS US POSTPONE BUILDING NEW AND EXPENSIVE POWER PLANTS.

#### Cash Incentives for New or Existing Single Family Homes

##### HEAT PUMPS SEER/EER 8 and Above

Central Systems .....	\$110 Per Ton
Window Units 11,999 BTU and Below .....	\$ 60 Per Unit
12,000 BTU and Above .....	\$ 75 Per Unit

##### AIR CONDITIONERS SEER/EER 8.5 and Above

Central Systems .....	\$ 50 Per Ton
Window Units 11,999 BTU and Below .....	\$ 40 Per Unit
12,000 BTU and Above .....	\$ 50 Per Unit

##### Heat Recovery For Electric Water Heating \$100 Per Unit

Solar-assisted Electric Water Heating  
\$100 Per Unit

To Qualify, Your Home must be served by WTU and meet our Energy Efficiency Requirements.

WEST TEXAS UTILITIES COMPANY



# Food Center welcomes newcomers and visitors to Sonora and Sutton County

money-saving food prices! with you in mind!

FRESHLY BAKED GOODIES

Check out our spacious produce counter, the large meat department, our deli items, the fresh baked pastries

QUALITY MEATS

PRODUCE SPECIALS



Call 387-3438 to order your specially designed cakes for all occasions.

Shop here and save!

Herbert Fields, owner

Les Robertson, manager



## FOOD CENTER

600 CROCKET STREET • SONORA

HOME OWNED HOME OPERATED

STORE HOURS: MON.-SAT. 7 a.m. to 7 p.m.







CHAMBER OF COMMERCE PRESIDENT-A W BISHOP

## Bishop extends a greeting to newcomers

Dear Newcomers: I would like to take this opportunity to welcome all the new residents of Sonora and hope that you will feel very much at home in Sonora as I do after having lived here only one and one-half years.

Sonora, being the county seat of Sutton County, serves a wide trade area and has much to offer its residents.

We are blessed to have many beautiful churches allowing many to worship according to their own con-

victions. Our school system is outstanding with nice facilities. Construction of the new high school complex is to begin soon. There is both a hospital and a nursing home in the community.

There are many nice shops and stores in Sonora offering a wide variety of goods, services, and convenience to the shopper. I urge you to shop Sonora first.

Whether in town on business or traveling through, Sonora offers its visitors nice motel facilities

and many good restaurants. The restaurants offer a variety of foods to visitors as well as residents of the area.

Professional services available locally include medical, dental, legal, veterinary, financial, insurance, and travel. Two weekly newspapers and two local radio stations serve our area.

Recreational facilities include a movie theatre, a nine-hole golf course, miniature golf, municipal swimming pool, and health club facilities.

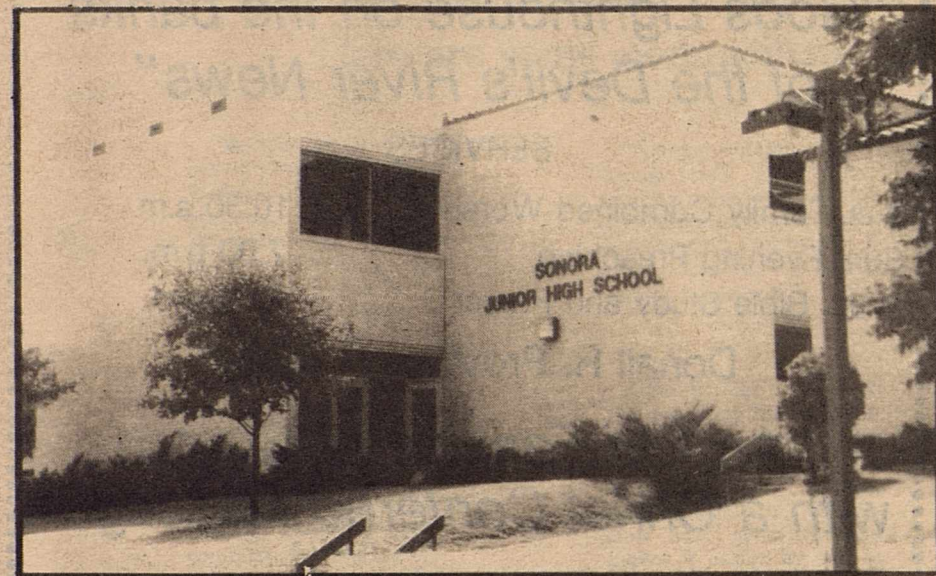
A variety of clubs and service organizations serve the community.

Sonora can boast of a diversified economy including agriculture, oil and gas production, hunting, tourism and light manufacturing with excellent access via the Interstate Highway and the airport.

I encourage you to avail yourself of all these goods and services right here in Sonora.

Of all that Sonora has to offer, I think most important is a lot of good people working together to make Sonora an even better place to live.

Sincerely  
A.W. Bishop, President  
Sonora Chamber  
Sonora Chamber  
of Commerce



JUNIOR HIGH SCHOOL



SUTTON COUNTY LIBRARY

## Welcome Newcomers

## Welcome to Sonora's Family Shopping Center

Sportswear & Dresses by Koret, Aileen, Ship & Shore and PBJ  
Jeans by Wrangler, Levi and Sedgfield Arrow, Wrangler and DeeCee shirts for men and boys  
Tony Lama, Justin and Red Wing Boots  
Jarman, Soft Spot and Nike Shoes  
American Tourister Luggage



# Spain's, Inc.

VISA® Downtown Sonora 387-3131 MasterCard



(Doyle Morgan -----Frances West)



Take a tip from hundreds of other satisfied newcomers....

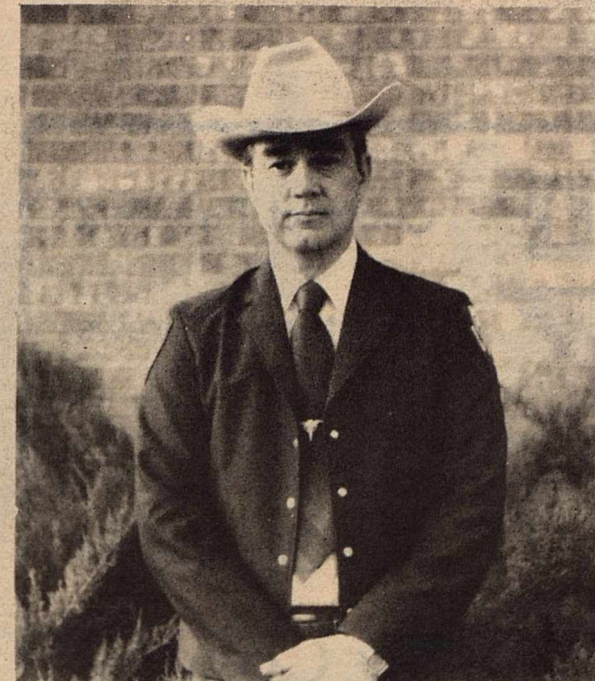
Let us add you to our growing list of happy customers....

Personal Lines of Insurance  
Commercial Insurance  
Life Insurance

We appreciate our customers and will handle your insurance program, large or small, in a professional and personal manner.

# Doyle Morgan Insurance

213 E. Main 387-3912



SHERIFF W.W. (BILL) WEBSTER



LOCAL BUS STATION

## Sheriff expresses gratitude

W.W. (Bill) Webster, Sheriff of Sutton County since January 1977, wishes to express his gratitude to the citizens of Sutton County for electing him their Sheriff for another four years. Sheriff Webster would also like to extend a warm welcome to all the 'newcomers' to Sonora.

Under Sheriff Webster, the Sutton County Sheriff's Office has grown from one deputy in 1977 to its present strength of four. Dispatchers were added to the Sheriff's Office to aid in 24 hour protection for the citizens of Sutton County. Sheriff Webster added that his department can be reached by dialing 387-2288 or 387-2250, twenty-four hours a day, seven days a week. The Sheriff's Office is located at 309 N.E. Oak Street.

## Welcome to Sonora and Sutton County

# Kasey's

Corner

"Check our new rates"  
1, 2, and 3,  
bedroom units

## LUXURY APARTMENTS

- Deluxe All-Electric Kitchens
- Laundry Room Secure
- Secure Storage Area
- Telephone Jacks (2)
- Sliding Glass Doors
- Smoke Detectors
- T.V. Outlets (2)
- Patio/Balcony
- Plush Carpet
- P.O. Boxes

Company Long Term Rentals Available

Korner of Dollie & Tayloe, Sonora

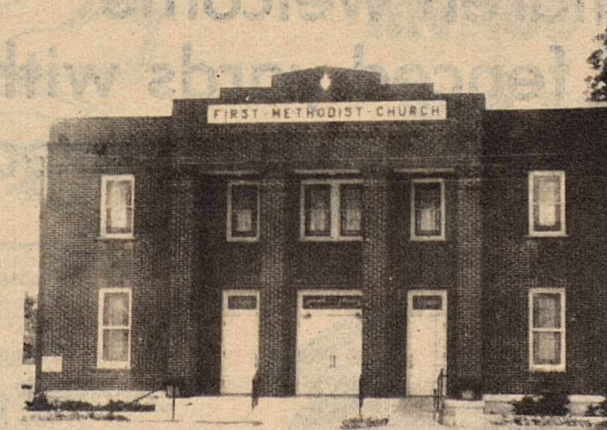
Come by Kasey's Korner Apt. D-2

or call 387-2104 or 387-2214



First United Methodist Church  
Water and Oak St. across from  
the U.S. Post Office in Sonora

"A genuine welcome  
in the heart of  
Sonora"



-First United Methodist Church-  
David W. Griffin, pastor

-Parsonage 915-387-2684.  
-Church-915-387-2466.

-Box 765-  
-Sonora, Texas 76950-

Sunday School  
9:45 a.m. for all ages-Linda Fisher, superintendent

## UNITED METHODIST WOMEN

UNITED METHODIST



WOMEN

Worship  
10:55 a.m.  
David W. Griffin, preaching  
KVRN AM-98 FM-92

Wesleyan Circle 7 p.m.  
Second Monday  
Mary Martha Circle 3 p.m.  
Third Wednesday  
Munch Bunch 4:15 p.m.  
Third Thursday

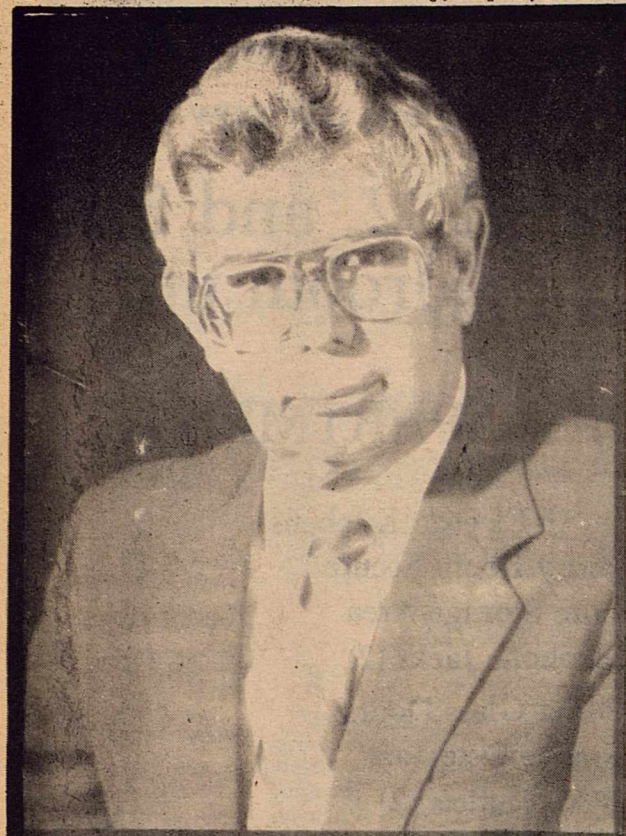


Children's Choir 4 p.m. Mondays Sept.-May  
Bridgette Griffin, children's choir  
Beverly Caldwell organist/choir director  
Pam Young youth director  
Claire James secretary

## UNITED METHODIST YOUTH FELLOWSHIP

6 p.m. Sundays  
Special activities year 'round  
youth coordinators  
Joyce and Mike Kropp





COUNTY JUDGE - CHARLES SHERRILL

Dear Newcomer:

Welcome to Sutton County, the "Capital of the Stockman's Paradise." You will find a most delightful climate, gracious and cheerful people and a real home!

To you we are privileged to present a sound economic atmosphere, a progressive school system, and many and varied recreational facilities as well as leading churches, efficient governmental units and a wonderful place to live. It is truly our pleasure to have you.

Sincerely,  
Charles Sherrill  
County Judge

### The way of life in Sonora

Through the years, the business community has stayed up with the times. They have improved and diversified, taking advantage of opportunities that come along.

All these things are important, but the best thing about living in Sonora is the way of life. You can make it what you want...the slow and easy pace of a West Texas town or enjoy the wonderful hunting opportunities or fishing at Lake Amistad or the many tourist attractions such as the Sonora Caverns, Mexico, the Big Bend, or even the professional sports of Dallas and San Antonio...the list could go on and on. What I mean to say is that you really have the best of two worlds...a friendly West Texas city away from the hustle and bustle of the big city yet close enough to enjoy all the big cities have to offer.

Last month a young friend of mine told me he was considering moving to Sonora, and he asked me what I thought. My reply was if he was happy with his job offer, to do it because he and his family would love Sonora.

Newcomers, remember that you also have a lot to offer, so get active in the community as soon as you can. In a twinkling of an eye YOU will be "Sonora" welcoming a newcomer to town!



Contract Pumping

Roustabout Crews

Construction

Tubing Rental

Forklift (915) 387-3843

Diana & Jimmy Condra,  
Owners  
P.O. Box 396

Brine Water Storage

Water Hauling

Oilfield Hauling

(915) 387-3179



ENTERPRISES, INC.  
SONORA, TEXAS



SONORA CITY HALL



LIVE OAK BAPTIST CHURCH

## Welcome Newcomers to LIVE OAK BAPTIST CHURCH



"Gods Lighthouse on the banks of the Devil's River News"

### SERVICES

Sun. Family Combined Worship 10:30 a.m.  
Sun. Evening Preaching 7:00 p.m.  
Wed. Bible Study and Prayer 7:00 p.m.

Donall R. Provines....Pastor

"An Old Fashioned Church with a Christ Centered Message"

W. 4th & Menard 387-2377 Sonora, Texas

Preston & Linda Love Welcome You To

## Sutton County Steakhouse & Catering Service

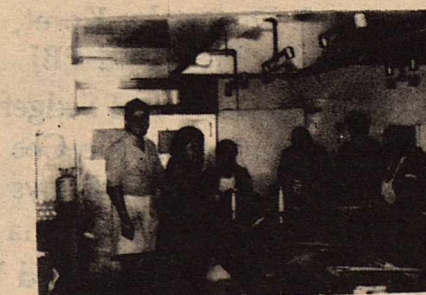


Owners Linda and Preston Love serve customer, Sam Dillard tea on her break.

"the best food buy for your dollar on Interstate-10" specializing in appetizers or complete meal selection

7 days weekly  
Grand Openings  
30-300 people  
Banquets,

Ball Games,  
Oilfield Locations,  
Rehearsal dinners,



The cooks stay busy all of the time, especially during the rushed lunch hour.

Located next to Devil's River Motel

'IH-10 Golf Course Rd.

call (915) 387-3833 for reservations



### Restaurant Hours

Mon-Thur. 6am-2pm 5pm-10pm

Fri.-Sat. 6am-2pm 5pm-10:30pm

Sunday 11am to 2pm

## J & V Mobile Home Parks

### Welcome to Sonora and Sutton County

- ★ Lots available for rent
- ★ Restricted to family units
- ★ No pets
- ★ Children welcome
- ★ All fenced yards with private parking area

Apply at J & V office  
For information call

387-3441



Located on  
Highway 290 W

Sonora, Tx.



## Look what we can do for you!

Pat Walker's features individual programs, tailored to fit your own special needs. All of our services are geared toward providing the individual with complete privacy and total comfort.

We cater to all therapeutic aspects, including weight reduction and firming and toning of tissue as well as increasing circulation ... all through passive exercise on our Symmetricon units.

Here are some comments from our satisfied customers

"Besides the pounds and inches you lose on the Pat Walker's 'Touch of Class' program, you feel better about yourself. The Symmetricon units help exercise and keep your body fit while you are losing the needed weight and the food plan is easy to follow. Besides the exercise, the unit is a great place to relax after a long day. I've told my friends about Pat Walker's, and now you, for a good look and a good feeling about yourself, come try Pat Walker's." Beverly Caldwell

"I enjoy working out on the unit itself. The passive exercise helps increase my circulation and enables me to get around a lot better. I feel great after a thirty minute treatment." Doris Merriman

"Pat Walker's has been the best thing that has ever happened to me!" The passive exercise of the Symmetricon unit relieves problems with my circulation and arthritis and makes it easier for me to get around. I wouldn't give it up for the world. Pat Walker's makes me feel healthier." Lucy Mae Morris

"I enjoy coming to Pat Walker's because it is a quiet and relaxing time for me after a long, hard day." Bridgette Griffin

"I enjoy every visit to Pat Walker's. The friendly staff makes me feel right at home, and the compassion and understanding Rosemary has shown me has meant so much to me. Besides firming and toning tissue, the program I'm on using the Symmetricon unit has increased my circulation as well as giving me a time for relaxation. The time I spend on the Symmetricon unit enables me to bring my thoughts together through the power of concentration and gives me the best approach to every day." Monica DuRussell

"Pat Walker's program is really great! It relaxes me and it has helped me lose weight too. The diet is one that I can live with and also a program for life." Tammy Holguin

"Pat Walker's keeps me trim and fit! With Pat Walker's help my blood pressure remains stable." Lena Belle Ross

"I have enjoyed Pat Walker's so much. The exercises have been very good for my arthritis and circulation." Faye McClelland

I come to Pat Walker's for friendship, relaxation, and just for the joy of coming."



Our professionally trained staff, Manager Rosemary Vickers assisted by Irma San Miguel and Edna Duren can provide you with the safest approach to your weight reduction or health problem!

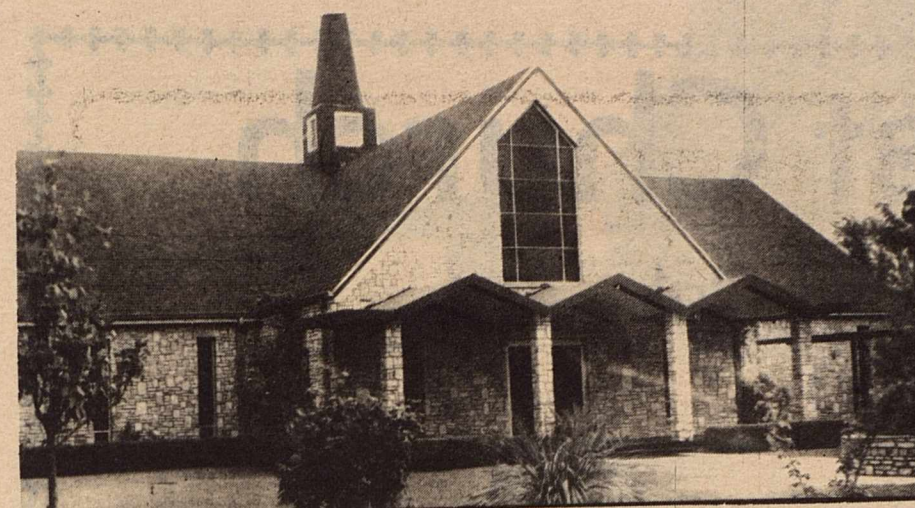
## Pat Walker's

figure perfection salon

211 Hwy. 277 N

Now under new ownership and management

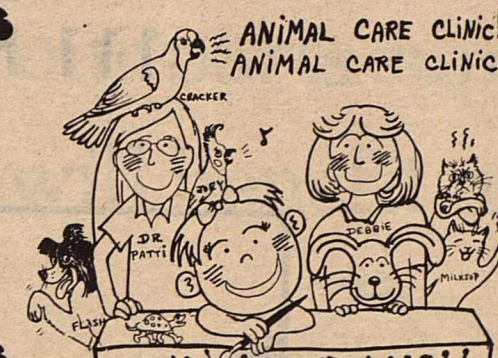
387-3874



## Animal Care Clinic

Birds

Cats



Dogs

Small Exotic Animals

PATTI STRAUCH  
D.V.M.

Grooming

Boarding

Dipping

Bathing

Dr. Patti Strauch, D.V.M.

Veterinary Medicine & Surgery

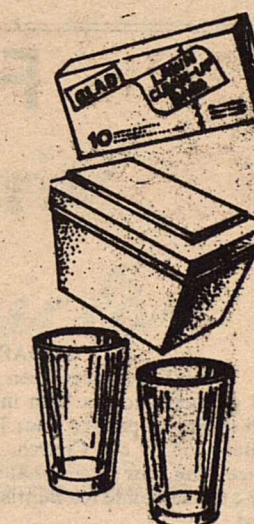
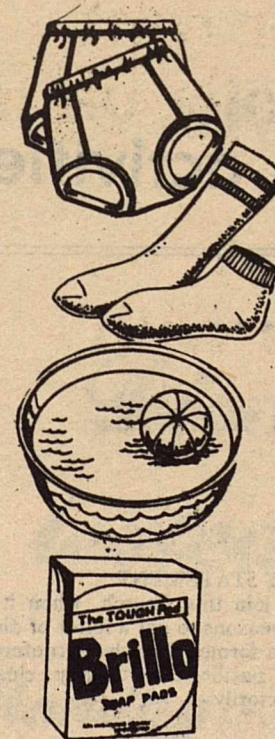
Telephone  
(915) 387-3784

606 Concho Ave.  
Sonora, Texas 76950

# You're Always Welcome at PERRY'S

Manager - Ray Hollingsworth  
invites you to come in  
and get acquainted.

Where You'll Find the best selection  
and low prices.



# PERRYS

Highway 277 North



# First Baptist Church

111 North East Oak

387-2951



## Schedule of Services

Sunday School	9:45 a.m.
Morning Worship	11:00 a.m.
Church Training	6:00 pm
Evening Worship	7:00 p.m.
Wednesday Evening	7:00 p.m.

Providing a full range of youth and children activities.

## First Baptist Church invites you....

You are invited to become a part of the fellowship of the Church. During the singing of the hymn of invitation please come to the front where the pastor is waiting to welcome you, should you be impressed by the Lord to unite with us in one of the following ways:

### BY BAPTISM

If you have never been a member of any Church, but publicly profess faith in the Savior, Jesus Christ, and desire to pattern your life after His teachings as understood by our Church, and we are fully satisfied concerning your sincerity and purpose, then we receive you as a candidate for Baptism, after the manner of our Lord.

If you know yourself to be a follower of Christ, but are of another denomination, and you desire to unite with First Baptist, then you can be received by Baptism, provided you desire to embrace the faith we proclaim.

### BY LETTER

If you are already a Baptist and wish to join our Church and cooperate with the program we project, then present yourself when the pastor extends the invitation (usually at the close of a service), and tell us where your membership is. We write your former Church and they in turn grant a letter of dismissal to this Church.

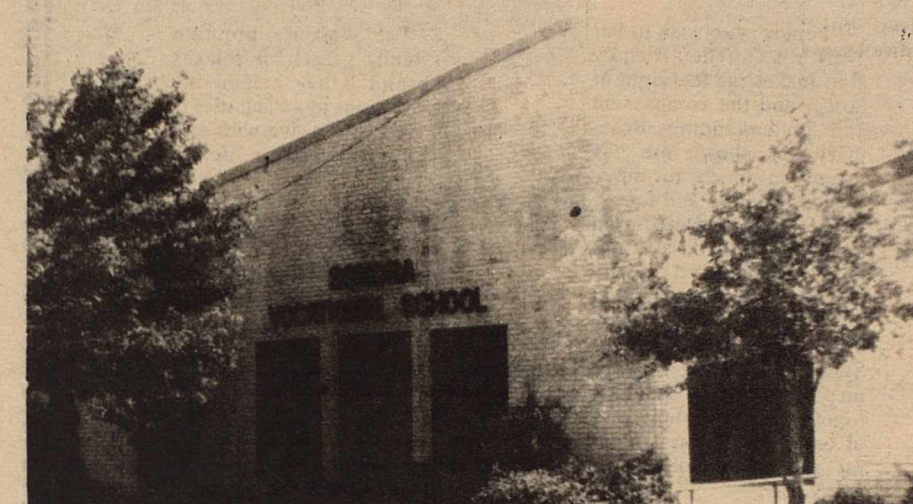
### BY STATEMENT

A Baptist may join this Church, when it is not possible for various reasons to get a letter of dismissal from the individual's former Church. A conference in advance with the pastor can usually clear this arrangement satisfactorily.

# Jim Stephen-Pastor



DISTRICT ADMINISTRATION OFFICE



SONORA VOCATIONAL SCHOOL

## Eastland Freightway Inc.

Owner--Mollie Brittain

Oil Field Trucking  
Forklift service

387-2457

409 Del Rio St.

**We extend a hearty  
welcome to the  
newcomers  
and visitors of  
our community.**

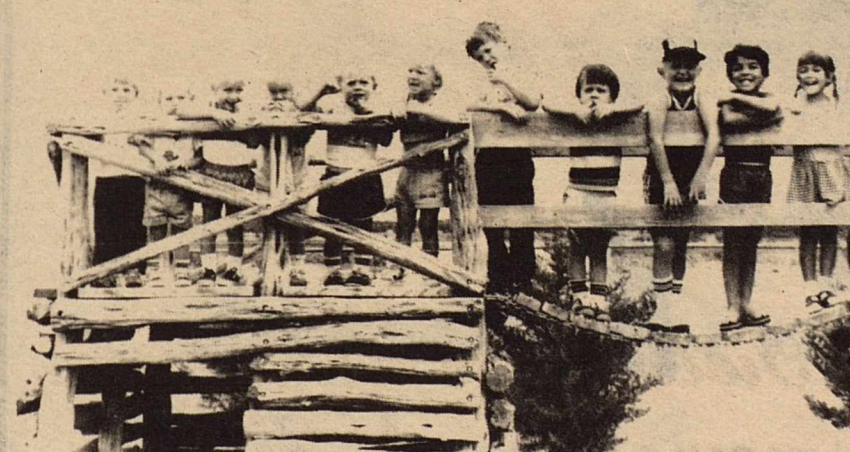
## Sonora Early Education Center

Open 7:30 a.m. until 6 p.m.

18 months thru 10 years accepted

S.E.E. CENTER OFFERS:

- ★ After school "pickup"
  - ★ Arts and Crafts projects
  - ★ Definite learning plans
- Also, monthly newsletters to keep parents informed of*



*upcoming activities.*

*Come by any weekday morning to  
examine the facilities and visit with  
Mrs. Simpler and her qualified staff.*

Contact *Mona Simpler*  
(In Stadium Park Addition)

511 Cornell  
387-5016



# Will Carver Joins Sam

Editor's Note: It was some 82 years ago that Will Carver, one of West Texas' famed outlaws, met death at the hands of Sutton County Sheriff E.S. (Lige) Briant in downtown Sonora. On Tuesday, April 2, 1901, the gunman and his companion were killed in the building which occupied the site now housing Circle S. Automotive.

The full account of Carver's death was carried in the Saturday, April 6, edition of The Devil's River News and here reproduced, through the courtesy of John Eaton:

April 6, 1901  
From The Devil's River News  
Compiled by John Eaton

The famous partner of Tom and Sam Ketchum was brought down by Sheriff Briant.

Sheriff E.S. Briant received last week a description of the men who killed Thornton in Concho County, an account of which, from the San Angelo

Standard, appears in this issue of the News. The description of the parties caused Sheriff Briant to suspect two men who were in Sonora six weeks ago presumably for the buying of horses and the officers have been keeping a sharp lookout for the suspects.

Tuesday night, about eight o'clock, two men bought some baking powder at the store in the Mexican part of Sonora and wanted some grain. The Mexican storekeeper did not have grain for sale and the two men rode up to Beckett's Livery Stable opposite the First National Bank and inquired for grain, but again being disappointed rode to Jack Owens bakery and were buying their supplies when Boosie Sharp recognized the smallest man one of the "rubber tried" buggy man whom the officers were on the lookout. He immediately informed his brother Deputy Sheriff Sharp who told Sheriff Briant, and the Sheriff with his deputies, Davis, Sharp, and Constable W.D. Thomason proceeded to arrest the men. Sheriff Briant having the least man further identified and the

tallest suiting the description of one of the Kilpatricks, acted promptly. He told his men to get ready and the four officers stepped into the store. Sheriff Briant covered the men and requested that they hold up their hands. The tall man (Kilpatrick) was nearest the door and made a surprise or fumbling motion with his hands, but the other went for his gun at once. Sheriff Briant saw the movement and shot instantly, and the man fell to the floor before he could cock his pistol. The next shot fired by Thomason and almost instantaneous with that of Sheriff Briant's brought down Kilpatrick and the four officers shooting as quickly as possible filled the prostrate bodies with lead. Sheriff Briant then fell on Kilpatrick and disarmed him while Thomason and the others disarmed the wounded man. Doctors were summoned and the seriousness of the wounds ascertained.

Didn't Plan On Robbing The Bank  
The wounds were considered fatal and it was supposed both men would die. Opiates were given and the small man began to talk

in a delirious way saying, "Keep shelling them boys," "Will you stay with me?" "Die game" etc. etc. The delirium passed and he was asked his name. He said he was one of the Off boys, and on being asked again, said he was one of the Carver boys, "Will Carver." He was sinking fast when carried to the Courthouse and while resting there was identified by one who had worked with him for years when he was working for the "sixes". He was asked if he remembered Binyon and answered "yes." Ben Binyon inquired if he had any messages to leave for his friends and he answered "no." Binyon stayed with him until he Aldwell saw Carver after he was dead and recognized him. Mr. Aldwell says up to a few years ago Carver was highly thought of and had hosts of friends.

George Kilpatrick acknowledges identity and says he lived in Concho County for 16 years. His brother Ben, says, left camp that morning and had not returned to camp when he and "Bill" left for town at sundown. He was asked concerning the murder of Thornton and said he was not there but that "they

said" that McDonald shot Thornton. Asked if the dead man (Carver) was McDonald he said no. Asked what the dead man's name was he said the only name he knew him by was Bill. He said McDonald was a dark man about the size of Bill, maybe a little larger or smaller but he thought smaller. He said he and Bill were the only ones that had come to town that night. Asked if they had intended to make a run on the First National Bank, he said he had not heard anything but could not get any. Asked how he knew it was opposite the bank, he said he saw the bank building. He said he had known Bill and "McDonald" for only two or three weeks.

Identified Beyond Doubt  
Sheriff Howze of Concho County was telephoned as to the capture Tuesday night and arrived in Sonora Wednesday afternoon. He identified George Kilpatrick and Carver as two of the men he wanted. Kilpatrick he knew well and Carver was the man seen at the Kilpatricks' camp and in Paint Rock.

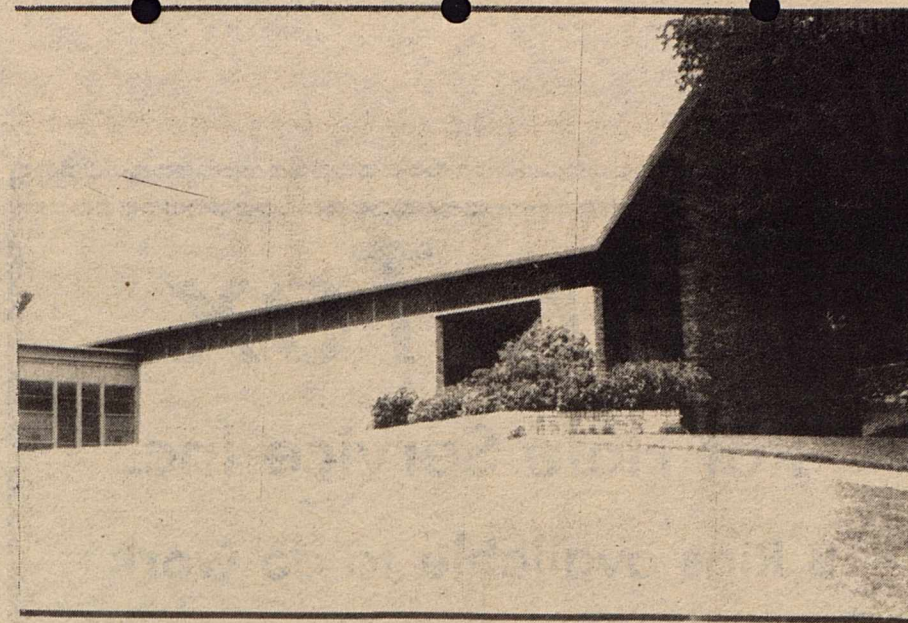
As to a fourth man Sheriff Howze knows nothing and thinks he is a myth.

As the identity of Will Carver, the dead man, there is no doubt as he has been identified by Ben Binyon, W.L. Aldwell, Geore Hamilton, E.R. Jackson, Archie Kuykendall, M.V. Sharp, and the Misses Ervin.

Carver was armed with two revolvers, one a handsome Colt 45, ivory handle and silver mounted, N. 201,916, one Smith and Wesson hammerless. He also had a belt filled with cartridges; some of the cartridges were steel jacket of large caliber. Kilpatrick was armed with a 38 Colt army pistol and wore a belt full of cartridges of same caliber as Carver.

Immediately after the shooting two men are said to have ridden out of town at top speed and some think they were pals of Kilpatrick and Carver but nothing definite can be learned regarding them. The officers have tried to locate the camp but have so far been unable to do so.

The general supposition is that this gang was arranging camp and supplies before making an attempt to hold up the First National Bank. When in Sonora before, they always got change at the bank for \$20 gold certificates.

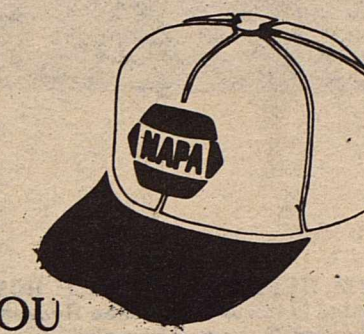


THE CHURCH OF THE GOOD SHEPHERD PRESBYTERIAN



First Assembly of God

Give us the chance to be your parts supplier. It will benefit us both.



Open for YOU  
Mon - Sat  
7:30 a.m. - 6 p.m.

Here to serve the newcomer

owned & operated by  
Mike and Sherry Sipes

112 NW Concho 387-5167  
387-5243 Sonora, Tx  
When the name is NAPA, the standard is quality.

**WE'RE EASY**

for auto fixin' you can count on ...see us



Trust professionals to get your car in top shape...repair, replace parts, tune up...at low rates!

**Live Oak 66**

welcomes newcomers

387-2740

*Twin Oaks Motel*

*You are invited, newcomers.*

*Twin Oaks welcomes newcomers to Sonora and offers its hospitality to all*

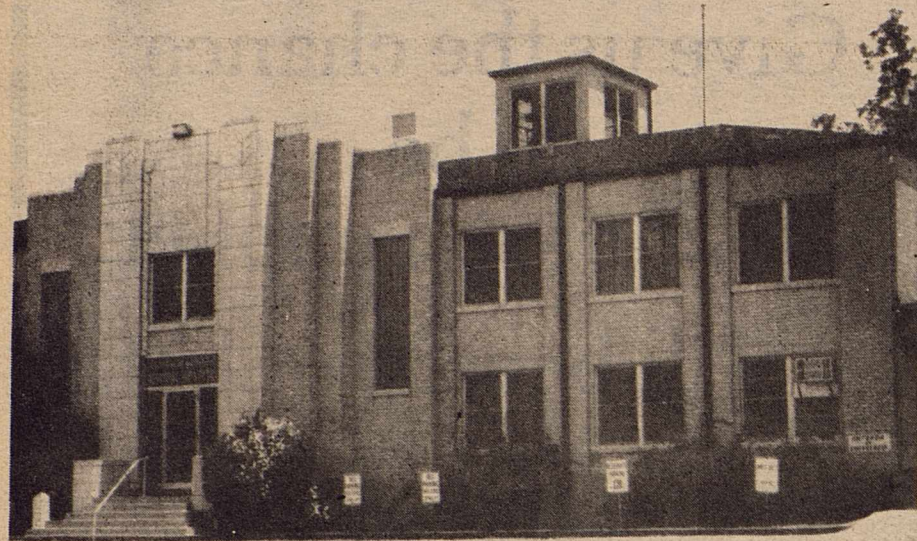
945-387-2551

*Carol's Merle Norman  
Cosmetics & Accessories  
Personalized Skin Care & Makeup  
as well as lingerie, designer belts,  
handbags & jewelry  
Discover our new Dermatologist  
tested and fragrance free products-*

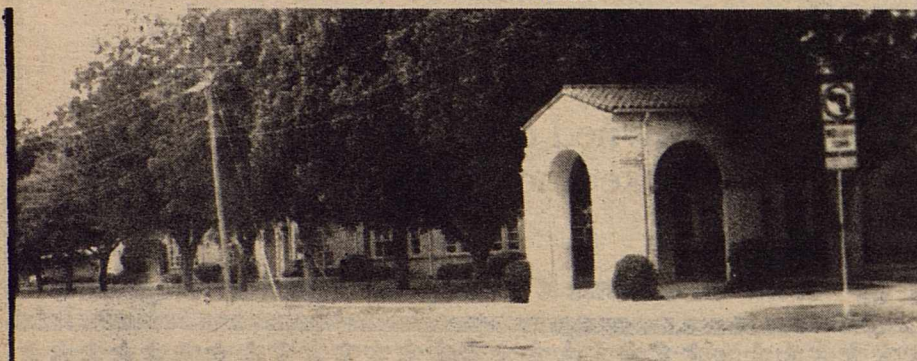
*Monday - Friday  
10:00 a.m. - 5:30 p.m.*

*387-2036  
405 Hwy 277 N*





LILLIAN M. HUDSPETH MEMORIAL HOSPITAL  
The Hospital is located in town on Hudspeth Street.  
Donna Robertson is the administrator.



ELEMENTARY SCHOOL

# Son-Tex

Rat Hole Service Inc.

3 Rigs available to do work

24 Hour Service

Mouse Holes, Rat Holes,  
Surface Holes

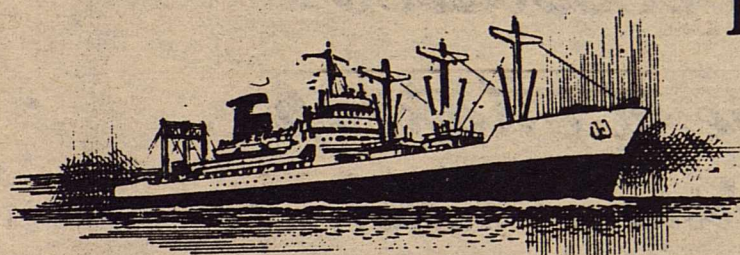
We Do The "Hole" Job

Call Yankee at 387-2480

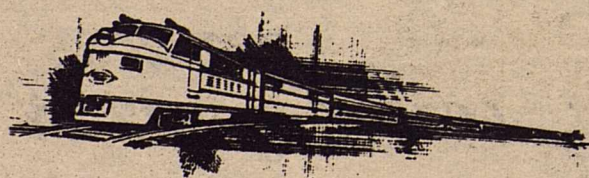
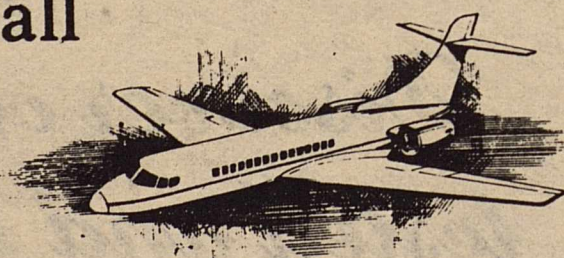
Now serving the Abilene area

## Going somewhere?

Let the Travelers III assist you  
with all your travel plans-



Our Datas II computer can do it all  
from banking your reservations to  
ordering your favorite meal



915/387-2586

403 Hwy 277 N

# TRANSPORTATION HEADQUARTERS

FOR  
Southwest Texas

★ Chevrolet ★ Oldsmobile ★ Pontiac ★ Buick  
Financing and insurance available.

See and Drive  
America's Greatest Cars and Trucks!

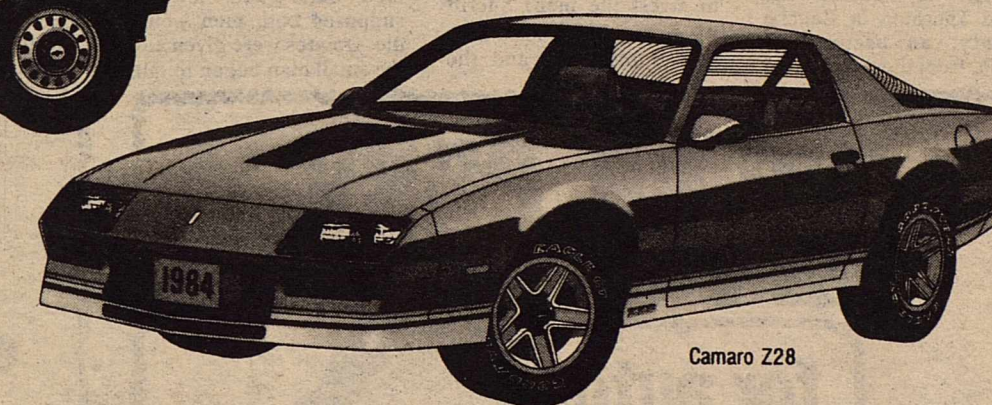


S-10 Tahoe Blazer



CHEVROLET

*Oldsmobile*



Camaro Z28

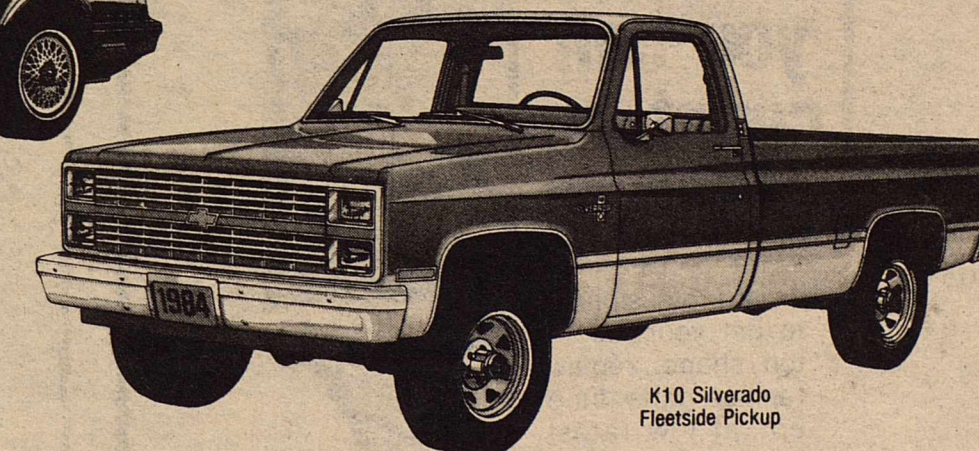


Celebrity 2-dr. Coupe

PONTIAC



BUICK



K10 Silverado  
Fleetside Pickup

## CHAPARRAL

CHEV-BUICK-PONT-OLDS

SONORA, TEXAS

I-10 at Golf Course Road

Phone 387-2529