



The Devil's River News
-Editorials-Features-Columns-

Future of All Affected by Events

Totalitarian governments have not changed. What they cannot take by persuasion or threat, they take by the ruthless use of military power.

What was it in Czechoslovakia that was intolerable to communism? Unlike the ill-starred Hungarian revolt, which was an open attempt to disavow communism...

television have suddenly begun reflecting all points of view and scrutinizing virtually every facet of government policy.

What the effect of Soviet oppression in Czechoslovakia will be remains to be seen.

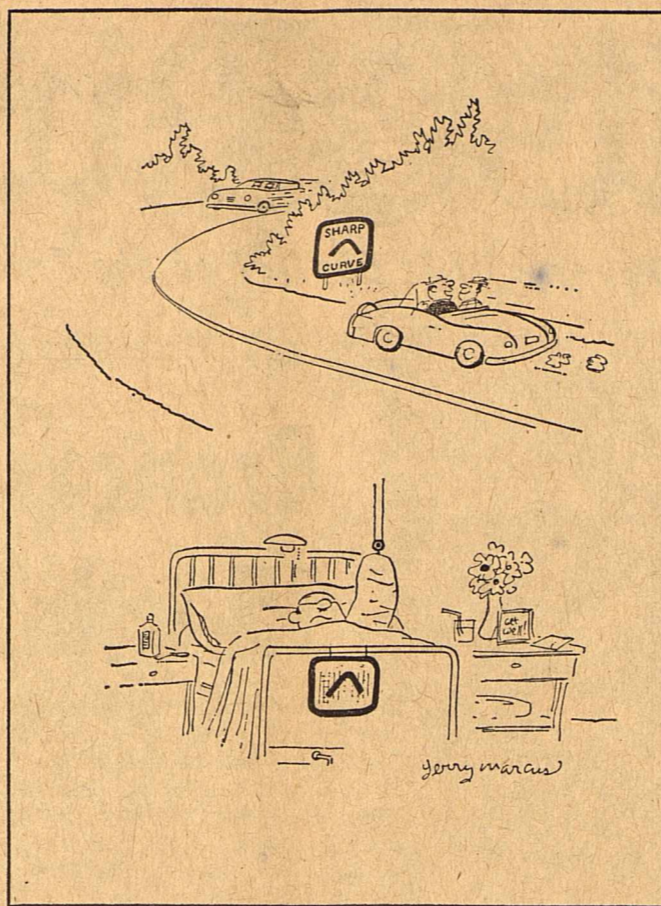
form" continued with a free rein, the urge to achieve independence would become contagious and infect other Soviet satellite nations...

As many observers pointed out years ago, it is easier to conquer an empire than to retain one.

MONETARY POLICEMAN

One of the strongest arguments put forth in support of the 10 percent surtax recently passed by Congress was the need to put our financial house in order...

Attitudes & Platitudes Jerry Marcus



Excessive speed was involved in almost 40% of the fatal accidents in 1967.

from HISTORY'S SCRAPBOOK DATES AND EVENTS FROM YESTERYEARS

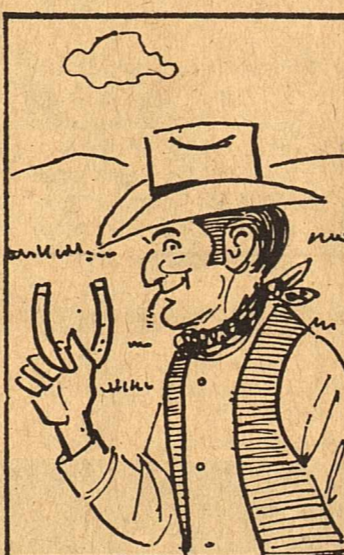
September 25, 1958 The Broncos scalped the Iran Braves 36-6 here Friday night in a rainy battle.

September 24, 1948 Start of the second half of the Sonora Bowling League was featured Monday night by victory of the Sonora Light and Water team...

for a supper and evening service during which the Rt. Rev. Everett H. Jones, Bishop of the Diocese of West Texas, spoke on his recent trip to England.

Sue Ann is the name given to the baby girl born to Mr. and Mrs. H. V. Stokes in San Angelo Wednesday.

When Sutton County tax payers receive their tax renditions they will find the rate at which they have been figured at 69 cents instead of 76 cents as previously announced.



IF YOU WANT CHANGE A PERSON-YOU MIGHT TRY PRACTICIN' ON YERSELF FIRST.

Amendments Analyzed

Amendment No. 11— Authorizing the legislature to provide for consolidation of governmental offices and functions and giving political subdivisions authority to contract for performance of governmental functions in El Paso and Tarrant counties.

Arguments: For: 1. It is more efficient and economical for local political subdivisions of the state to combine in performing functions...

2. Under the proposed amendment, one governmental unit could be authorized to make assessments for all political subdivisions under an equal and fair assessment ratio...

3. By consolidating functions and governmental offices in each of these two counties on an areal basis, which is possible under the proposed amendment, planning could be coordinated to meet the needs of these growing metropolitan areas.

Against: 1. Adoption of Amendment No. 11 would be but the first step toward over-centralization of government at the county level, and the end result could place too much authority and too many functions in the hands of a select few.

2. It would be unwise to adopt an amendment applicable only to two Texas counties with large urban areas and overlapping functions of government when there are at least 21 other metropolitan statistical areas in counties of the state which face the same or at least similar problems.

Political Announcements

State and Federal Offices. \$25.00 (The above price includes one write-up of not more than 250 words and the publication of candidate's name weekly in this column.) No refund to candidates withdrawing.

The Devil's River News is authorized to announce the following candidates for office, subject to the action of the General Election Tuesday, November 5, 1968: FOR STATE SENATE, 25th Senatorial District—

W. E. (Pete) Snelson (Democrat) Ernest Angelo (Republican)

Arguments: For: 1. It is more efficient and economical for local political subdivisions of the state to combine in performing functions which must be provided in cities, towns, and other political subdivisions of heavily populated counties.

3. The countywide area could assume expensive responsibilities in providing various services primarily or exclusively to the cities, thus increasing unfairly the countywide tax burden.

Amendment No. 12— Granting the legislature power to authorize cities and counties to issue revenue bonds for industrial development purposes.

Arguments: For: 1. Adoption of Amendment No. 12 would place Texas in a competitive position with neighboring states of New Mexico, Oklahoma, Louisiana, and Arkansas in inducing new industries to locate in the state.

2. As proposed by Amendment No. 12, the industrial revenue bonds issued by cities and

counties would be repaid through lease payments made by industry for land and plants and, therefore, would not be a burden on the taxpayer or state revenues.

Against: 1. The authority granted the legislature by the proposed amendment to permit cities and counties to issue industry-attracting revenue bonds is not only a form of subsidy to new industry but also has the effect of placing local governments in the commercial real estate business for other than a direct public purpose.

2. The proposed amendment could induce harmful competition between cities to provide the most favorable conditions for an industrial concern.

COMMUNITY CALENDAR

Thursday, September 26 Football, Sonora vs Big Lake, 1st Team, 6:30 p.m. Big Lake Football, Sonora vs Big Lake, 7th Grade, 5 p.m. Bronco Stadium

Friday, September 27 Ballingur vs Sonora, 8 p.m. Bronco Stadium

Saturday, September 28 2-5 p.m. Sonora Woman's Club Library open

Sunday, September 29 Services at the Church of your choice

Monday, September 30 7:30 p.m. General public meeting courthouse, OEO information and election of committee

Tuesday, October 1 12 noon, Downtown Lions Club meeting in fellowship hall of First Methodist Church

2:45 p.m. Sonora P.T.A. meeting in school cafeteria

7 p.m. L. W. Elliott P.T.A. meeting at L. W. Elliott school

7:30 p.m. Boy Scouts, Scout Hall

Wednesday, October 2 3-5 p.m. Sonora Woman's Club Library open

FLATS We Use Hot Patches 100% No Plugging S&H Green Stamps Brown's Texaco Station W. U.S. 290 Phone 7-2646

Spell Quiz Which of the Following is Spelled Correctly? vasselage vasalege vassalage (Meaning: A territory held in political dependence.) See Classified Page for Correct Answer.

The Devil's River News Published Every Thursday Entered as second-class mail matter on October 18, 1890 at the post office at Sonora, Texas under the act of congress of March 3, 1879. YEARLY SUBSCRIPTION RATES Sutton County \$3.65 - Elsewhere \$4.35

Federal Land Bank Association Serving America's Farmers: Providers of Plenty For more than 50 years The Federal Land Bank of Houston has provided DEPENDABLE agricultural real estate loans to Texas farmers and ranchers.

SECURITY BOX. Heavyweight. A secure protection for bonds, cash, and other valuables. Complete Windmill and Pump Service Jimmy R. Harris 387-2622 Sonora

COMPLETE INSURANCE SERVICE Fire - Theft - Auto - Liability - Property Morgan and Hunt Insurance "For Your Insurance Needs, Hunt MORGAN" Phone 387-2676 511 NE Main Sonora, Texas

the LUMILON II a "Reddy" study help A study lamp with a better sight better light tag can help improve children's study habits, make their studying easier and more effective. NOW! BACK TO SCHOOL SALE! \$11.48 (lamp & bulb) Reddy Credit \$1.48 down (plus tax) \$2.50 per month (added to your regular service statement) No interest or carrying charge



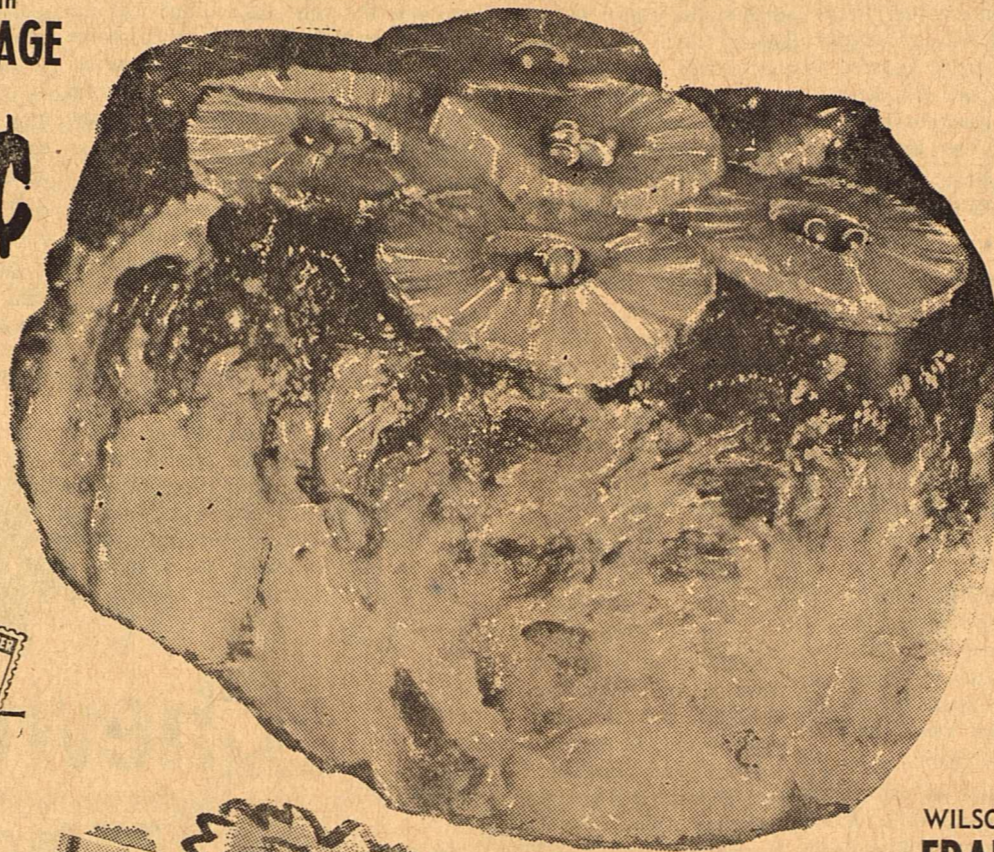
**QUALITY FOOD**  
at

**CASH SAVINGS**



KIMBELL 4 oz. can  
**VIENNA SAUSAGE**

**19¢**



PICNIC

**HAMS**

WHOLE

SLICED

**39¢** Lb. **43¢** Lb.

WILSON 12 oz. **FRANKS** ..... pkg. 49¢  
Lean **BEEF RIBS** ..... 3 lbs. for \$1.19  
Choice **CHUCK ROAST** ..... lb. 59¢  
**HOT LINKS** ..... lb. 59¢

**ALWAYS LOW PRICES**

- Giant Size 13¢ off **JOY LIQUID** ..... 49¢
- BOLD** Reg. Box **DETERGENT** ..... 39¢
- Tablet Detergent Small Size
- SALVO** ..... 47¢
- GIANT DASH** ..... 85¢
- Dish Detergent Reg. Size
- CASCADE** ..... 49¢

**FROM OUR SHELVES**

- GLADIOLA FLOUR** ..... 5 lb. bag 49¢
- KRAFT** Qt. Jar **MIRACLE WHIP** ..... 49¢
- FOLGERS** All Grinds **COFFEE** ..... lb. can 68¢
- LIPTON** 4 oz. bottle **INSTANT TEA** ..... 79¢
- KIMBELL** Sliced No. 2 cans **PINEAPPLE** ..... 3 cans 87¢
- KIM** Toilet **TISSUE** ..... 2 roll pkg. 19¢



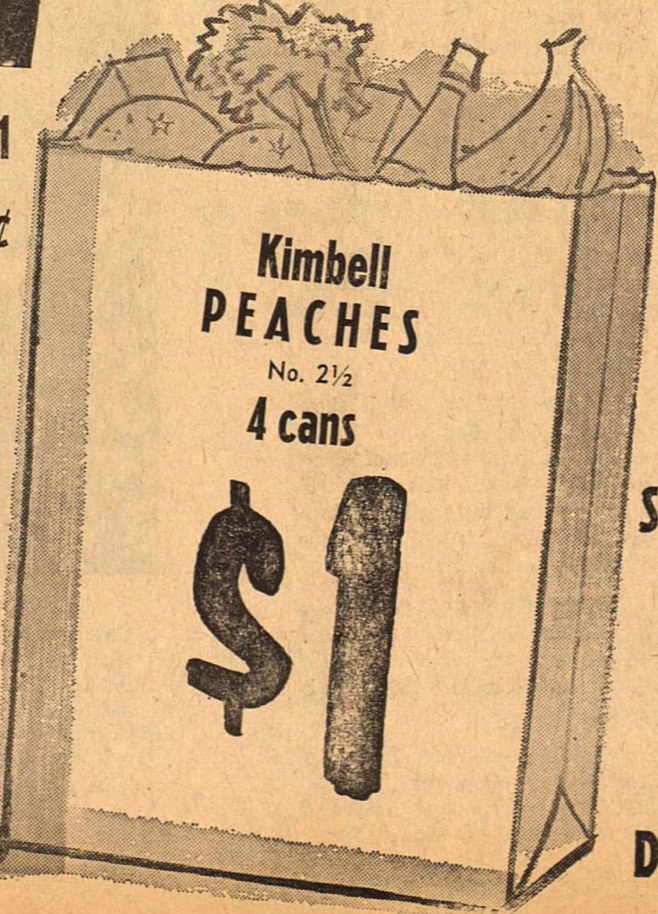
California **TOMATOES**  
**25¢**

Yellow **ONIONS** ..... 2 lbs. 15¢  
TEXAS **CUCUMBERS** ..... lb. 10¢  
Jonathon

**APPLES**  
**23¢** lb.

**FREEZER PLEASER**

- MORTON** Beef, Chicken or Turkey **POT PIES** ..... 5 for \$1
- MORTON** Asst. Flavors **CREAM PIES** ..... each 25¢



**Kimbell PEACHES**  
No. 2 1/2  
4 cans

**\$1**



PILLSBURY Asst. 19 oz. pkgs.  
**CAKE MIX**  
3 pkgs.

**98¢**



**FREEZER BEEF**  
**USDA CHOICE**

- HINDQUARTERS** ..... lb. 65¢
- FOREQUARTERS** ..... lb. 51¢
- HALF BEEF** ..... lb. 55¢

Cut Wrapped and Frozen  
CHECK OUR PAYMENT PLAN  
SATISFACTION GUARANTEED

- KELLOGS** 18 oz. pkg. **CORN FLAKES** ..... 39¢
- OUR DARLING** C.S. or W.K. 303 **CORN** ..... 5 cans \$1
- BIG K FLOUR** ..... 25 lbs. \$1.89
- SWIFT JEWEL** 3 lb. can **SHORTENING** ..... 49¢
- CAMPBELL** Tomato No. 1 can **SOUP** ..... 4 cans 49¢
- SWIFT PREM** 12 oz. can **LUNCHEON MEAT** ..... 49¢
- NABISCO** Honey Graham **CRACKERS** ..... lb. box 39¢
- NABISCO** Fig Newtons **COOKIES** ..... lb. box 39¢

SAVE VALUABLE COUPON SAVE

3 LB. 1 OZ. **GIANT SIZE TIDE ONLY** ..... 59¢  
WITH THIS COUPON

**SAVE** 20¢

Your Friendly  
**FOODWAY STORE 450**  
Sept. 28 1968

OFFER EXPIRES  
LIMIT 1 COUPON PER PACKAGE PURCHASED

**DAIRY-FRESH BUYS**

- GANDY FROZAN**, Half Gallon Carton **MELLORINE** ..... 39¢
- KIMBELL** 8 oz. can **BISCUITS** ..... 7¢
- KIMBELL** SOFT **MARGARINE** ..... lb. 29¢

**DRUG NEEDS**

- LAVORIS** Reg. \$1.15 **MOUTHWASH** ..... 83¢
- King Size **PEPSODENT** Reg. 83¢ **TOOTH PASTE** ..... 57¢
- RIGHT GUARD** Reg. \$1 **DEODORANT** ..... 69¢

Specials for Wed., Thurs., Fri., Sat., Sept. 25, 26, 27, 28

**FOODWAY**  
the friendly STORE

Double Stamps Wednesday with \$2.50 Purchase or More



**NEW! BINGO in the ROUND!**  
**RINGO BINGO**

WIN UP TO... \$100.00

How to Win

SAVE ALL TICKETS—when you have the correct tickets to BINGO, submit only the winning tickets to the store manager and collect your prize!  
When the tickets submitted complete a BINGO in more than one direction on the same game, only one prize will be awarded.  
ADULTS ONLY. Store employees and their immediate families are not eligible to win. No Purchase Necessary.



## 1969 Chevrolets on Display Thursday Offer Owners Tailored Performance

The widest choice of engines and transmissions in automotive history head a parade of exclusive Chevrolet features for 1969, Marion Elliott of Elliott Chevrolet Company, said today.

"This unparalleled opportunity for the 1969 buyer to custom tailor his car's performance and economy typifies the variety and value with which Chevrolet expects to increase its industry leadership," Elliott said.

"Other exclusive Chevrolet features are computer-selected springs for improved ride, jet stream headlight washers for better illumination in bad weather, wider wheels to improve vehicle handling and a 'liquid tire chain' system to increase rear tire traction on icy streets."

Elliott said 35 new Chevrolet models in seven distinctive car lines for 1969 go on sale nationally on Thursday, September 26.

"The industry's top seller—the big Chevrolet—is all new in 1969 and has the largest base V-8 engine in its class. It is a 327 cubic inch V-8, increased from a base 307 engine in 1969."

"Two new 350 cubic inch V-8's are also introduced, one using regular fuel as does the base V-8. The big Chevrolet also offers a high torque, regular fuel 396 cubic inch engine, largest fuel engine in its field."

Other exclusive features Elliott listed for the new big Chevrolet are full door glass styling with improved Astro Ventilation on all models, variable ratio power steering for more responsive maneuver-

ability, an electrically-heated rear window defroster and a one-of-a-kind roofline for the Caprice Coupe and Impala Custom Coupe.

Chevrolet introduces in 1969 a new Turbo Hydra-Matic three speed automatic transmission specially designed for six cylinder engines and V-8 engines up through 350 cubic inches. Teamed with the regular Turbo Hydra-Matic offered on larger displacement V-8's, this gives virtual across-the-board availability of this highly advanced transmission, Elliott said.

Chevrolet also introduces a new heavy duty, three-speed fully synchronized manual transmission. All others in the wide transmission selection are the standard three-speed, optional four-speed, Powerglide two-speed automatic and the Chevrolet's pace setting Torque-Drive "clutchless" transmission for four and six cylinder-equipped Chevy Novas and the six cylinder Camaro.

Safety and security advances on the 1969 Chevrolets range from an improved energy-absorbing steering column, contoured windshield headers and front seat head restraints to an anti-theft ignition, steering and transmission lock mounted on the steering column.

Elliott said there is also an all-new outside and inside look for Chevrolet's sporty Camaro in 1969, plus exterior and interior styling improvements in Chevelle, Nova, and Corvette and continued Corvair individuality.

Use of computer selection to get the best spring combination for each individual car increases Chev-

rolet vehicle quality in 1969. Each customer order is analyzed with high speed data processing equipment to determine the front and rear weight of all equipment and the proper springs to carry it. The result is carefully tailored, more consistent trim heights which insure a good ride as well as correct appearance.

Other quality improvements include stronger construction for greater durability, smoother, quieter engine drivelines to help reduce noise and vibration, a new air cleaner snorkel design that makes six cylinder engines quieter and new accessory drive systems of V-8 engines which give improved durability and quieter operation. The frame and sound isolation improvements give better ride.

Chevrolet air conditioning is improved for 1969 with greater airflow through larger ducts and added passenger compartment outlets.

An improved AM-FM stereo radio combination has all controls mounted on the radio.

Power door locking is offered in 1969 on Chevelle models as well as on the big Chevrolet. Chevrolet's exclusive light monitoring system that tells when front and rear lights and signals are operating is again offered on Chevrolet, Chevelle and Camaro and is standard on Corvette.

Chevrolet offers 15 exterior colors for 1969, nearly all new. There are up to six two-tone combinations, five vinyl top colors and three convertible top colors.

Here are additional details on each Chevrolet car line:

**REGULAR CHEVROLET** — The all-new look emphasizes its big car personality. Length is extended to more than one inch to 215.9 inches, making it the longest Chevrolet ever built.

A new one-piece bumper sur-

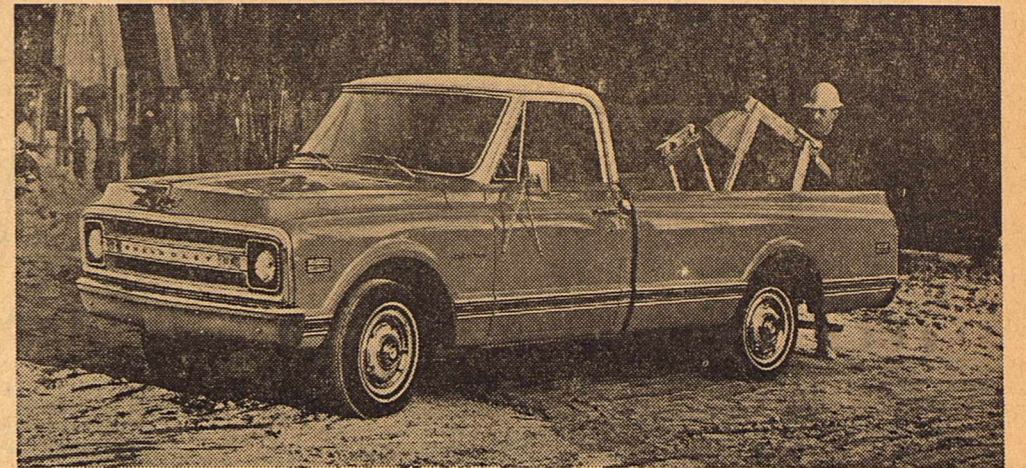
rounds a precision molded grille and recessed headlights in a protective chrome loop. Horizontal bars accent grille width.

Side sheet metal sculpturing gives emphasis to elliptical wheel openings. Distinctive rectangular tail-lights are mounted in the rear bumper.

Besides the larger 327 cubic inch base V-8 and new 350 and 396 V-8's, a new 427 cubic inch V-8 developing 335 horsepower is introduced to fulfill higher performance requirements. It replaces the 396 cubic inch, 325 horsepower engine offered in 1968. Turbo Hydra-Matic transmission is offered with every engine in 1969.

Full glass door styling without ventpipes—offering better visibility and quieter traveling without the wind noise—is standard on all models. Astro Ventilation, introduced in 1968 Caprice, is also standard. Larger ducts and high level outlets, combined with built-in pillar pressure relief valves, nearly double the inner air flow rate.

### New rugged styling featured in 1969 Chevrolet Light Truck Line



Boldly restyled for a more massive front-end look, the 1969 Chevrolet light conventional truck line has numerous improvements. They include brighter interiors, tighter door sealing, new cab mounts for quieter ride, automatic choke, and foot-operated parking brake. New options include a 350-cu.-in. 255-hp V8 and low-mounted side mirrors which afford better side vision and lower wind noise.



Phone News to Hazel McClelland, 387-2513

#### Just Us Bridge Club

Mrs. G. H. Davis entertained the Just Us Bridge Club at her home September 16. A salad plate was served. Present were Mimes, Bob Vicars, R. A. Halbert, J. F. Howell, George Wynn, Paul Turney, Howard Kirby, Ed Mayfield, and Sim Glasscock. Mrs. Halbert won high; Mrs. Howell bingoed, and Mrs. Wynn won the traveling prize.

#### HMc

Mr. and Mrs. Russell Oliver were here visiting her mother, Mrs. Sim Glasscock several days this past week. Sue and Russell are moving here, and will live on Mrs. Glasscock's ranch. We sure are glad to have you move here, Sue and Russell.

#### Tuesday Night Bridge Club

Mrs. Belle Steen entertained the Tuesday Night Bridge Club at her home September 17. Cake and coffee were served to Mmes. W. O. Crites, E. D. Shurley, Bob Vicars, Vestel Askew, R. A. Halbert, Leo Merrill, Bill Fields, L. E. Johnson Jr., Cleve T. Jones Jr., Louie Trainer, George Barrow, and Ernest McClelland. Mrs. Trainer won high for club; Mrs. McClelland won bingo, and Mrs. Merrill won the slam prize.

#### HMc

Mrs. R. A. Halbert and Mr. and Mrs. Vestel Askew were in San Antonio last week for several days.

Mr. and Mrs. Pascal Allison and children, and Mr. and Mrs. Johnny McClelland of Houston met in San Antonio to see the HemisFair. They had just gotten off the Mini Trains when the wreck happened. They report that it was the most horrible thing they had ever seen. We are so thankful that the Allison and the McClellands were not on the train when it happened.

Miss Linda McBride left Wednesday for Lubbock where she will be a freshman at Texas Tech.

Mr. and Mrs. Jack Neill were in San Antonio last week visiting their daughters and families, Mr. and Mrs. Richard Cooper, Elizabeth Jane, and Carolyn, and Dr. and Mrs. Paul Law, David, Judy and Jack Neill.

Mr. and Mrs. Ernest McClelland visited in Sweetwater for several days this past week with their daughter and family, Mr. and Mrs. George Thompson, Tracey and Mc.

Mr. and Mrs. A. W. Awalt left Sunday for Temple where Big A will enter the Scott and White Hospital for surgery. We are pulling for you, Big A.

Philip Chalk, and Buster Harris both of Sonora have been wounded in Vietnam, but neither one was seriously wounded.

Herman Moore Jr. and Bill Glasscock left Tuesday for the Army. They will be stationed in Ft. Bliss at El Paso.

Mr. and Mrs. Herman Moore have bought the house of Mrs. Zilpha Wheelis Wickham. We are sure glad to have you in our neighborhood, May Dell and Herman.

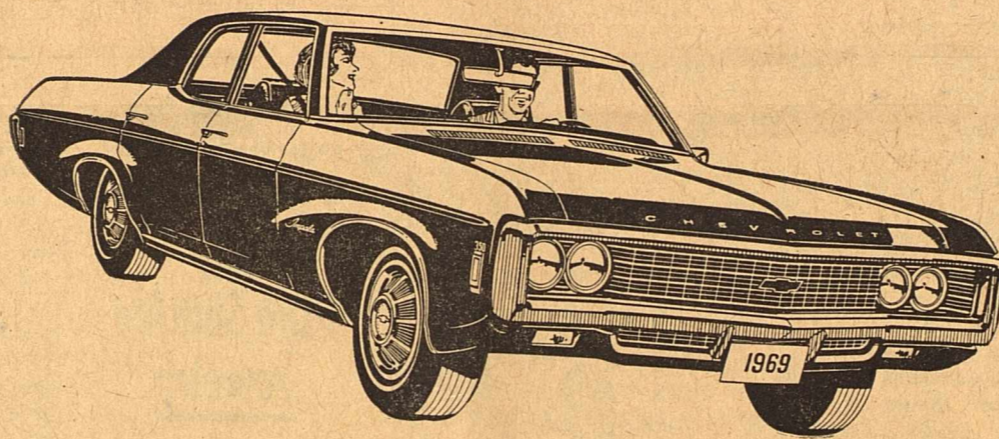
Wesley Sawyer of Sonora and Dallas has been here for several days this past week.

Billie Taylor and sons, Kevin and Billie Cash visited his sister and family, Mr. and Mrs. Royce Regeon, Nanetta, Resa and Rhonda. They attended HemisFair.

Mr. and Mrs. Cashes Taylor also attended HemisFair and visited their daughter and family.

New crop sweet potatoes are brightening the market and can also brighten your fall menu.

# PRESENTING . . .



# 1969 CHEVROLET

DRAMATIC!

DISTINCTIVE!

DARINGLY NEW!

COME TEST DRIVE THE CHEVROLET FOR 1969

THURSDAY, SEPTEMBER 26

**"Super Sport Sweepstakes"**

**7,500 PRIZES**

**CHEVROLET**

**Register Today!**

ADMIT ONE

NO. 1 TEAM

## COME IN

SEE THE GREAT NEW

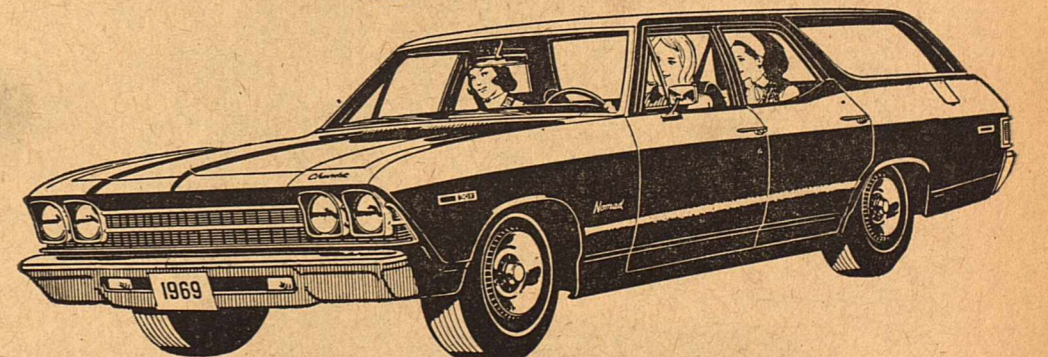
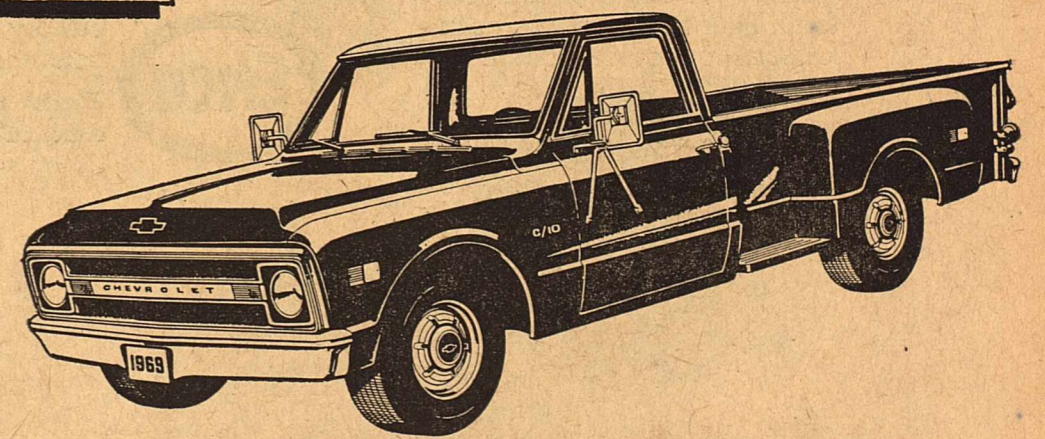
# CHEVROLET THURSDAY

- REFRESHMENTS
- FAVORS
- NEW CARS

BE SMART! BE SURE! BUY NOW AT YOUR CHEVROLET DEALER'S

# Elliott Chevrolet Co.

SONORA, TEXAS



**INSURANCE FOR EVERY NEED**

Davis Insurance Agency

PHONE 387-2600

### Texas Interconnected Power System

It is nice to have neighbors you can depend on—and electric company people long ago discovered that the "good neighbor policy" works well in business.

This is the simple principle behind the Texas Interconnected System, a network composed of nine major power systems in Texas. Whenever trouble occurs on one electric system, that system can instantly borrow power from neighbors—other members of the TIS. Of course, the operation of the TIS is more complicated than just one neighbor borrowing from another.

The subject of interconnection of electric systems is currently receiving considerable interest in the news. But, it is "old hat" in Texas where the major power suppliers have been operating successfully on the interconnected basis for more than a quarter of a century.

If a major generating station of one of the TIS members suddenly goes out of service, the system is designed for other plants to automatically pick up the load from the "spinning reserve" power that is available at all times.

The Texas Interconnected System is composed of West Texas Utilities Company and eight other power systems which operate wholly within the State of Texas.

In a state as large as Texas, with great variations in climate and geography, the membership of the TIS is divided into two groups to simplify operations: The North Texas Interconnected Systems (NTIS) and the South Texas Interconnected Systems (STIS). In the NTIS are Dallas Power & Light Company, Texas Power & Light Company, Texas Electric Service Company and West Texas Utilities Company, all investor-owned electric companies.

The STIS is composed of two investor-owned companies, Houston Lighting & Power Company and Central Power & Light Company; two municipal power systems, the City of Austin and the City Public Service Board of San Antonio; and one state authority, the Lower Colorado River Authority.

The purpose of TIS is to continue to insure a reliable supply of power to about 8,000,000 people served by the nine-member electric utilities.

The nine-member companies serve a combined area of 185,000 square miles (75 percent of Texas) extending generally to the Red River on the north, the New Mexico border (excluding the Panhandle) and the Monahans-Wink area on the west, the Rio Grande and the Gulf of Mexico on the south, and Paris-Tyler-Lufkin-Houston on the east.

TIS is not a power tool in the strictest sense of the word in that the nine member utilities do not pool their resources to finance, build or operate power plants and transmission lines. Each utility is responsible for the construction and operation of its own facilities. However, the nine utility companies do operate as one large system interconnected with 345,000, 138,000 and 69,000-volt transmission lines.

There are times when generating units at WTU power plants have tripped off the line. Even some of the larger units in other parts of the TIS have suddenly been disconnected from the system. But the spinning reserve took over without a hitch. Customers do not normally know there is any problem because their lights do not even dim.

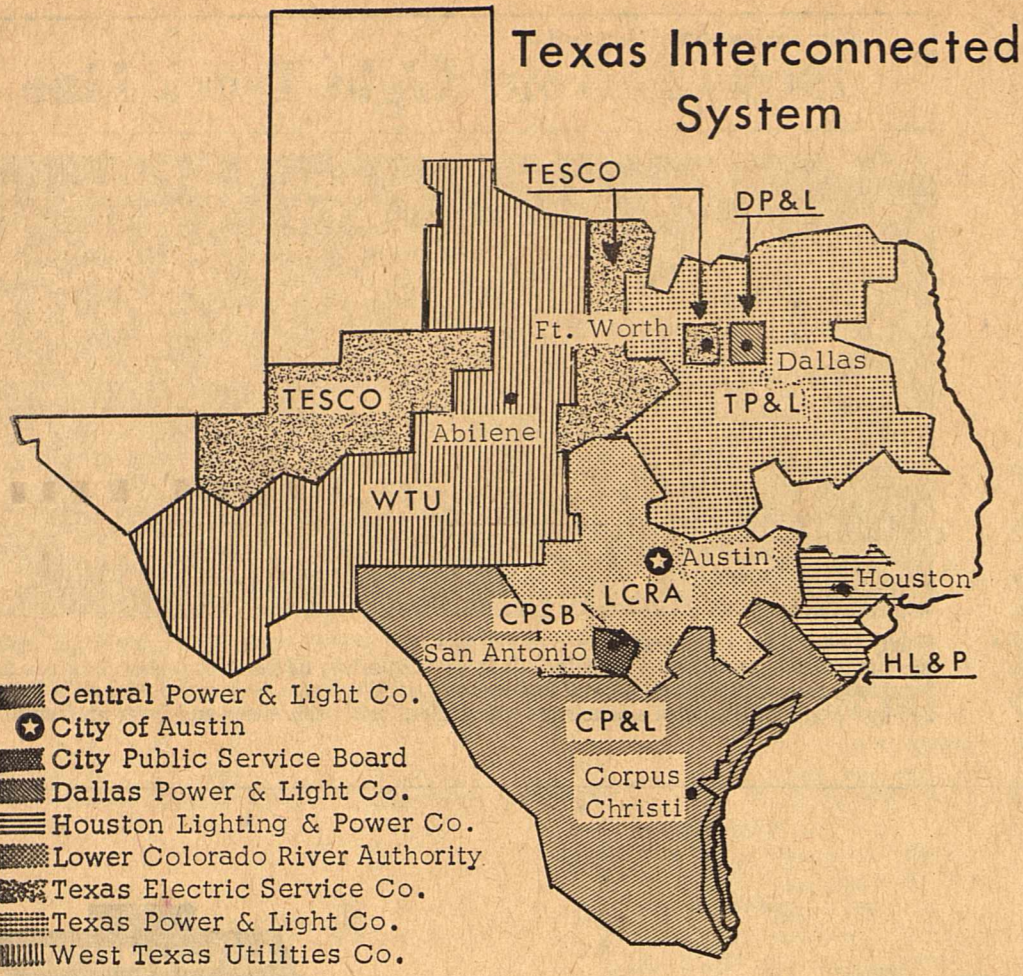
### HAPPY BIRTHDAY CALENDAR

- Thursday, September 26
Mrs. A. W. Awalt
Bobby Scott
Billy Scott
Debbie Howard
Mrs. Dewey Shroyer
Cliff Hudson
Billy Wayne Smith
Hi Eastland Newby Jr.
John T. King
Friday, September 27
Derrel Alley
Basil Taylor
Jessie F. Bricker Jr.
Johnnie Ramos
Brian Edward Valliant
Saturday, September 28
Preston Prater
Cathy Ward
Steven Mayer
Audrey Pfluger
Gloria Gutierrez
Sunday, September 29
Alice Fay Archer
Mrs. Vernon Luckie
Jack H. Sharp
Rebecca Puckett
Gabriel Espinosa
Julie Lyn Stewart
Susan Stewart
Monday, September 30
Mrs. Billy Galbreath
Barbara Granger
George Roberson
Linda Sue Smith
Tuesday, October 1
Jack Ratliff
Janie Letsinger
Clayton Tolliver
Corky Fields
Mrs. Louis Powers
Lisa Kay Trainer
John Allen Trainer
Roland Drennan

- James Ross Buita
Rena Samaniego
Wednesday, October 2
George D. Chalk
Mrs. Charles Howard
A. B. Hightower
Mrs. Nelson Stubbfield
Gaddy Lyles
Van Meter Bunnell
Darla Sue Moore
Gregory Schmidt
Enrique Noriega
Mrs. Herman Pettiet

### Card of Thanks

We very much appreciate the work done by firemen who answered the call and extinguished the fire at our rent house. Thanks to each of you.
Mr. and Mrs. Pat Jungk



- Central Power & Light Co.
City of Austin
City Public Service Board
Dallas Power & Light Co.
Houston Lighting & Power Co.
Lower Colorado River Authority
Texas Electric Service Co.
Texas Power & Light Co.
West Texas Utilities Co.

### USE The Devil's Want Ads

Complete INSURANCE SERVICE
RESIDENTIAL COMMERCIAL INDUSTRIAL
ALL TYPES OF INSURANCE
Fire, Casualty, Travel, Livestock, Bonds, Auto
Representing Southwestern Life Insurance Co.
WEB ELLIOTT AGENCY
First National Bank Building Sonora, Texas

### HAPPY ANNIVERSARY

- October 7
Mr. and Mrs. Wayne Bryant
October 9
Dr. and Mrs. Tom White
October 14
Mr. and Mrs. Theo Cahill
October 25
Mr. and Mrs. A. C. Hudson
Mr. and Mrs. Paul F. Law
October 30
Mr. and Mrs. Elba Adams

FRANK ADKINS
ADKINS
Plumbing, Heating and Air Conditioning
1012 Crockett Avenue
Phone 387-3150 Sonora, Texas

### SUBSCRIBE TO THE DEVIL

THIS AD IS SPONSORED BY THE FOLLOWING BUSINESSES

- The Ruth Shurley Jewelry
Elliott Butane Co.
Sonora, Texas
Chuck Wagon Grocery
The C. A. Lucketts
Elliott Chevrolet
Sonora, Texas
Ratliff - Kerbow Funeral Home
SOUTHWEST TEXAS Electric Cooperative INCORPORATED
Owned by Those It Serves
Neville's
Your Complete Department Store
Jo and J Neville

## FREE Southwest Conference Souvenir Coins!

With a gasoline purchase, you can get a free gold-finish Southwest Conference souvenir coin commemorating Humble's 35 years' sponsorship of Southwest Conference Football. There are eight coins in all, one for each school in the

conference, with the mascot on one side and the '68 football schedule on the other. They're free with a gasoline purchase at any participating Enco station. So hurry, while the supply lasts, and start your collection.



Humble Oil & Refining Company
America's Leading Energy Company



### It's Such a Big World

Some folks say that as we grow older the world grows smaller. Is that because of the wonders of modern communication and transportation? Or is it because when some folks grow older they become preoccupied with their own little orbit of life?
Junior certainly enters life completely preoccupied with himself. But once he begins to walk and talk—gosh how his world balloons!
That's why he needs the religious training our churches provide. His faith must keep pace with his burgeoning world.
And as grown-ups, in worship and Christian devotion, we need likewise the spiritual gifts our churches offer.
For it really is a big world. Full of challenges, opportunities, and promising tomorrows. It always looks that way to a growing soul.

Advertisement for The Devil's River News featuring a photo of a child standing next to a large sculpture and a table of church services.

Church service listings for First Baptist Church, First Methodist Church, and First Latin American Baptist Church.

Church service listings for Church of Christ (South Side), St. John's Episcopal Church, and St. Ann's Catholic Church.

Church service listings for Hope Lutheran Church, The Church of the Good Shepherd, and Church of Christ.







**First National Bank**

Since 1900

**Branding Iron Smoke House**

Live-Oak-Smoked Meats

**Sonora Motor Company**

Ford Sales & Service

**C. G. Morrison**

Variety Store

**Sonora Utilities**

Home Owned Municipal Power Plant

**The Ratliff Store**

Name Brands for Less

**Hill's Shell Station**

Shell Products

**Chuck Wagon Grocery**

Chuck Wagon Inn

**Carl J. Cahill, Inc.**

Dirt Contractor

**Thorp's Laundry**

Sanitone Dry Cleaning

**Elliott Chevrolet Co.**

See Us Before You Buy

**Greenhill Texaco Station**

Open 24 Hours



**Modern Way Gro. & Mkt.**

U.S. 277 South

**Sonora Feed Co.**

Texo, Paymaster, Purina Feeds

**Park Inn Cafe**

Fine Foods

**Big Boy's Shamrock Station**

Friendly, Courteous Service



**Neville's Department Store**

Jo and J Neville

**Benson Repair Service**

Phone 387-2966

**Sonora Conoco**

\$ Save \$ Service Your Own Car With Good Conoco Gas

# SONORA vs BALLINGER

BRONCOS

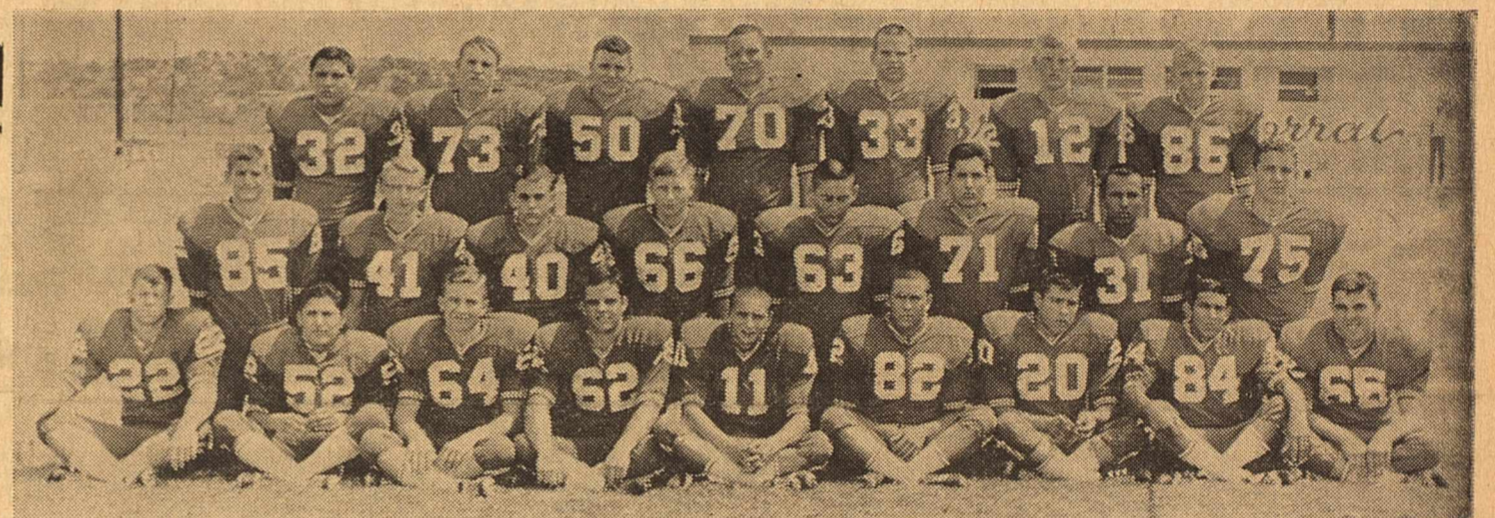
BEARCATS

Back The  
BRONCOS  
Attend The Games

FRIDAY, SEPTEMBER 27, 1968

8 p.m.

BRONCO STADIUM



THE 1968 SONORA HIGH SCHOOL football team members include left to right, (First row) Ed Lee Renfro, Israel Sanchez, Mark Jacoby, Scott Shurley, Thurston McCutchen, Richard Perez, Robert Mata, Herman Perez, and Charlie Goodson.

(Second row,) Jesso Cook, Scott Jacoby, Dick Bundy, Ted Fish, Marty Martinez, Ruben Chavez, Lupe Espinosa, and Jim Elliott. (Third row) Erasmo Lumberras, Barry Black, Bill Green, Monte Dillard, Kerry Joy, David Wuest, and Larry Everett. Not shown is Mitch Trainer.

## 1968 Football Schedule

Varsity Football Schedule			8th Grade Football Schedule		
Sept. 13	Sonora 24	Winters 0	Sept. 19	Sonora 20	Ozona 42
Sept. 20	Sonora 6	Big Lake 15	September 26	Big Lake	Here
September 27	Ballinger	Here	October 3	Eldorado	There
October 4	Ozona	Here	October 10	Ozona	Here
October 11	Rankin	There	October 17	Junction	There
October 18	Menard	Here	October 24	Mason	There
October 25	Mason	There	November 7	Eldorado	Here
November 1	Eden	Here	November 14	Junction	Here
November 8	Eldorado	There			
November 15	Junction	There			

All games will start at 8 p.m. except for the last three games which will begin at 7:30 p.m.

B-Team Football Schedule			Football Schedule—7th Grade		
Sept. 19	Sonora 0	Ozona 26	September 19		Cancelled
September 26	Big Lake	There	September 26	Big Lake	Here
October 3	Eldorado	There	October 10	Ozona	Here
September 10	Ozona	There	October 24	Mason	There
October 17	Junction	There			
October 24	Mason	Here			
November 7	Eldorado	Here			
November 14	Junction	Here			

Games scheduled for 5 p.m. except for final game which will begin at 5:30 p.m.

**Brown Texaco Station**

We Give S&H Green Stamps

**Gulf Restaurant**

Open 24 Hours

**Powers Livestock Sales**

Louis Powers

**Sonora TV Service**

Community Antenna

