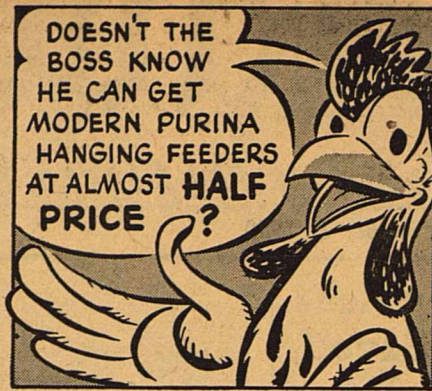
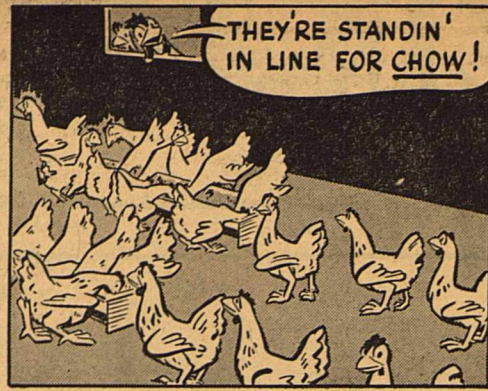


CHECKERBOARD CHUCKLES • From Your Purina Dealer



Regular Price \$2.60
Now only \$1.35
 with every 500 lbs. of Purina Laying Chows you purchase before October 31st. Ask us!

Sonora Feed & Supply

Typewriter Repair At News Office

Here Comes Kris Kringle!



Imagine the whoops of joy that will go up when Santa Claus arrives at the kids' Christmas party, riding high on these charming little coconut cakes instead of in the conventional sleigh with reindeer! Although Kris Kringle Cakes are very festive looking, they will give you no argument at all about time and work involved. You just make them with a quick white cake mix, or if you prefer, buy plain sponge cake, cut it in squares, and decorate them as pictured. The frosting itself couldn't be simpler, and the youngsters will love the tart flavor and delicate color the jelly gives it. Drifts of shredded coconut cover the cakes, so Kris Kringle looks for all the world as if he were climbing right out of drifts of snow.

KRIS KRINGLE CAKES

Buy or bake your favorite cake. Cut in squares and spread with Coconut-Currant Frosting.

Coconut-Currant Frosting

- 1/2 cup tart currant jelly
- 1 egg white, unbeaten
- 4 tablespoons sugar
- Dash of salt
- 1/2 cup coconut

Combine jelly, egg white, sugar, and salt, in top of double boiler and mix thoroughly. Place over boiling water and beat with rotary egg beater 3 minutes. Frosting will stand in peaks. Remove from boiling water and cool slightly before spreading. Spread on cake, sprinkling with coconut while frosting is still soft. Makes enough frosting to cover tops and sides of two 9-inch layers, or top and sides of 13x9x2-inch cake, or about 2 dozen cupcakes.

Economy Commission Points Out Increased Taxes Not Necessary

By JOHN REDDITT
 State Chairman
 Texas Economy Commission
 (Editor's Note: This is the second in a series of articles on the Texas Economy Commission)

You who are worried (or should become worried) about the ever-increasing demands for taxes to run your Texas state government, you have three choices before you:

- (1) Pay more taxes and grumble about.
- (2) Pay lower taxes and undergo a reduction in public services. And grumble some more.
- (3) Examine your state government for inefficiencies and waste: then on the basis of your factual findings, improve service without increasing taxes, or lower taxes without cutting service.

The first and second choices appeal to no one. The third choice clearly is the one to make.

The Texas Economy Commission has undertaken to make the third choice. But our eyes are open to certain pitfalls that must be avoided if we are to succeed in bringing economy and efficiency into our government.

This requires some explaining. In 1929, the Legislature created the office of State Auditor and

Efficiency Expert to look into the government. This new office, after nearly a year of study, reported that inefficiency, waste, and disorganization were growing as the government's expansion continued unrestrained.

Alarmed, the Legislature named a joint committee of both its houses to give thorough study to the problem. This committee employed an impartial, professional staff of experts in government management, Griffenhagen and Associates, which had been doing this sort of thing successfully for a generation.

The Griffenhagen firm made an extensive study and presented a detailed report calling for extensive reorganization of the government.

One hundred and thirty-one or less independent state agencies would have been consolidated into two executive branches: one with six "departments having administrative functions," and the other with 14 "departments rendering direct public service."

This was logical. It was efficient. It brought order and responsibility under economical control.

And it fell flat in the Legisla-

ture. We now know why it fell flat. We know why the past two decades have brought more disorganization, more inefficiency and waste into our state government. There was not enough popular demand for a change.

The people had neither opportunity to study the problem that faced them, nor opportunity to examine the proposed reforms. Lacking this information, they did not demand passage of the reforms. Lacking this demand, the reforms were not made.

Today we have, not 131 separate state agencies, but nearly 200. In 1930, the Texas state government spent \$103,100,000. In 1940, \$165,700,000. This year the state is spending \$500,000,000. That's half a billion dollars!

This amounts to \$1,370,000 per day, including Sundays and holidays, seven days a week!

What's more, this vast sum is spent, not through logically and carefully controlled means. It is spent out of more than 230 separate, disconnected checking accounts. Many of these accounts are earmarked for special purposes and no other purposes. Thus, if some accounts should have a surplus while other accounts are exhausted, more taxes must be raised to replenish the exhausted accounts. That's silly, I know. But that's how it is.

We know that a new structure of efficient and economical public service, provided through intelligent taxation, cannot be erected without the public's understanding of its need.

The people of Texas, through this series of newspaper articles, through public discussion and debate, through their local county branches of the Economy Commission, will be advised of and take part in every stage of the Economy Commission's work. If you don't like a certain recommendation that has been submitted to you, and if you come up with a better suggestion, the substitution can be made.

The, the revised recommendations will truly be your recommendations. You will know what is needed. The Legislature will know what you want, and you, by your own effort and understanding, will succeed.

The next article in this series will discuss how the Economy Commission operates at the local level close to every Texas home. The writer will be Mrs. Charley Ward, of Louise, state vice-chairman of the Texas Economy Commission.

SUBSCRIBE TO THE NEWS

THIS TASTES GOOD IN TEXAS

- Roast Wild Duck
- Buttered Asparagus
- Candied Sweet Potatoes
- Congeaed Cranberry Salad
- Biscuit - Butter Plum Pudding
- Coffee

WANTED AT ONCE: Man or woman to supply Consumers with Rawleigh Products in the City of Sonora. Full or part time. For details write the W. T. Rawleigh Co. Dept. TXL-1730-216, 139 W. Illinois, Memphis, Tenn. 4tc7

SUPERETTES SHOPPERS' GUIDE...

Friday Dec. 8 Saturday Dec. 9 Monday Dec. 11

SUGAR, Imperial, lb. bag 45c - 2 lb. bag 89c

DIA CORN, 2 - 303 Cans	25c	SCOTT TOILET TISSUE, 2 Rolls	25c
GLEN VALLEY PEAS, 2 - 303 Cans	25c	DROMEDARY DATES, 7 1/2 Oz. Pkg.	23c
HEART'S DELIGHT PEACHES, No. 2 1/2 Can	29c	HEINZ CATSUP, 14 Oz. Bottle	27c
ADAMS Orange Juice, 46 Oz. Can	33c	PINTOS, 10 lb Bag	81c

Cuts washday time in half!

TODAY'S VALUE

BOX **29c**

Wrigley's GUM
 CARTON OF 20 PKGS.
 Each **65c**

FLOUR PurAsnow
 With Valuable Coupon In Sack
 25 lb Bag **\$1.89**

PRODUCE

LETTUCE, Large Head	10c	CARROTS, Bunch	5c
GOLDEN RIPE BANANAS, lb	12c	TEXAS Grape Fruit, 5 lb Bag	29c
ORANGES, Texas, 5 lb. bag	29c		

MEATS

SAVE ON SUPERETTE MEATS

WHILE 50 LAST PICNIC HAMS, lb	40c	BROIL OR FRY Tenderloin Steak, lb	69c
CHARLIE'S FAMOUS HOME MADE CHILI, Pint	55c	SWIFT'S FANCY SEAL PACK SLICED BACON, lb	50c
INDIVIDUAL SIZE CLUB STEAKS, lb	59c	PLENTY OF MEAT ON THESE HAM HOCKS, lb	35c
CUT FROM TENDER YOUNG BEEF CHUCK ROAST, lb	55c	SWIFT'S PREMIUM TENDER GROWN FRYERS, lb	59c

FRESHWATER CATFISH DUE TODAY
 HOME DRESSED YOUNG HENS

SWIFT'S ALL SWEET MARGARINE, Colored In Quarters, lb **31c**

XMAS NUTS AND FRUIT CAKE MIXES

SONORA Superette MARKET
 E.V. SMITH, MGR.

Now is the time for all good men to come to the aid of their pocketbooks

There's been a lot of talk in recent weeks about "the buying power of the dollar"—past, present and future. We can't foretell the future—but we can tell you this right now: You'll look a long way before you'll find a car that offers as much for the money as you can get in a 1950 Buick. Close to half a million of these cars have been built and sold this year. Close to half a million people have checked their features and prices against the field—and decided they'd better buy Buick. As to prices—they start down below some sixes. And whether you price the SPECIAL, the SUPER or the ROADMASTER, you'll find, on a cents-per-

pound basis, that few other cars can touch them for value. And this is for sure! When it comes to performance—ride—the way they handle and hold the road—and thrifty use of fuel and oil—Buicks have never been finer. That's another way of saying that coil springs on all four wheels—Dynaflow—torque-tube drive—and Buick's high-compression, high-economy Fireball power produce an out-of-this-world combination. So if you want your dollars to do extra duty—the time to act is now. Look at the price tags—look at the features—sample the power and thrill that you get for your money—and you'll know what we mean. *Dynaflow Drive is standard on ROADMASTER, optional at extra cost on SUPER and SPECIAL models.

ONLY BUICK HAS Dynaflow— AND WITH IT GOES:

- HIGHER-COMPRESSION Fireball valve-in-head power in three engines. (New F-263 engine in SUPER models.)
- NEW-PATTERN STYLING, with MULTI-GUARD forefront, taper-through fenders, "double bubble" taillights
- WIDE-ANGLE VISIBILITY, close-up road view both forward and back
- TRAFFIC-HANDY SIZE, less over-all length for easier parking and garaging, short turning radius
- EXTRA-WIDE SEATS cradled between the axles
- SOFT BUICK RIDE, from all-coil springing, Safety-Ride rims, low-pressure tires, ride-steadying torque-tube
- WIDE ARRAY OF MODELS with Body by Fisher.

Better Buy Buick-Now!

Tune in HENRY J. TAYLOR, ABC Network, every Monday evening.

Phone Your BUICK dealer for a demonstration Right Now!

Lyles and Rape, Inc. Dial 23301
 Concho St., Sonora, Texas

WHEN BETTER AUTOMOBILES ARE BUILT BUICK WILL BUILD THEM

Ranchmen Take Part In Mesquite Control Tests

Visits were made recently to 16 of the 26 ranches in Texas on which field tests for controlling mesquite are being conducted. The off-station tests are being carried on by the ranchers under the direction of C. E. Fisher, superintendent of the Spur Experiment Station, and Dale W. Young, assistant agronomist with the Bureau of Plant Industry, and with the assistance of local county agents and P.M.A.

The group making the tour, which was led by Fisher, included representatives of the Production and Marketing Administra-

tion, the Agricultural Experiment Station, the Extension Service, chemical research men, and airplane operators.

From observations made on the tour, the ester of 2,4,5-T still appears to be the best chemical for the control of mesquite. Three-fourths pound acid of 2,4,5-T in three gallons of water and one gallon of diesel oil gave the most consistent and promising results in all the tests studied. Included were sprouts, seedlings, and small and large trees.

Mesquite on the ranches visited was sprayed by airplane during the spring of 1950. A. H. Walker, range specialist for the Texas A&M Extension Service and one of the group making the tour, says that, although it is too soon to determine the final results of

the spraying, the work definitely looks promising.

Walker reminds ranchmen that the present goal of this experimental work is to find a practical method of mesquite control, rather than mesquite eradication. A mesquite kill of 100 percent is not

expected. The immediate objective is to find a low cost method of control which stockmen can afford. For the method to be practical, the increased carrying capacity of the grazing land plus the ease of handling livestock must pay the

cost of applying the control. Application costs for the ester of 2,4,5-T runs about \$3.50 per acre for both material and flying.

Spraying with an airplane is the best method of applying the chemical mixture for controlling mesquite when there is no danger of damaging field crops. However, Fisher and Young caution that airplane operators should be experienced in brush control spraying and the airplanes should be properly equipped. Apparently the coarser the droplet size of the chemical, the better the results will be. To be most effective, the chemical should be applied at tree-top height.

Mesquite spraying gives the best results when the chemical is applied in the spring at full leaf stage, which will be six to eight weeks after the first leaves appear. If ground moisture conditions are not favorable, the control results will probably be disappointing, apparently because the chemical is not translocated properly so as to kill the roots. Fisher and Young suggest waiting another year if conditions are not favorable.

They warn against the danger of using 2,4,5-T in areas where susceptible crops are grown. This compound has been known to drift as far as eight miles in a high wind. Small droplets are carried easily in the wind, and applications made 20 to 30 feet above the tree-tops add to the drift danger. Although 2,4,5-T may do wonders when properly applied, Walker reminds stockmen that carelessness in applying may result in lawsuits and possibly outlawing of the chemical.

Grass will not kill mesquite but giving grass a chance to seed out on sprayed areas will materially reduce the number of sprouts and seedlings. If an operator can not rest the pasture the growing season following spraying, Walker advises to at least stock it lightly. Proper range management follow-

ing mesquite spraying may double the length of time that the treatment is effective. This may be the difference between profit and loss on the operation.

He emphasizes that the work on chemical control of mesquite is still in the experimental stage. Results of the work are not conclusive enough for making overall recommendations, and the range specialists can go no further at the present time than to make suggestions.

Walker mentions the fact that control tests on other species of brush are also in progress, but they have not reached the advanced stage of mesquite research.

FOR SALE: 15,000 bundles of Hegira, late cut. Fine as you ever saw to rain since cut. \$30 per ton. Delivered and stacked at above price. Bill McCravey, Phone 23811, Eldorado, Texas. tfn7-Adv.

LOST: Pair of Edward Caroe glasses at Old Park Inn several weeks ago. Finder please return to same place or Ellis Sporting Goods. Call for reward. Gordon McDonald, Eldorado, Texas 1tp7

If a legume is not available, the developing gilt should be fed a leguminous hay. This can be fed from a hay rack.

East or West—Home-Made is Best



The best gifts are those you make with your own two hands; and one of the sweetest gifts you can give is a box of candy, made and wrapped at home, with your own personal touches. A special candy-making chocolate helps you produce candies as delicious and professional-looking as any you could buy—and especially welcome because you made them yourself!

Chocolate Caramels

- 1 cup sugar
- 1 cup light corn syrup
- 3 squares candy-making chocolate
- 1/4 teaspoon salt
- 1 1/2 cups heavy cream

Combine sugar, corn syrup, chocolate, salt, and cream. Place over low heat and stir constantly until sugar is dissolved and mixture boils. Continue boiling over low heat until a small amount of the mixture forms a firm ball in cold water (or to a temperature of 246° F.) stirring constantly after mixture begins to thicken. Pour into lightly buttered 8x4x3-inch pan. (Do not scrape pan.) Let stand until cold. Mark in 3/4-inch squares with knife and turn out on cold slab, top-side up. Cut in squares, using full length of long, sharp blade. Let stand in cool place 2 to 3 hours to dry. Wrap each caramel in waxed paper. Makes 40 caramels.

Quick French Creams

- 1 package (8 squares) candy-making chocolate
- 1 cup sifted confectioners' sugar
- 1 tablespoon milk
- 1 egg, well beaten

Heat chocolate over boiling water until partly melted. Then remove from boiling water and stir rapidly until entirely melted. Add sugar, milk, and egg and beat only enough to blend. Chill until mixture can be shaped in 1/2-inch balls. Shape balls and roll lightly in breakfast cocoa, chocolate sprinkles, or chopped shredded coconut or nut meats.

SMITTY'S WELDING SHOP

EXPERT WELDING
Anything — Anytime — Anywhere
DIAL 24681
Lawn Mower Repair

Sonora Abstract Co.

J. D. LOWREY, Mgr.

EFFICIENT LAND TITLE SERVICE
ON SUTTON COUNTY LAND
We represent several of the old line fire insurance companies.



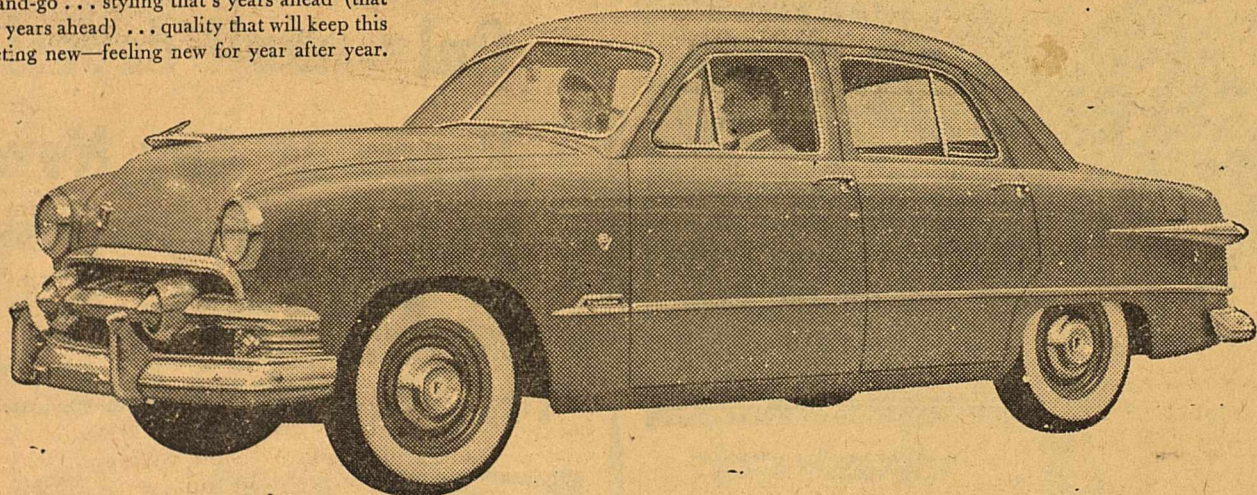
"FRIENDLY SERVICE"

Goodrich Tires & Tubes

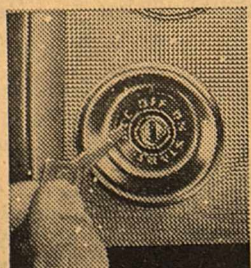
GREENHILL'S
Texaco Station

Here's the '51 FORD

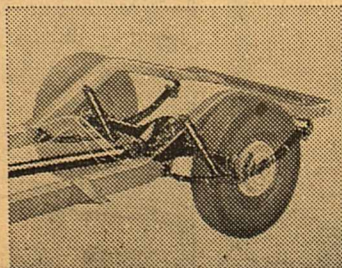
New—through and through—is this '51 Ford! It brings you V-8 or Six power that rules the road in get-up-and-go... styling that's years ahead (that will stay years ahead)... quality that will keep this Ford acting new—feeling new for year after year.



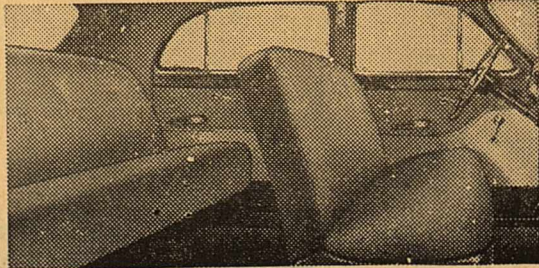
with 43 "Look Ahead" features



Ford's New Key-Turn Starting turns on your engine when you turn the ignition key past "ON". No more reaching for buttons or pedals!



New Automatic Ride Control... a unique springing system which automatically adjusts spring reactions to road conditions. You get an easy ride... a level ride... no pitch, no bounce, no roll!



Ford's "Luxury Lounge" interiors are designed to stay in style... to last through the years ahead. You'll find a new "Safety-Glow" Control Panel. You'll find a whole new selection of beautifully woven Fordcraft Fabrics that are matched to Ford's exterior colors. And Ford's interiors are built for the years ahead.

built for the years ahead!

In this '51 model, Ford has built a car, with 43 new "Look Ahead" features, that's as fine as the finest—yet priced with the lowest... a car that's built to last, not just for a year or two, but for the years ahead!

In addition to the "Look Ahead" features pictured on this page, Ford offers you a more rugged chassis frame box-sectioned back to the stiffer rear cross member for greater rigidity. For safety you get new Double-Seal King-Size Brakes... sealed against the weather. For quick, all-weather starts Ford offers you a new Waterproof Ignition System. And best of all, Ford brings you Fordomatic Drive*... the newest, finest, most flexible of all automatic transmissions. *Optional at extra cost.

Come in for the "LOOK AHEAD" facts on the

'51 FORD

SONORA MOTOR COMPANY

GEORGE WYNN Insurance Agency

Fire, Windstorm & Automobile Insurance.

Bond and Casualty Coverage

Protection against loss from suits arising out of automobile accidents.

Office at Devil's River News Bldg. DIAL 24501

Robert Massie Co.

Funeral Directors, Embalmers

Superior Ambulance Service

Phone 8121

Day or Night
SAN ANGELO, TEXAS

EYES EXAMINED

GLASSES FITTED

Dr. C. L. Basket

Optomist

DEL RIO, TEXAS

Sonora Wool & Mohair Company

Prickly Pear Killer
Shearing Supplies
New Mexico Salt
Knapsack Sprayers

PHONE 23601

EXPERT Stock Drenching

Prompt, Dependable Service

We drench your stock and get it back on the range in the shortest time possible.

ALSO, WE CARRY A FULL LINE OF STOCK MEDICINES AND VACCINES

Dial 23431 or 21581

Sonora, Texas

TAYLOR & MOORE STOCK MEDICINE CO.

SMITH ELECTRIC

CONTRACT WIRING COMMERCIAL WORK
APPLIANCE REPAIR & INSTALLATION
REWIRING & REPAIRING
ANYTHING ELECTRICAL
No Job Too Large Or Too Small

Agency For
AIRWAY VACUUM CLEANER
Have Stock of Supplies

J. P. (Smitty) SMITH

PHONE 24951

Contract Your Feed Needs NOW

RICE BRAN - GROUND EAR CORN

NORTHERN SHELLED YELLOW CORN

NOVEMBER - DECEMBER DELIVERY

PAYMASTER - 41% C/S MEAL & PELLETS

20% RANGE PELLETS - 21% VITAMIN A

Phone 21891

H. V. STOKES FEED CO.

SOCIETY NOTES

THE DEVIL'S RIVER NEWS

Sonora, Texas, Friday, December 8, 1950

Birthday Party Aids Children In Warm Springs

Wanda Sue Mackey was honored on her eleventh birthday Tuesday when her mother, Mrs. Jack Mackey, entertained with a party at the Episcopal parish house.

Instead of bringing birthday presents for the honoree, guests brought gifts for young patients at the Gonzales Warm Springs Foundation. Each child wrapped his gift and enclosed a note of good wishes.

Mrs. Mackey, assisted by Mrs. Raymond Morgan, served dinner to the children at quartet tables decorated in green and white.

Those present were Jim Ray Baker, Norma Dell Drews, Tom Elaine Espy, Freddie Fields, Clayton Friend, Joe Thomas Friess, Kenneth Fuqua, Charles Genrich, Jan Keng, June Rose Lyles, Gary Merritt, Jennell Mayhew, Harold Jean Moore, Anna Lou Morris, John Ed Neville, Yvonne Penick, Frank Joe Potmesil, Mary Jack Puckett, Anna George Reynolds, Betty Sue Fields, Katherine Taylor, Jan Vander Stucken, Addah B. Wardlaw, Linda Wardlaw, Mary Adele Wilson and Nancy Bess Wilson.

Also Mr. and Mrs. Joe M. Vander Stucken and daughter, Jo Bess, Mr. and Mrs. Duke Wilson and the Rev. Stanley Hauser.

CHRISTMAS MUSIC PROGRAM AT METHODIST CHURCH

A service featuring singing of Christmas music will be held at the Methodist Church on Wednesday evening, December 13, at 7:30 o'clock. Everyone is cordially invited to be present.

Woman's Club To Hold Open House

The Sonora Woman's Club will hold an open house this afternoon at the club house at 3:30 o'clock. A Christmas program will be presented and the Rev. Stanley Hauser will give a Christmas story.

Hostesses are Meses. Lea Allison, Howard Espy, Armer Earwood, Ed. Grobe and Carl Cahill.

HARRISON - KINDER RITES READ HERE NOVEMBER 30

Miss Mary Kinder, daughter of Mr. and Mrs. Archie Leslie of Boonville, Indiana, became the bride of Chester B. Harrison, son of Mr. and Mrs. H. H. Harrison of Bristow, Oklahoma, November 30, at 8:30 o'clock. The Rev. J. E. Eldridge, pastor of the First Baptist Church, read the ceremony at the parsonage.

The bride chose a dress of navy and navy accessories and wore a corsage of pink rosebuds. She was attended by Mrs. Bob Teaff, who wore a beige suit with brown ac-

FRIENDSHIP CIRCLE MEETS WITH MRS. C. T. JONES, JR.

Mrs. Cleve Jones, Jr. was hostess to the Friendship Circle of the Women's Society of Christian Service at the home of Mrs. E. E. Sawyer Wednesday, December 6.

Mrs. Dave Locklin was program leader, assisted by Mrs. Norman Davis. Mrs. Locklin gave "Open Thine Hand Wide." Mrs. Davis gave a story about Korea, "There's A Song In the Air."

The meeting was closed with a song, "O Little Town of Bethlehem," and the following were present: Mrs. Herman Smith, Mrs. Davis, Mrs. Edgar Shurley, Mrs. Locklin, Mrs. Rose Thorp and Mrs. Dewitt Lancaster.

P-TA MEETS TUESDAY

The regular meeting of the Parent-Teacher Association, which was postponed last Tuesday because of the Santa Claus parade, will be held Tuesday, December 12, Mrs. Dan Cauthorn, president, announced.

Most of the foot trouble among children results from their wearing outgrown and badly fitted shoes.

Bob Teaff was best man.

Mr. and Mrs. Harrison are making their home here, where he is employed by the Stamford Research Institute.

YOUR HEALTH

"Health examinations won't prevent old age, but many tens of thousands of persons, whose records of these examinations have been studied, have not only been helped to live longer, but also be sturdier and healthier, and enjoy more comfort and happiness by following the advice of the physicians who have made such examinations," declared Dr. Geo. W. Cox, State Health Officer.

Once the individual leaves school, he assumes the responsibility not only for his choice of work and method of living, but also for his continued good health. But he often fails to apply the available methods of preventing disease and prolonging life. Hardly a day passes in which our attention is not called to the untimely death of some prominent person or acquaintance, which may be attributed to a preventable disease. So something should be done in the way of educating the adult group of the population, so they will voluntarily carry out those measures which prolong life and maintain good health.

It is our firm belief that if the diseases of the gastrointestinal tract, which includes the lips, tongue, teeth, mouth, stomach and bowels, are recognized in their early stage, their progress may be curtailed, adequate treatment advised, many deaths might be prevented.

Today the medical profession realizes that many childhood diseases are now under control and that our present problem must center about the adult, encourag-

31 Years Ago

Mrs. L. P. Bloodworth, who has been visiting her mother, Mrs. B. M. Halbert at Angelo this past week, is moving from Fort Worth to Fort Smith, Ark.

Mr. and Mrs. Lewis Roueche and children visited relatives in Angelo this past week.

Ed. Robbins and brother-in-law, Lee Morris, were in town Monday from the ranch in the eastern part of the county.

Earnest Quigg was in town Wednesday.

Fred Earwood came in from the ranch in Edwards County Monday night with his father for medical attention.

Mr. and Mrs. O. R. Altizer of Juno and Mr. and Mrs. Willie Cauthorn accompanied by Mack Cauthorn were in town Wednesday shopping.

Mrs. Edgett, manager of the Frank Baker ranch in Sutton, has been in Junction the last few days and reports that section in good condition.

C. T. Jones leased to the Sinclair Gulf Oil Co., 320 acres in Middle Valley, 20 miles northeast of Sonora for \$320.

Tom Burditt returned Saturday from a visit to his old home at Uvalde.

Mr. and Mrs. Russell Martin returned Tuesday from a visit to Del Rio.

The changed conditions so noticeable in Sonora the past year have caused our young people to seek other towns for pleasure and excitement. They now find that with a little effort on their part Sonora will again be the ideal place. They find after a few visits the distant pastures are not as green as they looked, nor is the range as good as that at home.

FOOD SALE SATURDAY

The Sonora Parent-Teacher Association will sponsor a food sale beginning at 9:30 o'clock tomorrow (Saturday) morning at the Sonora Gas Company. The public is cordially invited to participate.

DRIVE SAFELY! OBSERVE STOP SIGNS!

ing periodic check-ups. Is semi-annual consultation with your physician too great a premium to pay for many years of additional life, freedom from suffering and consequently short periods of hospitalization?

WANTED VOLUNTEERS!



FOR THE U. S. MARINES

For information call or write now to: U. S. MARINE CORPS

POST OFFICE BLDG. SAN ANGELO, TEXAS

NOTICE
The Kratz Trucking Co.
Phone 22351
Now located corner US 290 and Main Street

Best of the Year! "Finest JAX Ever Brewed!"

JAX DISTRIBUTING CO. R. A. Magill - Box 509 SAN ANGELO, TEXAS

Making Brewing Company, New Orleans

Eldorado Meets Eden Friday

The Eldorado Eagles, paced by H. Nixon and Gerald Hicks, continued their drive for the regional championship as they rolled over Bodie Hunter's Marfa Shorthorns 28-0 last Friday night. The light but fierce Eagle line outplayed the hefty Shorthorn forwards to spring Gerald Hicks loose for two touchdowns and hold the Marfa lads to one first down. All four of the Eagle's touchdowns were scored by their outstanding quarterback, Hicks. He caught two touchdown passes and

MOVIE ON JOHN THE BAPTIST TO BE SHOWN

A forty-minute sound movie on the life of John the Baptist will be shown at the Episcopal parish house Sunday morning at 9:30 o'clock. The public is invited to attend.

rambled 33 and 38 respectively for the two remaining touchdowns.

The Eagles engage the Eden Bulldogs at 2:30 o'clock this afternoon at Eden for the regional title. The Eagles will be favorites to capture the title.

YOU GIVE MORE PLEASURE
YOU GET MORE VALUE...
WITH A
BULOVA
The Most Wanted Christmas Gift

MISS AMERICA
17 Jewels
Snake Chain
Bracelet
\$3375

HAWLEY
17 Jewels
Expansion Band
\$4950

Pay as little as
\$100
A WEEK

Brilliant 6 DIAMOND SET \$7250

George Barrow Your Jeweler

Special Holiday Offer!

Only small deposit Reserves Any New PHILCO for Christmas Delivery

Unmatched in Quality and Value
At The Price!
BIG 9 CU. FT. Philco 905. True Zero Zone Freezer. Quick Chiller, Meat Compartment, Adjustable Shelves. Full-Width \$209.95 Crisper.

Hurry-Avoid the Holiday Rush!
EASY TERMS
7.2 cu. ft. Value Triumph \$299.95

PHILCO 702. Luxury of a Full-Width Freezing Compartment—new double Utility Trays—many other modern features at lowest price ever offered!

Sonora Electric Company SONORA, TEXAS Dial 24791

Here's a tip... ZIP—your shirt's on!

LOOK SHARP on snappy days

ALL WOOL FOR ALL WINTER

Solid colors and so comfortable

GUARANTEED!

DRESS TO THRILL in stripes and patterns

A new shirt FREE if this collar doesn't outwear the shirt body!

SHEPPERD'S DIAL 24551 ROBT. L. WOLFF, Prop.

ARMY ANNOUNCES SIMPLE DEVICE TO MEASURE RADIATION EXPOSURE

Development of the first simple and inexpensive device to measure the extent of exposure of individuals to atomic radiation capable of mass production to meet both military and possible civil defense needs -- is announced by the Department of the Army.

Designated by the Army Signal Corps as a self-developing photographic dosimeter, the device is

small and light, may be hung around one's neck like a soldier's "dog tag," yet will measure very slight to fatal doses of radioactivity.

A reading can be obtained from the dosimeter one minute after exposure, without recourse to a photographic laboratory or the use of supplementary equipment.

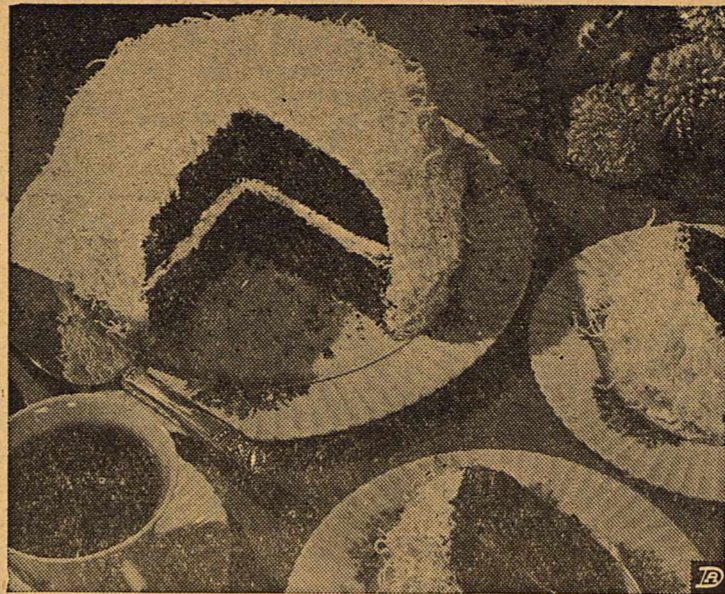
The dosimeter was developed under the sponsorship of the Signal Corps Engineering Laboratories, Fort Monmouth, New Jersey, by the Polaroid Corporation, Cambridge, Mass. It employs principles discovered by Dr. Edwin H. Land, President of Polaroid and inventor of the Land camera.

Because it works on a photographic principle, the dosimeter's

by altering the type of photographic emulsion used.

The dosimeter consists of a small metal case containing a flat paper package. The package, or plaque, in turn contains photographically sensitized film and a pod of developing solution. The film has graduated scales on its outer edges and an unexposed center part. Exposure to gamma radiation causes the center strip to turn light -- the greater the exposure, the whiter the strip. By comparing the center strip with the graded scale on the edges, a good measure of the dosage of radiation received by the dosimeter's user can be made. Shielding in the case blocks out alpha and beta radiation, since gamma rays are the ones to be reckoned

with in an atomic explosion. When an "individual" suspects that he has been exposed to dangerous radiation, he merely pulls a tab from the tab. The tab is attached to the film plaque, which is removed. As the plaque passes through a narrow slit in the case,



When the signals have all been called and the game won, invite your crowd home for cups of hot, hot coffee and this mouth-watering Coconut Devil's Food Cake. Whatever the scoreboard shows, there will be cheers for your side when you serve this perfect combination of food after the game, as a climax to the excitement and fun.

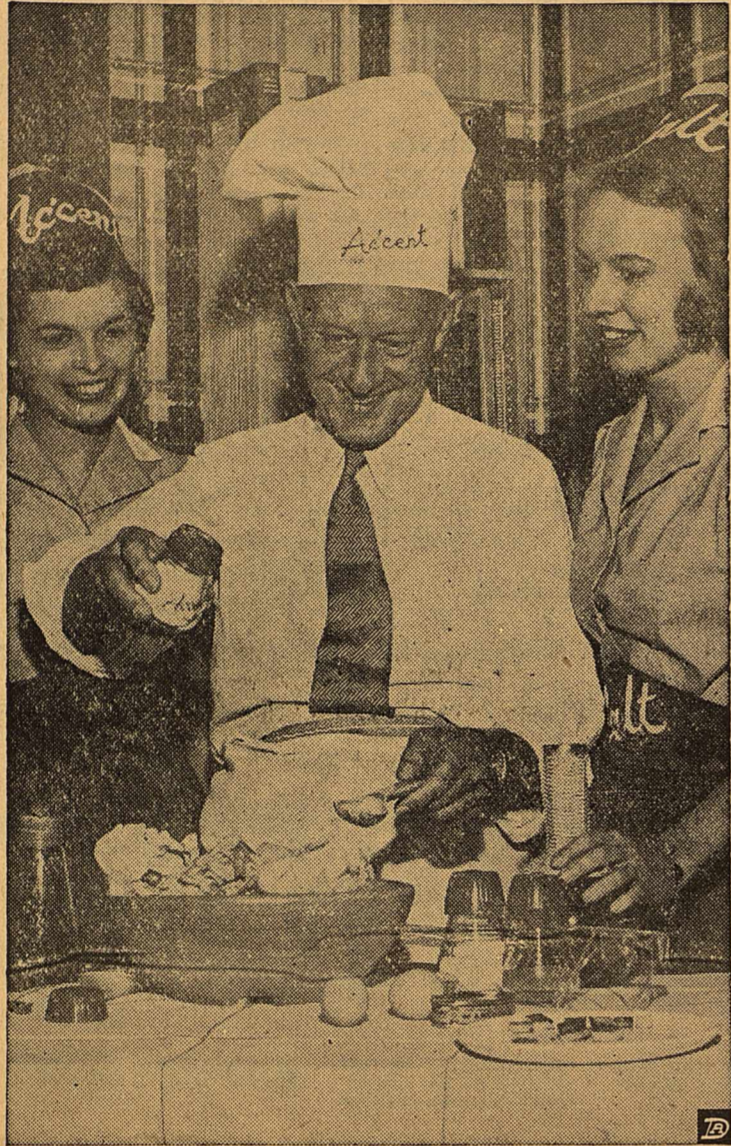
COCONUT DEVIL'S FOOD CAKE

- 2 cups sifted cake flour
- 1 teaspoon soda
- 3/4 teaspoon salt
- 1/2 cup shortening
- 1 1/2 cups Beet or Cane Sugar
- 1 egg and 2 egg yolks
- 3 squares unsweetened chocolate, melted
- *Milk (see below for amount)
- 1 teaspoon vanilla

*With butter, margarine, or lard, use 1 cup milk. With vegetable or any other shortening, use 1 cup plus 2 tablespoons milk.

Sift flour once, measure, add soda and salt, and sift together three times. Cream shortening, add sugar gradually, and cream together until light and fluffy. Add egg and egg yolks, one at a time, beating well after each; add chocolate and blend. Add flour, alternately with milk, a small amount at a time, beating after each addition until smooth. Add vanilla. Turn into two deep 9-inch layer pans which have been lined on bottoms with paper then greased. Bake in moderate oven (350° F.) 30 minutes, or until done. Spread frosting between layers and on top and sides of cake, sprinkling generously with shredded coconut while frosting is still soft.

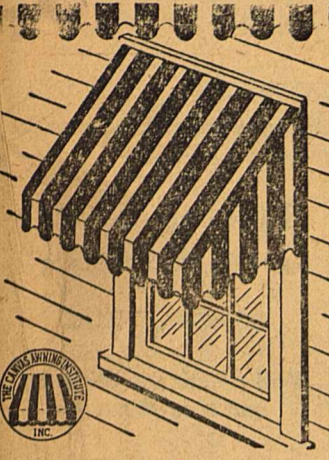
Accent on 'Celebrity Salad'



Conrad Nagel, noted star of screen, radio and television and an outstanding amateur chef, adds the expert touch to 'Celebrity Salad,' his version of "Caesar Salad." Nagel's recipe for two servings:

- 1 Head lettuce
- 1 Coddled egg
- 1/2 Cups croutons
- 1 Can anchovies or 1/2 Cup crisp bacon bits
- Salt and Pepper
- Ac'cent (monosodium glutamate)
- Parmesan cheese
- French dressing (optional)
- Garlic

Chill lettuce. Coddle (soft boil) egg for one minute, then chill. Make croutons by toasting or deep fat frying 3/4-inch bread cubes. Rub salad bowl with garlic. Break lettuce into bite-sized pieces. Add croutons. Add anchovies or crushed bacon. Sprinkle well with salt, pepper and Ac'cent. Add egg. Add French dressing, then cheese. Mix thoroughly. On serving, dust lightly with Ac'cent, grated pepper and cheese.



Keep Cool with CANVAS AWNINGS

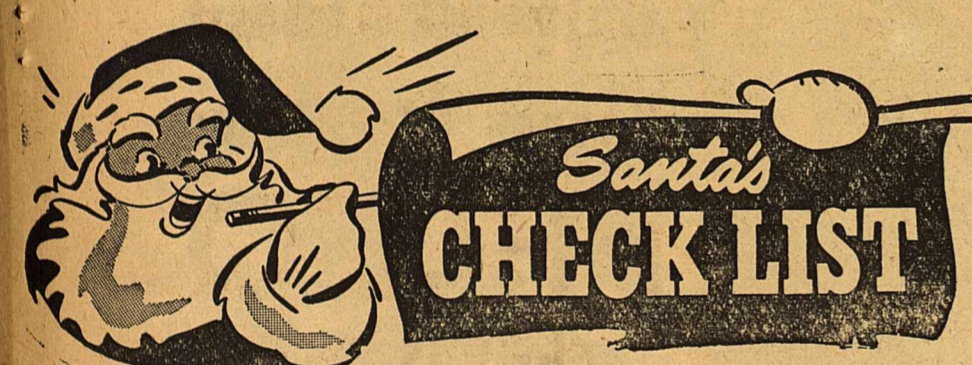
to suit your taste in PAINTED STRIPES... in WOVEN STRIPES... in SOLID COLORS, too!

• Finest quality materials... superb workmanship... and distinctive design--all these are yours today. But don't wait--decide now to make this your most joyous summer. Telephone us today for an estimate.

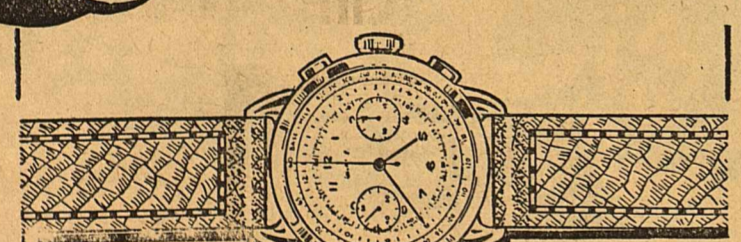
- Truck and Trailer Covers
 - Window Shades
 - Roll Duck
 - Awning Stripe
 - Car Door Awnings
- Acme Auto Top & Awning Co.

R. L. (Bob) Young
M. L. Young, Jr.

113 - 115 N. Chadbourne
DIAL 6130
SAN ANGELO, TEXAS



Santa's CHECK LIST



Chronograph. 17-jewels, 2 push buttons. On sale at only



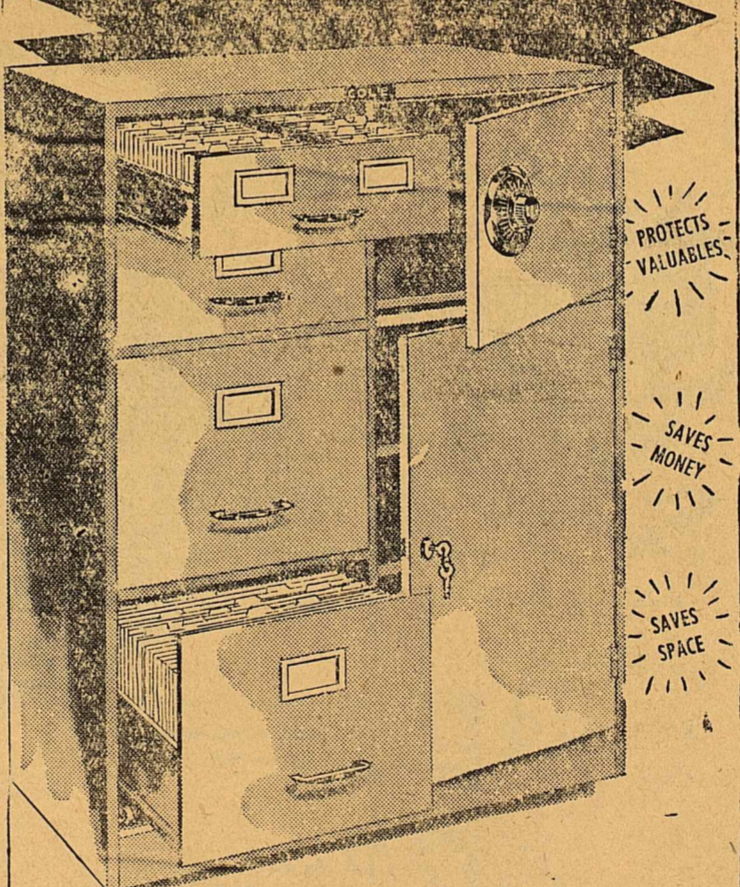
Waterproof. 17-jewels. Shock proof, sweep second hand.



Self-Winding. 17 jewels. Luminous dial. Shockproof.

The Wesley Sawyer Jewelry

COLE'S new invention for the ONE MAN OFFICE



THE 5-in-1 (5 cabinets in 1 unit)

COMPLETE OFFICE OUTFIT

- Sturdily built of heavy steel with:
- 1 Two double index drawers for 3" x 5" or 4" x 6" cards (6400 capacity).
- 2 Card drawers can also be used for cancelled checks.
- 3 Two ball-bearing, letter size files for bills and letters.
- 4 Safety vault for valuables (only you know the dial combination).
- 5 Three adjustable storage compartments under lock and key, for supplies or tools.

37 1/2" high, 30 1/2" wide, 17 1/2" deep. Cole gray baked enamel finish.

No. 478. Complete for only **\$81.00**

With plunger type lock which automatically locks all drawers. No. 478PL.....\$88.50

The above cabinet with four letter size drawers, instead of two. (The additional drawers replace the lower storage compartment.) No. 474.....\$87.00

The Devil's River News

Symphony Chorus To Present Christmas Concert

A chorus of 160 voices will join the San Angelo Symphony Orchestra for a Christmas Concert Sunday, December 10, at 3:30 o'clock.

A program of Christmas music has been arranged for the second concert of the 1950-51 season for the San Angelo Symphony. The symphony is under the direction of Dr. Eric Sorantin.

The chorus, which is directed by Miss Jean Barlow, San Angelo High School vocal music instructor, will join the symphony after the intermission period. The chorus will sing the "Hallelujah Chorus" from Handel's "The Messiah," "The Heavens Are Telling" from "The Seasons" by Haydn, and "The Seasons" by Haydn, and "The Seasons" by Haydn, and "The Seasons" by Haydn.

Program for the concert is: "Egmont Overture" - Beethoven; Symphony in B. Flat Major - Schubert; Carols; Allegra; Andante con moto; Minuetto; Allegro Vivace; Ballet music from "Faust" - Gounod; San Angelo Symphony Orchestra - Dr. Eric Sorantin; "Hallelujah Chorus" - from "The Messiah" - Handel; "The Heavens Are Telling" - from "The Seasons" - Haydn; Christmas Carols - Selected; San Angelo High School Chorus and San Angelo Symphony.

POSTED
No Hunting.
Trespassers will be prosecuted.
E. S. MAYER & SON
Sonora, Texas

EDW. A. CAROE
217 S. Chadbourne
SAN ANGELO
Phone 5384

Vic Vet says
SAY, PAL, IF YOU'RE RECEIVING A VA BENEFIT BY CHECK AND YOU RE-ENTER THE ARMED FORCES, NOTIFY VA IMMEDIATELY SO YOU WON'T GET AN OVERPAYMENT THAT YOU'LL HAVE TO REPAY LATER

WATER WELL DRILLING
FULLY INSURED
ALL WORK GUARANTEED
Wesley C. Young
Call 24661, Sonora, Texas

Order a **HAMMOND ORGAN** as a family Christmas Gift!

\$1305
DELIVERED AND INSTALLED!
You can learn to play the Hammond Organ in less than a month

Think of it! A two-manual-and-pedal Hammond Organ at such a price. Even if you have a small home or a tiny apartment, you can now have the beauty of organ music. The rich Hammond Organ tone... its inspiring versatility... its wonderful harmonies, all are yours in the new Spinnet Model. It's spinnet size to fit even the smallest homes and churches... self-contained in a rich beautiful case. It is easy to play... never needs to be tuned.

There are 4 complete Model Organs to fit any application for the home and church.

EXCLUSIVE REPRESENTATIVES FOR STEINWAY AND OTHER FINE PIANOS
San Antonio Music Co.
316 W. COMMERCE ST. ★ SAN ANTONIO, TEXAS
SAN ANTONIO MUSIC CO.
316 W. Commerce St., San Antonio, Texas
Without obligation, please send me information on the following Hammond Organ models:
() Home Model () Concert Model
() Church Model () Spinnet Model

USE COUPON TODAY
Name.....
Street.....
City..... P. O. Zone..... State.....

From The Churches

ST. ANN'S CHURCH
 Sunday Masses — 8 o'clock
 — 10 o'clock
 Weekday Masses — 7:30 o'clock

BAPTIST CHURCH
 Sunday School — 10:00
 Morning Service — 11:00
 Young People's Meeting — 6:00
 Evening Services — 7:00
 Mid-Week Services

Each Wednesday — 7:00
 W.M.U. — Each Wednesday
 Men's Brotherhood meets Tuesday
 after the first and third Sundays.

CHURCH OF CHRIST
 Bomer B. Gist, Minister
 10:00 a. m. — Bible Classes
 10:45 a. m. — Worship
 8:15 p. m. — Young People's Meeting
 8:00 p. m. — Worship

THURSDAY
 8:45 p. m., Ladies' Bible Class
 Everyone Is Welcome At Every
 Service.

FIRST METHODIST CHURCH
 W. H. MARSHALL, Pastor
 Church School — 9:45 o'clock
 Morning worship — 10:50 o'clock
 Youth Fellowship — 6 o'clock
 Evening Worship — 7 o'clock

CHURCH OF THE NAZARENES
 Everyone Invited
 Midweek Prayer Meetings
 7 p.m. Wednesdays
 Meetings held in South Side

Church of Christ.
 Rev. Ralph E. Bates
ST. JOHN'S CHURCH

Sunday Morning
 Holy Communion — 8 o'clock
 9:30 — Church School
 11:00 — Morning worship with
 sermon.

CHURCH OF CHRIST
 (South Side) Holiness Building
 Services Each Lord's Day at
 10:30 o'clock
 Evening Services — 7:30 o'clock
 Welcome All -- T. R. Chappell

MEXICAN BAPTIST CHURCH
 Rev. L. R. Flores, Pastor
 Sunday School — 9:30
 Morning Service — 11:00
 Young People's Meeting — 7:30
 Evening Service — 8:00

SUBSCRIBE TO THE NEWS

Understanding Service

RATLIFF FUNERAL

HOME

Ambulance Service

Dial

23501 - 21871 - 21801

Quail Season Now Open

Quail hunters in most of the state may look forward to improved quail hunting this fall, states the Executive Secretary of the Game, Fish and Oyster Commission.

The quail hunting season for the state is from December 1 through January 16, both days inclusive, with a bag limit of twelve per day or thirty-six per week. However, in the twenty-eight county area of the Panhandle, only

ten birds per day may be taken with a possession limit of twenty. West of the Pecos the season is open only during December and the daily bag limit is twelve, with not more than twenty-four in possession. There is no open season on Mearns quail.

The Executive Secretary explains that many counties have special quail laws and urges hunters to check the local regulations before they go hunting.

Wildlife biologists of the Game Department are conducting studies of quail populations through examination of quail wings again this year. The Executive Secretary

requests hunters to cooperate in this work by sending one wing from each bird they kill to the Game, Fish and Oyster Commission in Austin. A study of quail wings will show the percent of young birds and indicate the production and survival for the year.

To facilitate mailing of wing collections, the Game Commission will supply special business reply envelopes on request. These provide space for recording pertinent data and require no postage from the hunter. The active help of hunting clubs and other groups is being solicited.

It is essential that wings from cocks and hens be placed in separate envelopes but any number of wings from birds of the same sex may be placed together. Only one wing from each bird should be saved. Date and county of collection are also necessary. If official envelopes are not at hand, any kind of paper sack will suffice if properly labeled.

One further bit of information is requested. In order to compare quail populations in different parts of the state, a place on the wing envelopes will be shown for

NOTICE TO CONTRACTORS OF PROPOSED CONSTRUCTION FOR THE TEXAS AGRICULTURAL EXPERIMENT STATION ON SUBSTATION #14 SONORA, TEXAS

Sealed proposals addressed to the President of the Board of Directors of the A&M College of Texas, for the construction of A Superintendent's Residence on Sub-station No. 14 of The Texas Agricultural Experiment Station at Sonora, Texas, will be received in the office of the Manager of Physical Plants, 33 Administration Building, College Station, Texas, until 2:00 p.m., January 4, 1951, and then publicly opened and read.

Detailed plans and specifications of the work may be seen for examination, and information and proposal forms may be obtained from Arch - C. Baker, College

recording the number of coveys found per day of hunting. The Executive Secretary states that this will also add to the picture of the state quail situation.

Architect, 331 Administration Building, A&M College of Texas, College Station, Texas.

Make it your responsibility to see that the coming Holiday Season is a safe and sound one. Safety practiced in the home, on the farm and highway may save your own life or that of a member of your family.

Safety should be considered by the buyers of children's Christmas toys.

SUBSCRIBE TO THE NEWS

Elliott & Elliott
 ATTORNEYS-AT-LAW
 SONORA, TEXAS
 Will practice in all state and federal courts

Livestock Auction Sale EVERY WEDNESDAY JUNCTION, TEXAS

NEW SALES BARN AND PENS
 Located in junction of Menard and London Highway
 Two Miles North of Junction
 SALES BROADCAST OVER KMBL, 1450
 SHEEP SALE - 11:30 A.M. — CATTLE SALE - 1:30 P.M.
 NO SALES ON DECEMBER 27 & JANUARY 3
Ranchers' Commission Co.
 LEM AND JACK JONES, Owners

Archer and Son
 STONE MASONRY AND CONCRETE WORK
 G. W. Archer Francis Archer
 Dial 22111 Dial 27032
 SONORA, TEXAS

MATTRESSES FELTED IN LAYERS Furniture RE-UPHOLSTERED
 DIAL 21241
 Truck In Sonora Every Two Weeks
 Guaranteed When Built By **Bilderback Bros.**
 1717 S. Oakes St., San Angelo

POSTED!
 No Hunting
 Violators Prosecuted
Aldwell Brothers

Davis Insurance Agency
 Insurance For Every Need
 Real Estate Ranch Loans
 Phone 22951

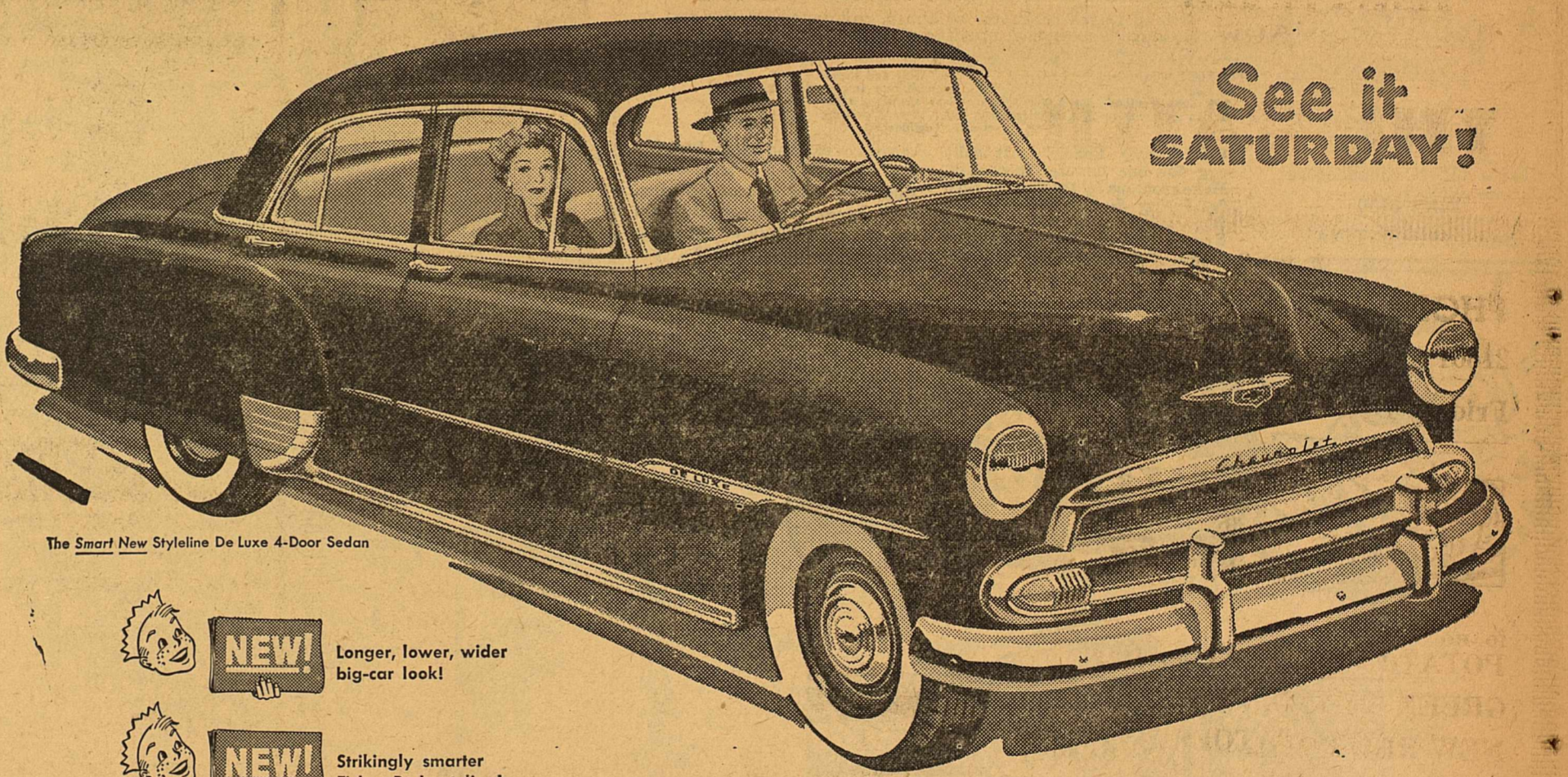
REAL ESTATE
 SEE US FOR CITY PROPERTY
INSURANCE
 Every kind of protection known to Standard Insurance Companies.
RANCH LOANS
 THE BIGGER THE BETTER
TAX CONSULTANTS
Elliott Brothers Co.

COSDEN PRODUCTS
 Wholesale & Retail
 Oil Gasoline Grease
 ALSO
 GROCERIES & COLD DRINKS
NEIL ROUCHE
 DIAL 25171
 Exclusive Distributors for Cosden Products in
 Sutton, Schleicher & Edwards Counties

RIDE WITH SAFETY and ECONOMY
 Put **Mobil Tires** ON YOUR CAR TODAY!
 They're built for long service... tough and dependable with a specially designed tread that reduces wear and skidding... and they're guaranteed by the makers of Mobilgas and Mobiloil. Mobil Tires and Tubes provide more trouble-free driving and greater safety. Put them on your car today!
 Your Friendly **MAGNOLIA Dealer**
Bill Smith

NEW 1951 Chevrolet

AMERICA'S LARGEST AND FINEST LOW-PRICED CAR!



The Smart New Styleline De Luxe 4-Door Sedan

See it **SATURDAY!**

- NEW!** Longer, lower, wider big-car look!
- NEW!** Strikingly smarter Fisher Body styling!
- NEW!** Luxurious Modern-Made interiors!
- NEW!** Jumbo-Drum brakes—largest in field!
- NEW!** Glare-Proof Safety-Sight instrument panel!
- NEW!** Improved, easier Center-Point steering!

Refreshingly new IN ALL THE THINGS YOU WANT!

New outside! New inside! Refreshingly new in feature after feature! That's Chevrolet for 1951!
 It's America's largest and finest low-priced car, with distinctive new styling, new front and rear-end design, and new America-Preferred Bodies by Fisher. And, with all these new things, it also brings you the proved things, which make Chevrolet America's top car. It brings you extra-sturdy, extra-

rugged, extra-durable Chevrolet construction; it brings you that more thrilling and thrifty Valve-in-Head engine performance for which Chevrolet is world-famous; it brings you comfort feature after comfort feature and safety feature after safety feature found only in Chevrolet and higher-priced cars. Come in... see Chevrolet for 1951... and you'll agree it's America's largest and finest low-priced car.

plus TIME-PROVED POWER Glide
 Automatic Transmission
 —proved by over a billion miles of performance in the hands of hundreds of thousands of owners.
 Optional on De Luxe models at extra cost.

MORE PEOPLE BUY CHEVROLETS THAN ANY OTHER CAR!



Lamar Fuqua Chevrolet Co.
 SONORA, TEXAS - PHONE 27921

San Antonio Show Offers \$48,000 In Premiums

tonio Livestock Exposition according to Mark Browne, General Livestock Superintendent. The February 16-25 stock show to be held at San Antonio's new Coliseum will feature 14 performances of the Everett Colborn World's Championship Rodeo, a

record number of commercial exhibits, a huge outdoors farm-ranch machinery and equipment show and the Don Franklin Carnival Midway. According to Browne, requests for entry blanks to exhibit stock at the San Antonio Show totaled

Happy Birthday

Friday, December 8—
Savell Lea Sharp
Jess Maxey
Saturday, December 9—
* * *
Sunday, December 10—
* * *
Monday, December 11—
Mrs. Bill Wade
G. V. Morris
Tuesday, December 12—

more than four thousand within three weeks after the premium list was issued.

"The spontaneous action we have received from exhibitors since we placed our premium list in the mail points towards a record increase in the number of livestock to be exhibited at the San Antonio Show," Browne stated.

National interest in the San Antonio Show is mounting with exhibitors and breeders from more than one hundred Texas towns—Oklahoma, Arkansas, Iowa, Kentucky and California requesting entry blanks for the ten-day livestock exposition which is offering \$48,000 in premiums.

Features of the February 16-25 stock show include classifications for milking Shorthorns and Brangus cattle. In addition an open class lamb show has been added to provide an opportunity for individual girls and colleges to exhibit.

A grass judging contest for 4-H and FFA Club boys will provide additional interest in rural youth participation at the '51 Show.

This year's San Antonio Livestock Show will have two breeding cattle sales. February 19, the Texas Angus Association will sponsor a sale of top quality Angus and on February 20, Hereford breeders will have a real offering on improved typed Hereford.

In addition, the South Texas Duroc Swine Breeders Association has scheduled a sale for the afternoon of February 23.

Mrs. C. T. Jones
O. L. Carpenter
Wednesday, December 13—
Mrs. E. L. Neuerburg

Thursday, December 14—
Mrs. R. A. Halbert
Mike Moore
Tommy L. Rees

Mrs. A. H. Adkins
DRIVE SAFELY! OBSERVE STOP SIGNS!

Pre Christmas Values!

Long Sleeve KNIT SHIRTS
One Lot — \$1.59

All Western Shirts
Reduced
REG. \$7.95 NOW \$6.95
REG. \$6.95 NOW \$5.95
REG. \$5.95 NOW \$4.95
— SAVE A \$ —

ZIP - JAC
Reg. \$4.95 — NOW \$3.95

One Group Long Sleeve Sport Shirts
\$2.95

Long Sleeve KNIT SHIRTS
\$1.98

CORDUROY
REG. \$1.98 Yd. NOW \$1.59
REG. \$1.69 Yd. NOW \$1.39

CURTAINS
Were \$2.29 NOW \$1.89

Ask About Odds & Ends SHOES

Ladies Waistcoats
Reg. \$5.95 & \$7.95 — Now \$3.95

3 Girls' COATS
Were \$3.95 — NOW \$2.95

4 All Wool Girls' Coats
Were \$9.95 — NOW \$7.95

4 GIRLS' JACKETS
Reg. \$8.95 — NOW \$4.95

2 LADIES JACKETS
Were \$10.95 — NOW \$8.95

4 GIRLS JACKETS
Reg. \$9.95 — NOW \$7.95

1 GIRL'S JACKET
Reg. \$7.95 — NOW \$5.95

Ladies Waistcoat & Slacks
Were \$17.95 — NOW \$12.95

1 Girl's Jacket & Slack Suit
Was \$12.95 — NOW \$7.95

3 Girls' 2-piece Suits
Were \$9.95 — NOW \$5.79

PRISSY - MISSY DRESSES
REG. \$9.95, \$10.95, & \$11.95 NOW \$5.95
REG. \$7.95 & \$7.50 NOW \$4.79
REG. \$5.95 & \$4.95 NOW \$3.79

One Small Group Children's Party Dresses
\$1.98

TEEN AGE DRESSES
REG. \$9.95 NOW \$6.95
REG. \$7.95 NOW \$4.95
REG. \$10.95, \$12.95 & \$14.95 NOW \$7.95

SUB TEEN DRESSES
REG. \$10.95 & \$9.95 NOW \$6.95

2 Teen Age Jumper Dresses
Reg. \$14.95 Now \$5.95

ODD SHIRTS
Reg. \$4.95, \$5.95, \$3.95, & \$3.49 NOW \$2.95
Reg. \$7.95, \$8.95, & \$9.95 NOW \$4.95

Girls Corduroy Slacks
REG. \$7.95 NOW \$6.95
REG. \$9.95 NOW \$7.95

LADIES SLACKS
One Group — \$2.95

1 GIRL'S COAT — \$5.95

GIRLS' BLOUSES
Reg. \$3.95 & \$4.95 Now \$1.98

CORDUROY DRESSES
REG. \$14.95 & \$12.95 NOW \$9.95
REG. \$19.95, \$17.95 & \$16.95 NOW \$10.95

THE RATLIFF STORE

Vic Vet says

VETERANS! IF YOU RE-ENTER SERVICE, PAY YOUR GI INSURANCE PREMIUM TO VA FOR AT LEAST THE NEXT MONTH, BUT ARRANGE IMMEDIATELY FOR PREMIUM DEDUCTIONS FROM YOUR SERVICE PAY THEREAFTER.



For full information contact your nearest VETERANS ADMINISTRATION office

Dad's a popular guy, he suggested—

home for Christmas! on the Santa Fe

It's a real gift to the whole family! A Santa Fe trip home is the best of all for Dad, Mom, and the kids too.

Remember, Santa Fe is the economical way to travel. Children under five ride free with an adult passenger, and big sister or brother, under twelve years, ride for half fare.

Make your plans with confidence—the Santa Fe will take you home and bring you back in any kind of weather. See your Santa Fe ticket man for full information on schedules and fares.

Gift Tickets! It's easy to send a Santa Fe gift ticket to a relative or friend. Ask the Santa Fe ticket man for details.

PHONE HAMILTON GROCERY PHONE

21601 A Red & White Store 21601
Friday, Dec. 8 DELIVERY SERVICE Saturday, Dec. 9



- IDAHO POTATOES, 10 lb Paper Bag 27c
- GREEN BEANS, 1b 21c
- NEW RED POTATOES, 2 lb 15c
- EGG PLANT, 1b 13c
- CUCUMBERS, 2 lb 25c
- RUTABAGA TURNIPS, 2 lb 15c
- LETTUCE, Head 9c



- FRESH GROUND VEAL, 1b 45c
- CHUCK ROAST, 1b 53c
- PORK CHOPS, 1b 53c
- LONGHORN CHEESE, 1b 48c
- SLAB BACON, Best Grade, 1b 55c

GIVE US YOUR CHRISTMAS TURKEY ORDER NOW

- CRISCO**
- 3 lb Can 89c
- | | |
|--|--|
| Franco-American Tomato Sauce With Cheeses SPAGHETTI 15 1/2 Oz. Can 16c | Empson's Garden Gathered LIMA BEANS 1b Can 31c |
| Red & White SPINACH No. 2 Can 18c | Red & White MINCE MEAT 9 Oz. Pkg. 18c |
- Gold Medal - Kitchen-Tested FLOUR
- 5 lb Bag 48c
- | | |
|--|--|
| Chambray Queen Print Bag FLOUR 25 lb Bag \$1.64 | Baker's Shred-Sweetened COCOANUT 4 Oz. Pkg. 18c |
| Red & White One Pie Size PUMPKIN 2 - 14 1/2 Oz. Cans 25c | Red & White Old Fashioned APPLE SAUCE 1b Can 18c |
- Wilson's PURE LARD
- 3 lb Carton 56c

OUR DEPENDABLE BRANDS NEVER LET YOU DOWN!

FRIDAY, DEC. 8 SATURDAY, DEC. 9

SPUDS, 10 lb. bag 39c

SAVE ON THESE CANNED FOODS FOR CREAMING VEGETABLES—USE PET MILK

SUN SPUN Salad Dressing, Qt. 59c	P & G LAUNDRY SOAP, 3 Bars 25c
RED & WHITE Cranberry Jelly 23c	DOROX BLEACH, Qt. 15c
RED & WHITE Pineapple, Sliced, Can 34c	WALCOTT'S Rat Poison, Large Bottle 89c
OIL PACKED SARDINES, 3 Cans 25c	SPRY, 3 lb 93c

FLOUR, Red & White - 25 lb Sack \$1.85

FRESH FRUITS and VEGETABLES

LETTUCE, 2 Heads 25c	SIRLOIN STEAK, 1b 69c
CELERY, Stalk 22c	Sugar Cured Jowls, 1b 39c
CAULIFLOWER, 1b 17c	WILSON SLICED Laurel Bason, 1b 42c
BELL PEPPER, 1b 17c	Sausage, Smoked Ring, 1b 43c

CHOICE MEATS

Xmas Nuts & Trees — Xmas Fruit Cake Mix
GIVE ME YOUR ORDER FOR XMAS TURKEY

Chappell Grocery **Free DELIVERY** **A Red & White Store**
DIAL 21341 DIAL 21341



YOUR PRESCRIPTION

PROMPT ATTENTION

You wait for your prescription here only as long as it takes our courteous pharmacist to insure the accuracy of his results. We are in business for your good health!



Sonora Drug Co.
PHONE 38
SONORA, TEXAS

Office Supplies at NEWS Office

Plenty Of

Dodge & Plymouth Trucks, Cars

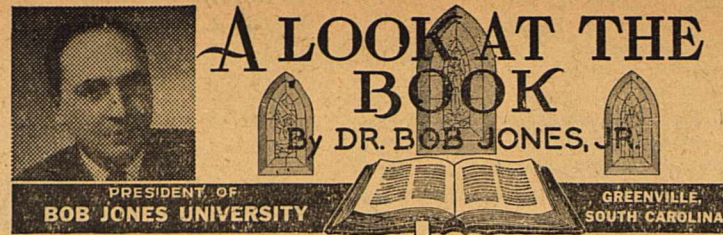
ANY BODY STYLE OR COLOR

LIBERAL TRADE IN ALLOWANCE

SEE ME BEFORE YOU TRADE

Parker Motor Co.

EARL PARKER — Franchised Dodge & Plymouth Dealer
Eldorado, Texas

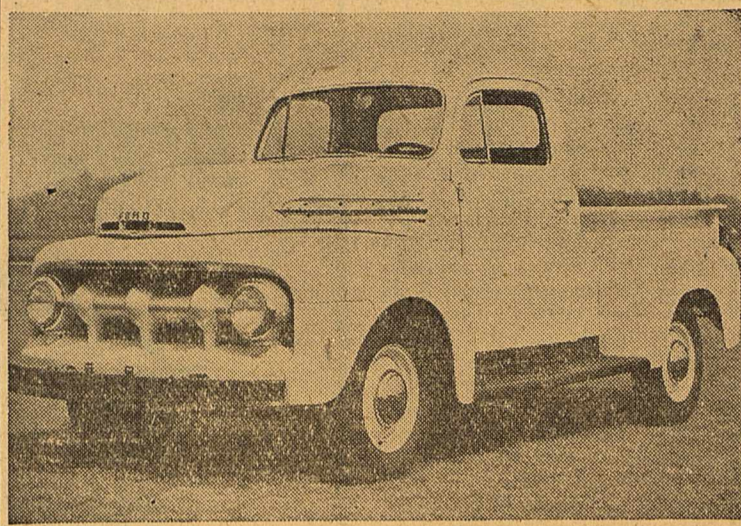


"God is love" (I John 4:8). The Lord Jesus Christ by His death manifested God's love to man. He who was God in the flesh demonstrated the love of the Father in the price of His own blood paid for man's redemption. "But God commeth His love toward us, in that while we were yet sinners, Christ died for us (Romans 5:8). God is wisdom and the Author of all wisdom (Daniel 2:20). The Lord Jesus Christ spoke only Words of divine wisdom. "Never

man spake like this man" (John 7:26).

God is Truth (Psalm 100:5). The Son of God never uttered one word untrue, and He Himself was Truth Incarnate. "I am the Truth" (John 14:6), said He.

God is Life and the Author of life (Genesis 2:7). Christ said "I am come that they might have life" (John 10:10) and "I am the Life" (John 14:6). The dead were restored to life at His command. God is Light (I John 1:5). In



The 1951 Ford F-1 pickup truck and other models in the new Ford truck line feature as optional equipment a new "5-Star Extra" cab for added comfort. An enlarged rear window in all 1951 Ford trucks provides better all-around vision. The steering column gearshift is standard equipment on the F-1 truck. The new cab, with many passenger car features, is sound-proofed with undercoating and roof insulation. Seats, including backs, are adjustable, and cushions have a thick foam rubber pad.

HOTEL McDONALD

"The Home Away From Home"

Sonora, Texas

The Devil's River News

ESTABLISHED 1890

PUBLISHED EVERY FRIDAY MORNING

ENTERED AT THE Postoffice at Sonora, Sutton County Texas, as second-class matter under the Act of Congress of 1879.

CLAY PUCKETT Editor and Publisher
ANY ERRONEOUS REFLECTION upon the character, standing, or reputation of any person, firm or corporation will be gladly corrected if the matter is brought to the attention of the publisher.

SUBSCRIPTION RATES — PAYABLE IN ADVANCE
One Year in Sutton and Adjoining Counties . . \$2.00
One Year Elsewhere \$2.50

the ark of the covenant ancient Israel God's presence manifested by the radiance called the shekinah glory. Jesus brought the light of heaven into the darkness of the world of sin. He is the "true Light, which lighteth every man that cometh into the world" (John 1:9). The brightness of His presence dispels the darkness in the lives of men.

God is power (Psalm 62:11). The flash of lightning and the roar of the thunder speak of God's omnipotence. All the forces locked in the universe came from God. The Lord Jesus Christ demonstrated Deity in the power of His very words. He commanded the winds to cease and the waves to be still and they obeyed His (Matthew 8:27). He had power over disease, power to break the bonds of death and loose the stony portals of the tomb.

God is righteousness (Jeremiah 23:6). Christ manifested perfect righteousness in every word and every act. Of all the sons of men He only was completely free from sin, without spot or blemish. No stain of guilt marred His life.

God is eternal (Deuteronomy 33:27). The Bible opens with the statement, "In the beginning God." The inspired psalmist exclaims, "From everlasting to everlasting, Thou art God" (Psalm 90:2). Jesus Christ is the eternal God come in the flesh. He "was in the beginning." He is "the same yesterday, and today, and forever" (Hebrews 13:8). Christ said, "Before Abraham was, I am" (John 8:58).

How true the words, "For in Him dwelleth all the fulness of the Godhead bodily" (Colossians 2:9).

THIS TASTES GOOD IN TEXAS

Stir-N-Roll Biscuits
2 cups sifted flour
3 teaspoons double-action baking powder
1 teaspoon salt
1/3 cup salad oil
2/3 cup milk
Sift flour, baking powder and salt into a bowl. Pour milk and oil into a measuring cup, but don't mix together. Pour all at once into the dry ingredients.

Stir with a fork until mixture cleans sides of bowl and rounds up into a ball. Smooth up by kneading about ten times without additional flour.

With the dough on waxed paper, press out 1/4 inch thick with hands, or roll out between waxed papers. For a higher biscuit roll dough 1/2 inch thick. Cut with unfloured biscuit cutter. For drop biscuits, after dough rounds up into ball, drop with fork on cookie sheet.

Bake 10 to 12 minutes on ungreased cookie sheet in very hot oven (475 degrees F.). Makes about 20 medium biscuits.

For Stir-N-Roll biscuits made with buttermilk instead of sweet milk, use only teaspoons double-action baking powder and add 1/4 teaspoon of soda.

If you are doubling or tripling the recipe, measure milk and oil into a bowl, then pour all at once into the flour.

Complete Menu
(Breakfast on a cold Morning)
Halves of Texas Grapefruit
Oatmeal (Cooked in Milk)
Cream and Sugar
Slices of Ham - Steamed Eggs
Stir-N-Roll Biscuits
Butter or Margarine
Plum Preserves
Milk - Coffee

\$500

Reward

I will pay \$500 to any person furnishing information leading to the arrest and conviction of anyone stealing any kind of livestock from any ranch in which I am interested.

SOL MAYER

John A. Martin's LITTLE PLUMBER



John A. Martin's PLUMBING
See JOHNNY at PLUMBING SUPPLY
Kohler & Crane
Dial 25281 Sonora, Texas

FRIDAY
DEC. 8

PIGGLY WIGGLY

SATURDAY
DEC. 9

Where The Cost Of Living Is Down

TIDE or FAB, large box - - - - - 29c

MONARCH		
APPLE CIDER, Qt. Bottle	33c	SPINACH, Diamond, No. 2 Can
MISSION PEAS, Tall Can	15c	HEINZ
Green Beans, Diamond, No. 2 Can	15c	Spaghetti, Tomato Sauce, Tall Can
KIMBELL'S - MEXICAN STYLE		HORMEL'S
BEANS, Tall Can	12c	SPAGHETTI & BEEF, Tall Can
		Blackberries, Kimbell's, No. 2 Can

SUGAR, Imperial, 10 lb. - - - - - 89c

HOMINY, Diamond, Tall Can	9c	LA FRANCE, 3 Boxes	25c
PLASTIC		CLOROX BLEACH, Qt. Bottle	19c
PAPER TOWEL HOLDERS, Each	35c	HERSHEY'S	
DOG FOOD, Our Pal, lb Can	8c	CANDY, 6 Bars	24c

FLOUR, White House, 25 lb. print bag - - - - - \$1.69

Fruits & Vegetables

YELLOW SQUASH, Fresh, lb	11c
BELL PEPPER, Good, lb	12c
CABBAGE, Green, lb	3 1/2c
GRAPES, Tokay's, lb	12 1/2c
CRANBERRIES, Eatmor, lb	18c

Full Line of Fruits & Vegetables

Meats

HAMS, 1/2 or Whole, lb	53c
Sausage, Home Made, Pure Pork, lb	39c
HAM HOCKS, Meaty, lb	30c
FRYERS, Fresh Dressed, lb	49c
SWEET BREADS, Calf, lb	43c

HENS — OYSTERS — BARBECUE

Sign right here—

APPLICATION FOR THE PAYROLL SAVINGS PLAN OF THE U.S. SAVINGS BONDS

By my pay each pay day, beginning _____, 19____, I authorize the _____ (NAME OF COMPANY OR ESTABLISHMENT) to purchase for me United States Savings Bonds (Series E), please have Bonds issued for the purchase price which I here check _____

ISSUE BONDS IN THE NAME OF OWNER _____

Mr. _____
Miss _____
Address _____

Co-owner or Beneficiary _____

Mr. _____
Miss _____
Address _____

NOTE—The purchaser may, if desired, designate an individual as co-owner to be named on the bond—of any bonds. Married women should use given name. (Example: Mrs. John Smith, not Mrs. John Smith.)

This order will continue until I advise you to change or cancel it.

START ONE OF THE WORLD'S SAFEST, EASIEST SAVINGS PLANS!

Begin today to build the financial security you've always wanted—through one of the *easiest* ways in the world! Just sign this application form where you work. Enroll now in the Payroll Savings Plan that automatically takes care of saving for you before you even draw your pay—that systematically buys you U.S. Savings Bonds.

Right from the start you'll have the wonderful feeling that part of the money you work for is safely working for you. If you can set aside only \$3.75 from your pay each week, in five years you'll watch it grow into bonds worth \$1,004.20; in ten years, \$2,163.45! If you can afford \$7.50 a week, in ten years, you'll have \$4,329.02!

Bonds are like cash—only better!

U.S. Savings Bonds are safer than cash because if you should lose or accidentally destroy them, the Treasury will replace them free of charge. And any Series E Savings Bond you've had over 60 days may be cashed any time at any bank or other authorized paying agency.

Pick the plan that suits you best—start on it today!	SAVE EACH WEEK	AND YOU WILL HAVE IN	
		5 YEARS	10 YEARS
	\$ 1.25	\$ 334.11	\$ 719.11
	2.50	668.97	1,440.84
	3.75	1,004.20	2,163.45
	7.50	2,009.02	4,329.02
	12.50	3,348.95	7,217.20
	15.00	4,018.67	8,660.42
	18.75	5,024.24	10,828.74

FOR YOUR SECURITY, AND YOUR COUNTRY'S TOO, SAVE NOW—THROUGH SYSTEMATIC INVESTMENT IN U. S. SAVINGS BONDS



First National Bank

SERVING SUTTON COUNTY 50 YEARS



PARTY LINE COOPERATION
Also SCORES with everyone

If you want to make a hit with your telephone party line neighbors, just take these three steps:
1. Use the line sparingly.
2. Space your calls reasonably.
3. Be sure to hang up the receiver after calling.

This cooperation is team play that will help bring better service to everyone, including you. Why not help drive it home on your telephone party line?
The San Angelo Telephone Co.