

Spring School Activities Reach Climax In Annual District Meet

Spring school activities will reach their peak during the coming weekend, when the district meet will be held in Ozona. Friday and Saturday will see the athletic events, with the literary contests to be held on Tuesday, April 12.

Tennis and softball will be run off Friday, and Sonora will have entries in all divisions of both events.

Saturday will see the track and field meet, and Coach Bud Moody will take thirteen tracksters to Ozona to try for district laurels. Battle for the title is expected to be between Junction and Sonora, with the Eagles having perhaps a slight edge in talent.

Among the events to be held Tuesday will be debate, extemporaneous speech, declamation, number sense, slide rule, essay writing and spelling. Again, Sonora students are expected to carry off more than their share of the honors.

The Sonora BRONCO was adjudged as the best paper of the district in a recent Austin judging, and is now eligible to send two members of the staff to the regional meet in Odessa in May. Judging in the Austin event was by sending eight school papers, published at various times throughout the year.

The Sonora High School Band, under the direction of Ross Hay, will enter the regional meet, which will be held in San Angelo on April 29-30. The band, to be composed of 55 members, will compete against some 40 bands in their effort to bring the honors back to Sonora. The local band will be entered in the Class B competition.

Band Director Hay has asked that any civic and social groups desiring entertainment before the April 29 date contact him, for he would like for his solo and ensemble entries in the regional meet to gain the extra experience in facing audiences before the contest. In addition, they put on most entertaining programs, worthy of the note of any program chairman who seeks a program for his or her club anytime during the next few weeks.

Cherry Blossom Time
Every year at about this time the Japanese cherry trees which form a ring around the reflecting Tidal Basin, adjacent to the Potomac, explode into myriad of blossoms almost overnight.

Due to the early Spring, it happened a week earlier this year—that is, a week earlier than planned by those who plan the annual Cherry Blossom festival.

This caused no little concern to the planners who ballyhooed the festival into a Nation-wide attraction, what with charming princesses from every State in the union vying for that coveted honor of being the Queen of the Cherry Blossoms. Texas was well represented by Miss Marian Sue Wilson, daughter of Congressman and Mrs. Frank Wilson, of Dallas. But a spin of a huge wheel picked the Queen, and in this game of chance Montana's Judy Queen was the lucky girl.

The festival was held on April 1, 2 and 3. Nature played a perverse trick in bringing on the blossoms ahead of man-made schedule. But they stay in bloom for less than a week; hence the concern of the planners.

Not to be outdone by Nature, the planners called in the scientists, and sure enough, out came two long-haired chemists with a spray called naphthaleneacetic acid. The expected result of this application was a blossom life of five days beyond the normal six or seven. And they claim the experiment helped.

Anyhow, an estimated half a million people viewed the short-lived glory of the cherry blossoms. They were really something to behold.

A. E. Housman, the poet, wrote his tribute to the beauty of cherry blossoms, including these lines: "Loveliest of trees, the cherry now is hung with bloom along the bough."

SCHOOL EXECUTIVES SPEAK IN AUSTIN
Superintendent A. E. Wells and Principals Rex Lowe and Lloyd Swindle attended the Elementary Education Conference in Austin on Thursday and Friday of this week. Purpose of the meeting was study of the theme, "Supervisory Leadership in Curriculum Revision Programs."

In addition, Wells and Lowe talks to the meeting, the former on organization and procedure for supervision and in-service education. Lowe spoke on general aspects of curriculum revision program.

The trio is expected to return sometime Saturday.

WEATHER BUREAU OPENS OBSERVATION STATION
The Sonora Climatological Station, located at the Duckett Nursery, opened operations here last Monday afternoon. The station, part of the United States Weather Bureau, Department of Commerce, is the newest link in a chain of stations which will completely cover the nation when it is completed.

J. W. Duckett is listed as observer at the station, with Clay Fuccett named as relief observer.

FUNERAL SERVICES HELD FOR MRS. CATHERINE LUNA
Funeral services were held at St. Ann's Church here last Sunday afternoon for Mrs. Catherine Sanchez Luna, 45, who died at her home on Saturday afternoon. Mrs. Luna has been a resident of Sonora for many years.

She is survived by her husband, and two brothers, Miguel and Abelino Sanchez.

Arrangements were by Ratliff Funeral Home.

Thieves Take Cabinet From Humble Office
An attempted robbery was foiled early Wednesday morning when nothing but checks were carried away from the local warehouse of the Humble Oil & Refining Company. A locked filing cabinet was taken from the office of the warehouse early Wednesday morning, and later found near the city dump grounds with locks shot off.

The checks, approximately \$400 worth, were found scattered in the vicinity. Of the checks, \$32 worth were property of the Sonora Volunteer Fire Department, receipts of the Saturday night dance given by that organization. The remainder were the property of R. L. Hallum, local agent of the Humble Company.

The robbers broke a glass door to get into the office, Sheriff B. W. Hutherson, who investigated, reported that the intruders left no clues and that there were no suspects at present. Officers are continuing to investigate.

A. E. Wells Speaks On Gilmer-Aiken Bill Provisions
At a recent Lions luncheon, Supt. of Schools A. E. Wells gave a short resume of the objectives of the controversial Gilmer-Aiken Education Bill, now before the Texas Legislature. The bill is divided into three parts, which have been presented as Senate Bills 115, 116 and 117. Purpose of each of the three bills was discussed by Wells, and are presented to the readers of the Devil's River News in a condensed form.

Senate Bill 115 provides for a state board of education elected by the people from nine geographical districts. These members will then appoint a state commissioner of education to serve for four years, replacing the present State Superintendent of Schools.

Senate Bill 116 provides for a minimum beginning salary of \$2,400 for a teacher with a Bachelor's degree, and an additional \$225 for a Master's degree. It proposes to increase current operating expenses in our equalization-aid schools from the present \$300 per teacher unit to \$400. It increases transportation 50 cents per child transported, and reduces the distance for which the state will pay from two and one-half to two miles.

The final bill provides for a board to be composed of the state commissioner of education, the state comptroller and the state auditor to estimate the cost of the minimum program fund and certify the cost to the State Comptroller, who shall be directed by law to set aside from the Clearing Fund a sufficient sum to finance the full cost of the program to all school districts.

SCHOOLS GET HOLIDAY
The Sonora schools will have a four-day holiday during the Easter season, according to Supt. A. E. Wells. The holiday will begin on Friday, April and last through Monday, April 18.

SONORA BAND TO ANGELO
Members of the Sonora High School Band visited in San Angelo on Wednesday afternoon of this week, and attended a concert presented in the city auditorium by the United States Army Air Force Band. Students made the trip in cars furnished by band parents and other local citizens.

SOIL CONSERVATION DIRECTORS IN MEET
Members of the Board of Supervisors of the Edwards Plateau Soil Conservation District held a Wednesday afternoon meeting at the Courthouse, at which time plans and applications for conservation service were approved.

Plans approved included those of Leonard Gibbs and Paul and Jack Turney. Applications were approved for work planned on the Cleve Jones, Sr. and J. D. Lowrey ranches.

In attendance at the meeting were Joseph Vander Stucken, Joe Brown Ross, Edwin Sawyer and Frank Bond of the board, County Agent D. C. Langford and E. B. Keng, District Conservationist.

Mr. and Mrs. Clayton Bray visited in Dallas during the past week.

Halbert Show String Cops More Honors
R. A. Halbert, Sonora rancher, continued his win streak in Polled Hereford shows throughout the state when his show string took the grand championship and reserve championship of the Polled Hereford Association's sixth annual show, held in Marshall last week.

Domestic Woodrow 23rd and Domestic Woodrow 120th took off the honors for sires, while Miss Advance Mischief 68th and Miss Domestic Woodrow 36th carried away the feminine honors.

In addition to the individual honors, the Halbert string also carried off blue ribbons in: Get of Sire, Domestic Woodrow; Best Two Bulls; Best Three Bulls; Best Two Females; Best Pair Calves; Best Six Head Cattle and was awarded an extra ribbon as Premier Exhibitor of the show.

In the judging, the local Herefords took only three second places, the remainder of entries coming in first.

In the sale, following the show, Halbert's Domestic Woodrow 31st took second honors with a \$1,250 price tag, second only to the \$1,550 paid to Mans Hoggett for his Domestic Anxiety 48th. The top sale price was paid by the Rev. J. Carter Horton of Pettis, who also paid the top female price of \$1,060 for Ruby Silver from the herd of Hugh White of Keller.

Halbert's Domestic Woodrow 31st sold to I. C. Underwood, Harrison County breeder.

Cold Snap Fails To Harm Weeds, Grass, Foliage In Sutton County
Old Man Winter, on his way out for a few months, turned and thumbed his nose at Sutton County and most of Texas during the past week, but this section escaped with nothing more than the gesture. Other parts of the state were not so lucky.

The temperature fell below the freezing mark here early Tuesday morning, but no serious damage resulted. The tops of tender vegetation were killed, some fruit trees and vegetables were damaged, but weeds and grasses withstood the weather very well. Low mark of the morning was 28 degrees, with a high of 71 degrees being recorded during that afternoon, a spread of 43 degrees for a 12-hour period.

A small amount of rain fell throughout the county last Friday, before the cold weather set in, but no precipitation was recorded after the temperature drop.

Throughout the rest of the state, snow, sleet, hail and heavy rains were recorded, causing severe crop damage in many instances. Snow fell at Odessa, Alpine, Midland, Marfa, Fort Stockton and many other West Texas cities.

At the present time, temperatures are rising over all of the state, with promise of summer heat being just around the corner.

REGISTRATION SHOWS INCREASE FOR 1949
Sutton County will have an additional 343 vehicles (including trailers) on its highways this year, according to Mrs. Lem Johnson, Deputy Tax Assessor-Collector. Registrations up to April 1 show that totals of 797 passenger cars, 246 commercials, 224 farm trucks, 2 farm tractors, 19 truck trailers, 37 trailers, 9 dealer licenses and 10 motorcycles were signed up in the Sutton County office. This is a total of 1,344 vehicles, as against 1,001 for the same period of 1948.

All classifications of motor vehicles showed a gain over 1948.

FEDERAL VETERINARIAN HERE AFTER APRIL 18
Dr. A. E. Peters of Mercedes, Federal Veterinarian, will be in Sonora on Monday morning, April 18, to start testing cattle. This is being done to re-accredit Sutton County, according to County Agent D. C. Langford, and will save having to test cattle before shipping them out of the county. Both beef and dairy cattle are included in the plans.

Ranchers desiring a definite date for testing after April 18 are advised to contact Langford at the Courthouse.

FORMER ANGELOAN NAMED TO OFFICE IN SONORA
Mr. and Mrs. Jean Derebery, formerly of San Angelo, have moved to Sonora to make their home. Derebery, formerly Assistant National Bank Examiner, will be the Assistant Cashier of the First National Bank here. Mrs. Derebery was an employee of the Standard-Times while the couple resided in San Angelo.

The new bank employee was a member of the Air Forces during World War II, and is a native of Denison, Texas.

Fourth Annual Speech Meet Called Best Yet Presented By School
A total of 74 out-of-town entrants were contestants in the fourth annual Sonora Speech Meet held here on Friday and Saturday of last week. Teams from Denton, Austin, San Angelo and Ft. Stockton entered the meet, which was under the direction of W. W. Wendt, high school principal.

Events which were held during the meet included, Declamation, Senior and Junior; Humorous Declamation; After-Dinner Speaking; Oratory; Original Oratory; Extemporaneous Speaking; Interpretation (Poetry); Dramatic Interpretation (Prose); Team Debate and Individual Debate.

The one-act plays were presented on Friday night, with the Denton play, "Opening of the Dam," being awarded first place. The Sonora presentation, "Our Town," was awarded first place in the competition, but withdrew from the elimination in order not to compete for the cup in its own meet. This also was true in the debate, when the local entry competed in five events, but withdrew when elimination debate started.

Local winners included Joyce Johnson in Girls' Extemporaneous Speech, John Stanley Hamby in

Boy's Junior Declamation and Jack Ratliff was awarded the best actor or acclade for his work as George in "Our Town." Best actress was Mary Louise Ivey of Denton, as Esther Frazier in "Opening of the Door."

Other Sonora contestants who placed in their events were: H. W. Kile in Junior Boy's Declamation; Inez Chalk in the Girl's division of the same event; Nina Smith in Humorous Declamation and Joyce Johnson in Poetry Interpretation.

The visitors were housed in Sonora homes while they were here, and all reported in as being treated royally during their short stay. The Speech Department of the school, and Wendt, wish to extend their thanks to the people of Sonora who volunteered their homes and their services in judging and other capacities during the meet, which was termed as the most successful one yet held here.

Mrs. Alfred Schwiening, Jr. and daughters, Jean and Clara Margaret, visited last week in Dallas with Mrs. Schwiening's mother, Mrs. Irene Arterberry. They returned home Saturday.

School Board Members Elected For New Terms
Results of the election held here on Saturday show that Mrs. George H. Neill and Frank Bond have been returned to their posts on the Board of Trustees for the local school system. There were no announced candidates, and several Sonora citizens received scattered votes in the write-in balloting. Approximately 105 votes were cast at the courthouse during the day.

The return of Mrs. Neill and Frank Bond to the board for three-year terms leaves the board comprised of the following members: Bryan Hunt, president, Mrs. Neill, Mrs. W. R. Cusenberry, Bond, Howard Espy, Lea Allison and George D. Chalk.

ELDORADO MEMORIAL BUILDING FINISHED
The Schleicher County Memorial Building, under construction at Eldorado for the past year, has been completed, according to reports from that city this week.

The building, constructed of Austin stone, tile and concrete, was started April 15, 1948. It includes an auditorium, stage, library, memorial room, banquet hall, American Legion quarters and various club rooms. The structure cost \$53,500 when completed. Dedication ceremonies will be held at some future date.

TWO WRECKS REPORTED HERE OVER WEEKEND
Two pickups were involved in wrecks in and near Sonora on Sunday night, April 3. The first, about 7 o'clock near the Jess Penick warehouse in Sonora, involved a 1941 Ford pickup, owned and driven by Alberto Tijerina of Ozona. The truck approached a curve at a high rate of speed, and turned over several times. Tijerina, 28, was injured in the mishap and taken to Shannon Hospital by a Ratliff ambulance. His companion, uninjured in the wreck, and riding to San Angelo with him, opened the ambulance door on the way there and fell out of the car, sustaining slight bruises and lacerations. Tijerina suffered a head injury, and at last reports was in a satisfactory condition at the hospital.

About 8:30 o'clock the same night, a 1941 Dodge pickup, driven by Ricardo Costancio, 22, of Ozona, turned over about seven miles west of Sonora, on the Ozona Highway. Costancio suffered a head cut, which was treated by Dr. Charles Browne in Sonora, while his companion, Antonio Hernandez, was taken to the Clinic Hospital by an Ozona ambulance.

E. B. Keng was a visitor to Temple this past week.

Field Day Set For April 14
The Extension Service of Texas A&M College will hold a Field Day for ranchers in the Crystal City-Carrizo Springs area, of which Sonora is a part, at the Winter Haven Experiment Station, near Crystal City, on Thursday, April 14.

Activities will get underway at 10 o'clock that morning, and last until 4 o'clock in the afternoon. Chief speaker will be Dr. Ide P. Trotter, Director of Extension Service, who will speak on "Advantage of Soil Building and Pasture Improvement in Post-War Agriculture." C. R. McDowell, Superintendent of the Winter Haven Station will speak concerning brush-control work.

Other speakers will be: Dr. Jack Miller, Head of the Animal Husbandry Department of A&M; Beal Pumphrey, of Union City Stock Yards, San Antonio; J. D. Prewitz, Vice-Director of the Extension Service; Dr. V. A. Young, Head of Range Management at A&M and A. L. Smith, beef cattle specialist for the Extension Service.

The program includes a tour of range crops and mesquite eradication projects currently underway at the station. Barbecue lunch will be served at the station.

Local ranchers who are interested in attending the Field Day are asked to contact County Agent D. C. Langford at the courthouse, so that those without rides may have a way over and back.

CORRECTION
Due to incorrect information received in its office, this paper last week printed a story which stated that two charges filed in Sutton County Court involved a much-publicized "rice hull" swindle. This is not the case, the local charges stemming from a perfunctory examination of rice bran on the floor of a Sonora feed house. The examination showed that the feed was not as advertised, and the charges were made as a matter of routine, many such charges being filed every week by the State Feed Control Service.

High school students are happy over the district meet in Ozona. They will receive holidays Friday and Tuesday for the events in the neighboring city. Not so the elementary school students, who will go to school just like always.

Judges in the one-act play competition presented here last week were GUY BIZZELL of Austin, Mrs. DICK ADAMS of Ozona and Mrs. MARION ELLIOTT of Sonora. No one envies them having to make a decision among the plays presented.

From the amount of pipe piled on the railroad sidings around Sonora, it appears that it won't be too long before the city will have a new pipeline running through it.

Congratulations to MRS. TOM RATLIFF, recently elected as new president of the Sonora P-TA. The new officers will take office before the next school term starts.

Although SON-OF-A-GUN captured a wild-running tire for R. G. NANCE, as yet no reward has been forthcoming.

Speaking of railroad sidings, a survey discloses that two carloads of wire have arrived, which preposes the start of a line between Sonora and Juno by the Southwest Texas Co-Op.

The contestants in the recent speaking events here were entertained on Saturday night by MR. and MRS. G. H. DAVIS at the Davis ranch with a barbecue and a dance. Awards to participants were presented that night at the ranch.

There will be an important meeting of the A&M Mothers Club at the home of MRS. E. E. SAWYER on Tuesday afternoon, April 12, at 3 o'clock.

Pedestrians beware! There are 343 more vehicles registered in Sutton County than last year, which improves the chances of being run over or involved in a wreck.

After carrying most of the honors in the Polled Hereford Show at Marshall this week, R. A. HALBERT then sold four head for a total of \$3,150, an average of \$787.50. The sale average was \$481 per head.

Entered in the district meet in Ozona this weekend and on Tuesday will be students from Big Lake, Junction, London, Eldorado, Menard, Rocksprings, Ozona and Sonora. Hot dog sales should be terrific in Ozona on those days.

When questioned concerning an event classified as "Number Sense," W. W. WENDT breaks down and admits its is - - of all things, ARITHMETIC.

Proud grandparents are MR. and MRS. JAMES D. TRAINER, whose cat had kittens the early part of the week.

Mohair is playing a more important part in men's suits, according to JOHN ROWLAND & SONS of Del Rio, who are displaying suits made of 50 per cent mohair and 50 per cent wool. These suits are made for summer wear and from all reports are well-suited for the job.

A bill down in Austin is going to make it tough on some Sonora citizens. It prohibits carrying a gun in a car on a public highway unless it is unloaded and either wrapped or enclosed in a case.

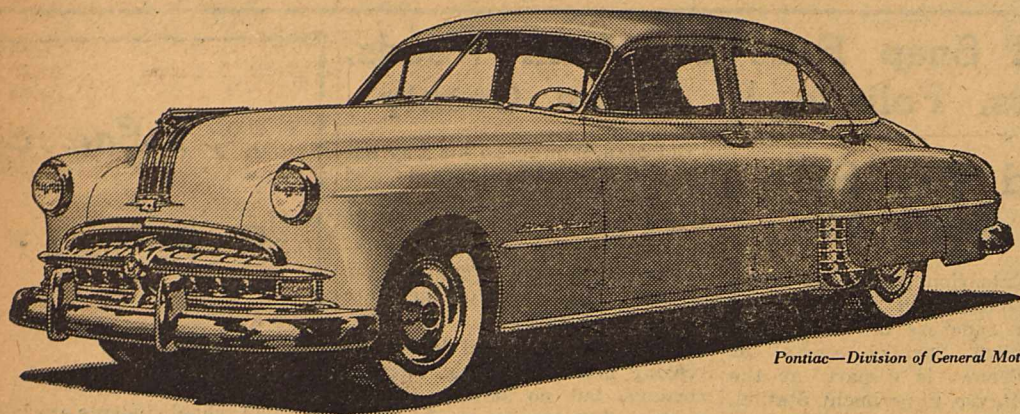
Shame on TRIS SCOTT, who pits a couple of contestants against each other in a tennis match, then sits down and enjoys a cold drink while they are battling it out.

Pride of the Lions Club is EMMETT (FAIR PLAY) AS-KINS, who won at Bingo, then returned his prize for another round of play. Couldn't he be wanted an extra steak dinner in New York rather than a lamp in Sonora, could it?

Continued to page 8

Be sure to see the

New '49 PONTIAC



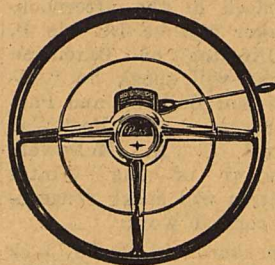
Pontiac—Division of General Motors

Lowest Priced Car with GM Hydra-Matic Drive!

Want thrilling performance plus "automatic" driving at its very best? Want lots and lots of room and airy vision? Want a ride that gentles the roughest highways? What YOU want is this big new Pontiac for 1949—the lowest-priced car with GM Hydra-Matic Drive!

Come feast your eyes on the stunning beauty of the new Pontiac models. And take our word for it, when you drive and ride, you're in for an even greater thrill!

So why not come in as soon as you can—see the 1949 models—and get the whole Pontiac story?



GM HYDRA-MATIC DRIVE gives you unsurpassed "automatic" driving ease. No clutch pedal. You just sit back and drive! GM Hydra-Matic has been proved in millions of miles of driving. Optional on all models at extra cost.

Johnson & Granger Pontiac Company

Range Specialist Warns Against Heavy Stocking

In many areas of Texas, range lands were overstocked last year, and the bad effects from this practice will last for several years, says A. H. Walker, extension range specialist of Texas A&M College.

Overgrazing not only makes it harder for the valuable range grasses and plants to grow and make seed, but it also causes the soil to pack. This means less pore space in the soil and a lighter covering of litter on top of the ground. Ranges in this condition receive little benefit from the hard, dashing showers that are common to Texas during most of the year. On the other hand, reminds Walker, ranges that have been only moderately grazed have a turf that will slow down the run-off and will give the water a chance to soak into the soil. Such range land will soak up water from two to four times as fast as overgrazed ranges.

It is always well, says Walker, to think in terms of future effects on the range when you're stocking a pasture. It is better still to make a close check on the amount and kinds of forage plants growing on the range and then stock in proportion to the amount of vegetation available. Light to moderate stocking will give the more desirable plants and grasses a chance to reproduce.

It is a slow and often trying process to bring back into production a badly overgrazed pasture, but it can be done. Walker says it's more profitable and better management to base the stocking

ENLISTMENT SERGEANT PLANS REGULAR CALLS

Master Sgt. J. R. Cates of Uvalde spent a day in Sonora this week, seeking enlistments and re-enlistments for the U. S. Army and U. S. Air Forces. He plans to make Sonora and Sutton County a regular call on his itinerary.

Those interested in enlistment, either in regular or reserve branches of the two services are invited to drop Sgt. Cates a line, in care of the Army and Air Force Recruiting Service, Uvalde.

PERSONALS

Mr. and Mrs. Jack Mayfield and children of San Antonio were here Saturday visiting Mrs. J. W. Mayfield.

Mr. and Mrs. James Vaughan of Seattle, Washington were recent visitors in the F. L. McKinney home.

Mrs. Nell Martin of Houston has been visiting her sister, Mrs. H. C. Saunders, and family the past week.

Mr. and Mrs. A. D. Magill have moved here from Marfa to make their home. Magill is in charge of the Bill Allison ranch.

Dr. and Mrs. Alvis Johnson, Jr. and daughter, Beverly Susan, arrived Sunday for a two weeks' visit with Johnson's parents, Mr. and Mrs. Alvis Johnson, Sr. Dr. Johnson is Chief Resident of the Medical Center at Dallas.

rate on the ability of the range to produce desirable forage over a long period than to put too many livestock on the range when it looks good.

Office Supplies at NEWS Office

See You
IN CHURCH
Sunday

BOATS - BOATS - BOATS

We just received another carload of STAR STEEL BOATS, THE TOUGHEST BOAT made for the fisherman who has no boathouse or protection from the weather, made from tough copper galvanized steel, practically rustproof and will last almost indefinitely. This fact is proven by quite a few of them being in continuous service for fifteen years on the Concho rivers, and still going strong.

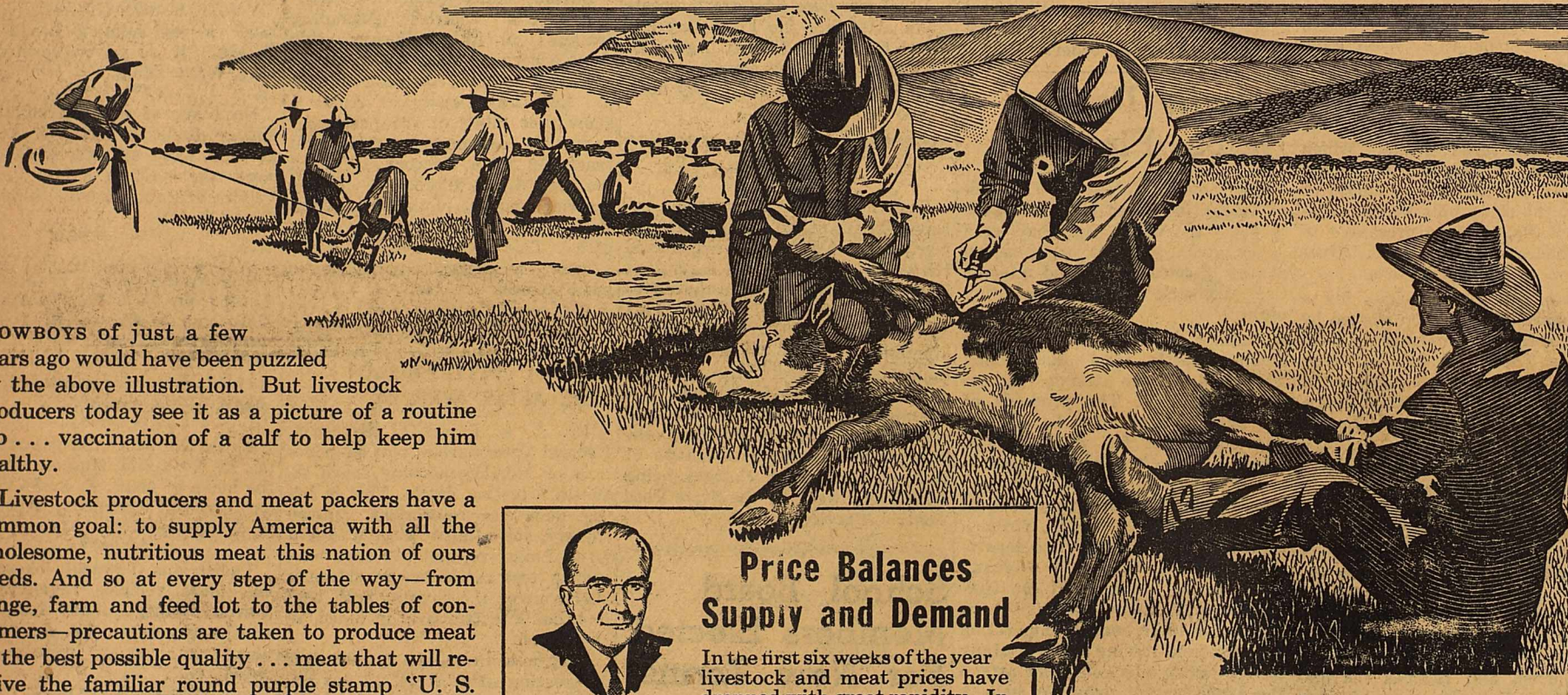
The prices are right too, the range being from \$115 to \$175, delivered in San Angelo. Also Century pleasure boats and Evinrude Motors.

Your West Texas Dealer

Bunyard Electric Co.

Dial 3304 San Angelo, Texas 5 S. Chadbourne St.

Ounce of Prevention...



Cowboys of just a few years ago would have been puzzled by the above illustration. But livestock producers today see it as a picture of a routine job... vaccination of a calf to help keep him healthy.

Livestock producers and meat packers have a common goal: to supply America with all the wholesome, nutritious meat this nation of ours needs. And so at every step of the way—from range, farm and feed lot to the tables of consumers—precautions are taken to produce meat of the best possible quality... meat that will receive the familiar round purple stamp "U. S. Inspected & Passed." This purple circle, found on every important cut supplied by federally inspected packers, is the housewife's guarantee of good, wholesome meat.

Growing animals are subject to various ailments. Meat, milk, wool and other valuable by-products... enough to supply a good-sized nation... are lost on farms and ranches each year. Add to this the lost grain and grass fed to animals which never live to maturity, or fed to unthrifty livestock that gain slowly. Total dollar losses run into billions.

Much has been done toward reducing these losses. New drugs and chemicals, such as the sulfas, penicillin and phenothiazine, are conquering livestock ailments, pests and parasites. But some of these causes of reduced production and profit are stubborn. To lick them will take increased knowledge, cooperation among neighbors and a constant watch for danger signs. But the increased earnings which can result from these efforts make them more than worth while. Production of healthy livestock is the only way to keep the markets for the meat you produce supplied and expanding. In solving your problems your local, state and federal veterinarians are good men to turn to for help.

Soda Bill Sez:



It's a good idea to save tough problems for a briny day. Dirt farmers and desk farmers both get calluses—but in different places.

OUR CITY COUSIN

April rain and April Road Make City Cousin A stick-in-the-mud!



Price Balances Supply and Demand

In the first six weeks of the year livestock and meat prices have dropped with great rapidity. In my 24 years with Swift & Company I have never seen so violent a drop. On the other hand, I have never seen prices start down from so high a level. It is the law of supply and demand at work.

When the wholesale prices of meat—the amount meat packers can get for it—go down, it means lower prices for livestock. It always has been and always will be that way. When demand for meat increases, we are able to pay producers more for their livestock. The prices Swift & Company, and the other 26,000 meat packers and commercial slaughterers, pay for livestock are governed by what they can get for the total available supply of meat and the by-products. As in the past, so in the future, livestock prices will result entirely from the balance between supply and demand.

Let's Be For Things Seems to me that most of us spend too much time and blood-pressure being against things. Let's be for things. Let's be for freedom of choice and initiative. Let's be for a system which allows a man to choose freely his own work, to make his own opportunities, to plan his own production. Which lets him decide where and how he lives; how he spends or invests his earnings. Let's be for our country, where a man's the boss of his own time, his own thoughts and his own political and religious beliefs. Let's take a good look at the rest of the world, then reverently thank God, and be for the United States.

Hope you have a prosperous summer, and we'll be looking forward to being with you again. Meanwhile, if you're in Chicago, plan to visit us at Swift & Company. All of us in the Agricultural Research Department cordially invite you to drop in for a chat. We'll be looking for you!

F.M. Simpson.
Agricultural Research Dept.

Martha Logan's Recipe for DELUXE CORNED BEEF HASH PATTIES



- 1 can corned beef hash
- 2 tablespoons shortening
- 1/2 cup thinly sliced onion
- 2 tablespoons flour
- 1 No. 2 can peas (2 1/2 cups)
- 3/4 teaspoon salt

Melt 1 tablespoon shortening in a frying pan and brown onions lightly. Sprinkle flour over onions and combine thoroughly. Drain juice from peas (approximately 1 cup). Add salt and juice from peas to onions and flour. Cook until sauce has thickened. Add 1/2 cup peas, stirring gently. Open can of hash at both ends. Push hash out on a board. Slice in four portions. Brown in 1 tablespoon shortening in a frying pan. Serve Corned Beef Hash Patties with vegetable sauce.

Quotes of the Month

The livestock producer, both by nature and by necessity, is a true conservationist. He would no more deliberately ruin the property on which he depends for his livelihood, and which he hopes to pass on to his children, than the manufacturer would deliberately tear down the plant in which he operates.

A. A. SMITH, President
American National Livestock Assoc.

Livestock provides one-third of all the food energy in the American diet, and 80 per cent of all the land used to produce the nation's food supply is devoted to livestock production. That is the story of a big business, vital to all Americans.

CHARLES A. BURMEISTER,
Production & Marketing Administration—USDA

Saving More Lambs

By Alexander Johnston, Wool Specialist
University of Wyoming, Laramie



Because every lamb grown to market maturity will now bring from \$15 to \$20, lamb mortality has become a source of increasing loss. Lambing practices reflect this. Open range lambing is decreasing. Pasture lambing is increasing in favor. Bands of from 500 to 1500 ewes are run in fenced separate meadow pasture. If spring storms are prevalent, shelter sheds are provided. The ewes lamb by themselves with little assistance.

Shed lambing is popular, especially when July or August fat lambs are desired. The lambing band is kept in a feed corral or small pasture adjacent to a lambing shed. When a ewe lambs, she and her "green" lamb are taken into the shed to an individual pen or "jug." After a day in the "jug," they are put in a larger pen with others. Gradually, over a period of 3 to 10 days, larger and larger units are merged. From the shed these bunches go out to green pastures or into feed yards until the pasture grows. Under this system of almost complete control, a very high percentage of lambs is saved.

The paddock system of lambing also is receiving favorable attention. Ewes, after they lamb, are transported from the range to the lambing shed by trailer. After a day or two in the shed, a small bunch is made up and turned into a small pasture with a shelter shed. In a day or two, several small bunches are merged and go into a larger pasture. This is repeated until at the end of two weeks or so, the summer bands are assembled.

Swift & Company

UNION STOCK YARDS, CHICAGO 9, ILLINOIS
Nutrition is our business—and yours

NOW AVAILABLE!

New Willis Jeeps & Jeep Pickups

IMMEDIATE DELIVERY

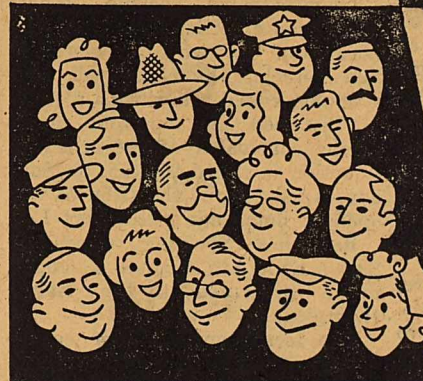
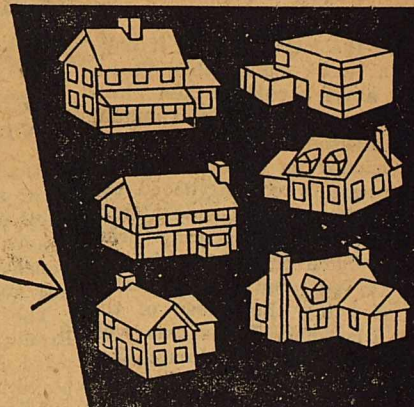
Complete Service and Full Stocks of Parts

Ozona Jeep Motor Co.

PHONE 302 — BOX 158 — OZONA, TEXAS



These are the homes



These are the people

THESE are the people who own your electric light and power company. Chances are you are one of this group, too.

They represent a cross-section of America—housewives, doctors, teachers—industrial workers, craftsmen, farmers—mechanics and milkmen. Yes, people from all walks of life have put their savings into companies like ours. They're direct owners.

But there are countless indirect owners, too—many who don't know they have a stake in the electric industry. They're people with life insurance policies and savings accounts. When banks and insurance companies accept your money, they must invest it wisely and productively. And because business-managed electric companies have a long record of successful service, much of that money is invested in utility securities.

So, you see, the electric industry is owned by the people it serves.

West Texas Utilities Company

Mrs. Herbert Smyrl and children, Shannon and Susan, and Mrs. Bon Tucker have returned after a week's visit in Houston and Jacksonville.

Mr. and Mrs. Preston Moody visited relatives in Austin over the weekend.

Attend SOME Church Sunday.

BOLO

Open For Service 1949

FEE \$100

Return Privilege

Pasture Conditions Near Perfect

Closer than half-brother to B. Seven, co-holder of world's record for 250-yards - 13.5.

Also Hill Country great roping horse till ten years old, then great race horse. Three-quarters brother to Bo-El, holder of world's three year stallion record. 330-yards - 17.4.

Blood kin to B Day, recent winner of stallion stakes in Tucson, Arizona, whom we raised.

Misty B., full brother to B Day, has been clocked 22.4 and 22.7 for the quarter, beating Stella Moore two lengths. Balmy L. sire of B Seven, B Day and Misty B, was born ours as were the dams of all these great horses. A great roping, polo playing, rock running family of horses, with wonderful hearts.

Cardwell Ranch

Junction, Texas

FARM LOAN OFFICERS MEET HERE MONDAY

Members of the Board of Directors of the Sonora National Farm Loan Association held a meeting in the local offices of the organization on Monday afternoon of this week. Routine business occupied the agenda.

Directors attending the meeting included B. E. Moore and J. I. King of Eldorado, P. T. Robison of Ozona and Joe Brown Ross and A. E. Prugel of Sonora.

R. S. Phillipi of Kermit was in Sonora Wednesday and Thursday of this week on business.

LIONS PLAY BINGO TO FINANCE NEW YORK TRIP

Members of the Sonora Lions Club played bingo Tuesday noon to help finance the forthcoming trip of the local club's representatives to the national convention in New York during July. Bingo winners included Clyde Clemens, Dr. Charles Browne, G. H. Hall, Pat Lyles, Yank McKnight and Edwin Sawyer. A net profit of \$56.80 was recorded.

Lunch was served to approximately 60 club members by the Mary Word Class of the Methodist Church.

SUBSCRIBE TO THE NEWS

Veterans School Shows Increase

The local unit of the Distributive Education Program of the Veterans Administration has gained some six members since its inception approximately 28 days ago, and is due for additional students on April 8, according to Ross Hay, instructor at the school. The April date is the beginning of a new billing period, and any veterans who would like to enroll in the school may do so at that time.

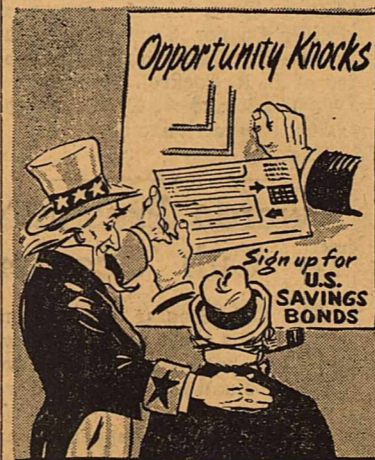
The local vets have spent some of their time painting and furnishing a new school room of their own, in the basement of the high school building. It is now completed, and will be for their exclusive use henceforth.

Any veterans who would like to enroll in the school, which teaches a business course on a half-time basis at present, are asked to contact Hay at the high school sometime before April 8. The class presently meets on Monday, Tuesday and Thursday nights, from 6 to 10 o'clock.

FOR SALE: Late 1938 two-door Chevrolet. Family car, good paint job, mechanically perfect. Inquire this office. 2tc25whm

Visitor in the home of Mr. and Mrs. A. W. Awalt during the past weekend was Miss Blanche Awalt of Brady.

Uncle Sam Says



"Put more Opportunity in your Future" during the Spring Opportunity Drive for the sale of U. S. Savings Bonds. When a representative calls at your home and asks you to sign up—don't miss this opportunity to say "yes." If any of the millions of volunteers—workers who are proud to help their country—should miss you—don't wait. Enroll for the Payroll Savings Plan where you work or the Bond-a-Month Plan where you bank. Make your own saving a sure, entirely automatic proposition. U.S. Treasury Department

Sonora Wool & Mohair Company

A Complete Line of Shearing Supplies & Shearing Equipment

PHONE 23601

No others compete when you compare!

Compare Features!

No other line of trucks in its price range has all these features! 4-Speed Synchro-Mesh Transmission • Splined Rear Axle Hub Connection • Foot-Operated Parking Brake • Steering Column Gearshift • The Cab That "Breathes"* • Full-floating Hypoid Rear Axle • Articulated Brake-Shoe Linkage.

Compare Quality!

There's an extra measure of massive strength and durability in Chevrolet trucks. They're built to take rough going in every feature of body, cab, engine and chassis.

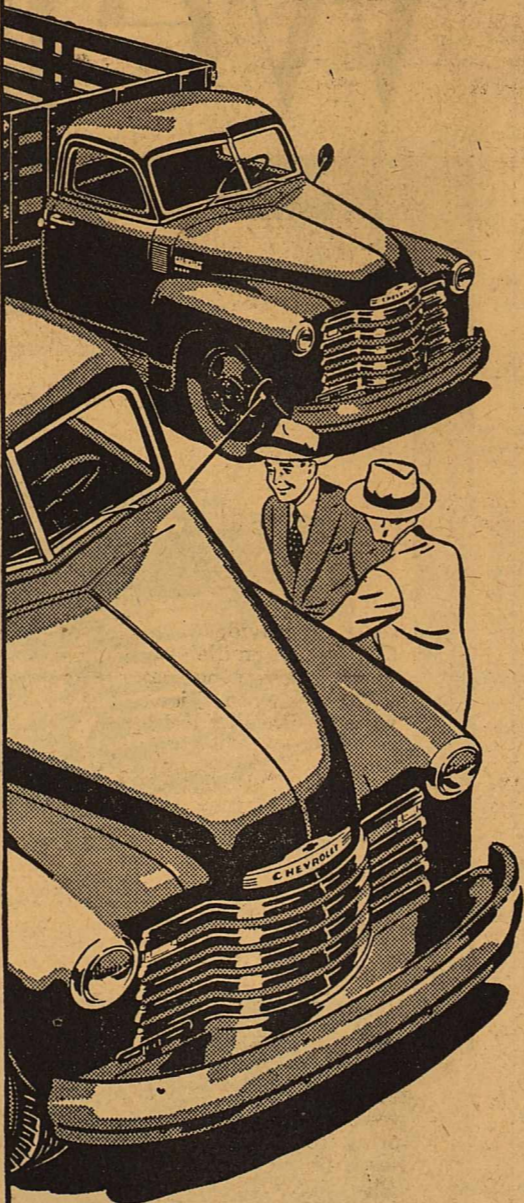
Compare Performance!

There's more power with economy in the Thrift-Master and Load-Master Valve-In-Head engines—Chevrolet's twin champions for low-cost operation, low-cost upkeep.

at the lowest list PRICES in the entire truck field

CHEVROLET TRUCKS

*Heating and ventilating system optional at extra cost.



THERE'S A CHEVROLET TRUCK FOR EVERY JOB... with capacities from 4,000 lbs. to 16,000 lbs. G. V. W. I



MORE CHEVROLET TRUCKS IN USE THAN ANY OTHER MAKE!

Lamar Fuqua Chevrolet Co.
SONORA, TEXAS - PHONE 27921

The Devil's River News
ESTABLISHED 1890
PUBLISHED EVERY FRIDAY MORNING
ENTERED AT THE Postoffice at Sonora, Sutton County, Texas, as second-class matter under the Act of Congress of 1879.
CLAY PUCKETT Editor and Publisher
ANY ERRONEOUS REFLECTION upon the character, standing, or reputation of any person, firm or corporation will be gladly corrected if the matter is brought to the attention of the publisher.
SUBSCRIPTION RATES — PAYABLE IN ADVANCE
One Year in Sutton and Adjoining Counties . . . \$2.00
One Year Elsewhere \$2.50

Banner Creamery

BUTTER — MILK — ICE CREAM

At Your Favorite GROCERY, DRUG OR CAFE

Listen to our Banner Birthday Party every Saturday KGKL at 10 A. M.

SMITTY'S WELDING SHOP

TOMMY SMITH JACK HITE

EXPERT WELDING

Anything — Anytime — Anywhere

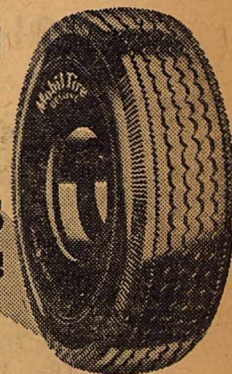
DIAL 24681

Lawn Mower Repair

RIDE WITH SAFETY and ECONOMY

Put Mobil Tires ON YOUR CAR TODAY!

They're built for long service... tough and dependable with a specially designed tread that reduces wear and skidding... and they're guaranteed by the makers of Mobilgas and Mobiloil. Mobil Tires and Tubes provide more trouble-free driving and greater safety. Put them on your car today!



Your Friendly MAGNOLIA Dealer



Bill Smith

FAST WORKERS! SPRING HOUSECLEANING Specials TO SPEED UP YOUR CLEANING!

FRIDAY, APRIL 8

SATURDAY, APRIL 9

SUGAR, 10 Lb. - 99c

GLASS WAX, Pt. Can 49c
Babo & Glim, Both For 36c
SWIFT'S CLEANSER, 3 Cans 29c
AERO HOUSEHOLD CLEANER, Qt. Bottle 19c
SPIC & SPAN, Box 25c
PUREX BLEACH, Qt. Bottle 17c
Gulf Spray, Qt. Bottle 45c
DUO DUSTIN -- CLEANS & POLISHES DUSTING SHEETS, Pkg. 19c

CRISCO 3 LB. TIN 85c
With Coupon

OXYDOL or TIDE LARGE BOX 21c
With Coupon

GLOCOAT 2 QT. CANS \$1.49
2 PT. CANS 89c

FLOUR, PEERLESS — 25 lb BAG - \$1.39

NO. 1 SPUDS, 10 lb Mesh 59c
FRESH RED SPUDS, lb 11c
SPINACH, Cello Bag 21c
CELERY, Fresh, Stalk 19c
SQUASH, Yellow, lb 19c
T-BONE STEAK, lb 59c
HAWKEYE SLICED BACON, lb 43c
SHORT RIBS, lb 37c
DURKEE'S -- COLOR EASE OLEO, lb 35c
EASTER -- WHOLE -- SMALL HAMS, lb 75c

McAllister

FOODS



A Red & White Store

DIAL 21341

DIAL 21341

Mrs. A. H. Adkins Party Honoree

Mrs. A. H. Adkins was honored guest Wednesday night when Mrs. Ernest McClelland entertained with a bridge party at her home. Refreshments were served to Mesdames G. G. Bennett, Sibe McKee, Francis Archer, Pat Carroll, Wylie Trainer, Tom Neville, Joe Hull and Raymond Morgan. Also Misses Nell Adams and Viola Adams. Mrs. Carroll won high club, Mrs. Morgan won high guest and the duce prizes, Mrs. Bennett won the slam prize and Mrs. Adkins won the bingo prize. The honoree was presented a set of dishes for her new home.

FIREMEN'S AUXILIARY IS GIVEN PARTY

The Firemen's Auxiliary was entertained Wednesday night by Mrs. Ford Allen. Prizes were won by Mesdames Tommy Smith, Jack Hite, Tommy Thorp, Tom Womack and Dick Morrison. A sandwich course was served to Mesdames George Barrow, J. H. Brasher, E. T. Smith, Lee Patrick, Scott Roberts, B. C. McGilvary, Wes Granger, J. A. Martin, Jr., Artie Joy, Jack Rape, O. C. Ogden, Tommy Smith, Hite, Thorp Womack and Morrison.

FOR RENT: Furnished apartment. Phone 23991. 1tp25
Room for rent. Call 27591. 1tp

Parent-Teachers Select New Officers For Coming Year

In a Tuesday afternoon meeting, the Sonora Parent-Teacher Association elected new officers for the 1949-50 school term, and attended to routine business matters. Elected to head the group for the next school year was Mrs. Tom Ratliff, who will succeed Mrs. Arthur Carroll serving as president. Other officers elected to serve with Mrs. Ratliff include: Mrs. Joseph Vander Stucken, vice-president; Mrs. Frank Potmesil, recording secretary; Mrs. H. V. Stokes, treasurer; Miss Anne Palmer, parliamentarian; Mrs. J. F. Hamby, historian, and Mrs. O. L. Carpenter, publicity chairman. Mrs. W. T. Hardy was selected to head a committee to study possible P-TA projects for the coming year. The association plans to make a gift to the school system through various projects now under study.

Entertainment was furnished by the finals of the student variety show. The five weekly winners were pitted against each other, with Billy Kring being declared as winner with a harmonica solo. Other contestants were Nina Smith, Nancy Hunt, Leon Brown and Phillip Cooper. Show-stopper came in the form of a quartet, composed of B. R. Cockrell, Ross Hay, W. W. Wendt and A. E. Wells, which sang several numbers for the gathering.

Awards Presented To Cub Scouters

The Cub Scouts, Pack 19, met recently for a pot luck supper with everyone bringing a dish. Seventeen Cubs and twenty parents were present.

Following the supper awards were presented, with Carlos Loeffler, Dan Eaton and Shannon Ratliff receiving the Bear Badge and Gold Arrow Badge. Don Letsinger, Rodney Davis and Jimmy Ward received Wolf Badges.

Den No. 3 put on a display of the Philippine Islands including houses and a scale model rice field. Lea Roy Aldwell showed slide pictures of the Philippines. Plans were revealed for the next pack meeting to be held a Camp Sol Mayer April 23 which will be an all-day affair. There will be boat races and a prize will be awarded to the Cub having the best individual boat.

Happy Birthday

- Friday, April 8—
- Saturday, April 9—
Flora Dell Davis
- Sunday, April 10—
Mrs. Wilfred Berger
Mrs. W. B. McMillan
- Monday, April 11—
Mrs. Frank Bond
Mrs. H. L. Taylor
Mrs. G. G. Bennett
- Tuesday, April 12—
Mrs. E. T. Smith
Artie Zina Joy
- Wednesday, April 13—
Bob Teaff
- Thursday, April 14—

For HAPPY WASHDAY HARMONY



... have our experts tune up your washer

Yes, it's a lot easier to keep clothes clean, when your washer is humming pleasantly. Undue noise tells you it's time for an expert check-up, adjustment and lubrication. Avoid serious trouble. Phone us today. We service ALL makes of washers.

Home Gas Co.



Operetta To Be Presented Soon

The operetta, "Peter Rabbit," will be presented by the first three grades in Elementary School, under the direction of Miss Katherine Davis, on Wednesday night, April 13, at 7:30 o'clock in the High School Auditorium. Characters are: Peter Rabbit, McClelland and Sonny Pfister; Mother Rabbit, Betty Sue Fields; Mopsy, Jan Vander Stucken; Mopsy, June Rose Lyles; Cottontail, Jessie Peitchinsky; McGregor, Ronnie Perkins. Vegetables in Robert Trainer, Joe Fields, Lynn Kirby, Barbara Walters, Barbara Wilson, Rex Ann Baker, Lomalee Bridges, Florie Mae Minnick and Linda Wardlaw; Carrots: Luther Chalk, Jerry Baldwin, Frankie Sessom, Norma Lee Maxey, Claire Jones, Carole Bricker and Jerry Potmesil, Pete Skains; Beans: John Alfred Cox, Patsy Ann Rode, Harvey Lee Wendt, George Caldwell, Ann Ross, Sandra Ann Skinner, Linda Sue Spoon and Dewey Shroyer; and Peas: Rodney Davis, Jennell Mayhew, Addah Wardlaw, Jan Keng, Freddie Fields, Gloria Jean Robinson, Frank Joe Potmesil and Tom Elaine Espy. The public is cordially invited to attend and there will be no admission charge.

Churches To Hold Friday Services

Prayer services will be held on Good Friday, April 15, in St. John's Episcopal Church from 12 noon to 3 o'clock in the afternoon. The Rev. Stanley Hauser will be in charge of the services, and will be assisted by the Rev. J. E. Eldridge and the Rev. W. H. Marshall.

Services will be divided into eight parts, consisting of the introduction by Rev. Hauser, and seven addresses on the seven last utterances. The addresses will be twenty minutes in length each, and a hymn will be sung between each to permit the worshippers to enter and leave as they desire. Sonora citizens are invited to attend the services, and will be welcome for either one or all of the eight parts of the program.

LAST CHANCE: To buy some of the bargains now on sale at Home Hardware & Furniture Co.

SUBSCRIBE TO THE NEWS

E. B. KENG TO ADDRESS HOME GARDEN CLUB

The Home Garden Club will meet at 3 o'clock, April 19, in the Homemaking Cottage. E. B. Keng will be the guest speaker and his subject will be "Grasses." Anyone interested is cordially invited to attend.

Three room furnished apartment for rent. Phone 24431. 1tp25

Attend SOME Church Sunday.

WMU MEETS FOR MISSION STUDY

The Women's Missionary Union met at the Baptist Church Wednesday afternoon for mission study. The group sang "To The Work", and a prayer was given by Mrs. Alfred Cooper. Mrs. Lawrence Nichols gave "Training In Stewardship."

Those present were Mesdames J. K. Lancaster, J. E. Eldridge, Nichols, R. G. Nance, Cooper, W. K. Regeon, W. O. Crites, Jack Drennan and Bob Odom.



NOW!

1847 ROGERS BROS.

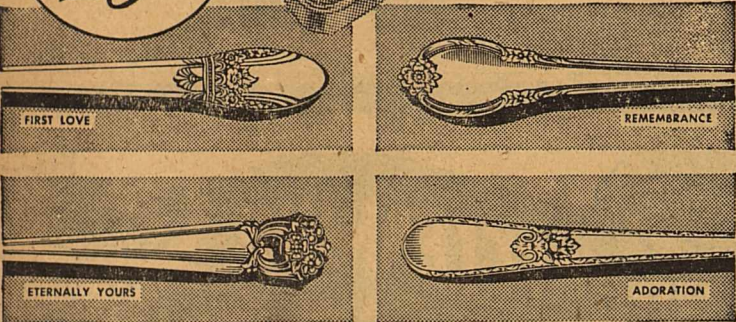
24-Piece "Completing" Set . .



To complete your starting service.



8 butter spreaders 8 oyster drink spoons, 8 oyster forks in attractive, permanent gift case . . . \$26.00



AT LAST they're back again . . . all those extra pieces you need for correct entertaining! They're available in all four patterns of 1847 Rogers Bros. You'll have new pride and assurance knowing your guests are served with the proper silverware. Your family, too, will enjoy the feeling of luxury these lovely pieces bring. Let us show them to you today.

The Wesley Sawyer Jewelry

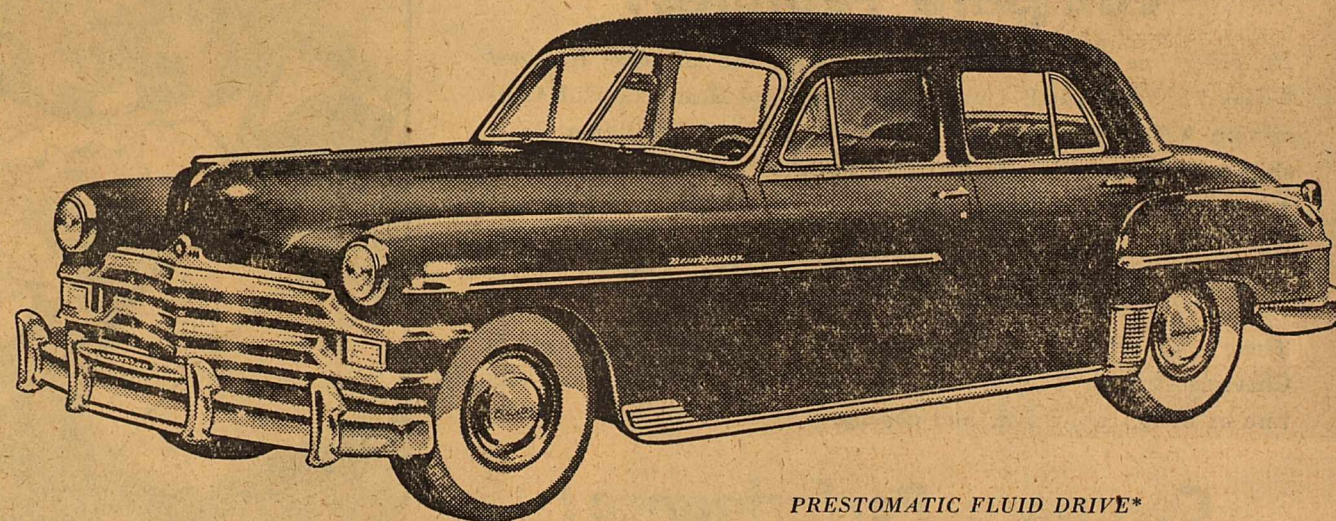
HAMILTON
Fine American Weatherproof Watches
PROTECTED AGAINST WATER • DIRT • HUMIDITY
A Hamilton Exclusive!
The first and only watches of style to really give extra protection to Hamilton's famous extra performance.

The Langdon \$66.00
17 jewels, 10k natural gold-filled, 18k applied gold numeral—dot or luminous dial.

The Brandon \$67.50
17 jewels, 10k natural gold-filled, 18k applied gold numerals on silver or black dial.

Fed. Tax Inc.
CONVENIENT PAYMENTS
George Barrow
Your Jeweler

Well-Bred



PRESTOMATIC FLUID DRIVE* TRANSMISSION

The Beautiful Chrysler Silver Anniversary Model

Come look inside . . . come look under the hood . . . come see the superb breeding and advanced engineering that makes this the most exciting, new beautiful Chrysler of all time.

Here in the Silver Anniversary Chrysler is the climax of 25 years of forward-looking common sense and imagination in engineering and research. Tailored to taste . . . here is well-bred beauty that reflects the perfection of the engineering that makes this the greatest Chrysler value in history.

Wider chair-height seats—plenty of headroom and shoulder room—plenty of legroom—more horsepower than ever before from the mighty Spitfire High Compression engine, the leader in high compression performance. Prestomatic Fluid Drive Transmission—the Safety-Level-Ride—exclusive Safety-Rim wheels that make it almost impossible to throw a tire in case of blow-out—more than 50 advances in safety, comfort, convenience and performance! These will make seeing the new beautiful Chrysler an experience you'll long remember. Come in today—for the greatest car value we've ever offered!

WE AIM TO TAKE CARE OF OUR OWN—WITH CHRYSLER-PLYMOUTH SERVICE THAT MATCHES CHRYSLER-PLYMOUTH ENGINEERING

ELLIOTT MOTOR COMPANY

From The Churches

ST. ANN'S CHURCH
Sunday Masses 8 o'clock
10 o'clock
Weekday Masses 7:30 o'clock
BAPTIST CHURCH
Sunday School 10:00
Morning Service 11:00
Evening Services 7 o'clock
W.M.U. Each Wednesday
Mid-week Services Each Wednesday 7 o'clock
Men's Brotherhood meets Tuesday after the first and third Sundays.

CHURCH OF CHRIST
Bomer B. Gist, Minister
LORD'S DAY
10:00 a. m. Bible Classes
10:45 a. m., Worship
6:45 p. m., Young People's Meeting
7:30 p. m., Worship
WEDNESDAY
3:45 p. m., Ladies' Bible Class
Everyone Is Welcome At Every Service.

FIRST METHODIST CHURCH
W. H. MARSHALL, Pastor
Church School 9:45 o'clock
Morning worship 10:50 o'clock
Evening Worship 7 o'clock
Parents desiring to have their infants dedicated to God by baptism are requested to have them present next Sunday, April 10, at the 11 o'clock service. At this time we will also receive a number of boys and girls into the membership of the church. We urge all parents

5 SCOUTS PRESENTED AT COURT OF HONOR
In ceremonies at the Boy Scout Hall on Monday night, April 3, five local Scouts were presented at a Court of Honor, with one, Edward Valliant, being classed as a First Class Scout and the remainder moving up as Second Class Scout. They were Eddie Farrell Smith, Jodie Minnick, Oscar Lee Carpenter and Joe David Ross.
The award to young Valliant was made by his mother, Mrs. Clarence Valliant, while Joe Brown Ross made the other presentations. Ross is the district executive officer of the West Ranch District.

Glenn Hays is visiting in Austin and Bandera for several days.

FOR SALE: Baby Play Pen, Baby Stroller, Three-burner Oil Cook Stove with Oven. See at Castle Courts. 1tc2'

CONTINUED: Home Hardware & Furniture Company's giant sale. For another week. 1tc25

of the church to be present for this gracious service. Also, we invite those of the public who do not attend any church to be present.

ST. JOHN'S CHURCH
Sunday Morning
Holy Communion 8 A. M.
9:30 Church School
11:00 Morning worship with sermon.
Good Friday Service 12 Noon

Cancer Control Campaign Planned During April

Throughout the nation April is observed as National Cancer Control Month, and on April 10, 17, and 24, the Texas State Department of Health is presenting special broadcasts over WOAI in San Antonio, at 7 A. M., outlining twenty different sites of cancer, the common age at which they appear, the accepted methods of treatment, the percentages of cures and any known preventive measures.

Dr. Geo. W. Cox, State Health Officer says that cancer patients today have a brighter prospect for recovery than at any time before in history, and agrees wholeheartedly with the national movement to stamp out cancer through education the public that "early discovery can mean recovery."

"Surgery, radium and x-ray therapy are working wonders in many different types of cancer," Dr. Cox said. "In all types of cancer except leukemia there is a possibility of cure if the patient is diagnosed in the very early stages. Any suspicious symptoms should be investigated by a competent physician at their first appearance, and if cancer is found to be present and treatment instituted at once, there is every reason to hope for complete recovery. The important thing to remember is that cancer can be cured; but it depends entirely on early discovery and proper treatment."

All persons interested in cancer control are urged to hear these special broadcasts on April 10, 17, and 24, on WOAI, San Antonio, at 7 A. M.

SUBSCRIBE TO THE NEWS

NOTICE

TREE SPRAYING
2-4D WEED SPRAYING
TERMITE CONTROL
DDT SPRAYING

See
Bill Drennan
And Save Money

POSTED!

No Hunting

Violators Prosecuted

Aldwell Brothers

THE BEST IN
Products
and
Service

at
JOY'S GULF STATION
DIAL 25151
Tires - Tubes
Waxing, Polishing and
Vacuum Cleaner Service.



217 S. Chadbourne
SAN ANGELO
Phone 5384

TEEN-AGE



Copyright 1947, by Mid-West Features, Inc.

"... something with a Latin-American slant this time, please."

GULLEY'S CAFE
MERCHANTS LUNCH
OUR SPECIALTY
PHONE 23801

Mohair Uses Now Expanded

Mohair upholstery is becoming more popular to buyers of furniture, says Bradley V. Borst, representative of Collins & Aikman Corp., New York City. That firm manufactures mohair fabrics for upholsteries and is the largest buyer of raw mohair.

Borst was in San Angelo week before last and is appearing in the other larger Texas towns and cities where he conducts special training periods for furniture salesmen.

Customers are now becoming more critical and are demanding fabrics that will give longer wear and better service, he said. This means more mohair.

Russell Martin, Del Rio, mohair buyer for the company, said that the outlook for mohair looks better now than it has for the past two years.

"Mohair is being consumed now. It is going into wearing apparel, furniture upholsteries and carpets, and I look for it to appear again in automobile upholsteries before long. Buying it and then storing it somewhere does not help the mohair producer. It has to be moving," he said.

Visiting in the B. W. Hutcherson home is Hunter Sneed, Jr. of Detroit, Michigan. Sneed is a nephew of Mrs. Hutcherson.

BARGAINS: At the Home Hardware & Furniture Company's sale, continued through another week.

CHURCH OF CHRIST TO HOLD SERIES OF GOSPEL SERMONS

The Church of Christ of Sonora has invited Forrest R. Waldrop



of Abilene, Texas to deliver a series of Gospel sermons April 10 through 17. Mr. Waldrop will speak twice daily, 4:00 p. m. and 7:30 p. m. The public is cordially invited.

WEST TEXAS TOWNS GET MONEY FOR IMPROVEMENT

Nine West Texas towns were listed this week as recipients of some \$641,060 in federal funds for airport improvement. The towns were San Angelo, Del Rio, Alpine, Kermit, Abilene, Coleman, Midland, Marfa and Ballinger. In most cases, the government will furnish 60 percent of the funds, with the city or county to furnish the remainder.

Mrs. J. T. Sellman underwent surgery at the Shannon Hospital in San Angelo Tuesday morning. She is reported to be resting very well, and is expected to return home within a week.

Terra-Lite* Vermiculite ...

A NEW DISCOVERY THAT PROVIDES SUPERIOR PLANT GROWTH AND CULTURE

Seldom do we have the opportunity to offer to our customers a product as unique and versatile as Terra-Lite vermiculite. This wonder garden aid has been acclaimed by professionals throughout the country as the finest growing medium there is.

Terra-Lite is a mineral containing millions of tiny air cells which hold and release air and water in just the right amounts for healthy plant development. Massive root systems on plants grown in Terra-Lite mean lovelier, greener growing things in your garden. See many ways you can use Terra-Lite.

Table with 3 columns: Fall and Winter, Spring, Summer. Lists various gardening tasks like Storing Root Crops, Seed Germination, Summer Mulch, etc.

Terra-Lite is a real "work-horse" for the gardener. Once you try it you'll never be without it!

Use Terra-Lite

"All Thru the Year"

2 Bu. Bag - \$2.50



*Terra-Lite is the registered trade mark of Zonolite Company

Saunders Flower Shop

SIMMONS

Hide-A-Beds Duplex Beds
Sofas Love Seats

Featuring
Newest Fabrics And
Colors For Spring, 1949

Choice of Favorite Fabrics
Including:

- NOVELTY BOUCLE MODERN FRIEZE
MOHAIR CREPE BOUCLE NOVELTY FRIEZE
JACQUARD BOUCLE JACQUARD FRIEZE
TAPESTRY DAMASK
BROCATELLE MODERN

ALL COLORS

Prices Governed By Grade Of Fabric

Sonora Appliance Store

HILLMAN D. BROWN

Mrs. Edwin Thompson and children are visiting her parents in Greenville.

The Navy's new 65,000-ton super-carrier is 1,090 feet long.

FOR SALE: Merchandise of all kinds, at bargain prices. See Jack Mackey at Home Hardware & Furniture Company. 1tc25

Mr. and Mrs. L. M. Roueche, Jr. and son, Hal, visited Mr. and Mrs. Bill Bell and Mr. and Mrs. Lewis Roueche in Hobbs, N. M. over the weekend.

Mrs. J. B. Blackburn, Sr. of Seymour and Mrs. J. B. Blackburn, Jr. of Stephenville were visitors here over the weekend with Miss Bilye L. Blackburn.



Chick Feeders Waterers

CHEK - R - TABS

A Drinking Water Disinfectant

PURINA

Startena - Growena - Broiler Mash

Sonora Feed & Supply

REAL ESTATE

SEE US FOR CITY PROPERTY

INSURANCE

Every kind of protection known to Standard Insurance Companies.

RANCH LOANS

THE BIGGER THE BETTER

TAX CONSULTANTS

Elliott Brothers Co.

HOTEL McDONALD

"The Home Away From Home"

Sonora, Texas

CLEAN, COURTEOUS SERVICE



TIRES, TUBES & BATTERIES

Merriman's Station



COSDEN PRODUCTS

Wholesale & Retail

Oil Gasoline

Grease

ALSO

GROCERIES & COLD DRINKS

NEIL ROUECHE
DIAL 25171



Exclusive Distributors for Cosden Products in Sutton, Schleicher & Edwards Counties

OPEN FOR BUSINESS

Monday, April 11

IN JOHNSON BUILDING - NEXT TO BOWLING ALLEY

Sonora Beauty Shop

Sonora Flower Shop

MRS. SCOTT ROBERTS, Owner - PHONE 27111

WALDROP

IS

COMING SOON

Warehouse or Plant Buildings by



MERAN

ECONOMICAL-PERMANENT
ERECTED QUICKLY

CALL OR WRITE

THE McRAN COMPANY

St. Angelus Hotel, San Angelo, Texas

Phones: San Angelo 8165 - Abilene 2-1015

CLEANING & PRESSING

ALTERATIONS

SONORA MEN'S STORE

Arrow - MacGregor

Shirts - Underwear - Sportswear

JOHN R. McCLELLAND SONORA, TEXAS

PHONE PLUGS

With Phone Plugs you can have a phone in every room with only one phone.

See JOHN EATON

Mr. and Mrs. Bill Reynolds of San Antonio spent Friday and Saturday here visiting Mr. and Mrs. Ed Mayfield. Mrs. Reynolds and Mrs. Mayfield are sisters.

SUBSCRIBE TO THE NEWS

Mr. and Mrs. Clayton Hamilton, Miss Anita Smith and George Hamilton spent Saturday and Sunday in San Antonio.

DRIVE SAFELY! — Give the pedestrian the right-of-way.

Mrs. Lee Martin was a visitor in Fort Worth this week.

Mrs. E. D. Shurley and daughter, Kay, visited in Jacksonville during the past week with Mrs. Shurley's father, Ed Tipton, Sr.



A LOOK AT THE BOOK
By DR. BOB JONES, JR.
PRESIDENT OF BOB JONES UNIVERSITY GREENVILLE, SOUTH CAROLINA

Joseph was a dreamer. There is nothing wrong with dreaming the right sort of dreams if dreams do not become the whole end of life. Of course; Joseph's dreams were prophetic. They were sent to him by God as a promise of what he should become. He dreamed that the sun and the moon, representing his father and mother, and eleven stars, representing his brothers, bowed down to his star. He dreamed he and his family were gathering grain in the field together and that the sheaves of his mother and father and brethren bowed down to his sheaf. It is interesting and significant that these prophetic indications of the glory that lay ahead of Joseph should have shaped themselves into dreams about such simple things—stars and sheaves of grain. These were the things with which Joseph was familiar and with which he lived. Through the clear Eastern night, as he sat outside his father's tent or kept watch with his brothers over his father's flocks, he became familiar with the moon and stars. Up before day he had often watched the sunrise. His life was largely occupied with planting, the cultivation, and harvesting of crops. Men's dreams are a good indica-

tion of their interest and a good key to their lives. The things upon which your thoughts dwell indicate what you are. The ambitions which you set for yourself measure the quality of your character. The desires of the heart shape the course of the life. The man who thinks evil thoughts and dreams evil dreams will bring forth a crop of evil deeds. No wonder then that the Word of God admonishes, "Whatsoever things are true, whatsoever things are honest, whatsoever things are just, whatsoever things are lovely, whatsoever things are of good report; if there be any virtue, and if there be any praise, think on these things" (Philippians 4:8). The man with an impure heart cannot live a pure life. The man whose impulses and desires are sinful will lead a sinful life, but through grace he may receive a cleansing of heart, for the blood of Jesus, Christ, God's Son, cleanses from all sin (1 John 1:7).

Mr. and Mrs. Ross Hay visited in San Antonio Friday through Sunday of last week.

A Navy carrier task group can greet an attacking plane with more than 6,000 shells per second.

Mrs. Dantes Reiley left Monday for a week's visit in Houston with her son, Bill Reiley.

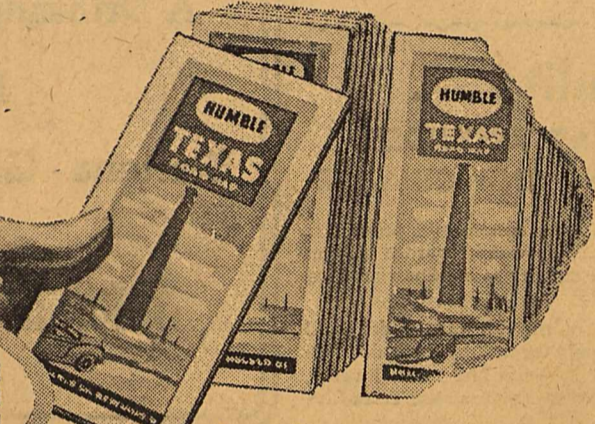
Mrs. Jane Hamilton is visiting Mrs. J. M. Puckett this week in San Antonio.



I know you can buy a map, but...

We think you'll find Humble's free road maps the best you ever used. When you plan your vacation trip, be sure to ask Humble Touring Service to help you. Get a free request card at any Humble sign, or write direct to Humble Touring Service, Houston. Humble Touring Service will send you marked road maps to your destination and return. There's no charge, and no obligation.

...ours are free."



HUMBLE
Esso Extra
GASOLINE

Something Extra for your money

Something extra for your money
Humble Esso Extra gasoline gives you: Extra 1, extra anti-knock performance; Extra 2, extra power; Extra 3, an extra clean engine. All at no extra cost.

Let us save you time and money
We can give your tires, your battery, your fan belt, etc., a pretty good check while you're filling up with gasoline. Let's have a look before you start your trip. May save you trouble, time and money on the road.

The Humble dealer in your neighborhood is a progressive merchant who supplies you with a variety of products and services to keep your car running right and looking good.

HUMBLE OIL & REFINING COMPANY

THIS TASTES GOOD IN TEXAS
Hot Fudge Pudding
1 cup flour, sifted
2 teaspoons baking powder
¼ teaspoon salt
¾ cup sugar
2 tablespoons cocoa
½ cup milk
2 tablespoons shortening, melted
1 cup chopped nuts
1 cup brown sugar
4 tablespoons cocoa
Sift first five dry ingredients together, stir in milk and shortening, mix until smooth. Add nuts, spread in pan. Sprinkle with brown sugar and cocoa mixed. Pour 1½ cups hot water over entire batter. Bake. Invert squares on plates, dip sauce from baking pan over each. Serve plain or with whipped cream.
Time: Bake 40 to 45 minutes.
Temperature: 350 degrees F.
Moderate Oven.
Complete Menu
Baked Filets of Fish
Lemon butter sauce
Hashed Brown potatoes
Fresh Spinach Salad
Hush Puppies
Hot Fudge Pudding
Milk - Coffee

Mr. and Mrs. Ed Harris of Camp Air, Mason County, visited in the home of Mr. and Mrs. J. D. Lowrey over the weekend.

Sonora Abstract Co.

J. D. LOWREY, Mgr.
EFFICIENT LAND TITLE SERVICE
ON SUTTON COUNTY LAND
We represent several of the old line fire insurance companies.



"FRIENDLY SERVICE"
Goodrich Tires & Tubes

GREENHILL'S
Texaco Station

Free Storage For Winter Woolens

For Information Inquire At
Sonora Steam Laundry
And
Dry Cleaners

Sonora Grocery

Geo. E. (Bud) Smith Mrs. Ralph Trainer

FRIDAY APRIL 8 **SPECIALS** SATURDAY APRIL 9

DIAL 22601 Delivery Service DIAL 22601

Easter Egg Colors, Pkg. 10c	FRESH GREEN BEANS, lb 25c
KRAFT FRIZZ	SPUDS, 10 lb Bag 40c
Ice Cream Mix, Pkg. 29c	YAMS, lb 13c
KOOL AID	FLORIDA ORANGES, Doz. 40c
Soft Drink Powder, 6 Pkg. 25c	RADISHES, 2 Bunches 15c
EMPSON'S CATSUP, Bottle 19c	GREEN ONIONS, Bunch 8c
303 CANS	CELERY, Nice Stalk 15c
Tomato Juice, 2 Cans 21c	YELLOW SQUASH, lb 20c
HUNT'S Sliced Peaches, No. 2½ Can 33c	FRESH STRAWBERRIES, Basket 29c
FLOUR, Big Chief, Print Bag 50 lb \$2.85 25 lb \$1.45	AVOCADOS, Each 16c
LONG GRAIN RICE, 2 lb Bag 39c	YELLOW ONIONS, lb 8c
TREND, 2 Boxes 33c	ORANGE JUICE, NuZest 46 Oz. 29c 2 - No. 2 Cans 25c
KLEENEX, 300 Count 24c	
MORTON'S Salad Dressing, Qt. Jar 43c	

MEATS

BANNER FRESH CREAMERY BUTTER, lb 65c	SPICED LUNCH MEAT, lb 49c
DURKEE'S COLORED OLEO, lb 45c	Fillet of Red Perch, lb 39c
CELLO WRAP SLICED BACON, lb 45c	AA CHOICE BEEF ROAST, lb 55c
DRY SALT PORK JOWLS, lb 25c	AA CHOICE BRISKET ROAST, lb 35c
FRESH DRESSED FRYERS - SMOKED BEEF TONGUES	
100% PURE HORSERADISH	

HAMILTON GROCERY

PHONE 21601 A Red & White Store PHONE 21601
FRIDAY, APRIL 8 DELIVERY SERVICE SATURDAY, APRIL 9

Hunt's Heavy Syrup PEACHES No. 2½ Can 29c	VEGETABLES IDAHO UTILITY POTATOES, 10 lb 39c	Collegian White - Cream Style CORN No. 2 Can 15c
Churh's Concord GRAPE JUICE Pint Bottle 22c	CARROTS, Bunch 4c	Print Bag FLOUR 25 lb Sack \$1.35
Sunshine PIMIENTOS 1 - 4 Oz. Can 15c	RADISHES, Bunch 5c	Laurel Leaf PURE LARD 3 lb Carton 48c
Red & White New IRISH POTATOES 1 - No. 2 Can 14c	CUCUMBERS, lb 16c	TOMATO PUREE 4 - 5 3/4 Oz. Cans 17c
Frost CUT BEETS No. 2 Can 12c	Strawberries, Pt. Box 28c	Q & Q VERMICELLI 4 Boxes 25c
	ONIONS, Yellow, 2 lb 15c	
	MEATS Seven Steak or Roast, lb 55c	
	WILSON'S CORN KING SLICED BACON, lb 59c	
	FRESH GROUND VEAL, lb 47c	
	Longhorn Cheese, lb 45c	
	SHORT RIBS, lb 39c	

from the ranch country

Son of a gun



With the warm season grasses beginning to green up, many co-operators in the Edwards Plateau Soil Conservation District are beginning their programs of pasture deferments and rotating-grazing for the present growing season. All livestock will be shifted to other pastures in order that the deferred pastures will be completely rested.

Deferred grazing is one management practice that may be used to bring about an improvement in the vigor of present grasses. It will also encourage the establishment of the more desirable grasses such as sideoats grama and the blue-stems.

Our best range grasses are penalized by continuous grazing year in and year out. Stock prefer certain "ice-cream" grasses (grama and bluestem grasses) and will graze them a majority of the time as long as they are present. All grasses live through their leaves, but, with continuous year long use they seldom have a chance to maintain enough leaf surface to produce seed and maintain a normal healthy condition. As a result they gradually die out, allowing the soil and moisture to be used by less desirable types of grass and weeds. Livestock are then forced to graze vegetation they would not ordinarily graze if the better grasses were available. If stocking is heavy enough to graze those less desirable plants (hairy triodio, red grama, Hall's panic, needle grass etc.) continuously, nature replaces them with vegetation that will not be molested by grazing, such as brush, prickly pear and various weeds. Then death losses and feed bills multiply rapidly.

A depleted range condition also affects the soil for, without a good protective cover it is exposed to sun and wind, baking or crusting on the surface. This limits infiltration of water and the water that does soak in evaporates quickly. Precious top soil is exposed to erosive action, and when lost down "the draw" further depletes the range. High soil temperatures reduce the action of microscopic life which thrives on plant litter converting it into mineral compounds available for use by growing

plants, and means a deficient diet for grazing animals.

Resting pastures during the growing season will permit the grasses to seed out and improve in vigor. These grasses will develop a bigger root system and furnish a good protective ground cover. Young seedlings will have a chance to establish themselves and livestock in grazing will not pull them up.

As the ground cover improves, more moisture will be available for plant growth, and a greater number of seeds will germinate. The more desirable grasses such as little bluestem sideoats grama, Texas Cupgrass and others will begin to appear in quantity.

Since grass is really the basis of the ranching industry and the ranchers' only "crop," the more grass forage produced, the more livestock production that can be had. Many co-operators with the Edwards Plateau Soil Conservation District are practicing methods of range management that will result in maximum sustained livestock production, maximum use of water and protection of the soil. At the same time these improving ranges are affording their owners the best possible range insurance a rancher can have - grass.

Edwin Sawyer's South Pasture is improving under a system of deferred grazing for short periods following rains. The better grasses are making vigorous growth and seeding out well. His Horse Pasture, under the same treatment, is now producing large amounts of forage with a good variety of grasses. Sideoats grama, blue-stems and hairy grama are giving the soil maximum protection as well as furnishing good feed.

W. R. Cusenbery is another cooperator, who by practicing deferred grazing and conservative stocking, has made rapid range recovery. The better grasses have displaced Hall's panic, hairy triodio and red grama, which had previously displaced bitterweed and other invaders.

Harold Friess has practiced deferred grazing in his Cedar Trap for several years. The forage pro-

43 Years Ago

Mr. and Mrs. W. F. Luckie were in from the ranch Tuesday visiting.

J. T. Bissett, the painter, left for Junction Tuesday to visit his family.

Juno stage office at Commercial Hotel. All fares 5 cents per mile.

Mr. and Mrs. D. O. Simmonds of Edwards County were in Sonora Tuesday to attend the funeral of Mrs. Simmonds' father, Green S. Dykes.

Miss Willie Holland left for Dallas Thursday where she will study vocal music.

Mrs. James Hagerlund left on Tuesday for Austin, her old home, where she will visit relatives and friends for a few days.

John Earnest, the stockman and farmer from the 12 mile pocket on the Angelo road, was in Sonora on business.

Sam Holland, the well known stockman and farmer of Eldorado, was in Sonora Saturday visiting his son, Will.

Sol Mayer was in from the ranch several days this week on business.

J. H. Martin, a well known trader of San Angelo, was in Sonora several days this week on business.

John A. Ward bought 60 dry cows from Milton Walters at \$13 per head.

W. A. Thomason, who ranches on the divide east of Sonora, was in Sonora Monday trading.

Mr. and Mrs. James Cornell and Mr. and Mrs. J. J. Ford are seeing the sights at the International Fair in San Antonio this week.

A surprise party was very much enjoyed Wednesday night at the Aldwell residence, where Miss Ida was surprised by a few of her friends. The party was a combination of little bluestem, sideoats grama, hairy grama, and other desirable grasses is increasing yearly.

These are just a few of the many who believe as Thomas Morriss says, "It takes grass to make grass."

BOYCE HOUSE



Probably as odd an excuse as a driver ever gave for driving fast is a distinction this commentator can lay claim to.

It was a good many years ago, when I was a reporter for the Fort Worth Star-Telegram and I was halted by a motorcycle officer who wanted to know, "Why the rush?" My reply was, "I have only 20 minutes to see a man on the way to the South Pole!"

Weird as it sounds, it was the truth. Lincoln Ellsworth, the explorer, was lost in the ice at the bottom of the world and a plane was being flown from Chicago, to enable Sir Hubert Wilkins to search for the lost man. I was on my way to the airport to interview the pilot of the rescue machine.

But I can still see the goggle eyes of that officer at the incredible excuse, "I have only 20 minutes to see a man on the way to the South Pole!"

On how frail a thread fate sometimes depends.

James G. Blaine and Grover Cleveland were the opposing candidates for president. It looked as though the man of magnetism from Maine, "the plumed knight" as Bob Ingersoll had called him, was "in."

Just a few days before the election, a group of ministers called on Blaine to pledge him their support. The preacher who was to have been the spokesman had gone to Philadelphia the night before to perform a marriage ceremony and he missed the train back to New York. The delegation waited almost an hour and when he did not arrive, the selected the Rev. Samuel Burchard to speak. In his speech, he declared:

"We are Republicans and do not propose to identify ourselves with the party whose antecedents have been rum, Romanism and rebellion."

This utterance was given wide publication and antagonized enough support that Blaine lost New York State by 1,149 votes out of a total of 1,100,000 cast-- and the loss of New York cost him the presidency.

young friends in masquerade. The Halloween games were played and everyone had a good time.

Geo. W. Logan, the stockman and farmer, was up from his place on the Llano this week attending court.

Bunk Caruthers and Will Kessler who have been in the territory for some time, arrived home Tuesday. They say it was getting cold up there.

Mr. and Mrs. Oscar Savage of Eldorado are visiting Mrs. Mollie Thomason this week.

GEORGE WYNN
Insurance Agency

Fire Windstorm & Automobile Insurance. Bonds and Casualty Coverage. Protection against loss from suits arising out of automobile accidents.

Office at Devil's River News Bldg. DIAL 27241

\$500
Reward

I will pay \$500 to any person furnishing information leading to the arrest and conviction of anyone stealing any kind of livestock from any ranch in which I am interested.

SOL MAYER

EYES EXAMINED GLASSES FITTED
Dr. C. L. Baskett
Optometrist
DEL RIO, TEXAS

Show Entries Due By 15th

Entries in the San Angelo Horse Show and Cutting Horse Contest, scheduled for May 13, 14, and 15, must be in the secretary manager's office by April 15, James F. Grote, secretary - manager, announced Wednesday.

Divisions of the halter classes with seven trophies given in each division are the Quarter Horse Section, Palomino Stock Horse Section, Palomino Pleasure Type Horse Section, and the Thoroughbred and Halfbred Section.

In the performance class nine trophies have been set up. Prizes have been offered in the reining finals, ladies barrel race, bending race for stallions, mares and geldings bending race, western pair class, silver mounted class, stallions pleasure class Palomino, and mares and gelding pleasure class Palomino.

As an added feature to the San Angelo Horse Show, the Cutting Horse Contest, run under the rules of the National Cutting Horse Association, will be staged for its initial appearance in San Angelo. A purse of \$500 plus the entrance fees of \$50 for each entry will be offered in this event.

Bryan Hunt of Sonora is chairman of the Thoroughbred and Halfbred Committee.

Entry applications and general rules and regulations may be obtained by writing the San Angelo Horse Show, Box 712, San Angelo.

Business Permits Remain Below '48

Building permits in Texas rose 18 per cent from January to February, a level 22 per cent under the like month in 1948, the Texas Bureau of Business Research reported.

Following the seasonal trend, a number of cities tallied sizable increases over the previous month. February permits were more than three times as high as the January level in Cleburne, Sweetwater, Kerrville, Amarillo, Lamesa, Midland, Borger, Denison, Temple, Lubbock and Wichita Falls.

On the other hand, permits in February declined from 3 per cent in Corpus Christi to 80 per cent in Bryan below January.

After adjustment for seasonal variation, the Bureau's index of building permits gained 12 per cent over January to 474 per cent of the prewar (1935-39) base period in February. A year earlier, the index stood at 601.

Leading the state in February, Houston's permits totaled \$5,901,700; Dallas slipped into second place with \$4,224,135; and San Antonio, Austin, Amarillo and Ft. Worth followed in that order.

Mr. and Mrs. R. C. Luckie and daughter, Lenora, of Crane spent the weekend here visiting Mr. and Mrs. Jim Luckie.

Attend SOME Church Sunday.

SCHOOL PRINCIPAL TO ADDRESS SPEECH GROUP

W. W. Wendt, high school principal, will be a speaker at the Southern Speech Association meeting, which will be held at Baylor University on Friday of this week. From Waco, Wendt will go to Tyler, where he will attend the annual Texas Tuberculosis Association meeting being held in that city on Saturday.

Mrs. Louin Martin visited with her mother in Waxahachie this week.

Mrs. W. H. Johnson of Junction is visiting her daughter and son-in-law, Mr. and Mrs. C. C. Stroud.

Mr. and Mrs. Max Turney and daughter, Maxine, of Brownwood left Wednesday after a four-day visit here with relatives.

SUBSCRIBE TO THE NEWS

SEE THE DIFFERENCE GROWING PULLETS RIGHT MAKES...

The above diagram shows the results of Purina Research Pullet Growing tests. They prove time and again that well-fed pullets are larger and better-developed - start laying earlier, lay more eggs and make more money in the fall high-egg-price months - than pullets that are poorly fed.

This year put your pullets on the straight road to early fall eggs, big fall eggs, lots of fall eggs. After Purina Chick Startena change to Purina Growena, complete ration or Purina Growing Chow, to balance grain!

NEW PURINA GROWING CHECKER-ETTS
Grow Big Pullets FAST

STORE WITH THE CHECKERBOARD SIGN

Sonora Feed & Supply

THE RATLIFF STORE

Gift - Party Items - Men's, Ladies' Children's Wear Household Furnishings - Complete Shoe Department

THE RATLIFF FUNERAL HOME

"Understanding Service In Time Of Need"

24 HOUR AMBULANCE SERVICE

PHONES 23501 - 21871 - 21801

We now have on hand grama grass seeds to plant on the range or in the fields.

K R. BLUESTEM LB. \$3.50
SLENDER GRAMA LB. \$2.35
BLUE GRAMA LB. .50

Get in touch with us or your Soil Conservation Service

SONORA Wool & Mohair Co.

Dial 23601

Sonora, Texas

Recently we have sold the ranchmen of this area rice bran as a bulky filler to feed with cottonseed meal. This feed was recommended as being rich in FATS which, blended with cottonseed meal, would make a good, bulky, balanced-ration feed for self-feeders.

The Feed Control Service has taken samples of two cars of this rice bran and has found them deficient in protein.

One of these cars carried a guaranteed analysis as follows: Protein, 12 per cent; Crude Fat, 12 per cent, and Crude Fiber, 15 per cent. The state's analysis shows: Protein, 11 per cent; Crude Fat, 15.07 per cent, and Crude Fiber, 12.88 per cent.

This car of feed proved to be better for the purpose used than the manufacturer's analysis showed, protein being off 1 per cent, crude fiber (waste) being down more than 2 per cent and the fat content being up over 3 per cent.

Rice bran has been fed in this area for years and has a very definite place in the feeding practices of this section.

We offer this explanation in view of the publicity concerning rice hulls and other inferior feeds which have been sold DIRECT to ranchmen and dairymen during the past few years.

H. V. STOKES FEED COMPANY
Phone 21891

PRESCRIPTIONS

We carry a complete line of drugs and are at all times ready to give you the best in accurate, carefully compounded prescriptions.

FOR 24-HOUR SERVICE
DIAL 21701

Sonora Drug Co.
PHONE 38
SONORA, TEXAS

Weekly Swing of SOUTHWEST FARM MARKETS

Most southwest farm products brought steady to strong prices for the week despite lower trends on hogs, cattle and some feeds, the U. S. Department of Agriculture's Production and Marketing Administrations reports.

Sheep and lambs sold fully steady to spots higher for the week at southwest and midwest terminals. Receipts increased at southwest yards, but declined in the midwest. Fort Worth turned good woolled slaughter ewes at \$15, while most ewes sold from \$11 to \$12 at Oklahoma City. San Antonio took medium and good shorn ewes and wethers from \$12.50 to \$13.50. Southwest wools found better interest this week, but trade continued dull.

Steady to weaker trends prevailed at southwest and midwest cattle markets for the week despite lighter offerings. Most classes of cattle and calves shared in the week's downturn. Odd head of good cows returned \$18.50 to \$19.50 at Fort Worth, \$19 at Denver, and to \$20 at San Antonio. Oklahoma City cleared good beef cows upward to \$18.50. Houston moved canners at \$14 to \$16, and cutters at \$16 to \$18.

A total of 78 different designs were submitted for the Navy's 65,000 ton aircraft carrier USS United States before one was accepted.

Attend SOME Church Sunday

Uncle Sam Says



Mr. and Mrs. Yank McKnight and son recently returned from a visit with relatives in Gilmer and other points in East Texas.

Mr. and Mrs. B. D. Roberts of Menard spent the weekend here visiting in the C. C. Stroud home.

DRIVE SAFELY! — Give the pedestrian the right-of-way.

**SCHENLEY GIVES YOU
OLDER WHISKIES***
— yet you pay
no more!

5, 6 AND 7
YEAR OLD WHISKIES
*BLENDED WITH GRAIN
NEUTRAL SPIRITS.



BLENDED WHISKEY, 86 PROOF. THE STRAIGHT WHISKIES IN THIS PRODUCT ARE 5 YEARS OR MORE OLD. 35% STRAIGHT WHISKEY. 65% GRAIN NEUTRAL SPIRITS. 10% STRAIGHT WHISKEY 5 YEARS OLD. 21% STRAIGHT WHISKEY 6 YEARS OLD. 4% STRAIGHT WHISKEY 7 YEARS OLD. SCHENLEY DISTILLERS, INC., NEW YORK CITY.

You American citizens who have been looking for an opportunity to take some aggressive action which will express faith in your country are now being given that chance. It is participation in the U. S. Savings Bonds Division's "Spring Opportunity Drive" which opens May 16. Through this drive you can help in the preservation of a prosperous economy in your land and show the world that Americans, men and women, still have that spark which has led the country to "accomplish the impossible". Volunteer workers are needed to help in this great drive and this is your opportunity to prove that you have the courage to protect the freedoms that are ours. Your community, your county, your state, and your country needs your help. Volunteer today. U.S. Treasury Department

—Continued from Page 1—

Seen in Sonora during the week - one 1948 license plate. The number? Aw, that'd be telling wouldn't it?

—(?*1/2\$*?)—
Suffering from an ankle injury after a scooter mishap is MISS WYNELLE YORK, who promises to act like a big girl from now on.

—(?*1/2\$*?)—
Mrs. BELLE STEEN plans a big time watching ice skaters in San Antonio, while HAZEL McCLELLAND stands by and moans that she never gets to go anywhere.

—(?*1/2\$*?)—
Nominated for tough-luck man of the week: EMIL PRUGEL, who invited in for coffee by BURETTE KENG and TOM DARROW, and ends up paying for it all.

—(?*1/2\$*?)—
Those of you who might want a song rendered should contact the COCKRELL-HAY-WENDT-WELLS quartet. From all reports, this foursome can really rend a song - to pieces.

—(?*1/2\$*?)—
MRS. MARGARET SIMMONS loses a fishing pole, and friends accuse her of losing it to a fish during a creek-side nap.

—(?*1/2\$*?)—
Employees of the paper are eagerly awaiting the return of fishermen SAM and LEA ALLISON and CLAY PUCKETT, when tall tales will be a dime a dozen.

—(?*1/2\$*?)—
Most disappointed bingo player at Lions Club was J. M. RABORN, who paid a quarter and only got to put down one grain of corn.

—(?*1/2\$*?)—
Reports from the FORD ALLEN household indicate that the family will have to move out of the house to make room for a trophy recently brought back from the San Angelo Track Meet by BOBBY.

—(?*1/2\$*?)—
Since it is definite that Sonora will have a baseball team this summer, what's wrong with local merchants presenting a trophy to the best-all-round player?

—(?*1/2\$*?)—
D. C. Langford, Sutton County Agent, visited in Cotulla this week.

Ratliff & Davis

INSURANCE

MATTRESSES
NEW OR RENOVATED

Furniture
RE-UPHOLSTERED

DIAL 21241

Guaranteed When Built By
Bilderback Bros.
1717 C. Oakes St., San Angelo

HOUSE
MOVING

All Sizes

BEST EQUIPMENT

FULLY INSURED

Call

W. D. Kring

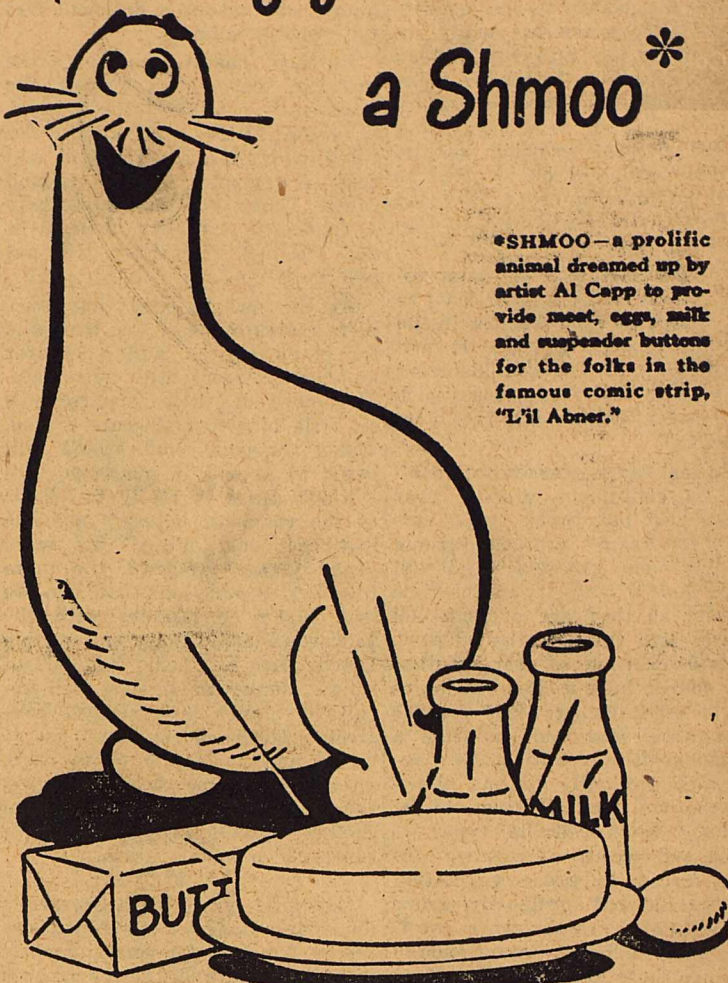
John A. Martin's LITTLE PLUMBER

HAPPY IS THE
HOUSE THAT HATH
WITHIN ITS WALLS
AN EXTRA BATH.



John A. Martin Jr.
PLUMBING
See JOHNNY for
PLUMBING & SUPPLIES
Phone 228 • SONORA, TEX.

What to do if you can't
lay your hands on
a Shmoo*



*SHMOO—a prolific animal dreamed up by artist Al Capp to provide meat, eggs, milk and suspender buttons for the folks in the famous comic strip, "L'il Abner."

Shmoos are remarkable creatures.

They give milk, lay eggs. Broiled, they taste like steak. Fried, they taste like chicken.

L'il Abner and his Dog Patch friends don't have to worry about the future since cartoonist Capp invented shmooos.

BUT—we happen to know that cartoonist Capp is providing for his own family's future needs another sure way. By buying U.S. Savings Bonds regularly.

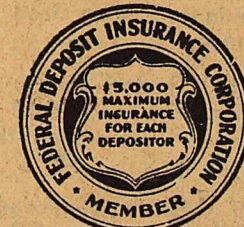
And that, without a doubt, is the wisest thing for anyone who doesn't own a shmoo to do!

Saving is every bit as easy as raising shmooos, once you've signed up for the Payroll Savings Plan. Whatever sum you say is saved out of your paycheck automatically every pay-day before you have a chance to spend it.

Safe and sure—every nickel is guaranteed by Uncle Sam. And that money grows fast. In just ten years, you get back \$4 for every \$3 you invest today.

If your company has a Payroll Savings Plan, enroll today. If not, join the Bond-A-Month Plan through your bank.

**AUTOMATIC SAVING IS
SURE SAVING
U. S. SAVINGS BONDS**

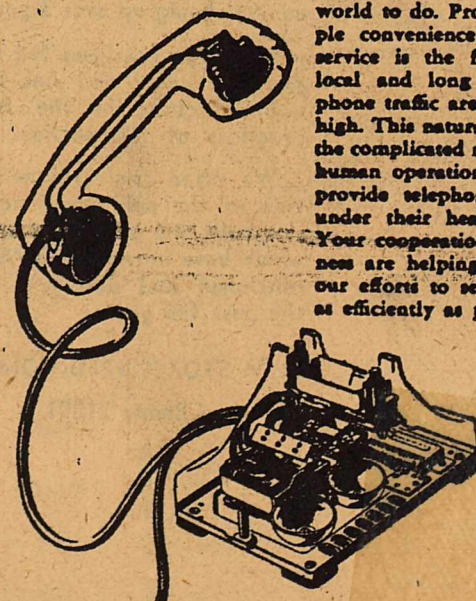


First
National
Bank

49 Years
Serving Sutton County

stripped
for action

If you could "x-ray" your telephone, you'd find a surprisingly complicated instrument. Yet, making a telephone call is just about the easiest thing in the world to do. Proof of the simple convenience of telephone service is the fact that both local and long distance telephone traffic are at an all time high. This naturally means that the complicated mechanical and human operations necessary to provide telephone service are under their heaviest pressure. Your cooperation and friendliness are helping us greatly in our efforts to serve this traffic as efficiently as possible.



The San Angelo Telephone Co.

FRIDAY
APRIL 8

PIGGLY WIGGLY

SATURDAY
APRIL 9

Where the Cost of Living Is Down

LARD, Armour's or Wilson's, 3 Lb. Carton - 49c

JACK SPRATT

WHOLE GREEN BEANS, No. 2 Can 19c
English Peas, Diamond, Tall Can 10c
Pinto Beans, Diamond, Tall Can 10c
CHILI, Whitson's, No. 2 Can 33c
Tomatoes, No. 1 Can 9c No. 2 Can 14c
CORN, Cream Style, No. 2 Can 14c

KOUNTY KIST

PEAS, Large Tender, No. 300 Can 17c
Pork & Beans, Jack Spratt, Tall Can 10c
HOMINY, SuMar, Tall Can 9c
CATSUP, Empon's, Large Bottle 19c
SPINACH, Del Monte, No. 2 Can 15c
Fruit Cocktail, Del Monte, No. 2 1/2 Jar 29c

COFFEE, Maxwell House, 1 lb. can 52c - 2 lb. can \$1.03

SURF, 2 Large Boxes 39c
TREND, 2 Large Boxes 39c
LUX OR LIFEBOUY
SOAP, 3 Bars 29c

SWAN SOAP, 3 Large Bars 29c
CLEANSER, Swift's, 3 Boxes 31c
JOHNSON'S
GLOCOAT, 2 Pints 89c 2 Quarts \$1.47

Fruits & Vegetables

CARROTS, Long Smooth, Bunch 5c
SQUASH, Yellow, Good, lb 11c
CELERY, Paschal, Stalk 19c
ONIONS, Yellow, lb 7c
GRAPEFRUIT, Texas, Each 5c

Full Line of Fruits & Vegetables

Meats

CHEESE, Borden's, 2 lb Box 83c
FRYERS, Fresh Dressed, lb 62c
PICNIC HAMS, Cooked, lb 55c
BACON SQUARES, Sugar Cured, lb 27c
Pork Sausage, Armour's Star, lb 43c
SHRIMP — FISH — BARBECUE