

WINTER WONDERLAND — NOPE! Just icy covered. Several large trees were broken down due to the overstreet and broken tree limbs on Young Street in Ranger. load of ice. (Times Staff Photo)



In this corner, with COLLINS

Well, winter is officially here. And with all the cold, icy weather we have been having for the past three or four days it looks like we just might have a white Christmas.

The City Commission held a meeting this week and agreed to give the city employees a six per cent raise in pay. Also at the meeting the commission voted to purchase a new police car. The new car will be delivered within the next 30 days, it was announced.

It has been reported that a very important meeting of the Bulldog's Mother's Club will be held this afternoon, Sunday, at 4 p. m. in the Ranger High School Library. So all mothers of the Bulldogs be sure and attend this meeting.

Don't forget the Winter Concert Tuesday night that will be presented by the "Spirit of Ranger." The concert will be held 7:30 p. m. in the high school auditorium under the direction of Band Director Richard Helmcamp.

We noticed in the "Ranger Roundup," the RJC paper, that the cheer leaders are selling candy at 50 cents a bar in order to earn money to go to the Hutchinson, Kansas basketball tournament March 19-23. Anyone wishing to aid a "very worthy cause," should see any of the five cheer leaders. The candy is delicious chocolate with almonds.

Ranger Schools Dismiss Wed. For Holidays

The Ranger Public Schools will dismiss Wednesday, Dec. 20 for the Christmas holidays and will resume classes Tuesday, Jan. 2. The high school students will dismiss at 2:45 p. m., Young School at 2:30 p. m., and Hodges Oak Park School will dismiss at 2 p. m., it was announced by superintendent of the schools, James Clark.



REALLY WINTERIZED — Trees and shrubs at home of Mr. and Mrs. John E. Boyd, 303 S. Austin St. bend beneath weight of ice on Friday morning.

"Spirit of Ranger" to Present Winter Concert Tuesday Night

The Ranger Independent School District presents the "SPIRIT OF RANGER" in winter concert Tuesday, Dec. 19, at 7:30 p. m. in the Ranger High School Auditorium under the direction of Richard Helmcamp.

The program will consist of Christmas songs as well as marches and popular numbers. The Christmas selections will include the following: "An Old English Christmas" by James D. Poybar which combined "The Friendly

Beasts," "Coventry Carol," "The Twelve Days of Christmas," the ever popular "Carol of the Drum" by Katherine K. Davis; Winter Wonderland by Dick Smith and Felix Bernard; "Continental Christmas" by Charles Richard Spinney which combines five

Mike Landtroop Is Promoted by AF

Mike Landtroop, 19, son of Mr. and Mrs. Lloyd Landtroop of Ranger, has been promoted to Specialist 5 in Qui Nhon, Viet Nam where he is assigned to the 160th Heavy Equipment Maintenance Company, General Support. His wife, the former Cathy Rogers resides in Weatherford and is employed at Southern Airways at Fort Worth.



A-1c JACK WATSON

PROMOTED

The recent promotion of Jack W. Watson to Airman First Class has been announced.

Now stationed at Ching Chuan Kang AFB in Taiwan, Airman Watson writes his grandmother, Mrs. Cordia Lambert that he is well but misses loved ones and friends. Typhoons are one of the many new experiences for him in the area. Watson is the son of Wilson Watson, former Ranger resident.

PAT and PAM

By Mildred & David Pickrell



ARE YOU INSURED BY PICKRELL Insurance Agency

MI 7-3582 RANGER

Melvin Alexander Is Promoted

Information has been received that Master Sergeant Melvin Joe Alexander has been selected for promotion to Senior Master Sergeant (E-8) in the United States Air Force. Sergeant Alexander, a 19 year veteran, is presently stationed at Tan Son Nhut AB, near Saigon, Viet Nam. He is assigned as a Logistical Plans Staff NCO with 7th Air Force Headquarters.

His wife, LaVeda, and four children, Jimmy, Beverly, Michael and Richard reside at 806 Cherry Street while the Sergeant is overseas.

David Pickrell Attends Meeting In Mineral Wells

David D. Pickrell II was in Mineral Wells on Tuesday to attend a regional meeting of Texas Association of Independent Insurance Agents.

Headquarters for the meeting was the Baker Hotel where agents heard an address by the president, participation in a workshop and enjoyed lunch in the hotel dining room. Pickrell was one of 35 agents in attendance.

Auto Loans At Low Bank Rates

FIRST STATE BANK Ranger, Texas

Board Hears Tax Proposal, Plans to Move Supt.'s Office

In a regular meeting Tuesday night the board of trustees of Ranger Independent School district listened to representatives of two tax evaluation firms but again took no action since they had no firm offer of cost.

The board did vote to move the office of the Superintendent of Schools James R. Clark to 204 Main Street to the offices now occupied by First Federal Savings and Loan Association. The move will be made after First Federal moves to their new quarters in a few months.

The offices are owned by Ranger Junior College and they have offered free use of the space to the public school. The main reason for the move is gain more space since there is room for only about 10 guests at the most at a board meeting. Noise of physical education classes in the gym and partly over the

office is another strong reason for the move, Clark said. A teacher textbook selection committee was named to select new science books for grades one through 8, new spellers for grades 2-8, new high school textbooks for Bookkeeping 1 and 2, Cosme-

tology, Shorthand 2, Physical Science. Elected to serve as Census Trustees for 1968 were Principals James W. Childress, Boone Yarbrough and Mrs. Annie Meredith. Census forms will be sent home by students for their parent's signature

early in January. Permission was given Band Director Dick Helmcamp to purchase a used baritone saxophone for \$350 to replace a worn out horn. New cost of such a horn is \$700 the board was told.

The board discussed offering a half credit course in choir for high school students beginning the second semester. Course would begin at 7:40 a. m. Twenty-nine students have signed up for the course. Edmund Lewis of the college faculty would teach the course if offered.

Action will be deferred until the January meeting to see if the average daily attendance will justify the state paying another teacher's salary.

Board members present were Dr. Luther Gohlke, president; R. V. Robinson, vice-president; Ross Hodges, secretary; Mrs. Frances Cox, Dr. W. P. Watkins, Gas to n Dixon.

The public is always welcome to attend all board meetings Clark said.

Ranger Lions Hear RJC Choir At Thursday Meet

The approaching holiday season was credited with sparking enthusiasm of Ranger Lions Club during their luncheon at Bryan's Steak House on Thursday.

Following the meal, R. B. Golemon, program chairman for the day, invited the group to Boswell Hall on the college campus where the Ranger Junior College Choir presented a very entertaining program of appropriate selections.

During the next luncheon meeting (Dec. 21) there will be gift exchange with Johnny Bates in charge of the program.

Approximately 35 members were present for Thursday's meal and program.

Ranger Rangers Play Crowder State Monday

Coach Ron Butler's undefeated Ranger roundballers hit the road today to begin a four game swing through Missouri and Indiana.

Monday night the 18th, the Rangers take on Crowder State JC at Neosho, Mo. Crowder has a 12-1 record for the season. Their only loss was to Fort Worth Christian at the Tulsa Tourney.

On the 19th, the Rangers move into Moberly, Mo., for a game with Moberly J.C. On the 20th, they travel to Festus, Mo., to tangle with Jeff County JC, and on the 21st they move east to Vincennes, Indiana, to take on champion Vincennes Junior College.

After time out for Christmas holidays, the Rangers hit the court again on Jan. 6 in Lawton, Okla., when they take on Cameron JC.

Their next appearance on home court will be on Jan. 8 when they take on Cisco JC in the Ranger Gym.

Rotarians Honor Rotary Anns With Christmas Party

Ranger Rotarians honored Rotary Anns and other guests at a Christmas dinner held in the Banquet Room of Lone Cedar Country Club at 7 p. m. Thursday, Dec. 14.

Dr. Paul Riffle offered the invocation. Following the meal, club President Gary Beauchamp introduced and welcomed guests. He presented E. W. Mince who, in turn introduced State Representative Burke Musgrove of Breckenridge, speaker for the evening. Musgrove presented a stirring address on "The Pride of being An American."

It was a pleasant evening for Messrs. and Mmes. David D. Pickrell II, Bill Herod, John Foster, E. W. Mince, Gary Beauchamp, Paul Riffle, W. E. Swaney, Dewey Cox, Herman Cupp, L. R. Gohlke, Morris Newnham; Rotary Sweetheart Nancy Newnham and escort Jimmy Durnith; Felton Brasher and Mrs. Auda Lammum and the speaker, Burke Musgrove.

Rotarians Hear Speech Students

Five members of the Speech Class, Ranger High School, were guests of Ranger Rotarians during their luncheon in Bryan's Steak Shop on Wednesday.

Introduced by James W. Childress, Donna Johnston, Tommy Bott, Vicki Higginbotham, Kathleen Cole and Billy Woods constituted a panel for discussion of the current problem of LSD.

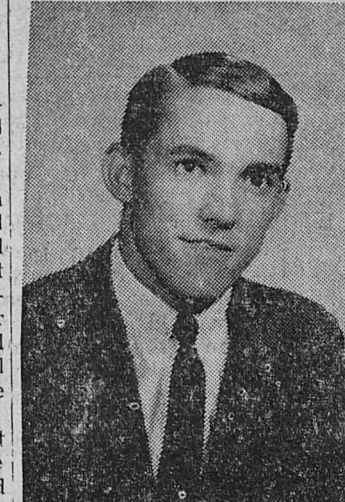
President Gary Beauchamp conducted a brief business meeting, welcomed guests and announced holiday activities of the club.

Floyd Caraway To Exhibit Charolis In Stock Show

FORT WORTH — (SpI).— Floyd Caraway of Box 352, Ranger, will have Charolis competing in the 1968 Southwestern Exposition and Fat Stock Show, Jan. 26 through Feb. 4.

With entry closing for cattle, horses, sheep and swine just past Fort Worth Stock Show officials, led by Show President and Manager W. R. Watt, started the task of computing 1968 entries. Poultry, rabbit and pigeon exhibitors have until Jan. 15, 1968, to submit their entries. "Although its still too early to tell," said Watt, "it looks like we've got some fine entries and should have another great show."

In the Fort Worth Rodeo Arena Watt's sure there's a great show lined up. Led by guest star Rex Allen with the "Men of the West" the Fort Worth Show will be packed with entertainment. Specialty acts include "Big Loop" Roping, Championship trick and fancy riding and an unusual exhibition of dressage performance. Rodeo action will be plentiful with over 450 top cowboys competing for nearly \$75,000 in prize money and entry fees on some of the roughest stock in the business. Stock producers for '68 are Tommy Steiner - Hoss Immen and Associates. Mail order tickets for the '68 Fort Worth Rodeo are available from the Southwest Exposition and Fat Stock Show, PO Box 150, Fort Worth Texas 76101.



DENNIS HART Mr. Ranger Junior College



WILMA FAHRING Miss Ranger Junior College

Dennis Hart and Wilma Fahring Named Mr., Miss Ranger College

Dennis Hart of Lewisville and Wilma Fahring of Knox City have been named Mr. and Miss RJC at Ranger Junior College in Ranger.

The two sophomores were chosen for the honor by their fellow students during a campus wide election.

They will be honored in the 1968 RANGER, the RJC yearbook.

Miss Fahring is the daughter of Mr. and Mrs. William L. Fahring of Knox City. She is a 1966 graduate of Knox City High School, and plans to further her college education at Sul Ross College after she graduates next spring from RJC.

Hart is the son of Mrs. Helen Foster's mother and brother, Mrs. Helen Johnson and Duane of Holly Springs, Miss., will spend Christmas holidays in Ranger. They will arrive in Dallas Monday night and the Fosters will meet them at the airport.

Both students are active in campus activities at RJC.

en Kuykendall of Lewisville. He is a 1966 graduate of Lewisville High, and is trainer for all the major athletic teams at RJC.

Both students are active in campus activities at RJC.

RHO PI CHAPTER PLAYS HOSTS TO FAMILIES WITH SOCIAL

Families and friends were guests of members of Rho Pi Chapter, Beta Sigma Phi, for a covered dish supper at the Community Club House at 7 p. m. Thursday, Dec. 14.

Following the meal, there was a social hour, complete with Christmas tree and gift exchange. Those present included Peggy Swafford and daughter

Neil Fox and son, Jeanet Bell and sons, Charlene Summers, Mr. and Mr. Norma Christian and family, Deann Carter and daughters, Mr. and Mrs. Robert Lawson, Mr. and Mrs. Homer Perry, Stephen Ashcraft and Mark Calhou Mr. and Mrs. Jack Robinson and Allan, Loresta Veale and Mollie Day and children.

RANGER TIMES

4th Street, Ranger, Texas 76470 — Established June 1, 1919 Entered as second class matter at the post office at Ranger, Texas under the act of Congress of March 3, 1879.

Published Semi-Weekly — Sundays and Thursdays By Eastland County Newspapers, Inc. PAT COLLINS, Editor

Table with subscription rates: One week by carrier in city .15, One month by carrier in city .65, One year by mail on Ranger RFD Routes 3.50, One year by mail in county 4.95, One year by mail in state 4.95, One year by mail out of state 6.95

NOTICE TO PUBLIC — Any erroneous reflection upon the character, standing or reputation of any person, firm or corporation which may appear in the columns of this newspaper will be gladly corrected upon being brought to the attention of the publishers.

CLASSIFIED

For Sale

FOR SALE: Limited number new edition, Texas Almanac \$1.75 the copy, at the Times Office.

FOR SALE: Road material driveway material, concrete rock, sewer line rock and agriculture limestone. Call King Aggregate Materials, Power Plant Road, Eastland (was H. B. Zachry Company), P.O. Box Eastland MA 9-1616, Cisco HI

FOR SALE: Wood, clean used 13-inch tire — 600x13s and 650x13s, \$3 each. See these and many more at Fortin Tire Co. Eastland

FOR SALE: Five ton Carrier central heating and cooling unit, water cooled. For further information, call 647-1182.

FOR SALE: Lake Leon cabin. Call MA 9-2215 in Eastland. tf

FOR SALE: — One 20-gauge pump shotgun, heaters, 1 range, oil drums, pecans, one overhead door, 8x7 ft. Arnold Gohlke, 605 Walnut, tel. 647-3103 in evenings

DEER LEASES: By the day. Contact J. H. Greer, Tel 647-3663.

FOR SALE: Boys' 26 inch bicycle. \$12. Call 647-3586. 39

FOR SALE: A good neighborhood grocery and market. Good location, clientele of good customers. Doing good volume with a very good lease. Will sell at inventory Call 647-3586. 39

Notice

LOST: Ladies brown strap purse. Contains billfold, driver's license, glasses and case. Reward. Call 647-1522 or 647-1329. 39

NOTICE: Lou's Ceramics. Green wire slip supplies. Inquire about free beginner's course in a fascinating hobby. Make your own Christmas gifts or get them ready made. 310 E. Sadosa, 629-2359, Eastland. 45

NOTICE — Learn to fly in Cub J-3 two Piper tri-pacers, and Cessna Skylane. Charter trips, airplane rentals. Commercial pilot, flight instructor on duty. Cisco Flying Service, Cisco Municipal Airport.

NOTICE: Painting, papering, sheet rock, taping, bedding, textone, and carpentry repair. Free estimates. C. O. Raiford, Box 963, Brownwood. Call 643-5126. 42

NOTICE

CISCO STEAM LAUNDRY

now has answering service in Ranger. Pickup and delivery every day. For fast service call 647-1380

ELECTROLUX Factory Authorized Sales & Service

Free Home Demonstrations — No charge for service calls

JACK BEDFORD Box 72, Cottonwood, Texas 79504

GIVE YOUR CHILD a future or a present. The World Book Encyclopedia plan will stimulate interest and promote better grades in school. You may earn our plan or purchase it. For details write Mrs. Lorene Parker, 774 Clinton, Abilene, or call collect DR 4-4851. A representative will explain our service without cost or obligation. Delivery of World Book guaranteed through Dec. 23. 41

NEED responsible party in Ranger to take over payments in late model Singer sewing machine, automatic zig-zagger, blind stitches, fancy patterns, etc. Assume four payments at \$6.12, discount for cash. Write Credit Manager, 2225 Pine, Abilene, Texas. tf

NOTICE — Call or see us for rubber stamps. The Ranger Times. tf

NOTICE: Learn a profession in just a few short months. Complete training. Low tuition, easy terms. Part time students welcome. Texas Barber College, 450 Pine, Abilene. Phone OR 4-5891. tf

ATTENTION NEWCOMERS! You can buy new home in Ranger, 207 Skylark (go out Gorman Hwy., turn right at Lamar, left on Skylark) in brand new addition, is ready for some lucky home owner. Three bedrooms, brick, two baths, all built-in kitchen, carpets, two-car garage. Go out and take a look, then call 642-9456 in Brownwood for Jean F. Balch, Western Mad. Homes. tf

NOTICE: Repossessed '67 Singer Zig Zag. Makes buttonholes fancy stitches, sews on buttons without attachment \$39.95 or \$8. a month. Write Credit Manager, Box 1292, Abilene, Texas. 42

TRUCKS - TRAILERS AND EQUIPMENT 4 cab-over tandem Diesels. 65 F750 Ford with drag. 64 V-220 with Air Drag. 61 Cab-over Chevrolet and hydraulic grain dump. 62 Tandem Chevrolet with two winches. 2 190 Int. Tandem winch truck. 3 Single Axle winch trucks. 64 VF192 Tandem Dump. 57 RF 190 Tandem Dump. 4 Single Axle dump trailers. 5 59 to 64 truck tractors. 4 other tandem trucks. 2 school buses. 6 tandem oil field floats. 2 tandem tank trailers. 1 Le Roi air compressor. 3 tandem cattle trailers. 36-ft. tandem grain trailer. 1 7-yd. mixer or tandem truck. 2 NH220 Cummins engines complete. Motors — Transmissions. Wheels — Tandem Units and Other trucks — trailers Used Parts, Etc. JOHNSTON TRUCK & SUPPLY 725-2181 — Cross Plains, Tex. 56

IF YOU WANT work but cannot give full time we have just the thing you need. Write Avon Mgr. Box 13446, Ft. Worth

HOMES FOR SALE New brick home, 3 bedrooms, 2 baths, close to school in Eastland. 3 bedroom home with 1 a. land, edge Ranger. 2 bedroom home with 1 a. land, edge Eastland. Duplex, close in Eastland, reasonable price. Many others. Contact us for prices and terms. FARMS AND RANCHES 57 a. Cisco area, \$2300 down. 140 a. Mostly coastal, on pavement, close to Eastland. \$157.50. 160 a., some peanuts, Desdemona area. 171 a., s. of Ranger, pavement, \$110 a. 460 a., some irrigated peanuts with other improved pasture land, good place, \$157.50 a., terms arranged. 516 a. Stephens Co., \$81 a. 1100 a. Stephens Co. \$90 a. 5000 a. show place, pecans, water, abundance of grass, excellent improvements, 50 miles Fort Worth. Many others. Contact us for details.

Real Estate Homes for Sale Off. 629-1725 Nite 629-1926 Farms and Ranches Have farms and ranches, any size, bottom land or peanuts. M. L. TERRELL REAL ESTATE 311 1/2 W. Main - Eastland, Tex.

RENTALS FOR LEASE: Shamrock Service Station on West Main in Eastland. Contact Larry Panzer, Box 395, Sweetwater. Call BE 4-2114, Area Code 917. 39

FOR RENT: Unfurnished duplex apply at 200 East Valley. tf

FOR RENT: Unfurnished duplex apply at 200 East Valley. tf

FOR RENT: Unfurnished duplex apply at 200 East Valley. tf

FOR RENT: Unfurnished duplex apply at 200 East Valley. tf

FOR RENT: Unfurnished duplex apply at 200 East Valley. tf

The Week Ahead In Ranger

SUNDAY Attend the church of your choice.

MONDAY Bullock Quilting Club. 3:00 p. m. — WSCS Prayer Group, at First Methodist Church.

TUESDAY 10:00 a. m. — Community Art Group, Community Club House. 7:00 p. m. — Xi Zeta Nu Christmas dinner, home of Mrs. David B. Allsup. 8:00 — Boy Scout Troop No. 88, Scout Hut. 7:30 p. m. — Rebekah Lodge.

WEDNESDAY 12:05 p. m. — Rotary Club, Bryan's Steak & Coffee Shop. 4:00 p. m. — Boy Scout Troop No. 10, First Methodist Church. 7:00 p. m. — Elks Club.

THURSDAY 6:30 a. m. — Jaycees breakfast, Bryan's Steak and Coffee Shop. 12:05 p. m. — Lions Club, Bryan's Steak & Coffee Shop.

HOSPITAL NEWS Patients in Ranger General Hospital Saturday morning were:

- W. J. Herrington. Mrs. J. E. Bryan. Mrs. Mae Belle Keller. L. S. Waddington. Ricky Reese. Wendel Hughes. Henry Davenport. Mrs. C. J. Johnson. Mrs. Sudie Jones. Mrs. Frona Ames. Mrs. Nora Shipman. Mrs. Mary Mitchell. Mrs. R. C. Wilson. Mrs. T. W. Parsons. Mrs. Ellen Cole. Mrs. Julie Calhoun. C. D. Erwin. E. P. Robinson. Mrs. Letha Womack. Mrs. Letha Buckbee. Mrs. Cordie Woods. Mrs. Amie Stephenson. Mrs. Emma Vaughn. Dan Walton. Kenneth Clark. Ray Welch. Lewis Dawson. Ed Dixon.

Real Estate

Homes for Sale Off. 629-1725 Nite 629-1926 Farms and Ranches Have farms and ranches, any size, bottom land or peanuts.

M. L. TERRELL REAL ESTATE 311 1/2 W. Main - Eastland, Tex.

Rentals

FOR LEASE: Shamrock Service Station on West Main in Eastland. Contact Larry Panzer, Box 395, Sweetwater. Call BE 4-2114, Area Code 917. 39

FOR RENT: Unfurnished duplex apply at 200 East Valley. tf

FOR RENT: Unfurnished duplex apply at 200 East Valley. tf

FOR RENT: Unfurnished duplex apply at 200 East Valley. tf

FOR RENT: Unfurnished duplex apply at 200 East Valley. tf

FOR RENT: Unfurnished duplex apply at 200 East Valley. tf

FOR RENT: Unfurnished duplex apply at 200 East Valley. tf

FOR RENT: Unfurnished duplex apply at 200 East Valley. tf

FOR RENT: Unfurnished duplex apply at 200 East Valley. tf

FOR RENT: Unfurnished duplex apply at 200 East Valley. tf

Mine Of Good Eating



Cut the cost of fresh vegetables for weeks by storing surplus from your garden in a cool basement or in a pit dug or barrel sunk in a well-drained out-of-the-way corner outdoors.

In these days of ever-rising food prices those of fresh vegetables are going up too. So the gardener who has surplus vegetables from his garden has the advantage over others for he can store his surplus.

Given a corner of a rat-proof basement where temperature may be maintained between 32 and 40 degrees F, where there is ventilation and the humidity can be controlled, many vegetables can be kept for weeks. Such a storage corner is prepared like a layer-cake with carrots, beets, rutabagas, turnips and kohlrabi stored at floor level. These root vegetables are simply dug and reset in boxes of sand, peat, sawdust or moist loam.

Celery, too, may be dug, outer and injured leaves discarded, then plants set close together in boxes of moist loam on the floor. Cleaned of earth after digging, potatoes may be stored in slatted boxes set several inches above the floor for all 'round circulation. Cover with burlap bags or a blanket to keep out light which turns tubers green.

The next layer up is onions which should be stored in slatted boxes suspended from the ceiling or supported so they set several feet above the floor. Dry the bulbs well before storing.

Plants of cauliflower, peppers and tomatoes may be pulled from the garden, hung from the ceiling of the storage room until used. Melon plants may be handled the same way, but hung in a sunny place.

All of the root vegetables named above also may be stored outdoors in a pit dug in a well-drained, out-of-the-way corner or in a sunken barrel. Line pit or barrel with 6 inches depth of straw. Mix vegetables so a variety is available, place them carefully in the "mine" and cover with another 6 inches of straw allowed to protrude through an additional heavy covering of earth to serve as vents.

State Capital NEWS

AUSTIN — State crackdown on loan abuses in the home improvements field is steadily widening. Consumer Credit Commissioner Frank Miskell issued show cause orders against 16 home improvement firms and 16 individuals, alleging they are lending money at illegal interest rates.

Orders applied to firms in Houston, Dallas, San Antonio, Kingsland and Fort Worth. "These cease and desist orders were but the initial step which will be followed by other legal actions as part of our comprehensive program to protect Texas consumers from abuse in the field of home improvement contracts," Miskell said.

Companies and personnel were directed immediately to stop any activity in violation of Texas Regulatory Loan Act or new Consumer Credit Code.

Practices complained of included cash advances on home improvement loans (primarily for debt consolidation) as an inducement for contracts at interest rates over 10 per cent. Some interest rates, an aide to Miskell said, range from 18 to 24 per cent.

A Houston finance company has filed suit in district court here, challenging Miskell's authority under the Regulatory Loan Act to regulate its purchases of discounted notes executed by homeowners to improvement contractors.

Texas' 91-year-old Constitution, as a result of Nov. 11 elections, has six more amendments.

Voters approved all six proposed amendments. Also, as a result of the general election, Texas has a new Republican senator, 35-year-old Dallas lawyer Ike Harris. Republicans are in run-off races with Democrats next month in all six districts which have House vacancies.

Two of the districts are in Houston, one in Austin, one in the Rio Grande Valley one in Wharton and Matagorda Counties and the other in Bailey, Cochran, Hockley, Terry and Yoakum Counties of West Texas. GOP candidates led November voting in all but the Valley district.

Atty. Gen. Crawford Martin held that the Department of Public Welfare must furnish monthly reports containing names of those seeking aid to blind to the Department of Public Safety so their drivers licenses can be promptly revoked under a new law. Opinion said 1941 law prohibited.

FRUIT CAKES: Anyone desiring famous Corsicana De Luxe Fruit Cakes may contact Mrs. W. C. Sanders, phone 647-3577, after 4 p. m.

Mr. and Mrs. Ralph Lockwood are spending the weekend in the home of Mr. and Mrs. Bob Lockwood of Houston.

Mr. and Mrs. Kenith Hill of Sacramento, Calif., and Mrs. Lucille Watson of Felton, Calif., arrived Saturday to spend the holidays with their parents, Mr. and Mrs. E. H. Mills. On December 22, Mr. and Mrs. Chuck E. Mills and Chas. E. Mills of Los Angeles, Calif. and Mr. and Mrs. Tom Broly of Long Beach, Calif. will arrive to join the family reunion, much of which will be held at the Lake Leon home of Buster Mills.

New Era Club

Has Meeting At Pearsall Home

Mmes. F. S. Pearsall and Howard Oliver were co-hostesses for the meeting of New Era Club in the home of Mrs. Pearsall at 4 p. m. Wednesday, Dec. 13.

Colorful seasonal decorations were used throughout the house. Hostesses served a delicious refreshment plate as guests arrived.

Mrs. R. V. Robinson, club president, conducted a short business meeting.

In introducing the speaker Mrs. A. B. Halbert expressed the thoughts of Christmas in the words of Charles Spurgeon who said "Give as though you love to give, as the flower pours forth its perfume." Mrs. Wayne Matthews gave the story of "The Other Wise Man" by Henry Van Dyke.

Those present were Mmes. T. J. Anderson, L. L. Bruce, Walter Daniels, Vernon Deffenbach, B. S. Dudley Sr., A. B. Halbert, Larry Hunt, H. H. Oliver, W. A. Lewis, Wayne Matthews, Gilbert Meredith, W. F. Mitchell, George Robinson F. S. Pearsall, Avery Sullivan R. V. Robinson, J. L. Turner, Buck Wallace, W. A. Robinson, A. W. Warford and one guest, Mrs. L. G. Kennedy.

Methodist Men

Host Christmas Dinner Dec. 14

Adult members of First Methodist Church were guests of the Methodist Men's Club for Christmas dinner in Fellowship Hall at 7 p. m. Thursday, Dec. 14.

Invocation by the pastor preceded the meal, served at tables artistically decorated in seasonal colors.

George Kloss, president of the club, was master of ceremonies. He introduced Edmond Lewis who directed the Ranger Junior College Choir in a program of appropriate selections.

Speaker for the evening was Dr. S. Wayne Reynolds who chose the topic "If Christ Had Not Come" for an inspiring address.

It was a holiday highlight for the large group who braved the inclement weather to attend.

St. Rita's Altar

Society Plans An Open House

Ranger residents have been invited to be guests of St. Rita's Altar Society, St. Rita's Catholic Church, during an open house in the Parish Hall beginning at 7:30 p. m. on Monday, Dec. 18.

Interior decoration of the Hall has been completed and will provide an appropriate setting for seasonal fellowship, said a spokesman for the hosts.

Approval came from Alpine, Georgetown, Granger, Hughes Springs, Marfa and San Marcos. Tax was turned down in Lufkin.

That brings to 34 the number of cities which have approved the tax. Only three have rejected it. At least 100 more are expected to vote on the question before the end of the year.

Short Shorts Agriculture Commissioner John C. White is in Viet Nam as special observer for U. S. State Department to review food and fiber aid programs and recommend better usage of U. S. farm tools and agricultural shipments.

J. Harrell West of Bishop received Texas Farm Bureau's Distinguished Service Award.

State Bar is pushing for a juris doctor (J. D.) degree for Texas lawyers instead of bachelor of laws.

Texas Hospital Association announces plans for spending at least \$1,000,000 over the next five years on programs to interest young people in careers in more than 200 professional and paramedical fields.

Robert N. Magourik, a veteran state parks official, has been named superintendent of the Eisenhower State Park on Lake Texoma near Denison.

Mr. and Mrs. Ralph Lockwood are spending the weekend in the home of Mr. and Mrs. Bob Lockwood of Houston.

Mr. and Mrs. Kenith Hill of Sacramento, Calif., and Mrs. Lucille Watson of Felton, Calif., arrived Saturday to spend the holidays with their parents, Mr. and Mrs. E. H. Mills. On December 22, Mr. and Mrs. Chuck E. Mills and Chas. E. Mills of Los Angeles, Calif. and Mr. and Mrs. Tom Broly of Long Beach, Calif. will arrive to join the family reunion, much of which will be held at the Lake Leon home of Buster Mills.

First Methodist

Announces Plans For Yule Event

Continuing the observance of the Advent Season, First Methodist Church is sponsoring a special youth-led worship service at 7 p. m. Sunday, Dec. 17, according to announcement of the pastor, Rev. Thomas Tribble. The service will be under the direction of James Dixon, Nancy Newlin, Kelly Tribble, Bobbie Golemon and Larry Butler.

Following the service, youth will go caroling, returning to the church at 9 p. m. for refreshments served by members of Women's Society of Christian Service.

Members are urged and visitors encouraged to attend this service.

Methodist Men

Host Christmas Dinner Dec. 14

Adult members of First Methodist Church were guests of the Methodist Men's Club for Christmas dinner in Fellowship Hall at 7 p. m. Thursday, Dec. 14.

Invocation by the pastor preceded the meal, served at tables artistically decorated in seasonal colors.

George Kloss, president of the club, was master of ceremonies. He introduced Edmond Lewis who directed the Ranger Junior College Choir in a program of appropriate selections.

Speaker for the evening was Dr. S. Wayne Reynolds who chose the topic "If Christ Had Not Come" for an inspiring address.

It was a holiday highlight for the large group who braved the inclement weather to attend.

HAPPY BIRTHDAY

Many Happy Returns to the following Rangerites who will be celebrating birthdays during the coming week:

Sunday — Ronnie Ainsworth, Mrs. Nola Hubbard. Monday — Joan Powell, Charlie Orms, Carole Ann Darden, Nancy Bethany.

Tuesday — Ruby Springer, Mrs. Cora Preslar, Mrs. John E. Boyd, Elva Taylor. Thursday — Lewis Pounds, Mike Cole, Mrs. L. G. Kennedy. Friday — Edwina Kent, Mrs. Robert Cherry. Saturday — Frances Cox.

Congratulations to Mr. and Mrs. J. L. Browning who will observe a wedding anniversary on Friday, Dec. 22.

Mrs. Christine Ware is spending the Christmas holidays in the homes of Mr. and Mrs. Dick Latham and son, Travis of Lubbock and Mr. and Mrs. E. F. Latham of Brownfield.

Ladies Bible

Class Continues Study Project

Under the direction of M. Gary Beauchamp, member of Ladies Bible Class of Methodist Church, the class of "The Over-Aim of Christian Growth" during their Class meeting of Wednesday morning. The two types of food for growth mentioned in 1 Cor. 3:1 were considered.

Cards were sent to sick and shut-ins. It was announced that the next meeting would be on Wednesday, Jan. 3, the lesson a continuation of the current study text.

Attending were Mmes. M. Williams, Juanette Seyres, Maxine Offield, Georgia Langford, Dora Lanier, Genevieve Wallace, Roper, De Witt Jones, Sabye Langley, Bill Parnell, Lela Quinn, Pa Gohlke, Sophia Freeman, Sandy Herod, Mary Deitz Beauchamp and four children.

Mrs. Langley offered the closing prayer.

Guest Luncheon

Is Planned By WMU on Dec. 19

In observance of the holiday season, Woman's Missionary Union of First Baptist Church will host a Guest Day Luncheon in Fellowship Hall of the church on Tuesday, Dec. 19.

The program preceding the meal will begin at 11:30 a.m. and will feature an address of Rev. Aaron Backus of Arlington.

Members are urged to attend and encouraged to bring guests.

SAVE \$10.00 Reg. \$54.95 NOW \$44.95 Special: Water heater, 30 gal, gas, 10 year, Warranty, glass lined.

MONTGOMERY WARD Ranger, Texas

FOR A NICE CHRISTMAS GIFT GIVE AN ELECTROLUX CLEANER Factory Authorized SALES & SERVICE

FREE DEMONSTRATION No charge for Service Calls

H. L. HEROD Call 647-3100 in RANGER

LAST MINUTE GIFT SUGGESTIONS FROM PULLEY'S JEWELRY

FOR HIM DIAMOND RINGS WATCHES WATCH BANDS DIAMOND TIE TACKS KEY RINGS BRITISH STERLING RONSON LIGHTERS TRAVEL CLOCKS IDENTIFICATION BRACELETS MONEY CLIPS PRINCE GARDNER BILLFOLDS LEATHER CASES HI INTENSITY LIGHTS TABLE LIGHTERS CIGARETTE LIGHTERS

FOR HER DIAMOND DINNER RINGS DIAMOND WEDDING SETS BIRTHSTONE RINGS DIAMOND NECKLACES DIAMOND EAR RINGS DIAMOND WATCHES CULTURED PEARLS CHARMS & CHARM Bracelets PINS EAR SCREWS (Pierced & Non Pierced) WATCH BANDS BILLFOLDS HEIRLOOM STERLING ROYAL DALTON CHINA FRANCISCAN CHINA FOSTORIA WATERFORD CRYSTAL HI INTENSITY LIGHTS WHITING & DAVIS Bracelets COSTUME JEWELRY

And Many Other Gifts

PULLEY JEWELRY

DIAMONDS SILVERWARE WATCHES JEWELRY

THE GORDON SPOT

By DeMarquis (Dee) Gordon
Eastland County Extension Agent



Many people had a part in making the pecan show and queen's contest a success last week. We wish we could thank everyone personally for their help and contribution.

Eighty-five winning pecan entries were sent to the West Texas Regional pecan show in Abilene to compete with the best pecans in West Texas Dec. 15 and 16.

Mrs. Fred Butler of the Cook community near Sabano brought some of the largest turnips to my office that I have ever seen. They were perfectly shaped and weighed about three pounds each. She said they had a big turnip crop this year.

Greenbugs and winter grain mites are building up in large numbers in wheat and oat fields in many areas of the state. I have not heard of any reports of insects in Eastland County small grain. The small grain should be carefully watched and particular attention should be given in detecting these insects. Farmers should be on the lookout for yellow spots appearing in their small grain fields which may indicate the presence of the greenbug. The weather conditions have been such that the greenbug is able to build up in large numbers. They reproduce in cool weather but their predators normally live and reproduce in warmer temperatures.

Farmers and ranchers should also be on the lookout for the annual invasion of lice on their livestock. These pests will reduce profits and increase feed bills unless they are controlled.

You might like to have a

copy of MP-691, "Texas Guide for Controlling External Parasites of Livestock and Poultry." This publication has information on insecticides formulations and how to use them in controlling flies, lice mites, ticks, fleas, cattle grubs and others. It contains a dilution chart for mixing sprays and dips and outlines control programs for beef cattle, sheep and goats, swine, horses, and poultry.

LOOKING At Agriculture

By GILBERT MEREDITH

(This is one of a series of articles dealing with agricultural programs in Eastland)

The Eastland County Pecan Show held in Cisco last weekend was a real success. Sometimes we fail to see the real value of a show like this. Pecans play an important part to our country's economy and will continue to increase. This is real pecan country and one of the few areas of the state that produced a crop in 1967. Some reports indicate \$100 or better yields per acre in 1967. The growing of pecans take real planning and a number of years to develop. It was most interesting to me to read the little pamphlet developed by the pecan growers association relative to the food value of pecans.

The pecan harvest is 99 per cent complete as of Dec. 15. Marketing will continue until well after the first of the year. Marketing cards must be returned to the ASCS office not later than Jan 29 as we must send our production report in by Feb. 1.

We believe that we have one of our best cover crops in history on the ground this year. Favorable conditions have attributed to this success. The cover crop practice is designed to help prevent wind erosion that occurs during the winter months. Several producers have tried winter peas for the first time this year. I noted a real good field of winter peas on the D. B. Warren farm in the Gorman area this week. Peas are especially good as a soil builder and will prepare the ground for a better crop the following year.

Producers are reminded that the cover crop must be left on the ground until April 1, 1968 to guard against wind erosion. Federal cost-shares amount to approximately 50 per cent of the cost of carrying out the practice.

This office is in the process now of paying cost-shares due on the winter cover crop practices. As in prior years we will not be able to complete payments by Jan. 1, but we will do so as time permits. We have about 700 applications for the practice which takes time to complete.

H. V. O'Brien, editor of the Eastland Telegram presented a program on Tuesday, Dec. 12 to the Eastland Lions Club on the agriculture and civic activities of the late J. M. Cooner, retired county agent. The program was most interesting. I shall never forget the fine working relationship with Mr. Cooner. He was most helpful in getting me acquainted with the farmers and ranchers of Eastland County.

The County Committee met on Dec. 13 to tabulate 1968 cotton referendum ballots. A total of 87 producers voted out of an estimated 130 eligible voters. Eastland County cotton producers voted 83 for for and 4 against marketing quotas for 1968. Producers who intend to sell or lease their 1968 cotton should remember the deadline is Jan. 2, 1968.

The Kentucky Derby has been run every May since 1875.

Off the island of Mindanao in the Philippines the ocean is the deepest—35,400 feet.

"El" in Hebrew names such

JRB PRODUCE FEATURES

CRISPY FANCY **CELERY** stalk 9c

EAST TEXAS **Sweet Potatoes** lb 9c

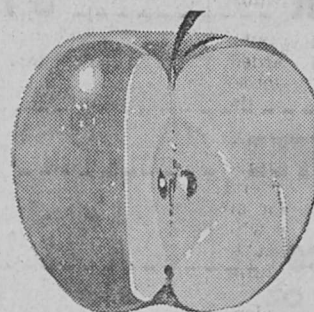
Yellow Onions lb 9c

VERY FRESH **Coconuts** each 19c

JUICY SWEET TEXAS **Oranges** 5 lb bag 39c

FANCY RED ROME

APPLES
lb 19c



SHORTENING — 3-LB CAN

Crisco 69c

GLADIOLA **CORN MEAL** .. 5 lb bag 39c

AF LARGE **EGGS** doz 39c

DEL MONTE WHOLE — NO. 303 **Green BEANS** 4 cans \$1

DEL MONTE CS or WK — No. 303 **CORN** 4 cans \$1

Del Monte Mary Washington — No. 300 **ASPARAGUS** 2 cans \$1

KLEENEX — 50 COUNT **NAPKINS** pkg 31c

LE SUER — NO. 303 **SWEET PEAS** can 37c

DEL MONTE

PUMPKIN
NO. 303 CAN 10c

FOREMOST **WHIPPING CREAM** 1/2 pt 25c

FOREMOST **EGG** qt 49c

FOREMOST **ICE CREAM** 1/2 gal 69c

** HEALTH & BEAUTY AIDS **

SECRET SPRAY — Reg. 1.49 **Deodorant** can 98c

JERGEN'S All Purpose — Reg. 1.00 **CREAM** jar 49c

25 COUNT — REG. 69c **Alka Seltzer** bottle 79c

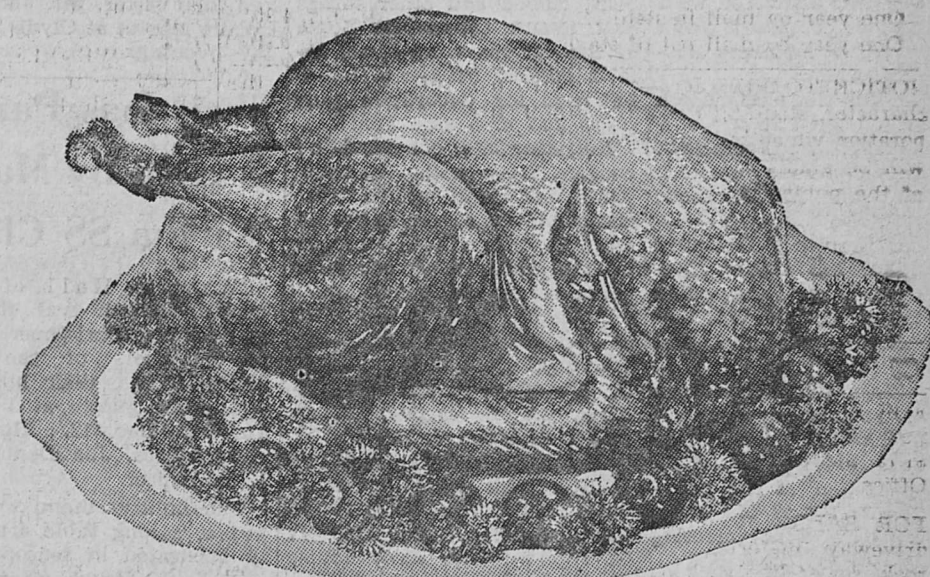
ULTRA BRIGHT — FAMILY SIZE **Toothpaste** tube 49c

PLAY **Super Santa** THIS YEAR

SAVE MORE S&H GREEN STAMPS NOW
-GET MORE GIFTS for CHRISTMAS-

ARMOUR'S STAR **TURKEY TOMS**
13 to 20 LBS
lb 29c

HONEYSUCKLE **TURKEY HENS**
10 to 14 LBS
lb 49c



TURKEY TOMS All Turkeys at JRB Are US Government Inspected And Graded 'A' **ARMOUR'S STAR** 20 LBS and UP LB 25c

BUTTERBALL — 10-14 LBS. **Turkey HENS** lb 49c

SWIFT'S PREMIUM — 4-6 LBS. **Chicken HENS** lb 45c

MELROSE — FULLY COOKED **HAMS**

Shank Half lb 55c

BUTT HALF LB 59c

WHOLE LB 55c

Mohawk Canned HAMS 5 lb can \$3.99

IMPERIAL SUGAR 10 lb bag 98c



OCEAN SPRAY **Cranberry SAUCE**
16 OZ CAN 19c

6-BOTTLE CARTON — 6 OZ. — PLUS DEPOSIT **SEVEN - UP** 3 for 89c

DEL MONTE — Sliced or Crushed — No. 2 **PINEAPPLE** 3 cans \$1

AMERICAN — 22 OZ. **SWEET PICKLES** jar 55c

PEPPERIDGE FARMS **STUFFING MIX** pkg 33c

SUGARY SAM — No. 3 Squat Cans **SWEET POTATOES** 4 cans \$1

GEOSHA or MYCO — 11 OZ. **MANDARIN ORANGES** can 25c

KRAFT'S — 12 OZ. **MARSHMALLOW CREME** jar 37c

KRAFT'S MINIATURE — 10 1/2 OZ. **MARSHMALLOWS** pkg 25c

ANGEL FLAKE — 7 OZ. CAN **COCONUT** can 49c

FOREMOST **BUTTERMILK** 1/2 gal 43c

FOREMOST **SOUR CREAM** 1/2 pt 25c

FROZEN MORTON'S PUMPKIN or **MINCE PIES** 3 for 89c

Double S&H Green Stamps with purchases of \$2.50 or more Wednesdays!

PRICES GOOD Thru Wednesday DECEMBER 20

JRB SUPER MARKETS MEMBER AFFILIATED

S&H GREEN STAMPS WITH EVERY PURCHASE

PRICES GOOD IN RANGER
Quantity Rights Reserved - No Sale To Dealers

RANGER **MONTGOMERY WARD**
The Big Store

Will Be Open Every Night To 8 p.m. Until CHRISTMAS

SEIBERLING FIRESTONE COOPER
The Reliable One **HORTON** Tire Service Eastland

there's still time to...
shop Wards 1967 Christmas Catalog
JUST CALL
Ranger — 647-3227
Eastland — 639-133
Cisco May Call Collect — 647-1633

WANTED
PROSPECTS FOR
Vinyl Insulating Windows
Plastic and Insulating Siding
Aluminum Replacement Windows
Aluminum and Steel Siding
Fry Boiling
Fiberglass Insulation
J. H. TURNER
Home Improvement Company

LACASA NEWS

Mr. and Mrs. Zelma Herrington and Mrs. Mary Herrington visited the J. B. Herringtons at Woodson Wednesday night.

Mrs. Maude Herrington of Fort Worth visited in the Herrington home Sunday. They accompanied her on a visit to Mrs. MacBay at Breckenridge.

Mr. and Mrs. D. B. Raney and Mrs. A. O. Templeton visited their sister, Mr. and Mrs. Hubert Martin at Clyde Saturday evening.

School. Mrs. Jackson had a display of cleverly decorated and wrapped baked goods and candies in containers that are available in almost any home. These were covered with either shelf or contact paper in red plaids and other designs decorated with mistletoe, greenery, poinsettias, jingle bells, ribbon and other things that meant Christmas. Some of the cartons were made into attractive bells that might be used for decorative purposes and then as a gift.

Refreshments consisted of cookies, fruit cake, candies, party mix, and spiced tea. Some of the refreshments were made from the recipes in the Lone Star pamphlet given at the demonstration.

Attending were Mmes. Mabel Jackson, Mary and Zelma Herrington, Jack Pockrus, J. C. Bradford, Kenneth Mitchell, D. B. Raney, R. E. Miller and Joe Jackson.

The New Hope Baptist Church will have a Christmas Program of carols and the Christmas Story, Dec. 17 at 7 p. m. with Miss Louise Mitchell, Missionary to the Indians in Teec Nos Pos, Ariz., as the evening speaker. Miss Mitchell, who formerly was a member of the church is to

Home Of Mrs. David Allsup Is Setting For Garden Club Meet

The beautifully decorated home of Mrs. David B. Allsup was the setting for the meeting of Ranger Garden Club at 9:30 a. m. Thursday, Dec. 14. The hostesses were Mmes. Jack Bedford and L. L. Bruce. Club president Mrs. R. W. Gordon conducted the short business meeting.

"The Air of Christmas" was the theme of the program presented by Mrs. W. A. Lewis,

Home Of Mrs. David Allsup Is Setting For Garden Club Meet

The refreshment table was laid with a green felt cloth, decorated with Christmas figures.

Poinsettias in a silver compote formed the centerpiece. Mrs. Gordon presided at the silver service where refreshments of coffee and tea, sweet rolls, fruit cake, candy and nuts were served to Mmes. R. V. Robinson, J. C. Carter, L. H. Kay, J. B. Hough-

ton, James R. Clark, O. G. Lanier, Joe Dennis, W. A. Lewis, one guest, Mrs. John McLean and the hostesses.

LOOK WHO'S NEW
Mr. and Mrs. Donnie Casey are the parents of a daughter, Cindy Ann, weight eight pounds, three and one-half ounces, born Wednesday Dec. 13, at Ranger General Hospital. Paternal grandparents are Mr. and Mrs. John Casey of Ranger. This is the couple's second child.

"The Rugger Realism of Christmas"

Hear This Sermon at 10:50 a.m. Sunday At The
First Methodist Church
REV. THOMAS TRIBBLE, Pastor
9:45 - Sunday School 10:50 - Morning Worship
7:00 p.m. - Evening Worship
(Nursery Open All Services)

Christmas Party Is Held by Mary Martha SS Class

Fellowship Hall of First Baptist Church was the setting for the Christmas dinner for members of the Mary Martha Class, their husbands and other guests at 1 p. m. Tuesday, Dec. 12. Hostesses were Mmes. Joe Dennis and L. L. Bruce.

The holiday menu was served at a long table artistically decorated in seasonal motif. L. L. Bruce offered the invocation.

Following the meal and devotional thoughts by Mrs. Frank Arrendale, class president Mrs. C. A. Strong conducted the business meeting. The group chose Mrs. D. C. Cox as friend of the month.

In lieu of gift exchange, an offering of \$86.50 was received for the Lottie Moon Offering for Foreign Missions. Joe Dennis voiced the closing prayer.

Those present were Messrs. and Mmes. L. L. Bruce, Joe Dennis, S. T. Williams, G. C. McGowen, W. E. Herweck; Mmes. E. P. Robinson, Ruby Springer, C. A. Strong, C. B. Pruet, Flake Turner, J. R. Ervin, N. L. Sudderth, Frank Harry Deal, W. F. Lovelace and a guest, Mrs. LeRoy Thomas of Odessa.

Grace Class Has Christmas Party Dec. 14th

Members of the Grace Class, First Baptist Church were guests of the teacher, Mrs. T. J. Anderson for a Christmas party in her home on Thursday evening, Dec. 14.

Following the opening prayer by the hostess, the devotional "Christmas Thoughts" was presented by Mrs. W. A. Lewis. Activity included Christmas games directed by Mrs. A. W. Warford and packing a basket of food for a needy family.

Gift exchange preceded refreshments of chips and dips, fruit cake and punch, served by the hostess to Mmes. H. E. Ewing, H. E. Brooks, A. W. Warford, Tom Lang, Nath Pirkle, K. E. Falls, John Tibbels, J. B. Houghton, O. W. House, H. B. Weathers, W. A. Lewis and Mildren Williams.

Xmas Party Held By Beginners Of Baptist Church

Members of the Beginner Department, First Baptist Church, enjoyed a Christmas party in Fellowship Hall of the church on Monday evening.

Directed by Mrs. E. W. Mince and Kay Aishman, the group enjoyed singing, the Christmas story, gifts and refreshments of holiday cookies and cold drinks.

Attending were John Christian, John Mathews, Billy Harold Bourdeau, Mary Ellen Hodges, Dana Day, Channing Hunt, Kathy and Carla Carter and Kirby and Karla Pair.

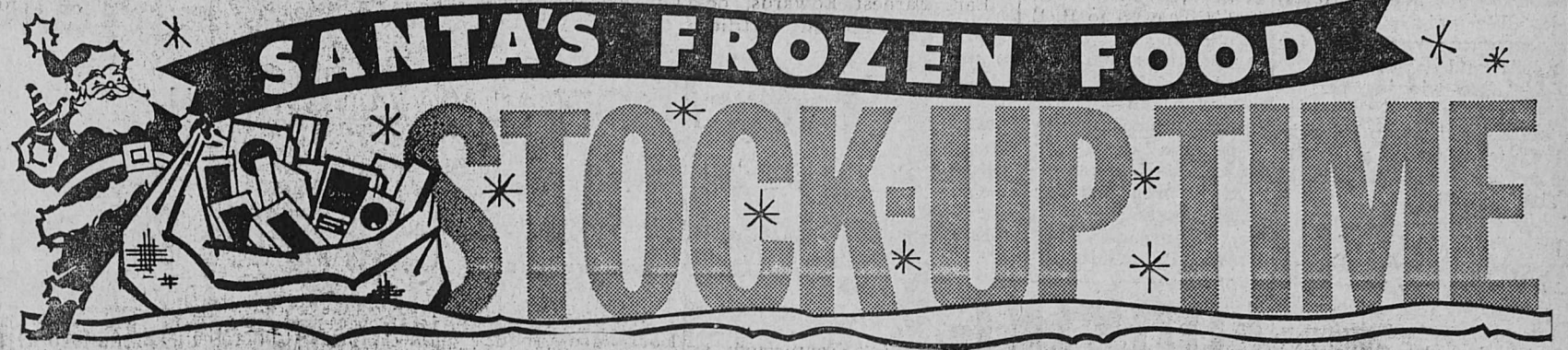
Merriman Class Meets Tuesday

Members of Ladies Bible Church held their final meeting of the year on Tuesday morning with Mrs. John Walters bringing the lesson based on the 39th and 40th chapters of the prophecy of Jeremiah.

Members present were Mmes. Will Vinson, Jack Burrows, O. G. Dugan, Betty Green, Doris Nix, A. E. Dawson, Callie Ainsworth, Mabel Barnes, C. J. Cole and George Falls.

The next meeting will be at 9:30 a. m. on Tuesday, Jan. 2.

Pvt. Benny Harris of Camp Pendleton, Calif. is spending a 20-day leave in Ranger guest of his parents, Mr. and Mrs. Albert Harris.



- REG. 49c SIZE
- FRITOS 39c
 - Shurfine MILK 3 for 39c
 - BETTY CROCKER
 - Cake Mix 29c
 - Folger's COFFEE lb 69c
 - DEL MONTE 8 OZ
 - Tomato Sauce 10c
 - DEL MONTE - 46 OZ
 - Fruit Drink 4 cans \$1

Prices Good Monday Through Saturday

Double Gold Bond Stamps On Wednesday With \$2.50 Purchase



SAVE GOLD BOND STAMPS



PRODUCE

- LARGE
- WALNUTS lb 49c
 - FANCY DELICIOUS
 - APPLES lb 19c
 - RUSSET
 - POTATOES 10 lbs 39c
 - EAST TEXAS
 - YAMS lb 10c

DAIRY FOODS

FOR ADDED ENERGY BETTER HEALTH CLASSROOM ALERTNESS

- KENDRICK - LARGE
- EGGS doz 39c
 - A F BRAND
 - BISCUITS 7 for 49c
 - BORDEN'S 1/2 pt WHIPPING CREAM or
 - SOUR CREAM 27c

CHOICE HOME KILLED MEATS

Quality MEATS

- WHOLE OR HALF
- HAMS lb 59c
 - CHOICE
 - SIRLOIN STEAK lb 79c
 - ROUND STEAK lb 89c
 - PORK CHOPS lb 59c

We Have Plenty of Hams And Turkeys For Your HOLIDAY NEEDS

ED BOLLMAN - MEAT MARKET MANAGER

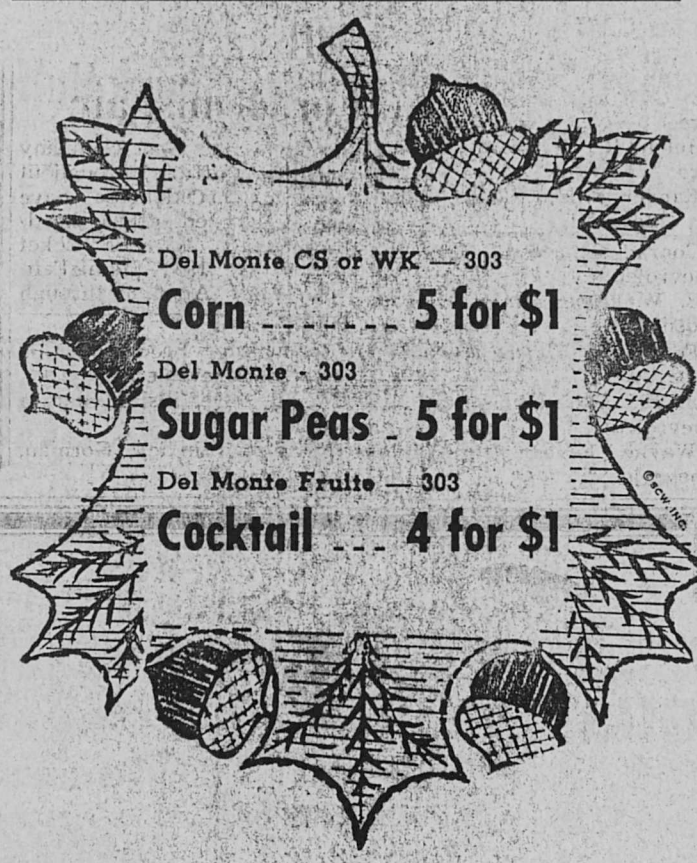
301 WEST MAIN — Phone 647-3206 — RANGER

WE RESERVE THE RIGHT TO LIMIT QUANTITIES

FREE CUSTOMER PARKING

Across From The Store

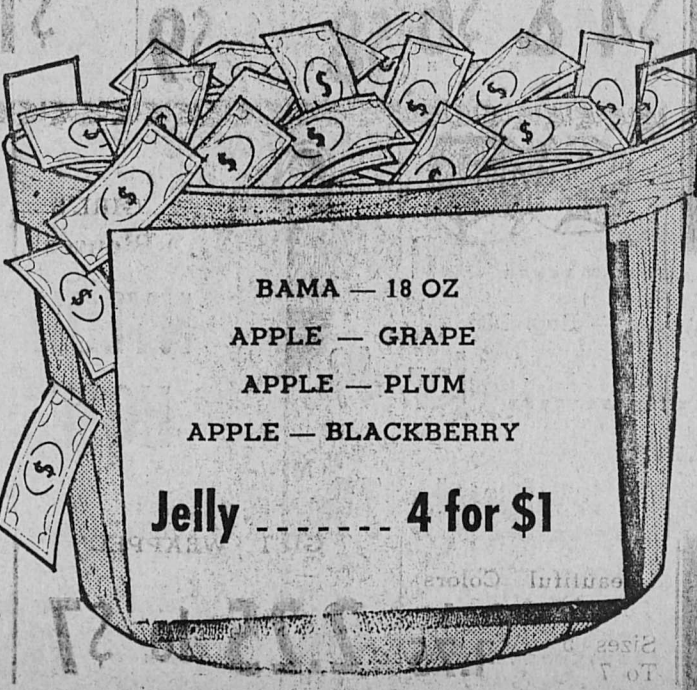
On Our New Parking Lot on The Corner of Main and Austin



- Del Monte CS or WK - 303
- Corn 5 for \$1
 - Del Monte - 303
 - Sugar Peas 5 for \$1
 - Del Monte Fruits - 303
 - Cocktail 4 for \$1



- KING SIZE
- Coke 49c
 - KING SIZE
 - Fresca 19c
- When Purchased Together Plus Deposit



- BAMA - 18 OZ
- APPLE - GRAPE
 - APPLE - PLUM
 - APPLE - BLACKBERRY
 - Jelly 4 for \$1

INTERSTATE'S
BOOK OF THEATRE TICKETS ON SALE NOW

INTERSTATE'S
MAJESTIC
EASTLAND PH. MA 9-1120

SUNDAY - MONDAY - TUESDAY
Sun. Open 1:45 - George at 2:15 - 5:35 - 9:00
Sorcerers at 3:50 & 7:10 - Mon & Tues. Open 5:15
George at 5:45 - 9:00 - Sorcerers at 7:20

George Hamilton
That Man George!
EASTMAN COLOR
CLAUDINE AUGER

BORIS KARLOFF
THE SORCERERS
EASTMAN COLOR
RELEASED BY ALLIED ARTISTS

STARTS WEDNESDAY
Open 4:45 - Guns at 5:15 and 9:05 - Duel at 6:50 only

The blazing passions of a land bursting aflame in revolt!

PARAMOUNT PICTURES presents
YUL BRYNNER · TREOR HOWARD
THE LONG JOURNEY

PLUS
HOSTILE GUNS
George Montgomery Yvonne DeCarlo
Fab Hunter Brian Donlevy

COURT NEWS

Instruments Filed
 American - Amicable Life Insurance Co. to Ollie Mae individual et al, release of trust.
 L. Agnew to L. F. Ar, warranty deed.
 Walter Hill Boon et ux, deed, to the public, proof of rship.
 Jim Barr to A. M. Cade et quit claim deed.

Paul Brashear to O. Gerread, Jr., et ux, warranty deed.
 Geneva Bailey et al to Arlton E. Smith et al, warranty deed.
 Hazel Lena, Nokes Chumley et vir to Gloria T. Swanas, mineral deed.
 City of Cisco to Clifford S. Harter et ux, quit claim deed.
 Robert R. Cox et al to B. E.

For Her Christmas Gift...

start
 darlene-ing



in a freshly blooming blazer. Marvelous cardigan sweater with the enlightened look of hand-screened flowers on a bubbly background. Knit of exclusive Angelon, 50% French angora rabbit hair, 40% lamb's wool, 10% nylon. Full fashioned, pearly buttoned and piped with white. In rich tones. 34 to 40.

18.95

ALL WOOL DOUBLE KNIT Slacks to match in four beautiful basic colors... Brown - Red - Gold - Green — \$16.95 — An ideal Christmas Gift for her and remember Gift Wrapping is FREE of any item purchased in our store.

THE MAN'S STORE

Bob Elliott
 CISCO, TEXAS

WARD'S SLASHES PRICES!!!

UPSTAIRS, DOWNSTAIRS, ALL-AROUND THE STORE

20% 30% 40% 50% 60%

MONDAY, TUESDAY and WEDNESDAY ONLY
 OPEN TO 8 P. M. EACH NIGHT UNTIL CHRISTMAS

RANGER



Fantastic

The Big Store

Now is the time for you to save 20% to 60% on hundreds of items. Save on Apparel, Home Appliances, Home Furnishings, Housewares, Hardware, Automotive Needs, and many more unadvertised specials at rock-bottom prices. No money down with WARD'S Charge-All. No trade-in required on furniture or appliances. Free Delivery

Hanson, release deed of trust.
 Robert R. Cox et al to B. E. Hanson, warranty deed.
 Cross Timbers Land Company to Ima Dean Cheek, warranty deed.
 Commercial State Bank of Ranger to L. R. Dempsey, release vendor's lien.
 A. B. Canno et ux to United States of America, deed of trust.
 City of Eastland to J. V. Cox, cemetery deed.
 Earneystene Garner Davis et vir to Eleanor Wright, trustee, warranty deed.
 Earl Earnest Edwards, deceased, to the public, certified copy of probate.
 First National Bank in Cisco to J. D. Yardley et ux, release vendor's lien and deed of trust.
 Federal Land Bank of Houston to C. L. Derryberry et ux, release deed of trust.
 Mildred Fambrough to A. P. Fambrough, warranty deed.
 A. P. Fambrough to Della Jane King et al, warranty deed.
 Arthur P. Fambrough to Mildred Fambrough et al, deed of trust.
 First National Bank in Dallas, trustee, to T. J. Taylor, III et al, certified copy of deed.
 Federal Land Bank of Houston to W. V. Fenter et ux, release deed of trust.
 J. C. Gunn to B. W. Martin, warranty deed.
 B. E. Hanson et ux to the Connecticut Mutual Life Insurance Co., deed of trust.
 Hansford County Parts and Supply vs. Richard Williams, individual and dba Gruner Body Shop, abstract of judgment.
 Ralph C. Hart to Bill J. Greenhaw, assignment of oil, gas lease.
 Joe B. Hunt et ux to Andy Moore, warranty deed.
 Hica Corporation to W. H. Parish, assignment of oil, gas and mineral interest.
 William D. Jeter to Thea Lee Raper Jeter, power of attorney.
 Kirkpartick Leather Goods, Inc., to State of Texas, state tax lien.
 Truman P. Kirk to Richard W. Sharp, Jr., warranty deed.
 H. E. Longino II et al to First National Bank of Magnolia, trustee, mineral deed.
 C. E. Leatherwood to T. W. Henry, abstract of judgment.
 Henry C. Moore et al to Triangle Aluminum, Inc., to North American Acceptance Corp., assignment of mechanic and materialman's lien.
 Dr. R. J. Mahoney to Wayne Williams, abstract of judgment.
 Andy Moore to First National Bank in Cisco, deed of trust.
 George H. McQuire et ux, decease, to the public, proof of heirship.
 Wills W. Needham et al to Homer T. Robinson, warranty deed.
 Maurice Owen et ux to Clayton Whitfield, deed of trust.
 Dewey David Paul et ux to Gardenhire Oil Co., warranty deed.
 Homer Park et ux to State of Texas, deed.
 Pruet Sub-Division, City of Ranger, to the public, plat.
 A. O. Perrin to H. L. Perrin, warranty deed.
 Luther Pryor et ux to A. B. Cannon et ux, warranty deed.
 Bill Pope to Evangelical Methodist Church, release of deed of trust.
 Homer T. Robinson to Burgess Delay, warranty deed.
 Don E. Rodgers to City of Gorman, quit claim deed.

Ima G. Scott to George Edward Scott, warranty deed.
 State of Texas et al to F. Dell Mellette and Claudia Mellette dba Claudia's Cafe, abstract of judgment.
 F. S. Turner to Mary Jane Bauer, deed.
 Texas Electric Service Co. to State of Texas, release easement and right of way.
 United States vs. Mary Arnold Allard dba Arnold Truck Stop Restaurant, notice of federal tax lien.
 Jerry Wayne Warren to the public, certified copy judgment.
 Eleanor Wright, trustee, to Earneystene Garner Davis et vir, warranty deed.
 Clayton Whitfield to Maurice Owen et ux, warranty deed.
 L. C. Zeiger to Ben F. Hobbs, assignment of oil and gas lease.
 Beatrice Zirlle to Martha Will Jones, warranty deed.
Marriage Licenses
 William Ledlin Tweed and Betty Diann Sanders.
 John James Husband and Maudie Lee Lowery.
 Farrell Glenn Tharp and Doris Moe Trout.
 Lester Hilmer Jacoby and Andra Mae Grammer.
 Jerry Glen Hafley and Amalia Jeanne Murray.
 Willie C. Oates and Shirley Ann Winn.
 Boyd Ben Porter and Linda Kay Hallmark.

Applications For Seedling Trees Being Accepted

COLLEGE STATION — Applications for forest and windbreak tree seedlings are still being accepted at the Texas Forest Service tree nursery, near Alto.
 About 2 million loblolly pine seedlings remain. Selling at last year's prices, regular loblolly pines are \$6 per thousand and special seed production loblolly pines are \$7 per thousand.
 Seedlings are sold on a "first come-first served" basis and prices quoted are FOB the Indian Mound Nursery plus state sales tax.
 Wind break seedlings are \$1.50 per hundred plus sales tax and are shipped postpaid. Species still available include Austrian, ponderosa and loblolly pines, black locust, black walnut, stratified seed, catarpa, Chinese elm, cottonwood, mulberry, Osage orange, redcedar, sycamore, euonymus, buffalberry, and multiflora rose.
 Seedling shipments will begin about Dec. 20 and continue through the end of February. Seedlings may not be resold nor used for ornamental purposes.
 A copy of Circular 54, "How to Plant Forest Tree Seedlings" is enclosed with each order.
 Information on preparing planting sites and choosing tree species as well as seedling applications are available from your county agriculture agent or nearest district office of the Texas Forest Service.

Lone Star Gas Selling Tickets For HemisFair

Lone Star Gas Company distribution offices throughout Texas and Oklahoma have been designated official headquarters for advance ticket sales to the 1968 HemisFair to be held April 6 through Oct. 6, 1968, in San Antonio. Tickets for the World's Fair will be sold at Lone Star district and reporting district offices at a reduced price of \$1.70, now through Dec. 31, 1967, and \$1.85, during the second discount period, Jan. 1-Mar. 31, 1968. These tickets will admit one adult to the Exposition grounds on any one day of the HemisFair or will always be exchangeable at any gate for two children's tickets (ages 2-11). The regular price of tickets to be sold at the gate will be \$2 for adults and \$1 for children. In addition to the general admission tickets Lone Star will sell, the utility will offer four special HemisFair bonus books at reduced prices.

These bonus books contain coupons for the most exciting attractions at the World's Fair. The four books include one bonus book for use by two adults, containing gate admissions, at a price of \$11, gate price will be \$15.85; a bonus book with one gate admission at price of \$7, gate price will be \$9.85; a bonus book for one adult who already has purchased a HemisFair gate admission ticket at a price of \$5, gate price will be \$7.25; and a bonus book for children ages 2-11 for a price of \$3, gate price will be \$4.50.

The center of a standard baseball is a piece of cork the size of a marble which has been aged for 15 years.

RANGER
MONTGOMERY WARD
 The Big Store
 Will Be Open Every Night To 8 p.m. Until CHRISTMAS

DINE HERE

FOR THE FINEST IN DINNERS

1.25 SUNDAY DINNER SPECIAL 1.25
 CHOICE: Chicken Rice Soup or Salad

ENTREES:
 Barbecued Pork Ribs - Candied Yams - Roast Leg of Pork Dressing and Apple Sauce - Baked Ham - Fruit Salad - Roast Sirloin Of Beef - Brown Sauce - Fillet of Lake Trout - Tartar Sauce

Buttered Cauliflower — Fresh Frozen Peas
 SNOWFLAKE POTATOES
 COFFEE Or TEA
 Dessert of Devil's Food Cake

The WHITE ELEPHANT

Bray's DEPARTMENT STORE

Eastland County's Family Store
 EASTLAND & RANGER

Christmas GIFTS

SMART SANTAS SHOP HERE!

 HOLLYWOOD VASSARETTE SLIPS Snowy White Nylon Knit With Lace Trim All Sizes \$4 & \$6	 WOMEN'S BLOUSES And Nylon Stretch PANTS Beautiful Colors Blouse Pants \$8 \$9	 WOMEN'S GIFT SWEATERS Cardigans Slip Overs Holiday Shades All Sizes Gift Wrapped 6.99 to \$15	 MEN'S COTTON PAJAMAS Solids - Stripes Washable All Sizes 350 \$4	 BOY'S Permanent Press SPORT SHIRTS Long Sleeve Plaids Solids Stripes All Sizes \$5 250 350
---	--	--	---	---

GIRL'S Blouses Pants Mix Or Match

HOLLYWOOD VASSARETTE BRIEFS
 Beautiful Colors Sizes 5 To 7 1.75 2.25 to \$7

MANY STYLES AND COLORS GIFT WRAPPED

SANTA HELPER SPECIAL

Christmas Cards For All
 10c to \$1.00

GET FREE TICKETS HERE
BRAY'S Dept. Store

SHOP HEIDENHEIMER'S In Cisco For Your LEVI'S!



Rugged Wale Corduroy LEVI'S
 MEN'S SIZES 26 TO 38 **5.98**
 BOYS REGULAR OR SLIM — 4-12 **4.98**
 COLORS
 Surf Blue — Whiskey and Burnt Olive



CALIFORNIANS
SUPER CORD LEVI'S
 GOLD — CLAY — CACTUS
 MEN'S WAIST SIZES 26 — 42 **4.98**

NEW!



LEVI'S
 NEVER NEEDS IRONING
Double-Knee Jeans
 BLUE DENIM

50% POLYESTER — 50% COTTON
 BOYS 2-12 — Reg. or Slim
3.98

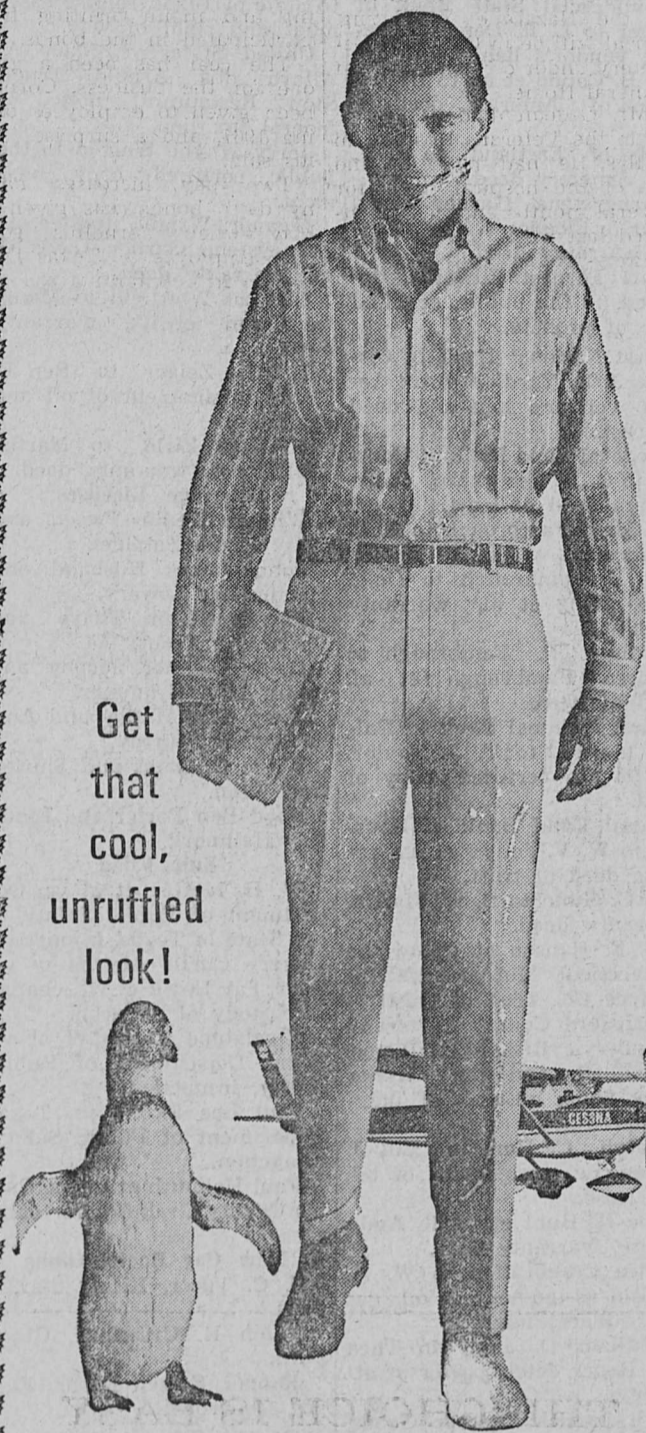
PLAY RUGGED?



you need
LEVI'S
 America's Original Jeans

X X DENIM LEVI'S

HEAVIEST WEIGHT DENIM — DARK BLUE
 GUARANTEED TO SHRINK
 MEN'S WAISTS SIZES 27-42 — Button Fly **4.79**
 BOYS 0-12 ZIPPER FLY **3.98**



Get that cool, unruffled look!

LEVI'S STA-PREST TRIMCUTS
 never need ironing

Sta-Prest Spartan CLOTH

50% FORTREL POLYESTER — 50% COTTON
 TEAL BLUE — SEAL BROWN — OLIVE

MENS PREPS BOYS	28 to 38 WAISTS	7.00
	25 TO 30 WAISTS SIZES 6 - 12	6.00
	Reg. or Slim — 6 to 12	5.00

★ ★ ★

Sta-Prest Dress TWILL

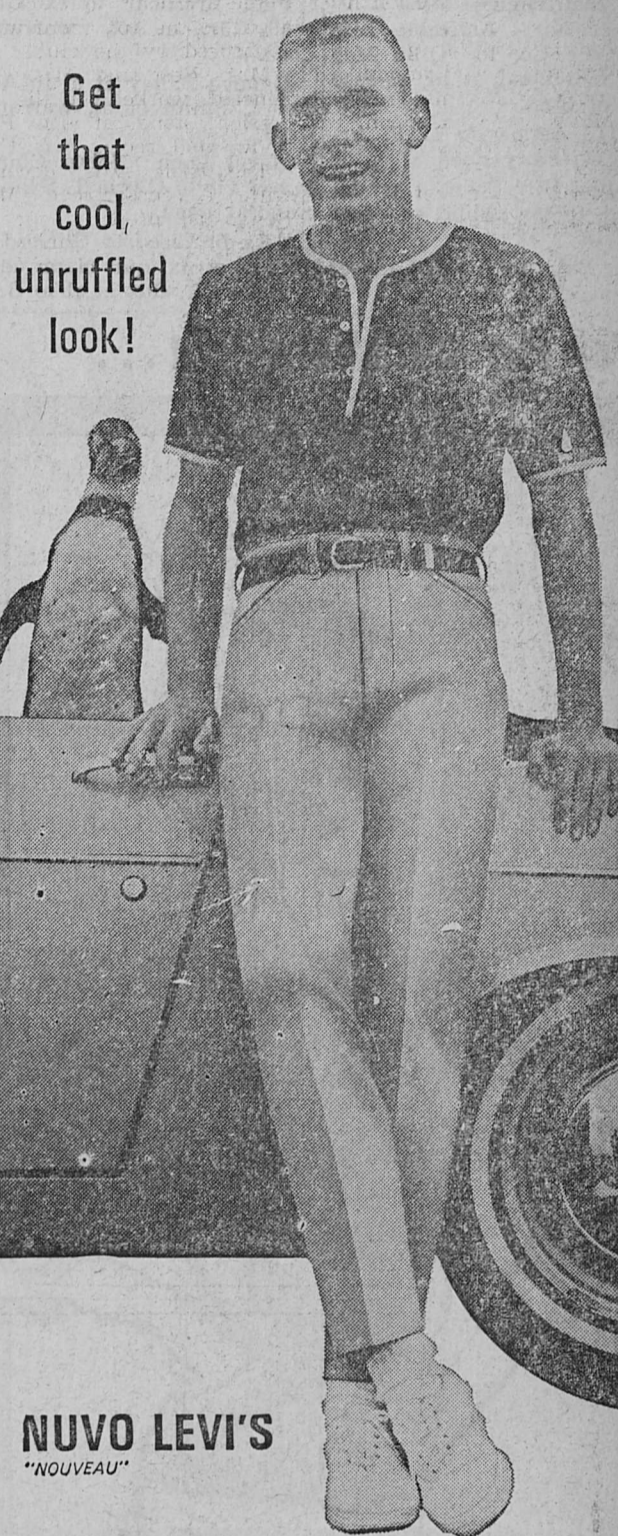
GULF BLUE — BRONZE — LODEN

MENS PREPS BOYS	28-38 WAISTS	8.00
	25-30 WAISTS	7.00
	Reg. or Slim	6.00

GIVE LEVI'S FOR CHRISTMAS

- FREE GIFT WRAPPING
- OPEN 8:30 - 5:30 SATURDAYS TIL 6:00
- CHARGE IT!
No Interest or Carrying Charges
- SHOP For Every Member Of Your Family At EASTLAND COUNTY LEVI HEADQUARTERS

HEIDENHEIMER'S
 THE FAMILY STORE IN CISCO



Get that cool, unruffled look!

NUVO LEVI'S
 "NOUVEAU"

LEVI'S STA-PREST
 never need ironing

GRIZZLY SPUN LEVI'S

COOL BLUE — WHISKEY — AVOCADO
 OLIVE — WHEAT

Men's 26-38	Boys Regular or Slim
7.50	Sizes 6 - 12 6.00



LEVI'S STA-PREST
 Mr. LEVI'S Stacks

Sta - Prest Spartan CLOTH

50% FORTREL POLYESTER — 50% COTTON

TEAL BLUE
 SEAL BROWN
 OLIVE, BLACK
 MEN'S SIZES 30-42

8.00

MORTON VALLEY HD CLUB HAS ANNUAL YULE PARTY

The Morton Valley Home Demonstration Club met at the Community Club house Wednesday for the annual Christmas party. Mrs. D. J. Harrison presided and Mrs. M. Harrison led the opening prayer and read from the Bible the story of the birth of Christ. Mrs. Joe Bond gave the annual report and announced the next THDA meeting will be March 8 in Hamilton. Mrs. W. E. Tankersley's resignation from the club was accepted with regret.



BATTERY
TROUBLES?
CALL
HORTON
TIRE
CO.
629-1420
\$8.95 and up
plus tax

RAWLINS SINCE 1884
Monuments
WEATHERFORD PHONE LY 4-2726
IF WE MAY ASSIST YOU, CALL US COLLECT OR MAIL THIS AD
NAME _____ PHONE _____
ADDRESS _____ CITY _____

Gillean Funeral Services Will Be Held on Sunday

Funeral services for Archie Ray Gillean, 56, of 305 West 13th, will be held at 1 p. m. Sunday in Rust Funeral Home Chapel with the Rev. Hillis Herron, pastor of the Church of the Nazarene, officiating. Burial will be in Oakwood Cemetery under direction of Rust Funeral Home.

Mr. Gillean died at 6:30 a. m. in the Veterans Hospital in Dallas. He had been in and out of the hospital there for several months and had re-entered last week.

Born May 27, 1911, he had been a resident of Cisco for many years. He married Elizabeth Jane Midkiff Oct. 13, 1945, in Breckenridge. He was a member of Bible Baptist Church.

Survivors include his wife; three daughters, Mrs. Mary Jackson of Cisco, and Barbara Ann and Carolyn Sue of the home; one son, Billy Ray of the home; one sister, Mrs. Ethel Davison of Clyde; and one granddaughter.

Pallbearers will be Alton McCune, Othel Reeves, Jay Richardson, Lester Agnew, Otis Melton and Neal Moore.

Esen A. Fields To Be Buried In Sunday Services

Esen A. Fields, 78, of 307 West 10th, died at the Veteran's Hospital in Dallas, at 7 a. m. Friday. Funeral services have been set at 2:30 p. m. Sunday in Rust Funeral Home Chapel and burial in Oakwood Cemetery.

Mr. Fields moved here 26 years ago from Putman. Born April 15, 1889, in Taylor, Williamson County, he was a retired stockman. He married Emma Hyde March 6, 1920 in Ft. Worth.

65 Employees Share In Cornelius Bonus

Christmas bonuses amounting to \$15,000 were given Wednesday by Victor Cornelius to his employees.

Sixty-five employees of the Cornelius theatrical advertising and menu printing firm participated in the bonus.

The year has been a good one for the business, Cornelius said.

Two pay increases have been given in May when Cornelius gave each employee a "Texas Doodle - Pad" containing \$30.

The firm now has \$40,000 in its Employees' Retirement Fund started in 1966.

The past year saw a marked increase in the volume of sales of Cornelius's latest invention and produce, the Redi Clip. The company recently filled its largest order to date from a single user, one for over 60,000 of the menu clips.

Mrs. J. Way Harman left Thursday for an extended visit in the home of her daughter, Mrs. L. E. Schott and family of Galveston.

Mrs. L. Q. Sparks of San Angelo was a recent guest in the home of Mrs. Lottie Daventport.

Mmes. Margaret Speed and Elizabeth Stroud were in Cisco on Monday evening to attend the Christmas party of Licensed Vocational Nurses.

He served with the 36th Division in France during World War II and was a charter member of the American Legion Post in Cisco.

Survivors include his wife of the home; three sons, Esen A. Jr. of Austin; John Dill of Little Rock, Ark., and Ted of Cisco; one brother, C. R. of Austin; one sister, Mrs. J. C. Blair of Lubbock; and five grandchildren.

Geo. Van Horn Buried In Rites Held Saturday

Funeral services for George W. Van Horn, 57, were held at 3 p. m. Saturday in Rust Funeral Home Chapel with the Rev. R. C. Flagg, vicar of Holy Trinity Episcopal Church in Eastland officiating. Burial followed in Oakwood Cemetery.

Mr. Van Horn, a former resident of Cisco died of an apparent heart attack at his home in Freeport about 10 p. m. Tuesday.

Born April 1, 1910, in Illinois, he resided in Cisco until about 1935. He was a graduate of Cisco High School and was a member of the Episcopal Church.

Survivors include his wife; two daughters, Miss Sara Van Horn of New York City, and Mrs. Dixon Bowles of Los Angeles, Calif.; two sisters, Miss Blanche Van Horn of Cisco and Mrs. J. Wright Ligon of Abilene; and one brother, Charles Van Horn of Midland.

All Employees Pictured On Yule Greeting

Beautifully designed and executed "Beasch's Greetings" are going far and wide from Eastland's Victor Cornelius, Inc., big plant.

Accompanying the firm's traditional desk calendars, the large broadsheet has photographs, job titles and length of service of all the employees. The special card commemorates the firm's 32nd year.

Owner - Manager Victor Cornelius reports that approximately 20,000 of the special greetings have been mailed with others to go out. For out-of-towners, it's a wonderful display of a firm's interest in its employees and an ideal interest item, that is getting warm reception all over the country, according to reports from local representatives.

For Eastlanders, it's an excellent reference item that will be kept and referred to for biographical purposes for a long time.

Shown are pictures of Mr. and Mrs. Victor Cornelius and the following staff.

Office: Hildegarde Everett, 33 years; Thelma Verner, 30 years; Lowell Snyder, 28; Jack Germany, 17; Sara Peel 17 years; Karen Paschall, 6 months; Jane Carter, 9 years; Mildred Dorr 3 years; Kay Warren, 6 months; Virginia Collings, 2 years; and Betty Muirhead, 2 years.

Sales: John Beil, 2 years; Ralph A. Senter, 5 years; and Woodrow W. Allen, 3 years.

Camera Art: Darwin Miller, 20 years; Floyd J. Rice, 15 years; Lloyd Armstrong, 5 years; Kenny Cogburn, 6 months; Rodger Terrell, one year; Joy Lewis, 1 year; and Glenn Gray, 2 years.

Art and Layout: Pat Purchell, 8 years; Robert L. Phillips, 5 years; Esther Groth, 9 years; Peggy Jo Calder, 1 year; Gail Graham, 2 years; Linda Chapman, 2 years; Linda Jarrett, 2 years; Jackie Wilson, 6 months; and Darlene Stacy, 6 months.

Paper - cutters: Bill Hallmark, 22 years and Tommy Rose, 2 years.

Pressmen: Eldress Gattis, 34 years; N. A. Johnson, 14 years; Jack Graham, 21 years; Dale Bakker, 14 years; Ronnie Rich, 4 years; Jerry Lasater, 1 year; Jerry Reeves, 2 years; Bill Jordan, 11 years; Kenneth Underhill, 5 years; Bob Shugart, 4 years and Don Guy, 2 years.

Printers: Carl Garner, 27 years; Robert Laws, 19 years; Jack Cogburn, 18; Billy John Keith, 13 years; J.R. Langham, 23 years; A. C. Blackwell, 7 years; Grady Shook, 1 year; Jack D. Hallmark, 6 months; and Gary Johnson, 1 year.

Lamination: Kenneth Bullard, 11 years; Martha Crabtree, 3 years; and Sue England, 6 months.

Rediclips: Ray Pryor, 15 years; Irene Cornelius, 5 years; Vertie O. Harp, three years; Winnette Maynard, 6 months; Cheryl Stephens, 6 months, and Melvin McCormack, 1 year.

Shipping: D. A. Collins, 28 years; and Warnie Kanady, 1 year.

Paper - cutters: Bill Hallmark, 22 years; and Tommy Rose, 2 years.

USED TIRES
\$3 And Up
The Big Store
Wards - Ranger

FREE
ESTIMATES ON
New Roof Only
Repair of Your Old Roof
Residential and Commercial
★ ★ ★
EASTLAND
ROOFING CO.
Call
Noble Squires
629-2370

RANGER
DRIVE-IN THEATRE
Adults 60c — Kiddies Under 11 FREE
SHOW STARTS AT 7:00 P.M.

LAST TIMES SUNDAY DECEMBER 17
"YOU ARE GOING TO ENJOY 'ALFIE' VERY MUCH."
—LIFE Magazine

PARAMOUNT PICTURES presents
ALFIE
(RECOMMENDED FOR MATURE AUDIENCES)
MICHAEL CAINE is ALFIE
MILICENT MARTIN • JULIA FOSTER • JANE ASHER • SHIRLEY ANNE FIELD
VIVIAN MERCHANT • ELEANOR BRON • WITH SHELLEY WINTERS AS RUBY
TECHNICOLOR • TECHNISCOP • A LEONARD GILBERT PRODUCTION
SCREENPLAY BY BILL MURPHY BASED ON THE PLAY BY BILL MURPHY • MUSIC BY SPYRY KELLER • PRODUCED AND DIRECTED BY LEWIS ALBERT

FRIDAY — SATURDAY — SUNDAY
DECEMBER 22 - 23 - 24

HARLES W. FEELDMAN'S
CASINO ROYALE
IS TOO MUCH...
FOR ONE JAMES BOND!
JAMES BOND 007
CASINO ROYALE
STARRING AMONG OTHERS:
PETER SELLERS • URSULA ANDRESS
DAVID HIVEN • WOODY ALLEN
PANAVISION • TECHNISCOP • A COLUMBIA PICTURES RELEASE

THE CHOICE IS EASY

Peace of mind is yours when you select an electrical gift, because she's sure to treasure it.

It's little wonder electrical gifts are so appreciated. They bring her convenience, work-saving ease and pride of possession. And they add pleasure to living year after year. Your appliance dealer has a large selection of modern electrical gifts, one meant just for her.

You'll know it when you see it. Have it Christmas wrapped soon.

She'll cherish an electrical gift

A FEW ELECTRICAL GIFT SUGGESTIONS

- Electric blanket
- Automatic coffeemaker
- Food mixer
- Toaster
- Radio
- Electric skillet
- Hair dryer
- Electric clock
- Electric shaver



TEXAS **ELECTRIC SERVICE COMPANY**

BILL COLLINGS Phone 647-1107

RANGER

MONTGOMERY WARD

The Big Store

★ ★ ★
Will Be Open
Every Night
To 8 p.m. Until
CHRISTMAS

"It's sure good to hear your voice!"

Long Distance has a way of making you feel close to folks you don't get a chance to see very often. It's so satisfying for sharing news... and keeping in touch, any time. And it's the next best thing to being there. Call soon and see.

Southwestern Bell



FACTS LIST PUBLISHED ON TEX. STATE PARKS

AUSTIN--The research and planning division of the Texas Parks and Wildlife Department recently compiled a list of 25 facts concerning the 61 State Parks.

These facts are published here for your information.

1. Texas has purchased only three of its sixty-one State Parks. The other fifty-eight have been donated or leased.

2. If 48,572 acres of recreation land were purchased for the Texas State Parks tomorrow, the State would still have to buy 18,540 more acres by 1970 to keep pace with outdoor recreation demand.

3. If no additional land acreage is added to the present State Parks system, the supply of land suitable for development will reach its maximum visitor capacity in 1971.

4. If Texas purchases 12,000 acres of land each year for the next 20 years, the State of Texas could obtain the current national average for State Parks, if the population does not increase.

5. Texas State Parks contain 6.3 acres per thousand population, or a block of land approximately 17 feet square per person.

6. Texas is 5 1/2 times larger than the State of New York, yet New York has 7 times the amount of State Park land.

7. The State of Oregon has only 3% less State Park acreage than Texas, yet the State of Texas is nearly three times larger with 5 1/2 times the population.

8. Twenty-two per cent of the land required for Texas State Parks has been acquired since 1940. . . population during this time has increased 68%.

9. Over the last five years (after development) the visitation at Huntsville State Park (60 miles from Houston) increased 346.5%. . . estimated visitation over the same period of time, based on trends, indicated an increase of only 25.4%.

10. Camping demand is expected to increase 3.5 times between 1964 and 1990, while camping facilities will increase only 0.4 times based on current supply rates.

11. While 5.34% of the nation's population resides in Texas, only 0.12% of the nation's State Park land is found here.

12. Texas' population increased 12.5% from 1960 to 1965, yet its State Park visitation rose 48.5%.

13. Texas has a per capita visitation of 0.6 to its State Parks while Michigan's per capita visitation is 2.4 and Oklahoma's is 3.7.

14. Texas has an average of 6.3 acres of Texas State Park land per thousand population. This is 24.4 acres per thousand below the national average and 38.7 below what the White House National Conference on Outdoor Recreation suggested for its acreage per thousand population.

15. If 7,500,000 people left Texas, the State's Park system would be equal to the national average of 30.7 acres of State Park land per thousand people.

16. The White House Regional Conference on Outdoor Recreation suggested 45 acres of State land per thousand population. If 8,500 people left the State, Texas would meet this standard.

17. Of the total existing State Park acreage, only 31% is suitable for intensive recreational development.

18. Twenty-six percent of the total existing State Park acreage is water.

19. There is a scant 0.7 square foot of developed coastal beach per 1000 people in Texas.

20. Seventy-five per cent of Texas' population resides within a 4.5 hour drive of the coast.

21. There are 1,100 miles recreational shoreline along the Texas Gulf Coast, of which 300 miles is recreational beach area.

22. Less than 1,500 acres of the 300 miles of open Gulf beach are set aside and developed for public recreation.

23. Since 1910, only three State Parks have been purchased with State funds with an investment of less than \$500,000.

24. Seventy-seven per cent of the 60,000 acres of existing Texas State Parks was acquired in the 1930s.

25. No money has been spent

Hob-nobbing actually means touching glasses together when drinking.

The word "girl" appears twice in the King James version of the Bible.

SHORT SNORTS

Secretary of State John L. Hill expects to resign about Jan. 20 to run for governor.

Governor Connally says he plans to serve out his term as governor and has no prospects for high government or private appointment.

Connally still insists no in-

crease in state sales tax rate will be necessary to raise the money the state government must have in the 1968 special session.

Attorney General Martin has held that county tax assessor-collectors must deposit tax funds in county depository at least weekly, pending

transfer to the county treasurer, and are subject to lawsuit if they don't.

Glenn Biggs, administrative aide to Speaker Ben Barnes, will join National Western Life Insurance Co. on Jan. 1 as vice-president in charge of development.

Texas Aeronautics Commis-

sion has set Dec. 18 for hearings on the application for a new airline linking Dallas-Fort Worth, Houston and San Antonio at passenger rates 20 per cent below current levels.

Major repairs to highway bridges damaged by Hurricane Beulah are among some \$15,500,000 in highway pro-

jects being bid on this week.

New Lower Rio Grande Valley Development Council received an \$8,500 state regional planning grant for Cameron, Hidalgo and Willacy County

COMPARE SAFEWAY'S EVERYDAY LOW PRICES & SPECIALS!

<p>Safeway Special!</p> <p>★ Coca-Cola</p> <p>★ Fresca</p> <p>King Size (Limit 2)</p> <p>6 Bottle Carton 29¢</p>	<p>Safeway Big Buy!</p> <p>Cream Pies</p> <p>Bel-air, Frozen. Assorted—14-oz.</p> <p>29¢</p>	<p>Safeway Specials!</p> <p>Meat Pies</p> <p>Manor House, Frozen. Assorted—8-oz. Pkg.</p> <p>5 for 89¢</p>	<p>Safeway Big Buy!</p> <p>Dinners</p> <p>Banquet, Frozen. Assorted—Regular Pkg.</p> <p>39¢</p>
--	---	---	--

Compare Safeway Everyday Low Prices!

Fresh Bread	Mrs. Wright's. ★Regular or ★Sandwich Sliced—1 1/2-Lb. Loaf	27c
Fresh Milk	Lucerne 2% Low Fat—Gallon Ctn.	95c
Shortening	Volkey—3-Lb. Can	49¢
Enriched Flour	Harvest Blossom—5-Lb. Bag	39¢
Parade Detergent	49-oz. Box	49¢
Liquid Bleach	White Magic—Gallon Plastic	39c
Sno-White Salt	Plain or Iodized. 26-oz. Box	9c

Patio Frozen Foods!

- ★ Combination Dinner 12-oz. Pkg. **49¢**
- ★ Cheese Enchilada Dinner 12-oz. Pkg. **49¢**
- ★ Mexican Dinner 12-oz. Pkg. **49¢**
- ★ Beef Enchiladas 1 1/2-Lb. Pkg. **69¢**
- ★ Cheese Enchiladas 1 1/2-Lb. Pkg. **49¢**
- ★ Beef Tamales with Gravy 21-oz. Pkg. **59¢**
- ★ Beef Tacos 13 1/2-oz. Pkg. **59¢**
- ★ Cocktail Tacos 11-oz. Pkg. **63¢**

Trophy Brand USDA Inspected

Tom Turkeys 29¢
USDA Inspected. 18 to 24-Lb. Average. —Lb.

Hen Turkeys 35¢
USDA Inspected... Grade A. 10 to 14-Lb. Average. —Lb.

Sliced Bacon 65¢
★ Armour. Thick Sliced. 1-Lb. Pkg. (Safeway—1-Lb. Pkg. 63¢)

Sliced Bacon 65¢
Safeway. Thick Sliced. 2-lb. Pkg. \$1.25

Pork Steak 55¢
Fresh. Butt Cut—Lb.

Pork Roast 45¢
Fresh. Butt Cut—Lb.

Cube Steaks 89¢
Beef, Manor House. 20-oz. Pkg.

Beef Patties 89¢
Chicken Fried. Fully cooked—Lb.

Ground Beef 98¢
Safeway Handy Chub Pak.

Oysters 98¢
Pacific Coast—Small Size—12-oz. Can

Chuck Steak 59¢
Baby Beef—Lb.

FRESH FRYERS 29¢
USDA Inspected... Grade A. (Cut-Up... Lb. 35¢) Whole—Lb.

Swiss Steak 79¢
Baby Beef. Arm Cut—Lb.

Rib Steak 89¢
Baby Beef—Lb.

Short Ribs 35¢
or Brisket. Baby Beef—Lb.

Smoked Hams 55¢
Samuel's Mohawk. Whole or Shank Half. (Full Butt Half—Lb. 59¢) Dry Cure. 14 to 18-Lb. Avg. —Lb.

Shank Portion 45¢
Smoked Ham—Lb.

Center Slices 99¢
Smoked Ham—Lb.

Fully Cooked Ham 65¢
Swift's Premium. Whole or Either Half. 14 to 18-Lb. Avg.—Lb.

Compare Non-Food Values!

Aspirin Tablets	Safeway—100-Ct. Bottle	12¢
Nylons	Seamless. Contrace. ★Beige ★Santone. Sizes 8 1/2-11 1/2 (98¢ Value)—Pair	89¢
Listerine	Antiseptic Mouthwash. (\$1.39 Value)—20-oz. Bottle	\$1.09
Glass Tumblers	Tall. Shell Clear. 10-oz. Size	3 for 29¢
Christmas Record	Bing Crosby "Family Christmas Favorites"—Each	\$1

Compare These Everyday Low Prices!

Pumpkin Pie	Country Cupboard, Frozen. 8-oz. Pkg.	\$1.19	Borden's Cream Cheese	Neuchâtel. 8-oz. Pkg.	33¢	Fisher Mixed Nuts	King Size—13-oz. Can	89¢
Mince Pie	Country Cupboard, Frozen. 4-oz. Pkg.	\$1.29	Circle T Enchiladas	Frozen—12-oz. Pkg.	49¢	Kraft Sliced Cheese	Natural Swiss—8-oz. Pkg.	47¢
Broccoli Spears	Green Giant, Frozen—10-oz. Pkg. in Butter Sauce.	39¢	Heinz Pickles	Fresh Kosher Baby Dills. 13 1/4-oz. Jar	41¢	Cream Cheese	Philadelphia Brand—8-oz. Pkg.	39¢
Green Peas	La Saur, Frozen—10-oz. Pkg. in Butter Sauce.	39¢	Sweet Gherkins	Heinz, Midget—7 1/2-oz. Jar	39¢	Safeway Cheese	Danish Port Salut—Lb.	98¢
Lemon Juice	Realman, Reconstituted. 24-oz. Bottle	59¢	Chocolate Drink	Stokely—46-oz. Can 3 for \$1.00	\$1.00	Peach Combings	Birds Eye, Frozen. —12-oz. Pkg.	41¢
Adams Extract	Butter Flavor—1/2-oz. Bottle	39¢	Quaker Quick Oats	Crystal, Wedding. 18-oz. Pkg.	27¢	Salad Strawberries	Birds Eye, Frozen. —10-oz. Pkg.	41¢
Instant Coffee	Nescafe—6-oz. Jar	85¢	Quaker Hominy Grits	Quick, White. 24-oz. Pkg.	25¢	Cherries Supreme	Birds Eye, Frozen. —10-oz. Pkg.	41¢
Hot Dog Sauce	Gebhardt's—10 1/2-oz. Bottle	29¢	Puss'n Boots Cat Food	Fish Flavor. 8-oz. Can 3 for 29¢	29¢	Breck Shampoo	★Dry or ★Normal Hair. —4-oz. Bottle	57¢
Fox Pizza	★Sausage or ★Pepperoni, Frozen. 10-oz. Pkg.	49¢	Mexena Chili Powder	2-oz. Jar	25¢	Sta-Flo Starch	Liquid—32-oz. Plastic	27¢







Safeway Big Buy!

Crackers 19¢
Melroe Soda. —Lb. Box

WINNERS!!

IRISH INTERNATIONAL Steeplechase SWEEPSTAKES™

Congratulations to New \$1000⁰⁰ Winners!

	
Julian Mesa, Jr.	Mae Hue Sneed
	
Mrs. A. B. Batchelor Fort Worth	Mrs. J. Massey
	
James D. Cain Dallas	Frank Thom

Here Are Some of the Big Steeplechase Winners:

Mrs. Joe J. Early	Coratha Miller
Mrs. Alma Williams	Mrs. M. S. Clayton
Bessie Lee Jones	Mrs. E. J. Crowder
Mrs. Henry Hull	Mrs. Fred Keith
Mrs. A. L. Teters	Joe John Robles
Mrs. Elliott Reid	Mrs. Ruth Eaton
Mrs. C. V. Miller	J. H. Cargile
John E. Allen	Mrs. Charles Hurd
A. Z. Clopton	Mrs. Marvin Wolfe
M. E. Raawick	Mrs. Margaret Werline
David H. Chaffin	Joe Brown
Ciuck Skelton	E. L. Sloan
Mrs. Lloyd Holmes	Mrs. T. W. Lockhart

HOLIDAY FRUITS & VEGETABLES AT SAFEWAY!

Navel Oranges 19¢
Sunkist. Fancy, Medium Size —Lb.

Navel Oranges 25¢
Sunkist. Fancy. Extra Large—Lb.

Bananas 2.29¢
Golden Ripe. Everyday Low Price! 2 Lb.

Avocados 29¢
From Florida. Extra Large—Each

Pineapples 39¢
Sugarloaf, Large Size. 3 to 3 1/2 Lbs.—Each

Papayas 39¢
Air Express from Hawaii. Large—Each

D'Anjou Pears 25¢
From Washington. Extra Fancy—Lb.

Cucumbers 25¢
Selected Salad Sizes. 2 for

Radishes 10¢
Add color to your salad. 6-oz. Cello Pkg.

Green Onions 10¢
New Texas Crop. Bunch

Walnut Meats 99¢
Diamond—7-oz. Pkg. (11-oz. Pkg. \$1.29)

Mince Meat 35¢
Borden's Pork and Veal. 8-oz. Pkg.

For Your Holiday!

Navel Oranges 4 lb. 59¢
Choice, Stacking fillers.

Apples 3 lb. 59¢
Red Delicious, Extra Fancy.

Ruby Grapefruit 5 lb. 59¢
Texas grown.

Eastland

SAFEWAY