

## Mrs. Allen Rushing to be Driver's License Clerk



MRS. ALLEN RUSHING  
... DPS Clerk

Mrs. Allen Rushing, 611 South Dixie, Eastland, will be Drivers License Clerk Typist when the Drivers License office opens in Eastland Jan. 1.

Mrs. Rushing will train in Abilene in December.

She is the former Barbara Cooper, daughter of Mr. and Mrs. Guy Cooper of Ranger, and is a graduate of Ranger High School. She is a former employee of the City Hall, First Federal Savings and Loan Association, and Lone Star Producing office, all in Ranger; and the Eastland Memorial Hospital.

Her husband, also a Ranger High School graduate, is with the Engineering office of the Texas Highway Department in Eastland.

They have two daughters, Tammy, 10, and Rhonda, 6, students at Eastland Elementary School. The family belongs to First Methodist Church and Mrs. Rushing is secretary-treasurer of the Ruth Circle of WSSC. She is a member of Eastland Civic League and Garden Club and is membership chairman of the Parent and Teacher Organization.



RANGER BLUEBIRDS who enjoyed a conducted tour of the office and print shop of Ranger Times on Friday afternoon.

## Bluebirds Visit Times Office Friday Afternoon

Fifteen members of Ranger's Bluebird group were visitors at the Ranger Times office on Friday afternoon.

Accompanied by their leader, Mrs. L. R. Gohlke, these very young ladies witnessed both offset and letter press, linotype and plate making. Editor Pat Collins directed the tour and print shop foreman Hede Dunsen gave demonstrations.

This experience is but one

of many for the group of 20 second and third grade girls who, since organization in September, have met twice monthly in the Gohlke home to engage in periods of instruction and drill, handicrafts, tours and picnics. Known at present as simply "The Bluebirds" the girls will choose a name in the near future.

Attending the meeting on Thursday were Pat and Paula Silvey, Kelley Carter, Wendy Moore, Karen Cupp, Stacy Duvall, Zarina Tollett, Karen Templeton, Debbie Cole, Tonya Langford, Tanya Page, Carrie Gohlke, Lisa Jacoby, Nelda Rodgers and Brenda Honeycutt.

## Captain Raines Promoted Nov. 1

Capt. John Wayne Raines, 23, son of Mr. and Mrs. T. P. Raines of Roscoe, formerly of Ranger, was promoted to that rank in the United States Army on Nov. 1, at An Khe, Viet Nam. He was awarded the Bronze Star for meritorious service in October and had received two medals on former occasions. He will arrive in Roscoe the first week in December for a 30-day leave following a 12-12 month tour of duty in Viet Nam.

Capt. Raines received his commission as Second Lieutenant through Reserve Officers Training Corps at Tarleton State College at Stephenville on May 30, 1965.

## Ranger Stores To Close Thursday For Thanksgiving

Thanksgiving Day will be a holiday for Ranger stores, according to announcement from the office of Chamber of Commerce. This is one of the five holidays agreed upon by the Chamber in a business meeting several months ago. Offices of Ranger School Supt. and School Tax office will be closed on Thursday and Friday, Nov. 23-24.

## RJC Concert Choir Provides Music At Thanksgiving Service

The RJC Concert Choir will provide choral music for the 1967 Community Thanksgiving Worship Service at the First Baptist Church in Ranger Sunday night, Nov. 19.

The 30-voice choir, under the direction of Choir Master Edmond Lewis, will be making its first formal appearance of the year. Their selections will include "Heavenly Light," "Alleluia," "Battle Hymn of the Republic," and "The Lord Bless You and Keep You."

## Second Baptist To Sponsor Conference

Second Baptist Church will sponsor a Christian Life Conference on Nov. 26-29 according to announcement of the pastor, Rev. Chas. J. Bush.

Theme for the four sessions will be "The Bible Speaks to Man's Needs Today" and will feature messages by the pastor and three visiting speakers. On Sunday evening, the pastor will discuss "The Bible Speaks on Man's Need of a Pure Religion." Monday evening will find Rev. Butch Pesch, pastor of First Baptist Church of Moran explaining how "The Bible Speaks on Christian Citizenship." Tuesday evening the speaker Rev. B. C. McCoy, pastor of First Baptist Church of Strawn has chosen the topic "The Bible Speaks on the Family." The concluding message on Wednesday will be delivered by Rev. James Aldridge of Fort Worth. He will present ways in which "The Bible Speaks on Moral Issues." All speakers are currently enrolled in Southwestern Baptist Theological Seminary of Fort Worth.

Services begin at 7 p. m. and all persons interested in the relevant interpretation of the scriptures are cordially invited to attend.

## Rev. Bratton Speaker For Second Baptist

"What Is Thanksgiving?" was the general theme of a message by Rev. Clayburn Bratton, pastor of a Baptist Church in Arkadelphia, who was visiting speaker during the Thanksgiving banquet at Second Baptist Church on Wednesday evening, Nov. 15. The program followed a meal consisting of turkey, dressing, giblet gravy, candied yams, creamed potatoes, green beans, fruit salad, pumpkin and pecan pie, tea and coffee.

The dining hall was artistically decorated in shades of orange, brown and yellow with miniature pumpkins and baskets, colorful foliage and flowers. A large group enjoyed the fine fellowship of the evening

## Ranger School Trustees Hear Representative of Tax Firm

The board of trustees of the Ranger Independent School District met in regular session Tuesday night and heard a representative of a tax evaluation firm explain how tax values were reached by his firm. The board also had their audit for the past school year returned and explained page by page by the auditor. The audit was approved by

the board and a copy sent to the Texas Education Agency. No action was taken regarding reevaluation of taxes in the school district as the representative said they were booked up for a year at least and also that they did mostly work on utilities, industry, oil and gas. He did estimate that it might cost at least \$17,000 to have every piece of

property on the tax rolls re-evaluated and that it would take several men several months to do the job.

Guests present for the meeting included Bill Marslander, E. W. Mince, James Ratliff, David Pickrell, Pete Brasher Jr., Dick Hodges, R. L. Mart, the auditor, O. G. Lanier, Pete Keener, T. L. Browning H. Powell of Olden, Don Adams, Porter Rainwater represented the tax firm.

The trustees approved a Title 2 budget which will spend \$702 for elementary books and \$623 for secondary books. This totaled \$1,325. All this expense is 100 percent reimbursable by the Texas Education Agency.

The resignation of Mrs. Rod Carter as Hodges School office aide was accepted as of Oct. 31 and Mrs. Billie Moore was elected to fill her place. Mrs. H. R. Tibbles was elected as a teacher aide in the first grade to replace

Mrs. Moore who formerly held that position.

Supt. James Clark was asked to make a survey of pay for substitute teachers in this area. Ranger has paid \$10 per day for many years which is the same pay that the NYC students earn.

It was voted to allow the homemaking and agriculture teacher ten cents a mile travel since this is the maximum allowed by the State and is paid in full by the State.

Salary adjustments of two hourly workers was made permanent in line with a proposal at an earlier meeting.

Reports submitted to the board included the luncheon report for October, high school activity fund report, menus for a month, athletic report enrollment report, football gate receipt report and a report that \$3,083.60 from the Interest and Sinking Fund account had been placed in savings account until needed to pay bonds Sept. 1.

Dr. Luther Gohlke, president, presided at the meeting which lasted nearly four hours. Members present were Ross Hodges, secretary, R. V. Robinson, vice-president, Mrs. Frances Cox, Dr. W. P. Watkins, J. D. Nichols and Gaston Dixon. None were absent.

A report to the trustees of Ranger Independent School district showed that the school buses traveled 4047.4 miles in October in addition to the regular bus routes to school each day.

The Athletic Bus traveled 309.1 miles while the Student bus to games traveled 206.6 miles. One bus traveled 133.5 for lunchroom commodities in Brownwood.

The Future Homemakers traveled 247.5 to the Dallas State Fair in a bus while the Vocational Agriculture Department traveled 243.6 miles to the Fair and 55.3 miles on local field trips.

Band buses to Albany, Baird and Houston totaled 2,851.8 miles in October. Three buses went to Houston totaling about 748 miles for each bus.

The report also showed the football bus was getting 5.7 miles per gallon. Bus 2 gets 6.2 while Bus 4 gets 7.5. Bus 5 gets 7.1 and Bus 6 gets 7.8. This mileage will drop in November due to muddy roads Supt. James Clark told the trustees.

## First Quarterly Conference Set For Methodist

The first Quarterly Conference of First Methodist Church of Ranger will be held in the Fellowship Hall beginning at 7:30 p. m. Monday, Nov. 20.

Presiding at the meeting will be Dr. S. Wayne Reynolds, District Superintendent of Cisco District. At this time, the pastor and all officers of the church will give reports. All members are asked to be present.

## PAT and PAM

By Mildred & David Pickrell



PICKRELL Insurance Agency  
MI 7-3582  
RANGER

## In this corner, with COLLINS

We suggest that all the kids get their letters to Santa early this year. Just address the letter to Santa in care of the Ranger Times and we will print the letters in the paper and send Santa a copy of the paper so he will be able to know what everyone would like for Christmas. We have only 29 shopping days before Old Santa Nick comes.

For all you cigarette smokers — Wayne Mathews, at the Ranger Rexall, has a sure cure for smoking. He has mixed up a solution called "Wayne's Cancer Curb" that guarantees one to stop smoking. You just squirt a little of the "stuff" in your mouth and you won't want to smoke anymore — says Wayne.

Members of the Bulldogs Mother's Club don't forget the meeting that will be held at 2:30 p. m. today (Sunday) in the home of Mrs. W. P. Watkins. This is an important meeting and all members are urged to be present.

We received a note from Fred Bennett Saturday morning. He also sent along a portion of the Cleburne paper which had a nice article and a picture of his new business unit. Fred stated he and his family are enjoying living in Cleburne but sometimes long for good ole Ranger. Thanks Fred for the note and the renewal of your subscription to the Times.

Auto Loans At Low Bank Rates  
COMMERCIAL STATE BANK  
Ranger, Texas

## RANGER HIGH SCHOOL 1967-68 Basketball Schedule

Nov. 30, Dec. 1, 2 — Eastland Tourney—A Boys & Girls  
Dec. 4 — Eastland — A & B Boys and A Girls—Here—6:00  
Dec. 5 — Olney — A & B Boys — Here - 6:30  
Dec. 7, 8, 9 — Graham Tourney — A Boys - Graham  
Dec. 11 — Eastland — A & B Boys & A Girls—Here—6:00  
Dec. 12 — Olney — A & B Boys — There - 6:30  
Dec. 14, 15, 16 — RJC Tourney — A Boys & A Girls—RJC  
Dec. 22 — Cisco — A & B Boys & A Girls—There—6:00

### CHRISTMAS HOLIDAYS

Jan. 2 — Cisco — A & B Boys & A Girls - Here - 6:00  
Jan. 16 — Baird\* — A & B Boys & A Girls - Here - 6:00  
Jan. 19 — DeLeon\* — A & B Boys & A Girls - Here—6:00  
Jan. 23 — Albany\* — A & B Boys & A Girls - Here - 6:00  
Jan. 26 — Open  
Jan. 30 — Dublin\* — A & B Boys & A Girls - Here - 6:00  
Feb. 1 — Baird\* — A & B Boys & A Girls - There—6:00  
Feb. 6 — DeLeon\* — A & B Boys & A Girls—There—6:00  
Feb. 9 — Albany\* — A & B Boys & A Girls—Here—6:00  
Feb. 13 — Open  
Feb. 16 — Dublin\* — A & B Boys & A Girls - There—6:00  
\* Denotes District Games — Coach Dewitt Jones

## COMMUNITY THANKSGIVING SERVICE

FIRST BAPTIST CHURCH  
RANGER, TEXAS  
NOVEMBER 19, 1967  
7:00 P.M.

- Prelude Organist
- Choral Introit RJC Concert Choir
- Processional Hymn "We Gather Together" Kremser
- Invocation Gary Shoemaker
- Announcements and Welcome Avery Sullivan
- Choral Selection "Heavenly Light" RJC Concert Choir
- Readings from the Scriptures Chas. J. Bush
- Thanksgiving Prayer Thomas Tribble
- Hymn: "Come, Ye Thankful People, Come" Congregation
- Offertory Prayer Lee Fields
- Offertory "Alleluia" RJC Concert Choir
- Thanksgiving Sermon Robert Wilson
- Choral Selection RJC Concert Choir  
"Battle Hymn of the Republic"
- Benediction D. A. Lambert
- Benediction Response RJC Concert Choir  
"The Lord Bless You and Keep You, Amen"
- Recessional RJC Concert Choir

## Annual Audit of RHS Shows \$13,170 Received

The annual audit of the Ranger High School activity fund showed the fund received \$13,170.24 while disbursing \$12,581.98 leaving a balance Aug. 31 of \$1,688.26. The beginning balance a year earlier was \$1,100.10.

The Annual account began with \$78.55, received \$2,036.51, spent \$1,648.94 leaving a balance of \$466.12 at the end of the fiscal year Aug. 31.

The Driver Education account began with \$291.68, received \$1,269.94, spent \$1,267.23, leaving a balance at the first of school of \$294.39.

The Fee fund, which was mostly student insurance, picture sales and the like, began with \$198.35, received \$4,456.42, spent \$4,374.52, leaving a balance of \$280.25. Most of this fund is just an in and out proposition.

The Library account began with \$180.71, received \$278.06, disbursed \$361.45, leaving a balance Sept. 1 of \$97.32.

The Cheer leader account started with \$44.64, received

\$157.80, spent \$202.44 leaving no money in the account.

The Paper Machine account started with \$10.75 and ended with that amount since the machine is out of order.

The Toilet Dispenser account started with \$19.50, received \$11.30, spent \$22.10, leaving a balance of \$8.70.

The Future Teachers of America started with \$24.43, received \$93.90, spent \$118.25, leaving a balance of eight cents.

The Beta Club began with \$45.54, received \$71.39 while spending \$115.00, leaving them \$1.93 Sept. 1.

The Student Council account started with \$45.92, received \$104.50, spent \$117.00, leaving them \$33.42.

The Class of 1967 began with \$121.96, took in \$2,040.90, and spent the entire amount which included a transfer to the Special Fund which is to be used for new auditorium stage curtains some day.

The current senior class was broke a year ago but took in \$1,271.56, spent \$1,138.01, leaving them \$133.57 to start the present school term.

The Special account started with \$38.96, received \$250.75 from the Class of '67, spent \$31.46 leaving a balance of \$252.25.

The Textbook Fine account began with \$5.00, received \$142.54 for damaged, lost or ruined textbooks, spent \$102.00. The band account started with one cent, took in \$690.80, disbursed \$688.54, leaving them \$66.43.

The Drama Club account took in \$30, spent \$23.57, leaving them \$6.43.



JOHNNY MCGEE

## Johnny McGee Is Named Prexy Of Phi Theta Kappa

Ranger Junior College sophomore Johnny McGee from Ranger has been elected president of Delta Tau Chapter of Phi Theta Kappa.

Phi Theta Kappa is the campus honor organization. Only students who rank in the top ten per cent of their class are eligible for membership.

Verganna Goswick, also of Ranger, was elected vice president of the group at a meeting on Nov. 14. Linda Davis of Abilene was named secretary, while two other Rangerites, Rick Theberge and Bobbie Golemon, will serve as treasurer and reporter, respectively. Bill Anderson of Breckenridge will represent the group on the RJC Student Government.

Installation of new members will be held at the home of the group's sponsor, Mrs. Marjorie Theberge, on Nov. 21.

## Eleven From RJC On All State Choir

Eleven members of the Ranger Junior College Choir have been selected to perform with the All-State Junior College Choir in Houston in February, according to Choir Director Edmond Lewis.

The eleven selected voices including: Bobbie Golemon, and Verganna Goswick from Ranger; Janie Trammell and Jay Dover from Breckenridge; Larry McCannless and Wayne Currier from Mineral Wells; Jynn Brubaker from Medina; Rick Wilhite and Mike Roan from Dallas; Fred Guerrero from Carnes City; and Don Hallbrook from Green Bay, Wisconsin.

The group will travel to Houston on Feb. 15, 16, and 17 to perform with the All-State Junior College Choir during the annual convention of the Texas Junior College Teachers Association. The convention will be headquartered at the Rice Hotel.



RANGER TIMES

311 1/2 W. Main Street, Ranger, Texas 76470 — Established June 1, 1917

Published Semi-Weekly — Sundays and Thursdays By Eastland County Newspapers, Inc. PAT COLLINS, Editor

Table with subscription rates: One week by carrier in city .15, One month by carrier in city .65, One year by mail on Ranger RFD Routes 3.50, etc.

NOTICE TO PUBLIC — Any erroneous reflection upon the character, standing or reputation of any person, firm or corporation which may appear in the columns of this newspaper will be gladly corrected upon being brought to the attention of the publishers.

CLASSIFIED

For Sale

FOR SALE: Trailer house, 10' x 50'. See at Craig's Trailer Court, Highway 80 East. Contact Mr. Daley. 33

FOR SALE: Two girls' bicycles, 24 inch. In good condition, \$7.50 each. Phone 647-1548. 33

FOR SALE: Two piece living room suite, cheap. Phone 647-1657. Mrs. Fr. Whitefield, 33

FOR SALE: Road material, driveway material, concrete rock, sewer line rock and agriculture limestone. Call King Aggregate Materials, Power Plant Road, Eastland (was H. B. Zachry Company), Phone Eastland MA 9-1616, Cisco HI

FOR SALE: Good, clean used 13-inch tires — 600x13s and 650x13s, \$3 each. See these and many more at Horton Tire Co. Eastland tf

FOR SALE: Five ton Carrier central heating and cooling unit, water cooled. For further information, call 647-1182. tf

FOR SALE: Lake Leon cabin. Call MA 9-2223 in Eastland. tf

FOR SALE: One 20-gauge pump shotgun, heaters, 1 range, oil drums, pecans, one over the door, 8x7 ft. Arnold Gohlke, 605 Walnut, tel. 647-3103 in evenings tf

DEER LEASES: By the day. Contact J. H. Greer, Tel 647-3663. 38

Notice

NOTICE: Lou's Ceramics. Green wire slip supplies. Inquire about free beginner's course in a fascinating hobby. Make your own Christmas gifts or get them ready made. 810 E. Sadosa, 629-2359, Eastland. 45

NOTICE — Learn to fly in Cub J-3 two Piper tri-pacers, and Cessna Skylane. Charter trips, airplane rentals. Commercial pilot, flight instructor or on duty. Cisco Flying Service, Cisco Municipal Airport.

Real Estate Homes for Sale Farms and Ranches Have farms and ranches, any size, bottom land or peanuts.

M. L. TERRELL REAL ESTATE 311 1/2 W. Main — Eastland, Tex. Off. 629-1725 Nite 629-1926

NOTICE CISCO STEAM LAUNDRY now has answering service in Ranger. Pickup and delivery every day. For fast service call 647-1380

ELECTROLUX Factory Authorized Sales & Service Free Home Demonstrations — No charge for service calls JACK BEDFORD Box 72, Cottonwood, Texas 79504

FOR EXCHANGE: Free trailer space rent in exchange for helping with pets and house cleaning. Phone 647-1759. 34

NEED responsible party in Ranger to take over payments on late model Singer sewing machine, automatic zig-zag, blind stitches, fancy patterns, etc. Assume four payments at \$6.12, discount for cash. Write Credit Manager, 22225 Pine, Abilene, Texas. tf

NOTICE — Call or see us for rubber stamps. The Ranger Times. tf

NOTICE: Learn a profession in just a few short months Complete training. Low tuition, easy terms. Part time students welcome. Texas Barber College, 450 Pine, Abilene. Phone OR 4-5891. tf

ATTENTION NEWCOMERS! You can buy new home in Ranger, 207 Skylark (go out Gorman Hwy., turn right at Lamar, left on Skylark) in a brand new addition, is ready for some lucky home owner

Three bedrooms, brick, two baths, all built-in kitchen, carpets, two-car garage. Go out and take a look, then call 642-9456 in Brownwood for Jean F. Balch, Western Made Homes. tf

Need responsible party with good credit in Ranger area to take up payments on a 1968 Singer Walnut Console, sewing machine, automatic zig-zag, blind hems, fancy pattern, etc. Four payments of \$6.57 or \$23.79 cash. Write credit department, Abilene Sewing Center, 2225 Pine Street, Abilene, Texas. TF

FOR RENT: Unfurnished duplex apply at 200 East Valley. tf

IF YOU WANT work but cannot give full time we have just the thing you need. Write Avon Mgr. Box 13446, Ft Worth

Wanted HELP WANTED: Male machinists and mechanics. Expanding company in flight control systems and instruments for general aviation. Production machinists; Set up own work, close tolerances, supervise apprentices, can lead to foreman's position. Model shop machinists; appx. three years model shop parts. Involves small precision parts. Mechanic; Mechanically inclined individual for installing and removing of flight systems, etc. Write to Mitchell Industries, P. O. Box 610, Mineral Wells, Texas, or call collect—817-325-2517. 34

WANTED: Painting and repair, by the hour or contract. Do good work. Ann Bryan, 410 South Oak. Phone 647-1559. 34

WANTED: Waitress. Apply at Ranger Hill Cafe. tf

The Dominion of Canada was established in 1876.

JOE SAYS: What we need most is not so much to realize the ideal as to idealize the real.

JOE CULPEPPER of Hood King Motor Co., also says: "See me for the best automobile deal."

HOUSE LEVELING UNDERPINNING

- Rock Fireplaces
Brick Blocks
Barbecue Pits
Veneering Waiks
Plaster Fences
Concrete Work

FREE ESTIMATES Clyde Grimes Phone 647-1830 Ranger, Texas

NOTICE DEER HUNTERS Bring your deer for cold storage

Cisco Ice Co. Phone 442-1415

NOTICE DEER HUNTERS Bring your deer for cold storage

Cisco Ice Co. Phone 442-1415

HOUSE LEVELING UNDERPINNING

- Rock Fireplaces
Brick Blocks
Barbecue Pits
Veneering Waiks
Plaster Fences
Concrete Work

FREE ESTIMATES Clyde Grimes Phone 647-1830 Ranger, Texas

NOTICE DEER HUNTERS Bring your deer for cold storage

Cisco Ice Co. Phone 442-1415

The Week Ahead In Ranger SUNDAY

Attend the church of your choice.

MONDAY 3:00 p. m. — WSCS Prayer Group at Methodist Church. 7:00 p. m. — Royal Neighbors, Community Club House. 7:30 p. m. — Quarterback Club meeting in High School Library.

Bullock Quilting Club. TUESDAY 9:30 a. m. — Ladies Bible Class, Merriman Baptist Church. 10 a. m. — Community Art Group, Comm. Club House. 6:00 p. m. — Boy Scout Troop No. 88, meeting at Scout Hut. 8:00 — Dutch Club, home of Mrs. Frank Arrendale. 3:30 p. m. — 1947 Club at the home of Mrs. Bill Marslander. 7:30 p. m. — Rebekah Lodge.

WEDNESDAY 9:30 a. m. — Ladies Bible Class, Mesquite and Rusk St. Church of Christ. 4:00 p. m. — Boy Scout Troop 10, First Methodist Church. 7:00 p. m. — Elks Club.

HELP WANTED: Male. I'm looking for a particular type man. If you are a member of a church: A. Willing to work hard; B. To tithe; C. To follow instructions; and have no objection to making \$15,000 a year — I am looking for you. You will not be asked to sell books, health and accident insurance, vacuum cleaners, brushes or knock on doors. Sales experience helpful, but not necessary. Mail resume today to: P. O. Box 12256, Dallas, Texas 75225. An interview will be arranged for you and your wife. 33

NOTICE The knock on your door on Tuesday evening will probably be a member of Baptist Student Union, Ranger Junior College, to collect used toys, clothing and books for missions projects. If you have articles to give, please have them ready by 7 p. m.

Mr. and Mrs. Anderson H. Brien of Breckenridge, will celebrate their fifth wedding anniversary Nov. 22.

FOR SALE We have several nice homes for sale, prices ranging \$5,000 to \$22,500. If you are looking for a home call or come in to see us. If you need financing we can assist you in arranging a home loan.

LAND FOR SALE 115 acres, half cultivated, \$75 acre, small down payment, 300 acres Lake Leon area. Make offer.

1,000 acres, net fences, 10% down. 516 acres, net fences, good house, on pavement, good financing. \$82 acre.

10,000 acres good grass land excellent terms, would consider clear trade on down payment. \$65 acre.

30,000 acre ranch land, well watered, good cattle fences; will trade. \$60 acre.

See us for a long term farm or ranch loan.

KINCAID REAL ESTATE 100 S. Seaman — 629-1788 J. W. Elder — Robert Kincaid 647-1321 629-2721 Ranger Eastland

NOTICE DEER HUNTERS Bring your deer for cold storage

Cisco Ice Co. Phone 442-1415

HOUSE LEVELING UNDERPINNING

- Rock Fireplaces
Brick Blocks
Barbecue Pits
Veneering Waiks
Plaster Fences
Concrete Work

FREE ESTIMATES Clyde Grimes Phone 647-1830 Ranger, Texas

NOTICE DEER HUNTERS Bring your deer for cold storage

Cisco Ice Co. Phone 442-1415

News From RANGER JOURNALISM CLASS

Editor's Note: The following story is by Catherine Schamp a sophomore journalism student at Ranger Junior College.

Large round eyes fairly shouting trust and affection. Wagging tails showing happiness and contentment.

These are two of the most prominent features belonging to some particular favorites on the RJC campus, and they just happen to belong to a group of "campus canines" that have attached themselves to the campus and to the hearts of many students at RJC.

Plate Lunch is one of those favorites. One of the better-known of the campus canines, he is a medium-size brown and white dog who belongs to Coach Ron Butler. Plate Lunch can often be seen "helping" the football team work out in the afternoons or trying to referee a game in Ranger Stadium. And if ever anyone cannot find him, just go to the cafeteria and wait a while. He is a fixture at that building at meal times and is one customer who never complains about the food.

Edmond Lewis often receives unsolicited help conducting choir rehearsals from Lady, another member of the campus canine society. Whether or not the small black Beagle-like Lady really thinks she is helping is not certain, but she obviously likes Mr. Lewis, who just happens to be her owner. Although the members of the choir enjoy Lady's visits, they think perhaps Mr. Lewis makes the better conductor.

The girls of both dorms have adopted a brown dog that doesn't complain a bit about the affections lavished upon him. Jack is his name, and he really has found a home. The girls have something to love and to take care of besides having their own watchdog. They think Jack is a very special fella' and there are many RJC boys who envy Jack's inside track at Jameson and Nicksick Halls.

Plate Lunch, Lady, and Jack are just dogs, but they aren't "just dogs." These animals are favorites with the students and have become personalities on the campus. When young people are away from home, often for the first time and just as often lonely or homesick, they fare better if they have an object for their affections.

Many students have passed hours enjoying and taking part in the antics that the dogs perform to liven up a monotonous afternoon. RJC's campus canines have found someone to trust. The students have found companionship.

It is hard to say who needs who the most.

Golfing News Following two weeks of "no golf", the lady golfers took advantage of the good weather Tuesday to play all day. Evelyn Daniels continued her winning streak during the morning round by turning in the low net score.

Jane Day, disgusted with her drive on the 368 yard par 4, No. 2, watched the second shot head straight down the fairway. Disbelief, surprise, and joy when the ball was found in the cup. A birdie and an eagle on the same hole in one day! It was so nerve shattering she could hardly play No. 3.

Others enjoying the day were Bonnie Rice, Jackie Williams and Doris Beazley.

School Menus Monday, November 20 Hot dogs, on buttered buns, onion rings, pickles, lettuce, cheese slice, orange juice, ice cream, milk. Tuesday, November 21 Turkey w-dressing, giblet gravy, cranberry sauce, candied sweet potatoes, green beans, hot rolls, butter, fruit salad, milk. Wednesday, November 22 Meat salad & pimento cheese sandwiches, lettuce, pickles, potato chips, apple wedge, milk. Thurs. & Friday Nov. 23 & 24 Thanksgiving Holidays.

Recent guest of Mrs. Lydia Clem was her daughter, Mrs. Betty Young of Arlington. Mrs. Clem returned with her for a visit.

New Era Club Has Thanksgiving Party In Community Club House

Members of the New Era Club held their traditional Thanksgiving party at the Community Club House on Tuesday evening, Nov. 14 with husbands as guests. Hostesses were the entertainment committee, Mmes. W. A. Lewis, Wayne Mathews and Buck Wallace.

A "Harvest Festival" theme was carried out in decorations consisting of a profusion of autumn leaves and multi-colored mums used throughout the spacious club room. The table was centered with a three-tier arrangement of mums, and fruit in a crystal background.

Club president Mrs. R. V.

Band Boosters Have Monthly Meeting Nov. 14

The monthly meeting of Ranger Band Booster Club was held in the Band Hall, beginning at 7:30 p. m. on Tuesday, Nov. 14 with the president, Mrs. Mary Clark in charge.

In the absence of Mrs. Morris Newnham, Mrs. Marvin McGee read the minutes of the previous meeting. Treasurer's report was submitted by Mrs. Wesley Poyner. Old business was completed and new fund raising projects considered.

Mrs. David B. Allsup served refreshments of cake and coffee to the unusually large number of members who attended.

HOSPITAL NEWS Patients in Ranger General Hospital Saturday morning were:

Ed Dixon. Mrs. J. E. Bryan. Mrs. Maybelle Keller. Mrs. Maude Kelley. Mrs. John Roper. Mrs. Lula Maddux. W. J. Herringtan. A. D. Thomas. C. O. Smith. Mrs. Dora Dempsey. Mrs. Rosa McAlister. Mrs. Onis Littlefield. Mrs. Vergie Lee. T. B. Harris. Henry Davenport. J. R. Welch. Mrs. J. C. Rose. Mrs. D. C. Brooks and baby boy.

Mrs. R. M. Sawyer. Mrs. Letha Buckbee. Mrs. Sula Walton.

HAPPY BIRTHDAY

Many Happy Returns to the following Rangerites who will celebrate birthdays during the coming week:

Sunday — Mrs. Chas. P. Ashcraft, Randy Kitchens, Mrs. Dorothy Barron, Mrs. Viola Stroud, H. C. Croom.

Monday — Johnny Rogers. Tuesday — T. Y. Sunday Midge Williams, Mrs. H. E. Deal.

Wednesday — Mrs. J. F. Byas, Larry Butler, Delbert Cozart.

Saturday — Debbie Bush, Tommy Browning, Vicky Hughes, Ricky Hughes.

Congratulations to these couples who will observe wedding anniversaries this week:

Wednesday, Nov. 22 — Mr. and Mrs. James Ratliff. Thursday, Nov. 23 — Mr. and Mrs. Wesley Poyner.

Mrs. Selwyn Leedy and Brian Lee Albraist of Fort Worth and Mrs. James Arrendale of Snyder were guests in the home of Mrs. Frank Arrendale on Wednesday.

Miss Susie Corry has returned to her home in Starks, La., following a visit in the home of Mr. and Mrs. Wade Albritton. Other recent guests in the Albritton home were her parents, Mr. and Mrs. M. M. Stroud and daughter, Bobbi of Electra and Mr. and Mrs. Rickey Allread of Odessa.

Mr. and Mrs. T. D. Stewart have returned from a visit in the homes of her brothers, H. S. and James L. White and families in Brownwood.

Miss Jewell Newnham has returned from a visit in the home of Mrs. Tommy Guest of Fort Worth. While there she accompanied relatives to Nashville, Tenn. and among many pleasant experiences, attended the "Grand Ole Opry."

Mrs. L. H. Kay was a weekend guest of her sister and husband, the McElroys, of Baird.

Airman IC and Mrs. David Russell and family of Abilene and Mr. and Mrs. Charles Blanton and family of Bowie are weekend guests of Mr. and Mrs. Lee C. Russell.

Mr. and Mrs. Price Crawley of Midland were weekend guests of their parents, Mr. and Mrs. A. E. Crawley and Mr. and Mrs. A. N. Larson.

Mmes. Saunders Gregg and H. X. Wallace have returned from a visit with relatives in Temple.

Mmes. P. M. Kuykendall and Jas. P. Morris were in Cross Plains on Wednesday for a visit in the home of Mrs. Tom Bryant and other relatives.

Mr. and Mrs. A. G. Langley were in Granbury on Wednesday to attend the funeral of Frank Moss.

Mr. and Mrs. Frank Miller of Mesquite were recent guests in the home of his mother, Mrs. Alberta Miller.

RANGER DRIVE-IN THEATRE

Adults 60c — Kiddies Under 11 FREE SHOW STARTS AT 7:00 P.M.

Last Times SUNDAY NOVEMBER 19



FRIDAY — SATURDAY — SUNDAY NOVEMBER — 24 - 25 - 26

JAMES GARNER as WYATT EARP JASON ROBARDS as DOC HOLLIDAY ROBERT RYAN as IKE CLANTON

UNDER NEW MANAGEMENT

THE GHOLSON COFFEE SHOP BERTHA WILSON

OPEN 5:30 A. M. — 4:00 P. M.

SIX DAY A WEEK NEW MENU EVERY DAY

YOU'LL FIND IT IN THE WANT ADS

THE RANGER STORY

A book printed by the Ranger Times, contains a history of Ranger during the famous Oil Boom in 1917. The book also contains several pictures of the oil boom and of Ranger and the Merriman Cemetery.

SOLD AT THE RANGER TIMES

PRICE — ONLY \$1.00



## Bowling Results

MONDAY NIGHT MEN'S HANDICAP LEAGUE		Odd Balls	
Team	W L		
Dodge Boys	60 20	The Goodies	596
Eastland Auto	57 23	<b>High Individual Game</b>	
Premier	49 31	Modell Gann	210
Kay Chev	46 34	Bonnie Morren	202
TESCO Trans	44 36	Dorothy Reid	181
KERC	38 42	<b>THURSDAY NIGHT MEN'S LEAGUE</b>	
Hoffmann's	38 42	November 9	
TESCO Dist	38 42	<b>Team</b>	<b>W L</b>
Village Barber	36 44	Guy's Texaco	59 13
Hollywood Vass.	34 46	Volunteer Firemen	48 24
Tommies Gro.	30 60	Safeway	46 26
Southern TV	20 60	Dr. Pepper	44 28
<b>High Team Three Games</b>			
Tommie's Grocery	2370	Arrington Funeral H	42 30
KERC	2963	Ward's	34 33
Hoffmann Well Service	2952	Goodyear	31 41
<b>High Individual Three Games</b>			
Doc Reuwer	626	Hoot's Place	30 42
Leo Gann	624	VC Menu	28 44
Benny Skinner	579	Gilbert's Gulf	28 44
<b>High Team Game</b>			
KERC	1053	Southwest Machine	28 44
Tommie's Grocery	1051	Cotton's Studio	14 58
Hoffmann Well Service	1019	<b>High Team Three Games</b>	
<b>High Individual Game</b>			
Doc Reuwer	230	Arrington Funeral Home	2969
Don Kidd	211	Guy's Texaco	2889
Leo Gann	210	Hoot's Place	2881
<b>THURSDAY MORNING HOUSEWIVES LEAGUE</b>			
October 26			
<b>Team</b>	<b>W L</b>	<b>Team</b>	<b>W L</b>
Odd Balls	42 14	Gerald Dempsey	242
Jet Sets	42 14	Bill Wofford	222
Hot Shots	34 22	Earl Lewis	215
Not Yets	33 23	<b>LADIES WEDNESDAY NIGHT LEAGUE</b>	
The Sleepers	31 25	November 8	
The Starrs	20 36	<b>Team</b>	<b>W L</b>
The Goodies	12 44	Scott's Bait House	48 24
The Dusters	10 46	Pro Shop	48 24
<b>High Team Three Games</b>			
Odd Balls	1837	Smith Plumbing	46 26
The Starrs	1753	Cisco Truck Stop Cafe	42 30
The Sleepers	1653	Shaker's Camp	32 40
<b>High Individual Three Games</b>			
Modell Gann	547	Ranger Frozen Food	30 42
Bonnie Morren	517	City Drug, Cisco	28 44
Dorothy Reid	506	Cisco Broom Shop	10 64
<b>High Team Game</b>			
The Starrs	674	<b>High Team Three Games</b>	
		Pro Shop	2216
		Smith Plumbing	2211
		Cisco Truck Stop Cafe	2203
		<b>High Team Game</b>	
		Pro Shop	588
		Smith Plumbing	572
		Cisco Truck Stop Cafe	543
		<b>High Individual Three Games</b>	
		Diana Elrod	517
		Juline Casey	502
		Gloria Scott	439
		<b>High Individual Game</b>	
		Juline Casey	187
		Diana Elrod	186
		Gloria Scott	177

### BATTERY



TROUBLES?

CALL  
**HORTON TIRE CO.**  
629 - 1420  
\$8.95 and up plus tax

### WANTED

PROSPECTS FOR  
• Vinyl Insulating Windows  
• Plastic and Insulating Siding  
• Aluminum Replacement Windows  
• Aluminum and Steel Siding  
• Fry Roofing  
• Fiberglass Insulation  
**J. H. TURNER**  
Home Improvement Company  
142-3262 - Cisco

### Cancer Society Sees Film On Time of Decision

Members of the Eastland County Unit, American Cancer Society, met in the Reddy Room of Texas Electric Building in Eastland on Thursday evening, Nov. 16 with the president, Sam Kimmell of Cisco, presiding.

Opening prayer by Mrs. O. G. Lanier was followed by reports. County Service Chairman Mrs. G. A. Fyffe reported that 33 women had worked 137 hours. The Bullock Quilting Club completed eight dozen dressings; the Church of Christ of Gorman, 14 dozen and Ranger Methodist Church group, 14 dozen. District Representative Riley Sloan showed the film, "The Time of Decision."

### TROUT RELEASED

NEW BRAUNFELS—The fourth and final stocking of 3-800 rainbows trout below Canyon Dam has ended a three-year project to determine if the fish can survive in the Guadalupe River, according to Richard White, inland fisheries biologist for the Texas Parks and Wildlife Department.

UP TO \$1,000.00

### BURIAL INSURANCE

Can Be Yours Now

For Less Cost Than You Might Guess THROUGH

### HAMNER LIFE INSURANCE

301 S. LAMAR ST.  
EASTLAND, TEXAS 76448

Mail this coupon today for complete information.

Mail To:  
Arrington - Hamner Insurance Co.  
301 S. Lamar  
Eastland, Texas 76448

NAME \_\_\_\_\_ Age (s) \_\_\_\_\_  
Address \_\_\_\_\_ City \_\_\_\_\_  
Phone Number: \_\_\_\_\_

DIG INTO OUR APPETIZING  
**Thanksgiving**  
MONEY SAVERS  
GET S&H GREEN STAMPS, TOO!

**CLOSED NOV. 23rd**  
This store will be closed all day Thursday, Nov. 23, in observance of Thanksgiving Day. Many thanks for your patronage during the past year.



### FOREMOST DAIRY FEATURES

FOREMOST EGG NOG	qt 49c
FOREMOST Whipping Cream	1/2 pt 25c
FOREMOST ICE CREAM	1/2 gal 69c
FOREMOST — 8 OZ.	
SOUR CREAM	29c

AF — 10 COUNT BISCUITS	14 cans \$1	5 LB BAG GLADIOLA FLOUR	49c
------------------------	-------------	-------------------------	-----

LIBBY'S — NO. 2 1/2 CAN Pumpkin Pie Mix	39c
AUNT JEMIMA — White or Yellow. Corn Meal	5 lb bag 49c
DEL MONTE — NO. 303 Sweet Peas	4 cans \$1
DEL MONTE WHOLE — NO. 303 Green Beans	33c
BORDEN'S NONE SUCH — 9 Oz. Pkg. Mince Meat	33c
KRAFT'S Miniature — 10 1/2 Oz. Pkg. Marshmallows	23c

FOLGER'S COFFEE	69c
ALL GRINDS 1-LB CAN	
FROZEN MORTON'S PIES	
Fruit — Pumpkin — Mince FAMILY SIZE	
4 pies	\$1

KLEENEX — 50 COUNT Dinner Napkins	31c
GEISHA WHOLE COVE — 8 Oz. Pkg. Oysters	45c
DEL MONTE — NO. 303 Pumpkin	21c
DROMEDARY — LB. PKG Pitted Dates	59c
SCOTT'S Jumbo Towels	roll 41c
AMERICAN BEAUTY — 10 Oz. Pkg. Wide Noodles	31c

SHURFINE OLEO	5 lbs \$1	SHORTENING — CRISCO	3 lb can 69c
---------------	-----------	---------------------	--------------



RED POTATOES	10 lb bag 39c
OCEAN SPRAY CRANBERRIES	1 lb box 29c
EAST TEXAS SWEET POTATOES	lb 9c
PASCAL CELERY	stalk 9c
KY BEANS	lb 29c
CALIFORNIA NAVAL ORANGES	lb 19c

Reg. 98c Size Pepto Bismol	59c	Bayer's — 100 COUNT Aspirin	botl 79c
----------------------------	-----	-----------------------------	----------

TOOTH PASTE  
**GLEEM** REG. 95c Size **63c**

PRICES GOOD Thru Wednesday NOVEMBER 22  
**JRB SUPER MARKETS**  
S&H GREEN STAMPS WITH EVERY PURCHASE  
MEMBER AFFILIATED FOOD STORES  
PRICES GOOD IN RANGER  
Quantity Rights Reserved - No Sale To Dealers



# 1st District Court Docket Is Announced

The court docket for the District Court for the few weeks has been announced by Judge Frank as follows:

Nov. 27 — Stephenson vs. of Texas; Mrs. L. L. kford vs. C. L. Archer; Harry L. Campbell vs. ana Campbell. All jury.

Nov. 29 — Henry Schaefer New Amsterdam Casualty non-jury.

Dec. 4 — Ima Dean Cheek est, et vir vs. Trinity Unil Ins. Co.; Pippens vs. ter, et al.; Reuben Pal- vs. T. E. I. A.

Dec. 11 — R&R Electronics

Supply Co. vs. Hollis Pip- pen, dba-TV Service Center; Lillian A. Stephenson, Gordon Woods, et ux vs. J. M. Jar- rell, et al; and Ben E. Ham- ner vs. W. H. Wende.

Jan. 8 — Hulon A. Knight vs. G. E. Lankford, dba South- west Machine Co.; L. G. Crawford vs. City of Rising Star; and Ralph Smith vs. C. W. Crowder, dba Noble Crowder Food Products.

Jan. 4 — Sweetwater Cot- ton Oil Co. vs. Sig Faircloth; Eastland Supply Co. vs. Lov- era Oil Co.; Eastland Supply Co. vs. E. W. Ervine, Jr., et al; Dell Elliott, Next friend for Gary Chilcutt, vs. G. J.

Clark; Wm. C. Griffin vs. Mrs. Joan Whitehead In- gram and L. D. Ingram; Do- ris Mickie Herrington vs. Duke Dixon; LeRoy Laugh- lin, et al vs. Carl A. Taylor (jury); Marion Gilbert vs. Betty Gilbert; and Deepwell Pump Corporation of Lorenzo, Tex., vs. J. T. Carson Jr.

**CRIMINAL CASES**  
Criminal cases are set for Jan. 8:

Defendants are Bill Green- haw, Ernest Edward Fielder, Morene Bacy, Mae Gardner, Marie Preston, Gloria Cum- by, Mildred Harriett Denson, Earl Williams, Tommy Bar- rett, Terry Larue Collins, Lon- nie Joe Hughes, Paul Wilson and Herman Maddox.



## LVNs To Hold Homecoming At Cisco JC Soon

The third annual homecom- ing of all students and grad- uates of the Vocational Nurses Program of Cisco Junior Col- lege will be held at 7 p. m., Saturday, Dec. 2, in the Cor- ral Room of the CJC Annex. Mrs. Venita Mitchell is teach- er of the class.

Each nurse is requested to bring a covered dish of her choice; also bring any pic- tures or clippings to be plac- ed in the scrap book which will be on display. The scrap book which has been compil- ed by Mrs. LaVerne Allgood and Mrs. Christell Gaines will be a permanent possession of the Alumnae and will be de- veloped each year.

Officers of this reunion are President, Marilyn Wende, Cisco; Vice President, Fran- cis McCree, Breckenridge; Secretary-Treasurer, Lor ene Arledge, Cross Plains; Re- porter, Christell Gaines, Cisco.

A good program has been planned and a large crowd anticipated. At present there are ten students in area hos- pitals.

## Morton Valley Club Sees Colored Slides

The Morton Valley Home Demonstration Club met Wed- nesday afternoon in the Com- munity Clubhouse. This meet- ing had been postponed a week because of rain.

Mrs. D. J. West presided and Mrs. Jeff Laughlin led the motto, pledge, and pray- er. Mrs. L. E. Orms read Psalms 100 for the devotional.

Members answered roll call with "One important thing I'm grateful to my mother for." Mrs. Joe Bond reported that the Council made \$170 at the recent rummage sale. Mrs. Brockman, who is now work- ing in Fort Worth, resigned as council chairman.

Mrs. Orms read a card of thanks from Mrs. Janet Tho- mas for the wedding gift from the club.

Each club member is asked to bring a gift for the Boy's Home in Austin to the home of Mrs. H. N. Sherman or the Council Christmas Party Dec. 6 at the First Baptist Church.

Mrs. Bond showed slides of trips to Six Flags, Chandor Gardens, and several other places of interest which club members have visited.

Mrs. Sherman, hostess, serv- ed cake and coffee. The club expressed pride in their mem- bers, Mrs. R. W. Gordon and Mrs. Joe Bond, who were blue ribbon winners at Achie- vement Day.

The next meetings will be the Council Christmas party Dec. 6 and the club Christmas party Dec. 13. Yearbooks will be distributed at the Council party.

Present were Mmes. West, Sherman, Jeff Laughlin, Orms, Bond, and Alvin Kin- caid.

## Engagement Is Announced Here

Mr. and Mrs. E. M. Mills of Route One, Carbon, an- nounce the engagement and approaching marriage of their daughter, Nancy, to Jimmy Hampton, son of Mr. and Mrs. R. W. Hampton of Route One, Gorman.

The wedding will be per- formed at 7 p. m. Friday, Nov. 24, at the Mangum Bap- tist Church.

All friends and relatives are cordially invited to at- tend.

- SEIBERLING
- FIRESTONE
- COOPER

The Reliable One  
**HORTON**  
Tire Service  
Eastland

**FREE**  
ESTIMATES ON  
New Roof Only

Repair of Your Old  
Roof  
Residential and  
Commercial  
★ ★ ★

**EASTLAND**  
ROOFING CO.

Call  
Noble Smith  
629-2370

## State President Visits Federated Club Meet

Mrs. Lewis Hale of Christo- val, president of the Heart of Texas District of Texas Federation of Women's Clubs, was a guest at the Federa- tion Day meeting of Thurs- day Afternoon Club at the Eastland Woman's Club Thursday. She was accom- panied by Mrs. Nolan Rob- erts, also of Christoval.

Other special guests were presidents of Federated Clubs in Eastland County: Mrs. R. V. Robinson, New Era Club, Ranger; Mrs. E. A. White, Cisco Twentieth Century Club; James Mearns, Woman's Study Club, and Mrs. Bernice Jeffs, both of Gorman; and Mrs. Wendell Siebert Las Leales Club, Eastland.

Local guests at the meeting were Mmes. Gwen Meacham, I. C. Heck, Mary Hood, Fran- ces Zernial, Clyde Garrett, Hubert Jones, Clara Cockrill, O. M. Boyles, Fannie Lee Littleton, and Sallie Bishop.

Mrs. Roy Young, president of Thursday Afternoon Club, presided. She read the quo- tation for the day, "Every traveler has a home of his own, and he learns to appreciate it the more from his wanderings."

The guests were introduced by Mrs. Joseph M. Perkins. The program, "Traveler Re- turned" was presented by showed slides of her trips.

Mrs. W. D. R. Owen and Mrs. J. F. Francis were co-hostesses.

The serving table was laid with a beige linen cut - work cloth brought from Venice by Mrs. Owen. The centerpiece was white mums.

Club members attending were Mmes. Haston Brewer, Turner M. Collier, Cecil Col- lings, Pat Crawford, A. E. Ethridge, A. E. Hallford, Ben Hamner, I. C. Inzer, Arthur Murrell, Grady Pipkin, E. G. Rice, E. R. Townsend, Esco Walter, Frank Weaver, C. L. Bigby, Young, Perkins, Hor- ton, and the hostesses, Mrs. Owen and Mrs. Francis.

## Eastland Auction

Eastland Auction Company report for November 14: The market was active and strong. Heifer calves and heifer year- lings, Receipts: 1348 head of cattle, 142 hogs, 66 sheep and goats sold. Consignors: 274 Buyers: 81.

Prices reported: butcher bulls, 17 to 22.40; stocker bulls 19 to 25; butcher cows, 14 to 17.80; canners and cutters, 10

to 16; butcher calves, 20 to 24 stocker steer calves, light cho- ice, 25 to 31; heavy choice, 23 to 28.80; stocker heifer calves, 21 to 25.

Yearling heifers, 20 to 23; stocker cows, 110 to 140; pairs, 140 to 200; butcher hogs, 16 to 17.40; sows, 15 to 16.50; packer goats, 4 to 6.50; stock- er goats, 4 to 9 per head; lambs 18.

In Mexico City there are no flies, insects or mosquitos.

RAWLINS SINCE 1884  
**Monuments**  
WEATHERFORD PHONE LY 4-2726

IF WE MAY ASSIST YOU, CALL US COLLECT OR MAIL THIS AD

NAME \_\_\_\_\_ PHONE \_\_\_\_\_

ADDRESS \_\_\_\_\_ CITY \_\_\_\_\_

# THANKSGIVING

## WEEK SALE

NOVEMBER 20 - 25  
CLOSED NOVEMBER 23

PRINTED OR SOLID COLORS

BEAUTIFUL COLORS

72 INCH WIDE

FLANNELS

**CORDUROY**

**Nylon Net**

In wide or narrow  
Wale - 41 In. Wide

15 Colors To  
Choose From

**33¢**  
YD.

**98¢**  
YD.

**18¢**  
YD.

## FALL FABRIC SALE

TO MAKE ROOM FOR NEW CHRISTMAS GOODS

NEW SHIPMENT  
100%

**DACRON**

Polyester  
Machine Washable  
All Wanted Colors



- 1,000 Yards
- Playwear Duck
- Jewel Tone Prints
- Canvas Prints
- Gold Prints
- 1 to 10 Yd. Lengths
- 100% COTTON

Piece Goods

**\$4.44**  
YD.

45" ACETATE  
Prints yd 99c

LINENWEAVE  
Prints 1.49

**77¢**  
YD.



Big Thirsty ROYAL FAMILY VELOUR

## CANNON TOWELS

Bath Size **\$2.49**  
Hand Size **\$1.69**  
Wash Cloths **69c**

## SPORTSWEAR

By FAMOUS MAKERS

CHOOSE FROM BOGART

LADY WRANGLER, STOCKTON  
AND JANE COLBY

## CAPRI PANTS

REGULAR or TALL

**3.99 to 10.99**



BEAUTIFUL  
KNIT TOPS

IN MATCHING COLORS

**2.99 to 10.99**

EASTLAND COUNTY HEADQUARTERS FOR BOY SCOUTS SUPPLIES

# HEIDENHEIMER'S

THE FAMILY STORE IN CISCO

TAKE THE FAMILY OUT FOR  
**Thanksgiving Dinner**  
ENJOY THE HOLIDAY...  
Don't Spend It In Your Kitchen... Have Your Dinner With Us.  
BOOKING HOLIDAY PARTIES NOW!

PS: SUNDAY DINNER SPECIAL - Reg. \$1.50 Dinner For Only \$1.25  
With this ad - Choice: BAKED CHICKEN or RIBS.

TRY THE WANT ADS FOR FAST ACTION!

**PEP**  
PROGRAM for ECONOMIC PROGRESS

An expanded program supporting community effort for development and growth

Although electric service is our business, one of Texas Electric Service Company's basic commitments is to support in every way possible the community development projects spearheaded by the leadership of the cities and towns we serve.

PEP - Program for Economic Progress - is a new program of our company, planned to broaden and strengthen our support to the communities we serve by providing to local groups such additional tools and assistance as community development clinics, industrial team training and accelerated economic research to identify potential development opportunities.

Texas Electric Service Company has engaged in area development activities for many years. We have industrial development specialists who work full time at the task. These men prepare community surveys, assist in resource studies and visit with industry leaders throughout the country, providing site selection information about the communities we serve. We will continue to work closely with local development groups so that all efforts are unified and are as effective as possible.

We are aware of the fact that Texas Electric Service Company will grow and progress as the communities we serve grow and progress. Our intention is to be a full partner in continuing efforts to promote the development of this area, and to help make the communities we serve better places in which to live and work.

In our Program for Economic Progress, as in providing electric service, we are committed to serving the needs of people.

BURL B. HULSEY, JR.  
President and General Manager

TEXAS ELECTRIC SERVICE COMPANY  
Working to make our service ever more helpful.



# COURT NEWS

**Instruments Filed**  
Bible Baptist Church to the Texas Electric Service Co., assignment and right of way.  
J. A. Boyle to W. B. Evans, lease deed of trust.  
W. N. Brogdon et ux to Wayne Eaves et ux, warranty deed.  
Morris A. Campbell to Texas Electric Service Co., right way and easement.  
Cisco Locker Plant to State Texas, state tax lien.  
Frances Cooper, deceased, to the public, proof of heirship will attached.  
Elwood H. Chisley, deceased, to the public, proof of heirship.  
Dorothy E. Crownover et al to R. F. Griffith, warranty deed.  
Preston M. Davis to City of Rising Star, agreement.  
C. H. Dawson to Dewayne Eason et ux, warranty deed.  
C. P. Everett to First National Bank of Cisco, assignment of deed of trust.  
Fannie B. Park Eppler to Norman Park, quit claim deed.  
Eastland County to H. L. Bilhartz and Associates, extension of oil and gas lease.  
Eastland Memorial Hospital to Bobby Higgenbotham, release hospital lien.  
Wayne Eaves et ux to First Federal S&L, Ranger, deed of trust.  
W. R. Forman et ux to W. B. Martin, warranty deed.  
First National Bank of Dallas, independent executor of estate of J. H. Reynolds to Cenard Oil & Gas Co., assignment of interest.  
James V. Fields et ux to Higginbotham Bros. & Co. to Allied Concord Financial Corporation, mechanic and materialman's lien and assignment.  
First Federal S&L, Ranger, to Carl Stacy et ux, warranty deed.  
Ina Mae Foster to the public, certified copy of judgment of name change.  
Federal Land Bank of Houston to Aubrey E. Guy et ux, release deed of trust.  
W. D. Gattis to Melvin L. Bailey, deed of trust.  
H. M. Gilbert et ux to Texas Electric Service Co., right of way and easement.  
Virginia Elizabeth Galloway, deceased, to the public, proof of heirship.  
J. J. Grimshaw et ux to Benny Watson to Stephenville Production Credit Ass'n., deed of trust.  
E. W. Griffin, trustee, to Go Services, Inc., mechanic and materialman's lien.  
Joe M. Gallegos et ux to W. M. Nation to First National Bank, assignment of mechanic and materialman's lien.

John W. Guy to Aubrey E. Guy et ux, quit claim deed.  
R. F. Griffith to Hershel R. Griffith, warranty deed.  
J. W. Huff, individual and as independent executor of estate of Lennie Mae Huff, to State of Texas, deed.  
Thomas Coleman Harrell et ux, deceased, to the public, proof of heirship with will attached.  
HCRC Corp. to Houston National Bank, deed of trust and assignment of interest.  
Robert R. Herrington et ux to Lester Lineham et ux, warranty deed.  
Pearl Hunt et al to C. P. Everett, warranty deed.  
J. T. Horn et al to Herbert Ekert, deed of trust.  
Billy J. Lairson et ux to Jerald Maynard, warranty deed.  
Earl D. Lee et al to City of Rising Star, ratification of gas purchase contract.  
C. E. Minnick Sr. to Etta Brittain, warranty deed.  
R. O. McCarty to Van H. Rogers, assignment of oil and gas lease.  
National Life and Accident Insurance Co. to Norman E. Rawson et ux, release deed of trust.  
T. B. Nix et ux to B. E. Hensen, deed of trust.  
Earl Nation et ux to Cisco Lumber & Supply to First National Bank of Cisco, mechanic and materialman's lien and assignment.  
Addie Norton et vir to Adra Lee Fox, release vendor's lien.  
Sidney G. Pittman to E. A. McBeth, warranty deed.  
John A. Pegues et al vs. Alex Pegues to the public, certified copy or order of dismissal.  
C. B. Pruet et ux to Herman Culp, warranty deed.  
H. B. Parker et ux to First Federal S&L, Ranger, deed of trust.  
J. M. Robinson et ux to Robert J. Hamilton et ux, release vendor's lien.  
D. V. Rodgers to W. M. Brogdon, quit claim deed.  
State of Texas vs. Pebble Hargus Boles et al, notice of his pendens.  
Donald C. Surles et al to Donald Gorr, warranty deed.  
Marie N. Snead et al, individual and independent co-executor of estate of Alice Walker, deceased, to H. L. Bilhartz and Associates, extension of oil and gas lease.  
Tom B. Stark et al to the public, affidavit.  
Beulah Sheridan to Mitchell and Mitchell Properties, Inc., oil and gas lease.  
Carl Stacy et ux to First Federal S&L, Ranger, deed of trust.  
Charley L. Sutton et ux to Billie Calvin Ainsworth et ux, warranty deed.  
State of Texas vs. M. H. McCleskey et al, notice of his pendens.  
State of Texas vs. C. M. Pogue et ux, notice of his pendens.  
State of Texas vs. A. O. Tindall et ux, notice of his pendens.  
Transworld Oil, Ltd., to Scurry-Rainbow, International, Ltd., power of attorney.  
Sophia Taubman et al to Charles S. Taubman, release production payments.  
Annie Laurie Treadwell et

al to Leo Chesley et al, mineral deed.  
Texas Water Right Commission to Larry Morrow, permit to appropriate state water.  
United States to Stanley J. Pirtle et ux, release federal tax lien.  
Ted Waters et ux to Cisco Lumber & Supply, assignment of mechanic and materialman's lien.  
John M. White et ux to J. T. Horn et al, warranty deed.  
Deward B. Warren et ux to Higginbotham Bros. & Co. to Allied Concord Finance Corp., assignment of mechanic and materialman's lien.  
**Marriage Licenses**  
Jerry Wayne Warren and Brenda Lee Bryant.  
William Henry Huddleston and Myrtle Elizabeth Meredith.  
**Suits Filed**  
Jerry Lee Yates vs. Diana Gordon Yates, divorce and

child custody.  
Mary Garces vs. Alfredo Garces, divorce and child custody.  
Garland L. Burnett, individual, et al vs. Tonia Trice Reed et vir, damages.  
Roy Lee Smith vs. Terry Cox, for temporary restraining order.  
Donna Salas vs. Robert Salas, divorce.  
James Monroe Bruton vs. Texas Department of Public Safety, injunction.  
**New Car Registrations**  
White Well Service, Inc., Eastland, Oldsmobile.  
Ethel M. Scott, Eastland, Rebel.  
J. H. Kendrick, Cisco, Cadillac.  
Lola Bennett, Gorman, Plymouth.  
Tim Spurrier, of Eastland, Chevrolet.  
Union Oil Co. of California, Chevrolet.

J. H. Medford, Eastland, Pontiac.  
Ernest McCoy of Eastland, Buick.  
Henry Holub of Eastland, Ford.  
Gulf Insurance Group, Dallas, Chevrolet.  
V. E. Overstreet of Gorman, Chevrolet.  
H. E. Britt of Gorman, Chevrolet.  
Ross Hodges of Gorman, Chevrolet.  
Jimmy D. Elmore of Olden, Chevrolet.

Fullen Motor Co., Eastland, Chevrolet.  
Larry Farroq, of Gorman, Chevrolet.  
Robert J. Daigle of Gorman, Chevrolet.  
H. M. Stephenson of Cisco, Chevrolet.

there's still time to shop Wards 1967 Christmas Catalog

**JUST CALL**  
Ranger — 647-3227  
Eastland — 639-1233  
Cisco May Call Collect — 647-1633

INTERSTATE'S  
**MAJESTIC**  
EASTLAND PH. MA 9-1120

SUNDAY — MONDAY — TUESDAY

SUN: Open 1:15 — Guitar at 1:30 - 4:50 - 8:10 — Heart at 2:55 - 6:15 - 9:35 — Mon & Tues Open 5:00 — Guitar at 5:30 & 9:00 — Heart at 7:00

**ROY ORBISON**  
ON THE SCREEN AT LAST  
AS SINGING SHOOTIN' SON OF A GUN

METRO-GOLDWYN-MAYER presents  
**The FASTEST GUITAR ALIVE**

ALSO  
The immortal Hank Williams lives again, sings again...  
**Your Cheatin' Heart**  
George Hamilton - Susan Hamilton - Oliver Buttons - Arthur O'Connell  
in PANAVISION

**STARTS WEDNESDAY**  
Open 4:45 — Show at 5:00 - 7:00 - 9:00

Special Thanksgiving Matinee  
Thursday — Open 1:15 p. m.

METRO-GOLDWYN-MAYER presents  
**GEORGE HAMILTON  
JOSEPH COTTEN  
MARIE LAFORET  
MAURICE EVANS**

**JACK OF DIAMONDS**

From Paris to New York he takes only the best jewels and the most beautiful women!

**Jarman**  
SHOES FOR MEN



\$14.95

YOU  
*Look Smarter*  
WHEN YOU SLIP INTO JARMANS...

... and you naturally feel better, too, with the confidence that your footwear is correct and the realization that it is made to fit snugly and comfortably. This "beef-roll" slip-on features authentic hand-sewn front and easy-to-shine leather. Come in and try a pair to wear with your favorite sport coat.

★ ★ ★

**THE MAN'S STORE**  
Bob Elliott  
CISCO, TEXAS

**SLEDGE RETAIL MARKET**  
*Choice Meats at Savory Savings*

WHERE GOOD PRICES, QUALITY MERCHANDISE AND FRIENDLY SERVICE TOP THE MENU.

CONSIDER THESE FOR YOUR HOLIDAY MENUS  
Grade A Fancy Fresh Frosted — 10-14 LB. AVG.

**TURKEY HENS** . . . . . lb 39c  
GRADE A — 4-6 LB AVG

**CHICKEN HENS** . . . . . lb 39c  
Dry Cured in Our Own Plant — 10-16 LB. AVG

**CURED HAM** . . . . . lb 59c  
FULLY

**COOKED HAMS** . . . . . lb 69c

**FRESH PORK ROAST** . . lb 49c  
SHOP MADE PURE

**PORK SAUSAGE** . . . . . lb 49c

**Boneless Rump or Pikes Peak Roast** . lb 73c

**Pin Bone Loin STEAK** . . . . . lb 69c

**Choice Loin STEAK** . . . . . lb 79c

**Broiling Sirloin STEAKS** . . . . . lb 89c

PLENTY PIT COOKED BAR-B-QUE  
BEEF, Sliced and Chipped, HAM, HOT LINKS, FRYERS, HOME COOKED BEANS and HOME - MADE POTATO SALAD.

ALSO A LIMITED SUPPLY OF  
SMOKED TURKEYS

**SLEDGE RETAIL MARKET**  
At Earnest Packing Company

210 S. Lamar  Eastland

**Have Thanksgiving Dinner**

**On Us!**  
GET YOUR  
**TURKEY WITH**  
**PURCHASE**  
**OF ANY TWO**



OFFER LIMITED - ONE TURKEY PER CUSTOMER

**SEIBERLING TIRES**  
**HORTON TIRE COMPANY**



## THE GORDON SPOT

By DeMarquis (Dee) Gordon  
Eastland County Extension Agent



The Eastland County Program Building Committee met Nov. 14 and heard reports on the Extension agents 1968 plan of work. The plan was developed by the Extension agents with the assistance of the subcommittees. Some of the important agricultural events in 1968 will be a series of peanut meetings, a beef cattle short course, pecan propagation school and several tours and field days.

## LOOKING At Agriculture

By GILBERT MEREDITH

(This is one of a series of articles dealing with agricultural programs in Eastland County).

The United States Department of Agriculture recently announced that a national peanut marketing quota of 1,489,250 tons and a national allotment of 1,610,000 acres would apply to the 1968 crop marketing quota penalties on acreage in excess of the farm allotment. The penalty provision was approved for a 3-year period by a vote of producers two years ago. Eastland County's share of the national allotment should be just under 40,000 acres. Eastland County farmers will receive about 10 to 12 percent of the state's share of the national allotment. Allotments are computed locally; each farm having a base acreage according to his planted and harvested acreage in the last three years. In order for a farm to protect his base, he must have picked or threshed 75 percent of his allotment during the current or either of the two preceding years.

Peanut farmers who have not protected their peanut base and will not pick or thresh 75 percent of their allotment are reminded that they may file a request for a waiver of this provision by not later than Dec. 1, 1967. This provision of the peanut law gives ASC County Committees the authority to waive the picking and harvesting provision and protect individual farm allotments where abnormal conditions exist. A review of our farms indicate that this provision will not apply to very many Eastland County farms.

Applications for New Grower allotments for 1968 peanuts and cotton will be announced by this office at an early date. Full details on eligibility will follow.

Rains this week have really slowed the peanut harvest. Peanut farmers are looking for some good weather. Some have already turned in marketing cards with yields from 700 to 2,000 pounds per acre. This indicates a better than average crop. After the frost of October 31, peanut harvest will get into full swing.

Cover crops already in are looking excellent. The ground is already covered on many farms. We are handling about 100 requests for cost-share per week through the ACP program.

The annual grass tour sponsored by the Eastland County TAP Committee scheduled for November 8 had to be postponed until Dec. 31 due to rain. We will have another notice on the tour in the local newspaper as a reminder on this tour. We want you to plan now to attend if at all possible. We believe that the tour will be very educational.

I read recently in the Fort Worth Star Telegram that the House of Representative had voted by a large majority to allow the transfer of peanut acreage by sell or lease. This will apparently be limited to transfers within the county. To become law this bill must be approved by the Senate and signed into law. Numerous inquiries have been directed to this office concerning this, but we do not have any details on how the program will work. All producers will be notified when details are received in this office.

1968 cotton and peanut allotments are being computed by this office. All producers will be notified within the next few weeks what their 1968 al-

Many of the deer hunters have already killed that first deer and some may have their limit by now. Those who are still hunting might be interested in a leaflet, "Field Dressing a Deer" which is available at my office.

Since quality venison depends primarily on how the deer is handled from the time of the kill until it is placed in the freezer, field dressing is important.

The leaflet explains one method of field dressing and skinning a deer. However, any method resulting in a clean, well-bled carcass is satisfactory. Unpleasant experiences with venison usually result from the lack of care before the meat reaches the kitchen.

Information in the leaflet has been provided by Wallace Klusmann, Extension wildlife specialist, and the Texas Parks and Wildlife magazine. Another publication that should be of interest to hunters and housewives during this hunting season is Extension Bulletin, B-987, "Wild Game Care and Cooking." It offers many suggestions for preparing delicious dishes of venison as well as other wild game meats.

Both publications are available from my office. If you would like one or both of the publications come by, write or call the county agents office.

I would like to warn livestockmen of the danger of grazing livestock on grass after it has been damaged by frost. Prussic acid poisoning occurs when certain plants are grazed after they have been damaged by frost.

Sorghum species, including Johnsongrass, sudangrass and the grain sorghums can become the source of poisoning. Cattle are the most susceptible although other animals can be effected.

The poisoning is rapid acting and signs of illness may start within a few minutes after the animal has eaten the plant. Death may occur within 15 minutes or an animal may live for several hours.

The most common symptoms of poisoning are salivation, labored breathing and bloat. Affected animals should be removed from the pasture or field and treated immediately by a veterinarian if possible.

Sorghum species should not be grazed after frost until they have dried out.

## LACASA NEWS

Kenneth Mitchell is in the All-Saints Hospital at Fort Worth, having undergone surgery Friday.

Lloyd Howton, son of Mr. and Mrs. Aaron Howton, who lives in Fort Worth underwent surgery this week at Fort Worth.

Bennett Bradford is still seriously ill in the Eastland Memorial Hospital. Mrs. Bradford is also ill in the hospital there.

Visiting Mr. and Mrs. Zella Herrington over the weekend were their son, Mr. and Mrs. Bill Herrington, and Billy Lynn of Snyder.

Mr. and Mrs. D. B. Raney had as visitors Saturday night and Sunday their daughter, Mr. and Mrs. J. H. Gorrell of Fort Worth. Sunday Mr. and Mrs. Ray Young, friends of the Gorrells, spent the day. The Gorrell children, Leland and Synthia who had been here the past week returned home with their parents, Sunday evening.

Visitors at New Hope Baptist Church Sunday morning were Mrs. Ray Young and Mrs. J. H. Gorrell, Leland and Synthia of Fort Worth, Billy Lynn Herrington of Snyder, and Karen Templeton of Ranger.

Remember the Gold Bond project at the Community Center.

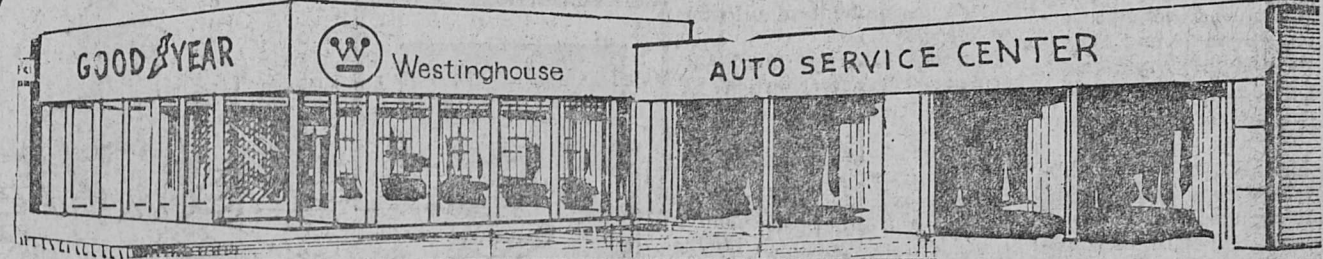
Seven army generals have

# GOOD YEAR Westinghouse

You Can Be SURE... If It's Westinghouse

Now at... **1** kick off TELEVISION STEREO 1968 MODEL

CONVENIENT LOCATION IN EASTLAND 306 - 308 East Main 629-2662



Two famous names now combine to bring you the finest values available in television and stereophonic equipment. All with Westinghouse and Goodyear guarantees.

**NO MONEY DOWN!**  
PAY AS LITTLE AS \$12.95 Weekly

**LIGHT WEIGHT PORTABLE TV**



**GIANT! 172 SQ. IN. STEEL GUARD PICTURE TUBE**

only \$129  
**NO MONEY DOWN**  
only \$1.25 weekly

- Lightweight—weighs only 32 3/4 lbs. Cabinet size! 16 5/16" Hx21" Wx12 3/4" D.
- All 82-channel tuning—VHF and UHF
- Ultra slim styling in pastel colors for the smart light look.
- 5-inch oval full fidelity speaker.
- Built-in stowaway unipole VHF antenna.
- Loop UHF antenna.
- Solid state power supply.
- Top carry handle.

**LIMITED QUANTITIES**  
**PRICE INCLUDES**  
ONE YEAR PICTURE TUBE REPLACEMENT  
90 DAYS PARTS AND LABOR WARRANTY

**INSTANT-ON COLOR YOUR CHOICE SALE!**



- Rectangular HIGH BRIGHT Tube with 25 KV Picture Power
- Instant-On Color TV—Sound At Once, Picture in 6 Seconds
- 270 Sq. Inches of Viewing Area Color Chassis—With Many
- New Westinghouse-Designed Important Improvements
- Instant Color Fidelity Automati-ly Assures Immediate, Totally Pure Color
- Illuminated Pop-Up Tuning
- Up-Front High Fidelity Sound System
- Selected Hardwood Solids and Genuine Hardwood Paneling

**YOUR CHOICE SALE**  
**\$569**  
**NO MONEY DOWN**  
\$4.75 WEEKLY

**FREE**  
ONE-YEAR PARTS GUARANTEE  
90-DAY SERVICE POLICY  
DELIVERY AND SET UP

# NO PAYMENTS 'TIL FEB.

**NO MONEY DOWN**

**NEW... JET SET**

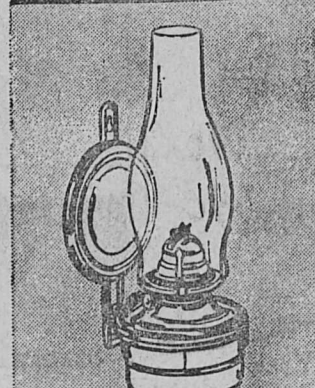


IT DOESN'T STARE BACK AT YOU WHEN IT'S OFF!

A new kind of TV picture—sharper, clearer, easier to watch. The new Westinghouse Jet Set gives you a picture of photographic clarity even in a brightly lit room. The completely new transistorized circuitry means longer life, greater reliability and superior weak-area reception.

The picture tube disappears from view and all you see is a handsome black panel. No big ugly eye to stare back at you. And there's Instant-On TV (other sets take about 25 seconds to warm up); a fold-away carrying handle; and memory fine tuning. That means once you set a channel for the best picture and sound, you'll receive that tuning automatically every time you turn to that channel.

**PRICE BREAK SPECIAL**



**Hurricane Lamp**  
1 to a customer  
Additional quantities \$1.00  
**79¢**

This beautiful ir ported copper finished lamp has a 9" glass chimney, adjustable cotton w. k. For table, wall.

**NEW... PORTABLE COLOR TV**

**GIANT 180-SQUARE-INCH PICTURE**

**FREE**  
INCLUDES ONE-YEAR PARTS WARRANTY  
90-DAY SERVICE POLICY  
DELIVERY AND SET UP

**NOW ONLY \$399**

only \$4.50 weekly

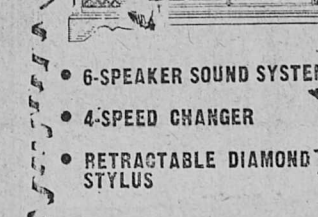
- New Westinghouse-Designed Color Chassis—With Many Important Improvements
- Instant Color Fidelity Automatically Assures Immediate, Total Pure Color
- Westinghouse HIGH BRIGHT Picture Tube
- 25KV Picture Power
- All-On-One Dial VHF/UHF Channel Numbers
- Memory Fine Tuning
- Up-Front High Fidelity Sound System
- Cabinet Size: 18 1/4" Hx26" Wx 19 3/16" D

Compare... You'll Buy Westinghouse

**NO MONEY DOWN**

**1968 Westinghouse STEREO SPECIALS**

- FM-AM RADIO
- FM STEREO MULTIPLEX
- STEREO INDICATOR LIGHT



**YOUR CHOICE**  
Only \$3.50 Weekly  
**\$299**  
**FREE!** 1-YEAR WARRANTY TO 90-DAY LABOR WARRANTY

- 6-SPEAKER SOUND SYSTEM
- 4-SPEED CHANGER
- RETRACTABLE DIAMOND STYLUS



**SET OF SIX COFFEE MUGS**  
**79¢**

Six large sized mugs in a most attractive rich blue with different frosted trim. Serving all kinds of drinks. Two handles makes this so distinctive, home, shop, or picnic. Get a set for yourself and for gifts.

# GOOD YEAR SERVICE STORE

306-308 Main St Eastland 629-2662



**The Spirit of Thanksgiving**

Hear This Sermon at 10:50 a.m. Sunday At The  
**First Methodist Church**  
REV. THOMAS TRIBBLE, Pastor  
9:45 - Sunday School 10:50 - Morning Worship  
7:00 p.m. - Evening Worship  
(Nursery Open All Services)



**MRS. PERRY PREXY OF RANGER DUTCH CLUB**

Editors Note: This is the twelfth in a series of articles about presidents of ladies clubs and church organizations in Ranger.

president, Mrs. Homer Perry. While a teenager, Cuban Swoveland, a native of Indiana moved with her parents, Mr. and Mrs. Earl Swoveland from Tulsa, Okla. to Ranger and here she earned her high school diploma and later married Perry, a native Texan.

Known to their many friends as "Homer and Cuban" they have, in all probability devoted more time to recreational programs for youth than any couple in this community. For approximately five years they were sponsors for Teen Town and since 1962 she has been librarian at Ranger Community Library. Always a lover of the printed page, she was author of a column "Covered Sugar" which appeared for three years in the Ranger Times.

Avid sports fans, the sound of their "cow bell" can be heard at football games and one cleverly masqueraded couple at school-sponsored fund raising projects is just bound to be "The Perry's."

In addition to the club of which she is president, Cuban is a member of Royal Neighbors of America, member and past-president of Rho Pi Chapter of Beta Sigma Phi, past member of New Era and Garden Clubs, First Baptist Church and its Grace Sunday school class.

Days are never long enough for all the things she wants to accomplish. Favorite hobbies, gardening and naturecraft must be laid aside in time to beat the clock to the library with its hum of activity, then home to prepare meals for Homer and the grandson, a student at Ranger Junior College, and a visit with her mother Mrs. Isa Swoveland on whom she lavishes a wealth of love and affection. Not as near but equally as dear are daughters, Mmes. W. T. Perrin of Fort Worth and Don McKensie of Houston and four grandchildren.

**Mrs. Lydia Clem Is Hostess Mary-Martha Class**

Mrs. Lydia Clem was hostess for the monthly meeting of the Mary Martha Class of the First Baptist Church in her home at 2:30 p. m. Monday, Nov. 13.

Opening prayer by Mrs. Clem preceded the business meeting conducted by Mrs. C. A. Strong. Reports were submitted and Mrs. Lula Powell chosen as class friend of the month. Plans for the Christmas dinner to be held at the church on Tuesday, Dec. 12 with husbands as guests, were made.

For devotional thoughts on "Thanksgiving", Mrs. F. U. Bourland chose excerpts from the 136th Psalm.

Refreshments of pumpkin cake, whipped cream and coffee were served to Mmes. F. U. Bourland, Harry Deal, S. T. Williams, J. W. Dillard, W. A. Reuwer, C. A. Strong, W. E. Herweck, J. R. Ervin, W. F. Lovelace and the hostess.

**Church of Christ Assemble For Fellowship Here**

Members of Mesquite and Rusk St. Church of Christ assembled at the Community Club House for a fellowship dinner following the evening worship service on Sunday.

Preceding the meal, the children rendered a program of hymns followed by the invocation by Herman Cupp.

The dinner featured a chicken-almond main dish prepared by Mary Deitz, complimented with vegetables, salads and dessert brought by other ladies of the congregation.

Approximately 100 persons enjoyed the meal and social hour.

**WSCS Meet November 13**

The Woman's Society of Christian Service, First Methodist Church, held their business meeting at the church at 3:30 p. m. Monday, Nov. 13 with the president, Mrs. Walter Daniels in charge.

Officers, committee chairmen and circle leaders submitted reports. It was announced that the fund raising project, sale of Christmas calendars is progressing and calendars are still available from any member of WSCS.

Attending the meeting were Mmes. B. Thomas Tribble, Gaston Dixon, Welter Daniels, B. A. Tunnell, T. D. Stewart, Beverley Dudley Jr., O. R. Criswell, Vernon Deffebach, A. J. Ratliff, R. R. Mitchell and P. M. Kuykendall.

**Adult Member of First Baptist Observe Thanksgiving Nov. 15**

Adult members of First Baptist Church observed Thanksgiving at a banquet held in Fellowship Hall at 7 p. m. on Wednesday, Nov. 15.

Autumn flowers, foliage and yellow candles lent a festive air to the dining area where the traditional menu of "turkey and trimmings" was served.

Lee C. Russell was master of ceremonies. Larry Hunt

directed group singing of favorite hymns and introduced Edmond Lewis and the Ranger Junior College Collegiate Singers who presented selections including "Shalom," "Summertime," "Yellow Bird," "Sleep Kentucky Babe," "Catch A Filling Star," and "The Lord Bless You and eep You."

Speaker for the evening was G. B. Rush, former su-

perintendent of Ranger Public Schools, who after recalling incidents of former years, challenged his hearers to follow the example of the Pilgrim Fathers in a perpetual spirit of Thanksgiving and complete dependence upon God in all of life's experiences.

Sunday school superintendent Jesse White offered the closing prayer.

Mrs. Sadie Rawls has returned to Abilene following a visit with Mr. and Mrs. Jack Rawls.

**FOOD SPECIALS for your THANKSGIVING DINNER**

Sugary Sam Sweet No 3 Can  
**Potatoes ... 2 for 49c**  
Libby's - 303 Can  
**Pumpkin ... 2 for 29c**  
Hershey - 6 Oz.  
**Dainties ... 2 for 45c**

Hi-C Fruit - 46 Oz.  
**Drink ... 4 for \$1**  
Gold Medal  
**Flour ... 5 lbs 49c**  
Snowdrift  
**Shortening 3 lbs 59c**

Shurfine - 300 Cut  
**Green Beans ... 5/\$1**  
Shurfine - 303 White CS or WK  
**Corn ... 5 for \$1**  
Shurfine - 303 Cans  
**Peas ... 5 for \$1**

SHURFINE - 28 OZ. JAR  
**APPLE BUTTER ... 29c**  
**WOLF CHILI ... no 2 can 59c**  
REYNOLDS - REGULAR  
**FOIL 25'x12" ... 25c**  
ZEE JUMBO  
**TOWELS ... 27c**  
SHURFINE  
**COFFEE ... lb 59c**

**CLOSED THURSDAY**

PRICES GOOD MONDAY THRU SATURDAY  
Double Gold Bond Stamps On  
Wednesday With \$2.50 Purchase



SAVE GOLD BOND STAMPS



**PRODUCE**

Delicious Apples ... lb 17c  
Large Fresh Apples ... hd 15c  
Large Stalk Celery ... 12c  
Red Potatoes ... 10 lbs 39c

**DAIRY FOODS**



BORDEN'S - 12 OZ.  
**SOUR CREAM ... 27c**  
1/2 PINT CARTON  
**WHIPPING CREAM ... 27c**  
GRADE 'A' MEDIUM  
**E G G S ... 3 doz \$1**  
A F BRAND  
**BISCUITS ... 7 cans 49c**

CHOICE HOME KILLED MEATS

**Quality MEATS**

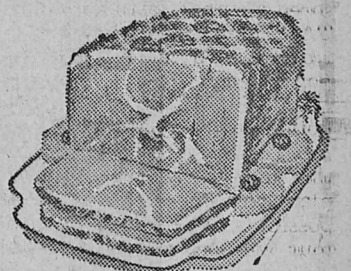
FRESH  
**GROUND BEEF ... 2 lbs 89c**  
**GROUND CHUCK ... lb 59c**  
**FAMILY STEAK ... lb 59c**  
**CHUCK ROAST ... lb 55c**  
**ARM ROAST ... lb 59c**  
DANKWORTH  
**SLICED BACON ... lb 55c**  
FRESH LEAN  
**PORK CHOPS ... lb 65c**  
**Lge. CHICKEN HENS ... lb 29c**  
WE ARE NOW TAKING ORDERS FOR THANKSGIVING



Turkeys

AND

Hams



**Quality FOOD MART**

301 WEST MAIN — Phone 647-3206 — RANGER  
WE RESERVE THE RIGHT TO LIMIT QUANTITIES

FREE CUSTOMER PARKING  
Across From The Store  
On Our New Parking Lot on The Corner of Main and Austin

**THIS WEEK'S KEY VALUE**

**CHRISTMAS CARDS**  
Box of 25 Alike  
Your choice of 10 gorgeous designs, all with elegant bronze finish. Suitable for imprinting.  
**63c**  
Reg. 1.50

**BEN FRANKLIN**  
RANGER, TEXAS

**NOW OPEN FOR BUSINESS**

RANGER'S  
Newest Restaurant

**The SHACK**

Highway 80 West

OPENS THURSDAY

6:00 A. M. — 10:00 P. M.



**The SHACK**

Highway 80 West

Ranger, Tex.



SAFEWAY

# FOR FINEST FEASTING



## Tom Turkeys 29¢

Trophy. USDA Inspected. 18 to 24-Lb. Avg. —Lb.

- Grade 'A' Tom Turkeys USDA Inspected, Grade A. 16 to 24-Lb. Avg.—Lb. **32c**
- Grade 'A' Hen Turkeys USDA Inspected, Grade A. 10 to 16-Lb. Avg.—Lb. **35c**
- Beltsville Turkey USDA Inspected, Grade A. 7 to 10-Lb. Average—Lb. **49¢**
- Honey-Suckle Brand Turkey. USDA Inspected, Grade A. 10 to 14-Lb. Avg.—Lb. **49¢**
- Swift's Butterball Hen Turkeys. USDA Inspected, Grade A. 10 to 14-Lb. Average—Lb. **49¢**

All Stores  
**CLOSED**  
THANKSGIVING DAY  
November 23rd

- Heavy Beef Sale!**
- Rib Roast Large End. USDA Choice Grade Heavy Beef—Lb. **79¢**
  - Beef Rib Steaks USDA Choice Grade Heavy Beef—Lb. **89¢**
  - Boneless Roast \*Shoulder \*Chuck USDA Choice Grade Heavy Beef—Lb. **79¢**
  - Smoked Hams **55¢**  
Dry Cure, Medium Size, Whole or Either Half. —Lb.  
(Shank Portion—Lb. 45¢) (Center Slices—Lb. 99¢)
  - Chicken Hens USDA Inspected, Grade A. 5 to 7-Lb. Avg.—Lb. **35c**
  - Ducks Manor House. USDA Inspected. Grade A. 5 to 5 1/2-Lb. Average—Lb. **55¢**
  - Glazed Ham Honey-Glazed Canned. Roll. Blackhawk. 4 Lb. Can **\$4.98**
  - Canned Ham Armour's Star. 6 Lb. Can **\$5.75**
  - Turkey Roast Boneless. Rolled. From Florida. Manor House—Lb. **99¢**
  - Turkey Roast Honey-Suckle. 2 1/2-Lb. Avg. **\$3.29**
  - Sliced Turkey & Gravy. Heavy-Suckle. 2-Lb. Pkg. **\$1.79**

- Pork Roast Fresh. Boston Butt—Lb. **49¢**
- Pork Steak Sliced. Fresh—Lb. **55¢**
- Pork Loin Rib Half. Fresh—Lb. **65¢**
- Pork Chops Quarter Pork Loin Sliced into Pork Chops—Lb. **69¢**
- Oysters (Gulf Coast, Std. Size) 12-oz. Can \$1.09 Pacific Coast, small size. 12-oz. Can **99¢**
- Ground Beef Safeway. 2 Lb. Can **\$1.19**
- Bacon Sliced. \*Armour's Miro-Cure \*Safeway—1-Lb. Pkg. **65¢**
- Chopped Sirloin Beef. Steak. 10-oz. Pkg. **59¢**
- Sausage Wingate. Regular or Hot. 2 Lb. Pkg. **89¢**
- Canned Ham Samuel's. 3 Lb. Can **\$2.69**

For Your Holiday Feast!

- Cream Cheese Lucerne. Special! (8-oz. Pkg. ... 29¢). 3-oz. Pkg. **2 for 25¢**
- Cranberry Sauce Ocean Spray. Jellied or Whole. 16-oz. Can **3 for 69¢**
- Stuffing Mix Mrs. Wright's. Special! 13-oz. Pkg. **39¢**
- Aluminum Foil Kitchen Craft. Heavy Duty. Special! 25' x 18" Roll **49¢**

Fresh Bakery Values!

- Wheat Bread Crushed. Skylark. 1-lb. Loaf **19¢**
- Twin Rolls or Cloverleaf. Brown & Serve. Special!—12-Ct. Pkg. **27¢**
- White Bread Mrs. Wright's. 1 1/2-Lb. Loaf **27c**

Traditional Dairy Items!

- Egg Nog (Half Gal. C'n. ... 97¢) Lucerne—Qt. C'n. **49¢**
- Half & Half Lucerne—Pint C'n. **39c**
- Whipping Cream Lucerne. 1/2-Pt. C'n. **39c**

Gold Medal

### Enriched Flour

Special! All-Purpose—5-Lb. Bag

## 49¢

Traditional Favorites!

### Pumpkin Pie

Bal-air. Frozen. Special! (Mince ... 31¢)—24-oz. Pkg.

## 29¢

Morton's

### Potato Chips

Twin Pak. Serve with Lucerne Party Dip. Special! —10 1/2-oz. Pkg. **59¢**

More Festive Items!

- Cigarettes Regular or King. All Popular Brands—Ctn. **3.15**
- Cling Peaches Slices or Halves. Highway—29-oz. Can **25¢** Why Pay 29¢
- Margarine Coldbrook Solids. 1-Lb. Pkg. **2 for 25¢** Why Pay 2/37¢
- Chunk Tuna Sea Trader. Light Meat. 6 1/2-oz. Can **29¢** Why Pay 33¢
- Cream Pies Bal-air. Assorted. Frozen—14-oz. Pkg. **29¢** Why Pay 35¢
- Grape Juice Welch—24-oz. Bottle **38¢** Why Pay 41¢
- Biscuits Mrs. Wright's. \*Sweet Milk \*Buttermilk—6-oz. Can **8¢** Why Pay 10¢

Fresh Fruits and Vegetables ... Traditional at Safeway!

- Pascal Celery Medium Size. Long Shank. Crisp and tender—Lb. **10¢**
- Texas Yams A Holiday Favorite. 2 Lbs. **29¢**
- Bananas Everyday Low Price! 2 Lbs. **29¢**
- Rome Apples Red. Best for baking—Lb. **19¢**
- Avocados Extra Large. Both—Each **25¢**
- Oranges Hamlin. Full of juice. 2 Lbs. **29¢**
- Carrots Waldorf. Crisp. 2 Lb. Bag **33¢**
- Mushrooms Fresh. Brown. Large. Fancy. 12-Lb. **59¢**
- Artichokes Marinated. 4 1/2-oz. Jar **49¢**
- Mushrooms Marinated. 4 1/2-oz. Jar **49¢**
- Green Beans Fresh and tender—Lb. **29¢**
- Orange Juice Pure. Safeway. From Florida. Quart Bottle **35¢**
- Yellow Onions US No. 1. 3 Lb. Bag **29¢**

Complete Menu Selections!

- Shortening Velkoy—3-Lb. Can **49¢** Why Pay 59¢
- Salad Dressing Piedmont. Quart Jar **37¢** Why Pay 45¢
- Candy Bars Assorted. 5¢ Bars. **4¢** Why Pay More!
- Reynolds Wrap Aluminum Foil. Heavy Duty. (6¢ Off Label) 25' x 18" Roll **59¢** Why Pay 69¢
- Corn Meal Covered Wagon. White. 5-Lb. Bag **39¢** Why Pay 45¢
- Cake Mixes Duncan Hines. Assorted. Regular Pkg. **38¢** Why Pay 41¢
- Soda Crackers Metrose—1-Lb. Box **19¢** Why Pay 25¢

MIX or MATCH NUTS

- \*Pecans
- \*Almonds
- \*Walnuts
- \*Brazil
- Large Sizes. New Crop. —Lb. **49¢**

**WINNERS!!**

## IRISH INTERNATIONAL Steeplechase SWEEPSTAKES™

© Copyright 1960, Safeway Stores, Inc., N.Y.C.

Beratrice Coats Big Spring	Mrs. Leroy Stockton	Vera Hunter	Mrs. Helen Walken
H. J. Willi Abilene	G. M. Robinson	Mrs. Mildred Smith	Mrs. G. F. Rhodes
Mrs. J. W. Hurley Bryan	Ruby Money	Doyle H. Harbert	Willie Halcomb
Daniel Bodner	Mrs. A. H. Gloff	Garry Terrell	Mary Jane Carpenter
Mrs. James Boshart	Mrs. F. T. Johnson	Ben Chandler	Henry H. Smith
Ben Yarbrough	E. M. Owen	Eugene Williams	Jennie L. Golden
Mrs. J. P. Balch	Mrs. Charles L. Veatch	H. D. Niemeyer	Bernice Coats
Mrs. E. L. Stubbs	Mrs. R. F. Clark	Velma Lewis	Mrs. Ruth Gay
Mrs. Leonard Hardy	Donald J. Baker	Mrs. Elaine Carwile	Mrs. H. W. Parchman
	Vernon Horsley	Mrs. J. T. Stateham	Mrs. Courtney Sproles
	Mrs. J. H. Cooper	Mrs. Doyle Weems	Mrs. Dorothy Bitnu
	Bernardo Vasquez	Joe Guevara	Mrs. J. C. Whatley
	Mary Carter	Mrs. Dan Platek	Mrs. F. Marberry
	Paul Urban	Horace Wheeler	Mrs. R. G. Roye
	Mrs. Ed Taylor	T. J. Standberry	Mrs. Sadie Elzey
	Ray Curry	Mrs. G. Ballard	W. A. Hardin
	Mrs. J. F. Todd	Richard A. McRae	Mrs. C. Hasselbach
	Mrs. J. E. Thomas	Loyd Gentry	Loraine Ritter
	Odessa Quinn	Burl Blaylock	Tommye Wilson
	J. A. Gentry	Mrs. Willie Gray	B. F. Humbert
	Bertha L. Johnson	Mrs. W. C. Yeager	Willie Breshears
	Trannie Jones	Ed. B. Munson	Mrs. C. M. Hoover
	Mrs. E. A. Gerke	Mrs. Gene Gramme	James Hicks
	Maggie Lukasher	Mrs. G. G. Grvis	Mrs. Wm. H. Burnett
	Mrs. Shirley Smith	Mrs. G. E. Berry	

**WINNERS!!**

Mrs. George Berry Taylor

H. D. Niemeyer Renner

Ruth Moon Colorado City

Ruben Castillo

John E. Tingle, Jr.

Sandi Morgan

Gertie Hendricks

A. W. Phillips

Mrs. Jesse Townlin

Frozen Food Feast!

- Green Peas Bel-air. Special!—10-oz. Pkg. **15¢**
- Ice Cream Lucerne. Party Pride. Special! Assorted Flavors—1/2-Gal. Ctn. **69¢**

Thanksgiving Non-Food Values!

- Anti-Freeze Penn Champ. —Gallon Can **\$1.39**
- Room Deodorizer Breath of Spring. 4 Fragrances. 7-oz. Aerosol Can **3 for \$1**
- Oven Cleaner Easy Off—14-oz. Aerosol Can **99¢**
- Hair Tonic Vaseline. (\$1.09 Value)—5 1/2-oz. Bottle **89¢**

For Your Festive Feast!

- Fruit Cocktail Town House. For All Your Jellied Fruit Salads. (Why Pay 24¢). —17-oz. Can **22¢**
- Mandarin Oranges Town House. 17-oz. Can **25¢** Why Pay 29¢
- Spiced Peaches Del Monte. Whole. 29-oz. Glass **45¢** Why Pay 49¢
- Cut Green Beans Libby's. 16-oz. Can **25¢** Why Pay 28¢
- Mexicorn Whole Kernel Golden Corn with Peppers—12-oz. Can **24¢** Why Pay 26¢
- Green Peas Green Giant. Fancy. 17-oz. Can **22¢** Why Pay 27¢
- Pickled Beets Sweet. Kuerst's. 16-oz. Glass **29¢** Why Pay 32¢

Assorted

### Mixers

Cragmont—Quart Bottle

## 2 for 25¢

Folger's

### COFFEE

All Grinds—1-Lb. Can

With \$5.00 Purchase or More, Special! (Excluding Cigarettes).

(Edwards 57¢) **59¢**

(Safeway Pre-ground 51¢) **59¢**

Prices Effective Mon., Tues. and Wed., Nov. 20, 21 and 22, in Eastland. We Reserve the Right to Limit Quantities. No Sales to Dealers.

# SAFEWAY

© Copyright 1960, Safeway Stores, Incorporated.