

**Panhandle
Press
Association**
1989
Award Winner

BAILEY COUNTY JOURNAL

'The Community Of Opportunity-Where Water Makes The Difference



Vol. 29, No. 30

12 PAGES TODAY

Published Every Sunday At Muleshoe, Bailey County, Texas 79347

Member
TA
TEXAS PRESS
ASSOCIATION

20¢

SUNDAY, JULY 22, 1990

Local, Area Banks Reflect Increases

around
muleshoe

Muleshoe's Jennyslippers will meet Tuesday, July 24, at noon at the Girl Scout Hut. You are invited to join this very active group of local women.

Airman 1st Class Michael Parrish Lee has graduated from Air Force basic training at Lackland Air Force Base, Texas.

During the six weeks of training the airman studied the Air Force mission, organization and customs and received special training in human relations.

In addition, airmen who complete basic training earn credits toward an associate degree through the community college of the Air Force.

He is the son of Mrs. Weldon Stevenson of Arlington and Marshall Lee of Amarillo. His grandparents, Mr. and Mrs. Alvis Burge and Mrs. W. H. Lee, reside in Muleshoe.

The airman is a 1988 graduate of Muleshoe High School.

Sgt. Charlie Simmons of the Plainview office of the Lubbock Highway Patrol District stated, "In Bailey County, our troopers investigated no fatal accidents, one personal injury accident and one property damage accident in the month of June."

Lazbuddie Set For Ex-Student School Reunion

Donna Glover, Reunion Secretary/treasurer said final plans are in progress for Lazbuddie Schools' 59th Anniversary and Reunion, scheduled for August 4-5, 1990.

Registration will begin at 10 a.m. on Saturday, August 4.

Mrs. Glover said this will be a time for refreshments, visiting, renewing old friendships and making new acquaintances.

School displays, arts and crafts will be exhibited. If you wish to display your art, contact Debbie Weir at 806-965-2302.

Athletic competition has been planned for the young and agile on Saturday afternoon. A concession will be available at noon and throughout the day. Some individual classes are planning get-togethers for Saturday evening.

Sunday, August 5, beginning at 11:30 a.m., will be registration, and a noon meal, with fish and chicken, catered by Hens and Fins of Lubbock. Tickets for the meal are \$7.50 for adults and \$5.50 for children.

Entertainment and recognition of teachers and students will be in the high school auditorium following the noon meal.

The Reunion Committee invites all interested persons to attend and a large turnout is expected.

If you plan to attend, send your reservations and monies by July 27 to Donna Glover - Reunion Secretary/Treasurer, at Route 1, Box 325, Muleshoe, TX 79347.

WEATHER

July 11	98	64	.00
July 12	84	62	.00
July 13	87	57	.00
July 14	66	53	.03
July 15	79	66	.00
July 16	88	61	.06
July 17	86	58	.00



SEALCOATING GOING ON IN MULESHOE--Each summer, a certain number of streets are seal-coated in Muleshoe, and this summer is no exception. Hot asphalt and gravel are being put on a number of streets in the city, in a never-ending battle to keep the streets as much as possible, without potholes to have to try to drive over. Here, the paving contractors are laying a new seal coat on a city street. (Journal Photo)

Group Asks City To Improve Park Located On East Side

Terming it "a very positive move," Muleshoe Mayor Darrell Turner and members of the Muleshoe City Council heard a request from residents of the east side of Muleshoe ask for improvements to the 'Old City Park.'

Spokesman Juan Chavez and several residents from east Muleshoe attended the city council meeting on Wednesday morning, and officially requested a number of improvements, with the first and foremost being adequate, working restroom facilities.

Chavez said he has been a resident of Muleshoe for 37 years and "the park hasn't been kept up or fixed in many years."

He said the group thinks restrooms need to be fixed, or better yet, build new ones. He also said more tables are needed and barbecue grills to

Farwell Church

Will Sponsor

Blood Drive

First Baptist Church of Farwell will sponsor a Blood Drive on Tuesday, July 24, from 10 a.m.-4 p.m. in the Fellowship Hall.

Donations to blood banks are at their lowest during summer months, said a spokesperson for the church. But, the demand for blood is great due to vehicular accidents.

Blood will be collected by United Blood Services of Lubbock, a non-profit organization. They are the sole providers of blood and blood products of West Texas and Eastern New Mexico.

Anyone willing to donate blood is welcome to come at their convenience during the donation times.

Cookies and juice will be served to the donors by members of the Farwell First Baptist Church.

Persons willing to help with the blood drive should contact Karen Martin at 925-6406.

cook outside.

Also, according to Chavez, when he checked on delinquent taxes several years ago, he was told there was a delinquent list showing \$96,000 due. He said only \$6,000 of this amount was on the east side of town, and

Exchange Students

Seeking Local

Host Families

According to Johanna Wrinkle, community coordinator for International Education Forum, opportunities are available for local families to host a foreign exchange student in their home. These are high school students from various countries and cultures throughout the world and are all interested in learning about the American way of life.

Mrs. Wrinkle says: "We need host families who will provide room, board and a caring family atmosphere. Students bring their own spending money and have complete medical and accident coverage. All students have been carefully screened and fulfill strict guidelines regarding English language skills, maturity and academic qualifications."

International Education Forum is a non-profit student exchange organization based in California and has been bringing students to the United States since 1981. The academic-homestay visits are generally 3, 5 or 10 months in length with the student living with the host family while attending high school.

Host families have the opportunity to review the student applications and select from available students regarding preference as to sex, nationality, interests and hobbies, etc. If anyone is interested in this unique culture-sharing opportunity, call Mrs. Wrinkle, community coordinator, at 272-3673.

Mrs. Wrinkle says several student have specified they would like to reside in Texas, and on farms.

said "our tax dollars need to be used to repair our park. It hasn't been watered, there's little grass and trees."

He was informed by City Manager Dave Marr that "at this time, we're not particularly proud of either one of our parks. Grass and trees have had to wait in both parks. From mid-May until two weeks ago, there's been a lot of stress on our city water facilities."

"The city has been pumping all the water we could pump just for houses. We have had no water we could pump into either park."

Also, in response to the restrooms being kept locked, the city manager said the restrooms are not open to the public 24 hours a day, seven days a week. They are open by request. The Cont. Page 6, Col. 4

School Board

To Set Prices

For Ball Games

Business items to be considered by the board of trustees for the MISD in regular session Monday night, at 7:30 p.m., will include:

Visit with school architect and take appropriate action; discuss salaries for teacher assistants and take appropriate action; approve correction to the Career Ladder List and take appropriate action; review the district health policy; consider substitute teacher salaries and take appropriate action; discuss season ticket prices for football and basketball and take appropriate action; discuss school lunch prices and take appropriate action; and consider for adoption Update 36 to the School Board Policy manual.

Informational reports will be given by the board president; superintendent; assistant superintendent for business and assistant superintendent for instruction.

The board will also meet in executive session for personnel considerations.

According to figures released by banks in the area, both deposits and loans show increases at the banks for the past year.

For the banks checked, the deposits increased by \$3,214,408 during the past year. Total deposits were \$244,682,269 at the end of June, 1989, and were \$247,896,677 closing out June, 1990.

Loans also took a \$10 million

Muleshoe State Bank Will Be Locally Owned

Robert E. Finney, president of Muleshoe State Bank, has announced that 34 families in the Muleshoe area, including several bank employees, have agreed to purchase 100 percent of the Muleshoe State Bank stock from Independent Bankshares, Inc. of Abilene, TX.

Finney explained that the new stockholders will form a one-bank holding company named High Plains Bancshares, Inc. to purchase the Muleshoe State Bank.

The name of the bank will remain the Muleshoe State Bank and will remain a state chartered bank, subject to all Texas State Bank regulations, as well as all Federal Reserve regulations.

"All bank deposits will continue to be insured by the FDIC," said Finney, "and the bank will continue to offer all the same loan and deposit services as it has in the past."

Finney further explained that local ownership will enable the bank to better serve the financial needs of our area.

Let's Visit In London, Paris And Switzerland

(Editor's note: In the last issue of *The Journal*, Johanna Wrinkle, a MHS teacher, started a series, whereby you may visit several European Countries with a group who just returned. This is the fourth through sixth days of the tour that took place last month. Come along, and we'll leave London for Paris.)

Today we traveled from London to Paris. It was light outside by 4:00. I do not know what time it first gets light. We left about 7:30 and drove across the beautiful country of Kent which is considered the more wealthy area of England.

We stopped at Canterbury to visit the Cathedral. The rose garden has some of the most beautiful roses anyone could hope to see. We parked outside the city walls and walked to the Cathedral. We spent about 30 minutes there. I bought a beautiful card of an oil painting of the *Canterbury Tales* characters that I want to get framed and put in my room at school.

We went to Ramsgate to catch a ferry instead of Dover, so we landed at Dunkerque after a two-hour ride. We had time to eat lunch on the ferry, take a few pictures, and sing happy birthday to Lonnie. We landed at Dunkerque and met our driver for the next 15 days, Jean Pierre.

After a few miles we met the Calais/Paris road and drove the 200 miles to Paris. This area is extremely beautiful and green. I love the patch-work fields and tree-lined roads.

After getting to our lovely hotel, we changed and went to dinner. The appetizer was something made with salmon with a sauce. We had veal with gravy, sliced potatoes baked and put into a casserole with

increase for the same time period. Loans were \$106,628,719 at the end of June of this year, an increase of \$10,681,082 over the \$95,947,637 reported on June 30, 1989.

In Muleshoe, deposits for the two banks, combined with First Bank of Bovina, showed a total of \$79,868,552. This was an increase of \$837,552 over the 1989 combined deposits of \$79,031,000.

Loans for the local banks also show an increase of \$1,333,957 during the past year. Combined loans for the banks last year on June 30 were \$42,028,000, and increased by \$1,333,957 to a total of \$43,361,957 this year for the same time period.

Muleshoe State Bank had deposits of \$33,109,552 closing out June this year, an increase of \$605,552 over the \$32,504,000 for the same time in June 1989. Loans for the bank decreased for the same period. Loans were \$19,257,957 at the end of June, 1990, down by \$653,043 from the \$19,911,000 shown at this time a year ago.

First Bank of Muleshoe, combined with First Bank of Bovina, showed deposits of \$46,759,000 at the end of June, 1990, up \$232,000 from the \$46,527,000 shown closing out June, 1989. Loans for the banks were up \$1,987,000 for the same period. Loans were \$22,117,000, and had increased to \$24,104,000 on June 30, 1990.

Deposits for First Bank of Morton were \$38,717,628 at the end of June this year, an increase of \$287,628 over the \$38,430,000 shown for the same period last year. Loans for the bank were \$12,657,000 to close out June, 1989, and had increased some \$670,341 to \$13,327,341 closing out June Cont. Page 6, Col. 1

cheese sauce. Our dessert was very rich. It was called "floating islands" and was made of baked meringue floating in sauce with caramel sauce over the top.

It was almost midnight before we returned to our room. We had another eighteen-hour day. Our rooms have been extra nice.

DAY FIVE - THURSDAY June 14

Paris is a city of ten million people. The entire country of France has fifty-five million. Apartments are extremely expensive. Our guide said a small one room with bath would be at least \$600. We stay at the Hotel D'International in an exclusive area of northwest Paris. Rooms were 1150 FF (\$230.00). We left the hotel at 8:30 for a guided tour of Paris. A young lady who was an art student and who worked part time at the Louvre was our morning guide. We drove up to get a good view of Eiffel Tower and to take some pictures. We drove by Notre Dame, Arc de Triomphe, Ritz Hotel, the Invalides (Napoleon's Tomb), the Army Museum, down Champs-Elysees, along the River Seine, Sorbonne, the Opera, and other highlights.

This took about two hours and then we went to the Louvre. Our guide was excellent here. We saw *Winged Victory*, *Venus DeMilo*, *Mona Lisa*, dozens of statues and outstanding painting. At the end of our tour we went through a new area that was only discovered last year when they were working on the Pyramid. This was the foundation of the original Louvre when it was used as a fortress.

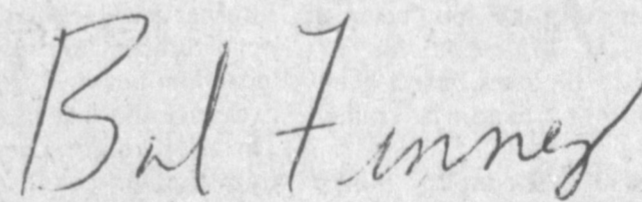
We met Henry outside the Louvre and we had a ham and Cont. Page 6, Col. 1

"You Are Appreciated"

We appreciate all our customers, who have supported us with their deposits and loan requests in the past.

The Muleshoe State Bank will continue to strive to provide the same personal and efficient banking service that you have come to expect.

We look forward to continue to serve you in the future.



Bob Finney
President, Muleshoe State Bank



MULESHOE STATE BANK

MEMBER FDIC

101 West American Blvd.

Phone 806/272-4561

MULESHOE, TEXAS 79347



Creative Living

by: Sheryl Borden

Information on the importance of recycling, preparing dessert toppings, and making string art creations will be the featured topics on "Creative Living" on Tuesday, July 24 at 12 noon and Saturday, July 28 at 2 p.m. (All times are Mountain.)

Jeanne Bakelar is from Sparta, NJ and represents the Pro-Environmental Packaging Council. She will talk about the importance of recycling. Recycling not only saves money, but offers an alternative to diminishing landfill space. Ms. Bakelar will explain how everyone can help alleviate the waste crisis by shopping for products displaying the paper recycling symbol.

Pat Mitchamore, from Nashville, TN, is co-author of the Jack Daniels Spirit of Tennessee Cookbook. Ms. Mitchamore will cover the fine points of how to tell a tall tale and demonstrate some of her favorite dessert toppings to top off the meal.

Mike Kelly is a former physicist with a major steel company who now runs a successful mail order craft company. Several years ago when string art was so popular, Kelly became interested in designing the patterns for them. Kelly's company is called Kelly's Crafts, Cincinnati, OH, and he will show several examples of finished string art.

On Tuesday, July 24 at 9:30 p.m. and on Thursday, July 26 at 12 noon, "Creative Living" will present information on user-friendly software that is especially designed for home use, a healthy heart kit, and some nifty fix-it-fast recipes.

Joe Glover, founder of Learning Technologies in Dallas, TX, will tell about a new level of instant computer software called "Go!" The idea behind this software is that customers can get immediate satisfaction and use from the computer. "Go!" features explicit graphics, and Mr. Glover will demonstrate how easy it is to start work on your home computer just as soon as you put in the disk.

Dr. Armand Brodeur, medical consultant for Armour Lower Salt in St. Louis, MO, will talk about the Healthy Heart Kit which is produced by Armour. The kit provides easy-to-understand information on how we can take better care of this vital organ.

Nancy Byal, representative with Better Homes & Gardens in Des Moines, IA says that some of the most popular recipes Better Homes & Gardens publishes are not only easy to put together but also

use few ingredients. Each of the recipes she will demonstrate uses four ingredients or less--and most use party-shelf staples you probably already have on hand.

"Creative Living" is produced and hosted by Sheryl Borden. The show is carried on more than 100 PBS stations in the United States, Canada, Guam and Puerto Rico and is distributed by Pacific Mountain Network, Denver, CO. Viewers can request copies of materials offered on the show by sending one 25 cent stamp for each handout requested. Send the stamps, along with your name, address and booklets requested to:

"Creative Living" Requests
% KENW-TV Station # 52
Eastern New Mexico University
Portales, N.M. 88130

NIFTY FIX-FAST
RECIPES
DOUBLEHEADER PIZZA

Place a 13-ounce frozen cheese pizza on a greased bakin

cheese pizza on a greased baking sheet. Arrange 1/2 of an 8-ounce package brown-and-serve sausage links, sliced 1/4 inch thick, and 1/4 cup sliced pimiento-stuffed olives on the top of the pizza.

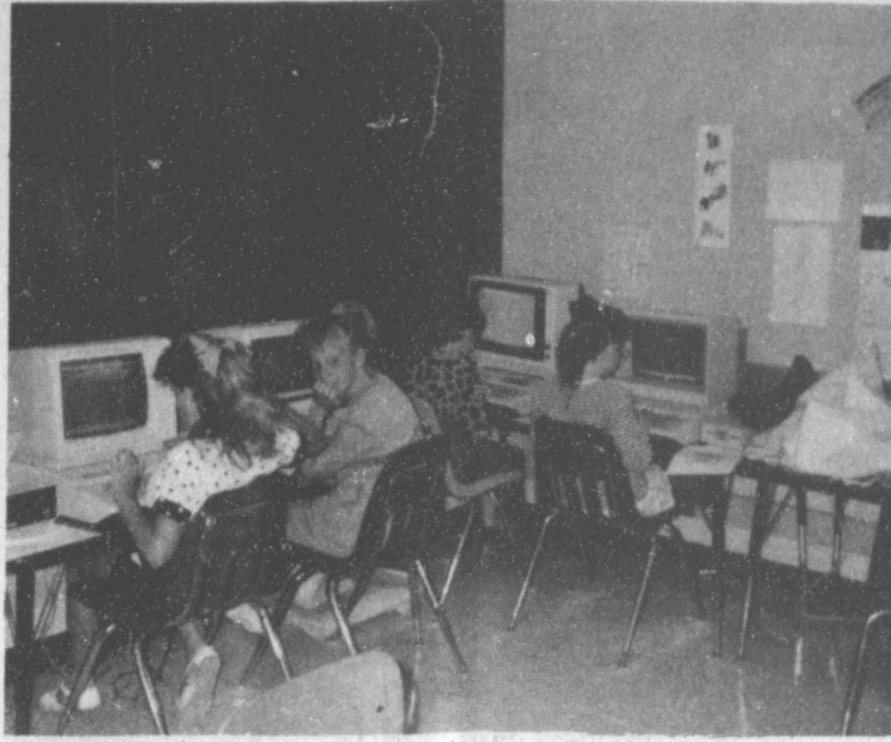
Sprinkle half of a 4-ounce package shredded mozzarella cheese over all. Top with another 13-ounce frozen cheese pizza, crust side up. Cover entire pizza with foil. Bake in a 375 degree oven for 30 minutes or more. Sprinkle the remaining half of the package of cheese over pizza; bake 5 minutes more or till melted. Makes 6 main-dish servings.

Hobby Club

The Muleshoe Hobby Club met at 2 p.m. Thursday, July 17 at the Senior Citizens Complex with ten members and one visitor present. Those present included: Mable Caldwell, Sammie Ethridge, Glenda Morris, Laura May Stancell, Blanche Aubrey, Frances Bruns, Edith Fox, Hazel Reeder, Betty Griswald and Myrtle Chambless and the visitor, Oneita Corneilson.

Myrtle Chambless won the hostess gift which was a set of towels.

The next meeting will be at 2 p.m. August 2 in the Senior Citizens Complex with Blanche Aubrey as hostess.



STUDENTS ATTEND COMPUTER CAMP--Sixty-five boys and girls in grades 2 through 6 attended a Summer Computer Camp July 9-13, under the direction of Georgia Pena. Christy Whitt was the instructor at DeShazo and Anna Gutierrez was instructor at Dillman. (Guest Photo)



SUMMER COMPUTER CAMP--Muleshoe ISD's Summer Computer Camp has grown to mean hours of stimulating problem-solving activities for interested students. The third annual summer session was held July 9-13 at Dillman and Mary DeShazo Elementary Schools. Instructors were Christy Whitt at DeShazo and Anna Gutierrez at Dillman. The program is under the direction of Georgia Pena, Director of Special Programs for Muleshoe ISD. (Guest Photo)



Latest Arrivals

Jessica Michelle Snell
Lincoln and Michelle Snell of Weatherford are the proud parents of a daughter, Jessica Michelle, who was born May 3, at 7:54 p.m. in Campbell Memorial Hospital.

The young lady weighed seven pounds and six ounces and was 19 inches long. She is the first child for the couple.

Maternal grandparents are Barbara Berry of Muleshoe and Robert A. Berry of Amarillo.

Paternal grandparent is Gene Snell of Muleshoe.

Great grandparents are Ona Berry of Muleshoe, Mary Austin of Weatherford and Eli Snell of Springtown.

ATTENTION

Your only local media of general circulation that qualifies for & has a 2nd class newspaper subscribers mailing permit.
U.S. Post Office Approved.

Bailey County Journal USPS 040-200

Established March 31, 1963. Published by Muleshoe Publishing Co., Inc. Every Sunday at 304 W. Second, Box 449, Muleshoe, Tx 79347. Second Class Postage paid at Muleshoe, Tx. 79347.



MEMBER 1990
L. B. Hall, Publisher
Sammie Hall, Vice President/Controller
Cleta Williams-Jacobson, News
Evelene Harris, Society
Bobby Millage, Advertising
Dora Toscano, Classified

SUBSCRIPTIONS
Muleshoe Journal and Bailey County Journal
Bailey and surrounding counties
Muleshoe Journal and Bailey County Journal
Elsewhere in Texas \$14.75
Muleshoe Journal and Bailey County Journal
Outside Texas, \$16.50
Yearly By Carrier
\$12.50

Advertising Rate Card on Application.
Advertisers should check their ad the first day of insertion. The Journals will not be liable for failure to publish an ad or for a typographical error or error in publication except to the extent of the cost of the ad for the first day insertion. Adjustment for errors will be limited to the cost of that portion of the ad where the error occurred.

Eric Wayne Debnam

Rod and Skokie Debnam of Dallas wish to announce the arrival of their son, Eric Wayne. The young man was born on July 4 and weighed six pounds and nine ounces. Eric has a sister, Lauren.

Grandparents are U.J. and Dee King of Sudan.

Innocence Abroad

A bride went to the butcher shop to buy a ham.

"Here are some fresh smoke-cured ones," said the butcher.

"But haven't you any that have never been sick?" asked the bride.

IN FASHION

Your next day at the beach can be more enjoyable if you carefully plan ahead. A waterproof bag can carry all the accessories you will need for a day at the beach.

A large beach towel, hat, sunscreen, and sunglasses must be included. Some still choose the very brief bikini, but many now are choosing the classic tank suit for swimming and sunning.

Mary Kay Cosmetics

1/2 price Sale On
All Glamour Products In Stock!
Josie Flowers
272-3865

True Value HARDWARE STORES

HOT BUYS

PP840-7 Plumbers Basin Wrench 11" Long
Reversible Jaw

BASIN WRENCH

Reg. \$8.49

\$5.49



PP825-18 Chrome Plated A.B.S. Shower Head
With Plastic Ball Joint.

PLUMB -PAK INC.

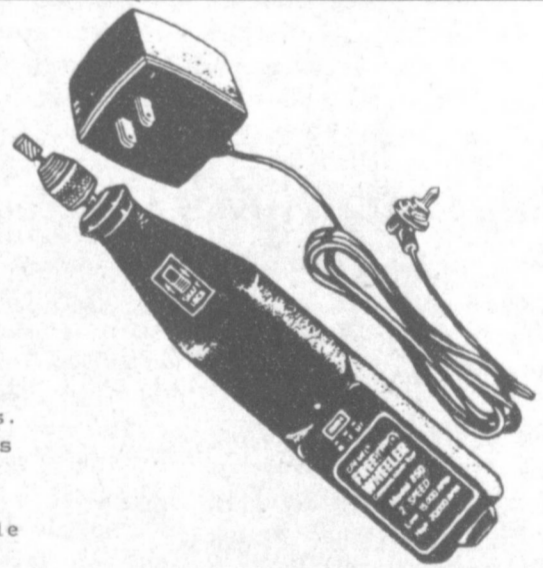
Reg. 4.39

\$2.99



Reg. 84.99 \$54.99

850 Dremel Cordless Freewheeler Motor-Tool
Two Speed (15,000 & 20,000 RPM) Moto Tool
With Charger And 1/8" Keyless Chuck. Powerful
High Torque 6.0 Volt Motor With 5 Long Lasting
Ni-Cad Batteries. Complete Recharge In 3 Hours.
LED Charging Indicator Assures User The tool Is
Being Charged. One Charge Supplies Plenty Of
Power To Grind, Cut, Sand, Polish, Engrave And
Many Others Do It Yourself Projects. Compatible
With All Dremel Attachments And Accessories.



6' Fiberglass
Step Ladder

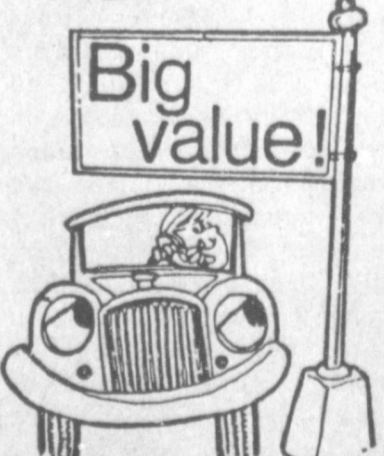
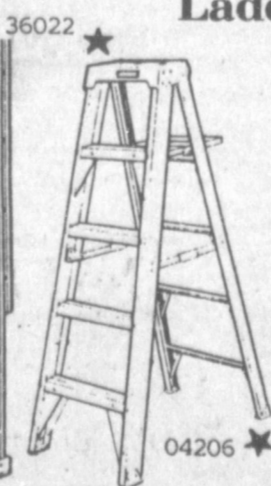
Reg. \$119.99

\$79.95

22' Aluminum Extension
Ladder

Reg. \$149.99

\$99.99



Open Monday - Saturday 8 a.m. - 6 p.m.

Fry & Cox, Inc.



401 S. 1st

Muleshoe

272-4511

Come enjoy the BTD Parade!

SIDEWALK SALE
Saturday, July 28th

Up to 75% Off

"Justin" Time
For Border Town Days

Prices Good July 20th through July 28th

- JUSTIN ROPERS\$79.98
- JUSTIN HI TIES\$95.98
- JUSTIN JUNIORS Sizes 8-13 1/2 & 1-6\$46.98 & up
- CHILDREN'S BOOTS Infants' sizes 1-4\$29.98 & up
- ROCKY MOUNTAIN SHORTS 20% Off
- ROCKY MOUNTAIN JEANS 10% Off
- MEN'S WESTERN SHIRTS 20% Off

Rip's
Since 1943

IN TEXICO 314 Wheeler Ave.
Open 8:00 a.m. to 6:30 p.m. CDT

482-3363 or 800-748-2459

* Layways Welcome *

* Free Gift Wrapping *

WE ACCEPT:

Mrs Lincoln Snell Honored With Shower

Mrs. Lincoln W. Snell was honored with a baby shower from 3 to 4:30 p.m. Saturday, April 21 in the home of Mrs. Dell Snell.

Mrs. Tammy Berry and Mrs. Ruthie Terry served cake, pineapple crush punch, nuts and mints.

The serving table was covered with a yellow table cloth and was accented in pink and yellow. The cake resembled a baby wrapped in a pink and white blanket. The honoree's

corsage consisted of white, baby booties and white ribbon.

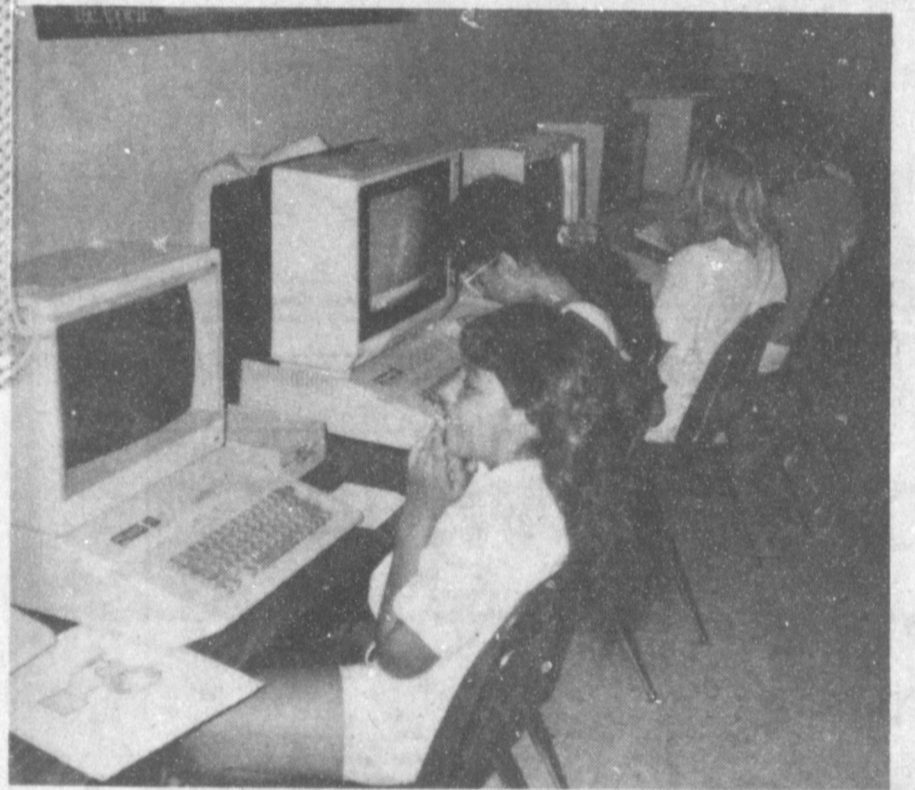
Special guests were Barbara Berry, mother of the honoree; Robin Berry and Linda Berry, sisters of the honoree, all of Muleshoe.

The hostesses gifts were a baby swing and infant dress.

Hostesses for the occasion included: Tammy Berry, Dell Snell, Renee Matthews, Patsy Frazier, Earlene Ruland, Velta Whitaker, Ruthie Terry, Edith Hayes and Laura Hayes.



USING APPLE IIE COMPUTER--Students attending the summer computer camp July 9-13, were each assigned to an Apple Iie computer for the five days and were encouraged to interact with other students as they worked. Many of the students designed and printed a banner to take home. Christy Whitt and Anna Gutierrez were the instructors for the 65 students attending. The camp was under the direction of Georgia Pena. (Guest Photo)



LEARNING TO USE THE COMPUTER--Working in groups of 16 students, 65 boys and girls attended the annual summer Computer Camp July 9-13. These students were actively involved in learning to use the computer as a writing tool, and were also intrigued by the use of graphics software packages to pictorially illustrate what they wrote. These students were from grades 2 through 6. (Guest Photo)

Writing Conference Scheduled At Amarillo

The 1990 Frontiers in Writing Conference, sponsored by Panhandle Professional Writers and Amarillo College, will be held August 10 and 11 in Amarillo. The speakers banquet, featuring Richard Lederer, author of "Crazy English", will be held at The Big Texan Steak Ranch on Friday night, August 10, at 8 p.m. Writers' study groups will meet on Saturday, August 11 at the Technology Building of Amarillo College, with registration beginning at 8 a.m.

The keynote speaker, Richard Lederer, holds a Ph.D. in linguistics, and has published more than 1000 articles and books about language. He has been featured in magazines such as "The New Yorker" and "People", and has appeared on "The Today Show" and "Good Morning America." His two books Anguished English: Get Thee to a Punnery and Crazy English have been best-selling language humor books.

Other speakers include Evan Marshall, president of the Evan Marshall Agency, Joe Clifford Faust, a writer of science fiction, John Drayton, assistant director/editor in chief of the University of Oklahoma Press, and noted poet Tim Seibles.

Also speaking will be Jack Cowan, humor columnist of the "San Angelo Standard-Times" since 1981, Deanna James, author of 15 historical Romances, Alec Horn, founding

member of Texas Accountants and Lawyers for the Arts, and Francis Fugate, professor emeritus from the University of Texas at El Paso.

The pre-registration fee for Frontiers in Writing, due by August 3, is \$55 for members of Panhandle Professional Writers and \$70 for non-members. The fee includes the Friday Night Banquet, the keynote speech and the Saturday workshops.

Pre-registration for the Saturday workshop only is \$40 for members and \$55 for non-members of PPW. Registration forms and additional information may be obtained by writing: Frontiers in Writing Conference, P.O. Box 19303, Amarillo, TX 79114.

Slipped Judge--So you were convicted of burglarly twice, robbery with violence three times, and manslaughter once?

Prisoner--That's right, sir. After that I seemed to drift into a life of crime.

Snappy Answer
Two farmers were sitting on the front porch of the general store when a city slicker drove up in a flashy convertible.

"Hey, you" yelled the driver, "how long has this town been dead?"

"Can't be long," snapped back one of the natives, "you're the first buzzard we've seen."



MR. AND MRS. LINCOLN SNELL

Class Of 1960 Holds Reunion At Sudan

The Sudan High School class of 1960 met Friday, June 29 at the Steak-n-More Restaurant in Littlefield for a Dutch Treat lunch and then returned to Sudan to the FNB community room to visit.

Saturday the class stayed at the bank room and also went to join in the fun at the celebration downtown. Saturday night Edward and Waynette Fisher served hamburgers and homemade ice cream to everyone at their home.

Those attending included: Ronald and Mary Carol Powell, Tulsa, Okla.; Rodney Cate, Pullman, Washington; Nancy Kitchens Stewart, Ramona, Calif.; Charles Radney Nichols, Spring; Raymond and Meleta Stanley, Azle; and Don and Karen Preston, Don and LeAnn Kuykendall, all of Lubbock.

Also Dean and Alice Warren Faver, Fieldton; and Dale and Lavelle Calloway Hill, Littlefield; Mack and Jane Meeks Campbell, Littlefield; and Jimmy and Linda Lane, Amarillo.

Also Pudd and Kay Gentry Wiseman, Donald and Linda Parrish Powell, Gaylon and Lynette Hill Burns, John and Gloria Humphreys, Edward and Waynette Fisher, Bobby and Ann Carson, and Phillip and Mary Ann Gordon, all of Sudan. And Jerry Walker of Hereford.

Former teachers and wives/husbands attending included Elsie and Tommy Cate, Gina Nichols, all of Sudan; and Nan Preston of Farwell.

Maxine and husband Nick Nichols, F.M. and wife Margaret Smith, Mary and

husband Marvin Tollett, and Elsie and husband Bernard Wilson.

Parents attending were Elsie and Tommy Cate, Gina Nichols, all of Sudan; and Nan Preston of Farwell.

Children and grandchildren attending included: Wendy Branson and Alan of Lubbock; Brent Preston of Lubbock; Becky Campbell of Littlefield; Courtney Nichols of Spring, Charles and Anita Murray, Amanda, and Jeremy of Littlefield; Kyle and Michelle Hill and Stephen Beau of Littlefield; Laura Powell of Lubbock; and Jordan and Trevor Thompson of Amherst.



CELEBRATING SIXTY YEARS--Mr. and Mrs. Henry Scarbrough will be honored on their 60th wedding anniversary with a reception Sunday, July 29 at the First Assembly of God Church. Hosting the reception will be their children. Mr. and Mrs. Scarbrough will greet their guests between the hours of 2:30 and 4:30 p.m. Scarbrough and the former Juanita Jackson were married July 26, 1930 in Portales, N.M. and have made their home in Muleshoe since 1934. Scarbrough is a retired carpenter. The couple have six surviving children, 20 grandchildren and 29 great grandchildren. They are active in church work at the Assembly of God Church. (Guest Photo)

Mendoza, Perez Engagement Announced

Jerry Mendoza and Elena Perez announce their engagement and approaching marriage. Vows will be exchanged at 6 p.m. Friday, August 3 in a garden ceremony at the home of Noe Anzaldua, 412 W. 7th.

Parents of the couple are Mr. and Mrs. Heriberto Mendoza and Mr. and Mrs. Frank Perez, of Muleshoe.

The couple both graduated from Muleshoe High School in

1988. They plan to make their home in Wichita Falls, where the groom will be attending Midwestern State University.

BRIEFS

Democrats' 1991 budget and Bush at odd.

Britain acknowledges link between tubes, Iraqi gun.

Give your money a raise.

7.75% Introducing Sunbelt's Money Market Investment Account. It's like a traditional savings account because you can come in and withdraw your money anytime you want. As much as you want. But there's nothing traditional about the rate, which is higher than many regular money market accounts.* Open a Money Market Investment Account at Sunbelt. You'll be doing your money a favor.

*\$5,000 minimum deposit needed for higher rate with no service charge. Initial deposit must be at least \$5,000. No checking or third-party withdrawals allowed. Rate subject to change without notice.

Sunbelt Savings FSB
No Excuses. Answers.™

Muleshoe: 304 Main St. 272-5527

BIBLE VERSE

"Be strong and of a good courage; be not afraid, neither be thou dismayed."

1. By whom was the statement made?
2. To whom was it made?
3. Whom did he succeed?
4. Where may this exhortation be found?

Answers:
1. The Lord.
2. Unto Joshua, the son of Nur.
3. Moses.
4. Joshua 1:9.

For Your
Mary Kay Cosmetics
Josie Flowers
272-3865
8 a.m. - 12 noon
& after 6 p.m.



Home Ceremony Unites Miss Ethridge, Soon



MRS. YOKE PEI SOON
(Nee Miss Kristi Ethridge)

The country home of Wayland and Janet Ethridge of Muleshoe was the scene of the union in marriage of their daughter, Kristi Shannan Ethridge and Soo Koon Soon, son of Kahn Cheow and Yoke Pei Soon of Malaysia, on June 29 at 11 a.m. The Rev. H.D. Hunter, Jr. read the double ring ceremony amid decorative flowers in peach and mint green colors, peach candles, lighted ficus trees, and under an arch accented with hanging baskets of Boston fern.

Music was provided by members of the Tom Brian family of Crosbyton, consisting of the father, Tom Brian, piano accompanist, and two of the Brian children, Tommy and Katy, playing classical duo violin arrangements. Special selections of prelude music included "O Perfect Love" by Barnby, "Theme and Variations" by Papini, "Chorus from Judas Maccabaeus" by Handel, "Bourree" by Handel, and "Waltz" by Brahms.

The duo violinists played the traditional Bridal Chorus from "Lohengrin" by Wagner for the processional, and Mendelssohn's wedding march from "A Midsummer Night's Dream" for the recessional. The instrumental selection, played by the trio immediately preceding the exchange of vows, was "The Lord's Prayer" by Malotte.

The bride's maternal grandmother, Mrs. Lizzie Lou Bridge from Afton, TX, and the bride's mother, Janet Ethridge, were escorted by the bride's father, Wayland Ethridge, shortly before his escorting of the bride.

The bride wore a Victorian candlelight organza gown which had a fitted bodice with ruffled Chantilly lace. It was accented with a ruffled Queen Anne neckline with beaded lace on the bodice. The full bishop sleeves had beaded lace cuffs which closed with small covered buttons. The long chapel length skirt was double flowered with organza and lace featuring a cascade of ruffles down the length of the train. A satin bow accented the waistline in back.

The bridal veil, which was a wreath of candlelight daisies with a chiffon veil edged with pearl beading and hung over the back of her Victorian

hairstyle, was made by the bride. The bride carried a full flowing cascade bouquet of peach lilies and miniature white roses accented with pearls, made by Helen Hunter. Candlelight and peach lace streamers were tied in love knots. The full bouquet was tied with wide candlelight lace swept into a double flowered bow.

In keeping with tradition, the bride carried pennies minted in the years of the bride and groom's births for something old. Something new was her bridal gown. Something borrowed was her mother's pearl earrings, and something blue was her garter.

Mrs. Jacque Holmes Ledgerwood of Jacksonville, North Carolina, served as matron of honor. She wore a peach taffeta tea length dress with a sheer embroidered front yoke. Tiers of ruffles formed the sleeves and the gathered skirt had a candy box bow in back. She carried a fresh bouquet of pastel flowers with peach satin ribbons and lace streamers.

The groom wore a formal black tuxedo, a black bow tie, and black cummerbund. His boutonniere was a candlelight rose with peach accents.

Retired Army Major Ray Brady of Lubbock served as best man. He wore a black tuxedo with a black bow tie and cummerbund. His boutonniere was a peach colored carnation accented with candlelight baby's breath.

Debbie Ward of Midland registered the guests in the entryway of the home. The table was covered with a peach cloth and candlelight lace over law was accented with the bride's book, a peach colored, ostrich-feather pen, and a vase of peach colored roses.

Following the double-ring ceremony, the new couple greeted guests at a brunch which consisted of croissant sandwiches, a vegetable tray with dip, fruit salad, and iced tea with floating orange slices was served by Dani Heathington

of the Blue Goose in the formal living room. The centerpiece, arranged by Helen Hunter, consisted of a bouquet of tall pastel fresh flowers and baby's breath with accents of peach colored satin hearts. The table was covered with a lace edged candlelight cloth which was gathered at each corner with miniature peach and mint green rosebuds in the middle of beaded peach and candlelight lace bows.

The reception table was covered with a peach cloth and candlelight lace overlay, with peach and lace bows, miniature rosebuds, and beads accenting the corners. Delia Torres of Harlington, served the three tiered wedding cake, which was made and given as a special wedding gift by Mrs. Cleo Ward, and was decorated with pastel fresh flowers and baby's breath. The crystal-handled cake server was engraved with the bride and groom's names and wedding date and tied with a peach and candlelight lace bow which was accented with miniature peach and mint green rosebuds. Mints decorated with rosebuds and mixed nuts were served from crystal appointments. A Precious Moments bride and groom figurine which stood under an arch made of peach and candlelight daisies with beads, served as the centerpiece.

The wedding gifts were on

display in one of the bedrooms on a blue lace tablecloth and accented with a bouquet of white daisies. Bows made of peach ribbon and candlelight lace with miniature mint green and peach rosebuds hung on the corners.

A wooden basket lined with peach eyelet and trimmed in white lace and peach satin ribbon, held the bell-shaped containers of birdseed which were covered with peach nylon netting and tied with peach satin ribbon. These were distributed among the guests by Jacque Ledgerwood.

Special out-of-town guests included: the maternal grandmother, Mrs. Lizzie Lou Bridge from Afton; Mr. and Mrs. Jerry Clements, aunt and uncle of Lubbock; Mr. and Mrs. Ron Ethridge, aunt and uncle, Clayton, N.M.; Tom, Ann, Tommy and Katy Brian, Crosbyton; Glenn Joyce, Ralls; Delia Torres, Harlingen; Jacque and Amanda Ledgerwood, Jacksonville, N.C.; Stephen Osire, Uganda; Mary Mabwa, Kenya; Ray Brady, Lubbock; Mr. and Mrs. Raymond Jackson, Afton; Faye Washington, Earth; and Debbie Ward, Midland.

The bride is a graduate of Muleshoe High School and holds a Master's degree in Education from Texas Tech University. She is presently employed with Midland I.S.D. as a Kindergarten teacher.

Soon is a graduate of Methodist High School in Malaysia and holds a Master's degree in Civil Engineering from Texas Tech University.

Bridal Shower Honors Miss Missy Fisher

Miss Missy Fisher, bride-elect of Joe Ky Shultz, was honored with a bridal shower Saturday, July 7 from 10 to 11:30 a.m. in the home of Mrs. R.A. Lance.

The serving table was covered with a white cloth and accented with an arrangement of white daisies and long stemmed red roses which were in a vase given to the honoree as a gift. Coffee, punch, breads and

fruit were served from silver and crystal appointments.

Special guests included: the mothers of the bride elect and prospective groom, Josephine Fisher of Sudan and Jerre Shultz of Dimmitt.

Also in attendance was the groom's grandmother, Bea Noland of Hereford. Other members of the bride's family who attended were Kathy Granger of Brownfield, Patsy Fisher, and Tanya Fisher of Sudan, Barbara and Wendi Burns from Canadian also attended.

The hostesses gift was an Oster Kitchen Center. Hostesses for the occasion included: Ruth Baker, Susan Baker, Pill Bellar, Shawnda Broadhurst, Marge Cardwell, Elsie Cate, Sue Chester, Barbara Damon, Nancy Davis, Winona Dudgeon, Glynna Harrison, Ann Hill, Pat Laceywell, Donna Lance, Pee Wee Lance, Zanelle Martin, Libby Mudgett, Shawni Nix, Norma Phillips, Tracey Provence, Georgann Rasco, Loretta Reid, LaDelta Bernon, and Ruth Vincent.

The couple are planning an August 11 wedding at the Sudan First Baptist Church.

Shawn Rejino Named 'Student Of The Phase'

Shawn Rejino, a resident of Muleshoe, recently was named "Student Of The Phase" in the Fuel And Ignition Systems course at Universal Technical Institute (UTI) in Houston. The course is part of UTI's Automotive Technology program.

The award is given to the student who has the best record of academic achievement, lab performance and attendance, and is a means of encouraging excellence and initiative.

Nationally accredited, TI trains students for careers in the Automotive, Diesel, Marine, and Air Conditioning, Refrigeration and Heating Repair industries. Students graduate with the skills necessary for entry into their chosen field of training.

The Institute has campuses in Phoenix, Arizona; Houston, Texas and Glendale Heights, Illinois (near Chicago). It has graduated nearly 20,000 technicians into those industries since opening in 1965.

Joke's On Her
When the very, very fat lady walked into the room, four fellows over by the punch bowl started laughing and pointing. "There they go," she muttered angrily, "having fun at my expense again."

Rebekah Lodge News

Fifteen members of the Muleshoe Rebekah Lodge traveled to Hereford Tuesday night, July 17 to meet with the Assembly State President Madeline Hutto. Four members from Dimmitt, ten from Friona, two from Amarillo, one from Houston and 30 from Muleshoe attended the District No. 5 meeting.

Hereford Lodge opened the meeting and Madilene was introduced and given the honors of her office.

Sister Madeline gave a talk on her travels since becoming president in March. She gave her program for 1990-91 which includes:

THEME: Teaching the basic upon which our order was founded.

MOTTO: Friendship, Love and Fruth with pride and dignity.

SLOGAN: Go with God one day at a time.

GUIDE: Bible and ritual. TRAVELING EMBLEM: Hot Air Balloon.

COLOR: Shade of pink. FLOWER: Pink rose with a bud for the Theta Rho's.

SCRIPTURE: Psalms 118:24 This is the Lord has made and we will rejoice and be in it.

EMBLEM: Swan. FUN SONGS: San Antonio Rose and Up, Up and Away.

THEME SONG: One Day at a Time.

HYMNS: "This is the Day the Lord has Made" and "Because He Lives"

ALTAR SONG: God Be With You.

BIBLE CHARTER: Angel. The Friona Lodge presented a skit "The meaning of our opening Ode".

Muleshoe Rebekah Lodge presented what it takes to make a good secretary.

Dimmitt read a tribute to our American flag.

It was reported that all members present enjoyed a very special evening and dinner.

Tops Club

TOPS chapter No. 34 met at 6:30 p.m. Thursday, July 19 in the Heritage Thrift Shop.

Laverne James, leader, led the group in the TOPS pledge and a prayer. Alma Robertson, song leader, led the fellowship song.

Minutes of the previous meeting were read by Aurora Mata, secretary, and they were approved as read.

Jewel Peeler called the roll with fourteen members responding with the amount they had lost or gained.

Best loser for the week was Mary Edmiston, first runner-up was a tie between Ernestine Steinbock and Zannea Kelly. Second runner-up was Marian Wilson.

Copies of the rules of the new contest were handed out and the rules were reviewed. The contest started this week.

The meeting was dismissed with the goodnight song.

Solidarity shows strong support for Walesa's work.

TOUGH STUFF

MADE IN U.S.A.

PECOS BOOT COMFORT

- Rugged, water-repellent, full-grain leather
- Cushion-soft insole
- Steel-shank foot support
- Red Wing's exclusive, long-wearing SuperSole

1104
Anthony's
321 Main 272-3478
RED WING SHOES

The Chrysler-Plymouth SUMMER SALE-ABRATATION!

Rebates up to \$1,000**
Option package savings of up to \$750†

<p style="text-align: center;">Chrysler Imperial</p> <p>A full complement of luxury features is standard including:</p> <ul style="list-style-type: none"> • Anti-lock brakes • World's most advanced automatic transmission • Crystal Key warranty protection and more. <p style="text-align: center;">\$25,495 Base price* - 1,000 Rebate** \$24,495 Start negotiating here</p> <p style="text-align: center;">Or choose low financing*</p> <table border="1" style="width: 100%; border-collapse: collapse;"> <tr> <th>Base Price</th> <th>20% Down Payment</th> <th>Total Financed</th> <th>10.9% for 60 Mos.</th> <th>7.9% for 48 Mos.</th> <th>7.9% for 36 Mos.</th> <th>2.9% for 24 Mos.</th> </tr> <tr> <td>\$25,495</td> <td>\$5,099</td> <td>\$20,396</td> <td>\$442 Mo.</td> <td>\$497 Mo.</td> <td>\$638 Mo.</td> <td>\$876 Mo.</td> </tr> </table>	Base Price	20% Down Payment	Total Financed	10.9% for 60 Mos.	7.9% for 48 Mos.	7.9% for 36 Mos.	2.9% for 24 Mos.	\$25,495	\$5,099	\$20,396	\$442 Mo.	\$497 Mo.	\$638 Mo.	\$876 Mo.	<p style="text-align: center;">Plymouth Acclaim</p> <p>Well equipped, with:</p> <ul style="list-style-type: none"> • Driver's air bag • 2.5 liter engine • 50 standard features <p>Regular option package includes:</p> <ul style="list-style-type: none"> • Air conditioning • Power windows and locks and more. <p style="text-align: center;">\$12,548 Base price with Super 9 Discount Package* - 750 Package Savings†† - 750 Rebate** \$11,048 Start negotiating here</p> <p style="text-align: center;">Or choose low financing*</p> <table border="1" style="width: 100%; border-collapse: collapse;"> <tr> <th>Package Price</th> <th>20% Down Payment</th> <th>Total Financed</th> <th>10.9% for 60 Mos.</th> <th>7.9% for 48 Mos.</th> <th>7.9% for 36 Mos.</th> <th>2.9% for 24 Mos.</th> </tr> <tr> <td>\$12,548</td> <td>\$2,510</td> <td>\$10,038</td> <td>\$218 Mo.</td> <td>\$245 Mo.</td> <td>\$314 Mo.</td> <td>\$431 Mo.</td> </tr> </table>	Package Price	20% Down Payment	Total Financed	10.9% for 60 Mos.	7.9% for 48 Mos.	7.9% for 36 Mos.	2.9% for 24 Mos.	\$12,548	\$2,510	\$10,038	\$218 Mo.	\$245 Mo.	\$314 Mo.	\$431 Mo.
Base Price	20% Down Payment	Total Financed	10.9% for 60 Mos.	7.9% for 48 Mos.	7.9% for 36 Mos.	2.9% for 24 Mos.																							
\$25,495	\$5,099	\$20,396	\$442 Mo.	\$497 Mo.	\$638 Mo.	\$876 Mo.																							
Package Price	20% Down Payment	Total Financed	10.9% for 60 Mos.	7.9% for 48 Mos.	7.9% for 36 Mos.	2.9% for 24 Mos.																							
\$12,548	\$2,510	\$10,038	\$218 Mo.	\$245 Mo.	\$314 Mo.	\$431 Mo.																							
<p style="text-align: center;">Chrysler LeBaron Coupe</p> <p>The sporty 2-door features:</p> <ul style="list-style-type: none"> • All new cockpit-style interior • Tinted glass • Power windows <p>Regular package features:</p> <ul style="list-style-type: none"> • Air conditioning • Tilt steering • Cruise control and more. <p style="text-align: center;">\$13,908 Base price with Popular Equipment Discount Package* - 150 Package Savings†† - 1,000 Rebate** \$12,758 Start negotiating here</p> <p style="text-align: center;">Or choose low financing*</p> <table border="1" style="width: 100%; border-collapse: collapse;"> <tr> <th>Package Price</th> <th>20% Down Payment</th> <th>Total Financed</th> <th>10.9% for 60 Mos.</th> <th>7.9% for 48 Mos.</th> <th>7.9% for 36 Mos.</th> <th>2.9% for 24 Mos.</th> </tr> <tr> <td>\$13,908</td> <td>\$2,782</td> <td>\$11,126</td> <td>\$241 Mo.</td> <td>\$271 Mo.</td> <td>\$348 Mo.</td> <td>\$478 Mo.</td> </tr> </table>	Package Price	20% Down Payment	Total Financed	10.9% for 60 Mos.	7.9% for 48 Mos.	7.9% for 36 Mos.	2.9% for 24 Mos.	\$13,908	\$2,782	\$11,126	\$241 Mo.	\$271 Mo.	\$348 Mo.	\$478 Mo.	<p style="text-align: center;">Chrysler New Yorker Fifth Avenue</p> <p>Luxury with equipped, with features including:</p> <ul style="list-style-type: none"> • Air conditioning • Driver's air bag • World's best luxury sedan warranty • Crystal Key and more. <p style="text-align: center;">\$22,342 Base price with Luxury Equipment Package* - 220 Package Savings†† - 1,000 Rebate** \$21,122 Start negotiating here</p> <p style="text-align: center;">Or choose low financing*</p> <table border="1" style="width: 100%; border-collapse: collapse;"> <tr> <th>Package Price</th> <th>20% Down Payment</th> <th>Total Financed</th> <th>10.9% for 60 Mos.</th> <th>7.9% for 48 Mos.</th> <th>7.9% for 36 Mos.</th> <th>2.9% for 24 Mos.</th> </tr> <tr> <td>\$22,342</td> <td>\$4,468</td> <td>\$17,874</td> <td>\$388 Mo.</td> <td>\$436 Mo.</td> <td>\$559 Mo.</td> <td>\$767 Mo.</td> </tr> </table>	Package Price	20% Down Payment	Total Financed	10.9% for 60 Mos.	7.9% for 48 Mos.	7.9% for 36 Mos.	2.9% for 24 Mos.	\$22,342	\$4,468	\$17,874	\$388 Mo.	\$436 Mo.	\$559 Mo.	\$767 Mo.
Package Price	20% Down Payment	Total Financed	10.9% for 60 Mos.	7.9% for 48 Mos.	7.9% for 36 Mos.	2.9% for 24 Mos.																							
\$13,908	\$2,782	\$11,126	\$241 Mo.	\$271 Mo.	\$348 Mo.	\$478 Mo.																							
Package Price	20% Down Payment	Total Financed	10.9% for 60 Mos.	7.9% for 48 Mos.	7.9% for 36 Mos.	2.9% for 24 Mos.																							
\$22,342	\$4,468	\$17,874	\$388 Mo.	\$436 Mo.	\$559 Mo.	\$767 Mo.																							

Hurry; Rebate and Financing offers end soon. **Advantage: Chrysler-Plymouth** See your Chrysler-Plymouth dealer now!

Another reason why we're America's Way to Go!

Muleshoe Motor Co.
1225 W. Amer. Blvd. 272-4251

London, Paris

Cont. From Page 1

hard roll sandwich with a Coke before we left for Versailles with another guide, Manuel, who proved to be a hit with all of us. He answered dozens of questions as we drove out to Versailles.

From the Louvre, even though it's not so many miles, it takes an hour. The town of Versailles is an exclusive area. It was interesting to see the tree lines, and sometimes double lined, rows of trees along the streets. They were trimmed to form a rectangle shape. We went through the palace seeing the King's chambers, the Queen of Mirrors, and the Queen's chambers. After this we walked about the gardens or rested as part of the group took an extensive tour of the gardens.

I wish I had gone because they saw an area that was a beautiful orchard of orange trees. King Louis XIV always wanted fresh orange juice so he had an orchard planted in individual containers that could be moved indoors during the winter. It must have been beautiful. We could see in a distance that many people were looking off over what appeared to be the edge of the gardens. This is where the orchard is.

We returned to the hotel and we decided on different activi-

ties. Lonnie, Hellen, Sharon and Margaret went to the Arc de Triomphe and up the Eiffel Tower. Beth and Marcia went on a boat ride on the Seine. The last six of us stayed at the hotel and walked about two blocks to an Italian restaurant for dinner. I guess the maitre 'd thought we looked "poor" because he said he didn't have room as he had so many reservations. I asked if he had any suggestions and he said he was sorry but no. I then commented that we were staying at the Hotel d' International and that they had recommended the restaurant. Within thirty seconds we had seats!!

The food was absolutely perfect. We stopped by a corner grocery and looked it over and some bought some fruit. Fruit was very expensive in Europe. We returned to our hotel about 9:00. It was a pleasant meal and we enjoyed the quiet of the night.

Those going to Eiffel Tower had fun riding the bus and tube. The U.S. dollar continues to be weaker each year. We got five francs to a dollar; in 1985, we got eight.

Manuel told us today that the reason there are so many tree lines roads in France was because during King Louis XIV time, the ships were wood so he had these trees planted that grew tall and slender for the wood that they would provide for ships.

An interesting thing about the traffic in France is that those going into a circle have the right of way (opposite of U.S.). In England the cars in "roundabouts" have the right of way.

DAY 6 -FRIDAY
June 15

Breakfasts were basic here. We had hard rolls, jellissants, juice, cheese and craisins with coffee. We have difficulty with "rotating." On tours, normally, the people rotate around the bus, skipping a seat. This way everyone gets to sit at the front of the bus, at the back of the bus, and on either side. Half of our group were from Tennessee and some of them were of the opinion "I paid for this trip and I will sit where I choose." It didn't seem to occur to them that everyone paid for the trip. Any way, we eventually got this accomplished and it does work beautifully.

We left Paris for Switzerland today. We drove toward Dijon. We saw more hills, and some castles along the way. Also, there were numerous vineyards in this area. We had lunch in Besancon at a very nice mall. We "window-shopped" and went into a grocery store and bought liters of Cokes for less than \$2.00.

We went into one children's shop that had adorable clothes with very expensive price tags. We turned off the major road here and went through the mountains toward Thun.

The drive was beautiful, lots of pine trees. At one point we saw the Chateau de Joux, a fortress by the road built in the sixth century. As we went into

Switzerland, we saw a rock fence up the hillside with steps along it that served as border stops during World War II.

We went from the French Jura Mountains to the Swiss Jura Mountains through the Travers Valley. This area has been popular for farm tours. The farms looked like gardens. This area grew more vegetables than grain, etc.

Henry said the average farm was from 40 to 80 acres, but that if a farmer only had forty acres, he would either rent it out or he would have another job and work on the farm after his hourly job.

The hotel in Lucerne called Henry the night before and cancelled our reservations so he got us some in Thun. This was a beautiful little village and our hotel was on the lake. It's name was The Holiday and we had a second floor room with a nice view of the mountains.

Dinner was of pork, creamed potatoes, English peas and brown gravy. Mushroom soup was appetizer and dessert was chocolate mousse over a half pear with whipped cream.

Several of us walked down along the lake for about thirty minutes before we went to bed. (Editor's note: In the next issue, we will visit in Switzerland, then go to Venice, Italy.)

Park Improvement

Cont. From Page 1

softball leagues, etc. request and receive keys to the restrooms. "If they (the restrooms) were open 24 hours a day, we could not keep fixtures in them," said Marr. "Last year we had to replace commodes in them twice. I don't like to have to keep them closed, but if we tried to keep them open all the time, the city could not afford it."

He explained that the restrooms in the new city park have metal doors, and the doors are kept locked.

Chavez said, "We want good facilities. We want to know who's got the key, and where we can get one when we need it."

He also asked for more lighting at the park. The city manager said two new lights were installed at the east side city park last year.

Marr commented, "I'm extremely proud of this community, and want to be proud of all our facilities. We want the community to work with us. We need some responsible party to keep the key to the restrooms and be responsible for seeing that they are not vandalized."

In further discussion, it was agreed that portable restrooms would not be a long-term solution, and would not solve the problem.

City Manager Marr also said, "We have problems with both parks. When we have problems with abuse and vandalism, it is in both parks. The guys who clean and work on these facilities become frustrated. It has been reported, for instance, that they fix the basketball net, go back the next day and find it badly damaged, and become personally frustrated."

"We look at this as a positive move," said Mayor Turner. "We will take this information and try to start working on this."

The city manager said we'll certainly try to work to improve the park. "Any help we can have to stop the vandalism will have to come from people in the area who see property being destroyed and report it. Most of the time, we only have one police officer on duty at a time in Muleshoe. But, they will respond as quickly as possible to a call."

Chavez talked about encouraging the young people who live in the east part of town to donate a tree to the park, plant the tree and take care of it. He believes it would be a positive influence if they could take pride in something they took part in, and felt like they owned.

"On behalf of our commun-

ity," concluded Chavez, "we want to thank you for listening. Mostly, we want to help, in any way we can."

Another item of business for the city council was to approve re-submitting a proposal to the Texas Community Development Program Application to the Texas Department of Commerce for the Community Development Fund. If granted, the money would be used to pave streets in northwest Muleshoe -- in the area called "The Flats." The city manager explained that if approved, this would put paving no further than one block from any resident of that area.

Karen King, of Lubbock, a South Plains Association of Governments (SPAG) representative, was at the meeting.

On a motion by A. V. Wood, seconded by Abel Arguello, the city council unanimously gave approval to seeking the grant to pave more city streets.

It was decided to postpone the city budget workshop from Wednesday night to Wednesday evening, July 25.

Mayor Turner said he had received a telephone call from Nancy Kidd, manager of the Muleshoe Chamber of Commerce and Agriculture, inviting the mayor and all city council members to ride in the Mule Days Parade on August 11. The mayor encouraged the city councilmen to participate in the parade.

Banks...

Cont. From Page 1

this year. In Farwell, Security State Bank had deposits of \$47,265,789 at the end of June this year, an increase of \$1,205,068 over the \$46,060,721 on deposit for the same time last year. Loans showed an increase of \$254,809 during the past year. Loans were \$4,281,468 at the end of June 1990 and were \$4,026,659 closing out June 1989.

First Bank of Dimmitt, Earth Branch, showed a decrease of \$780,689 in deposits for the past year. Deposits were \$11,645,572 closing out June, 1990, and were \$12,426,261 at the end of June a year ago. At the same time, loans increased for the bank. Loans were \$5,925,012 on June 30, 1990, up \$1,067,409 from the \$4,857,603 reported at the end of June last year.

Friona State Bank showed hefty increases in both deposits and loans during the past year. Deposits were \$60,473,599 on June 30 of this year, an increase of \$2,025,599 over the \$58,448,000 reported at the end of June last year. Loans for the bank increased by nearly six and a half million during the past year. Loans were \$28,029,000 at the end of June last year, and increased by \$6,495,377 to \$34,524,377 at the end of June this year.

From Sudan, First National Bank reported deposits of \$9,925,531 at the end of June this year, a decrease of \$360,756 from the \$10,286,287 on deposit on June 30, 1989. Loans were up for the bank, however, for the same period. Loans were \$5,208,564, an increase of \$859,189 over the \$4,349,375 reported on loan on June 30 of last year.

Report Of Condition Muleshoe State Bank Member F.D.I.C.

STATE 035 (3-90)

LEGAL TITLE OF BANK		STATE BANK NO.	
Muleshoe State Bank Muleshoe, Texas 79347		1631-21	
CITY		FEDERAL RESERVE DISTRICT NO.	
Muleshoe	BAILEY	11 13 16793	
COUNTY	STATE	CLOSE OF BUSINESS DATE	
BAILEY	Texas	June 30, 1990	
ZIP CODE	Dollar Amounts in Thousands		
79347	June	30	1990
ASSETS			
1. Cash and balances due from depository institutions:			
a. Noninterest-bearing balances and currency and coin		1	627
b. Interest-bearing balances		-	0
2. Securities			
3. Federal funds sold & securities purchased under agreements to resell in domestic offices of the bank & of its Edge & Agreement subsidiaries, & in IBFs:			
a. Federal funds sold		4	750
b. Securities purchased under agreements to resell		-	0
4. Loans and lease financing receivables:			
a. Loans and leases, net of unearned income		19	278
b. LESS: Allowance for loan and lease losses		-	362
c. LESS: Allocated transfer risk reserve		-	0
d. Loans and leases, net of unearned income, allowance, and reserve (item 4.a minus 4.b and 4.c)		18	916
5. Assets held in trading accounts			
6. Premises and fixed assets (including capitalized leases)			
7. Other real estate owned			
8. Investments in unconsolidated subsidiaries and associated companies			
9. Customers' liability to this bank on acceptances outstanding			
10. Intangible assets			
11. Other assets			
12. a. Total assets (sum of items 1 through 11)			
		35	956
b. Loans deferred pursuant to 12 U.S.C. 1823 (j)			
		n/a	
c. Total assets and losses deferred pursuant to 12 U.S.C. 1823(j) (sum of items 12.a and 12.b)			
		35	956
LIABILITIES			
13. Deposits:			
a. In domestic offices		32	913
(1) Noninterest-bearing		4	717
(2) Interest-bearing		28	196
b. In foreign offices, Edge and Agreement subsidiaries, and IBFs			
(1) Noninterest-bearing			
(2) Interest-bearing			
14. Federal funds purchased and securities sold under agreements to repurchase in domestic offices of the bank & of its Edge & Agreement subsidiaries, & in IBFs:			
a. Federal funds purchased		-	0
b. Securities sold under agreements to repurchase		-	0
15. Demand notes issued to the U.S. Treasury			
16. Other borrowed money			
17. Mortgage indebtedness and obligations under capitalized leases			
18. Bank's liability on acceptances executed and outstanding			
19. Subordinated notes and debentures			
20. Other liabilities			
		394	
21. Total liabilities (sum of items 13 through 20)			
		33	504
22. Limited-life preferred stock and related surplus			
		-	0
EQUITY CAPITAL			
23. Perpetual preferred stock and related surplus (No. of shares outstanding)			
		50,000	
24. Common stock (No. of shares):			
a. Authorized		50,000	
b. Outstanding		1,000	
25. Surplus (exclude all surplus related to preferred stock)			
26. a. Undivided profits and capital reserves			
b. LESS: Net unrealized loss on marketable equity securities		1,000	
		481	
		29	
27. Cumulative foreign currency translation adjustments			
28. a. Total equity capital (sum of items 23 through 27)			
		2	452
b. Losses deferred pursuant to 12 U.S.C. 1823 (j)			
		n/a	
c. Total equity capital and losses deferred pursuant to 12 U.S.C. 1823 (j) (sum of items 28.a. & 28.b)			
		2	452
29. Total liabilities, limited-life preferred stock, equity capital, and losses deferred pursuant to 12 U.S.C. 1823 (j) (sum of items 21, 22, and 28.c)			
		35	956
MEMORANDA: Amounts outstanding as of Report Date:			
1. a. Standby letters of credit. Total			
1. a. Amount of Standby letters of credit in memo 1.a. conveyed to others through participations		5	
		-	0

NOTE: This report must be signed by an authorized officer(s) and attested by not less than three directors other than the officer(s) signing the report. I/We, the undersigned officer(s), do hereby declare that this Report of Condition has been prepared in conformance with official instructions and is true and correct to the best of my (our) knowledge and belief.

SIGNATURE OF OFFICER(S) AUTHORIZED TO SIGN REPORT: Kay Mardis, Cashier

NAME AND TITLE OF OFFICER(S) AUTHORIZED TO SIGN REPORT: Kay Mardis, Cashier

We, the undersigned directors, attest the correctness of this Report of Condition and declare that it has been examined by us and to the best of our knowledge and belief and has been prepared in conformance with official instructions and is true and correct.

SIGNATURE OF DIRECTOR: Margaret Hamilton

SIGNATURE OF DIRECTOR: [Signature]

(MAKE MARK FOR NOTARY'S SEAL) State of Texas, Notary Public, Margaret Hamilton, Exp. May 12, 1993

THE TOWN & COUNTRY DIFFERENCE



COME EXPERIENCE THE TOWN & COUNTRY DIFFERENCE

FOR ALL APPLICANTS

If... You're looking for a better job and career opportunities, you should be talking to us. We are 900 employees, 140 stores and growing.

We are hiring energetic, ambitious, career oriented personnel to join the Town & Country team. Our policy is to promote from within those individuals who are top performers. Over 90% of our District Managers began as cashiers or Store Managers with our company.

STORE MANAGERS - Starting at \$1300 - 1650 month
ASSISTANT MANAGERS - Starting at \$4.55 per hour
CASHIERS - Starting at \$4.00 per hour

We offer an excellent variety of benefits including health insurance, paid sick leave, paid vacations, retirement plan, and a stock purchase plan.

If you're an aggressive self starter with a retail or fast food management background, apply in person at TOWN & COUNTRY FOOD STORES #72 and #134.

DRUG TEST REQUIRED
AN EQUAL OPPORTUNITY EMPLOYER

THE TOWN & COUNTRY DIFFERENCE

Supreme Court Case Sparks Interest In Living Wills

The Supreme Court's recent landmark decision that life support, including food and water, cannot be denied a comatose patient without "clear and convincing evidence" that this is the patient's wish has prompted the Real Estate Center at Texas A&M University to include a "living will" in its publication Texas Wills.

Most states, including Texas, accept "living wills" as formal evidence of a desire not to be kept alive under certain circumstances.

"The Constitution guarantees a competent person the right to refuse medical treatment. This desire must be formally stated in a document such as a 'living will', and it must be done before incompetency," said attorney Judon Fambrough, author of Texas Wills.

The Supreme Court case involved Nancy Cruzan, who was left unable to speak, hear or move and unaware of actions around her following a 1983 automobile accident.

Cruzan's parents sought termination of her life-support system, arguing that she should be allowed to "die with dignity." Representatives of Missouri, where Cruzan is hospital-

ized, fought this request on grounds of the state's interest in the lives of its citizens.

In a 5-4 decision, the court ruled that the patient alone is qualified to make such a judgment. Therefore, the constitutionality of the Texas law

Nursing Home News

by: Joy Stancell

Thursday afternoon Winnie Berry and J.E. Embry came to play Skip Bo with the residents.

Sunday afternoon members of the New Covenant Church came for church services.

Beth, Claudine, Linda, Alice, Olive and Lula Maye came to shampoo and set the ladies hair. Dustie and Helen gave manicures.

Wednesday Mr. Finley came to go shopping for the residents. Barbara Blackman served juice and visited the residents and left a beautiful bouquet for us to enjoy. Glenda and Jonessa Jennings came for our weekly Sing-a-Long.

Guy Kendall's son, Terry, has been here visiting this week.

Ella Faubus was visited by her daughter, Johnnie, Wednesday.

Patsy Franklin was visited by Joline Franklin last week.

Bernice Amerson was visited by a relative from Jacksboro Tuesday.

Mamie Askew was visited by Virgie Lee Murphy of Hobbs, N.M. and Irene Splawn Wednesday.

Josie Flowers visited Margaret Beard Wednesday.

Allie Barbour was visited by her son, Pinkie Barbour, Wednesday.

Happy Birthday Cari Kidd July 19th. We love you.

Effie Smith is feeling better after a few days of being under the weather.

Lona Embry came Thursday afternoon and made and served the residents refreshments of pudding and cookies.

Mike Doyle lead us in an exciting game of Bible Treva Thursday morning.

that allows next of kin to withhold life-support devices could be challenged in future cases.

Cruzan reportedly told her parents and friends before her debilitating accident that she would not want to be kept alive if in a vegetative state. However, the court ruled this was not "clear and convincing evidence" because it was not formally documented.

"This case underscores the need for citizens of all ages to prepare a legally binding document to cover more topics than simply how an estate is to be divided upon one's death," Fambrough said. "Even under less dramatic circumstances than the Cruzan case, a 'living will' can prevent needless frustration and grief.

"For instance, the Texas Natural Death Act provides a form that when executed directs a physician to withhold or withdraw life-sustaining procedures in the event of terminal condition. This directive can be revoked, and it may assist loved ones who are helpless in this decision if these procedures become necessary."

Texas Wills contains a detached, fill-in-the-blank "living will" plus a completed example. The 57 page Texas Wills was written for Texans with small estates and explains

the preparation, provisions and execution of different wills recognized in Texas, the legal process of changing and probating wills and how to grant a durable power of attorney.

Texas Wills is available for \$5 in Texas and \$10 out of state from the Real Estate Center, Texas A&M University, College Station, Texas 77843-2115. Request publication N-449.

Have A Nice Day



Summer Clearance Shoe Sale Continues With Further Price Reductions!

Famous Name Brand Shoes Including Dress, Casual, Sandals & Tennis Shoes

These Prices Start Mon., July 23rd

NOW...

40% To 75% Savings WOMEN'S - MEN'S - CHILDREN'S

"The Largest Shoe Sale In Eastern New Mexico & West Texas"

Randy's Shoes & Dayhoff's Shoes

410 Main Downtown Clovis

403 Main Downtown Clovis

Report From Larry Combest

The U.S. House of Representatives today approved FY 1991 construction funding for the Plant Stress and Water Conservation Lab at Texas Tech University, according to Congressman Larry Combest (R-Texas). The \$600,000 funding for the research facility comes at a time of tight federal budget considerations. "This continued funding illustrates the Congress' endorsement of the outstanding work done by researchers at the Plant Stress Laboratory," said Combest. "Each year, these scientists add more to our knowledge of how plants can survive and thrive in cold and drought. Their important research literally places us at the forefront of agricultural research. Developing efficient planting methods and improved yields can also benefit cotton and sorghum crops in our area."

The Plant Stress and Water Conservation Lab passed a milestone with last year's approval of funding to begin planning the centralized laboratory on the Texas Tech University campus. The \$17 million complex is planned for a 50 acre site where researchers can bring together work now being done in several labs on campus.

Report Of Condition

First Bank

Member F.D.I.C.

Consolidated Report of Condition of First Bank of Muleshoe And Foreign and Domestic Subsidiaries, published in accordance with the Federal Reserve System, at the close of business June 29, 1990, published in accordance with a call made by the Federal Reserve Bank of this District pursuant to the provisions of the Federal Reserve Act.

LEGAL TITLE OF BANK	STATE BANK NO.		
First Bank of Muleshoe Box 565 Muleshoe, Texas 79347	2720-02		
CITY	FEDERAL RESERVE DISTRICT NO.		
Muleshoe	11 13 22965		
COUNTY	CLOSE OF BUSINESS DATE		
BAILEY	June 30, 1990		
STATE			
Texas			
ZIP CODE			
79347			
Dollar Amounts in Thousands			
ASSETS	Bill	Mill	Thou
1. Cash and balances due from depository institutions:			
a. Noninterest-bearing balances and currency and coin		3	023
b. Interest-bearing balances		None	
2. Securities		18	518
3. Federal funds sold & securities purchased under agreements to resell in domestic offices of the bank & of its Edge & Agreement subsidiaries, & in IBFs:			
a. Federal funds sold		3	400
b. Securities purchased under agreements to resell		None	
4. Loans and lease financing receivables:			
a. Loans and leases, net of unearned income		24	104
b. LESS: Allowance for loan and lease losses		None	
c. LESS: Allocated transfer risk reserve		None	
d. Loans and leases, net of unearned income, allowance, and reserve (item 4.a minus 4.b and 4.c)		23	753
5. Assets held in trading accounts			563
6. Premises and fixed assets (including capitalized leases)			395
7. Other real estate owned			74
8. Investments in unconsolidated subsidiaries and associated companies			None
9. Customers' liability to this bank on acceptances outstanding			None
10. Intangible assets			122
11. Other assets			1
12. a. Total assets (sum of items 1 through 11)			51
b. Loans deferred pursuant to 12 U.S.C. 1823 (j)			None
c. Total assets and losses deferred pursuant to 12 U.S.C. 1823 (j) (sum of items 12.a and 12.b)			51
LIABILITIES	Bill	Mill	Thou
13. Deposits:			
a. In domestic offices:			
(1) Noninterest-bearing		8	094
(2) Interest-bearing		38	665
b. In foreign offices, Edge and Agreement subsidiaries, and IBFs:			
(1) Noninterest-bearing		None	
(2) Interest-bearing		None	
14. Federal funds purchased and securities sold under agreements to repurchase in domestic offices of the bank & of its Edge & Agreement subsidiaries, & in IBFs:			
a. Federal funds purchased		None	
b. Securities sold under agreements to repurchase		None	
15. Demand notes issued to the U.S. Treasury			None
16. Other borrowed money			None
17. Mortgage indebtedness and obligations under capitalized leases			None
18. Bank's liability on acceptances executed and outstanding			None
19. Subordinated notes and debentures			465
20. Other liabilities			47
21. Total liabilities (sum of items 13 through 20)			47
22. Limited-life preferred stock and related surplus			None
EQUITY CAPITAL	Bill	Mill	Thou
23. Perpetual preferred stock and related surplus (No. of shares outstanding)			None
24. Common stock (No. of shares:			
a. Authorized			50,000
b. Outstanding			50,000
25. Surplus (exclude all surplus related to preferred stock)			2
26. a. Undivided profits and capital reserves			1
b. LESS: Net unrealized loss on marketable equity securities			None
27. Cumulative foreign currency translation adjustments			4
28. a. Total equity capital (sum of items 23 through 27)			4
b. Losses deferred pursuant to 12 U.S.C. 1823 (j)			None
c. Total equity capital and losses deferred pursuant to 12 U.S.C. 1823 (j) (sum of items 28.a. & 28.b.)			4
29. Total liabilities, limited-life preferred stock, equity capital, and losses deferred pursuant to 12 U.S.C. 1823 (j) (sum of items 21, 22, and 28.c.)			51
MEMORANDA: Amounts outstanding as of Report Date:			
1. a. Standby letters of credit: Total			215
b. Amount of Standby letters of credit in memo 1.a. conveyed to others through participations			None
NOTE: This report must be signed by an authorized officer(s) and attested by not less than three directors other than the officer(s) signing the report.			

I, Phil Kent of the above-named bank do hereby declare that this Report of Condition has been prepared in conformance with the instructions issued by the Board of Governors of the Federal Reserve System and is true to the best of my knowledge and belief.

Phil Kent
Signature of officer authorized to sign report

We, the undersigned directors, attest to the correctness of this Report of Condition and declare that it has been examined by us and to the best of our knowledge and belief has been prepared in conformance with the instructions issued by the Board of Governors of the Federal Reserve System and is true and correct.

David J. ...
Director
James ...
Director
Clayton ...
Director

mid Summer SORCHERS

July Clearance Sale

10 to 40% off

All Pesticides, Fertilizers, Trees, Shrubs, Flowers, & Pottery

Kristy's Plants

710 E. Amer. Blvd.
272-5536

Letter To The Editor

DELBERT BRATCHER
3909 MONTEGO APT D
CORPUS CHRISTI, TEXAS
78415
(512) 854-6743

EDITOR
BAILEY COUNTY JOURNAL
BOX 449
MULESHOE, TEXAS 79347

Sir:
It was with great pleasure to receive the news that the Medal Of Honor was restored to Billy Dixon and to Amos Chapman. These men served with distinction as Army Scouts during the Indian Wars in the latter part of the 19th Century. Both men earned the MOH in what became known as the Buffalo Wallow Fight.

I like to feel that my letter writing campaign had something to do with the MOH restoration.

The Congress of the United States is to be commended for their action.

Now it is time to honor these brave men with a commemorative stamp.

I call on the Congress of The United States to support me and to ask the citizens of Oklahoma, Kansas and Texas to support me in this endeavor.

Respectfully
Delbert Bratcher
3909 Montego Apt D
Corpus Christi, Texas
(505) 845-6743

To The Muleshoe Journal:

The following words in type-written form I wish to be printed in the dear hometown paper. To the many people who helped plan and execute such a homecoming of over 600 Alumni deserve a big thank you!

Bonnie (Brooks) Dunnahoo
7617 American Heritage N.E.
Albuquerque, N.M. 87109

The Muleshoe High School reunion of 1990 is over, but the wonderful memories and thoughts remain with each one who participated. The week-end could not have been more enjoyable as a fun time was had by all.

We truly missed those who could not attend because of distance, sickness and death. Our thoughts and words were of them also.

A sincere thank you with great appreciation goes to each per-

son who planned and made possible this memorable and unforgettable time.

Bonnie (Brooks) Dunnahoo
Class of 1945

16 July 1990

Dear Ex-Student Association,

I want to thank you for all the work you did to have the Muleshoe High school reunion July 7th.

It was so well planned; things went so smooth. The visiting was wonderful and exciting. The food was delicious. I loved staying at the attractive Heritage Inn.

I especially appreciate Ruby Hart encouraging me to come.

I shared with some of my friends in Dallas about going to my 54th high school reunion in Muleshoe. One friend from Australia said, "Oh, Muleshoe that sounds so Texan."

Thanks again.
Crystal Kennedy Elliott
Class of 1936.

July 19, 1990

Letters to the Editor
Muleshoe Journal
304 West 2nd.
Muleshoe, TX 79347

Gentlemen:

Coming back to Muleshoe to the High School Alumni Reunion on July 7, was such a wonderful time for me! We saw many we had not seen for so many years and everyone was squinting to see the name tags for fear they would miss someone!

I thought this would be a good way to express my appreciation for the many hours spent upon the arrangements and getting everyone together.

I am very interested in learning the whereabouts of Doris Gatlin and Barbara Klutts, both of the class of 1948. If any of the readers know, please contact me at P. O. Box 261, Clyde, Texas 79510.

I thank the Good Lord for small towns like Muleshoe!

Sincerely,
Roxie Hoover Thomasson
Class of 1949

Modern Art
Economy is the art of spending money without getting any fun out of it.
-Daily News, Russell Kan.

Infallible Sign
We shall not expect the millennium until we see a bronze statue honoring a man who merely attended to his own business.
-Journal, Akron, Ohio.

News From Jim Hightower's Office

"We're opening the door today not just to this expanded plant, but to a new \$29 million agricultural industry in Texas," Agriculture Commissioner Jim Hightower said today. We're seeing the future of the multi-million dollar pinto bean industry, and the future is here.

"TDA projects that in 1990 the total economic impact of the Texas pinto bean industry will be \$29 million, with farm sales of \$19.7 million, processing income of \$4.6 million and increased retail sales of \$4.7 million."

Hightower made the comments as he participated in the ribbon cutting for the expansion of the Carter Processing Facility in Sunray, north of Amarillo, to include pinto bean processing. Hightower also released a new TDA marketing report projecting the growth potential for the pinto bean industry in Texas.

"Beans and chili, bean burritos, barbecue and beans--there's almost nothing we Texans won't put with frijoles. Texans eat an estimated 100-150 million pounds of these versatile beans each year, yet we produce less than 10 percent of what we consume. And virtually

Patients in Muleshoe Area Medical Center

JULY 14 19

SATURDAY
Jason Briscoe, Felicita Lopez, Mary Lou Garcia, Fred Mapes, R.A. Bradley, Henry Vandiver, Oscar Castillo, Jr. and Elton Gulley

SUNDAY
Felicita Lopez, Mary Lou Garcia, Fred Mapes, R.A. Bradley, Henry Vandiver, Oscar Castillo, Jr. and Warren Gulley

MONDAY
Felicita Lopez, Mary Lou Garcia, Diana Welch, Juanita Pena, Oscar Castillo, Jr., Warren Gulley and Dora Toscano

TUESDAY
Tiffany Bond, Felicita Lopez, Virginia Estrada, Diana Welch, Juanita Pena, Oscar Castillo, Jr. and Warren Gulley

WEDNESDAY
Felicita Lopez, Virginia Estrada, Diane Welch, and Elton Gulley

all of the processing of pinto beans is done out-of-state before being shipped back to Texas," Hightower said.

"In the past few years, however, Texas farmers have jumped on the 'bean wagon.' Production has soared from less than 1,000 acres in 1980 to an estimated 8,000 acres in 1989. TDA projects an expansion to 40,000 acres by the year 2000.

But these growers have had to send their beans to out-of-state processors, which means they've had to take a \$1.00 per hundredweight loss on their price to pay for transportation costs. Not only are farmers losing money, but so is the local economy.

"That's why the Texas Department of Agriculture has been proud to lend a hand to innovative entrepreneurs like Morris Carter here in Sunray and Billy Borchardt of Tulia in helping diversify their seed processing operations to handle pinto beans. This kind of grassroots enterprise will not only put new cash money into their pockets, but local farmers have indicated that they will receive a \$0.50 to \$1.00 per 100 pounds premium above market prices because their freight costs will be virtually eliminated," Hightower said.

This year, Carter plans to process about 10 million pounds of Texas pintos supplied by 25 growers from Moore, Sherman, Dallam, and Hartley counties. The facility has the capacity to process between 30 to 40 million pounds of beans each year, so it is well positioned for the expansion foreseen in the years ahead. TDA estimates that the expansion will create 25 jobs in the Sunray area.

Four new processing facilities have opened by this year, creating a total of 54 jobs. These plants will use the production of 100 Panhandle farmers by the end of 1990, processing up to 16 million pounds of pinto beans.

TDA has been involved in developing a pinto bean industry in Texas since 1985, when the TDA Agricultural Development staff conducted an in-depth study of the potential of producing and processing

pinto beans in Texas. The study concluded that the Panhandle region could be best suited for production, although pinto beans can be grown as far south as Waco and as far west as El Paso. Since that study, TDA has assisted several farmers in locating a market for their beans with Fleming Foods in San Antonio and in helping promote new processing facilities.

TDA marketing specialist Richard Salmon has been working with Morris Carter since 1988, preparing financing packages for his expansion plans and helping locate potential sources of loans.

"Pinto bean production offers several benefits for Texas farmers," Hightower said. "They provide a second cash crop that can be planted after wheat; they provide a means to recover losses from hail damage to other crops; they need little new equipment; and, as legumes, they improve soil conditions in crop rotation programs.

"Planting and processing pinto beans is the kind of down-to-earth, grunt-level, here-and-now profitable enterprise that Texans themselves can plant and grow throughout the state. Added together, these small and medium-sized agricultural ventures will help create the new income and the new jobs that the Texas economy must have tomorrow if we are to grow out of the economic doldrums of today. The projects in which we have been involved since 1983 have created nearly 2,800 new jobs, added more

than \$110 million in new sales to the state's economy, and generated lasting grassroots economic growth throughout the state," Hightower said.

Suggestions Sought For Pleasure Drivers

Where would you take visitors to show off the scenic, historical and recreational features of the Panhandle plains?

That's the question the highway department is asking Texans who live in the state's Panhandle section, as part of a new national tourism plan to encourage pleasure driving.

On Wednesday, July 25, in Amarillo, the highway department will seek public input about potential pleasure-driving routes in the wide area. The meeting, one of 10 such sessions in different regions of the state through July, will convene at the First National Bank's auditorium at Eighth and Taylor Sts. at 9 a.m.

Don Clark, director of the highway department's Travel and Information Division, explained that pleasure drives can include elements of scenery, recreation, and history. "Other states will be charting their own leisure drives as part of a tourism plan filtering down from Congress and the Federal Highway Administration. We need grass-roots ideas for Texas Routes," he said.

Tourism authorities and interested citizens are invited to attend the free, informal public forum July 25.

ATTENTION COTTON FARMERS!

For Precise Economical Application Of Pix With A Ground Sprayer

Call:

Hall Bros. Spraying, Inc.

946-3375 or 946-3422

CONOCO

SAE 15W/40
FLEET HEAVY DUTY
10 TBN MOTOR OIL

MULTIPURPOSE PREMIUM PROTECTION
FOR GASOLINE & DIESEL ENGINES

Conoco Multipurpose lubricants help you reduce your inventory and the risk of misapplication.

SAE 15W/40

Fleet Heavy Duty 10 TBN Motor Oil **2.59** Gallon

12.95 5 Gal. Pail **142.45** 55 Gal. Drum

SAE 30W
Fleet Heavy Duty 10 TBN Motor Oil **2.49** Gallon

12.45 5 Gal. Pail **136.95** 55 Gal. Drum

• BULK LUBRICANTS • DIESEL FUEL

CONOCO

HOTTEST BRAND GOING*

• TECHNICAL ASSISTANCE • GASOLINE

CONFUSED ABOUT HYDRAULIC OILS?



Why gamble with off brands, unknowns, and reruns, when you can buy Conoco Super Hydraulic oils for less \$?

These universal oils are excellent for systems with pumps of all types. They meet the most rigid specifications. Available in the popular ISO viscosity 32, 46, and 68.

CONOCO SUPER HYDRAULIC OIL

1.99 Gallon

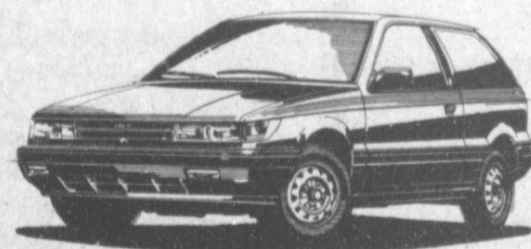
109.45 55 Gal. Drum **9.95** 5 Gal. Pail

Morrison
Oil Company

P. O. BOX 750 MULESHOE, TEXAS

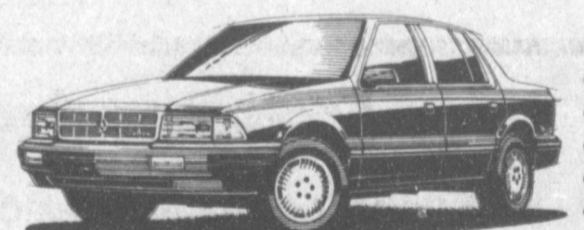
272-4688

FACTORY AUTHORIZED CLEARANCE



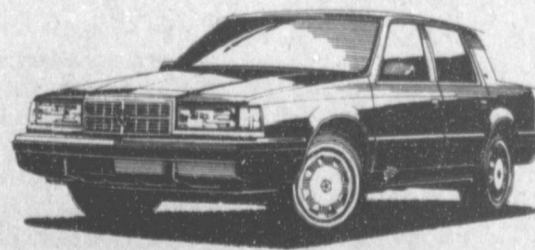
UP TO \$1000 CASH BACK!

Dodge Colt offers aerodynamic styling, room for five, and the convenience of a hatchback for all your gear. Now get \$750 cash back, \$1000 on Colt GL & GT, and a low clearance price.



\$750 CASH BACK!

Dodge Spirit is a sedan with plenty of performance, plenty of room for the family, and plenty of value too. Get \$750 cash back now. Don't miss your chance to save!



\$1000 CASH BACK!

Dodge Dynasty is the luxury sedan you can afford to drive. It combines comfort, convenience and style. Plus, you'll enjoy a low clearance price and \$1000 cash back too.



\$2000 CASH BACK!

Dodge D150 full-size pickups are tough to beat. With the highest pickup cash back around - \$2000! \$1500 on Club Cab. \$1000 on diesel models. Save big now, before it's too late!

HURRY! TIME TO MOVE ON BIG CASH BACK AND LOW CLEARANCE PRICES.

The '91's are coming soon, so now's the time to move! We're clearing out our inventory to make room. Now you can save big on a full lineup with low clearance prices. And big cash back on most models, too.

*Must buy from stock.
BUCKLE UP...AND PLEASE DRIVE SAFELY.

Advantage:
Dodge.



Muleshoe Motor Co.

1225 W. Amer. Blvd.

272-4251

Sudan News
by Ann Gaston

The Methodist Hospital School of Nursing Alumnae Association is seeking graduates' current addresses to mail invitations to the group's annual breakfast.

The breakfast, which is open to all alumnae, will take place July 21 in the hospital's Brewer Assembly Room.

For more information, contact the school at 797-0955.

Mr. and Mrs. Acie Daniel recently visited with their daughter and granddaughters. They flew into Boston and went to their daughters' home in West N.Y. Her name is Darlene Hill. While at Darlene's home, she attended Chisholm of Merrick, New Hampshire and Sue Vandover of Syracuse, N.Y., their granddaughters, came to visit.

Recently visiting in the home of Dot and Olin Nix, was Camilla Young of Lansdale, Pa.

Dot Nix and her friend Camilla Young of Pennsylvania attended the 6th Golden Tornado Jubilee in Lamesa. Dot and Camilla both were graduates from Lamesa High School. 2200 people registered on Friday and Saturday combined. An estimated 5,000 people attended the Jubilee.

Visiting in the home of Dyke and Ann Gaston Kade and Kady, were Dyke's sister Paige Butler, Meghan and Pace of Austin.

Greg and Jeannia Dykman of Mesquite returned home after visiting with her parents and sister Mike and Shawni Nix and Melissa.

Visiting in the home of Francis Gardner this past week, were Vicki Bowery, Shasta, Samantha, and Waylon of McAllan, and Courtney and Chad Turner of Enice, N.M.

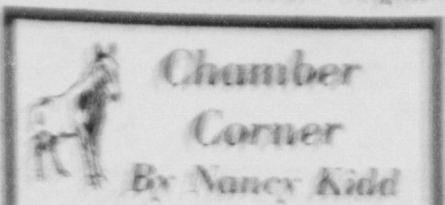
Rick and Pam Humphreys and Clint have been in Ruidoso for a few days and Mindy was at Church Camp at Ceta Canyon.

Recent visitors of Mike and Shawni Nix and Melissa, were Cliff and Janet Watson and Seth of Longview. They also visited with Cliff's parents W.T. and Pat Watson of Muleshoe.

Visiting in the home of Ves and Grace Patterson this past week was their daughter Freda Hayes of Austin and their granddaughter Tracey Moore and great-grandson Nathan Moore both of Lampassas, Tx.

Recent visitors of Mike and Shawni Nix, were Mack Reeves and Janet Smith of Tucson, Arizona. Mack is Mike's brother and he and Janet both work on the show "Young Riders". Last season, Mack did some acting and stunt work and will be working this next season which starts the 18th, behind the camera and also will be doing the lighting for the set.

Janet is the Script Supervisor and works closely with the actors and the director in maintaining continuity while filming. Before working on Young Riders, Janet worked for Moonlighting with Bruce Willis and Cybil Sheppard; Capital



Chamber Corner
By Nancy Kidd

WHAT: Community Committee Meeting

WHERE: Muleshoe State Bank Meeting Room

WHEN: Monday, July 23rd

TIME: 7:00 p.m.

REASON: Everyone involved in the July 4th activities, please, be there! We need to assess the day and get on with our upcoming Mule Days activities. People say, "well, it can't be what July 4th was," but isn't that not having expectations?

It will be a completely different day, but it will be a good one. The reason the 4th was a success, everyone who had a part did it and some did two. So, I expect the same for Mule Days! This meeting will determine the future of future Mule Days!

Larry Milner, president of Texas Chamber of Commerce, will be in Muleshoe on Tuesday July 24th from 2-4 p.m. at the Muleshoe State Bank meeting room. Mr. Milner will be here to listen to what you have to say, to give suggestions, and to answer questions. He has been around in the industrial world a few years. Your interest and involvement in the meeting will help with feed-back to your local Chamber of Commerce.

The E&B Fun Time Rides Carnival will be in Muleshoe August 14-18. This event comes to Muleshoe every year. So, it is 'fun time again.'

Don't forget the County Fair September 6, 7 and 8. Start getting all that 'stuff' together that goes into making a Fair a success. This is another event that takes cooperation from all to be a success. So, we'll see you there!!

QUOTE
The value of all human endeavor must be graded on this:
Is it good for the children?
Does it build people into better human beings?

News with Lloyd Bridges, and Amen with Sherman Hemsley. Mack and Janet met and fell in love on the set of Young Riders and if things work out, they would like to be married sometime in the future.

Hazel Gaston was admitted to the Lamb HealthCare Hospital in Littlefield this past week.

Arlene Grigsby is home and feeling better.

Clovis Birdwell is in Methodist after having surgery last week.

Harold Haynie is home and improving daily.

Homer McLarty is in Methodist Hospital after breaking his leg.

Julie Moore an employee of Sudan Livestock and Feeders, and her three daughters were involved in a car accident on Sunday in Portales, N.M. Julie suffered broken bones and 12 year old, Valerie suffered internal injuries and both were taken to the hospital in Portales. Ashley who is eight was released and stayed with friends in Portales. Ten year old Tiffany suffered massive facial injuries and head injuries from hitting the windshield. She was transported to Methodist Hospital in Lubbock. Julie and Valerie were transferred to Methodist

Tuesday to be with Tiffany who underwent reconstructive surgery Wednesday. She will be in surgical ICU there at Methodist. Julie is the daughter of Dr. Klein in Littlefield.

Three Way News
by Mrs. H.W. Garvin

Mr. and Mrs. Bill Key left Thursday, June 7, they visited his sister, Mr. and Mrs. J.P. Meek at Canadian, also a nephew, Mr. and Mrs. Mack Side and enjoyed home made ice cream. Early Sunday morning they left for Ft. Smith, Ark. and visited Mr. and Mrs. Smitty Smith and spent three nights with them and visited other friends there. Then drove to Cecil, AK and visited Bill's cousin, Mr. and Mrs. James King. It had rained there, was pretty and green there. Left Ft. Smith Thursday, June 14 and drove through Texarkana to Mr. Vernon where they visited Mr. and Mrs. R.M. Walker spent two nights with them both couples drove to Sulphur Springs and they parried there and the Keys' drove on to Weatherford where they visited his sisters, Mr. and Mrs. Hubert Gammons and Mrs. Mildred Butler. Mildred came home with them Sunday, June 17 to visit Mr. and Mrs. Robert Butler and Mr. and Mrs. Homer Howard in Littlefield.

Medication Aide Class Scheduled At SPC

A short course for medication aides is scheduled Aug. 4 at South Plains College.

The course is designed for medication aides currently employed in nursing homes who need seven hours of continuing

education as required by the Texas Department of Health, according to Don Harbrough, dean of continuing education at SPC. The course will meet 8 a.m.-4 p.m. in the SPC Technical Arts Building, Room 101.

Instructor is Martha Haynes, R.N., and cost is \$80 a person.

For more information, contact the SPC Division of Continuing Education at 896-8611, ext. 341.

THE RANGHER THE FARMER

UNIVERSAL POL-A-LIN

- Builds Cash Value
- Designed By Farmers and Ranchers

Sponsored By: Texas Wheat Producers Association

OWN YOUR HEALTH INSURANCE. DON'T JUST RENT IT!

Gain Control of Runaway Health Premium Costs!

For Rates Call Kenny Kirell 272-5946

Member of The American Life Insurance Company, Dallas, Texas

INSURANCE

PHILLIPS 66

For grand slam performance, choose...

PHILLIPS 66

SUPERCLEAN PREMIUM UNLEADED

AVAILABLE NOW!

At Our FUELCARD Station At 715 W. Amer. Blvd.
or Call 272-4556 for Farm Delivery

Western "66" Company

Earth Hwy Muleshoe 272-4556

- Reward -

For information leading to the recovery of my 1990 Suburban stolen at "Sugars" in Austin.

Not very old, but has high milage.

Contents that might be inside are:

1. My entire gun collection
2. 10 maps of states & countries I have not visited yet.
3. 14 empty purple sacks with gold strings
4. One Red plastic Ark Razorback Hog Hat.

I have a part-time job and need this for traveling.

Contact
Paul Wilbanks
Muleshoe, Tx.

Courthouse News

MARRIAGE LICENSE

Joe Francisco Reyes, Muleshoe and Charlene Andrea Morris, Muleshoe.

Gary Lewis Mitchell, Muleshoe and Holly Ann Hughes, Donna, Tx.

WARRANTY DEEDS

Wilma F. Roberts to Edwin L. Bottelman. (SW'ly 2') of Lot 3, and the (NE'ly 63') of Lot 4 in Block 2, Muleshoe Park Addition, to the town of Muleshoe, Bailey County, Tx.

Maurine B. Routon to Frank Guzman and wife Guadalupe Guzman. (NE'ly 1') of Lot 13, and all of Lot 14, in Block 3, Pool Addition to Muleshoe, Bailey County, Texas.

Elmer R. Scarbrough and wife Barbara Scarbrough to Gary Dale Pope. A one acre tract of land out of a 30 acre tract of Section 32, Block Y, W.D., and F.W. Johnson Subdivision Num.

Adeline Zimmerman to Ramon Mendoza. A tract of land in Warren Acreage, Tract 8, to the city of Muleshoe, Bailey County, Texas.

The Federal Loan Home Mortgage to James R. Murphree and wife Rhonda L. Murphree. A 0.466 acre tract of land out of a 2.5 acre tract of Section 53, Block Y, W.D. & F.W. Johnson Subdivision No. 2, Bailey County, Texas.

Elouise Vaughn

Funeral Services

Held Saturday

Funeral services for Elouise "Toby" Vaughn, 70, of Earth were held at 2 p.m. Saturday, July 21 in the Earth First Baptist Church with the Rev. Joe Vernon, pastor, officiating.

Burial was in Earth Memorial Cemetery under the direction of Parsons-Ellis Funeral Home. Mrs. Vaughn died at 12 p.m. Wednesday, July 18 in the Methodist Hospital at Lubbock.

Born July 10, 1920, in Vinson, Okla., she has been a resident of Earth since 1975, moving there from Hacenda Heights, Calif. She was a homemaker, a member of the Earth First Baptist Church, Earth Eastern Star, and served as Past Matron of Lodge 870. She married S.E. Vaughn on Dec. 23, 1938, in Clovis, N.M.

Survivors include her husband, S.E. Vaughn; two sons, Freddy Vaughn of Modesto, Calif. and Jimmy Vaughn of Fort Worth; a daughter, Deanna Sali of Big Rapids, Michigan; a sister, Leona Miller of Erick, Okla.; a brother, Doug Shelby of Oak Ridge, Tenn.; five grandchildren; and five great grandchildren.

Preston Coomer

Former Muleshoe

Resident Dies

Funeral services for Preston H. Coomer, 69, of Idalou were held at 2 p.m. Thursday, July 19 in White Funeral Home chapel with the Rev. Jim Green, retired Baptist minister, officiating.

Burial was in Idalou Cemetery under the direction of White Funeral Home. Coomer died at 3:30 a.m. Tuesday in the Methodist Hospital at Lubbock following a brief illness.

Born in Hamilton County, he attended school in Gustine. He married Helen Franks on Feb. 3, 1946, in Lamesa. They moved to Idalou in 1972, from Muleshoe. He was a veteran of World War II, serving in the Army. He was a member of Veterans of Foreign Wars in Lubbock, a Methodist, and owned and operated Triple C. Sanitation Co. He was involved with Texas Boys Ranch.

Survivors include his wife, Helen; a daughter, Carolyn Knox of Warroad, Minn.; two sons, Ronald of Idalou and Wayne of Graham; two sisters, Lennie Hall of Midland and Merle Carruth of Andrews; two brothers, Elmer of Midland and Olen of Andrews; five grandchildren; and a great grandchild.

The family suggests memorials to Texas Boys Ranch.

Chester Yerby and wife Elinor Yerby to Larry G. Combs and wife Berta D. Combs. Lot 4, Lot 5, and Lot 6, Block No. 3, Lakeside Add. #1 to the city of Muleshoe, Bailey County, Tx.

Albert Hughes Dupler and wife Beatrice Dupler to Leon Wencil Dupler and Associates. (SE/4) of Sect. 21, League 144, Hansford County School Land in Bailey and Cochran Counties, Texas.

H.J. Leal and wife Erma S. Leal to Fernando Fernandez and wife Gloria Fernandez. All of Lots 9, 10, 11, and 12, Block 38, Original Town of Muleshoe, Bailey County, Texas.

CIVIL COURT

Victor Cesar Lopez- DWI, 30 days jail, \$300 fine, 1 yr. prob.

Gerardo Sandoval-Not Guilty Judgement.

Luis Davila Daniel- Motion to

Dismiss
Rene Daniel Sandoval- Motion to Dismiss
Christopher L. Garza- Motion to Dismiss

Fase and speed in doing a thing do not give the work lasting solidity or exactness of beauty.

-Plutarch.

Sudan News

By Ann Gaston

Clovis Bridwell is in Methodist Hospital after having heart surgery.

Arlene Grigsby is still at home.

Wanted:
Host Families!

Host a Foreign Exchange
High School Student

I.E.F., a non-profit organization, has a number of teenage English-speaking students from Europe and Asia (German, Spanish, Japanese and ten other nationalities) who will be arriving in the U.S. this August. Each one is looking forward to living with an American family for 3, 5, or 10 months. YOU could be one of these families! Learn another culture and share yours.

You have been thinking about it, do it now!

Call your Community Coordinator:
Johanna Wrinkle
272-3673

OR 1-800-255-8339
INTERNATIONAL EDUCATION FORUM
P.O. Box 507
San Ramon, CA 94583

Harold Hayne is in the Veterans Hospital in Amarillo and doing fine.

1990 Crop		1990	
Pool Cash	Advance	Flat	Contract Basis
Feed Corn.....	Mkt.....	4.51,-0.07	No Bid.....
White Cobb Yellow.....	4.50.....	5.00,0.21	No Bid.....
Red Cobb Yellow.....	4.00.....	4.65,0.01	No Bid.....
White Food Corn.....	5.00.....	6.00,0.77	No Bid.....
Milo.....	Mkt.....	3.92,-0.40	No Bid.....
Soybeans.....	No Pool.	5.14,-0.77	-0.95.....
Wheat.....	No Pool.	2.76,-0.21	KC Sept.

103 1/2 %
Prices effective July 20, 1990

Farmer's Co-Op Elevators

272-4335

Immaculate Conception Catholic Church

Father Patrick Maher
Northeast of City

First Baptist Church

220 West Ave. E.
Barry Bradley, Pastor

Emmanuel Baptist Church

Iglesia Bautista Emmanuel
107 East Third

Isaias Cardenas, Pastor

Trinity Baptist Church

314 E. Ave. B.
Rev. Dale Berry

Circle Back Baptist Church

Intersection FM 3397 &
FM 298

Pastor, Glen Price
946-3676

Calvary Baptist Church

1733 W. Ave. C.
Rev. Rick Michael

Victory Baptist Church

605 West 8th
James Williams, Pastor

Progress Baptist Church

Charles Fisk, Pastor
Progress, Texas

Richland Hills Baptist Church

17th and West Ave. D.
Allen Petersen, Pastor

St. Matthews Baptist Church

Corner of West Boston
& West Birch

M.S. Brown, Pastor

Progress Second Baptist Church

1st and 3rd Sunday
Rev. Arthur Hayes

Primitive Baptist Church

621 South First
Elder Cleveland Bass, Pastor

1st Baptist Church

Lazbuddie, Tx.
Gary Wilcox, Pastor
965-2126

Plenty of ROOM!

Have you ever, when on a vacation, in the peak of the tourist season, looked and looked along the highway for a roadside park with an empty table so that your family could have a picnic lunch and rest? Then, of course, all might travel refreshed. How nice it is to come upon a park like this one, with the breeze blowing across the water.

Isn't it wonderful that there is always plenty of room at the House of God? There is always a church where you can receive spiritual food, and sweet rest of the soul. The church holds out its arms in welcome to all, inviting everyone to come and learn of God. Won't you attend this week?

"Come unto me, all ye that labour and are heavy laden, and I will give you rest." Matthew 11:28.

Coleman Adv. Ser.

EVERYONE IN THE CHURCH
THE CHURCH IN EVERYONE

The Church is God's appointed agency in this world for spreading the knowledge of His love for man and of His demand for man to respond to that love by loving his neighbor. Without this grounding in the love of God, no government or society or way of life will long persevere and the freedoms which we hold so dear will inevitably perish. Therefore, even from a selfish point of view, one should support the Church for the sake of the welfare of himself and his family. Beyond that, however, every person should uphold and participate in the Church because it tells the truth about man's life, death and destiny; the truth which alone will set him free to live as a child of God.

Primera Iglesia Bautista

223 E. Ave. B.
Roy Martinez, Pastor

Lariat Church Of Christ

Sunday School 10:00 a.m.
Worship 11:00 & 6:00 p.m.
Wednesday Services 7:00 p.m.
Sam Billingsley, Minister

Muleshoe Church Of Christ

Clovis Hwy
Bret McCasland, Minister

16th & Ave. D. Church Of Christ

Sunday 10:30 a.m.
Evening 6:00 p.m.
Wednesday 8:00 p.m.
Curtis Shelburne, Minister

Lazbuddie Church Of Christ

Minister, Keith Courmier
Sunday School 9:30 a.m.
Morning Services 10:00 a.m.
Evening Services 6:00 p.m.
Wednesday Night 7:00 p.m.

First Assembly Of God

Rev. G. Dean Reid, Pastor
Sunday School 9:45 a.m.
Morning Worship 11:00 a.m.
Evening Services 6:30 p.m.
Mid-Week Services 7:30 p.m.
272-3984

Spanish Assembly Of God

East 6th and Ave. F.
Mike Doyle, Pastor

First United Methodist Church

507 W. 2nd Street
Richard Edwards, Pastor

El Divino Salvador Methodist Church

5th and Ave. D.
Jose M. Fernandez, Pastor

United Pentacostal Lighthouse Church

207 East Ave. G.
Rev. N.W. Thompson
272-3258

Truth Tabernacle Pentecostal Church

200 E. Ithaca & Fir
Pastor, Les James
272-3391

The Community Church

Morton Hwy
Mort Cross, Pastor
272-5992

St. John Luthern

Sunday School and Bible
Classes 9:30 a.m.
Church Services 10:30 a.m.
Rev. Mac Bearss, Pastor

Lazbuddie Methodist Church

965-2121
Doug Chapman, Pastor

New Covenant Church

Plainview Hwy
Sunday 10:00 a.m.
Wednesday 7:00 p.m.
Jimmy Lowe, Pastor

Jehovah Witness

Friona Hwy
Jack Tiffin, Minister
Warren Meeks, Minister

Templo Calvario

507 South Main
Sunday 10:00 a.m.
Sunday Evening 7:00 p.m.
Evangelistic Services
J.L. Soto, Pastor

Church Of The Nazarene

9th and Ave. C.
Dennis Hayes, Pastor

Western Drug		Attend The Church Of Your Choice!		Dairy Queen	
114 Main	272-3106			1204 W. Amer. Blvd.	272-3410
Sparkle Cleaners		W. T. Services, Inc.		American Valley, Inc.	
114 E. Ave. C.	272-3570	319 E. Amer. Blvd.	272-4888	W. Hwy 84	272-4266
Fry & Cox, Inc.		Bob Stovall Printing		James Roy Meat Market	
401 S. First	272-4511	221 E. Ave. B.	272-3373	506 W. Amer. Blvd.	272-4361
Main Street Beauty Salon		1st Bank		Bratcher Motor Supply	
115 Main	272-3448	202 South First	272-4519	107 E. Ave. B.	272-4288
Irrigation Pumps & Power		Farmer's Co-Op Elevators		Wes-Tex Futures, Inc.	
W. Hwy 84	272-4483	Muleshoe	272-4335	1910 W. Amer. Blvd.	272-5585
				Richland Hills Texaco	
				1914 W. Ave. B.	272-4875
				Lookin' Good	
				206 Main	272-5052
				5-Area Telephone Co-Op	
				302 Uvalde	272-5533
				Robert D. Green, Inc.	
				2400 W. Amer. Blvd.	272-4588

CLASSIFIEDS 272-4536

CLASSIFIED RATES

15 Words & Under
Minimum Charge
\$2.30
Thereafter
\$2.00
16 Words & Over
1st Insertion
15 cents per word
2nd Insertion
13 cents per word

CLASSIFIED
DISPLAY RATES
\$1.75
Per Column Inch

DEADLINES
12 noon Tues.
For Thursday Paper
12 noon Friday
For Sunday Paper

To receive the re-
duce rate after the
first insertion ad
must run continuous-
ly.

We reserve the right
to classify, revise, or
reject any ad. We are
not responsible for
any error after ad
has run once.

1. Personals

CONCERNED
About Someone's
Drinking?
HELP IS
AVAILABLE
through Al-Anon
CALL 272-2350 or
965-2870 or come to
visit Tuesday nights,
8:00 p.m. or Saturday
mornings at 10:30 a.m.
and through AA call
965-2870 or come visit
Tuesday nights, 8:00
at 620 W. Second,
Muleshoe.

3. Help Wanted.

ADDRESSERS wanted
immediately! No ex-
perience necessary.
Excellent pay/ *Work*
at home. Call toll-
free: 1-800-395-3283.
A3-29t-8tc

SALESMAN
NEEDED:
Experience preferred
but will train. Appli-
cations can be picked
up at 1302 W. Amer.
Blvd. No phone calls.
A3-29t-tfc

WANTED: Experi-
enced machinist and
gearhead man. Call
(806) 238-1596 days or
238-1328 nights-after
9 p.m.
B3-25s-tfc

ATTENTION: Postal
Jobs! Start \$11.41/
hour! For application
info call (1) 602-838-
8885, Ext. M-10191, 6
a.m.-10 p.m., 7 days.
P-27s-4tp

MULESHOE AREA HOSPITAL

District
**Now Accepting Applications
For All Departments**
Now Hiring:
MEDICAL CENTER DIETARY
•Cooks helpers •Dishwashers
HEALTHCARE CENTER NURSING
•Licensed Vocational Nurses
•Nurse Aides
**For inquiries contact Mona Rosco
at 272-4524 between 8 am - 5 pm
Monday-Friday.**
Equal Opportunity Employers.

11. For Sale Or Trade

FOR SALE: 7-month-
old Gibson refrigera-
tor with a 10 yr.
Golden Warranty. Call
272-3495.
P11-29t-2tp

FOR SALE: 14 x 72
Trailer Mobile Home.
2 bdrm, 1 bath. Good
condition. Priced to
sell -- Call 272-4356.
F11-28t-4tc

FOR SALE: Tandem
axle trailer, 6'x14'.
Call 806-272-4159,
leave message.
W11-28t-2tc

For Sale: Bailey
County Memorial Park
Garden 1 Block 122-
Lots 5 and 6. Call
806/791-5605.
P11-28s-7tp

FOR SALE: 1984 Ya-
amaha Moto-4; 4-
Wheeler; Excellent
condition. See at 1910
W. Ave. G. Call Paul
Wilbanks, 272-3106 or
272-3571.
W11-29s-4tc

15. Misc.

GOLD CREDIT CARD
visa/mastercard guar-
anteed; \$2,500.00
unsecured credit line
cash advance.
1-900-446-0028
\$19.95 fee
P15-29s-4tpS

VEACH ROOFING
All Types. Built Up-
Gravel Composition
*Cedar
*Free Estimates
*Work Guaranteed
Jerry Veach, Owner,
272-3208 or 293-5617
15-24s-13tp

**ROUND-UP
APPLICATION**
Pipe-wick mounted
on high-bov. Row
Crops. CRP. Vol.
Corn, 30" or 40"
rows. Roy O'Brian,
265-3247.
B11-23t-tfc

9. Automobiles For Sale

FOR SALE: 1984 Chry-
sler Fifth Avenue,
Silver Gray. Nice Car.
And a 1980 Chevy 1/2
ton Pick-Up with top-
per. Standard Shift,
low mileage. 272-7575
H9-26s-tfc

3. Help Wanted

Applications being
taken for part-time
sales clerk. Apply in
person at the Mule-
shoe Fina-102 W.
Amer. Blvd.
T3-29s-2tc

18. Legals

LEGAL NOTICE

The Three Way Independent School District,
Maple, Texas, will be receiving bids for a
portable modular classroom building at the
Three Way Schools. Bids will be received at
the Superintendent's office until 8:00 P.M.,
July 26, 1990, or may be mailed directly to:
Don W. Parker, Superintendent
Three Way Independent School District
P. O. Box 60
Maple, Texas 79344
Plans and Specs may be acquired from:
Don W. Parker, Superintendent
Three Way I.S.D.
P. O. Box 60
Maple, Texas 79344

to obtain further information concerning the
bidding process, and or plans and specifica-
tions, call (806) 927-5531.

The Board of Trustees of Three Way
Independent School District reserve their
right to reject any and all bids, and waive all
formalities that are in the best interest of the
school district.

Signed:

Don W. Parker, Superintendent
Three Way I.S.D.
Maple, Texas
T18-29t-2tc

17. Seed and Feed

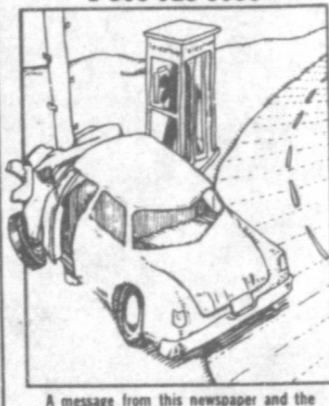
WANTED: Silage cut-
ting. Have 5820 John
Deere cutter with
Kemper head and
supporting trucks.
Call 913-567-4513.
J15-27t-2m'sc

8. Real Estate

**BAILEY COUNTY LAND
FOR SALE**
Owner will finance the following size
blocks: 2-80 acres, 3-160 acres, 1-320
acres, and 1-277 acres. Wheat, milo and
cotton allotments. 1 1/4 circles of
permanent grass. 7 Center Pivots. A Sweet
Cattle Set-Up.
If interested, contact T.L. Timmons
806-385-4487 806-925-6484-
(Day) (Night)

1,062 acres- 3 pivots.
Excellent water. Fully
allotted wheat and
cotton. Would make
good peanut or potato
farm. \$425 an acre.
Call 806-946-3461 or
946-3402.
S13-29s-4tcS

Need help out on the road?
1-800-525-5555



A message from this newspaper and the
Texas Department of Public Safety

8. Real Estate

FOR SALE OR REN1:
3 bedroom brick home
with fireplace. Located
3 miles west of Earth
on Highway 70. 272-
3056.
J8-16t-tfc

House For Sale: 3
bdrm, 2 bath. On
farm, 1.5 acres land.
6 1/2 miles East of
Muleshoe on Hwy. 70.
Call 272-2350 or 965-
2781.
P8-28s-4tpS

8. Real Estate

Bingham & Nieman Realty

116 E. Ave. C George Nieman, Broker 272-5285 or 272-5286

RICHLAND HILLS
IMMACULATE 3-2-2 Brick, Cent. A&H,
built-ins, FP, sunken lv. area with
cathedral ceiling, ceiling fans, earthtones,
storage bldg. \$50's!!!!

NICE RESIDENTIAL LOTS-\$5,000 UP...
3-2-2 Brick, large corner lot, Cent. A&H,
built-ins, basement area, & more!!!!

**NICE 3-2-2 Brick, earthtone carpets, Cent.
A&H, FP, built-ins, fenced yd. \$70's...**

**3-2-2 Home, heat pump, built-ins, FP,
earthtone carpets, fenced yd., & more.
PRICED TO SELL!!!!**

**3-2-2 Brick, corner lot, Cent. A&H,
built-ins, FP, patio. \$60's...**

HIGH SCHOOL
3-2 Home, remodeled, heat pump, storm
win. & doors, fans, stor. bldg., fenced yd.
\$20's!!!!

**PRICE REDUCED 3-1-1 Home, earthtone
carpets, workshop, cellar, fenced yd....**

**IMMACULATE 2-1-1 Home, Cent. A&H,
nicely remodeled, storm win. & doors,
fenced yd., cellar. \$20's!!!!**

**2-1 1/2-1 Brick, fl. furn., Cent. Air, fenced
yd., & more. \$20's!!!!**

HIGHLAND AREA
VERY NICE 4-2-1 Brick, Cent. A&H,
built-ins, earthtone carpets, util., encl.
patio, storm win. & doors, grill, spktr.
sys., stor. bldg., fenced yd. \$60's!!!!

**3-1-1 Home, corner lot, wall heat, fenced
yd. \$20's!!!!**

**3-2-1 Brick, Cent. A&H, built-ins, FP,
fenced yd., stor. bldg. \$40's!!!!**

18. Legals

NOTICE OF APPLICATION FOR BANK HOLDING COMPANY

High Plains Bancshares, Inc. located at
101 West American Boulevard, Muleshoe,
Texas 79347 intends to apply to the
Federal Reserve Board for permission to
form a one-bank holding company at 101
West American Boulevard, Muleshoe,
Texas 79347. We intend to acquire control
of Muleshoe State Bank, 101 West
American Boulevard, Muleshoe, Texas
79347. The Federal Reserve considers a
number of factors in deciding whether to
approve the application including the
record of performance of banks we own in
helping to meet local credit needs.

You are invited to submit comments in
writing on the application to the Federal
Reserve Bank of Dallas, Holding Company
Supervision Department, Station K, Dal-
las, Texas 75222. The comment period will
not end before August 21, 1990 and may
be somewhat longer. The Board's proced-
ures for processing applications may be
found at 12 C.F.R., Part 262. Procedures
for processing the protested application
may be found at 12 C.F.R. & 262.25. To
obtain a copy of the Board's procedures or
if you need more information about how to
submit your comments on the application,
contact the Community Affairs Officer at
the Federal Reserve Bank of Dallas, Mr.
Andrew W. Hogwood, Jr. (214) 651-6341.
The Federal Reserve will consider your
comments and any request for a public
meeting or formal hearing on the applica-
tion if they are received by the Fed-
eral Reserve Bank on or before the last date
of the comment period.
M18-30s-2tsc

8. Real Estate

350 acres with 2
pivots. Excellent wa-
ter. Fully allotted.
Has 2 circles of
growing cotton. \$700
per acre. Call 806-
946-3461 or 946-3402.
S13-29s-4tcS

**House For Sale: 3
bdr. 2 bath. Central
air & heat. Storage
shed and shop in
fenced back yard.
Price reduced \$2500.
Will negotiate. Need
to sell. Near high
school. Phone 272-
4883.
8-28s-2tp**

18. Legals

HCR REAL ESTATE

Immaculate 3-2-1
carport. Large shop
building, on large
lot, at the edge of
town.
**Thursie Reid
272-5318**

8. Real Estate

Smallwood Real Estate

232 Main 272-4838
Muleshoe
On pavement in Country. 3 bedroom, 2
bath, large kitchen and dining area, living
room, large den, and playroom. 1 acre.
405 E. Dallas--3 Bedroom, 1 Bath, 1 Car
Grage, Central heat, Cook top, Oven, &
Dishwasher. Beautiful carpet, Evaporative
cooling. Fenced back yard. Large storage
building
STUCKO--3 Bdr., 2 Bath, Living Room,
Den, Large Kitchen & Dining Area. 1 Car
Garage. Fenced back yard. 2,456 sq. feet;
Corner lot 75X140. Priced to Sell.

J.B. Sudderth Realty, Inc.

109 Fifth Street Farwell, Texas
Realtors/Certified Appraisers
Sold all our farm land-Call if you have
farm land to sell.
3200 Acres grassland and cultivated with
improvements.
Beautiful Country family home. Room for
animals & pets. 15.4 Acres. 3 Bedroom, 1
3/4 Bath, Brick, 2 Car Garage, Irrigation
Well with Pipe, Domestic Well, TV Dish,
Fruit Trees, Box Cars, Barns, Steel Pens;
Located on Hwy. Owner says sale-priced to
sell.
**J.B. Sudderth Broker
Daren Sudderth Broker
Master Senior Appraiser
806-481-3288**

CALL 272-4536 THROUGH THE CLASSIFIEDS!

Texas Country Music Report

TOP TEN SONGS

1. The Dance...Garth Brooks
2. He Walked On Water...Randy Travis
3. Nobody's Talking...Exile
4. Love Without End, Amen...George Strait
5. On Down The Line...Patty Loveless
6. Good Times...Dan Seals
7. Richest Man On Earth...Paul Overstreet
8. Hillbilly Rock...Marty Stuart
9. If You Could Only See Me Now...T. Graham Brown
10. Good Friends, Good Whiskey, Good Lovin...Hank Williams, Jr.

PICK OF THE WEEK

Next To You, Next To Me
by Shenandoah

HALL OF FAME SPOTLIGHT: 1960

The most remembered coun-
try classic of the year was the
Gunfighter Ballad "El Paso" by
Marty Robbins. Hank Locklin
had the biggest seller of the
year with "Please Help Me I'm
Falling." Other major hits were:
Jim Reeves' "He'll Have To
Go" and Ferlin Husky's "On
The Wings Of A Dove" Buck
Owens Burst On The Scene
with top hits like "Above and
Beyond" and "Excuse Me, I
Think I've Got A Heartache".

NEWS

The Texas Country Music
Association has over a thousand
members throughout the state.
If you are a country music fan,
we invite you to join and vote
for your favorite star. Member-
ship is free and all members get
to vote in the Texas Country
Music Awards. Write to us at
P.O. Box 505 Salado Texas
76571.

Lee Fisher

NOTES, COMMENT

Arguments usually aren't worth it.
Thinking means less talking.
The good old days are best forgotten.
Never underestimate people of small stature.

High Flier
The passenger in an airplane noticed a parachutist floating past the window.
"Going to join me?" usually called the man on the parachute.
"Not on your life," answered the passenger "I'm quite all right where I am."
"Please yourself," retorted the parachutist, "I'm the pilot."

8. Real Estate

Smallwood Real Estate

232 Main 272-4838
Muleshoe
On pavement in Country. 3 bedroom, 2
bath, large kitchen and dining area, living
room, large den, and playroom. 1 acre.
405 E. Dallas--3 Bedroom, 1 Bath, 1 Car
Grage, Central heat, Cook top, Oven, &
Dishwasher. Beautiful carpet, Evaporative
cooling. Fenced back yard. Large storage
building
STUCKO--3 Bdr., 2 Bath, Living Room,
Den, Large Kitchen & Dining Area. 1 Car
Garage. Fenced back yard. 2,456 sq. feet;
Corner lot 75X140. Priced to Sell.

J.B. Sudderth Realty, Inc.

109 Fifth Street Farwell, Texas
Realtors/Certified Appraisers
Sold all our farm land-Call if you have
farm land to sell.
3200 Acres grassland and cultivated with
improvements.
Beautiful Country family home. Room for
animals & pets. 15.4 Acres. 3 Bedroom, 1
3/4 Bath, Brick, 2 Car Garage, Irrigation
Well with Pipe, Domestic Well, TV Dish,
Fruit Trees, Box Cars, Barns, Steel Pens;
Located on Hwy. Owner says sale-priced to
sell.
**J.B. Sudderth Broker
Daren Sudderth Broker
Master Senior Appraiser
806-481-3288**