

BY BILL ELLIS

FARM LEADERS who have gone to Washington in a lobbying effort on behalf of favorable farm legislation have returned with a disappointed feeling, after seeing the attitude in both the U.S. Senate and in the U.S. Department of Agriculture.

Several local residents were able to watch the vote proceedings on both the Dole agricultural bill and the Panama Canal "neutrality" treaty, and they had some eye-opening experiences.

Especially on the canal issue, where Senator Byrd of West Virginia admitted that his home state voters were against the treaty, as far as his mall had gone, but that he was voting for it anyway, because he "knew better" about how to vote.

Byrd's fellow senator Randolph, who is facing re-election sooner, had an even more despicable situation. He's the senator who passed on the roll-call vote, in order to see if the measure would pass without his "yes" vote.

Randolph in reality is in favor of the canal giveaway, but in order to make it look to his constituents that he's doing their bidding, after the treaty had received the required number of "yes" votes, he then cast his vote in the "no" column.

"It's a shame when congress puts votes, and their own feelings above what is right and wrong when it comes time to vote," said one of the local citizens who had observed the senate proceedings. We have to agree wholeheartedly.

ON THE CANAL issue, we recently received a letter from Senator Lloyd Bentsen, who true to his promise cast his vote in favor of the treaty (giving it the one-vote margin it needed, if you prefer).

Bentsen attempted to defend himself against remarks we made in this column on February 8. He couldn't see how we could label a man of his "stature and background" as unpatriotic.

Bentsen claims that (according to his sources), by adding the amendment which guarantees the United States the right to defend the canal after the year 2,000, that his constituents were now in favor of the issue, by a 49-33 count.

We don't know the source of the survey, whether it was taken from among Bentsen's relatives, or perhaps his office staff. We know for a fact that we weren't polled--never have been. And if such a poll was ever published in any of the state's leading publications, we aren't aware of it.

Our answer to Senator Bentsen, although it will probably do little good to dislodge him from his pro-treaty stance, is stated adequately in a letter we're publishing this week on Page 3. We hope that a number of our readers will clip out the letter, sign it, and mail copies to all of the senators listed on the page.

Whether the senators read the information or not, we wish that every American voter could see it, so they would know what kind of leader the United States is turning the canal over to. They would also at once know just what kind of representation they were getting in the Senate, especially if their senator is in the "pro-treaty" column.

+++

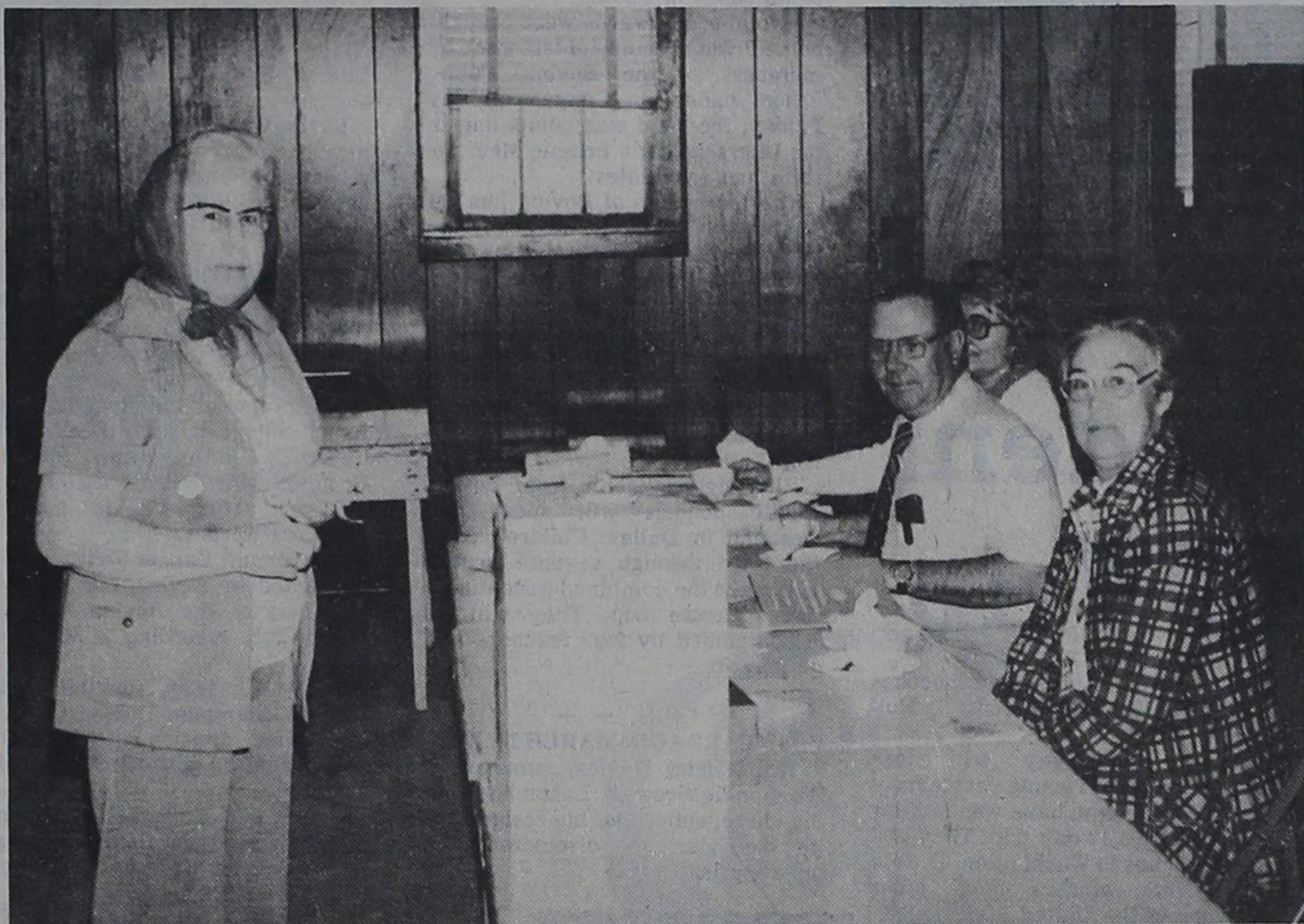
A SIGN WE HEARD about, on a church marquee: "Go to church Sunday, Avoid the Christmas rush."

Band Parents Meet Tuesday

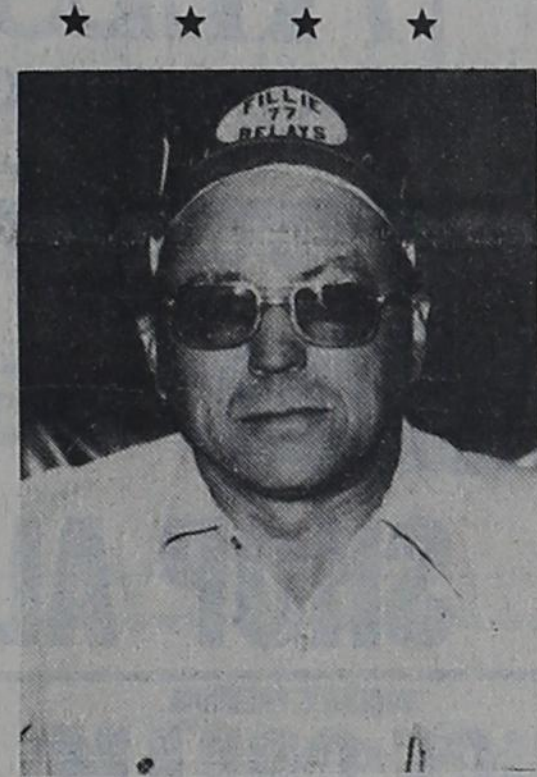
A called meeting of the Band Parents will be held Tuesday, April 11, at 7:30 p.m. in the Band Hall. Plans are to be completed for the spring band trip.

Register To Vote, Thursday Is Deadline!

Moderate Vote Turnout Elects Officials



MRS. RUBY WILSON...Exercises her franchise at the ballot box in the American Legion Hall during the voting for city officials. Also shown are, front to back on the right, assistant clerk Mrs. Marie Venable; election judge Jay Sherrill, Jr., and assistant clerk Mrs. Jean Wiseman.



GAYLON RHODES
...New Trustee

Boosters Make Plans For Bus To Austin

The Bovina Booster Club has announced plans are now being made to charter a bus to take those interested in the trip to Austin for the Girls State Track Meet.

If enough people sign up to go, the bus will leave from the high school on May 4, time to be announced, and will return on May 7. The cost for travel and lodging for three nights (not including meals), will be approximately \$80 per person.

Although a 43-passenger bus is now contemplated, the size can be changed to a 39- or 47-passenger

Hickman's Tenure At Clinic To End

In its search for a permanent resident physician for Bovina, the Chamber of Commerce Committee charged with this responsibility, has found potential, qualified doctors are reluctant to come to Bovina as long as the clinic is already occupied.

The Bovina Clinic Board met last week to discuss the matter and after some debate, decided to notify Dr. P.C. Hickman that the clinic must be vacated by May 1.

A board spokesman emphasized there is no ill will between the board and Dr. Hickman. The need for a

full-time doctor is self-evident, the spokesman said, and the occupancy of the clinic is a stumbling block that cannot be overcome in negotiating with physicians who show interest in coming to and settling in Bovina.

Elsewhere in this issue is a notice, authorized by Dr. Hickman, notifying local residents of the closing date of the clinic.

Cooperative Venture Aids City Alleys

A joint improvement project by Precinct 2 of Parmer County and the City of Bovina was completed last Friday. The project consisted of grading and rolling all the dirt streets and alleys within the city.

The project was made possible when former Mayor Tom Bonds and County Commissioner William Gromowsky decided to improve these streets and alleys.

Gromowsky agreed to furnish the needed county equipment, since the city does not own such equipment.

The city, in turn, agreed to pay the operator's salary and furnish fuel. According to the water and sewer superintendent, the project "has greatly improved our dirt streets and alleys. Some of our streets had become little more than trails, while many alleys were badly rutted."

MBPXL Has Profit Index

MBPXL Corporation announced that it earned \$1,889,000, or \$.77 per share of common stock, on sales of \$273,000,000 during the quarter ended January 28, 1978. In the same quarter of the preceding year, MBPXL Corporation lost \$409,000, or \$.17 per share of common stock, on sales of \$210,000,000. The earnings of \$.77 per share are the highest earnings MBPXL has ever had for a November-to-January quarter.

During the quarter, the MBPXL Board of Directors voted a regular \$10 per share cash dividend and a special 10 per cent stock dividend.

President David J. La Fleur attributed the improved earnings to a more orderly marketing of fed cattle and the resulting stronger margins between live cattle prices and carcass prices. Mr. La Fleur further stated that the second quarter was off to a very encouraging start.

Gober, Webb Are Named To Council

It might have been the fault of the high winds or general lack of interest but, with five candidates running for three positions on the City Council and one nominee unopposed for the mayor's job, only 214 voters cast ballots in the city election, held last Saturday.

Robert Roland Lusk, unopposed, becomes Bovina's mayor for the next two years, garnering a total of 154 votes.

The three councilmen to take the oath of office at the next Council meeting are Dale Gober, the top vote-getter, with 174; E.B. Caldwell, succeeding himself, 139, and Larry Webb, 128.

Robert Calaway received 124 votes and Alvan Don Bandy, 25.

The 214 votes were 67 short of the 281 cast in the 1976 elections, when three councilmen and a mayor were chosen; 38 less than 1977's 252 votes for two councilmen, and 73 below the record 287 who participated in the electoral process in 1970.

Gober, Caldwell and Webb will join holdover Councilmen Fred W. O'Hair and Rouel Barron, each of whom have one year remaining on two-year terms.

Jay Sherrill, Jr., served as election judge, with Mrs. Marie Venable and Mrs. Jean Wiseman assisting as clerks.

The election was held at the American Legion Hall from 7 a.m. to 7 p.m., with voters facing blustery, dust-laden winds.



R.R. LUSK
...New Mayor



LARRY WEBB
...New Councilman

Two New Trustees Elected To Board

Three hundred, eleven persons cast ballots last Saturday in the school trustee election, putting Gaylon D. Rhodes and Herb Howell on the local board for three years and electing Wendol Christian as Parmer County School Trustee at Large.

Christian received 213 votes; Howell, 141 and Rhodes, 131. Jon Lin Riddle got the approval of 109 voters, while C.C. "Cap" Naegle and Earl Whitten received 118 and 101 votes, respectively.

Naegle and Whitten were making a big for another term in office.

The 311 total was 60 below the 371 votes counted in 1977; 112 under the 423 in 1976, and 118 less than the all-time record 429 returns of 1975.

It was the seventh time in the city's history that 300 or more

electors marked ballots in a school election--in 1977, 371; 1976, 423; 1975, 429; 1970, 360; 1966, when 320 voters defeated a \$600,000 school board proposal, and in 1964, 300 voters cast ballots.

Holdover board members are Edwin Lide, Leroy Mayfield, James Clayton, Keith Garner and Tom Ware.

Leslie McCain was the election judge with Don Murphy, Mrs. Ernestine Minter and Mrs. Pat Sherrill acting as assistant clerks.

The new members will take the oath of office at the next board meeting and the board will be organized for the coming year.

This meeting will be a combined business-dinner meeting for hold-over and new members and their wives.



TOM WARE...Deposits his ballot in the box in the main lobby of Bovina Schools last Saturday. Looking on, from front to back, are assistant

clerks Don Murphy, Mrs. Pat Sherrill, Mrs. Ernestine Minter and election judge, Leslie McCain.

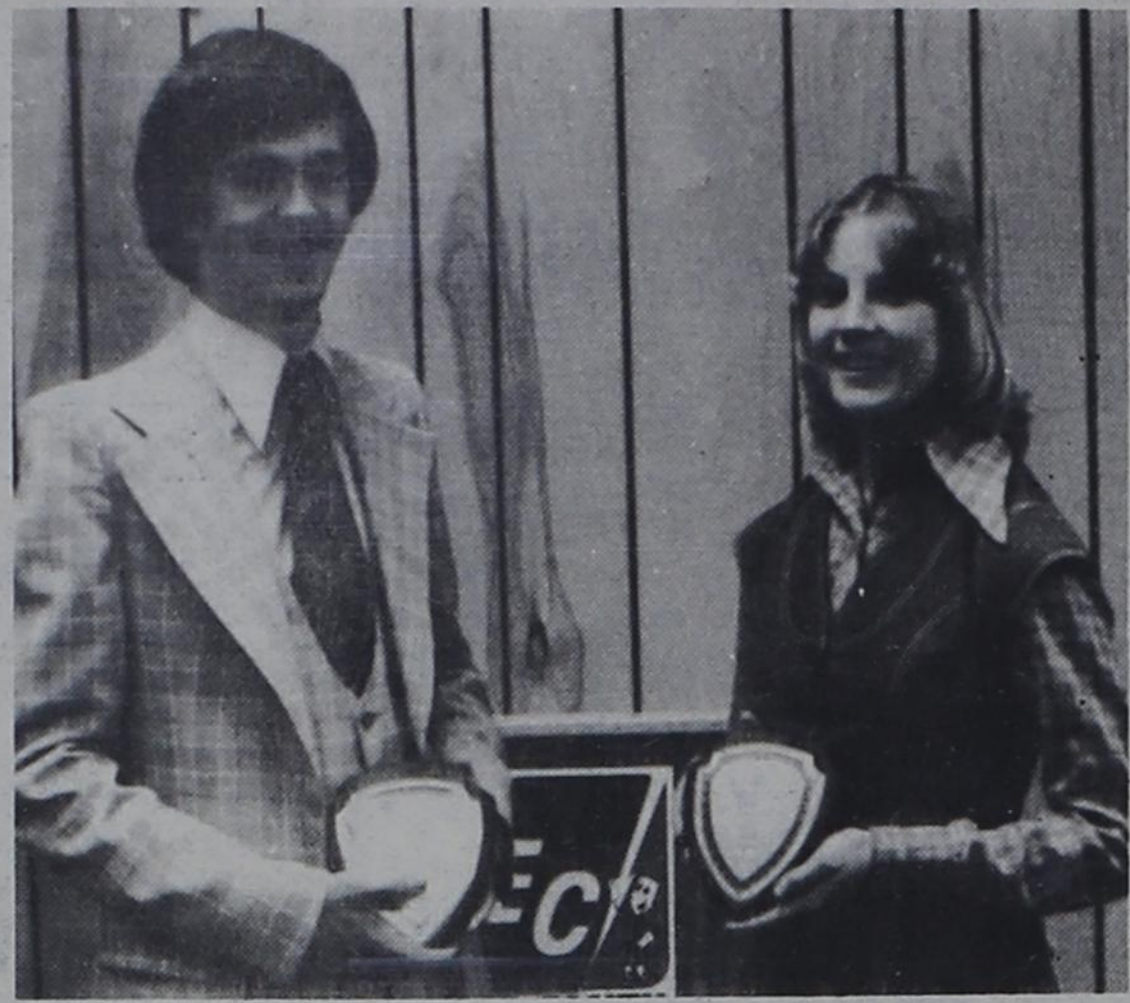


MARQUEE CONTRIBUTED...Bovina Chapter of FHA recently donated a lighted marquee to Bovina Schools. Shown standing in front of their contribution, left to right, are: Miss Beverly Allred, home economics teacher; Kara Mills, reporter-

historian; Pam Spring, freshman representative; Karla Mills, president; Laura Widner, secretary-treasurer; Alicia Spring, recreation chairman; Joan Carson, second vice president; and Denise McCormick, first vice president.

School Lunch Menu

WEEK OF APRIL 10-14
MONDAY—Corn dogs, French fries, cabbage slaw, orange juice, crackers, peanut pie, milk.
TUESDAY—Pizza, baked beans, lettuce and tomato salad, crackers, bananas, milk.
WEDNESDAY—Fried chicken, creamed potatoes, green beans, lemonade, hot rolls, butter, jello with topping, milk.
THURSDAY—Hamburgers, lettuce and tomatoes, French fries, mustard, onions, pickles, brownies, pear halves, milk.
FRIDAY—Fish, tartar sauce, jello salad, buttered corn, orange juice, toast, apple sauce cake, milk.



CONTEST WINNERS...Evey Wilhelm of Nazareth, right, and John Carson of Friona are the winners of the 1978 Government in Action Youth Tour Speech Contest sponsored by Deaf Smith Electric Coop,

and will receive a free 12-day trip to Washington, D.C. this summer. John is the son of Mr. and Mrs. David Carson of Friona and is active in school activities.

Friona Student Wins REC Trip

Winners of the 14th Annual Government in Action Youth Tour Speech Contest, sponsored by Deaf Smith Electric Cooperative were announced this week by James Hull, Manager of the Cooperative. High school students whose speeches qualified them for an all-expense paid trip to Washington, D.C. are Evey Wilhelm of Nazareth and John Carson of Friona.

Evey is the daughter of Mr. and Mrs. James Wilhelm. She is active on the Nazareth Girls' Basketball C Team and Track Teams, as well as serving as Junior Class treasurer; Historian for FHA; a member of the Pep Club, and has competed in UIL under persuasive speaking.

John is the son of Mr. and Mrs. D.H. Carson. He is president of the Forensic Club; a member of the Friona High School Debating Team; active in Thespians, Student Council, National Honor Society, and a member of the golf team.

The Washington Rural Electric Youth Tour winners were among six high school students from the area served by Deaf Smith Electric

Cooperative who presented speeches on "The Energy Crisis," Hull explained. John and Evey will join approximately 35 young people from across Texas who have won similar contests for a 12 day trip. They will travel by bus to Washington, D.C. to meet with winners from other sections of the United States.

YH's Sponsor Pastry Wagon

The Bovina Chapter, Young Homemakers, will sponsor a pastry wagon which will be making the rounds of all Bovina businesses on Friday morning. If you would like to have the wagon come by your house, call 238-1594 by Thursday night. A meeting of the Homemakers will be held Tuesday, April 11, at 4 p.m. in the Methodist Church. All members are urged to be present because of the importance of this meeting.

Reflections

From The Blade

20 YEARS AGO—MARCH 26, 1958

Bovina area farmers are to get a chance at vegetable growing. A representative of Gateway Produce Co. of Laredo told The Bovina Blade Tuesday that his firm will build a shed for packing and shipping cantaloupes in Bovina.

A total of 31 awards were brought home Friday evening of last week by members of the Bovina Public School bands. In Canyon all day Friday, the band was competing in the Interscholastic League Meet for solos and ensembles.

The Lions Club of Bovina has set tomorrow (Thursday) night for the postponed ladies night, which will include a banquet and special program.

Bovina Sales and Service, a radio-TV firm, closed its doors last week, and the owner, E.A. McCollum, announced plans to move to Dimmitt, where he had come from.

Fifty-eight students from Bovina Public Schools will spend the weekend in Dallas. Children from the third through seventh grades will make the combined educational and pleasure trip. They will be accompanied by four teachers and 12 parents.

Jim Ware has purchased the interest of his former partner, Dean McCallum, in Bovina Insurance.

Mike Grissom, seventh grade student of Bovina Schools, was named champion speller of Parmer County in a bee conducted here Friday.

Grand opening of OK Tire Store in Bovina will be observed next week, Darrell Holland, manager of the business, announces.

Bovina Volunteer Fire Department answered a call Thursday afternoon to a grass fire at the home of Mrs. Earl Ware on Eighth Street.

10 YEARS AGO—MARCH 27, 1968

The Red Cross is seeking wider representation and more participation in Parmer County—especially in Bovina and Farwell.

The proposed building of a new junior college to serve Deaf Smith, Castro, Oldham and Parmer Counties will be discussed at a public meeting to be held in Hereford April 4.

The annual Cancer Drive will be conducted in Bovina this year by members of The Bovina Woman's Study Club, according to Mrs. Tom Ware.

Larry Grissom exhibited the reserve champion Poland China in the swine division of the South Plains Junior Livestock Show held in Lubbock.

Nearly all farmers in Parmer County have signed up to participate in the 1968 farm programs,

according to Prentice Mills, ASC office manager.

5 YEARS AGO—MARCH 28, 1973

Dolph Moten has sold The Bovina Blade to Bill Ellis of Friona. Announcement of the transaction, which will become effective April 1, was made jointly by the two Parmer County newspapers this week.

Friends and neighbors of Joe Schilling gathered at the Schilling farm Thursday with their tractors and farm machinery for a work day. Schilling was injured in a car-truck collision near Oklahoma Lane March 17 and is a patient at Methodist Hospital in Lubbock.

This community was stunned and saddened Tuesday morning by the tragic accidental death of Robert F. Wilson of Bovina.

Mr. Wilson, 54, was killed instantly about 9:15 a.m. Tuesday when he was crushed by a tractor on his farm southeast of Bovina.

The Bovina Blade

Published Every Wednesday at 100 3rd St. Bovina, Texas 79009
 Second Class Postage Paid at Bovina, Texas 79009

Subscription Rates—Parmer & Adjoining Counties, \$4.50 per year. Outside area, \$6.30 per year.

Bill Ellis, Publisher
 Richard Jones, Editor
 Scooter Russell, Bookkeeper

EXPERIENCE
 INTEGRITY
 SERVICE

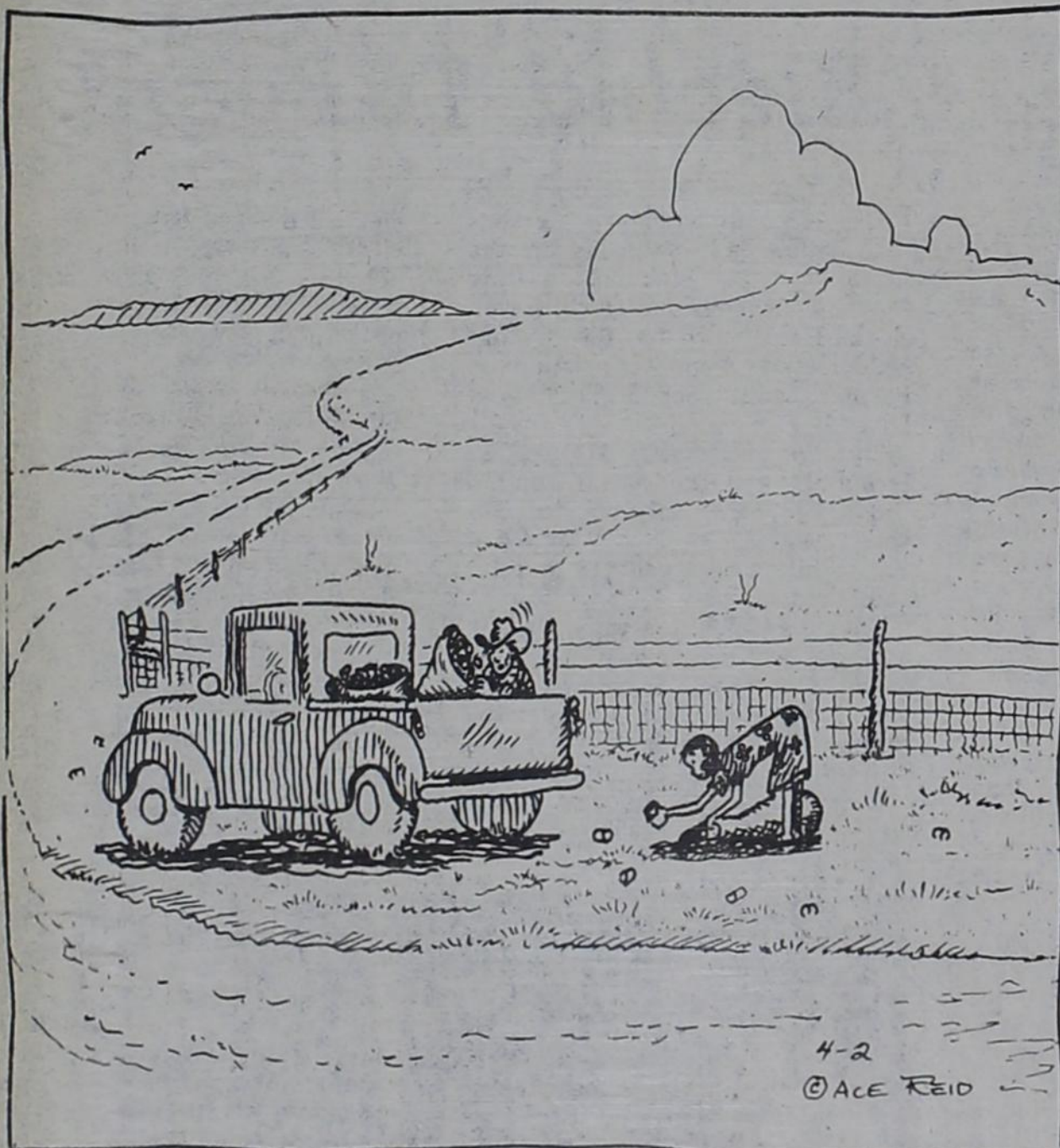


We Fill Prescriptions Carefully, Accurately

Don's MEDICINE CHEST
 Phone 238-1659
 Don & Gladys Spring

FIRST STATE BANK PRESENTS: COW POKES

By Ace Reid



"I'm sellin that ole ranch — we're makin more money pickin up beer cans than we do raisin cows!"

The Bank That's Bullish On Bovina, Texas

FIRST STATE BANK
 Member, FDIC OF BOVINA 115 3rd St.

Calendar Of Events

WEEK OF APRIL 6-12

Thursday, April 6
 City Council meets, City Hall, 7:30 p.m. Installation of three councilmen and the mayor.

Monday, April 10
 Jaycee Board of Directors meet, First State Bank, 12 noon.

Tuesday, April 11
 Jaycees meet, First State Bank, 12 noon.
 Young Homemakers meet, United Methodist Church, 4 p.m.

Bond Sales Are Given

January sales of Series E and H United States Savings Bonds in Parmer County were reported today by County Bond Chairman Charles Allen. Sales for the first-month period totaled \$4,588 for 5 per cent of the 1978 sales goal of \$100,000.

Texas sales during the month amounted to \$23,739,634 with 8 per cent of the yearly sales goal of 306.6 million achieved.

Read and Use Bovina Blade Classified Ads. Call 238-1523 By Tuesday Noon

CHILD FIND

All School-Age Children In Texas Have The Right To A Free-Public Education

Some children, however, are not in school. They may be handicapped. If you know of a child (age 3-21) not in school...

Mail this information to:
 Region XVI Education Service Center
 c/o Full Services Support System
 P. O. Box 30600
 Amarillo, Texas 79120
 OR CALL (806) 376-7463 (collect if long distance)
 OR Call Your Local School District's Special Education Director

(Name of child) _____ (Age) _____
 Address: _____
 (Parent's or guardian's name) _____
 (Phone number) _____

OPEN 24 HOURS

ALLSUP'S

CONVENIENCE STORES

PRICES GOOD APR. 6-9, 78

OPEN 24 HOURS

MEMO: CHECK ON SAVINGS SHOP ALLSUP'S

BORDEN'S PREMIUM ICE CREAM \$1.29 RD. CTN.
 SHURFINE TUNA 9 1/2 OZ. 69¢

LOTS OF 1/2 PRICE ITEMS
 BORDEN'S YOGURT 4/\$1.00 ASS'D FLAVORS

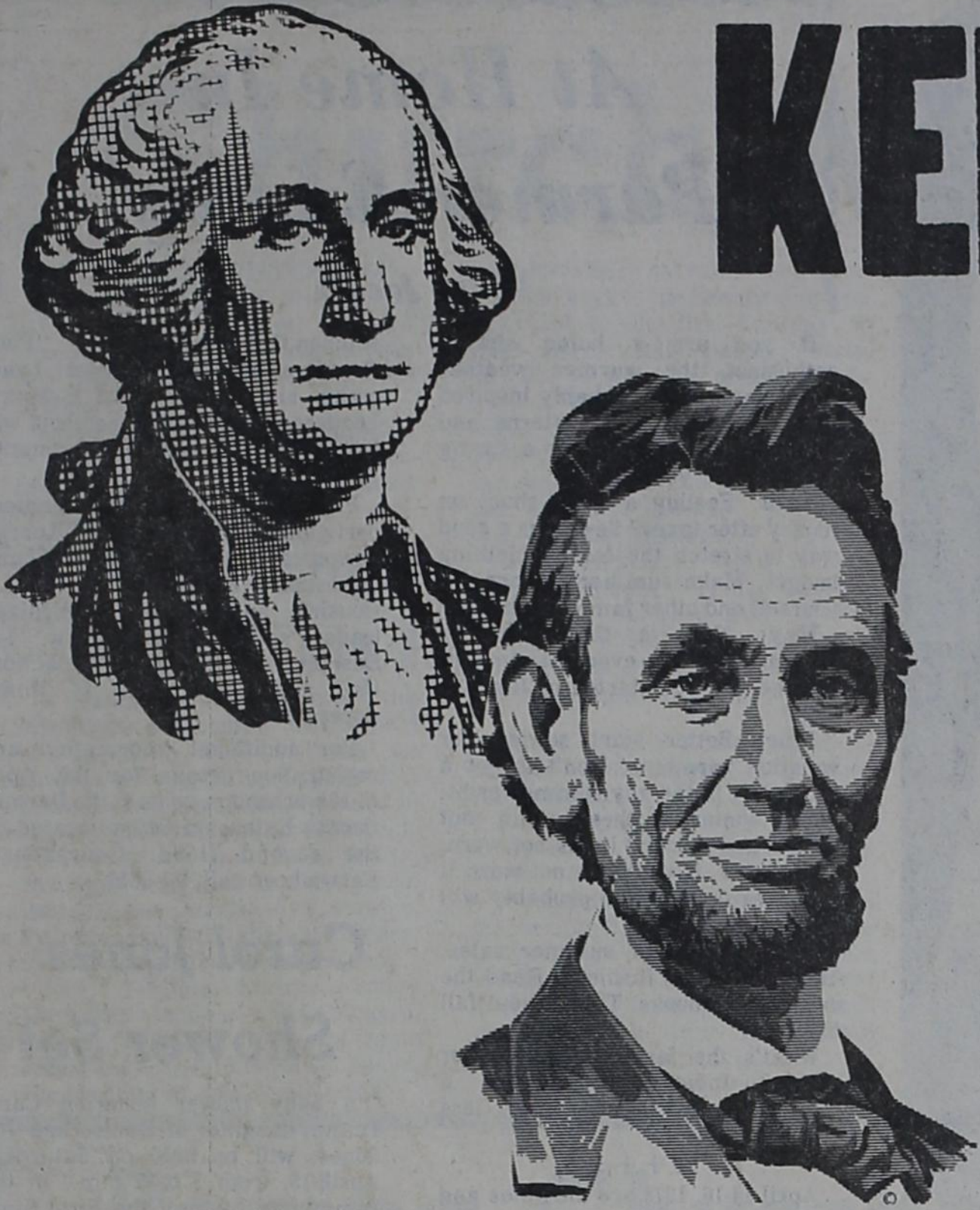
BORDEN'S COTTAGE CHEESE 59¢ 12 OZ. CTN.
 BOY'S CAPS 1/2 PRICE

A & W ROOT BEER QUART SIZE 39¢
 COCA-COLA 6 PAK CARTON 32 OZ. BTL. \$1.39 PLUS DEP.

FRESH COOKED HOT LINKS 3/\$1
 BODENS WESTERN DRINK GRAPE ORANGE TROPICAL PUNCH 59¢

201 3rd STREET BOVINA, TEXAS PH. 238-9912
 COOKED DAILY BURRITOS \$3/\$1

KEEP OUR CANAL



The Senate Vote of March 16th Concerned Only One of Two Canal Treaties-The Other Treaty To Be Voted On Later Should Be Defeated. Inform Yourself! Use Your Influence! Read Information On This Page! Ratification Would Give The Communists In Moscow Control Of Our Canal Very Soon Via The Pro-Communist Dictatorship of Panama.

YOU CAN HELP BY DOING THIS.

1. Read the two mailing pieces.
2. Make photographs (of either the clipped mailing pieces, or the entire page) or purchase additional papers, to mail to several Senators++
3. Write in Senator's name at the top of the letter and sign at bottom with your address underneath.
4. As these form letters pour in, the Senator will study the form to know the message so many are endorsing.

++SEND A COPY TO SENATOR LLOYD BENTSEN (D-Tex) TO HELP CHANGE HIS MIND. A copy to Senator John Tower (R-Tex) to let him know you agree with his opposition to the treaties.

POSSIBLE SWING-VOTE SENATORS: Dennis DeConcini (D-Ariz); Wendell Ford, (D-Ky); Walter Huddleston (D-Ky); Richard Stone (D-Fla.); and Edward Zorinsky (D-Neb.).



To: U.S. Senator
c-o U.S. Senate Office Building
Washington, D.C. 20010

SUBJECT: REGARDING THE NEW TREATY ON OUR U.S. CANAL IN PANAMA

Dear Senator—

With a sense of urgency, I ask you to stand loyally with America in exercising your maximum influence to defeat the treaty which would give our U.S. Canal and zone in Panama to the Communist-puppet-dictatorship sitting on the people of Panama.

The Communists are now testing this nation to determine whether the U.S. Senate can be persuaded by fear propoganda and deceptive illusions to give to the Communists our U.S. Canal in Panama which is a strategic part of the sovereign territory of the United States. To the Communists the great test is this: If the U.S. Congress can be persuaded to ratify the treaty, the U.S. Government could likewise be persuaded to surrender the entire United States in response to an ultimatum demanding surrender. The serious danger of ratification of the treaty and its ultimate consequences needs more in depth examination than the Senate has given to it.

If by your action or inaction Senator, you contribute to the surrender of our canal zone and thereby cause the Communists in the near future to issue the United States an ultimatum to surrender, you would find it exceedingly difficult in that emergency to prevent the Presidency from implementing their Pre-Emptive Surrender Plans already formulated. Surrender would be followed by the mass murder of the American people. We must not forget the extensive mass-murders by the Communists in Russia, China, Cambodia, and all other countries they have taken over. Sixty-six million murdered in the Soviet according to Alexander Solzhenitsyn. Up to sixty-four million murdered in China by the very conservative report of the U.S. Senate Internal Security Sub-Committee's report entitled THE HUMAN COST OF COMMUNISM IN CHINA, but which is far less than actually killed. In Cambodia they have killed at least one-third of the population and they are still killing them by driving families out of their homes to die in the country from exposure and starvation. Denmark's ambassador Kield Mortsen recently returned from Cambodia and stated only fifteen thousand live in the Cambodian City of Phnom Penh where three million lived before the Communists took over.

The tough foreign cadre Communists that would take control of America hate Americans far more than any other people, and with an insane passion borne of the conviction that all living in America are mentally diseased with the infection of capitalism and must be exterminated to prevent the infection and contamination of their New Social Order which will be world-wide if we let America fall into their hands. To the Communists, the extermination of Americans would alleviate the world population explosion. People of other lands would be imported into our land of technological wealth which the Communists intend to have intact by their series of chain-like tactics to persuade our surrender. Ratification of the treaty would force for them a very important link in that chain.

American Communists, Fellow Travelers, and other opportunists would be exterminated first because they are not only contaminated with the good life of American capitalism, but they would probably turn against the foreign Communists in control when the massmurders of Americans began. This could be anticipated from the record of many American Communist defections, including those in high positions, and in previous circumstances much less severe than the extermination of Americans would be. (i.e. Stalins alliance with Hitler, and Khrushchev's admissions to the massmurders under Communism.)

We must not let fear propoganda trick us into surrendering our canal and then the United States. We must remember that we would sustain far less deaths and suffering to fight with all of our might to prevent Communist domination than we would suffer by surrender followed by torture and extermination of our people.

Evidence shows that ratification of the treaty would in reality transfer the powers of sovereignty and control to the Communist dictators in the Kremlin who control through Castro the Communist-puppet-dictatorship sitting on the people of Panama. The columnist Drew Pearson identified Torrijos, the dictator of Panama, as a member of the Communist Party of Panama as far back as November 19, 1968. The columnist Paul Scott reported March 25, 1973 that Soviet documents referred to Torrijos as a Marxist-Leninist and a true friend of the Soviet Union and they also listed Panama as their coming Soviet military base. On January 22, 1976 Paul Scott reported that Torrijos had taken 200 of his aides to Cuba to plan for the Communist takeover of the Panama canal. Why would any U.S. Senator vote for ratification?

Obviously our leaders are not fully aware of the intense anger and hostility quietly growing at the grass roots against the policies of our government that continue to aid and abet the aggressions of Communism. The American people will not tolerate the giving of our canal to the Communists either by ratification of the treaty, or by the President (after-rejection of the treaty by the Senate) giving it to them by making only a pretense of defense smelling like the Bay of Pigs and then offering the senseless excuse that he could not defend it.

It appears that very little has been done to strengthen our defenses in our Canal Zone, especially in riot-crowd-control defense. This must be rectified immediately as a priority emergency. President Carter as Commander-In-Chief of the military is inviting invasion of our Canal Zone by not showing an existing massive defense force there.

Apparently the quiet American people will soon be angry enough to start raising their voices in demanding the impeachment and removal from office of those who would endanger our security by causing the Communists to believe that our courage and resistance are gone by giving them our U.S. Canal in Panama.

It is imperative that our U.S. Senators reject the new treaty and to demand by resolution that the President successfully defend our canal. It is recognized that upon rejection of the treaty it would be appropriate, under the circumstances, for the Congress to simultaneously and voluntarily increase the annuity payment to Panama as we have done several times in the past. Perhaps even that agreed upon in the negotiations, but NO NEW TREATY.

The American people have given the Senate an overwhelming mandate to defeat the treaty. Upon this issue each Senator will carve his image in the hearts of the American people as being either for or against giving the canal to the enemy. We must now be highly resolved to act with wisdom, foresight, and courage that this nation shall not perish from the earth.

Most sincerely,

I PLEDGE ALLEGIANCE TO THE UNITED STATES OF AMERICA.

I PLEDGE NEVER AGAIN TO VOTE FOR ANY ELECTED OFFICIAL WHO SUPPORTS THE SURRENDER OF U.S. SOVEREIGN JURISDICTION AND CONTROL OVER THE AMERICAN CANAL AND ZONE AT THE ISTHMUS OF PANAMA.

I WILL NOT BE FOOLED BY COSMETIC UNDERSTANDINGS, RESERVATIONS, OR AMENDMENTS TO THESE TREATIES. THE ONLY ACCEPTABLE VOTE IS A "NO" VOTE.

THE PENNY ATTACHED TO THIS PLEDGE CARD REFLECTS MY SUPPORT FOR A FOREIGN POLICY CONSISTENT WITH OUR HISTORICAL BELIEF IN "MILLIONS FOR DEFENSE. BUT NOT ONE CENT FOR TRIBUTE."

WHERE DO YOU STAND, SENATOR?

SINCERELY, _____

Say Thanks To These Co-Sponsors

NORTHSIDE '66'	SHERLEY GRAIN
BIG NICK MACHINERY	DON'S MEDICINE CHEST
SHERRILL LUMBER	CHARLES OIL
JONES TEXACO	HORN-CLAYTON INS.
AMERICAN AGRICULTURE	BOVINA WHEAT GROWERS
FIRST STATE BANK OF BOVINA	AGRI-SPRAYERS
PARMER COUNTY SPRAYING	CHEMICAL ENTERPRISES
BONDS OIL	BOVINA BLADE

Art Exhibit To Be Held In Muleshoe

The Muleshoe Art Association's Annual Spring Exhibit will be held Saturday, April 8 through Saturday, April 15 at The Art Loft, 1529 W. American Blvd., Muleshoe, Texas. Entries should be hand delivered to The Art Loft between 10 a.m. and 3 p.m. Thursday, April 6, and will remain on view until Saturday, April 15.

Cash and merchandise awards totaling \$1,480.00 will be given. Presentation of awards will be at 3 p.m. Saturday, April 15.

Entries must be original and done without supervision. Each entry must have a card attached to the back stating the name and address of the artist, media, title and price. Also, if the work is not available for Purchase Award it should be so designated. While reasonable care

will be taken with work submitted, neither The Art Association nor The Art Loft will be responsible for any damage to the entries. No wet paint, please!

Juror for the show will be Gerald Roberts of South Plains College, Levelland, Texas.

Awards and Citations are: Best of show-\$150; Muleshoe State Bank Purchase Award-\$200; Tri-County Savings and Loan Purchase Award-\$200; Mackey McCarty Purchase Award and Poor Boy Purchase Award-\$200. Oils: First-\$75; second-\$50; third-\$25. Watercolor: First-\$75; second-\$50; third-\$25. Sculpture, Graphics, Photography, etc.: First-\$50; second and third-ribbons.

Merchants Awards: Art Loft Framing Award-\$40; Higginbotham-Bartlett Framing Award-\$25; St. Clair's-\$15; Cobb's-\$20; Williams Bros-\$15; First National Bank-\$35; Bobo Insurance public opinion award-\$10.

Hospital Report

ADMISSIONS-

Margarita Cano, Hereford; Mike L. Brown, Friona; Doris Barnett, Friona; Gale Warren, Friona; E.E. Gulley, Muleshoe; Willie Mae Ross, Friona; Mary Hargett, Muleshoe; Harold Richardson, Friona; Juanita Alvarez, Friona; Isabel Diaz, Friona; W.A. Mandrell, Dimmitt; Elsa Vallejo and baby boy, Hereford; Martha Castillo, Friona; Tina Sides and baby boy, Farwell; Joe McKinney, Bovina; and Vera Navez, Hereford.

DISMISSALS-

Don Black, Margarita Cano, Teresa Munoz and baby boy, Samuel Montoya, Joe McKinney, Jean Swain, John Gaede, Gale Warren, Juanita Alvarez, Isabel Diaz, Mike Brown, Mary Hargett, Lucille Cellier, Robert Wayne Mones, Harold Richardson and W.A. Mandrell.

PATIENTS IN HOSPITAL-

Doris Barnett, Gertrude Allen, Willie Mae Ross, Ruby Gonser, Lillian Hubbard, Martha Castillo, Zelamae Garnett and baby girl, Elsa Vallejo and baby boy, Vera Navez, E.E. Gulley and Tina Sides and baby boy.

Joe Joneses Have Girl

Carol D'Ann Jones, the first child for Mr. and Mrs. Joe Jones, was born in Clovis Memorial Hospital at 12:08 a.m. on March 30.

At birth, the infant weighed seven pounds, one ounce and was 21 inches long.

The grandparents, all of Bovina, are Mr. and Mrs. Jimmie Clements and Mr. and Mrs. J.T. Jones.

Great-grandparents are Mr. and Mrs. Herbert Sikes of Clovis and Mr. and Mrs. Jim Clements, Muleshoe. Mrs. Nona Clayton of Roswell, N.M., is the great-great-grandmother.

Club Met In Douglas Home

The Variety Club met on Monday in the home of Mrs. Louise Douglas. Members covered coat hangers for the hostess.

Those present were Artie Faye O'Hair, Lola Grissom, Carlene Jones, Minnie Kelso, Ola Epperly, Montie Turner, Mona Smith, Mrs. L.M. Grissom, Mrs. P.O. Dixon, Charlie Eubanks and two guests, Suetla Rushing and Allene Russell. Refreshments consisted of egg custard, tea and coffee.



Mr. and Mrs. Timothy James

J. Wade, T. James Exchange Vows

Miss Judith Marcia Wade and W. Timothy James were united in marriage on March 11 at 4 p.m. at Kingswood United Methodist Church by Reverend Mark L. Dorff.

The bride wore a floor length white wedding gown with a train and long veil and carried a bouquet of white carnations surrounded by light blue baby's breath.

Her maid of honor, Tina Middleton, and bridesmaid Mary Rose Englant wore light blue floor length gowns and carried bouquets of light blue carnations surrounded by white baby's breath.

The bridegroom wore a white tuxedo with tails, trimmed in white silk and his boutonniere was a single white carnation surrounded by light blue baby's breath.

His best man, Kyle Ray Harris, groomsmen, Randy James, and ushers, Jim Wade and David Murphy, wore light blue tuxedos with tails and trimmed in dark blue silk. Their boutonnieres were single white carnations.

The bride was given in marriage by her uncle, Ed Gogerty.

Judy is the daughter of Mrs. Marcia Casey of Clovis. Tim is the son of Mr. and Mrs. Floyd Englant of Bovina, Texas.

The reception was held in the Hotel Clovis ballroom at 6 p.m. The bride's bouquet was caught by

the bridegroom's sister, Mary Rose Englant, and her garter was caught by her brother, Jim Wade.

Their guests from out-of-town were Mrs. Mary Gogerty, Mr. and Mrs. Ed Gogerty, Stefanie Lynn Gogerty, Jim Wade, Mrs. Katy Collins, Mr. and Mrs. Tommy Muse, Schiela Muse, Dana Harris, Haden Walling, Mr. and Mrs. Kyle Ray Harris, Mr. and Mrs. Jim Yell, "Curly" Yell, Karen Barnett and Howard Emr.

At Home In Parmer County

Laura Jacobs

If you are a home sewing enthusiast, the warmer weather we're having has probably inspired you to look for new patterns and fabric for spring. Here is a spring calendar for you:

April: Feeling a little short on money after taxes? Sewing is a good way to stretch the family clothing budget. Make summer cottons for yourself and other family members.

May: Now is the time for playsuits, shorts, even a swimsuit. Did the diet you started in January help?

June: Better start sewing for vacation garments. Don't forget a beach bag in the gay summer print. Store winter clothes, clean out closets and discard items not worn. Remember, if you have not worn it in a year or two, you probably will not!

July: Watch for summer sales. Think about fall fashions. Read the new pattern books. Think about fall fashions!

What's the fashion forecast for spring? Indications are for a nostalgic look. Looser, freer, less tailored styles

+++++

April 14-16, 1978 are the dates and the Texas 4-H Center near Brownwood is the place for 4-H leaders in clothing, family life, family resource management, foods and nutrition, and housing and home furnishings project. This weekend home economics training extravaganza for 4-H leaders will offer five outstanding workshops from which to choose. Both new 4-H leaders and experienced workers with youth are welcome to participate in the training.

Registration, supper and general sessions for everyone will begin on Friday evening, April 15 at 5 p.m. On Saturday, leaders will attend the workshop sessions for which they registered.

Clothing leaders will explore topics including "Fashion Direction," "Psychological Analysis," and "Creating An Illusion." Foods and Nutrition leaders will examine topics such as "Metrics in the

Kitchen," "Food Safety," "Food Preservation," and "Project Leadership and Achievement Events." Leaders in Family Life projects will look at "Personality Development-Y.E.S."

Family Resource Management participants will deal with "Energy Conservation Why's and How's" and "Consumer Education Activities." Housing and Home Furnishings leaders will preview the new "4-H Designer Event" plus "Selection, Use, and Construction of Home Accessories."

For additional information and registration details for the April 14-16 workshops, contact the Parmer County Extension Office located on the second floor, Courthouse, Farwell, or call 481-3619.

Carol Jones Shower Set

A baby shower honoring Carol D'Ann, daughter of Denise and Joe Jones, will be held on Saturday, April 15, from 3 to 5 p.m., in the community room of the First State Bank.

Hostesses will be: Nancy Sudderth, Candy Dyer, Brenda Wilson, Darlene Caldwell, Kay Venable, Linda Marshall, Brenda Riddle, Sue McClaran, Gay Horn, Donna Mitchell, Barbara Charles, Pam Bell, Pat Turner, Karen Grissom, Toni Barrett, Pauline Caldwell and Alethea Wilson.

Mrs. Connor To Be Feted

There will be a combined coffee hour and bridal shower given in honor of Mrs. Mike (Kellie) Connor at the home of Mrs. Thomas Rhodes on Wednesday, April 5, from 4 to 5 p.m.

There has been no announcement of the hostesses as yet.

ANNOUNCING

Dr. Kent Kelln announces the moving of his dental office from 614 Euclid to 104 West 7th in Friona, Texas for the practice of General Dentistry. For appointments call 247-2178.

36-7tc

Start With More Control.
Finish With More Cotton.
TEMIK® 15G
ALDICARB PESTICIDE

AN INSECTICIDE, A MITICIDE, AND A NEMATOCIDE. TRIPLE ACTION CONTROL WITH JUST ONE APPLICATION OF GRANULAR TEMIK (R) ALDICARB PESTICIDE AT PLANTING. PROTECTS UP TO 10 WEEKS AGAINST THIRPS, AND APHIDS, SPIDER MITES, FLEAHOPPERS, PLANT BUGS INCLUDING LYGUS AND LEAF MINERS, PLUS OUTSTANDING CONTROL OF ROOT-KNOT AND RENIFORM NEMATODES MICROSCOPIC SOIL PESTS THAT CAN SERIOUSLY REDUCE YIELDS THROUGH ROOT DAMAGE.

Riverside Chemical Co.

HIGHWAY 86 WEST 806-238-1443

BOVINA, TEXAS 79009



You're Invited

TO OUR GRAND OPENING

**FRIDAY & SATURDAY
APRIL 7th & 8th**



WE CORDIALLY INVITE EVERYONE TO THE GRAND OPENING OF OUR NEW BRANCH OFFICE LOCATED AT PRINCE STREET & PARKLAND IN CLOVIS.

WATCH FOR OUR UPCOMING ADS FOR SCHEDULE ETC.

● MANY PRIZES ● MANY GIVE AWAYS

Curtis Fort, NOTED COWBOY SCULPTOR, TO BE HERE WITH HIS WORKS OF ART ON DISPLAY.



SECOND LARGEST & ONE OF THE OLDEST FEDERALLY CHARTERED SAVINGS & LOAN ASSOCIATIONS IN NEW MEXICO

"Understanding A Growing Community"

801 Pile Street, Clovis, New Mexico 88101, (505) 762-4417
Prince and Parkland, Clovis, New Mexico 88101, (505) 762-4417
2nd and Abilene Streets, Portales, New Mexico 88130, (505) 356-4475

● REAL ESTATE FINANCE ● SAVINGS

UNITED MET
Welcome to M
our members
joined March 12
new home last
Avenue K.
We transferred
to another church
Leola Williams
Methodist

B. White
To be
A miscellane
Miss Betty Whit
at the Earl
Sherwood Lane
from 3 to 4:30 p.
is the bride-
The hostesses
Sherley Ware,
Isaac, Reba E
Frances Willa
Yvonne Stevens
Also, Virgin
Ware, Rose Mc
Carlene Jones
Sudderth, Kay
Norma Whitten

Bo
Church
ATT
DUD
P
Dudley & J
FIRS
L
PAR
SPE
Ph. Tharp
AGRI
Qu
WE
A
FR
"Your Po
Bov
PAF
IMP
W Hwy. 60
DON
Pres
BOVI
HO
ALL T

Church News

UNITED METHODIST CHURCH
Welcome to Mrs. V.E. Willard into our membership. Mrs. Willard joined March 12. She moved into her new home last week. It is at 907 Avenue K.

We transferred one of our families to another church last week: Mrs. Leola Williams to Borger United Methodist.

B. Whitecotton To Be Feted

A miscellaneous shower honoring Miss Betty Whitecotton will be held at the Earl Whitten home on Sherwood Lane, Saturday, April 8, from 3 to 4:30 p.m. Miss Whitecotton is the bride-elect of Terry Sherrill.

The hostesses are: Suzie Smith, Sherley Ware, Lura Hoover, Helen Isaac, Reba Bonds, Sue Fowler, Frances Willard, Shelby Rhodes, Yvonne Stevenson, Jeanne Kerby.

Also, Virginia Rhodes, Sandy Ware, Rose McCain, Lillian Rogers, Carlene Jones, Pat Read, Janie Sudderth, Kay Williams, Sid Lloyd, Norma Whitten and Sue Naegle.

We have been asked by the Friona ladies to work in the beauty shop one day a month, the first Tuesday, to wash and set hair, prepare nails, etc. We need not be professionally trained. We will be needed to push wheel chairs, guide the residents, wash hair and care for nails. Anyone can do it. Please call me. Our first day is next Tuesday. We need you.--Juanita Hastings.

Happy Birthdays: April 2, Mrs. Pat Kunselman, Virginia Garrett, Fern Bell, Durward Bell; 3, Pat Ware, Earl Stevenson; 4, Lottie Bandy; Mrs. Joe Bell, a member of the Over-Eighties; 5, Jerry Wright.

Things to Talk About: April 13, covered dish supper, 6:30 p.m. Administrative Board, Council, on E.E. program. 28-30, Mission Conference, My parish, all the world." John Wesley.

We urgently need a Sunday School teacher for Elementary 1-3. We are temporarily losing a very good teacher in this room and need someone to teach these precious children for a time. Please call me--Karen Kirkpatrick.

Known Ill--Robbie Dyer had his

tonsils removed recently. He was in Clovis.

Yvonne Stevenson has bronchial pneumonia. She is at home.

ST. ANN'S CATHOLIC CHURCH
Bovina--Mass, Sunday, 8:30 a.m. C.C.D. after Mass. Confessions, Saturday, 4-5 p.m.

Friona--Mass, Sunday, 10:30 a.m. C.C.D. before Mass. Confessions, Saturday, 7-8 p.m.

Assignments for April 9: Servers, Danny Schacher, Claude Tamez, Edward Alonzo. Communion distributors, Andres Martinez, Ruben Uriegas.

Special meeting of C.Y.O. Sunday, April 9, at 1 p.m. All 13-18-year-olds are invited.

From Father McGovern: Thanks to all committees for the help given to me. Without them, I could not function.

Meetings this week: Wednesday, April 5, Knights of Columbus, 8 p.m. Thursday, April 6, Bible Study (Spanish), 7:30 p.m. Baptisms every first Sunday of the month.

Instructions each first Sunday of the month at 8 p.m.

Methodist Men Host Breakfast

Methodist laymen hosted the monthly Bovina Christian Men's Fellowship Prayer Breakfast at 6:30 a.m. Monday.

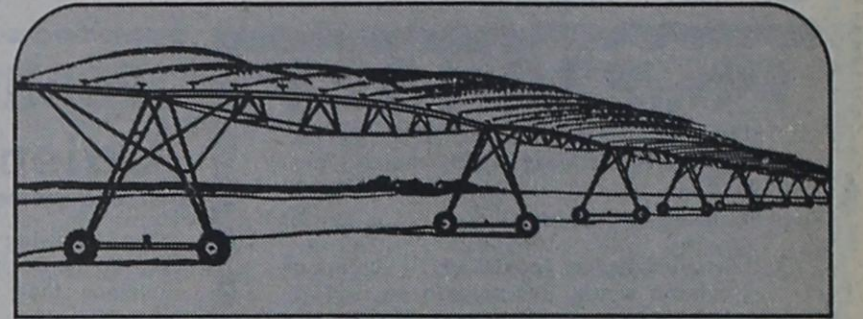
Rev. Wilburn Stone offered the opening prayer, and after a breakfast of bacon and eggs, hot biscuits and jelly, coffee and orange juice, L.M. Grissom introduced guest speaker, J.T. Hammonds. Mr. Hammonds spoke on "Christian Concern For One Another."

His talk reflected his personal observations of understanding the oneness that unites all Christians rather than the doctrines of man that seems to divide us, that Oneness being Christ and the love that He asked us to show one another. Mr. Hammonds cited the fellowship breakfast as having helped him achieve better understanding.

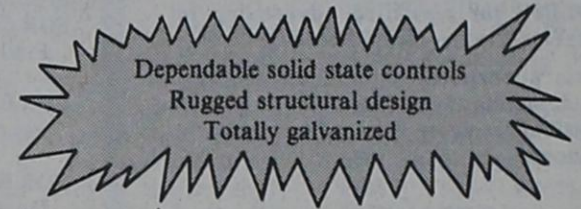
Fr. John Francis McGovern, attending for the first time as newly installed Pastor of St. Ann's Catholic Church, gave the prayer of dismissal.

The next Prayer Breakfast will be hosted by Catholic laymen on May 1.

Western Ag Sales Co.



Our center pivot...your best choice.



Western Ag... You've known us for a long time.

Center Pivot Systems Metal Farm Buildings
Underground Plastic Pipe Grain Storage Bins
Ken Cole, Salesman • Bovina, Texas 79009

★ call us 247-3065

Bovina Churches Welcome You!

Church Page Sponsors

ATTEND CHURCH
REGULARLY!

DUDLEY'S AUTO PARTS 3rd & Dimmitt Highway
Dudley & Jane Hughes Ph. 238-1219

FIRST STATE BANK
Of Bovina - MEMBER FDIC

LAWLIS GIN COMPANY
Highway 86

BONDS OIL COMPANY
Gulf Distributor

PARMER COUNTY SPRAYING SERVICE
Ph. Tharp 225-4990 Larry Gregory

AGRI-SPRAYERS, INC.
Quality Aerial Spraying Ph. 238-1475

KERBY WELDING SERVICE
A Deal The Year O

PAUL JONES TEXACO
Firestone Tires

FRIONA MOTORS
"Your Parmer County Ford Dealer"
Bovina Ph. 238-1395

PARMER COUNTY IMPLEMENT COMPANY
W Hwy. 60 Friona, Tex Ph. 247-2721

DON'S MEDICINE CHEST
Prescription & Health Needs
Ph. 238-1659

BOVINA GIN COMPANY
"Your Satisfaction Is Our First Concern"

HORN-CLAYTON INSURANCE
ALL TYPES OF INSURANCE

FIRST BAPTIST CHURCH of BOVINA

Sunday: Sunday School-9:45 a.m. Morning Worship-11 a.m. Training Union-6 p.m. Evening Worship-7 p.m.

WEDNESDAY Prayer Meeting-8 p.m.

BOVINA PENTECOSTAL HOLINESS CHURCH

Sunday School-10 a.m. Morning Worship-11 a.m. Evening Worship-7 p.m.



Rev. Wilburn Stone

ALLSUP'S CONVENIENCE STORE

201 - 3rd Street 365 Days A Year

★ Tires ★ Batteries ★ Accessories
CHARLES OIL COMPANY

GATEWAY FARMS BOVINA, TEXAS

SOUTHSIDE MOTOR SUPPLY

Dimmitt Road Phone 238-1427

BOVINA PUMP CO.

Highway 86 - West

SHERRILL LUMBER COMPANY

Highway 60 - Bovina

BOVINA BLADE

Bill Ellis, publisher

REEVE CHEVROLET - OLDS

"Your Transportation Counselors Since 1938"

SHERLEY GRAIN COMPANY

"Serving Parmer County Farmers The Year Around"

PLEASANT HILL BAPTIST CHURCH

Pleasant Hill, N.M. Sunday:

Sunday School-10:30 a.m. Texas Time; Morning Worship, 11:30 a.m. Texas Time;

Church Training, 7 p.m. Texas Time; Wednesday Night Evening Worship, 8 p.m. Texas Time; Meeting-8 p.m.

OKLAHOMA LANE BAPTIST CHURCH

Sunday School-10 a.m. Morning Worship-11 a.m. Evening Worship-6 p.m.

Rev. Moody Smith

OKLAHOMA LANE METHODIST CHURCH

Sunday School-10 a.m. Morning Worship-11 a.m. Evening Worship-7 p.m.

Rev. H.L. Whittenburg

BOVINA METHODIST CHURCH

Sunday School-9:45 a.m. Morning Worship-11 a.m. M.Y.F.-6 p.m. Evening Worship-7 p.m. Choir Practice-Wednesday-8 p.m.

Rev. James W. Putnam

BOVINA CHURCH of CHRIST

SUNDAY SERVICES
Classes-9:45 a.m. Worship-10:45 a.m. and 6 p.m. WEDNESDAY Devotional and Classes-9 p.m.

Cecil Bunch

MISSION BELEN BAUTISTA

Escuela Dominical-9:45 a.m. Mensaje-11:30 a.m.-Union De Pre Preparacion-5 p.m. Miercoles Estudio De La Biblia-7:30 p.m.

Church Chuckles by CARTWRIGHT



"I'm supposed to have proof you're a member. Can you recite the Apostle's Creed?"

Will God Always Bless America?

In our country we have a murder committed every 64 minutes, a rape every 37 minutes, some form of embezzlement every 20 minutes, an armed robbery every 7 minutes, a car stolen every 2 minutes and a burglary every 22 seconds.

There has been a percentage increase in juvenile delinquency every year for the past twenty years. The crime rate is now increasing four times faster than the population is increasing. (Crime now costs us over twenty billion dollars per year.)

We spend thirty billion dollars yearly on gambling, eleven billion on alcoholic beverage, seven billion on amusements, seven billion on tobacco, three billion on cosmetics, one and one half billion on sex magazines, and one-half billion dollars for chewing gum. (Every convicted sex maniac has been an avid reader of sex flith that is daily accessible to the children on our nation's news stands.) In our public schools and

colleges atheistic infidelity is being widely taught. However, in the same institutions it is ruled unconstitutional to teach the existence of God.

Let one of the popular movies glorifying adultery, prostitution, and other forms of moral perversion come to town and see how long the lines are at the box office. Most of them impressionable teenagers.

What does America need? It needs a leader like Moses, generals like Joshua, preachers like Paul, mothers like Hanna, children like Samuel, doctors like Luke, a God like Israel's, and a Savior like Jesus Christ.

The moral standards of atheistic Russia are higher than the moral standards of "Christian" America. Immorality is eating like a cancer at the very things that made America great. Yes, how long will God bless America?

Cecil F. Bunch
Minister
Church Of Christ

ST. JOHN LUTHERAN CHURCH

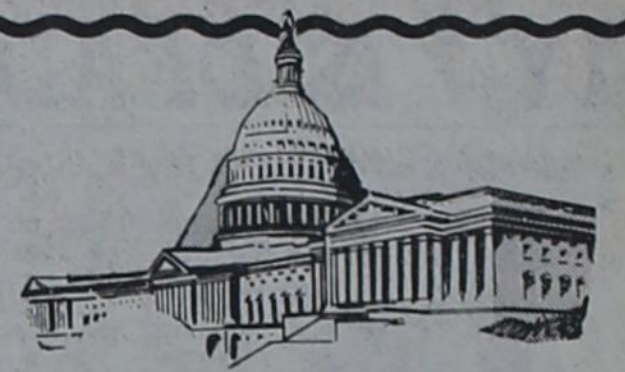
Sunday School-9:30 a.m. Morning Worship-10:30 a.m.

Rev. Herman Schel

ST. ANN'S CATHOLIC CHURCH

Mass--Sunday, 8:30 a.m. CCD--After Mass Sunday Confession: Sunday, 8-8:25 a.m. John Francis McGovern, S.A. Administrator Zeferino Villarreal, Deacon 238-1404

What's Washin' In Washington?



By JAN U. TURNER

Because the nature of what I am writing about is volatile, I want to give the reader the original source of my material and define the source itself:

"The source is the 'Congressional Record,' defined in 'The American Political Dictionary' as: 'A verbatim record of the proceedings (debates, speeches, and votes) in both the House and the Senate, printed daily. Members may edit their remarks and speeches before printing, and they may also insert material, called 'extension of remarks', which enables a member to record his position or legislative matters even though he had not been able, or did not wish, to do so orally on the floor of his chamber. Many such insertions are aimed at influencing a congressman's constituents and not other members. Permission to extend remarks is required by the member's house and is ordinarily granted.'"

At the end of this column are the actual page numbers and dates of the material from the Congressional Record, so those interested may obtain copies and read them in their

entirety. They were inserted by Rep. Larry McDonald of Georgia as extension of remarks.

Hon. Larry McDonald, Monday, October 17, 1977. Mr. Speaker, until recently the policies, plans and operations of the Trilateral Commission established by Chase Manhattan Bank head David Rockefeller were the concern of a relatively small number of expert political analysts. Now thanks to the pioneering examinations by conservative political analysts of this powerful special interest group working to influence our Government's policies, the activities of the Trilateral Commission are beginning to receive a public airing.

In recent weeks several of my constituents have submitted extensive magazine articles and newspaper stories on the Trilateral Commission. Several of these are of particular interest and I intend to submit them for the attention of my colleagues:

"Who Runs Jimmy Carter?" (By Craig S. Karpel): "The President and Vice-President of the United States and the Secretaries of State, Defense and the Treasury are Commissioners of an elite interna-

tional organization that is on record as being opposed to democracy.

The key strategy of this organization has been to install one of its 67 United States Commissioners in the nation's highest elective office, thus enabling him to choose a Vice-President and Cabinet from its ranks. This strategy has been stunningly successful.

Jimmy Carter was selected more than four years ago to be this organization's candidate for the Presidency. At that time, Carter was governor of Georgia and a political unknown.

This organization has issued a report advocating the limitation of democracy by such means as Governmental secrecy, laws allowing public officials to sue reporters for libel, regulation of the press and reduced higher education.

This remarkable organization is called the Trilateral Commission. It was founded and funded in 1973 by David Rockefeller. Rockefeller is a prominent Republican, youngest brother of Nelson Rockefeller and chairman of New York's giant Chase Manhattan Bank. He is widely considered to be the preeminent leader and spokesman of the international banking community. The purpose of the Trilateral Commission is to weld the corporate and financial sectors of the United States, Western Europe and Japan into a united front to cope with the escalating demands of disadvantaged groups at home and under-developed countries abroad.

Until two weeks before Carter's nomination, the Trilateral Commission was headed by Zbigniew Brzezinski, now the National Security Advisor to the President (the post to which Henry Kissinger was originally appointed). In contrast to Carter's human-rights campaign, a recent article by Brzezinski in Foreign Policy, 'America in a Hostile World', proposes that the United States stop championing democracy in the world arena.

Before the election, Carter's then-campaign manager and current staff chief Hamilton Jordan said in Playboy that he would quit if Carter were to appoint Trilateral Commissioners Brzezinski and Cyrus Vance to his Administration.

In addition to Brzezinski and Vance, Carter's appointments of Trilateral Commissioners include Harold Brown as Secretary of Defense, W. Michael Blumenthal as Secretary of the Treasury, Warren Christopher as Deputy Secretary of State, Richard Cooper as Undersecretary of State of Economic Affairs, Richard Holbrook as Assistant Secretary for East Africa and Pacific Affairs, Richard Gardner as ambassador to Italy and Paul Warnke as director of the Arms Control and Disarmament Agency and chief negotiator at the abortive Strategic Arms Limitation talks with the Soviet Union. Most recently, Carter appointed Gerald C. Smith, North American chairman of the Commission, as ambassador at large for international nuclear-power negotiations. Jordan has not yet submitted his resignation.

Jimmy Carter has presented himself to the American people as, variously, a populist, a conservative, a liberal, a born-again Christian and an aficionado of Bob Dylan. In reality, he was chosen to be President by the quasi secret coordinating council of the financial and corporate elite of the United

States, Western Europe and Japan. Contrary to his public positions, Carter is expected by this council to preside over the implementation of its basic program: the reduction and limitation of democracy at home and accommodation with undemocratic regimes abroad.

The time has come for the President of the United States to explain his continued association with the Trilateral Commission to the American people. Does Carter subscribe to the Commission's proposals for limiting democracy? If not, he must explain why he did not resign from the Commission long

ago. He must publicly repudiate Brzezinski and dismiss other Trilateral Commissioners from his Administration.

If Jimmy Carter does subscribe to the Commission's proposals, the American public has a right to know how he justifies his participation in a plan to use the Presidency as a vehicle for limiting the democratic process.

CONGRESSIONAL RECORD: 10-17-77-E6327-E6328; 10-18-77-E6393-6397; 10-21-77-E6461-E6462; 11-4-77-E6912; 11-11-77-E6979-E6981; 11-15-77-E7014-E7017; 11-18-77-E7061-E7063.



IN RECENT...Tournament play, the "Shooting Stars" basketball team won the Texas Tech All-University Championship. Going into the competition holding second place in the division, the Stars won all three of their tourney games, taking top honors with a final 44-22 victory. They finished ahead of 28

other entries. Shown above, first row, left to right: Cheryl Stovall, Muleshoe; Jency Thompson, Hartley; Bill Jones, coach. Back row: Dianna Hartzog, Bovina; Cindy Isaac, Muleshoe; Deborah Young, Morton; Connie Ware, Bovina, and Jerry Wade, Maude.

Dist. Has Tailwater Guide Book

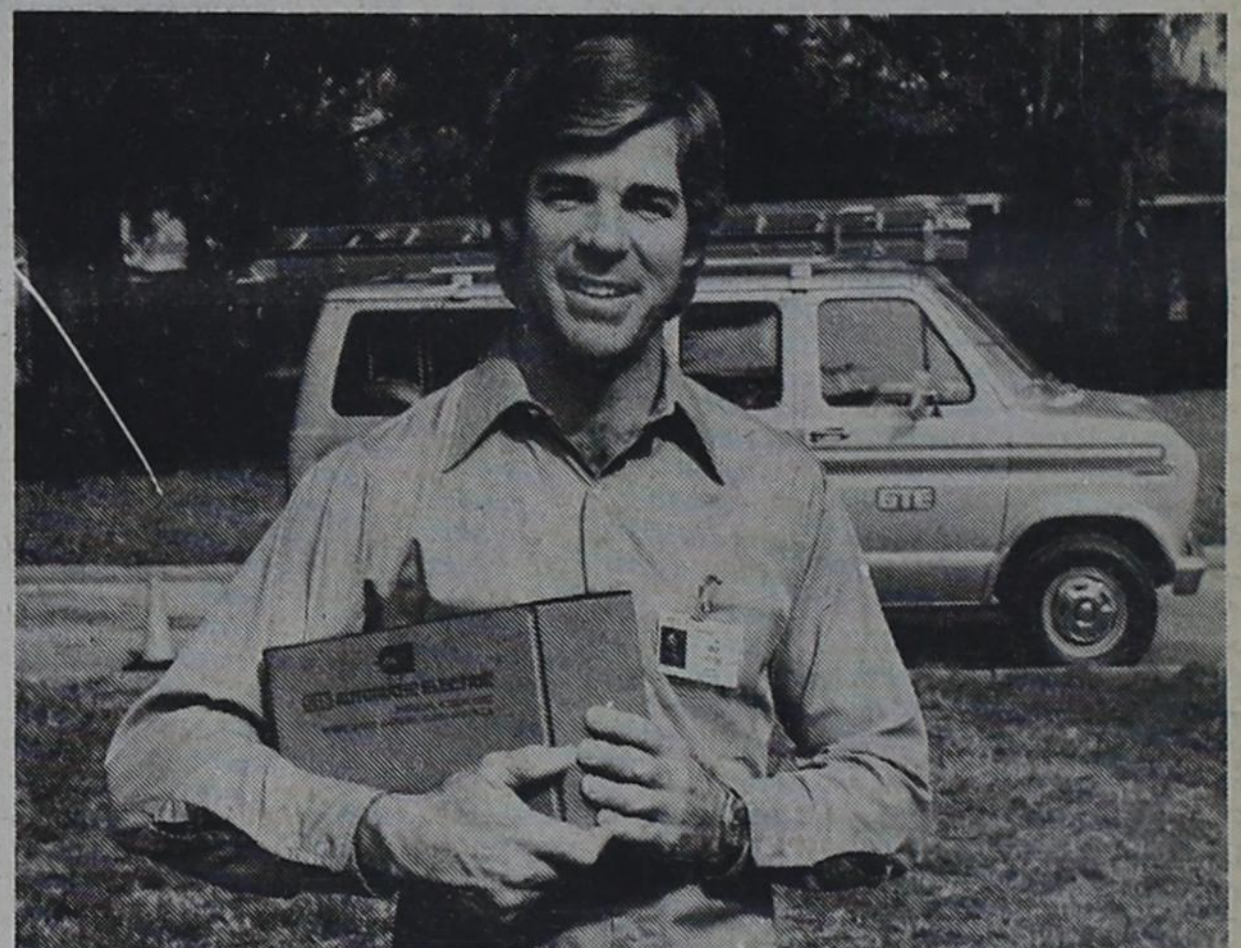
The High Plains Underground Water Conservation District No. 1 is pleased to announce the publication of the "Guide to Irrigation Tailwater Recovery."

In keeping with the District's "educational" approach to the abating of tailwater waste, this 78-page handbook has been prepared to assist the irrigator with the design and installation of tailwater return systems.

An irrigation tailwater return system not only has the advantage of controlling tailwater, but also conserves the underground water supply and saves money in pumping and operating costs. The return system combines a collection component, storage reservoir, and return equipment which, when properly utilized, provides a means to capture and transport tailwater runoff back to the field for reuse.

The District realizes that technical assistance may be necessary in the planning and construction of a return system; however, it is hoped that this publication will give the farmer an insight into the basics involved and help solve most tailwater problems both easily and practically.

Copies of the "Guide to Irrigation Tailwater Recovery" can be obtained free of charge upon request at the High Plains Underground Water Conservation District No. 1 office at 2930 Avenue Q, Lubbock, Texas 79405. This publication is also currently available through the District's County office located at Horn Insurance Agency in Bovina, the ASCS and County Agent's offices in Farwell, and at the SCS office in Friona.



Who doesn't charge extra for house calls?

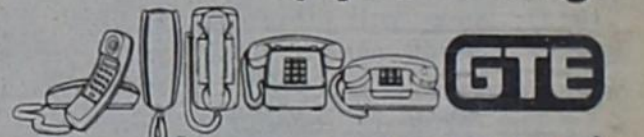
We don't...we're General Telephone. If anything ever goes wrong with a phone you rent from us, we'll be there to fix it. And we don't charge you an extra cent for the visit.

We realize how important it is to keep you in touch with your world. So we do all we can to give you a wide selection of phones that are not only reliable, but also available

in exciting colors and styles to match your every mood and decor. And every one guaranteed for life.

We spend hundreds of millions of dollars every year, making sure that when you pick up your phone... it works.

We keep you talking.



The First GRAIN STORAGE Sale In Our History.

25,624 Bushel Storage E in

Delivered To Your Farm For Only \$6,880.00

This Is Less Than 27¢ Per Bushel, 36 Ft. 10 Ring Chicago Grain Storage E in.

Do Not Be Fooled By This Price, This Is Our Top Of The Line First Quality Grain Storage E in And Backed By TAGCO'S And CHICAGO'S Limited Warranty.

HEAVY DUTY CORRUGATED WALL SHEETS
STEEP PITCH CLEAR-SPAN SUPER-RIB ROOFS
GALVANIZED STEEL USED THROUGHOUT
GRADE NO. 5 HARDENED BOLTS USED THROUGHOUT

"MANSIZED ROOF"
HATCH AND ROOF
RUGGED WALL SHEETS
LARGE PEAK RING VENT OPENING
RUGGED WALL SHEETS



TAGCO
INDUSTRIES

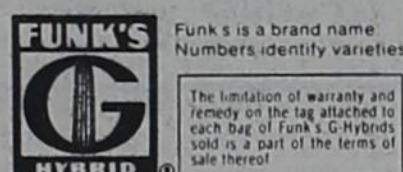
This sale good now thru April 15, 1978. (Limited Quantities Available) CALL: (806) 357-2222 Summerfield, Texas

Red hot numbers!

G-4449

G-4507

Plant these hot new hybrids from Funk's and see the difference their field performance can make in your yields. They pop out of the soil fast, stand tough against droughts and storms, dry down for a big, easy harvest. Phone today to reserve all the seed you need.

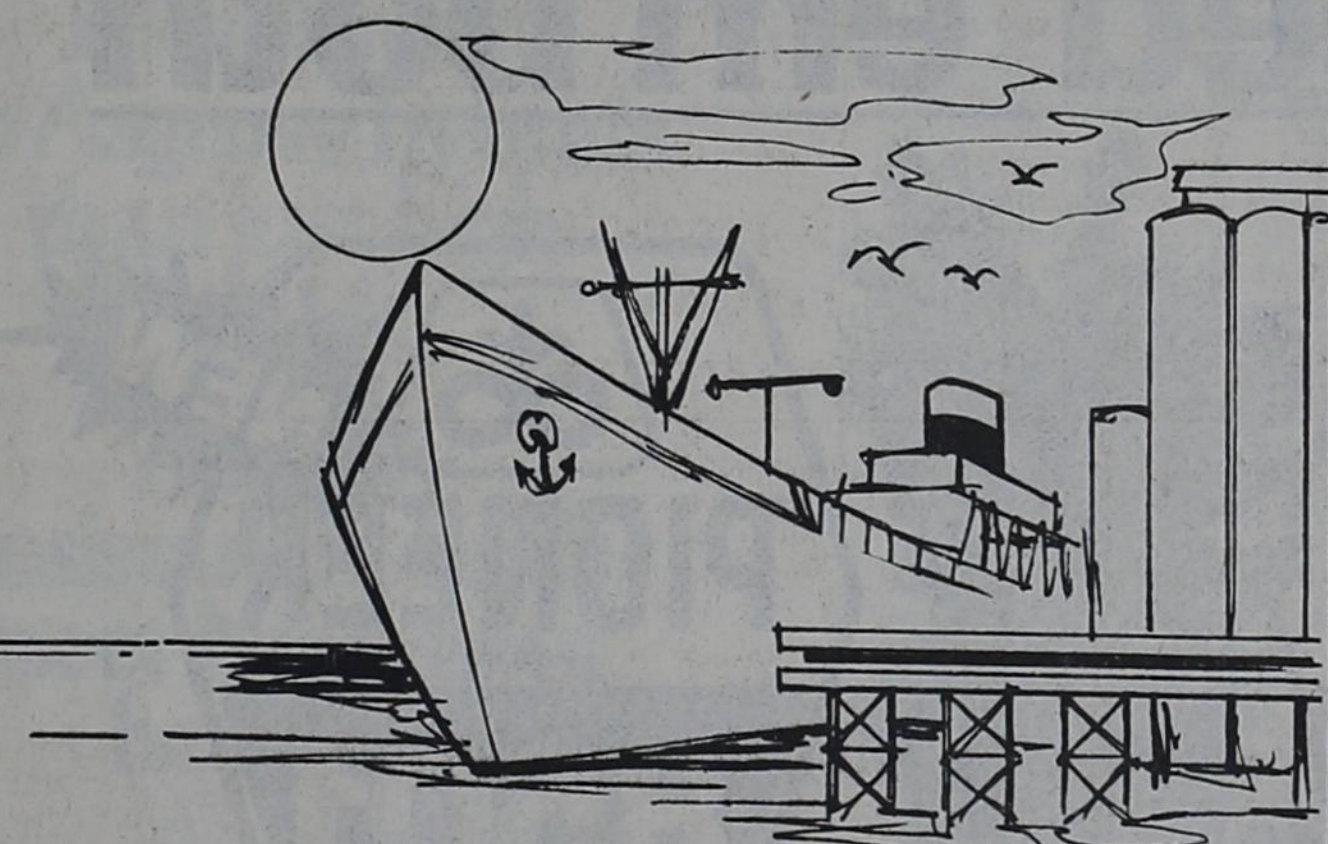


Taking a new stand

RALPH ROMING

PH. 238-1516

BOVINA, TEXAS



When a farmer's ship comes in...why can't he ride?

During the '60's when our storerooms were full and we had plenty of food and fiber for many seasons, barber shop talk was... "why does the government pay farmers not to grow cotton? They don't pay me not to cut hair...let 'em sell that corn, cotton and wheat on world markets."

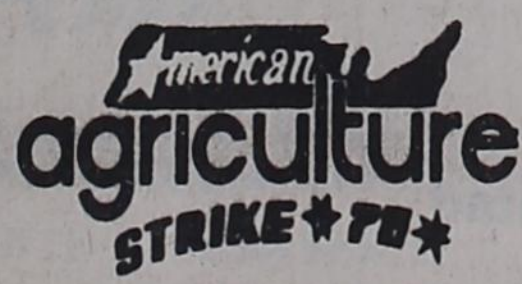
In the 1970's, shortages developed and world prices soared. Big grain and cotton trades were made with foreign countries and the barber shop crowd was saying "the government is gonna let 'em sell it all. There won't be any left for us."

During this time, labor unions refused to load ships and President Ford signed an embargo cancelling legitimate foreign contracts.

Is it fair to make the farmers sell on world markets when prices are low, then sell at home at a lower price when world markets are high?

The farmer is like a soldier. We only need him when at war...or hungry.

Agriculture is basic in Texas. America needs a strong Agriculture.




PAID FOR BY CONTRIBUTIONS TO AMERICAN AGRICULTURE



Jerry W. Jones
-Springlake, Texas:
"RA1501 is consistently the best corn I've planted."
RA 1501 Hybrid Corn

- Premium single cross
- Highest yields
- Medium maturity
- Fine grain quality
- Fast dry down
- Excellent Standability



Ring Around
P.O. Box 1629
Plainview, Texas

Dealerships Available Contact
Ronnie Brown
293-2878

Who doesn't charge extra for house calls?

We don't...we're General Telephone. If anything ever goes wrong with a phone you rent from us, we'll be there to fix it. And we don't charge you an extra cent for the visit.

We realize how important it is to keep you in touch with your world. So we do all we can to give you a wide selection of phones that are not only reliable, but also available

We keep you talking.

The First GRAIN STORAGE Sale In Our History.
25,624 Bushel Storage E in
Delivered To Your Farm For Only \$6,880.00
This Is Less Than 27¢ Per Bushel, 36 Ft. 10 Ring Chicago Grain Storage E in.
Do Not Be Fooled By This Price, This Is Our Top Of The Line First Quality Grain Storage E in And Backed By TAGCO'S And CHICAGO'S Limited Warranty.

HEAVY DUTY CORRUGATED WALL SHEETS
STEEP PITCH CLEAR-SPAN SUPER-RIB ROOFS
GALVANIZED STEEL USED THROUGHOUT
GRADE NO. 5 HARDENED BOLTS USED THROUGHOUT

"MANSIZED ROOF"
HATCH AND ROOF
RUGGED WALL SHEETS
LARGE PEAK RING VENT OPENING
RUGGED WALL SHEETS

TAGCO
INDUSTRIES

This sale good now thru April 15, 1978. (Limited Quantities Available) CALL: (806) 357-2222 Summerfield, Texas

MAY 1 IS DEADLINE

ASCS Explains Set-Aside Program

QUESTIONS AND ANSWERS

Farmers in Parmer County are reminded that May 1, is the final date for signing-up in the 1978 Set-Aside Program. There have been a number of questions asked about this program. The most common ones asked (with answers) are as follows:

1. Q: As a farmer, must I participate in the set-aside program?

A: Participation in the set-aside program is strictly voluntary. However, participation is a requirement for eligibility for several program benefits.

2. Q: What are the benefits of participating in these programs?

A: By participating in these programs, you become eligible for: (1) commodity loans; (2) deficiency payments; and (3) disaster payments. This applies not only to corn, sorghum and barley (the three feed grains) and wheat, but also to all crops included in the normal crop acreage (NCA) except sugar beets and sugar cane.

3. Q: What are the feed grains?

A: For the 1978 crop year, the designated feed grains are corn, sorghum and barley.

4. Q: What are the set-aside requirements?

A: For wheat, the set-aside requirement is 20 percent; for feed grains, it is 10 percent.

5. Q: Does this mean I set-aside some of my wheat and feed grain allotments in order to participate in the program?

A: No. There are no acreage allotments in 1978. To participate in the set-aside program, a producer need only set-aside 1 acre for every 10 acres planted to feed grains for harvest and 2 acres for every 10 acres planted to wheat in 1978. This includes any volunteer acreage harvested for grain.

6. Q: So my 1978 acreage really doesn't have to be less than my 1977 acreage, does it?

A: That's right. Your 1978 acres of wheat and the three feed grains can be as much or more than last year's as long as you meet set-aside and normal crop acreage requirements.

7. Q: What is the "normal crop acreage" (NCA) and what crops are included in it?

A: A farm's NCA consists of the number of acres normally planted to the following crops: barley, corn, dry edible beans, flax, oats, rice, rye, sorghum, soybeans, sugar beets, sugar cane, sunflowers, upland cotton and wheat. Other crops may be included as recommended by the State Agricultural Stabilization and Conservation (ASC) committee and approved by the ASCS Deputy Administrator for State and County Operations (DASCO). In the 1978 wheat and feed grain set-aside programs, the total acres of these crops planted on a farm plus acres set-aside can not exceed a farm's NCA.

8. Q: Will I be notified by the county ASCS office what my NCA is?

A: Yes. You will receive a notice giving both your farm's NCA and the yield established for your farm.

9. Q: When is the sign-up period for set-aside?

A: Sign-up for the set-aside program will begin March 1 and continue until May 1.

10. Q: How will this program reduce wheat and feed grain production?

A: The program will result in fewer acres planted in 1978. Farmers will look closely at market prices and make their decisions based on which crops should provide the best return for their investments. At least some of the acreage reduction will be in wheat and feed grains.

11. Q: What's an "allocation factor"?

A: The Secretary of Agriculture will announce a national wheat program acreage and a national feed grain program acreage the

number of harvested acres needed to produce enough wheat and feed grains for domestic use, for export, and for any necessary carryover.

The allocation factor is determined by dividing the national program acreage by the number of acres that were harvested. This figure cannot be less than 80 percent nor more than 100 percent.

12. Q: When will the allocation factor for 1978 be announced?

A: They will be announced after the first five months of the marketing year for the crop involved. For wheat and barley, the first five months of the marketing year are June-October; for corn and sorghum, October-February.

13. Q: What type of land must I designate for set-aside acreage?

A: Acreage designated as set-aside must be cropland that was tilled within one of the last three years in the production of a crop other than hay or pasture (unless the hay was in normal rotation with small grain or row crops). Excluded are orchards and vineyards, strips in skiprow planting patterns and other areas of abnormal shape or small size.

14. Q: What about the corners of fields where circular irrigation is a regular practice?

A: The corners of those fields will satisfy set-aside requirements provided they are normally planted to a crop. They will not be considered as being of "abnormal shape" or "small size."

15. Q: Will I receive any payments for setting aside my land?

A: No. There will be no land diversion payments made under this program.

16. Q: Can I use the set-aside land for any purpose?

A: No. Neither haying nor harvesting is permitted on land designated as set-aside for these

programs.

17. Q: Will I be allowed to graze the set-aside land?

A: Grazing will be permitted on set-aside land except during the six principal growing months determined by the State ASC committee.

In Parmer County, set-aside acreage may be grazed from September 15 to March 15.

18. Q: If I grow both wheat and feed grains, must I participate in both the wheat and feed grain set-aside programs?

A: There is a cross compliance provision in all set-aside programs to require participation in every set-aside as a condition for eligibility for deficiency and disaster payments and for commodity loans. This applies to all crops included in the NCA (except for sugar beets and sugar cane). For example, a farmer who failed to comply with the wheat set-aside would be ineligible for loans on his soybeans and upland cotton.

19. Q: Can I set-aside the same acreage under both programs?

A: No. The set-aside requirements apply to each crop individually. Thus, if you set-aside 20 acres under the wheat program and 10 acres under the feed grain program, you will be setting-aside a total of 30 acres.

20. Q: How do I determine my NCA if I double-crop?

A: When determining a farm's NCA, land that is double-cropped will be counted only once. So if you double-crop small grains and soybeans on 100 acres, you have an NCA of 100 acres, not 200 acres.

21. Q: How do I determine my set-aside acreage if I double-crop?

A: When determining a farm's set-aside, a farmer who double-crops wheat and feed grains must set-aside land under both the wheat and feed grain programs. The same

acreage cannot satisfy the requirements of both programs.

A farmer who double-crops 100 acres of wheat and 100 acres of corn must set-aside 20 acres for the wheat and 10 acres for the corn for a total of 30 acres set-aside.

22. Q: If I have more than one farm, can I participate on one farm and not on the other?

A: Yes. Persons owning and/or operating two or more farms will be eligible for program benefits on participating farms, provided the NCA is not exceeded on non-participating farms when a crop subject to set-aside is planted on the nonparticipating farm(s).

23. Q: How are deficiency payments figured?

A: If deficiency payments are made in 1978, they will be based on the producer's share of the national farm wheat program acreage as expressed by the allocation factor. Deficiency payments, when applicable, must be made on not less than 80 percent of the total harvested acreage.

The deficiency payment rate is the difference between the target price and the higher of (1) the national average market price received for the first five months of the marketing year for the crop involved or (2) the national average loan rate. For wheat and barley, the first five months of the marketing year are June-October; for corn and sorghum, October-February.

24. Q: If I'm eligible, how will ASCS compute my deficiency payment?

A: If you are eligible for a payment, ASCS will multiply the payment rate times your farm's established yield times the number of acres you planted for harvest. If you didn't reduce your 1978 plantings, this figure will then be multiplied by the allocation factor.

Again, payments are based on the number of acres planted for harvest in 1978, not on an acreage allotment.

25. Q: Has the disaster program been changed?

A: There are still two types of disaster payments: prevented planting and low yield. This year, however, they will be figured differently.

26. Q: How will the disaster programs be different?

A: They will be different in four ways: (1) payments will be computed on the number of acres you actually plant (or intended to plant) for harvest; (2) you will qualify when your yields are reduced 40 percent or more; (3) payments will be limited to losses that exceed 40 percent and (4) low yield payment rates will be 50 percent of the target price. (In the past, (1) payments were based on allotments; (2) yields had to be reduced at least 33 percent; (3) payments were on losses below the allotment times the established yield; and (4) the payment rate was one-third of the target price.)

27. Q: So what you've done is make it harder for me to qualify for low yield payments but you've increased the payment rate when I do qualify.

A: That's right. And if you do qualify, you'll be paid based on the number of acres you actually planted for harvest, not on an allotment.

28. Q: What about prevented planting payments?

A: A producer who is prevented from planting wheat or feed grain may be eligible for a payment based on the smaller of (1) the acreage intended for wheat or feed grain that could not be planted to wheat, feed grain or any other nonconserving crop or (2) the amount that the acreage planted to wheat or feed

grains in 1977 exceeds 1978's acreage. If the producer was also prevented from planting some acres to wheat or feed grains in 1977, the county ASC committee may adjust the 1977 planted acreage figure to reflect this.

29. Q: So eligibility and payments are not based on an allotment, are they?

A: That's right. In 1978, prevented planting disaster payments are based either on the number of acres you intend to plant or the number of acres you planted in 1977 rather than on an allotment.

30. Q: What about low yield payments?

A: Program participants will be eligible for payment on their loss below 60 percent of the established farm yield times the acreage planted for harvest.

31. Q: So low yield payments aren't figured on allotments either, are they?

A: Right. How yield payments are based on the established yield for your farm and the number of acres you actually plant for harvest.

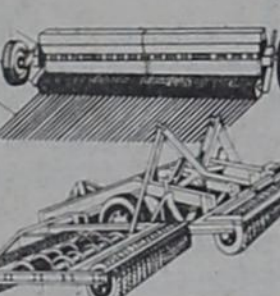
32. Q: How does ASCS compute deficiency payments if I also get disaster payments?

A: Before computing deficiency payments, ASCS will first subtract the number of bushels for which you have already received a disaster payment. You cannot receive both a disaster and a deficiency payment on the same bushel.

33. Q: Is there any limit on the payments I can receive?

A: There is a limit of \$40,000.00 that a person can receive under the wheat, feed grain and upland cotton disaster payments.

For more information on the 1978 wheat, feed grain and set-aside programs contact your county ASCS office.



this year...right here... you need 'em both



A consistent yielder year after year

Pioneer® brand 8311 has proven itself to be a dependable sorghum under many conditions. These bred-in characteristics make it just right for planting in the Texas Panhandle, South Plains and Eastern New Mexico:

- High test weight grain
- Outstanding disease tolerance including MDMV, smut and others
- Good standability with good roots and sturdy stalks
- Outstanding height uniformity with good head exertion



Outstanding yielder with excellent standability

This new sorghum hybrid has a superior yield record in this area. Pioneer® brand 8501 produces heavy test-weight grain and has outstanding stress tolerance. Take a look at these other characteristics that make 8501 so dependable:

- Yields well under limited irrigation or dryland
- Excellent seedling vigor and disease tolerance including smut, MDMV and others
- Uniform head height with good exertion
- Beautiful field appearance

Get greenbug tolerance without giving up yield!

New Pioneer brand 8451 delivers top yields in its class of medium maturity sorghum hybrids. And its greenbug tolerance protects 8451 through serious infestations. This hybrid has a lot going for it in '78.

- Outstanding greenbug tolerance *without* sacrificing yield
- Good seedling vigor
- Good tolerance to MDMV and head smut
- Dries fast for earlier harvest
- An all-around performer, irrigated or non-irrigated



Pioneer Hi-Bred International, Inc.
Southwestern Division
Plainview, Texas

Pioneer is a brand name; numbers identify varieties. ©Registered trademark of Pioneer Hi-Bred International, Inc. ©PHYB '78.

The limitation of warranty and remedy attached to each bag of Pioneer brand seed is a part of the terms and conditions of the sale thereof.

The Eovina Medical Clinic Inc. Board voted March 28, 1978 to vacate and close the clinic building April 30, 1978. Dr. Hickman's patients may receive treatment at his Amarillo Office, 34th & Western St. located in Fleetwood Shopping Center, Amarillo, Tex. or by appointment in the office of Dr. Gregory, Muleshoe, Texas.

Dr. P.C. Hickman

FHA'ers Observe Special Activities

The Bovina Chapter of FHA is observing FHA-HERO Week from April 2 through April 8.

Last Sunday, FHA members attended the 8:30 a.m. Mass at St. Ann's Catholic Church.

Teacher Appreciation Day was observed on Monday.

Tuesday, the members wore the colors of the chapter, marking the day as "Red and White Day."

A regular meeting was held on Wednesday and the eighth grade students were invited to attend. The members explained the aims and aspirations of the chapter to their guests and encouraged their membership.

Thursday (tomorrow) the chapter will install its officers for next year. The Secret Grannies will be guests for this occasion.

Big Nick's Softball Team Is Runnerup

Big Nick Traders, the defending 1977 District 4 champions, captured second place last weekend in the fourth annual April Fool's Tournament in Clovis, N.M.

Eleven teams entered the first tournament of the year, with teams represented from Clovis, Santa Fe and Alamogordo.

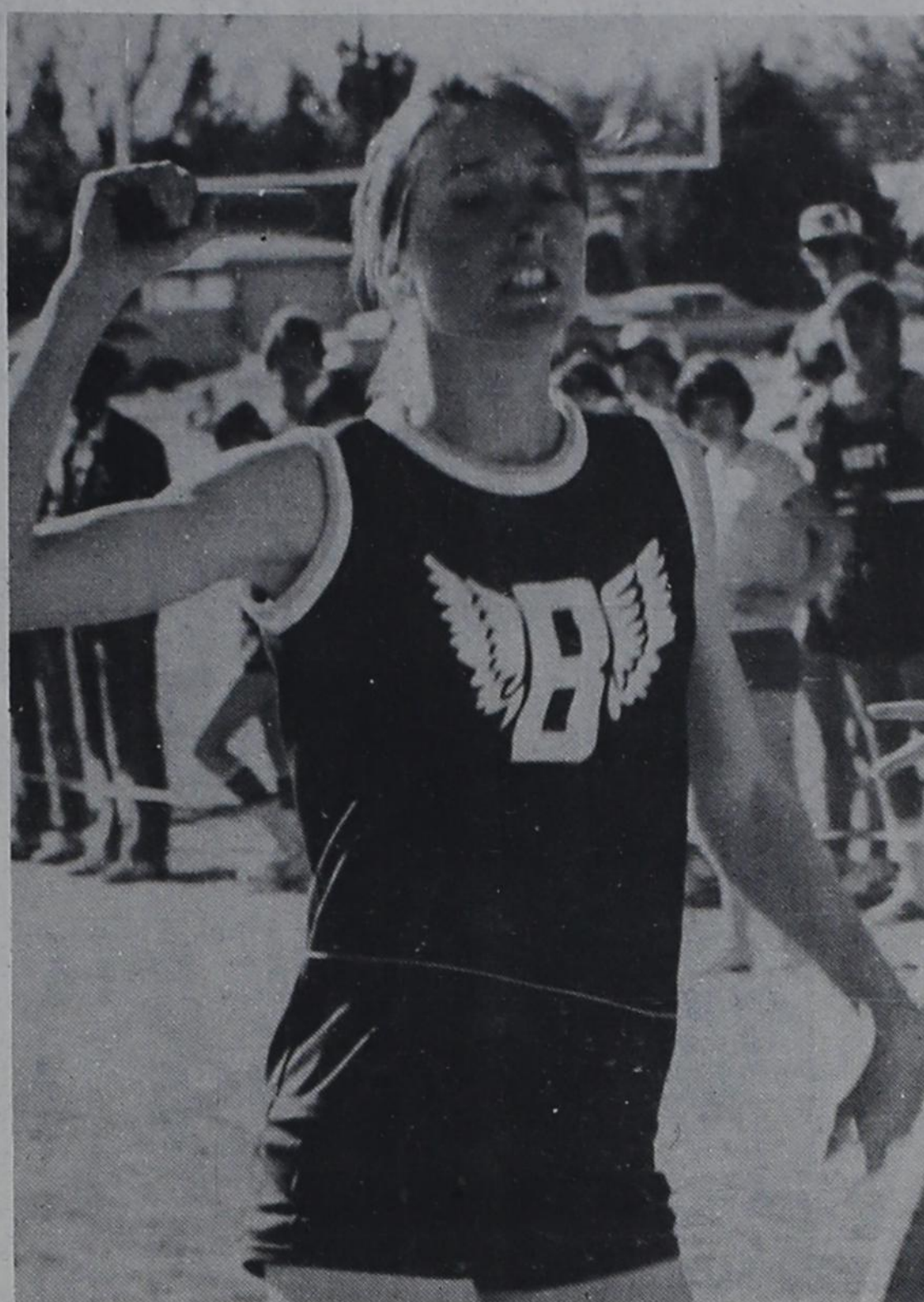
Big Nick started off by defeating T.N.T. and MBPXL, both of Clovis, before falling to Raleigh's Insurance of Santa Fe to drop them into the losers' bracket.

Big Nick then defeated Colonial West of Clovis to move into the

championship game against Raleigh's.

Big Nick won the game, 12-8, forcing a playoff to decide the championship. Raleigh's squeezed out a 14-13 victory.

Team members for the 1978 season include: A.L. Nuttall, coach; Wayne Spears, coach; Mike Grisson and Mike Spears, Bovina; Harold Cast, Ron Hyronamus, Ted Hare, Bob Nelson, Pat Miner, Rick Switzer, Kevin Hargrove, Doug Harrison, Travis Denton, Perry Mason and Tommy Miner.



WINNING STYLE.....Diane Gilbreath is shown hitting the finish tape to win the mile relay event for the Fillies. The Bovina girls are undefeated in five meets this season.



FIRST AGAIN....Sandi Sides, defeated in the relays at the Amarillo relays last weekend, and set a new meet record in the 440-yard relay, in 50.2.

Industrial Work Jumps

Industrial production in Texas edged up in January at a 4.3 per cent seasonally adjusted annual rate. Preliminary figures show total output 6.1 per cent above a year earlier. The rise resulted from an increase in mining output that more than compensated for a small decline in manufacturing output.

Strong drilling activity and production of metal, stone and earth minerals accounted for the overall rise in mining output. Moreover, production of crude oil was up slightly.

The decrease in manufacturing

centered in the nondurable goods industries. Reduced output in food, textiles, apparel, paper, and petroleum refining led the decline.

The gain in durable goods production reflected greater output in both primary and fabricated metals, furniture and fixtures, and transportation equipment. However, stone, clay, and glass products; lumber and wood products; and electrical machinery posted declines in output.

Despite the gain in factory output, the manufacturing capacity utilization index eased down in January to 101.8 per cent of the 1972 base.

Youth Gets Hero Award

Scot Mitchell, son of Mr. and Mrs. LaFray Mitchell of Lake Creek in Delta County, received the Texas Farm and Ranch Safety Council's "Rural Heroism" Award for 1977 at the annual meeting of the Texas Safety Association here Monday. The council is the farm and ranch section of the Safety Association. Ben Bullard, assistant safety director, Texas Farm Bureau, is president of the council.

Presentation was made by Millard Shivers, director of rural development for Blue Cross-Blue Shield of Texas and chairman of the council's awards committee.

Scot was cited for his action when his mother, Mrs. Mary Dee Mitchell, caught fire from an exploding jug of flammable liquid as she was attempting to light a charcoal grill. Mrs. Mitchell by mistake used gasoline to ignite the fire and the jug exploded, engulfing her in flames.

"I was inside the house and heard her," Scot related. "I tried rolling her on the ground, but that didn't work." Some of her clothing was of a synthetic fiber that would not smother when ablaze. "I grabbed the water hose and put the fire out," young Mitchell continued.

He then placed his mother in a car and drove her some two or three miles to their dairy where his father was working. "Even at this point, Scot had the presence of mind to realize that he must obey traffic safety," Mrs. Mitchell recalls. She was hospitalized for 18 days.

Fillies Flash To Amarillo Victories

Bovina's Fillies continued their undefeated season last Friday and Saturday, winning the AA-A-B Division in the Amarillo Relays in Dick Bivins Stadium. The Fillies accumulated 102 points on the way to their fifth consecutive championship of the year and the team's 15th over the last three seasons.

On Friday, Pat Shepherd took first in the discus, with a toss of 119'7" and then won in the shot put at 40'7". That same afternoon, Sandi Sides finished fifth in the triple jump, 33'7" and Denise Read won the high jump with a 5'2" effort.

The Fillies started Saturday afternoon on a winning note, taking the 440-yard relay in 50.2, lowering the division's old record of 50.6, set by Olton in 1975.

The same quartet—Belinda Shelby, Denise Read, Diane Gilbreath and Sandi Sides—then won the 880 baton event in 1:47.7.

With winds gusting past 30 m.p.h., Laura Widner, Read, Gilbreath and Sides joined efforts, with Gilbreath using a stronger last lap to outduel Panhandle's Robbie Russell as they brought their team's home, 4:15.8 to 4:16.5.

Read ran a strong second lap to pull the Fillies close to Panhandle, which held a 15-yard lead after one lap.

"We did about what I thought we would," Coach Joel Nelson said. "My quarter miler (Fonda Griffin, fourth) finished higher than I thought, but I figured we ought to win if we didn't make any mistakes on the relays.

"This is the biggest meet we've been in. I'm really thrilled with our 440 relay time. This is the first time we've won five meets in a row at Bovina, and it's the first time to go undefeated in all three relays this long. I've just got a bunch of dedicated girls who like to run."

The Fillies competed against 16 teams.

The results for Bovina:
Discus—1. Pat Shepherd, 119'7".
Shot put—1. Pat Shepherd, 40'7".
Triple Jump—5. Sandi Sides, 33'7".
High Jump—1. Denise Read, 5'2".
440 Relay—1. Bovina, 50.2. (Belinda Shelby, Denise Read, Diane Gilbreath, Sandi Sides.)
440 Dash—4. Fonda Griffin, 66.2.
880 Relay—1. Bovina, 1:47.3. (Belinda Shelby, Denise Read, Diane Gilbreath, Sandi Sides.)
Mile Run—3. Kathy Williams, 6:06.2.
Mile Relay—1. Bovina, 4:14. (Laura Widner, Denise Read, Diane Gilbreath, Sandi Sides.)

There's more to Asgrow hybrids than just high yields.

Asgrow resistant hybrids meet head smut head-on.



Corn growers in this area have learned that head smut means sizable losses in yield and profit. That's why next planting season you need more than hybrids with just claims for high yields. You need the complete performance of Asgrow hybrids...with head smut resistance...with

harvestable high yield potential. Now's the time to make plans to protect corn yield and profit next time you plant. See your Asgrow dealer and reserve head smut resistant hybrids while supplies last. Because Asgrow resistant hybrids meet head smut head-on.

These Asgrow hybrids are resistant to head smut.

RX90 RX100
RX4589

come grow with asgrow asgrow

GOOD DISCOUNTS AVAILABLE

Jimmie Cockerham

BOVINA, TEXAS

PH. 806-225-4588

GET READY FOR
SPRING DURING OUR
SPRING SALE

OIL FILTERS
Spin On Type

Ford & Chrysler Filters \$1.85

Chevrolet Filters \$1.95

AC & Champion Plugs

Delco-Remy and Niehoff

Ignitions At Sale Prices

BONDS OIL CO.

BOVINA

Ph. 238-1146

Plant a Winner!

"P-A-G 5514
Man...
that's Sorghum"



HERBERT SCHUELER
FRIONA, TEXAS

"I planted P-A-G 5514 for the second year this year. And I was real pleased with it. In a test field with other varieties P-A-G 5514 was the best. Will plant P-A-G 5514 next year."

FOR MORE INFORMATION CONTACT

Davy Thompson Friona, Texas
Bovina Wheat Growers Bovina, Texas

Ask your P-A-G Dealer about the 1978 REBATE PROGRAM. It will save you money on your P-A-G purchases.



P-A-G SEEDS
BOX 10303
LUBBOCK, TEXAS 79408

Performance of this seed may be adversely affected by environmental conditions, mutant strains of insects or diseases, or other factors beyond the control of P-A-G.

PRICES GOOD WEEK OF APRIL 6 THRU APRIL 12

HILLS BROS.
COFFEE
&
Coffee-mate
NON-DAIRY CREAMER



SUPER SALE

Specials for Coffee Lovers

LB. CAN
\$2.98

11 OZ. JAR
98¢

RENUZIT
AIR FRESHNER
7 OZ. AERO CAN
53¢



BETTY CROCKER LAYER
CAKE MIX
18½ OZ. BOX **69¢**



BETTY CROCKER FUDGE
BROWNIE MIX
22½ OZ. BOX **99¢**



BORDEN
DIPS or SOUR CREAM
8 OZ. CUP
2/89¢

MEATS
FRESH
FROM OUR MEAT MARKET
USDA CHOICE CHUCK

ROAST 99¢
BLADE CUT LB.

ROAST \$1.19
USDA CHOICE ARM LB.

STEAK \$1.19
USDA CHOICE 7-BONE FAMILY LB.

STEAK \$1.29
USDA CHOICE ARM ROUND LB.

STEAK \$1.29
USDA CHOICE LB.

BEEF RIBS LB. 79¢



CASCADE
DISHWASHING
DETERGENT
50 OZ. SIZE
\$1.69

KING SIZE
PEPSI-COLA
6 BOTTLE CARTON
79¢
PLUS DEPOSIT

Discover
BEN FRANKLIN
We bring variety to life!



FREEZER BEEF
USDA CHOICE
YIELD 2

HEIFERS	STEERS
HALVES 200 to 250 LB.	HALVES 200 to 300 LB.
GOOD 92¢ LB.	GOOD 98¢ LB.
CHOICE 93¢ LB.	CHOICE 99¢ LB.

— frozen foods —
GREEN GIANT **BROCCOLI SPEARS, BRUSSEL SPROUTS or CAULIFLOWER** in Sauce
10 OZ. PKG. **69¢**

SARA LEE **CHOCOLATE CAKE**
LIGHT and LUCIOUS **\$1.29**
13¼ OZ.

— fresh produce —
GOLDEN CENTRAL AMERICAN
BANANAS 4 LBS. **\$1.00**

YELLOW ONIONS U.S. NO. 1 LB. **15¢**

THIS WEEK'S KEY VALUE!

ANKLE HI'S
Ruth Barry
SHEER ANKLE HI'S
Perfect with pants! Reinforced toe, nude heel, in choice of shades. One size fits 8½-11.
Reg. 69¢ pair
37¢ pair

Men's One Size ORLON SOCKS
• Popular colors
• Fits size 10-13
2 Pcs. \$1.

Deluxe PATIO FURNITURE
for leisure outdoor living!

Sun Chair **99¢** each

Sun Cot **10.97** each

Tubular-wrapped furniture with sturdy steel frames. 6-position Cot; non-tilt chair.

Rubbermaid COVERED PITCHER
2¼-Qt. plastic pitcher with drip-proof spout!
Just **1.37** each

FACE CREAM
Rose Milk Night and Day Moisturizing Face Cream
2 OZ. JAR

Reg. \$2.53
1.47 each

For smoothing and soothing away dry skin without leaving oily film!

PICNIC JUG with Cup Caddy
Gallon jug is fully insulated for super efficiency. Fast flow 142 push button faucet.

5.88 each

Bovina Supermarket

DOUBLE STAMPS ON WEDNESDAY WITH \$2.50 PURCHASE OR MORE

Family Center

NOW OPEN 7 DAYS A WEEK FOR YOUR CONVENIENCE



"BIG CITY SELECTIONS SMALL TOWN CONVENIENCE"