

WINNER
of the Distinguished
Service Award of the
Vocational Agriculture Teachers
Association of Texas

The Bovina Blade

"In The Agricultural Center Of Parmer County"

10¢
Per
Single
Copy

THE NEWSPAPER
THAT WORKS FOR
A BIGGER, BETTER
BOVINA

WEDNESDAY, JANUARY 13, 1965

BOVINA, TEXAS

VOL. IX, NO. 28

WHITTLIN'

BY DOLPH MOTEN

The mildness of the present winter has been a pleasant topic of conversation for the past couple of weeks.

Optimists start making observations such as, "If the weather will just stay pretty like it is now . . ." And, really, they know all time that it can't, and won't, continue on the same mild note.

As a rule, folks are inclined to complain about the weather. This winter, though, we've noticed that many have been charitable with their compliments of the warmth and sunshine.

On the other hand, a continuation of same will bring out the bellyaching from farmers who will be wanting a snow to provide natural moisture for their wheat and to get their land in good condition for this summer's row crops.

You can't win 'em all, and no one knows that better than Old Man Weather, we're sure.

Date for fifth annual Bovina Quarterhorse Show has been set for August 21 by Bovina Roping Club members. This means, if the same scheduling as last year is followed, that the community's Bull Town Days will be Thursday, Friday and Saturday, August 19-20-21.

There'll be a lot of water under the bridge between now and then, but it isn't too early to start making plans and to be spreading the word to former residents, and others who might be interested in attending, so they can possibly plan their summer vacations to correspond with those dates.

The success of last year's celebration will be hard to top, but if the promoters of the event were looking for something easy, they never would have started it in the first place.

A Republican acquaintance of ours has commented that some of the things President LBJ administration is doing suit him and some of them don't.

"But I could say the same thing for my wife," he admitted.

We've been out of school for longer than we thought. This fact dawned on us during a recent tour of the new grade school classrooms, which are to be put into use shortly.

The lockers, bulletin board, chalk board, lavatory and drinking fountain in each individual room are just nicer and more than we'd expected . . . or remember.

Probably many patrons of the school district will be, or have been, just as impressed as we were with the new facilities. They are quite impressive, as we've stated before.

As of this moment, we expect this to be a l-o-n-g South-west Conference basketball season.

The Texas Tech team, as all its fans know, is off to a good start in the race while the defending champion, which is our favorite team, has been outscored in its first two encounters. We expect the ribbing to get louder . . . and worse . . . as the season progresses. We especially expect that if Tech's success continues.

This month is the last one for paying your poll tax for voting purposes in 1965, remember. The last day to pay this tax, which is still required in Texas, is Saturday, January 30, January 31 is usually the last day, but we figure the deadline will be moved up a day since the last day of the month is on a Sunday this year.

We won't elect a president this year, but there will be ample elections to justify the expense of a dollar and six bits. This detail can be taken care of at the city hall in Bovina or at the courthouse in Farwell.

J. T. Jones was admitted to North West Texas Hospital in Amarillo last Thursday where he underwent surgery. He was dismissed Sunday and is reported to be doing fine.

School Census Begins

Taking of the annual census of school-age children in Bovina Independent School District is being taken this month, Superintendent Otis Spears announces.

Work on the census began this week and is expected to be completed by the end of the month.

All children in the school district who are six years old or older by September 1, 1965 and not more than 18 years of age by the same date must be included in the census report, Spears points out.

The census is expected to total more than 650. "We'll appreciate the help of all citizens of the district in seeing that we don't miss any school-age children," Spears says.

A census blank may be obtained at the superintendent's office at school.

The census is taken each year during January.

An advertisement in regard to the school census in this issue of The Blade explains it in more detail.

OF ADMINISTRATORS, COACHES --

Board Extends Contracts

Contracts of administrators and coaches were extended at a regular meeting of board of trustees of Bovina Independent School District Monday night.

The contract of Otis Spears, who is serving his first year as superintendent here, was

extended for two years, making it run until July 1 of 1968. He was also given a raise of \$500 annually.

High School Principal Alan Staley and Grade School Principal Gary Cox were given new one-year contracts.

Also hired for another year were Roy Stone, head football coach, and Milt Fitts, head basketball coach.

The principals' and coaches' contracts were extended at the present salaries.

This is Staley's second year as high school principal while Cox, Stone and Fitts are each in their first year.

In other business, the board authorized a band trip to Lamesa for members of the band in the spring.

Also, board members in-

spected the new grade school classrooms which are slated to be put into use within the next

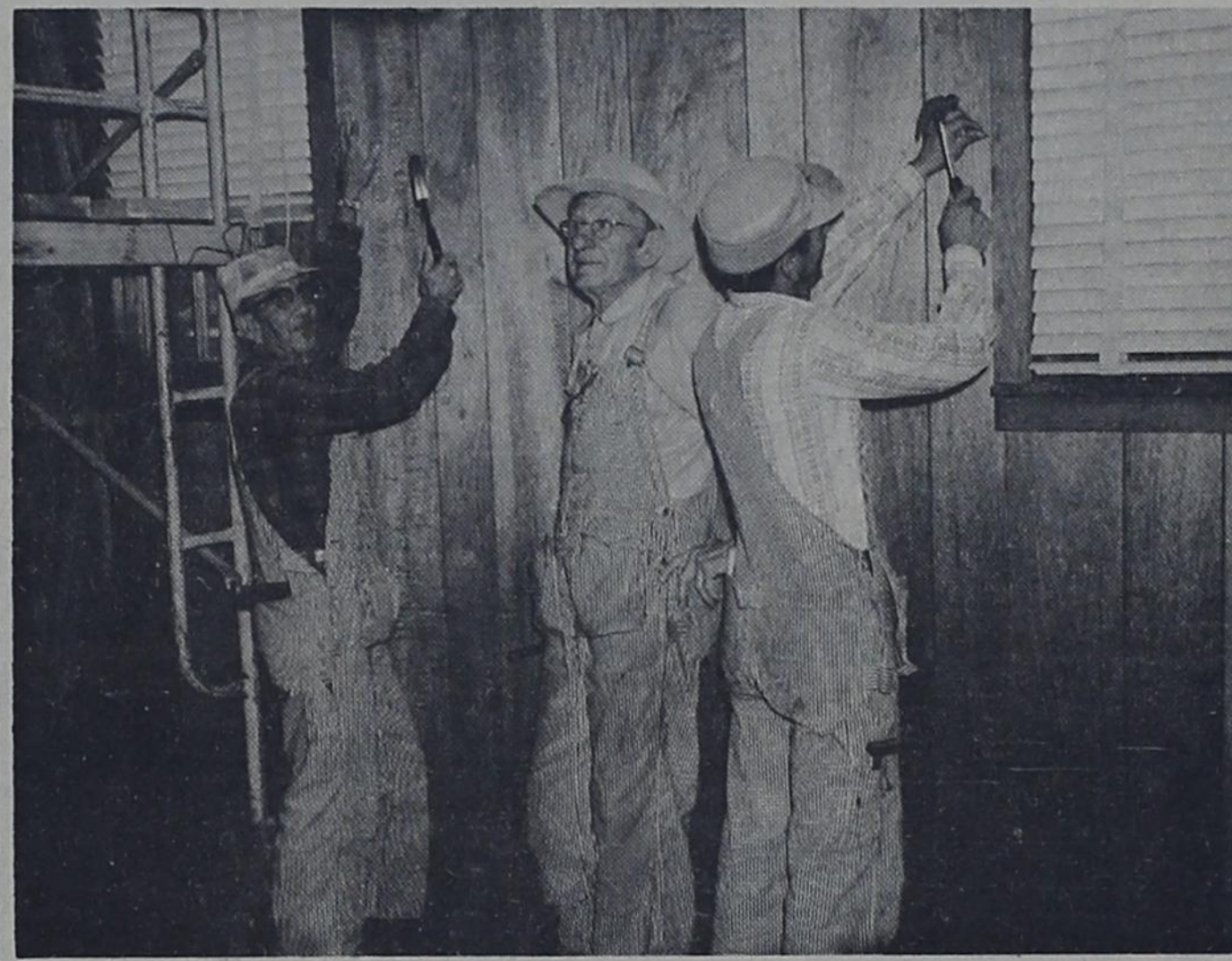
few days.

The board decided to have all steam valves on radiators

in the old part of the building overhauled. Work on this is scheduled to begin soon, Spears

says.

The meeting was adjourned at 9:30.



LEGION HALL REMODELING -- Shown installing paneling in the main room of Bovina American Legion building area, left to right, S. A. Brito, E. A. Hromas and George Cervantez. The paneling goes up 9.5 feet where it is joined by acoustical ceiling blocks. Work on inside of the building is expected to be completed within the next few days.

Deposits Remain Constant

In spite of short farm crops, bank deposits here remained steady with those of a year ago, according to a report compiled at the close of business December 31 at First National Bank of Bovina.

Actually, deposits were up slightly---from \$1,845,820.23 at the end of '63 to \$1,871,701.40 at the end of last year. The big difference in the bank's report at the close of the past two years was in the loans total. As of December 31, loans were \$1,316,639.39. That total a year ago was \$960,992.46.

The official statement of condition of the bank is scheduled to be published in next week's issue of The Blade.

Mr. E. H. Moody was able to be released from Parmer County Hospital over the week end after a two week stay in the hospital. He is at home and is reported to be doing real well.

Weather by Willie

Not much chance for moisture this week -- very little if any.

--Willie

MONDAY NIGHT --

Jaycees Schedule Drive For Clothing

Bovina Junior Chamber of Commerce members will conduct a house-to-house clothing drive here Monday night.

The clothing collected will be made available to needy people in the community, Bobby Fillpot, Jaycee president, an-

nounces.

Clothing for school age children will be given to school officials for use by students who need it.

Clothing for adults and pre-school age children will be distributed through the churches

in the community, Fillpot says. The drive will start about 6:30 and will be completed by 9:30.

"We'll appreciate the co-operation of everyone in helping us with the project," Fillpot says.

Decision to sponsor the clothing drive was made at a regular meeting of the organization Thursday night.

Alexander Orlowsky, exchange student from Germany, was guest speaker at the meeting.

Jerry Fowler of Hereford, who is a candidate for state vice president, visited the meeting.

Jaycees completed taking down the Christmas decorations in the community Sunday afternoon. This project was assisted financially by City of Bovina and Bovina Chamber of Commerce and Agriculture. They contributed \$200 each to the project. Money which was not used for the lights will be left in a special account for the same purpose next Christmas, according to Fillpot.

★ ★ ★

Charles Gives Legion \$500

Wilbur Charles, winner of the new tractor given away by Bovina American Legion in mid-December, has given a \$500 donation to the Legion. Announcement of the donation was made this week by Elton Venable, treasurer of the organization.

"We greatly appreciate Mr. Charles' donation and it will be used to make improvements on the Legion building," Venable says.

Work is presently underway on repairing and remodeling the building.

Paneling and acoustical ceiling are being installed in the main room of the building.

Funds for the building improvements were raised through the tractor give-away promotion.

Card Project Nets \$588

Final total for the 1964 Christmas Card Project was \$588, according to a spokesman for the Bovina Woman's Study Club, sponsor of the project.

Three donations were made following the deadline for names to appear in the Christmas issue (Continued on page 2)

AT 7:30 P.M. --

Farm Labor Meet Thursday

A county-wide meeting to discuss farm labor problems for 1965 has been scheduled for Thursday night at 7:30 in the school cafeteria.

Ed Dean, who is with Plains Cotton Growers in Lubbock and who is an authority on Mexican National labor will be the speaker. Dean has been in contact with Labor Department officials in Washington this week and is expected to have the latest information available at the session here.

The meeting is being sponsored by Panhandle Growers Association, which has been handling bracero labor in the area since 1958.

Public Law 78, which provided Mexican National labor, expired December 31.

Also to be represented at the Thursday night meeting, according to J. W. Wright, the labor association manager, is the Texas Employment Commission which is in charge of supplying the area with native labor.

At present, the labor association plans to continue to op-

erate its office here through March 31.

The association had approximately 300 bracero workers here during the peak of vegetable harvest last summer. At the time the law expired at the end of the year some 150 workers returned to Mexico.

Wright emphasizes that it is important for area farmers to attend the Thursday night session. "A lack of adequate farm labor can handicap our entire community," he explains.

Coffee and doughnuts will be served at the meeting by the labor association.

FOR BANDS' USE --

Band Parents Buy Recorder

At a meeting of the Band Parents Club Thursday night in the school auditorium, the group voted to purchase a tape recording machine for use of the band.

Included in the purchase were the recorder, two microphones, two speakers, one set of ear phones and six tapes. The band will be able to use the machine both as a group and individually

in aiding improvement. The recorder was demonstrated at the meeting by a sales representative.

The Band Parents also voted that the recorder would be for the exclusive use of the band and that it would not be loaned and would not leave the band hall, except under the direction of Wayne Harper, director.

The group was informed that there was some acoustical tile left from the new additions at the school. They would be given

(Continued on page 2)

Bovina Beets Average 23 Tons To A.

A total of 696 railroad cars of sugar beets, with approximately 60 tons to the car, were shipped from Bovina to the Holly mill at Hereford for processing during the recently-completed harvest.

Announcement of the total was made by Mrs. Henry Minter, who was in charge of the scales at the dump here during the harvesting season.

The dump was open from October 8 through January 2 and was operated 59 days during that period.

Approximately 1500 acres of beets were dumped here, Mrs. Minter says.

Sugar content of beets in this area was above average. Average for Bovina-grown beets was about 16.7 per cent which was better than the 15 per cent which was expected.

Average yield of the crop in this area was approximately 23 tons per acre, Mrs. Minter says. Yield varied from a low of six or eight tons per acre to a high of 41.5 tons per acre.

Banquet Tickets On Sale

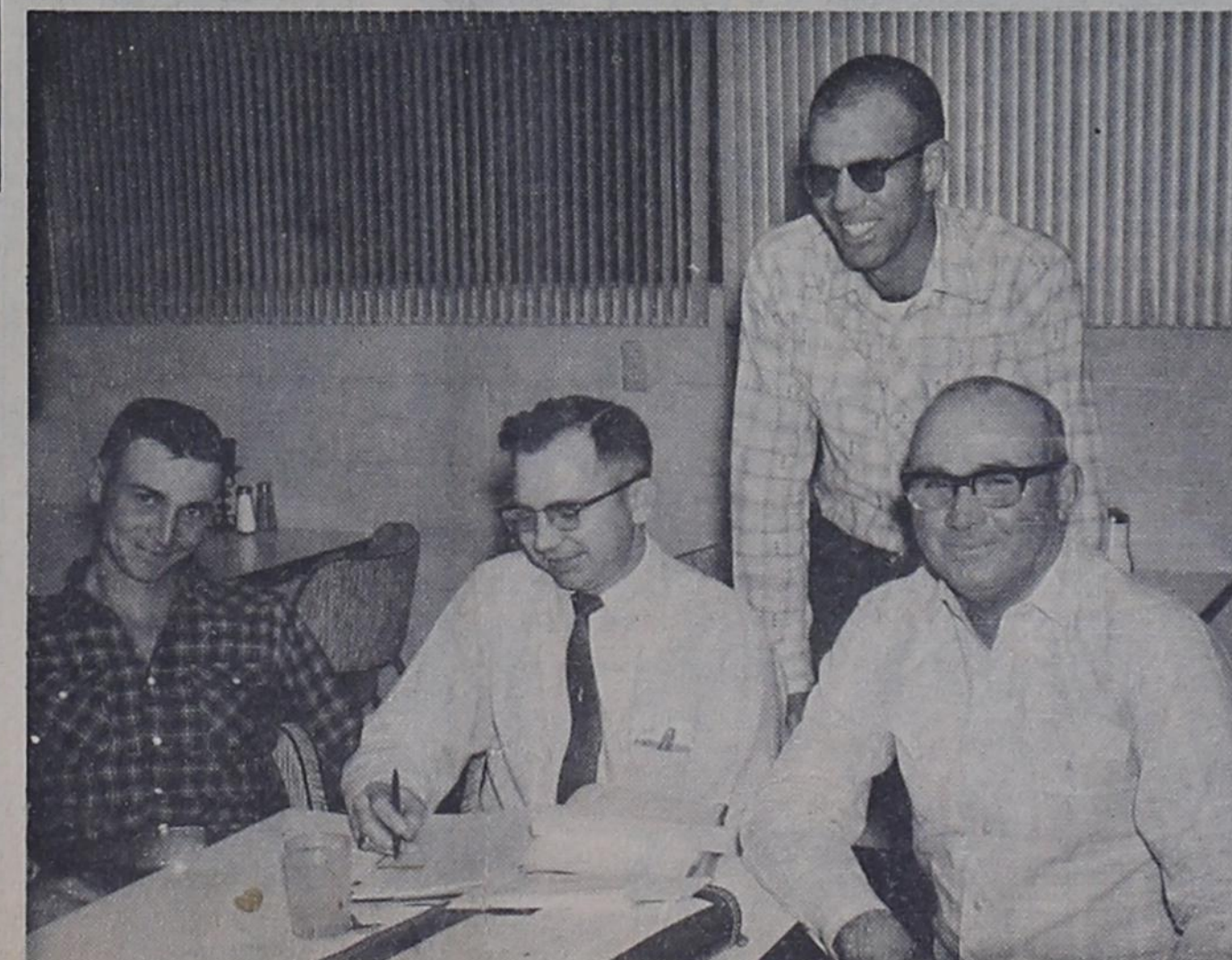
Deadline for ticket sales for annual football banquet is Monday, announces Jerry Rogers, president of Bovina Mustang Quarterback Club, which is sponsoring the event.

Tickets for the banquet which will be Friday, Jan. 22, are \$2.50 each and each member of the Quarterback Club has been asked to sell two tickets as well as buy two.

Rogers requests that members turn in their tickets or the money---preferably the money---by Monday so it will be known how many to prepare for.

Guest speaker will be Rev. Leon Hill of Amarillo, a popular after-dinner speaker. Rev. Hill last spoke here in '59.

Special guests at the banquet will be members of the 1964 district championship football team.



ROPING CLUB OFFICERS -- Re-elected to their positions in Bovina Roping Club for another year at a meeting of the organization Monday night were, left to right, Tommy Williams, vice president; Hugh Moseley, secretary-treasurer; Bobby Calaway, arena director; and Rouel Barron, president.

NEWSPAPER CONTESTS
1963
PRIZE WINNER

The Bovina Blade
 Second-Class Privileges Authorized at Bovina, Texas, 79009
 Published At Bovina, Texas, Every Wednesday
 Dolph Moten Publisher & Editor
 Sue Moten Women's News

Reflections

From
The Blade

Six Years Ago January 7, 1959
 Dolph Moten returned to Bovina as editor and publisher of The Bovina Blade. He replaces Leland Boyd who has held the posts for the past year.
 The first case of newly-elected W. J. Parker, Justice of the Peace, was heard Monday. It was also the first case of the newly created office.
 Tom Hudson, former Bovina resident, passed away in Hico. Services were held at Gall.
 Emmett Tabor and Paul Jones announced that they would not be candidates for re-election as commissioners.
 The school board voted to hire a replacement for W. Wayne Stevens as band instructor. They have two other vacancies, homemaking instructor and commercial teacher.
 A higher tower has been completed and will soon be erected for the fire siren. It has been difficult to hear the siren because of its lack of height and this is planned to take care of the problem.
 Several new homes have been completed in Bovina recently including the J. P. Macon home, Jim Clements, Lucille Foster, Tommy Williams and H. N. Turner homes.
 Three Years Ago January 10, 1962
 Bank deposits showed a five per cent increase at the close of 1961 and were a near record amount for the six year old bank. Deposits were a little higher in 1959. The late cotton harvest probably prevented the record figure.
 A meeting is being planned by Gateway Produce to encourage farmers in the area to put more acres in vegetables and to put more emphasis on variety.
 Postal receipts at the Bovina office were up this year with a three per cent increase over the previous year.
 Firemen answered three calls last week but none of the fires proved to be of a serious nature.
 Don Cumpton was named to Lubbock Avalanche-Journal's Area Dream Team as a linebacker on the first team defensive unit. John Sikes and Mac Glasscock received honorable mention for the team. It includes players from all classifications except AAAA.
 Burglars were again working in Bovina, something that has been happening quite regularly. They hit Charles Oil Co., again and also Paul Jones Service Station.
 Bovina's Mustangs won consolation honors over the week end in the Hale Center tournament.

PIONEER BRAND Sorghum

High yields—Top standability and uniformity for easy harvesting

JIM HEMKE
 Phone 389-2336
 Pleasant Hill

Band Recorder--
 (Continued from page 1)
 the tile for the band hall if they would make the installation. They discussed the matter and Wayne Harper, Bedford Caldwell and Billy Marshall will be in charge of this project.
 The club will have another meeting Monday, January 25. All parents of band members are urged to attend. The interest of the parents has not been as great as hoped for and all parents are invited to come and boost the Bovina bands, according to a spokesman for the group.
 Curious Male: "I wonder what kind of wood they make matches out of?"
 Practical Female: "The best kind of matches are made out of he-would and she-would."

Friona Teams Win Tourney

Friona teams took home the championship trophies of both brackets of B team basketball tournament played here last weekend.
 Bovina's girls salvaged the second place trophy by advancing to the finals, where they dropped a 66-47 decision to the tourney winners.

The Friona girls advanced to the finals by beating Muleshoe, 50-23, and Springlake, 51-24. The Bovina girls made their way to the championship game with wins over Hart, 59-31, and Lazbuddie, 49-35.

Farwell girls won the consolation trophy. After loosing to Friona, they downed Muleshoe, 35-32, and then accepted a forfeit from Kress in the consolation finals Saturday afternoon. The Kress girls were unable to come here for the game because of road conditions.
 Carol Kirkpatrick and Elaine Minyen paced the Bovina girls scoring during the tournament. They scored about 60 points each during the three games.

Friona's boys won the championship trophy by beating Muleshoe, 48-32, Farwell, 33-24, and Kress in the finals, 52-38.
 The Bovina boys won their opening game from Hart, 48-22, and were eliminated from the tourney by Kress, 29-50, in the semi-finals Friday.
 Lazbuddie won the consolation trophy after loosing to Kress in the opening game, Hart forfeited to the Lazbuddie boys in the consolation semi-finals and then Lazbuddie whipped Springlake, 48-38 in the finals Saturday afternoon.



FILLIES B TEAM -- Bovina girls' B team won second place in the eight-team basketball tournament held here last weekend. Team members are, standing, left to right, LaNelle Christian, Sharon Peterson, Betty Radford, Linda Refino, Elaine Minyen and Carol Kirkpatrick. Kneeling, left to right, are Zelda Donaldson, Nancy Fowler, Margaret Venable, Janice Boothe and Diane Stowers.

This was the first B team tournament to be held in the past several years. Good crowds attended most sessions, according to school officials, and a profit of approximately \$100 was realized from the three-day event.



UP AND AWAY -- Elaine Minyen, left, Bovina B team forward, is shown getting a shot off in the girls' championship game with Friona here Saturday night. Carol Kirkpatrick, in dark suit in the center, is preparing for the rebound. The Bovina girls team lost to Friona in the final game and won second in the tournament.

Thieves Hit Bowen Car

A number of items of clothing as well as some personal belongings were stolen from the Von Vowen automobile last Friday night in Texico.
 The car was parked at the Texico gym where Bowen was attending a basketball game. Entry was made by breaking

the small shield window and reaching through to unlock the door. The thieves also pried open the locked glove compartment. It only contained some sun glasses and papers which were not disturbed.
 The items that were stolen belonged to the neices and nephew of Mr. and Mrs. Bowen, the Glenn Kelley children of Pleasant Hill.

Card Project--

(Continued from page 1)
 of The Blade.
 They were Mr. and Mrs. J. W. Wright and Joe Pat, Mr. and Mrs. John Dixon and family and Mrs. Lady Armstrong.
 The grand total for the card project for the past two years is \$1,235.42. This amount has been placed on account to draw interest until a community project is decided on.

WINTER'S COMING
 Get Your New
National Battery
 Today!

HYDRALIC HOSE REPAIR SERVICE

No. 41
IRRIGATION DRIVESHAFTS \$37.50

BOVINA AUTO PARTS, INC.
 - Sonny Spurlin, Owner - Manager
 Highway 60 Pho. 238-3701

City Taxes Half Paid

Collections on city taxes were a little more than 50 per cent of the total the first of the week, according to Mrs. Mary Ruth Martin, assessor-collector.
 Taxes paid to date were \$12,623.02. This was up a fraction over the same period last year with \$11,796.60 being collected at that time.
 The total tax roll for the city is also up slightly over last year. Total for last year was \$20,791.28 with a total for 1964 of \$22,797.98.
 Mrs. Martin also reminded residents that they have through January 30 to make payment without penalty.

TOUCHE!
 "Look at that silly-looking girl with the bow in her hair," scathingly remarked a junior, not realizing that she was looking at her own reflection in the glass of the door.

Your Ford dealer's got the biggest selection of year. Walk in. Drive out.

BIG DEAL!

First National Bank Presents COW POKES By Ace Reid

"I shore bet that feller that invented heaters for pickups wuz an ole cowboy!"

We Didn't Invent Good Banking Services, But We're Following The Pattern Set By Those Who Did!

First National Bank of Bovina
 --Member FDIC--
 "Helping Make A Good Community Better"

An extra-safe tire for the winter season

PHILLIPS 66 SUPER TRACTION TREAD

This modern, nylon cord winter tire with a patented, specially engineered tread, provides extra traction on ice and snow, in freezing rain, and on any slippery surface. Thousands of abrasive particles in the tread itself, result in grip and traction on any road, in any weather.

During winter driving, the motorist with SUPER TRACTION TREAD conquers the problems of starting and stopping on icy surfaces.

For convenience and safety, consider these other extras . . .

- EXTRA-DEEP TREAD WITH CIS-4 POLYBUTADIENE — 56% deeper than first line conventional tires for longer tread life, greater safety.
- EXTRA WIDE TREAD — exceeds most other winter tires, provides far greater traction.
- THOUSANDS OF ABRASIVE PARTICLES — a patented feature assuring extra traction for starting and stopping.
- SPECIAL TREAD DESIGN — provides smooth, quiet performance, no humming or buzzing.

Mount one winter tire on the spare, the other on an extra rim . . . this provides a quick changeover for different climatic conditions.

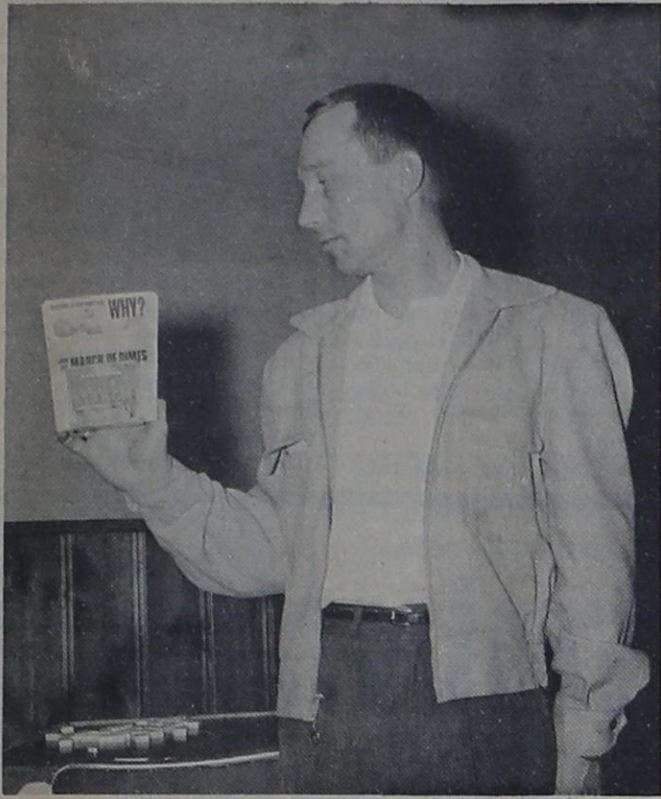
*A trademark for Phillips Polybutadiene Rubber.

PHILLIPS 66 CHARLES OIL CO.
 Phone 238-4321 - Bovina
 Free Tire Rotation Every 5000 Miles

ANNUAL OIL AND GREASE SALE

Book Your Oil And Grease Now - SAVE All Year!

BOVINA WHEAT GROWERS
 Not Everybody Belongs To A Co-op - But Everyone Benefits
 - Bovina And Rhea -



MOD CHAIRMAN -- Sonny Spurlin has been named Bovina chairman of the current March of Dimes campaign. He is shown here with one of the coin containers which have been placed in businesses in the area. Jack Patterson is county chairman.

Car Hits Cow

Elaine Fuller and Mac Glasscock escaped injury Saturday night when the car in which they were riding struck a cow on the highway south of Bovina near the Eddie Steelman home. The accident happened about 11:30 p. m.

The cow was struck by the right side of the '64 Ford owned and driven by Glasscock. The impact killed the cow and knocked it into the ditch on the left side of the road.

The cow had been on wheat pasture on the Eddie Steelman farm.

No estimate of the damage inflicted to the car had been made at noon Tuesday.

Charlie Owen President Of Brotherhood

Charlie Owen is 1965 president of the Baptist Brotherhood here.

He succeeds Jack Patterson as head of the organization and was elected, along with other officers, at the final meeting in December.

Named vice president was Travis Dyer, A. L. Nuttall is secretary-treasurer, Bob Bill-

ingsley is RA leader, and program chairmen are Ed Denny, Leslie McCain and J. D. Kirkpatrick.

At a meeting Monday night of this week, Rev. Ralph Aday, church pastor, showed slides of a preaching tour he made in Oklawaha.

The organization meets at the church the first and third Monday nights of each month.

Car, Pickup Wreck Here

There were no injuries in a spectacular car-pickup collision at the intersection of Avenue B and Boyce Street.

Driver of the pickup, which was owned by Bovina Glass and Paint Co., was Charles Teague. He was going east on Avenue B. Mrs. W. W. Wilcox was driver of the car which was going

north on Boyce Street.

Right front of the pickup hit the left front of the car. The pickup overturned after the impact and stopped on its top.

Estimated damage to the car was \$200 with approximately \$100 in damage to the pickup.

The accident was investigated by the highway patrol.

This was the only traffic accident in Bovina during the Christmas-New Year's holiday period.

Lifeguards at Atlantic City rescue some 1200 bathers each summer.

The Wabash River was named for the Indian work "ouabache" meaning white.

Pike as a name for a highway is a contraction for "turnpike," the bar on old toll roads.

Over Wendell Holmes called Baltimore the "gastronomic metropolis of the Union."

Cobra and python skins from India are used in making shoes and handbags.

The Jesuit Padre Kino introduced cattle ranching to the Indians of Sonora about 1700.

Population of Phoenix, Arizona, quadrupled between the census of 1950 and that of 1960.

Domestic cats spread all over the world when sailors carried them on board to keep rats and mice in check.

In an atmosphere of hydrogen or helium the human voice sounds highpitched and squeaky. This is due to the lightness of the gas.

C and S Chemical
Is The Best Place When You Want

Fertilizers

Insecticides

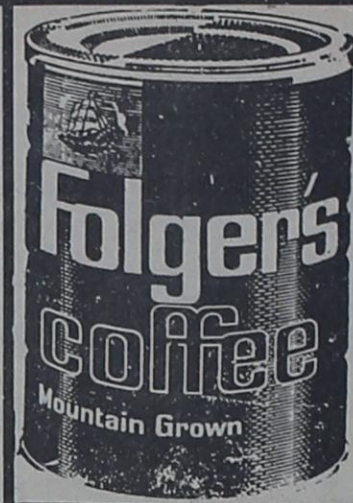
238-4311

Del Monte **CATSUP**
14 Oz. Bottle
15¢

Shop These Specials
Thur.-Fri.-Sat.
Many Continue Thru
Wednesday, Jan. 20!

STOCK-UP NOW and SAVE!

Bama **PEANUT BUTTER**
18 Oz. Jar
49¢



1 Lb. Can
4¢ Off Label!
75¢



10¢ Off Label
-Giant Box-

65¢

BAKE-RITE SHORTENING 3 Lb. Can **65¢**

Zee 3¢ Off Label
Facial Tissue 400-Ct. Box **21¢**

Roxey
DOG FOOD 9 Tall Cans **69¢**



Morton **FRUIT PIES** 22 oz. Size **29¢**
-Apples-Peach-Cherry-

Morton **BREAD DOUGH** 3 Lbs. **55¢**
Libby's **SLICED PEACHES** 10 oz. Pkg. **23¢**



Yellow Cling **PEACHES** Slices or Halves
No. 2 1/2 Cans **49¢**

Purex **BLEACH** 1/2 Gal Plastic Bottle **35¢**



Crisp, Young **RADISHES** Or Fresh Texas Green **ONIONS** Bu. **6¢**

California Red, Juicy Emperor **GRAPES** lb. **15¢**

Texas Ruby Red **GRAPEFRUIT** lb. **10¢**

Shurfine
Red Salmon No. 1 Tall Can **89¢**

VIENNA SAUSAGE 2 4 oz. Cans **39¢**

Print Bag **FLOUR** 10 lb. Sack **89¢**

Whole Sweet Pickles 22 oz. Jar **49¢**

Egg Noodles 12 oz. Pkg. **25¢**

GRAPE JUICE 24-oz. Bottle **39¢**

WAFFLE SYRUP Quart Bottle **39¢**

Cut-All Green **Asparagus** No. 300 Can **25¢**

GRAPE JELLY 18 oz. Tumbler **39¢**

Shurfine
CAULIFLOWER 10 oz. Pkg. **19¢**

Regular Size or King Size
Coca-Cola 6-BOTTLE CARTON PLUS DEPOSIT **39¢**

Double Gunn Bros. Stamps Each Wednesday With Purchase Of \$2.50 Or More



WILSON'S



SUPER MARKET
BOVINA

Phone 238-4781

PARMER COUNTY'S FINEST

Welcome To The **Q** Pool Snooker Dominoes
Thursday Night Is Family Night.
Fun For All The Family!
Now In Our New Location
On East Main Street

MR. AND MRS. FRED LANGER
Come On In - The Playing's Fine!

Phone -- 238-8421

Of Interest To THE WOMEN

CO-ED CORRESPONDENT --

Karen Beauchamp Receives Honor

Karen Beauchamp, 15, of Bovina, has been named Co-ed Correspondent for the 1964-65 school year, according to an announcement by Miss Margaret Hauser, editor of Co-ed Magazine. Miss Beauchamp, daughter of Mr. and Mrs. Tom Beauchamp, is a sophomore in Bovina High School. Her appointment was made by Mrs. Alan Staley, home economics teacher at Bovina.

Selected for her qualities of leadership and her enthusiasm for home economics, Miss Beauchamp will serve as junior advisor to the editors of Co-ed, national magazine for teen-age girls. She will keep them informed of activities at Bovina High School. More than 4,000 Co-ed correspondents throughout the United States and Canada report regularly.

Presentation of a special Co-ed pin and card will be made

to Miss Beauchamp in school assembly, Wednesday, January 13, at 10 a.m. by Alan Staley, principal of Bovina High School.



KAREN BEAUCHAMP

Study Club To Meet Thursday

Bovina Woman's Study Club will have its regular meeting Thursday afternoon at the club house.

Program for the afternoon will be "Future Decisions Under the Monroe Doctrine" and will be brought by Mrs. I. W. Quicquel and Mrs. Buck Ellison. Roll call will be answered by "Legislation I Am Interested In".

Hostesses for the meeting will be Mrs. Ovid Lawlis and Mrs. Reagan Looney.

Members of the club served lunch last week at the Howard Ellison-James Boardman farm sale. Treasurer, Mrs. Jack Clayton, announced that they made almost \$100 on the project. This amount will be added to the regular club fund to take care of club expenses.

Local Women At Hereford

Mrs. J.T. Hammonds and Mrs. W.E. Williams were in Hereford Saturday to attend a Delta Kappa Gamma luncheon.

The luncheon was held in the community center building. During the day they initiated six new members into the sorority. Following the luncheon they held a business meeting and heard a program, "Changing Education Patterns in Other Cultures".

School Lunch Menus

Monday, Jan. 18
Soup (meat, mixed vegetables, potatoes, tomatoes, ect), peanut butter, crackers, cabbage slaw, cornbread and butter, half pint milk, oatmeal cookies.

Tuesday, Jan. 19
Fried chicken, gravy, creamed potatoes, sliced tomatoes, hot rolls and butter, half pint milk, peach halves.

Wednesday, Jan. 20
Turkey salad, candied yams, apple sauce, hot rolls and butter, half pint milk, strawberry preserves.

Thursday, Jan. 21
Roast beef and gravy, creamed potatoes, tossed salad, bread and butter, half pint milk, fruit jello.

Friday, Jan. 22
Tuna pie, Waldorf salad, green beans, hot rolls and butter, half pint milk, applesauce cake.

Dilger's CLEANERS
Parmer County's Finest Cleaning
GUNN BROS., STAMPS
BOVINA, TEXAS

REPAIR! REMODEL!
Nothing Down - 60 Months To Pay
Complete Line Building Supplies
Cicero Smith
Lumber Co.
238-2671 Bovina

Joseph Frank Jesko Arrives Sunday

Mr. and Mrs. Pete Jesko announce the arrival of their first born, a son, Sunday night Jan. 10 at 11:08 p. m. in Clovis Memorial Hospital.

The little boy, who was 22 inches long and weighed 9 lb. 10 oz. at birth has been named Frank Joseph.

Paternal grandparents are Mr. and Mrs. Joe Jesko of Friona and maternal grandparents are Mr. and Mrs. Frank Mustl, Stamford.

Mrs. Jesko, is the former Ettie Mustl, Home Demonstration agent in Parmer county for a number of years.

Mother and baby are doing fine and expect to return to their home later this week.

Thrifty Club In Stevens Home

Thrifty Club In Stevens Home Mrs. J. D. Stevens was hostess recently when members of the Thrifty Club met at her home.

The group spent the afternoon visiting and quilting. They had refreshments of sandwiches, cookies, coffee and tea.

Attending were Mrs. Zemry Boover, Mrs. H. D. Bradshaw, Mrs. Wilbur Charles, Mrs. P. O. Dixon, Mrs. Cecil Sisk, Mrs. Jerry Ware, Mrs. L. M. Grissom, Miss Lola Grissom, Mrs. G. A. Bandy and the hostess Mrs. Stevens.

Church Plans Chili Supper

A family night chili-pie supper will be held at St. John Lutheran Church, Larlat, Sunday night at 6:00 o'clock, according to Mrs. Liz Kaltwasser, president of the Lutheran Women's Missionary League.

Mrs. Kaltwasser and the members of the missionary league, who are planning this supper, invite all members and friends of the church to share this evening of food and fellowship with them.

Another activity that will engage a number of the ladies of St. John this week is the editing of a year-book. This book will be used for ready reference throughout 1965. It will include a brief history of St. John from the date of its organization, June 19, 1921. Other items to be included are the financial report for 1964, the budget for 1965, the activities of the various societies, and a membership roster with names and birthdays of all the children.

W-I-N-T-E-R-I-Z-E

Your Home Now!
Special Prices On
STORM WINDOWS
And
DOORS



Call Today For Free Estimates
And Immediate Installation
Our Storm Windows Are Constructed Locally To Give You The Best In Service.
ALL SIZES BOVINA GLASS AND PAINT CO.
Highway 60 - Pho. 238-4421

The Old Timer

"Prosperity is something you feel, fold and mail to Washington."

W-I-N-T-E-R-I-Z-E
Your Home Now!
Special Prices On
STORM WINDOWS
And
DOORS
Call Today For Free Estimates
And Immediate Installation
Our Storm Windows Are Constructed Locally To Give You The Best In Service.
ALL SIZES BOVINA GLASS AND PAINT CO.
Highway 60 - Pho. 238-4421

Horns Host Bridge Party

Mr. and Mrs. Johnie Horn entertained a group of friends at their home Friday night. They played bridge during the evening with Mr. and Mrs. Tom Caldwell winning high prize and Mr. and Mrs. Vernon Estes second high.

Refreshments of chips and dips, banana chiffon pie and coffee were served the guests.

Attending were Mr. and Mrs. Gene Ezell, Mr. and Mrs. Bedford Caldwell, Mr. and Mrs. Tom Caldwell, Mr. and Mrs. Vernon Estes, Mr. and Mrs. Dean McCallum and the hosts.

Eastern Star Official Visits

Eastern Star met Thursday night at the Masonic Hall with special guest, Deputy Grand Matron Mrs. Lavern Long of Silverton, attending. Other guests visiting with Mrs. Long were Mrs. Dorothy Bomer and Mrs. Lillian Lindsey.

Mrs. Long brought instructions from the Worthy Grand Matron to the local group.

Following the meeting Mrs. Harry J. Charles and Mrs. Carl Rea were hostesses at a reception held in the dining room of the Hall. The table was laid with a red cloth and was centered with an arrangement of white mums. They served sandwiches, chips, relishes, cake and coffee.

There were about 25 attending the affair.

Pamela Grissom Hosts Party

Pamela Grissom entertained a group of friends with a party at her home recently. The group gathered in their game room where they played games and had snacks of pop corn balls, home made candies and chips and dips.

Later in the evening they were served a buffet supper of sandwiches, punch, relishes, fruit breads and cake. The table was laid with a green cloth and was centered with a Christmas arrangement of gold, green and silver.

Following the supper the girls gathered around the Christmas tree and held a gift exchange.

Attending the party were Krita Morris, Jan Gromowsky, Dee King, Candy Wilson, Denise Clements, Nancy Mitchell, Cindy Crump, Suzanne Wilson, Karen Bell, Betty Kesler, Doris Corn and the hostess Pam Grissom.

MONDAY NIGHT --

4-H Clubs See Film

The monthly meeting of the combined 4-H Clubs was held recently at the school with some 40 club members present.

The program for the evening was presented by Mrs. Lockhart, school nurse. She showed a film on artificial respiration to the group and according to a spokesman it was one of the best films of that type seen here.

Joe Van Zandt, county agent, was also present for the meet and gave the children pointers on carrying out their projects.

A study of electricity is scheduled for the boys with Otho Hammonds leading the group.

Following the program the children played games and had refreshments of cookies and cold drinks.

Workers are still needed to help with the clubs, according to Mrs. Hise, sponsor. The special need at the present is

Cuban Study Highlights WMU Meet

The Royal Service program highlighted the joint meeting of the WMU Tuesday afternoon at First Baptist Church.

Mrs. Travis Dyer, program chairman of the Keith Parks Circle, was in charge of the program and brought the opening discussion of "Christ for the Cubans". It was presented in the form of a panel discussion with Mrs. Bobby Englant presenting "Historians View"; Mrs. Wallace Rogers, "Missionary's View"; Mrs. W. W. Wilcox, "Cuban Baptist's View"; Mrs. Arnold Hromas, "Refugee's View"; Mrs. Ovid Lawlis, "Our View"; Mrs. A. L. Nuttall brought the closing meditation on Psalms 46.

Other members present were Mrs. Ralph Aday, Mrs. J. B. Barrett, Mrs. Don Murphy, Mrs. J. O. Combs, Mrs. R. N. Williford and Mrs. Jim Brummett.

Mrs. Tom Ware underwent minor surgery Thursday at Clovis Memorial Hospital. She is doing well and was able to return to her home Friday.

Guild Begins Reading Circle

Wesleyan Service Guild met Tuesday night at Bovina Methodist Church.

Mrs. Dean Hastings brought the devotional for the group and Mrs. Earl Stevenson gave the program, "Christian Outreach of the Methodist Church."

The next meeting will be February 2 at which time they will begin a study of Spanish America. They will study the book "A Death of a Myth" by Kyle Haselden. It will be under the leadership of Mrs. W. E. Williams.

The group also started a

reading circle. Each of the members brought one or two books on the Bible and devotions which they will exchange for reading.

Mrs. Harry J. Charles was hostess for the evening and served cookies, sandwiches, coffee and tea.

Attending were Mrs. Hastings, Mrs. Stevenson, Mrs. Bedford Caldwell, Mrs. Margaret Caldwell, Miss Rita Caldwell, Mrs. Harry Charles, Mrs. Jimmie Charles, Mrs. Harold Morris, Mrs. Ed Isaac and Mrs. Willie Williams.

A REMINDER

JANUARY IS THE LAST MONTH TO PAY YOUR PROPERTY TAX WITHOUT PENALTY.

DEADLINE FOR PAYING YOUR POLL TAX IS JANUARY 31st

POLL TAX RECEIPTS MAY BE OBTAINED AT ETHRIDGE-SPRING AGENCY IN FRIONA OR AT THE COUNTY OFFICE IN FARWELL.

BOVINA RESIDENTS MAY MAKE APPLICATION AT THE CITY OFFICE IN BOVINA. RECEIPTS CAN THEN BE MAILED.

HUGH MOSELEY

TAX ASSESSOR-COLLECTOR
PARMER COUNTY

Come meet the car men with the new business and old-fashioned ideas.

"I'm James A. Hale, general manager of Dishman-Hale Chrysler-Plymouth, Inc. new Chrysler-Plymouth dealer at 324 East First Street in Hereford.



JAMES A. HALE

This is our first week in business, and we'd like to get off on the right foot with you. So, let me put in writing the way we intend to do business.

Pledge: We're going to play it straight down the line. Fair and honest deals on beautiful new and used cars—plus fast, efficient and courteous service.

When it comes to pleasing people, nobody beats us. And we'll prove just that to you six days a week. We close on Sunday."

DISHMAN-HALE CHRYSLER-PLYMOUTH, INC.

345 East First Street
Hereford, Texas

AUTHORIZED DEALER CHRYSLER MOTORS CORPORATION

WANTED - job, severe Robert M. 3851.

Over Under Owner Man

ST CONC CO

CHECK quality you con

There is DIFFERENCE And In

Pho. F. Pho.

WANTED - hand, How furnished, W. tion Insuranc See Ralph 4390.

WILL DO bottle by day Owens, phon

CARD I wish to tude for the flowers and and neighb cent illness of kindness membered. E. H.

"Repossess Singer made equipped tr stitches, et \$6.81 or \$ Credit Ma Street, Lub

Medical Overwe Dr. Ye 519 Pile

FOR SALE equity for Three beds vna. Less See Big Ni chinery Sup 238-4861.

★ CBS ★ Get Major To Get On *Low *Low Clearvi O Phone Bo Or Frio

WANTED rent, Leroy 3410, Route

WANT ADS

WANTED - Year 'round farm job. Seven years experience. Robert McCormick, phone 238-3851. 28-2tp

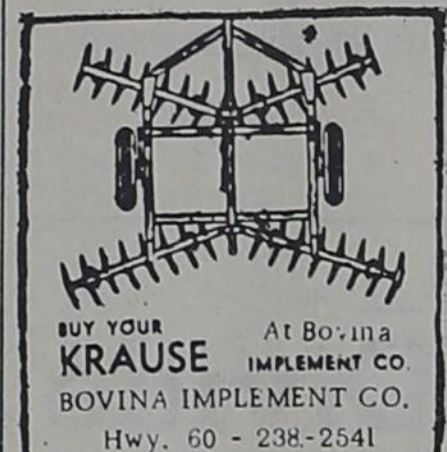
REAL ESTATE LOANS... with old line reliable companies. Free appraisal. Best terms. Absolutely no service charge to the borrower. McCallum Real Estate, Bank Building, Phone 238-2081. 13-tfn

WANTED... a farmhand. Contact Jim Daniel at Hub 265-3263. 27-2tp

WILSON DRILLING --Muleshoe-- Cess Pools, Pier Holes, Construction Man Holes, Boat Pits, Test Holes, Sizes from 36" to 9' in width and up to 50' deep. Phone Muleshoe Day - 3-0962 Night - 3-1480 or 3-5910

NOW OFFERING WORK With Electric Root Raider Machine ★ Ditching Service ★ BOVINA ELECTRIC Odie White - Pho. 238-3871

FOR ALL KINDS of insurance and farm loans, see Jim Ware at Bovina Insurance in First National Bank Building or phone 238-4382. 23-tfn



HOUSE FOR SALE... Three bedroom, two baths. Kitchen combination. Double carport. \$1500 down. Total monthly payment \$84. R. L. Fleming & Son, Friona, Phone 247-3283 or 247-2897. 14-2tc

HOUSE FOR RENT -- See C. R. Elliott, phone 238-2382. 27-tfn

FOR SALE -- Three-bedroom brick home in Bovina. Less than year old. On Corner lot. Ideally located near school and churches. Well landscaped. Financial commitment. Shown by appointment only, please. McCallum Real Estate, Bank Building, Pho. 238-2081.

FOR SALE BY OWNER -- 160 A, irrigated farm. Cotton, maize and wheat allotments. Strong 8" well, underground tile, natural gas. Located between Hub and Bovina, half mile from pavement. Call or see D. H. Nelson, Box 604, Friona, Phone 247-3108. 27-tfn

FOR SALE -- Small squirrel monkey. Seven months old. Mrs. J. T. Jones, phone 238-4771 or 225-4645. 27-3tc

FOR SALE CHOICE FARMS IN PARMER COUNTY

160 A., exclusive listing, strong 8" well, waters from one ditch, 23 A. cotton, balance in wheat and milo. \$45,000 down, 20 years on balance. Immediate possession.

160 A., exclusive listing, strong 8" well, all allotted, waters from one ditch. \$41,400 down, 20 years on balance. Immediate possession.

160 A., exclusive listing, lays perfect and all tiled, 26 A. cotton, balance in wheat and milo. One of the best! Immediate possession.

157 A., on pavement, all tiled and lays perfect. One 8" and one 6" well, 84 A. milo, 50 A. wheat and 10 A. cotton. Immediate possession.

160 A. with new 3-bdrm home with two baths, 8" well, all tiled, all waters one way. Immediate possession.

300 A. well-improved, two 8" wells all tiled, 38 A. cotton, 112 A. milo, 117 A. wheat, waters one way. Immediate possession.

628 A. well-located, two sets improvements, four 8" wells, practically all tiled. 105 A. cotton, balance in wheat and milo. Motors. Immediate possession.

320 A. with two strong 8" wells, well allotted, in the choice water district. Can be bought right and you can have immediate possession.

160 A. on pavement, only \$325 per acre. New 8" well with electric motor. Immediate possession.

160 A., all in cultivation, 125 A. milo, 14 A. cotton, 16 A. wheat, One 8" well. None better! Immediate possession.

We're in a position to handle all your farm loan needs -- new or old. Let us help you! RAY SUDDERTH REAL ESTATE Hwy. 60 Bovina Phone 238-4361 Residence phone: 481-9064 Farwell

LAND FOR SALE 2 sections, North Plains, 2 gas wells, irrigation water, tight land. Terms \$160.00, one-half minerals.

3580 acres, Deaf Smith County, 1950 acres milo allotment, 1200 acres wheat allotment, terms, \$135.

Section, Sherman County. One eight-inch well, one gas well, terms, \$325, one-half minerals.

1300 acres, North Plains. One ten-inch well. Terms, on pavement, improvements, \$275.00.

JOE KNIGHT 305 Lobby Amarillo Building Amarillo Office Phone DR 4-7922 Res. Phone FI. 6-2855 2-tp

FOR SALE: 1 Wakesha well motor; 1-605 Moline well motor; 260 feet - 8" aluminum pipe gated; 140 feet-8" aluminum pipe flowline; 1-8" cooling jacket; call 481-3814, Farwell. 27-4tp

Machinery For Sale New 66-Inch Shredders each \$275 9 Ft. Industrial Blade With 3-Point Hook-Up \$175 Thomas C. Hartwell Machinery Supply Hwy. 60 -- Bovina "See Tom For Your Best Deals"

MILLIONS of rugs have been cleaned with Blue Lustre. It's America's finest. Rent electric shampooer \$1. Super Saveway.

Local Public Debt Rises By 237 Percent

Local government debts have increased by 237 per cent since 1950, the Tax Foundation reports.

Fourteen years ago, the combined public debt of all communities stood at \$18.8 billion. By the end of 1963 it had grown to \$63.3 billion. In 1950, local government debt accounted for less than 7 per cent of all government debt; in 1963 the share had increased to 16 per cent.

Among the reasons for the post-World War II upsurge in local debt, the Foundation lists the growth of suburbia. "As the population increased and housing developments grew, demands for sewers, for more roads, for schools intensified," the Foundation pointed out. "And, while federal and state aid has helped in some instances, the laboring oar has been held by local government."



FARM SALE! -- This was a typical scene Thursday at the day-long farm sale at the farm of Howard Ellison, six miles west of Bovina. Farming equipment owned by Ellison and James Boardman were sold at the sale.

His selection's real big. His price's real low. Who? Your real Ford dealer.



The worlds have been framed by the word of God—(Heb. 11:3).

The substance of God is always at hand. Our worlds are framed by our word of God, by our prayers of faith, by our affirmations of His divine leadership.



ANOTHER REPORT...

"I have a rented farm with very light soil which has not responded to my applications of phosphate in the past. This year I used Western Ammonia's liquid 8-18-0-3 plus Ammonia, both pre-plant and sidedress and obtained very favorable results. Well, the test convinced me. Next year I plan to use this product on all my farms." R. V. BILLS, Castro County Farmer



...A REPORT OF SATISFACTION

An important by-product of any company is the man who openly admits when he's satisfied with the service. You will find that Western Ammonia has the know how, equipment and products to give the best satisfaction there is in a fertility program. Also Western is now offering the new high analysis liquid ammonium phosphate and new 11-20-0-11S in place of lower analysis 7-21-0. You'll find Western has complete facilities for all your dry fertilizer needs.

YOUR LOCAL WESTERN REPRESENTATIVE: Bill Hutto & Delbert Morris - 238-4164



Western Ammonia Corporation Dimmitt, Texas

QUIETLY AND EFFICIENTLY BUILDING THE BEST UNDERGROUND IRRIGATION SYSTEMS

Over The Years Under The Same Ownership and Management

STANDARD CONCRETE PIPE COMPANY

CHECK carefully the quality of the product you contract to purchase

There Is A MATERIAL DIFFERENCE In Product And Installations!

Bovina Pho. 238-6911 Friona Pho. 247-28888

WANTED -- Year 'round farmhand. House and utilities furnished. Workers compensation insurance will be provided. See Ralph Roming or call 225-4390. 27-tfn

WILL DO baby sitting in my home by day or hour. Carolyn Owens, phone 238-2071. 28-2tc

CARD OF THANKS I wish to express my gratitude for the helpfulness, visits, flowers and cards of my friends and neighbors during my recent illness. Your expressions of kindness will always be remembered. E. H. Moody and Family 28-1tp

"Repossessed 1964 model Singer made sewing machine, equipped to zig-zags, fancy stitches, etc. 5 payments at \$6.81 or \$30.00 cash. Write Credit Manager, 1114 19th Street, Lubbock, Texas." 24-tfn

Medical Management Of The Overweight Patient Dr. Youngblood 519 Pile Clovis

FOR SALE OR WILL TRADE equity for farm machinery -- Three bedroom home in Bovina. Less than two years old. See Big Nick Trilenen at Machinery Supply, Bovina, phone 238-4861. 11-tfn

★ CBS ★ NBC ★ ABC Get All Three Major Networks To Perfection: Get On Cable TV Now! *Low Tie -- On Fee AS LOW AS \$12. Down *Low Monthly Rates Clearview Company Of Bovina Phone Bovina 238-3592 Or Friona 247-3271

WANTED... Farm land to rent. Leroy Burnett, Phone 265-3410. Route 3, Box 117, Friona. 22-tfn

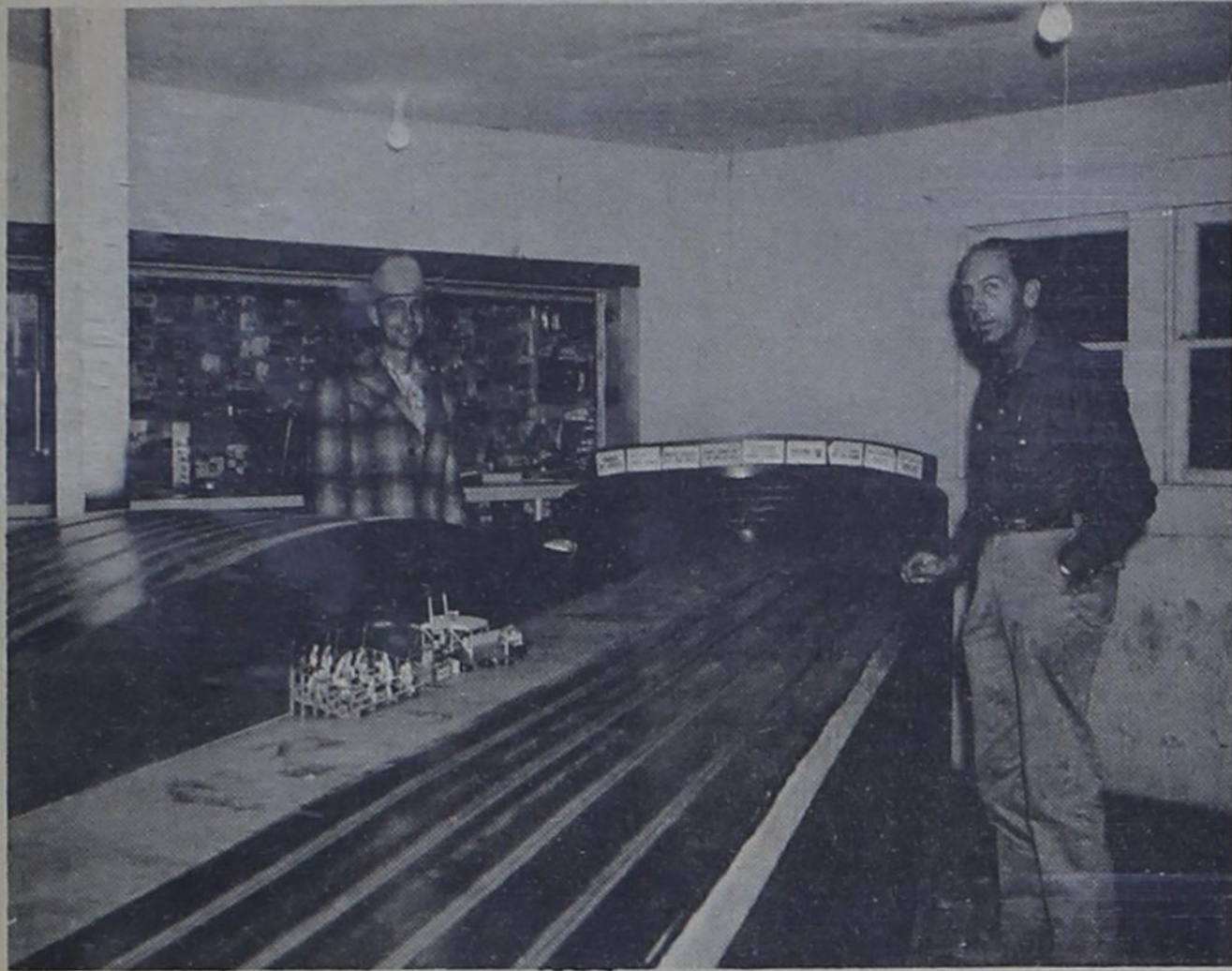
Now In Bovina!

A-1 Plumbing

All Kinds Of Plumbing - New Installations And Repairs

-- Jerry and Owen Burnett --

404 Ave. C Pho. 238-6501



RACE TRACK -- Shown here are two views of the model car race track at The Groove on Bovina's main street. Shown at left are Bobby Englant and Jack Kesler, who is a co-owner

of the track. The track, which features hills and straightaways and four turns is 73 feet in length.

AT "THE GROOVE" --

Model Car Building, Racing Interest High

Model car building and racing is currently a highly popular hobby-sport in this community. Largely responsible for the popularity of the sport which attracts enthusiasts from both sexes and most age groups are Jack Kesler and James Roach, owners of Bovina Hobby Shop.

Kesler and Roach designed and constructed an electrically-operated track in a building next door to their hobby shop location on Main Street and Bovina. "The Groove" is the name of the track which is available for practicing to model car fans during the day and night.

The track is equipped to operate with the use of coins -- a dime for 15 minutes and 25 cents for 45 minutes.

Equipped to handle four model cars at one time, the track is 73 feet long and features four turns which test the ability of the car driver to keep their vehicles on the track.

The model cars are driven from a "rheostat" control handle which the driver operates with his hand while he is in a standing position.

Probably the next best reason for having so much interest in model cars here, in addition to having the track available, is that Roach and Kesler sponsor trophy races each Thursday night.

Three divisions are run each

race night with trophies awarded to winners.

The three classes of model cars are stock, modified and formula. Each of the three classes of cars are built in two sizes -- 1/32 scale and 1/25 scale. Thus to be properly equipped to enter all races, a contestant needs six different cars.

Kesler says that during the past weeks, from 15 to 18 contestants have competed in each division. Since the track accommodates only four cars, it is necessary for the races to be run in heats with the slower cars being eliminated in the process. In the first round of racing in each class, two of the four cars are eliminated in a 10 lap race. The semi-finals are run for 20 laps and all but the four fastest cars are eliminated in it. Then in the finals, the four top cars decide the champion for that particular night in a 40-lap race.

Records are kept on a point system and the contestant who accumulates the most points over a six-month period is presented a large trophy. For a first place finish in a race, the winner receives 100 points, second place gets 72, third gets 55 and 42 go to a fourth place winner, Kesler explains.

The hobby of building model cars, which can quickly develop into a sport, is more economical to get into than many hob-

bies. The cost to "just get started" is about \$10, Kesler says. This will pay for a stock car kit and the incidentals which are needed to get it in operation and possibly for some practice laps on the coin-operated track.

From that point to the other extreme, there's no limit, Kesler says, as to how much time and money can be devoted to producing a fancier model car with more speed and handling ability.

From one to two hours of time are required to assemble a simple model car from a kit. Modified and formula cars will take as much attention as the builder is willing to devote.

For the Thursday night trophy races, the entry fee is \$1 for the first race and 50 cents for each of the others. Rules state that a stock car, for instance, may compete in its own class as well as the modified and formula classes. A formula class car, however, can't compete in the other two types of races. A car may move up in classification if its owner has enough confidence in it, but it can't move down.

Though Kesler and Roach designed and built the track last winter, the competition -- and most of the interest -- was started last fall. This is the only commercial track between Lubbock and Albuquerque. However, one will be in operation

in Clovis soon.

The sport is gaining in popularity throughout the country, Kesler says. Interest is especially keen on the West Coast.

The competition in model racing cars isn't just in the race itself. It is almost competitive to contract a better, faster car than the next fellow, Kesler points out.

He figures that the car contributes about 25 per cent to a winning effort while the ability of the driver is worth about 75 per cent. The secret is to run the car around the track as fast as possible and still keep the car on the track. According to race rules, if a car leaves the track and lands on its wheels, it may continue in the race. If it doesn't come to stop on its wheels it is disqualified and out of the race.

Model car kits, and the accessories, are available to enthusiasts of the hobby-sport through Bovina Hobby Shop.

Business Population Increases

The business population of Parmer County is up 5.3 per cent over January, 1964, announces Charles L. Swanson, manager of the Amarillo office of Dun & Bradstreet, Inc. He states that figures obtained by a physical count of the Dun & Bradstreet reference book for January, 1965 totaled 220 manufacturers, wholesalers and retailers in the county, as compared with 209 in January of last year.

Trolean dairy farmers use plastic pipe lines to carry milk from Alpine meadows to processing plants in the valley.

IN DISTRICT OPENERS --

Teams Divide With L'buddie

Bovina High basketball teams divided district opening games with Lazbuddie here last (Tuesday) night in Williford Gym.

The Fillies had an easy time in their 68-39 win and the Mustangs put up a better-than-expected fight against the heavily-favored Longhorns before they went under, 41-47.

The Fillies, featuring a hustling, loose-ball-grabbing defense, were never in trouble in their encounter.

Lynn Looney paced the scorers with a total of 33. Sandra Patterson made 18, Judy Strawn 13 and Gwen Christian and Connie Vaughn two each.

Seeing action at the guard posts were Linda Estes, Tonya Ivy, Cathy Minyen, Brenda Pruitt and Dorothy Bowman.

The Mustangs trailed throughout their game but rallied to cut the margin to five points in the fading minutes.

They were behind eight points, 22-30, at the half.

Jerry Roach was the leading scorer with 15. Gene Pruitt

threw in eight, Scotty Rundell seven, Randy Jones six, Roman Ramirez three and Richard Carson two.

In a boys' B team game played prior to the main events, Bovina won an exciting 32-28 verdict.

They trailed during the first half and were behind, 12-15, at the rest period. They had a two-point, 18-16 lead at the three-quarters mark.

Wayne Davies was high scorer with 10. Carl Harris made eight, Daryl Kirkpatrick six and Alfred Stanberry and Galen Hromas four each.

The teams continued their district schedule Friday night at Happy.

Next Tuesday night, they play Hart here.

World's largest flower is in North Borneo. It grows to the size of a washtub.

Natives of the Solomon Islands captured the English Ship Dancing Wave in 1876 and ate all except one of the crew, who escaped and reported the incident.

A large granite building encloses the log cabin at Hodgenville, Kentucky, in which Abraham Lincoln was born.

Gift Shop Has New Owners

Mrs. J.T. Jones has sold her gift shop, located on Third Street, to Mr. and Mrs. Otis Spears.

The business will be operated in connection with the firm next door, Spears Family Fashions, according to the new owners, and will be operated by Mr. and Mrs. Wayne Spears.

Mrs. Jones opened the firm in the summer of '63.

Toys and gifts will continue to be offered by the new operators. In addition a children's clothing department will be added. Ready-to-wear for boys and girls under 12 years of age will become a department in the store.

The Portland, Oregon, Traffic Safety Commission warns that automobiles can't stop on a dime. At a mere 30 miles an hour, it takes about 90 feet to bring a car to a halt under normal conditions. That's the distance from home plate to first base on a baseball diamond. The Commission adds following too closely is a major cause of accidents.



WHAT DO YOU WANT IN A REAR TRACTOR TIRE? WORKABILITY? WEARABILITY? DEPENDABILITY?

Get all three with the new Gulf Deep-Cleat HB.

WORKS BETTER. Has extra-high, extra-wide shoulder cleats that knife deeper to give you positive traction—even in reverse.

WEARS BETTER. Gives greater wear on the field or on the road. Has all-nylon cord construction and is made with extra-tough, extra-resilient rubber compounds.

GREAT DEPENDABILITY. The Gulf HB has been tested and proved in rugged farm use, day after day, week after week, month after month.

Your Gulf Dealer will show you how to save money on your tires, when you buy and when you drive. See him today!

Get farm-tested Gulf Tires!



BONDS OIL CO.

Highway 60-Pho. 238-2271 -

Bovina

NOTICE TO PARENTS Of School Age Children

The school census is being taken during the month of January this year. All children who are six years old on or before Sept. 1, 1965 but will not be 18 or older on or before that same date should be counted in this census. It is very important that all children six to 18 years be counted in this census. The child should be counted even though he may not be in school and even though he or she may be married.

If you, as a parent, have not received and filled out a school census blank on or before January 31 you are being overlooked and should do one of the following:

1. Phone the school office and ask for a census blank.
2. Call in person at the School Tax Office and get a census blank and fill it out. Remember, if your child will be six years old next Sept. 1st, he should be counted in the census now, even though he is not in school now. If he is six but not 18 or older next Sept. 1 he should be counted now. All children from six to 18 should be counted. The six years old who start next September to school are the ones most overlooked in the census. Failure to count them costs the school and taxpayers extra money. Please help us not to overlook anyone.

Don't Wait 'Till Feb. 1st To Turn Your Blanks In - As That Will Be Too Late

BOVINA PUBLIC SCHOOLS

GUARANTEED TO GO thru ice, mud, or snow or WE pay the tow

PLUS Guaranteed Against Road Hazards in all 50 States and Canada

Firestone Town & Country TIRES

Now Only

15.95

Plus tax and tire off your car regardless of condition - 6.70-15 Blackwall tube-type

PAUL JONES TEXACO SERVICE STATION

Highway 60

-BOVINA -

Pho. 238-4331



We're Ready To Go To Work For You



Let Corn's Farm Store Get Your Land Ready Now For A Great 1965 Crop. We're Ready Now To List And Fertilize Your

Land With Just The Right Combination Of Liquid And/Or Dry Fertilizer.

CORN'S Farm Store

Highway 86 And Third Street

Bovina

Phone 238-3181



On The Farm In Parmer County

By JOE VAN ZANDT
County Agent

We are in the process of computing our Parmer County totals on crop production for 1964 and the value of these crops produced to give us a value of our Agricultural economy to Parmer County for 1964.

We have sent questionnaires to the elevators and gins in the county as well as to the sugar beet company and the vegetable packing sheds in Bovina and Friona. You can help us out if your produced crops in 1964 and did not market them through one of the above firms. If you would please notify the County Agent's office of the kind, amount and approximate value of these crops we would appreciate it.

We are interested in having a fairly accurate picture of the value of our county total crop production. Since we are one of the top producing counties in the state, every little bit more we get soon adds up. We are particularly interested in hearing about certified seed and vegetables grown that weren't processed through county firms.

SUGAR BEETS

The ASCS office in Farwell now has applications that everyone wanting to grow Sugar Beets in 1965 must complete by January 29. Prentice Mills said that all 1964 beet growers as well as anyone else wanting to grow beets in 1965 must complete one of these applications.

HEREFORD STOCK SHOW

A total of eight Parmer County 4-H members are exhibiting some of their 4-H livestock projects in the Hereford Junior Livestock Show this week.

There will be six members showing barrows starting at 4:00 p.m. Thursday. These

members are Pamela Hawkins, Loy Dale Clark, Billy and Larry Eubanks and Theresa and Rickie Seaton.

On Friday at 7:00 p.m., Gary Phipps and John Hoover will be showing their Hereford steers. Then on Saturday at 1:00 p.m., the auction sale of the top animals in the show will take place.

CHEMICAL WOOD CONTROL

We have scheduled Dr. Allen Wise to present a program on Chemical Weed Control. The date is March 18, so mark your calendar, and he will cover weed control on the major crops grown in Parmer County. This will be the best opportunity I know of to get the latest, reliable information on chemical weed control from an expert.

Pork production in the 44 major producing counties in '65 may rise three to five percent above this year but may not reach the '63 record of 44 billion pounds. This year production dropped five percent mainly because of decreased output in the U.S., USSR, Belgium, France and a few other countries. A general increase in world slaughter is anticipated.

Council membership consists of the president and council

Tech, Western Ammonia Sponsor Soils Course

Harold Taylor and Lester Dean, Friona; A.C. Holland, Bill Shaw, Clovis; and Delbert Morris, Bovina, recently received certificates of award for successful completion of a soils course "Sub-soil Chemistry and Clay Mineralogy" co-sponsored by Texas Tech and Western Ammonia Corporation.

After a specially prepared dinner in Dimmitt, the group enjoyed a brief talk by Dean Gerald W. Thomas of the Tech Agricultural Department. Dr. Thomas presented each man who successfully completed the course a certificate of award.

The 12-week soils course is jointly approved and recognized by Texas Tech College Extension Division as equivalent to 3 semester hours in College Agronomy.

4-H Council Meets

The Parmer County 4-H Council met in the Hub Community Center on January 9. The main item of business concerned reorganization of the Council. Standing rules for the Council were adopted and officers were elected.

The officers elected for the 1965 4-H Council were: Chairman, Kathryn Gober; vice-chairman, Dale Blackstone; Meredith Anderson; secretary, Lisa Charles and treasurer, Cary Lyles. District 4-H Council delegates elected were Kathryn Gober and Dale Blackstone.

Council membership consists of the president and council

COURTHOUSE NOTES

INSTRUMENT REPORT

Jan. 4 thru 9, 1965
DT, Royce G. Welch, Prudential Ins. Co., SW/4 Sect 2 Roberts Sub.
WD, Samuel M. Bailey, Jr., Royce G. Welch, SW/4 Sect 2 Roberts Sub.

WD, Samuel M. Bailey, Jr., Royce G. Welch, J. W. Gould Sub.
DT, Royce G. Welch, Samuel M. Bailey, Jr., J. W. Gould Sub.
WD, Coy Glenn Johnson, Samuel M. Bailey, 160 a out of Cap. League 488

WD, Weldon M. Newsom, Glenn Johnson, 160 a out of Cap. League 488
WD, Marvin Lawson, Weldon Newsom, 160 a out of Cap. League 488

WD, Ivan W. Adkins, Glenn Dale Williams, Tract 1 West Loop Drive, Friona

DT, Glenn Dale Williams, Mountain States Invest, Tract 1 West Loop Drive, Friona
WD, Joe Wilson et al, Henry Minter, S/2 Lot 17 & Lots 14, 15 & 16 Blk 13 Bovina

WD, Geraldine Ware, Monty K. Corbin, Lot 1 & 2 Blk 52 Bovina

DT, Monty K. Corbin, Hi-Plains Sav. & Loan, Lot 1 & 2 Blk 52 Bovina

WD, H. H. Briggs, D. W. Carzile, S/2 NE/4 Sect 21 D&K DT, R. J. Renner, Jr., C. W. Dixon, SE/4 Sect 27 T3S R3E WD, Bessie D. Drake et al, Jerry Brown, Lot 7 & S 25 ft. Lot 8 Blk 7 Drake Rev. Sub. Friona

WD, Elbert Thomas, Claude J. Dyer, Lot 3 Blk 17 Friona DT, Royce G. Welch, Samuel M. Bailey, Jr., SW/4 Sect 2 Roberts Sub.

WD, H. Y. Overstreet, Farwell Consolidated School - Lot 9 thru 24 Blk 55; Lots 9 thru 24 Blk 56; Lots 9 thru 16 Blk 53 and Lots 9 thru 26 Blk 54 Farwell

DT, Oakley D. Stevenson, C. R. Elliott, NW/4 Sect 5 Synd "A"

DT, Chester B. Setliff, Federal Land Bank, E/2 Sect 3 T5S R4E

WD, Ray E. Castleberry, Claude A. Garth, S/2 Sect 16 T1N R4E

DT, Claude A. Garth, Ray E. Castleberry, S/2 Sect 16 T1N R4E

ML, Jerry Brown, Frank Matlock, Lot 7 & S 25 ft. Lot 8 Blk 7 Drake Rev. Sub. Friona

DT, Claude J. Dyer, Elbert Thomas, Lot 3 Blk 17 Friona WD, Earl Miller, Roy M. Miller, Part NE/4 Sect 20 Kelly "H"

WD, Earl Miller, Mildred Byrd, Part SW/4 Sect 20 Kelly "H"

WD, Earl Miller, Alma Goolsby, Part E/2 S 320 a Sect 29 Synd "C"

WD, Earl Miller, Hattie Jo Miller, Part NW/4 Sect 20 Kelly "H"

WD, Homer Stacy, Myrtle Reiser, SE/4 Sect 8 T10S R2E DT, Myrtle Reiser, Homer Stacy, SE/4 Sect 8 T10S R2E DT, Reavis Kerr, Fed. Land

Family wants more from you.

Analyze the list, and with the help of family members, decide how many of them are really important to you and the happiness and welfare of the entire family.

-Let the family help establish the goals.

-Keep in mind the various stage of your life.

You can only train and enjoy your children when they are small and at home. Programs that help you do a better job of training them might be worth the time spent at this stage.

Another value of planning with the entire family, you are teaching them to make decisions and organize their lives, which can result in harmonious family living.

Frustration, loss of time and energy comes from lack of planning and decision making.

We see homemakers that seem never to finish a job yet rush about all day long. The "faster they go, the behinder they get". Planning and decision making can eliminate most of their frustration and get important jobs done.

Young homemaker groups might be interested in having programs on family living. If they would like programs on this subject they may contact the County Home Demonstration Agent's office in the Courthouse at Farwell.



At Home In Parmer County

By CRICKET B. TAYLOR
County HD Agent

Home Demonstration Clubs in the County are organized for the purpose of studying and learning about Homemaking problems that will help them do a good job of managing their home and family.

Programs are planned to meet their needs whether it is Nutrition, Family Living, Home Management, Clothing or other home problems.

There is a great deal of interest in Family Living which

Set Goals For Each Stage In Life

Making decisions are easier if goals are set for each stage of life. Each homemaker must decide which things come first at each stage in her life. Setting priorities may help keep one from taking on too many projects.

First - list the things your

REMODEL SALE
\$650.00 Color TV Now \$499.
With Trade. All G. E. Appl. On Sale. Gas Line Piping, 24 Hrs. Service On All Repairs.
Call **FRIONA PLBG. & HTG. CO.**
247-3222
247-2480 After Six

Dr. William Beene
Optometrist
Phone 247-3061 13th. & Cleveland
Friona, Texas (South Of Hospital)

New Construction This Year Over \$24,000,000!

That's right! Reddy Kilowatt will invest \$24,607,000.00 this year, in the service area of Southwestern Public Service Company, as evidence of the faith we all share in a growing land that 100 years ago promised less but has delivered more than perhaps any other area in our nation. We'll be completing another large steam electric generating unit, adding new transmission and distribution lines with one view in mind - to give you better service at the lowest possible cost. You'll have, at the touch of your finger, all the power you'll need for a powerful area.

The ELECTRIC Company

Picture shows an example of modern construction methods. The aerial, truck-mounted bucket lift is being used by two linemen in a safe and efficient manner to construct a new 230,000 volt transmission line.



Our savers have green thumbs

When it comes to making dollars grow, our savers are real gardeners. Dollars saved with us thrive nicely on generous earnings. Put part of your pay regularly into "seed money" and watch it bloom into an impressive reserve. Why not start your bumper crop of "growth dollars" with us this week?

First Federal Savings And Loan Ass'n

Member of the Savings and Loan Foundation, Inc., sponsor of this advertisement in Reader's Digest, National Geographic and McCall's

Home Office 4th & Pile, Clovis
Branch Office 2nd & Abilene, Portales

THE HIGH PLAINS FARM AND HOME

Drilling Statistics For November 1964

During the month of November permits were closed on 134 wells within the High Plains Underground Water District; five replacement wells were drilled and nine wells were drilled that were either dry or non-productive for some other reason. The County Committees issued 179 drilling permits.

County	New		Replacement		Dry Holes
	Permits	Wells Drilled	Wells	Drilled	
Armstrong	0	0	0	0	0
Bailey	9	16	0	0	0
Castro	13	24	0	3	3
Cochran	7	0	0	0	0
Deaf Smith	15	21	0	1	1
Floyd	16	9	1	0	0
Hockley	31	16	0	0	0
Lamb	14	12	2	0	0
Lubbock	34	9	1	3	3
Lynn	6	3	0	2	2
Parmer	26	16	1	0	0
Potter	0	0	0	0	0
Randall	8	8	0	0	0
TOTAL	179	134	5	9	

Tailwater Lowers Costs

Records of the High Plains Underground Water District reveal that farmers can save approximately one third of the fuel cost required to pump an acre foot of water from an irrigation well if they utilize available tail water.

Cost records from farms conducting this study revealed that it required approximately \$3.20 worth of natural gas to pump an acre foot of water from an irrigation well. The average cost of fuel (butane or electricity) of tailwater return

systems was approximately \$1.90 per acre foot of water recovered.

Wayne Wyatt, field representative of the Water District, states that, "An acre foot of tailwater recovered eliminates the need of pumping an acre foot of water from an irrigation well." He further states that, "By using the tailwater there has been a saving on fuel cost of \$1.30 per acre foot of water by eliminating the need of pumping water from the irrigation well."

AUSTIN, Dec. -- The increase in Texas hunting pressure continued during the 1964 fall harvest season, according to W.J. Cutbirth Jr., of the Parks and Wildlife Department staff.

The assistant administrator said a partial report for the first two months of the state fiscal season beginning September 1 showed an increase of \$504,740.40 in hunting license receipts for 1963 to \$578,330.75 for 1964.

Phosphorus, a mineral especially deficient in late summer, fall and winter in all areas of Texas, can be supplied to range cattle in drinking water or in mineral feeders. Supplementing phosphorus can mean heavier cows heavier calves at weaning age and an increased calf crop by as much as 30 percent. Cows may also conceive earlier after calving.

Farm And Ranch Loans
Long Term
Low Interest
ETHRIDGE-SPRING Agency, Friona
Phone 247-2766

For The Finest In Spring Fashions

SEE THEM ALL - AT -

Lucille's

"ACRES OF FREE PARKING"

Hilltop Plaza Clovis, N. Mex.

A Great Land Breaking Team!

... The Massey-Ferguson Model 90 Tractor And The Massey Ferguson 55 Plow!

MF 55 PLOW is a roll-over mold-board model. Bottoms reverse when hitch is raised and plow can go back through the field in the same furrow. 2 or 3 bottoms.

See These NOW!

Put Them To Work For You Now!
This Combination Can Be The Answer To Your Land - Breaking Chores For Years To Come - We're Ready To Trade -

Bovina Implement Co.

-- YOUR MASSEY FERGUSON DEALER --
Highway 60 Bovina Phone 238-2541

COTTON TALKS

FROM PLAINS COTTON GROWERS, INC.

Mill Tour Set
Excluding temporary outside influences, the ultimate financial fate of any business -- including the business of producing cotton -- must largely depend on the businessman's ability to understand and satisfy the needs of his customers. And it is toward a greater understanding of the textile industry's needs and wants that the upcoming PCG textile mill tour for High Plains cotton producers and allied interests is directed.

The tour, sponsored by Plains Cotton Growers, Inc. with the American Textile Manufacturers Institute serving as host, leaves Lubbock for Spartanburg, South Carolina at 9:00 a. m., on February 16 and will leave Spartanburg at 1:30 p. m., February 18 for the return trip. Travel will be by chartered plane and the cost will be divided equally between those making the trip. Reservations must be made by February 1 in

order for room accommodations and other arrangements to be made in advance, and since the aircraft will accommodate only 70 people, reservations will be taken by Plains Cotton Growers on a first-come-first serve basis.

James Parker, Textile Industry Relations Representative for PCG is enthusiastic about the value of the tour both from the standpoint of what High Plains people are able to learn and from the impression the effort to learn makes on people in the industry. "Getting spinners and producers together is one of the first steps toward getting more High Plains cotton into the opening rooms of textile mills," Parker said.

Since the big item of cost on the tour will be transportation, it will largely depend on the number of participants. All meals on the trip will be furnished with the exception of two "dutch" breakfasts and PCG hopes to keep the total individual cost of the tour to something below \$120.00. Four people, winners of door prizes at the PCG annual meeting last year, will make the trip at the expense of Plains Cotton Growers. They are Mr. and Mrs. Jack Mason of Brownfield and a couple from the Wienke-Lambert Gin at Anton. The free trips are awarded each year at

the annual meeting to one grower and one producer. The most recent PCG mill tour was made in 1962 to mills in the Winston-Salem, North Carolina area and participants returned with high praise for the trip. Leroy Durham, Plainview farmer, said at the time that "This has been one of the most enlightening tours anybody who deals in cotton could make," and added that "any cotton grower who takes advantage of such an opportunity to learn more about what happens to cotton on its way to the consumer will never be sorry."

Those interested in making this year's tour may get additional details and make reservations by contacting Plains Cotton Growers, Inc., 1720 Avenue M, Lubbock.

Labor Problems Aired
Some 300 labor association managers and farmers crowded into the South Plains Electric Auditorium Thursday, January 7 to hear dismal predictions of what to expect on the farm labor front for 1965. Henry LeBlanc, Chief of Farm Placement for the Texas Employment Commission in Austin, told the group that "even if you had already complied with all of the prerequisites now set forth by the Department of Labor for importing Mexican National workers, there's not a person in the United States who could tell you where to go to get a Mexican National." He elaborated by saying that there are still many problems to be solved and questions to be answered before a foreign labor program can be put into effect.

The prerequisites to which he referred call for the prior offering to domestic workers all of the benefits included in Mexican National contracts under Public Law 78, which expired December 31, 1964, plus a wage of 90 cents an hour between now and March 31 and \$1.15 an hour after that time -- or the prevailing wage, whichever is higher at the time of employment.

Both LeBlanc and PCG Labor Relations Representative Ed Dean emphasized, however, that compliance with these criteria is only necessary for the employer who places an order with the Texas Employment Commission in the hopes of qualifying himself for importing a Mexican National (Bracero). "Unless the employer is trying to get certification for foreign labor," LeBlanc said, "neither the Department of Labor nor the TEC has anything to do with either the wages or other benefits offered by the employer and farmers are free to make whatever 'deal' they can get prospective domestic workers to agree to."

While no areawide policies were established at the meeting, those present were in general agreement that to place orders for workers with TEC at the present time as a means to qualifying for a Bracero under the recently issued criteria would constitute an acceptance of those criteria without any assurance that a Bracero could be contracted even after the employer had proved himself qualified.

NCC Meeting Set For Lubbock

Progress and problems in producing cotton more efficiently on the Texas High Plains and in western areas will be highlighted at a conference in Lubbock March 2-3, the National Cotton Council has announced.

General chairman will be Roy Forkner of Lubbock, president of the Plains Cotton Growers Association, which will be local host for the conference.

The conference program will include 21 agricultural authorities who will discuss various aspects of growing higher quality cotton at a lower cost. Practical techniques will be emphasized.

Attendance of growers, research and education workers, and representatives of commercial companies is expected to total 500.

This will mark the first time for the conference to be held in the High Plains area, in

prior years, it has been scheduled in Fresno and Bakersfield, Calif., Phoenix, Ariz., and El Paso, Texas.

Pointing out the program is designed to provide growers with practical and useful information, Forkner has urged all cotton producers in the area to make plans to attend the meeting. No registration fees are involved.

Co-sponsors are the Council and the Southwest Five-State Cotton Growers Association. Cooperating in the meeting will be the agricultural chemicals industry, U. S. Department of agriculture, Arizona Cotton Growers Association, El Paso Valley Cotton Association, Western Cotton Growers Association, Land-grant colleges, vocational agriculture, and farm organizations.

W. L. Edelman of Friona has recently been named to the National Cotton Council.

toward that goal," he said, "but there is no indication as to when such an agreement may be reached."

LeBlanc stated that teams of "recruiters" are now working in this area to establish the need for workers during the year, and that the TEC would make every effort to fill the orders received, but he said he felt the net result would be proof of a need for supplemental foreign workers.

In response to a question as to whether he could send 350 irrigators to farmers in Cochran County on March 15, LeBlanc replied: "I couldn't send 350 irrigators to Heaven."

LeBlanc also mentioned the possibility of an "Agricultural Training School" being established in Levelland to which farmers would be able to send trainees and, at least to some extent, specify the type training they would receive. The school has not been formally okayed by the Commissioners of the Texas Employment Commission, but would be under the direction of the Texas Education Agency through South Plains College at Levelland. The entire expense of the school would be borne by the Federal Government as a part of activities under the Manpower Development and Training Act. Trainees would be paid while in training and would also be allowed to work on a farm 20 hours a week during training.

Dean explained that while the authority for importing temporary foreign workers exists in the Immigration and Nationalization Act (P. L. 414), there still have been no arrangements made with Mexico and that until this is done we actually have no foreign labor program. "Mexico is pushing for a 'government to government' agreement and discussions are now in progress

helped to make the most of his precious gift of life; Do not despair. Professional help from physicians, clergy and others experienced in dealing with these problems can lead to a wholesome adjustment; Remember that there are many persons and organizations such as The National Foundation-March of Dimes that stand ready to help. Seek them out.

IF You Have Friends With a Defective Child,
Treat them as you would any other friends. They do not deserve pity, but the sympathetic understanding of true friendship is always welcome; Avoid giving advice. Let them make their own decisions with the aid of competent professional consultation.

The National Foundation-March of Dimes is using the experience gained in the fight against polio, which led to the development of both the Salk and Sabin vaccines, to back its attack on birth defects. March of Dimes funds now support:

• a national research program which finances the work of scientists studying the causes of birth defects and seeking ways to prevent or correct them;
• a professional education program to train medical professionals in diagnosis and detection, and in practical application of scientific advances to treatment techniques;
• a public education program, of which the marching mothers' leaflet is a part, to alert the people to the magnitude of the birth defects problem and to let them know how much can be done to help defective children.

How Can You Fight Birth Defects? March of Dimes Has Good Advice

What would you do if a defective child were born in your family or to friends or neighbors? Would you know where to turn?

To answer these questions, marching mothers, more than a million strong, will distribute a new leaflet with sound advice for every family in the nation as they call on their neighbors during January for support of the March of Dimes fight against birth defects.

More than a quarter of a million babies are born each year in the U.S. with serious birth defects.

The leaflet being distributed by Mothers' March volunteers is called "THINGS TO DO IF . . ."

IF You Are About To Be Married,

- Select a family physician;
- Each partner should have a complete medical examination, providing the doctor with complete medical histories;
- Learn your blood groups and Rh factors (+ or -);
- Consult your physician together for advice important to your marriage, particularly if either family has a history of birth defects or if there is Rh incompatibility.

IF You Are Expecting a Baby,

- See a physician as early as possible to confirm pregnancy;
- Keep in close touch with him, reporting any unusual discomfort or bleeding;
- Follow the diet prescribed by your doctor;
- Do not take any drugs or medicines unless he tells you;
- Do not knowingly expose yourself to infectious diseases -- particularly German measles;
- Tell any doctor you consult that you are pregnant so he may avoid prescribing harmful X rays or medication.

IF a Birth Defect Occurs in Your Family,

- Seek the best medical advice and treatment. Modern skills can often prevent or correct serious disability;
- Don't feel ashamed of yourself or the child born defective. No one is to blame so long as the stricken child is



JANE WYATT, National Mothers' March Chairman, reads to Tina Tidwell, 4, who was born with an open spine and is a patient at a March of Dimes Birth Defects Center in Los Angeles, Calif.

helped to make the most of his precious gift of life; Do not despair. Professional help from physicians, clergy and others experienced in dealing with these problems can lead to a wholesome adjustment; Remember that there are many persons and organizations such as The National Foundation-March of Dimes that stand ready to help. Seek them out.

IF You Have Friends With a Defective Child,

- Treat them as you would any other friends. They do not deserve pity, but the sympathetic understanding of true friendship is always welcome;
- Avoid giving advice. Let them make their own decisions with the aid of competent professional consultation.

Treasurer's Report

REPORT of Mabel Reynolds County Treasurer of Parmer County, Texas, of Receipts and Expenditures from October 1 to December 31 1964, inclusive;

JURY FUND, 1st Class	
Balance last Report, Filed Sept. 30, 1964	\$ 5,334.13
To Amount received since last Report,	893.48
By amount paid out since last Report, Ex. "A,"	
BALANCE	\$ 6,227.61
ROAD AND BRIDGE FUND, 2d Class	
Balance last Report, Filed Sept. 30, 1964	2,674.79
To Amount received since last Report,	893.48
By amount paid out since last Report, Ex. "B,"	150.00
BALANCE	\$ 3,418.27
GENERAL COUNTY FUND, 3d Class	
Balance last Report, Filed Sept. 30, 1964	\$ 43,061.12
To Amount received since last Report,	85,294.37
By amount paid out since last Report, Ex. "C,"	32,045.34
BALANCE	\$ 96,310.15
PERMANENT IMPROVEMENT FUND 4th Class	
Balance last Report, Filed Sept. 30, 1964	16,453.83
To Amount received since last Report,	893.48
By Amount paid out since last Report, Ex.	6,250.00
BALANCE	\$ 11,097.31
RIGHT OF WAY FUND 5th Class	
Balance last Report, Filed Sept. 30, 1964	41,501.99
To Amount received since last Report,	14,053.31
By amount paid out since last Report, Ex.	600.00
BALANCE	\$ 54,955.30
LATERAL FUND 6th Class	
Balance last Report, Filed Sept. 30, 1964	28,133.17
To Amount received since last Report,	6,906.92
By Amount paid out since last Report, Ex.	\$ 21,226.25
BALANCE	
SOCIAL SECURITY FUND 7th Class	
Balance last Report, Filed Sept. 30, 1964.	7,893.04
To Amount received since last Report,	3,043.09
By Amount paid out since last Report, Ex.	3,282.16
BALANCE	\$ 7,653.97
FARM TO MARKET R.&B. FUND 8th Class	
Balance last Report, Filed Sept. 30, 1964	78,119.55
To Amount received since last Report,	32,923.81
By Amount paid out since last Report, Ex.	32,984.57
BALANCE	\$ 78,058.79
FLOOD CONTROL FUND 9th CLASS	
Balance last Report, Filed Sept. 30, 1964	\$ 4,500.00
To Amount received since last Report	0.00
By amount paid out since last Report, Ex.	0.00
BALANCE	\$ 4,500.00
RECAPITULATION	
JURY FUND, Balance	\$ 6,227.61
ROAD AND BRIDGE FUND, Balance	3,418.27
GENERAL COUNTY FUND, Balance	96,310.15
PERMANENT IMPROVEMENT FUND, Balance	11,097.31
RIGHT OF WAY FUND, Balance	54,955.30
LATERAL FUND, Balance	21,226.25
SOCIAL SECURITY FUND, Balance	7,653.97
FARM TO MARKET R & B FUND Balance	78,058.79
FLOOD CONTROL FUND, Balance	4,500.00
TOTAL	\$ 283,447.65

LIST OF BONDS AND OTHER SECURITIES ON HAND
U. S. Government Bonds \$459,500.00

COUNTY INDEBTEDNESS:
Road Machinery Time Warrants \$ 31,400.00

THE STATE OF TEXAS
COUNTY OF PARAMER)
Before me, the undersigned authority, on this day personally appeared Mabel Reynolds, County Treasurer of Parmer County, who being by me duly sworn, upon oath, says that the within and foregoing report is true and correct.

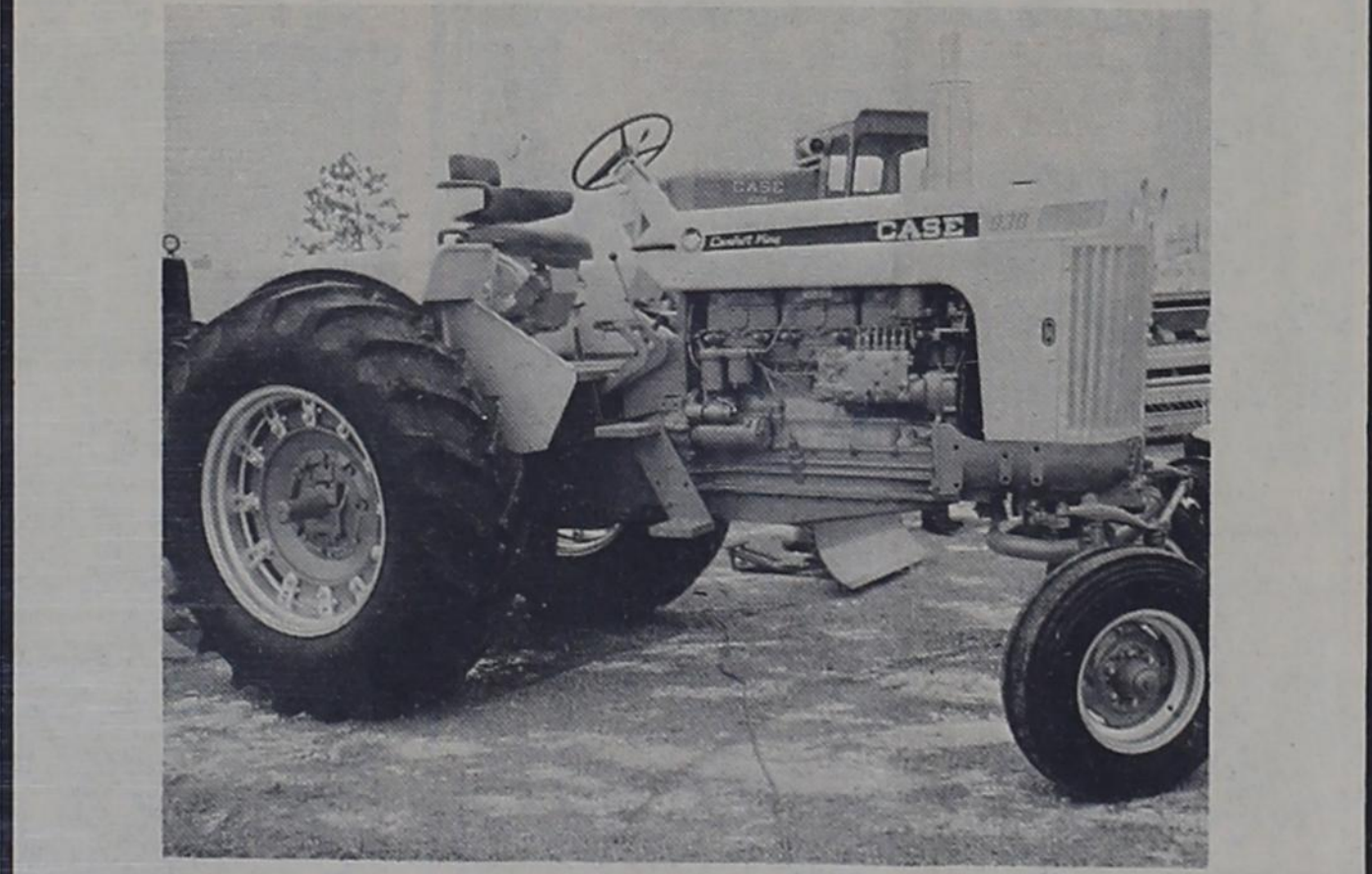
Mabel Reynolds, County Treasurer.
Sworn to and Subscribed before me, this 7 day of January 1965

Bonnie Warren Clerk,
County Court Parmer County, Texas.
(SEAL) By Jane Stovall Deputy,

If You Have
FARM MACHINERY
TO SELL
Call Big Nick
Trienen at
Machinery Supply
Highway 60 Bovina
Phone 238-4861

GUTS!

That's The BIG STORY Behind
The BIG NEW CASE ROW
CROP 930 And 830!



Head the new Case 930 and 830 Row Crop Comfort King down the furrow . . . sock six big bottoms down deep . . . pour it on . . . and man you've got something great going for you.

CALL IT POWER. . . CALL IT LUGGING ABILITY. . . CALL IT GUTS. . . Whatever the name, it all begins with the massive 6-cylinder tractor engine with its special breed of power . . . Case high-torque power that gives you the capacity to handle bigger implements and multiple hitches faster and with less down-shifting.

There's a lot more to the 930 and 830. Such as the dual-range, eight-speed transmission with five job-mated speeds in heavy tillage range. Rear-mounted 48-gallon fuel tank. Hydrostatic power steering. Draft-o-matic implement control. Simple, foolproof hydraulics. And a "command post" that has nine square feet of uncluttered platform space, clear visibility and unbeatable "armchair comfort."

True these are all big features . . . but the really outstanding advantage is Case high-torque power -- Guts. That's the one that gives you muscle to do jobs faster and more profitably. Stop by soon. Make us prove it!

OKLAHOMA LANE FARM SUPPLY
Phone Tharp 225-4386

Park Improvements Ahead Of Plan

AUSTIN, Dec. -- Authorized state park improvements are well ahead of schedule, according to J. Weldon Watson, executive director of the Parks and Wildlife Department. He said indications point to 1965 as the greatest park year in history.

The executive director said during the year substantial new facilities were completed at Bastrop State Park, Goose Island State Park, Tyler State Park, Buescher State Park and Port Lavaca Causeway State Park.

But the major emphasis, said Watson, was in creating a new park at Dam "B" near Woodville, and the development at Lake Whitney and Falcon State Parks.

A late season development marked creation of a "The LBJ State Park" near Johnson City, in honor of Texas' own, President Lyndon B. Johnson.

In addition, said Watson, the park field staff was busy serving an increase of more than a half million guests during the year. The 1964 attendance was 7,900,000, compared with

7,200,000 in 1963. "We consider the attendance noteworthy," said Watson, "because the near record heat of the early summer curtailed visitations. Then there were prolonged drought spells in some areas that definitely curbed partonage."

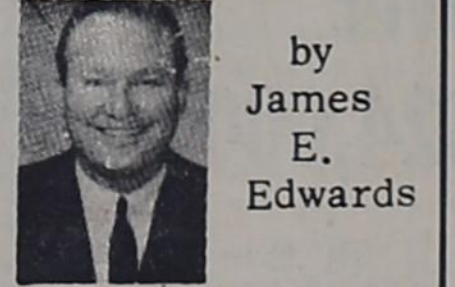
Watson said the 1.2 million dollar development program has advanced so well that it is anticipated every contract will be encumbered, as of December

29. The last deal was for a new concession building at Falcon State Park.

Falcon State Park has been open for partial use with screened shelters, a large boat ramp and the airplane landing strip completed since early fall.

Subject to weather conditions and other undetermined phases, Watson said the other two parks, also on large reservoirs already noted for their fishing, will be ready for the summer season.

FOOTSAVING EDUCATION



by James E. Edwards



Dr. Scholl's Foot Easers are highly effective in relieving most cases of aching and tiredness in the feet and legs due to longitudinal arch weakness. Light, springy, they can be worn in any well-fitting shoes.

IF THE NAAC* HAD ITS WAY



*Administration's National Agricultural Advisory Commission recommends removal of 10 million acres from cultivation.

FOR SALE:
Good 160 Acre Farm Near Lazbuddie, Small Down-Payment Will Handle. See Or Call Dan Ethridge At
Ethridge-Spring Agency
Phone 247-2766 In Friona

LARDY-CAMPBELL
fresh from the home of quality!
DIP-N-CHIP
Sour Cream
HOMOGENIZED Milk
VANILLA
"Sure Sign Of Flavor" Quality Chkd DAIRY PRODUCTS

U. S. Marine Corps Mountain Warfare Training

Throughout the year, Marine units regularly journey to the Marine Corps' Mountain Warfare Training Center at Pickel Meadows in the Sierra Nevada Mountains of California. Here they learn how to fight and survive at altitudes ranging from 6,500 to 11,000 feet and exist in below-zero temperatures during the winter months.

Parka - and - snowshoe - equipped Marines are taught to provide shelter and heat for themselves, to take care of clothing and equipment, and to recognize and care for injuries and illnesses peculiar to cold weather and high altitudes.

During the tactical training exercises every effort is made to make the training as realistic as possible. "Aggressor" forces constantly harass the Marines as they meet the varied requirements of the exercise. The men live in two-man tents, sleep in sleeping bags on the snow, and eat combat rations heated over outdoor fires. The actual firing of weapons is done using special blank ammunition.

The Marine Corps' cold weather training program was established in 1951 after the hard-learned lessons of the Chosin Reservoir in Korea where Marines were plagued almost as much by the bitter cold weather as by the fanatical and numerically superior enemy.

Knowledge and confidence gained from the extensive training at this center could, someday, spell the difference between life and death for many a marine.



Rope bridges provide Marines with safe passage over streams and gulleys. These men are trained to improvise whenever ready made or natural facilities are not available.

P&WD Gains Via Merger Are Listed

Austin, Dec.—Wildlife meat in every pot; a fish in every skillet; a shaded, waterfront camping site for every outdoor-conscious person!

The year just ending might not have provided that cherished budget, but J. Weldon Watson, executive director of the Parks and Wildlife Department, said that Sportsmen's Utopia definitely is the target for the Department.

Watson made his year-end statement as departmental authorities summarized the 1964 progress all along the outdoor recreational front which showed:

New gains in experimental wildlife and fish life restoration efforts;

Embracing new areas under regulatory authority methods;

Successful controlled public hunts on wildlife management areas;

Liberalized waterfowl regulations marking the best duck hunting season in recent years;

Application of new techniques to fill industry's needs for oyster shell without harming

natural facilities;

Readying three major state parks, including two new ones, for the next summer season;

Accommodating a record number of park visitors despite climatic extremes;

Release of hatchery raised red-legged partridges and release of hybrid pheasants;

Holding second annual open season on sound sheep in Panhandle;

Preparing state fish hatcheries to restock water areas devastated by drought;

Coordinating headquarters and field staffs in conformity with new merger plan.

If You're Interested In Buying FARM MACHINERY Call Big Nick Trienen at Machinery Supply Hwy. 60 Clovis Phone 238-4861

PRIVATE INDUSTRY SCORES AGAIN

The myth that only the federal government can create huge electric power projects has again been punctured.

This time it is a private investment group, known as the Western Energy Supply and Transmission Associates, that is proving that a massive project—one that eventually will dwarf the TVA, the Aswan Dam and other giant power producers—can be constructed without the use of a single penny of taxpayers' funds.

Work has been started by Western on a vast electric power complex that will cost over \$10 billion and will provide energy to consumers in nine western states—New Mexico, Colorado, Arizona, Utah, Nevada, California, Wyoming, Idaho and Texas.

An enormous new network of transmission lines will supply local utility companies with cheap and abundant power, Western says, and the consumers will benefit from lower rates.

Actually, the benefits will extend far beyond the consumers in the affected areas to all the nation's taxpayers. That's because the utility companies involved will not only supply private funds for the massive project but they will continue to pay taxes, as usual; something the government-financed power-plants do not do.

It was a dark alley in one of the worst parts of town. Three men were waiting. One of them pulled a slouch hat down over his eyes and said, "D'ya see him?"

Another took a quick peek around the corner. "Yes, here he comes," he hissed!

The man in the slouch hat picked up a short thick section of pipe. Another took a heavy wrench, and the third grabbed a smaller wrench that was none the less effective in close quarters. "All right, fellers, let's go," one whispered.

And thus, when the boss got around the corner, he found his three plumbers at work.

BOYD'S COMPLETE BRAKE and BEAR FRONT END SERVICE
TIRE TRING
WHEEL BALANCING AND OVERLOAD SPRINGS
MONRO-MATIC SHOCKS
MUFFLERS AND TAIL PIPES
FACTORY REBUILT POWER BRAKE UNITS-NEW UNIT
GUARANTEE-EXCHANGED
BOYD'S BRAKE SHOP
21 Years in Clovis
221 W. Grand - 763-4326

INSURANCE
SAVE MONEY ON ALL OF IT AT **RAYMOND EULER AGENCY**
715 Main, Friona Ph. 247-2230

Now Is The Time To Have Your Boat And Motor Winterized We Can Do Any Service Work On Any Make and Model Boat and Motor **Clovis Boat & Motor Sales & Service**
2106 N. Prince

ADAMS DRILLING CO.
WATER WELL DRILLING
LAYNE PUMPS, INC. PUMP & GEAR HEAD REPAIRS ALL MAKES
Sales & Service DIAL 247-3101 Friona Nights 247-2513 Texas

cotton with polish
Illustrious member of the Marcy Lee Spring collection of town tailored sheaths. Raglan-sleeved, trouser-pleated... with a belt-to-hem pleat satisfying today's demand for skirts that move with grace. Polished cotton print (drip-dries) in a hush-hush plaid. Subdued hues of cocoa on sky blue, teal on olive, leaf on lilac. Sizes 10 to 20, 12½ to 22½.

THE FASHION SHOP
6th. and Main, Clovis

Complete Automotive Machine Shop SERVICE
Valve Work-A Speciality
Crankshaft Grinding
MOTOR LAB
311 W. 7th. near Elliot Auto Parts Clovis

MR FARMER . . . START THE NEW YEAR OFF RIGHT

LET TIDE'S SERVICES INCREASE YOUR EFFICIENCY

Tide's Tilt-Box
Only TIDE can give you on the turn-row storage . . . 14,000 pounds of fresh free flowing prescription-blended fertilizer, convenient, economical, and efficient to use. . . fill a spreader in 3 minutes or less. NO ROADING OF SPREADERS Fill on the turnrow. . . No time lost between field and plant. . . Just open the gate and fill the spreader in the field.

Soil Testing.
TIDE offers you free soil testing; also tissue testing latter, with the correct interpretations and recommendations made by a qualified TIDE representative after a discussion with you the grower and your personal knowledge of the land and of your desired yield. No recommendations made in a distant laboratory. Eliminate the guess work in your fertilizer program by using TIDE'S experience and knowledge to help you start your New Farm Year out on a sound fertilizer program.

Complete Line Of Agriculture Chemicals
TIDE PRODUCTS, INC. brings to the West Texas area a complete line of farm chemicals. . . One stop agricultural chemicals, Herbicides, Insecticides, Fungicides, and Fertilizers.

TIDE
SYMBOL OF QUALITY
"ONLY the BEST is fit to be TIDE!"
Littlefield 385-5735 Farwell 481-3346
Herefore Em 4-0712 Hart 938-9535

Southwest Original Discount Center
GIBSON'S
108 Sycamore - Open 9 To 9 (Except Sunday) Clovis

SAVE GAS - Know your engine RPM
... RITE all chrome, supertronic Tachometer
The finest instrument of its class. Simple switching adapts to all 4, 6, or 8 cylinder operations. Zener diode controlled. Unaffected by vibration. Fully electronic. Adjustable shift indicator. Zero adjust button.
Model #301 TACHOMETER
Gibson's Discount Price \$19.97

4-Drawer FILE CABINET
Gibson's Discount Price \$28.88

FRITO CHILI 19 Oz. Car. 49¢

Oil Pressure #880 GAUGE AND AMMETER \$4.97

AMERICAN MADE RPS-6W-6 PIECE
● FULLY GUARANTEED
● FIRST QUALITY
Wrench SET \$2.99 Set

AMERICAN MADE RPS-5 5 PIECE SCREW DRIVER
● FULLY GUARANTEED
● FIRST QUALITY
GIBSONS DISCOUNT PRICE \$1.88

Farm Management Courses Offered

Texas A&M University will offer an off-campus Farm Management course for professional agricultural workers in the Panhandle during the 1965 spring semester. The course will be taught at the Southwestern Great Plains Research Center at Bushland.

The course will review the basic economic principles used in farm management, consider the use of these principles in farm business planning, and discuss some of the more common management problems confronting Texas farmers. It will include management problems based on actual farms and ranches in the Panhandle.

Enrollment in the course is open to any professional agricultural worker who has a Bachelors Degree from an accredited college or university. This includes farmers and men employed by commercial firms as well as those who are employed by schools and other governmental agencies. Students may earn 3 semester

hours credit which may be applied toward an M.S. Degree at Texas A&M. Registration for the course will be at the first class meeting on Monday, February 8. Students wishing to apply the credit toward an advanced degree must be enrolled as graduate students prior to registering in the course. Those who wish to enroll as graduate students should contact Dr. James S. Wehrly at the Research Center, or correspond directly with the departments at A&M in which they wish to earn their degrees.

The course will include 11 four-hour classroom sessions, from 4 p.m. to 6 p.m., and 7 p.m. to 9 p.m., on Monday evenings plus one all-day Saturday field trip.

Additional information about the course may be obtained from Wehrly or from the county agricultural agent, Joe VanZandt.

Water is a vital nutrient in the human diet. It comprises two-thirds of the adult body weight, and is necessary for building, dissolving, transporting and regulating. Dr. Eugenia Whitehead, chairman, Department of Home Economics, University of Iowa, said during the recent Human Nutrition workshop at Texas A&M University.

RITWAY JANITOR SERVICE
Clovis, N. Mex.
Carpet shampooing. Free estimate. Cleaning is our only business - not a sideline. Phone 763-6361.

Electrolux Vacuum Cleaner SALES & SERVICE
Authorizes Dealer
Mrs. L. R. WHITE
806 Ashland Ave.
FRIONA

AMMO NOTES



By Bill Bennett, Agronomist

Fertilization of sugar beet land is just around the corner. From observations of this past year's crop and experiences with the crop, certain trends are developing in regard to sugar beet fertilization.

Rates used this past year seemed to be about right. The 100# N rate should continue to be used where beets follow summer-till land. If the land has a history of low nitrogen use on the previous wheat crop or if beets should follow maize, rate of nitrogen should be higher. Some observations indicate that phosphorus rates may need to be 125 to 150# P205 per acre as compared to 100# P205. This would be true in fields which have not had any phosphate used in the past.

In regard to source or grade of fertilizer to use, observations have been that ammonia has been a very satisfactory source of nitrogen. Indications on phosphate show that ammonium phosphates, such as 11-37-0 or 18-46-0, will give better results than the same amount of actual phosphate from the calcium phosphates, such as 0-20-0 or 0-46-0. This is particularly true on fields which have had little or no phosphate in the past. Some relatively high yields were grown with 600 to 700# 0-20-0 per acre but in nearly every case, these fields has been phosphated for several years in a row. How-

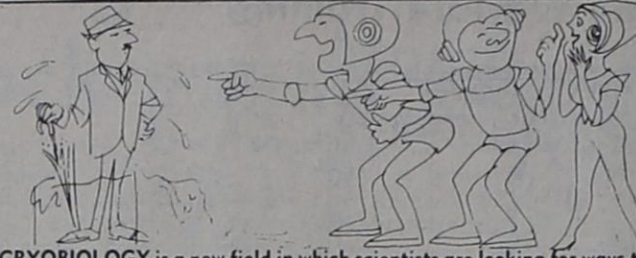
ever, the ammonium phosphates have generally been superior.

Source of fertilizer is closely related to method of application in that the calcium phosphates are generally broadcast, whereas, the ammonium phosphates, particularly liquids, are generally banded. Banding in the bed or in the sides of the bed has proven to be better in most cases than an equivalent quantity of phosphate as a broadcast application. If a dual application of ammonia and phosphorus is used, it should be placed in the sides of the bed rather than directly under the seed in the middle of the bed.

In summary, general observations this past year would indicate that rates of 100# N and 100# P205 per acre should be about right this next crop season with the possible exception of extra phosphorus where none has been used in the past. Source should generally be an ammonium phosphate - either liquid or dry - and it should be banded for best results. All nitrogen and phosphorus should be applied preplant.

Glass canning jars may be used for freezing most fruits and vegetables, except those packed in water, say food specialists in the U. S. Department of Agriculture. Glass jars made especially for freezing also are available.

SCIENCE SKETCHES



CRYOBIOLOGY is a new field in which scientists are looking for ways to use cold for man's benefit. It's a combination of cryogenics (extreme-low-temperature physics) and biology. Already achieved is the freezing of cells to preserve them alive and unchanged indefinitely. Some day it may be possible to freeze a man solid, put him in cold storage and take him out hundreds of years later to start living again in exactly the same condition as when he entered the deep freeze.



CRYOGENIC LIQUIDS so cold they make most metals brittle can be handled safely with special lightweight "Tube-Turn" welding fittings made of high-strength aluminum alloy. The fittings carry liquid helium, at 452 degrees below zero F. the coldest substance known, in research laboratories.

A WITCHWEED HUNT is on in the Carolinas. The parasite, discovered in 1956, attacks corn, sugar cane, sorghum, grasses, sedges and some broadleaved plants, advises the U.S. Dept. of Agriculture. Herbicides have been sprayed on 450,000 acres.

Hunters Get 13 Sheep

SAN ANGELO, Dec. -- Thirteen aoudad sheep were killed by trophy-conscious hunters during the December 11, 12, and 13 season in the rugged Palo Duro Canyon southeast of Amarillo, Texas, the Parks and Wildlife Department reports.

Wildlife workers reported two of the 13 barbary sheep harvested were in the 270 pound class.

The three-day hunt was the second ever held in Texas. In the late '50's, the Texas Parks and Wildlife Department purchased 44 barbary sheep from a rancher in New Mexico and released them in the Palo Duro Canyon. Until last year these sheep were permitted to reproduce and become firmly established in their new surroundings.

Forty-two hunting permits were distributed in 1963 among Palo Duro Canyon landowners and nine sheep were harvested. This year 50 permits were distributed with six males and seven females bagged.

Current estimate of the total number of the rare sheep now present in the Palo Duro Canyon is between 400 and 600 head.

NEW HAVEN, MO., LEADER: "The final victory for the Communists in many lands was made possible by internal subversion and by the artificial and cold-blooded creation of intolerable economic conditions within the borders of those unfortunate lands. How did the Communist agents create these intolerable economic conditions? By creating inflation. A typical example can be found in Hungary. . . There the Soviets unleashed the wildest currency inflation on record. That wild inflation was aimed at certain classes of Hungarians as deliberately as guns are aimed in battle."

I Get 5% Dividends On My Money At.....
FIDELITY SAVINGS & LOAN
416 Mitchell St. PO 2-2917
Clovis, N. Mex.

GIBSON'S DISCOUNT CENTER AND PHARMACY

EM4-2630 HEREFORD 111 W. Park Ave.

HEALTH AND BEAUTY AIDS

- CASUAL - MED. - CURLY
LILT HOME PERMANENT Retail \$1.17 \$2.00
- 1 OZ.
NOXZEMA SKIN CREAM Retail 77¢ \$1.35
- ESQUIRE
SHOE POLISH Retail 19¢ 29¢
- LAVORIS - DECANTER BOTTLE - 15 OZ.
MOUTHWASH Retail 49¢ 98¢
- 3 1/4 OZ. "44"
VICKS COUGH SYRUP Retail 57¢ 98¢
- JERGENS - DISPENSER
HAND LOTION Retail 87¢ \$1.49
- 10 OZ. ROOM VAPORIZER
CONGESTAID Retail \$1.17 \$1.89
- LUX LIQUID** King-Size 57¢
- Aer-O-Wax
FLOOR WAX Gallon \$2.17

5 oz.
HEAD & SHOULDERS SHAMPOO Retail \$1.35 **77¢**

King Size
WILD ROOT HAIR-DRESSING Retail 98¢ **57¢**

14 oz. Lustre Creme
HAIR SPRAY Retail 99¢ **47¢**

SPORTING GOODS

- UNION
TACKLE BOX Retail \$1.17 \$1.95
- ZEBCO
SPINNING REEL And ROD Retail \$8.95 **\$5.27**

JEWELRY AND CAMERA

- Kodak "300"
INSTANTANEOUS CAMERA Retail \$38.87 \$49.52
- 8 MM Complete - Auto. Load - Leather Case - Beaded Screen
Retail \$262.80
BELL AND HOWELL MOVIE SET **\$199.97**

HOUSEWARES

- White - Yellow - Sandalwood
UTILITY TABLE With Casters & Electric Outlet Retail \$4.95 **\$2.57**
- 4 Piece - Metal
CANISTER SET Retail \$1.98 **\$1.17**
- Waring
FOOD BLENDERS Retail \$24.95 **\$14.97**
- IDEAL - LARGE SIZE
STOVE MATS Retail \$2.95 **\$1.97**

SOFT GOODS

- MEN'S - SMALL, MED. LARGE, EXTRA LARGE
THERMAL UNDERWEAR Retail \$3.49 **\$2.66** Set
- CHILDREN'S REVERSIBLE - SIZES 2, 3, 4
HOODED JACKETS Retail \$4.59 **\$2.57**

Children's Sizes 4-10
HOUSE SHOES Ret. \$2.98 Reg. \$2.59 GIBSON'S SPECIAL PRICE **\$1.88**
PINK - WHITE - BLUE

HERCULES SHOCK ABSORBERS
Standard Heavy Duty
Regular \$3.95 Regular \$6.95
\$3.37 \$5.27

Body Guard
SEAT BELTS Retail \$3.95 **\$2.67**

SHOP AT GIBSON'S AND SAVE!

- AUTO And HARDWARE**
- FURY 7"
ELECTRIC SAW Retail \$19.95 **\$15.88**
- WHITE - WITH SLIDING MIRROR
MEDICINE CABINET Retail \$9.95 **\$5.77**

PRICES CUT

Entire Stock Fall Woolens

JANUARY CLEARANCE

"Heller" Boucle Wool Jersey Reg. 3.98 NOW \$2.98
Printed Worsted Wool Reg. 5.98 NOW \$3.98
"Heller" Mohair-Dark Colors Reg. 3.98 NOW \$2.49
"Heller" Double Knit Wool 62" Reg. 5.98 NOW \$3.98
"Botany & Burlington" Wool Crepe 58" & 6.98 \$2.79
"Botany" Tweed-60" 1 Piece Only-Reg. 4.98 NOW \$2.98
"Botany" Flannel-60" Reg. 3.98 NOW \$2.79
"Topmost" Washable Wool-Crepe Reg. 2.98 NOW \$2.79

Large Group Cottons & Synthetics
45" Width Reg. \$1.98 NOW \$1.29 Per Yard

PLAIN-PRINT-PLAID SYNTHETIC & COTTON 45" Width Reg. \$1.98 NOW \$1.29	1 PIECE ONLY 45" BLACK SILK LINEN Reg. \$4.98 NOW \$2.49
---	--

PLAIN ARNEL CREPE - 45" Reg. \$2.98 NOW \$1.69
MATCHED ARNEL CREPE-TUCKED Reg. \$3.98 NOW \$2.29
PRINTED ARNEL CREPE Reg. \$2.98 NOW \$1.69

Cottons & Synthetics-Plains & Prints
45" Width Reg. 1.49 & 1.59 NOW 98¢

- * Acetate & Rayon Blend
- * Textured Rayon Suiting
- * Doe Cord Prints - 100% Cotton
- * "Mission Valley" Bueno Plaids - 100% Cotton
- * "Wamsutta" Dacron & Cotton Prints

"BATES" ORIGINAL & "BATES" ACCLAIM Reg. 1.69 & 1.79 54" Width Material NOW \$1.98
REG. 98¢ 1.19, 1.29 & 1.39 NOW 69¢

35" Wamsutta Pima Cotton Madris Plaids
45" Wamsutta Oxford Cloth - Plain
45" Mission Valley Combed Cotton Stripe
36" Assortment Prints & Plaids

BIG SELECTION
NEW SPRING FABRICS ARRIVING DAILY!

SEE OUR FINE DRAPERY MATERIALS
MAKE YOUR OWN, OR WE'LL MAKE THEM FOR YOU!

SIMPLICITY PATTERNS
McCALL PATTERNS

Tannahill Fabric Mart
PHONE EM 4-3816 * 413 MAIN STREET
BOX 489
HEREFORD, TEXAS

"WHERE YOU ALWAYS BUY THE BEST FOR LESS!"
PLENTY OF FREE PARKING!