



Miss Arlene Clayton

Engagement Revealed

Mr. and Mrs. Jack Clayton announce the engagement and approaching marriage of their

daughter, Arlene, to Ronnie Isham. The ceremony will be November 5 at 2:00 p.m. at First Baptist Church. The public is invited.

Girl Born To Marlin Fergusons

Mr. and Mrs. Marlin Ferguson announce the birth of an eight pound one ounce baby girl born Wednesday at Parmer County Community Hospital at Friona. The name chosen for her is Linda Louise.

Charity Circle Plans Tea

Charity Circle of Methodist Church met Friday morning and made plans for the WSCS Tea, which will be Tuesday, November 18.

Baptist YWA Chooses Name

Marilyn Turner presided over YWA meeting Tuesday night at First Baptist Church. Members decided to name their club the Mary Ellen Badger YWA after a missionary who is working in the Philippines.

They also made plans to enter a float in the homecoming parade. The program was a Bible Quiz conducted by Mrs. Jimmy Ware.

Those attending were Mrs. Hallie Gee, Mrs. Jimmy Clements, Mrs. Mark Charles, Mrs. Leon Grissom, Mrs. Dean McCallum, Mrs. Jimmy Ware, Mrs. Leon Ware, Mrs. Vernon Willard and Mrs. Warren Morton.

Kerby, Mary Joyce Webb, Marilyn Brandon, Linda Gilreath, Jeanne Ivy, and the sponsor, Mrs. Bobby Englant.

FALL VALUES on PARADE

Men's Wrangler **JACKETS** \$5.98

Lustro-Ware 4-Piece Set **CANISTER** Reg. \$3.95 Value and **\$3.49**

CAKE PLATE Reg. \$3.95 **\$3.49**

MATERIAL Fall Patterns 49¢ To 89¢ Yd. Solid Colors 49¢ Printed 59¢

All Kinds **BOWLS**-19¢ to 59¢ Soft Spun

BLANKETS Twin Or Full Size Solid, Pastel Colors \$6.25

Beautiful, Artificial **FLOWERS**

All Kinds **SUPER ANAHIST** Reg. .98 **89¢**

Model Cars Tricycles Wagons Lay-Away Now For Christmas

Henderson's Variety
BOVINA

KNOW YOUR VOTING RIGHTS!

We feel that all legal voters of Texas should know-

No matter how you have ever voted . . .

Or in which primary you voted . . .

Or if you voted . . .

Or how your poll tax receipt is stamped . . .

You CAN vote for any candidate of any party on the November 8 ballot.

For Democrats who value the ideals and true aims of the Democratic Party, the only choice is Nixon and Lodge.

TEXAS DEMOCRATS FOR NIXON - LODGE

ALLAN SHIVERS, Chairman
308 W. 15th, Austin

(Pd. Pol. Adv.)

Snowdrift
SHORTENING 10¢ Off Label **3 Lb. 59¢** Can

FINE FOODS for your FALL MENUS!

Specials
Thur.- Fri.- Sat.
October 20-21-22
Many To Continue
Thru Wednesday,
October 26

Folger's
COFFEE 10¢ Off Label **2 Lb. \$1.29** Can

Gold Medal FLOUR
10 Lb. Bag
Only 93¢

Star Kist Chunk Style TUNA
Flat Can **25¢**

WEEK-END Meat buys
We're Here To Serve You.
Ask For Your Favorite Cut!
USDA Graded
T BONE STEAK Lb. **79¢**
Pinkney's Harvest Time **FRANKS** lb. **39¢**
Baby Beef Sirloin or Round **STEAK** lb. **79¢**

Shurfine **Salad Dressing**
Pint Jar **27¢**

Roxey **DOG FOOD**
6 No 1 Cans **49¢**

Shurfine **MILK**
3 Tall Cans **43¢**

Soflin **Toilet Tissue**
4 Roll Pkg. **35¢**

Shurfresh **Sliced Cheese**
6 Oz. Pkg. **25¢**

Shurfine **Stuffed Olives**
7 3/4 Oz. Jar **49¢**

Shurfine **Spinach**
2 No 303 Cans **29¢**

Morton's Plain or Iodized **SALT**
2 26 Oz. Boxes **25¢**

Sunshine Krispie **CRACKERS**
2 Lb. Box **55¢**

Northern Waxtex **WAX PAPER**
2 100 Ft. Rolls **49¢**

Frozen Food Sale!
Libby
Shurfine **BROCCOLI SPEARS** 10 Oz. Pkg. **19¢**
Banquet **LEMONADE** 3 6 Oz. Cans **29¢**
FRUIT PIES Apple Cherry Peach **39¢**
Cape Ann **FISH STICKS** 8 oz. Pkg. **29¢**

Pillsbury or Ballard's **BISCUITS** 3 8 Oz. Cans **25¢**

KLEENEX 2 400 Ct. Boxes **49¢**

Food King **TOMATO JUICE** 4 46 Oz. Cans **\$1.00**

fresh VEGETABLES AND FRUITS

Fancy Central American **Bananas** lb. **10¢**

Fancy Washington Red Delicious **APPLES** lb. **19¢**

Fancy Lb. Cello. Bag **CARROTS** 2 For **15¢**

Maryland **SWEET POTATOES** lb. **10¢**

Catalina Whole Spiced **PEACHES**

4 No. 2 1/2 Cans **\$1.00**

WILSON'S SUPER MARKET
PARMER COUNTY'S FINEST
BOVINA
Phone AD 8-4781

MEMBER AFFILIATED FOOD STORE

- Double GUNN Bros. stamps Wednesdays with purchase of \$ 2.50 or more -



THE HIGH PLAINS FARM AND HOME

TURBULENT WEATHER INFLECTS HEAVY DAMAGE



STRIPPED BY HAIL was this cotton patch between Farwell and Bovina, an area which received the brunt of a devastating hail storm early Saturday morning. Luckily, this field was an exception in the county but there was wide-spread damage to both cotton and maize fields.

A week of turbulent weather, marked by devastating hail, winds and heavy rains has inflicted extensive damage to grain sorghum and cotton crops through much of Farmer County and eastern Curry County.

The heaviest damage came early Saturday morning during a violent hail and electrical storm that riddled crops over a wide area, from Texico-Farwell north to Pleasant Hill and east to the Hub community.

Hail was spotted but also widespread in this region, with crop damage ranging from slight to total. Some of the heaviest losses were reported north of Texico-Farwell, near Bovina, and at the Hub. At places, hail stones were from six to eight inches deep following the storm.

Farmer County Agent Joe Jones estimated Monday that "several thousand" acres received hail damage in the county. Since the amounts of hail did vary throughout the area, it is impossible to estimate just how much of a financial loss the storm would mean to the county.

The storm was a severe blow to the farmers, who were just getting started harvesting bumper crops. Only a small percentage of the maize crop in the county had been cut when the hail came. Combines had just started cutting several fields, which were yielding up to 7,000 and 8,000 pounds.

The extent of the damage cannot be determined until farmers can get back into the fields and start cutting again.

Through Monday of this week, rain received since Saturday morning ranged from three inches to better than five, thus making this year reminiscent of 1957 when continued rains forced farmers off the combines and much of the grain could not be harvested until long after



WATER RUSHING DOWN THE BAR-DITCH and flooding both dirt and paved Farm-to-Market roads was a common sight Monday as rains continued for the third straight day. The rains have been general and have measured better than five inches in many places.



STANDING IN A FLOODED FIELD and checking hail damage to his maize crop is Truman Kittrell, who farms near Texico-Farwell. Kittrell started cutting this field Friday afternoon and it was averaging better than 5,000 pounds. The hail came early Saturday and inflicted damage, which Kittrell estimates at 50 per cent. Other fields in this area, north of the Twin Cities, were damaged as much as 80 and 90 per cent.

Keep Cotton Dry, Loose And Clean

The final grade of lint in a bale of cotton is determined

by the condition of the seed cotton when it reaches the gin. For this reason, cotton should be produced, harvested and handled so that it reaches the gin as dry, loose and clean as possible, says Fred Elliott, extension cotton work specialist.

Picking early in the morning or late in the afternoon when cotton is very moist should be avoided. Loss of color associated with delay in ginning of high-moisture seed cotton accounts for a large part of grade difference between

cotton harvested during high-moisture periods and dry periods. To get the best possible prices for cotton, the farmer should harvest it dry and keep it dry, the specialist points out.

Small capacity transport vehicles have no place in the cotton field, Elliott continues. Four-wheel, large-capacity, wood-slatted or wire-sided trailers are recommended.

Another quality reducer, which is closely associated with small transports, is tramping the seed cotton in the trailer. Even the most elaborate and expensive ginning systems cannot remove all of the small "pin and pepper" trash that is ground into the cotton by tramping.

Seed cotton should be harvested as clean as possible to permit the use of less gin machinery in obtaining a good grade. Pickers should be cautioned not to allow green leaves, excessive trash, dirt, colored rags, grass and other foreign objects to be mixed in seed cotton.

"Remember," Elliott concludes, "You can help maintain quality in cotton by harvesting seed cotton when it is dry and by keeping it loose and clean."

Courthouse

INSTRUMENTS FILED FOR RECORD WEEK ENDING OCTOBER 15, 1960 County Clerk's Office, Farmer County

W.D., A. L. Glasscock, F. O. Turner, SE90' Lot 2, Blk. 89, Bovina
W.D., Dan Ethridge, S. D. Rule, Lot 4, Blk. 10, Staley Add., Friona

W.D., Jane Overstreet Lokey, E. W. Sheets, Lots 14, 15 & 16, Blk. 59, Farwell
W.D., Tommy Williams, Mrs. J. H. Steelman, Lots 3 & 4, Part Lot 5, Blk. 22, Bovina

W.D., Carrie A. Lillard, Joe Johnson, E40' Lots 13, 14, 15 & 16, Blk. 63, Friona
MML, H. K. Kendrick, Geo. C. Taylor, Jr., Tract 9, W.L.D. Add., Friona
W.D., David Towry, et al,

Irrigation Systems

Concrete Pipe
Aluminum Pipe
Contact

PAUL A. HALL
Ph. 2341 Friona



Visual Care
DR. B. R. PUTMAN
OPTOMETRIST
Office Hours: 9-5 Sat, 9-12

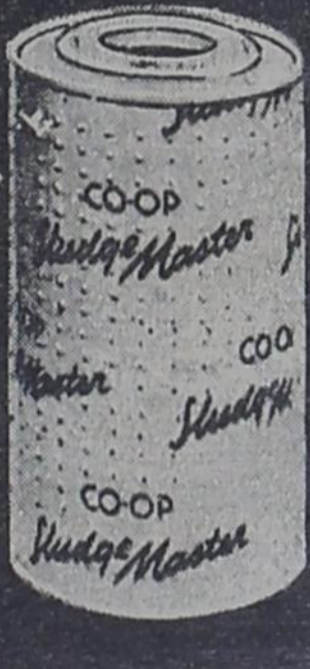
New & Rebuilt Electric Motors For All Purposes
Electric Motor Rewinding
General & Starter Service

Crown Electric
PO3-5433 1320 W.7th., Clovis

Contact Lenses
111 East 3rd St.
Muleshoe, Texas

KEEP DOWN UPKEEP

with a CO-OP Sludge Master OIL FILTER CARTRIDGE



- ABSORBS WATER
- INERT TO OIL ADDITIVES

CO-OPULOSE — a truly miracle product with high cleaning capacity. Its spongy, springy consistency provides maximum flow rate.

BUILT ON RESEARCH-NOT THEORY

CO-OP Farm Supply Store

—MULESHOE—

A RATTLESNAKE won't leave while you go for a weapon if you leave an article of clothing near it.

This Line
FIRST FEDERAL SAVINGS AND LOAN ASSOCIATION
Clovis, New Mexico

can SAVE thousands of dollars

No HUSTLE, NO BUSTLE — just three short minutes is all it takes to save-by-mail with us. Here's how — first, sign a check or money order — seal it in an envelope along with your passbook* — and send it off to us. Your savings will be promptly credited and your passbook returned through the mail. Easy isn't it?

Why not get that check into the mail — open or add to a safe, higher-earning savings account with us now!

CURRENT DIVIDEND ON INSURED SAVINGS 4%



4th And Pile



Clovis, N. Mex.

Sugar Beet Meeting Thursday At Friona

A meeting to discuss what farmers in Farmer and Deaf Smith counties might do to secure more sugar beet acreage is scheduled for this Thursday night at the Friona State Bank

J. B. Buske et al, W 155 a. of E 310 a. Sec. 4, T1N, R3E
D.T., J. B. Buske, et al, David Towry, et al, W155 a. of E 310 a. Sec. 4, T1N, R3E

W.D., Merler Shirley, Ruth Busby, W 70' Lots 7 & 8, Blk. 72, Friona
W.D., Merler Shirley, Lorene Dean, E 70' Lots 7 & 8, Blk. 72, Friona

D.T., L. L. Grissom, C. C. C., 10 a. of NE/4 Sec. 26, T10S, R2E

W.D., Terminal Bldg. Corp. of Texas, City of Friona, Part Sec. 32, T2N, R4E
Fed. Tax Lien, United States vs. L. A. & Helen Haws - --- MML, Walter Kaltwasser, Oklahoma Lane Farm Supply, Inc., NE/4 Sec. 6 & NW/40 a. of NW/4 Sec. 5, T15S, R2E

FARM & RANCH LOANS Long Term -- Low Interest
Ethridge-Spring Agency, Friona
Phone 8811

at 8 p. m. "All farmers who might be interested in acquiring sugar beet acreage are urged to be present at the meeting," says Prentice Mills, manager of the Farmer County ASC office.

Representatives from Hereford, who have been working on the acquisition of additional sugar beet acreage for this area, will be on hand at the meeting. The possibility of sugar beets



Dutch Quickel
MONEY Now
Means
MONEY Later

becoming another major crop for this area was first brought up when the United States started having difficulties with Cuba, this country's major supplier of sugar, President Eisenhower cut Cuba's sugar quota by 25 per cent, and since that time, there has been much interest in raising the sugar beet allot-

ments for this region, which agriculturalists believe can produce a high quality beet. At Thursday's meeting, farmers will be brought up to date on the subject and the discussion will be centered around what steps can now be taken to bring about an increased sugar beet allotment.

HENDERSON Seed Co., Inc.
FERTILIZER -- FEED -- SEED
James Harding FARWELL Heinie Henderson
Quality Pigs For Sale

"Sure Sign of Flavor"
QUALITY CHEK
DAIRY PRODUCTS
Butter Milk Cottage Cheese Sour Cream
In No-Wax, No-Leak Plastic-Coated Cartons
CLARDY-CAMPBELL Quality Chek DAIRY PRODUCTS

Announcing Ford Dealer's NEW EXTENDED WARRANTY

Now! 12,000 Miles Or One Full Year Warranty On All '61 Ford And Falcon Automobiles

New 1961 Fords and Falcons have been built with such a high degree of quality, durability and reliability your Ford Dealer is extending his warranty to 12,000 miles or one-full year, whichever comes first.

(Traditionally the standard for the American automobile industry has been only 4,000 miles or 90 days.) Ford dealers led the industry in extending their warranty on '61 Fords and Falcons.

Before you buy any new car, be sure to get the full details and inspect a copy of this outstanding warranty at your Ford Dealer's.

LET US FORD DEALERS SHOW YOU THE MOST MAINTENANCE-FREE FORD IN HISTORY

BECAUSE IT'S BEAUTIFULLY BUILT TO TAKE CARE OF ITSELF



'61 GALAXIE BY FORD
SEE IT...DRIVE IT...AT YOUR FORD DEALER'S TODAY
FRIONA MOTORS
P. O. Box 957
Grand & Hiway 60 Your Authorized Ford Dealer Friona, Texas

BEAUTIFULLY BUILT TO TAKE CARE OF ITSELF—HERE'S HOW
Lubricates itself. You'll normally get 30,000 miles without a single oil change.
Cleans its own oil. You'll never need an oil change.
Adjusts its own brakes. New Truck Size brakes adjust themselves automatically.
Guards its own muffler. Ford mufflers generally last three times as long as ordinary mufflers.
Protects its own body. 21 vital bodybody parts are pre-treated to resist rust.



GOING AFTER BINDWEED on a vacant lot in Farwell are these men who are saturating the weed with sodium chlorate. Bindweed has long been an enemy of the farmer, and a constant vigilance is required to keep the weed under control, both in the towns, along the highways and railroads and on the farms.

Wanted-All Your Shoe Repair
SKINNER'S
Clovis Boot Shop
308 Pile Clovis, New Mex.

Bindweed Fight Still On

Still on in Parmer County is the fight against bindweed, that deep-rooted, vine-type weed which is most feared by farmers.

Last week the City of Farwell joined forces with the county in an effort to eradicate several small patches which were growing in the city limits. The Farwell effort is part of an all-out campaign which has been in progress in Parmer County for several years.

All three of the county towns, Friona, Bovina and Farwell, along with the communities of Lariat, Lazbuddie, Oklahoma Lane, Hub, Rhea, and Black have consented to take part in the struggle against this unwanted vegetation, explains Joe Jones, Parmer County agent.

Also helping the county to carry out an extensive program, outlined by the Parmer County Weed Control Committee, has been the Santa Fe Railroad, the Texas Highway Department and individual farmers.

The railroad has treated with ground sterilizing chemicals 36 of the 38 miles of right-of-way in the county, Jones says. The highway department has helped to rid some of the bar-ditches of the weed and farmers have helped to take care of it their individual farms.

Nearly everybody who is concerned about weeds knows what bindweed can do, Jones points out. That's why such an all-out effort is constantly being made.

One of the most feared weeds in Texas, bindweed occurs in 167 counties and causes an annual crop loss of more than five million dollars. It climbs any type of support and can smother most every crop.

Even though much has already been done, it is a constant fight to keep bindweed from getting a start and spreading, the county agent explains. Therefore, a continual fight is necessary and everyone should be on the lookout for the weed at all times, he says.

The weed is easily recognized by its arrow-shaped leaves and its three-quarter to one-inch white to pink trumpet-shaped flowers. The black-pebbled seed is produced abundantly and is difficult to separate from small grains, Jones explains.

WITH THE COUNTY AGENT

JOE JONES

With the good moisture available wheat and barley will soon be large enough to graze. Where you have both wheat and barley, better graze the barley first. Barley makes its best growth in the fall, but does not stand the cold as well as rye and wheat, so to get the most from barley better get the growth it makes early and save the wheat and rye for pasture later on in the winter.

We have had a lot of pasture lost the last 2 years because the barley froze out or back. Much of the forage loss would have been prevented, had the barley been fenced separate and grazed off early and the wheat saved of the winter months.

In an effort to determine the value of phosphate on wheat

in the heavier soils, I am again working with Dr. Alex Pope of the Southwestern Great Plains Field Station at Bushland. The research plots this year are on Dee Brown's farm between Friona and Hub. These plots will be marked so you can stop by during the growing season and look them over. The value of phosphate on wheat in the sandier area of the county has already been established, but results on heavier soils is still questionable.

I will leave this Friday for the Agricultural Agents Annual Conference at College Station next week. I will be back in my office November 1.

Those of you who are interested in grass for seed or livestock production could well afford to visit the George Warner farm northeast of Black. Turn north at the road about 1 1/2 miles east of Black and his place is about 2 miles north on the west side of the road. We visited this farm on the Soil Conservation District Tour and George welcomes anyone to come out and take a look at his grasses. He has several different varieties of native grass under irrigation.

Head smut is wide spread in our grain sorghum this year. This is caused by a soil born organism and is likely to be of real significance in years ahead. There is no seed treatment for head smut and many have it, but have not recognized it as such. Too look for head smut look for heads just a little shorter than normal, that have little to no grain in them.

I made a count in one field and found a 7% infestation based on my limited count of 150 plants down one row. On infested plants you will find a pocket of smut about half way up the stalk, but not on the head as in case of Kernel smut like we treat for. At present resistant varieties hold only answer and a few varieties used here at present show much resistance, but some are more resistant than others. Take a close look while you are harvesting and see how much smut you have this year and figure it will in all likelihood, get worse as your soil gets infested with the organisms.

They are the main sources of new infestations and may remain viable in the soil for many years.

The Parmer County weed committee was organized seven years ago and its chief function has been to "stimulate enough interest in weed control to get the job done," Jones says.

There are several herbicides which can be used for eradicating the weed and one of the most common is sodium chlorate. Others which have been used widely are Concentrated Borascu, Dybar, Polybar Chlorate and Telver.

Jones says that, generally speaking, Parmer County has very little bindweed. "We can keep it on a small scale only if we keep up the fight to control it, he adds.

Early Corn Appears Most Profitable

Corn planted in early May had the highest average yields, while corn planted in late April had the lowest percentage of lodging (falling down) in the date of planting tests at the High Plains Research Foundation, Delbert Langford, associate agronomist, reported this week.

The two varieties used in

the tests were Northrup-King KT-6, representing the early maturing varieties, and Texas 30, representing the late maturing varieties. Each variety was planted on April 21, May 5, and May 20 and harvested September 8 and 19.

The acre yields produced by KT-6 for each planting date were 134 bushels - April 21, 148 bushels - May 5, and 132 bushels - May 20. The yields produced by Texas 30 were 173 bushels - April 21, 170 bushels - May 5, and 124 bushels - May 20.

Lodging percentages at harvest on KT-6 were 2% - April 21, 5.7% - May 5, and 8.5% - May 20. Lodging percentages

for Texas 30 were 4.3% - April 21, 9.1% - May 5, and 23% - May 20.

In summarizing the results of tests for the past three years, Langford said, "These tests indicate that early planting and early harvest can reduce corn production hazards and take advantage of early season rainfall. This procedure results in greater profits from corn production."

NEWS FROM THE FARM BUREAU

BY RAYMOND EULER

Although rains are always long range blessings to this area, they sometimes work hardships on farmers trying to harvest crops already produced. Even worse, of course is the accompanying hail, unusual for this time of year, but no less damaging because of the rarity. We know many farmers have already sustained serious losses, and we hope the rest of the crops can be saved.

In line with membership provisions of the 1960 conventions, AFB President, Charles Schuman has made the following recommendations to the USDA Secretary as guidelines in establishing 1961 cotton upland allotments:

1. An increase in the national allotment of not less than 10 per cent nor more than 14 per cent above the original 1960 allotment.

2. A price support level of more than the authorized minimum of 70 per cent of parity but not more than 75 per cent of parity.

3. Provision that no cotton can be released from Commodity Credit Corporation stocks for unrestricted use during the marketing year 1961-62 at less than 115 per cent of the 1961 support level.

We believe these recommendations will meet with the approval of cotton farmers of this area, as well as others.

The Texas Farm Bureau board of directors has voted to establish a trade development and bargaining organization as a means of expanding markets and increasing incomes of Texas farmers and ranchers.

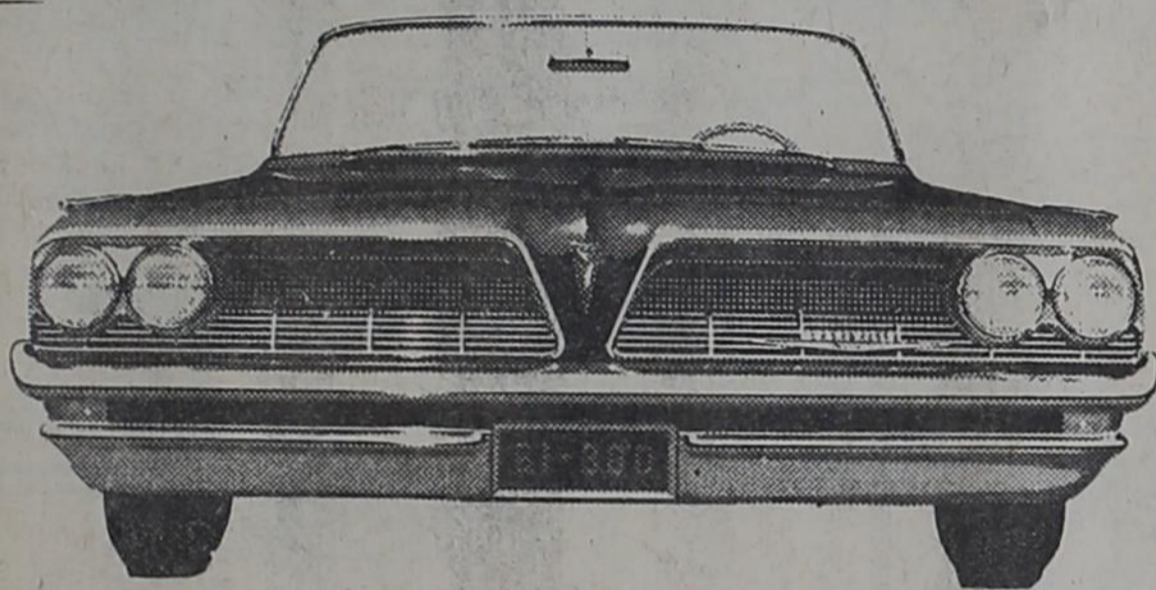
The American Farm Bureau Federation established a foreign trade office in Rotterdam, Holland in February, 1959, Harrel West, Texas Farm Bureau president said the success of this office in developing new markets in western Europe was beyond all expectations. He said the activities of the Rotterdam office had demonstrated the need for organizing an "efficient order-filling service" in this country.

Herman Gerles has called a special meeting of the board of

FOR SALE USED TIRES
For
Plows And Trailers
See
BOVINA TIRE SERVICE
AD 8-2801 Bovina

FOR SALE:
Monro-Matic shocks-
Load Leveler-Air Lifts-
Overload Springs-
Factory rebuilt power brake
units. Complete brake and
front end alignment.
Boyd's Brake Shop
221 W. Grand, PO 3-4326

IT'S ALL PONTIAC ON A NEW WIDE -- TRACK FOR '61



New Track To Body Proportion
Pontiac Is The Only Wide Track Car.

Announcing The New Pontiac Trophy V8 Engine

Horse Powers Range From 215 To 348. **It's**

Lower Compression Ratio Lets You Use Regular Gas

More Headroom, Legroom, Footroom.

For Greater Comfort

SEE - DRIVE - COMPARE TODAY!!

Bonneville - Star Chief - Ventura - Catalina

Frank Rierson Pontiac

401 East 1st

Clovis, N. Mex.

YOUR REDDY KILOWATT DEALERS IN PARMER COUNTY ARE:

ROBERTS FURNITURE
FRIONA

WHITE AUTO STORE
FRIONA

FARWELL ELECTRIC
FARWELL

REEVE CHEVROLET
FRIONA

EYES EXAMINED GLASSES FITTED

Black Optometric Clinic

A. J. BLACK, O. D.

OFFICE HOURS: 113 West 1st. St.
9:00 to 5:00 -- Sat. 9:00 to 1:00 Phone 8240 -- Muleshoe, Texas



... I'm so glad I made the **BIG CHANGE** to modern **ELECTRIC** cooking!

You will be, too, when you see the new electric ranges now on display at Reddy Kilowatt Electric Appliance Dealers.

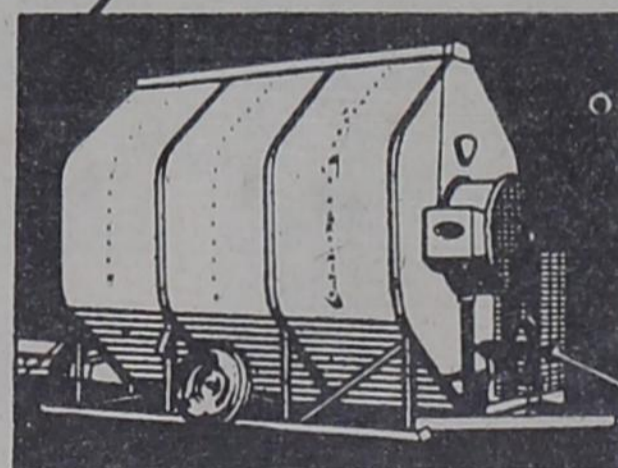
Look them over—find the model that makes the best of the big change for you. Learn about trades and terms—and a terrific allowance for wiring.

The age is electric. Is your range?

ASK ABOUT WIRING INSTALLATION ALLOWANCE SEE YOUR REDDY KILOWATT APPLIANCE DEALER



DRY YOUR GRAIN FASTER WITH CONTROLLED AIR MOVEMENT!



GRAIN DRYER

Look at these features that make Behlen America's Biggest Selling Grain Dryer:

AUTOMATIC GRAIN HANDLING—A system of augers moves grain into the dryer... distributes it evenly throughout the drying chamber... then removes it automatically after drying.

NEW AUTOMATIC MOISTURE CONTROL—Saves time, protects from over-drying. Set controls for the desired moisture content. Behlen Dryer automatically shuts off at the pre-set moisture content.

EXCLUSIVE H/A POWER—Exclusive variable-pitch axial vane fan and high-output Behlen burner give you the right amount and volume of heat and air.

Full "WRAPAROUND" Grain Compartment—Grain in drying chamber is actually "wrapped around" the air chamber. Heated air passes through all grain... gives fast, uniform drying and eliminates the need for costly grain movement.

Spra-Gro Steel Building Co.

2220 N. Prince

Phone PO3-4416

Clovis, N. M.

Is Vegetable Growing A Gamble?

The cost of living index in Bolivia jumped 15 fold between 1945 and 1955; in Paraguay, over the same period, the increase was 30 fold.

When the statement "Growing Vegetables is a gamble," is made could this be a case of the culprit blaming the victim? Is the business itself a gamble, or are the farmers actually the gamblers? Clyde Singletary, extension horticulturist, says that the only way to learn the answers to these questions is to take a close look at the vegetable business. With few exceptions, most vegetables are staple food items of most American families. Per capita consumption of most vegetables is increasing each year

along with rapid growth in our population. Vegetable surpluses are temporary—in many cases lasting only a few days or weeks. These surplus problems can, however, be damaging to growers.

The vegetable industry, particularly as it relates to consumption, appears quite stable, continues Singletary. Week-to-week price fluctuations occur, but averages over a period of years are fairly stable.

If consumption is always positive, why should there be this attitude that growing veg-

etables is such a gamble? Could it be that some farmers are blaming the industry when they should be blaming faulty pro-

duction practices? Singletary says that yield per acre, quality yield, speculative growing, concern for product

after harvesting and knowledge of competition are the main factors in determining profit or loss. Careful analysis of the

vegetable situation in Texas reveals that low yields per acre is the most important factor affecting income of growers. Consumers are quality conscious, thus quality is one of the most important tools of bargaining.

Speculative growing is another income reducer. Planting without planning can lead to disaster. Another common fault of some vegetable producers is the apparent desire to drop all responsibility for their products as soon as they leave the field. Growers need to be as concerned about the product from the field to the consumer as from seed to harvest,

says the specialist. Singletary concludes by saying that producers need to know their markets. That is, they must know how much of what will be needed at a certain place at a certain time.

FREE INSTALLATION
On all Monro-matic shocks & load levers, & Pryor overload springs
BOYD'S BRAKE SHOP
221 W. Grand PO 3-4326

Average yields, fertilizer costs, and net profit due to fertilizer on two varieties of wheat.

Treatment	Yield Average Bu./Acre	Average Cost	Average Profit due to Fertilizer
No Fertilizer	37.79	---	---
N alone	56.87	\$5.86	\$26.20
P2O5 alone	54.45	6.13	21.86
N + P2O5	57.67	11.99	21.61
N + P2O5 + K2O	56.87	13.99	18.07

-6-

Table 3. Yield in bushels per acre of eight varieties of wheat at the High Plains Research Foundation in 1960.

Variety	Yield
1. Concho	51.48
2. Bison	50.16
3. Westar	48.18
4. Triumph	48.18
5. Tascosa	47.52
6. Ponca	47.52
7. Improved Triumph	45.54
8. Crockett	41.58

Table 4. Effects of supplemental irrigation on yield and net return from three varieties of wheat.

Variety	Yield in Bu./A. Dryland	Yield in Bu./A. Irrigated	Increase over Dryland	Cost of Pumping 8" Water	Net Profit from 8" Water
Wichita	20.5	43.6	23.1	\$6.00	\$32.81
Comanche	21.1	42.2	21.1	6.00	29.48
Aztec	20.5	41.6	21.1	6.00	29.48

Dr. William Beene
OPTOMETRIST

Regular Office Hours
Monday Through Friday


Box 546 Ph 4051
9th & Main
Ft. Collins Texas

Will you harvest crops or accidents this year? Machine harvesting can be extremely dangerous if it is done in a hurry, or if the equipment is not in the best possible condition. Be sure the seats, controls and steps are in good repair. Keep the shields and safety guards in place. Wear the right clothes for the job. Also, the Texas Farm and Ranch Safety Council points out, children are definitely out of

place around harvesting machinery. Prevent accidents and reap the rewards of safer farming. It's a paying proposition, says the Council.

ADAMS DRILLING CO.
WATER WELL DRILLING

LAYNE PUMPS, INC. DIAL 2921 PUMP & GEAR HEAD REPAIRS
NIGHTS 2951
ALL MAKES
Sales & Service Ft. Collins Texas



Mexican Food Steaks Private Parties Can Be Arranged
U.S. Hwy. 70 "THE GORES" PO 2-2966

A COTTON STRIPPER
For Your **MASSEY-FERGUSON TRACTOR**
Now Available

- 1. 20 Minute Hook-Up Time
- 2. Hi-Speed - Big Capacity Stripper
- 3. Saves Extra Man In The Trailer
- 4. Better Turnout. No Tags - No Barkies

Can Be Adapted To Fit ALL Makes Of Tractors

"Sure We'll Trade" Terms Available

PRUITT BROS. IMPLEMENT CO.
Local Owned Local Operated
Your Friendly Massey-Ferguson Dealers
On Highway 70--Just North Of The Tracks
Phone 7550 Muleshoe

Plenty of seedlings are available to Texans for reforestation or windbreak plantings, says Bill Smith, extension forester. Orders are being taken now by the Texas Forest Service, College Station, Texas.

FOR FALL FASHIONS

- *HATS
- *COATS & SUITS
- *DRESSES
- *LINGERIE & JEWELRY

The Fashion Shop
On "The Fashion Corner Of CLOVIS"
PO 3-5431

SHOP and SAVE
during our
Second Anniversary Sale
October 3 - 31
Register FREE Once Each Day For
Ethan Allen Dining Table
And Four Chairs To Be Given Away Oct. 31 At 6 P. M.

McGee Furniture
511 N. Main Hereford EM 4-2584



Attention,
Mr. Cotton Producer
Of Parmer County:

Are you smoking more now but enjoying it less?



HUMAN FLY That's Orin Murray, Field Survey Engineer of fabulous Glen Canyon Dam in Arizona. Murray says, "Sure I've tried other brands. But Camel is the only one that gives me real smoking satisfaction every time I light up."

HAVE A REAL CIGARETTE
-HAVE A CAMEL



Orin Murray
TAKES IT EASY WITH A CAMEL
Camel is the best-tasting cigarette of all—because the Camel blend of costly tobaccos has never been equalled. Try Camels and see.

The best tobacco makes the best smoke!


Ask Your Ginner To Send Your Cotton To Western Warehouse Co. In Bovina.

YOU SAVE MONEY BY DOING BUSINESS AT HOME.

"We Have Nothing To Sell But Service"

WESTERN WAREHOUSE CO.

—Bovina—



Bovina Businesses 1960 Cotton Bowl

FOOTBALL

CONTEST

You May Win Weekly Prizes Of
\$5 — \$3 — \$1

Plus Grand Prize Of Expense-Paid Trip
For Two To Cotton Bowl, January 2, —1961—

Join The Fun!
Win The
Prizes!



Contest Rules

1. There are 10 high school and/or college football games listed in ads on this page.
2. Pick the team you think will win in each game and place the WINNER'S NAME beside the same number in the contest entry blank at bottom right of this ad.
3. Pick the score of the tie breaker game and place your guess in the appropriate blanks on the entry. The tie breaker game will not count on your won-lost record. It will be used only in case of a tie.
4. Winners will be named by the Monday following the contest deadline each Friday and they will be named by Saturday, if possible. Cash prizes of \$5 for first, \$3 for second, and third prize of \$1 will be awarded.
5. Tabulations of individual entrants will be kept all season and at the end of the season a grand prize winner will be named. Grand prize winner will receive two free tickets to Cotton Bowl games plus hotel, food and traveling expenses to Dallas and the January 2, 1961 football classic.
6. There is nothing to buy. No requirements other than to bring the entry blank, filled out, to The Blade office by 5 p. m. Friday of each week.
7. Only one entry blank may be submitted per individual. If more than one blank is submitted by an individual, all will be disqualified.
8. Tabulations will be available for public inspection. Members of Blade staff will serve as judges for contest.
9. Everyone, except employees of this newspaper and their families, is eligible to enter.

Weekly Prizes

1st \$5
2nd \$3
3rd \$1

*Expenses Include
2 Tickets To
Cotton Bowl Game,
Paid Reservations
For 2 At
Statler-Hilton Hotel
and \$55 For Food
and Traveling Costs.

Clip This Blank And Turn It In To Blade Office By 5 P. M. Friday

Bovina Businesses Cotton Bowl Football Contest

OFFICIAL ENTRY BLANK

Contestant's Name _____

Address _____

Tie Breaker (Pick Score Of This Game)

Bovina _____ Vs. Happy _____

NAME WINNERS ONLY OF THESE GAMES:

- | | |
|-------------------------|---------------------------|
| 1. Bonds Oil _____ | 6. First National _____ |
| 2. Wheat Growers _____ | 7. Charles Oil _____ |
| 3. Macon Elevator _____ | 8. Sherley Grain _____ |
| 4. Cicero Smith _____ | 9. 3-Way Chemical _____ |
| 5. Parmer Co. _____ | 10. Gaines Hardware _____ |

Bonds Oil Co.

AD 8-2271

Bovina



Gulf Products
Goodyear Tires

1. Hale Center At Farwell

Bovina Wheat Growers, Inc.

"We Serve To Serve Again"

Jim Russell, Mgr. AD8-2691

Not Everyone Belongs to A Co-Op -
But Everybody Benefits

2. Texas At Rice

MACON ELEVATOR

... Striving Constantly To Offer You
The Best In Elevator Service ...
Ready Now For Your 1960
Milo Crop
Mr. and Mrs. J. P. Macon - Bovina

3. West Texas At Hardin-Simmons

REPAIR! REMODEL!

Nothing Down — 60 Months
To Pay
Complete Line Building Supplies



4. SMU At Texas Tech



... Get Results!

See Us For All Your Farming Needs
PARMER COUNTY FARM SUPPLY
"Your Complete Farm Supply Store"
AD8-2621
A.E. (Bud) Crump, Mgr. - Bovina

5. Mississippi At Arkansas



FIRST NATIONAL BANK

OF BOVINA

Member
Federal Reserve System
And FDIC

"Working to Make A
Good Community Better"

6. Pittsburg At TCU



CHARLES OIL CO.

Phillips '66' Jobber
Oils - Greases - Philgas Gasoline - Tires
Batteries - Greases
Phone AD 8-4531
H.J. Charles - Bovina

7. Lazbuddie At Vega

SHERLEY GRAIN CO.

Serving Parmer County Farmers
The Year Round

AD 8-2211

--Bovina--

8. Texas A&M At Baylor

3 Way Chemical Co.

Call Us For
Anhydrous Ammonia - Phosphoric Acid -
Dry Fertilizers
OILS - GREASES - TIRES - BATTERIES
-- FARMERS' HEADQUARTERS --
Two Locations - Bovina And Pleasant Hill
Ed Hutto — Jay Harris

9. Kress At Springlake

Biggest Supply Of Bolts
In Parmer County!

Plus A Multitude of Other Items Farmers
and Housewives Need Every Day as Well
as On Special Occasions

--- FURNITURE and APPLIANCES ---

Gaines Hardware Co.

Nothing Knocks On Bovina But Opportunity

10. Canyon At Dimmitt

COVER THE GREASE spot on that cotton dress with liquid shampoo, then wash as usual. Leaves no ring.

A RATTLESNAKE won't leave while you go for a weapon if you leave an article of clothing near it.

Your Key To Security!
The VERY BEST Hospitalization Insurance Policy
 -Guaranteed Renewable For Life-
 See Us, Too, For Life Insurance
BOVINA REAL ESTATE & INSURANCE
 Bank Building
 A.L. Glasscock AD8-4382

NOW OPEN
Edwards Cafe
 At Lawlis Gin
 Hwy. 86—Bovina
Good Coffee - Short Orders

P. A. G. Sorghum Dealer
 Now Booking Orders For '61 Planting
 We Have A Supply Of
Certified Crockett Wheat Seed
\$3.25 Bushel
PERSONALIZED BUTANE SERVICE
 Phone AD8-2161

LESTER RHINEHART BUTANE GAS CO.
 The Farmer's Friend
 Highway 60
 Bovina
 AD8-2161

Paul Jones Texaco Service Station
 Highway 60
 AD 8-4331
BOVINA
Firestone
 SPEEDWAY PROVED—TURNPIKE PROVED TIRES

1195 6.70-15 Black Tube-Type Champion
 Original equipment tread depth.
 S/F, Safety-Fortified cord body for long mileage, top safety.
 Made with Firestone Rubber-X for long wear, improved ride.
 Famous 7-rib Firestone Champion tread design.
 Plus Tax and Recappable Tire
ALL SIZES and TYPES SALE PRICED
 Tubeless, Tube-Type... Whites, Blacks

Blade Sawdust
 by
 SUE MOTEN

What is your reason for being a Democrat or a Republican? This is a question that often comes to my mind. Many people will tell you that they are affiliated with a certain party due to their beliefs.
 I think this is in part true, however, I think the majority of people are influenced by other people as to what party they belong to. Many follow in their parents' footsteps and believe that their's is the best party simply because "my granddaddy or uncle John" was a member of such and such party. Many people are influenced by their teachers in both high school and college and then there are those who are members of the same party as their husband or wife simply because it is one of the composites of a happy home. Then there are those who vote for the man and not a party, think everyone has a tendency toward this even though we may not realize it.
 However, the main thing is to vote.

Have heard about the homecoming parade which is going to be here November 4. Think this is a real good plan and have heard others express the same opinion. Several have mentioned that they are going to enter floats in the parade. Believe that this sort of highlight to the football season is needed since it will mean more to both the students and ex-students of Bovina.

Many of those who went off to college for the first time this year are already beginning to look forward to the first holiday, Thanksgiving, which is entirely natural. I have talked to several of the parents of these students and the reports are quite favorable. Once a routine life is established it is easy to settle down and become a part of the college colony.

I'm sure many of you saw the "Year of the Polaris" on T. V. the other evening. Thought it was very interesting as well as informative. One thought stuck in my mind, they mentioned that one of these missiles contained as much destruction power as all the bombs of both sides together contained during World War II. Makes one real glad to know we have such powerful weapons and at the same time wonder what our enemies have that is equal or perhaps better than this.

WANT ADS

HOWARD GRIFFIN
 General Contractor
 Home Repairs
 Paint of All Kinds
 Stucco - Dash
 AD 8-4277
 Bovina, Texas

FOR SALE---1956 Baldwin combine, 14 ft. with cab and spare parts. Good condition, also pickup reel. See Warren Embree at bank in Bovina. 11-tfnc

FOR SALE---1948 Chevrolet 2-ton truck with '55 motor. Good nylon rubber, lift and grain bed. Extra clean. See Warren Embree at bank in Bovina. 11-tfnc

FOR RENT -- Floor Polisher. \$1 per day. Superior Electric, AD 8-2751 32-tfnc

FOR SALE---1956 Massey-Harris 14ft. 90 combine with cab and spare parts, in good condition, also, pickup reel. See Warren Embree at Bank in Bovina. 11-tfnc

FOR SALE---Used 14-inch tires. Ideal for cotton trailers. Your choice \$3 each. Paul Jones Texaco Service Station, Bovina. 14-4tc

Never had thought much about mental telepathy until Friday afternoon. Was sitting here thinking about something good to eat when Nola Read came in the office and handed me a chocolate pie. Hope I am thinking in this vein again sometime as the pie was delicious.

Hart Longhorns--
 Riddle was Bovina's leading ball carrier as he made 61 yards in 11 carries. Jerry Frazier, playing with a leg injury, toted nine times for 26 yards. Rocky Hance made 34 yards in eight tries, as Buddy Turner, who saw limited action because of an injury, carried the mail four times and made 29 net yards.

STATISTICS

Bovina	Hart	
14	First Downs	11
194	Yards Gained Rushing	278
4	Passes Attempted	0
1	Passes Completed	0
10	Yards Gained Passing	0
204	Total Offense	278
0	Passes Intercepted By	1
4	Punts	2
37	Punt Average	44
4	Fumbles	2
0	Opponent's Fumbles	2
2	Recovered Penalties	6
20	Yards Penalized	50

TO KEEP EGGS when chickens stop laying: beat eggs together, add sugar, put in ice cube trays. When frozen, store cubes in a plastic bag in freezer. Use 1 cube for each egg called for in any recipe.

Personalized Motor Repair Service for Cars Trucks Tractors Irrigation Motors
 Everything We Do Is Guaranteed.
 Call Us When We Can Help You.
HALL'S GARAGE
 AD8-4041
 In Building With Bovina Pump Service
 Hwy. 60 - Bovina

CARD OF THANKS
 I would like to express a sincere thank you to all my friends and neighbors for the many cards, flowers, and the thoughtful kindnesses extended to me and my family during my recent illness and stay in the hospital.
 Doris Strawn
 17-1tp

FOR SALE--1958 John Deere Broadcast Binder with three Hestons attached, reel included in excellent condition. Call Dalton Caffey. Friona 2481. 3-2tc

FOR SALE---2 bedroom home, newly redecorated and carpeted. New hot water heater. Good location on Third Street, see Dick Martin at First National Bank or Phone AD8-4721. 15-tfnc

For the best home and school reference, get the **WORLD BOOK ENCYCLOPEDIA AND CHILDCRAFT**.
 M. H. Laney, Representative
 Bovina, Texas 16-8tp

FOR SALE -- 320 Acre Stock Farm. About half pasture, balance in cultivation with 6 inch well. Located 4 1/2 miles NW Bovina. "Bargain!" C. R. Elliott. 16-tfnc

FOR SALE--Small, circulating gas heater, See Jack Baker, Bovina, or write, Box 638 16-2tp

Mustangs--
 Coach Gee says, and they will be slightly heavier than the Bovina team.
 The Mustangs have received good fan support throughout the season and a large following of sports-minded people from Bovina is expected to be on hand for the Friday night game at Happy.
 Game time is 8 p.m.

A recent publication of the Texas Agricultural Experiment Station discusses the possible role the current total cotton insect control program in central Texas has played in minimizing pink bollworm damage in the area. Copies of MP-44 are available from the Agricultural Information Office, College Station, Texas.

Always a phone at hand ... in a home that's telephone-planned!
 The height of convenience... that's what you and your family will enjoy when there are telephone extensions strategically spotted throughout the house.
 No more running, no more missed calls--not when there are extensions in the kitchen, the bedroom, the den, the workshop, the laundry, even out on the patio. All you have to do is reach... and there! your call is on the line.
 For help in making your home telephone-planned, simply call our Business Office. Start enjoying the height of convenience soon by calling us today.
GENERAL TELEPHONE
 America's Largest Independent Telephone System

AZTEC WHEAT SEED
 1st year from registered seed. See--
DONALD WATKINS
 Farwell, Ph. 825-2197

LAND WANTED - We have buyers for irrigated land, also dry land and grass land. Call, write or see Turner Bros. Land Co. Ph. 5221, Hale Center, Texas. 16-12tp

FOR SALE---Ford 2-ton deluxe truck with 18 1/2' steel bed, nylon tires. 20,000 miles. See Warren Embree at bank in Bovina. 11-tfnc

Richards Slaughter House
 "We Butcher Anytime"

LOOK NOW at the fine farms we have listed --- while the crops are still on them. We'll appreciate the opportunity to show you the farms or houses that we have listed. Joe Pinner, Real Estate and Insurance, AD8-4451, Bovina. 15-4tc

WANTED - Dry land farm for '61 crop year. Howard Griffin, Bovina, Texas. 13-tfnc

Turnkey Electrical Jobs & Repairs
 Plumbing Repairs
 Call Us!
BOVINA ELECTRIC
 Odis White
 AD8-2951

FOR SALE --- Nice, 2-bedroom house on 2nd St. in Bovina. Price \$6,000. Phone 335-4855, Littlefield. 15-4tp

FOR SALE -- 2-2-wheel trailers, 1 living room suite, 1 rollaway bed, 1 bathtub. R. L. Edwards, Bovina. 17-2tp

A PATTERN CATALOG the kind used in stores, makes a sturdy scrap book, complete with index, in which to paste favorite recipes, tips, news items, etc.

Football Contest--
 ton Moore, Allen Cumpton, Don Cumpton, H. N. Turner, Emmett Tabor, Ronnie Isham, Linda Estes, James Lawlis, Mark Charles, Jack McCracken, C. R. Brandon, Kay Looney, and Pat Kunselman.
 In the race for the grand prize an expense-paid trip to Cotton Bowl, Allen Cumpton held on to his one point margin. He now has a total of 54. Turner stayed in second place. He has 53. Neil Smith is just behind Turner with 52, while James Lawlis has 51.
 Others in striking distance of the leaders include Harry J. Charles and Bill Richards with 50, Mark Charles, Don Cumpton, Gene Ezell, Jack McCracken, and Joe Moore with 49, and A. M. Wilson with 48.
 The contest will run for four more weeks. It will end with the issue of November 11.

Whittlin'--
 of commerce, it'll be a chamber of commerce and agriculture. This will keep the organization from being limited to business people. Farmers, too, will be welcome and stand to benefit from a chamber.
 Between now and the 27th, he thinking about a chamber and how the community could benefit from one. Talk to your neighbor about it... and then see that you and he are both at the meeting.
 Details on that meeting will be announced in next week's issue of The Blade.

The heart of a horse beats 55 times a minute; that of a sheep 70 to 80; that of a dog 120 and that of a cat, 240.
 Of the 37,800 Americans killed in auto accidents during 1959, nearly one-fifth were killed on Saturday.

Guaranteed Motor Repair Service
 for
CARS-TRUCKS-TRACTORS
 IRRIGATION MOTORS
 We Welcome Your Business
 * * *
H&M Garage
 AD 8-2041
 Dub Mayhew
 Bovina
 Gene Hall

Call Today!
MONEY TO LOAN
 On Farms And On Residences In Bovina
 From \$10,000 To \$25,000
 Available On Homes.
Bovina Real Estate & Insurance
 Bank Building
 A.L. Glasscock AD8-1382

Cut your ENGINE OVERHAUL Costs in Half!
 with
GULF GULFTANE
 LP-GAS BUTANE PROPANE
Clean-burning Gulftane
 slashes maintenance costs to the bone. Here's why: It keeps tractor engines efficient and clean year after year... engines last longer. Actually cuts overhaul costs up to 50%! And you use less oil and save on spark plugs, too.
Powerful Gulftane
 delivers more pulling power and higher speeds. Result? You farm faster!
Economical Gulftane
 cuts fuel costs. Just compare Gulftane with other fuels. You'll find that this one convenient fuel can be used for scores of farm and home uses at savings that will surprise you.
Cut Your Tractor Bills to the Bone with this Modern Fuel!
Call or Stop in today!
Bonds Oil Co.
 AD 8-2271
 Bovina