

*****FIRM 79356
 382 01-01-10 0031D99 28P 2T
 POST PUBLIC LIBRARY
 105 E MAIN ST
 POST TX 79356-3245

Post Still Just \$49/hr
Plumbing
Heating
Air Conditioning
Drain Cleaning
 License # TACL010676E **495-2591** License # M17873

Jessie Carrisalez
 - Over 30 years experience
 - Bonded and Insured
J.C. Roofing Company
 composition, wood, and metal roofs
 Shakes, Gravel, Skylites 2211 College Ave.
 Siding, Remodel, Painting, Tile Snyder, TX 79549
 TAMKO, GAF, ELK (325) 573-6407
 (325) 573-0598 1-800-573-6406

BMG BLACKBURN MEDIA GROUP
Market your business!
Logos • Brochures •
Advertising • Business Cards
 info@blackburnmediagroup.com



The Post Dispatch

A tradition of excellence since 1926

85th Year, Number 7 USPS 439-620

© 2009 The Post Dispatch

Newsstand Price 50¢

Friday, August 14, 2009

Bold Gold Xs and Os

By Jim Plummer
 Sports Writer

Have you ever wondered what type of formation the teams are using on the field?

Well, I hope this will help you when watching the Antelope football teams play this season.

Last year, Head Coach Chris Jones introduced Post to the spread offense (Os) which is known for its passing attack. Even though statistics show that the Lopes had a balanced attack on the ground and in the air for an average of 305 total yards per game, you'll probably see more passing out of the spread this season. But the Lopes won't be lacking for ground yardage as Jones and offensive coordinator Billy Hardin will diversify the attack with the addition of the Wing T formation.

According to Wikipedia, the on-line info source,

the Wing T variation, has only one wing back, with the other back lined up next to the fullback on the opposite side from the wing. However, the wing back may also line up diagonally from the tight end. Other times, he may be used as an extra blocker or a receiver. Sometimes you'll see him go in motion for running plays.

The defense (Xs), managed by Coach Jay Hellums, gave up only 263 yards a game last season. This year the Lopes will feature the Split 6 formation. "The split six is an even man front, 4 defensive linemen and 2 inside linebackers," explains Hellums. He adds "I have been coaching this defense for 10 years, and have found that as teams have started to spread the field that this defense allows us to adjust to formations and motion the best. We can have multiple fronts, 4-5-or 6 defensive linemen, and still be able to disguise our secondary coverage."

Hellums, who has head coaching experience, leads the Post defense for a second year.

Tomorrow morning at 10 the Bold Gold get to test its offensive and defensive formations in the first scrimmage at Coahoma. The second and final scrimmage is next Friday, August 21st at 6:00 P.M. at home against Tahoka. The Junior Varsity will play before the Varsity squad in both preseason competitions.

And when they hit the field, in addition to the numerous returning lettermen I mentioned in the July 31st article, Coach Jones welcomes the contributions of seniors *Josh Palmer, Reed Williams, Cody Dean, John Rodriguez, Eddie Pizama,* and newcomer *Boston Mathis.* Juniors *Chase Greathouse, Shawn Perez* and sophomore *Matt Soto* may also see action on Friday nights this season.

Sidelines

The Antelope Booster Club invites you to the annual Meet the Lopes event set for Monday, August 24th, 7:30 P.M. at Jimmy Redman Memorial Stadium. Wear black and gold, enjoy ice cream and cookies and meet the 2009 Post football teams.

"Antelope Profiles" debuts in the August 21 edition of the Post Dispatch. Throughout the season you'll get to learn more about the varsity players and coaches.

Even though my assignment is to cover varsity sports, the Dispatch welcomes any information and pictures of Junior Varsity, Freshmen and Middle School sporting events. Please bring the info to the Dispatch downtown or email it to postcitydispatch@yahoo.com.

UPCOMING EVENTS

**UPCOMING EVENTS
 COMMUNITY/GOVERNMENT MEETINGS**
 All of these meetings are open to the public.

Garza County Commissioners' Court
 Special Meeting
 August 17
 9 a.m.

Garza County Courthouse
 300 W. Main

Garza County Commissioners' Court
 Regular Meeting
 August 21
 9 a.m.

Garza County Courthouse
 300 W. Main

**City of Post
 City Council Meeting**
 August 20
 5:30 p.m.
 Council Chambers
 City Hall
 105 E. Main Street

OTHER COMMUNITY EVENTS
 Event info available at press time.

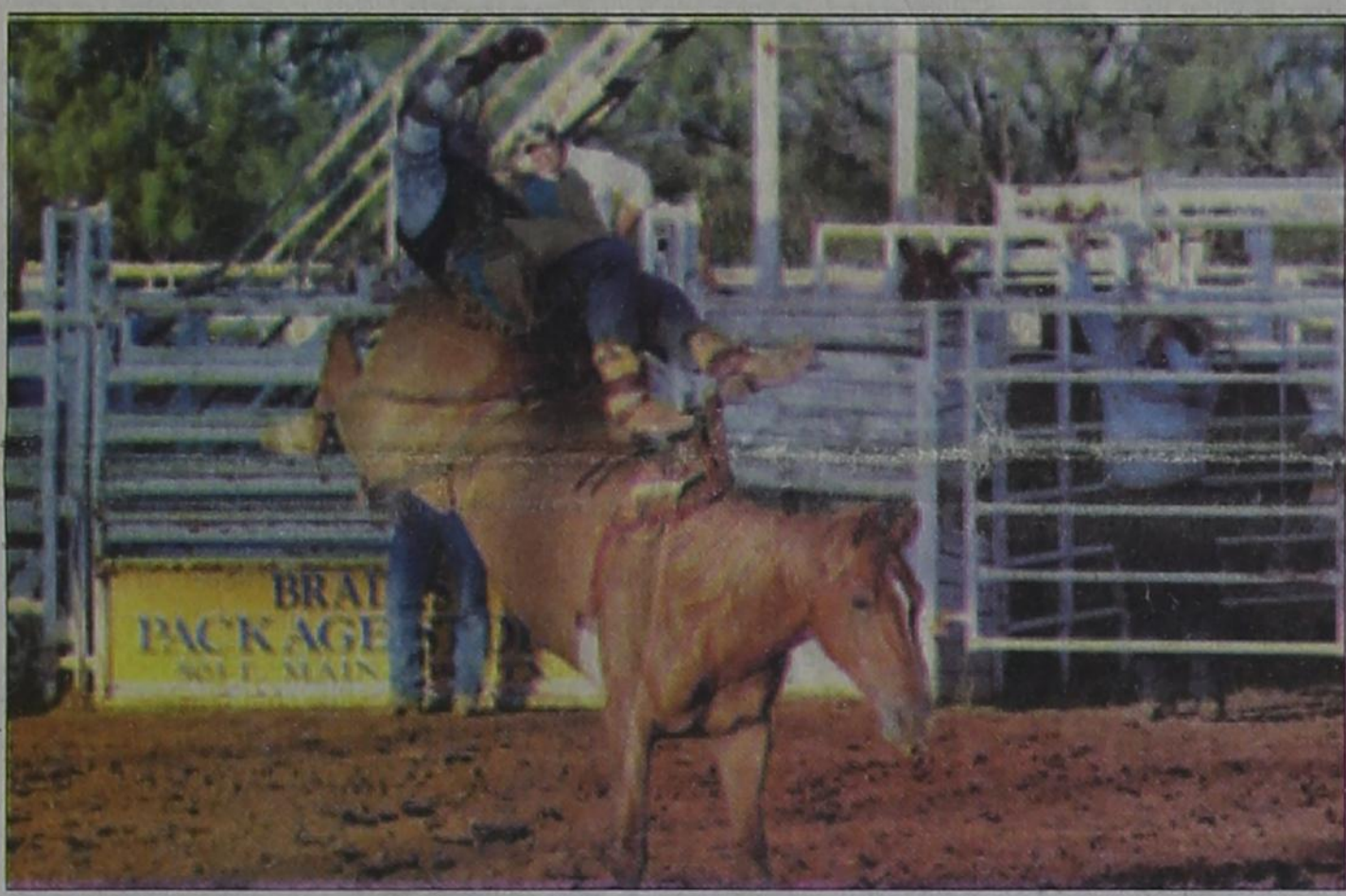
"The Baptist"
 Ragtown Gospel Theater
 August 14 - 7:30 p.m.
 August 15 - 3 p.m.
 877-RAGTOWN for reservations

Post Rotary Club Dog Dip
 August 15
 1 - 3 p.m.
 Post Fire Station
 8th St. & Avenue H
 \$5/each dog

Band Booster Club Meeting
 August 17
 7 p.m.
 Band Hall

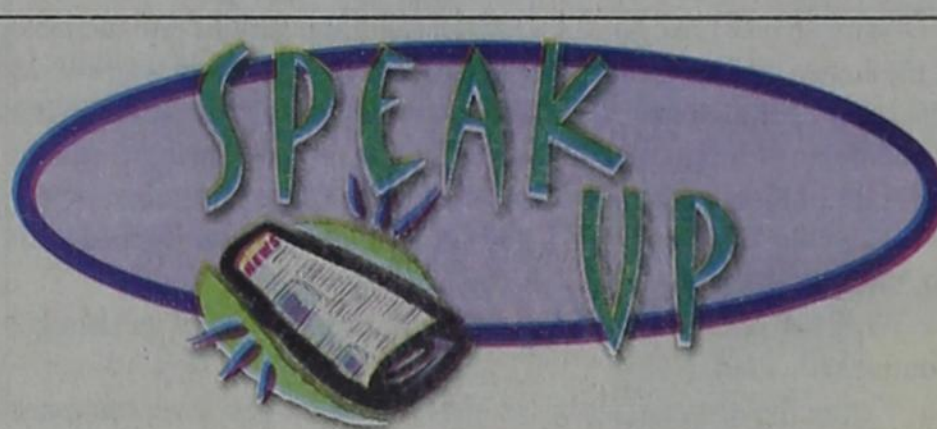
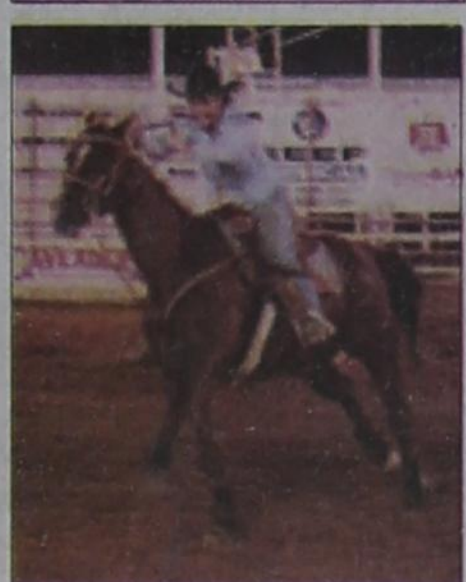
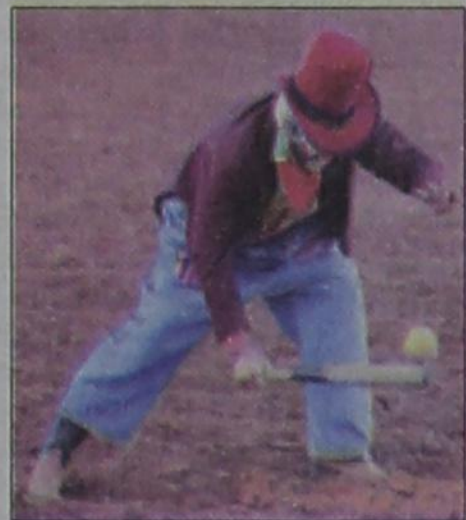
Back to School Health Fair
 August 21
 1 p.m.-5 p.m.
 201 E. Main

Meet the Lopes
 August 24
 7:30 p.m.
 Jimmie Redman Memorial Stadium



The 69th Annual Post Stampede Rodeo took place last weekend at the Post Stampede Rodeo Arena. Three shows were held during the rodeo along with a Friday night dance that featured the music of Jody Nix and the Texas Cowboys. The Saturday night dance featured The Wes Nixon Band. Rodeo participants competed in many different events including bronc riding, barrel racing, junior flag racing and calf roping.

Photos by Rosa Latimer



Proper recognition

The letter in the Post Dispatch "stand up" encouraging the citizens of Post to support Old Mill Trade Day Downtown was appreciated. But the merchants of Post are the ones who started this over a year ago and have worked very hard to keep it going. The Chamber joined in about three months ago to help with the advertising and obtaining permission to use the "Old Mill Trade Day" name. We appreciate their help but lets give credit where credit is due. The Post City Merchants. Thank you!

Thanks George

The City of Post is blessed to have a deputy like George Cavitt. He walks around to each of the local businesses and checks in on everybody. He also walks in the alleyways behind the businesses to make sure everything looks like it should. He is appreciated for his time and effort in making Post a safe community.

Obama birth certificate

I am proud Rep. Neugebauer is joining the growing chorus demanding (continued on Page 4)

4-H claims parade's top prize

This year's annual Post Stampede Rodeo Parade Best of Show winner was the Garza County 4-H float.

The 4-H group receives \$250 for the award which was sponsored by Xcel Energy.

In the commercial/ business division, Wells Fargo took first place (\$150) and Subway won second place (\$100).

In the non-profit organizations division, Holy Cross took first place (\$150) and the Post cheerleaders too second place (\$100).

In the novelty division, Close City Community took first place (\$50), the Jet Plane took second place (\$25) and DruAnn-Miniature Buggy took third place (\$25).

Post Notes

Dog Dip Scheduled

The Post Rotary annual dog dip will be Saturday, August 22, 1-3 p.m. at the Post Fire Station, 8th Street & Avenue H. Dogs will be dipped to eliminate fleas and ticks for a cost of \$5 for each dog. A veterinarian will be available for rabies shots for an additional cost.

Fund-raiser scheduled for August 14

M'Keison Guerrero has made it to Nationals for Rabbits in San Diego, California. There will be a fund-raiser on August 14, 2009 @ 5 pm at the Movie Gallery located at 508 North Broadway. Train rides for the young ones will be \$1.00 a ride, bake sale by donations and Salt water Taffy for sale

Second Annual Back to School Street Health Fair

The Back to School Health Fair is planned to take place on August 21, 2009 beginning at 1:00 pm - 5:00 pm. If your organization would like to participate please contact: Jamie Edwards 327-5312, Barbara Palmer 470-1295 or Community Organizer Reyes Pequeno 778-2628 for more information.

(continued on Page 4)

Commissioners Court Designates Meeting Dates

The Garza County Commissioners' Court held its regular meeting Monday and addressed several issues including designating when regular meetings are held each month.

The commissioners approved keeping the regular meetings scheduled for the second and fourth Monday of each month. Meetings are normally scheduled for 9 a.m. at the Garza County Courthouse located at 300 W. Main in Post.

Garza County Emergency Management Coordinator Michael Isbell also informed the court he has

been appointed to a disaster task force for the Waco region. If called, Isbell would serve a 21-day deployment at no cost to the county.

Other items discussed or acted upon:

- The commissioners voted to approve entering into an agreement with Joe Hays, CPA as an independent auditor of the county for the fiscal year ending Sept. 30, 2009. Hays' fee is \$20,900 to conduct the audit.
- The court approved an extension of leave time

(continued on Page 4)

Opinions

Entered at U.S. Post Office, Post, Texas for transmission through the mails as Second Class matter, according to an Act of Congress, March 3, 1879. Periodical Rate Postage Paid at Post, Texas 79356.
 Postmaster: send address changes to: The Post Dispatch, P.O. Box 426, Post, Texas 79356 (806) 495-2816 - Fax 495-2059
 William C. Blackburn, Publisher
 123 E. Main Street, Post, Texas 79356
 e-mail: postcitydispatch@yahoo.com
Subscription Rates:
 For Zip Codes 793, 794, 795, 796 - \$30.00 per year
 6 Months: \$16.00 or 3 Months: \$12.00
 All Other U.S. Zip Codes: \$52 per year
Deadline:
 Tuesdays at 5 p.m.
 web site: www.thepostdispatch.com
 All material Copyright 2008 The Post Dispatch

It is the mission of this newspaper to promote the rights of individuals, guided by the principles so eloquently described in the American Declaration of Independence. The right of life, liberty and ownership of property are the cornerstone for our freedom. Government's sole purpose is to enhance our liberty and freedom. Therefore, we hold every elected and appointed agent of government accountable to that standard.

Member Texas Press Association 2008

White River Water Report 08/10/09

Gauge Reading - 2348.50
 Feet below spillway - 24"
 Rise - 0"
 Rainfall Past Week - 0"
 Rain to Date - 7.41"

Rainfall for 2004 43.58"
 Rainfall for 2005 15.57"
 Rainfall for 2006 28.85"
 Rainfall for 2007 24.19"
 Rainfall for 2008 33.16"

DID YOU KNOW

White River Lake has 2,082,513,741 billion gallons left available at the Intake or 21% capacity or 6,391 acre feet. Subtract 47,090,725 MG for evaporation this week in August that leaves 2,035,423,016 BG available as of today. White River's daily average demand for 2008 was 1.23 million gallons per day for all White River Customers.

The Oil Company using water for mining has been stopped until the Lake level rises.

White River Municipal Water District is in Stage 1 of its Drought Contingency Plan.

Remember that the Water District is there for you if we can assist you in any way let us know.

The Texas Water Development Board has issued an invitation to White River Municipal Water District for the loan they requested. The District has 90 days to accept or lose their Ranking.

The Post Reservoir Permit that the Water District Owns has been renewed by the State of Texas for another 4 years, and the trade for the permit to the City of Lubbock for Water Rights for the District's Member Cities continues.



CAPITOL COMMENT

U.S. SENATOR

KAY BAILEY HUTCHISON



Our nation faces a growing threat from crime syndicates and other dangerous felons that operate inside the very facilities meant to keep them and their illicit activities off our streets and out of our communities. Imprisoned convicts coordinate murders, plot extortion schemes, and run drug trafficking, credit card fraud, and identity theft enterprises. These dangerous operations are increasingly facilitated by contraband cell phones smuggled to inmates. This problem is growing at such an alarming rate that it threatens not only the lives of the security professionals who work in these American prisons, but the general public as well.

In 2008, correctional facilities across the nation reported startling numbers of confiscated phones. For example, the federal prison system located more than 1,600 contraband communications devices, and in Texas alone, there were 1,162 cases. This year, there are already nearly 700 illicit cell phone cases in Texas. These numbers are even more disturbing because they represent only the phones that were actually found.

Prisoners are using increasingly sophisticated methods to smuggle phones into correctional facilities and then conceal them from authorities. A single phone is often shared among many inmates, and just a few phones inside a prison can lead to coordinated attacks both inside and outside prison walls. And we have seen how effective these tools are for spreading violence. Escape attempts coordinated by contraband cell phone have resulted in the deaths of corrections officers. Prisoners have also used them to intimidate witnesses and local officials and to carry out assassination attempts. In Maryland, a witness for an upcoming trial was gunned down in his front yard after a prisoner gave the murderer his address from a cell phone. At a recent Senate hearing, Texas state senator John Whitmire shared an account of how he was contacted by an inmate with an illicit phone, and how he and his family were subsequently subjected to harassment and death threats.

While the danger of inmates armed with cell phones is apparent, prisons are struggling to keep pace with the problem by using traditional security measures, such as trained dogs, handheld scanners, and metal detectors. We must provide corrections officers with a comprehensive solution that includes the tools necessary to prevent the use of phones when they evade detection and discovery. To that end, law enforcement officers, corrections professionals, governors, and others working to address this problem have asked Congress and the Federal Communications Commission for authority to use cell phone signal jamming equipment.

Federal law prohibits the use of jamming devices in all but a few cases. Prohibiting intentional interference serves an important purpose because unregulated jamming technology could hamper commercial wireless operations and public safety communications. That is why we

must have a sensible process to review devices and provide protections designed to minimize the chance of interference before permitting the use of jamming equipment.

In January, I introduced biparti-

san legislation which allows correctional facilities to seek a conditional waiver from the Federal Communications Commission (FCC) to operate a wireless jamming device. The Safe Prisons Communications Act creates a framework for the FCC to test and approve jamming equipment and to review applications from corrections facilities seeking to install cell phone jammers. Most importantly, to ensure the integrity of wireless networks for public safety and commercial wireless providers, and minimize any chance of interference, the legislation outlines the coordinated efforts from all stakeholders, including prisons and the telecommunication providers.

Some have suggested that there are alternatives to jamming technology. But many of these technologies present problems for corrections

departments because of their high cost, or because they may be useful at detecting phones, but not preventing their use. With lives on the line, Congress has a responsibility to ensure that all available technologies that can prevent the actual use of cell phones in prisons are available to the hard-working men and women on the front lines.

Prisons are meant to stop the commission of crimes, but cell phones inside prisons mean business as usual for dangerous felons. America's dedicated law enforcement and corrections professionals need this important capability, and they are counting on Congress to help them meet this challenge. I urge all of my colleagues to join me in this important fight to protect the innocent from the convicted when this legislation comes to the Senate floor for a vote this fall.



The Paperboy

By Christopher Blackburn

Do you send text messages on your cellular phone? If not, surely you've been around people who are texting.

In the world of texting, abbreviations (a type of shorthand) are commonly used. So much so, it is almost like another language.

To be honest, I'm not very good at texting. I'm slow and I really don't enjoy it that much. However, it does come in handy at times. One of the most useful aspects of texting for me is the fact you can send the same message to several people at the same time. Example: "Baseball practice tonight is canceled."

As text-messaging shorthand becomes more and more widespread in emails, text messages and Tweets, people have a need to decode the ever-evolving shorthand.

Parents want to keep up with or police their teens. Bosses want to know what employees are saying on company equipment.

One reason for the growing number of texting abbreviations - now over 2,000 according to NetLingo.com - is the boom in social-media sites like Twitter, where messages are limited to 140 characters. Text messages, too, are limited in length, so users have developed the shorthand abbreviations.

The trend will most likely continue. In 2008, over one trillion texts were sent in the U.S.

The confusion over the explosion of abbreviations is fueling a greater number of resources that provide English translations. They include independent Web sites like NetLingo.com and UrbanDictionary.com and corporate ones like LG Mobile Phones' DTXTR.com. Textpedia, a pocket guide to texting terms released last year, is now sold in over 4,000 stores nationwide. NetLingo reports a 391% increase in the number of unique visitors over the past five years, while UrbanDictionary says it saw a 40% jump in its unique visitors in the past year.

Both the AP Stylebook and Merriam-Webster Dictionary recognized texting shorthand for the first time in their 2009 editions. The AP Stylebook now includes IMO ("In my opinion"), ROFL ("Rolling on the floor laughing") and BFF ("Best friends forever"), among others. Merriam-Webster defines LOL ("Laugh out loud") and OMG ("Oh my God").

Some parents have created their own cheat sheets in an effort to keep up with their teens. Rightfully so given these abbreviations: GNOC ("Get naked on camera"); POS ("Parent over shoulder"); LMIRL ("Let's meet in real life"); and IWSN ("I want sex now").

Here are some more examples of some common shorthand abbreviations:

- * UG2BK - You got to be kidding
- *GBTW - Get back to work
- *NMP - Not my problem
- *PIR - Parent in room
- *GFTD - Gone for the day
- *FYEO - For your eyes only
- *B15 - Back in five minutes
- *DEGT - Don't even go there
- *BIL - Boss is listening
- *PAW - Parents are watching
- *99 - Parents are no longer watching
- *PCM - Please call me
- *IMS - I am sorry
- *TOY - Thinking of you
- *KUTGW - Keep up the good work
- *CID - Consider it done
- *FWIW - For what it's worth
- *HAND - Have a nice day
- *IAT - I am tired
- *NRN - No response necessary
- *4COL - For crying out loud
- *WRUD - What are you doing
- *A5 - High five

For what it's worth, I'll throw an original of mine in there: IHNIWAIS!

Know what it means. Hint: It's what I'm thinking when I get texts.

I Have No Idea What Anyone Is Saying. Of course, people are really not "saying" anything when they text, so I should probably change that to IHNIWAIT.

And you thought spelling and grammar suffered as a result of spellcheck...

Copyright Christopher Blackburn 2009

Christopher Blackburn is the president of Blackburn Media Group, owner of this publication. Feel free to comment on The Paperboy at <http://thenewbastion.blogspot.com/>.

Our Readers Are Very Important to Us and We Appreciate Every One of You!

Mortgage Payment Protection



Worried about losing your job? Relax! This free benefit will pay your mortgage for up to 6 mos, up to \$1,800/mo. Now 14 Sales Offices in Texas. Visit ubh.com to find one near you.



Homemade just for you.

800.756.2506 @ubh.com

IT'S NOT THE INTERNET THAT'S BAD.



GET WILDBLUE HIGH-SPEED INTERNET, AND START LOVING THE INTERNET ALL OVER AGAIN.

STARTING AT ONLY \$49.95/month INCLUDES FREE STANDARD INSTALLATION

WILDBLUE High-speed internet. Out of the blue. 877-288-5058 www.wildblue.com Also available from your local retailer.

Hurry, offer ends soon. Subject to WildBlue terms and conditions. Visit www.wildblue.com/legal for details and the Fair Access Policy. Download speed comparison is between Pro Package and 42 Mbps download file transfer rates. Actual speeds may vary. © 2009 WildBlue Communications Inc.

Host an Exchange Student Today!



Anna from Germany, 16 yrs. Likes to play tennis, swim, loves to dance. Anna hopes to play American softball and learn American 'slang' while in the USA.

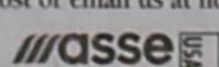


Pascal from France, 17 yrs. Loves the outdoors and playing soccer. Pascal's dream has been to spend time in America learning about our customs and attending American high school.

Make a lifelong friend from abroad.

Enrich your family with another culture. Now you can host a high school exchange student (girl or boy) from France, Germany, Scandinavia, Spain, Australia, Japan, Brazil, Italy or other countries. Single parents, as well as couples with or without children, may host. Contact us for more information or to select your student today.

Karen at 1-800-473-0696 (Toll Free) www.asse.com/host or email us at hostinfo@asse.com



Founded in 1976

ASSE International Student Exchange Program is a Non-Profit, Public Benefit Organization.

Don't Forget our new deadline: Monday at 5 p.m.

SIGN UP FOR A FREE SCOOTER

One Scooter Given Away Each Month

Toll Free 800-606-9860



Med Care MEDICAL SUPPLY



www.medcaremedicalsupply.com

Obituaries

Clara Belle "Bill" Crowley

Services for Clara Belle "Bill" Crowley, 87, Post, were held 10:30 am Wednesday August 12, 2009 at Calvary Baptist Church with Charles McCook officiating. Burial followed at the Terrace Cemetery. Arrangements were under the personal care of Dee and Janet Justice, Justice-Mason Funeral Home.

Bill died Sunday August 9, 2009 at the Golden Plains Care Center.

She was born on November 9, 1921 to William Sanders and

Hattie (Anderson) Wright at Crawford. She and her family lived in Crawford, Oregon, Washington and California. They returned to Texas and later to Post. Bill married Murrie Crowley November 29, 1937 here in Post. He preceded her in death January 16, 1981. Later years Bill worked for the McQuien family taking care of Mrs. McQuien and later Walton. She was a member of the Calvary Baptist Church.

Bill was also preceded in death by a Daughter: Patricia Crowley May 3, 2002, Daughter

in law: Kathy Crowley December 3, 2003 and a step-great-grandson: Andrew Engstrom July 4, 2007, who was serving in Iraq at the time of his death.

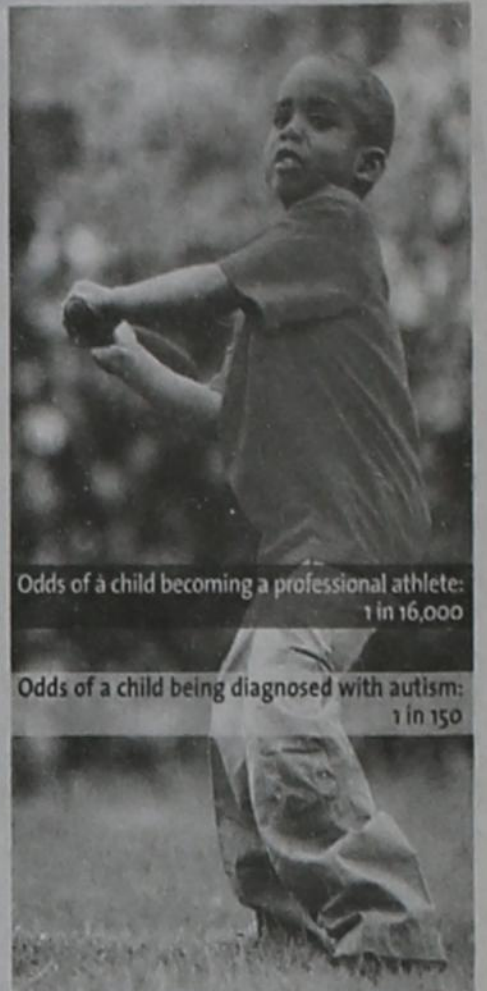
She is survived by Son, Lonnie Crowley of Haskell. Five grandchildren, 19 great-grandchildren and three great-great-grandchildren. Long time special friend: Walton McQuien of Post and several nieces and nephews.

Pallbearers were: Steve Crain, Robert Crain, Michael Crain, Shannon Crowley, Mark Crowley and Daniel Crowley.



JEFFREY ALAN HARVEY

Big sister Sidney Wrae Harvey is proud to announce the birth of her baby brother Jeffrey Alan Harvey. He was born on July 13, 2009. He weighed 6 lbs 2 oz and was 19 inches long. Proud parents are Justin and Angela Harvey; grandparents are Tino and Rosie Trevino of Post, Ava Harris and Jeff Harvey both of Olney; great grandparents Louis Valdez and the late Julio Valdez.



Odds of a child becoming a professional athlete: 1 in 16,000

Odds of a child being diagnosed with autism: 1 in 150

Some signs to look for:

- No big smiles or other joyful expressions by 6 months.
- No babbling by 12 months.
- No words by 18 months.

To learn more of the signs of autism, visit autismspeaks.org



Cash for clunkers has caught me clunkerless and left me sorting out mixed feelings.

Government-funded \$4,500 cash payments for qualifying trade-in vehicles inject an unrealistic dynamic into a process I've always considered something of a farce anyway. But Uncle Sam is serious.

Here's how it used to be:

The car salesman would keep a straight face while offering more for a trade-in junker than it was worth. The prospective car buyer would go along equally straight-faced. After all, the offer was nothing more than a new-car price discount that would have been part of the whole deal anyway, trade-in or no trade-in -- a clean way to ditch an old car without worrying about who would get it, like buying stolen property without knowing who got burglarized. Does that make sense? I didn't think so. I've never thought so.

That said, some of you probably trade in cars that actually are worth something. That's different. I don't even know how that works. By the time I'm ready to let go of a car, the value is negligible. What would you pay for a 2005 SUV with a big hitch, a fence post dent, a trailer dent, hail dents, other dents, a dash light that steadfastly insists the anti-lock braking system isn't working and an odometer that shows 174,989 miles on the original battery? And I'm not even ready to trade it in.

If I were ready to buy a new car, clunker cash wouldn't be an option because my stalwart

Hyundai Santa Fe is neither old enough nor fuel-hungry enough to be a clunker. I guess I'm glad.

If it were a bona fide clunker, I might think about taking the price on its head. Even so, it would be like taking a horse to the vet and telling him to shoot the animal, except you pay the vet. Vets are like that.

I saw a clunker death row this week. A nice old Ford pickup almost too old to be there was parked in the official lineup. The car salesman told me it had only 110,000 miles on it. But now the dealership will put something in the engine to freeze it beyond repair and scrap the whole vehicle. Seeing that pickup and other stately vehicles, noses to the fence, all equally doomed, made me think of a mixed-breed herd of cattle struck by an incurable contagious disease, all headed for slaughter and a mass grave.

Fortunately the clunker syndrome is congenital. Otherwise the government might broaden its official definition and demand all existing clunkers be reported, running or not, whatever their age, instead of than letting them die natural unattended deaths, rusting away in backyards, junkyards and pastures. Our farm would come under quarantine.

The '77 Cadillac comes to mind. Nicknamed "the hail-bent car" and parked between mesquites, it still gleams gold in the sun. In the trunk is an old water heater.

Don't laugh. Clunker water heaters may be next. I'm ready. See me if you need one.

Church of Christ Hosts Vacation Bible School

Tenth and Ave M Church of Christ and Graham Chapel Church of Christ co-hosted a vacation bible school on Saturday August 8th at the Graham Chapel building located at 15th Street and Avenue S. Children ages three to twelve were encouraged to be helping hands like the good Samaritan. The action packed morning beginning at 9 a.m. thru 12 noon, featured bible skits, puppet shows, a craft center, a card center where all attending made cards for the nursing home residents, helpers games and singing of action songs.

Jan Webb was coordinator assisted by her husband Chase Webb, and children Shelby and puppeteers Allie and Chase Webb. Tony Tucker, youth minister at 10th and M Church of Christ led the singing and was assisted in the skits by his wife, Sarah, Raegin Belongia, Wyatt and Hayden Benham. Others helping teach, playing the games and other activities were Amy Easterling, Patti Josey and Mendy Dably.

A noon meal of hamburgers and hot dogs were cooked by Russell Benham, Bobby Cowdrey, Noel White, and Frank Tobias. Jennie Cowdrey was in charge of setting up the meal, salads, baked beans and desserts were provided by ladies of both congregations. Decorations throughout the church were bright colored balloons, crepe paper streamers and painted helping hands. The tables were covered with white paper and decorated with colored helping hands, crayons and sequins. Parents and church family assisted with the cleanup. It was a great experience for old and young alike

Texas schools, AgriLife Extension walk the talk on obesity

COLLEGE STATION — Texas schools soon may be marching forward under new legislation that requires every student to be physically active for at least 30 minutes a day.

The Texas Education Agency has joined with the Texas AgriLife Extension Service to encourage students, teachers and parents to "Walk Across Texas."

Though people will not be actually trekking from Texarkana to El Paso or from the Panhandle to the Rio Grande Valley, officials at the two state agencies say students, parents and teachers might try to go the 830-mile distance right at home.

Walk Across Texas was created by AgriLife Extension as a fun way to increase physical activity, offering education as well as support and encouragement in a team structure, according to Dr. Carol Rice, AgriLife Extension health specialist. Rice said that the 14-year-old Walk Across Texas initiative is a well-established program readily available to help school districts meet the legislative requirement for physical activities.

Under Texas Senate Bill 891, all public school students below the sixth grade are now required to participate in moderate or vigorous physical activity for at least 30 minutes daily throughout the school year. This daily activity may be part of a district's physical education curriculum or part of a structured activity during recess, according to the education agency.

One possible way to meet that law is for teachers to team up with AgriLife Extension agents — there is one for every county — to start the walking program. AgriLife Extension leaders said a good time to start Walk Across Texas may be Sept. 14-18 during the state's Obesity Awareness Week. "We created the program to encourage a habit of physical fit-

ness," Rice added. Curriculum is available on the Web site, <http://walkacrosstexas.tamu.edu>. It is designed to meet Texas Essential Knowledge and Skills requirements, according to Dr. Susan Ballabina, AgriLife Extension regional program director in Dallas, where the program has been popular for years. She pointed to a recent study by the Cooper Institute of Dallas which found that the more physically fit students are more likely to do well on standardized tests, attend school regularly and have fewer disciplinary referrals.

Though the activity requirement is only for school kids, AgriLife Extension leaders said another benefit is that the program encourages teachers, the entire school district workforce and parent volunteers to participate.

Within one school, for instance, teams could form for parents and teachers of different grade levels, or perhaps the cafeteria workers and office staff could try to track more walking than the other.

"This program enables each school or district to design a fun effort over eight weeks so that healthy walking may become a habit," Ballabina added.

To find out how to begin the program, go to the Web site, <http://walkacrosstexas.tamu.edu> where you will find the quick link to teachers, grade-level appropriate curricula, various activities and informational materials.

Information and assistance is available from AgriLife Extension's network of county agents, found at <http://agrilifeextension.tamu.edu>

EXTENSION EXTRAS

Banquet

The banquet will be Tuesday, August 18, 2009 at the Heritage House. It will begin at 7:00.

Extension Office: 215 W Main (806) 495-4400

Extension programs serve people of all ages regardless of socioeconomic level, race, color, sex, religion, disability or national origin.

Thanks For Reading *The Post Dispatch*

We Appreciate you... Our Subscribers

Check Out The Classifieds!

Stop Downtown in Post at *She's done it....She's gone*



New Merchandise arriving daily!

Bridal Selections for:

K'leigh Babb and Nick Chamberlain

220 E. Main Post, TX 79356

495-0888 Donna Degan/Owner

Portable Car Wash



WE COME TO YOU!

Call to Schedule Your Appointment Today!

(806) 252-2600

Cars, Trucks, Equipment, Tanks, Buildings, Drive-ways and much more!

Western Texas College Continuing Education Division

EMT - Basic & Intermediate Courses to be offered in the Fall

CEU's Available

Classes Begin August 24, 6-10 pm

"Plan to pre-register early as class space is limited"

For further information, call (325) 574-7953

Western Texas College is an equal opportunity institution and is in compliance with the ADA. Applications are accepted and considered without regard to race, color, creed, sex, age, national origin, veteran's status or disability.

CALVERT HOME HEALTH CARE, LTD.

"The West Texas choice for quality home health care!"

Stop by our CROSBYTON OFFICE at 131 N. Grain (right behind the hospital) or call us at (806) 675-7321

RN On Call 24-7

Services offered: Skilled Nursing, Home Care Aide, Physical Therapy, Occupational Therapy, Speech Therapy, Medical Social Worker, Dietitian, Wellness Programs, LifeLine Program

AUGUST FOCUS: Infusion Therapy Program

Speak Up...

(continued from Page 3)

Obama be transparent (as he is always claiming to be) and simply release his birth certificate. End all the debate today and simply release it. The only thing that has been released is a certificate of live birth which can easily be obtained by simply telling the health department your baby was born in "x" place. "COLB" have been issued to people born outside the U.S. A "COLB" is not accepted by schools, little leagues or immigration for a passport ... only a true long form birth certificate, which Obama refuses to release.

Hang in there Rangers

As a baseball fan, I sure hope the Texas Rangers can make it to the playoffs this year. It has been too long since we've been in the playoffs. GO RANGERS!

What a great Rodeo

What a great 2009 Post Rodeo. Looked like the arena was full just about every evening!

Commissioners...
(continued from Page 1)

for Meg Nelson.
• The court also discussed a request for an employee benefit for 20 years plus of service to the county.

Chief Deputy Clerk Lina Rodriguez requested the court consider increasing longevity pay for those employed 20 years or more with the county. Rodriguez demonstrated to the court an example that Dawson County uses. The court took no action on the request but will consider it during budget workshops.

• Following the regular meeting, the commissioners' court held a budget workshop and discussed items relating to law enforcement and employee pay raises.

According to the meeting minutes, Garza County Judge Lee Norman went through the budget line item by line item. A 3-percent raise is being considered for county employees and elected officials

according to the minutes. The minutes also show that the county is expecting the City of Post to contribute \$250,000 for law enforcement.

Garza County Tax Assessor/Collector Judy Bush also informed the court during the workshop that at this time the Effective Tax Rate for maintenance and operations (M&O) is .35105. The rollback M&O rate is .37913 and the total rollback rate is .38441.

Post was founded in 1907 by breakfast cereal magnate C. W. Post, as his "dream city."

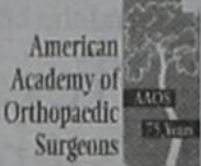
A SHORT STORY ABOUT GROWING UP WITH AN UNFAIR ADVANTAGE.

POLIO.

As one of the last American children to contract polio, Jeffrey Galpin grew up in a world of iron lungs and body casts, alone with his imagination. His story would be dramatic enough if it was just about his battle with this dreaded disease.

But Jeffrey Galpin did more than survive polio. He went on to a list of achievements in medical research—including being the principal investigator in applying the first gene therapy for HIV/AIDS.

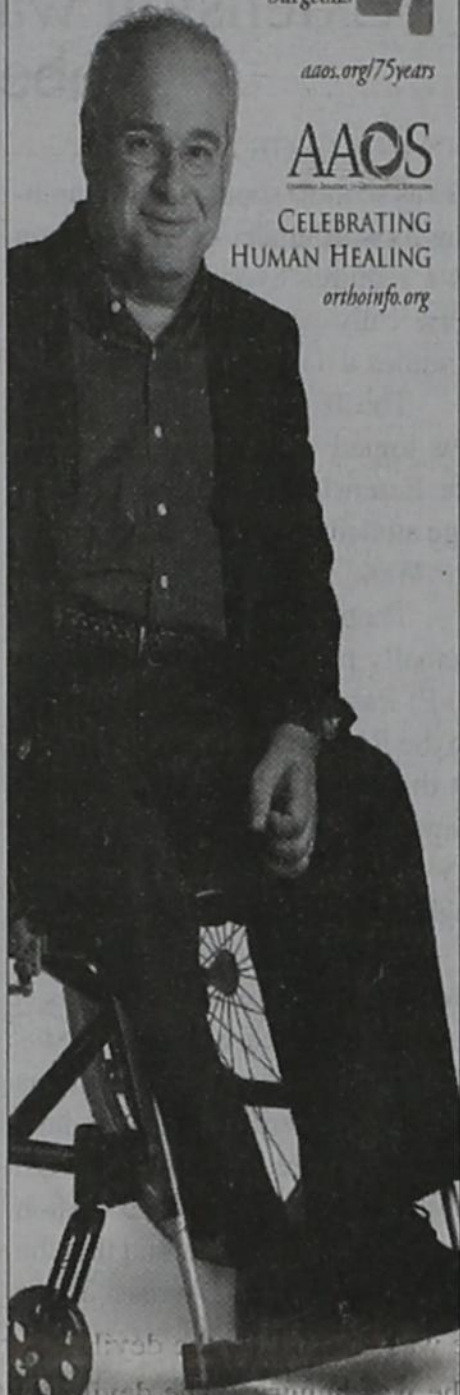
Dr. Galpin actually credits his own incurable condition for giving him the focus that made him so passionate in his research. His story leaves us with two of the most contagious messages we know. Don't give up, and remember to give back. If Dr. Galpin's story inspires just one more person to make a difference, then its telling here has been well worth while.



aaos.org/75years

AAOS

CELEBRATING HUMAN HEALING
orthoinfo.org



Post Notes

(Continued from Page 1)

Close City-Garlynn Reunion

The Close City-Garlynn Reunion is scheduled on Saturday August 15 2009 from 10:00 am to 3:00 pm. The location is in the Garden Room at Chapa's Family Restaurant, just north of Post on highway 84. Come for coffee, donuts and visiting at 10:00 am, for lunch just order from the menu and go Dutch. For more information contact: Miriam O'Neal at 806-495-2002 or Oneita Gunn at 806-495-2009.

Men of Abiding Faith

The Church of Christ, located at 10th Street and Avenue M, will be holding its annual summer series of speakers beginning July 22 thru August 26th. - August 19th Ryan Simpson- August 26th Rontrager. Please come and join us as we hear inspiring lessons on "Men of Abiding Faith". All meetings will begin at 7 p.m.

New student registration at Middle School

If you child is new to our district please come by the middle school starting August 10th 21st to register your child. Please bring a copy of your child's birth certificate and social security card for enrollment.

Middle school orientation schedule August 20th

Post Middle School will have an orientation and open house on Thursday August 20th at 6:00 pm in the Elementary Auditorium. Schedules will be handed out and students will have an opportunity to meet their teachers and tour the Middle school.

Band Booster Club scheduled to meet

It's that time again!! The Pride of Post will meet on August 17th, 2009 for its first meeting at 7:00 p.m. at the Band hall. Items to be discussed will be to appoint new officers, fundraisers, old business, and new business.

Clay shootout in Slaton

The Wayland Baptist University Pioneers basketball team is sponsoring a sporting clay shootout on August 22 at the Rustic Range in Slaton, beginning at 9 a.m. The entry fee is \$75 per person and includes a 50-target round and lunch. Prizes will be awarded to the top performers. Participants must supply their own gun and shells. Those interested may enter as individuals, or as a team of five. Proceeds will benefit the basketball program. For more information or to register contact coach Robert Davenport at 806-291-1147 or Chris Paddock at 806-291-1148.

2009/2010 Football tickets on sale

Post ISD is now selling football tickets for 2009-10 season. Reserved seat tickets will not be sold after August 26th. Please see Kay Postell at the Post ISD business office. Senior Citizens may also pick up

a free pass for all athletic events.

Public Library to award certificates

Hey Kids... Come to the library at 1:00 p.m. on Tuesday the 18th. Post Public Library will award reading certificates and more to those who return their summer reading logs by the 18th of August. See you then.

Meet the Lopes

Mark you calendars! Meet the Lopes will kick off the season for Post Antelopes Football. It is scheduled for Monday, August 24th, 7:30 p.m. at Jimmie Redman Memorial Stadium. Parents of the football players will need to bring homemade ice cream. Come support your cheerleaders, band and Post Antelope football team!

Clothes and food available from church

Graham Chapel Church of Christ located at 15th St. and Ave. S, is sponsoring a clothes closet with all sizes for men, women and children and a food pantry at the church. Anyone needing help with clothing or food, please contact Annette Riggs at 283-1142, Greg Massey at 778-4366 or Jane Mason at 495-2980.

Benefit to help Martinez Family

A benefit for Nathaniel Martinez is scheduled for Friday, August 14th. The benefit will start at 11 am and last all day. The location is 501 N. Ave P. Carina Guisada plates with rice, beans and cake will be sold for \$6.50 a plate. The benefit is to help with the medical expense of Nathaniel's open heart surgery. Nathaniel is the son of Steven and Michelle Martinez and the grandson of Cecil and Estella Martinez. Also an account is being setup at Wells Fargo. For more information about the account contact Suzie.

Need School Supplies?

South Plains Community Action Association will be assisting low-income households in your community. Backpacks filled with the basic school supplies will be provided for children in the upcoming school year. A one-page application will be completed and verification of income will be required to complete the process. If you are a recipient of Childcare Services, CHIP/Medicaid, Food Stamps, TANF, SS/SSI, or CEAP client; you must present proof of enrollment. If you are not receiving any of the services above, you may also qualify by presenting household monthly income for the past 30 days. Contact you local Neighborhood Center for applications. Carla Perez S. Highway 84 Post, Texas 79356 495-2329.

Garza County Democratic Party to meet

Yeller or blue, there's room for you! The Garza County Democratic Party will meet Saturday, August 22 at 10 a.m. in the Citizens Bank meeting room. Come and join in the positive change. Yes we can!

Cogdell Memorial Hospital at 1700 Cogdell Blvd. in Snyder is a full service hospital offering:

- o Emergency Room services, 7 days a week, 24 hours a day.
- o Air flights are available when critical needs must be met at a larger facility.
- o Laboratory services, 7 days a week, 24 hours a day.
- o Obstetrical Services. Our private, spacious, modern birthing rooms are equipped with state of the art birthing beds and Panda™ Baby Warmers by GE Healthcare.
- o Our Radiology Department utilizes a GE 64 Slice CT System. It will accommodate larger patients, has a faster rotation time for shorter breath holds and a reduced need for sedation. Other services include Mammography's, Ultrasounds, MRI's and Nuclear Medicine.
- o Ambulatory services for same day out-patient surgeries for Cataracts, Endoscopies, Colonoscopies, Laparoscopic, Orthopedics, and more.
- o A Sleep Lab is available to help patients who experience sleep problems. Call 877-940-2727 for more information.
- o An Assisted Living Center for individuals who need companionship and extra help. Call 325 574-7125 for more information.
- o Home Health Care for those homebound with skilled needs. 325-574-7340.
- o Our Cogdell Family Clinic Physicians located at 5009 College Ave. provide excellent primary health care. Phone 325-573-1300 for appointments.
- o Rehab & Fitness Center at 5301 Trinity Blvd., offers Occupational, Physical and Speech Therapy. It also has a fully furnished gym with cardiovascular and weight equipment. Phone 325-574-7259 for appointments and/or information.
- o Specialists can be seen for treatment in the areas of: Ophthalmology, Gynecology, Cardiology, Urology, Podiatry, Neurology, Oncology, Oral Surgery, Surgery/Wound Care, and Orthopedics at our either of our Specialty Clinics. Ask your primary care physician about referrals or phone 325-207-2133 for more information.

Providing you health care for life...it's Cogdell Memorial Hospital. 325.573-6374. If you have an emergency please call 9 1 1

★ AG TEXAS Clay Miller
FARM CREDIT SERVICES
P.O. Box 923
Ralls, TX 79357
Office (806)253-2506
Fax (806)253-2060
Cell (806)392-3920
clay.miller@agtxexas.com

LOANS FOR Real Estate

FAMILY POOL FUN.COM

- Our pools create Generations of Memories everyday, vacations never end!
- Aboveground & Inground pools at WHOLESALE PRICING
- SIMPLE DIY Pool Kit Assembly
- SAVE MONEY on All Pool Supplies & Accessories. Ships Fast

Call Today! **800-250-5502**

The Garza Co. Jimmie Redman Mon. team roping members would like to thank these sponsors for their continued support.

STRAWN TRANSPORT	CROP PRODUCTION SERVICE
THE POST STAMPEDE RODEO	O.D. KENNY
B.O.F.	TUCKER OIL CO.
THE SADDLE SHOP	JOHN AND SUSAN BORAN @
JACKSON BROS. MEAT LOCKER	TEXAS FARM BUREAU
BRADY'S PACKAGE STORE	ADA LOU BIRD
IRA PUMP	LAVENA PALMER
PORTER HARDWARE	RONNIE HART
PLUM CRAZY	
PALMER OIL CO.	
MATT HAMEL AG PRODUCTS	
DELUXE INN	
BUDGET INN	
DALBY CATTLE CO.	

Post is the home of the OS Museum

In by Tra We had out here on gin but Mike towards Gra inches South The annu if you weren a Close City the "Ragtow good. Nancy and Nedra El Guerrero and everything w Brook One C 1 Lo The F App 495 Roustal 204 E Locall 7 Call us We P Lync Elec Coo Inc. Tabo Lam Sund PLUM

In and Around Close City

by Traci Freeman

We had some crazy clouds with a lot of thunder out here on Tuesday, no rain to speak of here at the gin but Mike Aten tells me they got a little over towards Grassland and I hear they got about 2 inches Southeast of here.

The annual rodeo parade was this past weekend, if you weren't there you missed a good one. We did a Close City Community float this year, several of the "Ragtown" kids rode and it turned out really good. Nancy and I had some help this year from Jim and Nedra Ellis and Joe, Mandy, Raul, Abbi and Alli Guerrero and of course Raegan who helped pick up everything we forgot to get. Thanks to all of you!!! Brooke Morris celebrated her birthday with a

family dinner at Red Lobster in Lubbock. Helping her to celebrate were her grandparents; Charles and Sharron Morris; her parents; Barry and Amy; her sister and friend, Kayla and Daniel and Uncle and Aunts; Tim and Diane Morris and Dana Babb. Chuck, Kristi, Dylan and Rylan didn't get to attend because they took a little vacation to Amarillo. They had a great time at the waterpark and Wonderland Amusement park; they also got to eat at the Big Texan, which I'm sure was a BIG treat. While there they ran into Doug, Melissa, Haddie and Datch Flannigan who were in town visiting with Doug's brother, Nick and his family and also to attend the play, TEXAS at Palo Duro Canyon.

Tino and Linda Alaniz traveled to Ruidoso over the weekend for a short get away. Linda said while there they attended the horse races, she also said the weather was fantastic!

All of us here in Close City want to extend our sympathies to the family of Harold Childs who passed away earlier this week. Harold lived in San Angelo; he is a brother to the late WH Childs who was our gin manager out here for many years. Our thoughts and prayers are with his family.

I know ya'll have heard me tell y'all to send me your recipes for our blog, I still need those but we have a new project going to start soon out here. We

are going to compile a cookbook full of nothing but "Ragtown" recipes. We need them from anyone having ties to the Close City Community. So any of you who ever attended school or church out here or if you ever lived, farmed or just "hung out" in Close City, get yours and your family's recipes out and send them to us, the more we have the better the book will be. We want these books to be ready for our Fall Festival we are planning in October so send them now. You can mail them to me at 1390 CR 125 Post, Texas 79356 or you can email them to me a

Close City News...
Continued on Page 12

POKALAMBRO
One Company ... Unlimited Possibilities
115 W. Main • Post • 990-9901
Local • Long Distance • Internet

The **First Family**
First Baptist Church Post, Texas
1907-2007

Tanner's
Appliance Heating & Air
"Quality Service You can Trust"
806-495-1612

PALMER
OILFIELD CONSTRUCTION
Roustabouts • Oilfield Welding • Pump Mechanics
New & Used Pumps • Backhoes
495-2710 Mobile (806) 632-8147 • 495-3639

JACKSON BROTHERS
MEAT LOGGER
SPECIALIZING IN BEEF JERKY & SMOKED GERMAN SAUSAGE
"The Best Beef Jerky in West Texas"
121 S. Avenue H • 495-3245
Open Mon-Fri 8-6 SAT 8-12

The **Norman Agency**
Locally Owned & Operated
Bus: 806/495-3050 • Fax: 806-495-2261
204 E. Main St. • Post, Texas 79356

Germania
INSURANCE
113 N. Ave. H • 495-3330
Locally Served by Jerry Taylor LC 230

This spot could be advertising your business!
Call us today to be on our devotional page
(806) 495-2816

Watch Up For Power Lines
Lyntegar Electric Cooperative Inc.
Taboka - 998-4588
Lamesa - 872-2632
Sundown - 229-3741

Ira
PUMP & SUPPLY CO., INC.
Office:
806-495-3521
806-495-3503
Fax:
806-495-2985

Weekly Inspirations

A WHOPPER OF A TALE

By: Michael F. Taylor

Since we are so close to two Beautiful lakes here in Post, Texas - Lake Alan Henry and White River Lake- I would like to tell you a whopper of a fish tale this week. It seems that two fishermen were sitting in their bass boat in the wee hours of the morning having a spectacular time. They sat there, side by side, but only one of them was catching all the fish while the other sat there watching his friend experiencing all the fun. And, after several hours of this, the one still had not even had a nibble on his line. In total exasperation, he declared, "I can't figure this out! Here we sit, next to each other in the same boat, in the same lake, with the same bait, and yet you're catching all the fish! It just don't make any sense at all!" To which his friend happily replied, "Well, you see, my bait have an added "EXTRA FEATURE" which makes all the difference!" Looking down into his friends bait box, the unsuccessful fisherman noticed that the minnows were swimming around like they were Olympic competitors. What was giving them all of their energy, he thought to himself. So, he decided to investigate further and looking around, noticed a large bottle of Tequila sitting next to his friends bait box. Ahhah! That must be it. So he grabbed the bottle of spirits and began pouring a large amount into his minnow bucket to see if it would help. And Lo and Behold, his minnows began swimming around with a furor just like his friends minnows. He took one from the bucket, placing it on a hook and cast away with exuberance. Almost as soon as the line struck the water, there was a tremendous tug on his pole and he excitedly began reeling the fish in to the boat. Wow! It was a six pound Bass! The poor thing never even had a chance. THAT MINNOW HAD A DEATH GRIP AROUND HIS THROAT!

I warned you up front it was a Whopper of a Tale. Did you know that we also have a never ending supply of "Spirit" that will give us everything that we need to accomplish all things in our lives. He is not found in a bottle, but rather in the pages of our roadmap to life, the Holy Bible. He of course, is the Holy Spirit! We are taught in Luke, Chapter four, "1Jesus, full of the Holy Spirit, returned from the Jordan and was led by the Spirit in the desert, 2where for forty days he was tempted by the devil. He ate nothing during those days, and at the end of them he was hungry. 3The devil said to him, "If you are the Son of God, tell this stone to become bread." 4Jesus answered, "It is written: 'Man does not live on bread alone. 5The devil led him up to a high place and showed him in an instant all the kingdoms of the world. 6And he said to him, "I will give you all their authority and splendor, for it has been given to me, and I can give it to anyone I want to. 7So if you worship me, it will all be yours." 8Jesus answered, "It is written: 'Worship the Lord your God and serve him only. 9The devil led him to Jerusalem and had him stand on the highest point of the temple. "If you are the Son of God," he said, "throw yourself down from here. 10For it is written: " 'He will command his angels concerning you to guard you carefully; 11they will lift you up in their hands, so that you will not strike your foot against a stone. 12Jesus answered, "It says: 'Do not put the Lord your God to the test. 13When the devil had finished all this tempting, he left him until an opportune time."NIV

This scripture assures you and me that if we will but allow the Holy Spirit to fill our lives, we can resist the temptations of Satan. I love how it is said in The Message translation, John Chapter 14 where Jesus promises the coming of the Holy Spirit, Verses 15-17 "If you love me, show it by doing what I've told you. I will talk to the Father, and he'll provide you another Friend so that you will always have someone with you. This Friend is the Spirit of Truth. The godless world can't take him in because it doesn't have eyes to see him, doesn't know what to look for. But you know him already because he has been staying with you, and will even be in you!" So this week, remember that our big catch comes when we have the Holy Spirit indwelling in us. Have a great week!

Please send comments to:
postcitydispatch@yahoo.com

South Plains Answering Service
The personal touch for your business
495-3069

Contact us at 495-2816 or
postcitydispatch@yahoo.com

LYNN COUNTY HOSPITAL DISTRICT
www.lchdhealthcare.org
Tahoka • 998-4533
Physician & Wellness Clinic
Swing Bed & Physical Therapy

United Supermarkets

Holly's Drive In
"God Bless You"
615 S. Broadway
495-2704 • Phil. 4:19

Hudman Funeral Home
615 W. Main • 495-2821

Cogdell Memorial Hospital
Located at: 1700 Cogdell Blvd., Snyder, Texas 79549
Phone: 325-573-6374

Devotional Page and Church Directory brought to you by advertisers on this page

Church Directory

Assembly of God		Church of God	
Bethel Assembly of God (Bi-Lingual)	407 May St.	Graham Chapel Church of Christ	15th & Ave. S
Lifeline Church	108 N. Broadway	Church of God of Prophecy	602 W. 14th, 495-3644
Baptist		Power House Church of God and Christ	Pine Ave.
Calvary Baptist Church	210 E. 6th, 990-2342	Disciples of Christ	
First Baptist Church, Post	402 W. Main St. 495-3554	First Christian Church	812 W. 13th, 495-3716
First Baptist Church, Wilson	806-628-6333	Evangelical Methodist	
Grace Baptist Church	820 N. Ave. S 990-3497	Faith Chapel	1105 Green St., Wilson (806) 628-0018
Methodist		Justiceburg Baptist Church	Justiceburg
First United Methodist Church	216 W. 10th, 495-2942	Pleasant Home Baptist Church	E. 14th & N. Ave F
Graham Chapel United Methodist Church	495-3492	Pleasant Valley Baptist	Hwy 84 & N. 399 (806) 828-4174
Nazarene		Southland Baptist Church	Southland
Post Church of the Nazarene	202 W. 10th, 495-3044	Templo Bautista	315 W. Main
Grassland Church of the Nazarene	327-5656	Trinity Baptist Church	915 N Ave O, 990-3038
Non-Denominational		Catholic	
Family Harvest Church	111 N. Avenue I, 495-1400	Holy Cross Catholic Church	Ave. K and Main St., 495-2791
Caprock Springs Fellowship	12th & Ave. I 495-2171	Church of Christ	
Presbyterian		Church of Christ	108 N. Ave. M, 495-2326
First Presbyterian Church	910 W. 10th, 495-2135		

SMITH SOUTH PLAINS SLATON
Hwy 84 Bypass
(806) 828-6291
www.smithsouthplains.com
info@smithsouthplains.com

Visit any one of these businesses and churches and you will find wonderful Post City people and those who support Post.

Yesteryears

Compiled by Donna Jones From The Post Dispatch

10 Years Ago August 12, 1999

Marie Neff was bit surprised and happy to get a special letter in the mail. The envelope had been mailed to her late husband Ed in February 1979 from Oklahoma City. Their son Jim, who was working in Oklahoma City at the time, mailed the package with some satellite images of the earth, requesting his father to enlarge them. "Jim wondered why his dad never said anything about the photos," Marie explained, "but didn't realize that the envelope never arrived." Postal officials informed Marie that the envelope was discovered behind some equipment, and although it was 20 years late, she was very pleased to get the mail.

Mr. and Mrs. Edwardo Davida will be honored by their children and grandchildren at a 50th Wedding Anniversary celebration, August 14 at the Holy Cross catholic Church. Flora Gonzales and Edwardo Davida were married in Post.

Airman Apprentice Russ Bradley Moore of Post has completed basic naval training at Great Lakes Naval Training Center, Ill. And has been assigned to Pensacola, Fla. For advances technical training.

20 Years Ago August 15, 1989

Wade Giddens, son of Joe and Doris Giddens of Post, is now a resident of New York City where he is employed by The Cowperwood Company, an architectural firm on Lexington Avenue.

Best rodeo window was awarded to Danish Imports. Greg Wortham presented the Post Merchants' Association certificate to Orabeth White and Linda Lewis.

Garza County Roping winners included John Beaty, Novice Heeler; Clay Johnson, Novice Header; Jeff Williams, All Around; Robbie

King, Champion Heeler; Mike Babb, Champion Stopper and Richard Hart, Champion Header.

Post High School football coach Dwayne Osborne reported "two-a-day" practice began with week for varsity and junior varsity players. A total of 50 students reported for Monday's practice, with six offensive and six defensive starters returning from the 1988 team.

30 Years Ago August 16, 1979

Chad Morris, Chad Davis and Lance Bagby were the top three winners in the Post Stampede Rodeo Parade's decorated bicycle division.

After employing 13 new teachers, many of them without prior classroom experience, only two weeks before the start of the fall school term, school trustees decided to look into early formulation of a teacher retention policy for the 1980-81 school year.

Ten returning lettermen were on the field this week as workouts began at Antelope Stadium. Returning players are Jackie Stelzer, Chuck Black, Rance Adkins, Barry Wyatt, Deb Palmer, Alonzo Luna, Lynn Simpson, Larry Rodriguez, Mike Macy and Noel Pena.

Leon Flemmer was appointed pastor of the local Church of God of Prophecy during the 46th annual state convention.

Garza County's oil production, after a seven-year climb, dropped slightly in 1978, according to figures released this week by the Texas Mid-Continent Oil and Gas Association.

40 Years Ago August 14, 1969

The Post Dispatch won runner-up honors for general excellence in its division in the 1969 Better Newspaper Contest of the West Texas

Press Association. Funeral services for Post Police Chief Bill Gordon were held in the First Baptist Church of Haskell.

More than 50 Post citizens were brief - and some took ride - on the Department of Public Safety's helicopter, based at Lubbock Municipal Airport.

The Garza County Commissioners Court adopted the county 1970 budget calling for a reduction of \$75,488.15 in expenditures, basically in debt payments and hospital operations.

Don Noel and Joe McCowen won first and second places respectively in the Post Jaycee's beard growing contest held in connection with the post Stampede Rodeo.

50 Years Ago August 13, 1959

Funeral services for Post Police Chief Bill Gordon were held in the First Baptist Church of Haskell.

More than 50 Post citizens were brief - and some took ride - on the Department of Public Safety's helicopter, based at Lubbock Municipal Airport.

The Garza County Commissioners Court adopted the county 1970 budget calling for a reduction of \$75,488.15 in expenditures, basically in debt payments and hospital operations.

Don Noel and Joe McCowen won first and second places respectively in the Post Jaycee's beard growing contest held in connection with the post Stampede Rodeo.

The Garza County Commissioners Court adopted the county 1970 budget calling for a reduction of \$75,488.15 in expenditures, basically in debt payments and hospital operations.

The Garza County Commissioners Court adopted the county 1970 budget calling for a reduction of \$75,488.15 in expenditures, basically in debt payments and hospital operations.

The Farmer's and Businessmen's Barbeque sponsored by the Post Chamber of Commerce - at which all farmers and their families in the Post trade-area are to be guests - is expected to draw between 1,500 and 2,000 to the 4-H Building and grounds next month.

The resignation of Miss Jessie Pearce, Garza County Home Demonstration Agent, has been accepted by the commissioners' court. Miss Pearce is moving back to her hometown of Lometa.

Cara Lou Ray, Willa Faye Graves and Juanelle Nichols returned from a vacation in Denver, Colorado Springs and other points of interest in Colorado and New Mexico.

Post's most serious water shortage threat in six years has

eased - thanks to the cooperation of local citizens and a break in the searing heat wave.

Garza County Commissioners voted this week to extend the county's contract with the U.S. Department of Agriculture for surplus commodities for an additional 12 months.

60 Years Ago August 17, 1949

The "Up and Down Main Street" column gave a lot of credit for a successful Southwestern Championship Junior Rodeo to "Willie Ward Cross and Lois Floyd, who made a good percentage of the milkshakes, sundaes, cokes, etc., which gave the contestants added strength for their performances."

Rev. A.B. Cockrell will be the preacher for a revival meeting at the

Verbena Church this week. Calvin Storie and Ronald Joe Babb were elected co-captains of the Post Antelope football team.

Two Post business houses were broken into, but only one, Hodges Tractor Co. was robbed. The other break-in was at Ben Williams' Barber Shop.

John Smith of Post narrowly escaped serious injury, when his car was hit by Santa Fe train No. 95 at a local crossing. He was taken to Post clinic in a Hudman ambulance for treatment of cuts and bruises.

The Southland school will open this year with the same faculty as last year. School faculty members, are C.S. Lindsey, Mrs. C.S. Lindsey, Mrs. Eula Tillery, I.J. Duff, A.T. Nixon, Mrs. J.O. Roberts, Mrs. I.J. Duff and Mrs. A.T. Nixon.

ACROSS

- 1 TXism: "tough ___ old boot"
- 5 East TX critter: croco ___
- 6 "opposed to" prefix
- 7 Merkel newspaper
- 8 "MaryRichards" and "Laura Petrie" (init.)
- 9 Abilene university (abbr.)
- 12 Old ___ TX
- 17 Rafael left Rangers for this team
- 19 Dalhart is seat of this county
- 21 cancer of connective tissue after Pearl Harbor, LBJ was 1st congressman to ___ in the Navy
- 23 headache (2 wds.)
- 28 driving aid for TX pro golfer J.J. Henry
- 29 LBJ took ___ of office on Air Force One at Love Field
- 30 poker hand: "___ kind"
- 31 TXism: "he's a ___ in my side"
- 35 UT Pan American confer. in '78 (abbr.)
- 36 what TX TV weather folks study
- 42 OU's "Sooner ___"
- 44 TXism for "idiot" or popular web site
- 46 early Roy Orbison band: "___ Kings"
- 47 TX Freddie Fender hit: "Wasted ___ and Wasted Nights"
- 49 TXism: "he's ___ feller" (heavyset)

- 50 TX George H. to George W.
- 51 mineral spring
- 52 "killer ___" came up from Mexico
- 53 TXism: "slipping as an ___"
- 54 TX Christopher Cross' "___ That You Can Do"
- 55 TX Roy Orbison's 1st release: "Ooby ___"

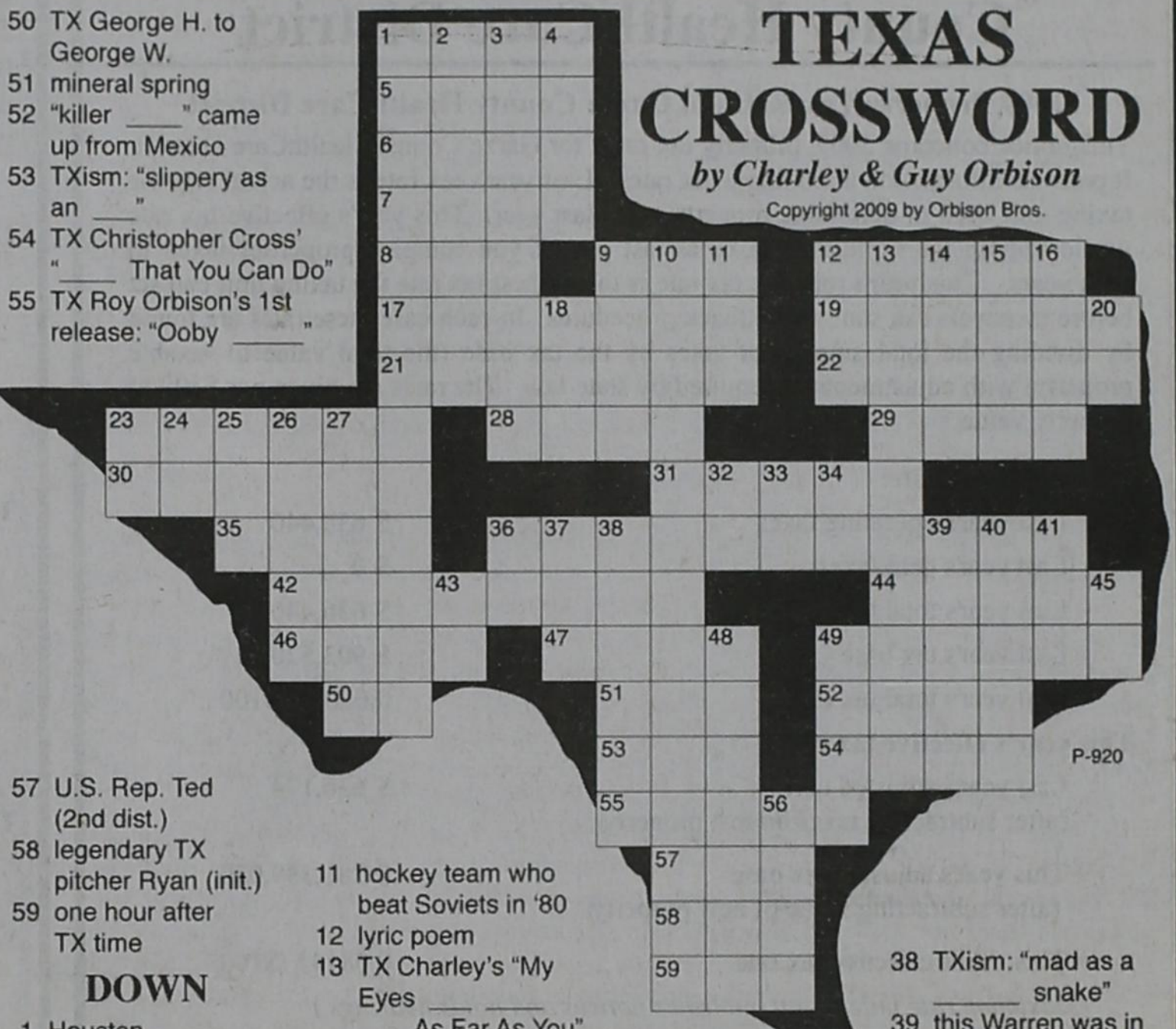
DOWN

- 1 Houston businessman & yacht racer Robert
- 2 Frank of "4 for Texas"
- 3 Bentsen State Park bird: "___ oriole"
- 4 this Armstrong spoke to Houston from the moon
- 9 ___ vera
- 10 TXism: "if he bought a ___ would stop dying" (unlucky)

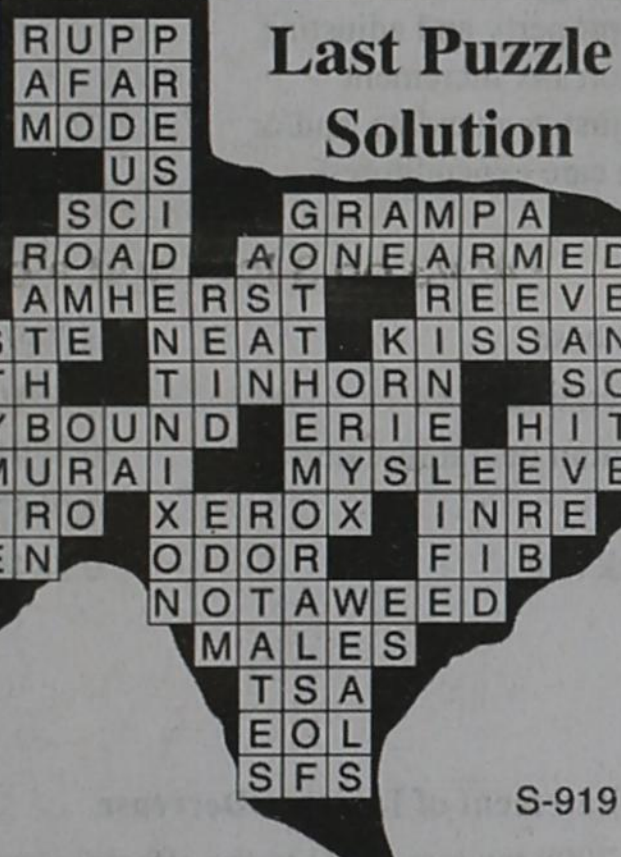
- 11 hockey team who beat Soviets in '80
- 12 lyric poem
- 13 TX Charley's "My Eyes ___ As Far As You"
- 14 TX "Babe": Mildred ___ Didrikson
- 15 don't check for a gas leak with ___ match
- 16 in Bowie Co. on 82
- 18 birth month of TX Jaclyn Smith (abbr.)
- 20 ___ Vernon, TX
- 23 TXism: "chompin' ___ the bit"
- 24 TX George Jones was married to this Wynette (init.)
- 25 TX summers
- 26 ___ beef

TEXAS CROSSWORD

by Charley & Guy Orbison
Copyright 2009 by Orbison Bros.



- 38 TXism: "mad as a ___ snake"
- 39 this Warren was in film "Tough Enough" with TX Quaid
- 40 TX Swazye '90 film with Demi Moore
- 41 TX Willie sang: "___ Don't Know Me"
- 43 TX Buddy Holly's "Rave ___"
- 45 Bible 1st half (abbr.)
- 48 bars in early TX
- 49 TX Betty Buckley was "___ Bradford" on "Eight is Enough"
- 56 "Dandy Don" Meredith won '66 "___ Bell Award"



Last Puzzle Solution

S-919

Fun-n-Facts for Brain-iacs!

Brain Boost!

THE NOT JUST FOR KIDS PAGE

VOL 135

SCHOOLHOUSE HISTORY

Reading, writing and ciphering?!

In the American era of one room schoolhouses, reading, writing and math would have indeed filled your day. So, take a trip back in time and find out what it was like in the schoolhouse of days gone by...

The schoolhouse was heated with pot-bellied stoves, fueled by coal, wood or corncobs. The stove sat at the front or center of the room and was often covered with a "coat" so the little ones wouldn't get burned.



http://www.brain-iacs.com

THREE A DAY!

Morning, noon and afternoon, students were released to recess. No fenced in playgrounds were provided. You were free to run, play and roam as far as you like, as long as you could hear the school bell ring when it was time to return to your seat.

NO HALL PASSES: Schoolhouses usually had two outhouses, facing opposite directions for privacy. It may be a one-two or three holer! Pages of an old Sears catalog were provided for toilet paper. Trustees of the school would pour ash and sand down the holes to keep the smell down. When the teacher excused you to the outhouse it was called *turn out* privileges.

DAILY CHORES: Students and teachers were expected to keep the schoolhouse neat and tidy. During the noon break girls would sweep the floor and boys would bring in wood and refill the wash bucket and drinking pail.



Boys on one side of the room and girls on the other. Individual desks were considered modern. You probably sat in benches with the youngest students up front and the big kids in back. If you misbehaved you were sent to sit on the other side of the room.

SCHOOL SUPPLIES

In very early America young scholars used hornbooks. These wooden paddles had a lesson on one side and a slate for writing on the back. Horns from sheep or cattle could be melted down and poured into a thin clear sheet. The melted horn (similar to our fingernails) was fastened over the paper to protect the lesson underneath.

In 1647 Massachusetts law required any town of fifty or more to build a school and hire a teacher. This was the beginning of public schools in America.

Laura Craig

United
Supermarkets



To sponsor your Fun-n-Facts for Brain-iacs call 495-2816

RANDY'S ROUND-UP CONGRESSMAN RANDY NEUGEBAUER

As you know, Representative John Fleming introduced H. Res. 615 on July 8, 2009. This resolution expresses the sense of the House of Representatives that Members who vote in favor of a government-run public health care option must forego their current private insurance plan and enroll in the public plan. I am a cosponsor of this resolution. I am opposed to government-run health care and cannot support H.R. 3200, the America's Affordable Health Choices Act of 2009, in its current form. I agree that Members should not force Americans to participate in a plan that they are not willing to participate in themselves, and I will continue

to support H. Res. 615 throughout the legislative process. Americans Deserve to Have Their Voices Heard The Obama Administration and House Democrat Leadership will stop at nothing to force through a massive and costly health care reform plan, even disregarding the large number of Americans opposed to this legislation. But hard-working Americans are fed up and for many this government takeover of the health care industry is the last straw. They understand that during these difficult economic times, this Administration is running up deficits and debt and is about to launch a \$1.6 trillion government takeover of health care paid for

with \$800 billion in higher taxes. A whole lot of West Texans that I'm talking to back home aren't having any of it. Sure - our healthcare system can be improved and could be more effective, but what concerns many, including me, is the idea of the government managing a system that will represent more than 15% of our nation's economy. If federal bureaucrats had a tough time managing the \$1 billion "cash for clunkers" program, what makes anyone believe they can ever handle a \$1.6 trillion government-run health care program? As people from across the country seek out elected officials and ways to have their voices heard, the Obama Administration and Democrat Leaders have organized to mislead the public. They are setting up and confirming false meetings with myself and members of my

staff. As you can see, both Speaker Pelosi and the Administration have become desperate. Do not be misled by these bogus attempts. It is the American way to let your elected representative know how you feel about these important issues. As your representative for the 19th Congressional District, I take your opinions very seriously. If you wish to express your concerns, please call my office, toll free, at 888-763-1611 or by email. My staff will discuss any concerns with you directly. It's time we stop playing partisan political games and start working together to find solutions. As Congress

continues to consider a government takeover of our health care system, I will continue to support solutions that provide choice and competition and do not rely on the government to micromanage the health care services. Congress should focus on reforming the system to save money for taxpayers and improve health care quality, not simply growing the size of the federal government. Check out my latest YouTube video on health care. Upcoming Coffees With Congress out of session in August, I'm taking advantage of the opportunity to make my way around the 19th district.

At the end of the month, I will be hosting "Coffee with the Congressman" to discuss the current state of health care and the economy. I look forward to these coffees and appreciate the opportunity to listen to your concerns. The feedback I receive at these meetings helps keep me informed so that I can better serve the people of the 19th Congressional District while in Washington. I want to invite everyone to join me at these meetings. The schedule is as follows: Abilene Coffee

Round-Up...
(continued on Page 11)

2009 Property Tax Rates in Garza County HealthCare District

2009 Property Tax Rates in Garza County HealthCare District

This notice concerns 2009 property tax rates for Garza County HealthCare District. It presents information about three tax rates. Last year's tax rate is the actual rate the taxing unit used to determine property taxes last year. This year's effective tax rate would impose the same total taxes as last year if you compare properties taxed in both years. This year's rollback tax rate is the highest tax rate the taxing unit can set before taxpayers can start tax rollback procedures. In each case these rates are found by dividing the total amount of taxes by the tax base (the total value of taxable property) with adjustments as required by state law. The rates are given per \$100 of property value.

Last year's tax rate:

Last year's operating taxes	\$ 636,440
Last year's debt taxes	\$ 0
Last year's total taxes	\$ 636,440
Last year's tax base	\$ 903,520,727
Last year's total tax rate	0.07044 /\$100

This year's effective tax rate:

Last year's adjusted taxes (after subtracting taxes on lost property)	\$ 636,174
+ This year's adjusted tax base (after subtracting value of new property)	\$ 781,389,070
= This year's effective tax rate	0.08141 /\$100

(Maximum rate unless unit publishes notices and holds hearings.)

This year's rollback tax rate:

Last year's adjusted operating taxes (after subtracting taxes on lost property and adjusting for any transferred function, tax increment financing, state criminal justice mandate, and/or enhanced indigent health care expenditures)	\$ 636,174
+ This year's adjusted tax base	\$ 781,389,070
= This year's effective operating rate	0.08141 /\$100
x 1.08 = this year's maximum operating rate	0.08792 /\$100
+ This year's debt rate	0.00000 /\$100
= This year's total rollback rate	0.08792 /\$100

Statement of Increase/Decrease

If Garza County HealthCare District adopts a 2009 tax rate equal to the effective tax rate of \$0.08141 per \$100 of value, taxes would increase compared to 2008 taxes by \$2,034.

Schedule A - Unencumbered Fund Balances

The following estimated balances will be left in the units property tax accounts at the end of the fiscal year. These balances are not encumbered by a corresponding debt obligation.

Type of Property Tax Fund	Balance
---------------------------	---------

Schedule B - 2009 Debt Service

The unit plans to pay the following amounts for longterm debts that are secured by property taxes. These amounts will be paid from property tax revenues (or additional sales tax revenues, if applicable).

Description of Debt	Principal or Contract Payment to be Paid from Property Taxes	Interest to be Paid from Property Taxes	Other Amounts to be Paid	Total Payment
Enter Text Here	\$0	\$0	\$0	\$0
Total Required for 2009 Debt Service				\$0
- Amount (if any) paid from funds listed in Schedule A				\$0
- Amount (if any) paid from other resources				\$0
- Excess collections last year				\$0
= Total to be paid from taxes in 2009				\$0
+ Amount added in anticipation that the unit will collect only 100.00% of its taxes in 2009				\$0
= Total Debt Levy				\$0

This notice contains a summary of actual effective and rollback tax rates calculations. You can inspect a copy of the full calculations at.

Name of person preparing this notice
Title:
Date Prepared: August 7, 2009

2009 Property Tax Rates in Garza County

2009 Property Tax Rates in GARZA COUNTY

This notice concerns 2009 property tax rates for GARZA COUNTY. It presents information about three tax rates. Last year's tax rate is the actual rate the taxing unit used to determine property taxes last year. This year's effective tax rate would impose the same total taxes as last year if you compare properties taxed in both years. This year's rollback tax rate is the highest tax rate the taxing unit can set before taxpayers can start tax rollback procedures. In each case these rates are found by dividing the total amount of taxes by the tax base (the total value of taxable property) with adjustments as required by state law. The rates are given per \$100 of property value.

Last year's tax rate:

Last year's operating taxes	\$ 2,632,635
Last year's debt taxes	\$ 41,541
Last year's total taxes	\$ 2,674,176
Last year's tax base	\$ 865,429,126
Last year's total tax rate	0.30900 /\$100

This year's effective tax rate:

Last year's adjusted taxes (after subtracting taxes on lost property)	\$ 2,673,011
+ This year's adjusted tax base (after subtracting value of new property)	\$ 749,614,979
= This year's effective tax rate	0.35658 /\$100

(Maximum rate unless unit publishes notices and holds hearings.)

This year's rollback tax rate:

Last year's adjusted operating taxes (after subtracting taxes on lost property and adjusting for any transferred function, tax increment financing, state criminal justice mandate, and/or enhanced indigent health care expenditures)	\$ 2,631,489
+ This year's adjusted tax base	\$ 749,614,979
= This year's effective operating rate	0.35105 /\$100
x 1.08 = this year's maximum operating rate	0.37913 /\$100
+ This year's debt rate	0.00528 /\$100
= This year's total rollback rate	0.38441 /\$100

Statement of Increase/Decrease

If GARZA COUNTY adopts a 2009 tax rate equal to the effective tax rate of \$0.35658 per \$100 of value, taxes would increase compared to 2008 taxes by \$9,075.

Schedule A - Unencumbered Fund Balances

The following estimated balances will be left in the units property tax accounts at the end of the fiscal year. These balances are not encumbered by a corresponding debt obligation.

Type of Property Tax Fund	Balance
---------------------------	---------

GENERAL FUND	\$1,551,866
R&B #1	\$138,965
R&B #2	\$71,652
R&B #3	\$93,796
R&B #4	\$19,790

Schedule B - 2009 Debt Service

The unit plans to pay the following amounts for longterm debts that are secured by property taxes. These amounts will be paid from property tax revenues (or additional sales tax revenues, if applicable).

Description of Debt	Principal or Contract Payment to be Paid from Property Taxes	Interest to be Paid from Property Taxes	Other Amounts to be Paid	Total Payment
EMS BUILDING	\$37,000	\$2,775	\$0	\$39,775
Total Required for 2009 Debt Service				\$39,775
- Amount (if any) paid from funds listed in Schedule A				\$0
- Amount (if any) paid from other resources				\$0
- Excess collections last year				\$0
= Total to be paid from taxes in 2009				\$39,775
+ Amount added in anticipation that the unit will collect only 100.00% of its taxes in 2009				\$0
= Total Debt Levy				\$39,775

This notice contains a summary of actual effective and rollback tax rates calculations. You can inspect a copy of the full calculations at 300 WEST MAIN.

Name of person preparing this notice: JUDY M BUSH
Title: GARZA COUNTY TAX A/C
Date Prepared: August 7, 2009



Paul Derrick Stargazer

Are we alone, or are "they" out there somewhere? While we can only guess how long humans have wondered about life beyond Earth, such curiosity surely predates recorded history.

In 1994 Terence Dickinson and Adolph Schaller published "Extraterrestrials: A Field Guide for Earthlings" which features amateur astronomer Dickinson's

fascinating text and artist Schaller's dazzling illustrations. (Inexpensive used copies are available via the Internet.)

After showing a sampling of Hollywood-created extraterrestrials -- like Mr. Spock, ET, and others -- they conjecture about what real aliens might be like. Right off, Dickinson acknowledges that, paraphrasing earlier writers, extraterrestrials -- if they exist -- are apt to be not just stranger than we anticipated, but stranger than we could have anticipated. Still, he and Schaller make some intriguing speculations about such beings based on things we do know, like some basic laws of

nature.

It is almost certain beings from other places would not resemble us. Just as we have been shaped by conditions on Earth, conditions where they live -- temperature, gravity, atmospheric pressure and composition, amount and form of water, and the like -- would have shaped their evolution.

Dickinson first looks at the kinds of places, in our solar system and beyond, where conditions might support life as we know and understand it. He discusses the evolution of brains and emergence of intelligence, and how smarter species are likely to out-survive the less smart ones.

He then examines, and Schaller visually portrays, the kinds of sensory organs aliens might use to gather information about their environment. Like humans, other life forms are likely to have mechanisms for sight, hearing, taste, smell, and touch.

They might have other sensory capabilities such as sonar (like bats and dolphins) or magnetic-field detection (like some birds, insects, and fish). Aliens might have "sight" in parts of the electromagnetic spectrum invisible to humans, enabling them to "see" ultraviolet, infrared, microwave, radio waves, x-ray, or gamma rays.

The authors pose one final mind-boggler. On Earth the chemical foundation of all life is carbon-based, but this might not be universal. Some life elsewhere might be silicon-based where crystalline critters nibble on rocks rather than bananas.

In a future column, we'll see what Dickinson has to say about how we might discover other life, and why we haven't already.

Sky Calendar.
* Aug. 13 Thu.: The Moon is at 3rd quarter.
* 14 Fri. morning: The Moon passes through

the Pleiades star cluster but moon glow will make binoculars needed to see the cluster.

* 14 Fri.: Jupiter is at opposition, and thus at its best for the year -- nearest, appears largest and brightest, and up all night.

* 16 Sun. morning: The crescent Moon is to the lower left of Mars.

* 17 Mon. evening: Saturn is to the upper right of brighter Mercury near the western horizon at dusk.

* 20 Thu.: The Moon is new.

* 22 Sat. evening: The crescent Moon is to the left of Mercury which is to the left of Saturn all near the western horizon at dusk.

* 27 Thu.: The Moon is at 1st quarter.

* Perseid Meteor Shower. The best times for seeing Perseid meteors are Tues. and Wed. evening, Aug. 11 & 12, until the Moon rises around midnight, but the nights before and after might also be worth a look. Perseus rises in the northeast but it's best to watch overhead where the sky is darkest.

* Naked-eye Planets. (The Sun, Moon, and planets rise in the east and set in the west due to Earth's west-to-east rotation on its axis.) Evening: Saturn and Mercury are low in the west at dusk as Jupiter rises in the east. Morning: Jupiter is the brightest object in the southwest with "morning star" Venus in the east and much fainter Mars well above it.

Stargazer appears every other week. Paul Derrick is an amateur astronomer who lives in Waco. Contact him at 918 N. 30th, Waco, 76707, (254) 753-6920 or paulderrickwaco@aol.com. See the Stargazer Web site at stargazerpaul.com.

2009 Property Tax Rates in City of Post

2009 Property Tax Rates in City of Post

This notice concerns 2009 property tax rates for City of Post. It presents information about three tax rates. Last year's tax rate is the actual rate the taxing unit used to determine property taxes last year. This year's effective tax rate would impose the same total taxes as last year if you compare properties taxed in both years. This year's rollback tax rate is the highest tax rate the taxing unit can set before taxpayers can start tax rollback procedures. In each case these rates are found by dividing the total amount of taxes by the tax base (the total value of taxable property) with adjustments as required by state law. The rates are given per \$100 of property value.

Last year's tax rate:

Last year's operating taxes	\$387,118
Last year's debt taxes	\$242,254
Last year's total taxes	\$629,372
Last year's tax base	\$122,948,712
Last year's total tax rate	0.511898 /\$100

This year's effective tax rate:

Last year's adjusted taxes (after subtracting taxes on lost property)	\$629,372
+ This year's adjusted tax base (after subtracting value of new property)	\$120,232,980
= This year's effective tax rate	0.523460 /\$100

(Maximum rate unless unit publishes notices and holds hearings.)

This year's rollback tax rate:

Last year's adjusted operating taxes (after subtracting taxes on lost property and adjusting for any transferred function, tax increment financing, state criminal justice mandate, and/or enhanced indigent health care expenditures)	\$387,117
+ This year's adjusted tax base	\$120,232,980
= This year's effective operating rate	0.321972 /\$100
x 1.08 = this year's maximum operating rate	0.347729 /\$100
+ This year's debt rate	0.566179 /\$100
= This year's total rollback rate	0.913908 /\$100
- Sales tax adjustment rate	0.195242 /\$100
= Rollback tax rate	0.718666 /\$100

Statement of Increase/Decrease

If City of Post adopts a 2009 tax rate equal to the effective tax rate of 0.523460 per \$100 of value, taxes would increase compared to 2008 taxes by \$0.

Schedule A - Unencumbered Fund Balances

The following estimated balances will be left in the unit's property tax accounts at the end of the fiscal year. These balances are not encumbered by a corresponding debt obligation.

Type of Property Tax Fund	Balance
---------------------------	---------

Schedule B - 2009 Debt Service

The unit plans to pay the following amounts for long-term debts that are secured by property taxes. These amounts will be paid from property tax revenues (or additional sales tax revenues, if applicable).

Description of Debt	Principal or Contract Payment to be Paid from Property Taxes	Interest to be Paid from Property Taxes	Other Amounts to be Paid	Total Payment
2009 Series Bonds	\$354,250	\$122,989	\$0	\$477,239
2006 Series C.O.'s	\$104,000	\$35,880	\$0	\$139,880
Fire Dept Lease Purchase	\$34,250	\$15,750	\$0	\$50,000
Total Required for 2009 Debt Service				\$667,119
- Amount (if any) paid from funds listed in Schedule A				\$0
- Amount (if any) paid from other resources				\$0
- Excess collections last year				\$0
= Total to be paid from taxes in 2009				\$667,119
+ Amount added in anticipation that the unit will collect only 98.00% of its taxes in 2009				\$13,615
= Total Debt Levy				\$680,734

Schedule C - Expected Revenue from Additional Sales Tax

In calculating its effective and rollback tax rates, the unit estimated that it will receive \$234,745 in additional sales and use tax revenues.

This notice contains a summary of actual effective and rollback tax rates' calculations. You can inspect a copy of the full calculations at 105 E. Main Street.

Name of person preparing this notice: Arbie Taylor
Title: City Manager
Date Prepared: July 29, 2009

The Road to Single-Payer Healthcare

By Dan Danner

House Speaker Nancy Pelosi and others in Congress have been talking a lot about how a government-run public option will lead to lower costs and more choices for health insurance. Nothing could be further from the truth. Instead, the reality is that a "public option" would restrict "choice" to a single plan: the government-run plan.

But what it's really intended to do, according to prominent leaders like U.S. Rep. Barney Frank of Massachusetts, is to put us on the road to single-payer, government-run healthcare. On a YouTube video that's making the rounds, he says, "If we get a good public option, it could lead to single-payer [healthcare] and I think that's the best way to reach single payer."

Sure enough, the House bill has elements that are deliberately designed to drive small business owners out of the private market and into the public option. For example, the bill includes a provision that would require employers above a certain revenue threshold to offer a health insurance plan, whether they can afford to or not.

If they don't, they're forced

to pay a tax of up to 8 percent of their total payroll. No matter how profitable or unprofitable a business might be, the owners are forced to pay this tax if they do not provide "qualified" health insurance to their employees.

The bill also establishes a confusing test that hits employers who already offer health insurance. Small businesses must, one, offer that qualified plan (determined by a government-appointed board); two, provide both individual and family coverage; and three, meet minimum contribution levels, which could be more than they are already paying, let alone can afford.

And if employees decline coverage and decide to go to the government-run option, the employer must also pay the payroll tax. All of these added expenses and new rules are likely to lead small business owners to throw up their hands and say it's cheaper to drop their plan and pay the tax.

As you can imagine, these ideas scare and outrage many small business owners, and rightly so. One owner told us, "How do I add expenses to my company when I've already lost \$100,000 this year and am just

desperately trying to survive? We lost one-third of our employees and the remaining ones are working reduced hours."

Another member wrote in, "Mandates are ineffective [and] this bill deprives me of my rights to determine how to use my resources. It harms small business and their employees—the very groups it is supposed to help."

The House bill simply will not work for small businesses. Small business owners, their employees and families are in dire need of health insurance reforms that will lower costs, increase competition and result in more choices for private health insurance.

That's why thousands of small business owner across the country are contacting their legislators while they are back home in August. Their message? If the president and Congress insist on going down the House's road, they will actually make things worse for small business. Anyone who values the contributions small businesses make to their communities and to the country should tell their representatives the same thing.

Social Security Holds Compassionate Allowances Hearing on Early-Onset Alzheimer's Disease

Michael J. Astrue, Commissioner of Social Security, today hosted the agency's fourth public hearing on Compassionate Allowances. Commissioner Astrue was joined by Marie A. Bernard, M.D., Deputy Director of the National Institute on Aging, National Institutes of Health, and other Social Security officials. They heard testimony from some of the nation's leading experts on early-onset Alzheimer's disease and related dementias about possible methods for identifying and implementing Compassionate Allowances for people with early-onset Alzheimer's.

"This year, through Compassionate Allowances and our Quick Disability Determination process, over 100,000 Americans with severe disabilities will be approved for Social Security disability benefits in a matter of days rather than the months and years it can sometimes take," said Commissioner Astrue. "We are now looking to add more diseases and impairments to these expedited processes. With today's hearing, we are expanding our focus from specific rare diseases and cancers to look at subgroups of much broader conditions. Early-onset Alzheimer's

disease is a rapidly progressive and debilitating disease of the brain that affects individuals between the ages of 50 and 65 and clearly deserves our consideration."

In October 2008, Social Security launched Compassionate Allowances to expedite the processing of disability claims for applicants with medical conditions so severe that their conditions by definition meet Social Security's standards. To learn more and to view a web cast of today's hearing, go to www.socialsecurity.gov/compassionateallowances.

"With the aging of the baby-boomers, we are beginning to see many more younger, working Americans diagnosed with this devastating disease," Commissioner Astrue said. "I want to thank the Alzheimer's Association and their staff, particularly Harry Johns, President and CEO. Their help has been invaluable and many of the witnesses are here at their suggestion. Together, we hope to identify the most severe cases that can be included in our Compassionate Allowances process."

The city of Post
observed its
Centennial in 2007.

Motley County Chamber to sponsor a foothills fiesta

The Motley County Chamber of Commerce will sponsor music, food, booths, and dancing in the street on August 22, 2009, from 5:30 to 10:00 p.m.

At 7:00 p.m. entertainment will feature local artists with performances by Chloe and Dode Gleghorn, Sage Guerrero, and Andrew Seigrist. Former resident Max Barton with his Flashback Band will also perform, specializing in 1970s music. Guests are invited to bring their lawn chairs to watch the festivities, dance in the street, or join in the fun with booths to sell crafts, jewelry, or other wares.

Hamburgers with chips, drink and dessert will only cost \$5.00; hot dogs will be free to children under the age of six.

"The chamber has planned the foothills fiesta as a family event," Chamber President Dianne Washington said. "Young, old and in between are encouraged to attend this end-of-summer event," she said, adding, "donations of brownies, rice crispy squares and other easy to eat goodies would be appreciated."

"Any suggestions to help make this a fun night would also be appreciated," she said. "Please call 347-2636 or 347-2820 with suggestions or for information on donating brownies."

In addition, call 806-347-2939 to reserve 10x10-foot booth space. Booth fees are waived for Motley County Chamber of Commerce members.

The Flashback Band has been performing together for seven years and has "wowed" crowds at many local festivals. Some of the festivals include Fort Worth's May-Fest, Main Street Arts Festival and several Cowtown Marathon Finish Line celebrations, Whitney's Pioneer Days Festival and many local venues including where it all started, The Stagecoach Ballroom in Fort Worth.

The group has appeared at venues such as Cristina's Mexican Restaurants, in Roanoke Trophy Club and Flower Mound, The Rig Steakhouse in Fort Worth and at many private functions throughout Texas.

Flashback prides themselves in delivering the

same performance whether they are performing for hundreds at any local venue or for thousands such as the Ameriplan's Group's "A Musical Journey Through Time" with thousands packing Trinity Hall at the Anatole Hotel in downtown Dallas, Max Barton said.

Meet the members of Flashback:

Glenn "T" Urquhart has been involved with music since childhood. He participated in various choral groups over the years and was the Director of Events and Functions for a large fraternal organization. His love for performing has continued to grow. Glenn's enthusiasm, organizational skills and leadership have helped to bring Flashback together.

Max Barton is a former resident and graduate of Matador High School. He began singing at the age of four with his older sisters. At age eight he won his first amateur contest. After performing in bands in high school and college, he began singing on a more professional level. He sang lead with "The Viscounts" who performed for various recording artists and opened for Bobby Vee and Glen Campbell. Max is a long time member of BMI and ASCAP and continues to write music in hopes of a publishing contract one day.

Tracey Howard began singing at the age of three. She soon began performing with her family in community stage musicals. Her experience includes years of "a cappella" training as well. In college Tracey traveled with "Baker's Dozen" and performed with the Waylon Jennings Bluegrass band. She continued her interest in performing over the years. Tracey's versatility and experience are a perfect complement to Flashback's vocal style.

Jay Hubbard is from a family of professional musicians. He began playing guitar at age 16 after seeing Chet Atkins live in concert. Other early influences were Jay's Dad, fiddler Carroll Hubbard of the Light Crust Doughboys and recording artist Ray Price. With a history of inspiration to entertain Jay he began singing, writing and recording three- and four-part harmonies in the early 1990s.

NRCS Texas Announces Sign-up for the New Conservation Stewardship Program

TEMPLE - Natural Resources Conservation Service (NRCS) state conservationist for Texas, Don Gohmert, announced a sign-up beginning on Aug. 10, 2009, for the new Conservation Stewardship Program (CSP) to assist agricultural and forestry producers. CSP is a new program authorized in the 2008 Farm Bill.

"Farmers and ranchers actively engaged in conservation land stewardship have the opportunity to earn conservation rewards through CSP," Gohmert said. "This program gives conversation-minded producers the ability to apply and build on their current stewardship efforts."

CSP is a five-year program which offers continuous sign-up, but all eligible applicants who sign up between Aug. 10 and Sept. 30,

2009, will be ranked as a group in October and November. A second ranking of subsequent applications will likely take place again in January or February.

CSP replaced a program authorized in the 2002 Farm Bill, the Conservation Security Program which was only offered on a watershed-specific basis. The new CSP is now available to landowners statewide.

Gohmert noted only top stewards will be awarded contracts for CSP and receive funding.

NRCS encourages farmers and ranchers actively involved in conserving their natural resources to apply for CSP in order to maintain existing conservation activities and implement additional enhancements or practices on their land.

"CSP is for the best of the best

stewards," Gohmert said. "We have many land stewards in Texas that are worthy of this recognition, and I encourage them to apply."

Lands eligible for CSP include cropland, grassland, pastureland, and private nonindustrial forestland, a new land use for the program. Agricultural land under the jurisdiction of an Indian tribe is expressly eligible as well.

The CSP application process begins with a self-screening checklist. Interested producers can obtain additional information from the NRCS website at http://www.nrcs.usda.gov/programs/new_csp/csp.html or contact their local USDA-NRCS field office.

Gov. Perry Announces Second ETF Investment in Halsal Pharmaceuticals Enzyme stymies Alzheimer's effects in mice

AUSTIN - Gov. Rick Perry today announced the state will invest \$750,000 in Halsal Pharmaceuticals Inc. of Houston through the Texas Emerging Technology Fund (ETF). This investment follows a \$250,000 deal announced in March 2008, and will fund additional development of Halsal's treatment for obesity and diabetes.

"Obesity continues to threaten more than 10 million Texans' quality of life, and is closely associated with serious diseases such as heart disease, diabetes, stroke and cancer," Gov. Perry said. "This continued ETF investment will help Halsal further develop their groundbreaking treatment for this disease, and help save lives, prevent further health issues and control medical costs."

Halsal Pharmaceuticals is a biotechnology company developing therapeutics for the treatment of obesity, diabetes, cancer cachexia and other metabolic diseases. In Texas, an estimated 28 percent of adults suffer from obesity, and 9 percent suffer from Type II diabetes, which cost the state billions of dollars in direct medical costs and loss of productivity.

"The initial ETF investment was intended to allow Halsal to reach certain milestones, important technical achievements that would indicate appropriate progress in the development of this medicine," ETF Director Alan Kirchoff said. "Halsal has shown clear and convincing evidence

that these milestones have been attained, and we look seeing the development of this technology."

"The ETF investment, in combination with capital raised from private investors, has allowed Halsal to move forward on a number of fronts," Halsal CEO Phil Seros said. "Not only were we able to achieve the technical milestones we set, but we've advanced in other important areas such as intellectual property and business development."

Halsal holds exclusive patent rights to ZAG (Zinc-alpha-2-glycoprotein), a natural material that is expected to cause immediate and substantial depletion of body fat when injected by a physician into an obese patient. The drug may have applications in diabetes treatment as well. Halsal is developing an injectable product using recombinant human ZAG to help restore ZAG levels to normal in patients, which will diminish body fat and the metabolic symptoms of diabetes.

The ETF is a \$200 million initiative created by the Texas Legislature in 2005 at the governor's request, and reauthorized in 2007 and again this session with \$203.5 million for the 2010-2011 biennium. A 17-member advisory committee of high-tech leaders, entrepreneurs and research experts reviews potential projects and recommends funding allocations to the governor, lieutenant governor and speaker of the House. To date, the ETF has allocated more than \$99 million in funds to 78 early stage companies.

The population of Post reached its highest level of 4,800 in 1964

NOTICE OF PUBLIC MEETING TO DISCUSS BUDGET AND PROPOSED TAX RATE

The Post Independent School District will hold a public meeting at 7:30 p.m. August 25, 2009 in Post I.S.D. Administrative Offices, 501 South Avenue K Post, Texas. The purpose of this meeting is to discuss the school district's budget that will determine the tax rate that will be adopted. Public participation in the discussion is invited.

The tax rate that is ultimately adopted at this meeting or at a separate meeting at a later date may not exceed the proposed rate shown below unless the district publishes a revised notice containing the same information and comparisons set out below and holds another public meeting to discuss the revised notice.

Maintenance Tax \$ 1.0012/\$100 (Proposed rate for maintenance and operations)

School Debt Service Tax

Approved by Local Voters \$ 0.00/\$100 (proposed rate to pay bonded indebtedness)

Comparison of Proposed Budget with Last Year's Budget

The applicable percentage increase or decrease (or difference) in the amount budgeted in the preceding fiscal year and the amount budgeted for the fiscal year that begins during the current tax year is indicated for each of the following expenditure categories:

Maintenance and operations	9.00 % increase	or 0.00 % (decrease)
Debt service	0.00 % increase	or 0.00 % (decrease)
Total expenditures	0.00 % increase	or 0.00 % (decrease)

Total Appraisal Value and Total Taxable Value (as calculated under Section 26.04, Tax Code)

	Preceding Tax Year	Current Tax Year
Total appraised value* of all property	\$ 840,510,470.00	\$ 727,922,890.00
Total appraised value* of new property**	\$ 3,299,020.00	\$ 2,788,930.00
Total taxable value*** of all property	\$ 821,677,531.00	\$ 709,125,339.00
Total taxable value*** of new property**	\$ 3,278,890.00	\$ 2,213,430.00

* "Appraisal value" is the amount shown on the appraisal roll and defined by Section 1.04(8), Tax Code.

** "New property" is defined by Section 26.012(17), Tax Code.

*** "Taxable value" is defined by Section 1.04(10), Tax Code.

Bonded Indebtness

Total amount of outstanding and unpaid bonded indebtedness* \$ 0.00

* Outstanding principal

Comparison of Proposed Rates with Last Year's Rates

	Maintenance & Operations	Interest & Sinking Fund*	Total	Local Revenue Per Student	State Revenue Per Student
Last Year's Rate	\$ 1.0012	\$ 0.00*	\$ 10012	\$ 9,156.00	\$ 2,536.00
Rate to Maintain Same Level of Maintenance & Operations Revenue & Pay Debt Service	\$ 1.08361	\$ 0.00*	\$ 1.08361	\$ 8,351.00	\$ 4,024.00
Proposed Rate	\$ 1.0012	\$ 0.00*	\$ 1.0012	\$ 7,619.00	\$ 4,051.00

* The Interest & Sinking Fund tax revenue is used to pay for bonded indebtedness on construction, equipment, or both. The bonds and the tax rate necessary to pay those bonds, were approved by the voters of this district.

Comparison of Proposed Levy with Last Year's Levy on Average Residence

	Last Year	This Year
Average Market Value of Residences	\$ 38,518.00	\$ 39,884.00
Average Taxable Value of Residences	\$ 27,246.00	\$ 26,386.00
Last Year's Rate Versus Proposed Rate per \$100 Value	\$ 1.0012	\$ 1.0012
Taxes Due in Average Residence	\$ 272.79	\$ 264.17
Increase (Decrease) in Taxes		\$ 8.62

Under state law, the dollar amount of school taxes imposed on the residence homestead of a person 65 years of age or older or of the surviving spouse of such a person, if the surviving spouse was 55 years of age or older when the person died, may not be increased above the amount paid in the first year after the person turned 65, regardless of changes in tax rate or property value.

Notice of Rollback Rate: The highest tax rate the district can adopt before requiring voter approval at an election is **1.04**. This election will be automatically held if the district adopts a rate in excess of the rollback rate of **1.04**.

Fund Balances

The following estimated balances will remain at the end of the current fiscal year and are not encumbered with or by a corresponding debt obligation, less estimated funds necessary for operating the district before receipt of the first state aid payment:

Maintenance and Operations Fund Balance(s) \$ 8,424,072.68

Interest & Sinking Fund Balance(s) \$ 0.00

Close City News... Continued from Page 5

close.citycoop@pcca.com Make sure all recipes have a name on them so that we can give them proper credit. We will be contacting many of you later on to help do some baking for the Festival, if you would like to help in anyway call me (Traci) @ 632-3611 or Nancy @ 239-0838

Don't forget our "Ragtown" folks in the nursing homes; Doug and Claudine Tipton and Carmen Abraham in Post; Jewel White in Lubbock; Jean Tipton and Odie Kemp in Tahoka. If I need to add anyone to this list, please let me know.

Everyone have a great weekend and remember..... Keep our troops and rain in your daily prayers. Don't forget to check out our blog at http://closecitycoopin.blogspot.com.

Birthdays

- August 14 - Devon McClain
August 15 - Maria Contreras
August 17 - Fabien Marquez
August 20 - Bailey Pennell

Round-Up... Continued from Page 8

Monday, August 24th 2:30pm-3:30pm CDT McMurry University Campus, Amy Ryan Fine Arts Center/Recital Hall 14th & Sayles Blvd. Abilene, TX Lubbock Coffee Tuesday, August 25th 3:30 pm - 4:30 pm CDT Lubbock Chamber of Commerce, Basement-Level Conference Room 1301 Broadway Lubbock, TX Hereford Coffee Monday, August 31st 2:30 pm - 3:30 pm CDT Hereford Community Center, Banquet Room 100 Avenue C Hereford, TX Plainview Coffee Tuesday, September 1st 1:30 pm - 2:30 pm CDT Plainview ISD Education Complex Boardroom 2411 Yonkers Plainview, TX Big Spring Coffee Wednesday, September 2nd 3:00 pm - 4:00 pm CDT Hall Center for the Arts at Howard College 1001 Birdwell Lane Big Spring, TX Albany Coffee Thursday, September 3rd 10:30am-11:30am CDT Aztec Theatre 141 S Main St, Albany, TX 76430 Constituents interested in attending one of these meetings can visit my website, www.randy.house.gov, or call my office, toll free, at 888-763-1611 for additional details.

As always, when events unfold in Washington, I will be sure to update you. In the meantime, do not hesitate to visit my website or call my office toll free district wide at (888) 763-1611 or my Washington, DC office at 202-225-4005.

Commissioner Staples Ensures Texas Schools Have Option of Serving Meals During Flu Outbreak Closures

AUSTIN - During the H1N1 flu outbreaks last spring, numerous Texas schools closed, leaving an estimated 490,000 students without access to meals normally provided under the National School Breakfast and Lunch Programs. In response to a letter from Agriculture Commissioner Todd Staples to the U.S. Secretary of Agriculture, a change in federal policy was secured that will allow schools to serve meals, and receive federal reimbursement, during a public health emergency.

"We are committed to protecting students from illnesses and ensuring nutritious meal services continue," Commissioner Staples said. "There are thousands of children who depend on the meals served at school every day, and we want to make sure schools have the option of continuing

this crucial service, while still protecting those students from any public health threat."

The procedures will make it possible for school food authorities or school districts to be reimbursed for meals served as a "grab and go" option or through delivery. Specifically, schools should create a plan to distribute meals in a non-congregate setting to help minimize the spread of disease. Schools also should alert all families of meal service, in particular those families of students who are eligible for free and reduced meals.

For more information regarding access to school meals during an H1N1 closure, contact the TDA Food and Nutrition Division at 888 TEX KIDS (839-5437).

DPS unveils new recruiting tool



As part of its new recruitment effort, DPS is rolling out the first of seven graphically-enhanced vehicles that will be used by DPS recruiters as they travel across the state.

"These vehicles will be rolling billboards for DPS, featuring photos of helicopters, the Dive Team, SWAT, K-9, Highway Patrol and Texas Rangers—just some of the many opportunities available to anyone who chooses an exciting career with DPS," said David Baker, who oversees the Texas Highway Patrol.

Once the current recruit class graduates in October, DPS will have 244 commissioned vacancies, and the Legislature authorized 80 new commissioned positions. The next recruit class starts in September.

"DPS will be more aggressive and creative in recruiting in the coming months, but quality not quantity is our goal," said DPS Director

Steve McCraw. "We want to thank the Texas Legislature for the additional positions and for authorizing a pay increase, which will help our recruiting efforts."

Trooper William Abel, a recruiter based in Corpus Christi, came up with the idea for the new Tahoes to assist in marketing the Department to prospective recruits.

Anyone interested in a DPS career can contact the toll-free recruiting hotline, 1-866-TX TROOP (1-866-898-7667), or visit the DPS Web site, www.tadps.state.tx.us. They can also pick up an application packet from the nearest DPS office.

Applicants must be U.S. citizens, at least 20 years of age and have completed 90 hours of college credit or an associate's degree. Law enforcement or military experience may be used toward fulfilling the college requirement.

We Appreciate you, our Readers!

Beef Cattle Nutrition Workshop planned for Aug. 13

PAMPA - Monitoring forage intake and quality is a critical element of cattle herd health and profitability, according to Texas AgriLife Extension Service specialists and agents.

A free Beef Cattle Nutrition Workshop on Aug. 13 on the Chisum Ranch headquarters in Roberts County, will focus on evaluating forage supply and demand. The workshop will open with a noon lunch provided by Panhandle Plains Land Bank and the program will begin at 12:45 p.m.

Chisum Ranch is located 2 miles off U.S. Hwy. 70 at Reynolds Ranch Road, which is 18 miles north of Pampa. Signs will be posted, said Brandon McGinty, AgriLife Extension

agriculture and natural resources agent for Gray County.

"Whether you are grazing native pastures, improved pastures or even forage sorghums, it is important to know what nutrients the forage is supplying to your beef herd, as well as risks that exist from issues like prussic acid and nitrate poisoning," McGinty said.

Those planning to attend should contact one of the following AgriLife Extension offices by Aug. 10: Carson County, 806-537-3882; Gray County, 806-669-8033; Roberts County, 806-868-3191; and Armstrong County, 806-226-3021.

Topics and speakers will be:

• Forage quality issues and sampling, Dr. Ted McCollum, AgriLife Extension beef cattle specialist.

• Estimating forage availability, Clint Rollins, Natural Resources Conservation Service range specialist.

• Determining stocking rates, Rollins.

• Having your cake and eating it too: Balancing the demands of livestock and wildlife, Ken Cearley, AgriLife Extension wildlife specialist.

• Cattle markets and updates, Dr. Steve Amosson, AgriLife Extension economist.

Three general continuing education credits will be offered to pesticide applicators.

Don't Miss the Chance... Hug A Kid Today!

Russell Graves Outdoors

WHEN THE EARTH OPENS - Part 3 A unique wildlife habitat

By Russell A. Graves

On my tour of Texas sinkholes, I felt it important to see the most prominent natural sinkhole in all of the state - the Devil's Sinkhole. So in July 2007, I took my family to witness the nightly bat flight and see the sinkhole firsthand.

At the Devil's Sinkhole Visitors' Center in Rocksprings, we boarded a bus painted in a bat motif to take a tour of the Texas Parks and Wildlife managed property. On the way out, tour guide Ben Banahan gave us a brief rundown on the history of the sinkhole and how a local rancher discovered it in the late 1800s. We arrived at the property well before sunset and had a chance to explore the area around the sinkhole. The landscape was typical of the Edwards Plateau - plenty of juniper, prairie grasses and cactus. Heavy rocks rimmed the sinkhole, and as I walked onto the observation deck, I was amazed how deep the hole plunged straight down.



The sinkhole is 351 feet deep, although I could see only about 200 feet down. The smell of moist cave air and bat guano belches up from the sinkhole's depths. Understandably, the sinkhole is a source of local lore, and it almost became a source of wealth also. Guano miners tried to harvest the abundance of bat droppings that were once a valuable source of fertilizer as well as an ingredient in gunpowder. Mining the guano proved too difficult and the effort was abandoned.

Right at sunset, I noticed the first flicker of bat wings emerging from the sinkhole. A few minutes later, thousands exited and streamed to the agricultural fields to the southeast. In only about a half hour's time, more than 3 million bats emerged from the sinkhole's depths.

Randy Rosales, superintendent of the Devil's Sinkhole State Natural Area, understands the importance of sinkholes as wildlife habitat. "Sinkholes provide a unique environment which can support life for important plants and wildlife," he says. "These bats can consume up to 30 tons of beetles and moths per night, many of which are agriculture pests. That's the weight of about 20 mid-size cars or 15 elephants!"

Rosales says that other types of wildlife live in the sinkhole as well. About 3,000 cave swallows nest in the hole, as well as a myriad of beetles and insects that feed on dead bats and guano. At the bottom of the sinkhole, where a small subterranean lake formed, you'll find a small shrimp-like creature known as the Devil's Sinkhole amphipod (Stygobromus hadenoecus). It lives only in this one spot and nowhere else on earth.

"The bat flights at night attract many predators as well, some that even roost inside the sinkhole, like the great horned owl. Oftentimes you can see owls catching bats as they exit the cave," he explains.

Sinkholes all over Texas, both big and small, provide habitat for skunks, raccoons, snakes, salamanders and a host of other creatures. Ferns and other plant life can thrive in sinkholes as well. Archaeological records show that the Bering Sinkhole in Kerr County was used as a cemetery by people 5,500 years ago.

In August 2007, Jason Smith and I again headed to the Lakeview sinkhole to take some pictures. I scanned the ground below as Jason piloted the helicopter. From our bird's-eye view, I spotted numerous sinkholes. In fact, Jason has an oval-shaped one on his ranch atop a big hill.

As we circled the Lakeview sink, I noticed two more sinkholes in close proximity. While they probably won't grow to the size of the big sinkhole, their presence alters the way the farmer cultivates his land. It seems that no matter how much man manipulates his surroundings, he never is in complete control - especially in sinkhole country.

Sponsored by:



Any questions or comments? Contact Russell at russell@russellgraves.com or visit his website at www.russellgraves.com

russellgraves.com

PAID CDL TRAINING! NO EXPERIENCE NEEDED! Stevens Transport, the premier refrigerated carrier in the US, sponsors the total cost of your CDL training! In 17 short days you will earn your CDL and begin your paid on-the-job training! Potential to earn up to \$40K first year! Excellent benefits and 401K! For more information, call 800-333-8595 www.becomeadrivers.com

Urgent news for people diagnosed with MESOTHELIOMA Exposure to asbestos is usually the cause of mesothelioma, a serious cancer. Whoever exposed you to asbestos should be held responsible. Call us now toll free at 1-800-THE-EAGLE for a free consultation. We practice law only in Arizona, but associate with lawyers throughout the U.S. GOLDBERG & OSBORNE 1-800-THE-EAGLE (1-800-843-3245) www.1800theeagle.com Open 7 days a week

Mesothelioma EXPERIENCE COUNTS Lawyers with over 90 years combined expertise. Ryan A. Krebs, M.D., J.D. Doctor-Lawyer in Full-time Law Practice Richard A. Dodd, L.C. Timothy R. Cappolino, P.C. Board Certified Personal Injury Trial Law and Civil Trial Law by the Texas Board of Legal Specialization NO FEE FOR FIRST VISIT GARDEN, TEXAS 1-888-MESO-FIRM (1-888-637-6347) www.AsbestosLaw.com

REGLAN Parkinson's Like Symptoms Tongue Protrusions Frowning, Facial Twitching Willis Law Firm HOUSTON, TEXAS BOARD CERTIFIED PERSONAL INJURY TRIAL LAWYER Texas Board of Legal Specialization DAVID P. WILLIS - ATTORNEY AT LAW 1-800-883-9858

HOME PHONE SERVICE 1st Month FREE with Lifeline Starting at \$13.49/mo • \$0 Deposit NO Credit Check • NO Contracts Everyone Approved! Restrictions May Apply. NEWTALK 866.934.3448

FREE DIRECTV 5 MONTHS! ALL 265+ DIGITAL CHANNELS! 130 HD CHANNELS! Plus HBO, Cinemax, Showtime & Starz! ALL FREE FOR 5 MONTHS! Ask How FREE DVR/HD We're Local Installers! Toll Free 800-214-7110 DirectStarTV



Lots of Garza County residents and visitors enjoyed last weekend's Post Stampede Rodeo held at the Post Stampede Rodeo Arena. The 69th Annual event drew large crowds during its three-night performance. Among the events were bronc riding, steer wrestling, calf roping, barrel racing, a junior flag race and mutton bustin.

Photos by Rosa Latimer



Congratulations Garza County 4-H Best of Show in Parade



We salute these Garza County 4-H students for winning the annual rodeo parade Best of Show award, which was sponsored by Xcel Energy. The students won \$250 for the top prize.



CitizensBANK

www.bankoncitizens.com

Post, Texas (806) 495-3545

Lobby Hours 9-3 M-F
Drive In Hours 9-6 M-F
9-12 Sat

Member FDIC



Thanks For Reading!
The Post Dispatch

SPARTAN TRANSPORTATION

SCHOOL ROUTES For students attending

Post Schools
Come by and complete
Application forms at:
Garza County Center
SPARTAN TRANSPORTATION
South Hwy. 84
Post, TX 79356
Or
Call 495-2329 or
800/462-8747
for an application packet

New student passengers
Are placed on routes
On a first come, first served basis

\$14.00 per week paid in advance